

1 Metabolic alterations in Crohn's disease: A Systematic Review

2 Atul Dev¹, Sartajdeep Kahlon¹, Jonathan Javier Ruiz¹, Avinash Chandra Kushwaha¹, Megan G.
3 Van Noord,² Sean H. Adams³, Kim Elaine Barrett⁴, Adam Paul Arkin⁵, Maneesh Dave^{1,6}

4

5 Author Affiliations:

6

7 ¹Division of Gastroenterology and Hepatology, Department of Internal Medicine, UC Davis
8 Medical Center, University of California Davis School of Medicine, Sacramento, CA, United
9 States

10 ²Researcher Services, University Library, University of California, Davis, Davis, CA 95616

11 ³Department of Surgery and Center for Alimentary and Metabolic Science, University of
12 California Davis School of Medicine, Sacramento, CA, United States

13 ⁴University of California Davis, School of Medicine, Sacramento, CA, United States

14 ⁵Department of Bioengineering, University of California Berkeley, Berkeley, CA, United States

15 ⁶Department of Internal Medicine, Institute for Regenerative Cures, University of California Davis
16 School of Medicine, Sacramento, CA, United States

17

18 Correspondence:

19 Maneesh Dave, MD, MPH

20 Associate Professor of Medicine

21 Division of Gastroenterology and Hepatology

22 University of California Davis

23 Institute for Regenerative Cures,

24 Suite 1615, 2921 Stockton Blvd,

25 Sacramento, California 95817

26 Tel: 916-734-3751

27 Email: mdave@ucdavis.edu

28

29 **Conflict of Interest Disclosures:** SHA is founder and principal of XenoMed LLC, which has
30 interest in microbial metabolism; however, XenoMed had no role in the analyses or writing of the
31 manuscript.

32

33 **Keywords:** Crohn's disease; metabolomics, metabolites, bile acids, lipids and fatty acids, biogenic
34 amines, gut dysbiosis.

35

36

37

38

39

40

41

42

43

44

45

46 **Abstract**

47

48 **Background:** Crohn's disease (CD) is a chronic inflammatory disorder of the gastrointestinal tract
49 with an unknown etiology. Several studies have identified dysregulated metabolites in patients
50 with CD. However, there is significant variability in the metabolites found to be dysregulated
51 across these studies, making it unclear whether a comprehensive, disease-specific metabolic
52 signature for CD exists.

53 **Objective:** To analyze Crohn's disease-specific metabolomic studies and available datasets to
54 identify a comprehensive signature of dysregulated metabolites and metabolic pathways
55 implicated in human CD.

56 **Design:** A comprehensive systematic review was conducted using Medline and Embase databases
57 to identify studies (from inception to May 2024) that employed analytical chemistry techniques to
58 quantify metabolites in various biological samples from Crohn's disease patients and non-IBD
59 controls. Metabolites that were significantly altered in Crohn's patients and reported in at least two
60 studies were included for further analysis.

61 **Results:** The systematic search identified 3,632 studies, with 88 selected for data extraction.
62 Across these studies, 79 metabolites were consistently reported as significantly altered in Crohn's
63 disease (CD) patients in two or more studies. These metabolites form a distinct metabolic signature
64 that differentiates CD patients from non-IBD controls, highlighting their relevance in the
65 pathophysiology of the disease.

66 **Conclusion:** This systematic review presents a comprehensive and well-defined signature of
67 dysregulated metabolites across various biological samples and provides detailed insight into the
68 perturbed metabolic pathways involved in CD.

69

70 **1. Introduction**
71

72 Inflammatory bowel disease (IBD), consisting of Crohn's disease (CD) and ulcerative colitis
73 (UC), is a chronic relapsing-remitting inflammatory disorder of the gastrointestinal (GI) tract.[1]
74 CD is characterized by transmural inflammation along any part of the digestive tract, which may
75 lead to complications such as abscesses, fibrotic strictures, or fistulas.[2] The pathogenesis of CD
76 involves epithelial barrier dysfunction, immune dysregulation, and gut dysbiosis.[3] These
77 disruptions alter metabolic pathways, which may contribute to the initiation and/or perpetuation
78 of chronic inflammation.[4]

79 Recent advancement of "omics" technologies has significantly enhanced our understanding of
80 Crohn's disease (CD) pathophysiology. Among these, metabolomics has emerged as a promising
81 field focused on the systematic identification and quantification of small molecules (metabolites)
82 in biological samples.[5] Each metabolite, with its unique chemistry and function, provides
83 valuable insights into the metabolic processes occurring in the body, offering a window into the
84 molecular and cellular changes that distinguish healthy individuals from those with disease.
85 Current metabolomics platforms utilize both targeted and untargeted approaches, employing a
86 range of high-throughput analytical techniques to detect and characterize metabolites, providing
87 detailed information about their structure and concentration.

88 As CD is a complex disease, identifying dysregulated metabolites can enhance our understanding
89 of the metabolic perturbations associated with the disease and potentially inform the development
90 of more effective, targeted therapies. Although numerous studies have quantified and compared
91 dysregulated metabolites in IBD patients versus non-IBD controls, significant differences exist
92 due to differences in patient populations, disease location, biological sample types, and detection
93 techniques. This systematic review aims to synthesize and evaluate all reported studies and

94 datasets on dysregulated metabolites in a diverse, global CD population, with the goal of
95 identifying a unique, comprehensive metabolite signature. By compiling these altered metabolites,
96 we aim to provide a detailed overview of the metabolic changes associated with CD, contributing
97 to a more precise molecular understanding of its pathophysiology.

98 99 **2. Methods**

100 We followed the standard PRISMA statement for performing and reporting systematic review.
101

102 103 **2.1 Search strategy**

104 A comprehensive literature search was conducted using the Medline and Embase databases (from
105 inception till May 2024). The search was independently performed by authors (AD, SK, JJR and
106 ACK) with the help of researcher services librarian (MGVN). Four authors (AD, SK, JJR and
107 ACK) performed initial screening of the studies and resolved any discrepancies through consensus
108 with the senior author (MD). We used free text words and MeSH terms with and without Boolean
109 operators (“AND” and “OR”) to increase the sensitivity of the search (**supplementary table S1**).
110 The in-detailed search strategy, study inclusion and exclusion criteria, data analysis strategy are
111 available in **supplementary information**.

112 **3.0 Results and discussion:**

113 **3.1 Search results:** A total of 3632 studies were identified prior to excluding the duplicates [n =
114 91]. For initial screening, title and abstracts of 3541 studies were assessed and irrelevant studies
115 were excluded [n = 3422] if they were not original studies or did not directly reference CD,
116 analytical techniques, metabolomics, or metabolites. A total of 64 studies were resolved by
117 consensus with several studies having been initially excluded by one reviewer as they only
118 referenced UC or IBD but were eventually included as they conducted subgroup analysis of CD

119 patients. In total 119 studies were sought for full text review, among those, few studies were
120 removed [n = 31] for reasons including ‘wrong indication’, where studies did not include
121 metabolites, ‘wrong patient population’, where less than 10 CD patients were included or did not
122 utilize non-CD controls, ‘wrong comparator’ where comparison was not between CD patients and
123 non-IBD controls and where no analytical chemistry techniques was used to quantify the
124 metabolites. Consequently, 88 full text articles comprising in-total of 5658 CD patients and 5375
125 non-IBD controls were included as a part of the review. A PRISMA flow diagram associated with
126 this search is shown in **Figure 1**.

127 **3.2 Dysregulated metabolites in Crohn’s disease**

128 Metabolites play an important role in maintaining homeostasis in the human body. Prolonged
129 disruptions in metabolic pathways can lead to symptomatic phenotypes, with a disease-specific
130 signatures in biological tissues, that can be quantified using metabolomic analytical techniques.
131 **(Figure S1)**. In the following paragraphs we described metabolic perturbations in CD in the four
132 major classes.

133 **3.2.1 Lipids and Fatty acids:**

134 Fats, a combination of triglycerides (TGs) and fatty acids (FAs) are crucial components of cellular
135 membranes and play vital roles in energy storage, signaling, and structural integrity of the cells.
136 Alterations in these metabolites can disrupt biological processes, potentially leading to
137 pathological conditions such as CD. In our systematic review, we observed SCFAs abnormalities
138 in multiple biological samples of CD patients. Levels of butyrate/butyric acids were consistently
139 low in the stool samples; however, no consistent pattern was observed for acetate, propionate and

140 valerate. Butyrate is synthesized via breakdown of dietary fibers by microbiota present in the colon
141 and serves as the main energy source for colonocytes, meeting approximately 70% of their daily
142 energy demand.[6, 7] CD is characterized by gut dysbiosis, with studies showing that butyrate-
143 producing bacteria, such as *Faecalibacterium prausnitzii* and *Roseburia hominis*, are significantly
144 lower in CD patients,[8] and are likely responsible for the consistently low butyrate levels observed
145 in their stool samples. Butyrate maintains low oxygen levels in human colon, reduced butyric acid
146 in stool increases oxygen concentration in the lumen, and promotes aerobic bacteria overgrowth
147 further contributing to gut dysbiosis and contribute to activation of immune cells via multiple
148 inflammatory mechanism (**Figure S2**).[9] In an attempt to restore the lost microbial diversity of
149 butyrate producing bacteria in CD patients and to reverse mucosal inflammation, Vaughn et al.[10]
150 performed a prospective open-label study of fecal microbiota transplant (FMT) from healthy
151 controls. In this open-label study FMT was overall safe and expanded the existing microbial
152 bacterial diversity in active CD patients, although, there was variable response in clinical
153 symptoms of CD, indicating that there are multiple contributing factors which governs the disease
154 etiology. In addition to dysregulated levels of butyrate in stool, 2-hydroxybutyrate (2HB), which
155 is non-conventional form of SCFAs and considered as ketone body, showed consistent elevated
156 levels in serum samples of CD patients. Humans produce high levels of ketone bodies like 2HB
157 during increased oxidative and metabolic stress or during increased energy demand in
158 inflammatory disease like CD. Another potential reason for increased levels of 2HB in the serum
159 is the contribution from the microbial metabolism in human gut. In a recent study, Qin et al [11]
160 showed that human gut microbiota produces 2HB from methionine, threonine, aspartic acid and
161 2-aminobutyric acid metabolism. In our systematic review, we observed elevated levels of
162 methionine and threonine in the biopsy samples of CD patients [12, 13] and abundance of

163 *Bacteroidetes* is well known in CD, therefore, providing a possible explanation of increased serum
164 levels of 2HB in CD patients.

165 In addition to SCFAs, levels of mono-unsaturated fatty acids (MUFAs) and poly-unsaturated fatty
166 acids (PUFAs) were consistently dysregulated in serum samples of CD patients; MUFAs (Oleic
167 acid and Palmitoleic acid) were consistently elevated, while PUFAs, omega-3 fatty acids
168 (Eicosapentaenoic acid; EPA, Docosopentanoic acid; DPA, Docosahexaenoic Acid; DHA) and
169 omega-6 fatty acid (Arachidonic Acid; AA) were consistently low. Elevated levels of oleic acid,
170 palmitoleic acid, linoleic acid (LA) in serum samples of CD patients could be a sign of preferential
171 consumption of fat rich diet or presence of genetic polymorphism in genes responsible for the FAs
172 metabolism. Several studies have shown the presence of genetic polymorphism in PUFA
173 metabolism in CD.[14, 15] The *FADS2* gene which catalyze the conversion of LA and ALA (Alpha
174 linolenic acid) into longer chain omega-6 and omega-3 PUFAs (EPA, DHA and AA) is often
175 dysregulated in CD.[16] In a recent study, mesenteric tissues obtained during ileocolonic resection
176 from CD patients showed decreased expression levels of *FADS2* compared to the healthy
177 controls.[17] The low expression of *FADS2* gene is one potential reason for the consistent low
178 levels of EPA, DHA, and AA in CD patients (**Table 2**) and Dietary restrictions and malabsorption
179 due to intestinal damage could further impair the intake and absorption of essential FAs required
180 for the synthesis of EPA, DPA, DHA and AA, increased demand in inflamed tissues in CD result
181 in its further depletion from the serum. Further, epidemiologic studies have linked increased intake
182 of omega-3 fatty acids with a reduced risk of CD,[18] while, increased intake of omega-6 were
183 linked to high incidence of CD.[19] [20, 21]. Omega-3 and Omega-6 fatty acids show competitive
184 binding for the same enzyme complex, and depending on preferential binding, result in a cascade
185 of pro-inflammatory or anti-inflammatory factors.[22] Therefore, a ratio of omega-3 and omega-

186 6 PUFA is considered as a more significant measure to predict the course of disease rather than
187 individual levels of omega-3 and omega-6 PUFA. A higher omega-3: omega-6 ratio is associated
188 with decreased susceptibility in pediatric CD.[15] Further, there was a consistent dysregulation at
189 the levels of sphingolipids and ceramides in CD patients. Sphingolipids are one of the main
190 building blocks of eukaryotic cell membranes, consisting of a sphingoid backbone that is N-
191 acylated with various FAs to form several ceramide species.[23] As a class, sphingolipid and
192 ceramides were elevated in multiple biological samples in CD. However, different studies have
193 measured different sphingolipids and ceramides (varying the carbon chain length; C16, C18 etc.)
194 with little overlap in structure. Sphingolipids influence the function and trafficking of immune
195 cells by interacting with the cell surface receptors and intracellular signaling molecules. [23]
196 Ceramides, a central component of sphingolipid metabolism, can activate various stress signaling
197 pathways, to produce pro-inflammatory cytokines TNF- α and IL-1 β . [24] Furthermore, the
198 dysregulation of sphingolipid and ceramide metabolism in CD could exacerbates intestinal barrier
199 dysfunction, increasing permeability and facilitating the translocation of bacteria and other
200 antigens, which in turn perpetuates the inflammatory cycle (**Figure S3**). A detailed list of
201 dysregulated lipids and FAs in the biological samples from CD patients and non-IBD controls is
202 provided in **Table 1**.

203 **3.2.1 Biogenic Amines and Peptides**

204
205 A biogenic amine is a biologically synthesized molecule with one or more amine groups. Amino
206 acids (AAs) and the proteins are some of the most common examples of biogenic amines in the
207 human body. In our systematic review, we observed dysregulation in the serum levels of essential
208 amino acids (EAAs) and non-essential amino acids (NEAAs) in the CD patients. Five of nine
209 EAAs, including leucine (Leu), lysine (Lys), phenylalanine (Phe), valine (Val) and tryptophan

210 (Trp) were consistently low. Similarly, the levels of NEAAs including, tyrosine (Tyr), alanine
211 (Ala), and glutamine (Gln) followed a similar pattern in the serum and plasma samples of CD
212 patients. In contrast, elevated levels of EAAs Isoleucine (Ile) and the NEAAs Proline (Pro),
213 arginine (Arg) were observed in the serum. The low levels of EAAs could result from intestinal
214 damage caused by chronic inflammation in CD, which impairs nutrient absorption and reduces
215 their availability in serum. Abnormality in NEAAs, which are primarily synthesized by the human
216 body, indicate compromised AAs metabolism in CD patients. Additionally, active inflammation
217 leads to elevated levels of inflammatory cytokines like TNF- α , IL-6, and IL-1 β which promote
218 protein catabolism[25] to meet the increased demand for AAs by the immune cells, [26] causing
219 rapid depletion of certain preferential AAs from the serum.

220 Glutamine (Gln) and Ala are two of the most preferential fuel sources for immune cells, supporting
221 rapid proliferation and cytokine production. Additionally, gut cells utilize Gln to promote
222 enterocyte proliferation, regulate tight junctions, and protect cells from apoptosis and stress under
223 normal and pathological conditions[27]. Consistent low serum levels of Gln and Ala in CD patients
224 suggest chronic inflammation and a high immune cell demand, potentially leading to their
225 depletion in plasma and serum. [28] Interestingly, despite low serum levels, Ala was noted to be
226 highly elevated in the stool samples of CD patients. Ala is a microbial metabolite produced by
227 *Proteobacteria* in the human gut. A recent microbiota characterization study of IBD patients in
228 Denmark by Andersen et al [29] showed a significant increase in the *Proteobacterium* phylum in
229 CD patients, potentially explaining the elevated levels of Ala in stool samples of CD patients.

230 In a separate category of AAs, Leucine (Leu), and Valine (Val) known as branched chain amino
231 acids (BCAAs), play an important role in the regular function of human immune cells and the
232 maintenance of muscle mass.[30] These BCAAs were depleted in the serum samples of CD

233 patients, while levels of another BCAA isoleucine (Ile) were consistently elevated. The gut
234 dysbiosis associated with CD can result in imbalance in the Ile metabolizing bacteria, which may
235 lead to its preferential synthesis or poor catabolism, contributing to elevated levels in serum. While
236 the changes in BCAAs levels have been well reported in several diseases like diabetes, however
237 their role in CD, particularly regarding their serum and plasma levels and its clinical implications
238 remain less clear. It is plausible that the dysregulation of BCAAs may reflect chronic
239 inflammation, elevated mitochondrial oxidation, and altered gut microbiota.

240 Further, aromatic AAs such as Trp, Phe and Tyr levels were consistently low in the serum and
241 plasma samples of CD patients, while highly elevated in stool samples. Enterocytes absorb and
242 transport Trp via B⁰AT1 (encoded by *SLC6A19*) and TAT1 transporters (encoded by *SLC16A10*).
243 The *SLC6A19* transporter expressed primarily in small intestine, with lower levels in the colon. A
244 previous study showed *SLC6A19* and *SLC16A10* gene expression were significantly
245 downregulated in colon and ileal biopsies of active UC and CD patients respectively.[31] This
246 downregulation could be linked to the decreased absorption of Trp, resulting in low serum levels.
247 Consequently, reduced absorption of Trp allows excessive excretion in the stool, causing elevated
248 levels in CD patients. In addition to Trp metabolism alterations, we observed dysregulation in the
249 Tyr and Phe metabolic pathways in CD patients. The low serum levels of Phe and Tyr may be
250 attributed to the disruptions in several key metabolic pathways, including the conversion of Phe to
251 Tyr, catecholamine synthesis, and protein metabolism. Malabsorption may further contribute to
252 their poor absorption and increased stool levels, while increased metabolic demands in CD could
253 reduce Phe levels, subsequently leading to decreased Tyr levels in the serum.[32, 33] In addition
254 to aromatic AAs, levels of creatine, an endogenous AA, are significantly elevated in the serum and
255 plasma samples of CD patients compared to non-IBD controls. Human body synthesizes creatine

256 from methionine, arginine, and glycine and uses it as an energy source for muscles. Higher serum
257 creatine levels indicate increased energy requirement in the muscles due to metabolic stress and
258 inflammation. Other AAs, such as methionine, histidine, aspartic acid, arginine, ornithine, were
259 also dysregulated in CD patients; however, we did not find any consistent trend in their
260 dysregulation. A complete list of dysregulated biogenic amines and AAs in biological samples
261 from CD patients and non-IBD controls is provided in **Table 2**.

262

263 **3.2.2 Bile acid and bile salts**

264

265 Bile acids (BAs) are essential components of bile and crucial for the emulsification and absorption
266 of dietary fats and fat-soluble vitamins. BAs are synthesized in the liver from cholesterol and are
267 termed as primary BAs (cholic acid; CA and chenodeoxycholic acid; CDCA). The human body
268 maintains a pool of BAs in enterohepatic circulation, which is primarily (>90%) composed of
269 conjugated CA, CDCA and deoxycholic acid (DCA); with lithocholic acid (LCA), and
270 ursodeoxycholic acid (UDCA) present in traces amount. Approximately 95% of intestinal BAs are
271 reabsorbed in the terminal ileum via the apical sodium-dependent bile acid transporter (ASBT)
272 and by passive diffusion into the hepatic portal vein, with residual ~5% BAs pool excreted through
273 the feces.[34] The gut microbiota plays a central role in the maintaining the of BAs pool through
274 enzymatic deconjugation and dehydroxylation reactions, producing unconjugated primary and
275 secondary BAs. The gut microbiome deconjugates primary BAs via bile salt hydrolase (BSH);
276 while $7\alpha/\beta$ -dehydroxylases and hydroxysteroid dehydrogenases (HSDHs) are responsible for
277 dehydroxylation and epimerization into secondary BAs.[35] *Bacteroides spp.* play a major role in
278 deconjugation of primary BAs, while *Firmicutes* are responsible for the $7\alpha/\beta$ -dehydroxylation.[36]
279 Gut dysbiosis, common in CD, is characterized by an abundance of *Bacteroides* [4, 37] and loss

280 in diversity of *Firmicutes*. [38] Dysregulation of these microbiota strongly affects the BAs
281 homeostasis in human gut, resulting in altered BAs profile (low serum levels of Taurocholic acid;
282 TCA, Glycholic acid; GCA, Taurochenodeoxycholic acid; TCDCA, Glycochenodeoxycholic acid;
283 GCDCA, Taurodeoxycholic acid; TDCA, Glycodeoxycholic acid; GDCA, Glycolithocholic acid;
284 GLCA, Tauroursodeoxycholic acid; TUDCA) and low stool levels of DCA, LCA, and UDCA
285 and BA induced diarrhea in CD patients. A significant percentage of CD patients undergo small
286 bowel resection, which further decreases reabsorption of BAs resulting in deficiency of BAs in
287 CD patients. [39]

288 In addition to the fat absorption, BAs play important role in immune regulation in human body.
289 BAs modulate the systemic pro-inflammatory/anti-inflammatory balance by binding to farnesoid
290 X receptor (FXR), Takeda G protein-coupled receptor 5 (TGR5), and other non-canonical BAs
291 receptors (**Figure S4**). [40, 41] FXR is a nuclear transcription factor and highly expressed in the
292 human gut, liver and innate immune cells such as macrophages. [42] FXR activation in myeloid
293 cells suppresses intestinal inflammation by inhibiting NF- κ B/NLRP3-induced expression of
294 TNF α , IL-1 β , and IL-6. [43] In addition to FXR, TGR5 plays an important role in BAs homeostasis
295 and shaping intestinal immunity. TGR5 is a G-protein coupled receptor present in the cell
296 membranes and is widely expressed in small intestine, colon, adipocytes, and innate immune
297 cells. [44] TGR5 signaling has an anti-inflammatory effect and prevents the production of pro-
298 inflammatory cytokines TNF α and IL-1 β , [45] highlighting the importance of TGR-5 signaling in
299 CD. BAs dysregulation can be attributed to gut dysbiosis in CD, and correcting gut dysbiosis
300 represents a potential therapeutic approach for the treatment of CD. In a recent study, Zhou et al.
301 showed that oral gavage treatment with a BAs consortium (BAC; *Clostridium AP sp000509125*,
302 *Bacteroides ovatus*, and *Eubacterium limosum*) in mice had protective effects against DSS-

303 induced colitis, suggesting that a rationally designed bacterial consortium could reshape gut
304 microbiome metabolism to treat CD.[46] A complete list of dysregulated BAs and bile salts in
305 biological samples from CD patients and non-IBD controls is provided in **Table 3**.

306 **3.2.3 Other primary metabolites**

307
308 In our systematic review, we observed reduced levels of alpha-ketoglutarate (AKG), succinate,
309 and citrate in the serum and urine samples of CD patients. These metabolites are key intermediates
310 of the TCA cycle, and their dysregulation suggests impaired mitochondrial metabolic pathways.
311 The human body tightly regulates citrate availability and elimination from the body based upon
312 the nutritional intake, cellular metabolism, renal clearance, and bone remodeling. Consistently low
313 levels of citrate in the urine samples of CD patients may be linked to poor absorption from the diet
314 or increased cellular metabolism. CD is characterized by chronic inflammation with increased
315 numbers and activity of immune cells and increased energy demand. To meet these energy
316 requirements, immune cell metabolism shifts towards glycolysis, leading to a compromised TCA
317 cycle. Activated macrophages exhibit a disrupted TCA cycle with reduced isocitrate
318 dehydrogenase (IDH) activity. IDH normally converts citrate to AKG, but its low expression in
319 activated macrophages leads to citrate accumulation in the immune cells and decreased AKG
320 production. Immune cells import citrate both extracellularly and intracellularly to meet their
321 increased energy demands. Accumulated citrate is then metabolized to several intermediates that
322 contribute to the production of pro-inflammatory molecules.[47] Inflammatory environment in
323 CD increase the demand for citrate in the serum to fuel immune cells, resulting in the low levels
324 in urine samples. In addition to citrate, succinate, another metabolite of TCA cycle, is implicated
325 in CD. Succinate shows similarly dysregulated pattern in CD patients compared to non-IBD
326 controls, potentially indicating shared dysregulated pathways. Elevated levels of intracellular and

327 extracellular succinate are pro-inflammatory, contributing to activation and maintenance of the
328 pro-inflammatory state of macrophages during inflammation. Besides, the TCA cycle
329 intermediates, we also observed consistently low levels of hippurate in the urine samples of CD
330 patients. Urinary hippurate is a product of the microbial metabolism of certain dietary compounds,
331 such as benzoic acid, and p-cresol sulphate (a metabolite of *Clostridia* spp. metabolism of
332 tyrosine). In CD, the reduction in *Clostridium* cluster IV and *Faecalibacterium prausnitzii* has
333 been linked to low levels of hippurate, Schicho et al. [48] reported significantly reduced levels of
334 p-cresol in the urine of CD patients compared to healthy subjects, indicating potential dysbiosis
335 of *Clostridia* spp in CD, which may contribute to the reduced levels of hippurate levels.

336 In addition to hippurate, several volatile metabolites produced by microbial metabolism and
337 oxidative stress were implicated in CD patients. We detected dysregulated levels of acetate,
338 ethanol, isoprene, pentane, acetone and butanoic acid in breath samples of CD patients compared
339 to non-IBD controls. However, most of these metabolites, except pentane, did not show a
340 consistent pattern in CD. Pentane levels were consistently elevated in breath samples of CD
341 patients, likely as a result of lipid peroxidation due to oxidative stress.[49] CD is characterized by
342 elevated levels of reactive oxygen species and disruptions in lipid metabolism, which may
343 contribute to the increased pentane levels in breath samples. A complete list of other dysregulated
344 primary metabolites in biological samples from CD patients and non-IBD controls is provided in
345 **Table 4.**

346

347 **4. Conclusion**

348 A key takeaway from the systematic review and analyses is that dysregulated metabolites in CD
349 patients compared to non-CD controls, span multiple metabolite classes, including lipids and fatty

350 acids, biogenic amines and peptides, bile acids and bile salts, as well as other primary metabolites.
351 Each category of metabolite provides a distinct signature within the biological samples of CD
352 patients. Notably, certain key metabolites such as butyrate, 2HB, Ile, Ala, primary and secondary
353 BAs, and hippurate, were strongly influenced by the gut dysbiosis linked to the CD. However, it
354 remains unclear whether these dysregulated metabolites are a cause or a consequence of gut
355 dysbiosis in CD. Another strength of our systematic review lies in the comprehensive comparison
356 of individual metabolites between CD patients and non-IBD controls. The metabolites reported
357 were not only consistently identified across multiple studies but were also detected using diverse,
358 high-throughput analytical techniques across various biological sample types, adding robustness
359 to our findings. This study's limitations include the focus on metabolites identified in at least two
360 independent studies, which may have excluded CD-associated metabolites found in single studies
361 due to differing analytical libraries and resources. Despite this, the metabolites presented are robust
362 and provide a foundation for further exploration of their roles in the CD phenotype. Additionally,
363 variability in disease severity, inflammation sites, and medical therapeutics, may have influenced
364 metabolite detection, as many studies did not stratify subjects based on disease severity. Future
365 research is required to distinguish cause from effect in CD-associated metabolites and examine
366 how CD progression interacts with host and microbial metabolism. Additionally, the limited
367 publicly available data restricts comprehensive analyses, and more data in standardized
368 repositories would enable better assessment and validation of metabolic signatures in Crohn's
369 disease. Our systematic review identified a comprehensive profile of metabolites that are important
370 in pathophysiology of Crohn's disease.

371 **Author Contributions:**

372 AD, SK, JJR and ACK independently searched studies with the help of MGVN, who helped as a
373 systematic review librarian in retrieving the studies. AD and SK independently extracted the data
374 from the studies. AD performed data analysis and wrote the manuscript with the help of JJR, ACK
375 and MD. SHA, and APA served as peer reviewers and experts in the field to contribute edits and
376 suggestions throughout the writing process. MD conceptualized and designed the study and
377 provided supervision.

378 **Acknowledgments:**

379 This work was supported by UC Davis School of Medicine TriP program (MD and APA). The
380 funding agencies had no role in the study analysis or writing of the manuscript. Its contents are
381 solely the responsibility of the authors.

382 **References:**

- 383 1 Neurath MF, Travis SP. Mucosal healing in inflammatory bowel diseases: a systematic
384 review. *Gut* 2012;**61**:1619-35.
- 385 2 Chang JT. Pathophysiology of Inflammatory Bowel Diseases. *N Engl J Med*
386 2020;**383**:2652-64.
- 387 3 Dave M, Papadakis KA, Faubion WA, Jr. Immunology of inflammatory bowel disease and
388 molecular targets for biologics. *Gastroenterol Clin North Am* 2014;**43**:405-24.
- 389 4 Imhann F, Vich Vila A, Bonder MJ, Fu J, Gevers D, Visschedijk MC, *et al.* Interplay of
390 host genetics and gut microbiota underlying the onset and clinical presentation of inflammatory
391 bowel disease. *Gut* 2018;**67**:108-19.
- 392 5 Nicholson JK, Lindon JC. Systems biology: Metabonomics. *Nature* 2008;**455**:1054-6.
- 393 6 Macfarlane GT, Macfarlane S. Fermentation in the human large intestine: its physiologic
394 consequences and the potential contribution of prebiotics. *J Clin Gastroenterol* 2011;**45**
395 **Suppl**:S120-7.
- 396 7 Goncalves P, Martel F. Butyrate and colorectal cancer: the role of butyrate transport. *Curr*
397 *Drug Metab* 2013;**14**:994-1008.
- 398 8 Cao Y, Shen J, Ran ZH. Association between *Faecalibacterium prausnitzii* Reduction and
399 Inflammatory Bowel Disease: A Meta-Analysis and Systematic Review of the Literature.
400 *Gastroenterol Res Pract* 2014;**2014**:872725.
- 401 9 Siddiqui MT, Cresci GAM. The Immunomodulatory Functions of Butyrate. *J Inflamm Res*
402 2021;**14**:6025-41.

- 403 10 Vaughn BP, Vatanen T, Allegretti JR, Bai A, Xavier RJ, Korzenik J, *et al.* Increased
404 Intestinal Microbial Diversity Following Fecal Microbiota Transplant for Active Crohn's Disease.
405 *Inflamm Bowel Dis* 2016;**22**:2182-90.
- 406 11 Qin F, Li J, Mao T, Feng S, Li J, Lai M. 2-Hydroxybutyric Acid-Producing Bacteria in Gut
407 Microbiome and *Fusobacterium nucleatum* Regulates 2-Hydroxybutyric Acid Level In Vivo.
408 *Metabolites* 2023;**13**.
- 409 12 Adegbola SO, Sarafian M, Sahnun K, Ding NS, Faiz OD, Warusavitarne J, *et al.*
410 Differences in amino acid and lipid metabolism distinguish Crohn's from
411 idiopathic/cryptoglandular perianal fistulas by tissue metabolomic profiling and may offer clues
412 to underlying pathogenesis. *Eur J Gastroenterol Hepatol* 2021;**33**:1469-79.
- 413 13 Nystrom N, Prast-Nielsen S, Correia M, Globisch D, Engstrand L, Schuppe-Koistinen I, *et al.*
414 Mucosal and Plasma Metabolomes in New-onset Paediatric Inflammatory Bowel Disease:
415 Correlations with Disease Characteristics and Plasma Inflammation Protein Markers. *J Crohns*
416 *Colitis* 2023;**17**:418-32.
- 417 14 Costea I, Mack DR, Israel D, Morgan K, Krupoves A, Seidman E, *et al.* Genes involved in
418 the metabolism of poly-unsaturated fatty-acids (PUFA) and risk for Crohn's disease in children &
419 young adults. *PLoS One* 2010;**5**:e15672.
- 420 15 Costea I, Mack DR, Lemaitre RN, Israel D, Marcil V, Ahmad A, *et al.* Interactions between
421 the dietary polyunsaturated fatty acid ratio and genetic factors determine susceptibility to pediatric
422 Crohn's disease. *Gastroenterology* 2014;**146**:929-31.
- 423 16 Lattka E, Illig T, Heinrich J, Koletzko B. Do FADS genotypes enhance our knowledge
424 about fatty acid related phenotypes? *Clin Nutr* 2010;**29**:277-87.
- 425 17 Liu R, Qiao S, Shen W, Liu Y, Lu Y, Liangyu H, *et al.* Disturbance of Fatty Acid
426 Desaturation Mediated by FADS2 in Mesenteric Adipocytes Contributes to Chronic Inflammation
427 of Crohn's Disease. *J Crohns Colitis* 2020;**14**:1581-99.
- 428 18 Chan SS, Luben R, Olsen A, Tjonneland A, Kaaks R, Lindgren S, *et al.* Association
429 between high dietary intake of the n-3 polyunsaturated fatty acid docosahexaenoic acid and
430 reduced risk of Crohn's disease. *Aliment Pharmacol Ther* 2014;**39**:834-42.
- 431 19 Shoda R, Matsueda K, Yamato S, Umeda N. Epidemiologic analysis of Crohn disease in
432 Japan: increased dietary intake of n-6 polyunsaturated fatty acids and animal protein relates to the
433 increased incidence of Crohn disease in Japan. *Am J Clin Nutr* 1996;**63**:741-5.
- 434 20 Peters V, Bolte L, Schuttert EM, Andreu-Sanchez S, Dijkstra G, Weersma RK, *et al.*
435 Western and Carnivorous Dietary Patterns are Associated with Greater Likelihood of IBD
436 Development in a Large Prospective Population-based Cohort. *J Crohns Colitis* 2022;**16**:931-9.
- 437 21 Li T, Qiu Y, Yang HS, Li MY, Zhuang XJ, Zhang SH, *et al.* Systematic review and meta-
438 analysis: Association of a pre-illness Western dietary pattern with the risk of developing
439 inflammatory bowel disease. *J Dig Dis* 2020;**21**:362-71.
- 440 22 Lands B, Bibus D, Stark KD. Dynamic interactions of n-3 and n-6 fatty acid nutrients.
441 *Prostaglandins Leukot Essent Fatty Acids* 2018;**136**:15-21.
- 442 23 Maceyka M, Spiegel S. Sphingolipid metabolites in inflammatory disease. *Nature*
443 2014;**510**:58-67.
- 444 24 Hannun YA, Obeid LM. Principles of bioactive lipid signalling: lessons from
445 sphingolipids. *Nat Rev Mol Cell Biol* 2008;**9**:139-50.
- 446 25 Spate U, Schulze PC. Proinflammatory cytokines and skeletal muscle. *Curr Opin Clin Nutr*
447 *Metab Care* 2004;**7**:265-9.

- 448 26 Yang L, Chu Z, Liu M, Zou Q, Li J, Liu Q, *et al.* Amino acid metabolism in immune cells:
449 essential regulators of the effector functions, and promising opportunities to enhance cancer
450 immunotherapy. *J Hematol Oncol* 2023;**16**:59.
- 451 27 Kim MH, Kim H. The Roles of Glutamine in the Intestine and Its Implication in Intestinal
452 Diseases. *Int J Mol Sci* 2017;**18**.
- 453 28 Felig P, Pozefsky T, Marliss E, Cahill GF, Jr. Alanine: key role in gluconeogenesis.
454 *Science* 1970;**167**:1003-4.
- 455 29 Vester-Andersen MK, Mirsepasi-Lauridsen HC, Prosberg MV, Mortensen CO, Trager C,
456 Skovsen K, *et al.* Increased abundance of proteobacteria in aggressive Crohn's disease seven years
457 after diagnosis. *Sci Rep* 2019;**9**:13473.
- 458 30 Hey P, Gow P, Testro AG, Apostolov R, Chapman B, Sinclair M. Nutraceuticals for the
459 treatment of sarcopenia in chronic liver disease. *Clin Nutr ESPEN* 2021;**41**:13-22.
- 460 31 Wang S, van Schooten FJ, Jin H, Jonkers D, Godschalk R. The Involvement of Intestinal
461 Tryptophan Metabolism in Inflammatory Bowel Disease Identified by a Meta-Analysis of the
462 Transcriptome and a Systematic Review of the Metabolome. *Nutrients* 2023;**15**.
- 463 32 Fernstrom JD, Fernstrom MH. Tyrosine, phenylalanine, and catecholamine synthesis and
464 function in the brain. *J Nutr* 2007;**137**:1539S-47S; discussion 48S.
- 465 33 Flydal MI, Martinez A. Phenylalanine hydroxylase: function, structure, and regulation.
466 *IUBMB Life* 2013;**65**:341-9.
- 467 34 Fleishman JS, Kumar S. Bile acid metabolism and signaling in health and disease:
468 molecular mechanisms and therapeutic targets. *Signal Transduct Target Ther* 2024;**9**:97.
- 469 35 Di Ciaula A, Garruti G, Lunardi Baccetto R, Molina-Molina E, Bonfrate L, Wang DQ, *et*
470 *al.* Bile Acid Physiology. *Ann Hepatol* 2017;**16**:s4-s14.
- 471 36 Ovadia C, Perdones-Montero A, Spagou K, Smith A, Sarafian MH, Gomez-Romero M, *et*
472 *al.* Enhanced Microbial Bile Acid Deconjugation and Impaired Ileal Uptake in Pregnancy Repress
473 Intestinal Regulation of Bile Acid Synthesis. *Hepatology* 2019;**70**:276-93.
- 474 37 Becker HEF, Jamin C, Bervoets L, Boleij A, Xu P, Pierik MJ, *et al.* Higher Prevalence of
475 *Bacteroides fragilis* in Crohn's Disease Exacerbations and Strain-Dependent Increase of Epithelial
476 Resistance. *Front Microbiol* 2021;**12**:598232.
- 477 38 Kowalska-Duplaga K, Gosiewski T, Kapusta P, Sroka-Oleksiak A, Wedrychowicz A,
478 Pieczarkowski S, *et al.* Differences in the intestinal microbiome of healthy children and patients
479 with newly diagnosed Crohn's disease. *Sci Rep* 2019;**9**:18880.
- 480 39 Hojo A, Kobayashi T, Matsubayashi M, Morikubo H, Miyatani Y, Fukuda T, *et al.*
481 Usefulness of colestimide for diarrhea in postoperative Crohn's disease. *JGH Open* 2022;**6**:547-
482 53.
- 483 40 Choudhuri S, Klaassen CD. Molecular Regulation of Bile Acid Homeostasis. *Drug Metab*
484 *Dispos* 2022;**50**:425-55.
- 485 41 Chiang JY. Bile acid metabolism and signaling. *Compr Physiol* 2013;**3**:1191-212.
- 486 42 Wang YD, Chen WD, Moore DD, Huang W. FXR: a metabolic regulator and cell protector.
487 *Cell Res* 2008;**18**:1087-95.
- 488 43 Anderson KM, Gayer CP. The Pathophysiology of Farnesoid X Receptor (FXR) in the GI
489 Tract: Inflammation, Barrier Function and Innate Immunity. *Cells* 2021;**10**.
- 490 44 Chiang JY, Pathak P, Liu H, Donepudi A, Ferrell J, Boehme S. Intestinal Farnesoid X
491 Receptor and Takeda G Protein Couple Receptor 5 Signaling in Metabolic Regulation. *Dig Dis*
492 2017;**35**:241-5.

- 493 45 Yoneno K, Hisamatsu T, Shimamura K, Kamada N, Ichikawa R, Kitazume MT, *et al.*
494 TGR5 signalling inhibits the production of pro-inflammatory cytokines by in vitro differentiated
495 inflammatory and intestinal macrophages in Crohn's disease. *Immunology* 2013;**139**:19-29.
- 496 46 Zhou C, Wang Y, Li C, Xie Z, Dai L. Amelioration of Colitis by a Gut Bacterial
497 Consortium Producing Anti-Inflammatory Secondary Bile Acids. *Microbiol Spectr*
498 2023;**11**:e0333022.
- 499 47 Jha AK, Huang SC, Sergushichev A, Lampropoulou V, Ivanova Y, Loginicheva E, *et al.*
500 Network integration of parallel metabolic and transcriptional data reveals metabolic modules that
501 regulate macrophage polarization. *Immunity* 2015;**42**:419-30.
- 502 48 Schicho R, Shaykhtudinov R, Ngo J, Nazyrova A, Schneider C, Panaccione R, *et al.*
503 Quantitative metabolomic profiling of serum, plasma, and urine by (1)H NMR spectroscopy
504 discriminates between patients with inflammatory bowel disease and healthy individuals. *J*
505 *Proteome Res* 2012;**11**:3344-57.
- 506 49 Yoshida Y, Umeno A, Shichiri M. Lipid peroxidation biomarkers for evaluating oxidative
507 stress and assessing antioxidant capacity in vivo. *J Clin Biochem Nutr* 2013;**52**:9-16.
- 508 50 Vancamelbeke M, Sabino, J., Deroover, L., Vandermeulen, G., Luybaerts, A., Ferrante,
509 M., Falony, G., Vieira-Silva, S., Verbeke, K., Raes, J., Cleyne, I., & Vermeire, S. Tu1862-
510 Profiling of the fecal microbiota and metabolome in patients with inflammatory bowel disease and
511 their unaffected relatives. *Gastroenterology* 2017:S991.
- 512 51 Dryahina K, Smith D, Bortlik M, Machkova N, Lukas M, Spanel P. Pentane and other
513 volatile organic compounds, including carboxylic acids, in the exhaled breath of patients with
514 Crohn's disease and ulcerative colitis. *J Breath Res* 2017;**12**:016002.
- 515 52 Zhgun ES, Kislun YV, Kalachniuk TN, Veselovsky VA, Urban AS, Tikhonova PO, *et al.*
516 [Evaluation of metabolites levels in feces of patients with inflammatory bowel diseases]. *Biomed*
517 *Khim* 2020;**66**:233-40.
- 518 53 Marchesi JR, Holmes E, Khan F, Kochhar S, Scanlan P, Shanahan F, *et al.* Rapid and
519 noninvasive metabonomic characterization of inflammatory bowel disease. *J Proteome Res*
520 2007;**6**:546-51.
- 521 54 Alonso A, Julia A, Vinaixa M, Domenech E, Fernandez-Nebro A, Canete JD, *et al.* Urine
522 metabolome profiling of immune-mediated inflammatory diseases. *BMC Med* 2016;**14**:133.
- 523 55 Bjerrum JT, Wang Y, Hao F, Coskun M, Ludwig C, Gunther U, *et al.* Metabonomics of
524 human fecal extracts characterize ulcerative colitis, Crohn's disease and healthy individuals.
525 *Metabolomics* 2015;**11**:122-33.
- 526 56 Hu J, Cheng S, Yao J, Lin X, Li Y, Wang W, *et al.* Correlation between altered gut
527 microbiota and elevated inflammation markers in patients with Crohn's disease. *Front Immunol*
528 2022;**13**:947313.
- 529 57 Lloyd-Price J, Arze C, Ananthakrishnan AN, Schirmer M, Avila-Pacheco J, Poon TW, *et*
530 *al.* Multi-omics of the gut microbial ecosystem in inflammatory bowel diseases. *Nature*
531 2019;**569**:655-62.
- 532 58 Ambrozkiwicz F, Karczmariski J, Kulecka M, Paziewska A, Niemira M, Zeber-Lubecka
533 N, *et al.* In search for interplay between stool microRNAs, microbiota and short chain fatty acids
534 in Crohn's disease - a preliminary study. *BMC Gastroenterol* 2020;**20**:307.
- 535 59 Walton C, Fowler DP, Turner C, Jia W, Whitehead RN, Griffiths L, *et al.* Analysis of
536 volatile organic compounds of bacterial origin in chronic gastrointestinal diseases. *Inflamm Bowel*
537 *Dis* 2013;**19**:2069-78.

- 538 60 De Preter V, Machiels K, Joossens M, Arijs I, Matthys C, Vermeire S, *et al.* Faecal
539 metabolite profiling identifies medium-chain fatty acids as discriminating compounds in IBD. *Gut*
540 2015;**64**:447-58.
- 541 61 Aldars-Garcia L, Gil-Redondo R, Embade N, Riestra S, Rivero M, Gutierrez A, *et al.*
542 Serum and Urine Metabolomic Profiling of Newly Diagnosed Treatment-Naive Inflammatory
543 Bowel Disease Patients. *Inflamm Bowel Dis* 2024;**30**:167-82.
- 544 62 Murgia A, Hinz C, Liggi S, Denes J, Hall Z, West J, *et al.* Italian cohort of patients affected
545 by inflammatory bowel disease is characterised by variation in glycerophospholipid, free fatty
546 acids and amino acid levels. *Metabolomics* 2018;**14**:140.
- 547 63 Di Giovanni N, Meuwis MA, Louis E, Focant JF. Untargeted Serum Metabolic Profiling
548 by Comprehensive Two-Dimensional Gas Chromatography-High-Resolution Time-of-Flight
549 Mass Spectrometry. *J Proteome Res* 2020;**19**:1013-28.
- 550 64 Esteve-Comas M, Ramirez M, Fernandez-Banares F, Abad-Lacruz A, Gil A, Cabre E, *et*
551 *al.* Plasma polyunsaturated fatty acid pattern in active inflammatory bowel disease. *Gut*
552 1992;**33**:1365-9.
- 553 65 Figler M, Gasztonyi B, Cseh J, Horvath G, Kisbenedek AG, Bokor S, *et al.* Association of
554 n-3 and n-6 long-chain polyunsaturated fatty acids in plasma lipid classes with inflammatory bowel
555 diseases. *Br J Nutr* 2007;**97**:1154-61.
- 556 66 Jansson J, Willing B, Lucio M, Fekete A, Dicksved J, Halfvarson J, *et al.* Metabolomics
557 reveals metabolic biomarkers of Crohn's disease. *PLoS One* 2009;**4**:e6386.
- 558 67 Kuroki F, Iida M, Matsumoto T, Aoyagi K, Kanamoto K, Fujishima M. Serum n3
559 polyunsaturated fatty acids are depleted in Crohn's disease. *Dig Dis Sci* 1997;**42**:1137-41.
- 560 68 Geerling BJ, v Houwelingen AC, Badart-Smook A, Stockbrugger RW, Brummer RJ. Fat
561 intake and fatty acid profile in plasma phospholipids and adipose tissue in patients with Crohn's
562 disease, compared with controls. *Am J Gastroenterol* 1999;**94**:410-7.
- 563 69 Jiang J, Chen L, Sun R, Yu T, Jiang S, Chen H. Characterization of serum polyunsaturated
564 fatty acid profile in patients with inflammatory bowel disease. *Ther Adv Chronic Dis*
565 2023;**14**:20406223231156826.
- 566 70 Scoville EA, Allaman MM, Adams DW, Motley AK, Peyton SC, Ferguson SL, *et al.*
567 Serum Polyunsaturated Fatty Acids Correlate with Serum Cytokines and Clinical Disease Activity
568 in Crohn's Disease. *Sci Rep* 2019;**9**:2882.
- 569 71 Akazawa Y, Morisaki T, Fukuda H, Norimatsu K, Shiota J, Hashiguchi K, *et al.*
570 Significance of serum palmitoleic acid levels in inflammatory bowel disease. *Sci Rep*
571 2021;**11**:16260.
- 572 72 Kruchinina MV, Gromov, A. A., Svetlova, I. O., Azgaldyan, A. V., Kruchinin, V. N.,
573 Shashkov, M. V., & Sokolova, A. S. P0388-New diagnostic capabilities for crohn's disease: Use
574 of fatty acid profiles of erythrocyte membranes and blood serum. *United European*
575 *Gastroenterology Journal* 2020 334-5.
- 576 73 Ben-Mustapha Y, Ben-Fradj MK, Hadj-Taieb S, Serghini M, Ben Ahmed M, Boubaker J,
577 *et al.* Altered mucosal and plasma polyunsaturated fatty acids, oxylipins, and endocannabinoids
578 profiles in Crohn's disease. *Prostaglandins Other Lipid Mediat* 2023;**168**:106741.
- 579 74 Lai Y, Xue J, Liu CW, Gao B, Chi L, Tu P, *et al.* Serum Metabolomics Identifies Altered
580 Bioenergetics, Signaling Cascades in Parallel with Exposome Markers in Crohn's Disease.
581 *Molecules* 2019;**24**.

- 582 75 Levy E, Rizwan Y, Thibault L, Lepage G, Brunet S, Bouthillier L, *et al.* Altered lipid
583 profile, lipoprotein composition, and oxidant and antioxidant status in pediatric Crohn disease. *Am*
584 *J Clin Nutr* 2000;**71**:807-15.
- 585 76 Alghamdi A, Gerasimidis K, Blackburn G, Akinci D, Edwards C, Russell RK, *et al.*
586 Untargeted Metabolomics of Extracts from Faecal Samples Demonstrates Distinct Differences
587 between Paediatric Crohn's Disease Patients and Healthy Controls but No Significant Changes
588 Resulting from Exclusive Enteral Nutrition Treatment. *Metabolites* 2018;**8**.
- 589 77 Fathi F, Majari-Kasmaee L, Mani-Varnosfaderani A, Kyani A, Rostami-Nejad M,
590 Sohrabzadeh K, *et al.* 1H NMR based metabolic profiling in Crohn's disease by random forest
591 methodology. *Magn Reson Chem* 2014;**52**:370-6.
- 592 78 Kruchinina MV, Gromov, A. A., Svetlova, I. O., Azgaldyan, A. V., Kruchinin, V. N.,
593 Shashkov, M. V., Sokolova, A. S., Yakovina, I. N., & Shestov, A. A. . P0305-Peculiarities of fatty
594 acid profiles of erythrocyte membranes and blood serum depending on activity rate of Crohn's
595 disease. *United European Gastroenterology Journal* 2021:436.
- 596 79 Franzosa EA, Sirota-Madi A, Avila-Pacheco J, Fornelos N, Haiser HJ, Reinker S, *et al.*
597 Gut microbiome structure and metabolic activity in inflammatory bowel disease. *Nat Microbiol*
598 2019;**4**:293-305.
- 599 80 Chen B, Wang Y, Wang Q, Li D, Huang X, Kuang X, *et al.* Untargeted metabolomics
600 identifies potential serum biomarkers associated with Crohn's disease. *Clin Exp Med*
601 2023;**23**:1751-61.
- 602 81 Filimoniuk A, Blachnio-Zabielska A, Imierska M, Lebensztejn DM, Daniluk U.
603 Sphingolipid Analysis Indicate Lactosylceramide as a Potential Biomarker of Inflammatory Bowel
604 Disease in Children. *Biomolecules* 2020;**10**.
- 605 82 Braun A, Treede I, Gotthardt D, Tietje A, Zahn A, Ruhwald R, *et al.* Alterations of
606 phospholipid concentration and species composition of the intestinal mucus barrier in ulcerative
607 colitis: a clue to pathogenesis. *Inflamm Bowel Dis* 2009;**15**:1705-20.
- 608 83 Ferru-Clement R, Boucher G, Forest A, Bouchard B, Bitton A, Lesage S, *et al.* Serum
609 Lipidomic Screen Identifies Key Metabolites, Pathways, and Disease Classifiers in Crohn's
610 Disease. *Inflamm Bowel Dis* 2023;**29**:1024-37.
- 611 84 Fan F, Mundra PA, Fang L, Galvin A, Moore XL, Weir JM, *et al.* Lipidomic Profiling in
612 Inflammatory Bowel Disease: Comparison Between Ulcerative Colitis and Crohn's Disease.
613 *Inflamm Bowel Dis* 2015;**21**:1511-8.
- 614 85 Iwatani S, Iijima H, Otake Y, Amano T, Tani M, Yoshihara T, *et al.* Novel mass
615 spectrometry-based comprehensive lipidomic analysis of plasma from patients with inflammatory
616 bowel disease. *J Gastroenterol Hepatol* 2020;**35**:1355-64.
- 617 86 Kurada S, Grove, D., Mao, R., Singh, A., Sarvepalli, S., Lopez, R., Fiocchi, C., Rogler, G.,
618 Kunst, C., Dweik, R., & Rieder, F. . Sa1789-Serum headspace metabolome analysis discriminates
619 crohn's disease from controls with high accuracy and is linked to disease phenotypes.
620 *Gastroenterology* 2018 S-395.
- 621 87 Williams HR, Willsmore JD, Cox IJ, Walker DG, Cobbold JF, Taylor-Robinson SD, *et al.*
622 Serum metabolic profiling in inflammatory bowel disease. *Dig Dis Sci* 2012;**57**:2157-65.
- 623 88 Jagt JZ, Struys EA, Ayada I, Bakkali A, Jansen EEW, Claesen J, *et al.* Fecal Amino Acid
624 Analysis in Newly Diagnosed Pediatric Inflammatory Bowel Disease: A Multicenter Case-Control
625 Study. *Inflamm Bowel Dis* 2022;**28**:755-63.

- 626 89 Powles STR, Gallagher, K., Hicks, L. C., Chong, L. W., Swann, J. R., Holmes, E.,
627 Williams, H. R. T., & Orchard, T. R. PTH-112 Effect of co-morbidities in crohn's disease
628 associated urinary metabolic profiles. *Gut* 2019;A89-A90.
- 629 90 Lins Neto MAF, Verdi GMX, Veras AO, Veras MO, Caetano LC, Ursulino JS. Use of
630 Metabolomics to the Diagnosis of Inflammatory Bowel Disease. *Arq Gastroenterol* 2020;**57**:311-
631 5.
- 632 91 Ooi M, Nishiumi S, Yoshie T, Shiomi Y, Kohashi M, Fukunaga K, *et al.* GC/MS-based
633 profiling of amino acids and TCA cycle-related molecules in ulcerative colitis. *Inflamm Res*
634 2011;**60**:831-40.
- 635 92 Scoville EA, Allaman MM, Brown CT, Motley AK, Horst SN, Williams CS, *et al.*
636 Alterations in Lipid, Amino Acid, and Energy Metabolism Distinguish Crohn's Disease from
637 Ulcerative Colitis and Control Subjects by Serum Metabolomic Profiling. *Metabolomics*
638 2018;**14**:17.
- 639 93 Kolho KL, Pessia A, Jaakkola T, de Vos WM, Velagapudi V. Faecal and Serum
640 Metabolomics in Paediatric Inflammatory Bowel Disease. *J Crohns Colitis* 2017;**11**:321-34.
- 641 94 Krzystek-Korpacka M, Fleszar MG, Bednarz-Misa I, Lewandowski L, Szczuka I,
642 Kempinski R, *et al.* Transcriptional and Metabolomic Analysis of L-Arginine/Nitric Oxide
643 Pathway in Inflammatory Bowel Disease and Its Association with Local Inflammatory and
644 Angiogenic Response: Preliminary Findings. *Int J Mol Sci* 2020;**21**.
- 645 95 Owczarek D, Cibor D, Mach T. Asymmetric dimethylarginine (ADMA), symmetric
646 dimethylarginine (SDMA), arginine, and 8-iso-prostaglandin F2alpha (8-iso-PGF2alpha) level in
647 patients with inflammatory bowel diseases. *Inflamm Bowel Dis* 2010;**16**:52-7.
- 648 96 Herlekar D, Martin, F. P., Zhang, S., Bosworth, B., Montoliu, I., Collino, S., Yantiss, R.,
649 Kochnar, S., Scherl, E., Dogan, B., & Simpson, K. Chemical perturbations in the inflamed ileum
650 promote the growth of crohn's associated adherent and invasive E. coli. *Inflammatory Bowel*
651 *Diseases* 2013:S121.
- 652 97 Tews HC, Schmelter F, Kandulski A, Buchler C, Schmid S, Schlosser S, *et al.* Unique
653 Metabolomic and Lipidomic Profile in Serum From Patients With Crohn's Disease and Ulcerative
654 Colitis Compared With Healthy Control Individuals. *Inflamm Bowel Dis* 2023.
- 655 98 Williams HR, Cox IJ, Walker DG, North BV, Patel VM, Marshall SE, *et al.*
656 Characterization of inflammatory bowel disease with urinary metabolic profiling. *Am J*
657 *Gastroenterol* 2009;**104**:1435-44.
- 658 99 Bosch S, Struys EA, van Gaal N, Bakkali A, Jansen EW, Diederens K, *et al.* Fecal Amino
659 Acid Analysis Can Discriminate De Novo Treatment-Naive Pediatric Inflammatory Bowel
660 Disease From Controls. *J Pediatr Gastroenterol Nutr* 2018;**66**:773-8.
- 661 100 Levhar N, Hadar, R., Braun, T., Efroni, G., Abramovich, I., Gottlieb, E., Sosnovski, K.,
662 Abass, H., Berger, T., Granot, M., Neuman, S., Selinger Feigin, L., Picard, O., Yavzuri, M., Lahat,
663 A., Eliakim, A., Weiss, B., Kopylov, U., Ben-Horin, S., Amir, A., Haberman, Y. . P0239-
664 Untargeted serum metabolome in longitudinal Crohn's disease (CD) cohort enrolled during
665 remission shows strong individualized signature and CD-associated signals that are maintained
666 also in patients who normalized their fecal calprotectin. *United European Gastroenterology Journal*
667 2021 396.
- 668 101 Morasso C, Truffi M, Vanna R, Albasini S, Mazzucchelli S, Colombo F, *et al.* Raman
669 Analysis Reveals Biochemical Differences in Plasma of Crohn's Disease Patients. *J Crohns Colitis*
670 2020;**14**:1572-80.

- 671 102 Gupta NK, Thaker AI, Kanuri N, Riehl TE, Rowley CW, Stenson WF, *et al.* Serum analysis
672 of tryptophan catabolism pathway: correlation with Crohn's disease activity. *Inflamm Bowel Dis*
673 2012;**18**:1214-20.
- 674 103 Nikolaus S, Schulte B, Al-Massad N, Thieme F, Schulte DM, Bethge J, *et al.* Increased
675 Tryptophan Metabolism Is Associated With Activity of Inflammatory Bowel Diseases.
676 *Gastroenterology* 2017;**153**:1504-16 e2.
- 677 104 Conrad M, Bittinger, K., Ren, Y., Dawany, N., Baldassano, R., Bushman, F., & Kelsen, J.
678 Taxonomic and metabolic differences among very early onset inflammatory bowel disease, older
679 onset pediatric inflammatory bowel disease. *Journal of Pediatric Gastroenterology and Nutrition*
680 2018:S197-S8.
- 681 105 Gnewuch C, Liebisch G, Langmann T, Dieplinger B, Mueller T, Haltmayer M, *et al.* Serum
682 bile acid profiling reflects enterohepatic detoxification state and intestinal barrier function in
683 inflammatory bowel disease. *World J Gastroenterol* 2009;**15**:3134-41.
- 684 106 Jacobs JP, Goudarzi M, Singh N, Tong M, McHardy IH, Ruegger P, *et al.* A Disease-
685 Associated Microbial and Metabolomics State in Relatives of Pediatric Inflammatory Bowel
686 Disease Patients. *Cell Mol Gastroenterol Hepatol* 2016;**2**:750-66.
- 687 107 Weng YJ, Gan HY, Li X, Huang Y, Li ZC, Deng HM, *et al.* Correlation of diet, microbiota
688 and metabolite networks in inflammatory bowel disease. *J Dig Dis* 2019;**20**:447-59.
- 689 108 Sun R, Jiang J, Yang L, Chen L, Chen H. Alterations of Serum Bile Acid Profile in Patients
690 with Crohn's Disease. *Gastroenterol Res Pract* 2022;**2022**:1680008.
- 691 109 Feng L, Zhou N, Li Z, Fu D, Guo Y, Gao X, *et al.* Co-occurrence of gut microbiota
692 dysbiosis and bile acid metabolism alteration is associated with psychological disorders in Crohn's
693 disease. *FASEB J* 2022;**36**:e22100.
- 694 110 Ju J, Zhang C, Yang J, Yang Q, Yin P, Sun X. Deoxycholic acid exacerbates intestinal
695 inflammation by modulating interleukin-1beta expression and tuft cell proportion in dextran
696 sulfate sodium-induced murine colitis. *PeerJ* 2023;**11**:e14842.
- 697 111 Kiasat A, Prast-Nielsen S, Rautiainen S, Engstrand L, Andersson F, Lindberg J, *et al.*
698 Plasma bile acids in association with Crohn's disease. *Scand J Gastroenterol* 2024;**59**:674-82.
- 699 112 Lu X, Zhou, M., Qu, C., Ge, W., Chen, Y. Serum Bile Acid Profile in Patients with
700 Inflammatory Bowel Disease. *Chinese Journal of Gastroenterology* 2017;**22**.
- 701 113 Ma R, Zhu Y, Li X, Hu S, Zheng D, Xiong S, *et al.* A Novel Serum Metabolomic Panel
702 for the Diagnosis of Crohn's Disease. *Inflamm Bowel Dis* 2023;**29**:1524-35.
- 703 114 Murakami M, Iwamoto J, Honda A, Tsuji T, Tamamushi M, Ueda H, *et al.* Detection of
704 Gut Dysbiosis due to Reduced Clostridium Subcluster XIVa Using the Fecal or Serum Bile Acid
705 Profile. *Inflamm Bowel Dis* 2018;**24**:1035-44.
- 706 115 Liu H, Xu M, He Q, Wei P, Ke M, Liu S. Untargeted serum metabolomics reveals specific
707 metabolite abnormalities in patients with Crohn's disease. *Front Med (Lausanne)* 2022;**9**:814839.
- 708 116 Rieder F, Kurada S, Grove D, Cikach F, Lopez R, Patel N, *et al.* A Distinct Colon-Derived
709 Breath Metabolome is Associated with Inflammatory Bowel Disease, but not its Complications.
710 *Clin Transl Gastroenterol* 2016;**7**:e201.
- 711 117 Kurada S, Grove, D., Alkhouri, N., Lopez, R., Brzezinski, A., Baker, M., Fiocchi, C.,
712 Dweik, R., & Rieder, F. A specific breath metabolome signature identifies patients with
713 inflammatory bowel diseases. *American Journal of Gastroenterology* 2015 S783.
- 714 118 Hicks L, Walker, D., Eng, D., Jiminez, B., Kinross, J., Holmes, E., Williams, H., &
715 Orchard, T. Urinary metabolic profiling of inflammatory bowel disease in a South Asian cohort
716 *Journal of Crohn's and Colitis* 2013:S258-S9.

717 119 Williams HR, Cox IJ, Walker DG, Cobbold JF, Taylor-Robinson SD, Marshall SE, *et al.*
718 Differences in gut microbial metabolism are responsible for reduced hippurate synthesis in Crohn's
719 disease. *BMC Gastroenterol* 2010;**10**:108.
720 120 Bodelier AG, Smolinska A, Baranska A, Dallinga JW, Mujagic Z, Vanhees K, *et al.*
721 Volatile Organic Compounds in Exhaled Air as Novel Marker for Disease Activity in Crohn's
722 Disease: A Metabolomic Approach. *Inflamm Bowel Dis* 2015;**21**:1776-85.
723 121 Hrdlicka L, Dryahina, K., Spanel, P., Bortlik, M., Duricova, D., Machkova, N., & Lukas,
724 M. . Noninvasive quantification of volatile metabolites in breath: A potential indicator of
725 inflammatory bowel diseases activity. . *Gastroenterology* 2012:S784.
726 122 Dryahina K, Spanel P, Pospisilova V, Sovova K, Hrdlicka L, Machkova N, *et al.*
727 Quantification of pentane in exhaled breath, a potential biomarker of bowel disease, using selected
728 ion flow tube mass spectrometry. *Rapid Commun Mass Spectrom* 2013;**27**:1983-92.
729 123 Wendland BE, Aghdassi E, Tam C, Carrier J, Steinhart AH, Wolman SL, *et al.* Lipid
730 peroxidation and plasma antioxidant micronutrients in Crohn disease. *Am J Clin Nutr*
731 2001;**74**:259-64.
732 124 Ludek H. Pentane and carbon disulphide breath concentrations: A potential indicator of
733 inflammatory bowel diseases activity. *Journal of Gastrointestinal and Liver Diseases* 2012: 21.
734
735
736
737
738
739
740
741
742
743
744
745
746
747
748
749
750
751
752
753
754
755
756
757
758
759
760
761
762

763 **Figure 1.** Preferred Reporting Items for Systematic Reviews and Meta-Analyses (PRISMA)
764
765

766

767

768

769

770

771

772

773

774

775

776

777

778

779

780

781

782

783

784

785

786

787

788

789

790

791

792

793

794

795

796

797

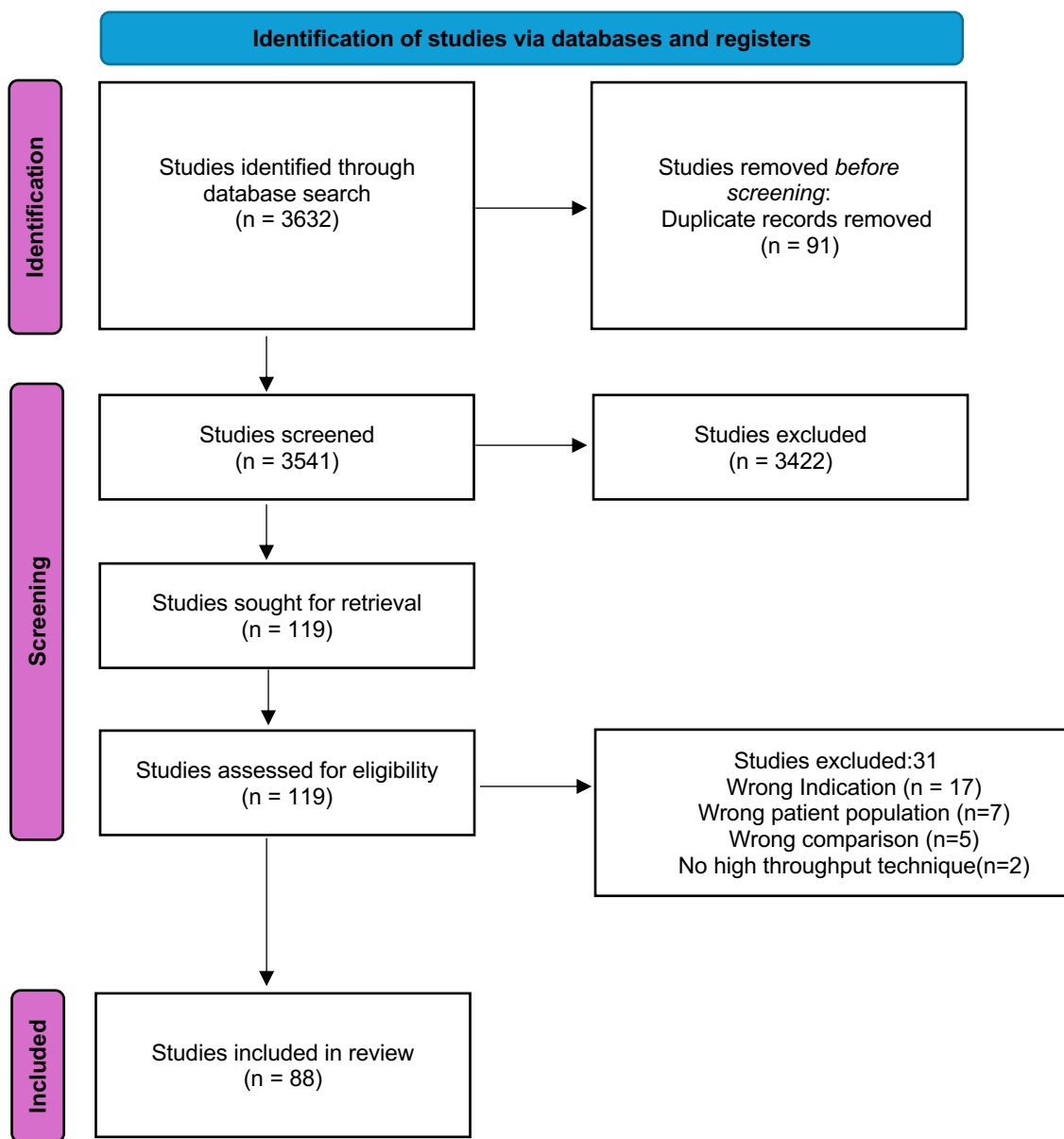
798

799

800

801

802



803 **Table 1.** Relative concentrations of fatty acids and annotated lipid metabolites in CD compared to
804 non-CD controls

Lipids	Colonic Tissue	Stool	Serum and/or Plasma	Urine	Breath
Acetic Acid/acetate [48, 50, 51, 52, 53, 54]		↓↑	↓↑*↓*	↓	↑
Propionate [52, 55, 56, 57]		↑↓↑↓			
Butyrate/Butyric acid [50, 51, 52, 53, 55, 56, 57, 58, 59, 60]		↓↓↓↓↓↓↓↓↓↑			↑
Valerate/Pentanoic acid [56, 57, 58]		↑↓↑			
Hydroxyvalerate [13, 54, 61]	↓			↑↓	
2-hydroxybutyrate [48, 61, 62, 63]			↑↑↑↑		
Stearic acid [64, 65, 66]		↑	↓↓		
Docosanoic acid [67, 68]			↓↓		
Oleic acid [62, 66, 68, 69, 70]		↓	↑↑↑↑		
Palmitoleic acid [62, 69, 71, 72]			↑↑↑↑		
Alpha-Linolenic acid [64, 65, 69, 73, 74]			↓↑↑↓↓		
Eicosapentaenoic acid [67, 69, 73]	↓*		↓*↓↓		
Docosopentanoic acid [17, 69, 72, 73]			↓↓↓↓		
Docosahexaenoic Acid [64, 67, 68, 69, 72, 73, 74, 75]			↓↓↓↓↓↓↓↓↓↑		
Linoleic Acid [13, 62, 65, 66]	↓	↑	↑↑		
Arachidonic Acid [57, 66, 67, 68, 69, 70, 74, 76, 77, 78]		↑↑	↓↓↓↓↓↓↓↓↓		
Sphingolipids and ceramides [12, 13, 79, 80, 81, 82]	↑↑↓	↑	↑*↑*↑		
Phosphatidylcholine [12, 79, 82, 83]	↑↑	↑	↓		
Phosphatidylethanolamine [80, 82]	↑		↑		
Phosphatidylserine [82, 84, 85]	↑		↑↓		
Lysophosphatidylcholine [13, 62, 82, 84]	↑↓		↓↑		
Triacylglycerol [75, 79]		↓	↑		

805
806 ↑: Each arrow represents a single study; directionality of the arrow denotes that the relative level of each
807 metabolite was either elevated (↑) or decreased (↓) in CD patients compared to non-IBD controls. '↑*' or
808 '↓*' represent the same study with multiple biological samples.

809 **Table 2.** Relative concentrations of biogenic amines and peptides in CD compared to non-CD
810 controls

Biogenic Amines and Peptides	Colonic Tissue	Stool	Serum and/or Plasma	Urine	Breath
Alanine [53, 54, 55, 62, 86, 87, 88, 89, 90, 91]		↑↑↑↑	↓↓↓↑	↓↓	
Arginine [12, 48, 92, 93, 94]	↑		↑*↑*↑↓	↓	
Asymmetric dimethyl arginine [93, 95]			↑↑		
Aspartic Acid [63, 89]			↑↓		
Carnitine [48, 57, 92]		↑	↓	↑	
Creatine [13, 48, 57, 61, 62]	↓	↑	↑↑↑		
Glutamine [13, 48, 61, 86, 91, 96, 97]	↑↑		↓↓↓↓↓		
Glutamic acid [61, 63]			↓↑		
Glutathione [75, 96]	↑		↑		
Glycine [48, 55, 61, 91, 98]		↑	↑↓↑	↑	
Di-methyl glycine [54, 89, 93]			↑	↓↓	
Histidine[61, 62, 88, 91, 99, 100]		↑↑	↓↑↓↑		
Methyl-histidine [48, 61, 98]			↓*	↓*↑↓	
Indole [59, 79]		↑↓			
Isoleucine [46, 48, 53, 77, 87]		↑	↓↑↑↑*↑*		
Leucine [53, 61, 92, 97]		↑	↓↓↓		
Lysine [12, 48, 53, 55, 86, 92]	↑	↑↑	↓↓↓↓		
Methionine[12, 13, 61, 62, 63, 91]	↑↑		↑↓↓↑		
Ornithine [48, 61, 76, 88]		↓	↓↓	↑	
Phenylalanine [12, 55, 66, 74, 97, 99, 101]	↑	↑↑↑	↓↓↓		
Proline [12, 46, 48, 61, 62, 91]	↑		↑↑↓↑↑		
Tryptophan [66, 88, 91, 93, 99, 101, 102, 103]		↑↑↑	↓↓↑↓		
Tyrosine [12, 48, 55, 61, 62, 66, 76, 90, 97]	↑	↓↑↑↑	↓↓↓↓		
Threonine [12, 48, 62]	↑		↓	↑	
Valine [48, 53, 61, 62, 77, 92]		↑	↑↓↓↓↓*↓*		
Citrulline [12, 62, 88, 93, 94]	↑	↑	↑↑↓		

811
812 ↑: Each arrow represents a single study; directionality of the arrow denotes that the relative level of each
813 metabolite was either elevated (↑) or decreased (↓) in CD patients compared to non-IBD controls. ‘↑*’ or
814 ‘↓*’ represent the same study with multiple biological samples.
815

816 **Table 3. Relative concentrations of bile acids and in CD compared to non-CD controls.**
817

<u>Bile Acids</u>	Colonic Tissue	Stool	Serum and/or Plasma	Urine	Breath
Chenodeoxycholate [57, 79, 104, 105, 106, 107]		↑↑↑↑	↓↑		
Tauro-chenodeoxycholic acid [105, 108]			↓↓		
Glycochenodeoxycholate [57, 105, 108]		↑	↓↓		
Cholate [57, 79, 105, 106, 109]		↑↑↑↑	↑		
Taurocholate [57, 66, 108]		↑↑	↓		
Glycocholate [57, 66, 105, 108]		↑↑	↓↓		
Lithocholate [57, 105, 108, 109, 110, 111, 112]		↓↓*↓#	↓*↓#↓↓↓↓		
Isolithocholic acid [110, 113]		↓	↓		
Deoxycholate [17, 57, 108, 109, 110, 111, 114]		↓◆↓#↓*	↓*↓#↓◆↓↑↓↓		
Taurolithocholic acid [105, 110, 111]			↓↓↓		
Taurodeoxycholic acid [17, 105, 108, 109, 110, 111, 113]			↓↓↓↓↓↓↓↓		
Glycolithocholic acid [105, 108, 109, 110, 111, 113]			↓↓↓↓↓↓↓↓		
Glycodeoxycholic acid [105, 108, 109, 110, 111, 115]			↓↓↓↓↓↓↓↓		
Ursodeoxycholic acid [105, 109, 110]			↑↓↓		
Glycoursodeoxycholate [57, 105]		↑	↓		
Tauroursodeoxycholic acid [105, 111]			↓↓		

818
819 ↑: Each arrow represents a single study; directionality of the arrow denotes that the relative level of each
820 metabolite was either elevated (↑) or decreased (↓) in CD patients compared to non-IBD controls. ‘↑*/ ↓*’,
821 ‘↑◆/ ↓◆’ and ‘↑#/ ↓#’ represent the same study with multiple biological samples.
822
823

824

825

826

827 **Table 4. Relative concentrations of other primary metabolites in CD compared to non-CD**
 828 **controls**
 829

<u>Other Primary Metabolites</u>	Colonic Tissue	Stool	Serum and/or Plasma	Urine	Breath
Alpha-ketoglutarate [63, 92]			↓↓		
Ethanol [86, 116, 117]			↑		↑↑
Methanol [48, 61]			↑*	↓↓*	
Formic acid/Formate [61, 98, 118]			↑	↑↑	
Galactose [48, 63]			↑	↑	
Hippuric acid/Hippurate [48, 54, 61, 89, 98, 118, 119]				↓↓↓↓↓↓↓↑	
Succinate[13, 48, 61, 90, 91, 92, 118]	↓	↑	↑↑↓	↓↓	
Citric acid/citrate [48, 54, 61, 62, 63, 89, 92, 97, 98]			↓↑↓↑↓*	↓↓↓↓↓↓↓*	
Lactic acid/lactate [48, 61, 90, 97]		↑	↓↓↑		
Pyruvic acid/Pyruvate [61, 97, 113]		↑	↓↑*	↑*	
Xylose [48, 63]			↑	↑	
Glucose [48, 61, 63, 97]			↑↑↑↑		
Isoprene[51, 116, 120]					↓↑↑
Acetone[61, 120, 121]			↑		↓↑
Pentane [51, 121, 122, 123, 124]					↑↑↑↑↑

830
 831 ↑: Each arrow represents a single study; directionality of the arrow denotes that the relative level of each
 832 metabolite was either elevated (↑) or decreased (↓) in CD patients compared to non-IBD controls. ‘↑*’ or
 833 ‘↓*’ represent the same study with multiple biological samples.
 834
 835
 836
 837
 838
 839
 840
 841
 842
 843
 844