

Title: SAMSN1 causes sepsis immunosuppression by inducing macrophages to express coinhibitory molecules that causes T cell exhaustion via KEAP1-NRF2 signaling

Authors: Yao Li^{1#}, Tingting Li^{1#}, Fei Xiao², Lijun Wang¹, Xuelian Liao^{1*}, Yan Kang^{1*}, Wei Zhang^{1*}

The authors contributed equally to this work

* Correspondence should be addressed to: Wei Zhang: zhangwei197610@whscu.edu.cn (or to

kangyan_hx@163.com, liaoXuelian@scu.edu.cn)

Detailed information about this study should be directed to Prof. Wei Zhang(zhangwei197610@whscu.edu.cn).

1 Department of Critical Care Medicine, West China Hospital, Sichuan University

2 Department of Intensive Care Unit of Gynecology and Obstetrics, West China Second University Hospital, Sichuan University

Abstract

Immunosuppression has been found to be closely related to the pathogenesis of sepsis, but the underlying mechanisms have not yet been fully elucidated. In this study, we identified that SH3 domain and nuclear localization signals 1 (SAMSN1), a gene encoding a putative adaptor protein, plays an important role in immunosuppression in sepsis. The expression of SAMSN1 was significantly increased in patients with sepsis and was positively correlated with sepsis mortality. When sepsis occurs, the number of monocyte-macrophages increases significantly, among which SAMSN1 is highly expressed. SAMSN1 binds to KEAP1, causing NRF2 to dissociate from the KEAP1-NRF2 complex and translocate into the nucleus, promoting the transcription of co-inhibitory molecules CD48/CD86/CEACAM1, which bind to their corresponding receptors 2B4/CTLA4/TIM3 on the surface of T cells, inducing T cell exhaustion. SAMSN1 blockade alleviated organ injuries and improved survival of septic mice. Our study reveals a novel mechanism that triggers immunosuppression in sepsis and may provide a candidate molecular target for sepsis immunotherapy.

Keyword: Sepsis; SAMSN1; Macrophage; Immunosuppression; Dysregulated host response

Introduction

Sepsis is currently defined as a life-threatening organ dysfunction caused by dysregulated host response to infection and is by far the most common cause of admission in intensive care units¹⁻³. Despite years of efforts, the mortality rate of sepsis remains high at approximately 22.5%. Rudd and colleagues analyzed multiple cause-of-death data from 109 million individual death records and a total of 48.9 million cases of sepsis were recorded worldwide, of which 11 million sepsis-related deaths were reported, representing 19.7% of all global deaths⁴.

Excessive inflammatory response has long been considered to be at the core of the pathogenesis of sepsis. Unfortunately, all clinical trials targeting inflammatory mediators have failed over the past few decades, suggesting that inflammation alone does not fully reflect the host response during sepsis. The 2016 Third International Consensus Definition of Sepsis and Septic Shock (Sepsis-3) proposed that dysregulated host response caused by infection, rather than inflammation, is the core of the pathogenesis of sepsis, and immunosuppression is an important component of this dysregulated response⁵⁻⁷. Various manifestations of immunosuppression in sepsis include increased secretion of immunosuppressive factors (IL-4, IL-10, etc.), increased expression of immunosuppressive surface molecules (PD-L1, CTLA-4, etc.), increased immunosuppressive cells (mainly Treg cells and myeloid-derived suppressor cells), and decreased adaptive immune cells (mainly B cells and T cells)⁵. However, although immunosuppression in sepsis has been widely studied, it is still unclear how it is triggered, what changes it causes in the host's immune response, and what the molecular mechanisms behind it are. When sepsis occurs, there may be some specific mechanisms that trigger this immunosuppression. If the key genes involved in these mechanisms can be identified, it will fill in the gaps in our understanding of the pathogenesis of sepsis and provide innovative diagnostic markers and targets for sepsis intervention.

In this study, we used the following strategy to identify potential genes that may affect the pathogenesis of sepsis: first, we analyzed the public gene sequencing database to screen for genes with significant expression changes during sepsis; second, we used prospective RNA-Seq data for external validation; third, we performed correlation analysis between the screened candidate gene and the clinical indicators, severity and survival rate of sepsis patients. We identified SH3 domain and nuclear localization signals 1 (SAMSNI), a gene encoding a putative adaptor protein, whose expression is significantly increased during sepsis. Higher SAMSNI levels are positively correlated with sepsis severity and mortality. Through gene editing, flow cytometry and functional experiments, we found that SAMSNI was mainly

expressed in monocytes-macrophages and promoted the expression of co-inhibitory molecules CD48, CD86 and CEACAM1, which bind to their corresponding receptors 2B4, CTLA4, TIM3 on the surface of T cells, inducing T cell exhaustion. SAMSNI binds to Kelch-like ECH-associated protein 1 (KEAP1), causing the transcription factor Nuclear factor erythroid 2-related factor 2 (NRF2) to dissociate from the KEAP1-NRF2 complex, NRF2 then translocates into the nucleus and initiates the transcription of downstream target genes including CD48, CD86, and CEACAM1. Our study reveals a novel mechanism that triggers immunosuppression in sepsis, and may provide translational opportunities for the design of sepsis immunotherapy.

Results

Bioinformatics analysis and external validation revealed that SAMSNI expression was increased in patients with sepsis and was negatively correlated with survival

To comprehensively screen the gene expression of immune responses when sepsis occurs, we first used GEO database to analyze the differences in gene expression between sepsis patients and healthy volunteers. By constructing search terms, we retrieved a total of 56 public sequencing data sets related to sepsis between 2016 and 2021, and selected 3 datasets that met the requirements for analysis (Supplementary Table 1, 2). Setting the definition of differential genes to $\text{adjP value} < 0.05$ and $|\log \text{Foldchange}| > 2$, there were 209, 769, and 232 differentially expressed genes were screened from datasets GSE131761, GSE154918, and GSE139913, respectively, among which 32 genes were shared by these three datasets (Fig. 1a). Among the 32 genes, a gene named SH3 domain and nuclear localization signals 1 (SAMSNI) showed significantly increased expression in the sepsis patients in all three datasets (Fig. 1a, b).

We used RNA-Seq data from peripheral blood mononuclear cells (PBMCs) from 59 sepsis patients and 27 healthy volunteers for external validation. The expression change trend of SAMSNI was consistent with the trend derived from the analysis of public data sets, and the SAMSNI mRNA level in sepsis patients was significantly higher than that in healthy controls (Fig. 1c). In addition, a markedly higher SAMSNI level was observed in survivors than in non-survivors (Fig. 1d). There was a linear correlation between SAMSNI and coagulation markers (APTT, ATIII), inflammation markers (IL-6, APACHEII WBC score), and metabolic markers (albumin, LDL) (Fig. 1e and Supplementary Table 3). Kaplan-Meier survival analysis showed that patients with higher SAMSNI levels had a significantly higher mortality

rates (Fig. 1f).

Blockade of SAMSNI improved the survival rate of septic mice by alleviating acute organ injuries

We used a classic mouse model, cecal ligation and puncture (CLP)-induced sepsis, to investigate the potential role of SAMSNI in sepsis. We found that the mRNA level of SAMSNI not only in PBMCs, but also in bone marrow, spleen, peripheral blood, and liver in the CLP group was significantly higher than that in the control group (Fig. 2a). We employed the CRISPR/Cas9 system to generate SAMSNI knockout (*Samsn1*^{-/-}) mice, which were ostensibly viable and fertile (Supplementary Fig. 1, 2 and Supplementary Materials 1). Weight-matched wild-type mice and *Samsn1*^{-/-} mice underwent CLP surgery, and 14-day survival rates were recorded. The survival experiment showed that *Samsn1*^{-/-} mice had an increased survival rate, fewer weight change, and a milder symptom score (Fig. 2b-d).

To verify the potential impact of intervening SAMSNI on sepsis survival, we prepared 6 anti-SAMSNI monoclonal antibody candidate strains, among which mAb-10-A2-H10 showed significant survival benefit (Fig. 2e and Supplementary Fig. 3). The lungs, kidneys, and livers were collected at 8h, 1d, 3d, 5d, and 7d after CLP surgery to assess acute organ injuries in sepsis. Histopathological scoring of H&E stained sections (Fig. 2f, h, j)⁸ showed significant lung and kidney injuries after CLP, whereas no significant changes were found in the liver (Fig. 2g, i, k). The lungs of wild-type mice showed large hemorrhagic lithiasis and concomitant severe inflammatory infiltrates, whereas the corresponding *Samsn1*^{-/-} mice had less severe damage (Fig. 2f, g). The wild-type mice showed obvious acute kidney injury (AKI) 1 day after CLP, characterized by nuclear vacuolar degeneration of renal tubular epithelial cells, necrotic detachment, and formation of intratubular casts (Fig. 2h). *Samsn1*^{-/-} mice showed an alleviated renal injury, and this effect was most significant 1 day after CLP (Fig. 2i). ELISA showed that the inflammatory factors IL-6 and TNF- α gradually increased in the serum of mice after CLP, while IL-10 showed an opposite trend, but no significant difference was found between wild-type and *Samsn1*^{-/-} mice (Supplementary Fig. 4).

SAMSNI blockade enhances macrophage proliferation, phagocytosis, and clearance of bacteria from the blood

SAMSNI was first identified in leukemia cells and mast cells. We analyzed the expression of SAMSNI in PBMCs of sepsis patients in the dataset GSE151263 and found that SAMSNI was expressed on various

types of immune cells, but mainly in monocytes-macrophages (Supplementary Fig. 5). We therefore chose murine mono-macrophage cell line RAW264.7 as a model cell and generated SAMSNI-KO RAW264.7 cells using Crisper-cas9 system to investigate the role of SAMSNI (Fig. 3a and Supplementary Fig. 6-8).

We first tested the stimulating effect of different doses of lipopolysaccharide (LPS) on macrophages in vitro. When the LPS dose reached 50 $\mu\text{g/ml}$, the proliferation effect on RAW264.7 cells was the strongest, while higher doses were toxic to cells (Fig. 3b). Under the stimulation of 50 $\mu\text{g/ml}$ LPS, the proliferation of SAMSNI-KO cells was significantly higher than that of WT cells, suggesting that SAMSNI may negatively regulate the proliferation of macrophages (Fig. 3b).

Phagocytosis is the essential function of macrophages to exert their biological effects. We used GFP-labeled *E. coli* as a model bacterium for phagocytosis experiments and found that the phagocytic ability of SAMSNI-KO cells was significantly stronger than that of WT cells (Fig. 3c, d). We also isolated primary peritoneal macrophages from WT and *Samsn1*^{-/-} mice and tested their ability to phagocytose pyroptotic cells. The primary macrophages were co-cultured with apoptotic Jurkat cells, an immortalized T lymphocyte line. Fluorescence co-localization experiments showed that macrophages derived from *Samsn1*^{-/-} mice had a stronger ability to phagocytose apoptotic cells (Fig. 3e, f and Supplementary Fig. 9). Blocking SAMSNI function promotes macrophage proliferation and phagocytosis, suggesting that it may help clear invading bacteria in sepsis. We collected blood samples from septic mice 12 hours after CLP surgery for blood culture testing. Compared with WT mice that underwent CLP surgery, bacteria in the blood of *Samsn1*^{-/-} mice were largely eliminated after CLP (Fig. 3g, h).

SAMSNI affects immune cell populations in normal and septic mice

To evaluate the effect of SAMSNI on immune cell populations in septic mice, we collected peripheral blood, spleen, and bone marrow samples 12 h after CLP for flow cytometric analysis. The number and proportion of CD3⁺, CD4⁺ and CD8⁺ T cells in the spleen and bone marrow of *Samsn1*^{-/-} mice were higher than that of wild-type mice (Fig. 4a-f), but myeloid cells in *Samsn1*^{-/-} mice were lower than that of WT mice (Supplementary Fig. 10). For B cells, the number and proportion of B220⁺ and B220⁺CD5⁺ B cells increased slightly in the peripheral blood and spleen of *Samsn1*^{-/-} mice, but did not significantly change in the bone marrow (Supplementary Fig. 10). These results indicate that in *Samsn1*^{-/-} mice, the number and proportion of T cells significantly increased, B cells increased slightly, while myeloid cells decreased.

SAMSN1 mediates the inhibition of T cells by macrophages through direct contact

Considering that SAMSN1 gene deletion increased the number of T cells and enhanced the ability of CD11b⁺ myeloid cells to clear bacteria, we speculated that SAMSN1 might mediate the crosstalk between myeloid cells and T cells. To verify this, we co-cultured RAW264.7 cells with primary T cells, and performed flow cytometry to detect changes in the cells after 12 hours of co-culture. We used two co-culture modes. First, the two cells were directly cultured in the same culture dish, so that macrophages could directly contact T cells; second, cells were cultured in the upper and lower chambers of the Transwell system to detect whether secreted factors produced by macrophages affect T cells. Flow cytometry showed that the number of T cells after direct co-culture with SAMSN1-KO RAW264.7 cells for 12 hours was significantly higher than that after co-culture with WT cells (Fig. 5a-e). However, RAW264.7 cells cultured in the upper chamber of the Transwell did not affect the number of T cells in the lower chamber (Fig. 5f-j). This suggests that macrophages are likely to reduce the number of T cells through direct contact, and knockout of the SAMSN1 gene inhibits this effect, resulting in a significant increase in CD3⁺CD4⁺ and CD3⁺CD8⁺ T cells.

The SAMSN1-mediated T cell exhaustion may be through upregulating the expression of CD48, CD86, and CEACAM1 on macrophages and binding to the corresponding receptors on T cells.

To explore the effect of SAMSN1 in macrophages, we compared the expression differences between SAMSN1-KO RAW264.7 cells and WT cells using RNA-Seq. Principal component analysis (PCA) showed that the expression characteristics of SAMSN1-KO RAW264.7 and WT cells were clearly divided into 2 groups (Fig. 6a). There was a total of 518 differentially expressed genes, of which 319 gene expressions were upregulated and 199 genes downregulated in SAMSN1-KO cell (Fig. 6b). Gene Ontology (GO) analysis showed that the genes identified from KO vs. WT cells were most significantly enriched in the terms “defense response to other organism”, “lymphocyte activation”, and “T cell activation” (Fig. 6c). A total of 134 genes related to immune response were screened out from 518 differential genes, including 42 down-regulated genes and 92 up-regulated genes (Fig. 6d, Supplementary Fig. 11). Three genes that may mediate the interaction between macrophages and T cells were screened out, namely CD48, CD86 and CEACAM1, which are usually expressed on antigen-presenting cells (APCs) and can bind to inhibitory receptors 2B4⁹, CD152¹⁰ and TIM3¹¹ on the surface of T cells, respectively. The combination of the three pairs of molecules transmits negative immune signals and mediates T cell

exhaustion¹². We also analyzed the expression of other T cell inhibitory receptors and ligands, but these genes showed no differences between groups (Supplementary Fig. 12). Flow cytometry was used to verify the RNA-Seq results, showing that the expression of CD48, CD86 and CEACAM1 on the surface of SAMSNI-KO RAW264.7 cells was significantly reduced compared with that of WT cells (Fig. 6f-g). These results suggest that SAMSNI may mediate T cell exhaustion by upregulating the expression of CD48, CD86 and CEACAM1 on macrophages and binding to their corresponding receptors on the surface of T cells.

***Samsn1*^{-/-} mice have decreased T cell exhaustion-related receptors expression and enhanced T cell activation and signaling**

We next examined the corresponding inhibitory receptors on T cells. The expression of 2B4, CD152 and TIM3 on the surface of CD3⁺ T cells in the spleen of *Samsn1*^{-/-} mice was markedly reduced, but no significant changes were found in the peripheral blood and bone marrow. (Fig. 7a-b). Similar to this expression trend, after CLP-surgery, 2B4, CD152, and TIM3 on T cells in the spleen were reduced in *Samsn1*^{-/-} mice, while there were no obvious changes in peripheral blood and bone marrow (Supplementary Fig. 13). We then examined the expression of activating receptors CD69 and CD25 on splenic T cells. Under normal conditions, there was no significant difference in the expression of CD69 in splenic T cells of WT and *Samsn1*^{-/-} mice. However, under sepsis, the expression of CD69 in splenic T cells of *Samsn1*^{-/-} mice was significantly increased (Fig. 7c-d). As for the expression of CD25, no significant change was observed after CLP surgery or between WT and *Samsn1*^{-/-} mice (Fig. 7e-f). ZAP70 and LCK are two non-receptor tyrosine kinases, playing a crucial role in the regulation of TCR signaling critical for T cell functions. Western blot (WB) detection showed that the phosphorylation level of ZAP70 and LCK in splenic T cells of *Samsn1*^{-/-} mice significantly increased in both normal and septic states (Fig. 7g-h, Supplementary Fig. 14), suggesting that the activity of T cells in *Samsn1*^{-/-} mice is increased.

SAMSNI binds to KEAP1, releasing NRF2 from KEAP1 and allowing NRF2 to enter the nucleus to promote the transcription of target genes CD48, CD86 and CEACAM1

Finally, we explored how SAMSNI affects the expression of CD48, CD86, and CEACAM1 in macrophages. We first analyzed the composition of the protein complexes bound to SAMSNI using IP-MS (immunoprecipitation of proteins bound to SAMSNI followed by mass spectrometry). We identified 81 and 74 proteins interacting with SAMSNI in resting RAW264.7 cells (WT-REST) and LPS-stimulated

RAW264.7 cells (WT-LPS), of which 38 genes were shared by both groups, 43 were unique to WT-REST, and 36 were unique to WT-LPS (raw data of mass spectrometry analysis are shown in Supplementary Materials 2). We speculated that if SAMS1 regulates the expression of CD48, CD86 and CEACAM1 through some pathway, it may be achieved by binding to a certain transcription factor. We analyzed the 43 genes unique to WT-REST and the 36 genes unique to WT-LPS to see if any transcription factors were present. Among them, there are 7 transcription factors that bind to SAMS1, and 4 of them (JUNB, ZFP36, NFKIBZ, and KEAP1) can be found in public databases for transcriptome sequencing data after knocking them out in macrophages (Fig. 8a). The 4 public datasets GSE50542, GSE229923, GSE43075, and GSE216252 show the RNA-Seq data of macrophages after JUNB, ZFP36, NFKIBZ, and KEAP1 were knocked out, respectively. We analyzed these datasets and found that the expression of CD48, CD86 and CEACAM1 was significantly reduced after KEAP1 knockout, while the deletion of JUNB, ZFP36, NFKIBZ genes had no effect on the expression of these genes (Fig. 8b and Supplementary Fig. 15). The results suggest that SAMS1 may regulate the expression of CD48, CD86 and CEACAM1 by binding to the transcription factor KEAP1.

Nuclear factor erythroid 2-related factor 2 (NRF2) plays pleiotropic roles in a variety of physiological and pathological regulation. In the resting state, KEAP1 binds to NRF2 in the cytoplasm, preventing NRF2 from translocating into the nucleus to trigger the transcription of target genes¹³⁻¹⁵. IP-MS analysis has revealed that SAMS1 and KEAP1 bind to each other upon LPS stimulation. We hypothesized that in the resting state, KEAP1 and NRF2 are bound in the cytoplasm, and SAMS1 and KEAP1 are separated. However, under the stimulation of pathogenic components such as LPS, SAMS1 binds to KEAP1 and promotes the release of NRF2 from KEAP1, so that NRF2 translocates into the nucleus and promotes the transcription of CD48, CD86 and CEACAM1.

We used two agents, ML385, which specifically inhibits NRF2, and KI696, which specifically blocks KEAP1 and NRF2 binding thereby activates NRF2, to test this hypothesis. Realtime-RT-PCR confirmed that the LPS-induced expression of CD48, CD86 and CEACAM1 could be significantly reduced when SAMS1 gene was deleted (Fig. 8c). ML385 significantly inhibited the LPS-induced expression of CD48, CD86 and CEACAM1 (Fig. 8d). On the other hand, under the stimulation of LPS, the use of agonist KI696 can significantly restore the expression of CD48/CD86/CEACAM1 in SAMS1-KO cells (Fig. 8e). The results suggest that NRF2 is a key downstream regulator of SAMS1 to promote the transcription of

the co-inhibitory molecules. IP-WB analysis showed that the specific binding of SAMSNI and KEAP1 increased when WT cells were stimulated with LPS (Fig. 8f). However, in SAMSNI-KO cells, the binding of KEAP1 and NRF2 increased significantly under the stimulation of LPS, suggesting that the loss of SAMSNI increased the number of NRF2 binding to KEAP1, thus inhibiting its transcriptional activity (Fig. 8g).

Discussion

In order to screen out key genes that may be involved in the pathogenesis of sepsis, we retrieved a total of 56 public sequencing datasets and selected three datasets that met the screening criteria (GSE131761, GSE154918, and GSE139913), in which a gene named SAMSNI was screened out. Screening of public datasets and external validation of prospective data revealed that SAMSNI expression was significantly increased in patients with sepsis and was correlated with sepsis severity and mortality. In vivo experiments showed that SAMSNI knockout or blockade with antibodies improved the survival of septic mice via enhancing macrophage proliferation, phagocytosis, and clearance of bacteria from the blood. SAMSNI induces macrophages to be immunosuppressive by upregulating the immune co-inhibitory molecules CD48, CD86, and CEACAM1, which bind to the corresponding receptors 2B4, CTLA4, and TIM3 on the surface of T cells, leading to T cell exhaustion. Through IP-MS analysis, we identified that SAMSNI binds to a transcription factor partner KEAP1, thereby dissociating the KEAP1-NRF2 complex in the cytoplasm, so that NRF2 translocates into the nucleus and initiates the transcription of downstream target genes CD48, CD86 and CEACAM1. The schematic of the molecular mechanism of SAMSNI is shown in Fig. 9.

SAMSNI was first identified and reported simultaneously by Claudio¹⁶ and Uchida¹⁷ in 2001. Claudio et al. found that SAMSNI was highly expressed in acute myeloid leukemia cells and multiple myeloma cells and named it HACS1¹⁶, whereas Uchida et al. identified SAMSNI in mast cells and named it NASH1¹⁷. SAMSNI has also been found to be highly expressed in other tumors¹⁸⁻²³. Another alias for SAMSNI is SLy2, which, together with SLy1 and SLy3, belongs to the adaptor protein family SLy/SASH1²⁴. The SLy family has a highly similar protein structure, including the SH3 motif, SAM1 domain, and nuclear localization signal (NLS). Earlier studies have suggested that SAMSNI mainly functions on B cells²⁵⁻²⁹. However, our analysis of the single-cell transcriptome sequencing dataset GSE151263 showed that SAMSNI is expressed in many types of immune cells, with the highest

expression in monocyte-macrophages. Wang et al. reported that conventional knockout of SAMSNI resulted in overall immune enhancement in T cells, B cells, and DC cells of mice³⁰. Our data suggest that SAMSNI can bind to the transcription factor partner KEAP1, and SAMSNI knockout resulted in KEAP1-NRF2 to remain in a bound state, and NRF2 could not dissociate from KEAP1 and enter the nucleus, thus failing to activate the expression of immunosuppressive co-stimulatory molecules CD48, CD86, and CEACAM1. After SAMSNI knockout, in addition to the increase in T cells, B220⁺CD5⁺ B cells also increased accordingly (Supplementary Fig. 9), suggesting that the recovery of T cell activity may also promote B cell function.

In the past few decades, all drugs designed to target inflammatory mediators have failed, suggesting that inflammation may not be the core of the pathogenesis of sepsis. The role of immunosuppression in the pathogenesis of sepsis has been recognized in recent years, but the mechanism that triggers immunosuppression in sepsis has not yet been fully elucidated. In this study, we proposed for the first time that SAMSNI in monocytes-macrophages may mediate crosstalk between monocyte-macrophages and lymphocytes, causing T cell exhaustion, and SAMSNI knockout can relieve immunosuppression and significantly improving survival in sepsis. According to the analysis of The Human Protein Atlas database, SAMSNI is mainly located in the cell membrane and partly in the nuclear membrane. Therefore, it is theoretically feasible to use antibodies to inhibit SAMSNI activity. We prepared 5 monoclonal antibody clones that can bind to SAMSNI. Among them, mAb-10-A2-H10 showed a significant improvement in survival rate in septic mice. Based on this, we may be able to design novel immune-boosting drugs for sepsis treatment.

Previous studies have shown that SAMSNI is expressed and functions in B cells, mast cells or tumor cells. According to our analysis of single-cell sequencing data of PBMC, SAMSNI is mainly expressed on monocyte-macrophages, which will broaden our understanding of the biological function of SAMSNI. There is currently a lack of reports on the relationship between SAMSNI and sepsis and septic immunosuppression. To the best of our knowledge, we show for the first time that SAMSNI expression is significantly increased during sepsis and exerts an immunosuppressive function. SAMSNI induces an immunosuppressive phenotype in monocyte-macrophages by up-regulating co-inhibitory molecules CD48/CD86/CEACAM1, which bind to the corresponding receptors 2B4/CTLA4/TIM3 on the surface of T cells, leading to T cell exhaustion. Through proteomic identification by IP-MS, followed by

transcriptome sequencing analysis, we identified the key molecules downstream of SAMS1 regulation. SAMS1 binds to KEAP1 to dissociate the KEAP1-NRF2 complex, allowing NRF2 to enter the nucleus and promote the transcription of its target gene immune co-suppressor molecules.

In this study, we first used public database to screen out genes that are significantly changed when sepsis occurs, and then performed external validation using a prospective cohort with RNA-Seq data, and finally used gene editing to study the function of the target gene and conduct sepsis therapeutic experiments. This stepwise screening process using a multi-omics approach improves the objectivity of the research and makes the findings more potentially translational. Our study proposes a novel mechanism for the triggering of immunosuppression in sepsis and may provide a new target for the diagnosis and treatment of sepsis.

Methods

Ethics. The observational study using human blood samples for RNA-Seq was approved by Ethics Committee on Biomedical Research, West China Hospital of Sichuan University (registered observational trial: ChiCTR2100047060). The informed consent was obtained from all subjects. This trial was examined and cleared by the Medical Ethics Committee under the ethical approval No.2020641. The informed consent was obtained from all subjects. The animal experiments were approved by the Animal Ethics Committee of Sichuan University and performed according to institutional and national guidelines.

Cecal ligation and puncture (CLP). WT C57BL/6 mice were purchased from GemPharmatech. *Samsn1*^{-/-} mice were generated by GemPharmatech. All mice were caged at $22 \pm 3^\circ\text{C}$ under 12h-12h light-dark cycles before cold and warm exposure, and air change rate of 12-15 times per hour are maintained at a constant level. The mice were randomly divided into groups before the experiment. Before CLP surgery, male mice (8-10 weeks, 20-25g) were anesthetized with an intraperitoneal (i.p.) injection of Pentobarbital Sodium (50mg/kg). An abdominal midline incision was performed and the caecum was isolated and ligated, then the caecum was ligated 7.5mm from the caecal tip at a site distal to the ileocecal valve, and the ligated caecal stump was then perforated using two “through and through” punctures (18-gauge needle). The cecum was then returned to the peritoneal cavity, and the abdominal skin was closed. In the sham group, except for cecal ligation and puncture, other operation steps remained unchanged. All mice undergoing CLP surgery received antibiotics and fluid therapy, including a single intramuscular injection of Ciprofloxacin at a dose of 20 mg/kg and subcutaneous fluid resuscitation with

800 μ l of saline immediately.

Quantitative real-time PCR. Total RNA was isolated from samples using Trizol Reagent, which was obtained from Invitrogen. Reverse transcription was performed with a Superscript II Two-Step RT-PCR Kit (Invitrogen). PCR was performed using SYBR® Green PCR Master Mix (Applied Biosystems). Gene expression was normalized to 18s. The reaction mixture was preheated for 10 min at 95 °C, followed by 45 cycles of denaturation at 95 °C for 30 s, annealing at 55 °C for 30 s, and extension at 72 °C for 30 s. The 2 $^{-\Delta\Delta C_t}$ method was employed to evaluate mRNA expression.

ELISA. Serum was collected from mice at 8h, 1d, 3d, 5d, and 7d after CLP surgery. Samples collected for the measurement of IL-6, IL-10 and TNF- α levels with ELISA kits (R&D Systems) according to the manufacturer's instructions.

Cell lines and Crispr/cas9-mediated Samsn1 editing. RAW264.7 cells, HEK293 cells and jurkat cells were obtained from ATCC; RAW264.7 cells and HEK293 cells routinely cultured in complete DMEM, while jurkat cells cultured in complete RPMI-1640. All cells cultured at 37 °C in a 5% CO₂ incubator. We designed sgRNAs targeting Samsn1 exon and integrated it into lentiCRISPRv2-mcherry plasmid backbone (Addgene); then lentivirus was packaged by HEK 293 cells, after that RAW264.7 cells were infected using lentivirus; after screening by puromycin, flow cytometry sorting was used to spread cells into 96-well plate to obtain single cells; after culturing the monoclonal cells, the identification was performed to obtain the final *Samsn1*^{-/-} RAW264.7 cell line.

Survival study. For survival study-1: Male C57BL/6 WT mice were randomly assigned to the Sham (WT-Sham) and CLP (WT-CLP) group; Male C57BL/6 *Samsn1*^{-/-} mice were KO-CLP group. For survival study-2: Male C57BL/6 WT mice were randomly assigned to the Sham, CLP, CLP+PBS, CLP+mAb-7-A7-H3, CLP+mAb-10-A2-H10, CLP+mAb-38-C5-C10, CLP+mAb-41-B2-H5 and CLP+ mAb-53-G11-H1 group. All 5 mAbs were purchased from AtaGenix. Mice were subjected to Sham or CLP surgery and excluded if they died during surgery. The survival of mice was monitored for up to 14 days.

H&E staining and histologic scoring. The septic mice were anaesthetized and perfused transcardially with 4% paraformaldehyde in PBS for 10 min. The liver, lung and kidney were removed, post-fixed with 4% paraformaldehyde for 24 h, embedded in paraffin, and sectioned at a 5- μ m thickness. After deparaffinization and rehydration, thesections were stained with hematoxylin and eosin. Based on the

scoring standard made by Ferrer et al³¹. The H&E staining was scored by two blinded observers (See Supplementary Table 5).

Cell proliferation. The cell counting plate was used to count the number of cells, and then the 96-well plate was inoculated with the same number of cells (5000 cells/well) and incubated for 2 h to wait for the cells to attach to the wall, then 50 ug/ml LPS was added to the medium; at 0, 1, 6, 12, 24, 48 and 72 hours, 10ul CCK-8 (MedChemExpress) was added to the medium and incubated for 1 h to check the OD value. The formula of Cell proliferation rate follows product protocol.

Blood bacterial load. Blood samples were collected from the septic mice (WT and *Samsn1*^{-/-}) 12h after the CLP surgery. Ten microliters from each sample were plated on blood agar plates, and bacterial colonies (CFU) were counted manually.

Bacterial phagocytosis assay. Escherichia coli (K-12 strain) BioParticles® conjugated to Alexa Fluor®488 (Invitrogen) were used according to the manufacturer's instructions. RAW264.7-WT and RAW264.7-KO Cells were seeded on 24-well plates and incubated for 1h at 37°C; the medium was then removed and replaced with medium treated with or without E. coli particles (1mg/ml), and cells were incubated at 37°C for 2h. The phagocytic activity was determined by measuring the fluorescent signal within the macrophages using Image-Pro Plus software.

Efferocytosis assay and Isolation of PPMs. Efferocytosis, phagocytosis of apoptotic cells. Construction of jurkat cells with green fluorescence: Calcein AM solution 1mg/ml (beyotime) was added to jurkat cells and incubated for 2h. Construction of ACs: Sraurosporine 1uM was added to jurkat cells (MedChemExpress) was incubated and then the degree of apoptosis was detected by flow cytometric staining for Annexin V/PI. Isolation of PPMs: Mouse peritoneal cells were obtained by repeated lavage of the mouse peritoneal cavity, incubated overnight to make them adherent to the wall, and the supernatant was removed to obtain PPMs. The prepared ACs and PPMs were co cultured in 1:1 ratio for 0,30 and 90 minutes.

Flow cytometry and antibodies. Antibodies to CD3 (Clone: 17A2, Catalog: 100204), CD4 (Clone: GK1.5, Catalog: 100449/100408), CD8a (Clone: S18018E, Catalog: 162306), B220 (Clone: RA3-6B2, Catalog: 103234), CD5 (Clone: 53-7.3, Catalog: 100606), CD11b (Clone: M1/70, Catalog: 101212), CD152/CTLA-4 (Clone: UC10-4B9, Catalog: 106306), CD244.2/2B4 (Clone: m2B4 (B6)458.1, Catalog:

133512), CD366/TIM3 (Clone: RMT3-23, Catalog: 119721), CD48 (Clone: HM48-1, Catalog: 103443), CD86 (Clone: PO3, Catalog: 105123), CD66a/CEACAM1 (Clone: MAb-CC1, Catalog: 134510), CD69 (Clone: H1.2F3, Catalog: 104512) and CD25 (Clone: A18246A, Catalog: 113704), were purchased from Biolegend. The fixable viability dye Zombie NIR™ Fixable Viability Kit and Zombie Violet™ Fixable Viability Kit were also purchased from Biolegend. Peripheral blood, spleen and bone marrow of WT and KO mice after CLP surgery were sampled for flow cytometry. Sampling was done 12h after CLP surgery. These tissues were homogenized by repeated pipetting and filtered through a 70µm cell strainer, and then washed once with complete RPMI to prepare a single-cell suspension. The cells were stained with different markers according to different experimental protocols for 20 min in the dark. The expression of cell surface markers was analyzed using a BD LSRFortessa flow cytometer (BD Biosciences, USA). The data were analyzed using FlowJo software (FlowJo, Ashland, OR, USA).

Isolation of Mouse splenic CD3⁺ cells and Co-culture. Mice were euthanized using carbon dioxide and immersed in 75% alcohol for 5 min; spleens were aseptically removed; then Grind the spleen and filtered through a 70µm filter to obtain a single-cell suspension; Red blood cells were lysed using Red Blood Cell Lysis Buffer (Abcam); the concentration of cells was adjusted to 10⁸/ml; 100ul of cell suspension was taken and 100ul of Biotin-Antibody Cocktail (Biolegend) mixed and incubated on ice for 15 min; after washing with MojoSort™ buffer (Biolegend), 10ul CD3⁻ Streptavidin Nanobeads (Biolegend) were added and incubated on ice for 15 min; 5 ml of buffer was added and the tubes were placed in MojoSort™ magnet (Biolegend); unlabeled cells in the tubes were obtained after 5 min, and the washing was repeated 2-3 times, each time obtaining unlabeled cells in the tubes. Co-cultured RAW264.7 cells with wild-type primary T cells by direct contact way or indirect contact way. The co-culture ratio of RAW264.7 cells to primary T cells was 1:1. Precise counting ensured that the number of primary T cells in each well was equal; after 12h of co-culture, the remaining primary T cells were stained and counted precisely. Direct contact: Co-culture RAW264.7 and primary T cells directly; Indirect contact: using a 0.04µm pore-size transwell to keep the two separated.

RNA-Seq. Total RNA was isolated from WT- RAW264.7 cells and KO-RAW264.7 cells using Trizol Reagent. RNAs were delivered to Novogene Inc (Beijing, China). After total RNA qualification, mRNA enrichment, double-stranded cDNA synthesis, end repair poly-A&adaptor addition, fragments selection and PCR, library quality assessment, illumina sequencing and quality control, we acquired RAW sequencing

data and performed data analysis on it.

Western blot. Cultured cells in 6-well plates and 100mg spleen from mice were harvested, washed twice with PBS, and lysed for 30 min on ice in 150 μ l of RIPA Lysis Buffer (Beyotime) containing 1 mM PMSF (Beyotime) and Protease inhibitor cocktail (Beyotime). Proteins were quantified with the BCA method. Protein samples were resolved by 10% SDS-PAGE, transferred to a 0.45 μ m PVDF membrane (Millipore), and blocked for 1 h with 5% BSA (Sigma-Aldrich) in Tris-buffered saline containing 0.1% Tween 20 (TBST) at room temperature. After incubation with a specific primary antibody overnight at 4 °C, the membrane was washed with TBST three times. Then, the membrane was incubated with a secondary antibody for 1 h at room temperature. Enhanced chemiluminescence (ECL) (Millipore) was used to visualize the protein bands, and images were acquired in a ChemiDoc™ Imaging System (Bio-Rad, Hercules, CA, USA). Each experiment was repeated at least three times. Primary antibodies: Anti-p-ZAP70 antibody (CST Cat. # 2717); anti-ZAP70 antibody (CST Cat. # 2705); anti-p-LCK antibody (CST Cat. #2751); anti-LCK antibody (CST Cat. # 2984); anti-Actin antibody (HUABIO); anti-Tubulin antibody (HUABIO); KEAP1; anti-SAMSN1 antibody (AtaGenix).

Immunoprecipitation-Mass Spectrometry (IP-MS) and CO-IP. Anti-SAMSN1 Antibody (AtaGenix) and Anti-NRF2 Antibody (CST Cat. # 12721S) were used for the immunoprecipitation process of proteins from RAW264.7 cells. After RAW264.7 cells were grown to full size in 10mm cell dishes, with or without 50 μ g/ml LPS (Sigma) for 1h, then added to the NP-40 lysate for cell lysis, after which the supernatant was extracted by centrifugation at 4 °C 12,000g for 15 min, the collected supernatant was determined by the BCA method and taken for immunoprecipitation. Protein A/G magnetic beads (Selleck) were used to pre-mix with the antibody and incubated for 4h in a tumbler at 4 °C to obtain the magnetic bead-antibody complex. The magnetic bead-antibody complexes were co-incubated with prepared proteins and incubated overnight at 4 °C in a tumbler. According to the experimental design, the magnetic bead-antibody-protein complexes were sent to QLBio Inc (Beijing, China) for mass spectrometry analysis or western blot after denaturation to detect the expression of proteins.

Statistical analysis. Data are presented as the means \pm standard deviations (SDs) from at least three individual experiments. When two groups were compared, each set of data was tested for Normal (Gaussian) distribution first, and *Welch's t test* (passed normality test) or *Mann-Whitney U test* (did not pass normality test) was used. For multi-group comparison, *one-way ANOVA test* followed by *Tukey's*

multiple comparison was used, and normality of Residuals was tested using "Anderson-Darling (A2*)", "D'Agostino-Pearson omnibus (K2)", "Shapiro-Wilk (W)", and "Kolmogorov-Smirnov (distance)". A p value < 0.05 was considered statistically significant. Survival outcomes were analysed using Kaplan-Meier survival curves, and the significance of the differences was assessed using the log-rank test.

References

1. Cecconi, M., Evans, L., Levy, M. & Rhodes, A. Sepsis and septic shock. *Lancet* **392**, 75–87 (2018).
2. Barichello, T., Generoso, J. S., Singer, M. & Dal-Pizzol, F. Biomarkers for sepsis: more than just fever and leukocytosis-a narrative review. *Crit Care* **26**, 14 (2022).
3. Singer, M. *et al.* The Third International Consensus Definitions for Sepsis and Septic Shock (Sepsis-3). *JAMA* **315**, 801–810 (2016).
4. Rudd, K. E. *et al.* Global, regional, and national sepsis incidence and mortality, 1990–2017: analysis for the Global Burden of Disease Study. *The Lancet* **395**, 200–211 (2020).
5. Liu, D. *et al.* Sepsis-induced immunosuppression: mechanisms, diagnosis and current treatment options. *Mil Med Res* **9**, 56 (2022).
6. Hotchkiss, R. S., Monneret, G. & Payen, D. Immunosuppression in sepsis: a novel understanding of the disorder and a new therapeutic approach. *Lancet Infect Dis* **13**, 260–268 (2013).
7. Inoue, S. *et al.* Persistent inflammation and T cell exhaustion in severe sepsis in the elderly. *Crit Care* **18**, R130 (2014).
8. Chen, H.-G., Han, H.-Z., Li, Y., Yu, Y.-H. & Xie, K.-L. Hydrogen alleviated organ injury and dysfunction in sepsis: The role of cross-talk between autophagy and endoplasmic reticulum stress: Experimental research. *Int Immunopharmacol* **78**, 106049 (2020).
9. Brown, M. H. *et al.* 2B4, the natural killer and T cell immunoglobulin superfamily surface protein, is a ligand for CD48. *J Exp Med* **188**, 2083–2090 (1998).

10. Qureshi, O. S. *et al.* Trans-endocytosis of CD80 and CD86: a molecular basis for the cell-extrinsic function of CTLA-4. *Science* **332**, 600–603 (2011).
11. Huang, Y.-H. *et al.* CEACAM1 regulates TIM-3-mediated tolerance and exhaustion. *Nature* **517**, 386–390 (2015).
12. Wherry, E. J. & Kurachi, M. Molecular and cellular insights into T cell exhaustion. *Nat Rev Immunol* **15**, 486–499 (2015).
13. Crisman, E. *et al.* KEAP1–NRF2 protein–protein interaction inhibitors: Design, pharmacological properties and therapeutic potential. *Medicinal Research Reviews* **43**, 237 (2023).
14. Yamamoto, M., Kensler, T. W. & Motohashi, H. The KEAP1-NRF2 System: a Thiol-Based Sensor-Effector Apparatus for Maintaining Redox Homeostasis. *Physiological Reviews* **98**, 1169 (2018).
15. Adinolfi, S. *et al.* The KEAP1-NRF2 pathway: Targets for therapy and role in cancer. *Redox Biology* **63**, 102726 (2023).
16. Claudio, J. O. *et al.* HACS1 encodes a novel SH3-SAM adaptor protein differentially expressed in normal and malignant hematopoietic cells. *Oncogene* **20**, 5373–5377 (2001).
17. Uchida, T. *et al.* Identification of Nash1, a novel protein containing a nuclear localization signal, a sterile alpha motif, and an SH3 domain preferentially expressed in mast cells. *Biochem Biophys Res Commun* **288**, 137–141 (2001).
18. Wang, M. *et al.* Angioimmunoblastic T cell lymphoma: novel molecular insights by mutation profiling. *Oncotarget* **8**, 17763–17770 (2017).
19. Friend, N. L. *et al.* Characterization of the role of Samsn1 loss in multiple myeloma development. *FASEB Bioadv* **2**, 554–572 (2020).
20. Li, Z. *et al.* Differentiation-related genes in tumor-associated macrophages as potential prognostic

- biomarkers in non-small cell lung cancer. *Front Immunol* **14**, 1123840 (2023).
21. Kanda, M. *et al.* Prognostic relevance of SAMSNI expression in gastric cancer. *Oncol Lett* **12**, 4708–4716 (2016).
22. Noll, J. E. *et al.* SAMSNI is a tumor suppressor gene in multiple myeloma. *Neoplasia* **16**, 572–585 (2014).
23. Yan, Y. *et al.* SAMSNI is highly expressed and associated with a poor survival in glioblastoma multiforme. *PLoS One* **8**, e81905 (2013).
24. Jaufmann, J. *et al.* The emerging and diverse roles of the SLy/SASH1-protein family in health and disease-Overview of three multifunctional proteins. *FASEB J* **35**, e21470 (2021).
25. Schmitt, F. *et al.* SLy2 controls the antibody response to pneumococcal vaccine through an IL-5R α -dependent mechanism in B-1 cells. *Eur J Immunol* **45**, 60–70 (2015).
26. Jaufmann, J. *et al.* SLy2-deficiency promotes B-1 cell immunity and triggers enhanced production of IgM and IgG(2) antibodies against pneumococcal vaccine. *Immun Inflamm Dis* **8**, 736–752 (2020).
27. Jaufmann, J., Tümen, L. & Beer-Hammer, S. SLy2-overexpression impairs B-cell development in the bone marrow and the IgG response towards pneumococcal conjugate-vaccine. *Immun Inflamm Dis* **9**, 533–546 (2021).
28. von Holleben, M., Gohla, A., Janssen, K.-P., Iritani, B. M. & Beer-Hammer, S. Immunoinhibitory adapter protein Src homology domain 3 lymphocyte protein 2 (SLy2) regulates actin dynamics and B cell spreading. *J Biol Chem* **286**, 13489–13501 (2011).
29. Zhu, Y. X. *et al.* The SH3-SAM adaptor HACS1 is up-regulated in B cell activation signaling cascades. *J Exp Med* **200**, 737–747 (2004).
30. Wang, D. *et al.* Enhanced adaptive immunity in mice lacking the immunoinhibitory adaptor Haes1.

FASEB J 24, 947–956 (2010).

31.Ferrer, T. J. *et al.* Interleukin-10 Reduces Morbidity and Mortality in Murine Multiple Organ Dysfunction Syndrome (MODS). *Journal of Surgical Research* 77, 157–164 (1998).

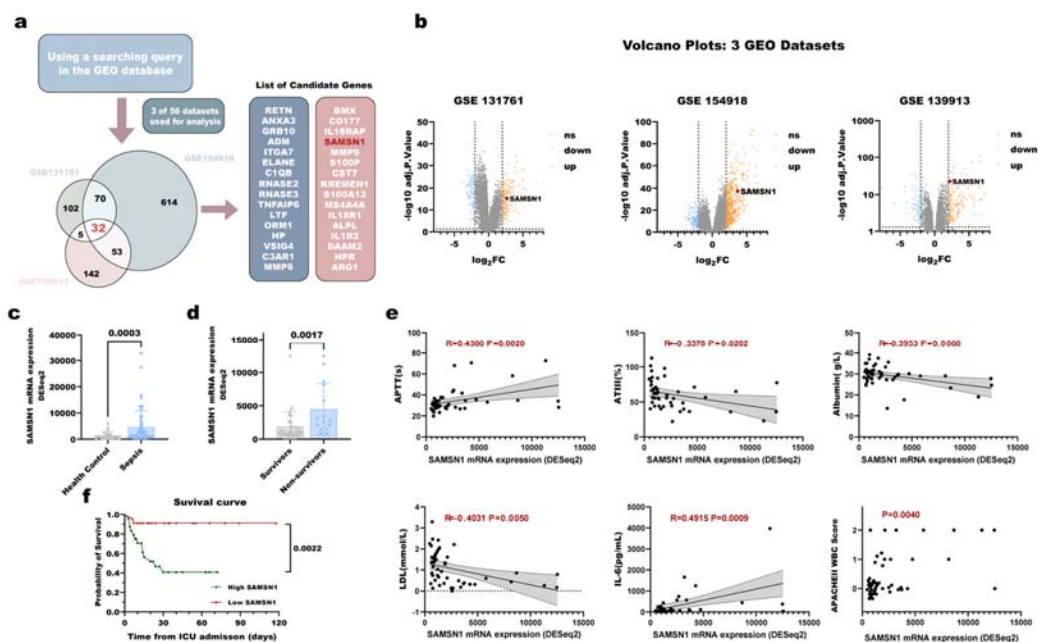


Figure 1. SAMS1 expression was increased in patients with sepsis and was positively correlated with sepsis severity and mortality. (a) Flow chart of screening candidate genes related to sepsis using the public GEO database. (b) Volcano plots of DEGs in 3 GEO Datasets. Colored dots represent DEGs based on the criteria of adjusted p-value < 0.05 and $|\log_2FC| > 2$; orange: up-regulation, blue: down-regulation, grey: non-significant mRNAs. Red dots specifically indicate SAMS1. (c) RNA-Seq

data from PBMCs from 59 sepsis patients and 27 healthy volunteers were used to externally validate the expression level of SAMS1. **(d)** RNA-Seq results showed that the SAMS1 levels of non-survivors (n=15) were significantly higher than those of survivors (n=32). The significance in **(c, d)** was assessed by *Mann-Whitney u test* for the data did not conform to a normal distribution. **(e)** Correlation analysis between SAMS1 and clinical indicators APTT, ATIII, albumin, LDL and IL-6. SAMS1 and APACHEII score were analyzed using Kruskal-Wallis test. **(f)** Kaplan-Meier survival analysis was used to analyze the correlation between SAMS1 expression and survival in patients with sepsis. Sepsis patients were divided into SAMS1 high expression group (Read account > 1352, n=24) and low expression group (Read account \leq 1352, n=23). The significance in was assessed by *log-rank test*.

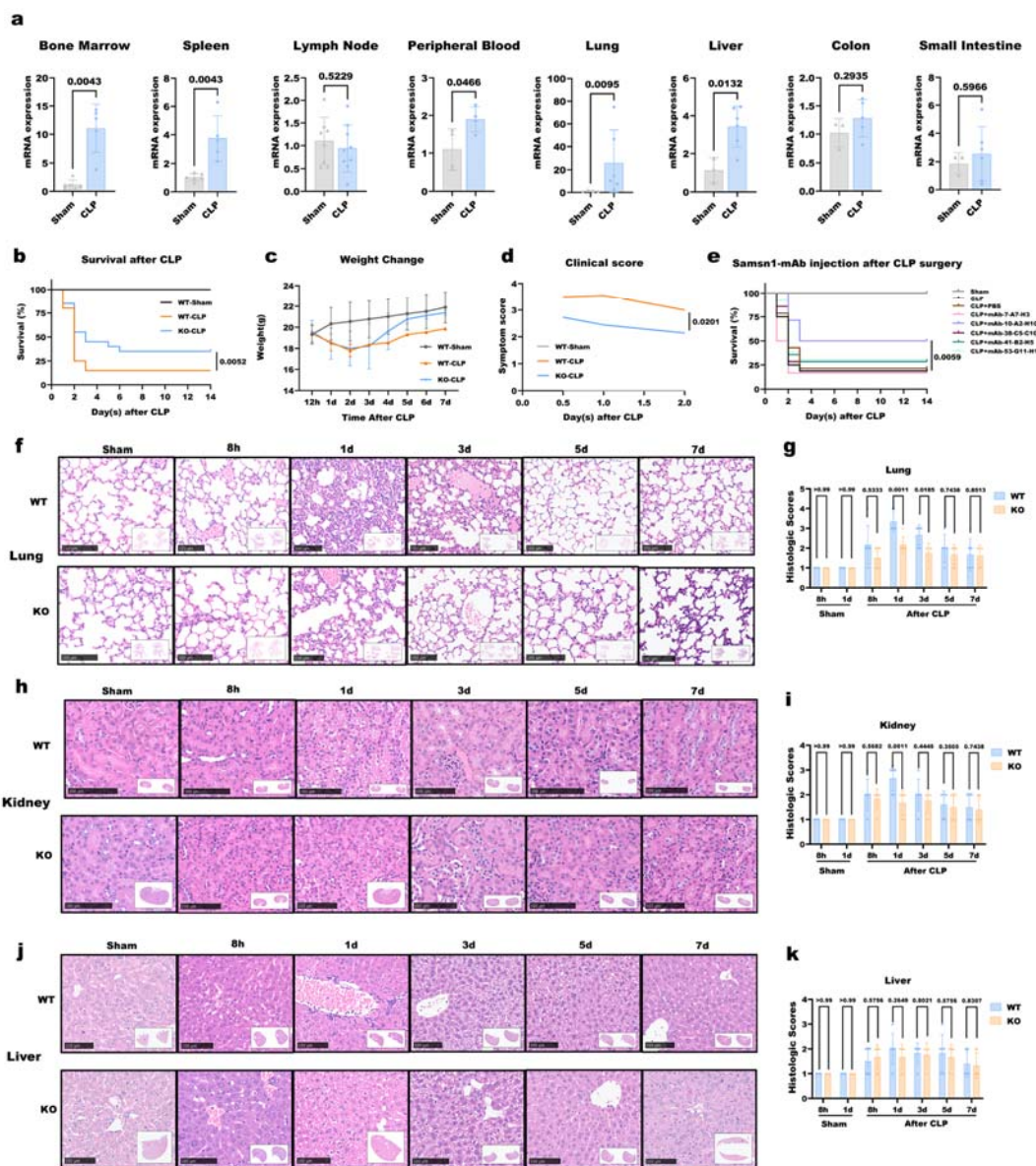


Figure 2. Blockade of SAMS1 improved the survival rate of septic mice by alleviating acute organ injuries. (a) Comparison of SAMS1 mRNA levels in different tissues and organs between control and septic mice by Realtime-RT-PCR. (b) Kaplan–Meier analysis of the survival rate of WT C57BL/6 mice and SAMS1-KO mice after CLP surgery. (c) Body weight changes in WT and KO mice after CLP surgery. (d) Clinical scores after CLP surgery in WT and KO mice. In (b–d), WT-Sham group, n=5; WT-CLP group, n=20; KO-CLP group, n=20. (e) Kaplan–Meier analysis of the therapeutic effects of 5 anti-SAMS1 monoclonal antibodies on CLP mice. Sham, n=5; CLP group and CLP + mAbs groups, n=12–14. (f, h, k) H&E staining of lungs, kidneys, and livers at 8h, 1d, 3d, 5d, and 7d after CLP. (g, i, k) Injury scores of the lung, kidney, and liver of mice at 8h, 1d, 3d, 5d, and 7d after CLP surgery. Significance in (a,

d, g, i, k) was assessed by 2-tailed Welch's *t* test, and significance in **(b, e)** was assessed by Log-rank test.

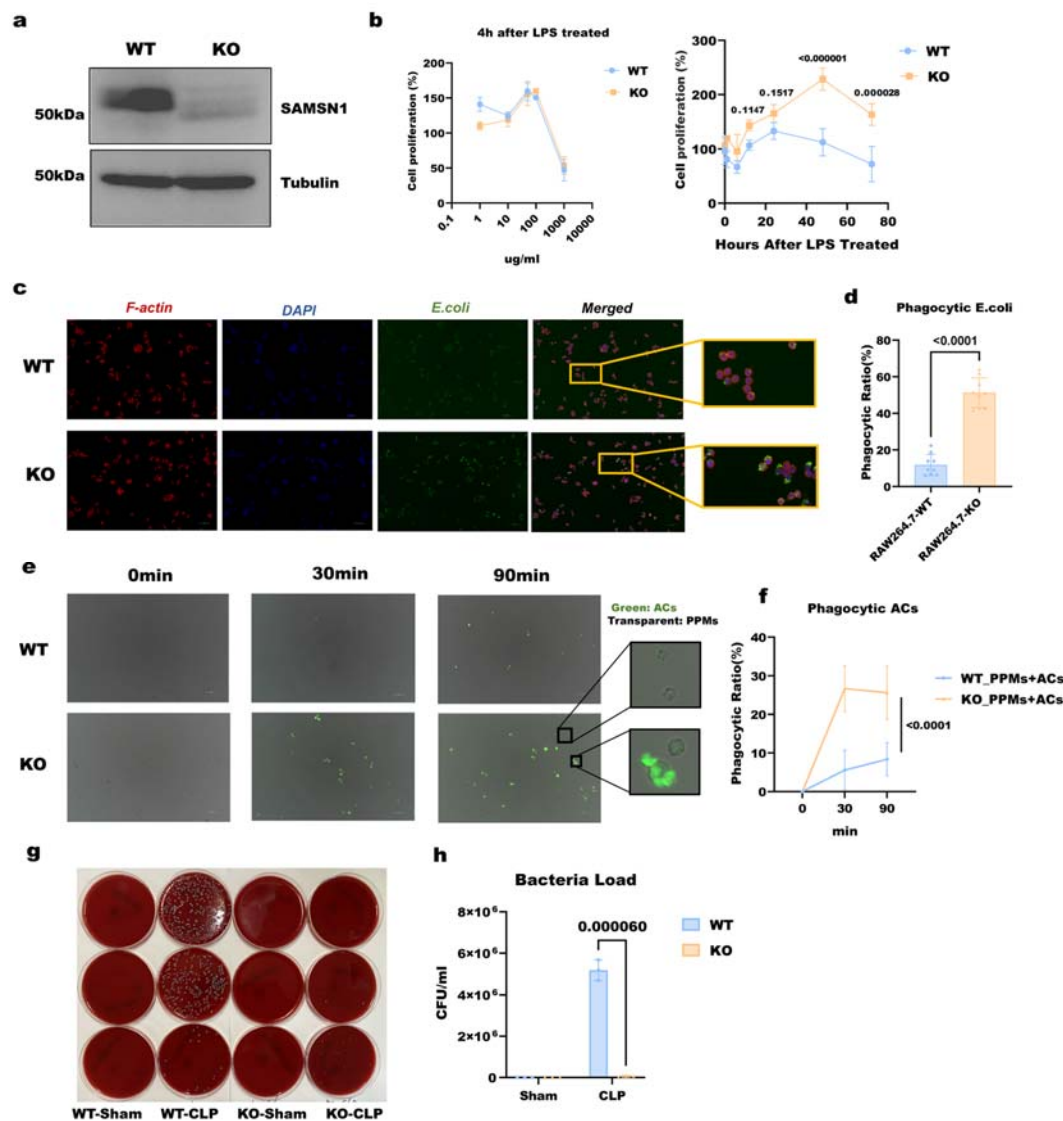


Figure 3. SAMSN1 knockout enhances macrophage proliferation, phagocytosis, and clearance of bacteria from the blood. (a) Western blot (WB) was used to detect whether SAMSN1 was successfully knocked out in RAW264.7 cells. WT: wild type RAW264.7. KO: SAMSN1-KO RAW264.7. (b) Left panel: the proliferation of WT and SAMSN1-KO cells was detected after 4 hours of LPS treatment with different concentrations (0, 1, 10, 50, 100, 1000ug/ml). Right panel: after adding 50ug/ml LPS, the proliferation of WT and SAMSN1-KO cells was detected at 0, 1, 6, 12, 24, 48, and 72 hours (n=3). (c) RAW264.7 cells phagocytose E. coli. Red: F-actin; Blue: DAPI; Green: E. coli. RAW264.7 cells were co-cultured with E. coli at a ratio of 1:10 for 60 minutes. (d) Quantification of phagocytotic ratio % (n=9). (e)

Analysis of phagocytosis of apoptotic Jurkat cells by primary peritoneal macrophages. The prepared apoptotic Jurkat cells (green) (ACs) and primary peritoneal macrophages (transparent) (PPMs) were co-cultured in 1:1 ratio for 0,30 and 90 minutes. The enlarged images show PPMs with or without phagocytosis of ACs. **(f)** Quantification of the ratio of macrophages phagocytosing apoptotic cells % (n=9). **(g)** Blood agar plate assay to measure bacterial load in peripheral blood of WT and KO mice after CLP surgery. **(g)** Quantification of bacterial load in each group (n=3). Significance was assessed by 2-tailed *Welch's t test*.

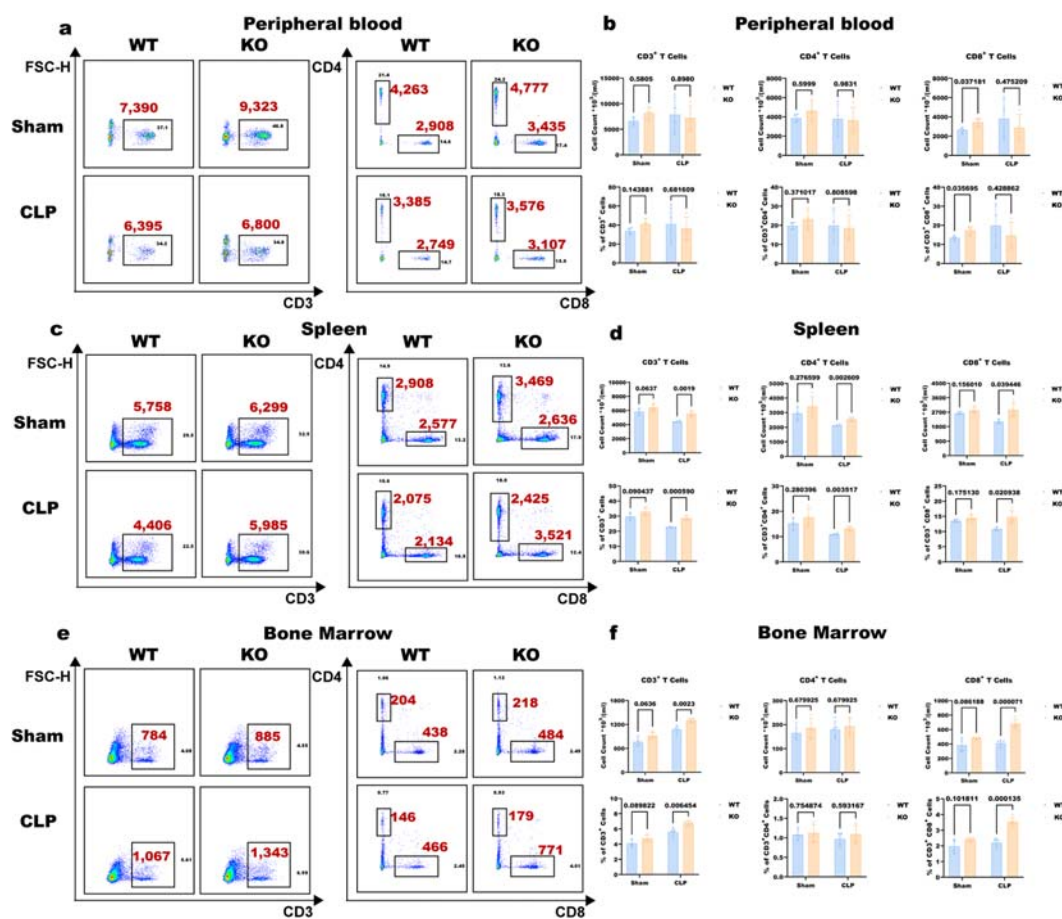


Figure 4. SAMSN1 affects T cell populations in normal and septic mice. (a, c, e) Flow cytometric analysis of T cell populations (CD3⁺, CD3⁺CD4⁺, CD3⁺CD8⁺ T cells) in peripheral blood, spleen, and bone marrow of WT and SAMSN1-KO mice after sham or CLP surgery. Samples were taken 12 hours after Sham or CLP surgery. Red text highlights the cell number in each group. (b, d, f) Quantification of changes in T cell proportions and cell numbers. The comparison between two adjacent groups was performed using 2-tailed Welch's *t* test (n=3).

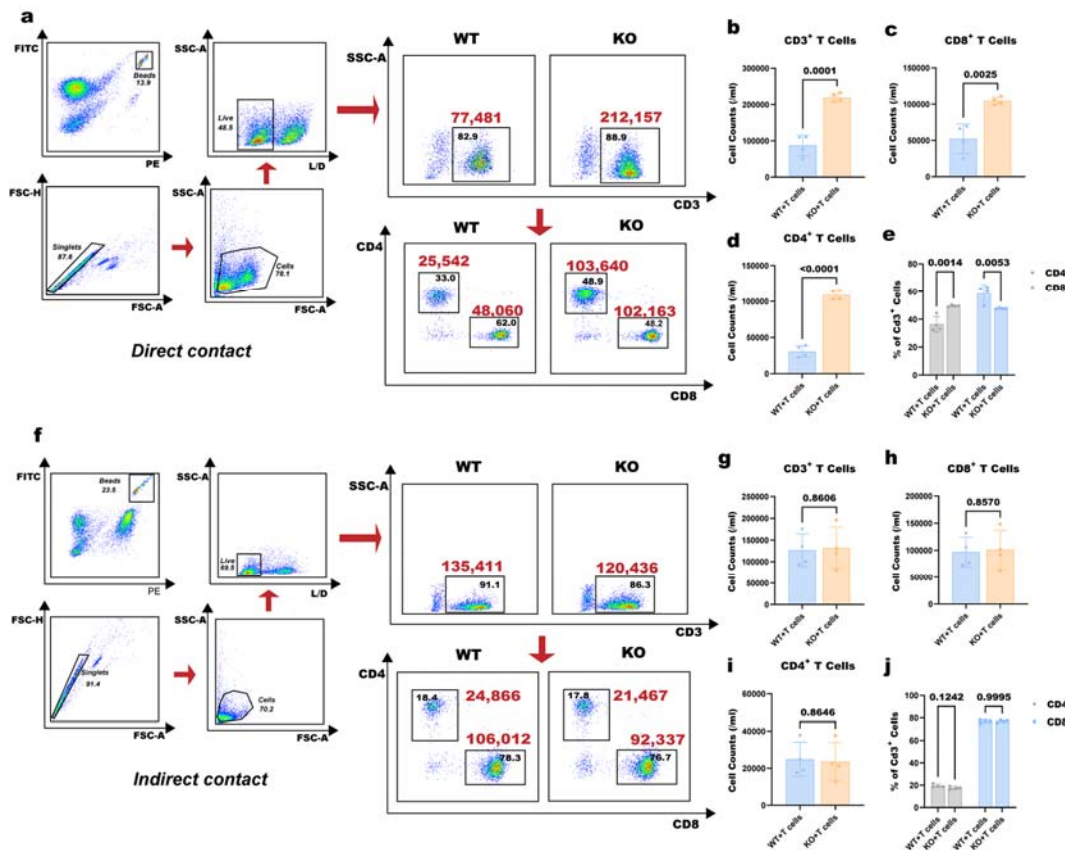


Figure 5. SAMSNI mediates the inhibition of T cells by macrophages through direct contact. (a) Flow cytometry analysis after 12 h of direct WT or SAMSNI-KO RAW264.7 cells and T cell co-culture. Red text highlights the cell number in each group. (b-e) Quantify the changes in the number of CD3⁺, CD4⁺, and CD8⁺ T cells. (f) WT or SAMSNI-KO RAW264.7 cells were cultured in the upper chamber of the Transwell system, and T cells were cultured in the lower chamber. Flow cytometry was used to detect changes in the T cell population. (g-j) Quantify the changes in the number of CD3⁺, CD4⁺, and CD8⁺ T cells. Significance in (b-d) and (g-i) was assessed by 2-tailed Welch's *t* test. Statistical analysis of (e, j) was performed using 2-way ANOVA test (n=4).

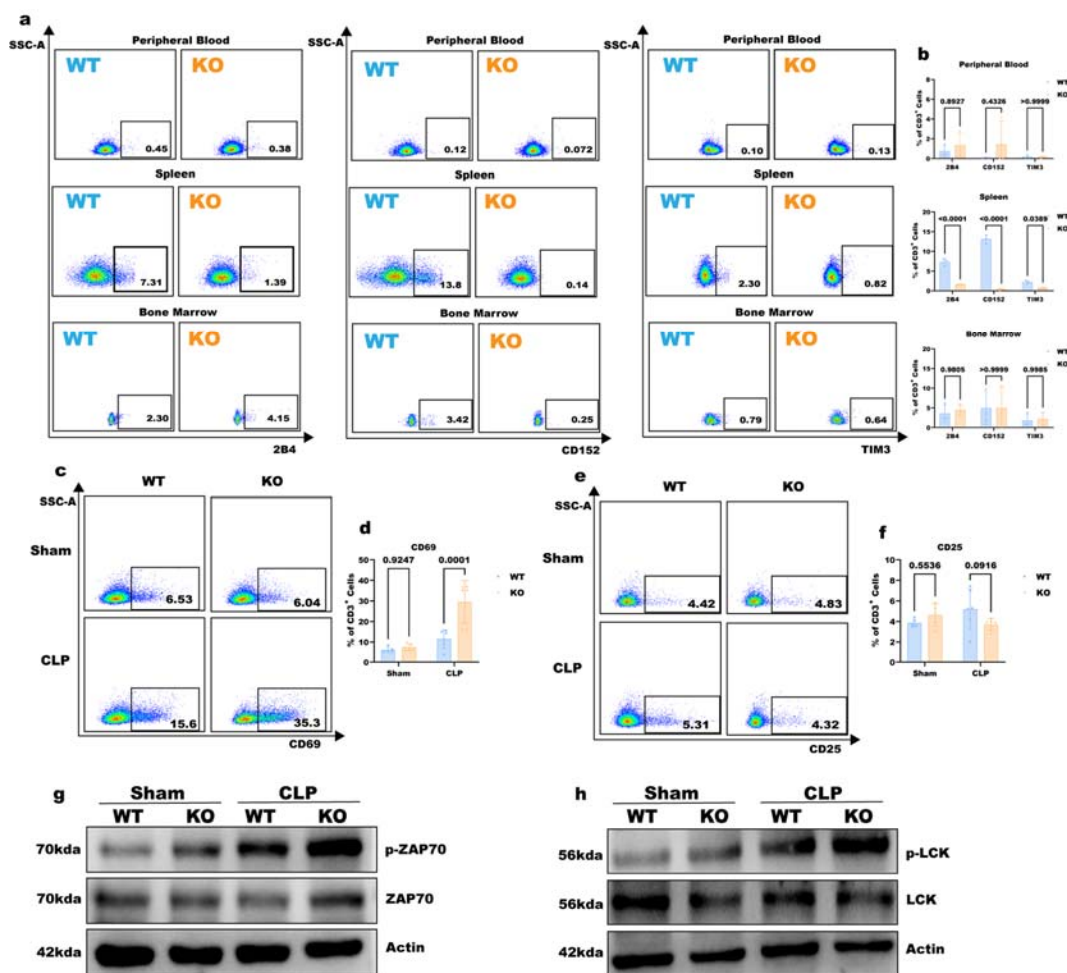


Figure 7. *Samsn1*^{-/-} mice have decreased T cell exhaustion-related receptors expression and enhanced T cell activation and signaling. (a) Flow cytometry showed the expression of 2B4, CD152, and TIM3 in T cells from peripheral blood, spleen, and bone marrow of WT and *Samsn1*^{-/-} mice. (b) The changes in the proportion of CD3⁺ T cells in WT and *Samsn1*^{-/-} mice were quantified. (c, e) Flow cytometry analysis of CD69 and CD25 expression in spleen T cells of WT and *Samsn1*^{-/-} mice 12 hours after CLP. (d, f) The changes in the proportion of CD3⁺ T cells were quantified. (g, h) WB analysis showed the phosphorylation of ZAP70 and LCK in spleen T cells from WT and *Samsn1*^{-/-} mice after Sham or CLP surgery. Statistical analysis of (b, d, f) was performed using 2-way ANOVA test (n=5).

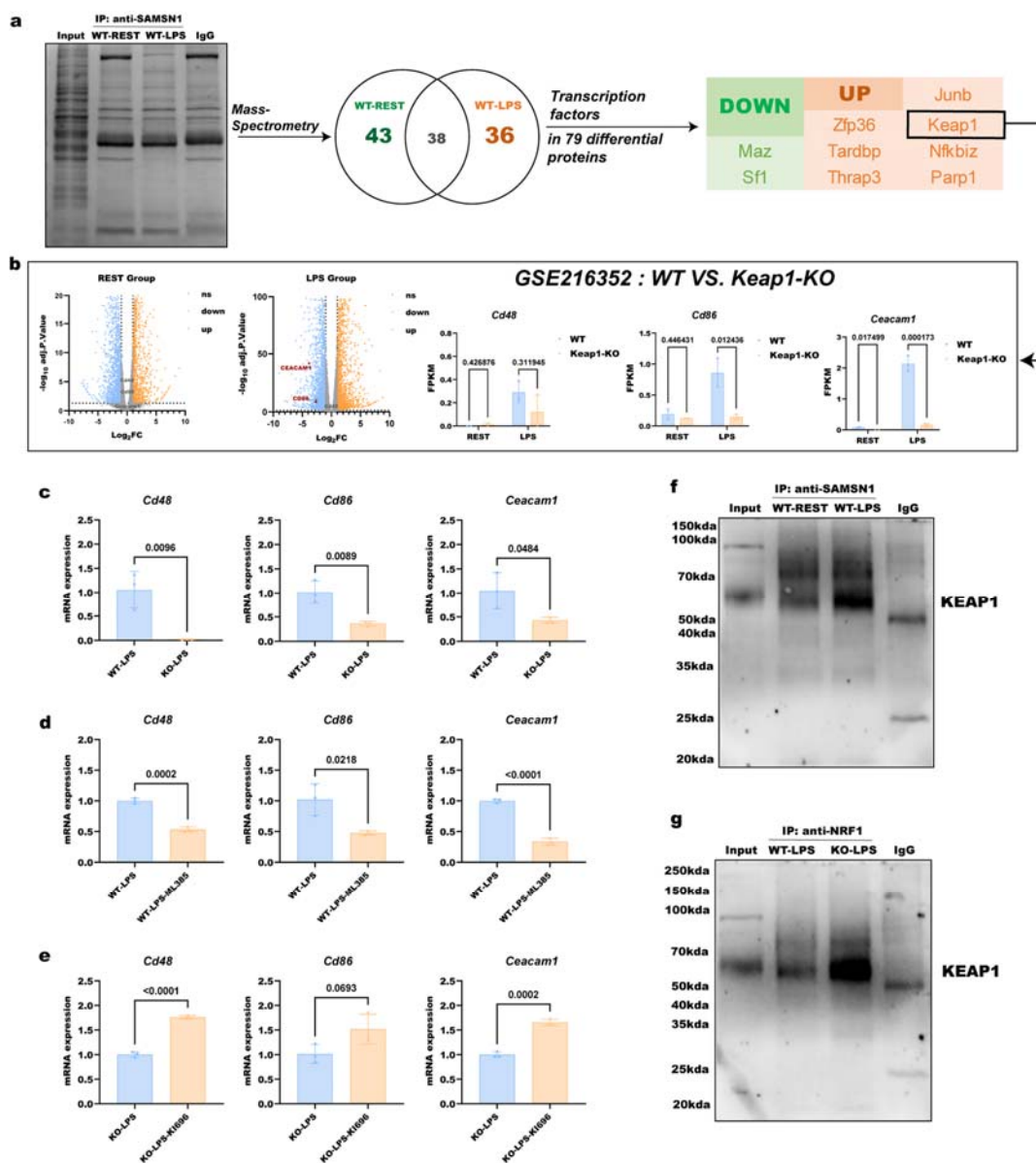


Figure 8. Identification of regulatory factors that bind to SAMS1 and regulate transcription of downstream genes. (a) The flow chart shows that proteins bound to SAMS1 are first precipitated by IP, and then the transcription factors that bind to SAMS1 and change under LPS stimulation are analyzed by mass spectrometry. Among the transcription factors that are upregulated after LPS stimulation, JUNB, ZFP36, NFKIBZ and KEAP1 can be found in the public datasets for RNA-Seq data after knocking them out. (b) GSE216352 dataset shows the expression of co-inhibitory molecules CD48, CD86, and CEACAM1 in WT and KEAP1-KO RAW264.7 cells. (c) Real-time RT-PCR detection of CD48/CD86/CEACAM1 mRNA levels after WT or SAMS1-KO cells were stimulated with LPS. (d) Real-time RT-PCR detection of CD48/CD86/CEACAM1 mRNA levels in WT cells stimulated with LPS

after treatment with the KEAP1 inhibitor ML385 (5 μ M for 1h). **(e)** Real-time RT-PCR detection of CD48/CD86/CEACAM1 mRNA levels in SAMSN1-KO cells stimulated with LPS after treatment with the agonist KI696 (20 μ M KI696 for 24h). **(f)** IP-WB assay showed that the specific binding of SAMSN1 and KEAP1 increased when WT cells were stimulated with LPS. **(g)** IP-WB assay detected the binding of KEAP1 and NRF2 in LPS-stimulated WT or SAMSN1-KO cells. Significance in **(b-e)** was assessed by 2-tailed Welch's *t* test.

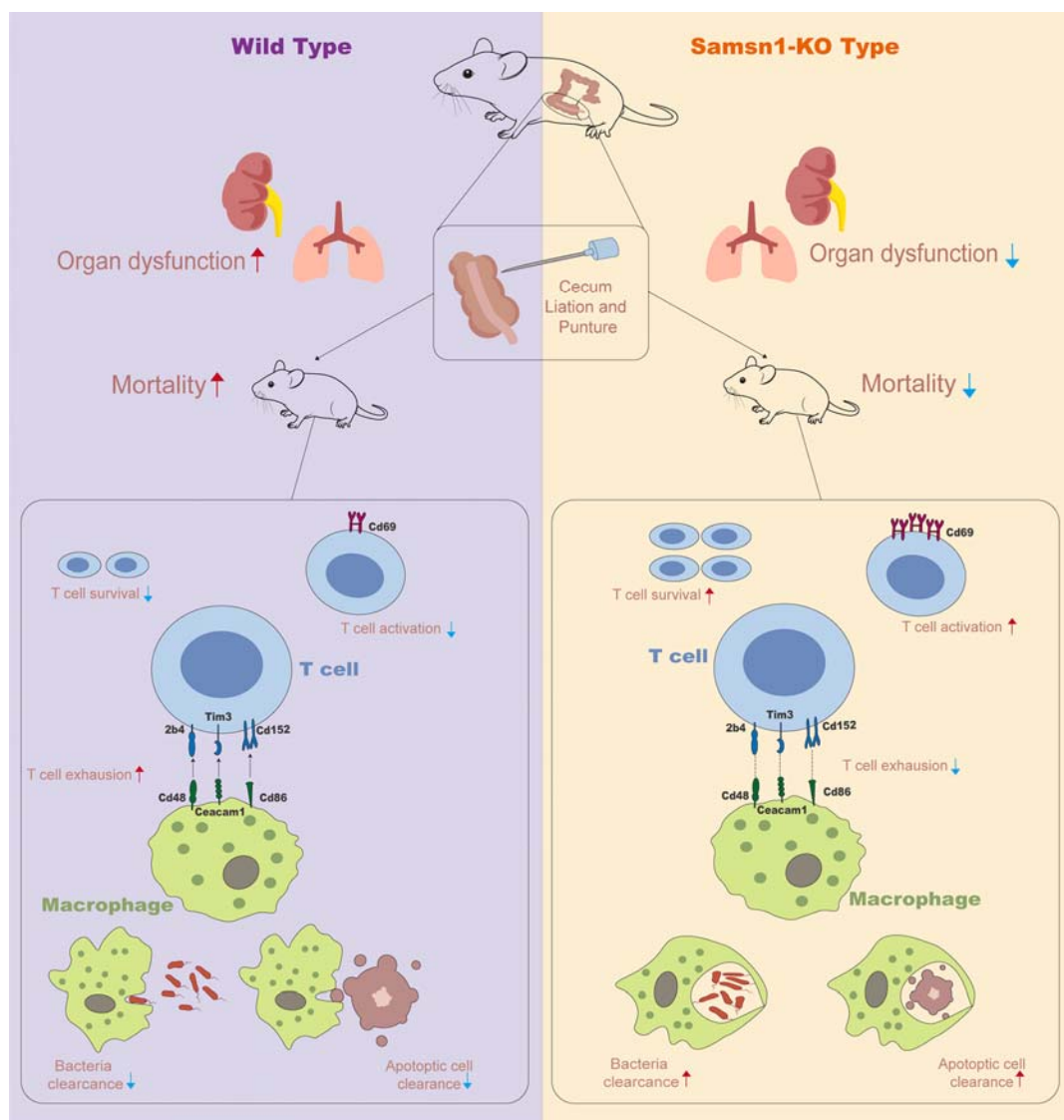


Figure 9. SAMSN1 affects macrophage-T cell cross-talk in sepsis immunosuppression. Schematic diagram: In the resting state, KEAP1 and NRF2 form a transcription complex in the cytoplasm of monocyte-macrophages and are in an inhibitory state. When sepsis occurs, the number of monocyte-macrophages increases significantly, in which SAMSN1 is highly expressed. SAMSN1 binds to KEAP1, causing NRF2 to dissociate from the complex and translocate into the nucleus, promoting the transcription of co-inhibitory molecules CD48/CD86/CEACAM1. Through cell-cell contact, these co-inhibitory molecules bind to corresponding receptors 2B4/TIM4/CD152 on the surface of T cells, causing T cell inhibition and exhaustion. High expression of SAMSN1 also switches macrophages into a suppressive phenotype, manifested by decreased phagocytic ability and ability to clear bacteria in the blood. Blockade of SAMSN1 by gene knockout or monoclonal antibody keeps KEAP1-NRF2 in a complex state,

preventing NRF2 from entering the nucleus and promoting the transcription of downstream co-inhibitory molecules, thereby failing to inhibit T cell activation. Blockade of SAMSN1 also switches macrophages to a pro-immune phenotype with enhanced phagocytic ability, resulting in reduced organ injuries and increased survival rate.

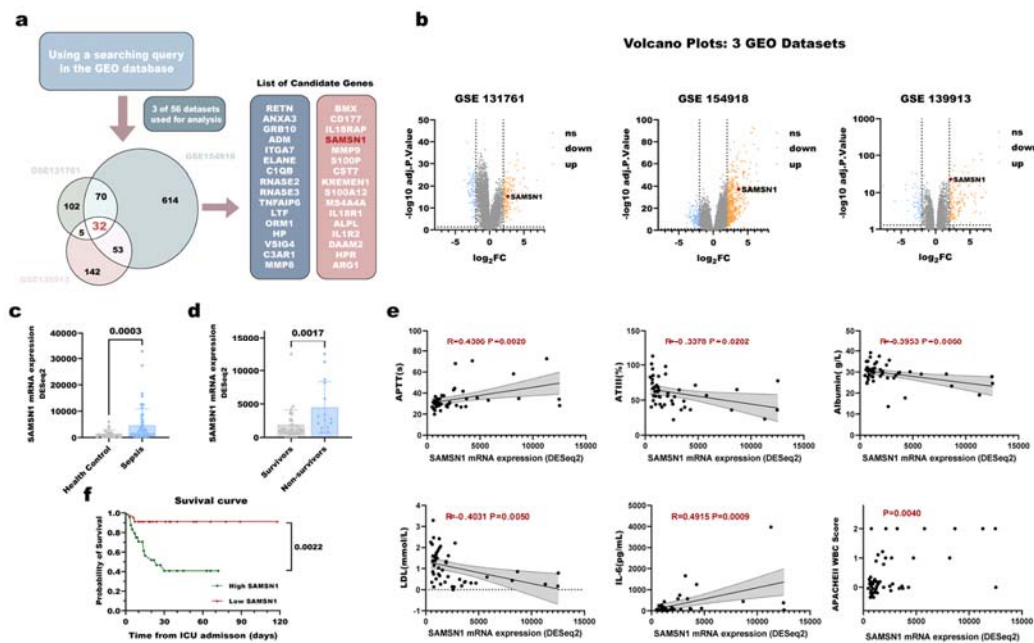


Figure 1. SAMS1 expression was increased in patients with sepsis and was positively correlated with sepsis severity and mortality. (a) Flow chart of screening candidate genes related to sepsis using the public GEO database. (b) Volcano plots of DEGs in 3 GEO Datasets. Colored dots represent DEGs based on the criteria of adjusted p-value < 0.05 and $|\log_2FC| > 2$; orange: up-regulation, blue: downregulation, grey: non-significant mRNAs. Red dots specifically indicate SAMS1. (c) RNA-Seq data from PBMCs from 59 sepsis patients and 27 healthy volunteers were used to externally validate the expression level of SAMS1. (d) RNA-Seq results showed that the SAMS1 levels of non-survivors (n=15) were significantly higher than those of survivors (n=32). The significance in (c, d) was assessed by *Mann-Whitney u test* for the data did not conform to a normal distribution. (e) Correlation analysis between SAMS1 and clinical indicators APTT, ATIII, albumin, LDL and IL-6. SAMS1 and APACHEII score were analyzed using *Kruskal-Wallis test*. (f) Kaplan-Meier survival analysis was used to analyze the correlation between SAMS1 expression and survival in patients with sepsis. Sepsis patients were divided into SAMS1 high expression group (Read account > 1352 , n=24) and low expression group (Read account ≤ 1352 , n=23). The significance in was assessed by *log-rank test*.

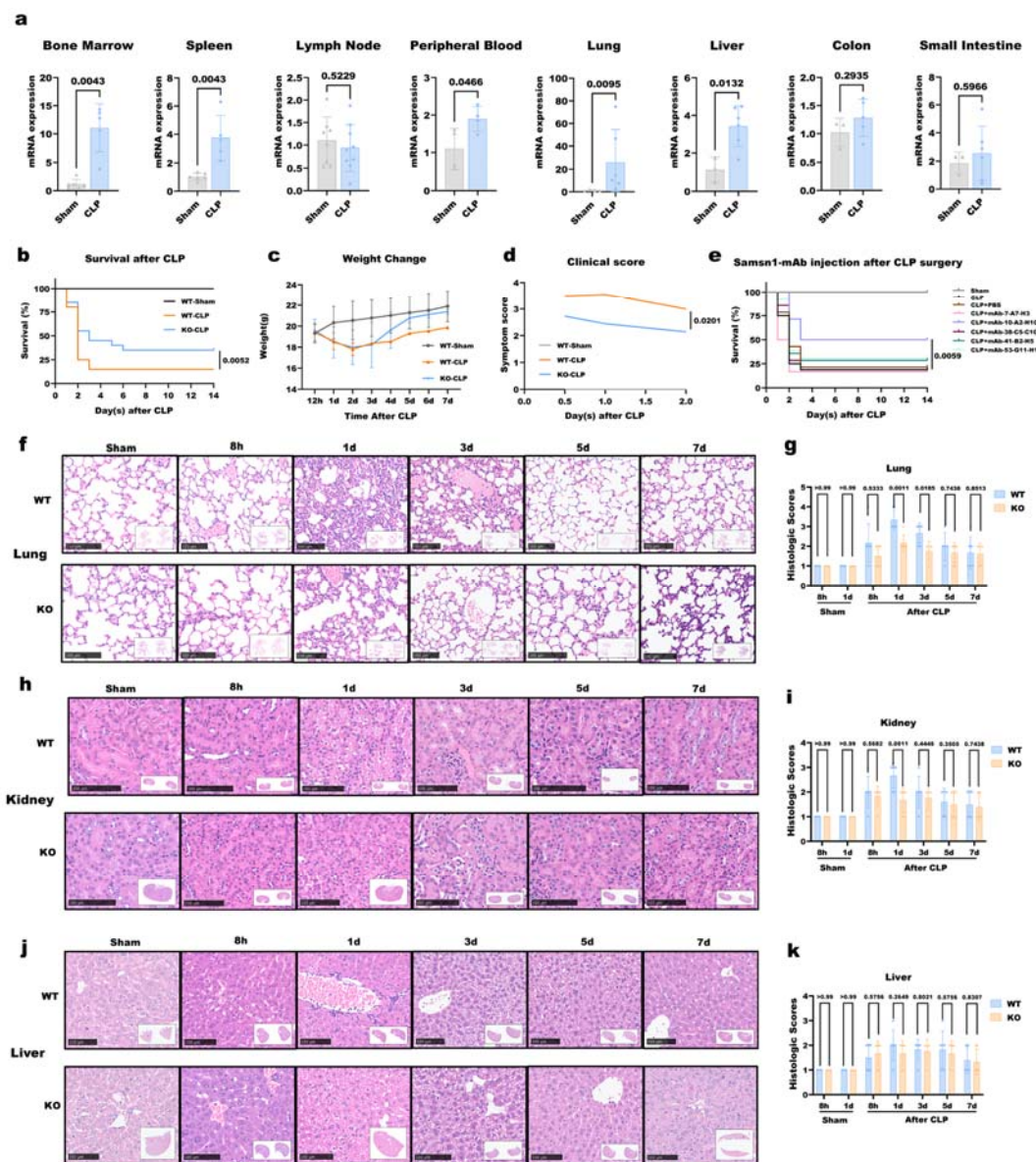


Figure 2. Blockade of SAMS1 improved the survival rate of septic mice by alleviating acute organ injuries. (a) Comparison of SAMS1 mRNA levels in different tissues and organs between control and septic mice by Realtime-RT-PCR. (b) Kaplan–Meier analysis of the survival rate of WT C57BL/6 mice and SAMS1-KO mice after CLP surgery. (c) Body weight changes in WT and KO mice after CLP surgery. (d) Clinical scores after CLP surgery in WT and KO mice. In (b–d), WT-Sham group, n=5; WT-CLP group, n=20; KO-CLP group, n=20. (e) Kaplan–Meier analysis of the therapeutic effects of 5 anti-SAMS1 monoclonal antibodies on CLP mice. Sham, n=5; CLP group and CLP + mAbs groups, n=12–14. (f, h, k) H&E staining of lungs, kidneys, and livers at 8h, 1d, 3d, 5d, and 7d after CLP. (g, i, k) Injury scores of the lung, kidney, and liver of mice at 8h, 1d, 3d, 5d, and 7d after CLP surgery. Significance in (a,

d, g, i, k) was assessed by 2-tailed Welch's *t* test, and significance in **(b, e)** was assessed by Log-rank test.

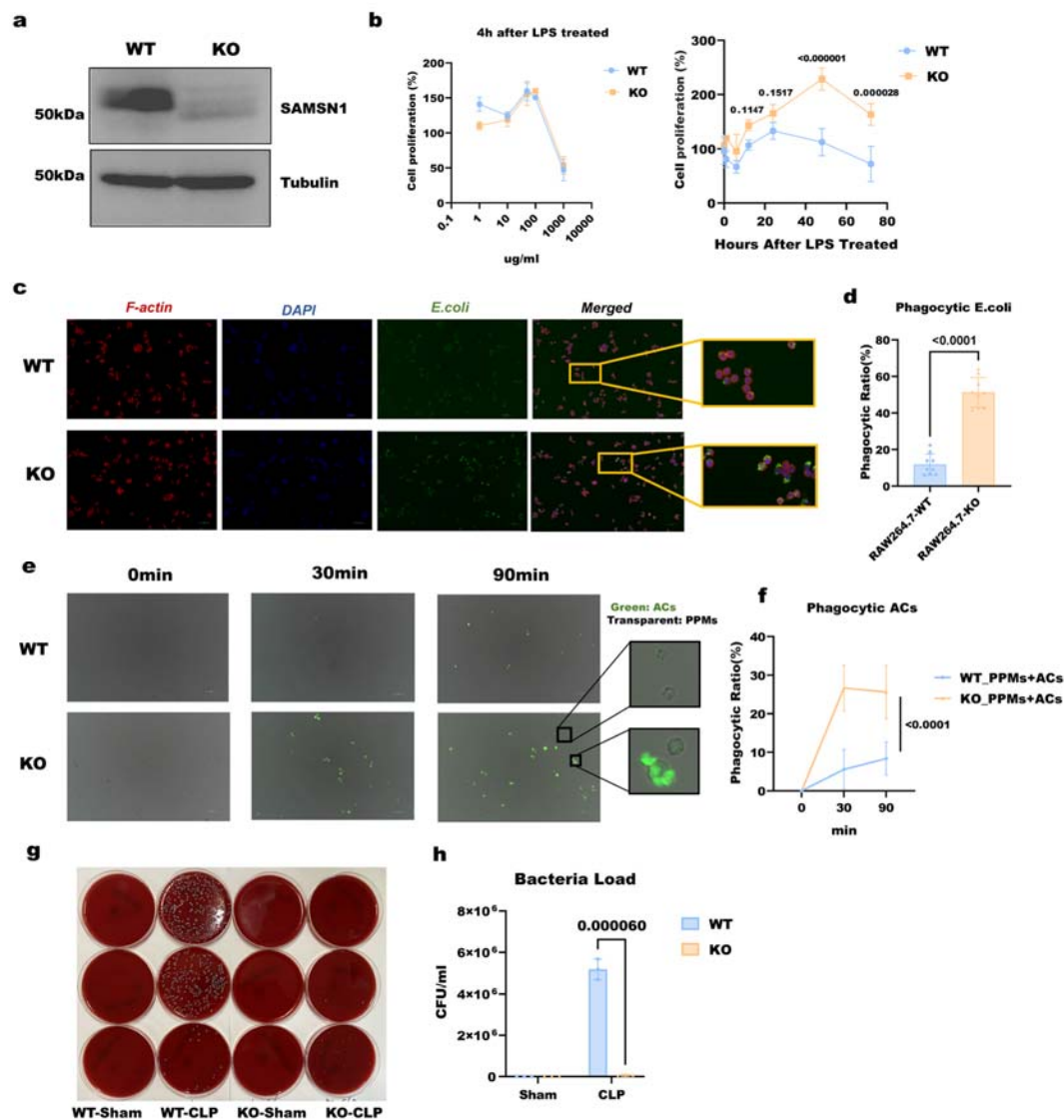


Figure 3. SAMSN1 knockout enhances macrophage proliferation, phagocytosis, and clearance of bacteria from the blood. (a) Western blot (WB) was used to detect whether SAMSN1 was successfully knocked out in RAW264.7 cells. WT: wild type RAW264.7. KO: SAMSN1-KO RAW264.7. (b) Left panel: the proliferation of WT and SAMSN1-KO cells was detected after 4 hours of LPS treatment with different concentrations (0, 1, 10, 50, 100, 1000ug/ml). Right panel: after adding 50ug/ml LPS, the proliferation of WT and SAMSN1-KO cells was detected at 0, 1, 6, 12, 24, 48, and 72 hours (n=3). (c) RAW264.7 cells phagocytose E. coli. Red: F-actin; Blue: DAPI; Green: E. coli. RAW264.7 cells were co-cultured with E. coli at a ratio of 1:10 for 60 minutes. (d) Quantification of phagocytotic ratio % (n=9). (e)

Analysis of phagocytosis of apoptotic Jurkat cells by primary peritoneal macrophages. The prepared apoptotic Jurkat cells (green) (ACs) and primary peritoneal macrophages (transparent) (PPMs) were co cultured in 1:1 ratio for 0,30 and 90 minutes. The enlarged images show PPMs with or without phagocytosis of ACs. **(f)** Quantification of the ratio of macrophages phagocytosing apoptotic cells % (n=9). **(g)** Blood agar plate assay to measure bacterial load in peripheral blood of WT and KO mice after CLP surgery. **(g)** Quantification of bacterial load in each group (n=3). Significance was assessed by 2-tailed *Welch's t test*.

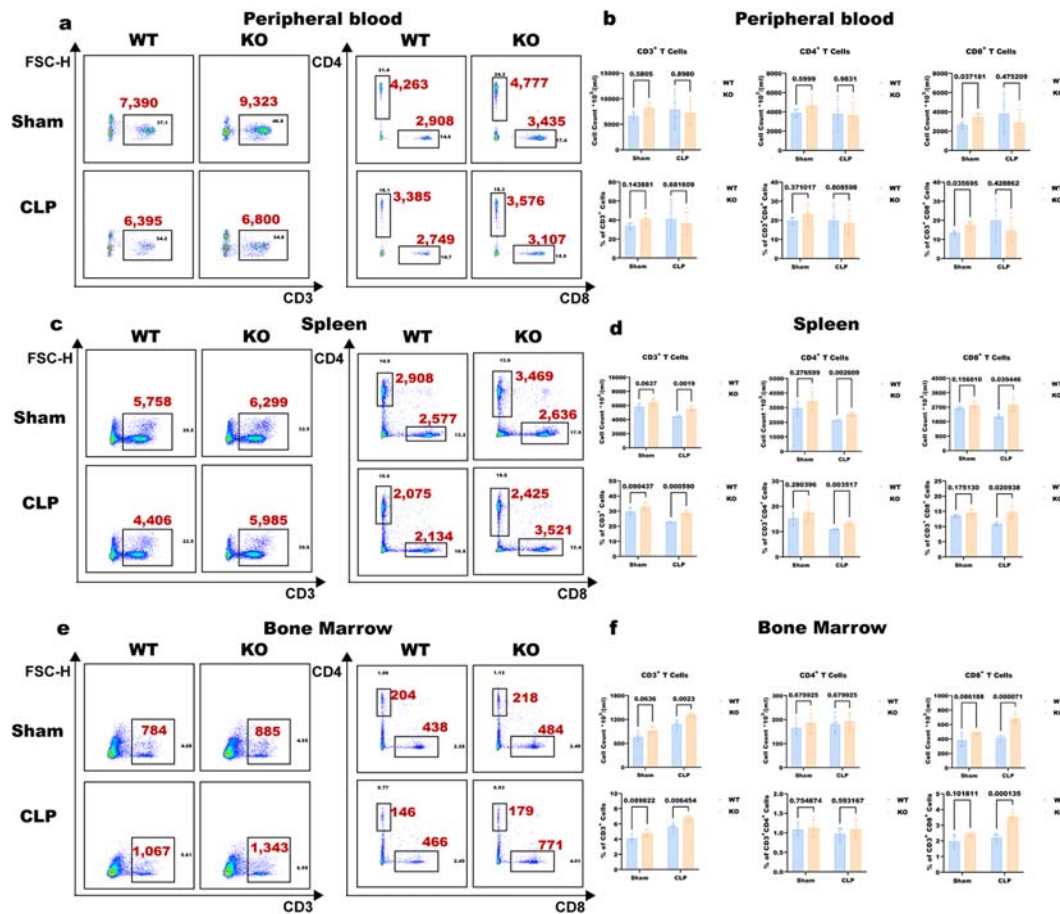


Figure 4. SAMSN1 affects T cell populations in normal and septic mice. (a, c, e) Flow cytometric analysis of T cell populations (CD3⁺, CD3⁺CD4⁺, CD3⁺CD8⁺ T cells) in peripheral blood, spleen, and bone marrow of WT and SAMSN1-KO mice after sham or CLP surgery. Samples were taken 12 hours after Sham or CLP surgery. Red text highlights the cell number in each group. (b, d, f) Quantification of changes in T cell proportions and cell numbers. The comparison between two adjacent groups was performed using 2-tailed Welch's *t* test (n=3).

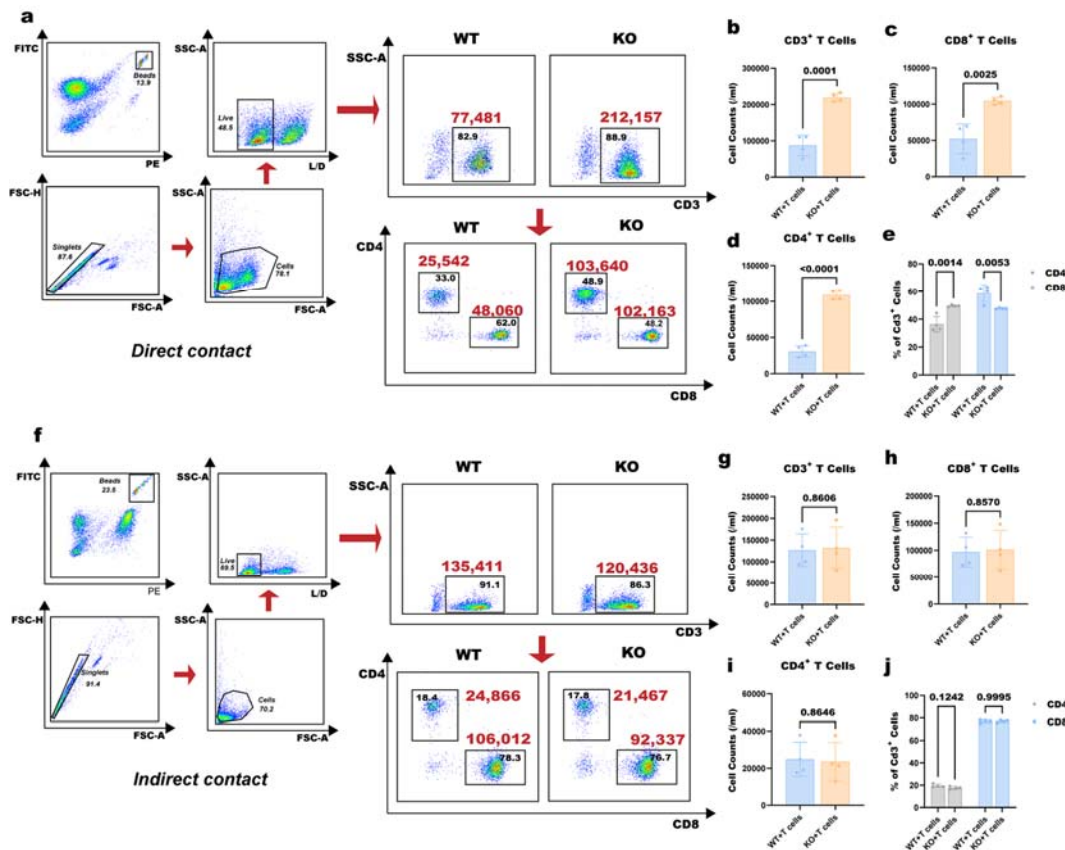


Figure 5. SAMSNI mediates the inhibition of T cells by macrophages through direct contact. (a) Flow cytometry analysis after 12 h of direct WT or SAMSNI-KO RAW264.7 cells and T cell co-culture. Red text highlights the cell number in each group. **(b-e)** Quantify the changes in the number of CD3⁺, CD4⁺, and CD8⁺ T cells. **(f)** WT or SAMSNI-KO RAW264.7 cells were cultured in the upper chamber of the Transwell system, and T cells were cultured in the lower chamber. Flow cytometry was used to detect changes in the T cell population. **(g-j)** Quantify the changes in the number of CD3⁺, CD4⁺, and CD8⁺ T cells. Significance in **(b-d)** and **(g-i)** was assessed by 2-tailed Welch's *t* test. Statistical analysis of **(e, j)** was performed using 2-way ANOVA test (n=4).

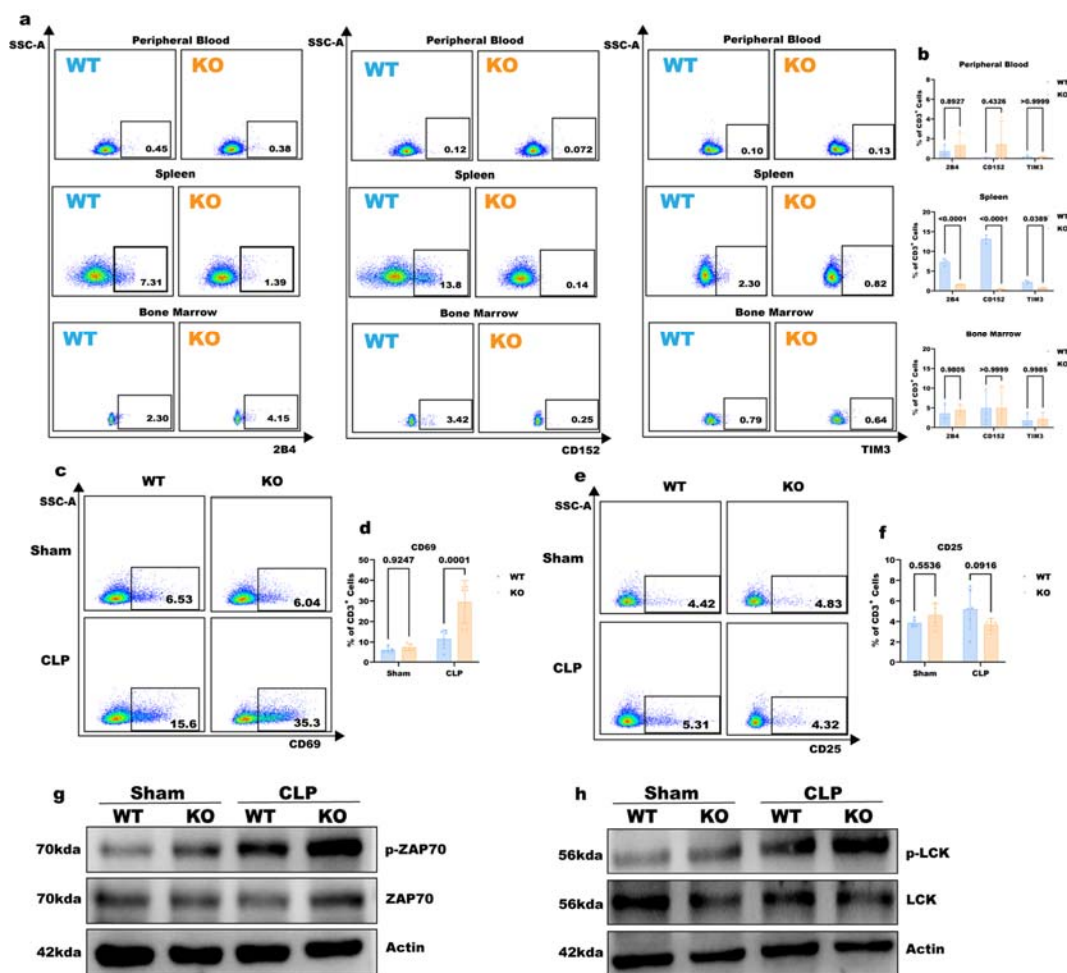


Figure 7. *Samsn1*^{-/-} mice have decreased T cell exhaustion-related receptors expression and enhanced T cell activation and signaling. (a) Flow cytometry showed the expression of 2B4, CD152, and TIM3 in T cells from peripheral blood, spleen, and bone marrow of WT and *Samsn1*^{-/-} mice. (b) The changes in the proportion of CD3⁺ T cells in WT and *Samsn1*^{-/-} mice were quantified. (c, e) Flow cytometry analysis of CD69 and CD25 expression in spleen T cells of WT and *Samsn1*^{-/-} mice 12 hours after CLP. (d, f) The changes in the proportion of CD3⁺ T cells were quantified. (g, h) WB analysis showed the phosphorylation of ZAP70 and LCK in spleen T cells from WT and *Samsn1*^{-/-} mice after Sham or CLP surgery. Statistical analysis of (b, d, f) was performed using 2-way ANOVA test (n=5).

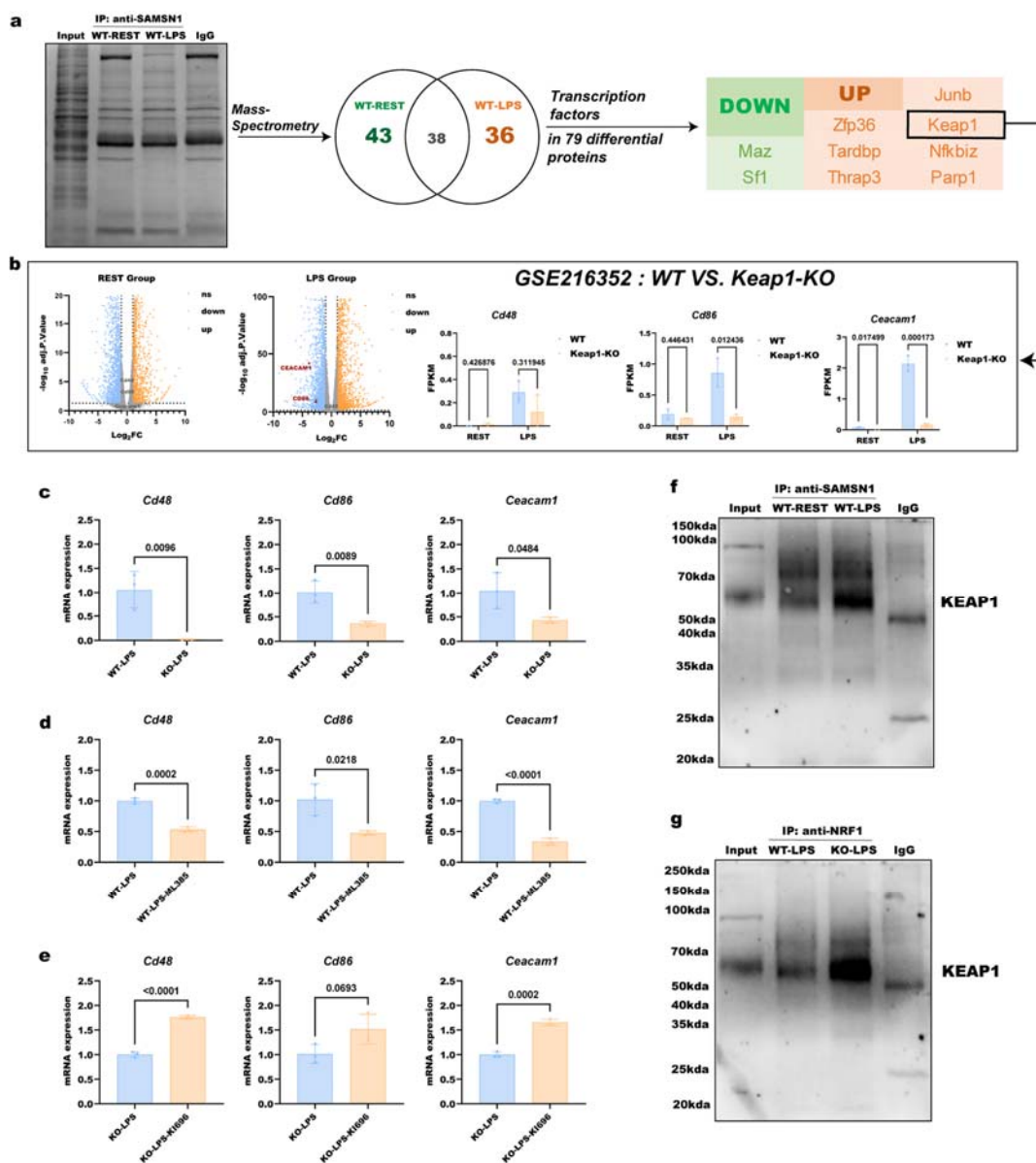


Figure 8. Identification of regulatory factors that bind to SAMS1 and regulate transcription of downstream genes. (a) The flow chart shows that proteins bound to SAMS1 are first precipitated by IP, and then the transcription factors that bind to SAMS1 and change under LPS stimulation are analyzed by mass spectrometry. Among the transcription factors that are upregulated after LPS stimulation, JUNB, ZFP36, NFKIBZ and KEAP1 can be found in the public datasets for RNA-Seq data after knocking them out. (b) GSE216352 dataset shows the expression of co-inhibitory molecules CD48, CD86, and CEACAM1 in WT and KEAP1-KO RAW264.7 cells. (c) Real-time RT-PCR detection of CD48/CD86/CEACAM1 mRNA levels after WT or SAMS1-KO cells were stimulated with LPS. (d) Real-time RT-PCR detection of CD48/CD86/CEACAM1 mRNA levels in WT cells stimulated with LPS

after treatment with the KEAP1 inhibitor ML385 (5 μ M for 1h). **(e)** Real-time RT-PCR detection of CD48/CD86/CEACAM1 mRNA levels in SAMSN1-KO cells stimulated with LPS after treatment with the agonist KI696 (20 μ M KI696 for 24h). **(f)** IP-WB assay showed that the specific binding of SAMSN1 and KEAP1 increased when WT cells were stimulated with LPS. **(g)** IP-WB assay detected the binding of KEAP1 and NRF2 in LPS-stimulated WT or SAMSN1-KO cells. Significance in **(b-e)** was assessed by 2-tailed Welch's *t* test.

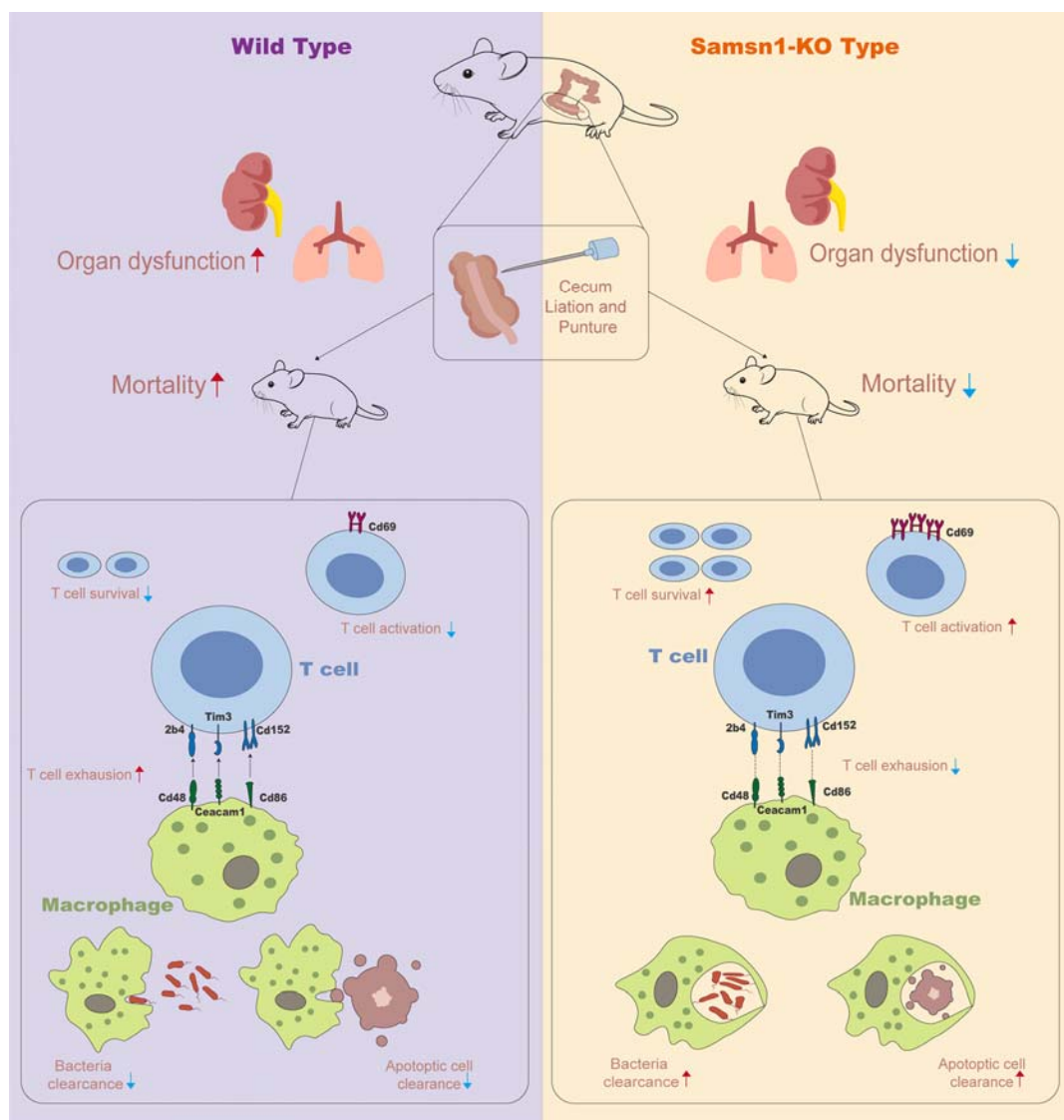


Figure 9. SAMSN1 affects macrophage-T cell cross-talk in sepsis immunosuppression. Schematic diagram: In the resting state, KEAP1 and NRF2 form a transcription complex in the cytoplasm of monocyte-macrophages and are in an inhibitory state. When sepsis occurs, the number of monocyte-macrophages increases significantly, in which SAMSN1 is highly expressed. SAMSN1 binds to KEAP1, causing NRF2 to dissociate from the complex and translocate into the nucleus, promoting the transcription of co-inhibitory molecules CD48/CD86/CEACAM1. Through cell-cell contact, these co-inhibitory molecules bind to corresponding receptors 2B4/TIM4/CD152 on the surface of T cells, causing T cell inhibition and exhaustion. High expression of SAMSN1 also switches macrophages into a suppressive phenotype, manifested by decreased phagocytic ability and ability to clear bacteria in the blood. Blockade of SAMSN1 by gene knockout or monoclonal antibody keeps KEAP1-NRF2 in a complex state,

preventing NRF2 from entering the nucleus and promoting the transcription of downstream co-inhibitory molecules, thereby failing to inhibit T cell activation. Blockade of SAMSN1 also switches macrophages to a pro-immune phenotype with enhanced phagocytic ability, resulting in reduced organ injuries and increased survival rate.