

# Greater pericardial and visceral adiposity increase risk of hospitalization or death from SARS-CoV-2 infection in community dwelling adults: A C4R Study

Nadine Al-Naamani MD MSCE<sup>1</sup>, Pallavi Balte PhD<sup>2</sup>, Michael G.S. Shashaty MD MSCE<sup>1</sup>,  
Asma Sharaf MS<sup>2</sup>, James G. Terry MS<sup>3</sup>, John Jeffrey Carr MD<sup>3</sup>,  
Matthew Allison MD MPH<sup>4</sup>, Cheryl A.M. Anderson PhD MPH MS<sup>4</sup>,  
Surya P. Bhatt MD MSPH<sup>5</sup>, Michelle T. Long MD MS<sup>6</sup>, Jason D. Christie MD MSCE<sup>1</sup>,  
Elizabeth Oelsner MD DrPH<sup>2\*</sup>, Michaela R Anderson MD MS<sup>1\*</sup>

\*Co-final authors indicating authors contributed equally to this manuscript

## Affiliations:

<sup>1</sup>University of Pennsylvania Perelman School of Medicine, Philadelphia, PA, USA

<sup>2</sup>Columbia University Medical Center, NYC, NY, USA

<sup>3</sup>Vanderbilt University School of Medicine, Nashville, TN, USA

<sup>4</sup>University of California San Diego School of Medicine, San Diego, CA, USA

<sup>5</sup>University of Alabama at Birmingham School of Medicine, Birmingham, AL, USA

<sup>6</sup>Boston University School of Medicine, Boston, MA, USA

## Co-Corresponding Authors

Michaela R Anderson MD MS

3400 Spruce Street Gates 9W 09041

Philadelphia, PA, 19104

[michaela.anderson@pennteam.upenn.edu](mailto:michaela.anderson@pennteam.upenn.edu)

Elizabeth Oelsner MD DrPH

630 West 168<sup>th</sup> Street,

Presbyterian Hospital 9<sup>th</sup> Floor, Suite 105

New York, NY 10032

[eco7@cumc.columbia.edu](mailto:eco7@cumc.columbia.edu)

Abstract Word Count: 350

Manuscript Word Count: 2932

Funding: NHLBI K23 150280, NHLBI K23 HL 141584

The Collaborative Cohort of Cohorts for COVID-19 Research (C4R) Study is supported by grant

OT2HL156812 from the NHLBI Collaborating Network of Networks for Evaluating COVID-19 and Therapeutic

Strategies/Researching COVID to Enhance Recovery, with co-funding from the National Institute of

Neurological Disorders and Stroke (NINDS) and the National Institute on Aging (NIA).

40 The Coronary Artery Risk Development in Young Adults (CARDIA) Study is conducted and supported by the  
41 NHLBI in collaboration with the University of Alabama at Birmingham (contracts HHSN268201800005I and  
42 HHSN268201800007I), Northwestern University (contract HHSN268201800003I), the University of Minnesota  
43 (contract HHSN268201800006I), and the Kaiser Foundation Research Institute (contract HSN268201800004I).

44 The Framingham Heart Study has received support from the NHLBI (grant N01-HC-25195, contract  
45 HHSN268201500001I, and grant 75N92019D00031).

46 The Jackson Heart Study is supported by and conducted in collaboration with Jackson State University  
47 (contract HHSN268201800013I), Tougaloo College (contract HHSN268201800014I), the Mississippi State  
48 Department of Health (contract HHSN268201800015I), the University of Mississippi Medical Center (contracts  
49 HHSN268201800010I, HHSN268201800011I, and HHSN268201800012I), the NHLBI, and the National  
50 Institute on Minority Health and Health Disparities.

51 The Multi-Ethnic Study of Atherosclerosis (MESA) and the MESA SNP Health Association Resource (SHARe)  
52 are conducted and supported by the NHLBI in collaboration with the MESA investigators. Support for MESA is  
53 provided by grants and contracts 75N92020D00001, HHSN268201500003I, N01-HC-95159,  
54 75N92020D00005, N01-HC-95160, 75N92020D00002, N01-HC-95161, 75N92020D00003, N01-HC-95162,  
55 75N92020D00006, N01-HC-95163, 75N92020D00004, N01-HC-95164, 75N92020D00007, N01-HC-95165,  
56 N01-HC-95166, N01-HC-95167, N01-HC-95168, N01-HC-95169, R01-HL077612, R01-HL093081, R01-  
57 HL130506, R01-HL127028, R01-HL127659, R01-HL098433, R01-HL101250, and R01-HL135009 from the  
58 NHLBI; grant R01-AG058969 from the NIA; and grants UL1-TR-000040, UL1-TR-001079, and UL1-TR-001420  
59 from the National Center for Advancing Translational Sciences.

60

## 61 ***ROLE OF THE FUNDERS***

62 The views expressed in this article are those of the authors and do not necessarily represent the views of the  
63 NHLBI, the NIH, or the US Department of Health and Human Services; the NINDS; or the NIA.

64 Representatives of the NHLBI, NINDS and NIA were not directly involved in the design and conduct of the

65 study; collection, management, analysis, and interpretation of the data; preparation, review, or approval of the  
66 manuscript; and decision to submit the manuscript for publication.

67  
68  
69  
70

71 **Key Points**

72 Question: Is ectopic adipose deposition measured on pre-pandemic CT scan associated with risk of respiratory  
73 failure from SARS-CoV-2?

74

75 Findings: In this retrospective cohort study of 8812 participants enrolled in 4 large cohort studies pre-  
76 pandemic, greater pericardial and abdominal visceral adipose tissue were associated with increased risk of  
77 severe SARS-CoV-2 infection independent of body mass index, diabetes, hypertension, and cardiovascular  
78 disease.

79

80 Meaning: Pericardial and abdominal visceral adipose tissue are associated with increased risk of  
81 hospitalization or death from SARS-CoV2 independent of existing measures of obesity; use of these measures  
82 could improve our risk assessments.

## 83 **Abstract**

84 **Importance:** Higher body mass index (BMI) increases risk of respiratory failure and death from SARS-CoV-2  
85 infection. BMI is imprecise and fails to account for adipose tissue distribution.

86  
87 **Objective:** To determine whether pericardial adipose tissue (PAT), abdominal visceral adipose tissue (VAT),  
88 subcutaneous adipose tissue (SAT), or hepatic adipose deposition on pre-pandemic computed tomography  
89 (CT) scans associate with increased risk of hospitalization or death from SARS-CoV-2.

90  
91 **Design:** The Collaborative Cohort of Cohorts for COVID-19 Research (C4R) ascertained SARS-CoV-2  
92 outcomes among participants from 14 US-based cohort studies. This analysis includes participants enrolled in  
93 the Jackson Heart, CARDIA, MESA, and Framingham Heart studies.

94  
95 **Participants:** C4R attempted to enroll all cohort participants who were alive on March 1, 2020 and had not  
96 withdrawn consent for cohort participation.

97  
98 **Exposures:** Adipose depot size measured on research CT scans performed between 2000 and 2011.

99  
100 **Outcome:** Time from March 1, 2020 to hospitalization or death from SARS-CoV-2 infection ascertained by self-  
101 report or active surveillance and confirmed when available, by protocolized record review.

102  
103 **Results:** There were 8412 participants with at least one CT adipose measure, among whom 184 events  
104 occurred over a median (interquartile range) of 547 (338-609) days. Participants were 57% female with median  
105 (SD) age of 69.1 (10.4) years. In adjusted models, both higher PAT (per doubling in PAT volume, HR 1.62,  
106 95% CI 1.25-2.09) and higher VAT (per 1-standard deviation, HR 1.41, 95% CI 1.20-1.67) were associated  
107 with greater hazards of hospitalization or death from SARS-CoV-2. Associations remained after adjustment for  
108 BMI, diabetes, cardiovascular disease, and hypertension. SAT was associated with hospitalization or death  
109 from SARS-CoV-2 but not after adjustment for BMI, diabetes, cardiovascular disease or hypertension. Hepatic  
110 adipose deposition was not associated with hospitalization or death. Associations did not vary by sex, age,  
111 race, cohort, smoking status, diabetes, or BMI.

112  
113 **Conclusions and Relevance:** Greater CT-measured pericardial and abdominal visceral adipose tissue were  
114 associated with increased hazards of hospitalization or death from SARS-CoV-2 independent of BMI or clinical  
115 cardiometabolic comorbidities. Further research should investigate use of CT adipose measures to quantify  
116 risk of severe disease from viral infections and to investigate mechanisms linking adiposity to lung injury.

## 118 Introduction

119 Obesity, defined by body mass index (BMI), is associated with an increased risk of testing positive for  
120 severe acute respiratory syndrome coronavirus-2 (SARS-CoV-2),<sup>1,2</sup> as well as for adverse COVID-19  
121 outcomes including severe disease,<sup>3-8</sup> intensive care,<sup>9</sup> and death.<sup>8,10,11</sup> Obesity is also a known risk factor for  
122 acute lung injury in other settings.<sup>12-18</sup> Nonetheless, the mechanisms linking obesity to lung injury are  
123 incompletely understood.

124 Our understanding of mechanisms linking obesity to respiratory failure is partly limited by use of BMI as  
125 a measure of adiposity. While BMI is readily available and low-cost,<sup>19</sup> it fails to capture differences in adipose  
126 tissue distribution, which vary by sex, race, and ethnicity.<sup>20-24</sup> Adipose distribution is associated with both  
127 cardiovascular and all-cause mortality in the general population, independent of BMI.<sup>20,25-27</sup> When energy  
128 intake exceeds energy utilization, excess energy is stored as free fatty acids, preferentially in subcutaneous  
129 adipose tissue depots.<sup>28</sup> With continued energy excess, the storage capacity of subcutaneous depots can get  
130 overwhelmed and these free fatty acids are increasingly stored in ectopic locations (e.g. visceral adipose,  
131 pericardial adipose, and liver).<sup>29</sup> Greater ectopic adiposity is associated with increased systemic inflammation,  
132 changes in innate immune cell function, and increased cardiovascular disease, kidney disease, insulin  
133 resistance, and diabetes mellitus.<sup>30-33</sup>

134 Whether greater ectopic fat storage alters risk of respiratory failure, such as with SARS-CoV-2  
135 infection, is unknown. Prior work investigating the association between adiposity and outcomes from SARS-  
136 CoV-2 has relied on small single-center cohorts using clinically-indicated computed tomography (CT) imaging  
137 and is therefore limited by indication bias.<sup>34-39</sup> Hence, we evaluated the association between adipose tissue  
138 depot sizes on pre-pandemic research CT scans and the risk of hospitalization or death from SARS-CoV-2  
139 infection in the Collaborative Cohort of Cohorts for COVID-19 Research (C4R) study.<sup>40</sup> We hypothesized that  
140 greater pericardial (PAT), abdominal visceral adipose tissue (VAT), and hepatic adipose deposition on pre-  
141 pandemic CT scans would associate with increased risk of hospitalization or death from SARS-CoV-2.

## 143 Methods

144 C4R attempted to enroll all participants from 14 large US-based longitudinal cohorts who were alive on  
145 March 1, 2020 and had not withdrawn consent for cohort participation. Enrollment in C4R included completion  
146 of two serial questionnaires (April 2020 through February 2023) and ascertainment of COVID-related  
147 hospitalizations and deaths by questionnaires or active surveillance. Additional information on protocols and  
148 mechanisms of pooling clinical and demographic data across studies has been published.<sup>40</sup> Four of the studies  
149 participating in C4R had available pre-pandemic CT-measures of adipose depots: the Multi-Ethnic Study of  
150 Atherosclerosis (MESA),<sup>41</sup> the Jackson Heart Study (JHS),<sup>42</sup> the Coronary Artery Risk Development in Young  
151 Adults (CARDIA) study,<sup>43</sup> and the Framingham Heart Study (FHS).<sup>44</sup> Descriptions of these cohorts are included  
152 in the *Supplementary Methods*.

153 We performed a retrospective analysis of C4R participants from the aforementioned cohorts who had  
154 any available CT-measure of adipose tissue prior to the pandemic. Cohorts obtained institutional review board  
155 approval from participating centers. Each cohort had previously consented participants to in-person, telephone,  
156 and/or e-mail contact and for abstraction of medical records. Consent for COVID-19 data collection was  
157 obtained in accordance with cohort-specific procedures. Participants with missing data for incident SARS-CoV-  
158 2 infection were excluded from this report. Recurrent SARS-CoV-2 infections, which were rare, were not  
159 analyzed.

### 160 161 *Measurement of exposures*

162 Methods for participant sampling for CT and protocols for adipose depot measurement in each cohort  
163 are further described in the *Supplementary Methods*. Chest and abdominal CT scans were performed as part  
164 of the research protocol in JHS from Exam 2 (2007-2010) and CARDIA Year 25 (2010-2011).<sup>45-47</sup> Abdominal  
165 CT scans were performed as part of the research protocol in FHS Offspring, Generation 3, Omni 1, and Omni  
166 2 cohorts (2008-2011). Chest CT and abdominal CT scans performed as part of the research protocol in MESA  
167 from Exams 1-4 (2000-2007) and Exams 2-3 (2002-2004), respectively.<sup>47-49</sup> Pericardial adipose tissue (PAT)  
168 volume quantification protocols were identical in all three cohorts with available measures (CARDIA, JHS,  
169 MESA).

170 Primary analyses pooled PAT volumes across cohorts. The PAT distribution was skewed, therefore  
171 analyses were performed after log<sub>2</sub> transformation and results are reported per doubling of PAT volume.  
172 Measurement protocols for abdominal visceral adipose tissue (VAT), subcutaneous adipose tissue (SAT), and  
173 liver attenuation differed across all cohorts. FHS did not have available measures of liver attenuation. To pool  
174 these values, measures were standardized within each cohort and then the standardized values were  
175 combined for analyses; this approach was also used in secondary analyses of PAT.

### 176 177 *Measurement of outcomes*

178 Our primary outcome was hospitalization or death from SARS-CoV-2 infection, hereafter described as  
179 “severe events.” This outcome was defined by self-report or active surveillance and confirmed, when available,  
180 by protocolized review of medical records or death certificates. Our secondary outcome was intensive care unit  
181 admission or death (hereafter, “critical events”) from SARS-CoV-2 infection, ascertained and confirmed in the  
182 same manner.

### 183 184 *Measurement of covariates*

185 Covariates were obtained at the most recent pre-pandemic exam, which was not necessarily the time of  
186 CT (Supplemental Methods). BMI was calculated using height and weight, which were measured using  
187 standard methods at the most recent pre-pandemic exam. Vaccination date and status were obtained by self-  
188 report; vaccination status at the time of infection was obtained by comparing infection and vaccination dates.

189 Clinical cardiovascular disease was defined by self-reported physician diagnosis or adjudication/administrative  
190 criteria for myocardial infarction, angina pectoris, or stroke.

## 192 *Statistical Analysis*

193 Adipose tissue measures were compared to BMI using Spearman correlations. For primary analyses,  
194 we used cause-specific hazards models to assess the association between adipose tissue measures and  
195 severe events over the period of March 1, 2020 to February 28, 2023. If a subject developed SARS-CoV-2  
196 infection but did not experience a severe event, they were censored on the date of non-severe infection as  
197 subjects with prior non-severe infection are unlikely to be hospitalized or die of SARS-CoV-2 with a subsequent  
198 infection. Participants who had not developed SARS-CoV-2 infection were censored on last available day of  
199 follow-up, defined as the date of the most recently completed questionnaire. Models were stratified by cohort to  
200 account for potential differences in the baseline hazards function. We evaluated the proportional hazards  
201 assumption by regressing Schoenfeld residuals over time. We visually display the associations between  
202 adipose measures and outcomes using the “survival” package with the “pspline” function in R.<sup>50,51</sup>

203 We used directed acyclic graphs to identify a minimal set of covariates (Supplement Figure 1) including  
204 age, sex, race and ethnicity, educational attainment, smoking status, and vaccination status as a time-varying  
205 covariate. Among participants with missing vaccination data, vaccination status was classified as non-  
206 vaccinated as of March 1, 2021 (since vaccination was rare before that time point) and subsequent follow-up  
207 was censored. To evaluate independent effects of CT-measured adiposity, we adjusted for BMI, diabetes,  
208 hypertension, and cardiovascular disease in separate models. We evaluated subgroups defined a priori by sex,  
209 age at C4R enrollment (<65 or ≥65), smoking status (never, former, current), diabetes, cohort, race, and WHO  
210 BMI category.<sup>52</sup> We evaluated for interactions using Likelihood Ratio tests.

211 We performed sensitivity analyses using Cox models with cohort as a frailty term using the “survival”  
212 package<sup>51</sup> and Fine and Gray competing risks models stratified by cohort using the “crrSc” package.<sup>53</sup> Frailty  
213 terms allow us to account for both between and within-study differences in risk.<sup>54</sup> Fine and Gray models allow  
214 us to account for competing events without the assumption that these events are independent. For PAT, we  
215 performed additional sensitivity analyses with intra-cohort standardization. We used logistic regression models  
216 to evaluate the association between adipose depots and outcomes among participants with infection. These  
217 logistic regression models included cohort as a covariate.

218 All analyses were performed using R version 4.0.0 (R Foundation for statistical computing) on the C4R  
219 Analysis Commons.

## 221 **Results**

222 Twelve thousand fifty-four participants from the 4 included cohorts were enrolled in C4R, of whom 8412  
223 (70%) had at least one available CT-measure of any of the adipose depots of interest. Pericardial adipose  
224 measures were available from 6474 participants enrolled in MESA, CARDIA, and JHS from CT scans

performed between the years 2000 and 2011 (Figure 1). VAT, SAT, and liver attenuation measures were available on 6467, 6323, and 7251 participants, respectively (Figure 1). Characteristics were similar across subgroups with different available adipose measures (Supplemental Table 1) and differed between cohorts by age, race and ethnicity, and education status, consistent with known differences in the populations enrolled for each study (Supplemental Methods, Supplemental Table 2). Participants with greater pericardial or visceral adiposity were older, more likely to be male, White, and with diabetes and/or cardiovascular disease, and less likely to be Black (Supplemental Tables 3-4).

One-hundred and eighty-four participants had a severe event and 794 had a non-severe infection over a median (interquartile range, IQR) follow-up of 547 (338-609) days. One-hundred thirty-nine of the severe events (76%) occurred within the first year of the pandemic when vaccine availability was low; only 8 severe events occurred among participants who had previously been vaccinated.

### *BMI as a measure of adiposity*

BMI was strongly correlated with SAT ( $r = 0.76$ ,  $p < 0.0001$ , Supplemental Table 5). BMI was only moderately correlated with VAT ( $r = 0.50$ ,  $p < 0.0001$ ) and weakly correlated with PAT ( $r = 0.33$ ,  $p < 0.0001$ ). Lower liver attenuation indicates greater adipose content. BMI was weakly inversely correlated with liver attenuation ( $r = -0.22$ ,  $p < 0.0001$ ).

### *Pericardial Adipose Tissue*

In the cohort with PAT measured, 135 participants experienced a severe event over a median (IQR) of 365 (282-591) days. Greater PAT was associated with increased hazard of severe events in unadjusted and adjusted models (Table 1). In minimally-adjusted models, every doubling in PAT volume was associated with 64% increased hazards of severe event (95% CI 128-109%,  $p = 0.0001$ , Figure 2A). This association remained after inclusion of BMI (HR 1.48, 95% CI 1.12-1.95), and diabetes, cardiovascular disease, and hypertension (HR 1.42, 95% CI 1.07-1.88). Greater pericardial adiposity was also associated with increased hazards of critical events in minimally-adjusted models (per doubling in PAT volume, HR 1.69, 95% CI 12-155%,  $p = 0.013$ , Table 2). Findings were similar when PAT was standardized within cohorts and then analyzed (Supplemental Table 6), in analyses limited to those with documented infection (Supplemental Table 7), and in competing risk and frailty models (Supplemental Tables 7-8).

### *Abdominal visceral adipose*

In the cohort with VAT measured, 135 participants experienced a severe event over a median (IQR) of 537 (365-610) days. Greater VAT was associated with increased hazards of severe events in unadjusted and adjusted models (Figure 2B, Table 1). In minimally adjusted models, every 1-SD increase in abdominal VAT was associated with 41% (95%CI 20-67%,  $p = 0.0002$ ) increased hazards of severe event. This association remained after inclusion of BMI (HR 1.32, 95% CI 1.09-1.56), and diabetes, cardiovascular disease, and



hypertension (HR 1.24, 95% CI 1.01-1.53). Greater abdominal visceral adiposity was associated with increased hazards of critical events in minimally adjusted models (per 1-SD increase in VAT, HR 1.48, 95% CI 1.15-1.89,  $p=0.0021$ , Table 2). Findings were similar in sensitivity analyses (Supplemental Tables 7-9).

In models including both PAT and VAT, 1-SD increase in PAT was associated with 25% increased hazards (95% CI -4% to 63%) of severe events while 1-SD increase in VAT was associated with 23% increased hazards (95% CI -7% to 63%) in 3934 participants with available measures for both.

### *Abdominal subcutaneous adipose*

In the cohort with SAT measured, 129 participants experienced a severe event over a median (IQR) of 538 (365-610) days. Greater SAT was associated with increased hazards of hospitalization or death in unadjusted and minimally adjusted models (Table 2) but not after adjustment for BMI or obesity-related complications. The plot suggested that there may be a threshold effect wherein after a certain amount of SAT has accumulated, greater SAT no longer alters risk (Figure 2C). Associations were similar in sensitivity analyses (Supplemental Tables 8-9). SAT was not associated with risk of critical illness or death (Table 2), or with risk of hospitalization among those with infection after adjustment for confounders (Supplemental Table 9).

### *Liver attenuation*

In the cohort with hepatic adiposity measured, 165 participants experienced a severe event over a median (IQR) of 365 (308-426) days. Decreased liver attenuation (indicating more intra-hepatic adipose deposition) was not associated with significantly increased risk of severe events (HR 1.14, 95% CI 0.99-1.32, Table 1, Figure 2D) in primary analyses or sensitivity analyses (Supplemental Tables 7-8).

### *Interactions*

The associations between adipose depots and severe events were not modified by age, sex, smoking status, diabetes, cohort, race or BMI category (Figure 3, Supplemental Figure 2).

## **Discussion**

Greater pericardial, abdominal visceral adipose, and abdominal subcutaneous adipose deposition, but not liver adipose deposition, as measured on pre-pandemic CT scans, were associated with increased risk of hospitalization or death from SARS-CoV-2 infection. Both pericardial and abdominal visceral adiposity, but not subcutaneous adiposity, were associated with risk of severe events even after adjustment for BMI and cardiometabolic comorbidities, suggesting an independent contribution of pericardial and abdominal visceral adipose to risk of hospitalization or death from SARS-CoV-2.

296 Our study is the first to evaluate pre-pandemic research CT-based measures of adiposity with risk of  
297 hospitalization or death due to SARS-CoV-2 infection. Prior work evaluating the association between CT  
298 measures of adiposity and outcomes from SARS-CoV-2 has had variable results.<sup>34-39</sup> The differences are likely  
299 attributable to the selection bias inherent to single center retrospective studies of participants who required  
300 hospitalization and had a clinical indication for cross-sectional imaging. Use of pre-pandemic research cohorts  
301 with protocolized scans allowed us to evaluate the association between adiposity and disease severity on an  
302 unbiased, population level. We identified a consistent relationship between multiple measures of ectopic  
303 adipose deposition and risk of severe manifestations of SARS-CoV-2 infection. Our results are consistent with  
304 prior work demonstrating an association between research CT measures of adiposity and subclinical  
305 parenchymal lung injury in the general population,<sup>55</sup> suggesting that there may be broader associations  
306 between adiposity and lung injury. Future work is needed to establish how CT-measured adiposity could be  
307 used to identify patients at high risk of respiratory failure in the setting of viral infection, such that they could be  
308 targeted for prevention and early treatment.

309 Our results illustrate that the standard, BMI-based classification of obesity does not capture all  
310 adiposity-related risk. Prior work has established that BMI frequently mis-classifies adiposity.<sup>22,23,56,57</sup>  
311 Specifically, BMI has been shown to misclassify body fat status in 41% of subjects with heart failure and 70%  
312 of subjects with advanced lung disease.<sup>56,57</sup> In our study, BMI did not strongly correlate with CT-measures of  
313 ectopic adipose deposition (PAT, VAT, liver attenuation), and associations of PAT and VAT with adverse  
314 SARS-CoV-2 outcomes were only modestly attenuated by co-adjustment for BMI. Notably, associations of PAT  
315 and VAT with adverse outcomes were not attenuated by co-adjustment for diabetes, cardiovascular disease,  
316 and hypertension, which are known risk factors for severe SARS-CoV-2 infection.<sup>58-60</sup> This suggests direct  
317 pathways linking adiposity and adverse SARS-CoV-2 outcomes.

318 Greater subcutaneous adiposity may increase risk of severe SARS-CoV-2 infection. Associations  
319 persisted after adjustment for a minimal set of confounders, but not after inclusion of BMI or cardiometabolic  
320 obesity complications. There may be a threshold effect between SAT and respiratory failure; greater SAT  
321 appeared to be associated with increased risk of respiratory failure until a threshold beyond which it no longer  
322 altered risk. Once subcutaneous adipose storage capacity is exceeded, fat begins to accumulate in other  
323 locations.<sup>61</sup> Greater accumulation after this SAT storage capacity threshold has been reached, may not  
324 significantly alter its inflammatory state.

325 There are multiple potential mechanisms to explain why excess adiposity may predispose adults to  
326 severe manifestations of SARS-CoV-2 infection.<sup>62</sup> Increased pro-inflammatory adipose tissue macrophages  
327 result in greater production of inflammatory mediators including interleukin-6, monocyte chemoattractant  
328 protein-1, and leptin.<sup>63-68</sup> Pericardial adipose may particularly increase risk of respiratory failure as it drains  
329 directly into the coronary and pulmonary circulations; chronic release of these inflammatory mediators into the  
330 pulmonary circulation may lead to greater endothelial damage or alterations in immune cell function, that leave  
331 the lung primed for greater injury in the setting of subsequent infection.<sup>32,66,69</sup> Greater expression of ACE-2 (the

332 binding receptor SARS-CoV-2 virus) in visceral adipose depots could contribute to excess risk by creating a  
333 larger viral reservoir.<sup>70</sup> Notably, obesity is a known risk factor for respiratory failure in multiple settings,<sup>12,14,15,71-</sup>  
334 <sup>73</sup> suggesting that this association, and these mechanisms, may not be specific to the SARS-CoV-2 virus.  
335 Future work should focus on whether these mechanisms could link ectopic adipose deposition to severe lung  
336 injury from viral infection and whether targeting ectopic adipose deposition could alter risk of lung injury.

337 There are limitations to our study. First, CT measures were obtained 10-20 years prior to the pandemic.  
338 Prior work has shown that these depots may increase over time.<sup>74,75</sup> Future work should consider measuring  
339 pericardial and abdominal visceral adipose in cohorts with more recent imaging. Second, protocols for  
340 measurement of abdominal adipose tissue differed across cohorts. Reassuringly, associations were similar  
341 within cohorts and across two measures of adiposity. Future work should validate a single standard  
342 measurement protocol to increase the clinical utility of these measures. Third, ascertainment of mild infection is  
343 primarily dependent on testing and self-report. It is possible that some participants who we consider “at-risk” for  
344 incident infection were asymptotically infected prior and should not have been part of the at-risk population.  
345 Fourth, approximately 6% of eligible cohort participants did not enroll in C4R, which may have introduced  
346 selection bias; however, reassuringly, characteristics of enrolled participants were similar to the eligible  
347 population.<sup>40</sup>

348 In conclusion, greater CT-measured pericardial and abdominal visceral adiposity were associated with  
349 increased risk of hospitalization or death from SARS-CoV-2 infection independent of BMI, diabetes,  
350 cardiovascular disease, and hypertension in a multi-ethnic US population-based sample of adults. Future work  
351 should investigate the use of CT measures of adipose to better quantify respiratory failure risk and to  
352 investigate mechanisms linking ectopic adipose deposition to risk of acute lung injury in the general population.

## 353 References

- 354 1. de Lusignan S, Dorward J, Correa A, et al. Risk factors for SARS-CoV-2 among patients in the Oxford  
355 Royal College of General Practitioners Research and Surveillance Centre primary care network: a cross-  
356 sectional study. *Lancet Infect Dis*. Sep 2020;20(9):1034-1042. doi:10.1016/S1473-3099(20)30371-6
- 357 2. Hernandez-Garduno E. Obesity is the comorbidity more strongly associated for Covid-19 in Mexico. A  
358 case-control study. *Obes Res Clin Pract*. Jul - Aug 2020;14(4):375-379. doi:10.1016/j.orcp.2020.06.001
- 359 3. Anderson MR, Geleris J, Anderson DR, et al. Body Mass Index and Risk for Intubation or Death in  
360 SARS-CoV-2 Infection: A Retrospective Cohort Study. *Ann Intern Med*. Jul 29 2020;doi:10.7326/M20-3214
- 361 4. Gao F, Zheng KI, Wang XB, et al. Obesity Is a Risk Factor for Greater COVID-19 Severity. *Diabetes*  
362 *Care*. Jul 2020;43(7):e72-e74. doi:10.2337/dc20-0682
- 363 5. Simonnet A, Chetboun M, Poissy J, et al. High prevalence of obesity in severe acute respiratory  
364 syndrome coronavirus-2 (SARS-CoV-2) requiring invasive mechanical ventilation. *Obesity (Silver Spring)*. Apr  
365 9 2020;doi:10.1002/oby.22831
- 366 6. Goyal P, Choi JJ, Pinheiro LC, et al. Clinical Characteristics of Covid-19 in New York City. *N Engl J*  
367 *Med*. Jun 11 2020;382(24):2372-2374. doi:10.1056/NEJMc2010419
- 368 7. Cai Q, Chen F, Wang T, et al. Obesity and COVID-19 Severity in a Designated Hospital in Shenzhen,  
369 China. *Diabetes Care*. Jul 2020;43(7):1392-1398. doi:10.2337/dc20-0576
- 370 8. Garibaldi BT, Fiksel J, Muschelli J, et al. Patient Trajectories Among Persons Hospitalized for COVID-  
371 19 : A Cohort Study. *Ann Intern Med*. Jan 2021;174(1):33-41. doi:10.7326/M20-3905
- 372 9. Lighter J, Phillips M, Hochman S, et al. Obesity in patients younger than 60 years is a risk factor for  
373 Covid-19 hospital admission. *Clin Infect Dis*. Apr 9 2020;doi:10.1093/cid/ciaa415
- 374 10. Tartof SY, Qian L, Hong V, et al. Obesity and Mortality Among Patients Diagnosed With COVID-19:  
375 Results From an Integrated Health Care Organization. *Ann Intern Med*. Nov 17 2020;173(10):773-781.  
376 doi:10.7326/M20-3742
- 377 11. Smati S, Tramunt B, Wargny M, et al. Relationship between obesity and severe COVID-19 outcomes in  
378 patients with type 2 diabetes: Results from the CORONADO study. *Diabetes Obes Metab*. Feb  
379 2021;23(2):391-403. doi:10.1111/dom.14228
- 380 12. Fezeu L, Julia C, Henegar A, et al. Obesity is associated with higher risk of intensive care unit  
381 admission and death in influenza A (H1N1) patients: a systematic review and meta-analysis. *Obes Rev*. Aug  
382 2011;12(8):653-9. doi:10.1111/j.1467-789X.2011.00864.x
- 383 13. Karki S, Muscatello DJ, Banks E, MacIntyre CR, McIntyre P, Liu B. Association between body mass  
384 index and laboratory-confirmed influenza in middle aged and older adults: a prospective cohort study. *Int J*  
385 *Obes (Lond)*. Aug 2018;42(8):1480-1488. doi:10.1038/s41366-018-0029-x
- 386 14. Mertz D, Kim TH, Johnstone J, et al. Populations at risk for severe or complicated influenza illness:  
387 systematic review and meta-analysis. *BMJ*. Aug 23 2013;347:f5061. doi:10.1136/bmj.f5061

- 388 15. Morgan OW, Bramley A, Fowlkes A, et al. Morbid obesity as a risk factor for hospitalization and death  
389 due to 2009 pandemic influenza A(H1N1) disease. *PLoS One*. Mar 15 2010;5(3):e9694.  
390 doi:10.1371/journal.pone.0009694
- 391 16. Phung DT, Wang Z, Rutherford S, Huang C, Chu C. Body mass index and risk of pneumonia: a  
392 systematic review and meta-analysis. *Obes Rev*. Oct 2013;14(10):839-57. doi:10.1111/obr.12055
- 393 17. Anderson MR, Udupa JK, Edwin E, et al. Adipose tissue quantification and primary graft dysfunction  
394 after lung transplantation: The Lung Transplant Body Composition study. *J Heart Lung Transplant*. Aug 10  
395 2019;doi:10.1016/j.healun.2019.08.013
- 396 18. Lederer DJ, Kawut SM, Wickersham N, et al. Obesity and primary graft dysfunction after lung  
397 transplantation: the Lung Transplant Outcomes Group Obesity Study. *Am J Respir Crit Care Med*. Nov 1  
398 2011;184(9):1055-61. doi:10.1164/rccm.201104-0728OC
- 399 19. Bhaskaran K, Dos-Santos-Silva I, Leon DA, Douglas IJ, Smeeth L. Association of BMI with overall and  
400 cause-specific mortality: a population-based cohort study of 3.6 million adults in the UK. *Lancet Diabetes  
401 Endocrinol*. Dec 2018;6(12):944-953. doi:10.1016/S2213-8587(18)30288-2
- 402 20. Khan I, Chong M, Le A, et al. Surrogate Adiposity Markers and Mortality. *JAMA Netw Open*. Sep 5  
403 2023;6(9):e2334836. doi:10.1001/jamanetworkopen.2023.34836
- 404 21. Hill SE, Bell C, Bowie JV, et al. Differences in Obesity Among Men of Diverse Racial and Ethnic  
405 Background. *Am J Mens Health*. Jul 2017;11(4):984-989. doi:10.1177/1557988315580348
- 406 22. Gallagher D, Visser M, Sepulveda D, Pierson RN, Harris T, Heymsfield SB. How useful is body mass  
407 index for comparison of body fatness across age, sex, and ethnic groups? *Am J Epidemiol*. Feb 1  
408 1996;143(3):228-39. doi:10.1093/oxfordjournals.aje.a008733
- 409 23. Romero-Corral A, Somers VK, Sierra-Johnson J, et al. Accuracy of body mass index in diagnosing  
410 obesity in the adult general population. *Int J Obes (Lond)*. Jun 2008;32(6):959-66. doi:10.1038/ijo.2008.11
- 411 24. Yoon JL, Cho JJ, Park KM, Noh HM, Park YS. Diagnostic performance of body mass index using the  
412 Western Pacific Regional Office of World Health Organization reference standards for body fat percentage. *J  
413 Korean Med Sci*. Feb 2015;30(2):162-6. doi:10.3346/jkms.2015.30.2.162
- 414 25. Mirzai S, Persits I, Martens P, Chen PH, Estep JD, Tang WHW. Significance of Adipose Tissue  
415 Quantity and Distribution on Obesity Paradox in Heart Failure. *Am J Cardiol*. Nov 15 2023;207:339-348.  
416 doi:10.1016/j.amjcard.2023.08.136
- 417 26. Li F, Wang Z, Li S, et al. Association of body fat distribution with all-cause and cardiovascular mortality  
418 in US adults: a secondary analysis using NHANES. *BMJ Open*. Nov 21 2023;13(11):e072752.  
419 doi:10.1136/bmjopen-2023-072752
- 420 27. Streng KW, Voors AA, Hillege HL, et al. Waist-to-hip ratio and mortality in heart failure. *Eur J Heart Fail*.  
421 Sep 2018;20(9):1269-1277. doi:10.1002/ejhf.1244
- 422 28. Ibrahim MM. Subcutaneous and visceral adipose tissue: structural and functional differences. *Obes  
423 Rev*. Jan 2010;11(1):11-8. doi:10.1111/j.1467-789X.2009.00623.x

- 424 29. Ghaben AL, Scherer PE. Adipogenesis and metabolic health. *Nat Rev Mol Cell Biol*. Apr  
425 2019;20(4):242-258. doi:10.1038/s41580-018-0093-z
- 426 30. Kuperberg SJ, Navetta-Modrov B. The Role of Obesity in the Immunopathogenesis of COVID-19  
427 Respiratory Disease and Critical Illness. *Am J Respir Cell Mol Biol*. Jul 2021;65(1):13-21.  
428 doi:10.1165/rcmb.2020-0236TR
- 429 31. Karlsson T, Rask-Andersen M, Pan G, et al. Contribution of genetics to visceral adiposity and its  
430 relation to cardiovascular and metabolic disease. *Nat Med*. Sep 2019;25(9):1390-1395. doi:10.1038/s41591-  
431 019-0563-7
- 432 32. Akimova T, Zhang T, Christensen LM, et al. Obesity-related IL-18 Impairs T-Regulatory Cell Function  
433 and Promotes Lung Ischemia-Reperfusion Injury. *Am J Respir Crit Care Med*. Nov 1 2021;204(9):1060-1074.  
434 doi:10.1164/rccm.202012-4306OC
- 435 33. Ndumele CE, Rangaswami J, Chow SL, et al. Cardiovascular-Kidney-Metabolic Health: A Presidential  
436 Advisory From the American Heart Association. *Circulation*. Nov 14 2023;148(20):1606-1635.  
437 doi:10.1161/CIR.0000000000001184
- 438 34. Favre G, Legueult K, Pradier C, et al. Visceral fat is associated to the severity of COVID-19.  
439 *Metabolism*. Feb 2021;115:154440. doi:10.1016/j.metabol.2020.154440
- 440 35. Rossi AP, Gottin L, Donadello K, et al. Intermuscular Adipose Tissue as a Risk Factor for Mortality and  
441 Muscle Injury in Critically Ill Patients Affected by COVID-19. *Front Physiol*. 2021;12:651167.  
442 doi:10.3389/fphys.2021.651167
- 443 36. Phan F, Boussouar S, Lucidarme O, et al. Cardiac adipose tissue volume and IL-6 level at admission  
444 are complementary predictors of severity and short-term mortality in COVID-19 diabetic patients. *Cardiovasc*  
445 *Diabetol*. Aug 12 2021;20(1):165. doi:10.1186/s12933-021-01327-1
- 446 37. Bunnell KM, Thaweethai T, Buckless C, et al. Body composition predictors of outcome in patients with  
447 COVID-19. *Int J Obes (Lond)*. Oct 2021;45(10):2238-2243. doi:10.1038/s41366-021-00907-1
- 448 38. Charpentier E, Redheuil A, Bourron O, et al. Cardiac adipose tissue volume assessed by computed  
449 tomography is a specific and independent predictor of early mortality and critical illness in COVID-19 in type 2-  
450 diabetic patients. *Cardiovasc Diabetol*. Dec 31 2022;21(1):294. doi:10.1186/s12933-022-01722-2
- 451 39. Nobel YR, Su SH, Anderson MR, et al. Relationship Between Body Composition and Death in Patients  
452 with COVID-19 Differs Based on the Presence of Gastrointestinal Symptoms. *Dig Dis Sci*. Sep  
453 2022;67(9):4484-4491. doi:10.1007/s10620-021-07324-4
- 454 40. Oelsner EC, Krishnaswamy A, Balte PP, et al. Collaborative Cohort of Cohorts for COVID-19 Research  
455 (C4R) Study: Study Design. *Am J Epidemiol*. Jun 27 2022;191(7):1153-1173. doi:10.1093/aje/kwac032
- 456 41. Bild DE, Bluemke DA, Burke GL, et al. Multi-Ethnic Study of Atherosclerosis: objectives and design. *Am*  
457 *J Epidemiol*. Nov 1 2002;156(9):871-81. doi:10.1093/aje/kwf113

- 458 42. Sempos CT, Bild DE, Manolio TA. Overview of the Jackson Heart Study: a study of cardiovascular  
459 diseases in African American men and women. *Am J Med Sci*. Mar 1999;317(3):142-6. doi:10.1097/00000441-  
460 199903000-00002
- 461 43. Friedman GD, Cutter GR, Donahue RP, et al. CARDIA: study design, recruitment, and some  
462 characteristics of the examined subjects. *J Clin Epidemiol*. 1988;41(11):1105-16. doi:10.1016/0895-  
463 4356(88)90080-7
- 464 44. Tsao CW, Vasan RS. Cohort Profile: The Framingham Heart Study (FHS): overview of milestones in  
465 cardiovascular epidemiology. *Int J Epidemiol*. Dec 2015;44(6):1800-13. doi:10.1093/ije/dyv337
- 466 45. Liu J, Fox CS, Hickson DA, et al. Pericardial fat and echocardiographic measures of cardiac  
467 abnormalities: the Jackson Heart Study. *Diabetes Care*. Feb 2011;34(2):341-6. doi:10.2337/dc10-1312
- 468 46. Liu J, Fox CS, Hickson DA, et al. Impact of abdominal visceral and subcutaneous adipose tissue on  
469 cardiometabolic risk factors: the Jackson Heart Study. *J Clin Endocrinol Metab*. Dec 2010;95(12):5419-26.  
470 doi:10.1210/jc.2010-1378
- 471 47. Carr JJ, Nelson JC, Wong ND, et al. Calcified coronary artery plaque measurement with cardiac CT in  
472 population-based studies: standardized protocol of Multi-Ethnic Study of Atherosclerosis (MESA) and Coronary  
473 Artery Risk Development in Young Adults (CARDIA) study. *Radiology*. Jan 2005;234(1):35-43.  
474 doi:10.1148/radiol.2341040439
- 475 48. Shah RV, Murthy VL, Abbasi SA, et al. Visceral adiposity and the risk of metabolic syndrome across  
476 body mass index: the MESA Study. *JACC Cardiovasc Imaging*. Dec 2014;7(12):1221-35.  
477 doi:10.1016/j.jcmg.2014.07.017
- 478 49. McAuley PA, Hsu FC, Loman KK, et al. Liver attenuation, pericardial adipose tissue, obesity, and  
479 insulin resistance: the Multi-Ethnic Study of Atherosclerosis (MESA). *Obesity (Silver Spring)*. Sep  
480 2011;19(9):1855-60. doi:10.1038/oby.2011.191
- 481 50. *pspline: Penalized Smoothing Splines*. Version R package version 1.0-19. 2022. [https://CRAN.R-](https://CRAN.R-project.org/package=pspline)  
482 [project.org/package=pspline](https://CRAN.R-project.org/package=pspline)
- 483 51. *A Package for Survival Analysis in R*. Version R package version 3.4-0. 2022. [https://CRAN.R-](https://CRAN.R-project.org/package=survival)  
484 [project.org/package=survival](https://CRAN.R-project.org/package=survival)
- 485 52. Ogden CL, Carroll MD, Curtin LR, McDowell MA, Tabak CJ, Flegal KM. Prevalence of overweight and  
486 obesity in the United States, 1999-2004. *JAMA*. Apr 5 2006;295(13):1549-55. doi:10.1001/jama.295.13.1549
- 487 53. *crrSC: Competing Risks Regression for Stratified and Clustered Data*. Version R package version  
488 1.1.2. 2022. <https://CRAN.R-project.org/package=crrSC>
- 489 54. Samoli E, Rodopoulou S, Hvidtfeldt UA, et al. Modeling multi-level survival data in multi-center  
490 epidemiological cohort studies: Applications from the ELAPSE project. *Environ Int*. Feb 2021;147:106371.  
491 doi:10.1016/j.envint.2020.106371
- 492 55. Anderson MR, Kim JS, Allison M, et al. Adiposity and Interstitial Lung Abnormalities in Community-  
493 Dwelling Adults: The MESA Cohort Study. *Chest*. Aug 2021;160(2):582-594. doi:10.1016/j.chest.2021.03.058

- 494 56. Singer JP, Peterson ER, Snyder ME, et al. Body composition and mortality after adult lung  
495 transplantation in the United States. *Am J Respir Crit Care Med*. Nov 1 2014;190(9):1012-21.  
496 doi:10.1164/rccm.201405-0973OC
- 497 57. Oreopoulos A, Ezekowitz JA, McAlister FA, et al. Association between direct measures of body  
498 composition and prognostic factors in chronic heart failure. *Mayo Clin Proc*. Jul 2010;85(7):609-17.  
499 doi:10.4065/mcp.2010.0103
- 500 58. Fishkin T, Goldberg MD, Frishman WH. Review of the Metabolic Risk Factors for Increased Severity of  
501 Coronavirus Disease-2019. *Cardiol Rev*. Nov-Dec 01 2021;29(6):292-295.  
502 doi:10.1097/CRD.0000000000000408
- 503 59. Zhou F, Yu T, Du R, et al. Clinical course and risk factors for mortality of adult inpatients with COVID-19  
504 in Wuhan, China: a retrospective cohort study. *Lancet*. Mar 28 2020;395(10229):1054-1062.  
505 doi:10.1016/S0140-6736(20)30566-3
- 506 60. Huang I, Lim MA, Pranata R. Diabetes mellitus is associated with increased mortality and severity of  
507 disease in COVID-19 pneumonia - A systematic review, meta-analysis, and meta-regression. *Diabetes Metab  
508 Syndr*. Jul-Aug 2020;14(4):395-403. doi:10.1016/j.dsx.2020.04.018
- 509 61. Freedland ES. Role of a critical visceral adipose tissue threshold (CVATT) in metabolic syndrome:  
510 implications for controlling dietary carbohydrates: a review. *Nutr Metab (Lond)*. Nov 5 2004;1(1):12.  
511 doi:10.1186/1743-7075-1-12
- 512 62. Steenblock C, Schwarz PEH, Ludwig B, et al. COVID-19 and metabolic disease: mechanisms and  
513 clinical management. *Lancet Diabetes Endocrinol*. Nov 2021;9(11):786-798. doi:10.1016/S2213-  
514 8587(21)00244-8
- 515 63. Andersson CX, Gustafson B, Hammarstedt A, Hedjazifar S, Smith U. Inflamed adipose tissue, insulin  
516 resistance and vascular injury. *Diabetes Metab Res Rev*. Nov-Dec 2008;24(8):595-603. doi:10.1002/dmrr.889
- 517 64. Dib LH, Ortega MT, Fleming SD, Chapes SK, Melgarejo T. Bone marrow leptin signaling mediates  
518 obesity-associated adipose tissue inflammation in male mice. *Endocrinology*. Jan 2014;155(1):40-6.  
519 doi:10.1210/en.2013-1607
- 520 65. Weisberg SP, McCann D, Desai M, Rosenbaum M, Leibel RL, Ferrante AW, Jr. Obesity is associated  
521 with macrophage accumulation in adipose tissue. *J Clin Invest*. Dec 2003;112(12):1796-808.  
522 doi:10.1172/JCI19246
- 523 66. Ubags ND, Vernooy JH, Burg E, et al. The role of leptin in the development of pulmonary neutrophilia in  
524 infection and acute lung injury. *Crit Care Med*. Feb 2014;42(2):e143-51. doi:10.1097/CCM.0000000000000048
- 525 67. Pang Y, Kartsonaki C, Lv J, et al. Associations of Adiposity, Circulating Protein Biomarkers, and Risk of  
526 Major Vascular Diseases. *JAMA Cardiol*. Mar 1 2021;6(3):276-286. doi:10.1001/jamacardio.2020.6041
- 527 68. Ellulu MS, Patimah I, Khaza'ai H, Rahmat A, Abed Y. Obesity and inflammation: the linking mechanism  
528 and the complications. *Arch Med Sci*. Jun 2017;13(4):851-863. doi:10.5114/aoms.2016.58928



- 529 69. Ubags ND, Burg E, Antkowiak M, et al. A Comparative Study of Lung Host Defense in Murine Obesity  
530 Models. Insights into Neutrophil Function. *Am J Respir Cell Mol Biol*. Aug 2016;55(2):188-200.  
531 doi:10.1165/rcmb.2016-0042OC
- 532 70. Saccon TD, Mousovich-Neto F, Ludwig RG, et al. SARS-CoV-2 infects adipose tissue in a fat depot-  
533 and viral lineage-dependent manner. *Nat Commun*. Sep 29 2022;13(1):5722. doi:10.1038/s41467-022-33218-  
534 8
- 535 71. Anderson MR, Cantu E, Shashaty M, et al. Body Mass Index and Cause-Specific Mortality after Lung  
536 Transplantation in the United States. *Ann Am Thorac Soc*. Jun 2023;20(6):825-833.  
537 doi:10.1513/AnnalsATS.202207-613OC
- 538 72. Anderson MR, Udupa JK, Edwin E, et al. Adipose tissue quantification and primary graft dysfunction  
539 after lung transplantation: The Lung Transplant Body Composition study. *J Heart Lung Transplant*. Dec  
540 2019;38(12):1246-1256. doi:10.1016/j.healun.2019.08.013
- 541 73. Milner JJ, Rebeles J, Dhungana S, et al. Obesity Increases Mortality and Modulates the Lung  
542 Metabolome during Pandemic H1N1 Influenza Virus Infection in Mice. *J Immunol*. May 15 2015;194(10):4846-  
543 59. doi:10.4049/jimmunol.1402295
- 544 74. Miyazawa I, Ohkubo T, Kadowaki S, et al. Change in Pericardial Fat Volume and Cardiovascular Risk  
545 Factors in a General Population of Japanese Men. *Circ J*. Sep 25 2018;82(10):2542-2548.  
546 doi:10.1253/circj.CJ-18-0153
- 547 75. Nerlekar N, Thakur U, Lin A, et al. The Natural history of Epicardial Adipose Tissue Volume and  
548 Attenuation: A long-term prospective cohort follow-up study. *Sci Rep*. Apr 28 2020;10(1):7109.  
549 doi:10.1038/s41598-020-63135-z
- 550

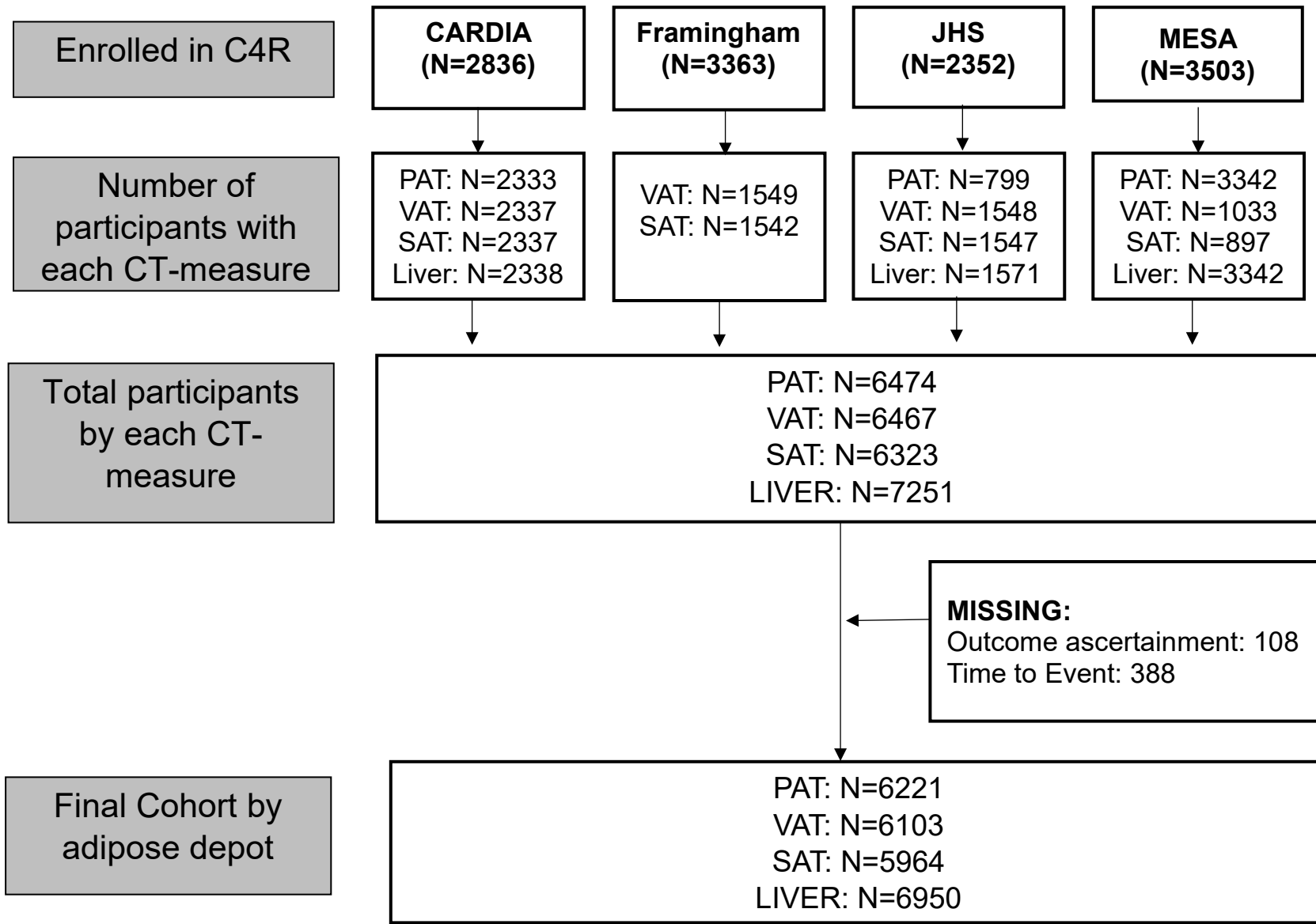
## Figure Legends

**Figure 1:** Flow Chart for study inclusion

**Figure 2:** Continuous association between (A) pericardial adipose volume, (B) abdominal visceral adipose tissue, (C) abdominal subcutaneous adipose tissue, (D) liver attenuation (lower attenuation indicates greater lipid deposition) and hazard of hospitalization or death due to SARS-CoV2 infection. Models were adjusted for age, sex, race, education, smoking status, vaccination status at infection, and stratified by study. Point estimates for each subject are represented as individual dots (which appear as a continuous line) with dashed lines representing 95% confidence bounds. Each vertical line along the x-axis represents an individual subject.

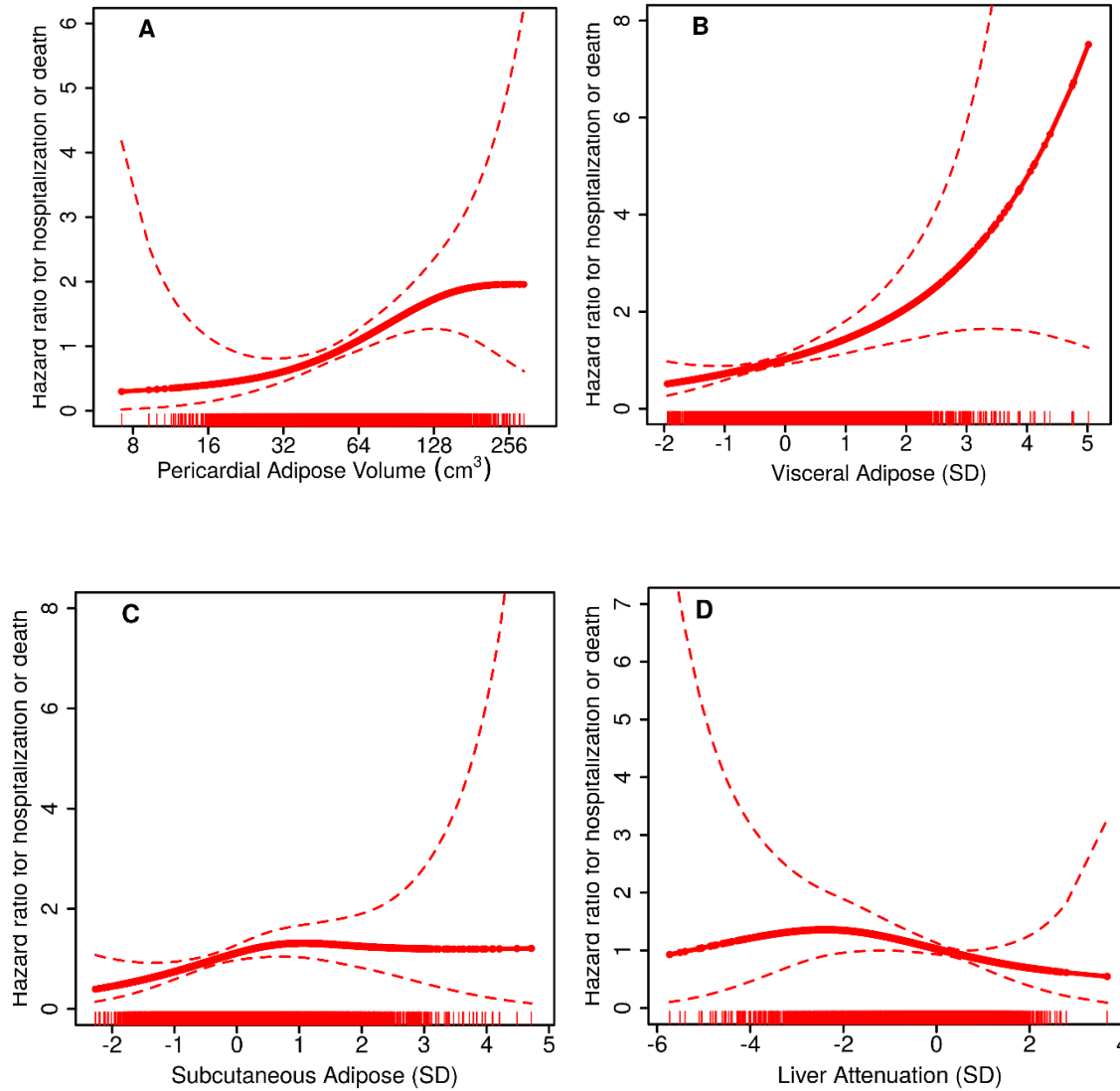
**Figure 3:** Forest plot demonstrating association between pericardial adipose, visceral adipose and hazard of hospitalization or death in subgroups defined by age, sex, smoking status, diabetes, cohort, and race. Models include same covariates as minimally-adjusted models (age, sex, race and ethnicity, educational attainment, smoking status, vaccination status as time-varying covariate; stratified by cohort) but exclude the variable of interest when evaluating subgroups defined by that variable.

**Figure 1:** Flow Chart for study inclusion

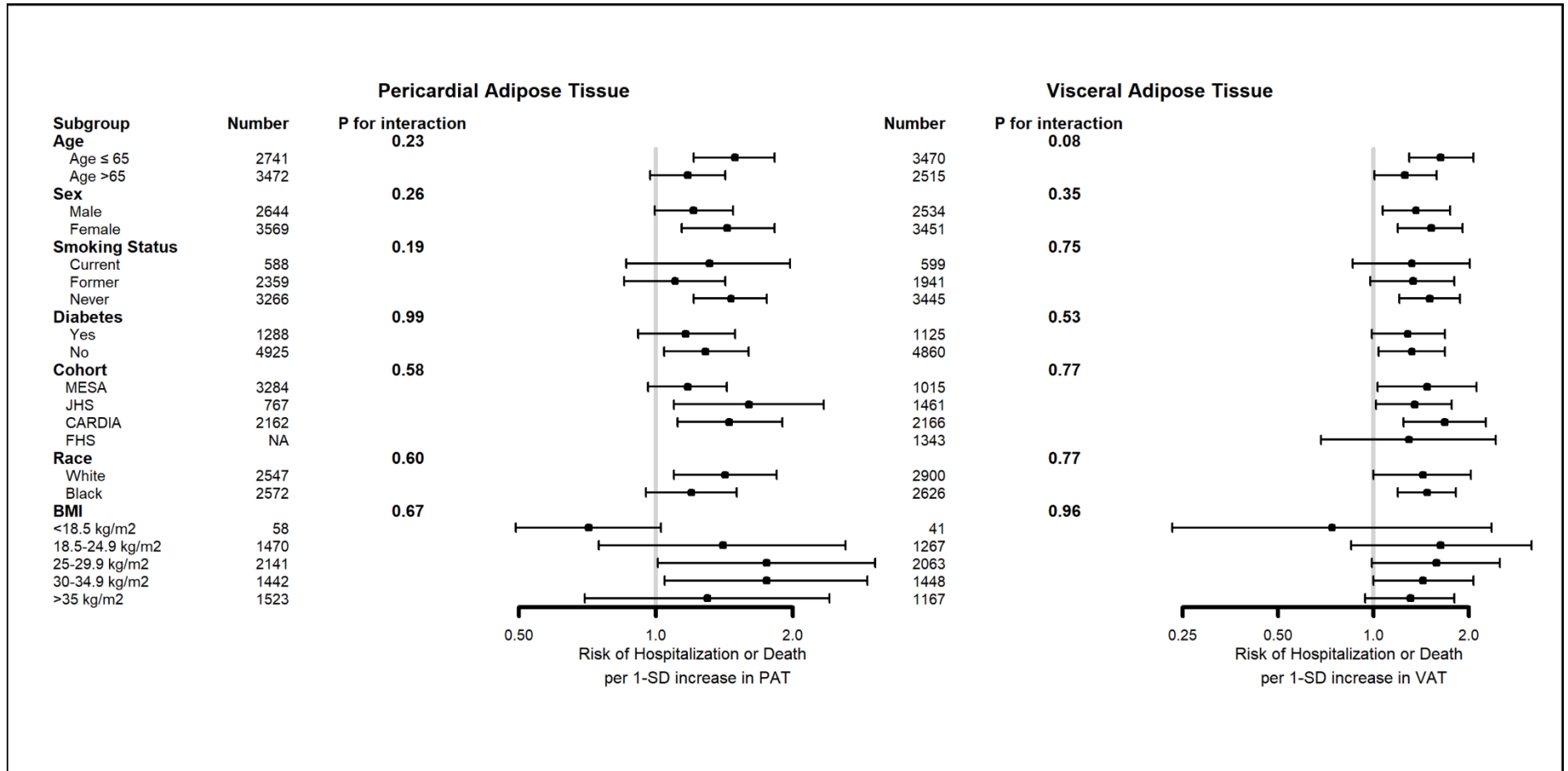


**Definition of abbreviations:** CARDIA: Coronary Artery Risk Development in Young Adults; JHS: Jackson Heart Study. MESA: Multi-Ethnic Study of Atherosclerosis; PAT: pericardial adipose tissue; VAT: visceral adipose tissue; SAT: subcutaneous adipose tissue.

**Figure 2:** Continuous association between (A) pericardial adipose volume, (B) abdominal visceral adipose tissue, (C) abdominal subcutaneous adipose tissue, (D) liver attenuation (lower attenuation indicates greater lipid deposition) and hazard of hospitalization or death due to SARS-CoV2 infection. Models were adjusted for age, sex, race, education, smoking status, vaccination status at infection, and stratified by study. Point estimates for each subject are represented as individual dots (which appear as a continuous line) with dashed lines representing 95% confidence bounds. Each vertical line along the x-axis represents an individual subject.



**Figure 3:** Forest plot demonstrating association between pericardial adipose, visceral adipose and hazard of hospitalization or death in subgroups defined by age, sex, smoking status, diabetes, cohort, and race. Models include same covariates as minimally-adjusted models (age, sex, race and ethnicity, educational attainment, smoking status, vaccination status as time-varying covariate; stratified by cohort) but exclude the variable of interest when evaluating subgroups defined by that variable.



**Table 1:** Association between adipose depot size and hazard of hospitalization or death due to SARS-CoV-2 infection.

	Pericardial Adipose Tissue			Visceral Adipose Tissue		
Number of events	135			135		
Event Rate	1.91 (1.61-2.3)			1.68 (1.42-1.98)		
	N	HR (95% CI) per doubling in adiposity	P-value	N	HR (95% CI) per 1-SD increase in adiposity	P-value
Unadjusted*	6221	1.64 (1.28-2.09)	0.0001	6103	1.34 (1.15-1.56)	0.0002
Minimally-Adjusted#	6213	1.62 (1.25-2.09)	0.0002	5985	1.41 (1.20-1.67)	0.0001
Min Adjusted + BMI	6213	1.48 (1.12-1.95)	0.006	5985	1.32 (1.08-1.62)	0.008
Min Adjusted + BMI, DM, HTN, CVD	6213	1.42 (1.07-1.88)	0.014	5981	1.24 (1.01-1.53)	0.041
	Subcutaneous Adipose Tissue			Liver Attenuation		
Number of events	129			165		
Event Rate	1.64 (1.37-1.94)			2.04 (1.74-2.37)		
	N	HR (95% CI) per 1-SD increase in adiposity	P-value	N	HR (95%CI) per 1-SD decrease in liver attenuation	P-Value
Unadjusted*	5964	1.20 (1.02-1.40)	0.028	6950	1.13 (0.99-1.30)	0.076
Minimally Adjusted	5849	1.19 (0.998-1.43)	0.053	6934	1.14 (0.99-1.32)	0.069
Min Adjusted + BMI	5849	0.93 (0.69-1.26)	0.64	6934	1.09 (0.94-1.27)	0.25
Min Adjusted + BMI, DM, HTN, CVD	5845	0.91 (0.67-1.24)	0.57	6934	1.06 (0.91-1.23)	0.48

Event-rates calculated using the Mid-P exact test and reported per 100 person-years.

\*Unadjusted models are stratified by cohort.

#Minimally adjusted models include covariates for age, sex, race-ethnicity, educational attainment, smoking status, vaccination status as time-varying covariate; stratified by cohort

**Definition of abbreviations:** PAT: pericardial adipose tissue; BMI: body mass index; DM: diabetes mellitus; HTN: hypertension; HR: hazard ratio

**Table 2:** Association between adipose depot size and hazard of critical illness or death due to SARS-CoV-2 infection.

Pericardial Adipose Tissue				Visceral Adipose Tissue		
Number of events	56			65		
Event rate	7.92 (6.04-10.21)			8.10 (6.30-10.25)		
	<b>N</b>	<b>HR (95% CI) per doubling in adiposity</b>	<b>P-value</b>	<b>N</b>	<b>HR (95% CI) per 1-SD increase in adiposity</b>	<b>P-Value</b>
Unadjusted*	6221	1.85 (1.25-2.73)	0.002	6103	1.42 (1.15-1.76)	0.0013
Minimally-Adjusted#	6213	1.69 (1.12-2.55)	0.013	5985	1.48 (1.15-1.89)	0.0021
Subcutaneous Adipose Tissue				Liver Attenuation		
Number of events	64			80		
Event rate	8.11 (6.31-10.30)			9.87 (7.90-12.20)		
	<b>N</b>	<b>HR (95% CI) per 1-SD increase in adiposity</b>	<b>P-value</b>	<b>N</b>	<b>HR (95% CI) per 1-SD decrease in liver attenuation</b>	<b>P-value</b>
Unadjusted*	5964	1.15 (0.92-1.45)	0.22	6950	1.17 (0.96-1.42)	0.110
Minimally-Adjusted#	5849	1.18 (0.92-1.53)	0.196	6934	1.22 (0.995-1.51)	0.056

Event-rates calculated using the Mid-P exact test and reported per 1000 person-years.

\*Unadjusted models are stratified by cohort.

#Minimally adjusted models include covariates for age, sex, race-ethnicity, educational attainment, smoking status, vaccination status as time-varying covariate; stratified by cohort

**Definition of abbreviations:** PAT: pericardial adipose tissue; BMI: body mass index; HR: hazard ratio.