

A novel modelling framework to simulate the effects of HIV stigma on HIV transmission dynamics

Donal Bisanzio^{1§}, Sarah T. Roberts², Rachel D. Stelmach¹, Kendall N. McClellan³, Georgiy Bobashev², Joella Adams², Katherine Karriker-Jaffe², Stacy M. Endres-Dighe^{2,4}, Khalida Saalim¹, Natalie Blackburn², Laura Nyblade²

¹ International Development Group, RTI International, Research Triangle Park, NC, USA

² Social, Statistical, and Environmental Sciences Business Unit, RTI International, Research Triangle Park, NC, USA

³ Department of Mathematics and Statistics, Georgetown University, Washington, DC, USA

⁴ Department of Epidemiology, Ohio State University, Columbus, OH, USA

§ Corresponding author: Donal Bisanzio

Street address: Wilmslow Road, The Pavilion, Towers Business Park, Manchester, M20 2LS United Kingdom

Email: dbisanzio@rti.org

Keywords: HIV; Social Stigma; Computer Models; Agent-based Modelling; Treatment Adherence and Compliance; HIV Infections, Prevention & Control

1 **ABSTRACT**

2 **Introduction**

3 HIV remains a global public health challenge, with social determinants such as stigma influencing
4 transmission dynamics, access to testing, and treatment. HIV stigma shapes both individual behaviour and
5 community responses to HIV. However, modelling approaches have rarely represented the complex role
6 of stigma in HIV epidemics. Our study introduces an innovative modelling framework designed to
7 capture the interplay between stigma and HIV transmission dynamics.

8 **Methods**

9 We modelled effects of anticipated, internalised, and experienced HIV stigma on HIV testing,
10 antiretroviral treatment initiation, and treatment adherence. We built an individual-based model
11 representing the HIV epidemic (HIV-IBM) in a USA-like population of 3 million individuals that
12 accounts for community demography, behaviour, and healthcare access. Stigma parameters were based on
13 a scoping review focused on the prevalence and effects of stigma in people living with and without HIV.
14 HIV-IBM was used to assess effects of interventions targeting different types of stigma. We tested
15 reductions of stigma by 50% and 100% across the simulated population and performed a sensitivity
16 analysis to identify effects of each type of stigma on the simulated HIV epidemic.

17 **Results**

18 Without reduced stigma, the HIV-IBM had an annual incidence rate of 12.6 (95% credible interval [CI]:
19 11.4-13.5) new cases per 100,000 people. Reducing the overall level of stigma in the population by 50%
20 resulted in an annual incidence rate of 9.6 (95% CI: 8.6-10.3) per 100,000, and a 100% reduction in
21 stigma resulted in an annual incidence rate of just 6.8 (95% CI: 6.1-7.3) per 100,000. In addition to
22 reducing HIV incidence, reducing stigma resulted in a substantial increase of viral suppression among
23 people living with HIV (50% stigma reduction: +10.5%; 100% stigma reduction: +16.4%). Sensitivity

24 analysis showed that outcomes resulting from interventions targeting each type of stigma were highly
25 heterogeneous.

26 **Conclusion**

27 Simulation results suggest that reducing HIV stigma could have a large effect on HIV incidence and viral
28 suppression. Our model framework provides a dynamic approach to understanding the role of stigma in
29 HIV outcomes that facilitates exploration of stigma reduction strategies and offers insights to inform
30 evidence-based policies and interventions for reducing stigma and curtailing HIV.

31

32

33 INTRODUCTION

34 HIV remains a global public health challenge, with over 39 million people living with HIV (PLWH) and
35 about 1.3 million new cases globally in 2022, including 31,800 new cases in the United States (US).(1)

36 Both the UNAIDS Global AIDS Strategy and U.S. *Ending the HIV Epidemic* Initiatives have set targets of
37 95% of PLWH aware of their status, 95% linkage to care among those diagnosed with HIV, and 95% viral
38 load suppression among those linked to care by 2025.(2,3) Despite some countries' success, many more
39 are unlikely to meet these targets. In the US in 2022, 87% of PLWH were aware of their status, and
40 among those, 83% have been linked to care and 65% were virally suppressed.(4)

41 HIV stigma shapes both individual behaviour and community responses to HIV, as well as transmission
42 dynamics and utilisation of testing and treatment. As described by Turan and colleagues (5), forms of HIV
43 stigma can include enacted or experienced HIV stigma, which occurs when people experience actual
44 discriminatory actions due to their HIV status; perceived HIV stigma, which describes the negative
45 attitudes a person believes other people hold about PLWH; anticipated HIV stigma, which occurs when a
46 person expects that other people will treat them badly due to their HIV status; and internalised HIV
47 stigma, which occurs when PLWH accepts that negative stereotypes about PLWH are true and applicable
48 to themselves. These types of HIV stigma have been demonstrated to influence uptake and adherence to
49 highly effective interventions such as HIV testing, antiretroviral therapy (ART), and pre-exposure
50 prophylaxis (PrEP), as well as HIV-related health outcomes such as viral load suppression, although
51 results vary across study designs, measures, and populations.(6–13)

52 Mathematical models can synthesize key evidence for understanding the HIV epidemic; informing policy
53 decisions; predicting long-term health outcomes; and characterizing the interaction of biological, social,
54 and behavioural factors to reduce or exacerbate those outcomes. Despite the known influence of stigma
55 on HIV transmission and progression, HIV models have rarely included stigma.(14–19) Modellers choose
56 to exclude stigma due to perceptions that stigma is too complex, poorly understood, or difficult to
57 measure to implement in a modelling process.(14,17,18) Not accounting for stigma when estimating the

58 effectiveness of HIV-related interventions omits important public health considerations and prevents
59 policymakers from fully evaluating the potential impact of stigma-reduction interventions. These
60 interventions may have greater benefit than expected due to the cumulative effect of stigma on multiple
61 steps of the prevention and treatment cascade. In this mathematical modelling study, we introduce an
62 innovative framework designed to estimate the effects of anticipated, internalised, and experienced HIV
63 stigma on HIV testing, treatment, and transmission dynamics.

64 **METHODS**

65 We estimated the impact of interventions targeting stigma using an individual based model (HIV-IBM)
66 representing a synthetic population of a hypothetical city of 3 million people in the US. We provide an
67 overview of the HIV-IBM here, with a more detailed description of the model provided in the Appendix.
68 The HIV-IBM simulates HIV transmission through two main HIV transmission routes: syringe sharing
69 among people who inject drugs (PWID) and sexual intercourse among serodiscordant partners. Thus, the
70 HIV-IBM includes two contact networks, with one representing the sexual network and another capturing
71 needle sharing among PWID. The HIV-IBM's sexual network simulates sexual contacts among
72 individuals above 14 years of age in the USA. This network accounts for sexual contact of men who have
73 sex with women (MSW), women who have sex with men (WSM), men who have sex with men (MSM),
74 women who have sex with women (WSW), men who have sex with both men and women (MSMSW),
75 and women who have sex with both women and men (WSWSM). This approach assumes that transgender
76 individuals identify as either a man or a woman and notably omits behaviours of individuals of any other
77 gender identity (e.g. nonbinary people). The HIV-IBM's needle-sharing network uses a contact network to
78 represent the action of sharing syringes among people who inject drugs (PWID), with a proportion of the
79 network assigned as HIV positive at the start of the simulation (see details below and in Appendix 1). The
80 network of needle sharing was created to represent needle sharing behaviour among PWID in the US.(20)
81 The HIV-IBM also simulates HIV testing and treatment in the synthetic population. Proportions of people
82 who get tested for HIV, PLWH who start treatment, and PLWH who adhere to treatment regimens were

83 based on data collected from published studies (Appendix 1, Table A5). The sexual network resulted from
84 individuals within the model interacting as they moved across the simulated city. Their movement was
85 simulated using a gravity model that has previously been used to model Ebola, COVID-19, and
86 mpox.(21–23)

87 The HIV-IBM aimed to assess the effects of reducing HIV stigma on HIV transmission. Thus, the HIV-
88 IBM simulates the impact of stigma at several points, as stigma can prevent people from getting tested,
89 delay the start of treatment, and reduce the probability of treatment adherence. We modelled three
90 different manifestations of stigma: anticipated stigma, internalised stigma, and experienced stigma (Table
91 1).(24)

92 **Table 1: Types of stigma modelled**

| Stigma type | Affected behaviour | Source used in model |
|---------------------|--------------------|----------------------|
| Anticipated stigma | Getting tested | (25) |
| | Adhering to ART | (26) |
| Internalised stigma | Starting ART | (27) |
| | Adhering to ART | (26) |
| Enacted Stigma | Adhering to ART | (26) |

93
94 Studies investigating the effects of stigma typically use continuous scales to represent level of stigma
95 affecting the target population rather than dichotomous variables (“affected by stigma” or “not affected by
96 stigma”).(28) Thus, the HIV-IBM included stigma using scale scores from different sources on the effects
97 of stigma on the HIV care continuum. Given the absence of a single standardized scale to quantify the
98 level of stigma types, we adopted scales reported in the studies from which we gathered information
99 about the associations of stigma with testing, starting treatment, and adhering to treatment (Appendix 1,
100 Table A3).

101 The parameters used to build the HIV-IBM starting population and its characteristics are reported in the
102 Appendix. The model simulation runs did not begin with a HIV-naïve population, but rather initiated with
103 a population representing the US population with current levels of HIV prevalence. We disaggregated the

104 number of cases in the starting population across sexual orientation, race, and ethnicity (Appendix 1,
105 Table A5) (29–31). The starting populations in the HIV-IBM also included a fraction of non-tested
106 individuals, PLWH who know their status but have not started HIV treatment, and PLWH who are not
107 adherent to HIV treatment (Appendix 1, Table A5). The IBM-HIV simulated HIV transmission over a
108 three-year time window. Weekly probabilities of HIV testing, initiating ART after a positive HIV test, and
109 ART adherence were estimated at the individual level.

110 The baseline model was calibrated to reflect HIV incidence reported for 2022, approximately 11.3
111 infected every 100,000 people (32). Results are reported using the median and the 95% credible interval
112 (CI, as 2.5 and 97.5 quantile) based on 10,000 simulations per scenario. We evaluate the effect of stigma
113 on HIV transmission by simulating scenarios in which we changed the level (i.e., score) of each
114 manifestation of stigma throughout the population. We compare the baseline model with two scenarios:

- 115 • Anticipated, internalised, and experienced stigma reduced by 50%
- 116 • Eliminating anticipated, internalised, and experienced stigma (i.e., simulated effects of 100%
117 stigma reduction)

118 We performed a sensitivity analysis to quantify the effect of anticipated, internalised, and experienced
119 stigma on the HIV care continuum and HIV transmissions. A full description of the sensitivity analysis is
120 provided in the Appendix.

121 **RESULTS**

122 The baseline model had an average annual HIV incidence of 12.6 (95% credible interval [CI]: 11.4-13.5)
123 new cases per 100,000 people, with 379 (95% CI: 242-405) incident HIV cases per year and 1,141 (95%
124 CI: 931-1,350) incident HIV cases over the three-year time window (Figure 1, Figure 2, and Table 2). The
125 modelled scenario reducing levels of anticipated, internalised, and experienced HIV stigma by 50%
126 resulted in annual incidence of 9.6 (95% CI: 8.6-10.3) new cases per 100,000 people, an average of 288
127 new cases per year (95% CI: 258-329), and an average of 872 (95% CI: 594-596) new cases at the end of

128 the three years (Figure 1, Figure 2, and Table 2). Eliminating anticipated, internalised, and experienced
 129 stigma resulted in an annual incidence of 6.8 (95% CI: 6.1-7.3) new cases per 100,000 people, an average
 130 of 204 (95% CI: 183-219) new cases per year, and an average of 612 (95% CI: 521-671) new cases at the
 131 end of the three years equal to (Figure 1, Figure 2, and Table 2).

132 **Table 2: Results of the three scenarios simulated with the HIV-IBM**

| Scenario | Baseline | | HIV stigma reduced by 50% | | HIV stigma reduced by 100% | |
|---|----------|------------|---------------------------|------------|----------------------------|------------|
| | Estimate | 95% CI* | Estimate | 95% CI | Estimate | 95% CI |
| Mean annual incidence per 100,000 people | 12.6 | 11.4 -13.5 | 9.6 | 8.6-10.3 | 6.8 | 6.1-7.3 |
| Mean new cases per year | 379 | 342-405 | 288 | 258-329 | 204 | 183-219 |
| Total number of new cases | 1,141 | 931-1,350 | 872 | 594-956 | 612 | 521-671 |
| Percentage of PLWH knowing their status | 86.7% | 82.1-90.1% | 91.8% | 87.2-94.1% | 96.1% | 91.3-98.2% |
| Percentage of PLWH who know their status who are on treatment | 80.8% | 75.5-86.3% | 81.1% | 73.2-85.3% | 90.2% | 87.7-93.3% |
| Percentage of PLWH on treatment with suppressed viral load | 81.6% | 76.1-88.6% | 90.2% | 87.7-93.3% | 94.9% | 90.3-97.4% |

133 *CI: credible interval

134 Stigma reduction had significant impacts throughout the HIV care continuum. Reducing stigma increased
 135 the proportion of PLWH who know their status and the proportion of people on treatment who had
 136 achieved viral load suppression (Table 2 and Figure 2). The fraction of PLWH who know their status
 137 increased from 86.7% (95% CI: 82.1%-90.1%) to 91.8% (95% CI: 87.2%-94.1%) when stigma was
 138 reduced by 50%, and to 96.1% (91.3%-98.2%) when stigma was eliminated. Eliminating stigma had a
 139 slightly positive effect on HIV treatment initiation for PLWH with an HIV diagnosis: a 2.5% increase
 140 (baseline: 80.8% [95% CI: 75.5%-86.3%] of PLWH with an HIV diagnosis who initiated treatment, and
 141 100% reduction: 82.8% [95%: 78.5%-92.8%] who initiated treatment) (Table 2, and Figure 2). Viral
 142 suppression among PLWH under treatment drastically increased comparing the baseline model and those
 143 with reduced or eliminated stigma. Compared to viral suppression resulted obtained from the baseline

144 scenario (81.6% [95% CI: 76.1%-88.6%]), the HIV-IBM with 50% stigma reduction resulted in a 10.5%
145 increase in viral suppression (90.2% [95% CI: 87.7%-93.3%]) among treated PLWH. Eliminating HIV
146 stigma resulted in a 16.2% increase compared to baseline (94.9% [95% CI: 90.3%-97.4%]). The
147 sensitivity analysis showed that reducing anticipated stigma affecting HIV testing provided the highest
148 mean reduction of HIV incidence compared to other stigma effects (Figure 3). However, sensitivity
149 analyses also showed that reducing experienced stigma affecting ART adherence had little effect on HIV
150 incidence (Figure 3).

151 **DISCUSSION**

152 This paper introduces a framework for incorporating HIV stigma into mathematical models of the HIV
153 epidemic. Findings suggest that eliminating HIV stigma could have a large impact on HIV incidence and
154 make substantial progress towards the 95-95-95 UNAIDS targets, leading to achievement of the 1st 95%
155 target and near-achievement of the 3rd target. Our results also suggest that interventions to reduce
156 anticipated stigma's effect on HIV testing could have the greatest single impact on HIV incidence of the
157 included stigma-reduction interventions. While our point estimates and their simulation bound intervals
158 are limited to the model and underlying synthetic population in a hypothetical U.S. city, the results show
159 an expected effect of stigma reduction that provides an initial estimate of the effects of potential
160 interventions. Application of this model's novel, dynamic approach in real-world settings, and to specific
161 subpopulations who experience higher levels of stigma, could strengthen the case for investment in
162 stigma reduction efforts; facilitate the exploration of specific, tailored stigma reduction strategies; and
163 offer insights to inform evidence-based policies and programming to reduce HIV stigma and curtail the
164 epidemic.

165 We are aware of three other mathematical models that have investigated the effects of stigma on the HIV
166 epidemic. Stover et al. incorporated internalised HIV stigma into a deterministic compartmental HIV
167 epidemic simulation model for each of 77 countries with a high burden of HIV.(19) Based on a
168 hypothetical scenario assuming that the 95-95-95 goals can be achieved only in the absence of

169 internalised stigma, they found that failure to reduce internalised stigma would substantially increase both
170 HIV incidence and HIV-related mortality by inhibiting rates of HIV testing, treatment, and viral load
171 suppression. Because their model does not include anticipated or enacted stigma, it likely underestimates
172 the potential impact of stigma elimination. Prudden et al. used a probabilistic mathematical model to
173 estimate the impact of stigma on vertical transmission of HIV in South Africa.(18) Under the scenario of
174 universal access to ART for all pregnant women, the model predicted that eliminating stigma would avert
175 51% of all infant HIV acquisitions, with the largest impact on the treatment adherence stages of the
176 cascade.(18) Their model does not disaggregate various forms of stigma to guide intervention choices.
177 Further, by nature of its focus on pregnant women, the results are not easily translated to other
178 populations with different levels of engagement with the healthcare system and different motivations for
179 treatment.(33) Our model had results similar in magnitude to these two preceding models, but it expands
180 upon their work by separately modelling different forms of stigma at different stages of the prevention
181 and care cascade to allow more detailed and comprehensive estimates of the potential results of stigma
182 reduction efforts.

183 In contrast to Prudden et al. and Stover et al., Levy et al. estimated the effects of HIV-related stigma on
184 epidemic dynamics in Kenya by integrating a mechanistic model of HIV stigma—based on prevalence
185 estimates of enacted and perceived stigma from the Demographic and Health Surveys and assumptions on
186 stigma dynamics—into a compartmental of HIV transmission dynamics.(17) Levy et al. found that
187 eliminating enacted stigma between 2004 and 2017 would have reduced HIV incidence from about 5% to
188 3%, while eliminating internalised stigma would have had little impact on incidence. Additionally, they
189 found that stigma elimination would have only a small impact on annual HIV incidence and HIV-related
190 mortality by 2030.(17) Key limitations to the model of Levy et al. are its reliance on fitted formulas rather
191 than epidemiologic data to estimate the prevalence of internalised stigma and the impact of stigma on
192 HIV outcomes, which may account for the differences in this model’s findings compared to our own and
193 to those of Stover et al. and Prudden et al.(17–19)

194 The quantity and nature of the available data on HIV stigma posed significant challenges in
195 parameterizing the model. While data on the prevalence or severity of HIV stigma are plentiful, few
196 studies have tested the impact of stigma on HIV-related health outcomes, and those studies have shown
197 inconsistent results. A possible explanation for these inconsistencies is the lack of standard definitions and
198 measures for different forms of HIV stigma. We chose to model anticipated, enacted, and internalised
199 stigma which are among the most commonly studied forms of stigma, but other researchers have also
200 reported on *community stigma, public stigma, felt stigma, self stigma, structural stigma, professional*
201 *stigma*, and other forms. Further, the definitions and items used to measure these various forms of stigma
202 often overlap. For example, disclosure concerns have been classified as representing either internalised or
203 anticipated stigma, depending on the scale (34–36). When consensus exists on the forms and definitions
204 of stigma, multiple scales are still used to quantify stigma, which makes it difficult to compare research
205 results and use them to parametrize a model. There was also insufficient data to model interactions
206 between different types of stigma, such as the potential for internalized stigma to mediate effect of
207 experienced stigma on medication adherence.(37) Finally, studies use various techniques to model stigma
208 as an exposure, such as continuous scores, z-scores, threshold levels, or percentiles for the study
209 population.. This variation makes results difficult to aggregate or compare across studies. These
210 challenges point to the need for greater consensus in stigma definitions, a more consistent approach to
211 analysing stigma across studies, and more well-designed studies to evaluate the impact of HIV-related
212 stigma on health outcomes, as well as dedicated resources and leadership to accomplish these objectives.

213 ———For better and worse, the HIV-IBM model reflects the current state of HIV stigma measurement at
214 the level of the full population. The model’s use of continuous scales for stigma instead of a dichotomous
215 “stigma” or “no stigma” model allows it to describe heterogenous experiences of stigma across the
216 population. It also provides insight into the effects of different manifestations of stigma on different
217 aspects of HIV prevention and treatment, which allows for a more nuanced understanding of how stigma
218 affects HIV transmission. The flexible nature of the model also makes it easy to adjust for future work

219 that provides further detail on specific populations, conditions, and interventions. The current model
220 represents what the authors feel is a reasonable balance between fidelity (complex but true-to-life) and
221 tractability (simple but feasible to program), but as the availability of data improves, the HIV-IBM should
222 be also revisited and improved. The current iteration of the model does not capture intersectional stigma,
223 nor does it describe differences in stigma affecting people of different marginalized identities, e.g. by
224 race, ethnicity, gender, sexual orientation, etc. Importantly, while the current model includes people with
225 multiple patterns of sexual behaviour, it does not include people with gender identities other than “man”
226 or “woman”. Future work building upon and expanding the HIV-IBM should consider these additional
227 variables as means for improving the fidelity and specificity of the model, and thereby increasing the
228 model’s usefulness for understanding the effects of HIV stigma on the populations most affected by HIV.

229 Both UNAIDS and the U.S. National HIV/AIDS Strategy frame stigma as a societal barrier to achieving
230 the 95-95-95 targets, and have explicit goals to reduce stigma experienced by PLWH and people
231 disproportionately affected by HIV. (2,3) Our results suggest that eliminating or reducing stigma will, in
232 fact, help to attain the 95-95-95 targets. Multiple interventions have been shown to effectively reduce HIV
233 stigma among people living with HIV, healthcare workers, and the community (38–45), including
234 education, contact strategies, counselling, and structural changes to laws and policies.(39) While not
235 explicitly included in the current model, evidence suggests that stigma reduction may also improve other
236 health outcomes, such as depression, anxiety, social support, access to health and social services, and
237 overall quality of life.(46) Future iterations of this model could incorporate scenarios mimicking specific
238 evidence-based stigma reduction interventions at different levels of the health system and of society and
239 incorporate additional health outcomes to understand the broader impact of stigma reduction on the health
240 and well-being of PLWH. Although our model suggests that reducing anticipated stigma would have the
241 greatest impact on HIV testing and incidence, there are fewer evidence-based interventions to reduce this
242 form of stigma. Multiple studies show community members’ negative attitudes towards people living with
243 HIV have declined over time, but this is not always accompanied by declines in anticipated stigma,

244 suggesting that to effectively reduce anticipated stigma, additional steps must be taken to convince
245 individuals that others in the society have also changed their views.(47,48)

246 **CONCLUSIONS**

247 Our model framework provides a dynamic approach to understanding the role and estimating the effect of
248 stigma in HIV transmission. Findings suggest that reducing HIV stigma could have a large impact on HIV
249 incidence and strengthen the case for investment in actions to reduce stigma and discrimination. This
250 model's novel approach could facilitate the exploration of stigma reduction strategies and offer insights to
251 inform evidence-based policies and interventions for reducing stigma and curtailing HIV.

252 **COMPETING INTERESTS**

253 The authors declare that they have no competing interests.

254 **AUTHORS' CONTRIBUTIONS**

255 DB, STR, GB, and LN conceptualized the research. KNM, RDS, and DB curated data inputs for the
256 model. DB developed the model and conducted the formal analysis. DB, STR, RDS, KNM, LN, JA, KKJ,
257 SMED, NB, and GB participated in model structuring and parameterization. LN and GB secured funding
258 for this project and provided supervision. STR, LN, and RDS provided project administration support.
259 DB, STR, and RDS wrote the first draft of the manuscript and GB, JA, LN, KNM, SMED, KS, NB, and
260 KKJ provided substantial revisions. All authors read and approved the final manuscript.

261 **ACKNOWLEDGEMENTS**

262 The authors thank members of the RTI Stigma Community of Practice for their contributions to the model
263 design and are grateful to the participants who contributed data to the many studies used to parameterize
264 the model.

265 **FUNDING**

266 This work was funded by the RTI Fellows' BUILD program at RTI International.

267 **DATA AVAILABILITY STATEMENT**

268 Data sharing not applicable – no new data generated

269 **SUPPORTING INFORMATION**

270 Appendix 1: Technical appendix.

271 Microsoft Word document. Contains details of parameter values and their sources as well as a more
272 detailed description of the modelling methods.

273 **LIST OF ABBREVIATIONS**

274 ART Antiretroviral therapy

275 CI Credible interval

276 HIV Human immunodeficiency virus

277 HIV-IBM Individual-based model representing the HIV epidemic

278 MSM Men who have sex with men

279 MSMSW Men who have sex with both men and women

280 MSW Men who have sex with women

281 WSM Women who have sex with men

282 WSW Women who have sex with women

283 WSWSM Women who have sex with both women and men

284 PrEP Pre-exposure prophylaxis

285 PLWH People living with HIV

286 PWID People who inject drugs

287 **REFERENCES**

- 288 1. Centers for Disease Control and Prevention. HIV Surveillance Supplemental Report: Estimated HIV
289 Incidence and Prevalence in the United States, 2018–2022. 2024 May 21; Available from:
290 <https://stacks.cdc.gov/view/cdc/156513>
- 291 2. UNAIDS. Global AIDS Strategy 2021-2026. End Inequalities. End AIDS. [Internet]. Geneva,
292 Switzerland; 2021 [cited 2024 Sep 16]. Available from:
293 <https://www.unaids.org/en/resources/documents/2021/2021-2026-global-AIDS-strategy>
- 294 3. The White House. National HIV/AIDS Strategy for the United States, 2022-2025. Washington, DC;
295 2021.
- 296 4. Centers for Disease Control and Prevention. HIV Surveillance Supplemental Report: Monitoring
297 Selected National HIV Prevention and Care Objectives by Using HIV Surveillance Data United States
298 and 6 Territories and Freely Associated States, 2022. 2024 May 21; Available from:
299 <https://stacks.cdc.gov/view/cdc/156511>
- 300 5. Turan B, Hatcher AM, Weiser SD, Johnson MO, Rice WS, Turan JM. Framing mechanisms linking
301 HIV-related stigma, adherence to treatment, and health outcomes. *Am J Public Health*. 2017
302 Jun;107(6):863–9.
- 303 6. Rueda S, Mitra S, Chen S, Gogolishvili D, Globerman J, Chambers L, et al. Examining the
304 associations between HIV-related stigma and health outcomes in people living with HIV/AIDS: a
305 series of meta-analyses. *BMJ Open*. 2016 Jul 1;6(7):e011453.
- 306 7. Katz IT, Ryu AE, Onuegbu AG, Psaros C, Weiser SD, Bangsberg DR, et al. Impact of HIV-related
307 stigma on treatment adherence: systematic review and meta-synthesis. *J Int AIDS Soc*. 2013 Nov
308 13;16(3 Suppl 2):18640.
- 309 8. Christopoulos KA, Neilands TB, Dilworth S, Lisha N, Saucedo J, Mugavero MJ, et al. Internalized
310 HIV stigma predicts subsequent viremia in US HIV patients through depressive symptoms and
311 antiretroviral therapy adherence. *AIDS*. 2020 Sep 1;34(11):1665–71.
- 312 9. Gamarel KE, Nelson KM, Stephenson R, Santiago Rivera OJ, Chiamonte D, Miller RL, et al.
313 Anticipated HIV stigma and delays in regular HIV testing behaviors among sexually-active young gay,
314 bisexual, and other men who have sex with men and transgender women. *AIDS Behav*. 2018
315 Feb;22(2):522–30.
- 316 10. Ssenyonjo J, Shrestha R, Copenhaver M. Influence of stigma on pre-exposure prophylaxis (PrEP)
317 care continuum among men and transwomen who have sex with men (MTWSM) in the United States.
318 *Int J HIV AIDS Prev Educ Behav Sci*. 2019 Dec;5(2):134–40.
- 319 11. Lui CW, Dean J, Mutch A, Mao L, Debattista J, Lemoire J, et al. HIV testing in men who have
320 sex with men: a follow-up review of the qualitative literature since 2010. *AIDS Behav*. 2018
321 Feb;22(2):593–605.
- 322 12. Babel RA, Wang P, Alessi EJ, Raymond HF, Wei C. Stigma, HIV risk, and access to HIV
323 prevention and treatment services among men who have sex with men (MSM) in the United States: a
324 scoping review. *AIDS Behav*. 2021 Nov;25(11):3574–604.
- 325 13. Nawfal ES, Gray A, Sheehan DM, Ibañez GE, Trepka MJ. A systematic review of the impact of
326 HIV-related stigma and serostatus disclosure on retention in care and antiretroviral therapy adherence

- 327 among women with HIV in the United States/Canada. *AIDS Patient Care STDS*. 2024 Jan;38(1):23–
328 49.
- 329 14. Vermeer W, Gurkan C, Hjorth A, Benbow N, Mustanski BM, Kern D, et al. Agent-based model
330 projections for reducing HIV infection among MSM: Prevention and care pathways to end the HIV
331 epidemic in Chicago, Illinois. *PLoS One*. 2022;17(10):e0274288.
- 332 15. Probert WJM, Sauter R, Pickles M, Cori A, Bell-Mandla NF, Bwalya J, et al. Projected outcomes
333 of universal testing and treatment in a generalised HIV epidemic in Zambia and South Africa (the
334 HPTN 071 [PopART] trial): a modelling study. *Lancet HIV*. 2022 Nov;9(11):e771–80.
- 335 16. Abuelezam NN, McCormick AW, Surface ED, Fussell T, Freedberg KA, Lipsitch M, et al.
336 Modelling the epidemiologic impact of achieving UNAIDS fast-track 90-90-90 and 95-95-95 targets in
337 South Africa. *Epidemiol Infect*. 2019 Jan;147:e122.
- 338 17. Levy B, Correia HE, Chirove F, Ronoh M, Abebe A, Kgosimore M, et al. Modeling the effect of
339 HIV/AIDS stigma on HIV infection dynamics in Kenya. *Bull Math Biol*. 2021 Apr 5;83(5):55.
- 340 18. Prudden HJ, Hamilton M, Foss AM, Adams ND, Stockton M, Black V, et al. Can mother-to-child
341 transmission of HIV be eliminated without addressing the issue of stigma? Modeling the case for a
342 setting in South Africa. *PLOS ONE*. 2017 Dec 8;12(12):e0189079.
- 343 19. Stover J, Glaubius R, Teng Y, Kelly S, Brown T, Hallett TB, et al. Modeling the epidemiological
344 impact of the UNAIDS 2025 targets to end AIDS as a public health threat by 2030. *PLOS Medicine*.
345 2021 Oct 18;18(10):e1003831.
- 346 20. Campbell EM, Jia H, Shankar A, Hanson D, Luo W, Masciotra S, et al. Detailed Transmission
347 Network Analysis of a Large Opiate-Driven Outbreak of HIV Infection in the United States. *J Infect*
348 *Dis*. 2017 Nov 27;216(9):1053–62.
- 349 21. Bisanzio D, Reithinger R. Projected burden and duration of the 2022 Monkeypox outbreaks in
350 non-endemic countries. *The Lancet Microbe*. 2022 Sep 1;3(9):e643.
- 351 22. Bisanzio D, Davis AE, Talbird SE, Van Effelterre T, Metz L, Gaudig M, et al. Targeted preventive
352 vaccination campaigns to reduce Ebola outbreaks: An individual-based modeling study. *Vaccine*. 2023
353 Jan 16;41(3):684–93.
- 354 23. Bisanzio D, Reithinger R, Alqunaibet A, Almudarra S, Alsukait RF, Dong D, et al. Estimating the
355 effect of non-pharmaceutical interventions to mitigate COVID-19 spread in Saudi Arabia. *BMC*
356 *Medicine*. 2022 Feb 7;20(1):51.
- 357 24. Nyblade L, Mingkwan P, Stockton MA. Stigma reduction: an essential ingredient to ending AIDS
358 by 2030. *Lancet HIV*. 2021 Feb 1;8(2):e106–13.
- 359 25. Golub SA, Gamarel KE. The impact of anticipated HIV stigma on delays in HIV testing
360 behaviors: findings from a community-based sample of men who have sex with men and transgender
361 women in New York City. *AIDS Patient Care STDS*. 2013 Nov;27(11):621–7.
- 362 26. Earnshaw VA, Smith LR, Chaudoir SR, Amico KR, Copenhaver MM. HIV stigma mechanisms
363 and well-being among PLWH: a test of the HIV stigma framework. *AIDS Behav*. 2013
364 Jun;17(5):1785–95.

- 365 27. Pearson CA, Johnson MO, Neilands TB, Dilworth SE, Saucedo JA, Mugavero MJ, et al.
366 Internalized HIV stigma predicts suboptimal retention in care among people living with HIV in the
367 United States. *AIDS Patient Care STDS*. 2021 May;35(5):188–93.
- 368 28. Earnshaw VA, Chaudoir SR. From conceptualizing to measuring HIV stigma: a review of HIV
369 stigma mechanism measures. *AIDS Behav*. 2009 Dec;13(6):1160–77.
- 370 29. Centers for Disease Control and Prevention. PrEP for HIV prevention in the U.S. [Internet]. 2023
371 [cited 2024 Apr 30]. Available from:
372 <https://web.archive.org/web/20240416105239/https://www.cdc.gov/nchhstp/newsroom/factsheets/hiv/PrEP-for-hiv-prevention-in-the-US-factsheet.html>
373
- 374 30. HIV.gov. U.S. statistics [Internet]. 2024 [cited 2024 Apr 30]. Available from:
375 <https://www.hiv.gov/hiv-basics/overview/data-and-trends/statistics>
- 376 31. AIDSvu. Understanding the current HIV epidemic in the United States [Internet]. [cited 2024 Apr
377 30]. Available from: <https://map.aidsvu.org/profiles/nation/usa/overview#/>
- 378 32. HIV.gov. U.S. statistics [Internet]. 2024 [cited 2024 Apr 30]. Available from:
379 <https://www.hiv.gov/hiv-basics/overview/data-and-trends/statistics>
- 380 33. Lytvyn L, Siemieniuk RA, Dilmitis S, Ion A, Chang Y, Bala MM, et al. Values and preferences of
381 women living with HIV who are pregnant, postpartum or considering pregnancy on choice of
382 antiretroviral therapy during pregnancy. *BMJ Open*. 2017 Dec 1;7(9):e019023.
- 383 34. Kalichman SC, Simbayi LC, Cloete A, Mthembu PP, Mkhonta RN, Ginindza T. Measuring AIDS
384 stigmas in people living with HIV/AIDS: the Internalized AIDS-Related Stigma Scale. *AIDS Care*.
385 2009 Jan;21(1):87–93.
- 386 35. Pantelic M, Boyes M, Cluver L, Thabeng M. “They say HIV is a punishment from God or from
387 ancestors”: cross-cultural adaptation and psychometric assessment of an HIV stigma scale for South
388 African adolescents living with HIV (ALHIV-SS). *Child Indic Res*. 2018;11(1):207–23.
- 389 36. Luseno WK, Field SH, Iritani BJ, Odongo FS, Kwaro D, Amek NO, et al. Pathways to
390 Depression and Poor Quality of Life Among Adolescents in Western Kenya: Role of Anticipated HIV
391 Stigma, HIV Risk Perception, and Sexual Behaviors. *AIDS and Behavior* [Internet]. 2020; Available
392 from: <https://doi.org/10.1007/s10461-020-02980-5>
- 393 37. Kay ES, Rice WS, Crockett KB, Atkins GC, Batey DS, Turan B. Experienced HIV-Related
394 Stigma in Health Care and Community Settings: Mediated Associations With Psychosocial and Health
395 Outcomes. *Journal of acquired immune deficiency syndromes (1999)*. 2018;77(3):257–63.
- 396 38. Stangl AL, Lloyd JK, Brady LM, Holland CE, Baral S. A systematic review of interventions to
397 reduce HIV-related stigma and discrimination from 2002 to 2013: how far have we come? *J Int AIDS*
398 *Soc*. 2013 Nov 13;16(3Suppl 2):18734.
- 399 39. Nyblade L, Mingkwan P, Stockton MA. Stigma reduction: an essential ingredient to ending AIDS
400 by 2030. *Lancet HIV*. 2021 Feb 1;8(2):e106–13.
- 401 40. Mak WWS, Mo PKH, Ma GYK, Lam MYY. Meta-analysis and systematic review of studies on
402 the effectiveness of HIV stigma reduction programs. *Soc Sci Med*. 2017 Sep;188:30–40.

- 403 41. Pantelic M, Steinert JI, Park J, Mellors S, Murau F. “Management of a spoiled identity”:
404 systematic review of interventions to address self-stigma among people living with and affected by
405 HIV. *BMJ Glob Health*. 2019;4(2):e001285.
- 406 42. Loutfy M, Tharao W, Logie C, Aden MA, Chambers LA, Wu W, et al. Systematic review of
407 stigma reducing interventions for African/Black diasporic women. *J Int AIDS Soc*. 2015;18(1):19835.
- 408 43. Feyissa GT, Lockwood C, Woldie M, Munn Z. Reducing HIV-related stigma and discrimination
409 in healthcare settings: A systematic review of quantitative evidence. *PLoS One*. 2019;14(1):e0211298.
- 410 44. Smith MK, Xu RH, Hunt SL, Wei C, Tucker JD, Tang W, et al. Combating HIV stigma in low-
411 and middle-income healthcare settings: a scoping review. *J Int AIDS Soc*. 2020 Aug;23(8):e25553.
- 412 45. Aghaei A, Sakhaei A, Khalilimeybodi A, Qiao S, Li X. Impact of Mass Media on HIV/AIDS
413 Stigma Reduction: A Systematic Review and Meta-analysis. *AIDS Behav*. 2023 Oct;27(10):3414–29.
- 414 46. Rueda S, Mitra S, Chen S, Gogolishvili D, Globberman J, Chambers L, et al. Examining the
415 associations between HIV-related stigma and health outcomes in people living with HIV/AIDS: a
416 series of meta-analyses. *BMJ open*. 2016;6(7):e011453.
- 417 47. Chan BT, Tsai AC. HIV stigma trends in the general population during antiretroviral treatment
418 expansion: analysis of 31 countries in sub-Saharan Africa, 2003–2013. *JAIDS Journal of Acquired
419 Immune Deficiency Syndromes*. 2016 Aug 15;72(5):558.
- 420 48. J Visser M. Change in HIV-related stigma in South Africa between 2004 and 2016: a cross-
421 sectional community study. *AIDS Care*. 2018 Jun 3;30(6):734–8.

422

423

424

425

426

427

428

429

430

431

432

433

Figure 1: Effect of stigma reduction on HIV incidence

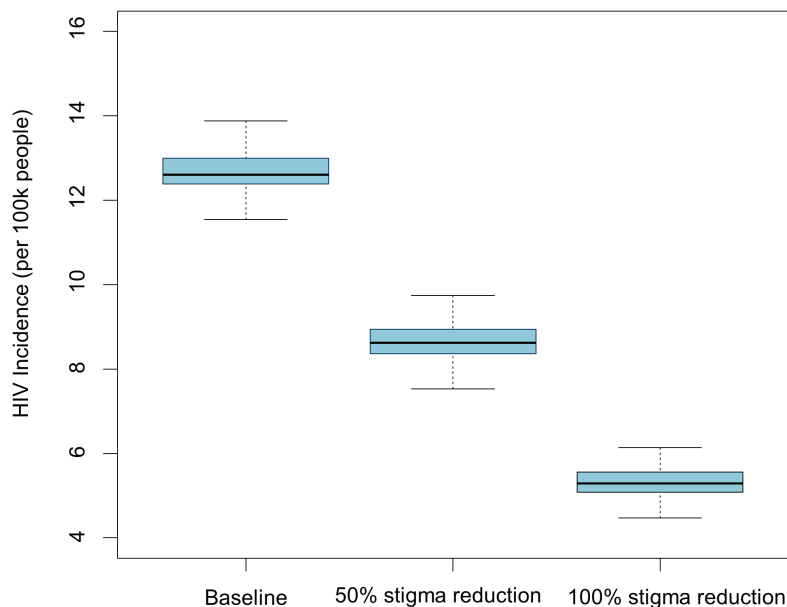


Figure 2: Effect of stigma reduction on HIV testing, treatment, and viral load suppression: Comparison to UNAIDS 95-95-95 targets

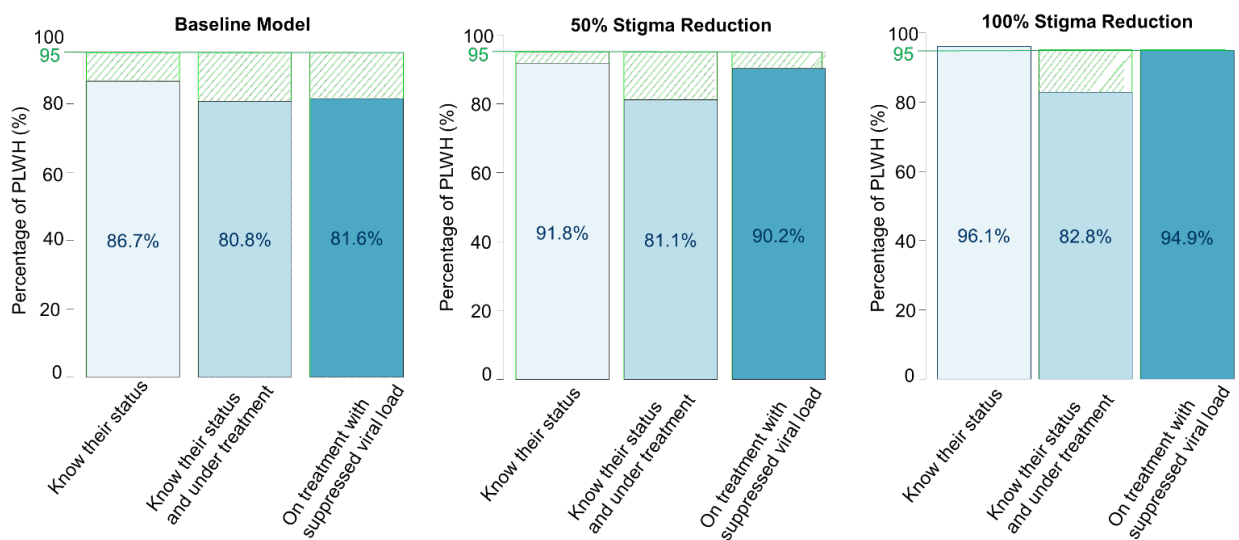


Figure 3: Effects of 100% reduction in individual types of stigma

