

# **A novel patient-level computational model of atrial fibrillation patterns and clinical outcomes for evaluating screening strategies**

Minsi Cai, MD<sup>1</sup>, Cristian Barrios-Espinosa, MD<sup>1,2</sup>, Michiel Rienstra, MD, PhD<sup>3</sup>, Harry J.G.M. Crijns, MD, PhD<sup>1</sup>, Ulrich Schotten, MD, PhD<sup>1,4</sup>, Jordi Heijman, PhD<sup>1,5</sup>

<sup>1</sup> Department of Cardiology, Cardiovascular Research Institute Maastricht, Faculty of Health, Medicine, and Life Sciences, Maastricht University, Maastricht, The Netherlands

<sup>2</sup> Institute of Biomedical Engineering, Karlsruhe Institute of Technology (KIT), Karlsruhe, Germany

<sup>3</sup> Department of Cardiology, University Medical Center Groningen, University of Groningen, Groningen, The Netherlands

<sup>4</sup> Department of Physiology, Cardiovascular Research Institute Maastricht, Faculty of Health, Medicine, and Life Sciences, Maastricht University, Maastricht, The Netherlands

<sup>5</sup> Gottfried Schatz Research Center, Division of Medical Physics & Biophysics, Medical University of Graz, Graz, Austria

**Short title:** patient-level modeling of atrial fibrillation

**Key words:** Computational modeling; Atrial fibrillation; Markov Model; Screening; Stroke

**Word Count:** 9607 (5968 excluding title page, references and figure legends)

**Corresponding author:**

Jordi Heijman, PhD

Gottfried Schatz Research Center, Division of Medical Physics & Biophysics,

Medical University of Graz

Neue Stiftingtalstr. 6; 8010 Graz, Austria

[Jordi.Heijman@medunigraz.at](mailto:Jordi.Heijman@medunigraz.at)

## 1 **Abstract**

### 2 **Background**

3 The dynamic, heterogenous nature of atrial fibrillation (AF) episodes and poor symptom-rhythm  
4 correlation make early AF detection challenging. The optimal screening strategy for early AF  
5 detection and its role in stroke prevention in different subpopulations are unknown. We developed  
6 a computational patient-level AF model able to simulate the dynamic occurrence of AF and AF-  
7 associated outcomes during the entire lifetime of a virtual patient cohort to elucidate the impact of  
8 AF screening in virtual randomized clinical trials (V-RCTs).

### 9 10 **Methods**

11 The Markov-like computer model has 7 clinical states (sinus rhythm, symptomatic/asymptomatic  
12 AF, each with/without previous stroke, and death). AF-related atrial remodeling was incorporated,  
13 which influenced the age-/sex-dependent transition probabilities between states. Model  
14 calibration/validation was performed by replicating a wide range of clinical studies. AF screening  
15 strategies and stroke rates in the presence of defined interventions were assessed in V-RCTs.

### 16 17 **Results**

18 The model simulates the entire lifetime of virtual patients with minute-level resolution and  
19 provides perfect information on the occurrence of AF episodes and clinical outcomes (stroke,  
20 death). It replicates numerous age/sex-specific episode- and population-level AF metrics,  
21 including AF incidence/prevalence, progression rates, burden, episode duration, and  
22 stroke/mortality incidence. The benefits of intermittent AF screening in V-RCTs were frequency-  
23 and duration- dependent, with systematic thrice-daily single-ECG recordings providing the highest  
24 detection rates (64.6% of AF patients being diagnosed before their symptom-based clinical  
25 diagnosis). Screening groups had comparable 5-year stroke rates and lower 25-year stroke rates  
26 than the control group. These differences were increased by more effective anticoagulation  
27 therapy, in patients with higher baseline stroke risk, or in patients with delayed clinical AF  
28 diagnosis.

### 29 30 **Conclusions**

31 We present a novel computational patient-level AF model consistent with a large body of real-  
32 world data, enabling for the first time the systematic assessment of AF-management strategies.  
33 Screening protocols with more frequent and longer monitoring have higher AF-detection rates, but  
34 stroke reduction in screening-detected individuals is highly dependent on patients' and healthcare-  
35 systems' characteristics. V-RCTs suggest that frequent AF screening with effective anticoagulation  
36 can reduce stroke incidence in patients with high likelihood of delayed AF diagnosis.

37

38

## 39 **Introduction**

40 Atrial fibrillation (AF) is the most common cardiac arrhythmia with 59.7 million prevalent cases  
41 estimated worldwide in 2019.<sup>1</sup> The lifetime risk of AF for individuals with European ancestry has  
42 been reported as 1 in 3 at the index age of 55 years.<sup>2</sup> The prominent increase in AF is attributable  
43 to the growth of the aging population, increasing prevalence of comorbidities and better detection  
44 opportunities.<sup>2</sup> AF is associated with higher risk of stroke/systemic embolism, heart failure, and  
45 mortality,<sup>3-5</sup> and early detection and treatment has been shown to improve outcomes.<sup>6</sup> However,  
46 early detection and treatment of AF are challenging in clinical practice, due to the highly variable  
47 duration of AF episodes, heterogenous dynamic AF progression and poor symptom-rhythm  
48 correlation.<sup>7,8</sup> The optimal screening strategy to promote early AF detection and the benefits of  
49 anticoagulation therapy in patients with screening-detected AF in the general population remain a  
50 topic of debate.<sup>9,10</sup> More studies are needed to optimize AF screening strategies, but such studies  
51 are challenging due to heterogeneous risk profiles in the target population, wide range of available  
52 monitoring devices, heterogenous AF patterns of patients, and high costs of clinical trials due to  
53 the low incidence of strokes.

54

55 Computational modeling potentially offers significant advantages, including perfect control over  
56 all parameters, the ability to track dynamic changes of all components, and the feasibility of  
57 comprehensively assessing various interventions. There is a long-standing history of  
58 computational modeling in cardiac electrophysiology with important real-world implications,  
59 including drug safety assessment and guidance of AF ablation through digital twins.<sup>14,15</sup> However,  
60 currently available mechanistic models have so far only been used for short-term simulations  
61 (seconds). Health technology assessment models on the other hand are commonly used to assess  
62 cost-effectiveness of therapies by simulating transitions between different clinical states, each  
63 associated with different costs and values.<sup>16,17</sup> While these models allow extrapolation beyond the  
64 duration of clinical trials (years) and have important implications for reimbursement decisions,  
65 these models have so far ignored AF development, pathophysiology and progression. Here, we  
66 present and validate the first computational patient-level AF model able to simulate individual AF  
67 patterns, population-level AF characteristics, key pathophysiological concepts, and relevant  
68 clinical outcomes during the entire lifetime of a virtual cohort. We employ this model to identify  
69 effective AF screening strategies and elucidate the impact of AF screening on clinical outcomes in  
70 virtual randomized clinical trials (V-RCTs).

## 71 **Methods**

### 72 **Development of a dynamic patient-level Markov model**

73 A Markov-like model was developed, comprising 7 different clinical states: sinus rhythm (SR),  
74 symptomatic and asymptomatic AF (sAF and aAF, respectively), each with or without a previous  
75 stroke, as well as death (**Figure 1A**). States were connected through age-dependent and sex-  
76 specific transition probabilities for AF development, conversion, incident stroke, and death. All  
77 virtual patients started in the SR state at birth. During each subsequent time step (30 min, unless  
78 specified otherwise), the transition probabilities toward every neighboring state were calculated.  
79 Subsequently, the state for the next time step was obtained by a stochastic process in which every  
80 state was chosen with likelihood corresponding to these probabilities (**Figure S1**). Proarrhythmic  
81 AF-related atrial remodeling was incorporated through changes in three components conceptually  
82 representing effective refractory period (ERP), atrial fibrosis, and atrial enlargement, which was  
83 determined by the time spent in AF states and age. Being in AF states decreased the value of ERP  
84 and increased the production rates of atrial fibrosis and atrial enlargement, whereas being in SR  
85 states selectively reversed the ERP variable back to normal, capturing the concept of ‘AF-begets-  
86 AF’. The relative values of the three components were used to modify the probability of AF  
87 development and cardioversion. Similarly, the non-reversible probabilities of stroke and death  
88 were modulated by vulnerability factors that increased when the virtual patient was in AF states  
89 and continued to modulate stroke/death risks after returning to sinus rhythm. A detailed model  
90 description is provided (**Supplemental Methods, Table S1, Table S2, and Figure S1**).

91  
92 Inter-patient variability was simulated by setting the baseline risk of AF development and the  
93 probability of converting to sinus rhythm to a different value for each patient at the start of the  
94 simulation based on a normal distribution centered around the default parameter value, reflecting a  
95 heterogeneous genetic background in the population (**Table S1**). In addition, virtual patients were  
96 randomly assigned a male or female biological sex at the beginning of the simulation, which  
97 modulated transition probabilities throughout the simulation (**Supplemental Methods and Table**  
98 **S1**).

### 100 **Model calibration and validation**

101 A general overview of the model calibration strategy is depicted in **Figure S2**. Population-level  
102 AF metrics, episode-level AF metrics, clinical outcomes, and the effects of continuous AF  
103 monitoring were calibrated by reproducing study-specific patient selection criteria (e.g., matching  
104 age/sex distribution, history/type of AF, etc., see **Table S3**) and changing parameters to reproduce  
105 the clinical outcomes. Subsequently, model validation with independent data not used for  
106 calibration was implemented by simulating a landmark analysis of stroke risks in patients with  
107 different durations of subclinical AF defined by a substudy of ASSERT (The Asymptomatic Atrial  
108 Fibrillation and Stroke Evaluation in Pacemaker Patients and the Atrial Fibrillation Reduction  
109 Atrial Pacing Trial)<sup>18</sup> using the final optimized parameters.

110  
111 **Population-level metrics:** Age/sex-specific AF incidence was calculated as the number of newly  
112 diagnosed AF patients divided by the number of person-years of the total population within the  
113 age interval and sex category. Age/sex-specific AF prevalence was calculated as the number of AF

114 patients alive at the midpoint of an age interval divided by the total number of individuals alive at  
115 this moment, for men and women. The proportion of patients with paroxysmal AF (pAF) was  
116 assessed by generating a random detection timepoint. Anyone with a clinical diagnosis of  
117 paroxysmal (but not persistent) AF before this timepoint would count towards the proportion of  
118 pAF. These population-level metrics were calculated based on a virtual diagnosis of clinical AF,  
119 consistent with the epidemiological origin of the clinical data. A virtual patient received a clinical  
120 AF diagnosis in our model whenever a symptomatic AF episode reached a duration of 3 hours for  
121 the first time, reflecting a lower bound on the time needed to receive medical care. The impact of  
122 this healthcare system-related parameter was subsequently investigated in a sensitivity analysis  
123 (discussed below). The proportion of symptomatic AF patients was calculated as the number of  
124 patients with any symptomatic episodes divided by the total number of AF patients.

125

126 **Episode-level metrics and progression:** The average number of AF episodes per day (AF  
127 frequency), the maximum duration among AF episodes (maximum duration), and the percentage  
128 of the time in AF (AF burden) were calculated.<sup>8</sup> Low/intermediate/high burden groups were  
129 defined as AF burden <0.5%, 0.5%-2.5%, and  $\geq 2.5\%$  based on the RACE-V study (Interaction  
130 Between HyperCoagulability, Electrical Remodelling, and Vascular Destabilisation in the  
131 Progression of Atrial Fibrillation registry).<sup>19</sup> Clinical AF progression rate was defined as the yearly  
132 percentage of patients developing persistent or permanent AF, while AF burden progression rate  
133 was defined as the yearly percentage of patients with an increase in AF burden  $>3\%$ , based on the  
134 RACE-V study.<sup>20</sup> AF recurrence rate after spontaneous cardioversion was assessed using Kaplan-  
135 Meier (K-M) curves.<sup>21</sup> All metrics were calibrated in virtual patients with a clinical diagnosis of  
136 pAF selected to match the characteristics of the clinical studies. The proportion of symptomatic  
137 AF episodes was calculated among all AF episodes of all virtual AF patients and compared to  
138 clinical data from patients with CRM.

139

140 **Clinical outcome metrics:** Age/sex-specific all-cause mortality was calculated as the number of  
141 new deaths divided by the number of person-years of the total population during the age range in  
142 men and women. The percentage of deaths was calculated as the number of deaths within the age  
143 interval divided by the total number of deaths. Similar definitions applied for age/sex-specific  
144 stroke incidence and percentage of strokes. Mortality and stroke rates for specific time frames  
145 were calculated as the total number of deaths and strokes during the follow-up period divided by  
146 the total population at the start of follow-up. Cumulative death and stroke rates were estimated by  
147 K-M curves.

148

#### 149 **Parameter optimization**

150 Fifty-eight parameters were included in the current model (**Table S1**, including ones for the sex of  
151 the virtual patient and screening characteristics such as frequency and duration of screening).  
152 Initial values were manually chosen based on the clinical data for the aforementioned metrics and  
153 a sensitivity analysis was implemented for 47 AF- and outcome-relevant parameters in order to  
154 show their impact on model calibration (**Supplemental Methods and Figure S3**). Subsequently,  
155 17 parameters were selected for further optimization using the Nelder-Mead Simplex algorithm in  
156 Matlab R2024a (Mathworks, Natick, MA) using the difference between the metrics calculated  
157 based on model output and the clinical data.

158

### 159 **AF detection rate and incident strokes with continuous monitoring**

160 The optimized model was verified by simulating the LOOP study (Atrial Fibrillation Detected by  
161 Continuous ECG Monitoring Using Implantable Loop Recorder to Prevent Stroke in High-risk  
162 Individuals).<sup>9</sup> Based on the inclusion criteria in the LOOP study, several parameters were changed  
163 to simulate the 3.25-year continuous screening (the average duration of screening) in  
164 individuals >70 years with at least one additional stroke/AF risk factor but without previous stroke  
165 and clinical AF, and the effect of anticoagulation therapy that could decrease the stroke probability  
166 by 70% (Table S4).<sup>22,23</sup> Next, AF detection rates for specific time frames with or without CRM  
167 were calculated as the total number of patients with AF episodes detected (with CRM) or newly  
168 diagnosed clinical AF (for patients with/without CRM) during the monitoring time, divided by the  
169 total population at the start of follow-up. Cumulative AF detection rates were estimated by K-M  
170 curves.

171

### 172 **Assessment of different AF screening strategies and their impact on stroke**

173 Systematic screening protocols with different frequency and duration were designed and were  
174 applied to all virtual individuals from 65 years old to death, while symptom-based strategies were  
175 initiated after the first symptomatic AF episode after 65 years of age (independent of its duration)  
176 for 2 weeks (short-term symptom-based strategies) or until death (long-term symptom-based  
177 strategies) (Table S5). Whenever clinical AF was diagnosed before or during follow-up, screening  
178 protocols for the virtual individual were stopped. Screening-detected AF was defined as patients  
179 without clinical AF but with at least one AF episode detected by the screening. Earlier-detected AF  
180 was defined as patients with screening-detected AF who also met the criteria for a subsequent  
181 clinical AF diagnosis. In all analyses, virtual anticoagulation therapy was initiated as soon as AF  
182 was detected by implementing a 70% reduction in the probability of stroke (i.e., parameter[51] set  
183 to 0.3). Subsequently, 5- or 25-year stroke rates after the initiation of AF screening were compared  
184 among different strategies. The effect of screening was assessed for different stroke risks  
185 (controlled by parameter[17]), defined as baseline stroke risk and 3 times baseline stroke risk.  
186 Additional sensitivity analyses were conducted by changing the cutoff value for a clinical AF  
187 diagnosis from 3 hours to 24 hours of continuous symptomatic AF, and by increasing the efficacy  
188 of anticoagulation therapy from 70% to 90% less stroke incidence, reflecting potential future  
189 advances in anticoagulation therapy.

190

### 191 **Statistical description of metrics**

192 Five independent datasets were simulated using the optimized parameters to produce calibration  
193 bar plots with error bars (mean  $\pm$  standard deviation) for all metrics. For K-M curves, all datasets  
194 were combined together and plotted with 95% confidence intervals (95% CIs) calculated by  
195 Greenwood's method. Hazard ratios (HRs) with 95% CIs in model validation were estimated by  
196 Cox regression. Mean relative reduction of stroke for each AF screening strategy compared with  
197 the control group was estimated with 95% CIs using 10 simulated datasets due to the limited  
198 number of strokes at 5-year follow-up. All K-M plots and survival analysis were conducted in  
199 RStudio v2023.06.1 and statistical software R v4.3.0 (R core team, 2023)





## 201 **Results**

### 202 **Population-level AF metrics**

203 The patient-level model was able to simulate the entire lifetime of a virtual cohort of 10,000  
204 individuals (50% female). During the 100-year follow-up, the virtual patients showed various AF  
205 patterns and clinical outcomes including death and stroke (top panels in **Figure 1B and 1C**). All  
206 AF episodes were captured with 30-minute-level resolution (bottom panels in **Figure 1B and 1C**),  
207 and in a subset of individuals showed the expected dynamic progression from pAF to persistent  
208 AF (**Figure 1B**).

209  
210 Consistent with the known age dependence of AF risk, the AF prevalence (**Figure 2A**) and  
211 incidence (**Figure 2B**) in this virtual cohort were significantly higher in older age groups.  
212 Although AF incidence was numerically consistent with the range estimated from numerous  
213 studies,<sup>24-37</sup> AF prevalence was slightly overestimated in the virtual cohort, possibly due to  
214 underestimation of clinical AF in the real-world general population or the definition of clinical AF  
215 in the model. Sex-specific AF prevalence and incidence were also calibrated and showed a similar  
216 age-dependence, with both metrics significantly higher in males, especially in the older age groups  
217 (**Figure S4**), consistent with clinical data.<sup>27-31,33,35-38</sup> The proportions of pAF (vs. non-pAF)  
218 patients (**Figure 2C**) and symptomatic (vs. asymptomatic) AF patients (**Figure 2D**) were also  
219 consistent with clinical data<sup>39,40</sup> and accounted for around 50% and 75% of total AF patients,  
220 respectively.

221

### 222 **AF-episode and progression metrics**

223 In pAF patients, the AF frequency, maximum duration of AF episodes, and AF burden during a 2-  
224 week period were assessed. Although the model slightly underestimates AF frequency (**Figure**  
225 **3A**), likely due to the temporal resolution (30 minutes) used in current simulations, the maximum  
226 duration of AF episodes (**Figure 3B**) and AF burden (**Figure 3C**) were in good agreement with the  
227 real data.<sup>8</sup> Consistent results were also obtained specifically for male and female patients (**Figure**  
228 **S5**).

229

230 We subsequently reproduced the selection criteria for early pAF from the RACE-V study.<sup>19</sup> The  
231 resulting mean age in patients with low, intermediate, and high AF burden according to the  
232 RACE-V definition was broadly consistent with the clinical data, ranging from 62 to 68 years  
233 (**Figure 3D**), and simulated median AF burden was 0.2%, 1.0%, and 7.8% respectively (**Figure**  
234 **3E**), comparable to 0.2%, 1.3% and 7.1% observed in the clinical study.<sup>19</sup> The proportion of  
235 symptomatic AF episodes was 45%, similar to the observed data (50%) in patients with  
236 continuous monitoring (**Figure 3F**).<sup>41</sup>

237 AF is known as a progressive disease. While the clinical AF progression rate from pAF to  
238 persistent AF was slightly overestimated at ~4.9% / year versus 3.8% / year (**Figure 3G**),<sup>20</sup> this  
239 factor can be quite variable depending on clinical characteristics and AF detection parameters.<sup>42</sup>

240 AF burden progression rate is a more robust parameter and agreed well between simulated data  
241 (5.3% / year) and clinical data (5.5% / year; **Figure 3H**).<sup>20</sup>

242

243 AF recurrence after spontaneous cardioversion varies significantly between pAF patients with



244 different baseline characteristics, ranging from 30%-90%.<sup>21,43,44</sup> Therefore, the AF recurrence rate  
245 in the virtual cohort was calibrated by reproducing baseline characteristics (age, history of AF) in  
246 individual simulations for each clinical dataset. Different pattern of recurrent AF episodes during  
247 the 28-day follow-up were documented for each virtual patient, with sparse and short episodes in  
248 patients with low AF recurrence rate (**Figure S6A**), but frequent and relatively longer episodes in  
249 patients with higher AF recurrence rate (**Figure S6B**). During the 28-day follow-up, recurrent AF  
250 episodes were detected in 60-90% of virtual patients with pAF (**Figure 3I**), which was in  
251 agreement with clinical data from some, but not all, randomized trials.<sup>21,43,44</sup> The difference  
252 between simulated recurrence and clinical data might in part be explained by the declining  
253 patients' adherence to a full monitoring during the follow-up.<sup>45</sup> Together, these data confirm that  
254 the model can reproduce a wide range of AF characteristics occurring during the entire lifetime of  
255 a virtual population.

256

### 257 **Clinical outcomes**

258 AF is associated with increased morbidity and mortality, notably due to an increased risk of heart  
259 failure and stroke.<sup>2-5</sup> The ultimate goal of AF management is to improve clinical outcomes.  
260 Accordingly, we assessed clinical outcomes in individuals with or without AF in our model.  
261 Mortality (**Figure 4A**), the percentage of deaths per age category (**Figure 4B**), stroke incidence  
262 (**Figure 4C**), and the percentage of strokes per age category (**Figure 4D**) in the virtual cohort were  
263 all consistent with age-dependent data from literature.<sup>46-48</sup> A similar age dependence was present  
264 for both females and males, with higher risks of death (**Figure S7A-D**) and stroke (**Figure S8A-**  
265 **D**) in males, consistent with clinical data. Furthermore, the acute, out-of-hospital death ( $\leq 24$   
266 hours) and early-phase fatality ( $\leq 30$  days and within 31-365 days) after stroke were reproduced for  
267 the total population (**Figure S9A**), as well as in female (**Figure S9B**) and male (**Figure S9C**)  
268 subpopulations.<sup>49,50</sup>

269

270 Age- and sex-matched mortality at 15 years after AF diagnosis was approximately 25% higher in  
271 simulated AF patients than in simulated individuals with SR (**Figure 4E**), which aligned well with  
272 clinical data.<sup>51</sup> Similarly, an almost 2-fold higher risk of cumulative incident strokes after AF  
273 diagnosis was observed in both simulated AF and clinical AF cohorts compared with those in SR  
274 over a 3-year follow-up period (**Figure 4F**).<sup>52</sup>

275

276 After calibrating the model to accurately reproduce these age- and sex-dependent clinical  
277 outcomes, we validated the model by comparing stroke risks in patients with different durations of  
278 AF episodes to a clinical dataset that was not used for parameter estimation. The simulated stroke  
279 risks in patients with AF over a 3.5-year follow-up resulted in HRs of 5.40 (95%CI: 3.38-8.63),  
280 2.15 (95%CI: 1.40-3.30) and 1.31 (95%CI: 0.79-2.17) compared to individuals without AF for  
281 episodes of  $>24$  hours, 6-24h and 6 minutes-6 hours, respectively. These numbers were highly  
282 consistent with 5.73 (95%CI: 2.41-13.64), 1.79 (95%CI: 0.42-7.69) and 1.31 (95%CI: 0.89-5.02)  
283 observed in the ASSERT study (**Figure 4G**).<sup>18</sup> These validation results highlight the model's  
284 accuracy and predictive abilities.

285

### 286 **Impact of different screening strategies on AF detection and stroke reduction**

287 AF screening has the potential to enable early AF detection and initiation of anticoagulation

288 therapy to reduce stroke risk, but the optimal screening strategy and the benefit of anticoagulation  
289 for screening-detected AF remain uncertain.<sup>9,10</sup> Firstly, the model's suitability for evaluating AF  
290 screening was assessed by simulating the detection rates and benefits for stroke prevention of  
291 CRM based on the LOOP study.<sup>9</sup> Cumulative stroke rates (**Figure 5A**) and AF detection rates  
292 (**Figure 5B**) reproduced in virtual CRM and control groups were highly similar to the clinical  
293 data, with 5.5-year stroke rates of 4.1% and 5%, and 5.5-year AF detection rates of 29.5% and  
294 16.5% in virtual CRM and control groups, respectively. This confirmed that the model can be used  
295 to assess the impact of screening on AF detection and stroke reduction.

296  
297 Because the follow-up time of CRM is limited by battery life and it will not be feasible to employ  
298 CRM for all patients at risk of AF, we employed the model to evaluate self-defined systematic  
299 (**Figure 5C**) and symptom-based AF screening protocols (**Figure 5D and 5E**). Generally, CRM  
300 and intermittent strategies with higher frequency and longer monitoring periods identified more  
301 AF cases from the total population (**Table 1**). The top 5 screening protocols that patients with AF  
302 would benefit from (defined as percentage of AF patients with screening-detected AF before a  
303 clinical diagnosis) were systematic CRM (99.7%, 3524 / 3534), systematic daily 3-time single  
304 ECG (64.6%, 2268 / 3511, representing a smart-watch-based approach), long-term (until death)  
305 symptom-based CRM (52.5%, 1852 / 3525), long-term symptom-based daily 3-time single ECG  
306 (35.1%, 1217/3464), and systematic yearly 14-day Holter monitoring (23.3%, 818/3517). AF  
307 could be detected earlier than the clinical diagnosis by 720 (IQR: 140, 1448), 301 (IQR: 9, 697),  
308 390 (IQR: 94, 813), 204 (IQR: 11, 551), and 285 (IQR: 66, 718) days, respectively, in these  
309 protocols (**Table 1**). Finally, we assessed the impact of the 5 screening strategies on stroke rates in  
310 V-RCTs, comparing oral anticoagulation upon routine clinical AF diagnosis (control group) with  
311 oral anticoagulation upon screening-detected or clinical AF. At 5-year follow-up, all strategies  
312 showed similar stroke rates to the control group (**Figure 6A**). However, at 25-year follow-up  
313 stroke rates were slightly reduced with the lowest stroke rate (5% relative risk reduction) with  
314 systematic CRM (**Figure 6B**).

315  
316 Given the limited benefits from AF screening in an unselected population, we finally performed a  
317 sensitivity analysis to assess the influence of the moment of clinical AF diagnosis, the baseline  
318 stroke risk, and the efficacy of anticoagulation therapy (**Figure 7**). The 5-year stroke rates were  
319 similar in all groups and were not significantly reduced compared with the control group (all 95%  
320 CIs cross the zero-effect line). However, different AF screening strategies showed distinct relative  
321 stroke risk reduction at 25-year follow-up, the extent of which was sensitive to the efficacy of  
322 anticoagulation therapy, baseline stroke risk, and the latency for a clinical AF diagnosis (**Figure 7**  
323 **and Figure S10-12**). The largest effects were observed with systematic CRM, daily 3 times single  
324 ECG, and yearly 14-day Holter groups with significant 6-12% reductions in stroke incidence  
325 (**Figure 7**).

## 326 **Discussion**

327 We presented a novel patient-level AF model that can simulate the entire lifetime of a virtual  
328 individual, capturing individual AF episodes, AF progression and relevant clinical outcomes with  
329 minute-level resolution. The model incorporates key pathophysiological components, including  
330 ‘AF begets AF’ and highlights the complex, heterogeneous and dynamic development and  
331 progression of AF. It reproduces many important population-level and episode-level AF  
332 characteristics, including their age- and sex dependence. The model enables for the first time a  
333 systematic evaluation of AF screening strategies and their impact on clinical outcomes in virtual  
334 RCTs, showing huge heterogeneity in AF detection rates and identifying determinants of stroke  
335 reduction when anticoagulation therapy after clinical or screening-detected AF was simulated,  
336 such as the efficacy of anticoagulation therapy, the baseline stroke risk profile, and the latency of  
337 clinical AF diagnoses.

338

### 339 **Computational models of atrial fibrillation**

340 Mechanistic modeling, data-driven modeling and health-technology assessment modeling are  
341 traditionally different approaches for computational modeling of AF, each with a long history and  
342 several important real-world applications, including the guidance of AF ablation using digital  
343 twins, the prediction of a history of AF from a sinus rhythm ECG and the assessment of cost-  
344 effectiveness of novel therapies.<sup>14</sup> However, none of these approaches have simulated AF  
345 development, progression and its associated outcomes, making them unsuitable for the benefit-  
346 assessment of AF screening. Chang et al. were the first to develop a patient-level Markov model  
347 for the simulation of AF progression during a person’s lifetime.<sup>53</sup> However, this model did not  
348 include clinical outcomes and AF incidence, characteristics and progression were not calibrated  
349 based on real-world data. Another study employed a patient-level Markov model to assess the  
350 effectiveness of 45 screening strategies by simulating bleeding and stroke risks in the general  
351 population. AF characteristics, common comorbidities, anticoagulation therapy, and screening  
352 specificity were considered. However, no individual AF episodes were simulated, and the  
353 progressive nature due to AF-induced remodeling was ignored in these simulations.<sup>54</sup> To the best  
354 of our knowledge, our model is the first to incorporate the information about every single  
355 symptomatic or asymptomatic episode, together with electrical and structural remodeling of the  
356 atrium and clinical outcomes during the entire lifetime with minute-level resolution, providing all  
357 the components required for the systematic assessment of AF screening strategies.

358

### 359 **Determining optimal AF screening strategies**

360 The LOOP trial showed that CRM results in a >2-fold increase in AF detection.<sup>9</sup> However, AF  
361 screening with implantable CRM devices is not feasible in the general population. After successful  
362 replication of the results from LOOP study, we therefore evaluated various self-designed AF  
363 screening protocols. Our results suggest that systematic screening (assessing the whole population  
364 from a certain age onwards) outperforms symptom-based screening (only starting screening in  
365 individuals with suspected symptomatic AF episodes). This can be explained by the fact that 1 in 4  
366 AF patients are totally asymptomatic and asymptomatic AF episodes account for 50% of total  
367 episodes in the virtual cohort, in line with clinical data.<sup>39,41</sup> On the other hand, the AF detection  
368 rates of both systematic and symptom-based AF screening strategies are frequency- and duration-

369 dependent in the simulation, which is consistent with previous simulation data<sup>55</sup> and suggests a  
370 need for long-term monitoring for better AF diagnosis. This idea is supported by a recent RCT that  
371 one-time single-lead ECG screening at 65 years or older does not increase the rate of new AF  
372 diagnosis significantly in primary-care settings.<sup>56</sup> Of note, longer total screening time is not  
373 associated with higher AF detection rates. For example, systematic daily 3-times 1-min ECG  
374 (1095 minutes per year) detects more AF patients than a systematic yearly 14-day Holter (20160  
375 minutes per year). This result is likely due to the typical patterns of AF development, often  
376 beginning with sporadic and short-lasting AF episodes and then progressing to more frequent and  
377 longer AF episodes during the follow-up (**Figure 1B and 1C**). In the current simulation, AF  
378 screening will be initiated at 65 years, when most virtual patients are most likely in the early phase  
379 of AF development. Thus, different screening strategies may capture this dynamic AF progression  
380 with heterogenous sensitivity. Our results indicate that heterogenous AF development and  
381 progression in the target population should be considered when choosing the best AF screening  
382 strategy. Long-term short, frequent monitoring facilitated by developments in single-lead ECG  
383 hardware, e.g., in smart-watch devices, may be more sensitive to identify sparse AF episodes. The  
384 feasibility of AF screening with consumer devices has been validated in the general population,  
385 showing improved anticoagulation therapy, rate- or rhythm-control strategies and risk factor  
386 management in diagnosed AF patients.<sup>57</sup>

387

### 388 **Potential benefits of AF screening and anticoagulation therapy**

389 After the evaluation of AF detection rates of different screening strategies, we evaluated the  
390 potential benefits of virtual anticoagulation therapy for screening-detected AF. The 5-year stroke  
391 rates are similar between control and screening groups, and only systematic CRM shows slight  
392 relative stroke risk reduction during long-term (25-year) follow-up in the unselected baseline  
393 population over 65 years of age. These results are consistent with recent RCTs which have shown  
394 small net reduction or no reduction in stroke despite increased AF diagnosis in individuals with  
395 extra stroke risks but without previous AF diagnosis undergoing intermittent screening or CRM  
396 during 5-7 years follow-up.<sup>9,10</sup> These results support the idea that although AF screening will  
397 identify more AF cases and lead to earlier anticoagulation therapy, benefits of AF screening in  
398 terms of stroke reduction may still be limited, even when long-term CRM is used. Considering the  
399 significantly higher risk of major bleeding in patients with device-detected subclinical AF and  
400 anticoagulation therapy<sup>13</sup> and the potential costs of such a screening strategy, screening for  
401 everyone is likely not the best choice. We therefore employed the model to evaluate parameters  
402 that may affect the benefit of AF screening.

403

404 In our sensitivity analysis, patients with more effective anticoagulation therapy, higher baseline  
405 stroke risk, and higher likelihood of delayed clinical AF diagnosis, e.g., due to poor ad-hoc  
406 accessibility to cardiology care (simulated by prolonged AF-duration criteria for clinical AF  
407 diagnosis), the reduction of 25-year stroke rates was more significant, particularly in CRM and  
408 systematic screening groups (**Figure 6, Figure 7, and Figure S10-S12**). Thus, our approach  
409 suggests that tailored systematic screening approaches in selected settings could be beneficial.  
410 One recent population-level simulation has indicated that AF screening can result in quality-  
411 adjusted life-year gains and a reduction in stroke risks, which varies significantly and is highly  
412 dependent on specific combinations of strategies used.<sup>54</sup> Of note, most current AF-screening

413 studies, including our simulations, have only evaluated the screening-enabled benefits of  
414 anticoagulation therapy, whereas a systematic evaluation of the combined effects with other  
415 interventions such as rhythm control and upstream treatments has not been performed.

416

#### 417 **Potential limitations**

418 Although age, the most important risk factor for AF development, and sex have been explicitly  
419 included in the model, other known AF risk factors such as hypertension and heart failure are only  
420 incorporated implicitly by reproducing epidemiological data sets. In particular, the model captures  
421 the age dependence of AF-development and mortality. Virtual individuals that develop AF or die at  
422 a young age likely implicitly represent those people with a higher burden of risk factors and  
423 comorbidities, even when these are not modelled explicitly. Nevertheless, the absence of these  
424 components can make the exact replication of inclusion criteria in different studies challenging.  
425 We have tried to simulate the study-specific patient selection as much as possible based on age,  
426 sex, AF history and clinical priors (**Table S3**). While the model is generally consistent with a wide  
427 range of clinical data, some quantitative differences exist and may be due to this patient selection.  
428 On the other hand, results from clinical studies may also be biased due to various practical issues  
429 during the implementation. For example, a lack of patients' adherence to full monitoring during  
430 the 4-week follow-up after spontaneous cardioversion was reported,<sup>45</sup> but without sufficient detail  
431 to reproduce in the model, potentially contributing to the mismatch between simulated and  
432 observed AF recurrence rates (red line and triangles in **Figure 3I**). In addition, the model uses a  
433 temporal resolution of 30 minutes for computational efficiency. As such, short episodes of micro-  
434 AF cannot be simulated, potentially contributing to the underestimation of the AF frequency  
435 (**Figure 2A**). However, the clinical relevance of such short-lived episodes remains uncertain at  
436 present. Finally, only stroke and death were incorporated as clinical outcomes in our model. Thus,  
437 safety analyses, e.g., in terms of bleeding risk after starting anticoagulation in screening-detected  
438 AF,<sup>13</sup> and risk-benefit assessment cannot be simulated in the current V-RCTs and should be  
439 considered in future research. Nevertheless, our simulation results are consistent with the limited  
440 short-term efficacy of oral anticoagulation therapy for screening-detected AF reported in recent  
441 trials. They also help to identify conditions when AF screening may benefit long-term outcomes,  
442 which will ultimately need to be validated in a real-world RCT.

443

#### 444 **Future perspectives**

445 The current computational patient-level AF model provides perfect control over every component  
446 responsible for AF development, progression and relevant clinical outcomes and can reproduce  
447 numerous population-level metrics and essential clinical characteristics of AF during the entire  
448 lifetime of a virtual patient. As such, the model is expected to be helpful for future mechanistic  
449 studies on AF development, evaluating AF pattern changes and progression, predicting long-term  
450 clinical prognosis, and assessing the efficacy of different treatments in different populations. As  
451 such, the model may provide valuable information for the design and statistical power estimation  
452 of future RCTs, potentially helping to overcome gender disparities by explicitly addressing sex  
453 differences and enabling studies with equal representation of men and women. Finally, it provides  
454 a foundation for follow-up studies into the role of different risk factors, making it a valuable tool  
455 to analyze personalized holistic AF management without any costs. We have made the model and  
456 source code freely available on <https://github.com/HeijmanLab/> to allow others to use and



457 expand this novel approach.

458

## 459 **Conclusions**

460 We developed a novel patient-level AF model that captures the individual dynamic AF  
461 development and progression during the entire lifetime of a virtual patient. The model reproduces  
462 many important clinical characteristics and population-level metrics of AF in virtual cohorts. V-  
463 RCTs simulated by the model revealed how different AF screening strategies can result in  
464 heterogenous AF detection rates and benefits for stroke reduction, highlighting potential benefits  
465 of AF screening combined with anticoagulation therapy in populations suspected of delayed AF  
466 diagnosis. The novel patient-level AF model is expected to enable future studies in the field of  
467 basic mechanisms, risk stratification and comprehensive management of AF.

468

## 469 **Acknowledgements**

470 The authors thank Adele Benzoni, Eva Schuijt, Fateme Farahani, and Paul Volders for helpful

471 discussions.

## 472 **Sources of funding**

473 The current work is funded by the Cardiovascular Research Institute Maastricht (CARIM PhD call  
474 2020 to J.H.), the European Union (MAESTRIA: Machine Learning Artificial Intelligence Early  
475 Detection Stroke Atrial Fibrillation, grant number 965286 to U.S.), the Netherlands Organization  
476 for Scientific Research (NWO/ZonMW Vidi 09150171910029 to J.H.) and the Dutch Heart  
477 Foundation (CVON2014-09, RACE V Reappraisal of Atrial Fibrillation: Interaction between  
478 hyperCoagulability, Electrical remodeling, and Vascular Destabilisation in the Progression of AF  
479 to H.C., M.R., and U.S. and Grant number 01-002-2022-0118, EmbRACE consortium to M.R.,  
480 U.S. and J.H.).

## 481 **Disclosures**

482 U.S. received consultancy fees or honoraria from Università della Svizzera Italiana (USI,  
483 Switzerland), Roche Diagnostics (Switzerland), EP Solutions Inc. (Switzerland), Johnson &  
484 Johnson Medical Limited, (United Kingdom), Bayer Healthcare (Germany). U.S. is co-founder  
485 and shareholder of YourRhythmics BV, a spin-off company of the University Maastricht. The  
486 other authors have nothing to declare.

## 487 **Supplemental material**

488 Supplemental methods and steps of sensitivity analysis

489 Table S1. Values and Sigma of parameters used in the current model.

490 Table S2. Initial values of different states in the model.  
491 Table S3. Values and Sigma of parameters changed for LOOP study calibration.  
492 Table S4 Parameters setting for the simulation of different AF screening protocols.  
493 Table S5 The detailed information for study-specific model calibration and model validation  
494 Figure S1. The schematic flowchart showing how the states transition runs in the patient-level AF  
495 model.  
496 Figure S2. The workflow for model development, calibration, validation and subsequent  
497 application.  
498 Figure S3. Sensitivity analysis showing the impacts of individual model parameters on different  
499 model outcomes.  
500 Figure S4. The age-dependent and sex-specific prevalence and incidence of clinical atrial  
501 fibrillation (AF).  
502 Figure S5. Sex-specific atrial fibrillation (AF) episode characteristics.  
503 Figure S6. Atrial fibrillation (AF) recurrence plots during a 4-week follow-up after spontaneous  
504 cardioversion.  
505 Figure S7. The age-dependent and sex-specific mortality and percentage of deaths across different  
506 age groups.  
507 Figure S8. The age-dependent and sex-specific stroke incidence and percentage of strokes across  
508 different age groups.  
509 Figure S9. The percentage of deaths prehospital (simulated as the first 24 hours), within the first  
510 month, or within the first year after stroke compared with data from clinical studies.  
511 Figure S10. Comparison of 5-year and 25-year stroke rates in populations with or without atrial  
512 fibrillation (AF) screening with 3-hour diagnostic criteria for clinical AF, EFFICACY OF  
513 ANTICOAGULATION THERAPY AS 90% LESS STROKE INCIDENCE, and normal baseline  
514 stroke rates.  
515 Figure S11. Comparison of 5-year and 25-year stroke rates in populations with or without atrial  
516 fibrillation (AF) screening with 3-hour diagnostic criteria for clinical AF, efficacy of  
517 anticoagulation therapy as 70% less stroke incidence, and 3-FOLD INCREASED BASELINE  
518 STROKE RATES.  
519 Figure S12. Comparison of 5-year and 25-year stroke rates in populations with or without atrial  
520 fibrillation (AF) screening with 24-HOUR DIAGNOSTIC CRITERIA FOR CLINICAL AF,  
521 efficacy of anticoagulation therapy as 70% less stroke incidence, and normal baseline stroke rates.  
522



523

## References

- 524 1. Roth GA, Mensah GA, Johnson CO, Addolorato G, Ammirati E, Baddour LM, Barengo NC,  
525 Beaton AZ, Benjamin EJ, Benziger CP, et al. Global Burden of Cardiovascular Diseases and Risk  
526 Factors, 1990–2019: Update From the GBD 2019 Study. *J Am Coll Cardiol*. 2020;76:2982-3021.  
527 doi: 10.1016/j.jacc.2020.11.010
- 528 2. Hindricks G, Potpara T, Dagres N, Arbelo E, Bax JJ, Blomstrom-Lundqvist C, Boriani G, Castella  
529 M, Dan GA, Dilaveris PE, et al. 2020 ESC Guidelines for the diagnosis and management of atrial  
530 fibrillation developed in collaboration with the European Association for Cardio-Thoracic Surgery  
531 (EACTS): The Task Force for the diagnosis and management of atrial fibrillation of the European  
532 Society of Cardiology (ESC) Developed with the special contribution of the European Heart  
533 Rhythm Association (EHRA) of the ESC. *Eur Heart J*. 2021;42:373-498. doi:  
534 10.1093/eurheartj/ehaa612
- 535 3. Ziff OJ, Carter PR, McGowan J, Uppal H, Chandran S, Russell S, Bainey KR, Potluri R. The  
536 interplay between atrial fibrillation and heart failure on long-term mortality and length of stay:  
537 Insights from the, United Kingdom ACALM registry. *Int J Cardiol*. 2018;252:117-121. doi:  
538 10.1016/j.ijcard.2017.06.033
- 539 4. Ceornodolea AD, Bal R, Severens JL. Epidemiology and Management of Atrial Fibrillation and  
540 Stroke: Review of Data from Four European Countries. *Stroke Res Treat*. 2017;2017:8593207.  
541 doi: 10.1155/2017/8593207
- 542 5. Magnussen C, Niiranen TJ, Ojeda FM, Gianfagna F, Blankenberg S, Njolstad I, Vartiainen E, Sans  
543 S, Pasterkamp G, Hughes M, et al. Sex Differences and Similarities in Atrial Fibrillation  
544 Epidemiology, Risk Factors, and Mortality in Community Cohorts: Results From the  
545 BiomarcARE Consortium (Biomarker for Cardiovascular Risk Assessment in Europe).  
546 *Circulation*. 2017;136:1588-1597. doi: 10.1161/CIRCULATIONAHA.117.028981
- 547 6. Kirchhof P, Camm AJ, Goette A, Brandes A, Eckardt L, Elvan A, Fetsch T, van Gelder IC, Haase  
548 D, Haegeli LM, et al. Early Rhythm-Control Therapy in Patients with Atrial Fibrillation. *N Engl J*  
549 *Med*. 2020;383:1305-1316. doi: 10.1056/NEJMoa2019422
- 550 7. Hermans ANL, Pluymaekers N, Lankveld TAR, van Mourik MJW, Zeemering S, Dinh T, den Uijl  
551 DW, Luermans J, Vernooy K, Crijns H, et al. Clinical utility of rhythm control by electrical  
552 cardioversion to assess the association between self-reported symptoms and rhythm status in  
553 patients with persistent atrial fibrillation. *Int J Cardiol Heart Vasc*. 2021;36:100870. doi:  
554 10.1016/j.ijcha.2021.100870
- 555 8. Wineinger NE, Barrett PM, Zhang Y, Irfanullah I, Muse ED, Steinhubl SR, Topol EJ.  
556 Identification of paroxysmal atrial fibrillation subtypes in over 13,000 individuals. *Heart Rhythm*.  
557 2019;16:26-30. doi: 10.1016/j.hrthm.2018.08.012
- 558 9. Svendsen JH, Diederichsen SZ, Hojberg S, Krieger DW, Graff C, Kronborg C, Olesen MS,  
559 Nielsen JB, Holst AG, Brandes A, et al. Implantable loop recorder detection of atrial fibrillation to  
560 prevent stroke (The LOOP Study): a randomised controlled trial. *Lancet*. 2021;398:1507-1516.  
561 doi: 10.1016/S0140-6736(21)01698-6
- 562 10. Svennberg E, Friberg L, Frykman V, Al-Khalili F, Engdahl J, Rosenqvist M. Clinical outcomes in  
563 systematic screening for atrial fibrillation (STROKESTOP): a multicentre, parallel group,  
564 unmasked, randomised controlled trial. *Lancet*. 2021;398:1498-1506. doi: 10.1016/S0140-  
565 6736(21)01637-8
- 566 11. Healey JS, Lopes RD, Granger CB, Alings M, Rivard L, McIntyre WF, Atar D, Birnie DH,

- 567 Boriani G, Camm AJ, et al. Apixaban for Stroke Prevention in Subclinical Atrial Fibrillation. *N*  
568 *Engl J Med*. 2023. doi: 10.1056/NEJMoa2310234
- 569 12. Kirchhof P, Toennis T, Goette A, Camm AJ, Diener HC, Becher N, Bertaglia E, Blomstrom  
570 Lundqvist C, Borlich M, Brandes A, et al. Anticoagulation with Edoxaban in Patients with Atrial  
571 High-Rate Episodes. *N Engl J Med*. 2023;389:1167-1179. doi: 10.1056/NEJMoa2303062
- 572 13. McIntyre WF, Benz AP, Becher N, Healey JS, Granger CB, Rivard L, Camm AJ, Goette A, Zapf  
573 A, Alings M, et al. Direct Oral Anticoagulants for Stroke Prevention in Patients with Device-  
574 Detected Atrial Fibrillation: A Study-Level Meta-Analysis of the NOAH-AFNET 6 and ARTESiA  
575 Trials. *Circulation*. 2023. doi: 10.1161/CIRCULATIONAHA.123.067512
- 576 14. Heijman J, Sutanto H, Crijns H, Nattel S, Trayanova NA. Computational models of atrial  
577 fibrillation: achievements, challenges, and perspectives for improving clinical care. *Cardiovasc*  
578 *Res*. 2021;117:1682-1699. doi: 10.1093/cvr/cvab138
- 579 15. Trayanova NA, Lyon A, Shade J, Heijman J. Computational modeling of cardiac  
580 electrophysiology and arrhythmogenesis: toward clinical translation. *Physiol Rev*. 2024;104:1265-  
581 1333. doi: 10.1152/physrev.00017.2023
- 582 16. Lyth J, Svennberg E, Bernfort L, Aronsson M, Frykman V, Al-Khalili F, Friberg L, Rosenqvist M,  
583 Engdahl J, Levin LA. Cost-effectiveness of population screening for atrial fibrillation: the  
584 STROKESTOP study. *Eur Heart J*. 2023;44:196-204. doi: 10.1093/eurheartj/ehac547
- 585 17. Aronsson M, Svennberg E, Rosenqvist M, Engdahl J, Al-Khalili F, Friberg L, Frykman-Kull V,  
586 Levin LA. Cost-effectiveness of mass screening for untreated atrial fibrillation using intermittent  
587 ECG recording. *Europace*. 2015;17:1023-1029. doi: 10.1093/europace/euv083
- 588 18. Van Gelder IC, Healey JS, Crijns H, Wang J, Hohnloser SH, Gold MR, Capucci A, Lau CP,  
589 Morillo CA, Hobbelt AH, et al. Duration of device-detected subclinical atrial fibrillation and  
590 occurrence of stroke in ASSERT. *Eur Heart J*. 2017;38:1339-1344. doi: 10.1093/eurheartj/ehx042
- 591 19. De With RR, Erkuner O, Rienstra M, Nguyen BO, Korver FWJ, Linz D, Cate Ten H, Spronk H,  
592 Kroon AA, Maass AH, et al. Temporal patterns and short-term progression of paroxysmal atrial  
593 fibrillation: data from RACE V. *Europace*. 2020;22:1162-1172. doi: 10.1093/europace/euaa123
- 594 20. Nguyen BO, Weberndorfer V, Crijns HJ, Geelhoed B, Ten Cate H, Spronk H, Kroon A, De With  
595 R, Al-Jazairi M, Maass AH, et al. Prevalence and determinants of atrial fibrillation progression in  
596 paroxysmal atrial fibrillation. *Heart*. 2022;109:186-194. doi: 10.1136/heartjnl-2022-321027
- 597 21. Pluymaekers N, Dudink E, Luermans J, Meeder JG, Lenderink T, Widdershoven J, Bucx JJJ,  
598 Rienstra M, Kamp O, Van Opstal JM, et al. Early or Delayed Cardioversion in Recent-Onset  
599 Atrial Fibrillation. *N Engl J Med*. 2019;380:1499-1508. doi: 10.1056/NEJMoa1900353
- 600 22. Hart RG, Pearce LA, Aguilar MI. Meta-analysis: antithrombotic therapy to prevent stroke in  
601 patients who have nonvalvular atrial fibrillation. *Ann Intern Med*. 2007;146:857-867. doi:  
602 10.7326/0003-4819-146-12-200706190-00007
- 603 23. Ruff CT, Giugliano RP, Braunwald E, Hoffman EB, Deenadayalu N, Ezekowitz MD, Camm AJ,  
604 Weitz JI, Lewis BS, Parkhomenko A, et al. Comparison of the efficacy and safety of new oral  
605 anticoagulants with warfarin in patients with atrial fibrillation: a meta-analysis of randomised  
606 trials. *Lancet*. 2014;383:955-962. doi: 10.1016/S0140-6736(13)62343-0
- 607 24. Bonhorst D, Mendes M, Adragao P, De Sousa J, Primo J, Leiria E, Rocha P. Prevalence of atrial  
608 fibrillation in the Portuguese population aged 40 and over: the FAMA study. *Rev Port Cardiol*.  
609 2010;29:331-350.
- 610 25. Lake FR, Cullen KJ, de Klerk NH, McCall MG, Rosman DL. Atrial fibrillation and mortality in

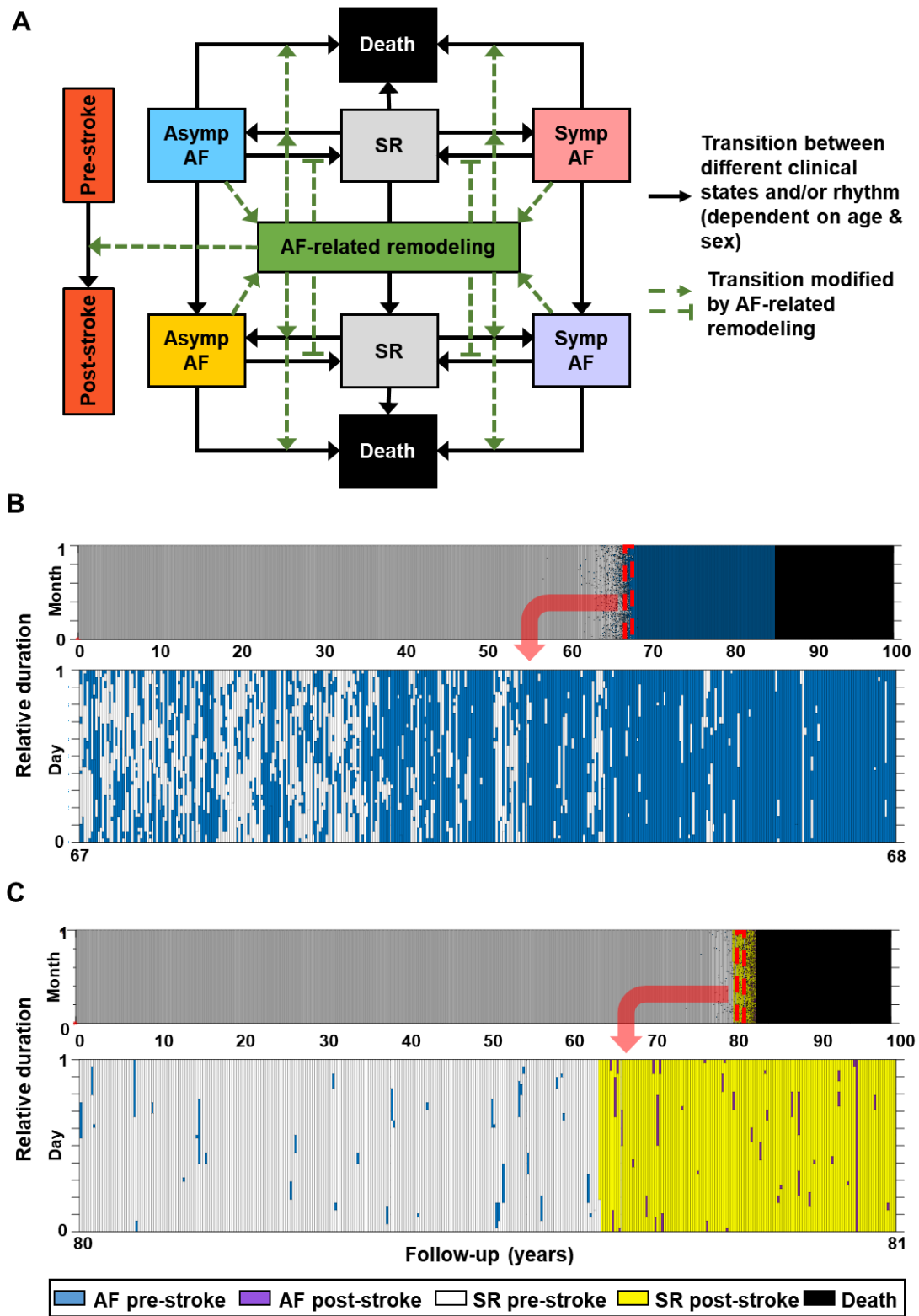
- 611 an elderly population. *Aust N Z J Med*. 1989;19:321-326. doi: 10.1111/j.1445-  
612 5994.1989.tb00271.x
- 613 26. Wolf PA, Abbott RD, Kannel WB. Atrial fibrillation as an independent risk factor for stroke: the  
614 Framingham Study. *Stroke*. 1991;22:983-988. doi: 10.1161/01.str.22.8.983
- 615 27. Naccarelli GV, Varker H, Lin J, Schulman KL. Increasing prevalence of atrial fibrillation and  
616 flutter in the United States. *Am J Cardiol*. 2009;104:1534-1539. doi:  
617 10.1016/j.amjcard.2009.07.022
- 618 28. Go AS, Hylek EM, Phillips KA, Chang Y, Henault LE, Selby JV, Singer DE. Prevalence of  
619 diagnosed atrial fibrillation in adults: national implications for rhythm management and stroke  
620 prevention: the AnTicoagulation and Risk Factors in Atrial Fibrillation (ATRIA) Study. *JAMA*.  
621 2001;285:2370-2375. doi: 10.1001/jama.285.18.2370
- 622 29. Miyasaka Y, Barnes ME, Gersh BJ, Cha SS, Bailey KR, Abhayaratna WP, Seward JB, Tsang TS.  
623 Secular trends in incidence of atrial fibrillation in Olmsted County, Minnesota, 1980 to 2000, and  
624 implications on the projections for future prevalence. *Circulation*. 2006;114:119-125. doi:  
625 10.1161/CIRCULATIONAHA.105.595140
- 626 30. Rietbrock S, Heeley E, Plumb J, van Staa T. Chronic atrial fibrillation: Incidence, prevalence, and  
627 prediction of stroke using the Congestive heart failure, Hypertension, Age >75, Diabetes mellitus,  
628 and prior Stroke or transient ischemic attack (CHADS2) risk stratification scheme. *Am Heart J*.  
629 2008;156:57-64. doi: 10.1016/j.ahj.2008.03.010
- 630 31. Heeringa J, van der Kuip DA, Hofman A, Kors JA, van Herpen G, Stricker BH, Stijnen T, Lip  
631 GY, Witteman JC. Prevalence, incidence and lifetime risk of atrial fibrillation: the Rotterdam  
632 study. *Eur Heart J*. 2006;27:949-953. doi: 10.1093/eurheartj/ehi825
- 633 32. Majeed A, Moser K, Carroll K. Trends in the prevalence and management of atrial fibrillation in  
634 general practice in England and Wales, 1994-1998: analysis of data from the general practice  
635 research database. *Heart*. 2001;86:284-288. doi: 10.1136/heart.86.3.284
- 636 33. Murphy NF, Simpson CR, Jhund PS, Stewart S, Kirkpatrick M, Chalmers J, MacIntyre K,  
637 McMurray JJ. A national survey of the prevalence, incidence, primary care burden and treatment  
638 of atrial fibrillation in Scotland. *Heart*. 2007;93:606-612. doi: 10.1136/hrt.2006.107573
- 639 34. Piccini JP, Hammill BG, Sinner MF, Jensen PN, Hernandez AF, Heckbert SR, Benjamin EJ,  
640 Curtis LH. Incidence and prevalence of atrial fibrillation and associated mortality among  
641 Medicare beneficiaries, 1993-2007. *Circ Cardiovasc Qual Outcomes*. 2012;5:85-93. doi:  
642 10.1161/CIRCOUTCOMES.111.962688
- 643 35. Chugh SS, Havmoeller R, Narayanan K, Singh D, Rienstra M, Benjamin EJ, Gillum RF, Kim YH,  
644 McAnulty JH, Jr., Zheng ZJ, et al. Worldwide epidemiology of atrial fibrillation: a Global Burden  
645 of Disease 2010 Study. *Circulation*. 2014;129:837-847. doi:  
646 10.1161/CIRCULATIONAHA.113.005119
- 647 36. Wilke T, Groth A, Mueller S, Pfannkuche M, Verheyen F, Linder R, Maywald U, Bauersachs R,  
648 Breithardt G. Incidence and prevalence of atrial fibrillation: an analysis based on 8.3 million  
649 patients. *Europace*. 2013;15:486-493. doi: 10.1093/europace/eus333
- 650 37. Dong XJ, Wang BB, Hou FF, Jiao Y, Li HW, Lv SP, Li FH. Global burden of atrial  
651 fibrillation/atrial flutter and its attributable risk factors from 1990 to 2019. *Europace*.  
652 2023;25:793-803. doi: 10.1093/europace/euac237
- 653 38. Alonso A, Agarwal SK, Soliman EZ, Ambrose M, Chamberlain AM, Prineas RJ, Folsom AR.  
654 Incidence of atrial fibrillation in whites and African-Americans: the Atherosclerosis Risk in

- 655 Communities (ARIC) study. *Am Heart J.* 2009;158:111-117. doi: 10.1016/j.ahj.2009.05.010
- 656 39. Gibbs H, Freedman B, Rosenqvist M, Virdone S, Mahmeed WA, Ambrosio G, Camm AJ,  
657 Jacobson B, Jerjes-Sanchez C, Kayani G, et al. Clinical Outcomes in Asymptomatic and  
658 Symptomatic Atrial Fibrillation Presentations in GARFIELD-AF: Implications for AF Screening.  
659 *Am J Med.* 2021;134:893-901 e811. doi: 10.1016/j.amjmed.2021.01.017
- 660 40. Nieuwlaat R, Capucci A, Camm AJ, Olsson SB, Andresen D, Davies DW, Cobbe S, Breithardt G,  
661 Le Heuzey JY, Prins MH, et al. Atrial fibrillation management: a prospective survey in ESC  
662 member countries: the Euro Heart Survey on Atrial Fibrillation. *Eur Heart J.* 2005;26:2422-2434.  
663 doi: 10.1093/eurheartj/ehi505
- 664 41. Verma A, Champagne J, Sapp J, Essebag V, Novak P, Skanes A, Morillo CA, Khaykin Y, Birnie  
665 D. Discerning the incidence of symptomatic and asymptomatic episodes of atrial fibrillation  
666 before and after catheter ablation (DISCERN AF): a prospective, multicenter study. *JAMA Intern  
667 Med.* 2013;173:149-156. doi: 10.1001/jamainternmed.2013.1561
- 668 42. Heijman J, Luermans J, Linz D, van Gelder IC, Crijns H. Risk Factors for Atrial Fibrillation  
669 Progression. *Card Electrophysiol Clin.* 2021;13:201-209. doi: 10.1016/j.ccep.2020.10.011
- 670 43. Pritchett EL, DaTorre SD, Platt ML, McCarville SE, Hougham AJ. Flecainide acetate treatment of  
671 paroxysmal supraventricular tachycardia and paroxysmal atrial fibrillation: dose-response studies.  
672 The Flecainide Supraventricular Tachycardia Study Group. *J Am Coll Cardiol.* 1991;17:297-303.  
673 doi: 10.1016/s0735-1097(10)80090-7
- 674 44. Atarashi H, Ogawa S, Inoue H, Hamada C, Flecainide Atrial Fibrillation I. Dose-response effect  
675 of flecainide in patients with symptomatic paroxysmal atrial fibrillation and/or flutter monitored  
676 with trans-telephonic electrocardiography: a multicenter, placebo-controlled, double-blind trial.  
677 *Circ J.* 2007;71:294-300. doi: 10.1253/circj.71.294
- 678 45. van der Velden RMJ, Pluymaekers N, Dudink E, Luermans J, Meeder JG, Heesen WF, Lenderink  
679 T, Widdershoven J, Bucx JJJ, Rienstra M, et al. Mobile health adherence for the detection of  
680 recurrent recent-onset atrial fibrillation. *Heart.* 2022;109:26-33. doi: 10.1136/heartjnl-2022-  
681 321346
- 682 46. Modig K, Talback M, Ziegler L, Ahlbom A. Temporal trends in incidence, recurrence and  
683 prevalence of stroke in an era of ageing populations, a longitudinal study of the total Swedish  
684 population. *BMC Geriatr.* 2019;19:31. doi: 10.1186/s12877-019-1050-1
- 685 47. Life tables. In: World Health Organization; 2019.
- 686 48. Deaths by main cause of death. In: Statistics Netherlands(CBS); 2019.
- 687 49. Vaartjes I, O'Flaherty M, Capewell S, Kappelle J, Bots M. Remarkable decline in ischemic stroke  
688 mortality is not matched by changes in incidence. *Stroke.* 2013;44:591-597. doi:  
689 10.1161/STROKEAHA.112.677724
- 690 50. Vaartjes I, Reitsma JB, de Bruin A, Berger-van Sijl M, Bos MJ, Breteler MM, Grobbee DE, Bots  
691 ML. Nationwide incidence of first stroke and TIA in the Netherlands. *Eur J Neurol.*  
692 2008;15:1315-1323. doi: 10.1111/j.1468-1331.2008.02309.x
- 693 51. Andersson T, Magnuson A, Bryngelsson IL, Frobert O, Henriksson KM, Edvardsson N, Poci D.  
694 All-cause mortality in 272,186 patients hospitalized with incident atrial fibrillation 1995-2008: a  
695 Swedish nationwide long-term case-control study. *Eur Heart J.* 2013;34:1061-1067. doi:  
696 10.1093/eurheartj/ehs469
- 697 52. Healey JS, Connolly SJ, Gold MR, Israel CW, Van Gelder IC, Capucci A, Lau CP, Fain E, Yang S,  
698 Bailleul C, et al. Subclinical atrial fibrillation and the risk of stroke. *N Engl J Med.* 2012;366:120-

- 699 129. doi: 10.1056/NEJMoa1105575
- 700 53. Chang ET, Lin YT, Galla T, Clayton RH, Eatock J. A Stochastic Individual-Based Model of the  
701 Progression of Atrial Fibrillation in Individuals and Populations. *PLoS One*. 2016;11:e0152349.  
702 doi: 10.1371/journal.pone.0152349
- 703 54. Khurshid S, Chen W, Singer DE, Atlas SJ, Ashburner JM, Choi JG, Hur C, Ellinor PT, McManus  
704 DD, Chhatwal J, et al. Comparative Clinical Effectiveness of Population-Based Atrial Fibrillation  
705 Screening Using Contemporary Modalities: A Decision-Analytic Model. *J Am Heart Assoc*.  
706 2021;10:e020330. doi: 10.1161/JAHA.120.020330
- 707 55. Diederichsen SZ, Haugan KJ, Kronborg C, Graff C, Hojberg S, Kober L, Krieger D, Holst AG,  
708 Nielsen JB, Brandes A, et al. Comprehensive Evaluation of Rhythm Monitoring Strategies in  
709 Screening for Atrial Fibrillation: Insights From Patients at Risk Monitored Long Term With an  
710 Implantable Loop Recorder. *Circulation*. 2020;141:1510-1522. doi:  
711 10.1161/CIRCULATIONAHA.119.044407
- 712 56. Lubitz SA, Atlas SJ, Ashburner JM, Lipsanopoulos ATT, Borowsky LH, Guan W, Khurshid S,  
713 Ellinor PT, Chang Y, McManus DD, et al. Screening for Atrial Fibrillation in Older Adults at  
714 Primary Care Visits: VITAL-AF Randomized Controlled Trial. *Circulation*. 2022;145:946-954.  
715 doi: 10.1161/CIRCULATIONAHA.121.057014
- 716 57. Gruwez H, Verbrugge FH, Proesmans T, Evens S, Vanacker P, Rutgers MP, Vanhooren G,  
717 Bertrand P, Pison L, Haemers P, et al. Smartphone-based atrial fibrillation screening in the general  
718 population: feasibility and impact on medical treatment. *Eur Heart J Digit Health*. 2023;4:464-  
719 472. doi: 10.1093/ehjdh/ztad054

720

721



722

723

724 **Figure 1. Schematic model overview and examples of AF episodes and clinical outcomes in virtual**

725 **individuals simulated by the patient-level model. A, Patient-level model with 7 clinical states**

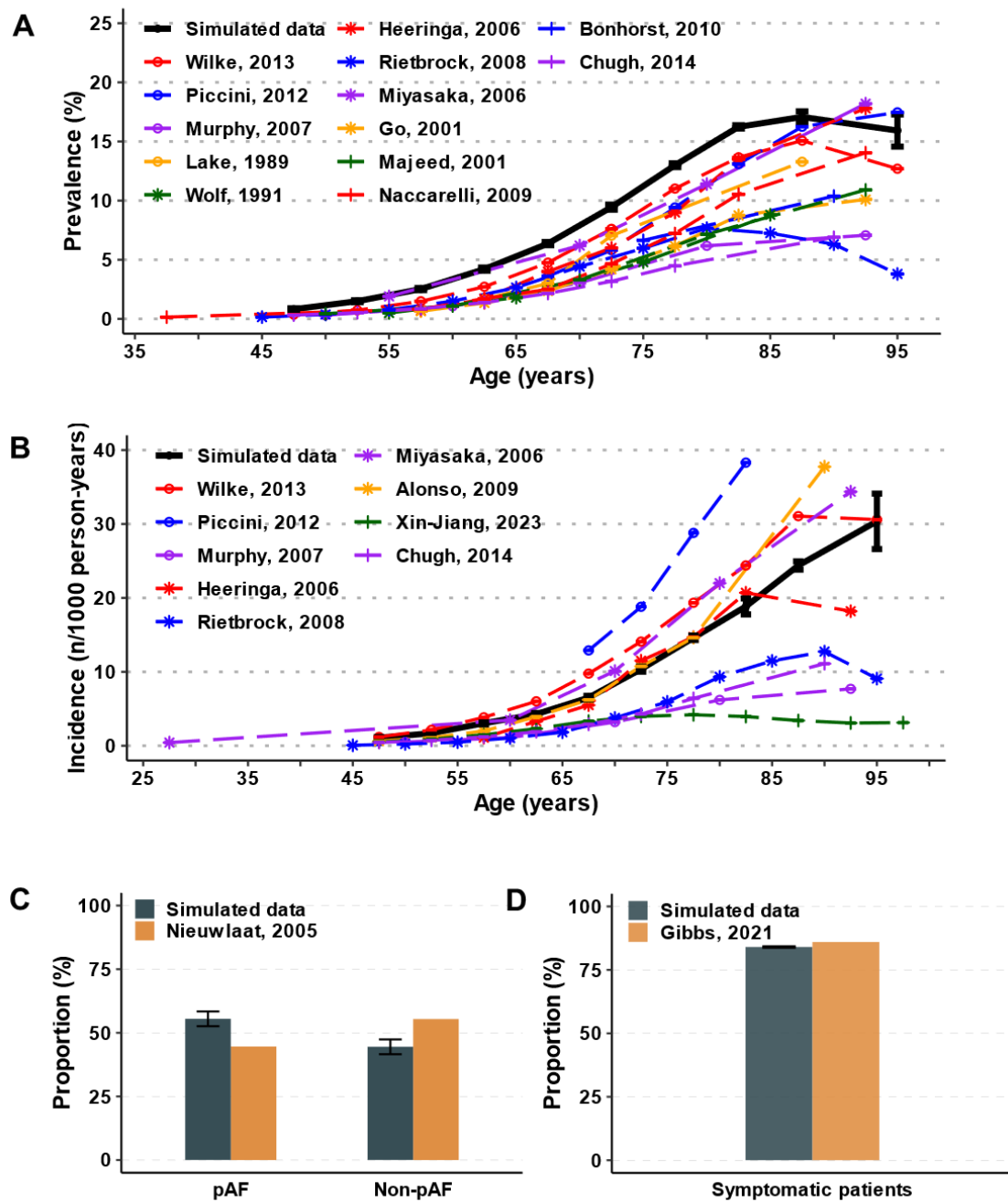
726 **including sinus rhythm, symptomatic AF, and asymptomatic AF, each with or without previous stroke,**

727 **as well as death. Transition probabilities were age/sex dependent. AF-related remodeling was also**



728 incorporated in the model as function of the time in AF, and modulated the likelihood of AF  
729 development, cardioversion, and the occurrence of stroke and death. **B**, Representative example of a  
730 patient with multiple AF episodes and AF progression during the 100-year follow-up (Top) and  
731 expanded view of the interval from 67 years to 68 years of age during which paroxysmal AF  
732 progressed to persistent AF (Bottom). **C**, Representative example of a patient with multiple AF  
733 episodes and incident stroke during the 100-year follow-up (Top) and expanded view from 80 years to  
734 81 years of age during which the stroke event occurred (yellow-shaded area). A single column in panels  
735 **B, C** represents one month and one day in the upper and lower panels, respectively.  
736





737

738

739 **Figure 2. Comparison of population-level atrial fibrillation (AF) metrics in 10,000 virtual**

740 **individuals to epidemiological data. A-B,** Age dependence of the prevalence (A) and incidence (B) of

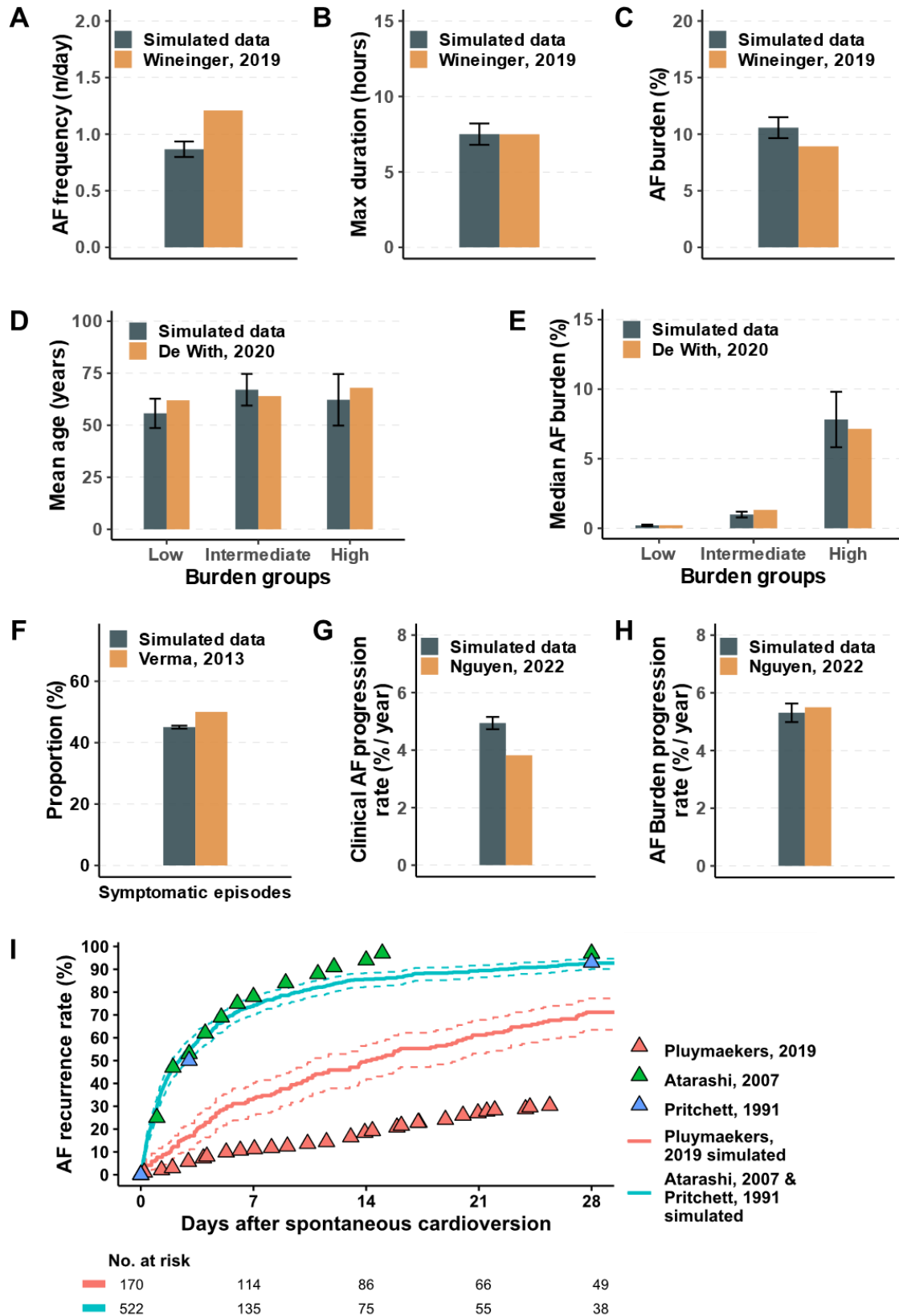
741 clinical AF in model (black line) and different clinical studies (colored lines).<sup>24-36</sup> Sex-specific AF

742 prevalence and incidence are shown in **Figure S4.** C, The proportion of paroxysmal AF (pAF) and non-

743 paroxysmal AF in virtual patients with a clinical diagnosis of AF compared to clinical data from

744 Nieuwlaat et al.<sup>40</sup> D, The proportion of symptomatic AF patients in the model compared to Gibbs et

al.<sup>39</sup>



745

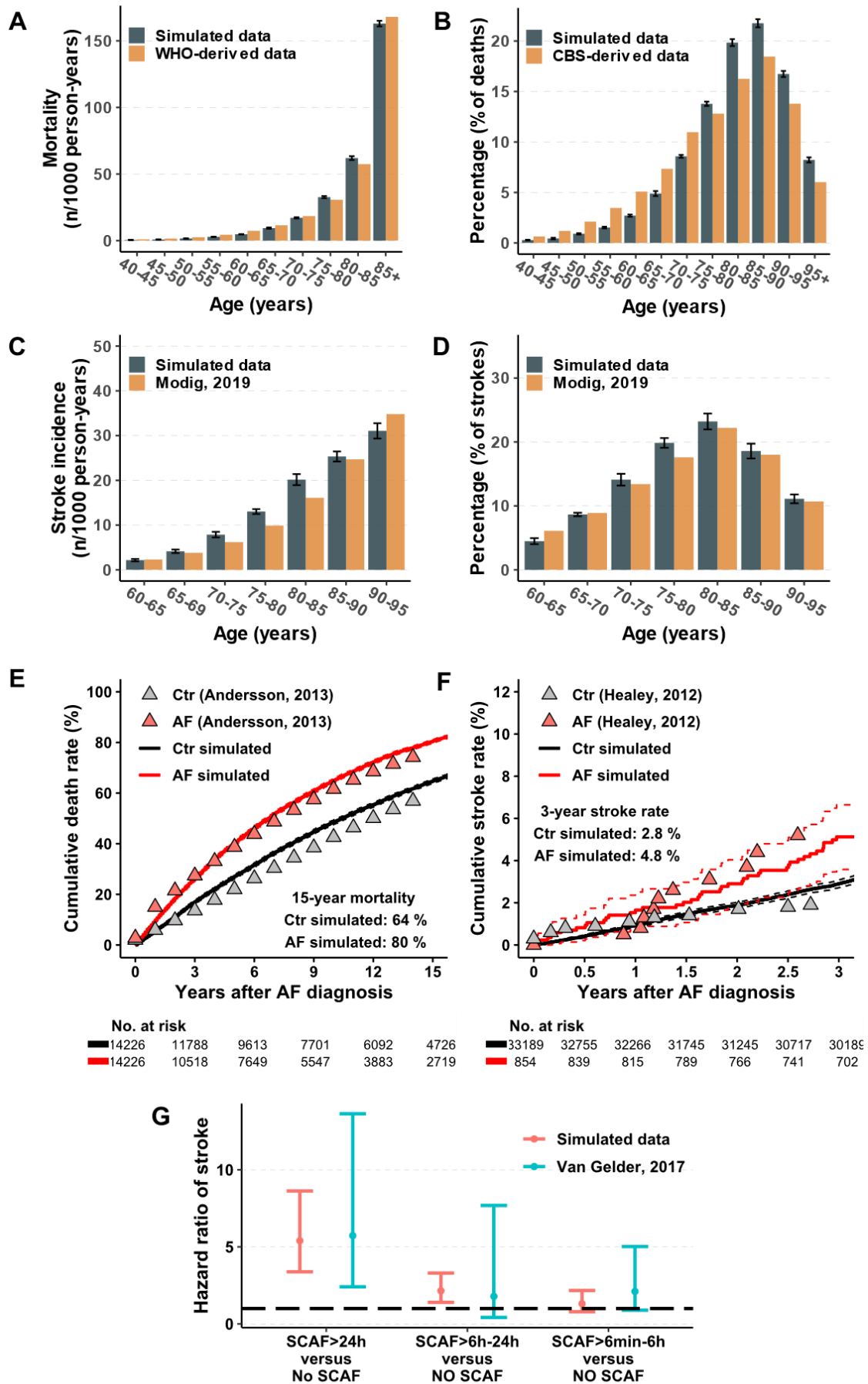
746

747 **Figure 3. Comparison of episode-level atrial fibrillation (AF) metrics and AF progression in the**

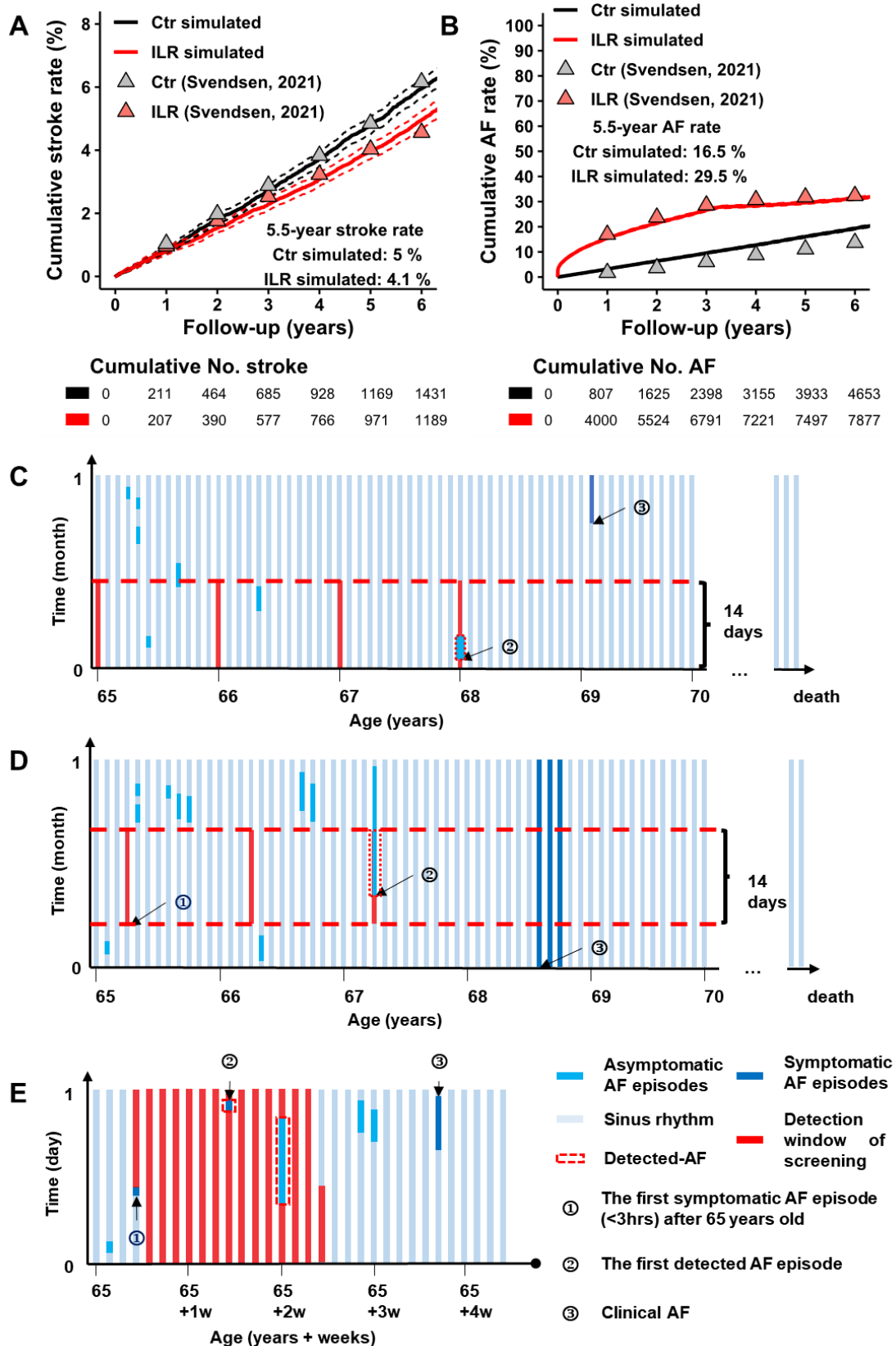
748 **patient-level model to rhythm-monitoring data in AF patients. A-C, Frequency (A), maximum**

749 **episode duration (B) and AF burden (C) during a 12-day follow-up period in patients with paroxysmal**

750 AF compared to Wineinger et al.<sup>8</sup> **D-E**, Mean age (**D**) and median AF burden (**E**) in different AF  
751 burden groups defined by the RACE-V study.<sup>19</sup> **F**, The proportion of symptomatic AF episodes from all  
752 virtual patients with AF compared to implantable cardiac monitor data.<sup>41</sup> **G-H**, Yearly progression rate  
753 from paroxysmal to non-paroxysmal AF (**G**) or AF burden progression rate (**H**) compared to data from  
754 the RACE-V study.<sup>20</sup> **I**, AF recurrence rate after spontaneous cardioversion in patients with early phase  
755 AF, as defined by the different clinical trials.<sup>21,43,44</sup>



757 **Figure 4. Comparison of clinical outcomes in 10,000 virtual patients to epidemiological data. A,**  
758 **Mortality across different age groups in the virtual cohort compared to the data from WHO.<sup>47</sup> B,**  
759 **Percentage of deaths across different age groups in the virtual cohort compared to the data from**  
760 **Statistics Netherlands.<sup>48</sup> C-D, Stroke incidence (C) and percentage of strokes (D) across different age**  
761 **groups in the virtual cohort compared to the data from Modig et al.<sup>46</sup> E, Mortality in patients with**  
762 **clinical AF compared to age- and sex-matched patients in model and data from Andersson et al.<sup>51</sup> F,**  
763 **Cumulative stroke rate in patients with or without any AF episodes compared to the continuous**  
764 **monitoring data from ASSERT study.<sup>52</sup> G, Validation of stroke risks in patients with different durations**  
765 **of subclinical AF compared to patients with no subclinical AF in the model compared to data from the**  
766 **ASSERT study,<sup>18</sup> which were not used for model development and calibration.**



767

768

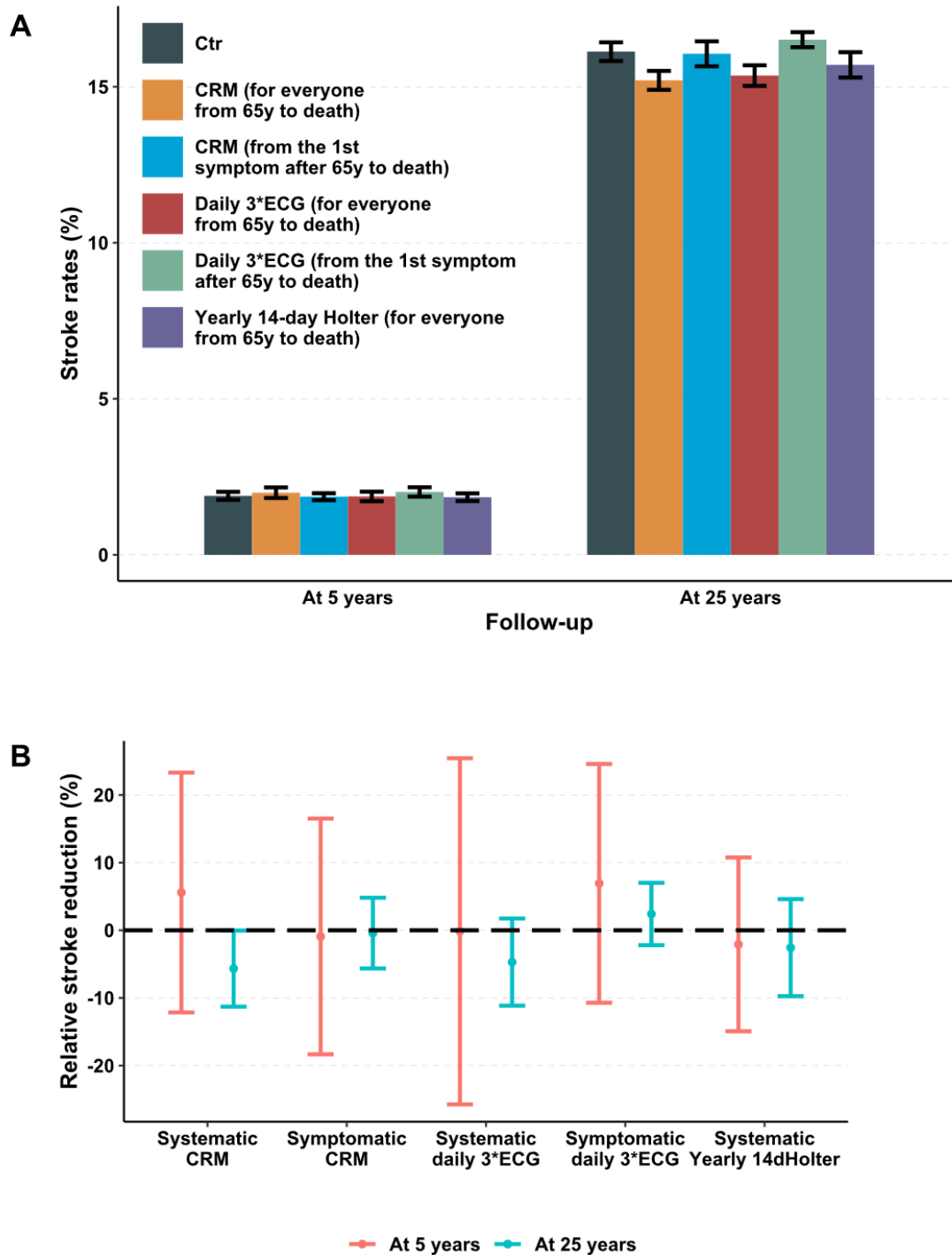
769 **Figure 5. AF screening in 10,000 virtual patients with or without continuous rhythm monitoring**

770 **(CRM) and schematic illustration of self-defined AF screening protocols. A-B, Cumulative stroke**

771 **rates (A) and AF detection rates (B) with or without CRM in the virtual cohort compared to data from**

772 patients with implanted loop recorders from the LOOP trial.<sup>9</sup> **C-E**, Schematic illustration of self-  
773 defined systematic AF screening (**C**), symptom-based long-term (until death, **D**) or short-term (2  
774 weeks, **E**) AF screening.





775

776

777 **Figure 6. Stroke rates in populations with or without AF screening.** A, Comparison of 5-year and

778 25-year stroke rates in populations with normal baseline stroke risk and different AF screening

779 strategies. B, The 5-year and 25-year relative stroke reduction for AF screening groups with normal

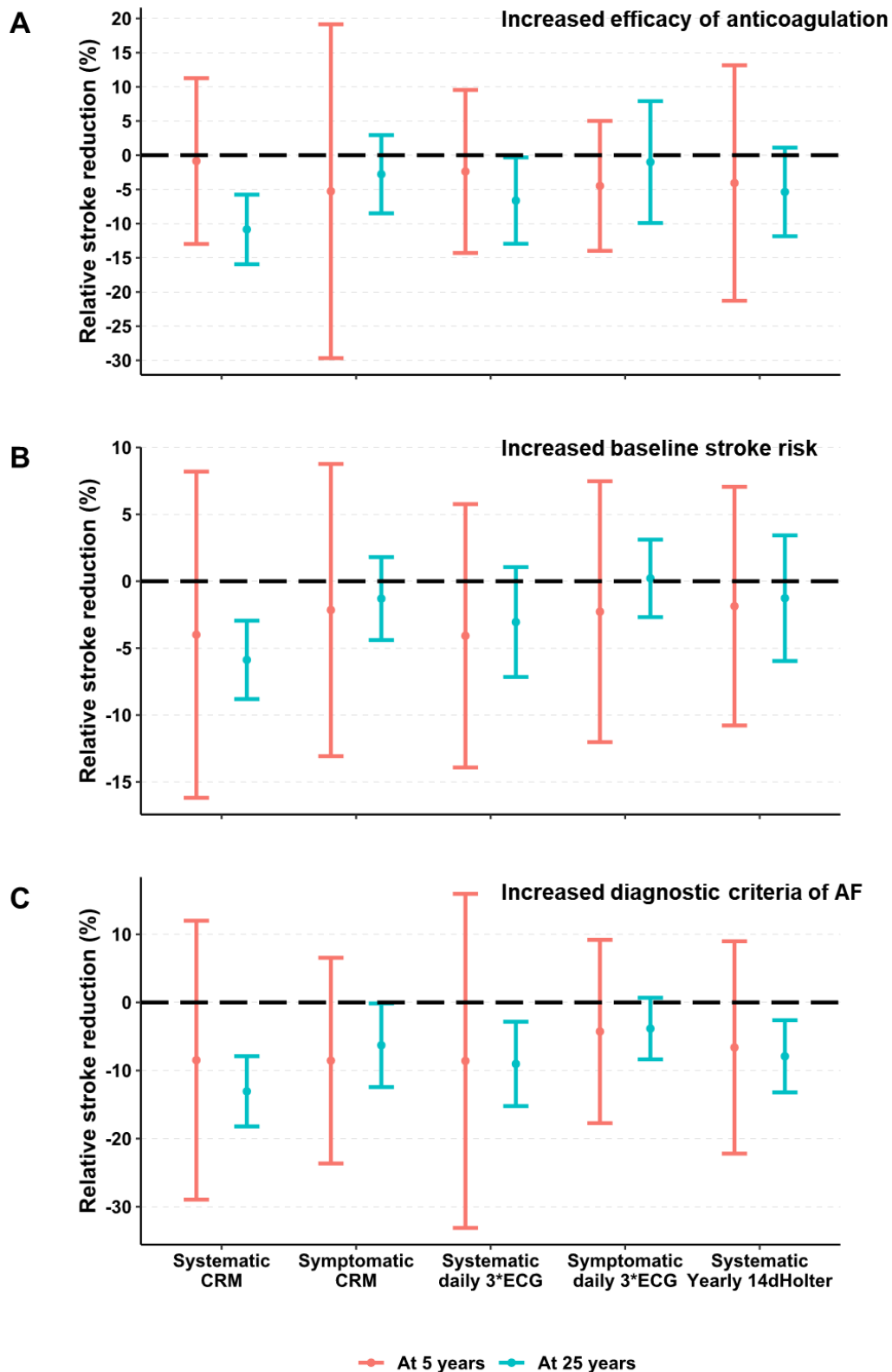
780 baseline stroke risk and anticoagulation therapy with 70% efficacy, compared with the control group.

781 Here, systematic screening means AF screening initiated for everyone from 65 years to death, and

782 symptomatic screening means AF screening initiated from the 1<sup>st</sup> symptomatic AF episode after 65

783 years to death. The diagnostic criterion for clinical AF was 3 hours of symptomatic AF. See **Methods**

784 for details.



785  
786

787 **Figure 7. Sensitivity analysis of the impact of different healthcare factors on relative stroke risk**  
 788 **reduction induced by AF screening. A-C,** The 5-year and 25-year relative stroke reduction for AF  
 789 screening groups with increased efficacy of anticoagulation therapy (90% less stroke compared with  
 790 the control group (A), 3-fold increase in baseline stroke risk (B), or with a diagnostic criterion of

791 clinical AF of 24 hours symptomatic AF (C). Abbreviations of different screening strategies are the  
792 same as in **Figure 6**.

793 **Table 1. AF detection rates of different screening protocols applied in the virtual cohort**

<b>Protocols applied (10,000 individuals)</b>	<b>% of patients benefitting from screening (n/ AF cases possibly at benefit*)</b>	<b>% of screening-detected AF<sup>†</sup> (n/ AF cases possibly at benefit)</b>	<b>% of earlier – detected AF<sup>‡</sup> (n/ AF cases possibly at benefit)</b>	<b># of days ahead of clinical AF diagnosis<sup>§</sup> for earlier-detected AF (n, IQR)</b>
<b>Continuous AF screening (systematic or long-term symptom-based)</b>				
Systematic continuous screen	99.7% (3524 / 3534)	31.6% (1118 / 3534)	68.1% (2406 / 3534)	720 (140, 1448)
Symptom-based continuous screen	52.5% (1852 / 3525)	8.0% (281 / 3525)	44.6% (1571 / 3525)	390 (94, 813)
<b>Systematic AF screening (all participants from 65y to death)</b>				
Yearly 1min ECG	4.7% (165 / 3491)	4.7% (164 / 3491)	0.03% (1 / 3491)	516
Daily 3 * 1min ECG	64.6% (2268 / 3511)	17.2% (603 / 3511)	47.4% (1665 / 3511)	301 (9, 697)
Yearly 7d Holter	16.7% (588 / 3514)	8.6% (301 / 3514)	8.2% (287 / 3514)	248 (53, 605)
Yearly 14d Holter	23.3% (818 / 3517)	10.4% (365 / 3517)	12.9% (453 / 3517)	285 (66, 718)
<b>Short-term symptom-based AF screening (from the 1<sup>st</sup> symptomatic AF after 65y, for 2w)</b>				
Daily 1min ECG	0.2% (8 / 3539)	0% (0 / 3539)	0.2% (8 / 3539)	428 (163, 558)
Daily 3 * 1min ECG	0.5% (26 / 3517)	0% (0 / 3517)	0.5% (26 / 3517)	100 (36, 277)
Weekly 1d Holter	0.6% (20 / 3400)	0.06% (2 / 3400)	0.5% (18 / 3400)	218 (107, 647)
One-time 14d Holter	2.7% (97 / 3583)	0.4% (16 / 3583)	2.3% (81 / 3583)	279 (111, 610)
<b>Long-term symptom-based AF screening (from the 1<sup>st</sup> symptomatic AF after 65y, until death)</b>				
Daily 1min ECG	17.6% (623 / 3530)	1.6% (58 / 3530)	16.0% (565 / 3530)	183 (17, 410)
Daily 3 * 1min ECG	35.1% (1217 / 3464)	4.0% (139 / 3464)	31.1% (1078 / 3464)	204 (11, 551)
Yearly 1d Holter	1.2% (29 / 3558)	0.2% (1 / 3558)	1.1% (28 / 3558)	167 (46, 383)

Yearly 14d Holter	12.0% (429 / 3563)	1.2% (41 / 3563)	10.9% (388 / 3563)	229 (37, 507)
----------------------	-----------------------	---------------------	-----------------------	---------------

---

794

795 Results are presented as absolute numbers with percentage or median numbers with quartiles.

796 \* AF cases possibly at benefit are those with **ANY** AF episodes during **LIFETIME** follow-up and  
797 still alive at 65 years of age (i.e., start of screening) without clinical AF diagnosis (= the number  
798 of total AF cases within 100 years - AF cases died before 65y - clinical AF cases before 65y)

799 † Screening-detected AF are patients detected by screening protocols **ONLY**

800 ‡ Earlier-detected AF are patients detected by screening protocols earlier than their clinical AF  
801 diagnosis

802 § Clinical AF was diagnosed when the first symptomatic AF episode lasted  $\geq 3$  hours