

1 **SeqFirst: Building equity access to a precise genetic diagnosis in critically ill newborns**

2
3 Tara L. Wenger,^{1,2} Abbey Scott,² Lukas Kruidenier,² Megan Sikes,² Alexandra Keefe,^{1,2} Kati J.
4 Buckingham,¹ Colby T. Marvin,¹ Kathryn M. Shively,¹ Tamara Bacus,¹ Olivia M. Sommerland,¹
5 Kailyn Anderson,¹ Heidi Gildersleeve,¹ Chayna J. Davis,¹ Jamie Love-Nichols,² Katherine E.
6 MacDuffie,^{1,4} Danny E. Miller,^{1-3,5} Joon-Ho Yu,^{1,4,6} Amy Snook,⁷ Britt Johnson,⁷ David L.
7 Veenstra,⁸ Julia Parish-Morris⁹, Kirsty McWalter,⁷ Kyle Retterer,^{7,10} Deborah Copenheaver,⁷
8 Bethany Friedman,⁷ Jane Juusola,⁷ Erin Ryan,⁷ Renee Varga,⁷ Dan Doherty,¹⁻³ Katrina
9 Dipple,^{1,2} Jessica X. Chong,^{1,3} Paul Kruszka,⁷ Michael J. Bamshad,¹⁻³

- 10
11 1. Department of Pediatrics, University of Washington, Seattle, WA, 98195, USA
12 2. Seattle Children's Hospital, Seattle, WA, 98105, USA
13 3. Brotman Bay Institute, Seattle, WA, 98195, USA
14 4. Treuman Katz Center for Pediatric Bioethics and Palliative Care, Seattle Children's
15 Research Institute, 98121, Seattle WA, USA
16 5. Department of Laboratory Medicine and Pathology, University of Washington, Seattle,
17 WA, 98195, USA
18 6. Institute for Public Health Genetics, University of Washington, Seattle, WA, 98195, USA
19 7. GeneDx, Gaithersburg, MD, 20877, USA
20 8. Department of Pharmacy, University of Washington, Seattle, WA, 98195, USA
21 9. Department of Biomedical and Health Informatics, Perelman School of Medicine,
22 Philadelphia, PA, 19146, USA
23 10. Geisinger, Danville, PA, 17822, USA

24
25
26

27

28 **Corresponding author**

29 Mike Bamshad, MD

30 Department of Pediatrics

31 University of Washington School of Medicine

32 Box 357371

33 1959 NE Pacific Street, HSB I607

34 Seattle, WA 98195

35 Correspondence: mbamshad@uw.edu

36

37 **Word count:**

38 **Summary**

39 Access to a precise genetic diagnosis (PrGD) in critically ill newborns is limited and inequitable
40 because complex inclusion criteria used to prioritize testing eligibility omits many patients at
41 high risk for a genetic condition. SeqFirst-neo is a program to test whether a genotype-driven
42 workflow using simple, broad exclusion criteria to assess eligibility for rapid whole genome
43 sequencing (rWGS) increases access to a PrGD in critically ill newborns. All 408 newborns
44 admitted to a neonatal intensive care unit between January 2021 and February 2022 were
45 assessed and of 240 eligible infants, 126 were offered rWGS (i.e., intervention group [IG]) and
46 compared to 114 infants who received conventional care in parallel (i.e., conventional care
47 group [CCG]). A PrGD was made in 62/126 (49.2%) IG neonates compared to 11/114 (9.7%)
48 CCG infants. The odds of receiving a PrGD was ~9 times greater in the IG vs. the CCG, and
49 this difference was maintained at 12 months follow up. Access to a PrGD in the IG versus CCG
50 differed significantly between infants identified as non-white (34/74, 45.9% vs. 6/29, 20.7%;
51 $p=0.024$) and Black (8/10, 80.0% vs. 0/4; $p=0.015$). Neonatologists were significantly less
52 successful at predicting a PrGD in non-white than non-Hispanic white patients. Use of a
53 standard workflow in the IG with a PrGD revealed that a PrGD would have been missed in
54 26/62 (42%) of infants. Use of simple, broad exclusion criteria that increases access to genetic
55 testing significantly increases access to a PrGD, improves access equity and results in fewer
56 missed diagnoses.

57

58

59

60 Introduction

61 Knowledge of the genetic basis of pediatric diseases has increased exponentially over
62 the past decade and genetic variation plays a role in virtually all pediatric conditions. New
63 technologies to rapidly and inexpensively interrogate human genomes, powerful computational
64 approaches to identify disease-causing (i.e., pathogenic) variants, and high-throughput
65 functional assays to facilitate development of precision therapeutics, have converged to create
66 an unprecedented opportunity to capitalize on this information and use genomics to
67 revolutionize pediatric healthcare. Indeed, the widespread application of genomics (e.g., exome
68 sequencing / whole genome sequencing [ES / WGS]) in clinical genetics has had a major
69 impact on the ability to make a precise genetic diagnosis (PrGD) in patients with rare conditions
70 (RCs).^{1,2} Use of ES / WGS increases diagnostic rates, enables faster diagnosis, reduces costs,
71 and improves both family and provider satisfaction while a delayed or absent PrGD can result in
72 both missed or inappropriate interventions.³⁻²¹ Nevertheless, integration of ES / WGS into most
73 pediatric clinical programs and specialty services has been modest at best.²²⁻²⁹

74 Rapid ES / WGS is transforming diagnosis and care of RCs in critically ill newborns.
75 Evidence from more than forty studies that collectively have evaluated >3,500 families is
76 compelling.^{3-13,15-21,26,29-54} Yet, the impact of the widespread use of rapid ES / WGS has been
77 blunted, to date, by the lack of availability of effective service-delivery models that support
78 scalability (i.e., widespread adoption in neonatal intensive care units [NICUs], offering testing to
79 all infants with a high prior risk for a genetic condition, etc.) limiting equitable access to a PrGD
80 (i.e., offering a genetic test and receipt of a test result that explains a patient's clinical
81 findings).⁵⁵⁻⁵⁷ Indeed, most children in the United States who could benefit from a PrGD aren't
82 offered advanced genetic testing since the availability of genetic testing is highly dependent
83 upon institution, geography, and social class.⁶ Another challenge is that non-specific
84 presentations of RCs are common, and thus suspicion of a RC as a prerequisite to request
85 genetic testing excludes many, if not most, individuals with a RC from access to testing.

86 Moreover, the ability to offer testing is most compromised in communities that have traditionally
87 been underserved and disproportionately represented by families that identify as Black,
88 Indigenous, People Of Color and / or living in rural areas.^{58,59} This disparity is compounded by
89 structural racism resulting in inequities in NICU care for underrepresented minorities. These
90 inequities are driven in part by a lower likelihood of admission to a high quality medical center
91 and differences in care compared to white infants admitted to the same NICUs.⁶⁰⁻⁶⁶ This is a
92 major gap in healthcare.

93 SeqFirst is a research initiative established to develop and test innovative genotype-
94 driven service delivery models in pediatric care settings that serve diverse communities with
95 varied levels of infrastructure for providing clinical genetic services. It currently includes three
96 arms: SeqFirst-Ddi, focused on children under three years of age newly found by their parents
97 or primary care providers to have atypical development; SeqFirst-All Kids Included, aimed at
98 supporting access to a PrGD in underserved communities; and SeqFirst-neo, a project to
99 develop and test approaches to center equity for a PrGD at the initial point of care of infants with
100 a critical illness. Each of these arms also represent an opportunity to develop and deploy
101 complementary technological strategies to support provider readiness (e.g., telemedicine
102 consults, virtual consenting, self-guided return of results, etc.).

103 Herein we present the results of Phase 1 of SeqFirst-neo in which we implemented a
104 genotype-driven workflow using simple, broad exclusion criteria to assess eligibility for rapid
105 whole genome sequencing (rWGS) and tested its impact on several outcomes including access
106 to a PrGD, diagnostic yield, and changes in clinical management in critically ill newborns. We
107 also compared these outcomes among groups delimited by self or provider assigned population
108 descriptors including race to test whether access to a PrGD was equitable.

109

110 **Subject, material, and methods**

111 *Patient selection and enrollment*

112 This study was reviewed and approved by the University of Washington IRB #
113 STUDY00008810 and consent was obtained for each participant. Exclusion criteria were
114 developed by a multidisciplinary team of care-providers and researchers including clinical
115 genetics, genetic counseling, and neonatology. Exclusion criteria included a corrected age > 6
116 months or clinical findings fully explained by physical trauma, infection, or complications of
117 prematurity. Infants with clinical findings initially considered fully explained by physical trauma,
118 infection, or complications of prematurity who developed, as judged by a neonatologist, an
119 atypical clinical course (e.g., excessive bleeding) during their hospitalization were offered
120 enrollment. Infants with a pre-existing PrGD via prenatal genetic testing or postnatal testing at
121 their birth hospital were also excluded. Eligibility did not require sample collection from any
122 biological parents.

123 From January 2021 to February 2022, the admission notes of each infant admitted to the
124 NICU at Seattle Children's Hospital (SCH), a tertiary pediatric hospital located in an urban
125 setting, were briefly (i.e., 2-3 minutes) assessed remotely each day by a clinical geneticist
126 (T.W., K.D., M.B.) to determine eligibility (Figure 1). This assessment was then confirmed with
127 the neonatologist on service. Eligible families were approached by a research team member,
128 either a genetic counselor or clinical geneticist, to assess parental interest in enrollment.
129 Interpreter services were used as needed. Infants enrolled were assigned to the intervention
130 group (IG). Conventional clinical care and testing, including genetic testing, continued in parallel
131 for each infant enrolled in SeqFirst without restriction on tests ordered. Families were given the
132 option to receive secondary findings. If no clinical genetics consult had been obtained through
133 conventional clinical care, reporting of a variant of unknown significance, likely pathogenic,
134 pathogenic, or secondary result triggered consultation.

135 Patients who were eligible but not enrolled (e.g., families not available for consent or
136 declined to participate) were assigned to a conventional care group (CCG). Standard clinical
137 care and testing, including genetic testing, continued for each infant in the CCG. The SeqFirst

138 and CCG were well-matched for gestational age at birth, age at admission, sex assigned at
139 birth, admitting diagnosis, and parent- or provider-assigned racial construct (PPARC) (Table 1).

140

141 *Rapid whole genome sequencing*

142 Whole blood was collected from the proband, parents, and, if necessary, additional
143 family members (e.g., siblings). rWGS was performed using a CLIA-certified, commercially
144 available clinical test (*GenomeXpress*) offered by GeneDx. In brief, PCR-free whole genome
145 sequencing libraries were prepared using Illumina DNA PCR-Free Prep, Tagmentation kit
146 following the manufacturer's protocol (Illumina Inc.). Massively parallel (NextGen) sequencing
147 was performed on an Illumina platform. Average mean sequencing coverage was at least 40x
148 across the genome, with a minimum threshold of 30x for any proband sample. Bi-directional
149 sequence reads were assembled and aligned using Dragen to reference sequences based on
150 NCBI RefSeq transcripts and human genome build GRCh37/UCSC hg19. Using a custom-
151 developed analysis tool, data were filtered and analyzed to identify sequence variants, repeat
152 expansions in *FMR1* and *DMPK*, homozygous loss of *SMN1* exon 8, and most deletions and
153 duplications greater than 1 kb in size. PCR-free whole genome sequencing libraries were
154 prepared using Illumina DNA PCR-Free Prep, Tagmentation kit following the manufacturer's
155 protocol (Illumina Inc.). Massively parallel (NextGen) sequencing was performed on an Illumina
156 platform. Average mean sequencing coverage was at least 40x across the genome, with a
157 minimum threshold of 30x for any proband sample. Bi-directional sequence reads were
158 assembled and aligned using Dragen to reference sequences based on NCBI RefSeq
159 transcripts and human genome build GRCh37/UCSC hg19. Using a custom-developed analysis
160 tool, data were filtered and analyzed to identify sequence variants, repeat expansions in *FMR1*
161 and *DMPK*, homozygous loss of *SMN1* exon 8, and most deletions and duplications greater
162 than 1 kb in size. Additional sequencing technology and variant interpretation protocol has been
163 previously described⁶⁷. The general assertion criteria for variant classification are publicly

164 available on the GeneDx ClinVar submission page
165 (https://www.ncbi.nlm.nih.gov/clinvar/docs/review_status/#ac). All reported variants were
166 confirmed by an orthogonal method in the proband and parents, if available. A result including
167 nuclear pathogenic and/or likely pathogenic variants potentially explaining a patient's clinical
168 findings was verbally communicated to the research team within seven calendar days and
169 written results within fourteen days.

170 Each reported variant was interpreted by the research team including at least two clinical
171 geneticists and a genetic counselor and each reported variant(s)/gene(s) was assigned to one
172 of five categories: clinical findings explained, clinical findings likely explained, clinical findings
173 partially explained (i.e., a variant(s) explains at least one but not all clinical findings), clinical
174 findings not explained, secondary finding unrelated to clinical findings. Assignments were made
175 based on a combination of clinical judgement of phenotype specificity and similarity to
176 previously reported gene-disease phenotypes, use of the ClinGen gene-disease validity
177 framework, and use of the ACMG/AMP sequence variant classification (SVC) and
178 ACMG/ClinGen CNV classification guidelines (plus soon to be released
179 ACMG/AMP/CAP/ClinGen v4 SVC guidelines). We required at least a moderate level of gene-
180 disease validity for a gene to be potentially considered explanatory and at least near-moderate
181 for likely explained. A PrGD was assigned to an infant if they had at least one variant
182 categorized as clinical findings explained, likely explained, or partially explained.

183

184 *Return of results and collection of clinical data*

185 Upon verbal receipt of a result, the research team communicated the result to the clinical
186 team. Results that were considered explanatory (i.e., explained, likely explained, or partially
187 explained) and secondary results were returned to the family by the clinical genetics
188 consultants. Results that were non-explanatory were returned to the family by the research
189 team.

190 Information about the clinical course of each infant in the IG was collected from the
191 electronic medical record (EMR). Additional information was collected via electronic surveys
192 administered to parents/guardians upon completion of consent (pregnancy, birth, and family
193 history), after results disclosure (impact of results returned), and at 6, 12, and 18 months
194 (developmental milestones and healthcare utilization) after enrollment. For CCG infants, clinical
195 data including gestational age at birth, age at admission, diagnoses at admission, and PrGD
196 were collected from the EMR.

197 Access to a PrGD was assessed upon receipt of results, and at 3 and 15 months after
198 enrollment. These latter two time points were selected to allow for completion of additional
199 testing (e.g., orthogonal validation of results, evaluation for somatic mosaicism, etc.) and clinical
200 evaluations, both of which were used to assist adjudication of variants found via rWGS and
201 identify variants not detected by rWGS. Changes in management were defined as actions taken
202 as a result of a PrGD including additional laboratory testing, imaging, consultations, procedures,
203 and changes in medical treatment.

204 Race and ethnicity information were collected by review of family history obtained by a
205 genetic counselor or clinical geneticist, and from race and ethnicity terms reported in the EMR.
206 Information collected by a provider was prioritized over that obtained from the EMR. Each
207 individual was assigned by the research team to one of six PPARC: Asian, Black, Hispanic,
208 Native American, non-Hispanic white and non-white multi-racial (NWMR).

209

210 *Outcomes and Statistical analysis*

211 Primary outcomes assessed were: 1) access to a PrGD defined as the percentage of
212 patients eligible for testing who received a PrGD; 2) diagnostic yield defined in the IG as the
213 percentage of patients tested with a variant identified by rWGS that likely explained, explained,
214 or partially explained the clinical findings of a patient and in the CCG as a variant identified by
215 any genetic testing that likely explained, explained, or partially explained the clinical findings of a

216 patient; 3) access to a PrGD and diagnostic yield among PPARC groups; and 4) PrGD missed
217 in the IG defined as families with a PrGD in whom genetic testing was not offered as part of
218 conventional care. In the IG, access to a PrGD and diagnostic yield are identical metrics as all
219 patients were tested.

220 The primary comparison between rate of PrGD diagnosis in the IG vs. CCG was made
221 using a generalized linear model (logistic regression), with χ^2 or Fisher's exact test applied to
222 smaller subsample comparisons. Fisher's exact test was used when greater than 20% of cells
223 had fewer than five individuals. Regressions were conducted in R version 4.4.1⁶⁸, with condition
224 coded as CCG=0 and IG=1. A p-value of 0.05 or less was deemed statistically significant.

225

226 Results

227 From January 2021 to February 2022, 408 infants were admitted to the NICU (Figure 1).
228 A total of 168 patients were ineligible (Supplementary Table 1) because their clinical findings
229 were explained by birth trauma (n=64), prematurity (n=47), infection (n=36), a pre-existing PrGD
230 (n=15) and "other" reasons including observation for a condition not identified (n=6). Two
231 hundred forty infants were eligible to participate. Thirty-one infants were discharged, transferred
232 from the NICU, or died before their families were available for eligibility screening and were
233 therefore considered "missed." Two hundred nine families were screened, and 126 (60%)
234 enrolled in the IG. Most enrolled patients (n=89, 71%) had either multiple congenital anomalies
235 (n=56, 44%) or an anomaly of a single organ / body part (n=33, 26%). Twelve infants had either
236 abnormal laboratory tests (n=10, 8%) or hematological abnormalities (n=2, 2%); 9 (7%) had
237 seizures, 6 (5%) had single or multi-organ failure, 3 (2%) had strokes, and 7 (6%) had other
238 unclassified admission diagnoses (e.g., congenital ichthyosis, meconium ileus, vocal cord
239 paresis, etc. [Supplementary Table 2]).

240 A total of 83 families declined to participate (Supplementary Table 3). Thirty-two parents
241 did not respond to requests for interview. The remaining families cited being overwhelmed

242 (n=26), concerns that testing was unnecessary (n=13), discomfort with research (n=7),
243 concerns over privacy (n=3), or concerns about phlebotomy (n=2). Infants who were eligible but
244 “missed” (n=31) or whose parents declined to participate (n=83) were assigned to the CCG
245 (n=114).

246 Eighty-five infants had one or more variants or events reported by GeneDx that
247 disrupted 120 genes, genomic regions or the mitochondrial genome (Figure 2). No variants
248 were reported in 41 infants (Figure 2). Clinical interpretation of these variants and events led to
249 a rapid PrGD in a total of 62/126 (49%) infants in the IG in the first 90 days post enrollment
250 (Table 2, Figure 3). Most infants were reported to have variant(s) that explained (n=37; 29%) or
251 likely explained (n=21; 17%) their clinical findings (Figure 2). Clinical findings were partially
252 explained in 4 (3%) infants. No PrGD was made in 64/126 infants (51%) including 7 (6%) who
253 received only secondary findings and 57 (45%) in whom no explanatory variants were identified.
254 In the CCG, a PrGD was made in 11/114 (10%) infants within their first 90 days of
255 hospitalization, significantly fewer (49% vs. 10%, $p<0.00001$) than in the IG (Figure 3). This
256 difference was sustained over the ensuing 12 months, 63/126 or 50%, in the IG compared to
257 12/114 or 11% in the CCG ($p<0.00001$). This difference reflected differences in access to
258 genetic testing as only a subset (n=46) of infants in the CCG underwent clinical genetic testing,
259 and even fewer (n=7) underwent ES in the first fifteen months of life (Supplementary Table 4).
260 But even among patients who received any type of genetic testing, the difference in diagnostic
261 yield in PrGD between the IG and the CCG was significant at 90 days (62/126, 49% vs. 11/45,
262 24%; 0.0039) and remained significant (63/126, 50% vs. 12/46, 26%; $p=0.0087$).

263 Logistic regression revealed a significant effect of use of exclusion criteria in the IG vs.
264 CCG on the likelihood of receiving a PrGD ($\beta = 2.07$, 95% CI = 1.40-2.80, $Z=5.84$, $p<.0001$).
265 This effect translates to an odds ratio (OR) of 7.92, meaning that infants in the IG were nearly 8
266 times more likely to receive a PrGD than infants in the CCG group, and the odds of receiving a
267 PrGD increased by 692% for infants in the IG vs. CCG group. This effect remained significant

268 after controlling for infant sex and race/ethnicity in the model ($\beta = 2.21$, 95% CI = 1.53-2.98,
269 $Z=6.02$, $p<.0001$, OR=9.16).

270 Of 126 patients in the IG, the diagnostic yield varied by phenotypic categorial group
271 (Table 3, Figure 4A) from 33% in those with isolated structural anomalies to 70% in infants with
272 laboratory abnormalities and infants with clinical findings not easily categorized (71%)
273 (Supplementary Table 5). The diagnostic yields in infants with multiple congenital anomalies
274 (MCA; 54%), whether with (57%) or without (50%) congenital heart defects (CHD), and seizures
275 (56%) were similar. A PrGD was made in both patients with hematological abnormalities but
276 none of the 3 patients with stroke. A total of 68 conditions were identified in the 63 infants who
277 received a PrGD including 59 infants with a single condition, 3 infants with two conditions, and
278 one infant with three conditions. Inherited or *de novo* autosomal dominant events were
279 responsible for 32 of 68 (47%) conditions found in 31 infants. Twenty-two autosomal recessive
280 conditions were identified in 21 infants and 6 X-linked conditions were identified in 6 infants.
281 Eleven chromosomal abnormalities including aneuploidy, uniparental disomy, microdeletions, or
282 duplications were observed in 11 infants. Four infants had mitochondrial disorders, two as a
283 result of mtDNA mutations and two with autosomal recessive conditions (Supplementary Table
284 6).

285 The number of infants with CHDs in the IG is notably lower than is typical of infants
286 admitted to a NICU as most newborns admitted to SCH with CHDs are instead admitted to a
287 Cardiac Intensive Care Unit (CICU). For this reason, from August 2021 to December 2021, we
288 applied the same eligibility criteria and assessment workflow to infants admitted to the CICU
289 until a sample size of 25 families was reached. A total of 52 infants were assessed, 42 of whom
290 were eligible. Forty-one families were interviewed, and 25 (61%) enrolled in SeqFirst. Most
291 enrolled patients ($n=15$, 60%) had an isolated CHD (Supplementary Table 7). Fourteen of these
292 were simplex families and one infant had a family history of dominantly inherited CHD. Nine
293 infants had CHD as one of multiple congenital anomalies, and one infant was admitted with

294 supraventricular tachycardia. A PrGD was made in a total of 8/25 (32%) infants in the CICU
295 group, 3 /15 (20%) of the infants with isolated CHD, and 5/9 (56%) of the infants with MCA.

296

297 *Stratification by patient or provider assigned racial construct (PPARC)*

298

299 Access to a PrGD among PPARC groups in the IG in the first 90 days of hospitalization
300 ranged between 20% (1/5; Native American) and 80% (8/10; Black) but none of these
301 differences were statistically significant (Table 2, Figure 4B). Access to a PrGD was not
302 statistically different among PPARC groups 12 months later ($p=0.1107$). Across PPARC groups
303 in the CCG, a PrGD was made in 5 families that identified as non-Hispanic white, 4 that
304 identified as Asian and 2 that identified as Hispanic in the first 90 days. A PrGD was not made in
305 any family that identified as Black, multi-racial, or Native American. A PrGD was made in only
306 one additional infant, (i.e., 12 / 114 families instead of 11 / 114 families) 12 months later. The
307 small number of PrGD in CCG families precluded a robust test of statistical significance of
308 differences across PPARC groups at either assessment point. In both the IG and the CCG,
309 collapsing PPARC assignments and comparing non-Hispanic whites to non-whites or comparing
310 non-Hispanic whites to Black+1P where families with at least one parent who identified as Black
311 were categorized as Black instead of multi-racial did not reveal statistically significant
312 differences in access to a PrGD.

313 Access to a PrGD in PPARC groups in the IG compared to the CCG at 90 days differed
314 significantly between non-Hispanic white (28/52, 54% vs. 5/48, 10%; $p<0.00001$), non-white
315 (34/74, 46% vs. 6/59, 10%; $p<0.00001$), Black (8/10, 80% vs. 0/12; $p=0.00001$) and Black+1P
316 (11/17, 65% vs. 0/17; $p=0.0001$) groups. Access to a PrGD did not differ significantly between
317 Asian ($p=0.1043$), Hispanic ($p=0.0764$), Native American ($p=1.0$), or multi-racial ($p=0.1137$)
318 PPARC groups in the IG compared to the CCG groups. These differences in access to a PrGD
319 between the IG and CCG result in part from differences in access to genetic testing, which

320 differed significantly between the groups. Accordingly, we repeated the analysis but included
321 only CCG infants who were tested. The difference in access to a PrGD in the IG versus CCG
322 non-Hispanic white group was no longer statistically significant ($p < 0.1$) whereas the difference
323 in access to a PrGD in the IG versus CCG remained statistically significant between non-white
324 (34/74, 46% vs. 6/29, 21%; $p=0.024$), Black+1P (11/17, 65% vs. 0/8; $p=0.003$), and Black (8/10,
325 80% vs. 0/4; $p=0.015$) groups.

326

327 *Yield of precise genetic diagnoses in newborns not suspected of having a genetic condition*

328

329 For participants in the IG who had a PrGD made in the first 90 days, we compared their
330 outcome to that from testing provided in parallel per a standard clinical workflow. This revealed
331 use of a standard workflow for ascertainment and testing would have missed a PrGD in
332 26/62 (42%) of these infants (Supplementary Table 8, Supplementary Figure 1). Nearly one
333 quarter (15/62; 24%) of the infants who received a PrGD in the IG in the first 90 days did not
334 have documented suspicion of a genetic condition in their EMR and therefore were not offered
335 clinical genetics consultation or genetic testing as part of their conventional care. All but one
336 (14/15) of these infants were diagnosed with genetic conditions that do not have recognizable
337 physical features, and most of these infants were described as having an unexpected response
338 to therapies or severity of illness disproportionate to what was expected based upon provisional
339 clinical diagnosis. Moreover, 10/15 (67%) of these infants were identified as a PPARC other
340 than non-Hispanic white. An additional 11/26 infants did not receive a PrGD despite clinical
341 genetics consultation and targeted genetic testing ($n=9$) or because of lack of access to testing
342 due to demise shortly after admission ($n=2$). Moreover, twice as many of these infants ($n=18$)
343 identified with a PPARC other than non-Hispanic white compared to those that identified as
344 white ($n=8$).

345 We sought to assess the ability of neonatologists to predict which patients would receive
346 a PrGD from the information available to them. We defined successful prediction of PrGD status
347 as requesting a genetics consult in a patient who was later found to have a PrGD and not
348 requesting a genetics consult in a patient who did not receive a PrGD. Overall, neonatologists
349 requested a consult in 76% of patients with a PrGD (i.e. recall) and did not request a consult in
350 56% of patients without a PrGD (i.e. precision). However, we hypothesized that there were
351 differences in their ability to predict a PrGD in non-white vs non-Hispanic white patients (Figure
352 5). We used a logistic model to assess the effects of PPARC, referral for a consult, and the
353 interaction between these variables on prediction of a PrGD. Although the impact of neither
354 PPARC nor whether a consult alone was significant, there was a significant interaction term
355 (coef=1.8, p=0.034). This indicates non-Hispanic white infants referred for genetics consultation
356 were 6.1 times more likely to receive a PrGD than non-white infants referred for a genetics
357 consultation. Conversely, non-white infants who were not referred for a genetics consult were
358 2.4 times more likely to receive a PrGD than white infants who also were not referred. To
359 confirm these findings, we used an alternative analysis approach assessing differences in
360 precision (not referring patients who did not later receive a PrGD) and recall (referring patients
361 who later did receive a PrGD). We observed relatively high precision (75%) and recall (86%) for
362 non-Hispanic white patients while both precision and recall were markedly lower (55% and 68%,
363 respectively) for non-white patients, yielding a composite F1 score of 0.61 for non-white patients
364 vs. 0.8 for non-Hispanic white patients. We performed a bootstrapping analysis with 10,000
365 replicates to assess the significance of the differences in F1 score (p=0.013), precision
366 (p=0.033), and recall (0.04) between non-white and non-Hispanic white PPARC groups.

367 Both analyses show that neonatologists were significantly less successful at predicting a
368 potential PrGD in non-white patients compared to non-Hispanic white patients. That is they
369 missed referring for genetics consult disproportionately more often in non-white patients who

370 would eventually receive a PrGD and simultaneously referred more non-white patients for a
371 consult who did not go on to receive a PrGD.

372

373 *Impact of a precise genetic diagnosis on changes in management*

374

375 Using simple exclusion criteria to assess eligibility for testing and use of rWGS as a first-
376 tier test revealed a high proportion of individuals across the IG with results that impacted their
377 clinical care. These impacts fell in one or more of eight changes in management (COM) options
378 (Figure 6). At 90 days after enrollment, access to a PrGD in the IG informed COM in 60 of 62
379 (97%) patients (Figure 5, Supplementary Table 9). Of the 60 families, anticipatory guidance was
380 provided to 53 (88%) and 51 (85%) received recurrence risk counseling. Fifty-two families (87%)
381 had at least one COM other than guidance or counseling. Of these families, the most common
382 management change (38/52; 73%) was request for consultation from additional specialists for
383 further evaluations, typically to facilitate medical decision-making, or consideration of diagnostic
384 imaging procedures. In 16 (31%) of these patients, a PrGD resulted in request for additional
385 laboratory testing, and a PrGD brought about a change in therapeutics in 10 patients (19%). In
386 15 of these 52 families (29%) with a change in management, a PrGD in their newborn had
387 health-related implications for other family members leading to additional genetic testing and/or
388 referrals for medical care (e.g. initiation of screening for hereditary hemorrhagic telangiectasia in
389 a parent). Among 22 families of infants with a PrGD of a condition associated with early
390 mortality, a PrGD contributed to a change in goals of care including a shift to palliative support
391 in 5 (23%) infants.

392 A total of 28 unique combinations of COM were observed, the most common of which
393 included guidance, counseling, and request for consultation (Figure 5). We then tested whether,
394 given a PrGD, a participant's downstream care was impacted by comparing differences in the total
395 number of COM and for any specific COM between non-Hispanic white and non-white PPARC

396 groups and between non-Hispanic white versus Black+1P groups. None of the comparisons reached
397 statistical significance (Wilcoxon rank sum test $p > 0.2$ for all comparisons). There was also no
398 significant difference in total number of COM or any individual COM upon excluding anticipatory
399 guidance and recurrence risk counseling.

400

401 **Discussion**

402 We tested the impact of a genotype-driven workflow using simple, broad exclusion
403 criteria to identify infants with critical illness who might benefit from rWGS as a first-line test,
404 using access to a PrGD, diagnostic yield, access to a PrGD and diagnostic yield among PPARC
405 groups, and missed PrGD in families not offered clinical genetic testing, as primary outcome
406 measures. Use of this workflow significantly increased access to a PrGD and diagnostic yield in
407 newborns admitted to the NICU and this increase was sustained over the ensuing year. Indeed,
408 only 14% of infants who received conventional care were even offered ES by the age of fifteen
409 months, suggesting that access to a PrGD further worsens upon discharge from the NICU, and
410 only about half of these infants (6.1%) underwent ES because of declination or barriers to
411 testing in the outpatient setting (e.g., insurance denials or requirement for additional clinical
412 evaluations). In other words, not using exclusion criteria to determine eligibility for rWGS to
413 infants in the NICU resulted in both an immediate and sustained loss of access to a PrGD and
414 thereby multiple missed opportunities for intervention.

415 Significantly more infants identified as non-white or Black received a PrGD in the IG
416 compared to the CCG, whereas access to a PrGD was comparable across all PPARC groups in
417 the IG. In other words, access to a PrGD was equitable in the IG as a whole and across all
418 PPARC groups compared to the CCG. This is due both to lack of access to genetic testing for
419 infants in the CCG and that when testing was ordered for infants in the CCG, tests with lower
420 diagnostic rates than rWGS were requested, particularly in non-white patients. Achieving equity
421 in access to a PrGD will necessitate removing the many barriers that lead to disparities in

422 underserved populations. Our results suggest that access to testing is a significant barrier in the
423 NICU and that equitable access to a PrGD can be achieved by using simple exclusion criteria
424 rather than conventional patient selection criteria as the basis for offering testing.

425 By comparing rWGS eligibility using simple, broad exclusion to typical inclusion criteria,
426 we observed that the conventional workflow limits access to genetic testing and would have
427 missed the opportunity to make a PrGD in 42% of infants with a PrGD in the IG, despite a
428 substantial infrastructure for providing inpatient clinical genetics services. Most of these infants
429 were non-dysmorphic with common clinical findings. Non-specific presentations of genetic
430 diseases are common in the NICU, and some studies have suggested that requiring a suspicion
431 of a genetic condition as a prerequisite to genetic testing will not only delay ordering testing but
432 will miss up to half of all genetic conditions leading to NICU admission. With approximately 800
433 NICUs in the U.S. (most of which do not have access to clinical geneticists, genetic counselors
434 or ES/WGS), and about 400,000 newborn admissions annually, tens of thousands of newborns
435 admitted to NICUs likely have genetic conditions that are missed due to lack of access to
436 genetic testing, much less access to a PrGD.⁶⁹ Our approach mitigated disparities in access to
437 genetic testing, particularly in non-whites.

438 A primary outcome metric used to assess the utility of ES / WGS, particularly in critical
439 care settings, is diagnostic yield. We anticipated that by using a simplified clinical workflow that
440 based eligibility on excluding infants whose clinical findings were fully explained by indications
441 for NICU admission unlikely due to a genetic variant(s) with a large effect (i.e., prematurity,
442 trauma, or infection), the diagnostic yield in the IG would be low in general and lower than that
443 of standard care provided in parallel. Instead, the diagnostic yield in the IG (50%) was higher
444 than in the conventional care group (26%). This is higher than the average diagnostic yield
445 across more than thirty studies evaluating the use of rapid ES / WGS in pediatric critical care
446 settings and accounted for largely by the PrGD made in infants who a neonatologist did not
447 suspect to have a genetic condition based on clinical findings.

448 Use of diagnostic rate as a proxy for the value of genomic testing has, in our opinion, the
449 potential to be misleading as a primary outcome measure. Diagnostic rates vary widely, often by
450 several fold, across different cohorts, conditions, and clinical contexts, each of which can be
451 defined in ways to maximize the pre-test probability of a PrGD and therefore diagnostic yield.⁷⁰
452 But maximizing pre-test probability of a PrGD can adversely impact access to a PrGD. For
453 example, the combination of subjectivity in case selection and the constraint of expert
454 availability has motivated development and validation of objective criteria to stratify families for
455 ES / WGS to maximize diagnostic rate. Such criteria are typically complex and challenging to
456 navigate even for expert clinical geneticists. Moreover, use of such criteria can be labor-
457 intensive, confusing, and intimidating for non-genetics providers (e.g., neonatologists). As a
458 result of these complex clinical workflows and lack of support for non-genetics providers,
459 critically ill infants who could benefit from genetic testing may often not be offered testing due to
460 ineligibility against these criteria or never having been evaluated for eligibility in the first place.
461 Simple exclusion criteria have the potential to improve access to a PrGD by offering a
462 straightforward, objective workflow for clinicians.

463 Limitations of this study include that it was performed at a single site of care with
464 potential differences in access to admission to the NICU and that its duration was limited to just
465 a year. It is possible that differences in access to genetic testing and a PrGD between the IG
466 and CCG are partly due to a selection bias resulting in more families in the CCG who were less
467 interested in testing or a PrGD, and / or a higher number of deaths in the CCG such that testing
468 could not be offered. However, of the 114 families enrolled in the CCG 90% (46/51) who were
469 offered genetic testing consented to testing and while there were 10 deaths (9% of the cohort) in
470 the CCG, 15 infants (12%) in the IG died in the first year of life. Differences in the presenting
471 clinical findings between the IG and CCG might have also led to differences in access to testing
472 and / or diagnostic yield. However, the percentage of patients with multiple congenital
473 anomalies, isolated congenital anomalies, abnormal lab values, and seizure disorders was

474 similar in each cohort. While survey and EMR data were available for the IG so that, for
475 example, families could be directly questioned about the impact of a PrGD on clinical care, for
476 the CCG, data were available only from the EMR. Lastly, the sample sizes of individual PPARC
477 groups were small, necessitating labeling patients into broad categories such as non-Hispanic,
478 white and non-white. This limits assessment of impact to a high, rather than granular, level
479 thereby impeding identification of potential barriers to testing.

480

481 **Conclusions**

482 Our results suggest that use of a simple workflow based on exclusion of only infants with
483 clinical findings fully explained by prematurity, infection, or trauma to assess eligibility for rWGS
484 coupled with support of provider readiness improves access to a PrGD and more equitable
485 access to a PrGD. Major limitations of conventional workflows include dependence on use of
486 complex stratification algorithms to maximize diagnostic rates and stepwise testing to minimize
487 cost that alone, much less in combination, are challenging to operationalize and result in missed
488 opportunities to make a PrGD, particularly in non-white infants. Collectively, our results
489 demonstrate clear opportunities exist to improve equitable access to a PrGD in critically ill
490 newborns and are a step toward establishing a practice to increase equity in the use of
491 genomics in the critical care of infants and in Pediatrics in general.

492

493 **Acknowledgements**

494 We thank the families for their participation and support. We thank the faculty and staff of the
495 SCH NICU and the CICU. Financial support was provided by grants from GeneDx, the Brotman-
496 Baty Institute, and University of Washington Center for Rare Disease Research (UW-CRDR)
497 with additional contributions from NHGRI grants U01 HG011744, UM1 HG006493,
498 and U24 HG011746. The content is solely the responsibility of the authors and does not

499 necessarily represent the official views of the National Institutes of Health.

500

501 **Declaration of Interests**

502 M. Bamshad is on the Scientific Advisory Board of GeneDx, and has research agreements with
503 GeneDx, Illumina, Inc., and PacBio, Inc. All GeneDx authors are/were employed by and may own
504 stock in GeneDx, Inc. D.L. Veenstra has served as a consultant to Illumina, Inc. D.E. Miller is
505 engaged in a research agreement with Oxford Nanopore Technologies (ONT). ONT has paid for
506 D.E. Miller to travel to speak on their behalf. D.E. Miller holds stock options in MyOme. Other
507 authors declare no competing interests.

508

509 **Data and code availability**

510 All data needed to evaluate the conclusions in the paper are present in the paper and/or the
511 supplemental information. The rWGS data will be deposited in NHGRI's Analysis Visualization
512 and Informatics Lab-space (AnVIL) (accession number phs003047, "internal_project_id"
513 contains seqfirst-neo). All other data are available upon request and if consistent with the
514 informed consent of study participants.

515

516

517

518

519

520

521

522

523

524 References

- 525 1. Bamshad MJ, Nickerson DA, Chong JX. Mendelian Gene Discovery: Fast and Furious with No End in
526 Sight. *Am J Hum Genet.* 2019;105(3):448-455. doi:10.1016/j.ajhg.2019.07.011
- 527 2. Chong JX, Buckingham KJ, Jhangiani SN, et al. The Genetic Basis of Mendelian Phenotypes:
528 Discoveries, Challenges, and Opportunities. *Am J Hum Genet.* 2015;97(2):199-215.
529 doi:10.1016/j.ajhg.2015.06.009
- 530 3. Cakici JA, Dimmock DP, Caylor SA, et al. A Prospective Study of Parental Perceptions of Rapid Whole-
531 Genome and -Exome Sequencing among Seriously Ill Infants. *Am J Hum Genet.* 2020;107(5):953-962.
532 doi:10.1016/j.ajhg.2020.10.004
- 533 4. Kingsmore SF, Cakici JA, Clark MM, et al. A Randomized, Controlled Trial of the Analytic and
534 Diagnostic Performance of Singleton and Trio, Rapid Genome and Exome Sequencing in Ill Infants. *Am*
535 *J Hum Genet.* 2019;105(4):719-733. doi:10.1016/j.ajhg.2019.08.009
- 536 5. Dimmock DP, Clark MM, Gaughran M, et al. An RCT of Rapid Genomic Sequencing among Seriously Ill
537 Infants Results in High Clinical Utility, Changes in Management, and Low Perceived Harm. *Am J Hum*
538 *Genet.* 2020;107(5):942-952. doi:10.1016/j.ajhg.2020.10.003
- 539 6. Wu B, Kang W, Wang Y, et al. Application of Full-Spectrum Rapid Clinical Genome Sequencing
540 Improves Diagnostic Rate and Clinical Outcomes in Critically Ill Infants in the China Neonatal
541 Genomes Project. *Crit Care Med.* 2021;49(10):1674-1683. doi:10.1097/CCM.0000000000005052
- 542 7. Ouyang X, Zhang Y, Zhang L, et al. Clinical Utility of Rapid Exome Sequencing Combined With
543 Mitochondrial DNA Sequencing in Critically Ill Pediatric Patients With Suspected Genetic Disorders.
544 *Front Genet.* 2021;12:725259. doi:10.3389/fgene.2021.725259
- 545 8. Hagen L, Khattar D, Whitehead K, He H, Swarr DT, Suhrie K. Detection and impact of genetic disease
546 in a level IV neonatal intensive care unit. *J Perinatol Off J Calif Perinat Assoc.* 2022;42(5):580-588.
547 doi:10.1038/s41372-022-01338-0
- 548 9. The NICUSeq Study Group, Krantz ID, Medne L, et al. Effect of Whole-Genome Sequencing on the
549 Clinical Management of Acutely Ill Infants With Suspected Genetic Disease: A Randomized Clinical
550 Trial. *JAMA Pediatr.* 2021;175(12):1218. doi:10.1001/jamapediatrics.2021.3496
- 551 10. Australian Genomics Health Alliance Acute Care Flagship, Lunke S, Eggers S, et al. Feasibility of
552 Ultra-Rapid Exome Sequencing in Critically Ill Infants and Children With Suspected Monogenic
553 Conditions in the Australian Public Health Care System. *JAMA.* 2020;323(24):2503-2511.
554 doi:10.1001/jama.2020.7671
- 555 11. Ceyhan-Birsoy O, Murry JB, Machini K, et al. Interpretation of Genomic Sequencing Results in
556 Healthy and Ill Newborns: Results from the BabySeq Project. *Am J Hum Genet.* 2019;104(1):76-93.
557 doi:10.1016/j.ajhg.2018.11.016
- 558 12. Dimmock D, Caylor S, Waldman B, et al. Project Baby Bear: Rapid precision care incorporating
559 rWGS in 5 California children's hospitals demonstrates improved clinical outcomes and reduced costs
560 of care. *Am J Hum Genet.* 2021;108(7):1231-1238. doi:10.1016/j.ajhg.2021.05.008

- 561 13. Olde Keizer RACM, Marouane A, Kerstjens-Frederikse WS, et al. Rapid exome sequencing as a
562 first-tier test in neonates with suspected genetic disorder: results of a prospective multicenter clinical
563 utility study in the Netherlands. *Eur J Pediatr.* 2023;182(6):2683-2692. doi:10.1007/s00431-023-
564 04909-1
- 565 14. McDermott H, Sherlaw-Sturrock C, Baptista J, Hartles-Spencer L, Naik S. Rapid exome
566 sequencing in critically ill children impacts acute and long-term management of patients and their
567 families: A retrospective regional evaluation. *Eur J Med Genet.* 2022;65(9):104571.
568 doi:10.1016/j.ejmg.2022.104571
- 569 15. Farnaes L, Hildreth A, Sweeney NM, et al. Rapid whole-genome sequencing decreases infant
570 morbidity and cost of hospitalization. *NPJ Genomic Med.* 2018;3:10. doi:10.1038/s41525-018-0049-4
- 571 16. Freed AS, Clowes Candadai SV, Sikes MC, et al. The Impact of Rapid Exome Sequencing on
572 Medical Management of Critically Ill Children. *J Pediatr.* 2020;226:202-212.e1.
573 doi:10.1016/j.jpeds.2020.06.020
- 574 17. Petrikin JE, Cakici JA, Clark MM, et al. The NSIGHT1-randomized controlled trial: rapid whole-
575 genome sequencing for accelerated etiologic diagnosis in critically ill infants. *Npj Genomic Med.*
576 2018;3(1):6. doi:10.1038/s41525-018-0045-8
- 577 18. Meng L, Pammi M, Saronwala A, et al. Use of Exome Sequencing for Infants in Intensive Care
578 Units: Ascertainment of Severe Single-Gene Disorders and Effect on Medical Management. *JAMA*
579 *Pediatr.* 2017;171(12):e173438. doi:10.1001/jamapediatrics.2017.3438
- 580 19. French CE, Delon I, Dolling H, et al. Whole genome sequencing reveals that genetic conditions
581 are frequent in intensively ill children. *Intensive Care Med.* 2019;45(5):627-636. doi:10.1007/s00134-
582 019-05552-x
- 583 20. Scholz T, Blohm ME, Kortüm F, et al. Whole-Exome Sequencing in Critically Ill Neonates and
584 Infants: Diagnostic Yield and Predictability of Monogenic Diagnosis. *Neonatology.* 2021;118(4):454-
585 461. doi:10.1159/000516890
- 586 21. Maron JL, Kingsmore S, Gelb BD, et al. Rapid Whole-Genomic Sequencing and a Targeted
587 Neonatal Gene Panel in Infants With a Suspected Genetic Disorder. *JAMA.* 2023;330(2):161-169.
588 doi:10.1001/jama.2023.9350
- 589 22. Wild KT, Miquel-Verges F, Rintoul NE, et al. Current Practices for Genetic Testing in Neonatal
590 Extracorporeal Membrane Oxygenation: Findings from a National survey. *Perfusion.* 2024;39(1):116-
591 123. doi:10.1177/02676591221130178
- 592 23. Callahan KP, Radack J, Wojcik MH, et al. Hospital-level variation in genetic testing in children's
593 hospitals' neonatal intensive care units from 2016 to 2021. *Genet Med.* 2023;25(3):100357.
594 doi:10.1016/j.gim.2022.12.004
- 595 24. Hays T, Hernan R, Disco M, et al. Implementation of Rapid Genome Sequencing for Critically Ill
596 Infants With Complex Congenital Heart Disease. *Circ Genomic Precis Med.* 2023;16(5):415-420.
597 doi:10.1161/CIRCGEN.122.004050

- 598 25. Franck LS, Kriz RM, Rego S, Garman K, Hobbs C, Dimmock D. Implementing Rapid Whole-
599 Genome Sequencing in Critical Care: A Qualitative Study of Facilitators and Barriers to New
600 Technology Adoption. *J Pediatr*. 2021;237:237-243.e2. doi:10.1016/j.jpeds.2021.05.045
- 601 26. D’Gama AM, Del Rosario MC, Bresnahan MA, Yu TW, Wojcik MH, Agrawal PB. Integrating rapid
602 exome sequencing into NICU clinical care after a pilot research study. *NPJ Genomic Med*.
603 2022;7(1):51. doi:10.1038/s41525-022-00326-9
- 604 27. Leon RL, Levy PT, Hu J, et al. Practice variations for fetal and neonatal congenital heart disease
605 within the Children’s Hospitals Neonatal Consortium. *Pediatr Res*. 2023;93(6):1728-1735.
606 doi:10.1038/s41390-022-02314-2
- 607 28. Wojcik MH, Callahan KP, Antoniou A, et al. Provision and availability of genomic medicine
608 services in Level IV neonatal intensive care units. *Genet Med Off J Am Coll Med Genet*.
609 2023;25(10):100926. doi:10.1016/j.gim.2023.100926
- 610 29. Elliott AM, du Souich C, Lehman A, et al. RAPIDOMICS: rapid genome-wide sequencing in a
611 neonatal intensive care unit-successes and challenges. *Eur J Pediatr*. 2019;178(8):1207-1218.
612 doi:10.1007/s00431-019-03399-4
- 613 30. Saunders CJ, Miller NA, Soden SE, et al. Rapid whole-genome sequencing for genetic disease
614 diagnosis in neonatal intensive care units. *Sci Transl Med*. 2012;4(154):154ra135.
615 doi:10.1126/scitranslmed.3004041
- 616 31. Clark MM, Hildreth A, Batalov S, et al. Diagnosis of genetic diseases in seriously ill children by
617 rapid whole-genome sequencing and automated phenotyping and interpretation. *Sci Transl Med*.
618 2019;11(489):eaat6177. doi:10.1126/scitranslmed.aat6177
- 619 32. Yang Y, Muzny DM, Xia F, et al. Molecular findings among patients referred for clinical whole-
620 exome sequencing. *JAMA*. 2014;312(18):1870-1879. doi:10.1001/jama.2014.14601
- 621 33. Guo F, Liu R, Pan Y, et al. Evidence from 2100 index cases supports genome sequencing as a
622 first-tier genetic test. *Genet Med*. 2024;26(1):100995. doi:10.1016/j.gim.2023.100995
- 623 34. Willig LK, Petrikin JE, Smith LD, et al. Whole-genome sequencing for identification of Mendelian
624 disorders in critically ill infants: a retrospective analysis of diagnostic and clinical findings. *Lancet*
625 *Respir Med*. 2015;3(5):377-387. doi:10.1016/S2213-2600(15)00139-3
- 626 35. van Diemen CC, Kerstjens-Frederikse WS, Bergman KA, et al. Rapid Targeted Genomics in
627 Critically Ill Newborns. *Pediatrics*. 2017;140(4):e20162854. doi:10.1542/peds.2016-2854
- 628 36. Stark Z, Lunke S, Brett GR, et al. Meeting the challenges of implementing rapid genomic testing
629 in acute pediatric care. *Genet Med Off J Am Coll Med Genet*. 2018;20(12):1554-1563.
630 doi:10.1038/gim.2018.37
- 631 37. Mestek-Boukhibar L, Clement E, Jones WD, et al. Rapid Paediatric Sequencing (RaPS):
632 comprehensive real-life workflow for rapid diagnosis of critically ill children. *J Med Genet*.
633 2018;55(11):721-728. doi:10.1136/jmedgenet-2018-105396

- 634 38. Sanford EF, Clark MM, Farnaes L, et al. Rapid Whole Genome Sequencing Has Clinical Utility in
635 Children in the PICU. *Pediatr Crit Care Med J Soc Crit Care Med World Fed Pediatr Intensive Crit Care*
636 *Soc.* 2019;20(11):1007-1020. doi:10.1097/PCC.0000000000002056
- 637 39. Gubbels CS, VanNoy GE, Madden JA, et al. Prospective, phenotype-driven selection of critically ill
638 neonates for rapid exome sequencing is associated with high diagnostic yield. *Genet Med Off J Am*
639 *Coll Med Genet.* 2020;22(4):736-744. doi:10.1038/s41436-019-0708-6
- 640 40. Wu ET, Hwu WL, Chien YH, et al. Critical Trio Exome Benefits In-Time Decision-Making for
641 Pediatric Patients With Severe Illnesses. *Pediatr Crit Care Med J Soc Crit Care Med World Fed Pediatr*
642 *Intensive Crit Care Soc.* 2019;20(11):1021-1026. doi:10.1097/PCC.0000000000002068
- 643 41. Wang H, Qian Y, Lu Y, et al. Clinical utility of 24-h rapid trio-exome sequencing for critically ill
644 infants. *Npj Genomic Med.* 2020;5(1):20. doi:10.1038/s41525-020-0129-0
- 645 42. Carey AS, Schacht JP, Umandap C, et al. Rapid exome sequencing in PICU patients with new-
646 onset metabolic or neurological disorders. *Pediatr Res.* 2020;88(5):761-768. doi:10.1038/s41390-020-
647 0858-x
- 648 43. Smith HS, Swint JM, Lalani SR, et al. Exome sequencing compared with standard genetic tests for
649 critically ill infants with suspected genetic conditions. *Genet Med Off J Am Coll Med Genet.*
650 2020;22(8):1303-1310. doi:10.1038/s41436-020-0798-1
- 651 44. Chung CCY, Leung GKC, Mak CCY, et al. Rapid whole-exome sequencing facilitates precision
652 medicine in paediatric rare disease patients and reduces healthcare costs. *Lancet Reg Health West*
653 *Pac.* 2020;1:100001. doi:10.1016/j.lanwpc.2020.100001
- 654 45. Powis Z, Farwell Hagman KD, Blanco K, et al. When moments matter: Finding answers with rapid
655 exome sequencing. *Mol Genet Genomic Med.* 2020;8(2):e1027. doi:10.1002/mgg3.1027
- 656 46. Śmigiel R, Biela M, Szmyd K, et al. Rapid Whole-Exome Sequencing as a Diagnostic Tool in a
657 Neonatal/Pediatric Intensive Care Unit. *J Clin Med.* 2020;9(7):2220. doi:10.3390/jcm9072220
- 658 47. Maron JL, Kingsmore SF, Wigby K, et al. Novel Variant Findings and Challenges Associated With
659 the Clinical Integration of Genomic Testing: An Interim Report of the Genomic Medicine for Ill
660 Neonates and Infants (GEMINI) Study. *JAMA Pediatr.* 2021;175(5):e205906.
661 doi:10.1001/jamapediatrics.2020.5906
- 662 48. Denommé-Pichon AS, Vitobello A, Olaso R, et al. Accelerated genome sequencing with
663 controlled costs for infants in intensive care units: a feasibility study in a French hospital network. *Eur*
664 *J Hum Genet EJHG.* 2022;30(5):567-576. doi:10.1038/s41431-021-00998-4
- 665 49. Halabi N, Ramaswamy S, El Naofal M, et al. Rapid whole genome sequencing of critically ill
666 pediatric patients from genetically underrepresented populations. *Genome Med.* 2022;14(1):56.
667 doi:10.1186/s13073-022-01061-7
- 668 50. Diaby V, Babcock A, Huang Y, et al. Real-world economic evaluation of prospective rapid whole-
669 genome sequencing compared to a matched retrospective cohort of critically ill pediatric patients in
670 the United States. *Pharmacogenomics J.* 2022;22(4):223-229. doi:10.1038/s41397-022-00277-5

- 671 51. Wells CF, Boursier G, Yaou K, et al. Rapid exome sequencing in critically ill infants:
672 implementation in routine care from French regional hospital's perspective. *Eur J Hum Genet EJHG*.
673 2022;30(9):1076-1082. doi:10.1038/s41431-022-01133-7
- 674 52. Bupp CP, Ames EG, Arenchild MK, et al. Breaking Barriers to Rapid Whole Genome Sequencing in
675 Pediatrics: Michigan's Project Baby Deer. *Children*. 2023;10(1):106. doi:10.3390/children10010106
- 676 53. Pronman-Thompson L. Clinical utility of positive, negative and uncertain results of rapid whole
677 genome sequencing for infants in an inpatient setting.
- 678 54. Lumaka A, Fasquelle C, Debray FG, et al. Rapid Whole Genome Sequencing Diagnoses and
679 Guides Treatment in Critically Ill Children in Belgium in Less than 40 Hours. *Int J Mol Sci*.
680 2023;24(4):4003. doi:10.3390/ijms24044003
- 681 55. Wojcik MH, Bresnahan M, Del Rosario MC, Ojeda MM, Kritzer A, Fraiman YS. Rare diseases,
682 common barriers: disparities in pediatric clinical genetics outcomes. *Pediatr Res*. 2023;93(1):110-117.
683 doi:10.1038/s41390-022-02240-3
- 684 56. Fraiman YS, Wojcik MH. The influence of social determinants of health on the genetic diagnostic
685 odyssey: who remains undiagnosed, why, and to what effect? *Pediatr Res*. 2021;89(2):295-300.
686 doi:10.1038/s41390-020-01151-5
- 687 57. Best S, Vidic N, An K, Collins F, White SM. A systematic review of geographical inequities for
688 accessing clinical genomic and genetic services for non-cancer related rare disease. *Eur J Hum Genet*
689 *EJHG*. 2022;30(6):645-652. doi:10.1038/s41431-021-01022-5
- 690 58. Edwards TL, Breeyear J, Piekos JA, Velez Edwards DR. Equity in Health: Consideration of Race
691 and Ethnicity in Precision Medicine. *Trends Genet*. 2020;36(11):807-809.
692 doi:10.1016/j.tig.2020.07.001
- 693 59. Khoury MJ, Bowen S, Dotson WD, et al. Health equity in the implementation of genomics and
694 precision medicine: A public health imperative. *Genet Med Off J Am Coll Med Genet*.
695 2022;24(8):1630-1639. doi:10.1016/j.gim.2022.04.009
- 696 60. Ravi D, Iacob A, Profit J. Unequal care: Racial/ethnic disparities in neonatal intensive care
697 delivery. *Semin Perinatol*. 2021;45(4):151411. doi:10.1016/j.semperi.2021.151411
- 698 61. Wallace M, Crear-Perry J, Richardson L, Tarver M, Theall K. Separate and unequal: Structural
699 racism and infant mortality in the US. *Health Place*. 2017;45:140-144.
700 doi:10.1016/j.healthplace.2017.03.012
- 701 62. Profit J, Gould JB, Bennett M, et al. Racial/Ethnic Disparity in NICU Quality of Care Delivery.
702 *Pediatrics*. 2017;140(3):e20170918. doi:10.1542/peds.2017-0918
- 703 63. Horbar JD, Edwards EM, Greenberg LT, et al. Variation in Performance of Neonatal Intensive
704 Care Units in the United States. *JAMA Pediatr*. 2017;171(3):e164396.
705 doi:10.1001/jamapediatrics.2016.4396

- 706 64. Howell EA, Janevic T, Hebert PL, Egorova NN, Balbierz A, Zeitlin J. Differences in Morbidity and
707 Mortality Rates in Black, White, and Hispanic Very Preterm Infants Among New York City Hospitals.
708 *JAMA Pediatr.* 2018;172(3):269-277. doi:10.1001/jamapediatrics.2017.4402
- 709 65. Sigurdson K, Mitchell B, Liu J, et al. Racial/Ethnic Disparities in Neonatal Intensive Care: A
710 Systematic Review. *Pediatrics.* 2019;144(2):e20183114. doi:10.1542/peds.2018-3114
- 711 66. Glazer KB, Sofaer S, Balbierz A, Wang E, Howell EA. Perinatal care experiences among racially
712 and ethnically diverse mothers whose infants required a NICU stay. *J Perinatol Off J Calif Perinat*
713 *Assoc.* 2021;41(3):413-421. doi:10.1038/s41372-020-0721-2
- 714 67. Borovetz HS, Kormos RL, Griffith BP, Hung TC. Clinical utilization of the artificial heart. *Crit Rev*
715 *Biomed Eng.* 1989;17(2):179-201.
- 716 68. R Core Team. R: A language and environment for statistical computing. [https://www.R-](https://www.R-project.org/)
717 [project.org/](https://www.R-project.org/)
- 718 69. DC Goodman, Little G, Harrison W, Moen A, Mowitz M, Ganduglia-Cazaban C. *The Dartmouth*
719 *Atlas of Neonatal Intensive Care.* Dartmouth Institute Health Policy Clinical Practice; 2019.
- 720 70. Kingsmore SF, Cole FS. The Role of Genome Sequencing in Neonatal Intensive Care Units. *Annu*
721 *Rev Genomics Hum Genet.* 2022;23(1):427-448. doi:10.1146/annurev-genom-120921-103442

722

723

724

725

726

727

728

729

730

731

732

733

734

735

736 **Figure legends:**

737

738 **Figure 1. STROBE diagram**

739 SeqFirst-neo cohort ascertainment of interventional group (IG) and conventional care group
740 (CCG) depicted using a STROBE diagram.

741

742 **Figure 2. Adjudication of variants reported in patients in the intervention cohort**

743 Of the 126 participants, 85 had one or more potentially explanatory variants reported by
744 GeneDx based on the American College of Medical Genetics and Genomics (ACMG) guidelines
745 for clinical sequence interpretation (variant of uncertain significance [VUS], likely pathogenic
746 [LP], pathogenic [P]). We grouped these variants by the genes/regions in which they were
747 reported (i.e., single gene, cytogenetic event, mitochondrial event) and by the inferred
748 inheritance pattern(s) of the condition(s) they underlie (autosomal dominant [AD] or X-linked
749 [XL], autosomal recessive [AR], or unknown mode of inheritance [MOI] for genes that underlie
750 both AD and AR conditions. Variant(s) or event(s) and the MOI were then adjudicated together
751 to determine whether each combination was explanatory of clinical findings (either partly or
752 fully), unrelated to clinical findings and secondary, or of uncertain relationship to clinical findings
753 of each participant. Variants / events in each participant were counted separately so for
754 example the same genotype in two participants would be counted twice.

755

756 **Figure 3. Diagnostic yield in the intervention group**

757 Overall diagnostic yield stratified by test result category in the intervention group (IG) and the
758 conventional care group (CCG) at 90 days and one year post ascertainment.

759

760 **Figure 4. Diagnostic yield in the intervention group by phenotypic presentation and**
761 **by racial construct**

762 (A) Diagnostic yield in the intervention group (IG) stratified by phenotype presentation, parent or
763 provider assigned racial construct (PPARC) and test result category. Abbreviations: multiple
764 congenital anomalies, MCA; congenital heart defects, CHD. (B) Access to a PrGD / diagnostic
765 yield in the intervention group (IG), access to a PrGD in the conventional care group (CCG) and
766 the diagnostic yield in the conventional care group who received genetic testing (CCG-tested)
767 stratified by PPARC. Abbreviations: precise genetic diagnosis (PrGD). Asterisks denote
768 statistically significant differences between groups.

769

770 **Figure 5. Impact of PPARC on prediction of precise genetic diagnosis in newborns**

771 Prediction of precise genetic diagnosis (PrGD) status for non-white and non-Hispanic, white
772 infants in the intervention group (IG) as assessed by patterns of referral for a genetics consult
773 by their neonatologists. We defined successful prediction of PrGD status as requesting
774 consultation on a patient who was later found to have a PrGD and not requesting consultation
775 on a patient who was not found to have a PrGD. Neonatologists missed requesting a genetics
776 consult significantly more often (2.4-fold) for non-white infants who would eventually receive a
777 PrGD and also referred non-white infants for consults who were 0.17-fold less likely to go on to
778 receive a PrGD. This translates to higher precision (75%) and recall (86%) for predicting PrGD
779 status for non-Hispanic white infants than for non-white infants (55% vs. 68%, respectively).

780

781 **Figure 6. Impact of a precise genetic diagnosis on changes in management**

782 The impact of a precise genetic diagnosis on changes in management (COM) stratified by
783 parent or provider assigned racial construct (PPARC). Management options are reflected in the
784 text at the lower left, with blackened circles representing assessment by clinical team. Multiple
785 options could be selected. The vertical black lines connecting blackened circles represent a

786 unique combination of COM options and all the unique COM combinations reported more than
787 once are shown. Bar plots above each set of responses indicate the number of families with
788 each COM combination stratified by PPARC. Abbreviations: anticipatory guidance (guidance),
789 genetic counseling (counseling), request for additional consults (consults), ordering additional
790 laboratory tests (labs), evaluation of other family members (cascade evaluation), ordering
791 additional imaging studies (imaging), addition of medications (meds), canceling laboratory tests,
792 imaging studies, or medications (cancel orders).

793

794

795

796

797

798

799

800

801

802

803

804

805

806

807

808

809

810

811

812 **Tables**

813 Table 1: Characteristics of Intervention Group (IG) and Conventional Care Groups (CCG)

814

	IG (n=126)	CCG (n=114)
Mean gestational age at birth (weeks)	36.5	36.5
Median gestational age at birth (weeks)	37.6	37.3
Mean age at admission (days)	10.6	5.5
Median age at admission (days)	2	1
Male	74 (58.7%)	56 (49.1%)
Female	52 (41.3%)	58 (50.9%)
Asian	23 (18.3%)	17 (14.9%)
Black	10 (7.9%)	12 (10.5%)
Hispanic	23 (18.3%)	20 (17.5%)
Native American	5 (4.0%)	3 (2.6%)
Non-white, multi-racial	13 (10.3%)	7 (6.1%)
Unknown	0 (0%)	7 (6.1%)
non-Hispanic white	52 (41.3%)	48 (42.1%)
Black+1P*	17 (13.5%)	17 (14.9%)
Total non-white	74 (58.7%)	59 (51.8%)
Multiple congenital anomalies	56 (44.4%)	44 (38.6%)
Isolated congenital anomaly	33 (26.2%)	33 (29.0%)
Abnormal lab value	10 (7.94%)	11 (9.65%)

815

816 *families with at least one parent who identified as Black categorized as Black+1P instead of

817 multi-racial

818

819

820
821
822
823
824

825
826
827
828
829
830
831
832
833
834
835
836

Table 2: Access to a PrGD among different PPARC groups at 90 days

PPARC groups	PrGD at 90 days			p-values	
	Intervention (n=126)	CCG (n=107*)	CCG any testing (n=46)	Intervention vs. CCG	Intervention vs. CCG any testing
Asian	12/23 (52.2%)	4/17 (23.5%)	4/8 (50%)	0.1043	0.4759
Black	8/10 (80%)	0/12 (0.0%)	0/4 (0%)	0.00001	0.015
Hispanic	8/23 (34.8%)	2/20 (10.0%)	2/10 (20%)	0.0764	0.6822
Native American	1/5 (20%)	0/3 (0.0%)	0/0 (0%)	1.0000	n/a
non-white, multi-racial	5/13 (38.5%)	0/7 (0.0%)	0/7 (0%)	0.1137	0.1137
non-Hispanic white	28/52 (53.8%)	5/48 (10.4%)	5/17 (10.4%)	<0.00001	0.0988
total	62/126 (49.2%)	11/107 (10.3%)	11/46 (23.9%)	<0.00001	0.0031
total non-white	34/74 (45.9%)	6/59 (10.2%)	6/29 (20.7%)	<0.00001	0.0241
Black+1P	11/17 (45.9%)	0/17 (0.0%)	0/8 (0%)	0.0001	0.0029

*CCG cohort denominator for this analysis totals 107 because seven cases had unknown PPARC.

837

838

	total	explained	Likely explained	partially explained	secondary only	not explained
MCA	56	18	8	4	3	23
MCA w/ CHD	28	10	4	2	1	11
MCA w/o CHD	28	8	4	2	2	12
Isolated congenital anomaly	33	4	7	0	2	20
abnormal lab test	10	6	1	0	0	3
hematological abnormality	2	2	0	0	0	0
seizures	9	3	2	0	1	3
single or multi-organ failure	6	1	1	0	0	4

839

840 Table 3: PrGD for Intervention Group by Categorical Admission Diagnosis

841

842

strokes	3	0	0	0	0	3
other	7	3	2	0	0	2

843

844

845

846

847

848

849

850

851

852

Figure 1

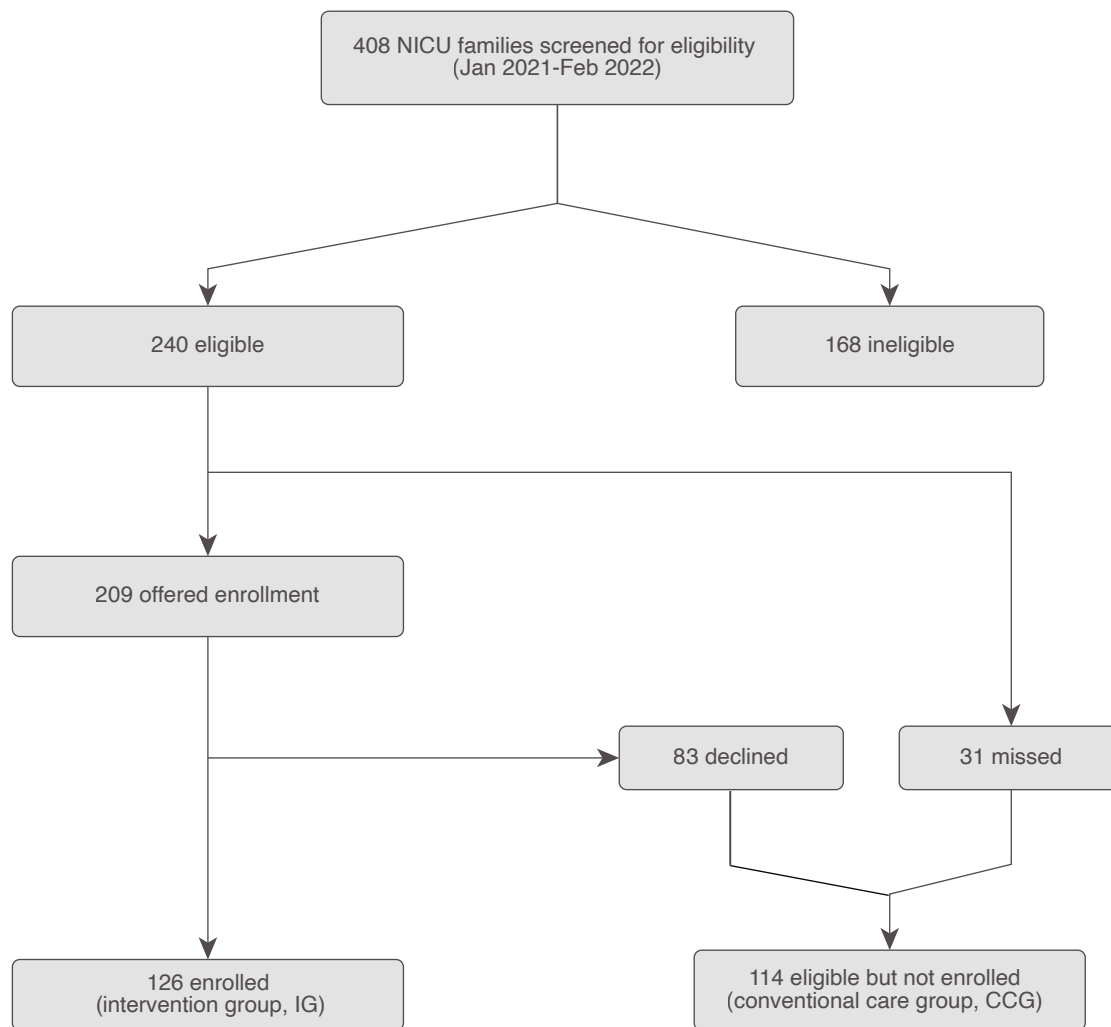


Figure 2

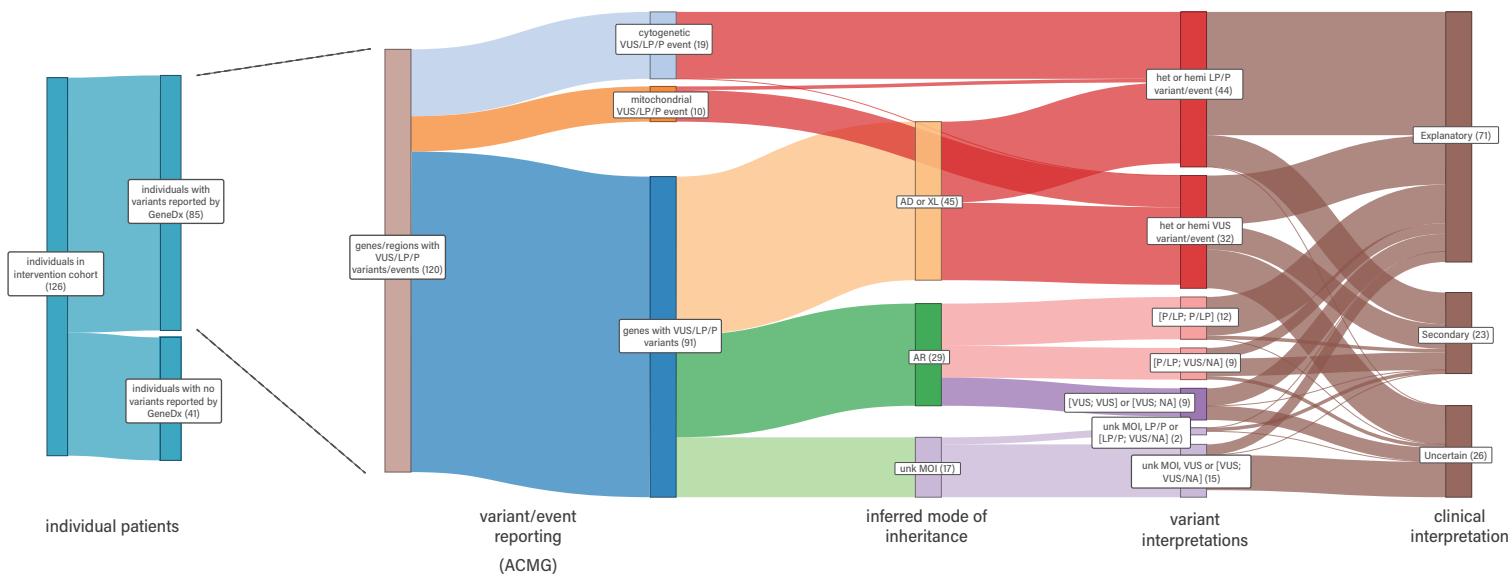


Figure 3

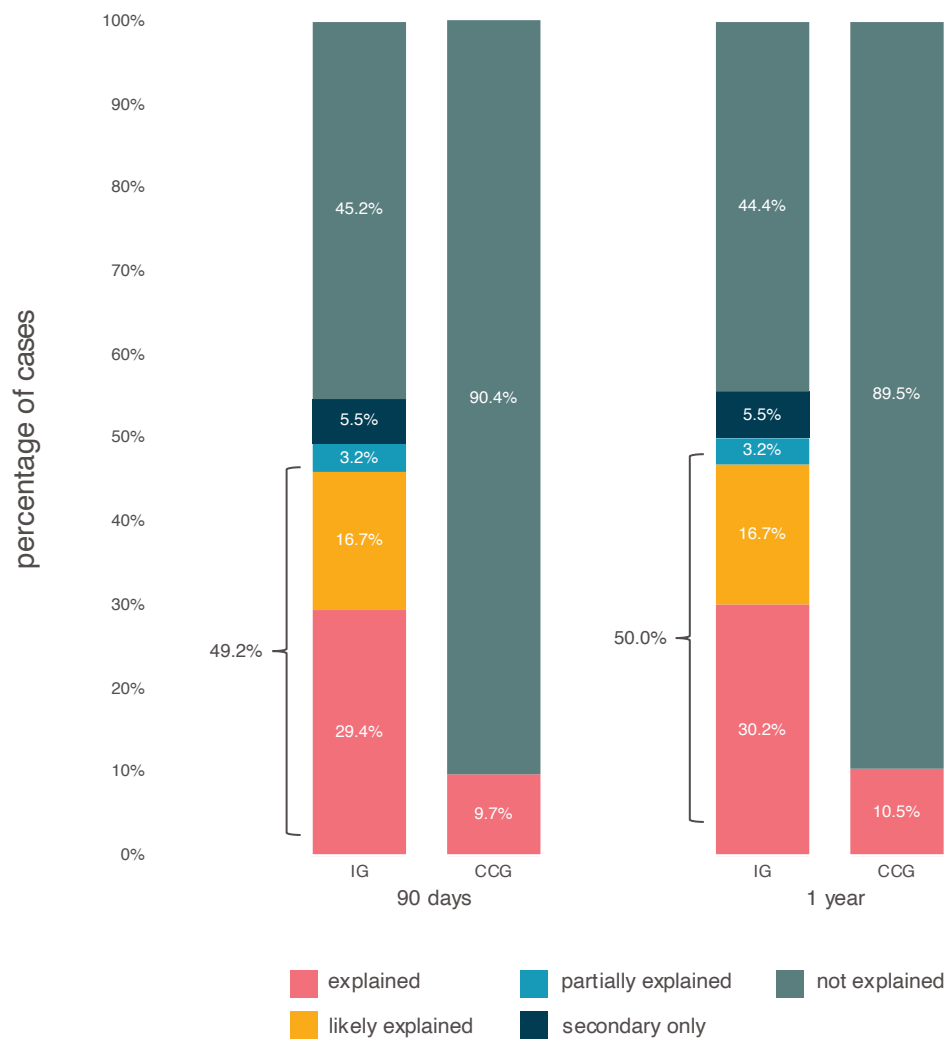
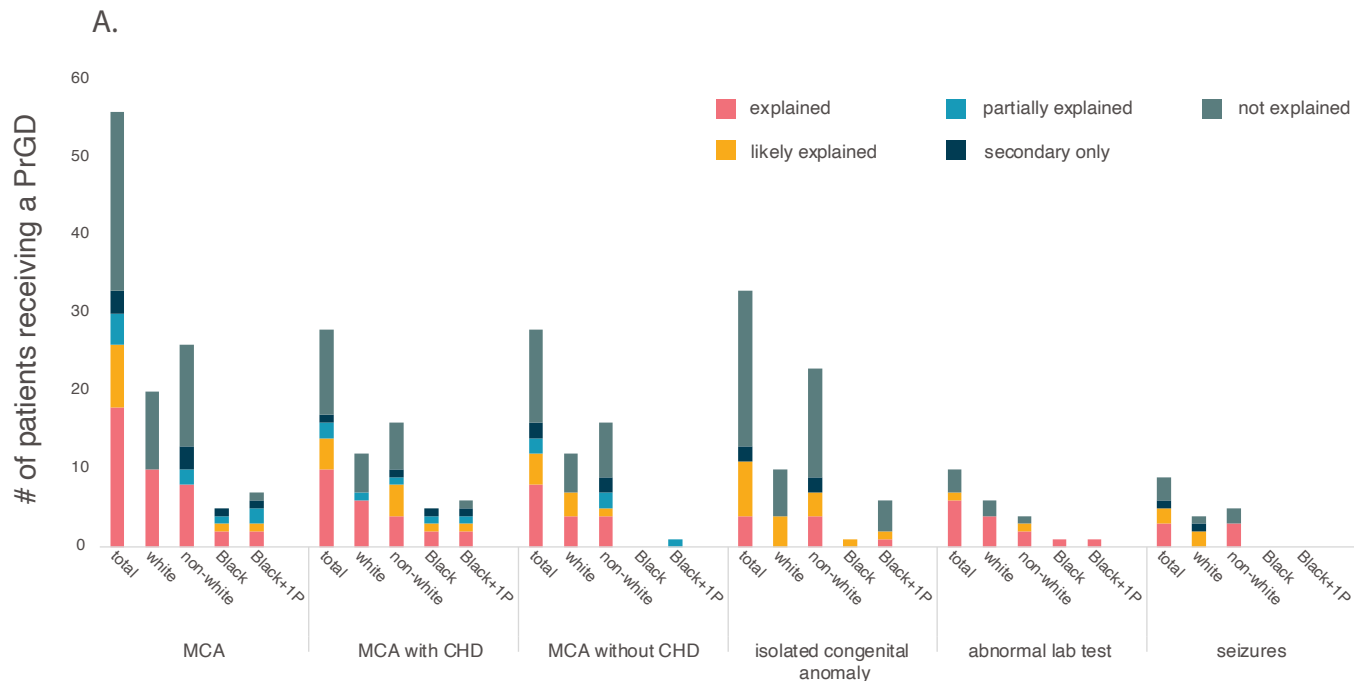


Figure 4



B.

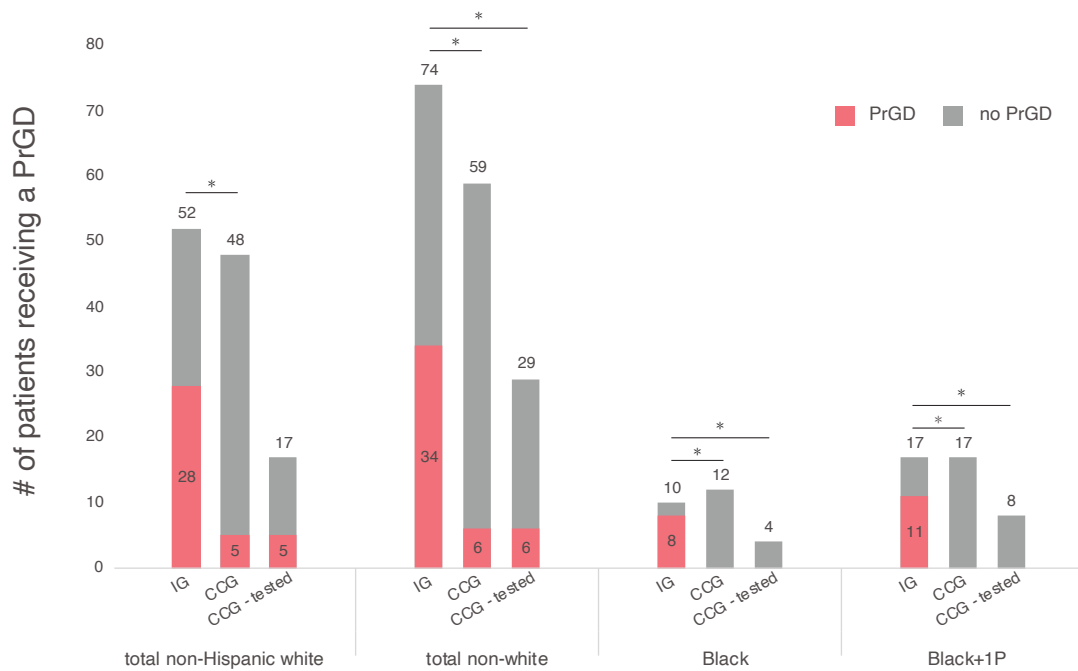


Figure 5

