

Word count: Main text 5911

Abstract: 283

References: 62

## **Racialised experience of detention under the Mental Health Act: a photovoice investigation of practice, policy and legislation**

\*Kamaldeep Bhui<sup>1,2,3</sup>, Roisin Mooney<sup>1</sup>, Doreen Joseph<sup>1</sup>, Rose McCabe<sup>4</sup>, Karen Newbigging<sup>5</sup>, Paul McCrone<sup>6</sup>, Ragu Raghavan<sup>7</sup>, Frank Keating<sup>8</sup>, Nusrat Husain<sup>9</sup>

<sup>1</sup>Department of Psychiatry, University of Oxford

<sup>2</sup>Nuffield Department of Primary Care Health Sciences, University of Oxford

<sup>3</sup>Wadham College, University of Oxford

<sup>4</sup>School of Health Sciences, City University

<sup>5</sup>School of Social Policy, University of Birmingham

<sup>6</sup>Institute for Life Course Development, Greenwich University

<sup>7</sup>Health and Life Sciences, De Montfort University

<sup>8</sup>Dept of Law and Criminology, Royal Holloway University of London

<sup>9</sup>Division of Psychology and Mental Health, University of Manchester

**& Co-Pact Team**

[**Researchers:** Tara Morey, Phuong Hua, Claire Dempsey, Michelle Yeung; **Local PIs:** Rahul Battacharya, Nuwan Dissanyake, Andrew Molodynski, Rochelle Ramkisson, Laura Dixon, Kopal Tandon, Gary Roberts. **Advisory Board:** Brian Brown, Paul Illingworth, Michael Larkin, Jacqueline Sin (Chair), Colin King (Chair), Julie Carr, Jo White, Karen Persaud, Anthony Zigmond; **PPIRG:** Sayeeda Basharat, Neil Caton, Tripti Kandia, Sandra Griffiths, Michael Molete]

**NOTE: This preprint reports new research that has not been certified by peer review and should not be used to guide clinical practice.**

\*Corresponding Author.

Prof. K. Bhui

Academic Dept of Psychiatry, Warneford Hospital, University of Oxford.

[Kam.bhui@psych.ox.ac.uk](mailto:Kam.bhui@psych.ox.ac.uk)

## **Abstract (283)**

**Background:** The rates of compulsory admission and treatment (CAT) are rising in mental health systems in the UK. These disparities are reported among migrants and black and ethnic minorities in Europe and North America. Lived experience perspectives from marginalised and multiple disadvantaged people are neglected in research yet may offer vital and novel insights into preventive opportunities to reduce coercive care

**Methods:** We conducted a participatory photovoice research process to assemble the life-experiences of people within two years of receiving CAT. We purposively sampled to maximise diversity by age, ethnicity, and different ‘sections’ of the Mental Health Act (England & Wales, 1983, 2007) from 8 health systems in England. The images, captions, and reflective narratives were deepened over 3 workshops before thematic analysis.

**Outcomes:** Forty-eight ethnically diverse people with lived experience of CAT contributed over 500 images and 30 hours of transcribed narratives. Participants lives showed significant complexity in terms of multimorbidity, adverse childhood experiences, and carer roles. The findings suggest insufficient co-ordination to prevent CAT despite early help-seeking, not being taken seriously when seeking help, hostility and dismissive responses from professionals; unnecessary police involvement which was distressing, stigmatising, and risked criminalisation. Participants wanted more advocacy given their vulnerability and inability to process information in crisis, as well as therapeutic and creative activities in inpatient environments. Participants recommended more family and carer involvement, and more appropriate, frequent and personalised information about care options, appeals processes, levels of restriction, and seclusion. A major concern was the lack of highly skilled staff, trauma-informed care, and therapies into the community.

**Interpretation:** We showed epistemic injustice in care processes and recommend better standards for essential skills, prevention, trauma informed care and therapies. Criminalising and coercive responses must also be reduced.

**Funding:**

This study/project is funded by the National Institute for Health Research (NIHR) Policy Research Programme [NIHR201704]. The views expressed are those of the author and not necessarily those of the NIHR or the Department of Health and Social Care

## Background

Ethnic minorities and migrants in the UK experience more adverse pathways to mental health care, including higher rates of compulsory admission and treatment (CAT), more contact with criminal justice agencies, and poorer long term outcomes compared with White British people.<sup>1-5</sup> These data also reflect the picture in North America and Europe.<sup>6-8</sup> Since 2008, rising rates of detention in England and Wales have cost an extra £6.8 billion.<sup>9</sup> Therefore reducing detentions might release savings, which could be re-invested to improve community-based support, alternatives to detention, early intervention, and crisis care.<sup>10</sup> Reducing CAT may also mitigate stigma, feelings of powerlessness and fear of services.<sup>11-14</sup>

Actions to reduce CAT must target causal drivers, however, most explanations focus on individual characteristics rather than care systems.<sup>15</sup> For example, potential explanations include traumatic psychosocial adversities over the life-course, such as early separation from parents, discrimination, isolation, unemployment, living in poorer places, gender violence, substance use and health risk behaviours, and psychiatric co-morbidities.<sup>16</sup> There may also be ethnicity related variations in help-seeking behaviours, clinical assessment of symptoms and dangerousness; poorer therapeutic alliances may also contribute.<sup>3 17 18 16 6 1</sup> Some argue that escalating levels of CAT arise due to delays in accessing effective services because of the stigma associated with mental illness as well as fears about harms and coercion.<sup>19</sup> Yet, some studies show there is no delay in help seeking for first episodes of psychosis among ethnic minorities.<sup>20</sup> The higher rates of CAT may reflect crises due to the absence of carers or lack of primary care involvement.<sup>21</sup> In addition, austerity measures reduced service capacity and may undermine the prevention of CAT.<sup>22</sup> An Independent Review of the Mental Health Act (MHA England & Wales) recommended more research including the experiences of those subject to CAT to inform actions to reduce CAT.<sup>1 2</sup>

The research aims to:

- Assemble experience data from racially and ethnically diverse people who experienced CAT under the powers of the Mental Health Act.
- Identify pathways to care and influences (biographical, interpersonal, societal, situational) leading to CAT, and related preventive lessons.
- Capture care experiences to inform progressive care, policy and legislation.

## **Methods**

### ***Inclusive Research***

Ethnic minorities and marginalised groups are under-represented in research.<sup>23-26</sup>

Accessibility and language barriers, fluctuating levels of insight and capacity, and fear of losing freedoms may lead to avoidance of services and research institutions if previous experiences were unsatisfactory and traumatic.<sup>27 28</sup> People may also struggle to verbalise painful memories. Furthermore, research processes may not support participation of the most marginalised, living with multiple disabilities, frailties, and precarious social situations.<sup>29 30</sup>

Therefore, in this study, we draw on participatory qualitative research methods, which can flexibly explore experiences to discover new perspectives. Such approaches have shown complex interactions between environmental, social, and biological drivers of health inequalities. For example, these methods have explained co-existence of diabetes, depression, and HIV, and why these combinations are more common in certain places and among those facing multiple disadvantage at the intersections of ethnicity and gender.<sup>20 31 32 33</sup>

We take a discovery orientated approach that foregrounds lived experience, as proposed in critical studies of black feminism, race theory, and intersectionality theory.<sup>33 34</sup> Participatory methods such as co-production and co-design show promise as they are particularly valuable to engage marginalised groups.<sup>35 1</sup> For example, photovoice (PV) can disrupt the traditional relationships between researcher and participant.<sup>36 28</sup> How an issue is defined or viewed, and by whom, might be key to problem solving.<sup>37-39</sup> PV has been used to engage service users in co-creation of their healthcare.<sup>39 40 41</sup> It also provides a safe, supportive, and creative approach to iteratively deepen personal narratives, whilst accommodating variations in literacy, ethnicity, and levels of disability.<sup>36 42</sup>

### ***Participants and recruitment procedures***

Participants were within two years of at least one CAT episode under the powers of the Mental Health Act (England & Wales, 1983, 2007; MHA), and living in one of eight locations in England (Oxford, London, Birmingham, Leeds, Derby, Bradford, Manchester, Lancashire). These venues were chosen to include a mix of urban and rural areas, and variation ethnic group makeup of residents.

Purposive sampling ensured participants were from diverse ethnic groups, across the 8 health systems, the fullest age range (over 18), and representative of gender and specific civil and crisis sections of the MHA (Sections 5(4), 5(2), 4, 2, 3, 136).<sup>\*</sup> We excluded those who had

---

\* Sample size in qualitative research is driven by study purpose, depth of data collected, and volume of data, rather than minimum levels as is common in statistical studies. Although samples of 12 may be sufficient for saturation among homogenous populations,<sup>43</sup> Vasileiou K, Barnett J, Thorpe S, et al. Characterising and justifying sample size sufficiency in interview-based studies: systematic analysis of qualitative health research over a 15-year period. *BMC Medical Research Methodology* 2018;18(1):148. doi: 10.1186/s12874-018-0594-7 we emphasized notions of information power (the more information the sample holds, relevant for the actual study, the lower number of participants is needed)<sup>44</sup>, Malterud K, Siersma VD, Guassora AD. Sample Size in Qualitative Interview Studies: Guided by Information Power. *Qualitative health research* 2016;26(13):1753-60. doi: 10.1177/1049732315617444 [published Online First: 2015/11/29] and adequacy determined final sample sizes.<sup>45</sup> Hennink M, Kaiser BN. Sample sizes for saturation in qualitative research: A systematic review of empirical tests. *Social Science & Medicine* 2022;292:114523. doi: <https://doi.org/10.1016/j.socscimed.2021.114523> Thus, we were careful in assessing the sampling as we proceeded.

only experienced forensic sections. The design sought to ensure an ethnically diverse sample overall and not to compare findings by ethnic groups.

Community organisations and NHS trusts assisted with recruitment. We involved potential participants in coffee mornings and by advertising through local charities and the National Service Users Network (NSUN), NGOs, radio channels, as well as through the project's Public Participant Involvement Research Group (PPIRG) and its networks. We ensured that those under-represented in research were supported to participate, for example, by paying for carers. We took advice from the PPIRG on study design, recruitment, execution of the research, and members were involved in the interpretation of the data.

### ***Photovoice procedures***

The rationale, methods, and full protocol are already published.<sup>46</sup> Briefly, participants took photographs, reflected upon and captioned them. They were aware this study sought to understand the use of CAT and identify preventive opportunities taking account of their biographies and complex histories. Photovoice workshops (see Table 1) were conducted in person or online to accommodate the challenges around the COVID-19 pandemic. This also optimised recruitment and participation for those with medical problems. In person workshops were conducted in accessible, public spaces, away from NHS settings wherever possible. Padlet was used to complete roadmaps, document captions, and share images for online participants. Participants received a £15 amazon voucher to thank them at the end of each workshop.



## **Ethics**

The study was granted REC and HRA approval [21/SC/0204], and local NHS research department approvals.

## **Data Analysis**

There are many diverse traditions of undertaking and analysing photovoice.<sup>47</sup> We have published our approach.<sup>48</sup> We used *Framework* to organise the data, as it is used for a wide range of qualitative analytic methods,<sup>49</sup> making the process explicit and transparent, permitting replication, and checks for consistency. The charts were a convenient way to present summary information for interpretation by participants, the PPIRG, and the research team. Images and transcripts were explored using the principles of polytextual thematic analysis<sup>50</sup> of original images alongside transcripts held in a qualitative software package (MAXQDA). We undertook a descriptive content analysis of images. The photographs acted as an elicitation process allowing participants to gently enter the study, deepen reflections, and explore experiences of CAT at their pace. Then we identified patterns and synthesised the findings using constant comparison.<sup>51</sup> RM and KB independently coded the information from two research sites, about 40% of the data, to develop and refine a coding framework. RM coded the remainder of the data, and KB reviewed all transcripts for coding checks on the entire data set. KB undertook the thematic analysis, reviewed by RM.

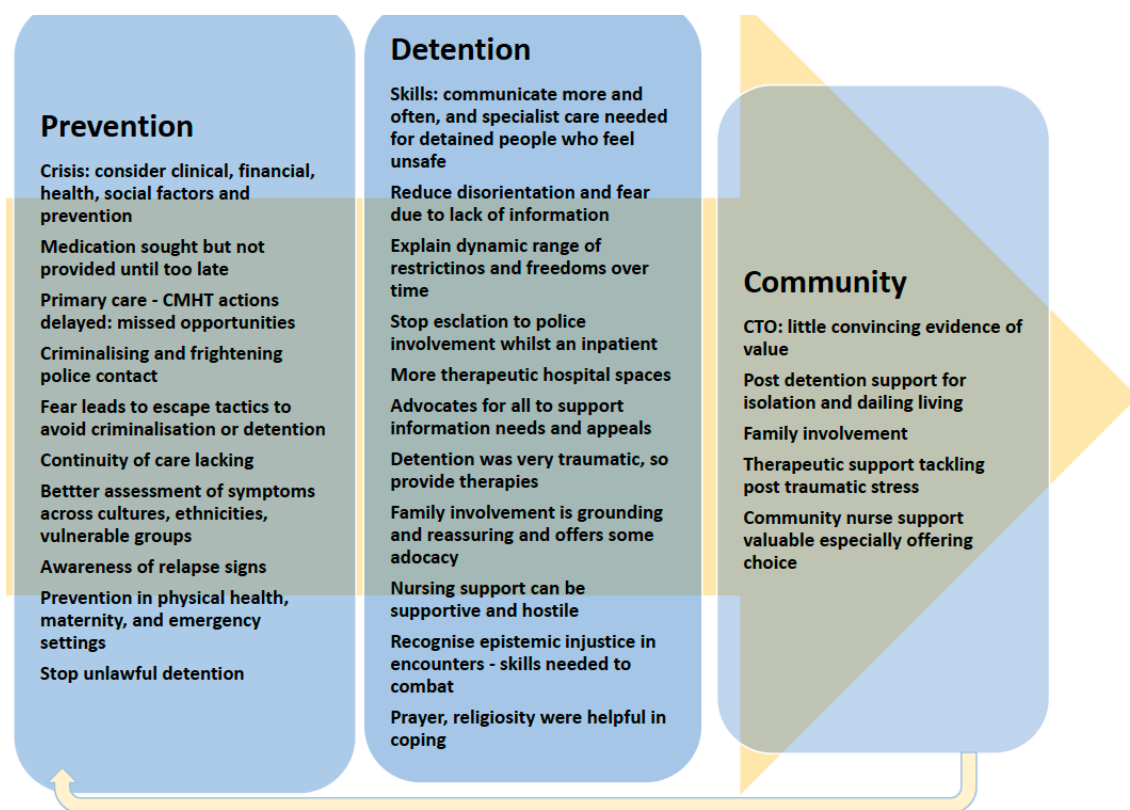
## **Results**

Of 60 recruited participants, 48 completed all three workshops. There were three broad types of data: a) demographic and roadmap information for 48 participants, b) 535 images and captions, c) transcripts of 32 hours of discussion (averaging around 90 minutes for online participants, and 2.5-3 hours for in-person workshops).

## Demographics

Most participants were ethnic minorities (see Table 2 for demographics); there was an equal gender balance. The roadmaps demonstrated high levels of multimorbidity (35.2%, 17/48), adverse childhood experiences (45.8%, 22/48), concerns about the impact of their detention on their children, (31.3%, 15/48) and police contact (26.8%, 10/48). Image codes that occurred on more than one occasion are listed in Table 3.

**Figure 1: Thematic Analysis of Experience Data**



## Thematic Analysis

First, we report an overall inductive thematic analysis and synthesis of the transcripts (see Figure 1; Annex A shows a matrix of quotes for overall themes). Annex B contains images from 6 participants and their captions to illustrate the overarching themes (colour codes and a key signify gender, age, ethnicity, location). The full library of images is online

(<https://www.flickr.com/photos/198122100@N06/albums/72177720307479644/>;

<https://www.psych.ox.ac.uk/research/chimes/co-pact/photovoice-exhibition>). We then report less common but important insights, referring to participant characteristics by aggregate summaries of gender (M,F), ethnicity (in accord with their preferred term of those used in the ethnic coding in the census: White British-WB, Black Caribbean-BC, Black British-BB, Black African-BA, Bangladeshi-BA, Indian-Ind, Pakistani-P, Asian-A, mixed-M), and age-group (decades).

### ***Overarching Findings***

#### **Awareness, Crisis Pathways & Prevention**

Participants were aware of deterioration in mental health and sought intervention early. Despite this, many did not receive any preventive intervention and were admitted in crisis. For example, when a primary care team was contacted, they alerted the community mental health teams (CMHT), which was unable to respond in a timely way. Financial difficulties were sometimes the trigger for a relapse and admission. The participants suggested professionals needed to be more aware of the role of poverty in mental health crises, and financial interventions might avert stress and prevent CAT.

#### **Families and Carers**

Participants felt that their loved ones were excluded. When present, they were able to offer advocacy, and protection against poor care by demanding accountability of staff. Families were often not permitted to visit or did not visit. Active involvement of family, friends, or carers was considered important to help patients in distress feel calmer. Maintaining these relationships helped restore dignity by reminding people of their lives outside hospital.

#### **Detention processes**

Some detention decisions were influenced by the availability of beds and not the need for admission. In some sites, people reported travelling for 4-5 hours to be admitted away from their home. Two participants in different parts of the country described being detained and transported in an unmarked van, which felt like ‘being kidnapped’ as there was nothing to indicate these were health service vehicles.

### Coercive Care and Staff Interactions

There were strongly held views that many mental health professionals appeared to not have sufficient experience, knowledge, or skills to support people in distress at the time of admission. Participants recognised it was challenging to care for very unwell people, and they were appreciative of the demands on staff. However, they felt there was too much variation in the levels of knowledge and skills amongst staff (for example, by day and night shifts), and too much stigmatising language. There were accounts of staff responses being hostile, dehumanising, disrespectful and threatening. Staff were sometimes openly rude and aggressive. Participants felt coerced. They could not understand why some professionals did not follow better professional standards, with care and concern for patients. In one instance, a person described being forced to have medication as ‘like being raped’.

The lack of interaction with professionals was a source of dissatisfaction. Communication was often through small openings in doors. The only interactions appeared to be to give medication or to record observations. Shortages of staff also meant leisure activities were not available, as risk management was prioritised. There was evidence of good practice too. Activities such as painting or quizzes were very welcomed and found to be helpful especially at weekends, which were otherwise very quiet.

The accuracy of medical records was questioned, as was confidentiality. For example, when secluded and blamed, participants feared the official documentation did not reflect their experiences and the records were inaccurate. Their voice was not allowed to come out, despite being detained for longer than six months in some instances. One participant described a diagnosis being shared with the employer without permission, resulting in long standing unemployment.

There were positive comments, for example, of community nurses acting with compassion and being more flexible than inpatient staff. Specifically, community staff were willing to trial different potentially helpful approaches, whereas inpatient care seemed less flexible or inattentive to needs. Our study took place during the COVID-19 pandemic thus the inpatient restrictions and staffing pressures might have influenced these experiences. Reassuringly, some participants said they trusted staff to give advice and do the right thing, it was good to know they ‘had my back’.

### Therapeutic Environments

Participants felt waking on a ward with no explanation was disorientating, especially as professionals wore plain clothes. Given their mental state, they did not know they were in a safe place. Participants wanted more information repeated on several occasions, to understand options and learn what was happening to them. They asked that professionals take more time, repeat the messages, use different modalities, for example, in induction packs. Participants were uncertain what ‘detention’ meant in terms of which freedoms they had at different points of their hospital stay, and options for securing more freedom; they received little information about why seclusion decisions were made, or what was happening when secluded. Once, detained, there were few opportunities for exercise or ordinary things, with

no access to families or friends. In some environments, the facilities fell short: no bedding, no toilet seat, no daylight, with nursing staff isolated in their station or office. ‘It felt like a zoo’, and so noisy that they could not sleep. It was not perceived to be a good place to recover, although short stays were tolerable.

## ***Specific Findings***

### *Police Involvement*

Thirteen participants commented on police involvement (4 women; ethnicity: 4WB, 2P, 5BB, 1BC, 1 mixed ethnicity; age: one aged 10-29, two 20-29, four 30-39, two 40-49, three 50-59, one 60-89). Unexpected police arrivals were distressing and embarrassing when seen by neighbours: ‘everyone watched’, ‘they drag you out sometimes with handcuffs and kicking.’ One participant rang the help number provided by the hospital on boxing day, the police arrived with a social worker. He was rude to them at first and only later talked calmly and thanked them. The process of detention was slow, and he knew it could escalate, moving from one section to another. Participants felt powerless and criminalised by police involvement, and sometimes took actions to keep safe in vulnerable moments. One participant (M, P, 20-29) over expressed symptoms of mental illness when arrested or when the police arrived, saying he ‘played the mental illness card’ to get to hospital and avoid being criminalised. Being handcuffed and removed from their homes was demeaning. Many said hospital admission often required a police arrest first; one person became accustomed to ‘making use of the police’ to ensure admission and avoid a criminal justice pathway.

Participants appreciated the police when they were kind but feared escalation and the use of force. A woman (F, BB, 30-39) was surrounded by police unexpectedly when on the way home. She had stopped in a park to ‘rest and get some air’. The participant had not realised she was

on the train tracks and not a park. In this instance, police intervention was helpful.

Participants acknowledged that the police did not enjoy the role and were good at the job:

‘they could be more understanding than paramedics’ (F, WB, 30-39). Although participants

recognised the police fulfilled a valuable role, they complained sometimes they were rude.

Another person in a police cell was handcuffed; he took a dislike to the officer and provoked

him; the police helped by asking him to take medication, saying he would become a

voluntary patient. He was getting agitated and apologised as they handcuffed him. He was in

a cell overnight and later diagnosed with a brain tumour as the underlying problem. Another

participant (M, mixed race, 50-59) was on a medical assessment ward for two weeks and was

surrounded by elderly men receiving end of life care. This did not help his mental state and

so he ran away and jumped in a reservoir; he was suicidal; the police rescued him and

returned him to the ward.

Police involvement was sometimes a consequence of the participant’s actions; for example, if

a person feared someone was breaking into their house. On arrival of the police, the person

feared being kidnapped when asked to go into the back of an ambulance. On refusing the

participant was arrested, put into a van, taken to the ward, and placed in an isolated room

without explanations (M, WB, 10-19). The police were called by inpatients when a female patient

was being racist towards a participant (M, P, 20-29), in order to ensure the incident was not

overlooked; and when a participant was pushed by another inpatient (F, BC, 50-59). A senior ward

nurse called the police in response to requests for help and medication. The participant was

ignored for over a half an hour, whilst seeking medication to calm agitation. The staff

member became angry, ignored the participant, even turned her back, and called the police as

a deterrent. The participant was then placed in a seclusion room, which was disorientating as

there were no windows. She could not tell if it was day or night, and it was cold. Then, she was threatened with being ‘*IM’d*’ (intramuscular medication against her will).

This account showed an unnecessary escalation, and the use of power and coercion rather than a therapeutic relationship to negotiate needs. This could easily be dismissed as a patient’s misperception; participants were aware of this possibility. However, participants said dismissal of their views was common. This was recognised as a structural problem, of power and knowledge of professionals over-riding that of the patient.

### *Preventive Actions*

There were nine people who referred to prevention (4 women; ethnicity: 4 WB, 1 P, 2 BB, 1 CB, 1 mixed ethnicity; age: one 10-19, two 20-29, three 30-39, three 50-59). Participants recognised medication could prevent detention. There were examples of professionals encouraging reflection on signs of relapse and plan to prevent detention. A Punjabi speaking doctor discussed the situation with the participants mother in her native tongue. A consultation in a group setting reiterated the importance of medication in prevention. This participant felt the community teams and support were brilliant and she had a good relationship with the community team. She reflected on how they seemed harsh, but it was for her own good: she emerged ‘out of the fog and back to her senses’.

Another participant had been discharged from community mental health services after six years of remission. She recognised an emerging psychosis but could no longer access a crisis team for medication and relapsed over 2 years. The medication was not so helpful in fact, due to adverse effects, but CBT prevented a relapse for quite some time. There were examples of early actions by patients to prevent admission, and they were awareness of relapse signatures. However, it took too long, in one instance, six months from contacting the GP to being seen



in specialist services; then a fifteen-minute meeting left the person feeling unknown and misunderstood. This meant the person did not trust the GP's suggestions. A woman with a postpartum psychosis spoke of services during the pandemic. She had 5-10 minutes with a midwife and all activities were centred on the child's health. She felt stressed and had a family history. As a single mum, she felt her mental health should have been noticed and relapse prevented. She was separated from her child for a week's admission.

### *The Dynamics of Communication and Assessment*

Contact with a care coordinator was perceived as important and helpful when there was a trusting relationship<sup>(F, P, 20-29)</sup>. More could be done to prevent admission when psychosis was emerging<sup>(M, WB, 30-39)</sup>, by sitting with the community or primary care team. This participant still believed the content of her delusional beliefs, but did not talk openly about them, anticipating the negative response. She said sharing information made her seem more unwell to the professional. Another participant<sup>(F, BC, 20-29)</sup> asserted that problems started long before hospital admission, and the diagnostic and formulation process was not culturally sensitive or precise, with excessive negative reading of experiences and behaviours. Misdiagnosis and misinterpretation were argued to explain higher admission rates for ethnic minorities.

### *Community Treatment Orders (CTOs)*

Only two participants (a Pakistani woman and a Black British man, respectively) talked about CTOs. One said CTOs were used when there was a bed shortage rather than for any therapeutic reason, although he felt it could prevent relapse. One participant was negative about CTOs and perplexed why a CTO was used if he had never been violent:

‘It felt like an ASBO (Anti-Social Behaviour Order).’

‘...I will be recalled...it’s like prison...you get back to a locked ward. What’s the answer?’

### *Emergency Departments*

Seeking help from Emergency Departments was not a good experience<sup>(F, WB, 30-39)</sup>: ‘you’re pushed aside and looked down on.’ A participant<sup>(M, mixed race, 50-59)</sup> who attended the emergency room after self-cutting, said as blood dripped from her arm, she was seen by generic staff not mental health specialists: ‘...at what point are you an emergency...you need help. You don’t have physical scars. How far do you have to go’ [to get help].

Contrary to guidance and legislation, some were held in emergency departments despite not being on a section<sup>(M, WB, 30-39)</sup>. ‘The security guard was preventing me from leaving...he had no right to, even though I needed to be prevented from leaving...’. There were positive experiences: ‘...security guards, ambulance staff, emergency staff, everybody was lovely’.

### *Feeling Safe and Advocacy*

Participants wanted more information at the time of detention. Furthermore, isolation in uncomfortable surroundings reinforced a lack of safety. Participants felt unentitled to comfortable and humane environments when detained; they questioned why such conditions were considered reasonable (police cells, seclusion rooms, and assessment and inpatient facilities). One participant<sup>(M, 60-69, WB)</sup> wanted a private room and someone to talk with (mental health staff not emergency staff); he resisted taking medication because he feared being ‘like a zombie’. He suggested staff should instead ask more about feelings as these were not easily expressed. Isolation and loneliness were common experiences, some wanting more communication and a person with them all the time especially in moments of crisis.

There were mixed experiences of advocates (3 women; ethnicity: 1 WB, 2 BB, 1 P; age: two 20-29, one 30-39, one 50-59), for example, some advocates supported the doctor's position and insisted the patient take the medication. For example, a person's mother urged she take medication. Just as she agreed, she was transferred from an assessment section 2 (lasting 28 days) to a section 3 for treatment (lasting up to six months); she felt this had happened because in a ward round she had persistently refused medication<sup>(F, WB, 50-59)</sup>. Some participants felt everyone should have an advocate, as 'you're not in a state of mind to decide ...when first detained'. One participant found the advocate helpful in explaining rights, getting a solicitor, 'someone on your side when you're in there.' One participant felt the advocate helped end the section by articulating their case, organising evidence, and reassuring the participant that someone cared and doing what they could not manage on their own. It was the advocate who explained what was happening to them rather than the ward staff. 'You rarely get told your rights, and even if on the ward, not everyone is aware; and people have different capacities to process information'.

Some were unable to secure an advocate until released into the community, too late to help with appeals. The paperwork required for an appeal was thought too burdensome<sup>(F, WB, 50-59)</sup>, especially when a person was distressed. One participant<sup>(F, P, 20-29)</sup> won three of four appeals, with support, the right staff, approach, paperwork and reports. The advocate assisted. This participant was troubled about the 'life and death' decision in front of three judges, 'like you're stuck in prison...it was a big thing' and she did not feel prepared. An advocate and more information would help.

### *Detention Trauma*

Eight participants (five women; ethnicity: 4 WP, 1 Ba, 1 In, 1 BB, 1 P; age: two 20-29, two 30-39, two 40-49, one 50-59, one 60-69) said the process of CAT was traumatic (see Table 4). They talked of isolation, loneliness, losing control over everyday decisions, and feeling distressed. Several spoke of ‘being broken’ by the experience rather than seeing it as helpful or restorative. For those with pre-existing post-traumatic symptoms, additional traumatic events were more distressing. One person was unable to remember what had happened until friends explained, as distress and re-traumatisation can affect memory processing. This participant had just taken an overdose and recognised she was not ‘in the right mind’. The cubicles in A&E were ‘small and stressful’ and she ‘wanted to leave and get some air. There were five security guards for one person (small frame) which was stressful. The situation was escalating, then one guard persuaded her to calm, ‘he took a risk and it worked’. She spent 8 hours in the early hours in A&E, eventually a nurse explained she was to be detained.

### *Community Support*

Leaving hospital was liberating (F, mixed race, 50-59; F, P, 20-29), giving access to gyms and shops. However, ‘adjusting back into living on your own in a quiet place’ was difficult in contrast to the ‘noise and number of interactions on a ward’. There was a need for structure outside the hospital, by joining health groups in the community; the only formal advice on leaving was around taking medication (F, WB, 30-39). Participants felt being discharged without carers or a network of community meant people became unwell again and returned to hospital (Table 5).

### *Religion and Ethnicity*

Religious practice was helpful, for example, ‘praying when ill’ (F, P, 20-29; M, BB, 40-49). Yet there was often no place to do so on the ward. A multi-faith room in one site was spoken of very highly as an example of good practice. There were positive experiences of chaplains but also

apprehension about evangelical and orthodox sentiments being expressed (F, WB, 50-59). White members of staff told one participant to ‘believe in God; this was not racist... but uncomfortable.’ One chaplain helpfully spent an hour with the person, but the variation between hospitals and over time was a concern. The participant was a Buddhist, and there was no religion-specific support for her. Another (F, British Asian, 30-39), a Muslim, was not given choice of appropriate foods.

### *Race and Epistemic Injustice*

‘Many minorities don’t understand their rights, they need advocates, and then the language and communication barriers also hinder recovery’ (F, P, 20-29). One person (F, BC, 20-29) was admitted whilst ‘grieving for her nan’. She was distressed and trying to get support. She was prescribed antihistamines and then accused of taking alcohol when leaving a message for her Community Psychiatric Nurse. She had not taken alcohol. She ‘broke down completely’ for not being taken seriously and being discredited.<sup>52</sup> She complained and was dismissed as just grieving, rather than receiving more mental health care which she needed. She also witnessed a patient with a strong Caribbean accent was also dismissed and ignored. A lot of staff misinterpreted her as aggressive. One participant (M, BC, 50-59) felt black people were admitted more rather being given home treatment.

Multi-ethnic wards created an atmosphere in which people had to hide concerns or conflicts. Participants talked of how (in some wards) the nurses were mostly black; some staff from India would speak only to men, and other staff would refuse to speak English, leading to conflict. Racialised explanations can arise between staff, between patients, and between staff and patients in the absence of skills to talk about racism and discrimination more generally.<sup>3</sup>

<sup>53</sup> Victimisation (by staff) of the same person was also witnessed, whilst others were left

alone even if they infringed the rules, like smoking on the ward. Some positively noted (M, WB, 30-39) that there were staff of many ethnicities, and they were caring; whereas other participants (see above) found this to be a source of tension and potential conflict. Yet, having staff who looked like the patient was helpful (F, BA, 20-29).

### ***Logic Model: designing preventive interventions***

Taking all the findings, we developed a logic model showing the context, inputs, processes, outputs, and impact (see Figure 2). This summarises the elements of interventions which our participants felt would substantially change their experiences and outcomes, anticipating touch points to co-design future interventions in later stages of the research.

### **Discussion**

This study brings experience to the fore, through images and text, sharing with us the struggles and repeated systemic obstacles to recovery.

### ***Epistemic Injustice***

Epistemic injustice includes testimonial injustice,<sup>54</sup> the discrediting of information on the basis of demographics and in this instance due to ethnicity, diagnoses of mental illness, and loss of agency due to CAT. Participants communicated many instances of hostility and discrediting of their views, not being given appropriate information, and nor having clarity on choices or appeals processes. This happened before admission and during. In part, cognitive impairments in the process of psychosis may make some people vulnerable to poorer function and need for more intensive care and support, which may end in relapse if not provided.<sup>55</sup>

Rather than respond to requests for care, for example, with more and repeated information,

they were ignored or the system failed to respond adequately, leading to relapse and ultimately CAT; or escalation to seclusion and police involvement whilst an inpatient.

**Figure 1b: Logic Model of Proposed Systems Interventions**

Context	Inputs	Activities	Outputs	Outcomes	Impact
Mental Health Act Review. Ethnic disparities in care. Rising detentions. Premature mortality of people with SMI	Better connection between services (physical, emergency, maternity, primary and secondary care) to act in an assertive, responsive, and timely way	Establish better knowledge of prevention across services and a shared approach	Timely prevention	Avoided admission in crisis and detention.	Better patient experience, prevention efforts rewarded, less costly to all.  Reducing detentions and ethnic disparities
Lack of continuous care (inpatient/ community/ medical/ other services)	Continuity of care between clinicians and inpatient and community care	Provide continuous care models between inpatient and community services	Establish continuous care protocols/advanced agreements for those at risk of admission	Fewer crises. Least restrictive care, relapse prevented, advance agreement honoured. Save resources, less social disruption	Less fear and more trust, and co-operation, fewer escape behaviours or non-adherence or escalation (less police contact)
Missed preventive opportunities.	Provide preventive financial advice/support before crisis	Provide welfare, financial, housing assessments and support to avert crisis	Minimise non-clinical crisis	More awareness, less fear and threat perception, trust	
Fear of services, and vulnerability in crisis.	Advocacy for all to provide information and protect the vulnerable from hostility, neglect, or misjudgement about agency and capacity	Provide advocacy.	Advocacy and information standards for all at time of assessment and admission	Better relationship between police and MH services. Health systems not reliant on police.	Legislation and guidance addresses Advocacy, Advanced Agreements, Information Standards, Skills.
Police dissatisfaction with demands of mental health care	Avoid involvement of police or escalation to criminalisation	Establish concordats around police involvement in specific cohorts	Less escalation to police, saving additional resources, but also reducing fear and criminalisation	Staff and patients less traumatised and able to manage difficult emotions and optimise recovery	More rewarding work and staff satisfaction and less sickness absence and shortages
Trauma informed, skilled workforce, training, high staff shortages and sickness absence	Awareness of the impacts of trauma and adverse childhood experiences	Undertaking trauma-informed assessment and therapeutic support especially for those with pre-existing ACEs and adversity and traumas, including those with neurodiverse identities	Detention process less traumatising; therapeutic support throughout admission and aftercare. Standards on information type and frequency.	Better patient experience, feeling safe, and that the workforce is to be trusted. Culturally competent workforce.	Detention is less traumatic and criminalising  Additional service specification, for improving care and upskilling and supporting staff
Unconscious bias, structural racism.	Cultural competency around assessment and communication	Skills clinicians and managers and tribunals in assessment of culture and mental health	Better equipped workforce to work with detained populations and avoid burnout, hostility and compounding coercion	Minimise stigma and prejudice, and escalation of restrictions or punitive responses.	Cultural Safety, Cultural Humility. New models of workforce. Workforce shortages and absence minimised
Shortage of staff, new training in place, new roles.	Skills for trauma informed care of detained patients, who may not be processing information and are vulnerable.	Evolve and sustain skills and standards on de-escalation, managing racialised conversations, protecting human rights and dignity.	Clearer standards and skills to provide high quality, safe care. Standing up to disrespectful/ hostile staff.	Staff retention, less work stress, confident management of dilemmas and complex care needs.	

These cycles of discrediting, disempowerment, and escalation to coercive care could and should be prevented. The main complaint was a failure of earlier care and the quality of care once detained. Shared decision making can be useful,<sup>56</sup> but needs explicit skills, and standards and competencies suitable for people receiving CAT. Bridging community, inpatient, general medical, social care and even specialist care like maternity, all require new models of identifying those at risk of CAT and commensurate assessment and decision-making skills. Integrated care systems and calls for more generalists rather than specialists irrespective of profession might help tackle both stigma and more cohesive care systems for prevention. Epistemic injustice also includes hermeneutics, how our structures of knowledge production, providing public services, and solving problems may themselves be perpetuating inequalities.<sup>54</sup> Advocacy and advanced agreements can assist,<sup>54</sup> as can progressive participatory research methods in knowledge production as these contest concepts such as mental illness, diagnosis, and disparities in care that reflect of historical relationships between patients and statutory agencies.<sup>52</sup> Thus services need to reflect more complex models and consider the intersections of racism, migration, religion, and complex trauma, alongside age and gender, rather than only crude ethnic group or diagnostic classifications.<sup>28</sup>

### ***Prevention***

We found scope for more preventive work before a crisis, and better resourced services equipped for preventive strategies. These should bridge and encompass primary care, specialist mental health care, maternal care, emergency departments, and other social supports. There is scope for financial and social interventions among those facing hardship and adversity. Importantly, these are not financial or social incentives for behaviour change, rather they seek to reduce distress that leads to crisis.<sup>57</sup> The data were not strong or consistent on CTOs as few participants commented. We need alternatives to admission and detention,



and long-term investment, better professional skills and standards to provide greater service capacity, flexibility, supported by clearer inter-sector policies.<sup>22</sup>

### ***Police Involvement***

Police involvement in the mental health system is hotly debated,<sup>58 59</sup> some arguing the police are essential to manage crises and risk. Others argue the police should never be involved, and only if there are criminal activities. Police involvement was felt to be stigmatising and criminalising, provoking fear of escalation, perhaps adding to the avoidance of care options and open resistance. The experience of detention can be felt as deeply racialised, and impossible to separate from racism in society.<sup>60 61</sup> Police involvement already leads to criminalisation of racialised groups, and criminal justice pathways to mental health care have been questioned for some time.<sup>1 62</sup> Efforts to reduce police involvement are controversial, but may prevent policing-related escalations of crises.<sup>63</sup> This requires services and professionals to acquire appropriate skills and to shift these long standing traditions.

### ***Therapeutic Environments***

Worryingly, therapeutic, respectful, and safe care were lacking, further compounding fear and a lack of trust. Supporting people experiencing traumatic symptoms before, during and after CAT, assuring family involvement in all stages, and personalisation of care to support religious practice were recommended for future service design. Many participants had experienced childhood traumas making CAT even more distressing. Family therapy, CBT, and trauma-informed therapies require development, testing, as this may help prevent readmission and future CAT episodes.<sup>64 65</sup> Although racial trauma is recognised,<sup>66</sup> the impact of detention as trauma is important to further evaluate, not least given the potential links with

criminalisation and fears of state authority and harms, something that is a historical reality that people fear today.<sup>67</sup>

### ***Strengths and Limitations***

We developed a logic model for preventive interventions and reducing CAT. We developed novel methods of participatory research using photovoice and demonstrated an approach to collating and analysing image and narrative data. The approach permitted diverse racial and ethnic groups and lived experience experts to engage when previously they would not have entered research.<sup>52</sup> They felt like equal partners in generating and interpreting new knowledge for wider impact.<sup>§</sup> The peer researchers and lived experience experts were central to all stages of the study, including communications, problem solving, analysis, and preparation and dissemination of outputs. Lived experience experts reviewed the data and interpretations, and drafts of this publication.

Although we experienced recruitment challenges, such as accessibility of complete ethnicity and section data, our data set of 60, of which 48 produced narratives and images across three workshops, is one of the largest on this topic according to an excellent meta-synthesis;<sup>68</sup> this meta-synthesis reported 17 of 56 studies included ethnicity; only 2 had comparable sample sizes or slightly larger to ours (up to 59); of these two, one was a review and included 20 people of ethnic minority status; another recruited 49 patients of which only 8% were ethnic minorities with detention experiences. None of the reviewed studies were seeking to specifically target and underserved group that does not usually participate in research.

Recruitment through screening routine data appeared to not be sufficient to engage potential

---

<sup>§</sup> We will be archiving all images for online access, creating case studies, and touring an exhibition for the public, policy makers and specialist.

participants, as it was not grounded in trusting relationships. However, during the post COVID recovery period, there were staff shortages and pressures on clinical time. Some services enforced COVID policies that prevented community-based recruitment and data collection.

### ***Conclusions***

These lived experiences data show many missed opportunities for prevention attuned to the needs of those being detained. We demonstrated testimonial and hermeneutic forms of epistemic injustice, to promote the development and implementation of more effective interventions. Our findings are consistent with previous studies which emphasise staff skills, de-escalation, collaborative care and the integration of services are effective at reducing detention.<sup>69</sup> Our findings provide new mechanisms of Self-Determination Theory through psychological safety, therapeutic environments, pervasive contexts, and life experiences.<sup>70</sup>

### **Acknowledgements:**

This study/project is funded by the NIHR-PRP (NIHR201704). The views expressed are those of the author(s) and not necessarily those of the NIHR or the Department of Health and Social Care.

Conflicts of Interest: none declared

## **Research in Context**

### ***Evidence before the study***

Escalating rates of compulsory admission and treatment (CAT) and racial and ethnic disparities in CAT are well established in the UK and European and North American countries. The reasons for these findings are debated, and often attributed to individual illness influences, rather than structural problems in services. People from racial and ethnic groups are under-represented in research, and so their voices do not enter policy or practice. Yet, legislative and policy and practice reforms require better lived experience data, including those from racial and ethnic groups.

### ***Added value of this study***

We developed a logic model of how coercive care and CAT could be prevented by co-design of future interventions to address the preventive opportunities exposed in experience narratives. We found epistemic justice in care processes, a lack of preventive actions in response to help seeking, dismissal of preventive efforts by patients, excessive use of police and coercive care, and insufficient attention to culturally and racially and religiously competent assessment and care. New skills standards are needed for people receiving CAT, including trauma-informed inpatient and aftercare, new standards for levels and methods of providing information during crises, and more skills on de-escalation when receiving CAT. Advocacy and advances agreements could be incorporated into trauma informed care and discharge planning.

### ***Implications of the study***

The findings expose epistemic and structural mechanisms through which people receive CAT followed by coercive and unhelpful care. We set out preventive opportunities, and make recommendations for both practice and policy reforms, as well as for new legislation, specifically in England and Wales, but the findings are instructive for care sectors more widely. We also show new ways of undertaking inclusive research and set out the methods for peer research and lived experience to be fully incorporated in all aspects of study design and delivery, with implications for commissioners of research.

Table 1: Three Photovoice Workshops

---

<p><b>1: Induction:</b> How to take photographs (inclusive of ethical considerations), what might be photographed, sharing information about the research, seeking consent to participate.</p> <p><b>2: Images, captions, and experience narratives:</b> Participants were given disposable cameras. Or they could use their own cameras if preferred, or brought other images, or forms of art, song, or poetry. Images were shared in person, or by e-mail or the study WhatsApp channel. Individuals chose specific photographs, and developed captions and narrative description, guided by <i>SHOWeD</i> questions.<sup>71</sup> We collected demographic information, biographical and CAT related information from Roadmaps. This consisted of a black and white drawing of a path which represented their lifeline. They share their demographics, and mark significant events, contexts, experiences, and age.</p> <p><b>3: Reflection:</b> Participants shared the images and narratives with each other and considered: what made a difference to their experiences and what could be done differently? These discussions were captured by audio recorder and transcribed verbatim.</p>
--

---

**Table 2: Co-Pact Participant Demographics (N=48, except were different N specified)**

<b>Gender</b>	Male	24	50	
	Female	24	50	
<b>Ethnicity</b>	WB	11	22.9	BB=Black British, BA=Black African, BBC=Black British Caribbean, BBA=Black British African, IND=Indian, PA=Pakistani, BRiAS=British Asian, BANG=Bangladeshi
	BBC	13	27.1	
	BBA	4	8.3	
	BB	1	2.1	
	IND	1	4.2	
	PA	2	18.8	
	BRiAS-BANG	9	2.1	
	BRiAS	1	8.3	
	MIXED Chinese	4	2.1	
	MIXED South American	1	2.1	
	MIXED	1	2.1	
<b>City</b>	Leeds	4	8.3	
	Manchester	3	6.3	
	Bradford	4	8.3	
	Derby	4	8.3	
	Birmingham	8	16.7	
	London	13	27.1	
	Oxford	8	16.7	
	Lancashire	4	8.3	
<b>MHA Section (N=46)</b>	2	20	43.5	
	3	21	45.7	
	5(2)	3	6.5	
	136	2	4.4	
<b>Diagnoses</b>				
Schizoaffective		8	16.7	
Delusional		1	2.1	
Bipolar		14	29.2	
Depression with psychosis		3	6.3	
EUPD		4	8.3	
cannabis with psychosis		1	2.1	
Schizophrenia		5	10.4	
Severe depression, no psychosis		2	4.2	
Non-organic psychosis		7	14.6	
Acute transient psychosis		2	4.2	
Recurrent depression		1	2.1	
<b>Roadmap data</b>				
ACE	Yes	22	45.8	
Physical Health Poor	Yes	17	35.2	
Children	Yes	15	31.3	
Police path	yes	10	26.8	

Table 3: Content analysis of images/captions (mentioned more than once)

---

Freedom	2
Cooking	3
Nature	4
TV movies	3
Quote	2
Water	2
Clothing	2
Photo frames	2
Food/drink	2
Activities on ward	2
Sun	2
Phone	3
Drugs	3
Smoking	4
Door	3
Lock	2
Creative tasks	5
Family	3
Babies	2
Trees	4
Walls	3
Gates	4
Medication	11
Fields gardens	7
Venues	2
The participant	12
People	7
Flower	12
Ornaments	6
House	9
Windows/blinds	3
Body parts	5
Religious symbols	4
Covid	2
Community venues	6
Hobbies	11
Bed	3
Events occasions	2
Remembrance 2	2
The past	4
Family	6
Music	6
Cars/vehicles	5
Pets	9
Animals	7
Seaside	3
Green spaces	16
Indoors	17
Outdoor	12

---

Table 4: Traumatic Detention

---

‘I need therapy from being inside those places.’<sup>7002</sup>  
‘That kind of broke me. I’m half ...the man now. I’m not the same person...the way I was treated in hospital. It’s not the same anymore.’<sup>6006</sup>  
‘No way I’m every coming into this place again.’<sup>1015</sup>  
‘From my first section that was traumatic...and I didn’t want to be sectioned again....’<sup>7007</sup>  
‘The nurses control me, put me in bed...made me worse rather than better in that environment.’<sup>7007</sup>

---

Table 5: Community Supports

---

‘GPs are not interested in taking on cases or support you’<sup>(6015 M, BA, 30-29)</sup>.  
‘The emphasis is all on taking medication,<sup>(6015)</sup> as if you’re never well enough to think about what happened’.  
One participant<sup>(6008 M, BB, 20-29)</sup> wanted ‘more cooking sessions’ and ‘help with employment.’  
One complained<sup>(8003 M, mixed race, 50-59)</sup> about the tail off of support to nothing after three months; a life-long condition meant more help longer term was probably needed.

---



## References

1. Barnett P, Mackay E, Matthews H, et al. Ethnic variations in compulsory detention under the Mental Health Act: a systematic review and meta-analysis of international data. *Lancet Psychiatry* 2019;6(4):305-17. doi: 10.1016/S2215-0366(19)30027-6 [published Online First: 2019/03/09]
2. Weich S, McBride O, Twigg L, et al. Variation in compulsory psychiatric inpatient admission in England: a cross-classified, multilevel analysis. *Lancet Psychiatry* 2017;4(8):619-26. doi: 10.1016/S2215-0366(17)30207-9 [published Online First: 2017/06/26]
3. Bhui K, Halvorsrud K, Nazroo J. Making a difference: ethnic inequality and severe mental illness. *Br J Psychiatry* 2018;213(4):574-78. doi: 10.1192/bjp.2018.148 [published Online First: 2018/08/23]
4. Halvorsrud K, Nazroo J, Otis M, et al. Ethnic inequalities and pathways to care in psychosis in England: a systematic review and meta-analysis. *BMC Medicine* 2018;16(1):223. doi: 10.1186/s12916-018-1201-9
5. Morgan C, Fearon P, Lappin J, et al. Ethnicity and long-term course and outcome of psychotic disorders in a UK sample: the AESOP-10 study. *Br J Psychiatry* 2017;211(2):88-94. doi: 10.1192/bjp.bp.116.193342 [published Online First: 2017/06/24]
6. van der Ven E, Smith S, Rawlins Y, et al. S243. Racial and Ethnic Differences in Pathway to Care and Baseline Characteristics in Early Intervention Services for Psychosis in New York State. *Schizophr Bull* 2020 May;46(Suppl 1):S131 doi: 10.1093/schbul/sbaa031 309 Epub 2020 May 18 (Suppl 1):S131.
7. Oluwoye O, Davis B, Kuhney FS, et al. Systematic review of pathways to care in the U.S. for Black individuals with early psychosis. *NPI schizophrenia* 2021;7(1):58. doi: 10.1038/s41537-021-00185-w [published Online First: 2021/12/04]
8. Archie S, Akhtar-Danesh N, Norman R, et al. Ethnic Diversity and Pathways to Care for a First Episode of Psychosis in Ontario. *Schizophrenia Bulletin* 2008;36(4):688-701. doi: 10.1093/schbul/sbn137
9. Smith S, Gate R, Ariyo K, et al. Reasons behind the rising rate of involuntary admissions under the Mental Health Act (1983): Service use and cost impact. *International Journal of Law and Psychiatry* 2020;68:101506. doi: <https://doi.org/10.1016/j.ijlp.2019.101506>
10. England N. Advancing Mental Health equalities strategy <https://www.england.nhs.uk/publication/advancing-mental-health-equalities-strategy/>: NHS England 2020 [2023].
11. Sayce LIZ. Stigma, discrimination and social exclusion: What's in a word? *Journal of Mental Health* 1998;7(4):331-43. doi: 10.1080/09638239817932
12. Clement S, Schauman O, Graham T, et al. What is the impact of mental health-related stigma on help-seeking? A systematic review of quantitative and qualitative studies. *Psychological medicine* 2015;45(1):11-27. doi: 10.1017/s0033291714000129 [published Online First: 2014/02/27]
13. Tsang HW, Ching SC, Tang KH, et al. Therapeutic intervention for internalized stigma of severe mental illness: A systematic review and meta-analysis. *Schizophrenia research* 2016;173(1-2):45-53. doi: 10.1016/j.schres.2016.02.013 [published Online First: 2016/03/13]

14. Keating F, Robertson D. Fear, black people and mental illness: a vicious circle? *Health & social care in the community* 2004;12(5):439-47. doi: 10.1111/j.1365-2524.2004.00506.x [published Online First: 2004/09/18]
15. Minchin M, Christiansen C, Maconick L, et al. Area-level factors associated with variation in involuntary psychiatric hospitalisation across England: a cross-sectional, ecological study. *Soc Psychiatry Psychiatr Epidemiol* 2024 doi: 10.1007/s00127-024-02748-5 [published Online First: 20240827]
16. Morgan C, Knowles G, Hutchinson G. Migration, ethnicity and psychoses: evidence, models and future directions. *World Psychiatry* 2019;18(3):247-58. doi: 10.1002/wps.20655 [published Online First: 2019/09/10]
17. Bhui K, Ullrich S, Kallis C, et al. Criminal justice pathways to psychiatric care for psychosis. *Br J Psychiatry* 2015;207(6):523-9. doi: 10.1192/bjp.bp.114.153882 [published Online First: 2015/08/22]
18. Coid J, Gonzalez Rodriguez R, Kallis C, et al. Ethnic disparities in psychotic experiences explained by area-level syndemic effects. *Br J Psychiatry* 2019;1-7. doi: 10.1192/bjp.2019.203 [published Online First: 2019/10/31]
19. Parkman S, Davies S, Leese M, et al. Ethnic differences in satisfaction with mental health services among representative people with psychosis in south London: PRiSM study 4. *Br J Psychiatry* 1997;171:260-4. doi: 10.1192/bjp.171.3.260 [published Online First: 1997/10/24]
20. Bhui K, Ullrich S, Coid JW. Which pathways to psychiatric care lead to earlier treatment and a shorter duration of first-episode psychosis? *BMC Psychiatry* 2014;14:72. doi: 10.1186/1471-244X-14-72 [published Online First: 2014/03/14]
21. Bhui K, Stansfeld S, Hull S, et al. Ethnic variations in pathways to and use of specialist mental health services in the UK. Systematic review. *Br J Psychiatry* 2003;182:105-16. doi: 10.1192/bjp.182.2.105
22. Sheridan Rains L, Weich S, Maddock C, et al. Understanding increasing rates of psychiatric hospital detentions in England: development and preliminary testing of an explanatory model. *BJPsych open* 2020;6(5):e88. doi: 10.1192/bjo.2020.64 [published Online First: 2020/08/15]
23. Goyal D, Dol J, Leckey M, et al. Scoping Review of Racial and Ethnic Representation of Participants in Mental Health Research Conducted in the Perinatal Period During the COVID-19 Pandemic. *J Obstet Gynecol Neonatal Nurs* 2023;52(2):117-27. doi: 10.1016/j.jogn.2022.11.003 [published Online First: 2022/12/04]
24. Gill PS, Plumridge G, Khunti K, et al. Under-representation of minority ethnic groups in cardiovascular research: a semi-structured interview study. *Fam Pract* 2013;30(2):233-41. doi: 10.1093/fampra/cms054 [published Online First: 2012/09/19]
25. Redwood S, Gill PS. Under-representation of minority ethnic groups in research--call for action. *Br J Gen Pract* 2013;63(612):342-3. doi: 10.3399/bjgp13X668456 [published Online First: 2013/07/10]
26. Smart A, Harrison E. The under-representation of minority ethnic groups in UK medical research. *Ethn Health* 2017;22(1):65-82. doi: 10.1080/13557858.2016.1182126 [published Online First: 2016/05/14]
27. Scharff DP, Mathews KJ, Jackson P, et al. More than Tuskegee: understanding mistrust about research participation. *Journal of health care for the poor and underserved* 2010;21(3):879-97. doi: 10.1353/hpu.0.0323 [published Online First: 2010/08/10]

28. Bansal N, Karlsen S, Sashidharan SP, et al. Understanding ethnic inequalities in mental healthcare in the UK: A meta-ethnography. *PLOS Medicine* 2022;19(12):e1004139. doi: 10.1371/journal.pmed.1004139
29. Han CS, Oliffe JL. Photovoice in mental illness research: A review and recommendations. *Health* 2016;20(2):110-26. doi: 10.1177/1363459314567790
30. Cabassa LJ, Nicasio A, Whitley R. Picturing recovery: a photovoice exploration of recovery dimensions among people with serious mental illness. *Psychiatr Serv* 2013;64(9):837-42. doi: 10.1176/appi.ps.201200503 [published Online First: 2013/06/04]
31. Mendenhall E. Beyond Comorbidity: A Critical Perspective of Syndemic Depression and Diabetes in Cross-cultural Contexts. *Med Anthropol Q* 2016;30(4):462-78. doi: 10.1111/maq.12215 [published Online First: 2015/04/14]
32. Tsai AC, Mendenhall E, Trostle JA, et al. Co-occurring epidemics, syndemics, and population health. *Lancet* 2017;389(10072):978-82. doi: 10.1016/S0140-6736(17)30403-8 [published Online First: 2017/03/09]
33. Carbado DW, Crenshaw KW, Mays VM, et al. INTERSECTIONALITY: Mapping the Movements of a Theory. *Du Bois Rev* 2013;10(2):303-12. doi: 10.1017/S1742058X13000349 [published Online First: 2014/10/07]
34. Ogunwole SM, Oguntade HA, Bower KM, et al. Health Experiences of African American Mothers, Wellness in the Postpartum Period and Beyond (HEAL): A Qualitative Study Applying a Critical Race Feminist Theoretical Framework. *International journal of environmental research and public health* 2023;20(13) doi: 10.3390/ijerph20136283 [published Online First: 2023/07/14]
35. Halvorsrud K, Rhodes J, Webster GM, et al. Photovoice as a promising public engagement approach: capturing and communicating ethnic minority people's lived experiences of severe mental illness and its treatment. *BMJ Open Quality* 2019;8(4):e000665. doi: 10.1136/bmjopen-2019-000665
36. Budig K, Diez J, Conde P, et al. Photovoice and empowerment: evaluating the transformative potential of a participatory action research project. *BMC Public Health* 2018;18(1):432. doi: 10.1186/s12889-018-5335-7 [published Online First: 2018/04/04]
37. Wang CC, Yi WK, Tao ZW, et al. Photovoice as a Participatory Health Promotion Strategy. *Health Promotion International* 1998;13(1):75-86. doi: 10.1093/heapro/13.1.75
38. Hergenrather KC, Rhodes SD, Cowan CA, et al. Photovoice as community-based participatory research: a qualitative review. *Am J Health Behav* 2009;33(6):686-98. doi: 10.5993/ajhb.33.6.6 [published Online First: 2009/03/27]
39. Catalani C, Minkler M. Photovoice: a review of the literature in health and public health. *Health education & behavior : the official publication of the Society for Public Health Education* 2010;37(3):424-51. doi: 10.1177/1090198109342084 [published Online First: 2009/10/03]
40. Overmars-Marx T, Thomese F, Moonen X. Photovoice in research involving people with intellectual disabilities: A guided photovoice approach as an alternative. *J Appl Res Intellect Disabil* 2018;31(1):e92-e104. doi: 10.1111/jar.12329 [published Online First: 2017/01/25]
41. Halvorsrud K, Kucharska J, Adlington K, et al. Identifying evidence of effectiveness in the co-creation of research: a systematic review and meta-analysis of the international healthcare literature. *Journal of Public Health* 2019 doi: 10.1093/pubmed/fdz126

42. Shumba TW, Moodley I. Part 1: A review of using photovoice as a disability research method: Implications for eliciting the experiences of persons with disabilities on the Community Based Rehabilitation programme in Namibia. *Afr J Disabil* 2018;7(0):418. doi: 10.4102/ajod.v7i0.418 [published Online First: 2018/11/27]
43. Vasileiou K, Barnett J, Thorpe S, et al. Characterising and justifying sample size sufficiency in interview-based studies: systematic analysis of qualitative health research over a 15-year period. *BMC Medical Research Methodology* 2018;18(1):148. doi: 10.1186/s12874-018-0594-7
44. Malterud K, Siersma VD, Guassora AD. Sample Size in Qualitative Interview Studies: Guided by Information Power. *Qualitative health research* 2016;26(13):1753-60. doi: 10.1177/1049732315617444 [published Online First: 2015/11/29]
45. Hennink M, Kaiser BN. Sample sizes for saturation in qualitative research: A systematic review of empirical tests. *Social Science & Medicine* 2022;292:114523. doi: <https://doi.org/10.1016/j.socscimed.2021.114523>
46. Roisin M, Karen N, Rose M, et al. Experience-based investigation and codesign of approaches to prevent and reduce Mental Health Act use (CO-PACT): a protocol. *BMJ Open* 2022;12(2):e060086. doi: 10.1136/bmjopen-2021-060086
47. Han CS, Oliffe JL. Photovoice in mental illness research: A review and recommendations. *Health (London)* 2016;20(2):110-26. doi: 10.1177/1363459314567790
48. Mooney R, Bhui K. Analysing multimodal data that have been collected using photovoice as a research method. *BMJ Open* 2023;13(4):e068289. doi: 10.1136/bmjopen-2022-068289
49. Petticrew M, Rehfuess E, Noyes J, et al. Synthesizing evidence on complex interventions: how meta-analytical, qualitative, and mixed-method approaches can contribute. *J Clin Epidemiol* 2013;66(11):1230-43. doi: 10.1016/j.jclinepi.2013.06.005
50. Gleeson K. Polytextual Thematic Analysis for visual data – pinning down the analytic. *Visual Methods in Psychology*: Routledge 2011.
51. Cabassa LJ, Nicasio A, Whitley R. Picturing recovery: a photovoice exploration of recovery dimensions among people with serious mental illness. *Psychiatr Serv* 2013;64(9):837-42. doi: 10.1176/appi.ps.201200503
52. Mooney R, Dempsey C, Brown BJ, et al. Using participatory action research methods to address epistemic injustice within mental health research and the mental health system. *Front Public Health* 2023;11:1075363. doi: 10.3389/fpubh.2023.1075363 [published Online First: 2023/04/08]
53. Nazroo JY, Bhui KS, Rhodes J. Where next for understanding race/ethnic inequalities in severe mental illness? Structural, interpersonal and institutional racism. *Sociol Health Illn* 2020;42(2):262-76. doi: 10.1111/1467-9566.13001 [published Online First: 2019/09/29]
54. Kidd IJ, Spencer L, Carel H. Epistemic injustice in psychiatric research and practice. *Philosophical Psychology*:1-29. doi: 10.1080/09515089.2022.2156333
55. McCleery A, Nuechterlein KH. Cognitive impairment in psychotic illness: prevalence, profile of impairment, developmental course, and treatment considerations . *Dialogues in clinical neuroscience* 2019;21(3):239-48. doi: 10.31887/DCNS.2019.21.3/amccleery [published Online First: 2019/11/22]
56. Barbu C, Purgato M, Abdulmalik J, et al. Efficacy of interventions to reduce coercive treatment in mental health services: umbrella review of randomised evidence. *The*

- British Journal of Psychiatry* 2021;218(4):185-95. doi: 10.1192/bjp.2020.144 [published Online First: 2020/08/27]
57. Johnson S, Dalton-Locke C, Baker J, et al. Acute psychiatric care: approaches to increasing the range of services and improving access and quality of care. *World Psychiatry* 2022;21(2):220-36. doi: <https://doi.org/10.1002/wps.20962>
58. Lamb HR, Weinberger LE, DeCuir WJ, Jr. The police and mental health. *Psychiatr Serv* 2002;53(10):1266-71. doi: 10.1176/appi.ps.53.10.1266 [published Online First: 2002/10/05]
59. van Steden R. Governing through care: A qualitative assessment of team play between police and nurses for people with mental illness. *Int J Law Psychiatry* 2020;68:101532. doi: 10.1016/j.ijlp.2019.101532 [published Online First: 2020/02/09]
60. Solanki J, Wood L, McPherson S. Experiences of adults from a Black ethnic background detained as inpatients under the Mental Health Act (1983). *Psychiatric rehabilitation journal* 2023;46(1):14-20. doi: 10.1037/prj0000537 [published Online First: 2023/02/23]
61. Alang S, McAlpine DD, Hardeman R. Police Brutality and Mistrust in Medical Institutions. *Journal of racial and ethnic health disparities* 2020;7(4):760-68. doi: 10.1007/s40615-020-00706-w [published Online First: 2020/01/29]
62. Halvorsrud K, Nazroo J, Otis M, et al. Ethnic inequalities in the incidence of diagnosis of severe mental illness in England: a systematic review and new meta-analyses for non-affective and affective psychoses. *Social psychiatry and psychiatric epidemiology* 2019 doi: 10.1007/s00127-019-01758-y
63. Wondemaghen M. Policing mental illness: Police use of section 136 - Perspectives from police and mental-health nurses. *Medicine, science, and the law* 2021;61(4):266-74. doi: 10.1177/0025802421993363 [published Online First: 2021/02/19]
64. Wood L, Williams C, Pinfold V, et al. Crisis-focused Cognitive Behavioural Therapy for psychosis (CBTp) in acute mental health inpatient settings (the CRISIS study): protocol for a pilot randomised controlled trial. *Pilot Feasibility Stud* 2022;8(1):205. doi: 10.1186/s40814-022-01160-7 [published Online First: 20220910]
65. Freitas DF, Walker S, Nyikavaranda P, et al. Ethnic inequalities in involuntary admission under the Mental Health Act: an exploration of mediation effects of clinical care prior to the first admission. *Br J Psychiatry* 2023;222(1):27-36. doi: 10.1192/bjp.2022.141
66. Metzger IW, Anderson RE, Are F, et al. Healing Interpersonal and Racial Trauma: Integrating Racial Socialization Into Trauma-Focused Cognitive Behavioral Therapy for African American Youth. *Child maltreatment* 2021;26(1):17-27. doi: 10.1177/1077559520921457 [published Online First: 2020/05/06]
67. Barham P. *Outrageous Reason: Madness and Race in Britain and Empire, 1780-2020*: PCCS Books 2023.
68. Akther SF, Molyneaux E, Stuart R, et al. Patients' experiences of assessment and detention under mental health legislation: systematic review and qualitative meta-synthesis. *BJPsych open* 2019;5(3):e37. doi: 10.1192/bjo.2019.19 [published Online First: 2019/09/19]
69. Barbui C, Purgato M, Abdulmalik J, et al. Efficacy of interventions to reduce coercive treatment in mental health services: umbrella review of randomised evidence. *Br J Psychiatry* 2021;218(4):185-95. doi: 10.1192/bjp.2020.144



70. Raeburn T, Chang CR, Kuek JHL, et al. Self-Determination Theory: A Framework Well Suited to Informing Research of Adverse Inpatient Mental Health Experiences. *Issues in Mental Health Nursing*:1-8. doi: 10.1080/01612840.2024.2385566
71. Hergenrather KC, Rhodes SD, Cowan CA, et al. Photovoice as community-based participatory research: a qualitative review. *Am J Health Behav* 2009;33(6):686-98. doi: 10.5993/ajhb.33.6.6