

## Genetic and Demographic Determinants of Fuchs Endothelial Corneal Dystrophy Risk and Severity

Running header: Multi-Center FECD Cohort Study

Siyin Liu, MRes<sup>1,2\*</sup>, Amanda N. Sadan, PhD<sup>1\*</sup>, Nihar Bhattacharyya, PhD<sup>1</sup>, Christina Zarouchlioti, PhD<sup>1</sup>, Anita Szabo, MSc<sup>1</sup>, Marcos Abreu Costa, MSc<sup>1</sup>, Nathaniel J. Hafford-Tear, PhD<sup>1</sup>, Anne-Marie S. Kladny, MD<sup>1,3</sup>, Lubica Dudakova, PhD<sup>4</sup>, Marc Ciosi, PhD<sup>5</sup>, Ismail Moghul, PhD<sup>1,2</sup>, Mark R. Wilkins, MD<sup>2</sup>, Bruce Allan, MD<sup>2</sup>, Pavlina Skalicka, MD<sup>4,6</sup>, Alison J. Hardcastle, PhD<sup>1,2</sup>, Nikolas Pontikos, PhD<sup>1,2</sup>, Catey Bunce, DSc<sup>7</sup>, Darren G. Monckton, PhD<sup>5</sup>, Kirithika Muthusamy MD<sup>1,2</sup>, Petra Liskova, MD, PhD<sup>1,4,6†</sup>, Stephen J. Tuft, MD<sup>1,2</sup>, Alice E. Davidson, PhD<sup>1,2†</sup>

### Institutions

<sup>1</sup>UCL Institute of Ophthalmology, London, UK

<sup>2</sup>Moorfields Eye Hospital, London, UK

<sup>3</sup>Eye Center, Faculty of Medicine, University of Freiburg, Freiburg, Germany.

<sup>4</sup>Department of Paediatrics and Inherited Metabolic Disorders, First Faculty of Medicine, Charles University and General University Hospital in Prague, Prague, Czech Republic

<sup>5</sup>School of Molecular Biosciences, College of Medical, Veterinary and Life Sciences, University of Glasgow, Glasgow, UK.

<sup>6</sup>Department of Ophthalmology, First Faculty of Medicine, Charles University and General University Hospital in Prague, Prague, Czech Republic

<sup>7</sup>National Institute for Health and Care Research (NIHR) BRC at the Royal Marsden NHS Foundation Trust and the Institute of Cancer Research, London, UK

\*These authors contributed equally to the manuscript

†Corresponding authors:

Prof Alice E Davidson, UCL Institute of Ophthalmology, 11-43 Bath Street, London UK Email: [alice.davidson@ucl.ac.uk](mailto:alice.davidson@ucl.ac.uk),

Prof Petra Liskova, First Faculty of Medicine, Charles University, Ke Karlovu 2, Prague, Czech Republic, Email: [petra.liskova@lf1.cuni.cz](mailto:petra.liskova@lf1.cuni.cz)

Keywords: Fuchs endothelial corneal dystrophy, trinucleotide repeat expansion disease, age-related disorder, corneal dystrophy, CTG18.1, *TCF4*, *COL8A2*, *ZEB1*, *SLC4A11*, *AGBL1*, *LOXHD1*.

Word count of the manuscript text: 2935

## **Key Points**

**Question:** How do demographics and genetic risk factors determine FECD disease risk and severity?

**Findings:** This multi-center FECD cohort (n=894) study reveals *TCF4* repeat expansions (CTG18.1) underlie disease in 77.3% of total cases, with longer repeats and biallelic expansion correlating with earlier keratoplasty and increased penetrance, respectively. Female overrepresentation is driven by cases without CTG18.1 expansions, where missing heritability remains high.

**Meaning:** Demographic factors and molecular diagnosis, including CTG18.1 repeat length and expanded allele dosage, are clinically relevant metrics that should inform future therapeutic strategies and clinical trial design.

## **Abstract**

**Importance:** Understanding the pathogenic mechanisms of Fuchs endothelial corneal dystrophy (FECD) is essential for developing gene-targeted therapies.

**Objective:** To investigate associations between demographic data and age at first keratoplasty in a large genetically refined FECD cohort.

**Design, Setting, and Participants:** This retrospective cohort study recruited 894 individuals with FECD at Moorfields Eye Hospital (London) and General University Hospital (Prague). Ancestry was inferred from genome-wide SNP array data. CTG18.1 status was determined by short tandem repeat and/or triplet-primed PCR. One or more expanded alleles ( $\geq 50$  repeats) were classified as expansion-positive (Exp+). Expansion-negative (Exp-) cases were whole exome sequenced.

**Main Outcome(s) and Measure(s):** Association between variants in FECD-associated genes, demographic data and age at first keratoplasty.

**Results:** Within the total cohort ( $n=894$ ), 77.3% were Exp+. The majority of European (668/829, 80.6%) and South Asian (14/22, 63.6%) patients were Exp+, whereas the majority of those with African (30/37, 81.1%), East Asian (2/3, 66.7%), and American Admixture (2/3, 66.7%) ancestry were Exp-. The percentage of females was significantly higher (151, 74.4%) in the Exp- cohort compared to the Exp+ (395, 57.2%;  $P<.001$ ). The median (IQR) age at first keratoplasty of the Exp+ patients (68.2 [63.2–73.6] years) was older than the Exp- patients (61.3 [52.6–70.4] years;  $P<.001$ ). The CTG18.1 repeat length of the largest expanded allele within the Exp+ group was inversely correlated with the age at first keratoplasty ( $r = -0.087$  [95% CI: -0.162 to -0.012],  $P=.02$ ). The ratio of biallelic to monoallelic expanded alleles was higher in the FECD cohort compared to an unaffected control group ( $P<.001$ ), indicating that two Exp+ alleles increase disease penetrance

compared to one expansion. We only identified potentially pathogenic variants (MAF <0.01; CADD >15) in FECD-associated genes in 13 (10.1%) Exp- individuals.

**Conclusions and Relevance:** CTG18.1 expansions are present in most European and South Asian patients with FECD. Repeat length and zygosity status of CTG18.1 modify disease severity and penetrance. Known disease-associated genes account for only a minority of Exp- cases, with unknown risk factors determining disease in the rest of this subgroup. These data have important implications for the development of future FECD gene-targeted therapies.

## Introduction

Fuchs endothelial corneal dystrophy (FECD) is a bilateral, progressive disease of the corneal endothelium that is a leading indication for keratoplasty in high-income countries.<sup>1,2</sup> It is a genetically heterogeneous, variably penetrant, autosomal dominant trait. Most studies report a preponderance of females, with a ratio of 1.5 to 3.7 female per male.<sup>3–9</sup> The disease appears to be more prevalent in European than East Asian or Middle Eastern populations.<sup>10–14</sup> A recent FECD comorbidity association study demonstrated that female sex and European ancestry increase the risk of developing FECD by 4.6 fold and 5.5 fold, respectively.<sup>15</sup> Depending on ancestry, 17% to 81% of FECD patients in these cohorts have one or more expanded copies of an intronic CTG repeat within the *TCF4* gene (termed CTG18.1; MIM: \*602272.0007),<sup>6–9,16–25</sup> making it, by far, the most common trinucleotide repeat expansion disease. Other rarer genetic causes have been identified through linkage analysis and candidate gene screening within familial cohorts.<sup>26,27</sup> For example, heterozygous missense variants in *COL8A2* cause an early-onset and phenotypically distinct form of the disease.<sup>28,29</sup> Rare variants in other genes, including *SLC4A11*, *ZEB1*, *AGBL1*, *LOXHD1* and *TCF4*, have also been associated with FECD, though several findings have not been replicated.<sup>13,26,30–33</sup> In addition, three FECD genome-wide association studies (GWAS) have collectively identified twelve significant genomic loci but, excluding CTG18.1 expansion status, the causal risk variants driving these association signals remain elusive.<sup>34–</sup>

36

Gene-targeted interventions to prevent or delay FECD progression are in development.<sup>37–41</sup> However, their success will rely on identifying at-risk individuals before corneal endothelial function deteriorates and sight loss occurs. Here, we present an in-depth analysis of a large and extensively genotyped FECD cohort, providing novel clinical, demographic and genetic insights.

## **Methods**

### **Subject recruitment**

We recruited participants at Moorfields Eye Hospital (MEH), London and the General University Hospital(GUH), Prague, from September 2009 to July 2023, following the tenets of the Declaration of Helsinki. The study was approved by the Research Ethics Committees of University College London (UCL) (22/EE/0090), Moorfields Eye Hospital (MEH) London (13/LO/1084), or the General University Hospital (GUH) Prague (151/11 S-IV). All participants were diagnosed with FECD based on the documented finding of confluent corneal guttae seen by slit-lamp examination. They provided written consent and whole blood or saliva for DNA extraction. The potential effect of CTG18.1 genotype on phenotypic outcome was evaluated using two clinical parameters: A) age at recruitment (at date of whole blood or saliva sample collection); B) the age at first keratoplasty (at date of their first keratoplasty), which could be before or after recruitment. To prevent the confounding effect of traumatic endothelial cell loss, patients with a history of intraocular surgery, including cataract extraction, were excluded. Similarly, we only included patients who had a primary endothelial keratoplasty with or without phacoemulsification. The study workflow is summarized in **eFigure 1**.

### **DNA extraction and CTG18.1 genotyping**

Genomic DNA was extracted from whole blood or saliva using a Gentra Puregene Blood kit (Qiagen) or Oragene saliva kit (Oragene OG-300, DNA Genotek). All samples were analyzed using a previously-described short tandem repeat (STR)-polymerase chain reaction (PCR) assay.<sup>16,18,42</sup> Triplet repeat-primed (TP)-PCR was subsequently performed if only one CTG18.1 allele was detected to determine if an allele longer than the STR-PCR detection maximum (~125 repeats) was present. We defined cases with one or both alleles having  $\geq 50$  repeats as expansion-positive (Exp+) and those with biallelic alleles of  $< 50$  repeats as expansion-negative (Exp-).<sup>17,42</sup>

## **Ancestry and relatedness**

We genotyped all participants using a UK Biobank Axiom Array (Applied Biosystems). Genotypes were called using Axiom Analysis Suite software. Ancestry was inferred by principal component analysis (PCA) (FRAPOSA).<sup>43</sup> We used 2,492 unrelated samples with known ancestry from the 1000 Genomes Project as a reference panel. Kinship analysis was performed using KING.<sup>44</sup> Probands were defined as the first recruited individual within such kinships, and all cases identified as 2nd-degree cousins or more closely related to probands were excluded (kinship coefficient > 0.0884).

## **Exome sequencing and rare variant analysis pipeline**

Exome libraries were generated using a SureSelect Human All Exome V6 capture kit (Agilent) or a SeqCap EZ MedExome Enrichment Kit (Roche) and sequenced on either a HiSeq 4000 or 2500 platform (Illumina). Raw sequencing data were aligned using Burrows-Wheeler Aligner (BWA, 0.7.17).<sup>45,46</sup> Variants and indels were called according to the Genome Analysis Toolkit Haplotypecaller (GATK, v4.4).<sup>47</sup> Aligned data were interrogated for rare and potentially disease-associated coding variants in previously implicated in FECD genes: *COL8A2*, *ZEB1*, *SLC4A11*, *AGBL1*, *LOXHD1* and *TCF4*.<sup>26,27,33</sup> Variants were annotated using Ensembl VEP (106.1),<sup>48</sup> with the Combined Annotation Dependent Depletion (CADD, v1.6)<sup>49</sup> and REVEL<sup>50</sup> plugins. We defined variants of interest as having a CADD score >15 and a minor allele frequency (MAF) <0.01 in the Genome Aggregation Database (gnomAD, v3.1.2) in all genetic ancestry groups, excluding the Amish population.<sup>51</sup> Variants of interest were verified by Sanger sequencing. SpliceAI was used to assess the effect of splice region variants on splicing.<sup>52</sup>

## **Corneal endothelial transcriptome analysis**

Cultured corneal endothelial cell (CEC) transcriptomes from four healthy control adults were queried to determine the relative abundance of the genes expressed within the corneal

endothelium (EGAS5000000303).<sup>33</sup> Briefly, FASTQ files were quantified with Salmon (GRCh38.p13, Ensembl v100, V1.4.0)<sup>53</sup> and tximport (v.1.30.0)<sup>54</sup> to generate normalized TPM gene-level counts. Genes with expression levels (TPM)  $\leq 0.02$  were considered not expressed within the corneal endothelium.

### **Statistical analysis**

Statistical analysis was performed using R (version 4.0.2, R Foundation for Statistical Computing). Data normality was assessed using Kolmogorov–Smirnov/Shapiro–Wilk tests. We used the  $\chi^2$  test to compare categorical data. Wilcoxon signed-rank test was used to analyze non-parametric continuous variables. A linear regression model assessed the association between CTG18.1 repeat length of the largest expanded allele and age at first keratoplasty. Cases with repeat lengths of  $\geq 125$  repeats, which exceed the detection limit of STR-PCR, and cases with biallelic Exp+ where the repeat lengths of either allele could not be determined by the STR-PCR assay, were excluded from the regression analysis. Allele frequencies of FECD cases and unaffected, aged controls, previously reported,<sup>17</sup> were calculated to derive the observed and expected monoallelic to biallelic Exp+ allelic ratio, respectively. The observed and expected ratios of monoallelic to biallelic Exp+ cases were compared. *P* values  $\leq 0.05$  were classified as significant.



## Results

### FECD cohort sex and ancestry vary with CTG18.1 allelic distributions

We recruited 918 patients with FECD. Twenty-four were determined to be closely related and excluded, leaving 894 probands, of which 546 (61.1%) were females. PCA of genome-wide SNP array data showed that 829 (92.7%) were European (**Table 1**). CTG18.1 genotyping revealed that 691 (77.3%) participants had at least one expanded copy of the CTG18.1 allele, and 46 (5.1%) had bi-allelic expansions. More European patients had a CTG18.1 expansion (668, 80.6%) compared to non-Europeans (23, 35.4%,  $P<.001$ ), in agreement with gnomAD (v3.1.2), which shows Europeans have the highest population frequency of CTG18.1 expansion.<sup>55</sup> By comparing these data to the age and ethnicity-matched control cohort,<sup>17</sup> harboring at least one expanded CTG18.1 allele conferred >78-fold risk for FECD in patients of European ancestry (odds ratio [OR] = 78.5; 95% CI: 50.3 to 122.6,  $P<.001$ ). Overall, there was a significantly lower proportion of Exp+ African cases (7, 18.9%) compared to European cases ( $P<.001$ ), while the proportion of Exp+ cases between South Asian (14, 63.6%) and European groups was similar ( $P=0.09$ ; **Table 1**; **Figure 1A**).

The high proportion of females in the total FECD cohort (2.20 female-to-male ratio) validates numerous previous reports (**Table 1**). For comparison, females comprise 52.0% (1.04 ratio) of the population of England and Wales over 40 years of age,<sup>56</sup> which is significantly lower than the sex ratio in the total FECD cohort ( $P<.001$ ). The Exp+ subgroup also exhibited a higher proportion of females (1.34 ratio) than the general population of England and Wales ( $P=.007$ ). In the Exp- subgroup 74.4% were female (2.88 ratio), which is significantly higher than both the general population ( $P<.001$ ) and the Exp+ subgroup ( $P<.001$ ; **Figure 1B**).

### CTG18.1 repeat length and expanded allele dosage modify the age at first keratoplasty and disease penetrance, respectively

The median (interquartile range [IQR]) age at recruitment of the total FECD cohort was 69.7y (62.7–76.1), though the Exp- patients (66.7y [53.7–74.7]) were significantly younger than Exp+ patients (70.2y [64.7–76.4],  $P < .001$ ; **Table 2**). Whilst both male and female Exp+ patients were recruited at a similar age, Exp- males tended to be recruited at a younger age than females (62.6y [50.8–73.6] vs 67.7y [55.8–75.1],  $P = .13$ ). After excluding cases that did not meet the inclusion criteria for genotype-keratoplasty data analysis, a higher proportion of Exp+ patients (382, 58.9%) had keratoplasty than the Exp- group (59, 34.9%; **eTable 1**).

The median age at first keratoplasty for the Exp+ patients (68.2y [63.2–73.6]) was significantly older than for the Exp- patients (61.3y [52.6–70.4],  $P < .001$ ; **Table 2**). This is likely due to a broader age distribution within Exp-, where there was a subset who had surgery at a relatively young age (Exp+ 40y–95y vs Exp- 22y–87y,  $P < .001$ ) (**Figure 2A**).

Although the median age at first keratoplasty was lower for patients with biallelic CTG18.1 Exp+ (67.7y [62.4–72.4]) compared to those with monoallelic expansions, the difference did not reach significance (68.2y [63.3–73.7],  $P < .69$ ; **Figure 2B; Table 2**). Notably, the observed ratio of biallelic to monoallelic Exp+ cases, derived from homozygous to heterozygous Exp+ allelic ratios, was significantly higher in the FECD cohort (1:14) compared to the expected ratio of Exp+ cases in an aged, unaffected group<sup>17</sup> (1:94) (expected vs observed biallelic Exp+ cases: 7 vs 46;  $P < .001$ ; **eTable 2**), suggesting that disease penetrance is higher in carriers of two expanded copies of CTG18.1.

Within the refined Exp+ patient group with sized CTG18.1 alleles (308/382; **eTable 3**), linear regression demonstrated a significant negative correlation between the CTG18.1 repeat length of the single largest expanded allele and age at first keratoplasty ( $r = -0.087$  [95% CI: -0.162 to -0.012],  $P = .02$ ; **Figure 2C**).

### **Rare coding variants in FECD-associated genes account for a minor fraction of missing heritability in Exp- cases**

To explore the missing heritability in the Exp- group, exome data was generated for 128 Exp- patients. FECD-associated genes were interrogated for rare and potentially deleterious variants in conjunction with bulk CEC-specific RNAseq data. Analysis of the transcriptomic data revealed that neither *LOXHD1* nor *AGBL1* are expressed (**eTable 4**). This finding, in conjunction with the fact that neither gene has been replicated as FECD-associated,<sup>26</sup> led us to discount variants in these genes. Within the remaining robustly validated gene set (*COL8A2*, *SLC4A11*, *ZEB1*, and *TCF4*), we only identified potentially disease-associated variants in 13 (10.1%) of 128 patients (**Table 3**).

Four Exp- patients had three qualifying heterozygous *COL8A2* missense variants (**Table 3**). Two harbored the same pathogenic missense variant, c.1363C>A p.(Gln455Lys), previously established to cause early-onset FECD (MIM #136800).<sup>28</sup> Notably, both cases had corneal transplantation in their second or third decade (**Table 3**). Patients P1425 and P1726 harbored p.(Arg434His) and p.(Pro575Leu) variants, but without early-onset disease. P1425 had a keratoplasty in late 60s, whilst P1726 was recruited in his early 60s but had not undergone surgery. Both variants have been associated with FECD, although lack of segregation with disease has been reported independently, suggesting they may be associated with incomplete penetrance or are non-causal.<sup>28,57</sup>

Two cases, P309 and P723, harbored heterozygous qualifying *SLC4A11* missense variants not previously associated with FECD. Interestingly, both variants alter the same amino acid residue: p.(Arg331Trp) and p.(Arg331Gln) (**Table 3**). In four cases, we identified qualifying *ZEB1* variants, including three heterozygous missense variants p.(Thr233Met), p.(Thr752Ala) and p.(Glu1033Asp) and a heterozygous splice region variant, c.794-7T>G, not predicted by SpliceAI to impact the splicing of any *ZEB1* transcripts (acceptor loss score  $\Delta 0.04$ ) (**Table 3**). There were five qualifying *TCF4* variants in four previously reported patients,<sup>33</sup> including three missense and two potentially loss-of-function variants (**Table 3**). In case P399, two consecutive missense and nonsense variants occurred *in cis*; c.[57G>T;58A>T]; p.[(Arg19Ser;Lys20\*)]. For P723, the rare variant resulted in a synonymous change,

c.66G>A p.(Glu22=), that is predicted to result in the loss of a native donor site (SpliceAI donor loss score  $\Delta 0.78$ ).<sup>33</sup>

## Discussion

Here we present the largest comprehensively genetically interrogated cohort with FECD reported to date, and show for the first time that: i) dosage of expanded CTG18.1 alleles modifies penetrance, ii) variants in known associated genes only account for a minority of missing heritability in Exp- cases, iii) and the preponderance of female disease is largely driven by Exp- cases.

The prevalence of CTG18.1 expansions varies between ethnic groups, with a reported allele frequency of 2.95% in European, and 0.7%–1.8% in non-European populations.<sup>55</sup> Here we also confirm our previous finding<sup>17</sup> that a single expanded allele confers  $\geq 78$ -fold increased risk of developing FECD. Thus the reported higher prevalence of FECD may be explained by the higher frequency of CTG18.1 expansions in the European population.<sup>10–14</sup> We found that the proportion of South Asian patients (63.6%) with a CTG18.1 expansion was higher than in previous reports (17.3%-34.0%)<sup>6,21</sup> which suggests that CTG18.1 expansion may also be a common driver of FECD in this population.

Studies have used a range of clinical metrics to examine the effect of CTG18.1 expansions on disease severity.<sup>19,23,24,58</sup> In the majority of these studies, the history of cataract extraction and the type of keratoplasty performed were not considered. Our study aimed to examine the inherent biological link between genotype and phenotype, whilst making our best effort to control for potential external influences that could distort the relationship. Hence, strict exclusion criteria were applied for our genotype-phenotype analyses. Our data demonstrate that the length of the largest expanded allele inversely correlates with the age at first keratoplasty. However, the correlation was modest, suggesting that age at first keratoplasty may be too crude a surrogate marker of disease severity and that other genetic or environmental factors modify the phenotype. Future longitudinal studies involving early screening with genotyping will likely improve our understanding of the impact of CTG18.1 repeat length on FECD onset and progression. Repeat length is established as a predictor of age at onset in some repeat-mediated diseases,<sup>59,60</sup> but the correlation is weak or absent in

others.<sup>61–65</sup> It is also possible that there may be a maximum repeat length threshold above which the phenotypic effect is constant.

In this study, DNA from blood/saliva was used to estimate the inherited allele length. We have previously shown that individuals with  $\geq 50$  CTG18.1 repeats detected in blood/saliva consistently display molecular hallmarks of repeat-mediated pathology in their CECs.<sup>33,42</sup> However, it is important to recognise that expanded CTG18.1 alleles are consistently much larger in affected CECs due to somatic instability.<sup>42</sup> Nonetheless, the inherited allele length estimates from stable cell populations (i.e. blood/saliva) are considered informative for genotype-phenotype correlations, as shown in previous studies of repeat-mediated disease.<sup>66</sup>

We observed a strong, approximately sevenfold, enrichment of biallelic expansion cases in our cohort, suggesting that two copies of the expanded repeat increase disease penetrance. However, patients with a biallelic CTG18.1 expansion did not have a younger age at first keratoplasty compared to those with a monoallelic expansion. Soliman et al. also found no differences in severity between these two groups when they compared clinical metrics such as Krachmer grade, central corneal thickness, and the proportion who had a keratoplasty.<sup>23</sup> Thus, two copies of the expanded repeat appear to increase disease penetrance without resulting in detectable signs of increased disease severity in the patient population.

Our data demonstrated that the Exp- group is more ethnically and phenotypically diverse. Despite 10% (13/128) of the exome-sequenced Exp- cases harboring rare qualifying variants in previously reported FECD genes, only one *COL8A2* variant (p.Gln455Lys) has previously been robustly demonstrated as an established cause of FECD.<sup>26,28,67</sup> Additional analysis is required to validate all remaining variants reported here. Furthermore, future in-depth genomic interrogation will be required to identify other rare Mendelian causes and/or complex genetic risk factors of disease that may in-part explain the missing heritability in the Exp- subgroup, though we cannot exclude the possibility that some cases with the FECD phenotype will not have a genetic basis for their disease. The high female preponderance in

the Exp- subgroup highlights a role for sex-specific factors underlying FECD in some cases. For example, dysregulation of estrogen metabolite pathways in FECD CECs and sex-specific sensitivity to UV-induced mitochondrial damage *in vitro* and in animal models have been reported.<sup>68-71</sup> Thus it is plausible that behavioral<sup>72</sup> and biological sex differences play a more critical role in FECD cases in the absence of established genetic causes or risk factors.

### **Limitations**

The majority of patients included in this study are European, which should be noted when contextualizing conclusions regarding ancestry. Accurately determining the age of onset in FECD was impossible as the disease can be asymptomatic for many years. We, therefore, used two surrogates to estimate disease severity: the age at recruitment and the age at first keratoplasty in either eye. Both of these parameters are likely to be affected by uncontrolled variables such as referral practice and patient preference.

## Conclusions

Comprehensive genetic interrogation of this multi-centre FECD cohort provides novel insight into this heterogeneous disease, such as the effect of genotype on phenotypic outcomes. However, a significant proportion of cases remain genetically unsolved. Several novel CTG18.1-targeted interventions are in development, which may reduce the demand for corneal donor tissue.<sup>17,37,38,40,41,73,74</sup> Our data indicates that CTG18.1 zygosity status and repeat length of the expanded allele should be included in the design of clinical trials. The success of any of these approaches depends upon population screening to identify individuals with CTG18.1 expansions before irreversible damage occurs. The higher prevalence of CTG18.1 expansions among European and South Asian patients means these populations are particularly well-positioned to benefit from the development of CTG18.1-targeted therapies once integrated into clinical practices.



## **Acknowledgements**

Jana Jedlickova and Beverly Scott for technical support. The authors declare no competing interests. AED has previously acted as a paid consultant for Triplet Therapeutics Ltd, LoQus23 Therapeutics Ltd, Design Therapeutics Ltd and had a research collaboration with ProQR Therapeutics. AED has an ongoing research collaboration with Prime Medicine. This work was performed within the framework of ERN-EYE.

## **Funding**

This work was funded by a UKRI Future Leader Fellowship MR/S031820/1 (AED), Moorfields Eye Charity GR000060, GR001395, GR001337 (AED) and Sight Research UK SAC 036 (AED), the Rosetrees Trust M784 (AED), Medical Research Council MR/X006271/1 (SL, AED), Fight for Sight 5171 / 5172 (MAC, AED) and The National Institute for Health Research Biomedical Research Centre at Moorfields Eye Hospital National Health Service Foundation Trust and UCL Institute of Ophthalmology (AED, NC, SJT, KM, AJH, MEC, NP). LD, PS, and PL were supported by MH CZ-DRO-VFN64165, GACR 20-19278S, UNCE/24/MED/022 and SVV 2600631. NP is funded by a National Institute for Health Research (NIHR) AI Award (AI\_AWARD02488). ASK is funded by the Deutsche Forschungsgemeinschaft (DFG, German Research Foundation, project number 527928847).

## **Author contributions**

**Concept and design:** Liu, Sadan, Bhattacharyya, Zarouchlioti, Monckton, Muthusamy, Liskova, Tuft, Davidson

**Data acquisition and analysis:** Liu, Sadan, Bhattacharyya, Zarouchlioti, Szabo, Costa, Hafford-Tear, Kladny, Dudakova, Ciosi, Moghul, Wilkins, Allan, Skalicka, Bunce, Muthusamy, Liskova, Tuft, Davidson

**Drafting of the manuscript:** Liu, Bhattacharyya, Zarouchlioti, Costa, Liskova, Tuft, Davidson

**Critical review of the manuscript for important intellectual content:** All authors

**Statistical analysis:** Liu, Bhattacharyya, Zarouchlioti, Ciosi, Bunce, Monckton

**Obtained funding:** Liu, Liskova, Tuft, Davidson

**Supervision:** Monckton, Hardcastle, Pontikos, Muthusamy, Liskova, Tuft, Davidson

## References

1. Mathews P, Benbow A, Corcoran K, DeMatteo J, Philippy B, Van Meter W. 2022 Eye Banking Statistical Report—Executive Summary. *Eye Banking and Corneal Transplantation*. 2023;2(3):e0008. doi:10.1097/ebct.000000000000008
2. NHSBT. NHS Blood and Transplant Annual Activity Report: Cornea Activity [Internet]. Accessed May 1, 2024. <http://nhsbt.dbe.blob.core.windows.net/umbraco-assets-corp/27122/section-10-cornea-activity.pdf>
3. Zoega GM, Fujisawa A, Sasaki H, et al. Prevalence and risk factors for cornea guttata in the Reykjavik Eye Study. *Ophthalmology*. 2006;113(4):565-569. doi:10.1016/j.ophtha.2005.12.014
4. Kitagawa K, Kojima M, Sasaki H, et al. Prevalence of primary cornea guttata and morphology of corneal endothelium in aging Japanese and Singaporean subjects. *Ophthalmic Res*. 2002;34(3):135-138. doi:10.1159/000063656
5. Zhang X, Igo RP Jr, Fondran J, et al. Association of smoking and other risk factors with Fuchs' endothelial corneal dystrophy severity and corneal thickness. *Invest Ophthalmol Vis Sci*. 2013;54(8):5829-5835. doi:10.1167/iovs.13-11918
6. Rao BS, Tharigopala A, Rachapalli SR, Rajagopal R, Soumitra N. Association of polymorphisms in the intron of TCF4 gene to late-onset Fuchs endothelial corneal dystrophy: An Indian cohort study. *Indian J Ophthalmol*. 2017;65(10):931-935. doi:10.4103/ijo.IJO\_191\_17
7. Xing C, Gong X, Hussain I, et al. Transethnic Replication of Association of CTG18.1 Repeat Expansion of TCF4 Gene With Fuchs' Corneal Dystrophy in Chinese Implies Common Causal Variant. *Invest Ophthalmol Vis Sci*. 2014;55(11):7073-7078. doi:10.1167/iovs.14-15390

8. Viberg A, Westin IM, Golovleva I, Bystro B. TCF4 trinucleotide repeat expansion in Swedish cases with Fuchs' endothelial corneal dystrophy. *Acta Ophthalmol*. Published online 2021:8.
9. Xu TT, Li YJ, Afshari NA, et al. Disease Expression and Familial Transmission of Fuchs Endothelial Corneal Dystrophy With and Without CTG18.1 Expansion. *Invest Ophthalmol Vis Sci*. 2021;62(1):17. doi:10.1167/iovs.62.1.17
10. Eghrari AO, Gottsch JD. Fuchs' corneal dystrophy. *Expert Rev Ophthalmol*. 2010;5(2):147-159. doi:10.1586/eop.10.8
11. Krachmer JH, Purcell JJ Jr, Young CW, Bucher KD. Corneal endothelial dystrophy. A study of 64 families. *Arch Ophthalmol*. 1978;96(11):2036-2039. doi:10.1001/archopht.1978.03910060424004
12. Lorenzetti DW, Uotila MH, Parikh N, Kaufman HE. Central cornea guttata. Incidence in the general population. *Am J Ophthalmol*. 1967;64(6):1155-1158. <https://www.ncbi.nlm.nih.gov/pubmed/6072991>
13. Vithana EN, Morgan PE, Ramprasad V, et al. SLC4A11 mutations in Fuchs endothelial corneal dystrophy. *Hum Mol Genet*. 2008;17(5):656-666. doi:10.1093/hmg/ddm337
14. Aiello F, Gallo Afflitto G, Ceccarelli F, Cesareo M, Nucci C. Global Prevalence of Fuchs Endothelial Corneal Dystrophy (FECD) in Adult Population: A Systematic Review and Meta-Analysis. *J Ophthalmol*. 2022;2022:1-7. doi:10.1155/2022/3091695
15. Nealon CL, Halladay CW, Gorman BR, et al. Association Between Fuchs Endothelial Corneal Dystrophy, Diabetes Mellitus, and Multimorbidity. *Cornea*. 2023;42(9):1140-1149. doi:10.1097/ICO.0000000000003311
16. Wieben ED, Aleff RA, Tosakulwong N, et al. A common trinucleotide repeat expansion within the transcription factor 4 (TCF4, E2-2) gene predicts Fuchs corneal dystrophy.

*PLoS One*. 2012;7(11):e49083. doi:10.1371/journal.pone.0049083

17. Zarouchlioti C, Sanchez-Pintado B, Hafford Tear NJ, et al. Antisense Therapy for a Common Corneal Dystrophy Ameliorates TCF4 Repeat Expansion-Mediated Toxicity. *Am J Hum Genet*. 2018;102(4):528-539. doi:10.1016/j.ajhg.2018.02.010
18. Vasanth S, Eghrari AO, Gapsis BC, et al. Expansion of CTG18.1 Trinucleotide Repeat in TCF4 Is a Potent Driver of Fuchs' Corneal Dystrophy. *Invest Ophthalmol Vis Sci*. 2015;56(8):4531-4536. doi:10.1167/iovs.14-16122
19. Okumura N, Hayashi R, Nakano M, et al. Association of rs613872 and Trinucleotide Repeat Expansion in the TCF4 Gene of German Patients With Fuchs Endothelial Corneal Dystrophy. *Cornea*. 2019;38(7):799-805. doi:10.1097/ICO.0000000000001952
20. Foja S, Luther M, Hoffmann K, Rupprecht A, Gruenauer-Kloevokorn C. CTG18.1 repeat expansion may reduce TCF4 gene expression in corneal endothelial cells of German patients with Fuchs' dystrophy. *Graefes Arch Clin Exp Ophthalmol*. 2017;255(8):1621-1631. doi:10.1007/s00417-017-3697-7
21. Nanda GG, Padhy B, Samal S, Das S, Alone DP. Genetic Association of TCF4 Intronic Polymorphisms, CTG18.1 and rs17089887, With Fuchs' Endothelial Corneal Dystrophy in an Indian Population. *Invest Ophthalmol Vis Sci*. 2014;55(11):7674-7680. doi:10.1167/iovs.14-15297
22. Eghrari AO, Vahedi S, Afshari NA, Riazuddin SA, Gottsch JD. CTG18.1 Expansion in TCF4 Among African Americans With Fuchs' Corneal Dystrophy. *Invest Ophthalmol Vis Sci*. 2017;58(14):6046-6049. doi:10.1167/iovs.17-21661
23. Soliman AZ, Xing C, Radwan SH, Gong X, Mootha VV. Correlation of Severity of Fuchs Endothelial Corneal Dystrophy With Triplet Repeat Expansion in *TCF4*. *JAMA Ophthalmol*. 2015;133(12):1386. doi:10.1001/jamaophthalmol.2015.3430

24. Soh YQ, Peh Swee Lim G, Htoon HM, et al. Trinucleotide repeat expansion length as a predictor of the clinical progression of Fuchs' Endothelial Corneal Dystrophy. *PLoS One*. 2019;14(1). doi:10.1371/journal.pone.0210996
25. Okumura N, Puangsricharern V, Jindasak R, et al. Trinucleotide repeat expansion in the transcription factor 4 (TCF4) gene in Thai patients with Fuchs endothelial corneal dystrophy. *Eye*. 2020;34(5):880-885. doi:10.1038/s41433-019-0595-8
26. Tsedilina TR, Sharova E, Iakovets V, Skorodumova LO. Systematic review of SLC4A11, ZEB1, LOXHD1, and AGBL1 variants in the development of Fuchs' endothelial corneal dystrophy. *Front Med*. 2023;10:1153122. doi:10.3389/fmed.2023.1153122
27. Fautsch MP, Wieben ED, Baratz KH, et al. TCF4-mediated Fuchs endothelial corneal dystrophy: Insights into a common trinucleotide repeat-associated disease. *Prog Retin Eye Res*. 2021;81:100883. doi:10.1016/j.preteyeres.2020.100883
28. Biswas S, Munier FL, Yardley J, et al. Missense mutations in COL8A2, the gene encoding the alpha2 chain of type VIII collagen, cause two forms of corneal endothelial dystrophy. *Hum Mol Genet*. 2001;10(21):2415-2423. doi:10.1093/hmg/10.21.2415
29. Gottsch JD, Sundin OH, Liu SH, et al. Inheritance of a novel COL8A2 mutation defines a distinct early-onset subtype of fuchs corneal dystrophy. *Invest Ophthalmol Vis Sci*. 2005;46(6):1934-1939. doi:10.1167/iovs.04-0937
30. Riazuddin SA, Parker DS, McGlumphy EJ, et al. Mutations in LOXHD1, a recessive-deafness locus, cause dominant late-onset Fuchs corneal dystrophy. *Am J Hum Genet*. 2012;90(3):533-539. doi:10.1016/j.ajhg.2012.01.013
31. Riazuddin SA, Vasanth S, Katsanis N, Gottsch JD. Mutations in AGBL1 cause dominant late-onset Fuchs corneal dystrophy and alter protein-protein interaction with TCF4. *Am J Hum Genet*. 2013;93(4):758-764. doi:10.1016/j.ajhg.2013.08.010

32. Mehta JS, Vithana EN, Tan DTH, et al. Analysis of the posterior polymorphous corneal dystrophy 3 gene, TCF8, in late-onset Fuchs endothelial corneal dystrophy. *Invest Ophthalmol Vis Sci.* 2008;49(1):184-188. doi:10.1167/iovs.07-0847
33. Bhattacharyya N, Chai N, Hafford-Tear NJ, et al. Deciphering novel TCF4-driven mechanisms underlying a common triplet repeat expansion-mediated disease. *PLoS Genet.* 2024;20(5):e1011230. doi:10.1371/journal.pgen.1011230
34. Afshari NA, Igo RP, Morris NJ, et al. Genome-wide association study identifies three novel loci in Fuchs endothelial corneal dystrophy. *Nat Commun.* 2017;8(1):14898. doi:10.1038/ncomms14898
35. Gorman BR, Francis M, Nealon CL, et al. A multi-ancestry GWAS of Fuchs corneal dystrophy highlights the contributions of laminins, collagen, and endothelial cell regulation. *Commun Biol.* 2024;7(1):418. doi:10.1038/s42003-024-06046-3
36. Baratz KH, Tosakulwong N, Ryu E, et al. E2-2 protein and Fuchs's corneal dystrophy. *N Engl J Med.* 2010;363(11):1016-1024. doi:10.1056/NEJMoa1007064
37. Hu J, Rong Z, Gong X, et al. Oligonucleotides targeting TCF4 triplet repeat expansion inhibit RNA foci and mis-splicing in Fuchs' dystrophy. *Hum Mol Genet.* 2018;27(6):1015-1026. doi:10.1093/hmg/ddy018
38. Therapeutics. P. Open-Label, Single-Dose, Exploratory Study With QR-504a to Evaluate Safety, Tolerability, and Corneal Endothelium Molecular Biomarker(s) in Subjects With Fuchs Endothelial Corneal Dystrophy With Trinucleotide Repeat Expansion in the TCF4 Gene (FECD3) [Internet]. Published 2022. Accessed January 9, 2024. <https://clinicaltrials.gov/study/NCT05052554>
39. Powers A, Rinkoski TA, Cheung K, et al. GeneTAC™ small molecules reduce toxic nuclear foci and restore normal splicing in corneal endothelial cells derived from patients with Fuchs endothelial corneal dystrophy (FECD) harboring repeat expansions in

- transcription factor 4 (TCF4). *Invest Ophthalmol Vis Sci.* 2022;63(7):2753-A0242.  
Accessed January 9, 2024. <https://iovs.arvojournals.org/article.aspx?articleid=2780764>
40. Angelbello AJ, Benhamou RI, Rzuczek SG, et al. A Small Molecule that Binds an RNA Repeat Expansion Stimulates Its Decay via the Exosome Complex. *Cell Chemical Biology.* 2021;28(1):34-45.e6. doi:10.1016/j.chembiol.2020.10.007
  41. Hu J, Shen X, Kheirabadi M, et al. Targeting the Expanded TCF4/Fuchs' Endothelial Corneal Dystrophy CUG Repeat with Morpholino Peptide Conjugates. *ACS Omega.* 2023;8(45):42797-42802. doi:10.1021/acsomega.3c05634
  42. Zarouchlioti C, Efthymiou S, Facchini S, et al. Tissue-specific TCF4 triplet repeat instability revealed by optical genome mapping. *EBioMedicine.* 2024;108(105328):105328. doi:10.1016/j.ebiom.2024.105328
  43. Zhang D, Dey R, Lee S. Fast and robust ancestry prediction using principal component analysis. *Bioinformatics.* 2020;36(11):3439-3446. doi:10.1093/bioinformatics/btaa152
  44. Manichaikul A, Mychaleckyj JC, Rich SS, Daly K, Sale M, Chen WM. Robust relationship inference in genome-wide association studies. *Bioinformatics.* 2010;26(22):2867-2873. doi:10.1093/bioinformatics/btq559
  45. Li H, Durbin R. Fast and accurate short read alignment with Burrows-Wheeler transform. *Bioinformatics.* 2009;25(14):1754-1760. doi:10.1093/bioinformatics/btp324
  46. Pontikos N, Yu J, Moghul I, et al. Phenopolis: an open platform for harmonization and analysis of genetic and phenotypic data. *Bioinformatics.* 2017;33(15):2421-2423. doi:10.1093/bioinformatics/btx147
  47. DePristo MA, Banks E, Poplin R, et al. A framework for variation discovery and genotyping using next-generation DNA sequencing data. *Nat Genet.* 2011;43(5):491-498. doi:10.1038/ng.806



48. McLaren W, Gil L, Hunt SE, et al. The Ensembl Variant Effect Predictor. *Genome Biol.* 2016;17(1):122. doi:10.1186/s13059-016-0974-4
49. Rentzsch P, Witten D, Cooper GM, Shendure J, Kircher M. CADD: predicting the deleteriousness of variants throughout the human genome. *Nucleic Acids Res.* 2019;47(D1):D886-D894. doi:10.1093/nar/gky1016
50. Ioannidis NM, Rothstein JH, Pejaver V, et al. REVEL: An ensemble method for predicting the pathogenicity of rare missense variants. *Am J Hum Genet.* 2016;99(4):877-885. doi:10.1016/j.ajhg.2016.08.016
51. Kircher M, Witten DM, Jain P, O’Roak BJ, Cooper GM, Shendure J. A general framework for estimating the relative pathogenicity of human genetic variants. *Nat Genet.* 2014;46(3):310-315. doi:10.1038/ng.2892
52. Jaganathan K, Kyriazopoulou Panagiotopoulou S, McRae JF, et al. Predicting Splicing from Primary Sequence with Deep Learning. *Cell.* 2019;176(3):535-548.e24. doi:10.1016/j.cell.2018.12.015
53. Patro R, Duggal G, Love MI, Irizarry RA, Kingsford C. Salmon provides fast and bias-aware quantification of transcript expression. *Nat Methods.* 2017;14(4):417-419. doi:10.1038/nmeth.4197
54. Sonesson C, Love MI, Robinson MD. Differential analyses for RNA-seq: transcript-level estimates improve gene-level inferences. *F1000Res.* 2015;4:1521. doi:10.12688/f1000research.7563.2
55. STRipy - STRs database (TCF4 locus). Accessed May 28, 2024. <https://stripy.org/database/TCF4>
56. Sex by single year of age - Office for National Statistics. Accessed July 26, 2024. <https://www.ons.gov.uk/datasets/TS009/editions/2021/versions/2>

57. Aldave AJ, Rayner SA, Salem AK, et al. No pathogenic mutations identified in the COL8A1 and COL8A2 genes in familial Fuchs corneal dystrophy. *Invest Ophthalmol Vis Sci.* 2006;47(9):3787-3790. doi:10.1167/iovs.05-1635
58. Eghrari AO, Vasanth S, Wang J, Vahedi F, Riazuddin SA, Gottsch JD. CTG18.1 Expansion in TCF4 increases likelihood of transplantation in Fuchs Corneal Dystrophy. *Cornea.* 2017;36(1):40-43. doi:10.1097/ICO.0000000000001049
59. Snell RG, MacMillan JC, Cheadle JP, et al. Relationship between trinucleotide repeat expansion and phenotypic variation in Huntington's disease. *Nat Genet.* 1993;4(4):393-397. doi:10.1038/ng0893-393
60. Morales F, Couto JM, Higham CF, et al. Somatic instability of the expanded CTG triplet repeat in myotonic dystrophy type 1 is a heritable quantitative trait and modifier of disease severity. *Hum Mol Genet.* 2012;21(16):3558-3567. doi:10.1093/hmg/dds185
61. Pellerin D, Danzi MC, Renaud M, et al. Spinocerebellar ataxia 27B: A novel, frequent and potentially treatable ataxia. *Clin Transl Med.* 2024;14(1):e1504. doi:10.1002/ctm2.1504
62. Currò R, Dominik N, Facchini S, et al. Role of the repeat expansion size in predicting age of onset and severity in RFC1 disease. *Brain.* 2024;147(5):1887-1898. doi:10.1093/brain/awad436
63. Day JW, Ricker K, Jacobsen JF, et al. Myotonic dystrophy type 2: molecular, diagnostic and clinical spectrum. *Neurology.* 2003;60(4):657-664. doi:10.1212/01.wnl.0000054481.84978.f9
64. Izumi Y, Maruyama H, Oda M, et al. SCA8 repeat expansion: large CTA/CTG repeat alleles are more common in ataxic patients, including those with SCA6. *Am J Hum Genet.* 2003;72(3):704-709. doi:10.1086/367775

65. Fournier C, Barbier M, Camuzat A, et al. Relations between C9orf72 expansion size in blood, age at onset, age at collection and transmission across generations in patients and presymptomatic carriers. *Neurobiol Aging*. 2019;74:234.e1-e234.e8.  
doi:10.1016/j.neurobiolaging.2018.09.010
66. Cumming SA, Jimenez-Moreno C, Okkersen K, et al. Genetic determinants of disease severity in the myotonic dystrophy type 1 OPTIMISTIC cohort. *Neurology*. 2019;93(10):e995. doi:10.1212/wnl.0000000000008056
67. Meng H, Matthaei M, Ramanan N, et al. L450W and Q455K Col8a2 knock-in mouse models of Fuchs endothelial corneal dystrophy show distinct phenotypes and evidence for altered autophagy. *Invest Ophthalmol Vis Sci*. 2013;54(3):1887-1897.  
doi:10.1167/iovs.12-11021
68. Miyajima T, Melangath G, Zhu S, et al. Loss of NQO1 generates genotoxic estrogen-DNA adducts in Fuchs Endothelial Corneal Dystrophy. *Free Radic Biol Med*. 2020;147:69-79. doi:10.1016/j.freeradbiomed.2019.12.014
69. Han S, Mueller C, Wuebbolt C, et al. Selective effects of estradiol on human corneal endothelial cells. *Sci Rep*. 2023;13(1):15279. doi:10.1038/s41598-023-42290-z
70. Liu C, Miyajima T, Melangath G, et al. Ultraviolet A light induces DNA damage and estrogen-DNA adducts in Fuchs endothelial corneal dystrophy causing females to be more affected. *Proc Natl Acad Sci U S A*. 2020;117(1):573-583.  
doi:10.1073/pnas.1912546116
71. Kumar V, Deshpande N, Parekh M, et al. Estrogen genotoxicity causes preferential development of Fuchs endothelial corneal dystrophy in females. *Redox Biol*. 2023;69:102986. doi:10.1016/j.redox.2023.102986
72. Dunlop S, Coyte PC, McIsaac W. Socio-economic status and the utilisation of physicians' services: results from the Canadian National Population Health Survey. *Soc*

*Sci Med.* 2000;51(1):123-133. doi:10.1016/s0277-9536(99)00424-4

73. Rong Z, Gong X, Hulleman JD, Corey DR, Mootha VV. Trinucleotide Repeat-Targeting dCas9 as a Therapeutic Strategy for Fuchs' Endothelial Corneal Dystrophy. *Transl Vis Sci Technol.* 2020;9(9):47. doi:10.1167/tvst.9.9.47
74. Powers A, Cheung K, Osgood N, et al. Pharmacological and molecular features of DT-168, a topical GeneTACTM small molecule being developed as potential treatment for Fuchs Endothelial Corneal Dystrophy caused by CTG repeat expansions in the TCF4 gene. *Invest Ophthalmol Vis Sci.* 2023;64(8):1333-1333. Accessed August 29, 2024. <https://iovs.arvojournals.org/article.aspx?articleid=2786494>

## Figures

**Figure 1. CTG18.1 repeat length distributions vary with ancestry and sex within a large FECD patient cohort.** Frequency histograms comparing the relative distribution of CTG18.1 repeat length within the (A) total cohort (894), and the allelic distributions of CTG18.1 repeat length within (B) European (EUR; 829), (C) South Asian (SAS; 22) and (D) African (AFR; 37) ancestry groups. The percentage of European patients with a CTG18.1 expansion (80.7%) was greater than that of non-Europeans (35.4%). A larger proportion of South Asian patients also harbored at least one expanded CTG18.1 allele (63%), compared to patients of African ancestry (18%). (E) Bar chart of the sex ratio across the total cohort (2.20 female:male, black bar) and subgroups stratified by CTG18.1 status: Exp- group (2.88 female:male, purple bar), Exp+ group (1.34 female:male, green bar), General population over 40 in England and Wales (1.04 female:male, striped bar). Abbreviation: CTG18.1 expansion positive allele defined as  $\geq 50$  CTG repeats; Exp-, CTG18.1 expansion negative allele defined as  $< 50$  CTG repeats.

**Figure 2. Age at first keratoplasty varies depending on CTG18.1 expansion status, repeat length and zygosity.** (A) Age at first keratoplasty (median [IQR]) was more heterogeneous in the expansion-negative (Exp-) group (61.3y [52.6–70.4]) compared to the expansion-positive (Exp+) group (68.2y [63.2–73.6]), including both mono- and bi-allelic Exp+ cases ( $P < .001$ ). (B) The median age at first keratoplasty in FECD patients with biallelic Exp+ (67.7y [62.4–72.4]) was not statistically significantly different ( $P < .69$ ) than in monoallelic Exp+ patients (68.2y [63.3–73.7]). (C) The scatter plot demonstrates a negative correlation between the CTG18.1 repeat length and age at first keratoplasty in Exp+ patients ( $r = -0.087$  [95% CI: -0.162 to -0.012],  $P = .02$ ). *Green dots*, monoallelic Exp+ cases; *green open circles*, biallelic Exp+ cases.

	Number of cases	CTG18.1 Exp+			CTG18.1 Exp-
		Cases with $\geq 1$ expanded allele	Monoallelic expanded cases	Biallelic expanded cases	
<b>Genotyped patients</b>	894	691 (77.3%)	645 (72.1%)	46 (5.1%)	203 (22.7%)
<b>Sex</b>					
Females	546/894 (61.1%)	395/691 (57.2%)	371/645 (57.5%)	24/46 (52.2%)	151/203 (74.4%)
Males	348/894 (38.9%)	296/691 (42.8%)	274/645 (42.5%)	22/46 (47.8%)	52/203 (25.6%)
<b>Ancestry<sup>a</sup></b>					
European	829 (92.7%)	668/829 (80.6%)	622/829 (75.0%)	46/829 (5.5%)	161/829 (19.4%)
African	37/894 (4.1%)	7/37 (18.9%)	7/37 (18.9%)	0/37 (0.0%)	30/37 (81.1%)
South Asian	22/894 (2.5%)	14/22 (63.6%)	14/22 (63.6%)	0/22 (0.0%)	8/22 (36.4%)
East Asian	3/894 (0.3%)	1/3 (33.3%)	1/3 (33.3%)	0/3 (0.0%)	2/3 (66.7%)
American Admixture	3/894 (0.3%)	1/3 (33.3%)	1/3 (33.3%)	0/3 (0.0%)	2/3 (66.7%)
<b>Recruitment Site</b>					
MEH	563	430/563 (76.4%)	401/563 (71.2%)	29/563 (5.2%)	133/563 (23.6%)
GUH	331	262/331 (79.2%)	245/331 (74.0%)	17/331 (5.1%)	69/331 (20.8%)

**Table 1. Summary of Fuchs endothelial corneal dystrophy (FECD) patient cohort demographics and CTG18.1 expansion status.** Exp+, CTG18.1 expansion positive cases defined as one or both expanded alleles ( $\geq 50$  CTG repeats); Exp-, CTG18.1 expansion negative cases defined as biallelic alleles of  $< 50$  repeats; MEH, Moorfields Eye Hospital; GUH, General University Hospital. The cohort data presented has been updated from an earlier publication.<sup>17</sup> <sup>a</sup>Determined by principal component analysis using FRAPOSA.<sup>43</sup>

	Age (years)	CTG18.1 Exp+			CTG18.1 Exp-
		Cases with $\geq 1$ expanded allele	Monoallelic expanded cases	Biallelic expanded cases	
<b>Median age at recruitment (IQR; in years)</b>					
<b>Total genotyped cohort (N=894)</b>	69.7y (62.7–76.1)	70.2y (64.7–76.4)	70.3y (64.7–76.5)	69.4y (64.9–73.1)	66.7y (53.7–74.7)
Female	69.6y (62.7–76.4)	70.2y (64.5–77.0)	70.1y (64.5–77.1)	71.1y (64.3–75.6)	67.7y (55.8–75.1)
Male	69.9y (62.8–75.5)	70.4y (64.9–75.9)	70.6y (64.8–76.1)	68.7y (65.44–71.8)	62.6y (50.8–73.6)
<b>Median age at first keratoplasty (IQR; in years)</b>					
<b>Cases Meeting Inclusion/Exclusion Criteria (N=649/894)<sup>a</sup></b>	67.8y (61.8–73.1)	68.2y (63.2–73.6)	68.2y (63.3–73.7)	67.7y (62.4–72.4)	61.3y (52.6–70.4)
Female (N=228)	67.4y (61.5–72.8)	67.6y (63.0–72.9)	67.5y (63.1–72.9)	69.4y (62.4–73.5)	62.6y (54.0–71.0)
Male (N=154)	69.1y (62.1–73.5)	69.3y (63.6–74.0)	69.4y (63.6–75.0)	67.6y (64.1–71.2)	57.1y (51.6–63.4)

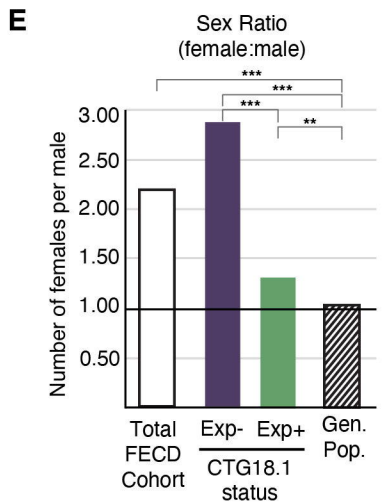
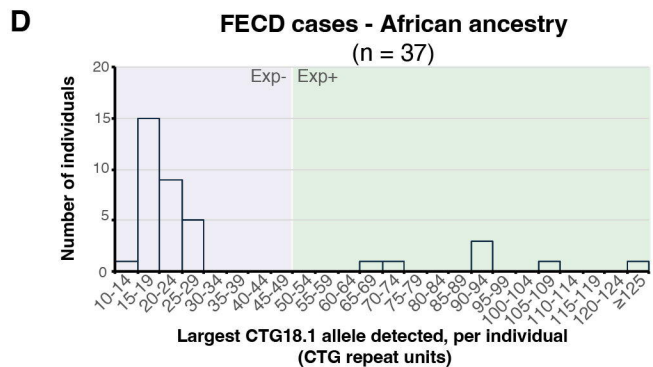
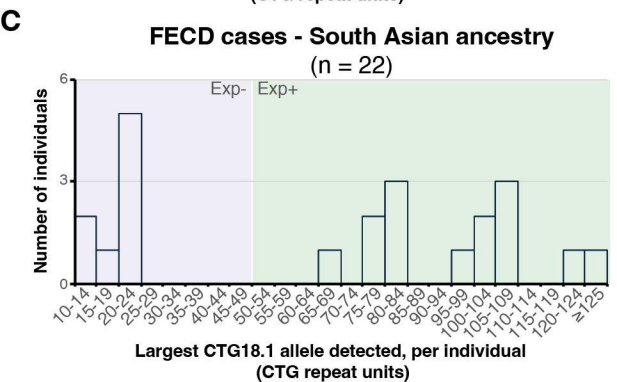
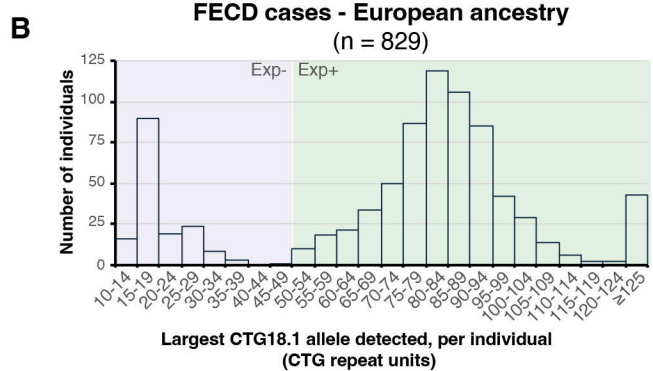
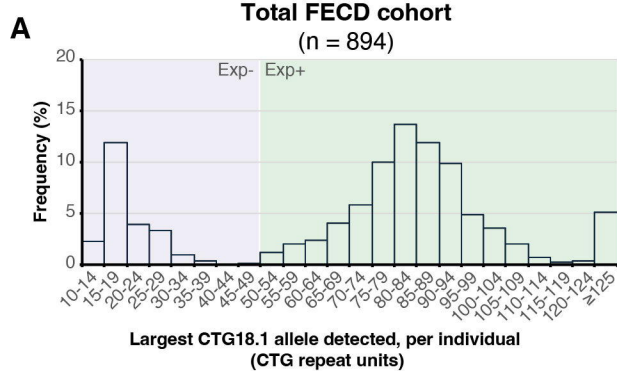
**Table 2. Age at recruitment and first keratoplasty of Fuchs endothelial corneal dystrophy (FECD) patient cohort stratified by sex and CTG18.1 genotype.** Exp+, CTG18.1 expansion positive allele defined as  $\geq 50$  CTG repeats; Exp-, CTG18.1 expansion positive allele defined as  $< 50$  CTG repeats; IQR, interquartile range. <sup>a</sup>Inclusion criteria: endothelial keratoplasty, whether as a standalone procedure, combined with phacoemulsification, or sequentially planned after phacoemulsification; Exclusion criteria: Penetrating keratoplasty, prior intraocular surgery, and unspecified keratoplasty type; the denominators include the total cohort, encompassing both operated and unoperated cases, after excluding those that meet the exclusion criteria.

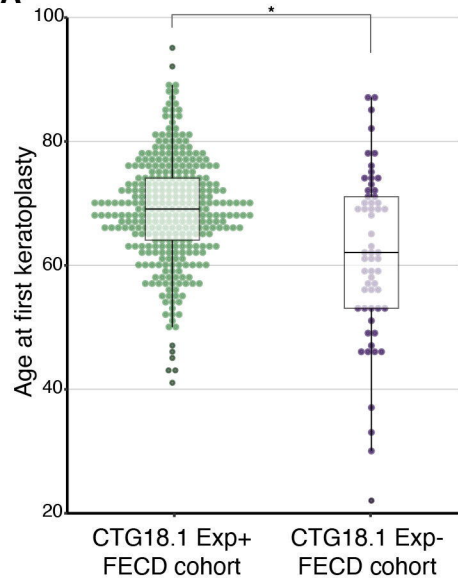
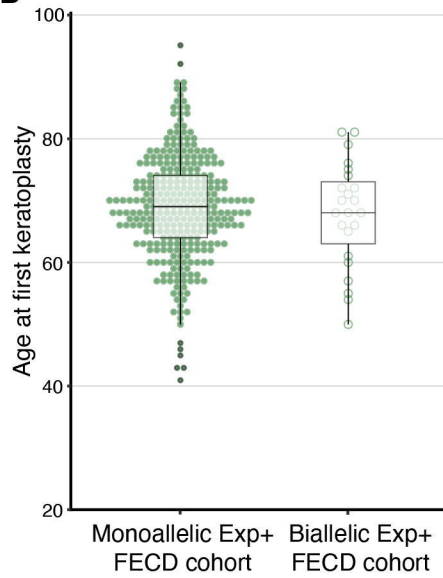
Gene CEC TPM	Transcript (ENST00000-)	Patient ID	Variant	CDS	Protein	CADD	gnomAD (v3.1.2)		Age at first keratoplasty (5-years range)	Sex	Ancestry <sup>a</sup>	Family history	Site	Previously reported
							Total	Max (Population)						
COL8A2 TPM = 806.3	397799.2	P1425	chr1-36098380-C-T	c.1301G>A	p.(Arg434His)	20.6	0.0008958 136/151828	0.001452 (SAS) 4/4820	66-70	M	EUR	No	GUH	56
		P573	chr1-36098318-G-T	c.1363C>A	p.(Gln455Lys)	19.2	-	-	20-25	F	EUR	Parent	MEH	28
		P836	chr1-36098318-G-T	c.1363C>A	p.(Gln455Lys)	19.2	-	-	36-40	F	EUR	No	MEH	28
		P1726	chr1-36097957-G-A	c.1724C>T	p.(Pro575Leu)	24.7	0.001399 213/152202	0.003952 (FIN) 42/10628	NS	M	EUR	No	GUH	28
ZEB1 TPM = 17.2	424869.6	P312	chr10-31514613-C-T	c.698C>T	p.(Thr233Met)	26.1	0.0000263 4/152066	0.0006219 (SAS) 3/4824	76-80	F	SAS	No	MEH	No
		P1812	chr10-31520119-T-G	c.794-7T>G	-	16.6	-	-	NS	F	EUR	No	GUH	No
		P733	chr10-31521586-A-G	c.2254A>G	p.(Thr752Ala)	17.6	0.001274 194/152228	0.001969 (NFE) 134/68042	46-50	F	EUR	No	MEH	No
		P469	chr10-31526985-G-C	c.3099G>C	p.(Glu1033Asp)	17.6	0.000006576 1/152076	0.0000147 (NFE) 1/68032	86-90	M	EUR	No	MEH	No
TCF4 TPM = 203.7	354452.8	P1400	chr18-55261512-G-A	c.944C>T	p.(Ala315Val)	26.3	0.0006243 95/152160	0.001029 (NFE) 70/68028	NS	F	EUR	Sibling	GUH	33
	544241.6	P351	chr18-55403689-A-G	c.26T>C	p.(Ile9Thr)	18.4	0.000006576 1/152076	0.0000147 (NFE) 1/68032	70-75	F	EUR	Relative	MEH	33
	566286.5	P723	chr18-55588470-C-T	c.66G>A	p.(Glu22=)	20.0	0.002131 324/152022	0.007271 (AFR) 301/41398	30-35	M	AFR	Unknown	MEH	33
		P399	chr18-55588478-T-A	c.58A>T	p.(Lys20Ter)	18.8	-	-	56-60	F	AFR	Unknown	MEH	33
		P399	chr18-55588479-C-A	c.57G>T	p.(Arg19Ser)	17.4	-	-	56-60	F	AFR	Unknown	MEH	33
SLC4A11 TPM = 2396.4	642402.1	P309	chr20-3231200-G-A	c.991C>T	p.(Arg331Trp)	16.6	0.001308 199/152192	0.002305 (ASJ) 8/3470	66-70	F	EUR	No	MEH	No
		P723	chr20-3231199-C-T	c.992G>A	p.(Arg331Gln)	17.8	0.001538 234/152168	0.005477 (AFR) 227/14146	30-35	M	AFR	Unknown	MEH	No

**Table 3. Summary of rare and potentially pathogenic variants identified in FECD-associated genes from 128 FECD CTG18.1 Exp- probands analysed by exome sequencing.** Relatives were not included in the main analysis even though identified here. The identifiers used in this study do not disclose the identity of any participants beyond the immediate research team. CEC, corneal endothelial cells; TPM, transcript per million; CADD, Combined Annotation Dependent Depletion; MAF, minor



allele frequency; EUR, European; AFR, African American/African; FIN, Finnish; NFE, non-Finnish European, ASJ, Ashkenazi Jews; M, male; F, female; NS, no surgery; MEH, Moorfields Eye Hospital London; GUH, General University Hospital Prague. <sup>a</sup>FRAPOSA predicted ancestry.



**A****B****C**