

Remote cognitive tests predict neurodegenerative biomarkers in the Insight 46 cohort

Martina Del Giovane^{*1,2}, Valentina Giunchiglia^{1,6,7}, Ziyuan Cai¹, Marguerite Leoni¹, Rebecca Street³, Kirsty Lu³, Andrew Wong⁴, Maria Popham⁴, Jennifer M. Nicholas^{3,5}, William Trender¹, Peter J. Helleyer⁶, Thomas D. Parker^{1,2,3}, Heidi Murray-Smith³, Paresh A. Malhotra^{1,2}, Sebastian J. Crutch³, Marcus Richards⁴, Adam Hampshire^{†,6,1}, Jonathan M. Schott^{†,3,4}

- (1) Imperial College London, Department of Brain Sciences. Burlington Danes, the Hammersmith Hospital, 72 Du Cane Road, London, England, W12 0NN, United Kingdom.
- (2) Imperial College London and the University of Surrey, UK Dementia Research Institute Care Research and Technology Centre. Sir Michael Uren Hub, 9th Floor, 86 Wood Lane, London, England, W12 0BZ, United Kingdom,
- (3) Department of Neurodegenerative Disease, The Dementia Research Centre, UCL Queen Square Institute of Neurology, London, England, WC1N 3BG, United Kingdom
- (4) MRC Unit for Lifelong Health and Ageing at UCL, University College London, 1-19 Torrington Place, London, England, WC1E 7HB, United Kingdom
- (5) Department of Medical Statistics, London School of Hygiene and Tropical Medicine, Keppel Street, London, England, WC1E 7HT, United Kingdom
- (6) Department of Neuroimaging, Institute of Psychiatry, Psychology and Neuroscience, King's College London, De Crespigny Park, London, England, SE5 8AF, United Kingdom
- (7) Department of Biomedical Informatics, Harvard Medical School, 10 Shattuck St, Boston, MA, 02115, USA

*Corresponding author

†Co-senior authors

Corresponding author's contact details

Martina Del Giovane

m.del-giovane@imperial.ac.uk

Imperial College London, Sir Michael Uren Hub, 9th Floor, 86 Wood Lane, London, England, W12 0BZ, United Kingdom

Abstract

BACKGROUND: Alzheimer's disease-related biomarkers detect pathology years before symptoms emerge, when disease-modifying therapies might be most beneficial. Remote cognitive testing provides a means of assessing early changes. We explored the relationship between neurodegenerative biomarkers and cognition in cognitively normal individuals.

METHODS: We remotely deployed 13 computerised Cognitron tasks in 255 Insight 46 participants. We generated whole brain, hippocampal, and white matter hyperintensity volumes at ages 69-71, rates of change over two-years, amyloid load and positivity. We examined the relationship between Cognitron, biomarkers, and standard neuropsychological tests.

RESULTS: Slower response time on a delayed recognition task predicted amyloid positivity (OR=1.79, CI:1.15, 2.95). Brain and hippocampal atrophy rates correlated with poorer visuospatial performance ($b=-0.42$, CI:-0.80, -0.05) and accuracy on immediate recognition ($b=-0.01$, CI:-0.01, -0.001), respectively. Standard tests correlated with Cognitron composites ($\rho=0.43$, $p<0.001$).

DISCUSSION: Remote computerised testing correlates with standard supervised assessments and holds potential for studying early cognitive changes associated with neurodegeneration.

1 Background

The pathological changes of Alzheimer's disease (AD) begin years before symptoms emerge [1–3]. Recent trials of anti-amyloid therapies showed beneficial effects in individuals with earlier symptomatic disease [4,5] and these medications are now being trialled in asymptomatic individuals with AD pathology [6]. However, these therapies come with significant risks [4,5], and not all individuals with AD pathology will develop cognitive decline [7]. Therefore, there is a pressing need to identify early cognitive signs associated with AD pathology, which could aid in targeting interventions to those most likely to benefit. Additionally, tools sensitive to subtle changes in memory decline are needed as outcome measures for presymptomatic clinical trials.

Among the available biomarkers included in the National Institute on Aging and Alzheimer's association criteria [8], cerebral β -amyloid ($A\beta$) deposition, detectable in vivo through $A\beta$ -PET imaging, is considered core to identify AD at both its asymptomatic and symptomatic phase [9]. Magnetic resonance imaging (MRI) provides additional information about the stage and magnitude of the disease. At the early stages of the disease, where the degree of atrophy measured cross-sectionally may not be sufficient to indicate abnormality, techniques that measure the atrophy rate on serial MRI (e.g., the boundary shift integral) can provide a more sensitive measure of neurodegeneration [10,11]. Vascular burden quantified on MRI as white matter hyperintensity volume (WMHV) can be used as a marker of co-pathology. Increased WMHV is predictive of the downstream neurodegeneration in the early symptomatic stage of AD and shorter time to AD development [12,13].

It is challenging to distinguish the earliest cognitive impairments emerging from AD pathology from those associated with normal aging. These impairments may be too subtle, domain-specific, or influenced by demographic factors to be easily detected using standard on-paper assessments [14,15]. Computerised cognitive assessment offers advantages,

providing simultaneous measurement of multiple behavioural measures and reaction time, and greater precision. Computerised testing can be scaled for difficulty and complexity to target cognitive impairments in the clinical population of interest. This enhances sensitivity and has the potential to reduce the sample size required for appropriate statistical power in clinical trials involving individuals at the early stage of AD [16,17]. Computerised testing can also be deployed longitudinally with higher stimuli variability and reduced learning effects. To maximize feasibility and sensitivity, tasks should be brief, easy to perform, targeted to cognitive domains thought to be affected in AD, and validated against gold-standard assessments.

We remotely deployed 13 computerised cognitive tasks in the Online 46 study, the remote cognitive sub-study of the MRC National Survey of Health and Development (NSHD) study, a population-based cohort of individuals born in England, Scotland, and Wales in 1946 [18,19]. The aims of this study were to a) identify tasks that were sensitive to markers of AD pathology and neurodegeneration in individuals without dementia; and b) to determine their degree of correlation with standard supervised neuropsychological assessments. The NSHD cohort is particularly suited for the scope of this study. At their current age, the study members are generally at risk of accumulation of AD pathology, prior to the development of dementia, enabling cognitive measures to be benchmarked in relation to these pre-clinical biological changes [20,21].

Our primary hypothesis was that memory performance would demonstrate significant sensitivity to AD pathology as memory impairment is widely recognised as one of the cognitive hallmarks of AD, emerges early in the disease process, and has previously been shown to related to amyloid deposition in this cohort [22-24]. However, memory impairments may occur in non-AD dementias [25], and amyloid deposition has been reported to impact other domains, such as language, attention, visuospatial abilities, and working memory

[25,26]. We therefore took an additional exploratory approach, administering a broad set of cognitive tasks to investigate the relationship of AD and vascular pathology with other cognitive sub-domains.

2 Methods

2.1 Participants and recruitment

The NSHD cohort includes extensive clinical, physical, and cognitive characterisation of an original group of 5362 individuals born in in England, Scotland, and Wales within the same week of March 1946 (<https://nshd.mrc.ac.uk/>). Online 46 is a remote cognitive sub-study of the NSHD designed to assess the feasibility and utility of remote computerised cognitive testing in this cohort. Online 46 took place between June and September 2023 and included a final sample of 813 participants who completed a battery of 13 cognitive tasks within 4 weeks of invitation. Participants were invited via email and asked to complete the tasks under unsupervised conditions using any electronic device (e.g., tablets, phones, computers) and web browser. Written instructions were provided at the beginning of each task, followed by a set of practice trials to confirm that the participants properly understood how to complete the tasks.

Here we present data from 274 participants who undertook the Online 46 remote cognitive battery and were also part of the Insight 46 neuroimaging sub-study. Insight 46 is a prospective longitudinal observational neuroimaging sub-study of the NSHD. It involves detailed clinical, neuropsychological testing and neuroimaging data, which have been used for the present study. The recruitment procedure is summarised in Figure 1 and the data collection methods for Insight 46 have been described previously described [18,19,27].

As our focus was on presymptomatic cognitively normal individuals, participants were excluded if they had evidence of major brain disorders including any clinically diagnosed

neurodegenerative disorder, any psychiatric disorder requiring an antipsychotic treatment, depression necessitating electroconvulsive shock therapy, evidence of traumatic brain injury or significant neurosurgery, multiple sclerosis, evidence of an ischemic or haemorrhagic cortical stroke, radiological evidence of a brain malignancy, and mild cognitive impairment (MCI).

2.2 Cognitive testing

A library of computerised tasks developed in HTML5 with JavaScript is available on the Cognitron platform (<https://www.cognitron.co.uk>) [28–33]. A battery of 13 of these tasks was deployed remotely to 813 participants of the Online 46 study group at age 77. Compliance, adherence and usability of the tasks have been studied and reported elsewhere [34]. The tasks were selected to cover multiple cognitive domains and target cognitive abilities thought to be impaired early in AD, while being brief and understandable by the study participants. Task descriptions are in Figure 2 and Table 1. Participants received written instructions and completed a brief sequence of practice trials before starting each task to ensure they understood how to complete them. Average completion time for the whole battery was 39 minutes (mean time per task=4.55 minutes, min=1.73, max=5.01). All tasks yielded a summary score that was accuracy-based (total correct answers) and a secondary score that was the median RT, except for motor control which was measured primarily with an RT score (Table 1). As the testing sessions were conducted under unsupervised conditions, we defined signs of non-compliance for each Cognitron task to exclude participants who did not properly engage. Specifically, one participant was excluded from 2D Manipulations for repetitively clicking in the same location of the screen. Two participants were excluded from Digit Span - one for clicking on another browser page while performing the task and the other for achieving an accuracy score below the established threshold for engagement (located on

the left tail of the distribution of accuracy scores across the entire cohort). Three participants were also excluded from Spotter as they showed an accuracy score below the expected threshold for engagement. In a separate analysis examining data from the whole Online 46 group (N=813) and reported elsewhere [34], 9% of individuals showed indicators of lack of compliance with the Choice reaction time (CRT) task. The task was therefore considered unreliable and excluded from further analysis.

Participants had already completed a comprehensive Insight 46 battery of standard supervised neuropsychological assessments at age 73 [18]. A subset of these standard measures mapping the cognitive domains measured by the Cognitron tasks was selected to study their association with the tasks (Supplementary table 1). These were the Mini-Mental State Examination (MMSE) [35], the Digit Symbol Substitution test (DSST) of the Wechsler Adult Intelligence Scale-Revised (WAIS-R) [36], the Logical Memory test of the Wechsler Memory Scale-Revised (WMS-R) [37], the 12-item Face-Name Associative Memory Exam (FNAME-12) [38], the Preclinical Alzheimer cognitive composite (PACC) generated from the measures listed above [39], and a Trail Making B test [38], the Matrix Reasoning task of the Wechsler Abbreviated Scale of Intelligence (WASI) [40], the Adult Memory and Information Processing Battery's Complex Figure Drawing task [41], a 15-item word learning task [42], the Graded Naming task [43], and a choice reaction time task [44].

Table 1. Details of the Cognitron tasks

		Cognitive Domain	Mean duration (s)	Std duration	Summary score	RT score	End criteria/trials
Objects immediate and delayed recognition	Participants are shown a sequence of target objects. Afterwards, they are asked to identify these targets in different arrays of objects. This task is repeated at the end of the battery to measure delayed memory recognition.	Memory	Immediate:183.9 Delayed:104.0	75.5 30.9	Total correct	Duration to complete task	20 objects
Motor control	Participants are shown a red target appearing at different locations of the screen and asked to tap on it as quickly as possible.	Processing speed	178.3	41.5	Median RT	Median RT	30 trials
CRT*	Participants are shown an arrow pointing either left or right and have to respond accordingly to it tapping on the left or right-hand side of the screen.	Processing speed	121.2	8.8	Median RT	Median RT	60 trials
Blocks	Participants are asked to remove blocks of different colours and shapes from one array to match the target array.	Visuospatial abilities	187.6	102.6	Total correct	Median RT	15 trials
Digit span	Participants are asked to memorise a list of digits and then repeat it. The list of digits increases in length every correct trial. The task is interrupted after three consecutive incorrect trials.	Executive functions	259.0	181.4	Total correct	Median RT	3 consecutive failures
Spatial span	Participants are asked to memorise a sequence of grey square appearing at different location of a 4X4 grid. The number of squares increases in length every correct trial. The task is interrupted after three consecutive incorrect trials.	Visuospatial abilities/attention	145.4	54.7	Total correct	Median RT	3 consecutive failures

Stroop	Participants indicate the colour of a tile by tapping on one of two words: "blue" and "red," which are coloured either blue or red. A box will indicate which modality they will have to provide the answer in (i.e., the colour, or text of the word).	Executive functions	281.3	75.229	Total correct	Median RT	60 trials
2D Manipulations	Participants are shown a target array of coloured squares and asked to identify this among four. The target is rotated through either 90, 180 or 270 degrees.	Visuospatial abilities	120.7	1.1	Total correct	Median RT	3-minute timer
Word definitions	Participants are shown a word and 4 possible definitions and asked to tap on the correct definition within a designated amount of time.	Language	206.5	50.6	Total correct	Median RT	28 trials, 20 seconds per trial
Verbal reasoning	Participants are shown different combinations of geometric shapes and asked to indicate whether the statement describing the shapes is true or false.	Language	172.1	39.0	Total correct	Median RT	3-minute timer
Spotter	Participants see numbers displayed inside a pixelated square. Their task is to click on the square immediately upon spotting the number "0." The stimuli are calibrated to be hard to detect, appearing on the screen for only 100 ms, in rapid succession and are degraded with a mask.	Processing speed	300.6	0.6	Total correct	Median RT	4-minute timer

Forager	<p>This is a reversal learning task that presents a continuous stream of shapes. Participants need to click on the shapes until they find the correct rule (e.g. tap on circles). They will do so based on the feedback they receive (correct/incorrect). After they follow the rule correctly for 6 consecutive trials, they receive negative feedback and a new rule will be generated (e.g., tap on squares).</p>	Processing speed	180.3	0.9	Total correct	Median RT	3-minute timer
---------	--	------------------	-------	-----	---------------	-----------	----------------

RT = response time, s=seconds, CRT= Choice reaction time, * excluded from further analysis

2.3 Neuroimaging biomarkers

Participants underwent a 60-minute scan at age ~69-71 and ~71-73 on a single Biograph mMR 3T PET/MRI scanner (Siemens Healthcare, Erlangen), with intravenous injection of 370 MBq of 18F-Florbetapir (Amyvid). $A\beta$ burden was assessed during a 10-minute period ~50 minutes after injection. PET data were processed using an automated pipeline including pseudo-CT (computed tomography) attenuation correction [45]. A global standard uptake value ratio (SUVR) was calculated from a cortical gray matter composite with an eroded subcortical white matter reference region. Positive or negative $A\beta$ status was determined by applying a Gaussian mixture model applied to SUVR values, with the 99th percentile of the $A\beta$ -negative Gaussian as the cut-point (0.6104) [23]. Whole brain, hippocampal, and ventricular volume were calculated as previously reported [18]. In cases where data were not available at follow-up (n=28), amyloid status and the extent of amyloid deposition were assessed based on the scans obtained at age 71. The rates of change in whole brain, hippocampal and ventricular volumes between age 71 and 73 were calculated using the boundary shift integral (BSI) [10]. Hippocampal volumes and BSI were derived as the sum of left and right structures. Additionally, white matter hyperintensity volumes were obtained from the MRI scans performed at age 71 using an unsupervised automated algorithm, Bayesian Model Selection to T1 and FLAIR images, generating a global WMHV, which included subcortical grey matter but not infratentorial regions.

2.4 Statistical analysis

Demographic differences between amyloid positive and amyloid negative individuals were assessed using Chi-squared tests for gender, handedness and education level, and two sample t-test for childhood cognitive abilities. We then analysed the demographic differences between participants who did and did not attempt the battery of Cognitron tasks. Chi-squared

tests were used to examine differences in gender, education, handedness, adult socioeconomic status, amyloid levels, and ApoE status. Two sample t-tests were conducted to assess differences in childhood cognitive abilities and PACC scores. To evaluate differences in MMSE scores, we used the Wilcoxon rank-sum test, as the data was not normally distributed.

We used linear regression to adjust the standard supervised assessments and the Cognitron accuracy and RT scores for demographic characteristics which may influence cognitive performance. Specifically, we included sex, handedness, education level, and the device used to complete the tasks as predictors, and the cognitive scores as dependent variables. Residuals were calculated as the difference between the observed score and the predicted score. These would represent the portion of cognitive performance not explained by the demographic factors. This effectively removes the influence of these variables. The residuals were then scaled by subtracting the mean and dividing by the standard deviation.

We examined the inter-correlations between the Cognitron tasks to confirm that they encompassed distinct cognitive domains. A Principal Component Analysis (PCA) with orthogonal varimax rotation was conducted using the Kaiser convention (eigenvalue > 1). Components were interpreted based on the tasks that had the highest and discrete loadings on them. We then investigated the relationship between the scaled Cognitron scores and biomarkers of neurodegeneration. Multivariable logistic regression was utilised with accuracy and RT measures of Cognitron as predictors and amyloid positivity as dependent variable. A secondary linear regression analysis tested the relationship between the Cognitron task that significantly predicted amyloid status and the extent of amyloid deposition (SUVR). We also ran a linear regression analysis to explore whether the relationship between RT and accuracy on this task differed by amyloid status. We included RT as the independent variable and accuracy as the dependent variable, with amyloid status as an interaction term. We then ran

separate linear regression models for each amyloid status group, using RT as the independent variable and accuracy as the dependent variable in each model.

To examine the relationships between the online cognitive scores and MRI variables, linear regression models were conducted inputting the Cognitron accuracy and RT scores as predictors and the volume and BSI for the whole brain, hippocampi, and ventricles, as well as the WMHV as dependent variables. To handle the skewed distribution of WMH volume, generalised linear models with a gamma log link function were employed. All models were conducted both with and without adjustment for childhood cognitive abilities measured at age 8, 11, and 15 using 4 tests of verbal and nonverbal ability devised by the National Foundation for Education Research [46]. We utilised the scores obtained at age 8. In cases where data were not available at this age, we utilised the scores derived at ages 11 or 15. The models including SUVR, whole brain, hippocampal, ventricular and WMH volume as dependent variables were corrected for total intracranial volume (TIV).

Additionally, we looked at the correlation between the Cognitron battery and the battery of standard supervised cognitive assessments. We extracted a composite score from the Cognitron tasks which had shown significant associations with neurodegeneration biomarkers, and a total composite score from the Insight 46 standard supervised assessments. This was done using PCA, where the first principal component was taken as a global composite score. Spearman correlation was used to compare the derived Cognitron and standard assessments total composite scores. The Cognitron composite score was also correlated with the PACC to assess its utility as measure of early AD-related cognitive changes. Finally, we examined the correlation between a memory composite score derived from the Cognitron memory tasks (i.e., Objects Memory Immediate and Delayed Recognition accuracy and RT) and a composite score generated from a subset of Insight 46 standard assessments targeting memory abilities (i.e., Logical Memory, FNAME-12, and AMIPB -

Complex Figure Drawing). These composite scores were calculated using PCA, with the first unrotated component serving as the composite memory score. The aim of these analyses was to confirm the diagnostic value of this subset of tasks, comparing their effectiveness to gold-standard assessments, and to inform the development of a more concise Cognitron battery for future studies.

3 Results

274 participants undertook the Cognitron battery. Following exclusion of 19 participants with evidence of a brain disorder, 255 individuals were included in the final analysis (51.76% males). Supplementary table 2 illustrates the number of participants included in the analysis for each task. Amyloid status was missing for 14 individuals at an SUVR cut-off of 0.61 [23], and 66 (27.39%) were A β -positive. Full details of the demographics characteristics of the sample are shown in Table 2. No significant demographic differences were observed between A β -positive and A β -negative participants. Of the 122 Online 46 participants who did not attempt the Cognitron battery, 36 (30.5%) were A β -positive. Demographic differences between individuals who did and did not attempt the Cognitron battery are reported in Supplementary table 3. In brief, Individuals who did not attempt the battery showed significantly lower childhood cognitive abilities ($t_{(665.44)}=-6.69$, CI:-0.38 to -0.21), and lower performance on the MMSE ($W=13229$, $p<0.001$) and PACC ($t_{(205.76)}=-3.85$, CI :-0.44 to -0.14). The factor analysis indicated that the Cognitron tasks clustered in five interpretable cognitive domains, explaining 61.34% of variance (Figure 2 and 3).

Table 2. Demographic characteristics of the study groups

	Total	Aβ- positive participants	Aβ-negative participants	Group differences
N	255*	66	175	
Sex, N (%) Male	132 (51.76%)	33 (50.00%)	92 (52.57%)	$X^2_{(1)}=0.04, p=0.83$
Education (N)				$X^2_{(2)}=5.17, p=0.08$
< 16 years	43 (16.86%)	10 (15.15%)	30 (17.14%)	
High School	155 (60.78%)	47 (71.21%)	99 (56.57%)	
Higher-level degree	57 (22.35%)	9 (13.63%)	46 (26.29%)	
Handedness N (%) right-handed	235 (92.16%)	57 (86.36%)	164 (93.71%)	$X^2_{(1)}=1.52, p=0.22$
Childhood cognitive ability mean (SD)	0.46 (0.72)	0.44 (0.70)	0.48 (0.72)	$t_{(119.21)}=0.37, p=0.71, [CI: 0.16, -0.24]$
MMSE mean (SD)	29.42 (0.78)	29.03 (0.89)	29.43 (0.76)	$W=614.55 p<0.001$
PACC mean (SD)	0.14 (0.62)	0.09 (0.68)	0.15 (0.61)	$t_{(462.13)}=-2.80, p=0.01, [CI: -0.23, 0.04]$

* Missing amyloid status for 14 participants

3.1 Associations with neurodegenerative biomarkers

We found that a one-unit increase in RT on the Objects delayed recognition task corresponded to a 1.79-fold increase in the odds of being A β -positive (CI: 1.15, 2.95). Conversely, a one-unit increase in accuracy on the same task was associated with a 0.60-fold reduction in the odds of having positive amyloid status (CI: 0.36, 0.99). When examining these associations using amyloid as a continuous measure, we confirmed that higher SUVR was associated with slower RT (0.05, CI: 0.01, 0.10) and reduced accuracy (-0.04, CI: -0.07, -0.003) on Objects delayed recognition (Figure 4). Using linear regression, we also investigated whether the effect of RT on the accuracy of the Objects delayed recognition task differed in the A β -positive and negative groups. We found a significant interaction between

RT and amyloid status affecting task accuracy (-0.32, CI: -0.63, -0.01). Further analysis revealed that slower performance was significantly associated with lower accuracy in the A β -positive (-0.49, CI:-0.73, -0.25) but not negative (-0.17, CI:-0.38, 0.05) group.

The results of the regression models examining the association between the Cognitron tasks and MRI-based biomarkers are presented in Figure 5. A one-unit decrease in accuracy on the Objects immediate recognition task was associated with a 0.01 mL/year faster rate of hippocampal atrophy rate (CI: 0.001, 0.012). Additionally, for each unit increase in RT on the Objects delayed recognition task, the WMHV increased by 1.19 mL (CI: 1.04, 1.57). We also found that a one-unit decrease in accuracy on the Spatial span task corresponded to a 0.42 mL/year increase in whole brain atrophy rate (CI: 0.05, 0.80) and a 0.83 mL increase in cross-sectional WMHV (CI: 0.71, 0.96). Furthermore, each unit increase in RT on the Spotter task corresponded to a 1.19 mL increase in WMHV (CI: 1.01, 1.43). Finally, we observed that every unit reduction on the Word Definition task was associated with an increase of 2.30 mL in ventricular volume (CI: 0.31, 4.30). When removing childhood cognitive abilities from this model, there was a reduction in effect size so that the association became non-significant (-1.17, CI:-3.01, 0.66). No significant associations were observed between the cognitive tasks and cross-sectional measures of whole brain and hippocampal volume. A full summary of the models' results is reported in Supplementary table 4.

3.2 Validation against standard supervised neuropsychological assessments

The Cognitron composite score derived from the Cognitron task scores which predicted the biomarkers (Objects delayed and immediate recognition, Spatial span, Word definitions, and Spotter) explained 26.62% of the variance of the Cognitron tasks and showed a positive correlation with the total composite score of the standard assessments ($\rho=0.42$, $p<0.001$), which explained 26.60% of the variance of the standard assessments, and the PACC

($\rho=0.32$ $p<0.001$). Higher Cognitron memory composite score, accounting for 54.63% of the variance, significantly correlated with the standard assessments' memory composite score, which explained 43.10% of the variance ($\rho=0.43$, $p<0.001$) (Figure 6).

4 Discussion

In this study, we remotely deployed a battery of computerised tasks to the Online 46 cohort, a population-based cohort of individuals born in England, Scotland, and Wales within the same week of March 1946. We identified the tasks that predicted biomarkers of AD and neurodegeneration and verified that these correlated with standard supervised cognitive assessments.

The key finding of this study is that A β -positive participants were significantly slower than A β -negative participants on the Objects delayed recognition task. Lower accuracy on the same task was also associated with amyloid positivity, although approaching significance with a weaker effect. These findings were further supported when examining the relationship between cognitive performance and amyloid deposition measured as a continuous variable (i.e., SUVR). Notably, we found that impairments in the A β -positive group affected delayed rather than immediate memory recognition, likely reflecting a process of accelerated forgetting. Previous studies measured this after 30 minutes and 7 days, showing effects in individuals with preclinical AD only after 7 days [47,48]. However, we detected this deficit at a single timepoint, which is advantageous since testing over multiple days is more challenging and often leads to lower compliance.

Previous studies have found slower RT and RT inter-individual variability in individuals with MCI and AD, as well as slower RT in attentional tasks for AD patients [49,50]. Additionally, lower performance on simple and choice reaction time tasks has been found to predict memory deficits in AD patients [49]. In line with these findings, we demonstrated that

cognitive impairment in A β -positive individuals is more evident when examining the RT required to perform a memory task rather than accuracy alone. Notably, slower RT was significantly associated with poorer accuracy only in the A β -positive group, which accords with memory access being more effortful and therefore requiring more processing time [48]. This may reflect the early stages of an amnesic syndrome, where overt memory deficits are obscured by compensatory mechanisms, such as taking more time to complete a task. Therefore, RT as a measure of processing speed and as potential evidence of compensation for memory problems appears to be a good indicator of early AD-related cognitive changes. Studies should further investigate the relationship between RT and accuracy on memory tasks in individuals with or at risk of developing dementia.

Higher rates of whole brain and hippocampal atrophy between were associated with poorer performance on the Spatial span and Objects recognition tasks. The annual atrophy rate in these regions accelerates in individuals with MCI compared to healthy controls and is even higher in progressive compared to stable MCI [51,52]. Atrophy rate has been shown to be a good indicator of disease progression, correlating with cognitive decline and predicting conversion from MCI to AD [53,54]. Our findings support that these tasks hold value in the remote assessment of disease risk and progression. Future studies should focus on the longitudinal administration of the tasks to map cognitive impairment trajectories and examine their association with the accumulation of AD pathology. Conversely, in line with previous findings, we did not find any significant association between cognitive performance and cross-sectional brain volumes, indicating that longitudinal measurements of atrophy change may be a more sensitive measure of preclinical AD [55].

We also found that performance on the Word Definitions task, the main Cognitron measure of crystallised cognitive abilities, was associated with increased ventricular volume. Ventricular enlargement occurs naturally with age, but it can also predict conversion from

MCI to AD and correlates with the degree of cognitive impairments in individuals with AD [56,57]. Late-life cognitive ageing typically affects fluid intelligence while sparing crystallised cognitive abilities, which are usually considered a better indicator for detecting early cognitive signs of AD [58]. Therefore, the association between Word Definitions and ventricular volume may reflect cognitive changes that deviate from the normal ageing trajectory. It is important to note that removing childhood cognitive abilities from the model resulted in a reduction in the estimated effect size and caused the relationship to lose statistical significance; this may reflect early life cognitive reserve having a protective effect on later-life cognitive deterioration.

In addition to the findings discussed above, the completion rate of the Cognitron battery suggests that remote computerised cognitive testing in elderly individuals at risk of developing dementia is both feasible and well-tolerated. Importantly, the completion rates of the tasks were not biased by the incidence of A β -positivity or by ApoE status, supporting the scope to use these cognitive tasks to measure cognitive abilities in preclinical AD.

There are however several limitations to this study. First, there is a difference in time between the data collection of the biomarkers and the standard cognitive tests and of the Cognitron tasks. Second, recruitment and participation to the Insight 46 study have been shown to be biased towards people with better health, higher education level and socioeconomic status, which may limit the generalisability of our sample, although this is common risk across any study cohort or epidemiological studies [59–61]. Additionally, there was variability in the number of participants who completed each task. Despite this, each task remained adequately powered, with a minimum of 229 subjects. Missing data might not be at random, as participants could not skip tasks, potentially excluding those with greater impairments. However, the inability to proceed with the assessment can itself serve as an indicator of cognitive status. Moreover, it is challenging to control the conditions under

which the tests were completed remotely, a common issue for all remote computerised assessments. We attempted to control for this variability by including the device used to complete the assessment in the regression models, providing participants with instructions on the testing environment to adopt, and selecting tasks whose paradigm and design has relatively lower sensitivity to device differences. Finally, the usability of the Cognitron tasks is restricted to individuals with access to internet or a computerised device and a basic level of computer literacy. However, this limitation is becoming progressively less significant across generations. Furthermore, the tests can also be administered in-person for such individuals, with reduced need of resources compared to on-paper assessments and an automated scoring system.

Research investigating the use of computerised cognitive testing in the context of dementia diagnosis is growing significantly [62]. Among the tools which have been studied in relation to AD biomarkers, the C3PAD was able to discriminate A β -positive from A β -negative individuals who underwent A β -PET scans [63], while a digital version of the FNAME test has shown significant correlations with CSF levels of plasma pTau181 and A β 42/40 ratio [64]. The CANTAB demonstrated to be able to identify individuals with AD and MCI, to detect cognitive changes of individuals with MCI longitudinally and to predict hippocampal volume and CSF biomarkers of T-tau, pTau181 and tau/A β 42 ratio in individuals with MCI [65–67]. Cogstate, instead, showed sensitivity to longitudinal cognitive decline in A β -positive individuals, and a significant association with tau-PET and hippocampal atrophy [68,69]. However, these studies were conducted in supervised settings and have yet to explore the remote applicability of the tests. Other studies have shown promise in testing elderly cognitively unimpaired individuals in unsupervised conditions and examined their cognitive abilities in relation to neurodegenerative biomarkers [70,71]. However, they have not investigated the administration of the tasks across multiple types of electronic devices or

selected the most appropriate tasks from a broader set measuring different cognitive domains. In our study, we evaluated a comprehensive battery of tasks administered remotely in unsupervised conditions and run on a broad range of electronic devices. We identified a subset that can specifically target cognitive impairments associated with amyloid status and biomarkers indicative of AD severity and progression, while correlating with standard face-to-face assessments. Being easy to deploy and score while requiring minimal amount of time to complete, the Cognitron tasks represent a cost-efficient tool for large-scale screening of individuals at risk of AD, and potentially for monitoring patients who require longitudinal follow-ups, such as those with atypical presentation or who received a diagnosis at early stages of the disease [72]. This is particularly advantageous in clinical settings and for large cohorts, where the required resources for repeat assessments of patients are limited.

5 Consent statement

The study was approved by the National Research Ethics Service Committee London (REC reference 19/LO/1774) and all participants provided written informed consent.

6 Source of funding

Insight 46 is funded by grants from Alzheimer's Research UK (ARUK-PG2014-1946, ARUK- PG2017-1946), Alzheimer's Association (SG-666374-UK BIRTH COHORT), the Medical Research Council Dementias Platform UK (CSUB19166), The Wolfson Foundation (PR/ylr/18575), The Medical Research Council (MC_UU_10019/1, MC_UU_10019/3), and Brain Research Trust (UCC14191). Florbetapir amyloid tracer was provided in kind by AVID Radiopharmaceuticals (a wholly owned subsidiary of Eli Lilly) who had no part in the design of the study. The funders of the study had no role in study design, data collection, analysis, interpretation, report writing, or in the decision to submit the article for publication.

JMS acknowledges the support of University College London Hospitals Biomedical Research Centre. MR is funded by the Medical Research Council (MC_UU_00019/1 and 3). VG is supported by the Medical Research Council, MR/W00710X/1. AW and MP are funded by the Medical Research Council (MC_UU_00019/1). TP is supported by a National Institute Healthcare Research (NIHR) lectureship. KL has nothing to disclose. MDG is employed as research technician by Imperial College London. PM receives research funding from Lifearc, NIHR, MRC, Dementia Platforms UK, Alzheimer's Research UK, the Football Association, FIFA and Alzheimer's Society. The study was also supported by the Biomedical Research Centre at Imperial College London.

7 Disclosures

AH is owner/director of H2 Cognitive Designs Ltd and Future Cognition Ltd, which produce online assessment technology and provide online survey data collection for third parties. PH is founder and director of H2 Cognitive Designs LTD, which develops and markets online cognitive tests. WT is an employee of H2 Cognitive Designs LTD. PM is lead for an NIHR-funded trial with drug/placebo provided by Takeda Pharmaceuticals and sits on the Data Monitoring Committee for a trial being carried out by Johnson and Johnson.

8 References

- [1] De Strooper B, Karran E. The Cellular Phase of Alzheimer's Disease. *Cell*. 2016 Feb;164(4):603–15.
- [2] Jia J, Ning Y, Chen M, Wang S, Yang H, Li F, et al. Biomarker Changes during 20 Years Preceding Alzheimer's Disease. *New England Journal of Medicine*. 2024 Feb 22;390(8):712–22.

- [3] Jack CR, Bennett DA, Blennow K, Carrillo MC, Dunn B, Haeberlein SB, et al. NIA-AA Research Framework: Toward a biological definition of Alzheimer's disease. *Alzheimer's & Dementia*. 2018 Apr;14(4):535–62.
- [4] Mintun MA, Lo AC, Duggan Evans C, Wessels AM, Ardayfio PA, Andersen SW, et al. Donanemab in Early Alzheimer's Disease. *New England Journal of Medicine*. 2021 May 6;384(18):1691–704.
- [5] van Dyck CH, Swanson CJ, Aisen P, Bateman RJ, Chen C, Gee M, et al. Lecanemab in Early Alzheimer's Disease. *New England Journal of Medicine*. 2023 Jan 5;388(1):9–21.
- [6] A Donanemab (LY3002813) Prevention Study in Participants With Alzheimer's Disease (TRAILBLAZER-ALZ 3) [Internet]. [cited 2024 Apr 24]. Available from: <https://trials.lilly.com/en-US/trial/302480>
- [7] Brookmeyer R, Abdalla N. Estimation of lifetime risks of Alzheimer's disease dementia using biomarkers for preclinical disease. *Alzheimer's & Dementia*. 2018 Aug 22;14(8):981–8.
- [8] Jack CR, Andrews JS, Beach TG, Buracchio T, Dunn B, Graf A, et al. Revised criteria for diagnosis and staging of Alzheimer's disease: Alzheimer's Association Workgroup. *Alzheimer's & Dementia*. 2024 Jun 27; 20: 5143–5169.
- [9] Jack CR, Bennett DA, Blennow K, Carrillo MC, Dunn B, Haeberlein SB, et al. NIA-AA Research Framework: Toward a biological definition of Alzheimer's disease. *Alzheimer's & Dementia*. 2018 Apr;14(4):535–62.
- [10] Freeborough PA, Fox NC. The boundary shift integral: an accurate and robust measure of cerebral volume changes from registered repeat MRI. *IEEE Trans Med Imaging*. 1997;16(5):623–9.

- [11] Leung KK, Bartlett JW, Barnes J, Manning EN, Ourselin S, Fox NC. Cerebral atrophy in mild cognitive impairment and Alzheimer disease. *Neurology*. 2013 Feb 12;80(7):648–54.
- [1] Brickman AM. Contemplating Alzheimer’s Disease and the Contribution of White Matter Hyperintensities. *Curr Neurol Neurosci Rep*. 2013 Dec 5;13(12):415.
- [13] Keuss SE, Coath W, Nicholas JM, Poole T, Barnes J, Cash DM, et al. Associations of β -Amyloid and Vascular Burden With Rates of Neurodegeneration in Cognitively Normal Members of the 1946 British Birth Cohort. *Neurology*. 2022 Jul 12;99(2).
- [14] Lu K, Nicholas JM, Collins JD, James SN, Parker TD, Lane CA, et al. Cognition at age 70. *Neurology*. 2019 Dec 3;93(23).
- [15] Bradfield NI. Mild Cognitive Impairment: Diagnosis and Subtypes. *Clin EEG Neurosci*. 2023 Jan 22;54(1):4–11.
- [16] Brooker H, Williams G, Hampshire A, Corbett A, Aarsland D, Cummings J, et al. FLAME: A computerized neuropsychological composite for trials in early dementia. *Alzheimer’s & Dementia: Diagnosis, Assessment & Disease Monitoring*. 2020 Jan 14;12(1).
- [17] Veitch DP, Weiner MW, Aisen PS, Beckett LA, Cairns NJ, Green RC, et al. Understanding disease progression and improving Alzheimer’s disease clinical trials: Recent highlights from the Alzheimer’s Disease Neuroimaging Initiative. *Alzheimer’s & Dementia*. 2019 Jan 12;15(1):106–52.
- [18] Lane CA, Parker TD, Cash DM, Macpherson K, Donnachie E, Murray-Smith H, et al. Study protocol: Insight 46 – a neuroscience sub-study of the MRC National Survey of Health and Development. *BMC Neurol*. 2017 Dec 18;17(1):75.
- [19] Murray-Smith H, Barker S, Barkhof F, Barnes J, Brown TM, Captur G, et al. Updating the study protocol: Insight 46 – a longitudinal neuroscience sub-study of the MRC

National Survey of Health and Development – phases 2 and 3. *BMC Neurol.* 2024 Jan 23;24(1):40.

[20] Kern S, Zetterberg H, Kern J, Zettergren A, Waern M, Höglund K, et al. Prevalence of preclinical Alzheimer disease. *Neurology.* 2018 May 8;90(19).

[21] Jansen WJ, Ossenkuppele R, Knol DL, Tijms BM, Scheltens P, Verhey FRJ, et al. Prevalence of Cerebral Amyloid Pathology in Persons Without Dementia. *JAMA.* 2015 May 19;313(19):1924.

[22] Weintraub S, Wicklund AH, Salmon DP. The Neuropsychological Profile of Alzheimer Disease. *Cold Spring Harb Perspect Med.* 2012 Apr 1;2(4):a006171–a006171.

[23] Lu K, Nicholas JM, Collins JD, James SN, Parker TD, Lane CA, et al. Cognition at age 70. *Neurology.* 2019 Dec 3;93(23).

[24] Lu K, Pavisic IM, James S, Street RE, Keuss SE, Buchanan SM, et al. Accelerated forgetting is sensitive to β -amyloid pathology and cerebral atrophy in cognitively normal 72-year-olds. *Alzheimer's & Dementia.* 2020 Dec 7;16(S6).

[25] Loreto F, Gunning S, Golemme M, Watt H, Patel N, Win Z, et al. Evaluating cognitive profiles of patients undergoing clinical amyloid-PET imaging. *Brain Commun.* 2021;3(2).

[26] Lim YY, Maruff P, Pietrzak RH, Ames D, Ellis KA, Harrington K, et al. Effect of amyloid on memory and non-memory decline from preclinical to clinical Alzheimer's disease. *Brain.* 2014 Jan;137(1):221–31.

[27] James SN, Lane CA, Parker TD, Lu K, Collins JD, Murray-Smith H, et al. Using a birth cohort to study brain health and preclinical dementia: recruitment and participation rates in Insight 46. *BMC Res Notes.* 2018 Dec 13;11(1):885.

[28] Del Giovane M, Trender WR, Bălăeș M, Mallas EJ, Jolly AE, Bourke NJ, et al. Computerised cognitive assessment in patients with traumatic brain injury: an observational

study of feasibility and sensitivity relative to established clinical scales. *EClinicalMedicine*. 2023 May;59:101980.

[29] Hampshire A, Chatfield DA, MPhil AM, Jolly A, Trender W, Hellyer PJ, et al. Multivariate profile and acute-phase correlates of cognitive deficits in a COVID-19 hospitalised cohort. *EClinicalMedicine*. 2022 May;47:101417.

[30] Hampshire A, Azor A, Atchison C, Trender W, Hellyer PJ, Giunchiglia V, et al. Cognition and Memory after Covid-19 in a Large Community Sample. *New England Journal of Medicine*. 2024 Feb 29;390(9):806–18.

[31] Bălăeș M, Alhajraf F, Zerenner T, Welch J, Razzaque J, Lo C, et al. Online cognitive monitoring technology for people with Parkinson’s disease and REM sleep behavioural disorder. *NPJ Digit Med*. 2024 May 7;7(1):118.

[32] Shibata K, Attaallah B, Tai XY, Trender W, Hellyer PJ, Hampshire A, et al. Remote digital cognitive assessment reveals cognitive deficits related to hippocampal atrophy in autoimmune limbic encephalitis: a cross-sectional validation study. *EClinicalMedicine*. 2024 Mar;69:102437.

[33] Taquet M, Skorniewska Z, De Deyn T, Hampshire A, Trender WR, Hellyer PJ, et al. Cognitive and psychiatric symptom trajectories 2–3 years after hospital admission for COVID-19: a longitudinal, prospective cohort study in the UK. *Lancet Psychiatry*. 2024 Sep;11(9):696-708.

[34] Cai Z, Giunchiglia V, Street R, Del Giovane M, Lu K, Popham M, Wong A, Murray-Smith H, Richards M, Crutch S, Schott JM, Hampshire. Online46: online cognitive assessments in elderly cohorts - the British 1946 birth cohort case study. *medRxiv* 2024091924313984.

- [35] Folstein MF, Folstein SE, McHugh PR. "Mini-mental state". A practical method for grading the cognitive state of patients for the clinician. *J Psychiatr Res.* 1975 Nov;12(3):189-98.
- [36] Wechsler D. The psychometric tradition: Developing the wechsler adult intelligence scale. *Contemp Educ Psychol.* 1981 Apr;6(2):82–5.
- [37] Wechsler D. Wechsler memory scale-revised edition. Psychological Corp. □: Harcourt Brace Jovanovich, San Antonio; 1987.
- [38] Papp K V., Amariglio RE, Dekhtyar M, Roy K, Wigman S, Bamfo R, et al. Development of a Psychometrically Equivalent Short Form of the Face–Name Associative Memory Exam for use Along the Early Alzheimer’s Disease Trajectory. *Clin Neuropsychol.* 2014 Jul 4;28(5):771–85.
- [39] Donohue MC, Sperling RA, Salmon DP, Rentz DM, Raman R, Thomas RG, et al. The Preclinical Alzheimer Cognitive Composite. *JAMA Neurol.* 2014 Aug 1;71(8):961.
- [40] Wechsler D. The Wechsler abbreviated scale of intelligence. San Antonio: The Psychological Corporation. 1999.
- [41] Coughlan Anthony K. HSE. The adult memory and information processing battery (AMIPB) □: test manual. A.K. Coughlin, Psychology Dept, St James’ Hospital, Leeds; 1985.
- [42] Richards M, Sacker A. Lifetime Antecedents of Cognitive Reserve. *J Clin Exp Neuropsychol.* 2003 Aug 1;25(5):614–24.
- [43] McKenna P, Warrington EK. Testing for nominal dysphasia. *J Neurol Neurosurg Psychiatry.* 1980 Sep 1;43(9):781–8.
- [44] Lu K, Nicholas JM, James S, Lane CA, Parker TD, Keshavan A, et al. Increased variability in reaction time is associated with amyloid beta pathology at age 70. *Alzheimer’s & Dementia: Diagnosis, Assessment & Disease Monitoring.* 2020 Jan 10;12(1).

- [45] Burgos N, Cardoso MJ, Thielemans K, Modat M, Dickson J, Schott JM, et al. Multi-contrast attenuation map synthesis for PET/MR scanners: assessment on FDG and Florbetapir PET tracers. *Eur J Nucl Med Mol Imaging*. 2015 Aug 24;42(9):1447–58.
- [46] Nishida A, Cadar D, Xu MK, Croudace T, Jones PB, Kuh D, et al. Adolescent Self-Organization and Adult Smoking and Drinking over Fifty Years of Follow-Up: The British 1946 Birth Cohort. *PLoS One*. 2016 Jan 11;11(1):e0146731.
- [47] Weston PSJ, Nicholas JM, Henley SMD, Liang Y, Macpherson K, Donnachie E, et al. Accelerated long-term forgetting in presymptomatic autosomal dominant Alzheimer’s disease: a cross-sectional study. *Lancet Neurol*. 2018 Feb;17(2):123–32.
- [48.] Lu K, Pavisic IM, James S, Street RE, Keuss SE, Buchanan SM, et al. Accelerated forgetting is sensitive to β -amyloid pathology and cerebral atrophy in cognitively normal 72-year-olds. *Alzheimer’s & Dementia*. 2020 Dec 7;16(S6).
- [49] Christ BU, Combrinck MI, Thomas KGF. Both Reaction Time and Accuracy Measures of Intraindividual Variability Predict Cognitive Performance in Alzheimer’s Disease. *Front Hum Neurosci*. 2018 Apr 9;12:124
- [50] Bailon O, Roussel M, Boucart M, Krystkowiak P, Godefroy O. Psychomotor Slowing in Mild Cognitive Impairment, Alzheimer’s Disease and Lewy Body Dementia: Mechanisms and Diagnostic Value. *Dement Geriatr Cogn Disord*. 2010;29(5):388–96.
- [51] Frankó E, Joly O. Evaluating Alzheimer’s Disease Progression Using Rate of Regional Hippocampal Atrophy. *PLoS One*. 2013 Aug 12;8(8):e71354.
- [52] Whitwell JL. Progression of Atrophy in Alzheimer’s Disease and Related Disorders. *Neurotox Res*. 2010 Nov 30;18(3–4):339–46.
- [53] Leung KK, Bartlett JW, Barnes J, Manning EN, Ourselin S, Fox NC. Cerebral atrophy in mild cognitive impairment and Alzheimer disease. *Neurology*. 2013 Feb 12;80(7):648–54.

- [54] Evans MC, Barnes J, Nielsen C, Kim LG, Clegg SL, Blair M, et al. Volume changes in Alzheimer's disease and mild cognitive impairment: cognitive associations. *Eur Radiol*. 2010 Mar 16;20(3):674–82.
- [55] Xie L, Wisse LEM, Das SR, Vergnet N, Dong M, Ittyerah R, et al. Longitudinal atrophy in early Braak regions in preclinical Alzheimer's disease. *Hum Brain Mapp*. 2020 Nov 26;41(16):4704–17.
- [56] Jack CR, Shiung MM, Gunter JL, O'Brien PC, Weigand SD, Knopman DS, et al. Comparison of different MRI brain atrophy rate measures with clinical disease progression in AD. *Neurology*. 2004 Feb 24;62(4):591–600.
- [57] Thompson PM, Hayashi KM, de Zubicaray GI, Janke AL, Rose SE, Semple J, et al. Mapping hippocampal and ventricular change in Alzheimer disease. *Neuroimage*. 2004 Aug;22(4):1754–66.
- [58] Harrington KD, Dang C, Lim YY, Ames D, Laws SM, Pietrzak RH, et al. The effect of preclinical Alzheimer's disease on age-related changes in intelligence in cognitively normal older adults. *Intelligence*. 2018 Sep;70:22–9.
- [59] James SN, Lane CA, Parker TD, Lu K, Collins JD, Murray-Smith H, et al. Using a birth cohort to study brain health and preclinical dementia: recruitment and participation rates in Insight 46. *BMC Res Notes*. 2018 Dec 13;11(1):885.
- [60] Baquet CR, Commiskey P, Daniel Mullins C, Mishra SI. Recruitment and participation in clinical trials: Socio-demographic, rural/urban, and health care access predictors. *Cancer Detect Prev*. 2006 Jan;30(1):24–33.
- [61] Strandhagen E, Berg C, Lissner L, Nunez L, Rosengren A, Torén K, et al. Selection bias in a population survey with registry linkage: potential effect on socioeconomic gradient in cardiovascular risk. *Eur J Epidemiol*. 2010 Mar 3;25(3):163–72.

- [62] Staffaroni AM, Tsoy E, Taylor J, Boxer AL, Possin KL. Digital Cognitive Assessments for Dementia: Digital assessments may enhance the efficiency of evaluations in neurology and other clinics. *Pract Neurol (Fort Wash Pa)*. 2020;2020:24–45.
- [63] Papp KV, Rentz DM, Maruff P, Sun CK, Raman R, Donohue MC, et al. The Computerized Cognitive Composite (C3) in A4, an Alzheimer’s Disease Secondary Prevention Trial. *J Prev Alzheimers Dis*. 2020;1–9.
- [64] Alegret M, Sotolongo-Grau O, de Antonio EE, Pérez-Cordón A, Orellana A, Espinosa A, et al. Automatized FACEmemory scoring is related to Alzheimer’s disease phenotype and biomarkers in early-onset mild cognitive impairment: the BIOFACE cohort. *Alzheimers Res Ther*. 2022 Mar 18;14(1):43.
- [65] Chipi E, Salvadori N, Montanucci C, Toja A, Siena E, Paoletti FP, et al. Subtle cognitive deficits assessed by means of CANTAB in a cohort of subjects with CSF AD profile. *Alzheimer’s & Dementia*. 2022 Dec 20;18(S7).
- [66] O’Connell H, Coen R, Kidd N, Warsi M, Chin A, Lawlor BA. Early detection of Alzheimer’s disease (AD) using the CANTAB paired Associates Learning Test. *Int J Geriatr Psychiatry*. 2004 Dec 3;19(12):1207–8.
- [67] Campos-Magdaleno M, Leiva D, Pereiro AX, Lojo-Seoane C, Mallo SC, Facal D, et al. Changes in visual memory in mild cognitive impairment: a longitudinal study with CANTAB. *Psychol Med*. 2021 Oct 7;51(14):2465–75.
- [68] Lim YY, Pietrzak RH, Bourgeat P, Ames D, Ellis KA, Rembach A, et al. Relationships Between Performance on the Cogstate Brief Battery, Neurodegeneration, and A Accumulation in Cognitively Normal Older Adults and Adults with MCI. *Archives of Clinical Neuropsychology*. 2015 Feb 1;30(1):49–58.
- [69] Lim YY, Villemagne VL, Laws SM, Pietrzak RH, Ames D, Fowler C, et al. Performance on the Cogstate Brief Battery Is Related to Amyloid Levels and Hippocampal

Volume in Very Mild Dementia. *Journal of Molecular Neuroscience*. 2016 Nov 1;60(3):362–70.

[70] Berron D, Olsson E, Andersson F, Janelidze S, Tideman P, Düzel E, et al. Remote and unsupervised digital memory assessments can reliably detect cognitive impairment in Alzheimer’s disease. *Alzheimer’s & Dementia*. 2024 Jun 12; 20: 4775–479

[71] Thompson LI, Kunicki ZJ, Emrani S, Strenger J, De Vito AN, Britton KJ, et al. Remote and in-clinic digital cognitive screening tools outperform the MoCA to distinguish cerebral amyloid status among cognitively healthy older adults. *Alzheimer’s & Dementia: Diagnosis, Assessment & Disease Monitoring*. 2023 Oct 27;15(4).

[72] Howard R, Schott JM. When dementia is misdiagnosed. *Int J Geriatr Psychiatry*. 2021 Jun 20;36(6):799–801.

NSHD (March 1946 – ongoing)
active study members = 2360

No email=540
No internet access=43
Withdrawn=1

Online 46

(June 2023 –Sept 2023)

Participants invited = 1776

Pilot phase = 23
Withdraw/no response/did not complete=940

Online 46 final sample=813

Not part of Insight 46 sub-study=526

Study sample=287

Did not retain participation in
Insight 46 Phase 2=13

Study sample=274

Other brain disorder=19

Our final sample = 255

Insight 46

Phase 1 (May 2015 – Jan 2018)

N=502

Median age 70.7 (min 69.2-max 71.8)

Phase 2 Jan 2018 – Jan 2021

N=413

Median age 73.0 (min 71.9-max 74.7)

Phase 3 (June 2023 – ongoing)

N=500

Median age 76.4 (min 75.5-max 77.3)

Figure 1. Recruitment flowchart

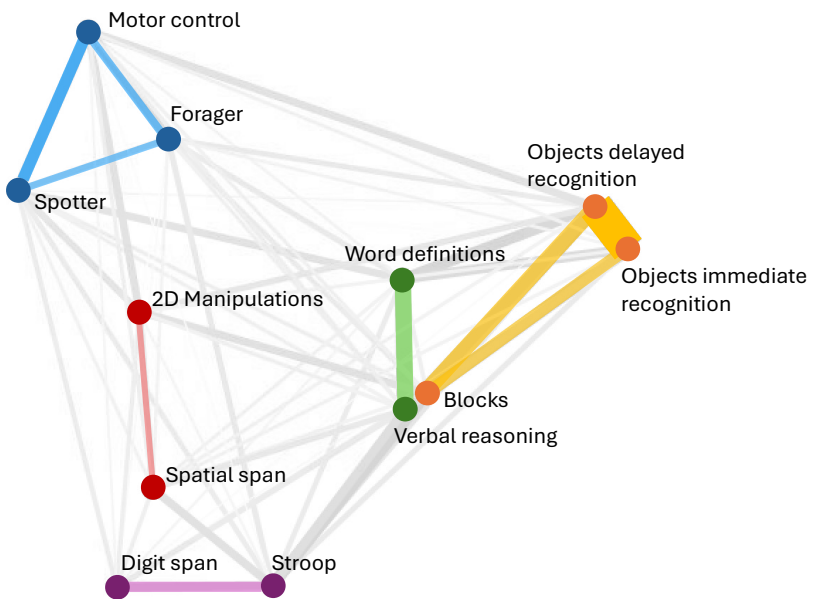
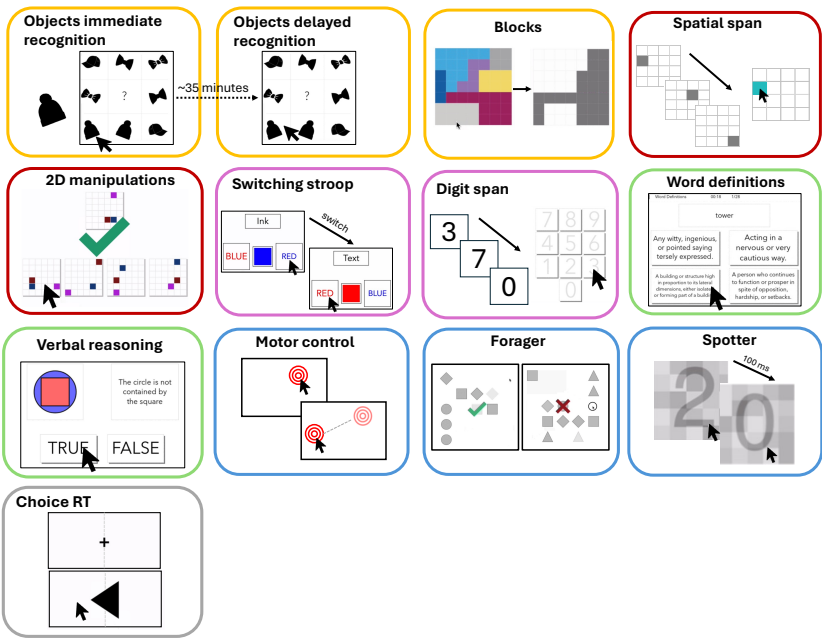
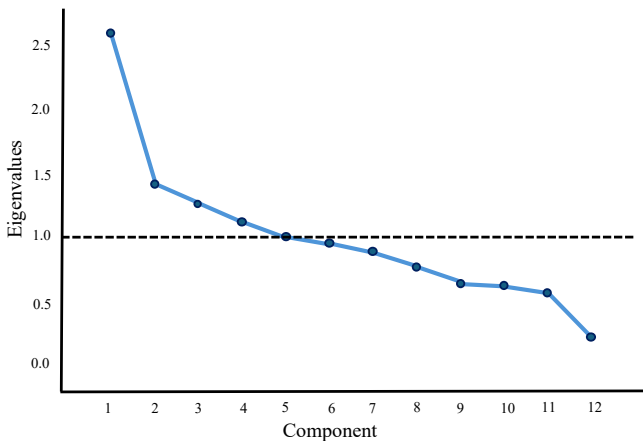


Figure 2. Top: Illustrations of the Cognitron tasks. Bottom: Network plot showing clustering of the primary task scores, and the cognitive domains measured. The colours of the connecting lines indicate the 5 components derived from the PCA. A smaller distance and lower opacity of the connecting line indicate a stronger correlation.



	1	2	3	4	5
Objects immediate recognition	0.883	-0.015	0.168	-0.008	-0.024
Motor control	-0.102	-0.740	0.004	0.106	-0.160
Digit span	-0.061	0.054	0.085	0.701	-0.136
Blocks	0.524	0.096	-0.074	0.386	0.234
Spatial span	-0.029	0.002	0.145	0.297	0.572
Stroop	0.158	0.024	0.072	0.718	0.171
2D Manipulations	0.138	0.127	-0.038	-0.183	0.819
Word definitions	0.121	0.125	0.841	-0.014	-0.050
Verbal reasoning	0.159	0.010	0.724	0.183	0.146
Spotter	-0.138	0.616	0.195	0.121	0.210
Forager	0.135	0.664	-0.001	0.118	-0.207
Objects delayed recognition	0.885	0.096	0.195	-0.001	0.035

Figure 3. PCA applied to the Cognitron summary scores. Top: Scree plot showing eigenvalues (components extracted based on eigenvalues > 1). Bottom: Loadings of the Cognitron summary scores onto the derived cognitive components

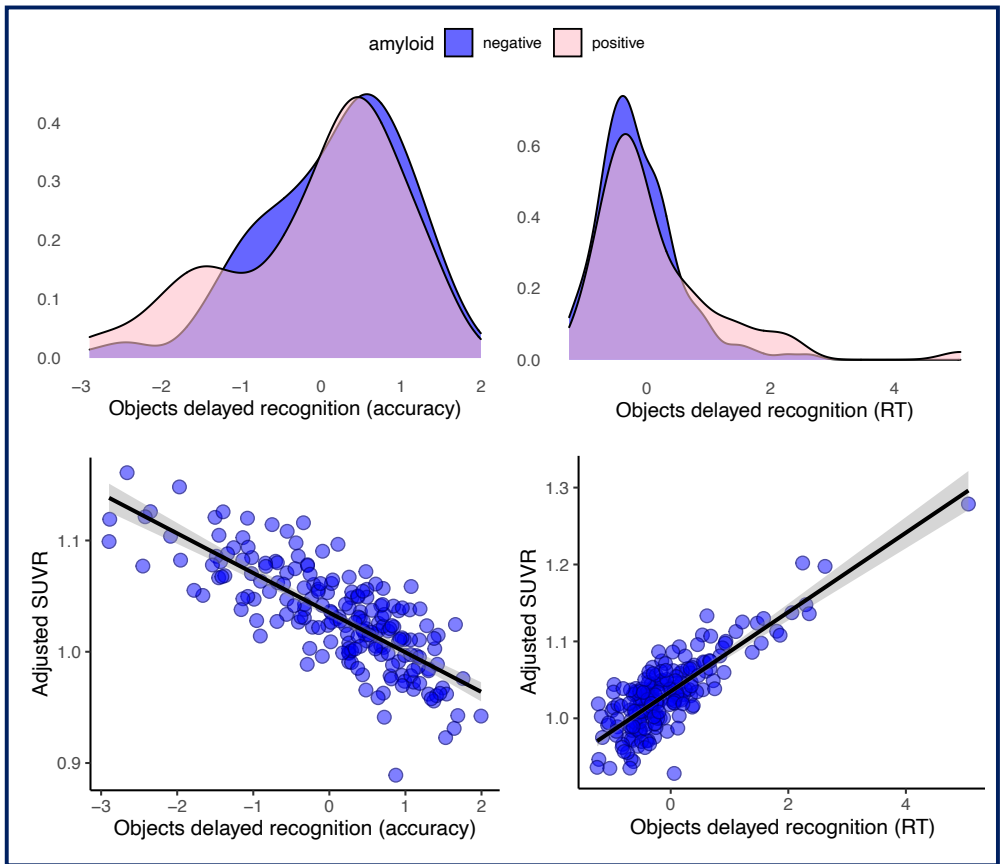


Figure 4. Top: Density plots showing performance differences on the Objects delayed recognition task (accuracy and RT scores) between the amyloid positive and negative groups. Bottom: Association between SUVR and the Objects delayed recognition task (accuracy and RT scores)

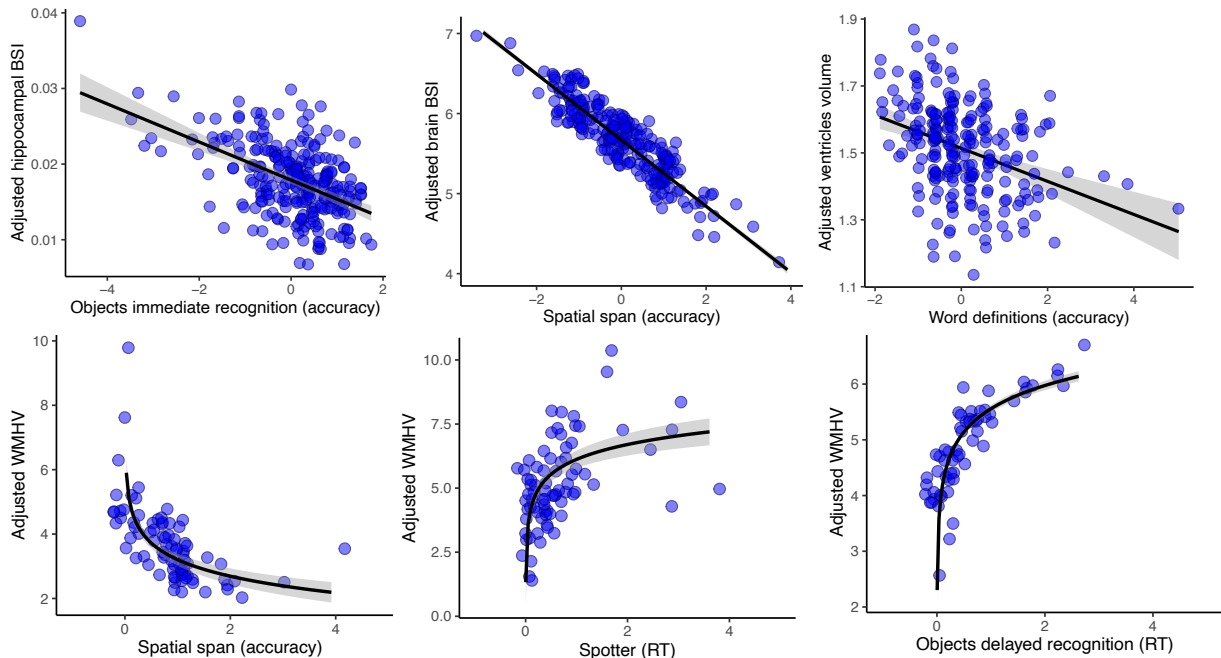


Figure 5. Scatter plots showing the associations between the Cognitron tasks and the biomarkers of AD, white matter pathology and neurodegeneration.

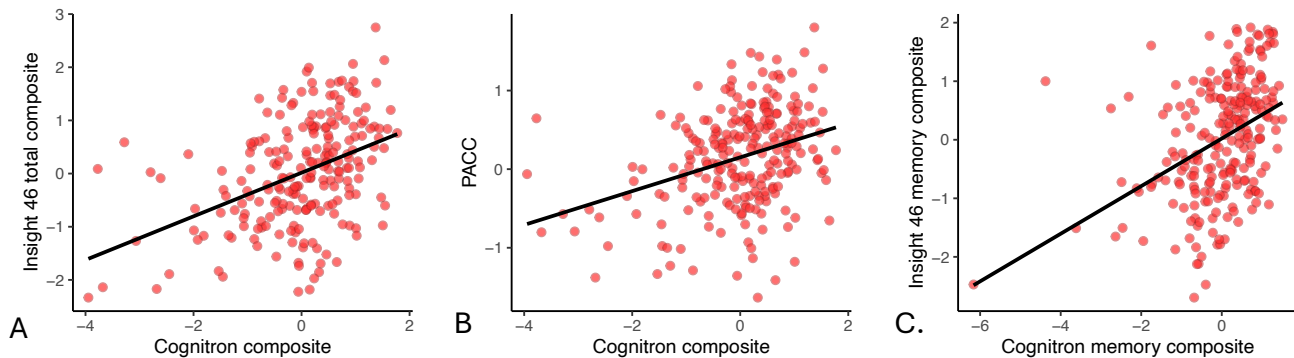


Figure 6. Plots showing the association between: (A) the Cognitron composite score generated from the tasks which predicted the imaging biomarkers and the Insight 46 total composite score (B) the Cognitron composite score generated from the tasks which predicted the imaging biomarkers and the PACC (C) the Cognitron memory composite score and the Insight 46 standard memory composite score.