

1 **Burden of Latent Tuberculosis Infection among Healthcare Workers of Primary Health**
2 **Centres and its Association with Clinical Laboratory Parameters**

3
4 Sivaprakasam T. Selvavinayagam,^{af} Ganga Sankar,^{bt} Yean K. Yong,^{c,df} Sathish Sankar,^{et}
5 Ying Zhang,^{df}, Hong Y. Tan,^g Pachamuthu Balakrishnan,^h Amudhan Murugesan,ⁱ
6 Manivannan Rajeshkumar,^b Asha Frederick,^a Masilamani Senthil Kumar,^a Paulkanraj
7 PriyaRaj,^a Jesudoss Prabhakaran,^a Pattusamy Sangeetha,^a Pasupathy Arunpathy,^a
8 Rajamani Charu,^a Nagarajan Muruganandam,^j Deepak M. Sakate,^k Deepak Jayakumar,^b
9 Prabu Dhandapani,^l Parthiban Rudrapathy,^m Vijayakumar Velu,ⁿ Marc Emmenegger,^{o,pt}
10 Marie Larsson,^q Esaki M. Shankar,^{r*} and Sivados Raju,^{b*}

11
12 ^aDirectorate of Public Health and Preventive Medicine, DMS Campus, Teynampet, Chennai,
13 Tamil Nadu, India; ^bState Public Health Laboratory, Directorate of Public Health and
14 Preventive Medicine, DMS Campus, Teynampet, Chennai 600 006, Tamil Nadu, India;
15 ^cLaboratory Center, Xiamen University Malaysia, 43900 Sepang, Selangor, Malaysia;
16 ^d*Kelip-kelip!* Center of Excellence for Light Enabling Technologies, Xiamen University
17 Malaysia, Sepang, Selangor, Malaysia; ^eDepartment of Microbiology, Centre for Infectious
18 Diseases, Saveetha Dental College and Hospitals, Saveetha Institute of Medical and
19 Technical Sciences, Saveetha University, Chennai 600 077, Tamil Nadu, India; ^fChemical
20 Engineering, Xiamen University Malaysia, Sepang, Malaysia; ^gSchool of Traditional Chinese
21 Medicine, Xiamen University Malaysia, Sepang, Malaysia; ^hDepartment of Research,
22 Meenakshi Academy of Higher Education and Research (MAHER), Chennai 600 078, India;
23 ⁱDepartment of Microbiology, Government Theni Medical College and Hospital, Theni 625
24 512, India; ^jIndian Council Medical Research - Regional Medical Research Centre, Port Blair
25 744 103, Andaman and Nicobar Islands, India; ^kDepartment of Statistics and Applied
26 Mathematics, Central University of Tamil Nadu, Thiruvavur, Tamil Nadu, India; ^lDepartment
27 of Microbiology, Dr. ALM Post Graduate Institute of Basic Medical Sciences, University of
28 Madras, Chennai, Tamil Nadu, India; ^mMicrobiology Division, Department of Clinical
29 Laboratory Services and Translational Research, Malabar Cancer Centre (Post Graduate
30 Institute of Oncology Sciences and Research), Thalassery 670 103, Kerala, India;
31 ⁿDepartment of Pathology and Laboratory Medicine, Emory University School of Medicine,
32 Division of Microbiology and Immunology, Emory National Primate Research Center, Emory
33 Vaccine Center, Atlanta, GA 30329, USA; ^oInstitute of Neuropathology, University Hospital
34 Zurich, Zürich, Switzerland; ^pDivision of Medical Immunology, Department of Laboratory
35 Medicine, University Hospital Basel, 4031 Basel, Switzerland; ^qDivision of Molecular
36 Medicine and Virology, Department of Biomedical and Clinical Sciences, Linköping

37 University, 58 185 Linköping, Sweden; †Infection and Inflammation, Department of
38 Biotechnology, Central University of Tamil Nadu, Thiruvavur 610 005, India.

39

40 †These authors contributed equally

41

42 **Corresponding authors**

43

44 ***Esaki M Shankar**, Infection and Inflammation, Department of Biotechnology, Central
45 University of Tamil Nadu, Thiruvavur, India. Email: shankarem@cutn.ac.in

46

47 ***Sivadoss Raju**, State Public Health Laboratory, Directorate of Public Health and Preventive
48 Medicine, Teynampet, Chennai, India. Email: sivraju@gmail.com

49

50 **Running title:** High burden of LTBI among primary HCWs.

51

52

53 **Summary**

54 **Objectives**

55 Healthcare workers (HCWs) are at high risk of latent tuberculosis infection (LTBI) due to their
56 continued occupational exposure. The incidence of LTBI among the HCWs has seldom been
57 investigated. Primary health centres (PHCs) provide effective and affordable medical care
58 largely for the local population. The HCWs of PHCs who are likely to have increased
59 occupational exposure have an increased risk of reactive as well as LTBI, and contribute to
60 overall TB transmission than the general population.

61

62 **Methods**

63 A cross-sectional study (March–April 2024) was carried out to assess the burden of LTBI
64 among the HCWs of PHCs (n=64) across Chennai, India. Blood samples were analyzed for
65 gamma interferon using a QuantiFERON-TB Gold Plus assay. A complete baseline health
66 profile, including complete blood count, blood glucose, liver and renal functions, and ferritin
67 levels was estimated to identify potential biomarkers that are independently associated with
68 LTBI.

69

70 **Results**

71 The present study revealed an LTBI prevalence of 25.3% (n=99) among PHC workers. The
72 red cell distribution width was significantly associated with LTBI positivity among different
73 biochemical and haematological parameters analyzed. Factors such as individuals' age,
74 underlying comorbid conditions (30.3%; n=30), and longer employment duration (28%; n=28)
75 were significantly associated with IGRA positivity. IGRA positivity was significantly
76 associated with decreased RDW-SD in females, overweight, and participants with 'O' blood
77 group.

78

79 **Conclusions**

80 The study reported a high prevalence of LTBI among HCWs of PHCs, which necessitates
81 their periodical screening for the elimination of TB.

82

83 **Keywords:** Latent tuberculosis; Healthcare worker, Primary health centre, TB; India; IGRA;
84 Interferon Gamma Release Assay

85

86 **Introduction**

87 Pulmonary tuberculosis (TB) predominates among the infectious causes of death especially
88 in low- and middle-income countries despite the availability of effective diagnostic tools and
89 anti-tubercular therapeutic (ATT) drugs. The WHO framework with the *End-TB Flagship*

90 *Strategy* was initiated to reduce TB incidence and deaths.¹ However, the COVID-19
91 pandemic appears to have disrupted the critical components of the End-TB strategy – *Find*
92 *and Treat All*. A significant reduction (~18%) of newly diagnosed TB was reported in 2020,
93 while a surge in cases and deaths was noticed during 2021–22.² The respiratory system
94 shares the battlefield for both SARS-CoV-2 and *M. tuberculosis* (MTB), which can trigger
95 lung damage.³ The increase in TB incidence and deaths post-COVID-19 could be attributed
96 to a perturbed immune system and subsequent reactivation of latent TB infection (LTBI).⁴
97 Although one-third of the global population remains infected, only ~5–10% of latently
98 infected reactivate within two years of primary infection.⁵ The latently infected individuals act
99 as a major reservoir from whom reactive TB disease is developed and transmitted in the
100 community, which poses a challenge to TB prevention and treatment. Certain underlying
101 comorbidities including renal and liver diseases, malnutrition, and prolonged exposure to TB-
102 infected individuals likely increase the risk of transition of LTBI into clinical TB disease.^{6–8}

103

104 The incidence rate of LTBI varies among HCWs ranging from 13–22% who own the highest
105 risk of progression to active TB disease and transmission.⁹ Nonetheless, the prevalence of
106 LTBI among HCWs of PHCs remains largely unknown. LTBI detection by tuberculin skin test
107 (TST) suffers several pitfalls including higher turn-around-time, false-positivity due to the
108 cross-reaction with the vaccine, and other bacterial antigens. It also suffers from poor
109 sensitivity in immunocompromised subjects and in differentiating active disease from latent
110 infections.^{10–12} Implementation of guidelines for TB prevention among HCWs has been one
111 of the top priorities of the National TB Elimination Programme. Therefore, it is imperative to
112 identify and treat appropriately to achieve the goal of ending TB by 2030. Here, a cross-
113 sectional study was carried out on the prevalence of LTBI among primary HCWs in Chennai,
114 India. To assess a more reliable estimate of their relative risk for LTBI, a comprehensive
115 analysis of socio-demographic details, associated risk factors, and clinical and laboratory
116 investigations were carried out.

117

118 **Material and Methods**

119 **Study design**

120 The HCWs including physicians, nurses, pharmacists, laboratory technicians, village health
121 nurses, and hospital staff (health assistants, housekeeping, educators, and clerks) from 64
122 PHCs who maintain close contact with patients with confirmed or unknown TB disease
123 status, were recruited between March and April 2024. Individuals aged ≥18 years, who
124 consented to participate with no clinical evidence of TB were considered. Individuals <18
125 years of age, pregnancy, HIV infection, and a history of active or latent TB infection were
126 excluded.

127

128 A total of 392 individuals meeting the inclusion criteria were recruited into the study. A
129 detailed clinical proforma on clinical history, comorbidities, and risk factors together with
130 sociodemographic details were collected from each participant (Figure 1). The study was
131 approved by the Institutional Ethical Committee.

132

133 **Clinical specimens**

134 Blood samples in lithium heparin tubes (5 ml), gel tubes (3 ml), EDTA tubes (2 ml), and
135 citrate tubes (1.6 mL) were collected by venipuncture. One PHC for every administrative
136 block was selected as a collection hub from where the samples were transported in the cold
137 chain to the State Public Health Laboratory (SPHL), Directorate of Public Health and
138 Preventive Medicine within two hours of collection. All the samples were promptly processed
139 for haematological, biochemical, and immunological analyses. Appropriate quality controls
140 were included for all the diagnostic assays.

141

142 **Haematological and biochemical parameters**

143 The erythrocyte sedimentation rate (ESR) by Westergren method and complete blood count
144 (CBC) were analyzed using a 5-part haematology analyzer (XN-550, Sysmex). The test
145 parameters included total WBC count, RBC count, haemoglobin, haematocrit (HCT), mean
146 corpuscular volume (MCV), mean corpuscular haemoglobin (MCH) and its concentration
147 (MCHC), platelet count (PLT), red cell distribution width (RDW-SD and RDW-CV), platelet
148 distribution width (PDW), mean platelet volume (MPV), platelet large cell ratio (P-LCR), and
149 plateletcrit (PCT). In addition, differential counts and percentages of neutrophils,
150 lymphocytes, monocytes, eosinophils, and basophils were also assessed. The mean cell
151 size and the breadth of the distribution curve were used to calculate the RDW-CV. The
152 standard deviation (SD) of the mean cell size was divided by MCV to derive the percentage
153 values. The RDW-CV typically ranges between 11 and 15%. Biochemical tests including liver
154 function test, renal function test, glycosylated haemoglobin (HbA1C) as a measure of
155 glucose levels, and C-reactive protein (CRP) were carried out using an automated Autopak
156 300 clinical chemistry analyzer (Siemens) and a D-10 haemoglobin testing system (Bio-
157 Rad).

158

159 **Interferon-gamma release assay (IGRA)**

160 The blood samples were processed for IGRA testing using a commercial QuantiFERON TB-
161 Gold plus assay (Qiagen) as per the manufacturer's instructions. The test employed a
162 peptide cocktail simulating mycobacterial proteins to stimulate lymphocytes in the

163 heparinized whole blood. The values are expressed in IU/mL. A TB1/TB2 value (minus Nil) of
164 ≥ 0.35 and $\geq 25\%$ of Nil was considered positive and reported as a potential MTB infection.

165

166 **Ferritin**

167 Ferritin level was determined using the Advia Centaur CP Immunoassay system (Siemens)
168 as per the manufacturer's instructions. The serum ferritin concentration was expressed as
169 ng/ μ L. The kit utilized a two-site sandwich chemiluminescence method and had an assay
170 range of 0.5–1650 ng/ μ L. The normal reference range for males was 22–332 ng/ μ L and for
171 females was 10–291 ng/ μ L as recommended by the assay kit.

172

173 **Statistical analysis**

174 The primary aim was to report the prevalence of LTBI among HCWs. The association
175 between the LTBI positivity and patient demographics was analyzed using the Chi-square
176 test and Mann-Whitney U test depending on the categorical variable or continuous variable,
177 respectively. Biomarkers were analyzed together using a standard Z-score. Each biomarker
178 was first transformed to Z-score using the following formula, $z=(x-\mu)/\sigma$, where (x) = subject's
179 biomarker levels, (μ) = mean of the biomarker levels, and (σ) = standard deviation biomarker
180 levels. The predictive power of biomarkers in aiding the prediction of LTBI-positivity was
181 examined using receiver operating characteristic (ROC) analysis. Fold change was done by
182 normalising the levels of a biomarker in the IGRA-positive group against the median level of
183 the same biomarker in the LTBI-negative group, and the biomarker with significant fold
184 changes was plotted in a heatmap according to the colour scheme indicated. Logistic
185 regression analysis was performed univariately to identify biomarkers that were significantly
186 associated with the LTBI-positivity and plotted as volcanic plots. The biomarkers that showed
187 significant association in the univariate were regarded as candidate predictors and were
188 included in multivariate regression analysis. The odds ratio (OR) and 95% confidence
189 interval (CI) were estimated. Statistical analyses were performed using PRISM software,
190 ver.5.02 (GraphPad Software, San Diego, CA). Logistic regression was performed using
191 SPSS software, ver. 20 (IBM, USA). A p-value of ≤ 0.05 was considered to be significant. Due
192 to the exploratory nature of the analyses and the dispensable rate of false positives,
193 correction for multiple comparisons was not required.

194

195 **Results**

196 A total of 392 individuals between May and June 2024 were included. A detailed clinical
197 proforma was collected from each participant to assess the associated risk factors, and
198 comprehensive laboratory investigations were carried out from the blood samples. The
199 participants from each PHC included different categories of HCWs. Among these, hospital

200 workers were higher in number (n=174; 44.4%) followed by nurses (n=149; 38.0%), and
201 physicians (n=69; 17.6%). The age of the participants ranged from 23 to 60 years with a
202 median of 38 years; The number of female participants was 298 (76%) and male participants
203 was 94 (24.0%). Among nurses, 109 were female (93.0%), among physicians 40 were
204 female (58.0%), among pharmacists, 16 were female (53.0%), and among laboratory
205 technicians, 52 were female (89.6%) (Figure 2).

206

207 Among the 392 samples tested, 99 (25.3%) revealed a positive IGRA test. Among the
208 different categories of HCWs tested, village health nurses showed the highest positive rate
209 (38.0%) followed by pharmacists (33.0%), hospital workers (32.0%), and staff nurses
210 (25.0%). The percentage of IGRA positives among males (28.7%) did not differ significantly
211 from females (24.2%, $p=0.414$). The domiciliary status of the study participants among the
212 IGRA-positives was also analyzed. Although participants from rural were higher in numbers
213 (61.5%) compared to urban areas, the percentage of IGRA-positive cases in rural and urban
214 populations were 27.8% and 21.2% respectively and the association between the domiciliary
215 status and IGRA-positive rate was not statistically significant ($p=0.153$).

216

217 Measurement of body mass index (BMI) among the 392 participants indicated that a larger
218 proportion were overweight (38.8%), 3.6% were underweight, and 31.9% showed normal
219 BMI. Intriguingly, 25.8% of individuals were identified with class III obesity. IGRA was highest
220 in class III obese participants (31.0%) followed by participants with normal BMI (25%). While
221 a majority of the participants were vaccinated for Bacillus Calmette-Guérin (BCG) and were
222 aware of their vaccination status (91.1%), 7.1% were unfamiliar with their vaccination history,
223 and 1.8% had not been vaccinated. The number of IGRA positives was higher in the
224 population with unknown vaccination status (32.1%) followed by the vaccinated population
225 (24.9%). Among the HCWs, 60.2% were graduates and 22.2% had completed secondary
226 education. However, educational categories did not show any difference between IGRA
227 positives and negatives. Of the 392 participants, n=21 (5.4%) disclosed a fair control of
228 blood glucose with a mean HbA1c value of 7.4 and a mean blood glucose level of 166
229 mg/dL. Among the 392 participants, 52.6% (n=206) had abnormal LFT and 25.3% (n=99)
230 had abnormal RFT (Table 1). No statistically significant difference was observed between the
231 two groups. SARS-CoV-2 IgG was detected among all participants except two, of which one
232 was positive for IGRA and the other was negative.

233

234 Among different demographic markers analyzed, the age of the participants and duration of
235 employment were significantly associated with IGRA positivity ($p=0.029$ and $p=0.034$,
236 respectively); however, gender and BMI were not significantly associated. Interestingly,

237 neither TB exposure history nor the number of TB cases treated by the HCW had a
238 significant association with LTBI positivity indicating a possible acquisition of infection from
239 the hospital but likely not directly from treated patients.

240

241 To improve comparability between biomarkers with different scales, the level of each
242 biomarker was transformed into a uniform scale, the Z-score. When compared between
243 IGRA-positives and -negatives, the positives showed a statistically significant lower Z-score
244 in RDW-SD, RDW-CV% ($p=0.002$ and $p=0.026$, respectively), and had a higher Z-score in
245 eosinophil percentage ($p=0.031$) (Figure 3A). ROC analysis was performed between IGRA-
246 positive and -negative participants to assess the suitability of RDW-SD, RDW-CV%, and
247 eosinophil percentage as surrogate markers of LTBI. The diagnosis efficacy of RDW-SD and
248 eosinophil percentage for diagnosis of LTBI was only marginal, where the AUC of 0.574;
249 $p=0.002$ and $AUC=0.597$; $p=0.004$, respectively. The AUC for RDW-CV% was not significant
250 (Figure 3B).

251

252 Consummated from our previous studies on biomarkers such as plasma CXCL8 and MCP-1
253 that aid in diagnosis and as surrogate predictors of disease progression¹³ and platelet-large
254 cell ratio and ESR¹⁴ that were probably affected by demographics, we here measured the
255 fold change of each biomarker (normalized against IGRA-negative) and stratified under
256 gender, ABO blood grouping, and BMI status. Biomarkers that showed significant alteration
257 in fold change were indicated according to the colour scheme (Figure 4A). The results
258 showed that the levels of biomarkers were differentially altered in gender, BMI status, and
259 ABO blood grouping. The results showed that IGRA positivity was significantly associated
260 with decreased RDW-SD in females, overweight, and participants with the 'O' blood group.
261 Eosinophils percentage was significantly associated with IGRA positivity in females,
262 participants with normal weight and obesity as well as participants with blood group type 'B'.
263 Participants with blood group 'O' showed the most profound alteration in haematological
264 markers, where IGRA positivity was associated with decreased percentages of neutrophils
265 and immunoglobulin, as well as increased percentages of lymphocytes and monocytes.
266 Besides, participants with IGRA positivity also showed elevation of blood urea and BUN in
267 total participants, females, participants with normal weight as well as participants with blood
268 groups B and AB.

269

270 To identify the biomarker that is independently associated with IGRA-positivity, we performed
271 logistic regression analysis whereby each biomarker was tested univariately against IGRA-
272 positive, and biomarkers with $p<0.05$ were regarded as candidates (Figure 4B). The
273 candidates were then subjected to a multivariate logistic regression analysis and biomarkers

274 with $p < 0.05$ were considered as independent predictors in their respective models (Figure
275 4C). We found that age was significantly associated with increased odds of IGRA-positive,
276 whereby every increase of age by one year was associated with increased odds of having
277 IGRA-positive by 3.0%, (95% CI = 1–6%); $p = 0.026$. Whilst every decrease of RDW-SD by
278 one unit was significantly associated with decreased odds of IGRA-positive by 9%, (95% CI
279 = 3–15%); $p = 0.006$.

280

281 Considering age, BMI, and ferritin as the confounding factors for CRP, logistic regression
282 analysis indicated a significant association of age-adjusted CRP ($p = 0.026$) and age-adjusted
283 ferritin ($p = 0.032$) with LTBI-positive individuals. The univariate and multivariate logistic
284 regression analyses on each parameter were carried out (Figure 4c). Spearman's correlation
285 (ρ) was used to evaluate the relationship between the biomarkers and determine the
286 biomarkers that are in colinearity. The correlations were considered significantly strong if
287 $\rho \geq 0.60$ and $p < 0.05$. The study did not show any biomarkers with strong colinearity in the
288 logistic regression model (see Supplementary Figure 1).

289

290 **Discussion**

291 We carried out a cross-sectional study to estimate the prevalence of LTBI among HCWs of
292 primary health centres across Chennai, India. With a prevalence of 25.3% among the
293 healthcare workers, the highest positivity rate was observed with village health nurses
294 followed by other workers including staff nurses and physicians.

295

296 For effective control of TB, appropriate identification and treatment of latently infected
297 individuals are vital to reduce their risk of progression to active disease, especially among
298 the risk groups. PHCs in India act as the frontline in medical care for the local population,
299 particularly at the community level, and provide affordable healthcare services including
300 laboratory diagnosis and treatment towards universal health coverage.¹⁵ HCWs are
301 considered to be the moderate-risk group for TB reactivation. Other factors such as
302 malnutrition, immune suppression or weakened immune system, smoking, and comorbidities
303 such as diabetes, thyroid dysfunction, renal dysfunction, and liver dysfunction may increase
304 the risk substantially.^{16–21} In addition, increased tuberculosis is contributed by social or
305 environmental determinants and personal health determinants which are often ignored while
306 assessing the prevalence of LTBI in the community. Overall, this puts the determination of
307 universal health coverage in jeopardy when the fundamental healthcare system at the
308 primary level is affected. In our study, we determined to study the prevalence of LTBI among
309 HCWs of PHCs and assess their LTBI-associated laboratory parameters using multiple
310 logistic regression analysis.

311

312 Our previous investigation on household contacts indicated a 43% positive rate with a
313 female predominance.¹³ It is therefore quintessential to identify LTBI test-positive individuals
314 who act as reservoirs and seedbeds for transmission of reactive TB disease in the
315 community. Likewise, HCWs have a very high occupational risk of latent infection and are
316 susceptible to progression to active TB.²² However, there are very limited reports on the
317 HCWs especially from PHC. Hence, it is of paramount importance for frontline healthcare
318 providers in low or limited-resource settings to undergo periodical clinical and radiological
319 screening and monitoring of fatal infections like tuberculosis. This is the first study to our
320 knowledge that reports the prevalence of LTBI and associated risk factors among HCWs of
321 primary health centres. The present study reported 25.3% positivity similar to trends seen
322 among other risk groups such as household contacts.²³

323

324 LTBI prevalence has been shown to increase with increasing duration of exposure.²⁴
325 Conceivably, the inclusion of factors such as exposure proximity, duration, and number of
326 exposures, number of patient contacts could have provided better insights and clinical
327 acumen but was unavailable and therefore not analyzed in this study. Mostly, individuals who
328 show a positive IGRA result may show a positive result throughout their lifetime despite the
329 use of anti-tubercular drugs. The IGRA test cannot identify re-infection post-treatment,
330 besides, all LTBI-positive individuals should be screened for active disease as the LTBI
331 treatment regimen could lead to drug resistance. It is therefore important to evaluate the
332 IGRA results carefully considering the patient's past clinical history. Of our test population
333 (n=392), none of them had a history of TB disease and a total of 20 (5.1%) had a history of
334 TST done previously. Based on their self-declaration, all were negative on testing although
335 the exact timelines of their previous test are unknown. This also implies that these
336 individuals most likely acquired the infection in the healthcare facility recently. It is imperative
337 to have a deeper understanding of the mode of pathogen transmission for better clinical
338 management and to develop appropriate public health policy.

339

340 Before the decision whether to treat or not treat LTBI is made, it is important to assess the
341 underlying conditions such as HIV, liver disease, alcohol use, pregnancy, and use of specific
342 medications that could compromise liver function. In our study, all the individuals were not
343 tested for HIV and hepatitis, however, baseline laboratory liver function test and renal
344 function test along with complete blood count were carried out to assess their health. Among
345 392 tested, 52% had abnormal liver function of which 25% of individuals were IGRA positive.
346 Also, 25% had abnormal renal function, of which 19% were IGRA positive. Although the
347 mean values of renal and liver biomarkers did not differ, the LTBI-positive individuals with

348 abnormal LFT and/or RFT could have an increased risk of disease progression.
349 Nevertheless, the baseline abnormal liver function tests are considered to be a major risk for
350 drug-induced hepatotoxicity when treated for LTBI.²⁵ In our study group, 14 (3.6%) had a
351 history of alcohol use, of these 11 continued to alcohol use. Among the 14 alcohol users,
352 four were positive for LTBI and all were current alcohol users. Alcohol use is a major risk
353 factor for a weakened immune system and substantially increases the risk of
354 reactivation.^{26,27} While an intake of alcohol in moderate quantities is protective against active
355 TB among non-smokers, there is a linear increased risk of disease progression with
356 increased consumption.^{28,29}

357

358 Four individuals were using immunosuppressive drugs, had no other risk factors and all of
359 them were negative for LTBI. Various immunosuppressants including methotrexate,
360 prednisolone, and phenytoin were found to be being used in these individuals. The use of
361 immunosuppressive drugs other than reactivation of latent TB has also been shown to
362 impact the latent TB testing, however, IGRA tests are shown to be more sensitive than TST
363 for immunosuppressed individuals. IGRA assay in contrast to skin testing, does not have a
364 predetermined cut-off value and is specific to mycobacterial antigens. The proposed
365 guideline indicates preventive treatment for LTBI without further testing for high-risk
366 groups.³⁰ The prevalence of LTBI among pregnant women ranges from 14 to 48% in the
367 USA and shows an increased risk of reactivation during the postpartum period.³¹ There were
368 no pregnant women in our study population; however, there were five lactating mothers and
369 all five were negative for LTBI. IGRA assay is also reported to be more specific, sensitive,
370 and unaltered by pregnancy.³¹

371

372 Among the different haematological parameters tested including absolute count, RDW-CD,
373 RDW-SD, PDW, PCT, MPV, and platelet-large cell ratio, RDW-CV was found to be highly
374 significant in LTBI-positive individuals. The significance of haematological markers such as
375 RDW-CV, RDW-SD, and inflammatory markers such as CRP have been shown to correlate
376 with the severity and prognosis of different diseases including TB.³²⁻³⁵ This is the first report
377 on the use of RDW-CV and RDW-SD as significant markers indicative of LTBI. Considering
378 the cut-off limits of RDW-CV, among 99 LTBI positives, 15.0% had abnormal RDW and
379 among 293 LTBI negatives, 24.0% had abnormal RDW. Its association and usefulness in
380 differentiating LTBI should be further investigated with a large sample size and heterogenous
381 test population. Likewise, ferritin level is an important factor when stratified with age, sex,
382 CRP, and other inflammatory markers in determining the magnitude and distribution of iron
383 deficiency and iron overload as a public health problem. Different studies indicated their role
384 in predicting LTBI and prognosis.^{36,37} Serum ferritin levels along with other inflammatory

385 biomarkers such as CRP were found in two studies to indicate mycobacterial load and TB-
386 associated inflammation during anti-tuberculous therapy.^{38,39} Another study showed many
387 markers including serum ferritin and certain risk factors not significantly associated with LTBI
388 individuals.⁴⁰ Yet, iron metabolism indices could be further evaluated with different
389 populations to evaluate its efficacy in differentiating LTBI from active disease and in
390 prognosis.

391

392 LTBI among HCWs, especially in resource-limited settings is of major global concern. The
393 healthcare workforce striving towards ending TB is largely affected due to their occupational
394 risk. Hence, routine screening and appropriate medical interventions are crucial for the
395 successful management of TB disease. Coordinated scientific efforts and clinical strategies
396 with appropriate aligned public health measures are urgently warranted for TB elimination.

397

398

399

400 **Supplementary Files**

401 Supplementary Figure 1. Spearman correlation analysis between the estimated biomarkers.

402

403 **Funding information**

404 S.T.S. and S.R. are funded by the National Health Mission, Tamil Nadu
405 (680/NGS/NHMTNMSC/ENGG/2021) for the Directorate of Public Health and Preventive
406 Medicine, WGS facility. M.L. is supported by grants through AI52731, the Swedish Research
407 Council, the Swedish, Physicians against AIDS Research Foundation, the Swedish
408 International Development Cooperation Agency, SIDASARC, VINNMER for Vinnova,
409 Linköping University Hospital Research Fund, CALF, and the Swedish Society of Medicine.
410 V.V. is supported by the Office of Research Infrastructure Programs (ORIP/NIH) base grant
411 P51 OD011132 to ENPRC A.M. is supported by Grant No. 12020/04/2018-HR, Department
412 of Health Research, Government of India. The funders of the study had no role in the study
413 design, data collection, data analysis, data interpretation, or writing of the report. The
414 authors thank the Indian SARS CoV-2 Genomics Consortium (INSACOG), Department of
415 Biotechnology, Ministry of Science and Technology, Government of India for their approval
416 and inclusion of the State Public Health Laboratory (SPHL) as INSAGOG Genomic
417 Sequencing Laboratory (IGSL) vide File No: RAD-22017/28/2020-KGDDBT-Part (6) Dated
418 29th December 2021.

419

420 **Data Availability Statement**

421 All the data generated from the study are reported in the manuscript and the supplementary
422 file.

423

424 **Ethical approval statement**

425 The study was approved by the Institutional Ethical Committee (Approval Reference number:
426 DPHPM/IEC/010/V2 Dated 20/03/2024). Participants provided written informed consent
427 themselves for the study.

428

429 **Author contributions**

430 Sivaprakasam T. Selvavinayagam, Masilamani Senthilkumar, Marie Larsson, Pachamuthu
431 Balakrishnan, Vijayakumar Velu, Esaki M. Shankar, and Sivados Raju designed the study
432 and were responsible for conceptualization and data curation. Sivaprakasam T.
433 Selvavinayagam, Sivados Raju, Esaki M. Shankar, Marie Larsson, Vijayakumar Velu,
434 Pachamuthu Balakrishnan, Ganga Sankar, Sathish Sankar, Yean K. Yong, Hong Y. Tan, Ying
435 Zhang, Manivannan Rajeshkumar, Nagarajan Muruganandam, Deepak M. Sakate, Deepak

436 Jayakumar and Prabu Dhandapani conducted the analyses and were responsible for
437 methodology, formal analysis, validation, and visualization. Asha Frederick, Paulkanraj
438 PriyaRaj, Jesudoss Prabhakaran, Pattusamy Sangeetha, Pasupathy Arunpathy, Rajamani
439 Charu were responsible for recruitment of participants, data collection, analysis and data
440 curation. Sivaprakasam T. Selvavinayagam, Sathish Sankar, Marie Larsson, Vijayakumar
441 Velu, Esaki M. Shankar, and Sivados Raju wrote the first draft of the manuscript. All authors
442 provided critical inputs and approved the final version of the manuscript for publication.

443

444 **Declaration of competing interests**

445 The authors have no competing interests to declare

446

447 **References**

- 448 1 Bhatia Vineet, Rijal Suman, Sharma Mukta, Islam Akramul, Vassall Anna, Bhargava Anurag, et
449 al. Ending TB in South-East Asia: flagship priority and response transformation. *The Lancet*
450 *Regional Health - Southeast Asia* 2023;**18**. Doi: 10.1016/J.LANSEA.2023.100301.
- 451 2 Winglee Kathryn, Hill Andrew N., Langer Adam J., Self Julie L. Decrease in Tuberculosis Cases
452 during COVID-19 Pandemic as Reflected by Outpatient Pharmacy Data, United States, 2020.
453 *Emerg Infect Dis* 2022;**28**(4):820. Doi: 10.3201/EID2804.212014.
- 454 3 Chiok Kim R., Dhar Neeraj, Banerjee Arinjay. Mycobacterium tuberculosis and SARS-CoV-2 co-
455 infections: The knowns and unknowns. *IScience* 2023;**26**(5). Doi: 10.1016/J.ISCI.2023.106629.
- 456 4 Alemu Ayinalem, Bitew Zebenay Workneh, Seid Getachew, Diriba Getu, Gashu Emebet, Berhe
457 Nega, et al. Tuberculosis in individuals who recovered from COVID-19: A systematic review of
458 case reports. *PLoS One* 2022;**17**(11). Doi: 10.1371/JOURNAL.PONE.0277807.
- 459 5 Kiazzyk S, Ball TB. Tuberculosis (TB): Latent tuberculosis infection: An overview. *Canada*
460 *Communicable Disease Report* 2017;**43**(3–4):62. Doi: 10.14745/CCDR.V43I34A01.
- 461 6 Ai Jing Wen, Ruan Qiao Ling, Liu Qi Hui, Zhang Wen Hong. Updates on the risk factors for
462 latent tuberculosis reactivation and their managements. *Emerg Microbes Infect*
463 2016;**5**(2):e10. Doi: 10.1038/EMI.2016.10.
- 464 7 Park Jiho, Yoon Ji Hyun, Ki Hyun Kyun, Eun Yeonghee, Han Kyungdo, Kim Hyungjin. Association
465 of duration of undernutrition with occurrence of tuberculosis. *BMC Public Health*
466 2022;**22**(1):1–10. Doi: 10.1186/S12889-022-14876-1/TABLES/3.

- 467 8 Mariah Benedict Raj Purnima, Ganta Gurupavan Kumar, Durai Singh Carmelin, Muthusamy
468 Raman. Efficacy of Various Tuberculosis Treatment Regimens at a Tertiary Health Care Center
469 in South India: A Retrospective Study. *Cureus* 2024;**16**(7). Doi: 10.7759/CUREUS.64496.
- 470 9 Meregildo-Rodriguez Edinson Dante, Yuptón-Chávez Verónica, Asmat-Rubio Martha Genara,
471 Vásquez-Tirado Gustavo Adolfo. Latent tuberculosis infection (LTBI) in health-care workers: a
472 cross-sectional study at a northern Peruvian hospital. *Front Med (Lausanne)*
473 2023;**10**:1295299. Doi: 10.3389/FMED.2023.1295299/BIBTEX.
- 474 10 Kruse Margaret, Cruikshank William. End TB Strategy: Time to Move on From the Skin Test to
475 the Interferon- γ Release Assays. *Am J Public Health* 2019;**109**(8):1102–4. Doi:
476 10.2105/AJPH.2019.305167.
- 477 11 Balaji Lavanya, Ramanan Lavanya, Nandhagopal Manivannan, Subramaniam Jayakumar.
478 Examining Diagnostic Efficacy: GeneXpert Versus Traditional Staining Techniques With Culture
479 in the Diagnosis of Tuberculosis. *Cureus* 2024;**16**(7). Doi: 10.7759/CUREUS.63641.
- 480 12 Ranganathan Avantika, Carmelin Durai Singh, Muthusamy Raman. Rifampicin Resistance
481 Pattern of Mycobacterium tuberculosis Infection in Tertiary Care Hospital Settings. *Cureus*
482 2024;**16**(3). Doi: 10.7759/CUREUS.55755.
- 483 13 Selvavinayagam Sivaprakasam T., Aswathy Bijulal, Yong Yean K., Frederick Asha, Murali
484 Lakshmi, Kalaivani Vasudevan, et al. Plasma CXCL8 and MCP-1 as surrogate plasma biomarkers
485 of latent tuberculosis infection among household contacts—A cross-sectional study. *PLOS*
486 *Global Public Health* 2023;**3**(11):e0002327. Doi: 10.1371/JOURNAL.PGPH.0002327.
- 487 14 Selvavinayagam Sivaprakasam T., Anusree Adukkadukkam, Yong Yean Kong, Frederick Asha,
488 Murali Lakshmi, Kalaivani Vasudevan, et al. Platelet-Large Cell Ratio and Erythrocyte
489 Sedimentation Rate are Surrogate Predictors of Latent Tuberculosis Infection n.d. Doi:
490 10.2139/SSRN.4692704.
- 491 15 Watkins David A., Jamison Dean T., Mills Anne, Atun Rifat, Danforth Kristen, Glassman
492 Amanda, et al. Universal Health Coverage and Essential Packages of Care. *Disease Control*
493 *Priorities, Third Edition (Volume 9): Improving Health and Reducing Poverty* 2017:43–65. Doi:
494 10.1596/978-1-4648-0527-1_CH3.
- 495 16 Ramalingam Gopinath, Jayaraman Selvaraj, Khan Javed Masood, Ahmed Mohammad Z.,
496 Ahmad Anis, Manickan Elanchezhian, et al. Exploring recombinant secretory proteins from

- 497 Mycobacterium tuberculosis to develop a serological platform for tuberculosis diagnosis. *Int J*
498 *Biol Macromol* 2023;**249**. Doi: 10.1016/J.IJBIOMAC.2023.126769.
- 499 17 Ezhilarasan Devaraj. Antitubercular drugs induced liver injury: an updated insight into
500 molecular mechanisms. *Drug Metab Rev* 2023;**55**(3):239–53. Doi:
501 10.1080/03602532.2023.2215478.
- 502 18 Vignesh Ramachandran, Balakrishnan Pachamuthu, Tan Hong Yien, Yong Yean Kong, Velu
503 Vijayakumar, Larsson Marie, et al. Tuberculosis-Associated Immune Reconstitution
504 Inflammatory Syndrome-An Extempore Game of Misfiring with Defense Arsenal. *Pathogens*
505 2023;**12**(2). Doi: 10.3390/PATHOGENS12020210.
- 506 19 Liu Qiao, Yan Wenxin, Liu Runqing, Bo Ershu, Liu Jue, Liu Min. The Association Between
507 Diabetes Mellitus and the Risk of Latent Tuberculosis Infection: A Systematic Review and
508 Meta-Analysis. *Front Med (Lausanne)* 2022;**9**:25. Doi: 10.3389/FMED.2022.899821/FULL.
- 509 20 Saeidi Alireza, Tien Tien Vicky L., Al-Batran Rami, Al-Darraj Haider A., Tan Hong Y., Yong Yean
510 K., et al. Attrition of TCR V α 7.2+ CD161++ MAIT Cells in HIV-Tuberculosis Co-Infection Is
511 Associated with Elevated Levels of PD-1 Expression. *PLoS One* 2015;**10**(4):e0124659. Doi:
512 10.1371/JOURNAL.PONE.0124659.
- 513 21 Saeidi Alireza, Chong Yee K., Yong Yean K., Tan Hong Y., Barathan Muttiah, Rajarajeswaran
514 Jayakumar, et al. Concurrent loss of co-stimulatory molecules and functional cytokine
515 secretion attributes leads to proliferative senescence of CD8+ T cells in HIV/TB co-infection.
516 *Cell Immunol* 2015;**297**(1):19–32. Doi: 10.1016/J.CELLIMM.2015.05.005.
- 517 22 Adams Shahieda, Ehrlich Rodney, Baatjies Roslynn, Van Zyl-Smit Richard N., Said-Hartley
518 Qonita, Dawson Rodney, et al. Incidence of occupational latent tuberculosis infection in South
519 African healthcare workers. *European Respiratory Journal* 2015;**45**(5):1364–73. Doi:
520 10.1183/09031936.00138414.
- 521 23 Selvavinayagam Sivaprakasam T., Anusree Adukkadukkam, Yong Yean Kong, Frederick Asha,
522 Murali Lakshmi, Kalaivani Vasudevan, et al. Platelet-Large Cell Ratio and Erythrocyte
523 Sedimentation Rate are Surrogate Predictors of Latent Tuberculosis Infection n.d. Doi:
524 10.2139/SSRN.4692704.
- 525 24 Reichler Mary R, Khan Awal, Yuan Yan, Chen Bin, McAuley James, Mangura Bonita, et al.
526 Duration of Exposure Among Close Contacts of Patients With Infectious Tuberculosis and Risk

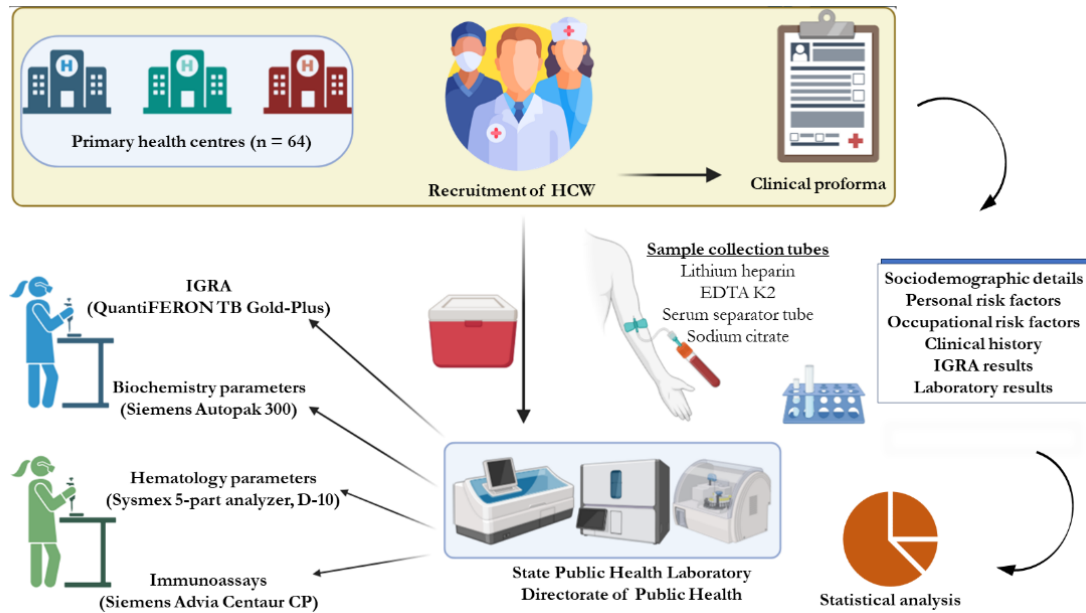
- 527 of Latent Tuberculosis Infection. *Clinical Infectious Diseases* 2020;**71**(7):1627–34. Doi:
528 10.1093/cid/ciz1044.
- 529 25 Gray E. L., Goldberg H. F. Baseline abnormal liver function tests are more important than age
530 in the development of isoniazid-induced hepatotoxicity for patients receiving preventive
531 therapy for latent tuberculosis infection. *Intern Med J* 2016;**46**(3):281–7. Doi:
532 10.1111/IMJ.12979.
- 533 26 Lönnroth Knut, Williams Brian G., Stadlin Stephanie, Jaramillo Ernesto, Dye Christopher.
534 Alcohol use as a risk factor for tuberculosis - A systematic review. *BMC Public Health*
535 2008;**8**(1):1–12. Doi: 10.1186/1471-2458-8-289/COMMENTS.
- 536 27 Rehm Jürgen, Samokhvalov Andriy V., Neuman Manuela G., Room Robin, Parry Charles,
537 Lönnroth Knut, et al. The association between alcohol use, alcohol use disorders and
538 tuberculosis (TB). A systematic review. *BMC Public Health* 2009;**9**(1):1–12. Doi: 10.1186/1471-
539 2458-9-450/TABLES/2.
- 540 28 Soh Avril Zixin, Chee Cynthia Bin Eng, Wang Yee Tang, Yuan Jian Min, Koh Woon Puay. Alcohol
541 drinking and cigarette smoking in relation to risk of active tuberculosis: prospective cohort
542 study. *BMJ Open Respir Res* 2017;**4**(1):e000247. Doi: 10.1136/BMJRESP-2017-000247.
- 543 29 Wigger Gregory W., Bouton Tara C., Jacobson Karen R., Auld Sara C., Yeligar Samantha M.,
544 Staitieh Bashar S. The Impact of Alcohol Use Disorder on Tuberculosis: A Review of the
545 Epidemiology and Potential Immunologic Mechanisms. *Front Immunol* 2022;**13**:864817. Doi:
546 10.3389/FIMMU.2022.864817/BIBTEX.
- 547 30 Valk paul van der, Crevel Reinout Van, Steenwinkel Jurriaan Jde, Bakker Marleen, Vonkeman
548 Harald, Hest Rob Van. New guidelines for screening for tuberculosis and latent tuberculosis
549 infection pre-immunosuppressive therapy in the Netherlands: a targeted and stratified
550 approach. *European Respiratory Journal* 2019;**54**(suppl 63):PA557. Doi:
551 10.1183/13993003.CONGRESS-2019.PA557.
- 552 31 Malhamé Isabelle, Cormier Maxime, Sugarman Jordan, Schwartzman Kevin. Latent
553 Tuberculosis in Pregnancy: A Systematic Review. *PLoS One* 2016;**11**(5). Doi:
554 10.1371/JOURNAL.PONE.0154825.
- 555 32 Ren Qiang, Liu Hebing, Wang Ying, Dai Deyu, Tian Zhennan, Jiao Guiwei, et al. The Role of Red
556 Blood Cell Distribution Width in the Severity and Prognosis of Community-Acquired
557 Pneumonia. *Can Respir J* 2021;**2021**(1):8024024. Doi: 10.1155/2021/8024024.

- 558 33 Ștefanescu Simona, Cocoș Relu, Turcu-Stiolica Adina, Mahler Beatrice, Meca Andreea Daniela,
559 Giura Ana Maria Cristina, et al. Evaluation of prognostic significance of hematological profiles
560 after the intensive phase treatment in pulmonary tuberculosis patients from Romania. *PLoS*
561 *One* 2021;**16**(4). Doi: 10.1371/JOURNAL.PONE.0249301.
- 562 34 Luo Mengxing, Liu Ming, Wu Xiaocui, Wu Yaxing, Yang Hua, Qin Lianhua, et al. Impact of
563 anemia on prognosis in tuberculosis patients. *Ann Transl Med* 2022;**10**(6):329–329. Doi:
564 10.21037/ATM-22-679.
- 565 35 Li Ning, Zhou Heng, Tang Qizhu. Red Blood Cell Distribution Width: A Novel Predictive
566 Indicator for Cardiovascular and Cerebrovascular Diseases. *Dis Markers* 2017;**2017**. Doi:
567 10.1155/2017/7089493.
- 568 36 Dai Youchao, Shan Wanshui, Yang Qianting, Guo Jiubiao, Zhai Rihong, Tang Xiaoping, et al.
569 Biomarkers of iron metabolism facilitate clinical diagnosis in Mycobacterium tuberculosis
570 infection. *Thorax* 2019;**74**(12):1161. Doi: 10.1136/THORAXJNL-2018-212557.
- 571 37 Comella-Del-Barrio Patricia, Abellana Rosa, Villar-Hernández Raquel, Coute Mariette Doresca
572 Jean, Mingels Beatriz Sallés, Aliaga Lydia Canales, et al. A model based on the combination of
573 ifn- γ , ip-10, ferritin and 25-hydroxyvitamin d for discriminating latent from active tuberculosis
574 in children. *Front Microbiol* 2019;**10**(AUG):442629. Doi: 10.3389/FMICB.2019.01855/BIBTEX.
- 575 38 Luo Ying, Xue Ying, Lin Qun, Tang Guoxing, Yuan Xu, Mao Liyan, et al. A combination of iron
576 metabolism indexes and tuberculosis-specific antigen/phytohemagglutinin ratio for
577 distinguishing active tuberculosis from latent tuberculosis infection. *International Journal of*
578 *Infectious Diseases* 2020;**97**:190–6. Doi: 10.1016/J.IJID.2020.05.109.
- 579 39 Miranda Pryscila, Gil-Santana Leonardo, Oliveira Marina G., Mesquita Eliene D.D., Silva
580 Elisangela, Rauwerdink Anneloek, et al. Sustained elevated levels of C-reactive protein and
581 ferritin in pulmonary tuberculosis patients remaining culture positive upon treatment
582 initiation. *PLoS One* 2017;**12**(4). Doi: 10.1371/JOURNAL.PONE.0175278.
- 583 40 Xia Yun, Fan Qiuxia, Zhang Jieyun, Jiang Li, Huang Xiaoyan, Xiong Zuying, et al. Risk factors and
584 prognosis for latent tuberculosis infection in dialysis patients: A retrospective cohort study at
585 a single tertiary care center. *Semin Dial* 2024;**37**(1):59–64. Doi: 10.1111/SDI.13150.
- 586
587

588

589

Figures



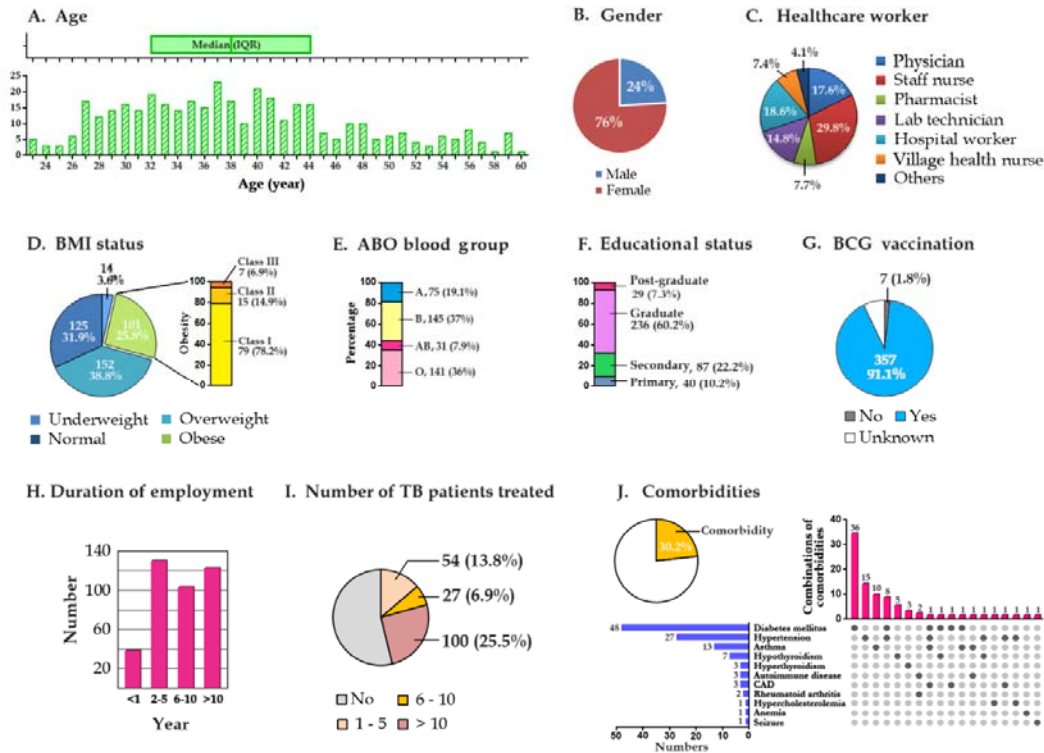
590

591 **Figure 1. Schematic flowchart of the study.**

592

593

594

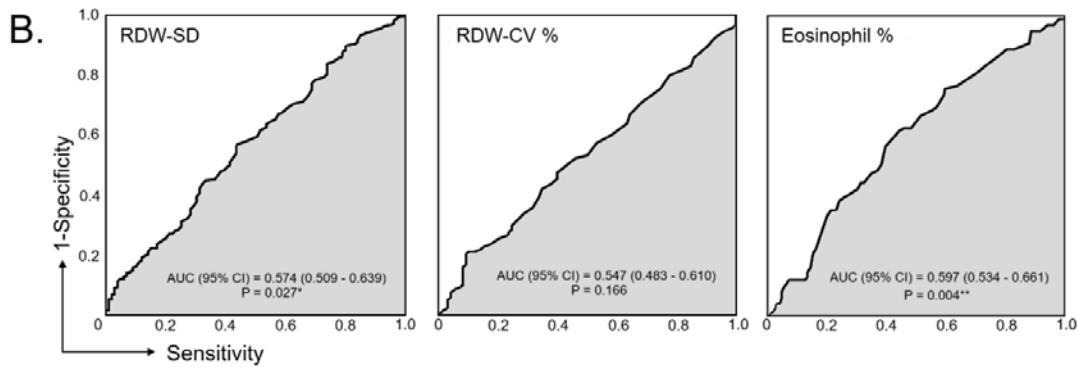
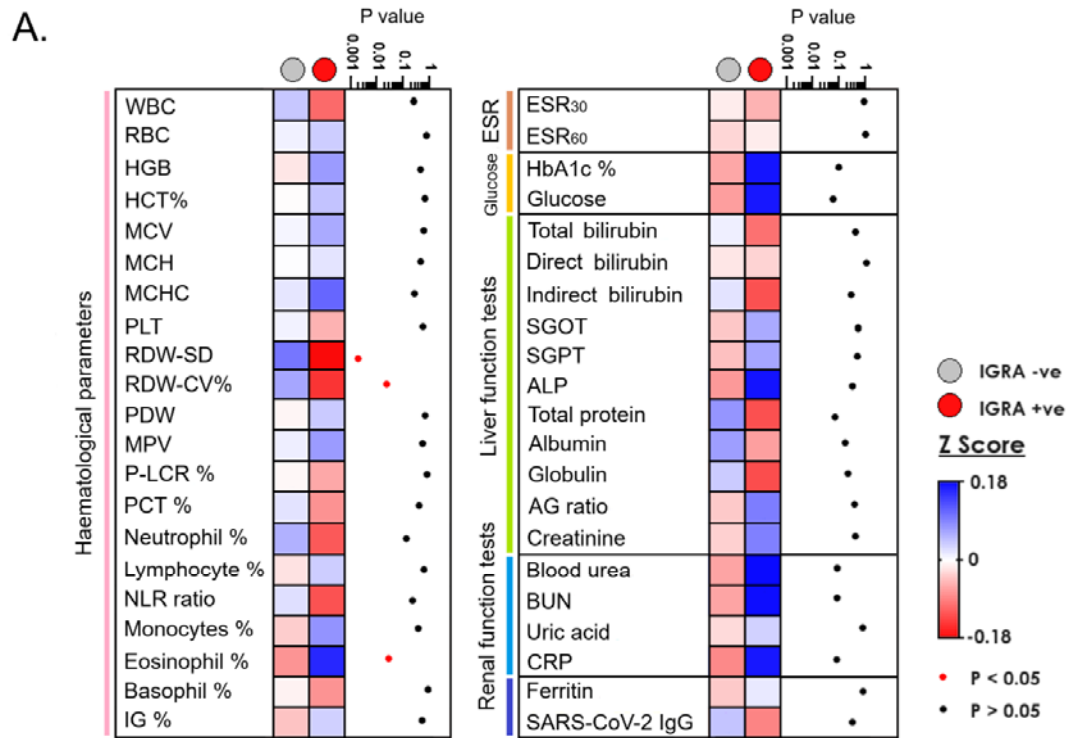


595

596 **Figure 2. Clinical and demographic description of the study cohort.** (A) age distribution
 597 of the cohort, (B) gender, (C) healthcare worker, (D) BMI status, (E) ABO blood group, (F)
 598 educational status, (G) BCG vaccination status, (H) duration of employment in hospital, (I)
 599 number of TB patients treated, (J) comorbidities.

600

601



602

603

604

605

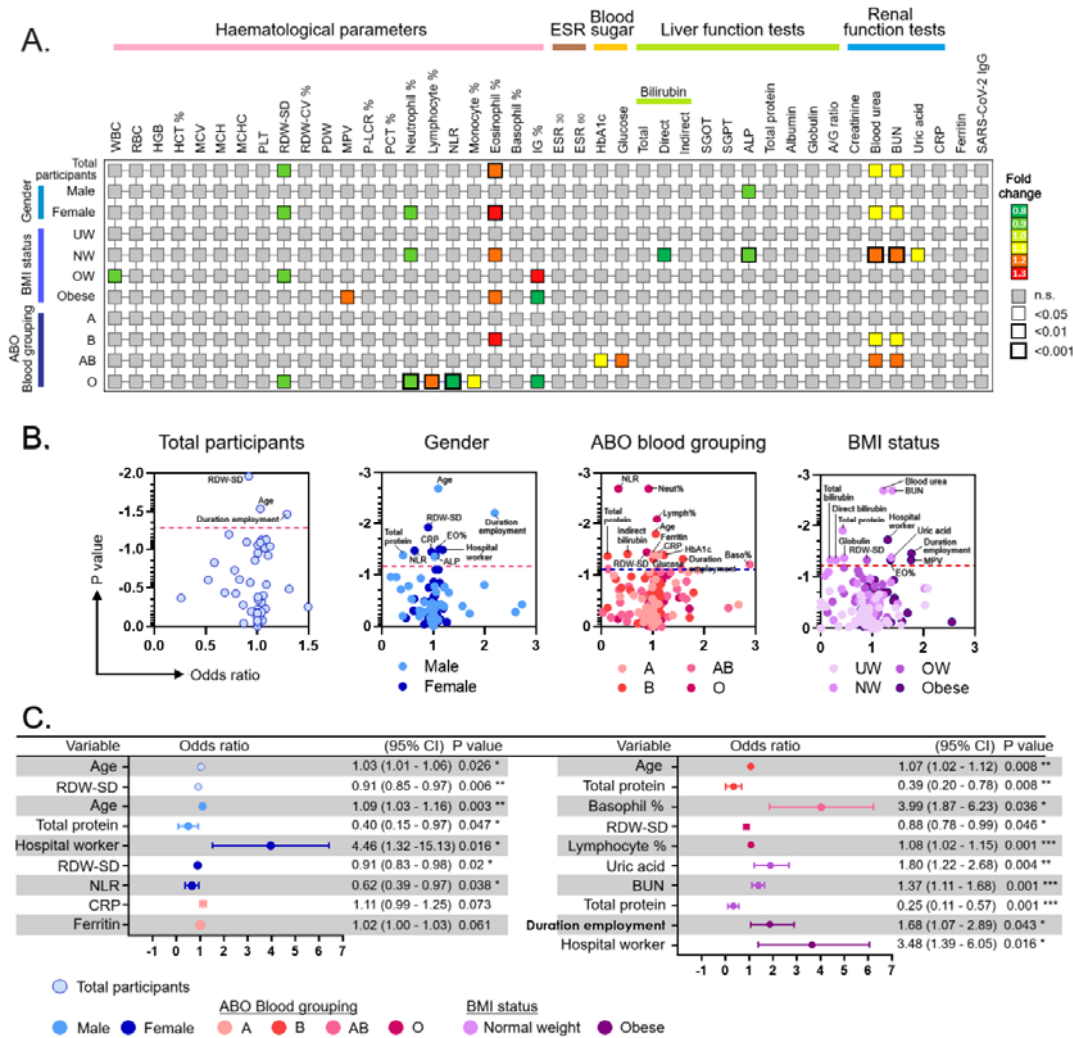
606

607

608

Figure 3. (A) Comparison of the standardized levels (Z-score) of parameters among HCWs with IGRA+ve and IGRA-ve (B) Receiver operating characteristic (ROC) curves for prediction of latent tuberculosis infection (LTBI) using RDW-SD, RDW-CV%, and eosinophils %; AUC = Area under curve. * and ** represent $p < 0.05$, and < 0.01 , respectively.

It is made available under a [CC-BY-NC-ND 4.0 International license](https://creativecommons.org/licenses/by-nc-nd/4.0/).



609

610 **Figure 4. Parameters associated with LTBI among HCWs stratified by gender, BMI**

611 **status, and ABO blood group. (A) Comparison of fold-change of parameters and their**

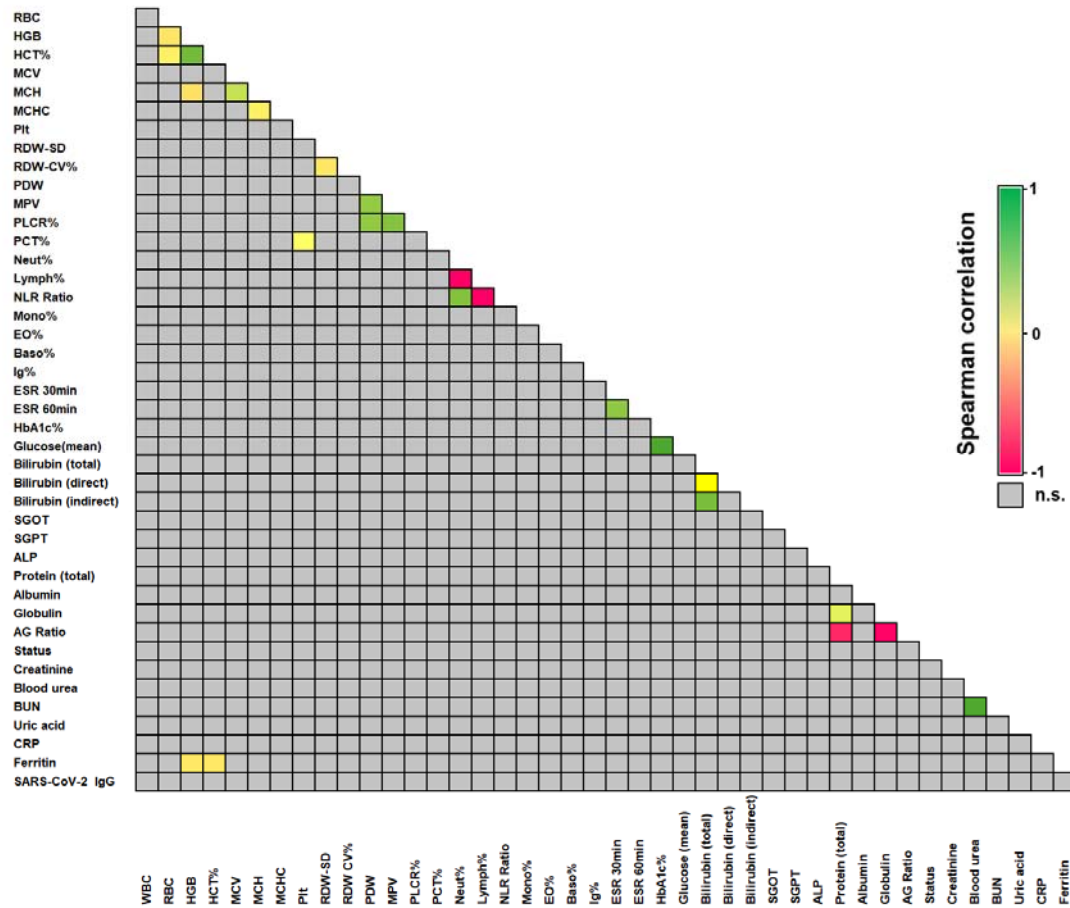
612 **association with LTBI, (B) Univariate logistic regression analysis of parameters associated**

613 **with LTBI, (C) Multivariate logistic regression analysis of parameters, associated with LTBI**

614 **(The Hosmer–Lemeshow value for this model was P=0.162).**

615

It is made available under a [CC-BY-NC-ND 4.0 International license](https://creativecommons.org/licenses/by-nc-nd/4.0/) .



619

Tables

620

Table 1. Sociodemographic and clinical characteristics among IGRA positive individuals.

621

622

Total sample tested = 392	N (%)	IGRA Positive N (%)	IGRA Negative N (%)
Males	94 (24)	27 (27.3)	67 (22.9)
Females	298 (76)	72 (72.7)	226 (77.1)
Comorbidities			
Asthma	13 (3.3)	3 (3)	10 (3.4)
Thyroid disorders	10 (2.5)	5 (5)	5 (5)
Diabetes	48 (12.2)	15 (15.2)	33 (11.3)
Hypertension	27 (6.9)	8 (8.1)	19 (6.5)
Anemia	1 (0.3)	1 (1)	0
Autoimmune disease	3 (0.8)	1 (1)	2 (0.7)
Seizures	1 (0.3)	1 (1)	0
None	289 (73.7)	65 (65.7)	224 (76.5)
Domiciliary status			
Rural	241 (61.5)	67 (67.7)	174 (59.4)
Urban	151 (38.5)	32 (32.3)	119 (40.6)
BMI			
Underweight	14 (3.6)	2 (2)	12 (4.1)
Normal	125 (31.9)	32 (32.3)	93 (31.7)
Obese class 3	101 (25.8)	32 (32.3)	69 (23.5)
Overweight	152 (38.8)	33 (33.3)	119 (40.6)
BCG			
Vaccinated	357 (91.1)	89 (89.9)	268 (91.5)
Unknown	28 (7.1)	9 (9.1)	19 (6.5)
Not vaccinated	7 (1.8)	1 (1)	6 (2)
Education			
Primary	40 (10.2)	13 (13.1)	27 (9.2)
Secondary	87 (22.2)	24 (24.2)	63 (21.5)

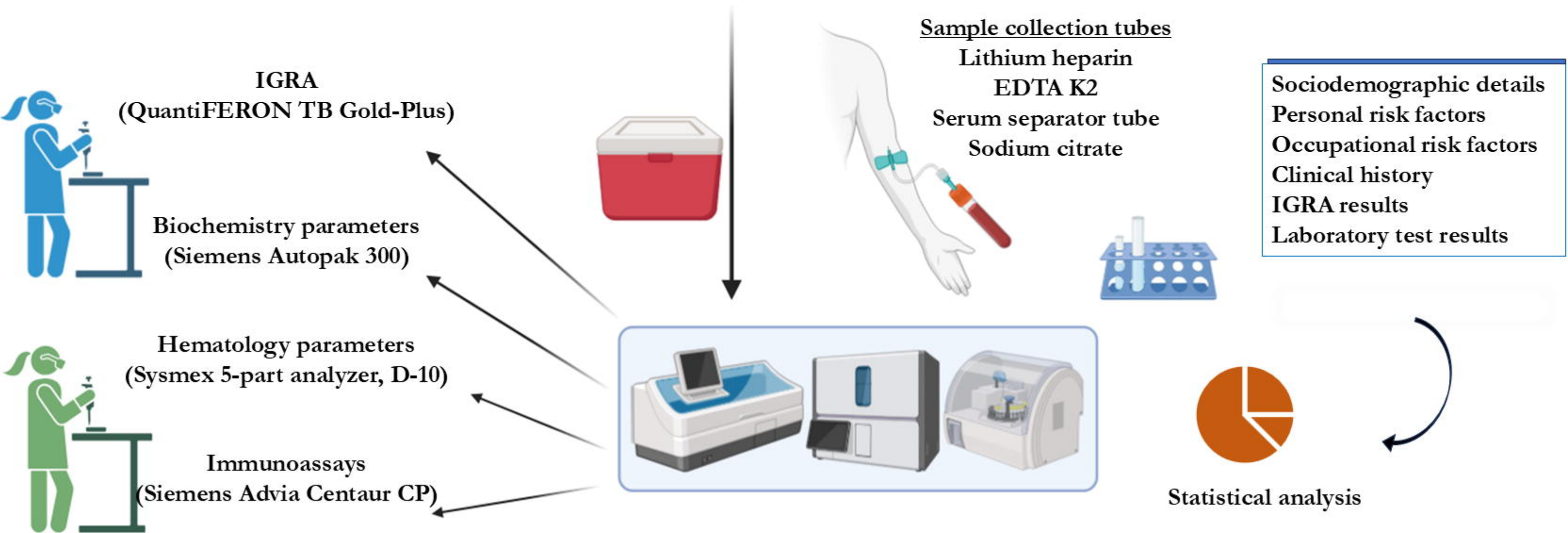
It is made available under a [CC-BY-NC-ND 4.0 International license](https://creativecommons.org/licenses/by-nc-nd/4.0/) .

Graduate	236 (60.2)	53 (53.5)	183 (62.4)
Post-graduate	29 (7.4)	9 (9.1)	20 (6.8)
Work experience			
Less than a year	39 (9.9)	6 (6.1)	33 (11.3)
2 to 5	128 (32.7)	25 (25.3)	103 (35.1)
6 to 10	103 (26.3)	34 (34.3)	69 (23.5)
More than 10 years	122 (31.1)	34 (34.3)	88 (30)
TST			
Done	20 (5.1)	6 (6.1)	14 (4.8)
Not done	372 (94.9)	93 (93.9)	279 (95.2)
Treated TB case			
1 to 5 cases	54 (13.8)	9 (9.1)	45 (15.3)
6 to 10 cases	27 (6.9)	7 (7.1)	20 (6.8)
More than 10 cases	100 (25.5)	27 (27.2)	73 (24.9)
No	211 (53.8)	56 (56.5)	155 (52.9)
HbA1C			
Fair control	21 (5.4)	9 (9.1)	12 (4.1)
Good control	82 (20.9)	19 (19.2)	63 (21.5)
Normal	250 (63.8)	58 (58.6)	192 (65.5)
Poor control	39 (9.9)	13 (13.1)	26 (8.9)
LFT			
Abnormal	206 (52.6)	51 (51.5)	155 (52.9)
Normal	186 (47.4)	48 (48.5)	138 (47.1)
RFT			
Abnormal	99 (25.3)	19 (19.2)	80 (27.3)
Normal	293 (74.7)	80 (80.8)	213 (72.7)
CRP			
Abnormal	114 (29.1)	35 (35.4)	79 (26.9)

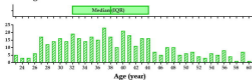
It is made available under a [CC-BY-NC-ND 4.0 International license](https://creativecommons.org/licenses/by-nc-nd/4.0/) .

Normal	278 (70.9)	64 (64.6)	214 (73)
Smoking			
Yes	4 (1)	2 (2)	2 (0.7)
No	388 (99)	97 (97.9)	291 (99.3)
Drinking			
Yes	14 (3.6)	4 (4)	10 (3.4)
No	378 (96.4)	95 (95.9)	283 (96.6)
Anti-SARS-CoV-2 IgG			
Reactive	390 (99.5)	98 (98.9)	292 (99.6)
Non-reactive	2 (0.5)	1 (1)	1 (0.3)
Ferritin			
Abnormal	57 (14.5)	13 (13.1)	44 (15)
Normal	335 (85.5)	86 (86.9)	249 (84.9)

623



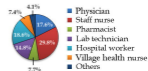
A. Age



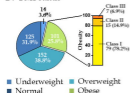
B. Gender



C. Healthcare worker



D. BMI status



E. ABO blood group



F. Educational status



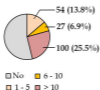
G. BCG vaccination



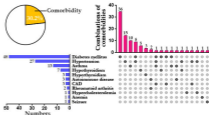
H. Duration of employment



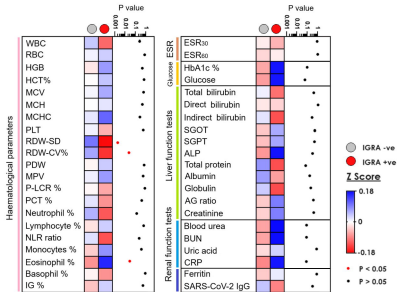
I. Number of TB patients treated



J. Comorbidities



A.



B.

