

Title: Predicting Mobile Health Clinic Utilization for COVID-19 Vaccination in South Carolina: A Statistical Framework for Strategic Resource Allocation

Fatih Gezer^{a,b,*}, PhD, MS, Kerry A. Howard^{a,b}, PhD, MS, Kevin J. Bennett^{c,d,e}, PhD, Alain H. Litwin^{d,e,f}, MD, MPH, Kerry K. Seaseⁱ, MD, MPH, Lior Rennert^{a,b,*}, PhD

^a Department of Public Health Sciences, Clemson University, Clemson, South Carolina, USA

^b Center for Public Health Modeling and Response, Clemson University, Clemson, South Carolina, USA

^c University of South Carolina School of Medicine – Columbia, Columbia, SC, USA

^d South Carolina Center for Rural & Primary Healthcare, Columbia, SC, USA

^e Research Center for Transforming Health, Columbia, SC, USA

^f Prisma Health-Upstate, Greenville, South Carolina, USA

^g Clemson University School of Health Research, Clemson University, Clemson, South Carolina, USA

^h University of South Carolina School of Medicine – Greenville, Greenville, SC, USA

ⁱ Institute for the Advancement of Community Health, Furman University, Greenville, SC, USA

*** Corresponding authors:**

Lior Rennert, PhD

Department of Public Health Sciences, Clemson University

517 Edwards Hall

Clemson, SC, 29601

864-656-7434

liorr@clemson.edu

Fatih Gezer, PhD

Department of Public Health Sciences, Clemson University

526 Edwards Hall

Clemson, SC, 29601

864-656- 5865

fgezer@clemson.edu

Declaration of interests: This study was funded by the National Library of Medicine of the National Institutes of Health and the Center for Forecasting and Outbreak Analytics of the Centers for Disease Control and Prevention. The MHC program was supported by The Greenville County CARES Program as part of a COVID-19 Funding Program. LR, KJB, AHL, and KKS received support from the National Library of Medicine of the National Institutes of Health (R01LM014193) during this study; LR, FG, KAH, KJB, AHL, and KKS received support from the Centers for Disease Control and Prevention (NU38FT000011) during this study. The funders had no role in the design, conduct, reporting of the study, or decision to submit for publication. Authors declare no competing financial, personal, or professional interests that could be construed to have influenced the work.

1 **Abstract**

2 **Background:** Mobile health clinics (MHCs) are effective tools for providing health services to
3 disadvantaged populations, especially during health emergencies. However, patient utilization of
4 MHC services varies substantially. Strategies to increase utilization are therefore needed to
5 maximize the effectiveness of MHC services by serving more patients in need. The purpose of
6 this study is to develop a statistical framework to identify and prioritize high-risk communities
7 for delivery of MHCs during health emergencies.

8 **Methods:** Prisma Health MHCs delivered COVID-19 vaccines to communities throughout South
9 Carolina between February 20, 2021, and February 17, 2022. In this retrospective study, we use
10 generalized linear mixed effects model and ordinal logistic regression model to identify factors
11 associated with, and predict, MHC utilization for COVID-19 vaccination by census tract.

12 **Results:** The MHCs conducted 260 visits to 149 sites and 107 census tracts. The site-level
13 analysis showed that visits to schools (RR=2.17, 95% CI=1.47-3.21), weekend visits (RR=1.38,
14 95% CI=1.03-1.83), and visits when the resources were limited (term 1: 7.11, 95% CI=4.43-
15 11.43) and (term 2: 2.40, 95% CI=1.76-3.26) were associated with greater MHC utilization for
16 COVID-19 vaccination. MHC placement near existing vaccination centers (RR=0.79, 95%
17 CI=0.68-0.93) and hospitals (RR=0.83, 95% CI=0.71-0.96) decreased utilization. Predictive
18 models identified 1,227 (94.7%) census tracts with more than 250 individuals per MHC visit
19 when vaccine resources were limited. Predictions showed satisfactory accuracy (72.6%). The
20 census tracts with potential of high MHC demand had higher adolescent, 30-44 years old, non-
21 White populations, lower Primary Care Practitioners per 1,000 residents, fewer hospitals, and
22 higher cumulative COVID-19 emergency department visits and deaths (compared to census

23 tracts in the low MHC demand category). After the vaccines became widely available, the
24 demand at MHCs declined.

25 **Conclusion:** These study findings can be used to improve MHC allocation by identifying and
26 prioritizing medically underserved communities for strategic delivery of these limited resources.

27

28

29

30

31

32

33

34

35

36

37

38

39

40

41

42 **Introduction**

43 The COVID-19 pandemic has affected the lives of millions worldwide, including nearly
44 1.2 million deaths in the United States (US).[1] The pandemic has also exacerbated inequalities
45 in health outcomes, compounded with ethnic minority groups and rural communities
46 experiencing less access for testing, vaccination, and treatment services, and greater death
47 rates.[2–8] These consequences underscored the need for strategies to reach vulnerable
48 communities more effectively.[9,10] Mobile health clinics (MHCs) deliver quality healthcare
49 services to medically underserved communities who lack access to healthcare resources and
50 facilities, especially during health emergencies.[11–14] MHCs were used during the COVID-19
51 pandemic for vaccination in the U.S. and different countries,[15–19] and mainly benefitted by
52 rural communities and medically underserved populations.[11,12,20,21]

53 However, the inability to effectively identify and prioritize high-risk communities has
54 posed daunting challenges for decision makers and has led to less-than-optimal allocation
55 strategies. This is especially problematic during phases of pandemics when resources are limited,
56 as these phases correlate with periods of high transmission, morbidity, and mortality.[22–24]
57 Less efficient allocation strategies have a disproportionate impact on medically underserved
58 communities. For example, age-based allocation of COVID-19 vaccines adopted by states
59 nationwide lead to inequity in vaccination uptake, with lower rates in economically
60 disadvantaged neighborhoods that were at an increased risk for severe SARS-CoV-2 infection
61 and death.[25–27] Alternatively, one study showed that the inclusion of geographic region into
62 the prioritization process would have led to an estimated 18% decrease in COVID-19 related
63 hospitalizations.[25]

64 Data-driven approaches can improve emergency planning and overall health outcomes by
65 guiding timely delivery of essential resources to high-risk communities.[28–31] One study
66 showed that prioritization of COVID-19 testing to high-risk areas is twice as likely to detect
67 positive cases compared to random allocation of tests (e.g., based on population sized).[32]
68 Moreover, utilization of MHC services can substantially vary by site location.[33,34] Site visits
69 with low utilization are a missed opportunity to provide health care to individuals in need, and
70 drastically reduce the potential impact of MHC services. Therefore, projecting low- and high-
71 demand areas at granular geographic levels can assist in optimizing the effectiveness of MHC
72 services.[35]

73 Various studies investigated the characteristics of individuals who used MHCs and
74 community-level factors associated with MHC utilization.[36,37] Individuals who utilized the
75 MHCs tend to be mostly ethnic minorities and uninsured persons.[34,38] MHCs had a higher
76 uptake when they were located at places where the proportions of uninsured and non-white
77 populations were higher, and primary care practitioner rates were lower.[34] Several studies built
78 predictive models for COVID-19 vaccine uptake using structural equation models, machine
79 learning-based approaches, and conceptual models.[39–42] However, these studies were
80 conducted based on data for general populations rather than MHC users hence they did not target
81 medically underserved populations. For such populations, geographic granularity is needed to
82 effectively inform public health interventions, including MHCs.

83 In this retrospective study, we develop predictive models to predict MHC utilization for
84 COVID-19 vaccination in South Carolina (SC) during different phases of the pandemic. The
85 projection of MHC utilization allows us to signify the low- and high-demand census tracts for
86 MHC utilization and understand their characteristic differences. We also explore MHC logistical

87 factors and community determinants that contribute to greater utilization after the high-demand
88 regions are detected, ultimately aiming to inform policy, improve public health outcomes, and
89 optimally allocate MHCs for greater utilization.

90 **Methods**

91 *Setting*

92 Prisma Health is a SC-based healthcare organization that serves 1.2 million patients per
93 year.[43] Prisma Health deployed MHCs to increase COVID-19 vaccination in underserved
94 communities between February 20, 2021, and February 17, 2022. A detailed explanation of
95 Prisma Health's MHC activities for COVID-19 vaccination program is provided in the
96 literature.[34]

97 *Variables*

98 Data obtained from MHC visits included the name, time, date, and location of the visit
99 site, site type, duration of the visit, and the number of individuals who received COVID-19
100 vaccines. Site types include churches; public K-12 schools; universities; corporate locations such
101 as business centers, homeless shelters; and other kinds of places such as community and wellness
102 centers, supermarkets, and parks. Based on the data, we categorized the timing of the week
103 (Monday to Thursday, Friday, or Weekend), determined time of the day (morning: before 12 pm,
104 afternoon: from 12 to 4 pm, and evening: after 4 pm), visit number (first, second, and third or
105 more), and zip code and census tract code of the visited sites.

106 The community-level variables included census tract and zip code level demographic,
107 socioeconomic, and health-related factors. Age, sex, race, ethnicity, median income,
108 unemployment rate, labor force participation, and social vulnerability index (SVI) variables were

109 at the census tract level and linked to census tracts of the MHC site locations. These
110 demographic and socioeconomic variables were obtained from the United States Census Bureau
111 American Community Survey for 2021.[44] SVI is a measure that assesses the resilience of
112 communities when faced with external stresses and is developed by the Agency for Toxic
113 Substances and Disease Registry (ATSDR) at the Centers for Disease Control and Prevention
114 (CDC).[45] The four components of SVI are socioeconomic status, household composition and
115 disability, minority status and language, and housing and transportation.[46] Data related to
116 health care access were obtained from The South Carolina Center for Rural and Primary
117 Healthcare (SCCRPH) and is available at the zip code level.[47] These variables included the
118 number of hospitals, primary care physicians (PCP) per 1000 residents, all-cause mortality rate
119 per 1000 residents, the percentage of uninsured individuals in each zip code, and the percentage
120 of rural areas in each zip code is provided. We also included the number of vaccination centers
121 within a 2-mile radius and the number of hospitals within a 3-mile radius of each MHC
122 location.[48,49] Data for emergency department (ED) COVID-19 hospitalizations and deaths
123 were obtained from the South Carolina Revenue and Fiscal Affairs Office.[50]

124 *Statistical analysis*

125 We used negative binomial generalized linear mixed effects models to assess the
126 relationship between site-related factors and MHC utilization for COVID-19 vaccination. For
127 the projection of MHC utilization, we aimed a ranking based approach of possible MHC
128 utilization at census tract level. Therefore, we used ordinal logistic regression models for the
129 ordered categorical outcome of the MHC utilization using demographic, socioeconomic, and
130 health-related predictors. Details about the model descriptions are provided in the Supplementary
131 Material.

132 The ordinal grouping of the MHC utilization consisted of number of individuals within 0-
133 19, 20-49, 50-99, 100-249, 250-399, and more than 400. These groupings were used both for the
134 validation of the models built on available MHC data, and for the projection of MHC utilization
135 for the remaining census tracts in SC. The validation stage is performed by randomly sampling
136 training and validation sets from the entire MHC data available for 106 census tracts. The
137 validation set included 25 randomly sampled census tracts and the remaining data is used for the
138 training of the models. Once the models are trained, we predicted the MHC utilization in 25
139 census tracts and compared it with the truth. If the predicted category is correctly predicted, we
140 noted is as exact category prediction. However, if the predicted category was different than the
141 truth, we noted the degree of deviation by checking how many categories the prediction was
142 away from the truth, for instance, one group higher than truth or two groups lower than truth. We
143 repeated the random sampling of 25 census tracts for 1,000 times independently, hence we
144 approximated the accuracy of the prediction performance. For the variables available at the
145 ZCTA level, we partitioned the data into census tracts linked to that ZCTA weighting on the
146 census tract population.

147 Due to significant changes in vaccine eligibility and availability, we stratify the study
148 period before and after March 31, 2021. There were significant policy changes on or near these
149 dates regarding the targeted groups for vaccination in the US. For instance, individuals aged 16
150 or older become eligible for COVID-19 vaccination on March 31. At the same time, COVID-19
151 vaccines became more widely available at pharmacies, clinics, and other health-providing
152 organizations.[51] As a sensitivity analysis, we also stratify the time period before and after May
153 10, 2021, which is the date adolescents aged 12 to 15 were eligible for COVID-19
154 vaccination.[52]

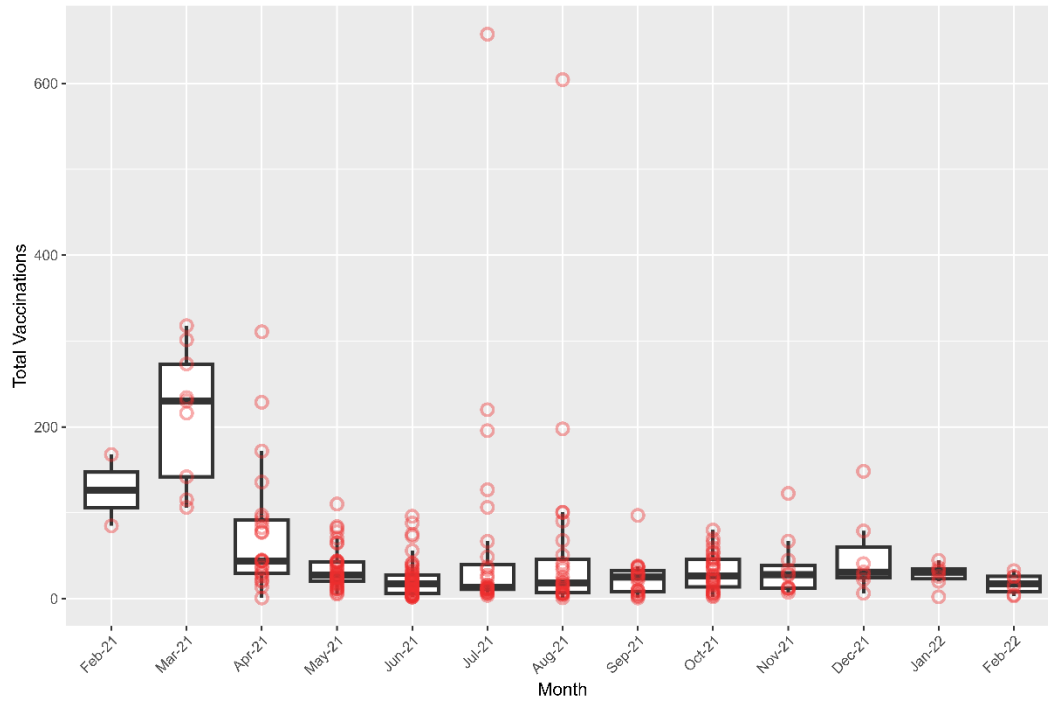
155 **Results**

156 *Descriptive summaries*

157 Between February 20, 2021, and February 17, 2022, the Prisma Health MHCs had 260
158 visits to 149 locations in SC. These visits took place in 59 zip codes (of 424 zip codes) and 107
159 census tracts (of 1,323 census tracts), and the MHC delivered 12,102 vaccines to 8,545
160 individuals. Descriptive statistics for the individuals and site types have been provided in
161 previous research.[34] The vaccine uptake at each site visit over one-year period is shown in
162 Figure 1. Box plots are generated based on the site visits in each month represented by the red
163 points. MHCs had higher demand per visit before March 31, 2021, when the vaccination
164 resources were limited and there were restrictions on certain age groups. After this date, although
165 the MHCs increased the frequency of its activities, utilization of MHCs per visit decreased.
166 There was an exception of a school site with visits that occurred in July and August 2021 in
167 which the MHC exceeded 600 vaccinations on both dates.

168 Vaccine uptake based on the site type and the day and time of the visit for different
169 vaccination terms (first term: before March 31, 2021, second term: between April 1 and May 9 of
170 2021, and third term: after May 10, 2021) are summarized in Figure 2. The majority of the MHC
171 events in the first term took place on weekends and mornings at churches, schools, and
172 universities. Although MHCs started visits on different days and times in the second and third
173 terms, overall MHC utilization per visit was not high especially on the third term. Considering
174 all terms, church visits mainly occurred on weekend mornings, and school and corporate visits
175 Monday to Thursday afternoons.

176

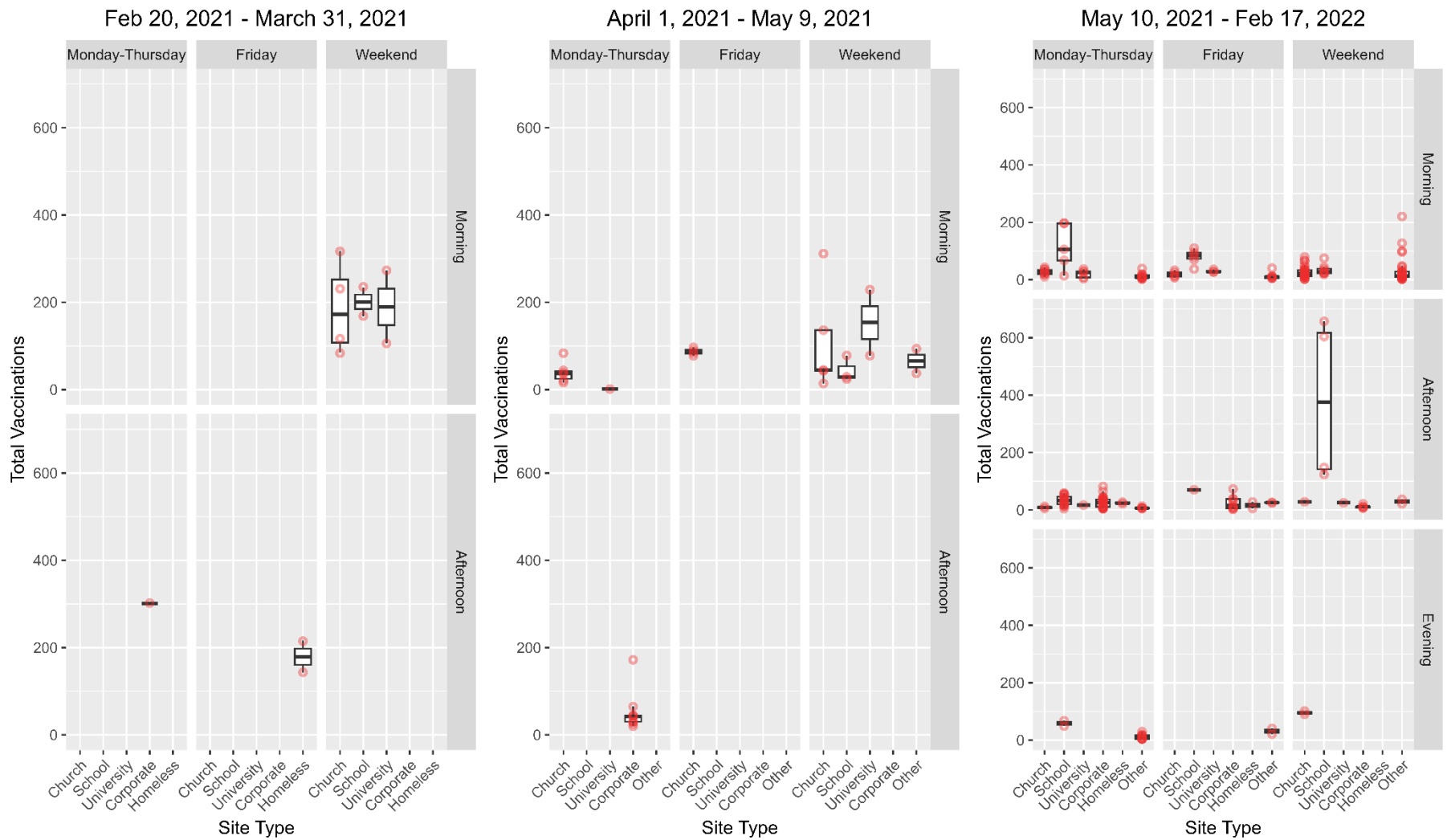


177

178 Figure 1. Boxplot of vaccination counts at site visits per month between February 20, 2021, and
179 February 17, 2022. Points show the number of vaccinated individuals at each site visit for
180 different months and constitute the box plot.

181

182



183

184 Figure 2. Boxplot of vaccination counts based on different terms (before March 31, 2021, between April 1 and May 9 of 2021, and
 185 after May 10, 2021), site types, the day of the week, and the time of the day.

186 ***Site-related factors associated with MHC utilization***

187 The site-related factors associated with MHC utilization are shown in Table 1. Estimated
 188 relative risk (RR) with 95% confidence intervals (CI) represents the relative change in the MHC
 189 utilization with respect to a standard deviation increase in the continuous predictor variables, and
 190 a category change in the categorical variables. School visits and visits on Weekends, and visits
 191 within the first term (between February 20, 2021, and March 31, 2021) and second term
 192 (between April 1, 2021 and February 17, 2022) were associated with higher MHC utilization.
 193 Also, MHCs gained greater utilization at their second visits to a certain site. Having nearby
 194 vaccination centers and hospitals, and other types of site visits than schools, churches, corporate
 195 locations and homeless shelters decreased MHC utilization.

196 Table 1: Results for negative binomial models that are adjusted for vaccination term, site type,
 197 day of the week, time of the day, visit number, visit duration, and population.

| | RR | CI | P-value |
|---|-----------|----------------|------------------|
| Vaccination Term (Ref: Third term) | | | |
| First Term | 7.11 | (4.43 - 11.43) | <0.001 |
| Second Term | 2.40 | (1.76 - 3.26) | <0.001 |
| Site type (Ref: Church) | | | |
| School | 2.17 | (1.47 - 3.21) | <0.001 |
| University | 1.22 | (0.68 - 2.17) | 0.509 |
| Corporate | 1.19 | (0.71 - 1.99) | 0.520 |
| Homeless | 1.17 | (0.49 - 2.80) | 0.731 |
| Other | 0.68 | (0.48 - 0.97) | 0.033 |
| Day of the week (Ref: Monday – Thursday) | | | |
| Friday | 1.32 | (0.97 - 1.81) | 0.079 |
| Weekend | 1.38 | (1.03 - 1.83) | 0.029 |
| Time of the day (Ref: Morning) | | | |
| Afternoon | 1.17 | (0.78 - 1.74) | 0.449 |
| Evening | 1.44 | (0.84 - 2.47) | 0.184 |
| Visit number (Ref: First visit) | | | |
| Second | 1.21 | (1.01 - 1.45) | 0.036 |
| Third or more | 0.96 | (0.75 - 1.25) | 0.778 |

| | RR | CI | P-value |
|--------------------------------------|-----------|---------------|----------------|
| Visit duration | 1.00 | (0.89 - 1.12) | 0.993 |
| Population | 1.06 | (0.92 - 1.22) | 0.429 |
| Number of nearby vaccination centers | 0.79 | (0.68 - 0.93) | 0.003 |
| Number of nearby hospitals | 0.83 | (0.71 - 0.96) | 0.015 |

198

199

200 *Model Validation*

201 The agreement between the predicted and actual category of MHC utilization is
 202 summarized in Table 2 using term-based models (term 1: before March 31, 2021, term 2: after
 203 April 1, 2021). Overall, 72.6% of model predictions were within +/- 1 of the true vaccine uptake
 204 group as described in the methods. The models predicted the exact category of the outcome in
 205 30.5% of the validation observations, and they predicted one group either a higher or lower
 206 category than the actual category for 42.1% of the validation observations.

207 Table 2: Results for prediction accuracy. Number of census tracts that have the same and
 208 deviated observed and predicted category for term-based predictions (term 1: before March 31,
 209 2021, term 2: after April 1, 2021).

| Predicted Category | Term-based Predictions N (%) |
|----------------------------------|---|
| 5 groups higher than truth | - |
| 4 groups higher than truth | - |
| 3 groups higher than truth | 197 (0.8) |
| 2 groups higher than truth | 2,598 (10.4) |
| 1 group higher than truth | 5,394 (21.6) |
| Exact group | 7,635 (30.5) |
| 1 group lower than truth | 5,136 (20.5) |
| 2 group lower than truth | 2,974 (11.9) |
| 3 group lower than truth | 926 (3.7) |
| 4 group lower than truth | 140 (0.6) |
| 5 group lower than truth | - |

210

211

212 *Vaccine projections for census tracts*

213 We projected the MHC utilization for all census tracts of SC. These models use the
214 characteristics of census tracts that MHCs visited as the predictors and projected the ordinal
215 category of MHC utilization in other census tracts. The projections are performed prior and post
216 March 31, 2021. The number of census tracts in each category of predicted MHC utilization is
217 shown in Table 3 for both cases. Projected MHC utilization per visit prior to March 31, 2021,
218 was substantially higher at most census tracts (Figure 3). Results for 12-months and for cutoff
219 term of May 10, 2021, are provided in Figure S1 in the Supplementary Material. There were 32
220 (2.5%) census tracts that were projected to receive more than 400 visitors at a single MHC visit,
221 and 1,195 (92.2%) census tracts projected to receive relatively high utilization with 250 to 399
222 individuals, whereas only 69 (5.3%) census tracts were estimated to be utilized by under 249
223 individuals. On the other hand, the models predicted overall low MHC utilization starting from
224 April 1, 2021, where only 181 (14.0%) census tracts would receive between 50 and 99
225 individuals, and 86.1% of census tracts would have low utilization.

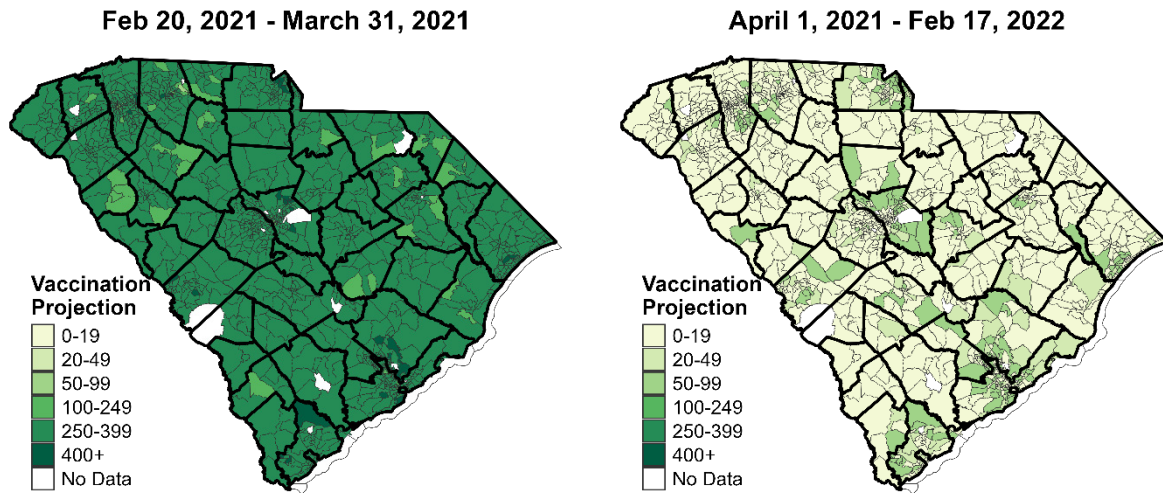
226 Census tracts categorized in the highest and lowest MHC utilization categories had
227 substantial differences in some of their community-level characteristics (Table 4). Compared to
228 the low MHC utilization category, the highest category census tracts had a higher proportion of
229 individuals under 18 years of age and 30-44 age group, a higher proportion of non-White and
230 Hispanic individuals. More importantly, these census tracts had lower PCP rates, lower number
231 of hospitals, higher cumulative COVID-19 ED visits and deaths prior to MHCs were deployed
232 on February 20, 2021. Sensitivity analyses for the cutoff date of May 10, 2021, and for 12-month
233 term are also performed, and the results are provided Tables S2-S6, respectively.

234 Table 3: Number of census tracts (N) for each category of the projected MHC utilization.
 235 Projections are made for an MHC visit at any time before March 31, 2021, and after April 1,
 236 2021.

| Grouping | Before | After |
|----------|---------------|---------------|
| | March 31 | April 1 |
| | N = 1,296 (%) | N = 1,296 (%) |
| 0-19 | - | 973 (75.0) |
| 20-49 | - | 142 (11.0) |
| 50-99 | 4 (0.3) | 181 (14.0) |
| 100-249 | 65 (5.0) | - |
| 250-399 | 1,195 (92.2) | - |
| 400+ | 32 (2.5) | - |

237

238



239

240 Figure 3: Projected MHC utilization for COVID-19 vaccination at census tracts at different time
 241 periods (pre and post March 31, 2021).

242

243

244

245

246

247

248

249

250

251

252

253 Table 4: Characteristics of census tracts that are projected to have high (groups: 250-399 and
 254 400+) and low (groups: 50-99 and 100-249) MHC utilization for COVID-19 vaccination before
 255 March 31, 2021. Median values with IQR and p-values for significance of the difference of
 256 medians are provided.

| | High Utilization | Low Utilization | |
|--------------------|-------------------------|------------------------|------------------|
| | N = 1,227 | N = 69 | P-value |
| % Age under 18 | 21.6 (18.0-25.1) | 20.1 (13.9-23.4) | 0.044 |
| % Age 18-29 | 14.1 (11.0-17.5) | 16.3 (12.6-34.7) | 0.001 |
| % Age 30-44 | 18.3 (15.0-21.5) | 16.2 (11.5-19.7) | 0.011 |
| % Age 45-64 | 26.5 (23.0-29.9) | 25.7 (16.9-31.0) | 0.263 |
| % Age over 65 | 17.4 (13.4-21.8) | 16.7 (11.9-21.7) | 0.398 |
| % Male | 48.5 (45.9-51.1) | 49.8 (46.9-53.0) | 0.030 |
| % Non-white | 35.6 (20.5-55.1) | 25.8 (9.1-37.5) | 0.009 |
| % Hispanic | 4.8 (2.8-7.9) | 3.7 (2.7-5.9) | 0.022 |
| SVI | 0.5 (0.3-0.8) | 0.6 (0.3-0.8) | 0.053 |
| Income (×\$1000) | 55.3 (42.6-71.3) | 46.9 (34.0-62.6) | 0.007 |
| % Unemployed | 4.6 (2.6-7.6) | 4.2 (2.6-6.9) | <0.001 |
| PCP rate | 0.3 (0.0-0.8) | 3.9 (0.5-16.0) | <0.001 |
| Hospitals | 0.0 (0.0-1.0) | 0.9 (0.2-1.5) | <0.001 |
| % Uninsured | 10.9 (8.8-12.3) | 10.2 (7.7-11.6) | 0.426 |
| Mortality rate | 51.3 (40.7-60.7) | 50.3 (38.3-60.3) | 0.797 |
| % in Poverty | 11.0 (7.1-15.7) | 14.0 (10.2-17.3) | 0.006 |
| % in Rural | 28.0 (5.0-60.0) | 15.0 (0.2-62.4) | 0.102 |
| COVID-19 ED visits | 1,189 (658-2,012) | 846 (504-1,260) | 0.002 |
| COVID-19 deaths | 64 (35-99) | 41 (22-70) | 0.002 |

257

258

259 Discussion

260 This study aims to serve as a tool to improve the MHCs' activities by providing important
 261 insights from the utilization of MHCs during COVID-19 vaccination across South Carolina,
 262 highlighting the potential to optimize resource allocation by identifying high-uptake areas and
 263 understanding the factors influencing MHCs' success. The findings underscore the importance of
 264 strategically deploying MHCs to maximize vaccine reach, particularly among underserved and
 265 vulnerable populations.

266 Operational factors including site type (e.g., church, school, etc.), day, and time of the
267 week were significantly associated with vaccine uptake. Notably, visits to schools and visits
268 conducted on weekends were linked to higher vaccine uptake. During the pre- and post-March
269 31, 2021, 72.7% and 38.6% of MHC visits were conducted on weekends with median utilization
270 of 199 (IQR: 112 - 243) and 23 (IQR: 10 – 38) per visit, respectively.[34] Although the school
271 visits were similar for pre- and post-March 31, 2021 with 18.2% and 18.5%, the utilization per
272 visit was 200 (IQR: 184 - 217) and 45 (IQR: 24 - 77) making highest utilized location for post-
273 March 31, 2021 followed by universities 27 (IQR: 17 - 36). These findings suggest that MHCs
274 can achieve a more significant impact by targeting educational institutions and scheduling visits
275 on days and times that are more convenient for community members. Moreover, the presence of
276 nearby vaccination centers and hospitals was found to negatively impact MHC utilization. This
277 suggests that MHCs are particularly valuable in areas with limited access to fixed-site
278 vaccination centers, highlighting the importance of strategic placement in underserved regions.

279 The predictive models identified 1,227 census tracts with higher potential for vaccine
280 uptake, which had a higher rate of uninsurance and mortality, a higher proportion of ethnic
281 minority populations and adolescents, and were in rural areas. These findings are consistent with
282 MHC-centered studies conducted for other states and cities.[36–38] In this study, we found
283 additional healthcare-related factors associated with MHC utility. Census tracts with lower rates
284 of primary care practitioners, hospitals, and other vaccination sites had higher MHC utilization
285 compared to the low-demand census tracts, highlighting the potential of MHC utilization at
286 locations with limited healthcare resources and facilities. The role of predictive models is to act
287 as a classifying or categorization mechanism that identifies areas and communities that are more
288 likely to use the MHCs given the limited data from previous MHC visits. A possible setting for

289 MHC allocation could be to use the existing data and base on the categorical projection of new
290 areas such as census tracts that MHC could possibly get high demand. As MHCs conduct visits
291 to more places relying on the projected high-demand areas, the models can be validated and
292 updated based on the new data. Hence this framework will allow an optimal deployment of
293 MHCs to gain the highest utilization especially by ones who need these services the most.

294 The time component of projections for MHC utilization at the census tract level provides
295 important decision-making implications for public health planning. Before March 31, 2021, the
296 models predicted high MHC utilization in most census tracts, reflecting the high demand for
297 vaccines during the initial rollout phase. However, after this date, the predicted utilization
298 decreased significantly, indicating the need for continuous assessment and adaptation of MHC
299 deployment strategies as the pandemic evolves and vaccine availability at other providers
300 changes.

301 This study has several limitations. First, there were substantial changes in vaccine
302 eligibility and availability which affected the MHC utilization. The retrospective design and
303 reliance on limited data may not capture all relevant factors influencing MHC utilization. These
304 factors may also differ from state to state. Future research should consider prospective studies
305 and incorporate additional factors such as community engagement and outreach efforts to
306 provide a more comprehensive understanding of MHC effectiveness. To extend the similar
307 framework to other states, countries, and to different diseases, one needs to consider the
308 determinants of the regions and the disease.

309 In conclusion, this study provides a framework for optimizing the deployment of MHCs
310 in future health emergencies by identifying factors associated with higher vaccine uptake and
311 predicting areas of high utilization. Predicting the highest- and lowest-demand census tracts for

312 MHC utilization provides categorized importance structure for public health planning and
313 resource allocation. Strategic allocation of MHCs based on these insights can enhance the timely
314 delivery of essential resources to the most vulnerable communities during health emergencies
315 and ultimately save more lives.

316

317

318

319

320

321

322

323

324

325

326

327

328

329

330

331

332

333

334

335

336

337

338

339 **References**

- 340 1. CDC. Centers for Disease Control and Prevention. 2020 [cited 2023 Sep 14]. COVID Data
341 Tracker. Available from: <https://covid.cdc.gov/covid-data-tracker>
- 342 2. Risk for COVID-19 infection, hospitalization, and death by race/ethnicity. [cited 2024 Jun
343 28]; Available from: <https://stacks.cdc.gov/view/cdc/105453>
- 344 3. Henning-Smith C. The Unique Impact of COVID-19 on Older Adults in Rural Areas. *J*
345 *Aging Soc Policy*. 2020;32(4–5):396–402.
- 346 4. Paul R, Arif A, Pokhrel K, Ghosh S. The Association of Social Determinants of Health With
347 COVID-19 Mortality in Rural and Urban Counties. *J Rural Health*. 2021;37(2):278–86.
- 348 5. Overcoming Barriers to COVID-19 Vaccination in African Americans: The Need for Cultural
349 Humility [Internet]. [cited 2024 Jun 28]. Available from:
350 <https://ajph.aphapublications.org/doi/epub/10.2105/AJPH.2020.306135>
- 351 6. Lieberman-Cribbin W, Tuminello S, Flores RM, Taioli E. Disparities in COVID-19 Testing
352 and Positivity in New York City. *Am J Prev Med*. 2020 Sep;59(3):326–32.
- 353 7. Press VG, Huisingh-Scheetz M, Arora VM. Inequities in Technology Contribute to
354 Disparities in COVID-19 Vaccine Distribution. *JAMA Health Forum*. 2021 Mar
355 19;2(3):e210264.
- 356 8. Fisk RJ. Barriers to vaccination for coronavirus disease 2019 (COVID-19) control:
357 experience from the United States. *Glob Health J*. 2021 Mar 1;5(1):51–5.
- 358 9. Abdul-Mutakabbir JC, Casey S, Jews V, King A, Simmons K, Hogue MD, et al. A three-
359 tiered approach to address barriers to COVID-19 vaccine delivery in the Black community.
360 *Lancet Glob Health*. 2021 Jun;9(6):e749–50.
- 361 10. Rutter H, Savona N, Glonti K, Bibby J, Cummins S, Finegood DT, et al. The need for a
362 complex systems model of evidence for public health. *The Lancet*. 2017 Dec
363 9;390(10112):2602–4.
- 364 11. Yu SWY, Hill C, Ricks ML, Bennet J, Oriol NE. The scope and impact of mobile health
365 clinics in the United States: a literature review. *Int J Equity Health*. 2017 Oct 5;16(1):178.
- 366 12. Schwitters A, Lederer P, Zilversmit L, Gudo PS, Ramiro I, Cumba L, et al. Barriers to health
367 care in rural Mozambique: a rapid ethnographic assessment of planned mobile health clinics
368 for ART. *Glob Health Sci Pract*. 2015 Mar;3(1):109–16.
- 369 13. Attipoe-Dorcoo S, Delgado R, Gupta A, Bennet J, Oriol NE, Jain SH. Mobile health clinic
370 model in the COVID-19 pandemic: lessons learned and opportunities for policy changes and
371 innovation. *Int J Equity Health*. 2020 May 19;19(1):73.

- 372 14. Rassekh BM, Shu W, Santosham M, Burnham G, Doocy S. An evaluation of public, private,
373 and mobile health clinic usage for children under age 5 in Aceh after the tsunami:
374 implications for future disasters. *Health Psychol Behav Med.* 2014 Jan 1;2(1):359–78.
- 375 15. Larson R, Hussain S, Chau MM, Jones A, Vangeepuram N, Madden D, et al. The Power of
376 Partnership: NYCEAL Collaborations With Health Agencies and Mobile Vaccination Vans.
377 *Am J Public Health.* 2024 Jan;114(Suppl 1):S92–5.
- 378 16. Kulle AC, Schumacher S, von Bieberstein F. Mobile vaccination units substantially increase
379 COVID-19 vaccinations: evidence from a randomized controlled trial. *J Public Health.* 2024
380 Mar 1;46(1):151–7.
- 381 17. Levy P, McGlynn E, Hill AB, Zhang L, Korzeniewski SJ, Foster B, et al. From pandemic
382 response to portable population health: A formative evaluation of the Detroit mobile health
383 unit program. *PLoS ONE.* 2021 Nov 30;16(11):e0256908.
- 384 18. Zhang X, Tulloch JSP, Knott S, Allison R, Parvulescu P, Buchan IE, et al. Evaluating the
385 impact of using mobile vaccination units to increase COVID-19 vaccination uptake in
386 Cheshire and Merseyside, UK: a synthetic control analysis. *BMJ Open.* 2023 Oct
387 6;13(10):e071852.
- 388 19. Serrano-Alarcón M, Mckee M, Palumbo L, Salvi C, Johansen A, Stuckler D. How to
389 increase COVID-19 vaccination among a population with persistently suboptimal vaccine
390 uptake? Evidence from the North Macedonia mobile vaccination and public health advice
391 caravan. *Health Policy Amst Neth.* 2024 Jan;139:104966.
- 392 20. Alvi RA, Justason L, Liotta C, Martinez-Helfman S, Dennis K, Croker SP, et al. The Eagles
393 Eye Mobile: assessing its ability to deliver eye care in a high-risk community. *J Pediatr
394 Ophthalmol Strabismus.* 2015;52(2):98–105.
- 395 21. Hill C, Zurakowski D, Bennet J, Walker-White R, Osman JL, Quarles A, et al.
396 Knowledgeable Neighbors:A Mobile Clinic Model for Disease Prevention and Screening in
397 Underserved Communities. *Am J Public Health.* 2012 Mar;102(3):406–10.
- 398 22. Emanuel EJ, Persad G, Upshur R, Thome B, Parker M, Glickman A, et al. Fair Allocation of
399 Scarce Medical Resources in the Time of Covid-19. *N Engl J Med.* 2020 May
400 21;382(21):2049–55.
- 401 23. Woolf SH, Chapman DA, Lee JH. COVID-19 as the Leading Cause of Death in the United
402 States. *JAMA [Internet].* 2020 Dec 17 [cited 2021 Mar 29]; Available from:
403 <https://jamanetwork.com/journals/jama/fullarticle/2774465>
- 404 24. The New York Times. Coronavirus in the U.S.: Latest Map and Case Count. The New York
405 Times [Internet]. 2020 Mar 3 [cited 2022 Feb 28]; Available from:
406 <https://www.nytimes.com/interactive/2021/us/covid-cases.html>

- 407 25. Brown KA, Stall NM, Joh E, Allen U, Bogoch II, Buchan SA, et al. COVID-19 Vaccination
408 Strategy for Ontario Using Age and Neighbourhood-Based Prioritization. *Sci Briefs Ont*
409 COVID-19 Sci Advis Table. 2021 Feb 26;2(10).
- 410 26. Salmon D, Opel DJ, Dudley MZ, Brewer J, Breiman R. Reflections On Governance,
411 Communication, And Equity: Challenges And Opportunities In COVID-19 Vaccination.
412 *Health Aff (Millwood)*. 2021 Feb 4;40(3):419–25.
- 413 27. Bachireddy C, Dar M, Chen C. Medicaid and COVID-19 Vaccination—Translating
414 Equitable Allocation Into Equitable Administration. *JAMA Health Forum*. 2021 Feb
415 17;2(2):e210114.
- 416 28. Rutter H, Savona N, Glonti K, Bibby J, Cummins S, Finegood DT, et al. The need for a
417 complex systems model of evidence for public health. *The Lancet*. 2017 Dec
418 9;390(10112):2602–4.
- 419 29. Quinn SC, Kumar S. Health Inequalities and Infectious Disease Epidemics: A Challenge for
420 Global Health Security. *Biosecurity Bioterrorism Biodefense Strategy Pract Sci*. 2014 Sep
421 1;12(5):263–73.
- 422 30. Guttieres D, Sinskey AJ, Springs SL. Modeling Framework to Evaluate Vaccine Strategies
423 against the COVID-19 Pandemic. *Systems*. 2021 Mar;9(1):4.
- 424 31. Angulo FJ, Finelli L, Swerdlow DL. Reopening Society and the Need for Real-Time
425 Assessment of COVID-19 at the Community Level. *JAMA*. 2020;323(22):2247–8.
- 426 32. Rennert L, McMahan C, Kalbaugh CA, Yang Y, Lumsden B, Dean D, et al. Surveillance-
427 based informative testing for detection and containment of SARS-CoV-2 outbreaks on a
428 public university campus: an observational and modelling study. *Lancet Child Adolesc*
429 *Health*. 2021;5(6):428–36.
- 430 33. Rennert L, Howard KA, Kickham CM, Gezer F, Coleman A, Roth P, et al. Implementation of
431 a mobile health clinic framework for Hepatitis C virus screening and treatment: a descriptive
432 study. *Lancet Reg Health – Am* [Internet]. 2024 Jan 1 [cited 2024 Apr 2];29. Available from:
433 [https://www.thelancet.com/journals/lanam/article/PIIS2667-193X\(23\)00222-3/fulltext](https://www.thelancet.com/journals/lanam/article/PIIS2667-193X(23)00222-3/fulltext)
- 434 34. Rennert L, Gezer F, Jayawardena I, Howard KA, Bennett KJ, Litwin AH, et al. Mobile health
435 clinics for distribution of vaccinations to underserved communities during health
436 emergencies: A COVID-19 case study. *Public Health Pract*. 2024;Under Review.
- 437 35. Gezer F, Howard KA, Litwin AH, Martin NK, Rennert L. Identification of factors associated
438 with opioid-related and hepatitis C virus-related hospitalisations at the ZIP code area level in
439 the USA: an ecological and modelling study. *Lancet Public Health*. 2024 Jun 1;9(6):e354–64.
- 440 36. Alcendor DJ, Juarez PD, Matthews-Juarez P, Simon S, Nash C, Lewis K, et al. Meharry
441 Medical College Mobile Vaccination Program: Implications for Increasing COVID-19
442 Vaccine Uptake among Minority Communities in Middle Tennessee. *Vaccines*. 2022 Jan
443 29;10(2):211.

- 444 37. Gupta PS, Mohareb AM, Valdes C, Price C, Jolliffe M, Regis C, et al. Expanding COVID-19
445 vaccine access to underserved populations through implementation of mobile vaccination
446 units. *Prev Med*. 2022 Oct 1;163:107226.
- 447 38. Gavin RM, Countryman M, Musco J, Ricard R, Roberts A, Lees C. Reaching Diverse
448 Communities During a Local Public Health COVID-19 Vaccination Response Through a
449 Mobile Clinic Compared to Mass Vaccination Sites. *J Public Health Manag Pract*. 2024
450 Jun;30(3):411.
- 451 39. Schmitz M, Luminet O, Klein O, Morbée S, Van den Bergh O, Van Oost P, et al. Predicting
452 vaccine uptake during COVID-19 crisis: A motivational approach. *Vaccine*. 2022 Jan
453 21;40(2):288–97.
- 454 40. Cheong Q, Au-yeung M, Quon S, Concepcion K, Kong JD. Predictive Modeling of
455 Vaccination Uptake in US Counties: A Machine Learning–Based Approach. *J Med Internet
456 Res*. 2021 Nov 25;23(11):e33231.
- 457 41. Shiloh S, Peleg S, Nudelman G. Vaccination Against COVID-19: A Longitudinal Trans-
458 Theoretical Study to Determine Factors that Predict Intentions and Behavior. *Ann Behav
459 Med*. 2022 Apr 1;56(4):357–67.
- 460 42. Zhou X, Li Y. Forecasting the COVID-19 vaccine uptake rate: an infodemiological study in
461 the US. *Hum Vaccines Immunother*. 2022 Jan 31;18(1):2017216.
- 462 43. Prisma Health celebrates groundbreaking of new emergency department at Prisma Health
463 Oconee Memorial Hospital [Internet]. [cited 2024 Aug 13]. Available from:
464 [https://prismahealth.org/patients-and-guests/news/prisma-health-celebrates-groundbreaking-
465 of-new-emergency-department-at-prisma-health-oconee-memorial](https://prismahealth.org/patients-and-guests/news/prisma-health-celebrates-groundbreaking-of-new-emergency-department-at-prisma-health-oconee-memorial)
- 466 44. DP05: ACS DEMOGRAPHIC AND ... - Census Bureau Table [Internet]. [cited 2024 Sep 5].
467 Available from:
468 <https://data.census.gov/table/ACSDP5Y2021.DP05?q=acs%202021&g=040XX00US45>
- 469 45. CDC/ATSDR SVI Data and Documentation Download | Place and Health | ATSDR
470 [Internet]. 2022 [cited 2023 Mar 7]. Available from:
471 https://www.atsdr.cdc.gov/placeandhealth/svi/data_documentation_download.html
- 472 46. Flanagan BE, Gregory EW, Hallisey EJ, Heitgerd JL, Lewis B. A Social Vulnerability Index
473 for Disaster Management. *J Homel Secur Emerg Manag* [Internet]. 2011 Jan 5 [cited 2023
474 Mar 7];8(1). Available from: [https://www.degruyter.com/document/doi/10.2202/1547-
475 7355.1792/html](https://www.degruyter.com/document/doi/10.2202/1547-7355.1792/html)
- 476 47. South Carolina Center for Rural and Primary Healthcare - School of Medicine Columbia |
477 University of South Carolina [Internet]. [cited 2024 Apr 2]. Available from:
478 [https://sc.edu/study/colleges_schools/medicine/centers_and_institutes_new/center_for_rural_
479 and_primary_healthcare/index.php](https://sc.edu/study/colleges_schools/medicine/centers_and_institutes_new/center_for_rural_and_primary_healthcare/index.php)

- 480 48. COVID-19 Vaccines Providers [Internet]. [cited 2024 Jul 8]. Available from: [https://sc-](https://sc-dhec.maps.arcgis.com/apps/instant/nearby/index.html?appid=903e4c38fc4b4771b04fb492d366fa78)
481 [dhec.maps.arcgis.com/apps/instant/nearby/index.html?appid=903e4c38fc4b4771b04fb492d3](https://sc-dhec.maps.arcgis.com/apps/instant/nearby/index.html?appid=903e4c38fc4b4771b04fb492d366fa78)
482 [66fa78](https://sc-dhec.maps.arcgis.com/apps/instant/nearby/index.html?appid=903e4c38fc4b4771b04fb492d366fa78)
- 483 49. American Hospital Directory - Free Daily Limit [Internet]. [cited 2024 Apr 8]. Available
484 from: https://www.ahd.com/states/hospital_SC.html
- 485 50. Healthcare | South Carolina Revenue and Fiscal Affairs Office [Internet]. [cited 2023 Mar 7].
486 Available from: <https://rfa.sc.gov/data-research/healthcare>
- 487 51. All South Carolinians Aged 16 and Older to be Eligible for COVID-19 Vaccine Beginning
488 March 31, 2021 | S.C. Governor Henry McMaster [Internet]. [cited 2024 Jul 8]. Available
489 from: [https://governor.sc.gov/news/2021-03/all-south-carolinians-aged-16-and-older-be-](https://governor.sc.gov/news/2021-03/all-south-carolinians-aged-16-and-older-be-eligible-covid-19-vaccine-beginning-march)
490 [eligible-covid-19-vaccine-beginning-march](https://governor.sc.gov/news/2021-03/all-south-carolinians-aged-16-and-older-be-eligible-covid-19-vaccine-beginning-march)
- 491 52. AJMC [Internet]. 2021 [cited 2023 Sep 5]. A Timeline of COVID-19 Vaccine Developments
492 in 2021. Available from: [https://www.ajmc.com/view/a-timeline-of-covid-19-vaccine-](https://www.ajmc.com/view/a-timeline-of-covid-19-vaccine-developments-in-2021)
493 [developments-in-2021](https://www.ajmc.com/view/a-timeline-of-covid-19-vaccine-developments-in-2021)
- 494

Appendix

Model description

Negative binomial generalized linear mixed effects model:

$$\log(\mu_{ij}) = \mathbf{X}_{ij}^T \beta + b_j + c_{ij}$$

The model assumes the following conditions:

Y_{ij} : Number of individuals utilized the mobile health clinic (MHC) at i-th site visit in the j-th census tract. The outcome variable Y_{ij} follows the negative binomial distribution

$Y_{ij} \sim \text{NegBin}(\mu_{ij}, \theta)$ where μ_{ij} is the mean of the negative binomial distribution at i-th site visit in the j-th census tract and θ is the dispersion parameter.

\mathbf{X}_{ij}^T : Vector of fixed effects for the i-th site visit in the j-th census tract. Fixed effects included the census tract population, visit term (term 1: before March 31, 2021, and after March 31, 2021), site category (food banks, schools, universities, corporate, homeless shelters, and other), time of the week (Monday to Thursday, Friday, and weekend), time of the week (morning, afternoon, and evening), visit number (first, second, and third or more), and the duration of the visit. The number of vaccination centers and hospitals close to the MHC location is added to the model separately to avoid collinearity between these variables. The visit time changed to (term 1: before May 10, 2021, and after May 10, 2021) for the sensitivity analysis.

b_j : Random effect for the j-th census tract with $b_j \sim N(0, \sigma_b^2)$

c_{ij} : Random effect for the i-th site in the j-th census tract $c_{ij} \sim N(0, \sigma_b^2)$

Ordinal logistic regression model

Let Y be the ordered categorical outcome of number of individuals utilized the MHC in a census tract {1: 10-19, 2: 20-49, 3: 50-99, 4: 100-249, 5: 250-399, and 6: more than 400 individuals}.

Ordinal logistic regression calculates the logged odds of being equal or less than a specific category k of the outcome variable. The cumulative logit model (proportional odds model) can be expressed as:

$$\log \frac{P(Y_i \leq k | X_i)}{1 - P(Y_i \leq k | X_i)} = \alpha_k - \mathbf{X}_i^T \beta$$

Y_i : The ordered categorical outcome {1: 10-19, 2: 20-49, 3: 50-99, 4: 100-249, 5: 250-399, and 6: more than 400 individuals} of MHC for i-th census tract.

\mathbf{X}_i^T : The vector of fixed effects for the i -th census tract. These effects include vaccination term, number of visits conducted to the census tract, census tract level population, proportion of individuals within 30-44, 45-64, and 65+ years of ages, proportion of males, non-White, unemployed, labor force participation, uninsured, under poverty, social vulnerability index (SVI), median income, primary care physicians per 1,000 people, all-cause mortality rate, hospital presence, and percent of rural areas. Variables that are available for zip codes are transformed to census tract level by weighting on the population of a census tract living in different zip codes.

Finally, α_k are the threshold parameters (cut-points) separating the adjacent categories of the ordinal response.

Table S1: Characteristics of census tracts that are projected to have high (group: 50-99) and low (groups: 0-19 and 20-49) MHC utilization for COVID-19 vaccination after April 1, 2021. Median values with IQR and p-values for significance of the difference of medians are provided.

| | High Utilization N = 181 | Low Utilization N = 1,115 | P-value |
|---------------------------|---|--|------------------|
| % Age under 18 | 21.3 (17.7-25.3) | 21.6 (18.0-25.0) | 0.480 |
| % Age 18-29 | 13.4 (10.5-16.0) | 14.5 (11.4-18.1) | 0.002 |
| % Age 30-44 | 19.3 (15.9-22.6) | 17.7 (14.7-20.9) | <0.001 |
| % Age 45-64 | 27.3 (23.6-30.6) | 26.3 (22.5-29.7) | 0.006 |
| % Age over 65 | 16.0 (12.7-21.2) | 17.7 (14.1-22.0) | <0.001 |
| % Male | 48.5 (46.1-50.8) | 48.5 (45.9-51.4) | 0.862 |
| % Non-white | 35.1 (23.0-54.4) | 34.8 (18.9-54.3) | 0.949 |
| % Hispanic | 5.7 (3.6-8.3) | 4.5 (2.6-7.4) | <0.001 |
| SVI | 0.29 (0.14-0.53) | 0.57 (0.32-0.80) | <0.001 |
| Income (\times \$1000) | 69.8 (55.7-90.1) | 50.5 (39.3-63.2) | <0.001 |
| % Unemployed | 4.3 (2.2-6.6) | 4.8 (2.7-8.0) | <0.001 |
| PCP rate | 0.2 (0.0-0.6) | 0.4 (0.1-0.9) | <0.001 |
| Hospitals | 0.0 (0.0-0.2) | 0.1 (0.0-1.0) | <0.001 |
| % Uninsured | 9.2 (7.0-11.6) | 11.0 (9.0-12.5) | <0.001 |
| Mortality rate | 42.3 (33.6-50.1) | 54.0 (44.6-63.2) | <0.001 |
| % in Poverty | 7.7 (4.8-11.2) | 12.6 (8.8-16.6) | <0.001 |
| % in Rural | 10.6 (1.8-44.7) | 34.1 (6.8-64.4) | <0.001 |
| Hospitalizations | 1,271 (796-2,014) | 1,106 (640-1,980) | 0.072 |
| Dead | 57 (32-92) | 64 (33-100) | 0.050 |

It is made available under a [CC-BY 4.0 International license](https://creativecommons.org/licenses/by/4.0/).

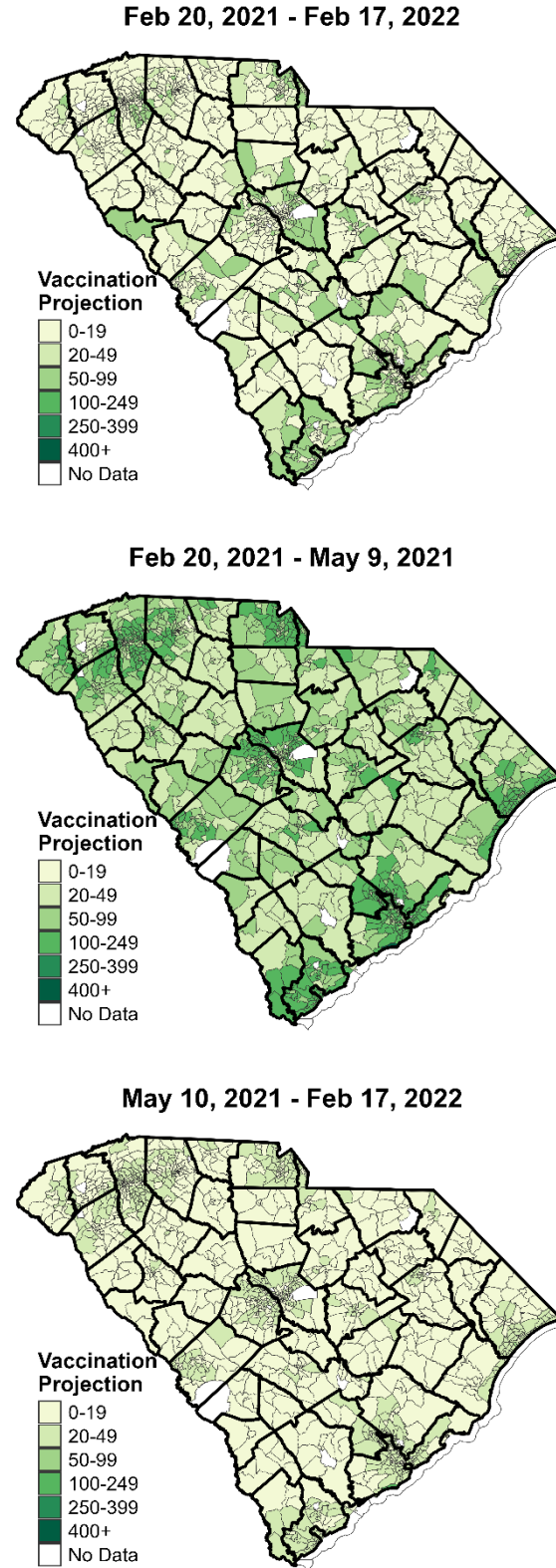


Figure S1: Projected MHC utilization for COVID-19 vaccination at census tracts at different time periods (12-months, and pre and post May 10, 2021).

Table S2: Results for prediction accuracy. Number of census tracts that have the same and deviated observed and predicted category for 12-month predictions, and term-based predictions (term 1: before May 9, 2021, term 2: after May 10, 2021).

| Predicted Category | 12-Month Predictions | Term-based Predictions |
|----------------------------------|-----------------------------|-------------------------------|
| | N (%) | N (%) |
| 5 groups higher than truth | - | 18 (0.1) |
| 4 groups higher than truth | 4 (0.0) | 11 (0.0) |
| 3 groups higher than truth | 286 (1.1) | 409 (1.6) |
| 2 groups higher than truth | 2,678 (10.7) | 1,841 (7.4) |
| 1 group higher than truth | 5,110 (20.4) | 5,898 (23.6) |
| Exact group | 7,158 (28.6) | 6,539 (26.2) |
| 1 group lower than truth | 4,869 (19.5) | 5,495 (22.0) |
| 2 group lower than truth | 3,069 (12.3) | 3362 (13.4) |
| 3 group lower than truth | 1,402 (5.6) | 1,213 (4.9) |
| 4 group lower than truth | 365 (1.5) | 214 (0.9) |
| 5 group lower than truth | 47 (0.2) | - |

Table S3: Number of census tracts (N) for each category of the projected MHC utilization. Projections are made for an MHC visit at any time during 12-month period (February 20, 2021, to February 17, 2022), before May 9, 2021, and after May 10, 2021.

| Grouping | 12-Month | Before | After |
|-----------------|----------------------|----------------------|----------------------|
| | N = 1,296 (%) | May 9 | May 10 |
| | | N = 1,296 (%) | N = 1,296 (%) |
| 0-19 | 914 (70.5) | 5 (0.4) | 753 (58.1) |
| 20-49 | 187 (14.4) | 388 (29.9) | 540 (41.7) |
| 50-99 | 192 (14.8) | 455 (35.1) | 2 (0.2) |
| 100-249 | 2 (0.2) | 447 (34.5) | 1 (0.1) |
| 250-399 | 1 (0.1) | - | - |
| 400+ | - | 1 (0.1) | - |

Table S4: Characteristics of census tracts that are projected to have high (groups: 50-99, 100-249, and 400+) and low (groups: 0-19 and 20-49) MHC utilization for COVID-19 vaccination before May 9, 2021. Median values with IQR and p-values for significance of the difference of medians are provided.

| | High Utilization N = 903 | Low Utilization N = 393 | P-value |
|--------------------|-------------------------------------|------------------------------------|------------------|
| % Age under 18 | 21.0 (17.5-24.6) | 22.7 (18.8-26.1) | <0.001 |
| % Age 18-29 | 13.9 (10.7-17.7) | 14.8 (12.3-18.1) | 0.007 |
| % Age 30-44 | 18.5 (15.2-21.8) | 17.5 (14.2-20.9) | 0.009 |
| % Age 45-64 | 27.1 (23.6-30.5) | 25.1 (21.0-28.6) | <0.001 |
| % Age over 65 | 17.1 (13.2-22.0) | 17.9 (14.2-21.7) | 0.122 |
| % Male | 48.9 (46.6-51.6) | 47.4 (44.6-50.4) | <0.001 |
| % Non-white | 31.5 (18.0-51.0) | 39.8 (25.3-59.1) | <0.001 |
| % Hispanic | 5.4 (3.4-8.5) | 3.1 (2.0-5.8) | <0.001 |
| SVI | 0.4 (0.2-0.7) | 0.6 (0.4-0.8) | <0.001 |
| Income (×\$1000) | 61.2 (47.8-78.9) | 43.1 (34.8-53.7) | <0.001 |
| % Unemployed | 4.5 (2.3-7.0) | 5.1 (3.1-8.4) | <0.001 |
| PCP rate | 0.3 (0.0-0.7) | 0.5 (0.1-1.5) | <0.001 |
| Hospitals | 0.0 (0.0-1.0) | 0.2 (0.0-1.0) | 0.001 |
| % Uninsured | 10.7 (8.3-12.6) | 10.7 (9.0-11.8) | 0.727 |
| Mortality rate | 48.0 (38.6-56.8) | 58.7 (49.6-66.1) | <0.001 |
| % in Poverty | 10.1 (6.1-14.5) | 14.4 (10.6-18.4) | <0.001 |
| % in Rural | 14.9 (2.4-45.7) | 59.7 (33.2-92.5) | <0.001 |
| COVID-19 ED visits | 1,339 (796-2,091) | 843 (430-1,432) | <0.001 |
| COVID-19 deaths | 67 (40-104) | 46 (22-76) | <0.001 |

Table S5: Characteristics of census tracts that are projected to have high (groups: 20-49, 50-99, and 100-249) and low (group: 0-19) MHC utilization for COVID-19 vaccination after May 10,

2021. Median values with IQR and p-values for significance of the difference of medians are provided.

| | High Utilization N = 543 | Low Utilization N = 753 | P-value |
|--------------------|-------------------------------------|------------------------------------|------------------|
| % Age under 18 | 20.8 (17.4-24.4) | 22.0 (18.1-25.5) | 0.001 |
| % Age 18-29 | 13.2 (10.0-16.8) | 14.8 (12.2-18.5) | <0.001 |
| % Age 30-44 | 18.5 (15.1-21.8) | 18.0 (14.8-21.2) | 0.132 |
| % Age 45-64 | 27.7 (24.5-31.2) | 25.7 (21.8-29.1) | <0.001 |
| % Age over 65 | 16.7 (13.0-22.4) | 17.7 (14.0-21.7) | 0.013 |
| % Male | 49.0 (47.0-51.5) | 48.1 (45.0-51.0) | <0.001 |
| % Non-white | 28.4 (16.1-46.4) | 39.3 (23.9-58.4) | <0.001 |
| % Hispanic | 5.9 (3.8-9.4) | 4.0 (2.3-6.7) | <0.001 |
| SVI | 0.3 (0.1-0.6) | 0.6 (0.4-0.8) | <0.001 |
| Income (×\$1000) | 68.6 (55.9-88.0) | 46.6 (37.1-56.9) | <0.001 |
| % Unemployed | 4.1 (2.2-6.2) | 5.2 (3.0-8.3) | <0.001 |
| PCP rate | 0.2 (0.0-0.6) | 0.4 (0.1-1.1) | <0.001 |
| Hospitals | 0.0 (0.0-1.0) | 0.1 (0.0-1.0) | <0.001 |
| % Uninsured | 10.4 (7.9-12.6) | 10.8 (9.0-12.1) | 0.063 |
| Mortality rate | 43.7 (36.0-53.0) | 56.0 (47.4-64.2) | <0.001 |
| % in Poverty | 8.2 (5.3-12.1) | 13.5 (9.7-17.3) | <0.001 |
| % in Rural | 7.6 (1.4-28.1) | 51.2 (17.8-82.6) | <0.001 |
| COVID-19 ED visits | 1,478 (904-2,349) | 953 (515-1,635) | <0.001 |
| COVID-19 deaths | 69 (43-104) | 56 (26-90) | <0.001 |

Table S6: Characteristics of census tracts that are projected to have high (groups: 20-49, 50-99, 100-249, and 250-399) and low (group: 0-19) MHC utilization for COVID-19 vaccination any time during 12-month period. Median values with IQR and p-values for significance of the difference of medians are provided.

| | High Utilization N = 382 | Low Utilization N = 914 | P-value |
|--------------------|-------------------------------------|------------------------------------|------------------|
| % Age under 18 | 21.3 (17.3-25.5) | 21.6 (18.1-24.9) | 0.472 |
| % Age 18-29 | 13.1 (9.9-16.0) | 14.6 (11.9-18.4) | <0.001 |
| % Age 30-44 | 18.9 (14.9-22.4) | 17.9 (14.9-21.0) | 0.008 |
| % Age 45-64 | 26.8 (23.1-30.1) | 26.4 (22.7-29.8) | 0.267 |
| % Age over 65 | 17.3 (13.3-22.9) | 17.3 (13.5-21.4) | 0.894 |
| % Male | 48.7 (46.3-51.2) | 48.4 (45.8-51.2) | 0.190 |
| % Non-white | 35.7 (22.2-57.4) | 34.6 (19.6-52.0) | 0.587 |
| % Hispanic | 5.2 (3.1-8.1) | 4.6 (2.7-7.5) | 0.043 |
| SVI | 0.4 (0.1-0.7) | 0.6 (0.3-0.8) | <0.001 |
| Income (×\$1000) | 69.6 (53.2-91.3) | 50.4 (39.2-62.6) | <0.001 |
| % Unemployed | 4.5 (2.3-7.1) | 4.7 (2.7-7.6) | <0.001 |
| PCP rate | 0.2 (0.0-0.6) | 0.4 (0.1-1.0) | <0.001 |
| Hospitals | 0.0 (0.0-0.4) | 0.2 (0.0-1.0) | <0.001 |
| % Uninsured | 9.6 (7.3-12.0) | 10.9 (9.0-12.4) | <0.001 |
| Mortality rate | 44.6 (35.3-53.9) | 53.6 (44.6-62.6) | <0.001 |
| % in Poverty | 8.1 (4.8-11.8) | 12.7 (9.2-16.5) | <0.001 |
| % in Rural | 15.0 (1.8-49.3) | 34.0 (6.9-64.3) | <0.001 |
| COVID-19 ED visits | 1,155 (627-1,999) | 1,151 (661-2,005) | 0.951 |
| COVID-19 deaths | 54 (29-87) | 66 (36-101) | <0.001 |