

α -Synuclein seeding activity and progression in sporadic and genetic forms of Parkinson's disease in the Parkinson's Progression Markers Initiative cohort

Jackson G. Schumacher ^{1,2,3*}, Xinyuan Zhang, PhD ^{4*}, Prof Jian Wang, PhD ^{2,5}, Armin Bayati, PhD ^{1,2}, Prof Johannes M. Dijkstra, PhD ⁶, Prof Hirohisa Watanabe, MD ⁶, Prof Michael A. Schwarzschild, MD, PhD ^{1,2}, Marianna Cortese, PhD ^{7,9#}, Prof Xuehong Zhang, ScD ^{8,9#}, Prof Xiqun Chen, MD, PhD ^{1,2#}

¹ MassGeneral Institute for Neurodegenerative Disease, Department of Neurology, Massachusetts General Hospital and Harvard Medical School, Boston, MA 02114, USA

² Aligning Science Across Parkinson's (ASAP) Collaborative Research Network, Chevy Chase, MD 20815, USA

³ Department of Psychology and Neuroscience, Morrissey College of Arts and Sciences, Boston College, Chestnut Hill, MA 02467, USA

⁴ Channing Division of Network Medicine, Brigham and Women's Hospital and Harvard Medical School, Boston, MA 02115, USA

⁵ Department of Biostatistics, The University of Texas MD Anderson Cancer Center, Houston, TX 77030, USA

⁶ Department of Neurology, School of Medicine, Fujita Health University, Toyoake, Japan

⁷ Department of Epidemiology, Harvard T.H. Chan School of Public Health, Boston, MA 02115, USA

⁸ Yale University School of Nursing, Orange, CT 06477, USA

⁹ Department of Nutrition, Harvard T.H. Chan School of Public Health, Boston, MA 02115, USA

*Denotes equal contribution

#Denotes senior author

Correspondence to: Prof Xiqun Chen, MD, PhD, MassGeneral Institute for Neurodegenerative Disease, Department of Neurology, Massachusetts General Hospital and Harvard Medical School, Boston, MA 02114, USA

Email: xchen17@mgh.harvard.edu

Phone Number: +1 (617) 643-7215

Abstract

Background α -Synuclein (α -syn) seed amplification assays (SAAs) have shown remarkable potential as a diagnostic tool for Parkinson's disease (PD). Using data from the Parkinson's Progression Markers Initiative (PPMI) cohort, we aimed to assess whether baseline α -syn seeding and seed concentration are associated with progression in sporadic PD, *LRRK2*-associated PD (*LRRK2* PD), and *GBA*-associated PD (*GBA* PD).

Methods Using a linear mixed-effects model adjusted for potential confounding factors, we analyzed 14 years of motor and cognitive assessments and five years of dopamine transporter imaging data from 878 PPMI participants to establish comprehensive progression profiles for sporadic PD (n=473), *LRRK2* PD (n=275), and *GBA* PD (n=130). By introducing α -syn SAA results from 586 participants (n=351 sporadic PD, 163 *LRRK2* PD, and 72 *GBA* PD), we determined whether baseline α -syn seeding positivity (95% sporadic PD, 69% *LRRK2* PD, and 94% *GBA* PD) and the time to 50% of the maximum fluorescence (T50), an indicator of seed concentration, are associated with progression in PD.

Findings Participants with sporadic PD (yearly change in MDS-UPDRS III: 1.50 points; 95% confidence interval 1.41–1.58) and *GBA* PD (1.52; 1.31–1.72)($p=0.873$) progressed similarly while those with *LRRK2* PD progressed slower (1.05; 0.89–1.20)($p<0.001$). There was no significant difference between α -syn SAA+ sporadic PD (1.48; 1.03–1.92) and *LRRK2* PD (1.09; 0.76–1.44) participants and their negative counterparts (1.25; 0.81–1.70)($p=0.347$)(0.80; 0.50–1.10)($P=0.087$). Similarly, α -syn seeding activity was not significantly associated with progression in *GBA* PD. Furthermore, there was no statistically significant difference in progression between sporadic PD participants with high (1.46; 1.33–1.59), medium (1.45; 1.30–1.61)($p=0.948$), and low seed concentration (1.42; 1.11–1.73)($p=0.804$). Similarly, seed concentration was not significantly associated with progression in *LRRK2* or *GBA* PD.

Interpretation Baseline α -syn seeding activity and seed concentration were not statistically significantly associated with PD progression in the PPMI cohort. More longitudinal investigations into the relationship between α -syn seeding activity, seed concentration, and progression are needed before concretely establishing α -syn aggregation as the primary driver of PD.

Funding This study was funded in part by Aligning Science Across Parkinson's No. ASAP-237603 through the Michael J. Fox Foundation for Parkinson's Research and the National Institute of Health through the National Institute of Neurological Disorders and Stroke grant R01NS102735.

Research in context

Evidence before this study

We searched PubMed with the terms "Parkinson's disease", "GBA", "LRRK2", " α -synuclein", "seed amplification assay", "seeding activity", "seed concentration", and "progression" for articles published on or before June 24, 2024. Many related articles were identified, particularly from the past four years, coinciding with the development of α -syn SAAs. While PD progression in sporadic and genetic populations has been previously addressed, there are significant gaps in knowledge in confirming progression results in large populations with a long follow-up period. Moreover, no studies have investigated a direct association between α -syn seeding activity, seed concentration, and PD progression.

Added value of this study

This study comprehensively investigated whether there is a relationship between α -syn seeding activity, seed concentration, and PD progression. Pairing a large participant pool with well-characterized longitudinal clinical assessments and dopamine transporter imaging data, we report that baseline α -syn seeding activity and seed concentration are not statistically significantly associated with motor decline, cognitive decline, and loss of dopamine transporter in sporadic and genetic forms of PD in the PPMI cohort. Additionally, we confirm that *LRRK2* gain-of-function variants are associated with slower PD progression and found that *GBA* variants are not associated with any change in PD progression.

Implications of all the available evidence

While α -syn SAAs are valuable as a research and diagnostic tool, this study does not support their potential as a marker for PD progression. Future studies, especially longitudinal studies, are needed to determine whether a relationship exists between α -syn SAA positivity, seed concentration, and PD progression.

Introduction

Parkinson's disease (PD) is a progressive neurodegenerative disease manifesting in motor dysfunction, including bradykinesia, resting tremors, muscle stiffness, and impaired balance and coordination.¹ Pathologically, PD is primarily thought to be characterized by abnormally aggregating α -synuclein (α -syn) contributing to neuronal cell death in the substantia nigra and other brain regions; however, not all individuals with clinical symptoms of PD have detectable α -syn aggregates and a concrete relationship between α -syn and PD progression has not been shown.² Techniques to detect pathogenic α -syn, collectively known as α -syn seed amplification assays (SAAs), have shown high sensitivity and specificity when differentiating between sporadic PD and healthy controls.³ The development of α -syn SAAs has had a remarkable impact on the field and has prompted calls for a biological definition of PD. In addition to their diagnostic capabilities, α -syn SAAs may provide information on disease severity and progression.

In addition to occurring in sporadic forms, several leucine-rich repeat kinase 2 (*LRRK2*) and glucocerebrosidase (*GBA*) variants have been discovered as genetic risk factors for PD.^{4,5} Interestingly, a recent study by the Parkinson's Progression Markers Initiative (PPMI) found that participants with the *LRRK2* G2019S variant demonstrate significantly lower rates of α -syn SAA positivity than their sporadic counterparts.⁶ However, the relationship between *LRRK2*-modified disease progression and lower α -syn SAA positivity is unknown.

Here we analyze Movement Disorder Society Unified Parkinson's Disease Rating Scale Part III (MDS-UPDRS III), Montreal Cognitive Assessment (MoCA), and dopamine transporter (DAT) imaging with single-photon emission computed tomography (DAT-SPECT) data from 878 participants in the PPMI cohort, including participants with sporadic PD, *LRRK2* PD, and *GBA* PD, to establish progression profiles for sporadic and genetic forms of PD. Given the potential for α -syn SAA to revolutionize PD detection and shed light on the origins and drivers of PD, we then use these progression profiles and α -syn SAA data from 586 participants to determine if α -syn seeding activity and seed concentration are associated with clinical progression and the loss of DAT in sporadic and genetic forms of PD.

Methods

Analysis design and participants

This cohort analysis is based on data collected by the PPMI study and includes participants from the Parkinson's disease cohort and the Genetic Registry. We excluded PPMI participants who met enrollment criteria but had scans without evidence of dopamine deficiency (SWEDD). Genome-wide sequencing (GWS) data from PPMI was used to categorize these participants into three groups: participants with sporadic PD (non-carriers of known *LRRK2* or *GBA* risk-factor variants), participants with *LRRK2* PD (carriers of *LRRK2* G2019S, R1441C/G+M1646T, and N2081D/N14D variants), and participants with *GBA* PD (carriers of *GBA* E326K, R502C, A495P, and N409S variants). We excluded participants carrying both *LRRK2* and *GBA* mutations.

The data analyzed was collected by PPMI between the study's inception, July 7, 2010, and May 24, 2024. More detailed information about PPMI's mission and inclusion criteria, as well as sources and methods of participant selection, can be found on the PPMI website. The data was last accessed using the PPMI portal on June 24, 2024.

Clinical and biomarker data

Participants underwent clinical assessments by PPMI at baseline and during subsequent follow-up visits as previously described.⁷ This study analyzed 14 years of MDS-UPDRS III and MoCA data as markers for PD-related motor and cognitive decline, respectively.^{8,9} For MDS-UPDRS III, we included assessments during both ON and OFF medication states when available. DAT-SPECT was performed, and the specific binding ratio (SBR) of DAT was calculated by PPMI-associated clinicians as previously described.¹⁰ The number of data points for MDS-UPDRS III, MoCA, and DAT-SPECT

available at each time point are shown in Supplemental Figure 1. Cerebrospinal fluid (CSF) was collected from participants (n=586) at baseline and analyzed by the PPMI team using both the 24-hour (n=81) and 150-hour (n=505) Amprion α -syn SAAs.^{6,11}

Statistical analysis

Participant GWS data was extracted and analyzed for *LRRK2* and *GBA* variants using Python version 3.10.11 software. All participants with available GWS data and a PD diagnosis at the time of extraction were included in our progression analysis. All statistical analyses were performed, and all figures were created using R version 4.4.1 software.

A linear mixed-effects model was used to estimate the yearly rate of change in MDS-UPDRS III score, MoCA score, and DAT-SPECT SBR for each group. Each outcome was modeled independently. All models were adjusted for baseline demographic characteristics (age, sex, race, ethnicity, and education level), baseline assessment score, and PD medication use, whether participants were taking PD medication (levodopa, dopamine agonists, MOA-B inhibitors, and amantadine) at the time of their visit. This modeling strategy includes both fixed and random effects to limit the effect of any confounding variables. All model residuals were checked for normality, heteroscedasticity, and linearity assumptions. The variance inflation factor was used to check for multicollinearity. A significance level of $\alpha=0.05$ was used for all analyses.

This linear mixed-effects model was used to determine whether α -syn seeding activity is associated with PD clinical progression and loss of DAT by comparing the progression of participants with a positive α -syn SAA result and those with a negative α -syn SAA result within groups. The time to reach 50% of the maximum fluorescence (T50) has been shown to best correlate with the concentration of α -syn seeds and aggregates.¹² T50 data was only available for participants with 150hr α -syn SAA data (n=505). As such, we categorized only those participants into tertiles based on their respective T50s (low seed concentration, medium seed concentration, and high seed concentration). We then compared the three groups, using the participants with high seed concentration as the reference group, to determine if baseline α -syn seed concentration is associated with clinical progression and loss of DAT.

Role of the funding source

The funders had no role in study design, analysis, interpretation of data, and the writing of the report.

Results

Progression in sporadic and genetic PD

To determine how sporadic and genetic forms of PD progress, we initially analyzed all PPMI participants with longitudinal and GWS data (n=878), including 473 with sporadic PD, 275 with *LRRK2* PD, and 130 with *GBA* PD. Extensive baseline demographic and clinical characteristics are shown in Table 1.

We analyzed the rate of change in MDS-UPDRS III scores over 14 years as a marker of motor decline (Figure 1a). Participants with sporadic PD and *GBA* PD progressed similarly with an increase of 1.50 (95% confidence interval 1.41 to 1.58) and 1.52 (1.31 to 1.72)(p=0.873) points per year respectively, while those with *LRRK2* PD declined slower at an increase of 1.05 (0.89 to 1.20)(p<0.001) points per year. A similar trend was observed in our analysis of cognitive decline as measured by the rate of change in MoCA (Figure 1b). Participants with sporadic PD and *GBA* PD again progressed at similar rates with a decrease of -0.11 (-0.14 to -0.09) and (-0.14; -0.21 to -0.08)(p=0.331) points per year, respectively, while those with *LRRK2* PD declined slower at -0.05 (-0.10 to 0.00)(p=0.018) points per year.

In addition to measures of clinical progression, we analyzed the rate of change in caudate and putamen DAT-SPECT SBR as a marker of DAT loss (Figure 1c-d). Participants with sporadic PD exhibited a yearly decrease in caudate and putamen SBR of -0.13 (-0.14 to -0.12) and -0.06 (-0.07 to -0.06) respectively. Participants with *GBA* PD exhibited a similar yearly decrease in caudate and putamen SBR of -0.14 (-0.16 to -0.12)($p=0.353$) and -0.06 (-0.07 to -0.05)($p=0.914$). *LRRK2* PD participants exhibited less yearly loss of caudate and putamen SBR than their sporadic counterparts at -0.11 (-0.13 to -0.09)($p=0.030$) and -0.05 (-0.06 to -0.04)($p=0.065$) respectively.

Given the observed differences in progression between groups as well as reported differences in α -syn SAA positivity, we performed further analyses on sporadic PD, *LRRK2* PD, and *GBA* PD independently.⁶

α -Synuclein seeding activity and PD progression

In order to determine if α -syn seeding activity is associated with PD progression, we analyzed 586 PPMI participants with available α -syn SAA results, including 351 with sporadic PD, 163 with *LRRK2* PD, and 72 with *GBA* PD. Baseline demographic and clinical characteristics categorized by α -syn SAA result are shown in Table 2.

We again used the change in MDS-UPDRS III scores as a marker for motor decline and found no statistically significant difference between α -syn SAA+ ($n=334$)(1.48; 1.03 to 1.92) and α -syn SAA- sporadic PD ($n=17$)(1.25; 0.81 to 1.70)($p=0.349$)(Figure 2a). Similarly, there was no statistically significant difference between α -syn SAA+ ($n=68$)(1.49; 0.25 to 2.72) and α -syn SAA- *GBA* PD ($n=4$)(2.23; 1.01 to 3.46)($p=0.129$). A trend towards faster motor decline was observed in α -syn SAA+ ($n=112$)(1.09; 0.76 to 1.44) *LRRK2* PD compared to their α -syn SAA- counterparts ($n=51$) (0.80; 0.50 to 1.10)($P=0.087$); however, statistical significance was not reached. Further exploratory analysis on each of the three *LRRK2* subgroups ($n=126$ G2019S, 15 R1441C/G+M1646T, and 30 N2081D/N14D) found that this trend is driven by R1441C/G+M1646T carriers. R1441C/G+M1646T α -syn SAA+ participants ($n=4$)(2.06; 0.94 to 3.18) progressed faster than their α -syn SAA- counterparts ($n=11$)(0.35; -0.32 to 1.02)($p=0.003$). There was no statistically significant difference between α -syn SAA+ G2019S ($n=87$)(0.67; 0.07 to 1.28) and N2081D/N14D carriers ($n=24$)(1.23; 0.22 to 2.23) and their α -syn SAA- counterparts ($n=39$)(1.09; 0.53 to 1.65)($p=0.175$)($n=6$)(0.61; -0.36 to 1.58)($p=0.228$). Excluding R1441C/G+M1646T participants removed any indication of a statistically significant difference between α -syn SAA+ (0.89; 0.29 to 1.49) and α -syn SAA- *LRRK2* PD (1.11; 0.54 to 1.68)($p=0.469$).

Using MoCA as a marker for cognitive decline, we found no statistically significant difference between α -syn SAA+ (-0.11; -0.14 to -0.09) and α -syn SAA- sporadic PD (-0.06; -0.21 to 0.04)($p=0.524$)(Figure 2b). The same was observed in α -syn SAA+ (-0.08; -0.44 to 0.28) and α -syn SAA- *GBA* PD (-0.31; -0.66 to 0.05)($p=0.215$) as well as in α -syn SAA+ (0.01; -0.19 to 0.19) and α -syn SAA- *LRRK2* PD (-0.06; -0.23 to 0.11)($p=0.477$).

Finally, using DAT-SPECT SBR as a marker for DAT loss, we found no statistically significant difference between α -syn SAA+ (caudate (cau): -0.12; -0.17 to -0.08)(putamen (put): -0.07; -0.09 to -0.04) and α -syn SAA- sporadic PD (cau: -0.09; -0.14 to -0.05)($p=0.129$)(put: -0.05; -0.07 to -0.02)($p=0.184$)(Figure 2c-d). We observed a similar lack of statistical significance between α -syn SAA+ (cau: -0.10; -0.20 to 0.01)(put: -0.05; -0.10 to 0.01) and α -syn SAA- *GBA* PD (cau: -0.05; -0.15 to 0.05)($p=0.386$)(put: -0.05; -0.11 to 0.00)($p=0.886$), as well as between α -syn SAA+ (cau: -0.09; -0.14 to -0.03)(put: -0.05; -0.07 to -0.02) and α -syn SAA- *LRRK2* PD (cau: -0.08; -0.13 to -0.03)($p=0.838$)(put: -0.06; -0.09 to -0.03)($p=0.333$).

α -Synuclein seed concentration and PD progression

To determine if T50, an indicator of seed concentration, is associated with PD progression, we categorized the 505 PPMI participants with kinetic α -syn SAA data available into tertiles. Of those, there were 123 sporadic PD, 23 *GBA* PD, and 59 *LRRK2* PD participants with a fast T50 (high seed concentration), 154 sporadic PD, 23 *GBA* PD, and 28 *LRRK2* PD participants with a medium T50 (medium seed concentration), and 34 sporadic PD, 13 *GBA* PD, and 42 *LRRK2* PD participants with a slow T50 (low seed concentration).

Using the rate of change in MDS-UPDRS III scores, we found no statistically significant difference in motor decline between sporadic PD participants with high (1.46; 1.33 to 1.59), medium (1.45; 1.30 to 1.61)($p=0.948$), and low seed concentration (1.42; 1.11 to 1.73)($p=0.804$)(Figure 3a). Similarly, there was no statistically significant difference between *LRRK2* PD participants with high (1.15; 0.91 to 1.39), medium (1.07; 0.62 to 1.52)($p=0.728$), and low seed concentration (1.20; 0.76 to 1.64)($p=0.824$). In participants with *GBA* PD, we found no statistically significant difference between those with high (1.82; 1.36 to 2.27) and low seed concentration (1.94; 1.26 to 2.62)($p=0.723$) while those with a medium seed concentration (1.15; 0.58 to 1.71)($p=0.020$) appeared to progress slower.

Analyzing the rate of change in MoCA scores revealed that sporadic PD participants with high seed concentration (-0.14; -0.18 to -0.10) decline faster than their counterparts with medium (-0.07; -0.12 to -0.02)($p=0.006$) and low seed concentration (-0.02; -0.12 to 0.08)($p=0.018$)(Figure 3b). Unlike participants with sporadic PD, there was no statistically significant difference in cognitive decline in *GBA* PD participants with high (-0.16; -0.29 to -0.03), medium (-0.14; -0.31 to 0.03)($p=0.842$), and low seed concentration (-0.03; -0.24 to 0.17)($p=0.201$) or in *LRRK2* PD participants with high (-0.05; -0.12 to 0.01), medium (-0.02; -0.14 to 0.10)($p=0.600$), and low seed concentration (-0.08; -0.20 to 0.04)($p=0.593$).

Analyzing the rate of change in DAT-SPECT SBRs revealed no statistically significant difference in the yearly decrease of caudate and putamen SBR between sporadic PD participants with high (cau: -0.13; -0.14 to -0.12)(put: -0.06; -0.06 to -0.05), and low seed concentration (cau: -0.11; -0.14 to -0.08)($p=0.280$)(put: -0.05; -0.07 to -0.03)($p=0.401$)(Figure 3c-d). There was a significant difference between sporadic PD participants with high and medium seed concentration for putamen SBR (-0.07; -0.08 to -0.06)($p=0.032$) but not for caudate SBR (-0.12; -0.14 to -0.11)($p=0.586$). In *LRRK2* PD, there was no difference between participants with high (cau: -0.12; -0.14 to -0.09)(put: -0.06; -0.07 to -0.04), medium (cau: -0.12; -0.17 to -0.07)($p=0.928$)(put: -0.05; -0.08 to -0.02)($p=0.543$), and low seed concentration (cau: -0.13; -0.18 to -0.08)($p=0.711$)(put: -0.08; -0.10 to -0.05)($p=0.307$). Similarly, there was no statistically significant difference between *GBA* PD participants with high (cau: -0.18; -0.22 to -0.14)(put: -0.08; -0.10 to -0.06), medium (cau: -0.12; -0.18 to -0.07)($p=0.056$)(put: -0.07; -0.10 to -0.04)($p=0.513$), and low seed concentration (cau: -0.12; -0.20 to -0.05)($p=0.138$)(put: -0.07; -0.11 to -0.03)($p=0.663$).

In addition to T50, we evaluated if α -syn SAA maximum fluorescence, time to threshold, and area under the curve are associated with PD progression and found no such association (Supplemental Figures 2–4). All statistics are shown in Supplemental Table 1.

Discussion

Using MDS-UPDRS III, MoCA, and DAT-SPECT data, we show that in the PPMI cohort, participants with sporadic and *GBA* PD progress similarly, while those with *LRRK2* PD progress slower. Using these progression profiles and each participant's baseline α -syn SAA, we show that α -syn seeding activity and seed concentration are not associated with motor and cognitive decline or the loss of DAT in sporadic PD, *LRRK2* PD, and *GBA* PD.

Our finding that *LRRK2* gain-of-function variants are associated with slower PD progression in the PPMI cohort aligns with and expands upon previous progression studies in the PPMI cohort as well

as a previous report of slower functional decline in Ashkenazi Jewish *LRRK2* G2019S PD patients compared to sporadic PD patients in a larger, non-Jewish cohort with a longer follow-up period.¹³⁻¹⁵ The slower progression observed in *LRRK2* PD patients appears unrelated to the lower rates of α -syn SAA positivity in those same patients, as both α -syn SAA positive and negative *LRRK2* PD patients progress slower than their sporadic counterparts. *LRRK2* gain-of-function mutations can cause PD. The seemingly paradoxical slower progression observed in *LRRK2* PD may suggest compensatory or protective mechanisms that may or may not be related to the ones that cause PD.^{4,16} A better understanding of the pathophysiological role of *LRRK2* in PD is essential for developing therapeutic strategies that can effectively address both the risk and progression aspects of *LRRK2*-associated PD.

While we found that pathogenic *GBA* mutations are not associated with any significant changes to PD progression, two previous studies found that patients carrying *GBA* mutations experience faster PD progression than non-carriers.^{17,18} Another study of *GBA* variants in PD found that only neuropathic variants are associated with accelerated cognitive decline.¹⁹ Of the *GBA* participants included in this study, only 3% carried neuropathic variants. It may be that only neuropathic variants modify PD progression while non-neuropathic variants are associated only with increased risk of initial PD development; however, larger-scale studies are necessary to resolve these discrepancies.

Previous research has shown that the aggregation of monomeric α -syn into pathogenic oligomeric confirmations and fibrils contributes to cell death through synaptic disruption, inflammation, and other mechanisms.² Once these pathogenic aggregates form, they are thought to propagate, leading to neurodegeneration and, eventually, symptoms of PD.²⁰ The propagation of pathogenic α -syn aggregates is currently the prevailing theory behind the progressive nature of PD.²¹⁻²³ However, a direct relationship between pathogenic α -syn and PD progression has not yet been shown. The development of α -syn SAAs has transformed our ability to detect α -syn aggregates and potentially diagnose PD; in particular, α -syn SAA kinetic measures, such as T50, may very well allow the field to establish a direct relationship between the quantitative measures of α -syn aggregates and PD.¹¹ These possibilities have led to new proposals for biological staging and classification systems centered around the presence of α -syn seeding activity.^{24,25}

Our finding that baseline α -syn seeding activity and seed concentration are not associated with PD progression seems to disagree with the theory that α -syn aggregation drives progressive neurodegeneration in PD, suggesting several possibilities. It may be that all PD patients have α -syn seeding activity and that current α -syn SAAs are not able to detect all types or forms of seeding activity, and that with future advances, the sensitivity of α -syn SAAs will improve, particularly in individuals with *LRRK2* variants. If this were true, we would not necessarily expect a difference in PD progression between patients who are α -syn SAA positive and those who currently test negative; however, our finding that α -syn seed concentration is not associated with disease progression does not support this theory. Additionally, postmortem studies have shown that Lewy bodies are not always present in clinically diagnosed cases of PD.²⁶ Another possibility is that α -syn aggregation and the concentration of seeds act as a source for the initial development of PD but that differences in aggregate and seed concentration do not necessarily result in a difference in disease progression. A previous study in PD patients seems to support this theory and found only a modest negative association between the concentration of CSF α -syn oligomers and disease severity; however, longitudinal studies are needed before any conclusion on PD progression can be made.²⁷

It is likely that PD is much more complex than only the presence or absence of α -syn aggregates and that there may be other contributing pathologies driving PD progression.²⁸ Collectively, these findings suggest that unknowns remain regarding the link between α -syn aggregation and PD. That α -syn aggregation is the primary mechanism underlying PD is not yet conclusive. Furthermore, our findings support caution in diagnosing α -syn SAA negative patients with clinically relevant symptoms and dopamine deficiency as non-PD.

A recent study found that the max fluorescence and the area under the curve from baseline α -syn SAA results are associated with cognitive decline in PD.²⁹ While we compare progression rates using a linear mixed effects model, their study compared the time to development of cognitive decline (MoCA<25) using Cox regression. Additionally, their cohort exhibited significant cognitive impairment and longer baseline disease duration (~eight years), whereas our cohort included mostly de novo participants with little to no cognitive decline. Another recent report found that the presence of α -syn seeding activity at baseline is associated with more severe clinical outcomes in Alzheimer's disease (AD) patients.³⁰ While this study was conducted in AD, not PD, their results seem to disagree with ours and raise interesting questions about the role of α -syn seeding activity in neurodegenerative diseases other than PD and highlight the need for further research to clarify these discrepancies.

It is important to note the inherent imbalance in sample size between α -syn SAA+ and α -syn SAA- participants. While we found no statistically significant association between α -syn seeding activity and motor decline in sporadic PD and *LRRK2* PD, the estimated motor decline of α -syn SAA+ participants was higher. As such, more cases may be needed to reveal any potential positive associations. In *LRRK2* PD, the trend towards faster motor decline was entirely driven by R1441C/G+M1646T carriers, while the trend was reversed in carriers of the most common mutation, G2019S. Interestingly, a previous postmortem study found that among *LRRK2* mutations, G2019S is most frequently associated with Lewy body pathology.²⁶ Further investigation is needed to determine how different *LRRK2* mutations may affect α -syn seeding activity and PD progression.

Our study does have other limitations. Despite the overall high quality of the PPMI data, there is inherent variability in data consistency across groups, and not all participants have data for the entire duration of our analysis. Although we limit confounding factors to the best of our ability, there may still be others we did not adjust for, including co-existing medical conditions and lifestyle factors. Moreover, the PPMI cohort primarily contains participants of European descent, and as such, our results may not apply to non-European populations. Further, despite having a 14-year follow-up period, a longer duration may be needed to accurately address progression due to the possibility of exponential worsening at latter stages of PD. Additionally, while MoCA is complementary to MDS-UPDRS III, not all individuals with PD will have cognitive deficits, and if these deficits do manifest, they are primarily towards the latter end of the disease. Lastly, the α -syn SAA data used in this study is from baseline CSF samples, and it will be imperative to assess how α -syn SAA results may change over the course of the disease with longitudinal data as it becomes available.

Here, we report that α -syn seeding activity and the concentration of α -syn seeds, as measured by α -syn SAA and T50, are not statistically significantly associated with clinical progression and the progressive loss of DAT in participants from the PPMI cohort with sporadic PD, *LRRK2* PD, and *GBA* PD. Given our findings and those from previous studies, longitudinal investigations into the relationship between α -syn seeding activity, quantitative measures of α -syn seed and aggregate concentration, disease severity, and progression are needed before the field can establish α -syn aggregation as the primary driver of PD.

Contributions

Conceptualization: JGS, XYZ, JW, AB, JD, HW, MAS, MC, XHZ, and XC; Data Curation: JGS and XYZ; Methodology, Software, and Formal Analysis: JGS, XYZ, JW, JD, MC, and XC; Visualization: JGS, and XYZ; Data Validation: JGS, XYZ, JW, AB, MC, and XC; Writing – Original Draft: JGS, XYZ, and XC; Writing – Review & Editing: JGS, XYZ, JW, AB, JD, HW, MAS, MC, XHZ, and XC; Supervision: MC, XHZ, and XC; Funding Acquisition: XC.

JS, XYZ, JW, AB, MC and XC have all had direct access to and have verified the underlying data.

Declaration of interests

JGS, XYZ, JW, AB, JD, MAS, MC, XHZ, and XC declare no conflicts of interest.

HW received payments from Takeda Pharmaceuticals, AbbVie, Kyowa Kirin, Sumitomo Pharma, Eisai, and Ono Corporation for work unrelated to this study.

Data sharing

Data used in the preparation of this article is openly available, and in the case of whole genome sequencing data, it is available upon request. Data was obtained in June 2024 from the Parkinson's Progression Markers Initiative (PPMI) database (www.ppmi-info.org/access-dataspecimens/download-data), RRID: SCR006431. For up-to-date information on the study, visit www.ppmi-info.org. All other resources used in this study can be found at doi:10.5281/zenodo.13852003. For the purpose of open access, the author has applied a CC BY public copyright license to all Author Accepted Manuscripts arising from this submission.

Acknowledgments

This research was funded in part by Aligning Science Across Parkinson's No. ASAP-237603 through the Michael J. Fox Foundation for Parkinson's Research (MJFF) and by the National Institute of Health through the National Institute of Neurological Disorders and Stroke grants R01NS102735 and 5R01NS126260. These funders had no role in study design, analysis, interpretation of data, the writing of the report, and in the decision to submit the paper for publication. The authors would like to thank PPMI – a public-private partnership – funded by the Michael J. Fox Foundation for Parkinson's Research and funding partners, including 4D Pharma, Abbvie, AcureX, Allergan, Amathus Therapeutics, Aligning Science Across Parkinson's, AskBio, Avid Radiopharmaceuticals, BIAL, BioArctic, Biogen, Biohaven, BioLegend, BlueRock Therapeutics, Bristol-Myers Squibb, Calico Labs, Capsida Biotherapeutics, Celgene, Cerevel Therapeutics, Coave Therapeutics, DaCapo Brainscience, Denali, Edmond J. Safra Foundation, Eli Lilly, Gain Therapeutics, GE HealthCare, Genentech, GSK, Golub Capital, Handl Therapeutics, Insitro, Jazz Pharmaceuticals, Johnson & Johnson Innovative Medicine, Lundbeck, Merck, Meso Scale Discovery, Mission Therapeutics, Neurocrine Biosciences, Neuron23, Neuropore, Pfizer, Piramal, Prevail Therapeutics, Roche, Sanofi, Servier, Sun Pharma Advanced Research Company, Takeda, Teva, UCB, Vanqua Bio, Verily, Voyager Therapeutics, the Weston Family Foundation and Yumanity Therapeutics.

References

- 1 Emamzadeh NF, Surguchov A. Parkinson's Disease: Biomarkers, Treatment, and Risk Factors. *Front Neurosci* 2018; **12**. doi:10.3389/fnins.2018.00612
- 2 Spillantini MG, Schmidt ML, Lee VM, Trojanowski JQ, Jakes R, Goedert M. Alpha-synuclein in Lewy bodies. *Nature* 1997; **388**: 839–40. doi:10.1038/42166
- 3 Russo MJ, Orru CD, Concha-Marambio L, et al. High diagnostic performance of independent alpha-synuclein seed amplification assays for detection of early Parkinson's disease. *acta neuropathol commun* 2021; **9**: 179. doi:10.1186/s40478-021-01282-8
- 4 Healy DG, Falchi M, O'Sullivan SS, et al. Phenotype, genotype, and worldwide genetic penetrance of LRRK2-associated Parkinson's disease: a case-control study. *Lancet Neurol* 2008; **7**: 583–90. doi:10.1016/S1474-4422(08)70117-0
- 5 Lwin A, Orvisky E, Goker-Alpan O, LaMarca ME, Sidransky E. Glucocerebrosidase mutations in subjects with parkinsonism. *Mol Genet Metab* 2004; **81**: 70–3. doi:10.1016/j.ymgme.2003.11.004
- 6 Siderowf A, Concha-Marambio L, Lafontant, DE, et al. Assessment of heterogeneity among participants in the Parkinson's Progression Markers Initiative cohort using α -synuclein seed amplification: a cross-sectional study. *Lancet Neurol* 2023; **22**: 407–17. doi:10.1016/S1474-4422(23)00109-6
- 7 Marek K, Chowdhury S, Siderowf A, et al. The Parkinson's progression markers initiative (PPMI)—establishing a PD biomarker cohort. *Ann Clin Transl Neurol* 2018; **5**: 1460–77. doi:10.1002/acn3.644
- 8 Goetz CG, Tilley BC, Shaftman SR, Stebbins GT, Fahn S, Martinez-Martin P, et al. Movement disorder society-sponsored revision of the Unified Parkinson's Disease Rating Scale (MDS-UPDRS): Scale presentation and clinimetric testing results: MDS-UPDRS: Clinimetric assessment. *Mov Disord* 2008; **23**: 2129–70. doi:10.1002/mds.22340
- 9 Nasreddine ZS, Phillips NA, Bédirian V, et al. The Montreal Cognitive Assessment, MoCA: a brief screening tool for mild cognitive impairment. *J Am Geriatr Soc* 2005; **53**: 695–99. doi:10.1111/j.1532-5415.2005.53221.x
- 10 Simuni T, Uribe L, Cho HR, et al. Clinical and DAT imaging characteristics of non-manifest LRRK2 and GBA mutation carriers in the Parkinson's Progression Markers Initiative (PPMI): a cross-sectional study. *Lancet Neurol* 2020; **19**: 71–80. doi:10.1016/S1474-4422(19)30319-9
- 11 Concha-Marambio L, Pritzkow S, Shahnawaz M, Farris CM, Soto C. Seed Amplification Assay (SAA) for detection of pathologic α Synuclein aggregates in CSF as biomarker for Parkinson's disease and related synucleinopathies. *Nat Protoc* 2023; **18**: 1179–96. doi:10.1038/s41596-022-00787-3
- 12 Concha-Marambio L, Pritzkow S, Shahnawaz M, Farris CM, Soto C. Seed amplification assay for the detection of pathologic alpha-synuclein aggregates in cerebrospinal fluid. *Nat Protoc* 2023; **18**: 1179–96. doi:10.1038/s41596-022-00787-3
- 13 Saunders-Pullman R, Mirelman A, Alcalay RN, et al. Progression in the LRRK2-Associated Parkinson Disease Population. *JAMA Neurol* 2018; **75**: 312–19. doi:10.1001/jamaneurol.2017.4019

- 14 Ahamadi M, Conrado DJ, Macha S, Sinha V, Stone J, Burton J, et al. Development of a Disease Progression Model for Leucine-Rich Repeat Kinase 2 in Parkinson's Disease to Inform Clinical Trial Designs. *Clin Pharmacol Ther* 2020; **107**: 553–62. doi:10.1002/cpt.1634
- 15 Ahamadi M, Mehrotra N, Hanan N, Yee KL, Gheyas F, Anton J, et al. A Disease Progression Model to Quantify the Nonmotor Symptoms of Parkinson's Disease in Participants With Leucine-Rich Repeat Kinase 2 Mutation. *Clin Pharmacol Ther* 2021; **110**: 508–18. doi:10.1002/cpt.2277
- 16 Alessi RD, Sammler E. LRRK2 kinase in Parkinson's disease. *Science* 2018; **360**: 36–7. doi:10.1126/science.aar5683
- 17 Davis MY, Johnson CO, Leverenz JB, et al. Association of *GBA* Mutations and the E326K Polymorphism With Motor and Cognitive Progression in Parkinson Disease. *JAMA Neurol* 2016; **73**: 1217–24. doi:10.1001/jamaneurol.2016.2245
- 18 Ortega RA, Wang C, Raymond D, et al. Association of Dual *LRRK2* G2019S and *GBA* Variations With Parkinson Disease Progression. *JAMA Netw Open* 2021; **4**. doi:10.1001/jamanetworkopen.2021.5845
- 19 Liu G, Boot B, Locascio JJ, Jansen IE, Winder-Rhodes S, Eberly S, et al. Specifically neuropathic Gaucher's mutations accelerate cognitive decline in Parkinson's. *Ann Neurol* 2016; **80**: 674–85. doi:10.1002/ana.24781
- 20 Hijaz BA, Volpicelli-Daley LA. Initiation and propagation of α -synuclein aggregation in the nervous system. *Mol Neurodegeneration* 2020; **15**: 19. doi:10.1186/s13024-020-00368-6
- 21 Braak H, Rüb U, Gai WP, Del Tredici K. Idiopathic Parkinson's disease: possible routes by which vulnerable neuronal types may be subject to neuroinvasion by an unknown pathogen. *J Neural Transm (Vienna)* 2003; **110**: 517–36. doi:10.1007/s00702-002-0808-2
- 22 Beach TG, Adler CH, Lue L, et al. Unified staging system for Lewy body disorders: correlation with nigrostriatal degeneration, cognitive impairment and motor dysfunction. *Acta Neuropathol* 2009; **117**: 613–34. doi:10.1007/s00401-009-0538-8
- 23 Braak H, Del Tredici K, Rub U, de Vos RA, Jansen Steur EN, Braak E. Staging of brain pathology related to sporadic Parkinson's disease. *Neurobiol Aging* 2003; **24**: 197–211. doi:10.1016/s0197-4580(02)00065-9
- 24 Simuni T, Chahine LM, Poston K, et al. A biological definition of neuronal α -synuclein disease: towards an integrated staging system for research. *Lancet Neurol* 2024; **23**: 178–90. doi:10.1016/S1474-4422(23)00405-2
- 25 Höglinger GU, Adler CH, Berg D, et al. A biological classification of Parkinson's disease: the SynNeurGe research diagnostic criteria. *Lancet Neurol* 2024; **23**: 191–204. doi:10.1016/S1474-4422(23)00404-0
- 26 Kalia LV, Lang AE, Hazrati LN, et al. Clinical correlations with Lewy body pathology in LRRK2-related Parkinson disease. *JAMA Neurol* 2015; **72**: 100–05. doi:10.1001/jamaneurol.20142704
- 27 Majbour NK, Vaikath NN, van Dijk KD, et al. Oligomeric and phosphorylated alpha-synuclein as potential CSF biomarkers for Parkinson's disease. *Mol Neurodegeneration* 2016; **11**: 7. doi:10.1186/s13024-016-0072-9
- 28 Brockmann K, Lerche S, Baiardi S, et al. CSF α -synuclein seed amplification kinetic profiles are associated with cognitive decline in Parkinson's disease. *npj Parkinsons Dis* 2024; **10**: 24. doi:1038/s41531-023-00627-5
- 29 Bellomo G, Toja A, Paoletti PF, et al. Investigating alpha-synuclein co-pathology in Alzheimer's disease by means of cerebrospinal fluid alpha-synuclein seed amplification assay. *Alzheimers Dement* 2024; **20**: 2444–52. doi:10.1002/alz.13658
- 30 Irwin DJ, Hurtig HI. The Contribution of Tau, Amyloid-Beta and Alpha-Synuclein Pathology to Dementia in Lewy Body Disorders. *J Alzheimers Dis Parkinsonism* 2018; **8**: 444. doi:10.4172/2161-0460.1000444

	Sporadic PD (N=473)	LRRK2 PD (N=275)	GBA PD (N=130)
Age at baseline (years)	63.0 (55.0–70.0)	67.0 (60.0–72.0)	64.0 (56.0–70.0)
Sex			
Male sex	295 (62%)	136 (49%)	76 (58%)
Female sex	178 (38%)	139 (51%)	54 (42%)
Race			
White	429 (91%)	247 (90%)	127 (98%)
Asian (Including Native Hawaiian or other Pacific Islander)	11 (2%)	1 (<1%)	0 (0%)
Black	7 (1%)	0 (0%)	0 (0%)
Multiracial	14 (3%)	22 (8%)	2 (2%)
Other	8 (2%)	4 (1%)	1 (<1%)
Not Reported	4 (1%)	1 (<1%)	0 (0%)
Hispanic or Latino ethnicity	24 (5%)	50 (18%)	3 (2%)
Relatives with Parkinson's disease			
Parent	96 (20%)	104 (38%)	23 (18%)
Other	115 (24%)	119 (43%)	32 (25%)
MDS-UPDRS III score at baseline	20.0 (15.0–27.0)	19.0 (12.5–29.0)	25.0 (15.0–31.8)
MoCA score at baseline	27.0 (26.0–29.0)	27.0 (25.0–28.0)	27.0 (25.0–29.0)
Caudate dopamine transporter specific binding ratio at baseline	1.92 (1.56–2.32)	1.85 (1.41–2.28)	1.79 (1.37–2.19)
Putamen dopamine transporter specific binding ratio at baseline	0.74 (0.57–0.98)	0.71 (0.56–0.93)	0.67 (0.52–0.89)

Table 1. Baseline demographic and clinical characteristics for sporadic, LRRK2, and GBA PD

Data is shown as n (%) or median (interquartile range). Statistical analysis comparing group characteristics was not performed. Abbreviations: PD, Parkinson's disease; LRRK2, leucine-rich repeat kinase 2; GBA, glucocerebrosidase; MDS-UPDRS, Movement Disorder Society Unified Parkinson's Disease Rating Scale; MoCA, Montreal Cognitive Assessment; DAT-SPECT, dopamine transporter imaging with single-photon emission computed tomography; SBR, specific binding ratio.

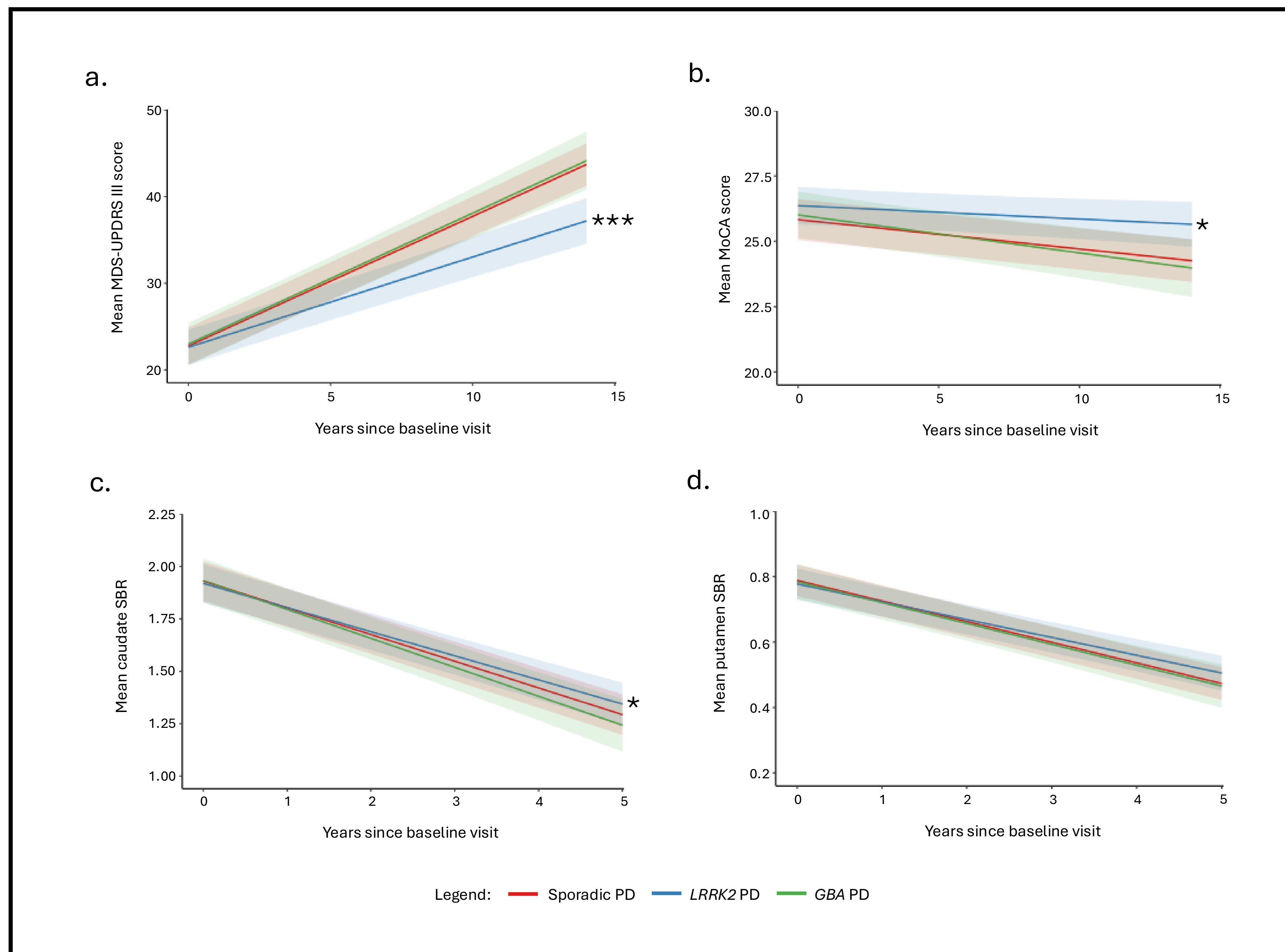


Figure 1. Estimated Parkinson's disease motor decline, cognitive decline, and change in DAT-SPECT SBR for participants with sporadic, LRRK2, and GBA PD

Estimated motor decline (a), cognitive decline (b), change in caudate SBR (c), and change in putamen SBR (d) in individuals with sporadic PD, LRRK2 PD, and GBA PD. * $P < 0.05$, *** $P < 0.001$, comparing the difference in change to those in the sporadic PD group as reference. Shading represents 95% confidence intervals.

Abbreviations: PD, Parkinson's disease; LRRK2, leucine-rich repeat kinase 2; GBA, glucocerebrosidase; MDS-UPDRS III, Movement Disorder Society Unified Parkinson's Disease Rating Scale Part III; MoCA, Montreal Cognitive Assessment; DAT, dopamine transporter; SBR, specific binding ratio.

	Sporadic PD (N=351)		LRRK2 PD (N=163)		GBA PD (N=72)	
	Positive SAA (N=334)	Negative SAA (N=17)	Positive SAA (N=112)	Negative SAA (N=51)	Positive SAA (N=68)	Negative SAA (N=4)
Age at baseline (years)	62.0 (54.0–69.0)	69.0 (65.0–74.0)	61.5 (52.8–66.3)	69.0 (66.0–71.5)	60.5 (56.0–68.0)	67.5 (58.8–75.0)
Sex						
Male sex	218 (65%)	11 (65%)	63 (56%)	20 (39%)	41 (60%)	3 (75%)
Female sex	116 (35%)	6 (35%)	49 (44%)	31 (61%)	27 (40%)	1 (25%)
Race						
White	302 (90%)	17 (100%)	101 (90%)	43 (84%)	65 (96%)	4 (100%)
Asian (Including Native Hawaiian or other Pacific Islander)	8 (3%)	0 (0%)	0 (0%)	0 (0%)	0 (0%)	0 (0%)
Black	7 (2%)	0 (0%)	0 (0%)	0 (0%)	0 (0%)	0 (0%)
Multiracial	10 (3%)	0 (0%)	7 (6%)	8 (16%)	2 (3%)	0 (0%)
Other	5 (2%)	0 (0%)	3 (3%)	0 (0%)	1 (1%)	0 (0%)
Not Reported	1 (<1%)	0 (0%)	1 (1%)	0 (0%)	0 (0%)	0 (0%)
Hispanic or Latino ethnicity	7 (2%)	0 (0%)	19 (17%)	16 (32%)	2 (3%)	0 (0%)
Relatives with Parkinson's disease						
Parent	48 (14%)	0 (0%)	35 (31%)	23 (45%)	13 (19%)	1 (25%)
Other	67 (20%)	0 (0%)	38 (34%)	25 (49%)	14 (21%)	0 (0%)
MDS-UPDRS III score at baseline	20.0 (14.0–26.0)	18.0 (17.0–20.8)	17.0 (12.0–24.8)	17.0 (12.0–26.0)	23.0 (17.0–31.5)	18.5 (8.3–33.3)
MoCA score at baseline	28.0 (26.0–29.0)	27.0 (25.0–29.0)	27.0 (26.0–29.0)	26.0 (23.0–28.0)	27.0 (25.0–28.3)	26.0 (24.0–28.3)
Caudate dopamine transporter specific binding ratio at baseline	1.94 (1.58–2.31)	1.81 (1.47–2.41)	1.90 (1.48–2.32)	1.86 (1.47–2.26)	1.84 (1.40–2.24)	1.45 (1.16–1.81)
Putamen dopamine transporter specific binding ratio at baseline	0.74 (0.57–0.97)	0.83 (0.53–1.25)	0.71 (0.55–0.87)	0.81 (0.62–1.07)	0.68 (0.54–0.89)	0.67 (0.48–1.15)

Table 2. Baseline demographic and clinical characteristics for sporadic, LRRK2, and GBA PD by α -synuclein seed amplification assay result

Data is shown as n (%) or median (interquartile range). Statistical analysis comparing group characteristics was not performed.

Abbreviations: PD, Parkinson's disease; LRRK2, leucine-rich repeat kinase 2; GBA, glucocerebrosidase; MDS-UPDRS, Movement Disorder Society Unified Parkinson's Disease Rating Scale; MoCA, Montreal Cognitive Assessment; DAT-SPECT, dopamine transporter imaging with single-photon emission computed tomography; SBR, specific binding ratio.

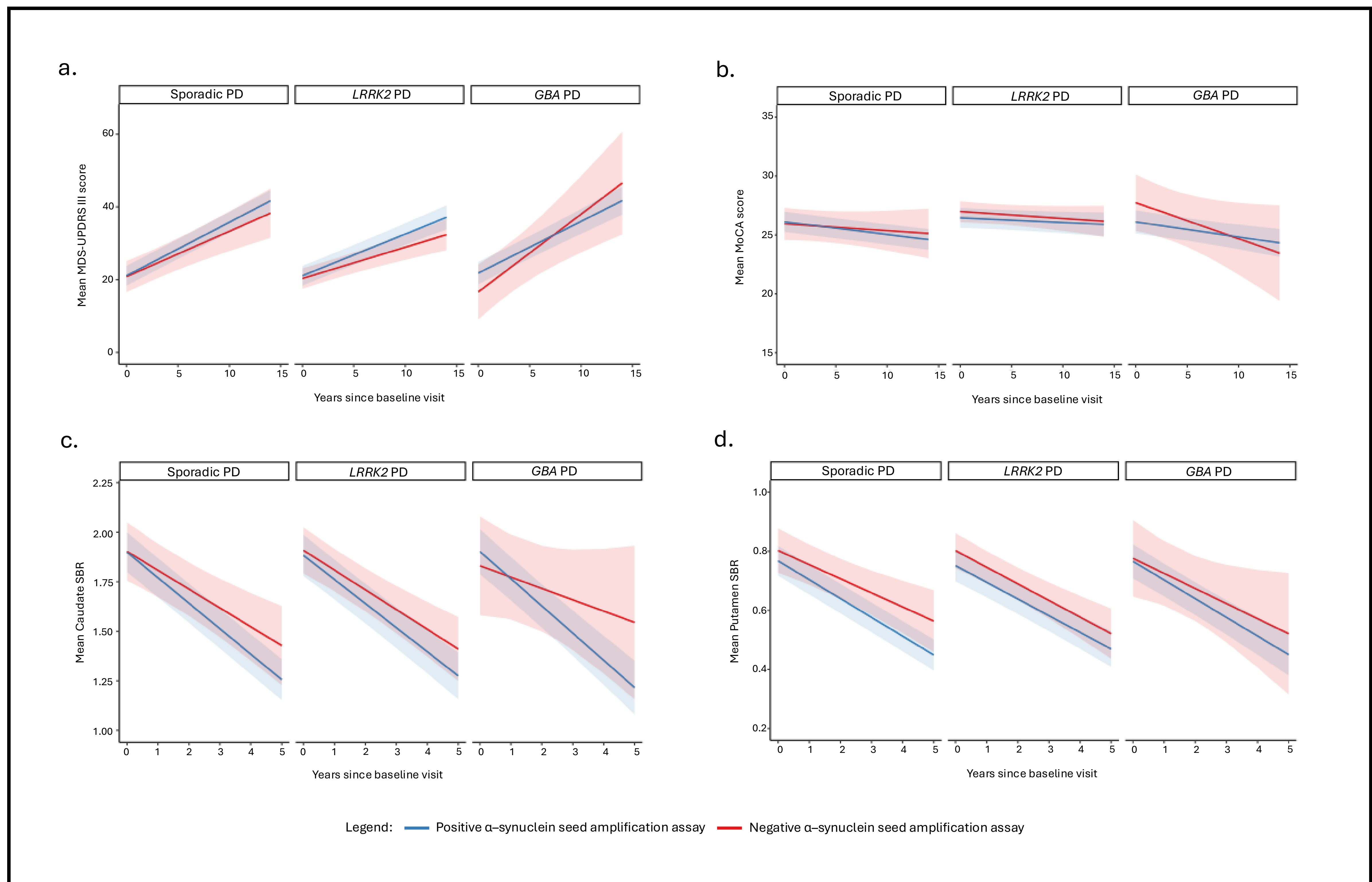


Figure 2. Estimated Parkinson's disease motor decline, cognitive decline, and change in DAT-SPECT SBR in sporadic, LRRK2, and GBA PD categorized by α -synuclein seed amplification assay result

Estimated motor decline (a), cognitive decline (b), change in caudate SBR (c), and change in putamen SBR (d) in individuals with sporadic PD, LRRK2 PD, and GBA PD categorized by α -syn SAA result. Comparing the difference in change to those in the negative α -syn SAA group as reference. Shading represents 95% confidence intervals. Abbreviations: PD, Parkinson's disease; LRRK2, leucine-rich repeat kinase 2; GBA, glucocerebrosidase; α -syn SAA, α -synuclein seed amplification assay; MDS-UPDRS III, Movement Disorder Society Unified Parkinson's Disease Rating Scale Part III; MoCA, Montreal Cognitive Assessment; DAT, dopamine transporter; SBR, specific binding ratio.

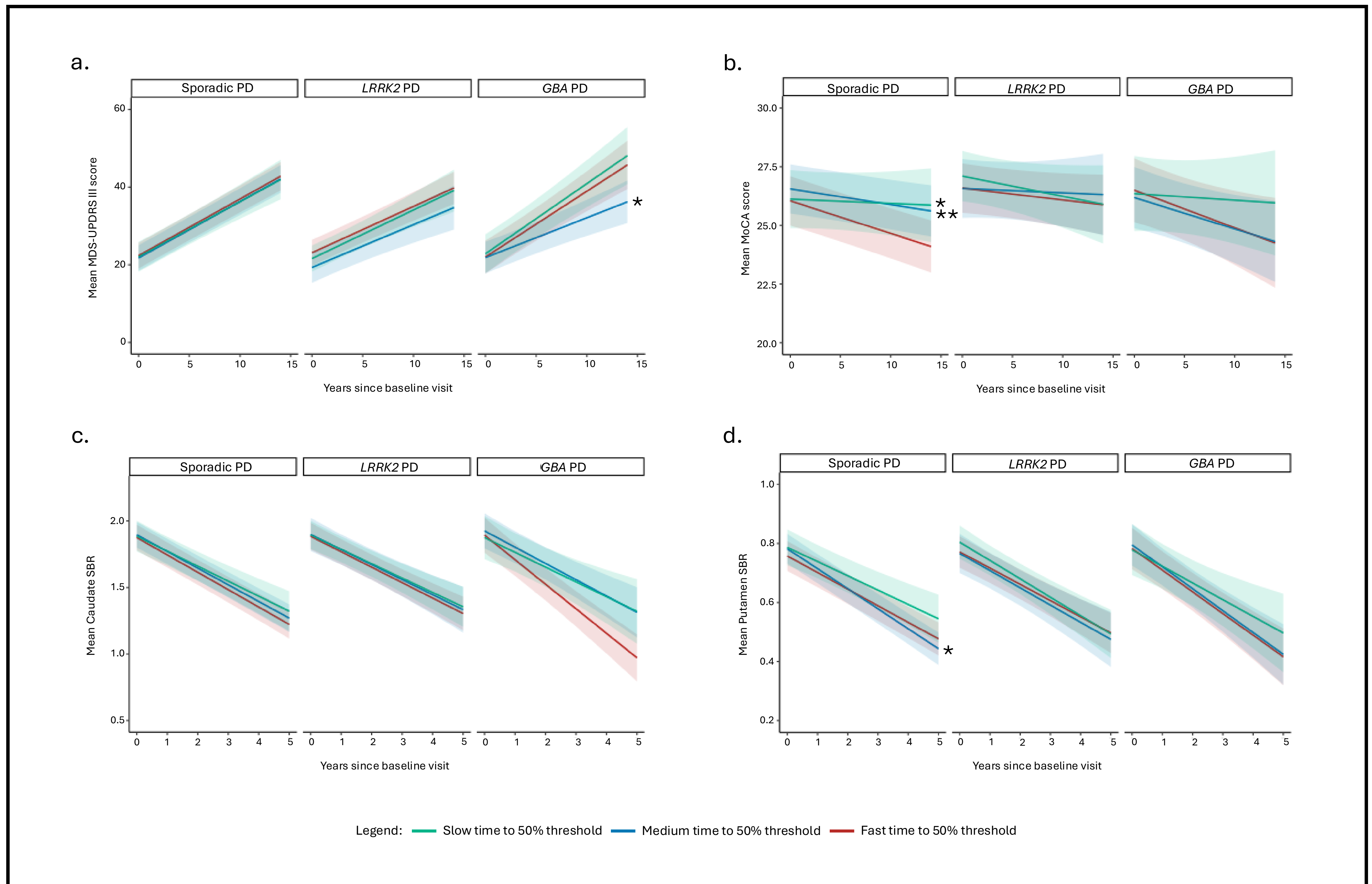


Figure 3. Estimated Parkinson's disease motor decline, cognitive decline, and change in DAT-SPECT SBR in sporadic, *LRRK2*, and *GBA* PD categorized by α -synuclein seed amplification assay time to 50% of maximum fluorescence.

Estimated motor decline (a), cognitive decline (b), change in caudate SBR (c), and change in putamen SBR (d) in individuals with sporadic PD, *LRRK2* PD, and *GBA* PD categorized by α -syn SAA T50 tertiles. * $P < 0.05$, ** $P < 0.01$, comparing the difference in change to those in the fast time to 50% threshold as reference. Shading represents 95% confidence intervals.

Abbreviations: PD, Parkinson's disease; *LRRK2*, leucine-rich repeat kinase 2; *GBA*, glucocerebrosidase; T50, time to 50% of maximum fluorescence; MDS-UPDRS III, Movement Disorder Society Unified Parkinson's Disease Rating Scale Part III; MoCA, Montreal Cognitive Assessment; DAT, dopamine transporter; SBR, specific binding ratio.