

1 **Title page**

2 **Exploring the potential benefits and challenges of artificial intelligence for research funding**

3 **organisations: a scoping review**

4

5 **Short title: Review on artificial intelligence for research funding organisations**

6

7 Amanda Jane Blatch-Jones<sup>1\*</sup>, Hazel Church<sup>1</sup> and Ksenia Crane<sup>1</sup>

8

9 <sup>1</sup> National Institute for Health and Care Research (NIHR) Coordinating Centre, School of Healthcare

10 Enterprise and Innovation, University of Southampton, Southampton, SO16 7NS.

11

12 \*Corresponding author

13 \*Amanda Blatch-Jones: [A.J.Blatch-Jones@southampton.ac.uk](mailto:A.J.Blatch-Jones@southampton.ac.uk)

14 Hazel Church: [H.B.M.Church@southampton.ac.uk](mailto:H.B.M.Church@southampton.ac.uk)

15 Ksenia Crane: [K.Crane@southampton.ac.uk](mailto:K.Crane@southampton.ac.uk)

16

17

18 **Abstract**

19 **Background:** Artificial Intelligence (AI) is at the forefront of today's technological revolution, enhancing  
20 efficiency in many organisations and sectors. However, in some research environments, its adoption is  
21 tempered by the risks AI poses to data protection, ethics, and research integrity. For research funding  
22 organisations (RFOs), although there is interest in the application of AI to boost productivity, there is also  
23 uncertainty around AI's utility and its safe integration into organisational systems and processes. The  
24 scoping review explored: '*What does the evidence say about the current and emerging use of AI?*'; '*What*  
25 *are the potential benefits of AI for RFOs?*' and '*What are the considerations and risks of AI for RFOs?*'

26 **Methods:** A scoping review was undertaken with no study, language, or field limits. Due to the rapidly  
27 evolving AI field, searches were limited to the last three years (2022-2024). Four databases were searched  
28 for academic and grey literature in February 2024 (including 13 funding and professional research  
29 organisation websites). A classification framework captured the utility and potential, and considerations  
30 and risks of AI for RFOs.

31 **Results:** 122 eligible articles revealed that current and emerging AI solutions could potentially benefit RFOs  
32 by enhancing data processes, administration, research insights, operational management, and strategic  
33 decision-making. These solutions ranged from AI algorithms to data management platforms, frameworks,  
34 guidelines, and business models. However, several considerations and risks need to be addressed before  
35 RFOs can successfully integrate AI (e.g., improving data quality, regulating ethical use, data science  
36 training).

37 **Conclusion:** While RFOs could potentially benefit from a breadth of AI-driven solutions to improve  
38 operations, decision-making and data management, there is a need to assess organisational 'AI readiness'.  
39 Although technological advances could be the solution there is a need to address AI accountability,  
40 governance and ethics, address societal impact, and the risks to the research funding landscape.

41

42 **Keywords:** Artificial intelligence, machine learning, data science, data management, research

43 management and administration, research funding organisations, research tools, automation

44

45

46

## 47 INTRODUCTION

48 Digital transformation is a cornerstone of innovation and progress. Sectors from healthcare to industry  
49 now operate on vast volumes of ('big') data and leverage it to stay competitive, deliver services, and meet  
50 societal needs. At the forefront of this technological revolution ("Industry 4.0"<sup>(1-3)</sup>) is innovation in data  
51 science and artificial intelligence (AI). AI is a collective term for technologies that enable 'machines' to  
52 emulate various complex human activities<sup>(4)</sup>, and their unique capabilities (autonomy, adaptivity) give  
53 them almost limitless societal value (e.g., as 'productivity' tools, or for making predictions in data).<sup>(5)</sup>

54

55 The unique capabilities of AI also lend to its diverse applications, particularly for the purposes of research.  
56 large language models (LLMs), like ChatGPT, have for instance enabled students and staff to develop and  
57 enhance research skills (e.g., academic writing), while machine learning (ML) algorithms have been used  
58 to enhance and/or automate routine research tasks, such as data analysis.<sup>(6-9)</sup> The impact of these  
59 technological advancements on education and research has been transformative, bolstering wider  
60 interest, investments, and public initiatives in AI/ML technologies.<sup>(10-14)</sup> The use of AI/ML in research is  
61 rapidly growing, with more tools becoming available, and the user base broadening from academic  
62 institutions to research funding organisations (RFOs) and government bodies that commission and fund  
63 societal research. However, the perceived benefits of implementing AI in different research contexts have  
64 also been tempered by growing concerns of potential impacts on ethics and research integrity.<sup>(15-19)</sup> With  
65 the rapid advancements in AI technology outpacing regulatory efforts, the potential for misuse (e.g.,  
66 plagiarism) or excessive reliance on AI tools in research is becoming a growing concern.<sup>(20-22)</sup> The  
67 apprehension this has created among organisations, stakeholders and users in research has triggered a  
68 global response to regulate and ensure the responsible use of AI.<sup>(23-28)</sup> Through initiatives such as

69 Responsible AI UK (<https://rai.ac.uk/>), governments and RFOs are introducing more evidence-based AI  
70 practices, guidelines and human oversight into AI-driven research activities.<sup>(24, 29, 30)</sup>

71

72 For RFOs, it is crucial to explore the application of AI/ML technologies, which although may have the  
73 potential to significantly reduce administrative research burden, could also bring substantial risk to public,  
74 organisational and funding activities.<sup>(31-33)</sup> However, efforts have been constrained by a lack of relevant  
75 evidence, which has so far predominantly focused on the use of academic applications of AI such as in  
76 learning environments or for grant writing and peer review.<sup>(17, 34-36)</sup> For publicly funded research, it is  
77 becoming increasingly burdensome due to stricter compliance and the volumes of data now needed to  
78 monitor and report on the outputs, outcomes and impacts of funded research.<sup>(31-33)</sup> As a result, RFOs find  
79 themselves managing growing research portfolios while coping with increasing research bureaucracy and  
80 data management issues created by the use of multiple digital systems.<sup>(33, 36)</sup> While there is a potential  
81 role for AI in reducing research bureaucracy (e.g., supporting risk assessment, automating data entry),  
82 many RFOs feel the need to tread carefully, due to concerns around issues such as data protection and  
83 privacy that creates understandable hesitancy around AI adoption.<sup>(37)</sup> There is also uncertainty around AI's  
84 utility, the safety of commercial AI solutions, the value to organisational efficiency, and the risks of AI  
85 integration into established RFO enterprise processes.<sup>(38, 39)</sup> As RFOs assess their capabilities and needs in  
86 this space, there is a need to review current published literature and be guided by latest evidence to gain  
87 insight (from across sectors and settings) on what AI is, what it is not, what it can be used for, and how it  
88 could be implemented.

89

90 To address the above, and inform RFOs with a better understanding of the potential utility of AI within an  
91 organisational context (e.g., data management, research, administrative and operational efficiency) a  
92 scoping review was conducted to explore: *'What does the evidence say about the current and emerging*

93 *use of AI?'; 'What are the potential benefits of AI for RFOs?' and 'What are the considerations and risks of*  
94 *AI for RFOs?'*

95

96

## 97 **METHODS**

98 A scoping review approach was chosen due to the breadth and complexity of the topic and the available  
99 research in terms of the source, type, and setting. Scoping reviews help address priority questions in  
100 research, clarify concepts, and provide background information or frameworks in preparation for a  
101 systematic review (where applicable). Scoping reviews typically seek to identify evidence gaps or scope a  
102 body of literature, rather than describing experiences or what interventions work for particular  
103 individuals.<sup>(40)</sup> Therefore, scoping review methodology does not judge the quality of the evidence but  
104 rather maps the evidence.

105 The JBI (Joanna Briggs Institute) scoping review framework was used to guide the development of the  
106 review, including the searches, data analysis and reporting (<https://jbi.global/scoping-review-network>).<sup>(41)</sup>  
107 To ensure the evidence was mapped according to areas of relevance for RFOs, a classification framework  
108 was developed <sup>(6,7)</sup> to capture the 1) utility and potential and 2) considerations and risks associated with  
109 the use of AI for RFOs (see **Fig 1**).

110

111 **[Insert] Fig 1. Utility, potential, considerations and risks of AI for research funding organisations**  
112 **classification framework to summarise the evidence**

113

## 114 **Eligibility criteria**

115 There is no universally accepted definition of ‘artificial intelligence’, so for the purpose of this review it was  
116 important to clarify what we meant by ‘AI’. Below are some previous explanations of AI that provided  
117 context for the review, including how we developed the eligibility criteria.

- 118 • ‘Artificial Intelligence’ is an umbrella term for an array of technologies possessing the unique  
119 capabilities of ‘adaptability’ and ‘autonomy’. This means that AI systems are trained by humans to  
120 infer connections and patterns in pre-defined data but can also generate new data and use it to make  
121 independent decisions.<sup>(42-44)</sup>
- 122 • AI can be simply defined as “a technology that enables machines to imitate various complex human  
123 skills” but others may also use more precise definitions, referring to specific capabilities and AI  
124 classification taxonomies.<sup>(45)</sup>
- 125 • Newman *et al.* (2022) defined AI as a “description of various computer operations designed to  
126 replicate human intelligence...It is a component of a greater set of computing technologies that  
127 includes automated decision making, advanced algorithms, and data processing at large scale.”<sup>(46)</sup>
- 128 • Today’s AI models can be broadly categorised into ‘predictive AI’ (analysing patterns in predefined  
129 datasets to make predictions on new data, for example ML) and ‘generative AI’ (generating new data  
130 on the basis of predictions from patterns in datasets, for example LLMs).<sup>(17, 47, 48)</sup>

131

## 132 **Context**

133 The context included UK, European and international settings (e.g., sectors, fields or disciplines) (based on  
134 the inclusion criteria) and were included to gain as much information as possible on potentially relevant  
135 AI applications.

136

137

138 ***Participants***

139 Research funding and performing organisations, private sector business and enterprise, and public  
140 administrations were included as part of the AI application context.

141

142 ***Inclusion criteria***

143 Articles were included if they were written in the English language (or could be transcribed to English),  
144 available in full text, and focused on the application and implementation of AI (rather than the  
145 development of algorithms). To be relevant to RFOs, these AI applications had to apply primarily to text  
146 data<sup>(16)</sup> (rather than images) used for/in organisational processes in an institutional, enterprise or business  
147 context (comprising specific human tasks and operational processes). We defined 'organisational  
148 processes' to include (but not be limited to): research management and administration; business  
149 intelligence; compliance and risk management; data management and analytics; and decision-making.

150 With regards to capturing relevant AI solutions:

- 151 • All included articles had to comply with the classification framework<sup>(6, 7)</sup>, whereby the evidence had  
152 to inform on either the 1) utility and potential of AI (e.g., technological advances, operational  
153 efficiencies, user focus, and functionality), and/or 2) the considerations and risks of AI (e.g., user,  
154 operational, technological (including data privacy and security, and intellectual property), and  
155 ethical), or preferably both.
- 156 • All included articles on AI solutions had to explain where, how and why these solutions have been, or  
157 could potentially be, applied to enhance organisational processes (e.g., for administrative efficiency  
158 and effectiveness).



- 159 • Relevant articles could include any type of AI system, model, or tool, whether already available and/or  
160 marketed (e.g., OpenAI’s ChatGPT, Cloud Solutions, Amazon Web Services) or in the research and  
161 development/piloting stage (e.g., predictive models, ML).
- 162 • Relevant articles could also discuss infrastructures that support the integration and implementation  
163 of AI by organisations, such as data management and storage solutions (e.g., data lakes, data  
164 warehouses) or Information and Communication Technology (ICT) solutions (e.g., Network solutions,  
165 PowerSwitch).
- 166 • Relevant articles could refer to other types of solutions relevant to AI implementation (but not  
167 software or tools), such as regulative laws or guidelines, business models and frameworks,  
168 recommendations, and standards (e.g., data standards or data management plans) that could support  
169 organisational integration of AI.

170

171 ***Exclusion criteria***

172 We excluded any articles that were retracted or provided limited information on AI applications, as defined  
173 in the inclusion criteria. News announcements related to company partnerships or the marketing of new  
174 products were excluded, as well as articles on AI applications not relevant to an organisational context  
175 (e.g., military or medical AI applications). The following is a non-exhaustive list of AI applications that were  
176 excluded from the scoping review: Drone technology; 3D printing; environmental and agricultural (e.g.,  
177 fire safety, water reserves, farming, drainage, space); satellite data and weather monitoring; facial and  
178 voice recognition; metaverse and mobile networking (5G and 6G); estimation and stimulation modelling  
179 (e.g., urban flood, mining, energy grids); medical education; healthcare intervention; medical devices and  
180 diagnostics.

181

## 182 **Source types**

183 All article types and study designs were included in the review to maximise coverage due to the diverse  
184 nature of the use and adoption of AI applications across different settings and sectors (which could be  
185 relevant to RFOs). We therefore included:

186 *Academic type articles:* Peer reviewed journal articles; commentaries; editorials; opinion letters;  
187 perspectives; and preprints

188 *Grey literature:* Policy documents; reports; blogs; educational articles; guidance; and newsletters (e.g., AI  
189 News, AI Magazine).

190 *Study designs:* Randomised controlled trials; non-randomised controlled trials; before and after studies  
191 and interrupted time-series studies; analytical observational studies (including prospective and  
192 retrospective cohort studies); case-control studies; analytical cross-sectional studies; descriptive  
193 observational study designs (including case series); individual case reports; and descriptive cross-sectional  
194 studies. Qualitative studies were also considered that focused on qualitative data including, but not limited  
195 to, phenomenology, grounded theory, ethnography, qualitative description, action research and feminist  
196 research. In addition, systematic reviews that met the inclusion criteria were considered, depending on  
197 the research question.

198

## 199 **Search strategy**

200 Searches were conducted on 1 February 2024, using Web of Science and ProQuest databases to search for  
201 published journal articles, and Overton and Google Scholar were used to search for grey literature and  
202 government or RFO documents. The search strategy was iteratively developed and adapted to each  
203 database, with keywords and search terms identified from pilot searches in Web of Science, and manual

204 searches in Connected Papers (<https://www.connectedpapers.com/>), to inform the final search strategy  
205 (**See S1 Appendix: Search terms and keywords** and **S1 Table: Search strategies**). The final search strategy  
206 was reviewed and approved by a librarian information specialist at the University of Southampton.

207 Searches were not limited by study type or design, source of publication, country, or language of  
208 publication. Initially, no limits were placed on year of publication; however, during initial screening of the  
209 title and abstract, it was noted that those published before 2022 were consistently out of scope and did  
210 not meet inclusion criteria for the current review (e.g., articles were too conceptual or focused on  
211 algorithm development only). Subsequent searches were limited to articles published in the last three  
212 years only (2022-2024) and this was reflected in the search strategy and screening process in accordance  
213 with PRISMA (<https://www.prisma-statement.org>) (**see Fig 2** and **S2 Appendix: PRISMA checklist**). Articles  
214 deemed relevant by title and abstract were then screened by reading the full texts of the articles.

215

216 Manual searches were also conducted on 13 websites of research funding and professional organisations  
217 (e.g., research councils, charities and professional/regulatory bodies) to identify announcements, funding  
218 opportunities, or other activities relevant to AI. This was done by typing the name of each organisation  
219 into the Google search engine and navigating to relevant webpages. The organisations were chosen by  
220 purposive sampling, following discussions with National Institute for Health and Care Research (NIHR)  
221 Coordinating Centre staff, and aimed to be representative of positions, practices and developments in big  
222 data and AI across the research funding landscape.

223

224 **Data extraction**

225 The articles identified through the databases and manual searches were exported with citation, titles, and  
226 abstracts into Endnote 20 (Clarivate, UK). Duplicates were removed using the EndNote duplication  
227 function and then manually checked for consistency. To test eligibility criteria and ascertain agreement, 20  
228 articles were assessed in a pilot screen by two authors (ABJ and KC). All remaining articles were screened  
229 by title and abstract against the inclusion criteria. Relevant articles were then checked for availability of  
230 full texts and the full texts were then screened by both authors to check for eligibility. Any disagreements  
231 between authors regarding the decision to include or exclude were resolved through discussion until  
232 consensus was reached.

233 After the final screening, ABJ and KC extracted data from the article's full texts into a Microsoft Excel data  
234 extraction spreadsheet developed by the authors specifically for this review and was piloted to make sure  
235 the relevant information was extracted to address the three research questions and the classification  
236 framework. The spreadsheet included the following sections for extraction:

- 237 • Demographics: article contributors; journal; year; geographical location/s; source type; study type  
238 (if relevant)
- 239 • Relevant information on the AI application/s: organisational or sector settings; area/s of AI  
240 application; aim; content and purpose of the article; summary of any current issues mentioned  
241 and AI solutions (if applicable)
- 242 • A classification framework was used to capture the evidence under two areas: utility and potential  
243 of AI (e.g., technological advances, operational efficiencies, user focus, and functionality) and  
244 considerations and risks of AI (e.g., user, operational, technological (including data privacy and  
245 security, and intellectual property), and ethical).<sup>(6, 7)</sup> (see **Fig 1**)

246

247 Where applicable, further exclusions were made during the full data extraction stage, for example, where  
248 the same article was included multiple times due to different source types (i.e., duplication of  
249 information). In such instances, a peer reviewed journal article took precedence (and was included) over  
250 a preprint manuscript and a conference proceeding, and a preprint manuscript took precedence over a  
251 conference proceeding. For peer reviewed articles, if the same article was published in two journals, only  
252 one was included. Any articles written in languages other than English, or lacking an English translation,  
253 were excluded from full extraction.

254

255 All extracted data were used to inform summary tables characterising the included articles and drawing  
256 out the key concepts to address the three research questions (refer to Results section for **Tables 2, 3, and**  
257 **4**). As this was a scoping review, we did not conduct a risk of bias or quality assessment, and all evidence  
258 was mapped or categorised to either pre-defined terms and concepts or to those developed and agreed  
259 by the authors during the data extraction stage. The results of the searches and study inclusion process  
260 are reported in full, in accordance with the Preferred Reporting Items for Systematic Reviews and Meta-  
261 analysis extension for scoping reviews (PRISMA-ScR) (see **Fig 2**).

262

263 Extraction from the research funding or professional organisations was extracted in a separate Microsoft  
264 Excel spreadsheet containing: the RFO or professional body name; links to the relevant webpages; the date  
265 the information was accessed; and a summary of the relevant AI information (e.g., funding  
266 announcements, public statements, training activities, and guidance or initiatives).

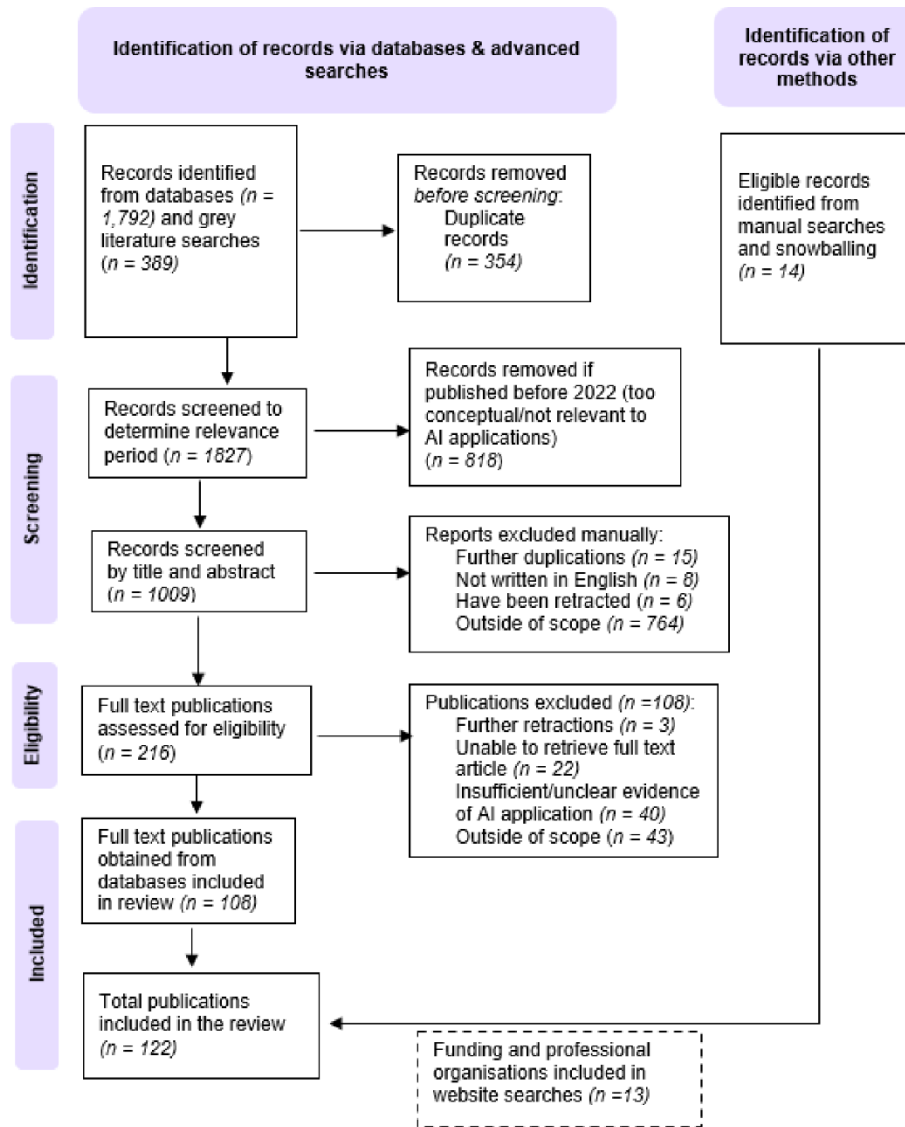
267

268

269 **RESULTS**

270 A total of 1,792 articles were retrieved from the two databases and 389 from grey literature searches  
271 (n=2,181). With 354 duplications removed and 818 assessed and screened for date relevance (2022-2024),  
272 1,009 titles and abstracts, and then 216 full text articles, were assessed for eligibility (see **Fig 2**). Of the  
273 216 full text articles, 108 met the eligibility criteria for inclusion and a further 14 were identified from  
274 manual searches, resulting in a total of 122 articles included in the scoping review (see **S2 Table: Full**  
275 **details of included studies**).

276



277

278 **Fig 2. PRISMA flow diagram of the search strategy used to identify articles, research funding and**  
279 **professional organisations websites and the results of the searches.**

280

### 281 ***Characteristics of the included articles***

282 The characteristics of the included articles are provided in **Table 1**. All articles were reviewed against the  
283 classification framework<sup>(6, 7)</sup> and demonstrated inclusion of evidence on the 1) utility and potential of AI

284 (n=112), or the 2) considerations and risks of AI (n=105). More than three quarters of the articles covered  
 285 both areas of the framework (n=94).

286 All 122 articles were published between 2022 and 2024, with the majority published in 2023 (n=68).

287 Almost half of the articles originated from Europe (n=54), with the remaining originating from the

288 Americas (n=49), Asia (n=25), Australasia (n=7), the Middle East (n=4), and Africa (n=1). There were 85

289 peer-reviewed journal articles, with more than half reporting on original research (n=47), and a further 25

290 articles were perspectives, and 13 were reviews.

291

292 **Table 1: Characteristics of the included articles**

<b>Characteristics</b>	<b>N=122 (%) articles</b>
<b><i>Focus area of AI evidence†*</i></b>	
Utility and Potential	112 (92%)
Considerations and Risks	105 (86%)
Both	94 (77%)
<b><i>Year of publication</i></b>	
2022	35 (29)
2023	68 (56)
2024**	13 (11)
<b><i>Geographical region</i></b>	
Europe	54 (44)
Americas	49 (40)
Asia	25 (20)
Australasia	7 (6)
Middle	4 (3)
East Africa	1 (1)
<b><i>Record/ Source type</i></b>	
Journal – Original research (incl. panel discussions)	47 (39)
Journal – Perspective***	25 (20)
Journal – Review	13 (11)
Newspaper/Magazine	13 (11)
Report	13 (11)
Conference proceeding	3 (2)
Thesis	3 (2)
Book	2 (2)
Webpages	2 (2)
Blog	1 (1)



<b>Sector/ Organisational setting</b>	
Data Science, IT and Software Engineering (incl. AI/ML)	40 (34)
Research and Industry (incl. Academia, R&D)	31 (25)
Public Administration, Policy and Legislature	27 (23)
Business, Enterprise and Finance	25 (20)
Healthcare	22 (18)
Food and Environment	3 (2)
Other (e.g., Generic, Retail)	4 (3)
<b>Focus area of AI application*</b>	
Data Management and Security	91 (75)
Data Analytics and Visualisation	35 (29)
Decision-Making and Strategy	35 (29)
Administration and Communications	22 (18)
Data Authentication (incl. Quality Assessment)	18 (15)
Research and Insights	10 (8)
Compliance and Risk Management	6 (5)
Operations Management and Maintenance	5 (4)

293 AI/ML = Artificial intelligence/machine learning

294 † Utility and potential/considerations and risks classification framework<sup>(6, 7)</sup>

295 \*Some articles report more than one area and therefore the number of articles does not equal to the total number  
296 of articles reviewed

297 \*\*Jan-February inclusive, searches were conducted in February 2024

298 \*\*\*Includes editorial, commentaries, news features, correspondence, and perspective articles

299

300 The literature on AI covered a wide range of sector and organisational settings (e.g., IT and software  
301 engineering, research and industry, healthcare, finance), and most of the reviewed literature was in the  
302 academic and big data/AI development space, with applications focused to data science, IT and software  
303 engineering (n=40) and/or research and industry (n=31). In 16 articles, the information covered was found  
304 to be relevant to multiple sectors or organisation types.

305 The evidence also covered a breadth of organisational AI application areas, pointing to numerous  
306 processes that could benefit from integrating AI systems. The most covered area was data management  
307 and security (n=91), followed by data analytics and visualisation (n=35), and decision-making and strategy  
308 (n=35). The least covered area was operations management and maintenance (n=5), which could be due  
309 to the evidence being more specialised to industry settings (e.g., manufacturing, production) and  
310 therefore having limited relevance to RFOs.

311

312 ***Summarising the evidence***

313 The evidence from the 122 included articles was summarised using the classification framework that was  
314 developed from existing AI/ML literature (see **Fig 1**).<sup>(6, 7)</sup> The summaries from the included articles were  
315 used to draw out key statements, which were then categorised into common themes and assessed for  
316 frequency (number of references contributing to each statement). **Table 2** presents the statements,  
317 frequencies and evidence sources regarding the utility and potential of AI, and **Table 3** presents the  
318 statements, frequencies and evidence sources regarding the consideration and risks of AI.

319 Interestingly, whilst mapping the evidence against the classification framework, an additional area around  
320 the importance of sharing efforts in AI, whereby articles focused on the value of collaborative working and  
321 partnerships between private sector companies (e.g., AI vendors), research institutions, and public  
322 administrations (e.g., including funding organisations) in the AI space. On this basis, key statements  
323 derived from article summaries promoting shared AI efforts across communities of interest were also  
324 extracted and presented in **Table 4** and **Fig 3**, along with the frequencies and evidence sources.

325 The following sections provide a summary of the evidence captured from the included articles based on  
326 the review's three research questions. The quality or assessment of the evidence was not explored as part  
327 of the review, and the key statements are not presented in order of priority.

328

329 **[Insert] Fig 3. Mapping of the evidence across the utility and potential, considerations and risks, and**  
330 **shared AI efforts for research funding organisations (including themed areas under each)**

331

332 ***Utility and potential of AI for research funding organisations***

333 Of the included articles, 112 described the utility and benefits (e.g., technological, functional, operational,  
 334 and user focused) of implementing AI to support organisational, research or administrative processes.  
 335 These articles either described the generic AI functions or systems (e.g., automation, generative AI, natural  
 336 language processing) or pointed to specific tools (e.g., models, proprietary software or web platforms) that  
 337 were either commercially distributed and ready to use (including open-source solutions) or remain in  
 338 development (e.g., experimental ML algorithms).

339 It was clear from the evidence that understanding the utility and applicability of different AI technologies  
 340 is complex, particularly due to the diversity of use across sectors and the different stages of digital  
 341 transformation.<sup>(49-54)</sup> However, the evidence did provide several opportunities for RFOs to consider,  
 342 particularly around the application, capability and implementation of AI. (see **Table 2**) The central focus  
 343 was on AI/ML-powered tools and platforms, illustrating the transformative impact on data-driven  
 344 organisational and/or administrative processes to enhance efficiency, innovation and decision-making.

345

346 **Table 2: Summary statements from the included articles on the utility and potential of AI for research**  
 347 **funding organisations.**

Key themes	No	Statements	No. refs
<b>Data driven initiatives and industry 4.0 driving innovation</b>	1	Several platforms are exploring data at scale; data management frameworks and new innovations (offering the adoption of a hybrid cloud); enabling organisations to gain insights from data with on-premises security and cost efficiency (e.g., Cloudera Data Platform (CDP) Private Cloud Base Artificial Intelligence Modern Data Platform (AIMDP)). <sup>(1-3, 43, 53, 55-64)</sup>	15
	2	Integration of AI/digital/analytics platforms such as Power BI, KNIME Analytics Platform, Hitachi Digital Marketplace, MS Azure, Apache Spark / Amazon cloud services, SAP Analytics Cloud, Denodo Platform, Oracle Cloud Infrastructure, and Mindsphere to drive initiatives such as the European Commission and the challenges of industry 4.0; the Global Partnership on Artificial Intelligence (GPAI); International Network for Governmental Science Advice's (INGSA). <sup>(36, 49, 55, 56, 62, 65-74)</sup>	15

Key themes	No	Statements	No. refs
	3	Edge AI applications allow for greater data privacy and security and perform the AI model locally on an edge device, reducing concerns around data accessibility as cloud computing can delay data processing (for example the Darktrace Enterprise Immune System for intrusion detection and prevention). <sup>(53, 71, 75-77)</sup>	5
	4	Opportunities to link FAIR and AI-ready datasets with FAIR AI models within a flexible and smart computing fabric that streamlines creation and accessibility (Data and Learning Hub for Science ( <a href="https://www.dlhub.org">https://www.dlhub.org</a> , DLHub); Materials Data Facility ( <a href="https://materialsdatafacility.org">https://materialsdatafacility.org</a> , MDF); funcX, <a href="https://funcx.org24">https://funcx.org24</a> , a distributed Function as a Service (FaaS) platform). <sup>(59, 78-80)</sup>	4
<b>The integration of AI technologies, systems, and tools</b>	1	Predictive Accuracy allows for real-time insights that adapt and evolve over time, enabling organisations to augment cost-efficiencies by applying automation, reducing data errors, and optimising efficiencies, including adopting an ‘ecosystem of innovation and excellence’. <sup>(1, 3, 51, 57, 62, 64, 68, 70, 71, 81-89)</sup>	18
	2	Incorporating AI technologies requires AI capability to develop AI e.g., how to deploy machine learning algorithms, including accessibility to data to foster AI adoption. <sup>(28, 42, 49, 53, 76, 86, 90-95)</sup>	12
	3	Reducing operational bottlenecks through enhanced efficiency. There is opportunity for AI/ML to reduce manual data intensive tasks, enabling organisations to redirect their focus and create a more productive workforce and play a role in AI capability, bridging technology to organisational tasks. <sup>(52, 61, 62, 64, 76, 82, 87, 96-99)</sup>	11
	4	Choosing the right model architecture and hyperparameters is essential for the success of ML, including data processing, model serving, model training, monitoring, and retraining, anomaly detection. <sup>(52, 61, 62, 64, 76, 82, 87, 96-99)</sup>	11
	5	Data management and security is instrumental for the adoption of AI. Stringent regulatory measures are required, especially where sensitivity, privacy, and security are non-negotiable. <sup>(51, 52, 61, 76, 100, 101)</sup>	6
	6	FAIR compliance for Large Language Models (LLM) provides interoperability, ensuring different data formats and systems can work together seamlessly. This is essential for integrating data sources into LLM training, facilitating education in data science and machine learning. <sup>(60, 68, 76, 78, 80, 102)</sup>	6
	7	The concept of ‘Explainable AI’ could help mitigate perceptions and ambiguity and deliver predictability, agility, and resiliency across large amounts of data, making AI more understandable for its users. <sup>(61, 95, 103-105)</sup>	5
	8	AI requires a powerful infrastructure, both for the development and the continuous training of AI systems; enhanced accuracy requires 10% on ML algorithms and 90% on data preparation, with the goal to improve data processing for enhanced accuracy and less on the ‘model training algorithm’. <sup>(26, 42, 79, 106)</sup>	4

Key themes	No	Statements	No. refs
	9	Ethical frameworks and principles are needed to regulate AI's impact, and to ensure responsible development and deployment of AI technologies do not inhibit societal benefit, human rights, and the privacy of individuals. <sup>(26, 99, 101, 107)</sup>	4
<b>Optimisation and innovation for organisational and user efficiencies</b>	1	The application of AI (e.g., LLMs and GPTs) is not a replacement for human intelligence and critical thinking. AI applications can support more streamlined and personalised experiences in business, research, and educational processes; free capacity of workforce for value-adding activities; AI cannot be developed without the involvement of human experts. <sup>(1, 9, 17, 26, 42, 46, 51-54, 57, 64, 75, 79, 81, 84-86, 94, 95, 101-103, 108-123)</sup>	39
	2	AI has the potential to redefine the data management landscape through automation, predictability, and adaptive learning. Offering data diversity, efficiency and speed, insights, data utilisation, scalability, real-time data, normalisation and standardisation, enhanced decision-making, and innovation. <sup>(2, 43, 51, 52, 60, 64, 71, 74, 76, 88, 89, 101, 105-108, 112, 114, 117, 122-124)</sup>	22
	3	The application of AI cannot be overbearing, scary or to be feared. For AI to work, it must be made strategically simple. Embracing AI applications could alleviate burdensome workflows, reducing bureaucracy in the public sector and increase the acceptance and future adoption of AI. <sup>(9, 17, 46, 51, 53, 86, 95, 102, 108, 110, 112, 119, 121, 125-127)</sup>	16
<b>Strategic direction and future focus</b>	1	Data management is frequently cited as the main technological inhibitor to AI/ML deployments. Efficiencies and enhancements to data governance to ensure quality, integrity, usability, and security is vital for driving trust in data. <sup>(9, 10, 16, 26-28, 36, 42-44, 52, 53, 57, 60, 61, 64, 68, 69, 71, 74, 76, 90, 91, 95, 98, 99, 101, 104-108, 116-118, 120, 122, 124, 127-131)</sup>	43
	2	Evaluation methods and frameworks are needed to critically assess AI performance, fairness, bias (including 'hallucinations'), and equity, using diverse perspectives (e.g., data management maturity models). Using data analytics tools and methodologies can provide meaningful insights and make evidence informed judgements. Data-driven organisations need to improve their performance and competitiveness by applying best practice. <sup>(9, 10, 26, 36, 49-51, 64, 67, 71, 73, 74, 76, 77, 85, 86, 94, 95, 108, 113, 117, 119, 121, 124, 128, 132-139)</sup>	33
	3	The adoption and future implementation of AI should not only focus on AI readiness but also the capability to develop AI technologies, levels of AI capability, potential fragility of the AI capability, support the growth and depth of AI implementation, and the need for resources to maintain and evaluate organisational variations over time. <sup>(2, 3, 26, 42-44, 50, 75, 84, 90-92, 94, 95, 99, 108, 109, 112, 120, 122, 138, 140-143)</sup>	25
	4	Organisations need to be unified and have consistent governance for the adoption of AI to be credible. Although there are risks, investing in technology, processes, and institutional structures create an enterprise wide AI strategy. <sup>(3, 26, 39, 49, 50, 53, 54, 59, 64, 67, 76, 83, 86, 88, 95, 102, 104, 108, 129, 132, 141, 142, 144, 145)</sup>	24

Key themes	No	Statements	No. refs
	5	Financial resources affect AI capability. To optimise the sustainable application of AI there needs to be stable resources within an organisation. <sup>(26, 38, 42, 51, 67, 70, 89-91, 95, 104, 105, 107, 113, 120, 121, 125, 139, 141, 146, 147)</sup>	22
	6	There is a requirement for clear governance for managing the application and adoption of AI, ensuring compliance, data, and AI functions e.g., The European Commission (EC) proposal for AI regulation or the Model AI Governance Framework. <sup>(27, 28, 39, 43, 51, 54, 59, 60, 62, 64, 66, 69, 77, 93, 99, 100, 102, 107, 113, 116, 122)</sup>	21
	7	AI/ML's energy use and carbon footprint are straining corporate sustainability goals, e.g., a survey found 68% of respondents indicated concerns about the impact of AI/ML on their organisation's energy use and carbon footprint. The cloud could offer greater AI sustainability, with 74% stipulating that sustainability is important and a critical motivator for moving workloads to a public cloud. <sup>(1, 3, 26, 27, 49, 53, 62, 66, 76, 86, 88, 93, 109, 120, 121, 136, 147, 148)</sup>	18

348

349 **Advanced data management and analytics:** The evidence offered several opportunities for using AI/ML  
 350 platforms to enhance organisations' abilities to manage and analyse large datasets, providing valuable  
 351 insights for ways to improve customer relationships and operational efficiency.<sup>(26, 49, 68, 71, 126)</sup> AI-enhanced  
 352 master data management and decision support systems also support data quality and can inform decision-  
 353 making for stakeholders and facilitate long-term data management efficiency. For example, AI Ignite goes  
 354 beyond building AI infrastructure, offering faster insights and operational efficiency, and empowering  
 355 organisations to utilise the full potential of AI.<sup>(72, 140)</sup> While, AI-driven systems like Darktrace have also  
 356 shown promising steps to enhance cybersecurity by preventing cyberattacks and are in turn driving the  
 357 development of more robust public policies to govern AI cybersecurity.<sup>(77)</sup> Data mining algorithms and  
 358 artificial neural networks are other AI solutions that can also inform organisations' business intelligence  
 359 models, and these work by enabling functions such as, data warehouse (e.g., Snowflake), data extraction  
 360 (e.g., ETL) and report generation.<sup>(55, 117, 136, 144)</sup>

361 **Administrative task automation:** Several ways of how AI can streamline public administration by  
 362 automating services and processes, enhancing efficiency, and increasing public confidence was noted from

363 the evidence.<sup>(26, 28, 42, 54, 121)</sup> For example, in accounting and law, AI has been used to automate repetitive  
364 tasks and enhance decision-making through predictive analytics and real-time data transparency, and  
365 therefore improving risk assessment and audit quality.<sup>(1, 103, 133, 136, 141)</sup> Conversational AI meanwhile showed  
366 to enhance efficiency and customer satisfaction by automating customer-staff communications.<sup>(53, 65)</sup> The  
367 evidence found that AI automation is predicted to save considerable time (40-50%) for administrative and  
368 analyst users, with this figure reportedly increasing to 80% as AI improves with more data. An Accenture  
369 analysis also determined that 40% of working hours across industries could be automated or augmented  
370 by AI adoption.<sup>(86, 147)</sup>

371 **Predictive and performance analysis:** The evidence offered several ways on how AI-driven automation  
372 and predictive analytics can optimise resource-intensive activities and support sustainability by enabling  
373 remote work and real-time performance analysis.<sup>(3, 52, 57, 147)</sup> This is particularly relevant for RFOs who are  
374 keen to enhance project management, as AI has the potential to predict costs and risks, therefore  
375 harnessing productivity and complex data problems. In Human Resources (HR) practices, neural networks,  
376 NLP, and gamification tools could be leveraged to enhance recruitment, training, and performance, while  
377 'Empathetic AI' can support leadership and HR processes through automation, improving employee  
378 support and organisational efficiency.<sup>(57, 87, 111, 119, 124, 147, 149)</sup> Other examples were shown in accounting,  
379 where predictive audit support enhanced risk assessment and audit quality, and in legal environments AI  
380 was shown to improve decision-making through real-time monitoring and data transparency.<sup>(1, 92, 112, 120,</sup>  
381 <sup>122)</sup>

382

### 383 ***Considerations and risks of AI for research funding organisations***

384 Of the included articles, 105 described the considerations and risks (e.g., technological, operational,  
385 ethical and user focused) associated with ensuring organisational AI 'readiness' to assess capabilities and

386 optimise organisation’s data infrastructure and management systems in preparation for AI/ML  
 387 deployment (see **Table 3**). The evidence strongly indicated several organisational challenges that must be  
 388 addressed for any business transformation or research activity involving AI/ML adoption to be credible.  
 389 In particular, introducing or experimenting with AI technologies has raised concerns around data quality,  
 390 issues with how data is shared, managed, and modelled for ML, and whether research and funding  
 391 environments generally have the space, capacity, capability, and infrastructure to support and potentially  
 392 mainstream the adoption of AI/ML for efficiency benefits.<sup>(46, 50, 67, 116, 150)</sup>

393

394 **Table 3: Summary of statements from the included articles on the considerations and risks of AI for**  
 395 **research funding organisations.**

Key themes	No	Statements	No. refs
<b>Support the AI readiness of organisations</b>	1	Organisations must ensure they can cope with the unique challenges of AI, have the required infrastructure in place and establish AI model lifecycle capabilities. <sup>(26, 39, 50, 53, 61, 66, 75, 76, 78-80, 86, 94, 99, 101, 104, 107, 109, 113, 116, 119, 121, 123, 127, 131, 142, 147, 151)</sup>	28
	2	Data leaders and research office staff need to acknowledge the need for increased investment into data management and AI solutions in research. <sup>(3, 10, 16, 26, 27, 39, 49, 50, 53-55, 76-78, 86, 88, 92-95, 100, 105, 120, 124, 145, 147)</sup>	26
	3	There are concerns about AI model maturity, compatibility and interoperability, the expectations of users, and the costs of equipment and training. <sup>(1, 3, 16, 28, 50, 54, 59-62, 64, 68, 71, 74, 80, 81, 95, 98, 132, 139, 145)</sup>	21
	4	Embracing new data norms and tools will require workforce adjustments to include data scientists, librarians or archivists, data management experts and AI/ML researchers. <sup>(3, 50, 54, 63, 74, 79, 92, 95, 100, 106, 109, 117, 144, 151)</sup>	14
	5	Organisations already using AI report similar barriers around AI knowledge and digital skills, data quality and data privacy and protection. <sup>(26, 28, 53, 82, 91, 92, 95, 97, 98, 108, 121)</sup>	11
<b>Support the AI readiness of data</b>	1	Data management is the most frequently cited inhibitor to AI adoption and data integrity is seen as the top risk. <sup>(1, 9, 16, 26, 37, 43, 44, 49, 51, 52, 55, 59, 63, 64, 68, 69, 74, 76, 77, 81, 84, 86, 87, 89, 91, 97, 99-101, 104-106, 108, 112, 114, 116, 119, 121-123, 134, 136, 139, 141, 143, 144, 151, 152)</sup>	48
	2	The need for better data management in research is increasingly recognised, for both RFOs, researchers and government bodies. <sup>(1, 9, 43, 44, 46, 49, 54, 63, 64, 74, 81, 84, 87, 88, 92, 98, 102, 104-106, 112, 119-121, 123, 126, 127, 136, 139, 141, 145)</sup>	31
	3	A data-centric approach to AI development should focus on tools for data management, visualisation, and error detection, practical FAIR definitions	19



Key themes	No	Statements	No. refs
		for software and workflows, and frameworks for quantifying the FAIRness of AI models. <sup>(50, 52, 59, 60, 74, 78-80, 87, 89, 99, 101, 105, 106, 115, 126, 131, 134, 139)</sup>	
	4	Research data needs to be FAIR (findable, accessible, interoperable, and reusable) to ensure accuracy and performance of AI models. This requires changes to research practices, guidance, examples, and consistent metrics for evaluating data and model FAIRification. <sup>(50, 59, 60, 74, 78-80, 87, 99, 101, 105, 126, 131, 134)</sup>	14
	5	Data must be cleaned and verified before it can be fed into algorithms to prevent bias and errors. This stage requires the most effort, but its importance is underestimated (for instance, compared to model development). <sup>(9, 52, 64, 78, 87, 104, 106, 116, 120, 126, 151)</sup>	11
<b>Support accountability and fairness in AI</b>	1	AI decisions should be monitored and audited by humans, e.g., using FAIRness metrics (e.g., disparate impact), algorithms to mitigate bias (e.g., FAIR model training methods) and fair representation learning (e.g., adversarial debiasing). <sup>(9, 10, 17, 43, 50, 52, 57, 59, 60, 74, 78-80, 86, 87, 89, 90, 99, 101, 105, 106, 109, 111, 115, 118, 126, 127, 129, 131, 134, 139, 141, 143)</sup>	33
	2	There are concerns about misconceptions and accountabilities around AI-driven decisions. These concerns can hinder AI implementation across organisations. <sup>(9, 10, 16, 28, 44, 46, 54, 57, 66, 74, 94, 99, 101, 103, 104, 107, 128, 130, 131, 133, 149)</sup>	21
	3	Biased AI decisions can have serious consequences, e.g., prejudice towards or against certain social groups and erasure of diversity from data. <sup>(9, 10, 17, 43, 57, 60, 86, 90, 99, 101, 105-107, 109, 111, 127, 129, 131, 134, 141, 143)</sup>	21
	4	There is a tendency to believe that automated decisions are bias-free, when in reality they are subject to the intrinsic biases of the humans involved in AI modelling. <sup>(9, 16, 17, 43, 60, 74, 85, 86, 90, 99, 101, 103, 105, 109, 111, 125, 131, 134, 143, 149)</sup>	20
	5	Organisations should ensure they involve end-users and the public in AI decisions to obtain a balanced representation of views, expectations and concerns around the use and societal impact of AI. <sup>(9, 28, 51, 58, 60, 79, 102, 107, 117, 118, 130)</sup>	11
<b>Governance and ethical use of AI</b>	1	The EU Guidelines for Trustworthy AI recommend following a compliance criteria for evaluation of AI systems (transparency, privacy and data governance, technical robustness and safety, human agency and oversight, accountability, societal and environmental wellbeing, and diversity, non-discrimination, and fairness); the EU's AI4GOV project is developing a reference framework for an ethical and democratic AI, involving AI fairness monitoring, explaining AI decisions, training stakeholders and citizens, and boosting the regulatory compliance of AI models. <sup>(10, 26, 27, 68, 69, 98, 104, 118, 120, 122, 123, 128, 131)</sup>	13
	2	Reports of ethical failures in AI use are increasing and enterprises face pressure to introduce sound and transparent controls for the systems they use. <sup>(9, 26, 38, 43, 54, 95, 103, 104, 109, 121, 122, 141)</sup>	12
	3	GDPR now provides rules for information governance in AI, e.g., that human involvement is needed where AI is used to process and protect personal data. <sup>(4, 53, 64, 66, 99, 101-103, 107, 117, 118, 131)</sup>	12

Key themes	No	Statements	No. refs
	4	Rapid advances in AI tools have outpaced the development of regulations and ethical guidelines, raising concerns about potential misuse and security of data. <sup>(10, 51, 90, 101, 107, 141, 152, 153)</sup>	8
	5	The opacity of some algorithms ('black box AI') can have unintended social or legal consequences if not risk-reviewed (e.g., quality assured or regularly monitored) and subjected to human oversight. <sup>(28, 54, 61, 95, 107, 113, 122)</sup>	7
	6	The IEEE Global Initiative on Ethics of Autonomous and Intelligent Systems for example have developed a set of ethical principles for AI, which are now widely recognised and used. <sup>(60, 78, 99, 122, 125)</sup>	5

396

397 **Data storage and governance:** From the evidence, several organisations were found to be implementing

398 cloud and edge computing solutions to improve data architecture (e.g., how data is integrated, stored, and

399 governed), manage AI/ML workloads, and cope with increasing data volumes and data types (e.g., text vs

400 image, structured vs unstructured data).<sup>(55, 64, 67, 70, 76, 100, 133, 145)</sup> Cloud-based solutions like data lakehouse

401 <sup>(55)</sup> and data mesh <sup>(145)</sup> can notably enable scalable and efficient data management, streamline data flows,

402 and provide real-time insights for enhanced business performance. Examples of data warehousing

403 solutions were also provided in the evidence (e.g., Hadoop, Microsoft Azure, and Apache Spark) and can

404 reportedly support big data management and decision-making by offering comprehensive governance

405 frameworks that enhance data quality, efficiency, and security.<sup>(64, 73)</sup> Cybersecurity was also highlighted in

406 the evidence, particularly around how federal agencies and organisations are adopting secure cloud fabrics

407 to ensure data governance, seamless connectivity, and secure access to data lakes.<sup>(67, 151)</sup> Other potential

408 opportunities to enhance big data management and security included using distributed ledger technology

409 like blockchain to securely manage digital assets (e.g., Syneos Health and startups like Granica) with

410 comprehensive data management strategies for organisations adopting LLMs.<sup>(98, 151)</sup>

411 **Frameworks, models, and metrics:** The evidence suggested that integrating standards, governance and

412 ethics into workflows and AI models could alleviate the burden on innovation, and allow organisations to

413 effectively utilise, regulate and govern AI.<sup>(16, 51, 59, 79, 80, 117, 154)</sup> A key consideration is having clear AI

414 definitions to implement the necessary legal frameworks; developing fairness metrics for models;  
415 mitigating algorithmic bias; and implementing learning frameworks (e.g., IBM AI Fairness 360<sup>(134)</sup>). Several  
416 frameworks and models were found in the evidence to regulate and verify the adoption and  
417 implementation of AI, such as the AI Ethics Orchestration and Automated Response (EOAR) framework<sup>(99)</sup>,  
418 to ensure regular audits and testing of models; using platforms such as Open Scale to define, monitor, and  
419 tune the ethical behaviour of IBM AI models<sup>(99)</sup>; the 'Digital-Era Governance' model for analysing the  
420 impact of digitalisation on administrations and<sup>(125)</sup>; the International Science Council's adaptive analytical  
421 framework (derived from the OECD AI Classification framework) which offers a comprehensive checklist  
422 for stakeholders to address AI impacts.<sup>(69)</sup> Other national-level efforts in this area included the UK  
423 Department for Science Innovation and Technology's proposed regulatory framework for AI<sup>(11)</sup> to ensure  
424 responsible innovation and research-driven initiatives in the US and Europe (e.g., HPC-FAIR, AI4GOV  
425 project ) aimed at redefining and applying FAIR principles to maximise the impact of data investments and  
426 monitoring AI for bias or non-compliance.<sup>(78, 131)</sup>

427 **Enhancing big data analytics:** Several cloud service providers were suggested such as AWS, Azure, and  
428 Google Cloud Platform (GCP) to enhance data management and AI-powered analytics in the financial  
429 sector, offering scalable, flexible solutions for handling large data volumes, enabling real-time decision-  
430 making, and improving operational efficiency.<sup>(70)</sup> In addition, edge computing can pinpoint and locally  
431 process the data necessary for analyses, providing scalability, real-time data analysis, interoperability and  
432 confidentially for emerging 'Internet of Things (IoT)' (e.g., sensor and ICT-based) solutions.<sup>(71)</sup>  
433 Developments in Blockchain technology were also shown to assist AI algorithms in managing big data in  
434 healthcare, and can help monitor data and assess the integrity of analytical outputs.<sup>(97)</sup>

435 **Data standards and research tools:** The evidence reported on the development and use of data standards  
436 for AI-driven research, as well as data-centric initiatives to promote AI data quality, facilitate big data

437 management in research, and ensure that data is more findable, accessible, interoperable and reusable  
438 (FAIR) across organisations, institutions and platforms. <sup>(50, 59, 60, 78-80, 154)</sup> For example, the FAIR4HEP  
439 collaboration promotes FAIR data principles for the reuse of experimental data within and between  
440 institutions<sup>(80)</sup>; the Research Description Framework (RDF) provides semantic web standards for  
441 consistently describing, integrating and exchanging metadata <sup>(59)</sup>; and a proposed computational  
442 framework for quantifying the FAIRness of AI models and adopting AI-ready datasets has been developed  
443 to enable AI-driven scientific discovery.<sup>(79)</sup> From a business perspective, knowledge graphs and semantic  
444 web standards were reported to enhance AI implementations by automating workflows and facilitating  
445 complex queries<sup>(132)</sup> and semantic web standards also ensure data compliance with FAIR principles,  
446 enabling efficient data governance and retrieval.<sup>(59)</sup>

447 **Technical infrastructure:** The evidence provided important considerations for organisations who wish to  
448 be ‘AI ready’ in their capabilities<sup>(90, 94, 109, 127, 129, 138)</sup>, such as upgrading outdated infrastructure,  
449 maintenance and management systems<sup>(3, 65)</sup>; harmonising business processes; standardising and validating  
450 master data; and enhancing IT agility (e.g., by adopting Cloud) and ensuring, competitiveness, and  
451 resilience.<sup>(65)</sup> However, it was also evident that upgrading maintenance management systems requires  
452 adopting big data, cloud computing, and automation, managing vast data efficiently, addressing  
453 sustainability issues, and ensuring robust cybersecurity.<sup>(3)</sup> Investment in data availability, quality and  
454 careful evaluation of cloud resources for model training are also crucial (e.g., for implementing generative  
455 AI models) and adopting cloud-based solutions in particular (e.g., Cloudera, Azure cognitive services) is  
456 advantageous as these support routine tasks; expedite report preparation; enable quicker strategic  
457 decisions; and promote data democratisation.<sup>(65)</sup>

458 **Guidance on ethical AI:** One of the key considerations from the evidence was for the need for countries  
459 and organisations to adopt ethical guidelines around AI tools, and LLMs like ChatGPT in research. <sup>(66, 107, 113,</sup>

460 <sup>117, 128, 131, 153</sup> Several factors were mentioned around AI's capacity to manage and analyse large data  
461 volumes (also enhancing data integrity), the need for human oversight to mitigate risks (e.g., reputational,  
462 legal, and regulatory)<sup>(113)</sup>; ensuring responsible use of AI in research funding and management<sup>(36)</sup>; and  
463 ensuring the protection of democracies and the risks to human equality posed by big data models (e.g.,  
464 bias against certain groups).<sup>(131, 134)</sup> Regulation and accountability in big data is essential, and there is a  
465 need for public sector organisations to consider the historical barriers to innovation; embrace  
466 technological changes; leverage data to meet public needs; and replace outdated systems.<sup>(28)</sup> However,  
467 any integrated AI solutions must uphold existing rules regarding data integrity, ensure proportional and  
468 transparent data collection, and maintain confidentiality of sensitive data (e.g., patient, public, and  
469 research data).<sup>(4, 51)</sup> Several regulatory efforts were reported, focusing on national AI model risk  
470 management frameworks, enhancing governance, and ensuring model lifecycle updates.<sup>(107)</sup> For example,  
471 The EU guidelines on ethics in AI, emphasises the need to ensure AI systems meet criteria for transparency,  
472 privacy, and fairness<sup>(4)</sup>; the United Nations Educational, Scientific and Cultural Organization's (UNESCO)  
473 recommend establishing a universal framework of ethical AI principles and actions<sup>(66)</sup>; the EU's AI4GOV  
474 project is developing a reference framework for ethical and democratic AI<sup>(131)</sup>; and the AIDE Project  
475 (Artificial Intelligence in Healthcare for All), a UK and Japan collaboration to identify and address public  
476 concerns regarding AI use in healthcare.<sup>(130)</sup>

477

#### 478 ***Facilitating shared AI efforts***

479 In addition to the above, the evidence also strongly indicated that facilitation of shared AI efforts through  
480 collaboration and partnerships is important in achieving AI readiness and successful implementation in  
481 the research sector. Fostering transparency and shared learning between the key stakeholders in research  
482 (e.g., researchers; RFOs; academic institutions; public and private organisations; public representatives) is

483 crucial for a) understanding the real-world use for AI/ML in administrative research and research  
 484 management practices, and b) enabling development of and access to solutions that can be transferable  
 485 across several organisational and data management contexts.<sup>(10, 26, 28, 31, 33, 42, 121)</sup> The statements below (see  
 486 **Table 4**) provide a summary around the importance of an open culture and shared AI efforts between  
 487 organisations and sectors who have a role to play in research.

488

489 **Table 4: Summary of statements from the included articles on facilitating shared AI efforts in research.**

Key themes	No	Statements	No. refs
<b>Promoting inter-sector and inter-disciplinary collaboration in AI</b>	1	Effective transformations are needed to address aspects such as data cycles, skills, workflow efficiencies, available technologies, and necessary partnerships to ensure return on investment, growth, and sustainable social and economic development. Collaborations between cutting-edge data science research groups and the wider science communities is not yet common practice. <sup>(54, 56, 58, 64, 66, 67, 70, 74, 76, 80, 82, 86, 88, 89, 94, 103, 105, 106, 108, 109, 125, 139, 140, 144, 145, 147)</sup>	26
	2	The most successful organisations will strike the right strategic balance based on careful calculation of risk, comparative advantage, and governance. <sup>(4, 9, 27, 36, 42, 44, 51, 54, 57, 64, 65, 69, 70, 86, 90, 91, 93, 94, 102, 110, 120, 121, 145, 149)</sup>	24
	3	Organisations need to integrate diverse stakeholders into the development of AI systems to facilitate AI implementation, and to facilitate the co-development of AI systems. <sup>(27, 44, 49, 64, 69, 76-78, 84, 85, 90, 94, 98, 100, 101, 103, 105, 107, 121, 129-131, 145)</sup>	23
	4	Interdisciplinary collaborative development needs to be inclusive at three levels: human values, humans' expression of intent and humans' abilities to create sufficient solutions that are sustainable across the research ecosystem. <sup>(9, 17, 28, 36, 38, 44, 51, 57, 63, 76, 78, 88, 108, 116, 120, 121, 132)</sup>	18
	5	The AI field is currently dominated by private companies with profit incentives. There should be a public option designed to serve the public interest. There is constant pressure to improve efficiency, reduce costs, but the ability to use AI here is limited by costs of computational infrastructure and model development. <sup>(26-28, 39, 42-44, 46, 55, 56, 65, 75, 99, 100, 113, 125, 149)</sup>	17
	6	Data information and sharing is critical for data management efficiency to improve societal demands, improve service delivery, and increase productivity (making it more dynamic and data driven). <sup>(26, 51, 53, 54, 64, 69, 74, 75, 82, 86, 101, 103, 105, 121, 123, 128)</sup>	16

Key themes	No	Statements	No. refs
	7	Seek opportunities to join communities of practice; FAIR initiatives across Europe and the US, establishing the implementation, and adoption of FAIR principles in research; A joint statement on the AI Safety Summit (2023) from Academy of Medical Sciences for a collaborative, interdisciplinary approach to define how AI is governed, developed, deployed and used safely and ethically; US institutions (Stanford) supporting government efforts to build capacity to use AI through training initiatives; The Research Data Alliance guidance. <sup>(50, 59, 60, 74, 75, 78-80, 87, 99, 101, 105, 126, 127, 131, 133)</sup>	16
	8	Aging data infrastructures and architectures directly impact AI/ML's sustainability performance. More than 75% of respondents stated that data architectures impact their sustainability performance. <sup>(50, 58, 61-63, 73, 76, 88, 120, 147)</sup>	10
	9	AI implementation does not just happen. Organisations need a collaborative approach for the development of AI systems. i) integrate diverse expertise, ii) manage the translation of AI systems to business functions, iii) consider the workforce as an important stakeholder for AI implementation. <sup>(50, 53, 54, 57, 86, 94, 119, 141, 149)</sup>	9
	10	More attention is required on public sectors role as an AI user and not just as a facilitator or regulator of AI technologies (facilitating and stimulating AI application within their own management and administrative practices). <sup>(27, 28, 42, 121, 125)</sup>	5
<b>Promoting leadership and support in data-driven practices</b>	1	Not all AI/ML technology are suitable or worth pursuing. The focus needs to be on what digital technology/ transformation will provide the most value to the organisation (and not test/pilot multiple tools). Research organisations need to maintain trust, and assess the risks and security concerns of AI implementation. <sup>(9, 10, 16, 26-28, 36, 42-44, 49, 52-54, 57, 60, 61, 64, 68, 69, 71, 74, 76, 88, 90, 91, 95, 98, 99, 101, 105-108, 116-118, 120, 122, 124, 127-131, 147)</sup>	46
	2	Whilst AI is often discussed in replacing or automating human activities, human resources and skillsets are invaluable in AI capability. <sup>(1, 9, 17, 26, 42, 46, 51-54, 57, 64, 75, 79, 81, 84-86, 94, 95, 101-103, 108-123)</sup>	40
	3	Gaining insight into how AI and digital technologies will impact research and science culture, including the use and application of AI-assisted tools to assist with research is starting to emerge (particularly around predictive analytics and natural language processing) but is still limited. <sup>(2, 17, 26, 28, 36, 42, 51-54, 60, 61, 64, 70, 72, 78, 80, 82, 84, 92, 94, 95, 105, 109, 110, 112, 121, 130, 145, 153)</sup>	30
	4	Opportunities to stimulate the adoption of innovations, possibly when accompanied with financial incentives or other rewards to enhance management support and/or credible leadership with a vision for integrating new solutions in administrative processes. <sup>(16, 17, 27, 28, 36, 44, 50, 52, 54, 64, 65, 75, 77, 82, 86, 90, 93-95, 105, 110, 112, 116, 119, 139, 141, 145)</sup>	27
	5	Explore ways to train staff on emerging technologies at all organisational levels and acquire human talent with expertise in AI, Big Data, and data science (crucial for emerging technological change). <sup>(9, 27, 43, 53, 54, 76, 77, 79, 83, 86, 94, 105, 109, 111, 114, 116, 119, 139, 147)</sup>	19



Key themes	No	Statements	No. refs
	6	Data infrastructure needs to be well-designed, well-provisioned and well-staffed to enable data flow and allow for valuable insights to data quality enhancements. Gathering insights from several sources, institutions and organisations normalises and standardises data (enhancing data consistency and comparability). <sup>(26, 28, 42, 50, 52, 64, 76, 78-80, 82, 86, 90, 93, 105, 121, 132, 151)</sup>	18
	7	When working with generative AI, context must be provided. Without context, AI is useless (e.g., receiving ChatGPT information that only dates back to 2021). If AI does not have the proper context to sift through data, then the data will be useless and the AI will be irrelevant. <sup>(9, 16, 39, 49, 53, 68, 75, 86, 92, 102, 104, 108, 117, 132, 142, 151, 153)</sup>	17
	8	Data literacy, an ability to interpret and communicate with data, is crucial for effective data-driven decision-making in organisations. To enhance data literacy, organisations need to invest in training to educate staff about the value and usage of data. Investment in staff is required. <sup>(4, 27, 53, 54, 64, 75, 90, 92, 101, 111, 112, 119, 137, 141, 153)</sup>	15
	9	All organisations and staff that develop, deploy, or operate AI should be accountable for the proper and accurate functioning; any AI operation should be transparent and explainable; AI technologies should be robust, secure, and safe throughout their entire lifecycle; AI technologies should be evaluated on a continuous regular basis. <sup>(42, 44, 61, 65, 66, 71, 95, 100, 103-105, 118, 119, 123)</sup>	14
<b>Promoting transparency and shared learning in AI</b>	1	AI governance, ethics and security requires a diverse group of stakeholders to provide a balance between digitalisation and risk management (e.g., the risks of AI tools and controls in place to manage them), to regulate developments and impacts of how AI tools are being used and modified to meet organisational requirements. <sup>(27, 44, 49, 69, 75-78, 84, 85, 90, 94, 98, 100, 101, 103, 105, 107, 109, 121, 129-131, 145)</sup>	24
	2	Open source initiatives and frameworks to support open and shared learning, powered by large technology companies such as Google, Apple, Amazon (e.g., Tensorflow, Apache's Mahout, Spark). <sup>(2-4, 36, 39, 51, 53, 59, 60, 63, 64, 72, 79, 80, 83, 86, 93, 95, 99, 101, 104, 128, 147)</sup>	23
	3	AI technology is still in the early experimental stage and there is a need for user validation, and investigative AI features are still at an early stage. More user validation and improvement with more annotated and testing data are required. <sup>(9, 52, 54, 60, 79, 97, 105-107, 109, 113, 114, 120, 121, 126, 147)</sup>	16
	4	A shared infrastructure with openly accessible data within and across organisations will require a significant cultural change. Data literacy and data strategies are key components to achieving 'buy-in' from all levels of the organisation. <sup>(17, 36, 50, 52, 61, 64, 75, 82, 86, 100, 105, 112, 116)</sup>	13
	5	Consider ways to manage unstructured data, place more emphasis on data infrastructure and architecture, assess ways to refine data using rigorous validation processes, regular reporting of effectiveness and areas for improvement, and consider multifaceted strategy as essential. <sup>(1, 42, 49, 52, 60, 62, 64, 70, 76, 79, 86, 112, 151)</sup>	13



Key themes	No	Statements	No. refs
	6	Peer-reviewed publications should be linked to data, AI models, and scientific software to reproduce and validate data-driven scientific discovery. Openness of data and code is essential for the research community (e.g., researchers, RFOs) to test/pilot existing algorithms and the opportunities to build on these and leverage AI-ready (FAIR) data. <sup>(17, 36, 78-80, 109, 111, 116, 153)</sup>	9
	7	Understanding the needs and gaps in data and AI models can promote sharing of knowledge and expertise at a rapid pace and scale. Unfortunately, such developments in focused areas such as Research and Development are currently lacking. <sup>(9, 27, 53, 54, 76, 79, 95, 101, 109)</sup>	9
	8	Making use of open access publishing and platforms specifically for AI (e.g., F1000Research gateway) provides the opportunity for interdisciplinary publications and promotes research community alignment and a sharing research culture. <sup>(17, 36, 61, 78, 97, 98, 105, 116)</sup>	8

490

491 **Developing organisational AI strategy:** From the evidence it was clear how understanding data value and  
 492 trends is crucial for developing AI capability. Although understanding data requirements are closely tied  
 493 to government policy (and initiatives), adherence to ethical standards, and availability of financial,  
 494 knowledge and technical resources, there is a need for organisations to carefully consider AI solutions and  
 495 develop data strategy plans that encompasses both AI and data management practices.<sup>(53, 92)</sup> Investing in  
 496 data strategies, with the significance of data literacy requirements, a key consideration for organisations  
 497 is the potential to invest in collaborations and partnerships to facilitate AI implementation.<sup>(26, 27, 53, 54, 64, 66,</sup>  
 498 <sup>67, 70, 74, 86, 89, 94, 109, 119, 125, 139, 145, 147, 149)</sup> Digitalisation strategy plans need to identify key performance  
 499 indicators and effective adoption of ethical AI business practices, which in turn should involve having the  
 500 right organisational structure; an interdisciplinary working culture; communication; management support;  
 501 training; appropriate measurement and reporting mechanisms; and enforcement.<sup>(9, 27, 43, 54, 76, 79, 83, 86, 94, 109,</sup>  
 502 <sup>111, 114, 116, 139, 147)</sup> The evidence also suggested that AI application management and AI-driven platforms  
 503 need to facilitate stakeholder interactions and continuously innovate in rapidly changing environments.<sup>(44,</sup>  
 504 <sup>77, 98, 107)</sup> LLMs in particular require a strategic roadmap for effective integration, with careful assessment  
 505 of applications, techniques, and regulatory considerations. In financial management, the strategic

506 roadmap should involve AI being implemented in stages and only follow once data management  
507 infrastructures have been upgraded.<sup>(50, 67, 90)</sup>

508 **Monitoring AI transparency:** Strengthening accountability in AI ('explainable AI') requires human  
509 oversight and involvement throughout the model lifecycle, as well as engagement with internal  
510 stakeholders and AI users to avoid automation bias.<sup>(101)</sup> The development and adoption of explainable AI  
511 was mentioned across several organisational settings, with particular focus on the transparency and  
512 interpretability of AI technology.<sup>(61, 86, 95, 101, 103-105)</sup> For companies developing powerful AI systems (e.g.,  
513 OpenAI), this means taking appropriate steps to involve independent members to ensure democratic AI  
514 governance and to prevent misuse.<sup>(104)</sup> Organisations, particularly in healthcare or research settings, need  
515 to ensure well-documented datasets for all AI technologies; identify user groups at risk of disparate  
516 performance or harm; justify appropriate dataset use; evaluate performance across groups; report  
517 limitations or misuse; and develop risk mitigation plans throughout the AI technology lifecycle.<sup>(26, 42, 52, 64,</sup>  
518 <sup>87, 104, 107, 151)</sup> The evidence also highlighted how model training and lifecycle development (e.g., for LLMs)  
519 need to explore incorporating FAIR data principles at every stage to generate FAIR-compliant datasets.<sup>(50,</sup>  
520 <sup>60, 74, 75, 78-80, 99, 101, 105, 126, 131, 133, 155)</sup>

521 **Increasing AI partnerships:** Several initiatives and alliances were reported in the evidence, particularly  
522 around forming partnerships to ensure return on investment and sustainable social and economic  
523 growth.<sup>(64, 74, 86, 94, 103, 125, 139, 154)</sup> Public and private sector collaborations can offer comprehensive support  
524 solutions across various stages of AI implementation and co-develop AI systems that are intrinsically  
525 inclusive of human values and humans' ability to create sufficient solutions that serve the public interest.<sup>(9,</sup>  
526 <sup>17, 26, 28, 42, 44, 51, 120, 121, 132)</sup> Initiatives such as the Responsible AI UK (<https://www.rai.ac.uk/>) and the European  
527 Commission's joint Research Centre's Artificial Intelligence Watch ([https://ai-](https://ai-watch.ec.europa.eu/index_en)  
528 [watch.ec.europa.eu/index\\_en](https://ai-watch.ec.europa.eu/index_en)) were two examples seen in the evidence to enhance potential

529 collaborative partnerships as well as strengthen data management and administrative practices in  
530 research.

531 **Developing AI knowledge and skills:** A key highlight from the evidence focused on staff training; staff  
532 development; career growth; and building talent that is adaptable to the rapidly changing technological  
533 advancements across and within different sectors and organisational settings.<sup>(50, 57, 86, 149)</sup> The evidence  
534 suggested how organisations need to invest time and resources into addressing the skills gap in order to  
535 successfully implement AI and understand the level of support required for the adoption of AI.<sup>(50, 53, 119)</sup>  
536 Although there was some evidence around the implementation and adoption of AI to streamline processes  
537 and reduce bias, data literacy and data strategies are key components to gain ‘buy in’ from all levels and  
538 sections of an organisation.<sup>(17, 64, 75, 112, 116, 119)</sup> Upskilling and offering AI education will be required across  
539 whole organisations, especially as AI-driven scheduling software and intelligent assistants are increasingly  
540 being implemented to reduce management and administrative burdens.<sup>(9, 37, 94, 134, 141)</sup> In educational  
541 settings, promoting knowledge around AI and adequate resources is required to support AI management  
542 and learning, facilitate staff willingness to adopt new digital skills and to reduce instances of unethical AI  
543 use that could have implications on academic integrity.<sup>(20, 153)</sup> In more business focused settings, data  
544 leaders are already capitalising on AI, or expecting increased interest and investment in AI technologies,  
545 by upskilling their employees in AI/ML, and focusing more on improving data literacy and data readiness  
546 for AI in future data strategy plans.<sup>(92)</sup>

547

#### 548 ***Evidence from funding and professional organisations in research***

549 To gain further insight into the priorities and positions of key funding and professional organisations with  
550 respect to AI, we reviewed 13 webpages of research organisations (**See S3 Table: Key research funding  
551 and professional organisations on AI: announcements and activities**). It was clear that several

552 organisations are initiating funding opportunities that involve AI, and this was particularly evident from  
553 organisations focused on healthcare. For example, the UK Research and Innovation's (UKRI) funding  
554 opportunities to accelerate new treatments and therapies using AI technologies, and the NIHR and  
555 Wellcome funding schemes to support healthcare research involving big data  
556 (<https://www.nihr.ac.uk/explore-nihr/funding-programmes/ai-award.htm>). Several key areas were noted  
557 from the review of a purposive sample of relevant organisations, which are reported below.

558

559 **Ethical conduct:** High on RFO's agendas is ensuring responsible use and addressing the ethical challenges  
560 that AI presents, which had led some organisations such as the Canadian Institute of Health Research  
561 (CIHR) and UKRI councils to set up leadership groups and advisory committees in ethical AI/ML (e.g.,  
562 Engineering and Physical Sciences Research Council (EPSRC), and the AHRC and Economic and Social  
563 Research Council (ESRC) have partnered to create a leadership team to drive the UK's responsible and  
564 trustworthy (R&T) AI agenda). Other RFOs, like UKRI's Arts and Humanities Research Council (AHRC) and  
565 the Academy of Medical Sciences (AMS), are exploring ways of including ethics in the research and  
566 development of AI technology, recognising the need for strengthening collaborations and partnerships  
567 with other organisations and technical experts to ensure that AI is used safely, effectively and ethically.

568 **Security and confidentiality:** Another area high on RFOs agenda focuses on security and confidentiality of  
569 personal data when using AI tools for peer review or grant applications. As a result, a joint statement from  
570 the UK's Research Funders Policy Group, which include Wellcome and the NIHR, issued caution against the  
571 application of LLMs such as ChatGPT. The National Institutes of Health (NIH) have gone further by  
572 prohibiting peer reviewers from using any AI technologies for analysing or formulating their reports on  
573 grant applications and contract proposals (e.g., NLPs, LLMs and other generative AI tools). In a response  
574 to these concerns, several organisations such as the UKRI's Challenge Fund are supporting service  
575 industries to use AI and data analytics in the security of their computer infrastructure.

576 **Equitable AI:** Preventing and mitigating biases were mentioned by several RFOs like the CIHR, who  
577 highlighted in a report from the *AI for Public Health Equity Workshop* in Toronto planned efforts to promote  
578 equitable AI and equip public health sectors in Canada with new methods to advance health equality as a  
579 priority area (Public Health: IPPH Strategic Plan 2022-2026). The Gates Foundation are also focusing on  
580 access and equity in AI work and have established a task force to ensure AI usage is safe, ethical and  
581 equitable worldwide. Furthermore, the NIHR have announced their Artificial Intelligence and Racial and  
582 Ethnic Inequalities in Health and Social Care funding call to conduct work ensuring that AI research meets  
583 the needs of ethnic minorities (<https://www.nihr.ac.uk/explore-nihr/funding-programmes/ai-award.htm>).

584 **AI knowledge, skills and resources:** Although, several RFOs highlighted how they are assessing the need  
585 for staff to enhance their research skills through interrogation of AI, they are addressing this in different  
586 ways. For example, the NIHR ARC North Thames Academy have set up an AI in Systematic Reviews  
587 Masterclass for healthcare and government staff ([https://www.arc-nt.nihr.ac.uk/news-and-](https://www.arc-nt.nihr.ac.uk/news-and-events/2024/feb-24/the-use-of-artificial-intelligence-ai-in-systematic-reviews-masterclass/)  
588 [events/2024/feb-24/the-use-of-artificial-intelligence-ai-in-systematic-reviews-masterclass/](https://www.arc-nt.nihr.ac.uk/news-and-events/2024/feb-24/the-use-of-artificial-intelligence-ai-in-systematic-reviews-masterclass/)), while the  
589 NIHR CRN have developed an AI e-learning course in partnership with Imperial College London  
590 (<https://www.nihr.ac.uk/news/artificial-intelligence-e-learning-launched-for-researchers/31387>).

591 **Big data in research:** The Association of Research Managers and Administrators (ARMA) first national  
592 survey of research offices predict that research management practices are poised for increased use of AI  
593 and big data in the near future. Similarly, the Cancer Research UK's (CRUK) Grand Challenges Fund  
594 demonstrates that researchers are also looking to harness big data and AI for medical data analytics for  
595 early detection and treatment of cancers. On a larger scale, the EU has announced a Digital Strategy to  
596 establish standards in data and invest in AI, while major funders such as the NIH are establishing data  
597 science and AI programmes to design and develop intelligent data-driven AI-based medical screening  
598 tools.

599 **Public scrutiny:** Several organisations have examined the use of and implementation of AI to ensure that  
600 the public's best interest are protected when using AI, while also considering (where applicable)  
601 regulations such as the EU Act (e.g., the European Commission AI Watch monitor the development, uptake  
602 and impact of AI across Europe through a regulatory framework based on human rights and fundamental  
603 values). Outside of the EU, the Gates Foundation are in efforts to make AI technology broadly accessible  
604 to all to transform how people communicate, work and learn, and the Joseph Rowntree Foundation are  
605 coordinating discussions around harnessing AI for public good. Other examples of promoting public  
606 scrutiny in AI include the Association of Medical Research Charities (AMRC) and their annual Benevolent  
607 AI award to help accelerate new treatment and therapies using AI, the CIHR have two initiatives through  
608 their Transforming Public Health IPPH Strategic Plan and AI Public Health Equity Workshop, and the NIHR's  
609 plans to apply real-time operational modelling to maximise care pathways  
610 ([https://www.uclhospitals.brc.nihr.ac.uk/criu/research-impact/artificial-intelligence-and-machine-](https://www.uclhospitals.brc.nihr.ac.uk/criu/research-impact/artificial-intelligence-and-machine-learning)  
611 [learning](https://www.uclhospitals.brc.nihr.ac.uk/criu/research-impact/artificial-intelligence-and-machine-learning)).

612

613

## 614 **DISCUSSION**

615 With this review, we addressed the complexities surrounding AI-powered digital transformation, drawing  
616 on evidence from a range of sectors, user contexts and AI application domains to highlight current and  
617 emerging applications of AI, their potential benefits, and the key considerations and risks for RFOs. Much  
618 of the evidence was solution-focused, using either tools, frameworks, models or general  
619 recommendations on how to prepare for and implement AI across diverse organisational contexts. A good  
620 proportion of the literature was from original research or research perspectives published in peer  
621 reviewed academic journals. By using a classification framework to capture the utility and potential, and  
622 considerations and risks of AI<sup>(6, 7)</sup>, we identified key aspects for RFOs who are already in the process of, or

623 are looking towards, adopting AI/ML within their organisation (or for their research or funding activities).  
624 In doing so, we also identified a compelling body of evidence indicating the need for more shared efforts  
625 in AI, and the importance of an open and collaborative culture between research stakeholders and  
626 communities of interest to improve AI capabilities, knowledge, and organisational strategies.<sup>(26, 28, 42, 50-54,</sup>  
627 <sup>60, 64, 78, 94, 95, 101, 121, 143)</sup> It was clear from the evidence that organisations are leveraging AI to build strategic  
628 capabilities, seek opportunities to remain competitive, and find ways to enhance consumer experiences.  
629 For sectors like research, this area of digital transformation has been comparatively slow, due to the  
630 hesitancy around ethics and regulation, and the uncertainty around AI's utility and the capabilities  
631 required for AI implementation. However, the level of hesitancy from RFOs is largely the result of a lack of  
632 clarity around AI-driven transformation, concerns around the ethical and societal implications of AI, and  
633 the need for more empirical evidence to develop governance frameworks, models and guidance to enable  
634 the responsible use of AI for data management in the public sector.<sup>(54)</sup>

635

636

### 637 ***Current and emerging use of AI***

638 Adopting and successfully implementing AI is complex, particularly when comparisons are made between  
639 the private sector (the 'facilitator' of AI) and the public sector (seen as the 'regulator').<sup>(26, 28, 42, 121)</sup> Added  
640 to the complexity is the need for organisations to assess the relative merit and effort required to  
641 implement AI technologies, which are particularly important in considering the readiness and capabilities  
642 of AI, and what is needed to address the unique challenges of AI adoption.<sup>(9, 28, 51-53, 64, 92, 94, 121)</sup>

643

644 A large proportion of the evidence was relevant to the research sector, particularly around improving the  
645 quality of research data management (making it FAIR and verified for AI/ML training), offering important  
646 considerations for RFOs who collect research data to monitor and report on the impacts of funded

647 research (for accountability and to secure further investments). RFOs manage high volumes of data both  
648 directly from awards and from other sources, and they engage in analytics to manage, monitor and  
649 evaluate their organisations funded portfolio. The evidence has shown the potential benefits and  
650 capability of AI, and how it could enhance efficiency and insights in these processes, particularly with ML.  
651 Standardising research data management and improving the quality of research data is needed to ensure  
652 accuracy of ML models applied to business and research processes, and ultimately the success of  
653 outcomes. However, it is also important for research in the wider context, based on reports of increasing  
654 research bureaucracy caused by lack of alignment in standards and data systems in digital research  
655 environments.<sup>(12, 13, 50, 76, 78-80, 132, 151, 154, 156)</sup>

656

657 The focus of the available evidence on AI in research for academic use may be explained by the fact that  
658 this is where AI is mostly used due to free access tools such as ChatGPT<sup>(6, 18, 20, 153, 157)</sup>, and subsequently  
659 raises several ethical concerns (e.g., data storage, data privacy and security, and the use of information).  
660 Although several efforts were noted from the literature<sup>(26, 101, 107)</sup> (e.g., ‘Explainable AI’ techniques such as  
661 LIME and SHAP) these may not necessarily anticipate all ethical and governance issues that may come up  
662 when AI is used more widely across public administrations (where accountability and public perception is  
663 more crucial).<sup>(9, 26, 27, 43, 87, 90, 101, 111, 154)</sup> RFOs require high quality evidence to inform their own practices with  
664 regards to the adoption, implementation and capability of AI use, particularly when some funding  
665 organisations are taking a position on the use of AI during the funding application process (e.g., peer  
666 review and grant writing).<sup>(10-12, 24, 32, 36, 79, 158)</sup>

667

### 668 ***Potential benefits of AI for RFOs***

669 To gain a comprehensive picture of the AI landscape, we considered existing AI applications, new  
670 developments in technologies and emerging uses for AI that could be applied to organisational contexts



671 in research (e.g., research data management and administration). There was emphasis on exploring how  
672 AI could be leveraged to reduce research bureaucracy, particularly administrative burden for RFOs, based  
673 on widespread reports of increasing pressures in research to demonstrate impact and value of  
674 investment.<sup>(31, 32)</sup> However, the increasing effort also extends to researchers, where most data  
675 management processes are manual and time-consuming.<sup>(98)</sup> AI implementation could have the potential  
676 to reduce prompt-like queries, and develop Edge AI applications and NLP models for human-AI interaction  
677 to shift towards enhanced insight and reduction in burden for researchers.<sup>(53)</sup> Despite the advantages of  
678 AI applications though, they are not a replacement for human intelligence or critical thinking; they are  
679 tools to encourage more streamlined approaches to data management, research and educational  
680 processes.<sup>(53, 120)</sup>

681

682 It is also particularly challenging for RFOs, given the rapid speed of AI/ML development, to address issues  
683 around performance, fairness, bias (e.g., ‘AI hallucinations’ which is when AI models generate incorrect,  
684 misleading or provide false information) and maturity of AI technologies. There are increasing efforts  
685 focusing on the integration and capability of AI, such as the Responsible Artificial Intelligence UK  
686 (<https://rai.ac.uk/>) and the European Commission’s Joint Research Centre’s Artificial Intelligence Watch  
687 ([https://ai-watch.ec.europa.eu/index\\_en](https://ai-watch.ec.europa.eu/index_en)), which could facilitate and foster greater reliability for the  
688 adoption and implementation of AI in research data management.<sup>(27, 28, 42, 43, 106, 116, 121, 154)</sup> Solutions are still  
689 needed to not only manage the current demand placed on RFOs, but also where AI/ML tools could serve  
690 organisations and the wider research community (e.g., by reducing duplication and facilitating monitoring,  
691 reporting and evaluations) (see **Box 1** for a summary of the evidence on the key considerations for  
692 optimising AI implementation for RFOs).

693

694 **[Insert] Box 1. Future considerations for AI implementation for research funding organisations**

695

696 ***Considerations and risks of AI for RFOs***

697 Concerns over current data quality, data management practices, and the implications for AI/ML model  
698 accuracy and effectiveness, are common across sectors, organisations and disciplines.<sup>(78, 134)</sup> The overall  
699 risk with using systems that are inaccurate, biased, or compromise human rights (e.g., privacy,  
700 accountability, security) is that users and leaders will lose trust in AI and not look to harness potentially  
701 useful technologies that could reduce the burden on innovation.<sup>(123)</sup> Although, the negative outcome can  
702 be avoided by ensuring human involvement throughout the AI model lifecycle, it is imperative for  
703 stakeholders and end-users to be actively involved in decision making throughout the initiation, and  
704 development of establishing systems for monitoring and evaluation purposes.<sup>(92)</sup>(see **Box 2** for a summary  
705 of the evidence on the key considerations to develop trust in AI implementation) There are also  
706 requirements for regulatory efforts to ensure safe and responsible AI innovation, particularly due to ethical  
707 and governance concerns around data integrity, data collection and confidentiality. Data initiatives and  
708 insight are constantly shifting (and at a rapid pace) and there is a clear drive for organisational and  
709 government strategies to engage in the long-term sustainability of AI technologies.<sup>(4, 91, 93, 146)</sup> These  
710 investments in AI are predicted to be long-term and sustainability should not be overlooked by focusing  
711 on cost alone.<sup>(150)</sup> Moreover, integrating AI technologies requires new initiatives to modernise existing  
712 research data management practices; whilst that may come at a cost, it will inevitably produce greater  
713 efficiencies and optimise reduction in operational costs resulting in longer term efficiency gains for RFOs.

714

715 **[Insert] Box 2. Future considerations for developing trust in AI implementation**

716

717 ***Shared AI efforts across sectors***

718 There was a particular emphasis on the need to promote openness and transparency through  
719 communities of interest (e.g., different sectors, settings and organisations), particularly when there is a  
720 need to reduce the burden on innovation, and facilitate trust with AI technologies.<sup>(16, 81, 83)</sup> Facilitating and  
721 fostering transdisciplinary collaborative opportunities across diverse cultural domains could offer greater  
722 reliability of potential applications and promote a more collaborative, data-driven approach to further  
723 advance the adoption, capability and implementation of AI/ML technologies (from a collective viewpoint  
724 rather than from one organisation) (see **Box 3** for a summary of the evidence on the key considerations  
725 around shared AI efforts). According to the International Science Council, there is an ontological gap  
726 between AI principles and their integration into regulatory and governance frameworks, requiring a  
727 systems approach that includes the scientific community and considers the broader implications of AI for  
728 science and society.<sup>(69, 78)</sup> Effective regulation will necessitate risk-informed decision-making across  
729 multiple layers and stakeholders, including RFOs. The adaptive analytical framework could serve as an  
730 example for RFOs as they assess multiple layers of impact and are looking to develop a more systematic  
731 approach to monitoring and reporting outputs, outcomes and impacts.<sup>(69, 78)</sup>

732  
733 With much of the literature in the data science space, RFOs may need to assess and consider how to upskill  
734 their workforce and seek collaborations with software companies and data science experts/ML  
735 researchers.<sup>(9, 27, 54, 76, 83, 86, 94, 105, 109, 111, 139, 147)</sup> Organisations could also engage with data scientists for AI  
736 expertise and to post-process their datasets, (clean, assemble and validate the data). Where AI is  
737 experimentally used on imperfect data, this reduces some processing effort and guides future data  
738 collection practices. These shared decision-making and learning practices across sectors could ultimately  
739 help foster and drive business performance and transformation, and by implementing strategies to  
740 enhance data management would be a competitive advantage in today's data-driven world.<sup>(26, 28, 42, 79, 80, 90,</sup>

741 <sup>93, 105, 121, 132, 151)</sup>

742

743 **[Insert] Box 3. Future considerations for shared AI efforts**

744

745 ***Study strengths and limitations***

746 The main strength of the review was the extensive coverage of sectors across varied organisational settings  
747 and including a review of 13 research funding and professional organisations. Using a framework to map  
748 the evidence provided a clear interpretation of where and how AI has been and is being applied and  
749 adopted across a range of settings to determine the potential benefits and opportunities, and  
750 consideration and risks associated to implementing AI technology for RFOs. However, a limitation to the  
751 review was that scoping reviews are restricted to only mapping the evidence and do not assess the quality  
752 or risk of bias of the literature. Although we mapped the evidence by research methodology (e.g., original  
753 research, perspective, review) due to the wide scope of the review (not limited to a particular sector,  
754 discipline or field) it was clear how some research methodologies were not as developed or consistently  
755 defined as one would expect in healthcare or food and environmental settings. The review only covered a  
756 three-year period due to the rapid pace of evolving evidence (also noting that literature published prior to  
757 2022 was more conceptual and focused on algorithm development only), which could also be seen as a  
758 limitation to the review. Although, there was some international coverage from the included articles, the  
759 majority were from Europe and Americas, which could have introduced regional biases. However, it could  
760 also be that there was a lack of evidence from these regions, given the coverage of the databases and grey  
761 literature searches.

762

763 **Conclusions**

764 Big data and AI has been a subject of intense public debate, but when it comes to applications and  
765 considerations for RFOs there was a clear evidence gap in the literature. This review has provided a  
766 ‘snapshot’ of the current evidence, across diverse sectors and settings, at a time when RFOs have been  
767 undergoing digital transformation and reviewing efforts to address research bureaucracy and barriers to  
768 collaborative and unified research management practices.<sup>(31, 32)</sup> Whilst previous research has focused on  
769 the interoperability in collection of research data, use of platforms, compliance and reporting  
770 requirements, there are still areas of concern to reduce current research burden (inclusive of researchers,  
771 institutions, funding organisations), which could also unintentionally introduce or increase administrative  
772 efforts.<sup>(33)</sup> However, in order for RFOs to be good custodians of public money, there will always be some  
773 form of administrative effort required around monitoring and reporting, in order to demonstrate the  
774 tangible value and benefit of research (from both RFOs and researchers).<sup>(26, 28, 42, 54, 121)</sup> Adopting and  
775 employing technological advances such as AI/ML could be a solution to change the research funding  
776 landscape. However, due to the nature of RFOs, and the increasing emphasis on accountability, societal  
777 impact, research integrity and transparency, there is a need to consider the published evidence around AI,  
778 with specific emphasis on its application, potential, and associated risks in the context of funding activities.  
779 With the increasing rise of digital transformation, advanced analytics and data-driven decision-making  
780 means a concerted research effort into understanding the opportunities, capabilities and risks of AI is  
781 needed more now than ever. Collaborative efforts are required to ensure such technologies are not only  
782 accessible and ethical but also support adequate advancements within organisations across different  
783 sectors to prepare, educate and train both staff, wider customers and users of AI in the long term.

784

785 **Acknowledgements**

786 We would like to thank Nancy Beckett-Jones from the University of Southampton Library services in  
787 developing the search strategies for the review, Sophie Hall for conducting Overton searches for funder  
788 literature on AI, and Gi-Yian Yiu for identifying and collating AI/ML tools described in the literature.

789

## 790 **Supporting information**

791 **S1 Appendix.** Search terms and keywords

792 **S2 Appendix.** PRISMA checklist

793 **S3 Appendix.** Full abbreviations

794 **S1 Table.** Search strategies

795 **S2 Table.** Full details of included studies

796 **S3 Table.** Key research funding and professional organisations

797

## 798 **Registration**

799 This study is registered on the RoR Registry and Hub (study number 3292) and can be accessed here:

800 <https://ror-hub.org/study/3292/>

801

## 802 **Data availability statement**

803 All relevant data are included in the paper and its supporting information files. These files are also openly

804 accessible on a preprints server (medRxiv) and OSF (<https://osf.io/d8bfn/>).

805

## 806 REFERENCES

- 807 1. Agrawal S, Sahu A, Kumar G. A conceptual framework for the implementation of Industry 4.0 in  
808 legal informatics. *Sustainable Computing-Informatics & Systems*. 2022;33:10.  
809 <https://doi.org/10.1016/j.suscom.2021.100650>.
- 810 2. Serey J, Alfaro M, Fuertes G, Vargas M, Durán C, *et al*. Pattern Recognition and Deep Learning  
811 Technologies, Enablers of Industry 4.0, and Their Role in Engineering Research. *Symmetry*.  
812 2023;15(2):535. <https://doi.org/10.3390/sym15020535>.
- 813 3. Shaheen BW, Németh I. Integration of Maintenance Management System Functions with  
814 Industry 4.0 Technologies and Features-A Review. *Processes*. 2022;10(11):27.  
815 <https://doi.org/10.3390/pr10112173>.
- 816 4. Sheikh H, Prins C, Schrijvers E. Artificial Intelligence: Definition and Background. *Mission AI: The*  
817 *New System Technology*: Springer; 2023. p. 15-41. [https://doi.org/10.1007/978-3-031-21448-6\\_2](https://doi.org/10.1007/978-3-031-21448-6_2).
- 818 5. Agrawal V. AI Autonomous and Adaptive Systems – Dawn of a New Era Delaware, USA: TARS;  
819 2024 [Available from: [https://hellotars.com/blog/ai-autonomous-and-adaptive-systems-dawn-of-a-new-](https://hellotars.com/blog/ai-autonomous-and-adaptive-systems-dawn-of-a-new-era)  
820 [era](https://hellotars.com/blog/ai-autonomous-and-adaptive-systems-dawn-of-a-new-era) [Last accessed: 13/09/2024].
- 821 6. Omar Ali, Peter Murray, Mujtaba Momin, Fawaz Al-Anzi. The knowledge and innovation  
822 challenges of ChatGPT: A scoping review. *Technology in Society*. 2023;75:102402.  
823 <https://doi.org/10.1016/j.techsoc.2023.102402>.
- 824 7. Omar Ali WA, Anup Shresthac, Ersin Elbasib, Mohammad Abdallah Ali Alryalatd, Yogesh K  
825 Dwivedi,. A systematic literature review of artificial intelligence in the healthcare sector: Benefits,  
826 challenges, methodologies, and functionalities. *Journal of Innovation & Knowledge*. 2023;8(1).  
827 <https://doi.org/10.1016/j.jik.2023.100333>.
- 828 8. Preiksaitis C, Rose C. Opportunities, Challenges, and Future Directions of Generative Artificial  
829 Intelligence in Medical Education: Scoping Review. *JMIR Med Educ*. 2023;9:e48785. 10.2196/48785.
- 830 9. Yu P, Xu H, Hu X, Deng C. Leveraging Generative AI and Large Language Models: A  
831 Comprehensive Roadmap for Healthcare Integration. *Healthcare*. 2023;11(20):2776.  
832 <https://doi.org/10.3390/healthcare11202776>.
- 833 10. Department for Science Innovation and Technology (DSIT). Consultation outcome: A pro-  
834 innovation approach to AI regulation: government response 2024. [Available from:  
835 [https://www.gov.uk/government/consultations/ai-regulation-a-pro-innovation-approach-policy-](https://www.gov.uk/government/consultations/ai-regulation-a-pro-innovation-approach-policy-proposals/outcome/a-pro-innovation-approach-to-ai-regulation-government-response#annex-a-method-and-engagement)  
836 [proposals/outcome/a-pro-innovation-approach-to-ai-regulation-government-response#annex-a-](https://www.gov.uk/government/consultations/ai-regulation-a-pro-innovation-approach-policy-proposals/outcome/a-pro-innovation-approach-to-ai-regulation-government-response#annex-a-method-and-engagement)  
837 [method-and-engagement](https://www.gov.uk/government/consultations/ai-regulation-a-pro-innovation-approach-policy-proposals/outcome/a-pro-innovation-approach-to-ai-regulation-government-response#annex-a-method-and-engagement) [Last accessed: 03/09/2024]].
- 838 11. Department for Science Innovation and Technology (DSIT). £54 million boost to develop secure  
839 and trustworthy AI research 2023 [Available from: [https://www.gov.uk/government/news/54-million-](https://www.gov.uk/government/news/54-million-boost-to-develop-secure-and-trustworthy-ai-research)  
840 [boost-to-develop-secure-and-trustworthy-ai-research](https://www.gov.uk/government/news/54-million-boost-to-develop-secure-and-trustworthy-ai-research) [Last accessed: 03/09/2024].
- 841 12. Department for Science Innovation and Technology (DSIT). Press release; Science, Innovation  
842 and Technology backed in Chancellor’s 2023 Autumn Statement 2023. [Available from:  
843 [https://www.gov.uk/government/news/science-innovation-and-technology-backed-in-chancellors-2023-](https://www.gov.uk/government/news/science-innovation-and-technology-backed-in-chancellors-2023-autumn-statement#:~:text=The%20Chancellor%20announced%20a%20%20C2%A3,to%20process%20complicated%2C%20lengthy%20tasks)  
844 [autumn-](https://www.gov.uk/government/news/science-innovation-and-technology-backed-in-chancellors-2023-autumn-statement#:~:text=The%20Chancellor%20announced%20a%20%20C2%A3,to%20process%20complicated%2C%20lengthy%20tasks)  
845 [statement#:~:text=The%20Chancellor%20announced%20a%20%20C2%A3,to%20process%20complicated%](https://www.gov.uk/government/news/science-innovation-and-technology-backed-in-chancellors-2023-autumn-statement#:~:text=The%20Chancellor%20announced%20a%20%20C2%A3,to%20process%20complicated%2C%20lengthy%20tasks)  
846 [2C%20lengthy%20tasks](https://www.gov.uk/government/news/science-innovation-and-technology-backed-in-chancellors-2023-autumn-statement#:~:text=The%20Chancellor%20announced%20a%20%20C2%A3,to%20process%20complicated%2C%20lengthy%20tasks) [Last accessed: 03/09/2024]].
- 847 13. The Royal Society. Science in the age of AI 2024 [Available from: [https://royalsociety.org/news-](https://royalsociety.org/news-resources/projects/science-in-the-age-of-ai/)  
848 [resources/projects/science-in-the-age-of-ai/](https://royalsociety.org/news-resources/projects/science-in-the-age-of-ai/) [Last accessed: 03/09/2024].
- 849 14. Forero-Corba W, Bennasar FN. Techniques and applications of Machine Learning and Artificial  
850 Intelligence in education: a systematic review. *Revista Iberoamericana de Educación a Distancia*.  
851 2024;27(1):209-38. <https://doi.org/10.5944/ried.27.1.37491>.

- 852 15. Chami G. Artificial intelligence and academic integrity: striking a balance. *Times Higher*  
853 *Education*. 2023. [Available from: [https://www.timeshighereducation.com/campus/artificial-intelligence-](https://www.timeshighereducation.com/campus/artificial-intelligence-and-academic-integrity-striking-balance)  
854 [and-academic-integrity-striking-balance](https://www.timeshighereducation.com/campus/artificial-intelligence-and-academic-integrity-striking-balance) [Last accessed: 03/09/2024]].
- 855 16. Harrer S. Attention is not all you need: the complicated case of ethically using large language  
856 models in healthcare and medicine. *Ebiomedicine*. 2023;90:12.  
857 <https://doi.org/10.1016/j.ebiom.2023.104512>.
- 858 17. Chubb J, Cowling P, Reed D. Speeding up to keep up: exploring the use of AI in the research  
859 process. *Ai & Society*. 2022;37(4):1439-57. <https://doi.org/10.1007/s00146-021-01259-0>.
- 860 18. Jaideep Vaidya HA. A critical look at AI-generated software: Coding with ChatGPT, GitHub  
861 Copilot, and other AI tools is both irresistible and dangerous2023. Available from:  
862 <https://spectrum.ieee.org/ai-software>.
- 863 19. Hanson B SS, Cutcher-Gershenfeld J, Vrouwenvelder K, Wirz C, Rao Y, Peng G. Garbage in,  
864 garbage out: mitigating risks and maximizing benefits of AI in research. *Nature*. 2023. [Available from:  
865 <https://www.nature.com/articles/d41586-023-03316-8> [Last accessed: 03/09/2024]].
- 866 20. Cotton DRE, Cotton PA, Shipway JR. Chatting and cheating: Ensuring academic integrity in the era  
867 of ChatGPT. *Innovations in Education and Teaching International*. 2023:1-12.  
868 <https://doi.org/10.1080/14703297.2023.2190148>.
- 869 21. Roberts S. Global AI experts sound the alarm: Leading researchers co-author unique report  
870 warning of the malicious use of AI in the coming decade. University of Cambridge. 2024. [Available from:  
871 <https://www.cam.ac.uk/stories/malicious-ai-report> [Last accessed: 03/09/2024]].
- 872 22. Brudage M, Avin S, Clark J, Toner H, Eckersley P, *et al*. The Malicious Use of Artificial Intelligence:  
873 Forecasting, Prevention, Mitigation. United Kingdom: University of Oxford, University of Cambridge,  
874 OpenAI, Electronic Frontier Foundation, Center for a New American Security; 2018 [Available from:  
875 <https://maliciousaireport.godaddysites.com/> [Last accessed: 03/09/2024].
- 876 23. Cancer Research UK. Research funders agree joint approach to generative AI in funding  
877 applications 2023 [Available from: [https://news.cancerresearchuk.org/2023/09/19/joint-approach-to-](https://news.cancerresearchuk.org/2023/09/19/joint-approach-to-generative-ai-in-funding-applications/)  
878 [generative-ai-in-funding-applications/](https://news.cancerresearchuk.org/2023/09/19/joint-approach-to-generative-ai-in-funding-applications/) [Last accessed: 03/09/2024].
- 879 24. National Institute for Health and Care Research. Funders agree on the use of AI tools in funding  
880 applications 2023 [Available from: [https://www.nihr.ac.uk/news/funders-agree-on-the-use-of-ai-tools-in-](https://www.nihr.ac.uk/news/funders-agree-on-the-use-of-ai-tools-in-funding-applications/34513)  
881 [funding-applications/34513](https://www.nihr.ac.uk/news/funders-agree-on-the-use-of-ai-tools-in-funding-applications/34513) [Last accessed: 03/09/2024].
- 882 25. Wellcome. Funders joint statement: use of generative AI tools in funding applications and  
883 assessment 2023 [Available from: [https://wellcome.org/what-we-do/our-work/joint-statement-](https://wellcome.org/what-we-do/our-work/joint-statement-generative-ai)  
884 [generative-ai](https://wellcome.org/what-we-do/our-work/joint-statement-generative-ai) [Last accessed: 03/09/2024].
- 885 26. van Noordt C, Medaglia R, Tangi L. Policy initiatives for Artificial Intelligence-enabled  
886 government: An analysis of national strategies in Europe. *Public Policy and Administration*. 2023b:39.  
887 <https://doi.org/10.1177/09520767231198411>.
- 888 27. Foffano F, Scantamburlo T, Cortés A. Investing in AI for social good: an analysis of European  
889 national strategies. *Ai & Society*. 2023;38(2):479-500. <https://doi.org/10.1007/s00146-022-01445-8>.
- 890 28. van Noordt C, Misuraca G. Exploratory Insights on Artificial Intelligence for Government in  
891 Europe. *Social Science Computer Review*. 2022b;40(2):426-44.  
892 <https://doi.org/10.1177/0894439320980449>.
- 893 29. Department for Education. Call for evidence outcome; Generative artificial intelligence in  
894 education call for evidence. 2023. [Available from: [https://www.gov.uk/government/calls-for-](https://www.gov.uk/government/calls-for-evidence/generative-artificial-intelligence-in-education-call-for-evidence)  
895 [evidence/generative-artificial-intelligence-in-education-call-for-evidence](https://www.gov.uk/government/calls-for-evidence/generative-artificial-intelligence-in-education-call-for-evidence) [Last accessed: 03/09/2024]].
- 896 30. Artificial intelligence (AI) act: Council gives final green light to the first worldwide rules on AI  
897 [press release]. Council of the EU, 21 May 2024 2024.



- 898 31. BEIS. Independent Review of Research Bureaucracy. 2022.[Available from:  
899 <https://www.gov.uk/government/publications/review-of-research-bureaucracy> [Last accessed:  
900 03/09/2024]].
- 901 32. Department for Science Innovation and Technology (DSIT). Government response to the  
902 Independent Review of Research Bureaucracy 2024. [Available from:  
903 <https://www.gov.uk/government/publications/review-of-research-bureaucracy> [Last accessed:  
904 03/09/2024]].
- 905 33. Crane K, Blatch-Jones A, Fackrell K. The post-award effort of managing and reporting on funded  
906 research: a scoping review [version 2; peer review: 2 approved]. *F1000Research*. 2023;12(863).  
907 <https://doi.org/10.12688/f1000research.133263.2>.
- 908 34. Checco A, Bracciale L, Loreti P, Pinfield S, Bianchi G. AI-assisted peer review. *Humanities and*  
909 *Social Sciences Communications*. 2021;8(1):1-11. <https://doi.org/10.1057/s41599-020-00703-8>.
- 910 35. Heaven D. AI peer reviewers unleashed to ease publishing grind. *Nature*. 2018. [Available from:  
911 <https://www.nature.com/articles/d41586-018-07245-9> [Last accessed: 03/09/2024]].
- 912 36. Holm J WL, Newman-Griffis D, Wilsdon J, . Good practice in the use of machine learning & AI by  
913 research funding organisations: insights from a workshop series. *RoRI Working Paper No. 10*. December  
914 2022; 2022.[Available from: <https://doi.org/10.6084/m9.figshare.21710015> [Last accessed:  
915 03/09/2024]].
- 916 37. Chowdhury S. AI and Internal Management of Educational Institutions: A Post-Pandemic  
917 Perspective. *3D: IBA Journal of Management & Leadership*. 2023b;14(2):12-9.
- 918 38. Kelley S. Understanding and Preventing Artificial Intelligence Ethics Issues in Financial Services  
919 Organizations: Three Studies [Ph.D.]. Canada -- Ontario, CA: Queen's University (Canada); 2022.
- 920 39. Korolov M. VMware, Nvidia team on enterprise-grade AI platform. *Network World (Online)*. 2023  
921 Aug 22. [Available from: [https://www.networkworld.com/article/957194/vmware-nvidia-team-on-](https://www.networkworld.com/article/957194/vmware-nvidia-team-on-enterprise-grade-ai-platform.html)  
922 [enterprise-grade-ai-platform.html](https://www.networkworld.com/article/957194/vmware-nvidia-team-on-enterprise-grade-ai-platform.html) [Last accessed: 03/09/2024]].
- 923 40. Pollock D, Davies EL, Peters MDJ, Tricco AC, Alexander L, *et al*. Undertaking a scoping review: A  
924 practical guide for nursing and midwifery students, clinicians, researchers, and academics. *Journal of*  
925 *Advanced Nursing*. 2021;77(4):2102-13. <https://doi.org/10.1111/jan.14743>.
- 926 41. Peters MDJ, Marnie C, Tricco AC, Pollock D, Munn Z, *et al*. Updated methodological guidance for  
927 the conduct of scoping reviews. *JB I Evidence Implementation*. 2021;19(1):3-10.  
928 <https://doi.org/10.1097/xeb.000000000000277>.
- 929 42. van Noordt C, Tangi L. The dynamics of AI capability and its influence on public value creation of  
930 AI within public administration. *Government Information Quarterly*. 2023a;40(4):14.  
931 <https://doi.org/10.1016/j.giq.2023.101860>.
- 932 43. Priya VL, Aghanaashaa A, Chahar A, Alisha A. Artificial Intelligence as a Tool for Enhanced Data  
933 Integrity and Data Security. Piscataway: The Institute of Electrical and Electronics Engineers, Inc. (IEEE);  
934 2023. <https://doi.org/10.1109/AISC56616.2023.10085250>.
- 935 44. Vrabie C, editor *Artificial Intelligence Promises to Public Organizations and Smart Cities*. 14th  
936 *PLAIS EuroSymposium on Digital Transformation (PLAIS)*; 2022 Dec 15; Sopot, POLAND. CHAM: Springer  
937 International Publishing Ag; 2022. [https://doi.org/10.1007/978-3-031-23012-7\\_1](https://doi.org/10.1007/978-3-031-23012-7_1).
- 938 45. De Silva D, Alahakoon D. An artificial intelligence life cycle: From conception to production.  
939 *Patterns*. 2022;3(6). <https://doi.org/10.1016/j.patter.2022.100489>.
- 940 46. Newman J, Mintrom M, O'Neill D. Digital technologies, artificial intelligence, and bureaucratic  
941 transformation. *Futures*. 2022;136:11. <https://doi.org/10.1016/j.futures.2021.102886>.
- 942 47. Dana Barlow R. AI: Opportunities, threats meet, tease healthcare supply chain: Does haste, hype  
943 and demand signal actual or superficial benefits? *Healthcare Purchasing News*. 2024:26-31. [Available  
944 from: [https://www.hponline.com/healthcare-it/article/53079756/ai-opportunities-threats-meet-tease-](https://www.hponline.com/healthcare-it/article/53079756/ai-opportunities-threats-meet-tease-healthcare-supply-chain)  
945 [healthcare-supply-chain](https://www.hponline.com/healthcare-it/article/53079756/ai-opportunities-threats-meet-tease-healthcare-supply-chain) [Last accessed: 03/09/2024]].

- 946 48. Messeri L, Crockett MJ. Artificial intelligence and illusions of understanding in scientific research.  
947 Nature. 2024;627(8002):49-58. <https://doi.org/10.1038/s41586-024-07146-0>.
- 948 49. Komprise. The 2023 Komprise Unstructured Data Management Report Unstructured Data  
949 Management in the AI Age. 2023.[Available from: [https://www.komprise.com/resource/the-2023-](https://www.komprise.com/resource/the-2023-komprise-unstructured-data-management-report/)  
950 [komprise-unstructured-data-management-report/](https://www.komprise.com/resource/the-2023-komprise-unstructured-data-management-report/) [Last accessed:03/09/2024]].
- 951 50. Allan B, Oldfield R, Doutriaux C, Lewis K, Ahrens J, *et al*. Assessment of data-management  
952 infrastructure needs for production use of advanced machine learning and artificial intelligence: Tri-Lab  
953 Milestone (8554). Sandia National Laboratories (SNL), Albuquerque, NM, and Livermore, CA.;  
954 2023.[Available from: <https://www.osti.gov/biblio/2212844> [Last accessed: 03/09/2024]].
- 955 51. Sheeder F. Compliance in the Age of Artificial Intelligence. Journal of Health Care Compliance.  
956 2023 Nov/Dec 2023:47-50. [Available from:  
957 [https://www.proquest.com/docview/2899183756/fulltext/F4F6E4B238594297PQ/1?accountid=13963&](https://www.proquest.com/docview/2899183756/fulltext/F4F6E4B238594297PQ/1?accountid=13963&sourcetype=Trade%20Journals)  
958 [sourcetype=Trade%20Journals](https://www.proquest.com/docview/2899183756/fulltext/F4F6E4B238594297PQ/1?accountid=13963&sourcetype=Trade%20Journals) [Last accessed: 03/09/2024]].
- 959 52. Srivastava A. Transformative Data Management Technique: Redefining Artificial Intelligence (AI).  
960 Management Insight. 2023;19(01):59-70. <https://doi.org/10.21844/mijia.19.1.6>.
- 961 53. Stoykova S, Shakev N. Artificial Intelligence for Management Information Systems: Opportunities,  
962 Challenges, and Future Directions. Algorithms. 2023;16(8):357. <https://doi.org/10.3390/a16080357>.
- 963 54. Valle-Cruz D, García-Contreras R. Towards AI-driven transformation and smart data management:  
964 Emerging technological change in the public sector value chain. Public Policy and Administration.  
965 2023;22. <https://doi.org/10.1177/09520767231188401>.
- 966 55. Anonymous. 50 big data companies driving innovation. Big Data Quarterly. 2022c Fall  
967 Fall 2022  
968 2023-12-02:20-30. [Available from:  
969 <https://www.proquest.com/docview/2735561305?accountid=13963&sourcetype=Trade%20Journals>  
970 {last accessed: 03/09/2024}].
- 971 56. Anonymous. Become More Data-Driven by Evolving Analytics Workloads. CIO. 2022a 2022 Mar  
972 09  
973 2022-11-30. [Available from: [https://www.proquest.com/trade-journals/become-more-data-driven-](https://www.proquest.com/trade-journals/become-more-data-driven-evolvinganalytics/docview/2678815236/se-2?accountid=13963)  
974 [evolvinganalytics/docview/2678815236/se-2?accountid=13963](https://www.proquest.com/trade-journals/become-more-data-driven-evolvinganalytics/docview/2678815236/se-2?accountid=13963) [Last accessed: 03/09/2024]].
- 975 57. Bobrovskiy O, Niema O, Domsha O, Zayats D, Vasiuk N. Elements of digitalization of public  
976 management and administration: Information technologies and artificial intelligence in the field of HR.  
977 Ad Alta-Journal of Interdisciplinary Research. 2023;13(2):151-9.  
978 <https://doi.org/10.33543/j.130235.151159>.
- 979 58. Ortega-Calvo AS, Morcillo-Jimenez R, Fernandez-Basso C, Gutiérrez-Batista K, Vila M-A, *et al*.  
980 AIMDP: An Artificial Intelligence Modern Data Platform. Use case for Spanish national health service data  
981 silo. Future Generation Computer Systems. 2023;143:248-64.  
982 <https://doi.org/10.1016/j.future.2023.02.002>.
- 983 59. Miguel APO, Manara S, Molé B, Muller T, Guillouche A, *et al*. Semantic Modelling of  
984 Organizational Knowledge as a Basis for Enterprise Data Governance 4.0 -- Application to a Unified  
985 Clinical Data Model. Ithaca: Cornell University Library, arXiv.org; 2023.  
986 <https://doi.org/10.48550/arXiv.2311.02082>.
- 987 60. Raza S, Ghuge S, Chen D, Pandya D. FAIR Enough: How Can We Develop and Assess a FAIR-  
988 Compliant Dataset for Large Language Models' Training? Ithaca: Cornell University Library, arXiv.org;  
989 2024.

- 990 61. Reji S, Hetterich J, Pitsios S, Gkolemi V, Perez-Castanos S, *et al.* Industrial Asset Management and  
991 Secure Sharing for an XAI Manufacturing Platform. Piscataway: The Institute of Electrical and Electronics  
992 Engineers, Inc. (IEEE); 2023. <https://doi.org/10.1109/ICE/ITMC58018.2023.10332309>.
- 993 62. Rousopoulou V, Vafeiadis T, Nizamis A, Iakovidis I, Samaras L, *et al.* Cognitive analytics platform  
994 with AI solutions for anomaly detection. *Computers in Industry*. 2022;134:17.  
995 <https://doi.org/10.1016/j.compind.2021.103555>.
- 996 63. Zárate G, Miñón R, Diaz-de-Arcaya J, Torre-Bastida AI. K2E: Building MLOps Environments for  
997 Governing Data and Models Catalogues while Tracking Versions. 19th IEEE International Conference on  
998 Software Architecture (ICSA); Mar 12-15; Electr Network. Los Alamitos: Ieee Computer Soc; 2022. p. 206-  
999 9. <https://doi.org/10.1109/ICSA-C54293.2022.00047>.
- 1000 64. Tito M. A comparative analysis of good enterprise data management practices: insights from  
1001 literature and artificial intelligence perspectives for business efficiency and effectiveness. University of  
1002 Oulu, Faculty of Medicine 2023.[Available from: <https://oulurepo.oulu.fi/handle/10024/42423> [Last  
1003 accessed: 03/09/2024]].
- 1004 65. Benito A. Anadolu Efes CIO drives AI-fuelled data, analytics strategy. *CIO*. 2022 2022 Feb 16  
1005 2023-12-04. [Available from:  
1006 <https://www.proquest.com/docview/2678813492?accountid=13963&sourcetype=Trade%20Journals>  
1007 [Last accessed: 03/09/2024]].
- 1008 66. Chache EG, Dremlyuga RI, Tret'yakova NA, Neznamov AV. System Approach to the Study of State  
1009 Policies and Formation of Ethics of Application of Artificial Intelligence Technologies: Global Atlas of  
1010 Regulation. *Doklady Mathematics*. 2022;106(SUPPL 1):S65-S9.  
1011 <https://doi.org/10.1134/S1064562422060059>.
- 1012 67. Flexera. 2023 State of the Cloud Report Economic volatility doesn't slow cloud growth; FinOps  
1013 increases in priority AWS and Azure continue to battle for dominance. *CIO*. 2023 2023 Jun 27  
1014 2023-06-28. [Available from: [https://www.flexera.com/blog/finops/cloud-computing-trends-flexera-  
1015 2023-state-of-the-cloud-report/](https://www.flexera.com/blog/finops/cloud-computing-trends-flexera-2023-state-of-the-cloud-report/) [Last accessed: 03/09/2024]].
- 1016 68. Gaur A. Empowering Seamless Data Management For AI Excellence. *Open Source for You*. 2023  
1017 2023 Dec 12. [Available from:  
1018 <https://www.proquest.com/docview/2900743051?accountid=13963&sourcetype=Magazines> [Last  
1019 accessed: 03/09/2024]].
- 1020 69. International Science Council. A framework for evaluating rapidly developing digital and related  
1021 technologies: AI, Large Language Models and beyond. Paris, France. : International Science Council. ;  
1022 2023.[Available from: <https://council.science/publications/framework-digital-technologies/> [Last  
1023 accessed:03/09/2024]].
- 1024 70. Ionescu S-A, Diaconita V. Transforming Financial Decision-Making: The Interplay of AI, Cloud  
1025 Computing and Advanced Data Management Technologies. *International Journal of Computers,  
1026 Communications and Control*. 2023;18(6). <https://doi.org/10.15837/ijccc.2023.6.5735>.
- 1027 71. Shirvanian N, Shams M, Amir Masoud R. Internet of Things data management: A systematic  
1028 literature review, vision, and future trends. *International Journal of Communication Systems*.  
1029 2022;35(14). <https://doi.org/10.1002/dac.5267>.
- 1030 72. Stoitsis G, Manouselis N. The Use of Big Data in Food Safety Management: Predicting Food  
1031 Safety Risks Using Big Data and Artificial Intelligence. *Food Safety Management: Elsevier*; 2023. p. 513-  
1032 20. <https://doi.org/10.1016/B978-0-12-820013-1.00019-X>.
- 1033 73. Yamani AZ, Alsunaidi SJ, Boudelloua I. Performance Evaluation of Machine Learning Models on  
1034 Apache Spark: An Empirical Study. Piscataway: The Institute of Electrical and Electronics Engineers, Inc.  
1035 (IEEE); 2022. <https://doi.org/10.1109/CICN56167.2022.10008282>.

- 1036 74. Yang X, Huang K, Yang D, Zhao W, Zhou X. Biomedical Big Data Technologies, Applications, and  
1037 Challenges for Precision Medicine: A Review. *Global Challenges*. 2024;8(1).  
1038 <https://doi.org/10.1002/gch2.202300163>.
- 1039 75. Born. 10 Ways Funders Can Address Generative AI Now Stanford Social Innovation review2023  
1040 [Available from: [https://ssir.org/articles/entry/10\\_ways\\_funders\\_can\\_address\\_generative\\_ai\\_now#](https://ssir.org/articles/entry/10_ways_funders_can_address_generative_ai_now#) [Last  
1041 accessed: 03/09/2024].
- 1042 76. Leong N. New Study Reveals Data Management Is a Top Challenge in the AI Revolution. 2023.  
1043 [Available from:  
1044 <https://www.proquest.com/docview/2851109882?accountid=13963&sourcetype=Wire%20Feeds> [Last  
1045 accessed: 03/09/2024]].
- 1046 77. Sen R, Heim G, Zhu Q. Artificial Intelligence and Machine Learning in Cybersecurity: Applications,  
1047 Challenges, and Opportunities for MIS Academics. *Communications of the Association for Information  
1048 Systems*. 2022;51. <https://doi.org/10.17705/1CAIS.05109>.
- 1049 78. Huerta EA, Blaiszik B, Brinson LC, Bouchard KE, Diaz D, *et al*. FAIR for AI: An interdisciplinary and  
1050 international community building perspective. *Scientific Data*. 2023;10(1):487.  
1051 <https://doi.org/10.1038/s41597-023-02298-6>.
- 1052 79. Ravi N, Chaturvedi P, Huerta EA, Liu Z, Chard R, *et al*. FAIR principles for AI models with a  
1053 practical application for accelerated high energy diffraction microscopy. *Scientific Data*. 2022;9(1):657.  
1054 [10.1038/s41597-022-01712-9](https://doi.org/10.1038/s41597-022-01712-9).
- 1055 80. Roy A. FAIR Principles for data and AI models in high energy physics research and education.  
1056 Ithaca: Cornell University Library, arXiv.org; 2022. <https://doi.org/10.48550/arXiv.2211.15021>.
- 1057 81. Christou AG, Stergiou CL, Memos VA, Ishibashi Y, Psannis KE. Revolutionizing Connectivity: The  
1058 Power of AI, IoT, and Edge Computing for Smart and Autonomous Systems. Piscataway: The Institute of  
1059 Electrical and Electronics Engineers, Inc. (IEEE); 2023.  
1060 <https://doi.org/10.1109/WSCE59557.2023.10365771>.
- 1061 82. Solutions e. New Research Reveals Status of AI/ML Adoption Amid Surging Interest for Clinical  
1062 Trial Leaders in 2024. *Businesswire*. 2024. [Available from: [https://www.silicon.co.uk/press-release/new-  
1063 research-reveals-status-of-ai-ml-adoption-amid-surg-ing-interest-for-clinical-trial-leaders-in-2024](https://www.silicon.co.uk/press-release/new-research-reveals-status-of-ai-ml-adoption-amid-surg-ing-interest-for-clinical-trial-leaders-in-2024) {Last  
1064 accessed: 03/09/2024}}].
- 1065 83. Engel R, Fernandez P, Ruiz-Cortes A, Megahed A, Ojeda-Perez J. SLA-aware operational efficiency  
1066 in AI-enabled service chains: challenges ahead. *Information Systems and E-Business Management*.  
1067 2022;20(1):199-221. <https://doi.org/10.1007/s10257-022-00551-w>.
- 1068 84. Konovalova M. AI and diplomacy: challenges and opportunities. *Journal of Liberty and  
1069 International Affairs*. 2023;9(2):520-30. <https://doi.org/10.47305/JLIA2392699k>.
- 1070 85. Mahmood A, Al Marzooqi A, El Khatib M, AlAmeemi H. How Artificial Intelligence can Leverage  
1071 Project Management Information System (PMIS) and Data Driven Decision Making in Project  
1072 Management. *International Journal of Business Analytics and Security (IJBAS)*. 2023;3(1):184-95.  
1073 <https://doi.org/10.54489/ijbas.v3i1.215>.
- 1074 86. Insights MTR. The great acceleration: CIO perspectives on generative AI (in Partnership with  
1075 Databricks). Article. 2022.[Available from:  
1076 [https://www.technologyreview.com/2023/07/18/1076423/the-great-acceleration-cio-perspectives-on-  
1077 generative-ai/](https://www.technologyreview.com/2023/07/18/1076423/the-great-acceleration-cio-perspectives-on-generative-ai/) [Last accessed: 03/09/2024}}].
- 1078 87. Nizami NS, Anjum S, Manikanta AS, Vanamula S. Artificial intelligence in clinical data  
1079 management: A review of currenet application and future directions *World Journal of Pharmaceutical  
1080 Research*. 2023;953-9. <https://doi.org/10.20959/wjpr20235-27678> [Available from: [https://wjpr.s3.ap-  
1081 south-1.amazonaws.com/article\\_issue/6c4d3c1e781d914c7d4361212190e2d7.pdf](https://wjpr.s3.ap-south-1.amazonaws.com/article_issue/6c4d3c1e781d914c7d4361212190e2d7.pdf) [Last accessed:  
1082 03/09/2024}}].



- 1083 88. Rottkamp DM, Khan H. Nonprofit Technology Predictions and Trends for 2023: Certified Public  
1084 Accountant. *The CPA Journal*. 2023 Mar/Apr 2023:6-7. [Available from:  
1085 [https://www.cpajournal.com/2023/05/12/nonprofit-technology-predictions-and-trends-for-](https://www.cpajournal.com/2023/05/12/nonprofit-technology-predictions-and-trends-for-2023/#:~:text=Automation%20to%20reduce%20resource%2Dintensive,capture%20real%2Dtime%20performance%20analysis)  
1086 [2023/#:~:text=Automation%20to%20reduce%20resource%2Dintensive,capture%20real%2Dtime%20perf](https://www.cpajournal.com/2023/05/12/nonprofit-technology-predictions-and-trends-for-2023/#:~:text=Automation%20to%20reduce%20resource%2Dintensive,capture%20real%2Dtime%20performance%20analysis)  
1087 [ormance%20analysis](https://www.cpajournal.com/2023/05/12/nonprofit-technology-predictions-and-trends-for-2023/#:~:text=Automation%20to%20reduce%20resource%2Dintensive,capture%20real%2Dtime%20performance%20analysis) [Last accessed: 03/09/2024]].
- 1088 89. Zhang W, Shen Y, Lu W, Zhuang Y. Data-Copilot: Bridging Billions of Data and Humans with  
1089 Autonomous Workflow. Ithaca: Cornell University Library, arXiv.org; 2023.  
1090 <https://arxiv.org/abs/2306.07209>.
- 1091 90. Gamble RH. Putting Intel Behind AI Decisions. *Credit Union Management*. 2023:10-4. [Available  
1092 from: <https://www.cumanagement.com/articles/2023/08/putting-intel-behind-ai-decisions> [Last  
1093 accessed: 03/09/2024]].
- 1094 91. Hradecky D, Kennell J, Cai W, Davidson R. Organizational readiness to adopt artificial intelligence  
1095 in the exhibition sector in Western Europe. *International Journal of Information Management*.  
1096 2022;65:1-13. <https://doi.org/10.1016/j.ijinfomgt.2022.102497>.
- 1097 92. Informatica. New Research from Informatica Reveals More Data Leaders Plan to Capitalize on  
1098 Generative AI, but Data Quality Remains the Key Obstacle to Adoption. *Business Wire (English)*. 2024.  
1099 [Available from: [https://www.informatica.com/gb/about-us/news/news-releases/2024/01/20240131-](https://www.informatica.com/gb/about-us/news/news-releases/2024/01/20240131-new-research-from-informatica-reveals-more-data-leaders-plan-to-capitalize-on-generative-ai-but-data-quality-remains-the-key-obstacle-to-adoption.html)  
1100 [new-research-from-informatica-reveals-more-data-leaders-plan-to-capitalize-on-generative-ai-but-data-](https://www.informatica.com/gb/about-us/news/news-releases/2024/01/20240131-new-research-from-informatica-reveals-more-data-leaders-plan-to-capitalize-on-generative-ai-but-data-quality-remains-the-key-obstacle-to-adoption.html)  
1101 [quality-remains-the-key-obstacle-to-adoption.html](https://www.informatica.com/gb/about-us/news/news-releases/2024/01/20240131-new-research-from-informatica-reveals-more-data-leaders-plan-to-capitalize-on-generative-ai-but-data-quality-remains-the-key-obstacle-to-adoption.html) [Last accessed:03/09/2024]].
- 1102 93. Jankovic SD, Curovic DM. Strategic Integration of Artificial Intelligence for Sustainable Businesses:  
1103 Implications for Data Management and Human User Engagement in the Digital Era. *Sustainability*.  
1104 2023;15(21):15208. <https://doi.org/10.3390/su152115208>.
- 1105 94. Weber M, Engert M, Schaffer N, Weking J, Krcmar H. Organizational Capabilities for AI  
1106 Implementation—Coping with Inscrutability and Data Dependency in AI. *Information Systems Frontiers*.  
1107 2023;25(4):1549-69. <https://doi.org/10.1007/s10796-022-10297-y>.
- 1108 95. Weinert L, Mueller J, Svensson L, Heinze O. Perspective of Information Technology Decision  
1109 Makers on Factors Influencing Adoption and Implementation of Artificial Intelligence Technologies in 40  
1110 German Hospitals: Descriptive Analysis. *JMIR Medical Informatics*. 2022;10(6):11.  
1111 <https://doi.org/10.2196/34678>.
- 1112 96. Rajamani SK, Iyer RS. A Scoping Review of Current Developments in the Field of Machine  
1113 Learning and Artificial Intelligence. *Designing and Developing Innovative Mobile Applications*. 2023:138-  
1114 64. <https://doi.org/10.4018/978-1-6684-8582-8.ch009>.
- 1115 97. Ramesh PV, Devadas AK, Ray P, Ramesh SV, Joshua T, *et al*. Under lock and key: Incorporation of  
1116 blockchain technology in the field of ophthalmic artificial intelligence for big data management-A perfect  
1117 match? *Indian Journal of Ophthalmology*. 2022;70(6):2188. [https://doi.org/10.4103/ijo.IJO\\_143\\_22](https://doi.org/10.4103/ijo.IJO_143_22).
- 1118 98. Rana SK, Rana SK, Nisar K, Ag Asri Ag I, Rana AK, *et al*. Blockchain Technology and Artificial  
1119 Intelligence Based Decentralized Access Control Model to Enable Secure Interoperability for Healthcare.  
1120 *Sustainability*. 2022;14(15):9471. <https://doi.org/10.3390/su14159471>.
- 1121 99. Hakem Al Harbi S, Tidjon LN, Khomh F. Responsible Design Patterns for Machine Learning  
1122 Pipelines. Ithaca: Cornell University Library, arXiv.org; 2023. <https://doi.org/10.48550/arXiv.2306.01788>.
- 1123 100. Anonymous. Secure cloud fabric: Enhancing data management and AI development for the  
1124 federal government. *CIO*. 2023 Dec 19. [Available from:  
1125 <https://www.proquest.com/docview/2903796360?accountid=13963&sourcetype=Trade%20Journals>  
1126 [Last accessed: 03/09/2024]].
- 1127 101. Nasir S, Rizwan Ahmed K, Bai S. Ethical Framework for Harnessing the Power of AI in Healthcare  
1128 and Beyond. Ithaca: Cornell University Library, arXiv.org; 2023.  
1129 <https://doi.org/10.1109/ACCESS.2024.3369912>.

- 1130 102. Parthasarathy R. How generative AI changes the data journey. InfoWorldcom Foundry. 2023 2023  
1131 Nov 20
- 1132 2023-12-14. [Available from:  
1133 <https://www.proquest.com/docview/2891799181?accountid=13963&sourcetype=Trade%20Journals>  
1134 [Last accessed: 03/09/2024]].
- 1135 103. Bracci E. The loopholes of algorithmic public services: an "intelligent" accountability research  
1136 agenda. Accounting Auditing & Accountability Journal. 2023;36(2):739-63. <https://doi.org/10.1108/aaaj-06-2022-5856>  
1137
- 1138 104. Tang N, Yang C, Fan J, Cao L, Luo Y, *et al.* VerifAI: Verified Generative AI. Ithaca: Cornell University  
1139 Library, arXiv.org; 2023. <https://doi.org/10.48550/arXiv.2307.02796>.
- 1140 105. Williamson H, Brettschneider J, Caccamo M, Davey R, Goble C, *et al.* Data management  
1141 challenges for artificial intelligence in plant and agricultural research [version 2; peer review: 2  
1142 approved]. F1000Research. 2023;10(324). <https://doi.org/10.12688/f1000research.52204.2>.
- 1143 106. Whang SE, Roh Y, Song H, Jae-Gil L. Data collection and quality challenges in deep learning: a  
1144 data-centric AI perspective. The VLDB Journal. 2023;32(4):791-813. <https://doi.org/10.1007/s00778-022-00775-9>.  
1145
- 1146 107. Souza C. AI model risk: What the current model risk management framework can teach us about  
1147 managing the risks of AI models. Journal of Financial Compliance. 2022 Winter2022/2023:103-12.  
1148 [Available from: <https://www.henrystewartpublications.com/jfc/AImodelrisk> [Last accessed:  
1149 03/09/2024]].
- 1150 108. Anonymous. 6 tough AI discussions every IT leader must have. CIO. 2024a 2024 Jan 09.  
1151 [Available from:  
1152 <https://www.proquest.com/docview/2912207253?accountid=13963&sourcetype=Trade%20Journals>  
1153 [Last accessed: 03/09/2024]].
- 1154 109. Bentum S. Digital Transformation Strategies for Applied Science Domains [Ph.D.]. United States --  
1155 Indiana: Indiana University; 2023.
- 1156 110. Cavanagh J, Pariona-Cabrera P, Halvorsen B. In what ways are HR analytics and artificial  
1157 intelligence transforming the healthcare sector? Asia Pacific Journal of Human Resources.  
1158 2023;61(4):785-93. <https://doi.org/10.1111/1744-7941.12392>.
- 1159 111. França C. AI empowering research: 10 ways how science can benefit from AI. arXiv. 2023.  
1160 <http://arxiv.org/pdf/2307.10265.pdf>.
- 1161 112. Hasnain A. How AI is Changing Data Management: Embracing the AI-Driven Automation Era.  
1162 Weblog post Newstex. 2023 2023 Sep 30. [Available from:  
1163 <https://www.proquest.com/docview/2870224370?OpenUrlRefId=info:xri/sid:wcdiscovery&accountid=13963&sourcetype=Blogs,%20Podcasts,%20%20Websites> [Last accessed: 03/09/2024]].  
1164
- 1165 113. O'Keefe E, Carter J, Byrne S, Meeks B, Stoker J, *et al.* Can we keep up with the machines?  
1166 Stronger and faster artificial intelligence systems require robust risk management practices. Journal of  
1167 Financial Compliance. 2022 Summer2022:294-306. [Available from:  
1168 <https://ideas.repec.org/a/aza/jfc000/y2022v5i4p294-306.htmlv> [Last accessed: 03/09/2024]].  
1169
- 1170 114. Owhonda G, Luke A, Inyele JR, Eze-Emiri C. The data analysis and validation engine: an  
1171 application of artificial intelligence in the improvement of COVID-19 data management. International  
1172 Journal of Community Medicine and Public Health. 2022;9(6):2437. <https://doi.org/10.18203/2394-6040.ijcmph20221517>.
- 1173 115. Rajagopal M, Hinge P, Srinivas K, Palav MR, Balaji P, *et al.* Artificial Intelligence & Data  
1174 Warehouse Regional Human Resource Management Decision Support System. 2022 5th International  
1175 Conference on Contemporary Computing and Informatics (IC3I): IEEE; 2022. p. 2110-3.  
1176 <https://doi.org/10.1109/IC3I56241.2022.10073122>.

- 1177 116. Rodgers C, Ellingson S, Chatterjee P. Open Data and transparency in artificial intelligence and  
1178 machine learning: A new era of research [version 1; peer review: not peer reviewed]. *F1000Research*.  
1179 2023;12(387). <https://doi.org/10.12688/f1000research.133019.1>.
- 1180 117. Samuels M. CDO Interview: Carter Cousineau, vice-president of data and model governance,  
1181 Thomson Reuters : Approaching AI responsibly *Computer Weekly*. 2023:9-12. [Available from:  
1182 [https://www.computerweekly.com/news/366554315/CDO-interview-Carter-Cousineau-vice-president-](https://www.computerweekly.com/news/366554315/CDO-interview-Carter-Cousineau-vice-president-of-data-and-model-governance-Thomson-Reuters)  
1183 [of-data-and-model-governance-Thomson-Reuters](https://www.computerweekly.com/news/366554315/CDO-interview-Carter-Cousineau-vice-president-of-data-and-model-governance-Thomson-Reuters) [Last accessed: 03/09/2024]].
- 1184 118. Simonofski A, Tombal T, De Terwangne C, Willem P, Frenay B, *et al.* Balancing fraud analytics with  
1185 legal requirements: Governance practices and trade-offs in public administrations. *Data & Policy*.  
1186 2022;4:21. <https://doi.org/10.1017/dap.2022.6>.
- 1187 119. Sung-Chu S. How HR Can Build A More Empathetic Workforce With AI And Blockchain  
1188 Technology: Creating a more efficient, diverse, and empathetic workforce. *HR Strategy & Planning*  
1189 *Excellence*. 2023:29-31. [Available from:  
1190 [https://www.hr.com/en/magazines/hr\\_strategy/april\\_2023\\_hr\\_strategy\\_planning\\_excellence/how-hr-](https://www.hr.com/en/magazines/hr_strategy/april_2023_hr_strategy_planning_excellence/how-hr-can-build-a-more-empathetic-workforce-with-ignihpi.html)  
1191 [can-build-a-more-empathetic-workforce-with-](https://www.hr.com/en/magazines/hr_strategy/april_2023_hr_strategy_planning_excellence/how-hr-can-build-a-more-empathetic-workforce-with-ignihpi.html) [Igni8hpi.html](https://www.hr.com/en/magazines/hr_strategy/april_2023_hr_strategy_planning_excellence/how-hr-can-build-a-more-empathetic-workforce-with-ignihpi.html) [Last accessed: 03/09/2024]].
- 1192 120. Tandale PG, Gaikwad AS, Kulkarni MA, Sampada SG, Bajirao Rajaram P. Big Data Management  
1193 and Analytics in the Era of Artificial Intelligence. *Piscataway: The Institute of Electrical and Electronics*  
1194 *Engineers, Inc. (IEEE)*; 2022. <https://doi.org/10.1109/SSTEPS57475.2022.00073>.
- 1195 121. van Noordt C, Misuraca G. Artificial intelligence for the public sector: results of landscaping the  
1196 use of AI in government across the European Union. *Government Information Quarterly*. 2022a;39(3):13.  
1197 <https://doi.org/10.1016/j.giq.2022.101714>.
- 1198 122. Wróbel I. Artificial intelligence systems and the right to good administration. *Review of European*  
1199 *and Comparative Law*. 2022;49(2):203-23. <https://doi.org/10.31743/recl.13616>.
- 1200 123. Yu X, Zhang C, Wang C. Construction of Hospital Human Resource Information Management  
1201 System under the Background of Artificial Intelligence. *Computational and Mathematical Methods in*  
1202 *Medicine*. 2022;2022. <https://doi.org/10.1155/2022/8377674>.
- 1203 124. Riesener M, Kuhn M, Schuh G. Methodology for Automated Master Data Management using  
1204 Artificial Intelligence. *Piscataway: The Institute of Electrical and Electronics Engineers, Inc. (IEEE)*; 2022.  
1205 <https://doi.org/10.1109/IEEM55944.2022.9989629>.
- 1206 125. Dunleavy P, Margetts H. Data science, artificial intelligence and the third wave of digital era  
1207 governance. *Public Policy and Administration*. 2023:30. <https://doi.org/10.1177/09520767231198737>.
- 1208 126. Medina J, Ziaullah AW, Park H, Castelli IE, Shaon A, *et al.* Accelerating the adoption of research  
1209 data management strategies. *Matter*. 2022;5(11):3614-42. <https://doi.org/10.1016/j.matt.2022.10.007>.
- 1210 127. Milmo D. AI firms 'should include members of the public on boards to protect society'. *The*  
1211 *Guardian*. 2023. [Available from: [https://www.theguardian.com/technology/2023/dec/06/ai-firms-](https://www.theguardian.com/technology/2023/dec/06/ai-firms-should-include-members-of-public-on-boards-to-protect-society)  
1212 [should-include-members-of-public-on-boards-to-protect-society](https://www.theguardian.com/technology/2023/dec/06/ai-firms-should-include-members-of-public-on-boards-to-protect-society) [Last accessed: 03/09/2024]].
- 1213 128. Boban M, Klaric M. Artificial Intelligence in Healthcare Services – Regulation, Implementation  
1214 and Future Challenges. *Piscataway: The Institute of Electrical and Electronics Engineers, Inc. (IEEE)*; 2023.  
1215 <https://doi.org/10.23919/MIPRO57284.2023.10159797>.
- 1216 129. Jiang X, Jiang XX, Sun W, Fan WG. How Do Manufacturing Firms Manage Artificial Intelligence to  
1217 Drive Iterative Product Innovation? *Ieee Transactions on Engineering Management*. 2023:13.  
1218 <https://doi.org/10.1109/tem.2023.3259396>.
- 1219 130. Katirai A, Yamamoto BA, Kogetsu A, Kato K. Perspectives on artificial intelligence in healthcare  
1220 from a Patient and Public Involvement Panel in Japan: an exploratory study. *Frontiers in digital health*.  
1221 2023;5:1229308. <https://doi.org/10.3389/fdgth.2023.1229308>.
- 1222 131. Manias G, Apostolopoulos D, Athanassopoulos S, Borotis S, Chatzimallis C, *et al.* AI4Gov: Trusted  
1223 AI for Transparent Public Governance Fostering Democratic Values. *Piscataway: The Institute of Electrical*  
1224 *and Electronics Engineers, Inc. (IEEE)*; 2023. <https://doi.org/10.1109/DCOSS-IoT58021.2023.00090>.

- 1225 132. Chance S. Semantic Knowledge Graphs Enable Tomorrow's AI Within Existing Architecture. *KM*  
1226 *World*. 2023;32(6):S23-S.
- 1227 133. Chen D, Ding W, Chen L, Chang X, Zhang J, *et al*. Accelerated Cloud for Artificial Intelligence  
1228 (ACAI). 2024. <https://doi.org/10.48550/arXiv.2401.16791>.
- 1229 134. Chen P, Wu L, Wang L. AI Fairness in Data Management and Analytics: A Review on Challenges,  
1230 Methodologies and Applications. *Applied Sciences*. 2023;13(18):10258.  
1231 <https://doi.org/10.3390/app131810258>.
- 1232 135. Choi J, Park H, Chie EK, Choi SW, Lee HY, *et al*. Current Status and Key Issues of Data  
1233 Management in Tertiary Hospitals: A Case Study of Seoul National University Hospital. *Healthcare*  
1234 *Informatics Research*. 2023;29(3):209-17. <https://doi.org/10.4258/hir.2023.29.3.209>.
- 1235 136. Chowdhury EK. Integration of Artificial Intelligence Technology in Management Accounting  
1236 Information System: An Empirical Study. *Novel Financial Applications of Machine Learning and Deep*  
1237 *Learning: Algorithms, Product Modeling, and Applications*: Springer; 2023a. p. 35-46.  
1238 [https://econpapers.repec.org/bookchap/sprisochnp/978-3-031-18552-6\\_5f3.htm](https://econpapers.repec.org/bookchap/sprisochnp/978-3-031-18552-6_5f3.htm).
- 1239 137. Kusal S, Patil S, Choudrie J, Kotecha K, Mishra S, *et al*. AI-Based Conversational Agents: A Scoping  
1240 Review From Technologies to Future Directions. *IEEE Access*. 2022;10:92337-56.  
1241 <https://doi.org/10.1109/ACCESS.2022.3201144>.
- 1242 138. The Standing Together Collaboration. Recommendations for diversity, inclusivity, and  
1243 generalisability in artificial intelligence health technologies and health datasets.: *datadiversity.org* 2023.  
1244 <https://doi.org/10.5281/zenodo.10048356>.
- 1245 139. Tawil A-R, Mohamed M, Schmoor X, Vlathos K, Haidar D. Trends and Challenges Towards an  
1246 Effective Data-Driven Decision Making in UK SMEs: Case Studies and Lessons Learnt from the Analysis of  
1247 85 SMEs. Ithaca: Cornell University Library, arXiv.org; 2023. <https://doi.org/10.48550/arXiv.2305.15454>.
- 1248 140. Anonymous. ePlus Announces AI Ignite: Artificial Intelligence Assessment, Enablement and  
1249 Implementation Offerings. *EPLUS-AI-Ignite*. 2024b. [Available from: [https://www.eplus.com/about-](https://www.eplus.com/about-us/press-releases/details/2024/02/01/eplus-announces-ai-ignite-artificial-intelligence-assessment-enablement-and-implementation-offerings)  
1250 [us/press-releases/details/2024/02/01/eplus-announces-ai-ignite-artificial-intelligence-assessment-](https://www.eplus.com/about-us/press-releases/details/2024/02/01/eplus-announces-ai-ignite-artificial-intelligence-assessment-enablement-and-implementation-offerings)  
1251 [enablement-and-implementation-offerings](https://www.eplus.com/about-us/press-releases/details/2024/02/01/eplus-announces-ai-ignite-artificial-intelligence-assessment-enablement-and-implementation-offerings) [Last accessed: 03/09/2024]].
- 1252 141. Holmes AF, Douglass A. Artificial Intelligence: Reshaping the Accounting Profession and the  
1253 Disruption to Accounting Education. *Journal of Emerging Technologies in Accounting*. 2022;19(1):53-68.  
1254 <https://doi.org/10.2308/JETA-2020-054>.
- 1255 142. Linthicum D. The case for holding off on generative AI. *InfoWorldcom*. 2023 03/11/2023.  
1256 [Available from:  
1257 [https://www.proquest.com/docview/2885603081?OpenUrlRefId=info:xri/sid:wcdiscovery&accountid=13](https://www.proquest.com/docview/2885603081?OpenUrlRefId=info:xri/sid:wcdiscovery&accountid=13963&sourcetype=Trade%20Journals)  
1258 [963&sourcetype=Trade%20Journals](https://www.proquest.com/docview/2885603081?OpenUrlRefId=info:xri/sid:wcdiscovery&accountid=13963&sourcetype=Trade%20Journals) [Last accessed: 03/09/2024]].
- 1259 143. The Equality Trust. Artificial Intelligence and healthcare inequalities. The Equality Trust  
1260 2024.[Available from: <https://equalitytrust.org.uk/evidence-base/health-inequalities-and-tech/> [Last  
1261 accessed: 03/09/2024]].
- 1262 144. Anonymous. DBTA Live. Database Trends and Applications. 2022b Oct/Nov  
1263 Oct/Nov 2022
- 1264 2023-12-02:20-2. [Available from:  
1265 <https://www.proquest.com/docview/2738616971?accountid=13963&sourcetype=Trade%20Journals>  
1266 [Last accessed: 03/09/2024]].
- 1267 145. McKendrick J. Data fabric, data mesh, and the Cloud: Data Management Architectures for the  
1268 Future. *Database Trends and Applications*. 2023 Feb/Mar 2023:4-7. [Available from:  
1269 <https://www.proquest.com/docview/2787936443?accountid=13963&sourcetype=Trade%20Journals>  
1270 [Last accessed: 03/09/2024]].

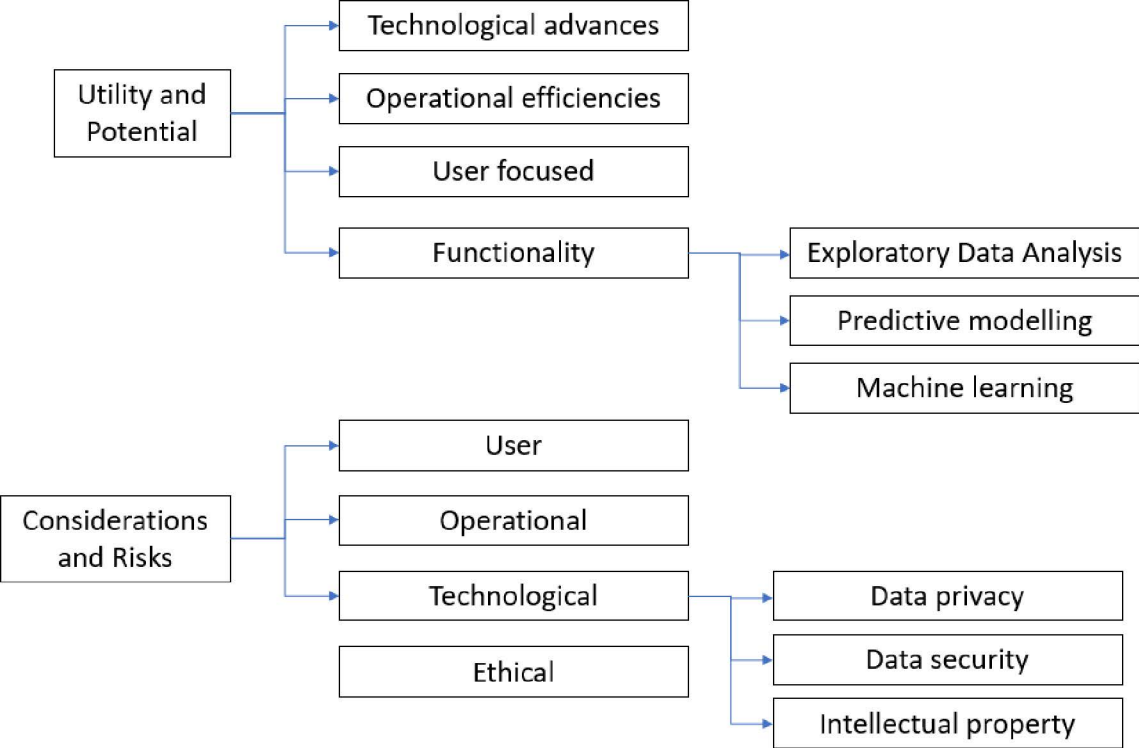


- 1271 146. Kanbach DK, Heiduk L, Blueher G, Schreiter M, Lahmann A. The GenAI is out of the bottle:  
1272 generative artificial intelligence from a business model innovation perspective. *Review of Managerial*  
1273 *Science*. 2023. <https://doi.org/10.1007/s11846-023-00696-z>.
- 1274 147. Nexus FrontierTech. AI-Fundamental ESG Scoring Platform: Training a machine learning system to  
1275 assist with ESG data analysis for 500 listed Chinese companies (White Paper). 2023. [Available from:  
1276 <https://nexusfrontier.tech/resources/ai-fundamental-esg-scoring-platform/>] [Last accessed:  
1277 03/09/2024]].
- 1278 148. McKendrick J. Managing the evolving data integration and governance strategies for the cloud  
1279 era. *Database Trends and Applications*. 2022 Aug/Sep 2022:18-9. [Available from:  
1280 [https://go.gale.com/ps/retrieve.do?tabID=T003&resultListType=RESULT\\_LIST&searchResultsType=SingleTab&retrievalId=67496708-98fb-4617-bee6-9f63f54325de&hitCount=1&searchType=AdvancedSearchForm&currentPosition=1&docId=GALE%7CA720232078&docType=Article&sort=RELEVANCE&contentSegment=ZGPP-MOD1&prodId=ITOF&pageNum=1&contentSet=GALE%7CA720232078&searchId=R1&userGroupName=unisoton&inPS=true](https://go.gale.com/ps/retrieve.do?tabID=T003&resultListType=RESULT_LIST&searchResultsType=SingleTab&retrievalId=67496708-98fb-4617-bee6-9f63f54325de&hitCount=1&searchType=AdvancedSearchForm&currentPosition=1&docId=GALE%7CA720232078&docType=Article&sort=RELEVANCE&contentSegment=ZGPP-MOD1&prodId=ITOF&pageNum=1&contentSet=GALE%7CA720232078&searchId=R1&userGroupName=unisoton&inPS=true)] [Last accessed: 03/09/2024]].
- 1286 149. Cho W, Choi S, Choi H. Human Resources Analytics for Public Personnel Management: Concepts,  
1287 Cases, and Caveats. *Administrative Sciences*. 2023;13(2):41. <https://doi.org/10.3390/admsci13020041>.
- 1288 150. Discovery Report. 2023 Global Trends in AI Report. 2023. [Available from:  
1289 <https://www.proquest.com/wire-feeds/new-study-reveals-data-management-is-top/docview/2851109882/se-2?accountid=13963>  
1290 <https://libkey.io/libraries/2281/openurl?genre=article&au=&aulast=&issn=&isbn=&title=New+Study+Reveals+Data+Management+Is+a+Top+Challenge+in+the+AI+Revolution&jtitle=PR+Newswire&pubname=PR+Newswire&btile=&atitle=New+Study+Reveals+Data+Management+Is+a+Top+Challenge+in+the+AI+Revolution&volume=&issue=&page=&date=2023&doi=&sid=ProQuest>].
- 1295 151. Lin B. Rush to Use Generative AI Pushes Companies to Get Data in Order; Data management is  
1296 under the spotlight again as companies seek to out-innovate competitors with large language models.  
1297 *Wall Street Journal (Online)*. 2023 06/08/2023. [Available from:  
1298 <https://www.proquest.com/docview/2823466462?OpenUrlRefId=info:xri/sid:wcdiscovery&accountid=13963&sourcetype=Newspapers>] [Last accessed: 03/09/2024]].
- 1300 152. Padarha S. Data-Driven Dystopia: an uninterrupted breach of ethics. Ithaca: Cornell University  
1301 Library, arXiv.org; 2023. <https://doi.org/10.48550/arXiv.2305.07934>.
- 1302 153. Currie GM. Academic integrity and artificial intelligence: is ChatGPT hype, hero or heresy?  
1303 *Seminars in Nuclear Medicine*. 2023;53(5):719-30. <https://doi.org/10.1053/j.semnuclmed.2023.04.008>.
- 1304 154. Williamson HF, Brettschneider J, Caccamo M, Davey RP, Goble C, *et al*. Data management  
1305 challenges for artificial intelligence in plant and agricultural research. *F1000Research*. 2023;10.  
1306 <https://doi.org/10.12688/f1000research.52204.2>.
- 1307 155. Connelly A. eClinical Solutions Expands illuminate IQ Offering for AI-Enabled Data Review to  
1308 Deliver Increased Efficiencies and Quality to Clinical Data Management. *Business Wire*. 2023 05/24/  
1309 2023 May 24. [Available from:  
1310 <https://www.proquest.com/docview/2818124420?accountid=13963&sourcetype=Wire%20Feeds>] [Last  
1311 accessed: 03/09/2024]].
- 1312 156. Liu N, Shapira P, Yue X. Tracking developments in artificial intelligence research: constructing and  
1313 applying a new search strategy. *Scientometrics*. 2021;126(4):3153-92. 10.1007/s11192-021-03868-4.
- 1314 157. Perkins M, Roe J. Academic publisher guidelines on AI usage: A ChatGPT supported thematic  
1315 analysis [version 1; peer review: 3 approved with reservations]. *F1000Research*. 2023;12(1398).  
1316 10.12688/f1000research.142411.1.

1317 158. Chawla SS. Should AI have a role in assessing research quality? . Nature 2022.

1318 <https://doi.org/10.1038/d41586-022-03294-3>.

1319



### Utility and potential (four themes)

- Data-driven initiatives and industry 4.0 driving innovation
- AI technologies, systems and tools
- Optimisation and innovation for organisational and user efficiencies
- Strategic direction and future focus

Application of AI for research funding organisations (122 articles)

### Considerations and risks (four themes)

- AI readiness of organisations
- AI readiness of data
- Accountability and fairness in AI
- Governance and ethical use of AI

### Shared AI efforts (three themes)

- Foster diversity and collaborative opportunities
- Foster insights and integration of AI within data-driven practices
- Promote insight, transparency and shared learning

### **Box 1. Future considerations for AI implementation for research funding organisations**

- Harnessing AI for efficiency and innovation in research, and ensuring its responsible use across research contexts, requires a multifaceted approach and commitment from all relevant sectors and organisations, including the AI/ML experts and industries (e.g., Amazon, Google, Meta, Microsoft and OpenAI) that develop AI tools.
- Industry 4.0 has revolutionized organisational processes and capabilities, with big data and advancements in AI (ML, LLM, NLP, IoT) now offering practical business solutions and insights to assess the need to improve AI capability within organisations (not just focusing on AI capability, but also the consideration of the fragility of the AI capability).
- Edge AI applications offer a solution for AI explorers, looking to develop and explore possibilities and siloed structures, allowing for data privacy and security and mitigate against concerns on data accessibility.
- The growth and speed at which AI has advanced over the last few years demonstrates the need for embedding openness, transparency, and curation for digital transformation.
- AI technology can have the potential to reduce research data management and administrative burden, enhance productivity and free up time to dedicate and redirect focus and attention to value-added activities that require complex decision-making.
- With the adoption of AI, it is important to consider the productivity of AI but also transformational AI (e.g., the creativity and competitive advantage by completely reforming processes and enabling new systems such as moving to the cloud to enhance integration and interoperability).
- Lack of understanding of the value, impact, and sustainability of AI adoption remains a significant gap in the evidence. There is a need for evaluation studies to understand whether AI technologies/ AI-enabled innovations can achieve the intended goals, and help to build trust in the use, applicability, and adoption for the application of AI for RFOs.

## **Box 2. Future considerations for developing trust in AI implementation**

- Ensuring best practice by following the latest developments and evidence in the ethical and responsible use of AI.
- Working with other funding organisations and government departments to further develop guidelines in AI Ethics and Governance, determining where they should be tailored to organisations or sectors and where establishing universal standards is needed and feasible.
- Developing in-house protocols and risk assessments for assessing where automation and AI can best support human tasks, increase efficiency, or enhance decision-making.
- Developing in-house monitoring systems (and metrics) to ensure transparency and fairness of AI models and to avoid systemic biases.
- Develop strategies to ensure compliance of research data with FAIR principles in line with other funding organisations such as Cancer Research UK and the National Institutes of Health.
- Build on existing capacity and capabilities to enable AI data preparation, model testing and implementation, where needed bringing in experts in data science and data management and ML/AI.

### **Box 3. Future considerations for shared AI efforts**

- Develop partnerships to be able to explore the strategic and organisational challenges around the use and implementation of AI for research funding organisations, paying particular attention to establishing greater community participation with a long-term investment.
- The benefits of AI and ML will remain limited to research funding organisations and institutions unless more research explores the interpretability of the effectiveness of AI (including the implications for several stakeholders such as staff, researchers, end users and the public).
- AI and data literacy requirements and training are required to understand the broader context and content about the application of AI (AI literacy framework).
- Develop and seek opportunities to experiment and pilot where AI can be applied to specific processes and systems in research management practices (including regular evaluation and interrogation on these technologies).
- Seek to establish a framework for responsible use of AI/ML in research management practice to enable funding organisations to be aligned and have a unified approach in business process (understanding that there will be variations across funding organisations).
- Promote openness and transparency through communities of interest and seek to share practices across funding organisations to enable greater transparency and generalisability.