

# Red blood cell distribution as Potential Predictor of Mortality in Diabetic Foot Patients

Chunmei Gou<sup>12</sup>, Siyi Huang<sup>23</sup>, Li Huang<sup>4</sup>, Tinggang Wang<sup>1\*</sup> and Guangtao Huang<sup>23\*</sup>

<sup>1</sup>General Department, Chongqing University Cancer Hospital, Chongqing, 400030, China

<sup>2</sup>Department of Burn and Plastic Surgery, Shenzhen Institute of Translational Medicine, The First Affiliated Hospital of Shenzhen University, Shenzhen, 518035, China

<sup>3</sup>Medical Innovation Technology Transformation Center of Shenzhen Second People's Hospital, Shenzhen, 518035, China

<sup>4</sup>Department of Plastic and Bum Surgery, West China Hospital, Sichuan University, Sichuan, 610047, China

## Abstract

**Background:** Red blood cell distribution width (RDW) reflects the heterogeneity of red blood cell volume, which reflects the variable width of red blood cell (RBC). RDW has been proved as predictor of mortality among several diseases. The purpose of this study is to analyze the relationship between RDW and mortality of diabetic foot patients.

**Methods:** We first collect clinic data from the public database MIMIC-III. Kruskal Wallis rank sum test was used to analyze the association between RDW and DF mortality, and to evaluate the relationship between them. Univariate and multivariate logistic regression analysis was used for determining the risk factors and prognosis of DF patients.

**Results:** A total of 283 patients were included in this study, with an average age of 64.0 [54.0,70.5] years, including 193 males and 90 females. We divided RDW into three groups (high, moderate and low) according to RDW tertiles and then compared the mortality of the three groups. The high RDW group (RDW > 16.8%) had significant higher mortality (P = 0.031). In multivariate logistic regression analysis, RDW, SOFA score and APS are risk factors for death in diabetic foot. After adjusting for confounding factors in model II, RDW remains a particularly strong predictor of mortality.

**Conclusions:** We confirm that RDW is an independent predictor of mortality in DF patients, and the higher the RDW, the higher the mortality of DF patients.

**Keywords:** Red blood cell distribution width (RDW); diabetic foot (DF); mortality

## Introduction

In recent years, the prevalence of diabetes is rising. Among them, diabetic foot is one of the most important complications<sup>1</sup>. Diabetic foot constitutes a major health and economic burden, which is one of the main reasons for hospitalization among diabetic patients<sup>2-5</sup>. Up to 25% of diabetic patients might suffer from foot ulcers during lifelong.

time. The annual incidence rate of diabetic foot is 2.4 - 2.6% and the prevalence rate is around 4 - 10%<sup>6-10</sup>. The early symptoms of diabetic foot are usually numbness, which are easy to be ignored by patients and clinicians. Meanwhile, DF is accompanied by many complications, leading to a serious decline in the quality of life of patients, which can lead to amputation or even death<sup>8, 9, 11-16</sup>. Diabetic patients with DF ulcers have twice as much mortality as those without ulcers<sup>17</sup>.

At present, the commonly used clinical treatment strategies include blood glucose control, dressing, debridement, negative pressure wound therapy and so on<sup>18-23</sup>. However, there are still many diabetic foot patients come out with poor prognosis. Considering the high incidence and mortality of diabetic foot, simple and feasible indicators are urgently needed to forecast the mortality of diabetic foot and ameliorate the prognosis of patients.

Some studies have evaluated the current predictors of diabetic foot mortality. In multivariate analysis, peripheral artery disease, procalcitonin, microbial growth in deep tissue and renal impairment are independent risk factors for death<sup>24-26</sup>. RDW refers to the variation degree of red blood cell volume. The larger the value, the greater the morphological divergence of red blood cells in blood sample. It is usually seen in various anemia, abnormalities of hematopoietic system or congenital red blood cell abnormalities<sup>27</sup>. Recently, RDW has been associated with mortality of several diseases<sup>28</sup>, such as heart failure, brain infarction, COVID-19, acute kidney injury, severe acute pancreatitis (SAP), stroke and community-acquired pneumonia<sup>29-35</sup>. Up to now, there is no relevant research on RDW and DF mortality. In this study, RDW is explored for predicting the mortality of DF, which is of great importance for prognosis of patients.

## **Methods**

### **The Database**

Our study is based on the Multiparameter Intelligent Monitoring in Intensive Care Database III version 1.3 (MIMIC-III V1.3). It is a free public resource. It includes more than 40000 ICU patients from 2001 to 2012, all of whom were admitted to Beth Israel Deaconess Medical Center (Boston, Massachusetts, USA). The database was established by the Massachusetts Institute of Technology (MIT, Cambridge, MA, USA) and Beth Israel Deaconess Medical Center. Since MIMIC-3 is publicly available and deidentified, the secondary analysis in this study is exempt from the institutional review boards (IRBs) of Beth Israel Deaconess Medical Center and the Massachusetts Institute of Technology review. As a result, this study did not undergo an IRB review. According to the patient privacy protection act, the identity of all patients is unknown.

### **Population Selection Criteria**

In total, 283 people were included. The diabetic foot patients were older than 18 years old and hospitalized for more than two days were included. If the patient has one of the following conditions, he will be excluded: (1) RDW value was not measured during hospitalization; (2) patients with hematological diseases; (3) personal data loss > 5%.

### **Data Extraction**

The data we obtained are from MIMIC-III. The extracted data include physiological information such as heartrate, respiratory rate, o2saturation, nibp\_systolic, nibp\_diastolic and temperature acquired by bedside monitor. Age, gender and laboratory parameters were also included. We extracted the following laboratory parameters: body mass index (BMI); creatinine; alanine aminotransferase (ALT); aspartate aminotransferase (AST); bicarbonate; hematocrit (HCT); urea nitrogen (BUN); serum calcium; serum sodium; serum potassium; white blood cell count (WBC); neutrophils; hemoglobin; platelet count (PLT); alkaline phosphatase; bilirubin; albumin and glucose. Osteomyelitis, amputation, SOFA and APS were also calculated to valuate the prognosis of the disease. The outcome measure was hospital mortality. Baseline features were extracted 24 hours after admission.

### **Regression analysis and subgroup analysis.**

Univariate and multivariate logistic regression analysis were used for determining the risk factors of clinical outcomes. Through multiple regression, we designed two models to determine the factors related to RDW value. In model I, we adjusted covariates for age and gender. In model II, we further adjusted covariates for age, gender, body mass index, osteomyelitis, amputation, bicarbonate, hematocrit, oxygen saturation, white blood cell count, neutrophils, alkaline phosphatase, bilirubin, albumin and temperature. We would use the above data to explore the relationship between RDW and diabetic foot mortality, and use corrected odds ratio (OR) and 95% confidence interval. We also performed subgroup analysis to confirm whether RDW has different effects on different subgroups classified by age, gender, HCT, HGB, SOFA, APS, ect.

### **Statistical Analysis**

All patients obtained were divided into three groups according to RDW tertiles. When  $p < 0.05$ , the difference was statistically significant. Continuous variables were represented by mean  $\pm$  standard deviation (SD) and contrasted by ANOVA or Kruskal Wallis test.

## **Results**

### **Subject Characteristics.**

We divided RDW into three groups (Table 1). In the low-RDW group ( $11.5 < RDW < 14.5$ ), there were 90 (31.8%) patients. There were 98 (34.6%) and 95 (33.6%) patients in moderate-RDW group ( $14.6 < RDW < 16.5$ ) and high-RDW group ( $16.6 < RDW < 24$ ), respectively. The grouping and laboratory data of RDW are shown in table 1.

There were no significant differences in age and BMI among the groups. At the same time, we found that the group with higher RDW had lower blood pressure. Patients with higher RDW had a higher risk of amputation. Higher RDW also had higher BUN, creatinine, alkaline, sodium than those with lower RDW. Instead, in the group with high RDW, hematocrit, hemoglobin, calcium and glucose were lower than those in other groups. The high RDW group had a higher SOFA and APS than the low RDW group, indicating that patients with a high RDW were more severely get ill.

### **RDW Levels and Mortality**

We further divided the patients into survival group and non-survival group. We found

that the RDW value of death group was higher than of survival group (15.4% vs 16.8%,  $P = 0.031$ ). The values of SOFA and APS in the death group were also higher than those in the survival group (Table 2). Furthermore, in univariate logistic regression analysis, many variables are associated with mortality, including RDW, SOFA score and APS (Table 3). The association between RDW and mortality are then confirmed by two multivariate models. Among in model I, RDW existed as a especially strong predictor in patients with diabetic foot (95% ORs: 1.0 - 1.4,  $P < 0.05$ ). After adjustment for age, gender, BMI, osteomyelitis, amputation, bicarbonate, HCT, oxygen saturation, WBC, neutrophils, alkaline phosphatase, bilirubin, albumin, PLT and temperature (model II), RDW still had a strong prediction effect (95% ORs: 1.0 - 1.5,  $P < 0.05$ ) (Table 4).

### Subgroup Analysis

We carried out a subgroup analysis to test each indicator that might predict the mortality of diabetic foot (Figure 1). After analysis, we found that HCT, HGB and alkaline are statistically significant in predicting mortality among subgroups. When  $HCT \geq 32.2\%$  (OR1.4, 95%CI 1.1 - 1.9),  $HGB \geq 10.5g/dl$  (OR1.6, 95%CI 1.2 - 2.2) and alkaline  $< 153U/L$  (OR1.4, 95%CI 1.1 - 1.8), RDW was more valuable in predicting the risk of death.

### Discussion

Wound healing process of diabetes patients involved in many factors, which is slower than normal patients. Treatment of diabetes foot ulcer, especially ulcers with severe infections or osteomyelitis is still challenging. A multi-disciplinary team is required, including endocrinologist, plastic and reconstruction surgeon, nutritionist and interventional therapy doctors. Even though, a large number of patients face amputation or even death. Therefore, early prediction of patient prognosis is of great significance. This study confirms that RDW is an independent risk factor for diabetic foot mortality.

RDW is positively correlated with the mortality of diabetic foot patients. High RDW value means high mortality risk of diabetic foot, indicating that RDW can predict mortality and associated risk in DF patients. It is estimated that the survival rate is only 60% after 5 years<sup>36</sup>. Age, smoking, lower BMI, cardiovascular disease, kidney disease, osteomyelitis, femoral amputation, previous history of ulcer, patients with severe lesions, peripheral neuropathy, anemia and patients with  $HbA1c < 7\%$  had been identified as independent predictors of mortality<sup>36-41</sup>. Hematological tests showed that neutrophil to lymphocyte ratio (NLR) and platelet to lymphocyte ratio (PLR) were reliable biomarkers for predicting mortality after DFU amputation<sup>42, 43</sup>. Meanwhile, male, smoking, amputation history, osteomyelitis history, peripheral artery disease, retinopathy, osteomyelitis, neuroischemic DFI, severe infection, leukocytosis, average ESR and average C-reactive protein (CRP) are also predictors of DF amputation<sup>44-46</sup>. Male gender, type 2 diabetes and smokers are significantly more other new diabetic foot ulcers or risk of relapse than those without these risk factors<sup>47</sup>.

Meanwhile, this study has several limitations. First, it is a single retrospective study

and might be affected by selection bias. Second, in multivariate analysis, the absence of disease information may lead to bias. Finally, the follow-up time of these patients are different, and only hospital mortality is analyzed in this study, which might affect the mortality. Therefore, the explanation and mechanism of the relevance between RDW and mortality of DF need further study. Further research should be carried out to test this hypothesis.

Through the extraction and analysis of a large number of data, we found that RDW is a strong predictor of DF patients. The higher the RDW, the higher the risk of mortality in these patients. Further studies are needed to confirm the relationship between RDW and poor prognosis of DF.

### **Data Availability**

The clinical data used to support this study are available from Monitoring in Intensive Care Database III (MIMIC-III), which is publicly available and contains deidentified data from ICU patients. To obtain permission to access the database, researchers must complete the National Institutes of Health's web-based course called Protecting Human Research Participants (certification number 29493483). The data used in our research adheres to the terms of this agreement, ensuring patient privacy and confidentiality. Researchers can obtain the MIMIC-III data set by following the specified access procedure on PhysioNet.

### **Conflicts of Interest**

The authors declare that they have no conflicts of interest.

### **Author contributions**

Guangtao Huang and Tinggang Wang designed the study; Chunmei Gou and Guangtao Huang extracted the data; Chunmei Gou, Siyi Huang and Li Huang performed all the statistical analyses; Chunmei Gou drafted the paper. All authors revised and approved the final manuscript. Guangtao Huang and Tinggang Wang have contributed equally to this work.

### **Funding**

This work is supported by Shenzhen Portion of Shenzhen-Hong Kong Science and Technology Innovation Cooperation Zone, project No. HTHZQSW-S-KCCYB-2023060, Shenzhen High-level Hospital Construction Fund (4004006), National Natural Science Foundation of China (No. 82172214,82472545,82472238).

### **Supplementary Materials**

The Supplementary file 1 used to extract data from MIMIC III.

### **References**

1. Matos, M.; Mendes, R.; Silva, A. B.; Sousa, N., Physical activity and exercise on diabetic foot related outcomes: A systematic review. *Diabetes Res Clin Pract* **2018**, *139*, 81-90.

2. Salutini, E.; Brocco, E.; Da Ros, R.; Monge, L.; Uccioli, L.; Anichini, R., The Complexity of Diabetic Foot Management: From Common Care to Best Practice. The Italian Expert Opinion by Delphi Survey. *Int J Low Extrem Wounds* **2020**, *19* (1), 34-43.
3. Boulton, A. J.; Vileikyte, L.; Ragnarson-Tennvall, G.; Apelqvist, J., The global burden of diabetic foot disease. *Lancet* **2005**, *366* (9498), 1719-24.
4. Schaper, N. C.; van Netten, J. J.; Apelqvist, J.; Bus, S. A.; Hinchliffe, R. J.; Lipsky, B. A.; Board, I. E., Practical Guidelines on the prevention and management of diabetic foot disease (IWGDF 2019 update). *Diabetes Metab Res Rev* **2020**, *36* Suppl 1, e3266.
5. Yazdanpanah, L.; Nasiri, M.; Adarvishi, S., Literature review on the management of diabetic foot ulcer. *World J Diabetes* **2015**, *6* (1), 37-53.
6. Perez-Favila, A.; Martinez-Fierro, M. L.; Rodriguez-Lazalde, J. G.; Cid-Baez, M. A.; Zamudio-Osuna, M. J.; Martinez-Blanco, M. D. R.; Mollinedo-Montano, F. E.; Rodriguez-Sanchez, I. P.; Castaneda-Miranda, R.; Garza-Veloz, I., Current Therapeutic Strategies in Diabetic Foot Ulcers. *Medicina (Kaunas)* **2019**, *55* (11).
7. Lozano-Platonoff, A.; Florida Mejia-Mendoza, M. D.; Ibanez-Doria, M.; Contreras-Ruiz, J., [The gold standard in diabetic foot treatment: total contact cast]. *Gac Med Mex* **2014**, *150* (1), 58-64.
8. Alavi, A.; Sibbald, R. G.; Mayer, D.; Goodman, L.; Botros, M.; Armstrong, D. G.; Woo, K.; Boeni, T.; Ayello, E. A.; Kirsner, R. S., Diabetic foot ulcers: Part I. Pathophysiology and prevention. *J Am Acad Dermatol* **2014**, *70* (1), 1 e1-18; quiz 19-20.
9. Dorresteyn, J. A.; Kriegsman, D. M.; Assendelft, W. J.; Valk, G. D., Patient education for preventing diabetic foot ulceration. *Cochrane Database Syst Rev* **2014**, (12), CD001488.
10. Volmer-Thole, M.; Lobmann, R., Neuropathy and Diabetic Foot Syndrome. *Int J Mol Sci* **2016**, *17* (6).
11. Potier, L.; Francois, M.; Dardari, D.; Feron, M.; Belhatem, N.; Nobecourt-Dupuy, E.; Dolz, M.; Bordier, L.; Ducloux, R.; Chibani, A.; Eveno, D. F.; Crea Avila, T.; Sultan, A.; Baillet-Blanco, L.; Rigalleau, V.; Gand, E.; Saulnier, P. J.; Velho, G.; Roussel, R.; Pellenc, Q.; Dupre, J. C.; Malgrange, D.; Marre, M.; Mohammedi, K.; group, O. s., Comparison of a new versus standard removable offloading device in patients with neuropathic diabetic foot ulcers: a French national, multicentre, open-label randomized, controlled trial. *BMJ Open Diabetes Res Care* **2020**, *8* (1).
12. Bem, R.; Dubsy, M.; Fejfarova, V.; Husakova, J.; Woskova, V., Diabetic foot. *Vnitr Lek* **2020**, *66* (2), 92-97.
13. Widatalla, A. H.; Mahadi, S. E.; Shower, M. A.; Elsayem, H. A.; Ahmed, M. E., Implementation of diabetic foot ulcer classification system for research purposes to predict lower extremity amputation. *Int J Diabetes Dev Ctries* **2009**, *29* (1), 1-5.
14. Aragon-Sanchez, J., Clinical-pathological characterization of diabetic foot infections: grading the severity of osteomyelitis. *Int J Low Extrem Wounds* **2012**, *11* (2), 107-12.
15. Jalilian, M.; Ahmadi Sarbarzeh, P.; Oubari, S., Factors Related to Severity of Diabetic Foot Ulcer: A Systematic Review. *Diabetes Metab Syndr Obes* **2020**, *13*, 1835-1842.
16. Brennan, M. B.; Hess, T. M.; Bartle, B.; Cooper, J. M.; Kang, J.; Huang, E. S.; Smith, M.; Sohn, M. W.; Crnich, C., Diabetic foot ulcer severity predicts mortality among veterans with type 2 diabetes. *J Diabetes Complications* **2017**, *31* (3), 556-561.
17. Dietrich, I.; Braga, G. A.; de Melo, F. G.; da Costa Silva Silva, A. C. C., The Diabetic Foot as a Proxy for Cardiovascular Events and Mortality Review. *Curr Atheroscler Rep* **2017**, *19* (11), 44.
18. Everett, E.; Mathioudakis, N., Update on management of diabetic foot ulcers. *Ann N Y Acad Sci*

**2018**, *1411* (1), 153-165.

19. Lavery, L. A.; Davis, K. E.; Berriman, S. J.; Braun, L.; Nichols, A.; Kim, P. J.; Margolis, D.; Peters, E. J.; Attinger, C., WHS guidelines update: Diabetic foot ulcer treatment guidelines. *Wound Repair Regen* **2016**, *24* (1), 112-26.
20. Lipsky, B. A.; Berendt, A. R.; Cornia, P. B.; Pile, J. C.; Peters, E. J.; Armstrong, D. G.; Deery, H. G.; Embil, J. M.; Joseph, W. S.; Karchmer, A. W.; Pinzur, M. S.; Senneville, E.; Infectious Diseases Society of, A., 2012 Infectious Diseases Society of America clinical practice guideline for the diagnosis and treatment of diabetic foot infections. *Clin Infect Dis* **2012**, *54* (12), e132-73.
21. Bus, S. A., The Role of Pressure Offloading on Diabetic Foot Ulcer Healing and Prevention of Recurrence. *Plast Reconstr Surg* **2016**, *138* (3 Suppl), 179S-187S.
22. Borys, S.; Hohendorff, J.; Koblik, T.; Witek, P.; Ludwig-Slomczynska, A. H.; Frankfurter, C.; Kiec-Wilk, B.; Malecki, M. T., Negative-pressure wound therapy for management of chronic neuropathic noninfected diabetic foot ulcerations - short-term efficacy and long-term outcomes. *Endocrine* **2018**, *62* (3), 611-616.
23. Snyder, R. J.; Hanft, J. R., Diabetic foot ulcers--effects on QOL, costs, and mortality and the role of standard wound care and advanced-care therapies. *Ostomy Wound Manage* **2009**, *55* (11), 28-38.
24. Adeleye, O. O.; Ugwu, E. T.; Gezawa, I. D.; Okpe, I.; Ezeani, I.; Enamino, M., Predictors of intra-hospital mortality in patients with diabetic foot ulcers in Nigeria: data from the MEDFUN study. *BMC Endocr Disord* **2020**, *20* (1), 134.
25. Meloni, M.; Izzo, V.; Giurato, L.; Brocco, E.; Ferrannini, M.; Gandini, R.; Uccioli, L., Procalcitonin Is a Prognostic Marker of Hospital Outcomes in Patients with Critical Limb Ischemia and Diabetic Foot Infection. *J Diabetes Res* **2019**, *2019*, 4312737.
26. Ghanassia, E.; Villon, L.; Thuan Dit Dieudonne, J. F.; Boegner, C.; Avignon, A.; Sultan, A., Long-term outcome and disability of diabetic patients hospitalized for diabetic foot ulcers: a 6.5-year follow-up study. *Diabetes Care* **2008**, *31* (7), 1288-92.
27. Salvagno, G. L.; Sanchis-Gomar, F.; Picanza, A.; Lippi, G., Red blood cell distribution width: A simple parameter with multiple clinical applications. *Crit Rev Clin Lab Sci* **2015**, *52* (2), 86-105.
28. Brzezniakiewicz-Janus, K.; Rupa-Matysek, J.; Tukiendorf, A.; Janus, T.; Frankow, M.; Lance, M. D.; Gil, L., Red Blood Cells Mean Corpuscular Volume (MCV) and Red Blood Distribution Width (RDW) Parameters as Potential Indicators of Regenerative Potential in Older Patients and Predictors of Acute Mortality - Preliminary Report. *Stem Cell Rev Rep* **2020**, *16* (4), 711-717.
29. Wang, R. R.; He, M.; Ou, X. F.; Xie, X. Q.; Kang, Y., The predictive value of RDW in AKI and mortality in patients with traumatic brain injury. *J Clin Lab Anal* **2020**, *34* (9), e23373.
30. Lorente, L.; Martin, M. M.; Abreu-Gonzalez, P.; Perez-Cejas, A.; Gonzalez-Rivero, A. F.; Ramos-Gomez, L.; Argueso, M.; Sole-Violan, J.; Caceres, J. J.; Jimenez, A.; Garcia-Marin, V., Early Mortality of Brain Infarction Patients and Red Blood Cell Distribution Width. *Brain Sci* **2020**, *10* (4).
31. Lorente, L.; Martin, M. M.; Argueso, M.; Sole-Violan, J.; Perez, A.; Marcos, Y. R. J. A.; Ramos-Gomez, L.; Lopez, S.; Franco, A.; Gonzalez-Rivero, A. F.; Martin, M.; Gonzalez, V.; Alcoba-Florez, J.; Rodriguez, M. A.; Riano-Ruiz, M.; Guillermo, O. C. J.; Gonzalez, L.; Cantera, T.; Ortiz-Lopez, R.; Ojeda, N.; Rodriguez-Perez, A.; Dominguez, C.; Jimenez, A., Association between red blood cell distribution width and mortality of COVID-19 patients. *Anaesth Crit Care Pain Med* **2021**, *40* (1), 100777.
32. Fava, C.; Cattazzo, F.; Hu, Z. D.; Lippi, G.; Montagnana, M., The role of red blood cell distribution width (RDW) in cardiovascular risk assessment: useful or hype? *Ann Transl Med* **2019**, *7* (20), 581.
33. Zhang, F. X.; Li, Z. L.; Zhang, Z. D.; Ma, X. C., Prognostic value of red blood cell distribution width

for severe acute pancreatitis. *World J Gastroenterol* **2019**, *25* (32), 4739-4748.

34. Jia, L.; Cui, S.; Yang, J.; Jia, Q.; Hao, L.; Jia, R.; Zhang, H., Red blood cell distribution width predicts long-term mortality in critically ill patients with acute kidney injury: a retrospective database study. *Sci Rep* **2020**, *10* (1), 4563.
35. Chen, C. M.; Lee, M.; Yang, Y. H.; Huang, S. S.; Lin, C. H., Association between Clinical and Laboratory Markers and 5-year Mortality among Patients with Stroke. *Sci Rep* **2019**, *9* (1), 11521.
36. Rubio, J. A.; Jimenez, S.; Lazaro-Martinez, J. L., Mortality in Patients with Diabetic Foot Ulcers: Causes, Risk Factors, and Their Association with Evolution and Severity of Ulcer. *J Clin Med* **2020**, *9* (9).
37. Abdissa, D.; Adujna, T.; Gerema, U.; Dereje, D., Prevalence of Diabetic Foot Ulcer and Associated Factors among Adult Diabetic Patients on Follow-Up Clinic at Jimma Medical Center, Southwest Ethiopia, 2019: An Institutional-Based Cross-Sectional Study. *J Diabetes Res* **2020**, *2020*, 4106383.
38. Gazzaruso, C.; Gallotti, P.; Pujia, A.; Montalcini, T.; Giustina, A.; Coppola, A., Predictors of healing, ulcer recurrence and persistence, amputation and mortality in type 2 diabetic patients with diabetic foot: a 10-year retrospective cohort study. *Endocrine* **2021**, *71* (1), 59-68.
39. Morbach, S.; Furchert, H.; Groblinghoff, U.; Hoffmeier, H.; Kersten, K.; Klauke, G. T.; Klemp, U.; Roden, T.; Icks, A.; Haastert, B.; Rumenapf, G.; Abbas, Z. G.; Bharara, M.; Armstrong, D. G., Long-term prognosis of diabetic foot patients and their limbs: amputation and death over the course of a decade. *Diabetes Care* **2012**, *35* (10), 2021-7.
40. Yammine, K.; Hayek, F.; Assi, C., Is there an association between anemia and diabetic foot ulcers? A systematic review and meta-analysis. *Wound Repair Regen* **2021**, *29* (3), 432-442.
41. Rastogi, A.; Goyal, G.; Kesavan, R.; Bal, A.; Kumar, H.; Mangalanadanam; Kamath, P.; Jude, E. B.; Armstrong, D. G.; Bhansali, A., Long term outcomes after incident diabetic foot ulcer: Multicenter large cohort prospective study (EDI-FOCUS investigators) epidemiology of diabetic foot complications study: Epidemiology of diabetic foot complications study. *Diabetes Res Clin Pract* **2020**, *162*, 108113.
42. Chen, W.; Chen, K.; Xu, Z.; Hu, Y.; Liu, Y.; Liu, W.; Hu, X.; Ye, T.; Hong, J.; Zhu, H.; Shen, F., Neutrophil-to-Lymphocyte Ratio and Platelet-to-Lymphocyte Ratio Predict Mortality in Patients with Diabetic Foot Ulcers Undergoing Amputations. *Diabetes Metab Syndr Obes* **2021**, *14*, 821-829.
43. Demirdal, T.; Sen, P., The significance of neutrophil-lymphocyte ratio, platelet-lymphocyte ratio and lymphocyte-monocyte ratio in predicting peripheral arterial disease, peripheral neuropathy, osteomyelitis and amputation in diabetic foot infection. *Diabetes Res Clin Pract* **2018**, *144*, 118-125.
44. Sen, P.; Demirdal, T.; Emir, B., Meta-analysis of risk factors for amputation in diabetic foot infections. *Diabetes Metab Res Rev* **2019**, *35* (7), e3165.
45. Uysal, S.; Arda, B.; Tasbakan, M. I.; Cetinkalp, S.; Simsir, I. Y.; Ozturk, A. M.; Uysal, A.; Ertam, I., Risk factors for amputation in patients with diabetic foot infection: a prospective study. *Int Wound J* **2017**, *14* (6), 1219-1224.
46. Byren, I.; Peters, E. J.; Hoey, C.; Berendt, A.; Lipsky, B. A., Pharmacotherapy of diabetic foot osteomyelitis. *Expert Opin Pharmacother* **2009**, *10* (18), 3033-47.
47. Engberg, S.; Kirketerp-Moller, K.; Ullits Andersen, H.; Rasmussen, A., Incidence and predictors of recurrent and other new diabetic foot ulcers: a retrospective cohort study. *Diabet Med* **2019**, *36* (11), 1417-1423.



Table 1: Population distribution characteristics of patients with RDW

N=283	RDW			P
	11.5-14.5	14.6-16.5	16.6-24	
	90 (31.8%)	98 (34.6%)	95 (33.6%)	
rdw	13.7 (13.0-14.0)	15.6 (15.0-16.0)	18.4 (17.3-20.1)	<0.001
age	63.0 (52.2-69.0)	64.0 (54.5-73.8)	63.0 (54.0-68.5)	0.174
gender				0.013
male	68 (75.6%)	73 (74.5%)	55 (57.9%)	
female	22 (24.4%)	25 (25.5%)	40 (42.1%)	
osteomyelitis	11 (12.2%)	9 (9.2%)	11 (11.6%)	0.778
amputation	4 (4.4%)	17 (17.3%)	14 (14.7%)	0.019
bmi	29.8 (25.6-36.4)	30.6 (25.4-37.2)	28.7 (24.3-34.1)	0.337
icu_los_hours	43.0 (23.0-76.0)	57.0 (34.2-104.8)	64.0 (25.5-102.0)	0.893
heartrate	89.9 (78.0-102.0)	87.5 (77.2-97.0)	89.9 (80.0-101.0)	0.541
Respiratory rate	19.7 (18.0-22.0)	19.7 (16.0-23.0)	19.0 (15.5-22.0)	0.936
o2saturation	96.8 (96.8-99.0)	97.0 (96.8-98.8)	98.0 (96.0-100.0)	0.411
nibp_systolic	122.0 (109.2-140.8)	121.8 (107.2-138.0)	112.0 (100.5-128.5)	0.044
nibp_diastolic	64.7 (61.0-75.8)	62.0 (53.2-67.8)	63.0 (54.0-70.5)	0.013
temperature	36.9 (36.5-37.4)	36.8 (36.5-37.2)	36.6 (36.3-37.0)	0.746
creatinine	1.2 (1.0-1.8)	1.9 (1.1-3.2)	2.7 (1.1-4.9)	<0.001
bun	26.0 (17.5-42.2)	37.6 (24.0-51.0)	34.0 (20.5-48.0)	0.022
alt	26.5 (15.0-62.3)	39.0 (17.0-62.3)	30.0 (15.5-62.3)	0.054
ast	23.5 (15.0-90.8)	58.5 (20.2-90.8)	35.0 (20.0-90.8)	0.01
bicarbonate	24.0 (20.0-27.0)	23.2 (19.4-26.0)	23.2 (21.0-26.0)	0.886
hct	34.8 (32.1-38.3)	31.3 (27.5-36.0)	29.9 (25.1-34.0)	<0.001
calcium	8.8 (8.4-9.4)	8.6 (8.1-8.9)	8.5 (8.0-8.9)	0.001
sodium	134.0 (131.0-137.0)	134.0 (131.0-137.0)	137.0 (133.5-139.5)	<0.001
potassium	4.2 (3.9-4.6)	4.4 (3.8-5.0)	4.3 (3.9-4.6)	0.053
wbc	13.0 (9.8-17.5)	15.4 (11.4-19.4)	11.3 (8.4-16.6)	0.439
neutrophils	78.8 (74.0-85.0)	78.8 (78.8-85.8)	78.8 (76.2-81.5)	0.396
hgb	11.6 (10.6-12.9)	10.4 (8.9-11.8)	9.6 (7.8-10.8)	<0.001
platelets	276.0 (192.2-366.2)	280.6 (234.2-342.5)	240.0 (172.5-317.0)	0.105
alkaline_phos	121.0 (90.5-178.3)	158.0 (100.5-178.3)	178.3 (105.0-178.7)	0.01
bilirubin	0.7 (0.4-1.1)	0.8 (0.5-1.1)	1.1 (0.5-1.1)	0.055
albumin	2.6 (2.5-3.1)	2.6 (2.3-2.7)	2.6 (2.4-2.8)	0.004
glucose	207.5 (136.2-369.8)	201.5 (147.0-263.0)	128.0 (105.0-199.5)	<0.001
sofa	4.0 (1.0-5.0)	5.0 (3.0-7.0)	7.0 (5.0-9.0)	<0.001
aps	52.0 (41.0-59.5)	59.5 (53.0-73.2)	59.5 (45.0-75.0)	0.013

medRxiv preprint doi: <https://doi.org/10.1101/2024.09.25.24314391>; this version posted September 26, 2024. The copyright holder for this preprint (which was not certified by peer review) is the author/funder, who has granted medRxiv a license to display the preprint in perpetuity. It is made available under a [CC-BY 4.0 International license](https://creativecommons.org/licenses/by/4.0/).

Table 2: comparison of patient characteristics between survival group and death group

	survival	dead	P
N	257	26	
rdw	15.4 (14.0-17.3)	16.8 (15.8-18.1)	0.031
age	64.0 (54.0-70.0)	62.5 (54.8-79.8)	0.169
male	179 (69.6%)	17 (65.4%)	0.653
bmi	29.4 (25.0-36.4)	30.2 (26.8-32.4)	0.539
icu_los_hours	47.0 (24.0-93.0)	78.5 (55.0-125.2)	0.337
heartrate	89.9 (78.0-100.0)	91.0 (84.2-105.8)	0.367
Respiratory rate	19.7 (16.0-22.0)	19.7 (16.0-23.8)	0.938
nibp_systolic	121.8 (106.0-139.0)	108.5 (99.0-122.0)	0.035
nibp_diastolic	64.4 (56.0-73.0)	61.0 (55.2-65.0)	0.162
o2saturation	97.0 (96.8-99.0)	97.5 (96.8-100.0)	0.343
osteomyelitis	27 (10.5%)	4 (15.4%)	0.448
amputation	31 (12.1%)	4 (15.4%)	0.624
sofa	5.0 (3.0-7.0)	7.0 (6.0-9.0)	0.001
aps	59.5 (45.0-67.0)	68.5 (55.8-86.0)	0.006

medRxiv preprint doi: <https://doi.org/10.1101/2024.09.26.24391439>; this version posted September 26, 2024. The copyright holder for this preprint (which was not certified by peer review) is the author/funder, who has granted medRxiv a license to display the preprint in perpetuity. It is made available under a [CC-BY 4.0 International license](https://creativecommons.org/licenses/by/4.0/).

Table 3: univariate factor analysis related to in-hospital death

	Statistics	ORs(95%)	P
rdw	15.7 (14.1-17.3)	1.2 (1.0, 1.4)	<b>0.034</b>
age	64.0 (54.0-70.5)	1.0 (1.0, 1.1)	0.169
bmi	29.7 (25.1-36.0)	1.0 (0.9, 1.0)	0.537
icu_los_hours	50.0 (25.5-96.0)	1.0 (1.0, 1.0)	0.372
heartrate	89.9 (79.0-101.0)	1.0 (1.0, 1.0)	0.366
respiratoryrate	19.7 (16.0-22.0)	1.0 (0.9, 1.1)	0.937
o2saturation	97.0 (96.8-99.0)	1.2 (1.0, 1.4)	0.12
nibp_systolic	121.8 (105.0-138.0)	1.0 (1.0, 1.0)	0.036
nibp_diastolic	64.4 (56.0-72.0)	1.0 (1.0, 1.0)	0.159
temperature	36.8 (36.4-37.2)	1.0 (0.8, 1.1)	0.74
alt	30.0 (16.0-62.3)	1.0 (1.0, 1.0)	0.75
ast	34.0 (18.5-90.8)	1.0 (1.0, 1.0)	0.511
bicarbonate	25.2 (20.0-26.0)	0.9 (0.9, 1.0)	0.11
hct	32.2 (27.6-37.2)	1.0 (0.9, 1.0)	0.422
calcium	8.6 (8.2-9.1)	0.7 (0.5, 1.2)	0.267
sodium	135.0 (132.0-138.0)	1.0 (0.9, 1.1)	0.938
potassium	4.3 (3.9-4.8)	1.3 (0.9, 2.1)	0.176
wbc	13.4 (9.4-18.0)	1.0 (0.9, 1.0)	0.695
neutrophils	78.8 (76.2-84.7)	1.0 (0.9, 1.0)	0.546
hgb	10.6 (8.9-12.1)	0.9 (0.7, 1.1)	0.156
platelets	261.0 (194.5-339.0)	1.0 (1.0, 1.0)	0.517
alkaline_phos	153.0 (97.0-178.3)	1.0 (1.0, 1.0)	0.8
bilirubin	0.9 (0.5-1.1)	1.0 (0.7, 1.3)	0.762
albumin	2.6 (2.4-3.0)	0.6 (0.3, 1.3)	0.217
glucose	184.0 (120.0-263.0)	1.0 (1.0, 1.0)	0.131
sofa	5.0 (3.0-7.0)	1.2 (1.1, 1.4)	<b>0.002</b>
aps	59.5 (45.5-68.0)	1.0 (1.0, 1.0)	<b>0.008</b>
male	196 (69.3%)	1.2 (0.5, 2.8)	0.654
osteomyelitis	31 (11.0%)	1.5 (0.5, 4.8)	0.451
amputation	35 (12.4%)	1.3 (0.4, 4.1)	0.625

medRxiv preprint doi: <https://doi.org/10.1101/2024.09.25.24314391>; this version posted September 26, 2024. The copyright holder for this preprint (which was not certified by peer review) is the author/funder, who has granted medRxiv a license to display the preprint in perpetuity. It is made available under a [CC-BY 4.0 International license](https://creativecommons.org/licenses/by/4.0/).

**Table 4: multivariate analysis of in-hospital death and RDW**

mortality	Non-adjusted		Adjusted I		Adjusted II	
	ORs(95%)	P	ORs(95%)	P	ORs(95%)	P
RDW	1.2 (1.0, 1.4)	0.034	1.2 (1.0, 1.4)	0.029	1.2 (1.0, 1.5)	0.027
RDW tertiles						
11.5-14.5	1.0		1.0		1.0	
14.6-16.5	4.4 (0.9, 21.2)	0.061	4.1 (0.9, 19.7)	0.076	5.3 (1.0, 27.3)	0.046
16.6-24.0	8.2 (1.8, 37.2)	0.006	8.2 (1.8, 37.1)	0.007	9.3 (1.9, 45.3)	0.006
P for trend	0.003		0.003		0.004	

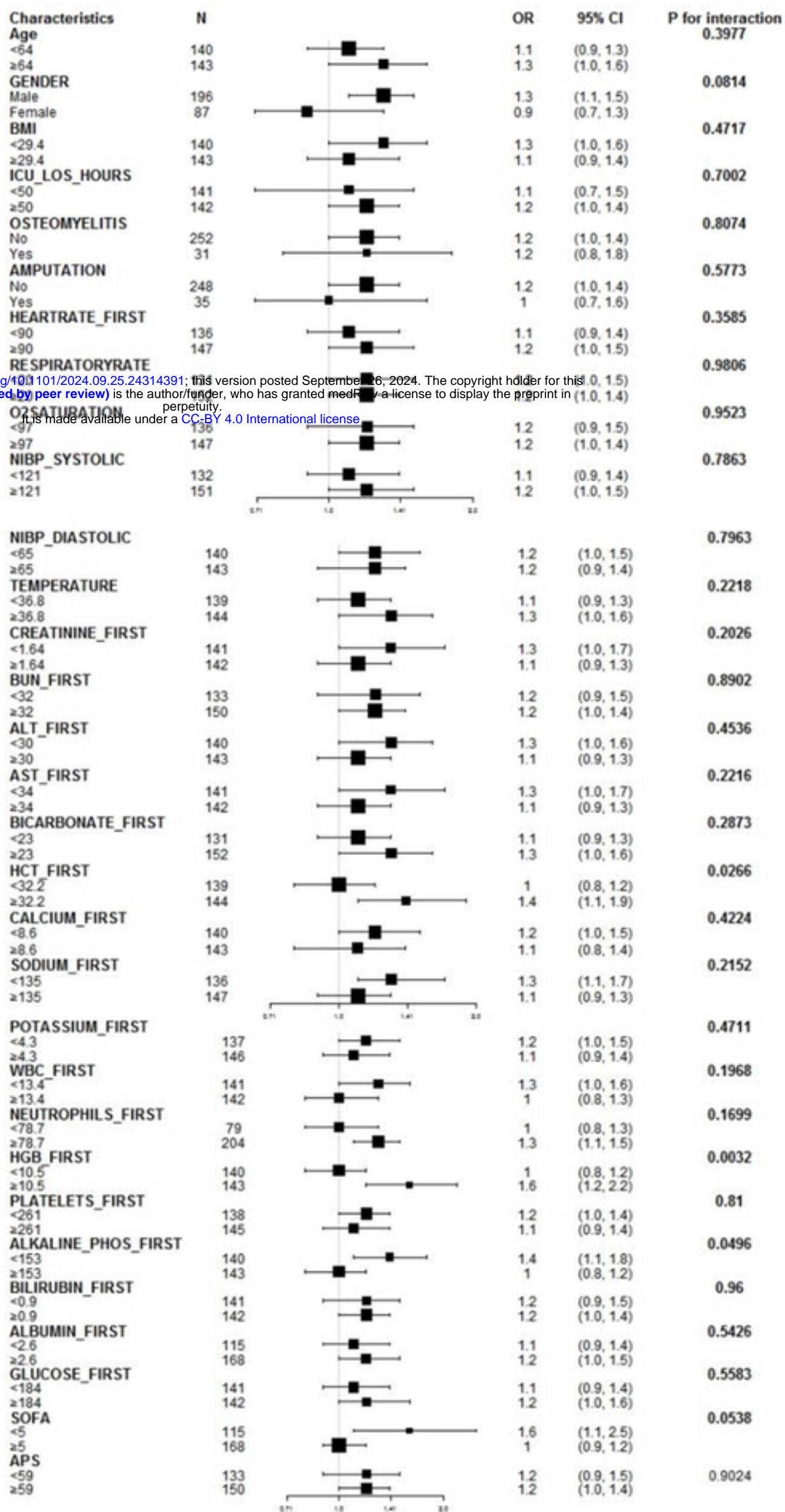
Non-adjusted model adjust for: None

Adjust I model adjust for: age; gender

Adjust II model adjust for: age; gender; heartrate; bmi; osteomyelitis; amputation; bicarbonate; hct; o2saturation; wbc; neutrophils; alkaline\_phos; bilirubin; albumin; platelets; temperature

medRxiv preprint doi: <https://doi.org/10.1101/2024.09.25.24314391>; this version posted September 26, 2024. The copyright holder for this preprint (which was not certified by peer review) is the author/funder, who has granted medRxiv a license to display the preprint in perpetuity. It is made available under a [CC-BY 4.0 International license](https://creativecommons.org/licenses/by/4.0/).

medRxiv preprint doi: <https://doi.org/10.1101/2024.09.25.24314391>; this version posted September 26, 2024. The copyright holder for this preprint (which was not certified by peer review) is the author/funder, who has granted medRxiv a license to display the preprint in perpetuity. It is made available under a [CC-BY 4.0 International license](https://creativecommons.org/licenses/by/4.0/).



## Figure 1. Subgroup analysis of in-hospital death and RDW.

medRxiv preprint doi: <https://doi.org/10.1101/2024.09.25.24314391>; this version posted September 26, 2024. The copyright holder for this preprint (which was not certified by peer review) is the author/funder, who has granted medRxiv a license to display the preprint in perpetuity.  
It is made available under a [CC-BY 4.0 International license](https://creativecommons.org/licenses/by/4.0/) .