

Antibody response to *Plasmodium vivax* in the context of Epstein-Barr virus (EBV) co-infection: A 14-year follow-up study in the Amazon rainforest

Luiz F. F. Guimarães¹, Bárbara A. Rodrigues¹, Michelle H. F. Dias¹, Matheus G. Barcelos²,
Maria F. A. Nascimento¹, Sâmick L. Moreira-Nascimento¹, Sofia L. Afonso¹, Barbara G. S. Abreu¹,
Jaap. M. Middeldorp³, Francis B. Ntumngia⁴, John H. Adams⁴, Camila Fabbri^{5,6}, Stefanie Lopes^{5,6},
Cor J. F. Fernandes⁷, Flora S. Kano¹, Luzia H. Carvalho^{1*}

¹ Instituto René Rachou, Fiocruz Minas, Fundação Oswaldo Cruz (Fiocruz), Belo Horizonte,
Minas Gerais, Brazil

² Laboratório de vírus, Departamento de Microbiologia, Instituto de Ciências Biológicas,
Universidade Federal de Minas Gerais (UFMG), Belo Horizonte, Minas Gerais, Brazil

³ Department of Pathology, Vrije Universiteit Medical Center, Amsterdam, The Netherlands.

⁴ Center for Global Health and Interdisciplinary Disease Research, College of Public Health,
University of South Florida, Tampa, Florida, United States

⁵ Instituto Leônidas & Maria Deane, Fiocruz Amazônia, Fundação Oswaldo Cruz, Manaus,
Amazonas, Brazil

⁶ Fundação de Medicina Tropical Dr. Heitor Vieira Dourado, Unidade de Pesquisa Clínica
Carlos Borborema, Manaus, Amazonas, Brazil

⁷ Hospital Universitário Julio Müller, Faculdade de Medicina, Universidade Federal de Mato
Grosso (UFMT), Cuiabá, Mato Grosso, Brazil

*Corresponding author

E-mail: luzia.carvalho@fiocruz.br (LHC)

27 Abstract

28 **Background:** To develop an effective vaccine against *Plasmodium vivax*, the most widely
29 dispersed human malaria parasite, it is critical to understand how coinfections with other pathogens
30 could impact malaria-specific immune response. A recent conceptual study proposed that Epstein-
31 Barr virus (EBV), a highly prevalent human herpesvirus that establishes lifelong persistent infection,
32 may influence *P. vivax* antibody responses. Here, it was investigated whether EBV could impact the
33 longevity of humoral immune response to *P. vivax*.

34 **Methodology/principal findings:** A 14-year follow-up study was carried out among long-
35 term *P. vivax*-exposed Amazonian individuals (272, median age 35 years), and included 9 cross-
36 sectional surveys at periods of high and low malaria transmission. The experimental approach focused
37 on monitoring antibodies to the major blood-stage *P. vivax* vaccine candidate, the Duffy binding
38 protein region II (DBPII-Sal1), including a novel engineered DBPII-based vaccine targeting
39 conserved epitopes (DEKnull-2). In parallel, the status of EBV infection was determined over time
40 by the detection of circulating EBV DNA (EBV-DNAemia) and EBV-specific antibodies to lytic
41 (VCAp18) or latent (EBNA1) antigens. Regardless of the malaria transmission period, the results
42 demonstrated that one or multiple episodes of EBV-DNAemia did not influence the longevity of
43 DBPII immune responses to both strain-specific (Sal-1) or strain-transcending (DEKnull-2)
44 antibodies. Also, the average time in which DBPII-responders lost their antibodies was unrelated to
45 the EBV serostatus. Considering all malaria cases detected during the study, there was a
46 predominance of *P. vivax* mono-infection (76%), with a positive association between malaria
47 infection and detectable EBV-DNAemia.

48 **Conclusions/significance:** In an immunocompetent *P. vivax*-exposed adult population neither
49 sporadic episodes of EBV-DNAemia nor antibody responses to lytic/latent EBV antigens influence
50 the longevity of both strain-specific and strain-transcending DBPII immune responses. Further
51 studies should investigate the role of acute *P. vivax* infection in the activation of EBV replication
52 cycle.

53

54

Introduction

55

56

57

58

59

60

61

62

63

Despite the decline in the global burden of malaria, the progress towards disease control has stagnated in recent years, underscoring the fragility of hard-won gains against malaria [1]. In the case of *Plasmodium vivax*, the most widespread human malaria parasite, plateauing gains and areas with an increased burden highlight the fact that the challenges on the road to malaria elimination are greater than expected [2]. Key discoveries in *P. vivax* biology, including an endosplenic life cycle associated with recurrent chronic infections, pose additional challenges to control and elimination of the parasite [3, 4]. Concurring, the proportion of malaria caused by *P. vivax* has been increasing in co-endemic regions where intensive malaria-control activities have successfully reduced the incidence of *P. falciparum* [5].

64

65

66

67

68

69

70

Although under investigated, *P. vivax* in a scenario of co-infection with viruses commonly circulating in endemic areas can worsen the impact of these diseases on public health, reducing the effectiveness of therapeutic and prophylactic measures [6-11]. With continuing interest in the elimination of *P. vivax* infections, and to the development of an effective vaccine against this parasite, it is necessary to understand how viral infections could impact the immune response induced by potential vaccine candidates. Particularly, because there are only a few *P. vivax* vaccines in clinical trials [12].

71

72

73

74

75

76

77

78

In experimental models, it has been proposed that gamma herpesvirus co-infection with malaria may suppress anti-parasitic humoral immunity [13]. Given that the B-cell compartment is the primary niche for Epstein-Barr virus (EBV), a highly prevalent human gamma herpes virus [14], it is plausible to speculate that the humoral immune response to malaria may be altered during EBV co-infection [13]. In a conceptual case-control study, we provided evidence that antibody levels against major *P. vivax* vaccine candidates were generally lower in malaria-exposed individuals whose viral DNA was persistently detected in the peripheral blood [15]. To further investigate whether EBV could impact the long-term humoral immune response to *P. vivax*, we took advantage of a 14-year follow-

79 up study among individuals exposed to malaria in the Amazon rainforest, focusing on a major blood-
80 stage *P. vivax* vaccine candidate, Duffy binding protein region II (DBPII). The experimental approach
81 included retrospectively analyzing the relationship between the long-term antibody response to
82 DBPII-related antigens in the presence (or absence) of a sustained response to EBV, as determined
83 by the detection of circulating EBV DNA (EBV-DNAemia) or EBV-specific antibody responses to
84 the viral capsid antigen P18 (VCAp18) or EBV nuclear antigen 1 (EBNA1).

85

86 **Material and methods**

87 **Area and study population**

88 The study was carried out in the agricultural settlement of Rio Pardo (1°46'S—1°54'S, 60°
89 22'W—60°10'W), Presidente Figueiredo municipality, Northeast of Amazonas State in the Brazilian
90 Amazon region (Fig 1A). The study site and malaria transmission patterns were described in detail
91 elsewhere [16-18]. In this area, malaria transmission is considered hypo to mesoendemic, and most
92 residents were natives of the Amazon region. Inhabitants of the settlement live on subsistence farming
93 and fishing along the small streams. In the study area, *P. vivax* transmission is predominant over *P.*
94 *falciparum* (Fig 1B) and, since 2010, *P. vivax* has been responsible for all clinical cases of malaria.
95 Malaria transmission decreased drastically in recent years, and as of 2020, no new clinical cases have
96 been reported (Fig 1B).

97

98

99 **Fig 1. Study site and methodological approach according to the temporal distribution of**
100 **malaria cases during the 14-year follow up period (2008-2022).** A) The study site, Rio Pardo
101 settlement (dark green), in the Amazonas State (AM) of the Brazilian Amazon region (malaria-
102 endemic area, light green). B) Monthly-time series of malaria cases in the study area, including
103 periods of high (I and III, light grey) and low (II and IV, dark grey) malaria transmission. Malaria
104 cases (microscopy-positives) were reported by the Brazilian Epidemiological Surveillance System
105 for Malaria (SIVEP-Malaria), with *P. falciparum* (red) and *P. vivax* (blue) cases plotted per month.

106 C) Study design included nine cross-sectional surveys which were carried-out between 2008 and
107 2022. Number of participants enrolled per cross-sectional survey is shown inside the circles above
108 (cross-sectional, n), and number of eligible participants for the current study is inside the circles below
109 (eligible participants, n).

110

111 **Study design and cross-sectional surveys**

112 A population-based open cohort study was initiated in November 2008 and included three
113 cross-sectional surveys carried-out at six-month intervals (baseline, 6 and 12 months) as previously
114 reported [15, 16]. Briefly, (i) interviews were conducted through a structured questionnaire to obtain
115 demographical, epidemiological, and clinical data; (ii) physical examination, including body
116 temperature and spleen/liver size were recorded according to standard clinical protocols; (iii) venous
117 blood was collected from individuals aged five years or older (EDTA, 5 mL); and (iv) examination
118 of Giemsa-stained thick blood smears for the presence of malaria parasites by light microscopy. The
119 geographical location of each dwelling was recorded using a hand-held 12-channel global positioning
120 system (GPS) (Garmin 12XL, Olathe, KS, USA) with a positional accuracy of within 15m. Additional
121 cross-sectional surveys were conducted during the 6th to 14th years of the study, specifically on the
122 following dates: October 6–13, 2014 (6th year), July 6–11, 2015 (7th year), July 18–27, 2017 (9th
123 year), August 4–16, 2019 (11th year), November 28–December 10, 2021 (13th year), and June 6–16,
124 2022 (14th year). During the long-term follow up study, the number of malaria cases fluctuated in the
125 study area, reflecting period of high (I and III) and low (II and IV) malaria transmission (Fig 1B).
126 The current study involved a retrospective approach, and the methodological strategy was designed
127 to include samples from all nine cross-sectional surveys without any new recruitment involved. For
128 this, a database (EpiData software; <http://www.epidata.dk>) contained all individual information was
129 accessed between June 27 of 2022 until July 30, 2024; in the database individual data were not linked
130 to participants' identity as participants were assessed by codes. The non-eligible criteria were (i)
131 refusal to sign the informed consent; (ii) young children (<5 years); (iii) pregnant women; (iv) any
132 other morbidity that could be traced; (iv) individuals who were unable to be recruited during at least

133 two cross-sectional surveys, (iv) individuals whose biological samples (DNA and plasma) were
134 unavailable. A total of 272 individuals were eligible to the current study (Table 1), and they matched
135 the original population for age, sex, malaria exposure [17]. The number of eligible participants
136 selected per cross-sectional surveys was included in the Fig 1C.

137

138 **Table 1. Demographic and epidemiological data of participants at the time of enrollment**

Variable	At enrollment (n=272)
Age, years - Median (IQR ¹)	35 (14-51)
Gender - male: female	1.12:1
Riverine population, n (%)	143 (53%)
Years of malaria exposure - Median (IQR ¹)	29 (15-48)
Years of residence in Rio Pardo - Median (IQR ¹)	19 (12-21)

139 ¹IQR, the Interquartile range

140

141 The ethical and methodological aspects of this study were approved by the Ethical Committee
142 of Research on Human Beings from the René Rachou Institute (Reports No. 007/2006, No. 07/2009,
143 No.12/2010, No. 26/2013 and CAAE 50522115.7.0000.5091), according to the Resolutions of the
144 Brazilian Council on Health (CNS-196/96 and CNS-466/2012). Formal written consent was obtained
145 from all participants, either from the participants themselves, their next of kin, caregivers, or
146 guardians on behalf of child participants. Data are separated from personal identifiers through use of
147 a code.

148 The current study was conducted according to Laboratory biosafety and biosecurity policy
149 guidelines of the Oswaldo Cruz Foundation (FIOCRUZ, Ministry of Health, Brazil
150 (http://www.fiocruz.br/biosseguranca/Bis/manuais/biosseg_manuais.html)).

151

152 **Laboratory diagnosis of malaria**

153 At the time of blood collection, all individuals were submitted to a finger-prick for malaria
154 diagnosis by light microscopy. The Giemsa-stained thick blood smears were prepared and examined
155 by experienced local microscopists, according to the malaria diagnosis guidelines of the Brazilian
156 Ministry of Health. Species-specific real-time PCR assay was conducted essentially as previously
157 described [19]. For this, genomic DNA was extracted from either whole blood samples collected in
158 EDTA, or from dried blood spots on filter paper using the Puregene blood core kit B (Qiagen,
159 Minneapolis, MN, USA) or the QIAmp DNA mini kit (Qiagen), respectively, according to
160 manufacturers' instructions.

161

162 **Recombinant blood stage *P. vivax* proteins and IgG antibodies**

163 **detection**

164 **DBPII-related antigens.** DBPII-Sal1, a recombinant Duffy binding protein region II (DBPII)
165 [20] including amino acids 243–573 of the Sal1 reference strain, and recombinant DEKnull-2 [21],
166 an engineered DBPII immunogen, were expressed as a 39kDa 6xHis fusion protein and properly
167 refolded, as previously described [21, 22]. Conventional Enzyme-Linked Immunoassays (ELISA) for
168 *P. vivax* IgG antibodies were carried out using *P. vivax* blood-stage recombinant proteins as
169 previously described [23], with serum samples at a dilution of 1:100. Recombinant proteins were used
170 at a final concentration of 3 µg/mL. The results were expressed as ELISA reactivity index (RI),
171 calculated as the ratio of the mean optical density (OD at 492 nm) of each sample to the mean OD
172 plus three standard deviations of negative control plasma samples from 30 individuals living in a
173 nonendemic area of malaria (Belo Horizonte, Minas Gerais, Brazil) and who have never been exposed
174 to malaria transmission (unexposed volunteers). Values of RI > 1.0 were considered seropositive.

175

176 **EBV DNA detection by real-time PCR**

177 The PCR primers for this assay were previously selected in the single-copy BALF-5 gene
178 encoding the viral DNA polymerase [24]; the upstream and downstream primer sequences were 50-
179 CGGAAGCCCTCTGGACTTC-30 and 50-CCCTGTTTATCCGATGGAATG-30, respectively,
180 with a fluorogenic probe (50-TGTACACGCACGAGAAATGCGCC-30) with a sequence located
181 between the PCR primers. Detectable DNA from EBV was identified by a real-time PCR assay as
182 previously described [15]. Briefly, DNA from whole blood samples collected in EDTA was extracted
183 using Puregene blood core kit B (Qiagen, Minneapolis, MN, USA). The PCR reaction was performed
184 using a mixture containing 1 µL of DNA, 0.2 µM each primer, 0.1 µM fluorogenic probe, and 5 µL of
185 TaqMan Master Mix (PE Applied Biosystems), and the PCR cycle was performed as follows: 2 min
186 at 50°C, 10 min at 95°C, and 40 cycles of 15 s at 95°C and 1 min at 60°C. The TaqMan Master mix
187 (PE Applied Biosystems) was used for all reactions. For all PCR analyses, water was used as negative
188 control, and DNA samples from individuals with history of mononucleosis were used as positive
189 control. Samples were defined as negative if the CT values exceeded 40 cycles.

190

191 **EBV antigens and serostatus**

192 EBV-specific antibodies were detected using two synthetic peptides covering
193 immunodominant epitopes of the viral capsid antigen P18 (VCAp18 [BFRF3]) and EBV nuclear
194 antigen 1 (EBNA1 [BKRF1]) [25, 26]. Both synthetic peptides were provided by Dr. J. M.
195 Middeldorp (VU University Medical Center, Amsterdam, Netherland). For the assessment of the
196 levels of antibodies against lytic (VCAp18) and latent (EBNA1) EBV antigens, we used synthetic
197 peptide-based ELISA assays as previously described [15]. Briefly, each peptide was used at final
198 concentration of 1 µg/mL with plasma samples diluted 1:100. IgG reactivities were determined using
199 commercial anti-human IgG secondary antibody conjugated to horseradish peroxidase (HRP)
200 (Sigma-Aldrich). For each experiment, plasma samples from subjects with or without a history of
201 mononucleosis infection who had previously been screened for the presence or absence of EBV-
202 specific antibodies were included as positive (EBV seropositive) or negative controls (seronegative),

203 respectively. All OD 450nm values were normalized by subtracting the value for 1:100-diluted EBV
204 negative sera used in duplicate in each ELISA run. ELISA's cutoffs were previously established as
205 [15]: (i) 0.38 for VCA IgG (82% sensitivity; 83% specificity), (ii) 0.20 for EBNA1 IgG (75%
206 sensitivity; 100% specificity).

207

208 **Statistical analysis**

209 A database was created using EpiData software (<http://www.epidata.dk>). The graphics and the
210 statistical analyses were performed using GraphPad Prism version 9.5.0 - GraphPad Software (La
211 Jolla, California, USA) and Stata software version 12.0 - Stata Corp (College Station, Texas, USA).

212 The Shapiro-Wilk test was performed to evaluate normality of variables. For the statistical
213 analyses, the antibody response was defined either as a continuous variable (the levels of antibody
214 response) or as a binary categorical variable (proportion of seropositive individuals); differences
215 between medians were tested by Mann-Whitney test or Kruskal-Wallis as appropriate; differences in
216 proportions were evaluated by chi-square test or Fisher's exact test, as appropriated. Spearman's
217 correlation matrices were used to nonparametric measure of rank correlation. For statistical purposes,
218 the amount of time participants contributed to this open cohort study was estimated in persons-month,
219 with the sum of total time contributed by all subjects (months) used to calculate the incidence densities
220 of the events of interest. Kaplan-Meier curves of survival were used to estimate the probability of
221 remaining seropositive for *P. vivax* as function of the profile of EBV infection (serostatus and EBV-
222 DNAemia). For that, the average duration of seropositivity over the 14th-years period was defined
223 when 50% of responders lost their antibodies. Logistical regression models were constructed to
224 investigate *P. vivax* antibodies clearance (rates adjusted per 100 persons-month) according to the
225 profile of EBV infections, with the relative risk (95% CI) of losing *P. vivax* antibody response
226 estimated according to the first seronegative episode. For all analyses, an alpha error of 0.05 was
227 considered.

228

229 Results

230 *Plasmodium vivax* infections and circulating EBV DNA during the 231 follow-up

232 In this long-term follow-up study, malaria blood-stage infections varied significantly, but with
233 a predominance of sub-patent (PCR-positive) over patent (microscopy-positive) infections (Fig 2A).
234 All malaria infections detected by microscopy were identified as *P. vivax* mono-infections, with all
235 but one (11 of 12) detected during the first year of the follow-up (Period I). Submicroscopic malaria
236 infections were also predominant in the first year of follow-up, with frequency ranging from 9 to 22%
237 (Fig 2A). In subsequent cross-sectional surveys, lower frequencies of PCR-positive samples were
238 detected (3-4% and 4-6% during periods II and III, respectively), with no cases of malaria detected
239 at the end of the study (IV) (Fig 2A). Considering all malaria cases detected during the study (n=113),
240 there was a predominance of *P. vivax* mono-infection, accounting for 76% (n=86) of the total malaria
241 infections, compared to 12% (n=14) of *P. falciparum*, and 12% (n=13) of mixed infections by these
242 two *Plasmodium* species (S1 Fig).

243

244

245 **Fig 2. Malaria infections and EBV-DNAemia during the follow-up-period.** A) Frequencies of
246 malaria positive samples detected by microscopy (red bars) or species-specific PCR-based protocol
247 (light pink bars) and B) Frequencies of circulating EBV DNA (EBV-DNAemia) detected by virus-
248 specific PCR-based protocol (lilac bars). Each bar represents a cross-sectional survey, with dashed
249 lines representing the periods of high (I and III) and low (II and IV) malaria transmission, as described
250 in the legend of Fig 1B. C) A comparison between the proportion of malaria infections and EBV-
251 DNAemia over time. D) Representation of a Spearman correlation coefficient, in which each dot
252 represents the intersection between the frequency of malaria infections and detectable EBV-
253 DNAemia by cross-sectional survey. Numbers at the bottom of each bar (A, B) represent the number
254 of participants per survey (n survey) and the total number of participants per period (n period).

255

256

257 On the first period of follow-up, the proportion of individuals who had circulating viral DNA
258 (EBV-DNAemia) ranged from 28 to 37% (Fig 2B). After that, EBV-DNAemia episodes decreased
259 substantially (Fig 1C), except for the beginning of period III (9-years of the follow-up), a time of high
260 malaria transmission in the study area (Fig 1B). It is noteworthy that the lowest frequencies of EBV
261 DNA positivity were found during the II (11 to 14%) and IV (2 to 3%) periods of the study (Fig 2B),
262 corresponding to periods of lowest malaria transmission in the area (Fig 1B).

263 In the study population, episodes of EBV-DNAemia were transiently detected in most individuals,
264 which excluded the possibility of categorizing individuals as having long-term persistent EBV-
265 DNAemia. Only seven out of 272 individuals had long-term EBV-DNAemia (positive samples from
266 baseline to at least the II period); four of them (343, 272, 179, 276) had malaria infections at some
267 point in the study (S1 Fig). During the follow-up, a strong positive association was detected between
268 malaria infections and EBV-DNAemia ($r = 0.7269$; $p = 0.0035$) (Fig 2D). Similar results were found
269 when only *P. vivax* mono-infections were analyzed ($r = 0.6522$; $p = 0.0085$, data not shown).

270

271 **Episodes of EBV-DNAemia and longevity of naturally acquired antibodies** 272 **against *Plasmodium vivax***

273 In the study population, the profile of antibody response to DBPII-based antigens decreased
274 over time, with a more prolonged response to DEKnull-2 in period II (low transmission) as compared
275 with DBPII (Sal1) (S2 Fig); at the same time, the levels of anti-DBPII antibodies were lower than
276 anti-DEKnull-2. To further evaluate whether episodes of EBV-DNAemia (none, one, or multiple)
277 could influence the persistence of strain-specific (Sal1) or strain-transcending (DEKnull-2) DBPII
278 antibody repertoire, Kaplan-Meier's survival curves were constructed. In general, the results
279 demonstrated that the persistence of antibody responses to either DBPII-Sal1 or DEKnull-2 was
280 similar between individuals who had none, one or multiple episodes of EBV-DNAemia (Fig 3). More
281 specifically, considering the subgroups of DBPII-Sal1 responders, the average time in which 50% of
282 responders lost their antibody response ranges from 156 to 168 months (S1 Table). The average time

283 for DEKnull-2 subgroups to lose antibody response was estimated as 168 months. In addition,
284 antibody clearance rates (adjusted per 100 persons-month) were similar between subgroups of DBPPII-
285 Sal1 (0.48 to 0.57) and DEKnull-2 (0.27 to 0.46) (S1Table).

286

287

288 **Fig 3. Maintenance of *P. vivax* antibody response over time according to episodes of EBV-**
289 **DNAemia (none, one or multiple).** The Kaplan-Meier's curves show the cumulative survival
290 probabilities of maintaining an antibody response against (A) DBPPII-Sal1 and (B) DEKnull-2 among
291 responders who were stratified according to the presence or absence of detectable EBV-DNAemia.
292 Each line represents the survival probability of antibodies over time among (i) individuals who did
293 not have detectable EBV DNA episodes during the 14-years follow-up (dashed line); (ii) individuals
294 who had a single EBV DNA episode (lilac line); and (iii) individuals who had more than one
295 (multiple) EBV DNA episodes (purple line). Number of individuals and contribution time
296 (persons/month) of each group were described in S1 Table.

297

298

299 **EBV serostatus and long-term *P. vivax* antibody response**

300 To evaluate the EBV serological status of the study population, the presence and levels of IgG
301 antibodies to EBV antigens associated with lytic (VCAp18) or latent (EBNA1) phases of infection
302 were investigated. As expected for a predominantly adult population, responders' frequencies were
303 high (> 60%) for both viral proteins and it remained relatively stable until the end of the follow-up
304 (S3 Fig). In general, IgG-VCAp18 levels were higher compared to IgG-EBNA1.

305 Spearman correlation analyses were performed to investigate whether the levels of EBV
306 antibodies correlated with *P. vivax*-specific antibodies. Regardless of the malaria transmission period
307 (high, I/III or low, II/IV), the results demonstrated that anti-EBV antibodies (VCAp18 and EBNA1)
308 did not correlate with anti-*P. vivax* antibodies (DBPPII-Sal1 and DEKnull-2) (Fig 4). Despite of that,
309 the antibody responses to DBPPII-Sal1 and DEKnull-2 were strongly correlated ($r=0.71$ to 0.82 ;

310 $p < 0,0001$ for all periods). In general, antibodies to VCAp18 and EBNA1 presented a weak but
311 positive correlation (except for period IV).

312

313

314 **Fig 4. Correlation between IgG antibody levels to *Plasmodium vivax* and EBV virus over time.**

315 Clustering was based on the Spearman correlation coefficient for assays measuring specific EBV
316 antibodies (VCAp18 and EBNA1) and specific *P. vivax* antibodies (DBP11-Sal1 and DEKnull-2).
317 Matrix heatmaps were illustrated for each study period (I, II, III and IV). Positive correlations are
318 shown in blue and negative correlations are shown in red. The asterisks represent statistically
319 significant differences (* $p < 0,05$; ** $p < 0,01$; *** $p < 0,001$).

320

321 To determine whether EBV serological status could influence the long-term antibody response
322 to DBP11-based antigens, IgG-VCAp18 and IgG-EBNA1 carriers were stratified as persistent (PR),
323 temporary (TR) or non-responder (NR). Survival curves of antibodies allowed to demonstrate that
324 the decline over time of responders to both DBP11-based antigens were similar between PR, TR or
325 NR for either VCAp18 (Figs 5A and 5B) or EBNA1 (Figs 5C and 5D). Despite that, antibody
326 clearance rates for DEKnull-2 responders (0.26 to 0.36 per 100 persons-month) declined more slowly
327 than from DBP11-Sal1 (0.45 to 0.53 per 100 persons-months) (S1 Table).

328

329

330 **Fig 5. Maintenance of *P. vivax* antibody response over time according to EBV serostatus**

331 **(persistent-PR, temporary-TR, and non-responder-NR).** The Kaplan-Meier's curves show the
332 cumulative survival probabilities of maintaining an antibody response against (A, C) DBP11-Sal1 and
333 (B, D) DEKnull-2 among responders who were stratified according to the response profile for
334 VCAp18 or EBNA1. Each line represents the survival probability of antibodies over time among (i)
335 persistent responders, who had IgG response over the 14 years of follow-up (A and B - brown line;
336 C and D - red line); (ii) temporary responders, who had variable IgG response during cross-sectional
337 surveys (A and B - yellow line; C and D - pink line); and (iii) non-responders, who had no IgG
338 response detected any time in the study (dashed line). Number of individuals and contribution time
339 (person/month) of each group are described in S1 Table.

340

341

342

Discussion

343

344

345

346

347

This 14-year follow-up study provided for the first time an exploratory description of the long-term *P. vivax* humoral immune response in the context of EBV co-infection. For this, immunogens based on the DBPII were used, including a common DBPII variant (Sal1) circulating in the Amazon area [16] and the engineered DEKnull-2 that has been associated with stronger, broader, and long-term neutralizing antibody response in the study area [18, 21].

348

349

350

351

352

353

354

355

356

357

358

359

360

361

362

363

364

365

366

In the study population, it was essential to identify viral DNA carriers, as circulating EBV DNA could be an indicator of active EBV replication [27]. In this *P. vivax* semi-immune adults, the detection of EBV DNA in peripheral blood decreased significantly over the years, precluding any attempts to classify individuals as long-term DNAemia carriers. The detection of viral DNA of most carriers did not persist over the first few months of the study, which may reflect that once infected by EBV early on, the subjects - in general - have good immunological control over EBV (reflected here by stable antibody responses to VCAp18 and EBNA1). Concomitantly, acute malaria infection (presence of parasites and/or *P. vivax* DNA in the peripheral blood) also decreased over time, which led to a positive association between the presence of acute *P. vivax* infection and EBV-DNAemia. At this point, it is not possible to determine whether this potential association represents a spurious correlation or may reflect an influence of concurrent *P. vivax* parasite in the activation of EBV replication cycle, as it has been proposed in the case of the more lethal malaria parasite, *P. falciparum* [28]. In Indonesia, where *P. falciparum* and *P. vivax* species are co-endemic at substantial proportions, it was demonstrated that EBV DNA levels were significantly elevated in both *P. falciparum* and *P. vivax* mono-infections as compared with uninfected controls, suggesting cytokine-mediated imbalance of immune control of EBV during active malaria [29]. Although the study from Indonesia supports our findings, the influence of concomitant transmission of *P. falciparum* cannot be ruled out in that area, especially because PCR-based protocols were not used to investigate submicroscopic infections. In the case of *P. falciparum* – whose relationship with EBV infections is

367 involved in the genesis of endemic Burkitt lymphoma (eBL) [30] – it was demonstrated that repeated
368 malaria infections were associated with increased proliferation and transformation of EBV-infected
369 cells [31]. Also, the clearance of circulating EBV after *P. falciparum* antimalarial treatment suggests
370 a direct relationship between active malaria infection and viral reactivation [28]. Of note, however,
371 the aggressive eBL childhood cancer seems to be exclusively linked to *P. falciparum* exposure, but
372 not to other human malaria parasites [32]. Because of this, the direct relationship between active *P.*
373 *vivax* infection and viral reactivation needs further confirmation.

374 We further analyzed whether one or more episodes of viral DNAemia, at any time of the long-
375 term follow-up period, could impact the persistence of *P. vivax*-specific antibody responses.
376 Regardless of viral DNA carriers' status, maintenance over time of antibody responses to either
377 DBPII-Sal1 or DEKnull-2 was similar between individuals who had no, one or multiple episodes of
378 EBV-DNAemia; for example, the average time for the loss of antibody response was 168 months for
379 DEKnull-2 and from 156 to 168 months for DBPII-Sal1. In our previous case-control study, lower
380 IgG reactivity to *P. vivax* antigens was detected in the group of persistent EBV DNA carriers (cases)
381 compared to age-matched controls (no circulant viral DNA) [15]. Unfortunately, differences in the
382 study design and the absence of a subset of persistent viral DNA carriers in the current study preclude
383 a direct comparison with the previous result. Despite this, it must be noted that, in the present study,
384 the frequencies of both malaria infection and circulating viral DNA progressively decreased over
385 time, making it reasonable to speculate that this may have masked a possible influence of active EBV
386 replication on the long-term *P. vivax* immune response. To properly address this topic, it would be of
387 relevance to examine *P. vivax*-exposed children, as typically the EBV primary infection occurs during
388 childhood, with an early EBV seroconversion in Latin American populations associated with low
389 socioeconomic status [33].

390 To address whether EBV serostatus could influence acquired *P. vivax* antibody responses,
391 individuals were further categorized as persistent (PR), temporary (TR), or non-responder (NR) for
392 lytic (VCAp18) or latent (EBNA1) viral antigens. Although antibody clearance rates were faster for

393 Sal-1 (0.49 to 0.55/100 persons-month) than for DEKnull-2 (0.27 to 0.37/100 persons-month), the
394 results of the 14-year follow-up study demonstrated that probabilities of maintaining antibodies to
395 DBP-II-based antigens were similar for IgG-VCAp18 or IgG-EBNA1 subgroups (PR, TR, or NR). It
396 is noteworthy that no association (positive or negative) was detected between the levels of anti-EBV
397 antibodies and anti-*P. vivax* antibodies. Together, these results suggested that sustained EBV antibody
398 responses to lytic/latent viral antigens did not impair the long-term antibody response to DBP-II-
399 related antigens, including both strain-specific (Sal1) and strain-transcending (DEKnull-2) immune
400 responses.

401 Our study has limitations that should be considered when interpreting the results. First, a
402 progressive decrease in malaria transmission over time precluded more robust statistical analysis to
403 confirm the association between acute *P. vivax* infection and EBV-DNAemia. To explore whether
404 concurrent *P. vivax* infection may result in EBV lytic replication, perhaps it should be more
405 appropriate to evaluate the levels of viral DNA methylation, as unmethylated viral DNA occurs when
406 EBV switches to the lytic phase and in virions [34]; nevertheless, the investigation of this topic was
407 outside of the scope of the current study. Secondly, the EBV serostatus of the study population was
408 constrained to the profile of IgG antibodies to VCAp18 (lytic) and EBNA1 (latent) antigens. Due to
409 the limitations of plasma samples available over the 14 years of study, we chose the lytic antigen
410 VCAp18, because from a panel of synthetic peptides targeting the most frequent EBV lytic antigens
411 (i.e., IgG/IgM to VCAp18, IgM to ZEBRA and IgM EAd-p45/52), only the levels of anti-IgG
412 VCAp18 showed a positive association with EBV DNA copies in the peripheral blood of Amazonian
413 adults [15]. Notwithstanding these limitations, we are confident that, in this immunocompetent adult
414 population, the assessment of VCAp18-IgG and EBNA1-IgG represented the best combination for
415 long-term sero-detection of anti-EBV antibodies. Finally, as EBV latency establishment is in B cells
416 [35], it should be of interest to investigate whether *P. vivax*-specific memory B cells are compromised
417 during EBV reactivation.

418 In conclusion, in this 14-year follow-up study we demonstrate that, in an immunocompetent
419 *P. vivax*-exposed adult population, neither sporadic episodes of circulating EBV DNA nor a sustained
420 antibody response to lytic/latent EBV antigens influence the longevity of both strain-specific and
421 strain-transcending DBP110 immune responses. Future studies should investigate a possible association
422 between the presence of acute *P. vivax* infection and EBV-DNAemia.

423

424 Acknowledgments

425 We thank the inhabitants of Rio Pardo for enthusiastic participation in the study; the local
426 malaria control team in Presidente Figueiredo for their logistic support; the Instituto Leônidas &
427 Maria Deane – Fiocruz-Amazônia and Fundação de Medicina Tropical Dr. Heitor Vieira Dourado for
428 local support, and the Instituto René Rachou – Fiocruz-Minas, Belo Horizonte, MG, for overall
429 support. LHC, FSK, and CFJF are research fellows from CNPq. Scholarship was sponsored by
430 FAPEMIG (BAR), CAPES (LFFG and SLA) and the Fiocruz Innovation Support Initiative/Inova-
431 Fiocruz (MFAN). We also thank the financial support from the Program for Institutional
432 Internationalization of the Higher Education Institutions and Research Institutions of Brazil-CAPES-
433 PrInt from FIOCRUZ. The authors thank the Network Technological Platforms from FIOCRUZ, for
434 the support and financing of the services provided by Digital and Real-Time PCR Facility from René
435 Rachou Institute - FIOCRUZ MG - RPT09D.

436

437 References

438

439 1. Weiss DJ, Lucas TCD, Nguyen M, Nandi AK, Bisanzio D, Battle KE, et al. Mapping the
440 global prevalence, incidence, and mortality of *Plasmodium falciparum*, 2000-17: a spatial and
441 temporal modelling study. *Lancet*. 2019;394(10195):322-31. Epub 20190619. doi: 10.1016/S0140-
442 6736(19)31097-9. PubMed PMID: 31229234; PubMed Central PMCID: PMC6675740.

- 443 2. Battle KE, Lucas TCD, Nguyen M, Howes RE, Nandi AK, Twohig KA, et al. Mapping the
444 global endemicity and clinical burden of *Plasmodium vivax*, 2000-17: a spatial and temporal
445 modelling study. *Lancet*. 2019;394(10195):332-43. Epub 20190619. doi: 10.1016/S0140-
446 6736(19)31096-7. PubMed PMID: 31229233; PubMed Central PMCID: PMC6675736.
- 447 3. Fernandez-Becerra C, Aparici-Herraiz I, Del Portillo HA. Cryptic erythrocytic infections in
448 *Plasmodium vivax*, another challenge to its elimination. *Parasitol Int*. 2022;87:102527. Epub
449 20211209. doi: 10.1016/j.parint.2021.102527. PubMed PMID: 34896615.
- 450 4. Anstey NM, Tham WH, Shanks GD, Poespoprodjo JR, Russell BM, Kho S. The biology and
451 pathogenesis of vivax malaria. *Trends Parasitol*. 2024;40(7):573-90. Epub 20240515. doi:
452 10.1016/j.pt.2024.04.015. PubMed PMID: 38749866.
- 453 5. Price RN, Commons RJ, Battle KE, Thriemer K, Mendis K. *Plasmodium vivax* in the Era of
454 the Shrinking *P. falciparum* Map. *Trends Parasitol*. 2020;36(6):560-70. Epub 20200422. doi:
455 10.1016/j.pt.2020.03.009. PubMed PMID: 32407682; PubMed Central PMCID: PMC67297627.
- 456 6. Mendonca VR, Andrade BB, Souza LC, Magalhaes BM, Mourao MP, Lacerda MV, et al.
457 Unravelling the patterns of host immune responses in *Plasmodium vivax* malaria and dengue co-
458 infection. *Malar J*. 2015;14:315. Epub 20150814. doi: 10.1186/s12936-015-0835-8. PubMed PMID:
459 26271921; PubMed Central PMCID: PMC4536664.
- 460 7. Rattanapunya S, Kuesap J, Chaijaroenkul W, Rueangweerayut R, Na-Bangchang K.
461 Prevalence of malaria and HIV coinfection and influence of HIV infection on malaria disease severity
462 in population residing in malaria endemic area along the Thai-Myanmar border. *Acta Trop*.
463 2015;145:55-60. Epub 20150226. doi: 10.1016/j.actatropica.2015.02.001. PubMed PMID:
464 25728746.
- 465 8. Hussein R, Guedes M, Ibraheim N, Ali MM, El-Tahir A, Allam N, et al. Impact of COVID-
466 19 and malaria coinfection on clinical outcomes: a retrospective cohort study. *Clin Microbiol Infect*.
467 2022;28(8):1152 e1- e6. Epub 20220331. doi: 10.1016/j.cmi.2022.03.028. PubMed PMID:
468 35367364; PubMed Central PMCID: PMC68968160.
- 469 9. Forero-Pena DA, Carrion-Nessi FS, Omana-Avila OD, Mendoza-Millan DL, Romero SR,
470 Escalante-Perez IA, et al. *Plasmodium vivax* and SARS-CoV-2 co-infection in Venezuela: A case
471 series from the malaria hotspot in Latin America. *Travel Med Infect Dis*. 2022;50:102460. Epub
472 20220914. doi: 10.1016/j.tmaid.2022.102460. PubMed PMID: 36115526; PubMed Central PMCID:
473 PMC69473143.

- 474 10. Guerra CVC, da Silva BM, Muller P, Baia-da-Silva DC, Moura MAS, Araujo JDA, et al. HIV
475 infection increases the risk of acquiring Plasmodium vivax malaria: a 4-year cohort study in the
476 Brazilian Amazon HIV and risk of vivax malaria. *Sci Rep.* 2022;12(1):9076. Epub 20220531. doi:
477 10.1038/s41598-022-13256-4. PubMed PMID: 35641592; PubMed Central PMCID:
478 PMCPMC9156757.
- 479 11. Forero-Pena DA, Carrion-Nessi FS, Lopez-Perez M, Sandoval-de Mora M, Amaya ID,
480 Gamardo AF, et al. Seroprevalence of viral and bacterial pathogens among malaria patients in an
481 endemic area of southern Venezuela. *Infect Dis Poverty.* 2023;12(1):33. Epub 20230410. doi:
482 10.1186/s40249-023-01089-w. PubMed PMID: 37038195; PubMed Central PMCID:
483 PMCPMC10084699.
- 484 12. da Veiga GTS, Moriggi MR, Vettorazzi JF, Muller-Santos M, Albrecht L. Plasmodium vivax
485 vaccine: What is the best way to go? *Front Immunol.* 2022;13:910236. Epub 20230116. doi:
486 10.3389/fimmu.2022.910236. PubMed PMID: 36726991; PubMed Central PMCID:
487 PMCPMC9885200.
- 488 13. Matar CG, Jacobs NT, Speck SH, Lamb TJ, Moormann AM. Does EBV alter the pathogenesis
489 of malaria? *Parasite Immunol.* 2015;37(9):433-45. Epub 2015/06/30. doi: 10.1111/pim.12212.
490 PubMed PMID: 26121587.
- 491 14. Thorley-Lawson DA. Epstein-Barr virus: exploiting the immune system. *Nat Rev Immunol.*
492 2001;1(1):75-82. doi: 10.1038/35095584. PubMed PMID: 11905817.
- 493 15. Dias MHF, Guimaraes LFF, Barcelos MG, Moreira EUM, do Nascimento MFA, de Souza
494 TN, et al. Impact of Epstein-Barr virus co-infection on natural acquired Plasmodium vivax antibody
495 response. *PLoS Negl Trop Dis.* 2022;16(8):e0010305. Epub 20220803. doi:
496 10.1371/journal.pntd.0010305. PubMed PMID: 35921373; PubMed Central PMCID:
497 PMCPMC9377613.
- 498 16. Kano FS, Sanchez BA, Sousa TN, Tang ML, Saliba J, Oliveira FM, et al. Plasmodium vivax
499 Duffy binding protein: baseline antibody responses and parasite polymorphisms in a well-
500 consolidated settlement of the Amazon Region. *Trop Med Int Health.* 2012;17(8):989-1000. Epub
501 2012/05/31. doi: 10.1111/j.1365-3156.2012.03016.x. PubMed PMID: 22643072.
- 502 17. Kano FS, Souza-Silva FA, Torres LM, Lima BA, Sousa TN, Alves JR, et al. The Presence,
503 Persistence and Functional Properties of Plasmodium vivax Duffy Binding Protein II Antibodies Are
504 Influenced by HLA Class II Allelic Variants. *PLoS Negl Trop Dis.* 2016;10(12):e0005177. Epub

- 505 2016/12/14. doi: 10.1371/journal.pntd.0005177. PubMed PMID: 27959918; PubMed Central
506 PMCID: PMCPMC5154503.
- 507 18. Medeiros CMP, Moreira EUM, Pires CV, Torres LM, Guimaraes LFF, Alves JRS, et al.
508 Dynamics of IgM and IgG responses to the next generation of engineered Duffy binding protein II
509 immunogen: Strain-specific and strain-transcending immune responses over a nine-year period. PLoS
510 One. 2020;15(5):e0232786. Epub 2020/05/08. doi: 10.1371/journal.pone.0232786. PubMed PMID:
511 32379804; PubMed Central PMCID: PMCPMC7205269.
- 512 19. Amaral LC, Robortella DR, Guimaraes LFF, Limongi JE, Fontes CJF, Pereira DB, et al.
513 Ribosomal and non-ribosomal PCR targets for the detection of low-density and mixed malaria
514 infections. Malar J. 2019;18(1):154. Epub 2019/05/02. doi: 10.1186/s12936-019-2781-3. PubMed
515 PMID: 31039781; PubMed Central PMCID: PMCPMC6492410.
- 516 20. Fang XD, Kaslow DC, Adams JH, Miller LH. Cloning of the Plasmodium vivax Duffy
517 receptor. Mol Biochem Parasitol. 1991;44(1):125-32. Epub 1991/01/01. doi: 10.1016/0166-
518 6851(91)90228-x. PubMed PMID: 1849231.
- 519 21. Ntumngia FB, Pires CV, Barnes SJ, George MT, Thomson-Luque R, Kano FS, et al. An
520 engineered vaccine of the Plasmodium vivax Duffy binding protein enhances induction of broadly
521 neutralizing antibodies. Sci Rep. 2017;7(1):13779. Epub 2017/10/25. doi: 10.1038/s41598-017-
522 13891-2. PubMed PMID: 29062081; PubMed Central PMCID: PMCPMC5653783.
- 523 22. Ntumngia FB, Adams JH. Design and immunogenicity of a novel synthetic antigen based on
524 the ligand domain of the Plasmodium vivax duffy binding protein. Clin Vaccine Immunol.
525 2012;19(1):30-6. Epub 2011/11/26. doi: 10.1128/CVI.05466-11. PubMed PMID: 22116684;
526 PubMed Central PMCID: PMCPMC3255949.
- 527 23. Pires CV, Alves JRS, Lima BAS, Paula RB, Costa HL, Torres LM, et al. Blood-stage
528 Plasmodium vivax antibody dynamics in a low transmission setting: A nine year follow-up study in
529 the Amazon region. PLoS One. 2018;13(11):e0207244. Epub 2018/11/13. doi:
530 10.1371/journal.pone.0207244. PubMed PMID: 30419071; PubMed Central PMCID:
531 PMCPMC6231651.
- 532 24. Kimura H, Morita M, Yabuta Y, Kuzushima K, Kato K, Kojima S, et al. Quantitative analysis
533 of Epstein-Barr virus load by using a real-time PCR assay. J Clin Microbiol. 1999;37(1):132-6. Epub
534 1998/12/17. doi: 10.1128/JCM.37.1.132-136.1999. PubMed PMID: 9854077; PubMed Central
535 PMCID: PMCPMC84187.

- 536 25. Fachiroh J, Paramita DK, Hariwiyanto B, Harijadi A, Dahlia HL, Indrasari SR, et al. Single-
537 assay combination of Epstein-Barr Virus (EBV) EBNA1- and viral capsid antigen-p18-derived
538 synthetic peptides for measuring anti-EBV immunoglobulin G (IgG) and IgA antibody levels in sera
539 from nasopharyngeal carcinoma patients: options for field screening. *J Clin Microbiol.*
540 2006;44(4):1459-67. Epub 2006/04/07. doi: 10.1128/JCM.44.4.1459-1467.2006. PubMed PMID:
541 16597877; PubMed Central PMCID: PMCPMC1448657.
- 542 26. Piriou E, Kimmel R, Chelimo K, Middeldorp JM, Odada PS, Ploutz-Snyder R, et al.
543 Serological evidence for long-term Epstein-Barr virus reactivation in children living in a holoendemic
544 malaria region of Kenya. *J Med Virol.* 2009;81(6):1088-93. Epub 2009/04/22. doi:
545 10.1002/jmv.21485. PubMed PMID: 19382256; PubMed Central PMCID: PMCPMC3134942.
- 546 27. Rasti N, Falk KI, Donati D, Gyan BA, Goka BQ, Troye-Blomberg M, et al. Circulating
547 epstein-barr virus in children living in malaria-endemic areas. *Scand J Immunol.* 2005;61(5):461-5.
548 doi: 10.1111/j.1365-3083.2005.01589.x. PubMed PMID: 15882438.
- 549 28. Donati D, Espmark E, Kironde F, Mbidde EK, Kamya M, Lundkvist A, et al. Clearance of
550 circulating Epstein-Barr virus DNA in children with acute malaria after antimalaria treatment. *J Infect*
551 *Dis.* 2006;193(7):971-7. Epub 20060301. doi: 10.1086/500839. PubMed PMID: 16518759.
- 552 29. Budiningsih I, Dachlan YP, Hadi U, Middeldorp JM. Quantitative cytokine level of TNF-
553 alpha, IFN-gamma, IL-10, TGF-beta and circulating Epstein-Barr virus DNA load in individuals with
554 acute Malaria due to *P. falciparum* or *P. vivax* or double infection in a Malaria endemic region in
555 Indonesia. *PLoS One.* 2021;16(12):e0261923. Epub 20211228. doi: 10.1371/journal.pone.0261923.
556 PubMed PMID: 34962938; PubMed Central PMCID: PMCPMC8714090.
- 557 30. Moormann AM, Bailey JA. Malaria - how this parasitic infection aids and abets EBV-
558 associated Burkitt lymphomagenesis. *Curr Opin Virol.* 2016;20:78-84. Epub 2016/10/01. doi:
559 10.1016/j.coviro.2016.09.006. PubMed PMID: 27689909; PubMed Central PMCID:
560 PMCPMC5102755.
- 561 31. Moormann AM, Chelimo K, Sumba OP, Lutzke ML, Ploutz-Snyder R, Newton D, et al.
562 Exposure to holoendemic malaria results in elevated Epstein-Barr virus loads in children. *J Infect*
563 *Dis.* 2005;191(8):1233-8. Epub 2005/03/19. doi: 10.1086/428910. PubMed PMID: 15776368.
- 564 32. Quintana MDP, Smith-Togobo C, Moormann A, Hviid L. Endemic Burkitt lymphoma - an
565 aggressive childhood cancer linked to *Plasmodium falciparum* exposure, but not to exposure to other

566 malaria parasites. *APMIS*. 2020;128(2):129-35. Epub 2020/03/07. doi: 10.1111/apm.13018. PubMed
567 PMID: 32133709.

568 33. Chabay P, Lens D, Hassan R, Rodriguez Pinilla SM, Valvert Gamboa F, Rivera I, et al.
569 Lymphotropic Viruses EBV, KSHV and HTLV in Latin America: Epidemiology and Associated
570 Malignancies. A Literature-Based Study by the RIAL-CYTED. *Cancers (Basel)*. 2020;12(8). Epub
571 20200804. doi: 10.3390/cancers12082166. PubMed PMID: 32759793; PubMed Central PMCID:
572 PMCPMC7464376.

573 34. Guo R, Gewurz BE. Epigenetic control of the Epstein-Barr lifecycle. *Curr Opin Virol*.
574 2022;52:78-88. Epub 20211208. doi: 10.1016/j.coviro.2021.11.013. PubMed PMID: 34891084;
575 PubMed Central PMCID: PMCPMC9112224.

576 35. Thorley-Lawson DA, Hawkins JB, Tracy SI, Shapiro M. The pathogenesis of Epstein-Barr
577 virus persistent infection. *Curr Opin Virol*. 2013;3(3):227-32. Epub 20130515. doi:
578 10.1016/j.coviro.2013.04.005. PubMed PMID: 23683686; PubMed Central PMCID:
579 PMCPMC3789532.

580

581

582 **Supporting information**

583 **S1 Fig. Malaria infections in 77 eligible participants screened for the presence of circulating**
584 **EBV DNA during the follow-up study.** *P. vivax* infections are represented in red, *P. falciparum* in
585 yellow, mixed infections (*P. falciparum* plus *P. vivax*) in orange, and uninfected samples in white.
586 During the cross-sectional surveys, the presence or absence of episodes of EBV-DNAemia are
587 represented in purple and white circles, respectively.

588

589 **S2 Fig. Dynamics of naturally acquired antibody responses to *P. vivax* DBPII-based antigens**
590 **during the follow-up study.** (A) Frequencies and (B) levels of antibodies against DBPII-Sall and
591 DEKnull-2, as determined by conventional serological assays (ELISA). Results were expressed as
592 reactivity index (RI), with RI >1.0 considered as an ELISA-positive response. In B, black lines inside

593 the violin plot represent the median RI, with light green and blue lines representing the interquartile
594 range.

595

596 **S3 Fig. Dynamic of antibody responses to EBV peptides during the 14 years follow-up study.**

597 (A) Frequencies and (B) levels of antibodies against VCAp18 and EBNA1, as determined by
598 conventional serological assays (ELISA). Results were expressed as the optical density at 450 nm
599 (OD450), with OD >0.37 and >0.20 considered as ELISA-positive responses to VCAp18 and
600 EBNA1, respectively. In B, black lines inside the violin plot represent the median RI, with yellow
601 and pink lines representing the interquartile range.

602

603 **S1 Table. DBP-II-related antibody responses over time based on the presence or absence of**
604 **EBV-DNAemia.**

605

606 **S2 Table. DBP-II-related antibody responses over time based on the antibody response profile**
607 **against EBV peptides**

608

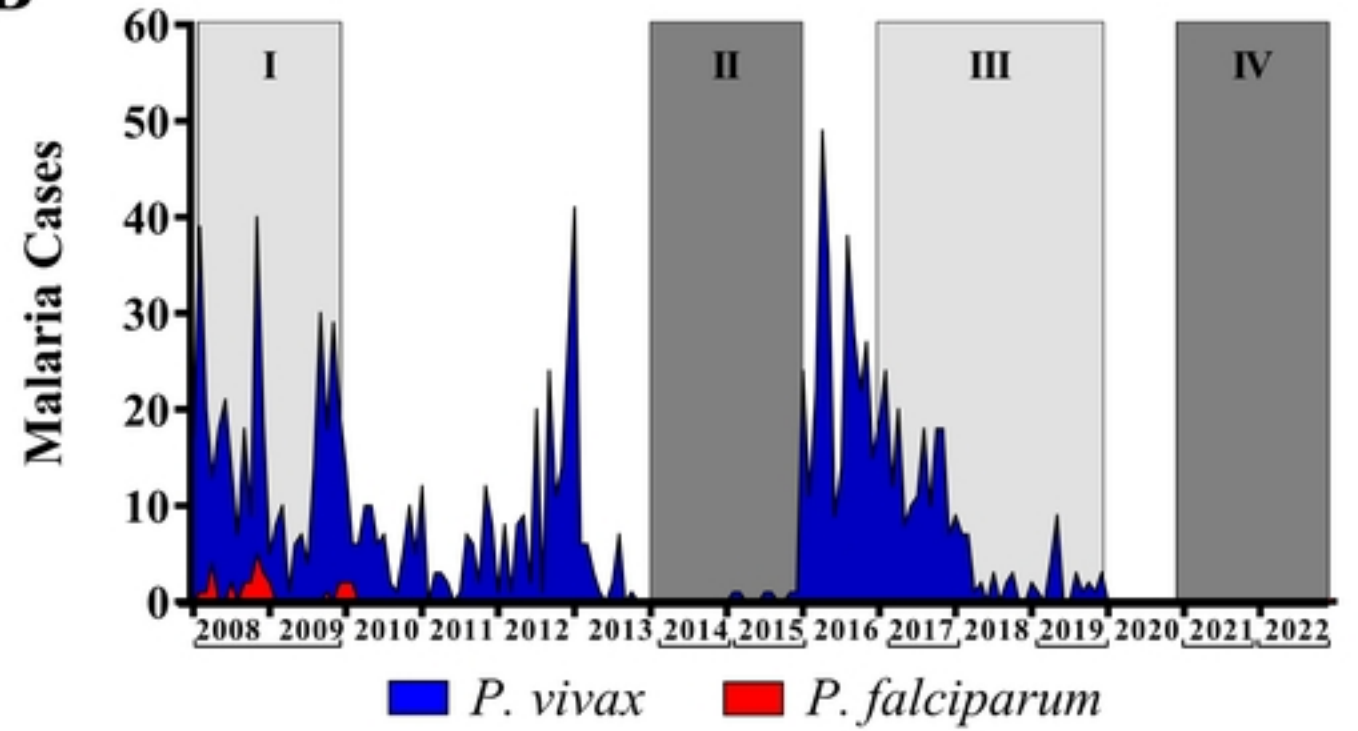
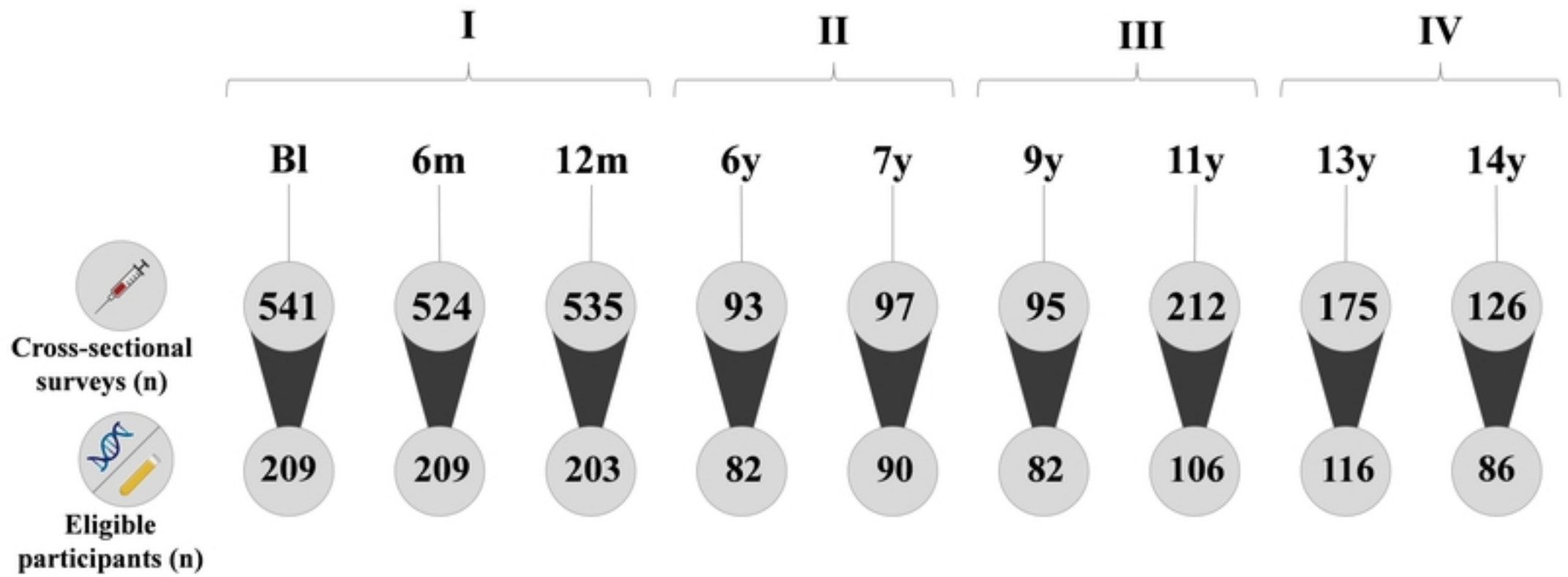
A**B****C**

Figure 1

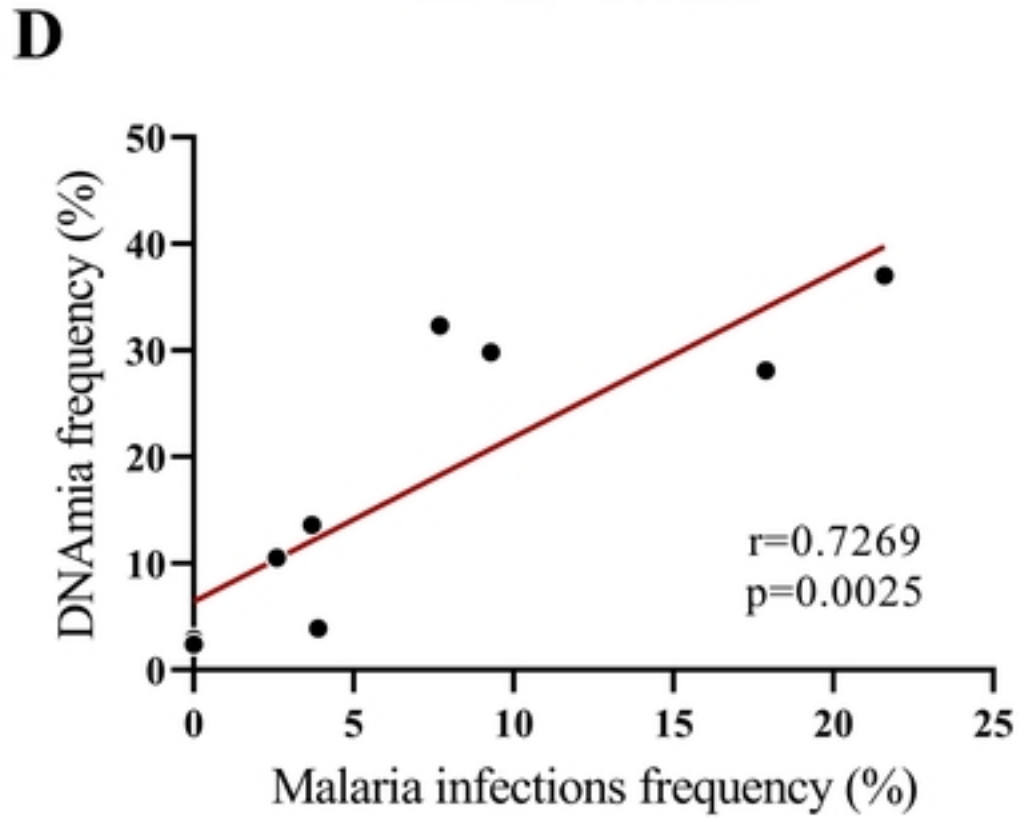
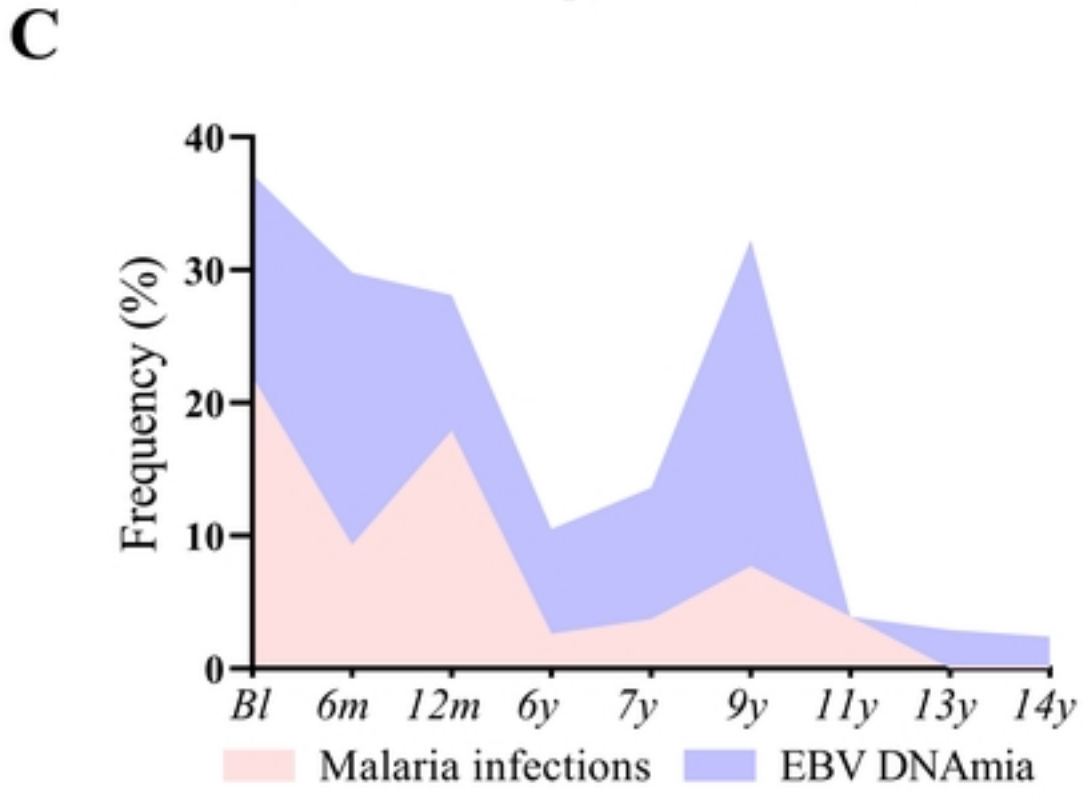
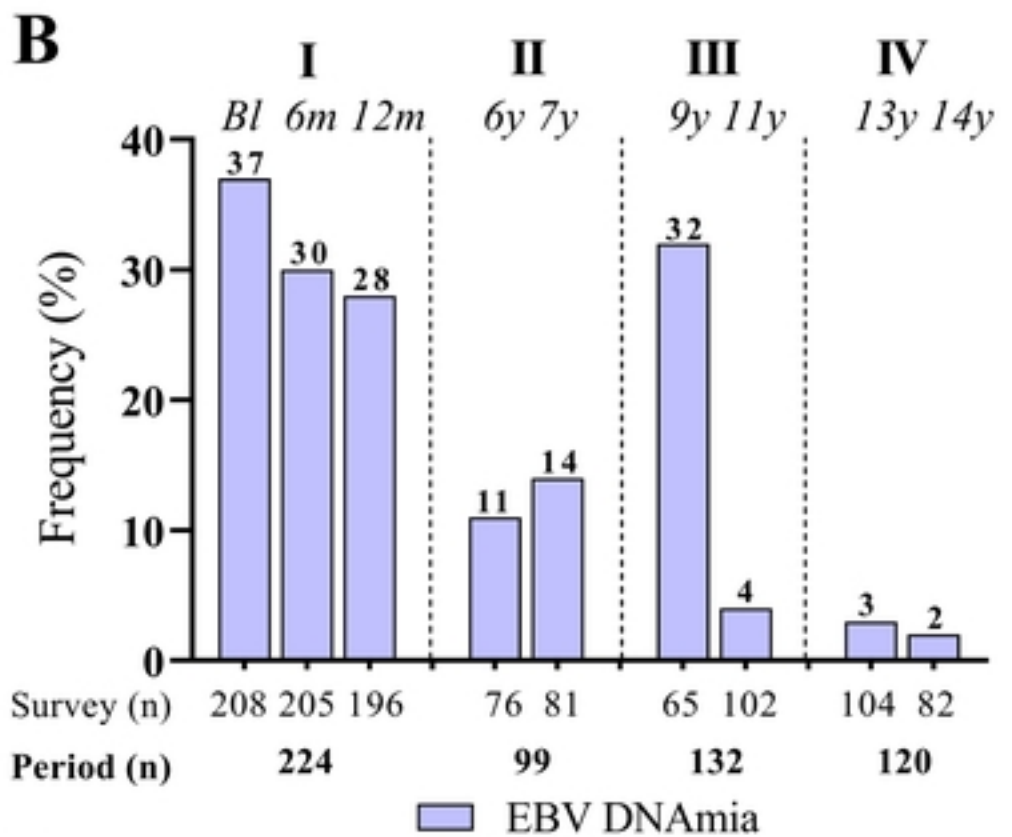
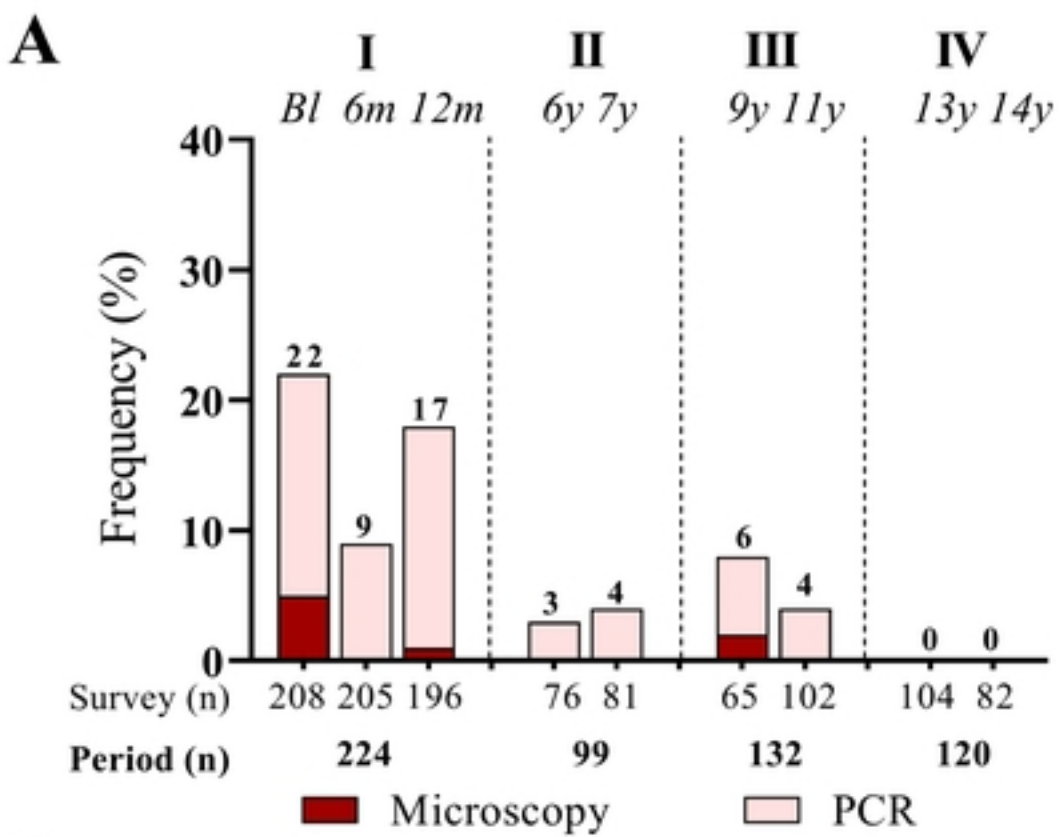


Figure 2

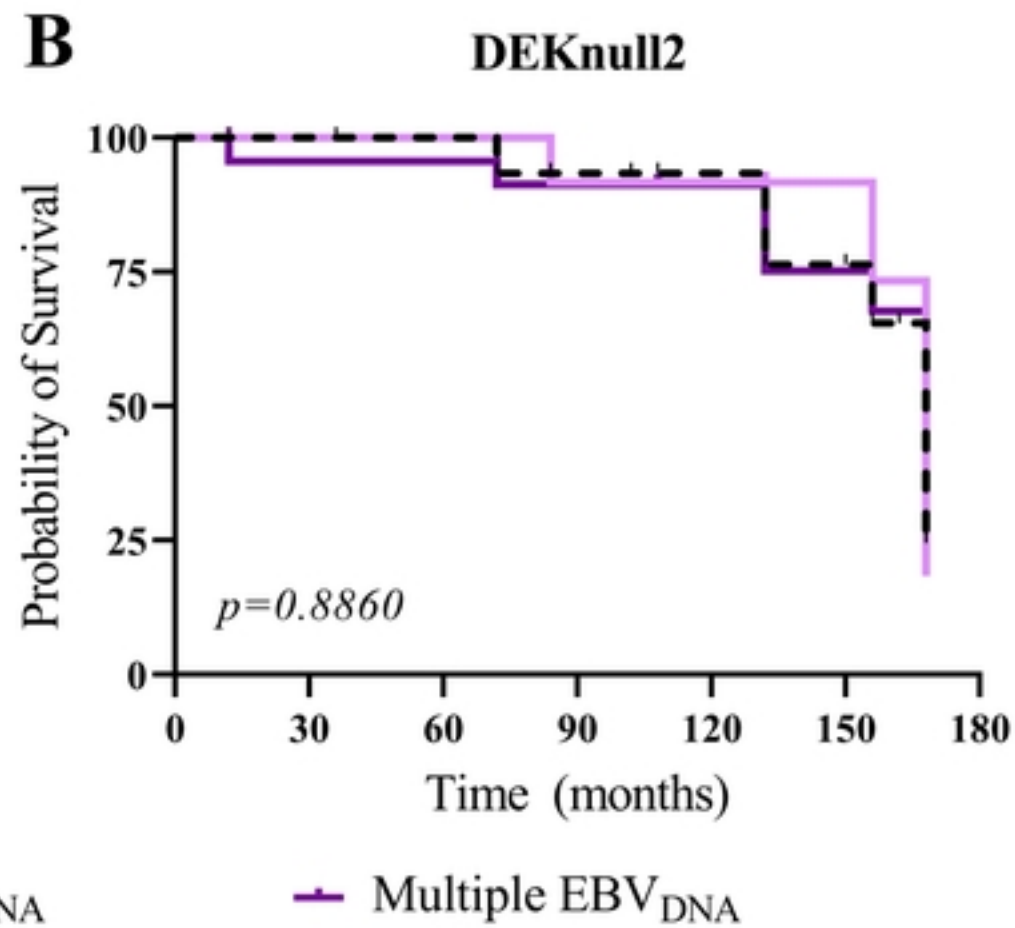
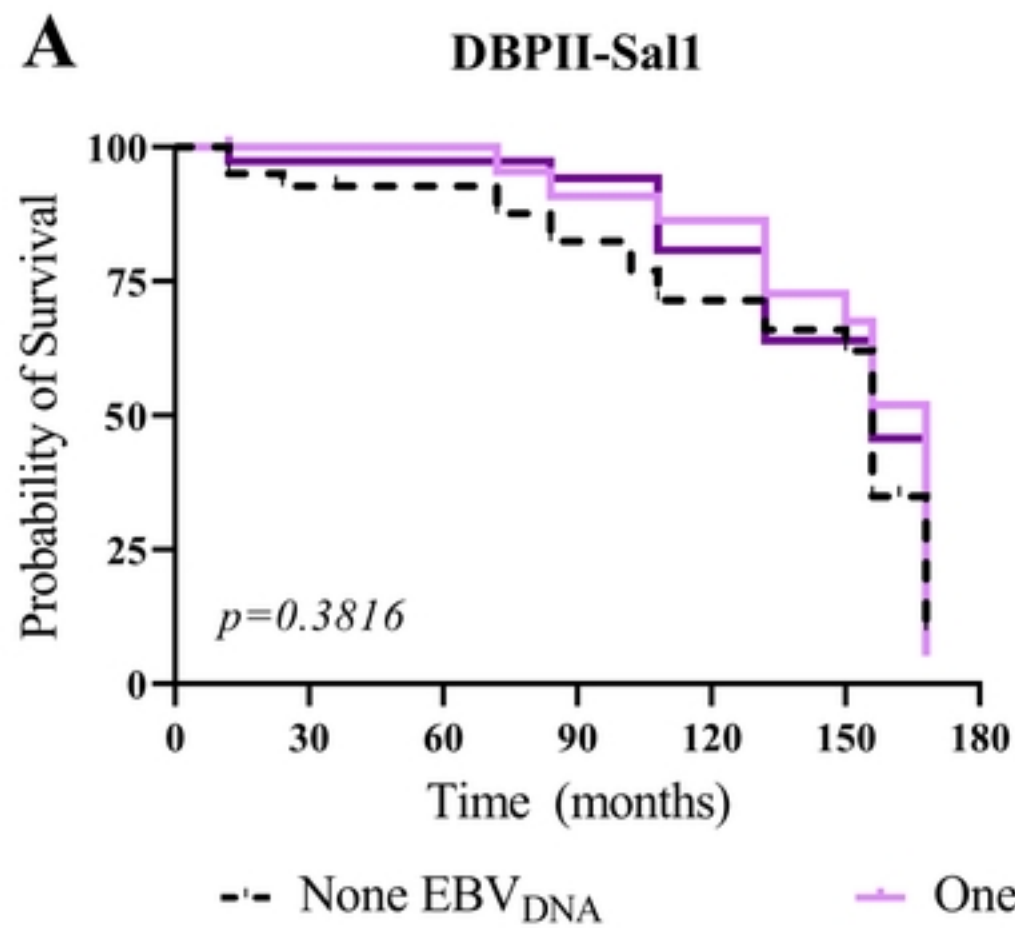


Figure 3

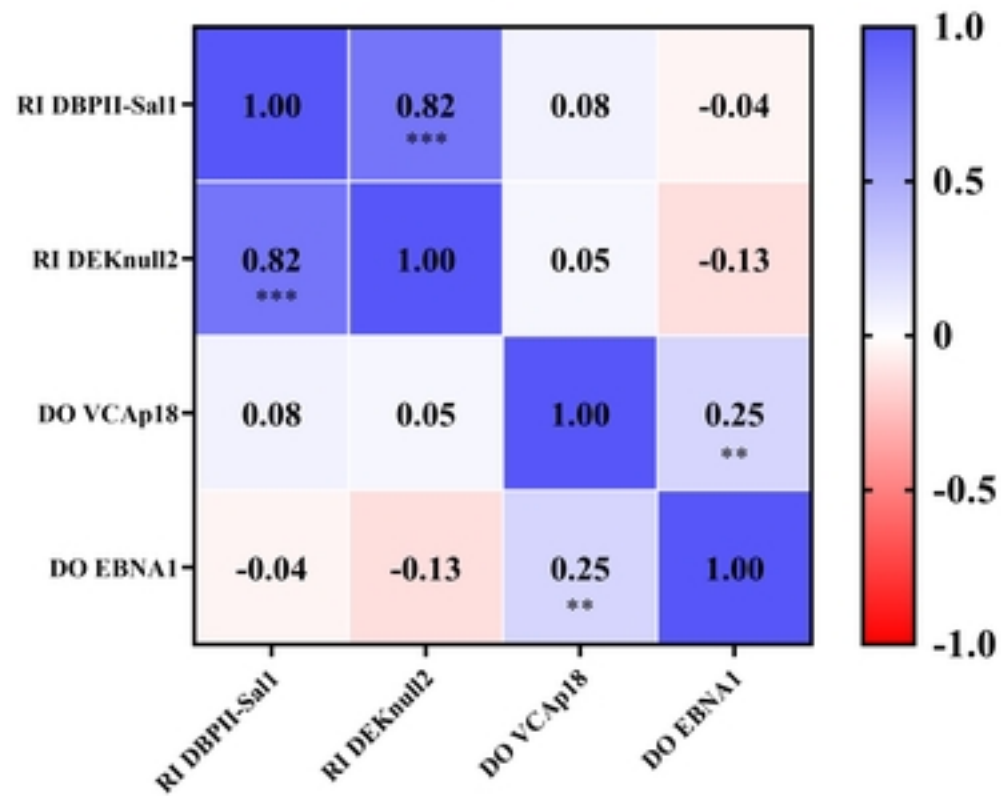
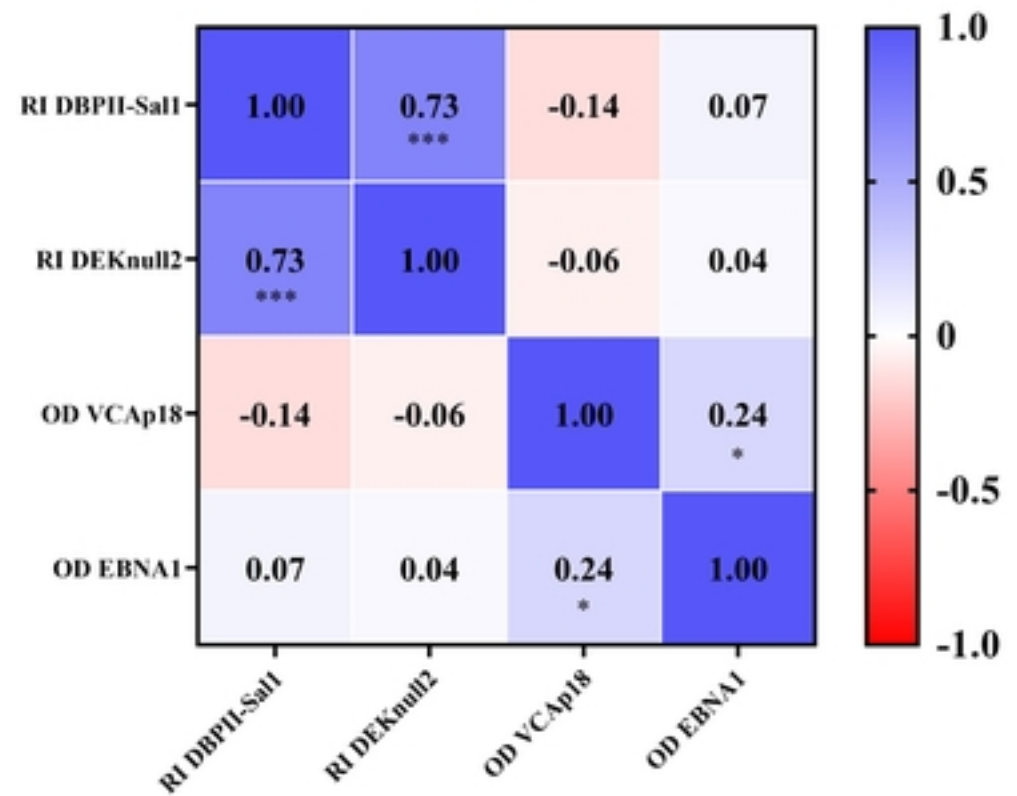
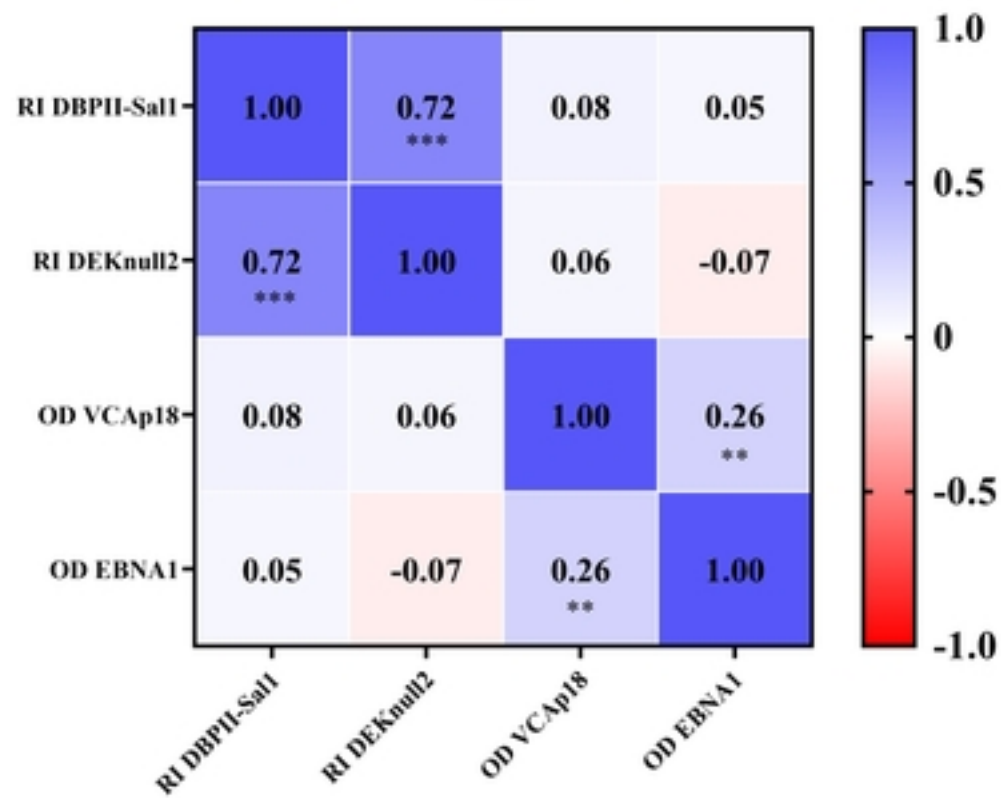
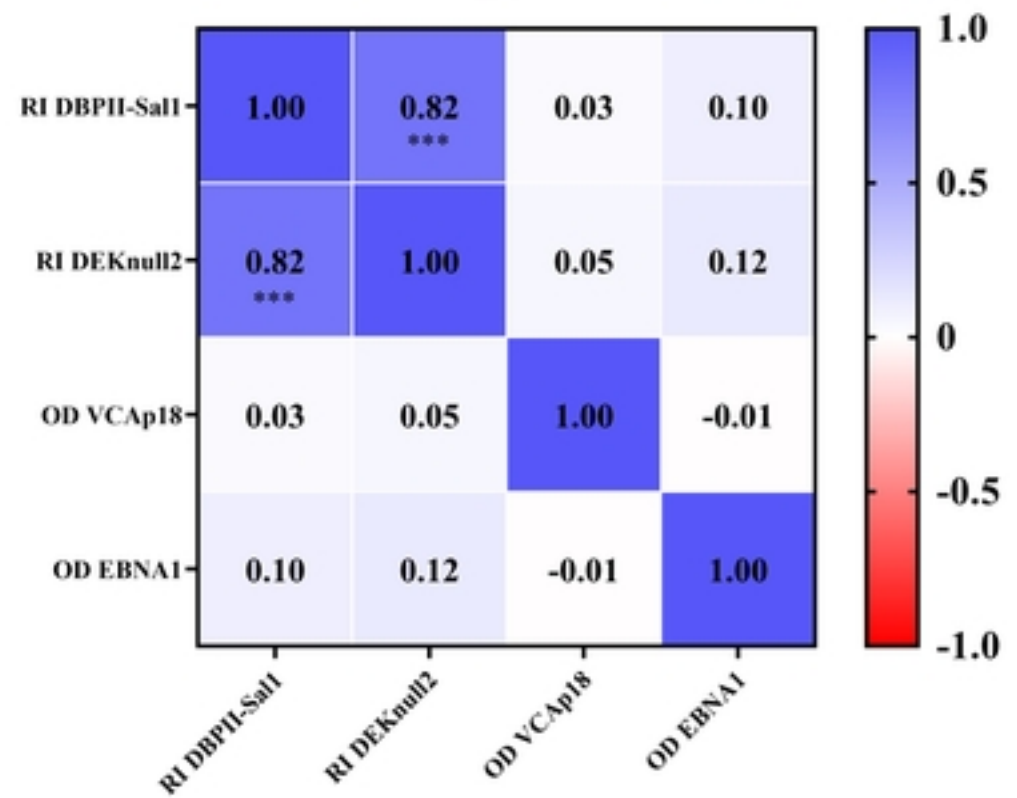
I**II****III****IV**

Figure 4

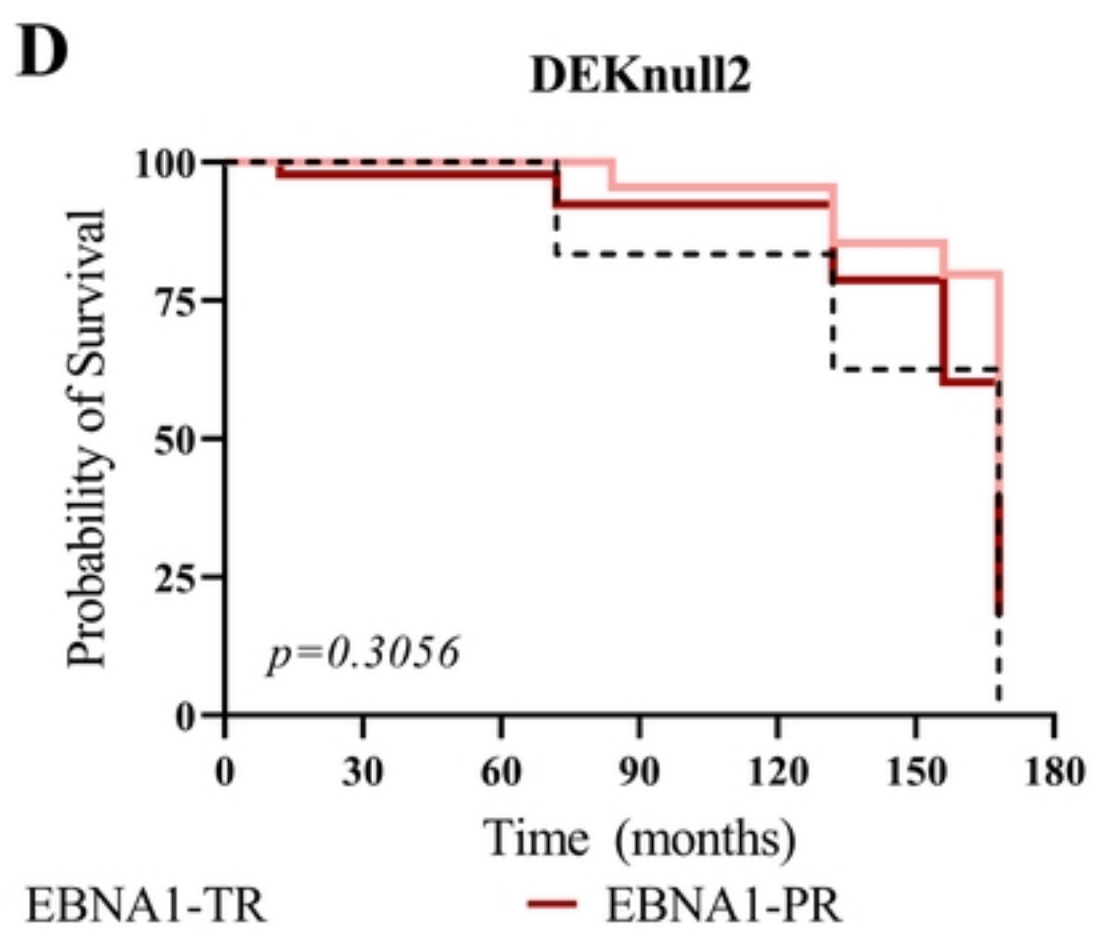
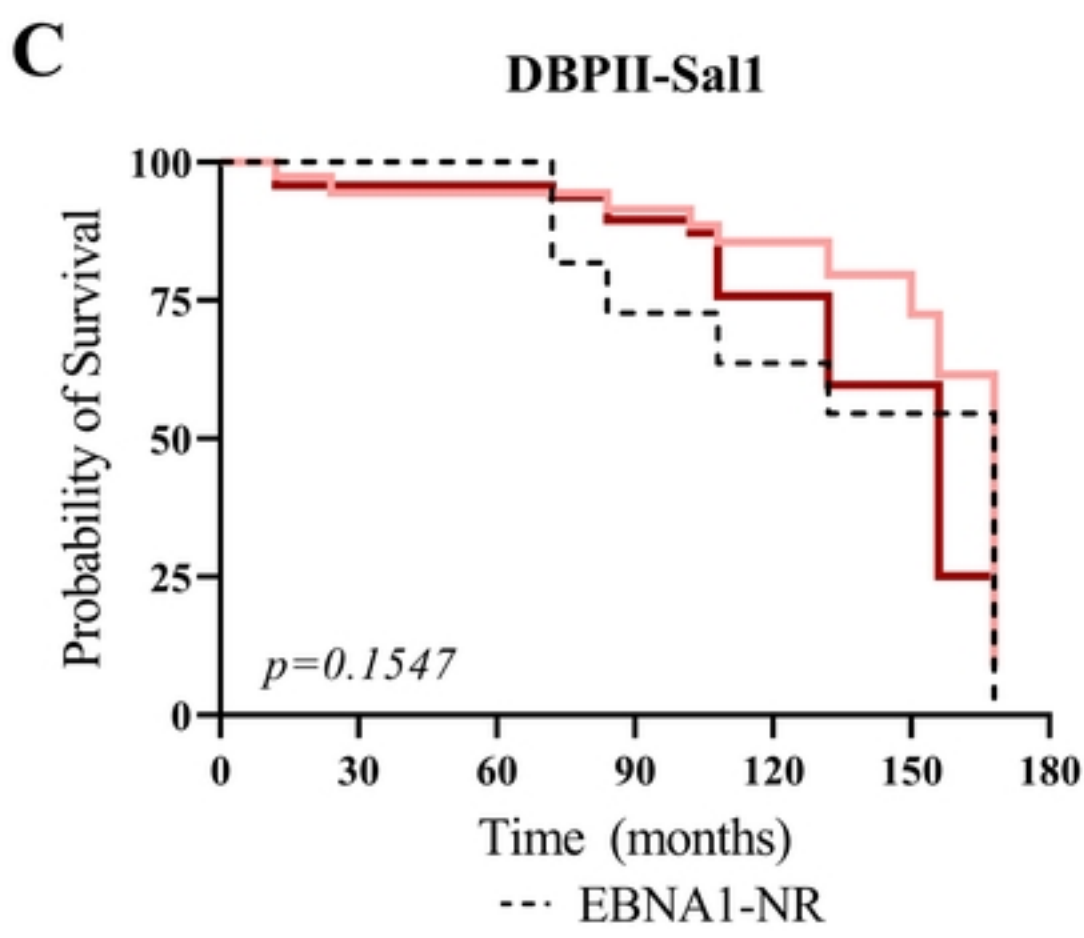
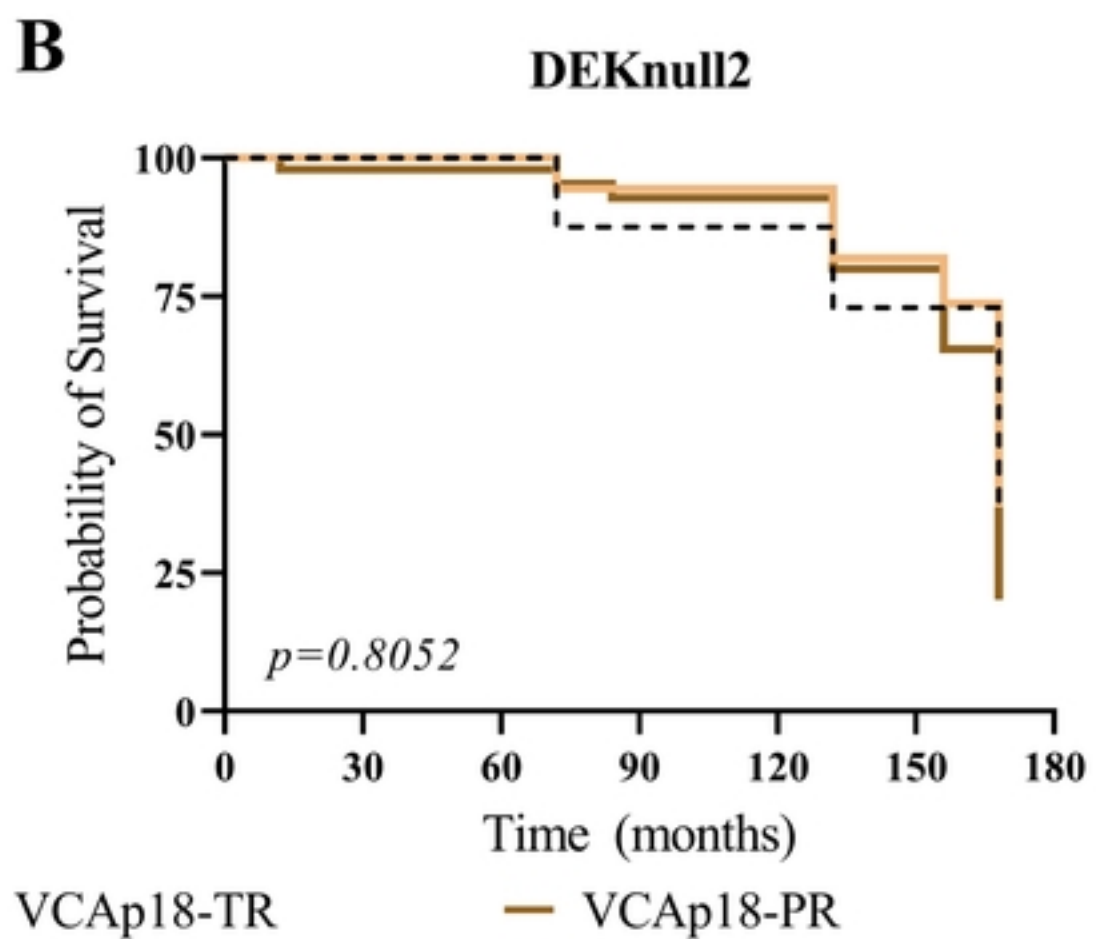
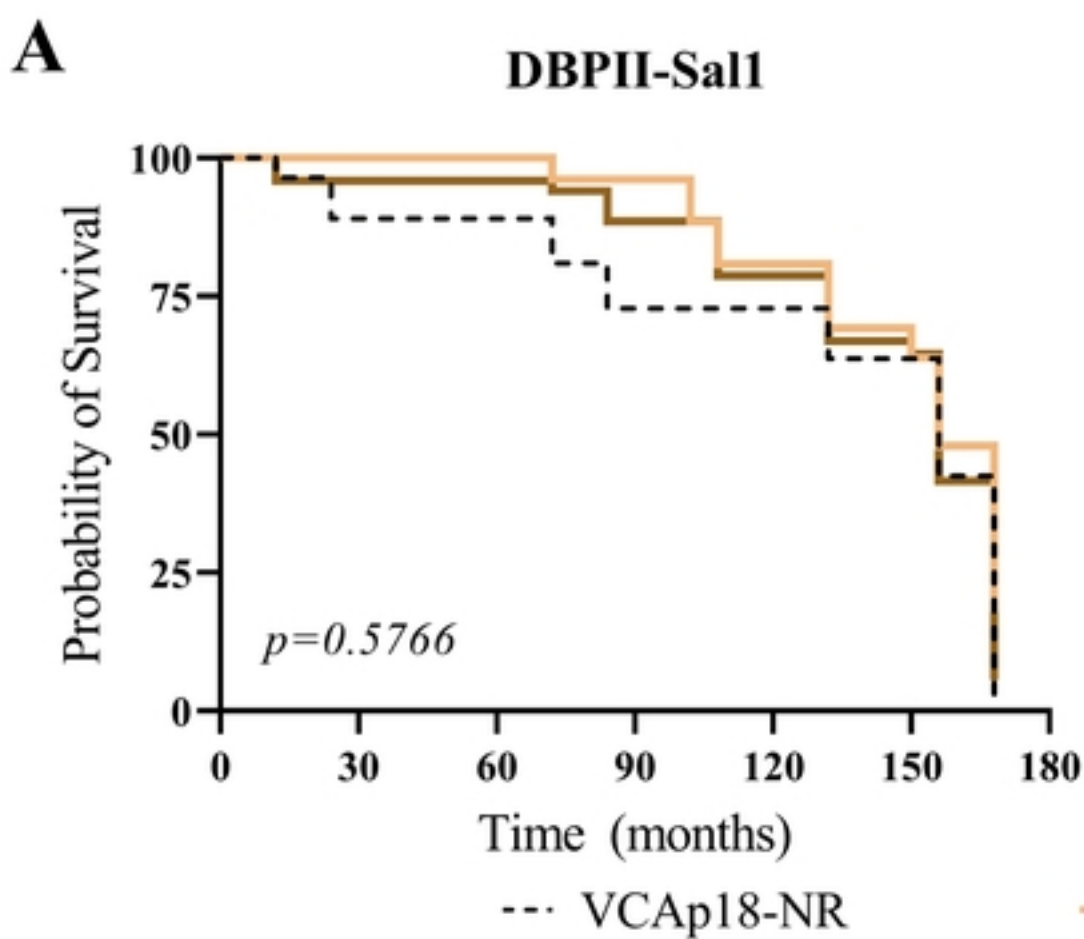


Figure 5