

1 **Erythropoietin single nucleotide polymorphisms are associated with anemia and**
2 **dyslipidemia in a cardiovascular disease population.**

3 Victoria Northrup^{1,2,6}, Ashley L. Eadie^{1,2,6}, Victoria L. Nelson^{1,2,6}, Kenneth D'Souza^{1,2,3,6}, Ansar
4 Hassan^{3,6}, Thomas Pulinilkunnil^{2,4,6}, Petra Kienesberger^{2,4,6}, Jean-Francois Légaré^{3,6}, Jeremy A.
5 Simpson^{5,6}, Keith R. Brunt^{1,2,3,6}

6 ¹Department of Pharmacology, Dalhousie University, Halifax, Nova Scotia, Canada

7 ²Dalhousie Medicine New Brunswick, Saint John, New Brunswick, Canada

8 ³Departments of Cardiology & Cardiac Surgery, New Brunswick Heart Center,
9 Saint John Regional Hospital, Saint John, New Brunswick, Canada

10 ⁴Department of Biochemistry and Molecular Biology, Dalhousie University, Halifax, Nova
11 Scotia, Canada

12 ⁵Department of Human Health and Nutritional Sciences, University of Guelph, Guelph, Ontario,
13 Canada

14 ⁶IMPART investigator team Canada (<https://impart.team/>)

15
16 Corresponding Author:

17 Dr. Keith R. Brunt

18 100 Tucker Park Road, Box 5050

19 Saint John, NB, Canada, E2L 4L5

20 1-(506)-636-6974

21 keith.brunt@dal.ca

22 @prof_brunt (social media)
23
24
25

26 **Abstract**

27 Human erythropoietin (EPO) is an essential erythropoietic cytokine and recombinant biological
28 therapeutic in anemia in chronic kidney disease. Single nucleotide polymorphisms (SNPs) in
29 EPO have been linked to anemia and diabetic microvascular complications but no other
30 cardiovascular comorbidities like dyslipidemia or hypertension. Here identified a clinical cohort
31 of cardiovascular patients with anemia, dyslipidemia, hypertension, type-2 diabetes, or heart
32 failure with preserved ejection fraction. Sanger sequencing was used for genotyping three EPO
33 SNPs (rs1617640, rs507392 and rs551238), which were compared to clinical outcomes with
34 SNPstat and clinical parameters profiles by student t-test. Nonstandard clinical chemistry
35 measures of plasma EPO, hepcidin, transferrin, and ferritin were determined by ELISA. In the
36 additive model, the C allele of rs1617640 was associated with lower EPO and anemia. In the
37 recessive model, the SNP rs507392 genotype of GG was associated with dyslipidemia, which
38 was associated with lower EPO in plasma and elevated total cholesterol and low-density
39 lipoproteins. Interestingly, the G allele of rs507392 was found to be associated with
40 hypertension, but only in females. Here we show that the SNPs in EPO are a potential risk factor
41 for anemia, dyslipidemia, and hypertension in cardiovascular disease patients.

42

43 **Introduction**

44
45 Cardiovascular disease is one of the leading causes of death worldwide[1] , with multiple
46 contributing risk factors like anemia, including some linked to erythropoietin (EPO) or the use of
47 erythropoietic stimulating agents.[2] Heart failure with preserved ejection fraction (HFpEF), is
48 an especially challenging multimorbid condition featuring anemia, hypertension, type-2 diabetes
49 mellitus (T2DM), obesity, or chronic kidney disease. The underlying cause of HFpEF and
50 optimal medical management remains a challenge[1]. Microvascular complications are typically
51 reported in HFpEF[3], and anemia in heart failure is generally associated with higher
52 mortality,[4] severity, and hospital admission rates[5,6]. HFpEF is also more common in
53 females, particularly those who are older, obese, and with a higher New York Heart Association
54 (NYHA) classification. Microvascular complications in diabetes and anemia have been linked to
55 EPO but have not previously been investigated in HFpEF or its multimorbid feature
56 comorbidities.

57 EPO is a master regulator of hematopoiesis and erythropoiesis, with secondary roles in
58 cytoprotection and cellular metabolism.[7] Research on EPO has been extensive, yet clinical
59 variation in EPO expression in health and disease and the underlying secondary mechanisms are
60 poorly understood. A significant source of clinical variation in hormones like EPO can occur
61 with haplotypes or single nucleotide polymorphisms (SNP). The entire gene of EPO has been
62 known for decades, yet just three SNP have been identified as clinically relevant
63 rs1617640(promoter), rs507392(intron) and rs551238(downstream). Genome-wide association
64 studies (GWAS) and expression quantitative trait loci (eQTL) analysis have previously
65 established that promoter SNP (rs1617640) is associated with an alteration in serum EPO,[8] a
66 finding confirmed in healthy blood donors[9]. The promoter SNP (rs1617640) has also been

67 linked to diabetic microvascular complications[10–18], anemia in T2DM[19], and renal
68 dysfunction after cardiac surgery[20] (Supplemental Table 1). In intron 3, SNP rs507392 was
69 linked to diabetic microvascular complications [10,12,13,21] and overall higher mortality in
70 diabetics [9]. SNP rs551238 (downstream of *EPO*) has also been associated with microvascular
71 complications[9,10,12–15,21,22] and higher hematocrit in healthy blood donors [9]
72 (Supplemental Table 1). Together, this suggests a potential link between microvascular
73 complications, hematocrit, and *EPO* SNPs. These *EPO* SNPs have also been associated with
74 *EPO* serum levels[18]. In CKD, a decrease in *EPO* is associated with anemia[23], whereas in
75 other forms of anemia, *EPO* can be increased up to 100-fold, suggesting insensitivity in
76 molecular signaling.[24] Secondary risks to CVD might also be linked to *EPO* independent of
77 anemia, especially classic risk factors of CVD. For example, dyslipidemia is a salient risk factor
78 for CVD characterized by abnormal serum cholesterol levels, triglycerides and related
79 lipoproteins[25]. In mice treated with recombinant *EPO* (rhEPO), triglyceride levels were
80 decreased[26] and lipoprotein lipase (in lipogenesis) was elevated.[26,27] In humans, treatment
81 with rhEPO is associated with lower triglyceride levels and cholesterol in end-stage renal
82 failure.[28]

83 Although anemia, dyslipidemia, T2DM, hypertension are risk factors for CVD and
84 multimorbid features of HFpEF with evidence of being modifiable by rhEPO—only anemia has
85 been linked to *EPO* SNPs to date.[19] Here, we hypothesize that three *EPO* SNPs—
86 rs1617640(promoter), rs507292(intron) and rs551238(downstream)—correlate with *EPO* plasma
87 concentrations and are associated with either anemia, dyslipidemia, T2DM, hypertension and/or
88 HFpEF in a clinical population requiring surgical interventions for CVD.

89

90 **Methods**

91 *Genomic DNA extraction*

92 Genomic DNA (gDNA) was isolated from the buffy coat of blood collected during the
93 impact of Obesity on Postoperative Outcomes following cardiac Surgery (OPOS) study
94 (<http://clinicaltrials.gov/study/NCT0324891>). The OPOS cohort consisted of participants aged
95 18-75 years old who underwent elective cardiac surgery at either the New Brunswick Heart
96 Center in New Brunswick, Canada or the Maritime Heart Centre in Nova Scotia, Canada.[29]
97 The OPOS study and related biomarker discovery was approved by the Horizon Health Network
98 Research Ethics Board (#RS20142006: RS100835). The buffy coat was separated from blood,
99 and gDNA was isolated using either DNAzol[®] reagent (GibcoBRL cat # 10503-027) or
100 QIAamp[®] DNA blood mini (Qiagen cat # 51104) kits (following the manufacturer's protocol).
101 DNA was quantified by spectroscopy on a BioTek Synergy[™] H4 Hybrid Microplate reader
102 using the 260:280 nm ratio by the Gen5 software (BioTek), and the average concentration of
103 technical duplicates was used.

104 *Primer design*

105 Primers were designed using Oligo 7 software (Table 1).[30] Primers designed for gDNA
106 sequencing included M13 sequences[31] to facilitate Sanger sequencing and M13 primers were
107 used in sequencing reactions.

108 *Polymerase Chain Reaction*

109 End-point polymerase chain reaction (PCR) was performed on gDNA using AmpliTaq
110 Gold[™] 360 Master Mix (Applied Biosystems cat # 4398881). PCR reactions consisted of 1 X
111 AmpliTaq Gold[™] 360 Master Mix, 0.3 μ M of forward and reverse primers, 4 μ g of Bovine
112 Serum Albumin (BSA, Thermo Scientific), 50 ng of gDNA and nuclease-free water up to 15 μ L.

113 Reactions were amplified on a Mastercycler Nexus Gradient Thermocycler (Eppendorf) using
114 the cycling conditions listed in Table 2.

115 PCR products were verified using 7500 Agilent DNA Chips (Agilent cat # 5067-1506) on
116 the Bioanalyzer 2100 system (Agilent). PCR products were cleaned up using 2 μ L of ExoSAP-
117 ITTM (Applied Biosystems cat # 78200) in 5 μ L of PCR product and incubating at 37°C for 15
118 minutes. ExoSAP-ITTM was inactivated at 80°C for 15 minutes.

119 *Sanger Sequencing*

120 Sequencing reactions were prepared using a BigDyeTM Terminator v3.1 Cycle
121 Sequencing Kit (Applied Biosystems cat# 4337457). The cleaned PCR product was added to a
122 reaction of 1X Sequencing buffer, 1X BigDyeTM MasterMix, and 2 μ M primer of M13
123 sequencing primers.[31] Sequencing reactions were incubated at 96°C for 1 minute and 25 cycles
124 of 96°C for 10 seconds, 50°C for 5 seconds and 60°C for 4 minutes.

125 BigDyeTM Xterminator beads (Applied Biosystems cat # 4376486) were added to the
126 sequencing reaction and vortexed at 2000 rpm for 25 minutes. Samples were centrifuged for 2
127 minutes at 2000 X rcf and let rest for 2 minutes before centrifuging again at 2000 X rcf for 30
128 seconds, followed by another 30 seconds of rest to ensure that beads were sedimented. Then,
129 20 μ L of the sequencing reaction (without beads) was transferred to a 96-well plate and loaded
130 onto the 3500 Genetic Analyzer (Applied Biosystems) for sequencing.

131 *Sanger Sequencing Analysis*

132 Sequences were analyzed using BioEdit Sequences Alignment Editor software.[32] The
133 forward and reverse sequences were aligned using the ClustalW Multiple alignment tool to
134 generate the consensus sequence for each product. Sequences were submitted to NCBI Blast to
135 validate correct target amplification and were compared to the NCBI reference sequence

136 NG_021471.2 to identify variants. A variant was defined as any base calling that differed from
137 the reference sequence.

138 *SNP analysis*

139 SNPStats (www.snpstats.net)[33] was used to determine allele and genotype frequencies,
140 test for Hardy-Weinberg equilibrium, assess SNP response using logistic regression in multiple
141 inheritance models (co-dominant, dominant, recessive, over-dominant and log-additive), linkage
142 disequilibrium statistics, and for haplotype analysis. Analysis used sex, age, and body mass index
143 (BMI) as co-variants. A p-value < 0.05 was deemed significant.

144 Clinical findings were obtained from the OPOS BioBank (storing retrievable databases of
145 de-identified data abstracted from patient records). Comparisons of clinical values with genotype
146 were performed using a student t-test to determine the p-value (<0.05 significant). A
147 Kolmogorov-Smirnov test in GraphPad was used to confirm normality. A ROUT (Q=1) test in
148 GraphPad was used to determine outliers; outliers were still presented and identified by
149 encirclement in figures for clinical relevance but were otherwise excluded from group testing.

150 *Enzyme-linked immunosorbent assays*

151 Plasma samples collected from OPOS [29] were used for enzyme-linked immunosorbent assays
152 (ELISA) for EPO (Human EPO ELISA kit, Invitrogen Cat # BMS2035-3), Transferrin
153 (Transferrin Human ELISA Kit, Invitrogen cat # EHTF), Hepcidin (Human Hepcidin Quantikine
154 ELISA kit, R&D systems cat # DHP350) and Ferritin (Ferritin Human ELISA Kit, Invitrogen cat
155 # EHFTEL). Plasma samples were diluted 1:2 for EPO, 1: 20,000 for Transferrin, 1:5 for
156 Hepcidin, and 1:10 for Ferritin using the kit manufacturer's diluent. ELISAs were performed
157 using the manufacturer's protocol and absorbance was measured at 450 nm using the Synergy
158 H4 plate reader. GraphPad Prism (Prism9) was used for statistical analysis and graphing data.

159 Two-way ANOVA was used to determine p-values. A p-value of <0.05 was deemed significant.

160 **Results**

161 *Subcohort of patients with multimorbid conditions at elevated risk of CVD*

162 The OPOS sub-cohort analyzed herein consisted of 95 participants recruited for the
163 OPOS study (358 participants). Participants with at least one condition: anemia, dyslipidemia,
164 hypertension, T2DM and/or diagnosed HFpEF, were sampled as a sub-cohort. The demographics
165 and clinical parameters of the OPOS cohort are shown in Table 3 and Supplemental Table 2.
166 Some multimorbid parameters overlap between controls and the cases in each condition but
167 otherwise served provided sex and age matched controls with CVD but without the specified
168 outcome. Among these cases, dyslipidemia were associated with a higher NYHA score. BMI was
169 higher in patients with T2DM and anemia but lower in those with HFpEF. Males were more
170 prevalent in T2DM, hypertension, and dyslipidemia sub-populations. In contrast, females were
171 more prevalent in anemia (taking into consideration the sex-dependent normal ranges used for
172 males/females of the study population). Overall, this subcohort represents patients with salient
173 risk factors requiring an intervention by cardiac surgery.

174

175 *Reassurance of experimental approach for avoiding SNP linkage disequilibrium*

176 SNPs rs1617640(promoter), rs507392(intron) and rs551238(downstream) are located
177 within 4.2 kb of one another. Due to this proximity, linkage disequilibrium is likely to occur[34].
178 Here, we performed a linkage disequilibrium analysis using SNPstats and found a high degree of
179 linkage disequilibrium between our three SNPs (Supplemental Figure 1a). The highest degree of
180 linkage disequilibrium was measured between rs1617640(promoter) and rs507392(intron),
181 followed by rs507392(intron) and rs551238(downstream). SNPs rs1617640(promoter) and

182 rs551238(downstream) were observed to have the least degree of disequilibrium. These
183 associations correlated with the SNPs' positions along the *EPO* gene, with those closest in
184 proximity (Supplemental Figure 1b) showing the highest degree of disequilibrium.

185

186 ***The presence of the C allele in rs1617640(promoter) increases the risk of anemia***

187 Each SNP was examined for association based on dominant, recessive, or additive
188 inheritance models (Table 4). The C allele of rs1617640 SNP in the promoter region was
189 associated with anemia in an additive inheritance model with an odds ratio (OR) of 1.96 (p-value
190 0.04). Whether clinical parameters correlated with specific genotypes was then investigated. In
191 SNP rs1617640, there were significant differences between genotypes in hemoglobin, neutrophil
192 to lymphocyte ratios (NLR), cholesterol, low-density lipoprotein (LDL), and non-high-density
193 lipoprotein (non-HDL) (Supplemental Table 3, Supplemental Figure 2). The lower hemoglobin
194 levels in the CC genotype support the association of anemia with the C allele, with the higher
195 NLR suggesting elevated inflammation. The rs1617640(promoter) CC genotype was associated
196 with a lower plasma EPO level, although iron bioavailability (as measured by Ferritin, Hpcidin
197 and Transferrin) was not significantly different (Figure 1). These findings suggest that SNP
198 rs1617640(promoter) is likely affecting EPO directly, not through iron bioavailability.

199

200 ***GG Genotype of rs507392(intron) is protective against dyslipidemia***

201 To characterize the role of the GG Genotype of intron SNP (rs507392) we examined the
202 OR-value for anemia, dyslipidemia, and hypertension. The GG genotype of rs507392 was
203 associated with protection against dyslipidemia in a recessive model (OR value = 0.29; p-value =
204 0.048) (Table 4), while there was no significance with anemia or hypertension. Variations based

205 on genotype in rs507392(intron) were seen in clinical parameters including cholesterol, LDL,
206 non-HDL, and NLR (Supplemental Table 4, Supplemental Figure 3). This suggests that SNP
207 rs507392(intron) is associated with lipid handling/regulation. As with rs1617640(promoter), the
208 GG genotype in rs507392(intron) demonstrated lower levels of EPO in the plasma (Figure 1).
209 There was no association to risk factors for SNP rs551238(downstream) (Table 4), and fewer
210 significant differences in clinical parameters were observed (Supplemental Table 5 and
211 Supplemental Figure 4). Unlike rs1617640(promoter) and rs507392(intron), no significant EPO
212 changes in rs551238(downstream) were observed (Figure 1).

213

214 ***No strong evidence for EPO haplotype association with risk factors***

215 Haplotype was also examined to determine the cumulative effects of all three SNPs to
216 clinical outcomes. The predominant haplotypes of AAT and CGG did not correlate with any
217 clinical phenotype. However, one of the rare haplotypes of CGT (which occurred in
218 approximately 3% of our cohort) did correlate with dyslipidemia. The OR-value of 0.05 suggests
219 that the CGT haplotype is protective against dyslipidemia but should be interpreted with caution
220 given the low prevalence (Table 5, Supplemental Table 6).

221

222 ***Sex differences are apparent with SNP associations to risk factors***

223 Precision medicine necessitates accounting for sex differences, and here we find
224 meaningful sex effects to the associated risk factors. In males, the prevalence of dyslipidemia,
225 T2DM, and hypertension are significantly higher than that observed in females[35], whereas in
226 females, the prevalence of anemia[36] and HFpEF[37] is significantly higher. Given these sex
227 differences in the clinical phenotypes examined herein, we analyzed the differences in SNPs

228 within each sex to determine if sex differences would affect our results. SNP rs507392(intron)
229 AG and GG genotypes, and rs551238(downstream) TG genotype, were associated with
230 hypertension in females, but not in males (Table 6, Supplemental Table 7), suggesting that the
231 rs507392(intron) and rs551238(downstream) SNPs could be risk factors for hypertension in
232 females but not males.

233

234 ***New EPO variants of potential concern identified***

235 During the analysis of *a priori* sequences obtained for rs1617640(promoter),
236 rs507392(intron), and rs551238(downstream), other variants were also identified (Supplemental
237 Table 8). Many of these variants were only detected in a single individual as a heterozygote;
238 others were identified in a several individuals, with most being heterozygotes. However, most of
239 these variants have not previously been reported and are, therefore, of unknown significance.
240 Three variants were found in a significant subset of our population, including a four-base pair
241 deletion (2167?-2170?del). This variant is located within a repeat region in intron 3, and thus the
242 breakpoint may be inexact. This base pair deletion was found to be homozygous in 76 cases and
243 suspected to be heterozygous in 4 cases. The 3154T>G substitution was found in 83 individuals,
244 with 77 of these determined as homozygotes. Lastly, 3806T>C was found in 33 individuals, with
245 31 of these determined as heterozygotes. This data suggests more variation in EPO than
246 previously reported, which needs further exploration in larger study populations where further
247 associations can be uncovered.

248

249 **Discussion**

250 Here, we identified linkage between the three *EPO* SNPs and cardiovascular disease risk
251 factors, including dyslipidemia and HFpEF-associated comorbidities: anemia, T2DM, and
252 hypertension. The CC genotype of rs1617640(promoter) and GG genotype of rs507392(intron)
253 were associated with lower EPO plasma levels and correlated with comparably higher
254 cholesterol, LDL, and non-HDL lipoproteins. The promoter-SNP (rs1617640) CC was associated
255 with lower Hb and anemia in a log additive model and has been previously linked to anemia in
256 T2DM[19]. While the role of the promoter-SNP in CVD has been explored to a lesser extent, our
257 data support it as being linked to anemia in CVD. Surprisingly, the intron-SNP (rs507392) GG
258 genotype had a protective association with dyslipidemia in a recessive model. There was no
259 significant association between hypertension and the SNPs in the overall population, although
260 rs507392(intron) and rs551238(downstream) were associated with hypertension in females,
261 suggesting a sex dependence. Our study highlights that EPO variants are associated with
262 comorbid conditions that present significant cardiovascular risk factors of anemia, dyslipidemia,
263 and hypertension for the first time.

264 EPO levels are well known to be associated with anemia[23,24], so any SNP that alters
265 plasma EPO levels, such as rs1617640(promoter) and rs507392(intron), as we have shown, could
266 be risk factors for anemia, and require additional pharmacogenetic guided intervention. Yet, iron
267 bioavailability also contributes to two of the most common forms, iron-deficiency anemia and
268 anemia of inflammation (or anemia of chronic disease, e.g., CVD)[38]. The
269 rs1617640(promoter) C-allele associated with anemia was also associated with NLR, indicative
270 of active inflammatory processes[39,40]. This suggests the C allele for rs1617640(promoter) is
271 associated with inflammation and decreased Hb. It has been purported that EPO can exert an

272 indirect anti-oxidant effect by utilizing iron in erythrocytosis resulting in less bioavailable
273 iron.[41] Patients with anemia of inflammation commonly have reduced serum iron and normal
274 to elevated iron stores.[42] In blood, iron is transported by transferrin[43] and can be stored in
275 ferritin within most cells, like macrophages and hepatocytes.[44] The release of recycled iron
276 from intracellular stores is partially regulated by hepcidin—a hormone that inhibits the
277 transportation of intracellular iron to the blood and is induced by inflammation.[38] Hypoxia-
278 inducible factors (HIFs; which upregulate *EPO*[7]) also reduce hepcidin, thus increasing
279 transferrin, ferritin, and iron bioavailability.[45] We measured hepcidin, transferrin and ferritin to
280 examine whether the *EPO* SNPs altered iron bioavailability. Still, despite elevated NLR
281 associated with allelic frequency, we did not find significant differences between genotypes. This
282 leads us to conclude that the SNPs in *EPO* are likely not exerting their effects by regulating iron
283 bioavailability.

284 Ours is the first study to identify *EPO* SNPs associated with dyslipidemia and/or
285 lipoproteins in medically managed patients. Prior studies have reported that rhEPO therapy
286 modulates triglycerides, cholesterol, and other lipoproteins [26–28]. In a mouse model of CKD,
287 treatment with rhEPO resulted in decreased triglycerides, cholesterol and LDL, but not HDL[26].
288 In the present study, the GG genotype of rs507392(intron) correlated with lower EPO
289 concentrations but increased cholesterol, LDL and non-HDL. These variations would also be
290 expected with diagnosed dyslipidemia, yet the GG genotype was associated with resistance to
291 dyslipidemia. This apparent contradiction is, however, more likely a consequence of medical
292 management of dyslipidemia (e.g., statins) to lower lipoprotein levels[46], not the association to
293 the clinical outcome. Future studies could be designed to validate this epidemiologically with
294 sufficient covariant adjustments. While rs1617640(promoter) and rs551238(downstream) did not

295 associate with dyslipidemia as an outcome, there was significant variation in cholesterol, with
296 the rs1617640(promoter)AC variant genotype being significantly lower for LDL and non-HDL
297 lipoproteins. The rs551238(downstream) TG variant was significantly associated with lower
298 cholesterol and non-HDL. The CGT haplotype was found to be protective against dyslipidemia,
299 but this was a rare finding (less than 3% of cohort) and should be interpreted with caution.
300 Together, these results show that *EPO* SNPs influence lipid metabolism and that
301 rs507392(intron) is associated with dyslipidemia. The fundamental biology and molecular
302 biology of *EPO* in these processes need to be explored further.

303 Many clinical phenotypes, including those examined here, have sex differences
304 attributable to prevalence, response to treatment, or clinical outcomes. Hypertension did not
305 show an association with the SNPs with the sexes combined, yet the presence of the G allele in
306 rs507392(intron) and the TG genotype in rs551238(downstream) showed an elevated risk in
307 females but not males. Hypertension is more prevalent in males[35], and our cohort contained
308 more males than females, which might explain why this association was initially masked. The
309 relationship between estrogen and the renin-angiotensin-aldosterone system (RAAS) is thought
310 to be one of the main reasons for the sex differences observed in hypertension. The RAAS has
311 also been found to be modulated by *EPO*: in Wistar rats, rh*EPO* increases renin[47] and in
312 isolated rat kidneys, rh*EPO* promotes angiotensin II (AngII) production.[48] In the oviduct and
313 endometrium, estrogen (17β (E₂)) can also promote the expression of *EPO*.[49,50] Given the
314 relationship between *EPO* and the RAAS system by estrogen, this could be a potential
315 mechanism for why the G allele of rs507392 and TG genotype of rs551238 are risk factors for
316 hypertension just in females. Although this finding does require validation in a larger cohort
317 (including more females with a direct assessment of sex hormones), this may be a significant

318 finding since hypertension tends to be a more salient risk factor for CVD in females.[51]

319 Our results suggest that *EPO* SNPs may be associated with risk factors and co-
320 morbidities of CVD by affecting the amount of EPO produced. Given the ability to modulate the
321 amount of EPO either directly through rhEPO or indirectly by targeting upstream of EPO using
322 hypoxia-inducible factor prolyl-hydroxylase inhibitors, these SNPs could be used to inform the
323 best course of medical management. Hypoxia-inducible factor (HIF) prolyl-hydroxylase
324 inhibitors increase EPO by stabilizing the HIFs that transcriptionally act upon *EPO* DNA under
325 normoxic conditions.[52,53] Though not yet established, should *EPO* SNP result in less HIF
326 binding to *EPO* in transcriptional regulation or stability of the intronic stores of EPO mRNA[54],
327 then the use of HIF prolyl-hydroxylase inhibitors may be less potent for directly increasing EPO
328 compared to rhEPO. Although more work is needed before these SNPs are applied clinically,
329 they could guide pharmacogenetic interventions that seek to increase EPO or address anemia in
330 the future or reclassify existing clinical trial data for subgroup analyses. In addition to the
331 principally known SNPs, we also identified novel variants. Most occurred as heterozygotes in a
332 single individual, but four occurred in multiple individuals and are potential polymorphisms. In
333 clinical care, sequencing is more commonplace because of the integration of next-generation
334 sequencing technologies into standard care. In other disorders, this led to increased variant
335 detection.[55] Surprisingly, *EPO* has long been overlooked on many gene arrays or panels,
336 which may account for the low prevalence of *EPO* variants in the literature. As the sequencing
337 of *EPO* increases, we anticipate further variants of concern can be detected, with a potential for
338 linkages in large epidemiology studies now that we have discovered them.

339 Our study is not without limitations. One was the small sample size and depth of patient
340 file analyses, which did not allow us to account for many covariates (such as ethnicity, other

341 comorbidities, or medical management) that could affect our results. Our study did identify
342 dyslipidemia as a novel disorder and can direct further focused sequencing toward cases of
343 dyslipidemia and potentially investigate use/efficacy of statins as a covariant. Additionally,
344 hypertension was identified in females but not males, with the rs507392 G allele and rs551238
345 TG genotype being risk factors. As we had relatively few females, more sequencing should target
346 females with hypertension. Even with our sample size, we have identified variables that can
347 benefit epidemiological or database studies to validate clinical relevance, screening risk or
348 precision medical management.

349 Here, we have established that *EPO* SNP rs1617640 C-allele was associated with anemia,
350 as well as changes in lipid metabolism and inflammation. We show the association of GG
351 genotype for rs507392 to dyslipidemia for the first time. This genotype indicates effects on lipid
352 profiles despite standard care. In females only, we show that the rs507392 and rs551238 *EPO*
353 SNPs are associated with hypertension. Together, our results suggest that SNPs in *EPO* are
354 involved in Hb regulation, lipid metabolism, and inflammation with a female-specific effect on
355 blood pressure.

356

357 **Acknowledgements**

358 Blood samples for gDNA and clinical data were obtained from the IMPART BioBank
359 (<https://impart.team/biobank/>). Clinical data and samples were retrieved by IMPART BioBank
360 staff, including Dr. Christie Aguiar, Angella Mercer, and Saumil Shah, in collaboration with the
361 authors who extend their appreciation. The IMPART BioBank was supported by endowed funds
362 from the Dalhousie Medical Research Foundation and specialized equipment provided by Saint
363 John Regional Hospital Foundation-directed donation. This study was supported by the Natural

364 Sciences and Engineering Research Council (NSERC) [discovery grant #RGPIN-2018-05626
365 and # RGPIN-(2020)-04878] (JAS & KRB), Heart & Stroke Foundation of New Brunswick and
366 the generosity of the Chesley Family Grant (KRB). VN was supported by the NSERC Alexander
367 Graham Bell Canada Graduate Scholarship-Doctoral (CGS-D) and the New Brunswick Health
368 Research Foundation Beatrice Hunter Cancer Research Training Program Award.

369 **Authorship Contributions**

370 Conceived; designed experimental approaches of the study (VN, JAS, KRB); Mentored trainee
371 acquisition of data and execution of the study (JAS & KRB); Collected and assembled data for
372 the study (VN, ALE, VLN, KD, AH, TP, PK, JFL, & KRB); Analyzed; interpreted & reported
373 data (VN, AE, VLN, & KRB); Drafted manuscript (VN & KRB); critically reviewed, revised and
374 edited manuscript for intellectual content and approved final work (VN, ALE, VLN, KD, JFL,
375 JAS, & KRB).

376 **Disclosure of Conflict of Interest**

377 At the time of study and reporting, KRB declares equity holdings in Fibrogen Inc. and serves as
378 director and majority shareholder in NBBM Inc.

379

380

381 **References**

- 382 1 Savarese G, Lund LH. Global Public Health Burden of Heart Failure. *Card Fail Rev*
383 2017;**03**:7. doi:10.15420/CFR.2016:25:2
- 384 2 Jean-Baptiste W, Yusuf Ali A, Inyang B, *et al.* Are There Any Cardioprotective Effects or
385 Safety Concerns of Erythropoietin in Patients With Myocardial Infarction? A Systematic
386 Review. *Cureus* 2022;**14**. doi:10.7759/CUREUS.25671
- 387 3 Bilak JM, Alam U, Miller CA, *et al.* Microvascular Dysfunction in Heart Failure with
388 Preserved Ejection Fraction: Pathophysiology, Assessment, Prevalence and Prognosis.
389 *Card Fail Rev* 2022;**8**. doi:10.15420/CFR.2022.12
- 390 4 Ezekowitz JA, McAlister FA, Armstrong PW. Anemia is common in heart failure and is
391 associated with poor outcomes: insights from a cohort of 12 065 patients with new-onset
392 heart failure. *Circulation* 2003;**107**:223–5. doi:10.1161/01.CIR.0000052622.51963.FC
- 393 5 Silverberg DS, Wexler D, Blum M, *et al.* The cardio renal anemia syndrome: correcting
394 anemia in patients with resistant congestive heart failure can improve both cardiac and
395 renal function and reduce hospitalizations. *Clin Nephrol* 2003;**60 Suppl 1**:S93-102.
- 396 6 Caramelo C, Justo S, Gil P. Anemia in Heart Failure: Pathophysiology, Pathogenesis,
397 Treatment, and Incognitae. *Rev Española Cardiol (English Ed)* 2007;**60**:848–60.
398 doi:10.1016/S1885-5857(08)60029-8
- 399 7 Bunn HF. Erythropoietin. *Cold Spring Harb Perspect Med* 2013;**3**:a011619.
400 doi:10.1101/cshperspect.a011619
- 401 8 Harlow CE, Gandawijaya J, Bamford RA, *et al.* Identification and single-base gene-
402 editing functional validation of a cis-EPO variant as a genetic predictor for EPO-

- 403 increasing therapies Graphical abstract Authors. Published Online First: 2022.
404 doi:10.1016/j.ajhg.2022.08.004
- 405 9 Khabour OF, Bani-Ahmad MA, Hammash NM. Association between polymorphisms in
406 erythropoietin gene and upper limit haematocrit levels among regular blood donors.
407 *Transfus Clin Biol* 2012;**19**:353–7. doi:10.1016/J.TRACLI.2012.10.001
- 408 10 Abhary S, Burdon KP, Casson RJ, *et al.* Association between erythropoietin gene
409 polymorphisms and diabetic retinopathy. *Arch Ophthalmol* 2010;**128**:102–6.
410 doi:10.1001/archophthalmol.2009.355
- 411 11 Alwohhaib M, Alwaheeb S, Alyatama N, *et al.* Single nucleotide polymorphisms at
412 erythropoietin, superoxide dismutase 1, splicing factor, arginine/serin-rich 15 and
413 plasmacytoma variant translocation genes association with diabetic nephropathy. *Saudi J*
414 *Kidney Dis Transpl* 2014;**25**:577–81. doi:10.4103/1319-2442.132190
- 415 12 Fan YF, Fu YY, Chen Z, *et al.* Gene–gene interaction of erythropoietin gene
416 polymorphisms and diabetic retinopathy in Chinese Han. *Exp Biol Med* 2016;**241**:1524–
417 30. doi:10.1177/1535370216645210
- 418 13 Kaur N, Singh IR, Vanita V. Association of Erythropoietin Gene Polymorphisms With
419 Type 2 Diabetic Retinopathy in Adult Patients From Northern India. *Can J Diabetes*
420 2021;**45**:785–91. doi:10.1016/j.jcjd.2021.03.008
- 421 14 Li H, Xu H, Li Y, *et al.* Associations between erythropoietin polymorphisms and risk of
422 diabetic microvascular complications. *Oncotarget* 2017;**8**:112675–84.
423 doi:10.18632/oncotarget.22699
- 424 15 Liu C, Bai GL, Liu P, *et al.* Role of EPO and TCF7L2 Gene Polymorphism Contribution
425 to the Occurrence of Diabetic Retinopathy. *Dis Markers* 2022;**2022**:6900660.

- 426 doi:10.1155/2022/6900660
- 427 16 Mankoč Ramuš S, Pungeršek G, Petrovič MG, *et al.* The GG genotype of erythropoietin
428 rs1617640 polymorphism affects the risk of proliferative diabetic retinopathy in Slovenian
429 subjects with type 2 diabetes mellitus: enemy or ally? *Acta Ophthalmol* 2021;**99**:e1382–9.
430 doi:10.1111/AOS.14813
- 431 17 Sesti LFC, Sbruzzi RC, Polina ER, *et al.* Association of polymorphisms in the
432 erythropoietin gene with diabetic retinopathy: a case–control study and systematic review
433 with meta-analysis. *BMC Ophthalmol* 2022;**22**:250. doi:10.1186/S12886-022-02467-Y
- 434 18 Tong Z, Yang Z, Patel S, *et al.* Promoter polymorphism of the erythropoietin gene in
435 severe diabetic eye and kidney complications. *Proc Natl Acad Sci U S A* 2008;**105**:6998–
436 7003. doi:10.1073/pnas.0800454105
- 437 19 Chiou TTY, Lee JJ, Wang MC, *et al.* Genetic disposition and modifiable factors
438 independently associated with anemia in patients with type 2 diabetes mellitus. *Diabetes*
439 *Res Clin Pract* 2015;**108**:164–9. doi:10.1016/j.diabres.2014.12.012
- 440 20 Popov AF, Schulz EG, Schmitto JD, *et al.* Relation between renal dysfunction requiring
441 renal replacement therapy and promoter polymorphism of the erythropoietin gene in
442 cardiac surgery. *Artif Organs* 2010;**34**:961–8. doi:10.1111/j.1525-1594.2010.01108.x
- 443 21 Song Q, Zhang Y, Wu Y, *et al.* Association of erythropoietin gene polymorphisms with
444 retinopathy in a Chinese cohort with type 2 diabetes mellitus. *Clin Exp Ophthalmol*
445 2015;**43**:544–9. doi:10.1111/ceo.12505
- 446 22 Sobrin L, Green T, Sim X, *et al.* Candidate gene association study for diabetic retinopathy
447 in persons with type 2 diabetes: The candidate gene association resource (CARE). *Investig*
448 *Ophthalmol Vis Sci* 2011;**52**:7593–602. doi:10.1167/IOVS.11-7510/-

- 449 /DCSUPPLEMENTAL
- 450 23 Portolés J, Martín L, Broseta JJ, *et al.* Anemia in Chronic Kidney Disease: From
451 Pathophysiology and Current Treatments, to Future Agents. *Front Med* 2021;**8**:642296.
452 doi:10.3389/FMED.2021.642296/BIBTEX
- 453 24 Anagnostou A, Lee ES, Kessimian N, *et al.* Erythropoietin has a mitogenic and positive
454 chemotactic effect on endothelial cells. *Proc Natl Acad Sci* 1990;**87**:5978–82.
455 doi:10.1073/PNAS.87.15.5978
- 456 25 Berberich AJ, Hegele RA. A Modern Approach to Dyslipidemia. *Endocr Rev*
457 2022;**43**:611–53. doi:10.1210/endrev/bnab037
- 458 26 Li J, Yang M, Yu Z, *et al.* Kidney-secreted erythropoietin lowers lipidemia via activating
459 JAK2-STAT5 signaling in adipose tissue. *EBioMedicine* 2019;**50**:317.
460 doi:10.1016/J.EBIOM.2019.11.007
- 461 27 Penna F, Busquets S, Toledo M, *et al.* Erythropoietin administration partially prevents
462 adipose tissue loss in experimental cancer cachexia models. *J Lipid Res* 2013;**54**:3045.
463 doi:10.1194/JLR.M038406
- 464 28 Pollock CA, Wyndham R, Collett P V., *et al.* Effects of erythropoietin therapy on the lipid
465 profile in end-stage renal failure. *Kidney Int* 1994;**45**:897–902. doi:10.1038/KI.1994.118
- 466 29 Aguiar C, Macleod J, Yip A, *et al.* Impact of Obesity on Postoperative Outcomes
467 following cardiac Surgery (The OPOS study): Rationale and design of an investigator-
468 initiated prospective study. *BMJ Open* 2019;**9**:e023418. doi:10.1136/bmjopen-2018-
469 023418
- 470 30 Rychlik W. *OLIGO 7 Primer Analysis Software*. Humana Press 2007. doi:10.1007/978-1-
471 59745-528-2_2/FIGURES/2_14_978-1-59745-528-2

- 472 31 Andersson B, Lu J, Edwards KE, *et al.* Method for 96-Well M13 DNA Template
473 Preparations for Large-Scale Sequencing. *Biotechniques* 1996;**20**:1022–7.
474 doi:10.2144/96206ST03
- 475 32 Hall T. BioEdit: a user-friendly biological sequence alignment editor and analysis
476 program for Windows 95/98/NT. *Nucleic Acids Symp Ser* 1999;**41**:95–8.
- 477 33 Solé X, Guinó E, Valls J, *et al.* SNPStats: a web tool for the analysis of association
478 studies. *Bioinformatics* 2006;**22**:1928–9. doi:10.1093/BIOINFORMATICS/BTL268
- 479 34 Reich DE, Cargill M, Bolk S, *et al.* Linkage disequilibrium in the human genome. *Nature*
480 2001;**411**:199–204. doi:10.1038/35075590
- 481 35 Peters SAE, Muntner P, Woodward M. Sex Differences in the Prevalence of, and Trends
482 in, Cardiovascular Risk Factors, Treatment, and Control in the United States, 2001 to
483 2016. *Circulation* 2019;**139**:1025–35. doi:10.1161/CIRCULATIONAHA.118.035550
- 484 36 Lionel AC, Waters R, Sholzberg M, *et al.* Sex Differences in Anemia and Red Blood Cell
485 Transfusions Among General Internal Medicine Inpatients. *Blood* 2021;**138**:1074–1074.
486 doi:10.1182/BLOOD-2021-154106
- 487 37 Sotomi Y, Hikoso S, Nakatani D, *et al.* Sex differences in heart failure with preserved
488 ejection fraction. *J Am Heart Assoc* 2021;**10**:1–20. doi:10.1161/JAHA.120.018574
- 489 38 Lanser L, Fuchs D, Kurz K, *et al.* Physiology and Inflammation Driven Pathophysiology
490 of Iron Homeostasis-Mechanistic Insights into Anemia of Inflammation and Its Treatment.
491 *Nutrients* 2021;**13**:3732. doi:10.3390/NU13113732
- 492 39 Zahorec R. Neutrophil-to-lymphocyte ratio, past, present and future perspectives.
493 *Bratislava Med J* 2021;**122**:474–88. doi:10.4149/BLL_2021_078
- 494 40 Gawdat K, Legere S, Wong C, *et al.* Changes in Circulating Monocyte Subsets (CD16

- 495 Expression) and Neutrophil-to-Lymphocyte Ratio Observed in Patients Undergoing
496 Cardiac Surgery. *Front Cardiovasc Med* 2017;**4**:12. doi:10.3389/fcvm.2017.00012
- 497 41 Katavetin P, Tungsanga K, Eiam-Ong S, *et al.* Antioxidative effects of erythropoietin.
498 *Kidney Int Suppl* 2007;**72**. doi:10.1038/SJ.KI.5002482
- 499 42 Weiss G, Goodnough LT. Anemia of chronic disease. *N Engl J Med* 2005;**352**:1011–23.
500 doi:10.1056/NEJMRA041809
- 501 43 Bomford AB, Munro HN. Transferrin and its receptor: their roles in cell function.
502 *Hepatology* 1985;**5**:870–5. doi:10.1002/HEP.1840050528
- 503 44 Nairz M, Theurl I, Swirski FK, *et al.* “Pumping iron”—how macrophages handle iron at
504 the systemic, microenvironmental, and cellular levels. *Pflugers Arch* 2017;**469**:397–418.
505 doi:10.1007/S00424-017-1944-8
- 506 45 Peyssonnaud C, Nizet V, Johnson RS. Role of the hypoxia inducible factors in iron
507 metabolism. *Cell Cycle* 2008;**7**:28–32. doi:10.4161/CC.7.1.5145
- 508 46 Zodda D, Giammona R, Schifilliti S. Treatment Strategy for Dyslipidemia in
509 Cardiovascular Disease Prevention: Focus on Old and New Drugs. *Pharm 2018, Vol 6*,
510 *Page 10* 2018;**6**:10. doi:10.3390/PHARMACY6010010
- 511 47 Eggena P, Willsey P, Jamgotchian N, *et al.* Influence of recombinant human
512 erythropoietin on blood pressure and tissue renin-angiotensin systems. *Am J Physiol*
513 1991;**261**:E642–6. doi:10.1152/AJPENDO.1991.261.5.E642
- 514 48 Brier ME, Bunke CM, Lathon P V., *et al.* Erythropoietin-induced antinatriuresis mediated
515 by angiotensin II in perfused kidneys. *J Am Soc Nephrol* 1993;**3**:1583–90.
516 doi:10.1681/ASN.V391583
- 517 49 Masuda S, Kobayashi T, Chikuma M, *et al.* The oviduct produces erythropoietin in an

518 estrogen- and oxygen-dependent manner. *Am J Physiol - Endocrinol Metab*
519 2000;**278**:E1038–44.
520 doi:10.1152/AJPENDO.2000.278.6.E1038/ASSET/IMAGES/LARGE/AEND10610007X.
521 JPEG

522 50 Peng B, Kong G, Yang C, *et al.* Erythropoietin and its derivatives: from tissue protection
523 to immune regulation. *Cell Death Dis* 2020;**11**. doi:10.1038/S41419-020-2276-8

524 51 Colafella KMM, Denton KM. Sex-specific differences in hypertension and associated
525 cardiovascular disease. *Nat Rev Nephrol* 2018 *143* 2018;**14**:185–201.
526 doi:10.1038/nrneph.2017.189

527 52 Johrapurkar AA, Pandya VB, Patel VJ, *et al.* Prolyl Hydroxylase Inhibitors: A
528 Breakthrough in the Therapy of Anemia Associated with Chronic Diseases. *J. Med. Chem.*
529 2018;**61**:6964–82. doi:10.1021/acs.jmedchem.7b01686

530 53 Sakashita M, Tanaka T, Nangaku M. Hypoxia-Inducible Factor-Prolyl Hydroxylase
531 Domain Inhibitors to Treat Anemia in Chronic Kidney Disease. In: *Contributions to*
532 *Nephrology*. S. Karger AG 2019. 112–23. doi:10.1159/000496531

533 54 Northrup V, Perez LJ, Edgett BA, *et al.* Intron retention is a mechanism of erythropoietin
534 regulation in brain cell models. *Gene* 2024;**898**:148099. doi:10.1016/j.gene.2023.148099

535 55 Northrup V, Maybank A, Carson N, *et al.* The Value of Next-Generation Sequencing in
536 the Screening and Evaluation of Hematologic Neoplasms in Clinical Practice. *Am J Clin*
537 *Pathol* 2020;**153**:639–45. doi:10.1093/AJCP/AQZ203

538
539
540

541 **Tables**

542 **Table 1 - Primers**

Target	Primer Name	Sequence 5'→3'
EPO rs507392	hEPO_1045F_M13	GTAAAACGACGGCCAGTGTGGCCC CAAACCATACCTG
	hEPO_1981R_M13	CAGGAAACAGCTATGACACTGACG GCTTTATCCACA
EPO rs551238	hEPO_2631F_M13	GTAAAACGACGGCCAGTCACCCTG CAAATTTGATGCC
	hEPOdown677R_M13	CAGGAAACAGCTATGACAGTGACC CATGATTGCACC
EPO rs1617640	h_EPOpro1316F_M13	GTAAAACGACGGCCAGTAGTGCTG GGATTATAGGTGTCA
	h_EPOpro404_M13	CAGGAAACAGCTATGACAGAGATG CCTGGGTTGCTG
M13 sequencing	M13_F	GTAAAACGACGGCCAGT
	M13_R	CAGGAAACAGCTATGAC

543

544

545 **Table 2 - Cycling conditions for gDNA end-point PCR.**

Step	h_EPOpro1316F_M13, h_EPOpro404R_M13	hEPO_1045F_M13, hEPO_1981R_M13	hEPO_2631F_M13, hEPOdown677R_M13
Initial Denaturation	10 min @ 95°C	10 min @ 95°C	10 min @ 95°C
Denaturation	30 sec @ 95°C	30 sec @ 95°C	30 sec @ 95°C
Annealing	30 sec @ 58°C	30 sec @ 58°C	30 sec @ 58°C
Extension	45 sec @ 72°C	60 sec @ 72°C	90 sec @ 72°C
Cycles	35	35	35
Final Extension	10 min @ 72°C	10 min @ 72°C	10 min @ 72°C

546

Min=minutes, sec=seconds @=at

547

Table 3. Demographics of the OPOS sub-cohort

	Total	Anemia			Dyslipidemia			Hypertension		
	(n=95)	Cases (n=31)	Controls (n=64)	p-value	Cases (n=66)	Controls (n=29)	p-value	Cases (n=70)	Controls (n=25)	p-value
Age (years)	63.5 ± 6.6	65.1 ± 5.8	62.7 ± 6.8	0.5	64.3 ± 6.3	61.7 ± 6.8	0.03	64.2 ± 6.9	61.6 ± 5.3	0.04
Females	30 (32%)	16 (52%)	14 (22%)		17 (26%)	13 (45%)		17 (24%)	13 (52%)	
BMI (kg/m ²)	31.8 ± 7.3	34.4 ± 9.4	30.5 ± 5.6	0.007	31.3 ± 6.0	32.7 ± 9.6	0.70	31.4 ± 6.3	32.8 ± 9.6	0.10
Hemoglobin (g/L)	134.8 ± 14.7	117.8 ± 11.5	142.6 ± 7.8	<0.0001	134.8 ± 14.6	135.0 ± 14.8	0.60	134.9 ± 15.2	134.7 ± 12.9	0.82
Hematocrit (L/L)	0.40 ± 0.04	0.35 ± 0.03	0.42 ± 0.02	<0.0001	0.40 ± 0.04	0.40 ± 0.04	0.46	0.40 ± 0.04	0.40 ± 0.03	0.75
MCV (fl)	90.1 ± 4.3	88.2 ± 4.7	90.9 ± 3.8	0.052	89.4 ± 4.2	91.9 ± 3.9	0.054	90.3 ± 4.3	89.6 ± 4.2	0.55
RBC (x10 ¹² /L)	4.4 ± 0.4	4.0 ± 0.4	4.6 ± 0.3	<0.0001	4.5 ± 0.4	4.4 ± 0.4	0.81	4.4 ± 0.5	4.5 ± 0.3	0.53
HbA1c (%)	6.1 ± 1.0	6.2 ± 1.3	6.0 ± 0.9	0.68	6.2 ± 1.1	5.8 ± 0.8	0.29	6.1 ± 1.1	5.8 ± 0.8	0.42
Cholesterol (mmol/L)	4.1 ± 1.2	4.0 ± 1.1	4.1 ± 1.2	0.86	3.9 ± 1.1	4.5 ± 1.1	0.06	3.9 ± 1.2	4.4 ± 1.1	0.52
HDL (mmol/L)	1.2 ± 0.4	1.2 ± 0.4	1.2 ± 0.3	0.66	1.2 ± 0.3	1.4 ± 0.3	0.057	1.2 ± 0.4	1.3 ± 0.3	0.26
LDL (mmol/L)	2.1 ± 0.9	2.1 ± 0.9	2.1 ± 0.9	0.89	2.0 ± 0.8	2.5 ± 1.0	0.03	2.0 ± 0.9	2.5 ± 1.0	0.51
LDL/HDL	1.8 ± 0.8	1.7 ± 0.8	1.8 ± 0.7	0.63	1.7 ± 0.7	1.9 ± 0.7	0.38	1.7 ± 0.7	1.9 ± 0.8	0.92
Non-HDL (mmol/L)	2.9 ± 1.1	2.8 ± 1.0	2.9 ± 1.1	0.75	2.7 ± 1.1	3.1 ± 1.0	0.17	2.8 ± 1.1	3.1 ± 1.0	0.79
Triglycerides (mmol/L)	1.6 ± 1.1	1.8 ± 1.2	1.6 ± 1.0	0.58	1.7 ± 1.2	1.3 ± 0.6	0.27	1.7 ± 1.2	1.4 ± 0.6	0.59
NLR	3.9 ± 5.1	6.1 ± 8.5	2.9 ± 1.2	0.11	3.8 ± 4.6	4.1 ± 6.0	0.47	4.2 ± 5.7	3.1 ± 2.1	0.55

BMI=Body mass index, HDL=high-density lipoprotein, LDL=low-density lipoprotein, MCV=Mean Corpuscular Volume, RBC=red blood cells (erythrocytes), NLR=Neutrophils Lymphocytes ratio. p-value for continuous variable (BMI, Hemoglobin, Hematocrit, HbA1c, Cholesterol, HDL, LDL, MCV, Triglycerides, RBC, NLR) expressed as mean ±SD, p-value calculated using t-test. Categorical variable (Sex) expressed as number of cases (percentage of group), p-value calculated using Chi-square test. Significant p-value of <0.05 are bolded.

Table 4. Association of anemia, dyslipidemia and hypertension by genotype

	Anemia				Dyslipidemia				Hypertension			
	Cases	Control	OR (95% CI)	P- value	Cases	Control	OR (95% CI)	P- value	Cases	Control	OR (95% CI)	P-value
rs1617640												
AA	8	30	2.83	0.065	29	9	0.41	0.11	28	10	1.24	0.73
AC	11	21	(0.93-		23	9	(0.14-		24	8	(0.36-	
CC	12	12	8.60)		13	11	1.23)		18	6	4.29)	
A	27	81	1.96	0.04	81	27	0.64	0.15	80	28	1.24	0.54
C	35	45	(1.02- 3.79)		49	31	(0.34- 1.19)		60	20	(0.62- 2.48)	
rs507392												
AA	7	29	2.58	0.12	28	8	0.29	0.048	27	9	1.21	0.79
AG	8	23	(0.78-		23	8	(0.09-		25	6	(0.29-	
GG	8	11	8.55)		10	9	1.00)		15	4		
A	22	81	1.73	0.12	79	24	0.53	0.066	79	24	1.29	0.51
G	24	45	(0.86- 3.46)		43	26	(0.27- 1.05)		55	14	(0.60- 2.81)	
rs551238												
TT	8	32	2.32	0.18	30	10	0.26	0.11	29	11	1.81	0.43
TG	9	22	(0.68-		23	8	(0.11-		24	7	(0.39-	
GG	7	10	7.97)		9	8	1.27)		14	3	8.30)	
T	25	86	1.63	0.17	83	28	0.66	0.23	82	29	1.55	0.27
G	23	42	(0.81- 3.25)		41	24	(0.33- 1.30)		52	13	(0.70- 3.40)	

OR=Odds Ratio, CI=confidence limit

Table 5. Haplotype association

Haplotype	Anemia			Dyslipidemia			Hypertension		
	Frequency	OR (95% CI)	p-value	Frequency	OR (95% CI)	p-value	Frequency	OR (95% CI)	p-value
AAT	0.5674	1.00	n/a	0.5673	1.00	n/a	0.5672	1.00	n/a
CGG	0.3837	1.98 (1.01-3.91)	0.051	0.3848	0.72 (0.36-1.44)	0.36	0.3836	1.45 (0.69-3.05)	0.33
CGT	0.0311	3.05 (0.38-24.72)	0.3	0.0298	0.05 (0.00-0.51)	0.014	0.329	0.39 (0.05-2.99)	0.37
GHA p-value		0.19			0.031			0.36	

OR=Odds ratio, CI=confidence limit, GHA=global haplotype association, n/a=not applicable

Table 6. Sex differences

Sex	Gen.	Anemia				Dyslipidemia				Hypertension			
		Case	Ctrl	OR (95% CI)	Int.	Case	Ctrl	OR (95% CI)	Int.	Case	Ctrl	OR (95% CI)	Int.
rs1617640													
F	A/A	4	5	1.00	0.99	5	4	1.00	0.5	3	5	1.00	0.1
	A/C	6	6	1.69 (0.25-11.25)		8	4	2.19 (0.33-14.68)		8	2	9.38 (0.90-98.15)	
	C/C	6	3	4.03 (0.45-35.91)		4	5	0.82 (0.11-6.28)		4	2	6.48 (0.47-89.67)	
M	A/A	4	25	1.00		24	5	1.00		24	5	1.00	
	A/C	5	15	1.82 (0.39-8.43)		15	5	0.55 (0.13-2.33)		16	4	0.50 (0.10-2.55)	
	C/C	6	9	3.80 (0.79-18.35)		9	6	0.27 (0.06-1.27)		12	2	0.54 (0.07-4.09)	
rs507392													
F	A/A	3	4	1.00	0.65	4	3	1.00	0.65	2	5	1.00	0.03
	A/G	3	7	0.73 (0.08-6.54)		7	3	1.88 (0.21-16.79)		8	2	18.48 (1.50-227.27)	
	G/G	4	3	3.55 (0.31-40.81)		3	4	0.43 (0.04-5.13)		5	2	15.43 (1.02-233.40)	
M	A/G	4	25	1.00		24	5	1.00		25	4	1.00	
	G/G	5	16	1.89 (0.41-8.82)		16	5	0.55 (0.13-2.33)		17	4	0.51 (0.10-2.63)	
	C/C	4	8	2.78 (0.51-15.09)		7	5	0.21 (0.04-1.11)		10	2	0.45 (0.06-3.49)	
rs551238													
F	T/T	4	4	1.00	0.57	4	4	1.00	0.42	2	6	1.00	0.02
	T/G	4	7	0.59 (0.08-4.36)		8	3	3.22 (0.40-25.64)		9	2	19.16 (1.84-199.49)	
	G/G	3	3	1.80 (0.17-19.69)		2	4	0.55 (0.05-6.61)		4	2	11.33 (0.84-153.49)	
M	T/T	4	28	1.00		26	6	1.00		27	5	1.00	
	T/G	5	15	2.26 (0.48-10.58)		15	5	0.62 (0.15-2.52)		15	5	0.47 (0.11-2.06)	
	G/G	4	7	3.40 (0.61-18.82)		7	4	0.32 (0.06-1.72)		10	1	1.11 (0.10-12.27)	

F=female, M=male, Geno=Genotype, Ctrl=Control, OR=odds ratio, Int=Interaction p-value, CI=confidence limit

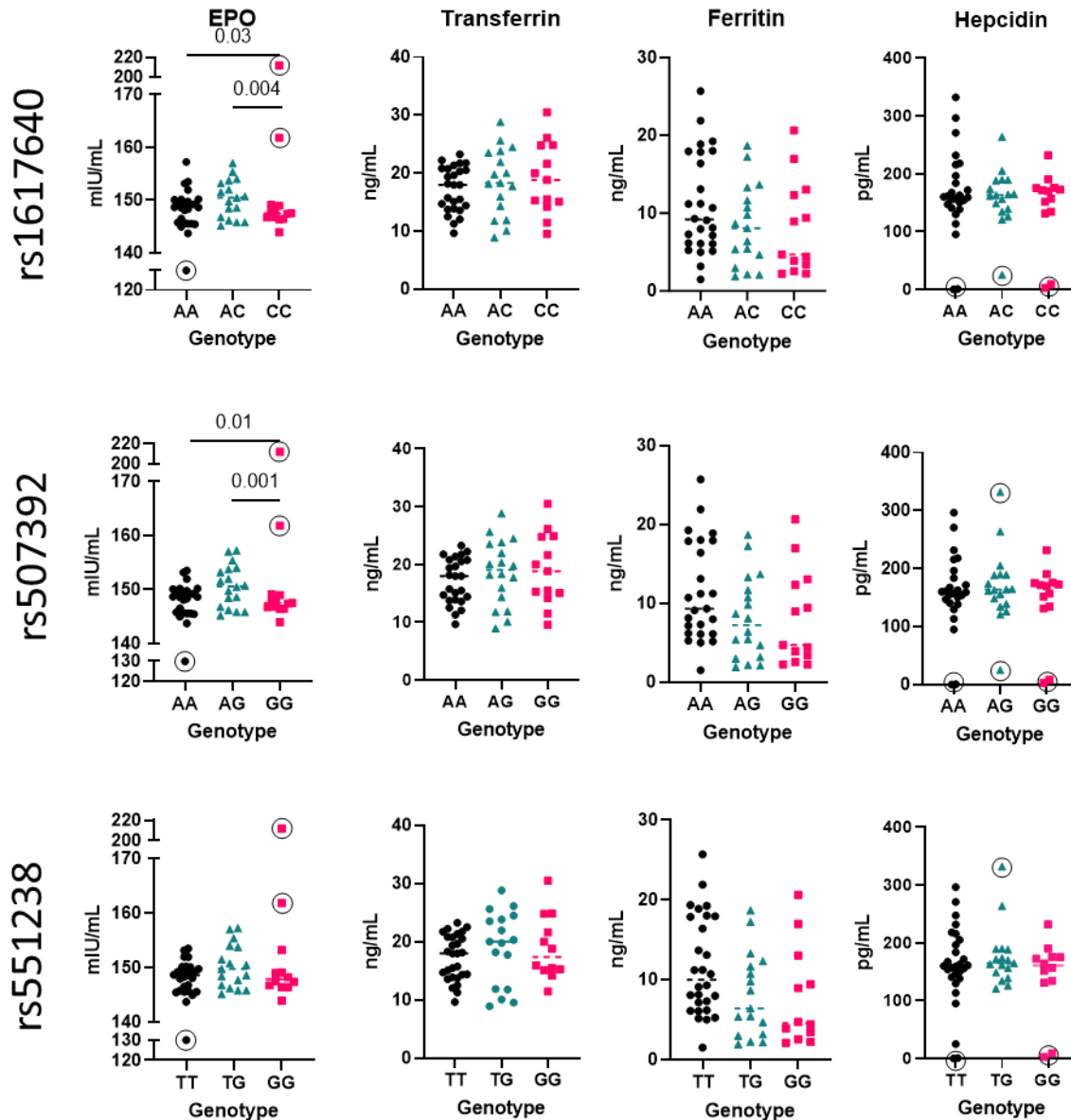


Figure 1. Plasma EPO concentration is decreased in rs161640 CC genotype and rs507392 GG genotype, but not rs51238. Transferrin and Hepcidin showed no genotype correlation although there does appear to be variation in Ferritin it does not reach significance. Plasma concentrations were determined using ELISA assays with outliers marked by circles and excluded from statistical analysis. Outliers were determined by ROUT test and *a priori* as two standard deviations from the mean or else being below the lower limit of detection of the ELISA. ANOVA was used to determine significance with p-values < 0.05 deemed significant.