

1 **Dynamics of serum BDNF After Aerobic Exercise in Subacute Stroke Patients: A Sub-**  
2 **Analysis of the randomized controlled Phys-Stroke trial**

3 Torsten Rackoll\*<sup>1,2</sup>, Lea Doppelbauer<sup>3</sup>, Konrad Neumann<sup>4</sup> and Alexander Heinrich Nave<sup>1,5,6</sup> for the Phys-  
4 Stroke study group

5 <sup>1</sup> Charité – Universitätsmedizin Berlin, corporate member of Freie Universität Berlin and Humboldt  
6 Universität zu Berlin, Clinic of Neurology with Experimental Neurology, Germany

7 <sup>2</sup> Berlin Institute of Health at Charité Universitätsmedizin Berlin, QUEST Center for Responsible  
8 Research, Germany

9 <sup>3</sup> Charité – Universitätsmedizin Berlin, corporate member of Freie Universität Berlin and Humboldt  
10 Universität zu Berlin, Clinic for Gynecology with Breast Center, Germany

11 <sup>4</sup> Charité – Universitätsmedizin Berlin, corporate member of Freie Universität Berlin and Humboldt  
12 Universität zu Berlin, Institute of Biometry and Clinical Epidemiology, Germany

13 <sup>5</sup> Charité – Universitätsmedizin Berlin, corporate member of Freie Universität Berlin and Humboldt  
14 Universität zu Berlin, Center for Stroke Research Berlin, Germany

15 <sup>6</sup> German Center for Cardiovascular Disease (DZHK), partner site Berlin, Germany

16

17 Corresponding author:

18 Dr. Torsten Rackoll

19 [torsten.rackoll@bih-charite.de](mailto:torsten.rackoll@bih-charite.de)

20 Anna-Louisa-Karsch Str. 2

- 1 10178 Berlin
- 2 Tel.: +49 30 450 543 674

1     **Abstract**

2     During the very early phase of stroke recovery, the brain is hypothesized to be in a neuroplastic state that  
3     is responsive to external stimuli. Here, brain-derived neurotrophic factor (BDNF) is thought to play an  
4     important role. BDNF, a member of the neurotrophin family, is implicated in processes such as  
5     synaptogenesis and long-term potentiation. Post-stroke, reduced BDNF levels are observed compared to  
6     the healthy population. An intervention that has been shown to elevate BDNF is Aerobic exercise. Yet,  
7     the impact of aerobic exercise in stroke patients remains unclear. This sub-analysis of the multicenter,  
8     randomized, controlled 'Physical Fitness Training in Patients with Subacute Stroke' trial aimed to  
9     investigate serum BDNF dynamics and the effects of a four-week aerobic exercise intervention on long-  
10    term BDNF levels.

11    Data from 200 patients, with missing data imputed, revealed a modest increase in serum BDNF levels up  
12    to three months post-stroke (22.6 ng/ml, 95% CI 19.2 to 26) which plateaued until six months (24.3  
13    ng/ml, 95% CI 20.6 to 27.9). Despite higher baseline BDNF levels in the exercise group, no treatment  
14    effect was observed until six months (training 24.6 ng/ml, 95% CI 20.2 to 29 vs relaxation: 24.3 ng/ml,  
15    95% CI 19.8 to 28.8,  $p = 0.95$ ). A sex-related interaction was identified in the relaxation group, with  
16    female patients exhibiting higher BDNF increases until end of follow up (20.9 ng/ml, 95% CI 15.7 to  
17    26.2 (males) vs 31.0 ng/ml, 95% CI 22.9 to 39.0 (females),  $p = 0.039$ ). Dose-response analyses and  
18    associations with recurrent events yielded no substantial differences.

19    While serum BDNF levels increased early after stroke in the first three months, aerobic exercise did not  
20    demonstrate a significant impact on BDNF levels within this dataset. Further investigations with more  
21    measurements during the early subacute phase are warranted to elucidate the interplay between exercise,  
22    BDNF, and recovery.

23

1 Keywords: Aerobic exercise, BDNF, Neuroplasticity, Stroke recovery, Subacute stroke

## 1 **Introduction**

2 The early phase after stroke is hypothesized as a critical time window as the brain responds to the  
3 structural damage with increased endogenous neuroplasticity. Most of the functional recovery is argued to  
4 occur in the early weeks after stroke.(1,2) Within this timeframe, processes of rewiring of structural and  
5 functional brain connections are activated and new neurons can evolve in certain brain areas.(3) Brain  
6 derived neurotrophic factor (BDNF) is part of the neurotrophin family and is involved in  
7 neuroplasticity.(4) It is primarily synthesized in the endoplasmic reticulum and is said to be able to cross  
8 the blood brain barrier. Although about 75% of BDNF are synthesized in the brain, BDNF is internalized  
9 and transported in platelets and therefore serum BDNF is regarded as a potential proxy of circulating  
10 BDNF in the brain.(5–7) Mature BDNF, the end product of BDNF synthesis, binds to the tyrosin-related  
11 kinase receptor B (TrkB) and via this pathway is involved in neuronal survival, synaptogenesis,  
12 outgrowth of dendritic spines and long-term potentiation.(8) In the brain, highest level of BDNF can be  
13 found in the CA3 region of the Hippocampus as well as the dentate gyrus, the amygdala and some cortical  
14 areas such as the visual and somatosensory cortex. Reduced levels of BDNF have been consistently  
15 shown in patients with cognitive impairments, highlighting its role in memory formation.(9)

16 In the stroke population, BDNF has been shown to be decreased compared to healthy individuals, and  
17 BDNF levels remained unchanged up to more than a month post stroke.(10) Further, lower BDNF levels  
18 are associated with an increased risk of incident stroke and with poor prognosis after stroke while  
19 elevated levels were associated with decreased risks of major disability and death.(11,12) Aerobic  
20 exercise has been shown to increase serum BDNF in the healthy population.(6,13) Whilst being a  
21 recommended therapy also during the early subacute phase in many clinical stroke guidelines worldwide  
22 aiming to to facilitate neuroplasticity,(14,15) literature on the effectiveness of aerobic exercise on BDNF  
23 levels in stroke patients is conflicting. Most evidence is derived from preclinical experiments and only  
24 most clinical studies measuring serum BDNF have a high risk of bias.(16–18)

1 In the randomized-controlled ‘Physical Fitness Training in Patients with Subacute Stroke’ (Phys-Stroke)  
2 trial,(19) BDNF was measured at four study visits up to six months post-stroke. BDNF was also measured  
3 after a four-week aerobic exercise intervention in half of the study population (intervention group). In this  
4 sub-analysis, we aimed to investigate overall serum BDNF levels over time and to examine potential  
5 effects of an aerobic fitness training intervention on BDNF levels.

## 1 **Materials and Methods**

2 Here we present secondary analyses of data from the Phys-Stroke trial. The Phys-Stroke trial was a  
3 multicentre, endpoint-blinded, randomised clinical trial in which we tested the efficacy of a four-week  
4 treadmill-based aerobic training against relaxation therapy as an active control group in patients 5 – 45  
5 days after stroke. The trial was conducted from 26 September 2013 to 30 April 2017 and registered at  
6 [clinicaltrials.gov](https://clinicaltrials.gov) ([clinicaltrials.gov](https://clinicaltrials.gov) identifier NCT01953549). Its primary efficacy endpoints have been  
7 reported previously.(19) The trial was approved by the local ethics committee of the Charité University  
8 Medicine Berlin (EA1/138/13) and patients gave written informed consent.

9

### 10 **Patients and study design**

11 Patients were eligible if they were within the early subacute phase after stroke confirmed via imaging and  
12 were moderately to severely affected operationalized by the Barthel Index less or equal to 65. Major  
13 exclusion criteria were bleeding from ruptured aneurysm or arteriovenous malformation, severe cardiac or  
14 neurologic comorbidities or major psychological or depressive disorders. In- and exclusion criteria are  
15 listed in Table 1. All patients admitted to any of seven rehabilitation wards in the Berlin area, Germany,  
16 were assessed and subsequently 200 patients were included. After baseline assessment, participants were  
17 randomized between an experimental condition (training) and an active control group (relaxation) using  
18 an online randomization tool stratified for age and functional impairment.(20) The intervention phase was  
19 targeted to deliver 20 sessions over a period of four weeks with a core intervention time of 25 min.  
20 Patients in the training group (n = 105) received treadmill-based aerobic exercise over a period of on  
21 average 16 (SD 6) sessions with an average of 21 (SD 4) min per session with a targeted heart rate of 55 –  
22 65% of their maximum heart rate. In the relaxation group (n = 95), patients were given muscle relaxation  
23 therapy after Jacobsen focused on the upper limb and body in on average 17 (SD 5) sessions with a core

1 intervention time of 24 (SD 3) minutes. Detailed descriptions of the interventions have been reported  
 2 previously and interventions were delivered by different personnel than the outcome assessment.(19)

3

4 Table 1: Inclusion and exclusion criteria

<b>INCLUSION CRITERIA</b>	
1.	Diagnosis of stroke (inclusion within 5-45 days after stroke onset); ischemic or haemorrhagic (cortical, subcortical, brainstem), as determined by initial MRI/CT scan of the brain)
2.	Age $\geq$ 18 years
3.	Able to sit unsupported (i.e. without holding onto supports such as the edge of the bed), with feet supported, for at least 30 seconds
4.	Barthel-Index $\leq$ 65 at inclusion
5.	Considered able to perform aerobic exercise, as determined by responsible physician
6.	Provision of written informed consent
<b>EXCLUSION CRITERIA</b>	
1.	Patient considered unable to comply with study requirements
2.	Stroke due to intracranial haemorrhage primarily due to bleeding from ruptured aneurysm or arteriovenous malformation
3.	Progressive stroke
4.	Unable to perform the required exercises due to a) medical, b) musculo-skeletal, or c) neurological problems (for details see below, 4a-c)
4a.	Medical problems: unstable cardiovascular condition, or other serious cardiac conditions (e. g., New York Heart Association criteria for Class IV heart disease, hospitalization for myocardial infarction or heart surgery within 120 days, severe cardiomyopathy or documented serious and unstable cardiac arrhythmias)
4b.	Musculoskeletal problems: restricted passive range of motion in the major lower limb joints (i.e. an extension deficit of $> 20^\circ$ for the affected hip or knee joints, or a dorsiflexion deficit of $> 20^\circ$ for the affected ankle)
4c.	Neurological problems: severity of stroke-related deficits
5.	Required help of at least 1 person to walk before stroke due to neurological (e. g., advanced Parkinson's disease, Amyotrophic Lateral Sclerosis, Multiple Sclerosis) or non-neurological co-morbidities (e. g. heart failure, orthopaedic problems)
6.	Life expectancy of less than 1 year as determined by responsible physician
7.	Drug or alcohol addiction within the last six months



8.	Significant current psychiatric illness defined as medication-refractory of bipolar affective disorder, psychosis, schizophrenia or suicidality.
9.	Current participation in another interventional trial

1 MRI = magnetic resonance imaging | CT = computer tomography

2

### 3 **Outcomes**

4 Study outcomes were assessed by blinded outcome assessors at baseline, post-intervention (V1), at three  
5 (V2) and at six months (V3) post stroke. Baseline characteristics included medical history, stroke  
6 aetiology and symptoms. Further, the Barthel-Index as a measure of ability to perform activities of daily  
7 living and maximal walking speed on a 10m hallway were conducted at each visit. Here, patients were  
8 asked to walk as fast but safe as possible. Participants are usually considered non-impaired if they score  
9 higher than 26 on a 30 points scale. We asked patients for depressive symptoms using the Center for  
10 Epidemiological Studies – Depression (CES-D) scale which is a validated tool to be used in the stroke  
11 population.(21) Depression has been shown to negatively impact serum BDNF levels before.(10) The  
12 CES-D is a 20-item tool in which scores range from 0 to 60, with higher scores indicating greater  
13 depressive symptoms. A lie criteria rates validity of the provided answers. We used  $\leq -28$  as a cut off and  
14 imputed data for the analysis with a value below the cut off. Fasting blood samples were collected from  
15 all participants at each respective visit, centrifuged and consequently stored at  $-80^{\circ}$  C until analyses of  
16 BDNF using Bioplex-Luminex assay (Milliplex® MAP Human Neurodegenerative Disease Magnetic  
17 Bead Panel 3, HNDG3MAG-36K; Millipore). Bioplex-Luminex assay was used according to the  
18 manufacturer’s guidelines. In addition, we assessed several additional biomarkers that have been reported  
19 before. For this analysis, we used platelet counts as they strongly correlate with serum BDNF.(22)

20

### 21 **Statistical analyses**

1 Descriptive analyses are presented with mean (SD) or median [IQR] where appropriate. Pearson  
2 correlations between levels of serum BDNF and platelet counts were calculated to see whether platelet  
3 counts were connected with levels of serum BDNF. Under the assumption of data missing at random,  
4 missing values were imputed using imputation with chained equations with iterations of 1000 imputations  
5 (MICE package). Analyses were pre-defined but exploratory in nature and therefore no adjustments for  
6 multiple comparisons were added (Statistical analysis plan of the Phys-Stroke trial can be found at  
7 <https://doi.org/10.6084/m9.figshare.5375026.v1>).<sup>(23)</sup> We performed sensitivity analyses on data from all  
8 patients without imputed data.

9 At first, we assessed BDNF progression over time to elucidate its overall progression based on the time of  
10 inclusion after stroke. Here, we fitted repeated measures linear mixed models with changes in serum  
11 BDNF as the primary outcome and days from stroke to start of intervention clustered in 5 to 15 days, 16  
12 to 30 days and 31 and more days as the explanatory variable. Models were controlled for baseline values  
13 and adjusted for age, sex, stroke severity operationalized with the National Institute of Health Stroke  
14 Scale (NIHSS), platelet counts, depressive symptoms at baseline and smoking status prior to stroke.<sup>(24)</sup>  
15 Centre was added to account for participants being clustered in different study sites. Different from the  
16 primary efficacy analyses published previously, we did not add Centre as a random intercept as this  
17 would have resulted in convergence problems due to the high number of covariates but formed three  
18 clusters with the early-rehabilitation wards (2 sites) and the geriatric ward being one cluster each and all  
19 inpatient rehabilitation wards clustered together (4 sites).

20 We further wanted to investigate whether allocation to either of the two treatment arms influenced serum  
21 BDNF progression. Another repeated measures linear mixed model was modeled where treatment was  
22 used as an explanatory variable. Further, a separate model was built with an interaction term of sex and  
23 treatment. This was done to explore whether a sex and treatment interaction found during the primary  
24 efficacy analyses was also present in serum BDNF. Here, we previously reported an exploratory finding

1 that females interacted with treatment allocation in the sense that females did improve in maximal  
2 walking speed in the training group compared to males.

3 Previous reviews suggested a dose-response relationship of aerobic exercise on BDNF levels. Therefore,  
4 we fitted another model with number of intervention days as an exploratory variable. Covariates remained  
5 the same throughout all linear models.

6 Lastly, we wanted to investigate whether serum BDNF levels would be connected with possible recurrent  
7 events. Here, we looked whether BDNF at baseline was associated with only the serious adverse events  
8 recurrent cerebro- or cardiovascular event within the study period of six months in line with the safety  
9 analyses reported previously.(25)

10 Analyses were conducted with R statistical software (Version 4.3.1) with the packages tidyverse (Version  
11 2.0.0), and mice (3.16.0).(26) Analyses codes are made freely accessible with the publication.

## 1 Results

2 Data with consecutive blood draws were available from 113 patients. Reasons for patients not receiving  
3 blood draws include dropouts and losses to follow-up at later time points. Missing blood draws occurred  
4 if patients were unavailable or discharged early. Data flow is depicted in the flow-chart (Figure 1).  
5 Descriptive analyses are reported without imputed data. Baseline characteristics from included patients  
6 are listed in Table 2. Overall, patients were moderately to severely affected with a median NIHSS score  
7 of 8 [5 to 12] and a Barthel-Index score of 50 [35 to 60]. Participants exhibited depressive symptoms at  
8 baseline with a median CES-D sum score of 10 [6 to 14]. CES-D data of 24 patients had to be removed  
9 and subsequently imputed as they were below the cut-off from the lie criterion. We found a weak positive  
10 correlation between serum BDNF at baseline with NIHSS assessed within the stroke unit ( $r = 0.17, p =$   
11  $0.031$ ) and a negative correlation with CES-D values at baseline ( $r = 0.21, p = 0.021$ ). We found that  
12 participants that presented with concomitant diabetes mellitus (14.2 ng/ml, SD = 9.7,  $t(146) = 2.4, p =$   
13  $0.019$ ) and cardiovascular disease (13.8 ng/ml, SD = 6.8,  $t(47) = 2, p = 0.052$ ) had overall lower serum  
14 BDNF at baseline while those with hypercholesterolaemia presented with increased serum BDNF (19.9  
15 ng/ml, SD = 14.3,  $t(120) = -2.1, p = 0.035$ ) compared to those participants without respective  
16 comorbidity. We found no such differences for any of the other comorbidities arterial hypertension, atrial  
17 fibrillation, or previous stroke. Platelet counts and serum BDNF levels at baseline were weakly correlated  
18 ( $r = 0.14, p = 0.087$ ).

19

20 Figure 1: Flow chart of patients with availability of respective blood draws

21

22 Table 2: Baseline characteristics

Baseline characteristics	Training (n = 105)	Relaxation (n = 95)	All (n = 200)
Age, mean (SD)	69 [12]	70 [11]	69 [12]
Female, n (%)	45 (43)	36 (38)	81 (41)
Days post stroke, mean (sd)	26 (12)	27 (17)	27 (15)
Ischemic stroke, n (%)	91 (87)	90 (95)	181 (91)
Treatment with alteplase, n (%) <sup>#</sup>	34 (37)	27 (30)	61 (34)
Previous stroke, n (%)	27 (27)	27 (28)	54 (27)
Diabetes mellitus, n (%)	32 (31)	31 (33)	63 (32)
Cardiovascular disease, n (%)	11 (11)	18 (19)	29 (15)
Hypercholesterolaemia, n (%)	43 (41)	37 (39)	80 (40)
Current smoker, n (%)	31 (30)	32 (34)	63 (32)
NIHSS, median [IQR]	9 [5 to 12]	7 [5 to 11]	8 [5 to 12]
Maximal walking speed, m/s, mean (sd)	0.4 (0.4)	0.5 (0.4)	0.4 (0.4)
Barthel Index, median [IQR]	50 [35 to 60]	55 [35 to 65]	50 [35 to 60]
CES-D, median [IQR]	10 [6 to 16] (n = 85)	11 [6 to 14] (n = 72)	10 [6 to 14] (n = 159)
BDNF, ng/ml, mean (sd)	19.7 (16) (n = 83)	14.3 (8.2) (n = 74)	17.2 (13.2) (n = 157)
Thrombocytes, no/ml	279.5 (89.8) (n = 102)	282.3 (106.9) (n = 94)	280.8 (98.1) (n = 196)

1 # refers only to patients with ischemic stroke

1

2 The intervention started in the training group two days earlier than in the relaxation group (27 SD = 12 vs.  
3 29 SD = 13). Compared to patients in the relaxation group, patients in the training group had more severe  
4 strokes (median NIHSS score 9, IQR 5 to 12 vs 7, IQR 5 to 11) and higher serum BDNF (mean 19.7  
5 ng/ml, SD 16 vs. mean 14.3 ng/ml, SD 8.2,  $t(125) = -2.7, p = 0.007$ ) values at baseline. Overall, treatment  
6 fidelity was fair and had been reported previously.(19)

7

## 8 **BDNF over time**

9 Blood draws were conducted on average on day 27 (SD 15) for the baseline visit, on day 59 (SD 32) for  
10 the post-intervention visit V1, on day 94 (SD 29) for the three months visit V2 and on day 181 (SD 8) for  
11 the six months visit V3. Progression of serum BDNF in the cohort is depicted in Figure 2a. Overall,  
12 serum BDNF levels increased until 3 months post stroke (22.6 ng/ml, 95% CI 19.2 to 26) and remained  
13 stable until six months post stroke (24.3 ng/ml, 95% CI 20.6 to 27.9). We looked whether the time point  
14 of baseline visit after stroke made a difference in the slopes of serum-BDNF progression if start was  
15 clustered in the three timeframes 5 to 15 days (50 participants), 16 to 30 days (68 participants) and 31 and  
16 more days (75 participants) but were overall not able to detect large differences (Figure 2b). In general,  
17 serum BDNF progressed from 17.8 ng/ml [95% CI 12.7 to 22.8] in the earliest, 18.5 ng/ml [95% CI 15.2  
18 to 21.8] in the middle and 14.6 ng/ml [95% CI 10.9 to 18.4] in the latest group to 23.7 ng/ml [95% CI  
19 16.4 to 30.9], 25.5 ng/ml [95% CI 20.6 to 30.3] and 22.9 ng/ml [95% CI 17.5 to 28.3] respectively at six  
20 months post stroke.

21

1 Figure 2: (a) Overall progression of serum BDNF over the study period up to six months post stroke.  
2 Time points of assessment are Baseline, after intervention, three months post stroke and six months post  
3 stroke. (b) Serum BDNF progression per time window, in which the baseline visit was conducted,  
4 clustered into the time frames less and equal to 15 days after stroke, between 16 and 30 days and more  
5 than 30 days after stroke.

6

### 7 **Treatment effect**

8 Although patients in the training group started with higher serum BDNF levels, progression was similar  
9 between groups and patients in the relaxation group reduced the difference almost completely at six  
10 months post stroke (training: 24.6 ng/ml, 95% CI 20.2 to 29 vs relaxation: 24.3 ng/ml, 95% CI 19.8 to  
11 28.8,  $p = 0.95$ ). Also, the changes between individual visits were similar between both groups (Figure 3a).

12

13 Fig 3: (a) Serum BDNF progression from baseline up to six months post stroke per intervention arm.  
14 Time points of assessment are Baseline, after intervention, three months post stroke and six months post  
15 stroke. (b) Serum BDNF progression per gender in both treatment arms up to six months post stroke.  
16 Values are displayed as means with 95% confidence intervals.

17

18 In the main analyses, we reported an interaction of treatment with sex in which females gained higher  
19 increases in maximal walking speed at 3 months post stroke if allocated to the training group compared to  
20 males. Therefore, we analyzed if similar interaction effects could be seen in serum BDNF (Figure 3b). An  
21 interaction could be found but dissimilar to what was expected a sex effect was found in the relaxation  
22 group in which females displayed higher increases in serum BDNF up to six months post stroke than

- 1 males (20.9 ng/ml, 95% CI 15.7 to 26.2 (males) vs 31.0 ng/ml, 95% CI 22.9 to 39.0 (females),  $p = 0.039$ )
- 2 while no such effects were seen in the training group (23.5 ng/ml, 95% CI 17.9 to 29.2 (males) vs. 14.7
- 3 ng/ml, 95% CI 3.4 to 26.1 (females),  $p = 0.148$ ) (Table 3).



1 Table 3: Progression of BDNF in both groups and per sex

	Training			Relaxation		
	Male, ng/ml (95% CI)	Female, ng/ml (95%CI)	p-value	Male, ng/ml (95% CI)	Female, ng/ml (95%CI)	p-value
<b>Baseline</b>	19.8 (16.2 to 23.5)	16.0 (8.9 to 23.1)	0.334	12.9 (9.4 to 16.3)	15.8 (11.1 to 20.5)	0.331
<b>Post-intervention (V1)</b>	16.7 (13.5 to 20.0)	17.0 (10.6 to 23.4)	0.935	17.8 (14.7 to 21.0)	22.5 (18.3 to 26.7)	0.078
<b>3-months post stroke (V2)</b>	24.0 (18.8 to 29.2)	20.8 (10.6 to 31.0)	0.568	22.1 (17.1 to 21.1)	20.7 (13.7 to 27.7)	0.748
<b>6-months post stroke (V3)</b>	23.5 (17.9 to 29.2)	14.7 (3.4 to 26.1)	0.148	20.9 (15.7 to 26.2)	31.0 (22.9 to 39.0)	<b>0.039</b>
<b>V1 – Baseline</b>	-0.1 (-3.3 to 3.0)	3.9 (-6.3 to 14.2)	0.935	1.0 (-2.2 to 4.1)	5.6 (1.4 to 9.8)	0.078
<b>V2 – V1</b>	7.3 (2.1 to 12.5)	3.8 (-6.5 to 14.1)	0.535	4.2 (-0.7 to 9.3)	-1.8 (-8.7 to 5.2)	0.167
<b>V3 – V2</b>	-0.5	-6.1	0.382	-1.2	10.2	<b>0.024</b>

	(-6.6 to 5.6)	(-18.0 to 5.9)		(-6.8 to 4.4)	(1.9 to 18.6)	
--	---------------	----------------	--	---------------	---------------	--

- 1 Interaction effect of treatment allocation and sex on Serum BDNF levels at each study visit and the change between each visit. Values
- 2 based on multiple imputation with chained equations.
- 3

1                    **Dose-response relationship**

2     Given that we could not find a treatment effect between patients being randomized to the training  
3     compared to the relaxation group, we aimed to elucidate whether the number of sessions received had an  
4     influence on serum BDNF progression irrespective of the treatment allocation. In an additional model, we  
5     used number of intervention sessions as an exploratory variable but could not find any association neither  
6     during the intervention period ( $\beta$  1.7 ng/ml, 95% CI -4.3 to 7.8,  $p = 0.572$ ) nor between either the post  
7     intervention visit and three months post stroke ( $\beta$  0.5 ng/ml, 95% CI -9.3 to 10.2,  $p = 0.925$ ) or between  
8     three to six months post stroke ( $\beta$  2.3 ng/ml, 95% CI -8.6 to 13.2,  $p = 0.681$ ).

9     Lastly, we investigated whether serum BDNF at baseline would be associated with cardiac- or  
10    cerebrovascular events after stroke but could not find an association (OR 1.01, 95% CI 0.97 to 1.04,  $p =$   
11    0.741).

## 1 Discussion

2 In this article, one of our aims was to describe serum BDNF levels after stroke and to report its  
3 progression up to six months follow-up in a cohort of subacute stroke patients of one of the largest  
4 aerobic exercise randomized controlled trials in this population. Overall, serum BDNF levels after stroke  
5 are reduced compared to the healthy population.(10,27) In a cohort of healthy volunteers aged 18 to 70  
6 years, mean serum BDNF levels were reported to be 32.7 ng/ml (SD 8.33) with aged participants showing  
7 higher levels (0.33% increase per year of age).(22) Compared to these reference values our cohort  
8 presented with lower serum BDNF values approximately one month after stroke as has been reported also  
9 in other stroke populations.(12) In concordance with the literature, serum BDNF levels correlated with  
10 stroke severity and inversely correlated with depressive symptoms, although correlations were less  
11 pronounced here.(10,27) At baseline, we could identify reduced serum BDNF levels in patients with  
12 concomitant diabetes mellitus and cardiovascular disease which has been found in individuals with  
13 diabetes and linked to cardiovascular disease earlier.(28–32) In mice, it was shown that a high-fat and  
14 refined sugar based diet reduces BDNF levels in the hippocampus and impairs learning mechanisms.(33)

15 In our cohort, progression of serum BDNF levels up to six months post stroke was modest. In a recent  
16 review, serum BDNF levels were found to be stable up to one month post stroke and also in healthy  
17 participants, serum BDNF levels did not alter within a 12 months period but presented with high  
18 variations of BDNF levels between participants.(10,22) Further, we could not identify differences  
19 between participants depending on the date of inclusion to the trial.

20 Due to its stability, BDNF has good potential to show signs of a response to an intervention such as  
21 aerobic exercise. The aerobic exercise intervention in the Phys-Stroke trial was partly chosen due to its  
22 neuroplastic effect after stroke. We therefore hypothesized to identify some positive association of serum  
23 BDNF levels with our training intervention. Dinoff et al. summarized findings of exercise training on

1 resting BDNF concentrations in which an increase of serum BDNF after aerobic exercise was found,  
2 although high between-study heterogeneity existed.(13) Limaye and colleagues synthesized findings from  
3 aerobic exercise studies in the stroke population.(17) Here, studies showing an effect of aerobic exercise  
4 on BDNF levels were considered high risk of bias while studies with low risk of bias showed no effect.  
5 On the contrary, another systematic review found an overall significant effect of aerobic exercise on  
6 BDNF in stroke but evidence was derived mostly from animal studies.(18) In Phys-Stroke, we did not  
7 identify a treatment effect on serum BDNF. A study by Boyne and colleagues but also others suggest that  
8 exercise effects on BDNF is intensity dependent and might occur only after high-intensity  
9 exercise.(16,34,35) In fact, increases in BDNF after exercise has been linked to lactate accumulation  
10 lately.(36,37) Also, an effect was seen in interventions of longer durations between 20 to 40 minutes.(17)  
11 In Phys-Stroke, participants trained on average 21 minutes in an intensity below the threshold of lactate  
12 accumulation which might explain why no treatment effect was seen in our cohort. Lastly, it might be that  
13 an increase in serum BDNF due to exercise is not detectable later than 24 hours after cessation of exercise  
14 as is the case after acute bouts of exercise.(10) In Phys-Stroke, post intervention visits were conducted  
15 between 1 to 2 days post intervention. Therefore, it could be that circulating BDNF levels as a response to  
16 exercise had already declined.

17 In concordance with our subgroup analyses of a sex and treatment interaction on our primary efficacy  
18 endpoint maximal walking speed, we aimed to investigate whether we would find a similar interaction on  
19 serum BDNF levels. To our surprise, we did find an interaction effect but not within the training but in  
20 the relaxation group. Women tend to exhibit higher increases over the course of the intervention phase but  
21 also long term between three to six months post stroke within our cohort. Sex differences in aerobic  
22 exercise after stroke have been reported before with women showing smaller increases as a response to  
23 exercise in the healthy population.(37,38) Literature on interaction effects of sex and relaxation therapy  
24 on BDNF levels in the stroke population could not be identified.

1 To elucidate whether longer durations might reveal dose-response relationships, we investigated whether  
2 the number of intervention sessions had an effect on serum BDNF levels irrespective of the treatment  
3 allocation but could not find any associations. Distribution of received intervention sessions in the Phys-  
4 Stroke trial was skewed as participants were targeted to receive 20 sessions.

5 Stanne and colleagues reported an association of low BDNF values with incident stroke.(12) In our  
6 extended safety analysis, we could not link BDNF with occurrence of cardio- or cerebrovascular events.

7

## 8 **Limitations**

9 Although a robust and independent sequence generation procedure was applied, participants in the  
10 training group were more severely affected with higher stroke severity and reduced mobility. Serum  
11 BDNF levels were elevated in this group, potentially as a response to the more severe strokes which  
12 might have limited the possibility to respond to external stimuli. Analyses reported here are adjusted for  
13 baseline values and the progression of BDNF levels in females being allocated to the relaxation group  
14 show that an upper limit of BDNF level increase has not been reached. Dropout rates were high in the  
15 Phys-Stroke trial and additionally some attrition of BDNF data occurred which could result in a biased  
16 effect estimate as most likely severely affected participants were less likely to come to follow-up visits.  
17 High dropout rates are common in trials in subacute stroke.(39) We therefore applied robust statistical  
18 methods to simulate overall effect estimates including data from all 200 participants. Still, in a study by  
19 Naegelin and colleagues, it was suggested in a power analysis that group sizes of 60 participants are  
20 already needed to find a change of 20% in serum BDNF levels.(22) It therefore might be that the Phys-  
21 Stroke trial was underpowered to assess a positive effect. The Phys-Stroke trial was powered to detect a  
22 meaningful change in maximal walking speed and Barthel Index and therefore the results presented here  
23 can be seen only as hypothesis generating.

1 We recruited patients within a time window of five to 45 days post stroke in which recovery processes  
2 have already started. Therefore, our participants were most likely in different neuroplastic states when  
3 they entered the study and might have showed different progressions of BDNF and intervention  
4 responses. We did analyze serum BDNF levels in clusters of time after stroke and could not identify  
5 differing progression behavior. Also, participants were almost equally distributed between the three  
6 clusters.

7 Serum BDNF levels have been reported to be influenced by a single nucleotide polymorphism on the  
8 BDNF gene. Those Val66Met polymorphism carriers are reported to present with altered activity  
9 dependent release of BDNF which may have impacted the effect of exercise on BDNF levels.(13,28,40)  
10 In our trial, we did not assess the percentage of Val66Met polymorphism carriers and are therefore not  
11 able to estimate its modifying effect on our results.

12 Lastly, there has been critique on the validity of serum BDNF assessment as a proxy measure to BDNF in  
13 the brain. Béjot and colleagues could not correlate serum nor plasma BDNF levels to brain BDNF levels  
14 at any time point after stroke in a rat model of stroke.(41) Further, as there is no data on circulating  
15 BDNF levels prior to stroke we do not know whether reduced BDNF levels found in stroke patients are a  
16 response to the incident or rather an effect on systemic diseases such as diabetes mellitus and  
17 cardiovascular diseases as BDNF is normally produced also in other organs and muscle tissue. So far, it is  
18 not straight forward to assess brain BDNF values in human subjects. Therefore, circulating BDNF seems  
19 currently to be the most appropriate proxy of BDNF levels within the cortex.

20

## 21 **Conclusion**

22 We found overall serum BDNF levels to be low after stroke with moderate increase within the first three  
23 months. In our sample, aerobic training did not influence BDNF levels.

1 Acknowledgements:

2 We thank all participants for their participation. In addition, we would like to thank Jadranka Denes for  
3 oversight of blood sample logistics. The Phys-Stroke study group consists of Ulrike Grittner, Holger  
4 Bläsing, Anna Gorsler, Darius G Nabavi, Heinrich J Audebert, Fabian Klostermann, Ursula Müller-  
5 Werdan, Elisabeth Steinhagen-Thiessen, Andreas Meisel, Matthias Endres, Stefan Hesse, Martin Ebinger,  
6 and Agnes Flöel.

7

8 Author contribution statement:

9 TR has written the first draft and analyzed the data, LD has designed the analysis and analyzed the data,  
10 KN analyzed the data and implemented the multiple imputation, AN designed and oversaw the analysis.  
11 All authors contributed to the final version of the manuscript and had access to the full data.

12

13 Disclosure/Conflict of interest:

14 TR receives funding from the German Ministry of Education and Research (01KC2311), the European  
15 Commission (HORIZON-WIDERA-2022-ERA-01) and the Corona Foundation through a personal  
16 funding to AN.

17 All authors declare no conflict of interest.

18

19 Data availability statement



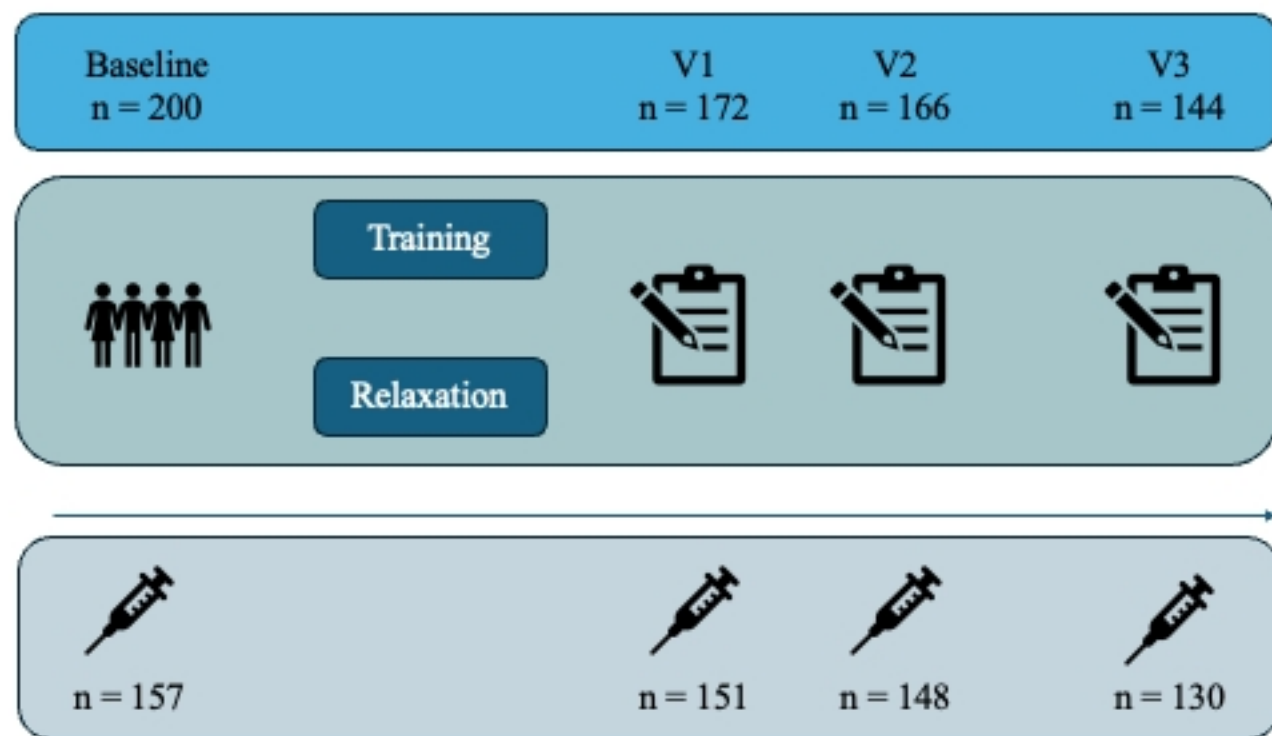
- 1 Related data to the primary efficacy endpoints have been published previously. Analysis scripts unique to
- 2 the current manuscript are freely accessible on github: <https://github.com/Funkstille1011/BDNF>

1     References:

- 2     1.       Kwakkel G, Kollen B, Twisk J. Impact of Time on Improvement of Outcome After Stroke.  
3     Stroke. September 2006;37(9):2348–53.
- 4     2.       Meyer S, Verheyden G, Brinkmann N, Dejaeger E, De Weerd W, Feys H, u. a. Functional and  
5     Motor Outcome 5 Years After Stroke Is Equivalent to Outcome at 2 Months: Follow-Up of the  
6     Collaborative Evaluation of Rehabilitation in Stroke Across Europe. Stroke. Juni 2015;46(6):1613–9.
- 7     3.       Murphy TH, Corbett D. Plasticity during stroke recovery: from synapse to behaviour. Nat Rev  
8     Neurosci. Dezember 2009;10(12):861–72.
- 9     4.       Thoenen H. Neurotrophins and Neuronal Plasticity. 1995;270.
- 10    5.       Pan W, Banks WA, Fasold MB, Bluth J, Kastin AJ. Transport of brain-derived neurotrophic  
11    factor across the blood–brain barrier. Neuropharmacology. Dezember 1998;37(12):1553–61.
- 12    6.       Rasmussen P, Brassard P, Adser H, Pedersen MV, Leick L, Hart E, u. a. Evidence for a release  
13    of brain-derived neurotrophic factor from the brain during exercise: Brain-derived neurotrophic factor  
14    release during exercise. Exp Physiol. 1. Oktober 2009;94(10):1062–9.
- 15    7.       Boukhatem I, Fleury S, Jourdi G, Lordkipanidzé M. The intriguing role of platelets as custodians  
16    of brain-derived neurotrophic factor. Res Pract Thromb Haemost. März 2024;8(3):102398.
- 17    8.       Reichardt LF. Neurotrophin-regulated signalling pathways. Philos Trans R Soc B Biol Sci. 29.  
18    September 2006;361(1473):1545–64.
- 19    9.       Brigadski T, Leßmann V. BDNF: a regulator of learning and memory processes with clinical  
20    potential. E-Neuroforum. März 2014;5(1):1–11.
- 21    10.      Mojtabavi H, Shaka Z, Momtazmanesh S, Ajdari A, Rezaei N. Circulating brain-derived  
22    neurotrophic factor as a potential biomarker in stroke: a systematic review and meta-analysis. J Transl  
23    Med. Dezember 2022;20(1):126.
- 24    11.      Pikula A, Beiser AS, Chen TC, Preis SR, Vorgias D, DeCarli C, u. a. Serum Brain-Derived  
25    Neurotrophic Factor and Vascular Endothelial Growth Factor Levels Are Associated With Risk of Stroke  
26    and Vascular Brain Injury: Framingham Study. Stroke. Oktober 2013;44(10):2768–75.
- 27    12.      Stanne TM, Åberg ND, Nilsson S, Jood K, Blomstrand C, Andreasson U, u. a. Low Circulating  
28    Acute Brain-Derived Neurotrophic Factor Levels Are Associated With Poor Long-Term Functional  
29    Outcome After Ischemic Stroke. Stroke. Juli 2016;47(7):1943–5.
- 30    13.      Dinoff A, Herrmann N, Swardfager W, Liu CS, Sherman C, Chan S, u. a. The Effect of Exercise  
31    Training on Resting Concentrations of Peripheral Brain-Derived Neurotrophic Factor (BDNF): A Meta-  
32    Analysis. Hills RK, Herausgeber. PLOS ONE. 22. September 2016;11(9):e0163037.
- 33    14.      Mackay-Lyons M, Billinger SA, Eng JJ, Dromerick A, Giacomantonio N, Hafer-Macko C, u. a.  
34    Aerobic Exercise Recommendations to Optimize Best Practices in Care after Stroke: AEROBICS 2019  
35    Update. 9. Oktober 2020;100(1):149–56.
- 36    15.      Billerger SA, Arena R, Bernhardt J, Eng JJ, Franklin BA, Johnson CM, u. a. Physical Activity  
37    and Exercise Recommendations for Stroke Survivors A Statement for Healthcare Professionals From the  
38    American Heart Association/American Stroke Association. 1. August 2014;45(8):2532–53.
- 39    16.      Ashcroft SK, Ironside DD, Johnson L, Kuys SS, Thompson-Butel AG. Effect of Exercise on  
40    Brain-Derived Neurotrophic Factor in Stroke Survivors: A Systematic Review and Meta-Analysis.  
41    Stroke. Dezember 2022;53(12):3706–16.
- 42    17.      Limaye NS, Carvalho LB, Kramer S. Effects of Aerobic Exercise on Serum Biomarkers of  
43    Neuroplasticity and Brain Repair in Stroke: A Systematic Review. Arch Phys Med Rehabil. August  
44    2021;102(8):1633–44.
- 45    18.      Alcantara CC, García-Salazar LF, Silva-Couto MA, Santos GL, Reisman DS, Russo TL. Post-  
46    stroke BDNF Concentration Changes Following Physical Exercise: A Systematic Review. Front Neurol.

- 1 28. August 2018;9:637.
- 2 19. Nave AH, Rackoll T, Grittner U, Blasing H, Gorsler A, Nabavi DG, u. a. Physical Fitness
- 3 Training in Patients with Subacute Stroke (PHYS-STROKE): multicentre, randomised controlled,
- 4 endpoint blinded trial. *BMJ*. 18. September 2019;15101.
- 5 20. Medical University of Graz. Randomizer.<http://www.randomizer.at/>. Accessed July 01, 2024.
- 6 21. Parikh RM, Eden DT, Price TR, Robinson RG. The Sensitivity and Specificity of the Center for
- 7 Epidemiologic Studies Depression Scale in Screening for Post-Stroke Depression. *Int J Psychiatry Med*.
- 8 Juni 1989;18(2):169–81.
- 9 22. Naegelin Y, Dingsdale H, Säuberli K, Schädelin S, Kappos L, Barde YA. Measuring and
- 10 Validating the Levels of Brain-Derived Neurotrophic Factor in Human Serum. *eneuro*. März
- 11 2018;5(2):ENEURO.0419-17.2018.
- 12 23. Nave AH, Kröber JM, Brunecker P, Fiebach JB, List J, Grittner U, u. a. Biomarkers and
- 13 perfusion - training-induced changes after stroke (BAPTISE): Protocol of an observational study
- 14 accompanying a randomized controlled trial. *Januar 2013*;13:197.
- 15 24. Shafiee A, Beiky M, Mohammadi I, Rajai S, Jafarabady K, Moradi S, u. a. Effect of smoking on
- 16 Brain-Derived Neurotrophic Factor (BDNF) blood levels: A systematic review and meta-analysis. *J*
- 17 *Affect Disord*. März 2024;349:525–33.
- 18 25. Rackoll T, Nave AH, Ebinger M, Endres M, Grittner U, Flöel A, u. a. Physical Fitness Training
- 19 in Patients with Subacute Stroke (PHYS-STROKE): Safety analyses of a randomized clinical trial. *Int J*
- 20 *Stroke*. Januar 2022;17(1):93–100.
- 21 26. Buuren S van, Groothuis-Oudshoorn K. mice : Multivariate Imputation by Chained Equations in
- 22 *R*. 2011;45(3).
- 23 27. Qiao HJ, Li ZZ, Wang LM, Sun W, Yu JC, Wang B. Association of lower serum Brain-derived
- 24 neurotrophic factor levels with larger infarct volumes in acute ischemic stroke. *J Neuroimmunol*. Juni
- 25 2017;307:69–73.
- 26 28. Rodier M, Quirié A, Prigent-Tessier A, Béjot Y, Jacquin A, Mossiat C, u. a. Relevance of Post-
- 27 Stroke Circulating BDNF Levels as a Prognostic Biomarker of Stroke Outcome. Impact of rt-PA
- 28 Treatment. Amédée T, Herausgeber. *PLOS ONE*. 15. Oktober 2015;10(10):e0140668.
- 29 29. Rozanska O, Uruska A, Zozulinska-Ziolkiewicz D. Brain-Derived Neurotrophic Factor and
- 30 Diabetes. *Int J Mol Sci*. 28. Januar 2020;21(3):841.
- 31 30. Davarpanah M, Shokri-mashhadi N, Ziaei R, Saneei P. A systematic review and meta-analysis of
- 32 association between brain-derived neurotrophic factor and type 2 diabetes and glycemic profile. *Sci Rep*.
- 33 2. Juli 2021;11(1):13773.
- 34 31. Bahls M, Könemann S, Markus MRP, Wenzel K, Friedrich N, Nauck M, u. a. Brain-derived
- 35 neurotrophic factor is related with adverse cardiac remodeling and high NTproBNP. *Sci Rep*. 28. Oktober
- 36 2019;9(1):15421.
- 37 32. Hang PZ, Zhu H, Li PF, Liu J, Ge FQ, Zhao J, u. a. The Emerging Role of BDNF/TrkB
- 38 Signaling in Cardiovascular Diseases. *Life*. 19. Januar 2021;11(1):70.
- 39 33. Molteni R, Barnard RJ, Ying Z, Roberts CK, Gómez-Pinilla F. A high-fat, refined sugar diet
- 40 reduces hippocampal brain-derived neurotrophic factor, neuronal plasticity, and learning. *Neuroscience*.
- 41 Juli 2002;112(4):803–14.
- 42 34. Boyne P, Meyrose C, Westover J, Whitesel D, Hatter K, Reisman DS, u. a. Exercise intensity
- 43 affects acute neurotrophic and neurophysiological responses poststroke. *J Appl Physiol*. 1. Februar
- 44 2019;126(2):431–43.
- 45 35. Ferris LT, Williams JS, Shen CL. The Effect of Acute Exercise on Serum Brain-Derived
- 46 Neurotrophic Factor Levels and Cognitive Function. *Med Sci Sports Exerc*. April 2007;39(4):728–34.
- 47 36. El Hayek L, Khalifeh M, Zibara V, Abi Assaad R, Emmanuel N, Karnib N, u. a. Lactate
- 48 mediates the effects of exercise on learning and memory through SIRT1-dependent activation of

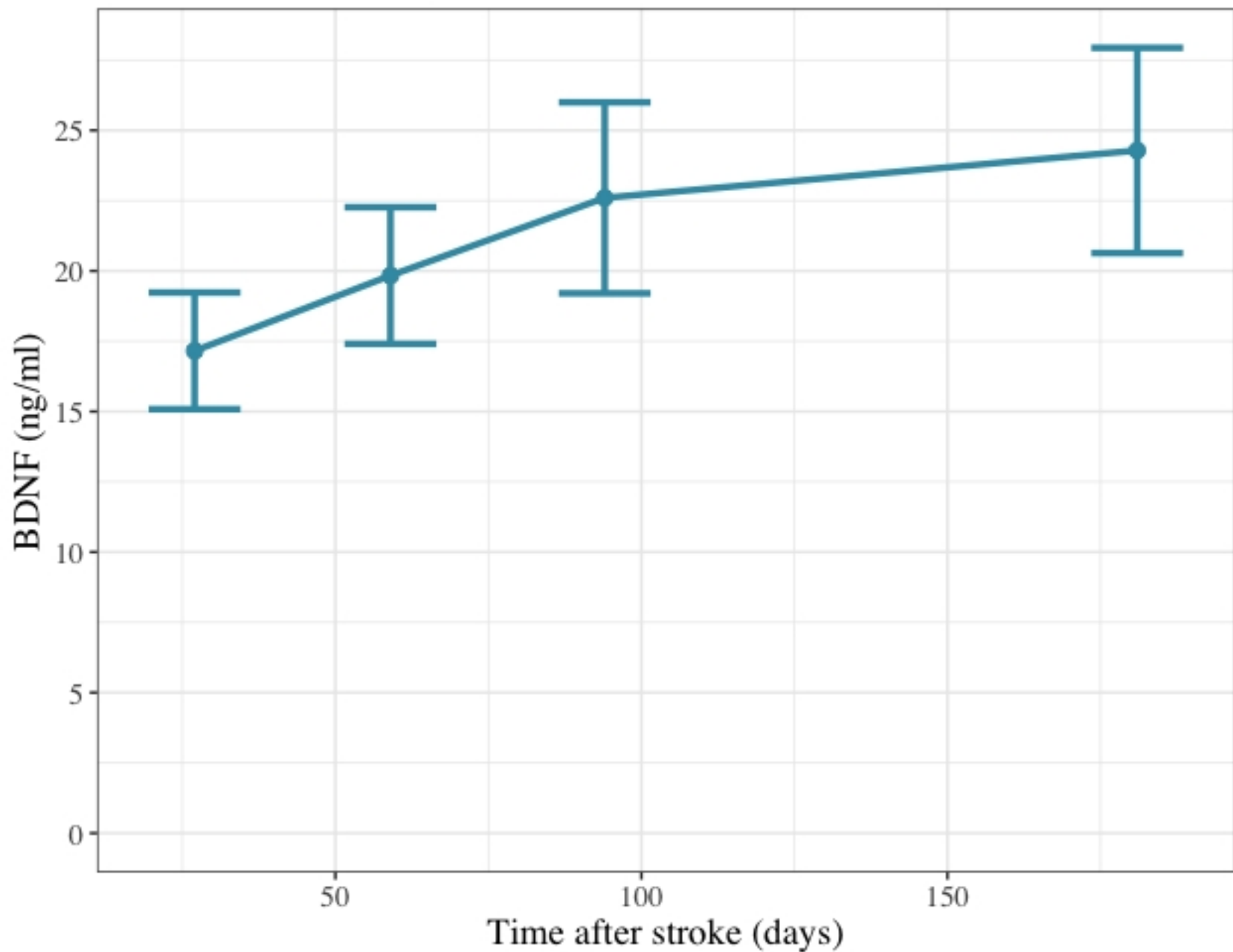
- 1 hippocampal brain-derived neurotrophic factor (BDNF). *J Neurosci*. 28. Januar 2019;1661–18.
- 2 37. Müller P, Duderstadt Y, Lessmann V, Müller NG. Lactate and BDNF: Key Mediators of
- 3 Exercise Induced Neuroplasticity? *J Clin Med*. 15. April 2020;9(4):1136.
- 4 38. Szuhany KL, Bugatti M, Otto MW. A meta-analytic review of the effects of exercise on brain-
- 5 derived neurotrophic factor. *J Psychiatr Res*. Januar 2015;60:56–64.
- 6 39. Tyson SF, Thomas N, Vail A, Tyrrell P. Recruiting to inpatient-based rehabilitation trials:
- 7 Lessons learned. 2015;16(1):2–5.
- 8 40. Berretta A, Tzeng YC, Clarkson AN. Post-stroke recovery: the role of activity-dependent release
- 9 of brain-derived neurotrophic factor. *Expert Rev Neurother*. November 2014;14(11):1335–44.
- 10 41. Béjot Y, Mossiat C, Giroud M, Prigent-Tessier A, Marie C. Circulating and Brain BDNF Levels
- 11 in Stroke Rats. Relevance to Clinical Studies. Götz J, Herausgeber. *PLoS ONE*. 16. Dezember
- 12 2011;6(12):e29405.



Analyzed  
n = 200

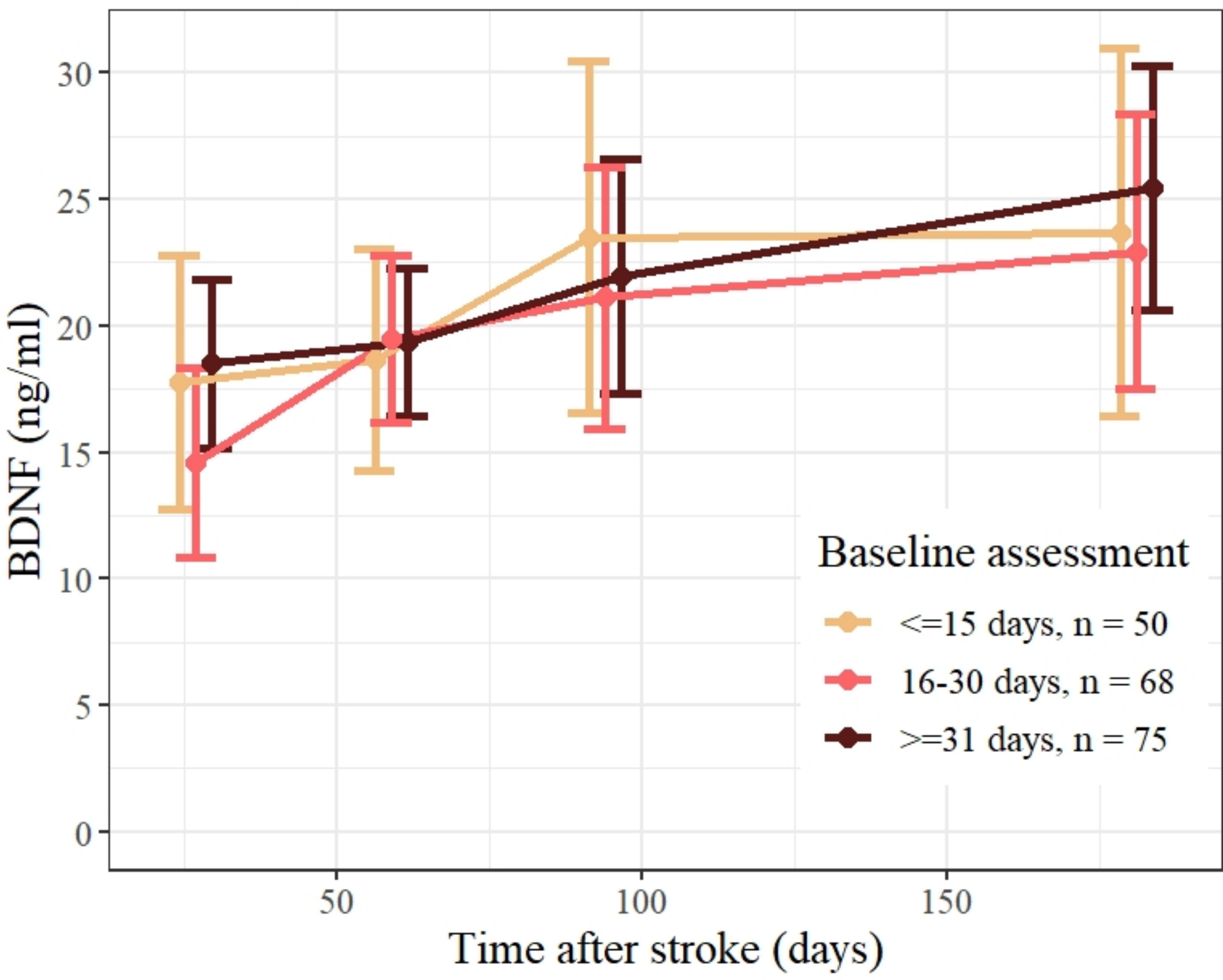
Figure

Serum BDNF progression over time



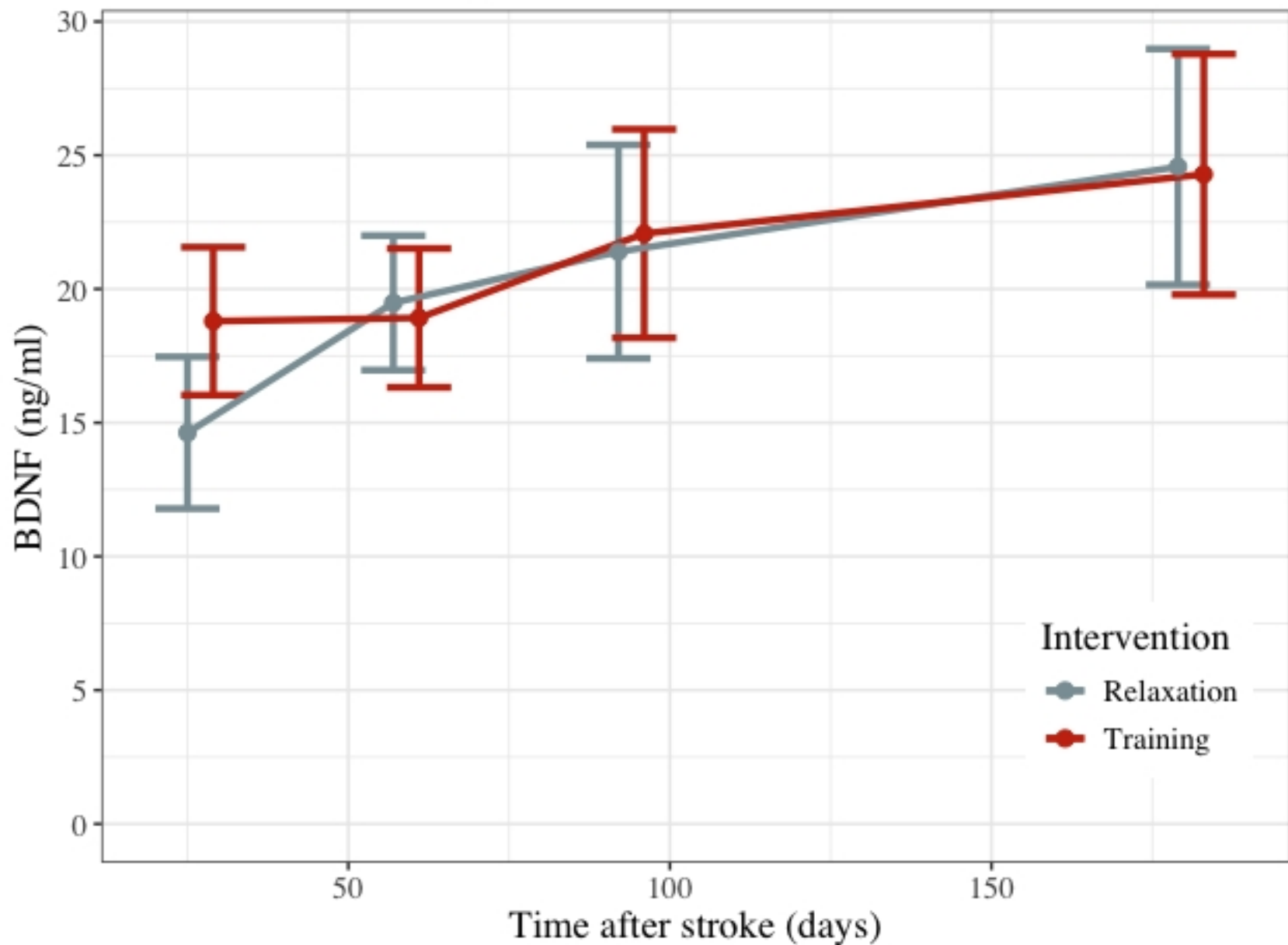
Figure

# Serum BDNF progression over time depending on commencement after stroke



Figure

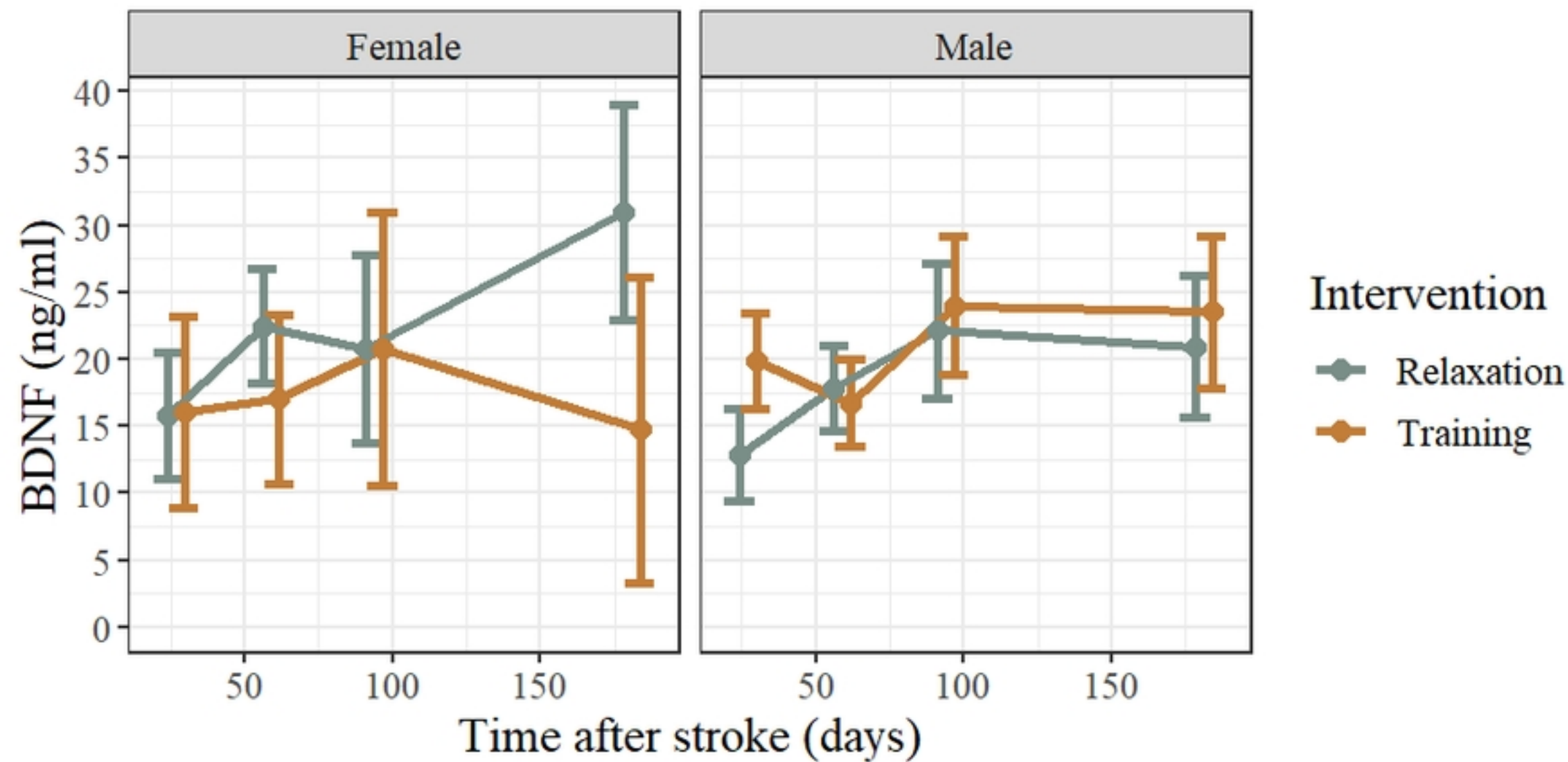
# Serum BDNF progression over time in both intervention groups



Figure



# Interaction in serum BDNF progression over time between intervention groups and sex



Figure