

1 **Early menarche and childbirth accelerate aging-related outcomes and age-related diseases: Evidence**
2 **for antagonistic pleiotropy in humans**

3 Yifan Xiang¹, Vineeta Tanwar¹, Parminder Singh¹, Lizellen La Follette¹, Vikram Narayan¹, Pankaj Kapahi^{1,2*}

4 **Affiliations:**

5 ¹The Buck Institute for Research on Aging, 8001 Redwood Blvd, Novato, CA 94945

6 ²Department of Urology, University of California, San Francisco, 400 Parnassus Avenue, San Francisco, CA
7 94143

8 *Corresponding author: Pankaj Kapahi, Email: pkapahi@buckinstitute.org.

9

10 **Abstract:** Aging can be understood as a consequence of the declining force of natural selection with age.
11 Consistent with this, the antagonistic pleiotropy theory of aging proposes that aging arises from trade-offs that
12 favor early growth and reproduction. However, evidence supporting antagonistic pleiotropy in humans
13 remains limited. Using Mendelian Randomization (MR), we demonstrated that later ages of menarche or first
14 childbirth were genetically associated with longer parental lifespan, decreased frailty index, slower epigenetic
15 aging, later menopause, and reduced facial aging. Moreover, later menarche or first childbirth were also
16 genetically associated with a lower risk of several age-related diseases, including late-onset Alzheimer's
17 disease (LOAD), type 2 diabetes, heart disease, essential hypertension, and chronic obstructive pulmonary
18 disease (COPD). We validated the associations between the age of menarche, childbirth, and the number of
19 childbirths with several age-related outcomes in the UK Biobank by conducting regression analysis of nearly
20 200,000 subjects. Our results demonstrated that menarche before the age 11 and childbirth before 21
21 significantly accelerated the risk of several diseases, and almost doubled the risk for diabetes, heart failure,
22 and quadrupled the risk of obesity, supporting the antagonistic pleiotropy theory. We identified 126 significant
23 single nucleotide polymorphisms (SNPs) that influenced age-related outcomes, some of which were involved
24 in known longevity pathways, including IGF1, growth hormone, AMPK, and mTOR signaling. Our study also
25 identified higher BMI as a mediating factor in causing the increased risk of certain diseases, such as type 2
26 diabetes and heart failure, in women with early menarche or early pregnancy, emphasizing the importance of
27 the thrifty gene hypothesis in explaining in part the mechanisms behind antagonistic pleiotropy. Our study
28 highlights the complex relationship between genetic legacies and modern diseases, emphasizing the need for
29 gender-sensitive healthcare strategies that consider the unique connections between female reproductive
30 health and aging.

31 Introduction

32 Given the decline in the force of natural selection with age, genes that influence aging and age-related diseases
33 are likely to be selected for their influence on early life events ¹. The theory of antagonistic pleiotropy suggests
34 that natural selection involves inherent trade-offs, where genes that are advantageous for early survival and
35 reproduction may have detrimental effects later in life, contributing to the aging process and the development
36 of age-related diseases. ¹⁻³. Though evidence for antagonistic pleiotropy has been observed in invertebrate
37 models, evidence for causal relationships in mammals, especially humans, is largely lacking ⁴. The timing of
38 reproductive events, such as menarche and childbirth, has long been recognized as a crucial aspect of human
39 life history and evolution. However, accumulating evidence suggests that these reproductive milestones may
40 have far-reaching implications ^{5,6}.

41 Considering reproductive events are partly regulated by genetic factors that can manifest the physiological
42 outcome later in life, we hypothesized that earlier or later onset of menarche and first childbirth could reflect
43 broader genetic influences on longevity and disease susceptibility, serving as proxies for biological aging
44 processes (**fig. S1** and **fig. S2**). Mendelian randomization (MR) is a term that applies to the use of genetic
45 variation to address causal questions about how modifiable exposures influence different outcomes ⁷. Two-
46 sample and two-step MR analyses were adopted in our research to explore the genetic causal associations
47 using the inverse variance weighted (IVW) model. We leveraged recent studies that have identified SNPs
48 associated with early menarche or birth in humans, to examine their role in antagonistic pleiotropy. After
49 preprocessing, there were 209 and 33 single nucleotide polymorphisms (SNPs) included in MR analyses for
50 the two exposures, age at menarche ⁸ and age at first birth ⁹, respectively.

52 Later menarche was genetically associated with later aging outcomes

53 Since parental ages at death may reflect the genetic heritability of lifespan, parental ages at death were used
54 as general aging outcomes ¹⁰. Compared to early menarche, later age at menarche was significantly
55 associated with later parental ages at death for mothers or fathers (Beta=2.27E-02, P=1.84×10⁻⁴;
56 Beta=1.97E-02, P=7.88×10⁻⁴ for father and mother's ages at death respectively) (**Fig. 1A** and **Table S1-S3**).
57 Aging is the biggest risk factor for frailty and several age-related diseases. Later age at menarche was
58 associated with a lower frailty index, which was calculated using a set of 49 self-reported questionnaire
59 items on traits covering health, presence of diseases and disabilities, and mental well-being ¹¹ (Beta=-2.36E-
60 02, P=5.75×10⁻³). After excluding the instrumental variables (IVs) associated with body mass index (BMI),
61 the significant association between later menarche and outcomes remained based on the weighted median
62 model (WMM) for frailty index (Beta=-2.88E-02, P=0.0202) and based on IVW for parental ages at death
63 (Beta=1.47E-02, P=2.46×10⁻²; Beta=1.24E-02, P=3.87×10⁻²). Next, we examined the associations between
64 the age of menarche and organ aging or age-related diseases (**Fig. 1B**). Later age of menarche was
65 associated with later menopause onset (Beta=1.16E-01, P=2.11×10⁻² with WMM), lower risks of late-onset
66 Alzheimer's disease (LOAD) (OR=0.897 (0.810–0.994), P=3.88×10⁻²), chronic heart failure (CHF)

(OR=0.953 (0.913–0.995), $P=2.80 \times 10^{-2}$), essential hypertension (OR=0.990 (0.986–0.993), $P=1.99 \times 10^{-8}$), facial aging (Beta=-1.76E-02, $P=2.16 \times 10^{-9}$), and early onset chronic obstructive pulmonary disease (COPD) (OR=0.838 (0.755–0.931), $P=9.50 \times 10^{-4}$) and mildly higher risk of osteoporosis (OR=1.009 (1.006–1.013), $P=1.95 \times 10^{-7}$). These associations were still significant after excluding SNPs associated with BMI, except for CHF. One potential mechanism of antagonistic pleiotropy is accelerated cell growth and division; therefore, we examined the relationship between menarche and certain cancers. Later age at menarche was associated with lower risks of breast cancer (OR=0.859 (0.764–0.966), $P=1.53 \times 10^{-2}$) and endometrial cancer (OR=0.896 (0.840–0.956), $P=9.02 \times 10^{-4}$) compared with early menarche (**Fig. 1B**).

Later age at first birth was genetically associated with later aging outcomes

Next, we examined the associations between the age of childbirth and age-related outcomes. Compared to early first birth, later age at first birth was associated with lower frailty index (Beta=-6.48E-02, $P=5.93 \times 10^{-11}$) and GrimAge, a measure of epigenetic aging (Beta=2.67E-01, $P=4.37 \times 10^{-2}$), and older parental ages at death (Beta=3.43E-02, $P=6.88 \times 10^{-5}$ for father's age at death; Beta=3.37E-02, $P=1.78 \times 10^{-4}$ for mother's age at death) (**Fig. 1A**). Similar to results with the age of menarche, later age at first birth was associated with later menopause onset (Beta=2.67E-01, $P=3.08 \times 10^{-4}$), lower risks of type 2 diabetes (OR=0.890 (0.847–0.935), $P=3.65 \times 10^{-6}$), CHF (OR=0.926 (0.866–0.991), $P=2.56 \times 10^{-2}$), essential hypertension (OR=0.989 (0.984–0.995), $P=1.54 \times 10^{-4}$), and gastrointestinal or abdominal disease (GAD) (OR=0.991 (0.985–0.996), $P=1.29 \times 10^{-3}$). Most significant associations remained after the BMI-related SNPs were excluded, except for CHF (**Fig. 1C** and **Table S3**). Furthermore, later age at first birth was also significantly associated with a lower risk of cervical cancer (OR=0.999 (0.998–1.000), $P=1.52 \times 10^{-2}$) but not breast and endometrial cancers (**Fig. 1C**).

BMI is an important mediator in significant associations

As BMI is an important modulator of aging¹², we examined its role in explaining these associations. Based on the two-sample MR analyses, significant associations between early menarche and CHF, and between early first birth and CHF and cervical cancer, were not observed after excluding SNPs related to BMI (**Fig. 1**). To estimate the effect of BMI as the mediator, we further conducted two-step MR. Exposures of age of menarche and age at first birth, and outcomes of frailty index, type 2 diabetes, and CHF, were included in the two-step MR analysis. Later ages of menarche and first birth were associated with lower BMI (Beta=-5.36E-02, $P=2.73 \times 10^{-13}$; Beta=-4.49E-02, $P=6.85 \times 10^{-5}$). Higher BMI was associated with higher risks of type 2 diabetes (OR=2.391 (2.243–2.550), $P=4.65 \times 10^{-156}$), CHF (OR=1.690 (1.570–1.819), $P=1.67 \times 10^{-44}$), and cervical cancer (OR=1.001 (1.000–1.002), $P=3.16 \times 10^{-2}$). Significant pleiotropy was detected in the association between BMI and frailty index. Two-step MR showed that BMI significantly mediated the associations between menarche and, type 2 diabetes or CHF (**Table S4**). BMI also significantly mediated the associations between first birth and, type 2 diabetes, CHF, or cervical cancer (**Table S4**). As both early menarche and first birth were associated with higher BMI, the BMI had a significant effect to explain the

102 associations partially. Results of colocalization analysis showed 5 SNPs associated with both the exposures
103 and outcomes (**Table S5**). The genetic correlation results analyzed with LDSC method are listed in Table S6.

104 **Mechanisms explaining antagonistic pleiotropy** We identified 126 significant SNPs in the genes from the
105 MR analysis for their association between age of menarche or first birth with 15 aging and age-related
106 disease outcomes. These SNPs were then listed according to (i) the number of study outcomes they were
107 associated with and (ii) their frequency of occurrence in the European and global population. We chose to
108 depict only the SNPs that were associated with greater than three outcomes as shown in **Fig. 2**. The SNP
109 rs2003476 in the *CRTC1* gene was found to be associated with seven aging and age-related disease
110 outcomes (frailty index, LOAD, CHF, father's age at death, mother's age at death, breast, and endometrial
111 cancer). Previous studies have indicated that *CRTC1* transcription domain is linked with extending the
112 lifespan in *C. elegans*¹³ and a decrease in *CRTC1* levels was found to be associated with human AD¹⁴. Two
113 other genes involved in the glutathione metabolism pathway, *CHAC1* and *GGT7*, were also found to be
114 associated with four different aging outcomes (*CHAC1* was associated with frailty index, diabetes, COPD,
115 and BMI; *GGT7* was associated with father's age at death, hypertension, breast cancer and BMI) (**Fig. 2**).
116 Importantly, the SNP in *CHAC1* is a missense variant, suggesting its impact on protein translation and
117 potential contribution to disease biology. *CHAC1* has recently been implicated in age-related macular
118 degeneration¹⁵ and muscle wasting¹⁶. Posttranslational protein-lipid modification processes are known to
119 contribute to aging and age-related diseases¹⁷. N-myristoylation is one such process that is catalyzed by
120 NMT (N-myristoyltransferase)¹⁸, another intriguing gene candidate identified in our analysis. We found an
121 association of *NMT1* with three aging outcomes: T2D, CHF, and endometrial cancer. Various myristoylated
122 proteins have been implicated in diverse intracellular signaling pathways¹⁹ including AMP-activated protein
123 kinase (AMPK)^{20,21}. It has been shown that *NMT1* exerts synovial tissue-protective functions by promoting
124 the recruitment of AMPK to lysosomes and inhibiting mTORC1 signaling²⁰. In addition, drugs targeting
125 NMTs (*NMT1* and *NMT2*) have been suggested to be potent senolytics²² and a target for treating or
126 preventing various diseases such as cancer^{23,24} and heart failure²⁵. Furthermore, modulating the
127 evolutionarily conserved N-myristoyl transferase *NMT1* was shown to extend lifespan in yeast²⁶. The full
128 table of SNPs and their population frequency and association with aging outcomes is provided in **Table S7**.

129 **Canonical signaling pathways analysis.** A total of 498 canonical signaling pathways related to 126 SNPs/gene
130 outcomes were identified based on the Ingenuity Pathway Knowledge Base (IPKB). After ranking the
131 identified canonical signaling pathways according to their adjusted P-values, the top 25 canonical signaling
132 pathways with a p-value < 10⁻² enriched by SNPs/genes involved in the age of menarche and first birth are
133 represented in **Fig. 3A**. The top enriched canonical signaling pathways fell into these broader categories: (1)
134 Developmental and cellular signaling pathways such as BMP, IGF-1, and growth hormone signaling; (2)
135 Neuronal signaling and neurological disorders that include amyloid processing, activation of NMDA receptors
136 and postsynaptic events, and glioma signaling; (3) Metabolic signaling pathways such as insulin receptor,
137 mTOR, and leptin signaling; (4) Immunological and inflammatory signaling pathways, which include

lymphotoxin β receptor and TREM1 signaling; (5) Cardiovascular and muscular signaling pathways including the role of NFAT in cardiac hypertrophy. In addition to canonical pathways, SNPs/genes were shown to be further associated with diseases and functions. IPA showed a total of 80 diseases and functions associated with age at menarche and first birth. These associated diseases and functions were rated according to their adjusted P-values, and the top 20 enriched categories with a P-value $< 10^{-5}$ were selected and depicted in **Fig. 3B**.

Gene network analysis and drug interactions. Besides pathway and disease associations, the 126 SNPs/genes were further connected to identify 11 functional networks using IPA. These IPA networks were ranked based on their consistency scores. The top 5 networks included a range of 13-17 genes with scores above 25, indicating robust regulatory analysis²⁷ (**Table S8**). The top networks were mainly connected to the following functions: Cellular interaction/signaling/development (**Fig. 3C**), cell death and survival, cancer, gastrointestinal, reproductive (**Fig. 3C**), neurological (**Fig. 3D**), and cardiovascular system, development, function, diseases. These results support the notion that dynamic cellular interactions and the development of various vital organ systems influenced by age at menarche and first birth also influence age-related diseases. The two top IPA networks were further outlined in **Fig. 3C** and **3D**. To further explore the drugs targeting genes associated with age at menarche and first birth, we conducted an analysis using ChEMBL²⁸ and DrugBank databases²⁹. This examination revealed that a total of 11 FDA-approved drugs target the identified genes (*PRKAG2*, *SCN2A*, *DPYD*, *MC3R*, *AKT*, *MAPK*, *KCNK9*, *TACR3*, *HTR4*, *KCNB2*, *RXRG*) (**Table S9**).

Population validation for associations between age at menarche, or first live birth, or number of births with age-related outcomes

Next, we validated the genetic associations in the population cohort of the UK Biobank. 264,335, 184,481, and 259,758 participants were included for independent variables of age at menarche, age at first live birth, and number of births, respectively (**Table S10**). Ages at menarche were divided into 5 age groups, $<11y$, 11-12y, 13-14y, 15-16y, and $>16y$. The probability of living to 80 years old, having menopause ≥ 50 years old, risk of diabetes, high blood pressure (HBP), heart failure, COPD, breast cancer, endometrial cancer, and obesity were compared among the 5 age groups of menarche. Each of the outcomes was compared between the highest and lowest education levels and 3 BMI categories (18.5-24.9, 25-29.9, and ≥ 30) among the 5 age groups (**Fig. 4A-I**). The ORs for each age group were calculated based on the coefficients (β) in logistic regression after including confounders of smoking, alcohol, education, and BMI. Compared to the group with menarche under 11 years old, which generally had the highest risk, females with menarche at 13-14y had the highest probability of living to 80 years old (OR=1.412, $P<0.001$) and having menopause ≥ 50 years old (OR=1.146, $P<0.001$), and had the lowest risk of diabetes (OR=0.773, $P<0.001$), heart failure (OR=0.835, $P<0.001$), and COPD (OR=0.728, $P<0.001$). The group with menarche at 15-16y had the lowest risks of high blood pressure (HBP) (OR=0.793, $P<0.001$) and obesity (OR=0.337, $P<0.001$). Females with menarche $>16y$ had the lowest risks of breast cancer (OR=0.832, $P<0.05$) and endometrial cancer (OR=0.641, $P<0.05$) compared to females with menarche $<11y$ (**Table S11**).

173 Ages at first birth were divided into 5 age groups, <21y, 21-25y, 26-30y, 31-35y, and >35y. The probability
174 of living to 80 years old, having menopause ≥ 50 years old, risk of diabetes, AD, HBP, heart failure, cerebral
175 infarction, digestive system disease, cervical cancer, and obesity were compared among the 5 age groups of
176 first live birth. Compared to the group with first live birth under 21 years old, which generally had the
177 highest risks, females with first live birth at 21-25y had the highest probability to live to 80 years old
178 (OR=1.667, $P<0.001$), and females with first live birth at 26-30y had the highest probability to have
179 menopause ≥ 50 years old (OR=1.184, $P<0.001$) and lowest risk of cervical cancer (OR=0.587, $P<0.01$).
180 Females with first live birth at 31-35y had the lowest risk of diabetes (OR=0.612, $P<0.001$). Females with
181 first live birth >35y had the lowest risk of having AD (OR=0.474, $P<0.01$), HBP (OR=0.587, $P<0.001$),
182 heart failure (OR=0.446, $P<0.001$), cerebral infarction (OR=0.485, $P<0.001$), digestive system disease
183 (OR=0.569, $P<0.001$), and obesity (OR=0.416, $P<0.001$) (**Fig. 4J-S**).

184 Females with the number of births from 0 to 4 were included. Compared to no birth, females with 3 births
185 had the highest probability of living to 80 years old (OR=1.818, $P<0.001$) and having menopause ≥ 50 years
186 old (OR=1.562, $P<0.001$). Females with 4 births had the highest risk of diabetes (OR=1.399, $P<0.001$), AD
187 (OR=1.676, $P<0.001$), HBP (OR=1.274, $P<0.001$), heart failure (OR=1.439, $P<0.001$), cerebral infarction
188 (OR=1.470, $P<0.001$), digestive system disease (OR=1.370, $P<0.001$), and obesity (OR=1.327, $P<0.001$) but
189 lowest risk of breast cancer (OR=0.869, $P<0.001$) (**Fig. 4T-AC**). The significant estimated effect (β) of each
190 group compared to the youngest age groups of menarche and first live birth and 0 birth group and the ability
191 to explain the variability of outcomes in regression analysis are exhibited in **Table S11**.

192 To estimate the combined effect of age at menarche and first live birth on diabetes, HBP, heart failure, and
193 BMI ≥ 30 , participants were divided into 25 groups according to the menarche and first live birth ages.

194 Females with menarche <11y and first live birth <21y had higher risks of diabetes (OR=1.881, $P<0.001$),
195 HBP (OR= 1.436, $P<0.05$), heart failure (OR= 1.776, $P<0.01$), and BMI ≥ 30 (OR= 4.417, $P<0.001$)
196 compared to females with menarche of 13-14y and first live birth of 26-30y (**Table S12** and **fig. S3**).

197

198 Discussion

199 The timing of reproductive milestones such as the age of menarche and age at first birth is partly governed by
200 genetic factors, which may exert lasting impacts on an individual's health trajectory. Our study finds support
201 for antagonistic pleiotropy by demonstrating that genetic variants that drive early menarche or early pregnancy
202 accelerate several aging outcomes, including parental age, frailty index, and several age-related diseases such
203 as diabetes and dementia. These results were validated in a cohort from the UK biobank, showing that women
204 with early menarche, or early pregnancy, were associated with accelerated aging outcomes and increased risk
205 of several age-related diseases.

206 Consistent with a recent study suggesting the relation of early first birth with a higher likelihood of frailty³⁰,

our MR analysis provided a strong association between early age of first birth and GrimAge, a DNA methylation based marker to predict epigenetic age. Our findings align with the observed negative genetic correlation between reproductive traits and lifespan that individuals with higher polygenetic scores for reproduction have lower survivorships to age 76³¹. Prior studies linking the female reproductive factors with aging are either limited to results obtained from observational studies^{32,33} or are limited to few outcomes such as brain disorders^{34,35}. Besides, emerging evidence suggests that early puberty in males is linked to adverse health outcomes, such as an increased risk of cardiovascular disease, type 2 diabetes, and hypertension in later life³⁶. A Mendelian randomization study also reported a genetic association between the timing of male puberty and reduced lifespan³⁷. These findings support the hypothesis that genetic variants associated with delayed reproductive timing in males might similarly confer health benefits or improved longevity, akin to the patterns observed in females. This would suggest that similar mechanisms of antagonistic pleiotropy could operate in males as well.

Using MR, we identified 126 SNPs associated with early menarche or first birth that significantly influence age-related outcomes. Among the top 25 enriched canonical signaling pathways, those involved in developmental and cellular processes are particularly significant in determining the timing of menarche and first childbirth, with nearly half of these pathways (12 out of 25) falling into this category. These developmental and cellular signaling pathways work together to regulate continuous growth and involution from puberty through menopause³⁸. Interestingly, known longevity pathways such as insulin-like growth factor 1 (IGF1), growth hormone (GH) signaling, melatonin signaling, and bone morphogenetic protein (BMP) signaling, seem to play a crucial role in regulating the timing of these reproductive events. IGF-1 signaling promotes the growth and development of reproductive organs and tissues³⁹⁻⁴¹, but is also a conserved modulator of longevity⁴²⁻⁴⁵. Melatonin, known for regulating circadian rhythms, influences the timing of menarche through its effects on the hypothalamic-pituitary-gonadal axis⁴⁶ and is postulated to modulate oxidative, inflammatory, and autophagy states⁴⁷. Furthermore, different processes in early life such as cell proliferation or differentiation⁴⁸, ovarian function, and follicular development⁴⁹⁻⁵¹ are dependent on BMP signaling. However, increased BMP signaling also contributes significantly to AD pathology⁵² and impairments in neurogenesis and cognitive decline associated with aging⁵³. Aberrant BMP signaling is also shown to be associated with age-related metabolic and cardiovascular diseases^{54,55}. Additionally, growth hormone signaling is not only vital for development during childhood and puberty⁵⁶ but also impacts longevity⁵⁷. Besides signaling pathways, genes in age at menarche and first childbirth were connected in gene-gene interaction networks. In IPA network 1, most genes were connected with either *AKT* or genes encoding for follicle-stimulating hormone (*FSH*), luteinizing hormone (*LH*), leptin receptor (*LEPR*), and inhibin subunit beta A (*INHBA*). *AKT* signaling is implicated in oocyte maturation and embryonic development⁵⁸ and mediates pregnancy-induced cardiac adaptive responses⁵⁹. *AKT* signaling also mediates age-related disease pathologies, such as AD⁶⁰. Major ovarian functions are controlled by *FSH* (follicular growth, cellular proliferation, and estrogen production) and *LH* (oocyte maturation, ovulation, and terminal differentiation of follicles) which in turn are modulated by other ovarian factors such as *INHBA* (a subunit of activin and inhibin)

244 ^{61,62}. Endocrine alterations at advanced aging or reproductive aging ⁶³ are marked by changes in FSH and LH
245 due to altered feedback resulting from the ovarian decline in sex steroids, inhibin A, and inhibin B production
246 ⁶⁴⁻⁶⁶. In IPA network 2, the hub genes are connected mostly with extracellular signal-regulated kinases (ERK),
247 Similar to AKT, ERK is also a member of the mitogen-activated kinase family (MAPK), a highly conserved
248 signaling pathway that plays a vital role in transducing extracellular signals into a wide range of cellular
249 responses ^{67,68}, maintaining tissue integrity during aging ⁶⁹, and mediating age-related disease pathology ^{60,70}.
250 These studies underscore the importance of considering that dysregulation or abnormal activation of any of
251 these pathways could contribute to the onset of late-life diseases consistent with antagonistic pleiotropy in
252 humans ^{2,71}.

253 The thrifty gene hypothesis provides a compelling framework to explain antagonistic pleiotropy, particularly
254 in the context of modern health challenges. The thrifty gene hypothesis suggests that genes favoring efficient
255 energy storage were advantageous in historical periods of food scarcity, helping individuals survive through
256 famines. However, in today's environment of abundant food, the same genes contribute to obesity and
257 metabolic diseases like diabetes. Similarly, in the context of antagonistic pleiotropy, we hypothesize that
258 genes that enhance early-life reproductive success favor efficient energy storage to support reproductive
259 health. This is supported by our observation that early pregnancy is associated with increasing BMI, a
260 recognized key factor in systemic aging ^{72,73}. In support of this, we found a lack of significant association
261 between early menarche or age at first birth for CHF and cervical cancer after removal of BMI as a
262 confounder in MR analysis. Based on regression analysis at the population level (Fig. 4), higher BMI was
263 associated with higher risks of cardiovascular diseases and diabetes. Thus, an increase in BMI is one of the
264 factors that explains the increased risk of age-related disease seen due to the exposure of early pregnancy or
265 the prevalence of genes that enhance early reproductive success. These results are also consistent with
266 calorie restriction being a robust way to extend healthspan and lifespan in many species ⁷⁴.

267 Several limitations of our study need to be considered. Firstly, all the associations are explored at the genetic
268 level with MR and population level with the UK Biobank. However, to confirm causal relationships, further
269 validation through *in vitro* and *in vivo* research is essential. Secondly, though we excluded confounder-related
270 SNPs and addressed potential pleiotropic effects, there may also be potential bias which could be addressed
271 by extending these findings to other populations. Thirdly, significant heterogeneity and pleiotropy remained
272 in some association analyses, which need further exploration. Fourthly, research regarding male-specific
273 reproductive traits and their relationship to aging and health outcomes is needed to compare the difference
274 between male and female aging. Given the increasing age of first childbirth in modern times, the ideal period
275 of first childbirth for both slowing down female aging and benefiting fetal development needs more research
276 ⁷⁵. In summary, our study underscores the complex relationship between genetic legacies and modern diseases.
277 Understanding these genetic predispositions can inform public health strategies and their relevance to age-
278 related disease outcomes in women of various ethnic groups. For example, interventions could be tailored not

only to mitigate the risks associated with early reproductive timing but also to address lifestyle factors exacerbating conditions linked to thrifty genes, like diet and physical activity.

Methods

All the MR research data is from the public genome-wide association studies (GWAS) databases of the IEU Open GWAS project (<https://gwas.mrcieu.ac.uk/>) and PubMed. The target analysis is based on public datasets. The population data is from the UK Biobank. No definite personal information was included. No additional ethical approval was required for our study.

Exposure data

2 traits were included as female reproductive activity exposures, involving age at menarche⁸ (GWAS ID: ebi-a-GCST90029036) and age at first birth⁹ (GWAS ID: ebi-a-GCST90000048).

Outcome data

The aging outcomes involved general aging, organ aging/disease, and organ cancers (Table S1). Frailty index⁷⁶ (GWAS ID: ebi-a-GCST90020053), father's age at death⁷⁷ (GWAS ID: ebi-a-GCST006700), mother's age at death⁷⁷ (GWAS ID: ebi-a-GCST006699), and DNA methylation GrimAge acceleration⁷⁸ (GWAS ID: ebi-a-GCST90014294) were included as general aging outcomes. Specific aging diseases and aging levels included age at menopause onset⁸ (GWAS ID: ebi-a-GCST90029037), late-onset Alzheimer's disease⁷⁹ (LOAD) (PMID: 30820047), osteoporosis⁸⁰ (GWAS ID: ebi-a-GCST90038656), and type 2 diabetes⁸¹ (GWAS ID: ebi-a-GCST90018926), chronic heart failure⁸¹ (CHF) (GWAS ID: ebi-a-GCST90018806), essential hypertension (GWAS ID: ukb-b-12493), facial aging (GWAS ID: ukb-b-2148), eye aging⁸² (PMID: 36975205), cirrhosis (GWAS ID: finn-b-CIRRHOSIS_BROAD), chronic kidney disease⁸³ (CKD) (GWAS ID: ebi-a-GCST008026), early onset chronic obstructive pulmonary disease (COPD) (GWAS ID: finn-b-COPD_EARLY), and gastrointestinal or abdominal disease (GAD)⁸⁰ (GWAS ID: ebi-a-GCST90038597). Organ cancers included breast cancer⁸¹ (GWAS ID: ebi-a-GCST90018799), ovarian cancer⁸¹ (GWAS ID: ebi-a-GCST90018888), endometrial cancer⁸⁴ (GWAS ID: ebi-a-GCST006464), and cervical cancer (GWAS ID: ukb-b-8777).

SNPs selection

We identified single nucleotide polymorphisms (SNPs) associated with exposure datasets with $p < 5 \times 10^{-8}$ ^{85,86}. In this case, 249 SNPs and 67 SNPs were selected as eligible instrumental variables (IVs) for exposures of age at menarche and age at first birth, respectively. All selected SNPs for every exposure would be clumped to avoid the linkage disequilibrium ($r^2 = 0.001$ and kb = 10,000). Then we identified whether there were potential confounders of IVs associated with the outcomes based on a database of human genotype-phenotype associations, PhenoScanner V2^{87,88} (<http://www.phenoscaner.medschl.cam.ac.uk/>), with a threshold of $p < 1 \times 10^{-5}$. IVs associated with education, smoking, alcohol, activity, and other confounders

313 related to outcomes would be excluded. During the harmonization process, we aligned the alleles to the
314 human genome reference sequence and removed incompatible SNPs. Subsequent analyses were based on the
315 merged exposure-outcome dataset. We calculated the F statistics to quantify the strength of IVs for each
316 exposure with a threshold of $F > 10$ ⁸⁹. If the effect allele frequency (EAF) was missing in the primary
317 dataset, EAF would be collected from dsSNP (<https://www.ncbi.nlm.nih.gov/snp/>) based on the population
318 to calculate the F value. As osteoporosis GWAS was processed by BOLT-LMM, we recalculated the beta
319 value for MR analysis. To adjust the beta values (β_{BOLT}) estimated by BOLT-LMM for dichotomous, we
320 applied the following formula to each SNP:

$$Adjusted\ beta = \frac{\beta_{BOLT}}{\sqrt{P(1 - P)}}$$

321 The prevalence (P) of the binary outcome in the population is the proportion of individuals with the
322 outcomes. The P value for osteoporosis was calculated based on the GWAS sample size (484,598) and
323 disease cases (7,751).

325 MR analysis

326 All analysis was performed using R software (version 4.3.1, R Foundation for Statistical Computing,
327 Vienna, Austria) and RStudio software (version 2023.09.0 Posit, PBC, Boston, USA) with TwoSampleMR
328 (version 0.5.7) and MRPRESSO (version 1.0) packages.

329 Five two-sample MR methods were applied for analysis, including inverse variance weighted model (IVW),
330 MR Egger regression model (MER), weighted median model (WMM), simple mode, and weighted mode. A
331 pleiotropy test was used to check if the IVs influence the outcome through pathways other than the exposure
332 of interest. A heterogeneity test was applied to ensure whether there is a variation in the causal effect
333 estimates across different IVs. Significant heterogeneity test results indicate that some instruments are
334 invalid or that the causal effect varies depending on the IVs used. MRPRESSO was applied to detect and
335 correct potential outliers of IVs with $NbDistribution = 10,000$ and threshold $p = 0.05$. Outliers would be
336 excluded for repeated analysis. The causal estimates were given as odds ratios (ORs) and 95% confidence
337 intervals (CI). A leave-one-out analysis was conducted to ensure the robustness of the results by sequentially
338 excluding each IV and confirming the direction and statistical significance of the remaining SNPs.

339 In two-step MR, we mainly use IVW to access the causal associations between exposure and outcome,
340 exposure and mediator, and mediator and outcome. Body mass index (BMI) (GWAS ID: ukb-b-19953) was
341 applied as a mediator. Similar steps of two-sample MR were repeated in the analysis after excluding
342 confounders. The mediator effect (ME) and direct effect (DE) were calculated. The MEs were calculated
343 with the formula: $\beta_1 \times \beta_2$; DEs were calculated according to the formula: $\beta - (\beta_1 \times \beta_2)$, β
344 stands for the total effect obtained from the primary analysis, β_1 stands for the effect of exposure on the
345 mediator, and β_2 stands for the effect of the mediator on the outcome.

346 Colocalization analysis

To improve the robustness of our research, colocalization analysis was conducted with packages gwasglue (version 0.0.0.9000), coloc (version 5.2.3), and gassocplot (version 1.0) between the exposures and outcomes revealing significant associations after BMI-related SNPs were excluded. SNPs with significant P values in single SNP OR analysis were set as target SNPs. SNP-level colocalization was conducted with 50kb⁹⁰ windows around each target SNP. EAF was set to 0.5 if it was missed in the primary datasets. The Bayesian algorithm in the coloc package generates posterior probabilities (PP) for the hypothesis that both traits are associated and share the same single causal variant at a specific locus (H₄)⁹³. SNP with significant results in the colocalization analysis would be removed and two-sample MR analyses would be conducted again.

Genetic correlation analysis

Genetic correlation analysis helps clarify whether there is a shared genetic architecture between two traits, which can support the interpretation of our MR results. LDSC software, a robust framework to estimate genetic correlation using GWAS summary statistics, was applied to calculate the genetic correlation^{91,92}. GWAS summary statistics were filtered with HapMap3 ref. Variants, which were repeated or had a minor allele frequency (MAF) ≤0.01 were excluded. Genetic Correlation (r_g) was calculated for all pairwise comparisons among age at menarche, age at first birth, BMI, and age at menopause onset using LDSC method. **Target Analysis**

We employed the Ingenuity Pathway Analysis (IPA) software (version 01-22-01; Ingenuity Systems; QIAGEN) to investigate various gene-related aspects associated with age at first birth and menarche. IPA is a widely used bioinformatics tool for interpreting high-throughput data⁹⁴. Briefly, the SNPs/genes from MR analysis were uploaded into Qiagen's IPA system for core analysis and then the outcome was overlaid with the global molecular network in the Ingenuity pathway knowledge base (IPKB). IPA was performed to identify canonical pathways, diseases, and functions, and to investigate gene networks. Additionally, the Chemical Biology Database (ChEMBL) (<https://www.ebi.ac.uk/chembl/>), a large-scale database of bioactive molecules for drug discovery²⁸, and the DrugBank database²⁹, a comprehensive database on FDA-approved drugs, drug targets, mechanisms of action, and interactions (<https://go.drugbank.com/>), were used to identify candidate genes targeted by approved drugs in clinical trials or under current development phases.

Population validation

The MR results were further validated based on the UK Biobank with package stats (version 4.3.1). In addition to age at menarche and first live birth, the number of births is listed as an independent variable for the validation analysis. Based on the significant associations, regression analysis was adopted to explore the effect of independent variables and related confounders on outcomes. Ages at menarche were divided into 5 age groups, <11y, 11-12y, 13-14y, 15-16y, and >16y. Ages at first live birth were divided into 5 age groups, <21y, 21-25y, 26-30y, 31-35y, and >35y. Females with the number of births from 0 to 4 were included. Education was divided into 7 levels based on the degrees. Smoking was divided into 2 categories, ever smoking or not.

382 Drinking was divided into 3 categories, never, previous, and current drinking. BMI was divided into four
383 categories, <18.5, 18.5-24.9, 25-29.9, and ≥ 30 based on the average value of 4 records. The outcome results
384 were preprocessed based on the baseline information collection, follow-up outcome, surgical history, and ICD-
385 10 diagnosis summary. Logistic regression was used for the analysis of disease risks (categorical variables).
386 The coefficients (β) in logistic regression were log-odds ratios. Although the continuous variables exhibited
387 mild to moderate skewed distributions, considering the large sample size, linear regression was used for the
388 analysis of age at death, menopause age, and BMI in the first step. Then logistic regression was applied to
389 confirm the robustness of the results with the outcome of death age ≥ 80 , menopause age ≥ 50 , and BMI ≥ 30 .
390 Confounders for regression analysis I include education, smoking, and drinking. Confounders for regression
391 analysis II include education, smoking, drinking, and BMI. Variance Inflation Factors (VIF) were calculated
392 for each predictor in regression analysis to avoid multicollinearity. Values of VIF were less than 1.5 for each
393 predictor. For outcomes of diabetes, HBP, heart failure, and BMI ≥ 30 , the combined effect of age at menarche
394 and first birth was analyzed. 179,821 participants were divided into 25 groups according to the menarche and
395 first live birth age groups. All other groups were compared to the group with menarche of “13-14y” and the
396 first birth of “26-30y” in logistic regression (confounders including education, smoking, drinking, and BMI
397 for diabetes, HBP, and heart failure; including education, smoking, and drinking for BMI ≥ 30).

398 **Data and code availability:** All data and code are available in the main text, supplementary materials, or
399 public resources. The population data is available through the UK Biobank.

400 **Acknowledgments:** We thank the Kapahi Lab at Buck Institute for helpful discussions. This research has
401 been conducted using the UK Biobank Resource under Application Number 151101. **Funding:** Hevolution
402 Foundation (PK). National Institute of Health grant R01AG068288 and R01AG045835 (PK). Larry L.
403 Hillblom Foundation (PK), Larry L. Hillblom Foundation (PS). **Author contributions:** Conceptualization:
404 YX, VT, PS, LLF, and PK. MR analysis and UK biobank validation: YX. Gene target analysis: VT. Funding
405 acquisition: PK and PS. Writing original draft: YX, PS, and VT. All authors reviewed and edited the
406 manuscript.

407 **Competing interests:** Authors declare that they have no competing interests.

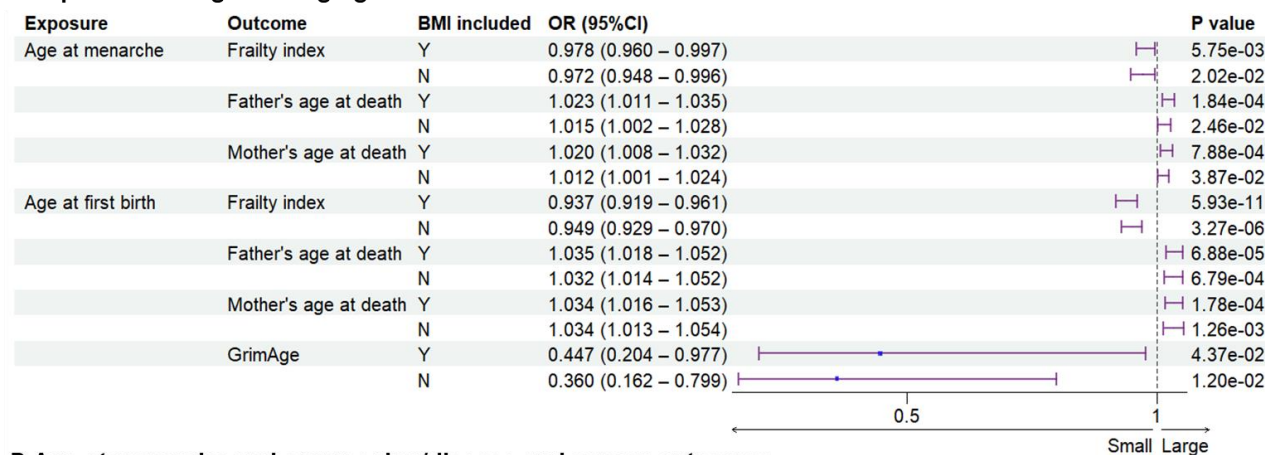
408 **Supplementary Materials**

409 Figs. S1 to S3

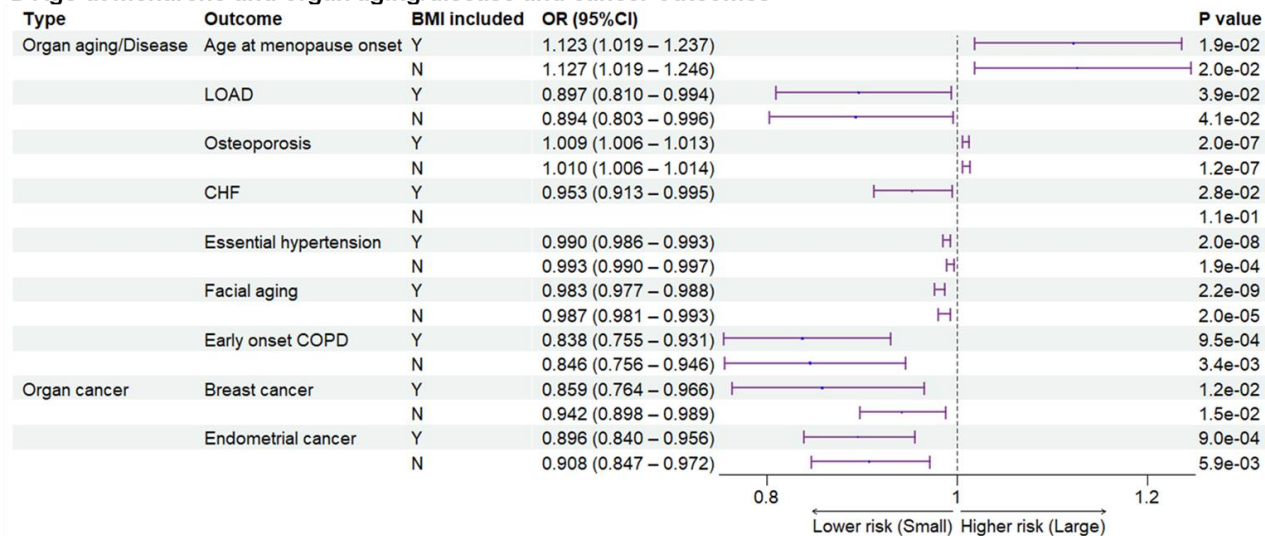
410 Tables S1 to S12

411

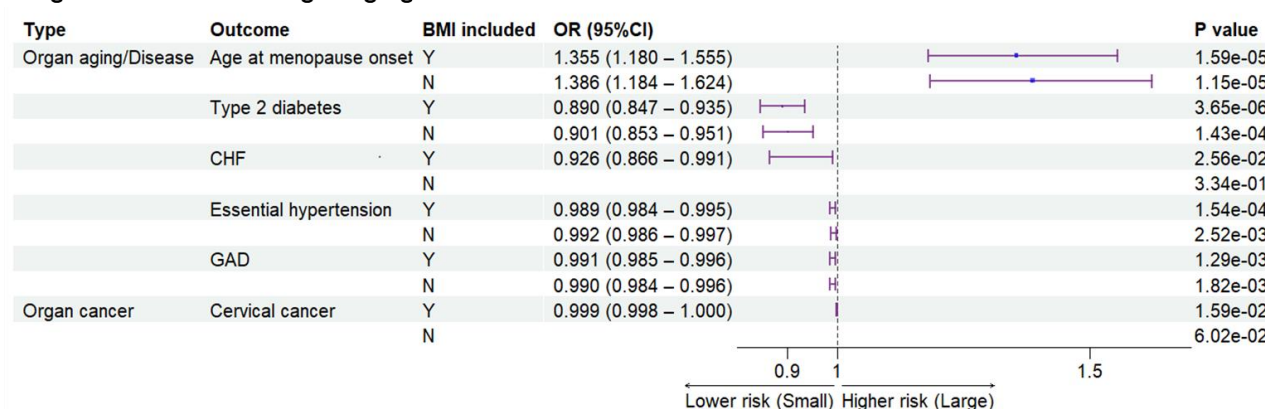
A Exposures and general aging outcomes



B Age at menarche and organ aging/disease and cancer outcomes



C Age at first birth and organ aging/disease and cancer outcomes



412

413

414

415

416

417

418

419

420

421

422

423

424

425

426

Figure 1. Genetic associations between exposures and outcomes. (A), genetic associations between exposures and general aging. Later age at menarche was associated with a lower frailty index and higher parental ages at death. Later age at first birth was associated with lower frailty index and GrimAge and higher parental ages at death. (B), genetic associations between age at menarche and outcomes of organ aging and diseases as well as organ cancer. Later age at menarche was associated with later age at menopause onset and lower risks of LOAD, CHF, essential hypertension, facial aging, early onset COPD, breast cancer, and endometrial cancer. (C), genetic associations between age at first birth and outcomes of organ aging and diseases as well as organ cancer. Later age at first birth was associated with later age at menopause onset and lower risks of type 2 diabetes, CHF, essential hypertension, gastrointestinal or abdominal disease, and cervical cancer. The significant associations were not detected after BMI-related SNPs excluded for outcomes of CHF and cervical cancer. BMI included, BMI-related SNPs included; LOAD, late-onset Alzheimer's disease; CHF, chronic heart failure; COPD, chronic obstructive pulmonary; GAD, gastrointestinal or abdominal; BMI, body mass index.

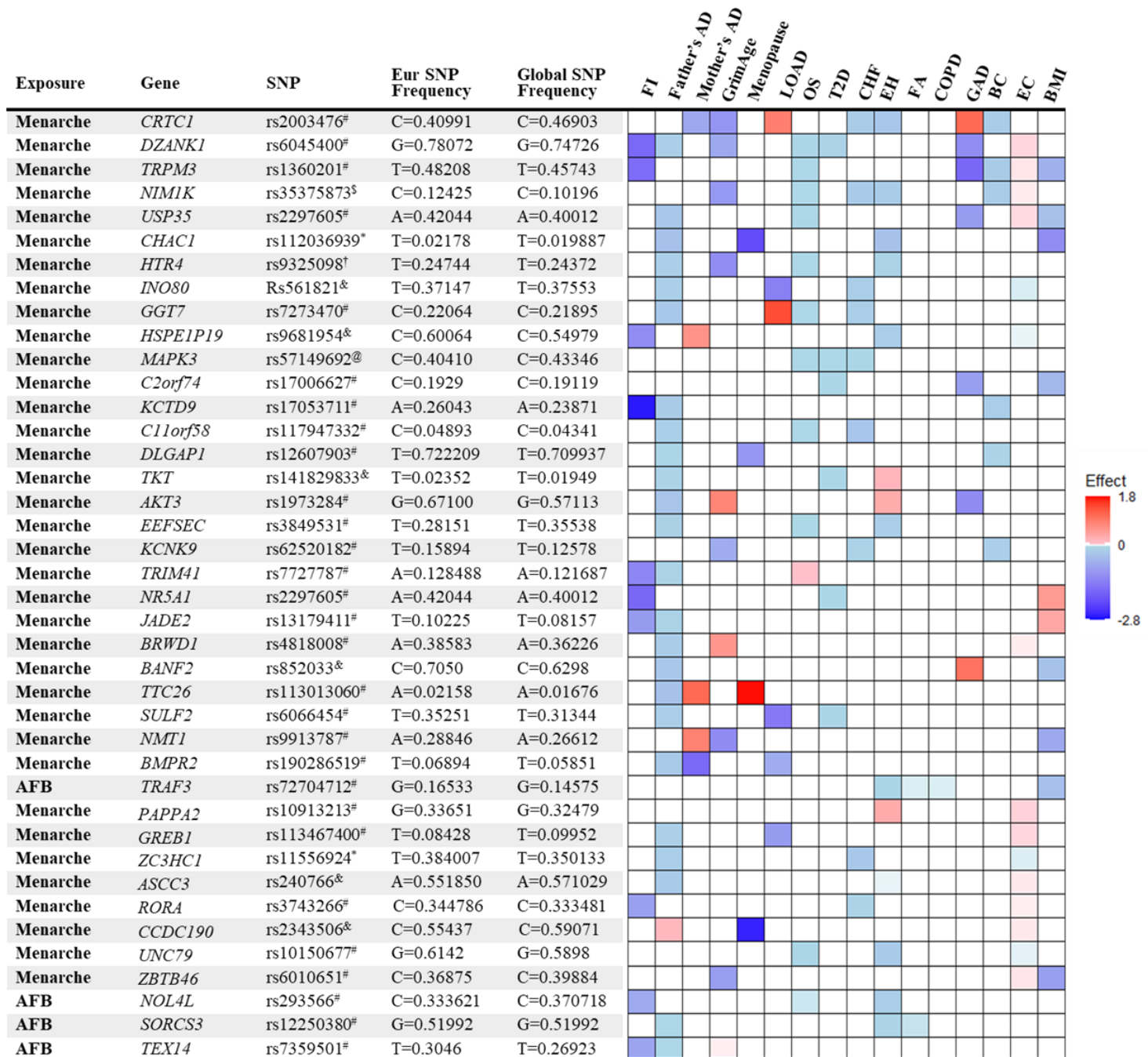
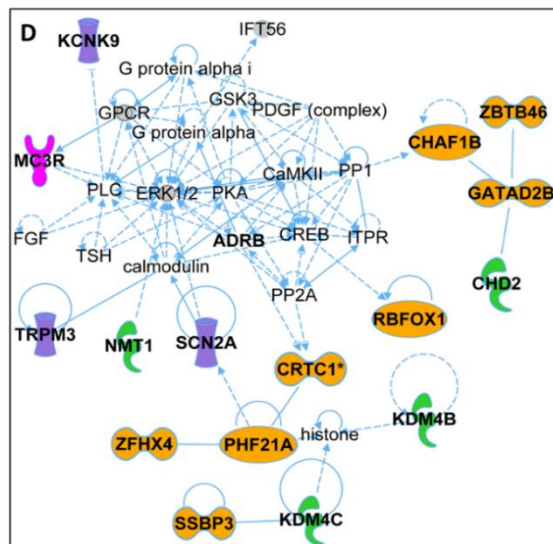
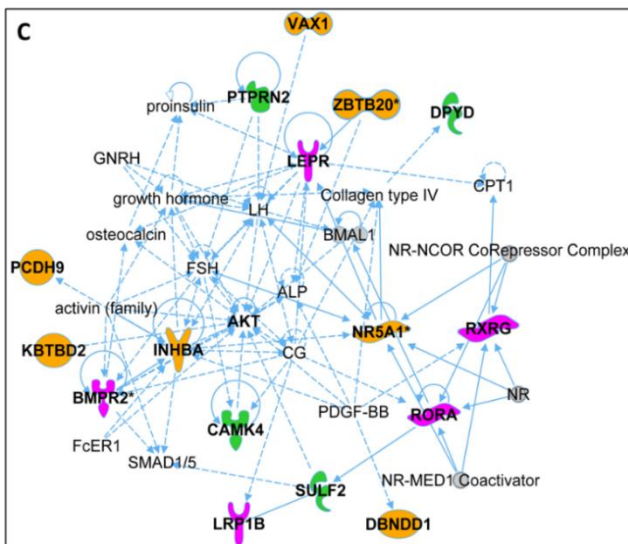
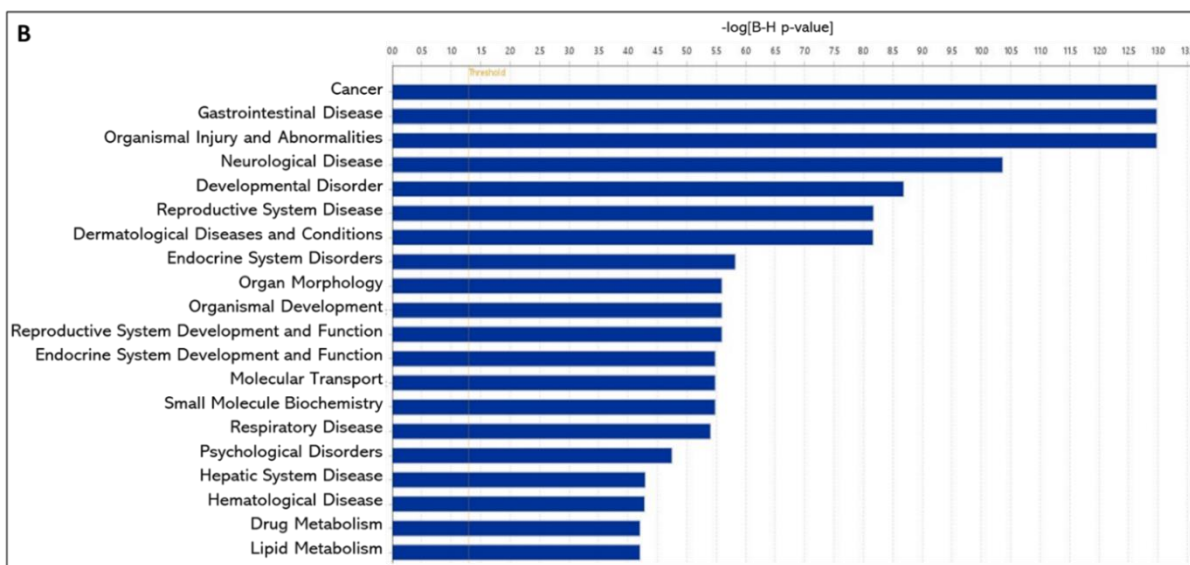


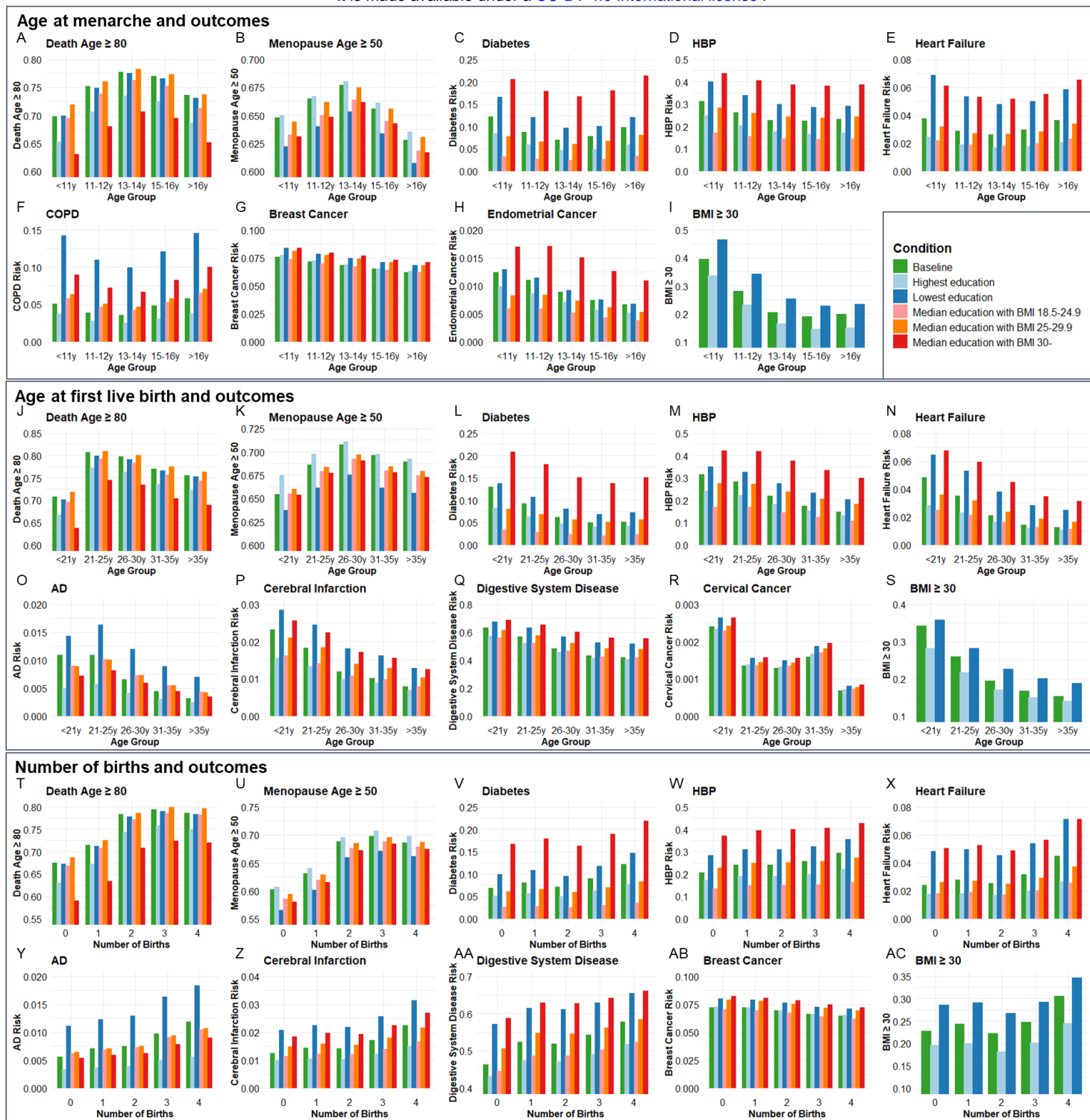
Figure 2. List and heatmap of SNPs/genes from post-MR analysis showing an association between age at menarche and first birth with three or more aging outcomes. Genomic region location for each variant is depicted by different characters: intron variant[#]; 2KB upstream variant[§]; Missense variant^{*}; Intergenic variant[&]; Regulatory region variant[@]. 3' UTR variant[†]. Heatmap is representative of an association of each gene/SNP with different aging outcomes. Red bar represents a harmful association (-beta for Father's DA, Mother's DA, and menopause; +beta for other outcomes); Blue bar represents a beneficial association (+beta for Father's DA, Mother's DA, and menopause; -beta for other outcomes); White bar represents no association. AFB; age at first birth; FI, frailty index; Father's DA, father's age at death; Mother's DA, mother's age at death; Menopause, age at menopause; LOAD, late-onset Alzheimer's disease; OS, osteoporosis; T2D, type II diabetes; CHF, chronic heart failure; EH, essential hypertension; FA, facial aging; COPD, chronic obstructive pulmonary disease; GAD, gastrointestinal or abdominal disease; BC, breast cancer; EC, endometrial cancer; BMI, body mass index.

A

| Canonical Signaling Pathways | $-\log_{10}(p\text{-value})$ | Fraction of genes that are involved in the pathway | Genes belonging to the pathway |
|--|------------------------------|--|---|
| Transcriptional Regulatory Network in Embryonic Stem Cells | 2.31 | 0.0427 | AKT3,BMPR2,IGF1R,INHBA,MAPK1,MAPK3,SMARCA1 |
| Leptin Signaling in Obesity | 2.31 | 0.0658 | AKT3,LEPR,MAPK1,MAPK3,PRKAG2 |
| Activation of NMDA receptors and postsynaptic events | 2.31 | 0.0595 | CAMK4,DLG2,MAPK1,MAPK3,PRKAG2 |
| Cachexia Signaling Pathway | 2.31 | 0.0245 | AKT3,BMPR2,DDIT4,IGF1R,INHBA,MAPK1,MAPK3,PRKAG2,PTH2R |
| BMP signaling pathway | 2.31 | 0.0549 | BMPR2,CAMK4,MAPK1,MAPK3,PRKAG2 |
| Signaling by Activin | 2.31 | 0.176 | INHBA,MAPK1,MAPK3 |
| PFKFB4 Signaling Pathway | 2.29 | 0.0816 | MAPK1,MAPK3,PRKAG2,TKT |
| Amyloid Processing | 2.28 | 0.0784 | AKT3,MAPK1,MAPK3,PRKAG2 |
| Intrinsic Pathway for Apoptosis | 2.28 | 0.0727 | AKT3,MAPK1,MAPK3,NMT1 |
| Lymphotoxin β Receptor Signaling | 2.28 | 0.0727 | AKT3,MAPK1,MAPK3,TRAF3 |
| IGF-1 Signaling | 2.28 | 0.0476 | AKT3,IGF1R,MAPK1,MAPK3,PRKAG2 |
| Docosahexaenoic Acid (DHA) Signaling | 2.23 | 0.028 | AKT3,MAPK1,MAPK3,PRKAG2,RXRG,STXB4,SYT14 |
| IL-22 Signaling | 2.18 | 0.125 | AKT3,MAPK1,MAPK3 |
| Glioma Signaling | 2.03 | 0.04 | AKT3,CAMK4,IGF1R,MAPK1,MAPK3 |
| Growth Hormone Signaling | 2.02 | 0.0563 | IGF1R,MAPK1,MAPK3,RPS6KC1 |
| CLEAR Signaling Pathway | 2.02 | 0.0246 | AKT3,BMPR2,DDIT4,IGF1R,MAPK1,MAPK3,PRKAG2 |
| Melatonin Signaling | 2.02 | 0.0556 | MAPK1,MAPK3,PRKAG2,RORA |
| Extra-nuclear estrogen signaling | 2.02 | 0.0548 | AKT3,IGF1R,MAPK1,MAPK3 |
| TREM1 Signaling | 1.98 | 0.0519 | AKT3,MAPK1,MAPK3,NLRC3 |
| mTOR Signaling | 1.98 | 0.028 | AKT3,DDIT4,MAPK1,MAPK3,PRKAG2,RPS6KC1 |
| Insulin Receptor Signaling | 1.98 | 0.0357 | AKT3,MAPK1,MAPK3,PRKAG2,STXB4 |
| Estrogen-Dependent Breast Cancer Signaling | 1.94 | 0.0488 | AKT3,IGF1R,MAPK1,MAPK3 |
| Transcriptional Regulation by NPAS4 | 1.94 | 0.0857 | BMAL1,MAPK1,MAPK3 |
| Role of NEAT in Cardiac Hypertrophy | 1.94 | 0.0268 | AKT3,CAMK4,IGF1R,MAPK1,MAPK3,PRKAG2 |
| RHO GTPases Activate WASPs and WAVES | 1.94 | 0.0833 | CYFIP2,MAPK1,MAPK3 |
| Dilated Cardiomyopathy Signaling Pathway | 1.94 | 0.0333 | AKT3,CAMK4,MAPK1,MAPK3,PRKAG2 |



442 **Figure 3. Ingenuity Pathway Analysis (IPA).** SNPs/gene outcomes from MR analysis were subjected to
 443 IPA. (A) Canonical signaling pathways in age at menarche and first birth. The adjusted P-values of the top 25
 444 signaling pathways are listed. (B) Disease and functions in age at first birth and menarche. The adjusted P-
 445 value of the top 20 significantly involved diseases and functions are listed. (C) IPA network 1 and (D) IPA
 446 network 2. The genes from our post-MR analysis are in bold. Solid lines indicate direct connections, while
 447 dotted lines indicate indirect connections (circular arrows mean influence itself). Color coding: pink-receptors,
 448 green-enzymes, purple-channels, orange-other proteins.



449 **Figure 4. The distributions of outcome age and risk according to age group of menarche and fist live**
 450 **birth as well as number of births before and after correcting confounders.** Condition Baseline, no
 451 confounder was corrected. Conditions Highest education and Lowest education, confounders of education,
 452 smoking, and drinking were corrected, and bars were painted based on most smoking and drinking situations
 453 with the highest and lowest education levels. Conditions Median education with BMI 18.5-24.9, Median
 454 education with BMI 25-29.9, and Median education with BMI 30-, confounders of education, smoking,
 455 drinking, and BMI were corrected, and bars were painted based on median education and most smoking and
 456 drinking situation with 3 BMI categories. BMI, body mass index; HBP, high blood pressure; COPD, chronic
 457 obstructive pulmonary disease; AD, Alzheimer's disease.

458
459
460

461 References

- 462 1 Medawar, P. B. An Unsolved Problem of Biology. (1952).
- 463 2 Byars, S. G. & Voskarides, K. Antagonistic Pleiotropy in Human Disease. *J Mol Evol* **88**, 12-25 (2020).
464 <https://doi.org/10.1007/s00239-019-09923-2>
- 465 3 Wang, Z. & Cong, H. Antagonistic pleiotropy can promote adaptation to patchy environments. *Evolution* **75**, 197-199
466 (2021). <https://doi.org/10.1111/evo.14133>
- 467 4 Kumar, J. *et al.* Zinc Levels Modulate Lifespan through Multiple Longevity Pathways in *Caenorhabditis elegans*. *PLoS One*
468 **11**, e0153513 (2016). <https://doi.org/10.1371/journal.pone.0153513>
- 469 5 Grundy, E. & Tomassini, C. Fertility history and health in later life: a record linkage study in England and Wales. *Soc Sci*
470 *Med* **61**, 217-228 (2005). <https://doi.org/10.1016/j.socscimed.2004.11.046>
- 471 6 Day, F. R. *et al.* Physical and neurobehavioral determinants of reproductive onset and success. *Nat Genet* **48**, 617-623
472 (2016). <https://doi.org/10.1038/ng.3551>
- 473 7 Sanderson, E. *et al.* Mendelian randomization. *Nat Rev Methods Primers* **2** (2022). [https://doi.org/10.1038/s43586-021-](https://doi.org/10.1038/s43586-021-00092-5)
474 [00092-5](https://doi.org/10.1038/s43586-021-00092-5)
- 475 8 Loh, P. R., Kichaev, G., Gazal, S., Schoech, A. P. & Price, A. L. Mixed-model association for biobank-scale datasets. *Nat*
476 *Genet* **50**, 906-908 (2018). <https://doi.org/10.1038/s41588-018-0144-6>
- 477 9 Mills, M. C. *et al.* Identification of 371 genetic variants for age at first sex and birth linked to externalising behaviour.
478 *Nat Hum Behav* **5**, 1717-1730 (2021). <https://doi.org/10.1038/s41562-021-01135-3>
- 479 10 Ng, J. C. M. & Schooling, C. M. Effect of basal metabolic rate on lifespan: a sex-specific Mendelian randomization study.
480 *Sci Rep* **13**, 7761 (2023). <https://doi.org/10.1038/s41598-023-34410-6>
- 481 11 Williams, D. M., Jylhava, J., Pedersen, N. L. & Hagg, S. A Frailty Index for UK Biobank Participants. *J Gerontol A Biol Sci*
482 *Med Sci* **74**, 582-587 (2019). <https://doi.org/10.1093/gerona/gly094>
- 483 12 Locke, A. E. *et al.* Genetic studies of body mass index yield new insights for obesity biology. *Nature* **518**, 197-206 (2015).
484 <https://doi.org/10.1038/nature14177>
- 485 13 Silva-Garcia, C. G. *et al.* The CRTC-1 transcriptional domain is required for COMPASS complex-mediated longevity in *C.*
486 *elegans*. *Nat Aging* **3**, 1358-1371 (2023). <https://doi.org/10.1038/s43587-023-00517-8>
- 487 14 Mendioroz, M. *et al.* CRTC1 gene is differentially methylated in the human hippocampus in Alzheimer's disease.
488 *Alzheimers Res Ther* **8**, 15 (2016). <https://doi.org/10.1186/s13195-016-0183-0>
- 489 15 Liu, Y. *et al.* CHAC1 as a Novel Contributor of Ferroptosis in Retinal Pigment Epithelial Cells with Oxidative Damage. *Int J*
490 *Mol Sci* **24** (2023). <https://doi.org/10.3390/ijms24021582>
- 491 16 Li, J. *et al.* CHAC1 inactivation is effective to preserve muscle glutathione but is insufficient to protect against muscle
492 wasting in cachexia. *PLoS One* **18**, e0283806 (2023). <https://doi.org/10.1371/journal.pone.0283806>
- 493 17 Cloos, P. A. & Christgau, S. Post-translational modifications of proteins: implications for aging, antigen recognition, and
494 autoimmunity. *Biogerontology* **5**, 139-158 (2004). <https://doi.org/10.1023/B:BGEN.0000031152.31352.8b>
- 495 18 Udenwobele, D. I. *et al.* Myristoylation: An Important Protein Modification in the Immune Response. *Front Immunol* **8**,
496 751 (2017). <https://doi.org/10.3389/fimmu.2017.00751>
- 497 19 Hayashi, N. & Titani, K. N-myristoylated proteins, key components in intracellular signal transduction systems enabling
498 rapid and flexible cell responses. *Proc Jpn Acad Ser B Phys Biol Sci* **86**, 494-508 (2010).
499 <https://doi.org/10.2183/pjab.86.494>
- 500 20 Wen, Z. *et al.* N-myristoyltransferase deficiency impairs activation of kinase AMPK and promotes synovial tissue
501 inflammation. *Nat Immunol* **20**, 313-325 (2019). <https://doi.org/10.1038/s41590-018-0296-7>
- 502 21 Liang, J. *et al.* Myristoylation confers noncanonical AMPK functions in autophagy selectivity and mitochondrial
503 surveillance. *Nat Commun* **6**, 7926 (2015). <https://doi.org/10.1038/ncomms8926>
- 504 22 McHugh, D. *et al.* COPI vesicle formation and N-myristoylation are targetable vulnerabilities of senescent cells. *Nat Cell*
505 *Biol* **25**, 1804-1820 (2023). <https://doi.org/10.1038/s41556-023-01287-6>
- 506 23 Thinon, E., Morales-Sanfrutos, J., Mann, D. J. & Tate, E. W. N-Myristoyltransferase Inhibition Induces ER-Stress, Cell
507 Cycle Arrest, and Apoptosis in Cancer Cells. *ACS Chem Biol* **11**, 2165-2176 (2016).
508 <https://doi.org/10.1021/acscchembio.6b00371>
- 509 24 Zhu, G. *et al.* N-Myristoylation by NMT1 Is POTEE-Dependent to Stimulate Liver Tumorigenesis via Differentially
510 Regulating Ubiquitination of Targets. *Front Oncol* **11**, 681366 (2021). <https://doi.org/10.3389/fonc.2021.681366>
- 511 25 Tomita, Y. *et al.* Targeting N-Myristoylation Through NMT2 Prevents Cardiac Hypertrophy and Heart Failure. *JACC Basic*
512 *Transl Sci* **8**, 1263-1282 (2023). <https://doi.org/10.1016/j.jacbts.2023.06.006>
- 513 26 Ashrafi, K., Lin, S. S., Manchester, J. K. & Gordon, J. I. Sip2p and its partner snf1p kinase affect aging in *S. cerevisiae*.
514 *Genes Dev* **14**, 1872-1885 (2000).
- 515 27 Kramer, A., Green, J., Pollard, J., Jr. & Tugendreich, S. Causal analysis approaches in Ingenuity Pathway Analysis.
516 *Bioinformatics* **30**, 523-530 (2014). <https://doi.org/10.1093/bioinformatics/btt703>
- 517 28 Gaulton, A. *et al.* ChEMBL: a large-scale bioactivity database for drug discovery. *Nucleic Acids Res* **40**, D1100-1107
518 (2012). <https://doi.org/10.1093/nar/gkr777>
- 519 29 Wishart, D. S. *et al.* DrugBank 5.0: a major update to the DrugBank database for 2018. *Nucleic Acids Res* **46**, D1074-
520 D1082 (2018). <https://doi.org/10.1093/nar/gkx1037>

- 521 30 Guo, H. J., Ye, Y. L., Gao, Y. F. & Liu, Z. H. Age at first birth is associated with the likelihood of frailty in middle-aged and
522 older women: A population-based analysis from NHANES 1999-2018. *Maturitas* **181**, 107904 (2023).
523 <https://doi.org/10.1016/j.maturitas.2023.107904>
- 524 31 Long, E. & Zhang, J. Evidence for the role of selection for reproductively advantageous alleles in human aging. *Sci Adv* **9**,
525 eadh4990 (2023). <https://doi.org/10.1126/sciadv.adh4990>
- 526 32 Liu, D. *et al.* Vitamin D and Multiple Health Outcomes: An Umbrella Review of Observational Studies, Randomized
527 Controlled Trials, and Mendelian Randomization Studies. *Adv Nutr* **13**, 1044-1062 (2022).
528 <https://doi.org/10.1093/advances/nmab142>
- 529 33 Chen, X. *et al.* Kidney damage causally affects the brain cortical structure: A Mendelian randomization study.
530 *EBioMedicine* **72**, 103592 (2021). <https://doi.org/10.1016/j.ebiom.2021.103592>
- 531 34 Barth, C. & de Lange, A. G. Towards an understanding of women's brain aging: the immunology of pregnancy and
532 menopause. *Front Neuroendocrinol* **58**, 100850 (2020). <https://doi.org/10.1016/j.yfrne.2020.100850>
- 533 35 Sherwin, B. B. & Henry, J. F. Brain aging modulates the neuroprotective effects of estrogen on selective aspects of
534 cognition in women: a critical review. *Front Neuroendocrinol* **29**, 88-113 (2008).
535 <https://doi.org/10.1016/j.yfrne.2007.08.002>
- 536 36 Day, F. R., Elks, C. E., Murray, A., Ong, K. K. & Perry, J. R. Puberty timing associated with diabetes, cardiovascular disease
537 and also diverse health outcomes in men and women: the UK Biobank study. *Sci Rep* **5**, 11208 (2015).
538 <https://doi.org/10.1038/srep11208>
- 539 37 Hollis, B. *et al.* Genomic analysis of male puberty timing highlights shared genetic basis with hair colour and lifespan.
540 *Nat Commun* **11**, 1536 (2020). <https://doi.org/10.1038/s41467-020-14451-5>
- 541 38 Jorge, S., Chang, S., Barzilai, J. J., Leppert, P. & Segars, J. H. Mechanical signaling in reproductive tissues: mechanisms
542 and importance. *Reprod Sci* **21**, 1093-1107 (2014). <https://doi.org/10.1177/1933719114542023>
- 543 39 Baumgarten, S. C., Armouti, M., Ko, C. & Stocco, C. IGF1R Expression in Ovarian Granulosa Cells Is Essential for
544 Steroidogenesis, Follicle Survival, and Fertility in Female Mice. *Endocrinology* **158**, 2309-2318 (2017).
545 <https://doi.org/10.1210/en.2017-00146>
- 546 40 Botkjaer, J. A. *et al.* Dynamics of IGF signalling during the ovulatory peak in women undergoing ovarian stimulation. *J*
547 *Clin Endocrinol Metab* (2024). <https://doi.org/10.1210/clinem/dgae132>
- 548 41 Stubbs, S. A. *et al.* Role of Insulin-like growth factors in initiation of follicle growth in normal and polycystic human
549 ovaries. *J Clin Endocrinol Metab* **98**, 3298-3305 (2013). <https://doi.org/10.1210/jc.2013-1378>
- 550 42 Papaconstantinou, J. Insulin/IGF-1 and ROS signaling pathway cross-talk in aging and longevity determination. *Mol Cell*
551 *Endocrinol* **299**, 89-100 (2009). <https://doi.org/10.1016/j.mce.2008.11.025>
- 552 43 Kalman, S. M. Effects of oral contraceptives. *Annu Rev Pharmacol* **9**, 363-378 (1969).
553 <https://doi.org/10.1146/annurev.pa.09.040169.002051>
- 554 44 van Heemst, D. Insulin, IGF-1 and longevity. *Aging Dis* **1**, 147-157 (2010).
- 555 45 Junnila, R. K., List, E. O., Berryman, D. E., Murrey, J. W. & Kopchick, J. J. The GH/IGF-1 axis in ageing and longevity. *Nat*
556 *Rev Endocrinol* **9**, 366-376 (2013). <https://doi.org/10.1038/nrendo.2013.67>
- 557 46 Aleandri, V., Spina, V. & Ciardo, A. [The role of the pineal body in the endocrine control of puberty]. *Minerva Ginecol* **49**,
558 43-48 (1997).
- 559 47 Olcese, J. M. Melatonin and Female Reproduction: An Expanding Universe. *Front Endocrinol (Lausanne)* **11**, 85 (2020).
560 <https://doi.org/10.3389/fendo.2020.00085>
- 561 48 Chen, D., Zhao, M. & Mundy, G. R. Bone morphogenetic proteins. *Growth Factors* **22**, 233-241 (2004).
562 <https://doi.org/10.1080/08977190412331279890>
- 563 49 Magro-Lopez, E. & Munoz-Fernandez, M. A. The Role of BMP Signaling in Female Reproductive System Development
564 and Function. *Int J Mol Sci* **22** (2021). <https://doi.org/10.3390/ijms222111927>
- 565 50 Childs, A. J. *et al.* BMP signaling in the human fetal ovary is developmentally regulated and promotes primordial germ
566 cell apoptosis. *Stem Cells* **28**, 1368-1378 (2010). <https://doi.org/10.1002/stem.440>
- 567 51 da Cunha, E. V. *et al.* Effects of bone morphogenetic protein 4 (BMP4) on in vitro development and survival of bovine
568 preantral follicles enclosed in fragments ovarian tissue. *Zygote* **25**, 256-264 (2017).
569 <https://doi.org/10.1017/S0967199417000089>
- 570 52 Zhang, X. *et al.* BMP4 overexpression induces the upregulation of APP/Tau and memory deficits in Alzheimer's disease.
571 *Cell Death Discov* **7**, 51 (2021). <https://doi.org/10.1038/s41420-021-00435-x>
- 572 53 Meyers, E. A. *et al.* Increased bone morphogenetic protein signaling contributes to age-related declines in neurogenesis
573 and cognition. *Neurobiol Aging* **38**, 164-175 (2016). <https://doi.org/10.1016/j.neurobiolaging.2015.10.035>
- 574 54 Ye, D. *et al.* Insights into bone morphogenetic proteins in cardiovascular diseases. *Front Pharmacol* **14**, 1125642 (2023).
575 <https://doi.org/10.3389/fphar.2023.1125642>
- 576 55 Baboota, R. K., Blucher, M. & Smith, U. Emerging Role of Bone Morphogenetic Protein 4 in Metabolic Disorders. *Diabetes*
577 **70**, 303-312 (2021). <https://doi.org/10.2337/db20-0884>
- 578 56 Saenger, P. Dose effects of growth hormone during puberty. *Horm Res* **60**, 52-57 (2003).
579 <https://doi.org/10.1159/000071226>
- 580 57 Bartke, A. Growth hormone and aging. *Rev Endocr Metab Disord* **22**, 71-80 (2021). <https://doi.org/10.1007/s11154-020-09593-2>
- 581

- 582 58 Kalous, J., Aleshkina, D. & Anger, M. A Role of PI3K/Akt Signaling in Oocyte Maturation and Early Embryo Development. *Cells* **12** (2023). <https://doi.org/10.3390/cells12141830>
- 583 59 Chung, E., Yeung, F. & Leinwand, L. A. Akt and MAPK signaling mediate pregnancy-induced cardiac adaptation. *J Appl Physiol* (1985) **112**, 1564-1575 (2012). <https://doi.org/10.1152/jappphysiol.00027.2012>
- 584 60 Chen, Y. R. *et al.* Aging-induced Akt activation involves in aging-related pathologies and Abeta-induced toxicity. *Aging Cell* **18**, e12989 (2019). <https://doi.org/10.1111/accel.12989>
- 585 61 Howard, S. R. Interpretation of reproductive hormones before, during and after the pubertal transition-Identifying health and disordered puberty. *Clin Endocrinol (Oxf)* **95**, 702-715 (2021). <https://doi.org/10.1111/cen.14578>
- 586 62 Bhartiya, D., Sriraman, K., Gunjal, P. & Modak, H. Gonadotropin treatment augments postnatal oogenesis and primordial follicle assembly in adult mouse ovaries? *J Ovarian Res* **5**, 32 (2012). <https://doi.org/10.1186/1757-2215-5-32>
- 587 63 Danilovich, N., Javeshghani, D., Xing, W. & Sairam, M. R. Endocrine alterations and signaling changes associated with declining ovarian function and advanced biological aging in follicle-stimulating hormone receptor haploinsufficient mice. *Biol Reprod* **67**, 370-378 (2002). <https://doi.org/10.1095/biolreprod67.2.370>
- 588 64 Hale, G. E. *et al.* Endocrine features of menstrual cycles in middle and late reproductive age and the menopausal transition classified according to the Staging of Reproductive Aging Workshop (STRAW) staging system. *J Clin Endocrinol Metab* **92**, 3060-3067 (2007). <https://doi.org/10.1210/jc.2007-0066>
- 589 65 Santoro, N. & Randolph, J. F., Jr. Reproductive hormones and the menopause transition. *Obstet Gynecol Clin North Am* **38**, 455-466 (2011). <https://doi.org/10.1016/j.ogc.2011.05.004>
- 590 66 Vanden Brink, H. *et al.* Associations Between Antral Ovarian Follicle Dynamics and Hormone Production Throughout the Menstrual Cycle as Women Age. *J Clin Endocrinol Metab* **100**, 4553-4562 (2015). <https://doi.org/10.1210/jc.2015-2643>
- 591 67 Plotnikov, A., Zehorai, E., Procaccia, S. & Seger, R. The MAPK cascades: signaling components, nuclear roles and mechanisms of nuclear translocation. *Biochim Biophys Acta* **1813**, 1619-1633 (2011). <https://doi.org/10.1016/j.bbamcr.2010.12.012>
- 592 68 Zhang, W. & Liu, H. T. MAPK signal pathways in the regulation of cell proliferation in mammalian cells. *Cell Res* **12**, 9-18 (2002). <https://doi.org/10.1038/sj.cr.7290105>
- 593 69 Yuan, W. *et al.* Modulating p38 MAPK signaling by proteostasis mechanisms supports tissue integrity during growth and aging. *Nat Commun* **14**, 4543 (2023). <https://doi.org/10.1038/s41467-023-40317-7>
- 594 70 An, Y. *et al.* Oridonin Delays Aging Through the AKT Signaling Pathway. *Front Pharmacol* **13**, 888247 (2022). <https://doi.org/10.3389/fphar.2022.888247>
- 595 71 Abdellatif, M. *et al.* Fine-Tuning Cardiac Insulin-Like Growth Factor 1 Receptor Signaling to Promote Health and Longevity. *Circulation* **145**, 1853-1866 (2022). <https://doi.org/10.1161/CIRCULATIONAHA.122.059863>
- 596 72 Lundgren, S. *et al.* BMI is positively associated with accelerated epigenetic aging in twin pairs discordant for body mass index. *J Intern Med* **292**, 627-640 (2022). <https://doi.org/10.1111/joim.13528>
- 597 73 Quach, A. *et al.* Epigenetic clock analysis of diet, exercise, education, and lifestyle factors. *Aging (Albany NY)* **9**, 419-446 (2017). <https://doi.org/10.18632/aging.101168>
- 598 74 Wilson, K. A. *et al.* Evaluating the beneficial effects of dietary restrictions: A framework for precision nutrigenetics. *Cell Metab* **33**, 2142-2173 (2021). <https://doi.org/10.1016/j.cmet.2021.08.018>
- 599 75 Balasch, J. Ageing and infertility: an overview. *Gynecol Endocrinol* **26**, 855-860 (2010). <https://doi.org/10.3109/09513590.2010.501889>
- 600 76 Atkins, J. L. *et al.* A genome-wide association study of the frailty index highlights brain pathways in ageing. *Aging Cell* **20**, e13459 (2021). <https://doi.org/10.1111/accel.13459>
- 601 77 Pilling, L. C. *et al.* Human longevity: 25 genetic loci associated in 389,166 UK biobank participants. *Aging (Albany NY)* **9**, 2504-2520 (2017). <https://doi.org/10.18632/aging.101334>
- 602 78 McCartney, D. L. *et al.* Genome-wide association studies identify 137 genetic loci for DNA methylation biomarkers of aging. *Genome Biol* **22**, 194 (2021). <https://doi.org/10.1186/s13059-021-02398-9>
- 603 79 Kunkle, B. W. *et al.* Genetic meta-analysis of diagnosed Alzheimer's disease identifies new risk loci and implicates Abeta, tau, immunity and lipid processing. *Nat Genet* **51**, 414-430 (2019). <https://doi.org/10.1038/s41588-019-0358-2>
- 604 80 Donertas, H. M., Fabian, D. K., Valenzuela, M. F., Partridge, L. & Thornton, J. M. Common genetic associations between age-related diseases. *Nat Aging* **1**, 400-412 (2021). <https://doi.org/10.1038/s43587-021-00051-5>
- 605 81 Sakae, S. *et al.* A cross-population atlas of genetic associations for 220 human phenotypes. *Nat Genet* **53**, 1415-1424 (2021). <https://doi.org/10.1038/s41588-021-00931-x>
- 606 82 Ahadi, S. *et al.* Longitudinal fundus imaging and its genome-wide association analysis provide evidence for a human retinal aging clock. *Elife* **12** (2023). <https://doi.org/10.7554/eLife.82364>
- 607 83 Wojcik, G. L. *et al.* Genetic analyses of diverse populations improves discovery for complex traits. *Nature* **570**, 514-518 (2019). <https://doi.org/10.1038/s41586-019-1310-4>
- 608 84 O'Mara, T. A. *et al.* Identification of nine new susceptibility loci for endometrial cancer. *Nat Commun* **9**, 3166 (2018). <https://doi.org/10.1038/s41467-018-05427-7>
- 609 85 Savage, J. E. *et al.* Genome-wide association meta-analysis in 269,867 individuals identifies new genetic and functional links to intelligence. *Nat Genet* **50**, 912-919 (2018). <https://doi.org/10.1038/s41588-018-0152-6>
- 610 86 Gao, X. *et al.* The bidirectional causal relationships of insomnia with five major psychiatric disorders: A Mendelian randomization study. *Eur Psychiatry* **60**, 79-85 (2019). <https://doi.org/10.1016/j.eurpsy.2019.05.004>

643 87 Staley, J. R. *et al.* PhenoScanner: a database of human genotype-phenotype associations. *Bioinformatics* **32**, 3207-3209
644 (2016). <https://doi.org/10.1093/bioinformatics/btw373>
645 88 Kamat, M. A. *et al.* PhenoScanner V2: an expanded tool for searching human genotype-phenotype associations.
646 *Bioinformatics* **35**, 4851-4853 (2019). <https://doi.org/10.1093/bioinformatics/btz469>
647 89 Burgess, S., Small, D. S. & Thompson, S. G. A review of instrumental variable estimators for Mendelian randomization.
648 *Stat Methods Med Res* **26**, 2333-2355 (2017). <https://doi.org/10.1177/0962280215597579>
649 90 Venkateswaran, S. *et al.* Enhanced Contribution of HLA in Pediatric Onset Ulcerative Colitis. *Inflamm Bowel Dis* **24**, 829-
650 838 (2018). <https://doi.org/10.1093/ibd/izx084>
651 91 Bulik-Sullivan, B. *et al.* An atlas of genetic correlations across human diseases and traits. *Nat Genet* **47**, 1236-1241
652 (2015). <https://doi.org/10.1038/ng.3406>
653 92 Bulik-Sullivan, B. K. *et al.* LD Score regression distinguishes confounding from polygenicity in genome-wide association
654 studies. *Nat Genet* **47**, 291-295 (2015). <https://doi.org/10.1038/ng.3211>
655 93 Wallace, C. A more accurate method for colocalisation analysis allowing for multiple causal variants. *PLoS Genet* **17**,
656 e1009440 (2021). <https://doi.org/10.1371/journal.pgen.1009440>
657 94 Ghosh, S. *et al.* Core Canonical Pathways Involved in Developing Human Glioblastoma Multiforme (GBM). *Int J Sci Res*
658 *Sci Eng Technol* **3**, 458-465 (2017).

659