

1 **Early menarche and childbirth accelerate aging-related outcomes and age-related**
2 **diseases: Evidence for antagonistic pleiotropy in humans**

3 Yifan Xiang¹, Vineeta Tanwar¹, Parminder Singh¹, Lizellen La Follette¹, Pankaj Kapahi^{1*}

4 **Affiliations:**

5 ¹The Buck Institute for Research on Aging, 8001 Redwood Blvd, Novato, CA 94945

6 *Corresponding author: Pankaj Kapahi, Email: pkapahi@buckinstitute.org.

7

8 **Abstract:** Aging can be understood as a consequence of the declining force of natural selection with age.
9 Consistent with this the antagonistic pleiotropic theory of aging suggests that aging results from the trade-offs
10 that promote early growth and reproduction. However, evidence for antagonistic pleiotropy in humans is
11 largely lacking. Using Mendelian Randomization (MR), we demonstrated that later ages of menarche or first
12 childbirth were genetically associated with longer parental lifespan, decreased frailty index, slower epigenetic
13 aging, later menopause, and reduced facial aging. Moreover, later menarche or first childbirth were also
14 genetically associated with a lower risk of several age-related diseases, including late-onset Alzheimer's
15 disease (LOAD), type 2 diabetes, heart disease, essential hypertension, and chronic obstructive pulmonary
16 disease (COPD). We validated the associations between the age of menarche, childbirth, and the number of
17 childbirths with several age-related outcomes in the UK Biobank by conducting regression analysis of nearly
18 200,000 subjects. Our results demonstrated that menarche before the age 11 and childbirth before 21
19 significantly accelerated the risk of several diseases, and almost doubled the risk for diabetes, heart failure,
20 and quadrupled the risk of obesity, supporting the antagonistic pleiotropy theory. We identified 128 significant
21 single nucleotide polymorphisms (SNPs) that influenced age-related outcomes, some of which were involved
22 in known longevity pathways, including IGF1, growth hormone, AMPK, and mTOR signaling. Our study also
23 identified higher BMI as a mediating factor in causing the increased risk of certain diseases, such as type 2
24 diabetes and heart failure, in women with early menarche or early pregnancy, emphasizing the importance of
25 the thrifty gene hypothesis in explaining in part the mechanisms behind antagonistic pleiotropy. Our study
26 highlights the complex relationship between genetic legacies and modern diseases, emphasizing the need for
27 gender-sensitive healthcare strategies that consider the unique connections between female reproductive
28 health and aging.

30 Introduction

31 Given the decline in the force of natural selection with age, genes that influence aging and age-related diseases
32 are likely to be selected for their influence on early life events ¹. The theory of antagonistic pleiotropy posits
33 that inherent trade-off in natural selection, where genes beneficial for early survival and reproduction may
34 have costly consequences later, contributes to the aging process and age-related diseases ¹⁻³. Though evidence
35 for antagonistic pleiotropy has been observed in invertebrate models, evidence for causal relationships in
36 mammals, especially humans, is largely lacking ⁴. The timing of reproductive events, such as menarche and
37 childbirth, has long been recognized as a crucial aspect of human life history and evolution. However,
38 accumulating evidence suggests that these reproductive milestones may have far-reaching implications ^{5,6}.

39 Considering reproductive events are largely regulated by genetic factors that can manifest the physiological
40 outcome later in life, we hypothesized that earlier or later onset of menarche and first childbirth could reflect
41 broader genetic influences on longevity and disease susceptibility, serving as proxies for biological aging
42 processes (**fig. S1** and **fig. S2**). Two-sample and two-step Mendelian randomization (MR) analyses were
43 adopted to explore the genetic causal associations using the inverse variance weighted (IVW) model. After
44 preprocessing, there were 209 and 33 single nucleotide polymorphisms (SNPs) included in MR analyses for
45 the two exposures, age at menarche ⁷ and age at first birth ⁸, respectively.

47 Later menarche was genetically associated with later aging outcomes

48 Since parental ages at death may reflect the genetic heritability of lifespan, parental ages at death were used
49 as general aging outcomes ⁹. Compared to early menarche, later age at menarche was significantly
50 associated with later parental ages at death for mothers or fathers (OR=1.023, $P=1.84\times 10^{-4}$; OR=1.020,
51 $P=7.88\times 10^{-4}$ for father and mother's ages at death respectively) (**Fig. 1A** and **Table S1-S3**). Aging is the
52 biggest risk factor for frailty and several age-related diseases. Later age at menarche was associated with a
53 lower frailty index, which was calculated using a set of 49 self-reported questionnaire items on traits
54 covering health, presence of diseases and disabilities, and mental well-being ¹⁰ (OR=0.977, $P=5.75\times 10^{-3}$).
55 After excluding the instrumental variables (IVs) associated with body mass index (BMI), the significant
56 association between later menarche and outcomes remained based on the weighted median model (WMM)
57 for frailty index (OR=0.972, $P=0.0202$) and based on IVW for parental ages at death (OR=1.015,
58 $P=2.46\times 10^{-2}$; OR=1.012, $P=3.87\times 10^{-2}$). Next, we examined the associations between the age of menarche
59 and organ aging or age-related diseases (**Fig. 1B**). Later age of menarche was associated with later
60 menopause onset (OR=1.121, $P=2.11\times 10^{-2}$ with WMM), lower risks of late-onset Alzheimer's disease
61 (LOAD) (OR=0.897, $P=3.88\times 10^{-2}$), chronic heart failure (CHF) (OR=0.953, $P=2.80\times 10^{-2}$), essential
62 hypertension (OR=0.990, $P=1.99\times 10^{-8}$), facial aging (OR=0.983, $P=2.16\times 10^{-9}$), and early onset chronic
63 obstructive pulmonary disease (COPD) (OR=0.838, $P=9.50\times 10^{-4}$) and mildly higher risk of osteoporosis
64 (OR=1.001, $P=2.07\times 10^{-2}$). These associations were still significant after excluding SNPs associated with
65 BMI, except for CHF. One potential mechanism of antagonistic pleiotropy is accelerated cell growth and

66 division; therefore, we examined the relationship between menarche and certain cancers. Later age at
67 menarche was associated with lower risks of breast cancer ($OR=0.859$, $P=1.53\times 10^{-2}$) and endometrial cancer
68 ($OR=0.896$, $P=9.02\times 10^{-4}$) compared with early menarche (**Fig. 1B**).

69 **Later age at first birth was genetically associated with later aging outcomes**

70 Next, we examined the associations between the age of childbirth and age-related outcomes. Compared to
71 early first birth, later age at first birth was associated with lower frailty index ($OR=0.937$, $P=5.93\times 10^{-11}$) and
72 GrimAge, a measure of epigenetic aging ($OR=0.447$, $P=4.37\times 10^{-2}$), and older parental ages at death
73 ($OR=1.035$, $P=6.88\times 10^{-5}$ for father's age at death; $OR=1.034$, $P=1.78\times 10^{-4}$ for mother's age at death) (**Fig.**
74 **1A**). Similar to results with the age of menarche, later age at first birth was associated with later menopause
75 onset ($OR=1.306$, $P=3.08\times 10^{-4}$), lower risks of type 2 diabetes ($OR=0.890$, $P=3.65\times 10^{-6}$), CHF ($OR=0.926$,
76 $P=2.56\times 10^{-2}$), essential hypertension ($OR=0.989$, $P=1.54\times 10^{-4}$), and gastrointestinal or abdominal disease
77 (GAD) ($OR=0.991$, $P=1.29\times 10^{-3}$). Most significant associations remained after the BMI-related SNPs were
78 excluded, except for CHF (**Fig. 1C** and **Table S3**). Furthermore, later age at first birth was also significantly
79 associated with a lower risk of cervical cancer ($OR=0.999$, $P=1.52\times 10^{-2}$) but not breast and endometrial
80 cancers (**Fig. 1C**).

81 **BMI is an important mediator in significant associations**

82 As BMI is an important modulator of aging¹¹, we examined its role in explaining these associations. Based
83 on the two-sample MR analyses, significant associations between early menarche and CHF, and between
84 early first birth and CHF and cervical cancer, were not observed after excluding SNPs related to BMI (**Fig.**
85 **1**). To estimate the effect of BMI as the mediator, we further conducted two-step MR. Exposures of age of
86 menarche and age at first birth, and outcomes of frailty index, type 2 diabetes, and CHF, were included in
87 the two-step MR analysis. Later ages of menarche and first birth were associated with lower BMI
88 ($OR=0.948$, $P=2.73\times 10^{-13}$; $OR=0.956$, $P=6.85\times 10^{-5}$). Higher BMI was associated with higher risks of type 2
89 diabetes ($OR=2.391$, $P=4.65\times 10^{-156}$), CHF ($OR=1.690$, $P=1.67\times 10^{-44}$), and cervical cancer ($OR=1.001$,
90 $P=3.16\times 10^{-2}$). Significant pleiotropy was detected in the association between BMI and frailty index. Two-
91 step MR showed that BMI significantly mediated the associations between menarche and, type 2 diabetes or
92 CHF (**Table S4**). BMI also significantly mediated the associations between first birth and, type 2 diabetes,
93 CHF, or cervical cancer (**Table S4**). As both early menarche and first birth were associated with higher BMI,
94 the BMI had a significant effect to explain the associations partially. Results of colocalization analysis
95 showed 5 SNPs associated with both the exposures and outcomes (**Table S5**).

96 **Mechanisms explaining antagonistic pleiotropy**

97 We identified 128 significant SNPs in the genes from the MR analysis for their association between age of
98 menarche or first birth with 15 aging and age-related disease outcomes. These SNPs were then listed according
99 to (i) the number of study outcomes they were associated with and (ii) their frequency of occurrence in the
100 European and global population. We chose to depict only the SNPs that were associated with greater than three

101 outcomes as shown in **Fig. 2**. The SNP rs2003476 in the *CRTC1* gene was found to be associated with seven
102 aging and age-related disease outcomes (frailty index, LOAD, CHF, father's age at death, mother's age at death,
103 breast, and endometrial cancer). Previous studies have indicated that *CRTC1* transcription domain is linked
104 with extending the lifespan in *C. elegans*¹² and a decrease in *CRTC1* levels was found to be associated with
105 human AD¹³. Two other genes involved in the glutathione metabolism pathway, *CHAC1* and *GGT7*, were also
106 found to be associated with four different aging outcomes (*CHAC1* was associated with frailty index, diabetes,
107 COPD, and BMI; *GGT7* was associated with father's age at death, hypertension, breast cancer and BMI) (**Fig.**
108 **2**). Importantly, the SNP in *CHAC1* is a missense variant, suggesting its impact on protein translation and
109 potential contribution to disease biology. *CHAC1* has recently been implicated in age-related macular
110 degeneration¹⁴ and muscle wasting¹⁵. Posttranslational protein-lipid modification processes are known to
111 contribute to aging and age-related diseases¹⁶. N-myristoylation is one such process that is catalyzed by NMT
112 (N-myristoyltransferase)¹⁷, another intriguing gene candidate identified in our analysis. We found an
113 association of *NMT1* with three aging outcomes: T2D, CHF, and endometrial cancer. Various myristoylated
114 proteins have been implicated in diverse intracellular signaling pathways¹⁸ including AMP-activated protein
115 kinase (AMPK)^{19,20}. It has been shown that NMT1 exerts synovial tissue-protective functions by promoting
116 the recruitment of AMPK to lysosomes and inhibiting mTORC1 signaling¹⁹. In addition, drugs targeting
117 NMTs (NMT1 and NMT2) have been suggested to be potent senolytics²¹ and a target for treating or preventing
118 various diseases such as cancer^{22,23} and heart failure²⁴. Furthermore, modulating the evolutionarily conserved
119 N-myristoyl transferase NMT1 was shown to extend lifespan in yeast²⁵. The full table of SNPs and their
120 population frequency and association with aging outcomes is provided in **Table S6**.

121 **Canonical signaling pathways analysis.** A total of 498 canonical signaling pathways related to 128 SNPs/gene
122 outcomes were identified based on the Ingenuity Pathway Knowledge Base (IPKB). After ranking the
123 identified canonical signaling pathways according to their adjusted P-values, the top 25 canonical signaling
124 pathways with a p-value < 10⁻² enriched by SNPs/genes involved in the age of menarche and first birth are
125 represented in **Fig. 3A**. The top enriched canonical signaling pathways fell into these broader categories: (1)
126 Developmental and cellular signaling pathways such as BMP, IGF-1, and growth hormone signaling; (2)
127 Neuronal signaling and neurological disorders that include amyloid processing, activation of NMDA receptors
128 and postsynaptic events, and glioma signaling; (3) Metabolic signaling pathways such as insulin receptor,
129 mTOR, and leptin signaling; (4) Immunological and inflammatory signaling pathways, which include
130 lymphotoxin β receptor and TREM1 signaling; (5) Cardiovascular and muscular signaling pathways including
131 the role of NFAT in cardiac hypertrophy. In addition to canonical pathways, SNPs/genes were shown to be
132 further associated with diseases and functions. IPA showed a total of 80 diseases and functions associated with
133 age at menarche and first birth. These associated diseases and functions were rated according to their adjusted
134 P-values, and the top 20 enriched categories with a P-value < 10⁻⁵ were selected and depicted in **Fig. 3B**.

135 **Gene network analysis and drug interactions.** Besides pathway and disease associations, the 128 SNPs/genes
136 were further connected to identify 11 functional networks using IPA. These IPA networks were ranked based

137 on their consistency scores. The top 5 networks included a range of 13-17 genes with scores above 25,
138 indicating robust regulatory analysis²⁶ (**Table S7**). The top networks were mainly connected to the following
139 functions: Cellular interaction/signaling/development (**Fig. 3C**), cell death and survival, cancer,
140 gastrointestinal, reproductive (**Fig. 3C**), neurological (**Fig. 3D**), and cardiovascular system, development,
141 function, diseases. These results support the notion that dynamic cellular interactions and the development of
142 various vital organ systems influenced by age at menarche and first birth also influence age-related diseases.
143 The two top IPA networks were further outlined in **Fig. 3C** and **3D**. To further explore the drugs targeting
144 genes associated with age at menarche and first birth, we conducted an analysis using ChEMBL²⁷ and
145 DrugBank databases²⁸. This examination revealed that a total of 11 FDA-approved drugs target the identified
146 genes (*PRKAG2, SCN2A, DPYD, MC3R, AKT, MAPK, KCNK9, TACR3, HTR4, KCNB2, RXRG*) (**Table S8**).

147 **Population validation for associations between age at menarche, or first live birth, or number of births** 148 **with age-related outcomes**

149 Next, we validated the genetic associations in the population cohort of the UK Biobank. 264,335, 184,481,
150 and 259,758 participants were included for independent variables of age at menarche, age at first live birth,
151 and number of births, respectively (**Table S9**). Ages at menarche were divided into 5 age groups, <11y, 11-
152 12y, 13-14y, 15-16y, and >16y. The probability of living to 80 years old, having menopause ≥ 50 years old,
153 risk of diabetes, high blood pressure (HBP), heart failure, COPD, breast cancer, endometrial cancer, and
154 obesity were compared among the 5 age groups of menarche. Each of the outcomes was compared between
155 the highest and lowest education levels and 3 BMI categories (18.5-24.9, 25-29.9, and ≥ 30) among the 5
156 age groups (**Fig. 4A-I**). The ORs for each age group were calculated based on the coefficients (β) in logistic
157 regression after including confounders of smoking, alcohol, education, and BMI. Compared to the group
158 with menarche under 11 years old, which generally had the highest risk, females with menarche at 13-14y
159 had the highest probability of living to 80 years old (OR=1.412, $P<0.001$) and having menopause ≥ 50 years
160 old (OR=1.146, $P<0.001$), and had the lowest risk of diabetes (OR=0.773, $P<0.001$), heart failure
161 (OR=0.835, $P<0.001$), and COPD (OR=0.728, $P<0.001$). The group with menarche at 15-16y had the lowest
162 risks of high blood pressure (HBP) (OR=0.793, $P<0.001$) and obesity (OR=0.337, $P<0.001$). Females with
163 menarche >16y had the lowest risks of breast cancer (OR=0.832, $P<0.05$) and endometrial cancer
164 (OR=0.641, $P<0.05$) compared to females with menarche <11y (**Table S10**).

165 Ages at first birth were divided into 5 age groups, <21y, 21-25y, 26-30y, 31-35y, and >35y. The probability
166 of living to 80 years old, having menopause ≥ 50 years old, risk of diabetes, AD, HBP, heart failure, cerebral
167 infarction, digestive system disease, cervical cancer, and obesity were compared among the 5 age groups of
168 first live birth. Compared to the group with first live birth under 21 years old, which generally had the
169 highest risks, females with first live birth at 21-25y had the highest probability to live to 80 years old
170 (OR=1.667, $P<0.001$), and females with first live birth at 26-30y had the highest probability to have
171 menopause ≥ 50 years old (OR=1.184, $P<0.001$) and lowest risk of cervical cancer (OR=0.587, $P<0.01$).

172 Females with first live birth at 31-35y had the lowest risk of diabetes (OR=0.612, P<0.001). Females with
173 first live birth >35y had the lowest risk of having AD (OR=0.474, P<0.01), HBP (OR=0.587, P<0.001),
174 heart failure (OR=0.446, P<0.001), cerebral infarction (OR=0.485, P<0.001), digestive system disease
175 (OR=0.569, P<0.001), and obesity (OR=0.416, P<0.001) (**Fig. 4J-S**).

176 Females with the number of births from 0 to 4 were included. Compared to no birth, females with 3 births
177 had the highest probability of living to 80 years old (OR=1.818, P<0.001) and having menopause \geq 50 years
178 old (OR=1.562, P<0.001). Females with 4 births had the highest risk of diabetes (OR=1.399, P<0.001), AD
179 (OR=1.676, P<0.001), HBP (OR=1.274, P<0.001), heart failure (OR=1.439, P<0.001), cerebral infarction
180 (OR=1.470, P<0.001), digestive system disease (OR=1.370, P<0.001), and obesity (OR=1.327, P<0.001) but
181 lowest risk of breast cancer (OR=0.869, P<0.001) (**Fig. 4T-AC**). The significant estimated effect (β) of each
182 group compared to the youngest age groups of menarche and first live birth and 0 birth group and the ability
183 to explain the variability of outcomes in regression analysis are exhibited in **Table S10**.

184 To estimate the combined effect of age at menarche and first live birth on diabetes, HBP, heart failure, and
185 BMI \geq 30, participants were divided into 25 groups according to the menarche and first live birth ages.
186 Females with menarche<11y and first live birth<21y had higher risks of diabetes (OR=1.881, P<0.001),
187 HBP (OR= 1.436, P<0.05), heart failure (OR= 1.776, P<0.01), and BMI \geq 30 (OR= 4.417, P<0.001)
188 compared to females with menarche of 13-14y and first live birth of 26-30y (**Table S11** and **fig. S3**).

189
190 The timing of reproductive milestones such as the age of menarche and age at first birth is partly governed by
191 genetic factors, which may exert lasting impacts on an individual's health trajectory. Our study finds support
192 for antagonistic pleiotropy by demonstrating that genetic variants that drive early menarche or early pregnancy
193 accelerate several aging outcomes, including parental age, frailty index, and several age-related diseases such
194 as diabetes and dementia. These results were validated in a cohort from the UK biobank, showing that women
195 with early menarche, or early pregnancy, were associated with accelerated aging outcomes and increased risk
196 of several age-related diseases. These results are also consistent with the disposable soma theory that suggests
197 aging as an outcome tradeoff between an organism's investment in reproduction and somatic maintenance and
198 repair. Consistent with a recent study suggesting the relation of early first birth with a higher likelihood of
199 frailty²⁹, our MR analysis provided a strong association between early age of first birth and GrimAge, a DNA
200 methylation based marker to predict epigenetic age. Our findings align with the observed negative genetic
201 correlation between reproductive traits and lifespan that individuals with higher polygenic scores for
202 reproduction have lower survivorships to age 76³⁰. Prior studies linking the female reproductive factors with
203 aging are either limited to results obtained from observational studies^{31,32} or are limited to few outcomes such
204 as brain disorders^{33,34}. Furthermore, the origins of aging in humans have also been considered adaptive³⁵.

205 Using MR, we identified 128 SNPs associated with early menarche or first birth that significantly influence
206 age-related outcomes. Among the top 25 enriched canonical signaling pathways, those involved in
207 developmental and cellular processes are particularly significant in determining the timing of menarche and

208 first childbirth, with nearly half of these pathways (12 out of 25) falling into this category. These
209 developmental and cellular signaling pathways work together to regulate continuous growth and involution
210 from puberty through menopause ³⁶. Interestingly, known longevity pathways such as insulin-like growth
211 factor 1 (IGF1), growth hormone (GH) signaling, melatonin signaling, and bone morphogenetic protein (BMP)
212 signaling, seem to play a crucial role in regulating the timing of these reproductive events. IGF-1 signaling
213 promotes the growth and development of reproductive organs and tissues ³⁷⁻³⁹, but is also a conserved
214 modulator of longevity ⁴⁰⁻⁴³. Melatonin, known for regulating circadian rhythms, influences the timing of
215 menarche through its effects on the hypothalamic-pituitary-gonadal axis ⁴⁴ and is postulated to modulate
216 oxidative, inflammatory, and autophagy states ⁴⁵. Furthermore, different processes in early life such as cell
217 proliferation or differentiation ⁴⁶, ovarian function, and follicular development ⁴⁷⁻⁴⁹ are dependent on BMP
218 signaling. However, increased BMP signaling also contributes significantly to AD pathology ⁵⁰ and
219 impairments in neurogenesis and cognitive decline associated with aging ⁵¹. Aberrant BMP signaling is also
220 shown to be associated with age-related metabolic and cardiovascular diseases ^{52,53}. Additionally, growth
221 hormone signaling is not only vital for development during childhood and puberty ⁵⁴ but also impacts longevity
222 ⁵⁵. Besides signaling pathways, genes in age at menarche and first childbirth were connected in gene-gene
223 interaction networks. In IPA network 1, most genes were connected with either *AKT* or genes encoding for
224 follicle-stimulating hormone (*FSH*), luteinizing hormone (*LH*), leptin receptor (*LEPR*), and inhibin subunit
225 beta A (*INHBA*). AKT signaling is implicated in oocyte maturation and embryonic development ⁵⁶ and
226 mediates pregnancy-induced cardiac adaptive responses ⁵⁷. AKT signaling also mediates age-related disease
227 pathologies, such as AD ⁵⁸. Major ovarian functions are controlled by FSH (follicular growth, cellular
228 proliferation, and estrogen production) and LH (oocyte maturation, ovulation, and terminal differentiation of
229 follicles) which in turn are modulated by other ovarian factors such as INHBA (a subunit of activin and inhibin)
230 ^{59,60}. Endocrine alterations at advanced aging or reproductive aging ⁶¹ are marked by changes in FSH and LH
231 due to altered feedback resulting from the ovarian decline in sex steroids, inhibin A, and inhibin B production
232 ⁶²⁻⁶⁴. In IPA network 2, the hub genes are connected mostly with extracellular signal-regulated kinases (ERK),
233 Similar to AKT, ERK is also a member of the mitogen-activated kinase family (MAPK), a highly conserved
234 signaling pathway that plays a vital role in transducing extracellular signals into a wide range of cellular
235 responses ^{65,66}, maintaining tissue integrity during aging ⁶⁷, and mediating age-related disease pathology ^{58,68}.
236 These studies underscore the importance of considering that dysregulation or abnormal activation of any of
237 these pathways could contribute to the onset of late-life diseases consistent with antagonistic pleiotropy in
238 humans ^{2,69}.

239 The thrifty gene hypothesis provides a compelling framework to explain antagonistic pleiotropy, particularly
240 in the context of modern health challenges. The thrifty gene hypothesis suggests that genes favoring efficient
241 energy storage were advantageous in historical periods of food scarcity, helping individuals survive through
242 famines. However, in today's environment of abundant food, the same genes contribute to obesity and
243 metabolic diseases like diabetes. Similarly, in the context of antagonistic pleiotropy, we hypothesize that
244 genes that enhance early-life reproductive success favor efficient energy storage to support reproductive

245 health. This is supported by our observation that early pregnancy is associated with increasing BMI, a
246 recognized key factor in systemic aging^{70,71}. In support of this, we found a lack of significant association
247 between early menarche or age at first birth for CHF and cervical cancer after removal of BMI as a
248 confounder in MR analysis. Based on regression analysis at the population level (Fig. 4), higher BMI was
249 associated with higher risks of cardiovascular diseases and diabetes. Thus, an increase in BMI is one of the
250 factors that explains the increased risk of age-related disease seen due to the exposure of early pregnancy or
251 the prevalence of genes that enhance early reproductive success. These results are also consistent with
252 calorie restriction being a robust way to extend healthspan and lifespan in many species⁷².

253 Several limitations of our study need to be considered. Firstly, all the associations are explored at the genetic
254 level with MR and population level with the UK Biobank. However, to confirm causal relationships, further
255 validation through *in vitro* and *in vivo* research is essential. Secondly, though we excluded confounder-related
256 SNPs and addressed potential pleiotropic effects, there may also be potential bias which could be addressed
257 by extending these findings to other populations. Thirdly, significant heterogeneity and pleiotropy remained
258 in some association analyses, which need further exploration. Given the increasing age of first childbirth in
259 modern times, the ideal period of first childbirth for both slowing down female aging and benefiting fetal
260 development needs more research⁷³. In summary, our study underscores the complex relationship between
261 genetic legacies and modern diseases. Understanding these genetic predispositions can inform public health
262 strategies and their relevance to age-related disease outcomes in women of various ethnic groups. For example,
263 interventions could be tailored not only to mitigate the risks associated with early reproductive timing but also
264 to address lifestyle factors exacerbating conditions linked to thrifty genes, like diet and physical activity.

266 **Methods**

267 All the MR research data is from the public genome-wide association studies (GWAS) databases of the IEU
268 Open GWAS project (<https://gwas.mrcieu.ac.uk/>) and PubMed. The target analysis is based on public
269 datasets. The population data is from the UK Biobank. No definite personal information was included. No
270 additional ethical approval was required for our study.

271 **Exposure data**

272 2 traits were included as female reproductive activity exposures, involving age at menarche⁷ (GWAS ID:
273 ebi-a-GCST90029036) and age at first birth⁸ (GWAS ID: ebi-a-GCST90000048).

274 **Outcome data**

275 The aging outcomes involved general aging, organ aging/disease, and organ cancers (Table S1). Frailty
276 index⁷⁴ (GWAS ID: ebi-a-GCST90020053), father's age at death⁷⁵ (GWAS ID: ebi-a-GCST006700),
277 mother's age at death⁷⁵ (GWAS ID: ebi-a-GCST006699), and DNA methylation GrimAge acceleration⁷⁶
278 (GWAS ID: ebi-a-GCST90014294) were included as general aging outcomes. Specific aging diseases and
279 aging levels included age at menopause onset⁷ (GWAS ID: ebi-a-GCST90029037), late-onset Alzheimer's

280 disease⁷⁷ (LOAD) (PMID: 30820047), osteoporosis⁷⁸ (GWAS ID: ebi-a-GCST90038656), and type 2
281 diabetes⁷⁹ (GWAS ID: ebi-a-GCST90018926), chronic heart failure⁷⁹ (CHF) (GWAS ID: ebi-a-
282 GCST90018806), essential hypertension (GWAS ID: ukb-b-12493), facial aging (GWAS ID: ukb-b-2148),
283 eye aging⁸⁰ (PMID: 36975205), cirrhosis (GWAS ID: finn-b-CIRRHOISIS_BROAD), chronic kidney
284 disease⁸¹ (CKD) (GWAS ID: ebi-a-GCST008026), early onset chronic obstructive pulmonary disease
285 (COPD) (GWAS ID: finn-b-COPD_EARLY), and gastrointestinal or abdominal disease (GAD)⁷⁸ (GWAS
286 ID: ebi-a-GCST90038597). Organ cancers included breast cancer⁷⁹ (GWAS ID: ebi-a-GCST90018799),
287 ovarian cancer⁷⁹ (GWAS ID: ebi-a-GCST90018888), endometrial cancer⁸² (GWAS ID: ebi-a-
288 GCST006464), and cervical cancer (GWAS ID: ukb-b-8777).

289 SNPs selection

290 We identified single nucleotide polymorphisms (SNPs) associated with exposure datasets with $p < 5 \times 10^{-8}$
291^{83,84}. In this case, 249 SNPs and 67 SNPs were selected as eligible instrumental variables (IVs) for exposures
292 of age at menarche and age at first birth, respectively. All selected SNPs for every exposure would be
293 clumped to avoid the linkage disequilibrium ($r^2 = 0.001$ and kb = 10,000). Then we identified whether there
294 were potential confounders of IVs associated with the outcomes based on a database of human genotype-
295 phenotype associations, PhenoScanner V2^{85,86} (<http://www.phenoscaner.medschl.cam.ac.uk/>), with a
296 threshold of $p < 1 \times 10^{-5}$. IVs associated with education, smoking, alcohol, activity, and other confounders
297 related to outcomes would be excluded. During the harmonization process, we aligned the alleles to the
298 human genome reference sequence and removed incompatible SNPs. Subsequent analyses were based on the
299 merged exposure-outcome dataset. We calculated the F statistics to quantify the strength of IVs for each
300 exposure with a threshold of $F > 10$ ⁸⁷. If the effect allele frequency (EAF) was missing in the primary
301 dataset, EAF would be collected from dsSNP (<https://www.ncbi.nlm.nih.gov/snp/>) based on the population
302 to calculate the F value.

303 MR analysis

304 All analysis was performed using R software (version 4.3.1, R Foundation for Statistical Computing,
305 Vienna, Austria) and RStudio software (version 2023.09.0 Posit, PBC, Boston, USA) with TwoSampleMR
306 (version 0.5.7) and MRPRESSO (version 1.0) packages.

307 Five two-sample MR methods were applied for analysis, including inverse variance weighted model (IVW),
308 MR Egger regression model (MER), weighted median model (WMM), simple mode, and weighted mode. A
309 pleiotropy test was used to check if the IVs influence the outcome through pathways other than the exposure
310 of interest. A heterogeneity test was applied to ensure whether there is a variation in the causal effect
311 estimates across different IVs. Significant heterogeneity test results indicate that some instruments are
312 invalid or that the causal effect varies depending on the IVs used. MRPRESSO was applied to detect and
313 correct potential outliers of IVs with NbDistribution = 10,000 and threshold $p = 0.05$. Outliers would be
314 excluded for repeated analysis. The causal estimates were given as odds ratios (ORs) and 95% confidence

intervals (CI). Leave-one-out analysis was conducted to ensure the robustness of the results by sequentially excluding each IV and confirming the direction and statistical significance of the remained SNPs.

In two-step MR, we mainly use IVW to access the causal associations between exposure and outcome, exposure and mediator, and mediator and outcome. Body mass index (BMI) (GWAS ID: ukb-b-19953) was applied as a mediator. Similar steps of two-sample MR were repeated in the analysis after excluding confounders. The mediator effect (ME) and direct effect (DE) were calculated. The MEs were calculated with the formula: $\beta_1 \times \beta_2$; DEs were calculated according to the formula: $\beta - (\beta_1 \times \beta_2)$, β stands for the total effect obtained from the primary analysis, β_1 stands for the effect of exposure on the mediator, and β_2 stands for the effect of the mediator on the outcome.

Colocalization analysis

To improve the robustness of our research, colocalization analysis was conducted with packages gwasglue (version 0.0.0.9000), coloc (version 5.2.3), and gassocplot (version 1.0) between the exposures and outcomes revealing significant associations after BMI-related SNPs were excluded. SNPs with significant P values in single SNP OR analysis were set as target SNPs. SNP-level colocalization was conducted with 50kb⁸⁸ windows around each target SNP. EAF was set to 0.5 if it was missed in the primary datasets. The Bayesian algorithm in the coloc package generates posterior probabilities (PP) for the hypothesis that both traits are associated and share the same single causal variant at a specific locus (H_4)⁸⁹. SNP with significant results in the colocalization analysis would be removed and two-sample MR analyses would be conducted again.

Target Analysis

We employed the Ingenuity Pathway Analysis (IPA) software (version 01-22-01; Ingenuity Systems; QIAGEN) to investigate various gene-related aspects associated with age at first birth and menarche. IPA is a widely used bioinformatics tool for interpreting high-throughput data⁹⁰. Briefly, the SNPs/genes from MR analysis were uploaded into Qiagen's IPA system for core analysis and then the outcome was overlaid with the global molecular network in the Ingenuity pathway knowledge base (IPKB). IPA was performed to identify canonical pathways, diseases, and functions, and to investigate gene networks. Additionally, the Chemical Biology Database (ChEMBL) (<https://www.ebi.ac.uk/chembl/>), a large-scale database of bioactive molecules for drug discovery²⁷, and the DrugBank database²⁸, a comprehensive database on FDA-approved drugs, drug targets, mechanisms of action, and interactions (<https://go.drugbank.com/>), were used to identify candidate genes targeted by approved drugs in clinical trials or under current development phases.

Population validation

The MR results were further validated based on the UK Biobank with package stats (version 4.3.1). In addition to age at menarche and first live birth, the number of births is listed as an independent variable for the validation analysis. Based on the significant associations, regression analysis was adopted to explore the effect of independent variables and related confounders on outcomes. Ages at menarche were divided into 5 age

350 groups, <11y, 11-12y, 13-14y, 15-16y, and >16y. Ages at first live birth were divided into 5 age groups, <21y,
351 21-25y, 26-30y, 31-35y, and >35y. Females with the number of births from 0 to 4 were included. Education
352 was divided into 7 levels based on the degrees. Smoking was divided into 2 categories, ever smoking or not.
353 Drinking was divided into 3 categories, never, previous, and current drinking. BMI was divided into four
354 categories, <18.5, 18.5-24.9, 25-29.9, and ≥ 30 based on the average value of 4 records. The outcome results
355 were preprocessed based on the baseline information collection, follow-up outcome, surgical history, and ICD-
356 10 diagnosis summary. Logistic regression was used for the analysis of disease risks (categorical variables).
357 The coefficients (β) in logistic regression were log-odds ratios. Although the continuous variables exhibited
358 mild to moderate skewed distributions, considering the large sample size, linear regression was used for the
359 analysis of age at death, menopause age, and BMI in the first step. Then logistic regression was applied to
360 confirm the robustness of the results with the outcome of death age ≥ 80 , menopause age ≥ 50 , and BMI ≥ 30 .
361 Confounders for regression analysis I include education, smoking, and drinking. Confounders for regression
362 analysis II include education, smoking, drinking, and BMI. Variance Inflation Factors (VIF) were calculated
363 for each predictor in regression analysis to avoid multicollinearity. Values of VIF were less than 1.5 for each
364 predictor. For outcomes of diabetes, HBP, heart failure, and BMI ≥ 30 , the combined effect of age at menarche
365 and first birth was analyzed. 179,821 participants were divided into 25 groups according to the menarche and
366 first live birth age groups. All other groups were compared to the group with menarche of “13-14y” and the
367 first birth of “26-30y” in logistic regression (confounders including education, smoking, drinking, and BMI
368 for diabetes, HBP, and heart failure; including education, smoking, and drinking for BMI ≥ 30).

369

370 **Data and materials availability:** All data are available in the main text, supplementary materials, or public
371 database. The population data is available through the UK Biobank.

372 **Acknowledgments:** We thank the Kapahi Lab at Buck Institute for helpful discussions. This research has
373 been conducted using the UK Biobank Resource under Application Number 151101. **Funding:** Hevolution
374 Foundation (PK). National Institute of Health grant R01AG068288 and R01AG045835 (PK). Larry L.
375 Hillblom Foundation (PK), Larry L. Hillblom Foundation (PS). **Author contributions:** Conceptualization:
376 YX, VT, PS, LLF, and PK. MR analysis and UK biobank validation: YX. Gene target analysis: VT. Funding
377 acquisition: PK and PS. Writing original draft: YX, PS, and VT. All authors reviewed and edited the
378 manuscript.

379 **Competing interests:** Authors declare that they have no competing interests.

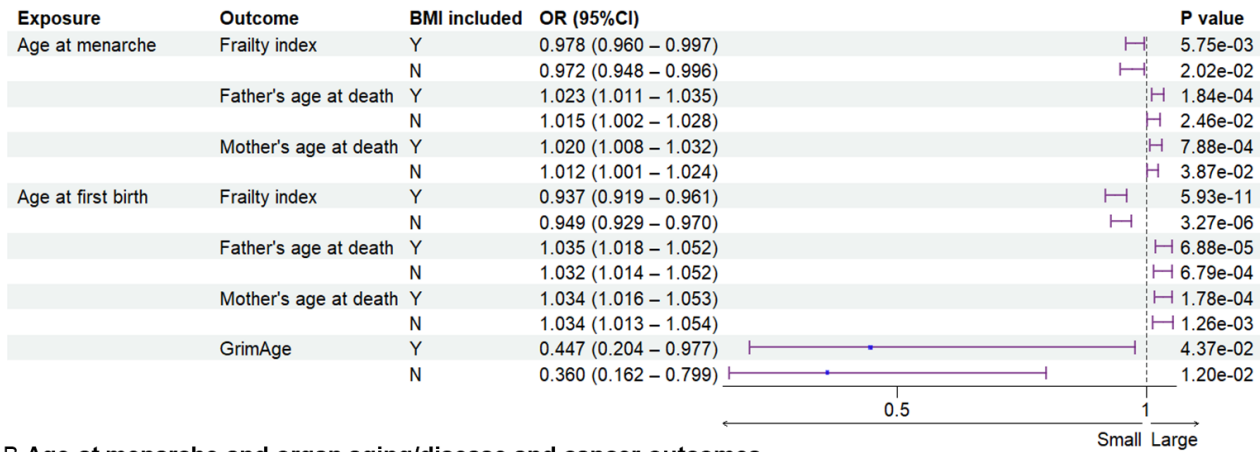
380 **Supplementary Materials**

381 Figs. S1 to S3

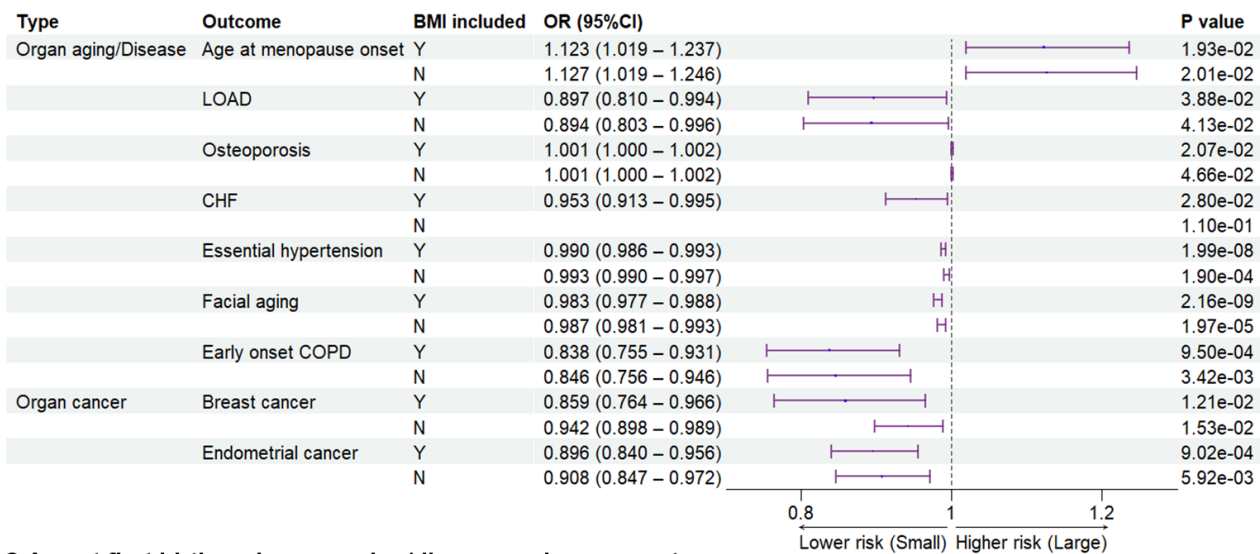
382 Tables S1 to S11

383

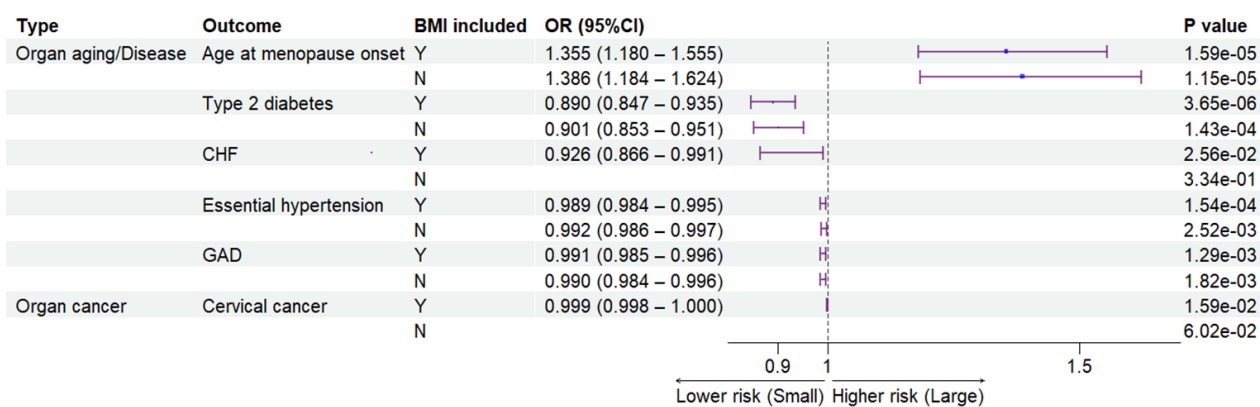
A Exposures and general aging outcomes



B Age at menarche and organ aging/disease and cancer outcomes



C Age at first birth and organ aging/disease and cancer outcomes



384 **Figure 1. Genetic associations between exposures and outcomes.** (A), genetic associations between
 385 exposures and general aging. Later age at menarche was associated with a lower frailty index and higher
 386 parental ages at death. Later age at first birth was associated with lower frailty index and GrimAge and
 387 higher parental ages at death. (B), genetic associations between age at menarche and outcomes of organ
 388 aging and diseases as well as organ cancer. Later age at menarche was associated with later age at
 389 menopause onset and lower risks of LOAD, CHF, essential hypertension, facial aging, early onset COPD,
 390 breast cancer, and endometrial cancer. (C), genetic associations between age at first birth and outcomes of
 391 organ aging and diseases as well as organ cancer. Later age at first birth was associated with later age at
 392 menopause onset and lower risks of type 2 diabetes, CHF, essential hypertension, gastrointestinal or
 393 abdominal disease, and cervical cancer. The significant associations were not detected after BMI-related
 394 SNPs excluded for outcomes of CHF and cervical cancer. BMI included, BMI-related SNPs included; CHF,
 395 chronic heart failure; GAD, gastrointestinal or abdominal disease.

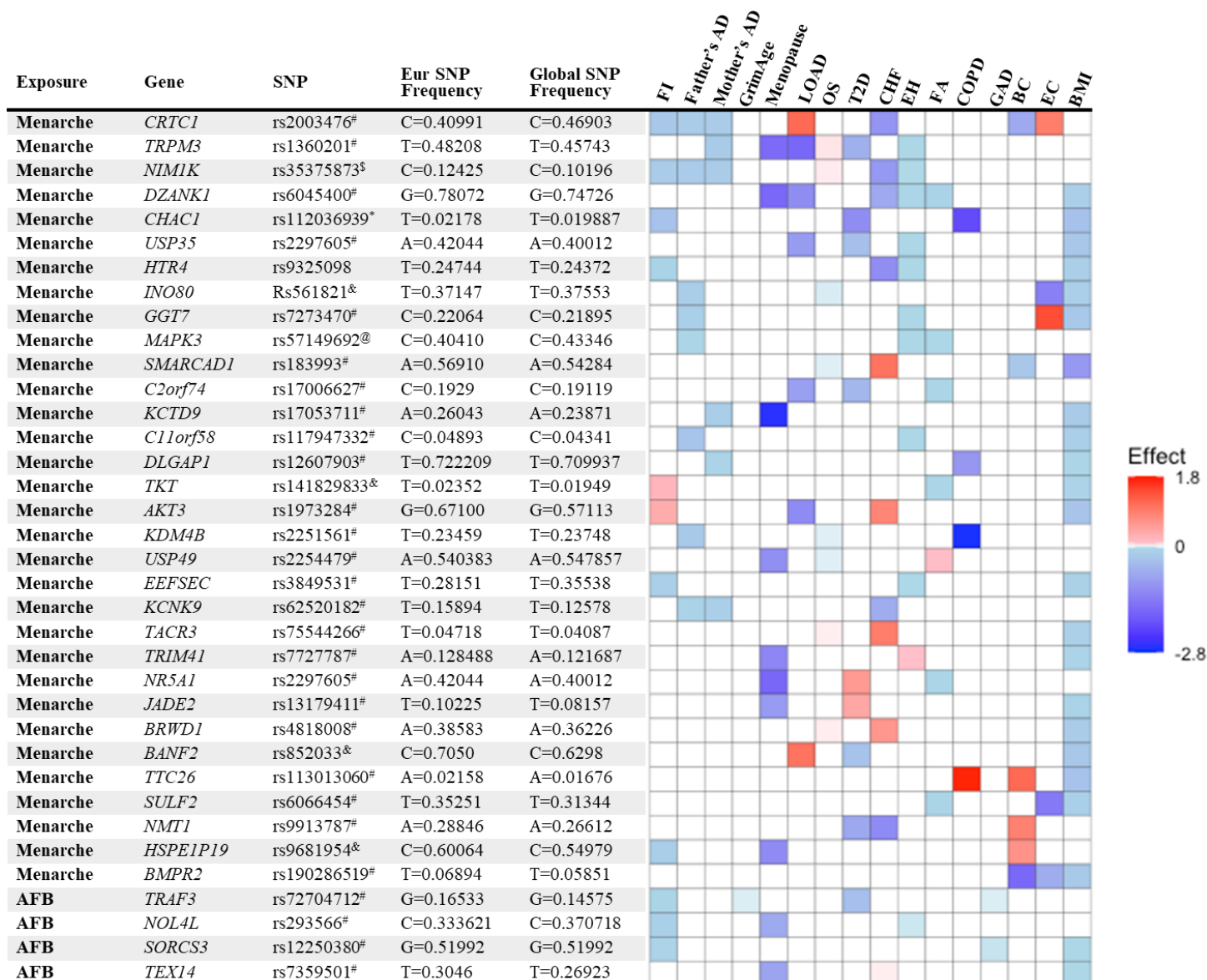


Figure 2. List and heatmap of SNPs/genes from post-MR analysis showing an association between age at menarche and first birth with three or more aging outcomes. Genomic region location for each variant is depicted by different characters: intron variant[#]; 2KB upstream variant; Missense variant^{*}; Intergenic variant[&]; Regulatory region variant[@]. Heatmap is representative of an association of each gene/SNP with different aging outcomes. Red bar represents a harmful association (-beta for Father's DA, Mother's DA, and menopause; +beta for other outcomes); Blue bar represents a beneficial association (+beta for Father's DA, Mother's DA, and menopause; -beta for other outcomes); White bar represents no association. AFB; age at first birth; FI, frailty index; Father's DA, father's age at death; Mother's DA, mother's age at death; Menopause, age at menopause; LOAD, late-onset Alzheimer's disease; OS, osteoporosis; T2D, type II diabetes; CHF, chronic heart failure; EH, essential hypertension; FA, facial aging; COPD, chronic obstructive pulmonary disease; GAD, gastrointestinal or abdominal disease; BC, breast cancer; EC, endometrial cancer; BMI, body mass index.

A

Canonical Signaling Pathways	$-\log_{10}(p\text{-value})$	Fraction of genes that are involved in the pathway	Genes belonging to the pathway
Transcriptional Regulatory Network in Embryonic Stem Cells	2.31	0.0427	AKT3,BMPR2,IGF1R,INHBA,MAPK1,MAPK3,SMARCA1
Leptin Signaling in Obesity	2.31	0.0658	AKT3,LEPR,MAPK1,MAPK3,PRKAG2
Activation of NMDA receptors and postsynaptic events	2.31	0.0595	CAMK4,DLG2,MAPK1,MAPK3,PRKAG2
Cachexia Signaling Pathway	2.31	0.0245	AKT3,BMPR2,DDIT4,IGF1R,INHBA,MAPK1,MAPK3,PRKAG2,PTH2R
BMP signaling pathway	2.31	0.0549	BMPR2,CAMK4,MAPK1,MAPK3,PRKAG2
Signaling by Activin	2.31	0.176	INHBA,MAPK1,MAPK3
PFKFB4 Signaling Pathway	2.29	0.0816	MAPK1,MAPK3,PRKAG2,TKT
Amyloid Processing	2.28	0.0784	AKT3,MAPK1,MAPK3,PRKAG2
Intrinsic Pathway for Apoptosis	2.28	0.0727	AKT3,MAPK1,MAPK3,NMT1
Lymphotoxin β Receptor Signaling	2.28	0.0727	AKT3,MAPK1,MAPK3,TRAF3
IGF-1 Signaling	2.28	0.0476	AKT3,IGF1R,MAPK1,MAPK3,PRKAG2
Docosahexaenoic Acid (DHA) Signaling	2.23	0.028	AKT3,MAPK1,MAPK3,PRKAG2,RXRG,STXBP4,SYT14
IL-22 Signaling	2.18	0.125	AKT3,MAPK1,MAPK3
Glioma Signaling	2.03	0.04	AKT3,CAMK4,IGF1R,MAPK1,MAPK3
Growth Hormone Signaling	2.02	0.0563	IGF1R,MAPK1,MAPK3,RPS6KC1
CLEAR Signaling Pathway	2.02	0.0246	AKT3,BMPR2,DDIT4,IGF1R,MAPK1,MAPK3,PRKAG2
Melatonin Signaling	2.02	0.0556	MAPK1,MAPK3,PRKAG2,RORA
Extra-nuclear estrogen signaling	2.02	0.0548	AKT3,IGF1R,MAPK1,MAPK3
TREM1 Signaling	1.98	0.0519	AKT3,MAPK1,MAPK3,NLRC3
mTOR Signaling	1.98	0.028	AKT3,DDIT4,MAPK1,MAPK3,PRKAG2,RPS6KC1
Insulin Receptor Signaling	1.98	0.0357	AKT3,MAPK1,MAPK3,PRKAG2,STXBP4
Estrogen-Dependent Breast Cancer Signaling	1.94	0.0488	AKT3,IGF1R,MAPK1,MAPK3
Transcriptional Regulation by NPAS4	1.94	0.0857	BMAL1,MAPK1,MAPK3
Role of NEAT in Cardiac Hypertrophy	1.94	0.0268	AKT3,CAMK4,IGF1R,MAPK1,MAPK3,PRKAG2
RHO GTPases Activate WASPs and WAVES	1.94	0.0833	CYFIP2,MAPK1,MAPK3
Dilated Cardiomyopathy Signaling Pathway	1.94	0.0333	AKT3,CAMK4,MAPK1,MAPK3,PRKAG2

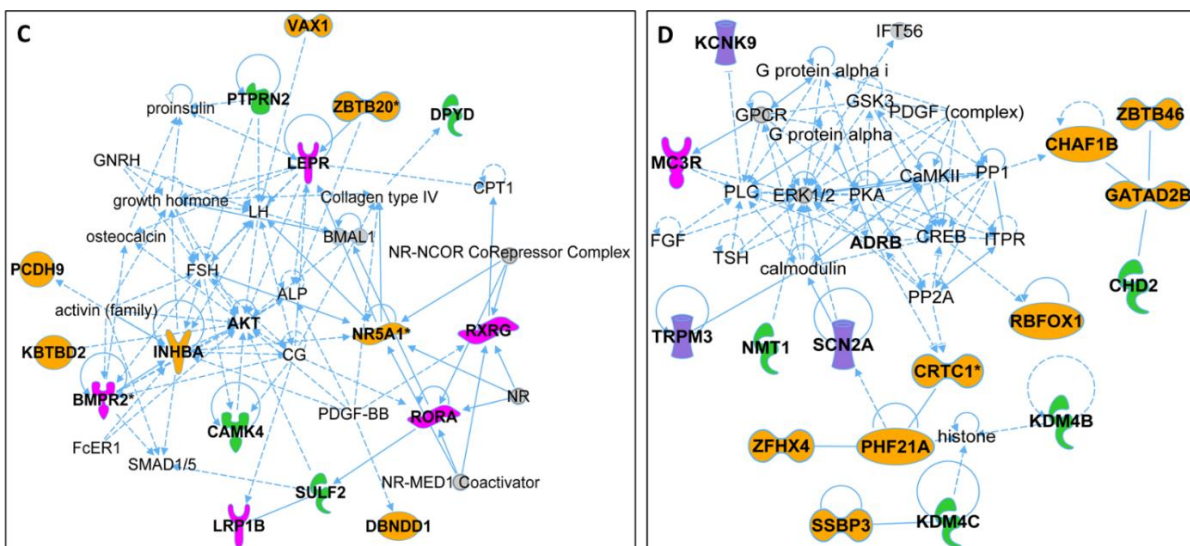
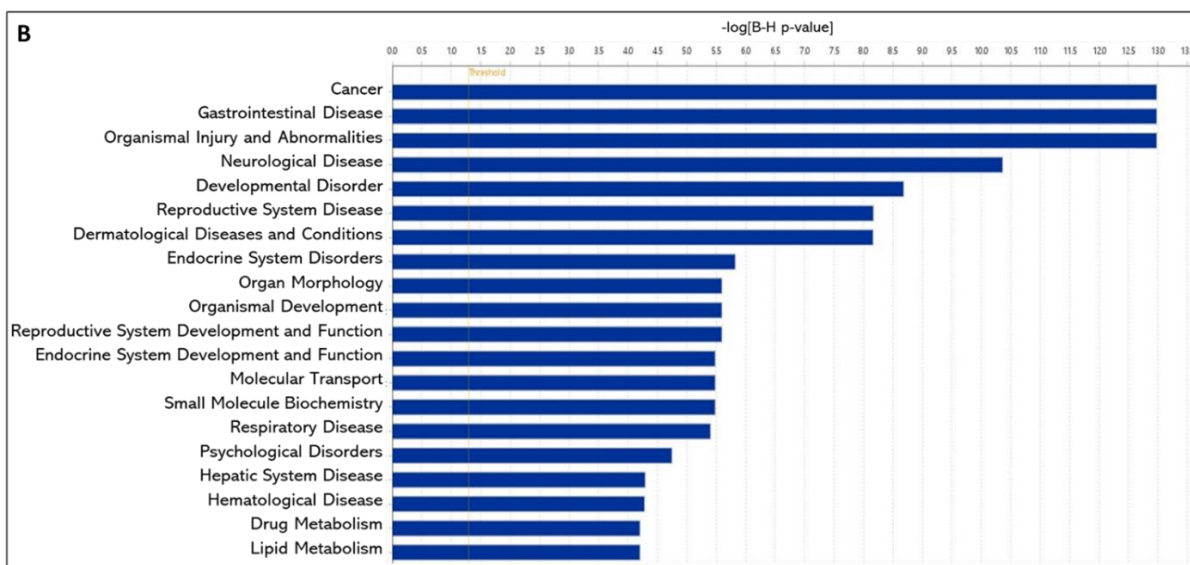
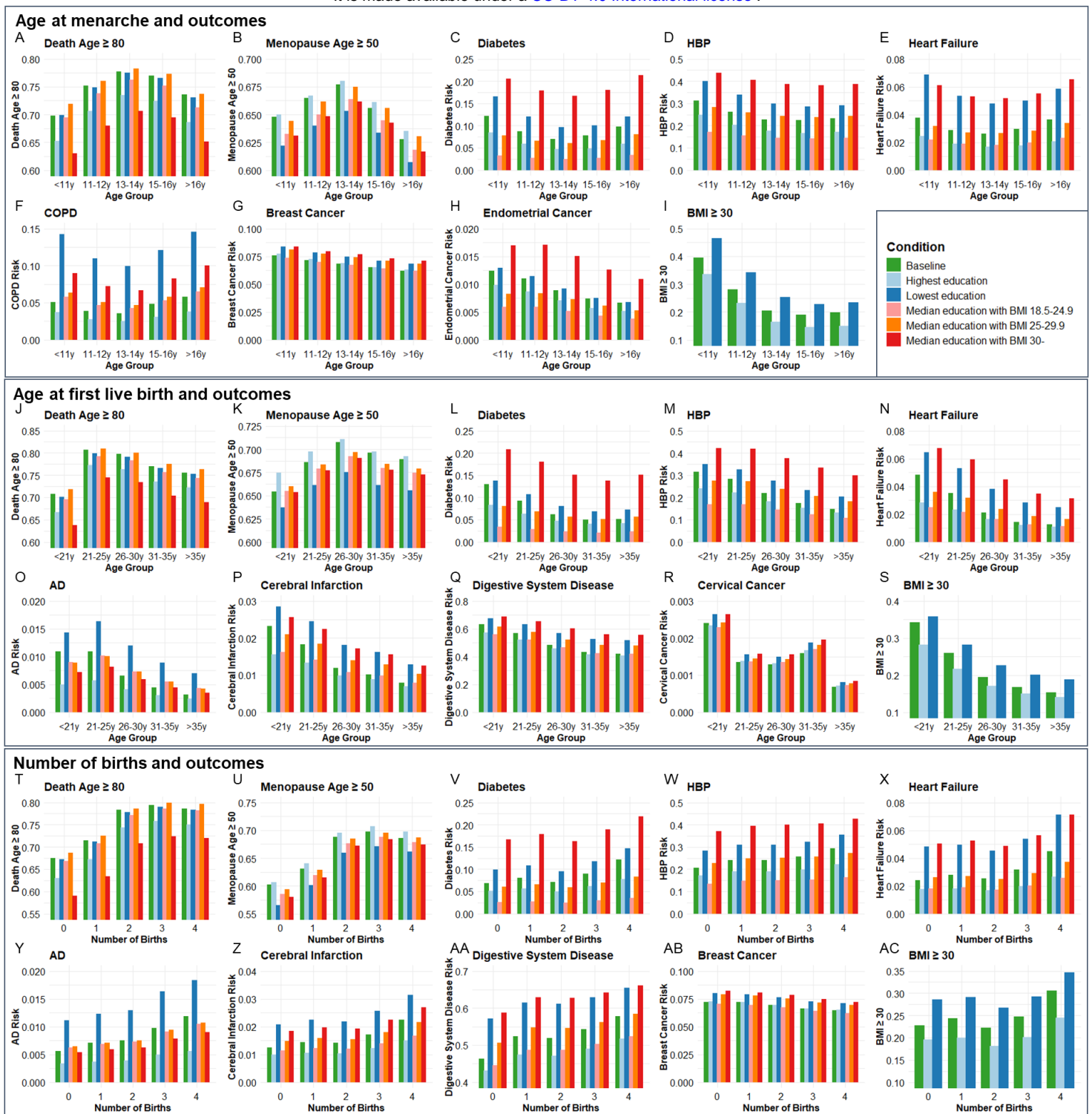


Figure 3. Ingenuity Pathway Analysis (IPA). SNPs/gene outcomes from MR analysis were subjected to IPA. (A) Canonical signaling pathways in age at menarche and first birth. The adjusted P-values of the top 25 signaling pathways are listed. (B) Disease and functions in age at first birth and menarche. The adjusted P-value of the top 20 significantly involved diseases and functions are listed. (C) IPA network 1 and (D) IPA network 2. The genes from our post-MR analysis are in bold. Solid lines indicate direct connections, while dotted lines indicate indirect connections (circular arrows mean influence itself). Color coding: pink-receptors, green-enzymes, purple-channels, orange-other proteins.



419 **Figure 4. The distributions of outcome age and risk according to age group of menarche and fist live**
 420 **birth as well as number of births before and after correcting confounders.** Condition Baseline, no
 421 confounder was corrected. Conditions Highest education and Lowest education, confounders of education,
 422 smoking, and drinking were corrected, and bars were painted based on most smoking and drinking situations
 423 with the highest and lowest education levels. Conditions Median education with BMI 18.5-24.9, Median
 424 education with BMI 25-29.9, and Median education with BMI 30-, confounders of education, smoking,
 425 drinking, and BMI were corrected, and bars were painted based on median education and most smoking and
 426 drinking situation with 3 BMI categories. BMI, body mass index; HBP, high blood pressure; COPD, chronic
 427 obstructive pulmonary disease; AD, Alzheimer's disease.

428
429
430

431 References

- 432 1 Medawar, P. B. An Unsolved Problem of Biology. (1952).
- 433 2 Byars, S. G. & Voskarides, K. Antagonistic Pleiotropy in Human Disease. *J Mol Evol* **88**, 12-25 (2020). [https://doi.org/10.1007/s00239-](https://doi.org/10.1007/s00239-019-09923-2)
- 434 3 Wang, Z. & Cong, H. Antagonistic pleiotropy can promote adaptation to patchy environments. *Evolution* **75**, 197-199 (2021).
435 <https://doi.org/10.1111/evo.14133>
- 436 4 Kumar, J. *et al.* Zinc Levels Modulate Lifespan through Multiple Longevity Pathways in *Caenorhabditis elegans*. *PLoS One* **11**,
437 e0153513 (2016). <https://doi.org/10.1371/journal.pone.0153513>
- 438 5 Grundy, E. & Tomassini, C. Fertility history and health in later life: a record linkage study in England and Wales. *Soc Sci Med* **61**, 217-
439 228 (2005). <https://doi.org/10.1016/j.socscimed.2004.11.046>
- 440 6 Day, F. R. *et al.* Physical and neurobehavioral determinants of reproductive onset and success. *Nat Genet* **48**, 617-623 (2016).
441 <https://doi.org/10.1038/ng.3551>
- 442 7 Loh, P. R., Kichaev, G., Gazal, S., Schoech, A. P. & Price, A. L. Mixed-model association for biobank-scale datasets. *Nat Genet* **50**, 906-
443 908 (2018). <https://doi.org/10.1038/s41588-018-0144-6>
- 444 8 Mills, M. C. *et al.* Identification of 371 genetic variants for age at first sex and birth linked to externalising behaviour. *Nat Hum Behav*
445 **5**, 1717-1730 (2021). <https://doi.org/10.1038/s41562-021-01135-3>
- 446 9 Ng, J. C. M. & Schooling, C. M. Effect of basal metabolic rate on lifespan: a sex-specific Mendelian randomization study. *Sci Rep* **13**,
447 7761 (2023). <https://doi.org/10.1038/s41598-023-34410-6>
- 448 10 Williams, D. M., Jylhava, J., Pedersen, N. L. & Hagg, S. A Frailty Index for UK Biobank Participants. *J Gerontol A Biol Sci Med Sci* **74**,
449 582-587 (2019). <https://doi.org/10.1093/gerona/gly094>
- 450 11 Locke, A. E. *et al.* Genetic studies of body mass index yield new insights for obesity biology. *Nature* **518**, 197-206 (2015).
451 <https://doi.org/10.1038/nature14177>
- 452 12 Silva-Garcia, C. G. *et al.* The CRT1 transcriptional domain is required for COMPASS complex-mediated longevity in *C. elegans*. *Nat*
453 *Aging* **3**, 1358-1371 (2023). <https://doi.org/10.1038/s43587-023-00517-8>
- 454 13 Mendioroz, M. *et al.* CRT1 gene is differentially methylated in the human hippocampus in Alzheimer's disease. *Alzheimers Res Ther*
455 **8**, 15 (2016). <https://doi.org/10.1186/s13195-016-0183-0>
- 456 14 Liu, Y. *et al.* CHAC1 as a Novel Contributor of Ferroptosis in Retinal Pigment Epithelial Cells with Oxidative Damage. *Int J Mol Sci* **24**
457 (2023). <https://doi.org/10.3390/ijms24021582>
- 458 15 Li, J. *et al.* CHAC1 inactivation is effective to preserve muscle glutathione but is insufficient to protect against muscle wasting in
459 cachexia. *PLoS One* **18**, e0283806 (2023). <https://doi.org/10.1371/journal.pone.0283806>
- 460 16 Cloos, P. A. & Christgau, S. Post-translational modifications of proteins: implications for aging, antigen recognition, and
461 autoimmunity. *Biogerontology* **5**, 139-158 (2004). <https://doi.org/10.1023/B:BGEN.0000031152.31352.8b>
- 462 17 Udenwobe, D. I. *et al.* Myristoylation: An Important Protein Modification in the Immune Response. *Front Immunol* **8**, 751 (2017).
463 <https://doi.org/10.3389/fimmu.2017.00751>
- 464 18 Hayashi, N. & Titani, K. N-myristoylated proteins, key components in intracellular signal transduction systems enabling rapid and
465 flexible cell responses. *Proc Jpn Acad Ser B Phys Biol Sci* **86**, 494-508 (2010). <https://doi.org/10.2183/pjab.86.494>
- 466 19 Wen, Z. *et al.* N-myristoyltransferase deficiency impairs activation of kinase AMPK and promotes synovial tissue inflammation. *Nat*
467 *Immunol* **20**, 313-325 (2019). <https://doi.org/10.1038/s41590-018-0296-7>
- 468 20 Liang, J. *et al.* Myristoylation confers noncanonical AMPK functions in autophagy selectivity and mitochondrial surveillance. *Nat*
469 *Commun* **6**, 7926 (2015). <https://doi.org/10.1038/ncomms8926>
- 470 21 McHugh, D. *et al.* COPI vesicle formation and N-myristoylation are targetable vulnerabilities of senescent cells. *Nat Cell Biol* **25**, 1804-
471 1820 (2023). <https://doi.org/10.1038/s41556-023-01287-6>
- 472 22 Thinon, E., Morales-Sanfrutos, J., Mann, D. J. & Tate, E. W. N-Myristoyltransferase Inhibition Induces ER-Stress, Cell Cycle Arrest, and
473 Apoptosis in Cancer Cells. *ACS Chem Biol* **11**, 2165-2176 (2016). <https://doi.org/10.1021/acschembio.6b00371>
- 474 23 Zhu, G. *et al.* N-Myristoylation by NMT1 Is POTEE-Dependent to Stimulate Liver Tumorigenesis via Differentially Regulating
475 Ubiquitination of Targets. *Front Oncol* **11**, 681366 (2021). <https://doi.org/10.3389/fonc.2021.681366>
- 476 24 Tomita, Y. *et al.* Targeting N-Myristoylation Through NMT2 Prevents Cardiac Hypertrophy and Heart Failure. *JACC Basic Transl Sci* **8**,
477 1263-1282 (2023). <https://doi.org/10.1016/j.jacbts.2023.06.006>
- 478 25 Ashrafi, K., Lin, S. S., Manchester, J. K. & Gordon, J. I. Sip2p and its partner snf1p kinase affect aging in *S. cerevisiae*. *Genes Dev* **14**,
479 1872-1885 (2000).
- 480 26 Kramer, A., Green, J., Pollard, J., Jr. & Tugendreich, S. Causal analysis approaches in Ingenuity Pathway Analysis. *Bioinformatics* **30**,
481 523-530 (2014). <https://doi.org/10.1093/bioinformatics/btt703>
- 482 27 Gaulton, A. *et al.* ChEMBL: a large-scale bioactivity database for drug discovery. *Nucleic Acids Res* **40**, D1100-1107 (2012).
483 <https://doi.org/10.1093/nar/gkr777>
- 484 28 Wishart, D. S. *et al.* DrugBank 5.0: a major update to the DrugBank database for 2018. *Nucleic Acids Res* **46**, D1074-D1082 (2018).
485 <https://doi.org/10.1093/nar/gkx1037>
- 486 29 Guo, H. J., Ye, Y. L., Gao, Y. F. & Liu, Z. H. Age at first birth is associated with the likelihood of frailty in middle-aged and older women:
487 A population-based analysis from NHANES 1999-2018. *Maturitas* **181**, 107904 (2023).
488 <https://doi.org/10.1016/j.maturitas.2023.107904>
- 489 30 Long, E. & Zhang, J. Evidence for the role of selection for reproductively advantageous alleles in human aging. *Sci Adv* **9**, eadh4990
490 (2023). <https://doi.org/10.1126/sciadv.adh4990>
- 491 31 Liu, D. *et al.* Vitamin D and Multiple Health Outcomes: An Umbrella Review of Observational Studies, Randomized Controlled Trials,
492 and Mendelian Randomization Studies. *Adv Nutr* **13**, 1044-1062 (2022). <https://doi.org/10.1093/advances/nmab142>
- 493 32 Chen, X. *et al.* Kidney damage causally affects the brain cortical structure: A Mendelian randomization study. *EBioMedicine* **72**,
494 103592 (2021). <https://doi.org/10.1016/j.ebiom.2021.103592>
- 495 33 Barth, C. & de Lange, A. G. Towards an understanding of women's brain aging: the immunology of pregnancy and menopause. *Front*
496 *Neuroendocrinol* **58**, 100850 (2020). <https://doi.org/10.1016/j.yfrne.2020.100850>
- 497

- 498 34 Sherwin, B. B. & Henry, J. F. Brain aging modulates the neuroprotective effects of estrogen on selective aspects of cognition in
499 women: a critical review. *Front Neuroendocrinol* **29**, 88-113 (2008). <https://doi.org/10.1016/j.yfrne.2007.08.002>
- 500 35 Goldsmith, T. C. Aging as an evolved characteristic - Weismann's theory reconsidered. *Med Hypotheses* **62**, 304-308 (2004).
501 [https://doi.org/10.1016/S0306-9877\(03\)00337-2](https://doi.org/10.1016/S0306-9877(03)00337-2)
- 502 36 Jorge, S., Chang, S., Barzilai, J. J., Leppert, P. & Segars, J. H. Mechanical signaling in reproductive tissues: mechanisms and
503 importance. *Reprod Sci* **21**, 1093-1107 (2014). <https://doi.org/10.1177/1933719114542023>
- 504 37 Baumgarten, S. C., Armouti, M., Ko, C. & Stocco, C. IGF1R Expression in Ovarian Granulosa Cells Is Essential for Steroidogenesis,
505 Follicle Survival, and Fertility in Female Mice. *Endocrinology* **158**, 2309-2318 (2017). <https://doi.org/10.1210/en.2017-00146>
- 506 38 Botkjaer, J. A. *et al.* Dynamics of IGF signalling during the ovulatory peak in women undergoing ovarian stimulation. *J Clin Endocrinol*
507 *Metab* (2024). <https://doi.org/10.1210/clinem/dgae132>
- 508 39 Stubbs, S. A. *et al.* Role of Insulin-like growth factors in initiation of follicle growth in normal and polycystic human ovaries. *J Clin*
509 *Endocrinol Metab* **98**, 3298-3305 (2013). <https://doi.org/10.1210/jc.2013-1378>
- 510 40 Papaconstantinou, J. Insulin/IGF-1 and ROS signaling pathway cross-talk in aging and longevity determination. *Mol Cell Endocrinol*
511 **299**, 89-100 (2009). <https://doi.org/10.1016/j.mce.2008.11.025>
- 512 41 Kalman, S. M. Effects of oral contraceptives. *Annu Rev Pharmacol* **9**, 363-378 (1969).
513 <https://doi.org/10.1146/annurev.pa.09.040169.002051>
- 514 42 van Heemst, D. Insulin, IGF-1 and longevity. *Aging Dis* **1**, 147-157 (2010).
- 515 43 Junnila, R. K., List, E. O., Berryman, D. E., Murrey, J. W. & Kopchick, J. J. The GH/IGF-1 axis in ageing and longevity. *Nat Rev Endocrinol*
516 **9**, 366-376 (2013). <https://doi.org/10.1038/nrendo.2013.67>
- 517 44 Aleandri, V., Spina, V. & Ciardo, A. [The role of the pineal body in the endocrine control of puberty]. *Minerva Ginecol* **49**, 43-48
518 (1997).
- 519 45 Olcese, J. M. Melatonin and Female Reproduction: An Expanding Universe. *Front Endocrinol (Lausanne)* **11**, 85 (2020).
520 <https://doi.org/10.3389/fendo.2020.00085>
- 521 46 Chen, D., Zhao, M. & Mundy, G. R. Bone morphogenetic proteins. *Growth Factors* **22**, 233-241 (2004).
522 <https://doi.org/10.1080/08977190412331279890>
- 523 47 Magro-Lopez, E. & Munoz-Fernandez, M. A. The Role of BMP Signaling in Female Reproductive System Development and Function.
524 *Int J Mol Sci* **22** (2021). <https://doi.org/10.3390/ijms222111927>
- 525 48 Childs, A. J. *et al.* BMP signaling in the human fetal ovary is developmentally regulated and promotes primordial germ cell apoptosis.
526 *Stem Cells* **28**, 1368-1378 (2010). <https://doi.org/10.1002/stem.440>
- 527 49 da Cunha, E. V. *et al.* Effects of bone morphogenetic protein 4 (BMP4) on in vitro development and survival of bovine preantral
528 follicles enclosed in fragments ovarian tissue. *Zygote* **25**, 256-264 (2017). <https://doi.org/10.1017/S0967199417000089>
- 529 50 Zhang, X. *et al.* BMP4 overexpression induces the upregulation of APP/Tau and memory deficits in Alzheimer's disease. *Cell Death*
530 *Discov* **7**, 51 (2021). <https://doi.org/10.1038/s41420-021-00435-x>
- 531 51 Meyers, E. A. *et al.* Increased bone morphogenetic protein signaling contributes to age-related declines in neurogenesis and
532 cognition. *Neurobiol Aging* **38**, 164-175 (2016). <https://doi.org/10.1016/j.neurobiolaging.2015.10.035>
- 533 52 Ye, D. *et al.* Insights into bone morphogenetic proteins in cardiovascular diseases. *Front Pharmacol* **14**, 1125642 (2023).
534 <https://doi.org/10.3389/fphar.2023.1125642>
- 535 53 Baboota, R. K., Bluher, M. & Smith, U. Emerging Role of Bone Morphogenetic Protein 4 in Metabolic Disorders. *Diabetes* **70**, 303-312
536 (2021). <https://doi.org/10.2337/db20-0884>
- 537 54 Saenger, P. Dose effects of growth hormone during puberty. *Horm Res* **60**, 52-57 (2003). <https://doi.org/10.1159/000071226>
- 538 55 Bartke, A. Growth hormone and aging. *Rev Endocr Metab Disord* **22**, 71-80 (2021). <https://doi.org/10.1007/s11154-020-09593-2>
- 539 56 Kalous, J., Aleshkina, D. & Anger, M. A Role of PI3K/Akt Signaling in Oocyte Maturation and Early Embryo Development. *Cells* **12**
540 (2023). <https://doi.org/10.3390/cells12141830>
- 541 57 Chung, E., Yeung, F. & Leinwand, L. A. Akt and MAPK signaling mediate pregnancy-induced cardiac adaptation. *J Appl Physiol* (1985)
542 **112**, 1564-1575 (2012). <https://doi.org/10.1152/japplphysiol.00027.2012>
- 543 58 Chen, Y. R. *et al.* Aging-induced Akt activation involves in aging-related pathologies and Abeta-induced toxicity. *Aging Cell* **18**, e12989
544 (2019). <https://doi.org/10.1111/acer.12989>
- 545 59 Howard, S. R. Interpretation of reproductive hormones before, during and after the pubertal transition-Identifying health and
546 disordered puberty. *Clin Endocrinol (Oxf)* **95**, 702-715 (2021). <https://doi.org/10.1111/cen.14578>
- 547 60 Bhartiya, D., Sriraman, K., Gunjal, P. & Modak, H. Gonadotropin treatment augments postnatal oogenesis and primordial follicle
548 assembly in adult mouse ovaries? *J Ovarian Res* **5**, 32 (2012). <https://doi.org/10.1186/1757-2215-5-32>
- 549 61 Danilovich, N., Javeshghani, D., Xing, W. & Sairam, M. R. Endocrine alterations and signaling changes associated with declining
550 ovarian function and advanced biological aging in follicle-stimulating hormone receptor haploinsufficient mice. *Biol Reprod* **67**, 370-
551 378 (2002). <https://doi.org/10.1095/biolreprod67.2.370>
- 552 62 Hale, G. E. *et al.* Endocrine features of menstrual cycles in middle and late reproductive age and the menopausal transition classified
553 according to the Staging of Reproductive Aging Workshop (STRAW) staging system. *J Clin Endocrinol Metab* **92**, 3060-3067 (2007).
554 <https://doi.org/10.1210/jc.2007-0066>
- 555 63 Santoro, N. & Randolph, J. F., Jr. Reproductive hormones and the menopause transition. *Obstet Gynecol Clin North Am* **38**, 455-466
556 (2011). <https://doi.org/10.1016/j.ogc.2011.05.004>
- 557 64 Vanden Brink, H. *et al.* Associations Between Antral Ovarian Follicle Dynamics and Hormone Production Throughout the Menstrual
558 Cycle as Women Age. *J Clin Endocrinol Metab* **100**, 4553-4562 (2015). <https://doi.org/10.1210/jc.2015-2643>
- 559 65 Plotnikov, A., Zehorai, E., Procaccia, S. & Seger, R. The MAPK cascades: signaling components, nuclear roles and mechanisms of
560 nuclear translocation. *Biochim Biophys Acta* **1813**, 1619-1633 (2011). <https://doi.org/10.1016/j.bbamcr.2010.12.012>
- 561 66 Zhang, W. & Liu, H. T. MAPK signal pathways in the regulation of cell proliferation in mammalian cells. *Cell Res* **12**, 9-18 (2002).
562 <https://doi.org/10.1038/sj.cr.7290105>
- 563 67 Yuan, W. *et al.* Modulating p38 MAPK signaling by proteostasis mechanisms supports tissue integrity during growth and aging. *Nat*
564 *Commun* **14**, 4543 (2023). <https://doi.org/10.1038/s41467-023-40317-7>
- 565 68 An, Y. *et al.* Oridonin Delays Aging Through the AKT Signaling Pathway. *Front Pharmacol* **13**, 888247 (2022).
566 <https://doi.org/10.3389/fphar.2022.888247>

- 567 69 Abdellatif, M. *et al.* Fine-Tuning Cardiac Insulin-Like Growth Factor 1 Receptor Signaling to Promote Health and Longevity. *Circulation*
568 **145**, 1853-1866 (2022). <https://doi.org/10.1161/CIRCULATIONAHA.122.059863>
- 569 70 Lundgren, S. *et al.* BMI is positively associated with accelerated epigenetic aging in twin pairs discordant for body mass index. *J Intern*
570 *Med* **292**, 627-640 (2022). <https://doi.org/10.1111/joim.13528>
- 571 71 Quach, A. *et al.* Epigenetic clock analysis of diet, exercise, education, and lifestyle factors. *Aging (Albany NY)* **9**, 419-446 (2017).
572 <https://doi.org/10.18632/aging.101168>
- 573 72 Wilson, K. A. *et al.* Evaluating the beneficial effects of dietary restrictions: A framework for precision nutrigenetics. *Cell Metab* **33**,
574 2142-2173 (2021). <https://doi.org/10.1016/j.cmet.2021.08.018>
- 575 73 Balasch, J. Ageing and infertility: an overview. *Gynecol Endocrinol* **26**, 855-860 (2010).
576 <https://doi.org/10.3109/09513590.2010.501889>
- 577 74 Atkins, J. L. *et al.* A genome-wide association study of the frailty index highlights brain pathways in ageing. *Aging Cell* **20**, e13459
578 (2021). <https://doi.org/10.1111/ace1.13459>
- 579 75 Pilling, L. C. *et al.* Human longevity: 25 genetic loci associated in 389,166 UK biobank participants. *Aging (Albany NY)* **9**, 2504-2520
580 (2017). <https://doi.org/10.18632/aging.101334>
- 581 76 McCartney, D. L. *et al.* Genome-wide association studies identify 137 genetic loci for DNA methylation biomarkers of aging. *Genome*
582 *Biol* **22**, 194 (2021). <https://doi.org/10.1186/s13059-021-02398-9>
- 583 77 Kunkle, B. W. *et al.* Genetic meta-analysis of diagnosed Alzheimer's disease identifies new risk loci and implicates Abeta, tau,
584 immunity and lipid processing. *Nat Genet* **51**, 414-430 (2019). <https://doi.org/10.1038/s41588-019-0358-2>
- 585 78 Donertas, H. M., Fabian, D. K., Valenzuela, M. F., Partridge, L. & Thornton, J. M. Common genetic associations between age-related
586 diseases. *Nat Aging* **1**, 400-412 (2021). <https://doi.org/10.1038/s43587-021-00051-5>
- 587 79 Sakae, S. *et al.* A cross-population atlas of genetic associations for 220 human phenotypes. *Nat Genet* **53**, 1415-1424 (2021).
588 <https://doi.org/10.1038/s41588-021-00931-x>
- 589 80 Ahadi, S. *et al.* Longitudinal fundus imaging and its genome-wide association analysis provide evidence for a human retinal aging
590 clock. *Elife* **12** (2023). <https://doi.org/10.7554/eLife.82364>
- 591 81 Wojcik, G. L. *et al.* Genetic analyses of diverse populations improves discovery for complex traits. *Nature* **570**, 514-518 (2019).
592 <https://doi.org/10.1038/s41586-019-1310-4>
- 593 82 O'Mara, T. A. *et al.* Identification of nine new susceptibility loci for endometrial cancer. *Nat Commun* **9**, 3166 (2018).
594 <https://doi.org/10.1038/s41467-018-05427-7>
- 595 83 Savage, J. E. *et al.* Genome-wide association meta-analysis in 269,867 individuals identifies new genetic and functional links to
596 intelligence. *Nat Genet* **50**, 912-919 (2018). <https://doi.org/10.1038/s41588-018-0152-6>
- 597 84 Gao, X. *et al.* The bidirectional causal relationships of insomnia with five major psychiatric disorders: A Mendelian randomization
598 study. *Eur Psychiatry* **60**, 79-85 (2019). <https://doi.org/10.1016/j.eurpsy.2019.05.004>
- 599 85 Staley, J. R. *et al.* PhenoScanner: a database of human genotype-phenotype associations. *Bioinformatics* **32**, 3207-3209 (2016).
600 <https://doi.org/10.1093/bioinformatics/btw373>
- 601 86 Kamat, M. A. *et al.* PhenoScanner V2: an expanded tool for searching human genotype-phenotype associations. *Bioinformatics* **35**,
602 4851-4853 (2019). <https://doi.org/10.1093/bioinformatics/btz469>
- 603 87 Burgess, S., Small, D. S. & Thompson, S. G. A review of instrumental variable estimators for Mendelian randomization. *Stat Methods*
604 *Med Res* **26**, 2333-2355 (2017). <https://doi.org/10.1177/0962280215597579>
- 605 88 Venkateswaran, S. *et al.* Enhanced Contribution of HLA in Pediatric Onset Ulcerative Colitis. *Inflamm Bowel Dis* **24**, 829-838 (2018).
606 <https://doi.org/10.1093/ibd/izx084>
- 607 89 Wallace, C. A more accurate method for colocalisation analysis allowing for multiple causal variants. *PLoS Genet* **17**, e1009440
608 (2021). <https://doi.org/10.1371/journal.pgen.1009440>
- 609 90 Ghosh, S. *et al.* Core Canonical Pathways Involved in Developing Human Glioblastoma Multiforme (GBM). *Int J Sci Res Sci Eng Technol*
610 **3**, 458-465 (2017).

611