

# 1 Characterizing trachoma elimination using serology

2

## 3 Authors

4 Evelyn Kamau<sup>1</sup>, Pearl Anne Ante-Testard<sup>1</sup>, Sarah Gwyn<sup>2</sup>, Seth Blumberg<sup>1</sup>, Zeinab Abdalla<sup>3</sup>,  
5 Kristen Aiemjoy<sup>4,5</sup>, Abdou Amza<sup>6</sup>, Solomon Aragie<sup>1,7</sup>, Ahmed M. Arzika<sup>8</sup>, Marcel S. Awoussi<sup>9</sup>,  
6 Robin L. Bailey<sup>10</sup>, Robert Butcher<sup>10</sup>, E. Kelly Callahan<sup>11</sup>, David Chaima<sup>12</sup>, Adisu Abebe Dawed<sup>13</sup>,  
7 Martha Idalí Saboyá Díaz<sup>14</sup>, Abou-Bakr Sidik Domingo<sup>15</sup>, Chris Drakeley<sup>10</sup>, Belgesa E. Elshafie<sup>16</sup>,  
8 Paul M. Emerson<sup>17</sup>, Kimberley Fornace<sup>18</sup>, Katherine Gass<sup>19</sup>, E. Brook Goodhew<sup>2</sup>, Jaouad  
9 Hammou<sup>20</sup>, Emma M. Harding-Esch<sup>10</sup>, PJ Hooper<sup>17</sup>, Boubacar Kadri<sup>6</sup>, Khumbo Kalua<sup>21,22</sup>, Sarjo  
10 Kanyi<sup>23</sup>, Mabula Kasubi<sup>24</sup>, Amir B. Kello<sup>25</sup>, Robert Ko<sup>26</sup>, Patrick J. Lammie<sup>17</sup>, Andres G. Lescano<sup>27</sup>,  
11 Ramatou Maliki<sup>28</sup>, Michael Peter Masika<sup>29</sup>, Stephanie J. Migchelsen<sup>10</sup>, Beido Nassirou<sup>6</sup>, John M.  
12 Nesemann<sup>1,30</sup>, Nishanth Parameswaran<sup>2</sup>, Willie Pomat<sup>31</sup>, Kristen Renneker<sup>17</sup>, Chrissy Roberts<sup>10</sup>,  
13 Prudence Rymil<sup>32</sup>, Eshetu Sata<sup>7</sup>, Laura Senyonjo<sup>33</sup>, Fikre Seife<sup>34</sup>, Ansumana Sillah<sup>35</sup>, Oliver  
14 Sokana<sup>36</sup>, Ariktha Srivathsan<sup>1,37</sup>, Zerihun Tadesse<sup>7</sup>, Fasahah Taleo<sup>38</sup>, Emma Michelle Taylor<sup>39</sup>,  
15 Rababe Tekeraoi<sup>40</sup>, Kwamy Togbey<sup>41</sup>, Sheila K. West<sup>42</sup>, Karana Wickens<sup>2</sup>, Timothy William<sup>43</sup>,  
16 Dionna M. Wittberg<sup>1</sup>, Dorothy Yeboah-Manu<sup>44</sup>, Mohammed Youbi<sup>20</sup>, Taye Zeru<sup>45</sup>, Jeremy D.  
17 Keenan<sup>1,30</sup>, Thomas M. Lietman<sup>1,30,37,46</sup>, Anthony W. Solomon<sup>47</sup>, Scott D. Nash<sup>11</sup>, Diana L. Martin<sup>2</sup>,  
18 Benjamin F. Arnold<sup>1,30,46</sup>

19

## 20 Affiliations

21 <sup>1</sup>F.I. Proctor Foundation, University of California San Francisco, USA, <sup>2</sup>Division of Parasitic  
22 Diseases and Malaria, Centers for Disease Control and Prevention, Atlanta, USA, <sup>3</sup>The Carter  
23 Center, Sudan, <sup>4</sup>Department of Public Health Sciences, School of Medicine, University of  
24 California Davis CA, USA, <sup>5</sup>Department of Microbiology and Immunology, Mahidol University  
25 Faculty of Tropical Medicine, Bangkok, Thailand, <sup>6</sup>Programme National de Lutte Contre la  
26 Cecité, Niger, <sup>7</sup>The Carter Center, Ethiopia, <sup>8</sup>Centre de Recherche et d'interventions en Sante  
27 Publique, CRISP, Niger, <sup>9</sup>Ministère de la Santé et de L'Hygiène Publique, Togo, <sup>10</sup>London  
28 School of Hygiene & Tropical Medicine, London, UK, <sup>11</sup>The Carter Center, Atlanta, USA,  
29 <sup>12</sup>Kamuzu University of Health Sciences, Malawi, <sup>13</sup>Amhara Regional Health Bureau, Bahir Dar,  
30 Ethiopia, <sup>14</sup>Department of Prevention, Control, and Elimination of Communicable Diseases, Pan  
31 American Health Organization, Washington DC, USA, <sup>15</sup>Ministère de la Santé et de L'Hygiène  
32 Publique, Lomé, Togo, <sup>16</sup>Ministry of Health, Sudan, <sup>17</sup>International Trachoma Initiative, Atlanta,  
33 USA, <sup>18</sup>Saw Swee Hock School of Public Health, National University of Singapore, Singapore,  
34 <sup>19</sup>Neglected Tropical Diseases Support Center, Task Force for Global Health, Atlanta, USA,  
35 <sup>20</sup>Epidemiology and Disease Control Directorate, Ministry of Health and Social Protection,  
36 Rabat, Morocco, <sup>21</sup>University of British Columbia, Canada, <sup>22</sup>Blantyre Institute for Community  
37 Outreach, Blantyre, Malawi, <sup>23</sup>The National Eye Health Programme, Ministry of Health, Banjul,  
38 The Gambia, <sup>24</sup>Muhimbili Medical Center, Dar es Salaam, Tanzania, <sup>25</sup>World Health  
39 Organization Regional Office for Africa, Brazzaville, Congo, <sup>26</sup>University of Papua New Guinea,  
40 Papua New Guinea, <sup>27</sup>School of Public Health and Administration, Universidad Peruana  
41 Cayetano Heredia, Lima, Peru, <sup>28</sup>The Carter Center, Niger, <sup>29</sup>National Eye Care Coordinator,  
42 Ministry of Health, Malawi, <sup>30</sup>Department of Ophthalmology, University of California San  
43 Francisco, USA, <sup>31</sup>PNG Institute of Medical Research, Papua New Guinea, <sup>32</sup>Ministry of Health,  
44 Vanuatu, <sup>33</sup>Sightsavers International, London, UK, <sup>34</sup>Federal Ministry of Health, Ethiopia, <sup>35</sup>The  
45 National Eye Health Programme, Ministry of Health, Banjul, The Gambia, <sup>36</sup>Solomon Islands  
46 Ministry of Health and Medical Services, Honiara, Solomon Islands, <sup>37</sup>Department of  
47 Epidemiology and Biostatistics, University of California San Francisco, USA, <sup>38</sup>World Health  
48 Organization, Vanuatu, <sup>39</sup>Sightsavers, Haywards Heath, UK, <sup>40</sup>Ministry of Health and Medical  
49 Services, South Tarawa, Kiribati, <sup>41</sup>Ministère de la Santé et de l'Hygiène Publique, Lomé, Togo,

50 <sup>42</sup>Wilmer Eye Institute, Johns Hopkins University, Baltimore, USA, <sup>43</sup>Subang Jaya Medical  
51 Centre, Subang Jaya, Malaysia, <sup>44</sup>Noguchi Memorial Institute for Medical Research, University  
52 of Ghana, Ghana, <sup>45</sup>Amhara Public Health Institute, Bahir Dar, Ethiopia, <sup>46</sup>Institute for Global  
53 Health Sciences, University of California San Francisco, USA, <sup>47</sup>Global Neglected Tropical  
54 Diseases Programme, World Health Organization, Geneva, Switzerland

55

56

57 **Abstract**

58 Trachoma is targeted for global elimination as a public health problem by 2030. Measurement of  
59 IgG antibodies in children is being considered for surveillance and programmatic decision-making.  
60 There are currently no guidelines for applications of serology, which represents a generalizable  
61 problem in seroepidemiology and disease elimination. We collated *Chlamydia trachomatis* Pgp3  
62 and CT694 IgG measurements (63,911 children ages 1–9 years) from 48 serosurveys, including  
63 surveys across Africa, Latin America, and the Pacific Islands to estimate population-level  
64 seroconversion rates (SCR) along a gradient of trachoma endemicity. We propose a novel,  
65 generalizable approach to estimate the probability that population *C. trachomatis* transmission is  
66 below levels requiring ongoing programmatic action, or conversely is above levels that indicate  
67 ongoing interventions are needed. We provide possible thresholds for SCR at a specified level of  
68 certainty and illustrate how the approach could be used to inform trachoma program decision-  
69 making using serology.

70

## 71 Introduction

72 Trachoma, caused by repeated ocular infection with *Chlamydia trachomatis*, is targeted for global  
73 elimination as a public health problem (EHP) by 2030 <sup>1,2</sup>. The World Health Organization (WHO)  
74 defined EHP based on clinical signs of trachoma, and significant progress has been made  
75 globally, with 18 countries validated to have achieved EHP as of July 2024 <sup>3</sup>. As countries  
76 approach and achieve EHP, programs are considering the use of complementary measures of  
77 *C. trachomatis* infection to monitor population-level transmission <sup>4-8</sup>. Potential approaches  
78 include nucleic acid amplification-based tests, such as polymerase chain reaction (PCR), and  
79 serologic assays that measure immunoglobulin G (IgG) antibody responses in young children.  
80 Unlike PCR-detectable infection, which is transient, IgG responses provide a measure of previous  
81 infection that is sensitive as populations approach trachoma elimination. Previous studies of IgG  
82 responses to *C. trachomatis* have characterized Pgp3 and CT694 antigens as highly  
83 immunogenic <sup>9</sup>. Consistent shifts in population-level age-specific seroprevalence and  
84 seroconversion rates (SCR) to these antigens among children correspond with changes in  
85 prevalence of trachoma <sup>6,10-12</sup>. Multiplex IgG assays lend themselves to inexpensive, concurrent  
86 surveillance of multiple diseases, including trachoma <sup>13</sup>. A key challenge remains: can surveys of  
87 serological responses reliably determine if *C. trachomatis* transmission falls below levels that  
88 require population-level trachoma interventions?

89  
90 Deriving data-driven thresholds for intervention represents a generalizable problem for neglected  
91 tropical diseases and other infectious diseases, such as malaria. In the context of trachoma, some  
92 ocular *C. trachomatis* infections could still occur at very low levels of transmission, but cases of  
93 blindness from trachoma would be unlikely in the absence of repeated infections over many years  
94 <sup>14</sup>. Therefore, trachoma-specific population interventions in support of EHP usually stop before  
95 interruption of ocular *C. trachomatis* transmission has been achieved. With this in mind, our focus  
96 was to characterize trachoma serology in relation to whether public health efforts were needed  
97 (or not).

98  
99 Here, we combine IgG antibodies, PCR, and clinical observations from 63,911 children ages 1–9  
100 years (41,168 ages 1–5 years) enrolled in 48 cross-sectional surveys across a gradient of  
101 trachoma prevalence settings to create a well-characterized trachoma serology dataset of  
102 unprecedented scale. Our objectives were to develop a serologic signature of trachoma  
103 elimination by examining the distribution of SCRs across many populations no longer requiring  
104 interventions against trachoma, to develop an approach that specifies thresholds of the SCR tied

105 to programmatic action, and provide guidance for future surveys about the need for trachoma-  
106 specific interventions given an estimate of the SCR. The final step is akin to using a population-  
107 based serological survey as a diagnostic tool to obtain a post-test probability of whether the  
108 population should be treated — using a diagnostic testing paradigm at the population level<sup>15</sup>. The  
109 results provide new information to guide the use of serology to monitor trachoma as we approach  
110 the 2030 endgame and provide a generalizable example for how programs could advance data-  
111 driven thresholds for action based on specific biomarkers.

112

## 113 **Results**

### 114 ***Characterizing populations along a gradient of endemicity***

115 The transition from endemic ocular *C. trachomatis* transmission causing blindness to interruption  
116 of transmission likely follows a continuum. We used the consensus of 10 expert reviewers and  
117 available clinical, PCR, and antibody data (**Methods**) to identify populations that fell at ends of  
118 the continuum corresponding with clear programmatic action: those at a high level of transmission  
119 that require additional trachoma-specific interventions to safeguard public health, and those that  
120 require no further interventions. Among the 48 study populations, 11 showed clear evidence of  
121 significant, ongoing transmission that required further intervention, 23 demonstrated clear  
122 evidence of trachoma control with no further program action needed, and 14 were unclassified  
123 (**Table 1**). Unclassified surveys were used as held-out populations to illustrate application of the  
124 methods and included (i) those for which there was no consensus regarding the need for  
125 intervention (five surveys in Ethiopia and Malawi), (ii) new baseline surveys and opportunistic  
126 serological surveys without PCR testing (five surveys in Sudan, Peru and Malaysia), and (iii)  
127 surveys in populations with unusual trachoma epidemiology where Trachomatous Inflammation—  
128 Follicular [TF] prevalence is above the EPHP threshold but Trachomatous Trichiasis [TT]  
129 prevalence is below the EPHP threshold, and biomarkers were inconsistent with clinical signs  
130 (four surveys in Papua New Guinea and Vanuatu). Each population was treated as an evaluation  
131 unit (EU), which is the normal administrative unit for health care management for trachoma  
132 interventions, typically representing 100,000 to 250,000 people<sup>16</sup>. Most EUs were surveyed  
133 following the Tropical Data protocol for trachoma, with villages as the primary sampling unit for  
134 cluster-based surveys<sup>17</sup>, though five cluster randomized trials also contributed.

135

136 In the 34 classified EUs, age-specific Pgp3 seroprevalence flattened as populations approached  
137 and achieved trachoma control (**Fig 1**), and SCRs decreased and approached 0 (**Table 1**). This  
138 initial result reinforced the previously established relationship between serology and other

139 measures of *C. trachomatis* transmission<sup>11</sup>. Unclassified surveys represented a range of  
140 seroprevalence and seroconversion rates (**Fig 1, Fig S1**).

141

### 142 ***Seroconversion rate distributions by trachoma classification***

143 We fitted a catalytic model that assumed a constant force of infection to estimate EU-level SCRs,  
144 which adequately fit the data given the narrow age range of 1–5 years (**Methods**). SCR estimates  
145 were heterogenous across settings but well separated between trachoma categories (**Fig 2A**).  
146 We focus on the SCR due to its epidemiologic interpretation, but the SCR was linearly related to  
147 seroprevalence (**Fig S2**), as previously shown in a narrower set of populations<sup>11</sup>, and the overall  
148 pattern in SCR estimates across the gradient of transmission was similar when summarized as  
149 seroprevalence (**Fig S3**).

150

### 151 ***Seroconversion rate thresholds to inform programmatic action***

152 Clear biomarker thresholds can aid programmatic decision-making. We used SCR distributions  
153 estimated in 1-5-year-olds in the different EU categories to estimate a post-test probability that a  
154 population would fall in each category given an estimate of the SCR. We assumed a Bayesian  
155 mixture model to allow for transition between categories. For each category, we multiplied the  
156 empirical, pooled SCR distributions in **Fig 2B** (the likelihood) with a prior probability of each  
157 category, leading to a posterior probability of each category as a function of the SCR (**Methods**).  
158 With a moderately informative prior of 80% probability that a trachoma program could halt control  
159 measures, the posterior probability that an EU would require no further action exceeds 90% when  
160 the SCR is  $\leq 2.2$  per 100 person-years (**Fig 3A**). Conversely, SCR values  $\geq 4.5$  per 100 person-  
161 years correspond with 90% certainty that the population falls in the category of EUs in which  
162 further programmatic action is needed to control transmission. The choice of a particular threshold  
163 is ultimately a policy decision based on a specified level of confidence. More stringent (lower)  
164 SCR thresholds correspond with higher levels of confidence of elimination. For example, an SCR  
165 = 1.9 per 100 person-years corresponds with a level of confidence of 95% (**Fig 3A**). Notably, the  
166 estimated posterior probabilities were relatively insensitive to the assumed prior probabilities (**Fig**  
167 **S4**). That is, with an uninformative prior (50% probability of each category), the SCR value  
168 corresponding to 90% probability of no action needed was 1.6 per 100 person-years, down from  
169 2.2 with an 80% prior (**Fig 3B, Table S2**). The results were insensitive to the prior because there  
170 was a reasonably good separation in SCR distributions between the groups (**Fig 2**). Additionally,  
171 the probability of elimination estimates were robust to exclusion of individual EUs and entire  
172 countries (**Fig 4**). Data from Malawi and Ethiopia were most influential based on jackknife  $n - 1$

173 posterior probability functions, but their influence was small in regions of the SCR near higher  
174 levels of confidence ( $\geq 80\%$  probability that no further action was needed).

175

### 176 ***Posterior probability of need for intervention in held-out evaluation units***

177 In future serological surveys, the methods proposed here lead to at least two useful probabilistic  
178 statements. First, pooled distributions of SCR in the different categories of endemicity (**Fig 2B**)  
179 can be combined with prior probabilities of each category to obtain a posterior probability that a  
180 newly surveyed EU falls in each category. The approach treats a serological survey as a  
181 diagnostic test at the population level, akin to a laboratory assay at the individual patient level,  
182 leading to a post-test probability of programmatic action given the survey SCR estimate. Second,  
183 the probability that a population's SCR falls below a chosen threshold immediately follows from  
184 estimating the SCR and its uncertainty.

185

186 To illustrate how new surveys can be used to determine the need for programmatic action, or  
187 whether a population's SCR is below a specified threshold, we used the 14 held-out EUs that  
188 were left unclassified. For each EU, we calculated the posterior probability of the need for  
189 additional programmatic action given its SCR distribution, assuming an informative prior  
190 probability of 80% that no programmatic action would be needed (**Fig 5A**). Additionally, we  
191 determined the empirical probability that an EU's SCR fell below an example threshold of 2.2 per  
192 100 person-years, with high probability that the SCR was  $\leq 2.2$  for most held-out EUs (**Fig 5B**,  
193 **5C**).

194

### 195 ***Sensitivity analyses***

196 Our main focus was characterizing Pgp3 serology in the age group 1–5 years, but we conducted  
197 sensitivity analyses that varied age ranges, single- vs dual-antigen testing, and catalytic model  
198 complexity. Owing to clear increases in seropositivity by age in all but the lowest transmission  
199 settings (**Fig 1**), seroprevalence was generally lower if estimated in a narrower, younger age  
200 range compared with ages 1–9 years, but SCR estimates were consistent when estimated using  
201 different age ranges 1–3 years, 1–5 years, and 1–9 years (**Fig S5**). Seroprevalence and SCR  
202 estimates were lower if individual positivity required positive IgG responses to both Pgp3 and  
203 CT694 antigens, compared to requiring positivity to Pgp3 alone, but the magnitude of reductions  
204 was small (median difference 0.7% for seroprevalence and 0.3 per 100 person-years for SCR **Fig**  
205 **S6**).

206

207 Comparison of SCR estimates from the primary analysis with those from a reversible catalytic  
208 model allowing for seroreversion showed linear increases in the SCR due to model structure  
209 ( $R^2=1$ ). As populations approach trachoma elimination, the differences in estimates are negligible,  
210 supporting a simplified model that ignores seroreversion (**Fig S7**). Finally, seroprevalence and  
211 SCR estimates from a generalized linear model aligned closely with Bayesian estimates (**Fig S8**).  
212 The Bayesian approach was a natural choice to generate parameter distributions (**Fig 2**) and  
213 estimate posterior probabilities from a mixture model (**Fig 3**), but comparability between estimates  
214 suggests that analysis of future monitoring surveys could use a simplified generalized linear  
215 modeling approach to estimate EU-level seroprevalence and SCR. Source code available with  
216 this paper provides a didactic example of a simplified approach to estimating posterior  
217 probabilities for new surveys, as in **Fig 5**.

218

### 219 ***Generalization to alternative definitions of elimination***

220 To illustrate how the approach could be used to develop SCR thresholds corresponding to  
221 interruption of ocular *C. trachomatis* transmission and generalize to applications with more than  
222 two population categories, we reclassified EUs using more stringent definitions based on PCR  
223 data and allowed for an intermediate category between extremes that included populations  
224 thought to be near interruption of transmission. Results were broadly consistent with the primary  
225 analysis focused on programmatic action, but with lower values of the SCR that correspond with  
226 a high level of certainty of being in the very low transmission group (**Supplementary Information**  
227 **Text**).

228

## 229 **Discussion**

230 Prevalence of TF has been instrumental in programmatic decision-making for trachoma over  
231 recent decades, and results from this study suggest that serology guidelines could provide a  
232 complementary tool as more populations approach and achieve EPHP. Characterizing the  
233 distribution of a key parameter, the SCR, across dozens of well-characterized populations  
234 enabled us to identify key regions of the SCR distribution that correspond with clear programmatic  
235 actions with specified levels of confidence. Beyond informing thresholds for stopping or resuming  
236 population-level interventions at a specified level of confidence, the method leads to another  
237 useful result. In the same way that clinicians estimate a post-test probability of disease based on  
238 a patient biomarker, we demonstrated how a population-level SCR distribution from a new  
239 serosurvey can be used to determine the population's post-test probability of a need for  
240 interventions, given empirical distributions of the SCR from other well-characterized serosurveys.



241 A similar analogy has been made between diagnostic tests and results from randomized  
242 controlled trials <sup>15</sup>. We also illustrated how future serosurveys estimate the probability that the  
243 population's SCR is below a defined threshold. Clear thresholds adopted by the community and  
244 endorsed by international organizations are easy to understand and can thus aid programmatic  
245 decision making. The probability that a population-level SCR is below a threshold combines both  
246 the magnitude of the SCR and its precision into a single number that is intuitive to decision  
247 makers.

248  
249 How could the results be useful for programmatic decision-making? Serological surveys that  
250 demonstrate high probability of action needed (or not) will be most definitive, while those with  
251 SCRs in an intermediate range (e.g., >2.2 to <4.5 per 100 person-years) instead could lead to  
252 either additional measurements (e.g., PCR testing for infection) or consideration e.g., future  
253 monitoring depending on programmatic context. Below, we illustrate this general guidance  
254 through three different scenarios based on EUs that contributed to these analyses (**Table 2**). First,  
255 in populations for which there is strong prior expectation of no action needed, such as having  
256 entered a period of post-treatment surveillance after halting antibiotic mass drug administration  
257 (MDA) or post-EPHP surveys, a population-level SCR below a defined threshold, would provide  
258 confirmatory evidence that no further population-level interventions are required. Ghana surveys  
259 provide examples of this scenario. In the same context, a survey that estimates a higher SCR  
260 could instead motivate additional inquiry. A second use is in baseline surveys where little is known  
261 about trachoma transmission and where serology can provide useful information in isolation or  
262 adjunct information to clinical signs. If serology suggests high probability of no action being  
263 needed, then programs could be confident in not initiating control activities or further investigation;  
264 Togo surveys illustrate this use case. Finally, serology can provide an objective characterization  
265 of *C. trachomatis* transmission in populations with persistent or recrudescing trachoma, or  
266 unusual epidemiology such as those characterized by high TF prevalence estimates but low  
267 prevalence of PCR-detected infection. Populations in Papua New Guinea and Vanuatu with TF  
268 prevalence 12–16% yet low SCRs are good examples of unusual epidemiology (**Table 1**). In these  
269 examples, SCR estimates are consistent with a high probability of no action being needed (**Fig**  
270 **5**). Additional serology surveys and monitoring for PCR-detected infection could help support  
271 program decision-making, such as whether MDA would be justified or whether there is a  
272 potentially different etiologic cause of TF.

273

274 The path to interruption of *C. trachomatis* transmission likely follows a continuous gradient in SCR,  
275 which makes specifying a single threshold to guide programmatic decision difficult and represents  
276 a broader challenge beyond trachoma. The approach developed here allows for this complexity  
277 and represents a methodologic advance in the use of serology to inform data-driven,  
278 programmatic guidelines. Using clinical and PCR measures of ocular *C. trachomatis* infection to  
279 identify populations that fell into clear categories of programmatic decision-making, we developed  
280 a statistical approach that leads to probabilistic statements of whether further programmatic action  
281 is needed. The result is that decision makers can identify values of SCR that correspond with a  
282 specified level of certainty, for example  $\geq 90\%$  probability of no action being needed corresponding  
283 with SCR values  $\leq 2.2$  per 100 person-years (**Fig 3**). Intuitively, higher levels of confidence lead  
284 to lower, more stringent SCR thresholds. Increasing the level of confidence to 95% corresponds  
285 with an SCR  $\leq 1.9$  per 100 person-years.

286  
287 Standard classification techniques, such as a receiver operator characteristic curve, provide an  
288 alternative approach to identifying thresholds from a continuous measure. In these data, the SCR  
289 was an almost perfect classifier of programmatic action (**Fig 2**). A cutoff in the SCR of 2.6 per 100  
290 person-years (area under the curve = 0.99) that optimizes sensitivity and specificity (the Youden's  
291 J statistic) corresponds with the SCR value where posterior probability curves cross under an  
292 uninformative prior (**Fig 3B**). This link illustrates how the Bayesian mixture approach enables  
293 additional information to inform thresholds through a prior probability of whether action is needed,  
294 and the certainty required to start or stop a program — effectively shifting a threshold to be more  
295 or less conservative depending on expectations and level of confidence desired.

296  
297 This study extends earlier efforts to inform decision-making thresholds using serology by using  
298 data from more diverse populations and by advancing the methodology. Yet, this led to results  
299 broadly consistent with previous estimates based on alternative methods, suggesting robustness  
300 in the overall area of research. In a subset of EUs studied here, previous analysis classified  
301 individual sampling clusters based on PCR-detected infection status and found that an SCR  $\leq 2.75$   
302 per 100 person-years had 90% sensitivity to identify clusters with any ocular *C. trachomatis*  
303 infection (AUC=0.91)<sup>11</sup>. Another previous effort regressed population-level SCR values against  
304 TF prevalence and estimated that the current TF <5% threshold for EPHP corresponded with a  
305 SCR of 1.5 per 100 person-years (95% CI: 0.0 to 4.9)<sup>10</sup>. In the United Republic of Tanzania, a  
306 population with 5.2% seroprevalence among children ages 1–3 years showed no evidence of  
307 trachoma re-emergence four years after cessation of antibiotic MDA<sup>18</sup>. Using linear mapping

308 between seroprevalence and SCR (**Fig S2**), 5.2% seroprevalence corresponds to a SCR of 1.9  
309 per 100 person-years. Diverse approaches to analysis and inference thus all converge on a  
310 narrow region of the SCR (1.5 to 2.8 per 100 child years) to delineate the threshold under different  
311 definitions. Moving forward, the present approach has advantages over previous efforts because  
312 it aligns with the current spatial scale of programmatic decision making (EUs), delineates EU  
313 categories using a process of expert consensus, and leads to a posterior probability of whether  
314 further control measures are needed as a continuous function of the SCR, allowing stakeholders  
315 to draft guidelines based on a specified level of confidence. Furthermore, it naturally  
316 accommodates new data from future surveys, which could then update the pooled SCR  
317 distributions and subsequent posterior probability estimates.

318

319 The analysis focused on the Pgp3 SCR among 1–5-year-olds, which was one of many variations  
320 across single- versus dual-antigen, age ranges, and population parameters (SCR versus  
321 seroprevalence that we evaluated. The addition of a second antigen, CT694 to the estimates  
322 could potentially improve specificity but did not dramatically reduce seroprevalence or the SCR,  
323 particularly near EPHP. A focus on Pgp3 alone should be sufficient given the added complexity  
324 of dual-antigen testing, particularly in the context of rapid diagnostic tests. A caveat is that most  
325 surveys measured IgG on the Luminex platform (**Table S1**). Results should be comparable but  
326 not perfectly equivalent with other platforms, and there is always a possibility of false positives or  
327 exposure to non-ocular *C. trachomatis* infections<sup>6,19,20</sup>. The 1–5 years age range is narrower than  
328 the current 1–9 years standard for TF surveillance but has practical advantages: it facilitates  
329 relatively reproducible household surveys, since these children are preschool aged, and IgG  
330 detected will reflect infections only in the preceding 6 years. The 1–3-year-old age range would  
331 provide a narrower infection history based on IgG, which may be ideal, but in many settings, it will  
332 be difficult to identify enough 1–3-year-olds per sampled cluster to assure survey rigor. Finally,  
333 although there was linear mapping between seroprevalence and SCR at EU level (**Fig S2**), the  
334 SCR should be preferable to guide decision-making because it implicitly adjusts for age, while  
335 seroprevalence estimates will differ when estimated in different age ranges due to increasing age-  
336 seroprevalence in settings with ongoing transmission (**Fig S5**). Seroprevalence could also be  
337 influenced by exposure at birth to maternal urogenital *C. trachomatis* infection<sup>21,22,6</sup>, yet  
338 seroprevalence would not increase with increasing age in the absence of ocular transmission to  
339 children. In these circumstances, population-level SCR should remain close to zero even with a  
340 higher seroprevalence in 1-year-olds.

341

342 This study had limitations. First, the process used to categorize EUs into groups that required  
343 public health action or not was based on clinical signs, PCR and serology data and involved an  
344 iterative process among the investigator team that ultimately relied on judgement. Separation of  
345 SCR distributions between categories was evident (**Fig 2**), and estimates were insensitive to  
346 excluding individual surveys or countries (**Fig 4**), but alternative approaches to defining categories  
347 could result in different SCR thresholds. In the **Supplementary Information Text**, we provide an  
348 example of categorizing EUs based on PCR but without serology data that provides more  
349 stringent posterior probability thresholds. Second, we used a sample of serologic surveys  
350 primarily from the research context, which may have over-emphasized EPHP settings and  
351 ambiguous transmission scenarios. We addressed this by grouping EUs into categories based on  
352 clear programmatic action then fitting the SCR estimates to probability functions, while retaining  
353 EUs without clear category membership as a held-out sample. The 34 EUs used to fit the  
354 probability functions represented a continuous gradient of the SCR (**Fig 3**), which suggests the  
355 analysis adequately captured the transition from endemic to interruption of transmission. As  
356 increasing number of routine trachoma surveys incorporate the collection of serology data, further  
357 data will be available from a wider range of epidemiological contexts to validate and, if necessary,  
358 refine, the approach presented in this paper. Finally, SCRs were estimated from cluster surveys  
359 typically optimized for TF among 1–9-year-olds. In general, there were sufficient data at the  
360 cluster- and EU-level for valid analyses among 1–5-year-olds, but an important area of future  
361 work will be to develop guidance for cluster survey designs optimized to estimate EU-level  
362 seroprevalence and SCR, preferably using comparable antibody testing platforms.

363  
364 Beyond advances in survey design for trachoma serology, this study prompts additional areas of  
365 future work. One, the posterior probability functions estimated here could potentially inform  
366 guidelines that specify SCR thresholds used to stop or start population-level trachoma control  
367 programs based on a specified level of confidence, as determined by programmatic stakeholders.  
368 Two, the probability below threshold estimates presented here (**Fig 5C**) were inspired by a  
369 geostatistical modeling framework, and so a natural extension may be to use geospatial design  
370 and analysis for the SCR, considering cluster locations and within-EU heterogeneity<sup>23,24</sup>. Three,  
371 we lacked sufficient data to study whether repeated surveys in a single EU provide opportunities  
372 to assess the predictive value of posterior probability estimates. Several populations were  
373 measured repeatedly over time — Wag Hemra and Woreta Town in Ethiopia and Dosso, Niger.  
374 (In Dosso, Niger, all data were combined into a single estimate, Niger-MORDOR/Dosso, but  
375 seroprevalence was  $\leq 0.6\%$  in every survey<sup>25</sup>). The consistently low SCRs in Woreta Town and

376 Dosso provide some proof of concept for the approach, but repeated surveys separated by  
377 multiple years in locations with moderate probability of no action needed would lead to higher  
378 posterior probabilities of no action needed or, potentially, detect recrudescence. Four, populations  
379 included in the analysis reflected a broad range of conditions and timing with respect to MDA  
380 treatment. Assessing whether timing between MDA and a serosurvey influences SCR estimates  
381 could be an area of future research. Finally, we identified levels of the SCR that correspond with  
382 trachoma program actions, but it remains unknown how current markers of infection in childhood  
383 (TF, PCR, serology) relate to future incidence of trichiasis and blindness from trachoma. The  
384 dynamic nature of transmission and the long timescale required to develop these complications  
385 make empirical measurements difficult, but modeling approaches could help fill the gap.

386

387 WHO guidance based on prevalence of TF has been central to the success of the global trachoma  
388 elimination program and we show here that a data-driven guideline based on serology could play  
389 a complementary role as we approach the trachoma endgame. Synthesis of extensive clinical,  
390 PCR, and antibody data enabled characterization of Pgp3 IgG in settings where population-level  
391 intervention was (or was not) clearly needed, and represents a new opportunity to develop an  
392 approach for programmatic decision-making based on a population's SCR. The approach  
393 represents a generalizable example for how to develop data-driven thresholds of elimination and  
394 for how serological surveys could be used to inform disease elimination programs.

395

## 396 **Methods**

### 397 ***Study sites and data sources***

398 We gathered population-based serology data conducted in 48 surveys across EUs in 15  
399 countries: Ethiopia (n=12), The Gambia (n=1), Ghana (n=9), Kiribati (n=2), Malawi (n=6), Morocco  
400 (n=2), Malaysia (n=1), Niger (n=2), Papua New Guinea (n=3), Peru (n=1), Solomon Islands (n=1),  
401 Sudan (n=3), Togo (n=2), United Republic of Tanzania (n=2) and Vanuatu (n=1). The data were  
402 from published trachoma serology surveys with an emphasis on IgG antibody responses to Pgp3  
403 collected among children ages 1–9 years and relatively recent reports. An EU is defined by WHO  
404 for trachoma control purposes as the administrative unit in which trachoma activities take place,  
405 typically consisting of 100,000–250,000 people<sup>16</sup>. Each EU included 20-30 clusters, where a  
406 group of households — typically in a single village — defined a study cluster. All surveys were  
407 conducted between 2013 and 2021, and demographic information on individual's age, gender,  
408 and household membership was collected. The sampled population comprised children ages <10  
409 years since trachoma control programs currently make MDA decisions on the basis of the  
410 prevalence of TF in children ages 1–9 years<sup>16</sup>. Full descriptions of survey design, sampling units  
411 and geographical areas for the 48 surveys were previously published and summarized in **Table**  
412 **S1**. The surveys included anti-Pgp3 IgG antibody measurements alongside clinical  
413 measurements in standard monitoring surveys and a small number of clinical trials. All surveys  
414 used population-based random and/or quasi-random sampling. Besides obtaining serology  
415 results for each survey, we also obtained individual- and population-level data on TF and PCR for  
416 ocular *C. trachomatis* infection, if available. (**Supplementary Information Text** includes detailed  
417 descriptions of clinical and specimen testing). In total, there were 63,911 individual observations  
418 from 1–9-year-olds, 41,168 from 1–5-year-olds, and 24,353 from 1–3-year-olds. Our principal  
419 focus was on anti-Pgp3 IgG antibody responses, but supplementary analyses included results  
420 based on a dual antigen approach, Pgp3 and CT694.

421

### 422 ***Classification of surveys based on trachoma program action***

423 Progression to interruption of transmission is likely a continuum but, as we detail below, making  
424 probabilistic statements about whether an EU has reached a sufficiently low level of ocular *C.*  
425 *trachomatis* infection that population-level interventions against trachoma could stop, would be  
426 valuable for program decision-making. An initial summary of serology estimates by EUs  
427 demonstrated a continuous gradient in the distribution of seroprevalence and SCR values from  
428 high to low trachoma endemicity, with no natural “breakpoint”. We identified populations at either  
429 ends of the gradient congruent with programmatic responses: (i) ‘action needed’, those with

430 clearly high endemicity likely to lead to development of disease sequelae and blindness from  
431 trachoma in the absence of interventions, and (ii) ‘action not needed’, those with very low levels  
432 of infection with exceedingly small possibility of sufficient and sustained ocular transmission  
433 leading to blindness from trachoma, and thus no justification for population-level interventions,  
434 such as antibiotic MDA. Identifying the two domains that correspond with clear programmatic  
435 action allowed for the possibility that some populations would fall between the two extremes as  
436 they are in transition or have unusual epidemiology, and therefore further inquiry is needed, or a  
437 ‘wait and watch’ approach could be adopted, dependent on context <sup>26,27</sup>.

438

439 We used an expert assessment of 10 coauthors with a range of knowledge of trachoma  
440 epidemiology and programmatic activities in each country to independently group EUs into one  
441 of the two categories, based on the above category descriptions and all available information,  
442 including summaries of clinical signs (TF, trachomatous inflammation—intense [TI]), PCR and  
443 serology. Raters could leave an EU unclassified if they felt it was unclear whether further  
444 trachoma-specific interventions would be needed or not (a copy of the dossier provided to raters  
445 and the rating results is provided in the repository, <https://osf.io/va8uc/>). EUs with  $\geq 7/10$   
446 agreement on the category between raters were considered a consensus classification. EUs  
447 without a consensus classification (five from Ethiopia [n=3] and Malawi [n=2]) were left  
448 unclassified and were retained in the held-out sample. The held-out sample additionally included  
449 new baseline surveys and opportunistic serological surveys without PCR testing (five from Sudan  
450 [n=3], Peru [n=1]), and Malaysia [n=1]), and surveys in populations with unusual epidemiology for  
451 trachoma based on available biomarkers (three EUs from Papua New Guinea and one survey  
452 from Vanuatu).

453

#### 454 ***Age-specific seroprevalence estimation***

455 We used semi-quantitative IgG antibody responses to the Pgp3 antigen to identify samples that  
456 were seropositive and seronegative using survey-specific receiver operating curve (ROC)-derived  
457 cutoffs based on known positive and negative control samples with high sensitivity and specificity  
458 for most surveys, and a finite mixture model in the case of the Malawi and Malaysia surveys  
459 (**Supplementary Information Text**). We estimated seroprevalence by age using semiparametric  
460 cubic splines in a generalized additive model to allow for potential non-linear relationships with  
461 age, specifying binomial errors for seroprevalence, and random effects for clusters to account for  
462 repeated observations <sup>28</sup>. Seroprevalence increased with age at higher levels of transmission, but

463 seroprevalence estimates throughout the paper were not age-adjusted as the adjustment made  
464 little difference over the narrow age ranges considered (**Fig S9**).

465

### 466 ***EU-level seroprevalence and seroconversion rate estimation***

467 We estimated seroprevalence and SCR as the two main serology-based summary measures.  
468 SCR is a serological measure for the force of infection (FOI), the rate at which susceptible  
469 individuals acquire infection.

470 EU-level seroprevalence estimates were calculated using a Bayesian extension of a generalized  
471 linear mixed effects model with a random intercept per sampling cluster,

$$472 \quad (\text{seroprev} \sim 1 + (1|\text{cluster}) + \varepsilon) \quad (\text{family} = \text{gaussian})$$

473 where the model response variable was antibody presence given as a binary variable (0,1). The  
474 models for seroprevalence estimation were implemented within the R package *rstanarm*<sup>29</sup> using  
475 weakly informative priors,  $N(0, 10)$ , for model parameters.

476

477 We estimated SCR in a catalytic model, where the probability of being seropositive as a function  
478 of age,  $P_a$ , or the proportion seropositive at age  $a$ , is given by,

$$479 \quad P_a = 1 - e^{-\lambda a}$$

480 modelled in a binomial likelihood as  $z_a \sim B(N_a, P_a)$ , where  $z$  is the number of seropositive  
481 individuals and  $N$  is the sample size. We assumed a constant SCR over the age range,  $\lambda_a = \lambda$ ,  
482 as previous analyses of 14 studies in this dataset demonstrated that a model with constant SCR  
483 fit the data as well as an age-varying SCR<sup>11</sup>. In a hierarchical structure, each cluster  $j$  had a  
484 different SCR drawn from a common distribution,

$$485 \quad \lambda_j \sim \exp(\lambda^{-1})$$

486 where the hyper-prior  $\lambda$  is the overarching EU-level SCR parameter fitted from data using an  
487 exponential prior distribution,  $\lambda \sim \exp(1)$ , a suitable prior to model a constant rate of infection  
488 events in a year. We fitted the catalytic models ignoring IgG waning to the seroprevalence data  
489 using *Stan* in R, using a Monte Carlo Markov Chain (MCMC) approach<sup>30</sup>.

490

### 491 ***Estimating the posterior probability of category***

492 To make probability statements for each category, we used a mixture model framework applied  
493 to the pooled distributions of SCR MCMC estimates. This approach assumed that each SCR  
494 estimate is drawn independently from a 2-component distribution of the two categories defined  
495 above,  $k \in \{1, 2\}$ . So, for each category or component ( $C_k$ : action not needed, action needed)  
496 and SCR estimate,  $x \in \mathbb{R}$ , we computed the posterior probability,  $p(C_k|x)$ , using Bayes' rule:



497 
$$p(C_k|x) \propto p(C_k) * \frac{p(x|C_k)}{p(x)}$$

498 where  $p(C_k)$  is the prior probability that a population is in category  $C_k$ ; and  $p(x|C)$ , is the likelihood  
499 evaluated as empirical probability density function at each MCMC draw  $x$ .  $p(x)$  denotes the  
500 marginal likelihood or normalizing constant for the posterior density obtained by integrating the  
501 products of the likelihood,  $p(x|C_k)$ , and the prior probability. That is, the sum of the products of  
502 the density function and prior probability for each  $k$ ,

503 
$$\sum_{k=1}^2 \omega_k f_k(x|C_k)$$

504 The prior probabilities were defined such that they sum up to one, i.e.,  $\sum_k \omega_k = 1$ . The expression  
505  $p(x|C)/p(x)$  forms the likelihood ratio in the Bayesian mixture model. In a sensitivity analysis, we  
506 compared five sets of prior probabilities, or mixture weights, with increasing weight of  
507  $p(C_{k=Action\ not\ needed}) = \{0.5, 0.65, 0.70, 0.75, 0.80\}$  reflecting scenarios where there may be more  
508 prior certainty that no action is needed. The prior probabilities of the 'action needed' were  
509 computed as the complement value:  $1 - p(C_{k=Action\ not\ needed})$

510  
511 Of the 48 EUs, 34 could be classified into the two categories. For the remaining 14 unclassified  
512 EUs, we used the above mixture model approach to estimate the EUs' posterior probability of  
513 being in each category.

514  
515 ***Serologic thresholds for programmatic action***

516 We plotted the estimated posterior probabilities,  $p(C_k|x)$ , against the SCR ( $x$ ) for each category  
517 and used the probabilities to identify example thresholds at which there is high posterior  
518 probability of being in each category. For both categories, we identified regions of the SCR where  
519 the  $p(C_k|x) \geq 90\%$ , corresponding to a high level of confidence in a program's need to deliver  
520 trachoma interventions (action needed) or not (action not needed).

521  
522 To assess the robustness of estimates to inclusion of individual EUs or countries, we used an  $n -$   
523 1 jackknife resampling approach to re-estimate the posterior probability values <sup>31</sup>. Given the full  
524 classified dataset of  $[n_{eu}] = 34$  EUs from  $[n_{country}] = 10$  countries, we repeated estimation of  
525 posterior probability of being in the 'Action not needed' category for each subsample  $[i] = \{1, \dots, n\}$   
526 of size  $n - 1$  obtained by leaving out one EU or country iteratively. We then aggregated the SCR  
527 values  $[c]$  at each posterior probability  $[p] = \{0.5, 0.6, 0.65, 0.7, 0.75, 0.8, 0.85, 0.9, 0.95, 0.99\}$

528 across the  $n$  subsamples, computed their mean, and compared the means with the SCR values  
529 determined at the same [p] probabilities using the full dataset as a jackknife estimate of the bias.

530

531 For each of the unclassified EUs ( $n=14$ ), we calculated the empirical probability that each of its  
532 posterior SCR values fell below an example threshold, computed as the proportion of the posterior  
533 SCR distribution below the threshold.

534

### 535 **Sensitivity analyses**

536 We conducted a series of sensitivity analyses that varied age ranges, single- vs dual-antigen  
537 testing, and SCR model complexity. We estimated seroprevalence and SCR in the age ranges  
538 1–3 and 1–9 years to determine if estimates were sensitive to the age range included and  
539 compared IgG antibody responses to dual antigens (Pgp3 + CT694) versus single antigen (Pgp3).  
540 We compared SCR estimation with or without the assumption of seroreversion, which we  
541 assumed to be 6 per 100 child-years for Pgp3, near the upper range of estimates from longitudinal  
542 studies in near-elimination and endemic settings<sup>32–35</sup>. A final sensitivity analysis compared SCR  
543 estimates from the Bayesian MCMC approach with a simplified approach that estimated the same  
544 SCR parameter ( $\lambda$ ) within a generalized linear model using maximum likelihood and robust  
545 standard errors (details in **Supplementary Information Text**). An additional analysis illustrates  
546 how the approach could be used to develop SCR thresholds corresponding to interruption of  
547 ocular *C. trachomatis* transmission using more stringent definitions based on PCR prevalence  
548 data (details in **Supplementary Information Text**).

549

550

551 **Data and materials availability**

552 De-identified data and replication files required to conduct the analyses are available through the  
553 Open Science Framework (<https://osf.io/va8uc/>). Analyses used R statistical software (version  
554 4.2.3).

555

556 **Acknowledgements**

557

558 **Funding**

559 This work was supported by the National Institutes of Health (NIAID R01AI158884 to BFA, NIGMS  
560 R35GM147702 to SB). ABK, AWS and FT are staff members of the World Health Organization.

561

562 Disclaimer: The findings and conclusions in this report are those of the author(s) and do not  
563 necessarily represent the official position of the funding agencies.

564

565 **Author contributions**

566 Following CRediT taxonomy, conceptualization (EK, BFA), data curation (all authors), formal  
567 analysis (EK, PAT, BFA), funding acquisition (SB, AWS, SDN, DLM, BFA), investigation (SG,  
568 DLM), methodology (EK, PAT, SB, MISD, EMHE, SKW, JDK, TML, AWS, SDN, DLM, BFA),  
569 project administration (BFA), resources (SG, DML), software (EK, PAT, BFA), supervision (BFA),  
570 validation (EK, PAT), visualization (EK, BFA), Writing – Original Draft Preparation (EK, SG, BFA),  
571 Writing – Review & Editing (all authors).

572

573 **Competing interests**

574 KR, PJH, and PME are employees of, and EMHE receives salary support from, the International  
575 Trachoma Initiative, which receives an operating budget and research funds from Pfizer Inc., the  
576 manufacturers of Zithromax® (azithromycin). The other authors declare no competing interests.  
577 The authors alone are responsible for the views expressed in this article and they do not  
578 necessarily represent the views, decisions or policies of the institutions with which they are  
579 affiliated.

580

581

582 **References**

- 583 1. Validation of elimination of trachoma as a public health problem (WHO/HTM/NTD/2016.8).  
584 Geneva: World Health Organization; 2016.
- 585 2. Ending the neglect to attain the Sustainable Development Goals: A road map for neglected  
586 tropical diseases 2021–2030. <https://www.who.int/publications-detail-redirect/9789240010352>.  
587
- 588 3. WHO. WHO Alliance for the Global Elimination of Trachoma: progress report on elimination  
589 of trachoma, 2023. (2024).
- 590 4. Tedijanto, C. *et al.* Predicting future community-level ocular *Chlamydia trachomatis* infection  
591 prevalence using serological, clinical, molecular, and geospatial data. *PLoS Negl. Trop. Dis.*  
592 **16**, e0010273 (2022).
- 593 5. West, S. K. *et al.* Can We Use Antibodies to *Chlamydia trachomatis* as a Surveillance Tool  
594 for National Trachoma Control Programs? Results from a District Survey. *PLoS Negl. Trop.*  
595 *Dis.* **10**, e0004352 (2016).
- 596 6. Martin, D. L. *et al.* The use of serology for trachoma surveillance: Current status and priorities  
597 for future investigation. *PLoS Negl. Trop. Dis.* **14**, e0008316 (2020).
- 598 7. Renneker, K. K. *et al.* Acceptability and feasibility of tests for infection, serological testing,  
599 and photography to define need for interventions against trachoma. *PLoS Negl. Trop. Dis.*  
600 **18**, e0011941 (2024).
- 601 8. WHO. Call for public consultation – Target Product Profiles (TPP) for trachoma surveillance.  
602 (2023).
- 603 9. Wang, J. *et al.* A genome-wide profiling of the humoral immune response to *Chlamydia*  
604 *trachomatis* infection reveals vaccine candidate antigens expressed in humans. *J. Immunol.*  
605 *Baltim. Md 1950* **185**, 1670–1680 (2010).
- 606 10. Pinsent, A. *et al.* The utility of serology for elimination surveillance of trachoma. *Nat.*  
607 *Commun.* **9**, 5444 (2018).

- 608 11. Tedijanto, C. *et al.* Monitoring transmission intensity of trachoma with serology. *Nat.*  
609 *Commun.* **14**, 3269 (2023).
- 610 12. Goodhew, E. B. *et al.* Changes in trachoma indicators in Kiribati with two rounds of  
611 azithromycin mass drug administration, measured in serial population-based surveys. *PLoS*  
612 *Negl. Trop. Dis.* **17**, e0011441 (2023).
- 613 13. Arnold, B. F., Scobie, H. M., Priest, J. W. & Lammie, P. J. Integrated Serologic Surveillance  
614 of Population Immunity and Disease Transmission. *Emerg. Infect. Dis.* **24**, 1188–1194  
615 (2018).
- 616 14. Solomon, A. W. *et al.* Trachoma. *Nat. Rev. Dis. Primer* **8**, 32 (2022).
- 617 15. Browner, W. S. & Newman, T. B. Are all significant P values created equal? The analogy  
618 between diagnostic tests and clinical research. *JAMA* **257**, 2459–2463 (1987).
- 619 16. Solomon, A. W. *et al.* Trachoma control: a guide for programme managers. Geneva: World  
620 Health Organization; 2006. (2006).
- 621 17. Harding-Esch, E. M. *et al.* Tropical Data: Approach and Methodology as Applied to  
622 Trachoma Prevalence Surveys. *Ophthalmic Epidemiol.* **30**, 544–560 (2023).
- 623 18. Odonkor, M. *et al.* Serology, infection, and clinical trachoma as tools in prevalence surveys  
624 for re-emergence of trachoma in a formerly hyperendemic district. *PLoS Negl. Trop. Dis.* **15**,  
625 e0009343 (2021).
- 626 19. Gwyn, S. *et al.* Comparison of platforms for testing antibodies to Chlamydia trachomatis  
627 antigens in the Democratic Republic of the Congo and Togo. *Sci. Rep.* **11**, 7225 (2021).
- 628 20. Gwyn, S. *et al.* The Performance of Immunoassays to Measure Antibodies to the Chlamydia  
629 trachomatis Antigen Pgp3 in Different Epidemiological Settings for Trachoma. *Am. J. Trop.*  
630 *Med. Hyg.* **105**, 1362–1367 (2021).
- 631 21. Schachter, J. *et al.* Prospective study of chlamydial infection in neonates. *Lancet Lond.*  
632 *Engl.* **2**, 377–380 (1979).

- 633 22. Schachter, J. *et al.* Prospective study of perinatal transmission of Chlamydia trachomatis.  
634 *JAMA* **255**, 3374–3377 (1986).
- 635 23. Amoah, B. *et al.* Model-based geostatistics enables more precise estimates of neglected  
636 tropical-disease prevalence in elimination settings: mapping trachoma prevalence in  
637 Ethiopia. *Int. J. Epidemiol.* **51**, 468–478 (2022).
- 638 24. Fronterre, C., Amoah, B., Giorgi, E., Stanton, M. C. & Diggle, P. J. Design and Analysis of  
639 Elimination Surveys for Neglected Tropical Diseases. *J. Infect. Dis.* **221**, S554–S560 (2020).
- 640 25. Arzika, A. M. *et al.* Effect of Biannual Mass Azithromycin Distributions to Preschool-Aged  
641 Children on Trachoma Prevalence in Niger: A Cluster Randomized Clinical Trial. *JAMA*  
642 *Netw. Open* **5**, e2228244 (2022).
- 643 26. Sata, E. *et al.* Wait and watch: A trachoma surveillance strategy from Amhara region,  
644 Ethiopia. *PLoS Negl. Trop. Dis.* **18**, e0011986 (2024).
- 645 27. WHO. Informal consultation on end-game challenges for trachoma elimination. (2021).
- 646 28. Arnold, B. F. *et al.* Enteropathogen antibody dynamics and force of infection among children  
647 in low-resource settings. *eLife* **8**, e45594 (2019).
- 648 29. Goodrich, B., Gabry, J., Ali, I. & Brilleman, S. rstanarm: Bayesian applied regression  
649 modeling via Stan. (2023).
- 650 30. Stan Development Team. RStan: the R interface to Stan. (2023).
- 651 31. Miller, R. G. The Jackknife--A Review. *Biometrika* **61**, 1–15 (1974).
- 652 32. Tedijanto, C. *et al.* Seroreversion to Chlamydia trachomatis Pgp3 Antigen Among Children  
653 in a Hyperendemic Region of Amhara, Ethiopia. *J. Infect. Dis.* jiad602 (2023)  
654 doi:10.1093/infdis/jiad602.
- 655 33. West, S. K. *et al.* Longitudinal change in the serology of antibodies to Chlamydia  
656 trachomatis pgp3 in children residing in a trachoma area. *Sci. Rep.* **8**, 3520 (2018).

- 657 34. West, S. K., Munoz, B., Mkocha, H., Gaydos, C. A. & Quinn, T. C. The effect of Mass Drug  
658 Administration for trachoma on antibodies to *Chlamydia trachomatis* pgp3 in children. *Sci.*  
659 *Rep.* **10**, 15225 (2020).
- 660 35. Chen, X. *et al.* Risk of seroconversion and seroreversion of antibodies to *Chlamydia*  
661 *trachomatis* pgp3 in a longitudinal cohort of children in a low trachoma prevalence district in  
662 Tanzania. *PLoS Negl. Trop. Dis.* **16**, e0010629 (2022).
- 663
- 664

665

## Tables and Figures

666 **Table 1.** Summary of clinical signs, *Chlamydia trachomatis* infection prevalence, and Pgp3 IgG  
 667 seroprevalence and estimated seroconversion rate (SCR) by study evaluation unit (EU). Surveys  
 668 are grouped by trachoma category or programmatic decision (Methods) and ordered by SCR  
 669 estimates as in Fig 2 and Fig 5. In the main analysis, seroprevalence and SCR are estimated for  
 670 children ages 1–5 years. Trachomatous inflammation—follicular (TF) and PCR-detected infection  
 671 prevalence were estimated among children ages 1–9 years.  
 672

Trachoma Category / Survey (Country-EU-Year)	N children (1–5 years)	N clusters	TF prevalence (1–9 years, %)	Infection prevalence (by PCR, %)	Seroprevalence (%) (95% CrI)	SCR per 100 person- years (95% CrI)
<b>Action needed</b>						
Kiribati-Kiritimati-2016	219	#	30	26.8	39.3 (32.7-45.4)	17.6 (13.6-22.3)
Kiribati-Tarawa-2016	615	22	41.5	29.1	50.7 (44.5-56.2)	14.3 (10.6-19.2)
Ethiopia-WUHA/Wag Hemra-2016	4384	40	51	21.6	38.2 (32.5-44)	13.3 (10.4-17.1)
Ethiopia-TAITU/Wag Hemra-2018	1487	48	54.3	16.7	33.3 (27-39.8)	12.1 (9.4-15.7)
Ethiopia-Ebinat-2019	510	30	42.5	7.1	28.3 (21.2-35.6)	9.4 (6.7-12.7)
Niger-PRET/Matameye-2013	1010	24	7.8	5.2	26.3 (18-34.2)	8.8 (6.4-12.3)
Ethiopia-Andabet-2017	307	22	37	11.3	24 (15.2-33.3)	7.6 (5.2-11)
United Republic of Tanzania-Kongwa-2013	2256	8	8.8	2.5	21.1 (11.1-31.2)	5.2 (3.3-8.4)
Solomon Islands-Temotu/Rennel/Bellona-2015	259	13	14.3	1.8	16.4 (8.7-23.8)	4.7 (3-7.6)
United Republic of Tanzania-Kongwa-2018	1307	50	7.1	3.5	12 (8.7-15.6)	4.1 (3.1-5.5)
Ethiopia-Goncha-2019	344	30	17.9	1.7	7.2 (2-12.8)	2.7 (1.6-4.2)
<b>Action not needed</b>						
Malawi-Chapananga-2014	566	24	4.9	0.2	8.5 (5.2-11.7)	2.8 (1.7-4.4)
Morocco-Agdaz-2019	578	30	0.2	-	7.6 (2.6-12.4)	2.5 (1.6-3.8)
Malawi-Luzi Kochilira-2014	701	24	6.5	0.3	5.1 (3-7.6)	1.7 (1.1-2.9)
Malawi-Kasisi/DHO-2014	599	24	4.7	0.2	4.4 (0.7-8.2)	1.6 (1-2.7)
Malawi-DHO Nkwazi-2014	683	24	5.4	0.3	4.7 (2.9-6.6)	1.5 (1-2.6)
Gambia-River Regions-2014	446	36	3.4	-	3.1 (1.2-5.1)	1 (0.5-1.8)
Ghana-Wa-2016	835	24	1.1	0	2.8 (1.3-4.3)	0.9 (0.5-1.7)
Ethiopia-Woreta Town-2021	427	30	2.9	0.8	2.5 (0.6-4.4)	0.9 (0.4-1.7)
Ethiopia-Woreta Town-2017	166	12	2.7	0	2.4 (0-5.1)	0.9 (0.3-2.3)
Ghana-Bole/Sawla-Tuna-Kalpa-2016	817	24	0.5	0.1	2.6 (1.2-4.1)	0.8 (0.4-1.5)
Togo-Anie-2017	779	25	0.3	-	1.9 (0.7-3.1)	0.6 (0.3-1.2)
Morocco-Boumalne Dades-2019	632	29	0	-	1.8 (0.5-3.1)	0.6 (0.3-1.1)
Togo-Keran-2017	802	25	0.4	-	1.6 (0-3.2)	0.5 (0.3-1)
Ethiopia-Metema-2021	497	30	3.2	0	1.6 (0.4-2.7)	0.5 (0.2-1)
Ghana-Zabzugu Tatali-2016	845	23	1	0.2	1.8 (0.2-3.3)	0.5 (0.2-1.1)
Ghana-Jirapa-2016	703	23	0.5	†	1.2 (0.2-2.2)	0.4 (0.2-0.8)



Ghana-Nadowli-2016	787	24	0.8	0	1 (0.1-1.8)	0.3 (0.1-0.8)
Ghana-Gushiegu Karagu-2016	845	24	0.7	0	1 (0.3-1.8)	0.3 (0.1-0.7)
Ghana-Tolon Kumbugu-2016	916	24	0.8	†	0.9 (0.2-1.6)	0.3 (0.1-0.7)
Ghana-West Gonja-2016	710	24	1.1	0	1.1 (0.1-2.1)	0.3 (0.1-0.7)
Ethiopia-Alefa-2017	316	22	3.2	0	0.6 (0-1.6)	0.2 (0-0.7)
Ghana-Saboba Cherepen-2016	718	22	0.8	†	0.5 (0-1.1)	0.2 (0-0.7)
Niger-MORDOR/Dosso-2015	5860	30	0.7	0	0.3 (0.1-0.5)	0.1 (0-0.2)
<b>Unclassified</b>						
Sudan-El Seraif-2019	749	30	13.7	-	25.4 (18-32.7)	8.2 (6-11.3)
Sudan-Saraf Omrah-2019	697	35	10.9	-	23.5 (15.4-32.3)	7.6 (5.5-10.5)
Ethiopia-Dera-2017	335	22	14.7	0	8.6 (1.4-14.6)	3 (1.8-4.8)
Sudan-Kotom-2019	710	30	1.5	-	7.8 (4.1-11.9)	2.5 (1.7-3.8)
Vanuatu-Torba/Malampa/Penama/Shefa/Tafea/Sanma-2016	634	33	16.5	1.8	7.7 (5.5-10)	2.5 (1.6-3.8)
Malawi-Ngabu Ngokwe-2014	579	24	5.7	0.1	7.3 (3.3-11.3)	2.4 (1.5-3.8)
Malawi-Mkanda Gumba-2014	694	24	7.2	0.6	6.9 (4.1-9.9)	2.3 (1.4-3.6)
Papua New Guinea-Daru-2015 *	469	24	13.6	0	5.2 (2.9-7.7)	1.9 (1.3-2.7)
Papua New Guinea-Mendi-2015 *	576	#	15.5	3.9	5.5 (3.6-7.3)	1.7 (1-2.9)
Malaysia-Sabah-2015	1033	151	-	-	4.7 (3.3-6.1)	1.5 (1-2)
Ethiopia-Debay Tilatgin-2019	292	30	10.8	1.6	4.2 (1.2-7.2)	1.5 (0.8-2.7)
Peru-Amazonia-2020	423	21	-	-	3.8 (1.7-5.7)	1.3 (0.7-2.3)
Ethiopia-Machakel-2019	449	30	10.7	0	2.3 (0-4.5)	0.8 (0.3-1.6)
Papua New Guinea-West New Britain-2015 *	602	27	12.8	2.4	1.5 (0.2-3)	0.2 (0.5-1)

673  
674  
675  
676  
677  
678  
679  
680  
681  
682

N = sample size for 1–5-year-olds; n = number of clusters per EU; TF = trachomatous inflammation—follicular; Ct = *Chlamydia trachomatis*; CrI = Bayesian credible interval; PCR = polymerase chain reaction

\* In the Papua New Guinea surveys, *C. trachomatis* infection prevalence was measured by PCR only among children who had TF, not in all children as in the other included surveys.

† Three surveys from Ghana did not measure *C. trachomatis* infection prevalence by PCR but were classified alongside the other Ghana EUs as they were part of the same survey series that included 9 total EUs, 6 of which measured infection by PCR and were definitively considered as not requiring programmatic actions.

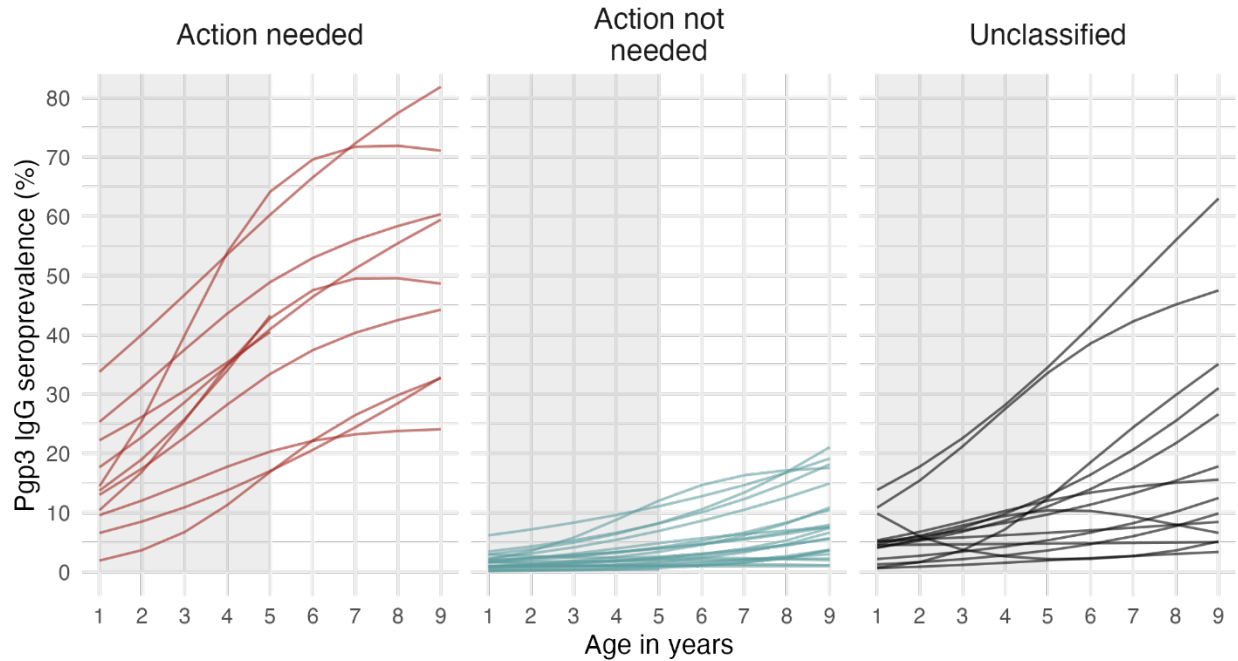
# In these surveys, each individual participant was treated as an independent observation (no cluster sample).

683 **Table 2.** Potential use of serological surveys to help inform programmatic response for three  
 684 anticipated use cases and nine scenarios. The scenarios vary the seroconversion rate (SCR)  
 685 estimated from Pgp3 IgG responses in children aged 1–5 years, per the primary analysis.  
 686 Illustrative thresholds for the SCR have been provided as examples for how thresholds could be  
 687 used to guide programmatic decision-making and were chosen for each use case using 90%  
 688 posterior probability that action is not needed and 90% posterior probability that action is needed.  
 689 The prior assumptions and illustrative thresholds by scenario or use case. In surveillance for  
 690 elimination, illustrative thresholds reflect an informative prior assumption of 80% that no action is  
 691 needed. For baseline survey and unusual epidemiology scenarios, illustrative thresholds reflect  
 692 an uninformative prior (50% in each category). There were no examples in the present dataset  
 693 of scenarios 3 and 9, but such results are possible.  
 694

Use case / scenario	Seroconversion rate	Programmatic Response/ Examples
<b>Surveillance for elimination of trachoma after halting MDA or during post-validation</b>		
1	SCR $\leq 2.2$	No action needed. Morocco-Boumalne Dades-2019 (Fig 2)
2	SCR $> 2.2$ & $< 4.5$	No action needed. Additional monitoring may be considered. Morocco-Agdaz-2019 (Fig 2)
3	SCR $\geq 4.5$	Additional monitoring required (clinical, serology, PCR).
<b>Baseline survey to assess trachoma endemicity</b>		
4	SCR $\leq 1.6$	No action needed. Togo-Anie-2017, Togo-Keran-2017 (Fig 2)
5	SCR $> 1.6$ & $< 3.8$	No action needed. Additional monitoring may be considered. Sudan-Kotom-2019 (Fig 5)
6	SCR $\geq 3.8$	Consider initiating MDA. Sudan-El Seraif-2019, Sudan-Saraf Omrah-2019 (Fig 5)
<b>Unusual epidemiology based on clinical and PCR markers</b>		
7	SCR $\leq 1.6$	Additional monitoring may be considered (serology, PCR) to assess etiology of clinical signs. Papua New Guinea-West New Britain-2015 (Table 1, Fig 5)
8	SCR $> 1.6$ & $< 3.8$	Additional monitoring may be considered. Ethiopia-Dera-2017 (Table 1, Fig 5) Vanuatu- Torba/Malampa/Penama/Shefa/Tafea/Sanma-2016 (Table 1, Fig 5)
9	SCR $\geq 3.8$	Additional monitoring required (serology, PCR).

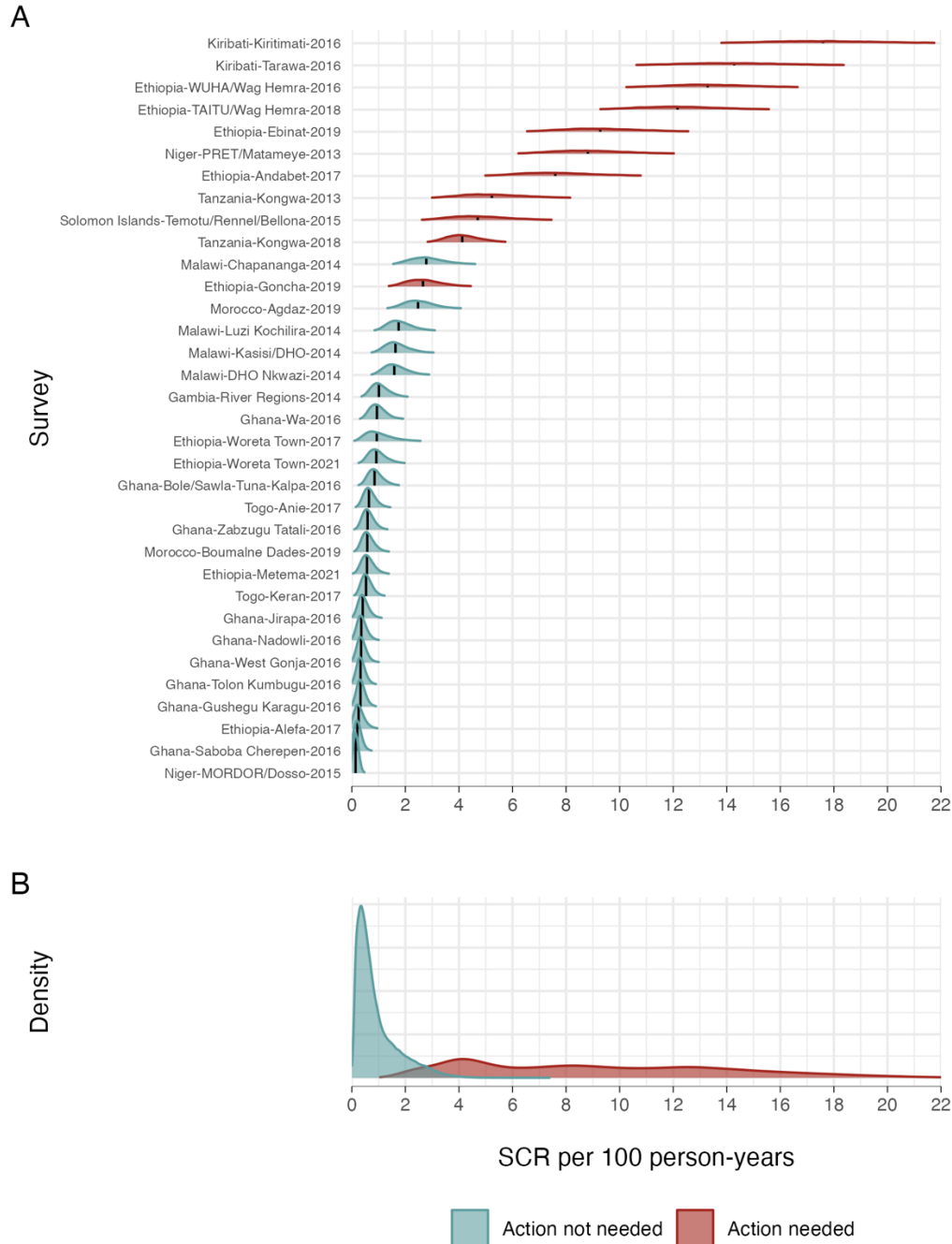
695  
696

697 **Fig 1. Age-specific Pgp3 IgG seroprevalence among 1–9-year-olds.** Evaluation unit (EU)-  
698 level seroprevalence to *Chlamydia trachomatis* Pgp3 antigen among children aged 1–9 years  
699 (N=48 evaluation units, and 63,911 children). Lines represent mean seroprevalence by age  
700 estimated using semiparametric cubic splines and EUs are grouped by categories based on  
701 programmatic responses (Methods). “Action needed” EUs include populations with clear evidence  
702 of ongoing transmission that require public health control measures, while “Action not needed”  
703 EUs include populations with demonstrated trachoma control. Unclassified EUs were used as a  
704 held-out sample in the analyses. The shaded region in each panel identifies the age range used  
705 in the main analyses: 1–5 years (41,168 children). Table 1 includes EU-specific sample sizes.  
706



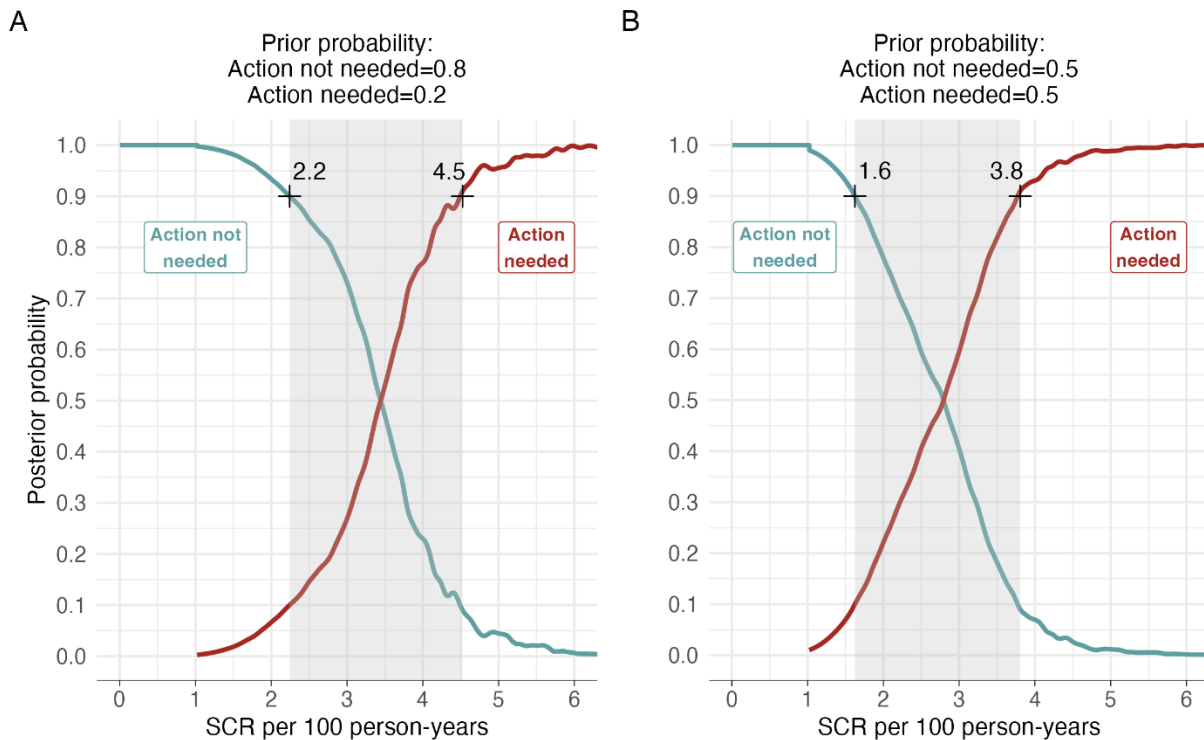
707

708 **Fig 2. Seroconversion rate (SCR) per 100 person-years in 1–5-year-olds. A.** Density  
709 distributions of the SCR for 34 evaluation units (N=41,168 children). For each evaluation unit, the  
710 black vertical line shows the median estimate, and the density distributions depict the uncertainty  
711 about the median. EUs are colored by programmatic response category (Methods) and ordered  
712 by increasing median SCR value. The unclassified evaluation units are shown in Fig S1. **B.**  
713 Pooled density distributions of the SCR for each category.



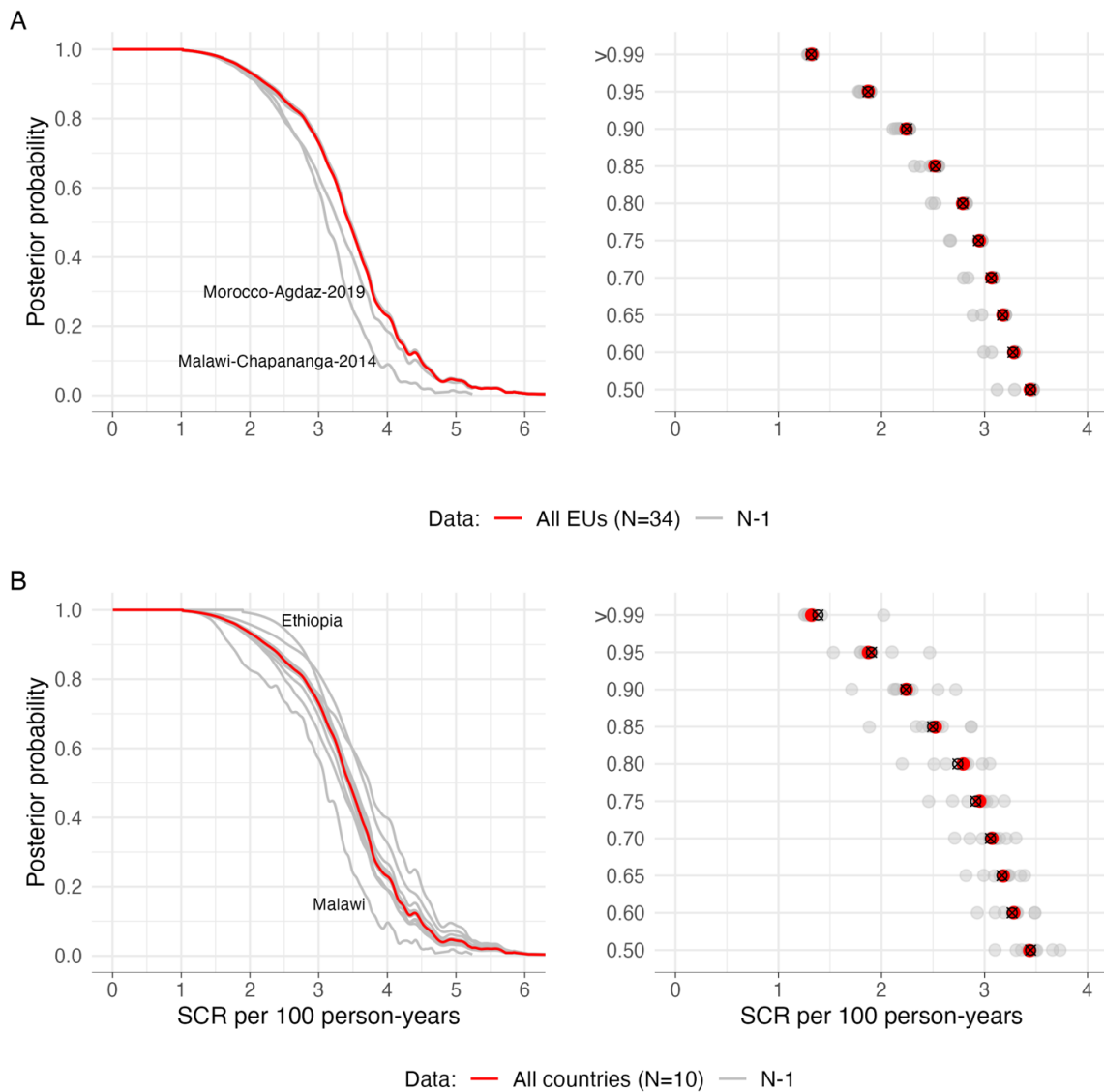
714  
715  
716

717 **Fig 3. Posterior probability of the need for population-level trachoma interventions using**  
718 **seroconversion rate.** Posterior probability of programmatic `Action not needed` versus `Action  
719 needed` categories along a range of seroconversion rates (SCRs) among 1–5-year-olds  
720 calculated using a two-component Bayesian mixture model (Methods). **A.** Posterior functions  
721 assume moderately informative prior probabilities of 80% `Action not needed` and 20% `Action  
722 needed`. In principle, the posterior probability functions allow for the selection of thresholds to  
723 inform decisions based on serological surveys with a desired level of certainty. For example, at a  
724  $\geq 90\%$  level of certainty, SCR of  $\leq 2.2$  per 100 person-years corresponds to a posterior probability  
725 of `Action not needed` and a SCR of  $\geq 4.5$  corresponds to a posterior probability of `Action  
726 needed`. SCR values  $> 2.2$  and  $< 4.5$  per 100 person-years may require additional information to  
727 inform programmatic action. **B.** Posterior functions assume an uninformative prior of 50% `Action  
728 not needed` and 50% `Action needed`. Sensitivity analyses in Fig S3 demonstrate that posterior  
729 probabilities are insensitive to the prior assumptions.



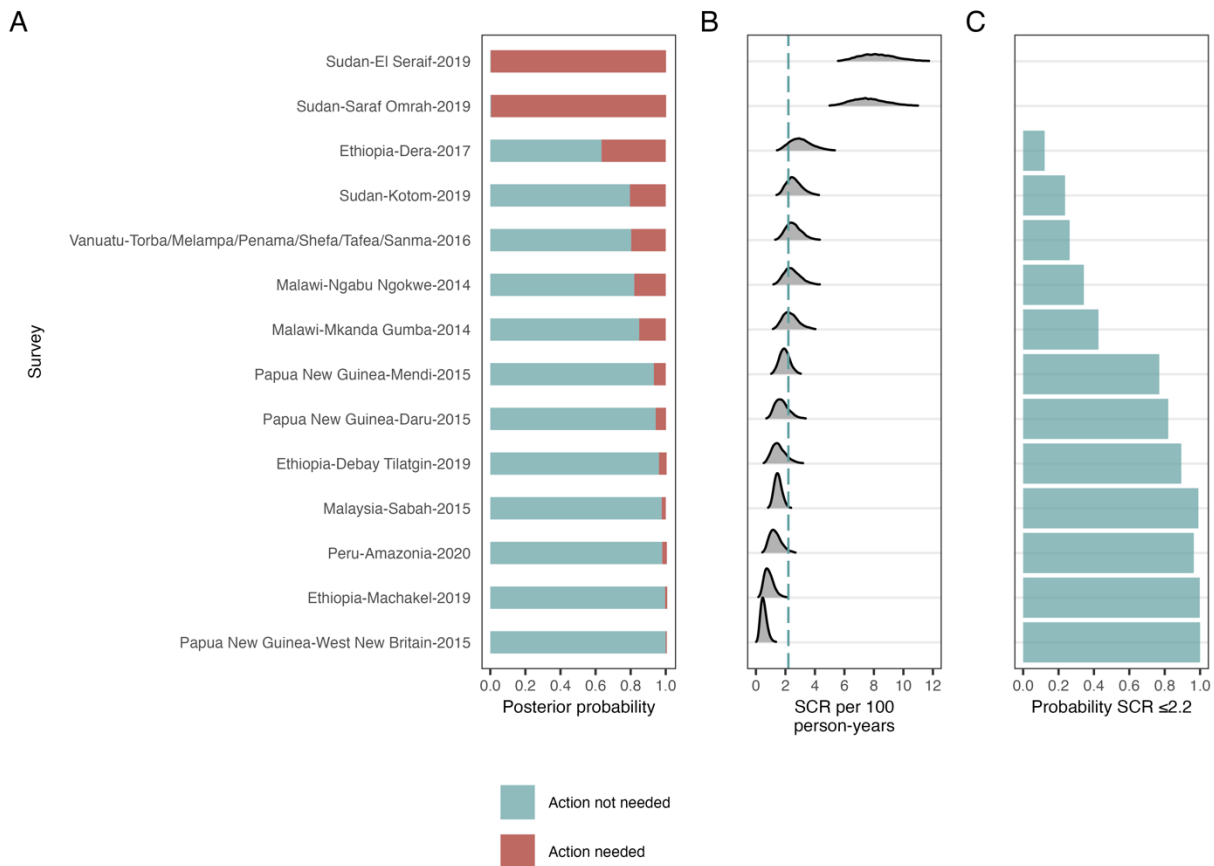
730  
731  
732  
733  
734

735 **Fig 4. Sensitivity analysis of exclusion of evaluation unit- and country-level data.** A jackknife  
736  $n-1$  resampling approach was used to iteratively alter group composition in a Bayesian Mixture  
737 model, with estimates based on the seroconversion rate (SCR) among 1–5-year-olds (Methods).  
738 **A.** Posterior probability of No Action Needed for trachoma control removing each of 34 evaluation  
739 units in turn. **B.** Posterior probability of No Action Needed for trachoma control as in panel A, but  
740 removing entire countries. All estimates assumed an 80% prior probability of no action needed.  
741 The gray lines and dots in each panel show results of the resampling approach, and the brown  
742 line and dots show results from the analysis using the original full dataset ( $N=34$  EUs and  $N=10$   
743 countries). The open circle with a 'x' symbol in indicates the mean SCR per person-years over  
744 the  $n$  jackknife subsamples. The two most influential held-out units are labeled in each sensitivity  
745 analysis. Overall, there was minimal effect of removing data at EU- or country-level in the higher  
746 posterior probabilities – our primary focus. More so, the effect was less pronounced in lower  
747 posterior probabilities and for the most part, there was an overlap of posterior probabilities and  
748 corresponding SCR values of the reduced datasets with that of the original full sample.



749

750 **Fig 5. Posterior probability estimates for held-out evaluation units.** **A.** Probability of need for  
 751 trachoma program intervention in held-out evaluation units (EUs). Held-out EUs included baseline  
 752 surveys in new populations that did not have PCR data (Sudan, Peru), opportunistic surveys not  
 753 focused on trachoma (Malaysia), settings with unusual epidemiology based on trachoma  
 754 biomarkers (Papua New Guinea, Vanuatu), and those that failed to achieve a consensus  
 755 classification into 'Action not needed' and 'Action needed' categories (five from Ethiopia and  
 756 Malawi). The posterior probability was calculated using seroconversion rate (SCR) estimates  
 757 among 1–5-year-olds in a Bayesian mixture model that assumed prior probabilities of 80% for  
 758 'Action not needed' and 20% for 'Action needed'. EUs are ordered by increasing median SCR  
 759 value shown in panel B. **B.** EU-specific SCR density distributions, with an example threshold  
 760 shown at 2.2 per 100 person-years. **C.** An illustrative threshold of 2.2 corresponding to the 90%  
 761 posterior probability ('+' in Fig 3) was used to calculate the empirical probability of 'Action not  
 762 needed' as the proportion of the SCR density distribution  $\leq 2.2$  per 100 person-years. Table 1  
 763 includes additional details for the unclassified EU populations that were used in the held-out  
 764 analysis.



765  
 766