

1 **Study Protocol.**

2 **The CASPAR study protocol. Can cervical stiffness predict**  
3 **successful vaginal delivery after induction of labour? A**  
4 **feasibility, cohort study.**

5 Elizabeth Medford<sup>1,2</sup>, Steven Lane<sup>3</sup>, Abi Merriel<sup>2,3</sup>, Andrew Sharp<sup>1,2</sup>, and Angharad Care<sup>1,2</sup>

6 1 Harris Preterm Birth Research Centre, Department of Women and Children's Health, University of  
7 Liverpool, UK.

8 2 Liverpool Women's Hospital, NHS Foundation Trust, Crown Street, Liverpool, UK

9 3. University of Liverpool, UK.

10 Correspondence to; E Medford [emedford@liverpool.ac.uk](mailto:emedford@liverpool.ac.uk)

NOTE: This preprint reports new research that has not been certified by peer review and should not be used to guide clinical practice.

## 11 **Abstract**

## 12 **Background**

13 Induction of labour (IOL) is a common obstetric intervention in the UK, affecting up to 33% of  
14 deliveries. IOL aims to achieve a vaginal delivery prior to spontaneous onset of labour to prevent  
15 harm from ongoing pregnancy complications and is known to prevent stillbirths and reduce neonatal  
16 intensive care unit admissions. However, IOL doesn't come without risk and overall, 20% of mothers  
17 having an induction will still require a caesarean section birth and in primiparous mothers this rate is  
18 even higher.

19 There is no reliable predictive bedside tool available in clinical practice to predict which patient's  
20 undergoing the IOL process will result in a vaginal birth; the fundamental aim of the IOL process.  
21 The Bishop's Score (BS) remains in routine clinical practice as the examination tool to assess the  
22 cervix prior to IOL, despite it being proven to be ineffective as a predictive tool and largely  
23 subjective. This study will assess the use of the Pregnolia System, a new objective antenatal test of  
24 cervical stiffness. This study will explore its' potential for pre-induction cervical assessment and  
25 indication of delivery outcome following IOL.

## 26 **Methods**

27 CASPAR is a feasibility study of term, primiparous women with singleton pregnancies undergoing  
28 IOL. Cervical stiffness will be assessed using the Pregnolia System; a novel, non-invasive, licensed,  
29 CE-marked, aspiration-based device proven to provide objective, quantitative cervical stiffness  
30 measurements represented as the Cervical Stiffness Index (CSI, in mbar). A measurement is  
31 obtained by applying the sterile single-use Pregnolia Probe directly to the anterior lip of the cervix,  
32 visualised via placement of a speculum.

33 Following informed consent, CASPAR study participants will undergo the Pregnoia System cervical  
34 stiffness assessment prior to their IOL process commencing. Participant questionnaires will evaluate  
35 the acceptability of this assessment tool in this population. This study will directly compare this  
36 novel antenatal test to the current BS for both patient experience of the different cervical  
37 assessment tools and for IOL outcome prediction.

## 38 **Discussion**

39 This feasibility study will explore the use of this novel device in clinical practice for pre-induction  
40 cervical assessment and delivery outcome prediction. Our findings will provide novel data that could  
41 be instrumental in transforming clinical practice surrounding IOL. Determining recruitment rates  
42 and acceptability of this new assessment tool in this population will inform design of a further  
43 powered study using the Pregnoia System as the point-of-care, bedside cervical assessment tool  
44 within an IOL prediction model.

45

## 46 **Study registration**

47 This study is sponsored by The University of Liverpool and registered at ClinicalTrials.gov, identifier  
48 NCT05981469, date of registration 7<sup>th</sup> July 2023.

49

50

51

52

53

## 54 Introduction

55 Induction of labour (IOL) is common in obstetrics affecting up to 33% of deliveries in the UK(1). It's  
56 indicated where the expected benefit of expediting labour outweighs the potential harms of  
57 awaiting spontaneous onset and affects the birth options and birthing experience of the woman (2-  
58 4). IOL is undertaken with the intention to achieve a vaginal birth, yet over 20% of inductions will  
59 ultimately require an unplanned caesarean section which has additional maternal and neonatal risks,  
60 as well as an increase in cost and use of healthcare resources (1, 5, 6). There is no current  
61 recommended predictive model to determine which women undergoing IOL will achieve a vaginal  
62 birth(7, 8).

63 At an individual level, a verified and reliable prediction model would be instrumental in providing  
64 women and their clinicians with robust information to allow more informed, decision making  
65 surrounding the risks associated with IOL care; importantly, their individualised risk of unsuccessful  
66 IOL and requirement for delivery by caesarean section(9, 10). At a policy level, a successful IOL  
67 prediction model could improve maternity service costing and resource allocation planning in an  
68 already overstretched and underfunded healthcare service (11, 12).

69 The IOL process requires changes in cervical status from a quiescent pregnant state to an actively  
70 labouring state. Previously explored clinical assessment tools to assess cervical change ready for  
71 labour include digital palpation; Bishop's score (BS) and transvaginal ultrasound (USS); cervical  
72 length, cervical angle, cervical funnelling and cervical elastography(13-19). In current literature  
73 these assessment tools have not been recommended for routine clinical use in IOL prediction  
74 models either due to subjectivity, poor predictive value or expensive and labour-intensive resources  
75 required(18-24). Thus the clinical question remains as to how best assess the cervix prior to IOL to  
76 subsequently predict the outcome.

77 The Pregnolia System is a CE- certified, novel device that provides objective, quantitative assessment  
78 of cervical stiffness through an aspiration-based technique(25, 26). A measurement is obtained by  
79 applying the device directly to the anterior lip of the cervix, visualised via placement of a speculum,  
80 and gives a quantitative assessment of cervical stiffness represented as the Cervical Stiffness Index  
81 (CSI, in mbar). It has been proven to be superior to digital palpation in an in-vitro setting(27) and  
82 has already shown promise in a clinical setting as a tool for preterm birth prediction(28-30). A  
83 feasibility study is needed to explore the application of this novel device to the IOL setting for pre-  
84 induction cervical assessment. Assessing the acceptability, implementation and efficacy of the  
85 Pregnolia System for consistent cervical stiffness assessments in this population is an exciting  
86 prospect to inform further IOL prediction model trial design.

87 This feasibility study will explore whether cervical stiffness obtained using the Pregnolia System has  
88 an association with the outcome of IOL in term, primiparous women. It will directly compare current  
89 routine clinical practice of BS to the cervical stiffness obtained using the Pregnolia System, and  
90 explore the association with vaginal delivery as an outcome of IOL(2). This study will assess the  
91 ability to use this device in real clinical practice and explore the acceptability of the Pregnolia System  
92 as an assessment tool in this population for this purpose. Together, these results will help inform  
93 future study design using the Pregnolia System as the simple, point-of-care, bedside cervical  
94 assessment tool within an IOL prediction model.

95

## 96 **Methods and Materials**

### 97 **Study Design**

98 This feasibility study is a single site prospective, cohort study of primiparous women with a singleton  
99 pregnancy undergoing IOL at the Liverpool Women’s Hospital in the UK. Participants will be

100 approached to participate at the time of attendance for their planned IOL as decided by their clinical  
101 team.

102 As per NICE guidelines they will have routine procedures prior to IOL including; confirmation of  
103 cephalic presentation and a CTG to confirm normal fetal heart rate and absence of uterine activity  
104 (31). Following informed consent, participants will undergo a cervical stiffness assessment, using the  
105 Pregnonia System, followed by their routine pre-induction digital vaginal examination for BS  
106 assessment. Participants will then proceed with routine IOL procedure as per the unit policy, either  
107 vaginal prostaglandin administration or balloon catheter placement.

108 Participants will be asked to complete a post-assessment questionnaire at the end of their study  
109 visit. This structured questionnaire will collect patient experience of the cervical stiffness  
110 assessment in comparison to the BS assessment. This questionnaire data will inform the  
111 acceptability of these assessments in this patient population. (appendix 1)

112 All study participation will coordinate with their planned IOL visit as decided by their clinical team.

113 Participants will remain in the study until after delivery and discharge from hospital. Study  
114 outcomes will be collected from electronic hospital records for the participant and their baby. This is  
115 outlined in the SPIRIT schedule (figure 1) and study flow chart (figure 2).

116 **Figure 1 SPIRIT schedule**

117 **Figure 2 Study Flow Chart**

118

## 119 **Study Objectives**

120 The CASPAR study has the following objectives.

- 121 1) To inform for the design of an appropriately powered study to assess the capability of this  
122 novel device for IOL prediction.
- 123 2) To explore the acceptability of the cervical stiffness assessment in patients undergoing IOL.
- 124 3) To obtain cervical stiffness measurements in primiparous women prior to term IOL to:
- 125 a. Determine the reliability and best interpretation of triplicate measurements in this  
126 patient group.
- 127 b. Explore any potential association between cervical stiffness assessment and vaginal  
128 delivery following IOL.
- 129 c. Compare to BS assessments taken concurrently and explore the association with  
130 outcome of IOL.

131

## 132 **Study population**

133 The CASPAR study will consist of consecutive pregnant women attending for IOL at Liverpool  
134 Women's Hospital. Study eligibility will be determined on arrival to the IOL suite by the clinical  
135 team. Patient's fulfilling the inclusion and exclusion criteria, outlined below, who wish to take part  
136 in the study must provide written informed consent for study procedures and use of their data from  
137 electronic medical records.

## 138 **Inclusion and exclusion criteria**

139 All participants should meet the following inclusion criteria to be eligible:

- 140 - Age  $\geq$  18 years
- 141 - Being induced
- 142 - Singleton pregnancy
- 143 - Primiparous
- 144 -  $\geq$ 37+0 weeks gestation

- 145 - Intact membranes
- 146 - Able to provide informed consent
- 147 Any possible exclusion criteria will be evaluated for eligibility for the study and includes:
- 148 - Previous cervical surgery including previous trachelectomy, cone biopsy, loop excision or
- 149 previous cerclage
- 150 - Any cervical pathology at 12 o'clock position on cervix position (cervical scarring/Nabothian
- 151 cyst/polyp/cervical tears/cervical myomas/cervical condylomas/cervical
- 152 endometriosis/cervical cancer)
- 153 - Vaginal bleeding evident on examination
- 154 - Visible, symptomatic cervical or vaginal infections
- 155 - Known congenital uterine anomalies
- 156 - Known or suspected structural/chromosomal fetal abnormality
- 157 - Known HIV infection

## 158 **Study Procedures**

### 159 **Pregnoia System**

160 The Pregnoia System is a novel medical device designed to quantitatively assess the biomechanical

161 properties of the cervix through cervical stiffness. The system consists of a single-use sterile probe

162 and a control unit as seen in figure 2. The control unit is the active component composed of a power

163 supply, foot switch for clinician control, and an integrated pump that generates a vacuum. The

164 sterile probe is attached to the control device via a connector cable and air filters on the probe

165 prevent microbiological contamination(32).

166 The device requires the use of a vaginal speculum to clearly visualise the cervix. The device probe is

167 placed at the 12 o'clock position on the cervix and the cervical stiffness measurement is operated by



168 a foot switch, creating a weak vacuum which displaces the cervical tissue into the probe tip to a  
169 depth of 4mm. The softer the tissue, the less pressure required to deform the tissue(33). The result  
170 is represented by the CSI shown on the control unit. The measurement is audio-guided for the  
171 clinician and indicates when the measurement has started, in progress and completed.

172 The device has instructions for use that outline appropriate clinical indications, contra-indications for  
173 use and clear instructions. All clinicians using the device will have read the instructions and  
174 completed the Pregnolia training instructional video.

175 **Figure 3- Pregnolia Device- Control Unit with foot switch and single-use sterile probe**

176

177 **Cervical Stiffness assessment**

178 Cervical stiffness will be measured using the Pregnolia System. Following informed consent, with the  
179 woman in a supine position, the cervix is visualised by use of a sterile speculum and the single-use,  
180 sterile Pregnolia Probe is placed on the anterior lip of the cervix at 12 o'clock position. A recording of  
181 cervical stiffness is generated over maximum 60 seconds (typically 15 seconds) and displayed as CSI in  
182 mbar. The measurement is repeated 3 consecutive times without any time lag. The clinician is audio-  
183 guided by the control unit which indicates when a reading has been taken.

184 The cervical stiffness readings will be stored on the Pregnolia Control Unit and documented for the  
185 participant once all study procedures have been completed. The cervical stiffness readings are blinded  
186 to the patient and the clinician who will perform the Bishop's score assessment at the time of the  
187 study visit.

188 Any difficulty in obtaining readings will be documented on the case report form (CRF). Simple  
189 troubleshooting guidelines will be followed to optimize readings at the time of the study visit as per  
190 Pregnolia instructions (e.g avoiding kinks in connector cable and ensuring Luer locks are secure).

## 191 **Bishops Score assessment**

192 BS assessment will be undertaken by a sterile digital vaginal examination. The study site uses an  
193 electronic maternity notes software, and the BS is documented in a standard format. Five  
194 components of the vaginal examination will be documented as a score: cervical dilatation (cm),  
195 consistency of cervix, cervical canal length (cm), position of cervix and station of presenting part in  
196 relation to ischial spines, giving a potential score from 0 to 12.

197 This procedure will be undertaken by a member of the induction suite midwifery team as per routine  
198 unit practice, and their score will be documented in the patient's electronic maternity records. The  
199 BS will be taken from the medical records and transferred to the CRF.

200

## 201 **Study Outcomes**

### 202 **Feasibility Outcomes**

203 Our feasibility outcomes of interest relate to whether the study procedure is acceptable, participant  
204 recruitment is achieved, data collection is feasible, and cervical stiffness assessment fidelity is  
205 maintained with adequate reliability and safety(34).

206 Our feasibility outcomes will be defined as follows;

207 1) Recruitment rate

208 a. Measured as proportion of participants recruited compared to total number  
209 approached for recruitment in the study period

210 b. Reasons for non-participation collected

211 2) Participant acceptability of cervical stiffness assessment at IOL

212 a. Qualitative questionnaire following assessment

213 b. Number of participant withdrawals throughout the study duration

- 214 3) Adherence to protocol and data collection
- 215 a. Measured as number of protocol deviations
- 216 b. Missing data
- 217 4) Cervical stiffness fidelity
- 218 a. Ability to obtain triplicate cervical stiffness measurements
- 219 b. Triplicate measurement reliability

## 220 **Clinical Outcomes**

221 Clinical outcome data will be collected in accordance with the “short-term” core outcome set for  
222 trials on IOL as determined by the international Delphi study (35, 36). Ability to capture this core  
223 data set in this feasibility study will inform data collection and study design for a larger definitive IOL  
224 study.

225 The primary clinical outcome will be vaginal delivery. Secondary maternal and neonatal outcomes  
226 will be recorded for descriptive analyses. Variables that are already recognised as informative for  
227 induction prediction modelling will be collected and included for descriptive analyses such as;  
228 maternal demographics, maternal obstetric parameters, induction methods and indications, cervical  
229 findings on digital examination and fetal parameters(8, 23).

## 230 **Study Endpoint**

231 The study will end when the last recruited woman has delivered and both herself and her baby have  
232 been discharged from hospital, or 1 month after delivery, whichever is sooner and all planned  
233 analysis of collected data has taken place.

## 234 **Statistical analysis**

## 235 **Sample size**

236 The Pregnolia System is a novel device with no published data providing cervical stiffness index  
237 results in primiparous women undergoing IOL. This will be the first study to provide this data and  
238 will guide how further research using this novel assessment tool can be most appropriately designed.

239 In this feasibility study we will recruit for 12 months and expect to achieve a cohort of 100  
240 participants. The study site has a high IOL capacity with on average 100 primiparous women being  
241 induced every month. We anticipate 50% to be eligible for the study and aim to achieve 50%  
242 recruitment. Previous IOL trials have struggled with recruitment, with over 70% declining  
243 participation(37). However, in our feasibility study design the clinical indication and timing of IOL  
244 have already been determined and the participant is already expecting to undergo an IOL at the time  
245 of study recruitment. The study does not influence or change routine clinical practice therefore, we  
246 expect to achieve a moderate recruitment rate of 50%. Clearly determining the expected  
247 recruitment rate for this novel device is of paramount importance for future successful definitive  
248 study design.

249 At the study site, routine IOL appointments are from 8am-8pm with emergency indications being  
250 accommodated throughout the 24hr, 7-day service. In this feasibility study we understand that not  
251 all eligible women will be able to be approached given the 24hr 7-day nature of the service. We  
252 have planned for a 12-month recruitment period to allow for these challenges and aim to achieve a  
253 sample size of 100 participants. Ability to achieve this target number for this feasibility study with  
254 the small study team available will help inform the larger study design resource and team allocation  
255 for study recruitment and study visit procedures in this dynamic clinical setting.

256 This feasibility study will provide key data including an accurate recruitment rate demonstrating this  
257 population's acceptability for the novel assessment in clinical practice, and an estimate of the  
258 variance for cervical stiffness using the Pregnolia System for pre-induction cervical assessment.  
259 Together this data can infer a larger study design for a predictive model for IOL outcome in this  
260 population(38-40).

261

## 262 **Statistical analysis**

263 Descriptive statistics will be generated and presented as means (SD), median (IQR) and frequency of  
264 observations (percentages) with 95% confidence intervals as appropriate.

265 Reliability assessment of the Pregnolia System using Cronbach's alpha and descriptive statistics with  
266 95% confidence intervals will inform best use of the triplicate CSI measurements. Specifically  
267 exploring whether the first, average, median or lowest measurement of the three readings should be  
268 utilised in further analysis and most importantly inform best use of the CSI results in clinical practice.

269 Diagnostic performance of cervical stiffness assessments using the Pregnolia System for IOL outcome  
270 will be demonstrated through receiver operating characteristic curves with area under the curve and  
271 95% confidence intervals being calculated, as well as aiming to define the optimum cut-off value for  
272 predicting vaginal delivery.

273 Multivariate analysis will be performed using logistic regression, including CSI and other variables  
274 related to IOL outcome, such as maternal age, gestational age and maternal weight at booking(23).  
275 Results will be presented as odds ratios with 95% confidence intervals.

## 276 **Data Management Plan**

277 All study participants are allocated a unique participant identification number and all data relating  
278 to that patient is pseudonymised. Study data is initially captured using paper CRF. The data from  
279 the paper CRFs is then transcribed to an electronic CRF within a bespoke, password protected, study  
280 database (REDCAP) . The Chief Investigator (CI) preserves the confidentiality of participants  
281 taking part in the study and abides by the EU General Data Protection Regulation 2016 and Data  
282 Protection Act 2018.

## 283 **Consent and criteria for withdrawal**

284 Consent to enter the study must be sought from each participant only after a full explanation has  
285 been given, an information leaflet offered, and time allowed for consideration. Signed participant  
286 consent will be obtained. The participant can decline to participate without giving reasons and this  
287 will not impact upon further care. All participants are free to withdraw at any time from the study  
288 without giving reasons and without prejudicing further care.

289 In addition, the CI may decide, for reasons of medical prudence, to withdraw a participant. In either  
290 event, the Sponsor will be notified and the date and reason(s) for the withdrawal will be documented  
291 in the participant source data. If a participant withdraws or is withdrawn, ideally, they should remain  
292 in the study for the collection of outcome data. If the participant states their wish not to contribute  
293 further data to the study, collected data will be removed from the study database and no further  
294 outcome data will be collected.

295

## 296 **Monitoring and Safety**

297 A Study Management Group (SMG) comprising the CI, principal investigator, co-applicants, and core  
298 study management staff meet at regular intervals throughout the course of the study and holds  
299 responsibility for the day-to-day running and management of the study. The need to stop the study  
300 will be determined by the SMG and the decision will be based upon data integrity and participant  
301 safety.

302 Any adverse events for this study will be recorded at each study visit on the study CRF. This is a non-  
303 interventional study we therefore do not anticipate many serious adverse events. The Pregnonia  
304 System is a licensed, CE-marked, non-invasive medical device and the risk of adverse events related  
305 to the measurement is small. The device has a very good safety profile, and the manufacturer has

306 not received any serious adverse event reporting related to the medical device either in studies or  
307 clinical practice to date.

## 308 **Ethical considerations and declarations**

309 The Seasonal Research Ethics Committee has given approval for this research (23/LO/0627). All  
310 patients have given written informed consent prior to entry to the study and are aware that  
311 participation is completely voluntary.

312

313

## 314 **Status and timeline of the study**

315 This study is registered at ClinicalTrials.gov, identifier NCT05981469 and has been open for  
316 recruitment since 29<sup>th</sup> September 2023. Recruitment is due to finish 30<sup>th</sup> September 2024, and  
317 patient follow up complete in November 2024.

## 318 **Discussion**

319 The CASPAR feasibility study will provide original data using the Pregnolia System for cervical  
320 stiffness assessments prior to IOL. Determining the acceptability and efficacy of this novel  
321 assessment tool for pre-induction cervical assessment is critical prior to funding and undertaking a  
322 larger, powered study incorporating the Pregnolia System assessment tool into a clinical prediction  
323 model for IOL.

## 324 **Author's Contributions**

325 EM wrote the protocol and the manuscript. SL reviewed the statistical analysis plan. AM assisted  
326 with study design. AS revised the protocol and the manuscript. AC initiated the research, sourced

327 the funding, and supervised EM in study design and writing of the protocol and manuscript. All  
328 authors read and approved the final manuscript.

## 329 **Supporting Information**

330 S1 Figure 1- SPIRIT Schedule

331 S2 Figure 2- Study Flow Chart

332 S3 Figure 3- Pregnotia System

333 S1 Appendix 1- Questionnaire

334

335

336

## 337 **References**

338 1. England N. NHS Maternity Statistics, England, 2022-23 2022-23 [Available from:

339 <https://digital.nhs.uk/data-and-information/publications/statistical/nhs-maternity-statistics/2022->

340 [23#resources](#).

341 2. NICE. Inducing Labour NICE Guideline (NG207). 2021.

342 3. Middleton P, Shepherd E, Crowther CA. Induction of labour for improving birth outcomes for  
343 women at or beyond term. Cochrane Database Syst Rev. 2018;5(5):CD004945.

344 4. Berghella V, Bellussi F, Schoen CN. Evidence-based labor management: induction of labor  
345 (part 2). Am J Obstet Gynecol MFM. 2020;2(3):100136.

346 5. Seyb ST, Berka RJ, Socol ML, Dooley SL. Risk of cesarean delivery with elective induction of  
347 labor at term in nulliparous women. Obstet Gynecol. 1999;94(4):600-7.

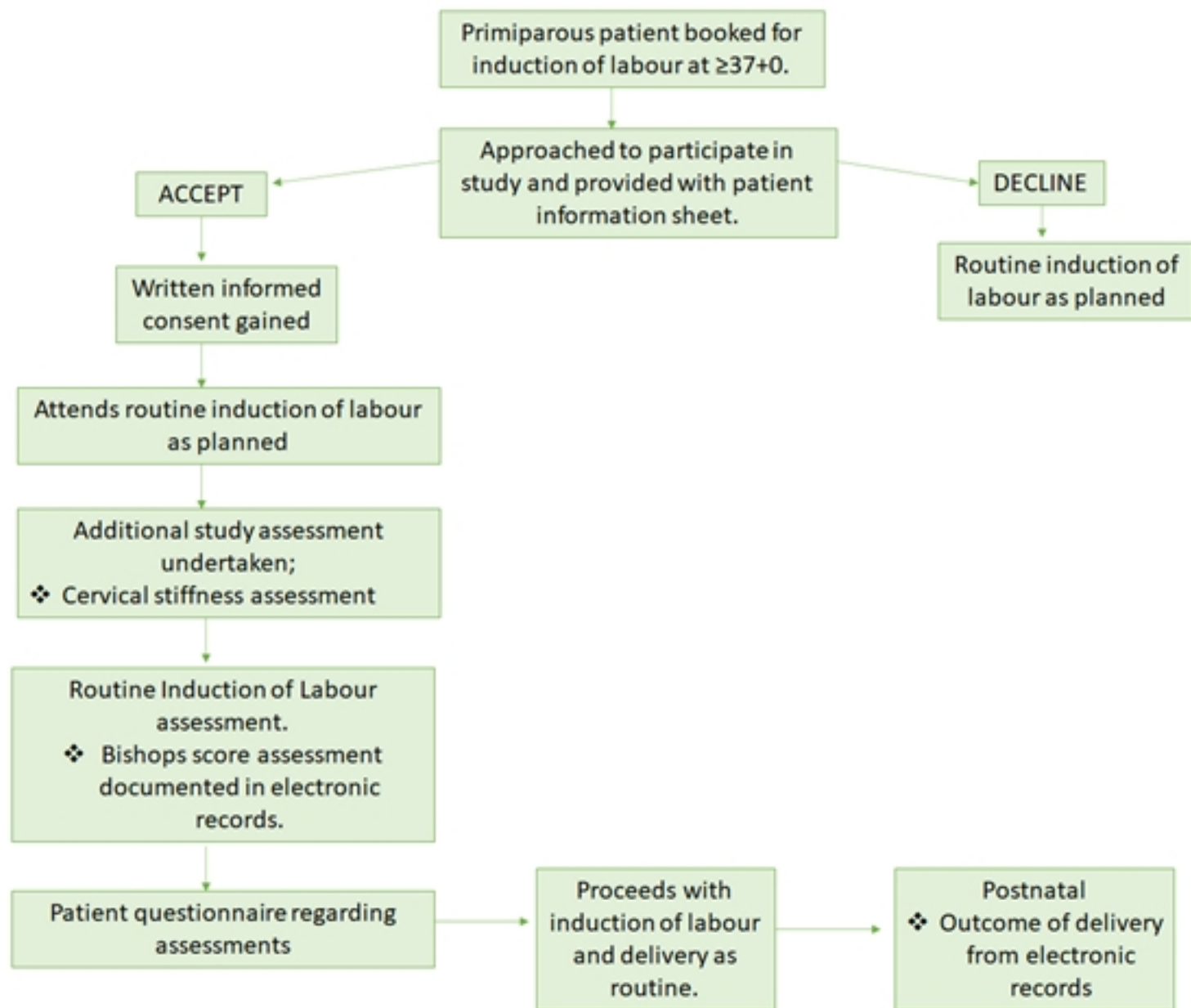


- 348 6. American College of O, Gynecologists, Society for Maternal-Fetal M, Caughey AB, Cahill AG,  
349 Guise JM, Rouse DJ. Safe prevention of the primary cesarean delivery. *Am J Obstet Gynecol.*  
350 2014;210(3):179-93.
- 351 7. D'Souza R, Ashraf R, Foroutan F. Prediction models for determining the success of labour  
352 induction: A systematic review and critical analysis. *Best Pract Res Clin Obstet Gynaecol.* 2022;79:42-  
353 54.
- 354 8. Meier K, Parrish J, D'Souza R. Prediction models for determining the success of labor  
355 induction: A systematic review. *Acta Obstet Gynecol Scand.* 2019;98(9):1100-12.
- 356 9. Coates D, Donnelly N, Thirukumar P, Lainchbury A, Spear V, Henry A. Women's experiences  
357 of decision-making and beliefs in relation to planned caesarean section: A survey study. *Aust N Z J*  
358 *Obstet Gynaecol.* 2021;61(1):106-15.
- 359 10. Coates R, Cupples G, Scamell A, McCourt C. Women's experiences of induction of labour:  
360 Qualitative systematic review and thematic synthesis. *Midwifery.* 2019;69:17-28.
- 361 11. Relph S, Delaney L, Melaugh A, Vieira MC, Sandall J, Khalil A, et al. Costing the impact of  
362 interventions during pregnancy in the UK: a systematic review of economic evaluations. *BMJ Open.*  
363 2020;10(10):e040022.
- 364 12. Appleby J, Leng G, Marshall M. NHS funding for a secure future. *BMJ.* 2024;384:e079341.
- 365 13. Hatfield AS, Sanchez-Ramos L, Kaunitz AM. Sonographic cervical assessment to predict the  
366 success of labor induction: a systematic review with metaanalysis. *Am J Obstet Gynecol.*  
367 2007;197(2):186-92.
- 368 14. Pereira S, Frick AP, Poon LC, Zamprakou A, Nicolaidis KH. Successful induction of labor:  
369 prediction by preinduction cervical length, angle of progression and cervical elastography.  
370 *Ultrasound Obstet Gynecol.* 2014;44(4):468-75.
- 371 15. Londero AP, Schmitz R, Bertozzi S, Driul L, Fruscalzo A. Diagnostic accuracy of cervical  
372 elastography in predicting labor induction success: a systematic review and meta-analysis. *J Perinat*  
373 *Med.* 2016;44(2):167-78.

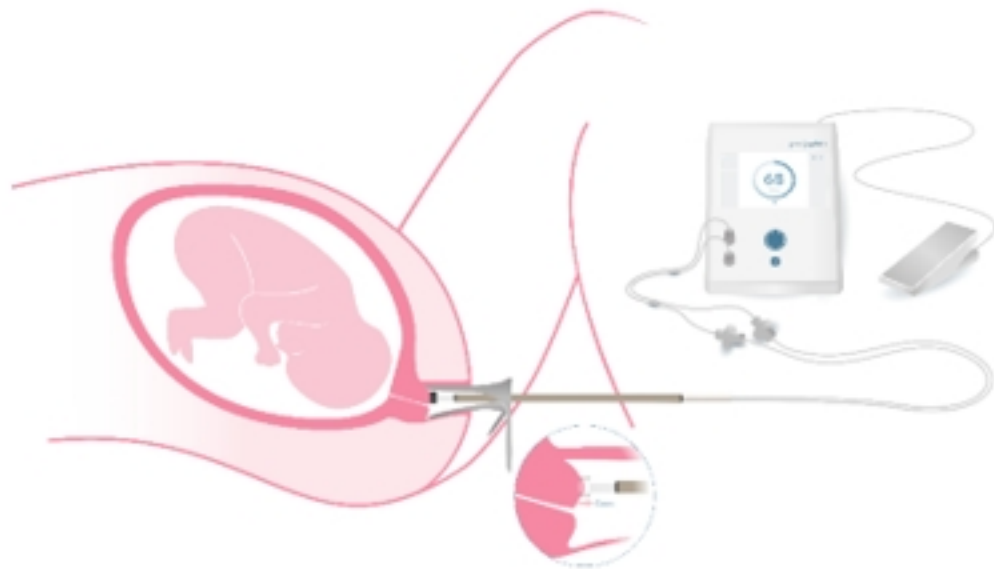
- 374 16. Ezebialu IU, Eke AC, Eleje GU, Nwachukwu CE. Methods for assessing pre-induction cervical  
375 ripening. *Cochrane Database Syst Rev.* 2015;2015(6):CD010762.
- 376 17. Bishop EH. Pelvic Scoring for Elective Induction. *Obstet Gynecol.* 1964;24:266-8.
- 377 18. Alvarez-Colomo C, Gobernado-Tejedor JA. The validity of ultrasonography in predicting the  
378 outcomes of labour induction. *Arch Gynecol Obstet.* 2016;293(2):311-6.
- 379 19. Migliorelli F, Rueda C, Angeles MA, Banos N, Posadas DE, Gratacos E, Palacio M. Cervical  
380 consistency index and risk of Cesarean delivery after induction of labor at term. *Ultrasound Obstet*  
381 *Gynecol.* 2019;53(6):798-803.
- 382 20. Abdullah ZHA, Chew KT, Velayudham VRV, Yahaya Z, Jamil AAM, Abu MA, et al. Pre-  
383 induction cervical assessment using transvaginal ultrasound versus Bishops cervical scoring as  
384 predictors of successful induction of labour in term pregnancies: A hospital-based comparative  
385 clinical trial. *PLoS One.* 2022;17(1):e0262387.
- 386 21. Teixeira C, Lunet N, Rodrigues T, Barros H. The Bishop Score as a determinant of labour  
387 induction success: a systematic review and meta-analysis. *Arch Gynecol Obstet.* 2012;286(3):739-53.
- 388 22. Lopez-Jimenez N, Garcia-Sanchez F, Hernandez-Pailos R, Rodrigo-Alvaro V, Pascual-Pedreno  
389 A, Moreno-Cid M, et al. Risk of caesarean delivery in labour induction: a systematic review and  
390 external validation of predictive models. *BJOG.* 2022;129(5):685-95.
- 391 23. Alavifard S, Meier K, Shulman Y, Tomlinson G, D'Souza R. Derivation and validation of a  
392 model predicting the likelihood of vaginal birth following labour induction. *BMC Pregnancy*  
393 *Childbirth.* 2019;19(1):130.
- 394 24. Kolkman DG, Verhoeven CJ, Brinkhorst SJ, van der Post JA, Pajkrt E, Opmeer BC, Mol BW.  
395 The Bishop score as a predictor of labor induction success: a systematic review. *Am J Perinatol.*  
396 2013;30(8):625-30.
- 397 25. Badir S, Bajka M, Mazza E. A novel procedure for the mechanical characterization of the  
398 uterine cervix during pregnancy. *J Mech Behav Biomed Mater.* 2013;27:143-53.

- 399 26. Badir S, Mazza E, Zimmermann R, Bajka M. Cervical softening occurs early in pregnancy:  
400 characterization of cervical stiffness in 100 healthy women using the aspiration technique. *Prenat*  
401 *Diagn.* 2013;33(8):737-41.
- 402 27. Badir S, Bernardi L, Feijo Delgado F, Quack Loetscher K, Hebisch G, Hoesli I. Aspiration  
403 technique-based device is more reliable in cervical stiffness assessment than digital palpation. *BMC*  
404 *Pregnancy Childbirth.* 2020;20(1):391.
- 405 28. Stone J, House M. Measurement of cervical softness before cerclage placement with an  
406 aspiration-based device. *Am J Obstet Gynecol MFM.* 2023;5(4):100881.
- 407 29. Kyvernitakis I, Lauer P, Malan M, Badir S, Maul H. A novel aspiration technique to assess  
408 cervical remodelling in patients with or without cervical shortening: Sequence of first changes,  
409 definition of cut-off values and impact of cervical pessary, stratified for cervical length. *PLoS One.*  
410 2023;18(4):e0283944.
- 411 30. Breuking S, Oudijk MA, van Eekelen R, de Boer MA, Pajkrt E, Hermans F. Assessment of  
412 cervical softening and the prediction of preterm birth (STIPP): protocol for a prospective cohort  
413 study. *BMJ Open.* 2023;13(11):e071597.
- 414 31. NICE. Inducing Labour 2021 [Available from: <https://www.nice.org.uk/guidance/ng207>.  
415 32. AG P. Pregnolia System Cervical Stiffness Assessment Instruction for Use. 2022.  
416 33. Manufacturer Website [Available from: <https://en.pregnolia.com/>.  
417 34. Teresi JA, Yu X, Stewart AL, Hays RD. Guidelines for Designing and Evaluating Feasibility Pilot  
418 Studies. *Med Care.* 2022;60(1):95-103.
- 419 35. Dos Santos F, Drymiotou S, Antequera Martin A, Mol BW, Gale C, Devane D, et al.  
420 Development of a core outcome set for trials on induction of labour: an international  
421 multistakeholder Delphi study. *BJOG.* 2018;125(13):1673-80.
- 422 36. Son M. Core outcome set for induction of labour trials: what's the expectation? *BJOG.*  
423 2018;125(13):1681.

- 424 37. Dahlen HG, Thornton C, Downe S, de Jonge A, Seijmonsbergen-Schermers A, Tracy S, et al.  
425 Intrapartum interventions and outcomes for women and children following induction of labour at  
426 term in uncomplicated pregnancies: a 16-year population-based linked data study. *BMJ Open*.  
427 2021;11(6):e047040.
- 428 38. Thabane L, Ma J, Chu R, Cheng J, Ismaila A, Rios LP, et al. A tutorial on pilot studies: the  
429 what, why and how. *BMC Med Res Methodol*. 2010;10:1.
- 430 39. Riley RD, Ensor J, Snell KIE, Harrell FE, Jr., Martin GP, Reitsma JB, et al. Calculating the sample  
431 size required for developing a clinical prediction model. *BMJ*. 2020;368:m441.
- 432 40. SA J. Sample size of 12 per group rule of thumb for a pilot study. . *Pharmaceut Statist*  
433 2005(4):287-91.
- 434



S2 Figure 2



© Copyright 2024 Pregnolia AG. Reproduced with permission

Procedure		Induction of labour Booking	Attendance for induction of labour	Postnatal	End of Study
<i>Patient Eligibility</i>		X	X		
<i>Patient information Leaflet provided</i>		X	X		
<i>Informed Consent</i>		X	X		
<i>Routine Assessments</i>	<i>Fetal presentation</i>		X		
	<i>CTG</i>		X		
<i>Cervical Stiffness assessment</i>			X		
<i>Bishop's score assessment</i>			X		
<i>Post- assessment patient questionnaire</i>			X		
<i>Primary Outcome</i>				X	
<i>Secondary outcomes</i>				X	
<i>Adverse Event Reporting</i>			x	x	x

S1 Figure 1