

Achievement of diabetes treatment goals in Mexico from 2016–2022: A retrospective analysis of nationally representative surveys

Daniel Ramírez-García^{1,2*}, Padme Nailea Méndez-Labra^{1,3*}, Carlos A. Fermín-Martínez^{1,3}, Jerónimo Perezalonso-Espinosa^{1,3}, Juan Pablo Díaz-Sánchez^{1,3}, César Daniel Paz-Cabrera^{1,4}, Arsenio Vargas-Vázquez², Neftali Eduardo Antonio-Villa^{5,6}, Goodarz Danaei^{6,7}, Jacqueline A. Seiglie^{8,9}, Omar Yaxmehen Bello-Chavolla^{1,6}

***These authors contributed equally to the drafting of this paper**

¹Research Division, Instituto Nacional de Geriátría, Mexico City, Mexico. ²Facultad de Medicina, Universidad Nacional Autónoma de México, Mexico City, Mexico. ³MD/PhD (PECEM) Program, Facultad de Medicina, Universidad Nacional Autónoma de México, Mexico City, Mexico. ⁴Especialidad en Medicina Preventiva, Instituto Nacional de Salud Pública, Mexico City, Mexico. ⁵Department of Endocrinology, Instituto Nacional de Cardiología Ignacio Chávez, Mexico City, Mexico. ⁶Department of Global Health and Population, Harvard T.H. Chan School of Public Health. ⁷Department of Epidemiology, Harvard T.H. Chan School of Public Health. ⁸Diabetes Unit, Massachusetts General Hospital, Harvard Medical School, Boston, Massachusetts, USA. ⁹Department of Medicine, Harvard Medical School, Boston, Massachusetts, USA.

Correspondence: Omar Yaxmehen Bello-Chavolla. Division of Research. Instituto Nacional de Geriátría. Anillo Perif. 2767, San Jerónimo Lídice, La Magdalena Contreras, 10200, Mexico City, Mexico. Phone: +52 (55) 5548486885. E-mail: oybello@inger.gob.mx.

CONFLICT OF INTERESTS: The authors declare that they have no conflict of interests.

3,856 text words; 34 references; 3 figures, 2 tables.

Running headline: Achievement of diabetes treatment goals in Mexico

ABSTRACT (249 WORDS)

BACKGROUND: Cardiovascular (CVD) risk factor reduction is a cornerstone of diabetes management. Here, we aimed to estimate the prevalence and determinants of individual and combined CVD risk factor control goals amongst individuals living with diagnosed diabetes in Mexico.

METHODS: We analyzed Mexican National Health and Nutrition Surveys from 2016-2022 including individuals aged ≥ 20 years with diagnosed diabetes. We estimated the prevalence of glycemetic, blood pressure, cholesterol, and smoking control, as well as combined control achievement according to current guidelines, as well as the prevalence of antihypertensive, statin and diabetes medication use. We also explored determinants of control achievement amongst individuals with diabetes using weighted logistic regression.

RESULTS: We analyzed data from 2,331 adults with diagnosed diabetes. Glycemic control increased over time reaching 41% (95%CI 30%–52%) by 2022. Blood pressure control remained similar over time reaching 45% (95%CI 35%–55%) in 2022, LDL-C control remained low regardless of the definition (<70 vs. <100 mg/dL), whilst smoking control was high and increased over time to 92% (95%CI 88%–96%) in 2022. Combined risk factor control achievement was low, primarily due to suboptimal LDL-C control, despite a high proportion of medication use. Control achievement was more likely in Northern Mexico, in younger individuals, those with college education or living in states with lower social lag.

CONCLUSIONS: Our results suggest a need to improve comprehensive glycemetic and CVD risk factor management for individuals living with diabetes in Mexico to improve diabetes care and reduce risk of adverse outcomes.

Keywords: Diabetes; glycemetic control, blood pressure, LDL-C control, Mexico.

INTRODUCTION

Diabetes mellitus is a growing health care problem in Mexico. Prevalence has increased significantly in the past three decades, with approximately 14.6 millions of individuals living with diabetes in 2022¹. Additionally, diabetes represents one of the leading causes of death in Mexico², and it is estimated that at least one third of premature deaths can be attributed to this condition. Despite its relevance, management of diabetes-related complications in Mexico has been suboptimal, which has been associated with increases in attributable mortality in recent years, primarily driven by impaired glycemic control and high rates of undiagnosed diabetes, which are unequally distributed throughout the country^{1,3,4}.

Clinical guidelines recommend comprehensive management strategies for joint risk factor control in individuals with diabetes, beyond approaches solely focused on glycemic targets⁵. The introduction of novel glucose-lowering medications that can reduce major adverse CVD events (MACE) is catalyzing progress in CVD-related mortality among people with diabetes, particularly in some high income settings.^{6,7} However, comprehensive clinical management for individuals with diabetes in middle-income countries like Mexico remains limited. Additionally, significant risk associations have been reported between diabetes and CVD mortality in Mexico, with previous studies suggesting that approximately 30-40% of cardiovascular deaths (cardiac, stroke, or vascular conditions) can be directly attributable to diabetes⁸. Furthermore, attainment of multicomponent treatment goals in diabetes in Mexico has not been reported, with previous studies focusing primarily on glycemic control^{9,10}. Therefore, here we aimed to: (1) estimate the prevalence of glycemic, blood pressure, cholesterol, and smoking control and the combined achievement of these measures, (2) explore trends in medication use and determinants of control achievement in diabetes, and (3) determine the geographic

distribution of control achievement across Mexican regions in individuals with diagnosed diabetes using data from nationally representative surveys.

METHODS

Study population

We analyzed data from the cross-sectional National Health and Nutrition Surveys (ENSANUT) cycles 2016, 2018, 2021 and 2022. As described previously, ENSANUT is a probabilistic survey which uses multistage, stratified, clustering sampling representative at national, regional, and rural/urban level¹¹⁻¹⁴. In each cycle, individuals are interviewed, and information is collected regarding sociodemographic, lifestyle, and self-reported medical history. Clinical measurements (blood pressure, weight, and height) are obtained, and a 10 mL blood sample is collected from a random subsample to undergo subsequent biochemical analyses. Further details on ENSANUT's methodology and data collection are reported elsewhere¹¹⁻¹⁴. For this study, we included individuals with previously diagnosed diabetes aged ≥ 20 years, who presented ≥ 8 hours of fasting, with available and complete HbA1c and diastolic blood pressure measurements. We excluded individuals with undiagnosed diabetes, as our primary objective was to estimate achievement of clinical goals linked to medical treatment, which could only be ascertained in individuals with previous medical diagnosis of diabetes.

Variable definitions

Diagnosed diabetes and glycemic control

Diagnosed diabetes was defined as any individual with self-reported medical diagnosis of diabetes. Glycemic control was defined in an individual with diagnosed diabetes aged < 65 years and HbA1c levels $< 7\%$ or ≥ 65 years and HbA1c levels $< 7.5\%$, taking into consideration clinical recommendations regarding a less restrictive approach to glycemic control according to patient's age¹⁵.

Hypertension and blood pressure control

Blood pressure was considered controlled if the mean measurement of systolic blood pressure (SBP) and diastolic blood pressure (DBP) were both $<130/80$ mmHg⁵. Diagnosed hypertension was defined as any individual with self-reported medical diagnosis of hypertension, and undiagnosed hypertension as individuals without medical diagnosis but with uncontrolled blood pressure. Hypertension treatment prevalence was estimated among individuals with diagnosed hypertension. Given that ENSANUT surveys do not ask the specific medications used by participants, we were unable to determine the adoption of specific glucose-lowering or blood pressure-lowering medications in our analyses.

Cholesterol control and statin treatment

Due to the high prevalence of hypertriglyceridemia in the Mexican population, LDL-C was estimated using the Sampson equation^{16,17}. Cholesterol control was defined as a fasting LDL-C measurement <70 mg/dL following recommendations of recent clinical international guidelines⁵; however, we also used a less stringent definition for LDL-C control of <100 mg/dL, which is more widely recommended in Mexican clinical guidelines⁵. Eligibility for primary CVD prevention with statins was defined as any individual ≥ 40 years without previous cardiovascular disease (myocardial infarction, stroke, heart failure), and eligibility for secondary prevention as individuals ≥ 40 years with previous CVD. Prevalence of statin use was estimated among these subgroups.

Smoking control and combined goal achievement

Smoking control was defined as individuals reporting being either never smokers or former smokers. To evaluate combined control achievement amongst individuals with diabetes in Mexico, we constructed composite control variables according to whether the participant achieved blood pressure and LDL-C control (BC), glycemic, blood pressure, and LDL-C control (ABC), or glycemic, blood pressure, LDL-C, and smoking control (ABCN)¹⁸.

Density-independent social lag index

To assess state-level social disadvantage we used the density-independent social lag index (DISLI) by obtaining the residuals from a linear regression of population density onto social lag index, which is a composite measure of access to education, health care, dwelling quality, and basic services in Mexico¹⁹.

Statistical analyses

Weighted prevalence estimates of control achievement were obtained taking into consideration the complex survey design using sample weights from ENSANUT. We further obtained prevalence estimates stratified by sex, age group (20-44, 45-64, ≥65 years), geographic location (urban or rural), indigenous identity (indigenous or non-indigenous), and educational level (no education, elementary, middle/high school, university, other). The proportion of participants with missing data across pooled ENSANUT cycles ranged from 1.76% for HbA1c in 2022 to 12.4% for DBP in 2018. To determine the potential association between control achievement and several variables of interest, we fitted logistic regression models adjusted by sex, age group, educational level, social security affiliation (with or without social security), survey cycle, and DISLI category. Finally, we used the *ggmap* package in R to visualize the geographic distribution of weighted prevalence control estimations according to nine regions in Mexico (Northern Pacific – Baja California, Baja California Sur, Nayarit, Sinaloa, Sonora; Border – Coahuila, Chihuahua, Nuevo León, Tamaulipas; Central Pacific– Colima, Jalisco, Michoacán; Northern Central – Aguascalientes, Durango, Guanajuato, Querétaro, San Luis Potosí, Zacatecas; Center – Hidalgo, Tlaxcala, Veracruz; Mexico City; México State; South Pacific – Guerrero, Morelos, Oaxaca, Puebla; Peninsula – Campeche, Chiapas, Tabasco, Quintana Roo, Yucatán). All statistical analyses were conducted using R version 4.2.1, weighted prevalence estimates were obtained using the *survey* R package, and a significance threshold of $p < 0.05$ was used.

RESULTS

Characteristics of individuals with diagnosed diabetes

Individuals with diagnosed diabetes in Mexico were primarily women with a higher proportion of individuals in the age group of 45-64 years (**Table 1**). Mean HbA1c levels had a downward trend from 2016 to 2018, with mean levels of 7.9% (95%CI 7.8%–8.2%) in 2018, but an increment to 8.4% (95%CI 8.0%–8.8%) in 2021 and a subsequent decrease in 2022. Mean systolic blood pressure ranged from 129 mmHg (95%CI 125–134 mmHg) in 2016 to 135 mmHg (95%CI 133–137 mmHg) in 2018, while mean diastolic blood pressure remained relatively steady across survey cycles. The prevalence of diagnosed hypertension increased slightly from 41% (95%CI 34%–49%) in 2016 to 42% (95%CI 33%–51%) in 2022. Undiagnosed hypertension was relatively stable across survey cycles, ranging from 26% (95%CI 20%–34%) in 2016 to 28% (95%CI 19%–38%) in 2022. Most individuals with diagnosed diabetes were eligible for primary prevention, which accounted for 85% (95%CI 77%–90%) of individuals in 2016 with a similar prevalence for the rest of survey cycles. The proportion of individuals eligible for secondary prevention ranged from 4.1% (95%CI 2.5%–6.5%) in 2016 to 8.5% (95%CI 3.8%–18%) in 2021. Important changes in social security affiliation were observed, with a high proportion of individuals insured during the 2016 and 2018 cycles, and a decrease for the 2021 and 2022 cycles. The highest share of participants with diagnosed diabetes was observed in urban settings and individuals with non-indigenous identity.

Prevalence of risk factor control achievement among individuals with diagnosed diabetes

Glycemic control in Mexico among individuals with diagnosed diabetes was suboptimal, reaching 36% (95%CI 28%–43%) in 2016, 45% (95%CI 41%–49%) in 2018, 35% (95%CI 26%–45%) in 2021 and 41% (95%CI 30%–52%) in 2022 (**Figure 1A**). Blood pressure control decreased from 44% (95%CI 35%–53%) in 2016 to 37% (95%CI 33%–41%) in 2018 with a subsequent increase to 45% (95%CI 35%–55%) in 2022 (**Figure 1B**). Notably, LDL-C control had the lowest proportion of achievement for every survey cycle, regardless

of control threshold levels, with a slight increase in survey cycles 2021 and 2022. Using the most recent and stringent goal of LDL-C <70 mg/dL, control was achieved by only 1% (95%CI 0.0%–2.0%) of individuals with diabetes in 2016, 2% (95%CI 0.0%–3.4%) in 2018, 0.4% (95%CI 0.0–1.1%) in 2021, and 8.8% (95%CI 0.0%–14.3%) in 2022 (**Figure 1C**). Using LDL-C <100 mg/dL as definition of control, the goal was achieved by 6.4% (95% CI 3.4%–9.4%) in 2016, 10% (95% CI 8.0%–12.9%) in 2018, 7% (95% CI 2.9%–11.3%) in 2021, and 23% (95% CI 16.2%–31%) in 2022 (**Figure 1D**). Smoking control was high, with a constant increase in control, changing from 85% (95%CI 77%–93%) in 2016 to 92% (95%CI 88%–96%) in 2022 (**Figure 1E**).

Prevalence of combined control achievement in individuals with diagnosed diabetes

Combined control was low, primarily due to suboptimal LDL-C control. Using LDL-C <70 mg/dL as the target, BC control ranged from 0.13% (95%CI 0.0%–0.36%) in 2016 to 3.73% (95%CI 0.2%–7.2%) in 2022 and ABCN control ranged from 0.11% (95%CI 0.0%–0.34%) in 2016 to 1.5% (95%CI 0.0%–3.1%) in 2022 (**Figures 2A-C**). Using <100 mg/dL as LDL-C target, combined control improved slightly with BC control ranging from 2.8% (95%CI 1.0%–4.7%) in 2016 to 11% (95%CI 6.4%–16.4%) in 2022. Similarly, using this definition, ABCN control increased slightly from 1.4% (95%CI 0.0%–2.7%) in 2016 to 4.6% (95%CI 2.1%–7.1%) in 2022 (**Figures 2D-F**).

Modifiers of control achievement in individuals with diagnosed diabetes

When stratifying by sex, glycemic control prevalence was similar among men and women, and blood pressure control prevalence was higher among women, especially for the cycles 2018, 2021, and 2022. Interestingly, although LDL-C control was poor for both men and women, men had a slightly higher prevalence of control than women, and smoking control was higher in women (**Supplementary Figure 1**). BC control prevalence was higher in men, especially in the year 2022. Stratifying by age group, individuals ≥65 years had a higher prevalence of glycemic and smoking control compared to other groups. However,

individuals 20-44 years had higher prevalence of blood pressure and LDL control (**Supplementary Figure 2**). Stratified analyses by geographic location and indigenous identity can be found in **Supplementary Figures 3-4**.

Medication use amongst individuals with diagnosed diabetes

Treatment with oral glucose-lowering medications had a prevalence of 72% (95%CI 64%–79%) in 2016, which decreased slightly to 67% (95%CI 56%–76%) in 2022, accompanied by a small increase in insulin treatment prevalence, which changed from 8.0% (95%CI 4.1%–15%) in 2016 to 10% (95%CI 6.8%–16%) in 2022 (**Figure 3A**). The prevalence of untreated individuals increased from 9.8% (95%CI 5.9%–16%) in 2016 to 15% (95%CI 8.9%–26%) in 2021, with a subsequent decrease to 9.0% (95%CI 5.3%–15%) in 2022. Amongst individuals with diagnosed hypertension, the proportion of those with blood pressure-lowering treatment was high, ranging from 87% (95%CI 80%–95%) in 2016 to 92% (95%CI 84%–99%) in 2022 (**Figure 3B**). Of note, overall statin use increased significantly across survey cycles, from a low prevalence use of 5.6% (95%CI 2.3%–8.8%) in 2016, 11% (95%CI 8.3%–13%) in 2018, 51% (95%CI 38%–64%) in 2021, and 59% (95%CI 43%–74%) in 2022 (**Figure 3C**), which is consistent with the slight increase in LDL-C control described previously. Amongst individuals eligible for primary prevention, statin use increased significantly from 6.1% (95%CI 2.4%–9.9%) in 2016 to 59% (95%CI 43%–75%) in 2022. Statin use amongst individuals eligible for secondary prevention showed a similar albeit smaller increase from 7.6% (95%CI 0%–20%) in 2016 to 28% (95%CI 0%–84%) in 2022. There was an unusual increase in 2021, with a prevalence of statin use of 73% (95%CI 39%–100%) in this group, although these estimations should be used with caution due to the small number of individuals in this subset of participants (**Supplementary Figure 5**).

Determinants of control achievement

Compared to women, men had higher odds of achieving glycemic (aOR 1.14, 95%CI 1.07–1.22) and LDL-C control (aOR 1.63, 95%CI 1.45–1.83), but lower odds of achieving blood pressure (aOR 0.5, 95%CI 0.48–0.52) and smoking control (aOR 0.21, 95%CI 0.19–0.22). Age groups 45–64 years and ≥65 years had lower odds of achieving glycemic, blood pressure and LDL control compared to individuals aged 20–44 years. However, these older age groups had higher odds of achieving smoking control (**Table 2**). Compared to individuals without education, those with college education had higher odds of achieving glycemic (aOR 1.55, 95%CI 1.32–1.82) and blood pressure control (aOR 1.32, 95%CI 1.19–1.46), but no such association was observed for LDL-C or smoking control. Lower DISLI categories were associated with higher odds of achieving glycemic control compared to the high category, but a negative association was found for blood pressure, LDL, and smoking control. Additionally, individuals in the survey cycle 2022 had much higher odds of achieving LDL-C control (aOR 3.64, 95%CI 2.96–4.49) compared to participants in the 2016 cycle. Finally, participants with social security had lower odds of achieving glycemic (aOR 0.73, 95%CI 0.67–0.79), and LDL-C control (aOR 0.84, 95%CI 0.74–0.95), but higher odds of achieving blood pressure (aOR 1.08, 95%CI 1.03–1.13), and smoking control (aOR 1.12, 95%CI 1.06–1.19) compared to those without social security affiliation. Finally, women and individuals in the age group 20–44 years had higher odds of achieving ABCN control, with lower odds among those who were in the low DISLI categories.

Geographic distribution of treatment goal achievement

Exploring the distribution of control achievement across geographic areas in Mexico during 2022, we found a higher proportion of glycemic control in central and northern regions, with the lowest proportion in the southern region of Mexico. When analyzing blood pressure control distribution, the highest prevalence was found in central, southeastern, and northeastern regions with the lowest control in southwestern Mexico. Interestingly,

LDL-C control prevalence was highest in northern and southwestern areas of Mexico, with the lowest prevalence of control in central Mexico (**Figure 2A**). Finally, smoking control was highest in central and southern Mexico, with the lowest prevalence in northern states (**Figure 2B**). As an exploratory analysis, we identified higher BC control in the Central Northern and Border regions with lower BC achievement in the Peninsula and Central Pacific regions; in contrast, combined ABC control was achieved primarily in the Border and South Pacific regions (**Figure 2C**).

DISCUSSION

The comprehensive management of diabetes in Mexico is suboptimal. Our estimates show that less than half of individuals with diagnosed diabetes achieve glycemic or blood pressure control, even though a high proportion of them report medication use. Furthermore, LDL-C control is seldom achieved in Mexican adults with diagnosed diabetes in whom, despite a consistent increase in statin use across survey cycles, less than a quarter of individuals were found to meet clinical targets in 2022. Additionally, although smoking control increased steadily throughout the study period, combined target control was rarely achieved, primarily due to inadequate cholesterol control. Our results are consistent with previous evidence which suggests some progress in diabetes management in Mexico, primarily related to glycemic and smoking control, and more recently on statin adoption. However, these improvements are still insufficient, and comprehensive management strategies are underutilized or not widely implemented^{3,20}.

Diabetes is the second leading cause of death in Mexico², and has been associated with mortality rates twice as high as those observed in high income countries²¹. Given that disease prevalence has increased significantly in the last two decades^{1,22}, suboptimal control of diabetes carries profound implications for public health in Mexico, leading to disparities in the diabetes presentation and related complications^{23,24}. The failure to achieve CVD targets is probably related to multiple causes, including lack of widespread

use of new generation glucose-lowering medications in Mexico (which might also be influenced by affordability issues), limited access to high-quality diabetes care, physician therapeutic inertia, and a generalized lack of disease awareness. These results highlight the need to address, not only individual-level factors (like improving patient education or physician training), but broader structural issues that might hinder CVD target achievement (like fragmented medical care or socioeconomic inequalities), always emphasizing the importance of comprehensive CVD target control in individuals with diabetes.

Uncontrolled risk factors are associated with higher risk of complications and death among individuals with diabetes, and combined interventions aimed at controlling risk factors have shown to reduce micro- and macrovascular complications, and mortality²⁵⁻²⁷. Accordingly, recent clinical guidelines emphasize a comprehensive approach to reduce CVD risk factors giving special priority to management of glycemia, blood pressure, and lipids⁵. Previous studies in the Mexican population have reported increasing disease prevalence and poor glycemic control throughout the last two decades²³. In 2006, only 3.5% of individuals with diabetes in Mexico were within glycemic control targets, and in 2012 this proportion increased substantially to 29%^{22,28}. Our estimates show that there was a continued, albeit moderate improvement in glycemic control over the first half of the past decade, reaching 36% in 2016, and 45% in 2018. This trend, however, stalled and declined after 2020, only to recover to previous levels in 2022. Given that the COVID-19 pandemic was associated with important disruptions to Mexican health services²⁹, and a significant increase in diabetes-related excess mortality in Mexico³, the observed reduction in glycemic control might be directly related to limited access to medical care during the pandemic. Interestingly, pharmacologic therapy for glycemic control has been high for the last two decades, with previous studies consistently finding more than 80% of individuals with diagnosed diabetes reporting medication use^{10,28}. Our estimates are in line with these results, with every survey cycle analyzed presenting more than 84% of diabetes

medication adoption. This signals that poor glycemic control might not only be related to lack of access to medical care but also to a lack of disease awareness, therapeutic inertia, or lack of physician compliance regarding clinical recommendations, all of which should be explored and addressed to improve diabetes management in Mexico.

Blood pressure control estimates stalled around 40% for the 2016-2022 period, and more than 85% of individuals with diagnosed hypertension reported use of antihypertensive medication. A previous analysis of the Mexico City Prospective Study (MCPS) found much smaller proportions of antihypertensive use, changing from 35% in 1998-2004 to 51% in 2015-2019, with an associated increase in the adoption of angiotensin-converting enzyme inhibitors (ACEI) and angiotensin II receptor blockers (ARB)³⁰. Although these estimations are lower than those found in ENSANUT, it should be noted that MCPS is not a representative cohort and recruitment was only done in urban participants from Mexico City. To our knowledge there are no other nationally representative studies exploring blood pressure control in individuals with diabetes in Mexico, so temporal trends of control are limited to our estimations. Notably, our analysis found that one out of four individuals with diagnosed diabetes in Mexico had undiagnosed hypertension. Given that hypertension in diabetes is related to increased risk of CVD events, heart failure, and microvascular complications³¹, and the fact that Mexican and international clinical guidelines recommend blood pressure measurements at every clinical visit^{5,32}, increasing awareness of comorbid hypertension amongst individuals with diabetes represents a significant area of improvement for the Mexican healthcare system, which could have direct implications on reducing the burden of diabetes on Mexican individuals.

Our results showed that LDL-C targets were the least likely to be achieved, with our estimates suggesting a low prevalence of control from 2016 to 2022, regardless of target definition. This finding is particularly worrisome given that reducing LDL-C levels has been strongly associated with reductions in CVD events, vascular mortality, and all-cause

mortality^{33,34}. Recent clinical recommendations have advocated for stringent LDL-C targets, emphasizing high intensity statin therapy in combination with ezetimibe or PCSK9 inhibitor to reach these goals⁵. In Mexico, however, statin adoption has been slow and affordability of other lipid lowering medications is a concern; notably, no previous studies have analyzed cholesterol management in Mexican individuals with diabetes. A previous analysis of the MCPS found that <1% of individuals with diagnosed diabetes reported using lipid-lowering medications in 1998-2004, with a slight increase to 14% in 2015-2019³⁰. Our results show that in 2016 overall statin use was low, with a prevalence of 5.6%, which then showed a significant increase to 59% in 2022. Even though this increase is an important step in cholesterol management, statin adoption appears to be insufficient, given that only one in four individuals with diabetes achieved an LDL-C level of <100 mg/dL by 2022 and even fewer achieved a level of LDL-C <70 mg/dL, the most recent recommended target. Additionally, our results show that statin use is insufficient particularly in individuals eligible for secondary prevention, which carry the highest risk and the bigger potential benefit. Of relevance, the statin intensity or the use of specific statins could not be evaluated in our study and should be further explored to identify areas of opportunity to improve prescription patterns for statins to improve cholesterol management for individuals with diabetes in Mexico.

Our study has several strengths. To our knowledge, this is the first study to evaluate the comprehensive management of diabetes in Mexico, while most have focused primarily on prevalence and glycemic control. The use of a series of nationally representative surveys allowed to obtain population-level estimates of diabetes control, and the availability of information since 2016 facilitates describing the most recent population-level trends. There are also some limitations that should be considered to adequately interpret our results. First, the small sample size of individuals with diagnosed diabetes in each survey cycle might reduce the accuracy of estimated and reduce statistical power to detect small but

meaningful changes over time. Second, we were unable to determine the type of glucose-lowering, blood pressure-lowering and lipid-lowering medications used by participants, as well as their prescribed doses and adherence, which represents important elements related to quality and accessibility of diabetes management. Finally, the cross-sectional nature of our analysis does not allow us to ascertain causal relationships in the observed associations, particularly for determinants of treatment goal achievements.

In conclusion, achievement of treatment goals in individuals with diagnosed diabetes remained suboptimal in Mexico during the 2016-2022 period. Achievement of glycemic and blood pressure control was observed in less than half of adults with diagnosed diabetes, smoking control improved significantly, whilst LDL-C control was low (regardless of LDL-C goals), even with a high proportion of participants reporting consistent medication use. Our results suggest a need to improve comprehensive CVD risk factor management in individuals with diabetes beyond glycemic control, which is essential to improve diabetes care and reduce the risk of diabetes-related mortality and complications in Mexico^{3,23}.

ACKNOWLEDGMENTS

CAFM is enrolled at the PECEM Program of the Faculty of Medicine at UNAM. CAFM and DRG are supported by CONACyT. JAS was supported by Grant Number K23DK135798 from the NIH/NIDDK and by the Massachusetts General Hospital Executive Committee and Center for Diversity and Inclusion Physician-Scientist Development Award.

AUTHOR CONTRIBUTIONS

Research idea and study design: DRG, PNML, JS, OYBC; data acquisition: CAFM, DRG, PNML, OYBC; analysis/interpretation: DRG, PNML, OYBC; statistical analysis: DRG, PNML, OYBC; manuscript drafting: DRG, PNML, CAFM, JPE, JPDS, MRBA, AVV, NEAV, GD, JAS, OYBC; supervision or mentorship: OYBC. Each author contributed important intellectual content during manuscript drafting or revision and accepts accountability for the overall work by ensuring that questions pertaining to the accuracy or integrity of any portion of the work are appropriately investigated and resolved.

DATA AVAILABILITY: All code and materials are available for reproducibility of results at https://github.com/oyaxbell/diabetescare_ensanut/

CONFLICT OF INTEREST/FINANCIAL DISCLOSURE: Nothing to disclose.

FUNDING: This research did not receive any specific grant from funding agencies in the public, commercial, or not-for-profit sectors.

TABLES

Characteristic	ENSANUT 2016 410, N = 5,944,006 (95% CI)	ENSANUT 2018 1,354, N = 7,279,457 (95% CI)	ENSANUT 2021 276, N = 7,258,810 (95% CI)	ENSANUT 2022 291, N = 9,787,416 (95% CI)
Sex (%)				
Women	61 (52%, 69%)	61 (57%, 65%)	52 (43%, 62%)	58 (49%, 67%)
Men	39 (31%, 48%)	39 (35%, 43%)	48 (38%, 57%)	42 (33%, 51%)
Age group (%)				
20-44	23 (15%, 33%)	15 (12%, 18%)	11 (5.9%, 19%)	14 (8.3%, 23%)
45-64	56 (47%, 65%)	51 (47%, 56%)	53 (43%, 63%)	54 (43%, 64%)
65+	22 (16%, 29%)	34 (30%, 38%)	36 (27%, 46%)	32 (24%, 42%)
HbA1c (%)	8.44 (8.0, 8.9)	7.97 (7.8, 8.2)	8.40 (8.0, 8.8)	8.13 (7.7, 8.6)
SBP (mmHg)	129 (125, 134)	135 (133, 137)	134 (130, 137)	130 (126, 134)
DBP (mmHg)	75 (73, 77)	76 (75, 77)	78 (76, 80)	74 (72, 76)
Diabetes treatment (%)				
None	9.8 (5.9%, 16%)	14 (11%, 17%)	16 (8.9%, 26%)	9.0 (5.3%, 15%)
Pills	72 (64%, 79%)	66 (61%, 70%)	64 (54%, 74%)	67 (56%, 76%)
Insulin	8.1 (4.1%, 15%)	9.0 (6.5%, 12%)	9.7 (5.8%, 16%)	10 (6.8%, 16%)
Both	9.9 (6.8%, 14%)	11 (8.7%, 14%)	10 (5.6%, 18%)	13 (6.3%, 26%)
Educational level (%)				
No education	13 (9.2%, 18%)	12 (9.2%, 15%)	13 (7.1%, 22%)	11 (6.7%, 17%)
Elementary school	42 (35%, 50%)	43 (39%, 48%)	37 (29%, 47%)	29 (21%, 38%)
Middle/High school	32 (24%, 42%)	30 (26%, 34%)	35 (25%, 45%)	43 (32%, 54%)
University	7.2 (3.9%, 13%)	9.5 (6.9%, 13%)	12 (6.2%, 22%)	12 (6.5%, 22%)
Other	5.7 (2.7%, 11%)	5.2 (3.6%, 7.6%)	3.0 (1.6%, 5.8%)	5.5 (2.2%, 13%)
Social security (%)				
Without social security	6.7 (3.7%, 12%)	7.7 (5.8%, 10%)	35 (26%, 45%)	32 (23%, 42%)
With social security	93 (88%, 96%)	92 (90%, 94%)	65 (55%, 74%)	68 (58%, 77%)
Location (%)				
Rural	22 (17%, 28%)	18 (15%, 21%)	16 (11%, 24%)	14 (9.9%, 21%)
Urban	78 (72%, 83%)	82 (79%, 85%)	84 (76%, 89%)	86 (79%, 90%)
Indigenous identity (%)				
Non-indigenous	90 (79%, 95%)	93 (90%, 95%)	90 (80%, 95%)	95 (89%, 98%)
Indigenous	10 (4.5%, 21%)	7.0 (5.1%, 9.5%)	10 (5.0%, 20%)	5.1 (2.4%, 11%)
Hypertension diagnosis (%)				
Without hypertension	32 (24%, 42%)	24 (21%, 28%)	29 (21%, 39%)	31 (22%, 41%)
Diagnosed hypertension	41 (34%, 49%)	48 (44%, 52%)	47 (36%, 57%)	42 (33%, 51%)
Undiagnosed hypertension	26 (20%, 34%)	28 (24%, 32%)	24 (17%, 34%)	28 (19%, 38%)
CV risk prevention (%)				
Not eligible for CV risk prevention (<40 years)	11 (6.3%, 19%)	7.8 (5.8%, 10%)	7.6 (3.2%, 17%)	10 (5.4%, 19%)
Eligible for primary prevention	85 (77%, 90%)	84 (81%, 87%)	84 (73%, 91%)	85 (75%, 92%)
Eligible for secondary prevention	4.1 (2.5%, 6.5%)	8.0 (5.9%, 11%)	8.5 (3.8%, 18%)	4.7 (1.3%, 15%)

HbA1c: Glycated hemoglobin, SBP: Systolic blood pressure, DBP: Diastolic blood pressure.

Table 1. Weighted characteristics of interviewed individuals with diagnosed diabetes according to ENSANUT survey cycle. Each survey shows the total number of participants with diabetes along with the expanded population of individuals with diabetes to whom these estimates are representative using ENSANUT complex survey design.

Variable	Glycemic control		Blood pressure control		Cholesterol control		Smoking control		BC control		ABCN control	
	aOR	95% CI	aOR	95% CI	aOR	95% CI	aOR	95% CI	aOR	95% CI	aOR	95% CI
Sex (Ref. Women)												
Men	1.14	(1.07-1.22)	0.50	(0.48-0.52)	1.63	(1.45-1.83)	0.21	(0.19-0.22)	1.07	(0.92-1.25)	0.68	(0.56-0.81)
Age group (Ref. 20-44 years)												
45-64 years	0.25	(0.23-0.27)	0.45	(0.43-0.47)	0.61	(0.53-0.7)	1.48	(1.4-1.57)	0.44	(0.35-0.54)	0.48	(0.38-0.61)
≥65 years	0.35	(0.31-0.39)	0.32	(0.3-0.34)	0.77	(0.63-0.94)	2.57	(2.33-2.83)	0.35	(0.25-0.49)	0.52	(0.36-0.75)
Educational level (Ref. No education)												
Elementary school	0.80	(0.7-0.9)	1.02	(0.93-1.11)	0.60	(0.47-0.76)	1.02	(0.89-1.16)	0.43	(0.29-0.63)	0.59	(0.37-0.94)
Middle/High school	1.13	(0.99-1.29)	1.18	(1.08-1.29)	0.76	(0.6-0.98)	1.03	(0.9-1.17)	0.86	(0.6-1.25)	1.27	(0.83-2.03)
University	1.55	(1.32-1.82)	1.32	(1.19-1.46)	0.82	(0.63-1.08)	1.12	(0.97-1.28)	0.64	(0.43-0.96)	0.95	(0.59-1.57)
Other	1.23	(1.01-1.49)	1.23	(1.09-1.4)	0.37	(0.23-0.57)	1.33	(1.1-1.59)	0.35	(0.18-0.65)	0.57	(0.27-1.15)
Indigenous identity												
Indigenous	0.80	(0.72-0.9)	1.06	(0.98-1.14)	1.07	(0.84-1.34)	2.56	(2.25-2.93)	0.71	(0.48-1.02)	0.89	(0.59-1.3)
Survey cycle (Ref. year 2016)												
Year 2018	0.99	(0.89-1.11)	0.72	(0.67-0.77)	0.56	(0.46-0.69)	0.98	(0.9-1.07)	0.41	(0.31-0.56)	0.34	(0.25-0.47)
Year 2021	0.81	(0.71-0.93)	0.88	(0.81-0.95)	0.81	(0.64-1.03)	1.02	(0.92-1.13)	1.22	(0.89-1.7)	1.17	(0.83-1.66)
Year 2022	0.64	(0.56-0.74)	0.84	(0.77-0.91)	3.64	(2.96-4.49)	0.83	(0.74-0.92)	4.63	(3.49-6.25)	3.08	(2.24-4.3)
DISLI category (Ref. DISLI High)												
DISLI Low	1.16	(1.07-1.26)	0.87	(0.83-0.92)	0.82	(0.71-0.95)	0.97	(0.91-1.04)	0.42	(0.34-0.52)	0.40	(0.31-0.5)
DISLI Moderate	1.21	(1.1-1.32)	0.89	(0.85-0.94)	0.85	(0.73-1)	0.77	(0.72-0.83)	0.72	(0.59-0.88)	0.50	(0.39-0.64)
DISLI Very Low	1.22	(1.09-1.35)	0.91	(0.85-0.96)	0.77	(0.64-0.91)	0.66	(0.61-0.71)	0.51	(0.4-0.64)	0.45	(0.34-0.59)
Social security (Ref. without social security)												
With social security	0.73	(0.67-0.79)	1.08	(1.03-1.13)	0.84	(0.74-0.95)	1.12	(1.06-1.19)	0.90	(0.76-1.07)	0.91	(0.75-1.12)

TABLE 2. Multivariate logistic regression estimates evaluating the adjusted odds ratio (aOR) of achieving glycemic, blood pressure, cholesterol (<70 mg/dL), smoking, BC, and ABCN control in individuals with diagnosed diabetes in Mexico. 95% CI: 95% confidence interval.

FIGURES

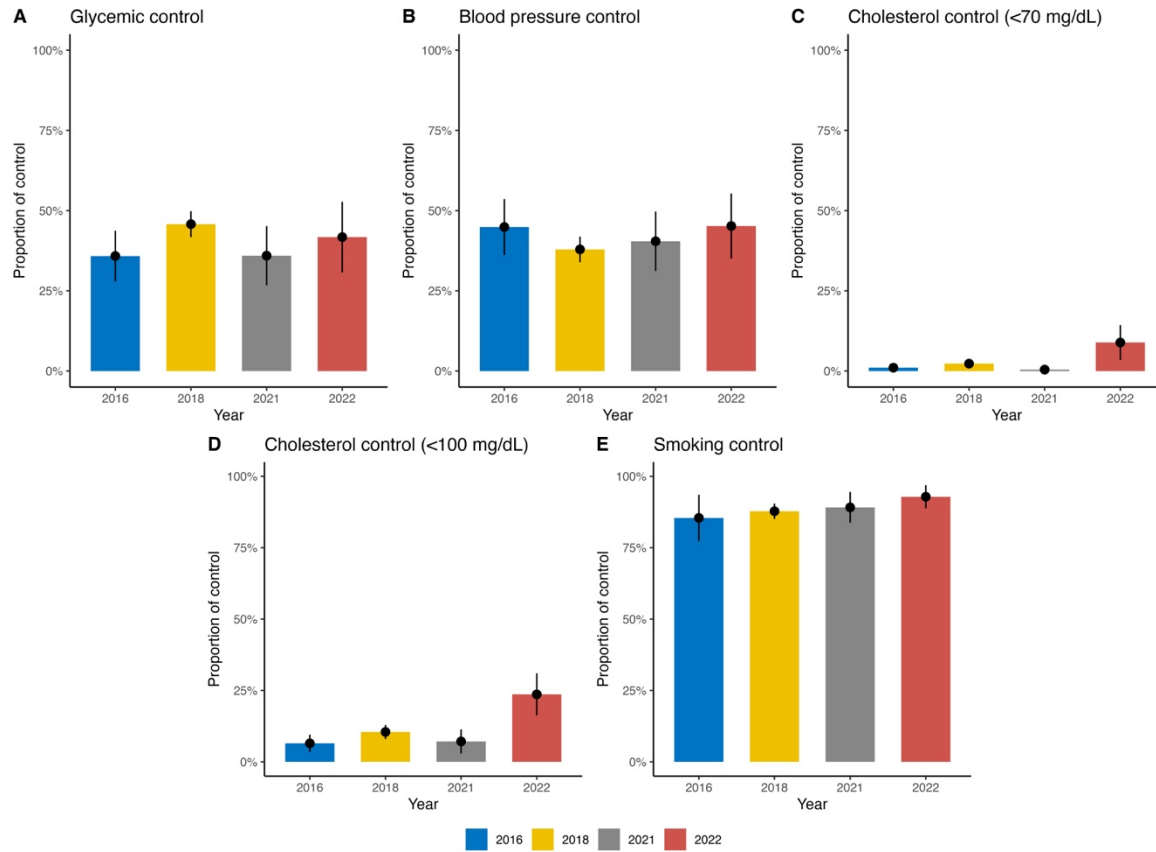


Figure 1. Prevalence of control achievement in individuals with diagnosed diabetes in Mexico during 2016-2022. (A) Prevalence of glycemic control, (B) Prevalence of blood pressure control, (C) Prevalence of cholesterol control (<70 mg/dL), (D) Prevalence of cholesterol control (<100 mg/dL), (E) Prevalence of smoking control.

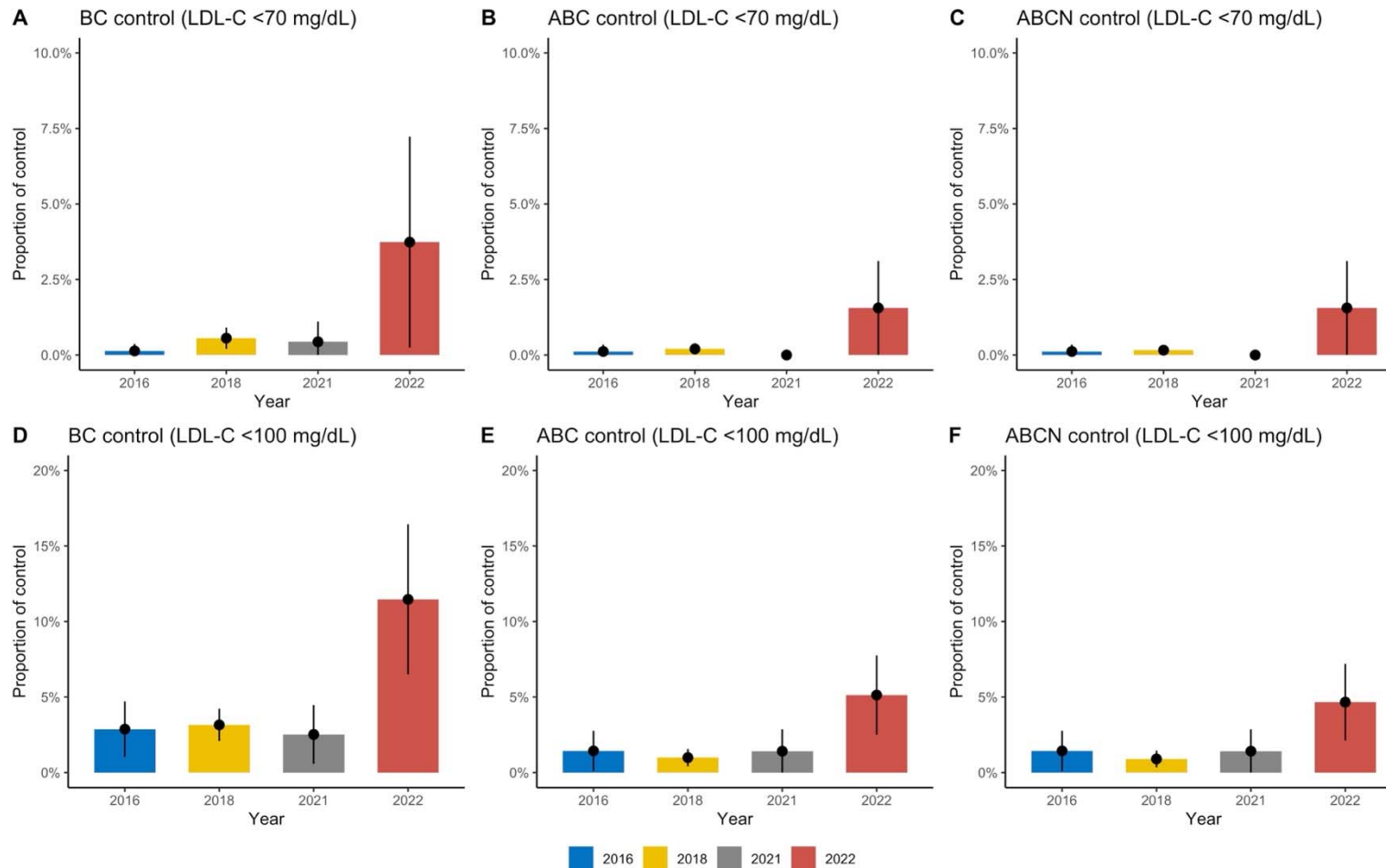


Figure 2. Prevalence of combined control achievement in individuals with diagnosed diabetes in Mexico during 2016-2022, defined as blood pressure and LDL-C control (BC), glycemic, blood pressure, and LDL-C control (ABC), or glycemic, blood pressure, LDL-C, and smoking control (ABCN); panels **A-C** use LDL-C targets <70mg/dL, whilst panels **D-E** use LDL-C targets <100mg/dL.

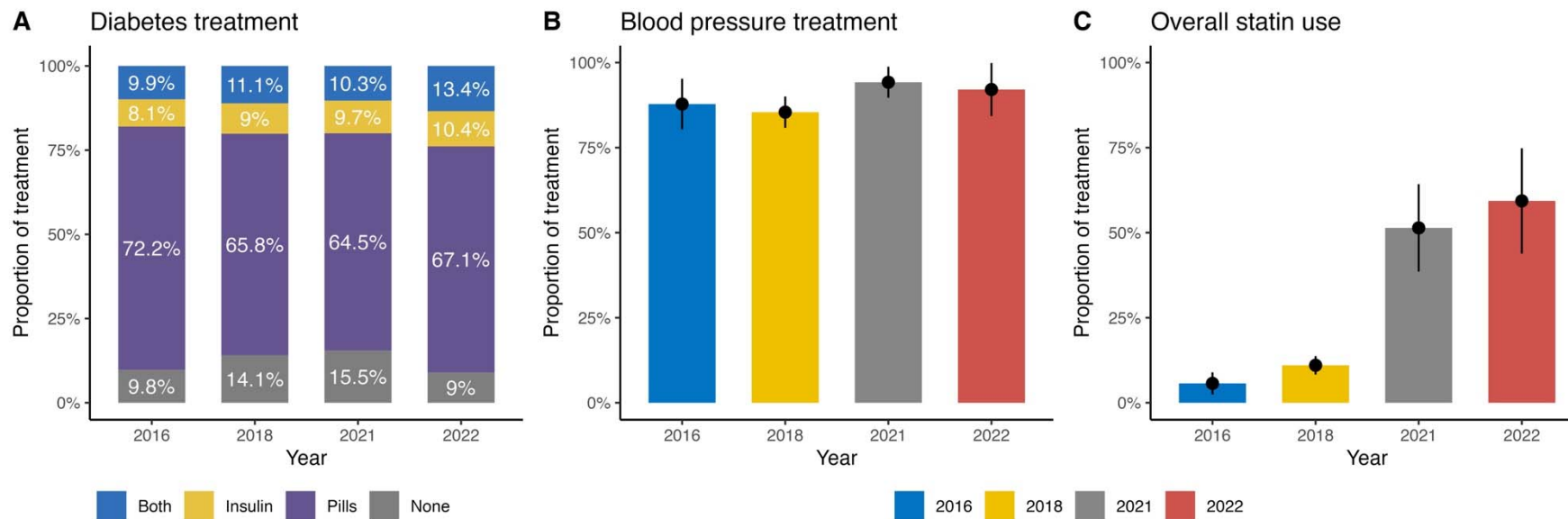


Figure 3. Prevalence of medication use amongst individuals with diagnosed diabetes during the 2016-2022 period. **(A)** Prevalence of diabetes medication use amongst individuals with diagnosed diabetes, **(B)** Prevalence of antihypertensive medication use amongst individuals with diagnosed hypertension, **(C)** Prevalence of overall statin use.

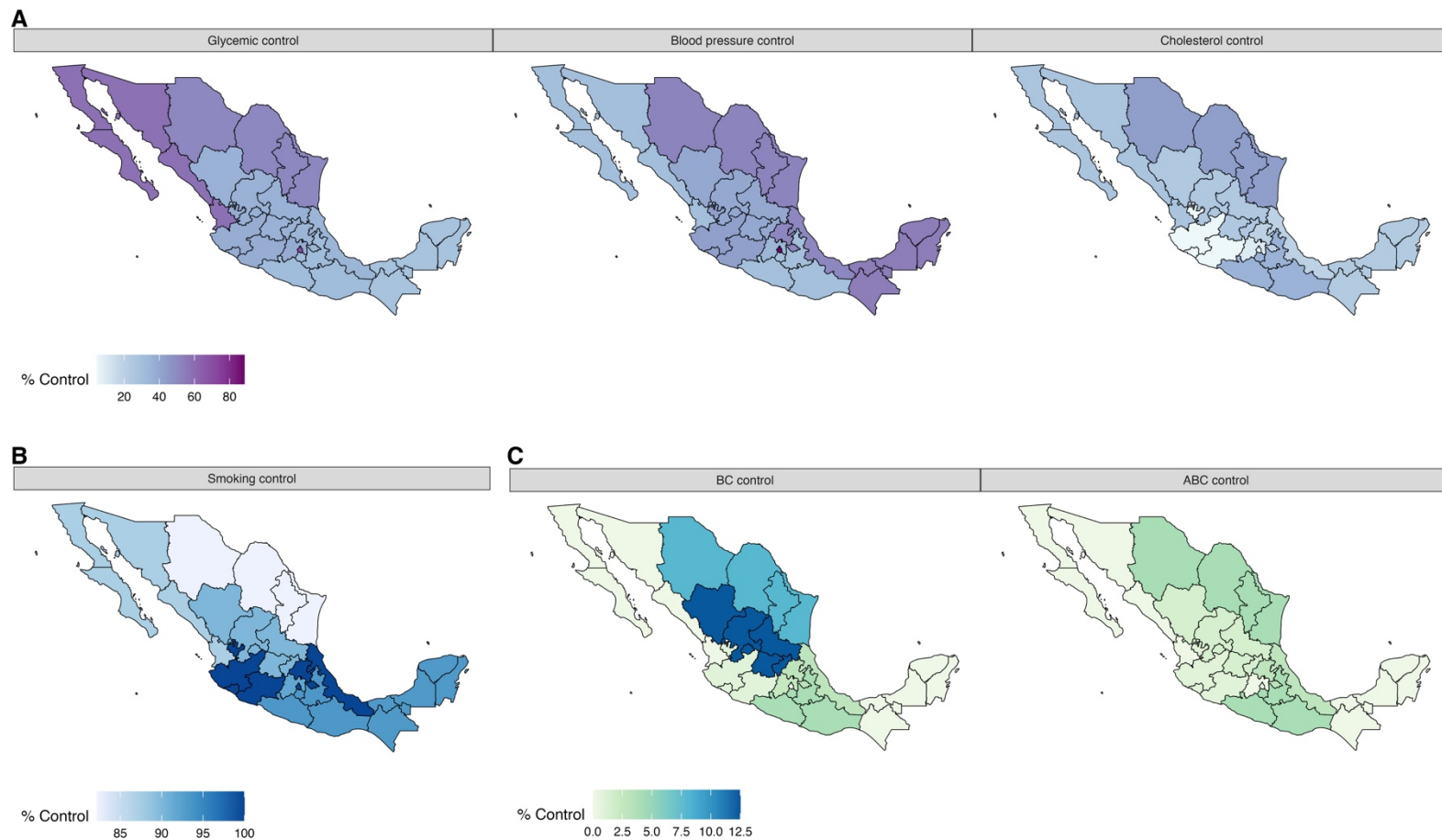


Figure 4. Geographic distribution of the prevalence of control in individuals with diagnosed diabetes in Mexico. Glycemic, blood pressure and cholesterol control (**A**), and smoking control (**B**). Panel **C** figure also shows prevalence of combined blood pressure and LDL-C control (BC), glycemic, blood pressure, and LDL-C control (ABC),

REFERENCES

1. Basto-Abreu A, López-Olmedo N, Rojas-Martínez R, et al. Prevalencia de prediabetes y diabetes en México: Ensanut 2022. *Salud Pública México*. 2023;65:s163-s168. doi:10.21149/14832
2. INEGI. *Estadísticas de Defunciones Registradas En 2022*. INEGI; 2023.
3. Bello-Chavolla OY, Antonio-Villa NE, Fermín-Martínez CA, et al. Diabetes-Related Excess Mortality in Mexico: A Comparative Analysis of National Death Registries Between 2017–2019 and 2020. *Diabetes Care*. 2022;45(12):2957-2966. doi:10.2337/dc22-0616
4. Rojas-Martínez R, Escamilla-Nuñez C, Aguilar-Salinas CA, Castro-Porras L, Romero-Martínez M, Lazcano-Ponce E. Trends in the mortality of diabetes in Mexico from 1998 to 2022: a joinpoint regression and age-period-cohort effect analysis. *Public Health*. 2024;226:128-137. doi:10.1016/j.puhe.2023.10.038
5. American Diabetes Association Professional Practice Committee, EISayed NA, Aleppo G, et al. 10. Cardiovascular Disease and Risk Management: *Standards of Care in Diabetes—2024*. *Diabetes Care*. 2024;47(Supplement_1):S179-S218. doi:10.2337/dc24-S010
6. Zinman B, Wanner C, Lachin JM, et al. Empagliflozin, Cardiovascular Outcomes, and Mortality in Type 2 Diabetes. *N Engl J Med*. 2015;373(22):2117-2128. doi:10.1056/NEJMoa1504720
7. Marso SP, Daniels GH, Brown-Frandsen K, et al. Liraglutide and Cardiovascular Outcomes in Type 2 Diabetes. *N Engl J Med*. 2016;375(4):311-322. doi:10.1056/NEJMoa1603827
8. Herrington WG, Alegre-Díaz J, Wade R, et al. Effect of diabetes duration and glycaemic control on 14-year cause-specific mortality in Mexican adults: a blood-based prospective cohort study. *Lancet Diabetes Endocrinol*. 2018;6(6):455-463. doi:10.1016/S2213-8587(18)30050-0
9. Ac BA, N LO, R RM, et al. Prevalence of diabetes and glycemic control in Mexico: national results from 2018 and 2020. *Salud Publica Mex*. 2021;63(6, Nov-Dic). doi:10.21149/12842
10. Basto-Abreu A, Barrientos-Gutiérrez T, Rojas-Martínez R, et al. Prevalencia de diabetes y descontrol glucémico en México: resultados de la Ensanut 2016. *Salud Pública México*. 2019;62(1, ene-feb):50. doi:10.21149/10752
11. Romero-Martínez M, Shamah-Levy T, Cuevas-Nasu L, et al. Diseño metodológico de la Encuesta Nacional de Salud y Nutrición de Medio Camino 2016. *Salud Pública México*. 2017;59(3, may-jun):299. doi:10.21149/8593
12. Romero-Martínez M, Shamah-Levy T, Vielma-Orozco E, et al. Encuesta Nacional de Salud y Nutrición 2018-19: metodología y perspectivas. *Salud Pública México*. 2019;61(6, nov-dic):917-923. doi:10.21149/11095
13. Romero Martínez M, Barrientos-Gutiérrez T, Cuevas-Nasu L, et al. Metodología de la Encuesta Nacional de Salud y Nutrición 2021. *Salud Pública México*. 2021;63(6, Nov-Dic):813-818. doi:10.21149/13348
14. Romero-Martínez M, Barrientos-Gutiérrez T, Cuevas-Nasu L, et al. Metodología de la Encuesta Nacional de Salud y Nutrición 2022 y Planeación y diseño de la Ensanut Continua 2020-2024. *Salud Pública México*. 2022;64(5, sept-oct):522-529. doi:10.21149/14186
15. American Diabetes Association Professional Practice Committee, EISayed NA, Aleppo G, et al. 6. Glycemic Goals and Hypoglycemia: *Standards of Care in Diabetes—2024*. *Diabetes Care*. 2024;47(Supplement_1):S111-S125. doi:10.2337/dc24-S006
16. Vargas-Vázquez A, Bello-Chavolla OY, Antonio-Villa NE, Mehta R, Cruz-Bautista I, Aguilar-Salinas CA. Comparative assessment of LDL-C and VLDL-C estimation in familial

- combined hyperlipidemia using Sampson's, Martin's and Friedewald's equations. *Lipids Health Dis.* 2021;20(1):46. doi:10.1186/s12944-021-01471-3
17. Bello-Chavolla OY, Vargas-Vázquez A, Antonio-Villa NE, et al. A High Incidence of Metabolic Syndrome Traits in Mexicans Points at Obesity-Related Metabolic Dysfunction. *Diabetes Metab Syndr Obes Targets Ther.* 2021;14:1073-1082. doi:10.2147/DMSO.S266568
18. Kazemian P, Shebl FM, McCann N, Walensky RP, Wexler DJ. Evaluation of the Cascade of Diabetes Care in the United States, 2005-2016. *JAMA Intern Med.* 2019;179(10):1376. doi:10.1001/jamainternmed.2019.2396
19. Antonio-Villa NE, Fernandez-Chirino L, Pisanty-Alatorre J, et al. Comprehensive Evaluation of the Impact of Sociodemographic Inequalities on Adverse Outcomes and Excess Mortality During the Coronavirus Disease 2019 (COVID-19) Pandemic in Mexico City. *Clin Infect Dis.* 2022;74(5):785-792. doi:10.1093/cid/ciab577
20. Hernández-Jiménez S, García-Ulloa AC, Bello-Chavolla OY, Aguilar-Salinas CA, Kershenovich-Stalnikowitz D, Group of Study CAIPaDi. Long-term effectiveness of a type 2 diabetes comprehensive care program. The CAIPaDi model. *Diabetes Res Clin Pract.* 2019;151:128-137. doi:10.1016/j.diabres.2019.04.009
21. Alegre-Díaz J, Herrington W, López-Cervantes M, et al. Diabetes and Cause-Specific Mortality in Mexico City. *N Engl J Med.* 2016;375(20):1961-1971. doi:10.1056/NEJMoa1605368
22. Bello-Chavolla OY, Rojas-Martinez R, Aguilar-Salinas C, Hernández-Avila M. Epidemiology of diabetes mellitus in Mexico. *Nutr Rev.* 2017;75(suppl 1). doi:10.1093/nutrit/nuw030
23. Antonio-Villa NE, Bello-Chavolla OY, Fermín-Martínez CA, et al. Diabetes subgroups and sociodemographic inequalities in Mexico: a cross-sectional analysis of nationally representative surveys from 2016 to 2022. *Lancet Reg Health – Am.* 2024;33. doi:10.1016/j.lana.2024.100732
24. Bello-Chavolla OY, Bahena-López JP, Vargas-Vázquez A, et al. Clinical characterization of data-driven diabetes subgroups in Mexicans using a reproducible machine learning approach. *BMJ Open Diabetes Res Care.* 2020;8(1):e001550. doi:10.1136/bmjdr-2020-001550
25. Intensive blood-glucose control with sulphonylureas or insulin compared with conventional treatment and risk of complications in patients with type 2 diabetes (UKPDS 33). UK Prospective Diabetes Study (UKPDS) Group. *Lancet Lond Engl.* 1998;352(9131):837-853.
26. Gæde P, Lund-Andersen H, Parving HH, Pedersen O. Effect of a Multifactorial Intervention on Mortality in Type 2 Diabetes. *N Engl J Med.* 2008;358(6):580-591. doi:10.1056/NEJMoa0706245
27. Gæde P, Oellgaard J, Carstensen B, et al. Years of life gained by multifactorial intervention in patients with type 2 diabetes mellitus and microalbuminuria: 21 years follow-up on the Steno-2 randomised trial. *Diabetologia.* 2016;59(11):2298-2307. doi:10.1007/s00125-016-4065-6
28. Flores-Hernández S, Saturno-Hernández PJ, Reyes-Morales H, Barrientos-Gutiérrez T, Villalpando S, Hernández-Ávila M. Quality of Diabetes Care: The Challenges of an Increasing Epidemic in Mexico. Results from Two National Health Surveys (2006 and 2012). Meyre D, ed. *PLOS ONE.* 2015;10(7):e0133958. doi:10.1371/journal.pone.0133958
29. Doubova SV, Leslie HH, Kruk ME, Pérez-Cuevas R, Arsenault C. Disruption in essential health services in Mexico during COVID-19: an interrupted time series analysis of health information system data. *BMJ Glob Health.* 2021;6(9):e006204. doi:10.1136/bmjgh-2021-006204
30. Aguilar-Ramirez D, Alegre-Díaz J, Gnatiuc L, et al. Changes in the Diagnosis and

Management of Diabetes in Mexico City Between 1998–2004 and 2015–2019. *Diabetes Care*. 2021;44(4):944-951. doi:10.2337/dc20-2276

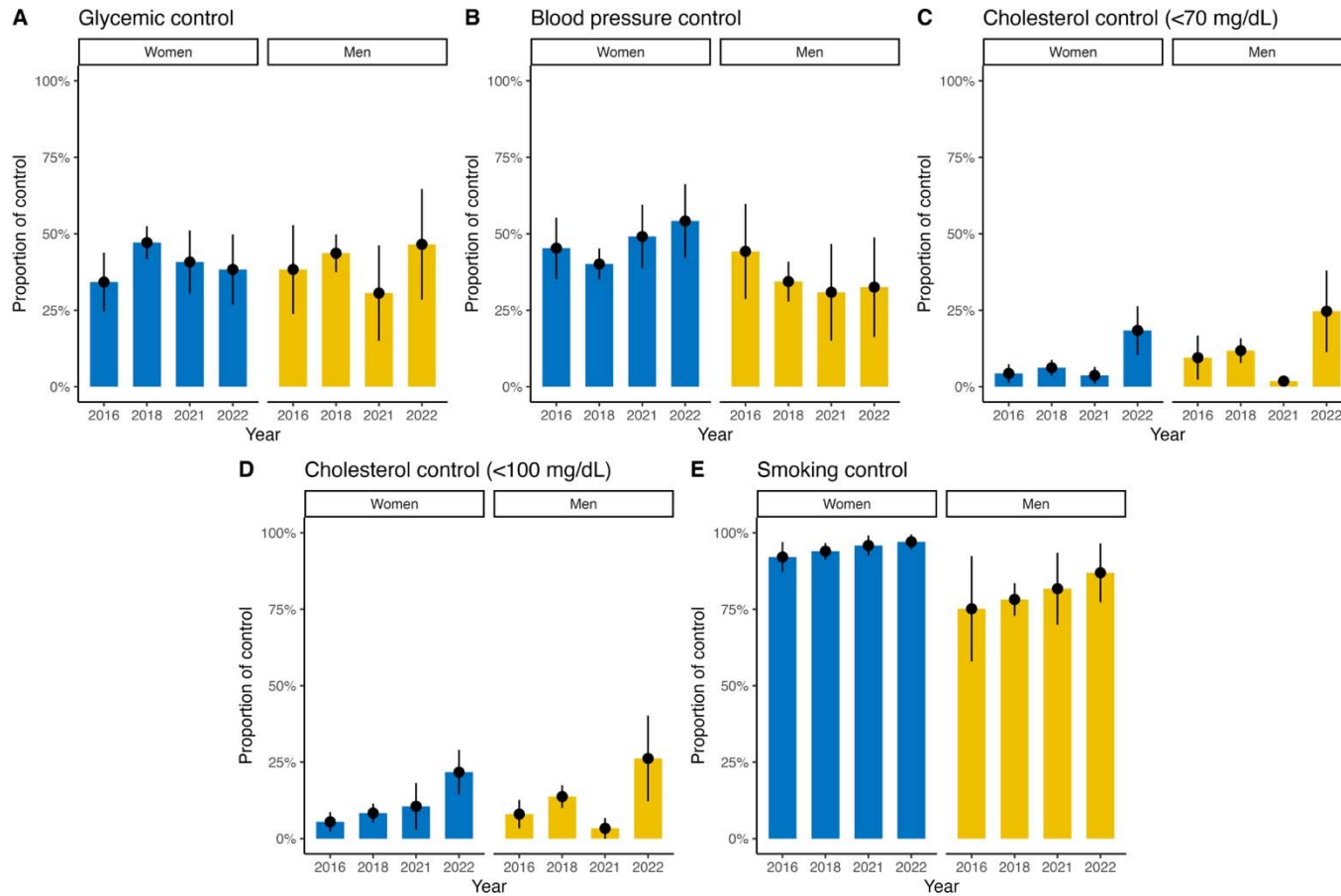
31. De Boer IH, Bangalore S, Benetos A, et al. Diabetes and Hypertension: A Position Statement by the American Diabetes Association. *Diabetes Care*. 2017;40(9):1273-1284. doi:10.2337/dci17-0026

32. Secretaria de Gobernación, ed. Norma Oficial Mexicana NOM-015-SSA2-2010, Para la prevención, tratamiento y control de la diabetes mellitus. Published online 2010.

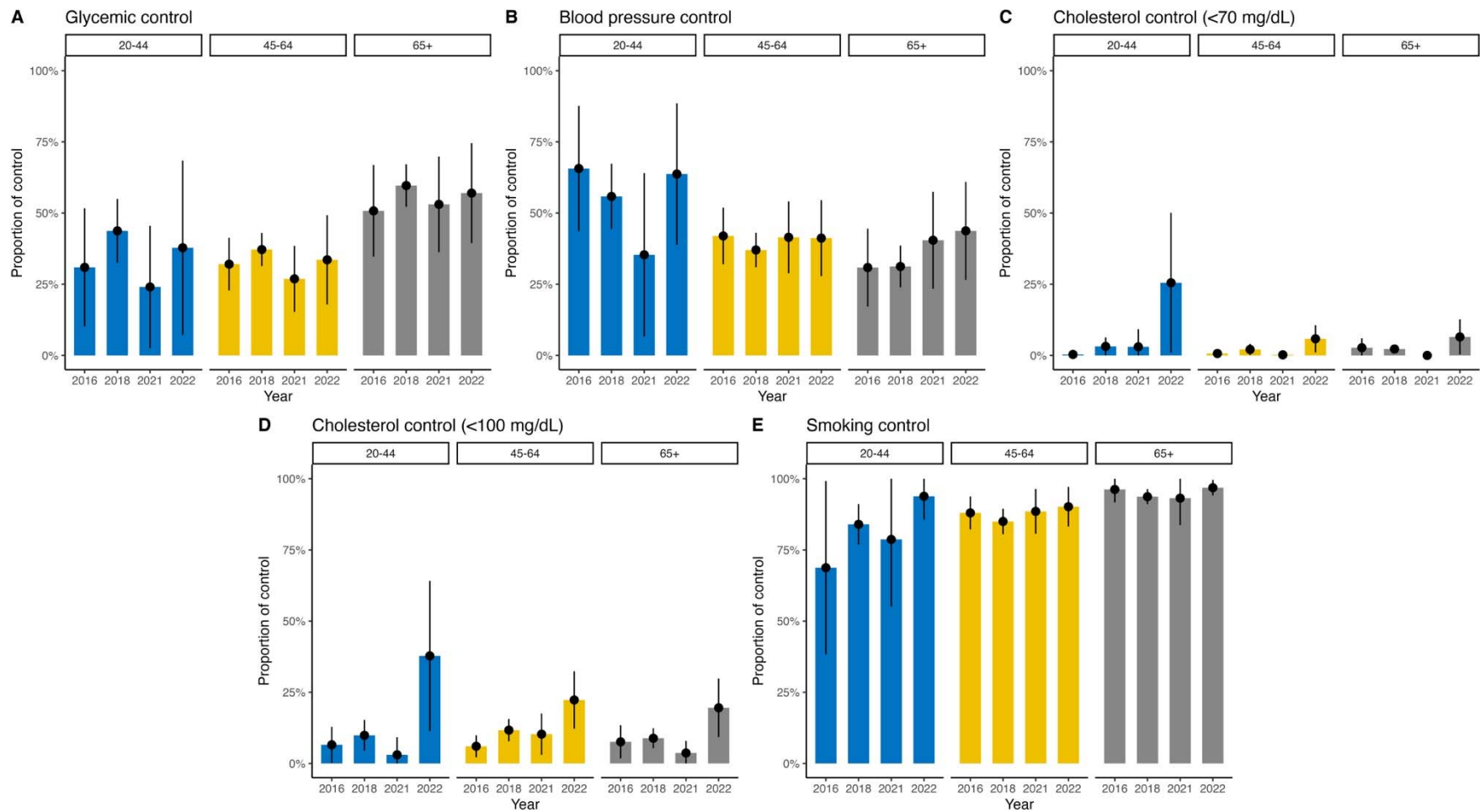
33. Colhoun HM, Betteridge DJ, Durrington PN, et al. Primary prevention of cardiovascular disease with atorvastatin in type 2 diabetes in the Collaborative Atorvastatin Diabetes Study (CARDS): multicentre randomised placebo-controlled trial. *The Lancet*. 2004;364(9435):685-696. doi:10.1016/S0140-6736(04)16895-5

34. Cholesterol Treatment Trialists' (CTT) Collaborators. Efficacy of cholesterol-lowering therapy in 18 686 people with diabetes in 14 randomised trials of statins: a meta-analysis. *The Lancet*. 2008;371(9607):117-125. doi:10.1016/S0140-6736(08)60104-X

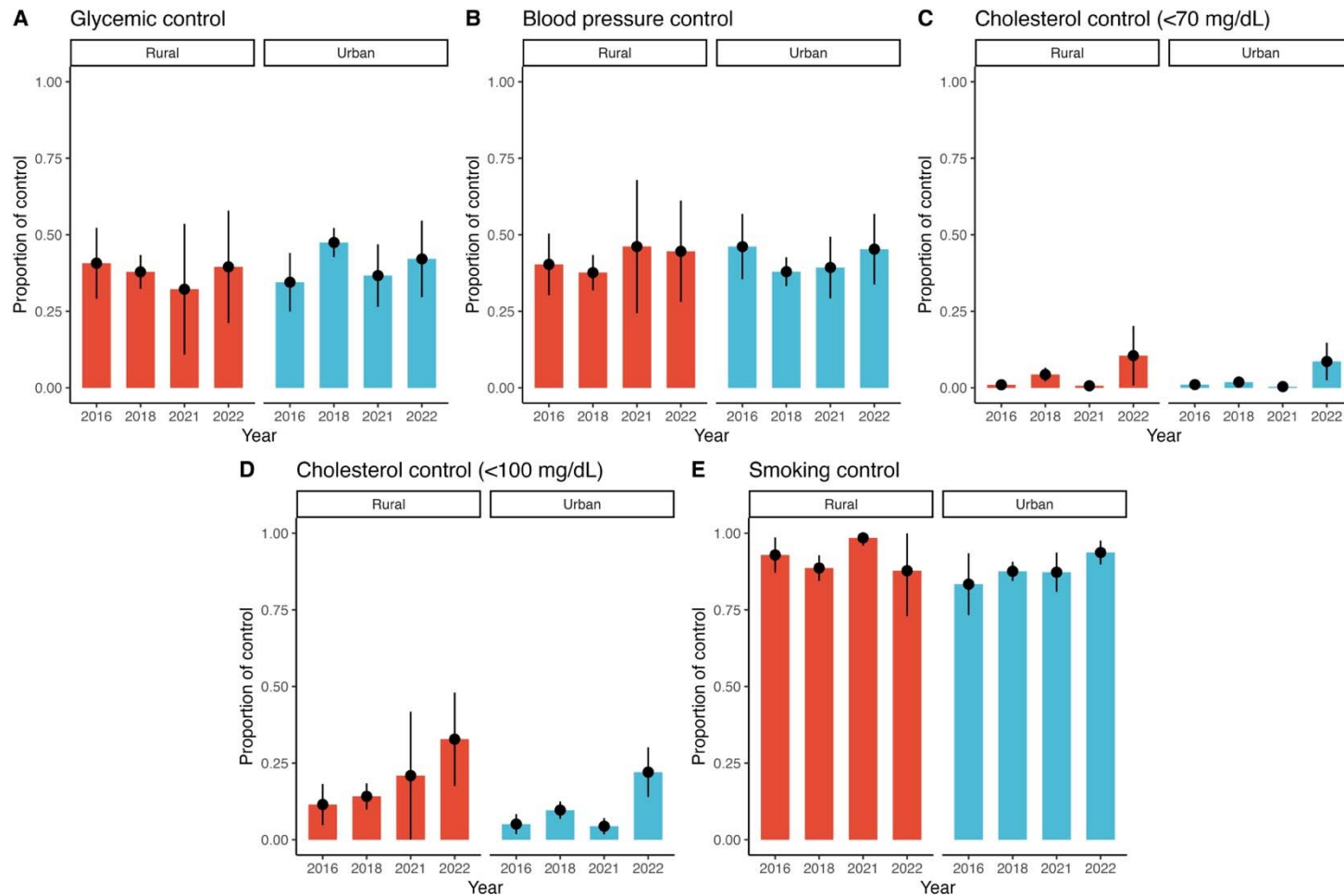
SUPPLEMENTARY FIGURES



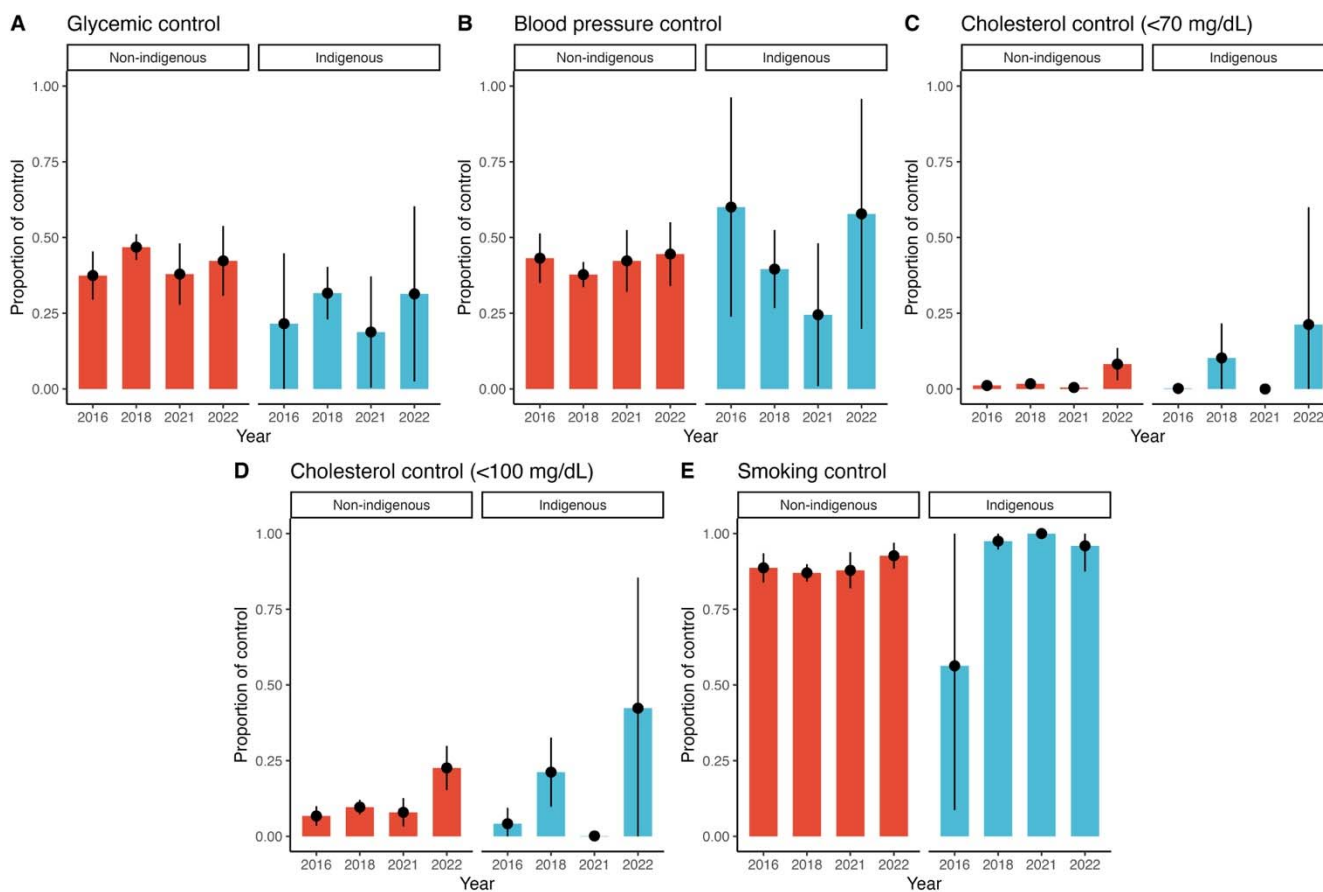
Supplementary Figure 1. Prevalence of control achievement in individuals with diagnosed diabetes in Mexico during 2016-2022 stratified by sex. (A) Prevalence of glycemic control, (B) Prevalence of blood pressure control, (C) Prevalence of cholesterol control (<70 mg/dL), (D) Prevalence of cholesterol control (<100 mg/dL), (E) Prevalence of smoking control.



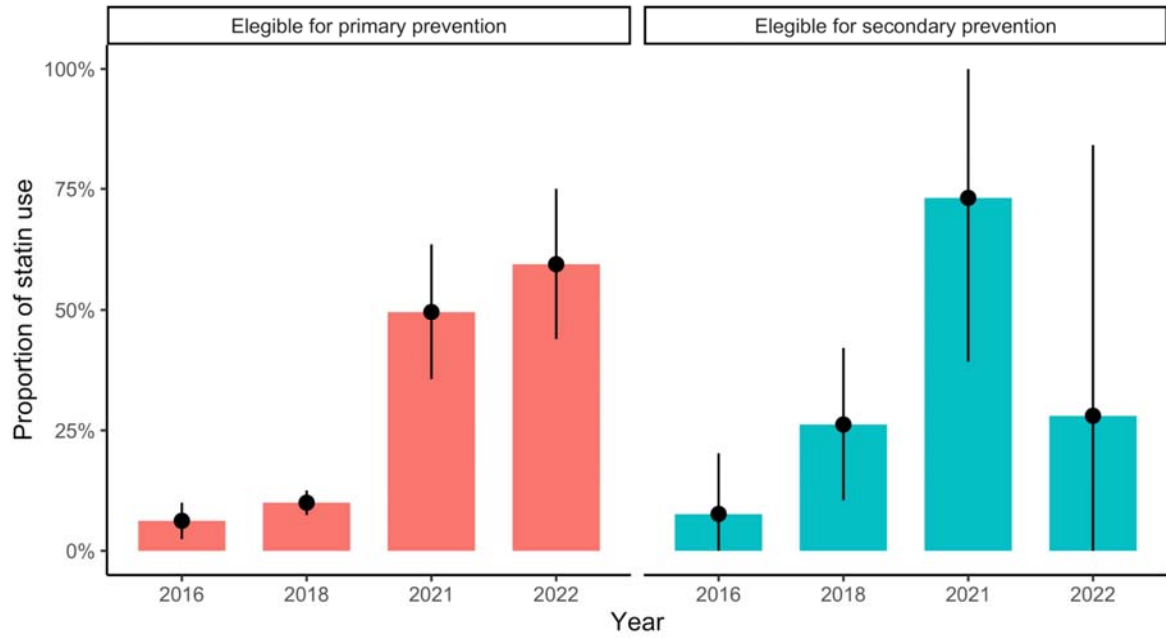
Supplementary Figure 2. Prevalence of control achievement in individuals with diagnosed diabetes in Mexico during 2016-2022 stratified by age groups. (A) Prevalence of glycemic control, (B) Prevalence of blood pressure control, (C) Prevalence of cholesterol control (<70 mg/dL), (D) Prevalence of cholesterol control (<100 mg/dL), (E) Prevalence of smoking control.



Supplementary Figure 3. Prevalence of control achievement in individuals with diagnosed diabetes in Mexico during 2016-2022 stratified by urban versus rural region. (A) Prevalence of glycemic control, (B) Prevalence of blood pressure control, (C) Prevalence of cholesterol control (<70 mg/dL), (D) Prevalence of cholesterol control (<100 mg/dL), (E) Prevalence of smoking control.



Supplementary Figure 4. Prevalence of control achievement in individuals with diagnosed diabetes in Mexico during 2016-2022 stratified by indigenous identity. (A) Prevalence of glycemic control, (B) Prevalence of blood pressure control, (C) Prevalence of cholesterol control (<70 mg/dL), (D) Prevalence of cholesterol control (<100 mg/dL), (E) Prevalence of smoking control.



Supplementary Figure 5. Prevalence of statin users amongst individuals with diabetes eligible for primary and secondary prevention during the 2016-2022 period.