

1 Family income is associated with regional brain glucose metabolism in middle-aged adults

2

3 **RUNNING TITLE**

4 Family income and brain

5

6 Kyoungjune Pak^{1,2*}, Seunghyeon Shin^{3*}, Hyun-Yeol Nam³, Keunyoung Kim^{1,2}, Jihyun Kim¹, Myung

7 Jun Lee^{2,4}

8

9 ¹Department of Nuclear Medicine and Biomedical Research Institute, Pusan National University

10 Hospital, Busan, Republic of Korea

11 ²School of Medicine, Pusan National University, Busan, Republic of Korea

12 ³Department of Nuclear Medicine, Samsung Changwon Hospital, Sungkyunkwan University School

13 of Medicine, Changwon, Republic of Korea

14 ⁴Department of Neurology and Biomedical Research Institute, Pusan National University Hospital,

15 Busan, Republic of Korea

16

17 Kyoungjune Pak* and Seunghyeon Shin* contributed equally in this work.

18

19 Kyoungjune Pak (Corresponding author)

20 Dept. of Nuclear Medicine, Pusan National University Hospital, 179 Gudeok-ro, Seo-gu, Busan

21 49241, Republic of Korea

22 Tel: +82-51-240-7389

23 ilikechopin@me.com

24

25 Seunghyeon Shin (Corresponding author)

26 forladou@naver.com

27

28 Hyun-Yeol Nam

29 monarch23@naver.com

30

31 Keunyoung Kim

32 nmpnuh@gmail.com

33

34 Jihyun Kim

35 march4900@hanmail.net

36

37 Myung Jun Lee

38 mslayer9@gmail.com

39

40

41

42

43

44

45

46

47

48

49

50

51

52

53

54

55 **ABSTRACT**

56 Socioeconomic status is a multifaceted construct that plays a prominent role in shaping our
57 environment by defining our access to healthcare, nutrition, and enrichment, as well as represents
58 social standing. Therefore, to address the effects of family income, and education level on brain
59 glucose metabolism, we analyzed a large cohort of healthy middle-aged adults who underwent brain
60 ¹⁸F- FDG PET, and survey of family income and education level. We retrospectively analyzed data of
61 healthy males who underwent health check-up program. Health check-up program included 1) Brain
62 ¹⁸F-FDG PET, 2) anthropometric measurements, 3) survey of family income and education level, and
63 4) measures of stress, anxiety, and depression. The effects of family income and education level on
64 regional SUVR were investigated using Bayesian hierarchical modelling. A total of 233 healthy males
65 were included in this study. Family income was positively correlated with education level. There was
66 no significant indirect effect of family income or education level via stress, anxiety, or depression on
67 regional brain glucose metabolism. Family income is positively associated with brain glucose
68 metabolism in caudate, putamen, anterior cingulate, hippocampus, and amygdala, while education
69 level does not show any significant association with brain glucose metabolism in middle-aged adults.
70 In conclusion, family income is positively associated with brain glucose metabolism in caudate, putamen,
71 anterior cingulate, hippocampus, and amygdala, while education level does not show any significant
72 association with brain glucose metabolism. This finding might reflect the link between family income,
73 and reward sensitivity, stress in middle-aged adults.

74

75

76

77

78

79

80

81

82 INTRODUCTION

83 Brain is a social organ ¹. No human brain exists outside of a particular socioeconomic
84 context ². Socioeconomic status (SES) is a multifaceted construct that plays a prominent role in
85 shaping our environment by defining our access to healthcare, nutrition, and enrichment, as well as
86 represents social standing ³. SES is predictive of a broad range of important life outcomes ². Higher
87 SES is associated with better health both physically, and mentally. The incidence of heart disease,
88 stroke, cancer, diabetes, as well as depression, anxiety, and psychosis is positively related with SES ⁴.
89 Also, intelligence and academic achievement exhibit positive gradients with SES ².

90 Even after 3 months of social housing, dopamine receptor (DR) availability was increased in
91 dominant monkeys, compared with subordinate monkeys or the baseline state of the individual housing ⁵.
92 In addition, subordinate monkeys were found to be vulnerable to the reinforcing effects of cocaine, while
93 dominant monkeys were found to be resistant to its effects ⁵. Therefore, these neurobiological alterations in
94 DR availability by social context can lead to different behavioral phenotypes ⁵.

95 Examination of the relationship between SES, and the brain has primarily focused on the
96 earlier or later stages of the lifespan when the brain is most vulnerable, which are characterized by
97 notable changes in brain structure and function ⁶. Early by the age of seven months, infant language
98 showed an inverse correlation with lower SES background ⁷. Also, adolescents from lower SES
99 background have less access to enriching opportunities and resources, which could shape how
100 adolescents respond to or pursue rewarding experiences ⁸. In the elderly, the relationship between SES
101 and brain is complicated due to ‘cognitive reserve’, the ability to maintain cognitive abilities despite
102 pathological changes ⁹. Several SES scales have been developed over the years, each using different
103 indicators to measure SES. However, there are several common components used to incorporate SES
104 scale; education level, occupation, income, geographic location, and self-reported of SES ^{10, 11}.

105 Therefore, to address the effects of family income, and education level on brain glucose
106 metabolism, we analyzed a large cohort of healthy middle-aged adults who underwent brain ¹⁸F-
107 Fluorodeoxyglucose (FDG) positron emission tomography (PET), and survey of family income and
108 education level. Human brain utilizes glucose as its main source of energy, thus, brain glucose

109 metabolism, assessed by PET with ^{18}F -FDG could be utilized for quantifying neuronal activity in the
110 human brain ¹². We used Bayesian hierarchical modeling to estimate the effects of family income, and
111 education level on brain glucose metabolism and hypothesized that family income, and education
112 level is positively associated with brain glucose metabolism.

113

114 **MATERIALS AND METHODS**

115 **Subjects**

116 We retrospectively analyzed data from 473 healthy males who underwent health check-up
117 program at Samsung Changwon Hospital Health Promotion Center in 2013. After excluding subjects
118 with neuropsychiatric disorders (n=5) or malignancies (n=3), those with missing data of family
119 income or education level (n=232), 233 subjects were included in this study. Health check-up
120 program included 1) Brain ^{18}F -FDG PET, 2) anthropometric measurements, 3) survey of family
121 income and education level, and 4) measures of stress, anxiety, and depression. Subjects in this study
122 were included in a previous study of the effect of aging on brain glucose metabolism ¹³. The study
123 protocol was approved by the Institutional Review Board of Changwon Samsung Hospital. The
124 requirement for informed consent was waived owing to the retrospective study design.

125 **Brain ^{18}F -FDG PET and Image analysis**

126 Subjects were asked to avoid strenuous exercise for 24 hours and fast for at least 6 hours
127 before PET study. PET/CT was performed 60 mins after injection of ^{18}F -FDG (3.7 MBq/kg) with
128 Discovery 710 PET/CT scanner (GE Healthcare, Waukesha, WI, USA). Continuous spiral CT was
129 obtained with a tube voltage of 120kVp and tube current of 30-180mAs. PET scan was obtained in 3-
130 dimensional mode with full width at half maximum of 5.6 mm and reconstructed using an ordered-
131 subset expectation maximization algorithm. PET scans were spatially normalized to MNI space using
132 PET templates from SPM5 (University College of London, UK) with pmod version 3.6 (PMOD
133 Technologies LLC, Zurich, Switzerland). Automated Anatomical Labeling 2 (AAL2) atlas ¹⁴ was
134 used to define region-of-interests (ROIs). The mean uptake of each ROI was scaled to the mean of
135 global cortical uptake of each individual, and defined as standardized uptake value ratio (SUVR). For

136 a full-volume analysis, the statistical threshold was set at a cluster level and corrected with false
137 discovery rate with $p < 0.05$ in a regression model (correction with age) after smoothing SUVR
138 images with a Gaussian kernel of FWHM 8mm (Statistical Parametric Mapping 12, Wellcome Centre
139 for Human Neuroimaging, UCL, London, UK).

140 **Family income and Education level**

141 Self-reported family income for the last 12 months (Korean won, KRW) was converted to
142 US dollars (USD) with an exchange rate of 1,388 KRW. Education level was defined as the highest
143 level of education completed by each subject; completion of 1) elementary school (6 years), 2) middle
144 school (9 years), 3) high school (12 years), 4) 2-year college (14 years), 5) 4-year college (16 years), 6)
145 graduate school (18 years).

146 **Measures of stress, anxiety, and depression**

147 Stress measures for Korean National Health and Nutrition Examination Survey (KNHANES)
148 consists of 9 self-reported items with higher scores indicating more stress ranging from 9 to 45¹⁵.
149 Beck Anxiety Inventory is a 21 self-report measures with higher scores indicating more anxiety
150 ranging from 0 to 63¹⁶. Centre for Epidemiologic Studies Depression Scale (CES-D) consists of 20
151 self-reported items with higher scores indication more depressed ranging from 0 to 60¹⁷.

152 **Neurosynth Image Decoder**

153 To test the association of family income dependent brain glucose metabolism with
154 Neurosynth terms, we used Neurosynth Image Decoder (<https://neurosynth.org/decode>). The t value
155 map of the association between brain glucose metabolism and family income was uploaded on
156 Neurosynth Image Decoder, and four meta-analytic uniformity maps of with the most similarity were
157 downloaded.

158 **Statistical analysis**

159 Spearman correlation was used to determine the association of family income with education
160 level, and measures of stress, anxiety, and depression. We standardized the continuous variables of
161 age, education level, family income, and log-transformed regional SUVR. Mediation analysis was
162 performed, where each potential mediator (stress, anxiety, and depression) was tested separately in

163 each model with family income or education level as a predictor and regional SUVR as the outcome.
164 The effects of family income and education level on regional SUVR were investigated using Bayesian
165 hierarchical modelling with brms¹⁸⁻²⁰ that applies the Markov-Chain Monte Carlo sampling tools of
166 RStan²¹. We set up a model for family income and education level with regional SUVR as a
167 dependent variable and family income and education level as predictors adjusting for age. These fixed
168 effects (family income, education level, and age) were calculated individually and subject and ROI
169 were added as random intercepts to allow SUVR to vary between subjects and ROIs. Bayesian models
170 were estimated using four Markov chains, each of which had 4,000 iterations including 1,000 warm-
171 ups, thus totaling 12,000 post-warmup samples. The sampling parameters were slightly modified to
172 facilitate convergence (max treedepth = 20). Total, direct, and indirect effects were calculated.
173 Statistical analysis was carried out in R Statistical Software ver 4.4.1 (The R Foundation for Statistical
174 Computing).

175

176 **RESULTS**

177 **Subjects' characteristics**

178 A total of 233 healthy males (mean age: 42.6±3.5 years) were included in this study. The
179 distribution of regional SUVR is shown in Figure 1. The mean family income was 61,319±17,978
180 USD; 32 had less than 50,000 USD, 193 between 50,000 USD and 100,000 USD, 8 more than
181 100,000 USD. The mean education level was 13.6±2.1 years; 1 completed elementary school; 133,
182 high school; 28, 2-year college; 58, 4-year college; 13, graduate school. The subjects' characteristics
183 are summarized in Table 1. Family income was positively correlated with education level ($\rho=0.2580$;
184 $p<0.0001$), while the measures of stress ($\rho=0.0084$; $p=0.8979$), anxiety ($\rho=-0.1224$; $p=0.0620$),
185 and depression ($\rho=-0.0338$; $p=0.6070$) did not show the significant association with family income
186 (Figure 1).

187 **Mediation of the association between family income, education level, and Brain glucose**

188 **metabolism**

189 The direct effect of family income on brain glucose metabolism was significant in amygdala,
190 hippocampus, pallidum, putamen ($p<0.05$), however, that of education level was not significant in any
191 regional brain glucose metabolism. There was no significant indirect effect of family income or
192 education level via stress, anxiety, or depression on regional brain glucose metabolism.

193 **Family income, education level and Brain glucose metabolism**

194 In a Bayesian model, family income was associated with brain glucose metabolism of fusiform,
195 putamen, thalamus, anterior cingulate, pallidum, amygdala, hippocampus, and caudate showing some of
196 their 95% posterior intervals overlapping with zero. However, educational level was not associated
197 with regional brain glucose metabolism (Figure 2). Full-volume analysis revealed the consistent
198 finding that shows the positive association of family income with brain glucose metabolism of
199 caudate, putamen, hippocampus, amygdala, and anterior cingulate (Figure 3).

200 **Localization of family income-dependent brain glucose metabolism and Neurosynth terms**

201 Meta-analytic uniformity maps of reward (correlation coefficient 0.251), monetary
202 (correlation coefficient 0.204), incentive (correlation coefficient 0.198), and motivation (correlation
203 coefficient 0.182) showed the most similarity with family-income dependent brain glucose
204 metabolism. The spatial correlation between family income-dependent brain glucose metabolism and
205 four meta-analytic uniformity maps showed the significant similarity (Figure 4).

206

207 **DISCUSSION**

208 Our main finding is that family income is positively associated with brain glucose metabolism in
209 caudate, putamen, anterior cingulate, hippocampus, and amygdala, while education level does not
210 show any significant association with brain glucose metabolism in middle-aged adults.

211 No human brain exists outside of a particular socioeconomic context². SES is an important
212 factor relating to health and behaviors in mammals, including humans³. SES also defines our social
213 standing and has a significant impact on how our environment is shaped³. Several SES scales have
214 been developed over the years, each using different indicators to measure SES. The Hollingshead
215 scale provides a composite score of social status based on the subject's education level, and

216 occupation¹⁰. The Barratt Simplified Measure of Social Status (BSMSS) scale incorporates education
217 level, and occupation of the subject, subject's parents, and spouse, recognizing that social status is
218 partly determined by the opportunities provided by one's background¹¹. SES predicts a wide range of
219 significant life outcomes. Higher SES is associated with better physical health; incidences of cancer,
220 heart disease, stroke, diabetes, psychosis, depression, and anxiety decline with SES, and lifespan is
221 positively correlated with SES⁴. However, SES is often included in neuroimaging studies as a
222 'nuisance variable', covariates of no interest²². Also, examination of the relationship between SES,
223 and the brain has primarily focused on the earlier or later stages of the lifespan when the brain is most
224 vulnerable, which are characterized by notable changes in brain structure and function⁶. In addition,
225 SES variables such as education level, family income, or occupation may not have a consistent
226 association with brain across subjects with varying ages and social contexts²³. Therefore, we evaluated
227 the association of the elements of SES (family income, and education level) with regional brain glucose
228 metabolism in middle-aged adults.

229 In a study of social dominance in monkeys, dominant monkeys had higher DR availability
230 compared to subordinate monkeys after three months of social housing⁵. Comparing with the baseline
231 state of the individual housing, DR availability was increased only in dominant monkeys, not in
232 subordinate monkeys after the social structure was established⁵. In addition, subordinate monkeys were
233 more susceptible to the reinforcing effects of cocaine⁵. Also, in humans, SES scores measured with the
234 Hollingshead scale²⁴ or BSMSS²⁵ were positively correlated with DR availability in the striatum,
235 suggesting that the higher social status, a greater sense of perceived social support, and lower levels of
236 social avoidance are associated with higher DR availability²⁵. Therefore, social context can have
237 profound effects on brain dopaminergic function in both nonhuman primates and humans. In addition,
238 according to a recent study, adolescents with higher SES background showed greater reward-driven
239 activation than those with lower SES background in the caudate, putamen, suggesting that lower SES
240 environments reduce reward sensitivity²⁶. Also, in adults with lower SES background, the response to
241 negatively valenced stimuli was higher from cortex, and the response to rewarding stimuli was lower
242 from anterior cingulate, striatum than those with higher SES background, probably due to the altered

243 functional connectivity implicated in reward processing and impulse regulation²⁷. Considering that
244 most previous studies analyzed the effect of SES of parents in the childhood, this study investigated
245 the association between family income and brain glucose metabolism more directly, as all subjects
246 included in this study are employed adults who underwent health check-up program as corporate
247 welfare. Therefore, the strong link between family income and glucose metabolism of caudate,
248 putamen, and anterior cingulate in this study might reflect the neuronal activation of reward system,
249 interpreted as the increased reward sensitivity in higher family income, which is consistent with the
250 findings from Neurosynth Image Decoder.

251 In adults who reported financial hardship, the volume of hippocampus and amygdala was
252 smaller than those who did not report financial hardship. Financial hardship is a potent stressor, and
253 might affect the volume of hippocampus and amygdala via the action of the hypothalamic-pituitary-
254 adrenal axis and other stress-related pathways²⁸. Also, equivalent income was associated with the
255 volume of hippocampus-amygdala complex²⁹, reflecting the impact of chronic stress derived from
256 disadvantageous life conditions³⁰. Similar with previous studies, family income was positively
257 associated with brain glucose metabolism in hippocampus, and amygdala, however, no significant
258 indirect effect of family income or education level via stress, anxiety, or depression was observed in
259 this study.

260 Surprisingly, there was no brain region showing the significant association with education level
261 both from ROI analysis and full volume analysis in this study, although family income and education level
262 was significantly correlated. According to previous studies, education level was positively correlated
263 with brain glucose metabolism⁹ and gray matter volume²⁹ of anterior cingulate. The cognitive
264 reserve hypothesis posits that brains with higher reserve could tolerate more aging or pathological
265 effects, thereby minimizing the symptoms in elders with higher education level⁹. However, the
266 subjects included in previous studies (mean age of 67.1, 52.4 years) are older than this study (mean
267 age 42.6 years). Therefore, the effect of education level on the brain might not be substantial until the
268 age of 40s before the aging process accelerates.

269 This study has several limitations. Firstly, only males were included in this study, thus these
270 results may not directly generalize to females. Secondly, this retrospective study was based on health
271 check-up program. Therefore, a brain MRI was not included in the program, and MRI-based
272 coregistration and partial volume correction of PET scans could not be done. Thirdly, self-reported
273 family income for the last 12 months was included in this study, however, there are several other
274 measures of financial status such as income-to-needs ratio, or equivalent income. Lastly, it is unclear
275 whether this observed association between family income and brain glucose metabolism reflects a
276 neurobiological predisposition, or a neurobiological alteration induced by the attainment of income.

277 In conclusion, family income, and education level show heterogeneous relationships with brain
278 glucose metabolism. Family income is positively associated with brain glucose metabolism in caudate,
279 putamen, anterior cingulate, hippocampus, and amygdala, while education level does not show any
280 significant association with brain glucose metabolism. This finding might reflect the link between
281 family income, and reward sensitivity, stress in middle-aged adults.

282

283 **ACKNOWLEDGEMENTS**

284 No

285

286 **CONFLICT OF INTEREST**

287 The authors declare no conflict of interest

288

289 **REFERENCES**

290 1. Insel TR, Fernald RD. How the brain processes social information: searching for the social
291 brain. *Annu Rev Neurosci* 2004; **27**: 697-722.

292

293 2. Farah MJ. The Neuroscience of Socioeconomic Status: Correlates, Causes, and Consequences.
294 *Neuron* 2017; **96**(1): 56-71.

295

- 296 3. Adler NE, Boyce T, Chesney MA, Cohen S, Folkman S, Kahn RL *et al.* Socioeconomic status
297 and health. The challenge of the gradient. *Am Psychol* 1994; **49**(1): 15-24.
298
- 299 4. Adler NE, Stewart J. Health disparities across the lifespan: meaning, methods, and
300 mechanisms. *Ann N Y Acad Sci* 2010; **1186**: 5-23.
301
- 302 5. Morgan D, Grant KA, Gage HD, Mach RH, Kaplan JR, Prioleau O *et al.* Social dominance in
303 monkeys: dopamine D2 receptors and cocaine self-administration. *Nat Neurosci* 2002; **5**(2):
304 169-174.
305
- 306 6. Hedman AM, van Haren NE, Schnack HG, Kahn RS, Hulshoff Pol HE. Human brain changes
307 across the life span: a review of 56 longitudinal magnetic resonance imaging studies. *Hum*
308 *Brain Mapp* 2012; **33**(8): 1987-2002.
309
- 310 7. Betancourt LM, Brodsky NL, Hurt H. Socioeconomic (SES) differences in language are
311 evident in female infants at 7 months of age. *Early Hum Dev* 2015; **91**(12): 719-724.
312
- 313 8. Farah MJ. Socioeconomic status and the brain: prospects for neuroscience-informed policy.
314 *Nat Rev Neurosci* 2018; **19**(7): 428-438.
315
- 316 9. Arenaza-Urquijo EM, Landeau B, La Joie R, Mevel K, Mezenge F, Perrotin A *et al.*
317 Relationships between years of education and gray matter volume, metabolism and functional
318 connectivity in healthy elders. *Neuroimage* 2013; **83**: 450-457.
319
- 320 10. Hollingshead AA. Four-factor index of social status. 1975.
321
- 322 11. Barratt W. The Barratt simplified measure of social status (BSMSS): Measuring SES. 2006.

323

324 12. de Leon MJ, Convit A, Wolf OT, Tarshish CY, DeSanti S, Rusinek H *et al.* Prediction of
325 cognitive decline in normal elderly subjects with 2-[(18)F]fluoro-2-deoxy-D-glucose/positron-
326 emission tomography (FDG/PET). *Proc Natl Acad Sci U S A* 2001; **98**(19): 10966-10971.

327

328 13. Pak K, Malen T, Santavirta S, Shin S, Nam HY, De Maeyer S *et al.* Brain Glucose
329 Metabolism and Aging: A 5-Year Longitudinal Study in a Large Positron Emission
330 Tomography Cohort. *Diabetes Care* 2023; **46**(2): e64-e66.

331

332 14. Rolls ET, Joliot M, Tzourio-Mazoyer N. Implementation of a new parcellation of the
333 orbitofrontal cortex in the automated anatomical labeling atlas. *Neuroimage* 2015; **122**: 1-5.

334

335 15. Kweon S, Kim Y, Jang MJ, Kim Y, Kim K, Choi S *et al.* Data resource profile: the Korea
336 National Health and Nutrition Examination Survey (KNHANES). *Int J Epidemiol* 2014; **43**(1):
337 69-77.

338

339 16. Beck AT, Epstein N, Brown G, Steer RA. An inventory for measuring clinical anxiety:
340 psychometric properties. *J Consult Clin Psychol* 1988; **56**(6): 893-897.

341

342 17. Siddaway AP, Wood AM, Taylor PJ. The Center for Epidemiologic Studies-Depression (CES-
343 D) scale measures a continuum from well-being to depression: Testing two key predictions of
344 positive clinical psychology. *J Affect Disord* 2017; **213**: 180-186.

345

346 18. Bürkner P-C. Bayesian Item Response Modeling in R with brms and Stan. *Journal of*
347 *Statistical Software* 2021; **100**(5): 1-54.

348

349 19. Bürkner P-C. brms: an R package for Bayesian multilevel models using Stan. *Journal of*

- 350 *Statistical Software* 2017; **80**(1): 1-28.
- 351
- 352 20. Bürkner P-C. Advanced Bayesian multilevel modeling with the R package brms. *The R*
353 *Journal* 2018; **10**(1): 395-411.
- 354
- 355 21. RStan: the R interface to Stan. <https://mc-stan.org/>, 2022, Accessed Date Accessed 2022
356 Accessed.
- 357
- 358 22. Farah MJ. Biological Psychiatry and Socioeconomic Status. *Biol Psychiatry* 2019; **86**(12):
359 877-878.
- 360
- 361 23. Tucker-Drob EM, Bates TC. Large Cross-National Differences in Gene x Socioeconomic
362 Status Interaction on Intelligence. *Psychol Sci* 2016; **27**(2): 138-149.
- 363
- 364 24. Wiers CE, Shokri-Kojori E, Cabrera E, Cunningham S, Wong C, Tomasi D *et al.*
365 Socioeconomic status is associated with striatal dopamine D2/D3 receptors in healthy
366 volunteers but not in cocaine abusers. *Neurosci Lett* 2016; **617**: 27-31.
- 367
- 368 25. Martinez D, Orłowska D, Narendran R, Slifstein M, Liu F, Kumar D *et al.* Dopamine type 2/3
369 receptor availability in the striatum and social status in human volunteers. *Biol Psychiatry*
370 2010; **67**(3): 275-278.
- 371
- 372 26. Decker AL, Meisler SL, Hubbard NA, Bauer CCC, Leonard J, Grotzinger H *et al.* Striatal and
373 Behavioral Responses to Reward Vary by Socioeconomic Status in Adolescents. *J Neurosci*
374 2024; **44**(11).
- 375
- 376 27. Gianaros PJ, Manuck SB, Sheu LK, Kuan DC, Votruba-Drzal E, Craig AE *et al.* Parental

377 education predicts corticostriatal functionality in adulthood. *Cereb Cortex* 2011; **21**(4): 896-
378 910.

379

380 28. Butterworth P, Cherbuin N, Sachdev P, Anstey KJ. The association between financial hardship
381 and amygdala and hippocampal volumes: results from the PATH through life project. *Soc*
382 *Cogn Affect Neurosci* 2012; **7**(5): 548-556.

383

384 29. Lotze M, Domin M, Schmidt CO, Hosten N, Grabe HJ, Neumann N. Income is associated
385 with hippocampal/amygdala and education with cingulate cortex grey matter volume. *Sci Rep*
386 2020; **10**(1): 18786.

387

388 30. McEwen BS, Gianaros PJ. Central role of the brain in stress and adaptation: links to
389 socioeconomic status, health, and disease. *Ann N Y Acad Sci* 2010; **1186**: 190-222.

390

391

392

393

394 **FIGURE LEGENDS**

395 Figure 1. The distribution of regional SUVR and the association between family income (USD) and
396 education level (years).

397

398 Figure 2. Posterior intervals of the regression coefficients for family income and education level
399 predicting brain glucose metabolism. The thick lines represent the 80% posterior intervals, the thin
400 lines represent the 95% posterior intervals, and the circles represent posterior means.

401

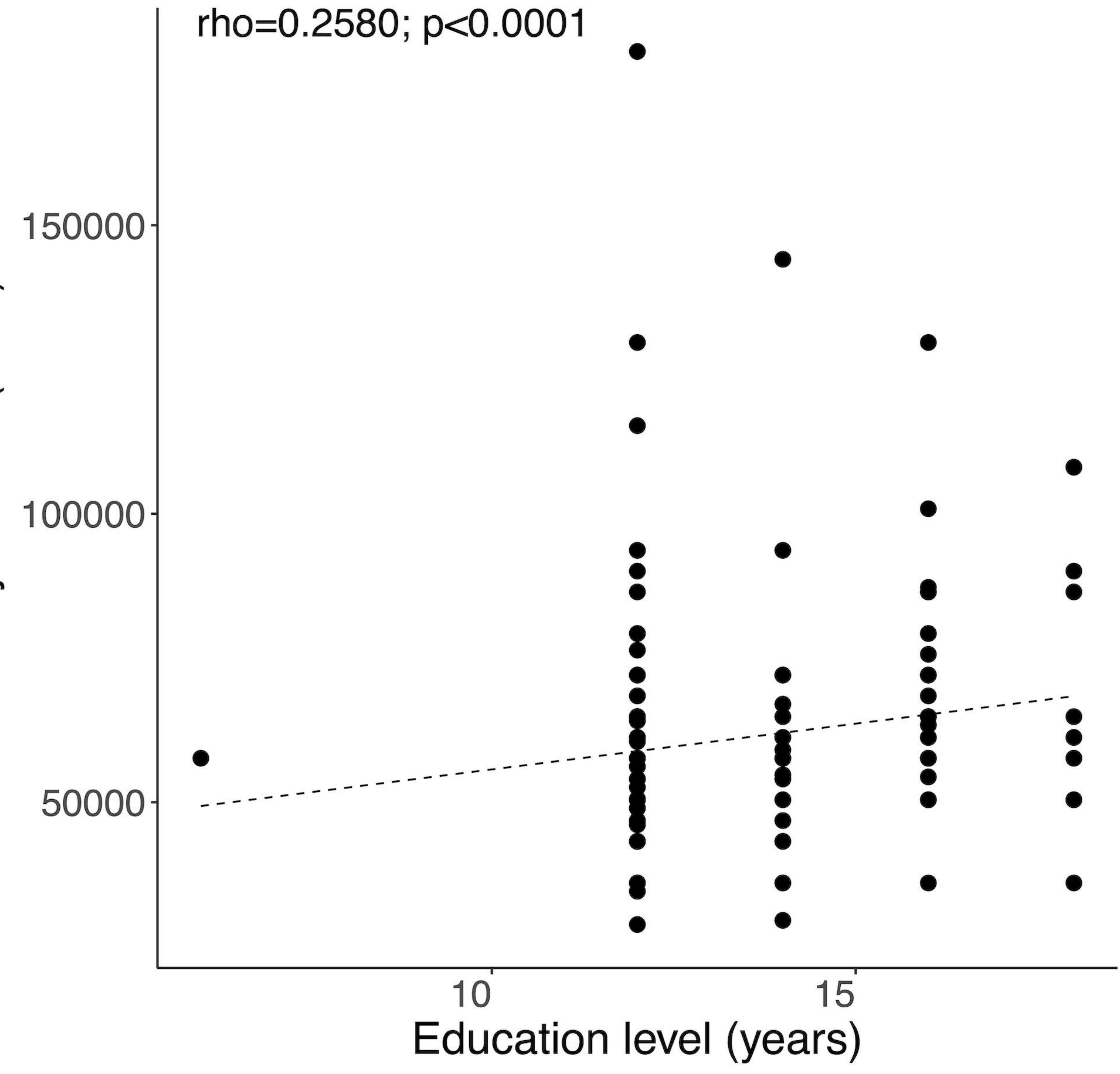
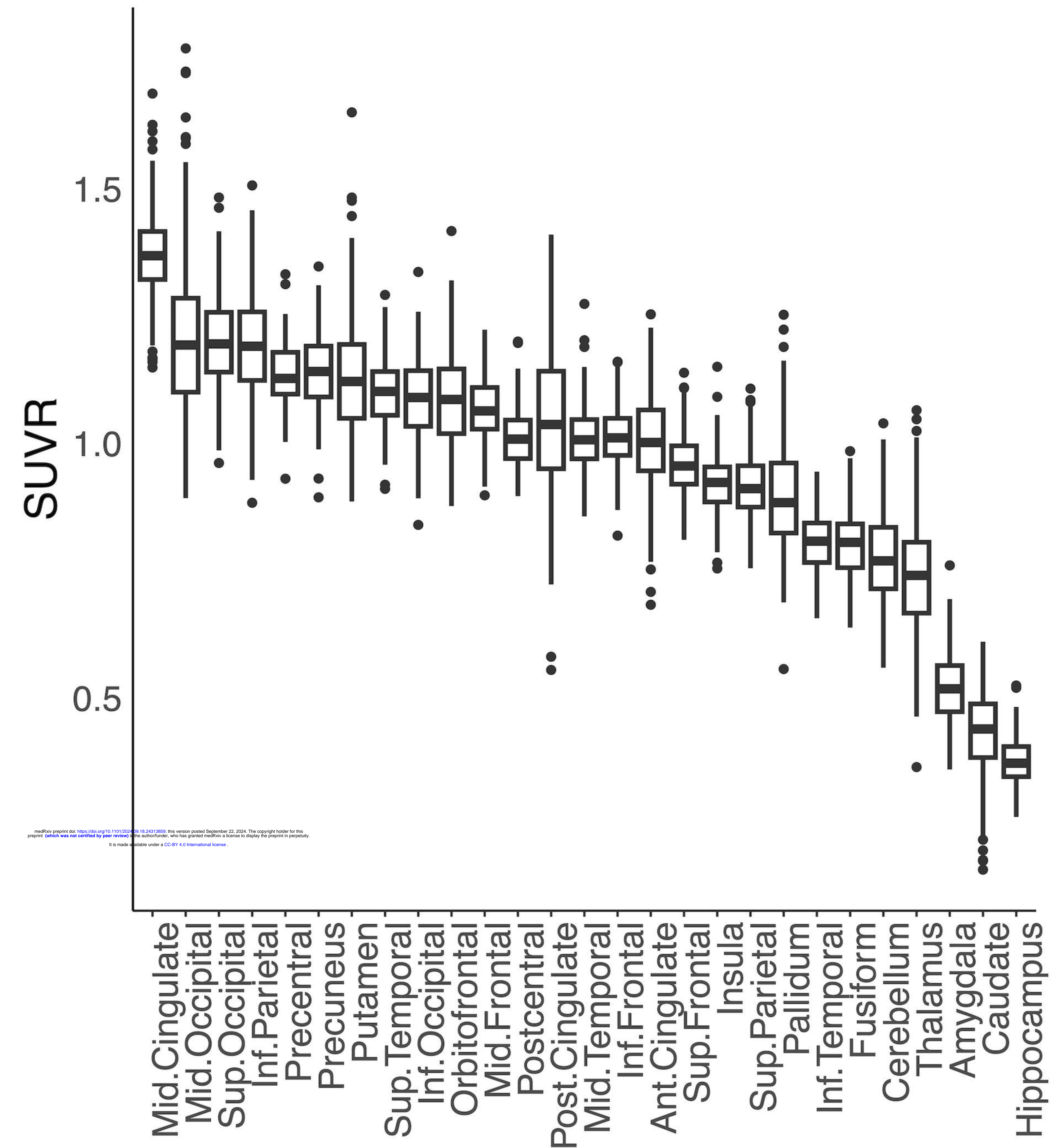
402 Figure 3. Full volume analysis showing the positive association of family income with brain glucose
403 metabolism

404

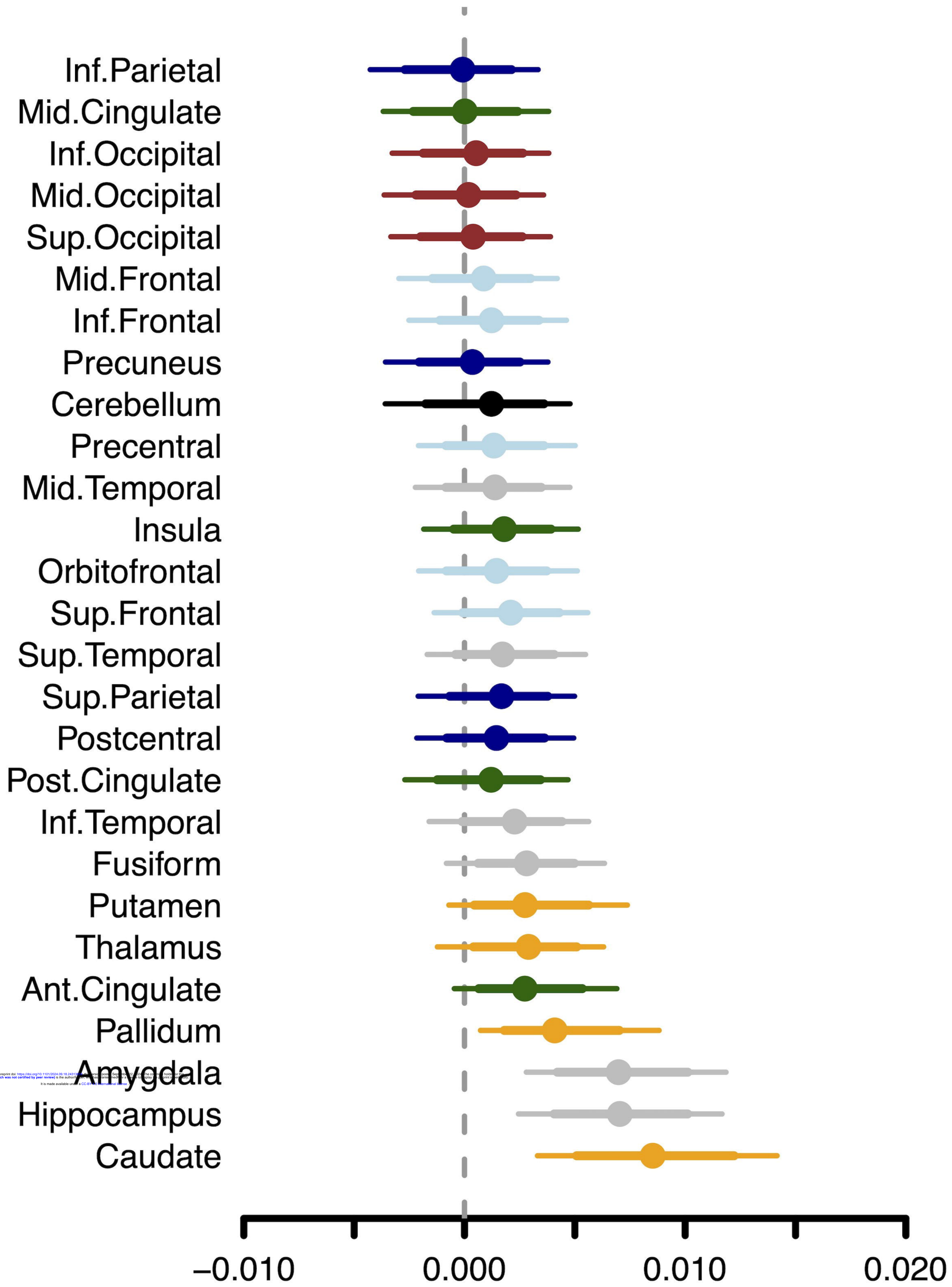
405 Figure 4. Spatial correlation between family income-dependent brain glucose metabolism and meta-
406 analytic blood oxygenation level-dependent functional MRI activation patterns for four terms with the
407 most similarity retrieved from the Neurosynth Image Decoder.

408

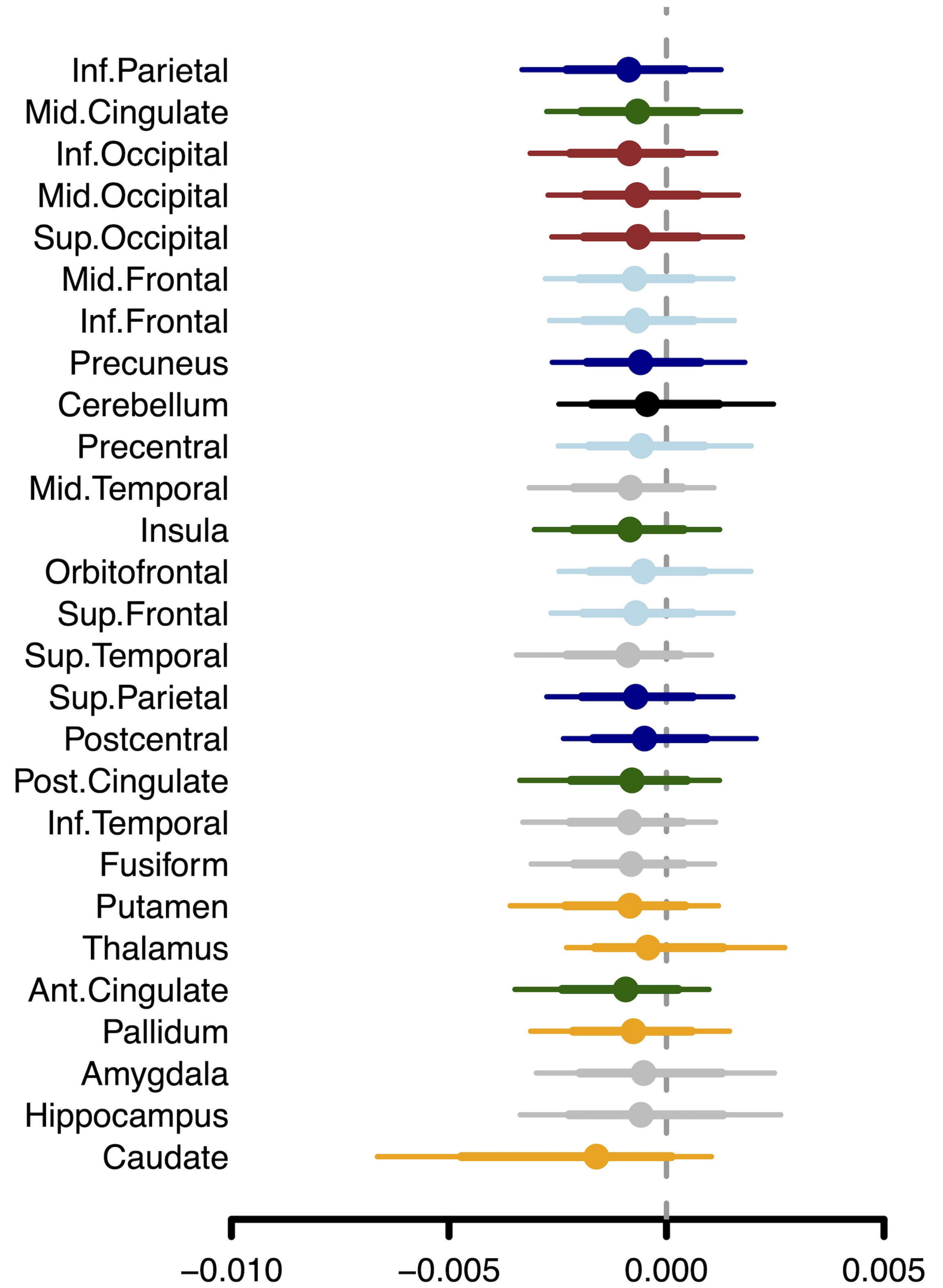
409

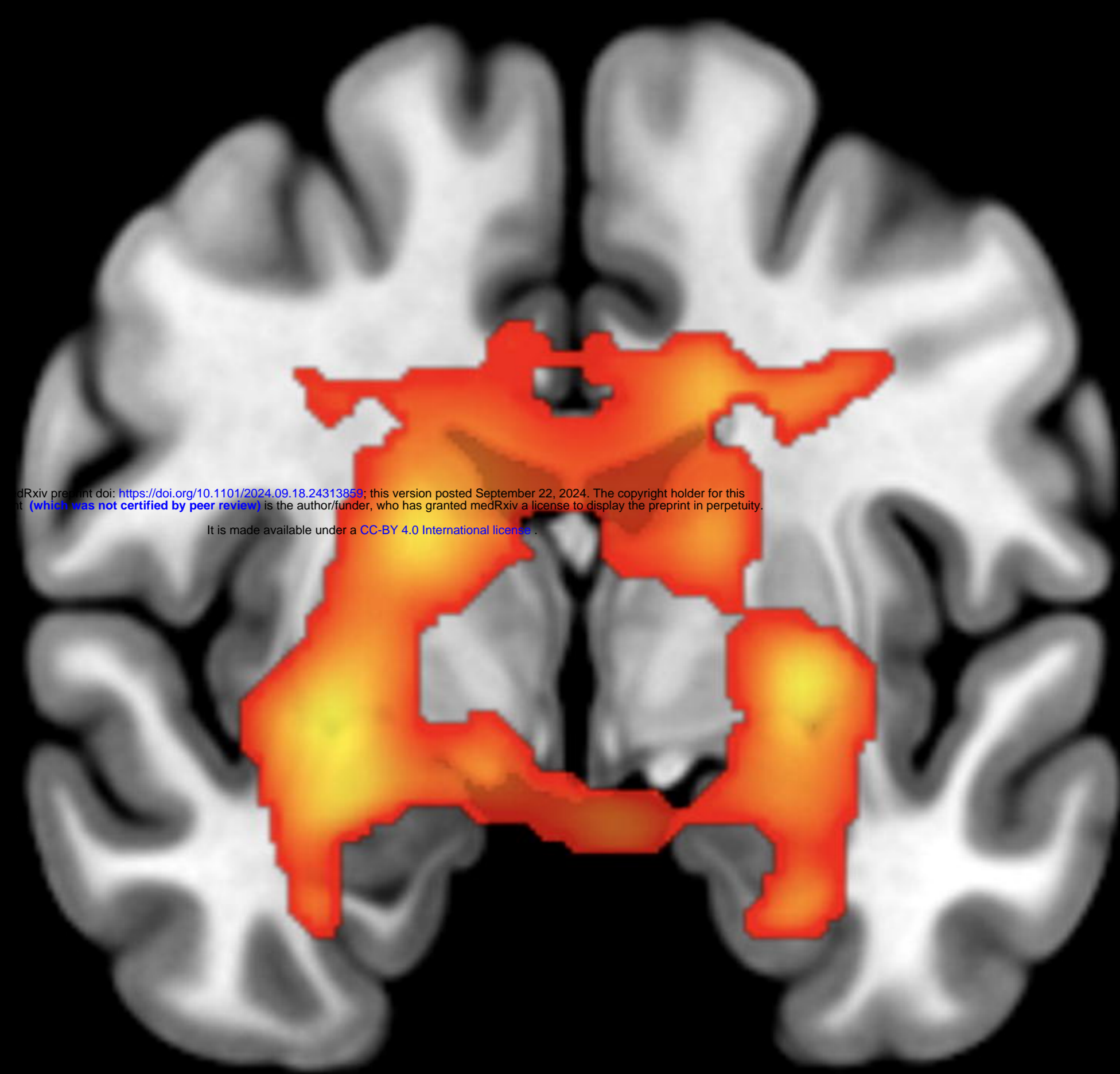


Family income

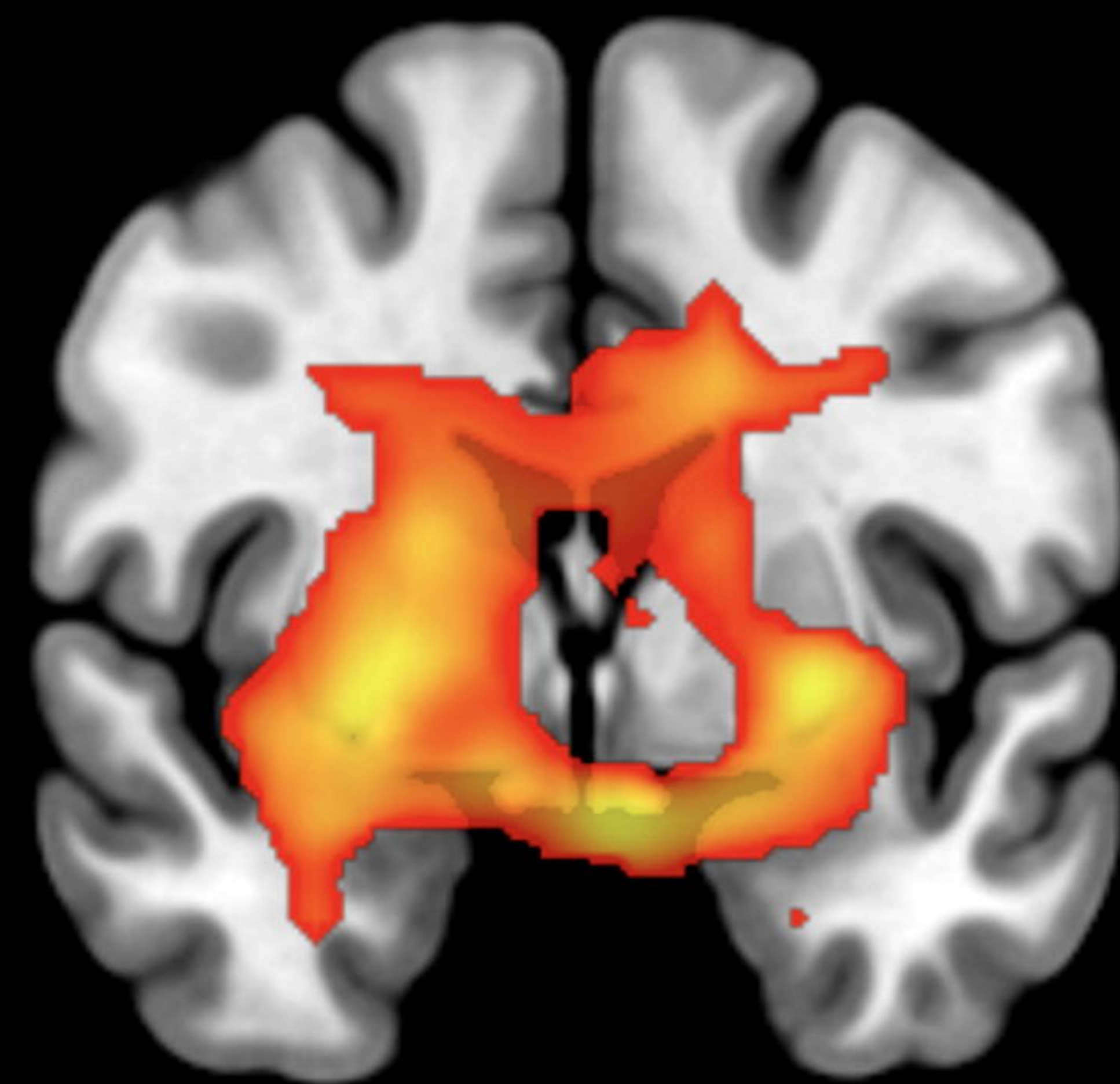


Education level





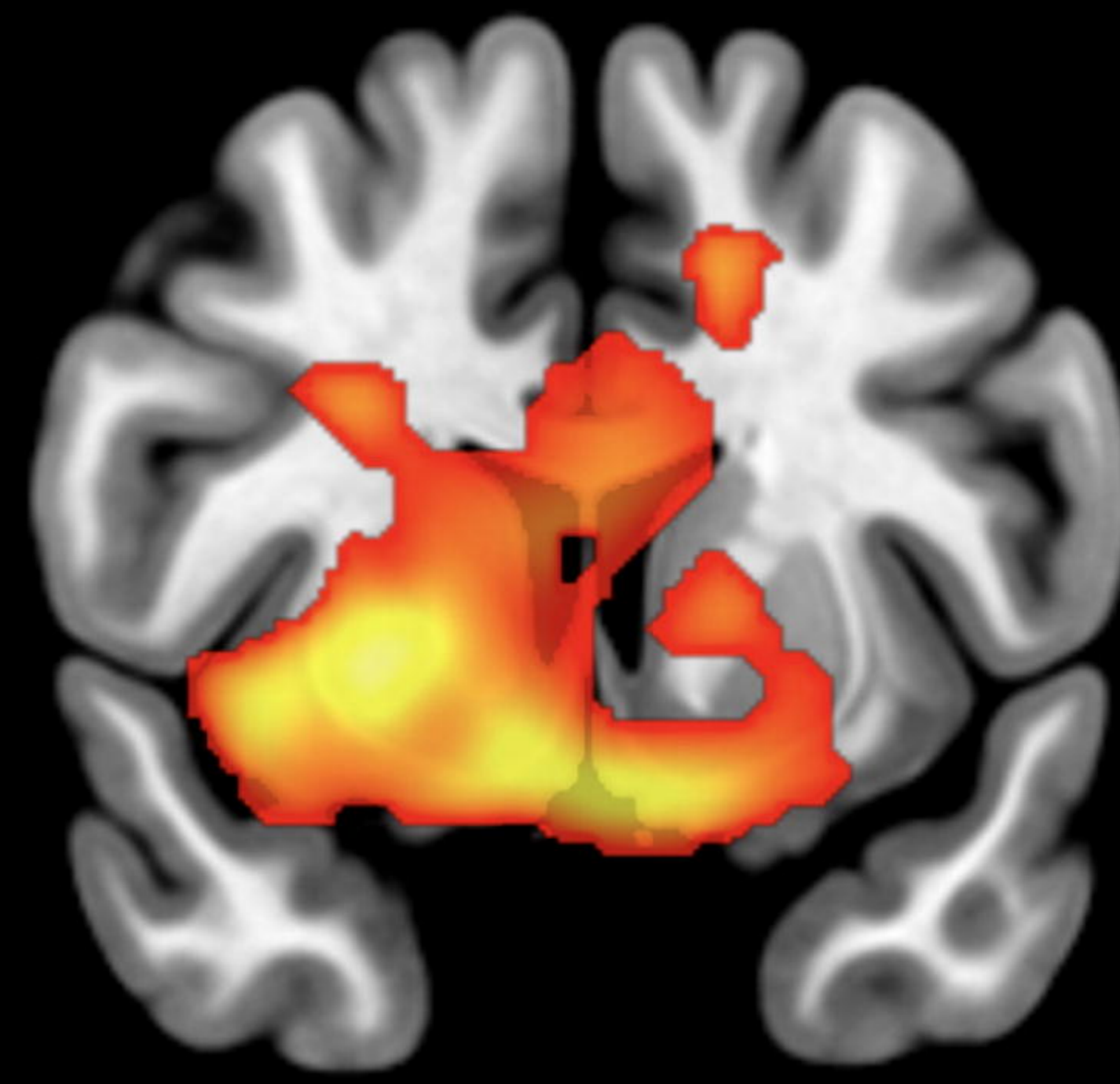
$y = -4$



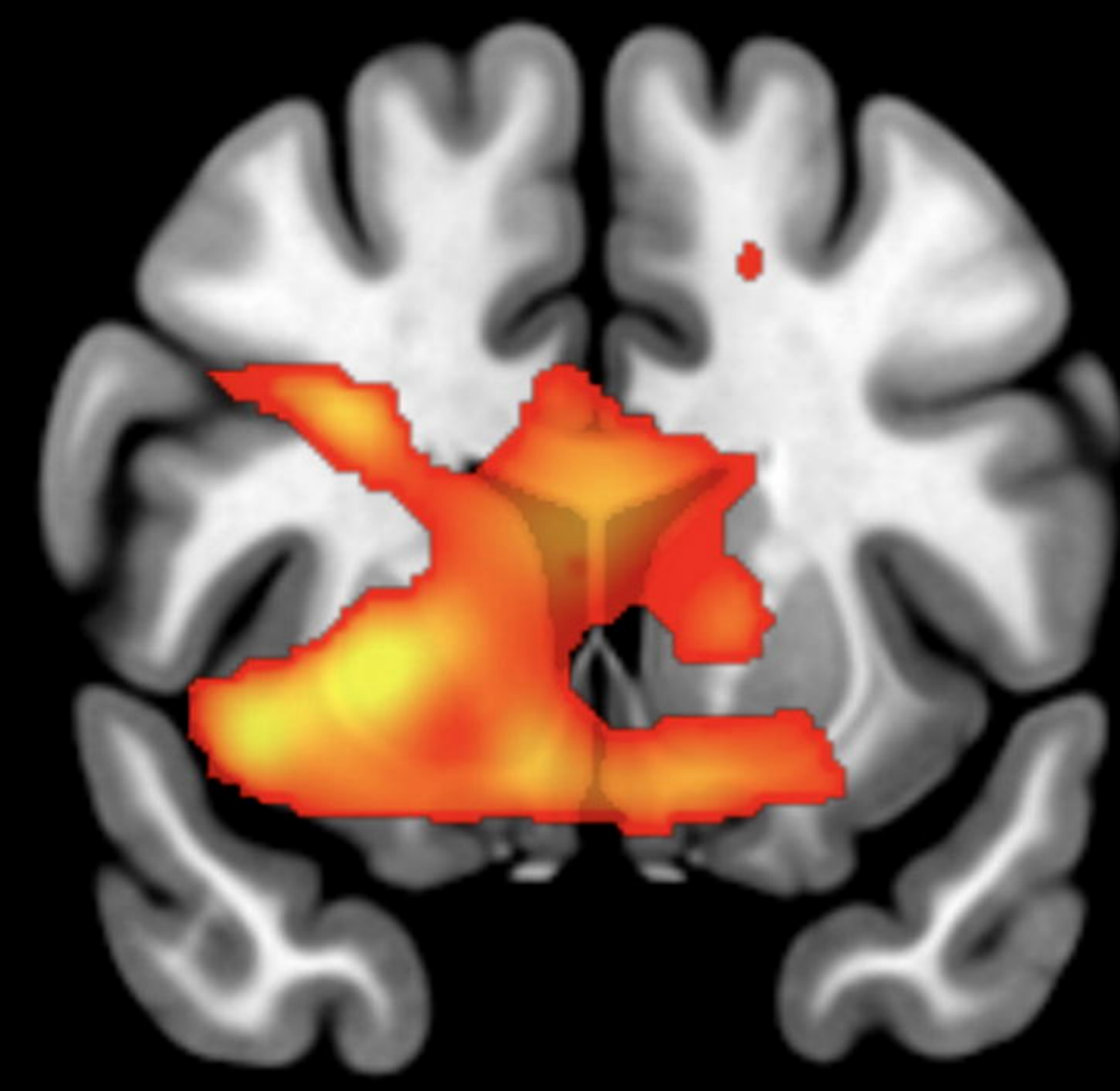
$y = 0$



$y = 4$



$y = 8$



$y = 12$

0

T score

4

