

Relationship between blood-cerebrospinal fluid barrier integrity, cardiometabolic and inflammatory factors in schizophrenia-spectrum disorders

Vladislav Yakimov^{1,2,3#*} (ORCID iD: 0000-0001-9559-7492), Iris Jäger^{1*}, Lukas Roell^{1,3} (ORCID iD: 0000-0002-0284-2290), Emanuel Boudriot^{1,4} (ORCID iD: 0000-0001-6083-6318), Verena Meisinger¹, Mattia Campana^{1,5}, Lenka Krčmář^{1,3}, Sean Halstead^{6,7} (ORCID iD: 0009-0000-4890-3506), Nicola Warren^{6,7} (ORCID iD: 0000-0002-0805-1182), Dan Siskind^{6,7} (ORCID iD: 0000-0002-2072-9216), Isabel Maurus^{1,2} (ORCID iD: 0000-0002-6208-5180), Alkomiet Hasan^{8,9}, Peter Falkai^{1,4,9} (ORCID iD: 0000-0003-2873-8667), Andrea Schmitt^{1,9,10} (ORCID iD: 0000-0002-5426-4023), Florian J. Raabe^{1,4,9} (ORCID iD: 0000-0001-8538-0783), Daniel Keeser^{1,3} (ORCID iD: 0000-0002-0244-1024), CDP-Working Group^{1,2,3,4,5,8,9,10,11}, Elias Wagner^{8,11*}, Joanna Moussiopoulou^{1,3*} (ORCID iD: 0000-0002-0157-6197)

¹Department of Psychiatry and Psychotherapy, LMU University Hospital, LMU Munich, Munich, Germany

²International Max Planck Research School for Translational Psychiatry (IMPRS-TP), 80804 Munich, Germany

³NeuroImaging Core Unit Munich (NICUM), LMU University Hospital, LMU Munich, 80336 Munich, Germany

⁴Max Planck Institute of Psychiatry, 80804 Munich, Germany

⁵Department of Psychiatry and Psychotherapy, Medical Faculty, LVR Hospital of the Heinrich Heine University Düsseldorf, Düsseldorf, Germany

⁶Medical School, The University of Queensland, Brisbane, QLD, Australia

⁷Metro South Addiction and Mental Health, Brisbane, QLD, Australia

⁸Department of Psychiatry, Psychotherapy and Psychosomatics, Faculty of Medicine, University of Augsburg, 86156 Augsburg, Germany

⁹German Center for Mental Health (DZPG), partner site Munich/Augsburg, Germany

¹⁰Laboratory of Neuroscience (LIM27), Institute of Psychiatry, University of Sao Paulo, São Paulo, Brazil

¹¹Evidence-based Psychiatry and Psychotherapy, Faculty of Medicine, University of Augsburg, Stenglinstrasse 2, 86156 Augsburg, Germany

* These authors contributed equally

#Corresponding author:

Dr. med. Vladislav Yakimov

Address: Department of Psychiatry and Psychotherapy, University Hospital, LMU Munich, Nussbaumstrasse 7, 80336 Munich, Germany

Email address: V.Yakimov@med.uni-muenchen.de

Running title: Blood-cerebrospinal fluid barrier disruption in schizophrenia

Word Count Abstract: 252 words

Word Count Manuscript (main text): 3942 words

Tables: 1

Figures: 4

Abstract

The blood-cerebrospinal fluid barrier (BCB) builds an integral interface between the central nervous system and the periphery and appears to be impaired in a substantial proportion of individuals with schizophrenia-spectrum disorders (SSD). Even though a disruption of the BCB is associated with higher symptom severity, factors linked to BCB disruption in SSDs have been minimally investigated.

To address this gap, 57 inpatients with SSD underwent cerebrospinal fluid (CSF) and blood analyses as well as comprehensive clinical assessments. In a subgroup of 28 participants structural magnetic resonance imaging (MRI) was performed. We developed a BCB dysfunction score, employing principal component analysis of CSF/serum albumin, CSF/serum IgG ratios and total protein levels in CSF, with higher values indicating stronger abnormalities. We calculated multiple regression models to explore the associations between BCB integrity and cardiometabolic, inflammatory, brain morphometric, and clinical measures respectively.

BCB dysfunction score was negatively associated with high-density lipoprotein cholesterol and positively associated with total cholesterol, low-density lipoprotein cholesterol, and triglycerides. Furthermore, we observed a trend towards a positive association between BCB dysfunction score and treatment resistance that did not survive multiple testing correction. We did not find significant associations between the BCB composite score and any other assessed cardiometabolic, inflammatory or cerebroventricular measures.

These findings suggest that BCB integrity is associated with dyslipidemia in SSD, highlighting the interplay between cardiometabolic risk factors and brain health in SSD. Addressing cardiometabolic health in individuals with SSD might thus have implications

beyond physical health, potentially influencing the integrity of the BCB and, consequently, clinical trajectories.

Key Words: schizophrenia, CNS barriers, cardiovascular system, inflammation, ventricular system

1. Introduction

Schizophrenia-spectrum disorders (SSD) are among the leading causes of morbidity worldwide due to high rates of treatment resistance as well as cognitive and functional impairment¹. Compared to the general population, life expectancy is reduced by ~15 years² not only due to high rates of suicide, but also due to high prevalence of somatic comorbidities such as cardiovascular diseases^{3,4}. Of note, data from drug-naïve first episode schizophrenia (SCZ) patients^{4,5}, as well as genetic studies^{6,7}, indicate that metabolic disturbances are not just sequelae of unhealthy lifestyle factors and adverse drug reactions, but potentially contribute to SSD pathophysiology.

Metabolic syndrome (MetS) is defined as the occurrence of at least three of interrelated cardiometabolic risk factors including central obesity, hypertension, hyperglycemia, and dyslipidemia⁸. It is highly prevalent in SSD⁹ and high-quality meta-analytic evidence suggests a link between MetS and cognitive impairment in people with SCZ^{10,11}. Furthermore, a study from the ENIGMA Working Group demonstrated that body-mass-index (BMI) (as a proxy for obesity) was additively associated with structural alterations in many of the same brain regions affected in schizophrenia, including changes in cortical thickness¹². Despite the limitations of the cross-sectional nature of this data, they suggest a complex relationship between metabolic disturbances, brain structure, and cognitive functions in individuals with SSD.

Even though the exact pathophysiology of SSD remains elusive, recent research has highlighted the role of immune system dysfunction as a contributing factor in a subset of individuals with SSD^{13,14}. Converging evidence from genetic¹⁵, as well as, large-scale epidemiological studies^{16,17} point to the role of immune dysregulation in SSD¹⁸. Furthermore, preliminary evidence from multimodal studies combining neuroimaging data with peripheral inflammatory markers suggests a link between peripheral low-grade inflammation and structural, as well as, functional cerebral changes, which potentially increase the risk for more pronounced psychopathology¹⁴.

Impairments of the blood-brain barrier (BBB) and the blood-cerebrospinal fluid (CSF) barrier (BCB) are common findings in SSD^{19,20}. While both barriers share similar functions, the BBB is spread throughout the brain whereas the BCB is mainly formed by epithelial cells of the choroid plexus (ChP) and the arachnoid membrane facing the CSF^{21,22}. Of note, CSF/serum ratios of proteins such as albumin and immunoglobulin G (IgG) are technically an indirect measure of BCB and not BBB integrity^{21,22}. Some of the functions of both interfaces include ensuring a stable milieu¹⁸, which is crucial for intact neural signaling in the brain, as well as transport of nutrients, oxygen, and waste products¹⁸. BCB and BBB also act as central immunological nodes, building the interface between central and peripheral immune system and coordinating access of leukocytes to the central nervous system (CNS)^{18,23}. Hence, a barrier disturbance is likely to be associated with disruption of brain homeostasis and functioning with potential relevance for SSD (psycho)pathology¹⁸. In line with those findings, there is growing evidence suggesting increased ChP volumes²⁴, variability²⁵, altered ChP epithelia²⁶, and associated upregulation of immune genes in the ChP²⁷ of individuals with SSD. Despite the anatomical and functional relevance of the ChP for BCB²³ and the growing evidence for alterations of both ChP²⁴ and BCB¹⁹ in SSD, the relationship between those two has never been studied before.

Even though the exact cause of BCB disruption in SSD is not known, one of the hypotheses states that it occurs following a primary inflammatory insult¹⁸. Once disrupted, this might render the brain susceptible to peripheral immune effectors with the potential to disturb brain

function¹⁸. Since blood vessels and especially endothelial cells are an integral building unit of the BCB, it is likely that vascular dysfunction, as a result of high cardiometabolic burden (e.g., hypertension, diabetes, obesity and dyslipidemia), might also be of relevance.

To address these questions, in our study we 1) explored the associations between BCB integrity and different disease characteristics (duration of illness, duration of antipsychotic treatment, first episode psychosis status) and clinical factors (global functioning, treatment resistance, positive, negative, and general symptoms, cognitive impairment). Next, we 2) studied the links between BCB integrity and peripheral inflammatory markers as well as 3) cardiometabolic risk factors. Lastly, in a subgroup of participants with SSD we 4) investigated the associations between BCB integrity and volumes of cerebroventricular regions, such as choroid plexus and lateral ventricles.

2. Methods

2.1. Participants

This study was conducted in the context of the IMPACT study, an ongoing add-on study to the Munich Mental Health Biobank (project number 18-716)²⁸, and approved by the ethics committee of the Faculty of Medicine, LMU University Hospital Munich (project number 21-1139).

The recruitment of study participants was conducted at the Department of Psychiatry and Psychotherapy, LMU University Hospital, LMU Munich, Germany, between July 26, 2018, and April 24, 2023. Only inpatients (N=57) were included. All study participants provided written informed consent and were between 18 and 65 years old. Included patients had a primary diagnosis of schizophrenia, schizoaffective disorder, delusional disorder, or brief psychotic disorder, collectively referred to as SSD throughout the manuscript.

Exclusion criteria were as follows: concurrent clinically relevant neurological disorders, such as multiple sclerosis and epilepsy, history of encephalitis, meningitis, stroke, traumatic brain

injury or cerebral surgery, current pregnancy or lactation, rheumatic disorders, inflammatory bowel disease, active malignancy, and acute or chronic infection.

2.2. Clinical assessments

The clinical characterization was performed by trained study personnel as previously described by our working group^{29,30}. The German version 7.0.2 of Mini International Neuropsychiatric Interview (M.I.N.I.)³¹, based on DSM-5 criteria, was conducted with all study participants to confirm the diagnosis. Symptom severity was assessed with the Positive and Negative Syndrome Scale (PANSS)³² and global functioning with the Global Assessment of Functioning (GAF)³³ scale. The assessments were performed within four weeks around the lumbar puncture. Information regarding medication, duration of illness (DUI), BMI, blood pressure, heart rate, concomitant somatic conditions, and current smoking status was collected based on self-report and by examining medical reports. Current treatment or history of clozapine use was used as a proxy for treatment resistance, as previously suggested³⁴.

To assess the cognitive performance of the participants, the Montreal Cognitive Assessment (MoCA)³⁵ and the Trail-Making-Test (TMT, part A and B) were performed in a subgroup of participants.

2.3. Blood and cerebrospinal fluid analyses

In line with recommendations from the German schizophrenia guideline^{19,36}, lumbar puncture was offered to all patients with first- (FEP) or multi-episode psychosis (MEP), who had not yet received CSF analysis in the past as part of the diagnostic work-up to exclude concurrent somatic etiologies. Paired CSF and serum samples were analyzed as part of the clinical routine diagnostics by the Institute of Laboratory Medicine, LMU Munich.

Most of the study participants underwent a basic blood test, including full blood (N = 54) and serum (N = 52 – 56, depending on the variable assessed) analyses, within 3 weeks from the

lumbar puncture as part of the clinical routine in our clinic. This was done during the morning hours under fasting conditions. The full blood analysis included a complete blood count, and the serum analysis included assessment of C-reactive protein (CRP), triglycerides, total cholesterol, low-density lipoprotein (LDL) cholesterol, high-density lipoprotein (HDL) cholesterol, glycated hemoglobin (HbA1c), albumin, immunoglobulin G (IgG) levels, and the presence of oligoclonal bands (OCBs). To compute CSF/serum albumin and IgG ratios, serum and CSF were collected and assessed at the same timepoint. The neutrophil-to-lymphocyte ratio (NLR) and monocyte-to-lymphocyte ratio (MLR) were calculated by dividing the absolute number of neutrophils and monocytes each by the absolute number of lymphocytes per individual³⁷. Further information is provided in the supplementary methods section.

2.4. Magnetic resonance imaging

A subset of 28 participants underwent brain magnetic resonance imaging (MRI) using a Siemens Magnetom Prisma 3T scanner (Siemens Healthineers AG, Erlangen, Germany) equipped with a 32-channel head coil. Regional brain volumes, including the lateral ventricles, third and fourth ventricles were quantified in cubic millimeters using FreeSurfer software (version 7.3.2; <https://surfer.nmr.mgh.harvard.edu>)³⁸. We utilized the FreeSurfer atlas to obtain the volumes of the ventricles. Additionally, the choroid plexus (ChP) in the lateral ventricles was manually segmented on the 3D-T1 images by one of the first authors (IJ), who was trained by a neuroimaging expert (DK). We employed ITK-SNAP software, version 4.2.0 (<http://www.itksnap.org>). The rater was blinded regarding clinical and imaging data and followed a previously published protocol for ChP segmentation³⁹. The ChP as well as the ventricle measures were adjusted for total intracranial volume using the proportions method⁴⁰. Structural MRI data quality control was performed as previously described by our working group⁴¹. Further information is provided in the supplementary methods section.

2.5. Assessment of BCB dysfunction

To quantify the integrity of the BCB, we computed a principal component analysis (PCA) including the CSF/serum albumin ratio, CSF/serum IgG ratio, and total protein levels in CSF as variables of interest (Fig. S1). All three measures have been associated with BCB disruption and regarded as biomarkers for BCB functioning^{42,43}. The variables were scaled, using the “*scale*” function in R, to increase comparability, given their differing scales. PCA reduces the dimensionality of data that are correlated⁴⁴. Instead of analysing all three measures individually PCA summarizes the information represented by those measures in one BCB composite score, which mirrors the integrity of the BCB (the higher the BCB composite score, the lower the BCB integrity and the higher the degree of BCB dysfunction) better than any of those measures alone.

2.6. Statistical analyses

The R language (v4.2.1, R Core Team, 2021) in RStudio environment (RStudio Team, 2020)⁴⁵ was used for all statistical analyses and visualizations. The following statistical tests were used to compare differences in demographic and clinical variables between SSD and HC: Fisher's exact test for categorical variables, Welch's *t* test for normally distributed and Wilcoxon rank-sum test for non-normally distributed continuous variables. Shapiro–Wilk test was used to assess normality within groups⁴⁶.

To investigate the relationships between BCB composite score (predictor variable) and measures of psychopathology, cognition, or cerebroventricular measures as outcome variables we computed multiple linear regressions, controlling for age and sex as covariates. In the linear regression models including cognition measures we additionally controlled for years of education as a covariate. To investigate the association between BCB composite score (predictor variable) and treatment resistance (outcome variable), we computed a logistic regression controlling for age, sex, smoking status, and BMI as covariates. To study the relationships between cardiometabolic risk factors (e.g., total cholesterol, HbA1c) or

inflammatory measures (e.g., CRP) as predictor variables and BCB composite score as outcome variable, we conducted multiple linear regressions controlling for age, sex, BMI and smoker status, as previously suggested^{47,48}.

The threshold for statistical significance was set at p value < 0.05 . Results from the descriptive statistics are shown as mean \pm standard deviation (SD). We employed the Benjamini-Hochberg method⁴⁹ for multiple testing correction within every group of sub-analyses. False discovery rate (FDR) adjusted p values were reported as q values.

3. Results

3.1. Cohort characteristics

The study cohort consisted of 57 individuals with SSD who were inpatients at the Department of Psychiatry and Psychotherapy, LMU university hospital, Munich, and underwent a lumbar puncture for diagnostic reasons. The cohort included 42 (74%) male and 15 (26%) female participants with an average age of 34.32 ± 11.97 years. Nearly half of the participants included (27/55; 49%) were active smokers. Thirty-eight individuals were diagnosed with schizophrenia (67%) and 13 with brief psychotic disorder (22%), five with schizoaffective disorder (9%), and one with delusional disorder (2%). Thirty-five (61%) of the participants had a first episode of psychosis at the time of inclusion. The mean duration of illness was 60.24 months (SD = 94.20) and the mean duration of antipsychotic treatment at the time of inclusion was 47.88 months (SD = 95.89). Forty-seven participants were assessed with the PANSS and averaged a total score of 62.87 ± 13.09 . The average GAF score of the participants was 46.87 ± 11.42 . Forty-one individuals performed the cognitive tests scoring an average of 25.93 ± 3.65 in the MoCA. They required an average of 33.39 ± 14.83 seconds to complete the TMT-A and 94.38 ± 65.15 seconds for the TMT-B. One of the 41 participants did not complete the TMT-B (Table 1).

3.2. Cerebrospinal fluid and blood characteristics

Mean number of white blood cells was $0.88 \pm 1.09/\mu\text{l}$ and no participant demonstrated a CSF pleocytosis. Oligoclonal IgG bands were present in 5/57 (8.8%) participants and none of these cases were of intrathecal origin (Table St1). Mean CSF protein level was 42.42 ± 18.55 mg/dl, mean CSF/serum albumin ratio (Q_{alb}) was 6.53 ± 3.36 and mean CSF/serum IgG ratio was 3.18 ± 1.66 . The age-adjusted Q_{alb} was elevated in 24/57 (42.1%) participants and neuronal autoantibodies were not detected in CSF or blood in any of the participants.

Following our PCA, the first principal component (PC1) explained 98.5% of the data variance (Fig. S1), so it was used to create a composite score that mirrors the BCB integrity (referred to as BCB composite score throughout the manuscript). Higher values of BCB composite score indicate higher level of disruption and lower BCB integrity.

In our cohort the mean numbers of neutrophils, monocytes, and lymphocytes ($N = 56$) were 4.27 ± 1.82 thou./ μl , 0.53 ± 0.17 thou./ μl , and 1.86 ± 0.57 thou./ μl , respectively. Mean neutrophil-to-lymphocyte ratio (NLR) was 2.43 ± 1.03 , mean monocyte-to-lymphocyte ratio (MLR) was 0.30 ± 0.10 and mean CRP: 0.18 ± 0.26 mg/dl. An elevated CRP level (> 0.5 mg/dl) was found in 5/56 (8.9 %) participants. Mean total cholesterol was 178.20 ± 32.64 mg/dl, mean high-density lipoprotein (HDL) cholesterol was 53.24 ± 16.48 mg/dl, mean low-density lipoprotein (LDL) cholesterol was 109.10 ± 37.74 mg/dl. Those parameters were abnormal in 14/55 (25.5%), 27/55 (49.1%), and 19/55 (34.5%) participants respectively (Table St2). Mean triglyceride level was 118.50 ± 82.99 mg/dl, mean glycated hemoglobin (HbA1c) was 5.34 ± 0.51 %. They were elevated in 14/55 (25.5%) and 3/54 (5.6%) participants respectively.

3.3. Association between blood-cerebrospinal fluid barrier integrity and clinical phenotype

First, we investigated whether there was an association between psychopathology or level of functioning and BCB integrity. We found no significant associations of BCB composite score

with PANSS positive, negative, general, and total scores or GAF scores (Fig. 1B, 1C, Fig. S2, Table S2). However, there was a nominally significant association between current or past treatment with clozapine and higher BCB composite score (Fig. 1A), which did not survive correction for multiple testing (estimate [95% CI] = 0.668 [0.158, 1.177]; $p = 0.031$; $q = 0.186$). After correcting for age, sex, and years of education, we found no significant associations between TMT A, TMT B, MoCA scores and BCB composite score (Fig 1D, Fig. S2, Table S3). Furthermore, there was no significant association between BCB composite score and duration of illness, duration of antipsychotic treatment, or first episode psychosis status (Fig. S3, Table S1).

3.4. Relationship between cardiometabolic factors and blood-cerebrospinal fluid barrier integrity

Subsequently, we explored the relationships between cardiometabolic risk factors and the blood-cerebrospinal fluid barrier composite score in SSD participants. We found significant positive associations between total cholesterol (estimate [95% CI] = 0.026 [0.014, 0.038]; $q = 0.003$), LDL cholesterol (estimate [95% CI] = 0.023 [0.013, 0.033]; $q = 0.001$), triglycerides (estimate [95% CI] = 0.013 [0.008, 0.017]; $q = 0.00006$) on the one hand, and BCB composite score on the other as well as a significant negative association between HDL cholesterol (estimate [95% CI] = -0.045 [-0.067, -0.022]; $q = 0.004$) and BCB composite score (Figure 2, Table S4), after controlling for the covariables age, sex, BMI, and smoking status. We did not find a significant association between other cardiovascular factors such as systolic blood pressure or HbA1c, and BCB composite score (Figure S4, Table S4).

3.5. Relationship between peripheral inflammation and blood-cerebrospinal fluid barrier integrity

Next, we investigated a possible association between peripheral inflammatory factors and BCB integrity. We did not find significant relationship between absolute neutrophil, monocyte

and lymphocyte counts and the BCB composite score respectively. There was also no significant association between NLR, MLR, CRP levels and BCB composite score (Fig. 3, Fig. S5, Table S5).

3.6. Relationship between blood-cerebrospinal fluid barrier integrity and cerebroventricular regions

Due to the functional relationship between the BCB and the cerebroventricular regions, particularly the choroid plexus, we investigated the association between the level of BCB disruption and the volumes of lateral ventricles, 3rd ventricle, 4th ventricle and choroid plexus in a subset of participants. We found no significant associations between the BCB composite score and the volumes of the 3rd ventricle, the 4th ventricle, the left and right lateral ventricle or the left and right choroid plexus (Fig. 4, S6, Table S6).

4. Discussion

In our study we found significant associations between higher total cholesterol, LDL cholesterol, triglycerides and disrupted BCB integrity as well as a significant association between lower HDL cholesterol and disrupted BCB integrity in individuals with SSD. We did not find significant associations between BCB composite score and measures of psychopathology or disease characteristics, despite a trend towards higher degree of BCB disruption in individuals with history of clozapine treatment. Additionally, there was no significant relationship between BCB disruption and peripheral immune markers or volumetric measures of cerebroventricular regions, respectively.

BCB disruption is a common finding in SSD¹⁹, but data on its relevance regarding psychopathology and disease course remains scarce. Even though some previous studies have investigated the link between abnormal CSF/serum albumin ratio (a proxy for BCB impairment) and different measures of symptomatology such as cognitive deficits⁵⁰, positive, negative or general symptoms, no significant associations could be found across both sexes.

Interestingly, Oviedo-Salcedo, Wagner et al. found a trend towards associations between elevated CSF protein, CSF/serum albumin ratio and history of treatment with clozapine (a proxy for TRS), that did not reach statistical significance⁵¹. Despite the weak evidence, it aligns with our results indicating higher degree of BCB disruption in individuals with history of clozapine treatment. This data must be regarded as preliminary and interpreted cautiously (not only due to lack of significance after multiple comparison correction, but also due to the low number of individuals with history of clozapine treatment (N = 7). A recent individual participant data meta-analysis from our working group⁴³ demonstrated that male individuals with SSD and elevated CSF/serum albumin ratio have significantly higher PANSS positive scores than male individuals with SSD and CSF/serum albumin ratio within the reference range. Of note, clozapine is usually prescribed to patients with treatment-resistant positive symptoms, which aligns well with these data. Overall, the results from our study and others suggest that BCB impairment might be associated with higher degree of symptom severity and even treatment resistance but should be interpreted carefully in light of the discussed limitations.

Dyslipidemia occurs in a substantial proportion of individuals with SSD⁹. To the best of our knowledge, this is the first study to show a significant relationship between blood lipid levels and BCB integrity in SSD. In line with our findings, a previous study found that subjects with Alzheimer's disease and elevated CSF/serum albumin ratio (a proxy for BCB impairment) had significantly higher mean plasma triglycerides and lower mean HDL cholesterol than individuals without BCB impairment⁵². Preclinical evidence also points to interactions between CNS barriers and peripheral lipids⁵³. For example, LDLr-knock-out mice, fed a high cholesterol diet, were more susceptible to blood-brain barrier damage and cognitive deficits⁵⁴. In two other studies dietary-fat-induced blood-brain barrier dysfunction was restored via treatment with statins^{55,56} or ibuprofen⁵⁶. It has been suggested that lipids affect structure and permeability of CNS barriers via altering the brain endothelial cells⁵³. Indeed, the effects of dyslipidemia on blood vessels and particularly its contribution to atherosclerosis is well-studied⁵⁷. Although we could not investigate the directionality or possible mechanisms

of the association between blood lipid levels and BCB disruption, it is possible that dyslipidemia in individuals with SSD damages the endothelial cells of the vessels, forming the BCB, thus affecting its integrity. A previous study investigating the impact of hypercholesterolemia on choroid plexus epithelial cells in rabbits could demonstrate that cholesterol insults from the circulation induce dysfunction of choroid plexus epithelial cells⁵⁸. This is particularly interesting since the choroid plexus epithelial cells are an integral building unit of the BCB²¹.

Previous studies in rats and humans have suggested that hypertension can disrupt the BCB or blood-brain barrier (BBB) integrity^{59,60} and hyperglycemia can exacerbate BBB disruption⁶¹, potentially through inflammatory pathways⁶². In our study, we did not find significant associations between systolic blood pressure, glycated hemoglobin and BCB composite score respectively, despite observing a trend towards positive associations. However, even though prevalence of cardiovascular diseases is increased in individuals with SSD, most of our participants did not have overt diabetes or hypertension. Thus, follow-up studies in cohorts that include more patients with cardiovascular comorbidities are needed. Furthermore, we only included systolic blood pressure from a single measurement, which could vary substantially and be influenced by multiple factors.

Building on evidence from multiple sclerosis⁶³ and Alzheimer's research⁶⁴ as well as on the inflammatory hypothesis for schizophrenia¹, some authors have suggested that CNS barrier disruption arises as a consequence of inflammatory insult and/or subtle immune dysregulation⁶⁵. Even though abnormal inflammatory markers are evident in individuals with SSD both in plasma¹³ and CSF⁴², a previous study trying to link peripheral inflammation (CRP) to BCB impairment failed¹⁹. In our current study we also did not find significant associations between peripheral leukocytes, CRP and BCB integrity, confirming previous evidence. It is possible that markers of inflammation (non-high-sensitive CRP and immune cell counts) used in both studies were not sensitive enough to detect subtle immune dysregulation and its link to BCB impairment.

Anatomically, the BCB is formed by epithelial cells of the choroid plexus, fenestrated blood vessels and the arachnoid membrane facing the CSF²². Interestingly, emerging evidence points to morphological alterations of the choroid plexus in psychosis²⁴ and ventricular enlargement is a well-known phenomenon in some individuals with SSD⁶⁶. Thus, these cerebroventricular regions and BCB integrity seem to be affected in individuals with SSD; however, to the best of our knowledge, the relationship between these variables has never been investigated before in any mental disorder. In a recent study of individuals with amyotrophic lateral sclerosis the authors showed higher choroid plexus volumes compared to healthy controls and found a significant positive correlation between choroid plexus volume and CSF/serum albumin ratio (as a proxy for BCB disruption)⁶⁷. In our study of people with SSD, we found no associations between BCB integrity and the choroid plexus or any of the ventricles.

The limitations of our study include its cross-sectional design which does not allow us to study disease progression or treatment response/remission, in relation to BCB integrity. Furthermore, a relevant part of the study participants was treated with antipsychotics, potentially influencing BCB integrity⁶⁸. It is not clear whether treatment resistance per se or clozapine-related side effects such as dyslipidemia drive the observed association between history of clozapine treatment and BCB dysfunction. Another important limitation includes the fact that blood for immunological and cardiometabolic analyses was taken within a three-week period around the lumbar puncture. Consequently, we might have missed associations between increased BCB permeability and peripheral measures which are not stable over time, such as immune cell counts or CRP. Even though this is the first study to investigate such an association in people with SSD, the sample size was relatively small (N = 28) and subsequent well-powered studies need to address this question.

Our study adds to the growing body of literature pointing to the relevance of brain-body interactions and CNS barrier impairment for the pathophysiology of SSD. Consequently, addressing cardiometabolic factors in individuals with SSD might have implications that extend beyond physical health and influence the brain as well as the course of the disease.

Future investigations with sufficiently powered cohorts, deeper immunometabolic phenotyping performed in both blood and CSF, and longitudinal designs might help elucidate the aetiology and clinical relevance of BCB disruption in individuals with SSD.

Acknowledgements: *The study was endorsed by the Federal Ministry of Education and Research (Bundesministerium für Bildung und Forschung [BMBF]) within the initial phase of the German Center for Mental Health (DZPG) (grant: 01EE2303C to AH, and 01EE2303A, 01EE2303F to PF, AS). This research was supported by BMBF with the EraNet project GDNF UpReg (01EW2206) to VY and PF. The procurement of the Prisma 3T MRI scanner was supported by the Deutsche Forschungsgemeinschaft (DFG, INST 86/1739-1 FUGG). No funding was received by commercial or not-for-profit sectors. IJ and VM were supported by doctoral scholarships from the Faculty of Medicine, LMU Munich, Munich, Germany. LK, and IM were supported by the Else Kröner-Fresenius Foundation for the Residency/PhD track of the International Max Planck Research School for Translational Psychiatry (IMPRS-TP), Munich, Germany. FJR, MC, JM were supported by the Förderprogramm für Forschung und Lehre (FöFoLe) of the Faculty of Medicine, LMU Munich, Munich, Germany.*

Contributions: *EW, JM and DK designed and conceptualized the IMPACT Study. VY, IJ, JM and EW designed this study and wrote the protocol. VY, JM, IJ, LK, EB, EW, and MK recruited patients and collected study data. EW trained staff on diagnostic and clinical assessments. MRI measurements were performed by JM and MK under the supervision of DK and LR. Statistical analyses were performed by VY and IJ. Data visualization was performed by VY. VY and IJ wrote the first draft of the manuscript. JM, LR, MM, EB, GH, MC, SH, NW, DS, SP, IM, AH, PF, AS, FJR, DK and EW provided critical review. VY and IJ prepared the final manuscript version with the help of all authors.*

Disclosures:

During the preparation of this work the author(s) used the GPT – 4 model developed by OpenAI in order to improve readability and language of the manuscript. After using this tool, the author(s) reviewed and edited the content as needed and take(s) full responsibility for the content of the publication. The authors declare that they have no biomedical financial interests or potential conflicts of interest regarding the content of this report. AH received paid speakership by Janssen, Otsuka, Lundbeck, and Recordati and was member of advisory boards of these companies and Rovi. PF received paid speakership by Boehringer-Ingelheim, Janssen, Otsuka, Lundbeck, Recordati, and Richter and was member of advisory boards of these companies and Rovi. EW was invited to advisory boards from Recordati, Teva and Boehringer-Ingelheim. SH is supported by an Australian Research Training Program scholarship. D.S. is supported by an NHMRC Investigator Fellowship GNT 1194635. NW has received speaker fees from Otsuka, Lundbeck and Janssen. All other authors report no biomedical financial interests or potential conflicts of interest.

References:

1. Owen, M. J., Sawa, A. & Mortensen, P. B. Schizophrenia. *The Lancet* **388**, 86–97 (2016).
2. Hjørthøj, C., Stürup, A. E., McGrath, J. J. & Nordentoft, M. Years of potential life lost and life expectancy in schizophrenia: a systematic review and meta-analysis. *The Lancet Psychiatry* **4**, 295–301 (2017).
3. Kahn, R. S. *et al.* Schizophrenia. *Nat Rev Dis Primers* **1**, 1–23 (2015).
4. Sayed, S. E., Gomaa, S., Alhazmi, A., ElKalla, I. & Khalil, D. Metabolic profile in first episode drug naïve patients with psychosis and its relation to cognitive functions and social cognition: a case control study. *Sci Rep* **13**, 5435 (2023).
5. Bioque, M. *et al.* Evolution of metabolic risk factors over a two-year period in a cohort of first episodes of psychosis. *Schizophrenia Research* **193**, 188–196 (2018).

6. Rødevand, L. *et al.* Characterizing the Shared Genetic Underpinnings of Schizophrenia and Cardiovascular Disease Risk Factors. *AJP* **180**, 815–826 (2023).
7. Xiao, P., Li, C., Mi, J. & Wu, J. Evaluating the distinct effects of body mass index at childhood and adulthood on adult major psychiatric disorders. *Science Advances* **10**, eadq2452 (2024).
8. Alberti, K. G. M. M. *et al.* Harmonizing the metabolic syndrome: a joint interim statement of the International Diabetes Federation Task Force on Epidemiology and Prevention; National Heart, Lung, and Blood Institute; American Heart Association; World Heart Federation; International Atherosclerosis Society; and International Association for the Study of Obesity. *Circulation* **120**, 1640–1645 (2009).
9. Mitchell, A. J. *et al.* Prevalence of metabolic syndrome and metabolic abnormalities in schizophrenia and related disorders--a systematic review and meta-analysis. *Schizophr Bull* **39**, 306–318 (2013).
10. Hagi, K. *et al.* Association Between Cardiovascular Risk Factors and Cognitive Impairment in People With Schizophrenia: A Systematic Review and Meta-analysis. *JAMA Psychiatry* **78**, 510–518 (2021).
11. Bora, E., Akdede, B. B. & Alptekin, K. The relationship between cognitive impairment in schizophrenia and metabolic syndrome: a systematic review and meta-analysis. *Psychological Medicine* **47**, 1030–1040 (2017).
12. McWhinney, S. R. *et al.* Obesity and brain structure in schizophrenia – ENIGMA study in 3021 individuals. *Mol Psychiatry* **27**, 3731–3737 (2022).
13. Halstead, S. *et al.* Alteration patterns of peripheral concentrations of cytokines and associated inflammatory proteins in acute and chronic stages of schizophrenia: a systematic review and network meta-analysis. *The Lancet Psychiatry* **10**, 260–271 (2023).
14. Bishop, J. R., Zhang, L. & Lizano, P. Inflammation Subtypes and Translating Inflammation-Related Genetic Findings in Schizophrenia and Related Psychoses: A

- Perspective on Pathways for Treatment Stratification and Novel Therapies. *Harv Rev Psychiatry* **30**, 59–70 (2022).
15. Trubetskoy, V. *et al.* Mapping genomic loci implicates genes and synaptic biology in schizophrenia. *Nature* **604**, 502–508 (2022).
 16. Benros, M. E., Eaton, W. W. & Mortensen, P. B. The Epidemiologic Evidence Linking Autoimmune Diseases and Psychosis. *Biological Psychiatry* **75**, 300–306 (2014).
 17. Benros, M. E. *et al.* Autoimmune diseases and severe infections as risk factors for schizophrenia: a 30-year population-based register study. *Am J Psychiatry* **168**, 1303–1310 (2011).
 18. The blood–brain barrier in psychosis. *The Lancet Psychiatry* **5**, 79–92 (2018).
 19. Campana, M. *et al.* Cerebrospinal Fluid Pathologies in Schizophrenia-Spectrum Disorder—A Retrospective Chart Review. *Schizophrenia Bulletin* **48**, 47–55 (2022).
 20. Moussiopoulou, J. *et al.* Increased blood–brain barrier leakage in schizophrenia spectrum disorders compared to healthy controls in dynamic contrast-enhanced magnetic resonance imaging. 2023.12.12.23299782 Preprint at <https://doi.org/10.1101/2023.12.12.23299782> (2023).
 21. Yakimov, V., Moussiopoulou, J., Hasan, A. & Wagner, E. The common misconception of blood–brain barrier terminology in psychiatry and neurology. *Eur Arch Psychiatry Clin Neurosci* (2023) doi:10.1007/s00406-023-01726-3.
 22. Tumani, H., Huss, A. & Bachhuber, F. The cerebrospinal fluid and barriers - anatomic and physiologic considerations. *Handb Clin Neurol* **146**, 21–32 (2017).
 23. Obermeier, B., Daneman, R. & Ransohoff, R. M. Development, maintenance and disruption of the blood-brain barrier. *Nat Med* **19**, 1584–1596 (2013).
 24. Lizano, P. *et al.* Association of Choroid Plexus Enlargement With Cognitive, Inflammatory, and Structural Phenotypes Across the Psychosis Spectrum. *AJP* **176**, 564–572 (2019).

25. Yakimov, V. *et al.* Investigation of choroid plexus variability in schizophrenia-spectrum disorders – insights from a multimodal study. 2023.12.18.23300130 Preprint at <https://doi.org/10.1101/2023.12.18.23300130> (2023).
26. Williams, M. R., Macdonald, C. M. & Turkheimer, F. E. Histological examination of choroid plexus epithelia changes in schizophrenia. *Brain, Behavior, and Immunity* **111**, 292–297 (2023).
27. Kim, S., Hwang, Y., Lee, D. & Webster, M. J. Transcriptome sequencing of the choroid plexus in schizophrenia. *Transl Psychiatry* **6**, e964–e964 (2016).
28. Kalman, J. L. *et al.* Biobanking in everyday clinical practice in psychiatry-The Munich Mental Health Biobank. *Front Psychiatry* **13**, 934640 (2022).
29. Krčmář, L. *et al.* The multimodal Munich Clinical Deep Phenotyping study to bridge the translational gap in severe mental illness treatment research. *Front Psychiatry* **14**, 1179811 (2023).
30. Boudriot, E. *et al.* Signature of altered retinal microstructures and electrophysiology in schizophrenia spectrum disorders is associated with disease severity and polygenic risk. *Biol Psychiatry* S0006-3223(24)01262–9 (2024) doi:10.1016/j.biopsych.2024.04.014.
31. Sheehan, D. V. *et al.* The Mini-International Neuropsychiatric Interview (M.I.N.I.): the development and validation of a structured diagnostic psychiatric interview for DSM-IV and ICD-10. *J Clin Psychiatry* **59 Suppl 20**, 22-33;quiz 34-57 (1998).
32. Kay, S. R., Fiszbein, A. & Opler, L. A. The positive and negative syndrome scale (PANSS) for schizophrenia. *Schizophr Bull* **13**, 261–276 (1987).
33. Pedersen, G., Urnes, Ø., Hummelen, B., Wilberg, T. & Kvarstein, E. H. Revised manual for the Global Assessment of Functioning scale. *Eur Psychiatry* **51**, 16–19 (2018).
34. Pardiñas, A. F. *et al.* Interaction Testing and Polygenic Risk Scoring to Estimate the Association of Common Genetic Variants With Treatment Resistance in Schizophrenia. *JAMA Psychiatry* **79**, 260–269 (2022).

35. Nasreddine, Z. S. *et al.* The Montreal Cognitive Assessment, MoCA: a brief screening tool for mild cognitive impairment. *J Am Geriatr Soc* **53**, 695–699 (2005).
36. AWMF Leitlinienregister. <https://register.awmf.org/de/leitlinien/detail/038-009>.
37. Steiner, J. *et al.* Innate Immune Cells and C-Reactive Protein in Acute First-Episode Psychosis and Schizophrenia: Relationship to Psychopathology and Treatment. *Schizophr Bull* **46**, 363–373 (2020).
38. Fischl, B. *et al.* Whole brain segmentation: automated labeling of neuroanatomical structures in the human brain. *Neuron* **33**, 341–355 (2002).
39. Bannai, D., Cao, Y., Keshavan, M., Reuter, M. & Lizano, P. Manual Segmentation of the Human Choroid Plexus Using Brain MRI. *J Vis Exp* (2023) doi:10.3791/65341.
40. Jernigan, T. L., Zatz, L. M., Moses, J. A. & Berger, P. A. Computed tomography in schizophrenics and normal volunteers. I. Fluid volume. *Arch Gen Psychiatry* **39**, 765–770 (1982).
41. Roell, L. *et al.* Effects of Exercise on Structural and Functional Brain Patterns in Schizophrenia-Data From a Multicenter Randomized-Controlled Study. *Schizophr Bull* **50**, 145–156 (2024).
42. Rømer, T. B., Jeppesen, R., Christensen, R. H. B. & Benros, M. E. Biomarkers in the cerebrospinal fluid of patients with psychotic disorders compared to healthy controls: a systematic review and meta-analysis. *Mol Psychiatry* **28**, 2277–2290 (2023).
43. Campana, M. *et al.* Association of symptom severity and cerebrospinal fluid alterations in recent onset psychosis in schizophrenia-spectrum disorders - An individual patient data meta-analysis. *Brain Behav Immun* **119**, 353–362 (2024).
44. Sanders-van Wijk, S. *et al.* Proteomic Evaluation of the Comorbidity-Inflammation Paradigm in Heart Failure With Preserved Ejection Fraction. *Circulation* **142**, 2029–2044 (2020).
45. Allaire, J. J. RStudio: Integrated Development Environment for R.

46. du Prel, J.-B., Röhrig, B., Hommel, G. & Blettner, M. Choosing statistical tests: part 12 of a series on evaluation of scientific publications. *Dtsch Arztebl Int* **107**, 343–348 (2010).
47. Asthana, A. *et al.* Effects of smoking intensity and cessation on inflammatory markers in a large cohort of active smokers. *Am Heart J* **160**, 458–463 (2010).
48. Fernandes, B. S. *et al.* C-reactive protein is increased in schizophrenia but is not altered by antipsychotics: meta-analysis and implications. *Mol Psychiatry* **21**, 554–564 (2016).
49. Benjamini, Y. & Hochberg, Y. Controlling the False Discovery Rate: A Practical and Powerful Approach to Multiple Testing. *Journal of the Royal Statistical Society: Series B (Methodological)* **57**, 289–300 (1995).
50. Maurus, I. *et al.* The relationship between blood–brain barrier dysfunction and neurocognitive impairments in first-episode psychosis: findings from a retrospective chart analysis. *BJPsych Open* **9**, e60 (2023).
51. Oviedo-Salcedo, T. *et al.* Cerebrospinal fluid abnormalities in first- and multi-episode schizophrenia-spectrum disorders: impact of clinical and demographical variables. *Transl Psychiatry* **11**, 621 (2021).
52. Bowman, G. L., Kaye, J. A. & Quinn, J. F. Dyslipidemia and Blood-Brain Barrier Integrity in Alzheimer’s Disease. *Current Gerontology and Geriatrics Research* **2012**, e184042 (2012).
53. Rhea, E. M. & Banks, W. A. Interactions of Lipids, Lipoproteins, and Apolipoproteins with the Blood-Brain Barrier. *Pharm Res* **38**, 1469–1475 (2021).
54. de Oliveira, J. *et al.* High Cholesterol Diet Exacerbates Blood-Brain Barrier Disruption in LDLr^{-/-} Mice: Impact on Cognitive Function. *Journal of Alzheimer’s Disease* **78**, 97–115 (2020).

55. Jiang, X. *et al.* Simvastatin blocks blood-brain barrier disruptions induced by elevated cholesterol both in vivo and in vitro. *Int J Alzheimers Dis* **2012**, 109324 (2012).
56. Pallegage-Gamarallage, M. *et al.* Restoration of dietary-fat induced blood-brain barrier dysfunction by anti-inflammatory lipid-modulating agents. *Lipids Health Dis* **11**, 117 (2012).
57. Libby, P. *et al.* Atherosclerosis. *Nat Rev Dis Primers* **5**, 56 (2019).
58. Obata, F. & Narita, K. Hypercholesterolemia negatively influences morphology and molecular markers of epithelial cells within the choroid plexus in rabbits. *Fluids Barriers CNS* **17**, 1–9 (2020).
59. González-Marrero, I. *et al.* High Blood Pressure Effects on the Blood to Cerebrospinal Fluid Barrier and Cerebrospinal Fluid Protein Composition: A Two-Dimensional Electrophoresis Study in Spontaneously Hypertensive Rats. *International Journal of Hypertension* **2013**, e164653 (2013).
60. van den Kerkhof, M. *et al.* Blood-Brain Barrier Integrity Decreases With Higher Blood Pressure: A 7T DCE-MRI Study. *Hypertension* **0**,
61. Banks, W. A. The Blood-Brain Barrier Interface in Diabetes Mellitus: Dysfunctions, Mechanisms and Approaches to Treatment. *Curr Pharm Des* **26**, 1438–1447 (2020).
62. Wei, X. *et al.* Hyperglycemia disrupted the integrity of the blood-brain barrier following diffuse axonal injury through the sEH/NF- κ B pathway. *Immun Inflamm Dis* **11**, e1105 (2023).
63. Hansen, C. E. *et al.* Inflammation-induced TRPV4 channels exacerbate blood-brain barrier dysfunction in multiple sclerosis. *J Neuroinflammation* **21**, 72 (2024).
64. Liebner, S. *et al.* Functional morphology of the blood-brain barrier in health and disease. *Acta Neuropathol* **135**, 311–336 (2018).
65. Pollak, T. A. *et al.* The blood-brain barrier in psychosis. *Lancet Psychiatry* **5**, 79–92 (2018).

66. Jauhar, S., Johnstone, M. & McKenna, P. J. Schizophrenia. *Lancet* **399**, 473–486 (2022).
67. Dai, T. *et al.* Choroid plexus enlargement in amyotrophic lateral sclerosis patients and its correlation with clinical disability and blood-CSF barrier permeability. *Fluids Barriers CNS* **21**, 36 (2024).
68. Elmorsy, E., Elzalabany, L. M., Elsheikha, H. M. & Smith, P. A. Adverse effects of antipsychotics on micro-vascular endothelial cells of the human blood–brain barrier. *Brain Research* **1583**, 255–268 (2014).

Figure Legends

Figure 1. Relationship between blood-cerebrospinal fluid barrier integrity and clinical phenotype.

(A) Comparison of mean blood-cerebrospinal fluid barrier composite score between treatment-resistant schizophrenia group (red) and non-treatment-resistant schizophrenia group (turquoise) illustrated with box and violin plots. Groups were compared using a logistic regression model, controlling for age, sex, and BMI. $N_{\text{non-TRS}} = 48$, $N_{\text{TRS}} = 7$. Regression plots illustrating associations between blood-cerebrospinal fluid barrier composite score, (A) PANSS total score ($N = 47$), (B) GAF score ($N = 47$) and (C) MoCA score ($N = 35$). Multiple linear regression models were employed, controlling for covariates. Abbreviations: N, number of participants; BCB, blood-cerebrospinal fluid barrier; TRS, treatment-resistant schizophrenia; non-TRS, non-treatment-resistant schizophrenia; PANSS, Positive and Negative Syndrome Scale; GAF, Global Assessment of Functioning scale; MoCA, Montreal Cognitive Assessment scale.

Figure 2. Association between blood-cerebrospinal fluid barrier integrity and serum lipids.

Regression plots illustrating associations between blood-cerebrospinal fluid barrier composite score, (A) total cholesterol, (B) LDL cholesterol, (C) HDL cholesterol and (D) triglycerides. Multiple linear regression models were employed, controlling for age, sex, smoking status, and BMI. $N = 53$. Abbreviations: N, number of participants; BCB, blood-cerebrospinal fluid barrier; LDL cholesterol, low-density lipoprotein cholesterol; HDL cholesterol, high-density lipoprotein cholesterol; WRR, within reference range.

Figure 3. Relationship between blood-cerebrospinal fluid barrier integrity and peripheral inflammatory measures.

Regression plots illustrating associations between blood-cerebrospinal fluid barrier composite score, (A) neutrophil count, (B) monocyte count, (C) neutrophil-to-lymphocyte ratio and (D) monocyte-to-lymphocyte ratio. Multiple linear regression models were employed, controlling for age, sex, smoking status, and BMI. $N = 54$. Abbreviations: N, number of participants; BCB, blood-cerebrospinal fluid barrier; NLR, neutrophil-to-lymphocyte ratio; MLR, monocyte-to-lymphocyte ratio.

Figure 4. Relationship between blood-cerebrospinal fluid barrier integrity and cerebroventricular regions.

Regression plots illustrating associations between blood-cerebrospinal fluid barrier composite score, (A) left choroid plexus volume, (B) right choroid plexus volume, (C) left lateral ventricle volume and (D) right lateral ventricle volume. Multiple linear regression models were employed, controlling for age and sex. $N = 28$. Abbreviations: N, number of participants; BCB, blood-cerebrospinal fluid barrier; Left ChP, left choroid plexus; Right ChP, right choroid plexus; Left Lat Vent, left lateral ventricle; Right Lat Vent, right lateral ventricle.

Tables

Table 1. Cohort characteristics.

Demographic characteristics	SSD	
	Mean ± SD	N
Age, years	34.32 ± 11.97	57
BMI	26.04 ± 4.09	57
Education (years)	14.86 ± 4.10	41
	<i>n (%)</i>	
Sex, male:female	42:15 (74%)	57
Current smoking, yes:no	27:28 (49%)	55
Clinical characteristics	Mean ± SD	N
Duration of illness, months	60.24 ± 94.20	56
Duration of antipsychotic treatment, months	47.88 ± 95.89	56
PANSS positive symptoms	15.34 ± 4.14	47
PANSS negative symptoms	15.60 ± 5.75	47
PANSS general symptoms	31.83 ± 6.56	47
PANSS total score	62.87 ± 13.09	47
GAF	46.87 ± 11.42	47
TMT A time (seconds)	33.39 ± 14.83	41
TMT B time (seconds)	94.38 ± 65.15	40
MoCA score	25.93 ± 3.65	41
Systolic Blood Pressure (mmHg)	121.50 ± 10.55	57
	<i>n (%)</i>	
First episode psychosis, yes:no	35:22 (61.4%)	57

It is made available under a [CC-BY-NC 4.0 International license](https://creativecommons.org/licenses/by-nc/4.0/) .

Clozapine lifetime, yes:no	7:48 (12.7%)	55
Diagnosis (<i>DSM-5</i>)	<i>n</i> (%)	
Schizophrenia	38 (66.7%)	
Brief psychotic disorder	13 (22.8%)	
Schizoaffective disorder	5 (8.8%)	
Delusional disorder	1 (1.7%)	

GAF, global assessment of functioning; MoCA, Montreal Cognitive Assessment; *N*, number of participants; PANSS, Positive and Negative Syndrome Scale; *SD*, standard deviation; SSD, Schizophrenia Spectrum Disorder; TMT, Trail making Test.

Figure 1

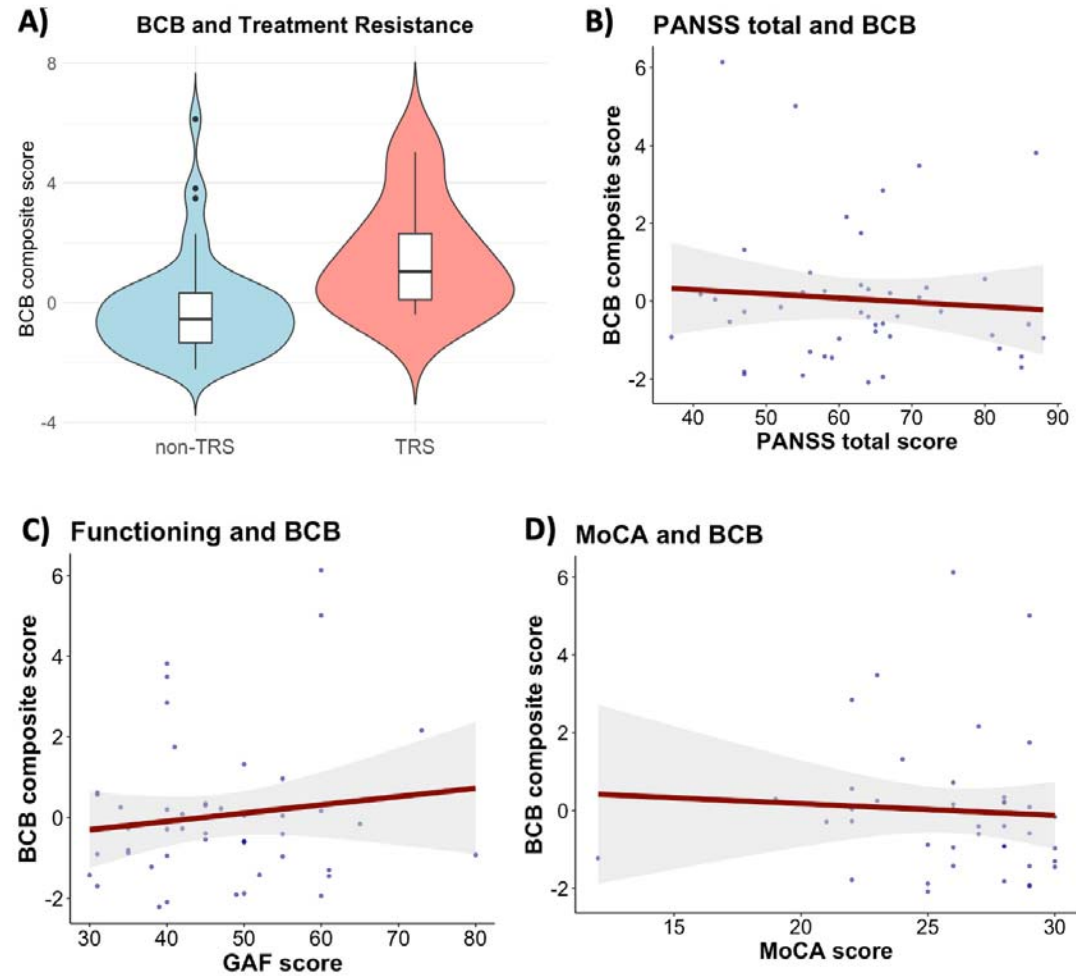
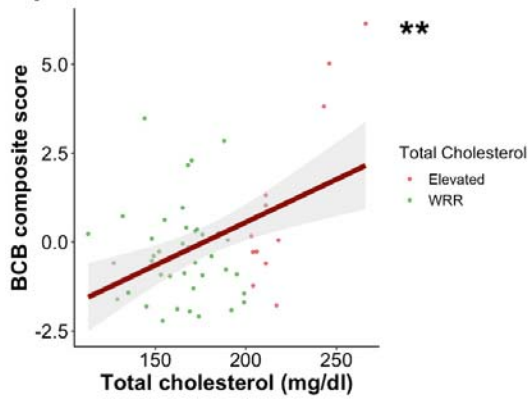
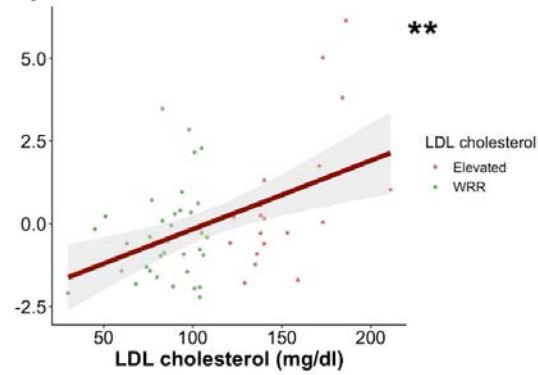


Figure 2

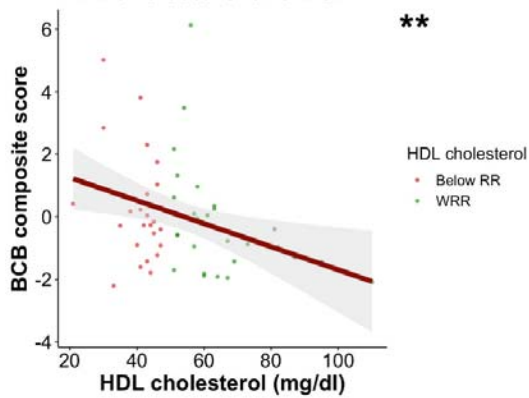
A) Total cholesterol and BCB



B) LDL cholesterol and BCB



C) HDL cholesterol and BCB



D) Triglycerides and BCB

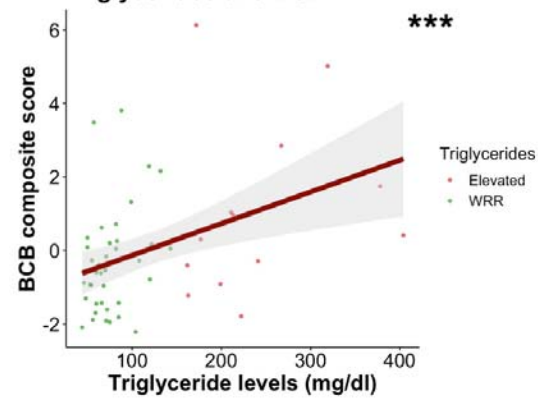


Figure 3

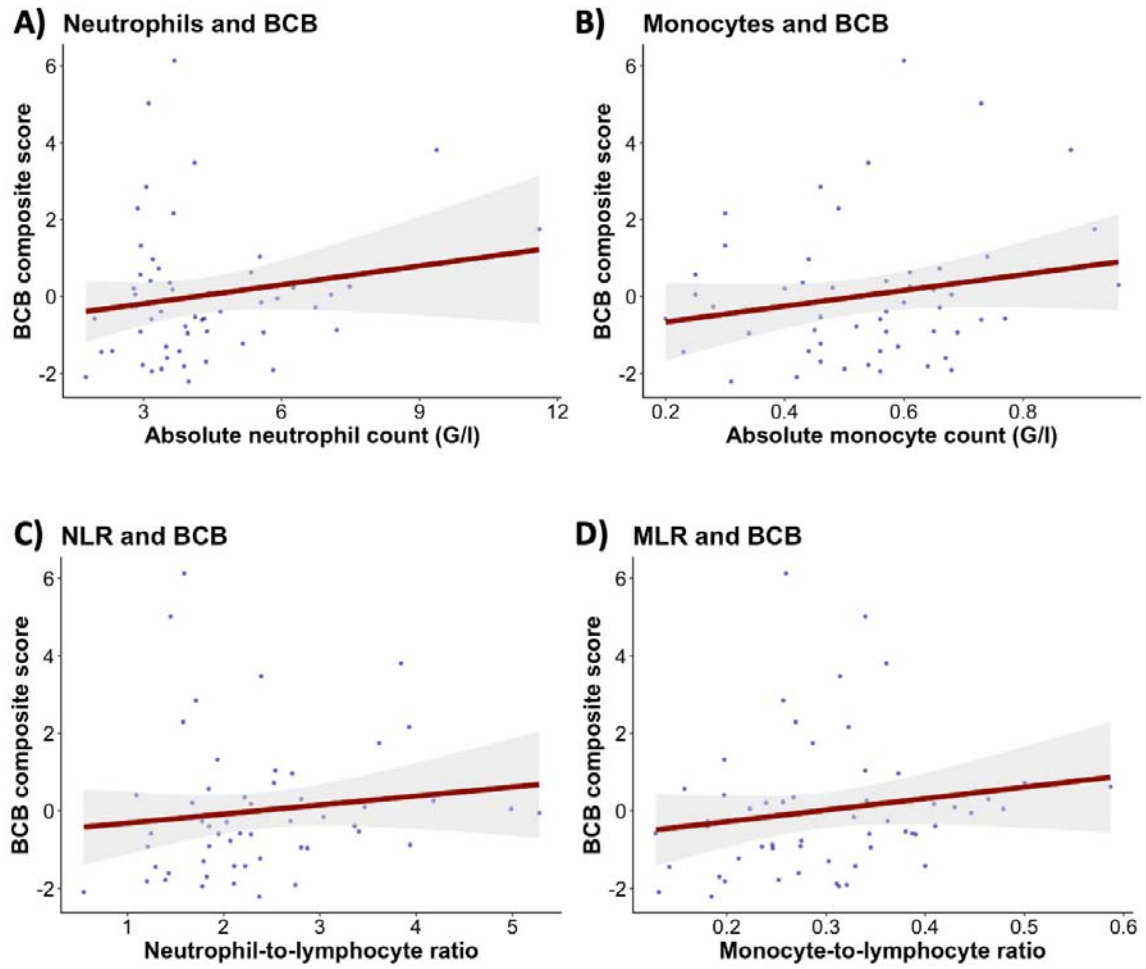


Figure 4

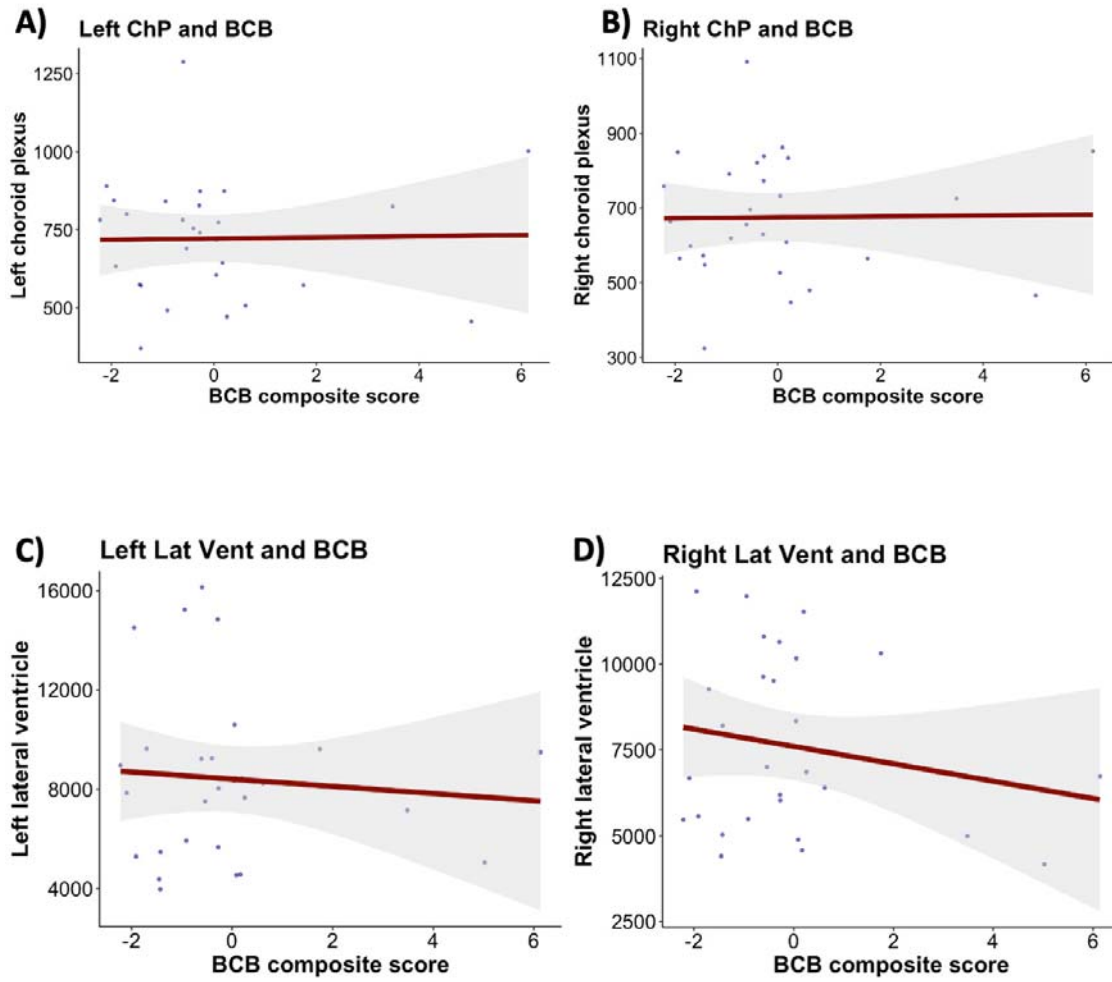


Figure S1

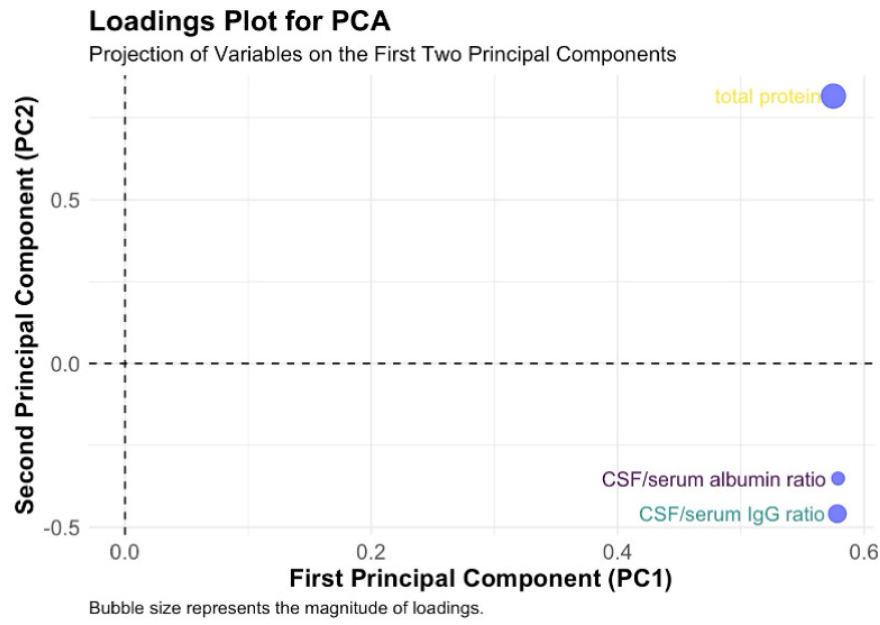


Figure S2

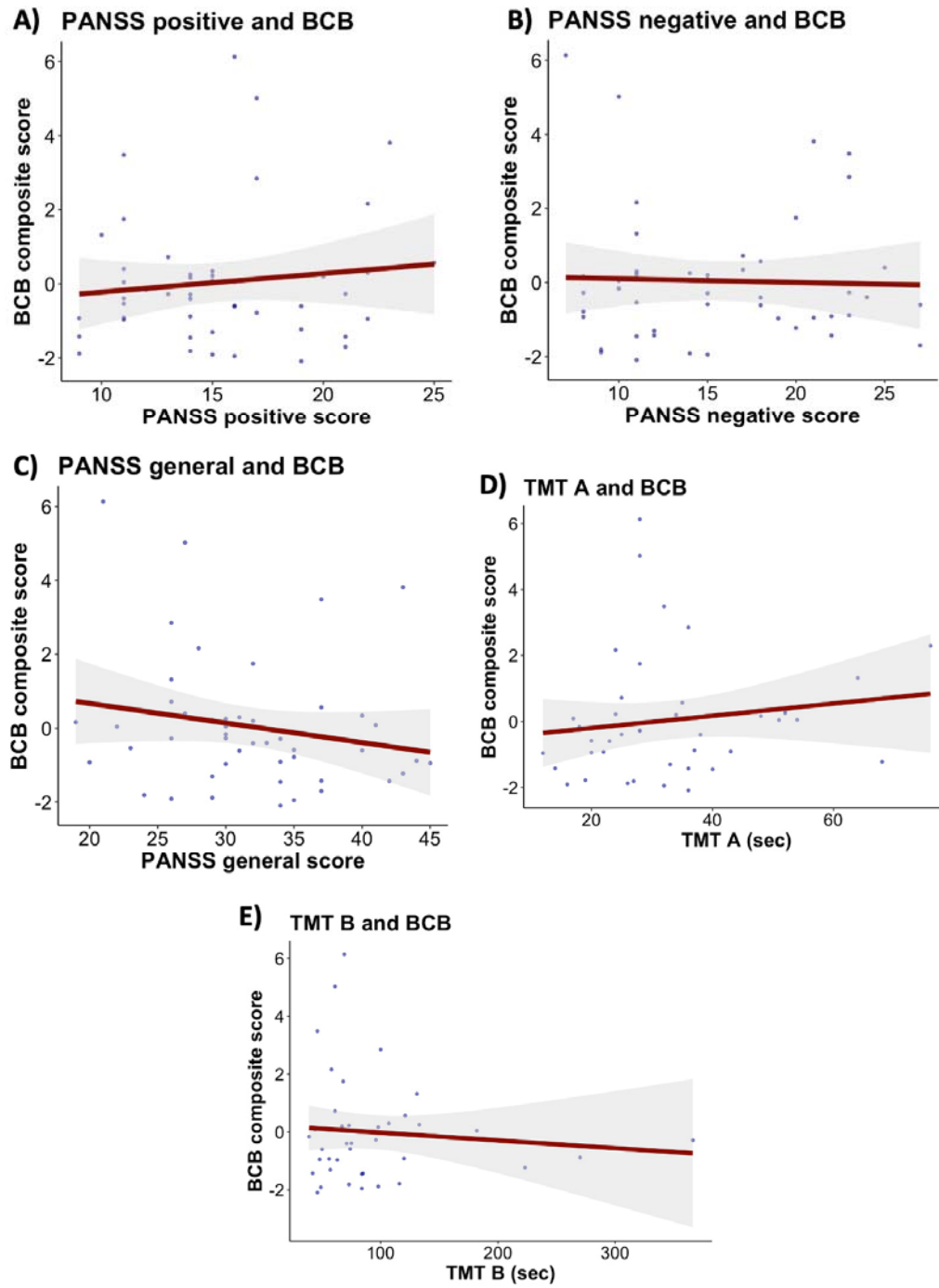
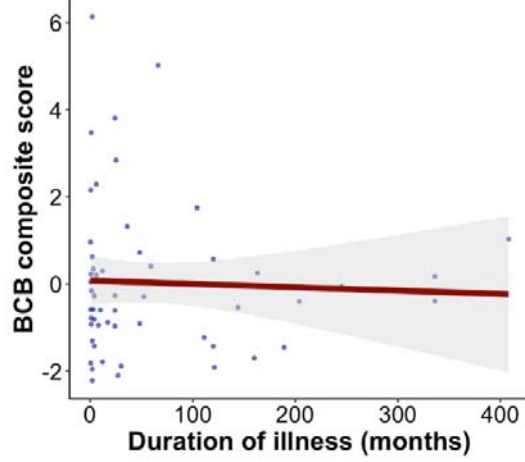
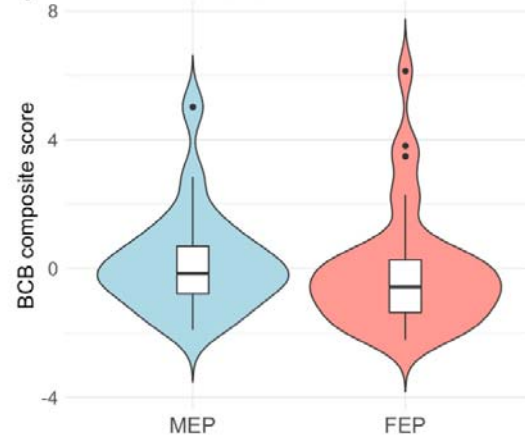


Figure S3

A) Duration of illness and BCB



B) BCB and psychosis recurrence



C) Duration of treatment and BCB

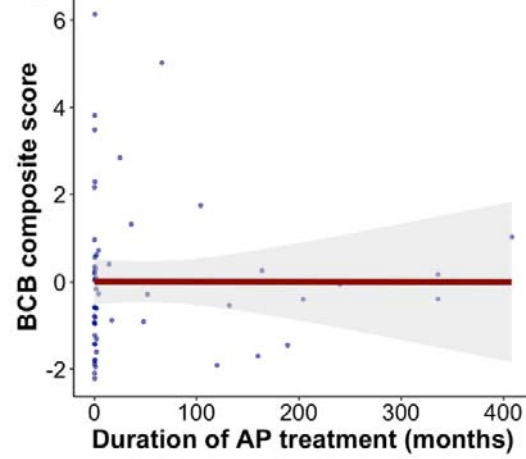


Figure S4

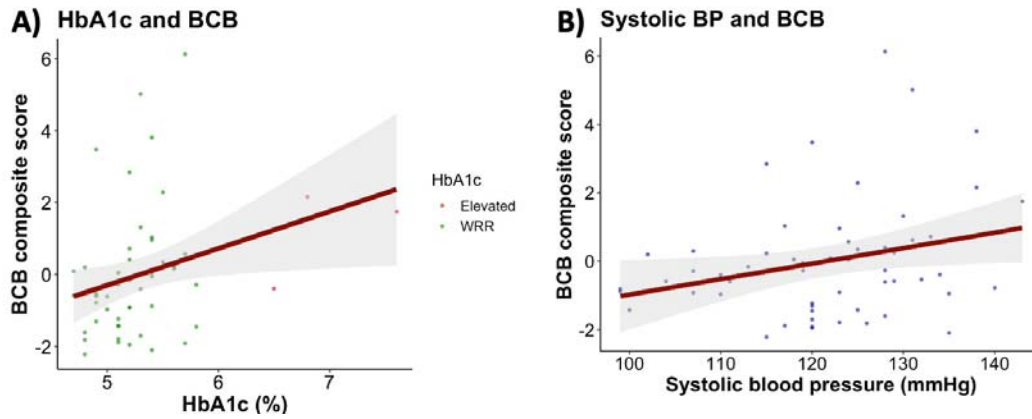


Figure S5

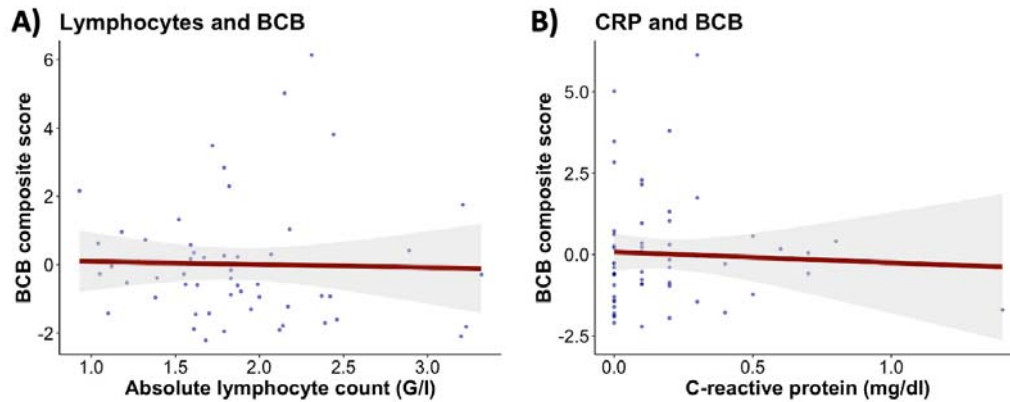


Figure S6

