

1 **Title:** Co-circulating pathogens of humans: A systematic review of mechanistic transmission
2 models

3

4 **Authors:** KE Shaw*, JK Peterson, N Jalali, S Ratnavale, M Alkuzweny, C Barbera, A Costello,
5 LT Emerick, GF España, AS Meyer, S Mowry, M Poterek, C de Souza Moreira, Eric Morgan, S
6 Moore, TA Perkins⁺

7

8 **Affiliations:** University of Notre Dame, South Bend, Indiana USA

9 *Corresponding author: kshaw7@nd.edu

10 + Corresponding author: taperkins@nd.edu

11

12 **Acknowledgements**

13 This work was supported by the NIH National Institute of General Medical Sciences R35 MIRA
14 program to T.A.P. (grant no. R35GM143029).

15

16 **Co-circulating pathogens of humans: A systematic review of mechanistic transmission** 17 **models**

18

19 **Abstract**

20 Historically, most mathematical models of infectious disease dynamics have focused on a single
21 pathogen, despite the ubiquity of co-circulating pathogens in the real world. We conducted a
22 systematic review of 311 published papers that included a mechanistic, population-level model
23 of co-circulating human pathogens. We identified the types of pathogens represented in this
24 literature, techniques used, and motivations for conducting these studies. We also created a
25 complexity index to quantify the degree to which co-circulating pathogen models diverged from
26 single-pathogen models. We found that the emergence of new pathogens, such as HIV and
27 SARS-CoV-2, precipitated modeling activity of the emerging pathogen with established
28 pathogens. Pathogen characteristics also tended to drive modeling activity; for example, HIV
29 suppresses the immune response, eliciting interesting dynamics when it is modeled with other
30 pathogens. The motivations driving these studies were varied but could be divided into two
31 major categories: exploration of dynamics and evaluation of interventions. Finally, we found that
32 model complexity quickly increases as additional pathogens are added. Future potential avenues
33 of research we identified include investigating the effects of misdiagnosis of clinically similar
34 co-circulating pathogens and characterizing the impacts of one pathogen on public health
35 resources available to curtail the spread of other pathogens.

36

37 **1. Introduction**

38 Mathematical modelling is a powerful tool in understanding and forecasting infectious diseases
39 and shaping public health responses (Ferguson et al. 2006, Heesterbeek et al. 2015, Pagel and
40 Yates 2022). Mathematical models allow researchers to investigate the population-level impact
41 of different treatment regimens for infectious diseases (Abu-Raddad et al. 2009), analyze the
42 effect of nonpharmaceutical interventions on disease spread (Cowger et al. 2022), and predict
43 how factors such as climate change will influence transmission of vector-borne diseases
44 (Lafferty 2009, Eikenberry and Gumel 2018, Mordecai et al. 2019). However, the majority of
45 infectious disease models focus on a single pathogen, despite the fact that multiple pathogens are
46 co-circulating in any given time and place (Tsai et al. 2017, Mendenhall et al. 2022).

47

48 Co-circulating pathogens have the potential to impact the dynamics of one another via multiple
49 mechanisms. People infected with HIV, for example, are more susceptible to infection by other
50 pathogens, and this individual-level phenomenon can have population-level effects on
51 transmission dynamics (Galvin and Cohen 2004, Mayer et al. 2007). HIV, TB, and malaria in
52 particular co-circulate widely in under-resourced settings and can exacerbate both the clinical
53 presentation and transmission of one another (Vitoria et al. 2009). This can lead to more
54 interventions necessary at the individual-patient level, as well as a greater population-level
55 burden of disease (Alemu et al. 2013, Montales et al. 2015). Furthermore, environmental factors
56 such as climate change and land use changes likely impact multiple pathogens simultaneously
57 and potentially synergistically, which could not be captured with a single-pathogen focus.
58 Deforestation and the expansion of agriculture, for example, have been shown to shift the
59 abundance, diversity, and biting rates of mosquito species that are known arbovirus vectors
60 (Zahouli et al. 2017, Da Silva Pessoa Vieira et al. 2022).

61

62 Shifting public health priorities in response to new threats can also have unintended effects on
63 co-circulating pathogens. For example, during the height of the COVID-19 pandemic, routine
64 vaccination campaigns across the world against diseases such as measles and polio were
65 disrupted, with ripple effects on vaccine coverage and transmission dynamics (Gaythorpe et al.
66 2021, Cardoso Pinto et al. 2022, Bigouette et al. 2022). In addition, co-circulating pathogens
67 with similar clinical presentations, such as Zika, dengue, and chikungunya, may hinder
68 surveillance efforts to discern the true prevalence of each pathogen contributing to the observed
69 syndromic data due to misdiagnosis and also hampering targeted public health interventions
70 (Oliveira et al. 2020, Oidtman et al. 2021, Ribas Freitas et al. 2024).

71
72 Given the many ways in which co-circulating pathogens may impact each other, mathematical
73 models that explicitly model these interactions may provide key insights. For example,
74 researchers may be better able to capture transmission dynamics and thereby improve forecasting
75 accuracy by including synergistic interactions such as one pathogen increasing host susceptibility
76 to other pathogens (Marimuthu et al. 2020), or mitigating interactions such as infection causing
77 decreases in host mobility, thus decreasing host exposure to other co-circulating pathogens
78 (Rohani et al. 2003). The presence of co-circulating pathogens in a population may necessitate
79 different screening or treatment regimens to achieve public health goals, and mathematical
80 models can aide in exploring these different scenarios (Macgregor et al. 2020, Rao et al. 2022).
81 The myriad possibilities in these approaches motivated us to explore the current state of the
82 literature on mathematical models of co-circulating pathogens.

83
84 Despite the evidence for the impact of co-circulating pathogens on each other and the potential
85 usefulness of mathematical models, we did not find any systematic reviews of mathematical
86 models of co-circulating pathogens in our literature search. Therefore, we conducted this
87 systematic review with the goal of characterizing the existing scientific literature on co-
88 circulating pathogen models, to both better understand the current state of this field and identify
89 knowledge gaps that need to be addressed. Specifically, our objectives were:

- 90 i. To determine the most common pathogens modeled together and the ecological,
91 biological, and clinical similarities between these pathogens,
- 92 ii. To analyze the authors' motivations for creating co-circulation models and the
93 intended purpose of their studies,
- 94 iii. To characterize common features of co-circulation models and their outputs,
- 95 iv. To quantify differences between single-pathogen and co-circulating pathogen models,
96 and
- 97 v. To report aspects of co-circulation models that are uncommon in the literature and
98 potentially fruitful avenues for future research.

99

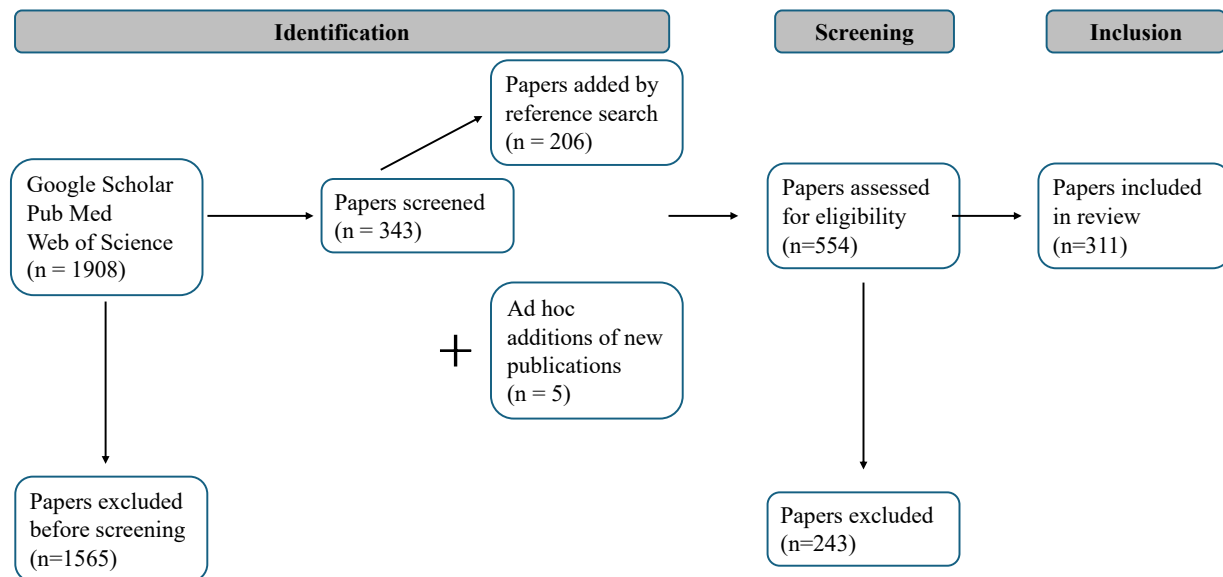
100

101 **2. Methods**

102 *2.1 Literature search*

103 On October 21st, 2022 we searched Google Scholar, Pubmed, and Web of Knowledge databases
104 using a set of keywords. Our keyword list consisted of: *co-circulating pathogen; concurrent*
105 *epidemic; polymicrobial infection AND mathematical model; concurrent infection AND*
106 *mathematical model; syndemic AND model; co-infection AND mathematical model;*
107 *heterologous reactivity AND mathematical model; polyparasitism AND mathematical model;*

108 *synergistic pathogens AND mathematical model; dual infection AND mathematical model;*
109 *pathogen co-occurrence; co-epidemic; superinfection AND mathematical model.* We retrieved a
110 total of 1,908 unique bibliographic records from Google Scholar, PubMed, and Web of Science,
111 which we reviewed in a four-stage process. In stage one, the titles and abstracts of the resulting
112 manuscripts were briefly scanned for the inclusion criteria, which yielded a total of 343 papers
113 published between 1985 and 2023 (1,565 excluded). In stage two, the references of each selected
114 paper were then scanned to find additional publications, which yielded an additional 206 papers.
115 Additionally, any newly published and relevant paper that the authors became aware of during
116 the review process were added (five papers total). In stage three, a pair of reviewers assessed
117 each paper (N=554) for meeting our inclusion criteria (below) and reached a consensus. In stage
118 four, the reviewers first extracted the data separately and then later compared their questionnaire
119 answers to reach a consensus on each question. We excluded papers not published in English
120 (Figure 1).



121
122 **Figure 1.** PRISMA flowchart for the literature search, screening, and inclusion process.
123
124

125 2.2 Eligibility criteria

126 All 554 papers were evaluated for inclusion based on six questions:

- 127 (i) Is the paper an original research article?
- 128 (ii) Are at least two real pathogen species (not theoretical) modeled in the same model?
- 129 (iii) Does at least one of the pathogens modeled cause human disease?
- 130 (iv) Does the model have at least one population-level aspect in a human population?
- 131 (v) Is some part of the model structure informed by a mechanistic derivation of biological
132 processes as opposed to purely involving phenomenological relationships?

133 (vi) Is there a place in the model where hosts transition from a susceptible to an exposed
134 or infected state?
135

136 We narrowed the scope of this review to real pathogen species that cause human disease (criteria
137 ii and iii) because co-circulating pathogens have been a salient topic in the non-human literature
138 for a longer period, and we were interested in how that has percolated into the modeling of
139 human disease. We focused on mechanistic, population-level models that include a transmission
140 process (criteria iv-vi) in contrast to descriptive or statistical models that fit data without any
141 consideration of the biological mechanisms involved. We included papers for which the answer
142 to all six questions was “yes”.
143

144 *2.3 Questionnaire development*

145 We used a questionnaire to screen each publication in order to standardize the data generated
146 from each review. We developed the questionnaire through a collaborative, iterative three-stage
147 process. In the first stage of the development process, our aim was to evaluate the ability of the
148 questionnaire to elicit similar responses from multiple reviewers assessing the same paper. To
149 this end, reviewers used the questionnaire to review the same paper, and we then evaluated
150 response data for discrepancies. Through group discussion, we identified areas of improvement
151 through group discussion, and feedback from the group was applied to the next iteration of the
152 questionnaire. We carried out this process twice. Finally, in the third round of evaluation all
153 papers were reviewed in pairs as described below and the data generated were used for analysis.
154 All reviewers were in communication throughout the review stage to harmonize any
155 discrepancies that arose.
156

157 *2.4 Paper review process*

158 Two reviewers were randomly assigned to each publication, which they reviewed using the
159 standardized questionnaire. After reviewing each paper individually, the pair of reviewers
160 assigned to each paper then met to compare and discuss answers and resolve any discrepancies
161 between answers. Each pair then submitted a final version of their answers in the form of a third
162 survey marked ‘consensus.’ Only consensus surveys were analyzed (N=311).

163 164 *2.5 Questionnaire description*

165 The questionnaire consisted of six sections: (i) bibliographic information; (ii) inclusion criteria;
166 (iii) basic information about each parasite modeled; (iv) model details; (v) model outputs; and
167 (vi) motivation for selecting the pathogens modeled. The final version of the questionnaire
168 contained 47 questions.
169

170 *2.6 Author motivations*

171 Question 39 of our systematic survey was an open-response question: “Did the authors develop
172 their model to answer a specific research question or to achieve a specific purpose or objective?”
173 To analyze the responses to this question, we inserted the pooled responses to this question and
174 into ChatGPT version 3.5 (“ChatGPT” 2024) with the prompt “The text I provided you was
175 supposed to illustrate authors’ motivations to write the papers we analyzed. From that text, what
176 would you say are the main motivations of authors?” Authors KS and TAP then discussed the
177 output from ChatGPT and refined the language of the motivations ChatGPT produced to create

178 four categories of motivations, and KS categorized each response to question 39 according to
179 these motivations. Each response could receive more than one categorization.

180

181 *2.7 Bibliometrics*

182 To explore how journal prestige and topic may be related to citation patterns, for all papers
183 included in our review for which a DOI was available, we queried Unpaywall (Richard Orr,
184 Heather Piwowar, Jason Priem 2024) and OpenAlex (Aria et al. 2024) to collect the times each
185 paper has been cited as well as the h-index and i-10index for the journal in which each paper was
186 published, as of March 11th, 2024. We then used the glmmTMB package in R (Brooks et al.
187 2017) to create generalized linear models to assess potential associations between citation count
188 and publication year, journal h-index, and journal i-10index. We also used the Web of Science
189 API Lite (“Web of Science API” 2024) to collect subject categories for each paper. We then
190 binned related categories such as “Mathematics, Applied” and “Mathematics” to create seven
191 meta-categories. We created a second generalized linear model to test for the impact of assigned
192 meta-category on citation counts.

193

194 *2.8 Complexity Index*

195 To estimate the extent to which each co-circulating pathogen model in our data set diverged from
196 a single-pathogen model, we designed a complexity index derived from the responses to
197 questions 23-30 in the questionnaire. The index was calculated by assigning one point to each
198 answer that indicated a divergence from a single-pathogen model and then totaling the points.
199 For example, question 23 (“Does the model structure include hosts that are co-infected with two
200 or more pathogens?”) would have yielded one point for a “yes” answer and zero points for a
201 “no.” For multi-part questions such as question 23f (“Which parameter values for the co-infected
202 class are different from the mono-infected and uninfected classes? [select all that apply]”), we
203 assigned one point for each parameter value selected. The maximum possible complexity index
204 score was 18. An example of how this index was calculated can be found in Table S1.

205

206 *2.9 Data availability*

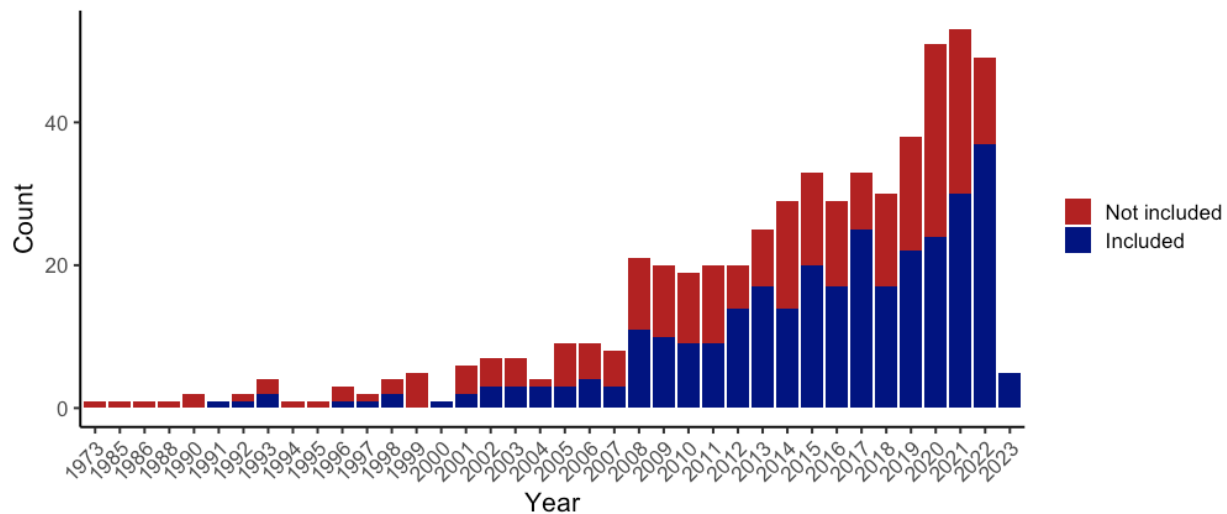
207 A full version of the questionnaire can be found in the supplementary materials. All data were
208 analyzed in R version 4.3.0 (R Core Team 2021), and raw files and code used for analysis as
209 well as a supplementary file of all tables produced from the analysis are available at
210 <https://figshare.com/s/2b268f5df8aed6acad3f>.

211

212 **3. Results**

213 *3.1 Study selection*

214 In our four-stage review process, we identified 554 papers to review for eligibility, 311 of which
215 met our inclusion criteria (Figure 1). The most common reasons for paper exclusion were: (i) the
216 study did not include two real pathogen species in the same model (67.1%, 163/243, question 7);
217 (ii) there was no place in the model where hosts transitioned into an exposed or infected state
218 (42.4%, 103/243, question 11); and (iii) the model did not have at least one population-level
219 aspect (35.4%, 86/243, question 9). Some papers were excluded based on multiple criteria. The
220 oldest papers that met our search criteria were from 1991, although the majority of relevant
221 papers were published in 2008 or later (90.4%; 281/311, Figure 2).



222
223
224
225
226
227
228

Figure 2. Temporal trends in the publication of co-circulating pathogen models. Papers that met our inclusion criteria gradually increased over time. The year of 2023 was only partially sampled up to papers published by the month of March.

3.2 Pathogen information

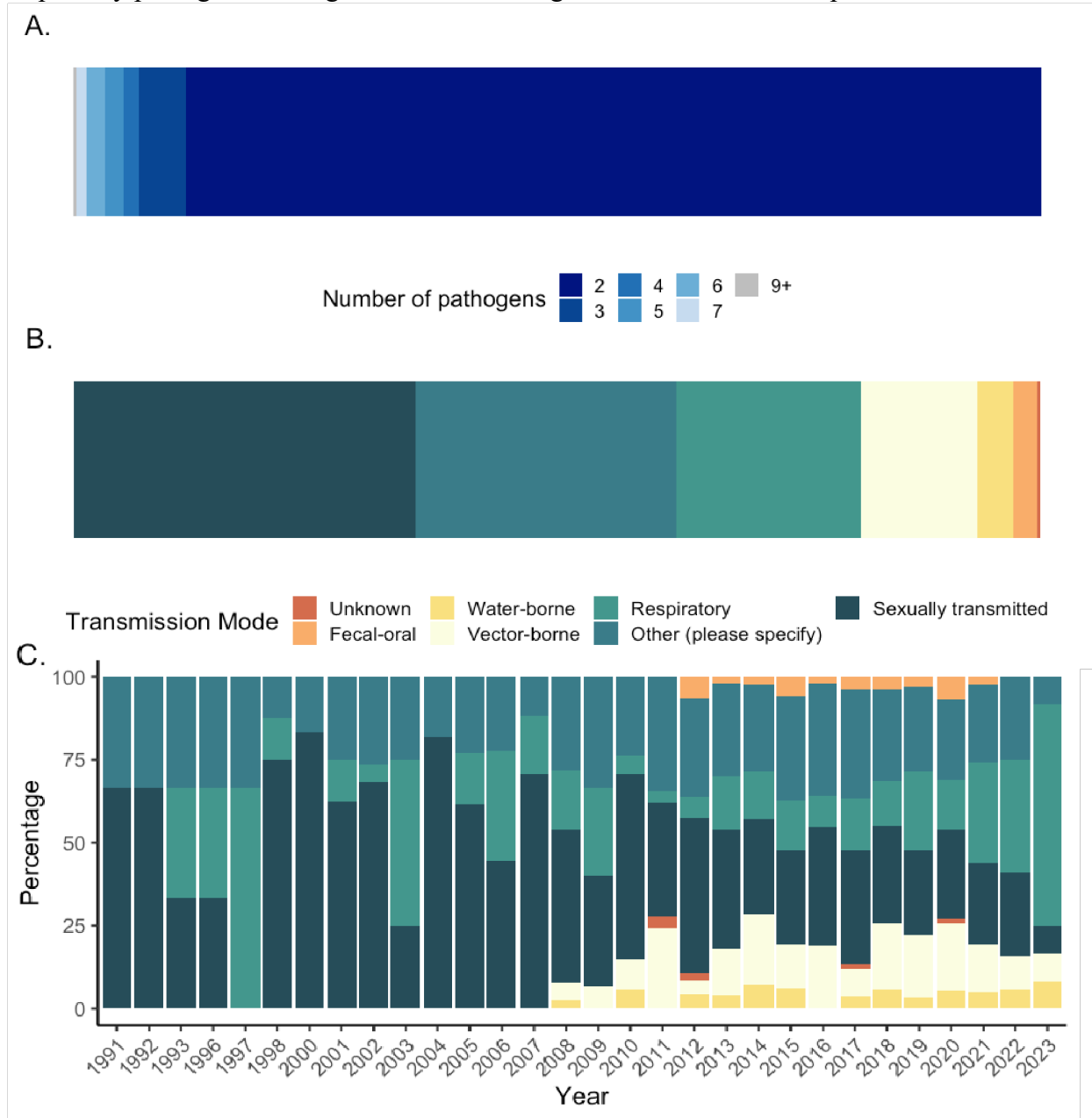
229
230
231
232
233
234
235
236
237
238
239
240

The majority of included models considered two pathogens (88.4%, 275/311), while the maximum number of pathogens included in the same model was nine (0.32%, 1/311; Figure 3A). The most commonly modeled pathogen pairs were human immunodeficiency virus (HIV) and *Mycobacterium tuberculosis* (TB), representing 25% (78/311) of the models we reviewed. Other models that included more than two pathogens often were focused either on STIs (e.g., Korenromp et al. 2005, Kate K Orroth et al. 2007, Jenness et al. 2017) or vector-borne diseases such as dengue, chikungunya, and Zika that are transmitted by the same vector (e.g., Isea and Lonngren 2016, Okuneye et al. 2017). One model that included nine pathogens considered a panoply of common STIs: HIV, genital herpes, syphilis, chancroid, gonorrhea, chlamydia, trichomonas, bacterial vaginosis, and vaginal candidiasis (Johnson et al. 2011).

241
242
243
244
245
246
247
248
249
250
251
252

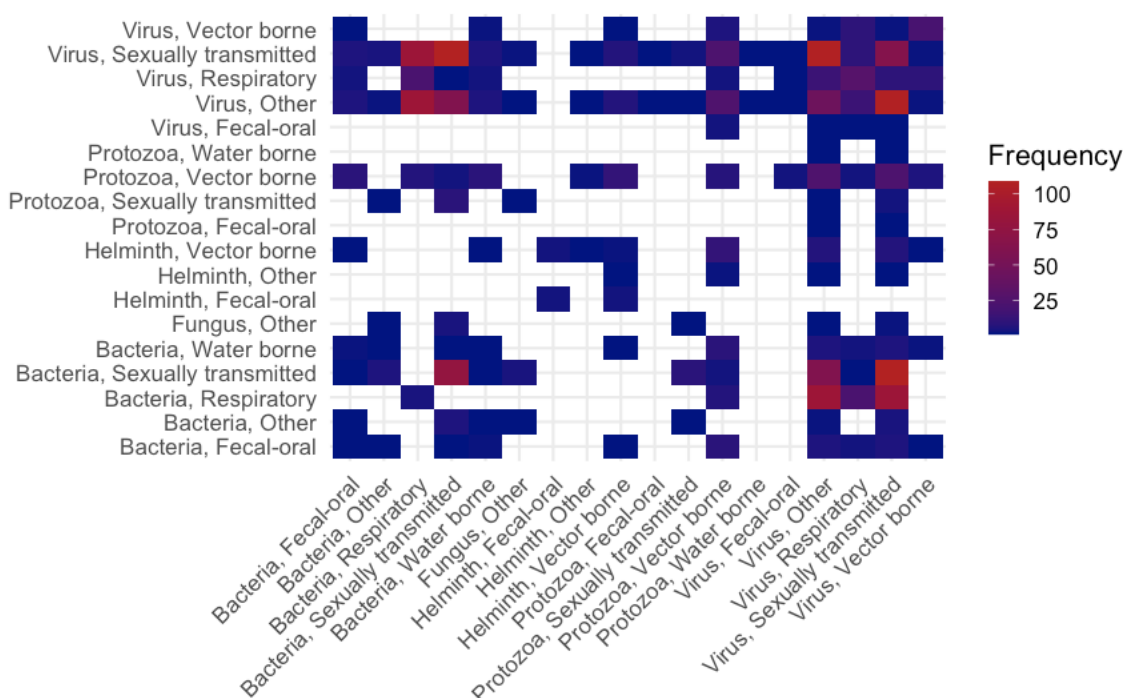
To investigate which modes of transmission were included in the same models, we recorded all viable transmission modes for each pathogen; e.g., HIV would be recorded as both “sexually transmitted” and “other (vertical and bloodborne).” Therefore, when we calculated the percentage of each transmission mode in our data, the denominator was the total number of transmission modes recorded across all pathogens (988). Corresponding to the exceptionally high number of HIV-TB models, the most common transmission modes of pathogens were sexually transmitted (35.3%, 349/988), followed by a transmission mode of “other” (27%, 267/988) of which 65.5% (175/267) were recorded as vertical and bloodborne (Figure 3B). Respiratory transmission was the third most common transmission mode at 19% (188/988). We also found that the earliest papers in our data set tended to focus on sexually transmitted and respiratory pathogens, again reflecting the focus on HIV in combination with other STIs and with TB in the 1990s (Figure 3C). Over time, a greater diversity of transmission modes appeared, notably with

253 an increase in models of vector-borne diseases starting in 2008 and an increase in models with
254 respiratory pathogens starting in 2020, coinciding with the SARS-CoV-2 pandemic.



255
256 **Figure 3.** Pathogen characteristics. **(A)** The frequency of how many pathogens were included in
257 models. The vast majority of models included two pathogens. **(B)** Frequency of transmission
258 modes represented across all models. Sexually transmitted pathogens and pathogens with “other”
259 transmission routes such as bloodborne were common in our data set due to the large number of
260 models focused on HIV. **(C)** Change in transmission modes represented in our data set over time,
261 represented as a percentage of the total models we analyzed for that publication year. Vector-
262 borne pathogens appear more frequently in the literature after 2008, and respiratory pathogens
263 become more common starting in 2021. **(B)** and **(C)** share a legend.
264

265 Beyond individual pathogens, we also investigated the frequency with which different pathogen
266 taxa were modeled together. We categorized the taxonomic group and transmission mode for
267 each pair of pathogens in our data set and counted the frequency of their co-occurrence in the
268 same model (Figure 4). This analysis reflected all possible transmission routes for each pathogen
269 and also all possible pairings within the same model. As such, a single paper could be
270 represented multiple times based on the number of pathogens and transmission modes present,
271 resulting in 957 distinct pathogen pairs. Sexually transmitted viruses with sexually transmitted
272 bacteria (11.4%, 109/957) and sexually transmitted viruses with viruses with other transmission
273 routes (11.3%, 108/957) occurred together most commonly, due to the high prevalence of STI-
274 focused models in our review. Other common pairings were respiratory bacteria with sexually
275 transmitted viruses (9.1%, 87/957) and respiratory bacteria with viruses with other transmission
276 routes (9.2%, 88/957), due to the large number of HIV-TB models.



277
278 **Figure 4.** Frequency of co-modelling pathogens within taxonomic groups and transmission
279 modes. The most frequent pairings were sexually transmitted viruses with sexually transmitted
280 bacteria and viruses with other transmission routes, followed by sexually transmitted viruses
281 with respiratory bacteria (dominated by the prevalence of HIV-TB models in our data set).

282
283 We found that the majority of pathogens modeled together did not share ecological similarities,
284 as reported by authors (87.8%, 273/311, question 40). Of those that did, 63.2% (24/38) had
285 shared seasonality and 39.5% (15/38) had shared environmental drivers of transmission. Shared
286 seasonality was commonly noted for respiratory pathogens such as SARS-CoV-2, influenza, and
287 RSV. Shared environmental drivers were noted for pathogens such as malaria and cholera, which
288 are both sensitive to environmental conditions (e.g., rainfall) but via different mechanisms
289 (Thomson et al. 2006, Lemaitre et al. 2019). Furthermore, pathogens that shared both seasonality
290 and environmental drivers were noted for several models (9/38, 23.7%, Figure S1A). Multiple

291 ecological similarities were most often recorded for models of vector-borne pathogens with a
292 shared vector taxa, such as the dengue, chikungunya, and Zika viruses.

293
294 In contrast, a majority of pathogens modeled together did share at least one biological similarity
295 (55.6%, 173/311, question 41), with 70.5% sharing a transmission route (122/173) and 63 %
296 (109/173) sharing host subsets as the most common responses. Shared transmission routes were
297 common in models with sexually-transmitted pathogens, vector-borne pathogens, and respiratory
298 pathogens. Models with shared host subsets commonly included studies of intravenous drug
299 users (de Vos et al. 2012, Vickerman et al. 2012, Zelenev et al. 2018) and childhood diseases
300 (Rohani et al. 2003, Huang and Rohani 2006). Clinical or epidemiological similarities were
301 shared by 62.7% (195/311, question 42) of pathogens modeled together, with the most common
302 similarity being that treatments existed for both pathogens (59%, 115/195), due to large number
303 of HIV-TB and STI models for treatable pathogens.

304 305 *3.3 Motivations and purpose*

306
307 Reviewers identified two main scholarly motivators (question 45): 1) prior research suggested an
308 effect of one pathogen on another but more research is needed (54.7%, 170/311), and 2) few or
309 no prior modeling studies conducted of these two pathogens together (35.1%, 109/311). No clear
310 scholarly motivation was noted in 11.6% (36/311) of papers.

311
312 In addition, we used ChatGPT (version 3.5) (“ChatGPT” 2024) to summarize common themes in
313 the reviewers’ answers to the open-ended question 39, “Did the authors develop their model to
314 answer a specific research question or to achieve a specific purpose or objective?” (Box 1). We
315 then refined the results from ChatGPT to better reflect the nuances we felt existed in our data set,
316 resulting in four categories of author motivation. We then classified reviewer responses to
317 question 39 according to the four motivation categories, allowing for more than one category to
318 apply to each paper. The categories that resulted from this process were:

- 319 (i) **Understanding the dynamics of co-circulating pathogens**, in particular how
320 multiple pathogens may alter the transmission patterns and/or population outcomes of
321 one another. This category applied to papers in which the authors’ goals included
322 evaluating quantitative outcomes such as R_0 , disease burden, mortality, etc., and how
323 outcomes differed in the presence of co-circulating pathogens.
- 324 (ii) **Developing mathematical models** for specific pairs of pathogens of interest, often
325 due to the perceived novelty of doing so by the authors. While all papers in this
326 review included a mathematical model, this category was for those that had a
327 primarily mathematical focus or in which the authors only stated motivation for
328 developing the model was that the pathogens had not been previously modeled
329 together.
- 330 (iii) **Implementing interventions or control measures** for one pathogen and the resulting
331 impact on it and/or other pathogens in the model. We placed papers in this category
332 when the authors were investigating how interventions such as treatment, vaccination,
333 or quarantining would impact co-circulating pathogens through either direct or
334 indirect effects.
- 335 (iv) **Calculating cost-effectiveness and optimal control** of different treatment and
336 control strategies. While there was some overlap with (iii), we created this category to

337 capture papers in which the authors were not necessarily investigating the impact of
338 interventions on outcomes such as transmission or mortality, but in which they were
339 primarily concerned with the best way to implement interventions given cost or labor
340 constraints.

341
342 Category (i), understanding disease dynamics, was the most common motivation for creating the
343 models, with 52.3% (164/311) of papers falling into this category. Implementation of
344 interventions (iii) was the second most common, at 35.4% (110/311), followed by cost-
345 effectiveness (iv, 14.9%, 46/311) and developing mathematical models (ii, 13.8%, 43/311).
346 Overlapping categorizations were common, in particular for categories (i) and (iii); Fig S2).
347 Some papers fell into one or more of the four categories but also contained unique motivations
348 and thus were counted in one or more of the four main categories and additionally as “other”
349 (10%, 31/311). A small number, 1.6% (5/311), did not neatly fit into any of these categories and
350 were categorized only as “other.” Examples of “other” author motivations include examining
351 how one pathogen may exert indirect evolutionary pressures on another (Lloyd-Smith et al.
352 2008), or what fundamentally allows for the co-existence of two co-circulating pathogens
353 (Amaku et al. 2011).

354

Box 1. Large language learning model analysis of survey question 39, “Did the authors develop their model to answer a specific research question or to achieve a specific purpose or objective?”

We provided the reviewers’ answers to question 39 for all papers included in our review that met inclusion criteria and provided the prompt “The text I provided you was supposed to illustrate authors’ motivations to write the papers we analyzed. From that text, what would you say are the main motivations of authors?” The exact output created, prior to our modified version stated in the text, was as follows:

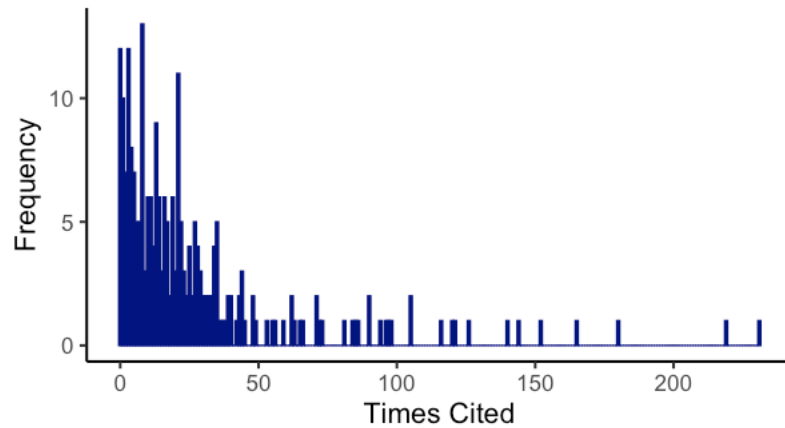
1. “Understanding Disease Dynamics: Authors aim to gain a deeper understanding of the dynamics of infectious diseases, including their transmission patterns, interactions between different pathogens, and the impact of interventions on disease spread.
2. Developing Mathematical Models: Many authors are motivated to develop mathematical models to simulate disease transmission, assess the effectiveness of intervention strategies, and predict the outcomes of various scenarios. These models allow researchers to study complex disease dynamics and inform public health decision-making.
3. Evaluating Intervention Strategies: There is a strong emphasis on evaluating the effectiveness and cost-effectiveness of intervention strategies, such as vaccination programs, treatment protocols, and preventive measures. Authors seek to identify optimal strategies for controlling disease spread and reducing disease burden in populations.”

355

356 *3.4 Bibliometrics*

357 We were able to source bibliometric data for 247 out of 311 of the papers in our analysis. The
358 majority of these papers were cited fewer than 25 times (64.3%, 159/247, Figure 5). However,

359 there were some distinct outliers, with the most highly cited paper having 231 citations (Table 1).
 360 Year of publication (z value = -7.721, $p < 0.001$) and h-index (z value = 3.501, $p = 0.0005$) of the
 361 journal in which a paper was published were both significantly associated with citations, but the
 362 effect sizes were minimal (central estimates of -0.0857 per year and 0.001653 per h-index unit,
 363 respectively), suggesting that outliers in citations likely reflect papers that were particularly
 364 useful or interesting to the field.



365 **Figure 5.** Frequency of citations. Most papers in our data set were cited fewer than 25 times,
 366 however there were several outliers with over 100 citations.
 367

368 **Table 1.** Top 10 cited papers from our data set.
 369

Title	Journal	DOI	Times cited
Modelling the impact of global tuberculosis control strategies	<i>Proceedings of the National Academy of Sciences</i>	10.1073/pnas.95.23.13881	231
Genital herpes has played a more important role than any other sexually transmitted infection in driving HIV prevalence in Africa	<i>PLOS One</i>	10.1371/journal.pone.0002230	219
Incidence of Gonorrhoea and Chlamydia following Human Immunodeficiency Virus preexposure prophylaxis among men who have sex with med: A modeling study	<i>Clinical Infectious Diseases</i>	10.1093/cid/cix439	180
Mathematical analysis of the transmission dynamics of HIV/TB coinfection in the presence of treatment	<i>Mathematical Biosciences and Engineering</i>	10.3934/mbe.2008.5.145	165
Ecological interference between fatal diseases	<i>Nature</i>	10.1038/nature01542	152

Determinants of the impact of sexually transmitted infection treatment on prevention of HIV infection: A synthesis of evidence from the Mwanza, Rakai, and Masaka Intervention Trials	<i>The Journal of Infectious Diseases</i>	10.1086/425274	144
Comparing Dengue and Chikungunya emergence and endemic transmission in <i>A. aegypti</i> and <i>A. albopictus</i>	<i>Journal of Theoretical Biology</i>	10.1016/j.jtbi.2014.04.033	140
Identifying the interaction between influenza and pneumococcal pneumonia using incidence data	<i>Science Translational Medicine</i>	10.1126/scitranslmed.3005982	126
Can Hepatitis C Virus (HCV) direct-acting antiviral treatment as prevention reverse the HCV epidemic among men who have sex with men in the United Kingdom? Epidemiological and modeling insights	<i>Clinical Infectious Diseases</i>	10.1093/cid/ciw075	121
Beneficial and perverse effects of isoniazid preventative therapy for latent tuberculosis infection in HIV-tuberculosis coinfecting populations	<i>Proceedings of the National Academy of Sciences</i>	10.1073/pnas.0600349103	120

370
371
372 We found additional metadata for 244 of our 311 papers on the Web of Science search engine.
373 This metadata provided subject categories for each paper, with one to five categorizations per
374 paper. By binning related categories (for example, “Mathematics, Applied” and “Mathematics”;
375 Table S2), we created seven main categories related to the research subject areas for each paper.
376 Life sciences (54.1%, 132/311) and Mathematics (52.9%, 129/311) were the most common
377 categories, while Operations and Management was the least common (3.3%, 8/311). Overlap
378 between categories, in particular Mathematics and Life Sciences, was also common (Figure S3).
379 Similar to citation year and journal h-index, we found that some categories were significantly
380 associated with citations; again though, effect sizes (relative to Operations and Management)
381 were minimal (Life Sciences: estimate = 0.639, z value = 3.207, p=0.00134; Medicine/Public
382 health: estimate = 0.593, z value = 2.199, p=0.028; Multidisciplinary: estimate = 0.731, z value =
383 3.015, p = 0.00257).

384 385 3.5 Model Characteristics and Outputs

386 The majority of publications presented deterministic models (89.7%, 279/311), followed by
387 individual-based models (8.4%, 26/311). A very small number of papers contained a within-host
388 model in addition to the population-level model required to meet our inclusion criteria (3.9%,

389 12/311). Spatially explicit models and metapopulation models were rare among the papers
390 reviewed (0.64%, 2/311 and 0.32%, 1/311, respectively). Some papers contained multiple model
391 components with varied structures, and thus fell into multiple categories (6.4%, 20/311).

392
393 85.2% of the publications included models that were informed by data (265/311). Of these
394 papers, 56.4% (149/265) used data extracted from the literature without giving further
395 information on the origin of those data. Surveillance data were used in 29.1% (77/265) of papers,
396 10.2% (27/265) used survey data, and 3% (8/265) used case study data. The most common use of
397 data was for model parameterization (97%, 257/265), including the use of data-informed
398 parameter values taken from other modelling studies. A smaller set of papers used data for model
399 fitting or calibration (36.2%, 96/265).

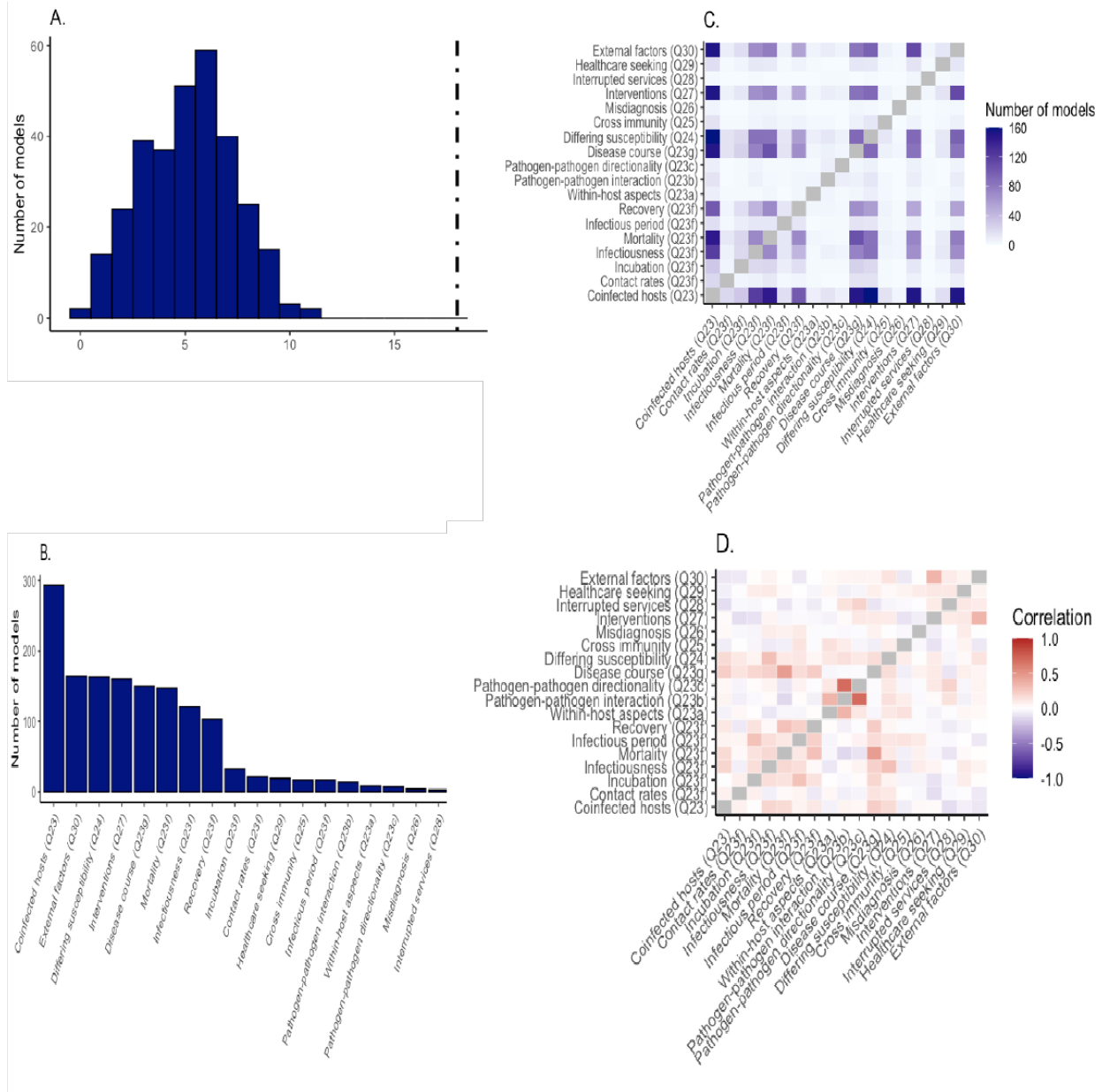
400
401 The most commonly reported model output (question 35) was disease prevalence (79.4%,
402 248/311), followed by the reproduction number (59.5%, 185/311) and stability properties of the
403 model (57.9%, 180/311). Several model outputs were not initially captured by our survey options
404 and were coded as “other” (49.2%, 153/311). Among these, common responses we found in the
405 “other” category were model sensitivity analysis, cost evaluation of different interventions, and
406 total cases of disease averted by interventions. Outputs were commonly examined as a function
407 of different interventions (question 36, 46.6%, 145/311), time (22.5%, 70/311), and varying
408 parameter values (22.5%, 70/311). Rarely did models evaluate outputs as a function of
409 seasonality (0.64%, 2/311), space (0.32%, 1/311), or temperature/climate (0.32%, 1/311).

410 411 *3.6 Complexity Index*

412
413 We created a complexity index to quantify how much co-circulating pathogen models diverged
414 from a set of independent, single-pathogen models. Scores were assigned based on questions 23-
415 30, with one point for each increase in complexity (see Methods). The largest score on the
416 complexity index we observed was 11, out of a maximum possible value of 18. Scores in the
417 intermediate range of 4-7 were most common (72.7%; 226/311), with very few at the minimum
418 score of 0 (2/311) or the maximum observed value of 11 (2/311; Figure 6A). This middle range
419 of complexity reflected a pattern we commonly observed where most models aimed to
420 investigate one or two dimensions of co-circulation/co-infection, but upon the incorporation of a
421 second (or more) pathogen(s), the biology of the interplay between the pathogens often required
422 multiple changes to the model relative to a single-pathogen model. The most commonly
423 observed elements of the complexity index were including hosts that were co-infected (94.5%,
424 294/311, question 23), including external factors that affect the transmission of both pathogens
425 (e.g., interventions) (52.7%, 164/311, question 30), and allowing mono-infected hosts to have
426 different levels of susceptibility to other pathogen(s) in the model as compared to uninfected
427 hosts (52.4%, 163/311, question 24). The least commonly observed elements of the complexity
428 index were accounting for interruptions or declines in services offered due to another co-
429 circulating pathogen in the model structure (0.96%, 3/311, question 28) and the model structure
430 including reporting or surveillance errors due to misdiagnosis between the pathogens modeled
431 (1.3%, 4/311, question 26). Models that included within-host aspects of co-infection in the model
432 structure were also rare (2.6%, 8/311, question 23a; Figure 6B).

433

434 Certain components of our complexity index were more likely to be included in the same model
435 than others. Including co-infected hosts (question 23) and differing levels of susceptibility to
436 other pathogens between uninfected and mono-infected hosts (question 24) were observed
437 together more than any other pair of complexity score elements (51.5%, 160/311), as well as
438 incorporating both co-infected hosts (question 23) and interventions (question 27) (48.9%,
439 152/311) and incorporating co-infected hosts and external factors impacting transmission
440 (question 30) (48.9%, 152/311) (Figure 6C). When looking at the correlation of different
441 components (either jointly present or absent in a model), the most highly correlated pairs were
442 likely due to question redundancy and dependency in our survey. For example, questions 23a,
443 “Does the model structure explicitly include within-host pathogen-pathogen interaction?” and
444 23b “What type of pathogen-pathogen interaction is represented?” are highly correlated ($r=0.7$).
445 Other than these types of related questions, there were few very strong correlations, either
446 positive or negative, indicating high variation in which aspects of co-circulation models in our
447 data set elaborated on (Figure 6D).



448
 449 **Figure 6.** Measures of model complexity. We calculated a complexity index, in which a model
 450 received one point for each aspect that increased model complexity in comparison to a single-
 451 pathogen model. A) The frequency of complexity scores in our data set; black line represents the
 452 maximum possible score of 18. Mid-range scores between 4 and 7 were most common. B) The
 453 frequency of each complexity component in our data set. C) The co-occurrence of different
 454 complexity components within the same model. The inclusion of coinfecting hosts and external
 455 interventions, in particular interventions, was very common in our data set. D) The correlation
 456 coefficients for each pair of complexity components. Question 23d was not answered for any
 457 models in our data set and thus was omitted from panels C and D.

458
 459 **4. Discussion**
 460

461 Pathogens do not exist in a vacuum; they are part of a complex ecosystem that, among other
462 players, contains multiple pathogens that often vie for the same pool of susceptible hosts and can
463 be influenced by the same external factors, such as climate and vector abundance. Mathematical
464 models that explicitly explore the dynamics of co-circulating pathogens have the potential to
465 inform numerous open questions in disease ecology and public health. In our systematic review
466 of co-circulating pathogen models, we found that the scope of the literature in this field has
467 gradually expanded over the past three decades. The emergence of HIV and the clear connection
468 between HIV infection and increased susceptibility to other pathogens was a major catalyzing
469 event for this area of work. However, even as models of multiple pathogens have become more
470 common, there are still extensions of these models that remain underexplored, such as tying
471 within-host processes to population-level models, exploring the effects of misdiagnosis of
472 clinically similar diseases, and assessing the impacts of changes in resource allocation during
473 outbreaks.

474

475 *4.1 Model complexity*

476

477 We created a complexity index to capture the extent to which a co-circulating pathogen model
478 diverged from a simple, single-pathogen model, and found that the majority of models in our
479 review fell into a middle range of this index. The inclusion of a second pathogen in the model
480 often necessitated a few key additional parameters to capture the known biological interactions
481 between the two pathogens, but a full range of model enhancements was rarely deployed. For
482 example, including HIV and TB in the same model necessitates that the model structure account
483 for susceptibility to TB in HIV-infected hosts. Other interactions between the two pathogens
484 were also commonly included including higher likelihood of TB reactivation from the latent
485 phase in HIV-infected individuals and increased morbidity and mortality in HIV-TB co-infecteds.
486 Far less common in our data set was the inclusion of external factors that reflect the ways in
487 which our health systems interface with the world of co-circulating pathogens and their hosts.
488 For example, arboviruses such as dengue, chikungunya, and Zika can present with similar
489 clinical symptoms, which can lead to misdiagnosis of one infection for one another (Silva et al.
490 2019). Misdiagnoses can then result in spurious surveillance data from which we build our
491 models (Oliveira et al. 2020), and potentially mis-appropriated public health funds targeted to
492 prevent one disease at the expense of the others. Another topic that came hurtling to the
493 foreground with the COVID-19 pandemic is the potential of one emerging pathogen to interrupt
494 and delay healthcare services targeted towards the treatment and prevention of other pathogens
495 (Bigouette et al. 2022). During the COVID-19 response, routine vaccination and surveillance
496 programs for endemic diseases were put on hold in many nations, with negative consequences,
497 especially for children (Menendez et al. 2020, Cardoso Pinto et al. 2022).

498

499 *4.2 A new framework for model development*

500

501 Model structure complexity often appeared to be driven by the authors' scholarly motivation(s)
502 for creating the model. Our analysis of author's motivations resulted in binning papers into four
503 meta-categories: (i) understanding the dynamics of co-circulating pathogens, (ii) developing
504 novel mathematical models, (iii) implementing intervention or control measures, and (iv)
505 calculating cost-effectiveness and optimal control of interventions. As an overarching schema to
506 approach the current state of the field, we propose that papers in categories (i) and (ii) be

507 classified under an umbrella of “**exploration**” and those in (iii) and (iv) as “**evaluation.**” This
508 overarching classification provides a convenient framework to be used for both viewing the
509 current state of the literature and evaluating where knowledge gaps remain. Many of the papers
510 focused on **exploration** had a primarily mathematical goal to simply develop a compartmental
511 model of two co-circulating pathogens (Lusiana et al. 2017, Jose et al. 2023), but some extended
512 into testing more fundamental hypotheses, such as why two co-circulating pathogens can co-
513 exist in some regions and not others (Amaku et al. 2011), or how asymmetric cross-immunity
514 between related pathogens observed in laboratory studies may impact population-level
515 transmission and prevalence (Restif et al. 2008). Notable examples of **evaluation** included
516 exploring the tradeoff between decreased population-level transmission of tuberculosis with
517 extended drug therapy regimens vs. the selective pressure for drug-resistant strains (Kunkel et al.
518 2016), and examining the impact that a lack of interventions due to health services disruptions
519 from the COVID-19 pandemic had on diseases such as HIV, malaria, and tuberculosis (Hogan et
520 al. 2020). Overall, this framework of exploration and evaluation can be useful for researchers to
521 take stock of the current state of knowledge in their system and identify critical knowledge gaps
522 to push the field forward.

523 524 *4.3 Model quality*

525 Despite the number of yet unexplored avenues in the field of co-circulating pathogens left to
526 pursue, in our review we noted that there was a glut of papers with very similar features that
527 perhaps represent a saturation of this corner of the field. Specifically, 40.8% (127/311) of papers
528 included two pathogens and had near-identical results sections that calculated the disease-free
529 equilibria in the model, the basic reproduction number, and performed one or two simple
530 numerical simulations of host prevalence. These same models often fully lacked any data to
531 inform the model (25.2%, 32/127), or used recycled parameters from the literature (72.4%,
532 92/127). Although there is value in such mathematical approaches, each additional study that
533 performs these steps on a nearly identical system makes only a very incremental contribution to
534 the body of knowledge of co-circulating pathogen dynamics.

535
536 Another quality issue we frequently noted was the misunderstanding and/or mischaracterizing of
537 known biology in the construction of some models. Concrete examples included misalignment of
538 stated model goals with reported model outcomes. For example, multiple papers stated in the
539 introduction section that a goal of the model was to explore how HIV-related changes in host
540 susceptibility to other pathogens may change population trends, but then nothing in the structure
541 of the model reflected a change in host susceptibility. Similarly, authors would often expound on
542 the importance of specific host cohorts in transmission, such as men who have sex with men or
543 intravenous drug users, but then only explicitly include heterosexual sexual encounters in their
544 contact process represented in the model. These overlooked errors in the pairing of model
545 structure to known biology are worrisome in a peer-reviewed system. In addition to both authors
546 and reviewers devoting more attention to detail, these errors suggest a need for greater emphasis
547 on the correspondence between model structure and stated biological assumptions in training
548 around mathematical modeling of infectious disease dynamics.

549 550 *4.4 Future directions: Multi-scale, multi-pathogen models*

551

552 Much of the complexity of disease dynamics arises from interactions across scales of biological
553 organization; from within hosts to the population level, and from the population to the greater
554 ecological community, disease dynamics occur across orders of magnitude. As the field of
555 modeling co-circulating pathogens continues to grow and evolve, the effects of scale in modeling
556 studies cannot be minimized. New studies are needed that examine multi-scale interactions and
557 impacts of multiple pathogens in a single model. Consider, for example, the known effect of
558 influenza on respiratory immune defenses, leading to a greater likelihood of infection by
559 bacterial pathogens such as *Streptococcus pneumoniae* and also potentially worse clinical
560 outcomes (Herrera et al. 2016). While a few papers in our data set did make simple adjustments
561 to the model to include aspects such as changes in host susceptibility due to infection, very few
562 contained a true within-host model where the processes at play within the host had the potential
563 to influence population-level transmission in a nuanced or mechanistic manner. Work that
564 connects the known within-host, cellular-level impacts of pathogen-pathogen interactions
565 (McCullers 2006) to population-level prevalence and disease burden could give insight into
566 better surveillance tactics and treatment schemes to mitigate the negative impacts of these
567 pathogens. Key to this pursuit are appropriate data sources at multiple scales, from the individual
568 to the population level, to verify how pathogens are interacting within hosts and tie these data to
569 phenomena observed with co-circulating pathogen transmission at the population level. For
570 respiratory pathogens, the COVID-19 pandemic and the accompanying “triple-demic” of
571 COVID-19, influenza, and RSV has, at least temporarily, heightened testing and surveillance and
572 expanded the use of excellent tools such as wastewater data (Boehm et al. 2023, Luo et al. 2023,
573 Petros et al. 2024). We hope for a continued focus on gathering high-quality data for these and
574 other pathogens, which will allow researchers to build robust, data-informed models that can
575 directly inform public health efforts.

576 577 *4.5 Study limitations*

578
579 It is important to emphasize that we restricted our review to include only models that contained a
580 mechanistic representation of co-circulating pathogens of humans. This criterion allowed for an
581 in-depth focus on this subset of the literature, but we recognize that there are still many insights
582 to be found from non-mechanistic statistical and geospatial approaches, models of theoretical
583 pathogens, and work done in animal and plant systems. Work on theoretical pathogens can
584 explore central mechanisms that drive the patterns seen in co-circulating pathogens in human
585 populations, such as how co-infection may (or may not) drive changes in pathogen virulence
586 (Brown et al. 2002). Experimental manipulations in non-human systems that would not be
587 feasible or ethical with human subjects can also yield fundamental insights into the interactions
588 and mechanisms at play in a multi-pathogen world, such as how variability in infection risk can
589 be more strongly influenced by co-infecting pathogens than other mechanisms such as host
590 exposure to parasites and host body condition (Telfer et al. 2010). These examples highlight the
591 depth of investigation that is possible in other host-pathogen systems, and we want to emphasize
592 that despite the focus of this systematic review, the power of non-human studies to inform and
593 inspire work on human pathogens should not be discounted. A tandem review of co-circulating
594 pathogen models that did not meet our inclusion criteria, such as non-mechanistic models and
595 those focused on non-human pathogens, could help further inform and advance approaches
596 across systems.

597

598 *4.6 Conclusion*

599

600 Co-circulating pathogen models can be a highly useful tool in the public health toolkit when it
601 comes to preventing and mitigating infectious disease. From the papers in our review, we found
602 clear examples of concrete recommendations that arise from considering co-circulating
603 pathogens, ranging from actionable recommendations based on a realistic public health budget
604 (Goyal and Murray 2017) to screening recommendations to meet WHO targets for a particular
605 disease (Macgregor et al. 2020). We believe many more insights remain to be discovered from
606 future work on co-circulating pathogens. What level of surveillance is needed to track and
607 forecast a pathogen of interest when it co-circulates with other pathogens that cause similar
608 clinical symptoms, such as arboviruses? What testing and treatment regimens can minimize the
609 population-level effects of co-circulating respiratory pathogens that are known to have within-
610 host interactions? How might antibacterial treatment for one pathogen influence the trajectory of
611 antibiotic resistance not just in the concerned species, but other co-circulating bacteria? We hope
612 that this systematic review serves as a launching point for others to identify and tackle the most
613 exciting and pressing challenges presented by co-circulating pathogens, and in doing so mitigate
614 the burden of infectious diseases.

615

616

617

618 **References**

- 619 Abu-Raddad, L. J., L. Sabatelli, J. T. Achterberg, J. D. Sugimoto, I. M. Longini, C. Dye, and M.
620 E. Halloran. 2009. Epidemiological benefits of more-effective tuberculosis vaccines,
621 drugs, and diagnostics. *Proceedings of the National Academy of Sciences*
622 106:13980–13985.
- 623 Alemu, A., Y. Shiferaw, Z. Addis, B. Mathewos, and W. Birhan. 2013. Effect of malaria on
624 HIV/AIDS transmission and progression. *Parasites & Vectors* 6:18.
- 625 Amaku, M., F. A. B. Coutinho, and E. Massad. 2011. Why dengue and yellow fever coexist in
626 some areas of the world and not in others? *Biosystems* 106:111–120.
- 627 Aria, M., T. Le, C. Cuccurullo, A. Belfiore, and J. Choe. 2024. openalexR: An R-Tool for
628 Collecting Bibliometric Data from OpenAlex. *The R Journal* 15:167–180.
- 629 Bigouette, J. P., A. W. Callaghan, M. Donadel, A. M. Porter, L. Rosencrans, J. S. Lickness, S.
630 Blough, X. Li, R. T. Perry, A. J. Williams, H. M. Scobie, B. A. Dahl, J. McFarland, and C.
631 S. Murrill. 2022. Effects of COVID-19 on Vaccine-Preventable Disease Surveillance
632 Systems in the World Health Organization African Region, 2020. *Emerging Infectious*
633 *Diseases* 28.
- 634 Boehm, A. B., M. K. Wolfe, B. J. White, B. Hughes, D. Duong, and A. Bidwell. 2023. More
635 than a Triple endemic: Influenza A Virus, Respiratory Syncytial Virus, SARS-CoV-2, and
636 Human Metapneumovirus in Wastewater during Winter 2022–2023. *Environmental*
637 *Science & Technology Letters* 10:622–627.
- 638 Bonyah, E., M. A. Khan, K. O. Okosun, and J. F. Gómez-Aguilar. 2019. On the co-infection of
639 dengue fever and Zika virus. *Optimal Control Applications and Methods* 40:394–421.

640 Brooks, M. E., K. Kristensen, K. J. Van Benthem, A. Magnusson, C. W. Berg, A. Nielsen, H. J.
641 Skaug, M. Machler, and B. M. Bolker. 2017. glmmTMB balances speed and flexibility
642 among packages for zero-inflated generalized linear mixed modeling. *The R journal*
643 9:378–400.

644 Brown, S. P., M. E. Hochberg, and B. T. Grenfell. 2002. Does multiple infection select for
645 raised virulence? *Trends in Microbiology* 10:401–405.

646 Cardoso Pinto, A. M., L. Ranasinghe, P. J. Dodd, S. S. Budhathoki, J. A. Seddon, and E.
647 Whittaker. 2022. Disruptions to routine childhood vaccinations in low- and middle-
648 income countries during the COVID-19 pandemic: A systematic review. *Frontiers in*
649 *Pediatrics* 10:979769.

650 ChatGPT. 2024, April 1. . OpenAI.

651 Cowger, T. L., E. J. Murray, J. Clarke, M. T. Bassett, B. O. Ojikutu, S. M. Sánchez, N. Linos,
652 and K. T. Hall. 2022. Lifting Universal Masking in Schools — Covid-19 Incidence
653 among Students and Staff. *New England Journal of Medicine* 387:1935–1946.

654 Da Silva Pessoa Vieira, C. J., C. Steiner São Bernardo, D. J. Ferreira Da Silva, J. Rigotti
655 Kubiszeski, E. Serpa Barreto, H. A. De Oliveira Monteiro, G. R. Canale, C. A. Peres, A.
656 L. Massey, T. Levi, and R. Vieira De Moraes Bronzoni. 2022. Land-use effects on
657 mosquito biodiversity and potential arbovirus emergence in the Southern Amazon,
658 Brazil. *Transboundary and Emerging Diseases* 69:1770–1781.

659 Eikenberry, S. E., and A. B. Gumel. 2018. Mathematical modeling of climate change and
660 malaria transmission dynamics: a historical review. *Journal of Mathematical Biology*
661 77:857–933.

662 Ferguson, N. M., D. A. T. Cummings, C. Fraser, J. C. Cajka, P. C. Cooley, and D. S. Burke.
663 2006. Strategies for mitigating an influenza pandemic. *Nature* 442:448–452.

664 Galvin, S. R., and M. S. Cohen. 2004. The role of sexually transmitted diseases in HIV
665 transmission. *Nature Reviews Microbiology* 2:33–42.

666 Gaythorpe, K. A., K. Abbas, J. Huber, A. Karachaliou, N. Thakkar, K. Woodruff, X. Li, S.
667 Echeverria-Londono, VIMC Working Group on COVID-19 Impact on Vaccine
668 Preventable Disease, A. Arsene Bitu Fouda, F. Cutts, E. Dansereau, A. Durupt, U.
669 Griffiths, J. Horton, L. K. Krause, K. Kretsinger, T. Mengistu, I. Mirza, S. R. Procter, S.
670 Shendale, M. Ferrari, M. L. Jackson, K. McCarthy, T. A. Perkins, C. Trotter, and M. Jit.
671 2021. Impact of COVID-19-related disruptions to measles, meningococcal A, and
672 yellow fever vaccination in 10 countries. *eLife* 10:e67023.

673 Goyal, A., and J. M. Murray. 2017. Roadmap to control HBV and HDV epidemics in China.
674 *Journal of Theoretical Biology* 423:41–52.

675 Heesterbeek, H., R. M. Anderson, V. Andreasen, S. Bansal, D. De Angelis, C. Dye, K. T. D.
676 Eames, W. J. Edmunds, S. D. W. Frost, S. Funk, T. D. Hollingsworth, T. House, V.
677 Isham, P. Klepac, J. Lessler, J. O. Lloyd-Smith, C. J. E. Metcalf, D. Mollison, L. Pellis, J.
678 R. C. Pulliam, M. G. Roberts, C. Viboud, and Isaac Newton Institute IDD
679 Collaboration. 2015. Modeling infectious disease dynamics in the complex
680 landscape of global health. *Science* 347:aaa4339.

681 Herrera, A. L., V. C. Huber, and M. S. Chaussee. 2016. The Association between Invasive
682 Group A Streptococcal Diseases and Viral Respiratory Tract Infections. *Frontiers in*
683 *Microbiology* 7.

684 Hogan, A. B., B. L. Jewell, E. Sherrard-Smith, J. F. Vesga, O. J. Watson, C. Whittaker, A.
685 Hamlet, J. A. Smith, P. Winskill, R. Verity, M. Baguelin, J. A. Lees, L. K. Whittles, K. E.
686 C. Ainslie, S. Bhatt, A. Boonyasiri, N. F. Brazeau, L. Cattarino, L. V. Cooper, H.
687 Coupland, G. Cuomo-Dannenburg, A. Dighe, B. A. Djaafara, C. A. Donnelly, J. W.
688 Eaton, S. L. Van Elsland, R. G. FitzJohn, H. Fu, K. A. M. Gaythorpe, W. Green, D. J.
689 Haw, S. Hayes, W. Hinsley, N. Imai, D. J. Laydon, T. D. Mangal, T. A. Mellan, S. Mishra,
690 G. Nedjati-Gilani, K. V. Parag, H. A. Thompson, H. J. T. Unwin, M. A. C. Vollmer, C. E.
691 Walters, H. Wang, Y. Wang, X. Xi, N. M. Ferguson, L. C. Okell, T. S. Churcher, N.
692 Arinaminpathy, A. C. Ghani, P. G. T. Walker, and T. B. Hallett. 2020. Potential impact
693 of the COVID-19 pandemic on HIV, tuberculosis, and malaria in low-income and
694 middle-income countries: a modelling study. *The Lancet Global Health* 8:e1132–
695 e1141.

696 Huang, Y., and P. Rohani. 2006. Age-structured effects and disease interference in
697 childhood infections. *Proceedings of the Royal Society B: Biological Sciences*
698 273:1229–1237.

699 Isea, R., and K. Lonngren. 2016. A Preliminary Mathematical Model for the Dynamic
700 Transmission of Dengue, Chikungunya and Zika. *American Journal of Modern*
701 *Physics and Application* 3:11–15.

702 Jenness, S. M., K. M. Weiss, S. M. Goodreau, T. Gift, H. Chesson, K. W. Hoover, D. K. Smith,
703 A. Y. Liu, P. S. Sullivan, and E. S. Rosenberg. 2017. Incidence of Gonorrhoea and
704 Chlamydia Following Human Immunodeficiency Virus Preexposure Prophylaxis

- 705 Among Men Who Have Sex With Men: A Modeling Study. *Clinical Infectious*
706 Diseases 65:712–718.
- 707 Johnson, L. F., R. E. Dorrington, D. Bradshaw, and D. J. Coetzee. 2011. The effect of
708 syndromic management interventions on the prevalence of sexually transmitted
709 infections in South Africa. *Sexual & Reproductive Healthcare* 2:13–20.
- 710 Jose, S. A., R. Raja, B. I. Omede, R. P. Agarwal, J. Alzabut, J. Cao, and V. E. Balas. 2023.
711 Mathematical modeling on co-infection: transmission dynamics of Zika virus and
712 Dengue fever. *Nonlinear Dynamics* 111:4879–4914.
- 713 Kate K Orroth, Esther E Freeman, Roel Bakker, Anne Buvé, Judith R Glynn, Marie-Claude
714 Boily, Richard G White, J Dik F Habbema, and Richard J Hayes. 2007. Understanding
715 the differences between contrasting HIV epidemics in east and west Africa: results
716 from a simulation model of the Four Cities Study. *Sexually Transmitted Infections*
717 83:i5.
- 718 Korenromp, E. L., R. G. White, K. K. Orroth, R. Bakker, A. Kamali, D. Serwadda, R. H. Gray, H.
719 Grosskurth, J. D. F. Habbema, and R. J. Hayes. 2005. Determinants of the Impact of
720 Sexually Transmitted Infection Treatment on Prevention of HIV Infection: A Synthesis
721 of Evidence from the Mwanza, Rakai, and Masaka Intervention Trials. *The Journal of*
722 Infectious Diseases 191:S168–S178.
- 723 Kunkel, A., F. W. Crawford, J. Shepherd, and T. Cohen. 2016. Benefits of continuous
724 isoniazid preventive therapy may outweigh resistance risks in a declining
725 tuberculosis/HIV coepidemic. *AIDS* 30:2715–2723.

- 726 Lafferty, K. D. 2009. The ecology of climate change and infectious diseases. *Ecology*
727 90:888–900.
- 728 Lemaitre, J., D. Pasetto, J. Perez-Saez, C. Sciarra, J. F. Wamala, and A. Rinaldo. 2019.
729 Rainfall as a driver of epidemic cholera: Comparative model assessments of the
730 effect of intra-seasonal precipitation events. *Acta Tropica* 190:235–243.
- 731 Lloyd-Smith, J. O., M. Poss, and B. T. Grenfell. 2008. HIV-1/parasite co-infection and the
732 emergence of new parasite strains. *Parasitology* 135:795–806.
- 733 Luo, W., Q. Liu, Y. Zhou, Y. Ran, Z. Liu, W. Hou, S. Pei, and S. Lai. 2023. Spatiotemporal
734 variations of “triple-demic” outbreaks of respiratory infections in the United States
735 in the post-COVID-19 era. *BMC Public Health* 23:2452.
- 736 Lusiana, V., P. S. Putra, N. Nuraini, and E. Soewono. 2017. Mathematical modeling of
737 transmission co-infection tuberculosis in HIV community. Page 020012. Makassar,
738 Indonesia.
- 739 Macgregor, L., M. Desai, N. K. Martin, J. Nicholls, F. Hickson, P. Weatherburn, M. Hickman,
740 and P. Vickerman. 2020. Scaling up screening and treatment for elimination of
741 hepatitis C among men who have sex with men in the era of HIV pre-exposure
742 prophylaxis. *EClinicalMedicine* 19:100217.
- 743 Marimuthu, Y., B. Nagappa, N. Sharma, S. Basu, and K. K. Chopra. 2020. COVID-19 and
744 tuberculosis: A mathematical model based forecasting in Delhi, India. *Indian*
745 *Journal of Tuberculosis* 67:177–181.

- 746 Mayer, K. H., C. L. Karp, P. G. Auwaerter, and K. H. Mayer. 2007. Coinfection with HIV and
747 Tropical Infectious Diseases. I. Protozoal Pathogens. *Clinical Infectious Diseases*
748 45:1208–1213.
- 749 McCullers, J. A. 2006. Insights into the Interaction between Influenza Virus and
750 *Pneumococcus*. *Clinical Microbiology Reviews* 19:571–582.
- 751 Mendenhall, E., B. A. Kohrt, C. H. Logie, and A. C. Tsai. 2022. Syndemics and clinical
752 science. *Nature Medicine* 28:1359–1362.
- 753 Menendez, C., R. Gonzalez, F. Donnay, and R. G. F. Leke. 2020. Avoiding indirect effects of
754 COVID-19 on maternal and child health. *The Lancet Global Health* 8:e863–e864.
- 755 Montales, M. T., A. Chaudhury, A. Beebe, S. Patil, and N. Patil. 2015. HIV-Associated TB
756 Syndemic: A Growing Clinical Challenge Worldwide. *Frontiers in Public Health* 3.
- 757 Mordecai, E. A., J. M. Caldwell, M. K. Grossman, C. A. Lippi, L. R. Johnson, M. Neira, J. R.
758 Rohr, S. J. Ryan, V. Savage, M. S. Shocket, R. Sippy, A. M. Stewart Ibarra, M. B.
759 Thomas, and O. Villena. 2019. Thermal biology of mosquito-borne disease. *Ecology*
760 *Letters* 22:1690–1708.
- 761 Oidtman, R. J., G. España, and T. A. Perkins. 2021. Co-circulation and misdiagnosis led to
762 underestimation of the 2015–2017 Zika epidemic in the Americas. *PLOS Neglected*
763 *Tropical Diseases* 15:e0009208.
- 764 Okuneye, K. O., J. X. VELASCO-HERNANDEZ, and A. B. GUMEL. 2017. The “Unholy”
765 Chikungunya-Dengue-Zika Trinity: A Theoretical Analysis. *Journal of Biological*
766 *Systems* 25:545–585.

- 767 Oliveira, J. F., M. S. Rodrigues, L. M. Skalinski, A. E. S. Santos, L. C. Costa, L. L. Cardim, E. S.
768 Paixão, M. D. C. N. Costa, W. K. Oliveira, M. L. Barreto, M. G. Teixeira, and R. F. S.
769 Andrade. 2020. Interdependence between confirmed and discarded cases of
770 dengue, chikungunya and Zika viruses in Brazil: A multivariate time-series analysis.
771 PLOS ONE 15:e0228347.
- 772 Pagel, C., and C. A. Yates. 2022. Role of mathematical modelling in future pandemic
773 response policy. BMJ:e070615.
- 774 Petros, B. A., C. E. Milliren, P. C. Sabeti, and A. Ozonoff. 2024. Increased Pediatric
775 Respiratory Syncytial Virus Case Counts Following the Emergence of Severe Acute
776 Respiratory Syndrome Coronavirus 2 Can Be Attributed to Changes in Testing.
777 Clinical Infectious Diseases:ciae140.
- 778 R Core Team. 2021. R: A language and environment for statistical computing. R Foundation
779 for Statistical Computing, Vienna, Austria.
- 780 Rao, D. W., C. J. Bayer, G. Liu, A. Chikandiwa, M. Sharma, C. L. Hathaway, N. Tan, N. Mugo,
781 and R. V. Barnabas. 2022. Modelling cervical cancer elimination using single-visit
782 screening and treatment strategies in the context of high HIV prevalence: estimates
783 for KwaZulu-Natal, South Africa. Journal of the International AIDS Society
784 25:e26021.
- 785 Restif, O., D. N. Wolfe, E. M. Goebel, O. N. Bjornstad, and E. T. Harvill. 2008. Of mice and
786 men: asymmetric interactions between Bordetella pathogen species. Parasitology
787 135:1517–1529.

- 788 Ribas Freitas, A. R., A. A. Pinheiro Chagas, A. M. Siqueira, and L. Pamplona De Góes
789 Cavalcanti. 2024. How much of the current serious arbovirus epidemic in Brazil is
790 dengue and how much is chikungunya? *The Lancet Regional Health - Americas*
791 34:100753.
- 792 Richard Orr, Heather Piwowar, Jason Priem. 2024. Unpaywall. OurResearch.
- 793 Rohani, P., C. J. Green, N. B. Mantilla-Beniers, and B. T. Grenfell. 2003. Ecological
794 interference between fatal diseases. *Nature* 422:885–888.
- 795 Silva, M. M. O., L. B. Tauro, M. Kikuti, R. O. Anjos, V. C. Santos, T. S. F. Gonçalves, I. A. D.
796 Paploski, P. S. S. Moreira, L. C. J. Nascimento, G. S. Campos, A. I. Ko, S. C. Weaver,
797 M. G. Reis, U. Kitron, and G. S. Ribeiro. 2019. Concomitant Transmission of Dengue,
798 Chikungunya, and Zika Viruses in Brazil: Clinical and Epidemiological Findings From
799 Surveillance for Acute Febrile Illness. *Clinical Infectious Diseases* 69:1353–1359.
- 800 Telfer, S., X. Lambin, R. Birtles, P. Beldomenico, S. Burthe, S. Paterson, and M. Begon. 2010.
801 Species Interactions in a Parasite Community Drive Infection Risk in a Wildlife
802 Population. *Science* 330:243–246.
- 803 Thomson, M. C., F. J. Doblas-Reyes, S. J. Mason, R. Hagedorn, S. J. Connor, T. Phindela, A. P.
804 Morse, and T. N. Palmer. 2006. Malaria early warnings based on seasonal climate
805 forecasts from multi-model ensembles. *Nature* 439:576–579.
- 806 Tsai, A. C., E. Mendenhall, J. A. Trostle, and I. Kawachi. 2017. Co-occurring epidemics,
807 syndemics, and population health. *The Lancet* 389:978–982.

808 Vickerman, P., N. K. Martin, and M. Hickman. 2012. Understanding the trends in HIV and
809 hepatitis C prevalence amongst injecting drug users in different settings—
810 Implications for intervention impact. *Drug and Alcohol Dependence* 123:122–131.

811 Vitoria, M., R. Granich, C. F. Gilks, C. Gunneberg, M. Hosseini, W. Were, M. Raviglione, and
812 K. M. De Cock. 2009. The Global Fight Against HIV/AIDS, Tuberculosis, and Malaria.
813 *American Journal of Clinical Pathology* 131:844–848.

814 de Vos, A. S., J. J. van der Helm, M. Prins, and M. E. Kretzschmar. 2012. Determinants of
815 persistent spread of HIV in HCV-infected populations of injecting drug users.
816 *Epidemics* 4:57–67.

817 Web of Science API. 2024. . Clarivate.

818 Zahouli, J. B. Z., B. G. Koudou, P. Müller, D. Malone, Y. Tano, and J. Utzinger. 2017. Effect of
819 land-use changes on the abundance, distribution, and host-seeking behavior of
820 *Aedes arbovirus* vectors in oil palm-dominated landscapes, southeastern Côte
821 d’Ivoire. *PLOS ONE* 12:e0189082.

822 Zelenev, A., J. Li, A. Mazhnaya, S. Basu, and F. L. Altice. 2018. Hepatitis C virus treatment as
823 prevention in an extended network of people who inject drugs in the USA: a
824 modelling study. *The Lancet Infectious Diseases* 18:215–224.

825
826

827 **Supplemental: Co-circulating pathogens of humans: A systematic review of mechanistic**

828 **transmission models**

829

830 **Table of contents:**

831 • Figure S1

832 • Figure S2

833 • Table S1

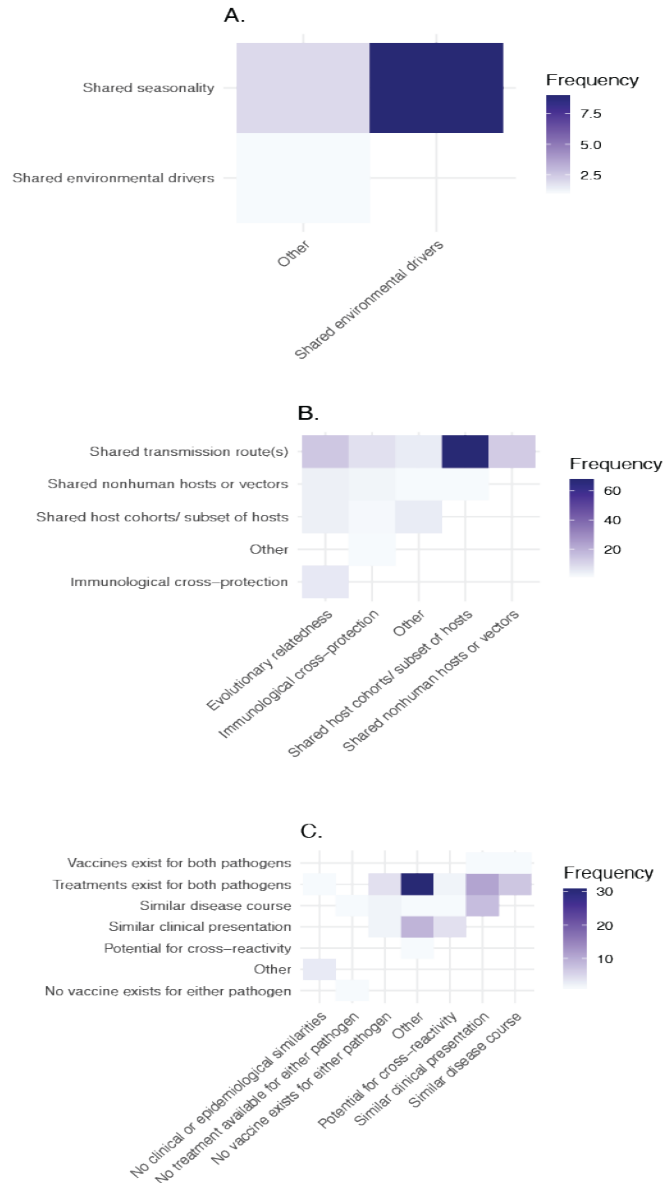
834 • Table S2

835

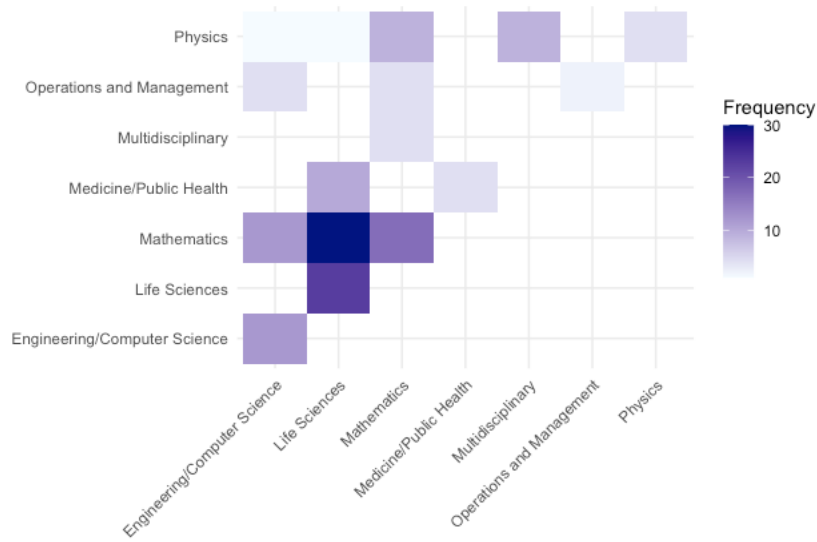
836

837

838



839
840 **Figure S1.** The co-occurrence of different environmental similarities (A), biological similarities
841 (B), or clinical/epidemiological similarities (C) noted between pathogens in the same model



842
843 **Figure S2.** Overlapping classifications of journal types for the journals represented by papers in
844 our data set.

845
846
847
848
849
850
851
852
853
854
855
856
857
858
859
860
861
862
863
864
865
866
867
868
869
870
871

872 **Table S1.** An example calculation of the complexity index. This calculation was made for one
 873 paper in our data set, “On the co-infection of dengue fever and Zika virus” (Bonyah et al. 2019).

Question	Response	Index points
Q23. Does the model structure include hosts that are co-infected with two or more pathogens?	Yes	1
Q23a. Are any within-host aspects of co-infection explicitly included in the model structure?	No	0
Q23b. Does the model structure explicitly include within-host pathogen-pathogen interaction (direct or indirect) in a co-infected host?	No	0
Q23c. What type of pathogen-pathogen interaction is represented in the model structure?	No	0
Q23f. Which parameter values for the co-infected class are different from the mono-infected and uninfected classes? Check all that apply: <ul style="list-style-type: none"> - Contact rates - Incubation period - Infectiousness - Infection-induced mortality - Infectious period - Recovery time - Other 	-Infectiousness - Infection-induced mortality	2
Q23g. Does the model include any separate terms to represent changes in disease symptoms, disease course, or disease severity in co-infected individuals?	Yes	1
Q24. In the model, do mono-infected and uninfected hosts have different levels of susceptibility to the other pathogens in the model?	Yes	1
Q25. Does the model structure include any representation of cross-immunity between two or more of the pathogens modeled?	No	0
Q26. Does the model structure include something to account for reporting or surveillance errors due to misdiagnosis between the pathogens modeled?	No	0

Q27. Does the model structure include anything to account for shared impacts of an intervention?	Yes	1
Q28. Does the model structure include anything to account for interruptions or declines in services offered due to another co-circulating pathogen in the model?	No	0
Q29. Does the model structure include changes in health seeking behavior for infection with one pathogen because of something occurring as the result of the other pathogen?	No	0
Q30. Does the model structure include any other external factors that directly or indirectly affect the transmission of both pathogens?	Yes	1
	Total Complexity Index Score	7

874
875
876

877
878
879

Table S2. We binned related Web of Science journal categories into meta categories used for analysis.

Web of Science Categories	Binned category
Mathematical and Computational Biology; Mathematics, Applied; Mathematics, Interdisciplinary Applications; Mathematics; Statistics and Probability	Mathematics
Computer Science, Interdisciplinary Applications; Computer Science, Software Engineering; Computer Science, Information Systems; Engineering, Electrical and Electronic; Engineering, Chemical; Engineering, Mechanical; Engineering, Multidisciplinary; Automation and Control Systems; Mechanics	Engineering/Computer Science
Management; Operations Research and Management Science	Operations and Management
Infectious Diseases; Biology; Ecology; Microbiology; Immunology; Parasitology; Tropical Medicine; Virology; Cell Biology; Genetics and Heredity; Environmental Science; Evolutionary Biology; Environmental Sciences; Biophysics; Biotechnology and Applied Microbiology; Biochemical Research Methods	Life Sciences
Gastroenterology and Hepatology; Medicine, General and Internal; Medicine, Research and Experimental; Medicine/Public Health; Substance Abuse; Psychiatry; Public, Environmental and Occupational Health	Medicine/Public Health
Physics, Applied; Physics, Mathematical; Physics, Multidisciplinary	Physics
Multidisciplinary Sciences; Materials Science, Multidisciplinary	Multidisciplinary

880
881
882