

1 **The Impact of Chlorinated Drinking Water Exposure on Gut Microbiota**
2 **Development in Infants: a Randomised Controlled Trial.**

3

4 **Kimberley Parkin**^{1,2}, **Claus T. Christophersen**^{4,5}, **Valerie Verhasselt**^{3,6}, **Debra J.**
5 **Palmer**^{2,6}, **Matthew N. Cooper**^{2,6}, **Susan L. Prescott**^{2,7,8,9,10}, **Desiree Silva**^{2,5,7,,10}, **David**
6 **Martino**^{1,11,*}

7

8 1 Wal-yan Respiratory Research Centre, The Kids Research Institute Australia, Nedlands,
9 Perth, WA 6009, Australia

10 2 Medical School, University of Western Australia, Nedlands 6009, WA, Australia

11 3 Larsson-Rosenquist Centre for Immunology and Breastfeeding, Medical School, University
12 of Western Australia, Nedlands 6009, WA, Australia

13 4 WA Human Microbiome Collaboration Centre, Curtin University, Bentley, Perth, WA
14 6102, Australia

15 5 Nutrition & Health Innovation Research Institute, School of Medical and Health Sciences,
16 Edith Cowen University, Joondalup, Perth, WA 6027, Australia

17 6 Telethon Kids Institute, Nedlands, Perth, WA 6009, Australia

18 7 Joondalup Health Campus, Joondalup, Perth, WA 6027, Australia

19 8 Nova Institute for Health, Baltimore, Maryland 21231, USA

20 9 Department of Family and Community Medicine, University of Maryland School of
21 Medicine, Baltimore, Maryland 21201, USA

22 10 The ORIGINS Project, The Kids Research Institute Australia, Nedlands, WA 6009,
23 Australia

24 11 School of Molecular Science, University of Western Australia, Nedlands, WA 6009,
25 Australia

26

27 *Correspondence: david.martino@telethonkids.org.au

28

29 **ABSTRACT**

30 **Background:** Early gut microbiota disruptions can increase the risk for dysbiosis and
31 predispose to chronic diseases. While chlorinated drinking water is generally considered safe,
32 the antimicrobial effects of chlorine-based disinfectants may negatively impact the
33 developing infant microbiota, which is particularly vulnerable during this critical period. This
34 study investigates the specific effects of chlorinated water on the gut microbiome in infants.

35 **Methods:** The waTer qUality and Microbiome Study (TUMS) is a double-blinded,
36 randomized controlled trial (RCT). Six-month old infants (n=197) received either de-
37 chlorinated drinking water (via benchtop filtration), or regular tap water for twelve months.
38 Stool samples were collected at six-months (baseline) and at eighteen-months of age.
39 Metagenomic sequencing was used for faecal microbiome analysis. Samples of participant
40 tap water was also collected pre- and post-intervention.

41 **Results:** Participants were balanced for sex, delivery method, and breast-feeding status at
42 time of recruitment between the control (n=98) and treatment (n=99) groups. We collected a
43 total of 170 baseline stool samples (83 in the control group and 87 in the treatment group),
44 and 130 follow-up stool samples (65 in the control group and 65 in the treatment group).
45 Interindividual variation was higher at six-months compared to eighteen months. No
46 significant differences in overall community structure (beta diversity (p=0.35), richness
47 (p=0.98) or Shannon Index (p=0.45)) were found between treatment groups. However, 55
48 genera were differentially abundant at follow-up (adjusted p-value < 0.01), primarily within
49 the Firmicutes phylum. Analysis of metabolic pathways revealed the chlorinated water group
50 showed significantly higher abundance of antibiotic resistance genes mostly attributable to
51 *Escherichia* and *Klebsiella* species.

52 **Conclusion:** Water chlorination induces predominantly minor changes in infant gut
53 microbiome composition; but appears to increase the abundance of antibiotic-resistant genes.
54 While water chlorination remains a vital public health tool for ensuring safe drinking water,
55 our findings underscore the need for continued research into the potential for increased
56 antibiotic resistance and suggest there may be value in exploring alternative disinfectant
57 strategies.

58

59 *Australian New Zealand Clinical Trial Registry:* ACTRN12619000458134, registered
60 20/03/2019,

61 <https://www.anzctr.org.au/Trial/Registration/TrialReview.aspx?id=377164&isReview=true>

62

63 **Key words:** Infant microbiota, water quality, water chlorination, disinfection by-products,
64 whole genome shotgun metagenomics, antibiotic resistance
65

66 INTRODUCTION

67 The gut microbiota, a complex ecosystem of microorganisms residing in the gastrointestinal
68 (GI) tract, is essential for healthy development and protection against non-communicable
69 disease. In infancy, environmental factors significantly influence the establishment of this
70 microbiota ¹, with long-term consequences for gut health and disease risk. Dysbiosis, a
71 disruption of the normal microbial balance, can lead to altered composition, diversity, and
72 function, potentially allowing harmful species to colonize ². This early life dysbiosis has been
73 repeatedly linked to an increased risk of chronic diseases in later childhood, including
74 allergies, asthma, atopic dermatitis, diabetes, obesity, cardiovascular diseases, and
75 neurological disorders ³⁻⁵. Given the global rise in chronic non-communicable diseases,
76 understanding the factors that contribute to gut dysbiosis is a critical research priority.

77 One understudied environmental factor with the potential to disrupt infant gut microbiota
78 assembly is early-life exposure to chlorinated drinking water ⁶. Water chlorination, a widely
79 implemented and effective method for controlling microbial contamination, has been
80 instrumental in safeguarding public health from waterborne diseases. Chlorine-based
81 disinfectants effectively inactivate harmful pathogens such as *Legionella pneumophila*,
82 *Salmonella typhi*, and *Vibrio cholerae*, known to cause severe illnesses ⁷. To ensure adequate
83 disinfection throughout the distribution system, current practices aim to maintain a controlled
84 residual chlorine level, typically below 5 mg/L ⁸, as recommended by international standards.
85 This level is considered sufficient for disinfection while minimizing adverse health effects
86 from disinfection by-products, which are formed when chlorine reacts with organic matter.
87 Notably, current infant feeding guidelines in many countries, including Australia, recommend
88 boiling and cooling tap water before giving it to infants under twelve months of age to
89 minimize potential risks ⁹.

90 Previous research in animal models has consistently shown that chlorine exposure alters gut
91 microbiome composition, diversity, and function ¹⁰⁻¹⁴. Additionally, observational human
92 studies have revealed associations between household water sources and distinct gut
93 microbiota signatures ^{6,15}. However, only one intervention study to date has directly
94 examined the impact of chlorine on the gastrointestinal microbiota in children ¹⁶. Conducted
95 in a low-middle income urban setting in Bangladesh, this study delivered chlorine via a
96 dosing device fitted to communal taps. Using metagenomic sequencing, the authors found
97 small, age-specific effects on the relative abundance of several human enterobacteria, as well
98 as an increased abundance of antibiotic resistance genes (ARGs) in children aged 15-30
99 months ¹⁶. While these findings support the overall safety of chlorine residuals for the GI

100 microbiota, they also suggest heightened susceptibility to alterations in microbial
101 composition and ARG enrichment in children, particularly during specific developmental
102 windows. Whether these effects on the gut microbiome are also evident in high-income
103 settings with more advanced water treatment infrastructure and demographically unique
104 microbiota remains an important unanswered question.

105 This study directly investigates the impact of chlorinated drinking water consumption on the
106 developing infant gut microbiome within a high-income setting. We conducted a randomized
107 controlled trial (RCT) in which six-month-old infants were assigned to receive either
108 chlorinated tap water or de-chlorinated water for twelve months. Our primary objective was
109 to compare measures of microbiome community composition, diversity and functional
110 potential between infants exposed to chlorinated or de-chlorinated water, to identify any
111 chlorine-specific alterations. These findings shed light on the impact of early-life chlorine
112 exposure on the developing microbiota and the potential public health implications.

113

114 **METHODS**

115 **Ethics approval and consent to participate**

116 The study protocol was approved by the Ramsay Health Care (RHC) WA | SA Human
117 Research Ethics Committee (EC00266; HREC reference number 1911). Mothers provided
118 written informed consent on behalf of their children. All procedures were conducted in
119 accordance with the Declaration of Helsinki.

120

121 **Study design**

122 The Water Quality and the Microbiome Study (TUMS) is a parallel (ratio 1:1), double-
123 blinded randomized controlled trial (RCT), nested within the ORIGINS Project birth cohort
124 ¹⁷. The ORIGINS Project is a longitudinal observational study of 10,000 pregnant women and
125 their families, recruited from the Joondalup and Wanneroo communities of Western Australia
126 during pregnancy, and followed until their offspring are five years of age ¹⁷. We recruited six-
127 month-old infants participating in the ORIGINS Project and randomly assigned them to
128 receive either de-chlorinated tap water (intervention group) or regular tap water (control
129 group) for twelve months. De-chlorinated water was provided via a benchtop water filtration
130 device, while the control group received an identical sham filter that did not alter the
131 chemical composition of the water.

132 Stool samples were collected from participants at study entry (baseline, six months of age)
133 and again after one year (follow-up, eighteen months of age). Metagenomic sequencing was
134 performed on both samples to profile the gut microbiome. Tap water samples were collected
135 at baseline (prior to filter installation) and post-intervention for detailed chemical analysis.
136 Health assessments were conducted on approximately half of the cohort (opt-in) at twelve
137 months of age as part of the standard ORIGINS Project protocol. The study design is
138 presented in Figure 1.

139

140 **Eligibility criteria**

141 Inclusion criteria were: living within the Perth metropolitan area (Western Australia), born
142 healthy, at least 37 weeks' gestation, and using tap water connected to the mains water supply
143 to prepare infant drinks. Exclusion criteria were: participating in another diet-based research
144 study, using bottled or filtered water to prepare infant drinks, using childcare facilities for
145 three or more days per week, planning overseas holidays lasting longer than four weeks,
146 having received antibiotics since birth, or being in their seventh month of life.

147

148

149 **Intervention**

150 All participants received a benchtop water filter attached to their kitchen faucet. The
151 intervention group's filters contained a Hi-Tech Optimizer carbon filtration block rated to
152 remove >97% of chloramines and >99% of chlorine, while preserving fluoride. The control
153 group received identical filters with a sediment-only filter that did not alter the chemical
154 composition of the water. Participants were encouraged to use the provided filter for all infant
155 drinks, maintain normal drinking habits, and carry study-supplied filtered water when outside
156 the home. Filter cartridges were rated for 5,000 liters or twelve months to last the study
157 duration. Participants were advised to follow Australian Infant Feeding Guidelines, regardless
158 of group assignment. Pure Water Systems (Burleigh Heads, Queensland, Australia) supplied
159 the intervention devices (unbranded) but did not sponsor this study. Both participants and
160 investigators were blinded during the intervention period.

161

162 **Randomization and blinding**

163 Following enrolment, participants were randomized to either treatment group 'A' or 'B' using
164 minimization (biased coin; 0.7) stratified by sex, breastfeeding status at recruitment, and
165 mode of delivery. Allocation of filters to treatment groups was done by an independent
166 biostatistician, with both participants and investigators blinded throughout the intervention.
167 The allocator labelled filters, removing identifying information, and revealed group
168 assignments only after data collection was complete. Filters were installed by the principal
169 investigator, and unblinding occurred at completion of the intervention.

170

171 **Data collection**

172 *House visits:* Home visits were conducted at study entry and post-intervention. Baseline data
173 collection included a study entry questionnaire, stool sample collection, tap water sampling,
174 and filter installation. Post-intervention, a water sample was collected from the filter before
175 removal. Participants returned their stool sample kits via a pre-paid envelope.

176 *Water quality testing:* A sample of flushed (30 seconds) tap water was analyzed for heavy
177 metals, major ions, nitrates, pH, phosphates, chloramines, and trihalomethanes at baseline
178 before installing the intervention filter, and at follow-up. On-site testing for free/total chlorine
179 and pH was also conducted using a Hach D300 pocket colorimeter. Sample collection bottles
180 were filled to exclude air and kept out of direct sunlight. Water samples were delivered to
181 accredited facility ChemCentre in Bentley, Perth.

182 *Questionnaires:* Participants completed ORIGINS Project questionnaires providing
183 information on antenatal characteristics, water use, child health, breastfeeding, demographics,
184 medical history, and diet. Additional questionnaires assessed filter usage at nine, twelve, and
185 fifteen months. Data was entered into a secure REDCap database.

186 *Health assessments:* Infant eczema, recurrent wheeze, and allergen sensitization were
187 assessed at twelve months in a subset of participants who opted for pediatrician visits.
188 Medically diagnosed eczema was defined by typical skin lesions¹⁸ clinically observed by a
189 medical practitioner. Recurrent wheeze was defined as more than one separate episode of
190 wheeze symptoms clinically observed by a medical practitioner. Infant allergen sensitisation
191 is defined as a positive skin prick test (with mean weal diameter ≥ 3 mm above the control
192 weal size) to at least one food and/or environmental allergen at one year of age. The panel of
193 allergens tested included hen's egg, cow's milk, wheat, fish (tuna), peanut, cashew nut,
194 ryegrass pollen, cat and house dust mite, with histamine and control solutions, using
195 commercial extracts, and in accordance with standard clinical methods.

196 *Stool sample collection:* Mothers collected stool samples at six and eighteen months using
197 provided stool collection kits that utilized a Copan FLOQSwab in an active drying tube
198 (FLOQSwab-ADT, Copan Diagnostics, Murrieta, CA, USA). Samples were shipped directly
199 to Microba Life Sciences Limited (for storage and processing).

200

201 **Laboratory processing and bioinformatics profiling**

202 *Metagenomic sequencing:* DNA was extracted from stool samples and subjected to shotgun
203 metagenomic sequencing and microbiome profiling using standard workflows developed by
204 Microba Life Sciences (Brisbane, Queensland, Australia). A more detailed description of the
205 methodology; DNA extraction, library preparation, and sequencing, has been previously
206 published¹. To summarise, DNA extraction was performed using a modified protocol,
207 optimising the mechanical lysis step, and following the manufacturer's instructions for the
208 QIAmp 96 PowerSoil QIAcube HT Kit (Qiagen 47021) on the QIAcube HT automated
209 extraction system. Samples were required to reach a minimum of 0.2 ng/ μ L to pass quality
210 control requirements. Libraries were prepared according to the manufacturer's instructions
211 using the Illumina DNA Prep (M) Tagmentation Kit and indexed with IDT for Illumina
212 Nextera DNA Unique Dual Indexes Set A-D (Illumina 20027213-16) with a modification to
213 volume to accommodate processing in a 384-well plate format. Nextera XT libraries were
214 pooled in equimolar amounts to create a sequencing pool and assessed using QuantIT
215 (Thermo Fisher Q33120) and visualised by capillary gel electrophoresis using a QIAxcel

216 DNA High Resolution Kit (Qiagen 929002). Sequencing pools were loaded and sequenced
217 on a NovaSeq6000 (Illumina) according to manufacturer's instructions and sequenced with 2
218 x 150bp paired-end chemistry in the Microba accredited laboratories.

219 *Raw data processing:* Data quality control and processing was performed at Microba Life
220 Sciences Limited. Paired-end DNA sequencing data was demultiplexed and adaptor-trimmed
221 using the Illumina BaseSpace Bcl2fastq2 (v2.20), accepting one mismatch in index
222 sequences. Reads were quality trimmed and residual adaptors were removed using the
223 Trimmomatic v0.39 ¹⁹ software package with the following parameters: -phred33
224 LEADING:3 TRAILING:3 SLIDINGWINDOW:4:15 CROP:100000 HEADCROP:0
225 MINLEN:100. Human DNA was identified and removed by aligning reads to the human
226 genome reference assembly 38 (GRCh38.p12, GCF_000001405) using bwa-mem v0.7.17 ²⁰
227 with default parameters, except that the minimum seed length was set to 31 (-k31). Human
228 genome alignments were filtered using SAMtools v1.7 ²¹, with flags -ubh-f1-F2304. Any
229 read pairs in which at least one read mapped to the human genome with >95% identity and
230 >90% of the read length were flagged as human DNA and removed. All samples were
231 randomly subsampled to a standard depth of seven million read pairs to standardize the
232 number of reads across all samples to ensure they could be statistically compared.

233 *Taxonomic and metabolic Profiling:* Species-level metagenomes were assembled using the
234 Microba Community Profiler (MCP) v1.0 (www.microba.com) using the Microba Genome
235 Database (MGDB) v1.0.3 as the genome reference database. Reads were assigned to
236 genomes within the MGDB, and the relative cellular abundance of species clusters were
237 estimated and reported. Quantification of gene and pathway abundance in the metagenomic
238 samples were performed using the Microba Gene and Pathway Profiler (MGPP) v1.0 against
239 the Microba Genes (MGGENES) database v1.0.3. MGPP is a two-step process. In step one, all
240 open reading frames (ORFs) from all genomes in the MGDB were clustered against
241 UniRef90 ²² release 2019/04 using 90% identity over 80% of the read length with MMSeqs2
242 Release 10-6d92c ²³. To determine metabolic pathways encoded by metagenome profiles, we
243 used the Enzyme Commission annotations of MetaCyc ²⁴ pathways using the EnrichM tool
244 (<https://github.com/geronimp/enrichM>), and identified MetaCyc pathways with a minimum
245 completeness $\geq 80\%$. In step two, all DNA sequencing read pairs aligned with one or more
246 bases to the gene sequence from any protein within an MGGENES protein cluster were
247 summed. The abundance of encoded pathways of species reported as detected by MCP was
248 calculated by averaging the read counts of all genes for each enzyme in that pathway.

249

250

251 **Statistical analyses**

252 All analyses were performed using R version 4.3.1. All boxplots represent the first and third
253 quartiles, with a median as a middle line and whiskers at the last value within a $1.5 \times$ IQR
254 distance from the upper or lower quartile, where IQR is the interquartile range. An alpha
255 level 0.05 was used to define statistical significance for unadjusted and adjusted p-values as
256 appropriate.

257 *Sample size:* Our sample size was based on a previously published randomized control
258 crossover intervention, which investigated the effects of alkaline and neutral water pH on
259 faecal microbiota in 29 Danish men. The authors noted that their post hoc analysis indicated a
260 sample size of 180 would have 80% power to detect differences alpha diversity at a p-value
261 of 0.05²⁵.

262 *Study outcomes:* The primary outcome of this study was the difference in infant gut
263 microbiome composition between the intervention and control groups, measured from stool
264 samples collected at six and eighteen months of age. Secondary outcomes included the
265 incidence of allergic sensitization, wheeze, and atopic eczema, as assessed by physician
266 diagnosis at 12 months of age.

267 *Community comparison:* The overall composition of the gut microbiome was visualized
268 using taxonomic bar plots of the average relative abundance of the top eight most abundant
269 phyla. Data were stratified by age and intervention group.

270 *Diversity analysis:* Diversity measures were calculated using the phyloseq R package
271 (version 1.38.0)²⁶. The Shannon index and observed richness were used to estimate alpha
272 diversity

273 and differences between groups was assessed using the Kruskal-Wallis test, followed by
274 Dunn's post hoc test with Bonferroni correction for multiple comparisons. Beta diversity was
275 calculated using the Bray-Curtis dissimilarity index, and non-metric multidimensional scaling
276 (NMDS) was employed to visualize beta diversity. Permutational multivariate analysis of
277 variance (PERMANOVA) was used to formally test for differences in beta diversity between
278 groups²⁷.

279 *Differential analysis:* To identify differentially abundant amplicon sequence variants (ASVs)
280 and metabolic pathways between the intervention and control groups at 18 months of age, we
281 utilized DESeq2 (version 1.40.2)²⁸. This approach models count data using a negative
282 binomial distribution and applies a Wald test for significance. ASVs present in at least 5% of
283 samples (n=9/170) and with a total count exceeding 1000 were considered for analysis, and

284 taxonomic classification was determined at the species level. P-values were adjusted for
285 multiple comparisons using the Benjamini-Hochberg false discovery rate (FDR) correction.
286 Similarly, differentially abundant MetaCyc pathways between groups were identified using
287 DESeq2. Data visualization was performed using the R packages phyloseq (24), microViz
288 (version 0.10.0) (27), ggplot2 (version 3.4.0) (28), and ggstatsplot (package version 0.12.2)
289 (29).

290

291 **SAGER guidelines.** Subject sex was recorded in clinical notes as parent-reported male or
292 female. Regression modelling was adjusted for sex such that findings are generalizable to
293 both sexes.

294

295 **Inclusion and Ethics.** This research was conducted in partnership with local researcher
296 consumers who were involved in the design, data collection, analysis and reporting of the
297 study. The research is locally relevant, and the study protocol was acceptable to parents and
298 local IRB.

299

300 **RESULTS**

301 **Study Design and Participant Flow**

302 Recruitment occurred between November 2019 and March 2022, enrolling 197 participants
303 randomized to the control (n=98) or treatment (n=99) groups. Baseline characteristics were
304 balanced between groups, including sex, delivery method (assisted vaginal, unassisted
305 vaginal, elective caesarean, or emergency caesarean), and breastfeeding status at recruitment
306 (predominantly formula-fed, predominantly breastfed, or mixed-fed), as shown in Table 1.
307 Further demographic details on the cohort were described previously (ref). During the study,
308 76 adverse events (AEs) were reported, defined as instances where a participant presented to
309 hospital for any reason. These were mostly due to unrelated common childhood infections or
310 injuries. Two participants experienced serious adverse events (SAEs) including anaphylaxis,
311 and septic arthritis which were assessed and deemed unrelated to the intervention.

312 Of the 426 infants assessed for eligibility, 229 were excluded (Figure 2). Reasons for
313 exclusion included: not meeting inclusion criteria (n=190), declining participation (n=36),
314 residing outside the eligible area (n=1), and logistical constraints preventing the initial home
315 visit (n=1). Of the 197 randomized participants, 10 did not receive the intervention (4
316 treatment, 6 control) due to filter incompatibility with their tap fittings. A total of 130
317 participants (66%) completed the study and provided stool samples at 18 months of age.

318 Among those with 12-month health assessment data available, no significant differences were
319 observed in health outcomes between intervention and control groups, including antibiotic
320 use (Table 1). Due to the logistical disruptions related to the COVID-19 pandemic, the rate of
321 missing data in these health outcomes was high (approximately 50%).

322

323 **Effectiveness of the Intervention on Water Quality**

324 Participants primarily resided in the northern regions of Perth, Western Australia (Figure 3A).
325 Pre- and post-intervention water samples were collected from 83 and 57 treatment group
326 households, and 82 and 57 control group households, respectively. Pre-intervention total
327 chlorine levels varied across homes (0.3-1.1 mg/L), but all were below the 5 mg/L
328 recommended by the Australian Drinking Water Guidelines (Figure 3A). Disinfection by-
329 products (bromoform, bromodichloromethane, chloroform, chlorodibromomethane) also
330 varied at baseline but remained below recommended levels (Supplementary Figure 1).

331 The intervention significantly reduced total chlorine levels in the treatment group from a
332 mean of 0.74 mg/L (SD = 0.2447) pre-intervention to 0.10 mg/L (SD = 0.000) post-
333 intervention (paired t-test, $p = 2.2^{-16}$). In contrast, the control group showed no significant

334 change in mean total chlorine levels (0.71 mg/L pre-intervention vs. 0.63 mg/L post-
335 intervention, paired t-test, $p = 0.06$). The intervention also significantly reduced bromoform,
336 bromodichloromethane, and chlorodibromomethane levels, while the control group showed
337 no significant changes in these disinfection by-products (Figures 3C, 3D, and 3E).

338 Participant compliance with the intervention, assessed through three monthly surveys,
339 revealed no significant differences between the treatment and control groups. Survey
340 questions encompassed the daily consumption of filtered water (cups per day) by the infant
341 (mean in control group=3.1, mean in intervention=2.9, $P=0.06$, Welch t-test), usage of study-
342 provided filters outside the home (never, sometimes, always, $P=0.574$, Chi-Squared test), and
343 the age at which unboiled tap water was introduced (mean in control group=10.71, mean in
344 intervention=10.60, $P=0.781$, Welch t-test). These findings suggest consistent adherence to
345 the intervention protocol across both groups (Supplementary Figure 2).

346

347

348 **Microbial community profiling**

349 We analysed 170 stool samples collected at baseline (six months of age) and 130 samples
350 collected at follow-up (18 months of age), totalling 300 unique faecal metagenomes. Batch
351 effect analysis did not identify any significant differences in microbial community
352 composition between sequencing batches (Supplementary Figure 3).

353 After quality filtering and rarefaction to 7,000,000 read pairs per sample, a total of
354 3,936,112,872 reads were obtained (mean per sample: 12,990,472 \pm 301,687 SD). On
355 average, 47,087 human DNA reads per sample (SD \pm 655,372) were removed before
356 analysis. Across all samples, we identified 1,305 bacterial ASVs classified at the species
357 level, belonging to 420 genera, 98 families, 42 orders, 17 classes, and 14 phyla. Additionally,
358 we identified two archaeal ASVs (*Methanobrevibacter smithii* and *Methanobrevibacter*
359 *smithii_A*) and ten eukaryotic ASVs (various *Candida*, *Clavispora*, *Geotrichum*,
360 *Kluyveromyces*, *Saccharomyces*, *Wickerhamiella*, and *Blastocystis* species).

361

362 **Effect of chlorinated water on microbiota taxonomic structure and diversity**

363 The taxonomic characterization of participants' microbiota aligned with previous reports on
364 young infants, with *Bifidobacterium infantis*, *Bifidobacterium longum*, and *Bifidobacterium*
365 *breve* as the predominant species at six months of age^{29,30}. Interindividual variation in
366 microbiome composition decreased from baseline to follow-up (Supplementary Figure 4).

367 While at each timepoint both groups displayed similar phylum-level structures (Figure 4A),
368 these structures overall changed significantly from baseline to follow-up.

369 Beta diversity analysis revealed significant variation associated with age (11.3% of variance
370 explained, PERMANOVA, $p = 0.001$), but no significant clustering by treatment group (0.6%
371 of variance explained, $p = 0.35$) in both longitudinal (Figure 4B) and cross-sectional analyses
372 (Supplementary Figure 5). Alpha diversity was not significantly different between treatment
373 groups at either time point (observed richness index $p = 0.98$, Shannon diversity index $p =$
374 0.45) (Figures 4C & 4D).

375

376 **Water chlorination-induced shifts in taxa abundance**

377 Differential abundance analysis using DESeq2 revealed 55 genera across 7 phyla were
378 significantly different in abundance between the intervention (de-chlorinated water) and
379 control (chlorinated water) groups in the 18-month (post-intervention) stool samples
380 (adjusted p -value < 0.01) (Figure 5). These differentially abundant genera were primarily
381 members of the Firmicutes phylum. However, due to high inter-individual variation, most of
382 these taxa were present at low frequencies in both groups, although they were more
383 frequently detected in the intervention group (Supplementary Figure 6). A comprehensive list
384 of all differentially abundant ASVs, along with their statistical significance, is provided in
385 Supplementary Table 1.

386

387 **Higher antibiotic resistance gene abundance in children receiving chlorinated water**

388 To assess the impact of water chlorination on gut microbiome function, we analysed the
389 abundance of metabolic pathways annotated in the MetaCyc database²⁴ using DESeq2²⁸. In
390 the 18-month (post-intervention) samples, we identified 901 metabolic pathways belonging to
391 51 major groups. Two of these groups were differentially abundant between the intervention
392 and control groups, with chlorinated water exposure most significantly associated with
393 higher abundance of the 'Antibiotic Resistance' major group, as well as the sundry group
394 'Other' (adjusted $p < 0.05$) (Figure 6A, Table 2). At the pathway level, 29 metabolic
395 pathways were upregulated in the chlorinated water group (adjusted $p < 0.05$), including
396 polymyxin resistance which has membership in the Antibiotic Resistance major group
397 (Figure 6B, Table 2). To determine which species contributed to increased expression of
398 antibiotic resistance genes, we examined the species abundance in individual microbiomes
399 that were annotated to the MetaCyc "Antibiotic Resistance" functional pathway. This analysis
400 revealed that antibiotic resistance genes were distributed across multiple species, including

401 *Escherichia*, *Klebsiella*, *Enterobacter*, *Clostridia*, and *Citrobacter*, among others
402 (Supplementary Figure 7).
403
404

405 **DISCUSSION**

406 In this double-blinded randomized controlled trial conducted in a high-income setting, infants
407 exposed to chlorinated drinking water exhibited no differences in the overall richness and
408 diversity of the microbiota, although subtle shifts in taxonomic abundance were observed.
409 Several species known to be part of a healthy gut microbiome, including *Bacteroides*,
410 *Clostridium*, and *Blautia* showed reductions in taxonomic abundance. While some beneficial
411 bacteria like *Faecalibacterium prauznitzii* and *Bifidobacterium* increased in abundance,
412 others *Streptococcus*, *Clostridia* and *Klebsiella pneumoniae* also increased, which could be
413 opportunistic pathogens under certain circumstances. It is important to note that carriage of
414 differentially abundant taxa was generally low across the cohort against a background of
415 strikingly individualized microbiota compositions in this age group. On balance, our data
416 suggest chlorination-induced shifts in the microbiota vary substantially from infant to infant,
417 possibly due to a range of factors including genetics, diet and environmental exposures.

418 Consistent with the recent study by Nadimpalli ¹⁶, we found that exposure to chlorinated
419 drinking water for a 12-month period was associated with a higher carriage of antibiotic
420 resistance genes in stool samples. These ARGs, which encompass genes encoding efflux
421 pumps and antibiotic-degrading enzymes, were detected across diverse bacterial species,
422 including *Escherichia*, *Klebsiella*, *Enterobacter*, *Clostridia*, and *Citrobacter*. While not
423 directly indicative of antibiotic-resistant species, this finding aligns with the Bangladeshi trial
424 suggesting chlorinated water may selectively promote the growth of bacteria harbouring these
425 genes. It's noteworthy that the age group in the previous study where chlorination effects
426 were observed (15-30 months) overlaps with the age range of our study participants. This
427 suggests there might be specific developmental windows during which the gut microbiome is
428 particularly susceptible to the influence of chlorinated water. Further investigation is required
429 to ascertain the potential for the development or spread of antibiotic resistance in this
430 population.

431 Our study has limitations, including a relatively small sample size and the inability to draw
432 definitive conclusions about infant health outcomes. Antibiotic use, recorded in
433 approximately one-third of participants equally across both groups, could not be controlled
434 for in a per-protocol analysis due to power limitations. While compliance and water
435 consumption practises were monitored, the potential for unmeasured confounders is
436 acknowledged. Individual exposure patterns likely varied due to the complexities of Perth's
437 water distribution network. Additionally, our findings cannot be solely attributed to chlorine,
438 as the study filters also removed nitrates, heavy metals, and disinfection by-products. The

439 potential for unmeasured confounders related to diet or socioeconomic status is also
440 acknowledged.

441

442 **CONCLUSION**

443 Our study extends previous findings and provides valuable insights into the impact of
444 chlorinated drinking water on the infant gut microbiota. These findings are particularly
445 relevant to the current Australian Infant Feeding Guidelines, which recommend introducing
446 unboiled tap water at twelve months. Considering the high plasticity of the infant gut
447 microbiome until three years of age, our findings raise questions about the potential benefits
448 of continuing to boil or filter tap water to remove chlorine residuals until later ages. Further
449 research is needed to explore the potential for increased antibiotic resistance.

450

451 **FUNDING STATEMENT**

452 This work was supported by Telethon Kids Institute Blue Sky award 2018. Individual
453 authors are supported by: DM work was supported by the Western Australian Future Health
454 Research and Innovation Fund, which is an initiative of the WA State Government. VV work
455 was supported by the funding endowed by the Family Larsson-Rosenquist Foundation. DJP
456 was supported by the NHMRC Medical Research Futures Fund (MRFF) Career Development
457 Fellowship ID1144544 (2018-2021) and the Telethon Kids Institute Ascend Fellowship
458 (2022-2026).

459

460 **INSTITUTIONAL REVIEW BOARD STATEMENT**

461 The study was conducted in accordance with the Declaration of Helsinki and was
462 completed in accordance with the ethical guidelines of the Ramsay Health Care (RHC) WA |
463 SA HREC (EC00266) and under the approved HREC reference number 1911 (approved 14
464 June 2019).

465

466 **INFORMED CONSENT STATEMENT**

467 Informed consent was obtained from all subjects involved in the study.

468

469 **DATA AVAILABILITY STATEMENT**

470 Raw data supporting the conclusions of the article will be make available by the
471 authors upon request.

472

473 **COMPETING INTERESTS STATEMENT**

474 The authors declare that this study received funding from the Water Corporation WA.
475 This funding was used to support the costs associated with home tap water analysis and
476 metagenomic sequencing. The funder had no role in study design, data collection and
477 analysis, decision to publish, or preparation of the manuscript. The authors declare no other
478 potential conflicts of interest.

479

480 **ACKNOWLEDGEMENTS**

481 The authors gratefully acknowledge the invaluable contributions of the ORIGINS
482 Project families for their ongoing support of The Water Quality and Microbiome Study
483 (TUMS). We extend our sincere thanks to the following teams and individuals who have
484 made The ORIGINS Project possible: The ORIGINS Project team; Joondalup Health
485 Campus (JHC); members of ORIGINS Project Community Reference and Participant
486 Reference Groups; Research Interest Groups and the ORIGINS Project Scientific Committee;
487 Telethon Kids Institute; City of Wanneroo; City of Joondalup; and Fiona Stanley.

488 We are also grateful for the contributions of Richard Theobald (WA Department of
489 Health) for advice on water quality testing and study design considerations; the Telethon
490 Kids Biostatistics team (Ali Hollingsworth, Zac Dempsey) for their assistance with
491 randomisation, blinding and compliance monitoring; Nikki Schultz for her analysis of the
492 compliance data, the Water Corporation WA (Cameron Gordon, Steve Christie, Gabrielle
493 O'Dwyer) for their interest, advice, and engagement with the study. We acknowledge the
494 support of our research partners, Microba Life Sciences, ChemCentre and Pure Water
495 Systems for their additional in-kind support of the project. We would also like to thank Jen
496 Rozier from Telethon Kids Institute for the geospatial mapping analysis, and Cynthia Joll
497 from Curtin University for her expertise and advice on water quality guidelines in Australia.

498

499 **AUTHORSHIP CONTRIBUTIONS.** Conception and design of the work (D.M, D.S, M.C,
500 D.P, C.C, V.V, S.P). Data collection (K.P.) Drafting the article (K.P, D.M). Critical revisions
501 (all authors). Final approvals (all authors).

502

503 REFERENCES

- 504 1. Parkin K, Palmer DJ, Verhasselt V, et al. Metagenomic Characterisation of the Gut
505 Microbiome and Effect of Complementary Feeding on Bifidobacterium spp. in Australian Infants.
506 *Microorganisms* 2024; **12**(1): 228.
- 507 2. Bidell MR, Hobbs ALV, Lodise TP. Gut microbiome health and dysbiosis: A clinical primer.
508 *Pharmacotherapy* 2022; **42**(11): 849-57.
- 509 3. Sarkar A, Yoo JY, Valeria Ozorio Dutra S, Morgan KH, Groer M. The Association between
510 Early-Life Gut Microbiota and Long-Term Health and Diseases. *J Clin Med* 2021; **10**(3).
- 511 4. Abrahamsson TR, Jakobsson HE, Andersson AF, Björkstén B, Engstrand L, Jenmalm MC. Low
512 gut microbiota diversity in early infancy precedes asthma at school age. *Clin Exp Allergy* 2014; **44**(6):
513 842-50.
- 514 5. Łoś-Rychalska E, Gołębiewski M, Grzybowski T, Rogalla-Ładniak U, Krogulska A. The
515 microbiome and its impact on food allergy and atopic dermatitis in children. *Advances in*
516 *Dermatology and Allergology/Postępy Dermatologii i Alergologii* 2020; **37**(5): 641-50.
- 517 6. Bowyer RCE, Schillereff DN, Jackson MA, et al. Associations between UK tap water and gut
518 microbiota composition suggest the gut microbiome as a potential mediator of health differences
519 linked to water quality. *Sci Total Environ* 2020; **739**: 139697.
- 520 7. Magana-Arachchi DN, Wanigatunge RP. Chapter 2 - Ubiquitous waterborne pathogens. In:
521 Vara Prasad MN, Grobelak A, eds. *Waterborne Pathogens: Butterworth-Heinemann*; 2020: 15-42.
- 522 8. Organization WH. Guidelines for drinking-water quality: World Health Organization; 2004.
- 523 9. Council. CNHaMR. Infant Feeding Guidelines. *National Health and Medical Research Council*
524 *(2012)* 2012.
- 525 10. Zhang Y, Zhao F, Deng Y, Zhao Y, Ren H. Metagenomic and metabolomic analysis of the toxic
526 effects of trichloroacetamide-induced gut microbiome and urine metabolome perturbations in mice.
527 *Journal of proteome research* 2015; **14**(4): 1752-61.
- 528 11. Sasada T, Hinoi T, Saito Y, et al. Chlorinated water modulates the development of colorectal
529 tumors with chromosomal instability and gut microbiota in Apc-deficient mice. *PLoS One* 2015;
530 **10**(7): e0132435.
- 531 12. Dias MF, Reis MP, Acurcio LB, et al. Changes in mouse gut bacterial community in response
532 to different types of drinking water. *Water Res* 2018; **132**: 79-89.
- 533 13. Zhou K, Liu W, Chen Z, et al. The effect of different drinking water in culture medium on
534 feces microbiota diversity. *J Water Health* 2021; **19**(2): 267-77.
- 535 14. Zhou Z, Lin Z, Shuai X, Achi C, Chen H. Antibiotic resistance genes alterations in murine guts
536 microbiome are associated with different types of drinking water. *J Hazard Mater* 2024; **465**:
537 133422.
- 538 15. Baumann-Dudenhoeffer AM, D'Souza AW, Tarr PI, Warner BB, Dantas G. Infant diet and
539 maternal gestational weight gain predict early metabolic maturation of gut microbiomes. *Nat Med*
540 2018; **24**(12): 1822-9.
- 541 16. Nadimpalli ML, Lanza VF, Montealegre MC, et al. Drinking water chlorination has minor
542 effects on the intestinal flora and resistomes of Bangladeshi children. *Nat Microbiol* 2022; **7**(5): 620-
543 9.
- 544 17. Silva DT, Hagemann E, Davis JA, et al. Introducing the ORIGINS project: a community-based
545 interventional birth cohort. *Rev Environ Health* 2020; **35**(3): 281-93.
- 546 18. Hanifin JM, Rajka G. Diagnostic features of atopic dermatitis. 1980.
- 547 19. Bolger AM, Lohse M, Usadel B. Trimmomatic: a flexible trimmer for Illumina sequence data.
548 *Bioinformatics* 2014; **30**(15): 2114-20.
- 549 20. Li H. Aligning sequence reads, clone sequences and assembly contigs with BWA-MEM. *arXiv*:
550 *Genomics* 2013.
- 551 21. Li H, Handsaker B, Wysoker A, et al. The Sequence Alignment/Map format and SAMtools.
552 *Bioinformatics* 2009; **25**(16): 2078-9.

- 553 22. Suzek BE, Wang Y, Huang H, McGarvey PB, Wu CH. UniRef clusters: a comprehensive and
554 scalable alternative for improving sequence similarity searches. *Bioinformatics* 2015; **31**(6): 926-32.
555 23. Steinegger M, Söding J. Clustering huge protein sequence sets in linear time. *Nat Commun*
556 2018; **9**(1): 2542.
557 24. Caspi R, Billington R, Keseler IM, et al. The MetaCyc database of metabolic pathways and
558 enzymes - a 2019 update. *Nucleic Acids Res* 2020; **48**(D1): D445-d53.
559 25. Hansen TH, Thomassen MT, Madsen ML, et al. The effect of drinking water pH on the human
560 gut microbiota and glucose regulation: results of a randomized controlled cross-over intervention.
561 *Sci Rep* 2018; **8**(1): 16626.
562 26. McMurdie PJ, Holmes S. phyloseq: an R package for reproducible interactive analysis and
563 graphics of microbiome census data. *PLoS One* 2013; **8**(4): e61217.
564 27. Anderson MJ. A new method for non-parametric multivariate analysis of variance. *Austral*
565 *Ecology* 2001; **26**(1): 32-46.
566 28. Love MI, Huber W, Anders S. Moderated estimation of fold change and dispersion for RNA-
567 seq data with DESeq2. *Genome Biology* 2014; **15**(12): 550.
568 29. Sakata S, Tonooka T, Ishizeki S, et al. Culture-independent analysis of fecal microbiota in
569 infants, with special reference to Bifidobacterium species. *FEMS Microbiol Lett* 2005; **243**(2): 417-23.
570 30. Tannock GW, Lawley B, Munro K, et al. Comparison of the compositions of the stool
571 microbiotas of infants fed goat milk formula, cow milk-based formula, or breast milk. *Appl Environ*
572 *Microbiol* 2013; **79**(9): 3040-8.

573

574

575 **Tables**

576 **Table 1.** Characteristics of 197 children participating in TUMS

Characteristics	Treatment, <i>n</i> (%)	Control, <i>n</i> (%)
Sex		
Male	49/99 (49.5)	46/98 (46.9)
Female	50/99 (50.5)	52/98 (53.1)
Milk-based diet at six months of age		
Predominantly breastfed	55/99 (55.5)	50/98 (51.0)
Predominantly formula-fed	32/99 (32.3)	36/98 (36.7)
Mixed fed	12/99 (12.1)	12/98 (12.2)
Delivery method		
Vaginal	55/99 (55.5)	57/98 (58.2)
Emergency caesarean	20/99 (20.2)	18/98 (18.4)
Elective caesarean	24/99 (24.2)	23/98 (23.5)
Health outcomes at twelve months of age		
Antibiotic use	33/156 (21.2)	30/156 (19.2)
Allergen sensitisation	4/76 (5.3)	4/76 (5.3)
Wheeze	3/15 (20)	2/15 (13.3)
Eczema	5/16 (31.3)	6/16 (37.5)

577

578 **Table 2.** Significantly differentially abundant MetaCyc groups ($p < 0.05$) and pathways
 579 (adjusted $p < 0.05$) between the intervention and control groups at follow-up (rounded to four
 580 decimal places)

MetaCyc major group	Log2FoldChange	p-value	Adjusted p-value
Antibiotic Resistance	1.5876	0.0006	0.0300
Other	1.7332	0.0017	0.0407
Methylglyoxal Detoxification	1.7602	0.0058	0.0587
TCA cycle	1.7502	0.0060	0.0587
Respiration	0.7191	0.0052	0.0587
Entner-Duodoroff Pathways	1.4993	0.0119	0.0975
Fatty Acid and Lipid Degradation	0.47441	0.0226	0.1583
Metabolic Regulator Biosynthesis	-0.2116	0.0430	0.2448
O-Antigen Biosynthesis	1.2175	0.0450	0.2448
MetaCyc pathway			
PWY-6618~guanine and guanosine salvage III	0.5285	0.0001	0.0480
PWY-6536~4-aminobutanoate degradation III	0.5265	0.0002	0.0480
PWY-1881~formate oxidation to CO ₂	0.3693	0.0003	0.0480
KDO-LIPASYN-PWY~(Kdo)2-lipid A biosynthesis I	0.5522	0.0005	0.0480
PWY66-162~ethanol degradation IV	0.3786	0.0005	0.0480
PWY0-1338~polymyxin resistance	0.5610	0.0006	0.0480
PWY-6537~4-aminobutanoate degradation II	0.5072	0.0007	0.0480
PWY0-1471~uracil degradation III	0.5748	0.0007	0.0480
GLUCARGALACTSUPER-PWY~superpathway of D-glucarate and D-galactarate degradation	0.4901	0.0007	0.0480
PWY-6896~thiamine salvage I	0.5748	0.0008	0.0480
PWY-46~putrescine biosynthesis III	0.2671	0.0009	0.0480
CHOLINE-BETAINE-ANA-PWY~choline degradation I	0.5296	0.0009	0.0480
BETSYN-PWY~glycine betaine biosynthesis I (Gram-negative bacteria)	0.5296	0.0009	0.0480
PWY66-394~aspirin triggered resolvin E biosynthesis	0.4882	0.0010	0.0480
P283-PWY~hydrogen oxidation I (aerobic)	0.2789	0.0010	0.0480
SO4ASSIM-PWY~assimilatory sulfate reduction I	0.6237	0.0011	0.0480
PWY-6050~dimethyl sulfoxide degradation	0.2765	0.0011	0.0480
TCA-GLYOX-BYPASS~superpathway of glyoxylate bypass and TCA	0.5565	0.0012	0.0480
FERMENTATION-PWY~mixed acid fermentation	0.5438	0.0013	0.0480
PWY-6535~4-aminobutanoate degradation I	0.5876	0.0013	0.0480

DETOX1-PWY-1~reactive oxygen species degradation	0.6156	0.0013	0.0480
PWY-7417~phospholipid remodeling (phosphatidate, yeast)	0.5341	0.0014	0.0480
PWY0-1241~ADP-L-glycero- β -D-manno-heptose biosynthesis	0.3240	0.0015	0.0480
PWY0-981~taurine degradation IV	0.5531	0.0015	0.0480
PUTDEG-PWY~putrescine degradation I	0.5320	0.0016	0.0480
PWY-5137~fatty acid β -oxidation III (unsaturated, odd number)	0.5200	0.0017	0.0480
TCA~TCA cycle I (prokaryotic)	0.5852	0.0018	0.0480
PWY-5755~4-hydroxybenzoate biosynthesis II (bacteria)	0.5693	0.0018	0.0480
PWY-7856~heme a biosynthesis	0.5484	0.0018	0.0480

581

582

583 **Figure Legends**

584 **Figure 1. Graphical overview of trial design.** A timeline of data collection events is shown
585 as a function of infant age in months.

586

587 **Figure 2. CONSORT flow diagram of participant recruitment, enrolment, allocation,**
588 **follow-up, and analysis.** This diagram illustrates the flow of participants through the
589 different stages of the TUMS randomized controlled trial. It shows the number of infants
590 assessed for eligibility, reasons for exclusion, randomization into the intervention and control
591 groups, loss to follow-up, and the final number of participants included in the analysis.

592

593 **Figure 3. Impact of the intervention on water quality in TUMS participant homes.** A
594 geospatial heatmap map displaying mean total chlorine levels (mg/mL), grouped by suburb.
595 Total n=197 (A). Boxplot comparison between mean levels of total chlorine (B) and
596 disinfection by-products: bromoform (C), bromodichloromethane (D), and
597 chlorodibromomethane (E) between the treatment and control groups. The box indicates the
598 interquartile range (25th to 75th percentile), the horizontal line within the box represents the
599 median, and the whiskers extend to 1.5 times the interquartile range. Outliers are shown as
600 individual points. Total n=140.

601

602 **Figure 4. No effect of chlorinated drinking water on the taxonomic structure and**
603 **diversity of the infant gut microbiome.** (A) Average relative abundance of bacterial phyla
604 across all samples, stratified by age (6 and 18 months) and treatment group (chlorinated or
605 de-chlorinated water). (B) Non-metric multidimensional scaling (NMDS) plot visualizing
606 beta diversity (inter-sample dissimilarity) based on Bray-Curtis distances. Each point
607 represents a sample, colored by age and shaped by treatment group. (C) Boxplots comparing
608 observed richness (number of unique genera) between treatment groups at 6 and 18 months of
609 age. (D) Boxplots comparing Shannon diversity indices (a measure of both richness and
610 evenness) between treatment groups at 6 and 18 months of age. The boxes indicate the
611 interquartile range (25th to 75th percentile), the horizontal line within the box represents the
612 median, and the whiskers extend to 1.5 times the interquartile range. Outliers are shown as
613 individual points.

614

615 **Figure 5. Differential abundance of bacterial genera in infant gut microbiota between**
616 **treatment groups.** The dot plot displays the log₂ fold change in abundance for each bacterial

617 genus identified as significantly different (adjusted p-value < 0.01) between the de-
618 chlorinated water (intervention) and chlorinated water (control) groups at 18 months of age.
619 Each dot represents a genus, coloured by phylum. A positive log₂ fold change indicates
620 higher abundance in the intervention group, while a negative value indicates higher
621 abundance in the control group. Data are plotted at the genus level for ease of visualisation.

622

623 **Figure 6. Impact of water chlorination on infant gut microbiome metabolic pathways.**

624 (A) Volcano plot displaying the differential abundance of MetaCyc metabolic groups
625 between the de-chlorinated water (intervention) and chlorinated water (control) groups. Each
626 point represents a metabolic group, with the x-axis showing log₂ fold change and the y-axis
627 showing -log₁₀ adjusted p-value. Red points indicate groups with significantly higher
628 abundance in the control group (adjusted p < 0.05). (B) Volcano plot displaying the
629 differential abundance of individual MetaCyc metabolic pathways between the intervention
630 and control groups, following the same format as panel A.

631

632 **Supplementary Figure 1. Geospatial heatmap of disinfection by-products (DBPs).**

633 Visualisation represents DBPs expressed as ug/mL averaged over participant homes and
634 represented at the suburb level.

635

636 **Supplementary Figure 2. Participant compliance with the intervention assessed through**

637 **three-monthly questionnaires.** (A) Frequency of parent-reported consumption of
638 intervention water (n=?). (B) Counts of the frequency that parents report taking intervention
639 water with them when outside the home (n=?). (C) Histogram showing distribution of mean
640 age of introduction of unboiled tap water into the infant diet for intervention and control
641 groups (n=?).

642

643 **Supplementary Figure 3. Lack of batch effect on gut microbiota composition.** Stool

644 samples were sequenced in two batches. The first batch included all 170 baseline samples and
645 35 follow-up samples. The remaining follow-up samples, along with three follow-up samples
646 re-sequenced from the first batch, were included in the second batch. Non-metric
647 multidimensional scaling (NMDS) ordination demonstrates no significant difference in gut
648 microbial community composition between sequencing batches. Each point represents an
649 individual sample. Red symbols denote three randomly selected samples sequenced in batch
650 1, while blue symbols represent the same three samples re-sequenced in batch 2. The

651 proximity of red and blue symbols for each sample indicates minimal variation introduced by
652 sequencing batch.

653

654 **Supplementary Figure 4. Inter-individual variation in gut microbiota composition with**
655 **age.** Taxonomic bar plot illustrating the top twelve most abundant genera at baseline (top)
656 and at follow-up (bottom), ranked by Bray-Curtis dissimilarity within each time point. Each
657 bar represents an individual participant, coloured according to the relative abundance of each
658 genus (x-axis).

659

660 **Supplementary Figure 5. Developmental shifts in gut microbiota composition.** Non-
661 metric multidimensional scaling (NMDS) ordination illustrating pairwise genomic distances
662 between samples at (A) six months and (B) eighteen months of age. Each point represents an
663 individual sample. The distinct clustering patterns at different ages suggest significant shifts
664 in gut microbial community structure during early childhood development.

665

666 **Supplementary Figure 6. Differentially Abundant Gut Microbiota Associated with**
667 **Intervention.** Box plots display the log-transformed abundance of the top four Amplicon
668 Sequence Variants (ASVs) exhibiting significant differences between the intervention and
669 control groups: (A) *Clostridium* MIC8573, (B) *Bacteroides* faecis, (C) *Bacteroides*
670 *fragilis_A*, and (D) *TF01-11 sp000436755*.

671

672 **Supplementary Figure 7. Antibiotic Resistance Genes in Gut Microbiota Across**
673 **Treatment Groups.** Heatmap depicting the abundance of bacterial species harbouring genes
674 associated with antibiotic resistance (as defined by the MetaCyc database) within the gut
675 microbiome of each infant. Rows represent individual bacterial species, while columns
676 represent treatment groups. Cell color intensity reflects the relative abundance of each species
677 within the respective group, highlighting potential differences in antibiotic resistance profiles
678 among infants receiving different treatments.

679

680

681

682 **SUPPLEMENTARY TABLES**

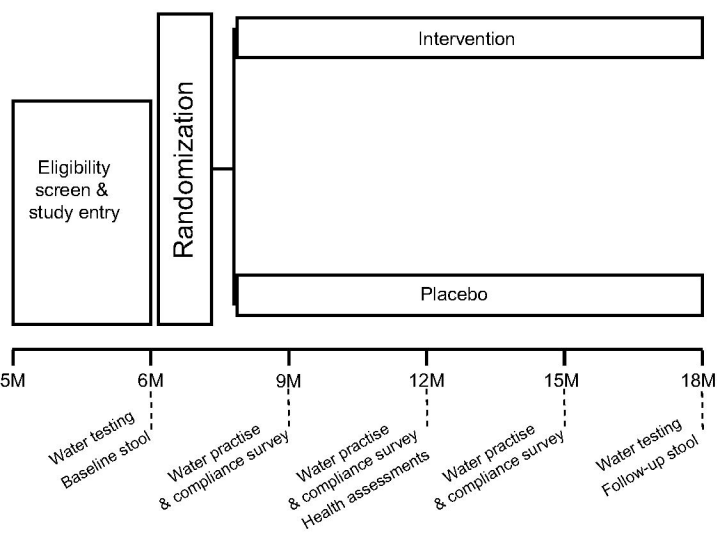
683 **Supplementary Table 1:** Differentially abundant species between the intervention (de-
 684 chlorinated water) and control (chlorinated water) groups at follow-up.

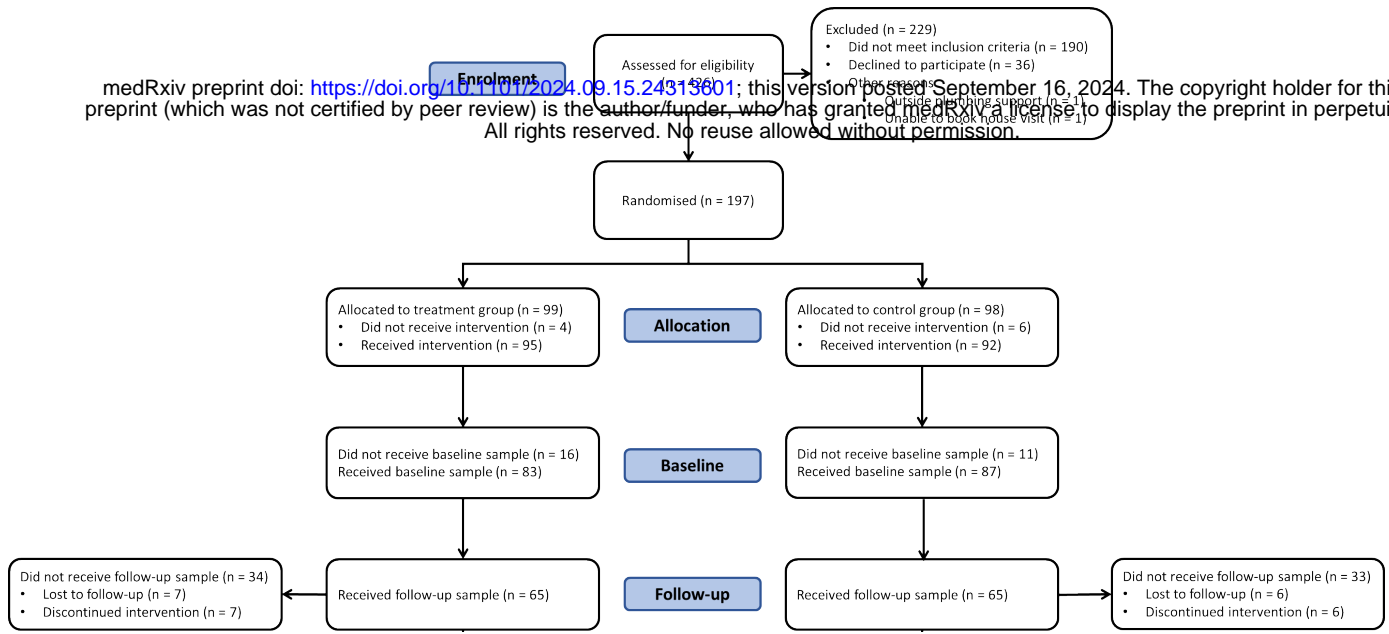
Species	log2FoldChange	p-value	Adjusted p-value	Effect of chlorinated water
<i>Clostridium MIC8573</i>	-30.00	1.34E-29	4.46E-27	Reduces abundance
<i>Bacteroides faecis</i>	-30.00	4.63E-28	7.69E-26	Reduces abundance
<i>Bacteroides fragilis_A</i>	-30.00	3.87E-25	1.43E-23	Reduces abundance
<i>TF01-11 sp000436755</i>	-30.00	3.87E-25	1.43E-23	Reduces abundance
<i>Bacteroides clarus</i>	-30.00	3.87E-25	1.43E-23	Reduces abundance
<i>CAG-83 sp000435555</i>	-30.00	3.87E-25	1.43E-23	Reduces abundance
<i>Butyricimonas synergistica_A</i>	-30.00	3.87E-25	1.43E-23	Reduces abundance
<i>Eubacterium_R sp003526845</i>	-29.57	1.81E-24	5.45E-23	Reduces abundance
<i>CAG-74 MIC7649</i>	-29.15	8.10E-24	1.94E-22	Reduces abundance
<i>CAG-45 sp000438375</i>	-28.90	1.91E-23	3.87E-22	Reduces abundance
<i>Parabacteroides goldsteinii</i>	-28.63	4.80E-23	8.43E-22	Reduces abundance
<i>CAG-1427 sp000435675</i>	-27.93	5.31E-22	8.39E-21	Reduces abundance
<i>Dialister MIC7247</i>	-27.85	6.92E-22	1.04E-20	Reduces abundance
<i>Oscillibacter MIC7169</i>	-27.75	9.55E-22	1.38E-20	Reduces abundance
<i>Monoglobus pectinilyticus</i>	-27.73	1.02E-21	1.41E-20	Reduces abundance
<i>Tyzzerella MIC7714</i>	-27.59	1.63E-21	2.16E-20	Reduces abundance
<i>Anaerotignum sp001304995</i>	-27.53	1.99E-21	2.48E-20	Reduces abundance
<i>Collinsella sp003487125</i>	-27.53	2.02E-21	2.48E-20	Reduces abundance
<i>Bacteroides nordii</i>	-27.48	2.37E-21	2.80E-20	Reduces abundance
<i>Lachnoclostridium_A edouardi</i>	-27.38	3.33E-21	3.81E-20	Reduces abundance
<i>Streptococcus parasanguinis_B</i>	-27.17	6.60E-21	7.00E-20	Reduces abundance
<i>Hungatella hathewayi</i>	-27.16	6.75E-21	7.00E-20	Reduces abundance

<i>Tyzzerella</i> <i>MIC8139</i>	-26.77	2.39E-20	2.27E-19	Reduces abundance
<i>Acutalibacteraceae</i> <i>MIC8041</i>	-26.64	3.66E-20	3.28E-19	Reduces abundance
<i>Blautia hominis</i>	-26.62	3.90E-20	3.41E-19	Reduces abundance
<i>Pauljensia</i> <i>sp001838165</i>	-25.89	3.98E-19	3.00E-18	Reduces abundance
<i>GCA-900066495</i> <i>MIC8689</i>	-25.85	4.48E-19	3.23E-18	Reduces abundance
<i>Haemophilus_D</i> <i>sp001679485</i>	-25.04	5.43E-18	3.60E-17	Reduces abundance
<i>Veillonella_A</i> <i>sp000431435</i>	-24.73	1.35E-17	8.63E-17	Reduces abundance
<i>Turicibacter</i> <i>sanguinis</i>	23.84	1.85E-16	1.12E-15	Increases abundance
<i>Corynebacterium</i> <i>argenteratense</i>	23.89	1.63E-16	1.00E-15	Increases abundance
<i>Streptococcus</i> <i>sp001587175</i>	24.56	2.29E-17	1.43E-16	Increases abundance
<i>QAMM01</i> <i>sp003150405</i>	24.76	1.27E-17	8.29E-17	Increases abundance
<i>Dorea</i> <i>sp900066555</i>	25.63	8.79E-19	5.95E-18	Increases abundance
<i>Clostridium_M</i> <i>lavalense</i>	25.75	6.16E-19	4.26E-18	Increases abundance
<i>Absiella dolichum</i>	25.77	5.79E-19	4.09E-18	Increases abundance
<i>Dorea phocaense</i>	25.87	4.16E-19	3.07E-18	Increases abundance
<i>CAG-306</i> <i>sp000980375</i>	25.92	3.62E-19	2.80E-18	Increases abundance
<i>Clostridium_M</i> <i>MIC9401</i>	26.01	2.68E-19	2.12E-18	Increases abundance
<i>Klebsiella</i> <i>pneumoniae</i>	26.08	2.18E-19	1.77E-18	Increases abundance
<i>Holdemania</i> <i>sp900120005</i>	26.31	1.07E-19	8.84E-19	Increases abundance
<i>UBA11774</i> <i>sp003507655</i>	26.49	5.88E-20	5.01E-19	Increases abundance
<i>Massiliomicrobiot</i> <i>a sp002160815</i>	26.70	2.98E-20	2.75E-19	Increases abundance
<i>Streptococcus</i> <i>MIC7545</i>	26.90	1.58E-20	1.54E-19	Increases abundance
<i>Eubacterium</i> <i>callanderi</i>	27.15	7.00E-21	7.04E-20	Increases abundance
<i>Holdemanela</i>	27.22	5.59E-21	6.19E-20	Increases abundance

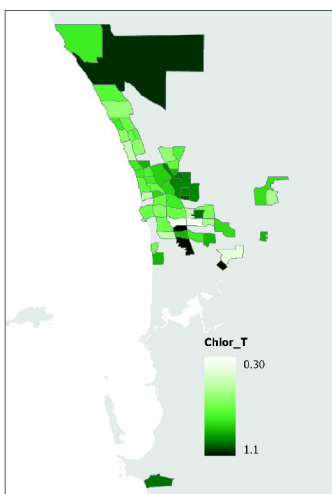
<i>sp002299315</i>				
<i>Eubacterium_G</i> <i>sp000432355</i>	28.35	1.26E-22	2.09E-21	Increases abundance
<i>Catenibacterium</i> <i>sp000437715</i>	28.63	4.82E-23	8.43E-22	Increases abundance
<i>Faecalibacterium</i> <i>prausnitzii_E</i>	28.89	1.98E-23	3.87E-22	Increases abundance
<i>CAG-245</i> <i>sp000435175</i>	28.91	1.87E-23	3.87E-22	Increases abundance
<i>UBA1691</i> <i>MIC9213</i>	29.14	8.20E-24	1.94E-22	Increases abundance
<i>Eubacterium_G</i> <i>sp000435815</i>	29.27	5.24E-24	1.45E-22	Increases abundance
<i>GCA-900066995</i> <i>sp900291955</i>	29.86	6.44E-25	2.14E-23	Increases abundance
<i>CAG-303</i> <i>sp000437755</i>	30.00	3.87E-25	1.43E-23	Increases abundance
<i>Bifidobacterium</i> <i>sp002742445</i>	30.00	3.87E-25	1.43E-23	Increases abundance

685

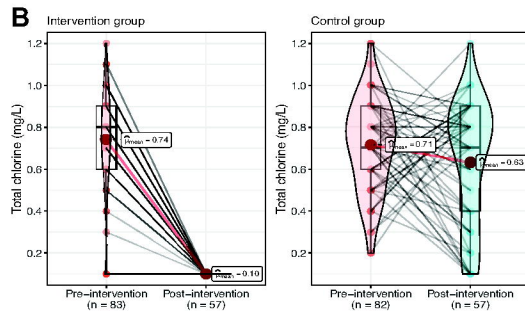




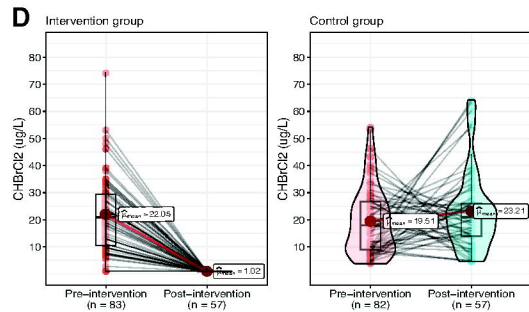
A



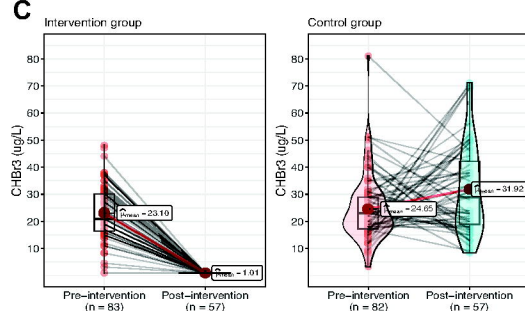
B



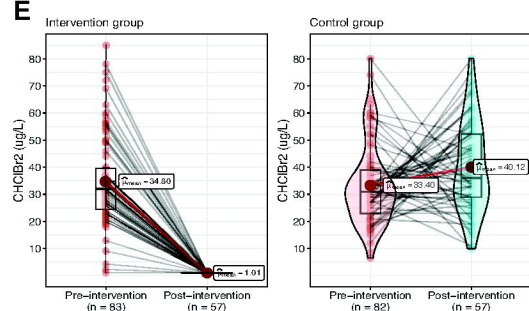
D

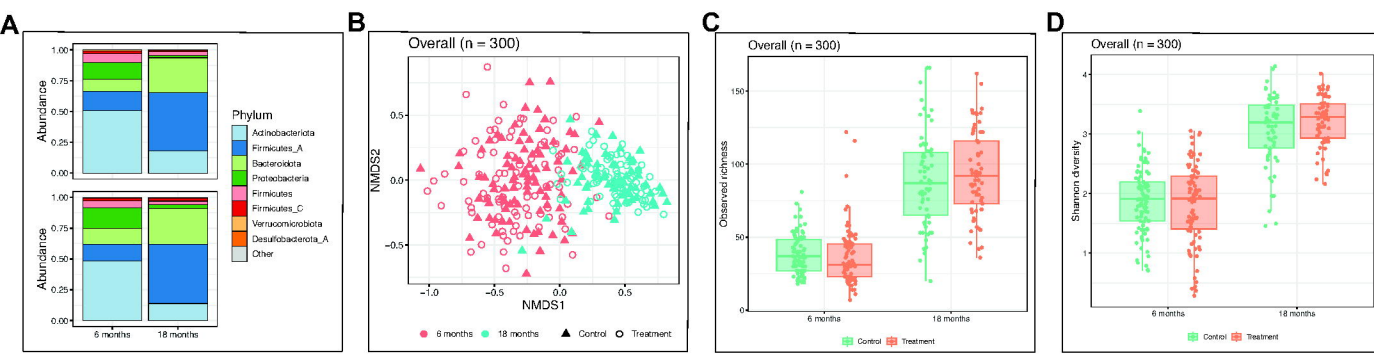


C

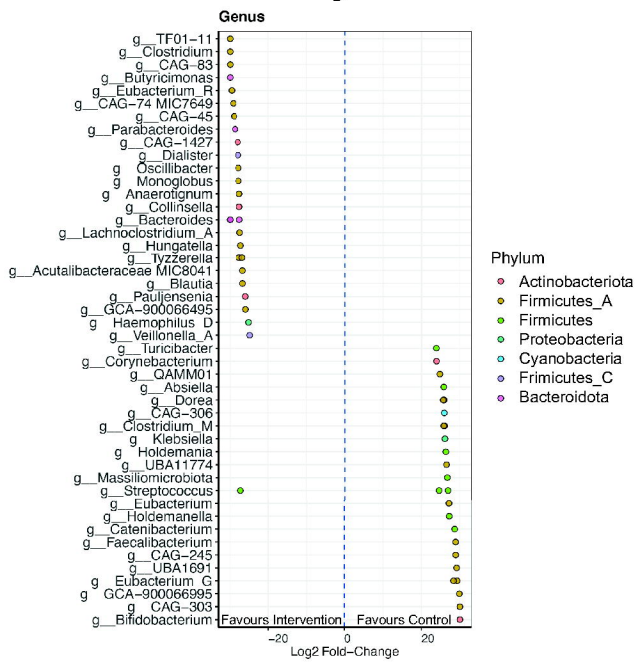


E

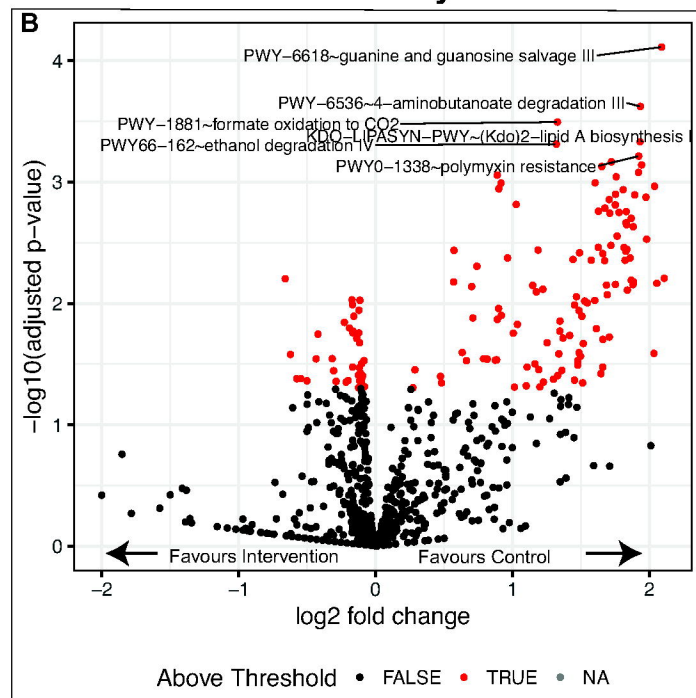
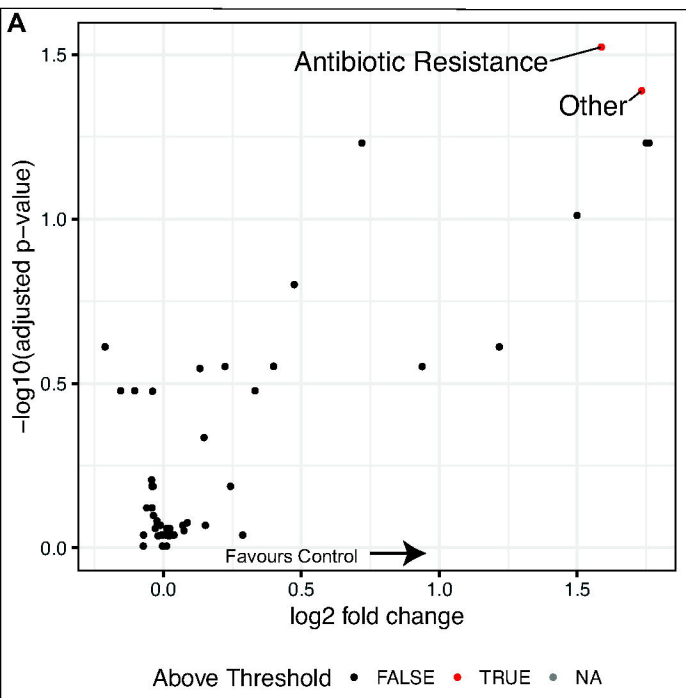




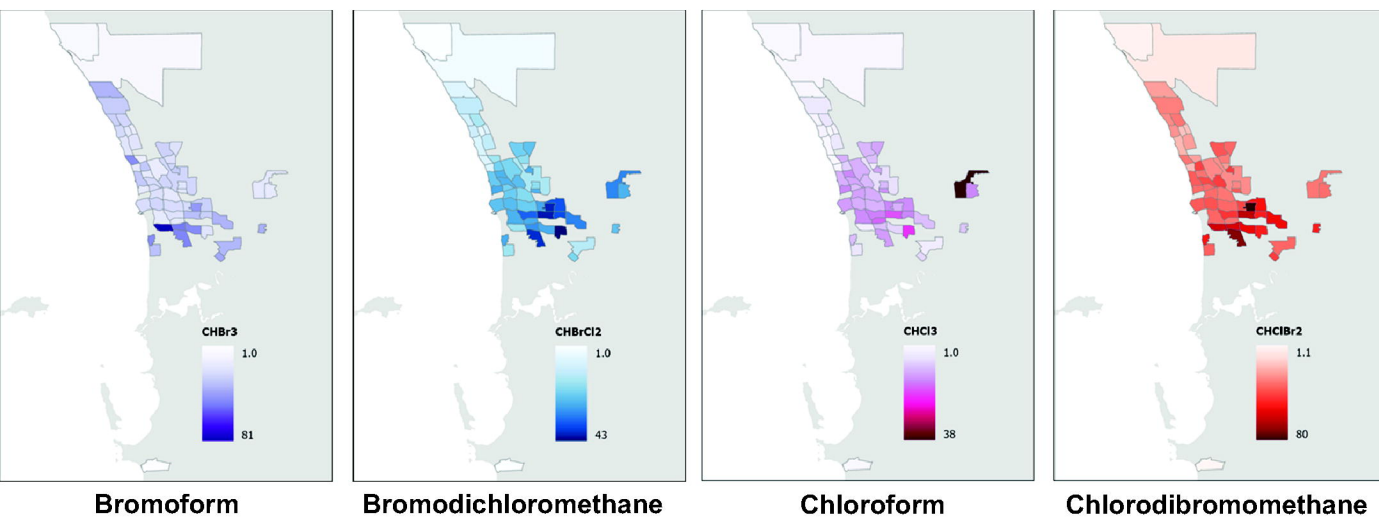
Most Differentially Abundant Genus



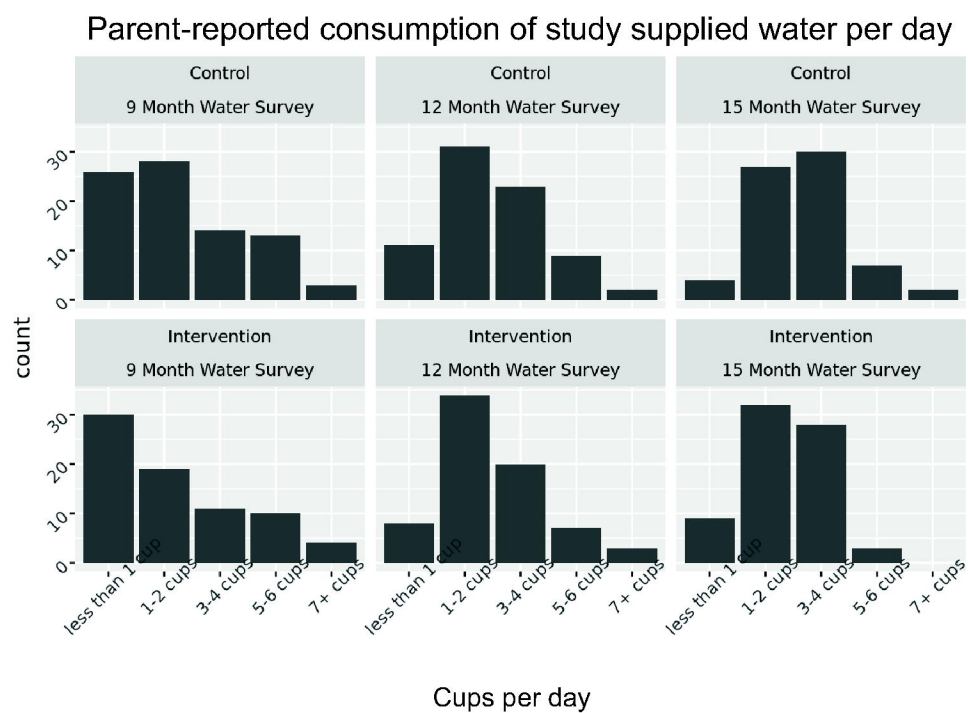
Volcano Plot of Treatment Effect on Metabolic Pathways



Disinfection by-products in Perth suburbs at study intake.

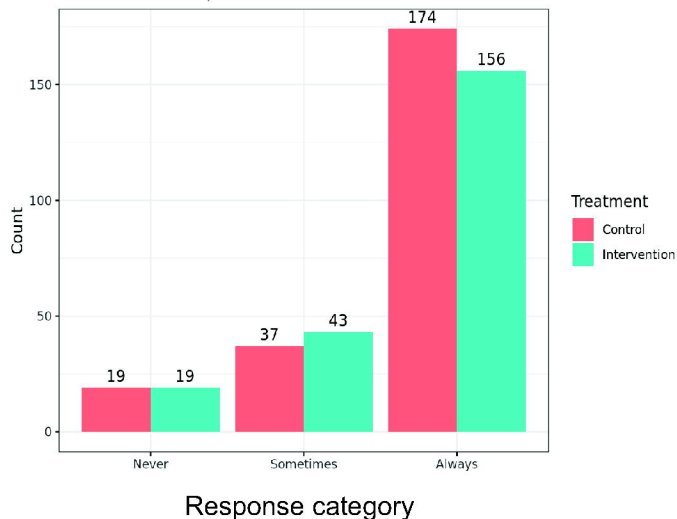


A



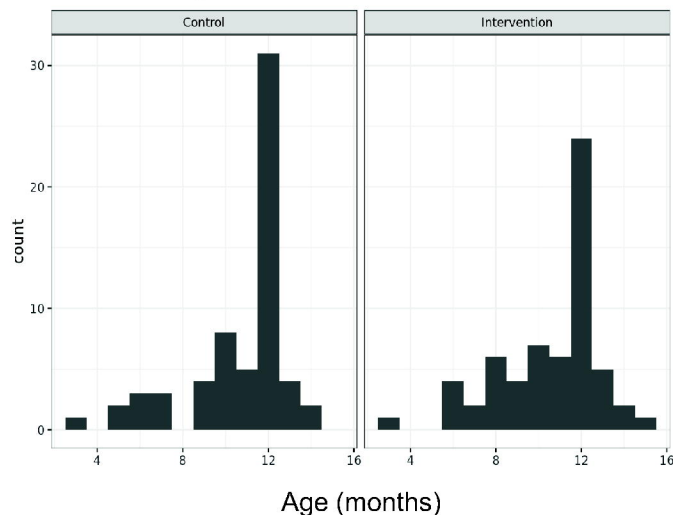
B

Frequency of study supplied water provided outside of the home.

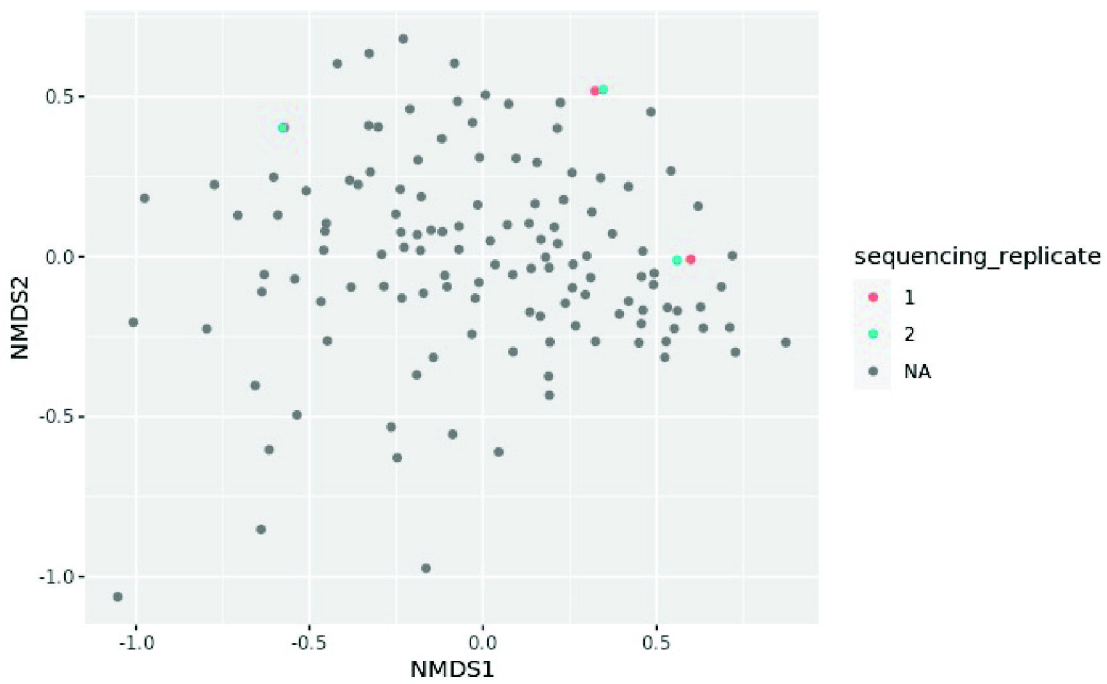


C

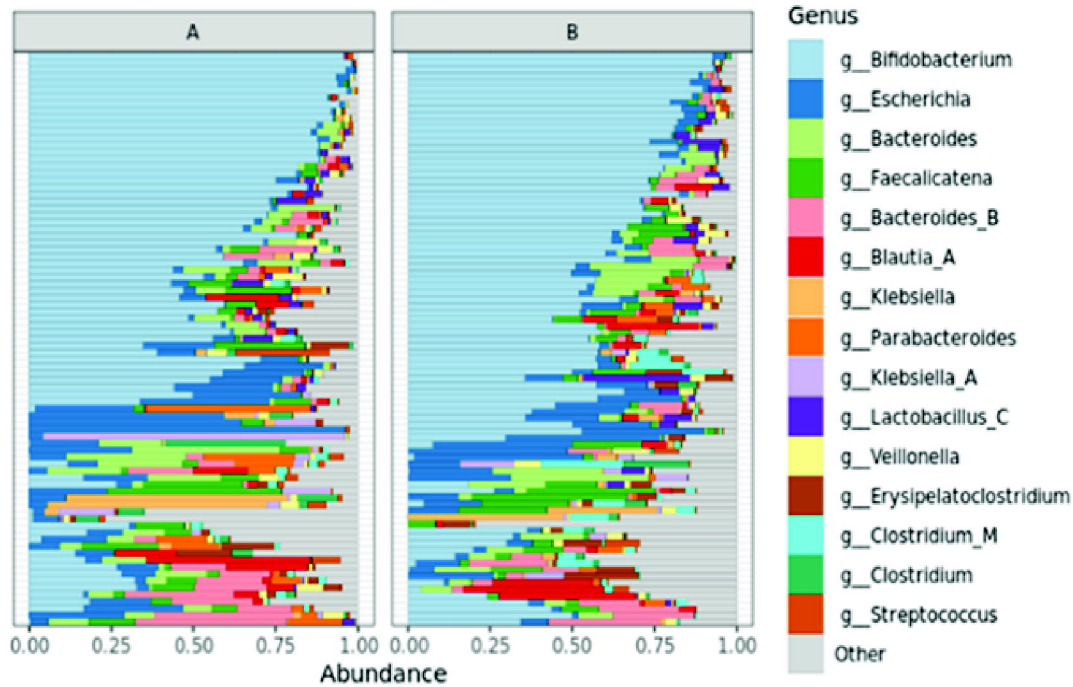
Average age of introduction of unboiled tap water to the infant diet



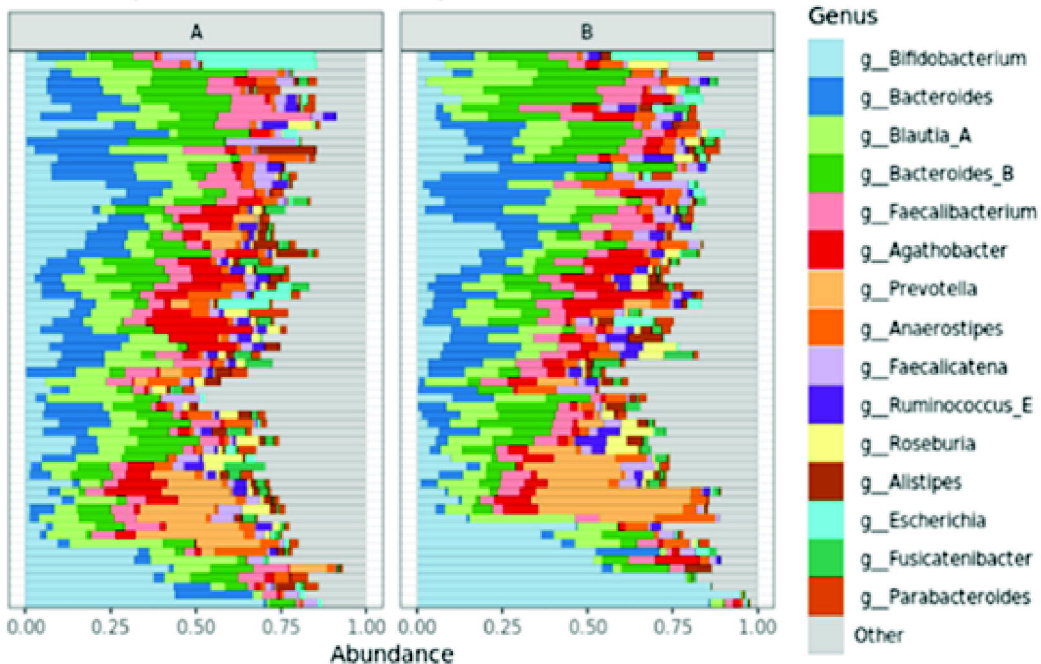
NMDS analysis of sequencing batch effect



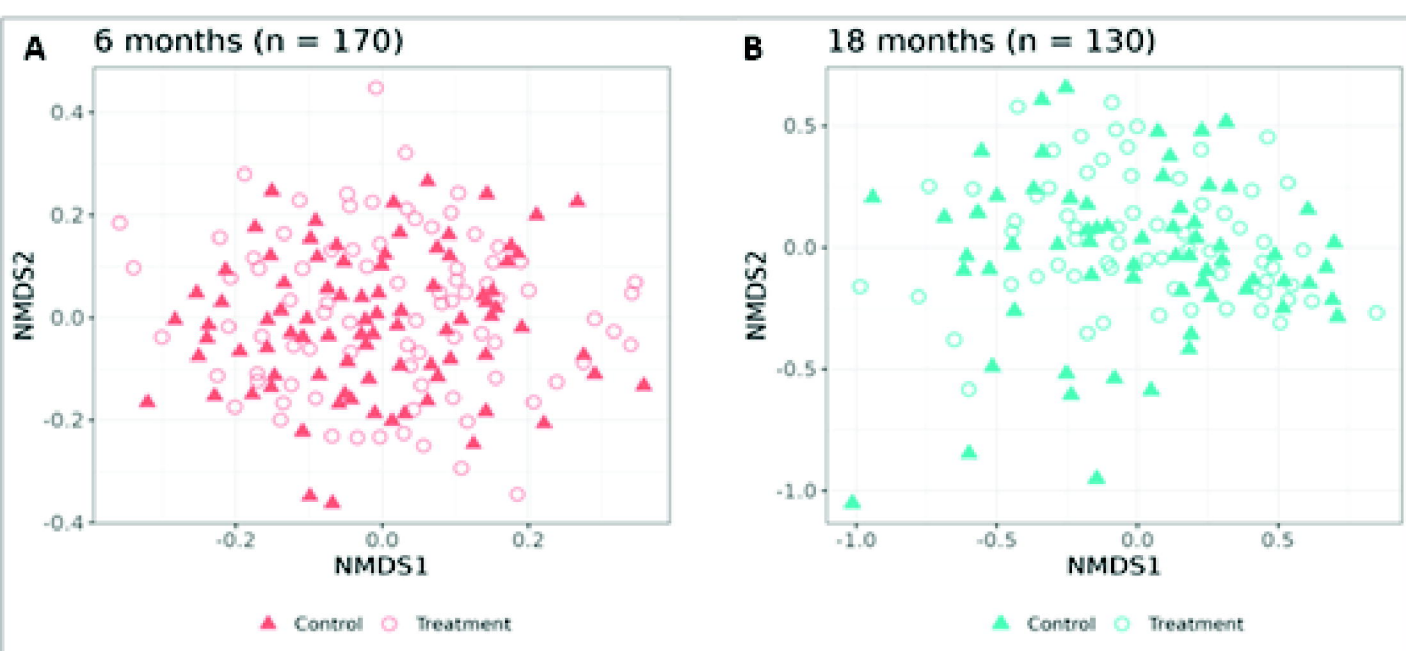
Taxa bar plots of baseline samples



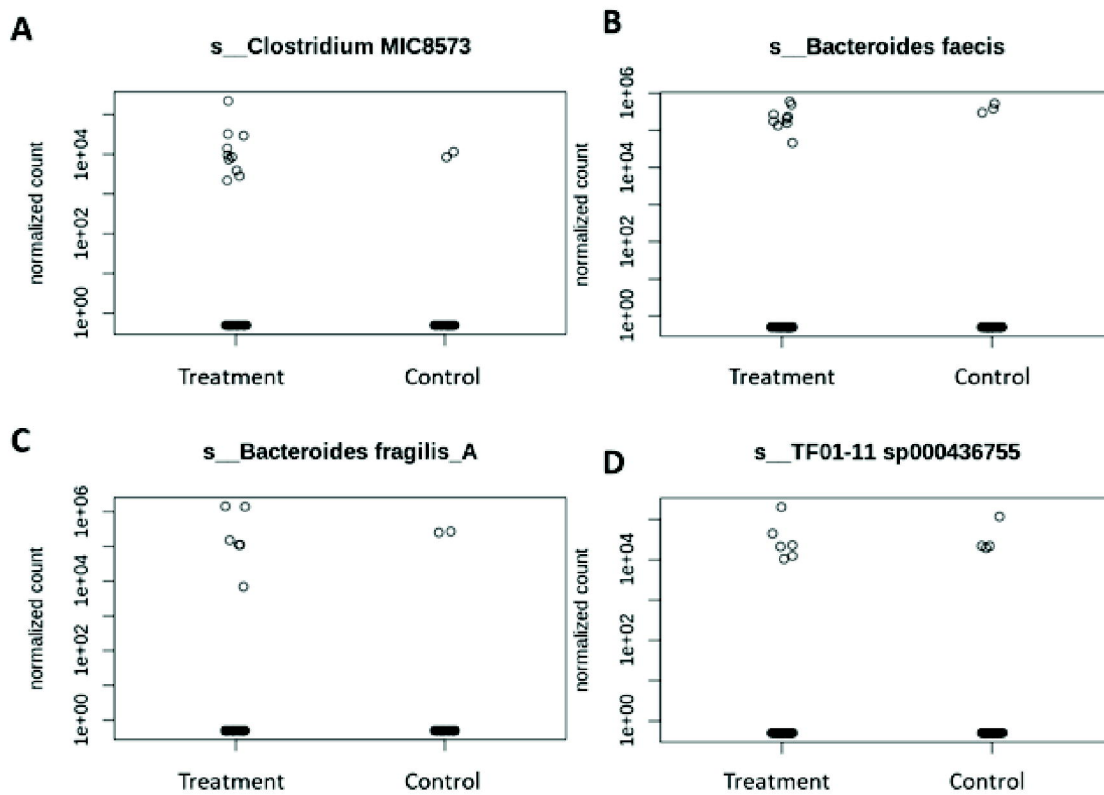
Taxa bar plots of 18-month samples



NMDS analysis of treatment main effect



Top Four Most Differentially Abundant Species



Log2 Sequencing reads for species annotated to the Antibiotic Resistance Metacyc pathway

