

## **Prevalence and determinants of modern contraception use among persons with disabilities in low- and middle-income countries: a systematic review and meta-analysis**

Atika Rahman Chowdhury, BSS<sup>1</sup>, Shimlin Jahan Khanam, MSS<sup>1</sup>, Mohammad Zahidul Islam, PhD<sup>1</sup>,  
Gulam Khandaker, PhD<sup>2,3</sup>, Md Nuruzzaman Khan, PhD<sup>1,4</sup>

<sup>1</sup>Department of Population Science, Jatiya Kabi Kazi Nazrul Islam University, Trishal, Mymensingh, Bangladesh.

<sup>2</sup> Central Queensland Public Health Unit, Central Queensland Hospital and Health Service, Rockhampton, Australia.

<sup>3</sup> School of Health, Medical and Applied Sciences, Central Queensland University, Rockhampton, Australia.s

<sup>4</sup> Nossal Institute for Global Health, School of Medicine and Public Health, The University of Melbourne, Australia.

\* Corresponding authors

Md. Nuruzzaman Khan, PhD

Associate Professor

Department of Population Science

Jatiya Kabi Kazi Nazrul Islam University, Bangladesh

Email: [sumonrupop@gmail.com](mailto:sumonrupop@gmail.com)

## **Prevalence and determinants of modern contraception use among persons with disabilities in low- and middle-income countries: a systematic review and meta-analysis**

### **Background**

Persons with disabilities should require the same level of access to contraception as the general population. However, the extent of contraception use among this group is underexplored in low- and middle-income countries (LMICs).

**Objective:** This study aimed to determine the prevalence of modern contraception use among persons with disabilities in LMICs and identify the key determinants.

### **Methods**

In June 2024, we conducted a systematic search across six databases to identify studies on disability and modern contraception in LMICs. The primary outcomes were the prevalence of modern contraception use and its determinants among persons with disabilities. Summary estimates were calculated using fixed or random-effects meta-analysis, depending on the level of heterogeneity.

### **Results**

A total of 19 studies were identified, with 11 included in the meta-analysis. The pooled prevalence of modern contraception use among persons with disabilities was 31.4% (95% CI: 26.5, 36.2), with significant heterogeneity across respondent characteristics. Five factors were significantly associated with higher contraception use: age over 25 years, having some level of education, being in a higher wealth quintile, adequate knowledge of family planning, and being in a formal marital relationship.

### **Conclusion**

This study reveals a significantly lower prevalence of modern contraception use among persons with disabilities in LMICs. Improving access to education, addressing social norms, and strengthening

healthcare systems may contribute to increase contraception access and uptake among persons with disabilities in LMICs.

**Keywords:** Modern contraception, persons with disabilities, LMICs, systematic review, meta-analysis, reproductive health.

## **Background:**

An estimated 1.3 billion people, representing 16% of the global population, are currently living with disabilities <sup>1</sup>. Over 80% of them reside in low- and middle-income countries (LMICs), majority of those without access to rehabilitation, education and other essential health services <sup>2</sup>. The majority of individuals with disabilities in LMICs rely on governmental and social support to meet their basic needs due to limited education and employment opportunities, as well as the persistent perception of them as burdens to society <sup>3-5</sup>. In this context, ensuring their well-being is particularly challenging, as community efforts often focus solely on providing basic necessities like food and clothing <sup>6</sup>. Access to healthcare services is also restricted by factors such as lack of disability-friendly healthcare facilities, inadequate transportation options, and the costs associated with accessing care <sup>2,7</sup>.

The challenges of accessing healthcare services for persons with disabilities are particularly pronounced in the area of sexual and reproductive health, including family planning and contraception <sup>7-9</sup>. The underlying reasons are multifaceted, including community assumptions about their limited or non-existent sexual lives, taboos related to family planning and contraception that are prevalent even among the general population in low resource settings, and the neglect of government family planning providers in existing services <sup>10-13</sup>. These issues persist despite evidence in the literature that individuals with disabilities lead sexual lives similar to those of non-disabled people <sup>14, 15</sup>. Consequently, persons with disabilities experience higher rates of unintended and closely spaced pregnancies, which further increase their vulnerability to adverse pregnancy outcomes and poor health <sup>16-18</sup>. Additionally, as people with disabilities often live in poverty, their children are more likely to remain trapped in the cycle of poverty, leading to issues such as school dropout and early marriage, perpetuating a cycle of disadvantage <sup>19-21</sup>. These burdens directly challenge LMICs in

achieving the Sustainable Development Goals (SDGs), particularly the goal of "leaving no one behind" and ensuring equitable access to sexual and reproductive health under SDG 3<sup>22</sup>.

Addressing the challenges of ensuring family planning and contraception for persons with disabilities requires international and national policies and programs that focus on providing these services at the household level. This effort necessitates accurate estimates of contraception use among persons with disabilities in LMICs through comprehensive research. However, this aspect is particularly challenging in LMICs, as existing research primarily focuses on contraception use and its determinants among the general population<sup>23</sup>, often systematically excluding persons with disabilities due to community-level ignorance of this issue<sup>24</sup>. Moreover, research in LMICs often relies on secondary data sources, such as the Demographic and Health Survey and the Multiple Indicator Cluster Survey, which do not specifically address persons with disabilities<sup>25</sup>. Consequently, the limited evidence available is based on small surveys with less precise analysis and inadequate consideration of a broad range of confounders. As a result, there are no accurate estimates of contraception use among persons with disabilities in LMICs, comparable to those available for the general population. A systematic review and meta-analysis of existing studies can help address this gap. Therefore, we conducted this study to summarize the prevalence of modern contraception use among persons with disabilities in LMICs and to identify their major determinants.

## **Methods**

We conducted a systematic review and meta-analysis, following the Preferred Reporting Items for Systematic Reviews and Meta-Analyses (PRISMA) guidelines for observational studies. We included relevant studies on contraception use among persons with disabilities.

### **Search Strategy**

In June 2024, we conducted a thorough literature search in six databases: PubMed, Web of Science, Embase, Global Health, Medline, and Scopus (Supplementary table 01-06). We included studies

published from January 2015 to June 2024, aligning with the establishment of the SDGs. Our search strategies included various keywords and medical subject headings (MeSH) related to the exposure, outcomes, and settings of interest. We also searched the websites of selected journals and reviewed reference lists of relevant articles.

### **Inclusion Criteria**

To be eligible for inclusion, articles had to meet the following criteria: (i) peer-reviewed journal articles, (ii) written or published in English, (iii) published from 2015 onwards, (iv) reported information on modern contraception use among persons with disability, (v) conducted in any LMICs, and (vi) presented original research using quantitative, qualitative, or mixed-methods.

### **Exclusion Criteria**

We excluded studies involving: (i) reproductive-aged women without disabilities, (ii) reproductive-aged women with high-risk characteristics like HIV/AIDS or cancer, (iii) studies conducted outside LMICs, (v) articles published before 2015, and (vi) studies published in the form of conference presentations, student theses, editorials, letters to the editor, commentaries, symposium proceedings, or those that were not peer-reviewed.

### **Study Selection**

Two authors (XX and XX) independently reviewed all articles, starting with title and abstract screening. Articles selected at this stage underwent full-text review by the same authors (XX and XX). Any disagreements were resolved through discussion, involving the lead author (XX) if necessary. We used online platforms like COVIDENCE, EndNote 21, and face-to-face meetings for efficient collaboration during the review process.

### **Data Extraction**

Before tabulating the final data, we designed a data extraction template, trialed and modified. We extracted relevant data, including authors' names, study design, sample size, study setting, related exposure groups, and family planning or contraceptive uptake information. Additionally, we

extracted reported effect sizes (odds ratios, ORs) and the underlying data used to calculate them. We also noted whether the ORs were adjusted or unadjusted for possible confounders. If there were any disagreements between the data extractors, we resolved them through discussion, involving the lead author (XX) if necessary.

### **Quality assessment**

We used the modified Newcastle-Ottawa Scale (NOS) for quality assessment of the included studies. The items included in the scale varied depending on the study type (cross-sectional, case-control, cohort studies, or randomized control trials). Two authors (XX and XX) assessed the included articles and assigned 1 point for each item if the study met the relevant criteria. We used aggregated scores to measure the overall study quality, categorizing it as good (score: 8 to 9), moderate (score: 5 to 7), or low (score: <5) following the guidelines.

### **Study variables**

The study variables were modern contraception use among persons with disabilities and their determinants. We classified contraception according to the World Health Organization's guidelines on modern contraception. They include: hormonal contraceptive methods (oral pills or implants, injectables, patches or vaginal rings), intrauterine devices (IUDs), male and female condom, male and female sterilization <sup>26</sup>.

### **Statistical analysis**

We used the extracted odds ratios (ORs) as the basis for our calculations. If the ORs were not available in the paper, we calculated unadjusted ORs based on the underlying data. The summary estimate of contraception prevalence among persons with disabilities were determined through fixed-effects or random-effects models determined heterogeneity assessment using the  $I^2$  statistic with a p-value. Random-effects model was considered where reported heterogeneity was moderate (50-74%) or high (75-100%). We also conducted subgroup analysis and meta-regression to explore

the source of heterogeneity once we identified moderate or higher heterogeneity. The pre-specified subgroups included study sample size, confounding adjustment, study design, study settings, and related exposure groups. To assess publication bias, we visually inspected the Funnel Plot for asymmetry and conducted Egger's regression test. For all analyses, we used the statistical software STATA version 16.1. The manuscript is written as per STROBE checklist (supplementary file 1)

## **Results**

### **Search results**

We identified a total of 314 articles from six databases and an additional 95 articles through searches on relevant journal websites, Google, Google Scholar, and reference lists of selected articles. After removing 166 duplicates, 243 unique articles remained. Screening of titles and abstracts led to the exclusion of 134 studies. Full-text reviews were conducted on the remaining 39 articles, with 21 further excluded based on the full-text review (Supplementary Table 7). Ultimately, 18 studies were included in our analysis: 11 in the quantitative synthesis and 7 in the narrative synthesis. The included studies were of moderate to good quality (Supplementary Table 8-9).

### **Study Characteristics**

The total sample size analyzed across the 18 included studies was 313,983 persons with disability. The majority of the studies were conducted in Ethiopia (n=7), followed by Uganda (n=2), Nigeria (n=2), Kenya (n=1), India (n=1), Ghana (n=1), Senegal (n=1), Pakistan (n=1), Bangladesh (n=1), and Nepal (n=1) (Supplementary Table 07). Of these studies, 16 employed a cross-sectional design, and almost two-thirds (n=11) reported community-based data.

### **Prevalence of Modern Contraception Among Persons with Disabilities**

Out of the 18 studies included in the review, 11 reported the prevalence of modern contraception use, with a combined sample size of 58,895 persons with disability. Modern contraception use among persons with disabilities in LMICs varied across studies, ranging from 20% to 49%<sup>27, 28</sup>. The



summary estimate, calculated using a random-effects meta-analysis, yielded an average prevalence of 31.4% (Figure 2).

### **Publication bias and estimate after adjustment**

We found evidence of publication bias in the overall prevalence estimate. Adjusting for this bias using the trim and fill method identified two missing studies. However, including these studies in the analysis did not result in any significant change in the estimated prevalence of contraception.

### **Subgroup Analysis and Meta-Regression**

We observed significant heterogeneity in the estimated prevalence of modern contraception. To identify the sources of this heterogeneity, we conducted subgroup analyses based on sample size, study setting, study design, and country. The overall prevalence of modern contraception use was estimated at 40.61% (95% CI: 24.15-57.08) in studies with sample sizes of 5,352 or more and 35.77% (95% CI: 22.33-49.20) in national-level studies (Table 1). The highest prevalence of modern contraception use was reported among persons with disabilities in Bangladesh, at 49.00% (95% CI: 46.25-51.75). The corresponding forest plots are presented in the supplementary figure 1-4.

### **Factors associated with modern contraception use among persons with disabilities in low- and middle-income countries**

We found that the 11 included studies identified a total of 19 variables significantly associated with modern contraception use among persons with disabilities. These variables were: age (n=6)<sup>9, 13, 27, 29-31</sup>, education (n=5)<sup>9, 13, 27, 29, 30</sup>, occupation (n=4)<sup>9, 13, 27, 29</sup>, wealth index (n=5)<sup>9, 13, 27, 29, 30</sup>, attitude towards contraception (n=5)<sup>9, 13, 31-33</sup>, knowledge about contraception (n=4)<sup>9, 13, 32, 34</sup>, marital status (n=6)<sup>9, 13, 27, 30, 32, 34</sup>, proximity to healthcare facilities (n=2)<sup>9, 28</sup>, residence (n=1)<sup>9</sup>, discussion about contraception with a partner or family members (n=1)<sup>31</sup>, partner's educational status (n=1)<sup>29</sup>, partner's economic status (n=1)<sup>29</sup>, availability of transportation (n=1)<sup>9</sup>, parity (n=1)<sup>13</sup>, antenatal

care visits (n=1)<sup>30</sup>, availability of friendly sexual and reproductive healthcare services (n=1)<sup>13</sup>, living children (n=1)<sup>30</sup>, difficulty in accessing health services (n=1)<sup>30</sup>, and confidentiality/privacy at health facilities (n=1)<sup>31</sup>.

Of these, eight variables were reported as significant determinants of modern contraception use in at least two studies. Their summary effect sizes are provided in Table 2. In summary estimate of the significant variables, five variables were found significant: age over 25 years (OR, 2.26, 95% CI: 1.27-4.02), having education (OR, 1.94, 95% CI: 0.91-1.83), being in a wealth quintile other than poor (OR, 1.95, 95% CI: 1.18-3.23), possessing adequate knowledge about contraception (OR, 3.23, 95% CI: 1.57-6.62), and being in a formal marital relationship (OR, 3.32, 95% CI: 1.59-6.90). The corresponding forest plots are presented in the supplementary figure 5-12.

### **Narrative synthesis of studies assessing Modern Contraception Use among Persons with Disabilities in Low- and Middle- Income Countries**

Of the seven studies included in the narrative synthesis, we found that overall prevalence of modern contraception use was 11% to 38.1% (Table 3). These studies also reported similar list of factors, as we presented above for the studies included in the meta-analysis, associated with modern contraception use among persons with disability.

### **Discussion**

The aims of this study were to explore the prevalence of modern contraception use among persons with disabilities in LMICs and identify key explanatory factors. The overall prevalence of modern contraception use was found to be 31.40% (95% CI: 26.56, 36.23), with significant heterogeneity across respondent characteristics. The highest prevalence was reported in studies with sample sizes of 5,352 or more (40.61%, 95% CI: 24.15-57.08), national-level studies (35.77%, 95% CI: 22.33-

49.20), and among persons with disabilities in Bangladesh (49.00%, 95% CI: 46.25-51.75). Five factors were significantly associated with modern contraception use among persons with disabilities: age over 25 years, having some education, being in a wealth quintile other than poor, having adequate knowledge, and being in a formal marital relationship. A narrative synthesis of an additional seven studies also supports the pooled prevalence of modern contraception use. Together, these findings indicate a lower prevalence of modern contraception use among persons with disabilities in LMICs, highlighting the need for policies and programs to increase modern contraception uptake among this population to improve maternal and child health outcomes.

We found that less than one-third of persons with disabilities use contraception, which is significantly lower than the overall contraception use rate of over 60% in LMICs<sup>35, 36</sup>. This disparity highlights the substantial challenges that persons with disabilities face in accessing and utilizing modern contraceptive services. The lower modern contraception use among this group is linked to several hierarchical levels of challenges<sup>9, 37</sup>. First, social stigma and religious norms often view contraception as sinful or against religious beliefs<sup>38, 39</sup>. Although these perceptions also affect the general population, persons with disabilities experience a greater impact due to their limited community engagement and lower exposure to family planning messages<sup>10, 40</sup>. Second, healthcare facilities and family planning workers tend to prioritize the general population, often neglecting persons with disabilities due to misconceptions about their sexual and reproductive needs<sup>10, 41</sup>. This is in addition to the country level overall prevalence of modern contraception use as this study findings found lower use of modern in the country where the average use of modern contraception is also low and higher total fertility rate. Moreover, the need for privacy in discussing and accessing modern contraception, combined with the fact that persons with disabilities often stay indoors,

complicates efforts to identify and engage them in family planning services<sup>31, 42</sup>. In addition to the lower modern contraception use among persons with disabilities and its explanations, this study reveals another concerning issue. Our broad search identified studies from only seven LMICs, with quantitative findings reported by just four of them<sup>43-46</sup>. These studies were based on small sample sizes and a limited number of confounders<sup>43-45</sup>. These scenarios suggest that modern contraception issues among persons with disabilities in LMICs remain underexplored in existing research, despite the high priority given to sexual and reproductive health for the general population in these countries in line with the ongoing SDGs target.

Another major factor contributing to the lower modern contraception use among persons with disabilities is their socio-economic and demographic disadvantages. The study highlights that factor such as older age, having some level of education, being in a higher wealth quintile, possessing adequate knowledge about family planning, and being in a formal marital relationship are associated with a higher likelihood of using modern contraception among persons with disabilities<sup>9, 13, 27, 30-32, 34, 43</sup>. Higher likelihoods of modern contraception use among persons with disability with higher age and being in formal relationship are found to be linked with interconnected factors<sup>28, 37</sup>. Older individuals typically have greater life experience and may be more informed about family planning options, leading to a higher likelihood of modern contraceptive use<sup>47</sup>. Additionally, as people age, they often face increased health risks associated with pregnancy, which can make the use of modern contraception more appealing<sup>48, 49</sup>. Moreover, it is also possible that they have desired number of children with increasing of age which result in increased modern contraception use. Being in a formal relationship, such as a marriage, often provides a more stable environment for discussing and implementing family planning methods<sup>13, 27, 32, 34</sup>. In such relationships, there is generally greater communication about reproductive health and shared responsibility for contraception. Moreover,

formal relationships may offer better access to healthcare resources and support networks, facilitating easier access to contraceptive services.

The study identified three key factors associated with increased modern contraceptive use among individuals with disabilities: having some level of education, belonging to a higher wealth quintile, and possessing adequate knowledge about family planning<sup>13, 27, 30, 32, 33</sup>. These factors often co-occur, creating a set of advantageous conditions that collectively enhance access to and use of modern contraceptive methods. Education empowers individuals with knowledge about sexual and reproductive health, including modern contraception methods, their benefits, and potential side effects<sup>50</sup>. It also improves decision-making abilities, allowing individuals to make informed choices about their reproductive health. Moreover, education is often linked to better access to healthcare services and information, which facilitates easier access to contraceptive methods<sup>50, 51</sup>. Similarly, individuals with disabilities in higher wealth quintiles have increased purchasing power for modern contraception, better access to healthcare services, and greater exposure to mass media about modern contraception, all of which contribute to higher modern contraceptive use in this group.

Moreover, persons with disabilities often face physical and communication barriers when accessing healthcare facilities, including family planning services. Limited accessibility of these facilities, inadequate training of healthcare providers on disability needs, and a lack of disability-friendly information and communication methods can hinder contraceptive uptake<sup>52, 53</sup>. Future policies should consider improving physical access to health services, training healthcare workers on disability inclusion, and developing accessible communication tools to ensure equitable access to contraception for persons with disabilities.

This study has several strengths and a few limitations. To our knowledge, it is the first study in LMICs to summarize the prevalence of modern contraceptive use and its major contributors among

individuals with disabilities. We included all studies conducted in LMICs since 2015, when the SDGs were established, regardless of their methodologies. We employed comprehensive search techniques for data extraction and the selection of eligible studies, adhering to the "Strengthening the Reporting of Observational Studies in Epidemiology" (STROBE) and PRISMA guidelines for reporting our findings. Appropriate statistical methods were utilized to provide summary estimates, enabling us to deliver more precise data for evidence-based policy and program development. However, the summary estimates presented in this study are primarily based on cross-sectional studies. We did not search for unpublished papers or grey literature, which may contribute to publication bias. Additionally, the lack of studies from a wide range of LMICs and the small sample sizes of the included studies, characterized by higher heterogeneity, limit the generalizability of our results at the national level. With two-thirds of the reviewed papers originating from Ethiopia, there is also a risk of estimation bias.

## **Conclusion**

This study highlights the significantly lower prevalence of modern contraception use among persons with disabilities in LMICs, with only 31.40% using modern contraception. Factors such as age, education, wealth status, knowledge of family planning, and being in a formal marital relationship are associated with modern contraception use. To increase modern contraception use among persons with disabilities in LMICs, it is crucial to improve education, address social norms, and strengthen healthcare facilities to enhance access to modern contraceptive services.

## **Declarations**

## **Data sharing statement**

All relevant data are presented in the supplementary files, table and figures.

## **Declarations of interests**

The authors have no conflicts of interest to declare

## **Funding**

This research did not receive any specific funds.

## **Acknowledgement**

We acknowledge the support of Department of Population science, Jatiya Kabi Kazi Nazrul Islam University, Bangladesh, where the study was conducted.

## **Authors' contributors**

MNK and ARC designed the study concept. ARC conducted the formal analysis with the help of MNK. ARC, MNK, and SJK drafted the manuscript. MZI and GK reviewed the first manuscript. MNK supervised all works. All authors critically reviewed and approved the final version of this manuscript.

## References

1. World Health Organization. Disability: WHO; 2023.
2. Clemente KAP, Silva SVD, Vieira GI, et al. Barriers to the access of people with disabilities to health services: a scoping review. *Rev Saude Publica*. 2022;56:64.
3. Saran A, White H, Kuper H. Evidence and gap map of studies assessing the effectiveness of interventions for people with disabilities in low-and middle-income countries. *Campbell Syst Rev*. 2020;16:e1070.
4. Hunt X, Bradshaw M, Vogel SL, et al. Community Support for Persons with Disabilities in Low-and Middle-Income Countries: A Scoping Review. *Int J Environ Res Public Health*. 2022;19.
5. Rana MS, Alam MB, Khanam SJ, Kabir MI, Khandaker G, Khan MN. Prevalence and patterns of comorbidities in people with disabilities and their associated socio-demographic factors. *Scientific Reports*. 2024;14:1425.
6. Banks LM, Kuper H, Polack S. Poverty and disability in low- and middle-income countries: A systematic review. *PLOS ONE*. 2017;12:e0189996.
7. Tesfaye T, Woldesemayat EM, Chea N, Wachamo D. Accessing healthcare services for people with physical disabilities in Hawassa City Administration, Ethiopia: a cross-sectional study. *Risk Management and Healthcare Policy*. 2021:3993-4002.
8. Singh DR, K.C S, Sunuwar DR, et al. Accessibility and Utilization of Sexual and Reproductive Health Services among People with Disabilities in Nepal. *Sexuality and Disability*. 2024.
9. Tenaw Z, Gari T, Gebretsadik A. Contraceptive use among reproductive-age females with disabilities in central Sidama National Regional State, Ethiopia: a multilevel analysis. *PeerJ*. 2023;11:e15354.
10. Horner-Johnson W, Klein KA, Campbell J, Guise JM. Experiences of Women With Disabilities in Accessing and Receiving Contraceptive Care. *J Obstet Gynecol Neonatal Nurs*. 2021;50:732-741.
11. Zimmerman LA, Sarnak DO, Karp C, et al. Family Planning Beliefs and Their Association with Contraceptive Use Dynamics: Results from a Longitudinal Study in Uganda. *Stud Fam Plann*. 2021;52:241-258.
12. Tumlinson K, Britton LE, Williams CR, Wambua DM, Onyango DO, Senderowicz L. Provider verbal disrespect in the provision of family planning in public-sector facilities in Western Kenya. *SSM Qual Res Health*. 2022;2.
13. Mesfin Yesgat Y, Gebremeskel F, Estifanous W, et al. Utilization of Family Planning Methods and Associated Factors Among Reproductive-Age Women with Disability in Arba Minch Town, Southern Ethiopia. *Open Access J Contracept*. 2020;11:25-32.
14. Carew MT, Braathen SH, Swartz L, Hunt X, Rohleder P. The sexual lives of people with disabilities within low- and middle-income countries: a scoping study of studies published in English. *Glob Health Action*. 2017;10:1337342.
15. Shah S. "Disabled People Are Sexual Citizens Too": Supporting Sexual Identity, Well-being, and Safety for Disabled Young People. *Frontiers in Education*. 2017;2.
16. Signore C, Davis M, Tinggen CM, Cernich AN. The Intersection of Disability and Pregnancy: Risks for Maternal Morbidity and Mortality. *J Womens Health (Larchmt)*. 2021;30:147-153.
17. Brown HK, Ray JG, Liu N, Lunsy Y, Vigod SN. Rapid repeat pregnancy among women with intellectual and developmental disabilities: a population-based cohort study. *Canadian Medical Association Journal*. 2018;190:E949-E956.
18. Ransohoff JI, Sujin Kumar P, Flynn D, Rubenstein E. Reproductive and pregnancy health care for women with intellectual and developmental disabilities: A scoping review. *J Appl Res Intellect Disabil*. 2022;35:655-674.



19. Group WB. Disability inclusion: World Bank; 2023.
20. UNICEF. Child Poverty: Unicef.
21. Bhattarai M, Smedema SM. Improving Health of Persons With Disabilities Living in Poverty: A Scoping Review. *Rehabilitation Counselors and Educators Journal*. 2023;12.
22. Nations U. The 17 GOALS | Sustainable Development: UN.
23. Bradley SEK, Shiras T. Where Women Access Contraception in 36 Low- and Middle-Income Countries and Why It Matters. *Glob Health Sci Pract*. 2022;10.
24. Camanni G, Ciccone O, Lepri A, et al. 'Being disabled' as an exclusion criterion for clinical trials: a scoping review. *BMJ Glob Health*. 2023;8.
25. Alam MB, Rana MS, Kabir MA, Khanam SJ, Khan MN. Pattern of contraceptive use among reproductive-aged women with disabilities in Bangladesh: Evidence from Multiple Indicator Cluster Survey 2019. *Disability and Health Journal*. 2024:101651.
26. World Health Organization. Family planning/contraception methods: World Health Organization; 2023.
27. Beyene GA, Munea AM, Fekadu GA. Modern Contraceptive Use and Associated Factors among Women with Disabilities in Gondar City, Amhara Region, North West Ethiopia: A Cross Sectional Study. *Afr J Reprod Health*. 2019;23:101-109.
28. Alam MB, Rana MS, Kabir MA, Khanam SJ, Khan MN. Pattern of contraceptive use among reproductive-aged women with disabilities in Bangladesh: Evidence from multiple indicator cluster survey 2019. *Disabil Health J*. 2024:101651.
29. Oumer M, Manaye A, Mengistu Z. Modern Contraceptive Method Utilization and Associated Factors Among Women of Reproductive Age in Gondar City, Northwest Ethiopia. *Open Access J Contracept*. 2020;11:53-67.
30. Natal Ayiga SK. Access to and Uptake of Contraception by Women with Disabilities. *journal of social science*. 2016.
31. Tsegay K, Gebremariam H, Haile F. Modern Contraceptive Methods Utilization and Associated Factors among Women with Disabilities in Mekelle Town, Tigray, Ethiopia 2017.
32. Yimer AS, Modiba LM. Modern contraceptive methods knowledge and practice among blind and deaf women in Ethiopia. A cross-sectional survey. *BMC Womens Health*. 2019;19:151.
33. Makau PM, Keraka MN, Kieru JN, Matoke VO, Geoffery O. Attitude towards utilization of family planning services among women of reproductive age living with disability in Kajiado County, Kenya. *Int J Community Med Public Heal*. 2021;8:3793.
34. Mekonnen AG, Bayleyegn AD, Aynalem YA, Adane TD, Muluneh MA, Asefa M. Level of knowledge, attitude, and practice of family planning and associated factors among disabled persons, north-shewa zone, Amhara regional state, Ethiopia. *Contraception and Reproductive Medicine*. 2020;5.
35. Hossain S, Akter T, Mohsin M, Islam MM, Chowdhury PB, Khudri MM. Contraceptive uses among married women in Bangladesh: a systematic review and meta-analyses. *Journal of Health, Population and Nutrition*. 2024;43:10.
36. Blumenberg C, Hellwig F, Ewerling F, Barros AJD. Socio-demographic and economic inequalities in modern contraception in 11 low- and middle-income countries: an analysis of the PMA2020 surveys. *Reproductive Health*. 2020;17.
37. Mahmood S, Hameed W, Siddiqi S. Are women with disabilities less likely to utilize essential maternal and reproductive health services?—A secondary analysis of Pakistan Demographic Health Survey. *PLOS ONE*. 2022;17:e0273869.
38. Anshebo AA, Markos Y, Behera S, Gopalan N. Contraceptive dynamics among women with disabilities of reproductive age in Ethiopia: systematic review. *Systematic Reviews*. 2024;13:42.

39. Amirrtha Srikanthan RLR, MD, FRCSC. Religious and Cultural Influences on Contraception. *WOMEN'S HEALTH*. 2008.
40. D'Souza P, Bailey JV, Stephenson J, Oliver S. Factors influencing contraception choice and use globally: a synthesis of systematic reviews. *The European Journal of Contraception & Reproductive Health Care*. 2022;27:364-372.
41. Ganle JK, Baatiema L, Quansah R, Danso-Appiah A. Barriers facing persons with disability in accessing sexual and reproductive health services in sub-Saharan Africa: A systematic review. *PLoS One*. 2020;15:e0238585.
42. Khanlou N, Mantini A, Khan A, Degendorfer K, Zangeneh M. Protection of Privacy of Information Rights among Young Adults with Developmental Disabilities. *Int J Ment Health Addict*. 2018;16:545-572.
43. Shiwakoti R, Gurung YB, Poudel RC, et al. Factors affecting utilization of sexual and reproductive health services among women with disabilities- a mixed-method cross-sectional study from Ilam district, Nepal. *BMC Health Serv Res*. 2021;21:1361.
44. Mac-Seing M, Zarowsky C, Yuan M, Zinszer K. Disability and sexual and reproductive health service utilisation in Uganda: an intersectional analysis of demographic and health surveys between 2006 and 2016. *BMC Public Health*. 2022;22:438.
45. Kumi-Kyereme A. Sexual and reproductive health services utilisation amongst in-school young people with disabilities in Ghana. *Afr J Disabil*. 2021;10:671.
46. Casebolt MT, Singh K, Speizer IS, Halpern CT. Use of modern contraceptives by women with disabilities in Rajasthan, India: An analysis of the annual health survey. *Sex Reprod Healthc*. 2022;31:100699.
47. Yen HY, Lin LJ. Quality of life in older adults: Benefits from the productive engagement in physical activity. *J Exerc Sci Fit*. 2018;16:49-54.
48. Clinic C. Advanced Maternal Age: Cleveland Clinic; 2022.
49. Glick I, Kadish E, Rottenstreich M. Management of Pregnancy in Women of Advanced Maternal Age: Improving Outcomes for Mother and Baby. *Int J Womens Health*. 2021;13:751-759.
50. Chowdhury S, Rahman MM, Haque MA. Role of women's empowerment in determining fertility and reproductive health in Bangladesh: A systematic literature review. *AJOG global reports*. 2023;3:100239.
51. Pazol K, Zapata LB, Dehlendorf C, Malcolm NM, Rosmarin RB, Frederiksen BN. Impact of Contraceptive Education on Knowledge and Decision Making: An Updated Systematic Review. *Am J Prev Med*. 2018;55:703-715.
52. Rotenberg S, Rodríguez Gatta D, Wahedi A, Loo R, McFadden E, Ryan S. Disability training for health workers: A global evidence synthesis. *Disability and Health Journal*. 2022;15:101260.
53. McPherson A, Durham J, Richards N, Gouda H, Rampatige R, Whittaker M. Strengthening health information systems for disability-related rehabilitation in LMICs. *Health Policy Plan*. 2017;32:384-394.
54. Adigun OT, Mngomezulu TP. 'They Forget I'm Deaf': Exploring the Experience and Perception of Deaf Pregnant Women Attending Antenatal Clinics/Care. *Ann Glob Health*. 2020;86:96.
55. Burke E, Kébé F, Flink I, van Reeuwijk M, le May A. A qualitative study to explore the barriers and enablers for young people with disabilities to access sexual and reproductive health services in Senegal. *Reprod Health Matters*. 2017;25:43-54.
56. Ademokoya JA, Igbeneghu PE. Sexual behaviours and contraceptive use among adolescents with learning disabilities in ibadan north local government area, oyo state, nigeria2016.



## Figures

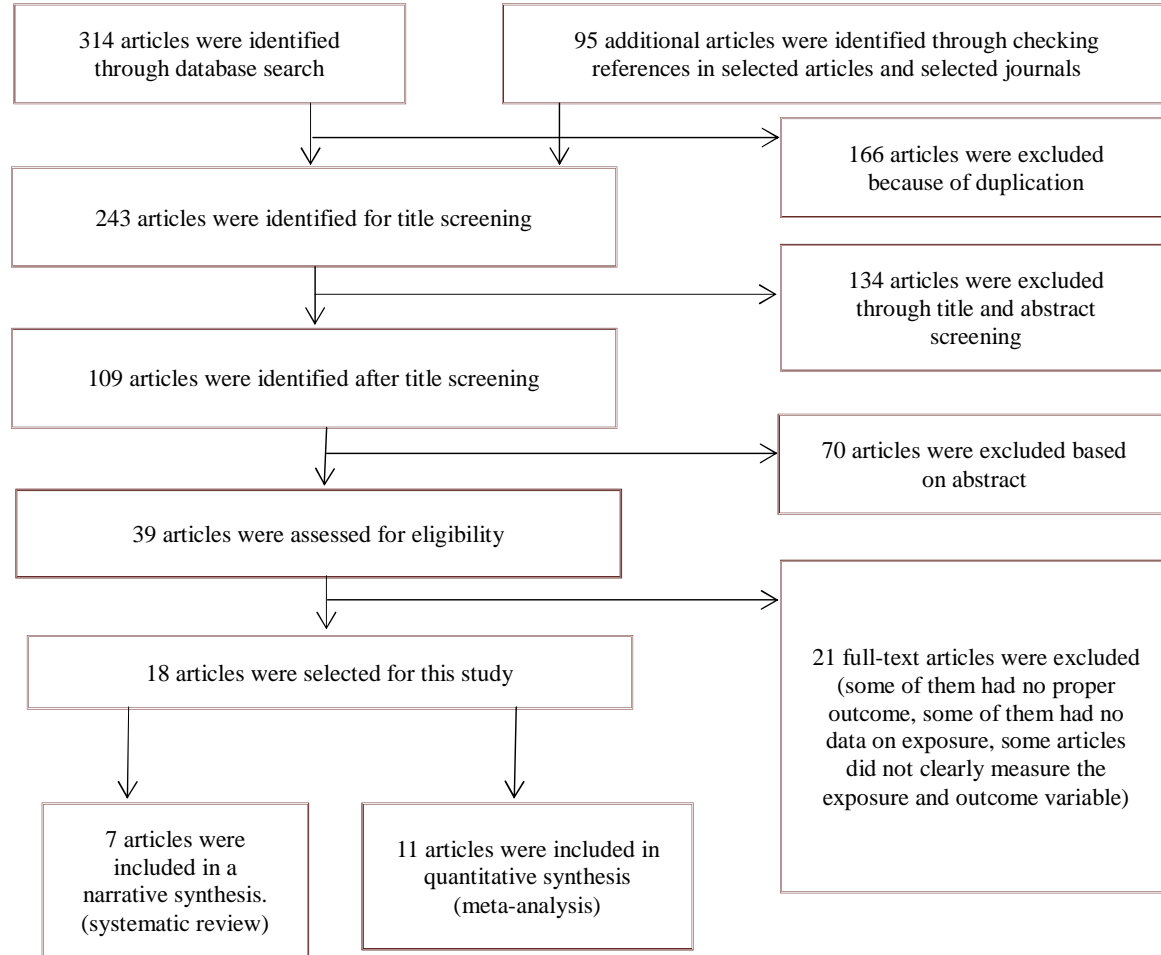


Figure 1: Schematic presentation of the studies included in the systematic review

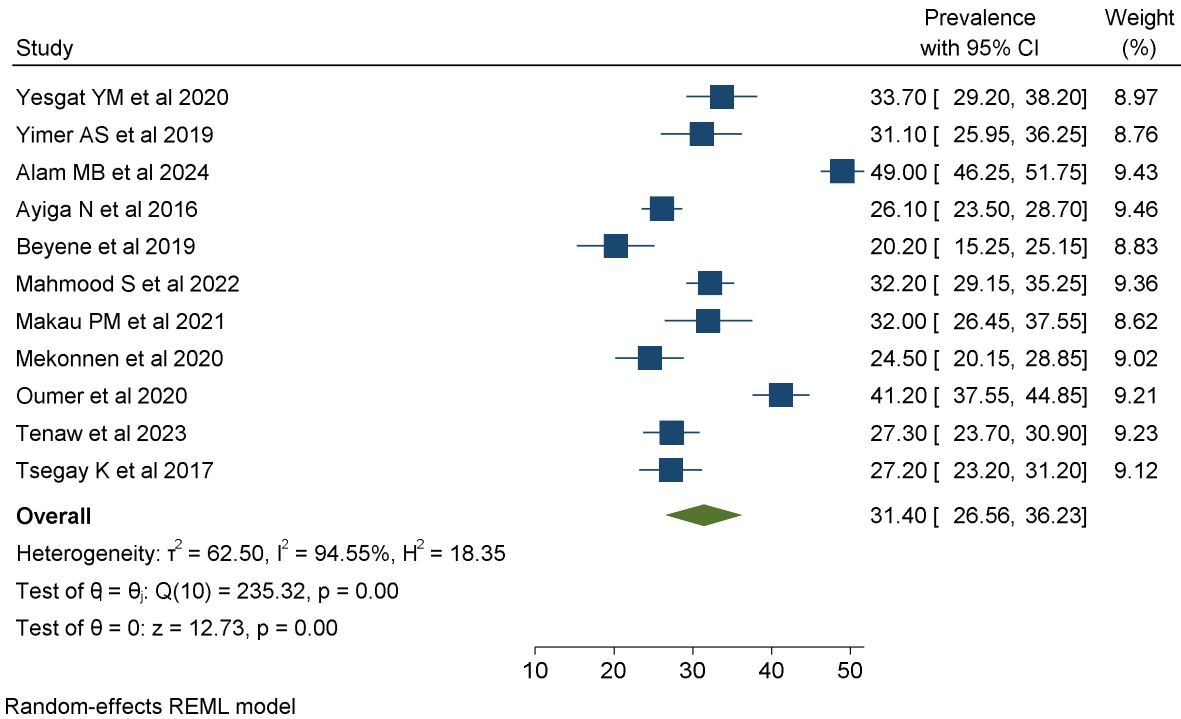
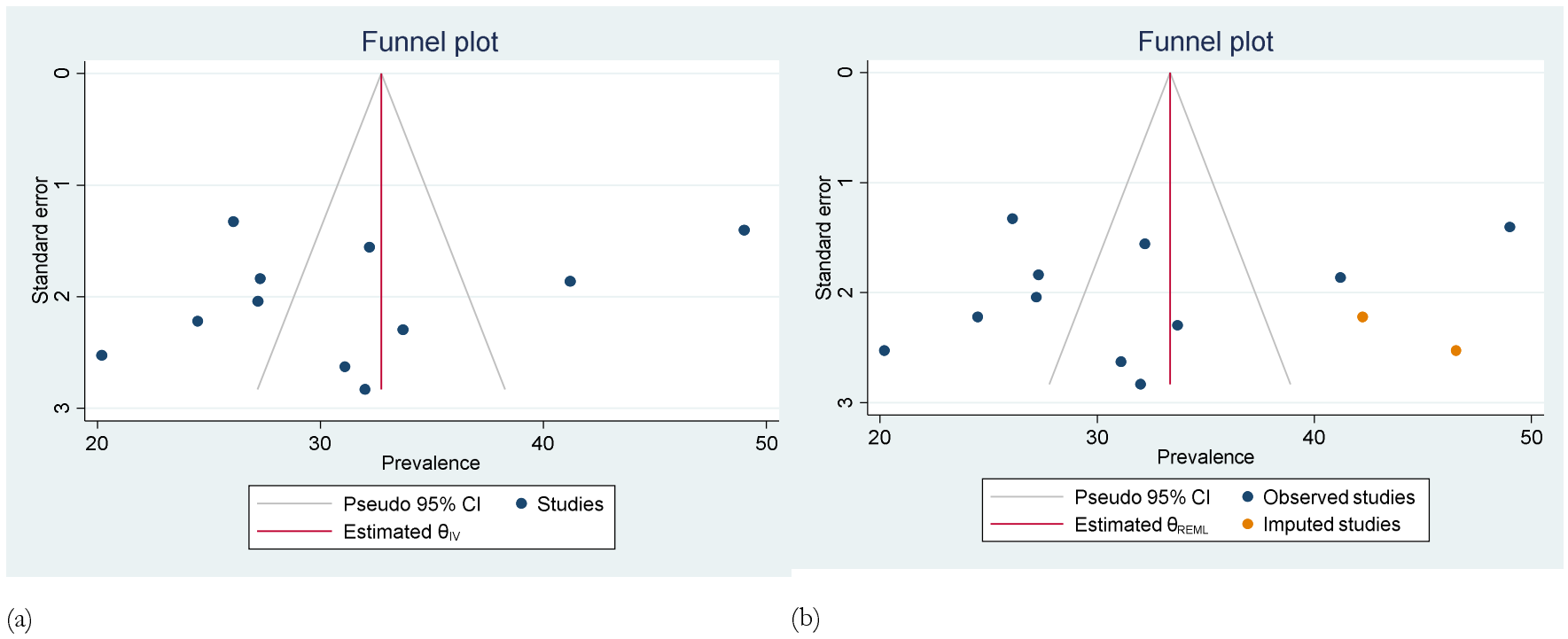


Figure 2. Summary estimation of prevalence of modern contraception use among persons with disabilities in low- and middle-income countries, January 2015 to June 2024.



**Figure 3:** Funnel plots to assess publication bias (a) and addressing publication bias through trim and fill estimate.

0 Tables

1 **Table 1:** Pooled prevalence of contraceptive use among persons with disability in low- and middle-  
 2 income countries across several selected characteristics, January 2015 to June 2024.

<b>Subgroups</b>	<b>Pooled prevalence (95% CI)</b>	<b>Heterogeneity, <i>p</i></b>	<b>Meta-regression, <i>p</i></b>
<b>Sample size</b>			
≤5352	29.26 (25.26-33.27)	<0.01	0.0362
>5352	40.61 (24.15-57.08)	<0.01	
<b>Study setting</b>			
Facility based study	31.10 (25.95-36.25) <sup>+</sup>	NA	
Community based study	29.49 (24.37-34.62)	<0.01	0.2595
Regional level study	NA		
National level study	35.77 (22.33-49.20)	<0.01	
<b>Study design</b>			
Cross-sectional study	31.40 (26.56-36.22)	<0.01	
Case-control study	NA		NA
Cohort (prospective or retrospective) study	NA		
<b>Country of the study</b>			
Bangladesh	49.00 (46.25-51.75) <sup>+</sup>	NA	
Ethiopia	29.38 (24.30-34.46)	<0.01	0.2638
Kenya	32.00 (26.45-37.55) <sup>+</sup>	NA	
Pakistan	32.20 (29.15-35.25) <sup>+</sup>	NA	
Uganda	26.10 (23.50-28.70) <sup>+</sup>	NA	

3 <sup>+</sup>Prevalence from a single study, Meta regression *p* values represent a test of the entire character

4

**Table 2: Major factors associated with utilization of modern contraception among persons with disabilities in low- and middle-income countries, January 2015 to June 2024.**

<b>Determinants</b>	<b>Reference category</b>	<b>No. of studies</b>	<b>Sample size</b>	<b>OR (95%CI)</b>	<b>P-value</b>	<b>I<sup>2</sup> (%)</b>	<b>Heterogeneity test (P-value)</b>
Age	≤ 25	6	3649	2.26 (1.27-4.02)	<0.01	90.2	<0.01
Education	No education	5	3126	1.94 (0.91-1.83)	<0.01	77.6	<0.01
Occupation	No occupation	4	2167	1.60 (0.94-2.74)	0.08	81.8	<0.01
Wealth quintile	Poor	5	3121	1.95 (1.18-3.23)	<0.01	82.2	<0.01
Attitude	Negative	5	1845	1.05 (0.36-3.08)	0.92	94.9	<0.01
Knowledge	Poor knowledge	4	1355	3.23 (1.57-6.62)	<0.01	72.6	0.012
Marital union	Not in a marital union	6	2806	3.32 (1.59-6.90)	<0.01	89.7	<0.01
Nearest health facility distance	Far	2	1156	1.40 (0.18-10.77)	0.75	96.3	<0.01



**Table 3:** Narrative synthesis of the studies assessing contraception use among persons with disabilities in low- and lower-middle-income countries, January 2015 to June 2024

Study	Study Design	Setting	Country	Sample	Results
Shiwakoti R et al, 2021 <sup>43</sup>	Cross-sectional study	Community	Nepal	384 disabled women	Only 11% of the total persons with disabilities reported ever using modern contraception.
Seing MM et al, 2022 <sup>8</sup>	Cross-sectional study	National	Uganda	15,733 people aged 18-49	Prevalence of contraception use among persons with disabilities was 34.2%. The likelihood of modern contraception use was lower (OR = 0.51, 95% CI 0.29 – 0.90) among persons with disabilities compared to the general population.
Adigun OT et al, 2020 <sup>54</sup>	Qualitative study	Community	Nigeria	9 reproductive-age disabled women	This study found that newly married women with disabilities and those with one or two previous pregnancies were less likely to use modern contraception.
Burke E et al, 2017 <sup>55</sup>	Qualitative study	Community	Senegal	23 interview informants (18-24)	Among them, 35% (8/23) reported never using contraception. Several men and women claimed their religion opposed contraceptives.
Kumi-Kyereme, A. 2021 <sup>45</sup>	Cross-sectional	Community	Ghana	489 disabled women	This study presents that only 13.49% of the participants with disabilities reported using contraception.
Ademokoya et al, 2016 <sup>56</sup>	Cross-sectional study	Community	Nigeria	210 participants	Findings showed that the prevalence of contraceptive uptake among participants was 38.1%
Casebolt MT	Cross-sectional	Regional	Rajasthan,	238,240	Study findings suggest that women with disabilities

et al, 2022 <sup>46</sup>	study		India	reproductive aged women	(WWD) were less likely to use modern contraception methods (OR 0.87, 95% CI: 0.78, 0.95).
---------------------------	-------	--	-------	-------------------------	---