

1 **Prevalence, intensity and risk factors of soil-transmitted helminthiasis after five**
2 **effective rounds of preventive chemotherapy across three implementation units**
3 **in Ondo State, Nigeria**

4 **Short title:** Impact of Preventive Chemotherapy on STH Control in Ondo State,
5 Nigeria

6 ^{1,2}Hammed O. Mogaji, ¹Francisca O. Olamiju, ¹Fajana Oyinlola, ¹Ijeoma Achu, ³Nimota O.
7 Adekunle, ⁴Lydia E. Udofia, ⁴Ekaette G. Edelduok, ⁵Clement A. Yaro, ⁶Olanike O. Oladipupo,
8 ⁷Alice Y. Kehinde ⁸Fatai Oyediran, ⁹Moses Aderogba, ⁹Louise K. Makau-Barasa, ^{4,10}Uwem F.
9 Ekpo*

10 ¹Mission To Safe the Helpless, Lagos, Nigeria; ²Public Health Unit, Department of Applied Social
11 Sciences, Marian University, Indianapolis, Indiana, United States; ³Department of Zoology and
12 Environmental Biology, Olabisi Onabanjo University Ago-Iwoye, Ogun State; ⁴Department of
13 Zoology, Akwa Ibom State University, Ikot Akpaden, Akwa Ibom State, Nigeria; ⁵ Department of
14 Animal and Environmental Biology, University of Uyo, Akwa Ibom State, Nigeria; ⁶Neglected
15 Tropical Diseases Program Unit, Department of Public Health, Ondo State Ministry of Health,
16 Akure, Ondo State, Nigeria; ⁷Neglected Tropical Diseases Program Unit, Department of Public
17 Health, Federal Ministry of Health, Zonal Office, Akure, Nigeria ⁸Neglected Tropical Diseases
18 Program Unit, Department of Public Health, Federal Ministry of Health, Abuja, Nigeria; ⁹The
19 Ending Neglected Diseases (END) Fund, New York, United States; ¹⁰Department of Pure and
20 Applied Zoology, Federal University of Agriculture Abeokuta, Nigeria.

21 **Corresponding author*:** ufekpo@hotmail.com; uwemekpo@aksu.edu.ng

22

23 **Abstract:**

24 **Background:** Routine epidemiological data are essential for monitoring the effectiveness of
25 preventive chemotherapy (PC), optimizing resource allocation, and addressing the evolving needs
26 in the elimination of soil-transmitted helminthiasis (STH). This study assesses the prevalence,
27 intensity, and associated risk factors of STH following five rounds of albendazole-based PC in
28 three implementation units (IUs) in Ondo State, Nigeria.

29

30 **Methodology:** Fresh stool samples were collected from 2,093 children aged 5–14 years across 45
31 systematically selected schools in three IUs: Ese-Odo, Irele, and Ile-Oluji. The samples were
32 analyzed using the Kato-Katz technique. Additionally, standardized questionnaires were
33 administered to gather data on demographics and access to water, sanitation, and hygiene (WASH)
34 resources. Data analysis was conducted using R software version 4.3.2, with a 95% confidence
35 interval.

36

37 **Principal Findings/Conclusions:** The parasitological data indicated a significant decline in the
38 aggregated prevalence of STH across the three IUs. In Ese-Odo, the prevalence decreased to 25.8%
39 (95% CI: 23.0–29.0) from 39% at baseline ($d = -34\%$, $p = 0.00$). In Irele, prevalence dropped to
40 9.7% (95% CI: 7.6–12.0) from 51.3% at baseline ($d = -81\%$, $p = 0.00$), and in Ile-Oluji, prevalence
41 was reduced to 6.4% (95% CI: 4.6–8.7) from 23% at baseline ($d = -72.2\%$, $p = 0.00$). The most
42 prevalent STH species was *Ascaris lumbricoides*, with infection rates of 25.5%, 9.4%, and 6.4%
43 in Ese-Odo, Irele, and Ile-Oluji, respectively, followed by *Trichuris trichiura* in Ese-Odo (2.7%)
44 and Irele (0.4%), while hookworm infections were detected only in Irele (0.7%). The majority of
45 infections were of low intensity in Ese-Odo (91.0%), Irele (96.8%), and Ile-Oluji (100%). Access

46 to improved sanitation (17.7%, 54.9%, and 58.2%, $p < 0.05$), improved water sources (24.5%,
47 66.1%, and 69.8%, $p < 0.05$), and handwashing facilities (9.0%, 39.6%, and 25.4%) was
48 suboptimal across Ese-Odo, Irele, and Ile-Oluji, respectively. Open defecation rates were high in
49 Ese-Odo (54.2%), Irele (36.3%), and Ile-Oluji (34.3%). In Ese-Odo, significant risk factors for
50 STH infection included the use of hand-pump boreholes (AOR: 2.44, 95% CI: 1.23–4.88, $p =$
51 0.01), unprotected dug wells (AOR: 3.25, 95% CI: 0.96–11.36, $p = 0.06$), ventilated improved pit
52 latrines (AOR: 3.95, 95% CI: 1.13–16.1, $p = 0.04$), pit latrines without a slab (AOR: 2.19, 95%
53 CI: 1.27–3.8, $p = 0.01$), and failure to use soap after defecation, both when soap was available
54 (AOR: 12.09, 95% CI: 1.86–112.97, $p = 0.01$) and when soap was unavailable (AOR: 8.19, 95%
55 CI: 1.73–76.65, $p = 0.04$). In Irele, access to protected dug wells was marginally significant (AOR:
56 1.79, 95% CI: 0.96–3.21, $p = 0.06$), while in Ile-Oluji, access to river water emerged as a
57 significant risk factor (AOR: 7.97, 95% CI: 1.81–58.58, $p = 0.02$). The use of rainwater was found
58 to be protective across all three IUs. These findings demonstrate significant progress in reducing
59 STH prevalence across the three IUs following PC interventions. However, the data underscore
60 the need for enhanced efforts to improve access to and use of WASH facilities to achieve STH
61 elimination.

62 **Keywords:** Soil-Transmitted Helminthiasis; Impact, Preventive Chemotherapy; Nigeria

63 **Word count: 336**

64

65

66 **Authors Summary**

67 The World Health Organization (WHO) recommends reducing soil-transmitted helminthiasis
68 (STH) prevalence to below 20% and moderate-to-heavy infections to less than 2% in treated areas
69 to achieve elimination targets. Endemic countries, including Nigeria, have implemented mass
70 albendazole administration to at-risk populations to meet these goals. After a decade of such
71 interventions in Nigeria, reassessing the infection status is essential for determining whether to
72 adjust or discontinue the program. This study analyzed stool samples from 2,093 children across
73 three implementation units (IUs) in Ondo State. The results indicated significant reductions in STH
74 prevalence to below 20% in two of the three IUs, with no heavy infections reported in any IU.
75 While these findings demonstrate the effectiveness of the PC interventions, the study also
76 identified poor access to water, sanitation, and hygiene (WASH) resources, highlighting the need
77 for improvements in these areas to sustain progress and prevent infection resurgence.

78

79 Introduction

80 Soil-transmitted helminthiasis (STH) is a widespread yet preventable neglected tropical disease,
81 affecting over 1.5 billion people globally, with a significant burden in sub-Saharan Africa [1-3].
82 STH is caused by four parasitic nematodes: *Ascaris lumbricoides* (roundworm), *Trichuris*
83 *trichiura* (whipworm), *Necator americanus* (hookworm), and *Ancylostoma duodenale*
84 (hookworm), which require soil for the development of their eggs [3,4]. Infection occurs primarily
85 through the fecal-oral route, with individuals ingesting infective eggs of roundworm and
86 whipworm or through skin penetration by hookworm larvae [3,4,5,6]. Transmission is often
87 facilitated by inadequate infrastructure, particularly poor sanitation and hygiene practices, leading
88 to contamination of water, soil, and food [7,8]. Rural and marginalized urban populations are
89 particularly vulnerable, where sanitation and hygiene facilities are often absent or underutilized
90 [9,10]. Young children, due to their developing immunity and increased exposure, face a higher
91 risk of infection, resulting in adverse health outcomes such as malnutrition, anemia, impaired
92 cognitive development, and educational disruptions [3,11-13]. These detrimental effects
93 underscore the importance of preventive chemotherapy (PC), which involves mass administration
94 of albendazole or mebendazole to at-risk populations [14].

95 The World Health Organization (WHO) has adopted PC as a primary strategy to control and
96 eliminate STH [3,15]. Over the past decade, the WHO, in collaboration with two pharmaceutical
97 companies GlaxoSmithKline and Johnson & Johnson, has coordinated the distribution of over 600
98 million donated medicines [16]. PC programs are implemented based on the prevalence of STH,
99 determined through baseline epidemiological surveys in which biannual PC is recommended when
100 prevalence exceeds 50%, annual PC is advised when prevalence is between 20–49.9%, and clinical
101 case management is suggested when prevalence is below 20% [2,3,15,16]. It is anticipated that

102 treating approximately 75% of the at-risk population over a period of 5–6 years will lead to a
103 substantial reduction in STH endemicity [15,16]. Therefore, epidemiological surveys after five of
104 effective ($\geq 75\%$) rounds of PC are essential to evaluate program impact, optimize resource
105 allocation, adjust or discontinue PC frequency, and mitigate the risk of developing drug resistance
106 [2,3,15,16].

107 Nigeria, with its large population, is the most endemic country for STH compared to other sub-
108 Saharan African countries [1,17-19] . Over the past eight years, the country has benefited from PC
109 programs supported by donated medicines, and some areas are now presumed to have significantly
110 reduced STH prevalence [20]. Given these developments, it is critical to conduct impact
111 assessments to determine the current status of STH to decisions on future PC interventions. In this
112 study, we evaluated the prevalence and intensity of STH following five effective rounds of
113 albendazole PC interventions in three implementation units (IUs), corresponding to Local
114 Government Areas (LGAs), in Ondo State, Nigeria.

115 **Materials and Methods**

116 *Ethics*

117 This study received ethical approval from the Ondo State Health Research Ethics Committee
118 (approval number: NHREC/18/08/2016) and the Neglected Tropical Diseases Unit of the Federal
119 Ministry of Health (reference number: NSCP/6/7/IV/23). Prior to data collection, we engaged key
120 stakeholders from the Ministries of Health and Education at both the State and LGA levels in the
121 study areas. This included organizing community meetings with representatives from the
122 participating communities and schools. During these meetings, we provided detailed information
123 to community leaders, teachers, parents, and children about the study's objectives, procedures, and

124 target population. Participation in the study was entirely voluntary and required informed consent
125 from both the minors (aged 5–14 years) and their legal guardians. Children who agreed to
126 participate provided written consent in the form of signatures or, where applicable, thumbprints
127 on pre-printed informed consent forms (ICFs) on the day of sample collection. Only those children
128 whose parents had previously provided consent, and who also received consent from a parent or
129 teacher on the day of sample collection, were included in the study.

130 *Study area and settings*

131 This study was conducted in the Ese-Odo, Irele, and Ile-Oluji Local Government Areas (LGAs) of
132 Ondo State, located in Southwestern Nigeria. Ondo State comprises 18 LGAs with a population
133 exceeding three million people. Baseline epidemiological mapping for soil-transmitted
134 helminthiasis (STH) was conducted in 2013, revealing that three LGAs had endemicity levels
135 below 20%, 12 had endemicity between 20% and 50%, and two LGAs had endemicity above 50%
136 [20] (Fig. 1). Since 2013, the Federal and State Ministries of Health, in collaboration with partners
137 such as EndFUND and Mission to Save the Helpless (MITOSATH), have implemented more than
138 nine rounds of preventive chemotherapy (PC) with albendazole [20]. To date, an average of five
139 effective PC rounds with therapeutic coverage exceeding 75% has been achieved. The three LGAs
140 included in this assessment have met the minimum requirement of five to six effective PC rounds,
141 making them eligible for an impact assessment survey.

142

143 *Fig 1: Map of Ondo State showing endemicity of the LGAs with Nigeria as inset*
144

144

145 *Study design and selection of sampling sites*

146 This assessment utilized a cross-sectional sampling design conducted between March and April
147 2024. Data were collected through standardized questionnaires, and stool samples were obtained

148 from school-aged children (SAC) across 45 systematically selected sampling sites (15 per LGA)
149 in three Local Government Areas (LGAs). The sampling sites comprised government-owned
150 primary schools, and participants (children aged 5–14 years) were selected following World Health
151 Organization (WHO) guidelines [21]. Schools within each LGA were stratified by sub-districts
152 (wards), and one school per ward was randomly selected using a paper ballot system from every
153 five schools. This method ensured unbiased selection and adequate geographic representation
154 across the LGAs and Wards [21].

155 *Sample size determination and selection of study participants.*

156 The World Health Organization (WHO) recommends recruiting 50 school-aged children (SAC)
157 aged 5 to 14 years to assess worm burden and the impact of preventive chemotherapy (PC) [15].
158 However, recent guidelines suggest prioritizing 30 older SAC aged 10 to 14 years [21]. To comply
159 with both sets of recommendations, we recruited a minimum of 50 SAC per school, including 30
160 late SAC (10–14 years) and 20 early SAC (5–9 years). A total sample size of 750 children was
161 targeted for recruitment in each Local Government Area (LGA).

162 *Selection of study participants and exclusion criteria*

163 Participants were recruited on school premises with the assistance of teachers. Children aged 5–9
164 years were selected from the first three primary school classes, with 6–7 boys and girls recruited
165 per class. Children aged 10–14 years were selected from the fourth, fifth, and sixth primary school
166 classes, with a target of at least 10 children (five boys and five girls) per class. A systematic
167 selection process was employed: children were lined up by class and gender, assigned a number,
168 and a sampling interval was calculated by dividing the total number of children by the required
169 sample size per class. The first child was chosen through a paper ballot, and subsequent children
170 were selected by adding the sampling interval to the previous child's position. If the target sample

171 size for a class was not met, additional children were recruited from the same class, school, or
172 community. Exclusion criteria included children outside the target age range (5–14 years), those
173 who were unwell, and those whose parents’ declined participation.

174

175

176 ***Questionnaire administration***

177 We utilized a closed-ended electronic questionnaire to collect epidemiological data from
178 participants. Two types of questionnaires were administered via Android or iOS devices: (i) a
179 school form and (ii) an individual questionnaire, both of which have been previously validated and
180 employed in similar epidemiological surveys by our research team [10, 22, 23]. The school form
181 captured information on school names, geographic coordinates, enrolment figures, and the
182 availability of water, sanitation, and hygiene (WASH) facilities. The individual questionnaire
183 collected demographic data, including age, gender, parental occupation, household WASH
184 facilities, and parasitological results from the stool samples. Copies of the questionnaires are
185 accessible at <https://zenodo.org/records/11080490>. All data were collected electronically and
186 securely transferred to a remote backup server following each interview. Interviews were
187 conducted in Yoruba and held confidentially, with a legal guardian or parent present when
188 necessary.

189 ***Collection of stool samples***

190 Before administering the questionnaires, participants were required to complete informed consent
191 forms and were assigned unique identification tags. These tags were affixed to their consent forms,
192 sterile specimen containers, microscopic slides, and result sheets to maintain rigorous quality
193 control throughout the data collection process. Participants were provided with applicator sticks,

194 a plain sheet of paper, tissue paper, and soap to assist with stool collection. The voiding and
195 collection process was supervised by a teacher and a member of the field team to ensure proper
196 sample collection within the first hour of distribution and to prevent sample contamination or
197 sharing. Bar soaps were distributed as incentives to promote good hygiene practices, with care
198 taken to ensure that participants' decisions to participate were voluntary and free from coercion.

199

200 *Parasitological assessment of stool samples*

201 Stool samples were processed on-site within two hours of collection at a mobile laboratory set up
202 by the field team. The Kato-Katz technique was used to process the specimens, and a single thick
203 smear was prepared from each sample. After a clearing period of 30 minutes, the smears were
204 examined microscopically for parasite eggs [24]. For quality assurance, each slide was re-
205 examined by a second microscopist, and egg counts were verified [24]. A participant was classified
206 as positive if at least one egg from any of the target parasites was detected per slide.

207

208 *Data Collection and Management*

209 Data collection was remotely monitored using the KoboCollect platform, with field supervisors
210 recording daily summaries through a closed-tracking tool developed in Microsoft Excel. This
211 approach facilitated the triangulation of electronic uploads and enabled timely resolution of any
212 discrepancies. Two distinct tracking tools were utilized during the study: one for school field forms
213 and another for parasitology components. All collected data were imported into R Studio (version
214 4.3.2) for subsequent analysis. The data were encoded using a predefined codebook, with
215 prevalence data recorded as numeric values—'0' indicating no infection and '1' indicating infection
216 for each observed soil-transmitted helminth (STH) species with an egg count greater than one.

217 Overall infection status (i.e., any STH infection) was determined by summing values across rows
218 using the `rowSums` function. Infection intensity, expressed as eggs per gram (EPG) of stool, was
219 calculated by multiplying the number of eggs observed per smear by 24. The intensity of *Ascaris*
220 *lumbricoides** was classified as low (1–4,999 EPG), moderate (5,000–49,999 EPG), or high
221 ($\geq 50,000$ EPG) [15]. For hookworms, intensities were classified as low (1–1,999 EPG), moderate
222 (2,000–3,999 EPG), or high ($\geq 4,000$ EPG) [15]. *Trichuris trichiura** infections were categorised
223 as low (1–999 EPG), moderate (1,000–9,999 EPG), or high ($\geq 10,000$ EPG) [15].

224

225 ***Data analysis and interpretation***

226 The analysis and interpretation of data for preventive chemotherapy (PC) adjustments followed
227 the most recent World Health Organization (WHO) guidelines for STH prevalence impact
228 assessment surveys [21]. Local Government Areas (LGAs) were categorised into four prevalence
229 groups: (1) $< 2\%$, (2) 2% to $< 10\%$, (3) 10% to $< 20\%$, and (4) $\geq 20\%$. For LGAs in the first group,
230 PC is recommended only during specific events, alongside the establishment and maintenance of
231 surveillance systems. For LGAs in the second group, biennial PC over five years is recommended,
232 with continuous surveillance. LGAs in the third group are advised to implement annual PC for five
233 years with ongoing surveillance, while those in the fourth group are required to administer annual
234 PC for five years. The aggregated proportion of moderate and heavy infections (MHI) was also
235 calculated for each LGA, using a threshold of $\leq 2\%$, where the upper bound of the 95% confidence
236 interval (CI) was below this limit.

237

238 The percentage change in prevalence between baseline and impact assessment surveys was also
239 computed. To evaluate associations between variables, chi-square tests were employed, and

240 Clopper-Pearson confidence intervals were calculated for prevalence estimates, where applicable.
241 Univariate and multivariate logistic regression models were conducted to assess relationships
242 between predictor variables (e.g., demographic characteristics and WASH conditions) and
243 outcome variables (e.g., presence of any STH infection). Only variables with $p \leq 0.05$ in univariate
244 analysis were included in multivariate models. Confounders and multicollinearity were examined
245 using the Variance Inflation Factor (VIF), and variables with a VIF exceeding 5 were excluded.
246 Crude and adjusted odds ratios (ORs) with 95% CIs were calculated, with a significance level set
247 at $P < 0.05$. Spatial distribution maps of STH across LGAs were generated using ArcGIS version
248 10.8. Further details on the dataset and analysis code can be accessed at
249 <https://zenodo.org/records/11080490>.

250

251

252

253 **Results**

254 **Profile of study locations and participants**

255 Table 1 presents a comprehensive profile of the study locations across the three Local Government
256 Areas (LGAs) of Ese-Odo, Irele, and Ile-Oluji. Each LGA consists of 10 sub-units, or wards, all
257 of which were surveyed, achieving 100% geographic coverage. Sampling encompassed 22.1% of
258 the 68 schools in Ese-Odo, 24.6% of the 61 schools in Irele, and 17.6% of the 85 schools in Ile-
259 Oluji. Of the 750 school-aged children (SAC) targeted for recruitment in each LGA, 722 children
260 (96.3%) were recruited in Ese-Odo, 750 children (100%) in Irele, and 621 children (82.8%) in Ile-
261 Oluji. Stool samples were collected from 691 children in Ese-Odo (95.7%), 668 children in Irele

262 (89.1%), and 613 children in Ile-Oluji (98.7%). The proportion of male participants exceeded that
263 of females across all LGAs, comprising 54.0% in Ese-Odo, 50.4% in Irele, and 51.4% in Ile-Oluji.
264 Additionally, a higher percentage of participants were in the 10–14-year age group: 54.8% in Ese-
265 Odo, 59.6% in Irele, and 52.2% in Ile-Oluji (Table 1).

266

267 **Table 1:** Profile of study locations and participants

268

269 **Prevalence and soil-transmitted helminthiasis across the LGAs**

270 Table 2 provides a summary of the prevalence of soil-transmitted helminthiasis (STH) across the
271 three surveyed Local Government Areas (LGAs): Ese-Odo, Irele, and Ile-Oluji. In Ese-Odo, 176
272 out of 691 individuals (25.5%) were infected with *Ascaris lumbricoides** (95% confidence
273 interval [CI]: 22.0%–29.0%), with no cases of hookworm detected (0%). Nineteen individuals
274 (2.7%) were found to have *Trichuris trichiura** infections (95% CI: 1.7%–4.3%). The overall
275 prevalence of any STH in Ese-Odo was 25.8% (95% CI: 23.0%–29.0%). This represents a 34%
276 reduction from the baseline prevalence of 39%, with a risk ratio of 0.66.

277

278 In Irele, of the 668 individuals assessed, 63 (9.4%) were infected with *Ascaris lumbricoides**
279 (95% CI: 7.4%–12.0%), five (0.7%) were found to have hookworm infections (95% CI: 0.28%–
280 1.8%), and three (0.4%) were infected with *Trichuris trichiura** (95% CI: 0.12%–1.4%). The
281 overall prevalence of any STH in Irele was 9.7% (95% CI: 7.6%–12.0%), indicating an 81%
282 reduction from the baseline prevalence of 51.3%, with a risk ratio of 0.19.

283

284 In Ile-Oluji, out of 613 individuals surveyed, 39 (6.4%) were infected with *Ascaris lumbricoides**
285 (95% CI: 4.6%–8.7%), with no cases of hookworm or *Trichuris trichiura** (0%, 95% CI: 0–
286 0.78%). The overall STH prevalence in Ile-Oluji was 6.4% (95% CI: 4.6%–8.7%). This reflects a
287 72% decrease from the baseline prevalence of 23%, with a risk ratio of 0.28.

288 **Table 2:** Prevalence of soil-transmitted helminthiasis across the three LGAs and comparisons
289 with the baseline survey

290

291

292 **Site-specific prevalence and spatial distribution of soil-transmitted helminthiasis across the**
293 **three LGAs**

294 Figures 2-4 display the endemicity maps for the three Local Government Areas (LGAs) included
295 in the study. In 2011, Ese-Odo LGA was classified as endemic, with an overall prevalence of 39%,
296 placing it in the 20–50% prevalence category. As a result, preventive chemotherapy (PC) was
297 administered annually for five years. Although the current impact assessment showed a reduction
298 in overall prevalence, the LGA remains within the same endemicity threshold (20–50%), with
299 more than 50% of surveyed sites reporting a prevalence above 20% (Figure 2).

300

301 In Irele LGA, the baseline prevalence was 51.3%, placing it in the category requiring PC twice
302 annually for five years. The current impact assessment revealed a significant reduction in overall
303 prevalence to 9.7%, moving the LGA into the 2–10% prevalence category. Only 2 of the 15
304 surveyed sites in Irele reported a prevalence above 20% (Figure 3).

305

306 In Ile-Oluji LGA, the baseline prevalence was 23%, placing it in the 20–50% endemicity category,
307 which required annual PC for five years. The current impact assessment indicated a decrease in
308 overall prevalence to 6.4%, positioning the LGA within the 2–10% threshold. Similar to Irele, only
309 2 of the 15 surveyed sites in Ile-Oluji had a prevalence above 20% (Figure 4). Detailed site-specific
310 prevalence data are provided in the supplementary file (S1).

311

312

313 *Fig 2: Endemicity map of soil-transmitted helminthiasis in Ese-Odo LGA at baseline and*
314 *impact assessment survey.*

315

316

317

318 *Fig 3: Endemicity map of soil-transmitted helminthiasis in Irele LGA at baseline and impact*
319 *assessment survey*

320

321

322

323

324

325 *Fig 4: Endemicity map of soil-transmitted helminthiasis in Ile-Oluji LGA at baseline and*
326 *impact assessment survey.*

327

328 **Intensity soil-transmitted helminthiasis infections across the three LGAs**

329 Table 3 presents the distribution of potential morbidities associated with soil-transmitted helminth
330 (STH) infections among the study participants. In Ese-Odo, 160 individuals (23.2%) infected with

331 *Ascaris lumbricoides* had light infections, 15 (2.2%) had moderate infections, and one participant
332 (0.1%) had a heavy infection. The 95% confidence intervals (CIs) for these infection levels ranged
333 from 20% to 27% for light infections, 1.3% to 3.6% for moderate infections, and 0.01% to 0.93%
334 for heavy infections ($p=0.001$). For *Trichuris trichiura*, 19 participants (2.7%) exhibited light
335 infections, with no moderate or heavy infections observed ($p=0.001$).

336

337 In Irele, 61 individuals (9.1%) infected with *Ascaris lumbricoides* had light infections, and two
338 participants (0.3%) had moderate infections ($p=0.001$). The 95% CIs for light infections were 7.1%
339 to 12%, and for moderate infections, 0.05% to 1.2%. *Trichuris trichiura* prevalence was very low,
340 with only three participants (0.4%) exhibiting light infections, and no cases of moderate or heavy
341 infections were detected ($p=0.064$). Additionally, among the five participants (0.7%) infected with
342 hookworms, all had light infections, with no moderate or heavy infections reported ($p=0.001$).

343

344 In Ile-Oluji, 39 participants (6.4%) infected with *Ascaris lumbricoides* had light infections, with
345 95% CIs ranging from 4.6% to 8.7% ($p=0.001$). No cases of moderate or heavy infections were
346 observed for any of the helminths.

347

348 **Table 3:** Intensity soil-transmitted helminthiasis infections across the three LGAs

349

350

351

352 **Status of water, sanitation and hygiene resources across the three LGAs**

353 Table 4 details the status of water, sanitation, and hygiene (WASH) resources in the three local
354 government areas (LGAs) studied. In Ese-Odo, the majority of the population, 579 individuals
355 (80.2%), relied primarily on rivers as their main water source. Only a small fraction of participants
356 had access to improved water sources, including protected dug wells (13.2%) and handpump
357 boreholes (10.5%), while public taps were scarcely available (0.8%). Open defecation was a
358 common practice, with 391 participants (54.2%) reporting this behavior. Pit latrines were widely
359 used, with 119 participants (16.5%) utilizing pits without slabs and 66 participants (9.1%) using
360 pits with slabs. A minority had access to flush toilets (5.8%) or ventilated improved pit latrines
361 (2.8%). Regarding hygiene practices, only 65 participants (9.0%) reported having handwashing
362 facilities in their toilets, and even fewer, 50 participants (6.9%), had access to soap within these
363 facilities.

364 Similarly, in Irele, rivers were the most common water source, used by 442 participants (58.9%).
365 Rainwater collection was another prevalent practice, reported by 329 participants (43.9%).
366 Unprotected dug wells were used by 184 participants (24.5%), while public taps and handpump
367 boreholes were available to 163 (21.7%) and 212 (28.3%) participants, respectively. Open
368 defecation remained widespread, practiced by 272 participants (36.3%). Flush toilets were more
369 commonly used in this LGA, with 220 participants (29.3%) reporting their use, followed by pit
370 toilets with slabs (22.7%) and without slabs (19.5%). Handwashing facilities were available to 297
371 participants (39.6%), while 251 participants (33.5%) had soap in their toilets. A high proportion,
372 211 participants (84.1%), reported using soap after defecation.

373

374 In Ile-Oluji, rainwater was the primary water source for 366 participants (58.9%), followed by
375 rivers, which were used by 339 participants (54.6%). Protected dug wells were another important
376 water source for 275 participants (44.3%), though public taps (18.7%) and hand pumps (6.8%)
377 were less frequently used. Open defecation was reported by 213 participants (34.3%). Among
378 sanitation facilities, pit latrines with slabs were used by 154 participants (24.8%), flush toilets by
379 147 participants (23.7%), pit toilets without slabs by 68 participants (11.0%), and ventilated
380 improved pit latrines by 60 participants (9.7%). Handwashing facilities were present in the toilets
381 of 158 participants (25.4%), and 150 participants (94.9%) reported using soap after defecation,
382 indicating a high level of hygiene compliance in this LGA.

383

384 **Table 4:** Status of water, sanitation and hygiene resources across the three LGAs

385

386 **Association between demography, WASH and STH infections**

387 Tables 5-7 present the results of logistic regression analyses evaluating the associations between
388 sex, age, and water, sanitation, and hygiene (WASH) variables with the risk of soil-transmitted
389 helminth (STH) infection. In Ese-Odo (Table 5), the adjusted model identified several significant
390 risk factors, including the use of handpump boreholes (adjusted odds ratio [AOR]: 2.44; 95%
391 confidence interval [CI]: 1.23–4.88; $p=0.01$), reliance on unprotected dug wells (AOR: 3.25; 95%
392 CI: 0.96–11.36; $p=0.06$), the use of ventilated improved pit latrines (AOR: 3.95; 95% CI: 1.13–
393 16.1; $p=0.04$), and pit latrines without slabs (AOR: 2.19; 95% CI: 1.27–3.8; $p=0.01$). Not using
394 soap after defecation, despite having access to it, was also a strong risk factor (AOR: 12.09; 95%
395 CI: 1.86–112.97; $p=0.01$), as was the absence or non-use of soap after defecation (AOR: 8.19; 95%

396 CI: 1.73–76.65; $p=0.04$). The use of rainwater was identified as a protective factor against infection
397 (AOR: 0.39; 95% CI: 0.24–0.64; $p<0.001$).

398

399 In Irele (Table 6), the adjusted model revealed that access to protected dug wells was a marginally
400 significant risk factor (AOR: 1.79; 95% CI: 0.96–3.21; $p=0.06$), while the use of pit latrines
401 without slabs was associated with a lower risk of infection (AOR: 0.38; 95% CI: 0.13–0.87;
402 $p=0.04$).

403

404 In Ile-Oluji (Table 7), access to rivers was a significant risk factor for STH infection (AOR: 7.97;
405 95% CI: 1.81–58.58; $p=0.02$), while access to rainwater was found to be protective (AOR: 0.47;
406 95% CI: 0.22–0.97; $p=0.05$).

407

408 **Table 5: Association between demography, WASH and STH infections in Ese-Odo**

409

410

411 **Table 6: Association between WASH variable and STH infections in Irele**

412

413 **Tale 7: Association between WASH variables and STH infection in Ile-Oluji**

414 **Discussion**

415 This study represents the first official impact assessment of soil-transmitted helminthiasis (STH)
416 in Ondo State, following a decade of preventive chemotherapy (PC) interventions using
417 albendazole. The importance of this assessment is underscored by several factors: first, to evaluate
418 the efficacy of PC in reducing worm burden; second, to avoid the misallocation of resources to
419 areas where they are no longer necessary, thereby maximizing returns on investment in
420 underserved regions; and finally, to generate evidence necessary for measuring progress and
421 optimizing PC programs for maximal effectiveness [15].

422

423 Recent guidelines from the World Health Organization (WHO) emphasize that for an area to meet
424 elimination targets, all implementation units must achieve four critical conditions: reducing overall
425 prevalence to below 20%, reducing the prevalence of moderate and heavy infections to less than
426 2% (including upper confidence intervals), reaching women of reproductive age (WRA), and
427 improving access to water, sanitation, and hygiene (WASH), with a particular focus on eliminating
428 open defecation [21]. While most country programs, including that of Ondo State, have
429 concentrated on meeting the first two conditions, less attention has been given to the equitable
430 allocation of resources for WRA and investment in WASH. The findings of this assessment
431 underscore the need to expand PC interventions by integrating comprehensive WASH strategies.

432

433 The assessment found significant reductions in STH infections across the three local government
434 areas (LGAs) evaluated. In Irele and Ile-Oluji LGAs, prevalence decreased to below 10%, with

435 Irele experiencing an 81% reduction and Ile-Oluji a 72% reduction. Consequently, participants in
436 Irele are now at only 0.18 times the risk of STH compared to baseline, while participants in Ile-
437 Oluji are at 0.29 times the baseline risk. These results align with WHO recommendations of
438 conducting PC every two years over five years, followed by continuous surveillance [15].
439 However, in Ese-Odo, the reduction in prevalence was modest, decreasing from 39% at baseline
440 to 25.8% at the time of assessment, with prevalence still exceeding 20%. The risk of STH in Ese-
441 Odo (66%) remained considerably higher than in the other LGAs, indicating a need for annual PC
442 over the next five years [15]. Similar observations of limited progress despite PC interventions
443 have been documented in countries such as Angola [28] and Kenya [29], where failures in
444 implementation or lack of access to WASH have constrained program effectiveness [28,30].

445

446 While prevalence is commonly used to assess endemicity, infection intensity—measured by the
447 number of parasitic eggs per gram of feces—is a more critical indicator of infection burden.
448 Intensity levels provide a clearer indication of morbidity, as reductions in infection intensity
449 correspond to diminished health risks from STH infections [26]. In line with WHO
450 recommendations, the goal is to reduce the proportion of individuals with moderate or heavy
451 infections to below 2% [15]. Among the three LGAs, only Ese-Odo had 2.3% of participants with
452 moderate or heavy infections, predominantly due to *Ascaris lumbricoides*. Despite conducting
453 six effective PC rounds (coverage >75%) out of nine since 2013, the high transmission rate in Ese-
454 Odo raises concerns about demographic factors, WASH access, and the quality of implementation
455 over the past decade [28].

456

457 Spatial analysis revealed that in Ese-Odo, more than 60% of sampled sites had prevalence rates
458 ranging from 26% to 81%, with these high-prevalence areas widely dispersed. Baseline
459 epidemiological surveys, conducted over a decade ago, used limited sampling strategies (typically
460 five sites) within smaller frames to represent entire districts. Such methodologies reduce the ability
461 to detect hotspots, particularly in areas with sparse or heterogeneously distributed infections
462 [26,27]. Thus, the minimal reduction in prevalence observed in Ese-Odo may result from an
463 underestimation of endemicity at baseline, a factor that influenced the decision to implement
464 annual PC. Similar findings have been reported elsewhere, where outbreaks occurred in areas
465 previously considered low endemic based on inadequate baseline data [30]. Consequently, robust
466 assessment methodologies should be prioritized during PC program formulation to ensure that
467 sampling strategies are comprehensive and effective.

468

469 A disaggregated risk analysis was conducted to examine the relationship between infection data
470 and WASH variables. Social-ecological systems, particularly those related to WASH, are critical
471 to the transmission of STH [10]. The study hypothesized that the limited reduction in prevalence
472 and higher proportion of moderate to heavy infections may be linked to inadequate WASH access.
473 The data supported this hypothesis, revealing poor access to improved sanitation, water sources,
474 and handwashing facilities across the LGAs. Ese-Odo stood out, with only 17.7% of households
475 using improved sanitation facilities, 25% using improved water sources, and just 9% having access
476 to handwashing facilities. Open defecation rates were alarmingly high at 54.2%, much worse than
477 in the other LGAs. Regression models indicated that inadequate hygiene practices, such as failure
478 to use soap after defecation, presented the highest risk for STH infection, followed by the use of
479 unimproved latrines and water sources. These findings align with recent reports from Ethiopia [32]

480 and highlight the need for targeted interventions to improve WASH access and hygiene practices
481 within these communities.

482

483 From a policy perspective, these findings underscore the need for timely impact assessments after
484 five effective PC rounds, as recommended by WHO, to prevent resource wastage. Routine
485 continuation of PC without evaluating its effectiveness leads to unnecessary expenditures in drug
486 procurement and program operations, diverting funds from other health priorities. While past
487 arguments pointed to the lack of standardized methods for impact assessment as a challenge, the
488 recent WHO Monitoring and Evaluation (M&E) framework for schistosomiasis and STH provides
489 clear guidelines for evaluation [21]. Donors and partners should thus prioritize impact assessments
490 to enhance programmatic decision-making, prevent resource misallocation, and optimize the value
491 of their investments. Further research into the comparative costs of conducting impact assessments
492 versus continuing routine PC without evaluation is needed to provide stronger evidence of cost-
493 efficiency. The present data offer clear evidence of the financial savings that can be achieved
494 through timely evaluations, reinforcing the importance of sustainable and impactful disease control
495 programs.

496 **Conclusion**

497 The implementation of the preventive chemotherapy (PC) program for soil-transmitted
498 helminthiasis (STH) has proven highly effective in Irele and Ile-Oluji, with prevalence rates
499 reduced to less than 10%. However, in Ese-Odo, the reduction in prevalence has been limited
500 to 66%, with current rates still around 25% and moderate-to-heavy infections persisting at 2.3%.
501 The continued transmission of STH in Ese-Odo a riverine LGA is largely attributed to

502 inadequate access to and use of water, sanitation, and hygiene (WASH) facilities. Given these
503 findings, a shift to biennial PC in Irele and Ile-Oluji is recommended, while annual PC should
504 be maintained in Ese-Odo for the next five years. Additionally, targeted investments in WASH
505 infrastructure, with a priority focus on Ese-Odo, are crucial to complement PC efforts and
506 facilitate progress toward STH elimination as a public health issue. Finally, this study
507 emphasizes the importance of conducting impact assessments after five effective rounds of PC,
508 as recommended by WHO, to optimize resource allocation and ensure the sustainability of
509 control programs.

510

511 **Acknowledgements**

512 We extend our heartfelt gratitude to the community leaders, health workers, education secretaries,
513 and staff of the NTDs Control Department, Ondo State Ministry of Health, for their unwavering
514 support and cooperation throughout this study. We sincerely acknowledge the contributions of
515 individuals who served as field supervisors, technicians, interviewers, and members of the
516 technical support team. We also appreciate the broader health community for their support and
517 collaboration in this endeavor. The efforts of the following field workers are duly acknowledged:
518 Jacob Babasola Ajayi, Oluwaseun Bunmi Awosolu, Oyinkansola Suliati Fadiji, Azeez God'sgift
519 Ibrahim, Adedotun Ayodeji Bayegun, Cynthia Uchechukwu Umunnakwe, Olajumoke Olubukola
520 Taiwo, Olubukola Deborah Adelokun, Effiong Okon Odiongenyi, Victor Kayode Gboyega,
521 Stephen Ayodeji Oluwole, Ifeoluwa Adeniyi George, Promise Funmilayo Akinwale, Uzodimma
522 Ikechukwu Vincent, Ridwan Olamilekan Mogaji, Oladotun Joseph Bankole, Damilola Rachael
523 Adeleye, Boluwatife Ifeoluwa Adebayo, Abdulrahman Afolamade Aladejana, Orosunnegan

524 Dunsin Elizabeth and Uwem Aniefiok Essien. Their dedication and hard work were instrumental
525 to the success of this impact assessment.

526

527 **Financial Support**

528 This study was funded by The Ending Neglected Diseases (END) Fund. The funder has no specific
529 role in the conceptualization, design, data collection, analysis, decision to publish, or preparation
530 of the manuscript.

531

532 **Authors' contributions**

533 UFE, FOO, and HOM conceptualized the study; HOM prepared the protocol, whereas UFE, FOO,
534 IU, and FOO improved the protocol; HOM, UFE, FOO, FO, NOA, LEU, EGE, CAY, and OOO
535 participated in supervised field surveys and data collection; HOM performed all statistical
536 analyses; HOM prepared the first draft of the manuscript; HOM, UFE, FOO, IU, FO, MA, and
537 LM contributed to the development of the final manuscript and approved its submission.

538

539 **Availability of data and materials**

540 The datasets used and analyzed during the current study have been attached as supplementary files
541 [See here at <https://zenodo.org/records/11080490>.].

542

543 **Conflicts of interest.**

544 The authors declare that they have no conflicts of interest.

545

546

547 **References**

- 548 1. Hotez PJ, Kamath A. Neglected tropical diseases in sub-Saharan Africa: review of their
549 prevalence, distribution, and disease burden. *PLoS Negl Trop Dis*. 2009;3(8): e412. doi:
550 10.1371/journal.pntd.0000412
- 551
- 552 2. World Health Organization (WHO). Ending the Neglect to Attain the Sustainable
553 Development Goals: A Road Map for Neglected Tropical Diseases 2021–2030; Geneva:
554 World Health Organization: Geneva, Switzerland, 2020.
- 555
- 556 3. World Health Organization (WHO). Fact Sheet: Soil Transmitted Helminthiasis [Online].
557 2024. Available at [https://www.who.int/news-room/fact-sheets/detail/soil-transmitted-](https://www.who.int/news-room/fact-sheets/detail/soil-transmitted-helminth-infections)
558 [helminth-infections](https://www.who.int/news-room/fact-sheets/detail/soil-transmitted-helminth-infections). Accessed on 8 August 2024.
- 559
- 560 4. Sharma S, Anand N. Parasitic Diseases: An Overview. In: Approaches to Design and
561 Synthesis of Antiparasitic Drugs, Chapter 1. 1997:25:1–45. Lucknow, India. ISBN: 978-0-
562 444-89476-2
- 563
- 564 5. Else KJ, Keiser J, Holland CV, Grensis RK, Sattelle DB, et al. Whipworm and roundworm
565 infections. *Nat Rev Dis Primers*. 2020;28;6(1):44. doi: 10.1038/s41572-020-0171-3. PMID:
566 32467581.
- 567
- 568 6. Ghodeif AO, Jain H. Hookworm. In: StatPearls [Internet]. Treasure Island (FL): StatPearls
569 Publishing; 2024. Available at <https://www.ncbi.nlm.nih.gov/books/NBK546648/>.
570 Accessed on 8 August 2024.
- 571
- 572 7. Ziegelbauer K, Speich B, Mäusezahl D, Bos R, Keiser J, et al. Effect of sanitation on soil-
573 transmitted helminth infection: systematic review and meta-analysis. *PLoS Med*.
574 2012;9:e1001162.
- 575
- 576 8. Strunz EC, Addiss DG, Stocks ME, Ogden S, Utzinger J, et al. Water, sanitation, hygiene,
577 and soil-transmitted helminth infection: a systematic review and meta-analysis. *PLoS Med*.
578 2014;11: e1001620.
- 579
- 580 9. Mascarini-Serra L. Prevention of Soil-transmitted Helminth Infection. *J Glob Infect Dis*.
581 2011;3(2):175-82. doi: 10.4103/0974-777X.81696. PMID: 21731306
- 582

- 583 10. Ekpo UF, Mogaji HO. Feasibility of Helminth Worm Burden as a Marker for Assessing the
584 Impact and Success of Water, Sanitation, and Hygiene Interventions (WASH) for the
585 Control of Neglected Tropical Diseases. *NJPAR*. 2023;(1). Available at
586 <https://njpar.com.ng/index.php/home/article/view/382>
587
- 588 11. Crompton DW, Whitehead RR. Hookworm infections and human iron metabolism.
589 *Parasitol*. 1993;107:S137–S145. doi: 10.1017/S0031182000075569.
590
- 591 12. Pabalan N, Singian E, Tabangay L, Jarjanazi H, Boivin MJ, et al. Soil-transmitted helminth
592 infection, loss of education and cognitive impairment in school-aged children: A systematic
593 review and meta-analysis. *PLoS Negl Trop Dis*. 2018;12:e0005523. doi:
594 10.1371/journal.pntd.0005523.
595
- 596 13. Ezeamama AE, Bustinduy AL, Nkwata AK, Martinez L, Pabalan N, et al. Cognitive deficits
597 and educational loss in children with schistosome infection—A systematic review and meta-
598 analysis. *PLoS Negl Trop Dis*. 2018;12:e0005524. doi: 10.1371/journal.pntd.0005524
599
- 600 14. World Health Organization (WHO). Control of Neglected Tropical Diseases. Preventive
601 Chemotherapy. 2024. Available at [https://www.who.int/teams/control-of-neglected-](https://www.who.int/teams/control-of-neglected-tropical-diseases/interventions/strategies/preventive-chemotherapy)
602 [tropical-diseases/interventions/strategies/preventive-chemotherapy](https://www.who.int/teams/control-of-neglected-tropical-diseases/interventions/strategies/preventive-chemotherapy). Accessed on 8 August
603 2024.
604
- 605 15. World Health Organization (WHO). Helminth Control in School-Age Children: A Guide
606 for Managers of Control Programmes. 2011. Available at
607 https://www.who.int/neglected_diseases/resources/9789241548267/en/. Accessed on 8
608 August 2024.
609
- 610 16. Montresor A, Mupfasoni D, Mikhailov A, Mwinzi P, Lucianez A, et al. The global progress
611 of soil-transmitted helminthiasis control in 2020 and World Health Organization targets for
612 2030. *PLoS Negl Trop Dis*. 2020;14(8):e0008505. doi: 10.1371/journal.pntd.0008505.
613
- 614 17. Oyeyemi OT, Okunlola OA. Soil-transmitted helminthiasis (STH) endemicity and
615 performance of preventive chemotherapy intervention programme in Nigeria (in year
616 2021). *Sci Rep*. 2023;13(1):10155. doi: 10.1038/s41598-023-37402-8.
617
- 618 18. Hotez PJ, Asojo OA, Adesina AM. Nigeria: “Ground Zero” for the high prevalence of
619 neglected tropical diseases. *PLoS Negl Trop Dis*. 2012;6:e1600
620

- 621 19. Mogaji HO, Johnson OO, Adigun AB, Adekunle ON, Bankole S, et al. Estimating the
622 population at risk with soil-transmitted helminthiasis and annual drug requirements for
623 preventive chemotherapy in Ogun State, Nigeria. *Sci Rep.* 2022;12(1):2027. doi:
624 10.1038/s41598-022-06012-1.
625
- 626 20. Expanded Special Project for Elimination of Neglected Tropical Diseases (ESPEN).
627 Available at <https://espen.afro.who.int/countries/nigeria>. Accessed on 8 August 2024.
628
- 629 21. World Health Organization (WHO). Monitoring and evaluation framework for assessing
630 soil-transmitted helminthiasis and schistosomiasis control programs. 2024.
631
- 632 22. Mogaji HO, Dedeké GA, Bada BS, Bankole S, Adeniji A, et al. Distribution of ascariasis,
633 trichuriasis and hookworm infections in Ogun State, Southwestern Nigeria. *PLoS One.*
634 2020;15(6):e0233423. doi: 10.1371/journal.pone.0233423.
635
- 636 23. Mogaji HO, Dedeké GA, Jaiyeola OA, Adeniran AA, Olabinke DB, et al. A preliminary
637 survey of school-based water, sanitation, hygiene (WASH) resources and soil-transmitted
638 helminthiasis in eight public schools in Odeda LGA, Ogun State, Nigeria. *Parasitol Open.*
639 2017;3:e16. doi:10.1017/pao.2017.18
640
- 641 24. World Health Organization. Bench Aids for the diagnosis of intestinal parasites. Second
642 edition. 2019. Available at: <https://www.who.int/publications-detail-redirect/9789241515344>. Accessed on 27 April 2024
643
644
- 645 25. Okoyo C, Campbell SJ, Williams K, Simiyu E, Owaga C, et al. Prevalence, intensity and
646 associated risk factors of soil-transmitted helminth and schistosome infections in Kenya:
647 Impact assessment after five rounds of mass drug administration in Kenya. *PLoS Negl Trop*
648 *Dis.* 2020;14(10): e0008604. Available at: <https://doi.org/10.1371/journal.pntd.0008604>
649
- 650 26. Montresor A, Crompton DWT, Bundy DAP, Hall A, Savioli L. Guidelines for the
651 Evaluation of Soil Transmitted Helminthiasis and Schistosomiasis at Community Level.
652 1988. Available at <https://iris.who.int/handle/10665/63821>. Accessed on 8 August 2024.
653
- 654 27. Knowles SCL, Sturrock HJW, Turner H, Whitton JM, Gower CM, et al. Optimising cluster
655 survey design for planning schistosomiasis preventive chemotherapy. *PLoS Negl Trop Dis.*
656 2017;11(5):e0005599. doi: 10.1371/journal.pntd.0005599.
657

- 658 28. Bartlett AW, Mendes EP, Dahmash L, Palmeirim MS, de Almeida MC, et al. School-based
659 preventive chemotherapy program for schistosomiasis and soil-transmitted helminth control
660 in Angola: 6-year impact assessment. *PLoS Negl Trop Dis*. 2023;17(5):e0010849. doi:
661 10.1371/journal.pntd.0010849.
662
- 663 29. Mwandawiro, C., Okoyo, C., Kihara, J. Simiyu E, Kepha S, et al. Results of a national
664 school-based deworming programme on soil-transmitted helminths infections and
665 schistosomiasis in Kenya: 2012–2017. *Parasit Vectors*. 2019;12(1);76. Available at
666 <https://doi.org/10.1186/s13071-019-3322-1>
667
- 668 30. Olamiju F, Nebe OJ, Mogaji H, Marcus A, Amodu-Agbi P, et al. Schistosomiasis outbreak
669 during COVID-19 pandemic in Takum, Northeast Nigeria: Analysis of infection status and
670 associated risk factors. *PLoS One*. 2022;17(1):e0262524. doi:
671 10.1371/journal.pone.0262524.
672
- 673 31. Atangana E, Oberholster PJ. Assessment of water, sanitation, and hygiene target and
674 theoretical modelling to determine sanitation success in sub-Saharan Africa. *Environ Dev*
675 *Sustain*. 2023;25, 13353–13377. Available at <https://doi.org/10.1007/s10668-022-02620-z>
676
- 677 32. Phillips AE, Ower AK, Mekete K, Liyew EF, Maddren R, et al. Association between water,
678 sanitation, and hygiene access and the prevalence of soil-transmitted helminth and
679 schistosome infections in Wolayita, Ethiopia. *Parasit Vectors*. 2022;15(1):410. doi:
680 10.1186/s13071-022-05465-7.
681
- 682

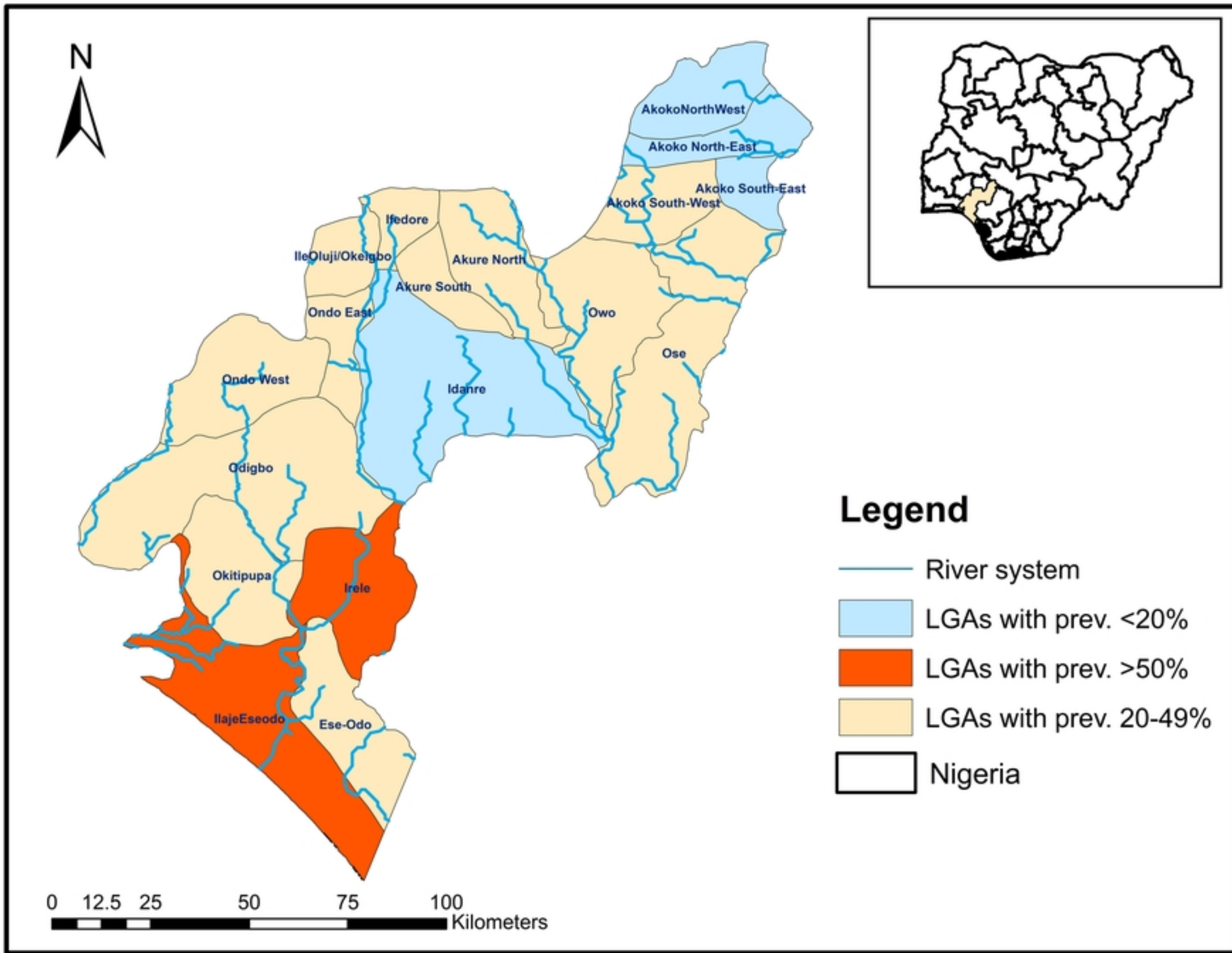
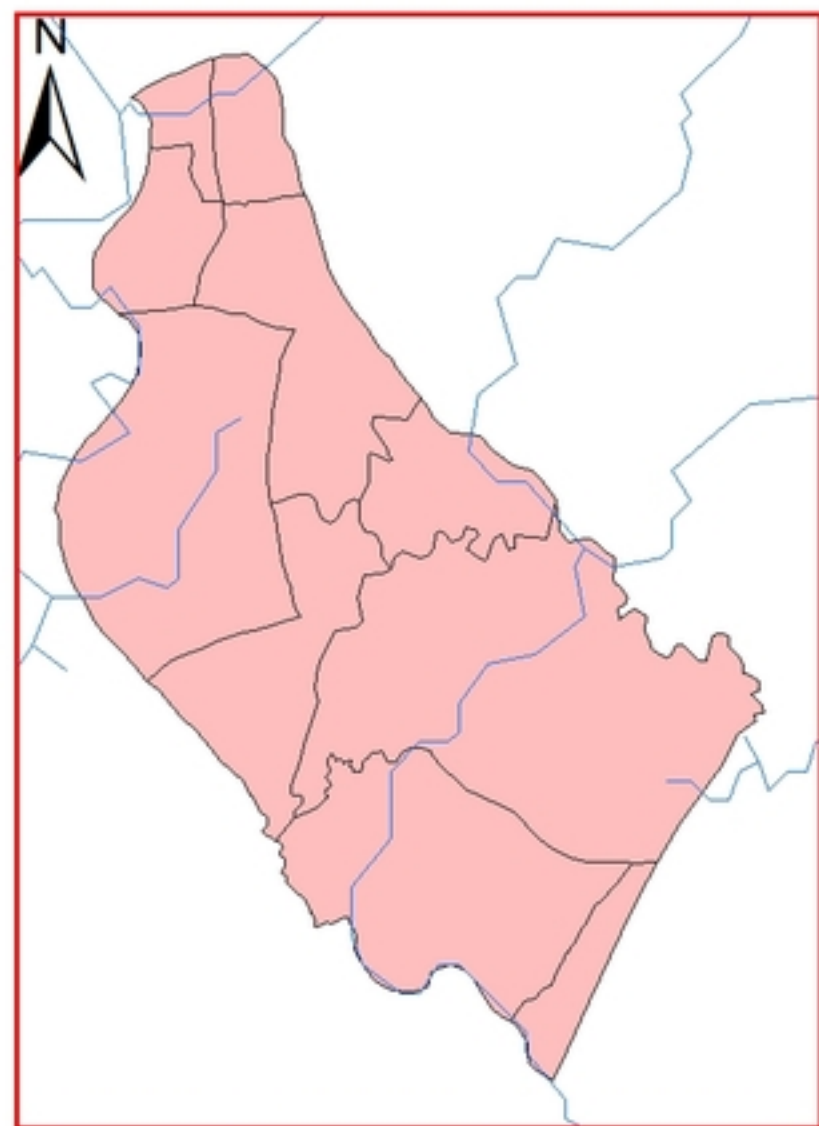
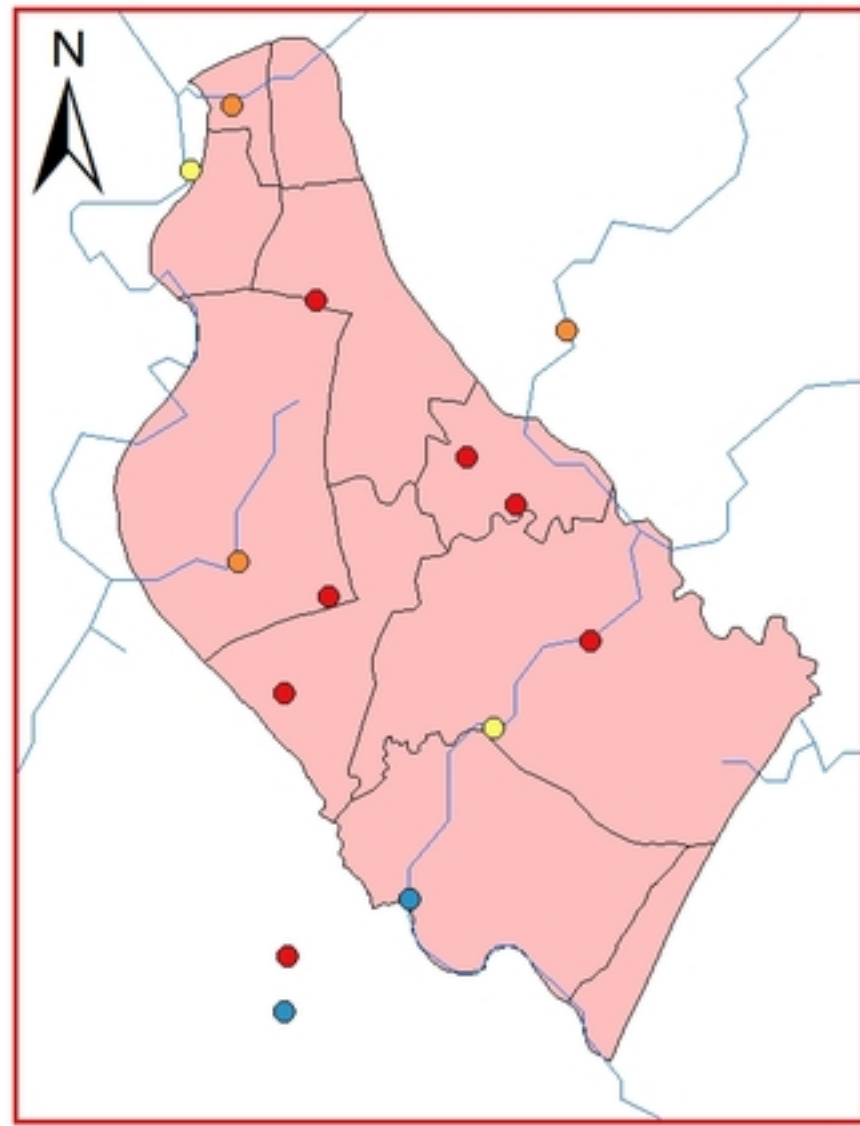


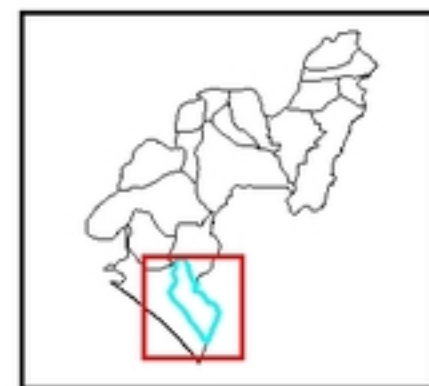
Figure 1



Baseline



Impact Assessment



Legend

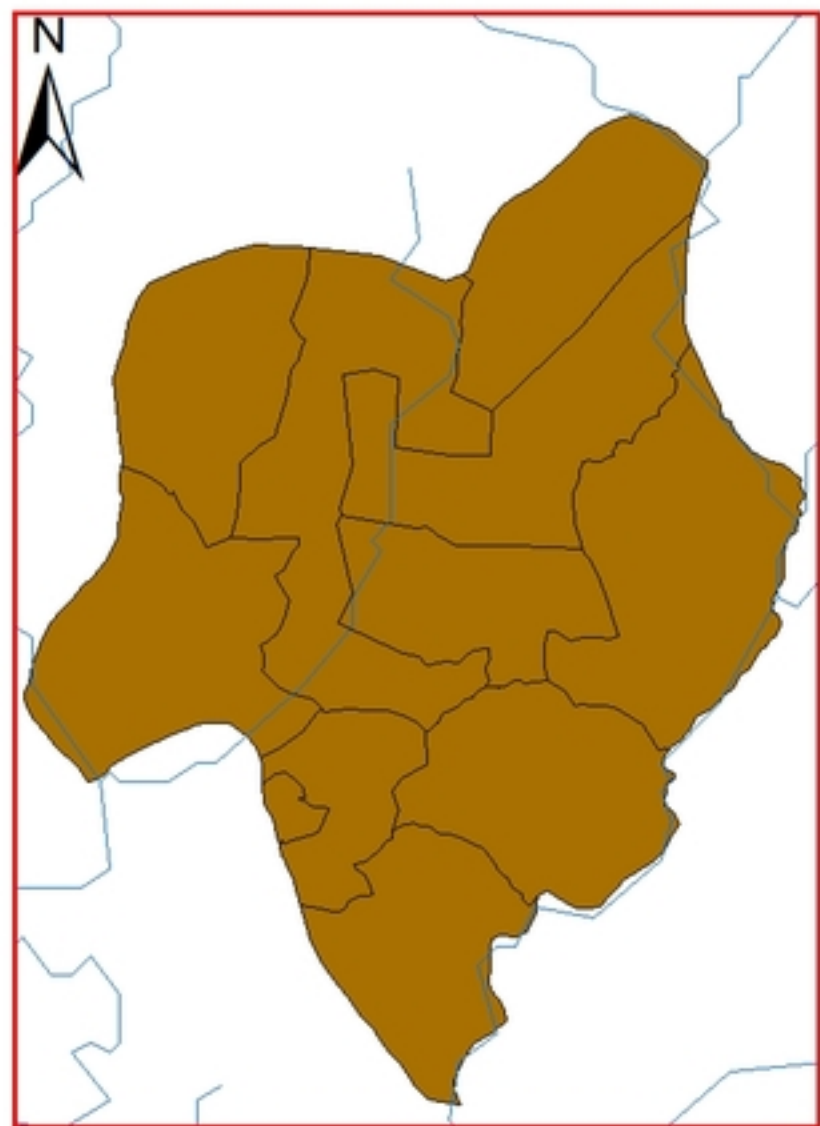
Prevalence

- 0%
- 0.1-2.0%
- 2.1-10%
- 10.1-20%
- >20%

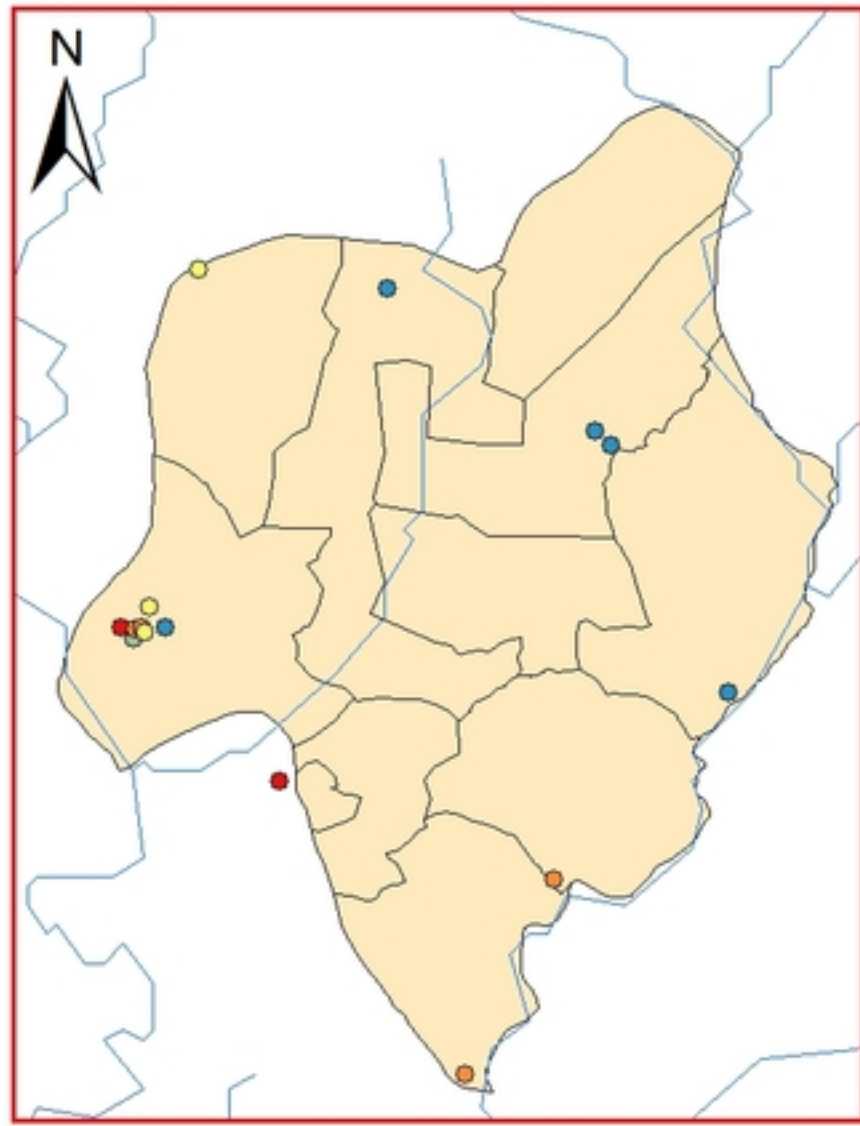
— River system

■ LGA prev > 20%

Figure 2



Baseline



Impact Assessment



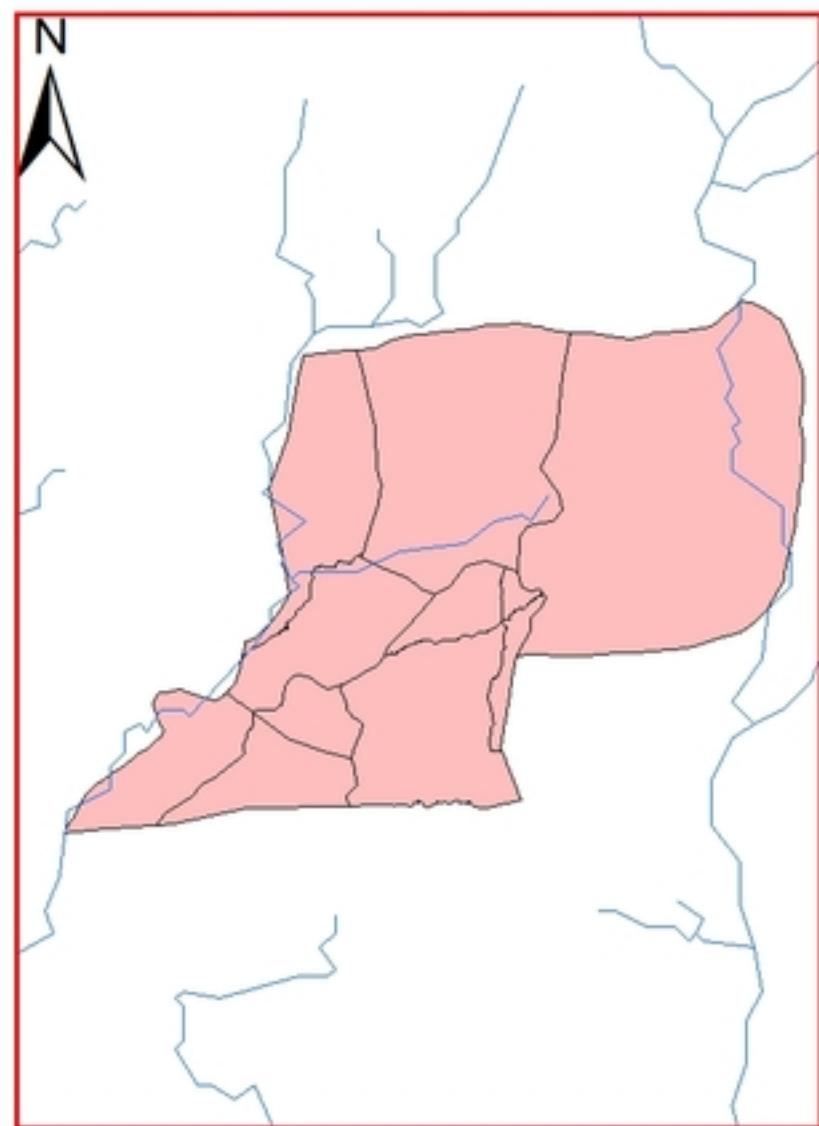
Legend

Prevalence

- 0%
- 0.1-2%
- 2.1-10%
- 10.1-20%
- >20%

- River system
- LGA prev > 50%
- LGA prev (2-10%)

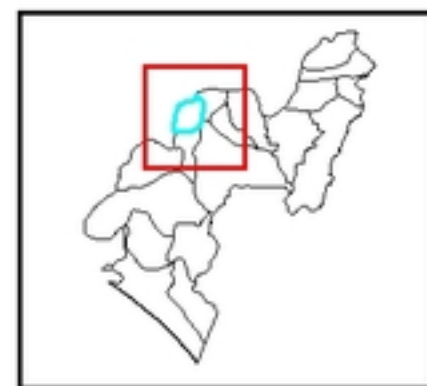
Figure 3



Baseline



Impact Assessment



Prevalence

- 0%
 - 0.1-2%
 - 2.1-10%
 - 10.1-20%
 - >20%
- LGA prev (2-10%)
- LGA prev (>20%)

Figure 4