

# Conceptualising care pathways for neglected tropical diseases in sub-Saharan Africa: A systematic scoping review

Sandrena Ruth Frischer<sup>1,2</sup>, Eloise Ockenden<sup>1</sup>, Fabian Reitzug<sup>1</sup>, Michael Parker<sup>2</sup>, Goylette F. Chami<sup>1\*</sup>

<sup>1</sup>Big Data Institute, Nuffield Department of Population Health, University of Oxford, Oxford, UK

<sup>2</sup>Ethox Centre, Nuffield Department of Population Health, University of Oxford, Oxford, UK

\*Correspondence: [Goylette.chami@ndph.ox.ac.uk](mailto:Goylette.chami@ndph.ox.ac.uk)

## Abstract (295/300)

**Background:** There is a lack of synthesized evidence on how best to support care continuity for neglected tropical diseases (NTDs) in sub-Saharan Africa (SSA).

**Methods:** To identify all SSA NTD care pathways, we conducted a systematic search of six scientific databases from inception to 18 February 2023. All studies were required to include care pathways for NTDs, defined at minimum as having both NTD diagnosis and treatment or referral to treatment for care continuity. Using an iterative approach to establish an understanding of care pathways relevant for NTDs, concept development drew from data extraction of variables relating to study characteristics; approaches to diagnosis, treatment, and referrals as pathway components; barriers to care and strategies for their resolution; and ethical challenges.

**Findings:** Searches returned 2178 studies where after de-duplication and eligibility screening, 164 were systematically reviewed. Medical referrals were used to support care continuity in 62.2% (102/164) of studies, and community health workers played roles in patient care in 22.6% (37/164) of studies. Only 6.7% (11/164) of studies explicitly mapped care pathways, none of which were for NTDs where preventive chemotherapy is the primary management strategy. The majority of studies (82.9%; 136/164) presented unmapped care pathways, which were primarily biomedical research studies that provided diagnosis and/or treatment of NTD patients (66.9%; 91/136). Of biomedical research studies, 36.3% (33/91) described strategies to support continuity of care. While there is no singular care pathway for all NTDs in SSA, we proposed a conceptual framework relevant for implementation of biomedical research.

**Interpretation:** Further research is needed on morbidity management of NTDs typically addressed through mass drug administration in sub-Saharan Africa. To conduct this research, there is a need for guidance on how research sponsors should collaborate with local health systems to enable continuity of care in low-income, NTD-endemic settings.

## Key messages

**What is already known on this topic** – Providing continuity of care for neglected tropical diseases (NTDs) in the low-income settings where NTDs are endemic is challenging due to a variety of factors, particularly for chronic NTDs requiring morbidity management.

**What this study adds** – All NTDs require patient care, yet NTDs are unjustifiably divided into morbidity management NTDs and preventive chemotherapy NTDs. Further research on morbidity management is needed on NTDs typically managed through mass drug administration of preventive chemotherapies. We show that implementation of biomedical research on NTDs creates distinct care pathways that connect research participants with local health systems for continuity of care. These

NOTE: This preprint reports new research that has not been certified by peer review and should not be used to guide clinical practice.

pathways provide a conceptual framework to understand care continuity during biomedical research as a practical ethical issue that merits further exploration, and illuminates how biomedical research studies might support care continuity for NTD patients such as through provision of transport, collaboration with community health workers, or structural support to local health system service providers.

**How this study might affect research, practice or policy** – This research opens avenues to create tools to assist researchers in providing care in resource-constrained settings. Researchers should consider care pathways for NTDs as a tool to understand local contexts of health seeking and care delivery prior to research implementation. Through these pathways, researchers can understand potential gaps in care continuity during research implementation, and determine what support may be required to address these gaps and facilitate research activities in low-income settings.

## Introduction

Neglected tropical diseases (NTDs) include more than 20 diseases associated with poverty and prevalent in settings where access to healthcare may be severely constrained (1). NTDs are endemic in many low and middle-income countries (LMICs), with the highest NTD burden globally in sub-Saharan Africa (SSA) (2). For many NTDs, symptoms are initially non-specific and may only become evident upon progression to severe disease (3). Per the the WHO 2023 NTD Roadmap, there is a push from vertical, NTD-specific programming towards integration of NTD care within national health systems (4). To understand the different routes NTD patients may navigate in accessing care, or lack thereof, in resource-constrained LMIC contexts, care pathways have proven a useful framework (5–8). Care pathways and related pathway frameworks, such as patient pathways, outline the journey a patient may take in respect to a specific condition based on patient preferences and decision making, from care seeking and diagnosis to treatment and follow up (9). By emphasizing patient experiences of illness and agency in care seeking preferences, care pathways are well suited for understanding healthcare seeking in real world settings where health systems infrastructure may be limited and recommended care for complex conditions requiring integrated case management may not be available (10).

Using a pathway framework to conceptualise continuity of care, McCollum et al conducted a scoping review on Severe and Stigmatizing Skin NTDs (SSSDs) in SSA to explore barriers to accessible care for NTD patients (11). This review focused on understanding patient experiences accessing the health system to bolster efficient health service delivery. However, this review was limited to select chronic NTDs, and did not include NTDs for which mass drug administration (MDA) of preventive chemotherapy (PC) is the primary control strategy (PC-NTDs). Additionally, there is a need to understand how these barriers are navigated during implementation of biomedical research on NTDs, particularly in the context of health system integration. In this systematic scoping review, we explore all NTDs and concepts of care pathways in SSA to address the following questions: 1) What are the care pathways when managing NTDs in SSA, including during biomedical research implementation? and 2) how is care continuity facilitated within these pathways?

## Methodology

This review followed the Joanna Briggs Institute methodological guidance for conducting systematic scoping reviews, with reporting in line with the 2018 Preferred Reporting Items for Systematic Reviews and Meta Analyses extension for Scoping Reviews (PRISMA-ScR) (S1 Text) (12,13). The full review protocol was published on 28 February 2023 on the Open Science Framework (14).

## Search Strategy

Guided by a 2019 scoping review on patient pathways within integrated healthcare (10), two researchers (SRF and GFC) developed the search string through discussion and iterative search piloting using terminology relating to care pathways. Given multiple understandings and varying applications of “care pathways” terminology and similarity with patient care concepts such as the “care continuum”, “treatment cascade,” and “patient journey”, we opted to include all terminology identified as potentially synonymous or relating to care pathway experiences. We also elected to include “referrals” in the search string to explicitly incorporate how patients move between pathway components, such as from suspect case assessment or diagnosis to follow up. However, terminology for individual components of the pathway such as “diagnosis” and “treatment” were omitted to constrain the search string to the pathway as a whole and its connective processes. All NTDs as recognized by the WHO were included in the search string. This decision allows for comparison of similarities and differences of pathways across NTDs as a group of diverse diseases and symptoms that share the difficulties of political deprioritisation and endemicity in settings of extreme poverty, including challenges accessing diagnosis and treatment. We restricted geographic scope to countries in SSA as categorised by the World Bank to focus on healthcare delivery contexts specific to the region

with the highest NTD burden, and to ensure comparisons across similar health systems. The broad search string included “patient pathways” AND “neglected tropical diseases” AND “sub-Saharan Africa”. Using the broad string with adaptations applied as necessary, one researcher (FR) searched the following databases on 16 February 2023 without year restrictions: PubMed/MEDLINE, Embase, Global Health, Global Index, Medicus, and Web of Science Core Collection – Science Citation Index Expanded. The same researcher (FR) also searched the Cochrane Central Register of Controlled Trials (established 1996-present) for randomised controlled trials before uploading all resulting articles into Covidence (Veritas Health Innovation, Melbourne, Australia) for deduplication and eligibility screening. The full string and table of database hits is available in S2 Text.

## Screening

Two researchers (SRF and EO) screened all titles and abstracts resulting from the search. The full text of all eligible studies was then retrieved, where available. All full texts were screened by one researcher (SRF), with a random 10% verified by a second researcher (EO). Disagreements between researchers were resolved through discussion and review of the full text. Where applicable, studies describing the same population at the same time point were selected based on the study providing the most information. Only texts in English or with a published translation were included at the full text stage. Only original research articles with primary data collection involving qualitative, quantitative, or mixed research methodologies were included. Analyses of routine electronic health data were excluded, with no other restrictions in study design. There were no age, sex, or other demographic restrictions in the study population beyond residence in SSA.

All studies were required to include care pathways for NTDs. As there is no standardized definition of what a care pathway entails, we initially defined care pathways as having both NTD diagnosis and treatment or referral to treatment for care continuity as identifiers of care pathways. Diagnosis entailed patient awareness of illness through feedback of clinical findings or self-reporting of symptoms, conditions, or morbidities. Treatment included initiation or follow up at formal, government-regulated providers or informal providers, such as local drug shops and traditional healers. To centre patient perspectives, we required that qualitative studies describing experiences of disease management included study participants with the NTD of focus. Given the paucity of literature on care continuity more broadly for NTDs, we did not require that included studies explicitly state or depict care pathways diagrammatically. Rather, by requiring NTD diagnosis and treatment or referral, we included pathways that were either unmapped given the aforementioned components, or clearly mapped, such as through a diagram or a list of ordered pathway components. Following full text screening, all studies excluded at the full text stage were re-reviewed by SRF to categorise reasons for exclusion.

## Data extraction and concept development

Prior to data extraction, SRF and GFC developed an initial data dictionary and table for extracted variables using Microsoft Excel. We then split data extraction into four stages. In the first stage, we extracted study design and aims, country, NTD of focus, study population. In this stage, we also attempted to derive a singular care pathway from each study for synthesis. However, given the diversity of patient preferences and decision making along with the range of experiences with follow up care and varying study designs, there was no singular pathway that could be derived from all included studies, and we determined this would not be the most appropriate methodology for capturing patient experiences with care continuity. Thus in the second stage, we iterated the extraction methodology to instead capture how care pathways are depicted, themes common to care pathways, and the types of pathways that can emerge in different context. In this second stage, we also began conceptualizing what care pathways can be and what they are not. In the third stage, SRF identified all studies that explicitly mapped care pathways to determine concepts to be explored further. In the fourth and final stage, SRF revised, piloted and iterated the data dictionary and

extraction table to capture these concepts before proceeding to extract data from all studies included in this review (15,16). The data dictionary is available in S3 text. The variables we chose to extract in this final stage aligned with following categories: study participants and care providers, including community health workers (CHWs); components of mapped care pathways, including pathway name, depiction, and starting and ending points; components of unmapped care pathways, including approaches to diagnosis, treatment, and referrals; continuity of care, including barriers to care and strategies or recommendations for their resolution; and ethical challenges identified by study authors. One researcher (SRF) extracted full texts in all stages. At the end of the fourth stage, a second researcher (EO) verified extraction of a random 10% of included studies, resulting in the final extraction table (S1 Dataset). Additionally, while we began with “patient pathways” as the primary terminology, during this concept development we shifted to “care pathways” as a more representative term that can encompass multiple perspectives beyond the patient.

## Analysis

Summary statistics for study characteristics are presented in line with guidelines for systematic reviews without meta-analysis (SWiM)(17). All studies were categorized based on study aims and how the care pathway was represented. For studies describing patient experiences as participants in biomedical research, we employed a “best fit” framework synthesis to outline an example pathway applicable to this context (18). To explore differences between NTDs across study aims and pathway representations, NTDs were grouped into three categories based on WHO care management approaches and treatment contexts: PC-NTDs (schistosomiasis, trachoma, scabies, and lymphatic filariasis), NTDs which cannot be treated through MDA of PC and require morbidity management (leprosy, buruli ulcer, podoconiosis, and human African trypanosomiasis (HAT)) and NTDs caused by animal bite injury (rabies and snakebite) (2,23). Within each categorization of study aim and care management approach, thematic synthesis was used to code the data and develop descriptive themes (19).

## Patient and public involvement

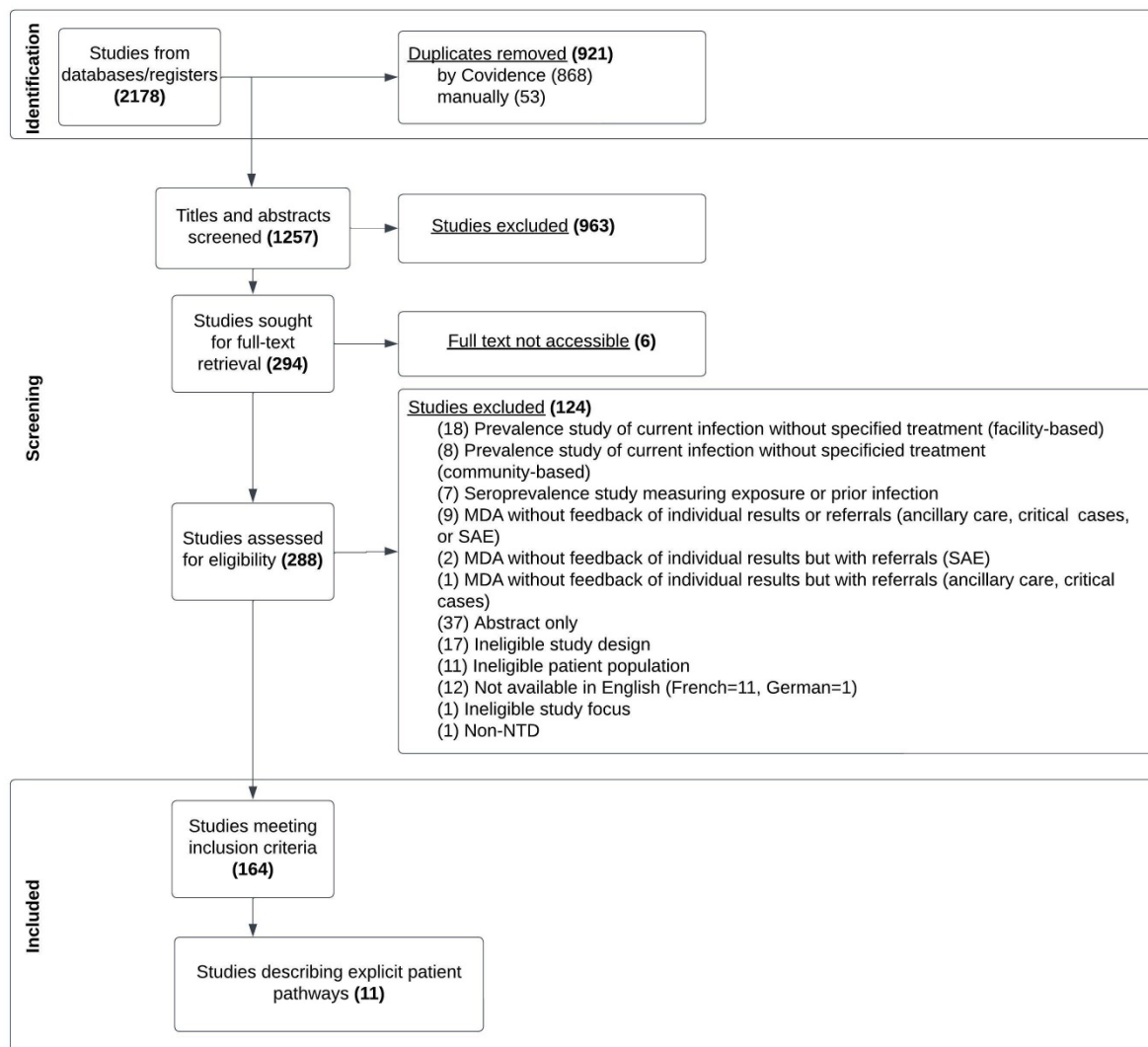
There was no patient or public involvement in the methodology of this review.

## Ethical approval

As this study reviewed existing published literature, no ethical approval was required.

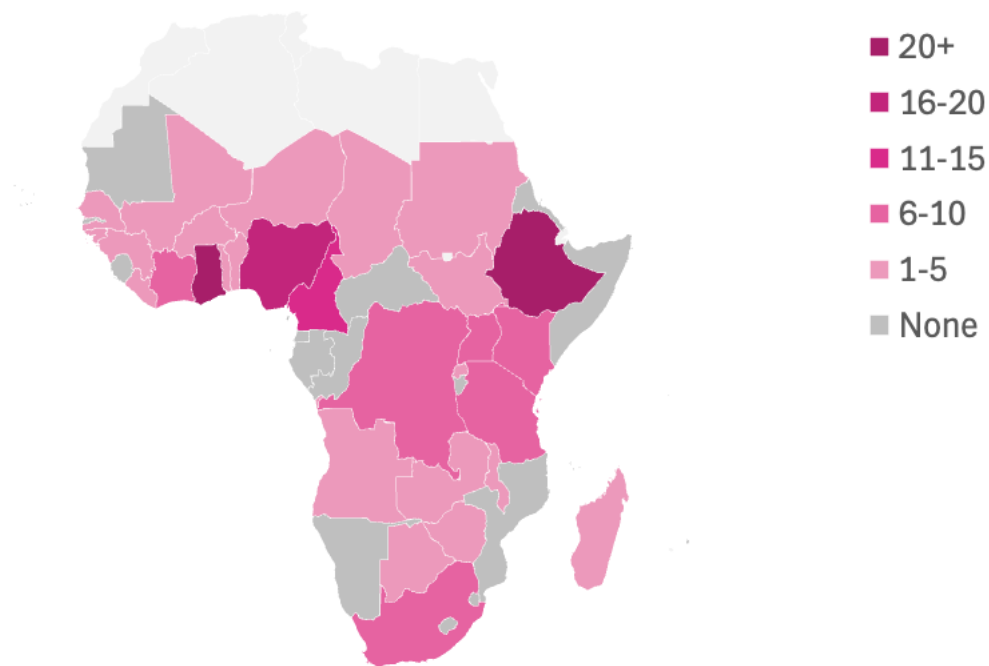
## Results

**Figure 1** details the search process for this systematic scoping review. The initial database search resulted in 2178 studies. Following deduplication, 1257 titles and abstracts were screened and 963 were deemed ineligible, leaving 294 studies. After full text retrieval and screening, 164 studies were available and met the inclusion criteria (S4 Text).



**Figure 1: PRISMA Study Selection Flowchart.** The screening and review process is split into three stages: 1) the identification of articles through an initial search, 2) the screening of articles following predefined inclusion and exclusion criteria and 3) the final included articles for data extraction. MDA: Mass Drug Administration, SAE: Severe Adverse Events.

All extracted variables from 164 included studies are available in S1 Dataset. **Figure 2** describes the geographical distribution in SSA of all included studies, with 62.5% (30/48) of SSA countries represented. The most common study countries were Ethiopia (17.6%; 29/164), Ghana (12.2%; 20/164) and Nigeria (11.6%; 19/164), with 2% (4/164) studies taking place in regions extending across international borders (Uganda and Kenya; Niger, Nigeria, Cameroon, and Chad).



**Figure 2: Geographic distribution of studies in sub-Saharan Africa**

Study publication years ranged from 1970 to 2023. More than 71% (117/164) of included studies were published from 2012, the year of the London declaration to control or eliminate at least 10 NTDs by 2020 (20). Total number of study participants varied substantially with study design, with qualitative studies describing in-depth NTD patient experiences, averaging 57 (SD=85) participants. Non-qualitative, non-case report studies averaged 8283 (SD=32,016) participants, typically as participants in mass screening campaigns. **Table 1** summarises key study characteristics.

Study characteristic	Category	No. of studies	Percentage (164 studies)
NTD(s) of focus	Buruli Ulcer	23	14.02%
	Leprosy	20	12.20%
	Schistosomiasis ( <i>S. mansoni</i> and/or <i>S. haematobium</i> )	16	9.76%
	Human African trypanosomiasis	15	9.15%
	Snakebite	15	9.15%
	Soil-transmitted helminths (hookworms, ascaris, intestinal nematodes), intestinal parasites	15	9.15%
	Trachoma	14	8.54%
	Lymphatic filariasis	13	7.93%
	Rabies	12	7.32%
	Podoconiosis	9	5.49%
	Scabies	6	3.66%
	Visceral leishmaniasis	4	2.44%
	Onchocerciasis	4	2.44%
Yaws	2	1.22%	
All other NTDs	8	4.88%	
NTD(s) or health conditions studied	Singular NTD	151	92.07%
	Two or more NTDs	13	7.92%
	NTDs and other diseases or health conditions	7	4.26%
	Non-specific symptoms requiring testing for multiple NTDs	8	4.87%
Care management approach	MDA of Preventive chemotherapy (PC)	62	37.80%
	Morbidity management	74	45.12%
	Animal bite injury	28	17.07%

Study type	Mapped care pathways	28	17.07%
	<i>Case reports</i>	17	10.40%
	Descriptions of NTD patient experiences	35	27.50%
	Diagnosis and/or treatment of NTD patients within a biomedical research context	91	66.90%
Study setting	Community-based	76	46.34%
	Facility-based	67	40.85%
	Mixed	20	12.20%
	Other (workplace)	1	0.61%
Study locality	Rural	110	67.07%
	Urban	34	20.73%
	Peri-urban	4	2.44%
	Mixed	15	9.15%
	Unspecified	1	0.61%
Did the study mention Community Health Workers?	Yes	49	29.88%
	<i>For care delivery</i>	37	22.56%
	<i>For research facilitation</i>	26	15.85%
	No	115	70.12%
Did the study mention referrals?	Yes	102	62.20%
	<i>Yes, but only as part of ethics statement</i>	14	8.54%
	No	62	37.80%

**Table 1: NTD distribution and study characteristics summary.** The total number of all included studies was 164. Care management approach reflects categorization and primary treatment regime as defined by the WHO (2,23). All other NTDs include one study each for chikungunya, Guinea worm, cystic echinococcosis, cutaneous leishmaniasis, dengue, mycetoma, and neurocysticercosis. There were 7/164 (4.26%) looking at NTDs alongside comorbidities or other non-NTD health conditions (malaria (2), HIV (2), diabetes (1), pregnancy (1), intimate partner violence (1)). There were also 8/164 (4.87%) studies which targeted non-specific symptoms where NTDs were discussed as a diagnosis (anaemia (3), eye disease or blindness (2), lymphoedema (1), common skin diseases (1), and central nervous system infections (1)).

### Community health workers

Nearly one third of included studies (49/164) mentioned involvement of community health workers. Among these 49 studies, there was substantial variation between CHW terminology, strategies for identification, and work expectations. CHWs were identified by 28 different terms, with 38.8% (19/49) studies using the term community health workers (CHWs), 8.2% (4/49) using community health volunteers (CHVs), 6.1% (3/49) using health extension workers, and 6.1% (3/49) using community drug distributors. Only 28.6% (14/49) of studies with CHWs provided CHW definitions or selection strategies. Among these, 28.6% (4/14) were elected based on community support, 28.6% (4/14) were repurposed from other activities, such as implementation of MDA, and 42.9% (6/14) were required to have some form of healthcare experience, such as being a retired health professional. CHW responsibilities encompassed both roles that CHWs played in care delivery and in research facilitation. CHWs played roles in patient care in 22.6% (37/164) of studies overall, and in studies 75.5% (37/49) of studies mentioning CHWs. CHW responsibilities for patient care included health promotion, support with daily self-treatment for NTDs requiring morbidity management, active case finding and case identification, and provision of medical referrals. In the 53.1% (26/49) of studies where CHWs were described as providing roles in research facilitation, typical responsibilities involved community engagement and participant enrolment, including taking of informed consent (21–31), participant recruitment through either enumeration of households or registration of presumptive cases (32–35), and interpretation support to communicate with study participants in local dialects (36,37). In the 55.1% (27/49) of studies describing training for CHWs to perform their roles, training ranged from care strategies including early stage NTD case identification (25,26,38–42), to basic treatment provision (41,43), to capacity building for research facilitation through training in survey procedures and interviewing techniques (28,29,36,44).



## Medical referrals

Medical referrals were described in 62.2% (102/164) of included studies. Referrals were less described in studies on PC-NTDs (38.2%; 39/102) than studies on NTDs requiring morbidity management or resulting from bite injury (61.7%; 63/102). Reasons for referral included further assessment and confirmatory diagnosis in 20.5% (21/102), treatment of any sort in 53.9% (55/102), speciality care for management of complex cases in 35.3% (36/102), and treatment requiring medication that was not available locally in 10.8% (11/102). While studies generally did not report whether medical referrals resulted in further medical care, two studies described incomplete referrals due to patient deaths during transit. In several studies, provision of medical referrals was problematized given limitations in healthcare accessibility. For example, one evaluation of a complex intervention on buruli ulcer control in Ghana sought to facilitate early disease recognition and referral (45). For participants in this study, an increase in referrals and a decrease in treatment non-completion was associated with increasing healthcare accessibility and supporting the availability of medical commodities at the treating health facility, engaging with providers to ensure acceptable treatment of study participants, provision of transport for accessible care, and connecting patients with free and affordable health services.

## Care pathway representation and study categorisation

Given that there was no singular pathway that could be derived from all included studies, studies were categorised based on whether care pathways were either explicitly mapped or unmapped. Studies determined to have mapped care pathways described the varying routes NTD patients may go through in accessing or attempting to access care from patient perspectives. Mapped pathways also provided terminology to identify the care pathway as a concept in itself beyond the simple inclusion of diagnosis and treatment or referral as pathway components, such as “health seeking pathway” or “illness narrative.” In identifying mapped pathways, we recognized several distinctions between mapped care pathways and diagnostic or treatment algorithms. Studies describing algorithms involved sequences of diagnostic steps to arrive at a confirmatory diagnosis. Conversely, mapped care pathways highlighted actual patient experiences along the care continuum, which deviated from clinically recommended diagnostic steps. While clinical case reports meet this criteria, we opted not to include these publications as examples of mapped pathways and analyse them separately given the facility-based context and distinct study design. Unmapped pathways were defined as meeting the care pathway criteria of including NTD diagnosis and referral, but without an explicit connection between pathway components represented through a diagram, list, or narrative.

Among unmapped care pathways, studies were also categorised based on if the study either 1) described the lived experiences of NTD patients, or 2) provided diagnosis and/or treatment of NTD patients and therefore an element of patient care within a biomedical research context. Studies describing NTD patient experiences were typically cross-sectional and used mixed methodologies or qualitative data collected through interviews or focus groups to describe the substantial barriers NTD patients face when attempting to access care and follow up. Biomedical research studies that provided an element of patient care included the following study designs: cross-sectional prevalence studies, randomised controlled trials (RCTs), case-control studies, or cohort studies, evaluations of complex interventions. Within each of these categories, NTDs were described by care management approach.

### Mapped care pathways

We identified mapped care pathways that were not case studies in 6.7% (11/164) of included studies. Summary characteristics of these mapped pathways are presented in **Table 2**. Mapped pathways were represented in a range of visual and geographic formats including flowcharts, narratives, and maps, with varying starting points ranging from exposure, infection, onset of symptoms, to care seeking. Of all 11 mapped pathways, 63.6% (7/11) were for NTDs requiring morbidity management and 36.4% (4/11) NTDs caused by animal bite injury. No mapped pathways were identified for PC-NTDS. All seven studies for NTDs requiring morbidity management referenced misdiagnosis as a key pathway

component. HAT was the disease of focus in 27.2% (3/11) of mapped pathways, where key barriers to care continuity in the pathway included difficulty of diagnostic testing given non-specific symptoms, lack of testing availability, and false positives (5–7). SSSD NTDs were the focus of 36.4% (4/11) studies, all of which including exploration of patient experiences with chronic buruli ulcer (8,36,46,47). One study mapped SSSD NTD care pathways in rural Liberia using narratives of patients living with buruli ulcer, leprosy, lymphatic filariasis, or onchocerciasis to examine the protracted trauma of living with a disabling, stigmatizing condition with no straightforward treatment in a resource-constrained setting (36). The 36.4% (4/11) studies on animal bite injury all referenced the need for prompt biomedical response despite limited availability of treatment (21,22,48,49). There was substantial variation among mapped pathway endings, from arrival at the health facility, to diagnostic tests conducted, to diagnosis confirmed, to start or end of treatment, to lack of ending given perpetuation of chronic disease. Only 18.2% (2/11) of these studies continued the pathway beyond the start of treatment to reflect treatment adherence and care continuity.

**Table 2: Study characteristic summary table for studies describing mapped care pathways.**

Author and year	Aim	Country	Setting	Study design	NTD	Pathway Name	Pathway representation	Pathway start	Pathway end
Palmer 2014	To evaluate the results of a syndromic HAT training intervention which targeted healthcare workers (HCWs) in peripheral facilities with the objective of increasing the rate of syndromic referrals to a central screening and treatment centre	South Sudan	Mixed	Before and after	Human African trypanosomiasis	Treatment seeking and test referral pathways	Flowchart	Infection	Screening and diagnostic tests conducted
vanOirschot 2021	To gain in-depth insights into the views and experiences of Kenyan community members with regard to snakebite prevention and care	Kenya	Community	Cross-sectional	Snakebite	Health seeking pathways	Narrative	Exposure (snakebite)	Visiting a health facility
Schurer 2022	To describe human activities and environment immediately preceding snakebite and characterise experiences accessing formal and informal care	Rwanda	Community	Cross-sectional	Snakebite	Care seeking routes	List	Care seeking	Arrival at hospital or traditional healer
N'Guessan 2022	To describe and analyse the social determinants of non-adherence to PEP treatment that occurred during the period of free health care in San Pedro, Cote d'Ivoire	Cote d'Ivoire	Mixed	Retrospective Cohort	Rabies (animal bite injury)	Therapeutic itineraries	Narrative	Exposure (animal bite)	End of treatment (either following treatment completion or early drop out)
Mulder 2008	To describe the steps that patients with Buruli ulcer go through before reporting to the hospital/treatment centre	Benin	Community	Cross-sectional	Buruli Ulcer	Model for healthcare seeking behaviour	Flowchart	Infection	Either healed or active disease, either at home or through hospital treatment
Dean 2019	To use feminist intersectional theory as a key analytical lens to consider how individuals' unique positions of power and privilege and can shape their experiences and to reflect on what this means for the	Liberia	Mixed	Cross-sectional	Leprosy, Buruli Ulcer, Lymphatic Filariasis, Onchocerciasis	Illness narratives/health seeking pathways	Narrative	Onset of symptoms	No clear ending; "freedom" from physical disease though emotional traumas remained; participant goals to return

	creation of responsive, people centred health systems in Liberia										to life circumstances before the onset of illness
Larson 2022	To characterize snakebite incidence, risk, factors, and subsequent health seeking behaviours in two regions of Kenya using a mixed methods approach	Kenya	Community	Retrospective Cohort	Snakebite	Incident narratives, bite incident narratives	Narrative with quotes, organized thematically	Exposure (snakebite)			Long term outcomes
Kone 2020	To describe the health seeking pathway of a girl who was the first HAT patient diagnosed through the national strategy for passive surveillance of HAT as integrated into the national health system and based on clinical suspicion	Cote d'Ivoire	Facility	Prospective and retrospective case study	Human African trypanosomiasis	Health seeking pathway, health-seeking itinerary	Narrative and map of geographical itinerary	Onset of symptoms			Parasitological diagnosis
Bukachi 2009	To document the treatment-seeking pathways followed by HAT cases in the areas of Western Kenya and eastern Uganda that together form the Busoga Focus	Uganda and Kenya (across borders)	Mixed	Cross-sectional	Human African trypanosomiasis	Treatment pathways	Narrative, case studies, and diagram of misdiagnoses	Onset of symptoms			Diagnosis, and subsequent start of HAT treatment
Kibadi 2009	To describe lay perceptions of the ulcerated forms of Mycobacterium ulcerans, commonly called Buruli Ulcer (BU), and therapeutic itineraries of BU patients in a rural area of the DRC	Democratic Republic of the Congo	Facility	Cross-sectional	Buruli Ulcer	Therapeutic itineraries	Narrative and flowchart	Onset of symptoms			Specific treatment at health centre
Peeters Grietens 2012	To assess the role beliefs play in determining BUD sufferers' choice between traditional and biomedical treatments	Cameroon	Mixed	Cross-sectional	Buruli Ulcer	Therapeutic itineraries, health seeking itineraries, health itineraries	Narrative and table	Care seeking			Unspecified

Among included texts, 10.4% (17/164) were clinical case reports. All clinical case reports were facility-based and provided accounts of clinical management for 1-2 individuals from care seeking through diagnosis and treatment from clinician perspectives. Only 18% (3/17) of case reports focused on PC-NTDs, all of which were on schistosomiasis. All case reports provided insight as to the care patients received upon arrival at the health facility. Rarely was this a linear path, as patients presenting with non-specific symptoms frequently required several rounds of diagnostic testing and trial treatments. Given the nature of clinical case reports as a medium for describing clinical decision processes and patient outcomes in facility settings, the conditions represented often described complex or atypical cases. For example, in the three case reports on patients with schistosomiasis, two case reports described cancer diagnoses associated with chronic schistosomiasis infection (50,51). Several case reports supplemented accounts of clinical care with exploration into the epidemiological context preceding diagnosis and suspected barriers to care. One such case report on HAT combined description of case management with a retrospective epidemiological investigation to understand the manifold barriers the patient had faced prior to accessing care at the present facility (6).

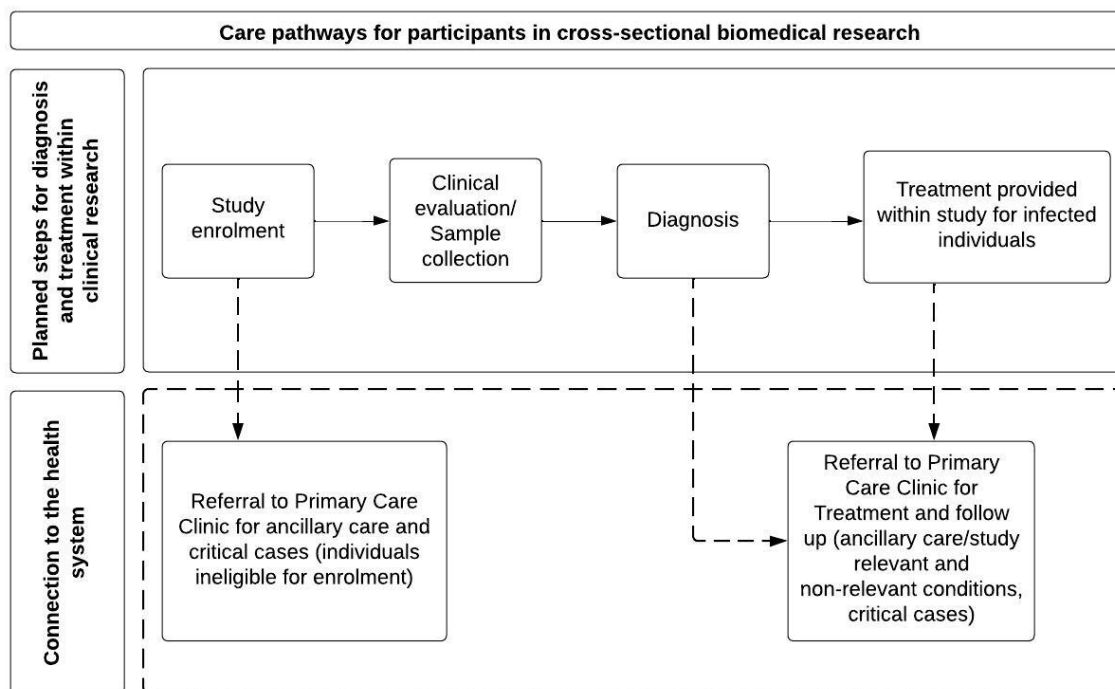
### Unmapped care pathways

The majority of included studies (82.9%; 136/164) presented unmapped care pathways. Within these, 35 studies (25.7%) described patient experiences of diagnosis and treatment. These studies referenced financial, geographic, social, and structural barriers to care continuity alongside non-linear care processes, where patients often sought symptom management prior to receiving a diagnosis, and obtaining a diagnosis did not necessarily result in treatment. Of these descriptive studies, 62.8% (22/35) were on NTDs requiring morbidity management, while NTDs resulting from animal bite injury and PC-NTDs comprised 11.4% (4/35) of these studies. PC-NTDs were the focus of the remaining 25.7% (9/35) studies. Of the nine studies on PC-NTDs, 50% (5/10) were on lymphatic filariasis, 40% (4/10) were on schistosomiasis, and one study was on trachoma. Among these 10, five explored barriers to care for treating chronic conditions (32,52–55), two of which described the challenges of care seeking given presentation of non-specific symptoms associated with schistosomiasis infection (54,55). Two studies highlighted the need for and accessibility of surgical services for severe disease for trachoma and lymphatic filariasis, respectively (56,57).

The majority of unmapped care pathways (66%; 91/136) were biomedical research studies that provided diagnosis and/or treatment of NTD patients and therefore an element of patient care. Of these, 52.7% (48/91) of studies were on PC-NTDs, with 81.3% (39/48) of these using cross sectional designs to determine PC-NTD prevalence. The remaining 39.6% (36/91) and 7.7% (7/91) of biomedical research studies focused on NTDs requiring morbidity management and NTDs resulting from animal bite injury, respectively. All care pathways for participants in biomedical research were implicit, i.e. not described diagrammatically.

### *Proposed pathway framework*

To map the interconnected components of care pathways for cross-sectional prevalence studies as the most frequent study design, a proposed care pathway for participants in biomedical research is depicted in Figure 3.



**Figure 3: Proposed care pathway for participants in biomedical research.**

In Figure 3, the care pathway is defined from the research study perspective and denoted through solid arrows, while dashed arrows indicate when research participants may receive medical referrals to the health system for continuity of care. Through this schematic, care pathways during biomedical research studies can be understood as diagnostic or treatment algorithms, with the critical addition of the complex, non-linear experiences a patient might have while trying to access care through the health system beyond the research context.

#### *Ethical challenges and strategies to support care continuity during biomedical research*

For participants in biomedical research, only 7.8% (7/91) studies explicitly mentioned any ethical challenges. These included improvements in health facility reputation resulting in a challenging increase in patient load (25), and the need to connect research participants with immediate local support in the event of acute mental distress (58). Additionally, 15.4% (14/91) of studies mentioned treatment or referral for study participants with a positive NTD diagnosis as part of the research ethics statement, and of these, only 14.3% (2/14) described any strategies for follow up. Of all 91 biomedical research studies, 36.3% (33/91) of studies described strategies to support care continuity and follow up of NTD patients. Strategies included provision of food to patients or transportation to access treatment (45,59–61), training for CHWs and support from CHWs in delivering community-based treatment (23,38,39,44,62,63), use of additional and alternative modes of communication, such as SMS (64), and adjustments to accessibility of treatment and speciality care, such as provision of free surgical services or use of mobile clinics to make care more accessible in community settings (40,65–69). Strategies were also described for building relationships between research studies and local clinics (24–26,38–41). In one study in Nigeria, clinics to receive referrals from study participants were visited every five weeks by research project staff to discuss preparedness to receive cases (24). In several complex interventions, strategies for care continuity extended beyond study participants to address structural or health systems factors. One study on morbidity management for lymphatic filariasis in Zambia took such an approach, highlighting how study funds were directed to improving the health facilities to receive referrals for care continuity (53). In this study, these investments were framed as

elements of health system strengthening with potential to improve care delivery within and beyond research implementation.

## Discussion

Providing care for NTDs requires engaging with resource-constrained health systems in the low-income settings where NTDs are endemic, such as in many parts of SSA. Through this systematic scoping review, we conceptualised care pathways for NTDs in SSA by identifying 164 studies that included pathway components of NTD diagnosis and treatment or referral to treatment for continuity of care. The conceptualisations presented in this review suggest that there is no singular care pathway for all NTDs in SSA. Care pathways for NTDs in SSA are marked by complex, nonlinear care seeking experiences, and there is a need to recognize the different care pathways that emerge in different contexts, such as during implementation of biomedical research. Importantly, conceptualisation of care pathways within biomedical research on NTDs in SSA, to our knowledge, has not been done prior to this review. This conceptualisation presents an opportunity to understand the distinct care pathways created during biomedical research that connect research participants with health systems for continuity of care, in contrast with care pathways based in routine health service delivery. Using a care pathway framework, researchers can understand potential gaps in care continuity during research implementation, and determine what support may be required to address these gaps and facilitate research activities in low-income settings.

The financial, geographic, social, and structural barriers to care continuity highlighted in this review broadly align with those identified in the McCollum review on SSSDs (11). This congruence suggests that, given the context of extreme poverty in which NTDs occur, challenges accessing care for SSSDs are shared across all NTDs, particularly for NTDs with chronic and/or non-specific manifestations. The most critical aspect of NTD care may not be in the pre-existing NTD management sub-categorizations, but rather the shared context of neglect and constrained health system capacity. Despite this, this review highlights a relative lack of research on care pathways for PC-NTDs and patient experiences of care continuity for PC-NTDs, compared to NTDs that require morbidity management per WHO guidance. This is most salient in the 11 mapped pathways, none of which focused on PC-NTDs. The limited number of case reports for PC-NTDs stresses this point, given the value of these reports as a source for development of case management strategies. This limited evidence would at face-value appear to suggest that complex care seeking processes and the need for morbidity management are not applicable to PC-NTDs. Yet, as emphasized in the 13 descriptive studies and case reports for PC-NTDs, patients suffering from PC-NTDs do require morbidity management and have complex care seeking experiences that can involve misdiagnosis and loss to follow up. This research gap reflects the limitations of MDA of PC as the predominant management strategy for PC-NTDs, particularly given imperfect MDA implementation that excludes high-risk populations alongside lack of PC-NTD treatment integration within health systems (70–72). For example, chronic schistosomiasis infection due to missed PC administration in schistosomiasis-endemic areas can result in nonspecific gastrointestinal symptoms which may develop into severe gut and liver morbidities, including periportal fibrosis that requires advanced care and follow up (73). However, despite the substantial burden of chronic schistosomiasis infection among impoverished individuals in rural sub-Saharan Africa, there are no clinical care or morbidity guidelines for schistosomiasis (74). To develop care guidelines that extend beyond MDA and include morbidity management, there is a need for further case management research on schistosomiasis and other PC-NTDs.

During research activities, research sponsors have an ethical obligation to make a reasonable effort to meet the health needs of research participants (75–77). This obligation raises complex ethical questions regarding continuity of care in NTD endemic settings of extreme poverty, as the necessary care might not be accessible. Despite this, only 7.8% of biomedical research studies included in this review explicitly mentioned ethical issues of any nature. To bolster discourse on practical ethical issues

during biomedical research implementation, the conceptualisation of care pathways presented in this review provides a framework to understand care continuity as a practical ethical issue that merits further exploration. In research-based care pathways, the research environment creates a unique opportunity for NTD diagnosis which might not otherwise be available in a low-income context. However, through referrals to the local health system for care delivery, biomedical research studies may create ethical tensions by exposing participants to challenges for accessing follow-up care while not necessarily presenting solutions. This tension is reflected in prior social research embedded within biomedical research in SSA showing participants referred to the health system for further treatment often are not able to access care through referrals alone (78–80).

To address ethical tensions and better facilitate continuity of care during research activities, this review identifies strategies for provision of additional support from research sponsors to research participants. These strategies include collaborations with CHWs or relationship building between research studies and local clinics to ensure referral preparedness. In some cases, these strategies involve structural support to health system service providers, which can be understood as collateral research benefits to communities where research is taking place (81). Yet, there remain ethical questions regarding what support should be provided to make follow-up care accessible during, and following, biomedical research activities. Open questions include who should provide this support, the type and duration of support, and the resulting implications of this support on the local health system. For example, if a research participant requires care for which the necessary treatment is not accessible, what role should the research sponsor play in facilitating access to care? Should the research sponsor focus on the immediate needs of the research participant, or is there an obligation to address gaps more sustainably by strengthening the broader health system? If the necessary care does not yet exist or has not yet been developed, should the research sponsor play a role in this development? As is true for many NTDs, challenges relating to care continuity for research on conditions with non-specific symptoms become even more relevant when considering multiple potential diagnoses and ancillary care needs that may extend beyond the immediate research scope (80,82). Alongside more established ethical issues during biomedical research in LMICs, such as selection of research participants and discrepancies surrounding standards of care, conducting biomedical research in the low-income contexts where NTDs are endemic necessitates consideration of these practical ethical issues relating to care continuity.

Addressing care continuity during biomedical research on NTDs in low-income settings may have important practical ethical dimensions for CHWs as research stakeholders. As indicated in this review, CHWs often play a role in NTD care pathways and can support facilitation of referrals that connect NTD patients with further care. This representation of CHWs reflects the historical engagement of CHWs in successful NTD program implementation and care delivery in low-income settings (83), and suggests a continued need to strengthen CHW roles within health systems for NTD care delivery. However, this review also highlights how CHWs are engaged in biomedical research implementation in NTD endemic settings of extreme poverty. By leading community engagement activities, or identifying and enrolling study participants, CHWs can act as liaisons between research participants, communities and sponsors. In these roles, CHWs who support research participants in accessing treatment may end up navigating the aforementioned ethical tensions relating to care continuity, such as limitations in study provision of ancillary care, or lack of means to connect research participants with accessible government healthcare services (84,85). Importantly, this review identified substantial study variation in CHW roles, responsibilities, training, recruitment, and approaches to compensation. This variation reflects the diversity of CHW models across health systems in SSA, alongside a lack of guidance for how CHWs can or should best be engaged to support implementation of biomedical research. To facilitate appropriate and effective research collaborations involving CHWs or other local healthcare providers across distinct, NTD endemic research environments in SSA, this variation highlights the need for understanding care pathways related to the research focus at the site of research implementation, prior to biomedical research activities. This understanding includes



determining existing structures for community health service provision, local capacity strengths or needs, and the roles of local stakeholders in care delivery.

### Limitations

As a scoping review, this study did not assess evidence quality or risk of bias in included articles. While this review seeks to capture key components of NTD care pathways in SSA, describing care pathways was not the main objective in the majority of studies. It is possible that several study components extracted for analysis, such as use of referrals and ethical challenges, were simply not reported rather than not done, which may lead to some underreporting in this review. Providing this detail in research publications would aid future researchers in identifying and addressing these issues during research activities. Given the fluid nature of study terminology relating to diagnosis, treatment, and care pathways, the findings of this scoping review may not be entirely exhaustive. Additionally, the English language restriction may have excluded publications from francophone and lusophone SSA or reports in local languages, leading to underrepresentation of care pathways from particular countries.

### Conclusion

The future of NTD care relies on health system integration (4). Yet, practical questions remain on how best to integrate biomedical research studies on NTDs into health systems. In NTD endemic settings of extreme poverty, implementation of biomedical research creates distinct care pathways that connect research participants with local health systems for care. The findings from this comprehensive review inform what considerations may be required to facilitate continuity of care during research on NTDs. To facilitate necessary further research on morbidity management of PC-NTDs and their chronic presentations, there is a need for bioethics research on how research sponsors and local health systems should collaborate to enable continuity of care in SSA and low-income settings more broadly.

## Declarations

**Acknowledgements:** We thank Nia Roberts at the Bodleian Libraries for her help developing the search strategy during the initial stages of the review. We also thank the Chami Group, the Ethox Centre, collaborators in the Department of Ethics, Law, and Humanities at the Amsterdam UMC and attendees at the 2023 Oxford Global Health and Bioethics conference for their feedback, support, and general advice.

**Competing interests:** The authors declare no competing interests.

**Author contributions:** Conceptualization: **SRF and GFC**. Resources, and supervision: **GFC and MP**. Data curation and validation: **SRF and EO**. Formal analysis, investigation, methodology, validation, visualization, and writing – original draft: **SRF**. Writing – review and editing: **SRF, EO, FR, MP, and GFC**. Funding acquisition: **SRF and GFC**.

**Funding:** SRF received funding for doctoral research associated with this project from a Rotary International Global Grant Scholarship and the Nuffield Department of Population Health, University of Oxford. GFC received funding from the Wellcome Trust Institutional Strategic Support Fund (204826/Z/16/Z) and John Fell Fund as part of the SchistoTrack Project, Robertson Foundation Fellowship, and UKRI EPSRC Award (EP/X021793/1). Salary contributions to GFC were received from the Robertson Foundation Fellowship and the UKRI EPSRC Award (EP/X021793/1). The funders had no role in study design, data collection and analysis, decision to publish, or preparation of the manuscript. For the purpose of Open Access, the authors have applied a CC BY public copyright licence to any Author Accepted Manuscript version arising from this submission.

## Bibliography

1. World Health Organisation. Neglected tropical diseases [Internet]. 2023 [cited 2023 Sep 28]. Available from: <https://www.who.int/news-room/questions-and-answers/item/neglected-tropical-diseases>
2. Addiss DG, Kienast Y, Lavery JV. Ethical dimensions of neglected tropical disease programming. *Comment Trans R Soc Trop Med Hyg.* 2021;**115**:190–5.
3. Hotez PJ, Alvarado M, Basáñez MG, Bolliger I, Bourne R, Boussinesq M, et al. The Global Burden of Disease Study 2010: Interpretation and Implications for the Neglected Tropical Diseases. *PLoS Negl Trop Dis.* 2014 Jul 24;**8**:e2865.
4. World Health Organisation. Ending the neglect to attain the Sustainable Development Goals A road map for neglected tropical diseases 2021–2030 [Internet]. 2020. Available from: <https://www.who.int/publications/i/item/9789240010352>
5. Palmer JJ, Surur EI, Checchi F, et al. A mixed methods study of a health worker training intervention to increase syndromic referral for gambiense human African trypanosomiasis in South Sudan. *PLoS Negl Trop Dis.* 2014;**8**:e2742.
6. Kone M, N’Gouan EK, Kaba D, et al. The complex health seeking pathway of a human African trypanosomiasis patient in Cote d’Ivoire underlines the need of setting up passive surveillance systems. *PLoS Negl Trop Dis.* 2020;**14**:e0008588.
7. Bukachi S.A., Wandibba S., Nyamongo I.K. The treatment pathways followed by cases of human African trypanosomiasis in western Kenya and Eastern Uganda. *Ann Trop Med Parasitol.* 2009;**103**:211–20.
8. Kibadi K., Boelaert M., Kayinua M., et al. Therapeutic itineraries of patients with ulcerated forms of *Mycobacterium ulcerans* (Buruli ulcer) disease in a rural health zone in the democratic Republic of Congo. *Trop Med Int Health.* 2009;**14**:1110–6.
9. Schrijvers G, van Hoorn A, Huiskes N. The care pathway: concepts and theories: an introduction. *Int J Integr Care* [Internet]. 2012;**12**(Special Edition Integrated Care Pathways). Available from: [/pmc/articles/PMC3602959/](https://pmc/articles/PMC3602959/)
10. Richter P, Schlieter H. Understanding Patient Pathways in the Context of Integrated Health Care Services - Implications from a Scoping Review. 14<sup>th</sup> International Conference on Wirtschaftsinformatik, 2019.
11. McCollum R, Berrian H, Theobald S, et al. Barriers and Enablers to Health-Seeking for People Affected by Severe Stigmatising Skin Diseases (SSSDs): A Scoping Review. *Soc Sci.* 2022 Aug;**11**:332.
12. Peters MDJ, Godfrey CM, Khalil H, et al. Guidance for conducting systematic scoping reviews. *JBI Evid Implement.* 2015 Sep;**13**:141.
13. Tricco AC, Lillie E, Zarin W, et al. PRISMA extension for scoping reviews (PRISMA-ScR): Checklist and explanation. *Ann Intern Med.* 2018 Oct;**169**:467–73.
14. Frischer SR, Parker M, Chami GF. Conceptualising patient pathways for neglected tropical diseases in sub-Saharan Africa: A systematic scoping review protocol. 2023 Feb 28 [cited 2023 Sep 29]; Available from: <https://osf.io/4nu2d>

15. Pollock D, Peters MDJ, Khalil H, et al. Recommendations for the extraction, analysis, and presentation of results in scoping reviews. *JBI Evid Synth*. 2023 Mar;**21**:520.
16. Thomas A, Lubarsky S, Durning SJ, et al. Knowledge Syntheses in Medical Education: Demystifying Scoping Reviews. *Acad Med*. 2017 Feb;**92**:161.
17. Campbell M, McKenzie JE, Sowden A, et al. Synthesis without meta-analysis (SWiM) in systematic reviews: reporting guideline. *BMJ*. 2020 Jan 16;l6890.
18. Carroll C, Booth A, Leaviss J, et al. “best fit” framework synthesis: Refining the method. *BMC Med Res Methodol*. 2013 Mar;**13**:1–16.
19. Thomas J, Harden A. Methods for the thematic synthesis of qualitative research in systematic reviews. *BMC Med Res Methodol*. 2008 Jul 10;**8**:45.
20. London declaration on neglected tropical diseases [Internet]. 2012; Available from: [https://assets.publishing.service.gov.uk/government/uploads/system/uploads/attachment\\_data/file/67443/NTD\\_20Event\\_20-20London\\_20Declaration\\_20on\\_20NTDs.pdf](https://assets.publishing.service.gov.uk/government/uploads/system/uploads/attachment_data/file/67443/NTD_20Event_20-20London_20Declaration_20on_20NTDs.pdf)
21. van Oirschot J, Ooms GI, Okemo DJ, et al. An exploratory focus group study on experiences with snakebites: health-seeking behaviour and challenges in rural communities of Kenya. *Trans R Soc Trop Med Hyg*. 2021;**115**:613–8.
22. Schurer JM, Dam A, Mutuyimana MT, et al. “At the hospital they do not treat venom from snakebites”: A qualitative assessment of health seeking perspectives and experiences among snakebite victims in Rwanda. *Toxicon X*. 2022;**14**(101741983):100100.
23. Lee SJ, Palmer JJ. Integrating innovations: a qualitative analysis of referral non-completion among rapid diagnostic test-positive patients in Uganda’s human African trypanosomiasis elimination programme. *Infect Dis Poverty*. 2018;**7**:84.
24. Nwosu CM, Njeze GE, Opara C, et al. Central nervous system infections in the rainforest zone of Nigeria. *East Afr Med J*. 2001;**78**:97–101.
25. Awah PK, Boock AU, Mou F, et al. Developing a Buruli ulcer community of practice in Bankim, Cameroon: A model for Buruli ulcer outreach in Africa. *PLoS Negl Trop Dis*. 2018;**12**:e0006238.
26. Maritim P, Silumbwe A, Zulu JM, et al. Health beliefs and health seeking behavior towards lymphatic filariasis morbidity management and disability prevention services in Luangwa District, Zambia: Community and provider perspectives. *PLoS Negl Trop Dis*. 2021;**15**:e0009075.
27. De Weggheleire A, Nkuba-Ndaye A, Mbala-Kingebeni P, et al. A Multidisciplinary Investigation of the First Chikungunya Virus Outbreak in Matadi in the Democratic Republic of the Congo. *Viruses*. 2021;**13**.
28. Ampah K.A., Asare P., Binnah D.D.-G., et al. Burden and Historical Trend of Buruli Ulcer Prevalence in Selected Communities along the Offin River of Ghana. *PLoS Negl Trop Dis*. 2016;**10**:e0004603.
29. Beyene TJ, Mourits MCM, Revie CW, Hogeveen H. Determinants of health seeking behaviour following rabies exposure in Ethiopia. *Zoonoses Public Health*. 2018;**65**:443–53.
30. Yotsu RR, Comoe CC, Ainyakou GT, et al. Impact of common skin diseases on children in rural Cote d’Ivoire with leprosy and Buruli ulcer co-endemicity: A mixed methods study. *PLoS Negl Trop Dis*. 2020;**14**:e0008291.

31. Porten K, Sailor K, Comte E, et al. Prevalence of Buruli ulcer in Akonolinga health district, Cameroon: results of a cross sectional survey. *PLoS Negl Trop Dis*. 2009;**3**:e466.
32. Kouassi BL, Barry A, Heitz-Tokpa K, et al. Perceptions, knowledge, attitudes and practices for the prevention and control of lymphatic filariasis in Conakry, Republic of Guinea. *Acta Trop*. 2018;**179**:109–16.
33. Smith EL, Mkwanda SZ, Martindale S, et al. Lymphatic filariasis morbidity mapping: a comprehensive examination of lymphoedema burden in Chikwawa district, Malawi. *Trans R Soc Trop Med Hyg*. 2014;**108**:751–8.
34. Negussie H., Molla M., Ngari M., et al. Lymphoedema management to prevent acute dermatolymphangioadenitis in podoconiosis in northern Ethiopia (GoLBeT): a pragmatic randomised controlled trial. *Lancet Glob Health*. 2018;**6**:e795–803.
35. Mahande M., Tharaney M., Kirumbi E., et al. Uptake of trichiasis surgical services in Tanzania through two village-based approaches. *Br J Ophthalmol*. 2007;**91**:139–42.
36. Dean L, Tolhurst R, Nallo G, et al. Neglected tropical disease as a “biographical disruption”: Listening to the narratives of affected persons to develop integrated people centred care in Liberia. *PLoS Negl Trop Dis*. 2019;**13**:e0007710.
37. Aboagye SY, Asare P, Otchere ID, et al. Environmental and Behavioral Drivers of Buruli Ulcer Disease in Selected Communities Along the Densu River Basin of Ghana: A Case-Control Study. *Am J Trop Med Hyg*. 2017;**96**:1076–83.
38. Boateng L.A. Healthcare-seeking behaviour in reporting of scabies and skin infections in Ghana: A review of reported cases. *Trans R Soc Trop Med Hyg*. 2020;**114**:830–7.
39. Atinbire S.A., Marfo B., Alomatu B., et al. The development of a capacity-strengthening program to promote self-care practices among people with lymphatic filariasis-related lymphedema in the Upper West Region of Ghana. *Infect Dis Poverty*. 2021;**10**:64.
40. Ackumey M., Kwakye-Maclean C., Ampadu E.O., et al. Health services for Buruli ulcer control: Lessons from a field study in Ghana. *Am J Trop Med Hyg*. 2011;**85**(SUPPL. 1):254–5.
41. Solomon A.W., Akudibillah J., Abugri P., et al. Pilot study of the use of community volunteers to distribute azithromycin for trachoma control in Ghana. *Bull World Health Organ*. 2001;**79**:8–14.
42. Godwin-Akpan T.G., Chowdhury S., Rogers E.J., et al. Recommendations for an Optimal Model of integrated case detection, referral, and confirmation of Neglected Tropical Diseases: A case study in Bong County, Liberia. *medRxiv [Internet]*. 2022. Available from: <https://www.medrxiv.org/>
43. Krah C.K. The prevalence of onchocerciasis and other parasitic infestations on an oil palm plantation in Ghana. *Trop Doct*. 2000;**30**:143–6.
44. Alo C, Okedo-Alex IN, Akamike IC, et al. Utilising community volunteers can increase the detection and referral of Buruli ulcer cases in endemic communities in Southeast, Nigeria. *Trop Dis Travel Med Vaccines*. 2022;**8**:24.
45. Ahorlu CK, Koka E, Yeboah-Manu D, et al. Enhancing Buruli ulcer control in Ghana through social interventions: a case study from the Obom sub-district. *BMC Public Health*. 2013;**13**:59.

46. Mulder AA, Boerma RP, Barogui Y, et al. Healthcare seeking behaviour for Buruli ulcer in Benin: a model to capture therapy choice of patients and healthy community members. *Trans R Soc Trop Med Hyg.* 2008;**102**:912–20.
47. Peeters Grietens K, Toomer E, Um Boock A, et al. What role do traditional beliefs play in treatment seeking and delay for Buruli ulcer disease?--insights from a mixed methods study in Cameroon. *PLoS One.* 2012;**7**:e36954.
48. N'Guessan R.D., Heitz-Tokpa K., Amalaman D.M., et al. Determinants of Rabies Post-exposure Prophylaxis Drop-Out in the Region of San-Pedro, Cote d'Ivoire. *Front Vet Sci.* 2022;**9**:878886.
49. Larson PS, Ndemwa M, Thomas AF, Tamari N, et al. Snakebite victim profiles and treatment-seeking behaviors in two regions of Kenya: results from a health demographic surveillance system. *Trop Med Health.* 2022;**50**:31.
50. Herman AM, Kische A, Babu H, et al. Colorectal cancer in a patient with intestinal schistosomiasis: a case report from Kilimanjaro Christian Medical Center Northern Zone Tanzania. *World J Surg Oncol* [Internet]. 2017 Aug;**15**. Available from: <https://pubmed.ncbi.nlm.nih.gov/28768520/>
51. Figueiredo JC, Richter J, Borja N, Balaca A, et al. Prostate adenocarcinoma associated with prostatic infection due to *Schistosoma haematobium*. Case report and systematic review. *Parasitol Res.* 2015;**114**:351–8.
52. Stanton M.C., Best A., Cliffe M., Kelly-Hope L., et al. Situational analysis of lymphatic filariasis morbidity in Ahanta West District of Ghana. *Trop Med Int Health.* 2016;**21**:236–44.
53. Zulu JM, Maritim P, Silumbwe A, et al. Unlocking Trust in Community Health Systems: Lessons From the Lymphatic Filariasis Morbidity Management and Disability Prevention Pilot Project in Luangwa District, Zambia. *Int J Health Policy Manag.* 2022;**11**:80–9.
54. Danso-Appiah A, De Vlas SJ, Bosompem KM, et al. Determinants of health-seeking behaviour for schistosomiasis-related symptoms in the context of integrating schistosomiasis control within the regular health services in Ghana. *Trop Med Int Health TM IH.* 2004;**9**:784–94.
55. Danso-Appiah A, Stolk WA, Bosompem KM, et al. Health seeking behaviour and utilization of health facilities for schistosomiasis-related symptoms in Ghana. *PLoS Negl Trop Dis.* 2010;**4**:e867.
56. Rabiou M.M., Abiose A. Magnitude of trachoma and barriers to uptake of lid surgery in a rural community of northern Nigeria. *Ophthalmic Epidemiol.* 2001;**8**:181–90.
57. Stanton M.C., Smith E.L., Martindale S., et al. Exploring hydrocoele surgery accessibility and impact in a lymphatic filariasis endemic area of southern Malawi. *Trans R Soc Trop Med Hyg.* 2015;**109**:252–61.
58. Davies B, Kinfu M, Ali O, Mengiste A, et al. Stakeholder perspectives on an integrated package of care for lower limb disorders caused by podoconiosis, lymphatic filariasis or leprosy: A qualitative study. *PLoS Negl Trop Dis.* 2022;**16**:e0010132.
59. Nkieri M, Mbo F, Kavunga P, et al. An Active Follow-up Strategy for Serological Suspects of Human African Trypanosomiasis with Negative Parasitology Set up by a Health Zone Team in the Democratic Republic of Congo. *Trop Med Infect Dis.* 2020;**5**.

60. Ukwaja KN, Alphonsus C, Eze CC, et al. Investigating barriers and challenges to the integrated management of neglected tropical skin diseases in an endemic setting in Nigeria. *PLoS Negl Trop Dis*. 2020 Apr;**14**:e0008248.
61. Lankoande M., Djiguemde N.N., Mion G., et al. Bonkougou P. Snakebite Envenomation during a Third Trimester of Pregnancy: A Case Report. *Matern-Fetal Med*. 2020;**2**:189–92.
62. Ali O., Kinfu M., Semrau M., et al. A qualitative study on the implementation of a holistic care package for control and management of lymphoedema: experience from a pilot intervention in northern Ethiopia. *BMC Health Serv Res*. 2021;**21**:1065.
63. Vouking MZ, Takougang I, Mbam LM, et al. The contribution of community health workers to the control of Buruli ulcer in the Ngoantet area, Cameroon. *Pan Afr Med J*. 2013;**16**:63.
64. Chuchu V.M., Nyamai M., Bichanga P., et al. Effect of phone text message reminders on compliance with rabies post-exposure prophylaxis following dog-bites in rural Kenya. medRxiv [Internet]. 2022. Available from: <https://www.medrxiv.org/>
65. Greene GS, West SK, Mkocho H, et al. Assessment of a Novel Approach to Identify Trichiasis Cases Using Community Treatment Assistants in Tanzania. *PLoS Negl Trop Dis*. 2015;**9**:e0004270.
66. Wester JR, Jackson LE, Mokgosi K, et al. Bullous Scabies in an Immunocompromised Host. *Case Rep Infect Dis*. 2022.
67. Sanders A.M., Adam M., Aziz N., et al. Piloting a trachomatous trichiasis patient case-searching approach in two localities of Sudan. *Trans R Soc Trop Med Hyg*. 2020;**114**:561–5.
68. Brito M., Paulo R., Van-Dunem P., et al. Rapid integrated clinical survey to determine prevalence and co-distribution patterns of lymphatic filariasis and onchocerciasis in a Loa loa co-endemic area: The Angolan experience. *Parasite Epidemiol Control*. 2017;**2**:71–84.
69. Mulenga P., Lutumba P., Coppieters Y., et al. Passive Screening and Diagnosis of Sleeping Sickness with New Tools in Primary Health Services: An Operational Research. *Infect Dis Ther*. 2019;**8**:353–67.
70. Chami GF, Bundy DAP. More medicines alone cannot ensure the treatment of neglected tropical diseases. *Lancet Infect Dis*. 2019 Sep 1;**19**:e330–6.
71. Molyneux DH. Neglected tropical diseases: now more than just 'other diseases'-the post-2015 agenda. Available from: <https://academic.oup.com/inthealth/article/6/3/172/2964842>
72. Ntuli Malecela M. Reflections on the decade of the neglected tropical diseases How can NTD interventions successfully contribute to the ambitious goal embodied by the SDGs? *Int Health*. 2019;**11**:338–40.
73. McManus DP, Dunne DW, Sacko M, et al. Schistosomiasis. *Nat Rev Dis Primer*. 2018;4(1):1–19.
74. World Health Organisation. WHO GUIDELINE on control and elimination of human schistosomiasis. 2022.
75. Ethics of research related to healthcare in developing countries [Internet]. Nuffield Council on Bioethics; 2002 [cited 2024 Aug 12]. Available from: <https://www.nuffieldbioethics.org/publications/research-in-developing-countries>

76. Sciences (CIOMS) C for IO of M. International Ethical Guidelines for Health-related Research Involving Humans. CIOMS; 2017.
77. Bhutta ZA. Ethics in international health research: a perspective from the developing world \*. Bull World Health Organ. 2002;**80**:114–20.
78. Kapumba BM, Desmond N, Seeley J. What do we know about ancillary care practices in East and Southern Africa? A systematic review and meta-synthesis. Wellcome Open Res. 2021;**6**:164–164.
79. Njeru RW, Uddin MdF, Zakayo SM, et al. Strengthening the role of community health workers in supporting the recovery of ill, undernourished children post hospital discharge: qualitative insights from key stakeholders in Bangladesh and Kenya. BMC Health Serv Res. 2021 Dec;**21**:1234.
80. Kapumba BM, Nyirenda D, Desmond N, et al. ‘Guidance should have been there 15 years ago’ research stakeholders’ perspectives on ancillary care in the global south: a case study of Malawi. BMC Med Ethics. 2023 Feb 10;**24**:8.
81. Molyneux S, Mulupi S, Mbaabu L, et al. Benefits and payments for research participants: experiences and views from a research centre on the Kenyan coast. BMC Med Ethics [Internet]. 2012;**13**. Available from: <https://pubmed.ncbi.nlm.nih.gov/22726531/>
82. Kapumba BM, Desmond N, Seeley J. A chronological discourse analysis of ancillary care provision in guidance documents for research conduct in the global south. BMC Med Ethics. 2022 Dec;**23**:1–16.
83. HOMEIDA M, BRAIDE E, ELHASSAN E, et al. APOC’s strategy of community-directed treatment with ivermectin (CDTI) and its potential for providing additional health services to the poorest populations. Ann Trop Med Parasitol. 2002 Mar 1;**96**:S93–104.
84. Kingori P. Experiencing everyday ethics in context: Frontline data collectors perspectives and practices of bioethics. Soc Sci Med 1982. 2013 Dec;**98**:361.
85. Angwenyi V, Kamuya D, Mwachiro D, et al. Working with Community Health Workers as ‘Volunteers’ in a vaccine trial: practical and ethical experiences and implications. Dev World Bioeth. 2013 Apr;**13**:38–38.