

Donor HLA class 1 evolutionary divergence and late allograft rejection after liver transplantation in children: An emulated target trial.

Jérôme DUMORTIER, MD, PhD (1,2), Sarah HAMADA, PharmD (3), Emma WISCHLEN, MD (4), Céline MANDIER (3), Noémie LAVERDURE, MD (4), Olivier BOILLOT, MD (1,2), Ilias KOUNIS, MD (5), Vincent ALLAIN, MD (6), Valérie HERVIEU, MD, PhD (2,7), Sophie COLLARDEAU-FRACHON, MD, PhD (2,7), Valérie DUBOIS, MD (3), Cyrille FERAY, MD, PhD (5).

(1) Hospices Civils de Lyon, Hôpital Edouard Herriot, Fédération des Spécialités Digestives, Lyon ,

(2) Université Claude Bernard Lyon 1, Lyon,

(3) Etablissement Français du Sang, Décines,

(4) Hospices Civils de Lyon, Hôpital Femme-Mère-Enfants, Service d'Hépatogastroentérologie et Nutrition, Bron,

(5) AP-HP, Hôpital Paul Brousse, Centre Hépatobiliaire, INSERM, Unité 1193, Hepatinov, and Université Paris-Saclay, Villejuif,

(6) Hôpital Saint-Louis, Assistance Publique-Hôpitaux de Paris (AP-HP), Université de Paris, Laboratoire d'Immunologie et Histocompatibilité, Paris,

(7) Hospices Civils de Lyon, Groupe hospitalier Est, Service d'Anatomie pathologique, Bron, France.

Keywords: liver transplantation; rejection; HLA evolutionary divergence; anti-HLA antibodies.

Running title: HLA evolutionary divergence and liver graft rejection

Word count = 1874

Financial support: There was no funding source for this study.

Correspondance:

Jérôme Dumortier,

Pavillon L, Hôpital Edouard Herriot, 69437 Lyon Cedex 03, France

Tel: 33 472110111, Fax: 33 472110147, jerome.dumortier@chu-lyon.fr

Abstract (n= 208)

HLA evolutionary divergence (HED), a continuous metric quantifying the differences between each amino acid of two homologous HLA alleles, reflects the importance of the immunopeptidome presented to T lymphocytes. It has been associated with rejection after liver transplantation. This retrospective cohort study aimed to analyze the potential effect of donor or recipient HED on liver transplant rejection in a new series of patients transplanted during childhood and followed in adulthood. The study included 120 children who had been transplanted between 1991 and 2010 and were followed by routine biopsies and histological evaluations with a median of 14.1 years post-LT. Liver biopsies were performed routinely 1, 5, 10 and 20 years after transplantation and in the event of liver dysfunction. HED was calculated using the physicochemical Grantham distance for donor and recipient class I (HLA-A, -B, -C) and class II (HLA-DRB1, -DQB1) alleles. The influence of HED on rejection was analyzed using IPW and target trial emulation using the g method. Based on the IPW score, donor HED class I was correlated with the occurrence of late (>90 days) rejection (HR, 1.19, 95% CI: 1.01-1.40) independently of HLA mismatches, donor age and initial induction. This emulated target trial confirmed that donor HED class I has a causal effect on liver graft rejection and this relationship was observed long-term.

Primary Funding Source:

None

Abbreviations:

CBGPS: covariate balancing generalized propensity scores

CNI: Calcineurin-Inhibitors

CSA: Cyclosporine

DSA: Donor Specific Antibody

HED: HLA Evolutionary Divergence

HLA: Human Leucocyte Antigen

IPW: Inverse Probability Weighting

MMF: Mycophenolate Mofetil

TAC: Tacrolimus

Introduction

HLA plays an essential role in allograft rejection, and the importance of HLA compatibility between donors and recipients has been well established (1). Regarding HLA, a more recent concept relies on the difference between the two alleles (2). The more divergent the two HLA alleles at a physicochemical level (Grantham's distance (3), the greater the size of the immunopeptidome. This is an extension of the idea of heterozygote advantage (4). HLA evolutionary divergence (HED) has emerged as a strong determinant of survival in patients with cancer who have received immune checkpoint inhibitors (5)(6) and in those with leukemia who have undergone allogeneic hematopoietic stem cell transplants (7).

In the context of organ transplantation, HED may increase the diversity of graft-derived immunopeptidomes targeted by recipient T-cells. In an adult population and in a smaller series of transplanted children from Necker Hospital, we previously reported that regardless of HLA compatibility, HED defined from donor class I HLA was positively associated with rejection (8).

The target trial approach is a structural method that emulates an RCT (9) based on observational data, and enables the definition of a causal relationship between exposure and a given outcome. In the present study, we performed an emulated target trial to analyze the influence of HED on the occurrence of late histological signs of rejection in patients transplanted during childhood and adulthood.

Methods

Study Population

Characteristics of the patients and donors are shown in Table 1.

Procedure

Liver biopsies were performed in the event of abnormal liver test results and systematically at 1, 5, 10, 15 and 20 years after LT. The liver specimens were paraffin-embedded and stained with hematein-eosin-safran and picosirius. The diagnosis of acute or chronic rejection was made according to the Banff Classification of Allograft Pathology (10) (11), while acute cellular rejection was classified using the Banff Rejection Activity Index. Chronic rejection was based on bile duct dystrophy, ductopenia, and hepatic venule fibrosis. Late chronic rejection was based on a ductopenia rate of 50% or more. The histological diagnoses were coded prospectively. The diagnosis of antibody-mediated rejection was based on the positive C4d staining of portal veins and portal capillaries and positive DSA.

Biomarkers

Donor-specific antibodies were available pre- and post-LT using Luminex Single Antigen Flow Beads assays (LSA class I and class II; Lifecodes, Immucor, Norcross, GA, US). Mean fluorescence intensity (MFI) was measured on a LABscan IS 200, and all specificities were evaluated using the company's defined threshold, i.e. $MFI \geq 1500$ and $AD-BCR \geq 5$ to define positivity (AD-BCR is the ratio of adjusted MFI to the quantity of coated antigen per bead).

HLA typing for HLA-A,-B,-C,-DRB1 and -DQB1 was available for 120 donor/recipient couples at a low-resolution level (one field) (the HLA typing of donors and recipients was performed using Luminex PCR-SSO reverse, One Lambda, Canoga Park, CA, US) and then extrapolated to a high-resolution level (two fields) using a tool called HaploSFHI (12). HLA matching was calculated for each recipient as the number of HLA-A, HLA-B, HLA-C, HLA-DRB1 and HLA-DQB1 identities with the donor. Sequence divergence (at the amino acid level) between HLA alleles was computed for all possible combinations of allele pairs among the alleles found in both cohorts for HLA-A, HLA-B, HLA-C, HLA-DRB1, and HLA-DQB1 loci. The respective protein sequences of the peptide-binding groove (exons 2 and 3 for HLA class I and exon 2 for HLA class II) were extracted from the international ImMunoGeneTics/HLA database (13). The calculation of HED between aligned allele pairs of a given locus was based on the Grantham distance metric (3). For each recipient and each donor, the mean class I HED and mean class II HED were calculated as the mean of HED defined at the HLA-A, HLA-B and HLA-C and HLA-DRB1 and HLA-DQB1 loci, respectively, assuming that each

locus contributes equally to the presentation of peptides. By definition, there was null divergence in the case of homozygosity. HED values were calculated in 2023 so they did not influence any diagnostic or therapeutic decisions.

Statistical Analysis.

IPW approach. To estimate the marginal effect of HED on the occurrence of rejection, we used the inverse probability weighting approach precisely described in (8) (14) based on covariate balancing generalized propensity scores (CBGPS) (15). First, we defined a set of demographic and clinical variables based on their clinical relevance. We followed the recommendations of Fong and colleagues (15) to add the squares of the continuous variables in the CBGPS and use a Box-Cox transformation of continuous exposure (16). Once fitted, the individual stabilized weightings were obtained from the CBGPS (14). Second, we fitted a weighted, cause-specific, proportional hazard Cox model with the exposure (i.e. HED) as the only explanatory variable (17). E-values were computed to assess the exchangeability assumption— in other words, no unmeasured confounding (18).

Emulated target trial used G computation, a causal inference technique which is possible on binary exposure (19) to estimate the average treatment (*i.e.*, marginal causal) effect on the entire population (ATE). The ATE is the average effect, at the population level, of moving an entire population from untreated to treated. In this study, the treatment was to receive or not receive a liver from a high HED donor and the outcome was rejection-free survival. The survival area plot (20) directly depicts the survival probability over time and as a function of a continuous covariate which is HED. This plot utilizes g-computation based on a suitable time-to-event model to obtain the relevant estimates. By using g-computation, these estimates can be adjusted for confounding and permit a causal interpretation under the standard causal identifiability assumptions.

All analyses were performed using R, version 3.6.0 (R Foundation) with the “survival,” “CBPS,” “ipw,” “splines,” “EValue,” “RISCA”, “forestplot” and “contsurvplot” packages.

Ethics

This study was approved by the local Ethics Committee and was performed in accordance with the principles of the Declaration of Helsinki. As it concerned a retrospective cohort without therapeutic intervention, no informed consent of the patients was required under French law (Jardé Law).

Results

The flow chart (Figure 1) describes patient selection. We only included patients who had undergone at least one liver biopsy, and we excluded premature deaths. The characteristics of the study population are shown in Table 1. The median number of biopsies was five [IQR: 3-7].

During histological follow-up, 88/120 patients (73%) presented with histological signs of rejection. Fifty-one of them displayed early signs of histological rejection (≤ 90 days), so that once these patients had been censored, only 37 could be evaluated for rejection beyond 90 days post-LT. Because all patients with early biopsies had signs of rejection, we analyzed the cumulative incidence of rejection on biopsies harvested beyond 90 days. Rejection lesions were encountered after 90 days in 64 patients, were purely acute in 41 patients, and chronic in 23, 14 of whom had also signs of acute rejection. In four cases of CR, the rejection was of a humoral type.

Through the univariate log-rank analysis of rejection-free survival, we selected six covariates (Figure 2) associated with the occurrence of rejection: HLA matching, initial induction, recipient gender, donor age, recipient age and cold ischemia time (more or less than 385 min). Among all 17 covariates, none was correlated or associated with any measured donor or recipient HED. These six covariates were used subsequently for IPW and for the emulated target trial.

HED values were considered as continuous for the IPW approach. As HED were not normally distributed, a Box-Cox transformation was performed. For the propensity score, we checked the balance of covariates and distribution of stabilized weightings as being correct. As shown in Figure 3, donor HED class I was positively associated with rejection while donor HED class II and recipient HED were not.

For the emulated target trial, the exposure needed to be binary as it was simulating a randomized trial. Since donor HED class I (as a continuous variable) was positively associated with rejection, we tested different thresholds for HEDs. Using the `contsurvplot` package we were able to illustrate the effect of donor HED class I on the occurrence of rejection (Figure 4A). Figure 4B shows the Odds ratio for each emulated trial. The risk of rejection was increased at values of 7 or higher.

Finally, the presence of DSA was not related to any HEDs (as a continuous or categorical variable) and was not related to rejection.

Discussion

This study confirms the findings of our previous study (8) showing that donor HED class I is a predictor of rejection after liver transplantation. However, in the present series, the patients had all been transplanted as children and the majority were studied in adulthood after a longer follow-up, thus suggesting that the effect of HED on rejection persists over time. The methodology was also enhanced. As in the first study (8), we used the IPW approach to study HED as a continuous variable. But furthermore, we performed an emulated target trial that simulated a therapeutic trial (receiving or not receiving a graft with HED class I >7) that met the standard causal identifiability assumptions (14). For this reason, a causal relationship between an HED class I donor and late rejection could be confirmed in the context of LT.

The relationship between donor HED and rejection was observed when early biopsies (e.g. <90 days) were excluded. Early (<90 days) rejection lesions after liver transplantation are common in children (21)(22). In the previously published pediatric series at Necker Hospital, early biopsies were infrequent, while they were frequent in the present study. This is due to the decline of early biopsies in pediatric centers, the Necker series being more recent than the present Lyon series. By excluding early biopsies from the current series, a direct comparison with the results at Necker Hospital could be made, and according to our findings, it appeared that an HED class I donor plays a role in late rejection.

As in the previous paper, we did not evidence any roles for recipient HED or class II HLA. This is surprising because the alloantigen presentation by a recipient's or donor's immune cells is crucial for rejection. However, no genotyping of HLA-DQA1 or -DP was available in this series, nor in the previous one.

One limitation of this study was that we were unable to distinguish between acute and chronic rejection, probably because of the small sample size and the low incidence of pure chronic rejection. In addition, we did not find a relationship between HED and DSA, despite the availability of the latter. This had also been the case in the Necker series. One possible reason for this might be the long study period, with heterogeneity affecting the tests used to detect DSA after TH (measurement bias). The other reason could be that the HLA-DQA1 locus was not explored and might possibly be related to the immune response. We recently published an article concerning the crucial influence of this locus on the response to HBV and SARS-CoV-2 vaccines (23).

There have been few recent advances regarding the immunology of liver transplantation. The demonstration that donor HED class I affects rejection suggests that this metric should be

considered in clinical practice. In patients with a high risk of rejection, the selection of a “low HED donor” might be more feasible than selection based on HLA compatibilities. It is worth noting that donor HED class I is not correlated with HLA donor/recipient compatibility and that the effect of donor HED class I was independent of HLA compatibility. The proposed metric could also guide the monitoring of biopsies and aid in selecting patients who may either be suitable for weaning from immunosuppression (24) or require significant long-term immunosuppression.

In conclusion, the present study confirms the major role of donor HED class I in liver allograft rejection. This opens a broad horizon for future investigations in organ transplantation, focused in particular on patients with a higher risk of rejection-associated graft loss, such as kidney or lung transplants. Further studies involving larger cohorts could, for instance, investigate acute and chronic rejection separately, the occurrence of DSA, or immune tolerance.

Legends to Figures

Figure 1

Flow chart of patients included in the study

Figure 2

Impact of HLA incompatibilities, recipient gender, initial induction, cold ischemia time, donor age and recipient age on the risk of rejection over time

Figure 3

IPW approach applied to the effect of donor and recipient class I and class II HED on rejection, acute rejection and chronic rejection. The results show adjusted hazard ratio (HR) values with a 95% confidence interval (CI) and E-values. Donor class I HED was associated with late rejection but not with either acute or chronic rejection. All other HEDs were not associated with rejection.

Figure 4

Emulated Target Trial using g computation applied to the risk of rejection with different values of donor or recipient HED class I or II.

References

1. Doherty PC, Zinkernagel RM. A biological role for the major histocompatibility antigens. *Lancet*. 1975 Jun 28;1(7922):1406–9.
2. Pierini F, Lenz TL. Divergent Allele Advantage at Human MHC Genes: Signatures of Past and Ongoing Selection. *Mol Biol Evol*. 2018 Sep 1;35(9):2145–58.
3. Grantham R. Amino acid difference formula to help explain protein evolution. *Science*. 1974 Sep 6;185(4154):862–4.
4. Doherty PC, Zinkernagel RM. Enhanced immunological surveillance in mice heterozygous at the H-2 gene complex. *Nature*. 1975 Jul 3;256(5512):50–2.
5. Lu Z, Chen H, Jiao X, Wang Y, Wu L, Sun H, et al. Germline HLA-B evolutionary divergence influences the efficacy of immune checkpoint blockade therapy in gastrointestinal cancer. *Genome Med*. 2021 Nov 3;13(1):175.
6. Chowell D, Krishna C, Pierini F, Makarov V, Rizvi NA, Kuo F, et al. Evolutionary divergence of HLA class I genotype impacts efficacy of cancer immunotherapy. *Nat Med*. 2019 Nov;25(11):1715–20.
7. Merli P, Crivello P, Strocchio L, Pinto RM, Algeri M, Del Bufalo F, et al. Human leukocyte antigen evolutionary divergence influences outcomes of paediatric patients and young adults affected by malignant disorders given allogeneic haematopoietic stem cell transplantation from unrelated donors. *Br J Haematol*. 2022 Nov 16;
8. Féray C, Taupin JL, Sebah M, Allain V, Demir Z, Allard MA, et al. Donor HLA Class 1 Evolutionary Divergence Is a Major Predictor of Liver Allograft Rejection: A Retrospective Cohort Study. *Ann Intern Med*. 2021 Oct;174(10):1385–94.
9. Hernán MA, Wang W, Leaf DE. Target Trial Emulation: A Framework for Causal Inference From Observational Data. *JAMA*. 2022 Dec 27;328(24):2446–7.
10. Demetris AJ, Bellamy C, Hübscher SG, O’Leary J, Randhawa PS, Feng S, et al. 2016 Comprehensive Update of the Banff Working Group on Liver Allograft Pathology: Introduction of Antibody-Mediated Rejection. *Am J Transplant* [Internet]. 2016 [cited 2020 Jun 27];16(10):2816–35. Available from: <https://onlinelibrary.wiley.com/doi/abs/10.1111/ajt.13909>

11. Banff Working Group, Demetris AJ, Adeyi O, Bellamy COC, Clouston A, Charlotte F, et al. Liver biopsy interpretation for causes of late liver allograft dysfunction. *Hepatology* Baltim Md. 2006 Aug;44(2):489–501.
12. Lhotte R, Letort V, Usureau C, Jorge-Cordeiro D, PHRC Acorghla Consortium, Siemowski J, et al. Improving HLA typing imputation accuracy and eplet identification with local next-generation sequencing training data. *HLA* [Internet]. 2024 Jan [cited 2024 Feb 9];103(1):e15222. Available from: <https://onlinelibrary.wiley.com/doi/10.1111/tan.15222>
13. Robinson J, Halliwell JA, Hayhurst JD, Flicek P, Parham P, Marsh SGE. The IPD and IMGT/HLA database: allele variant databases. *Nucleic Acids Res*. 2015 Jan;43(Database issue):D423-431.
14. Robins JM, Hernán MA, Brumback B. Marginal structural models and causal inference in epidemiology. *Epidemiol Camb Mass*. 2000 Sep;11(5):550–60.
15. Fong C, Hazlett C, Imai K. Covariate balancing propensity score for a continuous treatment: Application to the efficacy of political advertisements. *Ann Appl Stat* [Internet]. 2018 Mar 1 [cited 2023 Nov 2];12(1). Available from: <https://projecteuclid.org/journals/annals-of-applied-statistics/volume-12/issue-1/Covariate-balancing-propensity-score-for-a-continuous-treatment--Application/10.1214/17-AOAS1101.full>
16. Box GEP, Cox DR. An analysis of transformations. *J R Stat Soc Series B Stat Methodol*. 1964;
17. Cole SR, Hernán MA. Adjusted survival curves with inverse probability weights. *Comput Methods Programs Biomed* [Internet]. 2004 Jul [cited 2023 Jun 30];75(1):45–9. Available from: <https://linkinghub.elsevier.com/retrieve/pii/S0169260703001378>
18. VanderWeele TJ, Ding P. Sensitivity Analysis in Observational Research: Introducing the E-Value. *Ann Intern Med*. 2017 Aug 15;167(4):268–74.
19. Snowden JM, Rose S, Mortimer KM. Implementation of G-computation on a simulated data set: demonstration of a causal inference technique. *Am J Epidemiol*. 2011 Apr 1;173(7):731–8.
20. Denz R, Timmesfeld N. Visualizing the (Causal) Effect of a Continuous Variable on a Time-To-Event Outcome. *Epidemiol Camb Mass*. 2023 Sep 1;34(5):652–60.
21. Their M, Lautenschlager I, von Willebrand E, Höckerstedt K, Holmberg C, Jalanko H. The use of fine-needle aspiration biopsy in detection of acute rejection in children after liver transplantation. *Transpl Int Off J Eur Soc Organ Transplant*. 2002 May;15(5):240–7.

22. Goldschmidt I, Chichelnitskiy E, Götz J, Rübsamen N, Karch A, Jäger V, et al. Early steroids after pediatric liver transplantation protect against T-cell-mediated rejection: Results from the ChilSFree study. *Liver Transplant Off Publ Am Assoc Study Liver Dis Int Liver Transplant Soc.* 2023 Sep 5;

23. Féray C, Allain V, Desterke C, Roche B, Coilly A, Caillat-Zucman S. HLA-DQ Diversity Is Associated With Humoral Response to Vaccines in Patients Awaiting or After Liver Transplantation. *Gastroenterology.* 2024 Jan 10;S0016-5085(24)00042-8.

24. Perito ER, Martinez M, Turmelle YP, Mason K, Spain KM, Bucuvalas JC, et al. Posttransplant biopsy risk for stable long-term pediatric liver transplant recipients: 451 percutaneous biopsies from two multicenter immunosuppression withdrawal trials. *Am J Transplant Off J Am Soc Transplant Am Soc Transpl Surg.* 2019 May;19(5):1545–51.

Table1. Characteristics of the study population (n=120)

Characteristic	Value
Recipient	
Median age (IQR), y	4.68 (1.10-6.20)
Female, <i>n</i> (%)	68 (56.7%)
UNOS status, <i>n</i> (%)	
1	16 (13.3%)
2A	9 (7.5%)
2B	52 (43.3%)
3	43 (35.8%)
Child-Pugh score, <i>n</i> (%)	
A	19 (15.8%)
B	61 (50.8%)
C	40 (33.3%)
Principal indication, <i>n</i> (%)	
Biliary atresia	63 (52.5%)
Genetic liver disease ^a	27 (22.5%)
Metabolic disorder ^b	11 (9.2%)
Fulminant hepatitis	8 (6.7%)
Tumor	1 (0.8%)
Autoimmune	3 (2.5%)
Other indications ^c	7 (5.8%)
Combined kidney graft, <i>n</i> (%)	12 (10.0%)
Donor/graft, n	
Median age (IQR), y	21 (12-31)
Female, <i>n</i> (%)	48 (40.0%)
Living donor, <i>n</i> (%)	38 (31.7%)
Full liver, <i>n</i> (%)	40 (33.3%)
Left lobe, <i>n</i> (%)	71 (59.2%)
Left liver, <i>n</i> (%)	5 (4.2%)
Right liver, <i>n</i> (%)	4 (3.3%)
Median cold ischemic time (IQR), <i>min</i>	425 (151-632)
Number of HLA identities, <i>n</i> (%)	
0-2	58/118* (49.2%)
3-8	60/118* (50.8%)

Liver graft biopsy	
Median number (IQR)	6 (4.25-8.75)
Abbreviations: HBV = hepatitis B virus; HCV = hepatitis C virus; IQR = interquartile range UNOS = United Network for Organ Sharing.	
a. Progressive familial intrahepatic cholestasis (n=8), α -1-antitrypsin deficiency (n=4), Alagille syndrome (n=6), Primary sclerosing cholangitis (n=5), Isolated congenital hepatic fibrosis (n=2), Wilson's disease (n=7)	
b. Hyperoxalosis (n=10), Crigler Najjar syndrom (n=1), Methylmalonic Acidemia (n=1)	
c. Budd-Chiari syndrome (n=1), Cystic Fibrosis (n=2), C virus-related cirrhosis (n=1), NASH (n=1), Unknown (n=4)	
*HLA class II was not available for 2 patients	

Figure 1

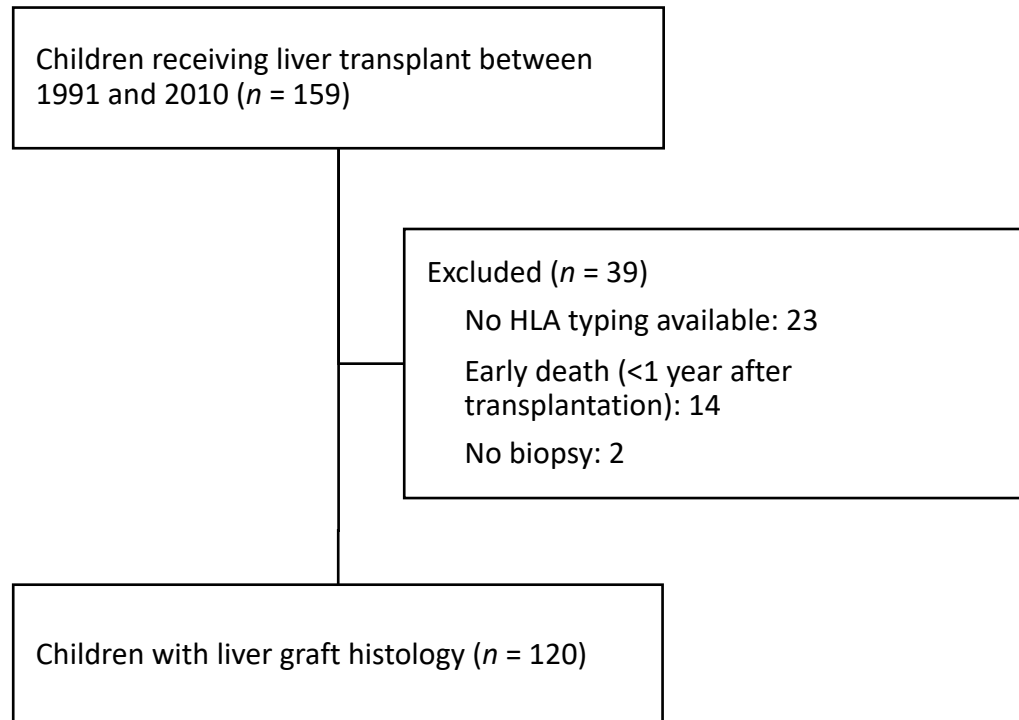


Figure 2

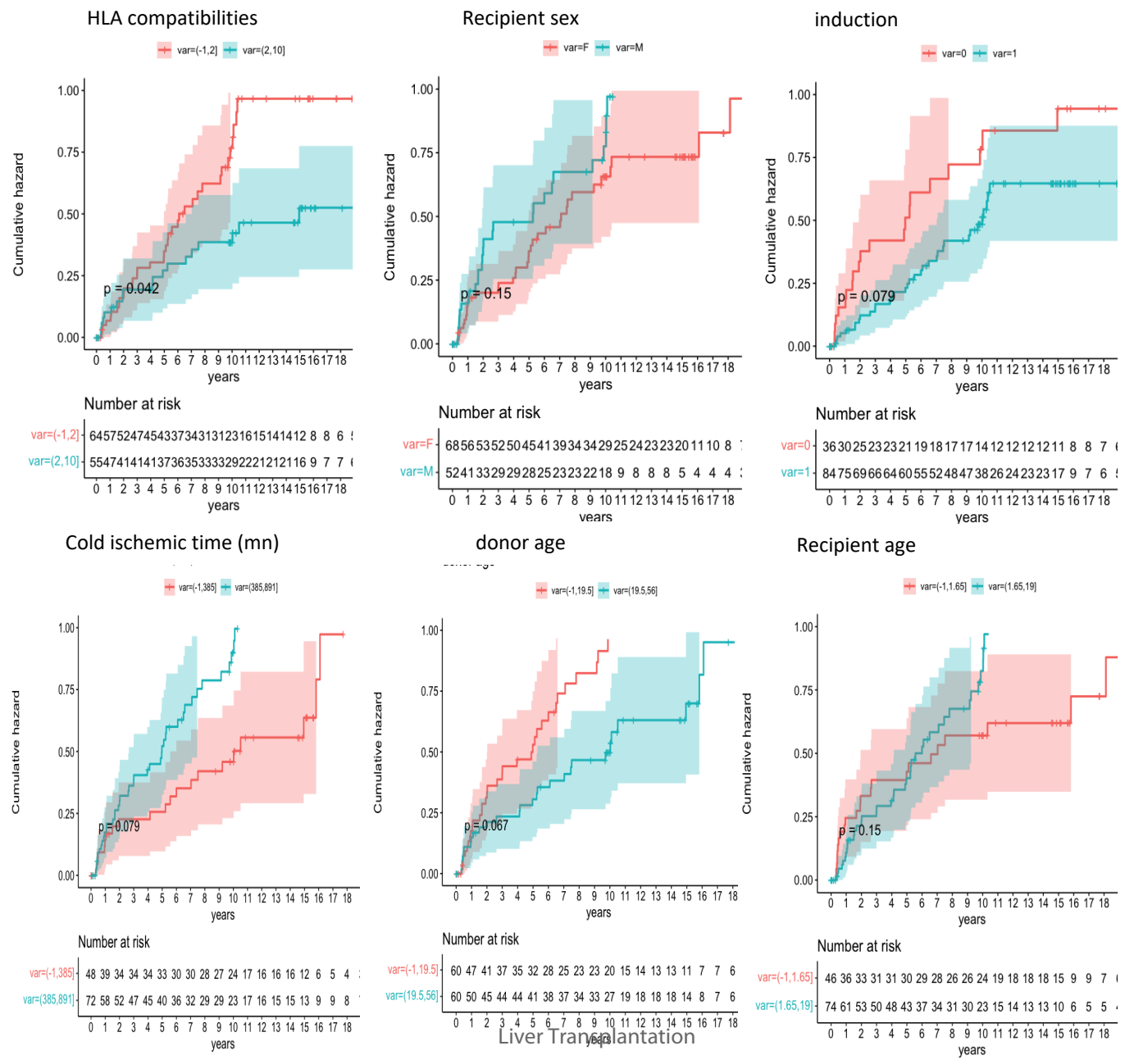
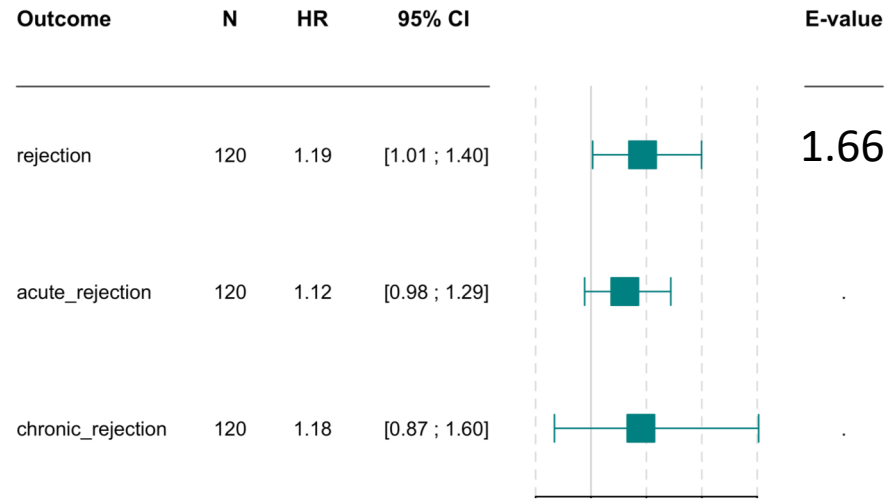
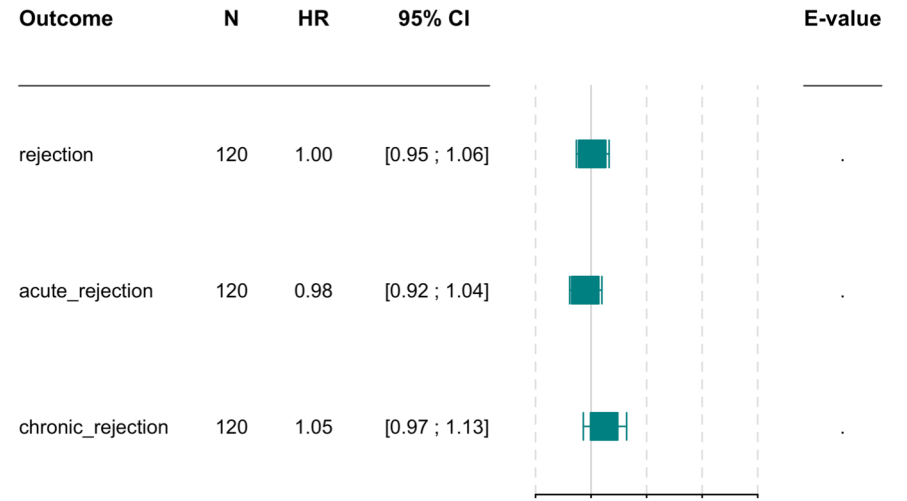


Figure 3

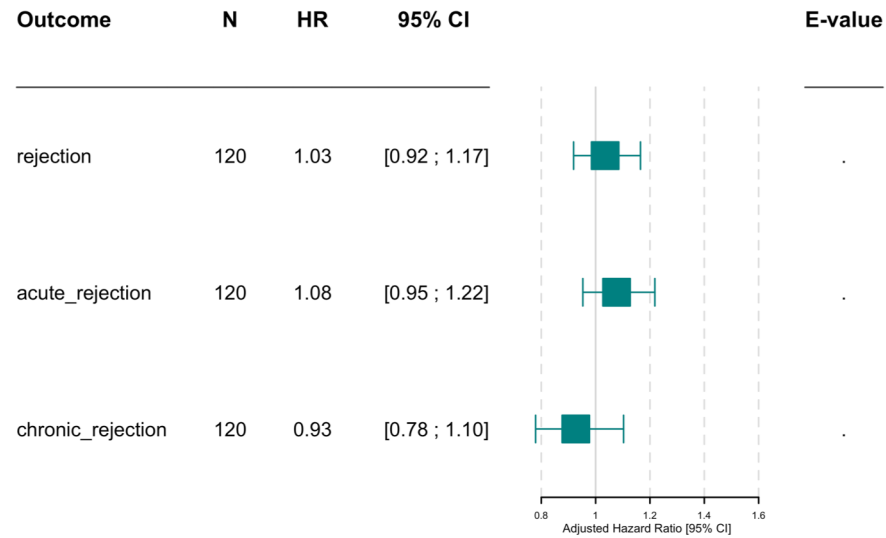
Donor HED class I



Donor HED class II



Recipient HED class I



Recipient HED class II

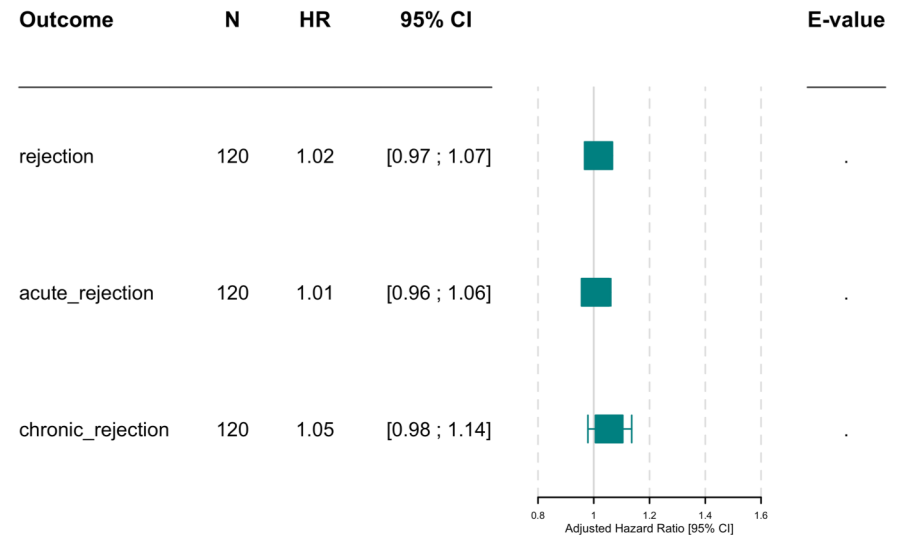
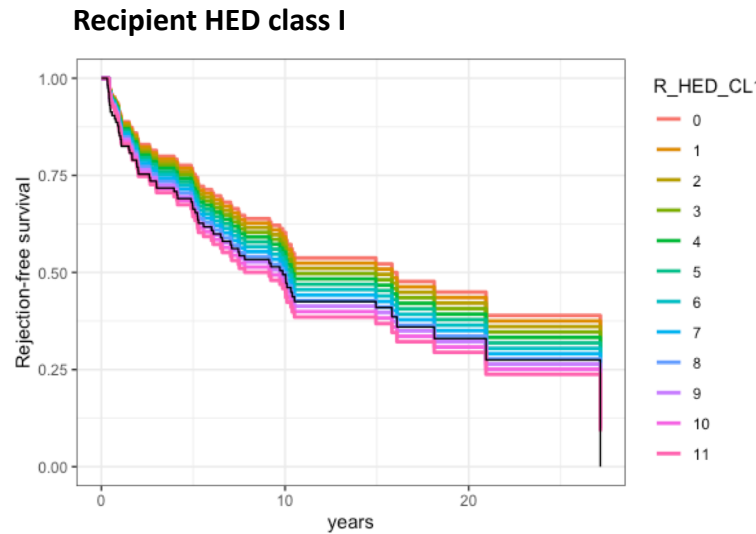
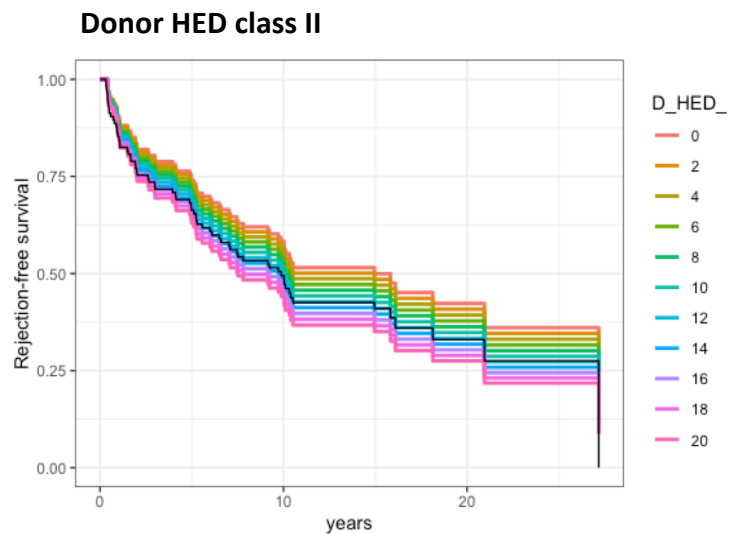
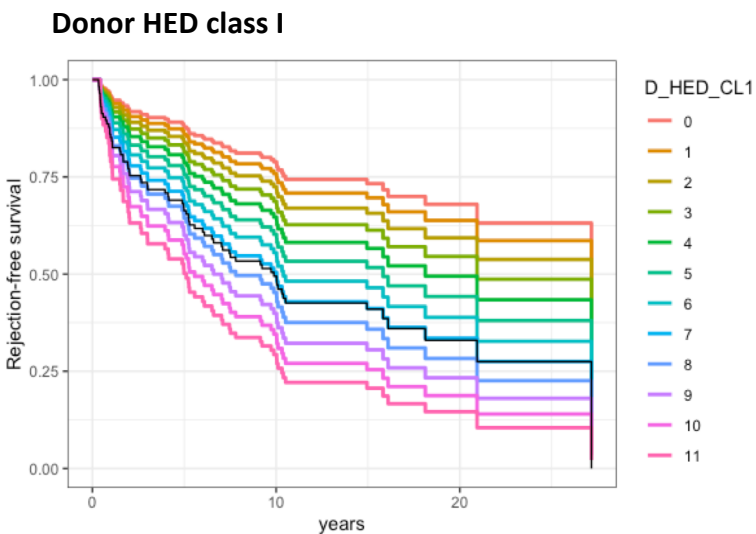


Figure 4

A



B

