

1 Scoping Review: Outpatient Psychotherapeutic Care for Children and 2 Adolescents in Germany – Status Quo and Challenges in Assessment

3 **Kristin Rodney-Wolf^{1*} and Julian Schmitz¹**

4 ¹ Department of Clinical Child and Adolescent Psychology, Wilhelm-Wundt-Institute of Psychology,
5 Leipzig University, Leipzig, Germany

6 *** Correspondence:**

7 Kristin Rodney-Wolf

8 kristin.rodney-wolf@uni-leipzig.de

9 **Keywords: outpatient psychotherapy, mental healthcare, healthcare research, epidemiology,**
10 **children, adolescents, Germany**

11 **Number of Words (excl. Tables):** 10,141

12 **Number of Figures and Tables:** one figure, seven tables

13 **Abstract**

14 In the context of multiple global crises, including the COVID-19 pandemic, climate change, and
15 global conflicts, children and adolescents worldwide are experiencing heightened psychological
16 stress. As the foundation for lifelong mental health is established during childhood and adolescence,
17 early prevention and treatment of mental health problems, such as through psychotherapy, are cru-
18 cial. In Germany, current outpatient psychotherapeutic care capacities appear inadequate, while sys-
19 tematic evaluations of the care situation are lacking. This study investigates the state of statutory
20 health insurance-funded outpatient psychotherapeutic care for children and adolescents in Germany
21 and evaluates various methodological approaches for its assessment. We conducted a scoping review
22 following the Preferred Reporting Items for Systematic Reviews and Meta-Analyses extension for
23 Scoping Reviews (PRISMA-ScR) guidelines. Publications from January 2018 to December 2023
24 were sourced from PubPsych, PubMed, APA PsycInfo, Google Scholar, and ProQuest. Included
25 studies reported quantitative primary data on the mental health of community samples of children and
26 adolescents in Germany or their outpatient psychotherapeutic care. We included 41 publications com-
27 prising epidemiological studies, administrative data, and psychotherapist and patient reports. A lack
28 of systematic and standardized research approaches resulted in significant variance in data. Nonethe-
29 less, qualitative analysis revealed that approximately one four children and adolescents in Germany is
30 affected by mental health problems, while one in six to seven children and adolescents requires psy-
31 chotherapeutic treatment. Yet, only up to one in fifty receives guideline-based psychotherapy. Most
32 requests for initial psychotherapeutic consultations are unmet, with waiting times for guideline-based
33 psychotherapy exceeding six months for at least half of the patients. Overall, our findings suggest
34 that outpatient psychotherapeutic care for children and adolescents in Germany is still insufficient.
35 They advocate for a systematic, multimodal, and longitudinal assessment of statutory health insur-
36 ance-funded outpatient psychotherapeutic care, along with an expansion of treatment capacities to
37 enhance access for children and adolescents in Germany.

38 1 Introduction

39 Worldwide, one in four to five children and adolescents suffers from a mental or behavioural disorder
40 (1–5). With one-third to half of all mental and behavioural disorders starting in adolescence or
41 earlier, childhood and adolescence are particularly vulnerable periods for mental health over the
42 entire lifespan (1, 6–10). Additionally, mental and behavioural disorders are among the leading
43 causes of disability and premature death in childhood and adolescence in industrialized nations (2, 3,
44 11). Currently, children and adolescents are experiencing multiple global crises and existential
45 threats, such as the climate crisis, the aftermath of the COVID-19 pandemic, and the global effects of
46 terror, war, and displacement. These experiences further strain the physical and mental health of
47 children and adolescents worldwide (12–23).

48 Untreated mental and behavioural disorders in childhood and adolescence exhibit high rates of
49 chronicity and persistence, along with a significant risk of developing comorbid disorders (1, 6–10).
50 This can lead to long-term impairment in social participation and substantial secondary costs for
51 society. Therefore, early intervention is essential to prevent mental health issues in adulthood and
52 promote well-being and productivity throughout life. Psychotherapy is a central component of
53 guideline-based treatment of mental and behavioural disorders in childhood and adolescence, and its
54 effectiveness is well documented for numerous mental and behavioural disorders in these age groups
55 (24–32). Nevertheless, even in wealthy Western countries with relatively well-developed public
56 healthcare systems, access to professional mental health services often remains inadequate (33–35).
57 To address this issue, the European Commission Reform Support, in cooperation with UNICEF, has
58 recently launched a Flagship project in four EU member states to initiate reforms to expand access to
59 mental healthcare for children and adolescents (36). To generally improve the provision of
60 psychotherapeutic care for children and adolescents systematic and multimodal evaluations of the
61 provision of psychotherapeutic care are needed but often lacking.

62 This review focusses on data regarding the outpatient psychotherapeutic care in Germany but offers a
63 general discussion of different data sources and aims to provide an example how to evaluate access to
64 psychotherapeutic care. Internationally, the German mental health care system for children and
65 adolescents stands out, as it is largely funded by statutory health insurance (SHI) and offers the
66 highest number of inpatient beds in psychotherapeutic and psychiatric units in Europe (34, 37).
67 However, in the outpatient sector the number of child and adolescent psychotherapists in proportion
68 to the number of children and adolescents is lower and relatively less children and adolescents use
69 mental health care system in Germany than in other European high-resource countries (34, 38). One
70 reason for this is that children and adolescents with mental illnesses are often unable to find care or
71 have to put up with unacceptably long waiting times (39, 40). Since the COVID-19 pandemic, the
72 demand for psychotherapy, especially among children and adolescents, has increased, leading to a
73 further rise in waiting times for psychotherapy. In 2021 and 2022, children and adolescents waited an
74 average of around ten weeks for an initial consultation and around 25 weeks for the start of guideline-
75 based psychotherapy (41–44). Meanwhile, SHI agencies only recorded a small increase in
76 applications for guideline-based psychotherapy of 4–6% during the COVID-19 pandemic (45). This
77 suggests that the supply capacities have already been fully exhausted before the pandemic and
78 therefore, the increase in psychotherapeutic services and applications is only a poor reflection of the
79 increased demand for psychotherapy. It is estimated that in the end only 5–10% of children and
80 adolescents with a confirmed diagnosis of a mental or behavioural disorder receive access to
81 guideline-based psychotherapy (32, 46, 47). “Guideline-based psychotherapy” in the German
82 healthcare system refers to outpatient psychotherapeutic treatment funded by SHI, as regulated in the

83 “Psychotherapy Guideline” (48). It does not include psychotherapeutic consultations and
84 probationary sessions and can only be provided by SHI-accredited psychotherapists and psychiatrists.

85 Current demand planning regulations, which determine the capacity and distribution of SHI-funded
86 outpatient healthcare in Germany, are based solely on the continuation of historical healthcare
87 capacities rather than on empirical analyses of demand and supply (49–51). There is a lack of specific
88 and systematic structures for psychotherapeutic care research in Germany (e.g., a longitudinal,
89 nationwide, state-funded, and multimodal empirical monitoring), which are necessary to accurately
90 assess the demand for mental healthcare and systematically evaluate and improve access to it (52,
91 53).

92 To accurately assess the state of psychotherapeutic care it is necessary to use valid measures for the
93 need and demand for, the service use and provision, and the availability and accessibility of
94 psychotherapeutic care. Therefore, different data sources are needed, such as epidemiological studies,
95 administrative data, and reports of psychotherapist and patients themselves. Epidemiological data can
96 be used to quantify the theoretical need for psychotherapy by estimating the prevalence of mental and
97 behavioural disorders indicating psychotherapy. Administrative data, derived from billing data
98 provided by SHI agencies, offer objective information on the utilisation of psychotherapeutic
99 services over a specific period of time (e.g., profession of the service provider, coded diagnoses,
100 billed services). Psychotherapists can furnish insights into the demand for psychotherapy (e.g.,
101 appointment requests), the need for psychotherapy (e.g., disorder diagnoses, severity of impairment,
102 stress factors in treated patients), and their treatment capacities (e.g., waiting times). Surveys
103 conducted among children, adolescents, or their caregivers can yield data on the self-perceived
104 mental health, demand for psychotherapeutic treatment, and barriers to accessing psychotherapeutic
105 care.

106 This review aims to provide an overview of the general epidemiological findings on mental and
107 behavioural disorders in children and adolescents in Germany, examine the state of outpatient
108 psychotherapeutic care for this population, and critically discuss various methodological approaches
109 used to assess the state of child and adolescent outpatient psychotherapeutic care. Thus, the following
110 research questions are investigated in this paper:

- 111 1. What is the current prevalence of the most common mental and behavioural disorder
112 diagnoses and symptoms in childhood and adolescence in Germany?
- 113 2. What is the state of outpatient psychotherapy regarding need and demand, use and provision,
114 and availability and accessibility of care according to the current database?
- 115 3. Which methods are used to assess the outpatient psychotherapeutic care for children and
116 adolescents in Germany? Which data is particularly suitable for a valid assessment of the
117 outpatient psychotherapeutic care situation of children and adolescents?

118 **2 Methods**

119 **2.1 Literature Research**

120 This review was conducted in accordance with the guidelines proposed by the Preferred Reporting
121 Items for Systematic Reviews and Meta-Analyses extension for Scoping Reviews (PRISMA-ScR)
122 (54). There was no registered protocol. The literature search was conducted in the PubPsych,
123 PubMed, APA PsycInfo, and Google Scholar databases, each consulted last on 25 October 2023.
124 Additionally, we searched in the grey literature database ProQuest on the same day, as administrative
125 data on the mental healthcare system is often not published as empirical studies in scientific journals.

126 The following English search string was used to identify studies that examined the epidemiology of
127 mental and behavioural disorders in children and adolescents or assessed the state of child and
128 adolescent outpatient psychotherapeutic care in Germany: (((“healthcare” OR treatment) AND
129 (mental OR psychotherap* OR psycholog*)) AND ((“health insurance” OR “claims data”) OR
130 (patient*) OR (*therapist* OR “clinical psychologist*” OR “mental health personnel”) OR
131 ((epidemiolog* OR prevalence OR morbidity) AND ((mental OR psycholog* OR psychopath*)
132 AND (health OR disorder* OR status OR illness* OR depress* OR anxi* OR conduct OR internali*
133 OR externali*)))) AND (child* OR adolescent* OR youth) AND (German* OR Baden-
134 W*rttemberg OR Bavaria OR Berlin OR Brandenburg OR Bremen OR Hamburg OR Hesse OR
135 Mecklenburg-Vorpommern OR “Lower Saxony” OR “North Rhine-Westphalia” OR Rhineland-
136 Palatinate OR Saarland OR Saxony-Anhalt OR Saxony OR Schleswig-Holstein OR Thuringia).

137 An equivalent German search string was used: (((Versorgung* OR Behandlung) AND
138 (Psychotherap* OR psycholog*)) AND ((Abrechnung* OR *kasse* OR GKV OR *versicherung*)
139 OR (Patient* OR Betroffene*) OR (*therapeut* OR "KJP" OR Versorger* OR *psycholog*)) OR
140 ((epidemiolog* OR Pr*valenz OR H*ufigkeit*) AND ("psychische Gesundheit" OR "psychische
141 Erkrankung*" OR "psychische St*rung*" OR psychopath* OR psycholog* OR mental* OR
142 Depress* OR \$ngst* OR Verhalten* OR internalisierend* OR externalisierend*)) AND (Kinder*
143 OR Jugendliche*) AND ((Deutschland OR deutsch* OR "BRD" OR Bundesrepublik) OR Baden-
144 W*rttemberg OR Bayern OR Berlin OR Brandenburg OR Bremen OR Hamburg OR Hessen OR
145 Mecklenburg-Vorpommern OR Niedersachsen OR Nordrhein-Westfalen OR Rheinland-Pfalz OR
146 Saarland OR Sachsen-Anhalt OR Sachsen OR Schleswig-Holstein OR Th*ringen).

147 For the search in Google Scholar the first 1,000 search results for the English and German search
148 words were retrieved via “Harzing’s Publish or Perish” tool (55). English search words for Google
149 Scholar were: outpatient, psychotherapy, care, children, adolescents, Germany. The equivalent
150 German search terms were: ambulant, Psychotherapie, Versorgung, Kinder, Jugendliche,
151 Deutschland. If available at the respective databases, we used automatic filters as follows: The search
152 terms named above had to appear in the title and/or abstract of the papers and the papers had to be
153 published between January 2018 and December 2023.

154 We identified additional studies via the ancestry approach by examining reference lists of studies
155 included in this review and of reviews and meta-analyses on the same topic. The first author and a
156 research assistant manually screened the identified studies multiple times based on titles and
157 abstracts. Eligible studies were then textually reviewed, and the results were summarized in tables.
158 The second author confirmed the literature search and inclusion process.

159 Results were filtered further using the following inclusion criteria: The publications should be written
160 in the German or English language. They should include either epidemiological data on the mental
161 health or data on the psychotherapeutic care of children and adolescents in Germany (i.e.,
162 administrative data, reports from psychotherapists or patients on demand, use and accessibility of
163 psychotherapeutic care). They should further present quantitative primary data of community
164 samples of children and adolescents.

165 Publications on data from other countries but Germany, data from only adult populations, clinical
166 samples, or other specific subsamples of children and adolescents (e.g., children and adolescents of
167 parents with mental or behavioural disorders, children and adolescents with migration history) were
168 excluded. Further exclusion criteria comprised publications focusing solely on psychiatric, paediatric,
169 or other medical care, healthcare cost analyses, analyses of care pathways and treatment quality, and

170 studies reporting only on attitudes towards mental healthcare. Research evaluating specific
171 intervention programs and methods was also excluded. Additionally, epidemiological studies on
172 specific symptoms or syndromes not matching an ICD-10 mental or behavioural disorder diagnosis
173 or studies in which prevalence of mental health problems was only a secondary outcome met
174 exclusion criteria. Opinion papers, statements, comments, reviews, and meta-analyses without
175 original primary data were not included. If data was both analysed on the state and federal level, state
176 reports were excluded if their data was included in a federal report (e.g. “DAK Gesundheitsreport”).
177 If multiple publications reported on the same data (e.g., studies published in English and in German),
178 they were regarded as one publication but all versions were cited.

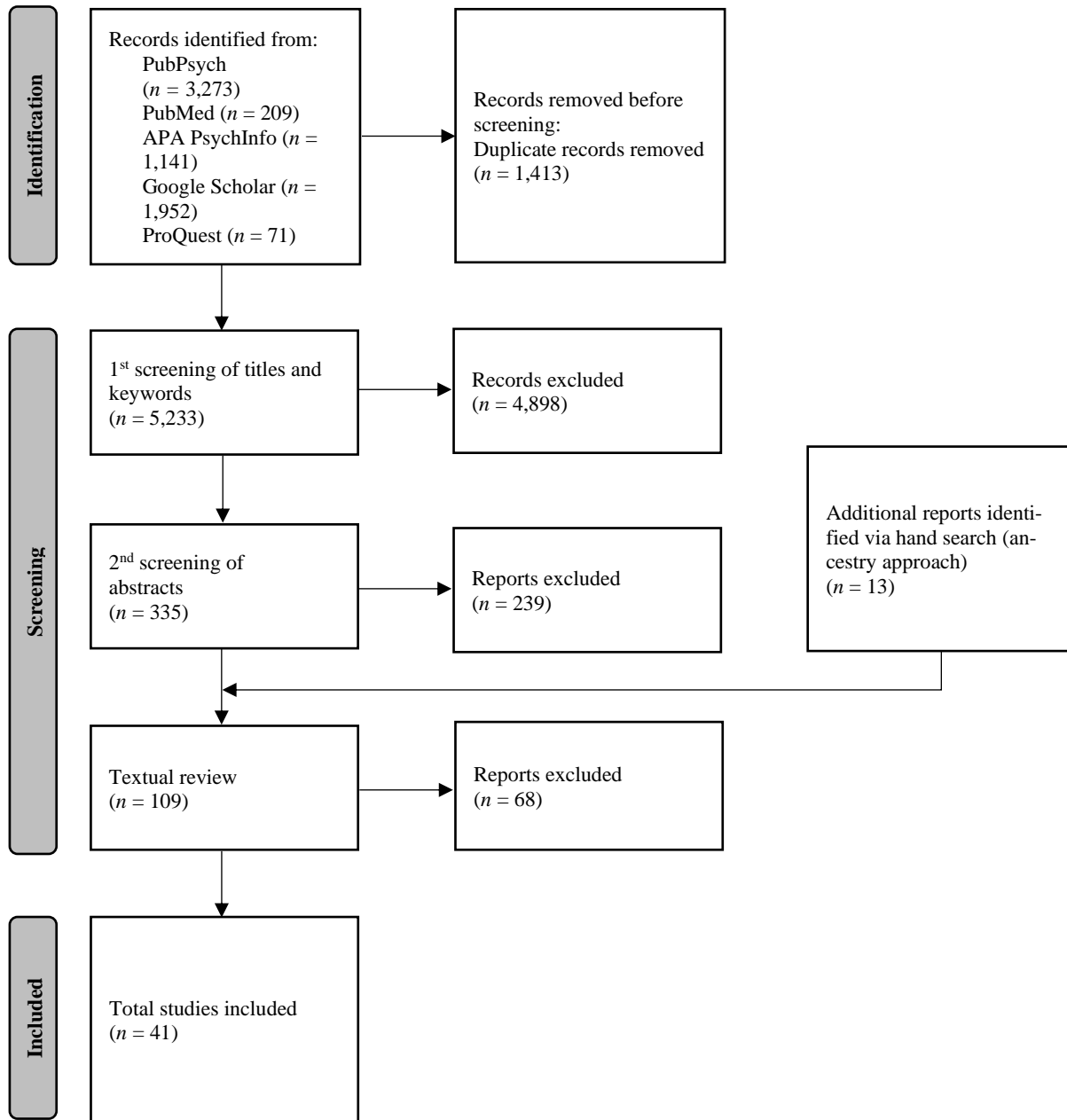
179 The process of study selection is depicted in Figure 1.

180 **2.2 Synthesis of Results**

181 In order to critically examine the suitability and investigated constructs of different methods to assess
182 the state of the outpatient psychotherapeutic care for children and adolescents, the included studies
183 were sorted into four categories according to data source or research focus: epidemiological studies,
184 administrative studies, psychotherapists’ reports, and patients’ reports. The latter could include
185 assessments of the psychotherapeutic care by the potential patients’ themselves (i.e. children and
186 adolescents) or their caregivers. If a study reported on both mental health problems and
187 psychotherapeutic care from the point of view of children, adolescents, and/or caregivers, it was
188 listed in both categories, epidemiological data and patient reports. Epidemiological studies were
189 specifically sought to answer the first research question. All data sources were assessed to answer the
190 second and third research question. If applicable, data on epidemiology of mental and behavioural
191 disorders and on the provision of psychotherapeutic care was summarized separately for each data
192 source. We sorted epidemiological studies by the age of the assessed children and adolescents (< six
193 years, six–12 years, > 12 years) to account for age effects in the prevalence and incidence of mental
194 and behavioural disorder diagnoses and symptoms. As the COVID-19 pandemic led to both a
195 disruption of the healthcare system and an increase of mental distress in children and adolescents,
196 data on the epidemiology of mental and behavioural disorder diagnoses and symptoms and on the
197 provision of mental healthcare from before (i.e., until 2020) and during the COVID-19 pandemic
198 (i.e., from 2020) were analysed separately.

199 **Figure 1**

200 *Process and Results of Literature Research*



201 *Note: Adapted from Page et al., 2021 (113)*

202 3 Results

203 3.1 Overview of Included Studies

204 In total, we included 41 studies, published between April 2018 and November 2023. The included
205 studies were summarized in four tables: Table 1 displays the 18 epidemiological studies. Table 2 de-
206 picts the 15 publications on administrative data. Table 3 includes the seven studies on psychothera-
207 pists' reports and Table 4 summarizes the remaining four studies on patient reports. Three studies
208 were listed in two categories (56–58) because they contained information on both epidemiology and
209 mental healthcare provision from the patients' perspective.

210 3.2 Epidemiological Studies

211 Eighteen epidemiological studies on the prevalence of mental or behavioural disorder diagnoses
212 and/or symptoms in German children and adolescents were identified. Ten of these studies had multi-
213 ple waves of assessment, while eight only had one. Nine studies were last conducted during the
214 COVID-19 pandemic (i.e. between 2020 and 2022) (21, 59–67). The remaining studies were last con-
215 ducted between 2014 and 2018 (56–58, 68–74). Ten papers are based on the KiGGS- (68, 70),
216 BELLA- (56, 57, 67), or COPSY-study (21, 56, 62–67), which are three interconnected study pro-
217 jects. Therefore these studies partially report on the same samples.

218 Three studies cover an age range from one to three until 18 years (59, 60, 70). Only two studies con-
219 centrate on younger children between one and six years (61, 69), while eight studies include older
220 children and adolescents aged seven to 18 years (21, 57, 62–67), and five studies focus only on ado-
221 lescents aged 11 to 17 years (58, 68, 71–74).

222 Only two studies investigate the prevalence of mental or behavioural disorder diagnoses (56, 58),
223 while the rest of the studies investigate a multitude of symptoms of mental or behavioural disorders.
224 One study used in-person structured clinical interviews (58), two studies used standardised telephone
225 interviews (71, 72, 74), and the remaining 15 studies used standardised online or paper-pencil ques-
226 tionnaires to assess symptoms of mental and behavioural disorders. Twelve studies used children's or
227 adolescents' self-report (21, 56, 58, 62–68, 71–74), whereas 14 studies used caregiver-reports (21,
228 56, 57, 59–70).

229 The detailed prevalence data for the different age groups is presented in Table 5. The data suggests a
230 sharp increase in a variety mental health problems and symptoms of mental and behavioural disor-
231 ders in the first year of the COVID-19 pandemic, followed by a decrease in prevalence after 2020
232 (21, 62–67). The latest studies from 2020–2022 suggest that every third to every fourth German child
233 and adolescent suffers from clinically relevant mental health problems (21, 56, 57, 61–67). However,
234 the high variance in methodology, included age groups, and researched outcomes between studies, as
235 well as small numbers of studies investigating the same symptom complex or disorder, do not allow
236 for further conclusions.

237 3.3 Administrative Data

238 We found 15 publications reporting on administrative data on the prevalence and incidence of mental
239 and behavioural disorder diagnoses in children and adolescents in routine practice and on the use of
240 SHI-funded mental healthcare in Germany. Most of these publications reported on broad age ranges
241 from zero to 19 years. Many included data collected over a span of multiple years, five using data

242 from 2009 until 2019 (46, 52, 75–77), three using data from until 2022 (78–80), and the remaining
243 seven being conducted between 2015 and 2020 (47, 52, 81–85).

244 Eight of these reports were provided by individual German SHI agencies (DAK, BARMER, AOK),
245 with six belonging to the “DAK Gesundheitsreport” series (47, 77–79, 81–84). Five more studies
246 were conducted in association with the German Central Institute for SHI Physicians (46, 52, 75, 80,
247 86). One study used data from the German Pharmaco-Epidemiological Research Database which
248 combines billing data of four SHI agencies (76). One study analysed records from psychotherapist
249 practices in Germany (85).

250 **3.3.1 Prevalence and Incidence Rates of Mental and Behavioural Disorder Diagnoses**

251 Ten publications report on prevalence or incidence rates of mental or behavioural disorders according
252 to SHI billing data. Most of these papers define a case of a mental or behavioural disorder as the
253 presence of an ICD-10 F-diagnosis (F0–F99), which was at least once coded in the billing data by a
254 practitioner (e.g., paediatrician, psychotherapist, psychiatrist) for a patient in a respective time. The
255 studies consistently report that 26–28% of children were diagnosed with a mental or behavioural dis-
256 order both before and during the COVID-19 pandemic (47, 79, 81–83). Around half of these diagno-
257 ses are developmental disorders (ICD-10 F8), one third are behavioural and emotional disorders with
258 onset in childhood and adolescence (ICD-10 F9), 10% are anxiety, dissociative, stress-related, soma-
259 toform, and other nonpsychotic mental disorders (ICD-10 F4), and 2% mood disorders (ICD-10 F3)
260 (46, 47, 81–83). The prevalence and incidence of specific ICD-10 diagnoses before and during the
261 COVID-19 pandemic are displayed in Table 6.

262 The publications indicate a small but steady increase of mental and behavioural disorder diagnoses
263 before the COVID-19 pandemic, which was followed by a general decrease in use of healthcare ser-
264 vices and incidence numbers of most mental and behavioural disorders during the pandemic (78, 79,
265 81). However, while the incidence of behavioural disorders seemed to stay constant or decrease, mul-
266 tiple papers report a disproportionate increase in incidence numbers of depressive, anxiety, and eating
267 disorders among female adolescents during the pandemic (78–80).

268 Over the lifespan, data conclusively shows a linear increase in prevalence of mental or behavioural
269 disorders until age five, followed by a steady linear decrease in prevalence (46, 47, 82). While male
270 children and adolescents are more often diagnosed with a mental or behavioural disorder than female
271 children and adolescents until age 15, from age 15 more female than male adolescents are diagnosed
272 (46, 47, 80, 82–84). In childhood, mental and behavioural disorder diagnoses are dominated by de-
273 velopmental and behavioural disorders (ICD-10 F8 & F9); in adolescence the most prevalent disor-
274 ders are mood and anxiety disorders (ICD-10 F3 & F4) (53, 58, 59, 61–63). Specifically, the highest
275 prevalence rates of developmental and behavioural disorders (ICD-10 F8 & F9) are found in male
276 children, whereas prevalence rates of substance use, anxiety, eating, and personality disorders (ICD-
277 10 F1, F3, F4, F5 & F6) are highest among female adolescents (46, 47, 80, 82–84).

278 **3.3.2 Use and Provision of Statutory Health Insurance Funded Mental Healthcare**

279 Twelve publications provide data on access and use of SHI-funded outpatient mental healthcare (i.e.,
280 any medical or psychological treatment of a mental or behavioural disorder provided by a physician,
281 psychologist, or psychotherapist), some of them also more specifically on psychotherapeutic care.
282 However, the papers differ greatly in their definitions of psychotherapeutic services/psychotherapeu-
283 tic care, which leads to variance in the provided data.

284 Nonetheless, the data conclusively shows that there is a general increase in the use of psychothera-
285 peutic care from age five: While less than 1% of under 5-year-olds are in psychotherapeutic care,
286 around 6% of 5–9-year-olds and 11% of 10–19-year-olds receive psychotherapeutic treatment (52,
287 77, 82, 84, 86). Consistent with gender differences in prevalence of mental and behavioural disor-
288 ders, more male than female children use psychotherapeutic care in late childhood, whereas more fe-
289 male than male adolescents use receive psychotherapeutic care in adolescence (46, 77, 82, 84).

290 In the years shortly before the COVID-19 pandemic (i.e. 2017–2019) the publications indicate that
291 between 5 to 7% of all children and adolescents used outpatient mental healthcare services in the
292 broader sense (i.e., psychotherapeutic/psychiatric consultations, medical coordination, verbal inter-
293 ventions, functional developmental therapy, probationary sessions, guideline-based psychotherapy
294 provided by a paediatrician, psychiatrist, medical, psychological, or child and adolescent psychother-
295 apist) (82, 86). 0.2–2% of all children and adolescents were reported to receive psychotherapeutic
296 care in the narrower sense in a year (i.e., guideline-based psychotherapy provided by a medical, psy-
297 chological, or child and adolescent psychotherapist) (52, 77, 84). Over a span of ten years, 10% of all
298 children and adolescents were recorded to have accessed guideline-based psychotherapy (46, 77). Of
299 those children and adolescents who were newly diagnosed with a mental or behavioural disorder,
300 nearly half received only initial consultations and no further treatment, and only one in ten of those
301 children and adolescents received guideline-based psychotherapy (46, 84).

302 Data further reveals that 97% of children and adolescents with a mental or behavioural disorder
303 sought treatment from a general practitioner or a paediatrician, while only half sought treatment from
304 a psychiatrist or psychotherapist (46). However, the prevalence of cases treated by psychotherapists
305 increased over the years before the COVID-19 pandemic (84). Most patients receiving psychothera-
306 peutic care in the broader sense were treated by a psychiatrist, whereas the most frequent providers of
307 guideline-based psychotherapy were child and adolescent psychotherapists (52, 86).

308 Information on waiting times between the initial consultation and the start of guideline-based psycho-
309 therapy is scarce in the included publications but indicates that half of patients got initially diagnosed
310 and started guideline psychotherapy in the same quarter of the year, while on average patients had to
311 wait 22 weeks between the initial consultation and the start of guideline-based psychotherapy (77,
312 85).

313 Diagnoses most frequently treated in psychotherapeutic outpatient care included anxiety, compulsive
314 and stress-related disorders (ICD-10 F40, F41, F42 & F43), depressive disorders (ICD-10 F32 &
315 F33), hyperkinetic disorders (ICD-10 F90), and emotional disorders with onset in childhood (ICD-10
316 F93) (52, 77, 82, 86). However, there is strong variance in the reported proportions of these diagno-
317 ses in outpatient psychotherapeutic care between different publications.

318 During the COVID-19 pandemic, the reports recorded a general decrease in use of healthcare ser-
319 vices, including visits to paediatricians, psychiatrists, and psychotherapists, particularly during the
320 first lockdown in spring 2020 (79, 82, 83). Consequently, administrative incidence rates of most
321 mental and behavioural diagnoses initially dropped. After the first lockdown the amount of contacts
322 surpassed the pre-pandemic level (83). Two years into the pandemic, data shows that significantly
323 less younger children and significantly more adolescents receive outpatient psychotherapeutic care
324 than before the pandemic (78).

325

326 **3.4 Psychotherapists' Reports**

327 Seven studies assessed the state of psychotherapeutic care for children and adolescents, particularly
328 waiting times and provided services, from the perspective of psychotherapists. Two of these studies
329 were conducted in 2017 to 2018 during the introduction of the obligatory initial psychotherapeutic
330 consultation. The rest of the studies were conducted between 2020 and 2022.

331 It was shown that the introduction of the obligatory initial consultation in 2017 led to an increase in
332 patients accessing care, however, at the same time also to an increase of waiting time for guideline-
333 based psychotherapy (40, 87). During the pandemic, psychotherapists consistently reported a grow-
334 ing demand and need for psychotherapy due to pandemic-related increases in mental disorders and
335 deterioration of existing mental health problems (44, 88–91).

336 The studies concordantly report that psychotherapists received five to six requests for an initial ap-
337 pointment per week, of which only one third could be offered an appointment during the pandemic
338 (41, 42, 44, 87, 92). Waiting times for an initial psychotherapeutic consultation seem to have in-
339 creased from approximately five to six weeks before the pandemic to six to ten weeks during the pan-
340 demic (40–42, 44, 87, 92). After the initial consultation, patients had to wait another four months be-
341 fore the pandemic and three to seven months during the pandemic to start guideline-based psycho-
342 therapy (40–42, 44, 87, 92). Roughly every second child or adolescent had to wait over a month for a
343 consultation after receiving an appointment and more than six months for the start of guideline-based
344 psychotherapy during the pandemic (41, 42). However, multiple studies found high variance in wait-
345 ing times between individual practices and between regions (40–42, 87). Furthermore, psychothera-
346 pists stated that they found it very difficult or even impossible to refer patients to other therapists be-
347 fore and during the pandemic (40, 92).

348 **3.5 Patients' Reports**

349 Four included studies investigated the provision psychotherapeutic care for children and adolescents
350 from the perspective of the patients' or their families themselves. Three of these studies were con-
351 ducted between 2014 to 2017 before the introduction of the obligatory initial psychotherapeutic con-
352 sultation, while one study was conducted during the COVID-19 pandemic in 2021 and 2022.

353 The studies show that approximately 7% of the general population children and adolescents reported
354 using mental healthcare in the broader sense (i.e., at least one consultation at a psychiatrist, psycho-
355 therapist or psychologist) before the pandemic (57). In a sample of children and adolescents with a
356 diagnosed mental or behavioural disorder, about two thirds to three quarters of those children and ad-
357 olescents were reported to received such care (56). During the COVID-19 pandemic, circa 17% of
358 caregivers stated that their child was in need of mental healthcare, while this need was not or only
359 partially met in the majority of cases (93). Reasons for the discrepancy between the perceived and
360 actual need for psychotherapeutic treatment and the care received include a lack of awareness about
361 mental healthcare services, treatment by other professionals, fear of stigma, and other factors. Socio-
362 economic status, the severity of mental health problems and related impairment, the specific diagno-
363 sis and comorbidities, and gender moderated the likelihood of seeking help for mental health prob-
364 lems (57, 58, 93).

No.	Authors	Association	Type of Article	Method/Design	Time of Assessment	Region	Age Range in Years	Informants	N	Format	Researched Constructs	Main Findings
1.	Cohrdes et al. (2019) (68)	KiGGS study (part of Robert-Koch-Institute (RKI) health monitoring)	empirical study, epidemiological research	descriptive and observational cross-sectional	<ul style="list-style-type: none"> 2003–2006 (KiGGS T1) 2014–2017 (KiGGS T2) 	Germany	11–17	children's and adolescents' self-report	<ul style="list-style-type: none"> 6,633 at T1 6,599 at T2 	survey with standardised questionnaire	prevalence of eating disorder symptoms via SCOFF	<ul style="list-style-type: none"> 19.8% of children and adolescents reported eating disorder symptoms over clinical cut-off in Wave 2 decrease of prevalence from T1 to T2 of 2.8 % (particularly for 11–13-year-old boys) children and adolescents with emotional problems, low family cohesion, low self-efficacy, or who perceive themselves as too thick or thin, show an increased risk for eating disorder symptoms
2.	Ehrenberg et al. (2022) (69)	n.a.	empirical study, epidemiological research	descriptive and observational cross-sectional	<ul style="list-style-type: none"> 2013–2016 06–10/2018 	Germany	2–6	caregivers' other-report	<ul style="list-style-type: none"> 489 caregivers of children raised in their biological families 88 caregivers of children raised in foster care (high risk sample) 	survey with standardised questionnaire	prevalence and structure of anxiety symptoms via PAS	<ul style="list-style-type: none"> 10% of children were reported to have overall elevated scores of anxiety prevalence of elevated scores in children raised in their biological families: <ul style="list-style-type: none"> 10% generalized anxiety disorder symptoms 12% social anxiety symptoms 12% obsessive compulsive disorder (OCD) symptoms 5% symptoms of physical injury fears 10% separation anxiety disorder symptoms no significant differences in reported elevated anxiety symptoms between children raised in their biological families and in foster families significantly more children in foster care had OCD scores that warrant further investigation than children raised in their biological families (26% vs. 14%)
3.	Geweniger, Barth et al. (2022) (59)	n.a.	empirical study, epidemiological research	descriptive and observational cross-sectional	08–10/2020 (following first COVID-19 related lockdown)	Germany	1–18	caregivers' other-report	<ul style="list-style-type: none"> 948 caregivers of children without special health-care needs 671 caregivers of children with special health-care needs 	survey with standardised questionnaire	prevalence of mental health problems via SDQ	<ul style="list-style-type: none"> 57.4% of children and adolescents were reported to have mental health problems over the clinical cut-off of slightly raised to high scores (47.2% of healthy children, 65.3% of children and adolescents with chronic diseases, 74.7% of children and adolescents with complex chronic diseases) children and adolescents with special healthcare needs, with low socioeconomic status, and parental mental health problems are reported to have a higher prevalence of mental health problems

No.	Authors	Association	Type of Article	Method/ Design	Time of Assessment	Region	Age Range in Years	Informants	N	Format	Researched Constructs	Main Findings
4.	Geweniger, Haddad et al. (2022) (60)	n.a.	empirical study, epidemiological research	descriptive and observational cross-sectional	04–07/2021 (1.5 years into the COVID-19 pandemic)	Germany	1–18	caregivers' other-report	<ul style="list-style-type: none"> • 225 caregivers of children without special health-care needs • 293 caregivers of children with special health-care needs 	survey with standardised questionnaire	prevalence of mental health problems via SDQ	<ul style="list-style-type: none"> • 55.7% of healthy children and adolescents were reported to have slightly raised or high scores of mental health problems • 77.6% of children and adolescents with special health-care needs were reported to have slightly raised or high scores of mental health problems • children and adolescents with special healthcare needs, with low socioeconomic status, and parental mental health problems are reported to have a higher prevalence of mental health problems
5.	Klipker et al. (2018) (70)	KiGGS study (part of Robert-Koch-Institute (RKI) health monitoring)	empirical study, epidemiological research	descriptive and observational cross-sectional	<ul style="list-style-type: none"> • 2003–2006 (KiGGS T1) • 2014–2017 (KiGGS T2) 	Germany	3–17	caregivers' other-report	<ul style="list-style-type: none"> • 14,477 at T1 • 13,205 at T2 	survey with standardised questionnaire	prevalence of mental health problems via SDQ	<ul style="list-style-type: none"> • 16.9% of children and adolescents were reported to have mental health problems over the clinical cut-off at T2 • decrease of prevalence from T1 to T2 of 3% (particularly for 9–17-year-old males) • children and adolescents with low socioeconomic status and female gender were reported to have higher prevalence of mental health problems
6.	Maldei-Gohring et al. (2022) (61)	n.a.	empirical study, epidemiological research	descriptive and observational cross-sectional	<ul style="list-style-type: none"> • 05–06/2020 (T1) • 02–03/2021 (T2) 	Germany, Rhineland-Palatinate	1–6	caregivers' other-report	<ul style="list-style-type: none"> • 100 at T1 • 204 at T2 	survey with standardised questionnaire	prevalence and incidence of mental health problems (emotional problems, behavioural problems, hyperactivity) via SDQ (only at T2)	<p>results for T2:</p> <ul style="list-style-type: none"> • 35.3% of children were reported to have clinically relevant mental health problems over the clinical cut-off • 17.2% of children were reported to have clinically relevant scores in emotional problems over the clinical cut-off • 31.6% of children were reported to have clinically relevant scores in behavioural problems over the clinical cut-off • 30.9% of children were reported to have clinically relevant scores in hyperactivity over the clinical cut-off • mental problems of 17.2% of all children persisted over a year • mental problems of 39.2% first developed within a year • 43.1% were reported to have no mental health problems • ability to cope with stress and tension in the family at T1 predicted mental health at T2
7.	Niermann et al. (2021) (58)	n.a.	empirical study, epidemiological research	descriptive cross-sectional	2015	Germany, Saxony	14–21	adolescents' self-report	1,180 (635 14–17-year-olds)	standardised clinical interview	prevalence for DSM-5 anxiety disorders and life-time service utilisation rates via DIA-X-5/CIDI	<p>results for 14–17-year-old age group:</p> <ul style="list-style-type: none"> • life time prevalence of any anxiety disorder: 18.6% • 12-months-prevalence of any anxiety disorder: 13.1% <p><i>data on mental healthcare utilisation can be found in Table 4 "Patient Reports"</i></p>

No.	Authors	Association	Type of Article	Method/ Design	Time of Assessment	Region	Age Range in Years	Informants	N	Format	Researched Constructs	Main Findings
8.	Otto et al. (2021) (56)	BELLA study (mental health module of KiGGS study, part of part of Robert-Koch-Institute (RKI) health monitoring)	empirical study	descriptive and observational cross-sequential cohort	<ul style="list-style-type: none"> T0: 2003–2006 T1: 6-year follow-up in 2009–2012 T2: 11-year follow-up in 2014–2017 	Germany	7–31	<ul style="list-style-type: none"> children's, adolescents', and adults' self-report for age 11 and up caregivers' other-report for 7–13-year-olds 	3,492, thereof 1,580 7–17-year-olds	survey with standardised questionnaires	<ul style="list-style-type: none"> recent diagnosis of mental or behavioural disorder general health via GHI health-related quality of life via KIDS-Cat, SF-12, SF-36, and KID-SCREEN-27 subjective well-being via PROMIS symptoms of mental health problem via SDQ depression symptoms via CES-DC and PROMIS Depression Short Forms 	<p>longitudinal results:</p> <ul style="list-style-type: none"> mental health problems in childhood and adolescence predicted impaired health outcomes at 6-year and 11-year follow-ups <p>results for age 7–13 years at T2:</p> <ul style="list-style-type: none"> 12.7% of parents reported that their child had ever been diagnosed with a mental or behavioural disorder 8.3% of parents reported that their child was recently diagnosed mental or behavioural disorder <p>results for age 14 and older at T2:</p> <ul style="list-style-type: none"> 14.2% of participants reported ever being diagnosed with a mental or behavioural disorder 7.0% of participants aged 14 years or older reported a recently diagnosed mental or behavioural disorder <p><i>data on mental healthcare utilisation can be found in Table 4 "Patient Reports"</i></p>
9.	Ravens-Sieberer, Kaman, Erhart, Devine et al. (2021) (63), Ravens-Sieberer, Kaman, Otto et al. (2021) (62)	COPSY-study, BELLA-study	empirical study, epidemiological research	descriptive and observational cross-sequential	<ul style="list-style-type: none"> 2017 (BELLA-study; T0) 05–06/2020 (T1) 	Germany	7–17	<ul style="list-style-type: none"> children's and adolescents' self-report (11–17 years) caregivers' other-report 	T1: <ul style="list-style-type: none"> 1,586 parents 1,040 children and adolescents (11–17 years) 	survey with standardised questionnaires	<p>prevalence of:</p> <ul style="list-style-type: none"> health-related quality of life via KID-SCREEN-10-Index mental health problems via SDQ generalised anxiety via SCARED depressive symptoms via CES-DC and PHQ-2 psychosomatic complaints via HBSC-SCL 	<p>results for T1:</p> <ul style="list-style-type: none"> 40.2% of children report low health-related quality of life 30.4% of children and adolescents report mental health problems 24.1% of children and adolescents report symptoms of generalised anxiety 11.3% (PHQ-2)/18.0% (CES-DC) of children and adolescents report symptoms of depression 48.4% of children and adolescents experience at least three psychosomatic complaints in a week significant increase in low health-related quality of life, mental health problems, and anxiety from T0 to T1 children and adolescents with low socioeconomic status, migration background and limited living space were at higher risk for poor health-related quality of life and mental health problems

No.	Authors	Association	Type of Article	Method/ Design	Time of Assessment	Region	Age Range in Years	Informants	N	Format	Researched Constructs	Main Findings
10.	Ravens-Sieberer, Kaman, Erhart, Otto et al. (2021) (64)	COPSY-study, BELLA-study	empirical study, epidemiological research	descriptive and observational cross-sequential	<ul style="list-style-type: none"> 2017 (BELLA-study; T0) 05–06/2020 (T1) 12/2020–01/2021 (T2) 	Germany	7–17	<ul style="list-style-type: none"> children's and adolescents' self-report (11–17 years) caregivers' other-report 	T2: <ul style="list-style-type: none"> 1,625 parents 1,077 children and adolescents (11–17 years) 	survey with standardised questionnaires	prevalence of: <ul style="list-style-type: none"> health-related quality of life via KID-SCREEN-10-Index mental health problems via SDQ generalised anxiety via SCARED depressive symptoms via CES-DC and PHQ-2 psychosomatic complaints via HBSC-SCL 	results for T2: <ul style="list-style-type: none"> 47.7% of children report low health-related quality of life 30.9% children and adolescents report mental health problems 30.1% of children and adolescents report symptoms of generalised anxiety 15.1% (PHQ-2) / 24.3% (CES-DC) of children and adolescents report symptoms of depression 53.0% of children and adolescents experience at least three psychosomatic complaints in a week socially disadvantaged children and children of mentally burdened parents were at particular risk of impaired mental health female gender, older age, positive family climate, social support were associated with fewer mental health problems
11.	Ravens-Sieberer et al. (2022) (65)	COPSY-study, BELLA-study	empirical study, epidemiological research	descriptive and observational cross-sequential	<ul style="list-style-type: none"> 2017 (BELLA-study; T0) 05–06/2020 (T1) 12/2020–01/2021 (T2) 09–10/2021 (T3) 	Germany	7–17	<ul style="list-style-type: none"> children's and adolescents' self-report (11–17 years) caregivers' other-report 	T3: <ul style="list-style-type: none"> 1,618 parents 1,139 children and adolescents (11–17 years) 	survey with standardised questionnaires	prevalence of: <ul style="list-style-type: none"> health-related quality of life via KID-SCREEN-10-Index mental health problems via SDQ generalised anxiety via SCARED depressive symptoms via CES-DC and PHQ-2 psychosomatic complaints via HBSC-SCL 	results for T3: <ul style="list-style-type: none"> 35.5% of children report low health-related quality of life 28.0% children and adolescents report mental health problems 26.2% of children and adolescents report symptoms of generalised anxiety 11.4% (PHQ-2) / 19.7% (CES-DC) of children and adolescents report symptoms of depression 54.6% of children and adolescents experience at least three psychosomatic complaints in a week children and adolescents with low parental education, restricted living conditions, migration background, and parental mental health problems were at higher risk for poor health-related quality of life and mental health problems

No.	Authors	Association	Type of Article	Method/ Design	Time of Assessment	Region	Age Range in Years	Informants	N	Format	Researched Constructs	Main Findings
12.	Kaman et al. (2023) (66)	COPSY-study, BELLA-study	empirical study, epidemiological research	descriptive and observational cross-sectional	<ul style="list-style-type: none"> • 2017 (BELLA-study; T0) • 05–06/2020 (T1) • 12/2020–01/2021 (T2) • 09–10/2021 (T3) • 02/2022 (T4) 	Germany	7–17	<ul style="list-style-type: none"> • children's and adolescents' self-report (11–17 years) • caregivers' other-report 	T4: <ul style="list-style-type: none"> • 1,668 parents • 1,119 children and adolescents (11–17 years) 	survey with standardised questionnaires	prevalence of: <ul style="list-style-type: none"> • health-related quality of life via KID-SCREEN-10-Index • mental health problems via SDQ • generalised anxiety via SCARED • depressive symptoms via CES-DC and PHQ-2 • psychosomatic complaints via HBSC-SCL 	results for T4: <ul style="list-style-type: none"> • 41.0% of children report low health-related quality of life • 28.5% children and adolescents report mental health problems • 27.8% of children and adolescents report symptoms of generalised anxiety • 12.8% (PHQ-2) / 21.3% (CES-DC) of children and adolescents report symptoms of depression • 58.4% of children and adolescents experience at least three psychosomatic complaints in a week • cluster of positive family atmosphere, strong personal resources, and social support reduced risk for poor health-related quality of life and mental health problems
13.	Ravens-Sieberer et al. (2023) (21)	COPSY-study, BELLA-study	empirical study, epidemiological research	descriptive and observational cross-sectional	<ul style="list-style-type: none"> • 05–06/2020 (Wave 1) • 12/2020–01/2021 (Wave 2) • 09–10/2021 (Wave 3) • 02/2022 (Wave 4) • 09–10/2022 (Wave 5) • compared to 2017 (BELLA-study) 	Germany	7–17	<ul style="list-style-type: none"> • children's and adolescents' self-report (11–17 years) • caregivers' other-report 	T5: <ul style="list-style-type: none"> • 1,701 parents • 1,085 children and adolescents 	survey with standardised questionnaires	prevalence of: <ul style="list-style-type: none"> • health-related quality of life via KID-SCREEN-10-Index • mental health problems via SDQ • generalised anxiety via SCARED • depressive symptoms via CES-DC and PHQ-2 • psychosomatic complaints via HBSC-SCL 	results for T5: <ul style="list-style-type: none"> • 27.0% of children report low health-related quality of life • 22.6% children and adolescents report mental health problems • 24.8% of children and adolescents report symptoms of generalised anxiety • 8.6% (PHQ-2) / 14.2% (CES-DC) of children and adolescents report symptoms of depression • 44.3–54.7% of children and adolescents report psychosomatic symptoms (sleeping problems, stomach-ache, irritability, head-ache) • 32–44% of children and adolescents expressed fears related to other current crises (e.g., energy crisis war in Ukraine, climate change)
14.	Reiß et al. (2021) (57)	BELLA study (mental health module of KiGGS study, part of Robert-Koch-Institute (RKI) health monitoring)	empirical study	descriptive and observational cross-sectional	<ul style="list-style-type: none"> • 2014–2017 	Germany	7–17	<ul style="list-style-type: none"> • caregivers' other-report 	1,580	survey with standardised questionnaires	<ul style="list-style-type: none"> • symptoms of mental health problem via SDQ • impairment due to mental health problems via SDQ-Impact 	<ul style="list-style-type: none"> • 9.7% of children and adolescents were reported to have symptoms of mental health problems over the clinical cut-off • 23.9% of children and adolescents were reported to have impairments due to mental health problems <p><i>data on mental healthcare utilisation can be found in Table 4 "Patient Reports"</i></p>

No.	Authors	Association	Type of Article	Method/Design	Time of Assessment	Region	Age Range in Years	Informants	N	Format	Researched Constructs	Main Findings
15.	Reiß et al. (2023) (67)	BELLA-study, COPSYS-study, HBSC-study	overview article over BELLA-, COPSYS-, and HBSC-study, epidemiological research	descriptive and observational cross-sectional	<ul style="list-style-type: none"> BELLA-study: 2003–2017 (five waves) COPSYS-study: 05/2020–10/2022 (five waves) HBSC-study: 2002–2018 	BELLA- and COPSYS-study: Germany HBSC: 51 countries including Germany	7–17	<ul style="list-style-type: none"> children's and adolescents' self-report (11–17 years) caregivers' other-report 	<ul style="list-style-type: none"> BELLA-study: 1,500–3,000 COPSYS-study: 1,600–1,700 HBSC-study: 4,300–7,300 	surveys with standardised questionnaires	prevalence of: <ul style="list-style-type: none"> health-related quality of life via KID-SCREEN-10-Index life satisfaction via Cantril Ladder mental health problems via SDQ generalised anxiety via SCARED depressive symptoms via CES-DC and PHQ-2 psychosomatic complaints via HBSC-SCL 	prevalence of reported mental health problems: <ul style="list-style-type: none"> 2003–2006: 22% 2009–2012: 17.2% 2014–2017: 18% 2020: 30% 2021–spring 2022: 27–29% autumn 2022: 23% prevalence of reported anxiety symptoms: <ul style="list-style-type: none"> 2003–2006: 10% 2009–2012: 15% 2014–2017: 15% 2020: 30% 2021–spring 2022: 27–28% autumn 2022: 25% prevalence of reported depressive symptoms (CES-DC): <ul style="list-style-type: none"> 2003–2006: 11% 2009–2012: 16% 2014–2017: 15% 2020: 24% 2021–spring 2022: 20% autumn 2022: 14%
16.	Wartberg et al. (2018a) (71), Wartberg et al. (2018b) (72)	n.a.	empirical study, epidemiological research	descriptive and observational cross-sectional	08–09/2017	Germany	12–17	children's and adolescents' self-report	988	structured clinical telephone interview	prevalence of depressive symptoms via DesTeen	<ul style="list-style-type: none"> 8.2% of children and adolescents reported depressive symptoms over the clinical cut-off risk factors: female sex, older age, poorer scholastic performance, lower interpersonal trust, negative body image, problematic use of social media or computer games, lower family functioning
17.	Wartberg et al. (2019) (73)	n.a.	empirical study, epidemiological research	descriptive and observational cross-sectional	09/2016	Germany	12–25 (12–17 reported here)	children's and adolescents' self-report	1,531	survey with standardised questionnaire	prevalence of problem drinking in the last year via AUDIT-C	<ul style="list-style-type: none"> one-year prevalence of problem drinking (no ICD-10 code given) over the clinical cut-off among adolescents: 5% problem drinking was associated with male gender, higher age, smoking behaviour and depressive symptoms
18.	Wartberg et al. (2020) (74)	n.a.	empirical study, epidemiological research	descriptive and observational cross-sectional	08-09/2017	Germany	12–17	children's and adolescents' self-report	1,001	structured clinical telephone interview	<ul style="list-style-type: none"> symptoms of Internet Gaming Disorder via IGD symptoms of problematic social media use via SMDS depressive symptoms via on DesTeen 	<ul style="list-style-type: none"> one-year prevalence of symptoms of Internet Gaming Disorder (DSM-V/ICD-11 6C51) was 3.5% one-year prevalence of problematic social media use: 2.6% 14.3% of the adolescents with Internet Gaming Disorder, 34.6% with problematic social media use, and 7.4% of the non-affected participants reported clinically relevant depressive symptoms

367 *Note:* This table summarises the main characteristics and findings of German epidemiological studies on mental and behavioural disorders in
368 childhood and adolescence. The publications are sorted alphabetically based on the first author's last name and associated project. The table

369 does not provide a complete record of all studied variables and reported findings but concentrates on data on epidemiological data on mental
370 and behavioural disorders in childhood and adolescence. If not specified otherwise, the depicted results include only findings concerning
371 children and adolescents.
372

No.	Authors	Association	Type of Article	Method/ Design	Time of Assessment	Region	Population	N	Researched Constructs	Main Findings
1.	Greiner et al. (2018) (47)	SHI agency DAK: "DAK Kinder- und Jugendreport 2018"	SHI report	descriptive cross-sectional analysis of SHI billing data	2016	Germany	children and adolescents (0–17 years) insured with DAK	600,000	administrative prevalence of mental and behavioural disorder diagnoses (i.e., ICD-10 F00–F99) in children (0–14 years) and adolescents (15–17 years)	<ul style="list-style-type: none"> • general prevalence of mental and behavioural disorder diagnoses in 2016: 25.9% <ul style="list-style-type: none"> ○ linear increase in diagnostic prevalence until age five, then steady linear decrease in diagnostic prevalence ○ highest prevalence at age of five years (47.6% males, 34.4% females) ○ until age 15 years more males are diagnosed with a mental or behavioural disorder, from age 15 more females than males are diagnosed • prevalence of most commonly diagnosed mental and behavioural disorder groups among all children and adolescents in 2016: <ul style="list-style-type: none"> ○ ICD-10 F8: 14.83% (highest prevalence in male children: 20.63%) ○ ICD-10 F9: 10.5% (highest prevalence in male children: 14.03%) ○ ICD-10 F4: 5.28% (highest prevalence in female adolescents: 10.78%) ○ ICD-10 F6: 1.29% (highest prevalence female adolescents: 1.77%) ○ ICD-10 F5: 1.24% (highest prevalence in female adolescents: 2.11%) ○ ICD-10 F3: 1.08% (highest prevalence in female adolescents: 4.46%) ○ ICD-10 F7: 0.63% (highest prevalence in male adolescents: 0.87%) ○ ICD-10 F1: 0.31% (highest prevalence in female adolescents: 1.37%) • prevalence of most commonly diagnosed specific mental and behavioural disorders among all children and adolescents in 2016: <ul style="list-style-type: none"> ○ ICD-10 F80: 9.52% (more pronounced in males: 11.4%) ○ ICD-10 F90: 4.05% (more pronounced in males: 5.93%) ○ ICD-10 F98: 3.71% (more pronounced in males: 4.67%) ○ ICD-10 F82: 3.49% (more pronounced in males: 4.54%) ○ ICD-10 F93: 2.68% (more pronounced in males: 3.8%)

2.	Greiner et al. (2019) (82)	SHI agency DAK: "DAK Kinder- und Jugendreport 2019"	SHI report	descriptive cross-sectional analysis of SHI billing data	2016–2017	Germany	children and adolescents (0–17 years) insured with DAK	800,000	<ul style="list-style-type: none"> • administrative prevalence of mental and behavioural disorder diagnoses (i.e., ICD-10 F00–F99) in children and adolescents • provision of psychotherapeutic care for mental and behavioural disorders in children and adolescents outpatient psychotherapeutic care (i.e., appointment at a psychiatrist (specialist group 47, 58, 59, 60), medical psychotherapist (specialist group 61), PP (specialist group 68), or CAP (specialist group 69)) • risk factors for mental and behavioural disorders 	<ul style="list-style-type: none"> • general prevalence of mental and behavioural disorder diagnoses in 2017: 26.7% <ul style="list-style-type: none"> ○ linear increase in diagnostic prevalence until age five, then steady linear decrease in diagnostic prevalence ○ highest prevalence at age of five years (47.6% males, 34.4% females) ○ until age 15 more males are diagnosed with a mental or behavioural disorder, from age 15 more females than males are diagnosed • 8% of children and adolescents were diagnosed with a potentially chronic mental or behavioural disorder (i.e., depression, ADHD, anorexia nervosa, bulimia nervosa, Borderline personality disorder, schizophrenic psychosis, school anxiety, Tourette-syndrome, OCD) • 1.4% of children and adolescents were diagnosed with both a physical and a mental chronic disorder • prevalence of most commonly diagnosed mental and behavioural disorder groups among all children and adolescents in 2017: <ul style="list-style-type: none"> ○ ICD-10 F8: 15.78% (higher prevalence in males: 19.0%) ○ ICD-10 F9: 11.15% (higher prevalence in males: 13.6%) ○ ICD-10 F4: 6.03% (higher prevalence in females: 6.72%) ○ ICD-10 F5: 1.38% (higher prevalence in females: 1.49%) ○ ICD-10 F6: 1.28% (higher prevalence in males: 1.35%) ○ ICD-10 F3: 1.28% (higher prevalence in females: 1.62%) ○ ICD-10 F7: 0.65% (higher prevalence in males: 0.87%) ○ ICD-10 F1: 0.38% (higher prevalence in females: 0.41%) • prevalence of most commonly diagnosed mental and behavioural disorders among all children and adolescents in 2017: <ul style="list-style-type: none"> ○ ICD-10 F80: 9.58% ○ ICD-10 F98: 3.96% ○ ICD-10 F90: 3.88% ○ ICD-10 F82: 3.70% ○ ICD-10 F93: 2.84% • prevalence of ICD-10 F3 and F4-diagnoses in school-aged children and adolescents (5–17 years): <ul style="list-style-type: none"> ○ ICD-10 F32: 1.34% ○ ICD-10 F33: 0.15% ○ ICD-10 F43: 3.47% ○ ICD-10 F45: 2.64% ○ ICD-10 F41: 1.29% ○ ICD-10 F40: 0.67% ○ ICD-10 F42: 0.24% ○ in total: 1.5% depression (highest prevalence in female adolescents: 7%) ○ in total: 1.9% anxiety (highest prevalence in female adolescents: 5%) ○ 17% of males with a diagnosis of depression are also diagnosed with anxiety, 24% of females with a diagnosis of depression are also diagnosed with anxiety • 5.4% of children and adolescents received outpatient psychotherapeutic care in 2017 <ul style="list-style-type: none"> ○ increase in use of psychotherapeutic care from age 5 (1–4 years: 0.7%, 5–9 years: 5.7%, 10–14 years: 8.3%, 15–17 years: 7.4%) ○ males used services more frequently in late childhood, females used services more frequently in adolescence • 3% of all outpatient visits of children and adolescents were to psychotherapists or psychiatrists (comprising 17% of all costs for outpatient child and adolescent services)
----	----------------------------	---	------------	--	-----------	---------	--	---------	---	--

No.	Authors	Association	Type of Article	Method/ Design	Time of Assessment	Region	Population	N	Researched Constructs	Main Findings
3.	Greiner et al. (2021) (81)	SHI agency DAK: "DAK Kinder- und Jugendreport 2020"	SHI report	descriptive and observational cross-sequential analysis of SHI billing data	2015–2018	Germany	children and adolescents (0–17 years) insured with DAK	800,000	administrative prevalence of mental and behavioural disorder diagnoses (i.e., ICD-10 F00–F99) and treatment in children and adolescents	<ul style="list-style-type: none"> • 5% of children were treated for the same mental or behavioural disorder in both 2016 and 2017 • prevalence of most frequent mental and behavioural disorder diagnoses in in-patient care: <ul style="list-style-type: none"> ○ ICD-10 F32: 0.078% ○ ICD-10 F10: 0.063% ○ ICD-10 F92: 0.056% ○ ICD-10 F43: 0.052% ○ ICD-10 F90: 0.051% • risk factors for diagnosis of mental and behavioural disorders: <ul style="list-style-type: none"> ○ being diagnosed with a chronic physical disorder ○ being diagnosed with obesity ○ receiving treatment for unspecified pain ○ having a parent with a diagnosed mental or behavioural disorder (children of parents with a diagnosed mental or behavioural disorder have a higher prevalence of mental or behavioural disorders (32.1%) than children without (23.7%)) ○ having parents with a medium level of education • general prevalence of mental and behavioural disorder diagnoses in 2018: 27.0% • prevalence of most common mental and behavioural disorder groups among all children and adolescents in 2017: <ul style="list-style-type: none"> ○ ICD-10 F8: 16.22% (higher prevalence in males: 19.5%) ○ ICD-10 F9: 11.24% (higher prevalence in males: 13.7%) ○ ICD-10 F4: 6.05% (higher prevalence in females: 6.78%) ○ ICD-10 F6: 1.35% (higher prevalence in males: 1.44%) ○ ICD-10 F5: 1.35% (higher prevalence in females: 1.45%) ○ ICD-10 F3: 1.27% (higher prevalence in females: 1.69%) ○ ICD-10 F7: 0.63% (higher prevalence in males: 0.77%) ○ ICD-10 F1: 0.39% (higher prevalence in females: 0.40%) • prevalence of most commonly diagnosed specific mental and behavioural disorders in 2018: <ul style="list-style-type: none"> ○ ICD-10 F80: 10.41% ○ ICD-10 F98: 4.15% ○ ICD-10 F90: 4.06% ○ ICD-10 F82: 3.91% ○ ICD-10 F93: 3.07% • incidence of most commonly newly diagnosed specific mental and behavioural disorders in 2018: <ul style="list-style-type: none"> ○ ICD-10 F80: 30.4 in 1,000 ○ ICD-10 F98: 16.0 in 1,000 ○ ICD-10 F43: 14.0 in 1,000 ○ ICD-10 F93: 12.9 in 1,000 ○ ICD-10 F45: 12.2 in 1,000 • increase in prevalence and incidence of developmental disorders, emotional and behavioural disorders from 2016 to 2018 • stronger regional differences in prevalence of diagnoses and access to care for mental and behavioural disorders than for somatic disorders • strong decrease of treated cases by paediatricians (-53%) and CAP (-41%) in the end of March 2020 in comparison to March 2019

No.	Authors	Association	Type of Article	Method/ Design	Time of Assessment	Region	Population	N	Researched Constructs	Main Findings
4.	Witte et al. (2021) (83)	SHI agency DAK: "DAK Kinder- und Jugendreport 2021"	SHI report	descriptive and observational cross-sequential analysis of SHI billing data	2017–2020	Germany	children and adolescents (0–17 years) insured with DAK	800,000	<ul style="list-style-type: none"> • administrative prevalence of mental and behavioural disorder diagnoses (i.e., ICD-10 F00–F99) in children and adolescents (focus on addictive disorders) • effects of COVID-19 pandemic on healthcare provision 	<ul style="list-style-type: none"> • general prevalence of mental and behavioural disorder diagnoses in 2020: 26.9% <ul style="list-style-type: none"> ◦ linear increase in diagnostic prevalence until age five, then steady linear decrease in diagnostic prevalence ◦ until age 15 years more males are diagnosed with a mental or behavioural disorder, from age 15 more females than males are diagnosed • prevalence of most commonly diagnosed specific mental and behavioural disorders in 2020: <ul style="list-style-type: none"> ◦ ICD-10 F8: 16.22% (higher prevalence in males: 19.5%) ◦ ICD-10 F9: 11.24% (higher prevalence in males: 13.73%) ◦ ICD-10 F4: 6.05% (higher prevalence in females: 6.78%) ◦ ICD-10 F6: 1.35% (higher prevalence in males: 1.44%) ◦ ICD-10 F5: 1.35% (higher prevalence in females: 1.45%) ◦ ICD-10 F3: 1.27% (higher prevalence in females: 1.69%) ◦ ICD-10 F7: 0.63% (higher prevalence in males: 0.77%) ◦ ICD-10 F1: 0.39% (higher prevalence in females: 0.40%) • prevalence of most commonly diagnosed specific mental and behavioural disorders in 2020: <ul style="list-style-type: none"> ◦ ICD-10 F80: 11.02% ◦ ICD-10 F82: 4.01% ◦ ICD-10 F90: 3.98% ◦ ICD-10 F98: 3.39% ◦ ICD-10 F93: 3.15% • increase in diagnosed cases of depression (+ 2.5%) in 2020 compared to 2018 and 2019 • for 1.5% of all 15–17-year-olds abusive substance use has been documented in 2020 (risk factors: depression, parent with a diagnosed substance abuse) • 0.25% of children and adolescents receive medical care due to pathological gaming • 16% less contacts to any health service in 2020 than in 2018–2019, 1.9% less contacts to psychologists and psychiatrists • 20.6% less contacts to psychologists/psychiatrists during the first lockdown (particularly for 5–9-year-olds) compared to 2018–2019 • after first lockdown and during second lockdown increase in contacts over the pre-pandemic level from 2018–2019 (+4.7%), particularly for 15-17-year-olds (+4.9%) compared to 5–9-year-old (-6.0%)

No.	Authors	Association	Type of Article	Method/ Design	Time of Assessment	Region	Population	N	Researched Constructs	Main Findings
5.	Witte et al. (2022) (79)	SHI agency DAK: "DAK Kinder- und Jugendreport 2022"	SHI report	descriptive and observational cross-sequential analysis of SHI billing data	2018–2022	Germany	children and adolescents (0–17 years) insured with DAK	782,000	<ul style="list-style-type: none"> • effects of COVID-19 pandemic on administrative incidence of mental and behavioural disorder diagnoses (i.e., ICD-10 F00–F99) in children and adolescents (focus on depressive (ICD-10 F32/F33), anxiety (ICD-10 F40/F41), and eating disorders (ICD-10 F50) in female adolescents) • risk factors for depressive, anxiety, and eating disorders in female adolescents 	<ul style="list-style-type: none"> • general prevalence of mental and behavioural disorder diagnoses in 2020: 26.9% (5% decrease from 27.2% in 2019) • general decrease in use of healthcare services and in incidences of diagnoses of most mental and behavioural disorders from 2019 to 2021 • incidence most commonly newly diagnosed specific mental and behavioural disorders in 5–9-year-olds in 2021 (change in incidence from 2019 to 2021): <ul style="list-style-type: none"> ○ ICD-10 F80: 50.3 in 1,000 (-9%) ○ ICD-10 F98: 28.4 in 1,000 (-14%) ○ ICD-10 F82: 20.4 in 1,000 (-10%) ○ ICD-10 F93: 17.8 in 1,000 (-23%) ○ ICD-10 F90: 16.8 in 1,000 (-26%) • incidence of most commonly newly diagnosed specific mental and behavioural disorders in 10–14-year-olds in 2021 and change in incidence from 2019 to 2021: <ul style="list-style-type: none"> ○ ICD-10 F43: 16.6 in 1,000 (-15%) ○ ICD-10 F93: 15.8 in 1,000 (-14%) ○ ICD-10 F98: 14.9 in 1,000 (-13%) ○ ICD-10 F90: 12.1 in 1,000 (-19%) ○ ICD-10 F81: 12.0 in 1,000 (-22%) • incidence of most commonly newly diagnosed specific mental and behavioural disorders in 15–17-year-olds in 2021 and change in incidence from 2019 to 2021: <ul style="list-style-type: none"> ○ ICD-10 F43: 24.9 in 1,000 (-9%) ○ ICD-10 F32: 22.7 in 1,000 (-21%) ○ ICD-10 F45: 20.2 in 1,000 (+10%) ○ ICD-10 F41: 14.6 in 1,000 (+11%) ○ ICD-10 F93: 10.2 in 1,000 (+2%) • incidence of mental and behavioural disorder diagnoses in female 15–17-year-olds which increased from 2019 to 2021: <ul style="list-style-type: none"> ○ ICD-10 F32/F33: 40.2 in 1000 (+18%) ○ ICD-10 F40/F41: 35.4 in 1,000 (+24%) ○ ICD-10 F50: 4.2 in 1,000 (+54%) • increase in proportion of depressive, anxiety and eating disorders in female 10–17-year-olds which are treated with pharmacotherapy from 2019 to 2021 • higher incidences of depression and eating disorders in female adolescents from families with a low socio-economic status, higher incidences in anxiety disorders in female adolescents from families with a high socio-economic status

6.	Witte et al. (2023) (78)	SHI agency DAK: "DAK Kinder- und Jugendreport 2023"	SHI report	descriptive and observational cross-sequential analysis of SHI billing data	2017–2022	Germany	children and adolescents (0–17 years) insured with DAK	800,000	<ul style="list-style-type: none"> • effects of COVID-19 pandemic on administrative incidence and prevalence of mental and behavioural disorder diagnoses (i.e., ICD-10 F00–F99 (focus on depressive (ICD-10 F32/F33), anxiety (ICD-10 F40/F41), and eating disorders (ICD-10 F50) in female adolescents)) • effects of COVID-19 pandemic on healthcare provision for mental and behavioural disorders • risk factors for depressive, anxiety, and eating disorders in female adolescents 	<ul style="list-style-type: none"> • decrease in incidence of mental and behavioural disorder diagnoses from 2021 to 2022 (-11% in females, -5% in males) • decrease in use healthcare services for mental or behavioural disorders from 2021 to 2022 • general prevalence of mental and behavioural disorder diagnoses in 2022: <ul style="list-style-type: none"> ○ 5–9-year-olds: 25.4% ○ 10–14-year-olds: 18.39% ○ 15–17-year-olds: 16.63% • general incidence of mental and behavioural disorder diagnoses in 2022 and change in incidence from 2019 to 2022: <ul style="list-style-type: none"> ○ 5–9-year-olds: 101.1/1,000 (-4%; higher incidence in males: 107.5/1,000) ○ 10–14-year-olds: 69.7/1,000 (0%) ○ 15–17-year-olds: 78.5/1,000 (0%; higher incidence in females: 96.8/1,000) • incidence of ICD-10 F32/F33 in 2022 and change in incidence from 2019 to 2022: <ul style="list-style-type: none"> ○ 5–9-year-olds: 0.9/1,000 (-28%) ○ 10–14-year-olds: 9.0/1,000 (+16%; higher incidence in females: 12.7/1,000) ○ 15–17-year-olds: 27.3/1,000 (+16%; higher incidence in females: 41.4/1,000) • incidence of ICD-10 F40/F41 in 2022 and change in incidence from 2019 to 2022: <ul style="list-style-type: none"> ○ 5–9-year-olds: 9.2/1,000 (0%) ○ 10–14-year-olds: 13.0/1,000 (+6%; higher incidence in females: 17.3/1,000) ○ 15–17-year-olds: 25.1/1,000 (+29%; higher incidence in females: 39.8/1,000) • incidence of ICD-10 F50 in 2022 and change in incidence from 2019 to 2022: <ul style="list-style-type: none"> ○ 5–9-year-olds: 1.9/1,000 (-8%) ○ 10–14-year-olds: 2.9/1,000 (+14%; higher incidence in females: 4.1/1,000) ○ 15–17-year-olds: 5.7/1,000 (+51%; higher incidence in females: 10.0/1,000) • prevalence of mental and behavioural disorders with strongest decrease in prevalences from 2019 to 2022 and change in prevalence from 2019 to 2022: <ul style="list-style-type: none"> ○ ICD-10 F91: 30.7/1,000 in 2022 (-16%) ○ ICD-10 F90: 58.5/1,000 in 2022 (-11%) ○ ICD-10 F81: 19.2/1,000 in 2022 (-24%) • 7.5% of all female 15–17 year-olds diagnosed with depression receive medical care (not specified) in 2022, 2.2% in every quarter of 2022 (+56% from 2019 to 2022) • 2.9% of all female 15–17 year-olds treated for depression in 2022 also had a comorbid anxiety disorder • 13.0% increase in proportion of children and adolescents who first get diagnosed with depression by a psychiatrist or psychotherapist from 2019 to 2022 (33% of 15–17-year-old females get diagnosed with depression by a psychiatrist or psychotherapist) • proportion of children and adolescents with a least one appointment at a psychiatrist or psychotherapist and change in proportion from 2019 to 2022: <ul style="list-style-type: none"> ○ 5–9-year-olds: 5.5% (-13%) ○ 10–14-year-olds: 9.2% (-1%) ○ 15–17-year-olds: 10.0% (+17%)
----	--------------------------	---	------------	---	-----------	---------	--	---------	--	---

No.	Authors	Association	Type of Article	Method/ Design	Time of Assessment	Region	Population	N	Researched Constructs	Main Findings
7.	Grobe and Szecsenyi (2021) (77)	SHI agency BARMER: "BARMER Arztreport 2021"	SHI report	descriptive and observational cross-sequential analysis of SHI billing data	2009–2019	Germany	children, adolescents, and adults insured with BARMER	8.97 million	<ul style="list-style-type: none"> trends in child and adolescent psychotherapeutic service provision (in particular outpatient guideline-based psychotherapy) prevalence of mental and behavioural disorder diagnoses leading up to guideline-based psychotherapeutic treatment in children and adolescents 	<ul style="list-style-type: none"> higher incidences of depressive, anxiety, and eating disorders in female adolescents from families with a high socio-economic status <p>data on psychotherapeutic services provision (only child and adolescent population):</p> <ul style="list-style-type: none"> 1.92% (~ 382.000) of children and adolescents received guideline-based psychotherapy in 2019 (+46% from 2009 to 2019) 4.13% (~ 823.000) of children and adolescents received at least one psychotherapeutic service (i.e., psychotherapeutic consultation, probationary and acute sessions, guideline-based psychotherapy) 10% of all children and adolescents received guideline-based therapy between 2009 and 2019 (12.4% female, 7.8% male) increasingly equal regional distribution of psychotherapy from 2009 to 2019 on average ~25 guideline psychotherapeutic sessions were billed per child or adolescent in guideline-based psychotherapy in 2019 until age four <1% of children receive psychotherapeutic services, afterwards steady increase in utilisation of services by age duration of guideline-based psychotherapy: at least 1 year for half of patients, at least 2 years and 3 months for a quarter of patients more males than females receive psychotherapeutic services from age eight to 12 more females than males receive psychotherapeutic services from age 14 one quarter of children and adolescents in guideline-based psychotherapy received psychopharmacotherapy in the first year of therapy and the year before starting therapy 28.1% of children and adolescents in guideline-based psychotherapy received inpatient treatment in five years after starting therapy more than one third of patients were diagnosed with a mental disorder 5 years before and 5 years after starting guideline-based psychotherapy half of patients get diagnosed and start guideline-based psychotherapy in the same quarter of the year prevalence of most common mental and behavioural disorder diagnoses leading to guideline-based psychotherapy in children and adolescents in 2019: <ul style="list-style-type: none"> ICD-10 F43: 23% ICD-10 F32/F33: 18.4% ICD-10 F40/F41: 14% ICD-10 F93: 13.6% ICD-10 F90: 5.1% ICD-10 F50: 3%

No.	Authors	Association	Type of Article	Method/ Design	Time of Assessment	Region	Population	N	Researched Constructs	Main Findings
8.	Jaite et al. (2021) (86)	German Central Institute for SHI Physicians (Zentralinstitut für die kassenärztliche Versorgung in Deutschland)	empirical study	descriptive cross-sectional analysis of SHI billing data	2009–2018	Germany	children and adolescents (0–19 years) with SHI	13.5 million	<ul style="list-style-type: none"> prevalence, treatment modalities, and providers of individual outpatient psychotherapy in children and adolescents (i.e., psychotherapeutic/psychiatric consultations, medical coordination, verbal interventions, functional developmental therapy, probationary sessions, guideline-based psychotherapy by a paediatrician (specialist group 34), psychiatrist (specialist group 47, 51, 58, 60), medical psychotherapist (specialist group 61), PP (specialist group 68), CAP (specialist group 69)) prevalence of mental and behavioural disorder diagnoses in outpatient psychotherapy 	<p>results for 2018:</p> <ul style="list-style-type: none"> 7.3% of children and adolescents received outpatient psychotherapeutic care in 2017 <ul style="list-style-type: none"> regional differences: range from 5.9% in Hesse to 8.8% in Lower Saxony; 7.2% in East Germany, 7.3% in West Germany thereof 18.4% received guideline-based psychotherapy prevalence of guideline-based psychotherapy highest in 10–14-year-olds (10.6%) and 15–19-year-olds (10.8%) most frequently treated mental and behavioural disorders in children and adolescents who received guideline-based psychotherapeutic treatment: <ul style="list-style-type: none"> anxiety/emotional disorders (23.0% of cases) ADHD (21.5% of cases) adjustment disorders (16.4% of cases) most frequently used guideline-based psychotherapy methods: <ul style="list-style-type: none"> behavioural therapy (10.2% of children and adolescents receiving any kind of psychotherapeutic care) depth psychological psychotherapy (6.8% of children and adolescents receiving any kind of psychotherapeutic care) psychoanalysis (1.8% of children and adolescents receiving any kind of psychotherapeutic care) most frequent providers of any psychotherapeutic care were child and adolescent psychiatrists (46.2% patients) most frequent providers of guideline-based psychotherapy were CAP (85.8% of guideline-based therapies)
9.	Jaite et al. (2022) (52)	German Central Institute for SHI Physicians	research letter	descriptive cross-sectional analysis of SHI billing data	2019	Germany	children and adolescents (0–19 years) with SHI	13.37 million	<ul style="list-style-type: none"> prevalence, treatment modalities, and duration of individual outpatient guideline-based psychotherapy of children and adolescents 	<ul style="list-style-type: none"> 1.4% of all children and adolescents received guideline-based psychotherapy only minor regional differences, however strong local differences in treatment frequency use of guideline-based psychotherapy slightly higher for females than males, and highest in 15- to 19-year-olds (2.5%) most frequently treated mental and behavioural disorders in children and adolescents who received psychotherapeutic treatment: <ul style="list-style-type: none"> obsessive-compulsive disorder (24.1%) depressive disorders (18.2%) adjustment disorders (14.2%) most frequently used therapy methods: <ul style="list-style-type: none"> behavioural therapy (56.7% of children and adolescents receiving guideline-based psychotherapy) depth psychological psychotherapy (35.2% of children and adolescents receiving guideline-based psychotherapy) psychoanalysis (9.5% of children and adolescents receiving guideline-based psychotherapy) most frequent service providers of guideline-based psychotherapy were child and adolescent psychotherapists average duration of therapy: <ul style="list-style-type: none"> psychoanalytic psychotherapy: 54.4 hours depth psychological psychotherapy: 37.1 hours behavioural therapy: 27.1 hours

No.	Authors	Association	Type of Article	Method/Design	Time of Assessment	Region	Population	N	Researched Constructs	Main Findings
10.	Kohring et al. (2023) (80)	German Central Institute for SHI Physicians	SHI report	descriptive and observational cross-sequential analysis of SHI billing data	2012–2022	Germany	children and adolescents (0–17 years) with SHI per year	~ 11.4–12 million	incidence trends mental and behavioural disorders in children and adolescents from 2014–2021 (focus on ICD F17, F32/33, F41, F50.0/F50.1, F63, F90–94)	<ul style="list-style-type: none"> incidences of mental and behavioural disorder diagnoses in 2021 and change in incidence from 2014 to 2021 <ul style="list-style-type: none"> ICD-10 F80: 558.7/10,000 (highest diagnostic incidence) ICD-10 F17: 5.5/10,000 (-50%) ICD-10 F32/33: 72.0/10,000 (+21%) ICD-10 F41: 72.3/10,000 (-0.5%) ICD-10 F50.0/F50.1: 7.1/10,000 (+27%) ICD-10 F63: 11.5/10,000 (+54%) ICD-10 F90–94: 432.2/10,000 (- 8%) except for developmental and behavioural disorders, higher incidences are reported in females directional changes or dynamization of already existing trends were particularly evident in 2020 and 2021 (COVID-19 pandemic): <ul style="list-style-type: none"> disproportionate increase in newly diagnosed depression (ICD-10 F32/F33) and eating disorders (ICD-10 F50.0–F50.3/ F50.8/F50.9), especially among female adolescents decreasing or constant temporal developments in behavioural disorders (ICD-10 F90–98, excl. F93.8)
11.	Müller et al. (2022) (84)	SHI agency AOK	empirical study	observational cohort analysis of SHI billing data	2015–2016, 2018–2019	Germany	children, adolescents, and adults insured with AOK	21.3/22.7 million (thereof 14.6%/15.7% children and adolescents)	effects of the psychotherapy reform 2017 on treatment of newly-diagnosed mental and behavioural disorders indicating psychotherapy: <ul style="list-style-type: none"> used elements of treatment access to guideline-based psychotherapy 	<ul style="list-style-type: none"> general incidence of mental and behavioural disorder diagnoses indicating psychotherapy in 2016: 1.5%; in 2019: 1.8% <ul style="list-style-type: none"> higher incidence in females than males after the age of 14 years 0.07% of all insured people receive psychotherapeutic care (i.e., psychotherapeutic consultation, probationary sessions, acute sessions, guideline-based psychotherapy) in 2016, 0.09% in 2019 <ul style="list-style-type: none"> more female patients access care than male patients increase in treatment access is strongest in children, adolescents and young adults <ul style="list-style-type: none"> 0.12–0.13% of 6–9-year-olds receive psychotherapeutic care after the reform 0.19% of 10–13-year-olds receive psychotherapeutic care after the reform 0.12% of 14–17-year-old males receive psychotherapeutic care after the reform 0.31% of 14–17-year-old females receive psychotherapeutic care after the reform 43% of patients with a newly diagnosed mental and behavioural receive only probationary sessions in 2016, 42% only initial consultations in 2019
12.	Riedel et al. (2021) (76)	German Pharmaco-Epidemiological Research Database	empirical study	descriptive and observational cross-sequential analysis of SHI billing data	2009–2017	Germany	children and adolescents (3–17 years) insured with SHI	2,156,733 in 2017	prevalence of diagnosed ADHD (i.e., ICD-10 F90.0 or F98.8) and multimodal ADHD-treatment	<p>results in 2017:</p> <ul style="list-style-type: none"> 4.28% (91,118) of children and adolescents were diagnosed with ADHD 25.2% had no psychiatric comorbidity, 28.8% had one, 21.6% had two, 24.5% had three or more 36.2% were treated only pharmacologically 6.8% were treated only with psychotherapy 6.5% received multimodal treatment 50.2% did not receive any treatment from 2009 to 2017 prevalence of ADHD remained stable, frequency of pharmacotherapy decreased, proportion of patients without any treatment increased

No.	Authors	Association	Type of Article	Method/ Design	Time of Assessment	Region	Population	N	Researched Constructs	Main Findings
13.	Singer et al. (2022) (85)	n.a.	empirical study	descriptive cross-sectional analysis of patient records	~ 2017	Germany	patients in psychotherapeutic treatment from nine practices (ages 3–85 years)	1,548 (184 under 20 years)	effects of psychotherapy reform 2017 on waiting times in outpatient psychotherapy	<p>results for under 20 year-old patients:</p> <ul style="list-style-type: none"> • waiting time between first contact and first visit was 2.0 weeks before and 3.9 weeks after the reform • average waiting time between first contact and start of guideline-based psychotherapy was 14.9 weeks before reform and 21.6 weeks after reform • time between the last session before the start of guideline-based therapy and the start of guideline-based therapy start was on average 2.3 weeks before and 1.0 weeks after the reform
14.	Steffen et al. (2018) (46)	German Central Institute for SHI Physicians	empirical study	observational cross-sequential analysis of SHI billing data	2009–2017	Germany	children and adolescents (0–18 years) insured with SHI	~ 11–12 million per year	prevalence of mental and behavioural disorder diagnoses (i.e., ICD-10 F00–F99) and treatment	<p>results for 2009–2017:</p> <ul style="list-style-type: none"> • one-year prevalence of any mental and behavioural disorder diagnosis increased from 23% in 2009 to 28% in 2017 (strongest increase from 2009 to 2014) <ul style="list-style-type: none"> ◦ strongest increase in mood disorders from 0,82% 2009 to 1,1% 2017 (+34%) ◦ 70% increase in prevalence of treatment by psychotherapists from 2009 to 2017 (strongest in the treatment of mood disorders from 20% in 2009 to 40% in 2017) <p>results for 2017:</p> <ul style="list-style-type: none"> • 16% of children and adolescents were diagnosed with a mental or behavioural disorder in at least two quarters of the year, 6% in all four quarters <ul style="list-style-type: none"> ◦ males are more often diagnosed than females, by age 15 females are more often diagnosed than males ◦ highest prevalence of diagnoses among 5-year-olds • most common diagnosed mental and behavioural disorder groups: <ul style="list-style-type: none"> ◦ ICD-10 F8: 49% of all diagnoses ◦ ICD-10 F9 (excl. F99): 34% of all diagnoses ◦ ICD-10 F4: 10% of all diagnoses ◦ ICD-10 F3: 2.1% of all diagnoses • most common diagnosed specific mental and behavioural disorders: <ul style="list-style-type: none"> ◦ ICD-10 F80: 25% of all diagnoses ◦ ICD-10 F90: 11% of all diagnoses ◦ ICD-10 F82: 7.9% of all diagnoses ◦ ICD-10 F98: 7.6% of all diagnoses ◦ ICD-10 F93: 5.4% of all diagnoses ◦ ICD-10 F43: 4.7% of all diagnoses • ≥ 97% of children and adolescents with a mental or behavioural disorder sought treatment from a general practitioner or a paediatrician • 47% of children and adolescents with a mental or behavioural disorder sought treatment from a psychiatrist or psychotherapist • 10% of children and adolescents with a mental or behavioural received guideline-based psychotherapeutic care
15.	Steffen et al. (2020) (75)	German Central Institute for SHI Physicians (Zentralinstitut für die kassenärztliche Versorgung in Deutschland), versorgungsatlas.de	empirical study	descriptive and observational cross-sequential analysis of SHI billing data	2009–2017	Germany	adolescents and adults insured with SHI	60.5–62.5 million per year	trends in the prevalence of depressive disorders (ICD-10 F32, F33, F34.1)	<p>results for 15–19 year-olds:</p> <ul style="list-style-type: none"> • highest increase in diagnosed depression from 2009 to 2017 in male adolescents (+95%) compared to other age groups, especially in moderate and severe depression • 3% of male and 7% of female adolescents were diagnosed with depression in 2017 • rural areas with a low population density showed the highest rise in administrative prevalence, while big urban municipalities showed the lowest

375 *Note:* This table summarises the main characteristics and findings of publications of administrative data. The publications are sorted
376 alphabetically based on the first author's last name and associated project. The table does not provide a complete record of all studied
377 variables and reported findings but concentrates on data on the provision of mental healthcare for children and adolescents with mental and
378 behavioural disorders. If not specified otherwise, the depicted results include only findings concerning children and adolescents. SHI =
379 statutory health insurance, PP = psychological psychotherapists, CAP = child and adolescent psychotherapist.

No.	Authors	Association	Type of Article	Method/ Design	Time of Assessment	Region	Participants	N	Format	Researched Constructs	Main Findings
1.	Bundespsychotherapeutenkammer (2018) (40)	Federal Chamber of Psychotherapists in Germany (Bundespsychotherapeutenkammer (BPK))	report of a psychotherapist organisation	descriptive cross-sectional	11–12/2017	Germany	<ul style="list-style-type: none"> SHI-accredited PP SHI-accredited CAP 	9,432	survey with standardised questionnaire	effects of the reform of the psychotherapy guideline in 2017 on waiting times in outpatient psychotherapy	<ul style="list-style-type: none"> waiting time for initial psychotherapeutic consultation: 5.7 weeks (CAP: 4.8 weeks) waiting time for acute treatment: 3.1 weeks waiting time for guideline-based psychotherapy: 19.9 weeks (CAP: 17.7 weeks) (particularly long outside of bigger cities and in the Ruhr area) decrease in waiting time for an appointment for an initial psychotherapeutic consultation after reform 2017 high variance in waiting time between practices correlation between waiting time and relative amount of psychotherapists in the respective area 9.3% of patients receiving an initial psychotherapeutic consultation do not get diagnosed with a mental and behavioural disorder 66.3% of psychotherapists offer acute treatment within two weeks, 62.7% said it was difficult to refer patients in need of acute treatment 33.5% of psychotherapists reported they could offer 2.6 hours for psychotherapy less per week due to the reform average monthly appointment requests: 22.6, average amount of new patients in 6 months: 13.9 (increase in appointment requests and amount of new patients from 2011 to 2017)
2.	Ostdeutsche Psychotherapeutenkammer (2022) (88–91)	East-German Psychotherapist's Chamber (Ostdeutsche Psychotherapeutenkammer (OPK))	press statement	descriptive cross-sectional	03–04/2022	East Germany	CAP	206	survey with standardised questionnaire	effects of the COVID-19 pandemic on mental health and need for mental healthcare of children and adolescents	<ul style="list-style-type: none"> 91% of CAP said that request for psychotherapy had increased due to the pandemic (63% significant increase, 28% slight increase), increases up to one year, compared to 2–5 months before the pandemic need for psychotherapy increased over 80% for 14–17-year-olds, 30% for 10–13-year-olds CAP reported to offer more initial consultations, increase waiting list capacity, and make appointments far in the future
3.	Psychotherapeutenkammer Niedersachsen (2022) (92)	Psychotherapist's Chamber of Lower Saxony (Psychotherapeutenkammer Niedersachsen (PKN))	presentation	descriptive cross-sectional	2021–22	Lower Saxony, Germany	<ul style="list-style-type: none"> PP (private practices & SHI-accredited) CAP (private practices & SHI-accredited) inpatient mental healthcare institutions 	1,085, thereof 200 CAP	survey with standardised questionnaire	<ul style="list-style-type: none"> demand for outpatient psychotherapy (requests, waiting times) patient referral 	<ul style="list-style-type: none"> CAP report to receive 4.7 requests in a week average waiting time for initial consultation 6.3 weeks (median = 4 weeks), similar waiting time for CAP and psychological psychotherapists average waiting time for start of therapy 32 weeks (median = 24 weeks), shorter waiting times for CAP 72% of SHI-accredited psychotherapists say that referring patients to other therapists is very difficult or not possible due to colleagues working at full capacity < 2% of SHI-accredited psychotherapists say that they do not experience issues referring patients to other therapists or mental health services

No.	Authors	Association	Type of Article	Method/ Design	Time of Assessment	Region	Participants	N	Format	Researched Constructs	Main Findings
4.	Plötner et al. (2022) (44)	n.a.	empirical study	descriptive cross-sectional	05/21–07/21	Germany	CAP	324	survey with standardised questionnaire	effects of COVID-19 pandemic on psychotherapeutic care for children and adolescents (waiting times, provided services, mental and behavioural)	<ul style="list-style-type: none"> • waiting time for initial consultation: 10.2 weeks • waiting time for start of guideline-based psychotherapy: 14.4 weeks • doubling of waiting time for treatment since start of the pandemic • increase in provided sessions per therapist, particularly initial consultations • half of patients experienced pandemic-associated deterioration in mental health • increase in mental disorders since start of the pandemic
5.	Rabe-Menssen et al. (2019) (87)	German Association of Psychotherapists (Deutsche Psychotherapeuten-Vereinigung (DPtV))	empirical study	descriptive and observational cross-sequential	<ul style="list-style-type: none"> • 02–04/2017 • 02–04/2018 	Germany	members of the DPtV <ul style="list-style-type: none"> • PP • CAP 	3,018 in 2018, thereof 24% of which treating children and adolescents	survey with standardised questionnaire	waiting time for psychotherapeutic care before and after introduction of obligatory initial consultation	<ul style="list-style-type: none"> • 44% increase in amount of initial psychotherapeutic consultations from 2017 to 2018 • average waiting time for initial consultation decreased from 9.8 in 2017 to 6.5 weeks in 2018 (5.5 weeks for children and adolescents) • average time from request to start of acute treatment: 10.5 weeks (8.8 weeks for children and adolescents), i.e., ~4 weeks after initial consultation → no relevant waiting time • average waiting time for guideline-based psychotherapy increased from 15.3 to 19.6 weeks (18.1 weeks for children and adolescents) due to introduction of obligatory initial consultation → lower threshold to access to initial consultation and diagnostic clarification, but no new treatment capacities • 21% increase in new patients receiving guideline-based therapy, particularly due to acute treatment from 2017 to 2018 • 40% of patients having an initial consultation start guideline-based therapy within six months • strong regional variance of waiting times (longest waiting times in Mecklenburg-Western Pomerania, Thuringia, Saarland, Lower Saxony), waiting time is correlated with supply density • reduction of regional differences from 2017 to 2018
6.	Rabe-Menssen (2021) (41)	German Association of Psychotherapists (DPtV)	empirical study	descriptive and observational cross-sequential	<ul style="list-style-type: none"> • 01–02/2020 • 01–02/2021 	Germany	members of the DPtV <ul style="list-style-type: none"> • PP • CAP 	4,693 in 2021, thereof 17% CAP	survey with standardised questionnaire	effects of COVID-19 pandemic on: <ul style="list-style-type: none"> • requests for psychotherapeutic care • waiting time for psychotherapeutic care 	<ul style="list-style-type: none"> • 40.8% increase in weekly requests from 2020 to 2021, on 6.9 requests per week in 2021 (60.3% increase to 5.9 requests for children and adolescents in 2021) • 26% of requests receive appointment for initial consultation (34.5% for children and adolescents) • waiting time for initial consultation: over a month for 49.6% of patients (43.4% for children and adolescents) • waiting time for guideline-based psychotherapy: more than six months for 38.3% of patients (38.8% for children and adolescents) • regional differences: stronger increase in requests in bigger cities, longer waiting times in smaller cities

No.	Authors	Association	Type of Article	Method/Design	Time of Assessment	Region	Participants	N	Format	Researched Constructs	Main Findings
7.	Rabe-Menssen (2022) (42)	German Association of Psychotherapists (DPtV)	empirical study	descriptive and observational cross-sequential	<ul style="list-style-type: none"> • 01–02/2020 • 01–02/2021 • 06/2022 	Germany	members of the DPtV <ul style="list-style-type: none"> • PP • CAP 	2,270 in 2022, 19% CAP	survey with standardised questionnaire	effects of COVID-19 pandemic on: <ul style="list-style-type: none"> • requests for psychotherapeutic care • waiting time for psychotherapeutic care 	<ul style="list-style-type: none"> • 40.8% increase in weekly requests from 2020 to 2022, on 6.9 requests per week in 2022 (48% increase to 5.5 requests for children and adolescents in 2022) • 24.6% of requests receive appointment for initial consultation (29.1% for children and adolescents) • waiting time for initial consultation: over a month for 51.0% of patients (similar for children and adolescents) • waiting time for guideline-based psychotherapy: over half a year for 47.4% of patients (similar for children and adolescents) • regional differences: stronger increase in requests in bigger cities, longer waiting times in smaller cities

382 *Note:* This table summarises the main characteristics and findings of studies on psychotherapeutic care for children and adolescents from the
383 point of view of psychotherapists. The publications are sorted alphabetically based on the first author’s last name. The table does not provide
384 a complete record of all studied variables and reported findings but concentrates on data on the provision of mental healthcare for children
385 and adolescents with mental and behavioural disorders. If not specified otherwise, the depicted results include only findings concerning
386 children and adolescents. PP = psychological psychotherapists, CAP = child and adolescent psychotherapists.

No.	Authors	Association	Type of Article	Method/Design	Time of Assessment	Region	Age Range in Years	Informants	N	Format	Researched Constructs	Main Findings
1.	Hartmann et al. (2023) (93)	CorJu1 study	project report	descriptive cross-sectional	summer 2021–summer 2022	Schleswig-Holstein, Germany	0–17	caregivers' other-report	878	survey	<ul style="list-style-type: none"> wellbeing and health status via KID-SCREEN-10 chronic disorders via CSHCN-screener need for healthcare in last 12 months via CHC-SUN satisfaction with and access to healthcare via CHC-SUN and ZUF-8 	<ul style="list-style-type: none"> 88.9% of children and adolescents were reported to be of a good or very good health 39.0% of children and adolescents were reported to have a mental or physical chronic illness 16.7% of parents reported their children had a need for psychological counselling or psychotherapy 57.9% of the need for psychological counselling or psychotherapy was not (29.3%) or only partially (28.6%) met
2.	Niermann et al. (2021) (58)	n.a.	empirical study, epidemiological research	descriptive cross-sectional	2015	Germany, Saxony	14–21	adolescents' self-report	1,180 (635 14–17-year-olds)	standardised clinical interview	<ul style="list-style-type: none"> prevalence for DSM-5 anxiety disorders and life-time service utilisation rates via DIA-X-5/CIDI 	<p>results for 14–17-year-old age group:</p> <ul style="list-style-type: none"> life time prevalence of any anxiety disorder: 18.6% 12-months-prevalence of any anxiety disorder: 13.1% 24.4% of adolescents with an anxiety disorder used any mental health service, 17.4% sought treatment from a psychotherapist/psychologist individuals with social anxiety or agoraphobia were most likely to seek treatment, individuals with specific phobia the least likely having a comorbid disorder or being female increased the likelihood of seeking help

No.	Authors	Association	Type of Article	Method/ Design	Time of Assessment	Region	Age Range in Years	Informants	N	Format	Researched Constructs	Main Findings
3.	Otto et al. (2021) (56)	BELLA study (mental health module of KiGGS study, part of part of Robert-Koch-Institute (RKI) health monitoring)	empirical study	descriptive and observational cross-sequential cohort	<ul style="list-style-type: none"> T0: 2003–2006 T1: 6-year follow-up in 2009–2012 T2: 11-year follow-up in 2014–2017 	Germany	7–31	<ul style="list-style-type: none"> children's, adolescents', and adults' self-report for age 11 and up care-giver's other-report for 7–13-year-olds 	3,492, thereof 1,580 7–17-year-olds	survey	<ul style="list-style-type: none"> “recent” diagnosis of mental or behavioural disorder general health via GHI health-related quality of life via KIDS-Cat, SF-12, SF-36, and KID-SCREEN-27 subjective well-being via PROMIS symptoms of mental health problem via SDQ depression symptoms via CES-DC and PROMIS Depression Short Forms mental healthcare utilisation and satisfaction with treatment 	<p>longitudinal results:</p> <ul style="list-style-type: none"> mental health problems in childhood and adolescence predicted impaired health outcomes at 6-year and 11-year follow-ups <p>results for age 7–13 years at T2:</p> <ul style="list-style-type: none"> life-time prevalence: 12.7% of parents reported that their child had ever been diagnosed with a mental or behavioural disorder, 75.8% of these children were in psychological, psychiatric or psychotherapeutic treatment 8.3% of parents reported that their child was recently diagnosed mental or behavioural disorder, 65% of those children were undergoing mental health treatment 77.6% of parents of children with a diagnosed mental disorder undergoing treatment were “rather” or “very happy” with the treatment, 39.5% of parents considered the treatment as “very effective” reasons given for not seeking mental healthcare were current medical treatment by a physician, treatment was already finished, current treatment by an Ergo therapist <p>results for age 14 and older at T2:</p> <ul style="list-style-type: none"> life-time prevalence: 14.2% of participants reported ever being diagnosed with a mental or behavioural disorder, 80.4% of those were in psychological, psychiatric or psychotherapeutic treatment 7.0% of participants aged 14 years or older reported a recently diagnosed mental or behavioural disorder, 61.8% of those were undergoing mental health treatment 71.9% of participants with a diagnosed mental or behavioural disorder undergoing treatment were “rather” or “very happy” with the treatment reasons given for not seeking mental healthcare were no interest in treatment, treatment was already finished, medical treatment by a physician, poor communication with professional, uncertainty about severity of the problem, fear of stigma

No.	Authors	Association	Type of Article	Method/Design	Time of Assessment	Region	Age Range in Years	Informants	N	Format	Researched Constructs	Main Findings
4.	Reiß et al. (2021) (57)	BELLA study (mental health module of KiGGS study, part of part of Robert-Koch-Institute (RKI) health monitoring)	empirical study	descriptive and observational cross-sectional	2014–2017	Germany	7–17	caregivers' other-report	1,580	survey	<ul style="list-style-type: none"> • symptoms of mental health problem via SDQ • impairment due to mental health problems via SDQ-Impact • knowledge about mental healthcare services • use of mental healthcare in the last 12 months (i.e., consultation of child and adolescent psychiatrists, medical and psychological psychotherapists, and psychologists) • effects of socio-economic status (i.e., household income, parental educational attainment, parental occupation status) on use of mental healthcare 	<ul style="list-style-type: none"> • 9.7% of children and adolescents were reported to have symptoms of mental health problems over the clinical cut-off • 23.9% of children and adolescents were reported to have impairments due to mental health problems • 7.4% of children and adolescents were reported to have used mental healthcare in the last 12 months • 12.4% of participants reported no knowledge about mental healthcare services • main predictor of mental healthcare utilisation are the presence of mental health problems and mental health-related impairment • children and adolescents from families with a low socio-economic status use mental healthcare significantly more than children and adolescents with a higher socio-economic status (explained by higher prevalence of mental health problems in children and adolescents from families with a low socio-economic status)

389 *Note:* This table summarises the main characteristics and findings of studies on psychotherapeutic care for children and adolescents from the
390 point of view of children, adolescents, and their caregivers themselves. The publications are sorted alphabetically based on the first author's
391 last name. The table does not provide a complete record of all studied variables and reported findings but concentrates on data on the
392 provision of mental healthcare for children and adolescents with mental and behavioural disorders. If not specified otherwise, the depicted
393 results include only findings concerning children and adolescents. PP = psychological psychotherapists, CAP = child and adolescent
394 psychotherapists.

395 **Table 5**396 *Overview of Epidemiological Prevalence Rates of Mental or Behavioural Disorder Diagnoses and Symptoms*

Mental or Behavioural Disorder Diagnoses and Symptoms	Pre-COVID-19 Pandemic			COVID-19 Pandemic		
	Younger children	Older children	Adoles-cents	Younger children	Older children	Adoles-cents
Mental or Behavioural Disorder Diagnosis	-	8.3% (56)	7.0% (56)	-	-	-
Mental Health Problems	-	16.9% (70)			55.7–57.4% (59, 60)	
	-	9.7%–22% (57, 67)		35.3% (61)	22.6%–30.9% (21, 57, 62–67)	
Low Health-Related Quality of Life	-	-	-	-	27.0–47.7% (21, 62–66)	
Depressive Symptoms	-	11–16% (67)		-	14.2%–24.3% (21, 62–67)	
	-	-	8.2% (71, 72)	-	-	-
Anxiety Symptoms	10% (69)	10–15% (67)		-	24.1%–30.1% (21, 62–67)	
Anxiety Disorder Diagnosis	-	-	13.1% (58)	-	-	-
Eating Disorder Symptoms	-	-	19.8% (68)	-	-	-
Psychosomatic Complaints	-	-	-	-	44.3%–58.4% (21, 62–66)	
Problem Drinking	-	-	5% (73)	-	-	-
Problematic Internet Use	-	-	2.6–3.5% (74)	-	-	-

397 *Note:* This table summarises the prevalence rates of mental and behavioural disorder diagnoses and symptoms according to epidemiological
398 studies from before (i.e., 2016–2018) and during the COVID-19 pandemic (2020–2022) in younger children (i.e. ~ <6 years), older children
399 (i.e. ~ 6–12 years), and adolescents (i.e. ~ >12 years).). A dash ("-") indicates that no data was available for the prevalence or incidence of
400 the respective diagnosis.

401 **Table 6**402 *Overview of Administrative Prevalence Rates of Mental or Behavioural Disorder Diagnoses in SHI Billing Data*

Diagnosis (According to ICD-10)	One-Year Prevalence		One-Year Incidence (in 1,000)	
	Pre-COVID-19 Pandemic	COVID-19 Pandemic	Pre-COVID-19 Pandemic	COVID-19 Pandemic
Any F- diagnosis	25.9%–28% (47, 81, 82)	26.9% (79, 83) 25.4% of 5–9-y.-o. (78) 18.39% of 10–14-y.- o. (78) 16.63% of 15–17-y.- o. (78)	-	-
F1	0.31%–0.39% (47, 81, 82)	0.39% (83)	-	-
F17	-	-	-	0.55 (80)
F2	0.05% (47, 81, 82)	0,05% (83)		
F3	1.08%–1.28% (47, 81, 82)	1.27% (83)		
F32 & 33	1.5% (82) 3% of 15–19-y.-o. males (82) 7% of 15–19-y.-o. females (82)	-	-	7.2 (80) 0.9 5–9-y.-o. (78) 9.0 10–14-y.-o. (78) 22.7 (only F32) –27.3 15–17-y.- o. (78, 79)
F4	5.28%–6.05% (47, 81, 82)	6.05% (83)	-	-
F40 & 41	0.67% (only F40), 1.29% (only F41) (82)	-	-	7.2 (only F41) (80) 9.2 5–9-y.-o. (78) 13.0 10–14-y.-o. (78) 25.1 15–17-y.-o. (78, 79)
F42	0.24% (82)	-	-	-
F43	3.47% (82)	-	14.0 (81)	16.6 10–14-y.-o. (79) 24.9 15–17-y.-o. (79)
F45	2.64% (82)	-	12.2 (81)	20.2 15–17-y.-o. (79)

Diagnosis (According to ICD-10)	One-Year Prevalence		One-Year Incidence (in 1,000)	
	Pre-COVID-19 Pandemic	COVID-19 Pandemic	Pre-COVID-19 Pandemic	COVID-19 Pandemic
F5	1.24%–1.38% (47, 81, 82)	1.35% (83)	-	-
F50	-	-	-	0.7 (only F50.0, F50.1) (80) 1.9 5–9-y.-o. (78) 2.9 10–14-y.-o. (78) 5.7 15–17-y.-o. (78)
F6	1.28%–1.35% (47, 81, 82)	1.35% (83)	-	-
F63	-	-	-	1.15 (80)
F7	0.63%–0.65% (47, 81, 82)	0.63% (83)	-	-
F8	14.83%–16.22% (47, 81, 82)	16.22% (83)	-	-
F80	9.52%–10.41% (47, 81, 82)	11.02% (83)	30.4 (81)	55.9 (80) 50.3 5–9-y.-o. (79)
F81	-	-	-	12.0 10–14-y.-o. (79)
F82	3.49%–3.91% (47, 81, 82)	4.01% (83)	-	20.4 5–9-y.-o. (79)
F9	10.5%–11.24% (47, 81, 82)	11.24% (83)	-	-
F90	3.88%–4.28% (47, 81, 82)	3.98% (83)	-	16.8 5–9-y.-o. (79) 12.1 10–14-y.-o. (79)
F93	2.68%–3.07% (47, 81, 82)	3.15% (83)	12.9 (81)	17.8 5–9-y.-o. (79) 15.8 10–14-y.-o. (79) 10.2 15–17-y.-o. (79)
F98	3.71%–4.15% (47, 81, 82)	3.39% (83)	16.0 (81)	28.4 5–9-y.-o. (79) 14.9 10–14-y.-o. (79)

403 *Note:* This table summarizes the administrative one-year prevalence and incidence rates of mental and behavioural disorder diagnoses in
404 children and adolescents (0–18 years unless specified otherwise) according to the ICD-10 in SHI billing data from the period before (2016–
405 2018) and during the COVID-19 pandemic (2020–2022). A dash (“-”) indicates that no data was available for the prevalence or incidence of
406 the respective diagnosis. y.-o. = year-olds.

407 **Table 7**

408 *Summary of Possible Outcomes, Main Strengths and Limitations of Different Data Sources*

Sources	Outcomes	Strengths	Limitations
Epidemiological data	Disorder and symptom prevalence and incidence in the general population Estimate for objective need in the general population	Clinical interviews: objective, professional, comprehensive assessments of psychopathology Population-based, i.e., inclusive of people not accessing mental healthcare	Resource-intense clinical interviews leading to small sample sizes, comprised representativeness Lack of professional clinical assessments in questionnaires allowing only for the assessment of symptoms, not disorder diagnoses or need for treatment lack of systematic, standardised, and longitudinal assessments
Administrative data	Utilisation of SHI-funded mental healthcare services Administrative prevalence and incidence of disorder diagnoses in routine practice	Objective and standardised data Large, population-representative samples Continuous data collection	Limited accessibility of data Lack of systematic analysis and reporting Lack of information on treatment barriers, quality, and duration Highly dependent on current capacities of healthcare system
Psychotherapist Reports	Experienced demand and need for psychotherapeutic treatment (e.g., appointment requests, symptom severity, stress factors) Availability of psychotherapeutic treatment (e.g., waiting time) Working conditions of mental healthcare service providers	Professional assessments of need and demand for treatment Allows for detailed analyses of psychotherapeutic care beyond mere utilisation data (e.g., quality of care)	Subjective assessments susceptible to distortion Less inclusive of people not accessing mental healthcare Lack of systematic longitudinal approaches
Patient reports	Subjective demand for psychotherapeutic treatment	Inclusive of people not accessing mental healthcare allowing for an analysis of barriers to access	Subjective assessments susceptible to distortion

Help seeking behaviour, barriers in
accessing mental healthcare
Availability of psychotherapeutic
treatment (e.g., waiting time)

Reflective of patients' needs in
mental healthcare system

Lack of objective, professional
assessments of symptoms and
need for psychotherapeutic
treatment
Lack of systematic longitudinal
approaches

410 **4 Discussion**

411 Worldwide, increasing numbers of children and adolescents are affected by mental or behavioural
412 disorders requiring psychotherapeutic treatment, but often face barriers to accessing outpatient psy-
413 chotherapeutic care. Here, we present a scoping literature review on the state of outpatient psycho-
414 therapeutic care for children and adolescents in Germany and its assessment. In Germany, mental
415 healthcare is predominantly funded by statutory health insurance and offers high treatment capacities
416 in the inpatient sector, but reportedly lacks sufficient treatment capacities in the outpatient sector in
417 comparison to other high-resource countries. Comprehensive, systematic, and multimodal analyses of
418 psychotherapeutic care provision, necessary for empirically-based demand planning, are lacking.
419 This review was conducted according to PRISMA-ScR guidelines (54). We included 41 papers based
420 on epidemiological studies, administrative data, and provider and patient reports and published be-
421 tween April 2018 and November 2023. Our assessment focussed on the prevalence and incidence
422 rates of mental and behavioural disorder symptoms and diagnoses, as well as the demand and need
423 for, the provision and use, and the availability and accessibility of outpatient psychotherapeutic care
424 in German children and adolescents. Additionally, we examined the suitability of different data
425 sources for adequately assessing outpatient psychotherapeutic care.

426 **4.1 Prevalence of Mental and Behavioural Disorder Diagnoses and Symptoms in German** 427 **Children and Adolescents**

428 Based on epidemiological studies, we aimed to address the first research question concerning the
429 prevalence of mental and behavioural disorder symptoms and diagnoses in children and adolescents
430 in Germany in recent years. Unfortunately, we found very few studies using systematic and standard-
431 ized clinical interviews to estimate disorder prevalence rates. There seems to be a lack of epidemio-
432 logical data on mental and behavioural disorders in German children and adolescents, in particular in
433 younger children. Older national and international reviews and meta-analyses estimated the preva-
434 lence of mental and behavioural disorders in childhood and adolescence to range between 10–25%,
435 with significant variance in the time of assessment, case definition, and methodology (1–3, 94, 95). A
436 promising and more recent Austrian study from 2016 assessed the prevalence of mental and behav-
437 ioural disorders according to the DSM-5 in 10–18-year-olds with both clinical questionnaires and a
438 structured interview and shows that 23.9% of children and adolescents met the criteria of a mental or
439 behavioural disorder (96). When comparing these studies, it is important to note that only one exclu-
440 sively reported on children and adolescents in Germany (94). Additionally, some of the reviews in-
441 clude data dating back to the 1970s, with one study even reaching back to the 1950s. Although epide-
442 miological estimates are generally considered to be more stable and less time-sensitive, it is likely
443 that the prevalence rates of mental and behavioural disorders in children and adolescents have
444 changed over the last decades due to shifts in their environments (e.g., political and societal develop-
445 ments, exposure to global crises, digitalization). Moreover, the conceptualization and diagnostic cri-
446 teria for mental and behavioural disorders have evolved over time, which is likely to influence epide-
447 miological data. However, the impact of these changes cannot be estimated based on the current re-
448 search, as recent epidemiological data on German children and adolescents is lacking.

449 Nevertheless, we found several studies using clinical questionnaires to assess the prevalence of self-
450 or caregiver-reported mental health problems or psychopathological symptoms as an estimate of
451 child and adolescent mental health, especially during the COVID-19 pandemic. This data suggests a
452 general increase in mental health problems from before the pandemic to during the pandemic, fol-
453 lowed by a slow decrease after the initial year of the pandemic in 2020 (21, 57, 62–67). Studies con-
454 ducted between 2020 and 2022 indicate that at least every third to every fourth child and adolescent

455 was affected by mental health problems during the pandemic (21, 62–67). However, the high vari-
456 ance in methods, researched constructs, and included age groups limits the synthesis of these studies'
457 results. Questionnaire data alone also does not allow for conclusions on disorder prevalence rates.
458 Furthermore, studies on the mental health of children and adolescents conducted after 2022 are still
459 lacking.

460 Consequently, the first research question cannot be sufficiently answered in light of the current data-
461 base. This underscores the urgent need for standardized, systematic, and longitudinal assessments of
462 child and adolescent mental health in Germany beyond mere questionnaire measures.

463 **4.2 Current State of Outpatient Psychotherapy**

464 We attempted to evaluate the current state of outpatient psychotherapeutic care by examining both
465 epidemiological and administrative data, alongside reports from psychotherapists, as well as children,
466 adolescents, and their families as potential patients. Specifically, we aimed to estimate the need and
467 demand for, the use and provision of, and the accessibility and availability of psychotherapeutic care
468 to address our second research question.

469 **4.2.1 Need and Demand for Psychotherapeutic Care**

470 As discussed above, there is a lack of studies estimating the prevalence of mental and behavioural
471 disorders indicating psychotherapeutic treatment in children and adolescents in Germany. Conse-
472 quently, it is difficult to estimate the objective need for psychotherapeutic treatment based on recent
473 epidemiological data.

474 Recent data from the statutory healthcare system indicate that the prevalence rates of mental and be-
475 havioural disorders among children and adolescents are slightly higher than those reported in older
476 epidemiological studies, now ranging between 26–28% (47, 79, 81–83). However, these administra-
477 tive numbers do not reflect the objective need for psychotherapy but merely the number of billed di-
478 agnoses in routine care, which usually have lower validity than diagnoses derived from epidemiologi-
479 cal studies. Although most mental and behavioural disorders can be treated with psychotherapy, cer-
480 tain disorders are not primarily an indication for psychotherapy, e.g., intellectual disability (ICD-10
481 F7) or developmental disorders (ICD-10 F8). As these disorders are usually included in the general
482 administrative estimate of mental and behavioural disorders, these estimates do not equal the need for
483 psychotherapy. In fact, roughly half of all mental and behavioural disorder diagnoses in routine care
484 are developmental disorders (46, 47, 81–83). Thus, according to administrative data, it can be cau-
485 tiously estimated that only 13–14% of all children and adolescents have a diagnoses a mental or be-
486 havioural disorder that can be primarily treated with psychotherapy (e.g., emotional and behavioural
487 disorders with onset in childhood and adolescence (ICD-10 F9), anxiety, compulsive and stress-re-
488 lated disorders (ICD-10 F4), mood disorders (ICD-10 F3)). However, this number does not include
489 children and adolescents who might fulfil the criteria of a mental or behavioural disorder but have not
490 yet been diagnosed in routine care. At the same time, it may include a significant number of false-
491 positive diagnoses, as the diagnostic quality is not accounted for in routine data, leading to concerns
492 about the validity of these diagnoses.

493 Regarding the subjective need or demand for psychotherapy, we again did not find many studies ex-
494 amining children's and adolescents' self-assessed or caregiver-assessed need or wish for treatment.
495 One study reported that during the COVID-19 pandemic, around 17% of caregivers stated that their
496 child was in need of mental healthcare and that this need was not or only partially met in the majority
497 of cases (93). Taken together with the data from epidemiological and administrative data, it can be

498 cautiously summarised that roughly every sixth to seventh child and adolescent in Germany is in
499 need of psychotherapeutic treatment. This equates to approximately three million children and ado-
500 lescents (97).

501 **4.2.2 Use and Provision of Psychotherapeutic Care**

502 It is important to note that the publications we reviewed vary in their definitions of mental or psycho-
503 therapeutic healthcare and frequently do not provide data specifically on psychotherapeutic care.
504 These inconsistencies contribute to significant variance in data and, at times, result in contradictory
505 findings.

506 Administrative data suggests that nearly all families with children and adolescents with a mental or
507 behavioural disorder initially consult a paediatrician or general practitioner regarding the child's or
508 adolescent's mental health problems (46). Only half of them come into contact with a mental health
509 specialist, e.g., a psychiatrist or psychotherapist (46). Other publications suggest that only 5–7% of
510 all children and adolescents, and therefore only a quarter to a third of children and adolescents with a
511 mental or behavioural disorder, receive mental healthcare in the broader sense (82, 86). This includes
512 services provided not only by a medical, psychological, or child and adolescent psychotherapist but
513 also by a general practitioner, paediatrician, or psychiatrist in connection to a mental or behavioural
514 disorder diagnosis. Only 0.2–2% of all children and adolescents receive guideline-based psychother-
515 apy, translating to up to 10% of children and adolescents with a mental or behavioural disorder (52,
516 77, 84).

517 Regarding age and gender differences in the use of mental healthcare, administrative data suggests a
518 peak in diagnosis prevalence at age five, as most developmental disorders are diagnosed at this age
519 (46, 47, 82). Until age 15, more male than female children and adolescents are diagnosed; afterwards,
520 more female than male adolescents receive a diagnosis (46, 47, 80, 82–84). This aligns with gender
521 differences in the type of diagnosis: while male children and adolescents are more frequently diag-
522 nosed with developmental and behavioural disorders, typically occurring first in early childhood, fe-
523 male children and adolescents are more often diagnosed with mood, anxiety, eating, personality, and
524 substance abuse disorders, which typically only start in late childhood or adolescence (46, 47, 80,
525 82–84). These trends are also reflected in age and gender differences in the use of mental healthcare
526 (46, 77, 82, 84). However, psychotherapy is mostly used by older children and adolescents and less
527 by younger children (52, 77, 82, 84, 86).

528 Considering changes over time, it seems that an increasing number of children and adolescents are
529 treated by psychotherapists, while fewer cases are only treated by a paediatrician or general practi-
530 tioner (46). This coincides with the introduction of the obligatory initial consultation in 2017, which
531 every SHI-accredited psychotherapist in private practice is required to provide. This initial consulta-
532 tion serves as a preliminary diagnostic assessment and treatment recommendation, as well as a first
533 step in accessing psychotherapeutic care. However, an appointment for an initial consultation often
534 does not result in a therapy place at the respective practice. Data shows that due to this reform, signif-
535 icantly more patients access psychotherapeutic care, while waiting times for guideline-based psycho-
536 therapy further increase (40, 85, 87). This is because the required number of initial consultations a
537 practice must provide reduce the capacity for guideline-based psychotherapy sessions. The COVID-
538 19 pandemic put a heavy strain on the healthcare system in general and therefore also affected the
539 provision of psychotherapeutic care. Administrative data indicates a general decrease in psychothera-
540 peutic service provision and administrative incidence rates at the start of the pandemic in 2020 (79,
541 81, 83). However, following the first lockdown, an increase in the administrative incidence of certain
542 mental and behavioural disorders, surpassing pre-pandemic levels, was recorded (78, 83).

543 Psychotherapists also reported a heightened demand for psychotherapy and pandemic-associated de-
544 teriorations in mental health (44, 88–91).

545 **4.2.3 Availability and Accessibility of Psychotherapeutic Care**

546 Waiting times for treatment are often used as a marker of the availability of care. In the studies we
547 reviewed, we found high variance in waiting times for an initial consultation and guideline-based
548 therapy both between regions and between individual practices. This disparity is concerning in a
549 healthcare system founded on the principle of solidarity, which aims to ensure equal access to care
550 nationwide. Furthermore, chances of even receiving an appointment are unacceptably low, with wait-
551 ing times reported to be excessively long and having doubled during the COVID-19 pandemic (41,
552 42, 44, 92). Psychotherapists reported receiving five to six requests for an initial appointment per
553 week, of which only one-third resulted in an appointment (41, 42, 92). Half of the patients waited
554 longer than four weeks for an initial consultation and more than six months for the start of guideline-
555 based psychotherapy (41, 42). Given the time-sensitive development of children and adolescents,
556 these difficulties in obtaining an appointment, followed by extensive waiting times, can lead to an
557 exacerbation of symptoms, impaired psychosocial development, and damage to social participation.
558 Additionally, they can result in reduced trust in the healthcare system and decreased motivation to
559 seek professional help.

560 Research on individual barriers to accessing psychotherapeutic care for children and adolescents is
561 still lacking. Nevertheless, we found indications that limited knowledge about mental health and
562 mental healthcare services, fear of stigma, and negative experiences in the healthcare system are as-
563 sociated with a reduced likelihood of attempting to access psychotherapeutic care (56). Gender, so-
564 cio-economic status, specific diagnosis, and severity of mental health problems and related impair-
565 ment seem to moderate the motivation to access psychotherapeutic care (57, 58).

566 Taken together, we found a wide range of data on psychotherapeutic care for children and adoles-
567 cents in Germany, allowing for some conclusions about the need and demand, service use and provi-
568 sion, and availability and access to care. It seems that the number of children and adolescents receiv-
569 ing psychotherapeutic treatment is far smaller than the number estimated to have an objective or sub-
570 jective need for this treatment. While the demand for psychotherapeutic care appears to be rising in
571 light of global crises, the capacities of psychotherapeutic care have not been adequately adjusted,
572 leading to impaired access to care and long waiting times.

573 However, these conclusions should be interpreted with caution, as we had to compare results from
574 different data sources which vary greatly in their content, methodology, and study purposes. The cur-
575 rent database is very fragmented, and the data available on specific constructs is often very limited.
576 Systematic, multimodal, comprehensive, and longitudinal assessments are necessary to reliably as-
577 sess the state of the psychotherapeutic care system, which unfortunately do not exist.

578 **4.3 Methods to Assess Outpatient Psychotherapeutic Care**

579 In the following, we discuss the suitability of different data sources used to assess the outpatient psy-
580 chotherapeutic care for children and adolescents in order to answer our third research question. The
581 outcomes, main strengths, and limitations of each data source are summarised in Table 7.

582 4.3.1 Epidemiological Data

583 Epidemiological data can be used to determine the prevalence and distribution of mental and behav-
584 ioural disorders and the need for treatment. Epidemiological studies typically use clinical interviews
585 with children and adolescents to assess for mental or behavioural disorder diagnoses. Children, ado-
586 lescents, or caregivers might also be asked if they have received a mental or behavioural disorder di-
587 agnosis in the past. Frequently, epidemiological studies also use questionnaires to assess general or
588 disorder-specific psychopathological symptoms via self-report or other-report. These questionnaires
589 can indicate whether the children, adolescents, or their caregivers observe symptoms that might be
590 clinically relevant and require professional clarification.

591 A major advantage of using epidemiological data in assessing mental healthcare in comparison to
592 data from routine practice is that it provides an objective estimate of the prevalence of specific men-
593 tal or behavioural disorders in the general population. Therefore, it can be used to assess the objective
594 need for professional mental healthcare based on treatment guidelines for respective disorders. Fur-
595 thermore, if the epidemiological data is derived from clinical interviews conducted by professionals,
596 it might serve as relatively objective, professional, and comprehensive assessments of psychopathol-
597 ogy and need for treatment, being less prone to distortion than other data sources (e.g., patient re-
598 ports).

599 However, epidemiological data alone is not sufficient to assess the state of mental healthcare provi-
600 sion as it most often does not include information on treatment rates but rather serves as a marker for
601 the need and demand for treatment. Epidemiological data itself holds several limitations: Firstly, uni-
602 form definitions and standardized approaches for the assessment of many mental or behavioural dis-
603 orders in childhood and adolescence are still missing (95, 98). Thus, there might be restrictions in the
604 validity of assessed symptoms or diagnoses due to inconsistencies in case definition, assessment
605 tools, and combination of different informants (95). While clinical interviews are the gold standard to
606 diagnose mental and behavioural disorders, they are time- and resource-intensive and therefore sel-
607 dom used in larger, representative samples in epidemiological studies. Large samples are, however,
608 necessary to adequately assess less prevalent syndromes and access to mental healthcare as they are
609 only relevant to a smaller subgroup of the sample (95). The more frequently used questionnaires
610 alone are, however, not suited to determine clinical diagnoses requiring treatment, as a rather artifi-
611 cial cut-off score in a questionnaire does not equal the presence of a clinically relevant disorder (99).
612 The results in a clinical questionnaire might also be distorted by the subjective biases of the children,
613 adolescents, and caregivers due to factors such as stigmatization or mental health literacy (98). The
614 assessment of mental health problems in younger children with clinical questionnaires is particularly
615 challenging as younger children's ability to reflect and report on symptoms is still limited, and espe-
616 cially internalising symptoms often go unnoticed by the caregivers. Furthermore, clinical question-
617 naires often differ in researched symptoms, case definitions, indicators, operationalization, and refer-
618 ence population, leading to variance in data (98). Additionally, to assess changes in pathology due to
619 developments in the healthcare system, longitudinal studies are necessary, which are, however, lack-
620 ing.

621 In the study sample included in the current review, we found a lack of studies using clinical question-
622 naires and studies specifically assessing the need for psychotherapy, particularly in younger children.
623 The latter would be particularly important as the prevalence of mental or behavioural disorder symp-
624 toms does not equal the need for psychotherapy. Furthermore, many of the included studies were as-
625 sociated with the same project (KiGGS-/BELLA-/COPSY-study). On the one hand, this leads to bet-
626 ter comparability between the studies due to similarities in methodology and allows for longitudinal

627 assessments. On the other hand, this accumulation of studies from the same project constricts the data
628 to the research focus of the specific project (i.e., health-related quality of life, general measures of
629 mental health problems). In the other studies, we found a large variety in assessed symptoms, limit-
630 ing the options for comprehensive conclusions.

631 **4.3.2 Administrative Data**

632 Administrative data comprises standardised billing information from healthcare service providers on
633 the utilisation of healthcare services. The data can be provided by health, pension, or accident insur-
634 ance agencies or by hospital statistics. In this review, we focus on data derived from SHI agencies.

635 A strength of this data source is its high ecological validity, as it is directly derived from routine
636 practice. Additionally, administrative data provides an objective and standardized description of
637 healthcare service provision. In Germany, around 90% of the population has SHI, hence the data
638 from SHI agencies provides large and approximately representative samples of the population. There-
639 fore, this data is less susceptible to distortion due to selection biases compared to epidemiological
640 studies, patient reports, or therapist reports. Due to the large amount of available data, both in terms
641 of sample size and number of assessed variables, a wide range of population-based analyses are pos-
642 sible (47, 81–83). Information which can be drawn from SHI data includes diagnosis and service data
643 from SHI-accredited medical, therapeutic, pharmaceutical, hospital, and rehabilitation services (48,
644 81–83). This data provides information on prevalence rates of coded diagnoses, frequency of utiliza-
645 tion of certain healthcare services, and waiting times between services. It can also include infor-
646 mation on caregivers' incapacity to work and (child) sickness benefit payments due to certain mental
647 or physical disorders (47, 81–83). Moreover, administrative data can be collected continuously, al-
648 lowing for the longitudinal analysis of trends in service provision and coded diagnoses.

649 However, these analyses are often limited because administrative data is typically published in re-
650 ports by SHI agencies rather than empirical studies. Thus, the data presentation can be distorted by
651 the interests of the SHI agencies. The agencies often publish focus analyses on specific aspects of
652 children's and adolescents' mental health (e.g., specific diagnoses or billing codes) and do not pro-
653 vide comprehensive reports (81–83). Most often complete data and conducted analyses cannot be
654 openly accessed. Further, there is a lack of standardised operationalisation and reporting as well as
655 systematic statistical evaluations. This leads to variance in the definition of core variables between
656 studies. For example, there are differences in the criteria for defining "cases" of mental or behav-
657 ioural disorders (e.g., in how many quarters of a year a respective diagnosis has to be documented,
658 which medical service has to be billed). Additionally, reports differ in which services (i.e., billing
659 codes) are counted as "psychotherapeutic care" or "mental healthcare." Some reports do not even
660 specify how cases or mental healthcare are conceptualized. These definitions, however, significantly
661 influence the results and limit comparability between reports (52).

662 Regarding diagnosis prevalence rates, it must be noted that the quality of diagnostic evaluation in
663 routine practice is often poor, as it highly depends on the assessment of the respective practitioner
664 and is not linked to a specific diagnostic procedure (100). Therefore, the validity of the coded mental
665 or behavioural disorder diagnoses is limited (86). Furthermore, the prevalence and incidence rates of
666 coded diagnoses are highly dependent on the current capacities of the mental healthcare system,
667 which is restricted by demand planning. The actual demand for diagnostic evaluation and psychother-
668 apeutic care, as well as changes in demand, cannot be depicted in administrative data since the capac-
669 ities for SHI-funded outpatient psychotherapeutic care are already fully utilized. It can be assumed
670 that not all children and adolescents in need of diagnostic evaluation or care are able to access the
671 system. Administrative data is not suited to assess barriers to treatment access and does not include

672 information on children and adolescents not entering the healthcare system. Regarding psychothera-
673 peutic care itself, there is a lack of information on the type, duration, quality, and effectiveness of
674 treatment in administrative data.

675 Consequently, it is important to keep in mind that administrative data is not a valid indicator for epi-
676 demiological prevalence and incidence rates, the demand for psychotherapeutic treatment, or ade-
677 quate psychotherapeutic care. It can merely depict the services and diagnoses billed in the current
678 SHI-funded healthcare system.

679 In this review, we found both reports published by respective SHI agencies and more standardized
680 empirical studies published by the German Central Institute for SHI Physicians. These publications
681 reported on a wide range of outcomes, including prevalence and incidence rates of documented men-
682 tal or behavioural disorders, frequency and modalities of treatment, and changes in diagnosis and
683 treatment prevalence during the COVID-19 pandemic. Six reports were published by the same SHI
684 agency in a series (“DAK Gesundheitsreport”). However, these reports vary greatly in their focus
685 (specific diagnoses, prevalence rates, incidence rates), definitions of treatment, and the time spans
686 they cover (e.g., data from one year vs. multiple years, data from one year or up to five years before
687 the report). This makes it difficult to compare these publications, even though they belong to the
688 same series. Additionally, the included publications do not differentiate between mental and behav-
689 ioural disorders requiring different types of treatment. Regarding psychotherapy, it must be consid-
690 ered that diagnoses from the diagnostic groups ICD-10 F7 and F8 are mostly not an indication for
691 psychotherapy. Thus, the overall prevalence of any ICD-10 F-diagnosis in the data cannot be used as
692 an estimate for the need for psychotherapeutic care.

693 **4.3.3 Psychotherapist Reports**

694 Reports on the current state of outpatient psychotherapeutic care from the perspective of providers in
695 private practice (including child and adolescent psychotherapists, psychological therapists, and medi-
696 cal psychotherapists) are often based on online surveys conducted by professional associations or
697 psychotherapist chambers.

698 This data can provide professional evaluations of current stress levels and stress factors in children
699 and adolescents, thereby contributing to assessments of the need for treatment. Psychotherapists can
700 further report on the demand for diagnostic evaluations or psychotherapeutic treatment they experi-
701 ence, including requests for appointments that cannot be fulfilled. Therefore, these studies can pro-
702 vide more information on patients seeking help but unable to access the healthcare system than epi-
703 demiological or administrative data. Additionally, they can provide estimates of waiting times for initial
704 consultations and the start of guideline-based psychotherapy and information on the treatment for-
705 mats psychotherapists offer and the disorders they are treating. Furthermore, psychotherapist reports
706 can offer unique insights into the experiences of psychotherapists as healthcare providers, such as
707 their working conditions, stress levels, and stress factors. This information is crucial for a compre-
708 hensive evaluation of the psychotherapeutic healthcare system, as adequate treatment is only possible
709 when service providers have decent working conditions.

710 Nevertheless, these studies are susceptible to distortion due to the subjective assessments of the psy-
711 chotherapists, which can be influenced by individual perceptions, assumptions, attitudes, and stress,
712 as well as certain biases or errors in reporting (e.g., hindsight or memory bias). This might limit the
713 validity and reliability of the derived data. Moreover, in an exhausted healthcare system, there might
714 be selection biases in the samples of participants, potentially reducing the representativeness of the
715 data.

716 In the articles we reviewed, we found that multiple surveys do not include or do not report separately
717 on psychotherapists who work with children and adolescents and therefore had to be excluded, limit-
718 ing the available data.

719 **4.3.4 Patient Reports**

720 Patient reports in our review included data derived from surveys among children, adolescents, or
721 their caregivers on the children's and adolescents' demand for and access to mental healthcare.

722 This data can include self- or caregiver-perceived mental health problems, the utilization of profes-
723 sional help, the demand or motivation to seek such help, and barriers experienced in accessing the
724 healthcare system. While epidemiological data and psychotherapist reports can serve as measures of
725 the objective need for psychotherapeutic care, patient reports can serve as a measure of subjective de-
726 mand for this treatment. An advantage of this data source over others is that it provides insights into
727 children and adolescents who may need psychotherapeutic treatment but do not do not succeed in ac-
728 cessing it.

729 However, it should be considered that these studies lack professional assessments of symptoms and
730 the need for treatment, which can limit the validity of the data. Furthermore, assessing symptoms and
731 the need for psychotherapeutic care is especially difficult in younger children due to their still-limited
732 ability to self-reflect and communicate. Therefore, studies often use caregiver reports, which can be
733 distorted by the caregivers' perceptions, attitudes, and stress. Moreover, the assessment of need or
734 use of different kinds of mental healthcare (e.g., treatment by a psychiatrist, psychologist, or psycho-
735 therapist) is limited by the participants' knowledge and ability to correctly differentiate between these
736 different healthcare providers.

737 In our data we found that patient reports on perceived demand for mental healthcare often con-
738 founded with epidemiological studies. In the studies included in this category, "mental healthcare"
739 was not further specified, which does not allow for statements on psychotherapeutic care in particu-
740 lar. Overall, we found a lack of studies using patient reports and a lack of data on quantity, quality,
741 and access to mental healthcare.

742 In conclusion, it becomes evident that each data source provides unique insights into the psychother-
743 apeutic care situation. However, relying on a single data source is insufficient, as each has limitations
744 in the scope of variables it can assess and the quality of the data it provides. Therefore, a comprehen-
745 sive assessment requires considering multiple data sources to capture indicators of both objective and
746 subjective need and demand for psychotherapeutic treatment, as well as factors such as utilization,
747 quantity, quality, accessibility, and availability of care.

748 **4.4 Strengths and Limitations of the Current Review**

749 To our knowledge, the current review is the only comprehensive study in recent years that examines
750 the psychotherapeutic care situation for children and adolescents in Germany using a variety of data
751 sources. However, due to regular changes in the healthcare system, demand planning, and current so-
752 cietal challenges potentially influencing the mental health of children and adolescents (e.g., the
753 COVID-19 pandemic, the climate crisis, global conflicts), it is necessary to continuously collect and
754 discuss current data on the provision of psychotherapeutic care. A strength of this review is that it
755 provides not only an overview of recent data, but also a methodological discussion of the strengths
756 and limitations of different data sources. Furthermore, we included empirical studies as well as ad-
757 ministrative reports, thereby offering a combination of scientific research and practical care data, thus

758 linking research and practice. Finally, our extensive search covered four databases and included grey
759 literature, reducing the influence of publication bias on our results.

760 This work, however, has several limitations. Most importantly, we focused solely on the provision of
761 outpatient psychotherapeutic care, which is by far not the only healthcare service for children and ad-
762 olescents with mental or behavioural problems in Germany. Other professions involved in the mental
763 healthcare of children and adolescents are paediatricians, child and adolescent psychiatrists, social
764 workers, psychologists, teachers, educators, occupational therapists, and child and youth welfare pro-
765 fessionals. Therefore, children and adolescents who do not access outpatient psychotherapeutic treat-
766 ment might still receive treatment from other professions or in different settings. For example, Ger-
767 many has the highest number of inpatient beds for children and adolescents in Europe, indicating that
768 many children and adolescents with mental or behavioural disorders could receive mental healthcare
769 in the inpatient sector (34). Moreover, our data does not allow for conclusions on the quality or dura-
770 tion of psychotherapeutic treatment but rather on the quantitative demand, service use, and access.

771 Methodologically, while including peer-reviewed empirical articles, administrative reports, and grey
772 literature broadens our data scope, it also introduces potential limitations in the quality of included
773 publications, which we did not assess or account for. We did not statistically evaluate the size of the
774 publication and reporting bias, so we cannot estimate their effects on our data. Due to the scoping ap-
775 proach of our review, we found significant heterogeneity in the data regarding data sources, method-
776 ology, and reported outcomes. This heterogeneity prevents a quantitative summary of the data. Thus,
777 our results are based on a qualitative synthesis of the research findings. Lastly, the lack of epidemio-
778 logical studies on the prevalence rates of mental and behavioural disorders in children and adoles-
779 cents and on patient reports limits our ability to draw conclusions on this data, leaving some research
780 questions insufficiently answered.

781 **4.5 Practical Implications**

782 Our results suggest that approximately 13–17% of German children and adolescents are be in need of
783 psychotherapeutic care, while only 5–7% receive broader mental healthcare and only 0.2–2% receive
784 guideline-based psychotherapy. Given the serious individual and societal consequences that untreated
785 mental and behavioural disorders in childhood and adolescence can have, this discrepancy is alarm-
786 ing. One reason children and adolescents may not access outpatient psychotherapeutic care could be a
787 lack of knowledge about mental health, mental healthcare services, and how to access them, as well
788 as prejudice and stigma surrounding psychotherapeutic care among children, adolescents, and their
789 families. To address these barriers, interventions are needed to provide education on mental health,
790 increase awareness of mental healthcare services, and combat stigma associated with mental health
791 and psychotherapy, particularly in hard-to-reach populations.

792 Another major reason is the limited availability of SHI-funded outpatient psychotherapy. Compared
793 to other high-resource countries, such as Italy, the Netherlands, or the USA, it seems that psychother-
794 apeutic care in Germany is behind in terms of the ratio of mental health professionals to the popula-
795 tion and the number of children and adolescents accessing mental healthcare (3, 38).

796 It is clear that the current capacity of psychotherapeutic care is not sufficient to meet the need for
797 treatment. This is reflected in the large proportions of unmet requests and long waiting times for
798 treatment, which are an immense burden on families with mentally ill children and adolescents who
799 are willing to seek professional help. This problem only seems to be becoming more drastic in the
800 future, as the demand is predicted to rise even further due to de-stigmatisation and improvements in
801 early diagnostics of mental and behavioural disorders, as well as an increase in stress factors for

802 children and adolescents (e.g., the advancing climate crisis, escalating global conflicts, increasing ac-
803 ademic pressure, and the growing shortage of teachers in Germany) (101). The capacity of SHI-
804 funded outpatient health services is determined by the system of “Demand Planning” carried out by
805 the Federal Joint Committee, the National Association of Statutory Health Insurance Funds, and the
806 National Association of Statutory Health Insurance Physicians at the federal level. It determines how
807 many practitioners of a certain medical profession (here psychotherapy) are allowed to provide health
808 services at the expense of SHI funds in a certain area. These numbers are, however, not based on epi-
809 demiological calculations of actual demand for services but merely on the continuation of a certain
810 historical ratio between practitioners and the population (49–51). Moreover, there is currently no in-
811 dependent demand planning for child and adolescent psychotherapy. The numbers of SHI-accredited
812 psychotherapists for children, adolescents, and adults are planned together, with a rather artificial
813 quota for child and adolescent psychotherapy. Hence, the current system has been heavily criticised,
814 and multiple expert reports and statements from psychotherapist organisations have called for major
815 reforms over the last few years (49, 50, 102–111).

816 The results of the current review strongly support the need for a reform in demand planning, as data
817 clearly indicates that the current number of SHI-accredited psychotherapists is not sufficient to ade-
818 quately and timely provide the necessary amount of psychotherapeutic care for children and adoles-
819 cents in Germany. An urgent expansion of SHI-funded psychotherapeutic care capacity is needed to
820 protect the long-term mental health and social participation of children and adolescents and to pre-
821 vent significant societal costs associated with untreated or late-treated mental and behavioural disor-
822 ders, such as increased treatment expenses, sick leave costs, and early retirement.

823 **4.6 Implications for Future Research**

824 We have demonstrated that a comparative analysis of different data sources is necessary to compre-
825 hensively assess outpatient psychotherapeutic care for children and adolescents. However, our review
826 revealed significant research gaps, particularly concerning epidemiological data on mental and be-
827 havioural disorders in German children and adolescents, and patient reports on access to psychothera-
828 peutic care. Therefore, further research focusing on these areas and integrating various data sources is
829 needed.

830 To adequately assess changes in the mental health of children and adolescents over time, longitudinal
831 study designs are essential. The KiGGS-/BELLA-/COPSY-study is one example of such a longitudi-
832 nal epidemiological research project. Continuous funding and support for these projects are crucial to
833 obtaining reliable data on child and adolescent mental health in the context of evolving challenges
834 and social crises. Similarly, systematic, comprehensive, and longitudinal study designs are necessary
835 to assess the psychotherapeutic care situation from the perspectives of psychotherapists and patients.
836 Regarding administrative data, our review highlighted that systematic and standardized approaches to
837 analysing and reporting this data are still lacking. Such standardization is essential for effective re-
838 search and service planning, as it allows for meaningful comparisons and analysis of changes over
839 time, ensuring that this data source can be fully utilized.

840 International studies on psychotherapeutic care provision yield similar conclusions. A comparable
841 review from Austria, which assessed epidemiological studies and administrative data to estimate
842 prevalence rates and care provision, found a lack of epidemiological studies in German-speaking
843 countries and great variance in data (112). The authors concluded that systematic data is necessary to
844 comprehensively assess the demand for and provision of psychotherapy. Furthermore, an interna-
845 tional survey assessing the provision of child and adolescent mental health services in 28 European

846 countries revealed that a major challenge shared among countries is the lack of systematic and stand-
847 arized assessments of service provision and quality (34). This lack of systematic structures to com-
848 prehensively assess the psychotherapeutic care situation appears to be an international issue, not just
849 a national one.

850 Lastly, as discussed in the limitations of this review, mental healthcare is also provided by other pro-
851 fessions and in the inpatient sector. Exploring the provision of care in these areas could offer valuable
852 insights and lead to more comprehensive conclusions about the overall healthcare system.

853 **5 Conclusion**

854 This scoping review of 41 publications on the state and assessment of SHI-funded outpatient psycho-
855 therapeutic care for children and adolescents in Germany indicates that approximately one in four to
856 five children has a mental or behavioural disorder, and one in six to seven children requires psycho-
857 therapeutic treatment. This need is largely unmet, as the majority of treatment requests are not ful-
858 filled, waiting times for therapy are excessively long, and only up to 10% of children and adolescents
859 with a mental or behavioural disorder receive guideline-based psychotherapy. These findings under-
860 score the insufficiency of current treatment capacities to meet the increasing mental healthcare needs
861 of children and adolescents and highlight the urgent need for expansion to prevent long-term harm to
862 current and future generations. Our findings emphasize the necessity for a systematic, multimodal,
863 and longitudinal analysis of the care system. Such an analysis should integrate epidemiological, ad-
864 ministrative, psychotherapist, and patient data to empirically assess the need and demand for treat-
865 ment, service use and provision, and the availability and accessibility of care. Future research must
866 provide these comprehensive and systematic assessments to scientifically guide and evaluate changes
867 in the mental healthcare system.

868 **6 Conflict of Interest**

869 The authors declare that the research was conducted in the absence of any commercial or financial
870 relationships that could be construed as a potential conflict of interest.

871 **7 Author Contributions**

872 Idea: JS; Conceptualisation: KRW, JS; Methodology: KRW; Literature search and data analysis:
873 KRW; Writing – original draft: KRW; Writing – review & editing: KRW, JS; Supervision: JS.

874 **8 Funding**

875 This review was funded by the Robert Bosch Stiftung GmbH (grant number: 01000971-001). The
876 funders had no role in study design, data collection and analysis, decision to publish, or the prepara-
877 tion of the manuscript. The publication was supported by the Open Access Publishing Fund of Leip-
878 zig University.

879 **9 Acknowledgements**

880 The authors would like to acknowledge that the language editing for this manuscript was supported
881 by ChatGPT (GPT 3.5), an artificial intelligence language model by OpenAI, to enhance the readabil-
882 ity and clarity of the text without altering or generating the scientific content.

883

884 10 Data Availability Statement

885 All relevant data are within the manuscript and its supporting information files. This paper was not
886 registered and no protocol was prepared.

887 11 References

- 888 1. Ihle W, Esser G. Epidemiologie psychischer Störungen im Kindes- und Jugendalter. *Psychologi-*
889 *sche Rundschau* (2002) **53**:159–69. doi:10.1026//0033-3042.53.4.159
- 890 2. Kieling C, Baker-Henningham H, Belfer M, Conti G, Ertem I, Omigbodun O, et al. Child and ad-
891 olescent mental health worldwide: evidence for action. *The Lancet* (2011) **378**:1515–25.
892 doi:10.1016/S0140-6736(11)60827-1
- 893 3. Merikangas KR, Nakamura EF, Kessler RC. Epidemiology of mental disorders in children and
894 adolescents. *Dialogues in clinical neuroscience* (2009) **11**:7–20.
895 doi:10.31887/DCNS.2009.11.1/krmerikangas
- 896 4. Sacco R, Camilleri N, Eberhardt J, Umla-Runge K, Newbury-Birch D. A systematic review and
897 meta-analysis on the prevalence of mental disorders among children and adolescents in Europe.
898 *Eur Child Adolesc Psychiatry* (2022):1–18. doi:10.1007/s00787-022-02131-2
- 899 5. Husky MM, Boyd A, Bitfoi A, Carta MG, Chan-Chee C, Goelitz D, et al. Self-reported mental
900 health in children ages 6-12 years across eight European countries. *Eur Child Adolesc Psychiatry*
901 (2018) **27**:785–95. doi:10.1007/s00787-017-1073-0
- 902 6. Blakemore S-J. Adolescence and mental health. *The Lancet* (2019) **393**:2030–1.
903 doi:10.1016/s0140-6736(19)31013-x
- 904 7. Caspi A, Houts RM, Ambler A, Danese A, Elliott ML, Hariri A, et al. Longitudinal Assessment
905 of Mental Health Disorders and Comorbidities Across 4 Decades Among Participants in the Dun-
906 edin Birth Cohort Study. *JAMA Netw Open* (2020) **3**:e203221. doi:10.1001/jamanetworko-
907 pen.2020.3221
- 908 8. Kessler RC, Amminger GP, Aguilar-Gaxiola S, Alonso J, Lee S, Ustün TB. Age of onset of men-
909 tal disorders: a review of recent literature. *Current Opinion in Psychiatry* (2007) **20**:359–64.
910 doi:10.1097/YCO.0b013e32816ebc8c
- 911 9. Kessler RC, Berglund P, Demler O, Jin R, Merikangas KR, Walters EE. Lifetime prevalence and
912 age-of-onset distributions of DSM-IV disorders in the National Comorbidity Survey Replication.
913 *Arch Gen Psychiatry* (2005) **62**:593–602. doi:10.1001/archpsyc.62.6.593
- 914 10. Solmi M, Radua J, Olivola M, Croce E, Soardo L, Salazar De Pablo G, et al. Age at onset of
915 mental disorders worldwide: large-scale meta-analysis of 192 epidemiological studies. *Molecular*
916 *psychiatry*, 2023 (2022) **27**:281–95. doi:10.1038/s41380-021-01161-7
- 917 11. World Health Organization. *Global Health Estimates: Life expectancy and leading causes of*
918 *death and disability* (2023) [cited 2023 Jun 12]. Available from:
919 <https://www.who.int/data/gho/data/themes/mortality-and-global-health-estimates>
- 920 12. Eichinger M, Andreas M, Hoeppe A, Nisius K, Rink K. Kinder- und Jugendgesundheit in der
921 Klimakrise. *Monatsschr Kinderheilkd* (2023) **171**:114–23. doi:10.1007/s00112-022-01685-4
- 922 13. Peter F, Dohm L, Krimmer M. Psychische Konsequenzen der Klimakrise. *Monatsschr Kinder-*
923 *heilkd* (2023) **171**:130–7. doi:10.1007/s00112-022-01670-x

- 924 14. Sheffield PE, Landrigan PJ. Global climate change and children's health: threats and strategies
925 for prevention. *Environ Health Perspect* (2011) **119**:291–8. doi:10.1289/ehp.1002233
- 926 15. World Health Organization. *Protecting health in Europe from climate change: 2017 update*. Co-
927 penhagen: World Health Organization Regional Office for Europe (2017). 76 p.
- 928 16. Clayton S. Climate anxiety: Psychological responses to climate change. *J Anxiety Disord* (2020)
929 **74**:102263. doi:10.1016/j.janxdis.2020.102263
- 930 17. Hickman C, Marks E, Pihkala P, Clayton S, Lewandowski RE, Mayall EE, et al. Climate anxiety
931 in children and young people and their beliefs about government responses to climate change: a
932 global survey. *The Lancet Planetary Health* (2021) **5**:e863-e873. doi:10.1016/S2542-
933 5196(21)00278-3
- 934 18. Pihkala P. Anxiety and the Ecological Crisis: An Analysis of Eco-Anxiety and Climate Anxiety.
935 *Sustainability* (2020) **12**:7836. doi:10.3390/su12197836
- 936 19. Wolf K, Schmitz J. Scoping review: longitudinal effects of the COVID-19 pandemic on child
937 and adolescent mental health. *Eur Child Adolesc Psychiatry* (2023). doi:10.1007/s00787-023-
938 02206-8
- 939 20. Riad A, Drobov A, Krobot M, Antalová N, Alkasaby MA, Peřina A, et al. Mental Health Burden
940 of the Russian-Ukrainian War 2022 (RUW-22): Anxiety and Depression Levels among Young
941 Adults in Central Europe. *Int J Environ Res Public Health* (2022) **19**.
942 doi:10.3390/ijerph19148418
- 943 21. Ravens-Sieberer U, Devine J, Napp A-K, Kaman A, Saftig L, Gilbert M, et al. Three years into
944 the pandemic: results of the longitudinal German COPSYS study on youth mental health and
945 health-related quality of life. *Front. Public Health* (2023) **11**:1129073.
946 doi:10.3389/fpubh.2023.1129073
- 947 22. Barchielli B, Cricenti C, Gallè F, Sabella EA, Liguori F, Da Molin G, et al. Climate Changes,
948 Natural Resources Depletion, COVID-19 Pandemic, and Russian-Ukrainian War: What Is the
949 Impact on Habits Change and Mental Health? *Int J Environ Res Public Health* (2022) **19**:11929.
950 doi:10.3390/ijerph191911929
- 951 23. Schlack R, Neuperdt L, Junker S, Eicher S, Hölling H, Thom J, et al. Veränderungen der psychi-
952 schen Gesundheit in der Kinder- und Jugendbevölkerung in Deutschland während der COVID-
953 19- Pandemie – Ergebnisse eines Rapid Reviews (2023).
- 954 24. Bandelow B, Aden I, Alpers GW, Benecke A, Benecke C, Beutel ME, et al. *S3-Leitlinie Behand-
955 lung von Angststörungen: Version 2*. AWMF online - Das Portal de wissenschaftlichen Medizin
956 (2021).
- 957 25. Deutsche Gesellschaft für Kinder- und Jugendpsychiatrie, Psychosomatik und Psychotherapie
958 e.V. *Langversion der interdisziplinären evidenz- und konsensbasierten S3-Leitlinie für Diagnos-
959 tik und Therapie von Zwangsstörungen im Kindes- und Jugendalter- / Hyperaktivitätsstörung
960 (ADHS) im Kindes-, Jugend- und Erwachsenenalter"*: AWMF-Registernummer 028-007. AWMF
961 online - Das Portal de wissenschaftlichen Medizin (2021).
- 962 26. Deutsche Gesellschaft für Kinder- und Jugendpsychiatrie, Psychosomatik und Psychotherapie
963 e.V., Deutsche Gesellschaft für Psychiatrie und Psychotherapie, Psychosomatik und Nervenheil-
964 kunde, Deutsche Gesellschaft für Sozialpädiatrie und Jugendmedizin e.V. *Langfassung der inter-
965 disziplinären evidenz- und konsensbasierten (S3) Leitlinie "Aufmerksamkeitsdefizit- /*

- 966 *Hyperaktivitätsstörung (ADHS) im Kindes-, Jugend- und Erwachsenenalter*: AWMF-Register-
967 nummer 028-045. AWMF online - Das Portal de wissenschaftlichen Medizin (2017).
- 968 27. NVL-Programm von BÄK, KBV, AWMF. *Nationale VersorgungsLeitlinie Unipolare Depres-*
969 *sion Langfassung: Version 3.2 AWMF-Register-Nr. nvl-005*. AWMF online - Das Portal de wis-
970 schaftlichen Medizin (2022).
- 971 28. Dickson SJ, Kuhnert R-L, Lavell CH, Rapee RM. Impact of Psychotherapy for Children and Ad-
972 olescents with Anxiety Disorders on Global and Domain-Specific Functioning: A Systematic Re-
973 view and Meta-analysis. *Clinical Child and Family Psychology Review* (2022) **25**:720–36.
974 doi:10.1007/s10567-022-00402-7
- 975 29. Wuthrich VM, Zagic D, Dickson SJ, McLellan LF, Chen JT-H, Jones MP, et al. Effectiveness of
976 Psychotherapy for Internalising Symptoms in Children and Adolescents When Delivered in Rou-
977 tine Settings: A Systematic Review and Meta-analysis. *Clinical Child and Family Psychology*
978 *Review* (2023) **26**:824–48. doi:10.1007/s10567-023-00433-8
- 979 30. Espada JP. Effectiveness of psychological treatments for depression in childhood and adoles-
980 cence: A review of reviews. *RPCNA* (2023) **10**. doi:10.21134/rpcna.2023.10.1.6
- 981 31. Pradhan B, Sahoo M. Psychotherapies for the Youth: Evolution, Progress, and On Way to Eclec-
982 ticism. *Journal of Indian Association for Child and Adolescent Mental Health* (2023) **19**:95–103.
983 doi:10.1177/09731342231179033
- 984 32. Fegert JM, Kölch M, Krüger U. *Versorgung psychisch kranker Kinder und Jugendlicher in*
985 *Deutschland – Bestandsaufnahme und Bedarfsanalyse: Sachbericht zum Projekt* (2017).
- 986 33. Rocha TB-M, Graeff-Martins AS, Kieling C, Rohde LA. Provision of mental healthcare for chil-
987 dren and adolescents: a worldwide view. *Current Opinion in Psychiatry* (2015) **28**:330–5.
988 doi:10.1097/YCO.000000000000169
- 989 34. Signorini G, Singh SP, Boricevic-Marsanic V, Dieleman G, Dodig-Ćurković K, Franic T, et al.
990 Architecture and functioning of child and adolescent mental health services: a 28-country survey
991 in Europe. *Lancet Psychiatry* (2017) **4**:715–24. doi:10.1016/s2215-0366(17)30127-x
- 992 35. Colizzi M, Lasalvia A, Ruggeri M. Prevention and early intervention in youth mental health: is it
993 time for a multidisciplinary and trans-diagnostic model for care? *Int J Ment Health Syst* (2020)
994 **14**:23. doi:10.1186/s13033-020-00356-9
- 995 36. European Commission Reform Support. *Supporting mental health and care for the wellbeing of*
996 *vulnerable children and young people* (2023) [cited 2024 May 22]. Available from: [https://re-](https://reform-support.ec.europa.eu/what-we-do/labour-market-social-protection-and-migration/supporting-mental-health-and-care-wellbeing-vulnerable-children-and-young-people_en)
997 [form-support.ec.europa.eu/what-we-do/labour-market-social-protection-and-migration/support-](https://reform-support.ec.europa.eu/what-we-do/labour-market-social-protection-and-migration/supporting-mental-health-and-care-wellbeing-vulnerable-children-and-young-people_en)
998 [ing-mental-health-and-care-wellbeing-vulnerable-children-and-young-people_en](https://reform-support.ec.europa.eu/what-we-do/labour-market-social-protection-and-migration/supporting-mental-health-and-care-wellbeing-vulnerable-children-and-young-people_en)
- 999 37. Boege I, Fegert JM. Debate: Quantity of impatient beds and quality of child psychiatric and psy-
1000 chotherapeutic care provision - a German perspective. *Child Adolesc Ment Health* (2021)
1001 **26**:169–70. doi:10.1111/camh.12468
- 1002 38. Kovess-Masfety V, van Engelen J, Stone L, Otten R, Carta MG, Bitfoi A, et al. Unmet Need for
1003 Specialty Mental Health Services Among Children Across Europe. *Psychiatr Serv* (2017)
1004 **68**:789–95. doi:10.1176/appi.ps.201600409
- 1005 39. Bundespsychotherapeutenkammer. Positionspapier - Unterversorgung psychisch kranker Kinder
1006 und Jugendlicher: Handlungsbedarf im Vertragsarztrechtsänderungsgesetz. *BPtK* (2006).
- 1007 40. Bundespsychotherapeutenkammer. *Ein Jahr nach der Reform der Psychotherapie-Richtlinie:*
1008 *Wartezeiten 2018* (2018).

- 1009 41. Rabe-Menssen C. Patientenfragen während der Corona-Pandemie. *Psychotherapie Aktuell*
1010 (2021) **13**:6–13.
- 1011 42. Rabe-Menssen C. Patientenfragen während der Corona-Pandemie 2022. *Psychotherapie Aktu-*
1012 *ell* (2022) **15**:8–15.
- 1013 43. Deutsches Ärzteblatt. *Bedarf an Psychotherapie für Kinder und Jugendliche höher als vor* (2022)
1014 [cited 2023 Mar 24]. Available from: [https://www.aerzteblatt.de/nachrichten/138249/Bedarf-an-](https://www.aerzteblatt.de/nachrichten/138249/Bedarf-an-Psychotherapie-fuer-Kinder-und-Jugendliche-hoehere-als-vor-Corona)
1015 [Psychotherapie-fuer-Kinder-und-Jugendliche-hoehere-als-vor-Corona](https://www.aerzteblatt.de/nachrichten/138249/Bedarf-an-Psychotherapie-fuer-Kinder-und-Jugendliche-hoehere-als-vor-Corona)
- 1016 44. Plötner M, Moldt K, In-Albon T, Schmitz J. Einfluss der COVID-19-Pandemie auf die ambu-
1017 lante psychotherapeutische Versorgung von Kindern und Jugendlichen = Impact of the COVID-
1018 19 pandemic on outpatient psychotherapy for children and adolescents. *Die Psychotherapie*
1019 (2022) **67**:469–77. doi:10.1007/s00278-022-00604-y
- 1020 45. Apel J. Psychotherapien in der Corona-Krise: „Erhebliche Zunahme an Anfragen“. *Redaktions-*
1021 *Netzwerk Deutschland (RND)* (2021).
- 1022 46. Steffen A, Akmatov MK, Holstiege J, Bätzing J. *Diagnoseprävalenz psychischer Störungen bei*
1023 *Kindern und Jugendlichen in Deutschland: Eine Analyse bundesweiter vertragsärztlicher Ab-*
1024 *rechnungsdaten der Jahre 2009 bis 2017*. Zentralinstitut für die kassenärztliche Versorgung in
1025 Deutschland (Zi) (2018).
- 1026 47. Greiner W, Batram M, Damm O, Scholz S, Witte J, Kuntz B, et al. *Kinder-und Jugendreport*
1027 *2018: Gesundheitsversorgung von Kindern und Jugendlichen in Deutschland Schwerpunkt: Fa-*
1028 *miliengesundheit*. Hamburg: DAK-Gesundheit (2018).
- 1029 48. Gemeinsamer Bundesausschuss. Richtlinie des Gemeinsamen Bundesausschusses über die Be-
1030 darfsplanung sowie die Maßstäbe zur Feststellung von Überversorgung und Unterversorgung in
1031 der vertragsärztlichen Versorgung (2023).
- 1032 49. Ozegowski S, Sundmacher L. Bedarfsplanung – quo vadis? *GuS* (2013) **67**:60–7.
1033 doi:10.5771/1611-5821-2013-6-60
- 1034 50. Sundmacher L, Flemming R, Franke S, Höser C, van den Berg N, Becker U, et al. *Gutachten zur*
1035 *Weiterentwicklung der Bedarfsplanung i.S.d. §§ 99 ff. SGB V zur Sicherung der vertragsärztli-*
1036 *chen Versorgung: Im Auftrag des Gemeinsamen Bundesausschusses*. München, Leipzig, Bonn,
1037 Greifswald, Köln (2018).
- 1038 51. Kassenärztliche Bundesvereinigung. *Sachstand und Weiterentwicklung der Bedarfsplanung: Isar*
1039 *Forum* (2016).
- 1040 52. Jaite C, Seidel A, Hoffmann F, Mattejat F, Bachmann CJ. Guideline-Based Psychotherapy of
1041 Children and Adolescents in Germany: Frequency, Treatment Modalities, and Duration of Treat-
1042 ment. *Deutsches Ärzteblatt* (2022).
- 1043 53. Lutz W, Rubel J. Warum die Psychotherapieforschung in Deutschland ausgebaut werden
1044 sollte/könnte/müsste. *Psychother Psychosom Med Psychol* (2015) **65**:161–2. doi:10.1055/s-0034-
1045 1387657
- 1046 54. Tricco AC, Lillie E, Zarin W, O'Brien KK, Colquhoun H, Levac D, et al. PRISMA Extension for
1047 Scoping Reviews (PRISMA-ScR): Checklist and Explanation. *Annals of internal medicine*
1048 (2018) **169**:467–73. doi:10.7326/M18-0850
- 1049 55. Harzing AW. *Publish or Perish* (2007). Available from: [https://harzing.com/resources/publish-](https://harzing.com/resources/publish-or-perish)
1050 [or-perish](https://harzing.com/resources/publish-or-perish)

- 1051 56. Otto C, Reiss F, Voss C, Wüstner A, Meyrose A-K, Hölling H, et al. Mental health and well-being from childhood to adulthood: design, methods and results of the 11-year follow-up of the
1052 BELLA study. *Eur Child Adolesc Psychiatry* (2021) **30**:1559–77. doi:10.1007/s00787-020-
1053 01630-4
1054
- 1055 57. Reiß F, Schlack R, Otto C, Meyrose A-K, Ravens-Sieberer U. Zur Rolle des sozioökonomischen
1056 Status bei der Inanspruchnahme fachspezifischer Versorgung von psychisch auffälligen Kindern
1057 und Jugendlichen in Deutschland: Ergebnisse der BELLA-Studie. *Das Gesundheitswesen* (2021)
1058 **83**:919–27. doi:10.1055/a-1335-4212
- 1059 58. Niermann HC, Voss C, Pieper L, Venz J, Ollmann TM, Beesdo-Baum K. Anxiety disorders
1060 among adolescents and young adults: Prevalence and mental health care service utilization in a
1061 regional epidemiological study in Germany. *Journal of Anxiety Disorders, 2021* (2021).
1062 doi:10.1016/j.janxdis.2021.102453
- 1063 59. Geweniger A, Barth M, Haddad AD, Högl H, Insan S, Mund A, et al. Impact of the COVID-19
1064 Pandemic on Mental Health Outcomes of Healthy Children, Children With Special Health Care
1065 Needs and Their Caregivers-Results of a Cross-Sectional Study. *Front Pediatr* (2022)
1066 **10**:759066. doi:10.3389/fped.2022.759066
- 1067 60. Geweniger A, Haddad A, Barth M, Högl H, Mund A, Insan S, et al. Mental health of children
1068 with and without special healthcare needs and of their caregivers during COVID-19: a cross-sec-
1069 tional study. *BMJ Paediatr Open* (2022) **6**. doi:10.1136/bmjpo-2022-001509
- 1070 61. Maldei-Gohring T, Opdensteinen KD, Hellbach C, Nowakowski N, Graßmann T, Hofer J, et al.
1071 Ein halbes Leben lang Corona: Auswirkungen der COVID-19-Pandemie auf die psychische Ge-
1072 sundheit von Vorschulkindern und deren Eltern = COVID-19 for half a lifetime: The impact of
1073 the COVID-19 pandemic on the mental health of preschool children and their caregivers. *Kind-
1074 heit und Entwicklung: Zeitschrift für Klinische Kinderpsychologie* (2022) **31**:91–9.
1075 doi:10.1026/0942-5403/a000374
- 1076 62. Ravens-Sieberer U, Kaman A, Otto C, Adedeji A, Napp A-K, Becker M, et al. Seelische Gesund-
1077 heit und psychische Belastungen von Kindern und Jugendlichen in der ersten Welle der COVID-
1078 19-Pandemie - Ergebnisse der COPSY-Studie. *Bundesgesundheitsblatt - Gesundheitsforschung -
1079 Gesundheitsschutz* (2021) **64**:1512–21. doi:10.1007/s00103-021-03291-3
- 1080 63. Ravens-Sieberer U, Kaman A, Erhart M, Devine J, Schlack R, Otto C. Impact of the COVID-19
1081 pandemic on quality of life and mental health in children and adolescents in Germany. *Eur Child
1082 Adolesc Psychiatry* (2021) **31**:879–89. doi:10.1007/s00787-021-01726-5
- 1083 64. Ravens-Sieberer U, Kaman A, Erhart M, Otto C, Devine J, Löffler C, et al. Quality of life and
1084 mental health in children and adolescents during the first year of the COVID-19 pandemic: re-
1085 sults of a two-wave nationwide population-based study. *Eur Child Adolesc Psychiatry* (2021).
1086 doi:10.1007/s00787-021-01889-1
- 1087 65. Ravens-Sieberer U, Erhart M, Devine J, Gilbert M, Reiss F, Barkmann C, et al. Child and Ado-
1088 lescent Mental Health During the COVID-19 Pandemic: Results of the Three-Wave Longitudinal
1089 COPSY Study. *Journal of Adolescent Health* (2022) **71**:570–8.
1090 doi:10.1016/j.jadohealth.2022.06.022
- 1091 66. Kaman A, Erhart M, Devine J, Reiß F, Napp A-K, Simon AM, et al. Two Years of Pandemic: the
1092 Mental Health and Quality of Life of Children and Adolescents. *Dtsch Arztebl Int* (2023)
1093 **120**:269–70. doi:10.3238/arztebl.m2023.0001

- 1094 67. Reiß F, Kaman A, Napp A-K, Devine J, Li LY, Strelow L, et al. Epidemiologie seelischen Wohl-
1095 befindens von Kindern und Jugendlichen in Deutschland. Ergebnisse aus 3 Studien vor und wäh-
1096 rend der COVID-19-Pandemie. *Bundesgesundheitsblatt - Gesundheitsforschung - Gesundheits-*
1097 *schutz* (2023) **66**:727–35. doi:10.1007/s00103-023-03720-5
- 1098 68. Cohrdes C, Göbel K, Schlack R, Hölling H. Essstörungssymptome bei Kindern und Jugendli-
1099 chen: Häufigkeiten und Risikofaktoren. Ergebnisse aus KiGGS Welle 2 und Trends. *Bundesge-*
1100 *sundheitsblatt - Gesundheitsforschung - Gesundheitsschutz* (2019) **62**:1195–204.
1101 doi:10.1007/s00103-019-03005-w
- 1102 69. Ehrenberg D, Lohaus A, Konrad K, Lüning L, Heinrichs N. How anxious are German preschool
1103 children? *Child Psychiatry & Human Development* (2022) **53**:992–1003. doi:10.1007/s10578-
1104 021-01185-8
- 1105 70. Klipker K, Baumgarten F, Göbel K, Lampert T, Hölling H. Mental health problems in children
1106 and adolescents in Germany. Results of the cross-sectional KiGGS Wave 2 study and trends. *J*
1107 *Health Monit* (2018) **3**:34–41. doi:10.17886/RKI-GBE-2018-084
- 1108 71. Wartberg L, Kriston L, Thomasius R. Depressive Symptomatik bei Jugendlichen. Prävalenz und
1109 assoziierte psychosoziale Merkmale in einer repräsentativen Stichprobe. *Deutsches Ärzteblatt*
1110 (2018) **115**:549–55.
- 1111 72. Wartberg L, Kriston L, Thomasius R. Depressive symptoms in adolescents. Prevalence and asso-
1112 ciated psychosocial features in a representative sample. *Dtsch Arztebl Int* (2018) **115**:549–55.
1113 doi:10.3238/arztebl.2018.0549
- 1114 73. Wartberg L, Kriston L, Thomasius R. Prevalence of problem drinking and associated factors in a
1115 representative German sample of adolescents and young adults. *Journal of Public Health* (2019)
1116 **41**:543–9. doi:10.1093/pubmed/fdy163
- 1117 74. Wartberg L, Kriston L, Thomasius R. Internet gaming disorder and problematic social media use
1118 in a representative sample of German adolescents: Prevalence estimates, comorbid depressive
1119 symptoms and related psychosocial aspects. *Computers in Human Behavior* (2020) **103**:31–6.
1120 doi:10.1016/j.chb.2019.09.014
- 1121 75. Steffen A, Thom J, Jacobi F, Holstiege J, Bätzing J. Trends in prevalence of depression in Ger-
1122 many between 2009 and 2017 based on nationwide ambulatory claims data. *J Affect Disord*
1123 (2020) **271**:239–47. doi:10.1016/j.jad.2020.03.082
- 1124 76. Riedel O, Klau S, Langner I, Bachmann C, Scholle O. Prevalence of multimodal treatment in
1125 children and adolescents with ADHD in Germany: A nationwide study based on health insurance
1126 data. *Child Adolesc Psychiatry Ment Health* (2021). doi:10.1186/s13034-021-00431-0
- 1127 77. Grobe TG, Szecsenyi J. *BARMER Arztreport 2021: Psychotherapie bei Kindern und Jugend-*
1128 *lichen*. BARMER Institut für Gesundheitssystemforschung (2021).
- 1129 78. Witte J, Zeitler A, Hasemann L, Diekmannshemke J. *DAK-Kinder- und Jugendreport 2023: Ge-*
1130 *sundheit und Gesundheitsversorgung während und nach der Pandemie Datenzeitraum: 2017-*
1131 *2022*. Bielefeld: Vandage GmbH (2023).
- 1132 79. Witte J, Zeitler A, Batram M, Diekmannshemke J, Hasemann L. *Kinder- und Jugendreport 2022.*
1133 *Kinder- und Jugendgesundheit in Zeiten der Pandemie: Eine Studie im Auftrag der DAK Ge-*
1134 *sundheit*. Bielefeld: Vandage GmbH (2022).
- 1135 80. Kohring C, Akmatov MK, Holstiege J, Heuer J, Dammertz L, Bätzing J. *Inzidenztrends psychi-*
1136 *scher sowie Entwicklungs- und Verhaltensstörungen bei Kindern und Jugendlichen in der*

- 1137 *ambulanten Versorgung — Entwicklungen zwischen 2014 und 2021*. Zentralinstitut für die kas-
1138 senärztliche Versorgung in Deutschland (Zi) (2023).
- 1139 81. Greiner W, Batram M, Hasemann L, Witte J, Berg G, Neuperdt L, et al. *Kinder-und Jugendre-*
1140 *port 2020: Schwerpunkt Corona-Pandemie: Folgen für die Krankenhausversorgung von Kindern*
1141 *und Jugendlichen*. Hamburg: DAK-Gesundheit (2021).
- 1142 82. Greiner W, Batram M, Witte J. *Kinder-und Jugendreport 2019: Gesundheitsversorgung von Kin-*
1143 *dern und Jugendlichen in Deutschland Schwerpunkt: Ängste und Depressionen bei Schulkindern*.
1144 Hamburg: DAK-Gesundheit (2019).
- 1145 83. Witte J, Batram M, Hasemann L, Dankhoff M, Greiner W, Thomasius R. *Kinder-und Jugendre-*
1146 *port 2021: Gesundheitsversorgung von Kindern und Jugendlichen in Deutschland Schwerpunkt:*
1147 *Suchterkrankungen*. Hamburg: DAK-Gesundheit (2021).
- 1148 84. Müller D, Erhart M, Tillmanns H, Dräther H, Klipker K. The Structural Reform in Outpatient
1149 Psychotherapy Shows Effects in Health Service Utilization, Especially in Younger Patients. *Ge-*
1150 *sundheitswesen* (2022) **84**:919–25. doi:10.1055/a-1670-7311
- 1151 85. Singer S, Engesser D, Wirp, Lang K, Paserat A, Kobes J, et al. Effects of a statutory reform on
1152 waiting times for outpatient psychotherapy: A multicentre cohort study. *Counselling & Psycho-*
1153 *therapy Research* (2022). doi:10.1002/capr.12581
- 1154 86. Jaite C, Hoffmann F, Seidel A, Mattejat F, Bachmann C. Ambulante psychotherapeutische Ver-
1155 sorgung von Kindern und Jugendlichen in Deutschland: Status quo und Trends im Zeitraum
1156 2009–2018 - Outpatient psychological therapies in children and adolescents in Germany: Status
1157 quo and time trends, 2009–2018. *Psychiatr Prax* (2021) **49**:304–12. doi:10.1055/a-1540-4958
- 1158 87. Rabe-Menssen C, Ruh M, Dazer A. Die Versorgungssituation seit der Reform der Psychothera-
1159 pie-Richtlinie 2017. Ergebnisse der DPtV-Onlineumfragen 2017 und 2018 zu Wartezeiten. *Psy-*
1160 *chotherapie Aktuell* (2019) **11**:24–34.
- 1161 88. Deutsche Presseagentur. Psychotherapie: Corona-Folgen: Kammer fordert mehr Zulassungen.
1162 *Die Zeit* (2022 Jul 14) **2022**.
- 1163 89. Deutsche Presseagentur. Folgen der Coronapandemie bringen Psychotherapeuten an ihre Gren-
1164 zen. *Deutscher Ärzteverlag GmbH, Redaktion Deutsches Ärzteblatt* (2022 Jul 15) **2022**.
- 1165 90. Schulze A-K. *Kinder- und Jugendlichenpsychotherapie: Mehr Kapazitäten notwendig* (2022) [ci-
1166 ted 2024 Jan 19]. Available from: [https://www.aerzteblatt.de/archiv/226474/Kinder-und-Jugend-](https://www.aerzteblatt.de/archiv/226474/Kinder-und-Jugendlichenpsychotherapie-Mehr-Kapazitaeten-notwendig)
1167 [lichenpsychotherapie-Mehr-Kapazitaeten-notwendig](https://www.aerzteblatt.de/archiv/226474/Kinder-und-Jugendlichenpsychotherapie-Mehr-Kapazitaeten-notwendig)
- 1168 91. Wissenschaftliche Dienste des Deutschen Bundestages. *Wartezeiten auf eine Psychotherapie -*
1169 *Studien und Umfragen: Dokumentation* (2022).
- 1170 92. Psychotherapeutenkammer Niedersachsen. Umfrage der PKN zur psychotherapeutischen Versor-
1171 gung (2022).
- 1172 93. Hartmann N, Elsner S, Baltus H, Peters E, Katalinic A. Sozialpädiatrische Versorgungslage von
1173 Kindern und Jugendlichen in Schleswig-Holstein in Zeiten der Covid-19-Pandemie von Sommer
1174 2021 bis Sommer 2022: Die Gesundheit und Gesundheitsversorgung von Kindern und Jugendli-
1175 chen aus Elternsicht. *Transparenzportal Schleswig-Holstein* (2023).
- 1176 94. Barkmann C, Schulte-Markwort M. Prevalence of emotional and behavioural disorders in Ger-
1177 man children and adolescents: a meta-analysis. *J Epidemiol Community Health* (2012) **66**:194–
1178 203. doi:10.1136/jech.2009.102467

- 1179 95. Petermann F. Zur Epidemiologie psychischer Störungen im Kindes- und Jugendalter. *Kindheit*
1180 *und Entwicklung* (2005) **14**:48–57. doi:10.1026/0942-5403.14.1.48
- 1181 96. Wagner G, Zeiler M, Waldherr K, Philipp J, Truttmann S, Dür W, et al. Mental health problems
1182 in Austrian adolescents: a nationwide, two-stage epidemiological study applying DSM-5 criteria.
1183 *Eur Child Adolesc Psychiatry* (2017) **26**:1483–99. doi:10.1007/s00787-017-0999-6
- 1184 97. Statistisches Bundesamt. *Bevölkerung nach Altersgruppen* (2024) [cited 2024 Jul 10]. Available
1185 from: <https://www.destatis.de/DE/Themen/Gesellschaft-Umwelt/Bevoelkerung/Bevoelkerungsstand/Tabellen/bevoelkerung-altersgruppen-deutschland.html>
1186
- 1187 98. Thom J, Mauz E, Peitz D, Kersjes C, Aichberger M, Baumister H, et al. Aufbau einer Mental
1188 Health Surveillance in Deutschland: Entwicklung von Rahmenkonzept und Indikatorenset
1189 (2021). doi:10.25646/8860
- 1190 99. Thombs BD, Kwakkenbos L, Levis AW, Benedetti A. Addressing overestimation of the preva-
1191 lence of depression based on self-report screening questionnaires. *CANADIAN MEDICAL*
1192 *ASSOCIATION JOURNAL* (2018) **190**:E44-E49. doi:10.1503/cmaj.170691
- 1193 100. Lehmkuhl G, Köster I, Schubert I. Ambulante Versorgung kinder- und jugendpsychiatrischer
1194 Störungen - Daten einer versichertenbezogenen epidemiologischen Studie. *0032-7034* (2009).
1195 doi:10.23668/psycharchives.9863
- 1196 101. Wosnitzka D. *Zi stellt Projektion zur Inanspruchnahme der vertragsärztlichen Versorgung*
1197 *bis 2030 vor* (2023) [cited 2023 Jul 06]. Available from: <https://www.zi.de/das-zi/medien/medieninformationen-und-statements/detailansicht/zi-stellt-projektion-zur-inanspruchnahme-der-vertragsaerztlichen-versorgung-bis-2030-vor>
1198
1199
- 1200 102. Bundespsychotherapeutenkammer. *Rund 20 Wochen Wartezeit auf psychotherapeutische Be-*
1201 *handlung: BPtK-Studie "Wartezeiten 2018"* (2018) [cited 2023 Jul 27]. Available from:
1202 <https://bptk.de/pressemitteilungen/rund-20-wochen-wartezeit-auf-psychotherapeutische-behandlung/>
1203
- 1204 103. Wahlster P, Varabyova Y, Schreyögg J, Bataille M, Wambach A, Jacobs K, et al. Bedarfsgerechte
1205 Steuerung der Gesundheitsversorgung — Chancen und Hindernisse. *Wirtschaftsdienst*
1206 (2018) **98**:619–37. doi:10.1007/s10273-018-2343-2
- 1207 104. Albrecht M, Ochmann R, Jacobi F, Bretschneider J, Thom J, Müllender S, et al. *Bedarfsplanung*
1208 *Psychotherapeuten-Konzept für eine bedarfsorientierte Planung der Psychotherapeuten-*
1209 *sitze* (2016).
- 1210 105. Berufsverband Deutscher Psychologinnen und Psychologen e.V. Reform der Bedarfsplanung:
1211 Noch immer zu wenig Psychotherapeuten auf dem Land. *Berufsverband Deutscher Psychologin-*
1212 *nen und Psychologen e.V.* (2019 May 24).
- 1213 106. Berufsverband Deutscher Psychologinnen und Psychologen e.V. BDP fordert deutlich kür-
1214 zere Wartezeiten für Therapieplätze in der ambulanten Psychotherapie. *Berufsverband Deutscher*
1215 *Psychologinnen und Psychologen e.V.* (2022 Dec 15).
- 1216 107. Berufsverband Deutscher Psychologinnen und Psychologen e.V. BDP fordert umgehende
1217 Umsetzung des Koalitionsvertrags zur Verbesserung der Versorgung psychischer erkrankter
1218 Menschen. *Berufsverband Deutscher Psychologinnen und Psychologen e.V.* (2023 Jan 19).
- 1219 108. Eichhorn T, Jansen A, Tophoven C. Neue Wege braucht das Land – auch um dort die Versor-
1220 gung psychisch kranker Menschen sicherzustellen. *GuS* (2020) **74**:30–8. doi:10.5771/1611-5821-
1221 2020-2-30

- 1222 109. Bundespsychotherapeutenkammer. Reform der Bedarfsplanungs-Richtlinie in Kraft getreten.
1223 *BPtK* (2019 Jul 15).
- 1224 110. Bundespsychotherapeutenkammer. Koalitionsvertrag jetzt umsetzen und Wartezeiten reduzie-
1225 ren! *BPtK* (2023 Jan 10).
- 1226 111. Bundespsychotherapeutenkammer. Minister Lauterbach erkennt Situation psychisch kranker
1227 Kinder. *BPtK* (2023 Feb 10).
- 1228 112. Piso B, Bachler S, Gredinger G, Hummer M, Kern D, Kienberger S, et al. *Therapeutische*
1229 *Versorgung von Kindern und Jugendlichen in Österreich. Überblick über IST-Stand der Versor-*
1230 *gung sowie über weitere Grundlagen für die Versorgung in den Bereichen der Physio-, Ergo-*
1231 *und logopädischen Therapie bei Entwicklungsstörungen und der Psychotherapie bei psychischen*
1232 *und Verhaltensstörungen*. Wien: Gesundheit Österreich (2020).
- 1233 113. Page MJ, McKenzie JE, Bossuyt PM, Boutron I, Hoffmann TC, Mulrow CD, et al. The
1234 PRISMA 2020 statement: An updated guideline for reporting systematic reviews. *Int J Surg*
1235 (2021) **88**:105906. doi:10.1016/j.ijso.2021.105906

