

Research Article

Insulin-dependence as a Predictor of Shortened Cancer-specific Survival in Pancreatic Neuroendocrine Tumors: A Multi-Institutional Study from the United States Neuroendocrine Study Group

Muhammad Bilal Mirza, MD^{*a}; Jordan J Baechle, MD^{*a, b}; Paula Marincola Smith, MD^a; Danish Ali, MBBS^a; Mary Dillhoff, MD^c; George Poultsides, MD^d; Flavio G. Rocha, MD^e; Clifford S. Cho, MD^f; Emily R. Winslow, MD^g; Ryan C. Fields, MD^h; Shishir K. Maithel, MDⁱ; Kamran Idrees, MD^a.

^a Department of Surgery, Vanderbilt University Medical Center, Nashville, TN, United States.

^b School of Medicine, Meharry Medical College, Nashville, TN, United States

^c The Ohio State University Comprehensive Cancer Center, Columbus, OH, United States.

^d Stanford University Medical Center, Stanford, CA, United States.

^e Virginia Mason Medical Center, Seattle, WA, United States.

^f Division of Hepatopancreatobiliary and Advanced Gastrointestinal Surgery, Department of Surgery, University of Michigan, Ann Arbor, MI, United States.

^g University of Wisconsin School of Medicine and Public Health, Madison, WI, United States.

^h Washington University School of Medicine, St Louis, MO, United States.

ⁱ Department of Surgery, Winship Cancer Institute, Emory University, Atlanta, GA, United States.

Short Title: Insulin-dependence and survival in PNETs

Corresponding Author:

Kamran Idrees, MD, MSCI, MMHC, FACS

597 Preston Research Building

2220 Pierce Ave, Nashville, TN 37232

615-322-2391 (office)

615-936-6535 (fax)

kamran.idrees@vumc.org

Previous meetings: These data were presented at the Annual Meeting of the Americas Hepato-Pancreato-Biliary Association (AHPBA) in March 2019.

Keywords: PNETs; Diabetes Mellitus (DM); Insulin Dependent (IDDM); Non-Insulin Dependent (NIDDM); Cancer-Specific Survival (CSS)

1 **Abstract**

2

3 **Introduction:** PNETs are rare pancreatic malignancies originating from islet cells and exhibit a strong
4 co-occurrence with Diabetes Mellitus (DM), associated with worse survival outcomes. However,
5 studies have yet to delineate the impact of insulin dependent (IDDM) and non -insulin dependent
6 (NIDDM) on poor oncological outcomes.

7 **Methods:** Utilizing the U.S. Neuroendocrine Tumor Study Group database (1999-2016), we
8 performed a retrospective cohort study of adult patients who underwent primary surgical resection
9 of PNETs. Patients were categorized based on preoperative diagnosis into non-DM, NIDDM, and
10 IDDM cohorts. We used the Kaplan-Meier method and log-rank test to study cancer-specific survival
11 (CSS). Cox proportional Hazards models were used to assess the impact of IDDM on CSS.

12

13 **Results:** Of the 1,122 patients included in the analysis, 870 (77%) were non-DM, 168 (15%) were
14 NIDDM, and 84 (8%) were IDDM. The groups were similar in tumor stage and grade. However, they
15 differed in sex, BMI, age, ASA class, tumor location, preoperative HbA1c and serum glucose (p -value
16 <0.05). Patients with IDDM had significantly decreased 5-year CSS compared to patients without
17 IDDM (CSS: IDDM 85%, NIDDM 94%, non-DM 93%, NIDDM + non-DM 93%; $P <0.01$). On multivariate
18 analysis, IDDM was independently associated with worse CSS (HR 2.27, 95% Confidence Interval 1.15-
19 4.45, $P=0.02$).

20 **Conclusion:** Insulin dependence is associated with worse cancer-specific survival in PNET patients
21 following surgical resection compared to PNET patients with NIDDM or without DM.

22

23 **Acknowledgement:** None

24

25 **Statement of Ethics**

26 The protocol for this study was reviewed and approved by Vanderbilt University Medical
27 Center Institutional Review Board, approval number 170730.

28

29 **Conflict of Interest Statement:** The authors have no conflicts of interest to declare.

30

31 **Funding Sources:** This study was not supported by any sponsor or funder.

32

33 **Author Contributions**

34 MBM, JBJ, PMS, and DA wrote the original draft. JBJ curated the data and performed a formal
35 analysis. MBM also presented the work. MBM, PMS, and DA reviewed and edited the manuscript.
36 MD, GP, FGR, CSC, ERW, RCF, SKM, and KI conceptualized the topic, helped develop the study design,
37 provided validation, conducted the investigation, and helped with resources. KI provided project
38 administration and supervision.

39

40 **Data Availability Statement:** Due to institutional policy, the data supporting this study's findings
41 are not publicly available but can be obtained from the corresponding author upon reasonable
42 request.

43 Introduction

44 Pancreatic neuroendocrine tumors (PNET) are rare tumors arising from the islet cells of the
45 pancreas [1]. Although the incidence remains low at roughly 2-3 per 100,000 annually in the United
46 States (US) [1–3], the overall incidence has been increasing over the last two decades as small,
47 nonfunctional PNETs are more frequently diagnosed due to the widespread use of cross-sectional
48 imaging [4].

49

50 While their clinical courses are remarkably dissimilar, PNETs and pancreatic adenocarcinoma
51 (PDAC) share a likeness in that they both show a strong concurrence with diabetes mellitus (DM)
52 [5,6]. As many as 25-55% of PNET patients have coinciding DM at the time of PNET diagnosis
53 compared to 7-9% of the general US population [7,8]. Some studies suggest that pre-existing DM is a
54 risk factor for the development of PNETs and that a concurrent diagnosis of DM is associated with
55 poor prognosis in PNET patients, without distinction between insulin dependent (IDDM) and non-
56 insulin dependent DM (NIDDM) [6,9,10]. Evidence from the multicenter Pancreatic Retrospective
57 Italian Metformin-NET (PRIME-NET) study analyzing patients with advanced PNETs treated both
58 medically and surgically showed that metformin use was significantly associated with improved
59 progression-free survival outcomes compared to non-diabetics as well as diabetics not taking
60 metformin, including those using insulin and other hypoglycemic agents [11]. Additionally, one
61 recent publication suggested that poor preoperative glycemic control, as indicated by elevated
62 preoperative hemoglobin A1c (HbA1c), is strongly associated with elevated PNET growth rates [12].
63 Although the mechanism is not entirely understood, all of this evidence suggests that metabolic
64 disease characteristics of DM are likely to influence PNET progression and, ultimately, PNET patient
65 outcomes.

66

67 Additionally, exogenous insulin use has been associated with poor outcomes in several
68 malignancies, including breast, colon, and prostate cancers, as well as in PDAC [13–18], the impact of
69 insulin dependence in PNET patients remains unexamined. The primary aim of this study was to
70 utilize a large, multi-institutional retrospective database to evaluate insulin dependence as a
71 predictor of cancer-specific survival among PNET patients.

72

73 **Methods**

74 *Data Collection and Study Design*

75 The US Neuroendocrine Tumor Study Group (US-NETSG) is a collaboration of eight academic
76 medical centers: Vanderbilt University, Emory University, Stanford University, The Ohio State
77 University, Stanford University, Virginia Mason University, and Washington University in St. Louis,
78 University of Michigan, and University of Wisconsin. Adult patients who underwent resection of
79 gastro-entero-pancreatic neuroendocrine tumors between 2000 and 2016 were retrospectively
80 identified at each institution. The institutional review board approved the data collection of each
81 participating institution.

82

83 Over 750 parameters were collected in the database for each patient, including but not
84 limited to demographics, general health information and comorbidities, preoperative imaging and
85 laboratory data, intraoperative data, pathology data, postoperative complications, time to
86 recurrence/progression/death, and cause of death. The American Joint Commission on Cancer
87 Staging Manual, seventh edition [19], was used to define the TNM classification. Survival data and
88 causes of death were determined through chart review. The de-identified data from each institution
89 were shared among the collaborating institutions for analysis.

90

91 All patients who underwent PNET resection for a reported cause of death were included in
92 the analysis. A documented preoperative diagnosis defined diabetic status (non-DM vs. DM). DM
93 patients were further classified as either insulin-dependent (IDDM) if they used exogenous insulin
94 preoperatively or non-insulin dependent (NIDDM) if they did not. Cancer-specific survival (CSS) was
95 calculated as the time from index operation to cancer-specific death. Demographic, clinical, and
96 tumor pathology parameters, as well as CSS, were compared across all three study arms (IDDM vs.
97 NIDDM vs. Non-DM) and among those who did and did not report preoperative insulin therapy use
98 (IDDM vs. NIDDM + Non-DM).

99

100 *Statistical Analysis*

101 Demographic, preoperative, intraoperative, pathologic, and survival data were compared
102 according to insulin dependence and diabetic status. Categorical variables were presented as
103 frequencies and percentages and compared using chi-square or Fisher's exact test, as appropriate.
104 Continuous variables were reported as median values with interquartile ranges (IQR) unless
105 otherwise specified and compared using the Kruskal-Wallis test. DSS was calculated using the Kaplan-
106 Meier method and compared using the log-rank test. Clinical and pathological data were analyzed
107 using multivariate Cox regression methods. Significance was set at a *p-value* < 0.05. All statistical
108 analyses were performed using 1.1.383 R statistics software (R Core Team Vienna, Austria).

109

110 **Results**

111 Of the 1,247 patients who underwent primary PNET resection during the study period (2000-
112 2016) at any of the US-NETSG participating institutions, 1,122 (90%) had both preoperative presence

113 or absence of DM and cause of death recorded and were included in our analysis. Within the study
114 cohort, 870 (77%) were non-DM, 168 (15%) had NIDDM, and 84 (8%) had IDDM at the time of PNET
115 resection. The groups were similar in race and operative intent (curative vs. non-curative), primary
116 tumor size, TNM clinical stage, and tumor grade. The demographics, clinical, and tumor pathology
117 parameters of the three sub-groups (non-DM, NIDDM, and IDDM) are listed in Table 1. The groups
118 differed in sex, BMI, age, ASA class, preoperative HbA1c and serum glucose, and intrapancreatic
119 location, as well as rates of preoperative hypertension, previous coronary events, and dyspnea
120 symptoms. Among these factors, ASA class was the only factor associated with shortened CSS and a
121 potential confounder. In comparison, according to insulin-dependence (IDDM vs. NIDDM + No-DM),
122 IDDM patients had significantly higher levels of HbA1c%, serum glucose, and rates of hypertension,
123 previous coronary events, and tumors within the body and tail of the pancreas. A complete list of
124 comorbidity rates and univariate survival analysis are summarized in Supplementary Table 1 and
125 Supplementary Table 2, respectively.

Table 1. Demographics, clinical, and tumor pathology parameters

Variable		No DM,	NIDDM,	IDDM,	P-values	
		N (%)	N (%)	N (%)	All	IDDM vs NIDDM + No DM
Total		870	168	84		
Gender	Male	429 (49.3)	99 (58.9)	48 (57.1)	0.040	0.321
	Female	441 (50.7)	69 (41.1)	36 (42.9)		
BMI - Median [IQR]		27.4 [24.0;31.7]	29.6 [25.7;33.6]	29.2 [24.0;35.3]	0.002	0.103
Age - Median [IQR]		56.0 [45.5;65.0]	61.2 [55.0;67.0]	59.4 [49.3;66.6]	<0.001	0.203
Race	White	679 (78.0)	125 (74.4)	61 (72.6)	0.308	0.340
	Black	66 (7.6)	19 (11.3)	6 (7.1)		
	Other	125 (14.4)	24 (14.3)	17 (20.2)		
ASA Class	I	26 (3.0)	2 (1.2)	2 (2.4)	<0.001	<0.001
	II	361 (41.5)	60 (35.7)	19 (22.6)		
	III	428 (49.2)	96 (57.1)	52 (61.9)		
	IV	11 (1.3)	7 (4.2)	8 (9.5)		
	<i>Unknown</i>	44 (5.1)	3 (1.8)	3 (3.6)		
Intent	Curative	805 (92.5)	154 (91.7)	77 (91.7)	0.902	0.979
	Noncurative	65 (7.5)	14 (8.3)	7 (8.3)		
Tumor Size*- Median [IQR]		2.3 [1.5;3.9]	2.5 [1.5;4.4]	2.1 [1.2;4.8]	0.579	0.451
HbA1c % - Median [IQR] (n=167)		5.4 [5.1;5.8]	6.9 [6.2;7.3]	9.0 [7.6;10.1]	<0.001	<0.001

Glucose mg/d - Median [IQR]		98 [87;113]	132 [102;201]	146 [114;209]	<0.001	<0.001
T Stage	T1	365 (42.0)	64 (38.1)	37 (44.0)	0.110	0.229
	T2	277 (31.8)	49 (29.2)	22 (26.2)		
	T3	215 (24.7)	53 (31.6)	21 (25.1)		
	T4	1 (0.1)	2 (1.1)	1 (1.1)		
	Tx	12 (1.4)	0 (0.0)	3 (3.6)		
N Stage	N0	510 (58.6)	95 (56.5)	48 (57.1)	0.241	0.928
	N1	222 (25.5)	55 (32.7)	24 (28.6)		
	Nx	138 (15.9)	18 (10.7)	12 (14.3)		
M Stage	M0	751 (86.3)	143 (85.1)	71 (84.5)	0.340	0.332
	M1	108 (12.4)	20 (11.9)	10 (11.9)		
	Mx	11 (1.3)	5 (2.9)	3 (3.6)		
Clinical Stage	I	333 (38.3)	57 (33.9)	36 (42.9)	0.278	0.158
	II	274 (31.5)	52 (31.0)	19 (22.6)		
	III	156 (17.9)	40 (23.8)	19 (22.6)		
	IV	105 (12.1)	19 (11.3)	9 (10.7)		
	<i>Unknown</i>	2 (0.2)	0 (0.0)	1 (1.2)		
Grade [±]	G1	548 (63.0)	95 (56.5)	52 (61.9)	0.530	0.564
	G2	234 (26.9)	51 (30.4)	22 (26.2)		
	G3 [◊]	36 (4.1)	10 (5.9)	2 (2.4)		
	<i>Unknown</i>	52 (5.9)	12 (7.1)	8 (9.5)		
	PNET Location	Head/Neck	354 (40.7)	57 (33.9)		
Body/Tail	512 (58.9)	111 (66.1)	53 (63.1)			
<i>Unknown</i>	4 (0.5)	0 (0.0)	3 (3.6)			

Note:

No DM = No preoperative Diabetes Mellitus Diagnosis; NIDDM = Non-Insulin Dependent Diabetes Mellitus; IDDM = Insulin Dependent Diabetes Mellitus; Tumor Size* on resection; IQR = Interquartile Range; HbA1c= glycosylated hemoglobin A1c; HTN = hypertension; NET = Neuroendocrine Tumor; NEC = Neuroendocrine Carcinoma; [±]Grade = 2017 World Health Organization Grading Classification; [◊]G3 = NET Grade 3 + NEC Grade 3

126

127 Patients with IDDM had significantly decreased 5-year CSS compared to non-DM and NIDDM

128 patients (CSS: IDDM 85%, NIDDM 94%, non-DM 93%, $P < 0.01$; NIDDM + non-DM 93%, $P < 0.01$)

129 (shown in Fig. 1. a-b). The median CSS was not met for any group. In CSS multivariable analysis, after

130 accounting for ASA class, factors associated with worse CSS included ASA class IV and insulin

131 dependence. Insulin dependence was independently associated with worse CSS (Hazard Ratio 2.27,

132 95% Confidence Interval 1.15 – 4.45, $P = 0.02$) than patients without DM (Table 2).

133 **Table 2.** Cancer-specific Survival Cox Multivariate Analysis

Variable		HR	95% CI	p-value
DM	IDDM	2.27	1.15 – 4.45	0.017
	NIDDM	0.83	0.39 – 1.78	0.653
ASA Class	III	0.91	0.52 – 1.57	0.723
	IV	3.49	1.06 – 4.64	0.035

Note:

HR = Hazard Ratio; CI = Confidence Interval; IDDM = insulin-dependent diabetes mellitus; NIDDM = non-insulin-dependent diabetes mellitus; ASA Class = American Society of Anesthesiologists Physical Status Classification System

134

135 Discussion

136 The current study identified a significant correlation linking insulin dependence to worse CSS

137 following surgical PNET resection. On multivariable analysis, insulin dependence was further

138 observed as an independent risk factor for CSS compared to NIDDM and non-DM PNET patients. The

139 higher rate of cancer-specific mortality, despite more favorable tumor stage and grade, in such a
140 generally indolent disease raises concern and the opportunity for improved prognostication and
141 clinical management of PNET patients with IDDM.

142

143 Evidence demonstrating insulin-induced carcinogenesis and mitogenicity, as well as increased
144 mortality, has been demonstrated in malignancies, including breast, pancreatic, colorectal, and
145 prostate cancers [13–18]. We believe the associations identified in this study, however, to be
146 particularly compelling in light of recent literature describing the mechanisms of PNET progression as
147 well as the high prevalence of IDDM among PNET patients, which steadily increased through the
148 duration of this study (shown in Fig. 2) [20–24]. In PNETs, insulin/IGF-1 signaling cascades (PI3K-Akt-
149 mTOR, Ras/Raf/MEK/ERK) are well-established drivers of malignant islet cell proliferation [25–27].
150 Since the RADIANT-1 and 3 clinical trials demonstrated the efficacy of the mTOR inhibitor Everolimus
151 in hindering the progression of advanced PNETs in 2011 [28,29], these anabolic pathways have
152 become standard targets of medical treatments and combinations [30–35]. In 2016, Pusceddu and
153 Vernieri et al. identified improved progression-free outcomes among PNET patients with concurrent
154 type 2 DM (T2DM) taking metformin, a widely used oral hypoglycemic agent with antineoplastic
155 properties attributed to indirect mTOR inhibition, compared to non-DM and DM patients with
156 alternative DM management (including insulin therapy) [11,36–38].

157

158 More recently, Vernieri and Pusceddu et al. determined that the poor outcomes among PNET
159 patients with DM were attributable to metabolic disease after observing hypertriglyceridemia and
160 hypercholesterolemia to be independently associated with shortened progression-free survival after
161 accounting for metformin use. In contrast, hyperglycemia measured by elevated glycosylated
162 hemoglobin A1c % (HbA1c%) was not [39].

163

164 In a previous USNET-SG database study, Baechle et al. identified elevated HbA1c% as
165 significantly associated with an elevated tumor-specific growth rate [12]. However, HbA1c has been
166 consistently not found to be independently associated with worse PNET prognosis in these prior
167 studies [11,12,40], nor was it in this study. Considering this collage of evidence, our findings suggest
168 that either the underlying metabolic derangements characteristic of IDDM (including
169 hypertriglyceridemia, hypercholesterolemia, and hyperinsulinemia), the use of exogenous insulin
170 therapy, or both may conspire favorable PNET outcomes.

171

172 It is also possible that the relationship observed between IDDM and poor PNET prognosis
173 may be attributable to endocrine disruptions secondary to the tumor mass effect or paraneoplastic
174 inflammation. Although the tumor sizes were similar, tumors of the diabetic groups were
175 disproportionally located in the body and tail regions of the pancreas in comparison to the head,
176 neck, and uncinata. Because β -cell concentration is highest in the body and tail of the pancreas,
177 tumors of these regions may inordinately disrupt β -cell function and insulin secretion [41]. This
178 relationship between PNET location and DM has not been previously characterized and is inverse to
179 that of PDAC [42]; however, these local and systemic phenomena are unlikely to fully explain the
180 difference in cancer-specific survival.

181

182 Of course, the retrospective nature of our study limits our ability to draw conclusions relating
183 to causality. However, we also acknowledge that this study carries several other limitations. First, the
184 US-NETSG database only classified DM patients as insulin-dependent, oral therapy, and diet-
185 controlled DM, and therefore, does not delineate between type 1 and type 2 DM; however, due to
186 the predominance of T2DM in the United States and its strong concurrence with PNETs, we believe

187 this to have little impact on our findings. This report also does not specify insulin type (long-acting vs.
188 short-acting), oral medication (metformin vs. sulfonylurea), or combined therapy regimens. Recent
189 studies attributed decreased tumor progression and superior outcomes to metformin use over other
190 T2DM oral medications in PNET patients, as well as those with other malignancies (breast,
191 pancreatic, colorectal, prostate) [43–47]. Furthermore, long-acting, high-affinity insulin analogs,
192 particularly glargine, have been associated with higher incidence, more rapid tumor progression, and
193 inferior outcomes among several cancers (breast, pancreatic, colorectal, prostate) compared to the
194 use of Neutral Protamine Hagedorn (NPH) insulin and other insulin analogs in the treatment of T2DM
195 [14–18]. However, unfortunately, due to the limitations of the US-NETSG database, it is not possible
196 to conduct a comparative sub-analysis of IDDM and NIDDM being treated with one insulin type or
197 oral DM agent over another, and we acknowledge this as an area of interest for future studies.

198

199 Second, the DM status of this cohort was determined by chart review of the preoperative
200 period and, therefore, cannot account for patients who may have recently altered treatment plans
201 preoperatively or those whose DM status or management may have changed following their
202 resection [particularly in the case of patients with total pancreatectomies, n=21 (2%)]. Third, because
203 the retrospective database includes only those patients who underwent PNET resection, we failed to
204 capture those patients being treated non-operatively, including those with small tumors being
205 observed and those with unresectable malignancy. Next, though the multi-institutional collaboration
206 behind this study allowed us to assemble a robust database characterizing this rare tumor, the
207 consortium was limited to large academic referral centers, which may lead to selection bias and limit
208 the generalizability of our conclusions in other populations. Lastly, the US-NETSG database is
209 somewhat limited in terms of data related to tumor biology, including data on tumor grade, Ki-67,
210 mitotic index, differentiation, serum insulin levels, and HbA1c%, and did not report lipid panel lab
211 values (triglycerides, cholesterol, lipoproteins, cholesterol). Because such lab tests, specifically lipid

212 panels, serum insulin, and HbA1c%, are not routine lab tests for all patients, they are unlikely to be
213 measured pre-operatively without clinical indication or suspicion of pre-existing DM diagnosis or
214 insulinoma. Therefore, we could not fully examine these factors related to diabetic status and PNET
215 patient outcomes in our patient cohort. Similarly, the scarce reporting of tumor Ki-67 and mitotic
216 rate limited our study from further delineating the possible correlations between DM therapy and
217 tumor biology. Similarly, the limited reporting of HbA1c% and lack of lipid lab values hindered
218 comparative analysis between hypertriglyceridemia, hypercholesterolemia, and hyperglycemia as to
219 how these factors may collectively or individually impact PNET progression and patient prognosis, as
220 postulated by previous studies [48]. Furthermore, elevated HbA1c was not associated with shortened
221 CSS in the sub-analysis. However, because of our limited capacity to control for chronic
222 hyperglycemia as a potential confounder, we did not attempt overall survival analysis comparative to
223 DM status because HbA1c is widely accepted as a risk factor for diabetes-related mortality.
224 Therefore, our analysis focused on cancer-specific death, where HbA1c% is not a direct confounder in
225 PNET oncologic outcomes [11,12,39].

226

227 Despite these limitations, our study provides further insight into the interplay between
228 PNETs and DM and how the insulin-dependent subset of PNET-DM patients has a uniquely inferior
229 cancer prognosis. Additionally, the concurrence of DM among PNETs rose twofold (13% to 26%) and
230 that of IDDM increased almost threefold (4.5% to 12%) throughout this study (1999-2016),
231 suggesting a growing clinical challenge and need for the investigation of optimal co-management of
232 DM and IDDM (shown in Fig. 2).

233

234 **Conclusion**

235 In conclusion, although DM has previously been shown to be a risk factor for worse
236 outcomes in PNET patients, the disparity in survival outcomes associated with insulin dependence
237 among PNET patients with DM has not been previously described. When delineating DM by insulin
238 dependence, IDDM alone appears to be associated with a worse cancer prognosis following surgical
239 resection. Should a causal relationship exist between insulin therapy and PNET cancer-specific death,
240 preferencing methods of peripheral insulin sensitization over insulin therapy in certain patients with
241 PNET may have the potential to alter oncological outcomes in PNET differentially. However, in the
242 case of a non-casual but co-linear relationship between DM and PNET severity, IDDM may indicate
243 the clinical course, supplementing standard stage and grade prognostication.

References:

- 1 Halfdanarson TR, Rubin J, Farnell MB, Grant CS, Petersen GM. Pancreatic endocrine neoplasms: Epidemiology and prognosis of pancreatic endocrine tumors. *Endocr Relat Cancer*. 2008 Jun;15(2):409.
- 2 Toumpanakis C. Laboratory Assessment of NETs. *Management of Pancreatic Neuroendocrine Tumors*. 2015;33–9.
- 3 Milan SA, Yeo CJ. Neuroendocrine tumors of the pancreas. *Curr Opin Oncol*. 2012;24(1):46–55.
- 4 Kuo EJ, Salem RR. Population-level analysis of pancreatic neuroendocrine tumors 2 cm or less in size. *Ann Surg Oncol*. 2013 Sep;20(9):2815–21.
- 5 Pannala R, Leirness JB, Bamlet WR, Basu A, Petersen GM, Chari ST. Prevalence and clinical profile of pancreatic cancer-associated diabetes mellitus. *Gastroenterology*. 2008;134(4):981–7.
- 6 Gallo M, Ruggeri RM, Muscogiuri G, Pizza G, Faggiano A, Colao A. Diabetes and pancreatic neuroendocrine tumours: Which interplays, if any? *Cancer Treat Rev*. 2018 Jun;67:1–9.
- 7 CDC. National Diabetes fact sheet, 2011. 2011 [cited 2024 Sep 8]. Available from: <https://stacks.cdc.gov/view/cdc/13329>
- 8 Hassan MM, Phan A, Li D, Dagohoy CG, Leary C, Yao JC. Risk factors associated with neuroendocrine tumors: A U.S.-based case-control study. *Int J Cancer*. 2008 Aug;123(4):867–73.
- 9 Ben Q, Zhong J, Fei J, Chen H, Yv L, Tan J, et al. Risk Factors for Sporadic Pancreatic Neuroendocrine Tumors: A Case-Control Study. *Sci Rep*. 2016 Oct;6. DOI: 10.1038/SREP36073
- 10 Leoncini E, Carioli G, La Vecchia C, Boccia S, Rindi G. Risk factors for neuroendocrine neoplasms: a systematic review and meta-analysis. *Ann Oncol*. 2016 Jan;27(1):68–81.
- 11 Pusceddu S, Buzzoni R, Vernieri C, Concas L, Marcegaglia S, Giacomelli L, et al. Metformin with everolimus and octreotide in pancreatic neuroendocrine tumor patients with diabetes. *Future Oncol*. 2016 May;12(10):1251–60.
- 12 Baechle JJ, Marincola Smith P, Tan M, Solórzano CC, Lopez-Aguilar AG, Dillhoff M, et al. Specific Growth Rate as a Predictor of Survival in Pancreatic Neuroendocrine Tumors: A Multi-institutional Study from the United States Neuroendocrine Study Group. *Ann Surg Oncol*. 2020 Oct;27(10):3915–23.
- 13 Call R, Grimsley M, Cadwallader L, Cialone L, Hill M, Hreish V, et al. Insulin--carcinogen or mitogen? Preclinical and clinical evidence from prostate, breast, pancreatic, and colorectal cancer research. *Postgrad Med*. 2010 May;122(3):158–65.

- 14 Habel LA, Danforth KN, Quesenberry CP, Capra A, Van Den Eeden SK, Weiss NS, et al. Cohort study of insulin glargine and risk of breast, prostate, and colorectal cancer among patients with diabetes. *Diabetes Care*. 2013 Dec;36(12):3953–60.
- 15 Chang CH, Toh S, Lin JW, Chen ST, Kuo CW, Chuang LM, et al. Cancer risk associated with insulin glargine among adult type 2 diabetes patients--a nationwide cohort study. *PLoS One*. 2011;6(6). DOI: 10.1371/JOURNAL.PONE.0021368
- 16 Hemkens LG, Grouven U, Bender R, Günster C, Gutschmidt S, Selke GW, et al. Risk of malignancies in patients with diabetes treated with human insulin or insulin analogues: a cohort study. *Diabetologia*. 2009 Sep;52(9):1732–44.
- 17 Colmers IN, Bowker SL, Tjosvold LA, Johnson JA. Insulin use and cancer risk in patients with type 2 diabetes: a systematic review and meta-analysis of observational studies. *Diabetes Metab*. 2012 Dec;38(6):485–506.
- 18 Colhoun HM. Use of insulin glargine and cancer incidence in Scotland: a study from the Scottish Diabetes Research Network Epidemiology Group. *Diabetologia*. 2009;52(9):1755–65.
- 19 Edge SB, Compton CC. The American Joint Committee on Cancer: the 7th edition of the AJCC cancer staging manual and the future of TNM. *Ann Surg Oncol*. 2010 Jun;17(6):1471–4.
- 20 Jiao Y, Shi C, Edil BH, De Wilde RF, Klimstra DS, Maitra A, et al. DAXX/ATRX, MEN1 and mTOR Pathway Genes are Frequently Altered in Pancreatic Neuroendocrine Tumors. *Science*. 2011 Mar;331(6021):1199.
- 21 Matkar S, Thiel A, Hua X. Menin: a scaffold protein that controls gene expression and cell signaling. *Trends Biochem Sci*. 2013 Aug;38(8):394–402.
- 22 Peeters K, Van Leemputte F, Fischer B, Bonini BM, Quezada H, Tsytlonok M, et al. Fructose-1,6-bisphosphate couples glycolytic flux to activation of Ras. *Nature Communications* 2017 8:1. 2017 Oct;8(1):1–15.
- 23 García-Jiménez C, García-Martínez JM, Chocarro-Calvo A, De la Vieja A. A new link between diabetes and cancer: enhanced WNT/ β -catenin signaling by high glucose. *J Mol Endocrinol*. 2013 Sep;52(1). DOI: 10.1530/JME-13-0152
- 24 Missiaglia E, Dalai I, Barbi S, Beghelli S, Falconi M, Della Peruta M, et al. Pancreatic endocrine tumors: Expression profiling evidences a role for AKT-mTOR pathway. *Journal of Clinical Oncology*. 2010 Jan;28(2):245–55.
- 25 Blagosklonny M V. Fasting and rapamycin: diabetes versus benevolent glucose intolerance. *Cell Death Dis*. 2019 Aug;10(8). DOI: 10.1038/S41419-019-1822-8
- 26 Djukom C, Porro LJ, Mrazek A, Townsend CM, Hellmich MR, Chao C. Dual inhibition of PI3K and mTOR signaling pathways decreases human pancreatic neuroendocrine tumor metastatic progression. *Pancreas*. 2014 Jan;43(1):88–92.

- 27 Wolin EM. PI3K/Akt/mTOR pathway inhibitors in the therapy of pancreatic neuroendocrine tumors. *Cancer Lett.* 2013 Jul;335(1):1–8.
- 28 Yao JC, Shah MH, Ito T, Bohas CL, Wolin EM, Van Cutsem E, et al. Everolimus for advanced pancreatic neuroendocrine tumors. *N Engl J Med.* 2011 Feb;364(6):514–23.
- 29 Pommier RF, Wolin EM, Panneerselvam A, Saletan S, Winkler RE, Cutsem E Van. Impact of prior chemotherapy on progression-free survival in patients (pts) with advanced pancreatic neuroendocrine tumors (pNET): Results from the RADIANT-3 trial. https://doi.org/10.1200/jco20112915_suppl4103. 2011 May;29(15_suppl):4103–4103.
- 30 Fonseca PJ, Uriol E, Galván JA, Álvarez C, Pérez Q, Villanueva N, et al. Prolonged Clinical Benefit of Everolimus Therapy in the Management of High-Grade Pancreatic Neuroendocrine Carcinoma. *Case Rep Oncol.* 2013;6(2):441.
- 31 Yao JC, Phan AT, Jehl V, Shah G, Meric-Bernstam F. Everolimus in advanced pancreatic neuroendocrine tumors: the clinical experience. *Cancer Res.* 2013 Mar;73(5):1449–53.
- 32 Yao JC, Pavel M, Lombard-Bohas C, Van Cutsem E, Voi M, Brandt U, et al. Everolimus for the Treatment of Advanced Pancreatic Neuroendocrine Tumors: Overall Survival and Circulating Biomarkers From the Randomized, Phase III RADIANT-3 Study. *J Clin Oncol.* 2016 Nov;34(32):3906–13.
- 33 Kordes S, Klumpen HJ, Weterman MJ, Schellens JHM, Richel DJ, Wilmink JW. Phase II study of capecitabine and the oral mTOR inhibitor everolimus in patients with advanced pancreatic cancer. *Cancer Chemother Pharmacol.* 2015 Jun;75(6):1135–41.
- 34 Panzuto F, Rinzivillo M, Spada F, Antonuzzo L, Ibrahim T, Campana D, et al. Everolimus in Pancreatic Neuroendocrine Carcinomas G3. *Pancreas.* 2017 Mar;46(3):302–5.
- 35 Liu E, Marincola P, Oberg K. Everolimus in the treatment of patients with advanced pancreatic neuroendocrine tumors: latest findings and interpretations. *Therap Adv Gastroenterol.* 2013;6(5):412–9.
- 36 Herrera-Martínez AD, Pedraza-Arevalo S, L-López F, Gahete MD, Gálvez-Moreno MA, Castaño JP, et al. Type 2 Diabetes in Neuroendocrine Tumors: Are Biguanides and Statins Part of the Solution? *J Clin Endocrinol Metab.* 2019;104(1):57–73.
- 37 Vlotides G, Tanyeri A, Spampatti M, Zitzmann K, Chourdakis M, Spttl G, et al. Anticancer effects of metformin on neuroendocrine tumor cells in vitro. *Hormones (Athens).* 2014 Oct;13(4):498–508.
- 38 Soares HP, Ni Y, Kisfalvi K, Sinnott-Smith J, Rozengurt E. Different patterns of Akt and ERK feedback activation in response to rapamycin, active-site mTOR inhibitors and metformin in pancreatic cancer cells. *PLoS One.* 2013 Feb;8(2). DOI: 10.1371/JOURNAL.PONE.0057289

- 39 Vernieri C, Pusceddu S, Fucà G, Indelicato P, Centonze G, Castagnoli L, et al. Impact of systemic and tumor lipid metabolism on everolimus efficacy in advanced pancreatic neuroendocrine tumors (pNETs). *Int J Cancer*. 2019 Apr;144(7):1704–12.
- 40 Pusceddu S, Vernieri C, Di Maio M, Marconcini R, Spada F, Massironi S, et al. Metformin Use Is Associated With Longer Progression-Free Survival of Patients With Diabetes and Pancreatic Neuroendocrine Tumors Receiving Everolimus and/or Somatostatin Analogues. *Gastroenterology*. 2018 Aug;155(2):479-489.e7.
- 41 Wang X, Misawa R, Zielinski MC, Cowen P, Jo J, Periwai V, et al. Regional differences in islet distribution in the human pancreas--preferential beta-cell loss in the head region in patients with type 2 diabetes. *PLoS One*. 2013 Jun;8(6). DOI: 10.1371/JOURNAL.PONE.0067454
- 42 Wakasugi H, Funakoshi A, Iguchi H. Clinical observations of pancreatic diabetes caused by pancreatic carcinoma, and survival period. *Int J Clin Oncol*. 2001;6(1):50–4.
- 43 Alimova IN, Liu B, Fan Z, Edgerton SM, Dillon T, Lind SE, et al. Metformin inhibits breast cancer cell growth, colony formation and induces cell cycle arrest in vitro. *Cell Cycle*. 2009 Mar;8(6):909–15.
- 44 Kumar NB, Vadaparampil ST, Mahajan N, Lilienfeld HS, Lee J-H, Laronga C, et al. Metformin- A Promising Agent for Chemoprevention in BRCA1 Carriers. *Hereditary Genet*. 2012;1(2). DOI: 10.4172/2161-1041.1000104
- 45 Wang LW, Li ZS, Zou DW, Jin ZD, Gao J, Xu GM. Metformin induces apoptosis of pancreatic cancer cells. *World J Gastroenterol*. 2008 Dec;14(47):7192.
- 46 Sadeghi N, Abbruzzese JL, Yeung SCJ, Hassan M, Li D. Metformin use is associated with better survival of diabetic patients with pancreatic cancer. *Clin Cancer Res*. 2012 May;18(10):2905–12.
- 47 Singh S, Singh H, Singh PP, Murad MH, Limburg PJ. Antidiabetic medications and the risk of colorectal cancer in patients with diabetes mellitus: a systematic review and meta-analysis. *Cancer Epidemiol Biomarkers Prev*. 2013 Dec;22(12):2258–68.
- 48 Vernieri C, Pusceddu S, de Braud F. Impact of Metformin on Systemic Metabolism and Survival of Patients With Advanced Pancreatic Neuroendocrine Tumors. *Front Oncol*. 2019 Sep;9:902.

Figure 1. Disease-specific Kaplan-Meier Survival analysis

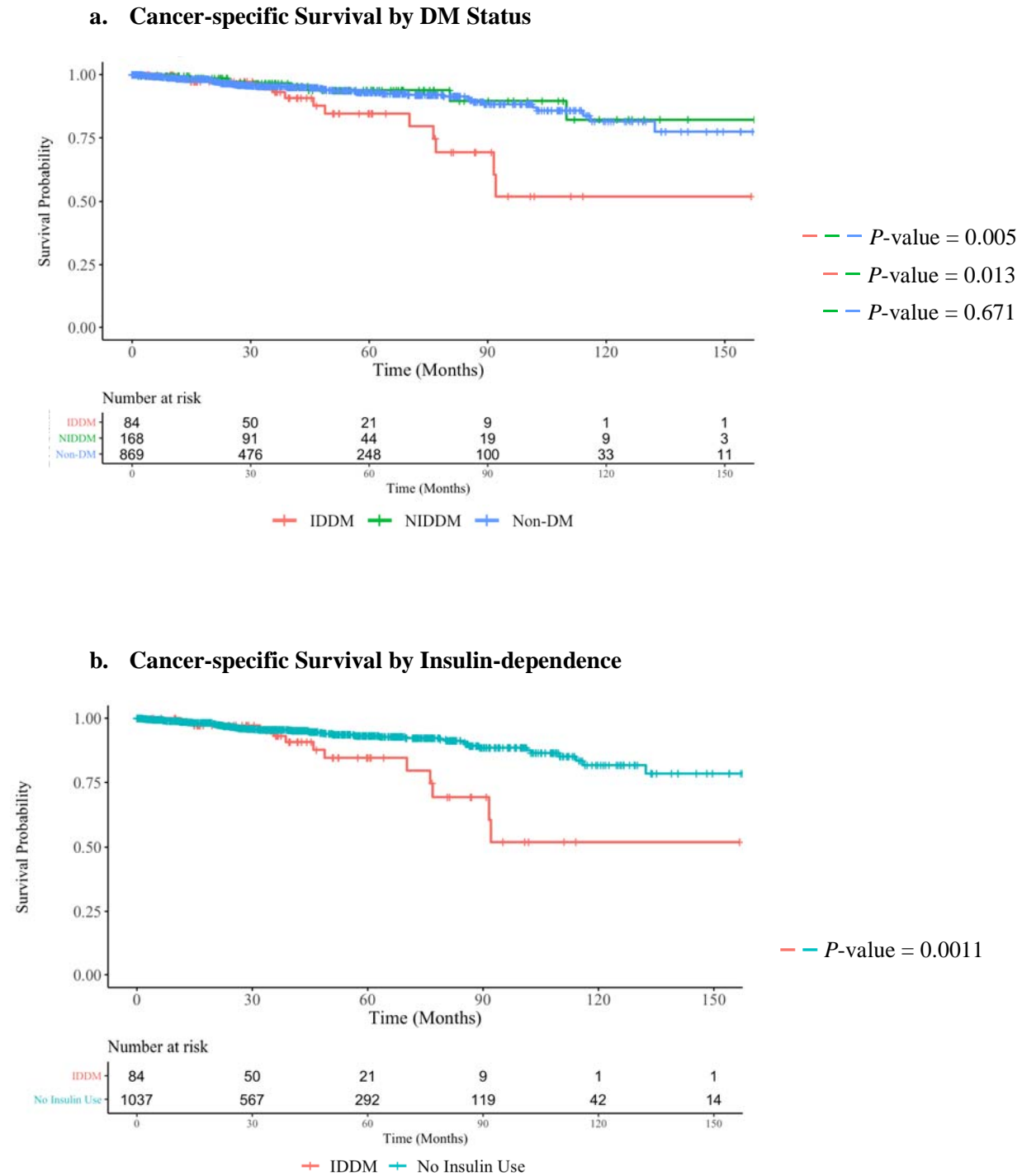
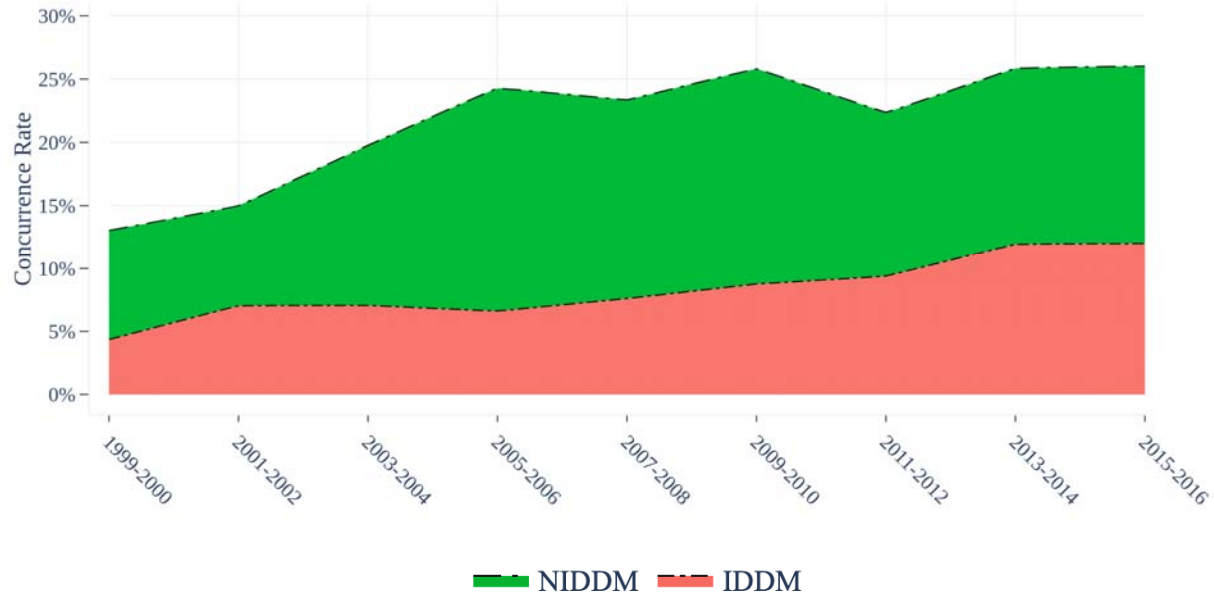


Figure 2. Concurrence of Pancreatic Neuroendocrine Tumors and Diabetes Mellitus



United States Neuroendocrine Tumor Study Group Database

NIDDM = non-insulin-dependent diabetes mellitus; IDDM = insulin-dependent diabetes mellitus