

Deficits in the knowledge of social norms and their underlying mechanisms in Alzheimer's disease

Thomas Carrier^{1,2}, Isabelle Rouleau¹, Marie-Anne St-Georges^{2,3}, Maxime Montembeault^{2,4}

¹Department of Psychology, Université du Québec à Montréal

²Douglas Research Centre

³Department of Psychology, Université de Montréal

⁴Department of Psychiatry, McGill University

Correspondence: Maxime Montembeault, maxime.montembeault@mcgill.ca

Total Word Count: 5289 words

Running Title: Norms Knowledge in Alzheimer's Disease

Keywords: Neurodegenerative Diseases, Social Cognition, Social Norms, Neuropsychological Tests

Data availability: The data that support the findings of this study are available from the National Alzheimer's Coordinating Center (NACC) database. Restrictions apply to the availability of these data, which were used under license for this study. Data are available at <https://naccdata.org/requesting-data/submit-data-request> with the permission of the NACC.

Abstract

Background. Compared to other components of social cognition, knowledge of social norms has received less attention, even more so in Alzheimer’s disease (AD). While semantic memory deficits have been identified early in the course of AD, no study has delved into the knowledge of social norms at these preliminary stages, although evidence suggests it shares common ground with semantic memory. In addition, it is unclear whether the knowledge of social norms in AD is associated socioemotional deficits, as seen in the behavioral variant of frontotemporal dementia (bvFTD). Finally, how social norms knowledge impairments predict behaviours in real-world settings remains unknown in the context of AD. **Methods.** This study included 286 participants with mild cognitive impairment (MCI), 157 with AD, 285 with bvFTD along with 384 older healthy controls. All participants were selected from the National Alzheimer’s Coordinating Center. They completed the Social Norms Questionnaire, which assesses the tendency to break or overadhere to social norms. They also completed tests assessing executive, semantic and socioemotional functions, along with tests measuring spontaneous interpersonal behaviours. **Results.** Between-group comparisons show that individuals with AD and MCI break and overadhere to social norms significantly more than HC, while they perform better than individuals with bvFTD. Knowledge of social norms was mainly associated with semantic knowledge across groups, and predicted insensitivity and disinhibition severity in patients. **Conclusions.** This study suggests that declines in semantic memory likely play a key role in social norms knowledge decreases and that these decreases predict behavioural tendencies.

Introduction

Worldwide, over 55 million individuals suffer from a major neurocognitive disorder, commonly known as dementia. Of these cases, 60% to 70% are due to Alzheimer's disease (AD), making it the leading cause of major neurocognitive disorders ¹. Impairment of episodic memory typically characterizes AD, but other deficits are often present ². Indeed, many individuals suffering from AD exhibit deficits in linguistic, visuospatial, executive capacities, or behavior/personality ³. Consequently, McKhann et al. (2011) propose that an impairment in at least one other cognitive domain, aside from memory, is required for diagnosing AD ³.

Compared to other cognitive domains, behavior/personality, and more specifically social cognition, is relatively understudied and under-assessed in AD ⁴⁻⁷. It has been recently proposed that this underrepresentation is linked to the recent recognition of social cognition as a cognitive domain (newly included in the DSM-5) and inconsistencies in its definition ⁵. Social cognition refers to the cognitive processes that govern social interactions. It includes key aspects such as recognizing socially relevant information (e.g., interpreting others' emotional expressions) as well as empathy, theory of mind and knowledge of social norms ⁸⁻¹¹. Disruptions in these processes can affect an individual's behavior and ability to interact socially and can negatively impact their interpersonal relationships ^{4,12}.

An increasing body of research point to social cognition impairments in AD. Throughout the progression of AD, affected individuals may exhibit changes in social behavior, theory of mind, empathy, facial emotion recognition, and self-awareness ^{4,12-15}. Furthermore, a recent systematic review highlighted a clear progression of social cognitive impairments from normal aging to AD, particularly affecting emotion recognition and theory of mind ¹⁶.

However, compared to other components of social cognition, knowledge of social norms has received less attention⁶. Social norms are typically defined as the unwritten rules shared by members of a group or society that influence decision making by promoting or prohibiting behaviors¹⁷. There are very few recognized assessment tools available to evaluate their knowledge^{18,19}. However, a new test was recently developed to evaluate knowledge of social norms in neurodegenerative diseases. This tool, called the Social Norms Questionnaire (SNQ), designed to determine how well individuals understand and accurately identify implicit, yet widely accepted, social boundaries in the predominant culture of the United States²⁰. It assesses the tendency to breach and overadhere to social norms.

Although relatively well studied in the behavioral variant of frontotemporal dementia (bvFTD), the SNQ has been used in a limited number of studies involving participants with AD. These studies have shown that individuals with AD are usually more likely to overadhere to social norms rather than breach them^{21,22}. Also, they have shown that the SNQ is valuable for distinguishing individuals with AD from those with bvFTD and individuals with psychiatric disorders, with deficits appearing less pronounced in AD than in people with bvFTD or psychiatric disorders²¹⁻²³.

Nonetheless, there are still many gaps to fill in our understanding of social norms knowledge in AD. Though semantic memory deficits have been identified early in the AD disease course (e.g., MCI), no study has yet examined knowledge of social norms in these prodromal stages²⁴. While most previous studies have focused on object or people knowledge, it would be interesting to investigate whether semantic deficits extend to the semantic category of social concepts in the MCI population and whether the SNQ can serve as an early cognitive marker of MCI. Furthermore, the cognitive mechanisms underlying the knowledge of social

norms in AD are still poorly understood. Previous studies have shown that it might be associated with semantic memory and executive functions, but no study has investigated socioemotional abilities and/or loss of empathy as a contributing mechanism^{22,23}. It is unclear whether knowledge of social norms in AD is associated with deficits in social cognition, as it is likely to be in bvFTD. Finally, the ecological validity of the SNQ (i.e. how test performance predicts behaviours in real-world settings) remains unknown in the context of AD. In other words, it would be crucial to know whether deficits in social norms knowledge can predict altered spontaneous interpersonal behavior.

Therefore, this study aims to compare knowledge of social norms between healthy participants, individuals with MCI, patients diagnosed with AD, and patients with bvFTD. Participants with bvFTD were included as a comparison group to better understand the contribution of social cognition in AD-related deficits. We hypothesize that knowledge of social norms will be significantly lower in individuals with MCI compared to healthy individuals, significantly lower in individuals with AD compared to those with MCI and healthy individuals, and significantly lowest in patients with bvFTD. Subsequently, the study seeks to investigate the cognitive correlates of social norms knowledge in participants with MCI/AD and bvFTD. We hypothesize that knowledge of social norms will be mainly associated with semantic abilities in MCI/AD, whereas it will be mainly associated with socioemotional abilities in bvFTD. Finally, this study also aims to examine whether social norms knowledge predicts spontaneous interpersonal behaviors in AD and bvFTD. We hypothesize that social norms knowledge will significantly predict spontaneous interpersonal behaviors in AD and bvFTD.

Methods

Participants

This study includes 286 individuals with MCI, 157 with AD, 285 with bvFTD along with 384 cognitively unimpaired older healthy controls (HC). Participants were selected from the National Alzheimer’s Coordinating Center (NACC), which consists of data collected at Alzheimer’s Disease Research Centers (ADRC). This study used data from 21 ADRC for Uniform Data Set visits conducted between March 2012 and October 2022. Diagnoses were made by either a consensus team or a single physician according to relevant current diagnostic criteria at the time of testing^{3,25,26}. To be considered healthy, HC had to be cognitively intact, as indicated by CDR® Dementia Staging Instrument score of 0. Additionally, all non-AD participants were required to be older than 47 years old, which corresponds to the age of the youngest AD participant. Written informed consent is obtained from all participants by all ADRCs. Approvals from the Institutional Review Boards of all participating institutions were obtained by the NACC.

Insert Table 1 here

Measures

Social Norms Questionnaire (SNQ)

The SNQ measures the degree to which a person understands and can accurately identify implicit but widely accepted social boundaries in the dominant United States culture²⁰. It consists of 22 Yes-No questions to be completed by the subject in the presence of a qualified psychologist or psychometrist during face-to-face testing. Subjects are instructed to determine whether a behavior would be appropriate in the presence of an acquaintance (not a close friend or family member) according to “mainstream” culture. A total score can be calculated (ranging

from 0 to 22), with higher score indicating greater knowledge of social norms. Additionally, the tendency to breach social norms (Break score, ranging from 0 to 12) and to adhere to norms excessively (Overadhere score, ranging from 0 to 10), which acts as a control scale, can be calculated.

Other measures

See Supplementary Material for details.

Disease severity. To describe the sample and measure disease severity, the CDR® Dementia Staging Instrument (CDR®) and the Montreal Cognitive Assessment (MoCA) were used to assess disease severity^{27,28}.

Semantic Memory. To assess semantic memory, the Semantic Associates Test and the Multilingual Naming Test (MINT) were used^{29,30}.

Executive functions. To assess executive functions, the part B of the Trail Making Test (TMT) and the Backward Number Span Test were used^{31,32}.

Socioemotional abilities. To assess socioemotional abilities, the Interpersonal Reactivity Index (IRI) and the Revised Self-Monitoring Scale (RSMS) were used^{33,34}.

Spontaneous interpersonal behaviours. To measure real-life interpersonal behaviors, the Social Behavior Observer Checklist (SBOCL) and the Disinhibition scale of the Neuropsychiatric Inventory-Questionnaire (NPI-Q) were used^{35,36}.

Statistical Analysis

Data were analyzed using R for Windows version 4.4.1. ANOVAs were performed to assess groups differences on demographic measures and overall cognitive performance, followed

by Tukey HSD's post-hoc test. Chi-squared test was used to assess group differences on dichotomous variables (i.e., sex). Between-group differences in the SNQ total score, Overadhere errors and Break scores were examined using ANCOVAs adjusted for participants' age, education, and sex. Pairwise comparisons were conducted with Tukey-Kramer's post-hoc tests. Furthermore, partial spearman correlations, adjusted for sex, age, education, and disease severity as measured with CDR®'s sum of boxes score, were conducted between SNQ variables and 1) semantic memory, as measured by the Semantic Associates Test and the MINT; 2) executive performance, evaluated using the Backward Number Span and the TMT; and 3) behavioral impairments, as indicated by scores on the IRI and the RSMS. Groups of MCI and AD participants were combined as both were considered on the AD spectrum. Finally, to assess whether social norms knowledge deficits predict interpersonal behaviors in AD and bvFTD, analyses of regression were conducted between SNQ break score, NPI-Q disinhibition severity, and SBOCL insensitivity scale, while controlling for participants age, education, sex, and disease severity. As in the previous analyses, groups of MCI and AD participants were combined

Results

Data preparation

Social norms questionnaire response ratios of Yes/No responses per participant were inspected to exclude participants with response bias great enough to render score meaningless (e.g., answering Yes or No to almost all, or all, items of the SNQ). That is, according to the SNQ's scoring instructions, cases with scores greater than or equal to 5, or is less than 0.3 were excluded (15 HC, 28 MCI, 38 AD and 107 bvFTD)⁹.

Demographic Data

The analyses included 286 individuals with MCI, 157 with AD, 285 with bvFTD along with 384 HC. Demographic data is presented in Table 1. Participants in the MCI and bvFTD group were significantly older than participants in the HC and AD group ($F(3, 1108) = 19.9, p < .001, \eta^2 = 0.05$). The percentage of women was significantly higher in the HC group than in the bvFTD group ($\chi^2(3) = 26.2, p < .001$), but equivalent in all other groups. There were no significant differences between groups in terms of level of education ($p = .39$). Participants with bvFTD had significantly higher CDR® sum of boxes score than AD participants, who had significantly higher score than MCI participants, who had significantly higher score than HC participants ($F(3, 1108) = 562.2, p < .001, \eta^2 = 0.60$). The same differences were observed between groups in MoCA total scores ($F(3, 752) = 159.7, p < .001, \eta^2 = 0.39$). Therefore, we controlled for demographic variables and disease severity in all analyses.

Between-Group Analysis

Insert Table 2 here

Analyses of variance adjusted for age, education and sex revealed significant main effects of participant's diagnosis on SNQ Total score ($F(3, 1087) = 66.7, p < .0001, \eta_p^2 = 0.16$), Break score ($F(3, 1087) = 44.6, p < .0001, \eta_p^2 = 0.11$) and Overadhere score ($F(3, 1087) = 32.9, p < .0001, \eta_p^2 = 0.08$). Detailed results are presented in Table 2 and Figure 1. Tukey-Kramer post hoc tests indicated that the mean Total scores of the MCI, AD and bvFTD groups were significantly lower than the HC group. Participants with bvFTD had lower mean Total scores than the MCI and AD groups. The mean Break and Overadhere scores of the MCI, AD and bvFTD groups

were significantly higher than the score of the HC group. Participants with bvFTD had higher mean Break scores than the MCI and AD groups, and higher mean Overadhere scores than the MCI group. The SNQ Overadhere score did not differ significantly between the AD and bvFTD groups ($p = .10$). The SNQ mean Total, Break and Overadhere scores did not differ significantly between the AD and MCI groups ($p = .74$; $p = .92$; $p = .82$).

Insert Figure 1 here

SNQ Cognitive Correlates

Semantic memory

Detailed results of norm transgression and overadherence correlates are respectively presented in Figure 2 and Figure 3. In the MCI/AD and bvFTD groups, partial Spearman correlations, controlling for age, education, sex, and disease severity revealed that semantic memory as measured by the Semantic Associates Test and the MINT was significantly associated with norm transgression (i.e., SNQ break score) and norm overadherence (i.e., SNQ overadhere score). In the total sample (HC, MCI, AD and bvFTD), norm transgression was significantly associated with performance on the Semantic Associates Test and the MINT. Additionally, norm overadherence was significantly associated with performance on the MINT.

Executive function

In MCI/AD participants, norm overadherence was significantly associated with the TMT part B completion time and with the backward digit span. In bvFTD participants, norm transgression was significantly associated with the TMT part B completion time. In the total sample, norm overadherence was significantly associated with the TMT part B completion time and with the backward digit span.

Socioemotional abilities

In MCI/AD participants, SNQ performance was not associated with socioemotional abilities. In bvFTD, norm transgression was significantly correlated with score on the RSMS. In the total sample, norm transgression was significantly associated with score on the RSMS and on the perspective taking scale of the IRI.

Insert Figure 2 and Figure 3 here

SNQ-based predictions of spontaneous interpersonal behaviours

In the total patient's sample (i.e., MCI, AD and bvFTD), controlling for participants' age, education, sex, and disease severity, norm transgression significantly predicted insensitivity on the SBOCL ($\beta = 0.06, p < .01; R^2_{adj} (717) = 0.07, p < .001$) and disinhibition severity ($\beta = 0.06, p < .05; R^2_{adj} (696) = 0.15, p < .001$). In MCI/AD only, norm transgression on the SNQ was a significant predictor of SBOCL insensitivity cluster ($\beta = 0.10, p < .001; R^2_{adj} (434) = 0.04, p < .001$), but not of disinhibition severity on the NPI. In bvFTD only, norm transgression did not significantly predict insensitivity nor disinhibition severity ($p > .05$). All regression plots are presented in Figure 4.

Insert Figure 4 here

Discussion

This study aimed to 1) compare the knowledge of social norms between healthy participants, individuals with MCI, those diagnosed with AD and patients with bvFTD, 2) investigate the cognitive correlates of knowledge social norms in patients with MCI/AD and

bvFTD and 3) to investigate whether social norms knowledge predicts spontaneous interpersonal behaviors in MCI/AD and bvFTD. First, results suggest that alterations in social norms knowledge are evident in AD and bvFTD, but also in MCI, such that they are more likely to breach social norms and overadhere to them. Second, results show social norms transgression was associated only with semantic memory in MCI/AD, whereas it was additionally associated with executive function and empathy in bvFTD. Social norms overadherence was associated with executive function and semantic memory in MCI/AD, while it was solely associated with semantic memory in bvFTD. Third, norm transgression significantly predicted insensitivity during cognitive testing and disinhibition severity in daily life in the total patient sample, as well as insensitivity in MCI/AD patients only.

Consistent with previous studies observing decline in semantic memory in MCI²⁴, decline in social norms knowledge were observed in MCI. Indeed, participants suffering with MCI were more likely to breach and overadhere to social norms than HC participants. These decline in social norms knowledge were as severe as those observed in AD. Although AD participants included in the study had mild dementia, these results still highlight the fact that the SNQ may be clinically useful even in early stages of the AD spectrum. To our knowledge, this is the first study investigating social norms knowledge in MCI. Consistent with previous studies, AD patients had better social norms knowledge than bvFTD patients^{21-23,37,38}. This suggests that the SNQ may not only be an early marker for the diagnosis of patients on the AD spectrum but may also aid in the differential diagnosis between AD and bvFTD. Interestingly, while initial research highlighted the importance of episodic memory and executive tests for the differential diagnosis of AD and bvFTD, it is becoming increasingly clear that social cognition tests may be more appropriate for this clinical purpose³⁹.

While decline in knowledge of social norms has been found in all clinical groups, it is possible that similar deficits are caused by different underlying cognitive mechanisms. Failing an item on the SNQ could be due to different reasons. For example, it could be due to loss of semantic knowledge underlying social norms, executive dysfunction (e.g., perseveration, rigidity, etc.) and/or lack of socioemotional abilities guiding social behaviour (e.g., empathy). Our results suggest that in AD, norm transgression was only significantly associated with semantic memory. However, in bvFTD, norm transgression was also associated with cognitive flexibility, empathy, in addition to semantic memory. This is coherent with common symptoms of bvFTD, such as executive dysfunction and loss of empathy⁴⁰. When norm transgression correlations were evaluated in the total sample, it was significantly associated with semantic memory and empathy. Taken together, these findings suggest that social norms knowledge is mostly associated with semantic memory, which is unsurprising since knowledge of social norms is a form of semantic knowledge. Additionally, recent studies have highlighted that social knowledge is processed by the same brain areas and networks implicated in non-social or object knowledge. More specifically, while numerous studies have demonstrated the core importance of the anterior temporal lobes (ATLs) in the storage and processing of conceptual knowledge⁴¹, a growing body of evidence reveals broader cognitive implications of the ATLs. In fact, several studies suggest that social semantics are maintained by a distributed set of cerebral regions with the ATLs at their core⁴²⁻⁴⁴. In this context, the ATLs are thought to be semantic knowledge hubs that interact with multiple brain regions to enable appropriate social behaviour⁴⁵. For example, in a previous study using the SNQ with AD and bvFTD patients, lower volumes of the ATLs were found to be significantly correlated with higher norm transgressions²³. Moreover, Rouse et al. (2023)⁴⁶ showed that both social and non-social types of semantic knowledge impairments

were associated with bilateral ATLs atrophy in FTD participants. Altogether, these findings suggest that impairments in social norms knowledge may be driven primarily by semantic disturbances.

The role of social norms knowledge in predicting spontaneous interpersonal behavior has been evaluated to better understand the life impact of decreases in social knowledge. In fact, the lack of ecological validity of social cognition tests has been criticized and may contribute to the fact that social cognition is not routinely assessed in a clinical setting^{47,48}. Our results suggest that, in the total patient sample, social norms performance predicts insensitivity during the cognitive assessment along with the severity of disinhibition over the previous month, as reported by an informant. Given that insensitivity encompasses a range of behaviors as evaluated in the SBOCL, our results suggest that norm transgression is associated with behaviors such as “too little self-consciousness”, “insensitive to other’s embarrassment”, “overly disclosing/inappropriately familiar”. In the NPI, disinhibition was defined as acting impulsively, for instance, talking to strangers as if they were acquaintances or making remarks that could hurt others' feelings. Although insensitive and disinhibited behaviors are most often seen in individuals suffering from bvFTD when compared to AD individuals and that social norm knowledge is generally more impaired in bvFTD than it is in AD, these behaviors were not predicted by social norms knowledge in bvFTD. This unexpected result might be due to methodological factors such as the absence of formal and specific assessment of socially inappropriate behavior. Alternatively, this result may suggest that socially inappropriate behaviors are driven by other deficits than loss of social semantic knowledge (e.g., empathy or cognitive disinhibition). Future studies with proper assessments of these constructs could clarify the strongest predictors of daily socially inappropriate behaviors in bvFTD. Surprisingly,

significant association between insensitivity and norm transgression was observed in AD. Taken together, we believe these results provide support for the ecological validity of the SNQ.

This study has some limitations. Diagnoses of dementia were clinical. Therefore, they were not supported by biomarkers evidence. Additionally, the sample of AD participants included in this study was relatively young compared to MCI and bvFTD participants, which is atypical in community-based patients. Thus, generalizability of results may be affected.

In conclusion, this study suggests that declines in semantic memory likely play a key role in the decline in social norms knowledge in both AD and bvFTD. In everyday settings, these declines appear to be associated with insensitivity and the severity of disinhibited behaviors. Overall, this study extends the findings of previous studies by focusing on the underlying mechanisms of social norms knowledge. This study may help clinicians and researchers better understand the potential behavioral consequences of specific cognitive impairments, such as semantic memory deficits. Future research should assess the progression of knowledge of social norms impairments over the course of AD and bvFTD, while delineating their cognitive and cortical associations. This may reveal key mechanisms driving behavioural dysfunction and thus contribute to the development of effective behavioral interventions.

Acknowledgments

The NACC database is funded by NIA/NIH Grant U24 AG072122. NACC data are contributed by the NIA-funded ADRCs: P30 AG062429 (PI James Brewer, MD, PhD), P30 AG066468 (PI Oscar Lopez, MD), P30 AG062421 (PI Bradley Hyman, MD, PhD), P30 AG066509 (PI Thomas Grabowski, MD), P30 AG066514 (PI Mary Sano, PhD), P30 AG066530 (PI Helena Chui, MD),

P30 AG066507 (PI Marilyn Albert, PhD), P30 AG066444 (PI John Morris, MD), P30 AG066518 (PI Jeffrey Kaye, MD), P30 AG066512 (PI Thomas Wisniewski, MD), P30 AG066462 (PI Scott Small, MD), P30 AG072979 (PI David Wolk, MD), P30 AG072972 (PI Charles DeCarli, MD), P30 AG072976 (PI Andrew Saykin, PsyD), P30 AG072975 (PI David Bennett, MD), P30 AG072978 (PI Neil Kowall, MD), P30 AG072977 (PI Robert Vassar, PhD), P30 AG066519 (PI Frank LaFerla, PhD), P30 AG062677 (PI Ronald Petersen, MD, PhD), P30 AG079280 (PI Eric Reiman, MD), P30 AG062422 (PI Gil Rabinovici, MD), P30 AG066511 (PI Allan Levey, MD, PhD), P30 AG072946 (PI Linda Van Eldik, PhD), P30 AG062715 (PI Sanjay Asthana, MD, FRCP), P30 AG072973 (PI Russell Swerdlow, MD), P30 AG066506 (PI Todd Golde, MD, PhD), P30 AG066508 (PI Stephen Strittmatter, MD, PhD), P30 AG066515 (PI Victor Henderson, MD, MS), P30 AG072947 (PI Suzanne Craft, PhD), P30 AG072931 (PI Henry Paulson, MD, PhD), P30 AG066546 (PI Sudha Seshadri, MD), P20 AG068024 (PI Erik Roberson, MD, PhD), P20 AG068053 (PI Justin Miller, PhD), P20 AG068077 (PI Gary Rosenberg, MD), P20 AG068082 (PI Angela Jefferson, PhD), P30 AG072958 (PI Heather Whitson, MD), P30 AG072959 (PI James Leverenz, MD).

References

1. World Health Organization. Dementia. <https://www.who.int/news-room/fact-sheets/detail/dementia>
2. Weintraub S, Wicklund AH, Salmon DP. The neuropsychological profile of Alzheimer disease. *Cold Spring Harbor perspectives in medicine*. 2012;2(4):a006171.
3. McKhann GM, Knopman DS, Chertkow H, et al. The diagnosis of dementia due to Alzheimer's disease: recommendations from the National Institute on Aging-Alzheimer's

Association workgroups on diagnostic guidelines for Alzheimer's disease. *Alzheimers Dement*.

May 2011;7(3):263-9. doi:10.1016/j.jalz.2011.03.005

4. Kessels RPC, Waanders-Oude Elferink M, van Tilborg I. Social cognition and social functioning in patients with amnesic mild cognitive impairment or Alzheimer's dementia. *J Neuropsychol*. Jun 2021;15(2):186-203. doi:10.1111/jnp.12223

5. Quesque F, Nivet M, Etchepare A, Wauquiez G, Prouteau A, Desgranges B, Bertoux M. Social cognition in neuropsychology: A nationwide survey revealing current representations and practices. *Appl Neuropsychol Adult*. Apr 29 2022:1-14. doi:10.1080/23279095.2022.2061859

6. Kelly M, McDonald S, Frith MHJ. A Survey of Clinicians Working in Brain Injury Rehabilitation: Are Social Cognition Impairments on the Radar? *The Journal of Head Trauma Rehabilitation*. 2017;32(4)

7. McDonald S, Wearne T, Kelly M. Calling on clinicians to get social and emotional. *Clin Neuropsychol*. Apr 2023;37(3):506-544. doi:10.1080/13854046.2022.2085176

8. Pinkham AE. Social cognition in schizophrenia. *J Clin Psychiatry*. 2014;75(Suppl 2):14-9.

9. Green MF, Penn DL, Bentall R, et al. Social Cognition in Schizophrenia: An NIMH Workshop on Definitions, Assessment, and Research Opportunities. *Schizophrenia Bulletin*. 2008;34(6):1211-1220. doi:10.1093/schbul/sbm145

10. Henry JD, von Hippel W, Molenberghs P, Lee T, Sachdev PS. Clinical assessment of social cognitive function in neurological disorders. *Nat Rev Neurol*. Jan 2016;12(1):28-39. doi:10.1038/nrneurol.2015.229

11. Adolphs R. The social brain: neural basis of social knowledge. *Annu Rev Psychol*. 2009;60:693-716. doi:10.1146/annurev.psych.60.110707.163514

12. Christidi F, Migliaccio R, Santamaria-Garcia H, Santangelo G, Trojsi F. Social Cognition Dysfunctions in Neurodegenerative Diseases: Neuroanatomical Correlates and Clinical Implications. *Behav Neurol*. 2018;2018:1849794. doi:10.1155/2018/1849794
13. Klein-Koerkamp Y, Beaudoin M, Baciú M, Hot P. Emotional decoding abilities in Alzheimer's disease: a meta-analysis. *J Alzheimers Dis*. 2012;32(1):109-25. doi:10.3233/JAD-2012-120553
14. Demichelis OP, Coundouris SP, Grainger SA, Henry JD. Empathy and Theory of Mind in Alzheimer's Disease: A Meta-analysis. *J Int Neuropsychol Soc*. Nov 2020;26(10):963-977. doi:10.1017/S1355617720000478
15. Bediou B, Ryff I, Mercier B, et al. Impaired social cognition in mild Alzheimer disease. *J Geriatr Psychiatry Neurol*. Jun 2009;22(2):130-40. doi:10.1177/0891988709332939
16. Roheger M, Brenning J, Riemann S, Martin AK, Floel A, Meinzer M. Progression of socio-cognitive impairment from healthy aging to Alzheimer's dementia: A systematic review and meta-analysis. *Neurosci Biobehav Rev*. Sep 2022;140:104796. doi:10.1016/j.neubiorev.2022.104796
17. Legros S, Cislighi B. Mapping the Social-Norms Literature: An Overview of Reviews. *Perspect Psychol Sci*. Jan 2020;15(1):62-80. doi:10.1177/1745691619866455
18. Blair RJR. A cognitive developmental approach to morality: investigating the psychopath. *Cognition*. 1995/10/01/ 1995;57(1):1-29. doi:[https://doi.org/10.1016/0010-0277\(95\)00676-P](https://doi.org/10.1016/0010-0277(95)00676-P)
19. Dewey M. Living with Asperger's syndrome. *Autism and Asperger syndrome*. Cambridge University Press; 1991:184-206.

20. Kramer JH, Mungas D, Possin KL, et al. NIH EXAMINER: conceptualization and development of an executive function battery. *J Int Neuropsychol Soc.* Jan 2014;20(1):11-9. doi:10.1017/S1355617713001094
21. Singleton EH, Fieldhouse JLP, van 't Hooft JJ, et al. Social cognition deficits and biometric signatures in the behavioural variant of Alzheimer's disease. *Brain.* May 2023;146(5):2163-2174. doi:10.1093/brain/awac382
22. van den Berg E, Poos JM, Jiskoot LC, et al. Impaired Knowledge of Social Norms in Dementia and Psychiatric Disorders: Validation of the Social Norms Questionnaire-Dutch Version (SNQ-NL). *Assessment.* Sep 2022;29(6):1236-1247. doi:10.1177/10731911211008234
23. Panchal H, Paholpak P, Lee G, et al. Neuropsychological and Neuroanatomical Correlates of the Social Norms Questionnaire in Frontotemporal Dementia Versus Alzheimer's Disease. *Am J Alzheimers Dis Other Demen.* Jun 2016;31(4):326-32. doi:10.1177/1533317515617722
24. Joubert S, Gardy L, Didic M, Rouleau I, Barbeau EJ. A Meta-Analysis of Semantic Memory in Mild Cognitive Impairment. *Neuropsychol Rev.* Jun 2021;31(2):221-232. doi:10.1007/s11065-020-09453-5
25. Albert MS, Dekosky ST, Dickson D, et al. The diagnosis of mild cognitive impairment due to Alzheimer's disease: Recommendations from the National Institute on Aging-Alzheimer's Association workgroups on diagnostic guidelines for Alzheimer's disease. *Alzheimer's & Dementia.* 2011;7(3):270-279. doi:10.1016/j.jalz.2011.03.008
26. Rascovsky K, Hodges JR, Kipps CM, et al. Diagnostic Criteria for the Behavioral Variant of Frontotemporal Dementia (bvFTD): Current Limitations and Future Directions. *Alzheimer Disease & Associated Disorders.* 2007;21(4):S14-S18. doi:10.1097/WAD.0b013e31815c3445

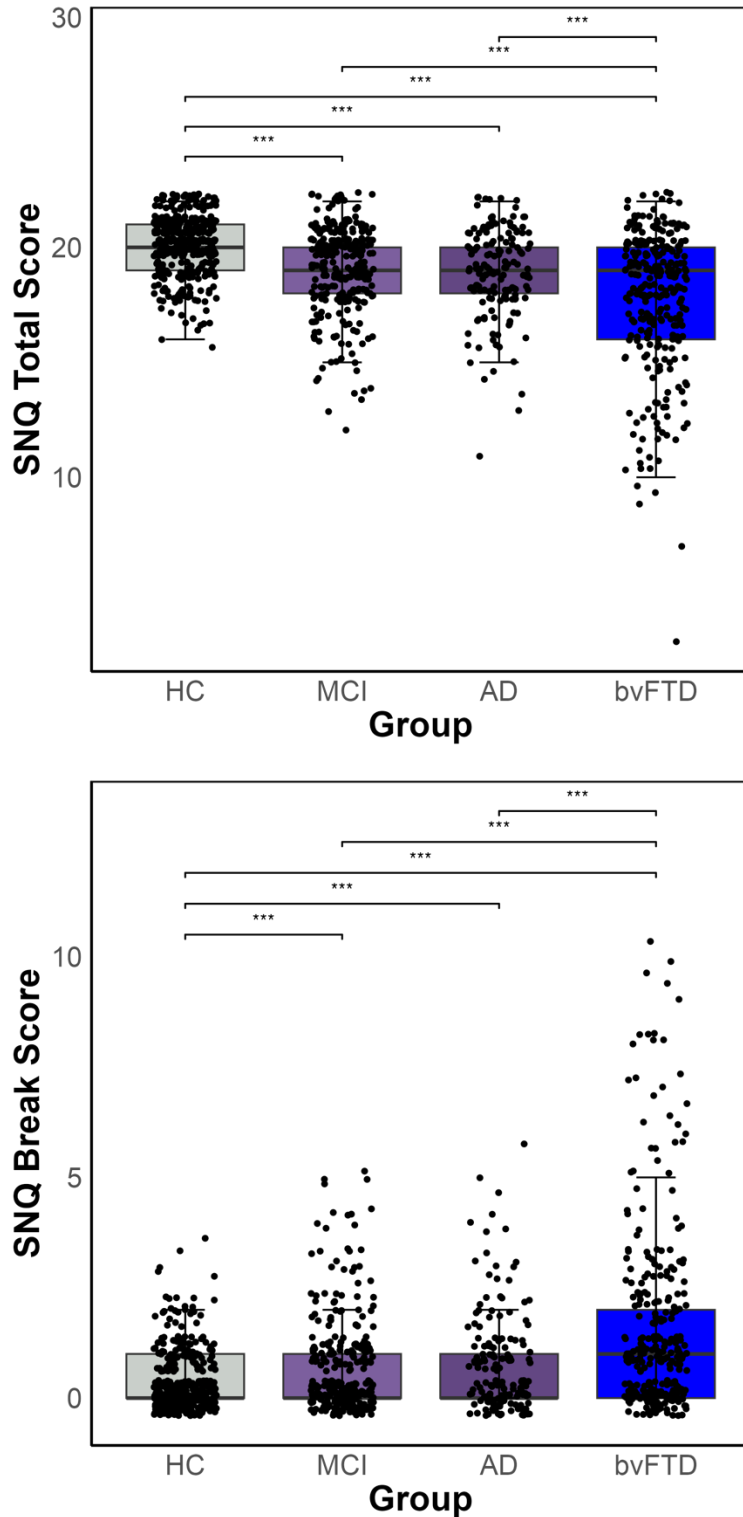
27. Morris JC. The Clinical Dementia Rating (CDR): current version and scoring rules. *Neurology*. Nov 1993;43(11):2412-4. doi:10.1212/wnl.43.11.2412-a
28. Nasreddine ZS, Phillips NA, Bedirian V, et al. The Montreal Cognitive Assessment, MoCA: a brief screening tool for mild cognitive impairment. *J Am Geriatr Soc*. Apr 2005;53(4):695-9. doi:10.1111/j.1532-5415.2005.53221.x
29. Thompson CK, Lukic S, King MC, Mesulam MM, Weintraub S. Verb and noun deficits in stroke-induced and primary progressive aphasia: The Northwestern Naming Battery(). *Aphasiology*. May 1 2012;26(5):632-655. doi:10.1080/02687038.2012.676852
30. Gollan TH, Weissberger GH, Runnqvist E, Montoya RI, Cera CM. Self-ratings of spoken language dominance: A Multilingual Naming Test (MINT) and preliminary norms for young and aging Spanish–English bilinguals. *Bilingualism: language and cognition*. 2012;15(3):594-615.
31. Reitan RM. Validity of the Trail Making Test as an indicator of organic brain damage. *Perceptual and motor skills*. 1958;8(3):271-276.
32. Weintraub S, Besser L, Dodge HH, et al. Version 3 of the Alzheimer Disease Centers' Neuropsychological Test Battery in the Uniform Data Set (UDS). *Alzheimer Dis Assoc Disord*. Jan-Mar 2018;32(1):10-17. doi:10.1097/wad.0000000000000223
33. Davis MH. A multidimensional approach to individual differences in empathy. 1980;
34. Lennox RD, Wolfe RN. Revision of the self-monitoring scale. *J Pers Soc Psychol*. Jun 1984;46(6):1349-64. doi:10.1037//0022-3514.46.6.1349
35. Rankin KP, Toller G, Gavron L, et al. Social Behavior Observer Checklist: Patterns of Spontaneous Behaviors Differentiate Patients With Neurodegenerative Disease From Healthy Older Adults. *Front Neurol*. 2021;12:683162. doi:10.3389/fneur.2021.683162

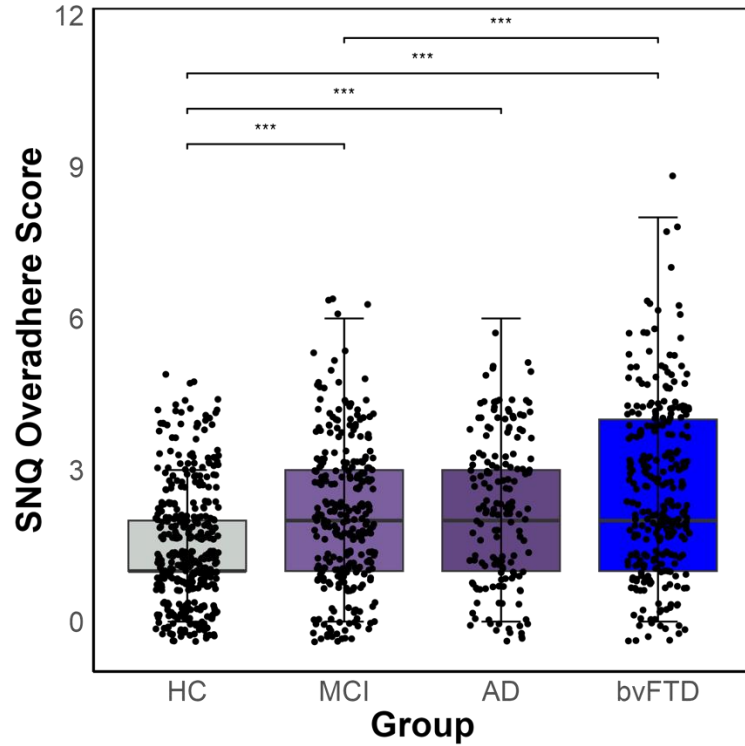
36. Cummings J. The Neuropsychiatric Inventory: Development and Applications. *J Geriatr Psychiatry Neurol.* Mar 2020;33(2):73-84. doi:10.1177/0891988719882102
37. Possin KL, Feigenbaum D, Rankin KP, et al. Dissociable executive functions in behavioral variant frontotemporal and Alzheimer dementias. *Neurology.* 2013;80(24):2180-2185.
38. Fong SS, Navarrete CD, Perfecto SE, Carr AR, Jimenez EE, Mendez MF. Behavioral and autonomic reactivity to moral dilemmas in frontotemporal dementia versus Alzheimer's disease. *Social Neuroscience.* 2017;12(4):409-418. doi:10.1080/17470919.2016.1186111
39. Bertoux M, de Souza LC, O'Callaghan C, Greve A, Sarazin M, Dubois B, Hornberger M. Social Cognition Deficits: The Key to Discriminate Behavioral Variant Frontotemporal Dementia from Alzheimer's Disease Regardless of Amnesia? *J Alzheimers Dis.* 2016;49(4):1065-74. doi:10.3233/JAD-150686
40. Rascovsky K, Hodges JR, Knopman D, et al. Sensitivity of revised diagnostic criteria for the behavioural variant of frontotemporal dementia. *Brain.* 2011;134(9):2456-2477. doi:10.1093/brain/awr179
41. Visser M, Jefferies E, Lambon Ralph MA. Semantic Processing in the Anterior Temporal Lobes: A Meta-analysis of the Functional Neuroimaging Literature. *Journal of Cognitive Neuroscience.* 2010;22(6):1083-1094. doi:10.1162/jocn.2009.21309
42. Rouse MA, Binney RJ, Patterson K, Rowe JB, Lambon Ralph MA. A neuroanatomical and cognitive model of impaired social behaviour in frontotemporal dementia. *Brain.* Jun 3 2024;147(6):1953-1966. doi:10.1093/brain/awae040
43. Rijpma MG, Montembeault M, Shdo S, Kramer JH, Miller BL, Rankin KP. Semantic knowledge of social interactions is mediated by the hedonic evaluation system in the brain. *Cortex.* Apr 2023;161:26-37. doi:10.1016/j.cortex.2022.12.015

44. Binney RJ, Ramsey R. Social Semantics: The role of conceptual knowledge and cognitive control in a neurobiological model of the social brain. *Neurosci Biobehav Rev*. May 2020;112:28-38. doi:10.1016/j.neubiorev.2020.01.030
45. Rankin KP. Brain Networks Supporting Social Cognition in Dementia. *Current Behavioral Neuroscience Reports*. 2020;7(4):203-211. doi:10.1007/s40473-020-00224-3
46. Rouse MA, Halai AD, Ramanan S, Patterson K, Rowe JB, Ralph MAL. A neuropsychological investigation of social-semantic knowledge in frontotemporal dementia. *Alzheimer's & Dementia*. 2023;19(S24)doi:10.1002/alz.082444
47. Msika EF, Despres M, Piolino P, Narme P. Dynamic and/or multimodal assessments for social cognition in neuropsychology: Results from a systematic literature review. *Clin Neuropsychol*. May 2024;38(4):922-962. doi:10.1080/13854046.2023.2266172
48. Qesque F, Coutrot A, Cox S, et al. Does culture shape our understanding of others' thoughts and emotions? An investigation across 12 countries. *Neuropsychology*. 2022;36(7):664-682. doi:10.1037/neu0000817

Figure 1

Group Differences in SNQ Total, Break and Overadhere Scores





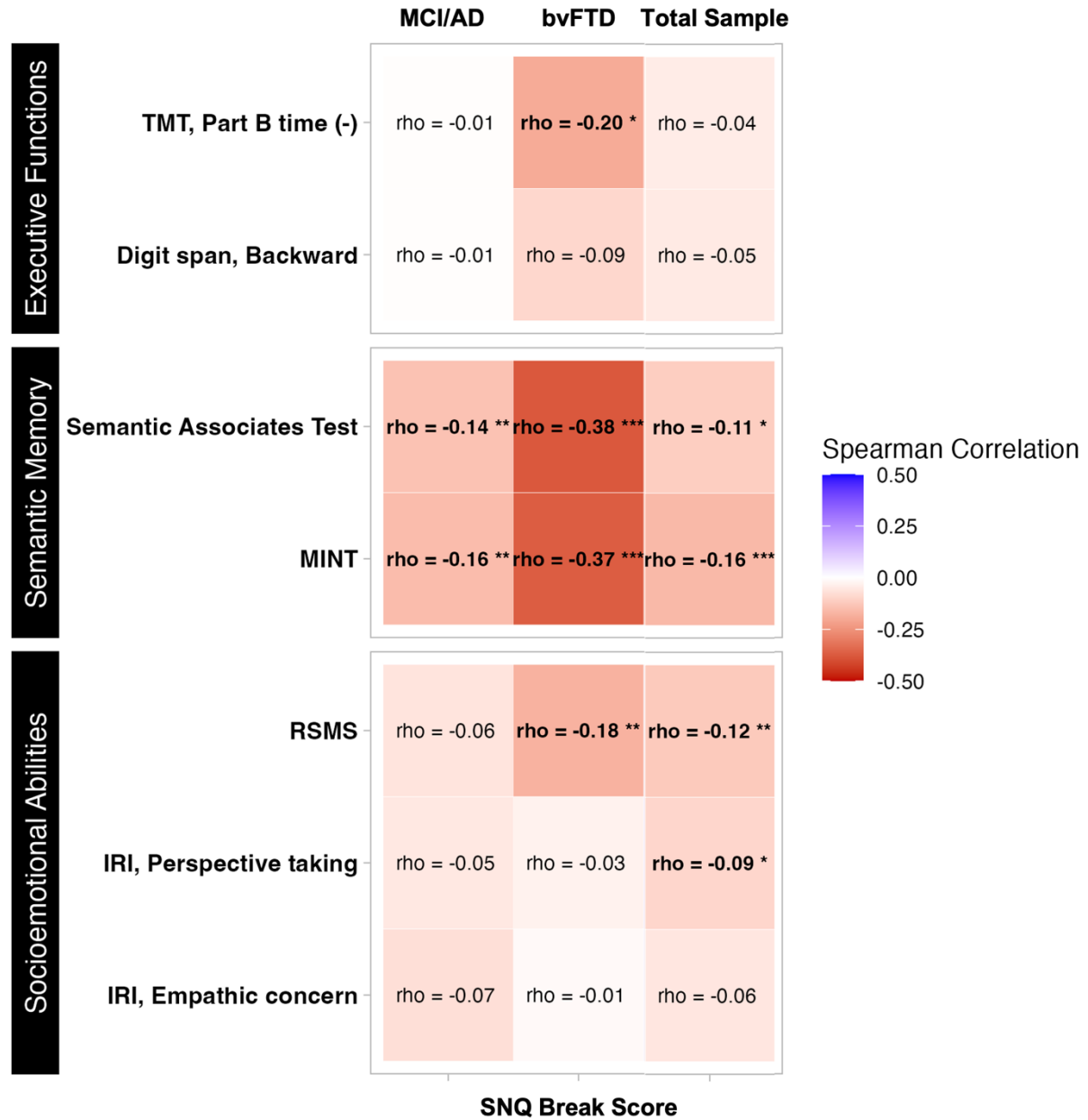
Note. Boxplots showing between-groups differences on SNQ variables after running ANCOVAs adjusted for participants' age, education, and sex, followed by Tukey-Kramer's post-hoc tests.

*** $p > .001$.

Abbreviations: SNQ, Social Norms Questionnaire; HC, healthy controls; MCI, mild cognitive impairment; AD, Alzheimer's disease; bvFTD, behavioural variant of frontotemporal dementia.

Figure 2

Norm Transgression Correlates in MCI/AD, bvFTD and in the Total Sample



Note. Heatmap of spearman correlations adjusted for participants' age, education, sex and disease severity.

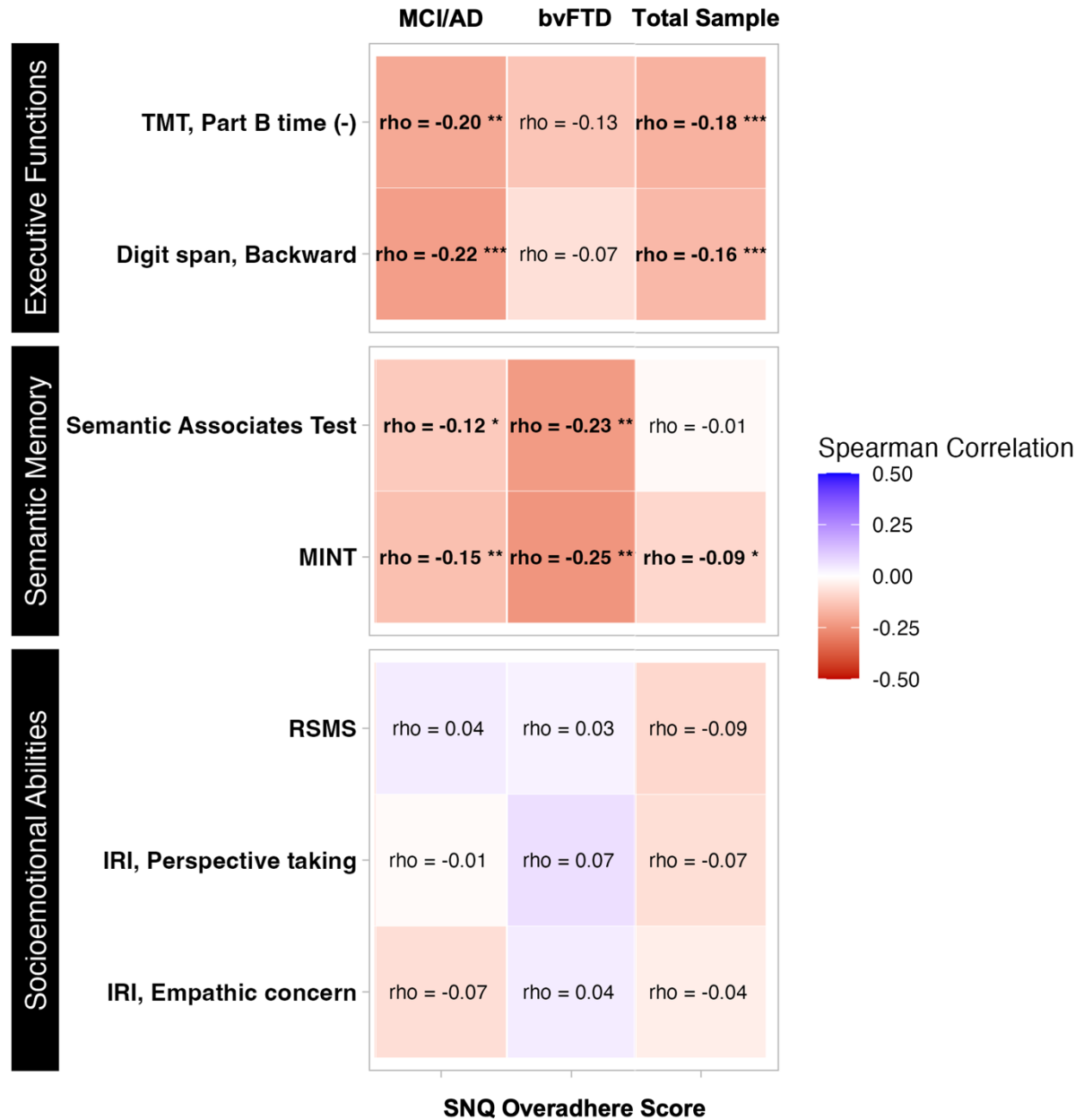
* $p > .05$; ** $p > .01$; *** $p > .001$.

(-) TMT, Part B time coefficients were turned negative so that higher completion time corresponds to worse performance.

Abbreviations: SNQ, Social Norms Questionnaire; MCI, mild cognitive impairment; AD, Alzheimer's disease; bvFTD, behavioural variant of frontotemporal dementia; TMT, Trail Making Test; MINT, Multilingual Naming Test; RSMS, Revised Self-Monitoring Scale; IRI, Interpersonal Reactivity Index.

Figure 3

Norm Overadherence Correlates in MCI/AD, bvFTD and in the Total Sample



Note. Heatmap of spearman correlations adjusted for participants' age, education, sex and disease severity.

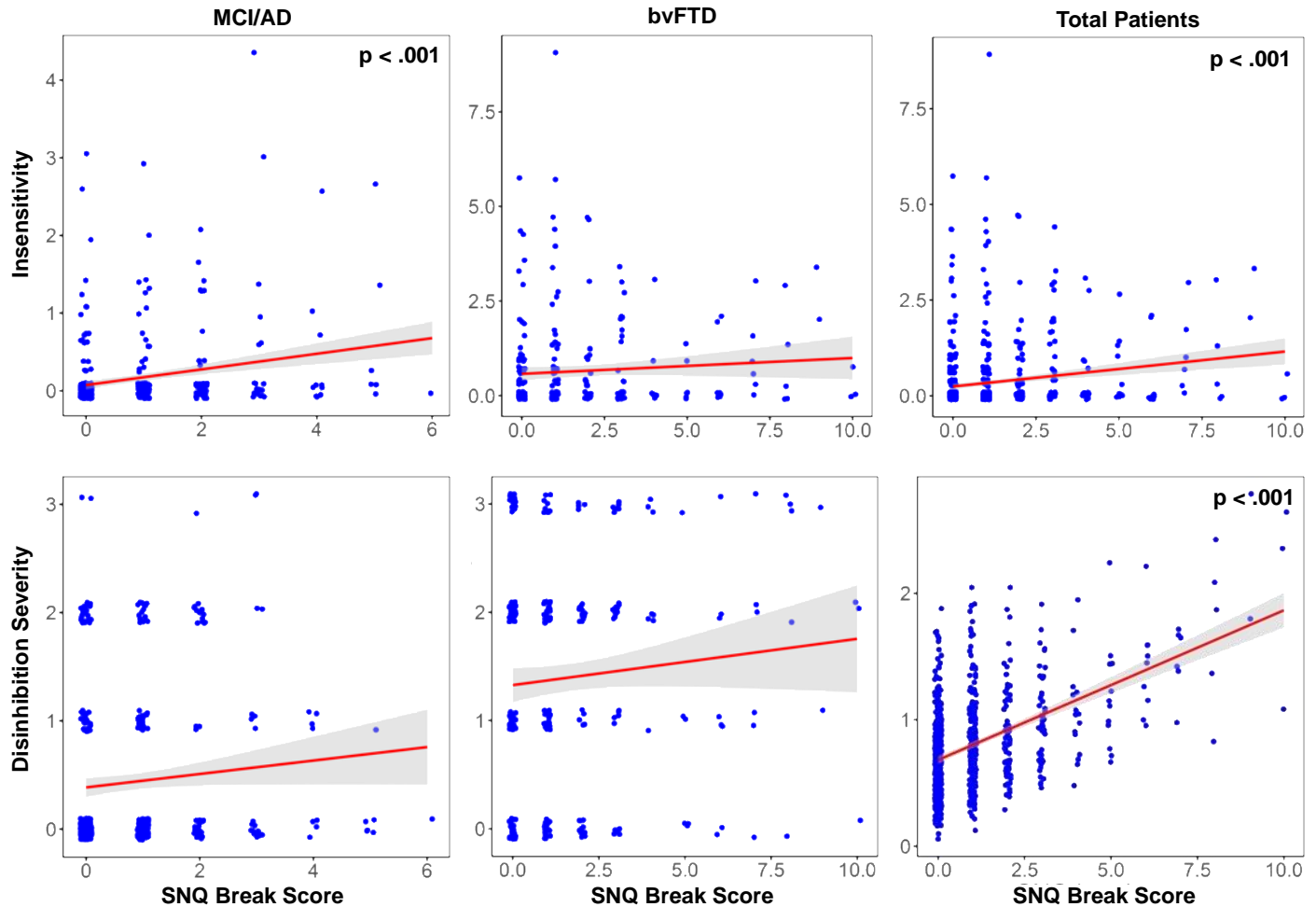
* $p > .05$; ** $p > .01$; *** $p > .001$.

(-) TMT, Part B time coefficients were turned negative so that higher completion time corresponds to worse performance.

Abbreviations: SNQ, Social Norms Questionnaire; MCI, mild cognitive impairment; AD, Alzheimer's disease; bvFTD, behavioural variant of frontotemporal dementia; TMT, Trail Making Test; MINT, Multilingual Naming Test; RSMS, Revised Self-Monitoring Scale; IRI, Interpersonal Reactivity Index.

Figure 4

Relationship Between Norm Transgression and Insensitivity Across Samples



Note. Scatterplots of analyses of regression adjusted for participants' age, education, sex, and disease severity.

Abbreviations: SNQ, Social Norms Questionnaire; MCI, mild cognitive impairment; AD, Alzheimer's disease; bvFTD, behavioural variant of frontotemporal dementia.

Table 1

Participants Characteristics According to Group

	HC	MCI	AD	bvFTD
n	384	286	157	285
Age	60.5 (9.4) ^{a,c}	64.6 (8.7) ^{b,d}	61.1 (6.7) ^{a,c}	64.6 (8.1) ^{b,d}
Sex, % women	57.6 ^c	48.6	49.0	37.5 ^d
Education	16.0 (2.5)	16.1 (2.7)	15.7 (2.9)	15.7 (2.9)
CDR®, sum of boxes	0.0 (0.0) ^{a,b,c}	1.9 (1.5) ^{b,c,d}	4.8 (2.5) ^{a,c,d}	6.1 (3.2) ^{a,b,d}
MoCA, total score	27.2 (2.4) ^{a,b,c}	22.0 (4.7) ^{b,c,d}	16.5 (5.7) ^{a,c,d}	19.8 (6.0) ^{a,b,d}

Note . The table presents mean (SD) values, unless indicated otherwise. For all comparisons, statistical significance criterion was $p < .05$.

Abbreviations: HC, healthy controls; MCI, mild cognitive impairment; AD, Alzheimer's disease; bvFTD, behavioural variant of frontotemporal dementia; MoCA, Montreal Cognitive Assessment.

^a $p < .05$ with MCI.

^b $p < .05$ with AD.

^c $p < .05$ with bvFTD.

^d $p < .05$ with HC.

Table 2

SNQ Performance Across Groups

	Mean			
	HC	MCI	AD	bvFTD
Total score	20.1 (1.3) ^{a,b,c}	19.1 (1.9) ^{c,d}	18.9 (1.9) ^{c,d}	17.7 (3.1) ^{a,b,d}
Break score	0.4 (0.7) ^{a,b,c}	0.8 (1.1) ^{c,d}	0.9 (1.2) ^{c,d}	1.7 (2.2)
Overadhere score	1.5 (1.2) ^{a,b,c}	2.1 (1.4) ^{c,d}	2.3 (1.5) ^d	2.6 (1.7) ^{a,d}

Note. The table presents mean (SD) values. For all comparisons, statistical significance criterion was $p < .05$.

Abbreviations: HC, healthy controls; MCI, mild cognitive impairment; AD, Alzheimer's disease; bvFTD, behavioural variant of frontotemporal dementia; MoCA, Montreal Cognitive Assessment.

^a $p < .05$ with MCI.

^b $p < .05$ with AD.

^c $p < .05$ with bvFTD.

^d $p < .05$ with HC.