

1 **Influenza A (H3) viral aerosol shedding in nasally inoculated and**
2 **naturally infected cases**

3 Jianyu Lai^{1*}, P. Jacob Bueno de Mesquita², Filbert Hong¹, Tianzhou Ma³, Benjamin J.
4 Cowling⁴, Donald K. Milton^{1*}

5

6 1 Department of Global, Environmental, and Occupational Health, University of
7 Maryland School of Public Health, College Park, MD, USA

8 2 Department of Public Health, Roger Williams University, Bristol, RI, USA

9 3 Department of Epidemiology and Biostatistics, University of Maryland School of
10 Public Health, College Park, MD, USA

11 4 World Health Organization Collaborating Center for Infectious Disease

12 Epidemiology and Control, School of Public Health, The University of Hong Kong,
13 Hong Kong Special Administrative Region, China

14

15 *Corresponding authors: Dr. Donald K. Milton, University of Maryland School of
16 Public Health, 4200 Valley Drive, College Park, MD 20742, USA email:

17 dmilton@umd.edu; Dr. Jianyu Lai, University of Maryland School of Public Health,
18 4200 Valley Drive, College Park, MD 20742, USA email: jlai12@umd.edu

19

20 **Short title:** Influenza A H3 viral aerosol shedding

21 **Abstract**

22 Nasally inoculated influenza cases reported milder symptoms and shed lower viral
23 RNA load in exhaled breath aerosols (EBA) than people with classic influenza-like
24 illness including fever, in a previous study. Whether nasally inoculated influenza is
25 representative of mild natural influenza infection, the majority of natural infections, is
26 unknown. Here, we extend our previous analyses to include a broader range of
27 community-acquired influenza cases. Previously, we reported on two groups: (A)
28 volunteers intranasally inoculated with a dose of $5.5 \log_{10} \text{TCID}_{50}$ of influenza
29 A/Wisconsin/67/2005 (H3N2) and (B) cases with cough and sore throat plus fever or
30 a positive rapid antigen test recruited on a college campus in the same year (2013).
31 Here we added two additional groups from a later study: (C) cases from a 2017-2019
32 surveillance cohort of college dormitory residents and their contacts, and (D) cases
33 recruited from a university health center in 2019. All cases had an influenza A(H3)
34 infection. Using a Gesundheit-II sampler, we collected 30-minute EBA samples.
35 Community-acquired cases from the surveillance cohort (C) shed more EBA viral
36 RNA and were more symptomatic than the nasally inoculated cases (A) but shed less
37 viral RNA than the natural cases that were selected for symptoms (B) in 2013, but not
38 (D) recruited in 2019. Despite sharing a similar symptomatic profile with the 2013
39 selected natural cases (B), the 2019 community-acquired cases (D) recruited post-
40 infection showed a lower fine aerosol viral RNA load. Nasal inoculation of influenza
41 virus did not reproduce EBA viral RNA shedding or symptoms observed in mild
42 natural infection. Circulating strains of influenza A(H3) may differ, year-to-year in
43 the extent to which symptomatic cases shed virus into fine aerosols. New models,

- 44 including possibly aerosol inoculation, are needed to study viral aerosol shedding
- 45 from the human respiratory tract.

46 **Author Summary**

47 In this study, we compared influenza A (H3) viral aerosol shedding in the exhaled
48 breath of four different groups of influenza cases: (A) volunteers given the influenza
49 virus intranasally, naturally infected (B) college community members with classic
50 influenza-like illness including fever recruited in 2013, (C) dormitory residents
51 undergoing active surveillance, and (D) patients from a university health center
52 recruited in 2019. We found that mild symptomatic cases among healthy college
53 students (C) released more viral RNA in their exhaled breath than those nasally
54 inoculated with influenza virus (A). We also observed that more symptomatic and
55 medically attended cases from different flu seasons (B and D), although reporting
56 similar symptom severity, shed different levels of viral RNA in their exhaled breath.
57 Our findings indicate that influenza viral aerosol shedding varies from season to
58 season. Most volunteers nasally inoculated at a high virus dose did not shed
59 detectable viral RNA in their exhaled breath or show symptoms, suggesting that nasal
60 inoculation may not accurately mimic natural infection. Our results highlight the need
61 for improved models to study the spread of influenza virus in aerosol forms.

62 **Introduction**

63 Seasonal influenza virus infections impose a tremendous health burden (1–4). In the
64 United States alone, Centers for Disease Control and Prevention estimated that
65 influenza-related deaths ranged from 12,000 to 52,000 per season from 2010 to 2020,
66 with between 140,000 and 710,000 hospitalizations per season (5). Among the
67 influenza strains, A(H3N2) viruses often result in more severe disease burdens in
68 terms of morbidity and mortality compared to other strains, such as A(H1N1) and B
69 viruses (2).

70

71 Existing research demonstrates the major role of aerosol inhalation in influenza
72 transmission (6,7). One study estimated that approximately half of influenza
73 transmissions in households occur via inhalation of aerosols (6). Experimental
74 influenza cases infected via intranasal inoculation of viruses typically shed lower
75 levels of fine and coarse EBA than naturally-infected symptomatic influenza cases
76 (7,8), and experience milder symptoms compared to those infected naturally (8,9) or
77 via aerosol inoculation (10). Influenza A viral shedding quantity typically aligns with
78 the progression of clinical symptoms over the course of the disease (8,11). For
79 instance, the peaks of EBA viral shedding and symptom scores were observed on day
80 one post symptom onset for selected natural cases and on the third day post-
81 inoculation for experimental cases (8).

82

83 Prior research comparing viral shedding between natural and intranasally inoculated
84 influenza cases has primarily focused on naturally infected cases presenting with

85 acute respiratory illness, a fever or a positive rapid antigen test (8,9). This tendency to
86 recruit symptomatic cases from the population for aerosol shedding studies led to a
87 lack of data on those with mild or asymptomatic influenza viral infection.
88 Additionally, there has been limited comparative research on EBA viral shedding
89 trajectories for both natural cases unselected for symptoms and experimental nasal
90 inoculated cases. Despite observations that experimentally infected cases shed less
91 virus in EBA than naturally infected cases, there is a lack of overlap in symptom
92 severity between the two groups, with the experimentally infected cases mostly
93 presenting with mild illness or asymptotically (8). The observed relationship
94 between symptom severity and exhaled breath viral shedding was potentially
95 confounded by the distinct populations under study, one being naturally infected and
96 the other infected via nasal inoculation.
97
98 This study sought to address these limitations by broadening the scope of prior
99 analyses. We included unselected community-acquired influenza cases from a
100 surveillance cohort of college dormitory residents and their contacts. This group was
101 defined as “unselected” due to being enrolled and followed up for cold or flu-like
102 symptoms regularly, with validated incentives for consistent responses (12). We also
103 included cases recruited post infections from a university health center, who generally
104 presented with more symptoms. We compared these two groups with volunteers
105 intranasally inoculated with influenza A/Wisconsin/67/2005(H3N2) as well as
106 selected naturally infected influenza cases with cough and sore throat plus fever or a
107 positive rapid antigen test recruited in 2013 that were reported previously (8). Our

108 aim was to examine the EBA viral shedding in an unselected sample of community-
109 acquired influenza cases and compare the EBA viral RNA loads and their trajectories
110 between nasally inoculated cases and different community-acquired influenza cases.

111

112 **Results**

113 *Characteristics of the study population*

114 This study included a total of 143 participants infected with influenza A(H3), with 36
115 nasally inoculated with influenza A/Wisconsin/67/2005(H3N2) (Group A), 83
116 selected symptomatic cases with fever or positive antigen test recruited in 2013
117 (Group B), 17 unselected cases recruited from the surveillance dorm resident cohort
118 (Group C), and 7 symptomatic cases recruited from a university health center (UHC)
119 in 2019 (Group D) (Figure 1). Group A had the most participants over 25 years of age
120 (mean age: 30.1 years), while the other three groups predominantly consisted of
121 younger adults, aged 18 to 25 years. A higher proportion of females was found in
122 Groups B (57%) and C (65%) compared to Groups A (31%) and D (29%) (Table 1
123 and Supplementary Table 1).

124

125 Table 1. Characteristics of the study population

| | A: Nasal Inoculation with influenza A/Wisconsin/67/2005 | B: Symptomatic with T>37.8°C or positive antigen test | C: Surveillance cohort with any symptoms and positive PCR | D: Symptomatic, seeking medical care | All participants |
|-----------|---|---|---|--------------------------------------|------------------|
| Number of | 36 | 83 | 17 | 7 | 143 |

| | | | | | |
|---|------------------|---------------------|--------------------|--------------------|---------------------|
| participants | | | | | |
| Influenza Season, N(%) | | | | | |
| 2012-2013 | 36 (100) | 83 (100) | 0 (0) | 0 (0) | 119 (83) |
| 2016-2017 | 0 (0) | 0 (0) | 3 (18) | 0 (0) | 3 (2) |
| 2017-2018 | 0 (0) | 0 (0) | 4 (24) | 0 (0) | 4 (3) |
| 2018-2019 | 0 (0) | 0 (0) | 10 (59) | 7 (100) | 17 (12) |
| Female, N (%) | 11 (31) | 47 (57) | 11 (65) | 2 (29) | 71 (50) |
| Age, mean \pm SD | 30.1 \pm 7.2 | 22.3 \pm 7.6 | 19.3 \pm 0.9 | 20 \pm 1.4 | 23.8 \pm 7.8 |
| Age group, N(%) | | | | | |
| <18 | 0 (0) | 2 (2) | 0 (0) | 0 (0) | 2 (1) |
| 18-25 | 11 (31) | 73 (88) | 17 (100) | 7 (100) | 108 (76) |
| >25 | 25 (69) | 8 (10) | 0 (0) | 0 (0) | 33 (23) |
| With fever > 37.9°C, N (%) ^a | 1 (3) | 17 (20) | 2 (12) | 1 (14) | 21 (15) |
| Coughs per 30 min, mean \pm SD (range) ^b | 2 \pm 6 (0-35) | 27 \pm 33 (0-265) | 13 \pm 18 (0-66) | 15 \pm 21 (0-60) | 19 \pm 29 (0-265) |
| Temperature (C), mean \pm SD ^c | 36.6 \pm 0.6 | 37.3 \pm 0.6 | 37.3 \pm 0.8 | 37.6 \pm 0.7 | 37.2 \pm 0.7 |
| Median upper respiratory symptoms (IQR) ^d | 1 (0 - 3) | 7 (5 - 9) | 6 (4 - 7) | 5 (3.5 - 6.5) | 5 (3 - 8) |
| Median lower respiratory symptoms (IQR) | 0 (0 - 0) | 3 (2 - 4) | 3 (2 - 3) | 2 (2 - 4.5) | 2 (1 - 4) |
| Median systemic symptoms (IQR) | 0 (0 - 1) | 5 (4 - 7) | 3 (1 - 6) | 6 (4 - 7.5) | 4 (1 - 6.5) |

- 126 a. Fever at the time of breath sample collection. Tympanic temperature was
 127 measured for Group A and oral temperature was measured for Groups B, C, and
 128 D. One subject in Group C did not have body temperature measured.
 129 b. Cough counts were missing for 4 observations in Group A, 3 observations in
 130 Group B, and 3 observations in Group C.

- 131 c. Temperature was missing for 1 observation in each of Groups A, B, and C.
132 d. Upper respiratory symptoms (range 0-15): runny nose, stuffy nose, sneezing, sore
133 throat, and earache symptom scores; lower respiratory symptoms (range 0-6):
134 shortness of breath and cough; systemic symptoms (range 0-9): malaise, headache,
135 and muscle/join ache.
136

137 As previously reported (8), Group A had very mild or non-existent symptoms. This
138 group had the lowest median score for all the three symptoms – upper respiratory
139 symptoms, lower respiratory symptoms, and systemic symptoms. They also had the
140 lowest incidence of febrile cases (3%) and a reduced frequency of coughs at the time
141 of sampling. Group C, the unselected community-acquired cases from the
142 surveillance cohort, demonstrated a medium level of symptom severity across the
143 groups. Specifically, we found a significant difference among the three community-
144 acquired infection groups in terms of their systemic symptoms and a borderline
145 significant difference for upper respiratory symptoms (Supplementary Table 1).
146 Group C had significantly lower upper respiratory and systematic symptom scores
147 than Group B. For Group B and D, the symptom distribution, as well as other
148 characteristics reported, did not demonstrate substantial differences (Table 1,
149 Supplementary Table 1, and Supplementary Figure 1).

150

151 *Positive detection rates and geometric means of EBA viral shedding*

152 Group A demonstrated a significantly lower rates of positive detection for both coarse
153 and fine EBA, in terms of the number of positive samples and positive cases, than
154 Group B and D. Group C had a slightly higher proportion of positive cases and
155 samples than Group A, although the differences were not significant.

156

157 There was no significant difference between Groups B and D in the proportions of
 158 positive cases and positive EBA samples. When comparing to Group C, we only
 159 found significant difference in the rates of positive cases and samples for fine EBA
 160 between Groups B and C (Table 2).

161

162 Table 2. Viral shedding into exhaled breath aerosols

| | A: Nasal Inoculation with influenza A/Wisconsin/67/2005 | | B: Symptomatic with T>37.8°C or positive antigen test | | C: Surveillance cohort with any symptoms and positive PCR | | D: Symptomatic, seeking medical care | |
|-----------------------------|---|---------|---|----------|---|--------|--------------------------------------|--------|
| Year | 2013 | | 2013 | | 2017-2019 | | 2019 | |
| EBA | Coarse | Fine | Coarse | Fine | Coarse | Fine | Coarse | Fine |
| Cases | 36 | 36 | 83 | 83 | 17 | 17 | 7 | 7 |
| Samples | 64 | 64 | 143 | 143 | 21 | 21 | 7 | 7 |
| No. of positive cases (%) | 6 (17) | 11 (31) | 43 (52) | 71 (86) | 5 (29) | 8 (47) | 4 (57) | 6 (86) |
| No. of positive samples (%) | 6 (9) | 14 (22) | 64 (45) | 110 (77) | 5 (24) | 8 (38) | 4 (57) | 6 (86) |

163

164 Figure 2 shows geometric mean viral RNA copy numbers measured in aerosols
 165 collected per 30-minute sampling period. In this analysis without controlling for
 166 confounders, Group A had a significantly lower geometric mean viral RNA copy
 167 numbers in both fine and coarse EBA, relative to the other three groups (Figure 2).
 168 Group B presented a significantly higher geometric mean viral RNA copy numbers in
 169 fine, but not in coarse EBA, compared to Group C and D. Both Group C and D

170 displayed intermediate levels of fine EBA viral RNA load, although D had a higher
171 value than C.

172

173 *Temporal Patterns of Symptoms and EBA Viral RNA Shedding*

174 For Groups B, C, and D, symptom scores peaked on the first day following symptom
175 onset, with the exception of upper respiratory symptom scores in Group C, which
176 fluctuated post-onset. For Group A, all symptom scores reached their peak on the
177 third day post-inoculation. Based on the observed trajectories, we estimate an
178 incubation period of two days for Group A (Figure 3).

179

180 The trajectories of EBA viral RNA shedding mirrored those of the symptom scores,
181 with the exception of Group C. For this group, the EBA shedding trajectory followed
182 the symptom trajectory for the initial two days, but then increased on the third day
183 post-symptom onset (Figure 4).

184

185 *Modeling Group Effects on EBA Viral RNA Shedding*

186 In models controlling for potential confounding variables and effect modifiers (age,
187 sex, and study days), Group A continued to present a significantly lower viral RNA
188 load in both aerosol fractions. The ratio of viral RNA shedding of Group A to that of
189 Group C was the lowest, with a value of 3.3×10^{-2} (95%CI: 1.1×10^{-3} , 0.99) for fine
190 aerosol and 9.5×10^{-4} (95%CI: 4.4×10^{-6} , 0.21) for coarse aerosol. Group B, on the
191 other hand, had a significantly higher viral RNA load in both aerosols compared to

192 Group C, with the ratio as 2.2×10^3 (95%CI: 1.7×10^2 , 2.8×10^4) for fine and 88
193 (95%CI: 1.6, 4.8×10^3) for coarse aerosols. There was no significant difference
194 between Group C and Group D in terms of viral RNA load in both EBA size fractions
195 (Figure 5 and Supplementary Table 2). Contrast analysis revealed that Group B had a
196 significantly higher viral load in fine aerosols than Group D, although no significant
197 difference was found for coarse aerosols (Supplementary Table 3).

198

199 Regarding shedding trajectories over time, no significant difference was observed
200 between Group C and the rest of the groups concerning the dynamics of EBA viral
201 RNA shedding by study days (Supplementary Table 4).

202

203 **Discussion**

204 This study provides a unique comparison of EBA viral shedding pattern among
205 influenza A/H3 infected individuals in distinct groups: nasally inoculated cases,
206 unselected community-acquired cases from a surveillance cohort, and selected natural
207 cases from different influenza seasons. We found previously that selected natural
208 cases shed higher viral load in EBAs and were more symptomatic than experimental
209 cases (8). This study further adds that unselected community-acquired cases,
210 representing a wider spectrum of symptom severity, shed more viral RNA in their
211 exhaled breath aerosols and were more symptomatic than the experimental, nasally
212 inoculated cases as well, but on average shed less viral RNA than the selected natural
213 cases that were more symptomatic and from different influenza season.

214

215 Those inoculated nasally with a high dose of influenza virus A/Wisconsin/67/2005
216 strain had a high percentage of people who did not have detectable level of viral RNA
217 load in their exhaled breath aerosols or have any symptoms, despite shedding
218 substantial virus into nasopharyngeal swabs. This indicates that nasal inoculation with
219 this strain may not provide a robust model for understanding EBA viral shedding
220 patterns or the range of symptom severity typical in natural influenza virus infections.
221 Given the major role of aerosol inhalation in influenza transmission (6,7), inoculation
222 via aerosol inhalation might offer a more representative model for mimicking natural
223 influenza infections (13). Previous studies showed that inhalation of various strains of
224 influenza viruses led to fevers in human subjects, a response rarely seen with
225 intranasal instillation (14). Also, animal studies have demonstrated that aerosol
226 inhalation of recombinant influenza viruses results in a more efficient infection of the
227 lower respiratory tract and faster viral replication compared to intranasal inoculation
228 (15). This might explain the lower viral load found in the exhaled breath aerosols of
229 individuals inoculated intranasally, as opposed to those infected naturally.
230
231 Of note, despite sharing a similar characteristic and symptomatic profile, the two
232 groups of medically attended cases from different years (Groups B and D) exhaled
233 statistically different fine aerosol viral RNA loads. The discrepancy in the
234 relationship between viral shedding and symptoms could be related to year-to-year
235 differences in circulating strains of influenza A(H3). The elevated viral load in fine
236 aerosols observed in participants from the 2012-2013 influenza season might, in part,
237 explain the heavier influenza burden during that season compared to the 2018-2019

238 influenza season in the United States (5). This discovery underscores the importance
239 of monitoring influenza virus strains, even within the same influenza A(H3) subtype,
240 to better inform public health measures to mitigate the impact of future influenza
241 seasons and protect vulnerable populations more effectively.

242

243 This study had several strengths. We did a unique comparison of EBA viral shedding
244 pattern among influenza A(H3) infected individuals from three sources, allowing us
245 to compare the viral shedding between experimental infections and the full range of
246 ambulatory community-acquired influenza virus infections. Including participants
247 from different years also allowed us to explore the difference between different
248 strains of influenza A(H3).

249

250 Our research was subject to some limitations. Our study volunteers were all
251 ambulatory; hence the results of this study may not be generalizable to those who are
252 critically ill. We did not have culture results for all the EBA samples, hence we could
253 not directly compare infectious viral load, and potentially the risk of inhalation
254 transmission, among the groups. Despite this, previous work reported a correlation
255 between viral RNA and quantitative culture (7).

256

257 This study reveals that the route of infection and strain difference could contribute to
258 the level of viral aerosol shedding in influenza virus infections. We highlight the need
259 for new models to study viral aerosol shedding from the human respiratory tract. In
260 particular, aerosol inoculation may represent a promising avenue for future research,

261 as this approach could better mimic natural infection process and offer insights into
262 aerosol transmission dynamics. Overall, this study contributes to the broader
263 understanding of viral shedding patterns in EBA and underscores the importance of
264 developing robust models to further our understanding of influenza transmission.

265

266 **Materials and Methods**

267 *Data sources and sample groups*

268 This study used data obtained from three studies. The first two of these studies -
269 Evaluating Modes of Influenza Transmission challenge study (EMIT-1 experimental
270 study) (16), and an observational study of selected acute respiratory illness (ARI)
271 cases (EMIT-1 campus study) (7) - have been previously reported (8). The third study
272 followed uninfected volunteers over an academic year for their ARI occurrence,
273 known as the Prometheus study (12).

274

275 *EMIT-1 experimental study*

276 This study, initiated in 2013 to investigate questions related to influenza transmission
277 (16), involved volunteers divided into two groups: "Donors" and "Recipients". The
278 Donors were intranasally inoculated with a dose of $5.5 \log_{10} \text{TCID}_{50}$ influenza
279 A/Wisconsin/67/2005 and subsequently confirmed to have an influenza A infection
280 (H3N2). After inoculation, the Donors were paired with uninfected healthy Recipients
281 in a common room to encourage interaction (16). For the purposes of this report, we
282 exclusively included the Donors, representing experimental cases, and have
283 designated them as Group A.

284

285 *EMIT-1 campus study*

286 The EMIT-1 campus study was conducted at the University of Maryland, College
287 Park (UMD) (7,8). Volunteers presenting symptoms of acute respiratory infections
288 were recruited from December 2012 to March 2013. Those who eventually provided
289 breath samples were within 3 days of symptom onset, and had a positive QuickVue
290 Influenza A + B test (Quidel, San Diego, CA) or were still febrile with an oral
291 temperature of greater than 37.8 °C plus coughing or a sore throat (7,8). In the context
292 of our current study, we incorporated those with a positive nasopharyngeal swab for
293 influenza A/H3N2 as confirmed by reverse transcription polymerase chain reaction
294 (RT-PCR). This group, representing the severe spectrum of symptoms, was classified
295 as Group C.

296

297 *Prometheus study*

298 The Prometheus study was also conducted at the UMD community (12). From 2017
299 to 2020, students and staff from UMD were actively recruited and monitored for the
300 occurrence of acute respiratory infections during each academic year. Volunteers
301 were instructed to report to the study team immediately upon developing cold or flu-
302 like symptoms. The identified volunteers and their close contacts were then invited to
303 a research clinic to provide samples for further examination. For the 2018-2019 flu
304 season, additional volunteers were recruited from the university health center,
305 typically presenting with more severe symptoms than those recruited from the
306 surveillance cohort. For this study, we included individuals with confirmed influenza

307 A via mid-turbinate or nasal and/or throat swabs, as identified by a TaqMan® Array
308 Card (Thermo Fisher, Waltham, MA, USA). Participants from the community,
309 generally presenting with very mild symptoms, were assigned to Group B1, while
310 those recruited from the university health center were classified as Group B2.

311

312 Sample Collection

313 For all these studies, volunteers with confirmed viral infections were invited to
314 provide 30-minute EBA samples using a Gesundheit-II sampler (17). They were
315 allowed to breathe normally and cough spontaneously during the collection. After
316 collection, EBA samples were categorized by size into two fractions: fine aerosols
317 (diameter $\leq 5 \mu\text{m}$) and coarse aerosols ($>5 \mu\text{m}$). Viral RNA was extracted from both
318 fine and coarse aerosol samples and quantified using real-time RT-PCR.

319 Statistical analyses

320 In our statistical analysis, we included only EBA samples on which day their nasal
321 and/or throat swabs were positive.

322

323 Descriptive analysis was carried out for the four comparison groups (A, B1, B2, and
324 C). We compared the four groups and the three natural infection groups using
325 Kruskal-Wallis test for the continuous variables and Fisher's exact test for the
326 categorical variables. We also did pair-wise comparison among the three natural
327 infection groups, using T-test for the continuous variables and Fisher's exact test or
328 Chi-square test for the categorical variables.

329

330 To visualize change over time, we plotted the EBA viral RNA loads as well as
331 symptom scores by study day for the four groups separately. The study day was
332 defined as days post symptom onset for Group B1, B2, and C and days post
333 inoculation for Group A, as most of the experimental cases were asymptomatic or not
334 sampled on the days after symptom onset. We then identified the incubation period (I)
335 for Group A by comparing the peak of symptom scores in Group A and the other
336 three groups.

337

338 Linear mixed effect models with censored responses (R package ‘lme4’, version 1.0
339 (18)) were used to calculate the geometric means (GM) of the EBA viral RNA load
340 for the four comparison groups. These models accounted for the censored outcome
341 variable (i.e., viral RNA load below limit of detection) as well as nested random
342 effects of individuals and samples within the same individuals. We also used the lme4
343 model to estimate the group effect on EBA viral shedding (Model I) and the shedding
344 over time (Model II), controlling for potential confounders and effect modifiers. For
345 Model I, age, sex, and study day (defined as day post symptom onset for Group B1,
346 B2, and C, and day post inoculation minus I for Group C) were included into the
347 models as potential confounders. Then the product terms of each of these three
348 variables and the group variable were included for further interaction assessment. The
349 best models were selected based on Akaike Information Criterion (AIC). For Model
350 II, we forced the interaction terms of group and study day into the model along with
351 age and sex, and then further selected the final model based on AIC.

352

353 We conducted all analyses in R version 4.2.3 (R Foundation for Statistical Computing,

354 Vienna, Austria) and RStudio.

355

356 **Acknowledgement**

357 We thank all the members of the EMIT Consortium and Prometheus-UMD

358 investigators (Both complete lists of the members can be found in the Supporting

359 Materials).

360

361 **Funding**

362 Elements of this work were supported by Cooperative Agreement 1U01IP000497

363 from the US Centers for Disease Control and Prevention, by the Defense Advanced

364 Research Projects Agency (DARPA) BTO under the auspices of Col. Matthew

365 Hepburn through agreements N66001-17-2-4023 and N66001-18-2-4015, by the

366 Office of the Assistant Secretary for Preparedness and Response, Biomedical

367 Advanced Research and Development Authority, by the National Institute of Allergy

368 and Infectious Diseases Centers of Excellence for Influenza Research and

369 Surveillance (CEIRS) Contract Number HHSN272201400008C, and by gifts from

370 The Flu Lab and Balvi Philanthropic Fund. The findings and conclusions in this report

371 are those of the authors and do not necessarily represent the official position or policy

372 of these funding agencies and no official endorsement should be inferred.

373

374 **Declaration of interests**

375 B.J.C. consults for AstraZeneca, Fosun Pharma, GlaxoSmithKline, Haleon, Moderna,
376 Novavax, Pfizer, Roche, and Sanofi Pasteur. D.K.M. consults for A.I.R LLC and
377 holds stock options for Lumen Bioscience, Inc. The authors declare no other
378 competing interests.

379 **References**

- 380 1. Centers for Disease Control and Prevention (CDC). Estimates of deaths
381 associated with seasonal influenza --- United States, 1976-2007. MMWR Morb
382 Mortal Wkly Rep. 2010 Aug 27;59(33):1057–62.
- 383 2. Chowell G, Miller MA, Viboud C. Seasonal influenza in the United States,
384 France, and Australia: transmission and prospects for control. Epidemiology &
385 Infection. 2008 Jun;136(6):852–64.
- 386 3. Rolfes MA, Foppa IM, Garg S, Flannery B, Brammer L, Singleton JA, et al.
387 Annual estimates of the burden of seasonal influenza in the United States: A tool
388 for strengthening influenza surveillance and preparedness. Influenza Other Respir
389 Viruses. 2018 Jan;12(1):132–7.
- 390 4. Taniguchi K, Ikeda S, Hagiwara Y, Tsuzuki D, Klai M, Sakai Y, et al.
391 Epidemiology and burden of illness of seasonal influenza among the elderly in
392 Japan: A systematic literature review and vaccine effectiveness meta-analysis.
393 Influenza and Other Respiratory Viruses. 2021;15(2):293–314.

- 394 5. Centers for Disease Control and Prevention. Centers for Disease Control and
395 Prevention. 2021 [cited 2021 Dec 24]. Burden of Influenza. Available from:
396 <https://www.cdc.gov/flu/about/burden/index.html>
- 397 6. Cowling BJ, Ip DKM, Fang VJ, Suntarattiwong P, Olsen SJ, Levy J, et al.
398 Aerosol transmission is an important mode of influenza A virus spread. *Nat*
399 *Commun.* 2013;4(1):1935.
- 400 7. Yan J, Grantham M, Pantelic J, Bueno de Mesquita PJ, Albert B, Liu F, et al.
401 Infectious virus in exhaled breath of symptomatic seasonal influenza cases from a
402 college community. *Proc Natl Acad Sci USA.* 2018 Jan 30;115(5):1081–6.
- 403 8. Bueno de Mesquita PJ, Nguyen-Van-Tam J, Killingley B, Enstone J, Lambkin-
404 Williams R, Gilbert AS, et al. Influenza A (H3) illness and viral aerosol shedding
405 from symptomatic naturally infected and experimentally infected cases. *Influenza*
406 *Other Respir Viruses.* 2021 Jan;15(1):154–63.
- 407 9. Little JW, Douglas RG, Hall WJ, Roth FK. Attenuated influenza produced by
408 experimental intranasal inoculation. *J Med Virol.* 1979;3(3):177–88.
- 409 10. Alford RH, Kasel JA, Gerone PJ, Knight V. Human influenza resulting from
410 aerosol inhalation. *Proc Soc Exp Biol Med.* 1966 Jul;122(3):800–4.
- 411 11. Ip DKM, Lau LLH, Chan KH, Fang VJ, Leung GM, Peiris MJS, et al. The
412 Dynamic Relationship Between Clinical Symptomatology and Viral Shedding in
413 Naturally Acquired Seasonal and Pandemic Influenza Virus Infections. *Clin*
414 *Infect Dis.* 2016 Feb 15;62(4):431–7.

- 415 12. Adenaiye O, Bueno de Mesquita PJ, Wu Q, Hong F, Lai J, Chen S, et al. The
416 effect of COVID-19 stay-at-home order and campus closure on the prevalence of
417 acute respiratory infection symptoms in college campus cohorts. *Influenza Other*
418 *Respir Viruses*. 2021 May;15(3):331–5.
- 419 13. Belser JA, Gustin KM, Katz JM, Maines TR, Tumpey TM. Comparison of
420 traditional intranasal and aerosol inhalation inoculation of mice with influenza A
421 viruses. *Virology*. 2015 Jul;481:107–12.
- 422 14. Henle W, Henle G, Stokes J, Maris EP. Experimental Exposure of Human
423 Subjects to Viruses of Influenza. *J Immunol*. 1946;52(2):145–65.
- 424 15. Zhang Y, Guo Z, Wang Z, Fu Y, Zhao Z, Liu L, et al. Comparison of traditional
425 intranasal and aerosol inhalation inoculation of guinea pigs with visualizing
426 influenza virus. *Journal of Aerosol Science*. 2017 Aug 1;110:43–52.
- 427 16. Jonathan S. Nguyen-Van-Tam, Ben Killingley, Joanne E. Enstone, Michael
428 Hewitt, Jovan Pantelic, Michael L. Grantham, et al. Minimal transmission in an
429 influenza A (H3N2) human challenge-transmission model within a controlled
430 exposure environment. *PLOS Pathogens*. 2020 Jul 13;16(7).
- 431 17. McDevitt JJ, Koutrakis P, Ferguson ST, Wolfson JM, Fabian MP, Martins M, et
432 al. Development and Performance Evaluation of an Exhaled-Breath Bioaerosol
433 Collector for Influenza Virus. *Aerosol Sci Technol*. 2013 Jan 1;47(4):444–51.

434 18. Liu FV and L. Imec: Linear Mixed-Effects Models with Censored Responses

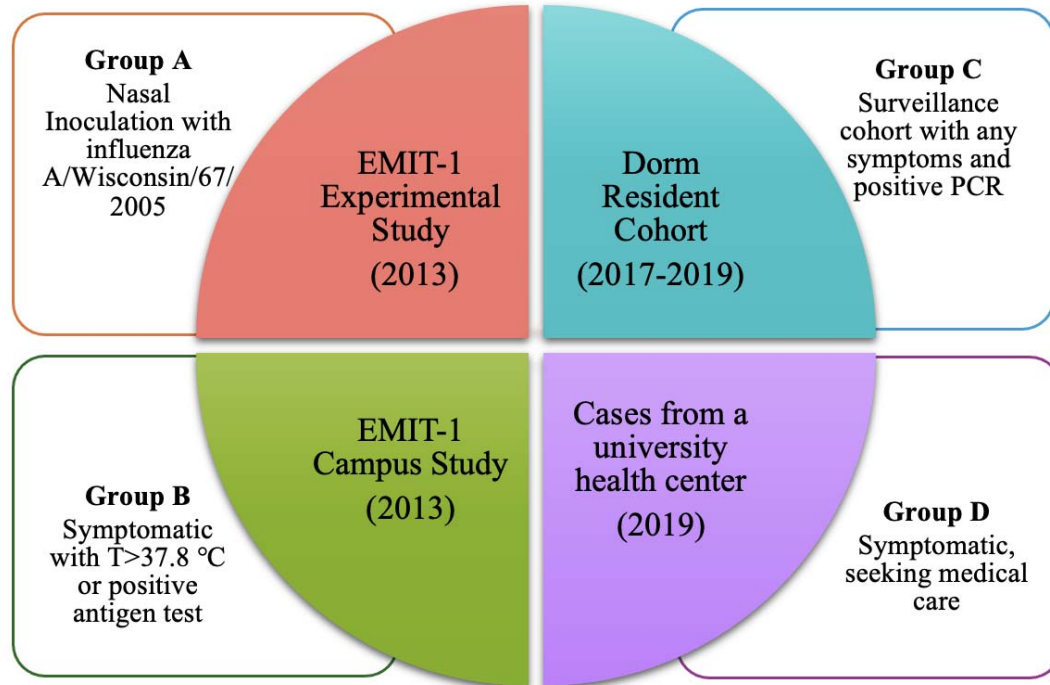
435 [Internet]. 2012 [cited 2022 Apr 30]. Available from: [https://CRAN.R-](https://CRAN.R-project.org/package=lme4)

436 [project.org/package=lme4](https://CRAN.R-project.org/package=lme4)

437

438 **Figures**

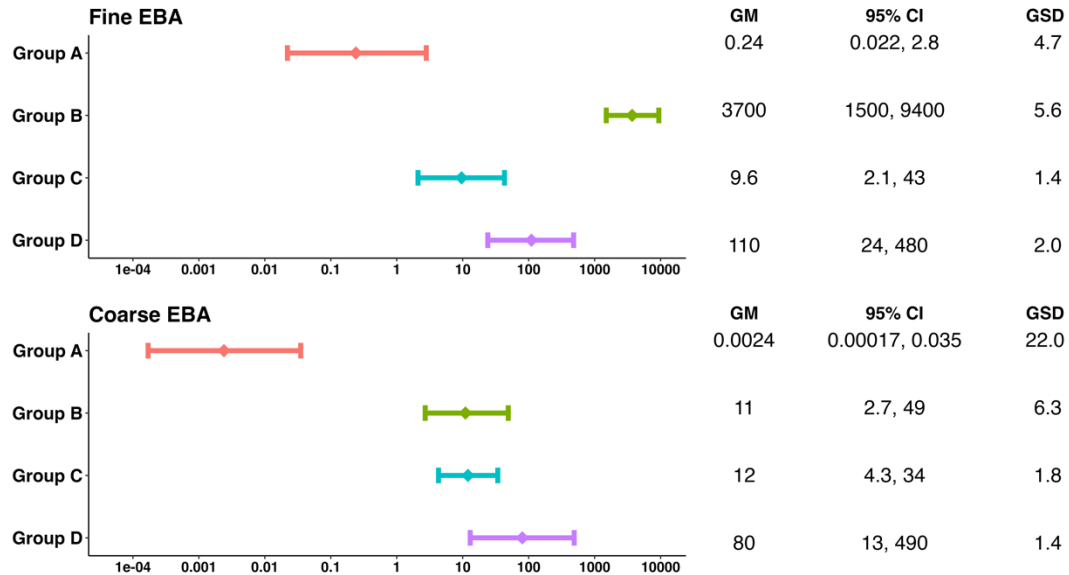
439



440
441

Figure 1. Study population

442



443

444

Figure 2. Geometric means of EBA viral shedding for the four groups

445

GM, geometric means; GSD, geometric standard deviation. Group A: Nasal

446

Inoculation with influenza A/Wisconsin/67/2005; Group B: Symptomatic with

447

T>37.8°C or positive antigen test; Group C: Surveillance cohort with any symptoms

448

and positive PCR; Group D: Symptomatic, seeking medical care. The GM and GSD

449

were computed for all the samples using linear mixed-effects models for censored

450

responses (R Project package “lme4”). These models accounted for the censored

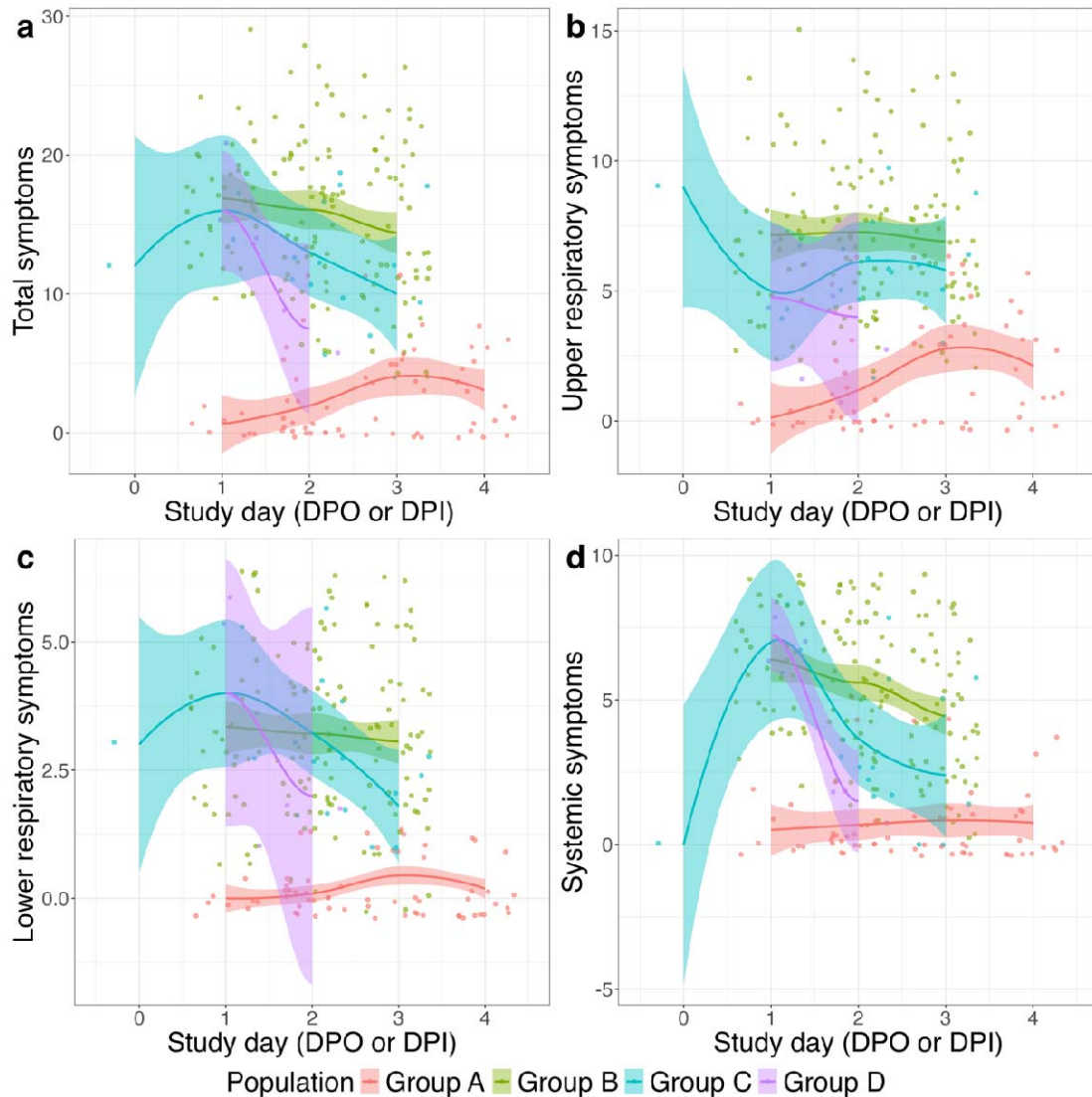
451

outcome variable as well as nested random effects of individuals and samples within

452

the same individuals.

453



454

455

Figure 3. Trajectories of symptom scores over study days

456

Group A: Nasal Inoculation with influenza A/Wisconsin/67/2005; Group B:

457

Symptomatic with $T > 37.8^{\circ}\text{C}$ or positive antigen test; Group C: Surveillance cohort

458

with any symptoms and positive PCR; Group D: Symptomatic, seeking medical care.

459

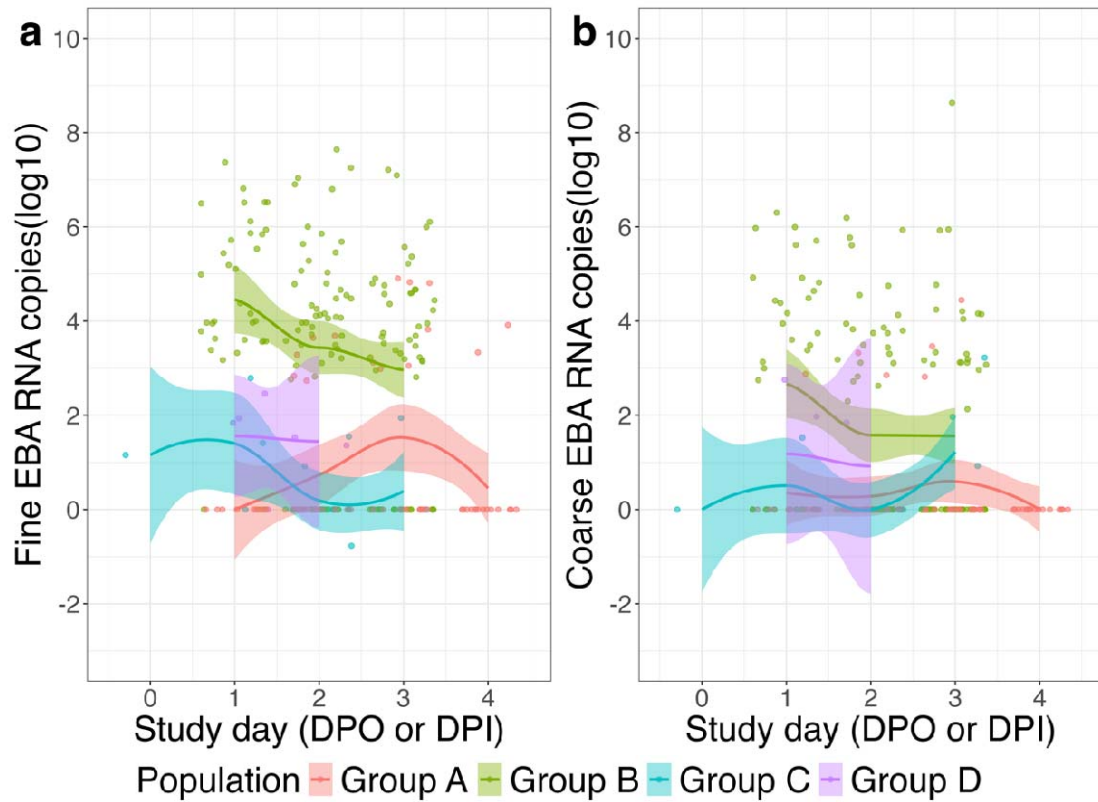
Study day was defined as day post symptom onset for Group B, C, and D, and day

460

post inoculation for Group A.

461

462



463

464

Figure 4. Trajectories of EBA viral shedding over study days

465

Group A: Nasal Inoculation with influenza A/Wisconsin/67/2005; Group B:

466

Symptomatic with $T > 37.8^{\circ}\text{C}$ or positive antigen test; Group C: Surveillance cohort

467

with any symptoms and positive PCR; Group D: Symptomatic, seeking medical care.

468

Study day was defined as day post symptom onset for Group B, C, and D, and day

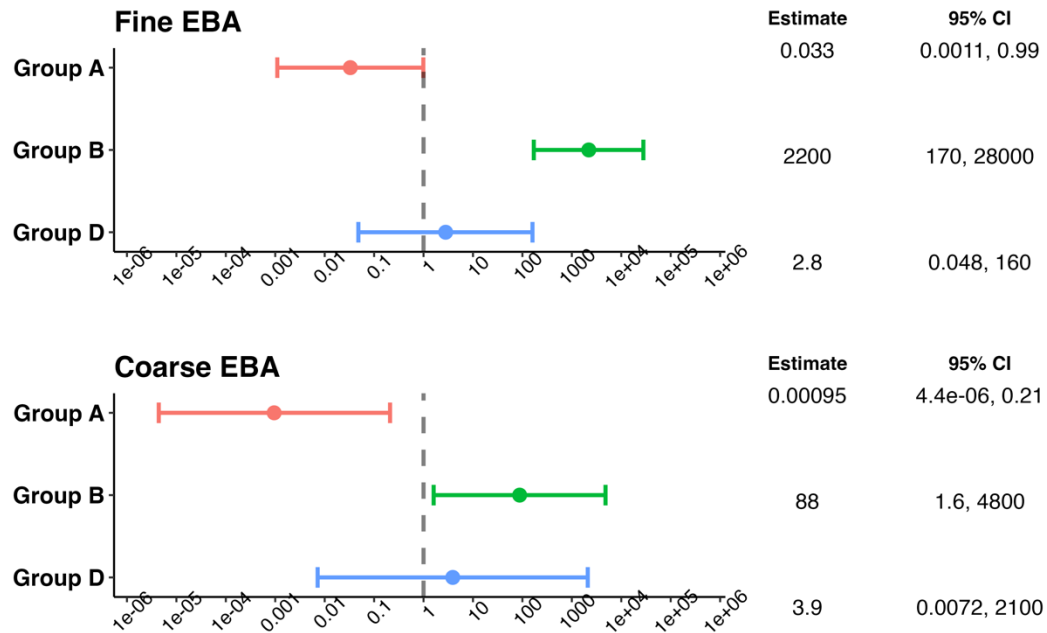
469

post inoculation for Group A.

470

471

472



473

474 **Figure 5. The ratio of viral shedding in EBA of selected and inoculated cases to**
475 **shedding by unselected cases (Group B1), controlling for age, sex, and study**
476 **days**

477 Group A: Nasal Inoculation with influenza A/Wisconsin/67/2005; Group B:

478 Symptomatic with $T > 37.8^{\circ}\text{C}$ or positive antigen test; Group C: Surveillance cohort

479 with any symptoms and positive PCR; Group D: Symptomatic, seeking medical care.

480 We included only those samples whose study day was not missing (three C and one D

481 cases were excluded due to not having symptom onset date on file or having no

482 symptoms over the course of the follow-up period). We used linear mixed-effects

483 models for censored responses (R Project package “lme4”) to estimate the ratio of

484 viral shedding in EBA of Group A/B/D to Group C. These models accounted for the

485 censored outcome variable as well as nested random effects of individuals and

486 samples within the same individuals. The best models were selected based on Akaike
487 Information Criterion (AIC).
488

489 **Supplementary materials**

490 **EMIT Consortium Team Members**

491 EMIT team members were: Walt Adamson, Blanca Beato-Arribas, Werner Bischoff,
492 William Booth, Simon Cauchemez, Sheryl Ehrman, Joanne Enstone, Neil Ferguson,
493 John Forni, Anthony Gilbert, Michael Grantham, Lisa Grohskopf, Andrew Hayward,
494 Michael Hewitt, Ashley Kang, Ben Killingley, Robert Lambkin-Williams, Alex
495 Mann, Donald Milton, Jonathan Nguyen-Van-Tam, Catherine Noakes, John Oxford,
496 Massimo Palmarini, Jovan Pantelic, and Jennifer Wang. The Scientific Advisory
497 Board members were: Allan Bennett, Ben Cowling, Arnold Monto, and Raymond
498 Tellier.

499

500

501

502 **Prometheus-UMD investigators:**

503 Addo, Kofi

504 Adenaiye, Oluwasanmi Oladapo

505 Agrawala, Agrawala

506 Aiello, Allison

507 Albert, Barbara

508 Arria, Amelia

509 Bueno de Mesquita, P. Jacob

510 Cai, Mara

511 Chen, Shuo

512 Chen, Wilbur

513 Corrada Bravo, Hector

514 Elworth, Leo

515 Felgner, Philip

516 Frieman, Matthew

517 German, Jennifer

518 Heidarinejad, Mohammad

519 Hong, Filbert

520 Jiang, Chengsheng

521 Khan, Saahir

522 Lai, Jianyu

523 Liu, Hongjie

524 Ma, Tianzhou

525 Maljkovic Berry, Irina
526 Martinello, Richard
527 Mattise, Nick
528 Memon, Atif
529 Milton, Donald
530 Mongodin, Emmanuel
531 Nasko, Dan
532 Pop, Mihai
533 Porter, Adam
534 Romo, Sebastian
535 Srebric, Jelena
536 Tai, Sheldon
537 Treangen, Todd
538 Wajid, Faizan
539 Washington-Lewis, Rhonda
540 Wu, Qiong
541 Xing, Yishi
542 Youssefi, Somayeh
543 Zhu, Shengwei

544 **Supplementary Tables**

545 **Supplementary Table 1. Group comparisons for the Characteristics of the study**

546 **population**

| | 4-group comparison ^a (A, B, C, D), <i>p</i> | 3-group comparison (B, C, D), <i>p</i> | C vs. D ^b , <i>p</i> | B vs. C, <i>p</i> | B vs. D, <i>p</i> |
|----------------------------------|---|---|------------------------------------|----------------------|----------------------|
| Flu season | <0.001 | <0.001 | 0.222 | <0.001 | <0.001 |
| Female | 0.02 | 0.293 | 0.182 | 0.73 | 0.239 |
| Age | <0.001 | 0.008 | 0.159 | <0.001 | 0.433 |
| Age group | <0.001 | 0.695 | 1 | 0.549 | 1 |
| With fever > 37.9°C | 0.056 | 0.896 | 1 | 0.73 | 1 |
| Coughs per 30 min | <0.001 | 0.042 | 0.826 | 0.08 | 0.338 |
| Temperature (C) | <0.001 | 0.14 | 0.32 | 0.711 | 0.256 |
| Upper respiratory symptoms | <0.001 | 0.061 | 0.87 | 0.028 | 0.139 |
| Lower respiratory symptoms | <0.001 | 0.403 | 0.498 | 0.146 | 0.939 |

| | | | | | |
|-------------------|--------|-------|------|--------|-------|
| Systemic symptoms | <0.001 | 0.004 | 0.08 | <0.001 | 0.957 |
|-------------------|--------|-------|------|--------|-------|

- 547 a. Four-group and three-group comparison: Kruskal-Wallis test for the continuous
548 variables and Fisher's exact test for the categorical variables
- 549 b. Two-group comparison: T-test for the continuous variables and Fisher's exact test
550 or Chi-square test for the categorical variables.

551 **Supplementary Table 2. The effect of group (ref = Group C) on EBA viral RNA**
552 **shedding^{a,b}.**

| Variables | | Fine EBA | Coarse EBA |
|---------------------------------------|---|----------------------|-------------------------|
| Group ^b (Ref=C) | A | 0.033 (0.0011, 0.99) | 0.00095 (4.4e-06, 0.21) |
| | B | 2200 (170, 28000) | 88 (1.6, 4800) |
| | D | 2.8 (0.048, 160) | 3.9 (0.0072, 2100) |
| Study Day ^c (DPS/DPI-2) | | 0.27 (0.14, 0.52) | 0.19 (0.079, 0.46) |
| Age | | 1.1 (0.95, 1.2) | 1.1 (0.94, 1.3) |
| Sex | | 8.2 (1.8, 36) | 6.4 (0.65, 62) |

553 a. Group A: Nasal Inoculation with influenza A/Wisconsin/67/2005; Group B:
554 Symptomatic with T>37.8°C or positive antigen test; Group C: Surveillance cohort
555 with any symptoms and positive PCR; Group D: Symptomatic, seeking medical care.
556 b. We used linear mixed-effects models for censored responses (R Project package
557 “lme4”) to estimate the ratio of viral shedding in EBA of Group A/B/D to Group C.
558 These models accounted for the censored outcome variable as well as nested random
559 effects of individuals and samples within the same individuals. The best models were
560 selected based on Akaike Information Criterion (AIC).
561 c. Study Day was defined as day post symptom onset for Group B, C, and D, and day
562 post inoculation minus two days for Group A. We included only those samples whose
563 study day was not missing (three C and one D cases were excluded due to not having
564 symptom onset date on file or having no symptoms over the course of the follow-up
565 period).

567

568 **Supplementary Table 3. Contrast analysis on the relative effect of selected and**

569 **inoculated cases^a**

| | Fine EBA | | | Coarse EBA | | |
|---------------------|----------------------|----------------|---------|----------------------|----------------|------------------------|
| | Contrast coefficient | Standard error | p-value | Contrast coefficient | Standard error | p-value |
| Group A vs. Group B | -11 | 1.2 | <0.001 | -11 | 1.9 | 4.3 x 10 ⁻⁹ |
| Group A vs. Group D | -4.4 | 2 | 0.025 | -8.3 | 3.1 | 0.007 |
| Group D vs. Group B | -6.7 | 1.7 | 0.00012 | -3.1 | 2.7 | 0.24 |

570 a. Group A: Nasal Inoculation with influenza A/Wisconsin/67/2005; Group B:

571 Symptomatic with T>37.8°C or positive antigen test; Group D: Symptomatic, seeking

572 medical care.

573

574 **Supplementary Table 4. The effect of group (ref = Group C) on EBA viral RNA**
 575 **shedding over study day^{a,b,c}**

| Variables | | Fine EBA | Coarse EBA |
|---------------------------|---|-----------------------|--------------------------|
| Group (Ref=C) | A | 0.0052 (1.7e-05, 1.6) | 3.7 (4.6e-05, 310000) |
| | B | 1200 (4.9, 280000) | 720000 (13, 4e+10) |
| | D | 0.25 (4.5e-06, 14000) | 11000 (0.00017, 6.5e+11) |
| Study Day (DPS/DPI- 2) | | 0.13 (0.0098, 1.8) | 10 (0.11, 910) |
| Age | | 1.1 (0.95, 1.2) | 1.1 (0.96, 1.3) |
| Sex | | 8.5 (1.9, 38) | 4.7 (0.49, 45) |
| Group A x Study Day | | 10 (0.51, 210) | 0.019 (0.00011, 3.4) |
| Group B x Study Day | | 1.5 (0.096, 22) | 0.012 (0.00012, 1.2) |
| Group D x Study Day | | 4.7 (0.0035, 6300) | 0.027 (3.7e-07, 1900) |

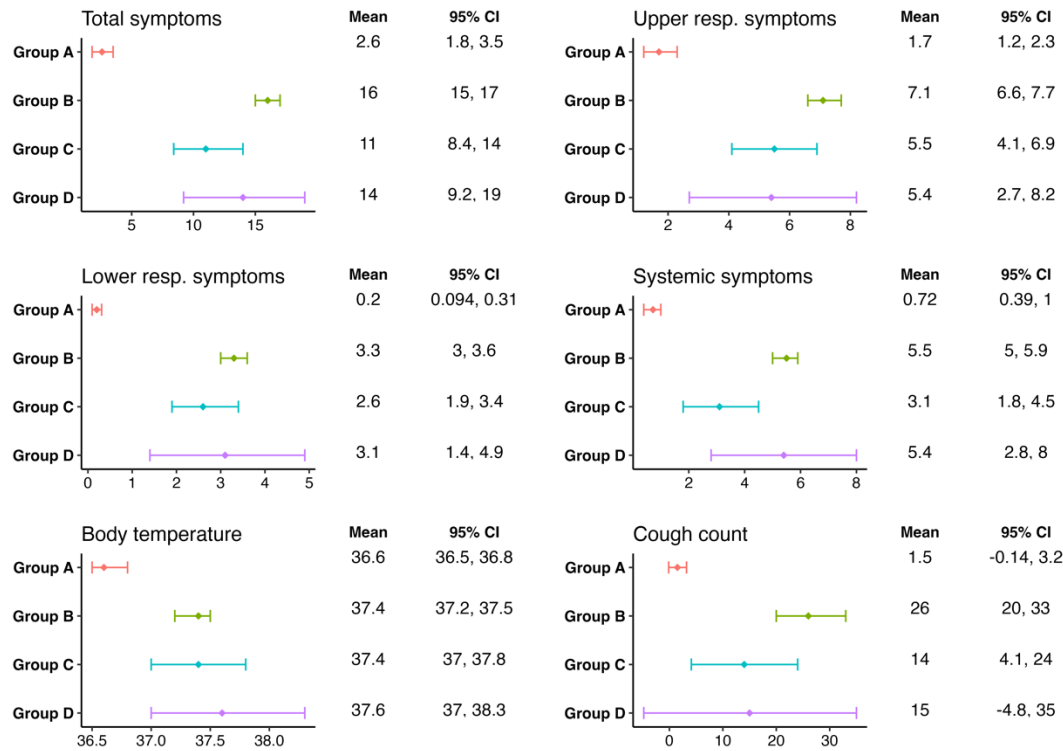
576 a. Group A: Nasal Inoculation with influenza A/Wisconsin/67/2005; Group B:
 577 Symptomatic with T>37.8°C or positive antigen test; Group C: Surveillance cohort
 578 with any symptoms and positive PCR; Group D: Symptomatic, seeking medical care.
 579 b. We used linear mixed-effects models for censored responses (R Project package
 580 “lme4”) to model the effect of groups on viral shedding over time. These models
 581 accounted for the censored outcome variable as well as nested random effects of
 582 individuals and samples within the same individuals. The best models were selected
 583 based on Akaike Information Criterion (AIC). None of the interaction terms
 584 demonstrated a significant effect.

585 c. Study Day was defined as day post symptom onset for Group B, C, and D, and day
586 post inoculation minus two days for Group A. We included only those samples whose
587 study day was not missing (three C and one D cases were excluded due to not having
588 symptom onset date on file or having no symptoms over the course of the follow-up
589 period).

590

591

592 **Supplementary Figure**



593

594 **Supplementary Figure 1. Mean symptom scores, body temperatures, and cough**
 595 **counts across groups.**

596 Group A: Nasal Inoculation with influenza A/Wisconsin/67/2005; Group B:

597 Symptomatic with $T > 37.8^{\circ}\text{C}$ or positive antigen test; Group C: Surveillance cohort

598 with any symptoms and positive PCR; Group D: Symptomatic, seeking medical care.

599

600