

1 Psilocybin alters brain activity related to sensory and cognitive 2 processing in a time-dependent manner

3 Marek Nikolic^{1,2}, Pedro Mediano^{3,4}, Tom Froese⁵, David Reydelle⁶
4 Tomas Palenicek^{1,2,*}

¹3rd Medical Faculty, Charles University, Prague

²Psychedelic Research Centre, National Institute of Mental Health, Czechia

³Department of Computing, Imperial College London

⁴Division of Psychology and Language Sciences, University College London

⁵Embodied Cognitive Science Unit, Okinawa Institute of Science and Technology

⁶Division of Psychiatry, Department of Brain Sciences, Centre for Psychedelic Research, Imperial College London

*Correspondence: tomas.palenicek@nudz.cz

4 September 2024

5 **Keywords:** Keywords: EEG, Signal Complexity, Psychedelics, Power Spectral Density

6 **Abstract:** Psilocybin is a classic psychedelic and a novel treatment for mood disorders.
7 Psilocybin induces dose-dependent transient (4-6 hours) usually pleasant changes in percep-
8 tion, cognition, and emotion by non-selectively agonizing the 5-HT_{2A} receptors and negatively
9 regulating serotonin reuptake, and long-term positive antidepressant effect on mood and well-
10 being. Long-term effects are ascribed to the psychological quality of the acute experience,
11 increase in synaptodensity and temporary (1-week) down-regulation of 5-HT_{2A} receptors.
12 Electroencephalography, a non-invasive neuroimaging tool, can track the acute effects of
13 psilocybin; these include the suppression of alpha activity, decreased global connectivity, and
14 increased brain entropy (i.e. brain signal diversity) in eyes-closed resting-state. However,
15 few studies investigated how these modalities are affected together through the psychedelic
16 experience. The current research aimed to evaluate the psilocybin intoxication temporal EEG

17 profile. 20 healthy individuals (10 women) underwent oral administration of psilocybin (0.26
18 *mg/kg*) as part of a placebo-controlled cross-over study, resting-state 5-minute eyes closed
19 EEG was obtained at baseline and 1, 1.5, 3, 6, and 24 hours after psilocybin administration.
20 Absolute power, relative power spectral density (PSD), power envelope global functional
21 connectivity (GFC), Lempel-Ziv complexity (LZ), and a Complexity via State-Space Entropy
22 Rate (CSER) were obtained together with measures of subjective intensity of experience.
23 Absolute power decreased in alpha and beta band, but increased in delta and gamma fre-
24 quencies. 24h later was observed a broadband decrease. The PSD showed a decrease in
25 alpha occipitally between 1 and 3 hours and a decrease in beta frontally at 3 hours, but
26 power spectra distribution stayed the same 24h later. The GFC showed decrease acutely
27 at 1, 1.5, and 3 hours in the alpha band. LZ and showed an increase at 1 and 1.5 hours.
28 Decomposition of CSER into functional bands shows a decrease in alpha band but increase
29 over higher frequencies. Further, complexity over a source space showed opposing changes
30 in the Default Mode Network (DMN) and visual network between conditions, suggesting a
31 relationship between signal complexity, stimulus integration, and perception of self. In an
32 exploratory attempt, we found that a change in gamma GFC in DMN correlates with oceanic
33 boundlessness. Psychological effects of psilocybin may be wrapped in personal interpreta-
34 tions and history unrelated to underlying neurobiological changes, but changes to perception
35 of self may be bound to perceived loss of boundary based on whole brain synchrony with the
36 DMN in higher frequency bands.

37 1 Introduction

38 Psilocybin is studied as a classic psychedelic and a novel antidepressant which induces potent changes to
39 consciousness, alongside with lysergic acid diethylamide (LSD) and dimethyl triptamine (DMT) and other
40 related chemicals of similar effects. Psilocybin's active metabolite psilocin is a non-selective serotonin
41 5-HT receptor agonist and SERT inhibitor (Dinis-Oliveira, 2017; Rickli et al., 2016). The antidepressant
42 effect of a psychedelic dose of psilocybin has a rapid onset and sustained duration (R. Carhart-Harris
43 et al., 2021; Davis et al., 2021; Griffiths et al., 2016; Yu et al., 2022). Evidence from animal research sug-
44 gests that these effects relate to lasting increased synaptogenesis and transient (<week) downregulation
45 of 5-HT_{2A} receptors (Raval et al., 2021) in the hippocampus and prefrontal cortex. The antidepressant
46 effect was previously associated with the magnitude of alterations to cognition, emotion, and perception
47 (Roseman et al., 2018) induced by agonisation specifically of the 5-HT_{2A}-Gq/11 receptors (Wallach et
48 al., 2023), however, complete remission in a treatment-resistant depression patient after single-dose of

49 psilocybin and pretreatment with a 5-HT_{2A} occupant trazadone was reported (Rosenblat et al., 2023),
50 suggesting that psychedelic experience may be a useful marker of intensity of the experience, but not
51 necessary for the long-term effects. The acute experience is accompanied by an increase in body tem-
52 perature, heart rate, and blood pressure with return to normal within 12 hours (Holze et al., 2022).
53 Early evidence suggests that increase in blood pressure and heart rate may be a marker of antidepressant
54 response (PhD Thesis, Andrashko).

55 Subjective psychedelic experience is generally characterised by intense changes in perception, emotion,
56 and cognition, changes usually perceived as positive (Studerus et al., 2011). These changes are occa-
57 sionally accompanied by feelings of dysphoria and panic in high doses, and show potential to be resolved
58 towards positive outcomes when occurring in supportive setting (Kluckova et al., 2024; Studerus et al.,
59 2011). Clinical use of psilocybin does not lead to subsequent drug abuse or increased incidence of mental
60 health problems (Krebs & Johansen, 2013; Studerus et al., 2011). Intensity of psychedelic experience
61 is captured by an Altered State of Consciousness questionnaire (ASC; Dittrich, 1998). The main axes
62 of the experience are oceanic boundlessness (OBN), anxious ego-dissolution (AED), and visionary re-
63 structuralization (VIR). Generally OBN captures the mystical nature of the experience, VIR captures
64 the hallucinatory part, whereas AED captures the aspects of a 'bad trip'. The limitation of the ASC is
65 that it provides a narrow retrospective narrative of the experience void of personal process (Preller &
66 Vollenweider, 2018).

67 Electroencephalography (EEG) captures the electrical activity generated by large groups of neurons, offers
68 a convenient, cost-effective, user-friendly, noninvasive method with high temporal resolution suitable for
69 capturing changes in brain activity in humans. Bravermanová et al., 2018 show that acute intoxication
70 with psilocybin affected early perceptual (p100) and higher cognitive (p300) processes and that the size
71 of this effect correlated with the individual intensity of the experience but that pre-attentive cognition
72 was not affected. The study of a resting-state (task-free activity), usually described in terms of neural
73 synchrony (power and functional connectivity) and predictability (signal complexity) shows that the
74 psychedelic state is hallmarked by a suppression of alpha (8-12Hz) power spectral density acutely (in
75 psychedelics, in general, Pallavicini et al., 2019, in psilocybin accompanied by a theta desynchronization
76 Ort et al., 2023), an increase in functional connectivity post intoxication (in the Default Mode Network
77 (DMN), Kuburi et al., 2022), and an increase in brain signal diversity (Lempel Ziv complexity LZc;
78 Lempel and Ziv, 1976, LSD, Mediano et al., 2020, DMT Timmermann et al., 2019, psilocybin M. M.
79 Schartner et al., 2017). Psilocybin modulates perceptual and higher-order activity to be more diverse
80 and unpredictable while preserving complex causal functioning (Bravermanová et al., 2018; Ort et al.,
81 2023).

82 Capturing progressive changes induced by the onset and duration of the psychedelic experience showed
83 power spectral density desynchronization (delta 0-4Hz, alpha 8-13Hz, and gamma 30-45Hz) dependent
84 on plasma levels, but changes in complexity (LZc) peaked after the intensity of experience started to
85 recede (DMT; Timmermann et al., 2023). Sensitivity of LZc to changes lasting beyond the acute
86 intoxication may be explained as relating to changes in thought pattern often reported by participants
87 after a psychedelic experience (Mason et al., 2019). LZc is dependent on level of interaction with
88 environment; increase in LZc was the largest in an eyes-closed resting-state condition compared to music
89 condition, eyes open, and TV watching; activities which also increase brain entropy, but this increase
90 was not as pronounced under LSD when compared with placebo (Mediano et al., 2024). Considering
91 the visual nature of psychedelic experience especially in eyes closed condition, together with that visual
92 stimulation increases Lempel-Ziv diversity (Orłowski & Bola, 2023), it may be that changes induced
93 by psychedelics turn trivial stimulation into vivid experiences, an effect pronounced particularly in the
94 absence of any stimuli (Kometer & Vollenweider, 2018; Wießner et al., 2021). Complexity via State-
95 Space Entropy Rate (CSER) is a novel measure analogical to LZc, which allows the study of brain signal
96 diversity across functional bands, thus crossing the bridge between LZc, and classical power analysis.
97 Mediano et al., 2023 show that the effect of psychedelics on brain entropy is mostly in the fast oscillating
98 gamma band ($> 25\text{Hz}$), associated with higher order activity.

99 The continual changes in brain activity have insofar not been tested under psilocybin using EEG. We
100 expect to see changes in absolute power, relative power spectral density, mainly in the alpha (8-12Hz).
101 We expect to see changes in brain signal complexity extended beyond the acute effects, and that these
102 changes will be mostly in the gamma frequency. We expect a global desynchronisation. We expect to
103 find an increase in LZc. We expect the magnitude of these changes to correlate with the intensity of the
104 experience measured by ASC, particularly with changes in the DMN. Acute effects should be accompanied
105 by a transient changes to heart rate but not heart rate variability. An exploratory attempt will be made
106 at relating EEG measures to the intensity of the experience, and at correlating the GFC and CSER.

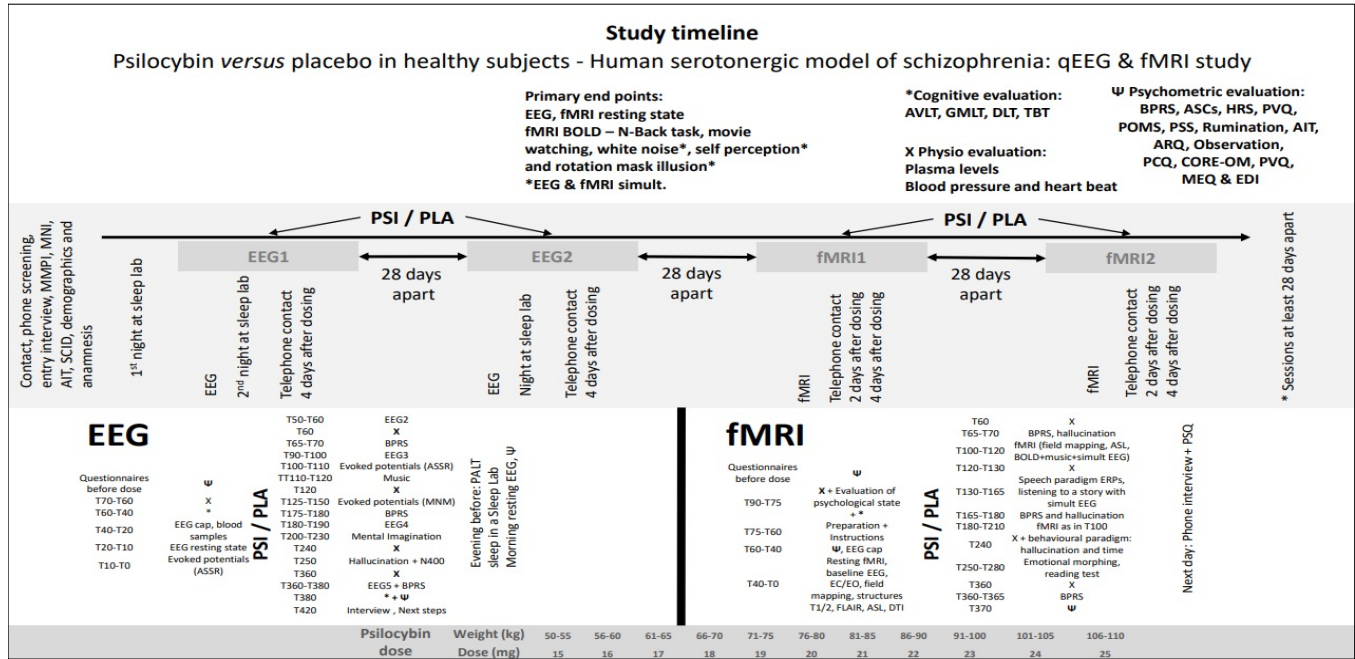


Figure 1: Study timeline: current study was a part of a larger clinical trial with many research caveats. From Kluckova et al., 2024

2 Methods

2.1 Study approval

The study was approved by the Ethical Committee of the National Institute of Mental Health (NIMH-CZ), by the State Institute for Drug Control, and as a clinical trial registered under the EudraCT No. 2012-004579-37.

2.2 Experimental design

In a double-blind, placebo-controlled crossover design, all participants took part in active and placebo sessions, which were a minimum of 28 days apart (thought to remove any subacute effects or afterglow of psilocybin Aday et al., 2020; Evens et al., 2023; Studerus et al., 2011, an average of 67.55 days apart, SD = 69.53). This experiment had two arms: EEG and fMRI (see fig. 2.2). The current experiment was part of the EEG arm and was not affected by the fMRI arm that followed. As the EEG arm always preceded the fMRI arm, participants were unblinded to which arm they were participating in.

119 The order of drug administration, gender, and order of drug/placebo administration was randomized in
120 5 balanced blocks of 4 participants. Psilocybin and placebo capsules were prepared by an independent,
121 unblinded pharmacy. Each session began with a short examination of participants, assuring the exclusion
122 of acute contraindications for participation. This included somatic examination, questions about a current
123 life situation, blood pressure, and heart rate, and a negative result of alcohol breathalyzer and urine rapid
124 drug tests for main drug classes. The session was held in a living room-like decorated experimental room
125 inside a Faraday cage where subjects spent most of the experiment. During the session, they were always
126 accompanied by a gender-balanced team of two sitters, one of whom was always a psychiatrist. The
127 study nurse was also present in a neighboring room throughout the session.

128 Participants slept at the clinic for habituation. On the morning of the experimental days (around 9 am),
129 psilocybin was administered orally on an empty stomach with 200 ml of water in 1 and 5 mg capsules
130 in a dosage adjusted to body weight (1 mg per 5 kg, range 15–22 mg, mean = 18.35 mg, SD = 2.21
131 mg). Psilocybin-induced psychedelic effects last approximately 6 hours. A standardized music playlist
132 was played throughout most of the session and was paused for the EEG recording. Approximately 9 hours
133 after the dosing, participants went to sleep in a sleep lab.

134 2.3 Participants

135 Twenty healthy volunteers (10 M/10F, mean age = 36, SD = 8.1, range 28 - 53) took part in the study
136 as part of a larger clinical trial registered under *EudraCT No. 2012-004579-37* (major inclusion criteria
137 are in appendix A.1, for full recruitment, screening, and procedure details see Viktorin et al., 2022).
138 Subjects were recruited from November 2017 to July 2018 via a peer-to-peer method and pre-screened
139 via phone or email interview to exclude those who did not meet the major inclusion criteria. Those
140 that met the major screening criteria were invited to an introductory meeting. During a two-hour-long
141 interview, participants were informed in detail about the nature of the study, the drug effects, and safety.
142 They were free to ask questions related to the experiments or psilocybin. All participants provided written
143 informed consent before they entered the study. Subjects were screened by the Minnesota Multiphasic
144 Personality Inventory (MMPI-2, Butcher et al., 1991) and Mini-International Neuropsychiatric Interview
145 (MINI, Sheehan et al., 1998) for any significant psychopathology. The study design corresponded to the
146 Guidelines for Safety in Human Hallucinogen Research (Johnson et al., 2008). Participants were asked to
147 abstain from drug use during the period between the interview and the experiment, alcohol use leading
148 to drunkenness (1 week), coffee and food (in the morning), and tobacco (2 h) before the experiment.
149 One participant was excluded due to excessive daytime sleepiness (recognized during the placebo EEG
150 session). To avoid interactions with the menstrual cycle, women were not dosed during their menses (see

2.4 EEG aquisition

7

151 Dudysova et al., 2020 for details).

152 2.4 EEG aquisition

153 20 participants were included in the study. One participant did not arrive to the second session. 4
154 recordings had to be excluded for non-systematic mistakes including detached reference electrode (2), a
155 mistake during saving the recording (1), and one missing file. Data were excluded element-wise, resulting
156 in 230 data entries included in the analysis.

157 2.5 Psilocybin dose

158 Psilocybin was manufactured according to good manufacturing practice standards from THC-Pharm
159 GmbH, Frankfurt, Germany. Gelatine capsules containing 1 and 5 mg of psilocybin homogenized with
160 *Triticum amyllum* were prepared in the pharmacy of the Institute for Clinical and Experimental Medicine in
161 Prague, Czech Republic. The dose was set to be approximately 0.26 mg/kg, an intermediate psychedelic
162 dose (Nichols, 2016; Tyls et al., 2016), and was adjusted by 1mg per each 5kg of body weight. The
163 drug was administered orally in an adjusted number of capsules and swallowed with drinking 200 mL of
164 water.

165 2.6 Acute psychedelic state

166 The Brief Psychiatric Rating Scale (BPRS), commonly used for a brief evaluation of psychiatric symptoms
167 by a clinician, informs about the absence, presence, and severity of symptoms that include anxiety,
168 depression, hostility, grandiosity, hallucinations, and unusual thought content (for full details, see Overall
169 and Gorham, 1962). In the context of our trial it is used to rate the intensity of the clinically relevant
170 psychological impact of psilocybin across the session at baseline, 1-, 3-, and 6-hours after (Figure 4).
171 Participants were evaluated by a psychiatrist-rater blinded to the treatment condition.

172 The Altered State of Consciousness Questionnaire (Dittrich, 1998) is used to retrospectively evaluate
173 the intensity of altered state of consciousness along three axis: Oceanic Boundlessness (OBN), Anxious
174 Ego Dissolution (AED), and Visionary Restructuration (VIR). Generally, OBN refers to the positive
175 experiences of loss of boundaries and experience of unity, AED refers to the negative experiences usually
176 related to anxiety and loss of control, and VIR captures extent to which the experience is unusual on
177 sensory level. A revised version of the ASC, the 5d ASC includes psychedelic specific axes Auditory

178 Alterations and Vigilance Reduction (for full details see Preller and Vollenweider, 2018. In the current
179 study, the questionnaire was used in it's original form.

180 **2.7 EEG setup, recording intervals**

181 A high-density equidistant 256-channel gel cap (HydroCel™, Geodesic Sensor Net 256-channel used with
182 EGI Net Amps) was applied by an EEG technician. EEG recordings took place in the EEG experimental
183 room (Faraday cage), with a battery-powered EGI system (EGI NetAmp GES 400 with FICS box) sampled
184 at 1000Hz. Each recording commenced with a measurement of impedance and electrode readjustment
185 to minimize impedances. A 5-minute-long recording of resting state task-free eyes closed spontaneous
186 activity in a semi-reclined or reclined position was obtained at baseline (prior to psilocybin/placebo
187 ingestion) and post ingestion at 1-, 1.5-, 3-, 6-, and 24-hours intervals (see fig. 2.2 for a full protocol).
188 Music was stopped during the resting-state recordings. The EEG cap was mounted at baseline, and kept
189 through the 1-, 1.5-, 3-, and 6-hours data acquisition points. After 24-hours was data was acquired with
190 a newly mounted cap.

191 **2.7.1 Data pre-processing**

192 Pre-processing was performed using the BrainVision Analyzer ("BrainVision Analyzer (Version 2.2.2),
193 Gilching, Germany: Brain Products GmbH.", 2021) for all 230 acquired recordings. Data sampled
194 at 1000Hz was band-pass filtered between 0.5 and 250Hz using an IIR filter, with a notch filter at
195 50Hz. Continuous data was visually inspected by an EEG expert; gross artifacts were marked as bad
196 segments. An Independent Component Analysis was used to remove eye artifacts (horizontal and vertical
197 eye movements) and ECG - ECG channel was included in the component calculation estimate. Sleep
198 specialist marked epochs of sleep, drowsiness, and reduced vigilance. If more than 60% of the signal had
199 to be removed due to artifacts or sleep, or if more than 4 independent components had to be removed,
200 recording was removed from the analysis. Data was parceled into 4 second epochs with 1 second overlap
201 and re-referenced to an average reference. This data was exported as continuous EEG data files and
202 used in further analysis.

203 **2.7.2 Electrocardiogram**

204 ECG was recorded and used to subtract ECG artifact from the EEG signal. QRS peaks were detected
205 using an inhouse python script. Heart rate (HR) and heart rate variability (HRV) obtained from the

2.7 EEG setup, recording intervals

9

206 peaks to compare between conditions across times.

207 2.7.3 EEG Measures

208

209

210

211

212

213

214

215

216

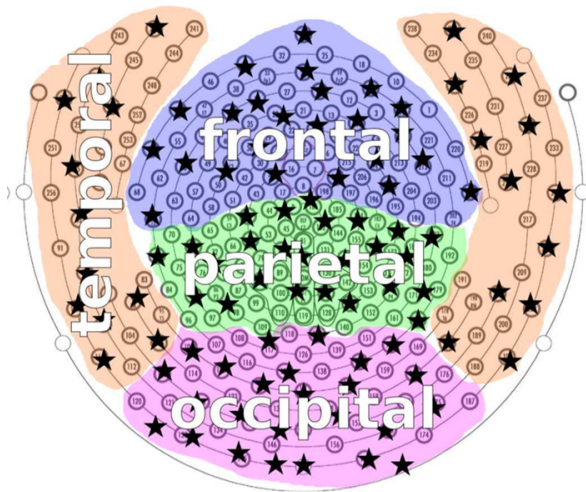
217

218

219

220 Figure 2: Electrodes divided by brain regions. Left
221 and right hemisphere were divided at the central line.
222 Image from M. Schartner et al., 2015.

223



224 **Relative power** was computed from the absolute power to assess the changes in spectra composition.
225 Data were divided into the functional bands delta 1-4Hz, theta 4-8Hz, alpha 8-12Hz, beta 13-25Hz,
226 and gamma 25-45Hz. Summative power in each band was divided by the total broadband energy,
227 normalising the power to values between 0 and 1. Cluster analysis was conducted between Placebo and
228 Psilocybin to assess the changes in EEG bands in time with permutation based correction for multiple
229 comparisons. **Alpha peak** frequency with maximum energy was identified to analyse shift in alpha peak
230 across conditions and times. To account for possible variation outside of the functional band, area from
231 6 to 15Hz was searched for maximum relative power value. Baseline subtracted values were then fitted
232 to a Linear Mixed Model.

233 **Functional connectivity** power envelope correlation was computed on orthogonalised time series FIR
234 band pass filtered to EEG functional bands, computing the power envelopes using the Hilbert transform,
235 then computing the correlation matrices using the mne_connectivity package. Orthogonalisation was
236 done pairwise. Correlation matrix was averaged to obtain an average correlation from each electrode
237 to all other electrodes (global functional connectivity, GFC), and GFC was averaged over the frontal,

Absolute power was calculated using the fast Fourier transformation from the 4 second segments further split into 2 second segments to achieve 0.5Hz accuracy, using the compute_psd function with multi-taper option and frequencies of interest 1 to 100hz, included in the MNE library. The median was computed across epochs and channels. The % difference from baseline was computed. Further, baseline distribution of power within frequency bins were used to calculate Z score normalised changes from baseline for each participant. This step also serves to aid visual inspection of data as it removes the 1/frequency power distribution. Finally, Z scores were averaged using the median, and placebo condition was removed from psilocybin condition.

238 parietal, and occipital areas laterally, and over RSNs on source localised data.

239 **Lempel Ziv** (LZ) signal diversity was calculated using the LZ76 algorithm. The algorithm was applied
240 to 4-seconds segments Z-scored EEG downsampled to 250Hz data, then averaged channels, and over
241 epochs, to avoid concatenation. LZ scores were normalised to obtain entropy rate.

242 **Complexity via State Space Entropy Rate** (CSER) was calculated analogically to LZ (for method-
243 ology see Mediano et al., 2023) on Z-scored EEG time series downsampled to 250Hz, then integrated
244 over the EEG functional bands. The benefit of such band decomposition is that the summation of the
245 parts is equal to the broadband entropy, which would not be the case if data were filtered before the
246 CSER calculation.

247 2.7.4 Source Localisation

248 Source localisation was applied to pre-processed
249 data using beamformer solution implemented in
250 the Matlab Fieldtrip (Oostenveld et al., 2011).
251 The LCMV method was used to obtain virtual
252 sensors in the 90AAL atlas source-space (Rolls
253 et al., 2020; Tzourio-Mazoyer et al., 2002), us-
254 ing an average BEM conduction model, and gen-
255 eral channel locations for the HydroCel Geodesic
256 256-channel Sensor Net. Results from source de-
257 composition were in statistical analysis averaged
258 over 3 functional networks, Frontoparietal network
259 (FPN), Default Mode Network (DMN), and the
260 Visual Network (VIS) according to Oliver et al.,
261 2019, and remaining space (Other, for reference
262 see fig. 3).

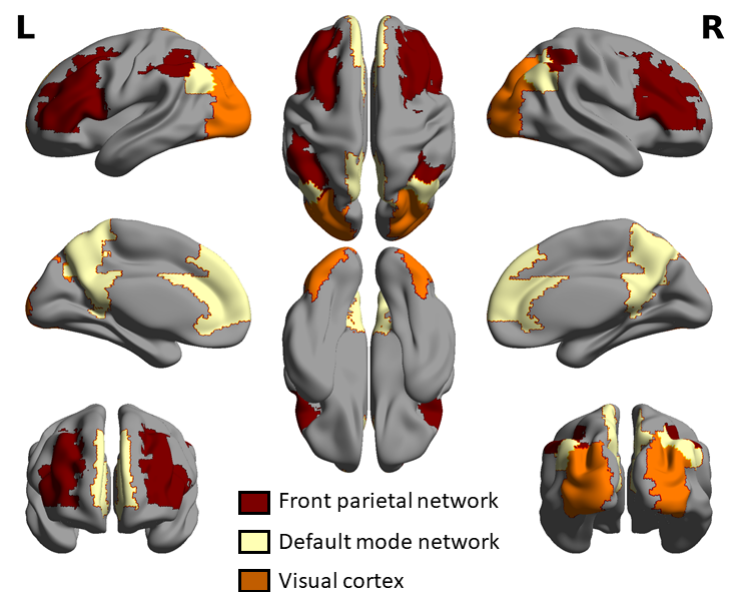


Figure 3: Resting state networks in the AAL90 space.

263 2.7.5 Statistical analysis

264 Questionnaires were analysed using a t-test. Linear mixed effects models (LMM) were fit to normalised
265 measures of EEG activity using the lme4 library for R, and the linear mixed effects models included in the
266 statsmodels library for Python. Fixed effects of condition with two levels of psilocybin and placebo with

2.7 EEG setup, recording intervals

11

267 the random effects of subject and time were included in the analysis. Analysis of variance was used to
268 interpret results of LMM modelling. False discovery rate of 5% was maintained by adjusting all p values
269 using the *p.adjust* function included in R language. Thus 5% of significant results is expected to be truly
270 null, with the exception of the permutation based cluster analysis of relative EEG power, where missing
271 data were removed pair-wise (for each condition across levels of time), and probability is adjusted to it's
272 permuted distribution.

273 2.7.6 Exploratory analysis

274 In an attempt to relate different measures of the EEG signal together, we explored the changes of EEG
275 measures in the DMN, and intensity of subjective experience measured by the ASC. Further, to relate
276 brain synchrony and unpredictability, we correlated the GFC and CSER across regions and EEG functional
277 bands. Exploratory analysis was not included while controlling for multiple comparisons.

278 3 Results

279 3.1 State of consciousness

280 The brief psychiatric rating scale (BPRS; Overall and Gorham 1962) revealed that participants were ex-
281 perienceing non-normal symptoms at 1 and 3 hours after intoxication, and were back to normal at 6 hours
282 after dosing (Figure 4A., asterisks denote levels of significance). The 4B. shows that participants retro-
283 spectively reported a significant difference along the three main axes of Altered State of Consciousness
284 scale (FDR corrected).

285 3.2 ECG: Heart rate and Heart Rate Variability

286 No difference between groups was observed between levels of condition psilocybin/placebo, or across time,
287 that could not be attributed to random fluctuations in heart rate and heart rate variability. Percentage
288 change from baseline is viewed in fig. 4 for individuals and group averages with standard error rates to
289 account for differences between individuals.

290 3.3 EEG absolute and relative power

291 **Absolute power** average increase is observed in both low and high frequencies both in psilocybin and
292 placebo condition, with the exception of alpha and low beta frequency at 1 and 1.5 hours in the psilocybin
293 condition, where power is below the baseline, and a broadband decrease except at alpha peak 24 hours
294 after. Broadband increase is visible in both conditions, particularly at 6 hours. Percentage change from
295 baseline absolute power group average is shown in 4D. Figure 5 shows that increase in delta and gamma
296 is localised in temporal electrodes. Z-score changes from baseline per participant are in fig. 6 A., showing
297 decrease in alpha and beta; effect size reaching significance at 1, 1.5 and 3 hours, and significant increase
298 in delta and gamma frequencies, after temporal channels were removed. A median group difference is
299 present in fig. 6B. where size of effect reaches significant decrease at 1.5 hours in alpha and beta at 3
300 hours, and shows a trend toward a decrease at 3 and 6 hours, and a broadband decrease at 24 hours (Z
301 score of $> \pm 1.96$).

302 **Relative power** obtained for each individual representing spectral composition was compared between
303 psilocybin and placebo groups and between functional bands (delta 1-4Hz, theta 4-7Hz, alpha 8-12Hz,
304 beta 13-25Hz, gamma 25-45Hz) at 6 time points computing a two-tailed permutation analysis ($\alpha =$

3.4 Global Functional Connectivity

0.05). Temporal channels known to include a lot of muscle artifacts were excluded from the analysis (see fig. 5 and fig 2).

Individual relative power is shown in figure 7. A drop in relative power from baseline in the alpha band can be seen in two participants (PSI025 and PSI026) with return to normal at 3 hours. We observed a significant reduction in power in the psilocybin condition in the Alpha band at 1, 1.5, and 3 hours compared to placebo. At 3 hours, we also observed a significant decrease in beta activity frontally (fig. 8b, relative power, cluster analysis).

3.4 Global Functional Connectivity

The GFC shows mainly a whole brain decrease in connectivity in the alpha band at 1 and 1.5 hours, and a decrease parietally in the beta frequency at 1 hour in psilocybin group. In placebo, an increase in delta band at 6 hours frontally and at 1.5 hours parietally is observed. Inverted individual difference from baseline, and group averages are shown in fig. 11 with error bars and asterisks marking FDR corrected significant difference obtained from an LMM model. Fig. 16A. shows GFC averaged over the source reconstructed space, baseline removed. Significant results of the LMM model did not survive correction. A trend towards a decrease was observed in alpha at 1 and 1.5 hours globally, and an increase in the DMN in the gamma band at 1 hour. Note that while significant group differences were observed in the alpha, beta, and gamma band, the opposite effect on individual level is also visible. Further, in the placebo condition, changes from baseline of similar magnitude can occur.

3.5 Entropy measures

3.5.1 Lempel Ziv Complexity

LZ signal diversity showed increase at 1 hour in the parietal lobes. When averaged over the 3 functional networks in the AAL90 space, significant increase in entropy is observed in the psilocybin condition, mainly in the default mode network and the visual network. A significant decrease in entropy is observed for the duration of the experiment in the placebo condition, particularly in the default mode network, see fig. 13.

330 3.5.2 Complexity via State Space Entropy Rate

331 Psilocybin reduced CSER complexity in the alpha band globally at 1 to 3 hours, and an increased
332 broadband complexity at 1h parietally and in the right frontal lobe. In the placebo condition, a decrease
333 was observed in the delta band (fig 14). Analysis over functional networks in the source-space revealed
334 that complexity decreased in the alpha band in the visual network and rest of the brain at 1 to 3 hours,
335 in the frontoparietal network at 1 and 1.5 hours, and at 1 hour in the DMN. A significant increase in
336 complexity from 1 to 6 hours is observed in the gamma band in the visual cortex. In the placebo group,
337 an increase in complexity is seen in the placebo group in the FPN cortex in alpha and beta, and a decrease
338 in the DMN at 1, 3, and 6 hours broadband. Interestingly, in the visual cortex, there is a significant
339 increase at 3 & 6 hours in the alpha, but a decrease in gamma (15).

340 3.5.3 EEG measures in the DMN and subjective experience

341 Changes in default mode network from baseline were explored. Only the change from baseline in gamma
342 GFC in DMN at 1 hour showed a moderate significant relationship between intensity of subjective
343 experience represented by the Oceanic Boundlessness. Due to low variability and the floor effect in
344 the placebo condition, this needs to be interpreted with caution. We also correlated changes in other
345 functional bands in the DMN with OBN, but these were not significant and we do not report them.

346 3.5.4 GFC and CSER

347 Fig 16 shows the relationship between absolute values of CSER and GFC at different time points and
348 across functional bands, with Pearson correlation and associated p-value, uncorrected. Note that the x
349 scale differs for each EEG band.

3.5 Entropy measures

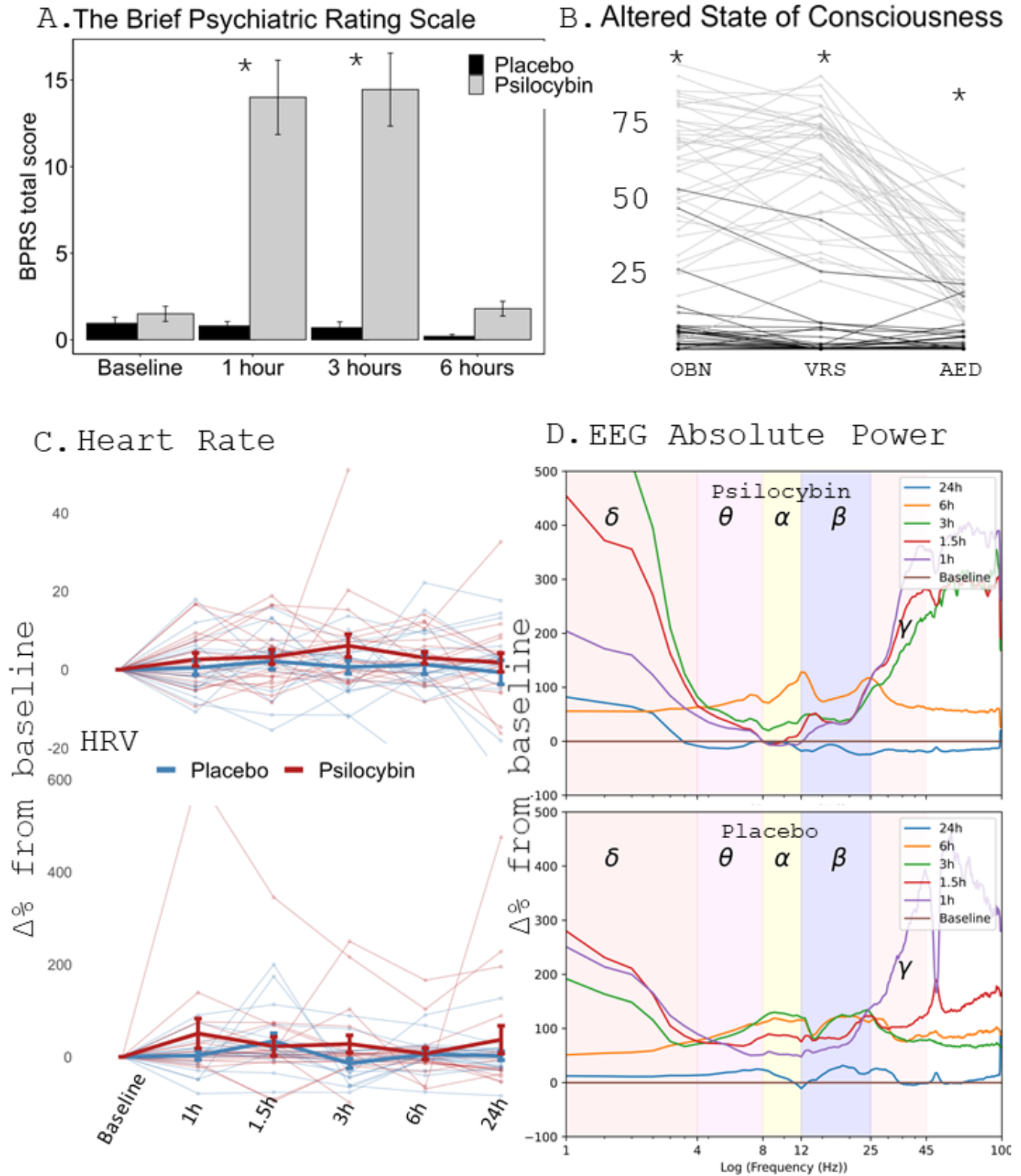


Figure 4: **A.** The BPRS used to evaluate mental state objectively shows significant departure from normality at 1 and 3 hours. **B.** The ASC retrospective assessment of the experience shows sig. difference between groups along the three main subscales. Note the overlap between the groups in $\sim 10\%$ of cases. **C.** shows that heart rate and heart rate variability did not differ between the groups significantly at any time point, change from baseline displayed. **D.** shows descriptive change from baseline of absolute EEG power between 1 to 100Hz. X axis is log scaled. The large differences between delta and gamma were explored further (see fig. 5.)

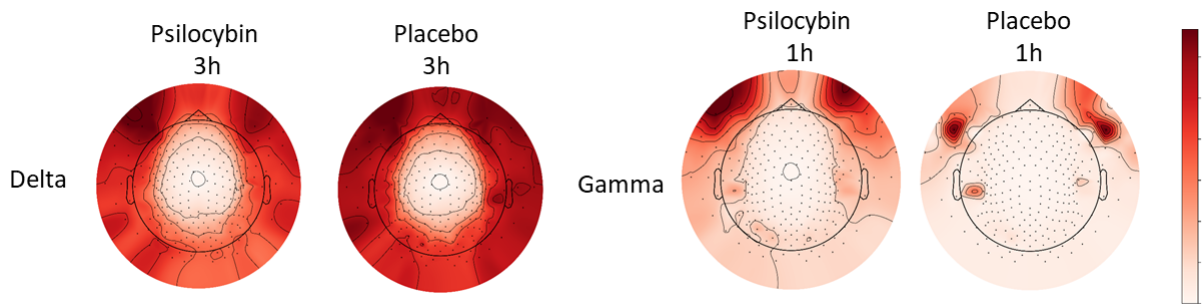


Figure 5: The topographical maps of median group activation in delta and gamma frequencies. The activation is from activity recorded under electrodes on the cheeks. Median is displayed as mean was affected by single electrode (outlier) activation. Temporal electrodes were excluded from further group statistical analysis (see fig. 2).

3.5 Entropy measures

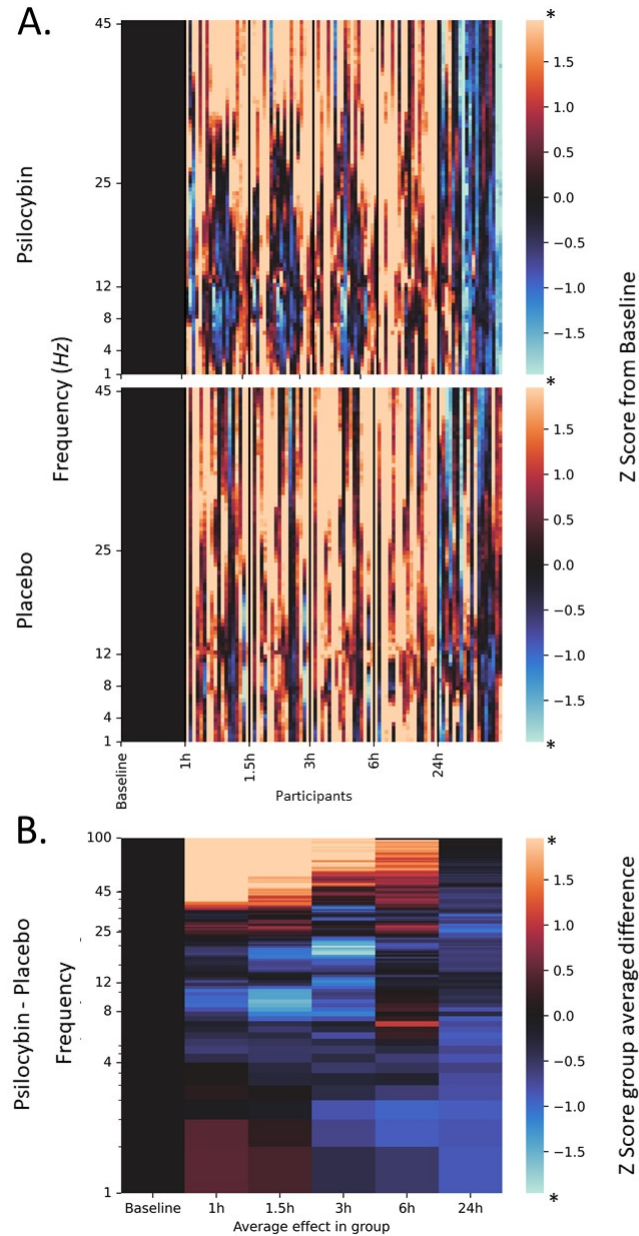


Figure 6: **A. Z score change from baseline in Psilocybin and Placebo.** Most prominent changes are decrease in alpha and beta activity. **B. Difference between Psilocybin and Placebo group** shows significant increase in high frequency synchronisation and trend towards a decrease in alpha and beta bands during intoxication. At 24 hours there is a trend towards a decrease in absolute power. Values further than absolute distance of 1.96 from zero are associated with $p < 0.05$.

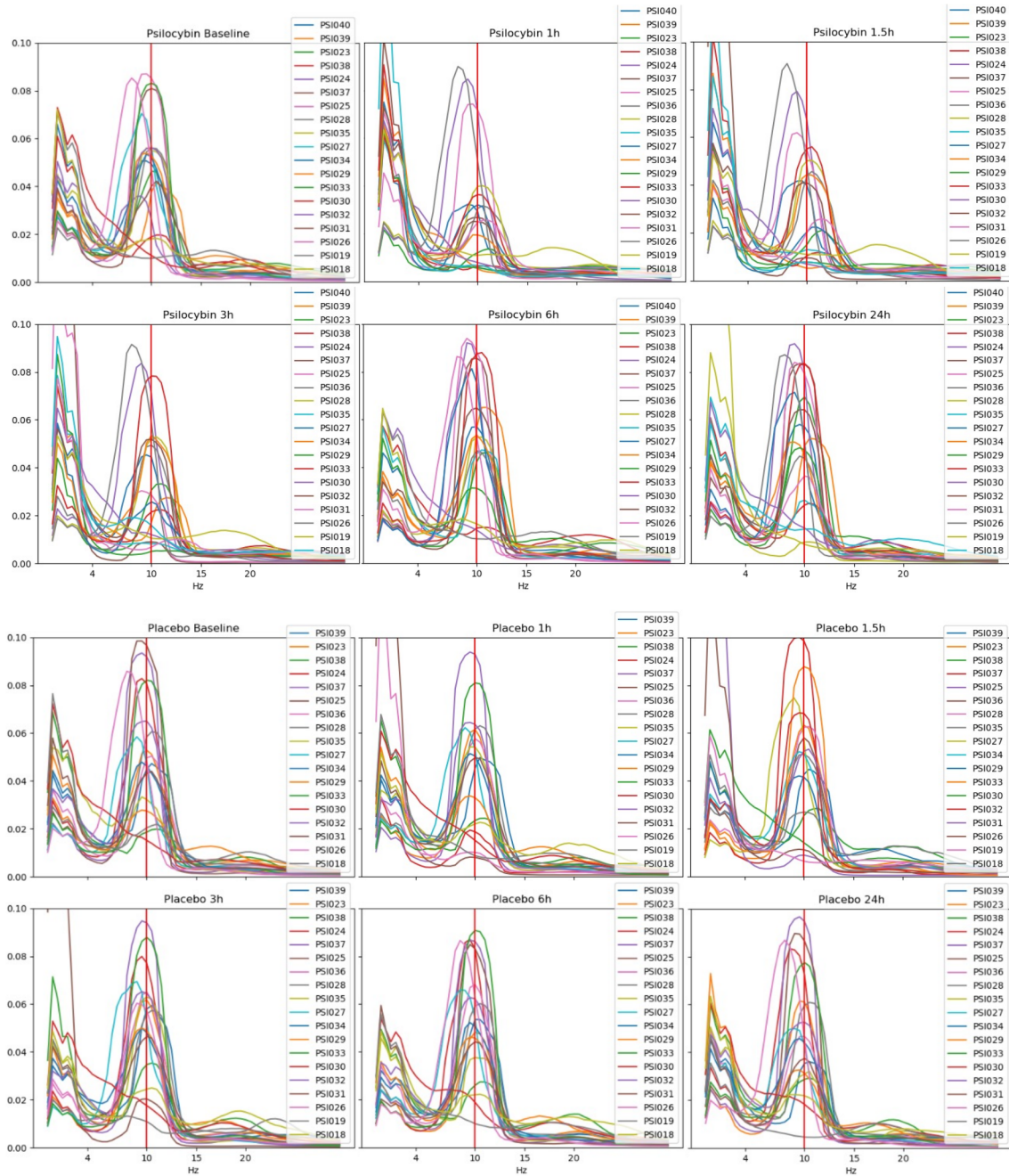
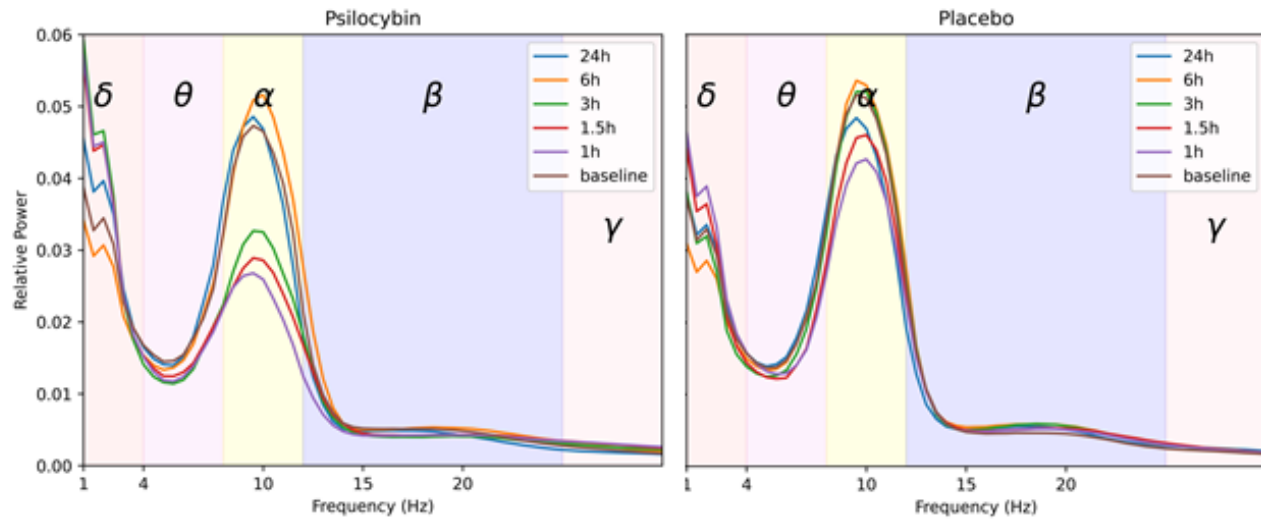


Figure 7: Relative power across conditions and times describe frequency energy composition changes for each individual.

3.5 Entropy measures

A. Relative power spectral composition



B. Relative power cluster analysis

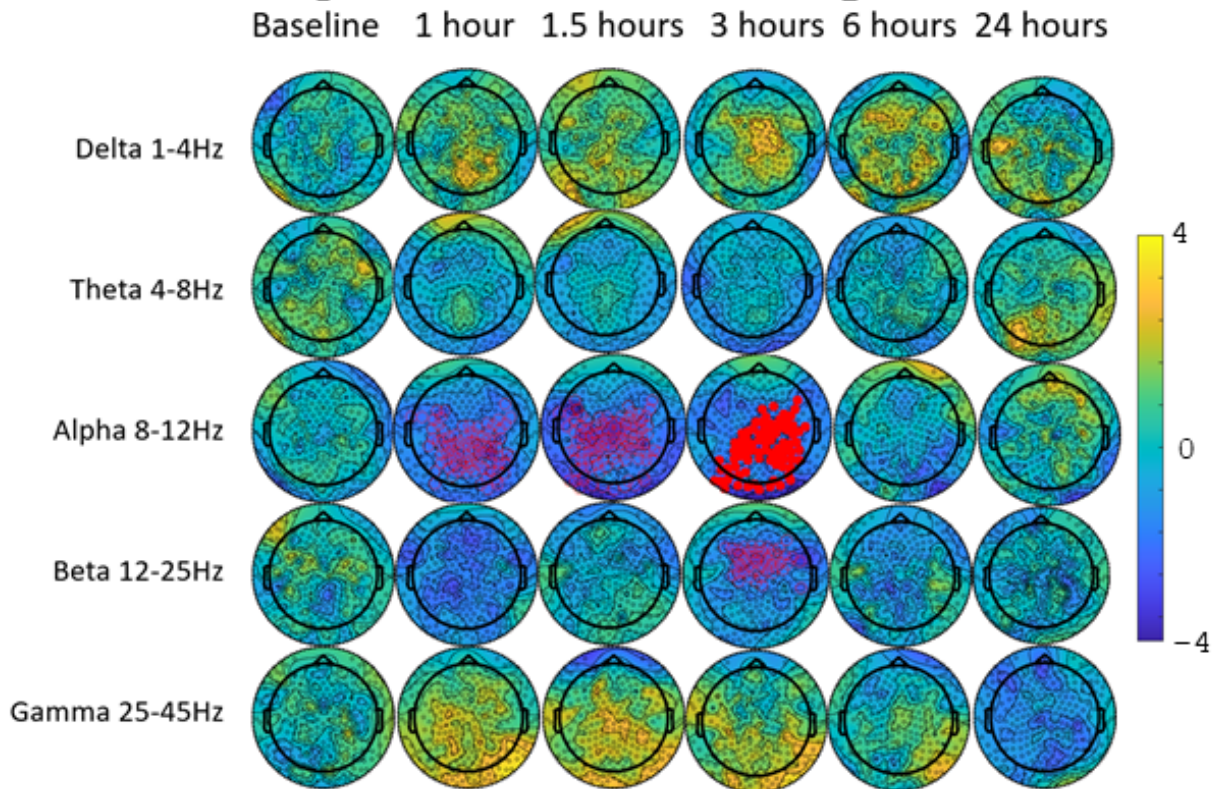


Figure 8: **A. Group average relative power spectral composition** across time shows drop in alpha EEG functional band (8-12Hz) at 1, 1.5, and 3 hours. **B. Relative power spectral density permutation based cluster analysis** shows changes in relative power distribution. Compared to placebo, a significant reduction frontally, parietally and occipitally occurred at 1, 1.5, and 3 hours. Reduction in Beta was observed at 3 hours. Full red mark significance at $p < 0.01$ and hollow red marks at $p < 0.05$. Topomaps show us a trend towards an increase in delta, and gamma bands at 1-3hours. T values shown.

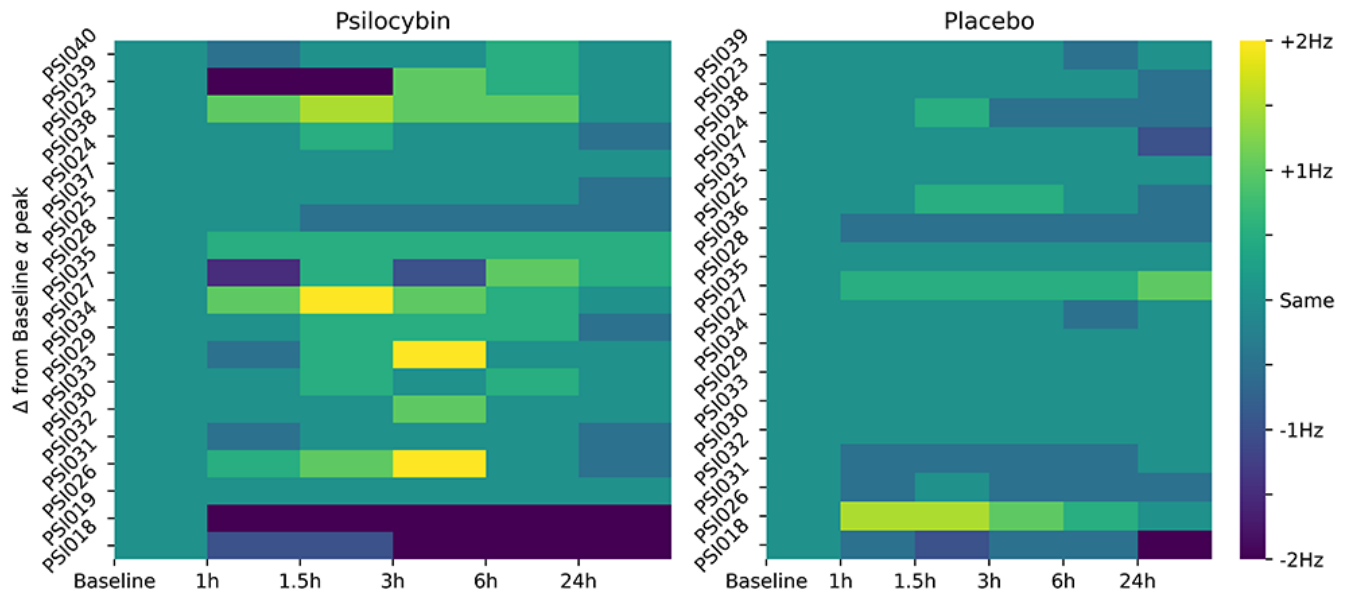


Figure 9: Change from baseline **Alpha** peak across conditions and times for each individual. No significant difference from baseline was observed, likely due to the opposing effects on each individual.

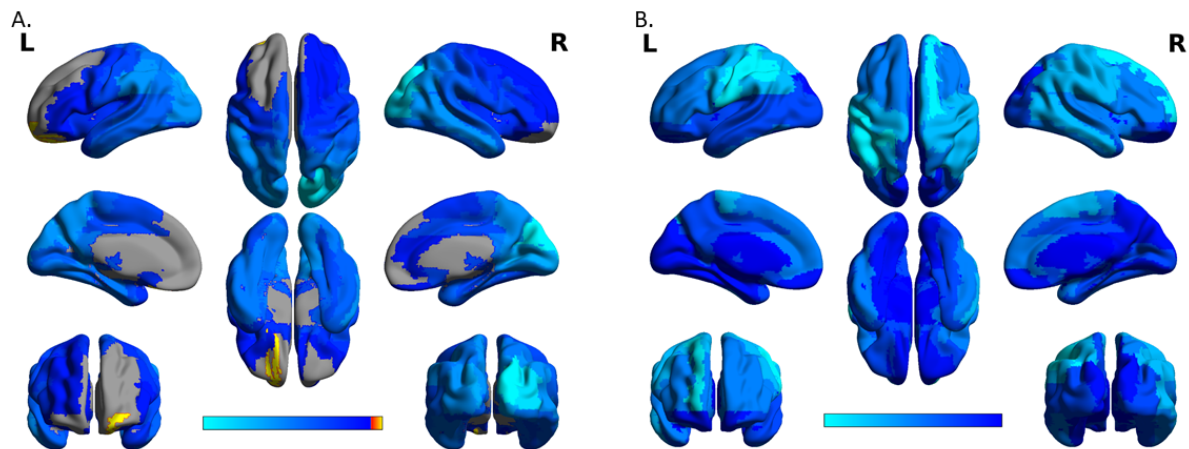


Figure 10: Source localisation of changes from placebo in **A. alpha band at 3 hours** post ingestion shows reduction in alpha EEG functional band (8-12Hz) activity in the right hemisphere Occipital superior and middle, Cuneus, Calcarine areas. **B. Beta band at three hours** shows decrease in activity mainly in Postcentral, Precentral, and Parietal Inferior left hemispheric areas and Frontal Superior on the right side.

3.5 Entropy measures

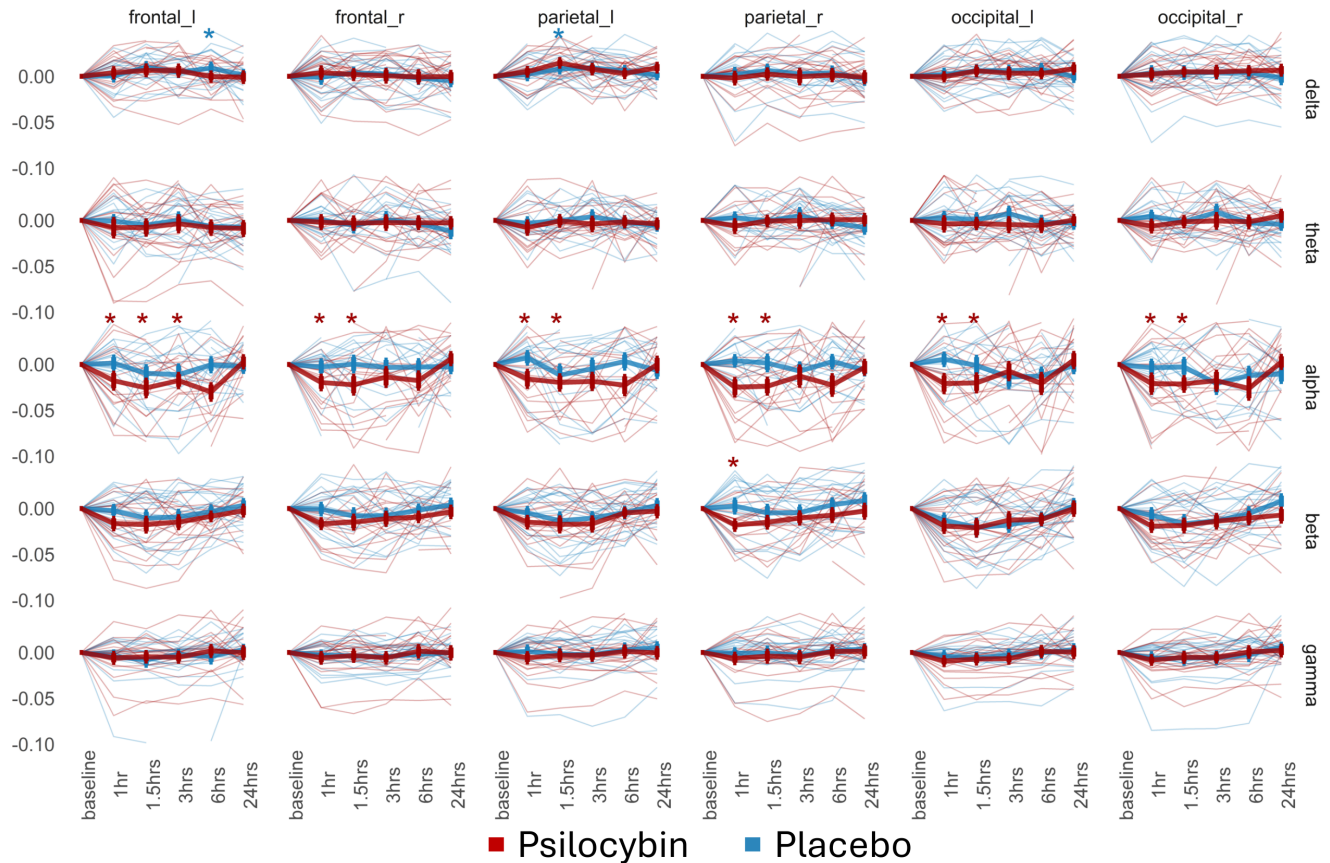


Figure 11:

Change from baseline in **Power Envelope GFC** across functional frequencies averaged over frontal, parietal, and occipital regions laterally shows significant decrease from baseline in connectivity globally at 1 and 1.5 hours, and frontally also at 3 hours in the psilocybin group. On the right parietal lobe we also see decrease in beta at 1 hour, and in the placebo group we see an increase in delta activity.

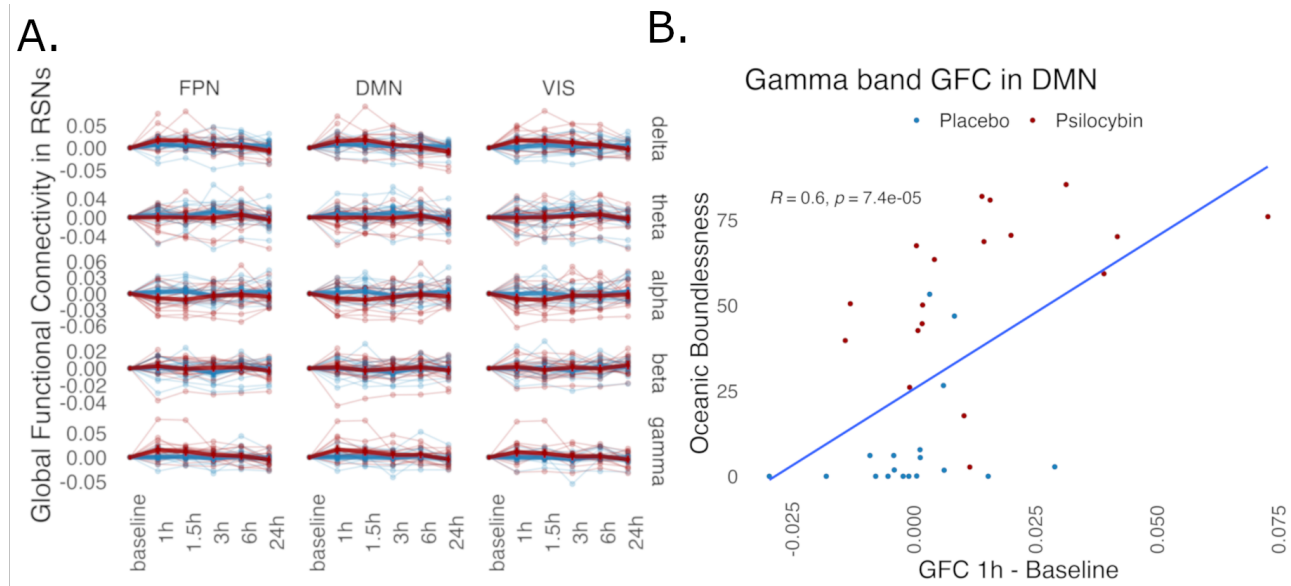


Figure 12:

A. Change from baseline in **GFC RSNs** across functional frequencies. Comparisons did not survive FDR correction. We see a trend towards a decrease in all networks in alpha band at 1 & 1.5 hours, and an increase in gamma in DMN at 1h. **B.** Change in GFC from Baseline in DMN gamma band shows a moderate Pearson correlation between magnitude of change, and intensity of oceanic Boundlessness subscale of the altered states of consciousness.

3.5 Entropy measures

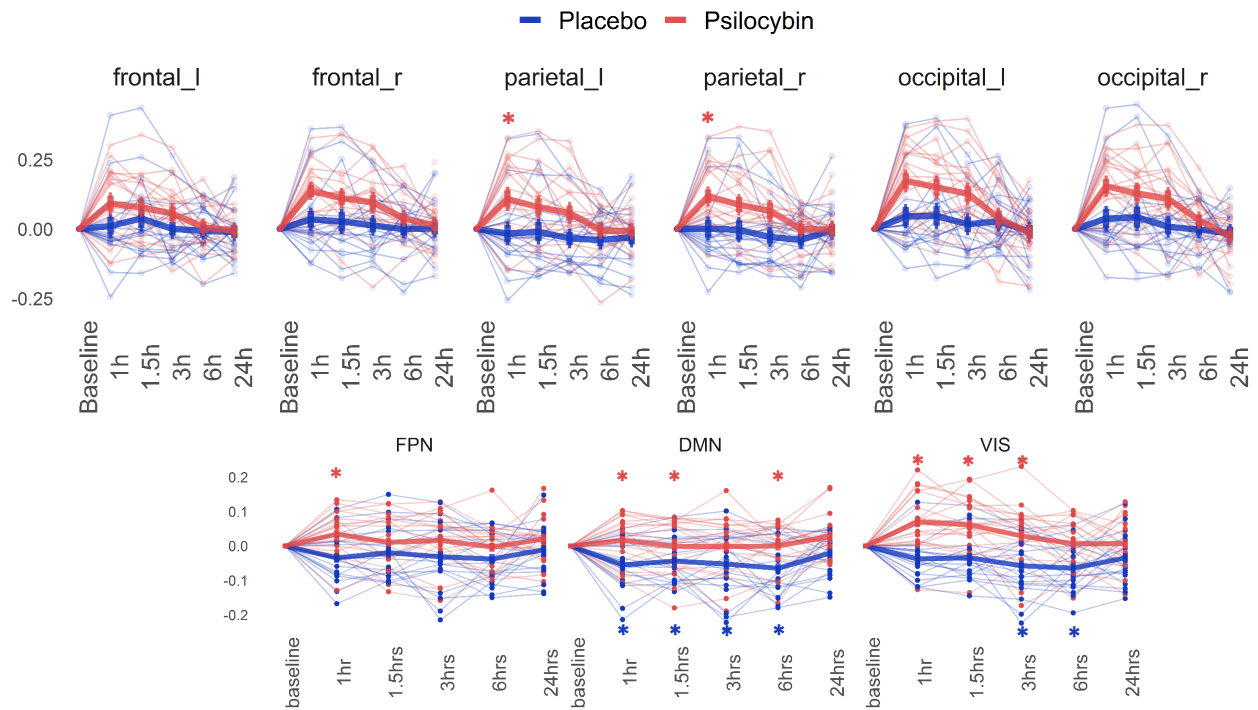


Figure 13: Change from baseline **Lempel-Ziv Complexity** normalised entropy rate shows rapid increase in entropy at 1 hour parietally. In the source-space, increase in entropy is observed in the psilocybin group at 1 hour in the frontoparietal network, at 1, 1.5, and 6 hours in the Default Mode Network, and 1, 1.5, and 3 hours in the Visual Network, and 1, and 3 hours in the rest of the brain. In the placebo condition, a drop in complexity is seen from 1 to 6 hours in the default mode network, and 3 and 6 hours in the visual network.

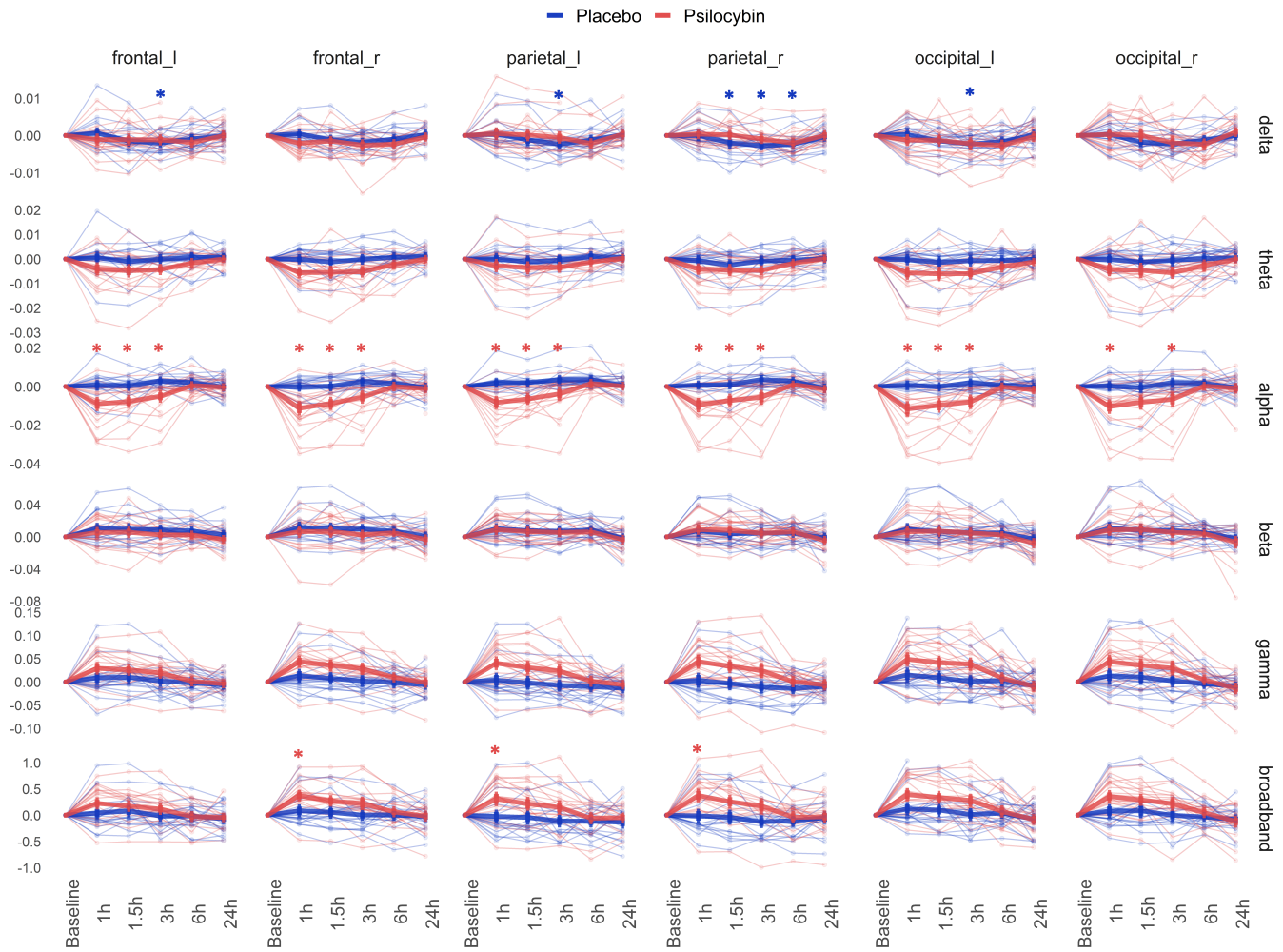


Figure 14: Change from baseline **Complexity via State Space Entropy Rate** shows a distinct change in psilocybin condition a decrease in alpha band at 1, 1.5, and 3 hours globally, and an increase at 1 hour parietally, and frontally on the right hemisphere. Broadband CSER shows similar results to LZ, and an opposing effects of psilocybin on alpha and broadband entropy, and further that entropy is mostly driven by higher frequencies. A decrease in entropy in the placebo condition is observed parietally and on the frontal and occipital left hemisphere. Note different scales on the Y axis.

3.5 Entropy measures

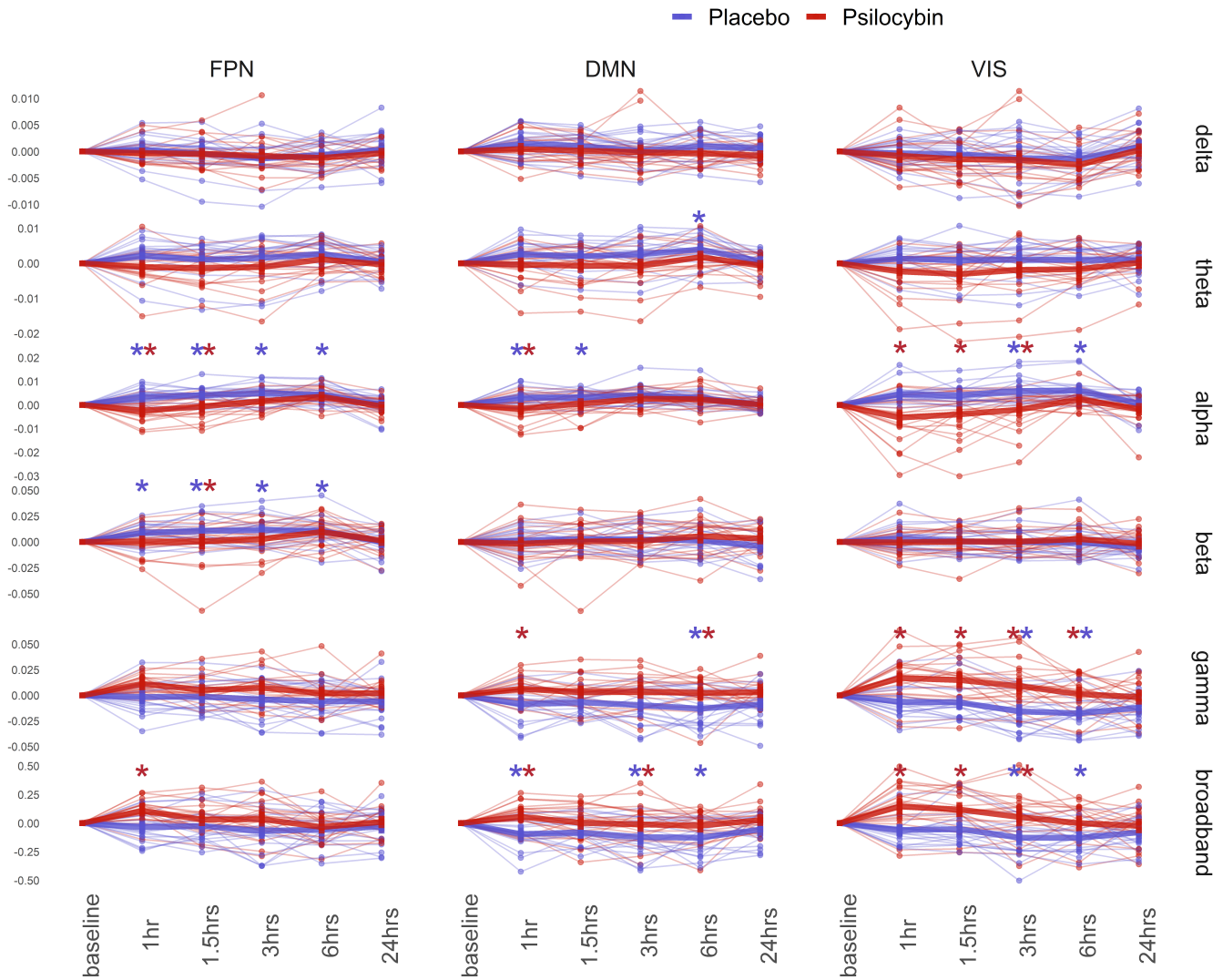


Figure 15: Change from baseline **Complexity via State Space Entropy Rate** normalised entropy rate over source-space functional networks shows a decrease in entropy mainly over the visual network at 1-3 hours in the alpha band, and an increase in gamma and higher frequencies. Interestingly, we can observe an increase in CSER in the alpha and beta band in the frontoparietal network, and a decrease in the default mode network and visual network in the broadband.

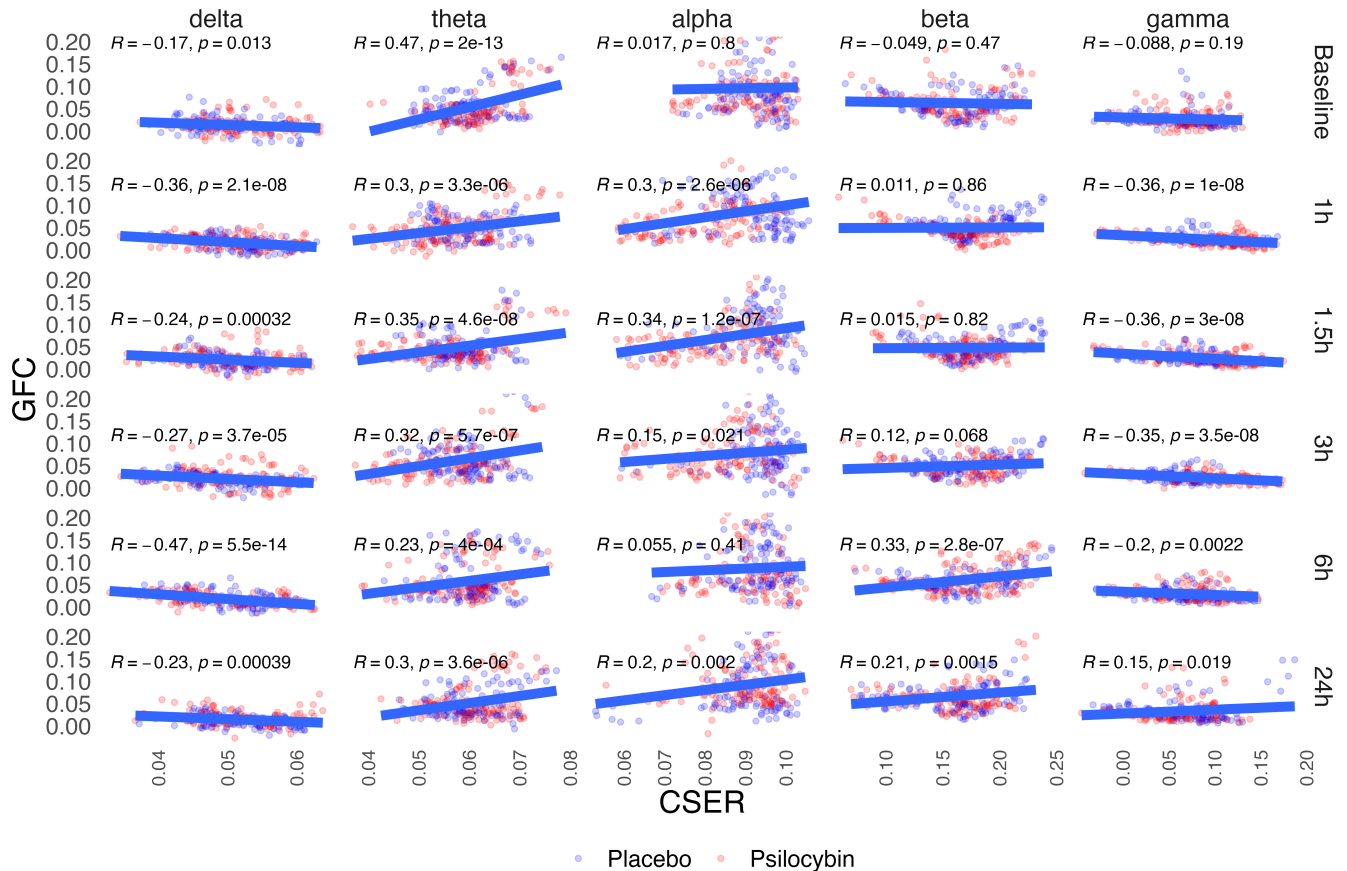


Figure 16: Functional band decomposition correlation between GFC and CSER. From left, weak negative relationship appears to be in delta, weak positive relationship in theta, but in alpha a weak positive relationship arises during the 1-3 hours, suggesting that psilocybin alters this relationship, and an opposite relationship is present in gamma. In beta, a weak positive relationship appears at 6 and 24 hours. Pearson correlation calculated, uncorrected. Lines represent general linear models.

350 4 Discussion

351 In a cross-over design, we compared placebo with 0.26mg/kg of psilocybin administered orally (20mg in
352 77kg person), a low to moderate dose. Healthy subjects experienced significant alteration to the normal
353 state of consciousness on sessions when they received psilocybin compared to placebo. Changes started
354 within 1 hour, and were back to normal levels at 6 hours (fig 4 A. and B.). These alterations did not
355 result in significant changes to the heart rate and heart rate variability (fig 4 C.) but resulted in changes
356 in EEG activity (fig 4 D.). In accord, Holze et al., 2022 shows that low dose of psilocybin (15mg) lasted
357 app. 4 hours, whereas high dose (30mg) lasted app. 7 hours, that the low dose did not cause changes
358 in the heart rate but the high dose did.

359 Absolute EEG power increased in high (gamma) and decreased in alpha and beta frequencies compared
360 to placebo during the session, and 24h after dosing there is a trend towards a decrease broadband (see
361 figs. 4D., and 6). Changes in delta and gamma were induced by activation in peripheral electrodes
362 (fig. 5) likely originates from jaw clenching rather than from neural activity, and temporal channels were
363 removed from further analysis. An increase in low and high frequencies was present in both placebo
364 and psilocybin conditions, and may be associated with setting of EEG gel, and galvanic skin response to
365 the warm conditions inside the Faraday cage. Broadband power desynchronisation after psilocybin was
366 observed previously in rodents (Tyls et al., 2016), and in humans with psychedelics in general (Le et al.,
367 2024).

368 Analysis of relative power composition showed that psilocybin administration resulted in attenuation in
369 the alpha band at 1 hour, 1.5 hours, and 3 hours globally and an attenuation in beta band frontally (fig
370 7 and 8). Source reconstruction localised sources of the decrease at 3 hours in alpha band mainly on
371 the right hemisphere in the occipital superior and middle, and the cuneus and calcarine areas. In the
372 beta band the decrease was mostly in the postcentral, precentral, and parietal inferior areas on the left
373 hemisphere, and in the frontal superior right area (fig. 10). Attenuation in the alpha band activity is a
374 robust trait of a psychedelic state associated with visual experience of imagery, seeing with eyes-closed
375 (R. L. Carhart-Harris et al., 2016; De Araujo et al., 2012), which may be caused by deficient thalamic
376 gating in the pulvinar (Preller et al., 2019) affecting activity in the V1. We did not observe a shift in
377 the alpha peak under psilocybin, our data shows that some individuals experience quickening and some
378 slowing of the alpha activity (fig 9). We observe a significant decrease in beta spectra at 3 hours (fig.
379 8). It is intriguing that this effect is temporarily localised to three hours, even though a trend towards
380 this is observable at 1 hour as well. The desynchronisation of the frontal beta activity may generally
381 be associated with inability to maintain focus, perform cognitively demanding tasks, and from inability
382 to suppress thoughts (Bonnieux et al., 2023; R. L. Carhart-Harris & Friston, 2019). From our data we

383 may conclude that psilocybin becomes active first in the occipital regions, then in the frontal regions,
384 experienced as intense visual stimulation only later followed by change in cognition.

385 The global functional connectivity (GFC) revealed a significant decrease in connectivity from baseline
386 globally in the alpha band at 1 and 1.5 hours, and at 3 hours frontally (fig 11), and a decrease in
387 beta GFC at 1 hour parietally. Comparing groups on GFC across RSNs did not survive FDR correction,
388 however a trend towards a decrease in alpha band and an increase in gamma band is visible (fig. 12
389 in the DMN). It has been shown that psilocybin produces broadband desynchronisation of activity in
390 MEG signal (Muthukumaraswamy et al., 2013). Siegel et al., 2023 report similar findings from fMRI
391 blood oxygen level dependent (BOLD) signal, that the decrease is mainly in the Default Mode Network.
392 R. L. Carhart-Harris et al., 2013 show that the functional connectivity from DMN is however increased
393 to task positive networks as a result of psilocybin, a relationship which is orthogonal otherwise. Decrease
394 in GFC may reflect two things. Firstly, decrease in information processing overall, or, secondly, increase
395 in information processing locally. Because power increased, but GFC decreased, it may be deduced that
396 information processing did not cease, but became segregated as a function of psilocybin. Decrease in
397 GFC is associated with cognitive decline (e.g. (Onoda et al., 2012)), but coupled with known effects of
398 psilocybin, it may reflect impairment in cognitive functioning perhaps due to over-integration of over-
399 salient stimuli. In other words, inability to focus by being distractable by external and internal processes
400 (R. L. Carhart-Harris et al., 2011).

401 If stimulus integration into neural activity is segregated, i.e. processed locally, then the brain activity
402 would reach more uncoordinated neural states, which would increase the complexity of the EEG traces.
403 Analysis of signal diversity using the Lempel-Ziv (Lempel & Ziv, 1976) algorithm shows an increase at 1
404 hour parietally. However, a significant increase in LZ is observed in the visual network at 1 to 3 hours,
405 in the DMN at 1, 1.5, and 6 hours, and in the frontoparietal network at 1 hour. Increase in LZ was
406 reported in LSD condition (Mediano et al., 2024), DMT (Timmermann et al., 2023) and Psilocybin
407 (M. M. Schartner et al., 2017). But an increase in LZ is also associated with changes in information
408 processing due to acupuncture (Luo et al., 2012) and after processing complex visual and auditory
409 stimuli (Orłowski & Bola, 2023). Thus, LZ may increase when the brain is trying to interpret a not-
410 easily interpretable stimulus. When psychedelics increase brain segregation, the brain struggles to process
411 information locally. This may be represented psychologically by experiences of novelty. Interestingly, we
412 also observe a decrease in signal diversity in the placebo condition mainly in the default mode network
413 from 1 to 6 hours, and the visual network at 3 and 6 hours (fig 13). From perspective of stimulus
414 integration, this may be explained as a habituation to the study conditions. Changes in the visual area
415 thus may be associated with vivid imagery, whereas changes to DMN may reflect perception of self; a
416 process which may be heightened in the psilocybin condition, but relaxes over time under in placebo

417 condition.

418 Complexity via State-Space Entropy Rate results show that signal diversity decreases globally under
419 psilocybin in the alpha band at 1 to 3 hours, and increases in the higher frequencies at 1 hour (see fig.
420 14), which replicates the findings of Mediano et al., 2023. CSER analysis over RSNs shows decrease
421 mainly in the alpha band in the visual network at 1 to 3 hours, and the fronto-parietal network at 1 and
422 1.5hours, and an increase in the gamma band at 1 to 6 hours in the visual network, but also a sporadic
423 increase in DMN. The visual cortex shows sensitivity to changes induced by psilocybin as measured
424 by decrease in CSER and LZ. An apparent relationship between alpha decrease and higher frequencies
425 increase in the psilocybin condition may reflect integration of stimuli behind closed eyes. In a normal
426 wake eyes-closed resting state, alpha activity in the visual cortex may be interpreted as synchronisation of
427 weakly coupled oscillators receiving random input (Hidalgo et al., 2022). Complexity may be driven down
428 when the signal becomes non-random due to changes induced by psilocybin, marked by desynchronisation
429 in the alpha power spectra. However, associative processing of drug induced content may be happening
430 in higher frequencies gamma. Our findings make case for the careful study of higher brain frequencies,
431 a task difficult due to EEG artifacts. In the placebo condition, we see a significant increase over the
432 fronto parietal network from 1 to 6 hours in both alpha and beta bands, but also decreases in the higher
433 frequencies over the default mode network and the visual area; we see the opposite effect to psilocybin
434 condition, that CSER increases in alpha at 3 & 6 hours and decreases in higher frequencies (fig 15).
435 These changes are intriguing, they may reflect on processes natural to prolonged relaxation, in any case
436 different to psychedelic experience. Changes in band-specific complexity need to be studied further to
437 allow for interpretation.

438 We found a relationship between a change from baseline to 1-hour in GFC in gamma band in the DMN,
439 and subjective experience as captured by Oceanic Boundlessness sub scale of the ASC questionnaire,
440 but not for LZ or CSER. Our exploratory finding suggests that the more DMN becomes connected with
441 the rest of the brain, the more individuals experience a sense of unity. The DMN, active during passive
442 rest and mind wandering and connected to self-reference, becomes under psilocybin more functionally
443 connected with the rest of the brain, which may explain the intensity of the psychedelic experience,
444 perhaps as the self is integrated with the rest of the brain, thus effectively lowering the segregation of
445 both our sensory information, associations about the world, and self. When correlating the GFC and
446 CSER values, we find an emergent relationship during the hours of effect of psilocybin in alpha and
447 gamma bands. This emergent relationship shows that the lower the GFC, the lower the CSER in alpha,
448 and conversely the lower the GFC, the higher the CSER in gamma. If alpha activity is connected mostly
449 to processing of the visual stimuli, and gamma mostly with the higher order associations, then the intense
450 visual imagery during psilocybin are associated with less unpredictable signal, i.e. visual experience is

451 processed locally. However, the gamma has the opposite relationship, gamma signalling under psilocybin
452 is processed locally, more segregated and more unpredictable. Our evidence may be viewed in support of
453 the REBUS theory that psychedelics work to relax high-level priors on both sensory and associative level
454 (R. L. Carhart-Harris & Friston, 2019), which leads to both segregation in the sensory cortex as marked
455 by decrease in power and GFC in the alpha band, but also an integration of the DMN as the high-level
456 priors are being re-addressed by propagation of bottom-up prediction-errors, as marked by the increase
457 in gamma signal complexity.

458 In summary, we found difference between the psilocybin and placebo group on measures of subjective
459 intensity of experience (fig. 4), and in EEG measures of Power, GFC, LZ, and CSER (see 6, 8, 11, 13,
460 15), but we observed a linear relationship only between DMN gamma GFC and subjective experience
461 (fig. 12). Two possible explanations arise, A. changes in the brain do not relate to psychological
462 intensity of experience, or B. intensity of psychological experience is not only related to dose-dependent
463 neurobiological changes captured by EEG, but also dependent on a complex pattern of personal experience
464 including immediate mood and long-term traits (Studerus et al., 2012), generally referred to as Set in
465 Set and Setting (e.g. Hartogsohn, 2016). Our findings are complementary to emerging evidence that
466 neuroimaging changes correlate with symptoms improvement in depression patients (Kuburi et al., 2022),
467 with changes in brain activity mainly in the DMN, however, these changes are insofar too insensitive to
468 use reliably as a predictor of treatment outcome.

469 5 Limitations

470 This study was part of a clinical trial. Dosage was weight dependent, which is currently not the standard.
471 Dose was administered orally, which may lead to different metabolisation speed, biasing the effects of
472 psilocybin at any given time point in a small sample. EEG measures used are sensitive to noise in the
473 signal. Techniques beyond removal of obviously affected epochs are limited. Is not the topic of this work
474 to prove that EEG gamma activity is of neural origin. We show that changes in the gamma range differ
475 across the psilocybin/placebo conditions, and that these changes should be further studied in relation to
476 psychedelics. Thus interpretation of our results should be cautious. The within subject design has limited
477 validity in an EEG study with variable length between dosages, as the EEG traces may change in time in
478 themselves and together with dependency on electrode position and impedance. Functional unblinding
479 appears problematic in all studies with psychedelics. In our case, if participants experienced psychedelic-
480 like state on their first visit, they would be unblinded to the second visit. Perhaps partly because of
481 the reasons above, we observe a variation in our measures marked by that $\approx 10\%$ of participants in

482 either group show results similar to average of the opposite group; in EEG measures and the subjective
483 measures of intensity of experience measured by the ASC. This fosters the notion that the role of the
484 set and setting in which such experience is meant to take place, is crucial.

485 6 Conclusion

486 Psilocybin affects EEG activity acutely. The dominant change is the decrease in the alpha and an increase
487 in the gamma power, followed by a decrease in beta. This decrease, a local desynchronisation, is marked
488 by the decrease in global functional connectivity. Signal complexity increased, particularly in the visual
489 area and DMN. Decomposition of complexity into functional bands shows decrease in complexity in the
490 alpha band but an increase in the gamma band. These changes are time dependent, and are likely related
491 with the relaxation of strong beliefs about the world, and integration of self with the environment as
492 marked by the experience of unity. We could not confirm associations between baseline values or changes
493 in magnitude of EEG measures as intensity of the psilocybin experience, except for changes in GFC in
494 DMN in the gamma band.

495 Data and Code Availability

496 The data that support the findings are available on request from the corresponding author. The data
497 are not publicly available due to privacy or ethical restrictions.

498 Author Contributions

499 TP run the study as a principal investigator. TF guided the analysis of signal complexity. MN carried
500 out the current analysis. PM assisted with computational approaches. All authors contributed to the
501 manuscript.

502 7 Acknowledgements

503 This work was supported by the Czech Science Foundation (projects 23-07578K), Czech Health Research
504 Council (project NU21-04-00307), the national budget through MEYS, LRI CZECRIN (LM2023049),
505 Long-term Conceptual Development of Research Organization (RVO 00023752), and Specific University
506 Research, Czech Ministry of Education, Youth and Sports (project 260533/SVV/2024), the Charles Uni-
507 versity research program Cooperatio-Neurosciences, ERDF-Project Brain dynamics, No. CZ.02.01.01/00/22_008/00
508 Japan Science and Technology Agency via grant number JPMJPF2205, and PSYRES –Psychedelic Re-
509 search Foundation. The funding sources were not involved in the study design; in the collection, analysis,
510 and interpretation of data; in the writing of the report; nor in the decision to submit the article for
511 publication.

512 Declaration of Competing Interests

513 The authors declare no competing interests.

514 A Appendix

515 A.1 Appendix 1: Inclusion and Exclusion Criteria

Inclusion criteria

1. Men and women at the age between 18 to 65 years
 2. Healthy volunteers with negative psychiatric anamnesis, including harmful use, abuse and addiction to addictive substances
 3. Negative family psychiatric anamnesis without psychotic disorders to II. Generation of relatives
 - a) Men and women between 29 and 65 years of age
 - b) Healthy volunteers with negative psychiatric screening (psychiatric disorders MKN 10. F0.X-F99.X)
 - c) Negative familiar psychiatric anamnesis in relatives up to second-degree
-

Exclusion criteria

- a) Pregnant women
 - b) A volunteer with intracranial hypertension, severe arterial hypertension or pulmonary hypertension
 - c) A volunteer after a stroke
 - d) A volunteer with congestive heart failure
 - e) A volunteer with a pacemaker
 - f) A volunteer with a metal clamp in the head and face
 - g) A volunteer with celiac disease
 - h) A left-handed volunteer
 - i) Any use of regular hormonal contraception except medication
 - j) Person in a dependent position – undergraduate students of medical faculties
 - k) Persons in a dependent position – students of other faculties aged less than 28 years old
 - l) Usage of any regular medication with the exception of hormonal anti-contraceptives
 - m) Persons in dependent position – pre-gradual medical
-

⁵¹⁶ Supplementary Material

⁵¹⁷ Supplementary Material (created during production as a web link to online material).

518 **References**

- 519 Aday, J. S., Mitzkovitz, C. M., Bloesch, E. K., Davoli, C. C., & Davis, A. K. (2020). Long-term effects of
520 psychedelic drugs: A systematic review. *Neuroscience and Biobehavioral Reviews*, *113*, 179–189.
- 521 Bonnieux, J. N., VanderZwaag, B., Premji, Z., Garcia-Romeu, A., & Garcia-Barrera, M. A. (2023).
522 Psilocybin's effects on cognition and creativity: A scoping review. *Journal of Psychopharmacology*,
523 *37*(7), 635–648.
- 524 Brainvision analyzer (version 2.2.2), gilching, germany: Brain products gmbh. (2021).
- 525 Bravermanová, A., Viktorinová, M., Tylš, F., Novák, T., Androvičová, R., Korčák, J., Horáček, J.,
526 Balíková, M., Griškova-Bulanova, I., Danielová, D., et al. (2018). Psilocybin disrupts sensory
527 and higher order cognitive processing but not pre-attentive cognitive processing—study on p300
528 and mismatch negativity in healthy volunteers. *Psychopharmacology*, *235*, 491–503.
- 529 Butcher, J. N., Aldwin, C. M., Levenson, M. R., Ben-Porath, Y. S., Spiro III, A., & Bossé, R. (1991).
530 Personality and aging: A study of the mmpi-2 among older men. *Psychology and Aging*, *6*(3),
531 361.
- 532 Carhart-Harris, R., Giribaldi, B., Watts, R., Baker-Jones, M., Murphy-Beiner, A., Murphy, R., Martell,
533 J., Blemings, A., Erritzoe, D., & Nutt, D. J. (2021). Trial of psilocybin versus escitalopram for
534 depression. *New England Journal of Medicine*, *384*(15), 1402–1411.
- 535 Carhart-Harris, R. L., & Friston, K. J. (2019). Rebus and the anarchic brain: Toward a unified model of
536 the brain action of psychedelics. *Pharmacological reviews*, *71*(3), 316–344.
- 537 Carhart-Harris, R. L., Leech, R., Erritzoe, D., Williams, T. M., Stone, J. M., Evans, J., Sharp, D. J.,
538 Feilding, A., Wise, R. G., & Nutt, D. J. (2013). Functional connectivity measures after psilocybin
539 inform a novel hypothesis of early psychosis. *Schizophrenia bulletin*, *39*(6), 1343–1351.
- 540 Carhart-Harris, R. L., Muthukumaraswamy, S., Roseman, L., Kaelen, M., Droog, W., Murphy, K., Tagli-
541 azucchi, E., Schenberg, E. E., Nest, T., Orban, C., et al. (2016). Neural correlates of the lsd
542 experience revealed by multimodal neuroimaging. *Proceedings of the National Academy of Sci-
543 ences*, *113*(17), 4853–4858.
- 544 Carhart-Harris, R. L., Williams, T. M., Sessa, B., Tyacke, R. J., Rich, A. S., Feilding, A., & Nutt,
545 D. J. (2011). The administration of psilocybin to healthy, hallucinogen-experienced volunteers
546 in a mock-functional magnetic resonance imaging environment: A preliminary investigation of
547 tolerability. *Journal of psychopharmacology*, *25*(11), 1562–1567.
- 548 Davis, A. K., Barrett, F. S., May, D. G., Cosimano, M. P., Sepeda, N. D., Johnson, M. W., Finan, P. H.,
549 & Griffiths, R. R. (2021). Effects of psilocybin-assisted therapy on major depressive disorder: A
550 randomized clinical trial. *JAMA psychiatry*, *78*(5), 481–489.

- 551 De Araujo, D. B., Ribeiro, S., Cecchi, G. A., Carvalho, F. M., Sanchez, T. A., Pinto, J. P., de Martinis,
552 B. S., Crippa, J. A., Hallak, J. E., & Santos, A. C. (2012). Seeing with the eyes shut: Neural basis
553 of enhanced imagery following ayahuasca ingestion. *Human brain mapping, 33*(11), 2550–2560.
- 554 Dinis-Oliveira, R. J. (2017). Metabolism of psilocybin and psilocin: Clinical and forensic toxicological
555 relevance. *Drug metabolism reviews, 49*(1), 84–91.
- 556 Dittrich, A. (1998). The standardized psychometric assessment of altered states of consciousness (ascs)
557 in humans. *Pharmacopsychiatry, 31*(S 2), 80–84.
- 558 Dudysova, D., Janku, K., Smotek, M., Saifutdinova, E., Koprivova, J., Buskova, J., Mander, B. A.,
559 Brunovsky, M., Zach, P., Korcak, J., et al. (2020). The effects of daytime psilocybin administration
560 on sleep: Implications for antidepressant action. *Frontiers in pharmacology, 11*, 602590.
- 561 Evens, R., Schmidt, M. E., Majić, T., & Schmidt, T. T. (2023). The psychedelic afterglow phenomenon:
562 A systematic review of subacute effects of classic serotonergic psychedelics. *Therapeutic Advances
563 in Psychopharmacology, 13*, 20451253231172254.
- 564 Griffiths, R. R., Johnson, M. W., Carducci, M. A., Umbricht, A., Richards, W. A., Richards, B. D.,
565 Cosimano, M. P., & Klinedinst, M. A. (2016). Psilocybin produces substantial and sustained
566 decreases in depression and anxiety in patients with life-threatening cancer: A randomized double-
567 blind trial. *Journal of psychopharmacology, 30*(12), 1181–1197.
- 568 Hartogsohn, I. (2016). Set and setting, psychedelics and the placebo response: An extra-pharmacological
569 perspective on psychopharmacology. *Journal of psychopharmacology, 30*(12), 1259–1267.
- 570 Hidalgo, V. M., Díaz, J., Mpodozis, J., & Letelier, J.-C. (2022). Envelope analysis of the human alpha
571 rhythm reveals eeg gaussianity. *IEEE Transactions on Biomedical Engineering, 70*(4), 1242–1251.
- 572 Holze, F., Ley, L., Müller, F., Becker, A. M., Straumann, I., Vizeli, P., Kuehne, S. S., Roder, M. A.,
573 Duthaler, U., Kolaczynska, K. E., et al. (2022). Direct comparison of the acute effects of lysergic
574 acid diethylamide and psilocybin in a double-blind placebo-controlled study in healthy subjects.
575 *Neuropsychopharmacology, 47*(6), 1180–1187.
- 576 Johnson, M. W., Richards, W. A., & Griffiths, R. R. (2008). Human hallucinogen research: Guidelines
577 for safety. *Journal of psychopharmacology, 22*(6), 603–620.
- 578 Kluckova, T., Nikolic, M., Tyls, F., Viktorin, V., Vejmola, C., Viktorinova, M., Bravermanova, A., Androvi-
579 cova, R., Andrashko, V., Korcak, J., et al. (2024). The phenomenology of psilocybin's experience
580 mediates subsequent persistent psychological effects independently of sex, previous experience or
581 setting. *medRxiv*, 2024–08.
- 582 Kometer, M., & Vollenweider, F. X. (2018). Serotonergic hallucinogen-induced visual perceptual alter-
583 ations. *Behavioral neurobiology of psychedelic drugs, 257–282*.
- 584 Krebs, T. S., & Johansen, P.-Ø. (2013). Psychedelics and mental health: A population study. *PloS one,*
585 *8*(8), e63972.

REFERENCES

- 586 Kuburi, S., Di Passa, A.-M., Tassone, V. K., Mahmood, R., Lalovic, A., Ladha, K. S., Dunlop, K.,
587 Rizvi, S., Demchenko, I., & Bhat, V. (2022). Neuroimaging correlates of treatment response with
588 psychedelics in major depressive disorder: A systematic review. *Chronic Stress*, *6*, 24705470221115342.
- 589 Le, G. H., Wong, S., Badulescu, S., Au, H., Di Vincenzo, J. D., Gill, H., Phan, L., Rhee, T. G., Ho, R.,
590 Teopiz, K. M., et al. (2024). Spectral signatures of psilocybin, lysergic acid diethylamide (Lsd) and
591 ketamine in healthy volunteers and persons with major depressive disorder and treatment-resistant
592 depression: A systematic review. *Journal of Affective Disorders*.
- 593 Lempel, A., & Ziv, J. (1976). On the complexity of finite sequences. *IEEE Trans. Inf. Theory*, *22*, 75–81.
- 594 Luo, X.-L., Wang, J., Han, C.-X., Deng, B., Wei, X.-L., & Bian, H.-R. (2012). Characteristics analysis of
595 acupuncture electroencephalograph based on mutual information lempel—ziv complexity. *Chinese*
596 *Physics B*, *21*(2), 028701.
- 597 Mason, N. L., Mischler, E., Uthaug, M. V., & Kuypers, K. P. (2019). Sub-acute effects of psilocybin
598 on empathy, creative thinking, and subjective well-being. *Journal of psychoactive drugs*, *51*(2),
599 123–134.
- 600 Mediano, P. A., Rosas, F. E., Luppi, A. I., Noreika, V., Seth, A. K., Carhart-Harris, R. L., Barnett, L.,
601 & Bor, D. (2023). Spectrally and temporally resolved estimation of neural signal diversity. *eLife*.
602 <https://doi.org/10.1101/2023.03.30.534922>
- 603 Mediano, P. A., Rosas, F. E., Timmermann, C., Roseman, L., Nutt, D. J., Feilding, A., Kaelen, M.,
604 Kringelbach, M. L., Barrett, A. B., Seth, A. K., et al. (2020). Effects of external stimulation on
605 psychedelic state neurodynamics. *BioRxiv*, 2020–11.
- 606 Mediano, P. A., Rosas, F. E., Timmermann, C., Roseman, L., Nutt, D. J., Feilding, A., Kaelen, M.,
607 Kringelbach, M. L., Barrett, A. B., Seth, A. K., et al. (2024). Effects of external stimulation on
608 psychedelic state neurodynamics. *ACS Chemical Neuroscience*, *15*(3), 462–471.
- 609 Muthukumaraswamy, S. D., Carhart-Harris, R. L., Moran, R. J., Brookes, M. J., Williams, T. M., Ertizoe,
610 D., Sessa, B., Papadopoulos, A., Bolstridge, M., Singh, K. D., et al. (2013). Broadband cortical
611 desynchronization underlies the human psychedelic state. *Journal of Neuroscience*, *33*(38), 15171–
612 15183.
- 613 Nichols, D. E. (2016). Psychedelics. *Pharmacological reviews*, *68*(2), 264–355.
- 614 Oliver, I., Hlinka, J., Kopal, J., & Davidsen, J. (2019). Quantifying the variability in resting-state networks.
615 *Entropy*, *21*(9), 882.
- 616 Onoda, K., Ishihara, M., & Yamaguchi, S. (2012). Decreased functional connectivity by aging is associated
617 with cognitive decline. *Journal of cognitive neuroscience*, *24*(11), 2186–2198.
- 618 Oostenveld, R., Fries, P., Maris, E., & Schoffelen, J.-M. (2011). Fieldtrip: Open source software for
619 advanced analysis of meg, eeg, and invasive electrophysiological data. *Computational intelligence*
620 *and neuroscience*, *2011*(1), 156869.

- 621 Orłowski, P., & Bola, M. (2023). Sensory modality defines the relation between eeg lempel–ziv diversity
622 and meaningfulness of a stimulus. *Scientific Reports*, *13*(1), 3453.
- 623 Ort, A., Smallridge, J. W., Sarasso, S., Casarotto, S., von Rotz, R., Casanova, A., Seifritz, E., Preller,
624 K. H., Tononi, G., & Vollenweider, F. X. (2023). Tms-eeg and resting-state eeg applied to altered
625 states of consciousness: Oscillations, complexity, and phenomenology. *Iscience*, *26*(5).
- 626 Overall, J. E., & Gorham, D. R. (1962). The brief psychiatric rating scale. *Psychological reports*, *10*(3),
627 799–812.
- 628 Pallavicini, C., Vilas, M. G., Villarreal, M., Zamberlan, F., Muthukumaraswamy, S., Nutt, D., Carhart-
629 Harris, R., & Tagliazucchi, E. (2019). Spectral signatures of serotonergic psychedelics and gluta-
630 matergic dissociatives. *Neuroimage*, *200*, 281–291.
- 631 Preller, K. H., Razi, A., Zeidman, P., Stämpfli, P., Friston, K. J., & Vollenweider, F. X. (2019). Effective
632 connectivity changes in lsd-induced altered states of consciousness in humans. *Proceedings of the
633 National Academy of Sciences*, *116*(7), 2743–2748.
- 634 Preller, K. H., & Vollenweider, F. X. (2018). Phenomenology, structure, and dynamic of psychedelic
635 states. *Behavioral neurobiology of psychedelic drugs*, 221–256.
- 636 Raval, N. R., Johansen, A., Donovan, L. L., Ros, N. F., Ozenne, B., Hansen, H. D., & Knudsen, G. M.
637 (2021). A single dose of psilocybin increases synaptic density and decreases 5-HT_{2A} receptor density
638 in the pig brain. *International journal of molecular sciences*, *22*(2), 835.
- 639 Rickli, A., Moning, O. D., Hoener, M. C., & Liechti, M. E. (2016). Receptor interaction profiles of novel
640 psychoactive tryptamines compared with classic hallucinogens. *European Neuropsychopharmacol-
641 ogy*, *26*(8), 1327–1337.
- 642 Rolls, E. T., Huang, C.-C., Lin, C.-P., Feng, J., & Joliot, M. (2020). Automated anatomical labelling
643 atlas 3. *Neuroimage*, *206*, 116189.
- 644 Roseman, L., Nutt, D. J., & Carhart-Harris, R. L. (2018). Quality of acute psychedelic experience predicts
645 therapeutic efficacy of psilocybin for treatment-resistant depression. *Frontiers in pharmacology*,
646 *8*, 309463.
- 647 Rosenblat, J. D., Leon-Carlyle, M., Ali, S., Husain, M. I., & McIntyre, R. S. (2023). Antidepressant effects
648 of psilocybin in the absence of psychedelic effects. *American Journal of Psychiatry*, *180*(5), 395–
649 396.
- 650 Schartner, M., Seth, A., Noirhomme, Q., Boly, M., Bruno, M.-A., Laureys, S., & Barrett, A. (2015). Com-
651 plexity of multi-dimensional spontaneous eeg decreases during propofol induced general anaes-
652 thesia. *PloS one*, *10*(8), e0133532.
- 653 Schartner, M. M., Carhart-Harris, R. L., Barrett, A. B., Seth, A. K., & Muthukumaraswamy, S. D.
654 (2017). Increased spontaneous meg signal diversity for psychoactive doses of ketamine, lsd and
655 psilocybin. *Scientific reports*, *7*(1), 46421.

REFERENCES

- 656 Sheehan, D. V., Lecrubier, Y., Sheehan, K. H., Amorim, P., Janavs, J., Weiller, E., Hergueta, T., Baker,
657 R., Dunbar, G. C., et al. (1998). The mini-international neuropsychiatric interview (mini): The
658 development and validation of a structured diagnostic psychiatric interview for dsm-iv and icd-10.
659 *Journal of clinical psychiatry*, 59(20), 22–33.
- 660 Siegel, J. S., Subramanian, S., Perry, D., Kay, B., Gordon, E., Laumann, T., Reneau, R., Gratton, C.,
661 Horan, C., Metcalf, N., et al. (2023). Psilocybin desynchronizes brain networks. *medRxiv*.
- 662 Studerus, E., Gamma, A., Kometer, M., & Vollenweider, F. X. (2012). Prediction of psilocybin response
663 in healthy volunteers. *PloS one*, 7(2), e30800.
- 664 Studerus, E., Kometer, M., Hasler, F., & Vollenweider, F. X. (2011). Acute, subacute and long-term
665 subjective effects of psilocybin in healthy humans: A pooled analysis of experimental studies.
666 *Journal of psychopharmacology*, 25(11), 1434–1452.
- 667 Timmermann, C., Roseman, L., Haridas, S., Rosas, F. E., Luan, L., Kettner, H., Martell, J., Erritzoe, D.,
668 Tagliazucchi, E., Pallavicini, C., et al. (2023). Human brain effects of dmt assessed via eeg-fmri.
669 *Proceedings of the National Academy of Sciences*, 120(13), e2218949120.
- 670 Timmermann, C., Roseman, L., Schartner, M., Milliere, R., Williams, L. T., Erritzoe, D., Muthuku-
671 maraswamy, S., Ashton, M., Bendrioua, A., Kaur, O., et al. (2019). Neural correlates of the dmt
672 experience assessed with multivariate eeg. *Scientific reports*, 9(1), 16324.
- 673 Tyls, F., Palenicek, T., Viktorinova, M., Prokopcova, D., Korcak, J., Androvicova, R., Brunovsky, M., &
674 Horacek, J. (2016). Psilocybin clinical trial: Acute effects and its relationship to the brain activity
675 as measured by quantitative eeg. *Int J Neuropsychopharmacol*, 19, 233.
- 676 Tzourio-Mazoyer, N., Landeau, B., Papathanassiou, D., Crivello, F., Etard, O., Delcroix, N., Mazoyer, B.,
677 & Joliot, M. (2002). Automated anatomical labeling of activations in spm using a macroscopic
678 anatomical parcellation of the mni mri single-subject brain. *Neuroimage*, 15(1), 273–289.
- 679 Viktorin, V., Griškova-Bulanova, I., Voicikas, A., Dojčánová, D., Zach, P., Bravermanová, A., Andrashko,
680 V., Tylš, F., Korčák, J., Viktorinová, M., et al. (2022). Psilocybin—mediated attenuation of
681 gamma band auditory steady-state responses (assr) is driven by the intensity of cognitive and
682 emotional domains of psychedelic experience. *Journal of personalized medicine*, 12(6), 1004.
- 683 Wallach, J., Cao, A. B., Calkins, M. M., Heim, A. J., Lanham, J. K., Bonniwell, E. M., Hennessey, J. J.,
684 Bock, H. A., Anderson, E. I., Sherwood, A. M., et al. (2023). Identification of 5-ht2a receptor
685 signaling pathways responsible for psychedelic potential. *bioRxiv*.
- 686 Wießner, I., Falchi, M., Palhano-Fontes, F., Oliveira Maia, L., Feilding, A., Ribeiro, S., Bezerra Mota,
687 N., Araujo, D. B., & Tófoli, L. F. (2021). Low-dose lsd and the stream of thought: Increased
688 discontinuity of mind, deep thoughts and abstract flow. *Psychopharmacology*, 1–13.
- 689 Yu, C.-L., Liang, C.-S., Yang, F.-C., Tu, Y.-K., Hsu, C.-W., Carvalho, A. F., Stubbs, B., Thompson, T.,
690 Tsai, C.-K., Yeh, T.-C., et al. (2022). Trajectory of antidepressant effects after single-or two-

- 691 dose administration of psilocybin: A systematic review and multivariate meta-analysis. *Journal of*
692 *clinical medicine*, 11(4), 938.