

1 **Evaluation of the diagnostic accuracy and analytical sensitivity of the novel Xpert® Mpox**  
2 **(Cepheid®) and STANDARD™ M10 MPX/OPX (SD Biosensor) molecular point-of-care assays**  
3 **for the detection of Mpox virus in skin lesion swabs and upper-respiratory swab samples.**

4 Alessandra Romero-Ramirez<sup>a</sup>, Anushri Somasundaran<sup>a</sup>, Konstantina Kontogianni<sup>a</sup>, Jacob Parkes<sup>a</sup>,  
5 Yusra Hussain<sup>a</sup>, Susan Gould<sup>b,c</sup>, Christopher T Williams<sup>a</sup>, Dominic Wooding<sup>a</sup>, Richard Body<sup>d</sup>, Hayley  
6 E Hardwick<sup>e</sup>, J Kenneth Baillie<sup>f</sup>, Jake Dunning<sup>g,h</sup>, Malcom G Semple<sup>e</sup>, CONDOR steering group,  
7 ISARIC CCP UK investigators, Tom E Fletcher<sup>b,c</sup>, Thomas Edwards<sup>a</sup>, Devy Emperador<sup>i</sup>, and Ana I  
8 Cubas-Atienzar<sup>a</sup>.

9

10 <sup>a</sup>Centre for Drugs and Diagnostics, Liverpool School of Tropical Medicine, UK

11 <sup>b</sup>Department of Clinical Sciences, Liverpool School of Tropical Medicine, UK

12 <sup>c</sup>Royal Liverpool University Hospital NHS Foundation Trust, UK

13 <sup>d</sup>Manchester University NHS Foundation Trust, UK

14 <sup>e</sup>NIHR Health Protection Research Unit in Emerging and Zoonotic Infections, Department of Clinical  
15 Infection, Microbiology and Immunology, Institute of Infection, Veterinary and Ecological Sciences,  
16 University of Liverpool, Liverpool, UK

17 <sup>f</sup>Baillie Gifford Pandemic Science Hub, Institute for Regeneration and Repair, University of  
18 Edinburgh

19 <sup>g</sup>Pandemic Sciences Institute, University of Oxford, UK

20 <sup>h</sup>Infectious Diseases Department, Royal Free London NHS Foundation Trust, London, UK

21 <sup>i</sup>Foundation of Innovative Diagnostics, Geneva, Switzerland

22

23 Address correspondence to Dr Ana Cubas-Atienzar, email: [Ana.CubasAtienzar@liverpool.ac.uk](mailto:Ana.CubasAtienzar@liverpool.ac.uk)

24

25 **Highlights**

26

- 27 • The Xpert® Mpox detected Monkeypox virus (MPXV) DNA in more samples than the M10

28

MPX/OPX, CDC qPCR and Sansure qPCR, suggesting higher sensitivity at lower viral loads.  
NOTE: This preprint reports new research that has not been certified by peer review and should not be used to guide clinical practice.

- 29       • Xpert® Mpox fulfilled the performance requirements recommended in the World Health  
30       Organisation (WHO) target product profile (TPP) using upper-respiratory swabs (URS) and  
31       skin lesion swabs (SS) but M10 MPX/OPX performance was only met when using SS.
- 32       • MPXV DNA was reliably detectable in SS up to 5 days after onset of symptoms.  
33       with all PCR tests
- 34       • The use of URS for mpox diagnosis is not recommended for use more than 3 days after onset  
35       of symptoms.

## 36 **Abstract**

### 37 Objectives

38 Evaluation of diagnostic accuracy of two point-of-care (POC) molecular diagnostic tests for the  
39 detection of monkeypox virus (MPXV): Xpert® Mpox (Cepheid, Inc., USA) and STANDARD™  
40 M10 MPX/OPX (SD Biosensor, Inc., Korea).

### 41 Methods

42 Diagnostic accuracy of both platforms was evaluated using 53 upper-respiratory swabs (URS) and 32  
43 skin lesions swabs (SS) collected from mpox and COVID-19 patients in the UK against the Sansure  
44 (Sansure Biotech Inc.) and the CDC reference qPCR tests. The analytical sensitivity of both platforms  
45 was assessed using a viral isolate from the lineage II, B.1.

### 46 Results

47 The limit of detection was  $1 \times 10^1$  pfu/ml for both tests. The overall sensitivity and specificity of the  
48 Xpert® Mpox was 97.67% [95% CI 87.71–99.94%] and 88.57% [95% CI 73.26–96.80%] and 97.44%  
49 [95% CI 86.52–99.94%] and 74.42% [95% CI 58.83–86.48%] comparing the Sansure and CDC qPCR,  
50 respectively and for the M10 MPX/OPX was 87.80% [95% CI 73.80–95.92%] and 76.60% [95% CI  
51 61.97–87.70%] and 94.29% [95% CI 80.84–99.30%] and 86.67% [95% CI 73.21–94.95%] with the  
52 Sansure and CDC qPCR.

### 53 Conclusion

54 The Xpert® Mpox had good diagnostic accuracy for both sample types while the M10 MPX/OPX  
55 clinical accuracy was deficient with URS. Our data supports the use of URS during the first 3 days of  
56 symptoms onset for mpox diagnosis.

57 **Keywords:** mpox, MPXV, point-of-care (POC), diagnostics, PCR, Monkeypox, Orthopoxvirus,

58

## 59 **Introduction**

60 The highly infectious monkeypox virus (MPXV) is a double-stranded DNA virus belonging to the  
61 *Orthopoxviridae* family, which includes vaccinia, cowpox, and variola viruses<sup>1</sup>. Orthopoxviruses are  
62 large viruses with a size range from 140-450 nanometers and a genome that contains over 200 genes<sup>2</sup>.  
63 MPXV was identified in 1958 in captive cynomolgus macaques (*Macaca fascicularis*) that were  
64 transported from Singapore to Denmark<sup>3</sup> and in 1970, the first known case of MPXV infection in a  
65 human from the Democratic Republic of the Congo (DRC) was reported<sup>4</sup>. The WHO recommended  
66 “Mpox” as the preferred term for human disease caused by MPXV in November 2022<sup>5</sup>.

67 In May 2022, an mpox outbreak spread to over 110 countries with over 86,000 confirmed cases<sup>6</sup>. The  
68 number of infections during the 20<sup>th</sup> century has already been surpassed by cases after the 2022  
69 outbreak<sup>7</sup>. At that time, in the United Kingdom (UK), all clades of mpox were classified as a High  
70 Consequence Infectious Disease (HCID) and patients were looked after in specially designed HCID  
71 treatment facilities run by a nationwide network<sup>8</sup>. From August 2018 to September 2021, 7 mpox cases  
72 were identified in the UK and received treatment in HCID centres (4 imported cases and 3 secondary  
73 cases)<sup>8</sup>. The discovery of the first mpox case of the global outbreak was on May 7, 2022, a person who  
74 travelled from Nigeria<sup>9</sup> and as of June 8, 2022, there were 336 laboratory-confirmed cases in the UK.  
75 Most of these cases were identified in men [99%], who were primarily residents of London [81%]<sup>10</sup>.  
76 For the first time, community transmission was reported in the UK, which was mainly through intimate  
77 person-to-person contact, often involving sexual activity and mostly unrelated to travel from endemic  
78 countries<sup>11</sup>.

79 Clinical manifestations of mpox infection include a vesiculopustular rash resembling that of smallpox,  
80 fevers, lymphadenopathy and a rash may affect palms and soles. Skin lesions may commence at the site

81 of initially inoculation or exposure e.g. the anogenital region after transmission during sexual contact  
82 or at the site of a needlestick injury or bite<sup>12</sup>. According to the Centres for Disease Control and  
83 Prevention (CDC), the incubation period is up to 21 days following/after viral exposure and the rash  
84 appears 1-4 days after initial flu-like prodrome<sup>13</sup>. To confirm a clinical diagnosis, the World Health  
85 Organisation (WHO) advises testing for mpox as soon as possible in people who fit the suspected case  
86 definition<sup>14</sup>. Laboratory-based nucleic acid amplification tests (NAAT) are the primary method used  
87 for mpox diagnosis<sup>15</sup>. Laboratory-based PCR testing requires specialist equipment, up front DNA  
88 extraction, and skilled personnel to perform such tests. Many cases in low- and middle-income countries  
89 (LMIC) remain unreported due to a lack of decentralised diagnostic resources in the area, and issues  
90 with the current healthcare system and civil upheaval.

91 The increasing global cases of mpox following the 2022 outbreak brought to light the difficulties in  
92 meeting the increased and erratic demand of decentralised diagnostics for different virus prone to  
93 outbreaks. Another public health emergency of international concern (PHEIC) was declared by WHO  
94 on 14<sup>th</sup> August 2024 given the significant increase in mpox cases which has the potential to spread  
95 beyond Africa<sup>16</sup>. This highlighted the urgent need for the rational development of rapid diagnostic  
96 methods for emerging pathogens such as for MPXV as a priority. As a result, several NAAT were  
97 developed to identify MPXV at the point-of-care (POC) since the 2022 outbreak<sup>17,18</sup>. POC NAAT offer  
98 higher sensitivity and specificity compared to antigen-based POC tests and are equal to laboratory-  
99 quality testing without the requirement for sophisticated laboratory facilities<sup>19</sup>, requiring less  
100 operational training and fewer sample preparation steps compared to lab-based PCR.

101 Prompt isolation and optimal clinical care are all dependent on an accurate diagnosis of MPXV  
102 infection. In this study, we evaluated the diagnostic accuracy of two new POC NAAT, Xpert® Mpox  
103 (Cepheid, Inc., Sunnyvale, CA, USA) and STANDARD™ M10 MPX/OPX (SD Biosensor, Inc.,  
104 Suwon, Korea), for the detection of MPXV on skin lesion and upper-respiratory swabs.

## 105 **Methodology**

### 106 **Study design**

107 Skin lesion swabs (SS) (n=30) and upper-respiratory swab (URS) samples (n=23, [nasopharyngeal=1,  
108 oropharyngeal=22]) in universal transport media (UTM, RT-UTM Copan, Italy) from a cohort of 16

109 mpox patients enrolled at the Royal Liverpool University Hospital, Sheffield Teaching Hospital NHS  
110 Foundation Trust, and Royal London Hospital were used for this study. Patients were recruited during  
111 the last two outbreaks of mpox in the UK, 2018 and 2022. Patients were consented under the WHO  
112 ISARIC4 Comprehensive Clinical Characterisation Collaboration Protocol for severe emerging  
113 infections [ISRCTN66726260]<sup>20</sup>, ethical approval was obtained from the National Research Ethics  
114 Service and the Health Research Authority (IRAS ID:126600, REC 13/SC/0149). All mpox patients  
115 were diagnosed by sending samples to the UK Health Security Agency (UKHSA) for testing using  
116 qPCR. In addition to the samples from mpox positive patients, to fulfil with the minimum number of  
117 negative swab specimens for Mpox diagnostic evaluations recommended by the by the FDA<sup>15</sup>, a set of  
118 32 leftover nasopharyngeal samples in UTM (RT-UTM Copan, Italy) from prior COVID-19 studies<sup>19-</sup>  
119 <sup>22</sup> were used as mpox negative controls. These were collected under the Facilitating AcceLerated  
120 Clinical validation Of Novel diagnostics for COVID-19<sup>19,23</sup> and ethical approval was obtained from the  
121 National Research Ethics Service and the Health Research Authority (IRAS ID:28422, REC:  
122 20/WA/0169). All samples were aliquots stored at -80°C and thawed for the first time for this study.  
123 Samples were processed and tested at the Biosafety Level 3 (BSL3) Laboratories of the Liverpool  
124 School of Tropical Medicine (LSTM) as previously described<sup>19</sup>.

#### 125 **MPXV PCR reference assays**

126 The DNA was extracted from 200µL of UTM using the QiAamp96 Virus Qiacube HT kit (Qiagen,  
127 Germany). Two reference PCR tests were used, the commercially available CE-IVD Sansure qPCR kit  
128 (Monkeypox virus Nucleic Acid Diagnostic Kit, Sansure Biotech Inc.), and the CDC Monkeypox virus  
129 Generic Real-Time PCR Test<sup>21</sup>. Both lab-based PCR tests were used as reference tests as the CDC  
130 qPCR is widely used, the Sansure qPCR kit is CE-IVD marked and both have successfully demonstrated  
131 to detect MPXV clades I, IIa and IIb<sup>22,23</sup>. The PCRs were performed on the QuantStudio 5  
132 (ThermoFisher, USA) following the manufacturer instructions (Sansure Biotech Inc.) and the CDC  
133 guidelines<sup>21</sup>. The CDC qPCR was performed using the QuantiFast Pathogen PCR kit (Qiagen,  
134 Germany).

#### 135 **MPXV POC index NAAT**

136 Two rapid molecular POC platforms which perform automated sample processing and qPCR to detect  
137 viral DNA were evaluated in the study: Xpert® MpoX and the STANDARD™ M10 MPX/OPX (M10  
138 MPX/OPX hereinafter). The platforms were selected following an expression of interest launched by  
139 FIND ([www.finddx.org](http://www.finddx.org)) and a scoring process based on defined criteria. The evaluation of the  
140 platforms at LSTM was done in BSL3 laboratories.

141 The Xpert® MpoX assay is authorized for use under FDA Emergency Use Authorization (EUA) and  
142 provides semiquantitative detection and differentiation between MPXV clade II (two undisclosed  
143 targets) and non-variola *Orthopoxvirus* (target OPXV-E9L NVAR gene) DNA, respectively<sup>24</sup>. A  
144 Sample Processing Control (SPC), a Sample Adequacy Control (SAC), and a Probe Check Control  
145 (PCC, not included in the algorithm, used as quality control) are also included in the cartridge utilised  
146 by the GeneXpert® instrument<sup>25</sup>. The tests were performed according to the manufacturer's  
147 instructions. Briefly, 300µL sample were transferred to the sample chamber of the Xpert® MpoX test  
148 cartridge and loaded onto the GeneXpert® Instrument System platform. The results were automatically  
149 interpreted by the GeneXpert® System based on the Ct values results. A sample was called positive  
150 when it was positive for the 2 MPXV targets (OPXV, SAC, SPC could be either positive or negative);  
151 negative result when it was negative for MPXV and OPXV but positive for SAC and SPC; a positive  
152 result for non-variola OPXV when it was positive for the OPXV target, negative for MPXV (SAC and  
153 SPC can be either positive or negative); and invalid when it was negative for both viral targets and  
154 controls or when only one control was positive but both viral targets negative.

155 The M10 MPX/OPX assay is for Research Use Only and provides semiquantitative detection and  
156 differentiation between MPXV and OPXV DNA using E9L and G2R gene targets, respectively. The  
157 LOD as reported by the manufacturer is 100 copies/ml. The tests were performed according to  
158 manufacturer's instructions. Briefly, 300µL of sample were transferred to the sample chamber of the  
159 cartridge and loaded onto the STANDARD™ M10 platform. After 1 hour, the results with the  
160 corresponding Ct values were displayed on the STANDARD™ M10 screen and the results were  
161 automatically interpreted. A sample was considered positive for MPXV when MPXV and OPVX  
162 targets were positive (IC can be either positive or negative), positive result for OPXV when MPXV was

163 negative and OPXV was positive (IC can be either positive or negative), negative when only the IC was  
164 positive and invalid when all targets were negative or when only the MPXV target was positive.

### 165 **Analytical limit of detection of qPCR reference assays and POC index NAATs**

166 A MPXV strain (Slovenia\_MPXV-1\_2022, isolate 2225/22 Slovenia ex Gran Canaria) from the lineage  
167 II, B.1 (European Virus Archive Global EVAg, Marseille, France) was cultured in Vero C1008  
168 (ECACC 85020206) (Vero E6 cells) obtained from the European collection of authenticated cell  
169 cultures (ECACC) in Dulbecco's Modified Eagle Medium (DMEM, Gibco, USA) plus 10% foetal  
170 bovine serum (FBS, Gibco, USA) and 1% Penicillin/Streptomycin solution (Gibco, USA) to generate  
171 the MPXV stock. Frozen aliquots of the fourth passage of the virus were quantified via plaque assay.  
172 The MPXV stock was used to investigate the limit of detection (LOD) of both Xpert® Mpx and M10  
173 MPX/OPX assays. A fresh aliquot was serially diluted from  $1.0 \times 10^4$  plaque forming units (pfu)/ml to  
174  $1.0 \times 10^2$  pfu/ml using UTM media. Each dilution was tested in triplicate and UTM was used as negative  
175 control following previous work<sup>26-29</sup>. The LOD was defined as the lowest dilution where all the three  
176 replicates were positive. DNA from the serial dilutions was extracted using the QiAamp96 Virus  
177 Qiacube HT kit and viral copy numbers per mL (copies/mL) were calculated using a standard curve of  
178 quantified synthetic DNA (G2R gene) in the QuantStudio 5 tested using the CDC PCR. Synthetic DNA  
179 (Eurofins Genomics, UK) was re-hydrated in Tris-EDTA buffer and concentration quantified using  
180 Qubit™ SSDNA Quantification Assay kit (ThermoFisher, USA). Standard curve was prepared using  
181 an eight 10-fold serial dilution series with 5 replicates per dilution.

### 182 **Statistical analysis**

183 The sensitivity and specificity of the index tests were calculated with 95% confidence interval in  
184 comparison to both reference PCR assays, including stratification by cycle threshold (Ct) value. Prior  
185 the analysis, a normality test was performed using the Shapiro Wilk test ( $p < 0.05$ ). Differences between  
186 the Ct values (expressed as mean  $\pm$  standard deviation [SD]) in sample groups were assessed using the  
187 paired Student's t-test. Differences in the frequency of MPXV detection by sampling date were analysed  
188 using Chi-squared test and Fisher's exact test. Statistical significance was set for a  $p < 0.05$ . The  
189 statistical analysis was performed using GraphPad Prism version 8.0.0, GraphPad Software (Boston,  
190 USA).

191 **Results**

192 **Clinical evaluation**

193 The demographic and clinical characteristics of the participants are shown in Table 1. The 16 positive  
194 patients with mpox were assessed at the three hospitals during the study period. All individuals were  
195 men (100%) with a mean age of 35.1 years (range 24-58 years). The median days from onset of  
196 symptoms was 8 with the most common symptoms being skin lesions (100%), skin rashes (87.5%) and  
197 fever (68,75%). The results shown in table 1 included only the mpox positive patients (n=16). The  
198 negative cohort (COVID-19 patients) was not included in Table 1 as these were from a population not  
199 suspected from MPXV infection.

200 **Table 1.** Clinical characteristics of mpox patients from UK used for the evaluation of both molecular  
201 platforms.

Characteristic	
Age [mean (min-max), N]	35.1 (24-58), 16
Gender [%M, (n/N)]	100%; (16/16)
Days from symptom onset [median (Q1-Q3); N]	8 (4.25 - 12.75); 16
Days < 0–3 (n, %)	1, 6.25%
Days 4–7 (n, %)	6, 37.5%
Days 8+ (n, %)	9, 56,25%
<b>Symptoms [% (n/N)]</b>	
Skin lesions	100% (16/16)
Skin rashes	87.5% (14/16)
Fever	68.75% (11/16)
Flu like symptoms	25% (4/16)
Headache	25% (4/16)
Sore throat	25% (4/16)
Cough	6.25% (1/16)
Diarrhoea	6.25% (1/16)
Chest pain	0% (0/16)
Abdominal pain	0% (0/16)
Nausea	0% (0/16)
Vomiting	0% (0/16)
Painful Urination	0% (0/16)

202  
203 Fourteen of the 23 URS and 25 of 30 SS collected from mpox positive patients were positive by the  
204 CDC qPCR. When using the Sansure qPCR, 1 further URS (4.3%) and 4 SS (13%) were positive. The  
205 mean Ct value when using the Sansure and CDC qPCR were 30.09 ( $\pm$  5.70) and 27.54 ( $\pm$ 5.87),  
206 respectively. The mean difference in Ct values between both tests had no significant difference for any



207 of the sample types (p-value= 0.34). As expected, all 32 UTM samples collected from the COVID-19  
208 cohort were negative for MPXV using both reference qPCR tests.

209 The overall clinical sensitivity and specificity for the Xpert® Mpox assay using both sample types were  
210 97.67% [95% CI 87.71 – 99.94%] and 88.57% [95% CI 73.26 – 96.80%] with the Sansure qPCR and  
211 97.44% [95% CI 86.52 – 99.94%] and 74.42% [95% CI 58.83 – 86.48%] comparing to the CDC qPCR.  
212 The values by sample type are found in Tables 2 and 3. The overall percentage of agreement was 90.3%  
213 [95% CI 81.7– 95.7%] and 91.5% [95% CI 83.2– 96.5%], when using the Sansure qPCR and CDC  
214 qPCR. Three URS were invalid with Xpert® Mpox assay (5.45%, 3/55) and all of SS were valid.  
215 (Tables 2-3). The specificity was 83.78% [95% 78.20 - 100%] and 81.58% [95% CI 65.67 – 92.26%]  
216 for URS using Sansure and CDC PCR. Specificity could not be accurately calculated for SS due to the  
217 lack of negative specimens using the reference tests.

218 The overall sensitivity and specificity for the M10 MPX/OPX using both sample groups were 87.80%  
219 [95% CI 73.80 – 95.92%] and 76.60% [95% CI 61.97 – 87.70%] and 94.29% [95% CI 80.84 – 99.30%]  
220 and 86.67% [95% CI 73.21 – 94.95%] compared with the Sansure and CDC qPCR, respectively. The  
221 values by sample type are found in Tables 2 and 3. The overall percentage of agreement was 91.3%  
222 [95% CI 82.8 – 96.4%] and 95.0% [95% CI 87.7 – 98.6%] with the Sansure qPCR and CDC qPCR,  
223 respectively. The specificity was 92.11% (78.62% - 98.34%) and 94.59% [95% CI 81.81 - 99.34%]  
224 using URS compared to Sansure and CDC PCR, respectively. All SS were positive with both reference  
225 assays except for 1 sample using the CDC PCR, therefore specificity could not be accurately calculated  
226 for this sample type. Three URS (5.45%, 3/55) and 2 SS (6.66%, 2/30) were invalid using the M10  
227 MPX/OPX.

228

229

230

231

232

233

234 **Table 2.** Results and clinical sensitivity and specificity of the Xpert® Mpxo assay and M10 MPX/OPX  
 235 using upper-respiratory samples from mpox (n=23) and COVID-19 patients (n=32).

	Results	Sansure qPCR			CDC qPCR		
		Positive	Negative	Total	Positive	Negative	Total
<b>Xpert® Mpxo</b>	Positive	15	6	21	14	7	21
	Negative	0	31	31	0	31	31
	Total*	15	37	52	14	38	52
	Clinical sensitivity (95% CI)	100% (78.20% - 100%)			100% (76.24% - 100%)		
	Ct <25 [95% CI, N]	100% (15.81% - 100%), 2			100% (39.76% - 100%), 4		
	Ct <35 [95% CI, N]	100% (69.15% - 100%), 10			100% (69.15% - 100%), 10		
	Ct <40 [95% CI, N]	100% (78.20% - 100%), 15			100% (76.84% - 100%), 14		
	Clinical specificity (95% CI)	83.78% (67.99% - 93.81%)			81.58% (65.67% - 92.26%)		
<b>M10 MPX/OPX</b>	Positive	10	2	12	10	2	12
	Negative	4	36	40	2	38	40
	Total*	14	38	52	12	40	52
	Clinical sensitivity (95% CI)	71.43% (41.90% - 91.61%)			71.43% (41.90% - 91.61%)		
	Ct <25 [95% CI, N]	100% (15.81% - 100%), 2			100% (15.81% - 100%), 2		
	Ct <35 [95% CI, N]	100% (66.37% - 100%), 9			100% (66.37% - 100%), 9		
	Ct <40 [95% CI, N]	71.43% (41.90% - 91.61%), 10			100% (69.15% - 100%), 10		
	Clinical specificity (95% CI)	92.11% (78.62% - 98.34%)			94.59% (81.81% - 99.34%)		

236 \*Three samples were invalid with Xpert® Mpxo and M10 MPX/OPX.

237

238

239

240 **Table 3.** Results and clinical sensitivity and specificity of the Xpert® Mpxo assay and M10 MPX/OPX  
 241 assays using skin lesion swabs (SS) (n=30).

	Results	Sansure qPCR			CDC qPCR		
		Positive	Negative	Total	Positive	Negative	Total
<b>Xpert® Mpxo</b>	Positive	27	2	29	24	4	28
	Negative	1	0	1	1	1	2
	Total	28	2	30	25	5	30
	Clinical sensitivity (95% CI)	96.43% (81.65% - 99.91%)			96% (79.65% - 99.90%)		
	Ct <25 [95% CI, N]	100% (63.06% - 100%), 8			100% (73.54% - 100%), 12		
	Ct <33 [95% CI, N]	100% (63.03% - 100%), 17			100% (83.16% - 100%), 20		
	Ct <40 [95% CI, N]	96.43% (81.65% - 99.91%), 30			96% (79.65% - 99.90%), 30		
	Clinical specificity (95% CI)*	NA			NA		
<b>M10 MPX/OPX</b>	Positive	26	1	27	23	4	27
	Negative	1	0	1	0	1	1
	Total**	27	1	28	23	5	28
	Clinical sensitivity (95% CI)	96.30% (81.03% - 99.91%)			100% (85.18% - 100%)		
	Ct <25 [95% CI, N]	100% (69.15% - 100%), 10			100% (73.54% - 100%), 12		
	Ct <33 [95% CI, N]	100% (79.41% - 100%), 16			100% (82.35% - 100%), 19		
	Ct <40 [95% CI, N]	96.30% (81.03% - 99.91%), 28			100% (85.18% - 100%), 23		
	Clinical specificity (95% CI)*	NA			NA		

242 \*Only one SS was negative using the CDC qPCR so specificity was not calculated for this sample type. \*\*Two  
 243 SS were invalid with M10 MPX/OPX assay.

244

245 The Ct values of paired samples were also compared and evaluated for each qPCR reference assay and  
246 POC index NAAT (Figures 1A-1D). Nine, 10, 10 and 7 URS and SS paired samples were positive for  
247 Sansure qPCR, CDC, Xpert Mpox and M10 MPX/OPX. No significant differences in Ct values were  
248 found between URS and SS sample groups when using the Sansure qPCR, CDC and M10 MPX/OPX  
249 (p-value=0.54, 0.73 and 0.37, respectively). The analysis of the paired samples using the Xpert<sup>®</sup> Mpox  
250 assay showed higher Ct values in the URS group compared to the SS group (p-value=0.03) with mean  
251 Ct values of 30.58 ( $\pm$  5.48) and 24.75 ( $\pm$ 5.98) for URS and SS.

252

253

254

255

256

257

258

259

260

261

262

263

264

265

266

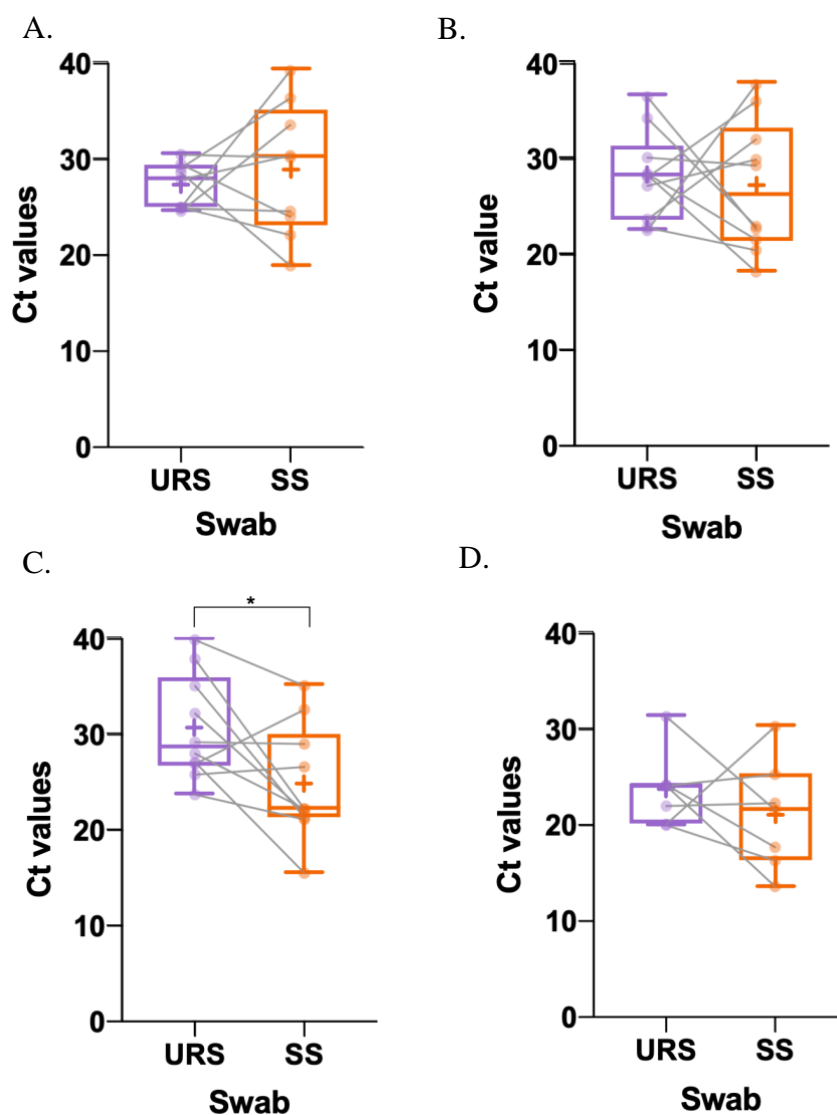
267

268

269

270

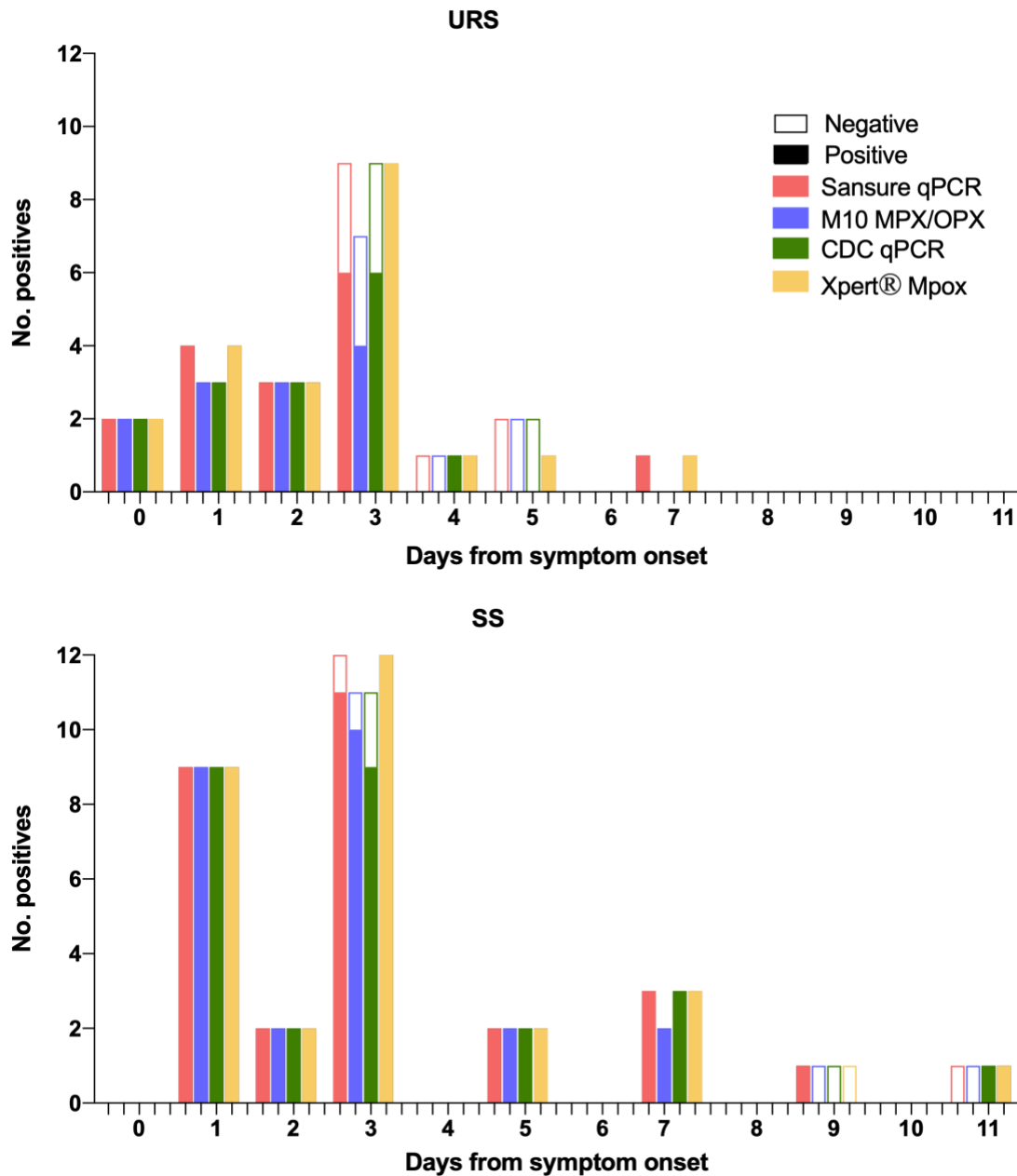
271



272 **Figure 1.** Boxplot of the Ct values from paired URS and SS tested by A. Sansure qPCR (n=9), B. CDC  
273 qPCR (n=10), C. Xpert<sup>®</sup> Mpox (n=10) and D. M10 MPX/OPX (n=7). The whiskers show the maximum  
274 and minimum values and the vertical line the median. There was a significant difference (p-value <0.05)  
275 between paired URS and SS when evaluated with the Xpert<sup>®</sup> Mpox assays with higher Ct values in the  
276 URS group.

277 Overall, the higher positivity rates for detecting MPXV DNA in clinical samples was the Xpert<sup>®</sup> Mpox  
278 (n=50/53), followed by Sansure qPCR (n=44/53), CDC qPCR (n=41/53) and M10 MPX/OPX (n=37/53)  
279 and this difference was statistically significant for URS (p= 0.015) but not for SS (p= 0.692).

280 The number of MPXV positive samples depending on the sampling collection day from onset of symptoms  
281 was evaluated for all samples and all PCR tests (Figure 2). URS collected from MPXV patients more than 3  
282 days after the symptom onset were less likely to have detectable levels of virus using all PCR assays used in  
283 the study (Sansure p = 0.017, CDC p = 0.033, Xpert<sup>®</sup> Mpox p = 0.04 and M10 MPX/OPX p = 0.014).  
284 URS collected from MPXV patients more than 2 days after the symptom onset were less likely to present  
285 the virus to detectable levels by Sansure (p = 0.014) and M10 MPX/OPX (p = 0.007). This was not  
286 significant for the SS for any collection date (all p values > 0.05) except for M10 MPX/OPX among SS  
287 collected more than 5 days after onset of symptoms (p = 0.022).



288

289 **Figure 2:** Number of positive samples according to sampling date from symptoms onset for SS and URS.

290

291 The Ct values as a proxy for viral loads were analysed by sampling day from onset of symptoms and higher

292 Ct values were observed as the sampling day increased in URS for Sansure qPCR ( $p = 0.0093$ ,  $r=0.58$  95%

293 0.12-0.84) CDC qPCR ( $p = 0.0444$ ,  $r=0.45$  95% -0.08-0.8) and Xpert® Mpox ( $p = 0.0024$ ,  $r=0.59$  95% 0.21-

294 0.81) but not for M10 ( $p = 0.1752$ ,  $r=0.30$  95% -0.33-0.74). No correlation was observed between viral loads

295 and sampling date in SS (Figure 3).

296

297

298

299

300

301

302

303

304

305

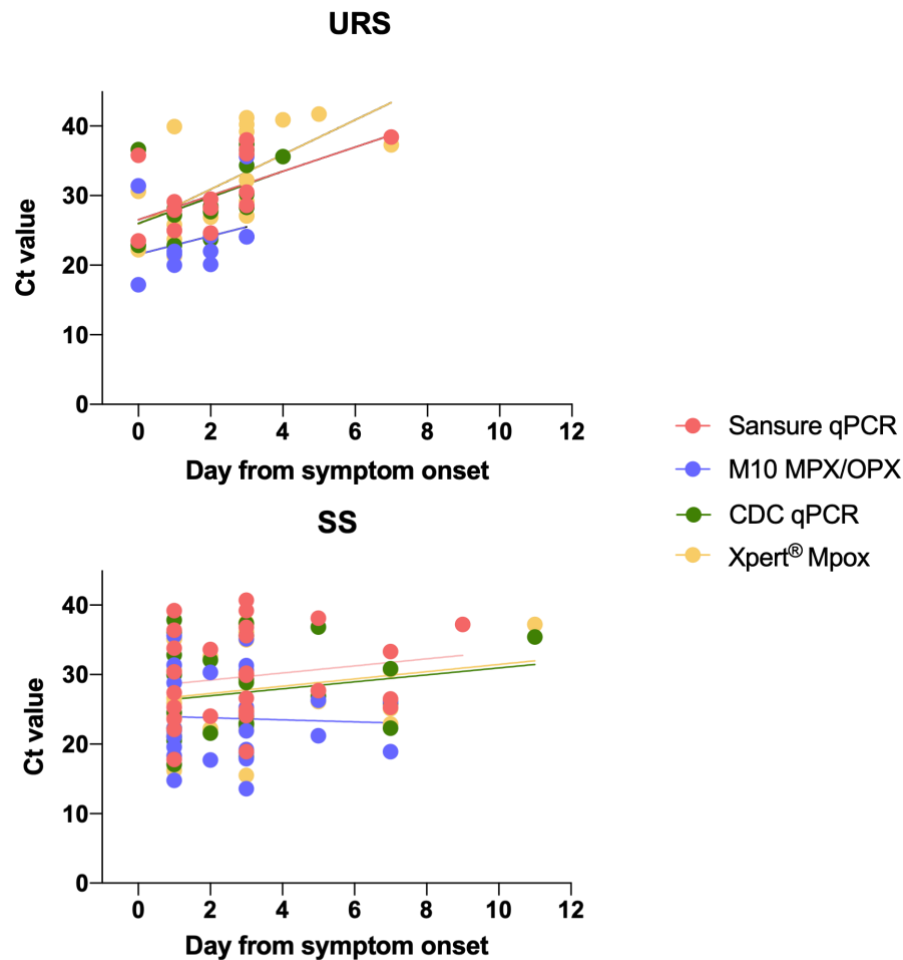
306

307

308

309

310



311 **Figure 3:** Plot of the Ct values of the four platforms by collection day from symptom onset using SS

312 (n=30) and URS (n=23) from MPXV positive patients. Data points are individual clinical samples, with

313 SS sampling from different lesions.

314

### 315 Analytical evaluation

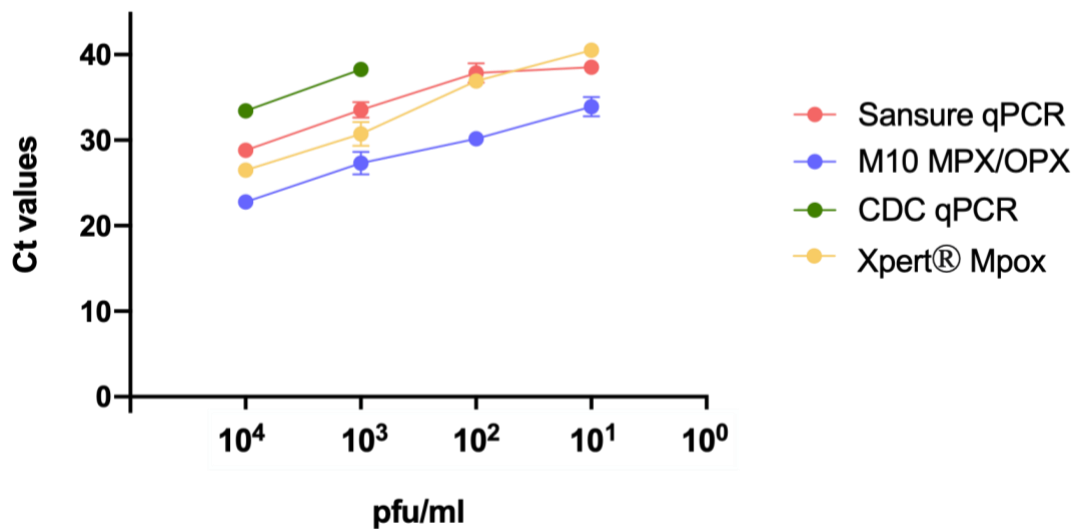
316 The LOD was  $1.0 \times 10^1$  pfu/mL for Xpert® Mpox and M10 MPX/OPX,  $1.0 \times 10^2$  pfu/mL for Sansure qPCR

317 and  $1.0 \times 10^3$  pfu/mL for the CDC qPCR (Figure 4). The approximated viral copy number of the LOD

318 was calculated for all the assays and was at  $\approx 1.31 \times 10^2$  copies/mL for Xpert® Mpox and M10 MPX/OPX,

319  $\approx 1.3 \times 10^3$  copies/mL for Sansure qPCR and  $\approx 1.3 \times 10^4$  copies/mL for CDC qPCR.

320



321

322 **Figure 4:** Relationship between Ct values and viral load using both qPCR reference assays and POC  
323 index NAATs.

#### 324 Discussion

325 The primary aim of this study was to evaluate the diagnostic performance of two POC NAAT, Xpert®  
326 Mpxox and M10 MPX/OPX. Rapid molecular diagnostic tests offer several advantages to laboratory-  
327 based PCR methods such as minimal sample processing, automated results readout and rapid  
328 availability of results to speed up clinical decision-making for timely management in outbreak  
329 situations, hence it is critical to assess their diagnostic accuracy.

330 The Xpert® Mpxox test is designed to be used with lesion swabs<sup>30</sup>. Previous studies have evaluated the  
331 accuracy for detection of MPXV in crusts and vesicular swabs samples in DRC showing a sensitivity  
332 of 98% and a specificity of 100% in both sample types<sup>31</sup> and in oropharyngeal, lesions and anal swabs  
333 in Georgia, USA with a sensitivity of 100% and specificity of 83.3% to 90.9% depending on sample  
334 type<sup>32</sup>. The published data aligns with our results when using the platform with both lesion and upper-  
335 respiratory swabs. In this study, the Xpert® Mpxox detected MPXV DNA from clinical samples that  
336 were negative by the reference lab-based qPCR Sansure and CDC, suggesting greater sensitivity. The  
337 greater sensitivity of the Xpert® Mpxox compared to a reference lab-based MPXV PCR has also been  
338 observed elsewhere<sup>32</sup>. This could be due to the larger sample volume used in the Xpert® Mpxox (300 µl)

339 compared to the volume used in the lab-based qPCR tests (2.5µl and 10µl of 50µl eluted DNA extracted  
340 from 200µl of UTM for CDC and Sansure respectively). The GeneXpert platform has been widely used  
341 for the detection of several infectious diseases, including SARS-CoV-2, *Mycobacterium tuberculosis*  
342 with rifampicin resistance, methicillin-resistant *Staphylococcus aureus*, and Ebola virus disease also  
343 showing high sensitivity and specificity<sup>33-35</sup>.

344 The M10 MPX/OPX can be used on different specimen types such as skin lesion material, whole blood,  
345 oropharyngeal swabs and plasma<sup>36</sup>. Compared to Xpert<sup>®</sup> Mpox, sensitivity was lower despite of  
346 manufacturer claims of having the same analytical LOD (100 copies/mL) as the Sansure reference test.

347 The M10 MPX/OPX assay is for research use and skin lesion material, whole blood, oropharyngeal  
348 swabs and plasm. In this study, the M10 MPX/OPX platform detected less MPXV positive samples  
349 than the other tests, suggesting lower sensitivity. A previous study evaluating the diagnostic accuracy  
350 of the M10 MPX/OPX test, showed lower sensitivity compared to the lab-based qPCR RealStar<sup>®</sup> OPX-  
351 1<sup>37</sup>, aligning with the results obtained in the present study. During the COVID-19 pandemic, SD  
352 Biosensor developed the M10 SARS-CoV-2, a molecular in vitro diagnostic assay able to detect SARS-  
353 CoV-2 viral RNA that also uses the M10 platform as the MPX/OPX assay<sup>38</sup> with 100% sensitivity and  
354 100% specificity<sup>39,40</sup>.

355 The WHO recommends the use of skin lesions for laboratory confirmation of MPXV infection  
356 whenever possible<sup>15</sup>. Our study indicates that URS can be used as a reliable alternative sample type to  
357 SS for patients sampled within the first 3 days of symptoms onset. This presents an advantage as the  
358 use of URS for POC testing in suspected cases can be used to diagnose Mpox in patients without typical  
359 skin lesions including those who may be in the prodromal phase of the disease when skin lesions have  
360 not appeared yet. The use of URS for Mpox diagnosis early in the disease can be particularly beneficial  
361 for monitoring contacts of positive cases for rapid detection, isolation and patient management.

362 However, the use of SS for MPXV detection was more robust among samples collected from patients  
363 regardless of the time from symptom onset, except for M10 MPX/OPX that showed poor sensitivity in  
364 skin lesion swabs collected from patients more than 5 days after symptom onset. This provides key  
365 information for choosing the adequate sample type and tests, specifically for when patients present to  
366 the clinic several days after the disease onset. The Ct value of paired URS and SS showed no significant



367 differences except for the Xpert<sup>®</sup> Mpox platform. These results differ from previous studies where they  
368 observed that lesion samples presented a viral load 3 orders of magnitude higher than URS<sup>41</sup> and suggest  
369 that URS testing offers no additional information for the diagnosis in individuals presenting skin  
370 lesions<sup>41-43</sup>. The lower sensitivity obtained in URS among these collected from patients more than 3  
371 days after symptom onset can be attributed to viral clearance occurring earlier in the oropharynx sample  
372 than in skin lesions<sup>44</sup>.

373 Based on the target products profile (TPP) for tests used for mpox diagnosis within health care settings  
374 and laboratories published by the WHO, the minimal and optimal clinical sensitivity should be  $\geq 95\%$   
375 and  $\geq 97\%$ , and minimal and optimal clinical specificity should be  $\geq 97\%$  compared to a reference  
376 molecular method<sup>45</sup>. The results obtained using the Xpert<sup>®</sup> Mpox assay met the minimal clinical  
377 sensitivity using SS and optimal sensitivity using URS regardless of the qPCR used as reference  
378 method. In the case of the MPX/OPX assay, the minimal and optimal clinical sensitivity was met with  
379 SS when compared to Sansure and CDC qPCR reference tests however the sensitivity using URS did  
380 not fulfil the minimum clinical sensitivity regardless of the qPCR reference assay used. False positive  
381 results in the index tests have been attributed to lower sensitivity of the reference test compared to the  
382 index tests since all the “false positive” results were obtained from MPXV positive patients and both  
383 Xpert<sup>®</sup> Mpox and M10 MPX/OPX had a lower LOD than the reference tests used in this study. This is  
384 of importance as reference lab-based qPCR tests such as the widely used CDC protocol may fail to  
385 diagnose true MPXV positive samples, and a composite reference standard should be determined.

386 The WHO recommends using laboratory-based nucleic acid amplification testing (NAAT) to confirm  
387 an MPXV infection<sup>15</sup>. The primers and probes used in the current MPXV generic qPCR test created by  
388 the CDC<sup>21</sup> differ significantly due to genetic variations in >1000 available sequenced MPXV genomes  
389 impacting on the sensitivity and specificity of the test<sup>46</sup>. This could be a possible explanation of the  
390 higher LOD, and consequently lesser number of positive samples detected with the CDC qPCR  
391 compared with Sansure qPCR.

392 In this study we used frozen samples due to low prevalence causing difficulties for fresh samples and  
393 prospective evaluation. However, the IFU of both index tests indicate they can detect MPXV in frozen

394 samples as well as samples stored at 4°C and room temperature<sup>30</sup>. The lack of negative skin lesion swab  
395 specimens is a limitation of the study as we could not calculate specificity using this sample type.

396 In conclusion, the Xpert® Mpox demonstrated the greatest diagnostic accuracy for POC testing and the  
397 use of URS as alternative sample type to skin lesions have been shown to perform well in samples  
398 collected within 3 days from onset symptoms. This study adds important insights on diagnostics of  
399 Mpox.

#### 400 **Author contributions**

401 The study was conceived and designed by AICA, JD and DE. Laboratory work was conducted by AS,  
402 JP, YH, DW, NK, CTW and ARR, with supervision by AICA and TE. Data collections were conducted  
403 by AS, JP, YH, HH, NK, and SG. Data analysis and interpretation were conducted by ARR and AICA.  
404 The initial manuscript was prepared by ARR and AICA. Funding was acquired by AICA, the CONDOR  
405 steering group and ISARIC CPP investigators. Oversight of participant recruitment was performed by  
406 AICA, the CONDOR steering group and ISARIC CPP investigators. All authors edited and approved  
407 the final manuscript.

#### 408 **Declarations of interests**

409 DE had no role on the data collection, analysis and interpretation. The other authors have no interests  
410 to declare. The views expressed are those of the authors and not necessarily those of the funding bodies.

#### 411 **Acknowledgements**

412 We acknowledge the participants for volunteering for this study. We thank all the CRN, research nurses  
413 and clinical research fellows for supporting us with the sample collection and recruitment. We also  
414 would like to extend our acknowledgements to the wider FIND team involved in this study, specifically  
415 to Audrey Albertini, Juvenal Nkeramahame, Michael Otieno and Ryan Ruiz.

416 *CONDOR steering group:* A. Joy Allen, Julian Braybrook, Peter Buckle, Eloise Cook, Paul Dark,  
417 Kerrie Davis, Gail Hayward, Adam Gordon, Anna Halstead, Charlotte Harden, Colette Inkson, Naoko  
418 Jones, William Jones, Dan Lasserson, Joseph Lee, Clare Lendrem, Andrew Lewington, Mary Logan,  
419 Massimo Micocci, Brian Nicholson, Rafael Perera-Salazar, Graham Prestwich, D. Ashley Price,  
420 Charles Reynard, Beverley Riley, John Simpson, Valerie Tate, Philip Turner, MarkWilcox, Melody  
421 Zhifang.

422 *ISARIC CCP investigators*: Dr Mike Beadsworth, Dr Ingeborg Welters, Dr Lance Turtle, Dr Jane  
423 Minton, Karl Ward, Dr Elinor Moore, Dr Elaine Hardy, Dr Mark Nelson, Dr Jane Minton, Karl Ward,  
424 Dr David Brealey, Dr Ashley Price, Dr Brian Angus, Dr Graham Cooke and Dr Oliver Koch.

#### 425 **Funding**

426 This work was funded as part of FIND's work as coconvener of the diagnostics pillar of the Pandemic  
427 Threats Programme. ISARIC4 was funded from the National Institute for Health Research [award CO-  
428 CIN-01], the Medical Research Council [grant MC\_PC\_19059] and by Liverpool Pandemic Institute  
429 and the National Institute for Health Research Health Protection Research Unit (NIHR HPRU) in  
430 Emerging and Zoonotic Infections at University of Liverpool in partnership with UK Health Security  
431 Agency (UK-HSA), in collaboration with Liverpool School of Tropical Medicine and the University of  
432 Oxford [NIHR award 200907], Wellcome Trust and Department for International Development  
433 [215091/Z/18/Z], and the Bill and Melinda Gates Foundation [OPP1209135], and Liverpool  
434 Experimental Cancer Medicine Centre for providing infrastructure support for this research (Grant  
435 Reference: C18616/A25153).

436 The FALCON study was funded by the National Institute for Health Research, Asthma United  
437 Kingdom, and the British Lung Foundation. This work is partially funded by the National Institute for  
438 Health Research (NIHR) Health Protection Research Unit in Emerging and Zoonotic Infections  
439 (200907), a partnership between the United Kingdom Health Security Agency (UKHSA), The  
440 University of Liverpool, The University of Oxford, and LSTM.

441

## 442 References

- 443 1 Parker, S., Schultz, D., Meyer, H. & Buller, R. Smallpox and Monkeypox Viruses. (2014).  
444 2 Titanji, B. K., Tegomoh, B., Nematollahi, S., Konomos, M. & Kulkarni, P. A. in *Open forum*  
445 *infectious diseases*. ofac310 (Oxford University Press).  
446 3 von Magnus, P., Andersen, E. K., Petersen, K. B. & Birch Andersen, A. A pox-like disease in  
447 cynomolgus monkeys. (1959).  
448 4 Breman, J. G., Steniowski, M., Zanotto, E., Gromyko, A. & Arita, I. Human monkeypox, 1970-  
449 79. *Bulletin of the World Health Organization* **58**, 165 (1980).  
450 5 Organization, W. H. *WHO recommends new name for monkeypox disease*, (2022).  
451 6 Organization, W. H. 2022 Mpox (Monkeypox) Outbreak: Global Trends. *World Health*  
452 *Organization* (2022).  
453 7 Pan, D. *et al.* Transmission of monkeypox/mpox virus: A narrative review of environmental,  
454 viral, host, and population factors in relation to the 2022 international outbreak. *Journal of*  
455 *Medical Virology* **95**, e28534 (2023).  
456 8 Adler, H. *et al.* Clinical features and management of human monkeypox: a retrospective  
457 observational study in the UK. *The Lancet Infectious Diseases* **22**, 1153-1162 (2022).  
458 9 Organization, W. H. Multi-country monkeypox outbreak: situation update. (2022).  
459 10 Agency, U. H. S. Vol. Technical Brief# 4 (United Kingdom Health Security Agency, 2022).  
460 11 Girometti, N. *et al.* Demographic and clinical characteristics of confirmed human monkeypox  
461 virus cases in individuals attending a sexual health centre in London, UK: an observational  
462 analysis. *The Lancet Infectious Diseases* **22**, 1321-1328 (2022).  
463 12 McCollum, A. M. & Damon, I. K. Human monkeypox. *Clinical infectious diseases* **58**, 260-  
464 267 (2014).  
465 13 Prevention, C. f. D. C. a. *Mpox: signs and symptoms*, (2024).  
466 14 Organization, W. H. Clinical management and infection prevention and control for monkeypox:  
467 interim rapid response guidance, 10 June 2022. (World Health Organization, 2022).  
468 15 Organization, W. H. in *Diagnostic testing for the monkeypox virus (MPXV): interim guidance*,  
469 *9 November 2023* (2023).  
470 16 Organization, W. H. *WHO Director-General declares mpox outbreak a public health emergency*  
471 *of international concern*, (2024).  
472 17 Agency, U. F. a. D. A. F. *Monkeypox (mpox) Emergency Use Authorizations for Medical*  
473 *Devices*, (2024).  
474 18 FIND. *Outbreaks tests directory*, (2024).  
475 19 Gavina, K., Franco, L. C., Khan, H., Lavik, J.-P. & Relich, R. F. Molecular point-of-care devices  
476 for the diagnosis of infectious diseases in resource-limited settings—A review of the current  
477 landscape, technical challenges, and clinical impact. *Journal of Clinical Virology* **169**, 105613  
478 (2023).  
479 20 Hardwick, C. S. H. *Clinical characterisation protocol for severe emerging infection*, (2020).  
480 21 Prevention, C. f. D. C. a. *Test Procedure: Monkeypox Virus Generic Real-time PCR Test.*, (2022).  
481 22 Michel, J. *et al.* Evaluation of 11 commercially available PCR kits for the detection of  
482 monkeypox virus DNA, Berlin, July to September 2022. *Eurosurveillance* **27**, 2200816 (2022).  
483 23 Li, Y., Zhao, H., Wilkins, K., Hughes, C. & Damon, I. K. Real-time PCR assays for the specific  
484 detection of monkeypox virus West African and Congo Basin strain DNA. *Journal of*  
485 *virological methods* **169**, 223-227 (2010).  
486 24 Li, Y., Olson, V. A., Laue, T., Laker, M. T. & Damon, I. K. Detection of monkeypox virus with  
487 real-time PCR assays. *Journal of Clinical Virology* **36**, 194-203 (2006).  
488 25 Pawar, S. D. *et al.* Replication of SARS-CoV-2 in cell lines used in public health surveillance  
489 programmes with special emphasis on biosafety. *Indian Journal of Medical Research* **155**, 129-  
490 135 (2022).  
491 26 Byrne, R. L. *et al.* Comparison of the analytical and clinical sensitivity of thirty-four rapid  
492 antigen tests with the most prevalent SARS-CoV-2 variants of concern during the COVID-19  
493 pandemic in the UK. *medRxiv*, 2023.2007. 2024.23293072 (2023).  
494 27 Cubas-Atienzar, A. I. *et al.* Limit of detection in different matrices of 19 commercially available  
495 rapid antigen tests for the detection of SARS-CoV-2. *Scientific reports* **11**, 18313 (2021).

- 496 28 Kontogianni, K. *et al.* Analytical evaluation of thirty-two severe acute respiratory syndrome 2  
497 lateral flow antigen tests demonstrates sensitivity remains with the SARS-CoV-2 Gamma  
498 lineage. *Revista da Sociedade Brasileira de Medicina Tropical* **55**, e0016-2022 (2022).
- 499 29 Kontogianni, K. *et al.* Lateral flow antigen tests can sensitively detect live cultured virus of the  
500 SARS-CoV-2 B.1.1.7 lineage. *Journal of Infection* **83**, e1-e4 (2021).
- 501 30 Innovation, C. (2023).
- 502 31 Li, D. *et al.* Evaluation of the GeneXpert for human monkeypox diagnosis. *The American*  
503 *journal of tropical medicine and hygiene* **96**, 405 (2017).
- 504 32 Damhorst, G. L. *et al.* Performance of the Xpert™ Mpox PCR assay with oropharyngeal,  
505 anorectal, and cutaneous lesion swab specimens. *Journal of Clinical Virology* **171**, 105659  
506 (2024).
- 507 33 Pan, Z.-Y. *et al.* Pooled Analysis of the Accuracy of Xpert Ebola Assay for Diagnosing Ebola  
508 Virus Infection. *BioMed Research International* **2021** (2021).
- 509 34 Evans, C. A. GeneXpert—a game-changer for tuberculosis control? *PLoS medicine* **8**,  
510 e1001064 (2011).
- 511 35 Rossney, A. S., Herra, C. M., Brennan, G. I., Morgan, P. M. & O'Connell, B. Evaluation of the  
512 Xpert methicillin-resistant *Staphylococcus aureus* (MRSA) assay using the GeneXpert real-  
513 time PCR platform for rapid detection of MRSA from screening specimens. *Journal of clinical*  
514 *microbiology* **46**, 3285-3290 (2008).
- 515 36 Biosensor, S. *STANDARD M10 MPX/OPX*.
- 516 37 Mancon, A. *et al.* Evaluation of analytical performance of the STANDARD™ M10  
517 MPX/OPX assay for the simultaneous DNA detection and clade attribution of Monkeypox  
518 virus. *Emerging Microbes & Infections* **13**, 2337666 (2024).
- 519 38 Biosensor, S. (2023).
- 520 39 Parakatselaki, M.-E., Alexi, G., Zafiropoulos, A. & Sourvinos, G. Evaluation of  
521 STANDARD™ M10 SARS-CoV-2 assay as a diagnostic tool for SARS-CoV-2 in  
522 nasopharyngeal or oropharyngeal swab samples. *Journal of Clinical Virology Plus* **3**, 100129  
523 (2023).
- 524 40 Ham, S. Y. *et al.* Performance of STANDARD™ M10 SARS-CoV-2 Assay for the Diagnosis  
525 of COVID-19 from a Nasopharyngeal Swab. *Infection & Chemotherapy* **54**, 360 (2022).
- 526 41 Tarín-Vicente, E. J. *et al.* Clinical presentation and virological assessment of confirmed human  
527 monkeypox virus cases in Spain: a prospective observational cohort study. *The Lancet* **400**,  
528 661-669 (2022).
- 529 42 Ouafi, M. *et al.* Oropharyngeal samples versus lesion specimens at diagnosis in patients  
530 infected with monkeypox virus in Northern France. *Journal of Medical Virology* **95**, e28276  
531 (2023).
- 532 43 Palich, R. *et al.* Viral loads in clinical samples of men with monkeypox virus infection: a French  
533 case series. *The Lancet Infectious Diseases* **23**, 74-80 (2023).
- 534 44 Suñer, C. *et al.* Viral dynamics in patients with monkeypox infection: a prospective cohort study  
535 in Spain. *The Lancet Infectious Diseases* **23**, 445-453 (2023).
- 536 45 Organization, W. H. *Target product profiles for tests used for mpox (monkeypox) diagnosis*.  
537 (World Health Organization, 2023).
- 538 46 Wu, F., Oghuan, J., Gitter, A., Mena, K. D. & Brown, E. L. Wide mismatches in the sequences  
539 of primers and probes for monkeypox virus diagnostic assays. *Journal of Medical Virology* **95**,  
540 e28395 (2023).