

1        **A prebiotic diet intervention can restore faecal short chain fatty acids in**  
2        **Parkinson's Disease yet fails to restore the gut microbiome homeostasis**

3

4        Janis Rebecca Bedarf<sup>1, 2, 3</sup>, Stefano Romano<sup>3</sup>, Silke Sophie Heinzmann<sup>4</sup>, Anthony  
5        Duncan<sup>3,5</sup>, Maria H. Traka<sup>6</sup>, Duncan Ng<sup>6</sup>, Daniella Segovia-Lizano<sup>6</sup>, Marie-Christine  
6        Simon<sup>7</sup>, Arjan Narbad<sup>3</sup>, Ullrich Wüllner<sup>1,2</sup>, Falk Hildebrand <sup>3,5</sup>.

7

8        1 Dept. of Movement Disorders (PSB), Centre of Neurology, University Hospital  
9        Bonn, Germany

10       2 German Centre for Neurodegenerative Diseases, DZNE Bonn, Germany

11       3 Food, Microbiome, and Health Institute Strategic Programme, Quadram Institute  
12       Bioscience, Norwich Research Park, NR4 7UQ Norwich, Norfolk, UK

13       4 Research Unit Analytical BioGeoChemistry, Helmholtz Center Munich,  
14       Neuherberg, Germany

15       5 Decoding Biodiversity, Earlham Institute NR4 7UZ Norwich, Norfolk, UK

16       6 Food & Nutrition National Bioscience Research Infrastructure, Quadram Institute  
17       Bioscience, Norwich Research Park, NR4 7UQ Norwich, Norfolk, UK

18       7 Institute of Nutritional and Food Sciences (IEL), Nutrition and Health, University of  
19       Bonn, Germany

20

21

22       **Corresponding authors:**

23       Dr Falk Hildebrand: [falk.hildebrand@quadram.ac.uk](mailto:falk.hildebrand@quadram.ac.uk)

24       Dr. Janis Rebecca Bedarf: [janis.bedarf@ukbonn.de](mailto:janis.bedarf@ukbonn.de)

25

**NOTE: This preprint reports new research that has not been certified by peer review and should not be used to guide clinical practice.**

26 **ABSTRACT**

27 Despite extensive research, current treatment of Parkinson's Disease (PD) remains  
28 symptomatic and disease modifying approaches are urgently required. A promising  
29 approach is to target the gut-brain-axis by modifying the intestinal microbiota and the  
30 herein produced metabolites.

31 We decided to test this approach by modifying key metabolites of bacterial intestinal  
32 fermentation: short chain fatty acids (SCFA), known to be decreased in PD patients.

33 A prospective, controlled pilot study was conducted in 11 couples, with one PD patient  
34 and healthy spouse as control (CO) each. Participants followed a 4-week diet rich in  
35 dietary fibre in addition to the intake of a prebiotic sirup (Lactulose). Metagenomes  
36 and metabolites of the gut microbiota, urinary metabolites and clinical characteristics  
37 were assessed.

38 The short-term dietary intervention significantly augmented gastrointestinal SCFA  
39 production, likely associated with increased *Bifidobacteria spp.* PD associated  
40 gastrointestinal symptoms improved with increasing SCFA levels. The pre-existing  
41 bacterial dysbiosis associated with PD, such as depletion of genera *Blautia*, *Dorea*,  
42 and *Erysipelatoclostridium* in PD, persisted within the study period. Some pathobionts,  
43 i.e. *Klebsiella*, were reduced after the intervention. Bacterial metabolite composition  
44 (both faecal and urine metabolomes) shifted towards the composition of the healthy  
45 control in PD after the intervention. Among these brain-relevant gut metabolic  
46 functions improved in PD patients, such as S-Adenosyl methionine (SAM), 3,4-  
47 Dihydroxyphenylacetic acid (DOPAC), Glutathione (GSH), Tryptophan and inositol  
48 related changes, involved in neuroprotective and antioxidant pathways.

49 Despite the small cohort size and short-term study period a minor dietary intervention  
50 was sufficient to improve gastrointestinal symptoms in PD and altered metabolic

- 51 parameters in a presumed neuroprotective manner, warranting further investigation in  
52 larger cohorts.

## 53 **Introduction**

54 The human gut microbiota form a complex community with high taxonomic diversity  
55 and complex metabolic activity. The bi-directional microbiota-related gut-brain  
56 signalling has emerged as an important factor in human brain (patho-)physiology<sup>1</sup>. The  
57 gut microbiome is involved in immune homeostasis and might have a role in the  
58 development or progression of neuro-psychiatric diseases, including multiple  
59 sclerosis, Alzheimer's and Parkinson's disease (PD)<sup>2,3</sup>. The early involvement of the  
60 gastro-intestinal tract in PD – sometimes preceding motor symptoms for years – has  
61 been linked to the intestinal dysbiosis in multiple independent cohorts (reviewed in<sup>4,5</sup>).  
62 Taxonomic alterations hinted at impairments of the intestinal barrier and altered  
63 immune function as well as metabolic changes<sup>6</sup> but it remains unclear, whether these  
64 changes are the causes or consequences of disease.

65 Among the variety of metabolites that have been shown to beneficially impact both  
66 intestinal barrier and blood brain barrier (BBB)-integrity<sup>7-9</sup>, short chain fatty acids  
67 (SCFA, represented mainly by butyrate, propionate, and acetate, and fermented from  
68 dietary fibres<sup>10</sup>) seem to play a pivotal role. For example, SCFA's can directly influence  
69 the colonic epithelium, act as major energy substrates for colonocytes and promote  
70 tight junction proteins and neuronal activation through stimulation of G protein–  
71 coupled receptors<sup>11,12</sup>. Administration of butyrate in transgenic animal models of PD  
72 improved motor deficits, reduced inflammation and alleviated dopamine deficiency<sup>13,14</sup>  
73 and together with a high-fibre diet, reduced markers of cerebral inflammation in aged  
74 mice<sup>15,16</sup>. SCFAs may thus present a link between gut microbiota dysbiosis and  
75 neurodegenerative alterations<sup>12</sup>. In line with a concept of anti-inflammatory and  
76 neuroprotective effects of SCFA, studies in human PD found depleted faecal SCFA  
77 concentrations and reduced abundance of SCFA producing bacteria compared with

78 healthy controls<sup>17,18</sup>. Moreover, an integrated study examining both faecal and plasma  
79 SCFA levels, suggested that SCFAs may even reflect disease severity and could thus  
80 serve as a surrogate marker for PD<sup>19</sup>. In concordance with this data, a high fibre  
81 ‘mediterranean’ diet was reported to decrease the risk for PD<sup>20,21</sup>, in comparison to a  
82 low fibre, high caloric ‘western’ diet<sup>22,23</sup>.

83 Altering the microbiome composition and metabolism through dietary interventions  
84 might thus evolve as a therapeutic option to protect against or modulate the course of  
85 PD and other neurodegenerative diseases<sup>24,25</sup>. We here investigated whether a dietary  
86 intervention designed to prebiotically enrich colonic SCFA production would alter  
87 faecal SCFA concentrations and ameliorate gut microbiome dysbiosis as well as  
88 gastrointestinal symptoms in PD.

89

## 90 **Results**

### 91 **Participants and clinical measures**

92 10 of 11 enrolled couples (each consisting of 1 PD and 1 CO) completed the study  
93 (clinical characteristics and dietary baseline information in Suppl. Table 1) and

	PD	CO	p-value
Age (yrs)	64.73 ± 8.92	61.18 ± 7.92	p=0.31
Sex (f/m)	3/8	8/3	p=0.09
BMI (kg/m <sup>2</sup> )	26.81 ± 4.64	27.48 ± 4.71	p=0.72
Smoking [yes/past/never]	0/6/5	1/7/3	p=0.66
Levodopa [yes/no]	7/4	0/0	p=0.02
Dopamine-Agonist [yes/no]	10/1	0/0	P<0.0001
MAO-Inhibitor [yes/no]	1/10	0/0	p=0.48
COMT-Inhibitor [yes/no]	2/9	0/0	p=1
Statine intake [yes/no]	1/10	1/10	p=1
Diet omnivor	11	11	p=1
Probiotics at baseline			
Yes	0	2	p=1
No	10	9	
sometimes	1	0	
Dairy consumption at baseline			
<1/d	6	9	p=0.36
2-3/d	4	2	
NS	1	0	
Vegetable consumption at baseline			
<1/d	1	0	p=0.59
2-3/d	7	9	
3-4/d	1	2	
5 or more/d	1	0	
NS	1	0	

**Suppl. Table 1 Clinical characteristics and dietary baseline information**

Dietary baseline information was acquired by a questionnaire assessing the dietary habits of the participants before the intervention; Note that one couple dropped out of the study after baseline measurements due to non-study related reasons; BMI, body mass index; PD, Parkinson's disease; CO, healthy control; Data is presented as mean ± standard deviation or absolute numbers of participants; NS, not specified.

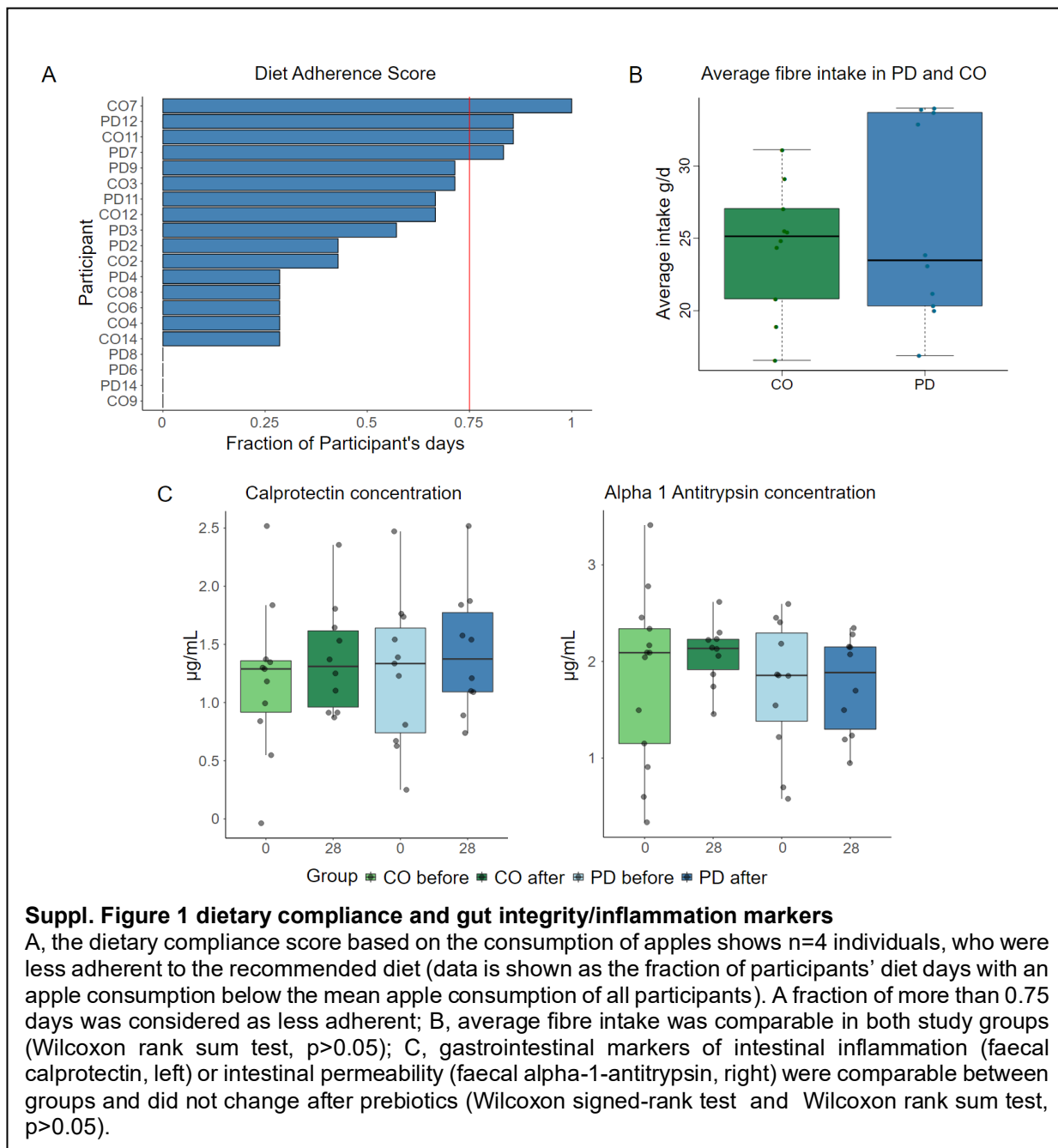
94 performed the dietary intervention for 4 weeks (Fig. 1a). One couple dropped out of  
95 the study before the second visit due to non-study related reasons. PD patients were  
96 mild to moderately advanced (Hoehn and Yahr 1-2).

97 No serious adverse events occurred. Some participants (N=4 PD and N=4 CO) had  
98 tolerable bloating when starting the dietary intervention, which ceased during the study  
99 (self-reported); no diarrhea was reported. Safety parameters (sodium, potassium, C-  
100 reactive protein, and thyroid-stimulating hormone) were comparable between groups  
101 before prebiotics and there were no changes after prebiotics. All participants followed  
102 an omnivorous diet prior to the study with occasional intake of probiotics in 3 subjects  
103 (n=1 PD and n=2 CO, Suppl. Table 1).

104 To measure the participants' compliance to the dietary recommendations, a food  
105 adherence score was calculated based on the recommended consumption of raw  
106 apples (see methods). This showed overall good adherence throughout the study  
107 cohort; four participants (n=2 CO and n=2 PD subjects, of whom 2 belong to one  
108 couple) had less compliance with our dietary intervention. (Suppl. Fig. 1a).

109 The average fibre intake during the intervention was similar in both CO and PD  
110 (median 25.1 g/d and 23.5 g/d, respectively, Suppl. Fig. 1b). Although this is below the  
111 recommended daily intake of 30 g/d in Germany, it is still above average reported  
112 levels in Germany of 23 g/d and 20 g/d for males and females, respectively<sup>26</sup>.

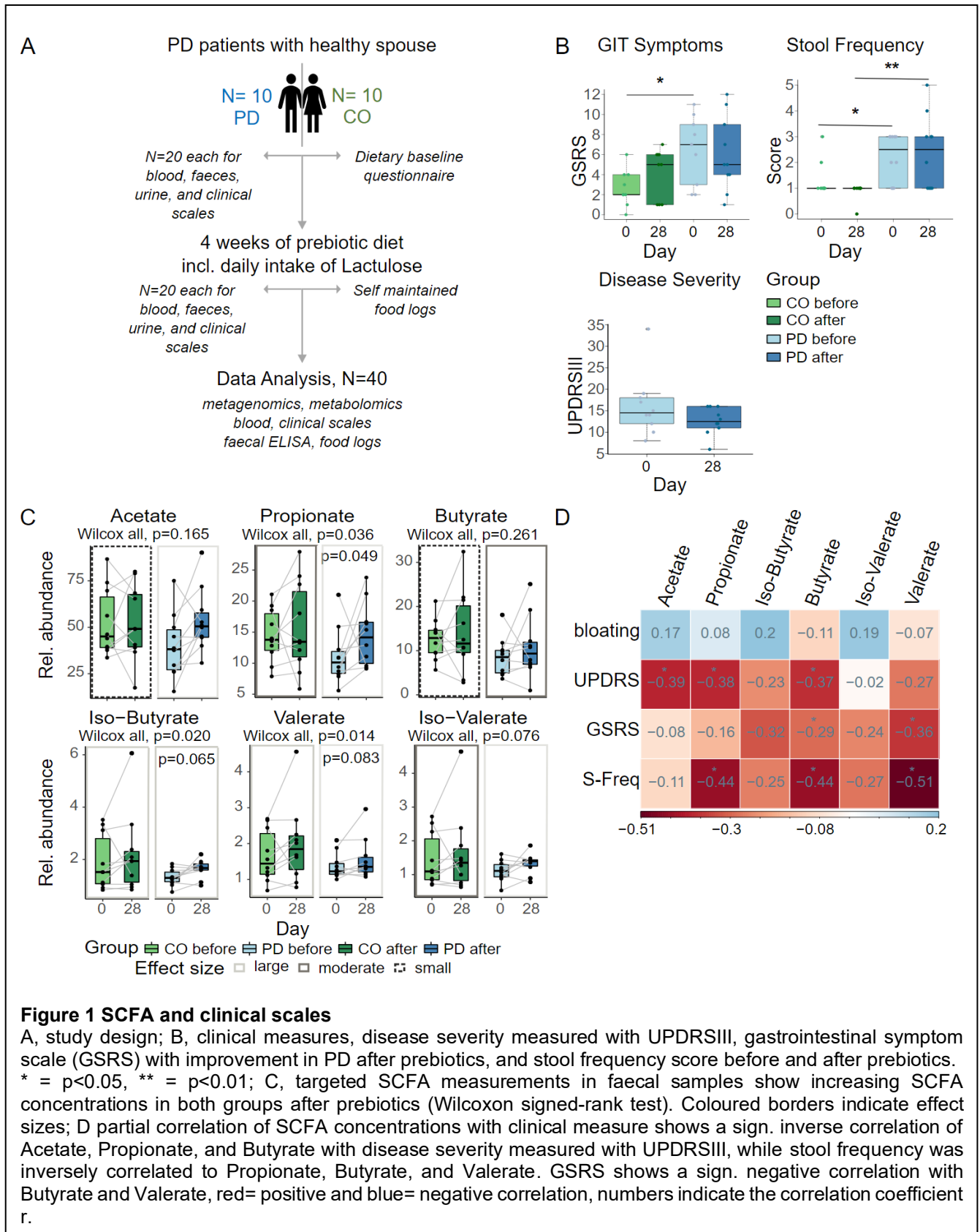
113



114 UPDRS<sub>III</sub>, as a measure of the PD disease severity, was slightly reduced after the  
 115 prebiotic intervention (Wilcoxon signed-rank test,  $p > 0.05$ , Fig. 1b). While  
 116 gastrointestinal symptoms (sum score of the modified GSRS) were significantly higher  
 117 in PD patients compared to CO before prebiotics, no significant difference could be  
 118 observed after prebiotics (Wilcoxon rank sum test,  $p = 0.025$  and  $p = 0.48$ , respectively,  
 119 Fig. 1b); however, this could be related to increasing GIT symptoms in the CO, mostly  
 120 related to constipation and bloating. Stool frequency (as a sub measure of the GSRS)



121 was sign. differed between PD and CO and this did not change during diet intervention  
 122 (Wilcoxon rank sum test,  $p=0.043$  and  $p=0.007$ , respectively, Fig. 1b). Faecal markers

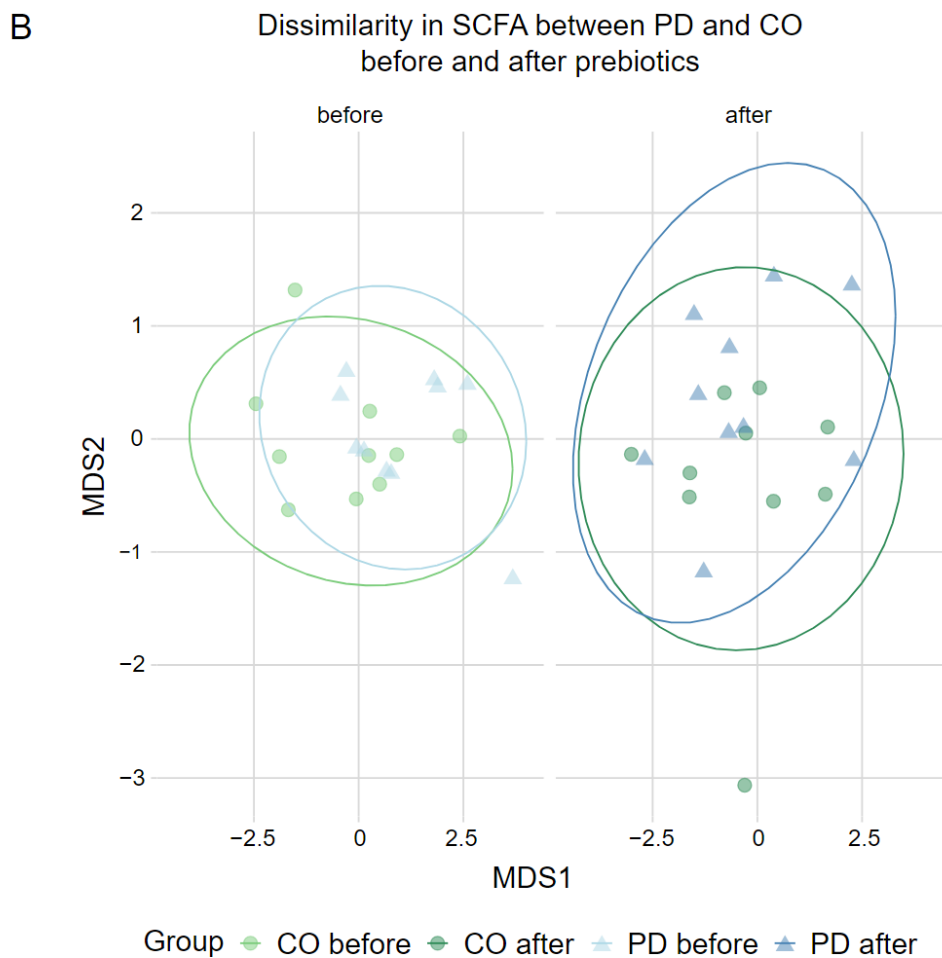
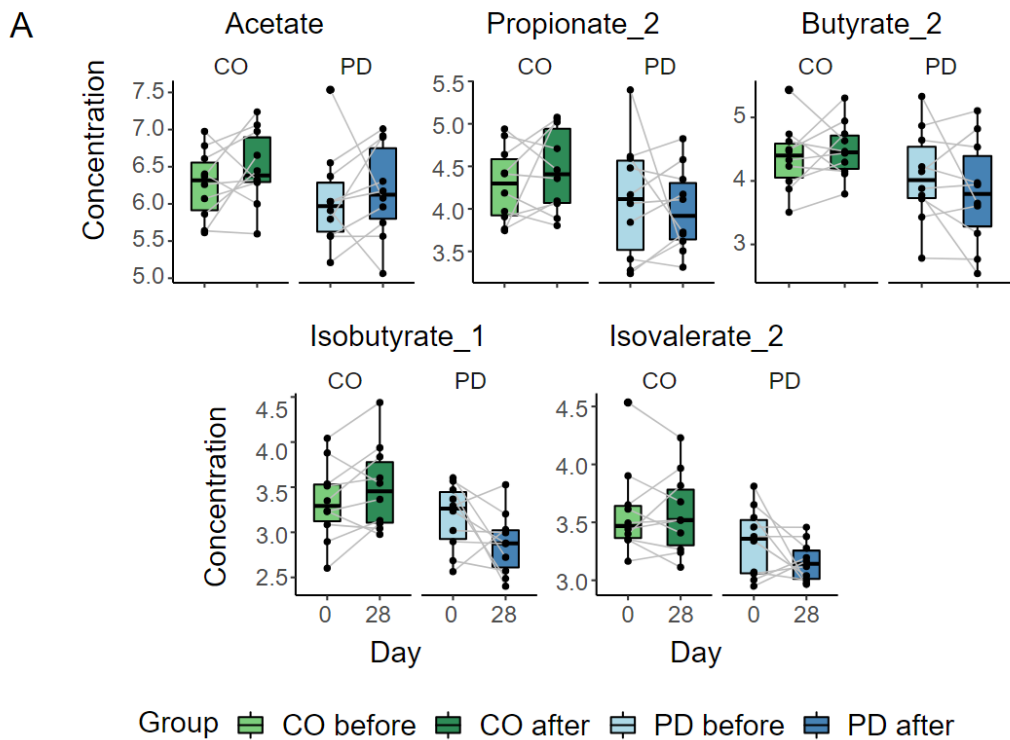


123 of intestinal inflammation (Calprotectin) or intestinal permeability (Alpha-1-Antitrypsin,  
124 Suppl. Fig. 1c) were comparable between study groups and remained unchanged after  
125 prebiotics.

126 **The prebiotic diet increased faecal SCFA levels and improved gastro-intestinal**  
127 **functioning in PD**

128 Faecal SCFA concentrations were lower in PD subjects at baseline (Wilcoxon rank  
129 sum test,  $p < 0.05$ ,  $q > 0.1$ ), note that baseline SCFA results were comparable between  
130 targeted SCFA measures (Fig. 1c) and SCFA based on metabolomics (Suppl. Fig.  
131 2a). The short-term dietary intervention increased concentrations of most SCFAs

132



**Suppl. Figure 2, SCFA**

A, relative abundance of SCFA based on metabolomics (log transformed data) shows comparable baseline conditions between PD and CO similar to targeted SCFA measures, B, dissimilarity of SCFA composition between PD and CO before and after prebiotics show that SCFA composition equalizes after prebiotics (perMANOVA, before  $R^2=0.13$ ,  $p=0.08$ , after  $R^2=0.01$ ,  $p=0.8$ , unconstrained dbRDA, Euclidean distance, targeted SCFA measures).

133 (Fig. 1c), as the statistical power was likely limited by cohort size.  
134 Considering effect sizes (borders in Fig. 1c), the increase in several SCFA  
135 concentrations was markedly greater in PD than in CO, possibly related to an  
136 increased Lactulose intake in the PD group.

137 Multivariate testing of the SCFA composition between PD and CO either before or  
138 after the diet intervention revealed fewer dissimilarities after prebiotics (perMANOVA  
139 before  $R^2=0.13$ ,  $p=0.08$ , and after  $R^2=0.01$ ,  $p=0.8$ , respectively, Suppl. Fig. 2b),  
140 indicating that the SCFA profile of PD patients adapted to a healthy state after  
141 prebiotics.

142 Stool frequency, modified GSRs, and PD disease severity were inversely correlated  
143 with several SCFA including butyrate, in PD patients (Fig. 1d), suggesting that  
144 increased SCFA concentrations were linked with better gastro-intestinal functioning  
145 and reduced disease symptoms.

146 **The prebiotic diet enhanced beneficial Bifidobacteria in both study groups yet**  
147 **failed to restore the dysbiosis associated with PD**

148 All 40 faecal samples from 20 participants and two time points each, were sequenced  
149 using short read metagenomics. MGS (metagenomic species) dereplicated from  
150 MAGs (metagenomics assembled genomes) were used to obtain the taxonomic  
151 composition for all samples.

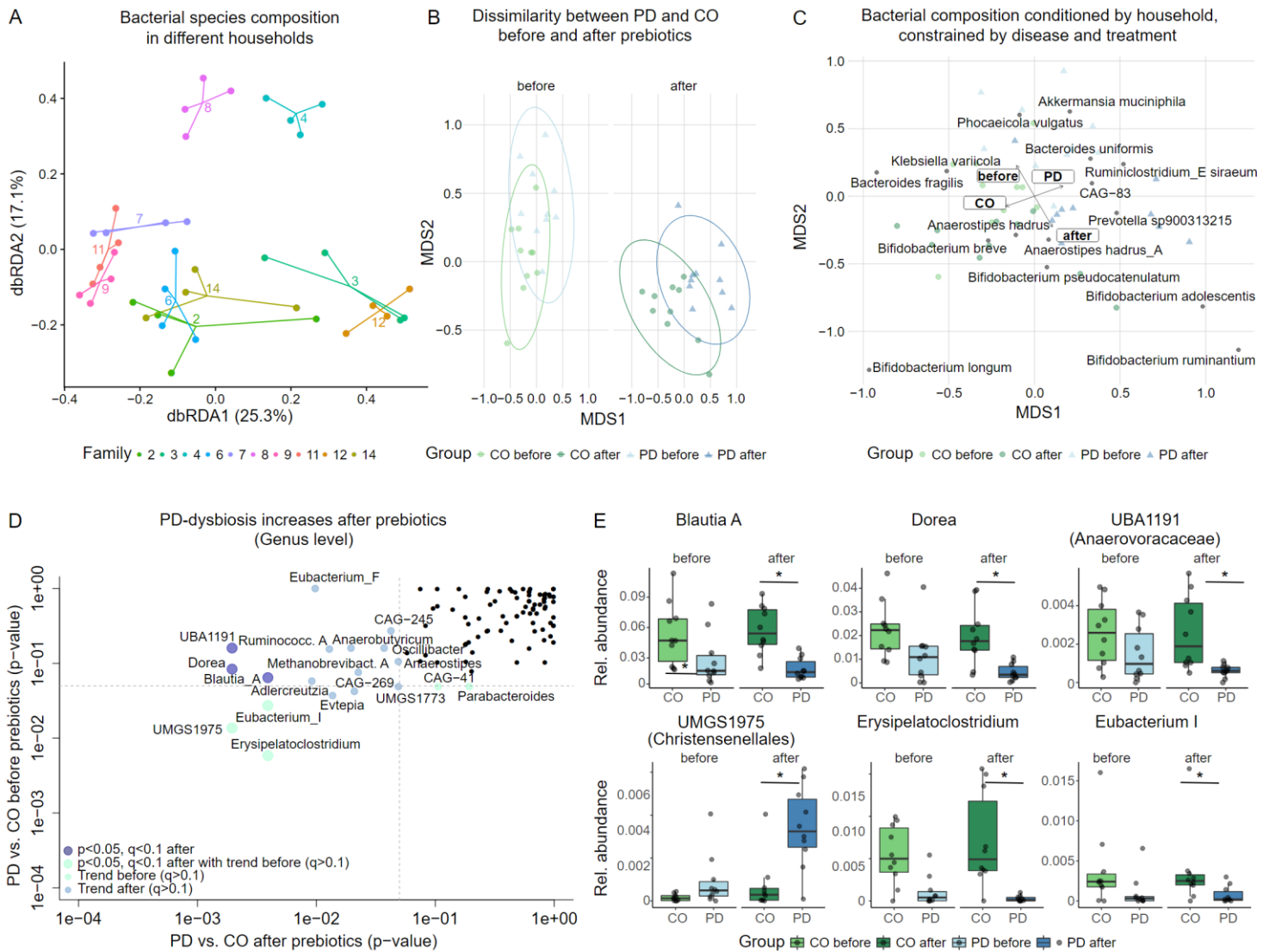
152 Species level alpha diversity was comparable between study groups, however,  
153 richness and diversity decreased after prebiotics (only sign. for CO, Wilcoxon signed-  
154 rank test,  $p=0.02$ , Suppl. Fig. 3a). The genera *Bifidobacteria*, *Bacteroides*,  
155 *Faecalibacterium*, *Blautia A*, and *Phocaeicola* dominated the overall taxonomic  
156 composition (Suppl. Fig. 3b).

157 Most of the species level differences in faecal sample composition were driven by  
158 household ( $R^2 = 0.47$ ,  $p < 0.001$ , perMANOVA, dbRDA), i.e., most samples of the same  
159 household clustered together (Fig. 2a). Disease status (PD vs.CO) and diet  
160 intervention (before vs. after prebiotics) explained only 9.8% of total variance together  
161 (Fig. 2b and c). This “household-effect” was the prevalent source of variation between  
162 individual gut microbiomes at all taxonomic levels ( $R^2 = 0.41 - 0.47$ ) as well as  
163 functional potential and metabolomics profiles ( $R^2 = 0.36 - 0.47$ , Suppl. Table 2).

**Suppl. Table 2, Household-effect on different data types assessed in this study**

<b>Data</b>	<b>R<sup>2</sup></b>	<b>p-value</b>
MGS Species	0.46	<0.001
Species	0.46	<0.001
Genus	0.47	<0.001
Family	0.44	<0.001
Order	0.46	<0.001
Class	0.41	<0.001
Phylum	0.41	<0.001
Functional metabolic potential (KEGG, general)	0.42	<0.001
Functional metabolic potential (KEGG/GBM, brain-relevant)	0.49	<0.001
Urine metabolomics	0.36	<0.001
Faeces metabolomics	0.45	<0.001

165 For our further analysis we therefore consequently used statistics conditioned for  
 166 household effect. An ordination conditioned by household revealed that the  
 167 dissimilarity in taxonomic composition was driven by differences between PD and CO

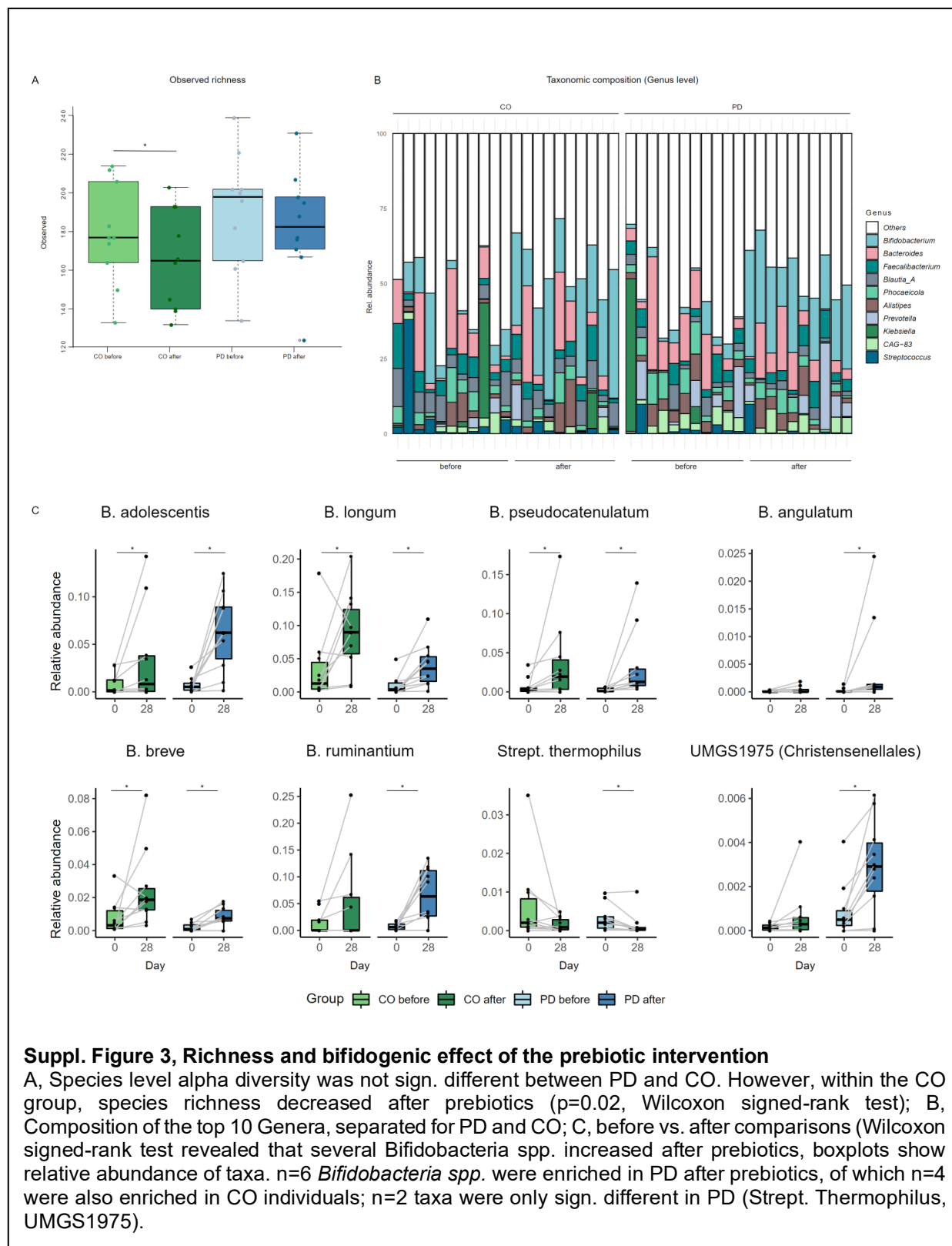


**Figure 2 Household-effect and taxonomic differences between PD and CO**

A, the dbRDA shows a strong clustering of metagenomes by household, i.e. from PD with their respective healthy spouse/CO, further termed “household-effect”; this effect explained 46% of data variability on MGS species level; B, dbRDA conditioned for households reveals a sign. difference in taxa dissimilarity between PD and CO after prebiotics, but not before prebiotics; C, top 15 correlated taxa (MGS species) between the constrained dbRDA (conditioned for households) and study group (PD/CO) or diet intervention (before/after prebiotics), indicating a strong association of different *Bifidobacteria spp.* with the intervention. D and E, several genera were markedly reduced in the PD group after prebiotics, paralleled by several trends, e.g., enrichment in *Eubacterium F* and *Methanobrevibacter\_A* in PD; some of these Genera already tended to differ before prebiotics ( $p < 0.05$ , but  $q > 0.1$  before prebiotics;  $p < 0.05$ ,  $q < 0.1$  after prebiotics; data in D is presented with p-values generated by univariate tests between PD and CO on a log scaled axis, Wilcoxon signed-rank test; data in E is presented as relative abundance of the different Genera). \* =  $p < 0.05$ ,  $q < 0.1$ .

168 subjects ( $R^2=0.27$ ,  $p<0.001$ , permutation test), or differences between before and after  
169 prebiotics ( $R^2=0.2$ ,  $p<0.001$ , permutation test, Fig. 2b and c):  
170 Several taxa were identified representing the previously documented PD dysbiosis,  
171 including *Akkermansia muciniphila* and *Prevotella spp.* (*sp900313215*) enriched in PD  
172 subjects, while *Bacteroides fragilis* and *Anaerostipes hadrus* were enriched in CO (Fig.  
173 2c). The strongest signal relating to diet intervention was an enrichment of several  
174 *Bifidobacteria spp.* after prebiotics in both CO and PD (multivariate and univariate  
175 tests, Fig. 2c, Fig. 3a, and Suppl. Fig. 3c). In PD patients, we observed a significant  
176 enrichment in six different *Bifidobacteria spp.*, four of which were also increased in CO  
177 after prebiotics (Fig. 3a and Suppl. Fig. 3c Wilcoxon signed-rank test). Similarly,  
178 *UMGS1975* (Christensenellales) was enriched after prebiotics in both groups, but  
179 more so in PD subjects that were also enriched for *UMGS1975* before the intervention.

180 *Streptococcus thermophilus* was reduced only in the PD group after the diet  
181 intervention.



182

183

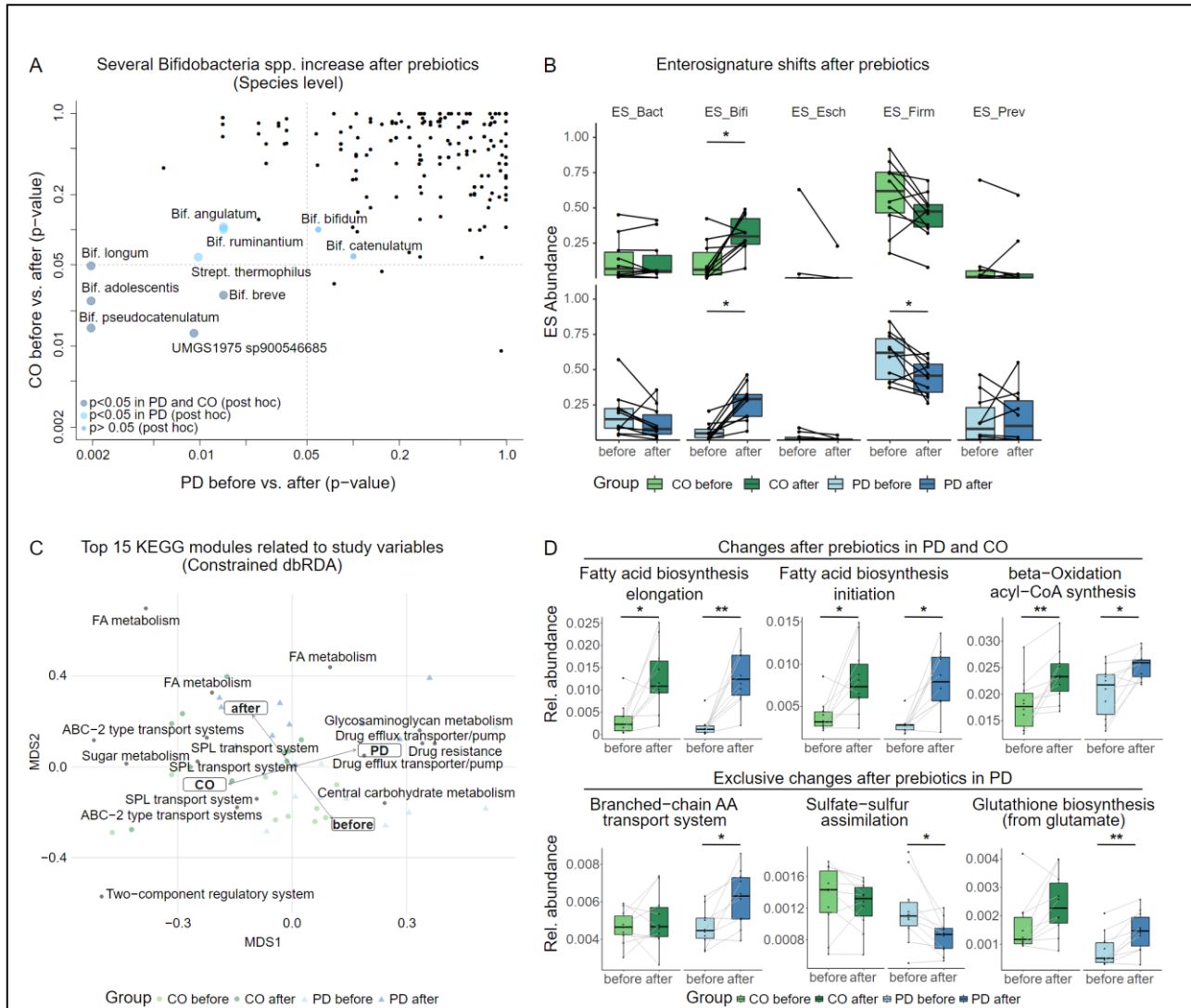


184 The PD-associated dysbiosis was not compensated by the diet intervention: *Blautia*,  
185 *Dorea*, *UBA1191* (Anaerovoracaceae) and *Erysipelatoclostridium* remained depleted  
186 in PD and *UMGS1975* (Christensenellales) remained increased in comparison to CO  
187 before and after prebiotics (all  $p < 0.05$ ,  $q > 0.1$  before prebiotics;  $p < 0.05$ ,  $q < 0.1$  after  
188 prebiotics, Wilcoxon rank sum test, Fig. 2d and 2e). This was also reflected in a  
189 markedly different species composition between PD and CO after prebiotics  
190 (perMANOVA,  $R^2 = 0.08$ ,  $p = 0.03$  and  $R^2 = 0.05$ ,  $p = 0.16$ , after and before, respectively,  
191 Fig. 2b). Notably, some subjects had elevated levels of genus *Klebsiella* ( $p > 0.05$ ),  
192 which decreased after prebiotics. Since this genus contains several pathobionts, this  
193 could be a benefit provided by prebiotics.

194 Alternatively, we cannot exclude that the high abundance of *Klebsiella* in some  
195 samples was due to inadequate anaerobic conditions during sample collection or  
196 storage.

197

198 To assess the extent of dysbiosis further, we assessed common bacterial guilds of  
 199 the human gut microbiome (represented through Enterosignatures, ES) and their  
 200 prevalence in our samples<sup>27</sup>. Overall, both study groups showed a good ES model

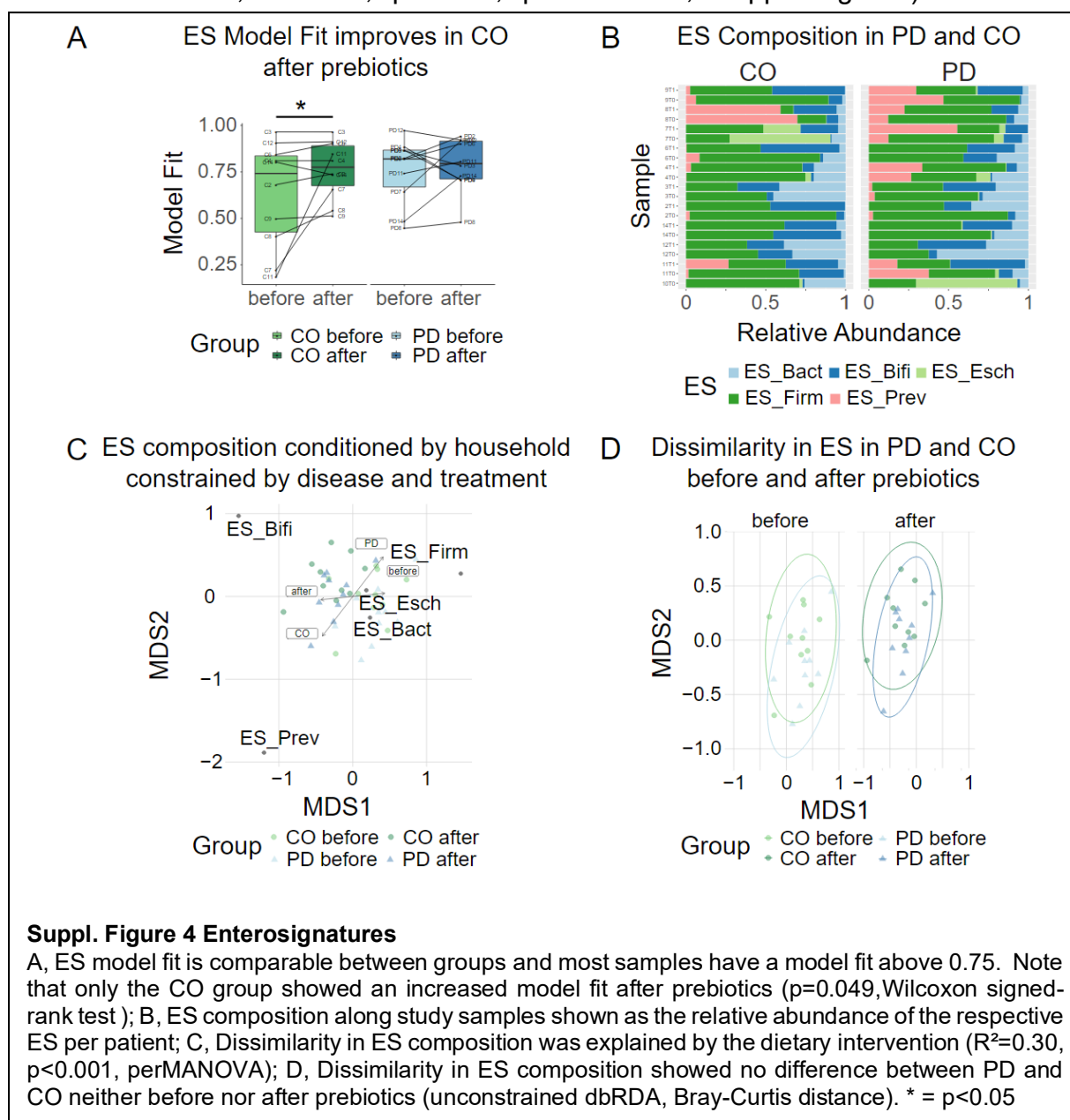


**Figure 3, Gut bacterial communities affected by the prebiotic diet intervention**

A, several taxa were significantly different between before and after prebiotics tests in both groups; n=6 *Bifidobacteria* spp. were enriched after prebiotics in PD, of which n=4 were also enriched in CO individuals; n=2 taxa are only changed in PD (*Strept. Thermophilus*, *UMGS1975*, data is presented as p-values generated with univariate tests/ Wilcoxon signed-rank test between before and after prebiotics on log scaled axes); B, ES composition shifted towards increased ES-Bifi in both groups while ES-Firmi decreased (sign. only in PD group, Wilcoxon rank sum test; C, top 15 KEGG modules in relation to the study group (PD/CO and diet intervention (before/after prebiotics), constrained dbRDA, conditioned for household), shows a strong correlation of fatty acid (FA) metabolism with the intervention (permutation test,  $R^2=0.3$ ,  $p<0.001$ ) as well as several functions correlated to either PD or CO (permutation test,  $R^2=0.16$ ,  $p<0.001$ , SPL, Saccharide, Polyol and lipid transport System); D, Differences in KEGG Modules before vs. after prebiotics (relative abundance, Wilcoxon signed-rank test), increased microbial genes related to fatty acid metabolism after prebiotics were similarly observed in PD and CO subjects (upper panel), on the other hand several genes were only changed in PD (lower panel). \* =  $p<0.05$ , \*\* =  $p<0.01$  (AA, amino acid).

201 fit, comparable between both groups (Suppl. Fig. 4a). In the PD group ES model fit

202 increased marginally after prebiotics ( $p > 0.05$ , Wilcoxon signed-rank test), while this  
 203 increase was significant in CO ( $P = 0.049$ , Wilcoxon signed-rank test, Suppl. Fig. 4a),  
 204 indicating that the gut microbiome after the diet intervention is more similar to an  
 205 average gut microbiome from the enterosignature model (trained on  $> 5,000$  gut  
 206 microbiomes<sup>27</sup>).  
 207 The dietary intervention had a strong impact on overall ES composition (Suppl. Fig.  
 208 4b), explaining 30% of variance amongst samples (after conditioning out the  
 209 “household-effect”,  $R^2 = 0.30$ ,  $p < 0.001$ , perMANOVA, Suppl. Fig. 4c). This was



210 probably driven by an increase in ES-Bifi (Bifidobacterium dominated guild,  $p \leq 0.01$   
211 in both CO and PD, Wilcoxon signed-rank test), and decrease in ES-Firmi (Firmicutes  
212 dominated guild,  $p=0.08$  and  $p=0.04$  in CO and PD, respectively, Wilcoxon signed-  
213 rank test) after the prebiotic intervention (Fig. 3b). Note that this effect seemed overall  
214 stronger in PD than CO microbiomes and is potentially related to a higher intake of  
215 Lactulose in this group.

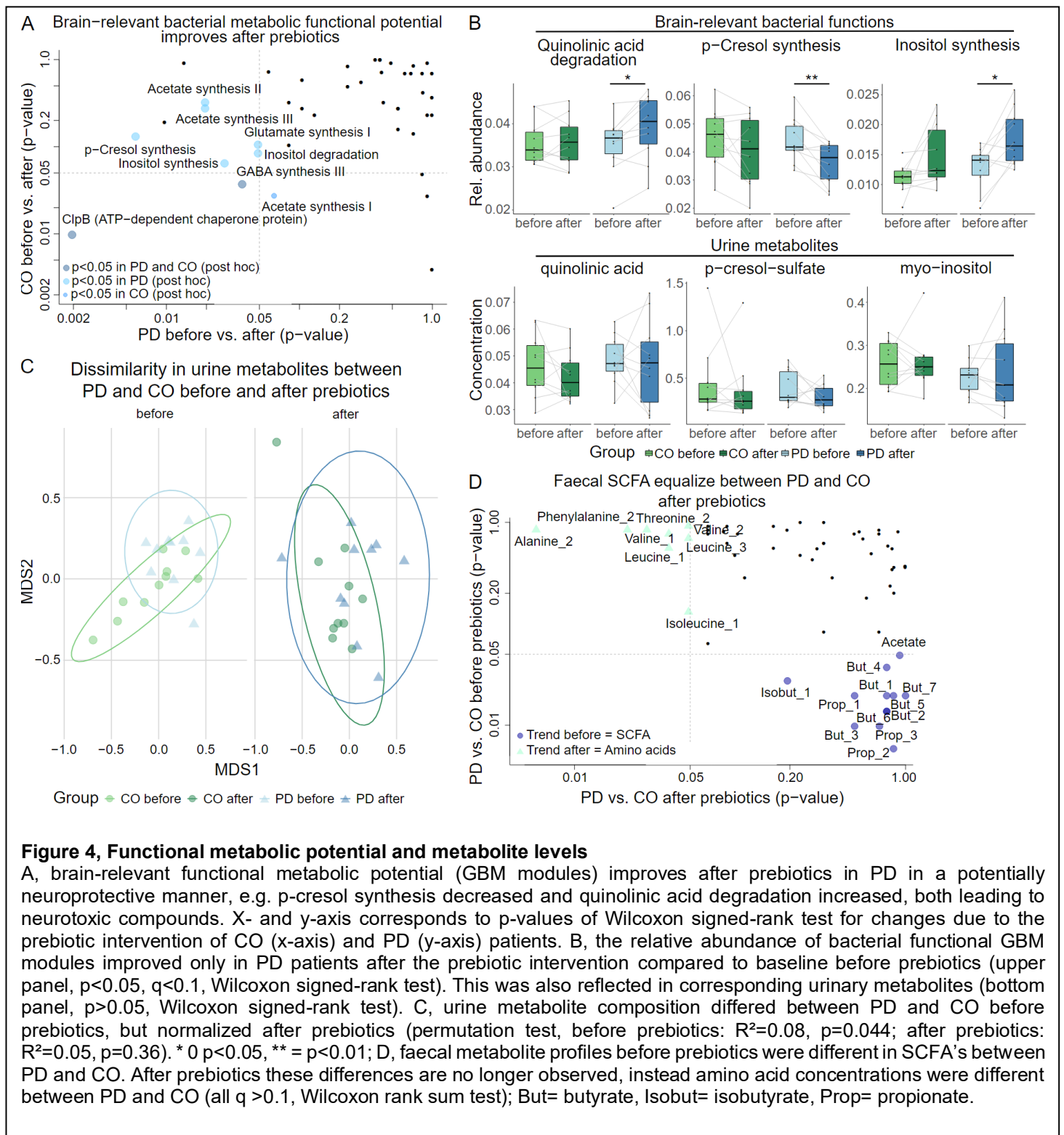
216

217 **The prebiotic intervention enhanced the bacterial metabolic potential for fatty**  
218 **acid metabolism in PD and CO and strengthened neuroprotective and**  
219 **antioxidative pathways in PD**

220 Given the apparent consolidation of the PD dysbiosis following prebiotics, we sought  
221 to ascertain whether the intervention exerted any influence on the functional potential  
222 of the microbiome. For this we used key metabolic pathway modules relevant for gut  
223 bacterial metabolism from the KEGG database<sup>28</sup>, as well as GBM<sup>29</sup> modules  
224 especially relevant for human brain functions. The functional composition of both,  
225 general and brain relevant pathways, was again dominated by household effects,  
226 which accounted for 42.1% and 49.1% of the total variance. In contrast, differences  
227 between PD and CO, explained 7.7% and 8.8% of variance in KEGG modules, while  
228 7% and 6% of variance were explained through GBM modules, respectively (all  
229  $p < 0.001$ , perMANOVA). Interestingly, the dissimilarity for KEGG modules between PD  
230 and CO before prebiotics decreased after prebiotics, while GBM differences between  
231 PD and CO became more pronounced after prebiotics (perMANOVA conditioned for  
232 household, KEGG before:  $R^2=0.10$ ,  $p=0.028$ , after prebiotics:  $R^2=0.08$ ,  $p=0.048$ , GBM  
233 before:  $R^2=0.07$ ,  $p=0.025$ , after prebiotics:  $R^2=0.10$ ,  $p=0.003$ ).

234 Investigating the modules driving these differences between PD and CO, we find the  
235 PD microbiome enriched in bacterial functions related to drug efflux and drug  
236 resistance, similar to our findings in 2017<sup>6</sup>. CO microbiomes were instead enriched in  
237 genes related to saccharide, polyol, and lipid transport systems (Fig. 3c). PD patients  
238 had increased abundances of genes related to butyrate synthesis, and decreased S-  
239 adenosylmethionine (SAM) synthesis ( $p < 0.05$ ,  $q > 0.1$ , Wilcoxon rank sum test) compared  
240 to CO, but this was normalized after prebiotics (n.s. difference to CO, Suppl. material  
241 1). After the prebiotic intervention, other functions differed between PD and CO,  
242 including Dihydroxyphenylacetic acid (DOPAC) Synthesis and GABAII Synthesis  
243 (decreased abundance in PD,  $p < 0.05$ ,  $q < 0.1$ , Suppl. material 1) and Tryptophan  
244 degradation (increased abundance in PD, Wilcoxon rank sum test,  $p < 0.05$ ,  $q > 0.1$ ,  
245 Suppl. material 1).

246 We next determined bacterial functions changed with the prebiotic diet (before vs. after  
247 prebiotics comparisons). In both CO and PD, multiple fatty acid metabolism related  
248 genes increased in relative abundance after prebiotics, involved in the synthesis of  
249 medium- and long-chain fatty acids (Fig. 3c and 3d).



**Figure 4, Functional metabolic potential and metabolite levels**

A, brain-relevant functional metabolic potential (GBM modules) improves after prebiotics in PD in a potentially neuroprotective manner, e.g. p-cresol synthesis decreased and quinolinic acid degradation increased, both leading to neurotoxic compounds. X- and y-axis corresponds to p-values of Wilcoxon signed-rank test for changes due to the prebiotic intervention of CO (x-axis) and PD (y-axis) patients. B, the relative abundance of bacterial functional GBM modules improved only in PD patients after the prebiotic intervention compared to baseline before prebiotics (upper panel,  $p < 0.05$ ,  $q < 0.1$ , Wilcoxon signed-rank test). This was also reflected in corresponding urinary metabolites (bottom panel,  $p > 0.05$ , Wilcoxon signed-rank test). C, urine metabolite composition differed between PD and CO before prebiotics, but normalized after prebiotics (permutation test, before prebiotics:  $R^2 = 0.08$ ,  $p = 0.044$ ; after prebiotics:  $R^2 = 0.05$ ,  $p = 0.36$ ). \*  $p < 0.05$ , \*\* =  $p < 0.01$ ; D, faecal metabolite profiles before prebiotics were different in SCFA's between PD and CO. After prebiotics these differences are no longer observed, instead amino acid concentrations were different between PD and CO (all  $q > 0.1$ , Wilcoxon rank sum test); But= butyrate, Isobut= isobutyrate, Prop= propionate.

251 In addition, 19 KEGG modules related to nucleotide, amino acid, carbohydrate and  
252 lipid metabolism were significantly changed in both PD and CO after prebiotics (Suppl.  
253 material 1). Notably, the prebiotic diet decreased formaldehyde assimilation, which is  
254 identified as increased in the PD dysbiosis<sup>30</sup>.

255 Compared to baseline values before prebiotics, several alterations in KEGG modules  
256 (N=20) were only different in PD patients (but not in CO) after prebiotics, e.g.,  
257 Sulphate-sulphur-assimilation pathway associated genes decreased, genes related to  
258 glutathione (GSH), serine synthesis as well as branched chain amino acid transport  
259 increased (Wilcoxon signed-rank test, Suppl. material 1 and Fig. 3d), the latter  
260 matching our metabolomic observations (see below). Notably, several bacterial  
261 pathways leading to brain relevant metabolites changed after prebiotics ( $p < 0.05$ ,  
262 Wilcoxon signed-rank test, Fig. 4a and 4b). These could have potentially positive  
263 implications for PD patients, e.g. the changes in genes related to both the neurotoxic  
264 p-cresol and quinolinic acid (decreased synthesis and increased degradation,  
265 respectively). Inositol synthesis genes increased, and inositol degradation genes  
266 decreased (a neuroprotective metabolite).

### 267 **Bacteria driving changes in functional potential**

268 To better understand the contribution of taxonomic changes to the observed changes  
269 in bacterial pathways, we correlated KEGG and GBM modules to MGS species  
270 clusters (partial correlation to correct for the time series). These functional metabolic  
271 changes could be correlated to different microbes, that were all previously implicated  
272 in PD<sup>4,6</sup> (Suppl. material 2). Fatty acid synthesis (initiation and elongation) and beta-  
273 oxidation/acyl-CoA-synthesis correlated positively to several *Bifidobacteria* species,  
274 but negatively to *Alistipes spp.* and *Barnesiella spp.*. The former species contributes

275 to the dysbiosis associated to PD, suggesting that an induced depletion of these taxa  
276 could benefit PD patients.

277 Several members of *Bifidobacteria* and *Oscillospiraceae* correlated to branched chain  
278 amino acid transport pathways (changed only in the PD group in before vs. after  
279 prebiotics comparisons), while e.g., *Blautia A spp.* showed a strong negative  
280 correlation. Further, *Eubacterium I spp.* were the strongest sign. positively correlating  
281 taxa with Sulphate-sulphur-assimilation (Suppl. material 2). Regarding brain-relevant  
282 GBM functions, a strong positive correlation was observed for different *Alistipes spp.*  
283 with inositol degradation as well as with p-cresol-synthesis, again suggesting that a  
284 diet-depleted *Alistipes spp.* would be of benefit in PD due to potentially reduced levels  
285 of neurotoxic compounds.

286

#### 287 **PD faecal and urine metabolites profiles normalized with the diet intervention**

288 Faecal metabolites<sup>31</sup> approximate the bacterial metabolism in the gut, while urine  
289 metabolites<sup>32</sup> can reflect both human and bacterial metabolism. We therefore  
290 analysed both faecal and urine metabolomes (NMR) of our cohort (N=80, coinciding  
291 with faecal sample collections). Variance in both urine and faecal metabolites was  
292 again mostly driven by differences between households (perMANOVA,  $R^2=0.36$ ,  
293  $p<0.001$ , and  $R^2=0.45$ ,  $p<0.001$ ; respectively, Suppl. Table 2), but study groups (PD  
294 vs. CO) had a sign. different urine metabolites composition ( $R^2=0.04$ ,  $p=0.03$ ).

295 Testing dissimilarities in urine metabolites for both timepoints separately (conditioning  
296 for households) revealed that the PD urinary metabolite profiles after the prebiotic  
297 intervention resembled the CO profiles (Fig. 4c). However, no clear causative  
298 biological signal was derived from the single metabolite composition to better explain  
299 this improvement based on differential abundance testing of all metabolites in urine  
300 between PD and CO. Comparing faecal metabolites between PD and CO before and



301 after prebiotics revealed that several faecal SCFA normalized after prebiotics in the  
302 PD group (e.g., Iso-/Butyrate and Propionate); instead, amino acids concentrations  
303 differed, such as a decrease in Alanine and Iso-/Leucine (Wilcoxon Rank Sum test,  
304  $p < 0.05$ ,  $q > 0.1$ , Fig. 4d), or neurotoxic metabolites (but  $p > 0.05$ , Fig. 4b), corresponding  
305 to the observed changes in the gut metabolic functional potential. Although limited by  
306 our cohort size, this highlights a plausible biological relation and potentially important  
307 result for PD patients.

308

309

## 310 **DISCUSSION**

### 311 **Key results- Beneficial effects of the prebiotic diet for PD patients**

312 The short-term prebiotic diet intervention was safe and well tolerated in all subjects  
313 (mild bloating was the only complain) and resulted in increased SCFA concentrations  
314 and improved gastro-intestinal symptoms in PD. We observed a trend towards  
315 reduced disease severity (UPDRSIII), which was inversely correlated with SCFA  
316 concentrations, indicating the importance of SCFA's for gastro-intestinal functioning  
317 and possibly also motor symptoms in PD. Interestingly, in a recent study of faecal  
318 microbiota transplant<sup>33</sup>, the improvement in motor symptoms became pronounced  
319 between the sixth and twelfth month after the transplant, suggesting that the effects of  
320 a dietary intervention might also occur at a later point than assessed here.

321 We observed several gut microbes that were sign. different before and after the  
322 intervention between PD and CO metagenomes, and these coincided with several  
323 well-known "dysbiotic" PD gut microbes. However, on a functional and metabolic level,  
324 the prebiotic diet appeared to remove most of the aberrations observed between PD  
325 and CO patients, presumably improving gut microbial metabolism in PD patients:  
326 Apart from normalized SCFA concentrations in the faecal metabolite profile, we also  
327 found decreased branched chain amino acids (BCAA), potentially harmful for neurons  
328 by oxidative stress<sup>34</sup>, mitochondrial dysfunction<sup>34</sup>, and a decrease in dopamine  
329 synthesis<sup>35</sup>, while presumably neurotoxic compounds associated with PD<sup>36,37</sup> were  
330 reduced in the urine metabolites after prebiotics (the aromatic amino acid p-cresol-  
331 sulfate, and the tryptophan/kynurenine downstream metabolite quinolinic acid). This  
332 coincided with changes in corresponding bacterial pathways derived from the  
333 metagenome. The prebiotic intervention seemed to restore a normal metabolite profile

334 in general, as PD urinary metabolomic profiles were no longer distinct from CO after  
335 the prebiotic intervention.

336 Our analyses identified and had to be statistically corrected for a prevailing “household  
337 effect”. The importance of family shared microbes (possibly arising from social  
338 interactions, shared environments or diet) has been described before<sup>38,39</sup>, but the  
339 scale accounting for >36% (mean 44%) of explained variance at all data levels (Suppl.  
340 Table 2) was surprising to us.

### 341 **SCFAs at the Blood-Brain-Barrier**

342 SCFAs, increased due to the prebiotic intervention in our cohort, have a range of  
343 presumed beneficial effects on gut- and blood-brain-barrier (BBB) integrity<sup>9,40</sup>.  
344 Translocating from the intestines to the systemic circulation, SCFA can reduce  
345 neuroinflammation<sup>41</sup> and contribute to microglia maturation<sup>42</sup> in murine models.  
346 Propionate, enriched in PD patients after prebiotics, has anti-inflammatory and BBB  
347 permeability-reducing effects in human brain endothelial cells<sup>43</sup>. Dietary fibre and  
348 SCFA can suppress intestinal inflammation, thereby improving the gut barrier function  
349 based on animal and cell culture studies<sup>44,45,46</sup>. In addition to the observed changes  
350 in SCFA concentrations, we identified enriched bacterial pathways for fatty acid  
351 metabolism (middle-chain fatty acids, MCFAs, and long-chain fatty acids, LCFAs).  
352 MCFAs have been shown to have beneficial effects, particularly on metabolic features  
353 and insulin sensitivity<sup>47</sup>, and LCFAs like palmitic acid (pathways enriched in our study),  
354 can lead to enhanced IgA antibody production *in vitro* and in mice<sup>48</sup>, contributing to  
355 host defence against pathogenic microorganisms.

### 356 **PD microbiome is not restored through prebiotics**

357 To date, only few studies investigated the effects of dietary interventions on PD gut  
358 microbiome dysbiosis, focusing on constipation<sup>49,50</sup> and/or pharmacokinetics<sup>49</sup>. The

359 effects of dietary mixed fibres were investigated in a cohort<sup>56</sup> of n=10 PD subjects over  
360 10 days resulting in increased plasma SCFA, gut integrity markers and reduction in  
361 potentially pathogenic family (*Enterobacter*), while potentially SCFA-producing  
362 species (*Bifidobacterium*, *Faecalibacterium*) were increased, in accordance with our  
363 results after a 1-month intervention. With the inclusion of a control group, we could  
364 also characterize and monitor the PD-associated dysbiosis, corroborating our earlier  
365 work<sup>4,6</sup>.

366 The PD dysbiosis persisted during the diet intervention. Whether extended prebiotic  
367 use could restore the PD microbiome in the long-term, or if other, as-yet-unknown  
368 host-microbe or microbe-microbe mechanisms are responsible, remains a subject for  
369 further research. The microbiome is highly individual (or family) specific<sup>38,39</sup> and  
370 distinct microbial communities might show divergent responses to prebiotics,  
371 indicating a hierarchical specificity towards gut microbes<sup>51</sup>, potentially limited by  
372 physico-chemical fibre characteristics. These mechanisms might be strain specific.  
373 Dysbiosis associated taxa (e.g., *Akkermansia*) in PD patients might stem from specific  
374 strains, which are particularly successful in outcompeting other microbiome taxa but  
375 with detrimental effects for the host. The removal of a persistent (dysbiosis associated)  
376 member of the microbiota might require much stronger remedies than a prebiotic, as  
377 most bacterial strains persist in the gut microbiome for extended periods<sup>39</sup>. Other  
378 factors that favour dysbiotic taxa in PD patients include constipation and increased  
379 transit time, as discussed in<sup>4</sup>. Although it is tempting to speculate, that the PD  
380 microbiota is less adaptable and remains therefore trapped in a dysfunctional state,  
381 we cannot exclude that the persistent dysbiosis might be a less favourable effect of  
382 the SCFA-enhancing diet in PD.

383 **Alterations in bacterial functional capacity with potential pathophysiological**  
384 **implications for PD**

385 Following prebiotic intervention, alterations in gene abundance were identified in  
386 multiple bacterial metabolic pathways, particularly within the PD cohort. These findings  
387 offer a potential pathophysiological relevance to PD. This included a normalized SAM  
388 synthesis, enhanced GSH metabolism, decreased DOPAC synthesis, and an  
389 increased Tryptophan degradation along with the above-mentioned reductions in  
390 pathways resulting in neurotoxic metabolites (p-cresol sulphate and quinolinic acid)  
391 and increase in a pathway resulting in the neuroprotective metabolite myo-inositol.  
392 SAM, an endogenous amino acid metabolite involved in the methylation and trans-  
393 sulfuration processes critically modulates autophagy<sup>52</sup>, a process also relevant for PD,  
394 but excessive SAM on the other hand has been shown to cause PD like symptoms in  
395 rats<sup>53</sup>. It has been suggested that PD severity is related to a disturbed host-trans-  
396 sulphuration, a pathway central to antioxidant response, along with an increased  
397 bacterial Sulphur-metabolism<sup>76</sup>, related potentially to PD medication<sup>54</sup>. GSH (a SAM  
398 derived metabolite) is involved in neuro-immune and neuro-oxidative processes and  
399 in the regulation of cell death. Reduced GSH levels also is a key finding in PD brain  
400 tissue<sup>55</sup>, associated with mitochondrial dysfunction constituting a critical factor in the  
401 neuroinflammatory and -degenerative processes in PD<sup>56</sup>. The major dopamine  
402 metabolite, dihydroxyphenylacetic (DOPAC), seems to play a role in PD  
403 pathophysiology associated cell death<sup>57</sup> and mitochondrial inhibition. Prebiotically  
404 decreased bacterial DOPAC concentrations in parallel with elevated antioxidative  
405 GSH concentrations in the gut lumen could in turn be advantageous for the human  
406 host with PD. However, it remains to be seen whether the aforementioned changes in

407 bacterial metabolism or respective metabolite changes within the gut lumen will reach  
408 the human host in a manner that beneficially influences the PD process.

### 409 **The therapeutic potential for Bifidobacteria in PD**

410 The prebiotic intervention led to a substantial increase in *Bifidobacteria*. Bifidobacteria  
411 were among the taxa consistently increased in PD patients<sup>4,58</sup>, albeit several  
412 studies<sup>59,60</sup> controlled for laxatives such as the *Bifido*-genic Lactulose used here.

413 These *Bifidobacteria* were most likely already colonizing the host's gut and might  
414 therefore be more desirable for the PD patient, as seeding the gut microbiome with  
415 newly colonizing *Bifidobacteria* (or any other probiotic) could inadvertently negatively  
416 impact the gut microbiome, e.g. elicit an immune response to so-far-unknown taxa  
417 and/or disrupt the established and stabilized microbial ecosystem through the new  
418 strains. Prebiotics may represent a more suitable option for chronic conditions such  
419 as PD than probiotics, because of their longer-lasting effects<sup>58,59</sup>.

420 *Bifidobacteria* have the potential to benefit the PD patient and they are sometimes  
421 used as *Psychobiotics*<sup>60</sup> (a subclass of probiotics), given their ability to stimulate  
422 neurotransmitters, SCFA, anti-inflammatory cytokines, production of  $\gamma$ -aminobutyric  
423 acid (GABA) or tryptophan<sup>61,62</sup> or enteroendocrine hormones with potentially brain-  
424 protective functions. However, *Bifidobacteria* could also be harmful, as their  
425 metabolism of tryptophan can produce potentially harmful metabolites (i.e., the  
426 neurotoxic quinolinic acid<sup>63</sup>) and certain *Bifidobacteria* strains can *in vitro* metabolize  
427 L-Dopa via a deamination<sup>64</sup>, potentially interfering with standard PD pharmacotherapy.  
428 Thus, despite many potential benefits that *Bifidobacteria* could provide, the actual  
429 species and strains already residing in a microbiome should be assessed before  
430 manipulating their abundances through prebiotic interventions.

### 431 **Limitations**

432 Due to the limited number of subjects involved in this pilot study, the resulting data  
433 may be subject to bias and therefore require further corroboration. Lactulose was  
434 prescribed to PD patients as a basic medication to treat constipation at a dosage  
435 exceeding that used in the control group i.e., prebiotic dosage given for reasons of  
436 comparability. However, given our intention to investigate potential disease-modifying  
437 strategies that are particularly focused on PD patients, this approach may be deemed  
438 justifiable.

### 439 **CONCLUSION**

440 A systematic investigation of metagenomics and metabolomics in both faecal and  
441 urine samples demonstrated that a SCFA-promoting diet modulated the metabolism  
442 of the intestinal microbiota in PD patients, along with improved gastro-intestinal  
443 symptoms. Hence, the potential of a microbiota-directed prebiotic intervention as a  
444 modifying therapeutic approach in PD appears promising. To safely exploit the  
445 therapeutic potential of *Bifidobacteria* in PD, we suggest using strain resolved  
446 metagenomics to guide prebiotic regimes to control for potentially harmful effects  
447 (such as L-Dopa deamination). It remains to be determined whether the dysbiosis  
448 associated with PD can be restored with longer-term prebiotic interventions or may  
449 require a probiotic approach or a (faecal) microbiome transfer. Larger placebo-  
450 controlled trials with longer-lasting dietary interventions including different types of  
451 fibres and probiotic interventions are required and justified given the beneficial  
452 metabolic changes observed in our data.

453

## 454 **METHODS**

### 455 **Study design and participants**

456 This prospective controlled clinical pilot study was approved by the local ethics  
457 committee of the University of Bonn, Germany, and all participants gave written  
458 informed consent (internal ethics vote 145/17).

459 The study was registered in the German Clinical Trials Register (DRKS under the  
460 number DRKS00034528). Inclusion criteria were: (1) idiopathic PD (mild to moderately  
461 advanced, i.e., Hoehn and Yahr 1-2) with (2) stable medication within the previous  
462 three months, and (3) willingness for their healthy non-PD spouses to participate; (4)  
463 both at ages  $\leq 75$  years. Exclusion criteria were (1) atypical parkinsonism; (2) PD  
464 patients with deep brain stimulation or continuous intestinal levodopa infusion; (3)  
465 chronic and inflammatory gastrointestinal diseases including severe chronic  
466 constipation; (4) the use of laxatives, antibiotics, or immunosuppressive agents in the  
467 past three months (note that n=1 PD took 1 day of antibiotics 4 weeks before study);  
468 (5) lactose intolerance; and (6) veganism. Participating PD patients were recruited  
469 from the Department of Neurology, University of Bonn, Germany, and underwent the  
470 dietary intervention together with their healthy spouses. The control group was  
471 selected to ensure a certain degree of standardisation and comparability with regard  
472 to the dietary recommendations provided throughout the course of the study.  
473 Furthermore, it was hypothesised that habitual diets would prove more comparable to  
474 those of age-matched healthy controls, thus enhancing the reliability of the baseline  
475 conditions. The recruitment of participants was conducted between October 2017 and  
476 July 2019, with the relevant study data collected concurrently. N=11 PD patients and  
477 their N=11 healthy spouses (control group, CO) were included in the study. One couple



478 (1 PD, 1 CO) withdrew from the study before the final visit for reasons not related to  
479 the study.

480 PD was clinically diagnosed according to the UK Brain Bank criteria. Disease severity  
481 was measured using the Movement Disorders Society Unified Parkinson's Disease  
482 Rating Scale (MDS\_UPDRS) part III. Gastrointestinal symptoms and constipation  
483 presence were evaluated through a Gastrointestinal Symptom Rating Scale (GSRS  
484 <sup>65</sup>, selected items: borborygmus, abdominal distension, increased flatus, decreased  
485 passage of stools, increased passage of stools, loose stools, hard stools, urgent need  
486 for defecation and feeling of incomplete evacuation, rated 0-3 based on intensity,  
487 frequency, duration, or social impact) and a post-prebiotic interview for adverse  
488 effects.

#### 489 **Dietary intervention**

490 All participants agreed to follow a recommended diet, a combination of nutrients rich  
491 in fibres, fruits, and vegetables for 4 weeks: a combination of i) 2 apples/10 apple rings  
492 a day (rich in pectin, a polysaccharidic prebiotic) and ii) 5 portions per week (portion=  
493 the size of the own hand) of foods rich in resistant starch, lignin, and anthocyanins  
494 (lentils, potatoes, green beans, onions, oat bran, lettuce, olive oil, and bananas as well  
495 as strawberries). PD patients were taking a prebiotic Lactulose syrup to treat  
496 constipation as a basic medication and the spouses thus were ingesting Lactulose in  
497 a prebiotic dosage. Lactulose, a non-digestible synthetic disaccharide, is used for  
498 different purposes, such as a prebiotic, for constipation and hepatic encephalopathy  
499 treatment (ranging from 10g to 100g respectively). PD patients took 2x15 mL (2x10 g)  
500 daily for treatment of constipation, while controls took 1x15 mL (1x10 g, i.e., prebiotic  
501 dosage). Lactulose is anaerobically fermented in the colon by microbiota, enhancing  
502 *Bifidobacteria*, *Lactobacillus* (and SCFA<sup>66,67</sup>). Dietary baseline information was

503 assessed with a questionnaire (Suppl. material 3). Diet compliance was verified  
504 through self-maintained food logs over the 4 weeks, reviewed after completion of the  
505 study (n=7 representative diet days per subject, i.e., n=5 weekdays and n=2 weekend  
506 days across the 4 weeks). Diet diaries were analysed using the Nutritics dietary  
507 analysis software (Nutritics Ltd), based on the German Food Composition Database  
508 available within Nutritics. To establish a comparable and scalable measure for  
509 assessing dietary adherence, we focused on measuring the consumption of raw  
510 apples, as they are easily quantifiable, as well as total fibre intake. It should be noted,  
511 however, that apple/fibre consumption alone does not necessarily indicate full  
512 adherence to our recommendations. Due to the nature of our recommendation as a  
513 portion (resembling the size of the own hand) and because we did not systematically  
514 quantify dietary habits over a longer period before intervention, application of absolute  
515 values of other nutrients was considered inappropriate. The food score was calculated  
516 as following: the consumption of raw apples based on our given recommendations (2  
517 Apples= 365 g/d or 10 Apple rings dried = 65 g/d) was considered 100% adherent.  
518 Then the fraction of the participants' diet days with an apple consumption below the  
519 mean apple consumption of all participants was computed (mean=70%/d of our  
520 recommendation). A fraction of more than 0.75 days was considered as less adherent.  
521 Additionally, dietary analysis including estimating the average fibre intake of every  
522 representative day was calculated and used for basic statistical testing (see below),  
523 using the Nutritics dietary analysis software.

#### 524 **Sample collection**

525 Urinary and faecal samples were non-invasively collected at baseline and 4 weeks  
526 after diet. Faecal samples were put in a specimen collector (Sarstedt) and stored in a  
527 plastic bag under anaerobic conditions (Anaerocult® P, Merck Millipore). Participants

528 were advised to collect samples the latest the evening prior to or at the day of the  
529 study visit. All samples were cooled in a refrigerator (5-7 °C) at the patients' home and  
530 transported to the study site with a cool pack. Samples were immediately stored at -  
531 80°C upon arrival at the study site. Additionally, routine laboratory parameters were  
532 assessed at baseline and 4 weeks after diet (focusing on serum sodium and potassium  
533 levels as safety measures due to the ingestion of Lactulose syrup).

#### 534 **Outcome**

535 Primary: i) modification of SCFA in faeces, ii) changes in gut microbial composition  
536 including key species for SCFA production, and iii) changes in bacterial metabolism  
537 based on bacterial genomes and metabolomics analysis in urine and faeces.

538 Secondary: i) changes in motor symptoms (UPDRSIII), ii) modification of gastro-  
539 intestinal symptoms (modified GSRS, stool frequency, side effects).

#### 540 **Faecal DNA Extraction and sample preparation**

541 DNA extraction was performed with the Maxwell® RSC PureFood GMO and  
542 Authentication Kit (Cat. #AS1600) according to the manufacturer's recommendations.  
543 In brief, 200 mg of faeces were placed into a 2 mL microcentrifuge tube and 1 mL of  
544 CTAB Buffer was added. Samples were heated at 95°C for 5 minutes and allowed to  
545 cool down for 2 minutes. Manually homogenisation was performed with bead beating  
546 in the 2 mL Lysing Matrix E tubes (containing 1.4 ceramic spheres, 0.1 silica spheres,  
547 and one 4 mm glass bead) using a Homogenizer (FastPrep, Setting/Speed 6.0, 3  
548 times for 1.0 minute). Samples were then mixed with 40 µl of proteinase K and 20 µl  
549 of RNase A and incubated at 70°C for 10 minutes. Cartridges were prepared according  
550 to the manufacturer's recommendations (300 µl lysis buffer). The Maxwell RSC was  
551 run with the PureFood Protocol, automatically purifying and eluting DNA in 100µl.

#### 552 **Sequencing**

553 Genomic DNA was normalised to 5 ng/µl with EB (10mM Tris-HCl). A miniaturised  
554 reaction was set up using the Illumina Nextera DNA Flex Library Prep Kit (Illumina  
555 Catalogue No 20018704). 0.5 µl Tagmentation Buffer 1 (TB1) was mixed with 0.5 µl  
556 Bead-Linked Transposomes (BLT) and 4.0 µl PCR grade water in a master mix and 5  
557 µl added to a chilled 96 well plate. 2 µl of normalised DNA (10 ng total) was pipette  
558 mixed with the 5 µl of the tagmentation mix and heated to 55 °C for 15 minutes in a  
559 PCR block. A PCR master mix was made up using 4 ul kapa2G buffer, 0.4 µl dNTP's,  
560 0.08 µl Polymerase and 4.52 µl PCR grade water, contained in the Kap2G Robust  
561 PCR kit (Sigma Catalogue No. KK5005) per sample and 9 µl added to each well need  
562 to be used in a 96-well plate. 2 µl of each P7 and P5 of Nextera XT Index Kit v2 index  
563 primers (Illumina Catalogue No. FC-131-2001 to 2004) were added to each well.  
564 Finally, the 7 µl of Tagmentation mix was added and mixed. The PCR was run with  
565 72°C for 3 minutes, 95°C for 1 minute, 14 cycles of 95°C for 10s, 55°C for 20s and  
566 72°C for 3 minutes. Following the PCR reaction, the libraries were quantified using the  
567 Quant-iT dsDNA Assay Kit, high sensitivity kit (Catalogue No. 10164582) and run on  
568 a FLUOstar Optima plate reader. Libraries were pooled following quantification in  
569 equal quantities. The final pool was double-SPRI size selected between 0.5 and 0.7X  
570 bead volumes using KAPA Pure Beads (Roche Catalogue No. 07983298001) and  
571 quantified on a Qubit 3.0 instrument and run on a D5000 ScreenTape (Agilent  
572 Catalogue No. 5067- 5588 & 5067- 5589) using the Agilent TapeStation 4200 to  
573 calculate the final library pool molarity.

574 Samples were sent to Novogene (Novogene (UK) Company Limited, 25 Cambridge  
575 Science Park, Milton Road, Cambridge, CB4 0FW, United Kingdom) to be run along  
576 with sample names and index combinations used. Faecal samples were shotgun  
577 sequenced (paired end) using an Illumina Novaseq 6000 at Novogene. Demultiplexed

578 fastq's were returned on a hard drive, and further analyzed with the Mafiler  
579 Pipeline<sup>39</sup>.

### 580 **Targeted SCFA measurements in faeces**

581 Frozen aliquots of raw faeces were sent to an external laboratory (GANZIMMUN  
582 Diagnostics GmbH, Hans-Böckler-Str. 109, 55128 Mainz, Germany) to measure  
583 SCFA levels via GC-MS (GC; Perkin Elmer Clarus 680, MS: Perkin Elmer Clarus  
584 SQ8). In brief, 1 g of raw faeces was suspended and homogenized in 26% NaCl-  
585 solution (ACROS - 387640025). Then 900 mL 6M HCl were added for stabilization. 3  
586 mL of the former were transferred into a plastic tube together with 30 µL of Istd-solution  
587 (100 µL 2-ethylbutyric acid in 9.9 mL 0.6 M HCl-solution). Samples were thoroughly  
588 mixed and 50 µL, placed into a Wheaton-Vial, and closed with a crimp-cap. Calibration  
589 standards of the respective SCFA were similarly prepared in 26% NaCl, stabilized with  
590 6 M HCL, and treated analogously as the faecal samples. Then levels of SCFA were  
591 measured (Headspace-System: Perkin Elmer TurboMatrix 40, Column: Phenomenex  
592 Zebron ZB-FFAP, 30 m length, 0.25 mm ID, 0.25 µm width, gas: Helium, 80 kPa,  
593 injection-volume: 1 µL, temperature-program: 2 min at 45 °C, heating (15°C/min) to  
594 reach 250°C, heat 250°C for a duration of 10 min, Headspace-temperatures: Vial-  
595 Oven 60 °C, transfer line 110 °C, injection-pin 95 °C). Data was sent electronically  
596 with SCFA concentrations given in µmol per 1 g faeces.

### 597 **Non-targeted metabolomics analysis in urine and faeces**

599 Nuclear magnetic resonance (NMR) spectroscopy was used for non-targeted  
600 metabolomics. A detailed description of the metabolomics method including urine  
601 sample preparation, NMR analysis and data processing is outlined in Heinzmann et  
602 al<sup>32</sup>. In brief, 150 µL of urine is mixed with 50 µL PO<sub>4</sub>-buffer (100% D<sub>2</sub>O) and 10 µL  
603 4.5 M KF in D<sub>2</sub>O. To extract aqueous faecal metabolites, we homogenized 50 mg

604 faeces in 1 mL H<sub>2</sub>O using ceramic beads (NucleoSpin, Macherey–Nagel, Dueren,  
605 Germany) and a TissueLyser (Qiagen, Hilden, Germany) mixing for 3 x 20 sec at 4500  
606 rpm with a 10 sec cooling break (< 0°C). Subsequently, the homogenate was  
607 centrifuged (13.000 rpm for 10 mins at 4°C), the supernatant evaporated with a  
608 SpeedVac, the dried extract reconstituted in 150 µL H<sub>2</sub>O and mixed with 50 µL NMR  
609 buffer and 10 µL 4.5 M KF. Samples were immediately submitted to NMR analysis and  
610 the same workflow protocols were used for urine and faecal extracts<sup>32</sup>. For metabolite  
611 identification, we analyzed the quality control sample (i.e., a mixture of all samples in  
612 the study) as a representative sample of urine and faecal water extract respectively  
613 with a series of 2-dimensional NMR analyses as specified in<sup>68</sup>. Data were imported  
614 into Matlab software R2011b (Mathworks, Natick, MA, USA) and the water region  
615 removed, and spectra normalized<sup>69</sup>. Relative quantification of metabolites was done  
616 using the peak height of selected peaks, as identified by a peak picking algorithm<sup>70</sup>.  
617 As the urine metabolites were commonly characterized by multiple peaks, we chose  
618 the best representative peaks for data reduction prior to statistical testing.

### 619 **ELISA (faecal Calprotectin and Alpha-1-Antitrypsin)**

620  
621 Quantitative determination of calprotectin and alpha1-antitrypsin in stool each was  
622 performed with an enzyme linked immunoassay from Immundiagnostik AG  
623 (Stubenwald-Allee 8a, 64625 Bensheim, Germany; calprotectin: IDK® Calprotectin  
624 ELISA, K 6927, K 6927.20, MRP (8/14, S100A8/A9); alpha1-antitrypsin: IDK® α1-  
625 antitrypsin ELISA, K 6760) following the manufacturer's instructions.

### 626 **Genome reconstruction, taxonomic and functional profiling of metagenomes**

627 MATAFILER<sup>39,71</sup> (<https://github.com/hildebra/MATAF3>) was used to process raw  
628 reads, assemble metagenomes, reconstruct metagenomics assembled genomes

629 (MAGs) and dereplicate these to metagenomic species (MGS). Briefly, raw shotgun  
630 metagenomes were quality filtered using sdm v1.63 with default parameters<sup>72</sup>.  
631 Kraken2<sup>73</sup> was used to remove human reads. Host-filtered metagenome reads, were  
632 assembled using MEGAHIT v 1.2.9<sup>74</sup> and reads were backmapped onto the assembly  
633 using Bowtie2 v2.3.4.1<sup>75</sup>, genes predicted with Prodigal v2.6.1 with parameters “-p  
634 meta” and a gene catalogue clustered at 95% nt identity using MMseqs2<sup>76</sup>. Matrix  
635 operations on the gene catalog were carried out using rtk2<sup>77</sup>.  
636 MAGs were calculated using SemiBin2<sup>78</sup>, their completeness and contamination  
637 estimated using checkM2<sup>79</sup>. Using a combination of SemiBin2 MAGs and canopy  
638 clusters<sup>80</sup> (<https://github.com/hildebra/canopy2>), high-quality reference genomes  
639 (>80% completeness, <5% contamination) were dereplicated into metagenomic  
640 species (MGSs) using clusterMAGs (<https://github.com/hildebra/clusterMAGs>) in  
641 MATAFILER. Abundances of MGS in different samples were estimated based on  
642 conserved marker genes and their median abundances within the gene catalog.

### 643 **Enterosignature calculation**

644 The reapplication of Enterosignatures (ES) were generated at  
645 <https://enterosignatures.quadram.ac.uk/>. The Genus abundance table was fitted to the  
646 five Enterosignatures model<sup>27</sup> and taxa names were matched between the abundance  
647 table (H) and the five Enterosignatures W matrix, which gives the weight of each taxon  
648 in each signature. The W matrix and H have been modified so taxa names and orders  
649 in each match. ES are a set of five signatures that represent common microbial guilds  
650 complementary in their metabolism and found in all gut samples. The ES model allows  
651 to define a normal/homeostatic microbiome, i.e., a low model fit  $\leq 0.4$  could be  
652 suggestive of a microbiome in an atypical state (or at least in a state that was not well  
653 represented amongst the >5,000 gut microbiomes the model was originally learnt

654 from). Brain related metabolic functional potential was assessed with a previously  
655 published database of manually curated gut-brain modules<sup>81</sup> (GBMs, with each  
656 corresponding to a single neuroactive compound production or degradation process).

## 657 **Statistical analyses**

658 Statistical analysis was conducted in R 4.1.3. Alpha-diversity and Beta-diversity  
659 indices and compositional analyses were calculated using the R-packages rtk<sup>77</sup>,  
660 phyloseq<sup>82</sup>, microbiome<sup>83</sup>, and vegan<sup>84</sup>, and data was visualized with ggplot2 and  
661 custom R scripts. For Alpha-diversity measures i.e., indices of diversity and evenness  
662 (Shannon, Simpson) and richness (Observed, Chao1, and ACE), sample count  
663 matrices were rarefied to 90% of the minimal sample sum to ensure even sampling  
664 depth. For Beta-diversity i.e., the quantification of sample dissimilarity (between PD  
665 and CO or between before and after prebiotics based on Bray-Curtis or Euclidean  
666 distance, see below) and taxonomic composition, taxa count matrices were  
667 normalized by dividing each feature by the respective total sample sum (TSS).

668 For univariate tests, features from the abundance matrix were removed that were  
669 present in less than four samples or had less than 0.001% relative abundance.  
670 Significance between PD and CO was tested with a paired samples Wilcoxon rank-  
671 sum (Wilcoxon signed-rank test, function “wilcox.test(..., paired=TRUE)”) test between  
672 couples for each time point separately (PD vs. CO before and PD vs. CO after  
673 prebiotics) followed by a multiple testing correction (Benjamini-Hochberg), to account  
674 for the “family effect”. For within-patient comparisons, a Wilcoxon signed-rank test (see  
675 above) was performed on all data (before prebiotics vs. after prebiotics), then multiple  
676 testing corrected (Benjamini-Hochberg). Post-hoc testing was performed using a  
677 Wilcoxon signed-rank test (PD before vs. PD after and CO before vs. CO after). All P-  
678 values were corrected for multiple testing using the Benjamini–Hochberg false



679 discovery rate<sup>85</sup> (referred to as q- value) using the function “p.adjust”. Differences in  
680 categorial metadata between PD and CO were tested with a Fisher’s exact test as  
681 implemented in base R (function “fisher.test”). For all univariate tests, a p-value <0.05  
682 and a q-value <0.1 were considered statistically significant. Effect sizes were  
683 calculated using the R-package coin<sup>86</sup> and rstatix, using the function “wilcox\_effsize”  
684 and “coin::wilcoxsign\_test”. The effect size r varies from 0 to close to 1, and we  
685 considered 0.10 - < 0.3 (small effect), 0.30 - < 0.5 (moderate effect) and ≥0.5 (large  
686 effect).

687 For estimation of dissimilarity between study variables we used (un)constrained and  
688 conditioned distance-based redundancy analysis (dbRDA, function “dbrda” in  
689 vegan<sup>84</sup>). As this function does not allow missing data values, we imputed NAs in  
690 metadata with the mean value of the respective variable (this was the case for n=3  
691 GSRS and n=1 stool frequency values missing). Estimation of dissimilarity was based  
692 on Bray-Curtis distance for taxonomic and function tables (composition of TSS  
693 normalized data) or based on Euclidean distance for faecal SCFA, faecal and urine  
694 metabolomics on log-transformed data (log x+1).

695 A permANOVA (function “adonis2” in vegan) was used to test the significance of the  
696 constraints in the conditioned dbRDA distances. As the household effect had a major  
697 impact on data variability (see also results section), we blocked the perMANOVA test  
698 for the variable household (i.e., the pairs PD + healthy spouses) with the function  
699 “setBlocks” in permute<sup>87</sup> and tested the dissimilarity either for the total data or the  
700 different timepoints separately. Dissimilarity matrices were then associated with  
701 different variables (study group, time point, metabolites, taxa) with the function “envfit”  
702 (with a permutation test as implemented in vegan).

703 For composition plots, taxa were summarized into a higher phylogenetic level (i.e.,  
704 *Genus* level) and rare taxa were combined (with the function  
705 “microbiome::aggregate\_taxa” or “microbiome::aggregate\_rare”, respectively, as  
706 implemented in microbiome<sup>83</sup>/phyloseq<sup>82</sup>).

707 Partial correlation analyses between taxa and KEGG/GBM modules were conducted  
708 with ppcor<sup>88</sup> with spearman correlation corrected for autocorrelation (with the function  
709 “ppcor.test” the pairwise partial correlations between two variables (x, y) can be  
710 controlled for a third variable (z, the individual participant to avoid autocorrelation))  
711 and the correlation matrix was visualized with corrplot<sup>89</sup>.

## 712 **Code availability**

713 The underlying code for this study is available in GitHub and can be accessed via this  
714 link <https://github.com/PDMicro/PDD-scripts>.

## 715 **Data availability**

716 The metagenomic sequencing data generated and/ analysed during the current study  
717 is available in the European Nucleotide Archive, ENA repository, PRJEB57228.  
718 Further data types are available upon request from the corresponding authors.

719

## 720 **References**

721

- 722 1. Collins, S. M. & Bercik, P. The Relationship Between Intestinal Microbiota and  
723 the Central Nervous System in Normal Gastrointestinal Function and Disease.  
724 *Gastroenterology* **136**, 2003–2014 (2009).
- 725 2. Spielman, L. J., Gibson, D. L. & Kleggeris, A. Unhealthy gut, unhealthy brain: The  
726 role of the intestinal microbiota in neurodegenerative diseases. *Neurochem Int*  
727 **120**, 149–163 (2018).
- 728 3. Bedarf, J. R., Hildebrand, F., Goeser, F., Bork, P. & Wüllner, U. Das  
729 Darmmikrobiom bei der Parkinson-Krankheit. *Nervenarzt* **90**, 160–166 (2019).
- 730 4. Romano, S. *et al.* Meta-analysis of the Parkinson’s disease gut microbiome  
731 suggests alterations linked to intestinal inflammation. *NPJ Parkinsons Dis* **7**, 27  
732 (2021).
- 733 5. Boertien, J. M., Pereira, P. A. B., Aho, V. T. E. & Scheperjans, F. Increasing  
734 Comparability and Utility of Gut Microbiome Studies in Parkinson’s Disease: A  
735 Systematic Review. *J Parkinsons Dis* **9**, S297–S312 (2019).

- 736 6. Bedarf, J. R. *et al.* Functional implications of microbial and viral gut metagenome  
737 changes in early stage L-DOPA-naïve Parkinson's disease patients. *Genome*  
738 *Med* **9**, (2017).
- 739 7. Collins, S. M., Surette, M. & Bercik, P. The interplay between the intestinal  
740 microbiota and the brain. *Nat Rev Microbiol* **10**, 735–742 (2012).
- 741 8. Braniste, V. *et al.* The gut microbiota influences blood-brain barrier permeability  
742 in mice. *Sci Transl Med* **6**, (2014).
- 743 9. Parker, A., Fonseca, S. & Carding, S. R. Gut microbes and metabolites as  
744 modulators of blood-brain barrier integrity and brain health. *Gut Microbes* **11**,  
745 135–157 (2020).
- 746 10. Holmes, Z. C. *et al.* Microbiota responses to different prebiotics are conserved  
747 within individuals and associated with habitual fiber intake. *Microbiome* **10**, 114  
748 (2022).
- 749 11. Vijay, N. & Morris, M. Role of Monocarboxylate Transporters in Drug Delivery to  
750 the Brain. *Curr Pharm Des* **20**, 1487–1498 (2014).
- 751 12. Dalile, B., Van Oudenhove, L., Vervliet, B. & Verbeke, K. The role of short-chain  
752 fatty acids in microbiota–gut–brain communication. *Nat Rev Gastroenterol*  
753 *Hepatol* **16**, 461–478 (2019).
- 754 13. Paiva, I. *et al.* Sodium butyrate rescues dopaminergic cells from alpha-  
755 synuclein-induced transcriptional deregulation and DNA damage. *Hum Mol*  
756 *Genet* **26**, 2231–2246 (2017).
- 757 14. St. Laurent, R., O'Brien, L. M. & Ahmad, S. T. Sodium butyrate improves  
758 locomotor impairment and early mortality in a rotenone-induced *Drosophila*  
759 model of Parkinson's disease. *Neuroscience* **246**, 382–390 (2013).
- 760 15. Matt, S. M. *et al.* Butyrate and Dietary Soluble Fiber Improve Neuroinflammation  
761 Associated With Aging in Mice. *Front Immunol* **9**, (2018).
- 762 16. Sampson, T. R. *et al.* Gut Microbiota Regulate Motor Deficits and  
763 Neuroinflammation in a Model of Parkinson's Disease. *Cell* **167**, 1469-1480.e12  
764 (2016).
- 765 17. Aho, V. T. E. *et al.* Relationships of gut microbiota, short-chain fatty acids,  
766 inflammation, and the gut barrier in Parkinson's disease. *Mol Neurodegener* **16**,  
767 6 (2021).
- 768 18. Unger, M. M. *et al.* Short chain fatty acids and gut microbiota differ between  
769 patients with Parkinson's disease and age-matched controls. *Parkinsonism*  
770 *Relat Disord* **32**, 66–72 (2016).
- 771 19. Chen, S.-J. *et al.* Association of Fecal and Plasma Levels of Short-Chain Fatty  
772 Acids With Gut Microbiota and Clinical Severity in Patients With Parkinson  
773 Disease. *Neurology* **98**, (2022).
- 774 20. Gao, X., Cassidy, A., Schwarzschild, M. A., Rimm, E. B. & Ascherio, A. Habitual  
775 intake of dietary flavonoids and risk of Parkinson disease. *Neurology* **78**, 1138–  
776 1145 (2012).
- 777 21. Maraki, M. I. *et al.* Mediterranean diet adherence is related to reduced probability  
778 of prodromal Parkinson's disease. *Movement Disorders* **34**, 48–57 (2019).
- 779 22. Mischley, L. K., Lau, R. C. & Bennett, R. D. Role of Diet and Nutritional  
780 Supplements in Parkinson's Disease Progression. *Oxid Med Cell Longev* **2017**,  
781 1–9 (2017).
- 782 23. Mattson, M. P. Interventions that Improve Body and Brain Bioenergetics for  
783 Parkinson's Disease Risk Reduction and Therapy. *J Parkinsons Dis* **4**, 1–13  
784 (2014).

- 785 24. Gilbert, J. A. *et al.* Current understanding of the human microbiome. *Nat Med*  
786 **24**, 392–400 (2018).
- 787 25. David, L. A. *et al.* Diet rapidly and reproducibly alters the human gut microbiome.  
788 *Nature* **505**, 559–563 (2014).
- 789 26. Gose, M., Krems, C., Heuer, T. & Hoffmann, I. Trends in food consumption and  
790 nutrient intake in Germany between 2006 and 2012: results of the German  
791 National Nutrition Monitoring (NEMONIT). *British Journal of Nutrition* **115**, 1498–  
792 1507 (2016).
- 793 27. Frioux, C. *et al.* Enterosignatures define common bacterial guilds in the human  
794 gut microbiome. *Cell Host Microbe* **31**, 1111–1125.e6 (2023).
- 795 28. Kanehisa, M. KEGG: Kyoto Encyclopedia of Genes and Genomes. *Nucleic*  
796 *Acids Res* **28**, 27–30 (2000).
- 797 29. Valles-Colomer, M. *et al.* The neuroactive potential of the human gut microbiota  
798 in quality of life and depression. *Nat Microbiol* **4**, 623–632 (2019).
- 799 30. Rosario, D. *et al.* Systematic analysis of gut microbiome reveals the role of  
800 bacterial folate and homocysteine metabolism in Parkinson’s disease. *Cell Rep*  
801 **34**, 108807 (2021).
- 802 31. Zierer, J. *et al.* The fecal metabolome as a functional readout of the gut  
803 microbiome. *Nat Genet* **50**, 790–795 (2018).
- 804 32. Heinzmann, S. S., Waldenberger, M., Peters, A. & Schmitt-Kopplin, P. Cluster  
805 Analysis Statistical Spectroscopy for the Identification of Metabolites in <sup>1</sup>H NMR  
806 Metabolomics. *Metabolites* **12**, 992 (2022).
- 807 33. Bruggeman, A. *et al.* Safety and efficacy of faecal microbiota transplantation in  
808 patients with mild to moderate Parkinson’s disease (GUT-PARFECT): a double-  
809 blind, placebo-controlled, randomised, phase 2 trial. *EClinicalMedicine* **71**,  
810 102563 (2024).
- 811 34. Bridi, R. *et al.*  $\alpha$ -Keto Acids Accumulating in Maple Syrup Urine Disease  
812 Stimulate Lipid Peroxidation and Reduce Antioxidant Defences in Cerebral  
813 Cortex From Young Rats. *Metab Brain Dis* **20**, 155–167 (2005).
- 814 35. Fernstrom, J. D. Branched-Chain Amino Acids and Brain Function. *J Nutr* **135**,  
815 1539S–1546S (2005).
- 816 36. Chen, S.-J. *et al.* Plasma metabolites of aromatic amino acids associate with  
817 clinical severity and gut microbiota of Parkinson’s disease. *NPJ Parkinsons Dis*  
818 **9**, 165 (2023).
- 819 37. Venkatesan, D., Iyer, M., Narayanasamy, A., Siva, K. & Vellingiri, B. Kynurenine  
820 pathway in Parkinson’s disease—An update. *eNeurologicalSci* **21**, 100270  
821 (2020).
- 822 38. Brito, I. L. *et al.* Transmission of human-associated microbiota along family and  
823 social networks. *Nat Microbiol* **4**, 964–971 (2019).
- 824 39. Hildebrand, F. *et al.* Dispersal strategies shape persistence and evolution of  
825 human gut bacteria. *Cell Host Microbe* **29**, 1167–1176.e9 (2021).
- 826 40. O’Riordan, K. J. *et al.* Short chain fatty acids: Microbial metabolites for gut-brain  
827 axis signalling. *Mol Cell Endocrinol* **546**, 111572 (2022).
- 828 41. Matt, S. M. *et al.* Butyrate and Dietary Soluble Fiber Improve Neuroinflammation  
829 Associated With Aging in Mice. *Front Immunol* **9**, (2018).
- 830 42. Erny, D. *et al.* Host microbiota constantly control maturation and function of  
831 microglia in the CNS. *Nat Neurosci* **18**, 965–977 (2015).
- 832 43. Hoyles, L. *et al.* Microbiome–host systems interactions: protective effects of  
833 propionate upon the blood–brain barrier. *Microbiome* **6**, 55 (2018).

- 834 44. Vinolo, M. A. R. *et al.* Suppressive effect of short-chain fatty acids on production  
835 of proinflammatory mediators by neutrophils. *J Nutr Biochem* **22**, 849–855  
836 (2011).
- 837 45. Singh, N. *et al.* Activation of Gpr109a, Receptor for Niacin and the Commensal  
838 Metabolite Butyrate, Suppresses Colonic Inflammation and Carcinogenesis.  
839 *Immunity* **40**, 128–139 (2014).
- 840 46. Kundi, Z. M. *et al.* Dietary Fiber from Oat and Rye Brans Ameliorate Western  
841 Diet-Induced Body Weight Gain and Hepatic Inflammation by the Modulation of  
842 Short-Chain Fatty Acids, Bile Acids, and Tryptophan Metabolism. *Mol Nutr Food*  
843 *Res* **65**, (2021).
- 844 47. Huang, L., Gao, L. & Chen, C. Role of Medium-Chain Fatty Acids in Healthy  
845 Metabolism: A Clinical Perspective. *Trends in Endocrinology & Metabolism* **32**,  
846 351–366 (2021).
- 847 48. Hosomi, K., Kiyono, H. & Kunisawa, J. Fatty acid metabolism in the host and  
848 commensal bacteria for the control of intestinal immune responses and  
849 diseases. *Gut Microbes* **11**, 276–284 (2020).
- 850 49. Astarloa, R., Mena, M. A., Sánchez, V., de la Vega, L. & de Yébenes, J. G.  
851 Clinical and Pharmacokinetic Effects of a Diet Rich in Insoluble Fiber on  
852 Parkinson Disease. *Clin Neuropharmacol* **15**, 375–380 (1992).
- 853 50. Barichella, M. *et al.* Probiotics and prebiotic fiber for constipation associated with  
854 Parkinson disease. *Neurology* **87**, 1274–1280 (2016).
- 855 51. Cantu-Jungles, T. M. & Hamaker, B. R. New View on Dietary Fiber Selection for  
856 Predictable Shifts in Gut Microbiota. *mBio* **11**, (2020).
- 857 52. Ouyang, Y., Wu, Q., Li, J., Sun, S. & Sun, S. S-adenosylmethionine: A  
858 metabolite critical to the regulation of autophagy. *Cell Prolif* **53**, (2020).
- 859 53. Charlton, C. G. & Crowell, B. Parkinson's disease-like effects of S-: Effects of l-  
860 Dopa. *Pharmacol Biochem Behav* **43**, 423–431 (1992).
- 861 54. Hertel, J. *et al.* Integrated Analyses of Microbiome and Longitudinal Metabolome  
862 Data Reveal Microbial-Host Interactions on Sulfur Metabolism in Parkinson's  
863 Disease. *Cell Rep* **29**, 1767-1777.e8 (2019).
- 864 55. Sian, J. *et al.* Alterations in glutathione levels in Parkinson's disease and other  
865 neurodegenerative disorders affecting basal ganglia. *Ann Neurol* **36**, 348–355  
866 (1994).
- 867 56. Bjørklund, G., Peana, M., Maes, M., Dadar, M. & Severin, B. The glutathione  
868 system in Parkinson's disease and its progression. *Neurosci Biobehav Rev* **120**,  
869 470–478 (2021).
- 870 57. Nunes, C., Barbosa, R. M., Almeida, L. & Laranjinha, J. Nitric oxide and DOPAC-  
871 induced cell death: From GSH depletion to mitochondrial energy crisis.  
872 *Molecular and Cellular Neuroscience* **48**, 94–103 (2011).
- 873 58. Markowiak, P. & Śliżewska, K. Effects of Probiotics, Prebiotics, and Synbiotics  
874 on Human Health. *Nutrients* **9**, 1021 (2017).
- 875 59. Sanders, M. E., Merenstein, D. J., Reid, G., Gibson, G. R. & Rastall, R. A.  
876 Probiotics and prebiotics in intestinal health and disease: from biology to the  
877 clinic. *Nat Rev Gastroenterol Hepatol* **16**, 605–616 (2019).
- 878 60. Sharma, R., Gupta, D., Mehrotra, R. & Mago, P. Psychobiotics: The Next-  
879 Generation Probiotics for the Brain. *Curr Microbiol* **78**, 449–463 (2021).
- 880 61. Desbonnet, L., Garrett, L., Clarke, G., Bienenstock, J. & Dinan, T. G. The  
881 probiotic *Bifidobacteria infantis*: An assessment of potential antidepressant  
882 properties in the rat. *J Psychiatr Res* **43**, 164–174 (2008).

- 883 62. Barrett, E., Ross, R. P., O'Toole, P. W., Fitzgerald, G. F. & Stanton, C.  $\gamma$ -  
884 Aminobutyric acid production by culturable bacteria from the human intestine. *J*  
885 *Appl Microbiol* **113**, 411–417 (2012).
- 886 63. Saito, K., Markey, S. P. & Heyes, M. P. Effects of immune activation on quinolinic  
887 acid and neuroactive kynurenines in the mouse. *Neuroscience* **51**, 25–39  
888 (1992).
- 889 64. Cirstea, M. S. *et al.* A novel pathway of levodopa metabolism by commensal  
890 Bifidobacteria. *Sci Rep* **13**, 19155 (2023).
- 891 65. Svedlund, J., Sjödin, I. & Dotevall, G. GSRS?A clinical rating scale for  
892 gastrointestinal symptoms in patients with irritable bowel syndrome and peptic  
893 ulcer disease. *Dig Dis Sci* **33**, 129–134 (1988).
- 894 66. Venema, K., van Nuenen, M. H. M. C., van den Heuvel, E. G., Pool, W. & van  
895 der Vossen, J. M. B. M. The Effect of Lactulose on the Composition of the  
896 Intestinal Microbiota and Short-chain Fatty Acid Production in Human  
897 Volunteers and a Computer-controlled Model of the Proximal Large Intestine.  
898 *Microb Ecol Health Dis* **15**, 94–105 (2003).
- 899 67. Aguirre, M., Jonkers, D. M. A. E., Troost, F. J., Roeselers, G. & Venema, K. In  
900 Vitro Characterization of the Impact of Different Substrates on Metabolite  
901 Production, Energy Extraction and Composition of Gut Microbiota from Lean and  
902 Obese Subjects. *PLoS One* **9**, e113864 (2014).
- 903 68. Heinzmann, S. S. & Schmitt-Kopplin, P. Deep Metabotyping of the Murine  
904 Gastrointestinal Tract for the Visualization of Digestion and Microbial  
905 Metabolism. *J Proteome Res* **14**, 2267–2277 (2015).
- 906 69. Dieterle, F., Ross, A., Schlotterbeck, G. & Senn, H. Probabilistic Quotient  
907 Normalization as Robust Method to Account for Dilution of Complex Biological  
908 Mixtures. Application in <sup>1</sup> H NMR Metabonomics. *Anal Chem* **78**, 4281–4290  
909 (2006).
- 910 70. Robinette, S. L. *et al.* Cluster Analysis Statistical Spectroscopy Using Nuclear  
911 Magnetic Resonance Generated Metabolic Data Sets from Perturbed Biological  
912 Systems. *Anal Chem* **81**, 6581–6589 (2009).
- 913 71. Bahram, M. *et al.* Metagenomic assessment of the global diversity and  
914 distribution of bacteria and fungi. *Environ Microbiol* **23**, 316–326 (2021).
- 915 72. Özkurt, E. *et al.* LotuS2: an ultrafast and highly accurate tool for amplicon  
916 sequencing analysis. *Microbiome* **10**, 176 (2022).
- 917 73. Wood, D. E., Lu, J. & Langmead, B. Improved metagenomic analysis with  
918 Kraken 2. *Genome Biol* **20**, 1–13 (2019).
- 919 74. Li, D., Liu, C.-M., Luo, R., Sadakane, K. & Lam, T.-W. MEGAHIT: an ultra-fast  
920 single-node solution for large and complex metagenomics assembly via succinct  
921 *de Bruijn* graph. *Bioinformatics* **31**, 1674–1676 (2015).
- 922 75. Langmead, B. & Salzberg, S. L. Fast gapped-read alignment with Bowtie 2. *Nat*  
923 *Methods* **9**, 357–359 (2012).
- 924 76. Steinegger, M. & Söding, J. MMseqs2 enables sensitive protein sequence  
925 searching for the analysis of massive data sets. *Nat Biotechnol* **35**, 1026–1028  
926 (2017).
- 927 77. Saary, P., Forslund, K., Bork, P. & Hildebrand, F. RTK: efficient rarefaction  
928 analysis of large datasets. *Bioinformatics* **33**, 2594–2595 (2017).
- 929 78. Pan, S., Zhao, X.-M. & Coelho, L. P. SemiBin2: self-supervised contrastive  
930 learning leads to better MAGs for short- and long-read sequencing.  
931 *Bioinformatics* **39**, i21–i29 (2023).

- 932 79. Chklovski, A., Parks, D. H., Woodcroft, B. J. & Tyson, G. W. CheckM2: a rapid,  
933 scalable and accurate tool for assessing microbial genome quality using  
934 machine learning. *Nat Methods* **20**, 1203–1212 (2023).
- 935 80. Nielsen, H. B. *et al.* Identification and assembly of genomes and genetic  
936 elements in complex metagenomic samples without using reference genomes.  
937 *Nat Biotechnol* **32**, 822–828 (2014).
- 938 81. Valles-Colomer, M. *et al.* The neuroactive potential of the human gut microbiota  
939 in quality of life and depression. *Nat Microbiol* **4**, 623–632 (2019).
- 940 82. McMurdie, P. J. & Holmes, S. phyloseq: An R Package for Reproducible  
941 Interactive Analysis and Graphics of Microbiome Census Data. *PLoS One* **8**,  
942 e61217 (2013).
- 943 83. Leo Lahti, S. S. *et al.* Tools for microbiome analysis in R. Version 1.1.10013.  
944 URL: <http://microbiome.github.com/microbiome>.
- 945 84. Jari Oksanen, F. G. B. M. F. R. K. P. L. D. M. P. R. M. R. B. O. G. L. S. P. S. M.  
946 H. H. S. E. S. and H. W. vegan: Community Ecology Package. R package  
947 version 2.5-7. (2020).
- 948 85. Benjamini, Y. & Hochberg, Y. Controlling the False Discovery Rate: A Practical  
949 and Powerful Approach to Multiple Testing. *Journal of the Royal Statistical*  
950 *Society: Series B (Methodological)* **57**, 289–300 (1995).
- 951 86. Hothorn, T., Hornik, K., Wiel, M. A. van de & Zeileis, A. Implementing a Class of  
952 Permutation Tests: The **coin** Package. *J Stat Softw* **28**, (2008).
- 953 87. Gavin L. Simpson, D. M. B. J. O. permute: Functions for Generating Restricted  
954 Permutations of Data. <https://github.com/gavinsimpson/permute> (2022).
- 955 88. Kim, S. ppcor: An R Package for a Fast Calculation to Semi-partial Correlation  
956 Coefficients. *Commun Stat Appl Methods* **22**, 665–674 (2015).
- 957 89. Wei T, S. V. R package 'corrplot': Visualization of a Correlation Matrix. (Version  
958 0.92),. <https://github.com/taiyun/corrplot>. (2021).
- 959

## 960 **Author contribution**

961 **JRB** conceptualised and performed the study, acquired funding, wrote the analytical  
962 code and performed the formal analysis and drafted the manuscript. **SR** performed the  
963 calprotectin and alpha 1 antitrypsin ELISA, helped in formal analysis and critically  
964 revised the manuscript. **SSH** performed the NMR metabolomics in faeces and urine  
965 and helped in formal analysis of the respective data. **AD** helped in formal analysis of  
966 the Enterosginatures. **DN** helped in formal analysis of the household effect. **MT** and  
967 **DSL** formally analysed the food logs with the Nutritics software. **MCS** helped in  
968 interpreting the SCFA and nutrition data and critically revised the manuscript. **AN**  
969 funded the calprotectin and Alpha 1 Antitrypsin ELISA and critically revised the  
970 manuscript. **UW** helped in recruiting the study participants and in interpreting the data

971 and critically revised the manuscript. **FH** performed the bioinformatic analyses of the  
972 sequencing data, supervised the statistical code writing, interpreted all data and wrote  
973 the manuscript with JRB. All authors read and approved the final manuscript.

974

## 975 **Acknowledgements**

976 This study was funded by the Hilde-Ulrichs-Foundation for Parkinson's research. This  
977 research was also supported by the BBSRC Institute Strategic Programme (ISP) Food  
978 Microbiome and Health BB/X011054/1 and its constituent project  
979 BBS/E/F/000PR13631, the BBSRC Core Capability Grant BB/CCG2260/1 and its  
980 constituent project BBS/E/QU/23NB0006, the ISP Decoding Biodiversity  
981 BBX011089/1, projects BBS/E/ER/230002A and BBS/E/ER/230002B, and Cellular  
982 Genomics Cellular Genomics BBX011070/1, project BBS/E/ER/230001A. The funders  
983 played no role in study design, data collection, analysis and interpretation of data, or  
984 the writing of this manuscript. JRB was supported by a local grant (FEMHabil) at the  
985 medical faculty of the University Hospital Bonn. FH was supported by European  
986 Research Council H2020 StG (erc-stg-948219, EPYC).

987 We thank Lia Mareen Taube for her support during the study performance.

988

## 989 **Competing interests**

990 All authors declare no financial or non-financial competing interests.