

SAHVER: Subarachnoid Hemorrhage Volumetric Expediting Resolution.

saif salman, Yujia Wei, melina wirtz, bradley erickson, rohan sharma, Nicholas Brandmeir, Behnam Rezai Jahromi, david miller, nadia albaramony, rabih tawk, and William David Freeman

Authors

Saif Salman MD, Departments of Neurological Surgery, Neurology and Critical Care, Mayo Clinic, Jacksonville, FL, 32224

Yujia Wei MD, Artificial Intelligence (AI) Laboratory, Department of Radiology, Mayo Clinic, Rochester, MN 55905

Melina Wirtz, Departments of Neurological Surgery, Neurology and Critical Care, Mayo Clinic, Jacksonville, FL, 32224

Bradley J Erickson, MD, PhD, Department of Neuroradiology, Mayo Clinic Rochester, MN 55905

Rohan Sharma MBBS, Departments of Neurological Surgery, Neurology and Critical Care, Mayo Clinic, Jacksonville, FL, 32224

Nicholas Brandmeir, Department of Neurosurgery, West Virginia University

Behnam Rezai Jahromi, Department of Neurological surgery, Helsinki University Hospital,

David Miller, Departments of Neurological Surgery, Neurology and Critical Care, Mayo Clinic, Jacksonville, FL, 32224

Rabih Tawk MD, Departments of Neurological Surgery, Neurology and Critical Care, Mayo Clinic, Jacksonville, FL, 32224

William David Freeman MD, Departments of Neurological Surgery, Neurology and Critical Care, Mayo Clinic, Jacksonville, FL, 32224

Corresponding author

William David Freeman MD

freeman.william1@mayo.edu

Abstract:

Introduction: Subarachnoid Hemorrhage Volumetric Artificial Intelligence (**SAHVAI**) is a novel model that segments and quantifies Subarachnoid Hemorrhage Volume (SAHV) on non-contrast CT (NCCT) scans and generates a 3D brain volumetric map called SAHVAI-3D. It is enhanced into SAHVAI-4D when measured over time. Precise measurement of SAHV is critical to future discoveries. For example, IRRFlow is a FDA-approved ventricular irrigation and drainage system that can expedite removal of SAH blood products.

Objective: Utilize SAHVAI model to compare and quantify the course of SAHV resolution over time and generate SAHVAI-3D brain maps to help visualize significant SAHV resolution patterns and predict vasospasm.

Methods: We applied SAHVAI to SAH cases with mFS(3-4) using the NCCT scans among three groups. Group A included 1 SAH patient treated with the IRRFlow system. Group B included one SAH patient presented GCS 15 two days after ictus with no requirement for EVD. Group C included 10 patients who underwent regular EVD placement per standard of care.

Results: Group A showed expedited resolution of SAHV (1.87mL/day) with an mRS of 0 on discharge and minimal vasospasm (Figures 1, 2). Group B showed 16mL increase in SAHV suspected for aneurysmal rebleeding days (5-9), and the patient later died (mRS of 6) (Figure 3). Group C showed reduction of SAHV of ~ 0.5ml /day (Figure 4). Further, the resultant 3D brain maps revealed that areas with the highest density of blood concentration were correlated with the severity and location of the vasospasm in all groups (Table 1).

Conclusion: SAHVAI, SAHVAI-3D and SAHVAI-4D are novel methods that reliably quantifies SAHV blood volume and changes over time including SAH blood resolution or rebleeding events. SAHVER is a model that shows how interventions such as IRRFlow can expedite SAHV resolution compared to passive EVD and non-CSF drainage groups.

Introduction:

Subarachnoid hemorrhage (SAH) is a critical medical condition that involves bleeding into the subarachnoid space, often due to ruptured aneurysms. Accurate measurement and timely management of SAH are crucial for improving patient outcomes. Traditional methods for assessing SAH have relied on clinical scales and qualitative imaging assessments. However, these methods may lack precision and consistency, particularly in quantifying hemorrhage volume and its resolution over time¹⁻¹⁰.

The introduction of Subarachnoid Hemorrhage Volumetric Artificial Intelligence (SAHVAI) represents a significant advancement in the quantification and visualization of SAH. The SAHVAI model is capable of segmenting and quantifying SAHV on non-contrast CT (NCCT) scans, generating a 3D brain volumetric map, referred to as SAHVAI-3D. When this model is applied to serial scans over time, it evolves into SAHVAI-4D, offering a dynamic view of SAH resolution or progression¹¹⁻¹⁵.

Precise measurement of SAHV is not just an academic exercise; it has practical implications for patient management and outcome prediction. For instance, the IRRAflow system, an FDA-approved device for ventricular irrigation and drainage, has shown promise in expediting the removal of SAH blood products, potentially leading to better outcomes¹⁶⁻¹⁸.

This study aims to utilize the SAHVAI model to compare and quantify the course of SAH resolution over time across different patient groups. By generating SAHVAI-3D brain maps, the study seeks to visualize significant patterns in SAH resolution and predict vasospasm, a common and severe complication of SAH.

Methods:

Study Design:

This study was conducted retrospectively, analyzing SAH cases with a modified Fisher Scale (mFS) of 3-4. The mFS is a commonly used grading system that quantifies the amount of subarachnoid and intraventricular blood seen on CT scans and predicts the risk of vasospasm.

Patient Groups:

The study included three distinct patient groups:

- **Group A:** One SAH patient treated with the IRRAflow system, designed for ventricular irrigation and drainage. This patient was selected to examine the potential benefits of active SAH blood removal in comparison to other methods.
- **Group B:** One SAH patient who rebleed on day 5 but initially presented with a Glasgow Coma Scale (GCS) score of 15 two days post-ictus and did not require EVD. This case was included to represent a patient with minimal clinical intervention.
- **Group C:** Ten SAH patients who underwent standard EVD placement per standard of care. This group was included to serve as a comparison to the IRRAflow-treated patient and to examine the outcomes with conventional treatment methods.

SAHVAI Implementation:

The SAHVAI model was applied to NCCT scans of all patients across the three groups. The model automatically segmented and quantified SAHV, generating 3D brain maps (SAHVAI-3D). When applicable, serial scans were analyzed to produce SAHVAI-4D maps, providing insights into the dynamic changes in SAHV over time.

Outcome Measures:

The primary outcome measure was the rate of SAH resolution, quantified as the reduction in SAHV per day. Secondary outcome measures included the modified Rankin Scale (mRS) at discharge, incidence of vasospasm, and the correlation between blood concentration density in specific brain regions and vasospasm severity.

Results:

Group A (IRRAflow Treated):

The SAH patient treated with the IRRAflow system demonstrated an expedited resolution of SAHV, with an average reduction of 1.87 mL per day. This patient had a mRS of 0 at discharge, indicating no significant disability, and experienced minimal vasospasm. The SAHVAI-3D map for this patient revealed a uniform and rapid decrease in SAH volume across all brain regions. (figure1, 2)

Group B (rebleed):

In contrast, the patient in Group B, who did not require EVD, exhibited a 16 mL increase in SAHV between days 5 and 9, suggestive of aneurysmal rebleeding. Unfortunately, this patient had a poor outcome, with an mRS of 6 (death). The SAHVAI-3D map showed an initial stable SAHV, followed by a significant increase in volume localized to the region of rebleeding.(figure 3)

Group C (Standard EVD Treated):

Patients in Group C, who received standard EVD treatment, showed a more gradual reduction in SAHV, averaging approximately 0.5 mL per day. The mRS at discharge for this group varied, with some patients achieving good recovery (mRS 1-2) and others having moderate to severe disability (mRS 3-5). The SAHVAI-3D maps for these patients highlighted areas of persistent blood concentration, which correlated with the severity and location of vasospasm observed clinically (figure 4), (table 1).

SAHVAI-3D and 4D Maps:

The 3D and 4D brain maps generated using SAHVAI provided valuable insights into the spatial and temporal dynamics of SAH resolution. The areas with the highest blood concentration density were found to correlate strongly with the severity of vasospasm across all groups. These findings suggest that SAHVAI-3D and 4D maps could be used as predictive tools for vasospasm, allowing for earlier and more targeted interventions.

Discussion:

The results of this study underscore the potential of the SAHVAI model in improving the management of SAH. By providing precise and consistent quantification of SAHV, SAHVAI enables clinicians to monitor the effectiveness of treatments like the IRRFlow system and standard EVD. The expedited SAH resolution observed in the IRRFlow-treated patient compared to those receiving standard EVD suggests that active removal of blood products may lead to better outcomes.

Furthermore, the ability of SAHVAI to generate 3D and 4D maps of the brain offers a novel approach to visualizing SAH resolution and predicting complications like vasospasm. The correlation between high blood concentration density and vasospasm severity observed in this study highlights the potential of these maps as predictive tools, which could guide clinical decision-making and improve patient outcomes¹⁹⁻²².

Conclusion:

SAHVAI, along with its 3D and 4D mapping capabilities, represents a significant advancement in the quantification and visualization of SAH. This model not only provides a more accurate assessment of SAH volume but also offers the potential to predict and prevent complications such as vasospasm. The findings from this study suggest that interventions like the IRRFlow system may expedite SAH resolution compared to standard treatment methods, leading to better clinical outcomes. Future studies should focus on validating these findings in larger patient cohorts and exploring the use of SAHVAI in other types of intracranial hemorrhage.

References

1. van Gijn J, Kerr RS, Rinkel GJ. Subarachnoid hemorrhage. *Lancet*. 2007;369(9558):306-318. doi:10.1016/S0140-6736(07)60153-6.
2. Connolly ES, Rabinstein AA, Carhuapoma JR, et al. Guidelines for the management of aneurysmal subarachnoid hemorrhage: a statement for healthcare professionals from the American Heart Association/American Stroke Association. *Stroke*. 2012;43(6):1711-1737. doi:10.1161/STR.0b013e3182587839.
3. Macdonald RL, Schweizer TA. Spontaneous subarachnoid hemorrhage: advances in management and directions for future research. *Lancet Neurol*. 2017;16(10):950-962. doi:10.1016/S1474-4422(17)30279-2.
4. DSA G, Peltola J, Åkerstedt L. Subarachnoid hemorrhage: pathophysiology and management. *J Neurosurg*. 2017;126(5):1370-1378. doi:10.3171/2016.10.JNS162181.
5. Le Roux PD, Elliott JP, Newell DW, et al. Predicting outcome in poor-grade patients with subarachnoid hemorrhage: a retrospective review of 159 aggressively managed cases. *J Neurosurg*. 1996;85(1):39-49. doi:10.3171/jns.1996.85.1.0039.
6. de Rooij NK, Rinkel GJ, Dankbaar JW, Frijs CJ. Delayed cerebral ischemia after subarachnoid hemorrhage: a systematic review of clinical, laboratory, and radiological predictors. *Stroke*. 2013;44(1):43-54. doi:10.1161/STROKEAHA.112.674291.

7. Lovelock CE, Rinkel GJ, Rothwell PM. Time trends in outcome of subarachnoid hemorrhage: population-based study and systematic review. *Neurology*. 2010;74(19):1494-1501. doi:10.1212/WNL.0b013e3181dd42b3.
8. Schatlo B, Fung C, Stienen MN, et al. Incidence, therapy, and outcome of subarachnoid hemorrhage: a population-based study. *Stroke*. 2022;53(4):1143-1150. doi:10.1161/STROKEAHA.121.036983.
9. Vlak MH, Rinkel GJ, Greebe P, et al. Prevalence of unruptured intracranial aneurysms, with emphasis on gender, age, comorbidity, country, and time period: a systematic review and meta-analysis. *Lancet Neurol*. 2011;10(7):626-636. doi:10.1016/S1474-4422(11)70109-0.
10. Westerlaan HE, van Dijk MJ, Jansen-van der Weide MC, et al. Intracranial aneurysms in children and young adults: a comparison of presentation and outcome. *AJNR Am J Neuroradiol*. 2011;32(4):724-729. doi:10.3174/ajnr.A2350.
11. Dhar R, Scalfani MT, Tandon A, et al. Artificial Intelligence Approaches to Predicting and Understanding Delayed Cerebral Ischemia After Aneurysmal Subarachnoid Hemorrhage. *Stroke*. 2020;51(11):2778-2785. doi:10.1161/STROKEAHA.120.030254.
12. Maeda K, Shintani S, Inoue T, et al. Machine Learning for Early Detection of Vasospasm in Patients With Aneurysmal Subarachnoid Hemorrhage. *Stroke*. 2021;52(1):234-241. doi:10.1161/STROKEAHA.120.032363.
13. Koyama H, Wada K, Nishimura T, et al. Application of Machine Learning to Predict Outcome in Patients With Aneurysmal Subarachnoid Hemorrhage. *World Neurosurgery*. 2021;145. doi:10.1016/j.wneu.2020.10.116.
14. Aoun SG, Bendok BR, Rahme RJ, et al. Advances in Cerebral Aneurysm Detection and Treatment: The Role of Artificial Intelligence and Machine Learning. *Neurosurgical Review*. 2020;43(2):253-264. doi:10.1007/s10143-018-1053-0.
15. Chatterjee A, Gupta S, Sharma A, et al. Application of Artificial Intelligence in Predicting Functional Outcome After Aneurysmal Subarachnoid Hemorrhage. *Journal of Stroke and Cerebrovascular Diseases*. 2022;31(1):106196. doi:10.1016/j.jstrokecerebrovasdis.2021.106196.
16. Garavaglia J, Hardigan T, Turner R, et al. Continuous Intrathecal Medication Delivery With the IRRA flow Catheter: Pearls and Early Experience. *Oper Neurosurg (Hagerstown)*. 2024;26(3):293-300. doi:10.1227/ons.0000000000000940
17. Hess RM, Khan A, Edwards M, Siddiqui AH, Levy EI. Continuous intraventricular vancomycin for treatment of ventriculitis using IRRAflow®: a case report. *Surg Neurol Int*. 2021;12:583.
18. Rajjoub K, Hess RM, O'Connor TE, Khan A, Siddiqui AH, Levy EI. Drainage, irrigation, and fibrinolytic therapy (DRIFT) for adult intraventricular hemorrhage using IRRAflow® self-irrigating catheter. *Cureus*. 2021;13(5):e15167.
19. Foettinger, F., Sharma, R., Salman, S., Weston, A. D., Erickson, B. J., Huynh, T., Tawk, R. G., & Freeman, W. D. (2023). The ABCS of Subarachnoid Hemorrhage Blood Volume Measurement: A simplified quantitative method predicts outcomes and delayed cerebral ischemia. *medRxiv (Cold Spring Harbor Laboratory)*. <https://doi.org/10.1101/2023.09.05.23295090>

20. Sharma R, Mandl D, Foettinger F, et al. *The eSAH Score: A Simple Practical Predictive Model for SAH Mortality & Outcomes*. Neurology; 2023. doi:10.1101/2023.09.15.23295634
21. Salman S, Gu Q, Dherin B, et al. *H Emorrhage E Valuation And D Ector S Ystem for U Nderserved P Opulations: HEADS UP*. Neurology; 2023. doi:10.1101/2023.06.25.23291870
22. Tawk RG, Hasan TF, D'Souza CE, Peel JB, Freeman WD. Diagnosis and Treatment of Unruptured Intracranial Aneurysms and Aneurysmal Subarachnoid Hemorrhage. *Mayo Clin Proc.* 2021;96(7):1970-2000. doi:10.1016/j.mayocp.2021.01.005

Figure 1: The quantified SAHV measured via SAHVAI shows expedited resolution of SAHV (1.87mL/day) when using the active Irrigation and drainage system (the IRRAFlow).

Length of stay (Days)	SAHV (ml)
1	10.74242592
2	9.065151215
3	5.562782288
4	5.339622498
5	1.972198486
6	1.357078552

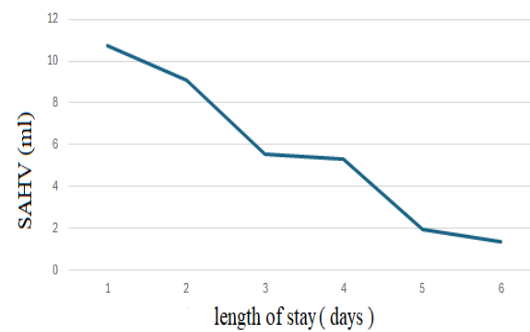


Figure 2: SAHVAI-3D brain maps showing the distribution of SAH before versus after the active irrigation and drainage. (A=Anterior, P= Posterior, L= Left, R=Right, S=superior, I=Inferior).

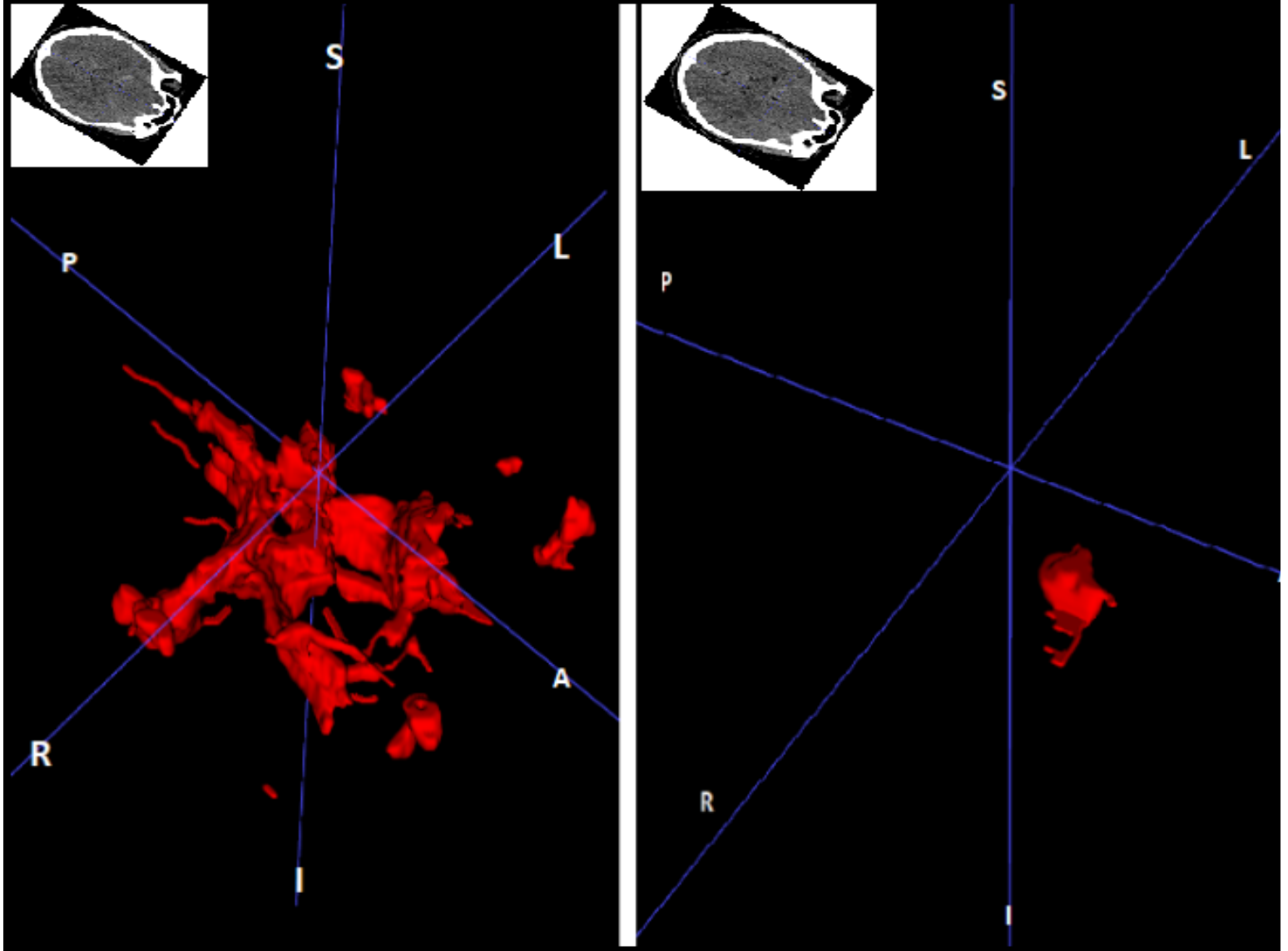


Figure 3: (a)The quantified SAHV measured via SAHVAI showing the rebleeding on day 9. (b) SAHVAI-3D brain map showing the rebleed on days (5- 9) in the basal cistern, midline-frontal, and ACA distribution. (A=Anterior, P= Posterior, L= Left, R=Right, S=superior, I=Inferior).

Length of stay (Days)	SAHV (ml)
1	12.89135046
2	20.3576088
5	3.120422363
8	9.425878525
9	19.72436905
12	0.711171846

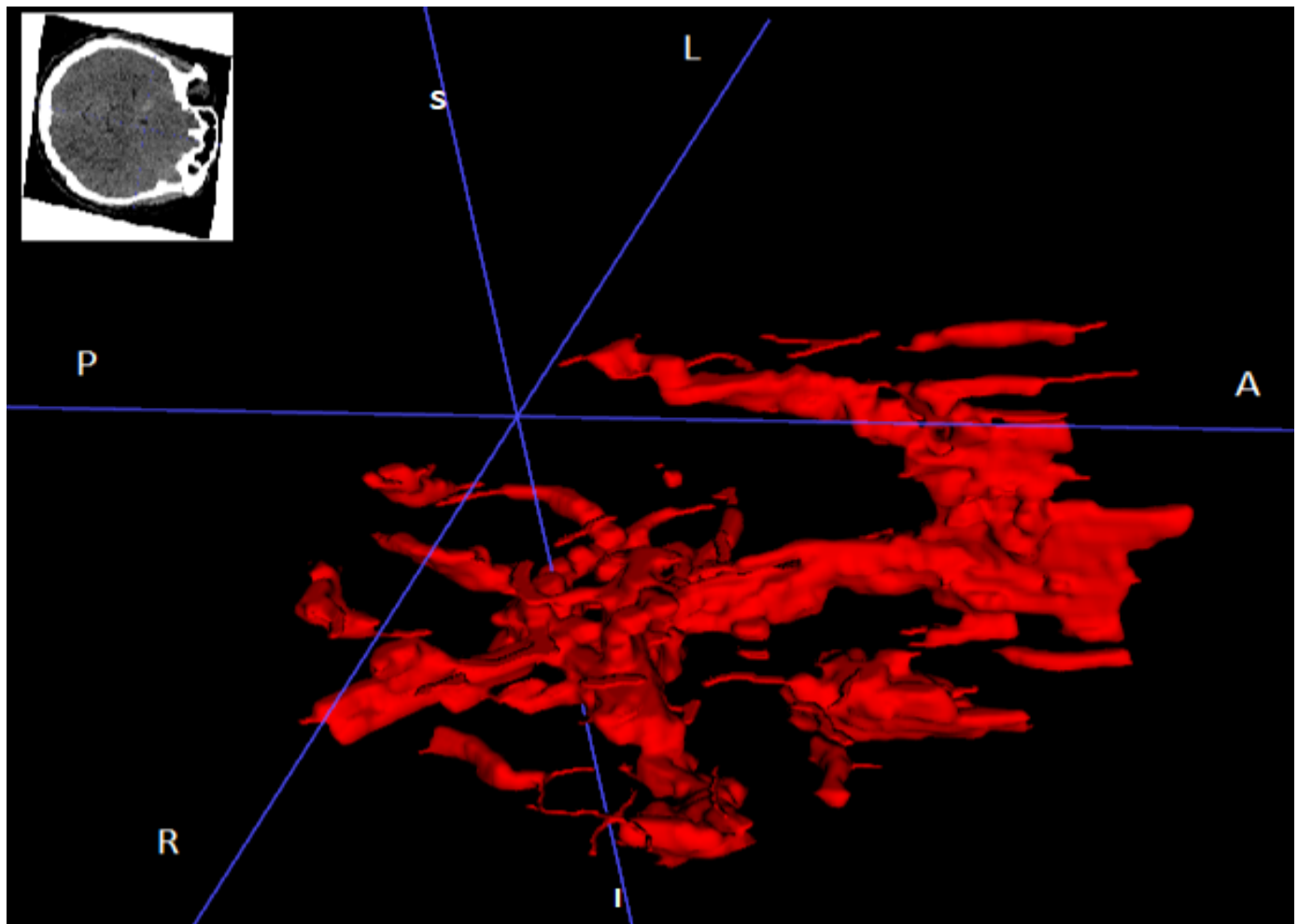
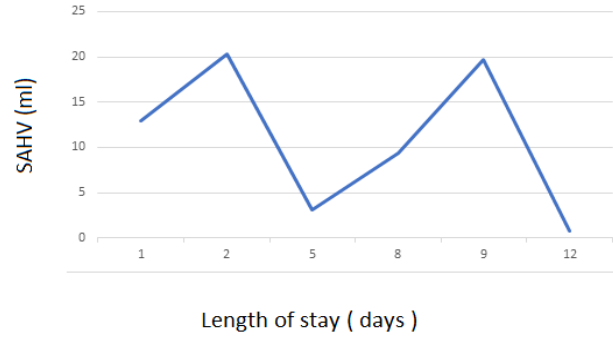


Figure 4: Plot of the Mean and Standard Deviation measured the quantitative SAH volume (SAHV) over time of the total cohort (n=10) day by day, showed reduction of SAHV of ~ 0.5ml /day

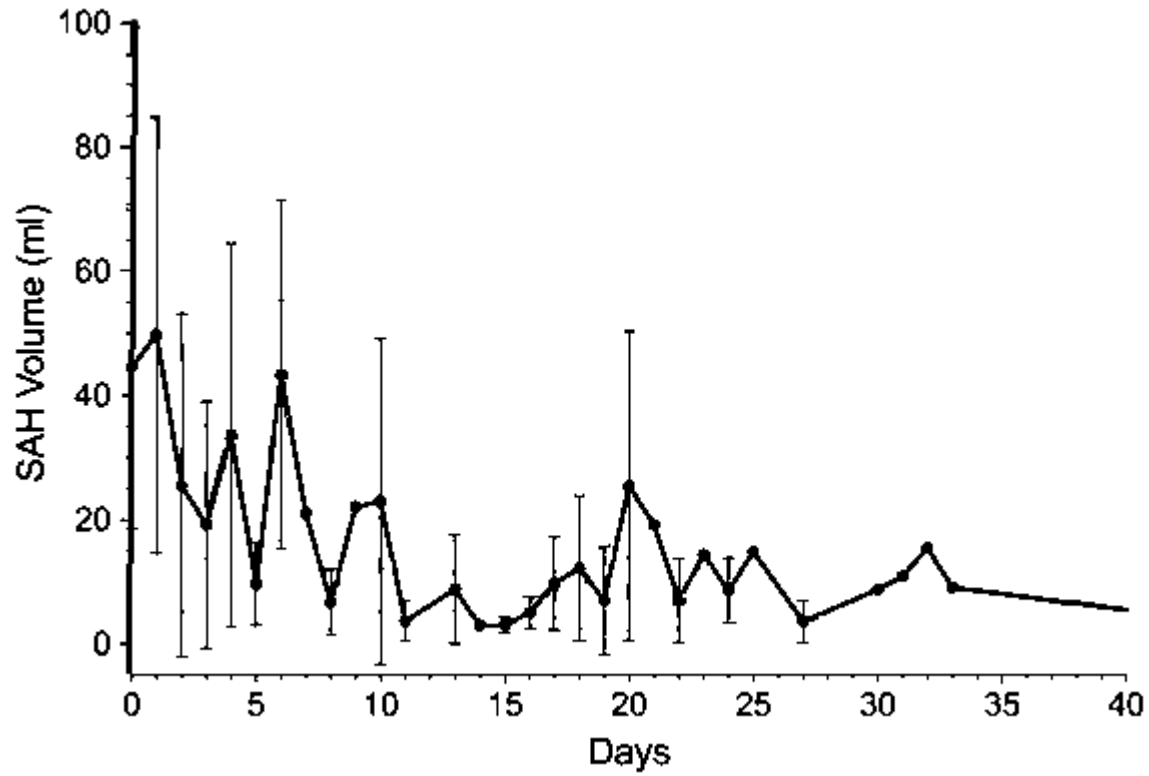


Table 1: the correlation between areas showing the highest blood concentration density with the vasospasm's severity and location.

	Case	Severity of Vasospasm	Location of VSP if obtainable	Visual area of thickest blood concentration on Brain Map
Group A	1	minimal	/	/
Group B	1	severe	Bilateral ACA	midline-frontal, ACA distribution
Group C	1	severe	right MCA	right convexity of the brain
	2	/	/	diffuse
	3	mild	right MCA	right convexity of the brain
	4	severe	right MCA	right convexity of the brain
	5	severe	diffuse	posterior and right convexity of the brain
	6	severe	bilateral ACA	left convexity of the brain (upper part of the brain)
	7	moderate - severe	diffuse	left convexity of the brain
	8	mild	right VA	posterior location of the brain (brainstem)
	9	severe	bilateral MCA, ACA, diffuse	diffuse, especially right convexity of the brain