

1 **Primary aldosteronism results in a decline estimated glomerular filtration rate independent**
2 **of blood pressure: evidence from a case-control and mendelian randomization study**

3

4 Mingjie Xu^{1,2*}, Boteng Yan^{1,2*}, Mingli Li^{2,3*}, Yushuang Wei^{2,3}, Xihui Jin^{1,2}, Xiaoyou Mai^{2,3}, Hui
5 Liang⁴, Haiyun Lan⁴, Wenchao Xie⁴, Tianjiao Pang⁴, Guijian Pang⁴, Qiang Lin⁴, Yifeng Chen⁴,
6 Zeguang Zhou⁴, Yongxian Wu^{1,2}, Xinyang Long^{2,3}, Shengzhu Huang^{2†}, Chaoyan Tang^{4†}, Zengnan
7 Mo^{1, 2†}

8

9 ¹ Institute of Urology and Nephrology, First Affiliated Hospital of Guangxi Medical University,
10 Guangxi Medical University, Nanning 530021, Guangxi, China.

11 ² Center for Genomic and Personalized Medicine, Guangxi key Laboratory for Genomic and
12 Personalized Medicine, Guangxi Collaborative Innovation Center for Genomic and Personalized
13 Medicine, Guangxi Medical University, Nanning 530021, Guangxi, China.

14 ³ School of Public Health, Guangxi Medical University, Nanning 530021, Guangxi, China.

15 ⁴The First People's Hospital of Yulin, Yulin 537000, Guangxi, China.

16 *These authors have contributed equally to this work.

17 †Correspondence:

18 Zengnan Mo, Email: mozengnan@gxmu.edu.cn

19 Chaoyan Tang, Email: 751246378@qq.com

20 Shengzhu Huang: [Email: hszhu2580@163.com](mailto:hszhu2580@163.com)

21

22 KEYWORDS: primary aldosteronism, estimate glomerular filtration rate, aldosterone, blood pressure,
23 aldosterone-to-renin ratio, renin

24

25 **ABSTRACT**

26 Background: Primary aldosteronism (PA) is the predominant cause of secondary hypertension,
27 leading to cardiovascular and renal damage via mechanisms such as oxidative stress and fibrosis.
28 However, current epidemiology findings on the association between PA and estimated glomerular
29 filtration rate (eGFR) remain inconsistent.

30 Methods: A 1:1 sex- and age-matched case-control study was conducted among participants with
31 PA, essential hypertension (EH), and normotension, with 204 participants in each group. Multiple
32 linear regression was used to explore the correlations of PA, plasma aldosterone concentration
33 (PAC), plasma renin concentration (PRC), and the aldosterone-to-renin ratio (ARR) with eGFR.
34 Additionally, we performed a bidirectional two-sample mendelian randomization (MR) analysis to
35 assess the causal relationship between PA and eGFR based on public genome wide association
36 study (GWAS) databases, and established a multivariable MR (MVMR) analysis to further
37 explore whether the causal effect of PA on eGFR decline independent of systolic (SBP) or
38 diastolic blood pressure (DBP).

39 Results: Multiple linear regression model showed that PA was associated with a decline eGFR (β
40 = -0.234, [95% CI, -0.099, -0.039], $P < 0.001$) after adjusted potential confounders. When stratified
41 the PA patients into three groups according to the levels of PAC, PRC and ARR, patients in the
42 highest PAC groups ($\beta = -0.146$ [95% CI, -0.093, -0.008], $P = 0.021$), the lowest PRC group ($\beta =$
43 -0.127 [95% CI, -0.084, -0.004], $P = 0.033$), and the highest ARR group ($\beta = -0.147$ [95% CI,
44 -0.092, -0.009], $P = 0.017$) had much lower eGFR compared to the EH group. The inverse

NOTE: This preprint reports new research that has not been certified by peer review and should not be used to guide clinical practice.

45 associations mentioned above remained significant even further adjusted for SBP or DBP,
46 respectively. Besides, MR results indicated that genetically predicted PA was causally associated
47 with a decline eGFR ($\beta = -6.671 \times 10^{-4}$ [95% CI, -1.291×10^{-4} , -4.328×10^{-5}], $P = 0.036$), consistent
48 effects were further detected in SBP ($\beta = -1.121 \times 10^{-3}$ [95% CI, -2.132×10^{-3} , -1.110×10^{-4}], $P =$
49 0.029) or DBP ($\beta = -1.542 \times 10^{-3}$, [95% CI, -2.693×10^{-3} , -3.912×10^{-4}], $P = 0.008$) adjusted model
50 using MVMR analysis.

51 Conclusion: Our study indicates that PA is causally associated with lower eGFR independent of
52 blood pressure, and the adverse effects might be greater than negative controls or EH patients.

53

54

55

56

57 **Introduction**

58 Primary aldosteronism (PA) is the leading cause of secondary hypertension, detected in
59 5%-13% of the hypertensive population [1]. Excess aldosterone leads to the overactivation of the
60 mineralocorticoid receptor, subsequently resulting in target organ damage through mechanisms
61 such as fibrosis, oxidative stress, and tissue remodeling [2-4]. Renal dysfunction is a principal
62 complication in PA patients, where excessive mineralocorticoid receptor activation induces renal
63 inflammation, mesangial cell proliferation, interstitial fibrosis, and glomerulosclerosis[5,6],
64 ultimately impairing renal function. Compared to patients with essential hypertension (EH), those
65 with PA exhibit a higher incidence of chronic kidney disease and face a significantly increased
66 risk of disease progression[7,8].

67 The estimated glomerular filtration rate (eGFR) is universally recognized as the optimal
68 indicator for assessing renal function and is a crucial prognostic factor for the progression to
69 end-stage renal disease[9,10]. It is also strongly associated with clinical outcomes, including
70 cardiovascular events, the initiation of dialysis, and all-cause mortality[11,12]. However, the
71 correlation between PA and eGFR is still ambiguous, with prior limited studies presenting
72 conflicting conclusions. A case-control study in 2009 that compared PA with EH discovered that
73 patients with PA had higher serum creatinine levels and lower GFR than those with EH, and
74 identified plasma aldosterone concentration (PAC) as an independent risk factor for decreased
75 GFR[7]. Ribstein et al. reported no difference in baseline GFR between PA and EH patients[13],
76 whereas other studies observed that PA patients exhibited higher baseline eGFR levels than EH
77 patients during long-term follow-up[14,15]. These contradictory results underscore the need for
78 further research to clarify the precise relationship between PA and eGFR, especially across
79 different geographic and demographic contexts. Mendelian randomization (MR) utilizes genetic
80 variants associated with modifiable exposures (or risk factors) to evaluate their potential causal
81 relationships with outcomes[16]. Since genetic variants are randomly assigned at conception, this
82 method effectively eliminates potential sources of error and establishes a clear causal chain.
83 Consequently, MR minimizes potential biases arising from confounding factors and reverse
84 causation, thereby enhancing the reliability of the results[17]. However, current studies primarily
85 focus on correlations with clinical physiological markers, with few exploring the causal
86 relationship between PA and eGFR from a genetic perspective.

87 We therefore conducted a cross-sectional survey in the southwestern region of China,
88 measuring PAC, plasma renin concentration (PRC), the aldosterone-to-renin ratio (ARR), and

89 renal function of participants, while also collecting their medical histories and other relevant
90 clinical data. A case-control study was designed, including groups of patients with PA, EH, and
91 negative control (NC). By analyzing these three groups, we could more accurately assess the
92 impact of PA on renal function. Utilizing genome wide association study (GWAS) public
93 databases, we employed a two-sample Mendelian randomization approach to explore the potential
94 causal relationship between PA and eGFR.

95 **Materials and methods**

96 Study design and participants

97 This cross-sectional study recruited participants from September 2022 to March 2024 at the
98 First Affiliated Hospital of Guangxi Medical University and the First People's Hospital of Yulin in
99 Guangxi, China. We collected demographic characteristics, medical histories and biochemical
100 indicators, including PA screening measurements (PAC, PRC, and ARR), renal function (serum
101 creatinine, blood urea nitrogen, uric acid), and electrolytes (serum potassium, serum sodium,
102 serum chloride, serum calcium). eGFR was calculated as $175 \times (\text{SCR})^{-1.234} \times (\text{Age})^{-0.179}$
103 ($\times 0.79$ if female) using the modified MDRD equation tailored for the Chinese population [18]. We
104 excluded the participants with renal diseases, including renal cancer, obstructive nephropathy,
105 nephritis, nephrotic syndrome, polycystic kidney disease, nephrectomy and other urological
106 disorders, as these conditions could alter eGFR levels. Additionally, participants who were
107 pregnant, suffering from severe cardiovascular or cerebrovascular disease, malignancy, and usage
108 of mineralocorticoid receptor antagonists were further excluded. Finally, our study included a total
109 of 612 participants based on 1:1 propensity score matching by age and gender, each of PA group,
110 EH group, and NC group comprised of 204 participants, respectively.

111 **Ascertainment of Primary Aldosteronism**

112 According to guidelines^[19], before conducting the initial PA screening, participants with
113 hypokalemia needed to remedy the levels of serum potassium exceed to 3.5 mmol/L. Patients who
114 taking antihypertensive medications, such as dihydropyridine calcium channel blockers,
115 β -blockers, Angiotensin-Converting Enzyme Inhibitors and Angiotensin II Receptor Blockers,
116 were advised to switch to non-dihydropyridine or α -blockers medicines to control blood pressure
117 for three weeks. In this study, $\text{ARR} \geq 30$ is considered as positive in the preliminary screening.
118 Patients with positive screening results were recommended to take the following confirmatory
119 testing, 1) Intravenous saline loading test, when the PAC levels exceed to 100 pg/ml after the test,
120 or the PAC suppression ratio is $\leq 30\%$ was defined as positive test. 2) Captopril challenge test,
121 when the PAC exceeds to 110 pg/ml at two hours post-test, or the PAC suppression ratio is $\leq 30\%$
122 was defined as positive test. Two senior endocrinologist confirmed the final diagnosis of PA.

123 **Ascertainment of Essential Hypertension:**

124 EH is diagnosed based on the absence of identifiable secondary causes. The diagnostic
125 process encompasses a comprehensive medical history and physical examination, supplemented
126 by routine laboratory tests to exclude secondary factors like renal disease, adrenal gland disorders,
127 and thyroid dysfunction. Moreover, the diagnosis involves systematically ruling out established
128 causes of secondary hypertension, such as renal hypertension, renal artery stenosis,
129 pheochromocytoma, Cushing's syndrome, hyperthyroidism, and polyarteritis nodosa. Additionally,
130 patients exhibiting transient increases in blood pressure, such as those with white coat
131 hypertension, are excluded from this diagnosis to ensure accuracy.

132 **Mendelian Randomization Analysis:**

133 To investigate the causal relationship between PA and eGFR, bidirectional and multivariable
134 two-sample MR analyses were conducted using summary-level data from genome-wide
135 association studies (GWAS). Initially, univariable MR analysis was conducted in the forward and
136 reverse directions between PA and eGFR to establish their causal relationships. Then,
137 multivariable MR (MVMR) analysis, which incorporating of systolic blood pressure (SBP) and
138 diastolic blood pressure (DBP), was further performed to assess the role of blood pressure in the
139 causal relationship between PA and eGFR.

140 To our knowledge, only one publicly available GWAS dataset for PA exists in European
141 populations, which comprising of 562 PA cases and 950 controls (GWAS catalog accession code
142 GCST90129615)^[20]. Genetic instrumental variables (IVs) for eGFR were derived from a
143 large-scale GWAS study among over one million individuals (GCST008059)^[21]. The GWAS
144 summary statistics for DBP and SBP involving a total of 349,328 participants were obtained from
145 GWAS datasets GCST90301698 and GCST90301695, respectively^[22]. To avoid the MR results
146 might be bia from racial heterogeneity, all participants used in these MR studies were restricted to
147 European descents.

148 For the summary GWAS statistics of eGFR, SBP and DBP, we selected genetic IVs with a
149 significant P threshold of $< 5 \times 10^{-8}$. For PA, we chose single nucleotide polymorphisms (SNPs)
150 with a P value of $< 5 \times 10^{-6}$ as IVs due to the scarcity of SNPs. Subsequently, IVs were clumped
151 within a 10 Mb window using a stringent linkage disequilibrium (LD) threshold of $r^2 = 0.001$ to
152 ensure that SNPs were independent. Next, F statistics were employed to assess the strength of the
153 genetically determined IVs, when $F > 10$ to align with the first Mendelian Randomization
154 assumption and to avoid bias from weak IVs^[23-25]. Finally, we harmonized the data to ensure the
155 effect of a SNP on the exposure and the effect of that SNP on the outcome correspond to the same
156 allele. Detailed information on the IVs is provided in supplemental data.

157 We identified Inverse variance weighted (IVW) as primary analytical method^[26], and applied
158 other MR methods, including Weighted Median (WM) , to verify the robustness of the causal
159 effects^[27]. MR-Egger and MR-pleiotropy tests are utilized to assess horizontal pleiotropy
160 ^[28], MR-PRESSO is applied to identify and remove outlier SNPs^[29] and MR-heterogeneity
161 methods are utilized to detect population heterogeneity^[30].

162 **Statistical Analysis:**

163 To mitigate skewness and enhance statistical power, non-normally distributed variables such as
164 aldosterone, renin, ARR, and eGFR were log-transformed. Differences between groups for
165 skewed variables were assessed using the Mann-Whitney U test, while one-way ANOVA was
166 utilized for normally distributed variables. Chi-square tests were applied for comparisons between
167 categorical groups. Multiple linear regression was used to evaluate the differences in eGFR
168 between groups, and stratified analysis of the PA group, adjusting covariates contained gender, age,
169 BMI, serum potassium, and type 2 diabetes. Forest plots were used to visualize the effect sizes of
170 the models. All statistical analyses were performed using R software (version 4.2.2), with the
171 TwoSampleMR (version 0.5.6) and MR-PRESSO (version 1.0) packages for MR analyses. A
172 two-sided P value of < 0.05 was considered statistically significant.

173 **RESULT**

174 **Baseline Characteristics of the Participants**

175 Of the 612 participants, the average age was 53.85 years old, and the proportions of females
176 and those with T2DM were 66% and 57%, respectively. In the PA group, the median PAC was
177 185.09 pg/ml, the median PRC was 2.72 pg/ml, and the median ARR was 73.14. There were no
178 significant differences among the three groups in blood urea nitrogen, uric acid, serum chloride, or
179 serum calcium levels. However, eGFR, SBP, DBP, serum creatinine, BMI, serum potassium,
180 serum sodium, and type 2 diabetes showed statistically significant differences among the groups.
181 Notably, the SBP, DBP, and eGFR of the PA group were similar to those of the EH group but
182 significantly different from the NC group (Table 1).

183 **Associations of PA and eGFR compared to control participants**

184 Compared to the NC group, multiple linear regression model revealed that PA was associated
185 with a decline eGFR ($\beta = -0.234$, [95% CI, -0.099, -0.039], $P < 0.001$) after adjusted potential
186 confounders, and the association remained significant even adjusted for SBP ($\beta = -0.234$, [95%
187 CI, -0.102, -0.035], $P < 0.001$) or DBP ($\beta = -0.217$, [95% CI, -0.095, -0.032], $P < 0.001$). We further
188 stratified the PA patients into three groups according to the levels of PAC, PRC and ARR to
189 explore the correlations of PA related phenotypes with eGFR. When compared to the NC group,
190 significant inverse associations were consistently observed between PAC, PRC and ARR with
191 eGFR across three groups, except for the lowest tertile of PAC adjusted for blood pressure ($P >$
192 0.05) (Table 2).

193 **Associations of PA and eGFR compared to patients with EH**

194 Compared to the EH group, there were no significant difference between PA and eGFR ($\beta =$
195 -0.065 , [95% CI, -0.046, 0.009], $P = 0.217$). When stratified the PA patients into three groups
196 according to the levels of PAC, PRC and ARR, patients in the highest PAC groups ($\beta = -0.146$
197 [95% CI, -0.093, -0.008], $p = 0.021$), the lowest PRC group ($\beta = -0.127$ [95% CI, -0.084, -0.004],
198 $P = 0.033$), and the highest ARR group ($\beta = -0.147$ [95% CI, -0.092, -0.009], $P = 0.017$) had lower
199 eGFR compared to the EH group, and these associations remained significant even further
200 adjusted for SBP or DBP (Table 3).

201

202 **Subgroup Analysis of PA related phenotypes and eGFR in PA patients**

203 Among PA patients, multiple linear regression showed that, after adjusted potential
204 confounders, PAC ($\beta = -0.137$, [95% CI, -0.209, -0.065], $P < 0.001$) and ARR ($\beta = -0.03$, [95%
205 CI, -0.061, 0], $P = 0.048$) were negatively associated with eGFR. Compared to the lowest tertile

206 group, patients in the highest tertile of PAC was associated with lower eGFR (T3 vs. T1, $\beta =$
207 -0.061 , [95% CI, $-0.108, -0.015$], $P=0.01$), and the trend was statistically significant (P -trend =
208 0.013). In subgroup analyses, we found that PA patients who were male ($\beta = -0.069$, [95%
209 CI, $-0.109, -0.028$], $P=0.001$) and aged 60 and older ($\beta = -0.081$, [95% CI, $-0.123, -0.04$], $P<0.001$)
210 resulted in lower eGFR. (Table 4 and Figures 1)

211

212 **Two-Sample MR and MVMR Analysis of PA and eGFR:**

213 In the forward MR analysis, IVW method indicated that genetically predicted higher risk of
214 PA was causally associated with declined eGFR ($\beta = -6.67 \times 10^{-4}$; [95% CI, -1.29×10^{-3} to -4.33×10^{-5}],
215 $P = 0.036$); other MR analyses. such as WMM, further corroborated the direction of their causal
216 relationship (Figure 2). Besides, Cochran's test and MR-Egger regression showed no evidence of
217 heterogeneity ($Q = 4.936$, $P = 0.668$) or directional pleiotropy (intercept = -0.0009 , $P = 0.331$). In
218 the reverse MR analysis, IVW method revealed that genetically predicted eGFR did not have an
219 impact on PA ($\beta = -1.093$, [95% CI, $-10.946, 8.778$], $P = 0.828$) (Figure 2), the robustness of the
220 MR findings were further supported by sensitivity tests.

221 Subsequently, MVMR analysis was further conducted to explore the roles of SBP and DBP in
222 the effect of genetic susceptibility to PA on eGFR (Figure 3). IVW method showed that
223 genetically predicted PA remained a causal relationship with a declined eGFR ($\beta =$
224 -1.12×10^{-3} ; [95% CI, -2.13×10^{-3} to -1.11×10^{-4}]; $P = 0.029$) after adjusting for SBP. The association
225 of PA and eGFR turn into null after adjusting for DBP ($\beta = -6.67 \times 10^{-4}$; $P = 0.494$), but the
226 significance recovered statistically when selecting PA-associated SNPs with a P value of $= 0.005$
227 as the IVs ($\beta = -1.54 \times 10^{-3}$; 95% CI, $[-2.69 \times 10^{-3}$ to $-3.91 \times 10^{-4}]$, $P=0.008$). No significant
228 heterogeneity or horizontal pleiotropy was observed in the MVMR analysis ($P>0.05$).

229

230

231

232

233 **DISCUSSION**

234 In this study, the cross-sectional data firstly demonstrated that patients with PA resulted in much
235 lower eGFR than those of age- and sex-matched negative controls or EH patients, especially in the
236 extremely severe condition of PA that characterized by the highest levels of PAC and ARR, or the
237 lowest levels of PRC. Of note, these inverse associations remained significant even adjusted for
238 blood pressure. Moreover, bidirectional two-sample MR analyses confirmed that genetically
239 predicted higher risk of PA was causally associated with eGFR decline, and MVMR analysis
240 further clarified that the impacts of PA on eGFR might not mediated by blood pressure. These
241 findings collectively suggest that PA plays a crucial role in the reduction of eGFR, and these
242 adverse effects might be independent of blood pressure.

243 Recent evidence has been reported that patients with PA was associated with more severe renal
244 impairment and a higher risk of chronic kidney disease than those with EH^[31-34], few studies focus
245 on the relationship between PA and continuous variable eGFR, however. Our cross-sectional
246 findings indicated that eGFR was significantly lower in PA patients compared to the matched
247 negative controls or EH patients, especially in the PA patients with extremely severe condition.
248 Consistent with our findings, Reincke et al found that eGFR was significantly lower in PA patients

249 than matched EH patients in a case-control study, a finding echoed in recent analyses examining
250 PA-related kidney damage^[7,35]. Catena et al. observed that the positive association between low
251 renin levels and lower eGFR in PA patients^[36], suggests that the severity of PA is associated with
252 lower eGFR, which further validates our findings. Conversely, Ribstein et al. found no significant
253 difference in GFR between tumor-related PA and EH patients with similar demographic data and
254 duration of hypertension^[13]. The contradictory findings regarding PA and eGFR could be attribute
255 to several reasons. Firstly, accumulating evidence has recognized PA as a progressive disease that
256 target organ damage intensifies with the severity of PA rather than a binary state^[37,38]. Secondly,
257 relative increases in PAC leading to sodium retention may cause an initial elevation in eGFR due
258 to hyperfiltration, maintaining normal metabolic functions at milder stages of PA, However,
259 interventions that mitigate this hyperfiltration may reveal the true extent of PA-related renal
260 impairment^[14,39]. When the severity of PA surpasses the kidney's compensatory abilities, a decline
261 in eGFR occurs. Epidemiological studies are often subject to confounding factors, leading to
262 inconsistent conclusions. MR minimizes potential biases due to confounding factors and reverse
263 causation, thereby increasing the reliability of the results^[17]. Therefore, we conducted a
264 two-sample MR analysis to further elucidate the relationship between PA and eGFR. The IVW
265 results indicate a causal association between PA and declined eGFR, while eGFR is not associated
266 with PA. Sensitivity analyses confirmed the robustness of these findings.

267 It is worth noting that is that the trend of eGFR decline due to PA remained significant
268 even adjusting for SBP or DBP compared to the normotension controls and EH groups.
269 Furthermore, MVMR analysis also verified that SBP could not alter the causal association
270 between genetically predicted PA and decreased eGFR, and a similar pattern of effect was
271 detected in DBP adjusted model when we relaxed the threshold of the risk variants associated with
272 PA to include more SNPs as IVs. These findings revealed that PA could affect the reduction of
273 eGFR independent of blood pressure pathway. Clinical studies have found that PA led to renal
274 glomerular damage and progressive glomerulosclerosis, interstitial inflammation and scarring,
275 ultimately worsen renal function^[40,41]; In fundamental research , aldosterone cause renal
276 impairment through mechanisms such as promoting inflammation^[42], oxidative stress^[43],
277 fibrosis^[44], mesangial cell proliferation^[45], and podocyte damage^[46]. Therefore, we believed that
278 the underlying mechanisms involving in PA-driven eGFR decline might not blood pressure but the
279 inflammatory response and fibrosis caused by autonomous aldosterone secretion. Besides, we
280 found only PAC was significantly correlates with the reduction of eGFR among PA patients,
281 which could corroborate with the above explanations to some extent.

282 In subgroup analysis, we found that PA patients who were males or older than 60 years old
283 have a greater likelihood of eGFR decline. In fact, eGFR typically decreases with increasing age
284 in healthy populations^[10], and renal function becomes more impaired after suffering from PA.
285 Related studies have observed that male PA patients are more susceptible to the reduction in
286 eGFR^[47], which could be potentially attributate to endocrine regulation. Animal studies suggested
287 that testosterone may accelerate the progression of renal disease, whereas estrogen appears to offer
288 renal protection, manifested in its anti-inflammatory and anti-fibrotic effects^[48] and its role in
289 regulating glomerular endothelial cell functions^[49], these factors may account for the diminished
290 influence of PA on females relative to males, However, the mechanisms underlying these gender
291 differences in PA patients require further investigation to elucidate.

292 Our study has the following strengths. Firstly, a well-designed case-control study, which
293 included sex- and age- matched NC controls, patients with EH and PA, is helpful to understand
294 the actual effects of PA on eGFR decline independent of blood pressure. Furthermore, to our best
295 knowledge, this is the first study to systematically assess the causal relationship between PA and
296 eGFR through bidirectional two-sample MR analysis, and MVMR analysis was further performed
297 to elucidate the mediated effects of blood pressure in the causal relationship between PA and
298 eGFR. These analyses make the MR results more credibility and robustness. However, our study
299 also has several limitations. Firstly, epidemiological data are derived from the Chinese population,
300 while the MR analysis is based on European populations, indicating potential population
301 heterogeneity. Therefore, it is necessary to conduct a PA GWAS study specifically in the Chinese
302 population. Secondly, we did not document the specific dosages of antihypertensive medications
303 for all participants at enrollment, making the assessment of the direct effects of these medications
304 on eGFR is difficult. Lastly, owing to our study is a cross-sectional study with small sample size,
305 long-term follow-up in larger population is necessary to further clarify the long-term effects of PA
306 on eGFR, However, our study does provide some evidence for the association between PA and
307 eGFR.

308 In summary, our study highlighted that PA is causally associated with lower eGFR
309 independent of blood pressure, and the adverse effects might be greater than negative controls or
310 EH patients. In the treatment of PA, it may be necessary to pay more attention to the control of
311 PAC, particular attention should be directed towards the protection of renal function in older or
312 male patients with PA. Future efforts to establish a high-quality PA GWAS dataset are crucial for
313 elucidating the pathogenesis of PA and its associations with other diseases.

314
315
316
317
318
319
320

321 **Ethics statement**

322

323 This study was received ethical approval by the Ethics and Human Subject Committee of Guangxi
324 Medical University, China (No. 2022-0193), and the Ethics and Human Subject Committee of First
325 Affiliated Hospital of Guangxi Medical University, China (No. 2023-K090-01). All participants
326 provided written informed consents at the time of their recruitment.

327 **Funding**

328 The author(s) declare financial support was received for the research, authorship, and/or
329 publication of this article. This study was supported by the Guangxi Key Research and
330 Development Project (Grant No. Guike AB21196022);
331 Guangxi Science and Technology Major Project (Grant No. Guike AA22096032); Guangxi Science
332 and Technology Major Project (Grant No. Guike AA22096030); The National Natural Science
333 Foundation of China (82270806); Major Project of Guangxi Innovation Driven (AA18118016);
334 Guangxi key Laboratory for Genomic and Personalized Medicine [grant number 22-35-17].

335 **Conflict of interest**

336 The authors declare that the research was conducted in the absence of any commercial or
337 financial relationships that could be construed as a potential conflict of interest.

338 **Acknowledgments**

339 The study was performed in the first Affiliated Hospital of Guangxi Medical University and the
340 First People's Hospital of Yulin in Guangxi, China. We sincerely thank all the study participants
341 and the staff involved in facilitating and conducting the study.

342

343

344 **Reference**

345

346 [1] L. Mosso, C. Carvajal, A. Gonzalez, A. Barraza, F. Avila, J. Montero, A. Huete, A. Gederlini, C.E.
347 Fardella, Primary aldosteronism and hypertensive disease, *Hypertension* 42(2) (2003) 161-5.

348 [2] N. Lopez-Andres, B. Martin-Fernandez, P. Rossignol, F. Zannad, V. Lahera, M.A. Fortuno, V.
349 Cachofeiro, J. Diez, A role for cardiotrophin-1 in myocardial remodeling induced by aldosterone, *Am J*
350 *Physiol Heart Circ Physiol* 301(6) (2011) H2372-82.

351 [3] K. Matsumura, K. Fujii, H. Oniki, M. Oka, M. Iida, Role of aldosterone in left ventricular
352 hypertrophy in hypertension, *Am J Hypertens* 19(1) (2006) 13-8.

353 [4] C.H. Tsai, C.T. Pan, Y.Y. Chang, Z.W. Chen, V.C. Wu, C.S. Hung, Y.H. Lin, Left ventricular remodeling
354 and dysfunction in primary aldosteronism, *J Hum Hypertens* 35(2) (2021) 131-147.

355 [5] M. Briet, E.L. Schiffrin, Aldosterone: effects on the kidney and cardiovascular system, *Nat Rev*
356 *Nephrol* 6(5) (2010) 261-73.

357 [6] N.J. Brown, Contribution of aldosterone to cardiovascular and renal inflammation and fibrosis, *Nat*
358 *Rev Nephrol* 9(8) (2013) 459-69.

359 [7] M. Reincke, L.C. Rump, M. Quinkler, S. Hahner, S. Diederich, R. Lorenz, J. Seufert, C. Schirpenbach,
360 F. Beuschlein, M. Bidlingmaier, C. Meisinger, R. Holle, S. Endres, R. Participants of German Conn's, Risk
361 factors associated with a low glomerular filtration rate in primary aldosteronism, *J Clin Endocrinol*
362 *Metab* 94(3) (2009) 869-75.

363 [8] M. Fernández-Argüeso, E. Pascual-Corrales, N.B. Rojano, A.G. Cano, L.J. Mendiguchía, M.
364 Araujo-Castro, Higher risk of chronic kidney disease and progressive kidney function impairment in
365 primary aldosteronism than in essential hypertension. Case-control study, *Endocrine* 73(2) (2021)
366 439-446.

367 [9] A.S. Levey, J. Coresh, H. Tighiouart, T. Greene, L.A. Inker, Measured and estimated glomerular
368 filtration rate: current status and future directions, *Nat Rev Nephrol* 16(1) (2020) 51-64.

369 [10] M. Provenzano, L. Hu, C. Abenavoli, G. Cianciolo, G. Coppolino, L. De Nicola, G. La Manna, G.
370 Comai, O. Baraldi, Estimated glomerular filtration rate in observational and interventional studies in
371 chronic kidney disease, *J Nephrol* 37(3) (2024) 573-586.

372 [11] K.J. Jager, C. Kovesdy, R. Langham, M. Rosenbergl, V. Jha, C. Zoccali, A single number for advocacy
373 and communication-worldwide more than 850 million individuals have kidney diseases, *Kidney Int*
374 96(5) (2019) 1048-1050.

375 [12] S. Borrelli, C. Garofalo, F. Mallamaci, G. Tripepi, G. Stanzione, M. Provenzano, G. Conte, L. De
376 Nicola, C. Zoccali, R. Minutolo, Short-term blood pressure variability in nondialysis chronic kidney
377 disease patients: correlates and prognostic role on the progression of renal disease, *J Hypertens*
378 36(12) (2018) 2398-2405.

- 379 [13] J. Ribstein, G. Du Cailar, P. Fesler, A. Mimran, Relative glomerular hyperfiltration in primary
380 aldosteronism, *J Am Soc Nephrol* 16(5) (2005) 1320-5.
- 381 [14] C. Catena, G. Colussi, E. Nadalini, A. Chiuch, S. Baroselli, R. Lapenna, L.A. Sechi, Relationships of
382 plasma renin levels with renal function in patients with primary aldosteronism, *Clin J Am Soc Nephrol*
383 2(4) (2007) 722-31.
- 384 [15] L.A. Sechi, M. Novello, R. Lapenna, S. Baroselli, E. Nadalini, G.L. Colussi, C. Catena, Long-term
385 renal outcomes in patients with primary aldosteronism, *JAMA* 295(22) (2006) 2638-45.
- 386 [16] V.W. Skrivankova, R.C. Richmond, B.A.R. Woolf, J. Yarmolinsky, N.M. Davies, S.A. Swanson, T.J.
387 VanderWeele, J.P.T. Higgins, N.J. Timpson, N. Dimou, C. Langenberg, R.M. Golub, E.W. Loder, V. Gallo,
388 A. Tybjaerg-Hansen, G. Davey Smith, M. Egger, J.B. Richards, Strengthening the Reporting of
389 Observational Studies in Epidemiology Using Mendelian Randomization: The STROBE-MR Statement,
390 *JAMA* 326(16) (2021) 1614-1621.
- 391 [17] S. Burgess, R.A. Scott, N.J. Timpson, G. Davey Smith, S.G. Thompson, E.-I. Consortium, Using
392 published data in Mendelian randomization: a blueprint for efficient identification of causal risk
393 factors, *Eur J Epidemiol* 30(7) (2015) 543-52.
- 394 [18] X. Kong, Y. Ma, J. Chen, Q. Luo, X. Yu, Y. Li, J. Xu, S. Huang, L. Wang, W. Huang, M. Wang, G. Xu, L.
395 Zhang, L. Zuo, H. Wang, G.F.R.I.C. Chinese e, Evaluation of the Chronic Kidney Disease Epidemiology
396 Collaboration equation for estimating glomerular filtration rate in the Chinese population, *Nephrol*
397 *Dial Transplant* 28(3) (2013) 641-51.
- 398 [19] J.W. Funder, R.M. Carey, F. Mantero, M.H. Murad, M. Reincke, H. Shibata, M. Stowasser, W.F.
399 Young, Jr., The Management of Primary Aldosteronism: Case Detection, Diagnosis, and Treatment: An
400 Endocrine Society Clinical Practice Guideline, *J Clin Endocrinol Metab* 101(5) (2016) 1889-916.
- 401 [20] E. Le Floch, T. Cosentino, C.K. Larsen, F. Beuschlein, M. Reincke, L. Amar, G.P. Rossi, K. De Sousa,
402 S. Baron, S. Chantalat, B. Saintpierre, L. Lenzini, A. Frouin, I. Giscos-Douriez, M. Ferey, A.B. Abdellatif,
403 T. Meatchi, J.P. Empana, X. Jouven, C. Gieger, M. Waldenberger, A. Peters, D. Cusi, E. Salvi, P.
404 Meneton, M. Touvier, M. Deschasaux, N. Druesne-Pecollo, S. Boukroun, F.L. Fernandes-Rosa, J.F.
405 Deleuze, X. Jeunemaitre, M.C. Zennaro, Identification of risk loci for primary aldosteronism in
406 genome-wide association studies, *Nat Commun* 13(1) (2022).
- 407 [21] M. Wuttke, Y. Li, M. Li, K.B. Sieber, M.F. Feitosa, A catalog of genetic loci associated with kidney
408 function from analyses of a million individuals, *Nat Genet* 51(6) (2019) 957-972.
- 409 [22] M.L. Yang, C. Xu, T. Gupte, T.J. Hoffmann, C. Iribarren, X. Zhou, S.K. Ganesh, Sex-specific genetic
410 architecture of blood pressure, *Nat Med* 30(3) (2024) 818-828.
- 411 [23] B.L. Pierce, H. Ahsan, T.J. Vanderweele, Power and instrument strength requirements for
412 Mendelian randomization studies using multiple genetic variants, *Int J Epidemiol* 40(3) (2011) 740-52.
- 413 [24] G. Davey Smith, G. Hemani, Mendelian randomization: genetic anchors for causal inference in
414 epidemiological studies, *Hum Mol Genet* 23(R1) (2014) R89-98.
- 415 [25] B.L. Pierce, S. Burgess, Efficient design for Mendelian randomization studies: subsample and
416 2-sample instrumental variable estimators, *Am J Epidemiol* 178(7) (2013) 1177-84.
- 417 [26] J. Bowden, G.D. Smith, S. Burgess, Mendelian randomization with invalid instruments: effect
418 estimation and bias detection through Egger regression, *International Journal of Epidemiology* 44(2)
419 (2015) 512-525.
- 420 [27] S. Burgess, J. Bowden, T. Fall, E. Ingelsson, S.G. Thompson, Sensitivity Analyses for Robust Causal
421 Inference from Mendelian Randomization Analyses with Multiple Genetic Variants, *Epidemiology*
422 28(1) (2017) 30-42.

- 423 [28] J. Bowden, M.F. Del Greco, C. Minelli, G.D. Smith, N. Sheehan, J. Thompson, A framework for the
424 investigation of pleiotropy in two-sample summary data Mendelian randomization, *Stat Med* 36(11)
425 (2017) 1783-1802.
- 426 [29] M. Verbanck, C.Y. Chen, B. Neale, R. Do, Detection of widespread horizontal pleiotropy in causal
427 relationships inferred from Mendelian randomization between complex traits and diseases, *Nature*
428 *Genetics* 50(5) (2018) 693-+.
- 429 [30] S. Burgess, A. Butterworth, S.G. Thompson, Mendelian randomization analysis with multiple
430 genetic variants using summarized data, *Genet Epidemiol* 37(7) (2013) 658-65.
- 431 [31] M. Curione, L. Petramala, C. Savoriti, M. Verrenti, E. Baiocco, S. Salvatore, L. Zinamosca, G.
432 Iannucci, S. Sciomer, C. Letizia, Electrical and Myocardial Remodeling in Primary Aldosteronism, *Front*
433 *Cardiovasc Med* 1 (2014) 7.
- 434 [32] S.M. Li, J.Y. Huang, C.Y. Zhu, M.Y. Ng, Q.S. Lin, M. Wu, M.Y. Liu, R. Wang, G.Z. Cao, C. Chen, M.Z.
435 Wu, Q.W. Ren, H.F. Tse, K.H. Yiu, Target organ damage in untreated hypertensive patients with
436 primary aldosteronism, *J Clin Hypertens (Greenwich)* (2024).
- 437 [33] D.L. Cohen, H. Wachtel, A. Vaidya, G.L. Hundemer, Y. Tezuka, A. Davio, A.F. Turcu, J.B. Cohen,
438 Primary Aldosteronism in Chronic Kidney Disease: Blood Pressure Control and Kidney and
439 Cardiovascular Outcomes After Surgical Versus Medical Management, *Hypertension* 80(10) (2023)
440 2187-2195.
- 441 [34] J. Hu, X. Chen, Y. Luo, J. Yang, Q. Zeng, W. Luo, X. Shu, Q. Cheng, L. Gong, Z. Wang, Q. Li, S. Yang,
442 Renin-independent aldosteronism and chronic kidney disease in diabetes: Observational and
443 Mendelian randomization analyses, *Metabolism* 145 (2023) 155593.
- 444 [35] S. Monticone, E. Sconfienza, F. D'Ascenzo, F. Buffolo, F. Satoh, L.A. Sechi, F. Veglio, P. Mulatero,
445 Renal damage in primary aldosteronism: a systematic review and meta-analysis, *J Hypertens* 38(1)
446 (2020) 3-12.
- 447 [36] C. Catena, G. Colussi, R. Lapenna, E. Nadalini, A. Chiuch, P. Gianfagna, L.A. Sechi, Long-term
448 cardiac effects of adrenalectomy or mineralocorticoid antagonists in patients with primary
449 aldosteronism, *Hypertension* 50(5) (2007) 911-8.
- 450 [37] G.L. Hundemer, M. Agharazii, F. Madore, A. Vaidya, J.M. Brown, A.A. Leung, G.A. Kline, E. Larose,
451 M.E. Piche, A.M. Crean, J.L.V. Shaw, T. Ramsay, B. Hametner, S. Wassertheurer, M.M. Sood, S.
452 Hiremath, M. Ruzicka, R. Goupil, Subclinical Primary Aldosteronism and Cardiovascular Health: A
453 Population-Based Cohort Study, *Circulation* 149(2) (2024) 124-134.
- 454 [38] A. Vaidya, P. Mulatero, R. Baudrand, G.K. Adler, The Expanding Spectrum of Primary
455 Aldosteronism: Implications for Diagnosis, Pathogenesis, and Treatment, *Endocr Rev* 39(6) (2018)
456 1057-1088.
- 457 [39] V. Fourkiotis, O. Vonend, S. Diederich, E. Fischer, K. Lang, S. Endres, F. Beuschlein, H.S.
458 Willenberg, L.C. Rump, B. Allolio, M. Reincke, M. Quinkler, G. Mephisto Study, Effectiveness of
459 eplerenone or spironolactone treatment in preserving renal function in primary aldosteronism, *Eur J*
460 *Endocrinol* 168(1) (2013) 75-81.
- 461 [40] R.W. Grady, W.M. Kaylor, J.C. Lee, E.L. Bravo, G.N. Gephardt, A.C. Novick, Renal pathology in
462 patients with primary hyperaldosteronism secondary to an adrenal cortical adenoma, *Urology* 48(3)
463 (1996) 369-72.
- 464 [41] H. Ogata, Y. Yamazaki, Y. Tezuka, X. Gao, K. Omata, Y. Ono, Y. Kawasaki, T. Tanaka, H. Nagano, N.
465 Wada, Y. Oki, A. Ikeya, K. Oki, Y. Takeda, M. Kometani, K. Kageyama, K. Terui, C.E. Gomez-Sanchez, S.J.
466 Liu, R. Morimoto, K. Joh, H. Sato, M. Miyazaki, A. Ito, Y. Arai, Y. Nakamura, S. Ito, F. Satoh, H. Sasano,

467 Renal Injuries in Primary Aldosteronism: Quantitative Histopathological Analysis of 19 Patients With
468 Primary Adosteronism, *Hypertension* 78(2) (2021) 411-421.

469 [42] R. Rocha, A.E. Rudolph, G.E. Friedrich, D.A. Nachowiak, B.K. Kekec, E.A. Blomme, E.G. McMahon,
470 J.A. Delyani, Aldosterone induces a vascular inflammatory phenotype in the rat heart, *Am J Physiol*
471 *Heart Circ Physiol* 283(5) (2002) H1802-10.

472 [43] S. Spencer, C. Wheeler-Jones, J. Elliott, Aldosterone and the mineralocorticoid receptor in renal
473 injury: A potential therapeutic target in feline chronic kidney disease, *J Vet Pharmacol Ther* 43(3)
474 (2020) 243-267.

475 [44] F.J. Rios, Z.G. Zou, A.P. Harvey, K.Y. Harvey, L.L. Camargo, K.B. Neves, S.E.F. Nichol, R.
476 Alves-Lopes, A. Cheah, M. Zahraa, A.G. Ryazanov, L. Ryazanova, T. Gudermann, V. Chubanov, A.C.
477 Montezano, R.M. Touyz, TRPM7 deficiency exacerbates cardiovascular and renal damage induced by
478 aldosterone-salt, *Commun Biol* 5(1) (2022) 746.

479 [45] S.M. Huang, A.H. Zhang, G.X. Ding, R.H. Chen, Aldosterone-induced mesangial cell proliferation is
480 mediated by EGF receptor transactivation, *Am J Physiol-Renal* 296(6) (2009) F1323-F1333.

481 [46] C. Chen, W. Liang, J. Jia, H. van Goor, P.C. Singhal, G. Ding, Aldosterone induces apoptosis in rat
482 podocytes: role of PI3-K/Akt and p38MAPK signaling pathways, *Nephron Exp Nephrol* 113(1) (2009)
483 e26-34.

484 [47] S. Katsuragawa, A. Goto, S. Shinoda, K. Inoue, K. Nakai, J. Saito, T. Nishikawa, Y. Tsurutani,
485 Association of Reversal of Renin Suppression With Long-Term Renal Outcome in Medically Treated
486 Primary Aldosteronism, *Hypertension* 80(9) (2023) 1909-1920.

487 [48] S.J. Elliot, M. Berho, K. Korach, S. Doublier, E. Lupia, G.E. Striker, M. Karl, Gender-specific effects
488 of endogenous testosterone: female alpha-estrogen receptor-deficient C57Bl/6J mice develop
489 glomerulosclerosis, *Kidney Int* 72(4) (2007) 464-72.

490 [49] M.P. Hutchens, T. Fujiyoshi, R. Komers, P.S. Herson, S. Anderson, Estrogen protects renal
491 endothelial barrier function from ischemia-reperfusion in vitro and in vivo, *Am J Physiol Renal Physiol*
492 303(3) (2012) F377-85.

493
494
495
496
497
498
499
500
501
502
503
504
505
506
507
508
509
510

511 **Table1 Baseline Characteristics of the Three Groups of Participants**

Characteristic	Overall, N = 612	NC, N = 204	PA, N = 204	EH, N = 204	PValue
Gender					>0.999
Male	210 (34%)	70 (34%)	70 (34%)	70 (34%)	
Female	402 (66%)	134 (66%)	134 (66%)	134 (66%)	
Age,years	53.85 ± 12.53	54.11 ± 12.55	53.45 ± 12.70	53.99 ± 12.40	0.852
SBP,mmHg	140.97 ± 22.45	126.29 ± 17.42a	148.40 ± 19.76b	147.70 ± 22.50b	<0.001
DBP,mmHg	86.97 ± 14.32	80.51 ± 10.81a	89.79 ± 14.38b	90.36 ± 15.18b	<0.001
BMI,kg/m ²	24.42 ± 4.01	23.46 ± 4.05	24.98 ± 3.74	24.79 ± 4.08	<0.001
T2DM	349 (57%)	157 (76.96%)	84 (41.18%)	108 (52.94%)	<0.001
OSAS	43 (7.03%)	4 (1.96%)	29 (14.21%)	10 (4.90%)	<0.001
PAC,pg/ml	150.75 (111.84, 210.11)	134.41 (104.05, 183.13)	185.09 (138.29, 289.40)	134.02 (100.05, 190.36)	<0.001
PRC,pg/ml	9.69 (3.96, 21.09)	15.08 (8.31, 26.22)	2.72 (1.08, 6.60)	14.30 (7.59, 30.73)	<0.001
ARR	14.56 (6.85, 35.24)	9.65 (5.66, 16.44)	73.14 (36.66, 203.05)	9.61 (5.25, 17.69)	<0.001
eGFR,ml/min/1.7 m ²	96.62 (76.45, 116.39)	104.84 (84.97, 127.96)a	90.21 (71.29, 110.22)b	95.23 (75.48, 112.53)b	<0.001
SCR,μmol/L	70.05 (59.00, 88.00)	65.50 (55.00, 83.00)	73.00 (63.00, 92.25)	72.50 (60.75, 91.00)	<0.001
BUN,mmol/L	5.26 ± 1.95	5.34 ± 1.94	5.03 ± 1.83	5.40 ± 2.08	0.135
UA,μmol/L	337.54 ± 111.27	324.21 ± 109.76	337.58 ± 111.20	350.83 ± 111.80	0.054
Serum potassium,mmol/L	3.89 ± 0.46	4.07 ± 0.35	3.73 ± 0.51	3.88 ± 0.43	<0.001
Serum Sodium,mmol/L	139.73 ± 3.13	138.50 ± 3.18	140.89 ± 2.76	139.80 ± 2.97	<0.001
Serum Chloride,mmol/L	102.45 ± 6.69	101.89 ± 3.85	102.08 ± 10.33	103.36 ± 3.46	0.056
Serum Calcium,mmol/L	2.32 ± 0.23	2.33 ± 0.13	2.33 ± 0.35	2.31 ± 0.13	0.462

512

513 Data are presented as n (%) for categorical variables, mean (SD) for normally distributed continuous

514 data, or median (interquartile range) for skewed continuous variables. Differences between groups are

515 denoted by the symbols 'a' and 'b'.

516 SBP indicates systolic blood pressure; DBP, diastolic blood pressure; BMI,Body mass index; T2DM,Type 2
517 Diabetes Mellitus; OSAS,obstructive sleep apnea syndrome; PAC,plasma aldosterone concentration;
518 PRC,plasma renin concentration; ARR,aldosterone-to-renin ratio; eGFR,Estimate glomerular filtration rate;
519 SCR,Serum creatinine; BUN,Blood urea nitrogen; UA,uric acid; NC,negative control;PA,primary
520 aldosteronism; EH,essential hypertension.

521

522

523

524

525

526

527

528

529

530

531

532

533

534

535

536

537

538

539

540

541

542

543

544

545

546

547

548

549

550

551

552

553

554

555

556 **Table 2 Associations of primary aldosteronism and estimated glomerular filtration rate compared to negative control group**

557

558

559

560

561

562

563

564

565

566

567

568

569

570

571

572

573

574

Beta represents the change in eGFR(ml/min/1.7 m²)

	Model 1		Model 2		Model 3		Model 4	
	Beta (95% CI)	<i>P</i> Value	Beta (95% CI)	<i>P</i> Value	Beta (95% CI)	<i>P</i> Value	Beta (95% CI)	<i>P</i> Value
NC	Reference	-	Reference	-	Reference	-	Reference	-
PA	- 0.248 (-0.1 , -0.045)	<0.001	- 0.234 (-0.099 , -0.039)	<0.001	-0.234(-0.102,-0.035)	<0.001	-0.217(-0.095,-0.032)	<0.001
PA Subgroups*								
PAC T1	-0.161(-0.091,-0.014)	0.008	-0.134(-0.083,-0.004)	0.029	-0.123(-0.083,0.003)	0.066	-0.124(-0.081,0)	0.05
PAC T2	-0.219(-0.11,-0.033)	<0.001	-0.228(-0.114,-0.036)	<0.001	-0.275(-0.134,-0.047)	<0.001	-0.252(-0.124,-0.042)	<0.001
PAC T3	-0.262(-0.134,-0.052)	<0.001	-0.278(-0.15,-0.051)	<0.001	-0.311(-0.165,-0.059)	<0.001	-0.274(-0.15,-0.047)	<0.001
PRC T1	-0.303(-0.148,-0.067)	<0.001	-0.25(-0.133,-0.048)	<0.001	-0.272(-0.145,-0.052)	<0.001	-0.261(-0.139,-0.05)	<0.001
PRC T2	-0.156(-0.089,-0.012)	0.01	-0.204(-0.105,-0.026)	0.001	-0.245(-0.124,-0.035)	0.001	-0.203(-0.107,-0.024)	0.002
PRC T3	-0.18(-0.098,-0.02)	0.003	-0.162(-0.098,-0.009)	0.018	-0.171(-0.104,-0.009)	0.02	-0.159(-0.098,-0.007)	0.024
ARR T1	-0.166(-0.093,-0.016)	0.006	-0.168(-0.098,-0.013)	0.01	-0.184(-0.107,-0.014)	0.011	-0.166(-0.099,-0.011)	0.015
ARR T2	-0.155(-0.088,-0.012)	0.01	-0.19(-0.1,-0.023)	<0.001	-0.204(-0.109,-0.024)	0.002	-0.187(-0.101,-0.021)	0.003
ARR T3	-0.317(-0.152,-0.072)	<0.001	-0.273(-0.145,-0.053)	<0.001	-0.308(-0.162,-0.062)	<0.001	-0.284(-0.151,-0.055)	<0.001

*Each row under the

575

576

577

578

PA subgroups represents a different subgroup of PA patients according to the tertiles of PAC, PRC, and ARR.

Model 1: no adjustment. Model 2: adjusted for gender, age, BMI, type 2 diabetes mellitus, and serum potassium. Model 3: adjusted for systolic blood pressure based on Model 2. Model 4:

adjusted for diastolic blood pressure based on Model 2. eGFR, Estimate glomerular filtration rate; PAC, plasma aldosterone concentration; PRC, plasma renin concentration;

ARR, aldosterone-to-renin ratio; NC, negative control; PA, primary aldosteronism.

Table 3 Associations of primary aldosteronism and estimated glomerular filtration rate compared to essential hypertension group

Beta represents the change in eGFR(ml/min/1.7 m ²)								
	Mode1		Mode2		Mode3		Mode4	
	Beta(95% CI)	PValue	Beta(95% CI)	PValue	Beta(95% CI)	PValue	Beta(95% CI)	PValue
		e		e		e		e
EH	Reference	-	Reference	-	Reference	-	Reference	-
PA	-0.065(-0.046,0.009)	0.192	-0.065(-0.046,0.009)	0.217	-0.056(-0.043,0.011)	0.251	-0.059(-0.044,0.01)	0.227
PA Subgroups								
PAC T1	0.005(-0.037,0.04)	0.935	0.04(-0.024,0.05)	0.501	0.047(-0.023,0.052)	0.433	0.041(-0.024,0.051)	0.492
PAC T2	-0.056(-0.056,0.02)	0.36	-0.063(-0.056,0.017)	0.287	-0.062(-0.057,0.017)	0.294	-0.059(-0.055,0.018)	0.324
PAC T3	-0.113(-0.08,0.002)	0.063	-0.146(-0.093,-0.008)	0.021	-0.145(-0.093,-0.007)	0.023	-0.149(-0.094,-0.008)	0.019
PRC T1	-0.156(-0.094,-0.013)	0.01	-0.127(-0.084,-0.004)	0.033	-0.124(-0.084,-0.002)	0.039	-0.124(-0.084,-0.002)	0.039
PRC T2	0.011(-0.035,0.042)	0.858	-0.023(-0.044,0.03)	0.705	-0.018(-0.042,0.031)	0.767	-0.018(-0.043,0.031)	0.765
PRC T3	-0.016(-0.044,0.033)	0.79	-0.021(-0.046,0.032)	0.736	-0.02(-0.046,0.033)	0.747	-0.025(-0.047,0.032)	0.697
ARR T1	-0.002(-0.039,0.038)	0.975	-0.016(-0.043,0.033)	0.789	-0.017(-0.044,0.033)	0.786	-0.017(-0.044,0.033)	0.776
ARR T2	0.012(-0.034,0.042)	0.847	-0.013(-0.041,0.032)	0.819	-0.007(-0.039,0.035)	0.911	-0.012(-0.041,0.033)	0.843
ARR T3	-0.171(-0.098,-0.018)	0.005	-0.147(-0.092,-0.009)	0.017	-0.146(-0.092,-0.009)	0.019	-0.145(-0.092,-0.008)	0.021

*Each row under the PA subgroups represents a different subgroup of PA patients according to the tertiles of PAC, PRC, and ARR.

581 Model 1: no adjustment. Model 2: adjusted for gender, age, BMI, type 2 diabetes mellitus, and serum potassium. Model 3: adjusted for systolic blood pressure based on Model 2. Model 4: adjusted for diastolic blood pressure based on Model 2.
582 eGFR indicates Estimate glomerular filtration rate; PAC, plasma aldosterone concentration; PRC, plasma renin concentration; ARR, aldosterone-to-renin ratio; EH, essential hypertension; PA, primary
583 aldosteronism.

584

585

Table4 Correlations of ARR, PRC, and PAC with Estimated Glomerular Filtration Rate (eGFR) in Primary Aldosteronism

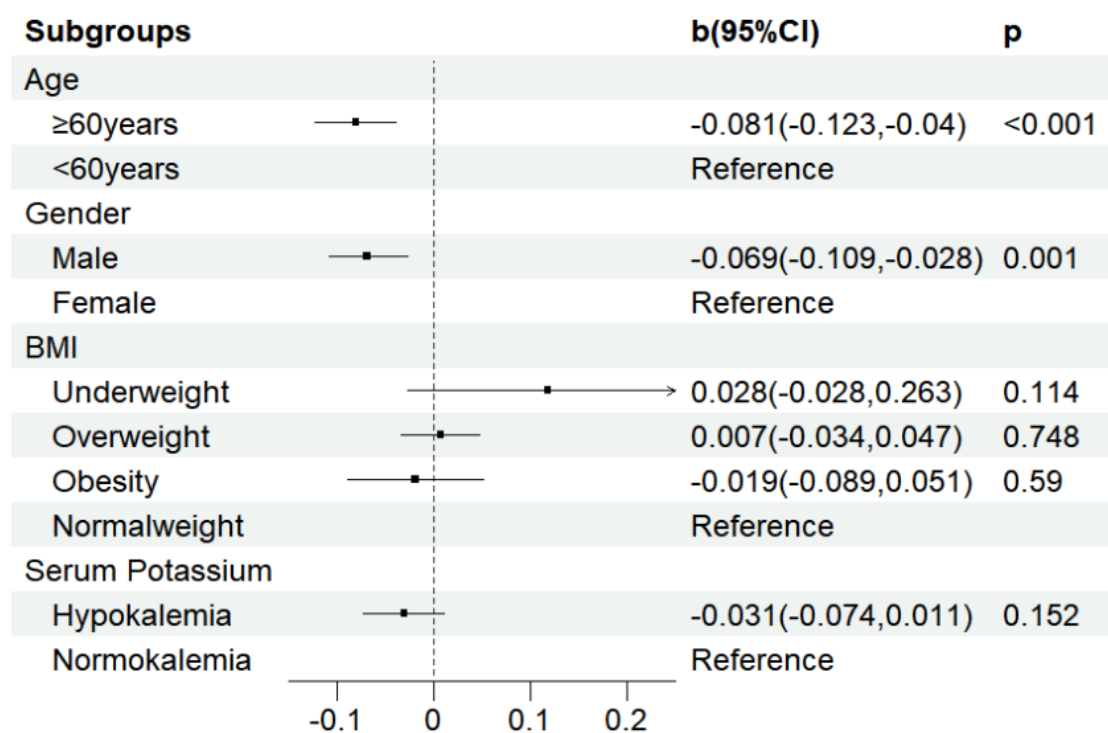
PA Group	Change in eGFR(ml/min/1.7 m ²)											
	Mode1			Mode2			Mode3			Mode4		
	b(95%CI)	PValue	P-trend	b(95%CI)	PValue	P-trend	b(95%CI)	PValue	P-trend	b(95%CI)	PValue	P-trend
PAC(Continuous)	-0.094(-0.164,-0.025)	0.008		-0.137(-0.209,-0.065)	0		-0.138(-0.208,-0.067)	0		-0.131(-0.202,-0.06)	0	
PAC Tertile 1	Reference	-		Reference	-		Reference	-		Reference	-	
PAC Tertile 2	-0.019(-0.066,0.027)	0.416	0.095	-0.037(-0.08,0.007)	0.096	0.013	-0.036(-0.08,0.007)	0.104	0.01	-0.034(-0.078,0.009)	0.12	0.015
PAC Tertile 3	-0.04(-0.087,0.006)	0.091		-0.061(-0.108,-0.015)	0.01		-0.064(-0.111,-0.017)	0.008		-0.06(-0.107,-0.013)	0.012	
PRC(Continuous)	0.022(-0.01,0.053)	0.182		0.009(-0.024,0.041)	0.599		0.007(-0.025,0.038)	0.686		0.005(-0.026,0.037)	0.738	
PRC Tertile 1	Reference	-		Reference	-		Reference	-		Reference	-	
PRC Tertile 2	0.057(0.01,0.103)	0.016	0.047	0.034(-0.011,0.078)	0.136	0.101	0.034(-0.011,0.079)	0.138	0.131	0.033(-0.012,0.077)	0.153	0.163
PRC Tertile 3	0.048(0.002,0.094)	0.042		0.039(-0.007,0.084)	0.097		0.036(-0.01,0.082)	0.124		0.033(-0.013,0.079)	0.154	
ARR(Continuous)	-0.037(-0.067,-0.007)	0.015		-0.03(-0.061,0)	0.048		-0.029(-0.058,0.001)	0.056		-0.001(-0.003,0)	0.075	
ARR Tertile 1	Reference	-		Reference	-		Reference	-		Reference	-	
ARR Tertile 2	0.004(-0.042,0.05)	0.873	0.013	-0.001(-0.045,0.042)	0.951	0.093	0(-0.044,0.043)	0.989	0.128	-0.001(-0.044,0.043)	0.975	0.158
ARR Tertile 3	-0.058(-0.104,-0.012)	0.014		-0.039(-0.084,0.006)	0.086		-0.037(-0.082,0.008)	0.108		-0.034(-0.079,0.011)	0.144	

586

This table presents the predictive effects of PAC, PRC, and ARR on eGFR decline in patients with primary aldosteronism. It details direct impacts as continuous

587 variables and stratified effects across tertiles, where 1, 2, and 3 denote low, middle, and high groups, respectively. Model 1: no adjustment. Model 2: adjusted for gender, age,
588 BMI, type 2 diabetes mellitus, and serum potassium. Model 3: adjusted for systolic blood pressure based on Model 2. Model 4: adjusted for diastolic blood pressure based on Model 2. eGFR
589 indicates Estimate glomerular filtration rate; PA, primary aldosteronism; PAC, plasma aldosterone concentration; PRC, plasma renin concentration;
590 ARR, aldosterone-to-renin ratio.

591 **Figure 1: Subgroup analysis of the association between PA and eGFR among PA patients,adjusted for**
 592 **covariates.**

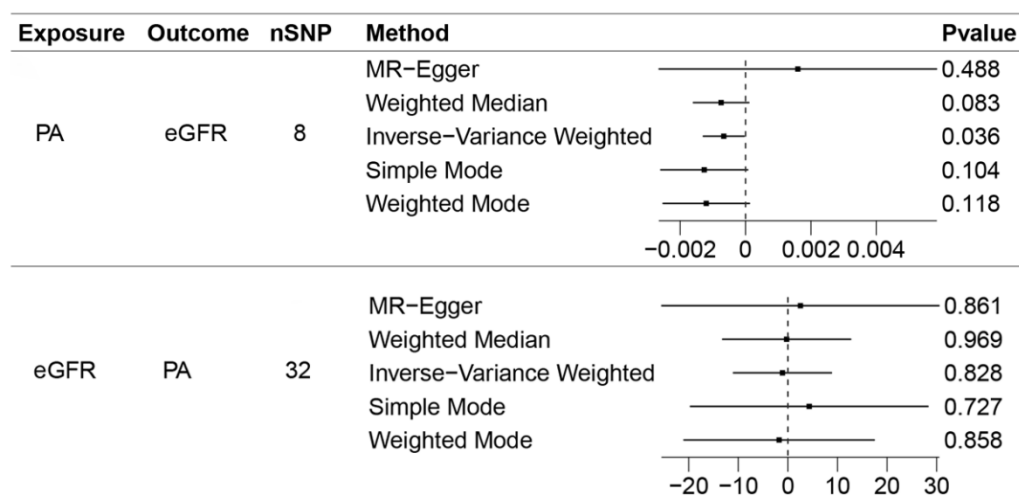


593
 594 Adjusted covariates included gender, age, type 2 diabetes mellitus and BMI. BMI(kg/m²) indicates Body mass
 595 index.underweight: BMI<18.5;normalweight:18.5 ≤ BMI<25;overweight:25 ≤ BMI<30;obesity: BMI
 596 ≥ 30; hypokalemia:serum potassium level below 3.5 mmol/L.

597
 598
 599
 600
 601
 602
 603
 604
 605
 606
 607
 608
 609
 610
 611
 612
 613
 614

615

616 **Figure 2 Bidirectional two-sample MR analyses of genetically predicted PA and**
 617 **eGFR**



618

619 PA indicates primary aldosteronism; eGFR, estimated glomerular filtration rate.

620

621

622

623

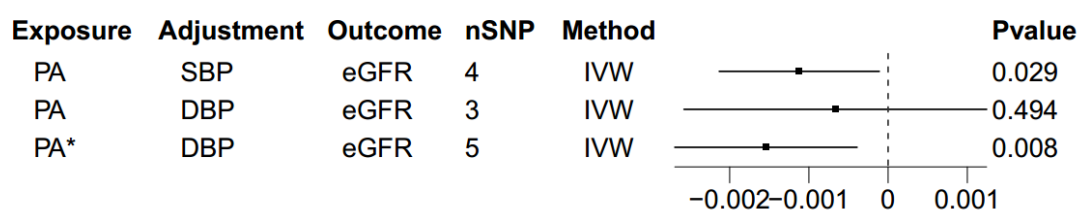
624

625

626

627

628 **Figure 3 Multivariable two-sample MR analysis of genetically predicted PA and**
 629 **eGFR**



630

631 The analysis adjusts for two scenarios: SBP or DBP. The notation “PA*” indicates that genetic instrumental
 632 variables for PA were selected based on a significance threshold of P=0.005.

633 PA indicates primary aldosteronism; eGFR, estimated glomerular filtration rate. SBP, Systolic Blood
 634 Pressure; DBP, Diastolic Blood Pressure; IVW, inverse-variance weighted.

635

636

637

638

639

640

641

642

643

644

645