

## **Development and calibration of a mathematical model of HIV outcomes among Rwandan adults: informing equitable achievement of targets in Rwanda**

April D. Kimmel <sup>1,2</sup>, Zhongzhe Pan <sup>1</sup>, Ellen Brazier <sup>3</sup>, Gad Murenzi <sup>4</sup>,

Benjamin Muhoza <sup>4</sup>, Marcel Yotebieng <sup>5</sup>, Kathryn Anastos <sup>5</sup>, Denis Nash <sup>3,6</sup>, and on

behalf of the Central Africa International epidemiology Databases to Evaluate AIDS (CA-IeDEA)

<sup>1</sup> Department of Health Policy, Virginia Commonwealth University School of Public Health, Richmond, USA. <sup>2</sup> Division of Infectious Diseases, Department of Internal Medicine, Virginia Commonwealth University School of Medicine, Richmond, USA. <sup>3</sup> Institute for Implementation Science in Population Health, City University of New York, USA. <sup>4</sup> Research for Development (RD Rwanda), Kigali, Rwanda. <sup>5</sup> Albert Einstein College of Medicine, New York, USA. <sup>6</sup> Department of Epidemiology and Biostatistics, City University of New York Graduate School of Public Health, USA.

Research reported in this publication was supported by the U.S. National Institutes of Health's National Institute of Allergy and Infectious Diseases, the Eunice Kennedy Shriver National Institute of Child Health and Human Development, the National Cancer Institute, the National Institute of Mental Health, the National Institute on Drug Abuse, the National Heart, Lung, and Blood Institute, the National Institute on Alcohol Abuse and Alcoholism, the National Institute of Diabetes and Digestive and Kidney Diseases, and the Fogarty International Center under

Award Number U01AI096299. Informatics resources are supported by the Harmonist project under Award Number R24AI24872.

This work was presented in part at the 25<sup>th</sup> International Workshop on HIV and Hepatitis Observational Databases (IWHOD), Athens, Greece, March 23 – 25, 2023.

Corresponding author:

April D. Kimmel, PhD

Department of Health Policy, School of Population Health

Virginia Commonwealth University

Box 480530

Richmond, VA USA 23280

Word count: 4,454

## 1 ABSTRACT

2 **Background:** We developed and calibrated the Central Africa-International epidemiology  
3 Databases to Evaluate AIDS (CA-IeDEA) HIV policy model to inform equitable achievement of  
4 global goals, overall and across sub-populations, in Rwanda.

5 **Methods:** We created a deterministic dynamic model to project adult HIV epidemic and care  
6 continuum outcomes, overall and for 25 subpopulations (age group, sex, HIV acquisition risk,  
7 urbanicity). Data came from the Rwanda cohort of CA-IeDEA, 2004–2020; Rwanda  
8 Demographic and Health Surveys, 2005, 2010, 2015; Rwanda Population-based HIV Impact  
9 Assessment, 2019; and the literature and reports. We calibrated the model to 47 targets by  
10 selecting the 50 best-fitting parameter sets among 20,000 simulations. Calibration targets  
11 reflected epidemic (HIV prevalence, incidence), global goals (percentage on antiretroviral  
12 therapy (ART) among diagnosed, percentage virally suppressed among on ART) and other  
13 (number on ART, percentage virally suppressed) indicators, overall and by sex. Best-fitting sets  
14 minimized the summed absolute value of the percentage deviation (AVPD) between model  
15 projections and calibration targets. Good model performance was mean AVPD  $\leq 5\%$  across the  
16 50 best-fitting sets and/or projections within the target confidence intervals; acceptable was mean  
17 AVPD  $> 5\%$  and  $\leq 15\%$ .

18 **Results:** Across indicators, 1,841 of 2,350 (78.3%) model projections were a good or acceptable  
19 fit to calibration targets. For HIV epidemic indicators, 256 of 300 (85.3%) projections were a  
20 good fit to targets, with the model performing better for women (83.3% a good fit) than for men  
21 (71.7% a good fit). For global goals indicators, 96 of 100 (96.0%) projections were a good fit;  
22 model performance was similar for women and men. For other indicators, 653 of 950 (68.7%)  
23 projections were a good or acceptable fit. Fit was better for women than for men (percentage  
24 virally suppressed only) and when restricting targets for number on ART to 2013 and beyond.

25 **Conclusions:** The CA-IeDEA HIV policy model fits historical data and can inform policy  
26 solutions for equitably achieving global goals to end the HIV epidemic in Rwanda. High-quality,  
27 unbiased population-based data, as well as novel approaches that account for calibration target  
28 quality, are critical to ongoing use of mathematical models for programmatic planning.

## 29 INTRODUCTION

30 Rwanda, a Central African country with a generalized HIV epidemic (HIV prevalence =  
31 3%) [1, 2], is accelerating toward achieving the 95-95-95 global targets and ending the public  
32 health threat posed by HIV epidemic by 2030 [3]. Recent data have generated optimism, with  
33 97.5% of diagnosed Rwandan adults receiving antiretroviral therapy (ART) and 90.1% of  
34 Rwandan adults on ART having achieved HIV viral suppression [1]. However, Rwanda's  
35 success is tempered by data suggesting lower HIV awareness (83.8% from population-based  
36 survey estimates); worse care continuum outcomes among men, adolescents and young adults;  
37 and notable HIV acquisition risk among rural populations [1, 4], which will impede continued  
38 progress and perpetuate existing disparities in achieving global targets.

39 Mathematical models are a tool commonly used to evaluate potential policy solutions  
40 addressing advancement toward epidemic control and health equity. For Rwanda, these models  
41 have been used to understand the distribution of new HIV infections [5]; evaluate the impact of  
42 HIV prevention policies on epidemic outcomes overall and among key population (i.e., female  
43 sex workers and their male clients) [6, 7]; forecast improvements along the care continuum on  
44 overall mortality among people with HIV [8]; and project achievement of behavioral and  
45 treatment targets on HIV transmission dynamics [9].

46 While the existing literature has used mathematical models primarily to assess the impact  
47 of different strategies on epidemic indicators, no mathematical models applied to Rwanda, to our  
48 knowledge, have examined potential policy solutions for achieving all global targets and  
49 promoting equity in achieving these targets across sub-populations. We aimed to develop and  
50 calibrate the Central Africa-International epidemiology Databases to Evaluate AIDS (CA-  
51 IeDEA) HIV policy model. IeDEA is an international research consortium that has collected and

52 harmonized globally diverse observational data for over 2 million people living with HIV and  
53 enrolling in HIV care since 2004. The Rwanda cohort of CA-IeDEA comprises over 30,000 ever  
54 enrolled in HIV care at 12 clinics. It is thus a rich data source with which to populate  
55 mathematical models used to examine relevant, real-world policy solutions.

56

## 57 **MATERIALS AND METHODS**

### 58 **Overview**

59 We developed the CA-IeDEA HIV policy model, a deterministic dynamic compartmental  
60 model that projects HIV epidemic and care continuum outcomes. After model implementation,  
61 instantiation and parameterization, we calibrated the model to historical data, selected the best-  
62 fitting sets of model parameters, and evaluated the model's performance. Model parameters and  
63 calibration targets were based on individual-level data from the Rwanda cohort of CA-IeDEA  
64 [10, 11], as well as Rwandan national surveys [12-14], international databases [15] and the  
65 literature (see Table 1). Secondary data were accessed 7 April 2022; the authors did not have  
66 access in the data to readily identifiable information that could identify individual participants.  
67 The model was implemented in R version 4.2.1 (R Core Team, 2022). Additional details are in  
68 the **Supplement**.

### 69 **CA-IeDEA HIV policy model**

#### 70 ***Overall structure***

71 The CA-IeDEA HIV policy model is an extended Susceptible-Infected-Removed (SIR)  
72 dynamic epidemic model, adapted from previous work [16]. The model includes a susceptible  
73 compartment, 24 mutually exclusive infectious compartments and a death compartment (

74           ). The susceptible compartment includes the population at risk of acquiring HIV.  
75   Infectious compartments capture HIV disease progression and steps along the HIV care  
76   continuum. We characterize HIV disease progression according to different CD4 cell count strata  
77   (>500, 351–500, 201–350 and <200 cells/mm<sup>3</sup>) that reflect key thresholds for the risk of HIV-  
78   related opportunistic infections and other illnesses [17]. They also correspond to international  
79   and Rwandan recommendations on CD4-based thresholds for antiretroviral therapy (ART)  
80   initiation over time [18-24]. We did not explicitly model acute HIV, given its small window of  
81   detection (approximately 14 days) that is captured in a single model time step (see below).

82

83   **Fig 1. Model schematic of the CA-IeDEA HIV policy model**

84   *S*=Susceptible compartment; *I*=Infectious compartments; *D*=Death compartments; *ART*=antiretroviral.  
85   Shown is a simplified schematic of the CA-IeDEA HIV policy model. Each modeled population enters the  
86   susceptible compartment, can probabilistically transition to and move between infectious compartments and can  
87   probabilistically transition to the death compartment, with transitions and their directionality denoted by arrows.  
88   Infectious model compartments are outlined by the dotted line and represent the combination of degree of HIV  
89   disease progression (i.e., CD4 cell count strata) and engagement in HIV care; disease progression for those on ART  
90   represents the CD4 cell count stratum at ART initiation. Each model compartment includes 25 sub-populations  
91   partitioned by age, sex, risk of acquisition and urbanicity (sub-populations not shown).

92

93           The HIV care continuum is defined as key steps along the care cascade: undiagnosed,  
94   diagnosed, linked to care, on ART and virally suppressed, on ART and not virally suppressed,  
95   and lost to follow-up. We explicitly modeled linkage to care due to historical delays in ART  
96   initiation [25, 26], including rapid ART initiation (e.g., within 7 days), after linkage to care [21,  
97   25, 26]. We did not explicitly model on-ART disease progression to maintain model parsimony  
98   and given successful calibration of other similarly structured HIV policy models [16, 27]. Death  
99   occurs from background mortality and HIV-related causes, with transitions to the death  
100   compartment occurring only from infectious compartments. There is no transition from the  
101   susceptible to the death compartment as changes in the size of the susceptible population over  
102   time reflect background mortality.

103 Model dynamics are expressed using a system of ordinary differential equations. The  
104 differential equations are implemented as difference equations in order to project outcomes at  
105 discrete time points [28], which is important for informing policy decisions, and also to reduce  
106 computational complexity during the model calibration process. Movement between  
107 compartments occurs based on a one-month time step, which captures clinically meaningful  
108 events related to disease progression and engagement in care.

### 109 *Study population partitions*

110 The model is partitioned into 25 sub-populations by age, sex, risk and subnational unit  
111 (i.e., urbanicity) to account for differences in HIV acquisition risk and steps along the care  
112 continuum, resulting in a total of 650 model compartments (25 sub-populations x 26  
113 compartments). Age is partitioned into five groups (i.e., 15–24, 25–34, 35–44, 45–54, 55+ years)  
114 given age-related differences in HIV prevalence and HIV testing [29-32]. Women are  
115 represented as having either lower or higher HIV acquisition risk, with the latter representing  
116 female sex workers (FSWs) who have higher HIV prevalence (45.8% compared to 3.6% among  
117 low-risk women) and lower viral suppression (71% compared to 79% among lower-risk women)  
118 [33]. Men are considered lower risk. We do not explicitly include male clients of female sex  
119 workers as a higher risk sub-population, given the HIV acquisition risk for male clients of female  
120 sex workers is similar to non-clients [29-31]. Subnational units are applied as an urban-rural  
121 classification because HIV prevalence in urban areas in Rwanda is more than double that of rural  
122 areas [21]. However, we did not partition women who were at higher risk of HIV acquisition  
123 (i.e., FSWs) by urbanicity given more than 80% reside in urban areas [34].

### 124 *Force of infection*

125           The force of infection, or the probability of HIV acquisition in different susceptible sub-  
126 populations, is based on heterosexual contact. We calculate the force of infection using: the per-  
127 cent HIV transmission probability in the absence of condoms and HIV treatment, the probability  
128 of condom use, the probability of having a virally suppressed partner, the reduction in HIV  
129 acquisition risk due to condom use or having a virally suppressed partner, the probability of  
130 sexual contact with a specific sub-population, the probability of a sexual partner with HIV within  
131 a sub-population, and the number of sex acts per month. We assume no sexual contact between  
132 lower risk populations living in urban and in rural areas due to relatively low spatial mobility in  
133 Rwanda [35]; however, FSWs have sexual contact with sub-populations living in either urban or  
134 rural areas. We apply random mixing across sub-populations with sexual contacts given our  
135 assumption that all sub-populations are sexually active and randomly choose their sexual  
136 partners, including FSWs.

## 137 **Model inputs**

### 138 *Instantiation*

139           Model instantiation involved distributing the total population across sub-populations and  
140 by HIV status, disease progression and care engagement (**Table 1**). In the current study, the  
141 initial distribution was applied to the overall Rwandan adult population 15–64 years in 2004, the  
142 first year in the historical projection period used for the calibration process. We determined the  
143 total number in each sub-population based on population projections and the literature specific to  
144 Rwanda [15, 36], estimating the number of people living with HIV in a given sub-population  
145 from national survey data on HIV prevalence (Demographic and Health Survey (DHS) Rwanda,  
146 2005; Behavioral and Biological Surveillance Survey (BBSS), 2010) [12, 37].



**Table 1. Key model parameters and calibration targets**

	Baseline value(s) <sup>a</sup>	Data source(s)
<b>Panel A. Parameters</b>		
Model instantiation		
Total population	4,729,488	World Bank [15]
Population size of female sex workers	12,278	UNAIDS [36]
HIV prevalence, by sub-population	0.27%–63%	DHS Rwanda (2005) [12], BBSS (2010) [37]
Proportions along the care continuum, by sub-population and CD4 stratum <sup>a</sup>	0–85%	CA-IeDEA (Rwanda, 2004) [11]
Force of infection		
Probability of HIV transmission per sex act	0.0005–0.0087	Boily (2009) [39]
Proportion consistently using condoms	4%–62%	DHS Rwanda (2005, 2010, 2015) [12-14], BBSS (2010) [37]
Effectiveness of condoms	0.80	Weller (2002) [40]
Effectiveness of viral suppression on HIV transmission	0.966	Supervie (2014) [41]
Number of sex acts	1–40	Braunstein (2011a) [42]
Transition probabilities (monthly) for infectious compartments		
Susceptible population growth rates	0.09%–0.45%	World Bank [15]
Natural history disease progression, by sex	0.008–0.099	CA-IeDEA (Rwanda, 2004–2020) [11]
Diagnosis, by CD4 stratum and year	0.016–0.241	DHS Rwanda (2005, 2010, 2015) [12-14], Okal (2017) [43]
Linkage to care, by CD4 stratum and year	0.075–0.207	Nsanzimana (2015) [44], Braunstein (2011b) [38], Okal (2017) [43]
Loss to follow-up, by CD4 stratum and ART status	0.011–0.021	CA-IeDEA (Rwanda, 2004–2020) [11]
On ART and virally suppressed, by CD4 stratum and year	0.003–0.148	CA-IeDEA (Rwanda, 2004–2020) [11]
ART failure, by CD4 stratum	0.001–0.002	CA-IeDEA (Rwanda, 2004–2020) [11]
Re-engagement in care <sup>b</sup>	0.023	CA-IeDEA (Rwanda, 2004–2020) [11]
Death on ART and virally suppressed, by sub-population and CD4 stratum <sup>b</sup>	0.0002–0.017	CA-IeDEA (Rwanda, 2004–2020) [11]
<b>Panel B. Calibration targets</b>		
HIV epidemic		
HIV prevalence (15–44 years), overall and by sex and year	0.018–0.037	DHS Rwanda (2005, 2010, 2015) [12-14], RPHIA (2019) [1]
HIV prevalence (15–64 years), overall and by sex	0.022–0.037	RPHIA (2019) [1]
HIV incidence (15–44 years), overall and by sex	0.0006–0.0010	RPHIA (2019) [1]
Global goals		
% on ART among diagnosed (15–44 years), overall and by sex	96.2%–97.2%	RPHIA (2019) [1]
% virally suppressed among on ART (15–44 years), overall and by sex	75.9%–89.9%	RPHIA (2019) [1]
Other		
% virally suppressed among diagnosed (15–44 years), overall and by sex	61.3%–76.5%	RPHIA (2019) [1]
% virally suppressed among diagnosed (15–64 years), overall and by sex	66.8%–77.2%	RPHIA (2019) [1]
Number on ART (15–44 years), overall	6,356–197,544	Rwanda National Report [45]

Abbreviations: UNAIDS=Joint United Nations Programme on HIV/AIDS; DHS=Demographic and Health Survey; BBSS=Behavioral and Biological Surveillance Survey; CA-IeDEA= Central Africa International epidemiology Databases to Evaluate AIDS; RPHIA= Rwanda Population-Based HIV Impact Assessment.

<sup>a</sup> The baseline value(s) reporting a range represent the range of baseline parameter values or calibration targets across all sub-populations and years. The parameter values and calibration targets, overall and for each sub-population, are reported separately in the supplementary material.

148 For each infectious compartment of a given sub-population, the initial population was  
149 calculated based on the proportion living with HIV in each step of the HIV care continuum and  
150 in each CD4 stratum. These proportions were estimated using individual-level longitudinal data  
151 on HIV treatment and care from the Rwanda cohort of CA-IeDEA [11], as well as national  
152 surveys (DHS Rwanda 2005) [12] and the literature [38].

### 153 *Parameterization*

154 Model parameterization involved deriving parameters, by sub-population, for susceptible  
155 population growth, force of infection, and monthly transition probabilities between  
156 compartments (**Table 1**). We assumed that the monthly population growth rate applied to the  
157 susceptible compartments was equal to the total population growth rate, which we estimated as  
158 the simple average of the Rwanda's monthly population growth rate, 2004–2020, from World  
159 Bank population projections [15]. Parameter values for the force of infection were generally  
160 extracted from literature synthesizing existing evidence from sub-Saharan African countries or  
161 surveys conducted in Rwanda, with the proportion using condoms estimated directly from DHS  
162 Rwanda (2005, 2010, 2015) for the lower risk population and from the BBSS report for FSWs  
163 [12-14, 37].

164 For all sub-populations except FSWs, transition probabilities for natural history disease  
165 progression, HIV viral suppression, ART failure, loss to follow-up, care re-engagement and  
166 death were derived from the Rwanda cohort of CA-IeDEA, 2004–2020 [11], while those for HIV  
167 diagnosis and linkage to care were estimated from DHS Rwanda (2005, 2010, 2015) and  
168 extracted from the literature [12-14, 44], respectively. We defined HIV viral suppression as  
169 individuals on ART without evidence of virologic failure, which was at least one post-ART  
170 initiation follow-up HIV viral load test result  $\geq 1000$  copies/mL [24]. We defined loss to follow-

171 up as at least 365 days between the last clinic visit and last contact (among those on ART) or at  
172 least 6 months between the most recent clinic visit and last contact (pre-ART) [43, 46]. Monthly  
173 probabilities of death accounted for misclassification of loss to follow-up both on and off ART  
174 [47, 48].

175 For FSWs, transition probabilities for diagnosis, linkage to care and condom use were  
176 extracted from existing literature and government reports [38, 39, 41]. When transition  
177 probabilities for loss to follow-up and re-engagement in this sub-population were unavailable, we  
178 applied the baseline values used for the lower risk female population but applied wider confidence  
179 bounds to account for the uncertainty in the parameter value.

## 180 **Model calibration**

181 We calibrated model parameter values in order to fit model projections to historical data.  
182 The process involved identifying calibration targets, generating and selecting best-fitting sets of  
183 model parameters, and assessing the model's performance.

### 184 ***Calibration targets***

185 We selected 47 calibration targets reflecting HIV epidemic, global goals and other care  
186 engagement indicators for adults 15–44 years and 15–64 years, overall and/or by sex, over a 16-  
187 year historical calibration period between 2004 and 2020 (Table 1). HIV epidemic targets  
188 included HIV prevalence and HIV incidence and came from DHS (Rwanda, 2005, 2010, 2015)  
189 and RPHIA (2019) [1, 29-31]. Global goals targets included the percentage on ART among  
190 adults diagnosed with HIV and percentage virally suppressed among adults on ART (RPHIA,  
191 2019) [1]. We did not include global goals targets for youth 15–24 years due to small sample  
192 sizes in available survey data. Finally, other targets included the percentage virally suppressed  
193 among adults living with HIV (RPHIA, 2019) and the number of adults on ART (Rwanda

194 National HIV Report, 2020) [1, 45]. Because available data report all Rwandans on ART,  
195 including pediatric cases, we estimated the number of adults on ART as the product of the total  
196 reported number on ART and the proportion reported on ART within a given age group (e.g.,  
197 15–44 years) among total population on ART [45].

### 198 *Selecting best-fitting sets of model parameters*

199 To select best-fitting parameter sets, we first generated sets of model parameters. We  
200 assigned distributions to all model parameters, with the exception of the population size for each  
201 sub-population and the proportions of people living with HIV by CD4 stratum given these  
202 parameters are single point estimates. We assigned the normal distribution to the susceptible  
203 population growth rate; beta distributions to transition probabilities, except the probabilities of  
204 linkage to care due to limited information on sample size; and triangular distributions to model  
205 parameters that lacked information on their distribution. Across relevant parameters, we then  
206 performed a random draw of each parameter's value from its distribution in order to generate a  
207 parameter set. We applied random draws to the over 1,500 model parameters and generated  
208 20,000 randomly selected parameter sets to fully capture variability across model parameters.  
209 Each parameter set was then used to project historical model outcomes associated with the set.

210 We selected the best-fitting sets of model parameters by examining their goodness of fit  
211 (GoF), a measure quantifying the difference between the model's projected outcomes and  
212 calibration targets. No standard GoF measure(s) exists and thus GoF is defined according to a  
213 given model structure and selected calibration targets [49]. In the current analysis, the GoF  
214 measure was defined as the summed absolute value of the percentage deviation (sAVPD)  
215 between the model's projected outcomes and the calibration targets, with the sAVPD a scale-  
216 independent measure selected to standardize differences in the units of analysis across calibration

217 targets [50, 51]. A smaller sAVPD value represents a smaller overall difference between model  
218 projections and the historical data, indicating a better model fit. The 50 sets that minimized the  
219 sAVPD were considered the best-fitting sets of model parameters.

### 220 *Performance of the calibrated model*

221 Model performance was evaluated according to the percentage of model projections  
222 considered good or acceptable. ‘Good’ model performance was a mean AVPD  $\leq 5\%$  between the  
223 model’s projected outcomes and the calibration target(s) across the top 50 best-fitting parameter  
224 sets, while ‘acceptable’ performance was defined as a mean AVPD  $>5\%$  and  $\leq 15\%$  [52, 53]. If a  
225 model projection was with a given target’s confidence intervals, performance was also  
226 considered ‘good’ regardless of the mean AVPD. Among model projection(s) considered ‘good’,  
227 visual trend(s) were required to reflect trends in the historical data, although this was a subjective  
228 assessment and only occurred if sufficient targets were available. Model performance was  
229 evaluated separately for HIV epidemic indicators, global goals indicators and other indicators.

230

## 231 **RESULTS**

### 232 **HIV epidemic indicators**

233 For the overall adult population (15–44 and 15–64 years), we compared 300 model  
234 projections for HIV epidemic indicators to the calibration targets (50 projections/target x 6  
235 targets=300). Among these 300, 256 (85.3%) were a good fit to calibration targets and 23 (7.6%)  
236 an acceptable fit (**Fig 2**). For HIV prevalence indicators only (5 targets), 216 (86.4%) projections  
237 were a good fit to calibration targets and 23 (9.2%) were an acceptable fit. Model performance  
238 worsened when fitting to targets in 2019, with at least 47 (94.0%) projections a good fit for 2005,  
239 2010 and 2015 targets, but less than 32 (64.0%) projections a good fit to 2019 targets. For the

240 HIV incidence indicator only (1 target), 50 (100%) projections were good fit to the calibration  
241 targets; assessing trends over time was not possible given only a single target.

242

243 **Fig 2. Model projections and HIV epidemic calibration targets for 15–44 year-olds in Rwanda, 2004–2020.**  
244 *Abbreviation: DHS=Demographic Health Survey; RPHIA=Rwanda Population-based Health Impact Assessment*  
245 The blue line and light blue shades represent the mean and range of the model projections, respectively, using the 50  
246 best-fitting parameter sets. The points and the error bar represent the point estimates and 95% confidence interval of  
247 the calibration targets, with targets from DHS Rwanda data in purple and targets from RPHIA in red. (A) For HIV  
248 prevalence indicators, 80.9% of model projections have good or acceptable fit to calibration targets, with model  
249 performance better for women than for men particularly later in the calibration period. (B) For HIV incidence, 100%  
250 of model projections have a good fit, which is consistent for women and men.  
251

252 For the adult female and male sub-populations (15–44 and 15–64 years), we examined  
253 300 model projections each for women and for men (50 projections/target x 6 targets=300 for  
254 each sub-population). The model performed better for women than for men, with 250 (83.3%)  
255 and 215 (71.7%) projections having a good fit, respectively (Fig 2). An additional thirteen  
256 projections for women were an acceptable fit, but none for men. For HIV prevalence indicators  
257 only, 200 (80.0%) projections for women and 165 (66.0%) for men were a good fit. Model  
258 performance was consistently good ( $\geq 96\%$  good fit) for women 15-44 years over time; however,  
259 performance varied for men in this age group, with over 80% of projections a good fit in 2005  
260 and 2015, but only 8 (16.0%) a good fit in 2019. In contrast, among the population age 15–64  
261 years, the model performed better for men (68.0% of projections a good fit) compared to women  
262 (10.0% of projections a good fit and 22% an acceptable fit). For the HIV incidence indicator, 50  
263 (100%) projections were a good fit to calibration targets for both women and men.

#### 264 **Global goals indicators**

265 For the overall adult population (15–44 years), we examined 100 model projections for  
266 global goals indicators (50 projections/target x 2 targets=100) (**Fig 3, Panels A and B**). Among  
267 these 100, 96 (96.0%) projections were a good fit and 4 (4.0%) were acceptable. For the

268 percentage on ART among adults diagnosed with HIV (1 target), 50 (100.0%) projections were a  
269 good fit to calibration targets. Visually, the projected percentages decreased in both 2005 and  
270 2011, but had sharp increases to reflect trend in the subsequent projection periods. For  
271 percentage virally suppressed among adults on ART (1 target), 46 (92.0%) projections were  
272 good fit to targets with an additional 4 (8.0%) projections being acceptable.

273

274 **Fig 3. Model projections and global goals calibration targets for 15–44 year-olds in Rwanda, 2004–2020**  
275 *Abbreviation: DHS=Demographic Health Survey; RPHIA=Rwanda Population-based Health Impact Assessment*  
276 The blue line and light blue shades represent the mean and range of the model projections, respectively, using the 50  
277 best-fitting parameter sets. The points and the error bar represent the point estimates and 95% confidence interval of  
278 the calibration targets, with targets from DHS Rwanda data in purple and targets from RPHIA in red. (A) For the  
279 percentage on ART among diagnosed adults, 100% of model projections had good fit to calibration targets. (B) For  
280 the percent virally suppressed among adults on ART, 92% of model projections had a good fit. (C) For the number  
281 of adults on ART, 28% of model projections had a good fit.  
282

283 For the adult female and male sub-populations (15–44 years), we examined 100  
284 projections each for women and for men (50 projections/target x 2 targets=100 for each sub-  
285 population). Here, 98 (98.0%) and 94 (94.0%) projections were good fit for women and men,  
286 respectively. Two additional projections were acceptable for women and six for men. For  
287 percentage on ART among adults diagnosed with HIV, 50 (100%) projections were good fit to  
288 calibration targets for both women and men. For percentage virally suppressed among adults on  
289 ART, model performance is slightly better for women than men, with 48 (96.0%) and 44  
290 (88.0%) being good fit to calibration targets, respectively.

### 291 **Other indicators**

292 For the overall adult population (15–44 and 15–64 years), we examined projections for  
293 the number on ART (50 projections/target x 18 targets=850) and the percentage virally  
294 suppressed among the diagnosed adult population with HIV (50 projections/target x 2  
295 targets=100). For number on ART, 573 (67.4%) projections were good or acceptable fit with

296 two-fifths of these projections a good fit (**Fig 4**). Model fit for the number on ART improved  
297 when restricting the targets to years 2013 and beyond (8 targets), where 369 (92.3%) were good  
298 or acceptable. For the percentage virally suppressed, 80 (80.0%) projections had a good or  
299 acceptable fit with less than one-fifth of these projections considered a good fit. Here, the model  
300 performed better among adults age 15–64 years (94.0% of projections a good or acceptable fit)  
301 than adults age 15–44 years (67.0% of projections a good or acceptable fit).

302

303 **Fig 4. Model projections and other calibration targets for 15–44 year-olds in Rwanda, 2004–2020**

304 *Abbreviation: RPHIA=Rwanda Population-based Health Impact Assessment*

305 The blue line and light blue shades represent the mean and range of the model projections, respectively, using the 50  
306 best-fitting parameter sets. The points and the error bar represent the point estimates and 95% confidence interval of  
307 the calibration targets, with targets from DHS Rwanda data in purple and targets from RPHIA in red (A) For the  
308 number of adults on ART, 28% of model projections had a good fit. (B) For the percentage virally suppressed  
309 among adults living with HIV, 65% of model projections had good or acceptable fit to calibration targets.

310

311 For the adult female and male sub-populations (15–44 and 15–64 years), we examined  
312 100 model projections each for women and men on percentage virally suppressed among people  
313 with HIV (50 projections/target x 2 targets=100 for each sub-population). Here, 77 (77%)  
314 projections for women and 54 (54%) for men had good or acceptable fit. For both age ranges, a  
315 smaller proportion of projections had a good fit for women (less than 5%) than for men (20%–  
316 40%). Model fit for number on ART was not assessed by sub-population due to lack of data.

317

318 **DISCUSSION**

319 Leveraging the Rwanda cohort of CA-IeDEA and other nationally representative data, we  
320 developed and calibrated the CA-IeDEA HIV policy model that will inform policy solutions for  
321 equitably achieving global targets. Based on 50 best-fitting sets of model parameters, we found  
322 that the policy model has a good fit to HIV epidemic and global goals (i.e., 95-95-95) targets  
323 over the calibration period, with better performance for women than for men for most targets.



324 Model performance was acceptable for the number on ART in recent years and percentage  
325 virally suppressed among adults 15–64 years.

326         Across HIV epidemic and global goals targets, we found that model projections for  
327 women outperformed those for men in most cases. This could be explained by greater  
328 uncertainty in model parameters for men than for women [54, 55]. For example, among men,  
329 model projections for HIV incidence were consistently towards the lower bound of the target  
330 confidence intervals, but increasingly overestimated HIV prevalence over the calibration period.  
331 This could result from model parameters that overestimate the proportion of condom use among  
332 men, which results in underestimation of the probability of HIV transmission, lower projected  
333 HIV incidence and higher HIV prevalence. In our model, the parameters for the proportion of  
334 men using condoms were based on self-reported condom use [29-31]. Self-reported condom use  
335 may be affected by social desirability bias, a type of response bias suggesting respondents may  
336 answer questions in a way that is likely to be viewed more favorably [56]. In this case, the  
337 socially desirable response is to report consistent condom use with sexual partners. Men have  
338 been found to consistently report higher levels of condom use compared to women’s reporting of  
339 condom use by their male partners [57], suggesting overreporting among men. Improved data  
340 quality can reduce uncertainty in parameters and improve model performance.

341         For HIV epidemic indicators, namely HIV prevalence, we found that model fit later in the  
342 calibration period (2019) was not as good as earlier in the calibration period (2005–2015). A  
343 possible explanation is uncertainty in HIV prevalence targets because they come from two  
344 independent data sources, variation in the number of targets available for a given data source and  
345 differences in methodologic approach across sources. That is, three targets came from DHS  
346 (2005, 2010, 2015), while one target came from PHIA (2019). This resulted in higher weight of

347 DHS targets during the model calibration process. This resultant weighting is notable because the  
348 DHS and PHIA data used different sample selection approaches to estimate HIV prevalence.  
349 DHS data estimated HIV prevalence among Rwandans who voluntarily received anonymous  
350 HIV testing (i.e., opt-in approach) [31]; in contrast, PHIA data estimated HIV prevalence among  
351 individuals who did not refuse to receive their HIV testing result (i.e., opt-out approach) [1].  
352 Evidence suggests that opt-out HIV testing has a higher uptake than opt-in testing [58], which  
353 implies a less biased sample for PHIA estimates. Ultimately, the estimate from PHIA is less  
354 likely to follow the model's HIV prevalence trend fitted to DHS data. Future work to consider  
355 data quality in model calibration targets—an area understudied in the literature—is warranted.

356 While the model generally had a good fit to HIV epidemic and global goals calibration  
357 targets, the model did not perform as well for other targets. For percentage virally suppressed  
358 among diagnosed adults, for example, a possible explanation is potential bias in the targets. That  
359 is, the targets were calculated and reported conditional on self-reported awareness of HIV-  
360 positive status. However, evidence suggests that underreporting of awareness of HIV-positive  
361 status in observational data occurs consistently across countries, ranging from 3% (Eswatini) to  
362 47% (Nigeria) [59-62]. Our model's worse fit to these targets may reflect potential biases in the  
363 data or, alternatively, may reveal plausible trends in care engagement in this setting.

364 Model fit for number on ART, 15–44 years, similarly did not perform as well as for HIV  
365 epidemic or global goals indicators, although fit was better later in the calibration period. Worse  
366 performance could be due in part to the aggregated data available for this calibration target: That  
367 is, available data report all Rwandans on ART, including pediatric cases. Although we adjusted  
368 the targets based on the age distribution of Rwandans on ART, the age distribution we applied

369 was available only in the most recent data year for this target (2021) [63]. Model fit could be  
370 improved with additional data that disaggregate the information by age and time.

371 The CA-IeDEA HIV policy model, designed explicitly to assess potential policy  
372 solutions for equitably achieving global targets in Rwanda, extends existing mathematical  
373 models applied in the Rwandan context. Our model includes two broad dimensions (disease  
374 progression and the HIV care continuum) versus only a single dimension (care continuum) as in  
375 the Nsanzimana model [6]. Including these two dimensions better account for differences in  
376 health policy (e.g., ART initiation criteria) over time, improved model fit to historical data and  
377 increased potential to capture more nuanced differences in future health outcomes overall and for  
378 different sub-populations. Further, our model included 25 sub-populations defined by age,  
379 gender, risk and sub-national unit versus risk only (as in the Nsanzimana model) or age and  
380 gender only (as in the Bendavid model) [6, 8]. The CA-IeDEA HIV policy model's structure will  
381 allow for more nuanced assessment of programmatic needs to achieve country-specific goals and  
382 do so equitably across sub-populations [31].

383 The CA-IeDEA HIV policy model also adds to existing mathematical modeling literature  
384 methodologically. Systematic reviews find that a large proportion of modeling studies do not  
385 specify quantitative GoF measures for model calibration [64, 65]. Indeed, the two existing  
386 modeling studies in Rwanda provide no description of GoF measures. While our approach,  
387 percent deviation, has been used less commonly [65], it aligns with modeling studies that use  
388 calibration targets with disparate scales [50]. That is, a percent deviation GoF measure allows for  
389 inclusion of a variety of calibration targets and from multiple data sources, as in Rwanda, in  
390 order to improve model performance [44].

### 391 **Limitations**

392 Our model is not without limitations. First, we did not explicitly include men who have  
393 sex with men (MSM) as a sub-population in our model, although model revisions to include this  
394 sub-population are in development. Second, we assumed no urban-rural sexual contacts. While  
395 this may lead to underestimation of HIV incidence over time due to urbanization and increased  
396 mobility in Rwanda [66], the model had a good fit to HIV incidence indicators over the  
397 calibration period. Third, in deriving model parameters, we did not explicitly account for  
398 potential bias inherent in the observational data. However, in the calibration process, we  
399 addressed this limitation by allowing for full variation in the baseline parameter values derived  
400 from the observational data. Fourth, we did not specifically capture either in the model or in the  
401 model parameters social and health system contexts (e.g., women empowerment, trust in HIV  
402 services) in Rwanda [67], which might limit the accuracy of model projections. However, by  
403 allowing for variation in parameter values, we likely account for the effects of social and health  
404 system factors on HIV epidemic, global goals and other indicators.

405 Fifth, calibration targets for certain sub-populations (e.g., adolescent girls and young  
406 women, female sex workers) were limited given data unavailability. However, model fit can be  
407 re-assessed as population-based data emerge for these sub-populations. Lastly, our GoF measure,  
408 i.e., percent deviation, may overweight calibration targets with small baseline values because  
409 small differences between projected and calibrated values can translate into a large percentage  
410 differences. Similarly, our GoF measure did not capture differences in the quality of calibration  
411 target data. To minimize such effects, we integrated an additional model performance measure  
412 on the percentage of model projections within calibration target CIs, when available.

413

414 **CONCLUSIONS**

415           The calibrated CA-IeDEA HIV policy model is ideally positioned to examine the policy  
416 solutions that will propel Rwanda not only toward ending the HIV epidemic as a public health  
417 threat, but doing so equitably. As mathematical modeling continues to be used to inform  
418 programmatic planning, there is a critical need for high quality population-based calibration  
419 target data over time, as well as development of approaches to measure and adjust for calibration  
420 target quality and refine GoF measures when relying on disparate scales.

## 421 ACKNOWLEDGEMENTS

422 Members of Central Africa IeDEA are:

423 Nimbona Pélagie, Association Nationale de Soutien aux Séropositifs et Malade du Sida (ANSS),  
424 Burundi; Patrick Gateretse, Jeanine Munezero, Valentin Nitereka, Annabelle Niyongabo,  
425 Zacharie Ndizeye, Christella Twizere, Théodore Niyongabo, Centre National de Référence en  
426 Matière de VIH/SIDA, Burundi; Hélène Bukuru, Thierry Nahimana, Martin Manirakiza, Centre  
427 de Prise en Charge Ambulatoire et Multidisciplinaire des PVVIH/SIDA du Centre Hospitalo-  
428 Universitaire de Kamenge (CPAMP-CHUK), Burundi; Patrice Barasukana, Hélène Bukuru,  
429 Martin Manirakiza, Zacharie Ndizeye, CHUK/Burundi National University, Burundi; Jérémie  
430 Biziragusenyuka, Ella Ange Kazigamwa, Centre de Prise en Charge Ambulatoire et  
431 Multidisciplinaire des PVVIH/SIDA de l'Hôpital Prince Régent Charles (CPAMP-HPRC),  
432 Burundi; Caroline Akoko, Ernestine Kesah, Esther Neba, Denis Nsame, Vera Veyieeneneng,  
433 Bamenda Regional Hospital, Cameroon; Bazil Ageh Ajeh, Rogers Ajeh, Dan Ebai Ashu, Eta  
434 Atangba, Christelle Tayomnou Deussom, Peter Vanes Ebasone, Ernestine Kendowo, Clarisse  
435 Lengouh, Gabriel Mabou, Sandra Mimou Mbunguet, Judith Nasah, Noline Ndiforkwah, Marc  
436 Lionel Ngamani, Eric Ngassam, George Njie Ngeke, Clénise Ngwa, Anyangwa Sidonie, Clinical  
437 Research Education and Consultancy (CRENC), Cameroon; Anastase Dzudie, CRENC and  
438 Douala General Hospital, Cameroon; Djenabou Amadou, Joseph Mendimi Nkodo, Eric Pefura  
439 Yone, Jamot Hospital, Cameroon; Annereke Nyenti, Phyllis Fon, Mercy Ndobe, Priscilia Enow,  
440 Limbe Regional Hospital, Cameroon; Catherine Akele, Akili Clever, Faustin Kitetele, Patricia  
441 Lelo, Kalembelembe Pediatric Hospital, Democratic Republic of Congo; Nana Mbonze, Guy  
442 Koba, Martine Tabala, Cherubin Ekembe, Didine Kaba, Kinshasa School of Public Health,  
443 Democratic Republic of Congo; Jean Paul Nzungani, Simon Kombela, Dany Lukeba, Sangos  
444 plus/Bomoi, Democratic Republic of Congo; Mattieu Musiku, Clément Kabambayi, Job  
445 Nsoki, Hopital de Kabinda, Democratic Republic of Congo; Merlin Diafouka, Martin Herbas  
446 Ekat, Dominique Mahambou Nsonde, CTA Brazzaville, Republic of Congo; Ursula Koukha,  
447 Adolphe Mafoua, Massamba Ndala Christ, CTA Pointe-Noire, Republic of Congo; Jules  
448 Igirimbabazi, Nicole Ayinkamiye, Bethsaida Health Center, Rwanda; Providance Uwineza,  
449 Emmanuel Ndamijimana, Busanza Health Center, Rwanda; Jean Marie Vianney Barinda, Marie  
450 Louise Nyiraneza, Gahanga Health Center, Rwanda; Marie Louise Nyiransabimana, Liliane  
451 Tuyisenge, Gikondo Health Center, Rwanda; Catherine Kankindi, Christian Shyaka, Kabuga  
452 Health Center, Rwanda; Bonheur Uwakijijwe, Marie Grace Ingabire, Kicukiro Health Center,  
453 Rwanda; Beltirde Uwamariya, Jules Ndumuhire, Masaka Health Center, Rwanda; Gerard  
454 Bunani, Fred Muyango, Nyagasambu Health Center, Rwanda; Yvette Ndoli, Oliver Uwamahoro,  
455 Nyarugunga Health Center, Rwanda; Eugénie Mukashyaka, Rosine Feza, Shyorongi Health  
456 Center, Rwanda; Chantal Benekigeri, Jacqueline Musaninyange, WE-ACTx for Hope Clinic,  
457 Rwanda; Josephine Gasana, Charles Ingabire, Jocelyne Ingabire, Faustin Kanyabwisha, Gallican  
458 Kubwimana, Fabiola Mabano, Jean Paul Mivumbi, Benjamin Muhoza, Athanase Munyaneza,  
459 Gad Murenzi, Françoise Musabyimana, Alleluia Giovanni Ndabakuranye, Fabienne  
460 Shumbusho, Patrick Tuyisenge, Francine Umwiza, Research for Development (RD Rwanda) and  
461 Rwanda Military Hospital, Rwanda; Jules Kabahizi, Janvier Mutamuliza, Boniface  
462 Nsengiyumva, Ephrem Rurangwa, Rwanda Military Hospital, Rwanda; Eric Remera, Gallican  
463 Nshogoza Rwibasira, Rwanda Biomedical Center, Rwanda. Adebola Adedimeji, Kathryn  
464 Anastos, Jean Claude Dusingize, Lynn Murchison, Viraj Patel, Jonathan Ross, Marcel

465 Yotebieng, Natalie Zotova, Albert Einstein College of Medicine, USA; Ryan Barthel, Ellen  
466 Brazier, Heidi Jones, Elizabeth Kelvin, Denis Nash, Saba Qasmieh, Chloe Teasdale, Institute for  
467 Implementation Science in Population Health, Graduate School of Public Health and Health  
468 Policy, City University of New York (CUNY), USA; Batya Elul, Columbia University, USA;  
469 Xiatao Cai, Don Hoover, Hae-Young Kim, Chunshan Li, Qiuhi Shi, Data Solutions, USA;  
470 Kathryn Lancaster, The Ohio State University, USA; Mark Kuniholm, University at Albany,  
471 State University of New York, USA; Andrew Edmonds, Angela Parcesepe, Jess Edwards,  
472 University of North Carolina at Chapel Hill, USA; Olivia Keiser, University of Geneva;  
473 Stephany Duda; Vanderbilt University School of Medicine, USA; April Kimmel, Virginia  
474 Commonwealth University School of Medicine, USA.  
475

476 **REFERENCES**

- 477 1. Rwanda Biomedical Center (RBC). Rwanda population-based HIV impact assessment  
478 (RPHIA) 2018–2019: Final Report 2020 [cited 2024 July 1]. Available from:  
479 [https://phia.icap.columbia.edu/wp-content/uploads/2020/11/RPHIA-Final-Report\\_Web.pdf](https://phia.icap.columbia.edu/wp-content/uploads/2020/11/RPHIA-Final-Report_Web.pdf).
- 480 2. National Institute of Statistics of Rwanda (NISR) [Rwanda], Ministry of Health (MOH)  
481 [Rwanda], ICF International. Demographic and Health Survey, 2019-2020: Supplemental  
482 report for HIV prevalence 2023 [cited 2024 July 1]. Available from:  
483 <https://dhsprogram.com/pubs/pdf/FR370/FR370s.pdf>.
- 484 3. Joint United Nations Programme on HIV/AIDS. Global AIDS Strategy 2021-2026 — End  
485 Inequalities. End AIDS. 2021 [cited 2024 July 1]. Available from:  
486 [https://www.unaids.org/sites/default/files/media\\_asset/global-AIDS-strategy-2021-](https://www.unaids.org/sites/default/files/media_asset/global-AIDS-strategy-2021-2026_en.pdf)  
487 [2026\\_en.pdf](https://www.unaids.org/sites/default/files/media_asset/global-AIDS-strategy-2021-2026_en.pdf).
- 488 4. Rwanda Biomedical Center (RBC). HIV, STIs and viral hepatitis programs annual report  
489 2022-2023 2023 [cited 2024 July 1]. Available from:  
490 [https://www.rbc.gov.rw/fileadmin/user\\_upload/report23/HIV%20Annual%20report%202022](https://www.rbc.gov.rw/fileadmin/user_upload/report23/HIV%20Annual%20report%202022%20-2023.pdf)  
491 [2%20-2023.pdf](https://www.rbc.gov.rw/fileadmin/user_upload/report23/HIV%20Annual%20report%202022%20-2023.pdf).
- 492 5. Borquez A, Cori A, Pufall EL, Kasule J, Slaymaker E, Price A, et al. The incidence patterns  
493 model to estimate the distribution of new HIV infections in Sub-Saharan Africa:  
494 development and validation of a mathematical model. *PLoS Med*. 2016;13(9):e1002121.
- 495 6. Nsanzimana S, Mills EJ, Harari O, Mugwaneza P, Karita E, Uwizihwe JP, et al. Prevalence  
496 and incidence of HIV among female sex workers and their clients: modelling the potential  
497 effects of intervention in Rwanda. *BMJ Glob Health*. 2020;5(8):e002300.



- 498 7. Banzi W, Rotich TK, Ntaganda JM. Mathematical Modelling of the effects of peer-  
499 educators' campaign on the dynamics of HIV/AIDS in Rwanda. Rwanda Journal of  
500 Engineering, Science, Technology and Environment. 2019;2(1).
- 501 8. Bendavid E, Stauffer D, Remera E, Nsanzimana S, Kanters S, Mills EJ. Mortality along the  
502 continuum of HIV care in Rwanda: A model-based analysis. BMC Infect Dis. 2016;16.
- 503 9. Stover J, Glaubius R, Teng Y, Kelly S, Brown T, Hallett TB, et al. Modeling the  
504 epidemiological impact of the UNAIDS 2025 targets to end AIDS as a public health threat  
505 by 2030. PLoS Med. 2021;18(10):e1003831.
- 506 10. Adedimeji AA, Hoover DR, Shi Q, Kim H-Y, Brazier E, Ross J, et al. Trends in  
507 demographic and clinical characteristics and initiation of antiretroviral therapy among adult  
508 patients enrolling in HIV care in the Central Africa International epidemiology Database to  
509 Evaluate AIDS (CA-IeDEA) 2004 to 2018. J Int AIDS Soc. 2021;24(6):e25672.
- 510 11. Central Africa International epidemiology Databases to Evaluate AIDS [cited 2024 July 1].  
511 Available from: <https://ca-iedea.org/>.
- 512 12. Institut National de la Statistique (INSR) [Rwanda], ORC Macro. Rwanda Demographic  
513 and Health Survey 2005 [Dataset] Calverton, Maryland, USA: Institut National de la  
514 Statistique and ORC Macro [Producers]; ICF [Distributor], 2006 [cited 2020 February 24].  
515 Available from: <http://dhsprogram.com/pubs/pdf/FR183/FR183.pdf>.
- 516 13. National Institute of Statistics (NISR) [Rwanda], Ministry of Health (MOH) [Rwanda], ICF  
517 International. Rwanda Demographic and Health Survey 2010 [Dataset] Calverton,  
518 Maryland, USA: National Institute of Statistics, Ministry of Health, ICF International  
519 [Producers]; ICF [Distributor], 2012 [cited 2020 August 24]. Available from:  
520 <http://dhsprogram.com/pubs/pdf/FR259/FR259.pdf>.

- 521 14. National Institute of Statistics [Rwanda], Ministry of Finance and Economic  
522 Planning[Rwanda], Ministry of Health[Rwanda], ICF International. Rwanda Demographic  
523 and Health Survey 2014-15 [Dataset] Kigali, Rwanda: National Institute of Statistics,  
524 Ministry of Finance and Economic Planning, Ministry of Health, and ICF International  
525 [Producers]; ICF [Distributor], 2016 [cited 2024 August 24]. Available from:  
526 <http://dhsprogram.com/pubs/pdf/FR316/FR316.pdf>.
- 527 15. The World Bank. Population estimates and projections 2020 [cited 2024 July 2]. Available  
528 from: <https://datacatalog.worldbank.org/dataset/population-estimates-and-projections>.
- 529 16. Kimmel AD, Charles M, Deschamps M-M, Severe P, Edwards AM, Johnson WD, et al.  
530 Lives saved by expanding HIV treatment availability in resource-limited settings: the  
531 example of Haiti. *J Acquir Immune Defic Syndr*. 2013;63(2):p e40-e8.
- 532 17. Holmes CB, Wood R, Badri M, Zilber S, Wang B, Maartens G, et al. CD4 decline and  
533 incidence of opportunistic infections in Cape Town, South Africa: implications for  
534 prophylaxis and treatment. *J Acquir Immune Defic Syndr*. 2006;42(4):p 464-9.
- 535 18. World Health Organization. Antiretroviral therapy for HIV infection in adults and  
536 adolescents: recommendations for a public health approach 2006 [cited 2024 July 2].  
537 Available from: <https://iris.who.int/handle/10665/43554>.
- 538 19. World Health Organization. Antiretroviral therapy for HIV infection in adults and  
539 adolescents: recommendations for a public health approach 2010 [cited 2024 July 2].  
540 Available from: <https://www.who.int/publications/i/item/9789241599764>.
- 541 20. World Health Organization. Consolidated guidelines on the use of antiretroviral drugs for  
542 treating and preventing HIV infection: recommendations for a public health approach 2013

543 [cited 2024 July 2]. Available from:

544 <https://www.who.int/publications/i/item/9789241505727>.

545 21. World Health Organization. Consolidated guidelines on the use of antiretroviral drugs for  
546 treating and preventing HIV infection: recommendations for a public health approach 2nd  
547 edition 2016 [cited 2024 July 02]. Available from:

548 <https://www.who.int/publications/i/item/9789241549684>.

549 22. Rwanda Biomedical Center (RBC). National guidelines for prevention and management of  
550 HIV , STIs & other blood borne infections. Edition 2013 2013 [cited 2024 July 2]. Available  
551 from: <https://www.rbc.gov.rw/index.php?id=696>.

552 23. Rwanda Biomedical Center (RBC). National guidelines for prevention and management of  
553 HIV and STIs. Edition 2016 2016 [cited 2024 July 1]. Available from:

554 <https://www.rbc.gov.rw/index.php?id=696>.

555 24. Rwanda Biomedical Center (RBC). Guidelines for HIV prevention, treatment and care in  
556 Rwanda. Edition 2022 2022 [cited 2024 July 2]. Available from:

557 <https://www.rbc.gov.rw/index.php?id=696>.

558 25. Ross J, Sinayobye JdA, Yotebieng M, Hoover DR, Shi Q, Ribakare M, et al. Early outcomes  
559 after implementation of treat all in Rwanda: an interrupted time series study. J Int AIDS  
560 Soc. 2019;22(4):e25279.

561 26. Nsanzimana S, Remera E, Kanters S, Forrest JI, Ford N, Condo J, et al. Effect of baseline  
562 cd4 cell count at linkage to HIV care and at initiation of antiretroviral therapy on mortality  
563 in HIV positive adult patients in Rwanda: A nationwide cohort study. Lancet HIV.  
564 2015;2(9):e376-e84.

- 565 27. Kimmel AD, Fitzgerald DW, Pape JW, Schackman BR. Performance of a mathematical  
566 model to forecast lives saved from HIV treatment expansion in resource-limited settings.  
567 Med Decis Making. 2015;35(2):230-42.
- 568 28. Kerr CC, Stuart RM, Gray RT, Shattock AJ, Fraser-Hurt N, Benedikt C, et al. Optima: a  
569 model for HIV epidemic analysis, program prioritization, and resource optimization. J  
570 Acquir Immune Defic Syndr. 2015;69(3):365-76.
- 571 29. Institut National de la Statistique (INSR) [Rwanda], ORC Macro. Rwanda Demographic  
572 and Health Survey 2005 Calverton, Maryland, USA: INSR and ORC Macro; 2006 [cited  
573 2024 July 2]. Available from: <http://dhsprogram.com/pubs/pdf/FR183/FR183.pdf>.
- 574 30. National Institute of Statistics (NISR)[Rwanda], Ministry of Health (MOH)[Rwanda], ICF  
575 International. Rwanda Demographic and Health Survey 2010 Calverton, Maryland, USA:  
576 NISR/Rwanda, MOH/Rwanda, and ICF International; 2012 [cited 2024 July 2]. Available  
577 from: <http://dhsprogram.com/pubs/pdf/FR259/FR259.pdf>.
- 578 31. National Institute of Statistics [Rwanda], Ministry of Finance and Economic Planning  
579 [Rwanda], Ministry of Health[Rwanda], ICF International. Rwanda Demographic and  
580 Health Survey 2014-15 Kigali, Rwanda: National Institute of Statistics of Rwanda, Ministry  
581 of Finance and Economic Planning/Rwanda, Ministry of Health/Rwanda, and ICF  
582 International; 2016 [cited 2024 July 2]. Available from:  
583 <http://dhsprogram.com/pubs/pdf/FR316/FR316.pdf>.
- 584 32. Ross J, Ribakare M, Remera E, Murenzi G, Munyaneza A, Hoover DR, et al. High levels of  
585 viral load monitoring and viral suppression under Treat All in Rwanda – a cross-sectional  
586 study. J Int AIDS Soc. 2020;23(6):e25543.

- 587 33. The U.S. President's Emergency Plan for AIDS Relief. Rwanda country operational plan  
588 (COP/ROP) 2022 strategic direction summary 2022 [cited 2024 July 2]. Available from:  
589 <https://www.state.gov/wp-content/uploads/2022/09/Rwanda-COP22-SDS.pdf>.
- 590 34. Mutagoma M, Kayitesi C, Gwiza A, Ruton H, Koleros A, Gupta N, et al. Estimation of the  
591 size of the female sex worker population in Rwanda using three different methods. Int J  
592 STD AIDS. 2015;26(11):810-4.
- 593 35. National Institute of Statistics of Rwanda, Ministry of Finance and Economic Planning.  
594 Fourth population and housing census, Rwanda, 2012. Thematic report: Migration and  
595 spatial mobility 2014 [cited 2024 July 2]. Available from:  
596 [https://www.statistics.gov.rw/publication/rphc4-thematic-report-migration-and-spatial-](https://www.statistics.gov.rw/publication/rphc4-thematic-report-migration-and-spatial-mobility)  
597 [mobility](https://www.statistics.gov.rw/publication/rphc4-thematic-report-migration-and-spatial-mobility).
- 598 36. Joint United Nations Programme on HIV/AIDS. Sex workers: Population size estimate:  
599 UNdata; 2015 [updated 2024 July 3]. 2015 October 21:[Available from:  
600 <http://data.un.org/Data.aspx?d=UNAIDS&f=inID%3A111>.
- 601 37. Rwanda Ministry of Health. Behavioral and biological surveillance survey among female  
602 sex workers, Rwanda – 2010: Suevey report 2010 [cited 2024 July 3]. Available from:  
603 [https://rbc.gov.rw/IMG/pdf/behavioral\\_and\\_biological\\_survey\\_among\\_female\\_sex\\_workers](https://rbc.gov.rw/IMG/pdf/behavioral_and_biological_survey_among_female_sex_workers_rwanda_2010.pdf)  
604 [\\_rwanda\\_2010.pdf](https://rbc.gov.rw/IMG/pdf/behavioral_and_biological_survey_among_female_sex_workers_rwanda_2010.pdf).
- 605 38. Braunstein SL, Umulisa MM, Veldhuijzen NJ, Kestelyn E, Ingabire CM, Nyinawabega J, et  
606 al. HIV diagnosis, linkage to HIV Care, and HIV risk behaviors among newly diagnosed  
607 HIV-positive female sex workers in Kigali, Rwanda. J Acquir Immune Defic Syndr.  
608 2011;57(4):70-6.

- 609 39. Boily M-C, Baggaley RF, Wang L, Masse B, White RG, Hayes RJ, et al. Heterosexual risk  
610 of HIV-1 infection per sexual act: systematic review and meta-analysis of observational  
611 studies. *Lancet Infect Dis.* 2009;9(2):118-29.
- 612 40. Weller SC, Davis-Beaty K. Condom effectiveness in reducing heterosexual HIV  
613 transmission. *Cochrane Database Syst Rev.* 2002;(1):CD003255.
- 614 41. Supervie V, Viard JP, Costagliola D, Breban R. Heterosexual Risk of HIV Transmission per  
615 Sexual Act Under Combined Antiretroviral Therapy: Systematic Review and Bayesian  
616 Modeling. 2014;59(1):115-22.
- 617 42. Braunstein SL, Ingabire CM, Geubbels E, Vyankandondera J, Umulisa MM, Gahiro E, et al.  
618 High burden of prevalent and recently acquired HIV among female sex workers and female  
619 HIV voluntary testing center clients in Kigali, Rwanda. *PloS One.* 2011;6(9):e24321.  
620 PubMed PMID: 21949704.
- 621 43. Okal DO, Oyaró B, Zeh C, Desai MA, Samandari T, Chen RT, et al. Effect of point-of-care  
622 CD4 cell count results on linkage to care and antiretroviral initiation during a home-based  
623 HIV testing campaign: a non-blinded, cluster-randomised trial. *Lancet HIV.*  
624 2017;4(9):e393-e401.
- 625 44. Nsanzimana S, Kanters S, Remera E, Forrest JI, Binagwaho A, Condo J, et al. HIV care  
626 continuum in Rwanda: A cross-sectional analysis of the national programme. *Lancet HIV.*  
627 2015;2(5):e208-e15.
- 628 45. Rwanda Ministry of Health. National HIV and viral hepatitis annual report 2020-2021 2021  
629 [cited 2024 July 3]. Available from: <https://www.rbc.gov.rw/index.php?id=693>.
- 630 46. Rwanda Ministry of Health. Rwanda HIV and AIDS national strategic plan 2013–2018:  
631 Extension: 2018–2020 2018 [cited 2024 July 3]. Available from:

- 632 [https://rbc.gov.rw/fileadmin/user\\_upload/stra2019/strategie2019/Rwanda%20Strategic%20P](https://rbc.gov.rw/fileadmin/user_upload/stra2019/strategie2019/Rwanda%20Strategic%20Plan%20for%20HIV%20Extended%20to%202020.pdf)  
633 [lan%20for%20HIV%20Extended%20to%202020.pdf](https://rbc.gov.rw/fileadmin/user_upload/stra2019/strategie2019/Rwanda%20Strategic%20Plan%20for%20HIV%20Extended%20to%202020.pdf).
- 634 47. Rachlis B, Ochieng D, Geng E, Rotich E, Ochieng V, Maritim B, et al. Evaluating outcomes  
635 of patients lost to follow-up in a large comprehensive care treatment program in western  
636 Kenya. *J Acquir Immune Defic Syndr*. 2015;68(4):e46 - e55.
- 637 48. Geng EH, Bwana MB, Muyindike W, Glidden DV, Bangsberg DR, Neilands TB, et al.  
638 Failure to initiate antiretroviral therapy, loss to follow-up and mortality among HIV-infected  
639 patients during the pre-ART period in Uganda. *J Acquir Immune Defic Syndr*.  
640 2013;63(2):e64 - e71.
- 641 49. Vanni T, Karnon J, Madan J, White RG, Edmunds WJ, Foss AM, et al. Calibrating models  
642 in economic evaluation: A seven-step approach. *Pharmacoeconomics*. 2011;29(1):35-49.
- 643 50. Zang X, Krebs E, Min JE, Pandya A, Marshall BDL, Schackman BR, et al. Development  
644 and Calibration of a Dynamic HIV Transmission Model for 6 US Cities. *Med Decis*  
645 *Making*. 2020;40(1):3-16.
- 646 51. Hyndman RJ, Koehler AB. Another look at measures of forecast accuracy. *Int J Forecast*.  
647 2006;22(4):679-88.
- 648 52. McKenna MT, Weis JA, Barnes SL, Tyson DR, Miga MI, Quaranta V, et al. A Predictive  
649 Mathematical Modeling Approach for the Study of Doxorubicin Treatment in Triple  
650 Negative Breast Cancer. *Sci Rep*. 2017;7:5725.
- 651 53. Bastan M, Grösser S, Zadfallah E, editors. Model-based risk assessment to clinical risk  
652 management policies. The 36th International Conference of the System Dynamics Society,  
653 Reykjavík, Iceland, System Dynamics Society; 2018.

- 654 54. Anderson RM. The role of mathematical models in the study of HIV transmission and the  
655 epidemiology of AIDS. *J Acquir Immune Defic Syndr*. 1988;1(3):241-56.
- 656 55. Tolles JL, Thai Binh. Modeling epidemics with compartmental models. *JAMA*.  
657 2020;323(24):2515-6.
- 658 56. Krumpal I. Determinants of social desirability bias in sensitive surveys: a literature review.  
659 *Quality & quantity*. 2013;47(4):2025-47.
- 660 57. De Walque D, Kline R. Variations in condom use by type of partner in 13 Sub-Saharan  
661 African Countries. *Stud Fam Plann*. 2011;42(1):1-10.
- 662 58. Soh QR, Oh LYJ, Chow EPF, Johnson CC, Jamil MS, Ong JJ. HIV testing uptake according  
663 to opt-in, opt-out or risk-based testing approaches: a systematic review and meta-analysis.  
664 *Curr HIV/AIDS Rep*. 2022;19(5):375-83.
- 665 59. Mooney AC, Campbell CK, Ratlhagana M-J, Grignon JS, Mazibuko S, Agnew E, et al.  
666 Beyond social desirability bias: investigating inconsistencies in self-reported HIV testing  
667 and treatment behaviors among HIV-positive adults in North West Province, South Africa.  
668 *AIDS Behav*. 2018;22(7):2368-79.
- 669 60. Xia Y, Milwid RM, Godin A, Boily M-C, Johnson LF, Marsh K, et al. Accuracy of self-  
670 reported HIV-testing history and awareness of HIV-positive status in four sub-Saharan  
671 African countries. *AIDS*. 2021;35(3):503-10.
- 672 61. Jahun I, Ehoche A, Bamidele M, Yakubu A, Bronson M, Dalhatu I, et al. Evaluation of  
673 accuracy and performance of self-reported HIV and antiretroviral therapy status in the  
674 Nigeria AIDS Indicator and Impact Survey (2018). *PloS One*. 2022;17(8):e0273748.



- 675 62. Chasimpha SJD, Mclean EM, Dube A, McCormack V, dos-Santos-Silva I, Glynn JR.  
676 Assessing the validity of and factors that influence accurate self-reporting of HIV status  
677 after testing: a population-based study. *AIDS*. 2020;34(6):931-41.
- 678 63. Nsanzimana S, Remera E, Kanters S, Chan K, Forrest JI, Ford N, et al. Life expectancy  
679 among HIV-positive patients in Rwanda: A retrospective observational cohort study. *Lancet*  
680 *Glob Health*. 2015;3(3):e169-e77. PubMed PMID: 25701995.
- 681 64. Conrads-Frank A, Jahn B, Bundo M, Sroczynski G, Mühlberger N, Bicher M, et al. A  
682 systematic review of calibration in population models. *Value Health*. 2017;20(9):A745.
- 683 65. Hazelbag CM, Dushoff J, Dominic EM, Mthombothi ZE, Delva W. Calibration of  
684 individual-based models to epidemiological data: A systematic review. *PloS Comput Biol*.  
685 2020;16(5):e1007893.
- 686 66. Camlin CS, Charlebois ED. Mobility and its effects on HIV acquisition and treatment  
687 engagement: recent theoretical and empirical advances. *Curr HIV/AIDS Rep*.  
688 2019;16(4):314-23.
- 689 67. Ingabire C, Watnick D, Gasana J, Umwiza F, Munyaneza A, Kubwimana G, et al.  
690 Experiences of stigma and HIV care engagement in the context of Treat All in Rwanda: a  
691 qualitative study. *BMC Public Health*. 2023;23(1):1817.

692

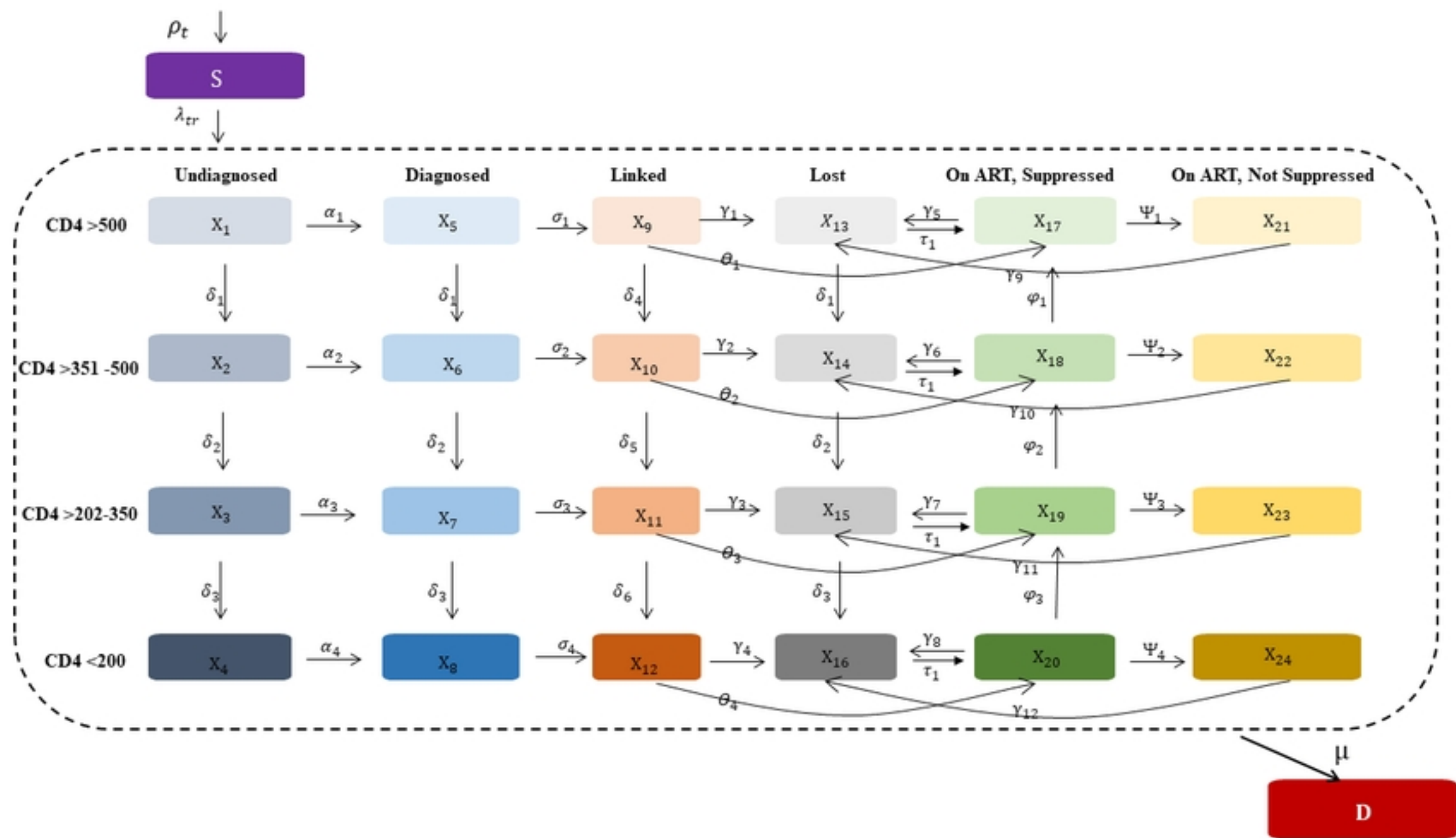
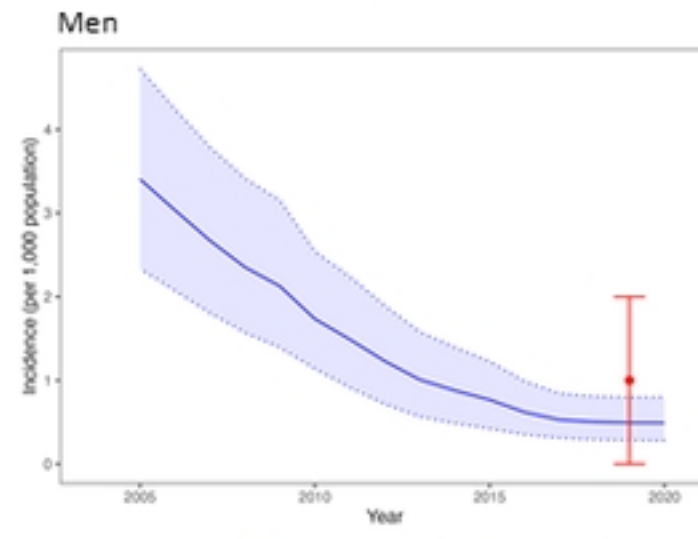
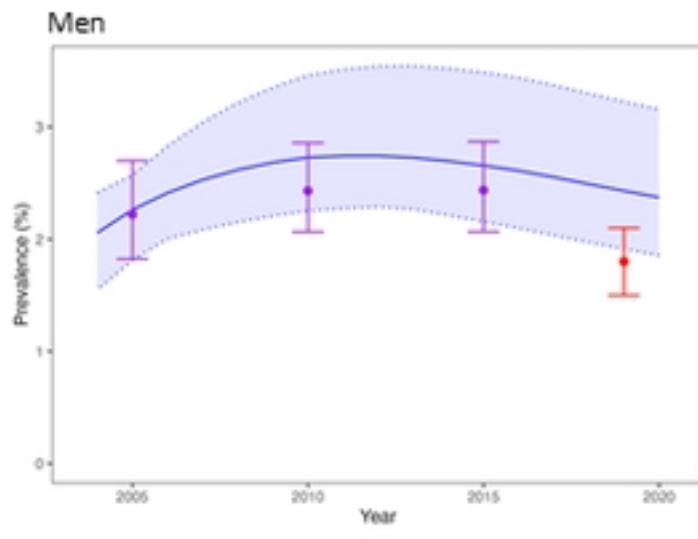
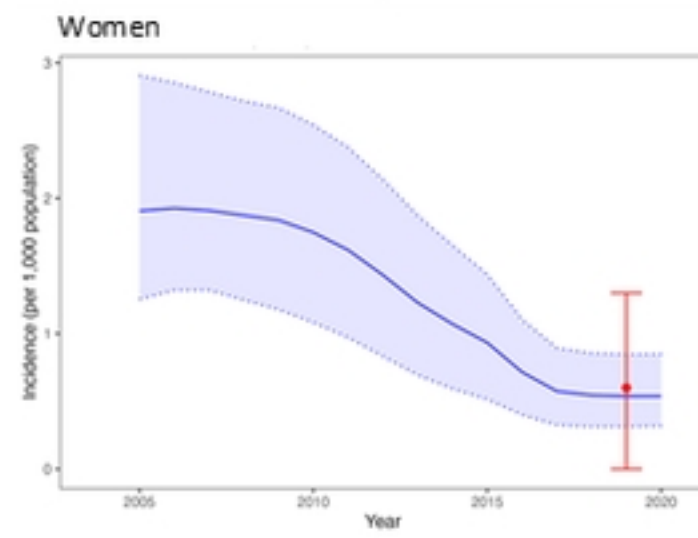
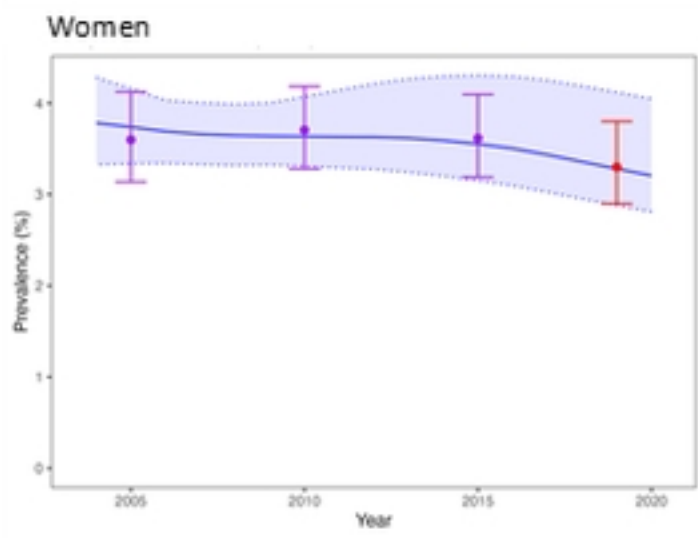
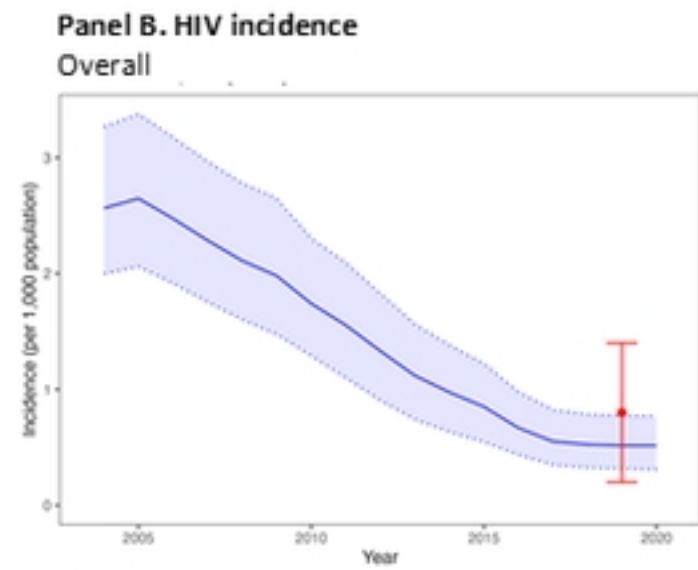
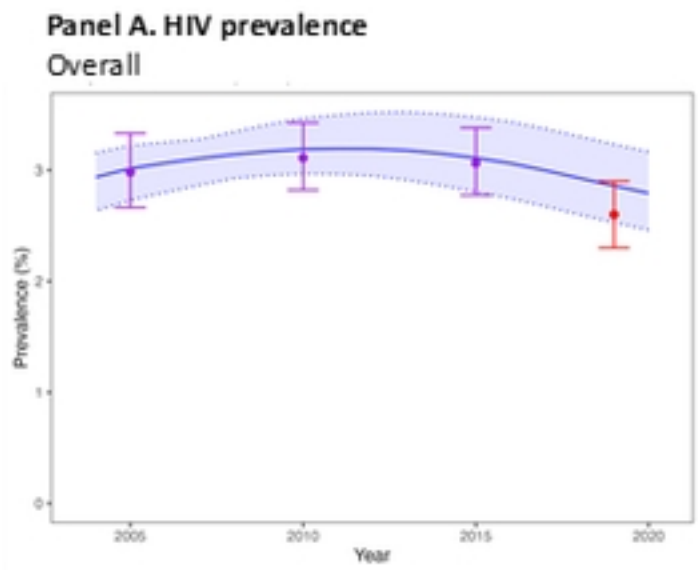


Figure 1



Legend: DHS targets (purple bars), Projected outcomes (solid blue line), RPHIA targets (red dot with error bars)

Legend: Projected outcomes (solid blue line), RPHIA targets (red dot with error bars)

Figure 2

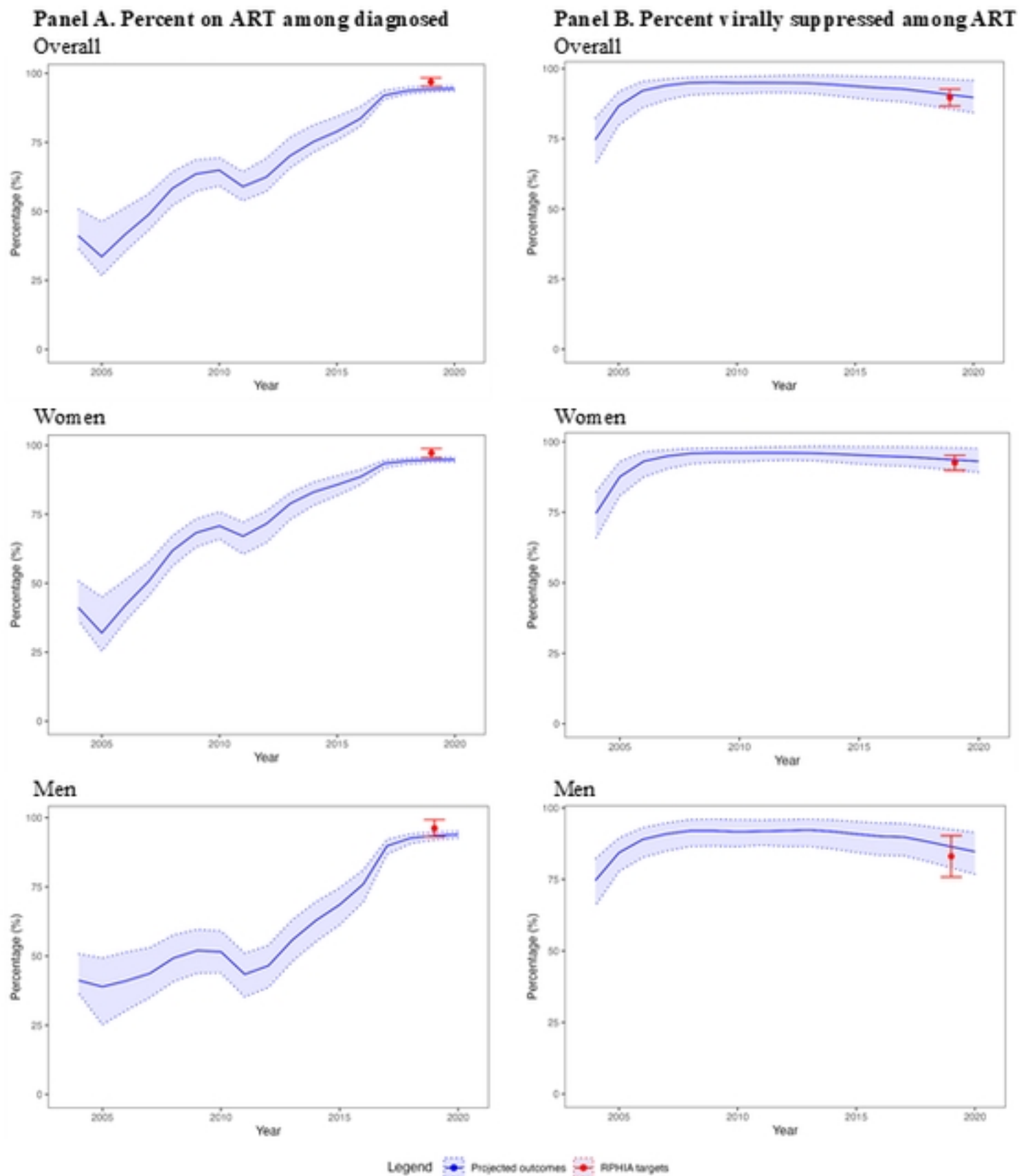
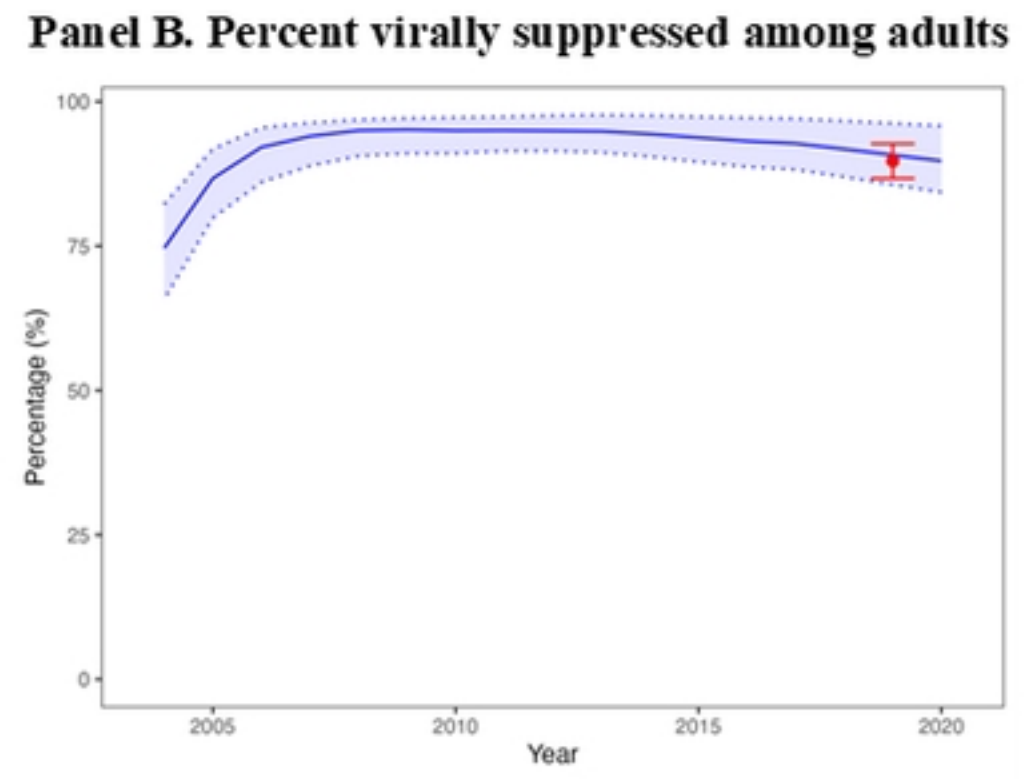
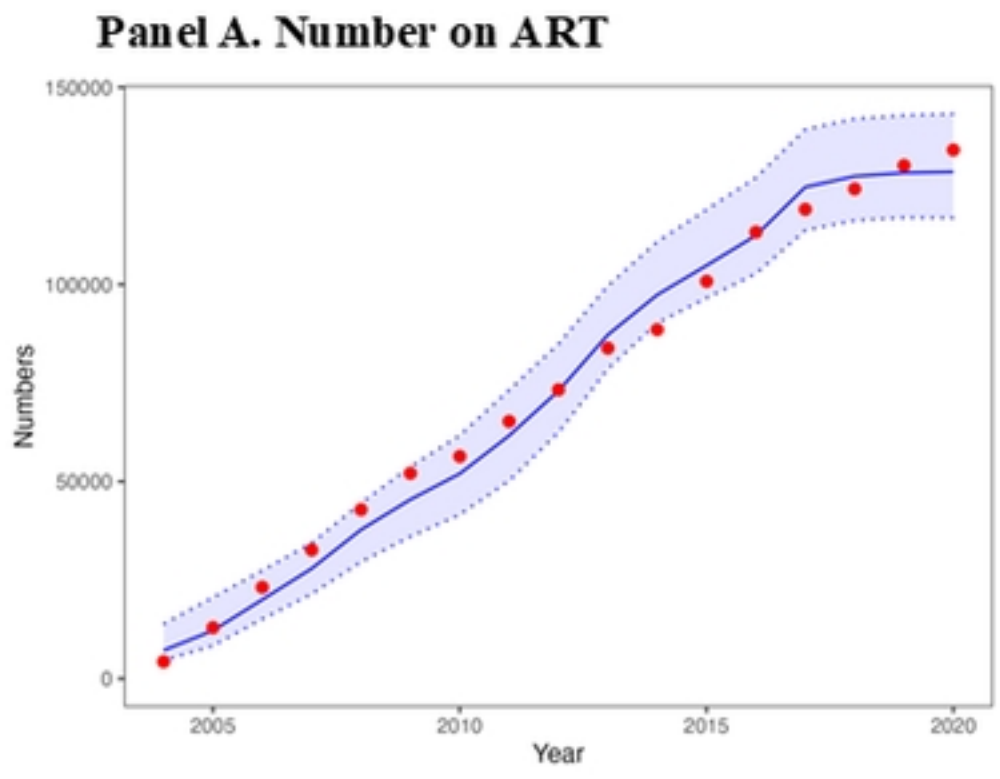


Figure 3



Legend Projected outcomes RPHIA targets

Figure 4