

Establishing a Core Outcome Set for Creatine Transporter Deficiency and Guanidinoacetate Methyltransferase Deficiency

Authors: Zahra Nasser Moghaddam^{1*}, Emily K. Reinhardt^{2*^}, Audrey Thurm³, Beth K. Potter⁴, Maureen Smith⁵, Celeste Graham^{2,6}, Beth H. Tiller⁶, Steven A. Baker⁷, Deborah A. Bilder⁸, Regina Bogar⁶, Jacobus Britz⁶, Rachel Cafferty⁶, Daniel P. Coller^{2,6}, Ton J. DeGrauw⁹, Vicky Hall⁶, Gerald S. Lipshutz¹⁰, Nicola Longo^{9,10}, Saadet Mercimek-Andrews^{9,11}, Judith S. Miller¹², Marzia Pasquali^{9,13}, Gajja S. Salomons^{9,14}, Andreas Schulze^{9,15}, Celine P. Wheaton⁶, Kayla F. Williams⁶, Sarah P. Young^{9,16}, Jasmine Li¹, Sofia Balog^{2#}, Theresa Selucky¹⁷, Sylvia Stockler-Ipsiroglu^{1,9,18**}, Heidi Wallis^{2,6**}

Affiliations

¹Department Pediatrics, University of British Columbia, Vancouver, BC, Canada

²Board of Directors & Staff, Association for Creatine Deficiencies, Carlsbad, CA, USA

³National Institute of Mental Health, NIH, Bethesda, MD, USA

⁴School of Epidemiology and Public Health, Faculty of Medicine, University of Ottawa, Ottawa, ON, Canada

⁵Patient Partner, University of Ottawa, Ottawa, ON, Canada

⁶Patient/Family Partner, Association for Creatine Deficiencies, Carlsbad, CA, USA

⁷Department of Transfusion Medicine, University of Utah, Salt Lake City, UT, USA

⁸Huntsman Mental Health Institute, University of Utah, Salt Lake City, UT, USA

⁹Scientific Medical Advisory Board, Association for Creatine Deficiencies, Carlsbad, CA, USA

¹⁰David Geffen School of Medicine at the University of California-Los Angeles, Los Angeles, CA, USA

¹¹Department of Medical Genetics, Faculty of Medicine & Dentistry, University of Alberta, Edmonton, AB, Canada

¹²Center for Autism Research, Children's Hospital of Philadelphia, Philadelphia, PA, USA

¹³ARUP Laboratories, Department of Pathology, University of Utah, Salt Lake City, UT, USA

¹⁴Laboratory Genetic Metabolic Diseases & Amsterdam Gastroenterology Endocrinology Metabolism, Amsterdam University Medical Centers, University of Amsterdam, Amsterdam, The Netherlands

¹⁵Hospital for Sick Children & University of Toronto, Toronto, ON, Canada

¹⁶Division of Genetics and Metabolism, Department of Pediatrics, Duke University Medical Center, Durham, NC, USA

¹⁷Fine Point Consulting, Los Angeles, CA, USA

¹⁸Division Biochemical Diseases, British Columbia Children's Hospital, Vancouver, BC, Canada

#At the time of this work, SB was affiliated with ACD. SB's current affiliation is Ultragenyx Pharmaceutical Inc., Novato, CA, USA

* Indicates joint first authors

** Indicates joint senior authors

^Corresponding author: Emily Reinhardt, registry@creatineinfo.org, 6965 El Camino Real, Suite 105-598, Carlsbad, CA 92009

Word counts: Abstract 245/250; Intro 500/500; Method-Discussion 4329/4500

Figures/Tables: 2 figures, 3 tables, 7 supplemental

Keywords (max 6):

1. Core outcome set (COS)
2. Rare disease
3. Creatine transporter deficiency
4. Guanidinoacetate methyltransferase deficiency
5. Patient-centered research
6. Patient-informed drug development

SUMMARY

Creatine transporter (CTD) and guanidinoacetate methyltransferase (GAMT) deficiencies are rare inborn errors of creatine metabolism, resulting in cerebral creatine deficiency. Patients commonly exhibit intellectual and developmental disabilities, often accompanied by behavior problems, delayed speech, seizures, and motor impairments. There is currently no efficacious treatment for CTD, while the current management for GAMT requires lifelong treatment with a protein restricted diet and intake of high amounts of oral supplements. Efforts to develop effective, sustainable treatments for these disorders are limited by the lack of clinical and patient-derived meaningful outcomes. A core outcome set (COS) can facilitate consensus about outcomes for inclusion in studies. Unfortunately, patient and caregiver perspectives have historically been overlooked in the COS development process, thus limiting their input into the outcome selection. We partnered with caregivers and health professionals to establish the first COS for CTD and GAMT. The COS developed includes seven outcomes (“Adaptive Functioning”, “Cognitive Functioning”, “Emotional Dysregulation”, “MRS Brain Creatine”, “Seizure/Convulsions”, “Expressive Communication”, and “Fine Motor Functions”) for both CTD and GAMT, and an additional outcome for GAMT (“Serum/Plasma Guanidinoacetate”) that are important to stakeholders and consequently should be considered for measurement in every clinical trial. Caregivers were valued partners throughout the COS development process, which increased community engagement and facilitated caregiver empowerment. We expect this COS will ensure a patient-centered approach for accelerating drug development for CTD and GAMT, make clinical trial results comparable, minimize bias in clinical trial outcome selection, and promote efficient use of resources.

1-sentence take home message: A core outcome set for creatine transporter (CTD) and guanidinoacetate methyltransferase (GAMT) deficiencies was created through a multiphase process in partnership with caregivers and health professionals.

CONFLICTS OF INTEREST

Zahra Nasser Moghaddam reports a stipend and travel support from ACD for this project. Beth K. Potter reports a grant from INFORM RARE which receives industry matching research funds from Takeda, BiMarin, Ultragenyx, and Perkin Elmer. Nicola Longo reports the following: clinical trial support for Amgen/Horizon, Amicus Therapeutics, Audentes/Astellas, BioMarin, Chiesi/Protalix, Genzyme/Sanofi, Jnana, Moderna, PTC Therapeutics, Takeda, and Ultragenyx; serves on advisory boards for Amgen/Horizon, Amicus Therapeutics, Audentes/Astellas, BioMarin, Chiesi/Protalix, Genzyme/Sanofi, Ipsen, Jaguar Gene Therapy, Jnana, Leadiant Biosciences, Moderna, Nestle Pharma, PTC Therapeutics, Reneo, and Ultragenyx Data Safety; serves on monitoring boards for Applied Therapeutics, iE cure, and Regeneron. Gerald S. Lipshutz reports grant and travel support funding from ACD. Judith S. Miller reports a consulting agreement with Ultragenyx and Johnson & Johnson, and has done legal consultation for a variety of cases. Andreas Schulze reports receiving consultation fees from Ceres Brain. Emily K. Reinhardt, Audrey Thurm, Maureen Smith, Celeste Graham, Beth H. Tiller, Saadet Mercimek-Andrews, Steven A. Baker, Deborah A. Bilder, Regina Bogar, Jacobus Britz, Rachel Cafferty, Daniel P. Coller, Ton J. DeGrauw, Vicky Hall, Marzia Pasquali, Gajja S. Salomons, Celine P. Wheaton, Kayla F. Williams, Sarah P. Young, Jasmine Li, Sofia Balog, Theresa Selucky, Sylvia Stockler-Ipsiroglu, and Heidi Wallis declare they have no conflicts of interest.

INTRODUCTION

Creatine transporter (CTD, MIM:300352) and guanidinoacetate methyltransferase (GAMT, MIM:612736) deficiencies are rare inborn errors of creatine metabolism and transport, resulting in cerebral creatine deficiency.¹⁻³ CTD is an X-linked disorder caused by hemizygous or heterozygous pathogenic variants in *SLC6A8*, disrupting the cellular uptake of creatine in the brain.³⁻⁴ GAMT is an autosomal recessive disorder caused by biallelic pathogenic variants in *GAMT*, preventing the biosynthesis of creatine.⁵ GAMT also causes an accumulation of guanidinoacetate (GAA), which is neurotoxic.⁵⁻⁹ Similar to other genetic conditions associated with neurodevelopmental disorders, individuals with CTD and GAMT commonly exhibit intellectual and/or developmental disabilities, often accompanied by behavior problems, delayed speech, seizures, and motor impairments.^{5,10-12}

There is currently no efficacious disease-modifying treatment for CTD. However, some evidence suggests that creatine oral supplementation and creatine precursors, arginine and glycine, partially improve symptoms in some CTD patients.^{4,13-15} CTD patients currently utilize medications and therapies (e.g., speech, occupational) to improve functioning. For GAMT, oral creatine supplementation has shown efficacy in partially restoring brain creatine levels while dietary arginine restriction and L-ornithine supplementation may further reduce GAA levels.¹⁶⁻²¹ The current management for GAMT requires lifelong treatment with a protein restricted diet and intake of high amounts of supplements.^{18, 22-23} In both CTD and GAMT, timely diagnosis and early intervention have been associated with enhanced quality of life and reduced cognitive

impairment.^{2,4,17,24} Worldwide efforts are ongoing to understand the long-term impacts of CTD and GAMT.^{3,25-28}

Implementing clinical trials in rare diseases such as CTD and GAMT is especially challenging due to factors that include a small population and substantial heterogeneity in phenotypes.²⁹⁻³³ Identifying outcomes (e.g., clinical, behavioral, and/or laboratory-based) that assess treatment efficacy is critical to clinical trial success. Unfortunately, measuring different outcomes between trials makes it difficult to compare the efficacy of different therapeutics, especially when treatments target disease-modification of multi-systemic conditions affecting development.³⁴⁻³⁵ Historically, trial outcomes have been selected without input from patients and caregivers.³⁶⁻³⁷ Patients and caregivers are often the best equipped to identify the meaningful changes that would improve daily functioning and overall health as a result of a treatment. The U.S. Food and Drug Administration (FDA) and other organizations now require patient and caregiver input as part of the clinical trial design process.³⁸

A core outcome set (COS) can be used to address these obstacles to rare disease research and inform trial design. A COS is a small set of outcomes that are established as important to be collected in every research study of the same disease.³⁹⁻⁴⁰ A COS promotes efficient use of resources and minimizes risk of bias by incorporating stakeholder perspectives, thereby ensuring that the evidence generated addresses outcomes that reflect meaningful treatment responses.⁴¹ It also facilitates uniformity in the selection, measurement, and reporting of outcomes to simplify comparison across studies.⁴¹⁻⁴² To support future clinical trials, we established the first COS for CTD and GAMT.

METHODS

Project Design

We relied on the Core Outcome Measures in Effectiveness Trials (COMET) initiative to guide us in developing our COS.^{41,43-44} Our findings are reported in accordance with the COS Standard for Reporting statement (Supplemental 1).⁴⁵

To ensure that the final COS reflected the patient and caregiver perspective, active patient and caregiver engagement was a key design element throughout the COS development process. The project was conducted in three sequential phases: 1) Candidate Outcome Selection, 2) Delphi Surveys, 3) Consensus Workshop (Figure 1).

Patient and Caregiver Engagement

CTD and GAMT result in severe neurodevelopmental disorders, with affected individuals often nonverbal. Since caregivers must therefore serve as the patient's voice, caregivers were critical in representing lived experiences. An active partnership between caregivers, clinicians, researchers, and scientists was utilized. This project was a component of a broader Patient-Centered Outcomes Research Institute (PCORI)-funded patient engagement project "Parents Advancing REsearch NeTworkS" or PAREnts.⁴⁶ PAREnts aimed to empower caregivers and build their capacity to partner with researchers. Broadly, members of the PAREnts project received training and education about clinical trial research and COS development, shared their personal experiences, participated in focus groups, and actively engaged with other stakeholders to help develop the final COS for CTD and GAMT.

Candidate Outcome Selection

The goal of the candidate outcome selection phase was to identify possible outcomes for CTD and GAMT from a variety of sources and diverse perspectives.

Rapid Literature Reviews

Two separate rapid literature reviews were conducted, one for CTD and one for GAMT, following the Cochrane rapid review methodology (Supplemental 2, 3).⁴⁷ The protocols for the CTD and GAMT reviews were published on PROSPERO⁴⁸ and Open Science Framework (OSF)⁴⁹, respectively. Embase (via OVID) and MEDLINE (via OVID) were searched for relevant articles. Article screening, carried out on Covidence⁵⁰, involved two reviewers (ZNM, JL) who independently screened the title, abstract, and full-text of each article. Articles not meeting the inclusion criteria (Supplemental 4) were excluded. Conflicts that could not be resolved between the reviewers were discussed with a third reviewer (SS-I). Data relating to outcomes, bibliographic information, and population details were extracted by one reviewer and verified by another.

CreatineInfo Patient Registry & Natural History Study

Additional outcomes were identified from the CreatineInfo Patient Registry and Natural History Study.⁵¹ CreatineInfo is a Cerebral Creatine Deficiency Syndrome (CCDS) patient- and caregiver-reported registry and natural history study created by the Association for Creatine Deficiencies (ACD), hosted by the National Organization for Rare Disorders (NORD). Outcomes were gathered from de-identified, aggregate data shared from CreatineInfo's previously conducted Patient Meaningful Outcomes (PMO)

survey which asked participants to identify and rate the outcomes that were most important to them.⁵²

Focus Groups

In-person and virtual semi-structured focus groups were conducted with caregivers of individuals with CTD and GAMT to identify outcomes that were important to them. In-person focus groups took place at ACD's annual symposium while virtual focus groups were conducted separately. Participants were recruited through their affiliation with the "Creatine Deficiency Support Group" and/or the "ACD Family Network". One interpreter was present in one of the in-person focus groups.

Focus group participants were grouped according to proband diagnosis (CTD and GAMT) and age (0-8 years old and 9+ years old), when possible, for a total of five focus groups (three in-person and two virtual). Each focus group included three project team members: a facilitator who guided discussion and ensured equitable speaking time for each participant, an observer who served as quality control to the process and identified any bias that was introduced by the project team, and a notetaker. Participants discussed a series of broad questions designed to elicit their views on outcomes that would be important to them if improved with a treatment or therapy, based on their lived experiences (Supplemental 5).

The focus groups were audio-recorded and transcripts were generated using Otter.ai. The transcripts were cross-referenced with the audio recordings, all identifying information was removed, and focus group outcomes were extracted from the transcripts. These outcomes were added to the list of candidate outcomes from the

rapid literature reviews and CreatineInfo. The list was then pruned by the project team to remove duplicate and non-disease-specific outcomes, with feedback from the PAREnts project caregivers and health professionals. A clear definition was created for the remaining outcomes in consultation with the PAREnts project caregivers and health professionals.

Delphi Surveys

The goal of the Delphi survey phase was to systematically reduce the list of candidate outcomes by asking the CCDS community to rate and rank the importance of candidate outcomes.⁵³ We conducted three Delphi survey rounds to collect data on which outcomes are most important to participants. We used the findings to move toward consensus on the list of candidate outcomes for our final COS.

Delphi Survey Development

Three sequential rounds of Delphi surveys (“Round 1”, “Round 2”, and “Round 3”) were created to evaluate the importance of candidate outcomes. Data were collected and managed using REDCap (Research Electronic Data Capture) hosted at Vanderbilt University.⁵⁴⁻⁵⁵ In all Rounds, participants were asked, for each outcome, “How important do you think it is for research studies to measure [outcome]” on a scale of 1-9, with 1-3 being of “limited importance”, 4-6 being “important but not critical”, and 7-9 being “most important”. Open text boxes were available in Rounds 1 and 2 for additional feedback. In Rounds 2 and 3, each outcome was accompanied by graphical distributions of ratings from the previous round by “Patients and Caregivers” and “Health Professionals”, and returning participants were provided with their own previous rating.

This process facilitated consensus on the outcomes, which is a key element of the Delphi methodology.⁵⁶ In Round 3, participants also ranked their top 10 most important outcomes. Each survey included two catch trials that participants had to answer correctly for their entry to be included in the analysis. The surveys used lay language which was reviewed and improved through PAREnts review for clarity. This facilitated comprehension by all survey participants. Surveys were available in English, French, and Spanish, with translations completed by CryaCom International Inc. translation services and reviewed by native speakers.

Delphi Eligibility and Recruitment

Adult patients (18 years and older) who were able to express themselves and parents/caregivers of patients with CTD or GAMT were eligible to participate (“Patients and Caregivers”). Professionals with experience working with individuals with CTD and/or GAMT were also eligible to participate (“Health Professionals”). This included clinicians, researchers, laboratory scientists, health policy advisors, and additional professionals and therapists (e.g., speech therapists, psychologists, teachers). Round 1 was open to all eligible participants. Round 2 was open to Round 1 participants and new eligible participants. Round 3 was open exclusively to Round 1 and Round 2 participants.

Participants were recruited through direct email, newsletters, meetings, webinars, and social media. Recruitment materials were available in English, French, and Spanish. All recruitment materials for patients and caregivers were reviewed in advance by the PAREnts project caregivers. Active recruitment varied by survey round but lasted between 4-8 weeks per round. Participants received weekly email reminders to finish

their surveys. Surveys were accessed via a publicly available link (Round 1) or by personalized survey links (Rounds 2 and 3).

Delphi Survey Analysis

At the completion of each survey round, the data were analyzed to determine which candidate outcomes were most important among stakeholders. Those outcomes that garnered the most support by reaching stakeholder consensus advanced to the next round. Stakeholder consensus was defined by the outcome inclusion criteria in each round, with the criteria becoming more rigorous in subsequent rounds. Inclusion criteria specifics are found in Figure 2. Criteria were applied first to “Patients and Caregivers” and “Health Professionals”; if the criterion was met for either of these groups, the outcome advanced. If an outcome did not meet the inclusion criterion for at least one of these two stakeholder groups, the subgroups “CTD Patients and Caregivers” and “GAMT Patients and Caregivers” were analyzed separately. An outcome had to meet the criterion for one of these subgroups to advance. In Round 3, inclusion criteria were applied in a stepwise manner (Figure 2; i.e., 3-1, 3-2, 3-3) in which an outcome had to meet all three criteria to advance. Upon completion of Round 3, the remaining list of candidate outcomes were further refined by combining similar outcomes and removing non-disease specific outcomes.

Consensus Workshop

The goal of the consensus workshop was to prioritize the remaining candidate outcomes and reach consensus on a final list of 8-10 core outcomes that would become the COS for CTD and GAMT. The workshop was held in person at the University of

Utah, Salt Lake City, Utah, USA; one member of the project team attended virtually. A group of 25 participants with a diverse range of perspectives attended the workshop to facilitate a holistic discussion of outcomes. Workshop participants consisted of CTD caregivers, GAMT caregivers, and health professionals/researchers including those who would use the COS in a clinical and research setting. The majority of workshop participants had completed at least one round of the Delphi survey and most of the caregivers were PAREnts cohort members. Two separate pre-workshop meetings were held for caregivers and health professionals to prepare participants for successful engagement in the workshop.

The workshop began with an overview of the COS development project and a review of Round 3 results. Utilizing an adapted Nominal Group Technique⁵⁷, each participant was then given one minute to provide their perspective on their three most important outcomes. Guided by a neutral moderator (BP), an open discussion unfolded among workshop participants. After thorough discussion of outcomes, each participant voted on the candidate outcomes via a Google Form. Caregivers voted once based on their lived experience with the disorder, while health professionals voted once for CTD and once for GAMT, based on their expertise. There were three response choices for each candidate outcome:

- 1) 1-Definitely In: outcome must be in the COS
- 2) 2-Maybe: outcome is a strong contender for the COS
- 3) 3-Definitely Out: outcome can be left out of the COS in favor of higher priority outcomes

Participants were asked to select a maximum of 5 outcomes as “1-Definitely In”. Once all participants had voted, the data were organized by disorder, analyzed using the consensus inclusion criteria, and shared with participants. Workshop participants discussed the voting results and eventually reached consensus on a final set of core outcomes.

RESULTS

Candidate Outcome Selection & Outcome Pruning

At the completion of the candidate outcome selection (i.e., literature review, focus groups, and CreatineInfo) 1148 outcomes were identified. After the outcome pruning stage (i.e., removal of duplicates and non-disease-specific outcomes, and feedback from caregivers and health professionals), 85 candidate outcomes remained.

Most of the 85 candidate outcomes were identified from multiple sources. Interestingly, 23 of the 85 outcomes were only found in the literature reviews, while eight were unique to the focus groups and not identified from any of the other sources. There were no unique outcomes identified only from CreatineInfo. Of the 85 outcomes, two emerged from discussions with the project team during the outcome pruning stage (Figure 2).

Delphi Surveys

Collectively, 150 individuals participated in the Delphi surveys from 27 countries and six continents (Table 1). In Round 1, 120 participants rated 85 candidate outcomes. In Round 2, 81 remaining outcomes were rated by 111 participants, 32 of whom were

new participants in Round 2 (i.e., retention rate from Round 1 = 71.2%). In Round 3, 84 participants rated the remaining 50 outcomes; 66 of the 84 participants (78.6%) had participated in Round 1, and 75 of the 84 participants (89.3%) had participated in Round 2. In each Delphi round, participants who did not answer at least 25% of the outcome survey questions or failed to correctly answer the catch trials were excluded from analysis. After Round 3, we further refined the candidate outcomes; similar outcomes were combined and five additional outcomes were removed because they are already typically included in clinical trial designs (Figure 2). No new outcomes were identified from comments shared by participants in open text boxes during Rounds 1 and 2. Detailed aggregate results from the Delphi survey, Supplemental 6.

Consensus Workshop

Ahead of the consensus workshop, the 20 candidate outcomes were categorized into four core areas to highlight the comprehensive nature of our remaining candidate outcomes: “Life Impact”, “Growth and Development”, “Physiological/Clinical”, and “Death” (Table 2).⁵⁸⁻⁵⁹ Consensus workshop participants reviewed, discussed, and voted on the 20 candidate outcomes (Supplemental 7). Six outcomes were voted as “1-Definitely In” by more than 50% of workshop participants and were included in the COS: “Adaptive Functioning”, “Cognitive Functioning”, “Emotional Dysregulation”, “MRS Brain Creatine”, “Seizure/Convulsions”, and “Serum/Plasma Guanidinoacetate” (for GAMT specifically). Two outcomes, “Expressive Communication” and “Fine Motor Functions”, did not meet the inclusion criteria but were included based on unanimous agreement during the group discussions. Thus, a total of eight outcomes (seven for CTD and GAMT, and one additional outcome for GAMT) were defined for the CTD and

GAMT COS, with their definitions shown in Table 3. Three outcomes that were excluded from the COS were identified by workshop participants as worth tracking as they are often measured in parallel with the required COS: “MRI Brain General”, “MRS Brain Guanidinoacetate”, and “Serum/Plasma Creatine” (Figure 2).

During the consensus workshop discussion, participants removed the outcomes “Intellectual & Developmental Disability”, “Receptive Language”, “Independence”, and “Executive Functioning”. While “Intellectual & Developmental Disability” is a prominent diagnosis in the population, its components, “Cognitive Functioning” and “Adaptive Functioning”, were included in the COS and can be measured with metrics more sensitive to change. “Independence” is reflected in “Adaptive Functioning” while “Executive Functioning” is an aspect of “Cognitive Functioning”. “Expressive Language” was renamed “Expressive Communication” to include non-verbal forms of communication.

DISCUSSION

Using a structured consensus process, we successfully identified a set of eight core outcomes that should be used in clinical trials and research studies for CTD and GAMT based on caregiver and health professional input. Following the recommended COMET framework, we identified candidate outcomes by performing literature reviews, focus groups, and Delphi surveys, and finalized the COS by holding an in-person consensus workshop.⁴¹ The final COS includes outcomes from three of the relevant recommended core areas, meeting the current recommendation that a COS be holistic to better represent the patient.⁵⁸⁻⁵⁹

Seven of the eight outcomes are applicable to both CTD and GAMT.

“Serum/Plasma Guanidinoacetate” is a unique outcome exclusive to GAMT because elevated GAA levels are a hallmark of GAMT and reducing GAA is a standard objective of GAMT treatment. In contrast, GAA levels tend to be normal in individuals with CTD and are not expected to change with any treatment. Measurement of creatine with magnetic resonance spectroscopy (MRS), “MRS Brain Creatine”, is recommended for CTD clinical trials as cerebral creatine is markedly low in CTD and may increase with a successful treatment. This outcome is also recommended for monitoring in the case of GAMT; however this biomarker may be normalized in patients receiving oral creatine supplementation prior to a trial with a new therapy.

Workshop participants agreed that three outcomes eliminated from the core outcome set will often be measured in parallel with the required COS and are worth tracking. In the case that plasma is collected for “Serum/Plasma Guanidinoacetate”, tracking “Serum/Plasma Creatine” is encouraged in trials that aim to replenish GAMT activity and thus endogenous synthesis of creatine. Similarly, when measuring “MRS Brain Creatine”, also measuring “MRS Brain Guanidinoacetate” may provide valuable monitoring insights in GAMT trials. When magnetic resonance imaging (MRI) is performed in parallel with MRS, any abnormality in “MRI Brain General” in GAMT and CTD clinical trials is recommended to be noted. This is supported by the fact that certain abnormalities (e.g. abnormal signal intensity in basal ganglia) are reversible in patients with GAMT upon treatment with creatine and/or guanidinoacetate lowering therapies.^{19,60}

Caregiver involvement in developing a COS for two rare conditions

CTD and GAMT present with similar phenotypes and share the treatment goal of restoring creatine to the brain.¹¹ Additionally, patients, caregivers, researchers, and clinicians actively partner together to advance research on these two conditions. Given their ultra-rare nature, both conditions benefit from mutual support within this collaborative community. We hypothesized that very few critical differences in prioritized outcomes would be identified between these two conditions, thereby driving our effort to develop a COS for CTD and GAMT simultaneously. Our COS supports this hypothesis, with seven of the core outcomes applicable to both conditions.

Though we utilized multi-stakeholder collaboration to develop a COS, we took deliberate measures to ensure that caregiver and patient voices remained distinct. Our caregiver focus groups resulted in eight candidate outcomes that were exclusively identified by caregivers, with one outcome (“Caregiver Burden”) receiving extensive discussion during the consensus workshop (see Figure 2). By conducting caregiver focus groups and analyzing Delphi responses separately for each diagnosis and stakeholder group, we created a COS that is informed by the experiences of CTD and GAMT patients and families. For example, the impacts of “Seizures/Convulsions”, a frequent characteristic of both CTD and GAMT¹¹, were highlighted during the consensus workshop when one caregiver conveyed the effects on their family:

“Ninety-nine percent of my burden is my daughter’s seizures and her moods that come out of nowhere because she’s going to have a seizure. And that they ruin my family’s life.”

Similarly, many caregivers expressed concern about their child(ren)'s "Emotional Dysregulation", an outcome that encompasses an array of emotional responses such as aggression and irritability. One caregiver expressed during the focus group:

"Last night, I had an iPad thrown at my face. He gets mad really quickly. He can't seem to control his outbursts. [He's] put his foot through a wall before."

Impaired "Expressive Communication" was another key concern of many caregivers. One parent shared their frustration when their child is unable to verbally communicate with others:

"I can see that he gets disappointed when he cannot get his message across to others. And it's frustrating for me because I'm trying to understand him, but I can't."

These real-world examples demonstrate how caregivers' experiences and their related outcomes are captured in the COS. Patient and caregiver participation in our project was integral to developing a COS that is not only disease-specific but also patient-centered.

While consensus on outcomes was eventually reached, differences in outcome prioritization between caregivers and health professionals were identified during the Delphi survey and consensus workshop phases (Figure 2). For example, "Emotional Dysregulation" and "Fine Motor Skills" both met the inclusion criteria among caregivers, but not health professionals in Delphi Rounds 2 and 3. While "Emotional Dysregulation" met the consensus workshop inclusion criteria, "Fine Motor Skills" initially did not. After further discussion, workshop participants unanimously agreed to include both

“Emotional Dysregulation” and “Fine Motor Skills” in the final COS. Conversely, “Serum/Plasma Guanidinoacetate (GAA)” met the inclusion criteria among health professionals, but not caregivers, in Delphi Rounds 2 and 3. During the consensus workshop discussions, participants reached a unanimous agreement to include it in the final COS. Additionally, “Caregiver Burden” was an outcome that received thoughtful debate among consensus workshop participants. Caregivers argued that improvements in patient-focused outcomes will naturally lead to reduced “Caregiver Burden”, making inclusion of this outcome unnecessary. Health professionals agreed to defer to caregivers and this outcome was not included in the COS.

Caregivers utilized their research engagement training to effectively collaborate with health professionals and advocate for their families during the consensus workshop, directly influencing the final COS. For instance, caregivers voiced their concern that “Expressive Language” and its original definition was too limited and exclusionary, failing to capture meaningful improvements in non-verbal forms of communication (e.g., sign language, communication devices). Participants collectively agreed to change this outcome to “Expressive Communication” and modify the definition to include non-verbal forms of communication. Throughout the COS development process, caregivers’ lived experiences complemented the health professionals’ clinical expertise, resulting in an inclusive and holistic COS for CTD and GAMT.

COS Importance in CTD and GAMT clinical trials

Given the rarity of CTD and GAMT, it is essential that researchers use this multistakeholder-influenced COS in every clinical trial for these conditions as it effectively captures what is most important for these patients. This COS will become increasingly impactful as new treatments are developed, as the COS represents an opportunity to ensure that these therapies are evaluated based on meaningful outcomes. Additionally, using the COS contributes to reduced waste, standardizes comparison across studies, and promotes collaboration and data sharing. We expect our COS to increase the efficiency of research methods and clinical trial designs, and ultimately expedite the development of effective treatments for CTD and GAMT. Moreover, regulatory agencies, such as the U.S. FDA, can be reassured that patient perspectives are included in the proposed trial design when the COS is included. By including patient and caregiver perspectives to establish a COS for CTD and GAMT, the investigator burden of creating patient-centered trial design is greatly reduced.

Recommendations for COS Development and Future Directions

This collaboration marks the first COS developed for CTD and GAMT, and is one of only a few efforts to create a COS for inborn errors of metabolism (IEM). Our approach shares many similarities with other COS development projects for IEM, including mucopolysaccharidoses (MPS)⁶¹⁻⁶², phenylketonuria (PKU) and medium chain acyl coA dehydrogenase deficiency (MCAD)⁶³, as they were also guided by the COMET framework. Our project is unique compared to other COS development projects, as it incorporated all of the following design elements: 1) caregiver and health professional

participation, 2) focus groups, 3) literature reviews, 4) patient registry data, 5) Delphi surveys, and 6) consensus workshop. Other unique features instrumental to our consensus process included progressively more rigorous Delphi inclusion criteria, approximately equal numbers of caregiver and health professionals in the consensus workshop, and our workshop voting process.

We hope that other disease populations, especially other rare diseases, will benefit from the strengths of our COS development project and our recommendations on potential areas for improvement as they develop their own COS. One of the unique components of this project was the active engagement of caregivers in the entire process, as part of our larger PAREnts Project. Caregivers received training and education in COS and clinical trial development, learned how to become better advocates by sharing their personal stories, and contributed to the focus groups, Delphi surveys, and consensus workshops. Health professionals commented on how knowledgeable caregivers were during the workshop discussions:

"Their ability to synthesize and comment on the scientific issues was amazing."

Based on our experience, we propose the use of adaptable inclusion criteria for retention of proposed outcomes between Delphi survey rounds. Many patients and caregivers find it challenging to deprioritize outcomes⁴¹, which may result in limited variability in the scoring of outcomes using less rigorous *a priori* criteria. After thoughtful consideration, we implemented more rigorous *post hoc* criteria in Delphi Rounds 2 and 3 to filter the total number of outcomes. Reducing outcomes prior to survey distribution decreases the burden on participants and the attrition rate between rounds.^{41,64}

We reflect that the pre-workshop training and the in-person format of our consensus workshop, with approximately equal numbers of caregivers and health professionals in attendance, helped us reach consensus on the COS more efficiently. Additionally, the alternating placement of stakeholders throughout the consensus workshop room facilitated open conversation with all participants and encouraged them to make new connections.

Future COS development projects should prepare for potential challenges. In the case of stakeholder participation, it is important to target recruitment of stakeholders who are from traditionally underrepresented groups to ensure their participation and minimize bias. For example, GAMT is rarer than CTD; therefore, we employed various recruitment strategies to ensure a more representative participant pool between the two conditions, still not reaching equal representation. We recommend inclusion of health policy advisors, as we believe this would have provided us with valuable insights on clinical trials and the drug development process during this project. It is important to consider in advance how to accommodate the communication needs of participants. Our materials only included English, French, and Spanish translations; additional languages would have broadened participation. It is important to consider translating recruitment documents, project materials, and the Delphi survey into multiple languages, and providing interpretation services or closed captioning during focus groups and the consensus workshop.

While the outcomes established in the COS serve as a foundation, we acknowledge that the measurement of additional outcomes may be beneficial depending on the type of therapeutic intervention, characteristics of the target patient

population, and other variables. For instance, phenotypes of males and females with CTD may vary significantly and warrant the inclusion of additional outcomes to capture these differences. An N-of-1 trial may benefit from additional customized outcomes as well.

Understanding how to measure the COS is an important next step. Outcomes may be measured using different tools. Not all tools may be effective in a particular population, especially among neurodevelopmentally impacted patient populations like CTD and GAMT. Development of patient-centered considerations for selecting outcome measurement tools appropriate to this patient community is a logical next step and will serve as a valuable companion to our COS.⁴¹

In order to design appropriate and relevant studies and clinical trials for rare diseases, it is important to have a group of patient-centered core outcomes that are consistently measured to enable comparison across studies and facilitate therapeutic development. Here, we share the first COS for CTD and GAMT. Throughout the development of this COS, patient and caregiver perspectives were considered through their engagement in focus groups, Delphi surveys, and the consensus workshop. We especially benefited from the caregivers who partnered with us to co-design the recruitment materials, outcome definitions, Delphi surveys, and attended the consensus workshop. This COS is a step towards designing more appropriate clinical trials and accelerating the development of effective interventions for CTD and GAMT.

ACKNOWLEDGMENTS

We thank our PaReNts Project caregiver collaborators, who contributed a wealth of knowledge and perspectives through their lived experiences to all aspects of this project: Irene Adjetey, Regina Bogar, Rachel & Mac Cafferty, Carole Chehowah, Daniel Coller, Reza Fathi, Celeste Graham, Vicky Hall, Mikelle Law, Gustavo Mattos, Gina Nichols, Haley Prescher, Beth Robinson, Anthony Tedesco, Beth Tiller, Kim Tuminello, Nathan Vandenberg, Lacy Vandivort, Celine Wheaton, and Kayla & Sidney Williams. We also thank everyone who participated in the Delphi surveys. Thank you to Carole Chehowah and Laura Duque Lasio for their assistance in translating Delphi survey materials. Thank you to Alison Howie and Sangeetha Iyer for their support in developing this project. Thank you to Cristan Farmer and Andrew Marshall for their help in building this manuscript.

AUTHOR CONTRIBUTIONS

AT, BP, MS, SB, TS, SS-I, and HW conceptualized the project; ZNM, EKR, AT, BP, MS, CG, BHT, SS-I, and HW designed the project; MS, CG, BHT, and HW led the caregiver engagement strategy as patient/caregiver partners; ZNM, EKR, JL, SS-I, and HW acquired the data; ZNM, EKR, AT, BP, MS, CG, BHT, SAB, DAB, RB, JB, RC, DPC, TJDG, VH, GSL, NL, SM-A, JSM, MP, GSS, AS, CPW, KFW, SPY, SS-I, and HW analyzed and interpreted the data; ZNM, EKR, AT, SS-I, and HW drafted the manuscript; BP, MS, CG, BHT, SAB, DAB, RB, JB, RC, DPC, TJDG, VH, GSL, NL, SM-A, JSM, MP, GSS, AS, CPW, KFW, and SPY critically revised the manuscript. All authors approve the final manuscript.

FUNDING INFORMATION

This program was funded through a Patient-Centered Outcomes Research Institute (PCORI) Eugene Washington PCORI Engagement Award (EACB-23059). The views presented in this publication are solely the responsibility of the author(s) and do not necessarily represent the views of the Patient-Centered Outcomes Research Institute® (PCORI®), its Board of Governors or Methodology Committee. This work was partially supported by the Intramural Research Program of the National Institute of Mental Health (ZIC MH002961).

DATA AVAILABILITY STATEMENT

Raw data are not publicly available due to privacy and/or ethical restrictions. Aggregate data that supports the findings of this study are available in the supplementary materials of this article. Additional data may be made available on request from the corresponding author. Data ownership is maintained by ACD.

ETHICS STATEMENT

All focus groups and Delphi surveys received institutional review board (IRB) approval from the North Star Review Board (protocols NB200065, NB300094; <https://learningirb.org/>).

PATIENT INFORMED CONSENT

Informed consent was obtained from all focus group and Delphi survey participants prior to participation (IRB protocols NB200065, NB300094).

TABLES & FIGURES

Table 1. Demographics of focus groups, Delphi surveys, and consensus workshop participants.

	Focus Groups n (%)	Delphi Round 1 n (%)	Delphi Round 2 n (%)	Delphi Round 3 n (%)	Consensus Workshop n (%)
Patients/Caregivers of children with CTD or GAMT	n = 30	n = 90	n = 83	n = 63	n = 12
Diagnosis					
CTD	22 (73)	72 (80)	64 (77)	51 (81)	7 (58)
GAMT	8 (27)	18 (20)	19 (23)	12 (19)	5 (42)
Gender					
Woman	-	58 (64)	53 (64)	36 (57)	-
Man	-	30 (33)	24 (29)	23 (37)	-
Unspecified	-	2 (2)	6 (7)	4 (6)	-
Age treatment began (GAMT only)					
Before 2 years of age	-	7 (39)	7 (37)	5 (42)	-
Age 2 years or later	-	11 (61)	9 (47)	6 (50)	-
Continent					
South America	-	4 (4)	3 (4)	2 (3)	-
Europe	-	26 (29)	18 (22)	14 (22)	-
Asia	-	5 (6)	3 (4)	4 (6)	-
Australia	-	2 (2)	2 (2)	1 (2)	-
Africa	-	3 (3)	3 (4)	3 (5)	-
North America	-	45 (50)	46 (55)	33 (52)	-
Unspecified	-	5 (6)	8 (10)	6 (10)	-
Race/Ethnicity ^a					
Asian	-	3 (3)	4 (5)	4 (6)	-
Black	-	2 (2)	3 (4)	3 (5)	-

Hispanic, Latino, or Spanish origin	-	7 (8)	5 (6)	3 (5)	-
Middle Eastern or North African	-	2 (2)	1 (1)	2 (3)	-
White	-	72 (80)	64 (77)	47 (75)	-
Some other race, ethnicity, or origin ^b	-	0 (0)	1 (1)	1 (2)	-
Prefer not to answer	-	3 (3)	1 (1)	1 (2)	-
Unspecified	-	2 (2)	6 (7)	4 (6)	-
Health Professionals		n = 30	n = 28	n = 21	n = 13
Gender					
Woman	-	21 (70)	19 (68)	13 (62)	-
Man	-	7 (23)	5 (18)	6 (29)	-
Prefer not to say	-	1 (3)	1 (4)	1 (5)	-
Unspecified	-	1 (3)	3 (11)	1 (5)	-
Continent					
Europe	-	6 (20)	7 (25)	6 (29)	-
Asia	-	2 (7)	2 (7)	2 (10)	-
North America	-	21 (70)	17 (61)	13 (62)	-
Unspecified	-	1 (3)	2 (7)	0 (0)	-
Race/Ethnicity ^a					
Asian	-	5 (17)	3 (11)	3 (14)	-
Hispanic, Latino, or Spanish origin	-	0 (0)	2 (7)	0 (0)	-
Middle Eastern or North African	-	1 (3)	1 (4)	1 (5)	-
White	-	21 (70)	19 (68)	17 (81)	-
Some other race, ethnicity, or origin ^b	-	1 (3)	1 (4)	1 (5)	-
Prefer not to answer	-	3 (10)	2 (7)	1 (5)	-
Unspecified	-	0 (0)	1 (4)	0 (0)	-
Health Professional Role ^a					
Biochemical geneticist,	-	12 (40)	10 (36)	9 (43)	-

metabolic specialist, geneticist					
Developmental neurologist, - neurologist		3 (10)	5 (18)	3 (14)	-
Pediatrician	-	2 (7)	1 (4)	1 (5)	-
Physiotherapist, physical therapist, speech therapist, occupational therapist	-	3 (10)	2 (7)	2 (10)	-
Psychologist	-	1 (3)	2 (7)	1 (5)	-
Teacher	-	2 (7)	0 (0)	0 (0)	-
Other ^c	-	4 (13)	2 (7)	1 (5)	-
Unspecified	-	1 (3)	1 (4)	0 (0)	-
Employment Setting ^a					
Academic institution	-	19 (63)	14 (50)	13 (62)	-
Healthcare setting (e.g., hospital, private clinic)	-	13 (43)	12 (43)	10 (48)	-
Hospital-based research institute	-	3 (10)	4 (14)	4 (19)	-
Other ^d	-	6 (20)	1 (4)	0 (0)	-
Unspecified	-	1 (3)	1 (4)	1 (5)	-

Note: ^aParticipants had the option to select more than one answer. ^bAdditional responses included: “Cuban”, “Turkish”. ^cAdditional responses included: “Behavior analyst”, “ABA therapist”, “Pediatric Epileptologist”. ^dAdditional responses included: “ABA Organization”, “Home and School”.

Table 2. Candidate outcomes discussed during the consensus workshop

Core area & definition	Outcomes discussed during consensus workshop (n=20)	Included in final COS?
Life Impact A general concept of well-being that refers to a combination of various life aspects [e.g., health, emotional, and social], as well as parents' perspectives about their involvement and observations	Aggressive Behaviors	
	Caregiver Burden	
	Emotional Dysregulation	yes
	Seizure/Convulsions	yes
Growth and Development process of change across a combination of physical, emotional, cognitive, social, and language areas over the course of childhood	Adaptive Functioning	yes
	Cognitive Functioning	yes
	Executive Functioning	
	Expressive Communication ^a	yes
	Fine Motor Functions	yes
	Independence	
	Intellectual & Developmental Disability	
Physiological/Clinical observable and measurable abnormal changes and symptoms in the body as a result of CTD/GAMT	EEG Epileptic Potentials	
	MRS Brain Creatine	yes
	MRI Brain General	
	MRS Brain Guanidinoacetate	
	MRS Brain Phosphocreatine	
	Serum/Plasma Creatine	
	Serum/Plasma Guanidinoacetate	yes
Lifespan/Death the length/end of a person's life	Life Expectancy	

Note: ^aOutcome was originally called "Expressive Language" but was changed to

"Expressive Communication" during the consensus workshop.

Table 3. The final core outcome set (COS) for CTD and GAMT.

Core Outcome	Definition
Adaptive Functioning	An individual's level of independence in functioning compared to similarly-aged peers, in areas including communication and practical tasks, such as daily living skills involving toileting, eating, dressing, and hygiene
Cognitive Functioning	Specific mental abilities, including the ability to learn, think, remember, problem solve, as well as decision-making, and attention
Emotional Dysregulation	Having a difficult time appropriately managing and controlling one's feelings and emotional responses
Expressive Communication	Ability to express one's needs and wants through communication
Fine Motor Functions	Motor skills that involve the smaller muscles (e.g., wrists, hands, fingers) and allow for more precise movement
MRS Brain Creatine ^a	Amount of creatine in the brain as determined by magnetic resonance spectroscopy (MRS), a technique that shows the levels of chemical components in the brain
Seizure/Convulsions	Sudden and uncontrollable movements and/or loss of consciousness and/or loss of body control; episodes can be self-limiting and last for a few seconds, or they can persist, or come in clusters
Serum/Plasma Guanidinoacetate ^b	Amount of guanidinoacetate in the serum or plasma

Note: Consensus workshop participants provided comments on two of the eight outcomes. ^a“MRS Brain Creatine” is worth noting in GAMT clinical trials. However, it is anticipated that this biomarker may remain stable if the patient received oral creatine supplementation prior to the trial. ^b“Serum/Plasma Guanidinoacetate” should be measured in GAMT clinical trials, but is not an appropriate outcome in CTD trials.

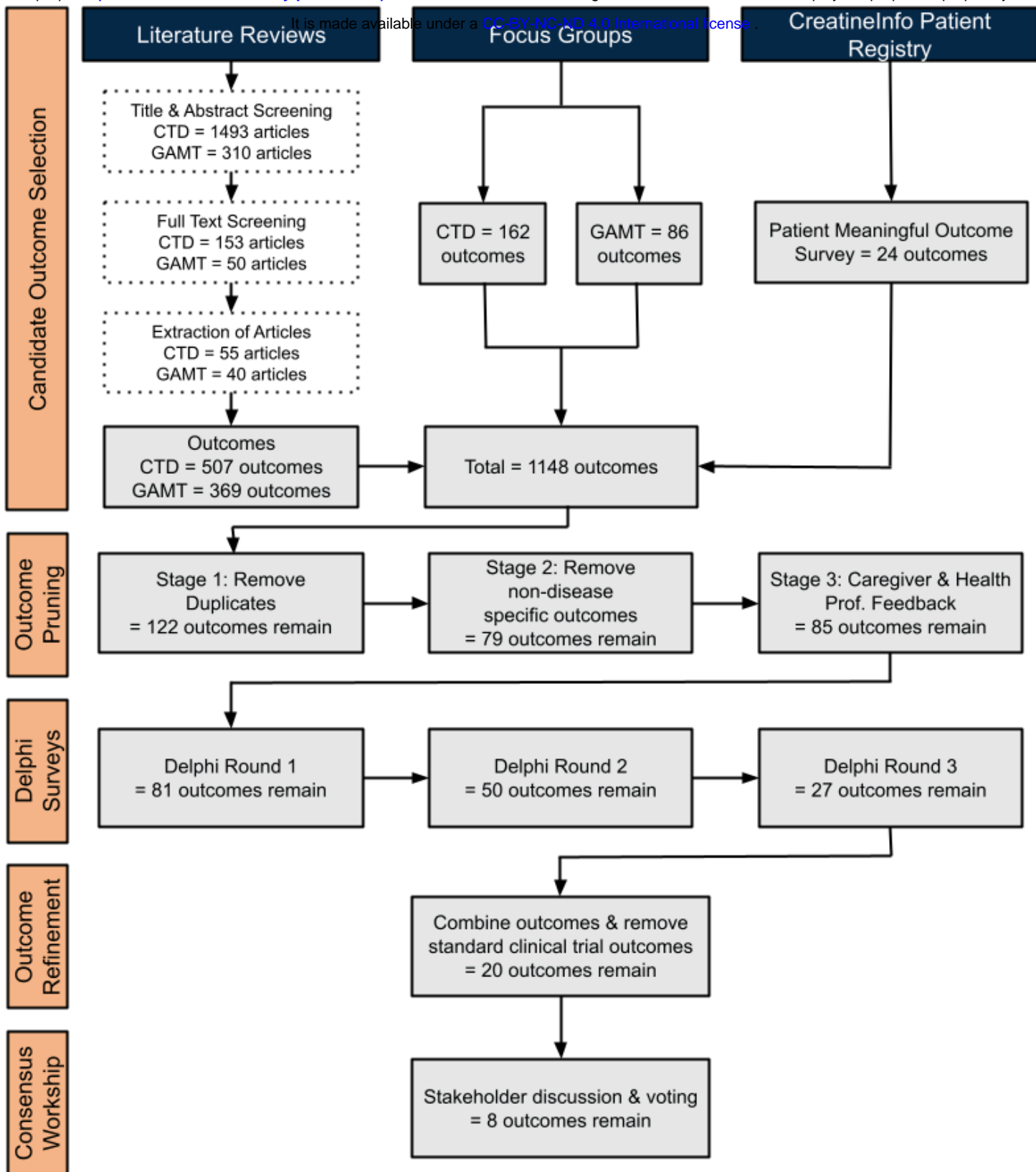
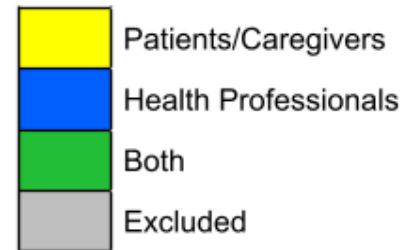


Figure 1. Outcome selection process for COS development for CTD and GAMT. During the candidate outcome selection phase, the total number of candidate outcomes gathered during each stage are identified. During the remaining project phases, the total number of remaining outcomes at the end of each stage are identified.

It is made available under a [CC-BY-NC-ND 4.0 International license](https://creativecommons.org/licenses/by-nc-nd/4.0/).

Adaptive Functioning					
Daily Living Skills					
Cognitive Functioning					
Emotional Dysregulation					
MRS Brain Creatine					
Seizures/Convulsions					
Serum/Plasma Guanidinoacetate (GAA)					
Expressive Communication					◆
Fine Motor Functions					◆
MRI Brain, General ▲					+
MRS Brain Guanidinoacetate					+
Serum/Plasma Creatine					+
Aggressive Behaviors					
Caregiver Burden ■					
EEG Epileptic Potentials					
Executive Functioning					
Independence					
Intellectual and Developmental Disability					
Life Expectancy					
MRS Brain Phosphocreatine					
Receptive Language					
Treatment Access ■					○
Treatment Efficacy ■					○
Treatment Practicability					○
Treatment Safety ■					○
Treatment Tolerability ■					○
Coordination					
EEG Abnormal Unspecific					
Healthcare System Resource Availability ■					
Low Muscle Tone, Hypotonia					
MRI Brain Basal Ganglia					
MRI Brain Atrophy					
MRI Brain White Matter					
MRI Cerebellum & Brainstem					
Self-Protection					
Sensory Processing Issues					
Urine Creatine/Creatinine					
Walking Ability					
Ataxia					
Autism Spectrum Disorder (ASD)					
QTc and Prolonged QTc					
Attention Deficit/Hyperactivity Disorder (ADHD)					
CSF Creatine					
CSF Guanidinoacetate (GAA)					
Healthcare System Resource Use					
High Muscle Tone, Spasticity					
Sleep Disturbance					
Social Relationships					
Urine Guanidinoacetate (GAA)					
Academic Achievement					
Anxiety					
Arrhythmia					
Bladder Incontinence					
Body Length					
Breath-Holding					
Cardiac Events ■					
Cardiomyopathy					
Constipation					
Depression					
Dystonia					
Educational Resource Use ▲					
Failure to Thrive					
Feeding and Eating Problems					
Frustration					
Intolerance to Change					
Low Energy					
Muscle Weakness					
Obsessive Compulsive Behavior					
Oppositional Defiant Behavior ■					
Pain					
Physical Activity					
Physical Endurance					
Psychosis					
Regression					
Repetitive Behaviors					
Restlessness/Agitation					
Self-Injury					
Vision Impairment					
Vomiting					
Weight					
Diarrhea					
Gastroesophageal Reflux Disease (GERD)					
Hearing Impairment					
Strabismus and Gaze Palsy					

Outcomes Meeting Inclusion Criteria Based on Stakeholder Group



Additional Designations

- From focus groups
- ▲ From project team
- Removed; typically included in clinical trial design
- ◆ Did not meet criteria, but still included in COS
- ⊕ Not included in COS, but worth measuring

Figure 2. Outcomes remaining after each Delphi survey round and the consensus workshop. Column headers reflect the Delphi round and each set of inclusion criteria. The inclusion criteria for each round were as follows: Delphi 1, rated ≥ 3 by $\geq 70\%$ of any stakeholder group; Delphi 2, rated ≥ 7 by $\geq 70\%$ of any stakeholder group; Delphi 3-1, rated ≥ 7 by $\geq 70\%$ of any stakeholder group; Delphi 3-2, mean rating ≥ 7 for any stakeholder group; Delphi 3-3, ranked in top 10 by $\geq 15\%$ of any stakeholder group; Consensus (C), $\geq 50\%$ of workshop participants voted outcome as “1-Definitely In”. Stakeholders meeting the inclusion criteria for each outcome are identified by color: patients/caregivers (yellow), health professionals (blue), both patients/caregivers and health professionals (green), outcome did not meet the criteria and was excluded (gray). Some outcomes were combined and/or changed throughout the process: “Developmental Delay” and “Intellectual Disability” were combined into “Intellectual and Developmental Disability”, “Adaptive Functioning” and “Daily Living Skills” were combined into “Adaptive Functioning”, and “Expressive Language” was changed to “Expressive Communication”. Outcomes marked with ■ came exclusively from the focus groups. Outcomes marked with ▲ were introduced by the project team during the pruning phase. Outcomes marked with ○ were removed by the project team because they are typically already included in clinical trial designs. Outcomes marked with ◆ did not meet the consensus workshop inclusion criteria but were later included after unanimous agreement among participants. Outcomes marked with + are not included in the COS, but are worth measuring alongside the COS.

REFERENCES

1. Sun W, Wang Y, Wu M, et al. Fourteen cases of cerebral creatine deficiency syndrome in children: a cohort study in China. *Transl Pediatr.* 2023;12(5):927-937. doi:10.21037/tp-23-164
2. Tise CG, Palma MJ, Cusmano-Ozog KP, Matalon DR. Creatine Transporter Deficiency Presenting as Failure to Thrive: A Case Report of a Novel *SLC6A8* Variant Causing a Treatable but Likely Underdiagnosed Genetic Disorder. *J Investig Med High Impact Case Rep.* 2023;11:23247096231154438. doi:10.1177/23247096231154438
3. Fernandes-Pires G, Braissant O. Current and potential new treatment strategies for creatine deficiency syndromes. *Mol Genet Metab.* 2022;135(1):15-26. doi:10.1016/j.ymgme.2021.12.005
4. Dunbar M, Jaggumantri S, Sargent M, Stockler-Ipsiroglu S, van Karnebeek CD. Treatment of X-linked creatine transporter (*SLC6A8*) deficiency: systematic review of the literature and three new cases. *Mol Genet Metab.* 2014;112(4):259-274. doi:10.1016/j.ymgme.2014.05.011
5. Stockler-Ipsiroglu S, van Karnebeek CD. Cerebral creatine deficiencies: a group of treatable intellectual developmental disorders [published correction appears in *Semin Neurol.* 2014 Sep;34(4):479]. *Semin Neurol.* 2014;34(3):350-356. doi:10.1055/s-0034-1386772
6. Neu A, Neuhoff H, Trube G, et al. Activation of GABA(A) receptors by guanidinoacetate: a novel pathophysiological mechanism. *Neurobiol Dis.* 2002;11(2):298-307. doi:10.1006/nbdi.2002.0547

7. Schulze A, Tran C, Levandovskiy V, Patel V, Cortez MA. Systemic availability of guanidinoacetate affects GABAA receptor function and seizure threshold in GAMT deficient mice. *Amino Acids*. 2016;48(8):2041-2047.
doi:10.1007/s00726-016-2197-0
8. Meera P, Uusi-Oukari M, Wallner M, Lipshutz GS. Guanidinoacetate (GAA) is a potent GABA_A receptor GABA mimetic: Implications for neurological disease pathology. *J Neurochem*. 2023;165(3):445-454. doi:10.1111/jnc.15774
9. Hanna-El-Daher L, Béard E, Henry H, Tenenbaum L, Braissant O. Mild guanidinoacetate increase under partial guanidinoacetate methyltransferase deficiency strongly affects brain cell development. *Neurobiol Dis*. 2015;79:14-27.
doi:10.1016/j.nbd.2015.03.029
10. Passi GR, Pandey S, Devi ARR, et al. Cerebral creatine deficiency disorders - A clinical, genetic and follow up study from India. *Brain Dev*. 2022;44(4):271-280.
doi:10.1016/j.braindev.2021.12.004
11. Mercimek-Andrews S, Salomons GS. Creatine Deficiency Disorders. In: Adam MP, Feldman J, Mirzaa GM, et al., eds. *GeneReviews*®. Seattle (WA): University of Washington, Seattle; January 15, 2009.
12. Thurm A, Srivastava S. On Terms: What's in a Name? Intellectual Disability and "Condition," "Disorder," "Syndrome," "Disease," and "Disability". *Am J Intellect Dev Disabil*. 2022;127(5):349-354. doi:10.1352/1944-7558-127.5.349
13. Li J, Xu S. Diagnosis and Treatment of X-Linked Creatine Transporter Deficiency: Case Report and Literature Review. *Brain Sci*. 2023;13(10):1382. Published 2023 Sep 28. doi:10.3390/brainsci13101382

14. Valayannopoulos V, Boddaert N, Chabli A, et al. Treatment by oral creatine, L-arginine and L-glycine in six severely affected patients with creatine transporter defect. *J Inherit Metab Dis*. 2012;35(1):151-157. doi:10.1007/s10545-011-9358-9
15. Chilosi A, Casarano M, Comparini A, et al. Neuropsychological profile and clinical effects of arginine treatment in children with creatine transport deficiency. *Orphanet J Rare Dis*. 2012;7:43. Published 2012 Jun 19.
doi:10.1186/1750-1172-7-43
16. Ensenauer R, Thiel T, Schwab KO, et al. Guanidinoacetate methyltransferase deficiency: differences of creatine uptake in human brain and muscle. *Mol Genet Metab*. 2004;82(3):208-213. doi:10.1016/j.ymgme.2004.04.005
17. Schulze A, Battini R. Pre-symptomatic treatment of creatine biosynthesis defects. *Subcell Biochem*. 2007;46:167-181. doi:10.1007/978-1-4020-6486-9_9
18. Schulze A, Ebinger F, Rating D, Mayatepek E. Improving treatment of guanidinoacetate methyltransferase deficiency: reduction of guanidinoacetic acid in body fluids by arginine restriction and ornithine supplementation. *Mol Genet Metab*. 2001;74(4):413-419. doi:10.1006/mgme.2001.3257
19. Stöckler S, Hanefeld F, Frahm J. Creatine replacement therapy in guanidinoacetate methyltransferase deficiency, a novel inborn error of metabolism. *Lancet*. 1996;348(9030):789-790.
doi:10.1016/s0140-6736(96)04116-5
20. Stockler-Ipsiroglu S, van Karnebeek C, Longo N, et al. Guanidinoacetate methyltransferase (GAMT) deficiency: outcomes in 48 individuals and

- recommendations for diagnosis, treatment and monitoring. *Mol Genet Metab.* 2014;111(1):16-25. doi:10.1016/j.ymgme.2013.10.018
21. Verbruggen KT, Sijens PE, Schulze A, et al. Successful treatment of a guanidinoacetate methyltransferase deficient patient: findings with relevance to treatment strategy and pathophysiology. *Mol Genet Metab.* 2007;91(3):294-296. doi:10.1016/j.ymgme.2007.03.006
22. Viau KS, Ernst SL, Pasquali M, Botto LD, Hedlund G, Longo N. Evidence-based treatment of guanidinoacetate methyltransferase (GAMT) deficiency. *Mol Genet Metab.* 2013;110(3):255-262. doi:10.1016/j.ymgme.2013.08.020
23. Leuzzi V, Mastrangelo M, Battini R, Cioni G. Inborn errors of creatine metabolism and epilepsy. *Epilepsia.* 2013;54(2):217-227. doi:10.1111/epi.12020
24. Dhar SU, Scaglia F, Li FY, et al. Expanded clinical and molecular spectrum of guanidinoacetate methyltransferase (GAMT) deficiency. *Mol Genet Metab.* 2009;96(1):38-43. doi:10.1016/j.ymgme.2008.10.008
25. Farr CV, El-Kasaby A, Freissmuth M, Sucic S. The Creatine Transporter Unfolded: A Knotty Premise in the Cerebral Creatine Deficiency Syndrome. *Front Synaptic Neurosci.* 2020;12:588954. Published 2020 Oct 23. doi:10.3389/fnsyn.2020.588954
26. Iqbal F, Hoeger H, Lubec G, Bodamer O. Biochemical and behavioral phenotype of AGAT and GAMT deficient mice following long-term Creatine monohydrate supplementation. *Metab Brain Dis.* 2017;32(6):1951-1961. doi:10.1007/s11011-017-0092-3

27. Marten LM, Krätzner R, Salomons GS, et al. Long term follow-up in GAMT deficiency - Correlation of therapy regimen, biochemical and *in vivo* brain proton MR spectroscopy data. *Mol Genet Metab Rep*. 2024;38:101053. Published 2024 Jan 18. doi:10.1016/j.ymgmr.2024.101053
28. Molinaro A, Alessandri MG, Putignano E, et al. A Nervous System-Specific Model of Creatine Transporter Deficiency Recapitulates the Cognitive Endophenotype of the Disease: a Longitudinal Study. *Sci Rep*. 2019;9(1):62. Published 2019 Jan 11. doi:10.1038/s41598-018-37303-1
29. Tingley K, Coyle D, Graham ID, et al. Using a meta-narrative literature review and focus groups with key stakeholders to identify perceived challenges and solutions for generating robust evidence on the effectiveness of treatments for rare diseases. *Orphanet J Rare Dis*. 2018;13(1):104. Published 2018 Jun 28. doi:10.1186/s13023-018-0851-1
30. Griggs RC, Batshaw M, Dunkle M, et al. Clinical research for rare disease: opportunities, challenges, and solutions. *Mol Genet Metab*. 2009;96(1):20-26. doi:10.1016/j.ymgme.2008.10.003
31. Mellerio JE. The challenges of clinical trials in rare diseases. *Br J Dermatol*. 2022;187(4):453-454. doi:10.1111/bjd.21686
32. Kaufmann P, Pariser AR, Austin C. From scientific discovery to treatments for rare diseases - the view from the National Center for Advancing Translational Sciences - Office of Rare Diseases Research. *Orphanet J Rare Dis*. 2018;13(1):196. Published 2018 Nov 6. doi:10.1186/s13023-018-0936-x

33. Logviss K, Krievins D, Purvina S. Characteristics of clinical trials in rare vs. common diseases: A register-based Latvian study. *PLoS One*. 2018;13(4):e0194494. Published 2018 Apr 3. doi:10.1371/journal.pone.0194494
34. Schmitt J, Lange T, Kottner J, et al. Cochrane Reviews and Dermatological Trials Outcome Concordance: Why Core Outcome Sets Could Make Trial Results More Usable. *J Invest Dermatol*. 2019;139(5):1045-1053. doi:10.1016/j.jid.2018.11.019
35. Gargon E, Gurung B, Medley N, et al. Choosing important health outcomes for comparative effectiveness research: a systematic review. *PLoS One*. 2014;9(6):e99111. Published 2014 Jun 16. doi:10.1371/journal.pone.0099111
36. Morel T, Cano SJ. Measuring what matters to rare disease patients - reflections on the work by the IRDiRC taskforce on patient-centered outcome measures. *Orphanet J Rare Dis*. 2017;12(1):171. Published 2017 Nov 2. doi:10.1186/s13023-017-0718-x
37. Contesse MG, Valentine JE, Wall TE, Leffler MG. The Case for the Use of Patient and Caregiver Perception of Change Assessments in Rare Disease Clinical Trials: A Methodologic Overview. *Adv Ther*. 2019;36(5):997-1010. doi:10.1007/s12325-019-00920-x
38. Faulkner SD, Somers F, Boudes M, Nafria B, Robinson P. Using Patient Perspectives to Inform Better Clinical Trial Design and Conduct: Current Trends and Future Directions. *Pharmaceut Med*. 2023;37(2):129-138. doi:10.1007/s40290-022-00458-4

39. Williamson PR, Altman DG, Blazeby JM, et al. Developing core outcome sets for clinical trials: issues to consider. *Trials*. 2012;13:132. Published 2012 Aug 6.
doi:10.1186/1745-6215-13-132
40. Clarke M. Standardising outcomes for clinical trials and systematic reviews. *Trials*. 2007;8:39. Published 2007 Nov 26. doi:10.1186/1745-6215-8-39
41. Williamson PR, Altman DG, Bagley H, et al. The COMET Handbook: version 1.0. *Trials*. 2017;18(Suppl 3):280. Published 2017 Jun 20.
doi:10.1186/s13063-017-1978-4
42. Sinha IP, Smyth RL, Williamson PR. Using the Delphi technique to determine which outcomes to measure in clinical trials: recommendations for the future based on a systematic review of existing studies. *PLoS Med*. 2011;8(1):e1000393. Published 2011 Jan 25. doi:10.1371/journal.pmed.1000393
43. Kirkham JJ, Davis K, Altman DG, et al. Core Outcome Set-STAndards for Development: The COS-STAD recommendations. *PLoS Med*. 2017;14(11):e1002447. Published 2017 Nov 16.
doi:10.1371/journal.pmed.1002447
44. Developing a Core Outcomes Set (COS) for Creatine Transporter Deficiency (CTD) and Guanidinoacetate Methyltransferase (GAMT) Deficiency. COMET Initiative. Accessed July 25, 2024.
<https://www.comet-initiative.org/Studies/Details/3162>
45. Kirkham JJ, Gorst S, Altman DG, et al. Core Outcome Set-STAndards for Reporting: The COS-STAR Statement. *PLoS Med*. 2016;13(10):e1002148. Published 2016 Oct 18. doi:10.1371/journal.pmed.1002148

46. Parents Advancing REsearch NeTworkS (PAREnTs). Patient-Centered Outcomes Research Institute. Updated April 12, 2024. Accessed June 6, 2024.
<http://www.pcori.org/research-results/2021/parents-advancing-research-networks-parents>
47. Garritty C, Gartlehner G, Kamel C, et al. Cochrane Rapid Reviews. Interim Guidance from the Cochrane Rapid Reviews Methods Group. March 2020.
48. PROSPERO. University of York Centre for Reviews and Dissemination.
Accessed August 1, 2022. <http://www.crd.york.ac.uk/PROSPERO/>
49. Open Science Framework (OSF). Accessed May 9, 2022. <http://osf.io/>
50. Covidence. Accessed September 15, 2022. <https://www.covidence.org/>
51. CreatineInfo Registry. Accessed July 25, 2024. <https://creatineinfo.iamrare.org/>
52. Iyer S, Potter BK, Reinhardt EK, Balog S, Trutoiu L. Patient and caregiver perceptions about the importance of different outcomes for CCDS: Results from a registry-based survey. Talk presented at: *2022 CCDS Scientific & Patient Symposium*; July 25, 2022; Park City, UT.
53. Rowe G, Wright, G. The Delphi technique: Past, present, and future prospects—Introduction to the special issue. *Technol Forecast Soc Change*. 2011; 78(9), 1487-1490. doi:10.1016/j.techfore.2011.09.002
54. Harris PA, Taylor R, Thielke R, Payne J, Gonzalez N, Conde JG. Research electronic data capture (REDCap)—a metadata-driven methodology and workflow process for providing translational research informatics support. *J Biomed Inform*. 2009;42(2):377-381. doi:10.1016/j.jbi.2008.08.010

55. Harris PA, Taylor R, Minor BL, et al. The REDCap consortium: Building an international community of software platform partners. *J Biomed Inform.* 2019;95:103208. doi:10.1016/j.jbi.2019.103208
56. Barrios M, Guilera G, Nuño L, Gómez-Benito J. Consensus in the delphi method: What makes a decision change?. *Technol Forecast Soc Change.* 2021;163, 120484.
57. Harvey N, Holmes CA. Nominal group technique: an effective method for obtaining group consensus. *Int J Nurs Pract.* 2012;18(2):188-194. doi:10.1111/j.1440-172X.2012.02017.x
58. Boers M, Kirwan JR, Wells G, et al. Developing core outcome measurement sets for clinical trials: OMERACT filter 2.0. *J Clin Epidemiol.* 2014;67(7):745-753. doi:10.1016/j.jclinepi.2013.11.013
59. Joachim KC, Farid-Kapadia M, Butcher NJ, et al. Core outcome set for children with neurological impairment and tube feeding. *Dev Med Child Neurol.* 2020;62(2):201-206. doi:10.1111/dmcn.14326
60. Mercimek-Mahmutoglu S, Stoeckler-Ipsiroglu S, Adami A, et al. GAMT deficiency: features, treatment, and outcome in an inborn error of creatine synthesis. *Neurology.* 2006;67(3):480-484. doi:10.1212/01.wnl.0000234852.43688.bf
61. Metryka A, Brown N, Mercer J, Wilkinson S, Jones S, Williamson P, Bruce I. Toward a core outcome set for head, neck, and respiratory disease in mucopolysaccharidosis type II: systematic literature review and assessment of

heterogeneity in outcome reporting. *J Inborn Errors Metab Screen*. 2019;7, 2326409818816721.

62. Howie AH, Tingley K, Inbar-Feigenberg M, et al. Establishing a core outcome set for mucopolysaccharidoses (MPS) in children: study protocol for a rapid literature review, candidate outcomes survey, and Delphi surveys [published correction appears in *Trials*. 2021 Dec 9;22(1):893. doi: 10.1186/s13063-021-05893-3]. *Trials*. 2021;22(1):816. Published 2021 Nov 17. doi:10.1186/s13063-021-05791-8
63. Pugliese M, Tingley K, Chow A, et al. Core Outcome Sets for Medium-Chain Acyl-CoA Dehydrogenase Deficiency and Phenylketonuria. *Pediatrics*. 2021;148(2):e2020037747. doi:10.1542/peds.2020-037747
64. Harman NL, Bruce IA, Kirkham JJ, et al. The Importance of Integration of Stakeholder Views in Core Outcome Set Development: Otitis Media with Effusion in Children with Cleft Palate. *PLoS One*. 2015;10(6):e0129514. Published 2015 Jun 26. doi:10.1371/journal.pone.0129514