

Impact of vaccination on SARS-CoV-2 transmission in the UK: a modelling study

Authors:

Nieves Derqui¹, Swapnil Mishra^{1,2}, Wes R Hinsley¹, Samir Bhatt^{1,3} and Daniel J Laydon^{1,*}

Affiliations:

¹ MRC Centre for Global Infectious Diseases Analysis, School of Public Health, Imperial College London, UK

² Saw Swee Hock School of Public Health, National University of Singapore

³ Section of Epidemiology, Department of Public Health, University of Copenhagen

* Corresponding author: d.laydon@imperial.ac.uk

Word count:

Abstract: 396

Main text: 3,118

Abstract

Background: Efficacy and effectiveness of vaccines against SARS-CoV-2 infection, severe disease and death have been widely assessed. However, the impact of vaccination against SARS-CoV-2 transmission is far less well-characterized, and has major implications for public health, because it informs the indirect effects of vaccination in addition to its direct effects. Analysing the effects of SARS-CoV-2 vaccination on transmission is challenging, because they must be considered in tandem with the time-varying reproduction number (R_t), while also accounting for regional variability, for example due to the presence of more transmissible variants.

Methods: We fitted a Bayesian hierarchical model to previously obtained estimates of R_t to estimate the effectiveness of vaccination with one, two and three doses on SARS-CoV-2 transmission in the UK during 2021. Vaccine effectiveness is defined as the proportional reduction in the time-varying reproduction number R_t . The model accounts for transmission at national and Lower Tier Local Authority (LTLA)-level, and uses vaccination data provided by the UK Health Security Agency (UKHSA), detailing the LTLA-specific proportions of people who have received doses one, two and three. The model also incorporates data on the proportion of wild-type, Alpha and Delta SARS-CoV-2 variants over time in each LTLA, obtained from UKHSA and the COVID-19 Genomics UK (COG-UK) Consortium.

Results: We find that vaccination had moderate-to-large effectiveness against transmission for dose 1 (39.30%, 95% CrI 26.64% - 48.07%), and for dose 3 (48.69%, 95% CrI 27.97% - 71.30%), but negligible effects on dose 2, likely attributable to the coincident importation and dominance of the Delta variant in the UK. Nationally, our model fitted the previously estimated values of time-series of R_t values well, largely reproducing the reproduction number averaged across LTLAs for each timepoint. This lends support to our hypothesis that the extent of vaccination (or lack thereof) was a major determinant of transmission intensity. Our model fits further reproduced well the reproduction numbers at regional level, although outliers were less well captured, implying some degree of variation that is not explained by our model.

Conclusions: To our knowledge, our analysis is the first evidence of the effectiveness of SARS-CoV-2 vaccination against its transmission at population level. We find that vaccination is an effective tool for the control of SARS-CoV-2 transmission, in addition to its well-documented effects on disease burden and mortality. Our results allow future assessment of the impact of vaccination accounting for several circulating variants and sociodemographic factors.

Keywords: Epidemiology, SARS-CoV-2, COVID-19, vaccination, reproduction number, R_t , Bayesian hierarchical model

Introduction

Mass vaccination against SARS-CoV-2 was introduced in December 2020 in the UK [1]. SARS-CoV-2 vaccines had been proven safe and efficacious in clinical trials [2-4], and further analyses demonstrated their effectiveness to reduce infections, symptomatic disease, hospitalisations and death [5, 6]. In the UK, vaccinated individuals had an adjusted hazard ratio of 0.44 for infection versus those unvaccinated [7], and vaccines were proven highly efficacious against Alpha and Delta variants [8]. Globally, a study published in 2022 demonstrated that SARS-CoV-2 vaccination averted 14.4 million deaths [9]. Nevertheless, evidence on the impact of vaccination on SARS-CoV-2 transmission remains scarce [10, 11], with no studies thus far calculating the impact of SARS-CoV-2 vaccination on the real-time reproduction number R_t (or effective reproduction number).

To accurately estimate the impact of vaccination on SARS-CoV-2 transmission in the UK, it is important to understand and model the complex progression of R_t in the UK. SARS-CoV-2 transmission in the UK was determined by multiple periods of increased and decreased transmission, as different viral variants emerged [12-17], non-pharmaceutical interventions were enacted [18, 19], and vaccines were rolled out. However, SARS-CoV-2 variants spread differently across UK's regions [13, 16]. Further, vaccination uptake varied across UK Lower Tier Local Authorities (LTLA). Additionally, regions vary in their background immunity, as well as a myriad of sociodemographic factors. Thus, analysing the impact of vaccination on SARS-CoV-2 transmission must consider the regional variation on the proportion of circulating variants and vaccination uptake. This is vital for public health in order to ascertain not only a vaccine's direct effects on preventing hospitalizations and deaths, but also its indirect effects that prevent further onward transmission. The UK's vaccine rollout in 2021 allows efficacy against transmission to be estimated, because of its increase in vaccination uptake, and the variation between LTLAs in their speed of vaccine uptake.

The aim of this study was to measure the impact of vaccination on SARS-CoV-2 R_t across UK LTLAs. To do so, we used multiple detailed datasets reporting: i) the proportions of vaccine uptake for each LTLA throughout 2021; ii) the proportions of each SARS-CoV-2 variant circulating in each LTLA over time; and iii) the time-varying R_t in each LTLA. With all data sources, we were able to obtain a high-resolution dataset that combined information on the transmission of SARS-CoV-2 in each LTLA in the UK with the corresponding vaccination uptake and proportion of circulating variants. Furthermore, we developed a Bayesian hierarchical model [20] that

estimates the effect of SARS-CoV-2 vaccination with one, two and three doses on transmission across LTLAs.

Methods

Data sources and definitions

Vaccination data was available from UK Health Security Agency (UKHSA) [21] from 8th December 2020 until 14th November 2021. The number of vaccinated individuals, as well as the proportion of vaccinees from the overall population, was available for every Lower Tier Local Authority (LTLA) at each timepoint.

Data on the number of each SARS-CoV-2 variant detected in each LTLA over time was calculated using the variants and mutations (VAM) linelist provided by UKHSA, and public genomic survey data provided by the COVID-19 Genomics UK (COG-UK) Consortium. This data was used to estimate each LTLA's proportion of circulating "wild-type", Alpha and Delta variants. Note that only these three variants were considered for this analysis, and thus the sum of the proportions of wild-type, Alpha and Delta variants for every LTLA and timepoint was always one. Data on circulating variants was available from 2nd February 2020 until 5th July 2022.

Real-time effective reproduction number estimates, henceforth referred to as "observed R_t " for brevity (with the caveat that this is a slight misnomer), considered in the analyses were obtained using an previously established method [22], considering national and regional data on daily SARS-CoV-2 cases and death and sero-surveillance data. Observed R_t were available from 30th January 2021 until 2nd January 2022 for each timepoint and LTLA.

Only those timepoints with complete data (i.e., vaccination, circulating variants and observed R_t data available) were considered. Therefore, analyses run with data from 30th January 2021 until 14th November 2021. This precluded analysis of Omicron as it was only detected in the UK in late 2021. Though data was available daily, for simplicity, timepoints were considered weekly. Final dataset included 9,282 total observations from 221 LTLAs over 42 weeks.

Modelling the effect of vaccination

To estimate the effect of vaccination on transmission, we developed a Bayesian hierarchical model of the evolution of SARS-CoV-2 reproduction number in the UK, where $R_m(t)$ denotes the time-varying reproduction number for times $t = 1, \dots, \tau$ (treated discretely in weeks) in each UK LTLA $m = 1, \dots, M$. Our final dataset had $\tau = 42$ weeks and $M = 221$ LTLAs. The model allowed

for random variation in $R_m(t)$, which is assumed to be normally distributed about means μ_m in each LTLA m with a standard deviation σ as follows:

$$R_m(t) = \text{Normal}(\mu_m, \sigma),$$

where μ_m is defined by the following expression:

$$\mu_m = \sum_{v=1}^{N_v} p_{vmt} M_v g_m \lambda(t) \prod_{d=1}^D (1 - \rho_{mdt} VE_d).$$

To account for national and LTLA-specific trends in transmission, we defined $\lambda(t)$ as the national SARS-CoV-2 transmission trend for each time t , and $g_m \lambda(t)$ as the national trend transformed to LTLA level for each time t in each LTLA m . To convert the national SARS-CoV-2 transmission trend to LTLA-specific trend, we considered a transformation where g_m is defined as a LTLA-specific multiplier that allowed for the national trend to be scaled to LTLA level. These only described the national or LTLA-specific SARS-CoV-2 transmission trends, without considering the effect of vaccination or increased transmission by viral variants.

To account for the circulation of more transmissible variants, we defined a term to multiply the LTLA-specific trend. For $v = 1, \dots, N_v$ variants, we defined p_{vmt} as the proportion of variant v in LTLA m at time t , and M_v as the relative transmission advantage of variant v . Thus, the LTLA-specific trend at time t in LTLA m considering increased or decreased transmission due to variant v , but without considering the effect of vaccination, would be denoted by $\sum_{v=1}^{N_v} p_{vmt} M_v g_m \lambda(t)$. We only considered SARS-CoV-2 wild-type, Alpha and Delta variants due to data availability (see above), and assumed that $\sum_{v=1}^{N_v} p_{vmt} = 1$ for all times t and all regions m . Note that a variant's relative transmission advantage is relative to wild-type variant, and thus $M_1 = 1$.

The reduction in transmission by all doses of vaccination was defined by $\prod_{d=1}^D (1 - \rho_{mdt} VE_d)$, where ρ_{mdt} is the proportion of vaccinated individuals in each LTLA m at a timepoint t with a dose $d = 1, \dots, D$, and VE_d is the vaccination efficacy against SARS-CoV-2 transmission in a population 100% vaccinated with a dose d . A maximum of three doses was considered, and so $D = 3$.

The model is given below:

$$R_m(t) \sim \text{Normal}(\mu_m, \sigma)$$

$$\mu_m = \sum_{v=1}^{N_v} p_{vmt} M_v g_m \lambda(t) \prod_{d=1}^D (1 - \rho_{mdt} VE_d)$$

$$M_v \sim \text{Normal}(0, \psi_1)$$

$$g_m \sim \text{Normal}(0, \psi_2)$$

$$\lambda \sim \text{Normal}(0, \psi_3)$$

$$VE_d \sim \text{Normal}(0, \psi_4)$$

$$\psi_1, \psi_2, \psi_3, \psi_4 \sim \text{Normal}(0, 2)$$

$$\sigma \sim \text{Normal}(0, 2)$$

Model outcomes and counterfactuals

We report the model-predicted R_t for each LTLA and timepoint, given by the expression $\sum_{v=1}^{N_v} p_{vmt} M_v g_m \lambda(t) \prod_{d=1}^D (1 - \rho_{mat} VE_d)$. Additionally, as a counterfactual, we also estimated R_t in the absence of vaccination (i.e. the national and LTLA-specific transmission trends considering the variants advantage and defined by the $\sum_{v=1}^{N_v} p_{vmt} M_v g_m \lambda(t)$ term). To report all model-predicted estimates, we calculated the average estimate across iterations and the 2.5% and 97.5% credible intervals.

Software

Analyses were conducted on R [23], version 4.2.3. The model was implemented in Stan [24], through the R package 'rstan'[25], using 5,000 iterations with a warm-up of 1000 iterations across 10 chains. Leave-one-out cross-validation was performed with the 'loo' package [26]. All plots were generated using 'ggplot2' [27].

Data availability

All model code is available at https://github.com/NDerqui/Vaccine_Model.

Results

Description of data available

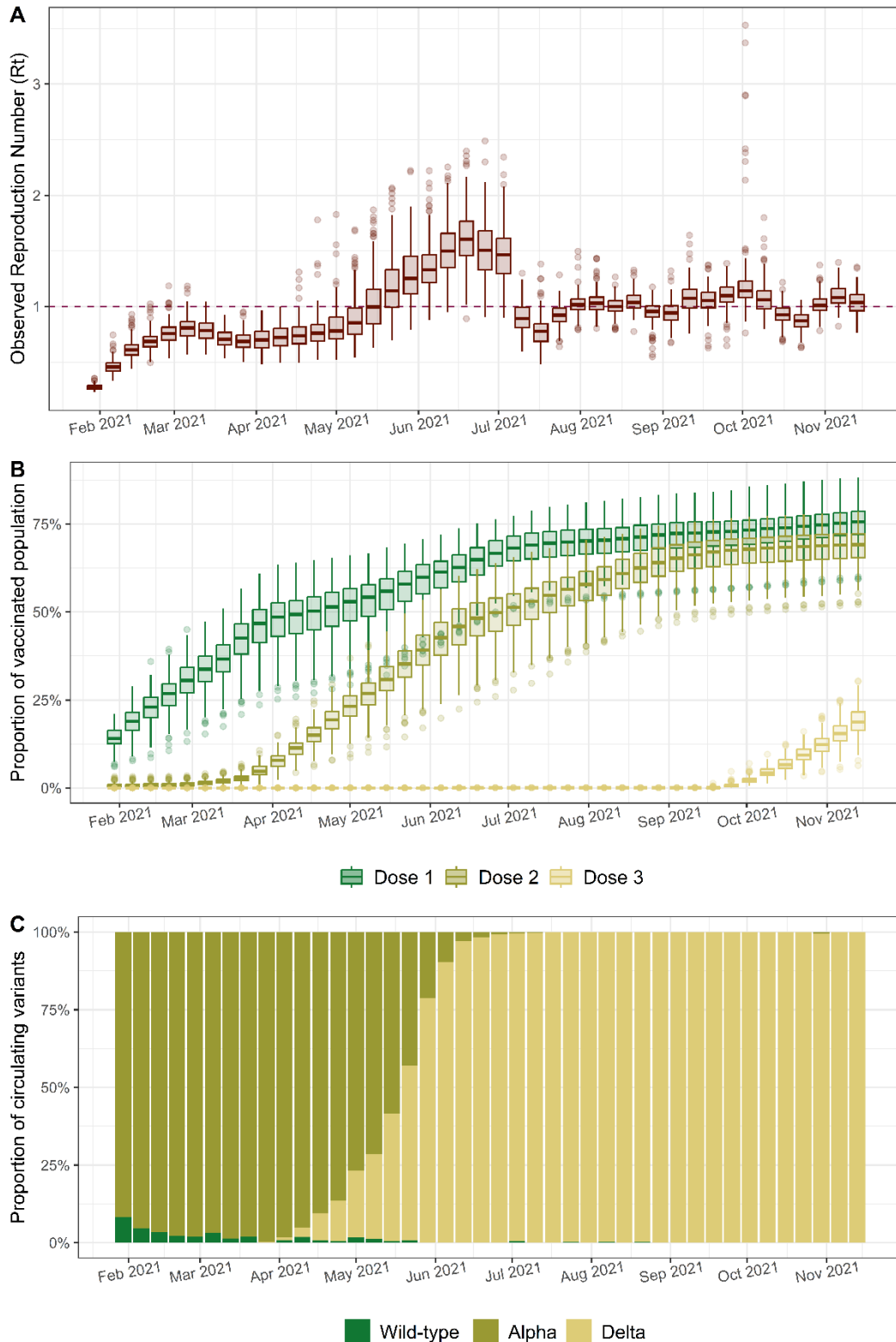
The distribution of observed reproduction number (R_t) estimates across LTLAs over the study time is displayed on Figure 1A. From January until April 2021, R_t estimates remained below 1. Median R_t in the UK was around 0.6, and there was little variability between LTLAs. There was a gradual increase in R_t estimates around mid-April, with median values rising from 0.7 in April to 1.5 in July.

By then, the variability across LTLAs was more pronounced, with maximum R_t values reaching 2.5. A sudden drop in R_t estimates was observed in mid-July, with median values decreasing to around 1. Less variability across LTLAs was observed between July and November.

The proportions of people vaccinated with one, two or three doses across LTLAs during the defined study time is depicted on Figure 1B. An increasing proportion of one dose-vaccinated individuals was observed across the country starting in January, and from April, with dose two. By mid-April, median vaccination proportion with one dose across LTLAs in the UK had surpassed 50%. By July, median proportion of dose two-vaccinees had reached 50%. Nevertheless, variability across LTLAs was very high, and in autumn, a plateau with considerable overlap between the proportions of vaccinees with either one or two doses was observed. In October, when median proportion of population vaccinated across LTLAs with either one or two doses was near 75%, vaccination with the third dose began.

During the study period, the predominant SARS-CoV-2 circulating variants were Alpha and Delta [15, 28]. The proportions of circulating variants in the UK used in this study are depicted in Figure 1C, which were normalised so that the proportion of wild-type, Alpha and Delta variants in any given LTLA and timepoint would sum up to one (see methodology). Although there were some wild-type variants circulating in late January 2021, by March the only variant circulating was Alpha. In April, Delta SARS-CoV-2 variant emerged in the UK, and rapidly took over other circulating variants. By July 2021, Delta was the only variant circulating, and remained as such until the end of the study period with few small and sporadic Alpha variant appearances.

Figure 1: A) Time-series of boxplots showing observed R_t across the UK in 2021. B) Time-series of boxplots showing vaccine uptake by dose across the UK in 2021. C) Time-series of proportion of SARS-CoV-2 variants circulating across the UK in 2021. Boxplots represent distribution across 221 LTLAs of R_t estimates (A) or proportion of vaccinees (B) on the y-axis, at each timepoint considered in the study on the x-axis. Boxplots represent 1st quartile, median and 3rd quartile of observed vaccinated proportion at each time point. Whisker's limits correspond to maximum and minimum values, whenever these remained within 1.5xIQR range; otherwise, points outside this range are individually plotted as outliers. Abbreviations: IQR, Inter-Quartile Range; LTLA, Lower Tier Local Authority; R_t , Reproduction Number.



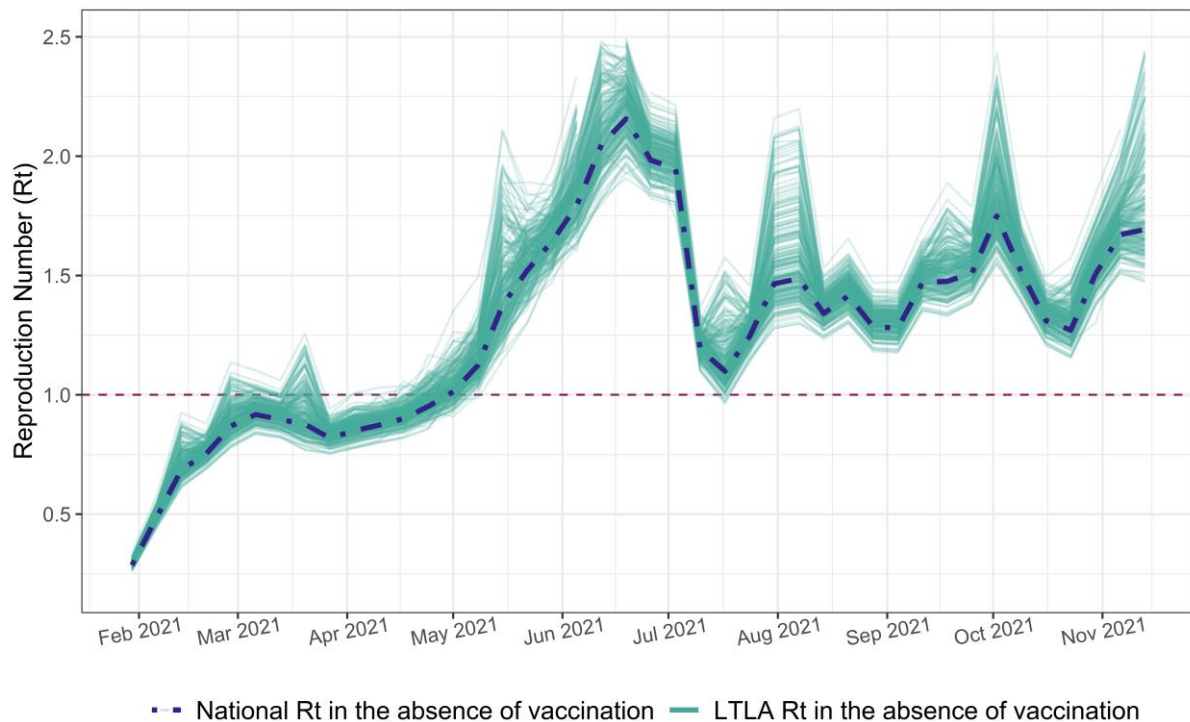
Modelling results

Nationally, our model fitted the previously estimated values of time-series of R_t values reasonably well (Figure S1A), and largely reproducing the reproduction number averaged across LTLAs for each timepoint (Figure S1B). Our model fits further reproduced well the reproduction numbers at regional level (Figure S1B), although some outliers were less well captured, implying a degree of variation that is not explained by our model.

Using our model fits, we estimated the national and LTLA transmission trend, but in the absence of vaccination (Figure 2). This is an imperfect counterfactual, in that other measures would likely have been implemented (e.g. greater social distancing, whether mandatory or voluntary) if there had genuinely been an absence of vaccination, but this is nevertheless informative in examining vaccination's effectiveness.

In the absence of vaccination, national and regional transmission followed the similar progression as the observed and model-predicted R_t : they were below 1 at the start of 2021, but quickly increased around May. In the absence of vaccination, national and LTLA R_t also peaked around mid-July but soon dropped. However, although the observed and model-predicted R_t remained around 1 until the end of the year, in the absence of vaccination, R_t remained around 1.5 until December 2021, both at national and LTLA-level. Additionally, at the beginning of the year, there was little variability across the LTLA's R_t trends, while at the end of 2021, the R_t in the absence of vaccination from some LTLAs differed from the national R_t by a factor of 1.

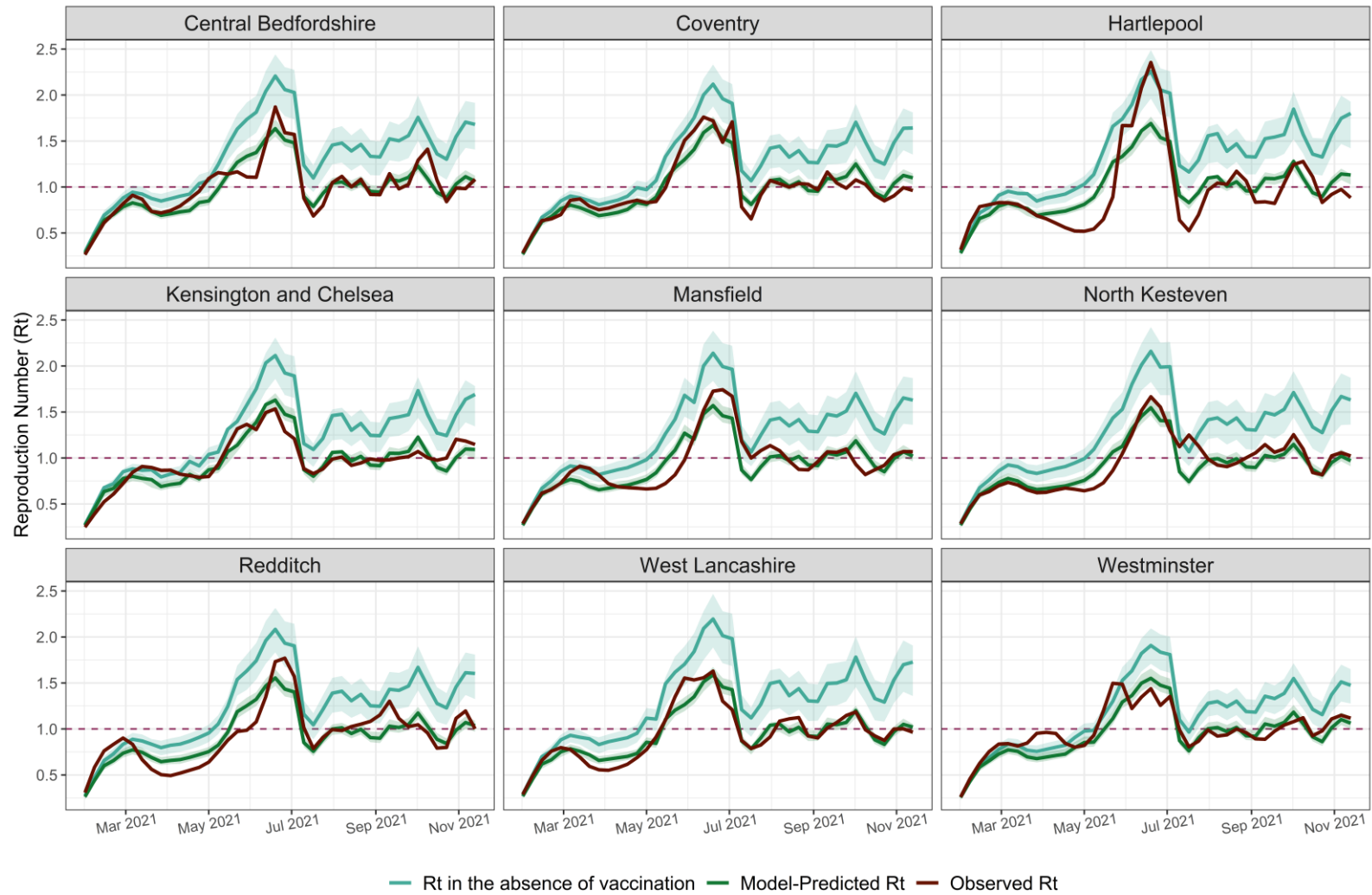
Figure 2: Counterfactual: National and LTLA-level reproduction number in the absence of vaccination across the UK in 2021. Transmission trends over time for each LTLA are represented as a single continuous line, where R_t is defined as the national trend scaled to LTLA-level then multiplied by the proportion of circulating variants in the LTLA and each variant's transmission advantage. National trend, plotted as a dashed line, over time depicts the national transmission trend multiplied by the average proportion of each variant circulating at each timepoint and each variant's transmission advantage. Abbreviations: LTLA, Lower Tier Local Authority; R_t , Reproduction Number.



Modelling fits for nine example LTLAs are depicted on Figure 3, the rest of individual LTLA's model fits can be found on Figures S2A to Figures S2K. Consistent with previous results (Figure S1B), observed R_t over time showed more variability across LTLAs than the model-predicted R_t estimates (Figure 3). Because the model-predicted R_t are more consistent across LTLAs, there were minor differences between observed versus model-predicted R_t values in individual LTLAs estimates; for example, the peak in July is much higher among the observed R_t than the model-predicted in Hartlepool, while in Westminster the model predicted one single peak when there three smaller peaks among the observed R_t .

It is also noteworthy that, at the start of 2021, individual R_t values in the absence of vaccination, are more similar to the observed and model-predicted R_t (Figure 3). However, at the end of the year, these individual LTLA R_t in the absence of vaccination trends are much higher, with values around 1.5, while observed and model-predicted R_t stay close to 1.

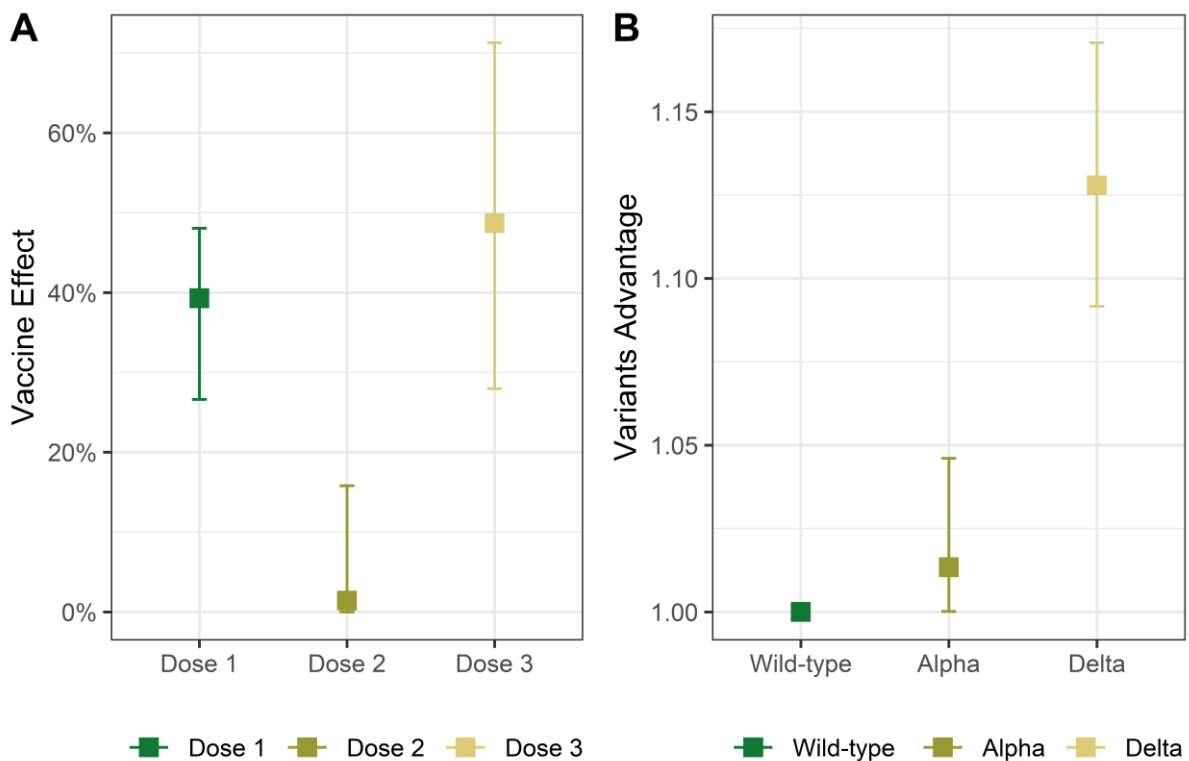
Figure 3: Model fits in nine example LTLA: R_t in the absence of vaccination, model-predicted and observed R_t in 2021. Each LTLA R_t in the absence of vaccination, model-predicted R_t and observed R_t are plotted as a continuous line. The 2.5% and 97.5% percentiles for each LTLA R_t in the absence of vaccination and model-predicted R_t are plotted as a ribbon line. Abbreviations: LTLA, Lower Tier Local Authority; R_t , Reproduction Number.



Effect of vaccination on transmission

Vaccine efficacy against SARS-CoV-2 transmission across the UK in 2021 was 39.30% (95% Credible Interval: 26.64% - 48.07%) for dose 1, but there was little to no effect of vaccination with dose 2 against transmission (Figure 4A). The largest vaccine efficacy against transmission was estimated for dose 3, 48.69% (27.97% - 71.30%), but this estimate also had the widest credible intervals. We also estimated the extent to which vaccination reduced R_t overall across all LTLAs. Average across all timepoints and LTLAs of our predicted R_t estimates was 0.9760, and average across all timepoints and LTLAs of our predicted R_t without the vaccination effect was 1.3233, meaning we estimated an overall 26.25% reduction of R_t by vaccination.

Figure 4: A) Efficacy of vaccination against transmission by dose. B) Variant advantage. Model predictions for vaccine efficacy (A) and variant's advantage (B) are shown as point estimates depicting the average across iterations, with error bars showing 2.5% percentile 97.5% percentile.



Model predictions showed Alpha was 1.0134 (1.0002 – 1.0461) more transmissible than pre-Alpha circulating variants (Figure 4B), while Delta was 1.1279 (1.0917 – 1.1707) times more transmissible than variants circulating prior to Alpha.

Discussion

In this study, we developed a Bayesian hierarchical model to estimate the effect of vaccination on the SARS-CoV-2 effective reproduction number (R_t) in the United Kingdom over 2021. We found that vaccine efficacy against SARS-CoV-2 transmission in the UK was 40% for dose one and 49% for dose three, but we estimated a negligible effect of dose two. Our model reproduced trends in the reproduction number well at national level and LTLA-level, supporting our hypothesis that the extent of vaccination (or lack thereof) was a major determinant of transmission intensity. At regional level, our model exhibited less variability in its effective reproduction numbers across LTLAs than in the observed reproduction numbers, suggesting that our model does not capture all relevant factors dictating SARS-CoV-2 transmission.

The estimates on observed reproduction numbers revealed a changing trend in transmission over 2021 in the UK, with considerable variability across LTLAs. Although there was a small increase in transmission levels at the beginning of 2021, R_t remained under 1 for most LTLAs until April. This is consistent with the restrictions in place at that time: a national lockdown was enacted early in January [18], which significantly reduced the number of cases detected in the country [29]. However, as the roadmap for easing lockdown started in April-May [18], SARS-CoV-2 R_t increased [29]. Additionally, the Delta variant entered the UK at this time, which was more transmissible than previous variants [17, 30], and rapidly expanded to be the dominant variant in the country [28]. R_t estimates were highly variable across LTLAs and reached their maximum levels around July 2021. A sudden drop in R_t numbers was observed in mid-July, and then the SARS-CoV-2 transmission trend remained somewhat constant from August until the end of the year, with R_t values across LTLAs staying around 1. Though our analysis was undertaken just before the appearance of Omicron, it is important to note that cases rose exponentially after the introduction of this variant in the UK [1].

Our model-predicted reproduction number showed a very similar trend to the observed R_t , although there was much less variability across LTLAs. This is observed in the individual results for each LTLA, where model-predicted R_t show a very similar trend among different LTLAs but observed R_t substantially vary (e.g. observed R_t evolution in Hartlepool shows a higher peak in July than the model-predicted whereas in Westminster there are three minor peaks in the observed R_t). Yet, the model predicted the rise in R_t in spring 2021 for all LTLAs, the peak in July and the stationary R_t around 1 during autumn 2021.

The United Kingdom was the first country to roll-out vaccination against COVID-19, beginning in December 2020 [1], yet vaccination uptake was very low at the start of 2021. Our predicted R_t

remained below 1 until April 2021, as so did our estimated R_t in the absence of vaccination, which is concordant with the low vaccination uptake. Vaccination with the second dose began in April following similar curves to the vaccination with dose one, and in autumn 2021, vaccination with the booster (third) dose began in the UK [1]. Our estimated R_t in the absence of vaccination started to rise in April, when the R_t absence of vaccination trend showed increasing separation with the predicted R_t trend as the year progressed. At the end of 2021, when vaccination uptake was highest, median R_t in the absence of vaccination across LTLAs was around 1.5 while the median model-predicted and observed R_t across LTLAs were around 1.

Our model-estimated vaccine efficacy against SARS-CoV-2 vaccination was 39.30%, which is similar to results from other studies. One dose vaccination with BNT162b2 reduced by four folds infections among Health Care Workers (HCW) from Cambridge hospitals [31], while an adjusted hazard ration for infection of 0.44 (CI: 0.24 – 0.81) was observed after one dose vaccination among residents in care living facilities in the UK [7]. Additionally, a study recruiting households across the UK found a vaccine effectiveness of 61% (CI: 54 – 68%) and 66% (CI: 60 – 71%) against a SARS-CoV-2 PCR-positive result after vaccination with one dose of ChAdOx1 and BNT162b2 respectively [32]. However, we estimated a vaccine efficacy against transmission of 48.69% for dose three, which is higher than other dose three effects. A study from Israel measured a decrease of 11.3% in SARS-CoV-2 infections after booster vaccination [33]. Nevertheless, this could be due a different outcome (R_t versus infection) or different methodology.

There are limitations in our analysis. Firstly, the effect of vaccination on reducing transmission was considered to be constant over time. Although we fit into the model the weekly proportion of vaccinees, the overall effect estimate is independent of time. This is an important limitation, as it has already been well-described that SARS-CoV-2 vaccines have waning efficacy [34]. Importantly, in our model, the effect of different doses is accounted cumulatively because of the nature of vaccination; therefore, the estimated efficacies of doses two and three account only for the reduction in transmission of that dose in addition to previous doses. This could explain why there was no effect of two dose-vaccination, as some studies have previously described only a mild difference between vaccination with one and two doses [6]. Furthermore, in the present study, we did not measure the effect of vaccination over symptomatic disease, severe outcome or hospitalization, while several studies have reported a reduction in symptomatic disease or hospitalization due to SARS-CoV-2 vaccination [5, 8, 33]. Finally, we were not able to account for different transmission or vaccine efficacy by age or other sociodemographic factors.

To our knowledge, this analysis represents the first evidence of SARS-CoV-2 vaccine effectiveness against transmission at the level of a population. We find that vaccination is effective in the control of SARS-CoV-2 transmission, and so vaccination's indirect effects should be considered alongside its well-documented direct effects on disease burden and mortality.

Acknowledgments

ND, WRH, SB and DJL acknowledge funding from the MRC Centre for Global Infectious Disease Analysis (reference MR/X020258/1), funded by the UK Medical Research Council (MRC). This UK funded award is carried out in the frame of the Global Health EDCTP3 Joint Undertaking. SM acknowledges support from the National Research Foundation via The NRF Fellowship Class of 2023 Award (NRF-NRFF15-2023-0010). SB is funded by the National Institute for Health and Care Research (NIHR) Health Protection Research Unit in Modelling and Health Economics, a partnership between UK Health Security Agency, Imperial College London and LSHTM (grant code NIHR200908). SB acknowledges: support from the Novo Nordisk Foundation via The Novo Nordisk Young Investigator Award (NNF20OC0059309); the Danish National Research Foundation (DNRF160) through the chair grant, and support from The Eric and Wendy Schmidt Fund For Strategic Innovation via the Schmidt Polymath Award (G-22-63345). DJL acknowledges funding from the Wellcome Trust for the Vaccine Impact Modelling Consortium (VIMC) Climate Change Research Programme (grant ID: 226727_Z_22_Z).

Disclaimer: "The views expressed are those of the author(s) and not necessarily those of the NIHR, UK Health Security Agency or the Department of Health and Social Care".

References

1. GOV.UK. *Coronavirus (COVID-19) in the UK*. [cited 2021 23/12/2021]; Available from: <https://coronavirus.data.gov.uk/>.
2. Baden, L.R., et al., *Efficacy and Safety of the mRNA-1273 SARS-CoV-2 Vaccine*. New England Journal of Medicine, 2021. **384**(5): p. 403-416.
3. Polack, F.P., et al., *Safety and Efficacy of the BNT162b2 mRNA Covid-19 Vaccine*. New England Journal of Medicine, 2020. **383**(27): p. 2603-2615.
4. Voysey, M., et al., *Safety and efficacy of the ChAdOx1 nCoV-19 vaccine (AZD1222) against SARS-CoV-2: an interim analysis of four randomised controlled trials in Brazil, South Africa, and the UK*. The Lancet, 2021. **397**(10269): p. 99-111.
5. Haas, E.J., et al., *Impact and effectiveness of mRNA BNT162b2 vaccine against SARS-CoV-2 infections and COVID-19 cases, hospitalisations, and deaths following a nationwide vaccination campaign in Israel: an observational study using national surveillance data*. The Lancet, 2021. **397**(10287): p. 1819-1829.
6. Kissling, E., et al., *Vaccine effectiveness against symptomatic SARS-CoV-2 infection in adults aged 65 years and older in primary care: I-MOVE-COVID-19 project, Europe, December 2020 to May 2021*. Eurosurveillance, 2021. **26**(29).
7. Shrotri, M., et al., *Vaccine effectiveness of the first dose of ChAdOx1 nCoV-19 and BNT162b2 against SARS-CoV-2 infection in residents of long-term care facilities in England (VIVALDI): a prospective cohort study*. The Lancet Infectious Diseases, 2021. **21**(11): p. 1529-1538.
8. Lopez Bernal, J., et al., *Effectiveness of Covid-19 Vaccines against the B.1.617.2 (Delta) Variant*. New England Journal of Medicine, 2021. **385**(7): p. 585-594.
9. Watson, O.J., et al., *Global impact of the first year of COVID-19 vaccination: a mathematical modelling study*. The Lancet Infectious Diseases, 2022.
10. Braeye, T., et al., *Vaccine effectiveness against onward transmission of SARS-CoV-2 infection by variant of concern and time since vaccination, Belgian contact tracing, 2021*. Vaccine, 2022. **40**(22): p. 3027-3037.
11. Eyre, D.W., et al., *Effect of Covid-19 Vaccination on Transmission of Alpha and Delta Variants*. New England Journal of Medicine, 2022. **386**(8): p. 744-756.
12. Public Health England, *Technical Briefing 1, in SARS-CoV-2 variants of concern and variants under investigation in England*. 2020.
13. Public Health England, *Technical Briefing 4, in SARS-CoV-2 variants of concern and variants under investigation in England*. 2021.
14. Volz, E., et al., *Assessing transmissibility of SARS-CoV-2 lineage B.1.1.7 in England*. Nature, 2021. **593**(7858): p. 266-269.
15. Public Health England, *Technical Briefing 9, in SARS-CoV-2 variants of concern and variants under investigation in England*. 2021.
16. Public Health England, *Technical Briefing 14, in SARS-CoV-2 variants of concern and variants under investigation in England*. 2021.
17. Ward, T., et al., *Growth, reproduction numbers and factors affecting the spread of SARS-CoV-2 novel variants of concern in the UK from October 2020 to July 2021: a modelling analysis*. BMJ Open, 2021. **11**(11): p. e056636.
18. Institute For Government. *Timeline of UK government coronavirus lockdowns and restrictions*. 2022; Available from: <https://www.instituteforgovernment.org.uk/charts/uk-government-coronavirus-lockdowns>.
19. Davies, N.G., et al., *Effects of non-pharmaceutical interventions on COVID-19 cases, deaths, and demand for hospital services in the UK: a modelling study*. The Lancet Public Health, 2020. **5**(7): p. e375-e385.

20. Laydon, D.J., et al., *Modelling the impact of the tier system on SARS-CoV-2 transmission in the UK between the first and second national lockdowns*. *BMJ Open*, 2021. **11**(4): p. e050346.
21. GOV.UK. *UK Health Security Agency*. 2024.
22. Mishra, S., et al., *A COVID-19 model for local authorities of the United Kingdom*. *J R Stat Soc Ser A Stat Soc*, 2022. **185**(Suppl 1): p. S86-S95.
23. R Core Team, *R: A Language and Environment for Statistical Computing*. 2023, R Foundation for Statistical Computing: Vienna, Austria.
24. Stan Development Team, *Stan Modeling Language Users Guide and Reference Manual, Version 2.21*. 2021.
25. Stan Development Team, *RStan: the R interface to Stan*. 2021.
26. Vehtari, A., et al., *loo: Efficient leave-one-out cross-validation and WAIC for Bayesian models*. 2020.
27. Wickham, H., *ggplot2: Elegant Graphics for Data Analysis*. 2016, Springer-Verlag New York.
28. Public Health England, *Technical Briefing 15, in SARS-CoV-2 variants of concern and variants under investigation in England*. 2021.
29. Sonabend, R., et al., *Non-pharmaceutical interventions, vaccination, and the SARS-CoV-2 delta variant in England: a mathematical modelling study*. *The Lancet*, 2021. **398**(10313): p. 1825-1835.
30. Allen, H., et al., *Household transmission of COVID-19 cases associated with SARS-CoV-2 delta variant (B.1.617.2): national case-control study*. *The Lancet Regional Health - Europe*, 2021: p. 100252.
31. Jones, N.K., et al., *Single-dose BNT162b2 vaccine protects against asymptomatic SARS-CoV-2 infection*. *eLife*, 2021. **10**.
32. Pritchard, E., et al., *Impact of vaccination on new SARS-CoV-2 infections in the United Kingdom*. *Nature Medicine*, 2021. **27**(8): p. 1370-1378.
33. Bar-On, Y.M., et al., *Protection of BNT162b2 Vaccine Booster against Covid-19 in Israel*. *New England Journal of Medicine*, 2021. **385**(15): p. 1393-1400.
34. Barnard, R.C., et al., *Behaviour, booster vaccines and waning vaccine protection: modelling the medium-term dynamics of SARS-CoV-2 transmission in England*. 2021, Cold Spring Harbor Laboratory.

Supplementary Information

Supplementary Figures

Figure S1: A) Observed R_t and model-predicted R_t . B) Time-series of boxplots showing observed R_t and model-predicted R_t . Boxplots represent distribution across 221 LTLAs of R_t estimates on the y-axis, at each timepoint considered in the study on the x-axis. Boxplots represent 1st quartile, median and 3rd quartile of observed vaccinated proportion at each time point. Whisker's limits correspond to maximum and minimum values, whenever these remained within 1.5xIQR range; otherwise, points outside this range are individually plotted as outliers. Abbreviations: IQR, Inter-Quartile Range; LTLA, Lower Tier Local Authority; R_t , Reproduction Number.

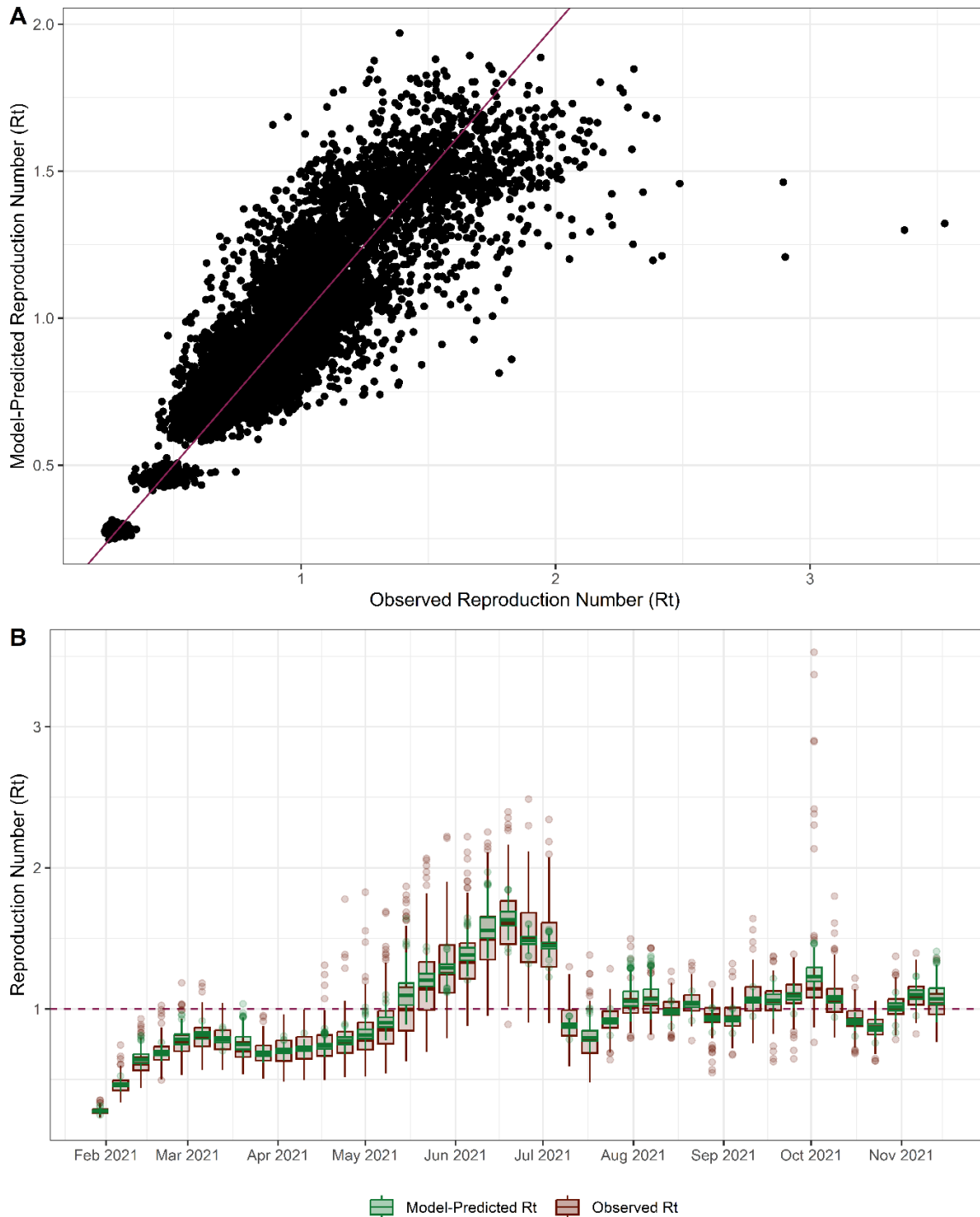


Figure 2A: Model fits for individual LTLA: R_t in the absence of vaccination, model-predicted and observed R_t in 2021. Each LTLA R_t in the absence of vaccination, model-predicted R_t and observed R_t are plotted as a continuous line. The 2.5% and 97.5% percentiles for each LTLA R_t in the absence of vaccination and model-predicted R_t are plotted as a ribbon line. Abbreviations: LTLA, Lower Tier Local Authority; R_t , Reproduction Number.

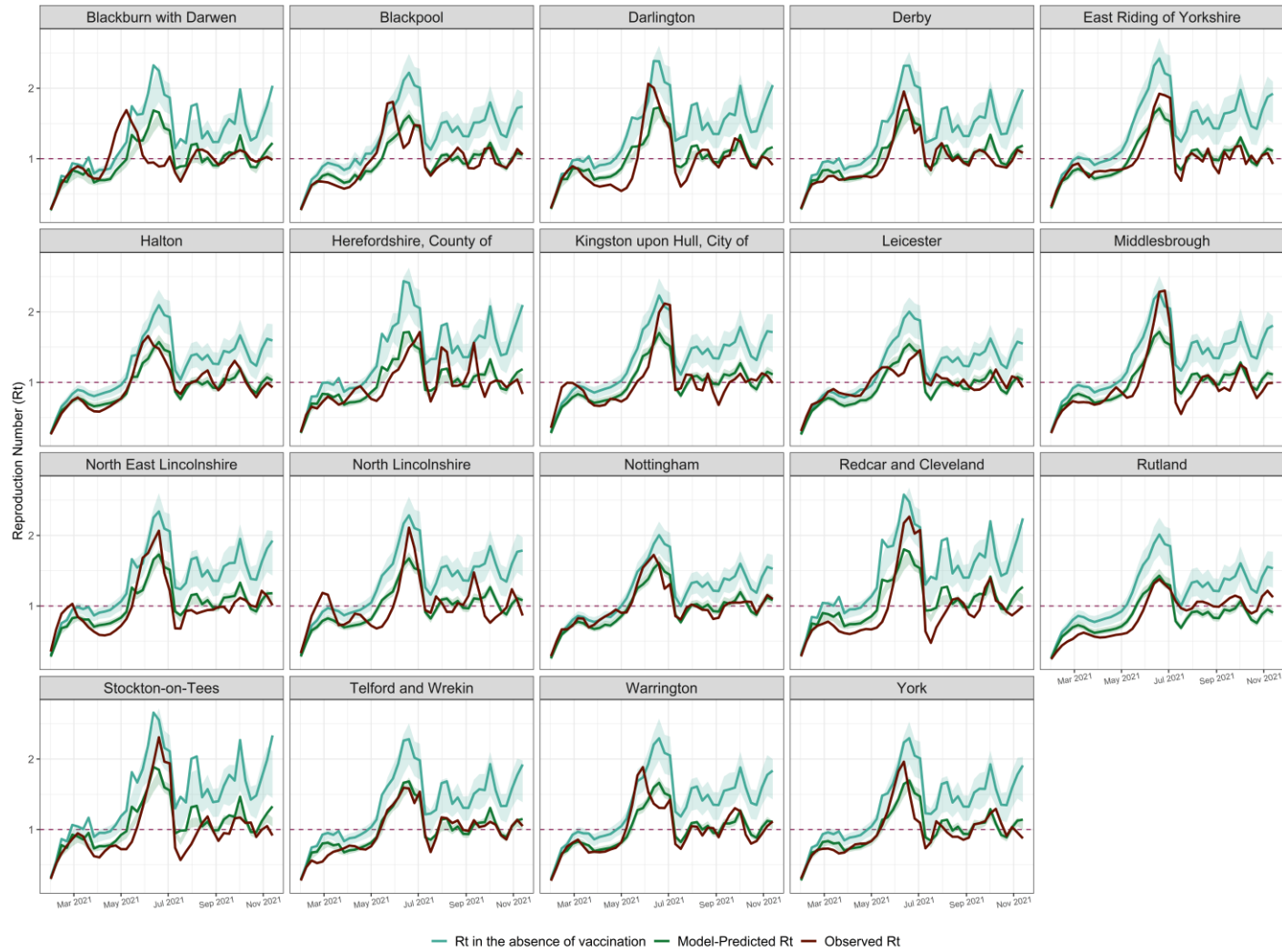


Figure 2B: Model fits for individual LTLA: R_t in the absence of vaccination, model-predicted and observed R_t in 2021. Each LTLA R_t in the absence of vaccination, model-predicted R_t and observed R_t are plotted as a continuous line. The 2.5% and 97.5% percentiles for each LTLA R_t in the absence of vaccination and model-predicted R_t are plotted as a ribbon line. Abbreviations: LTLA, Lower Tier Local Authority; R_t , Reproduction Number.

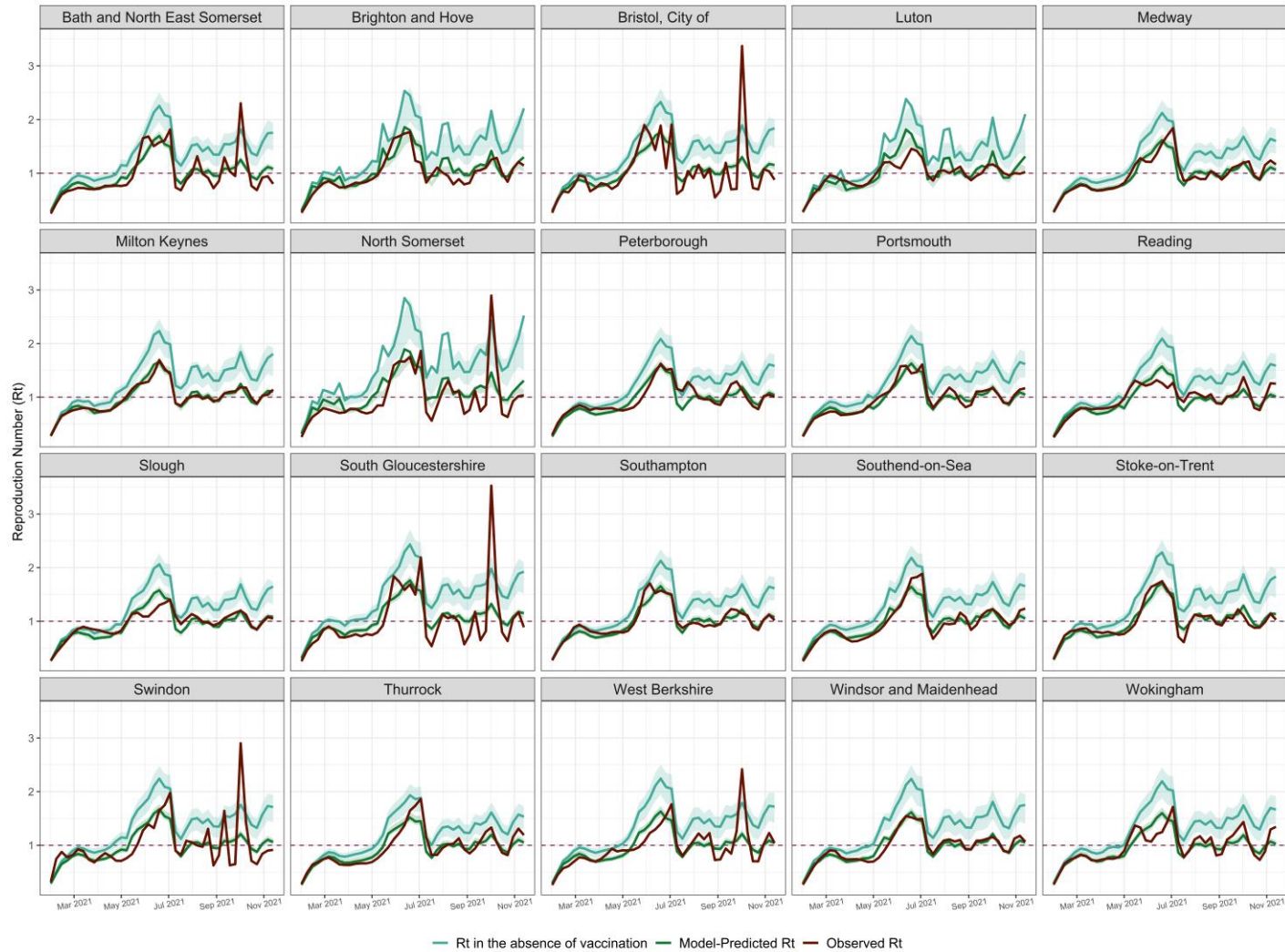


Figure 2C: Model fits for individual LTLA: R_t in the absence of vaccination, model-predicted and observed R_t in 2021. Each LTLA R_t in the absence of vaccination, model-predicted R_t and observed R_t are plotted as a continuous line. The 2.5% and 97.5% percentiles for each LTLA R_t in the absence of vaccination and model-predicted R_t are plotted as a ribbon line. Abbreviations: LTLA, Lower Tier Local Authority; R_t , Reproduction Number.

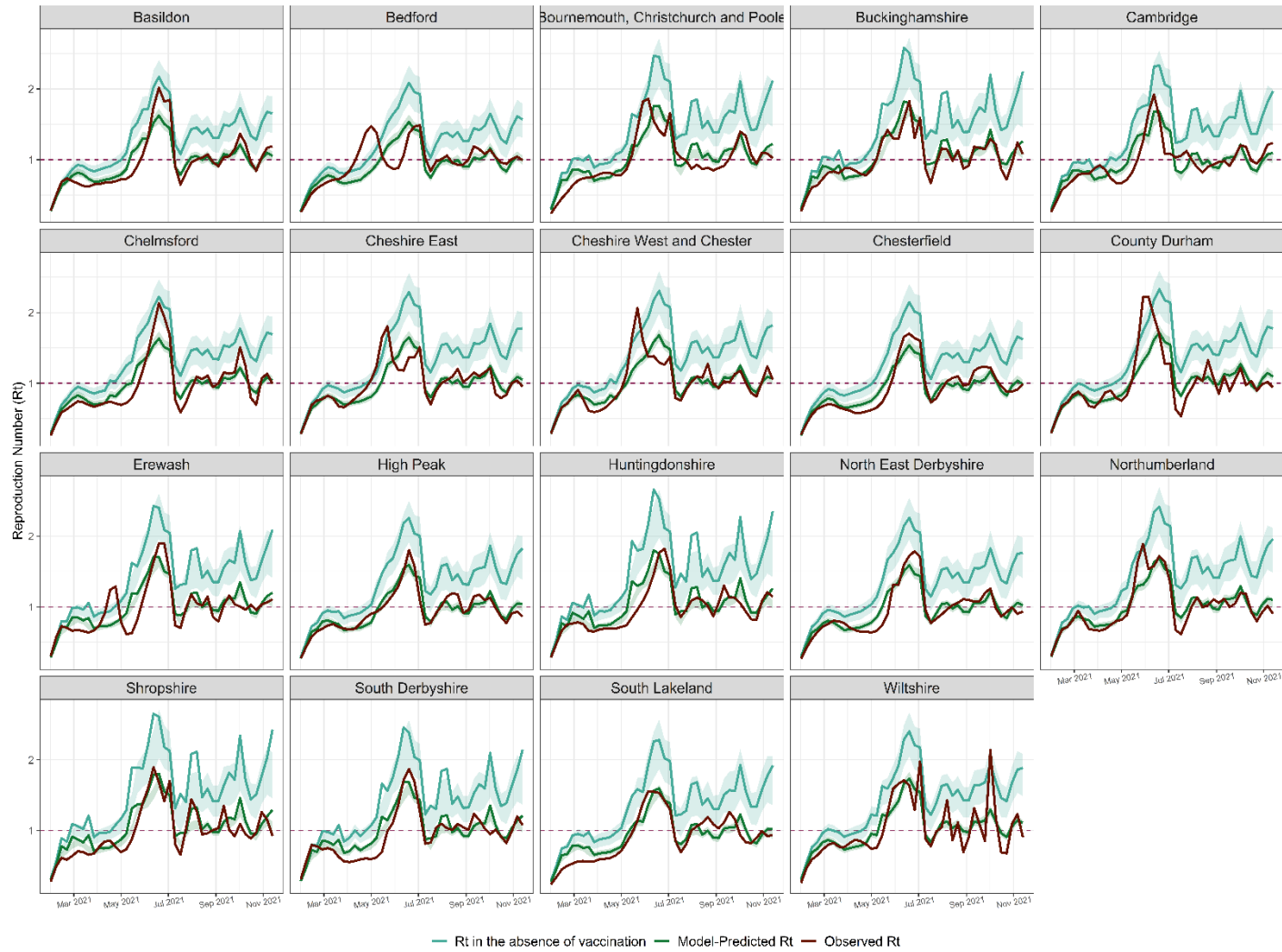


Figure 2D: Model fits for individual LTLA: R_t in the absence of vaccination, model-predicted and observed R_t in 2021. Each LTLA R_t in the absence of vaccination, model-predicted R_t and observed R_t are plotted as a continuous line. The 2.5% and 97.5% percentiles for each LTLA R_t in the absence of vaccination and model-predicted R_t are plotted as a ribbon line. Abbreviations: LTLA, Lower Tier Local Authority; R_t , Reproduction Number.

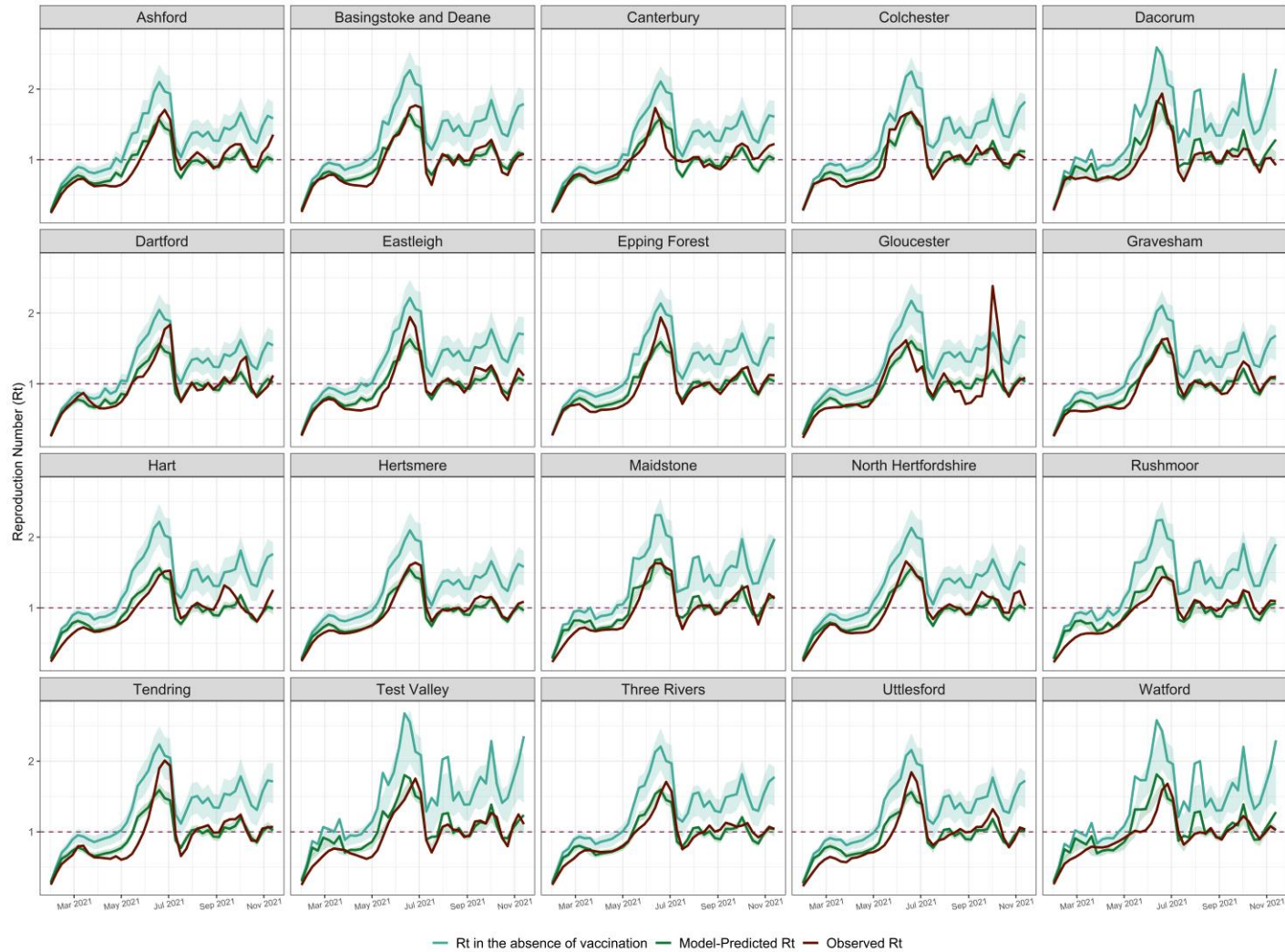


Figure 2E: Model fits for individual LTLA: R_t in the absence of vaccination, model-predicted and observed R_t in 2021. Each LTLA R_t in the absence of vaccination, model-predicted R_t and observed R_t are plotted as a continuous line. The 2.5% and 97.5% percentiles for each LTLA R_t in the absence of vaccination and model-predicted R_t are plotted as a ribbon line. Abbreviations: LTLA, Lower Tier Local Authority; R_t , Reproduction Number.

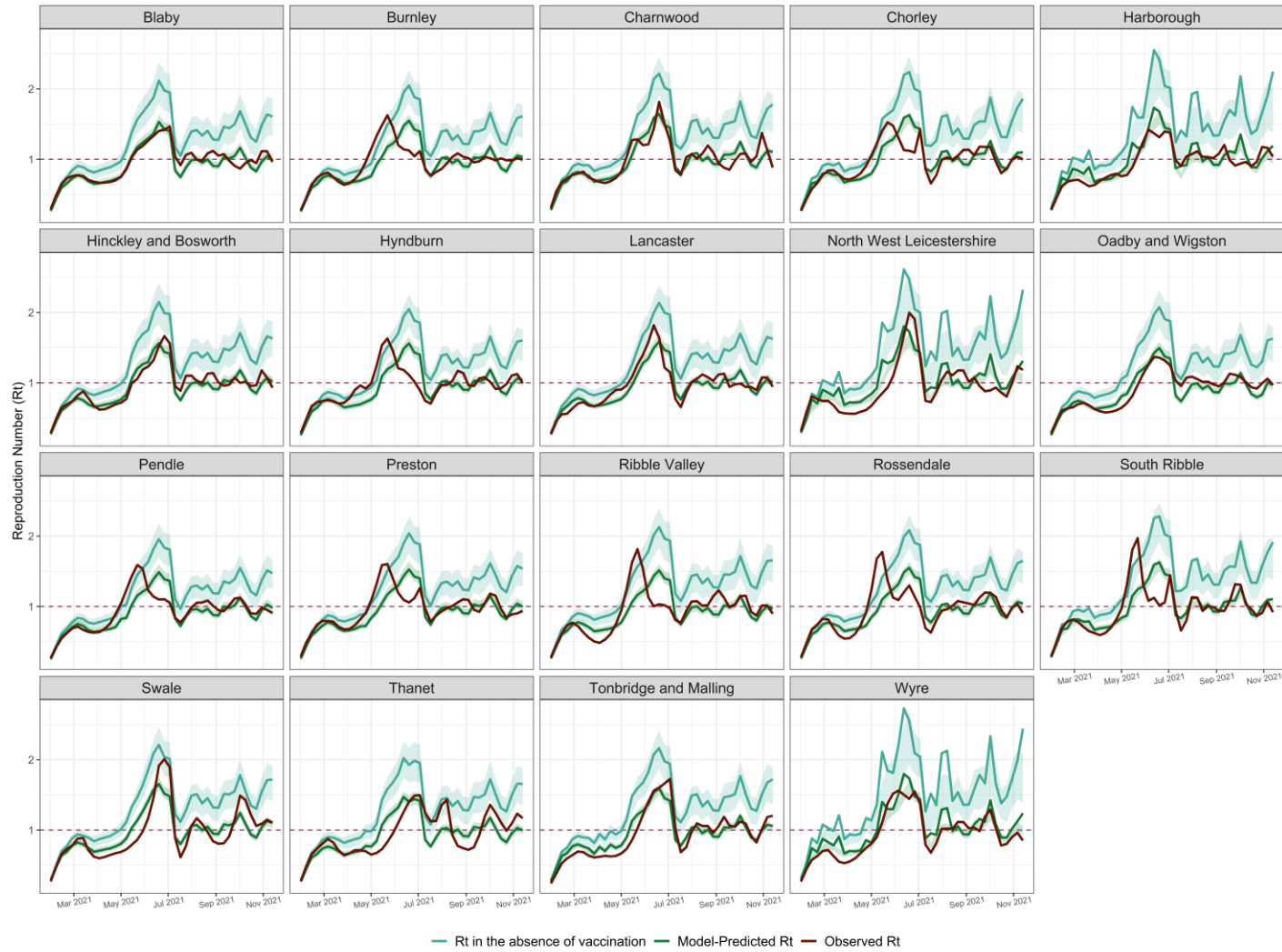


Figure 2F: Model fits for individual LTLA: R_t in the absence of vaccination, model-predicted and observed R_t in 2021. Each LTLA R_t in the absence of vaccination, model-predicted R_t and observed R_t are plotted as a continuous line. The 2.5% and 97.5% percentiles for each LTLA R_t in the absence of vaccination and model-predicted R_t are plotted as a ribbon line. Abbreviations: LTLA, Lower Tier Local Authority; R_t , Reproduction Number.

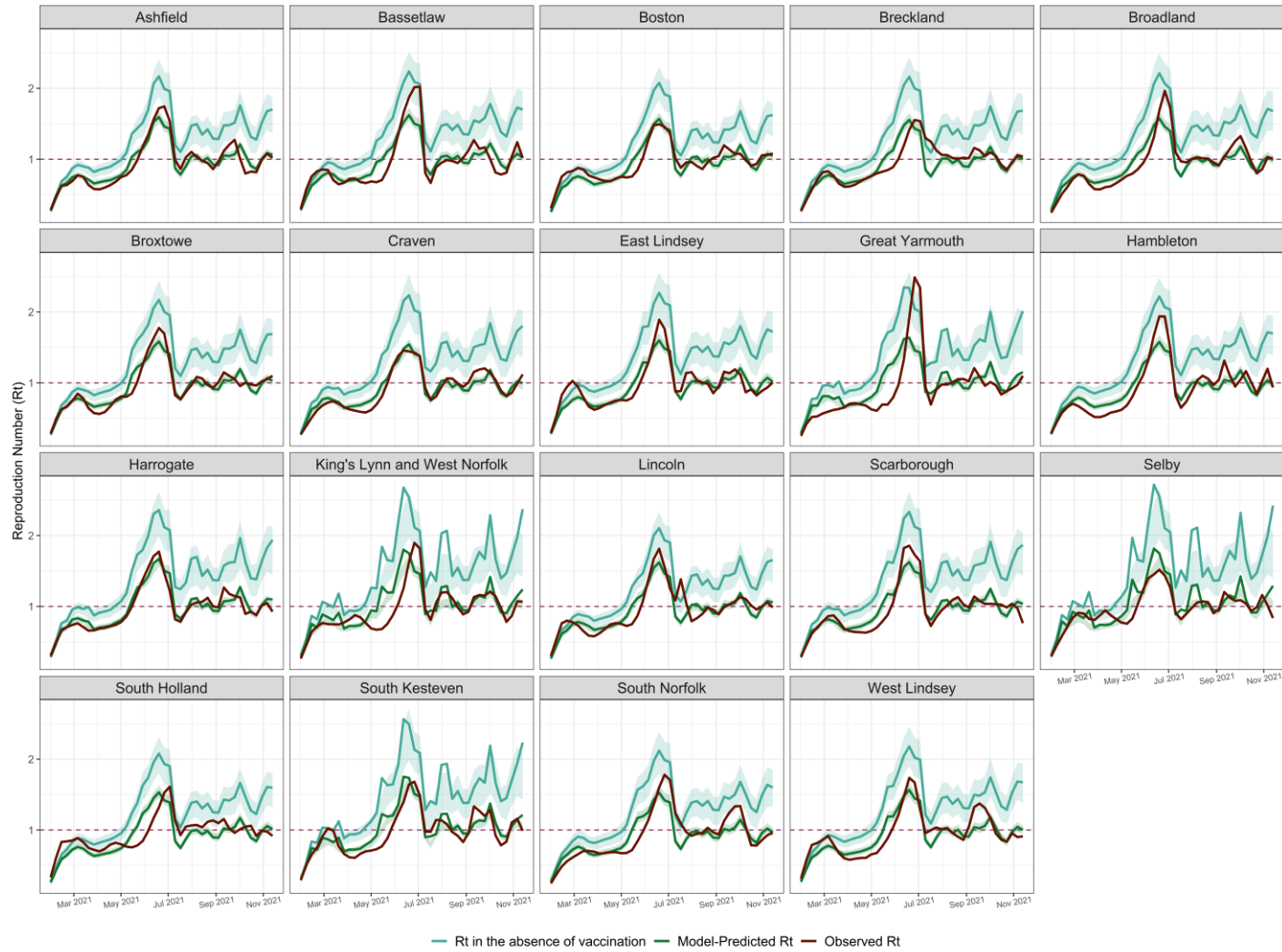


Figure 2G: Model fits for individual LTLA: R_t in the absence of vaccination, model-predicted and observed R_t in 2021. Each LTLA R_t in the absence of vaccination, model-predicted R_t and observed R_t are plotted as a continuous line. The 2.5% and 97.5% percentiles for each LTLA R_t in the absence of vaccination and model-predicted R_t are plotted as a ribbon line. Abbreviations: LTLA, Lower Tier Local Authority; R_t , Reproduction Number.

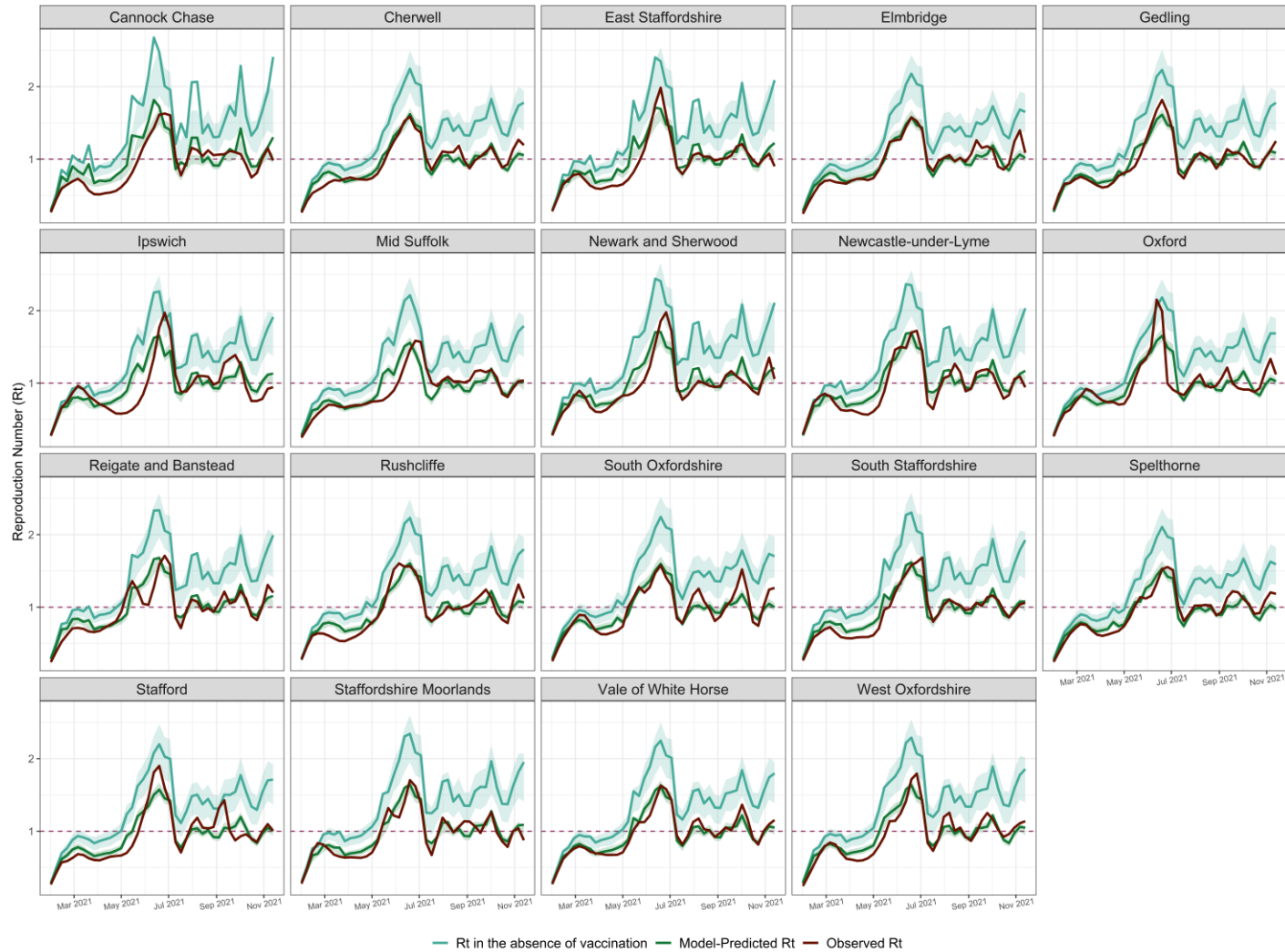


Figure 2H: Model fits for individual LTLA: R_t in the absence of vaccination, model-predicted and observed R_t in 2021. Each LTLA R_t in the absence of vaccination, model-predicted R_t and observed R_t are plotted as a continuous line. The 2.5% and 97.5% percentiles for each LTLA R_t in the absence of vaccination and model-predicted R_t are plotted as a ribbon line. Abbreviations: LTLA, Lower Tier Local Authority; R_t , Reproduction Number.

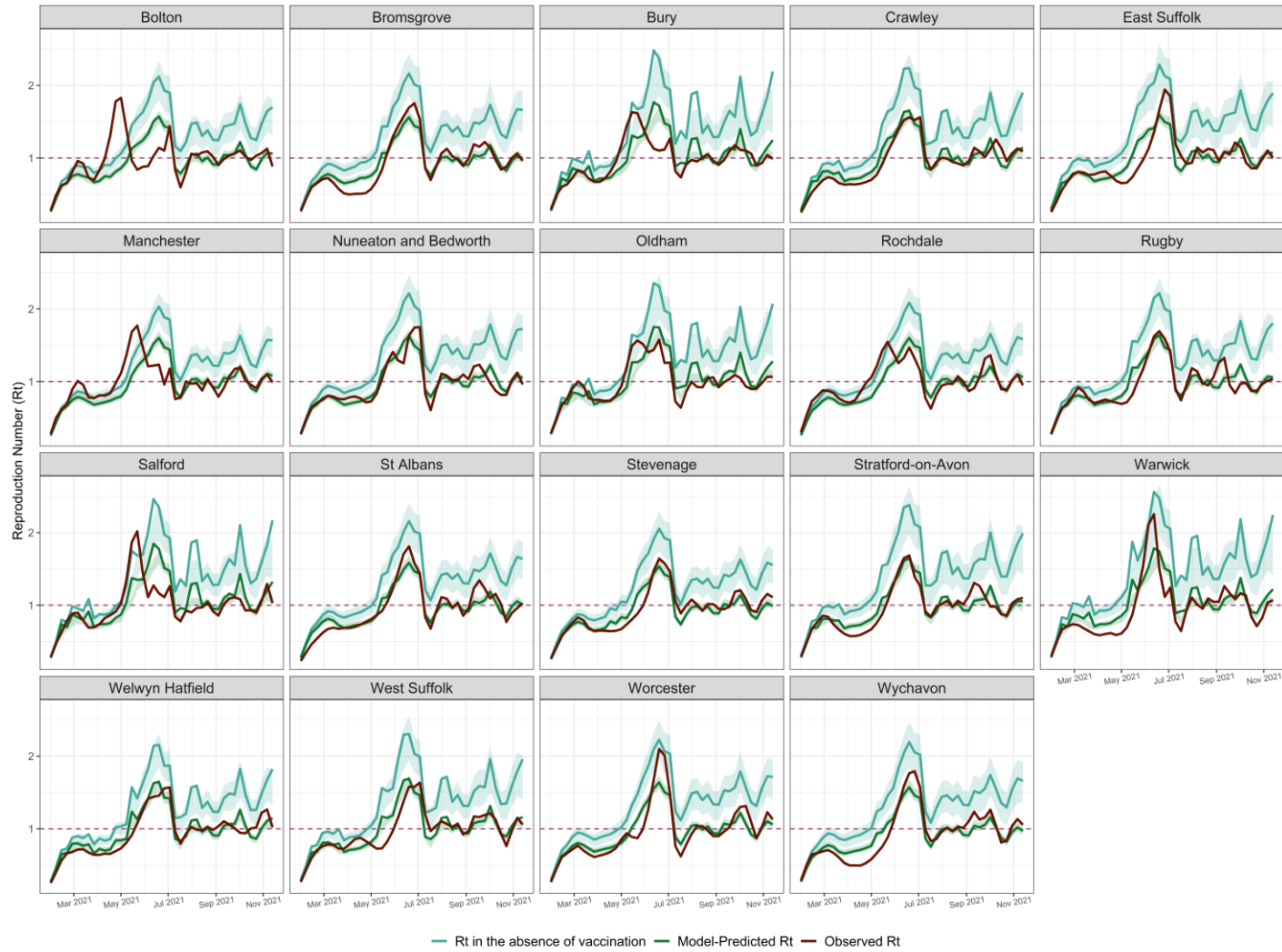


Figure 2l: Model fits for individual LTLA: R_t in the absence of vaccination, model-predicted and observed R_t in 2021. Each LTLA R_t in the absence of vaccination, model-predicted R_t and observed R_t are plotted as a continuous line. The 2.5% and 97.5% percentiles for each LTLA R_t in the absence of vaccination and model-predicted R_t are plotted as a ribbon line. Abbreviations: LTLA, Lower Tier Local Authority; R_t , Reproduction Number.

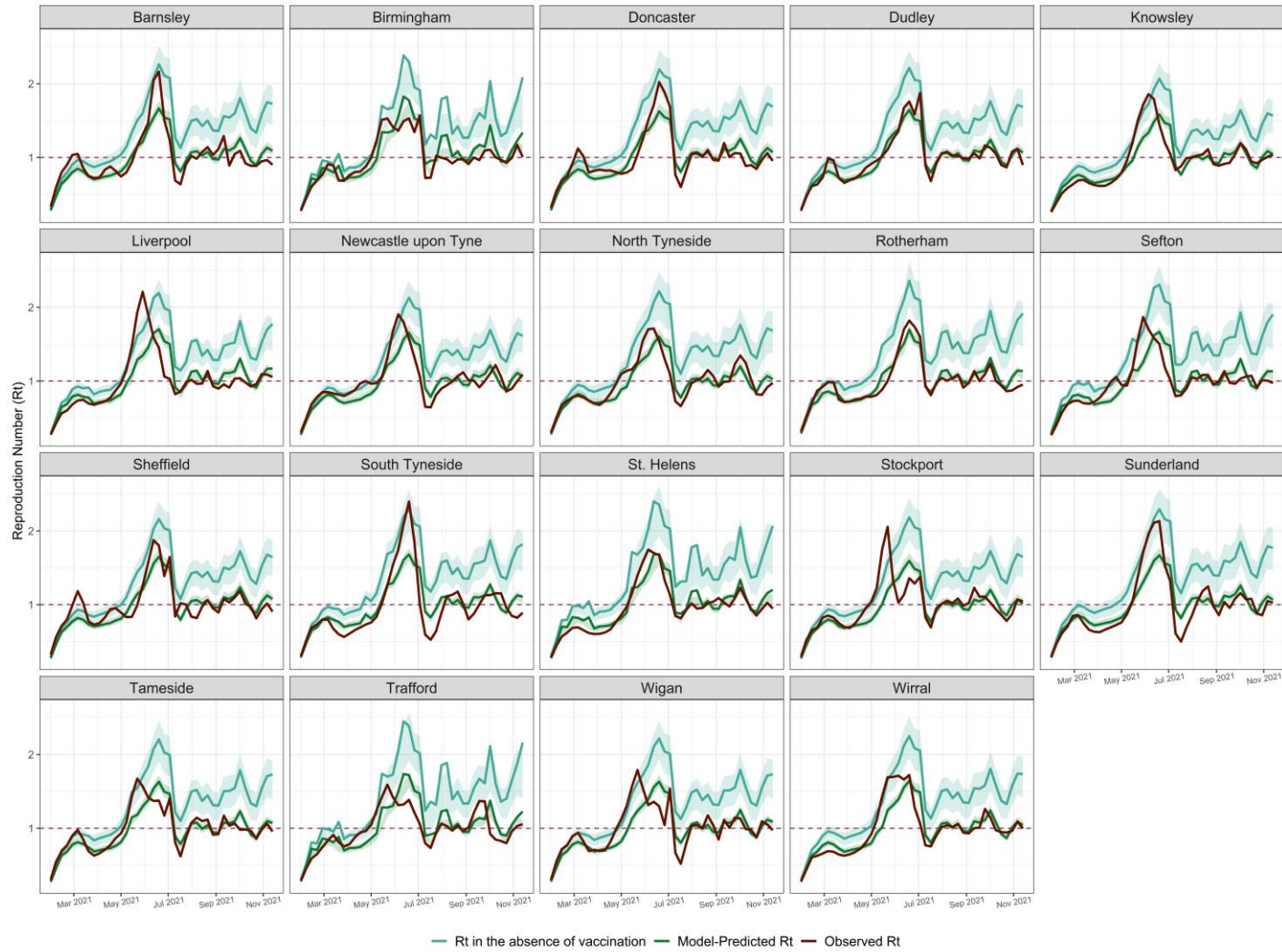


Figure 2J: Model fits for individual LTLA: R_t in the absence of vaccination, model-predicted and observed R_t in 2021. Each LTLA R_t in the absence of vaccination, model-predicted R_t and observed R_t are plotted as a continuous line. The 2.5% and 97.5% percentiles for each LTLA R_t in the absence of vaccination and model-predicted R_t are plotted as a ribbon line. Abbreviations: LTLA, Lower Tier Local Authority; R_t , Reproduction Number.

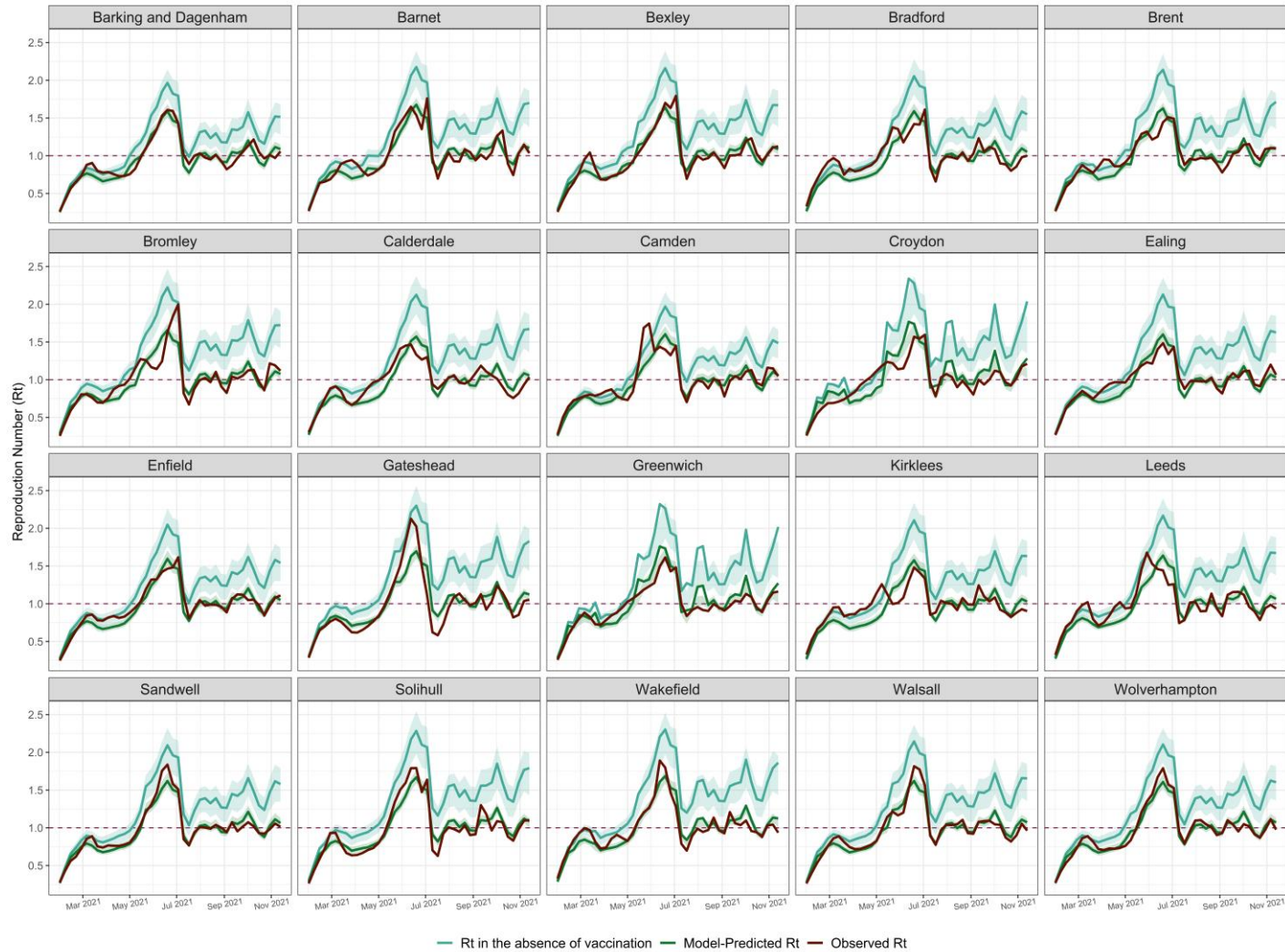


Figure 2K: Model fits for individual LTLA: R_t in the absence of vaccination, model-predicted and observed R_t in 2021. Each LTLA R_t in the absence of vaccination, model-predicted R_t and observed R_t are plotted as a continuous line. The 2.5% and 97.5% percentiles for each LTLA R_t in the absence of vaccination and model-predicted R_t are plotted as a ribbon line. Abbreviations: LTLA, Lower Tier Local Authority; R_t , Reproduction Number.

