

1 **Title**

2 A multicenter study to assess the performance of the point-of-care RT-PCR Cobas SARS-  
3 CoV-2 & Influenza A/B nucleic acid test for use on the Cobas Liat system in comparison with  
4 centralized assays across healthcare facilities in the United States

5

6 **Authors**

7 Elissa M. Robbins<sup>a#</sup>

8 Rasa Bertuzis<sup>a</sup>

9 Ho-Chen Chiu<sup>b</sup>

10 Lupe Miller<sup>a</sup>

11 Christopher Noutsios<sup>a</sup>

12

13 **Affiliations**

14 <sup>a</sup>Roche Molecular Systems, Inc., Pleasanton, California, USA

15 <sup>b</sup>Roche Sequencing Solutions, Inc., Indianapolis, Indiana, USA

16

17 **#Corresponding author**

18 Elissa M. Robbins

19

20 **Running title**

21 POC SARS-CoV-2 & Influenza A/B test

NOTE: This preprint reports new research that has not been certified by peer review and should not be used to guide clinical practice.

## 22 **Non-structured abstract**

23 Respiratory diseases can share many of the same symptoms, highlighting the need for  
24 timely and accurate differentiation to facilitate effective clinical management and reduce  
25 transmission. Compared with centralized testing, molecular point-of-care tests (POCT) can  
26 provide a faster time to result.

27 We evaluated the RT-PCR POCT Cobas<sup>®</sup> SARS-CoV-2 & Influenza A/B qualitative assay for  
28 use on the Cobas Liat<sup>®</sup> system (the POC SARS-CoV-2 & Influenza A/B test) in nasal and  
29 nasopharyngeal swab samples from 10 diverse healthcare facilities in the US. A composite  
30 comparator design consisting of three centralized tests was used to analyze SARS-CoV-2,  
31 whilst performance versus a single centralized test was used for analysis of influenza A and  
32 B. Evaluations included performance stratified by sample type (prospective/retrospective and  
33 nasal/nasopharyngeal [paired by subject]), collection method (self/healthcare worker-  
34 collected [alternated and approximately balanced]), symptom status  
35 (symptomatic/asymptomatic), and SARS-CoV-2 vaccination status, as well as assay  
36 inclusivity and system ease of use.

37 A total of 2,247 samples were tested. For SARS-CoV-2, the overall percent agreement (OPA)  
38 was 98.8% (95% CI: 97.9, 99.3) in nasal swab samples and 99.0% (95% CI: 98.2, 99.4) in  
39 nasopharyngeal swab samples. Regression analysis showed that Ct values from paired nasal  
40 and nasopharyngeal swab samples were highly correlated (correlation coefficient 0.83). The  
41 OPA was  $\geq 99.5\%$  (sample type dependent) and 100.0% for influenza A and B, respectively.  
42 The POC SARS-CoV-2 & Influenza A/B test was easy to use.

43 These results support the use of the POCT in various sample types and by various operators  
44 in the intended-use setting.

## 45 **Summary statement/importance**

46 This study highlights the benefits of RT-PCR POCT, namely comparable performance to  
47 centralized testing in multiple sample types and ease of use. Utilizing assays such as the  
48 POC SARS-CoV-2 & Influenza A/B test may improve timely differentiation of respiratory  
49 diseases that share similar symptoms.

## 50 **Introduction**

51 More than 4 years since the start of the coronavirus disease 2019 (COVID-19) pandemic,  
52 much of the world has returned to normality, yet COVID-19 continues to cause severe illness  
53 and mortality in the United States (US) and elsewhere(1, 2). This applies particularly for the  
54 immunocompromised, who are at risk of severe outcomes (3) and comprise approximately  
55 3% of the US adult population(4). Disease activity is year-round, but seasonal spikes occur  
56 from November to April(5), coinciding with circulation of other respiratory viruses, such as  
57 influenza(6). Respiratory diseases such as COVID-19 and influenza share similar  
58 symptoms(7), highlighting the need for timely and accurate differentiation of the causative  
59 agent to help facilitate effective clinical management and reduce onward transmission.

60 The current choice of testing for severe acute respiratory syndrome coronavirus 2 (SARS-  
61 CoV-2) is setting dependent(8), but standard laboratory-based (i.e., centralized) nucleic acid  
62 amplification tests are the mainstay of diagnosis(9). Numerous antigen or molecular point-  
63 of-care tests (POCT) are commercially available(10, 11), offering the benefit of a faster time  
64 to result(12). Both POCT formats have lower performance compared with centralized  
65 testing, particularly sensitivity (13) — a secondary analysis of antigen POCT found the  
66 performance to be commonly lower than stated within manufacturers' instructions for use  
67 (14) — but molecular POCT have relatively higher performance in comparison with antigen  
68 POCT, with pooled sensitivity values of 93% (99% specificity) versus 71% (99% specificity),  
69 respectively(13). Molecular POCT can provide actionable results in as little as 20 minutes  
70 depending on the assay and workflow(11).

71 Influenza is a significant cause of severe illness and death(15-17), resulting in a substantial  
72 clinical burden to patients and the healthcare system alike(18). Molecular POCT for the  
73 detection of influenza A/B subtypes, and other respiratory viruses such as respiratory  
74 syncytial virus, have been available for several years(11, 12, 19-22). Clinical practice  
75 guidelines from the Infectious Diseases Society of America recommend that antivirals are  
76 initiated for certain patient groups as soon as possible regardless of illness duration, or  
77 within 48 hours of illness onset(23), supporting the use of rapid molecular POCT for  
78 influenza testing in preference to centralized laboratory testing. In the hospital setting, an  
79 interventional study of a molecular POCT for influenza found significant improvements in  
80 isolation practices and reductions in length of stay compared with centralized testing(24),  
81 whilst a modeling study found that the introduction of POCT could reduce time to diagnosis,  
82 hospital stay, and in-hospital costs(25). Molecular POCT for influenza can generate  
83 sensitivity estimates of  $\geq 96$ –100% in real-world settings(22, 26).

84 The primary objective of this study was to evaluate the real-world clinical performance of  
85 the POC Cobas SARS-CoV-2 & Influenza A/B qualitative assay for use on the Cobas Liat  
86 system (herein referred to as the POC SARS-CoV-2 & Influenza A/B), a multiplexed RT-PCR  
87 test combining measurement of SARS-CoV-2 and influenza subtypes, in reference to  
88 comparator centralized PCR tests for SARS-CoV-2 and influenza A and B viruses. Sample  
89 types were nasal and nasopharyngeal swab specimens from individuals suspected of  
90 respiratory viral infection consistent with COVID-19, and asymptomatic individuals exposed  
91 to COVID-19, who presented at healthcare facilities across the US during the COVID-19  
92 public health emergency. Secondary objectives were to evaluate the influence of collection  
93 method and the ease of use of the Cobas Liat system.

## 94 **Materials and methods**

### 95 **Sites**

96 Testing was conducted at 11 sites: 10 geographically diverse healthcare facilities that were  
97 representative of intended-use sites (i.e., POC settings, such as emergency departments,  
98 urgent care, pediatric and primary care clinics, and drive-through COVID-19 testing sites),  
99 and one reference laboratory for centralized testing. After testing using the POC SARS-CoV-2  
100 & Influenza A/B test at the healthcare facilities, samples were shipped to the reference  
101 laboratory for analysis with the comparator assays (see below).

102 Healthcare facilities were selected based on sample availability, ability to provide adequate  
103 resources and operators, ability to adhere to good clinical practice, and with the aim of  
104 ensuring representation of the demographic diversity of the US population. Not all  
105 healthcare facilities performing testing were certified under Clinical Laboratory Improvement  
106 Amendments (CLIA) regulations to perform waived testing, but all facilities met the  
107 requirements for CLIA-waived settings (i.e., intended-use settings using untrained non-  
108 laboratory personnel). All healthcare facilities performed both sample collection and POC  
109 testing. POC operators at the 10 healthcare facilities (n=30 operators in total) had limited or  
110 no laboratory training and were representative of typical test operators in CLIA-waived  
111 settings (e.g., nurses, nursing assistants, and medical assistants). Operators at the  
112 reference laboratory were blinded to the results generated at the healthcare facilities.

### 113 **Study population**

114 The symptomatic group comprised samples from individuals with suspected respiratory viral  
115 infection consistent with COVID-19 (see Signs/symptoms, Supplementary material). The  
116 asymptomatic group comprised individuals with self-reported 'recent' exposure (timeframe  
117 undefined) to SARS-CoV-2-positive individuals or any other reasons to suspect COVID-19.  
118 Patient clinical information was gathered, including, but not limited to, antiviral usage for up

119 to 7 days prior to and on the day of sample collection, gender, race/ethnic group, and age.  
120 Individuals presenting at the healthcare facilities were considered for study inclusion,  
121 subject to the eligibility criteria (see Eligibility criteria, Supplementary material).

## 122 **Study design**

123 The clinical performance of the POC SARS-CoV-2 & Influenza A/B test (27) was evaluated by  
124 comparing results to a composite comparator method for the SARS-CoV-2 analyte using the  
125 following three highly sensitive centralized testing assays: Cobas SARS-CoV-2 qualitative  
126 assay for use on the Cobas 6800/8800 systems (herein referred to as the 6800/8800 SARS-  
127 CoV-2 test)(28); Cobas SARS-CoV-2 & Influenza A/B qualitative assay for use on the Cobas  
128 6800/8800 systems (herein referred to as the 6800/8800 SARS-CoV-2 & Influenza A/B  
129 test)(29); and Hologic® Aptima® SARS-CoV-2 Assay(30).

130 The clinical performance for the influenza A/B analyte components of the POC SARS-CoV-2  
131 & Influenza A/B test was evaluated against a single centralized testing assay, the 6800/8800  
132 SARS-CoV-2 & Influenza A/B (29).

133 Samples that generated invalid results were repeated where sample volume permitted  
134 additional testing; samples generating a second invalid result upon retesting were reported  
135 as invalid. Interrogation of discrepant samples was not performed, though selected samples  
136 were further retested with the POC SARS-CoV-2 & Influenza A/B test for exploratory  
137 purposes.

## 138 **Sample types and collection**

139 Sample types included fresh and frozen nasal and nasopharyngeal swab samples, collected  
140 in the same media formulations but under different brand names: Copan Universal  
141 Transport Medium (UTM) or BD Universal Viral Transport (UVT) medium.

142 Prospective fresh samples (UTM)

143 One nasal swab and one nasopharyngeal swab sample were collected from each study  
144 participant. A nasal swab of both nostrils was first collected either by the healthcare worker  
145 (HCW), herein referred to as 'HCW-collected', or by the study participant under instruction  
146 from the HCW, herein referred to as 'self-collected', as per manufacturer's instructions.(31)  
147 A nasopharyngeal swab was then collected by HCWs from the same study participant to  
148 generate paired samples. If a nasopharyngeal swab had already been collected (using one  
149 nostril) as part of the healthcare facility's standard of care, the study nasopharyngeal swab  
150 was taken from the opposite nostril.

151 All prospective samples were collected from patients presenting to healthcare facilities  
152 during February to June 2022, characteristic of the 2021/2022 winter respiratory season.

153 Retrospective frozen samples (archived or purchased from external vendors; UTM or UVT)

154 The low influenza prevalence in the prospective population was anticipated because of  
155 reduced international travel, new respiratory care paradigms, increased public health  
156 awareness, and use of interventions (such as masking policies or social distancing) that  
157 occurred during the COVID-19 pandemic and study enrollment period, in which influenza A  
158 virus had been the dominant virus type in circulation.(32) Therefore, frozen samples positive  
159 for influenza A virus and for influenza B virus were used to supplement the prospectively  
160 collected fresh samples. These retrospective samples were collected in the US during the  
161 2013–2014, 2014–2015, and 2019–2020 influenza seasons. Baseline demographic data and  
162 patient characteristics related to these samples were unavailable.

163 Retrospective samples with known SARS-CoV-2 status, collected between March 29, 2021  
164 and May 26, 2021, were also included in the SARS-CoV-2 analyses.

165 Whilst multiple freeze-thaw cycles have a limited effect on the viral titer(33), there is the  
166 potential for samples that were initially low-titer positives to appear negative following  
167 storage. Internal Roche data support the stability of viral titer for up to three freeze-thaw  
168 cycles, so retrospective samples were only eligible for inclusion if they had undergone no  
169 more than two freeze-thaw cycles. Retrospective positive and negative samples were  
170 blended in a standard POCT workflow and assessed alongside prospectively collected  
171 samples.

## 172 **Details of assays and instruments**

### 173 POC SARS-CoV-2 & Influenza A/B test (POC RT-PCR)

174 The Cobas Liat analyzer is for *in vitro* diagnostic use(27). The analyzer automates all nucleic  
175 acid amplification test processes, including target enrichment, inhibitor removal, nucleic acid  
176 extraction, reverse transcription, DNA amplification, real-time detection, and result  
177 interpretation in approximately 20 minutes(27). The Cobas Liat system comprises the Cobas  
178 Liat analyzer in conjunction with the Cobas Liat assay tubes(27).

179 The POC SARS-CoV-2 & Influenza A/B test utilizes a single-use disposable assay tube that  
180 contains all the reagents necessary for the detection of SARS-CoV-2 and hosts the sample  
181 preparation and PCR processes(34). This multiplex real-time RT-PCR test is intended for the  
182 simultaneous rapid *in vitro* qualitative detection and differentiation of SARS-CoV-2, influenza  
183 A, and influenza B virus RNA in healthcare provider-collected nasal and nasopharyngeal  
184 swab samples and self-collected nasal swab samples (collected in a healthcare setting with  
185 instruction by a healthcare provider) from individuals suspected of respiratory viral infection  
186 consistent with COVID-19(34).



187 6800/8800 SARS-CoV-2 & Influenza A/B test (centralized testing method [CTM] 1)

188 The Cobas 6800/8800 systems consist of the sample supply module, the transfer module,  
189 the processing module, and the analytic module(29). Automated data management is  
190 performed by the Cobas 6800/8800 software, which assigns results for all tests. Results are  
191 available within less than 3.5 hours after loading the sample on the system.(29) The positive  
192 SARS-CoV-2 result is defined as positive on the SARS-CoV-2 channel (Target 2) and/or the  
193 pan-sarbeco channel (Target 3).

194 The 6800/8800 SARS-CoV-2 & Influenza A/B test is an automated multiplex real-time RT-  
195 PCR assay intended for simultaneous qualitative detection and differentiation of SARS-CoV-  
196 2, influenza A virus, and/or influenza B virus RNA in healthcare provider-collected nasal and  
197 nasopharyngeal swab samples and self-collected nasal swab samples (collected in a  
198 healthcare setting with instruction by a healthcare provider) from individuals suspected of  
199 respiratory viral infection consistent with COVID-19(29).

200 6800/8800 SARS-CoV-2 test (CTM 2)

201 The 6800/8800 SARS-CoV-2 test is an automated real-time RT-PCR assay intended for the  
202 qualitative detection of nucleic acids from SARS-CoV-2 in healthcare provider-instructed,  
203 self-collected anterior nasal (nasal) swab samples (collected onsite) and healthcare provider-  
204 collected nasal, nasopharyngeal, and oropharyngeal swab samples collected from any  
205 individuals, including those suspected of COVID-19 by their healthcare provider, and those  
206 without symptoms or with other reasons to suspect COVID-19(28). The positive SARS-CoV-2  
207 result is defined as positive on the SARS-CoV-2 channel (Target 1) and/or the pan-sarbeco  
208 channel (Target 2).

209 Hologic Aptima SARS-CoV-2 assay (tiebreaker; CTM 3)

210 As a commonly used molecular assay(30), CTM 3 was utilized as a tiebreaker. The test  
211 utilizes transcription-mediated amplification for the qualitative detection of RNA from SARS-  
212 CoV-2 isolated and purified from nasopharyngeal, nasal, mid-turbinate and oropharyngeal  
213 swab samples, nasopharyngeal wash/aspirate, or nasal aspirates obtained from individuals  
214 meeting COVID-19 clinical and/or epidemiological criteria(35).

215 **Analyses**

216 All data analyses were performed using SAS/STAT® software (v9.4 or higher of the SAS  
217 System for Linux). No formal sample size calculations were calculated for this study, but  
218 patient enrollment was adjusted to accommodate disease prevalence and to generate a  
219 minimum of 50 SARS-CoV-2 positives, 30 influenza A positives, and 10 influenza B positives  
220 for analysis.

221 The clinical performance of the POC SARS-CoV-2 & Influenza A/B test was evaluated using  
222 estimates of positive percent agreement (PPA), negative percent agreement (NPA), and  
223 overall percent agreement (OPA), calculated with 2-sided 95% confidence intervals (CI)  
224 using the Wilson-score method(36). Comparison was against either the composite  
225 comparator for SARS-CoV-2 (CTM 1, CTM 2, and CTM 3 [tiebreaker if required]) or a single  
226 comparator for influenza A/B (CTM 1).

227 For SARS-CoV-2, concordant results from CTM 1 and CTM 2 established true positive or true  
228 negative status. In the event of discordance between CTM 1 and CTM 2, CTM 3 (the  
229 tiebreaker) was used to establish true status. Samples could be coded as uninterpretable in  
230 the event of invalid, failed, aborted or missing results that were not resolved upon retesting.  
231 If CTM 1 or CTM 2 or CTM 3 returned uninterpretable results, and the other two methods  
232 returned different results (i.e., CTM 1 positive, CTM 2 negative, and CTM 3  
233 uninterpretable), then the status of the sample would be described as indeterminate.

234 McNemar's mid-p test (P-value) was used to assess any differences between sample types.

235 A P-value of <0.05 was considered statistically significant.

236 POCT operators were asked to complete a questionnaire to evaluate the ease of use of the

237 POC SARS-CoV-2 & Influenza A/B test.

238 *In silico* analysis of the POC SARS-CoV-2 & Influenza A/B test was performed to assess

239 assay design inclusivity on all available SARS-CoV-2 sequences (taxonomy ID 2697049) in

240 the Global Initiative on Sharing All Influenza Data (GISAID) and National Center for

241 Biotechnology Information (NCBI) databases up to July 2024 (>16,800,000 sequences in

242 NCBI and >8,900,000 sequences in GISAID). The predicted impact of each variant on gene

243 target 1 and gene target 2 primer and probe binding site sequence was evaluated using

244 Roche proprietary software and Melting5 software. A SARS-CoV-2 sequence would be

245 potentially not detected by the POC SARS-CoV-2 & Influenza A/B test if a delay in cycle

246 threshold greater than five cycles and/or a probe melting temperature of <65°C was

247 predicted.

## 248 **Ethics statement**

249 This study was a non-interventional evaluation of an *in vitro* diagnostic device (test results

250 were not used to inform patient care decisions). This study was conducted in compliance

251 with International Conference on Harmonisation Good Clinical Practice guidelines,

252 regulations of the US Food and Drug Administration (FDA), and the Declaration of Helsinki.

253 The study protocol was submitted to Institutional Review Boards (IRBs) in accordance with

254 FDA and local regulatory requirements before the start of the study. The following IRBs

255 gave permission for this study to be performed: NorthShore University Health System

256 Institutional Review Board; University of Rochester, Research Subjects Review Board; and

257 Western IRB.

## 258 **Results**

## 259 **Participants and summary of testing results**

260 Subjects from 10 geographically diverse healthcare facilities were enrolled in the study. The  
261 summary of testing results can be seen in **Supplemental Table A**. A total of 2,209 SARS-  
262 CoV-2 results from prospective samples (both nasal and nasopharyngeal swabs) were valid  
263 for inclusion in downstream analyses.

## 264 **Population and baseline characteristics**

265 Baseline demographic data for study participants were available for the prospectively  
266 collected samples; details on the study participants are presented in **Table 1**. Of these  
267 subjects, 506 were male (47.8%) and 553 were female (52.2%). The median age was 35  
268 years (range 0–86).

269 Patient characteristics are present in **Supplemental Table B**. In total, 60.4% of subjects in  
270 the prospective population had signs and symptoms of respiratory infection, with days from  
271 onset of first symptom ranging from 1 to 365 days. The remaining 39.6% of subjects were  
272 asymptomatic but were clinically suspected of SARS-CoV-2 infection by their healthcare  
273 provider due to recent exposure or other reason. The nasal swab samples were evenly  
274 distributed between HCW-collected and self-collected.

## 275 **Medical history**

276 The medical history relating to vaccination status is presented in **Table 2**. Most participants  
277 received a COVID-19 vaccine (68.7%), with Pfizer as the most common vaccine for both first  
278 and second doses (69.5% and 72.2%, respectively).

## 279 **SARS-CoV-2**

### 280 Determination of the composite comparator status for SARS-CoV-2

281 In symptomatic study participants, the composite comparator method was SARS-CoV-2  
282 positive for 134 nasal and 131 nasopharyngeal swab samples (**Supplemental Table C**).

283 In asymptomatic study participants, the composite comparator method was SARS-CoV-2  
284 positive for 39 nasal and 39 nasopharyngeal swab samples (**Supplemental Table C**).

#### 285 Performance

286 The total number of samples that were positive, negative, or invalid, and how these align  
287 with the composite comparator status, can be seen in **Figure 1**. The diagnostic  
288 performance (total number of positive and negative results) for SARS-CoV-2 can be seen in  
289 **Table 3**. Agreement between the composite comparator and the POC SARS-CoV-2 &  
290 Influenza A/B test for detection of SARS-CoV-2 in nasal swabs (total, prospective and  
291 retrospective, self-collected or HCW-collected), nasopharyngeal swabs (total, prospective  
292 and retrospective), in samples from vaccinated and unvaccinated participants, and in  
293 symptomatic and asymptomatic participants can be seen in **Supplemental Table D**. For  
294 nasal swab samples, the total OPA, PPA, and NPA was 98.8% (95% CI: 97.9, 99.3), 97.1%  
295 (95% CI: 93.3, 98.7), and 99.1% (95% CI: 98.2, 99.5), respectively. Of note, the OPA for  
296 HCW-collected nasal swab samples was 98.4% (95% CI: 97.0, 99.2) and 99.1% (95% CI:  
297 98.0, 99.6) for self-collected nasal swab samples. The total OPA, PPA, and NPA for  
298 nasopharyngeal swab samples was 99.0% (95% CI: 98.2, 99.4), 96.4% (95% CI: 92.4,  
299 98.4), and 99.4% (95% CI: 98.7, 99.8), respectively.

300 Using all paired results for nasal and nasopharyngeal swab samples by subject, the swab  
301 type did not make a difference in the reported result (McNemar's mid-p test,  $P=0.771$ ).

#### 302 Cycle threshold (Ct) value distributions

303 The range of Ct values in nasal and nasopharyngeal swab samples can be seen in **Figure 2**.  
304 Self-collected nasal swabs showed the highest average viral load followed by  
305 nasopharyngeal swabs, then HCW-collected nasal swabs.

306 The range of Ct values in subject-paired nasal and nasopharyngeal swab samples can be  
307 seen in **Figure 3**. The Deming regression analysis showed that the two sample types were  
308 highly correlated (**Figure 3A**;  $r = 0.83$ ). Exploration of the collection method showed that  
309 HCW-collected nasal swabs had greater concordance between the paired samples (**Figure**  
310 **3B**;  $r = 0.91$ ) than the self-collected nasal swabs ( $r = 0.77$ ; **Figure 3C**).

#### 311 Discordance

312 Fourteen nasal and 11 nasopharyngeal swab samples showed discordant results between  
313 the POC SARS-CoV-2 & Influenza A/B test and the centralized testing methods  
314 (**Supplemental Table E**); 10 were positive only on the POC SARS-CoV-2 & Influenza A/B  
315 test.

#### 316 **Influenza A**

##### 317 Performance

318 The agreement between the POC SARS-CoV-2 & Influenza A/B test and the 6800/8800  
319 SARS-CoV-2 & Influenza A/B test for detection of influenza A in nasopharyngeal swabs  
320 (total, prospective and retrospective) and nasal swabs (total, prospective and retrospective,  
321 HCW-collected or self-collected) can be seen in **Supplemental Table F**. The OPA ranged  
322 from 98.9% to 100.0%.

##### 323 Discordance

324 Two nasal and five nasopharyngeal swab samples showed discordant results between the  
325 POC SARS-CoV-2 & Influenza A/B test and the 6800/8800 SARS-CoV-2 & Influenza A/B test  
326 for detection of influenza A (**Supplemental Table G**), four of which were positive only on  
327 the POC SARS-CoV-2 & Influenza A/B test.

#### 328 **Influenza B**

## 329 Performance

330 The agreement between the POC SARS-CoV-2 & Influenza A/B test and the 6800/8800  
331 SARS-CoV-2 & Influenza A/B test for detection of influenza B in nasopharyngeal swabs  
332 (total, prospective and retrospective) and nasal swabs (total, prospective and retrospective,  
333 self-collected nasal or HCW-collected) can be seen in **Supplemental Table H**. The OPA for  
334 all comparisons was 100.0%.

## 335 Discordance

336 No discordant results between the POC SARS-CoV-2 & Influenza A/B test and the 6800/8800  
337 SARS-CoV-2 & Influenza A/B test for detection of influenza B were recorded.

## 338 **Evaluation of the ease of use for the Cobas Liat system**

339 Twenty-seven operators with experience of testing samples on the Cobas Liat completed the  
340 questionnaire. The operators' average scores indicating their agreement with the statements  
341 in the questionnaire are shown in **Supplemental Table I**. The overall score was 4.5 out of  
342 5 for the operators' answers to all eight statements, indicating that the operators agreed  
343 that the Cobas Liat system was easy to use.

## 344 **Inclusivity analysis**

345 The POC SARS-CoV-2 & Influenza A/B test targets the nucleocapsid (N) and ORF1a/b  
346 regions of the SARS-CoV-2 genome.<sup>(34)</sup> *In silico* analysis showed that 99.98% of NCBI and  
347 99.99% of GISAID sequences for SARS-CoV-2 had no changes in the primer/probe binding  
348 sites of both target regions simultaneously. All sequences were predicted to be detected by  
349 at least one of the two sites.

## 350 **Discussion**

351 In this study, we evaluated the performance of the POC SARS-CoV-2 & Influenza A/B test  
352 against up to three centralized assays, stratified by various parameters. The high  
353 performance of the POC SARS-CoV-2 & Influenza A/B test in comparison with centralized  
354 testing methods utilizing nasopharyngeal or nasal samples has previously been reported(37-  
355 41), but this study is the first to report the performance of the POC SARS-CoV-2 & Influenza  
356 A/B test across variables such as collection method (self/HCW, retrospective/prospective),  
357 vaccination status, symptom status, and ease of use. Using the comparator result to  
358 establish the status of infection, we found high agreement between the POC RT-PCR test  
359 and the centralized testing assays for all three analytes across all variables.

360 Previously, a meta-analysis of nucleic acid amplification testing reported that the sensitivity  
361 for detection of SARS-CoV-2 in nasal samples may be less than nasopharyngeal  
362 samples(42), whilst a study specifically assessing the POC SARS-CoV-2 & Influenza A/B test  
363 reported similar differences in SARS-CoV-2 detection by sample type(37). However, we saw  
364 no evidence of a sample-type difference in sensitivity, with SARS-CoV-2 positivity identified  
365 in both nasal and nasopharyngeal swab samples to a similar extent (POC SARS-CoV-2 &  
366 Influenza A/B test positivity rate approximately 15%; the difference in sensitivity [nasal  
367 minus nasopharyngeal] was +0.9%).

368 A small study from Denmark found almost equivalent sensitivity for detection of SARS-CoV-2  
369 using self- and HCW-collected samples (84.2% vs 89.5%, respectively), and that patients  
370 preferred self-collection(43). In our study, whether nasal samples were collected by HCWs  
371 or by the patients themselves had little impact on the agreement values between the POC  
372 RT-PCR test and the comparators. Indeed, in all comparisons the agreement for self-  
373 collected samples was actually higher than for HCW-collected samples. For SARS-CoV-2, Ct  
374 values of paired nasal and nasopharyngeal swab samples as measured by the POC RT-PCR  
375 test were highly correlated, and Ct values were on average lower in nasal swab samples  
376 (i.e., higher viral RNA titer) compared with nasopharyngeal swab samples, with self-



377 collected nasal swabs exhibiting the lowest Ct values. Collectively, this indicates that the  
378 high performance level of the POC RT-PCR test is maintained across collection methods, and  
379 that patients are able to self-sample effectively, and are willing to do so.

380 We identified a small number of discrepant samples for the SARS-CoV-2 analyte in both  
381 nasal and nasopharyngeal swab samples, consistent with other studies(37, 38), most of  
382 which were false positives. The majority of the false positives were in the high Ct/low viral  
383 titer range (POC SARS-CoV-2 & Influenza A/B test Ct values: lowest 28.2, median 35.2,  
384 highest 37.1) and thus close to or at the lower limit of detection of Ct 35.2 (USA-WA1/2020  
385 strain) for the POC SARS-CoV-2 & Influenza A/B test(34). Of the false negatives detected by  
386 the POC SARS-CoV-2 & Influenza A/B test, all except one sample were in the high Ct range.  
387 Indeed, after exploratory re-testing of false-negative nasopharyngeal samples, two were  
388 found to be positive (re-tested Ct values were 34.8 and 35.4). Generally, low viral burden  
389 can be a cause of discrepant results(44), and a small external quality assessment  
390 (reproducibility) study reported that the performance of the POC SARS-CoV-2 & Influenza  
391 A/B test is highest at low Ct values(45).

392 US legislation categorizes tests for complexity (moderate or high) using seven criteria, such  
393 as the need for training and experience, and assigns scores within each criterion(45). Test  
394 systems can be assigned as 'waived complexity' under certain conditions, and these tests  
395 require no formal operator training or competency(45). In addition to CLIA-certified  
396 laboratories, the POC SARS-CoV-2 & Influenza A/B test is authorized for use in patient care  
397 settings that are CLIA waived(34). In conjunction with the fast turnaround offered by the  
398 Cobas Liat system and demonstrated in studies of the POC SARS-CoV-2 & Influenza A/B test  
399 in real-world settings (40, 46) or studies evaluating workflow or processing time(41, 47), our  
400 study confirms that the POC SARS-CoV-2 & Influenza A/B test is easy to use in CLIA-waived  
401 settings, and offers results in a timeframe conducive for rapid patient management.

402 The strength of our multicenter study lies in the comprehensive nature of the variables  
403 assessed, encompassing a wide variety of patient characteristics likely to be encountered in  
404 healthcare settings. The study included a prospectively enrolled cohort of patients seeking  
405 care, which is representative of the intended-use population of the POC SARS-CoV-2 &  
406 Influenza A/B test. Our study has some limitations. Firstly, we did not ascertain the SARS-  
407 CoV-2 variants present in the samples. Whilst the emergence of SARS-CoV-2 variants has  
408 the ability to affect the diagnostic performance of the test, previous studies have indicated  
409 that the POC SARS-CoV-2 & Influenza A/B test detects both wild-type and variants of  
410 concern, such as Alpha (B.1.1.7) or Omicron (B.1.1.529)(39, 47). Bioinformatic analysis to  
411 assess inclusivity showed that the POC SARS-CoV-2 & Influenza A/B test is predicted to bind  
412 all sequences available in the NCBI and GISAID databases as of July 2024. The dual target  
413 assay design helps to ensure that the assay is robust and safeguards against the emergence  
414 of variants that have the potential to affect assay performance and evade detection.

## 415 **Conclusion**

416 A POC RT-PCR test combining both measurement of SARS-CoV-2 and influenza subtypes  
417 with performance equivalent to routine centralized testing would provide a critical tool to  
418 improve the diagnosis and management of COVID-19 and influenza. We found that the  
419 performance of the POC SARS-CoV-2 & Influenza A/B test was comparable to centralized  
420 testing methods. With the ease of use and equivalent performance, it highlights the question  
421 as to whether centralized testing should be considered as the gold standard. A study of the  
422 POC Cobas Influenza A/B test (a Liat RT-PCR test that detects only the influenza analyte) in  
423 the emergency department found that POC testing for influenza was useful in improving  
424 several metrics, including the indication for treatment with neuraminidase in positive  
425 cases(48). It is relevant to note that SARS-CoV-2 and influenza coinfection can increase the  
426 risk of severe outcomes compared with those infected with SARS-CoV-2 alone, particularly  
427 for those coinfecting with influenza A.(49) Our study highlights the benefits of molecular

428 multiplex POCT to help improve timely differentiation of respiratory diseases that share  
429 similar symptoms and support efforts to improve patient management.

#### 430 **Funding**

431 This study was funded by Roche Molecular Systems, Inc (Pleasanton, California, USA).

#### 432 **Disclosures**

433 EMR, RB, HC, LM, and CN are employees of Roche Molecular Systems, Inc. EMR participates  
434 in Roche Connect and is a shareholder.

#### 435 Assay disclaimers

436 The Cobas SARS-CoV-2 & Influenza A/B qualitative assay for use on the Cobas Liat system  
437 (herein referred to as the POC SARS-CoV-2 & Influenza A/B test) was originally approved  
438 under Emergency Use Authorization EUA201779 and has since been cleared and Clinical  
439 Laboratory Improvement Amendments (CLIA) waived under 223591/CW220014,  
440 respectively, in the US and is CE-IVD marked in the European Union. Sample collection in  
441 the patient's home is not approved in the US or European Union.

442 The Cobas SARS-CoV-2 & Influenza A/B qualitative assay for use on the Cobas 6800/8800  
443 systems (herein referred to as the 6800/8800 SARS-CoV-2 & Influenza A/B test) is  
444 authorized only for use under Emergency Use Authorization (EUA) in the US, and is CE-IVD  
445 marked in the European Union. The assay is not approved for use in asymptomatic patients  
446 in the US or European Union. The assay is not approved for use as a point-of-care (POC)  
447 test/near-patient test (NPT) in the US/European Union. Sample collection in the patient's  
448 home is not approved in the US or European Union.

449 The Cobas SARS-CoV-2 qualitative assay for use on the Cobas 6800/8800 systems (herein  
450 referred to as the 6800/8800 SARS-CoV-2 test) is authorized only for use under EUA in the  
451 US, and is CE-IVD marked in the European Union. The assay is not approved for use as a

452 POC test/NPT in the US/European Union. Sample collection in the patient's home is not  
453 approved in the US or European Union.

454 Hologic Aptima SARS-CoV-2 assay is an FDA EUA assay.(30)

#### 455 **Data availability**

456 The datasets generated during and/or analyzed during the current study are not publicly  
457 available due to patient confidentiality. Any access requests from qualified researchers  
458 should be submitted directly to the Ethical Committee of each participating study site.

#### 459 **Acknowledgments**

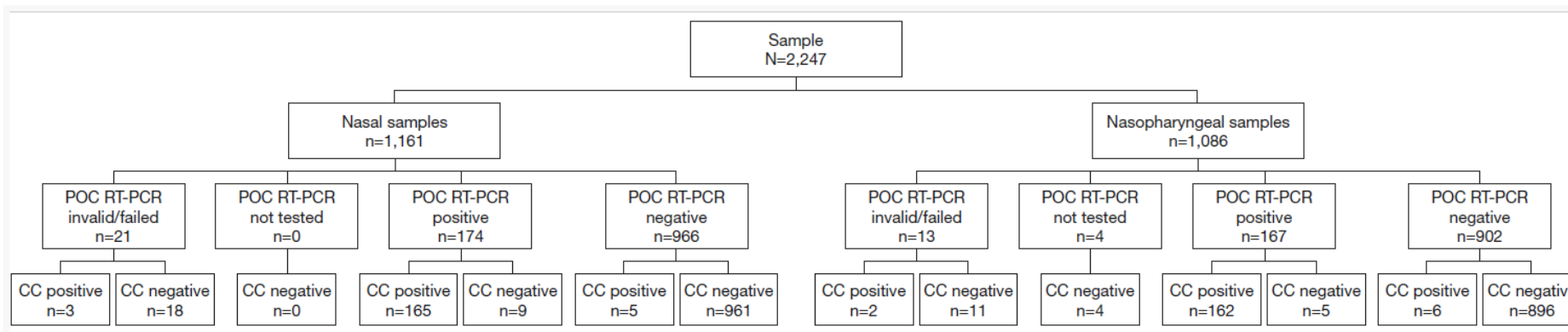
460 Medical writing support was provided by Corrinne Segal of Obsidian Healthcare Group Ltd  
461 (London, UK) and was funded by Roche Molecular Systems, Inc.

462 COBAS and LIAT are trademarks of Roche. All other product names and trademarks are the  
463 property of their respective owners.

464 We would like to thank Saima Shams and Vaishali Mody for their contributions to the  
465 development of the Cobas SARS-CoV-2 & Influenza A/B qualitative assay for use on the  
466 Cobas Liat system (herein referred to as the POC SARS-CoV-2 & Influenza A/B test), and  
467 Jingtao Sun for his bioinformatics expertise.

468 **Figures**

469 Figure 1: Detection of SARS-CoV-2 using the POC SARS-CoV-2 & Influenza A/B test and the composite comparator (prospective and  
470 retrospective, symptomatic and asymptomatic subjects)<sup>a</sup>



471

472 Abbreviations: CC, composite comparator; POC RT-PCR, point-of-care RT-PCR; SARS-CoV-2, severe acute respiratory syndrome coronavirus 2.

473 <sup>a</sup>The composite comparator comprises the 6800/8800 SARS-CoV-2 & Influenza A/B test, 6800/8800 SARS-CoV-2 test, and Hologic® Aptima®

474 SARS-CoV-2 Assay; the POC RT-PCR test is the POC SARS-CoV-2 & Influenza A/B test.

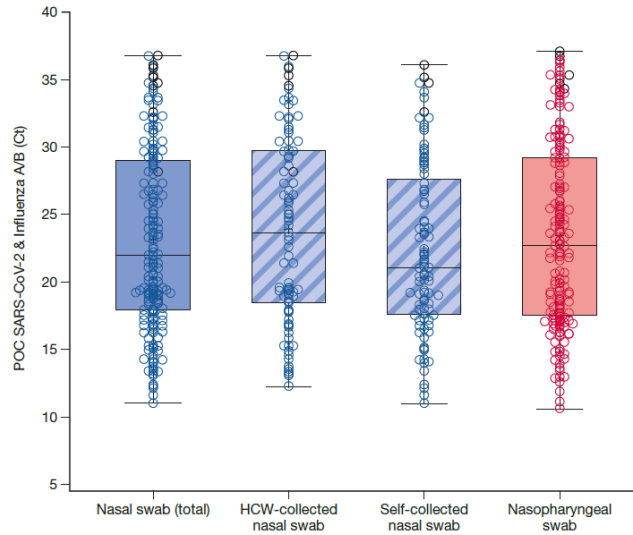
475 The Cobas® SARS-CoV-2 & Influenza A/B nucleic acid test for use on the Cobas Liat® system is herein referred to as the POC SARS-CoV-2 &

476 Influenza A/B test. The Cobas SARS-CoV-2 & Influenza A/B qualitative assay for use on the Cobas 6800/8800 systems is herein referred to as

477 the 6800/8800 SARS-CoV-2 & Influenza A/B test. Cobas SARS-CoV-2 qualitative assay for use on the Cobas 6800/8800 systems is herein

478 referred to as the 6800/8800 SARS-CoV-2 test.

479 Figure 2: C<sub>t</sub> values for the SARS-CoV-2 analyte from the POC SARS-CoV-2 & Influenza A/B test in nasal and nasopharyngeal swab samples<sup>a</sup>



480

481 Abbreviations: Ct, cycle threshold; HCW, healthcare worker-collected; SARS-CoV-2, severe acute respiratory syndrome coronavirus 2.

482 <sup>a</sup>False positives are represented by black circles. Cross represents mean Ct values. Nasal (total): n=179, mean Ct 23.1, median Ct 21.9,

483 minimum Ct 11.0, maximum Ct 36.8; HCW-collected nasal: n=87, mean Ct 23.9, median Ct 23.7, minimum Ct 12.3, maximum Ct 36.8; self-

484 collected nasal: n=92, mean Ct 22.4, median Ct 21.1, minimum Ct 11.0, maximum Ct 36.1; nasopharyngeal: n=177, mean Ct 23.4, median Ct

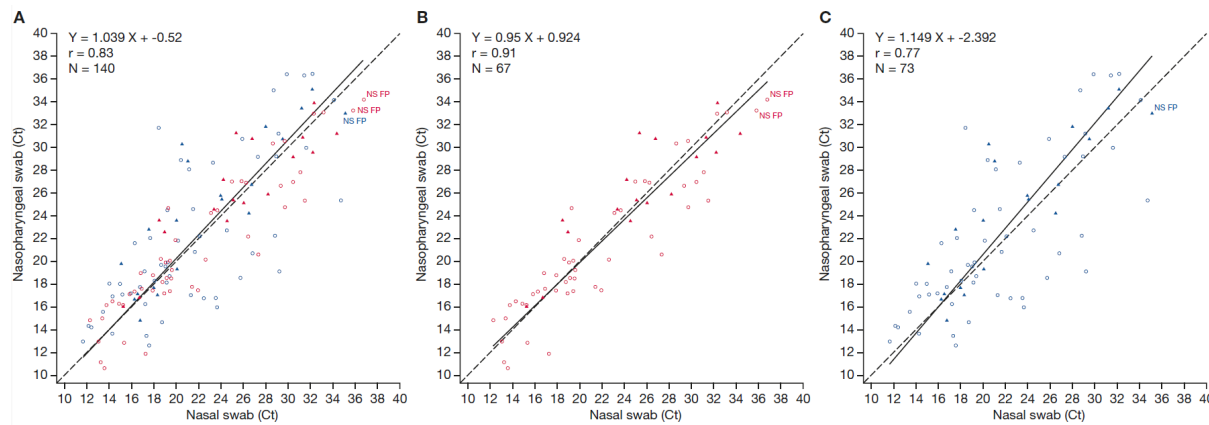
485 22.8, minimum Ct 10.6, maximum Ct 37.1.

486 False positives are indicated by black circles. The Cobas<sup>®</sup> SARS-CoV-2 & Influenza A/B nucleic acid test for use on the Cobas Liat<sup>®</sup> system is  
487 herein referred to as the POC SARS-CoV-2 & Influenza A/B test. Horizontal solid line represents median values. Upper and lower boundaries of  
488 box plot represent 75th and 25th percentile.

489

490 Figure 3: Deming regression for the SARS-CoV-2 analyte from the POC SARS-CoV-2 & Influenza A/B test in subject-paired nasal and  
491 nasopharyngeal swab samples<sup>a</sup>

492 A: Nasal (total); B: HCW-collected nasal swab; C: Self-collected nasal swab



494 Abbreviations: Ct, cycle threshold; FP, false positive; HCW, healthcare worker-collected; NPS, nasopharyngeal swab; NS, nasal; NS FP, nasal  
495 false positive; SARS-CoV-2, severe acute respiratory syndrome coronavirus 2.

496 <sup>a</sup>The Cobas<sup>®</sup> SARS-CoV-2 & Influenza A/B nucleic acid test for use on the Cobas Liat<sup>®</sup> system is herein referred to as the POC SARS-CoV-2 &  
497 Influenza A/B test. Prospective symptomatic = open circle; prospective exposed = triangle. Dashed line represents perfect correlation. Solid  
498 line represents Deming regression. Red data points represent HCW-collected nasal swabs. Blue data points represent self-collected nasal  
499 swabs.



500 **Tables**

501 Table 1: Demographics (prospective symptomatic and asymptomatic subjects)

| <b>Characteristics</b>               | <b>Prospective population</b> |
|--------------------------------------|-------------------------------|
| <b>Total</b>                         |                               |
| N                                    | 1,059                         |
| <b>Age (years)</b>                   |                               |
| Mean                                 | 34.2                          |
| Standard deviation                   | 19.88                         |
| Median                               | 35.0                          |
| Range (minimum–maximum) <sup>a</sup> | 0.0–86.0                      |
| <b>Age group (years), n (%)</b>      |                               |
| ≤18                                  | 287 (27.1)                    |
| 19–39                                | 319 (30.1)                    |
| 40–64                                | 391 (36.9)                    |
| ≥65                                  | 62 (5.9)                      |
| <b>Sex at birth, n (%)</b>           |                               |
| Male                                 | 506 (47.8)                    |
| Female                               | 553 (52.2)                    |
| <b>Ethnicity, n (%)</b>              |                               |
| Hispanic/Latino                      | 212 (20.0)                    |
| Not Hispanic/not Latino              | 589 (55.6)                    |
| Not reported <sup>b</sup>            | 236 (22.3)                    |
| Unknown <sup>c</sup>                 | 22 (2.1)                      |
| <b>Race, n (%)</b>                   |                               |
| American Indian/Alaskan Native       | 3 (0.3)                       |
| Asian                                | 37 (3.5)                      |
| Black/African American               | 175 (16.5)                    |
| Native Hawaiian/Pacific Islander     | 6 (0.6)                       |
| White                                | 520 (49.1)                    |
| Other                                | 56 (5.3)                      |
| Not reported <sup>b</sup>            | 262 (24.7)                    |

502

503 <sup>a</sup>All subjects <1 year old are counted as age 0.

504 <sup>b</sup>A clinical site that was a mobile drive-through site was not able to collect race/ethnicity  
505 identification from subjects.

506 <sup>c</sup>Unknown category indicates subjects for whom the corresponding information is not  
507 available.

508

509 Table 2: Subject medical history (prospective symptomatic and asymptomatic subjects)

510

| <b>Characteristics</b>   | <b>Population statistics</b> |
|--|------------------------------|
| <b>Total</b>   |                              |
| N  | 1,059                        |
| <b>Subject received the influenza vaccine within the last 6 weeks, n (%)</b> |                              |
| Yes  | 14 (1.3)                     |
| No   | 1,045 (98.7)                 |
| Unknown  | 0 (0.0)                      |
| <b>Influenza vaccine route of administration, n (%)<sup>a</sup></b>          |                              |
| Intramuscular  | 14 (100.0)                   |
| Intranasal   | 0 (0.0)                      |
| Unknown  | 0 (0.0)                      |
| <b>Subject received a COVID-19 vaccine, n (%)</b>                            |                              |
| Yes  | 728 (68.7)                   |
| No   | 303 (28.6)                   |
| Unknown  | 28 (2.6)                     |
| <b>Type of COVID-19 vaccine received for first dose, n (%)<sup>b</sup></b>   |                              |
| Pfizer   | 506 (69.5)                   |
| Moderna  | 185 (25.4)                   |
| Johnson & Johnson (J & J)  | 30 (4.1)                     |
| Other  | 3 (0.4)                      |
| Unknown  | 4 (0.5)                      |
| <b>Type of COVID-19 vaccine received for second dose, n (%)<sup>b</sup></b>  |                              |
| Pfizer   | 488 (72.2)                   |
| Moderna  | 182 (26.9)                   |
| Other  | 3 (0.4)                      |
| Unknown  | 3 (0.4)                      |
| <b>Type of COVID-19 vaccine received first booster, n (%)<sup>b,c</sup></b>  |                              |
| Pfizer   | 217 (64.0)                   |
| Moderna  | 115 (33.9)                   |
| Johnson & Johnson (J & J)  | 5 (1.5)                      |

| <b>Characteristics</b> | <b>Population statistics</b> |
|------------------------|------------------------------|
| Other                  | 1 (0.3)                      |
| Unknown                | 1 (0.3)                      |

511

512 Abbreviations: COVID-19, coronavirus disease 2019

513 <sup>a</sup>Percentages calculated based on number of subjects who received the influenza vaccine  
514 within the last 6 weeks prior to enrollment and sample collection.

515 <sup>b</sup>Percentages calculated based on number of subjects who received COVID-19 vaccine or  
516 first booster.

517 <sup>c</sup>There were six subjects that reported receiving a second booster.

518

519

520 Table 3: Results for the detection of SARS-CoV-2 using the composite comparator compared with the POC SARS-CoV-2 & Influenza A/B test<sup>a</sup>

|   | <b>Composite comparator (+)</b> | <b>Composite comparator (-)</b> | <i>Total</i> | <b>PPA % (95% CI)</b>    | <b>NPA % (95% CI)</b>    |
|---|---------------------------------|---------------------------------|--------------|--------------------------|--------------------------|
| <b>Nasal</b>                            |                                 |                                 |              |                          |                          |
| POC SARS-CoV-2 & Influenza A/B test (+) | 165                             | 9                               | 174          | <b>97.1 (93.3, 98.7)</b> | <b>99.1 (98.2, 99.5)</b> |
| POC SARS-CoV-2 & Influenza A/B test (-) | 5                               | 961                             | 966          |                          |                          |
| <i>Total</i>                            | <b>170</b>                      | <b>970</b>                      | <b>1,140</b> |                          |                          |
| <b>Nasopharyngeal</b>                   |                                 |                                 |              |                          |                          |
| POC SARS-CoV-2 & Influenza A/B test (+) | 162                             | 5                               | 167          | <b>96.4 (92.4, 98.4)</b> | <b>99.4 (98.7, 99.8)</b> |
| POC SARS-CoV-2 & Influenza A/B test (-) | 6                               | 896                             | 902          |                          |                          |
| <i>Total</i>                            | <b>168</b>                      | <b>901</b>                      | <b>1,069</b> |                          |                          |

521

522 Abbreviations: CI, Score confidence interval; NPA, negative percent agreement; PPA, positive percent agreement; SARS-CoV-2, severe acute  
 523 respiratory syndrome coronavirus 2.

524 <sup>a</sup>The Cobas<sup>®</sup> SARS-CoV-2 & Influenza A/B nucleic acid test for use on the Cobas Liat<sup>®</sup> system is herein referred to as the POC SARS-CoV-2 &  
 525 Influenza A/B test.

## 526 **References**

- 527 1. Mathieu E, Ritchie H, Rodés-Guirao L, Appel C, Giattino C, Hasell J, Macdonald  
528 B, Dattani S, Beltekian D, Ortiz-Ospina E, Roser M. 2020. Coronavirus  
529 pandemic (COVID-19). <https://ourworldindata.org/coronavirus>. Accessed Mar  
530 06, 2024.
- 531 2. Ahmad FB, Cisewski JA, Xu J, Anderson RN. 2023. COVID-19 Mortality Update  
532 - United States, 2022. *MMWR Morb Mortal Wkly Rep* 72:493–496.
- 533 3. Meyerowitz EA, Scott J, Richterman A, Male V, Cevik M. 2023. Clinical course  
534 and management of COVID-19 in the era of widespread population immunity.  
535 *Nat Rev Microbiol* 22:75–88.
- 536 4. Antinori A, Bausch-Jurken M. 2023. The burden of COVID-19 in the  
537 immunocompromised patient: implications for vaccination and needs for the  
538 future. *J Infect Dis* 228:S4–S12.
- 539 5. Wiemken TL, Khan F, Puzniak L, Yang W, Simmering J, Polgreen P, Nguyen  
540 JL, Jodar L, McLaughlin JM. 2023. Seasonal trends in COVID-19 cases,  
541 hospitalizations, and mortality in the United States and Europe. *Sci Rep*  
542 13:3886.
- 543 6. Moriyama M, Hugentobler WJ, Iwasaki A. 2020. Seasonality of Respiratory  
544 Viral Infections. *Annu Rev Virol* 7:83–101.
- 545 7. World Health Organization. 2024. Coronavirus disease (COVID-19):  
546 similarities and differences between COVID-19 and influenza.  
547 [https://www.who.int/news-room/questions-and-answers/item/coronavirus-](https://www.who.int/news-room/questions-and-answers/item/coronavirus-disease-covid-19-similarities-and-differences-with-influenza)  
548 [disease-covid-19-similarities-and-differences-with-influenza](https://www.who.int/news-room/questions-and-answers/item/coronavirus-disease-covid-19-similarities-and-differences-with-influenza). Accessed Aug 05,  
549 2024.

- 550 8. Baldanti F, Ganguly NK, Wang G, Möckel M, O'Neill LA, Renz H, Dos Santos  
551 Ferreira CE, Tateda K, Van Der Pol B. 2022. Choice of SARS-CoV-2 diagnostic  
552 test: challenges and key considerations for the future. *Crit Rev Clin Lab Sci*  
553 59:445–459.
- 554 9. Hayden MK, Hanson KE, Englund JA, Lee MJ, Loeb M, Lee F, Morgan DJ, Patel  
555 R, El Mikati IK, Iqneibi S, Alabed F, Amarin JZ, Mansour R, Patel P, Falck-Ytter  
556 Y, Morgan RL, Murad MH, Sultan S, Bhimraj A, Mustafa RA. 2023. The  
557 Infectious Diseases Society of America guidelines on the diagnosis of  
558 coronavirus disease 2019 (COVID-19): molecular diagnostic testing. *Clin*  
559 *Infect Dis* doi:10.1093/cid/ciad646.
- 560 10. Katzenschlager S, Brümmer LE, Schmitz S, Tolle H, Manten K, Gaeddert M,  
561 Erdmann C, Lindner A, Tobian F, Grilli M, Pollock NR, Macé A, Erkosar B,  
562 Carmona S, Ongarello S, Johnson CC, Sacks JA, Denkinger CM, Yerlikaya S.  
563 2023. Comparing SARS-CoV-2 antigen-detection rapid diagnostic tests for  
564 COVID-19 self-testing/self-sampling with molecular and professional-use  
565 tests: a systematic review and meta-analysis. *Sci Rep* 13:21913.
- 566 11. Tolan NV, Horowitz GL. 2022. Clinical diagnostic point-of-care molecular  
567 assays for SARS-CoV-2. *Clin Lab Med* 42:223–236.
- 568 12. Shirley JD, Bennett SA, Binnicker MJ. 2023. Current regulatory landscape for  
569 viral point-of-care testing in the United States. *J Clin Virol* 164:105492.
- 570 13. Fragkou PC, Moschopoulos CD, Dimopoulou D, Ong DSY, Dimopoulou K,  
571 Nelson PP, Schweitzer VA, Janocha H, Karofylakis E, Papatthanasiou KA,  
572 Tsiordras S, De Angelis G, Thölken C, Sanguinetti M, Chung HR, Skevaki C.  
573 2023. Performance of point-of care molecular and antigen-based tests for

- 574 SARS-CoV-2: a living systematic review and meta-analysis. *Clin Microbiol*  
575 *Infect* 29:291–301.
- 576 14. Bigio J, MacLean EL, Das R, Sulis G, Kohli M, Berhane S, Dinnes J, Deeks JJ,  
577 Brümmer LE, Denkinger CM, Pai M. 2023. Accuracy of package inserts of  
578 SARS-CoV-2 rapid antigen tests: a secondary analysis of manufacturer versus  
579 systematic review data. *Lancet Microbe* 4:e875–e882.
- 580 15. Wang X, Li Y, O'Brien KL, Madhi SA, Widdowson MA, Byass P, Omer SB,  
581 Abbas Q, Ali A, Amu A, Azziz-Baumgartner E, Bassat Q, Abdullah Brooks W,  
582 Chaves SS, Chung A, Cohen C, Echavarria M, Fasce RA, Gentile A, Gordon A,  
583 Groome M, Heikkinen T, Hirve S, Jara JH, Katz MA, Khuri-Bulos N, Krishnan A,  
584 de Leon O, Lucero MG, McCracken JP, Mira-Iglesias A, Moïsi JC, Munywoki PK,  
585 Ourohiré M, Polack FP, Rahi M, Rasmussen ZA, Rath BA, Saha SK, Simões EA,  
586 Sotomayor V, Thamthitiwat S, Treurnicht FK, Wamukoya M, Yoshida LM, Zar  
587 HJ, Campbell H, Nair H. 2020. Global burden of respiratory infections  
588 associated with seasonal influenza in children under 5 years in 2018: a  
589 systematic review and modelling study. *Lancet Glob Health* 8:e497–e510.
- 590 16. Paget J, Spreeuwenberg P, Charu V, Taylor RJ, Iuliano AD, Bresee J,  
591 Simonsen L, Viboud C. 2019. Global mortality associated with seasonal  
592 influenza epidemics: new burden estimates and predictors from the GLaMOR  
593 Project. *J Glob Health* 9:020421.
- 594 17. GBD 2017 Influenza Collaborators. 2019. Mortality, morbidity, and  
595 hospitalisations due to influenza lower respiratory tract infections, 2017: an  
596 analysis for the Global Burden of Disease Study 2017. *Lancet Respir Med*  
597 7:69–89.



- 598 18. Maleki F, Welch V, Lopez SMC, Cane A, Langer J, Enstone A, Markus K,  
599 Wright O, Hewitt N, Whittle I. 2023. Understanding the global burden of  
600 influenza in adults aged 18-64 years: a systematic literature review from 2012  
601 to 2022. *Adv Ther* 40:4166–4188.
- 602 19. Gibson J, Schechter-Perkins EM, Mitchell P, Mace S, Tian Y, Williams K, Luo R,  
603 Yen-Lieberman B. 2017. Multi-center evaluation of the Cobas® Liat®  
604 Influenza A/B & RSV assay for rapid point of care diagnosis. *J Clin Virol* 95:5–  
605 9.
- 606 20. Young S, Phillips J, Griego-Fullbright C, Wagner A, Jim P, Chaudhuri S, Tang  
607 S, Sickler J. 2020. Molecular point-of-care testing for influenza A/B and  
608 respiratory syncytial virus: comparison of workflow parameters for the ID  
609 Now and Cobas Liat systems. *J Clin Pathol* 73:328–334.
- 610 21. Azar MM, Landry ML. 2018. Detection of influenza A and B viruses and  
611 respiratory syncytial virus by use of Clinical Laboratory Improvement  
612 Amendments of 1988 (CLIA)-waived point-of-care assays: a paradigm shift to  
613 molecular tests. *J Clin Microbiol* 56:e00367-18.
- 614 22. Melchers WJG, Kuijpers J, Sickler JJ, Rahamat-Langendoen J. 2017. Lab-in-a-  
615 tube: real-time molecular point-of-care diagnostics for influenza A and B using  
616 the Cobas® Liat® system. *J Med Virol* 89:1382–1386.
- 617 23. Uyeki TM, Bernstein HH, Bradley JS, Englund JA, File TM, Fry AM, Gravenstein  
618 S, Hayden FG, Harper SA, Hirshon JM, Ison MG, Johnston BL, Knight SL,  
619 McGeer A, Riley LE, Wolfe CR, Alexander PE, Pavia AT. 2019. Clinical practice  
620 guidelines by the Infectious Diseases Society of America: 2018 update on

- 621 diagnosis, treatment, chemoprophylaxis, and institutional outbreak  
622 management of seasonal influenza. *Clin Infect Dis* 68:895–902.
- 623 24. Berry L, Lansbury L, Gale L, Carroll AM, Lim WS. 2020. Point of care testing of  
624 Influenza A/B and RSV in an adult respiratory assessment unit is associated  
625 with improvement in isolation practices and reduction in hospital length of  
626 stay. *J Med Microbiol* 69:697–704.
- 627 25. Rahamat-Langendoen J, Groenewoud H, Kuijpers J, Melchers WJG, van der  
628 Wilt GJ. 2019. Impact of molecular point-of-care testing on clinical  
629 management and in-hospital costs of patients suspected of influenza or RSV  
630 infection: a modeling study. *J Med Virol* 91:1408–1414.
- 631 26. Mikamo H, Koizumi Y, Yamagishi Y, Asai N, Miyazono Y, Shinbo T, Horie M,  
632 Togashi K, Robbins EM, Hirotsu N. 2022. Comparing the Cobas Influenza A/B  
633 Nucleic acid test for use on the Cobas Liat System (Liat) with rapid antigen  
634 tests for clinical management of Japanese patients at the point of care. *PLoS*  
635 *One* 17:e0276099.
- 636 27. Roche Molecular Systems Inc. 2021. Cobas® Liat® System User Guide.
- 637 28. Roche Molecular Systems Inc. 2021. Instructions for use. Cobas® SARS-CoV-  
638 2. Qualitative assay for use on the Cobas® 6800/8800 Systems. P/N:  
639 09179917001-07EN.
- 640 29. Roche Molecular Systems Inc. 2021. Instructions for use. Cobas® SARS-CoV-  
641 2 & Influenza A/B. Qualitative assay for use on the Cobas® 6800/8800  
642 Systems. P/N: 09233474190.

- 643 30. Mostafa HH, Hardick J, Morehead E, Miller JA, Gaydos CA, Manabe YC. 2020.  
644 Comparison of the analytical sensitivity of seven commonly used commercial  
645 SARS-CoV-2 automated molecular assays. *J Clin Virol* 130:104578.
- 646 31. Copan Diagnostics Inc. 2020. Instructions for use. FLOQSwabs. HPC217  
647 Rev.00 Date 2020.10. [https://www.copanusa.com/wp-](https://www.copanusa.com/wp-content/uploads/2021/03/HPC217-PI-FLOQSWAB-NO-CE-REV.00-2020.10.pdf)  
648 [content/uploads/2021/03/HPC217-PI-FLOQSWAB-NO-CE-REV.00-2020.10.pdf](https://www.copanusa.com/wp-content/uploads/2021/03/HPC217-PI-FLOQSWAB-NO-CE-REV.00-2020.10.pdf).  
649 Accessed Aug 5, 2024.
- 650 32. Centers for Disease Control and Prevention. 2023. 2021-2022 flu season  
651 summary. [https://www.cdc.gov/flu/season/faq-flu-season-2021-](https://www.cdc.gov/flu/season/faq-flu-season-2021-2022.htm#print)  
652 [2022.htm#print](https://www.cdc.gov/flu/season/faq-flu-season-2021-2022.htm#print). Accessed Aug 05, 2024.
- 653 33. Dzung A, Cheng PF, Stoffel C, Tastanova A, Turko P, Levesque MP, Bosshard  
654 PP. 2021. Prolonged unfrozen storage and repeated freeze-thawing of SARS-  
655 CoV-2 patient samples have minor effects on SARS-CoV-2 detectability by RT-  
656 PCR. *J Mol Diagn* 23:691–697.
- 657 34. Roche Molecular Systems Inc. 2020. Instructions for use. Cobas® SARS-CoV-  
658 2 & Influenza A/B. Nucleic acid test for use on the Cobas® Liat® System.  
659 P/N: 09211101190.
- 660 35. Hologic. 2020. Instructions for use. Aptima® SARS-CoV-2 Assay (Panther®  
661 System).
- 662 36. Wilson E. 1927. Probable inference, the law of succession, and statistical  
663 inference. *J Am Stat Assoc* 22:209–212.
- 664 37. Akashi Y, Horie M, Kiyotaki J, Takeuchi Y, Togashi K, Adachi Y, Ueda A,  
665 Notake S, Nakamura K, Terada N, Kurihara Y, Kiyasu Y, Suzuki H. 2022.

- 666 Clinical performance of the cobas Liat SARS-CoV-2 & Influenza A/B Assay in  
667 nasal samples. *Mol Diagn Ther* 26:323–331.
- 668 38. Hansen G, Marino J, Wang ZX, Beavis KG, Rodrigo J, Labog K, Westblade LF,  
669 Jin R, Love N, Ding K, Garg S, Huang A, Sickler J, Tran NK. 2021. Clinical  
670 performance of the point-of-care Cobas Liat for detection of SARS-CoV-2 in 20  
671 minutes: a multicenter study. *J Clin Microbiol* 59:e02811-20.
- 672 39. Park K, Sung H, Kim MN. 2023. Evaluation of the cobas Liat detection test for  
673 SARS-CoV-2 and influenza viruses following the emergence of the SARS-CoV-  
674 2 Omicron variant. *Diagn Microbiol Infect Dis* 105:115891.
- 675 40. Er TK, Chou YC, Chen SY, Huang JW. 2021. Rapid cobas Liat SARS-CoV-2  
676 assay in comparison with the laboratory-developed real-time RT-PCR test. *Clin*  
677 *Lab* 67.
- 678 41. Matic N, Lawson T, Ritchie G, Lowe CF, Romney MG. 2024. Testing the limits  
679 of multiplex respiratory virus assays for SARS-CoV-2 at high cycle threshold  
680 values: Comparative performance of Cobas 6800/8800 SARS-CoV-2 &  
681 Influenza A/B, Xpert Xpress SARS-CoV-2/Flu/RSV, and Cobas Liat SARS-CoV-2  
682 & Influenza A/B. *J Assoc Med Microbiol Infect Dis Can* 8:328-335.
- 683 42. Lee RA, Herigon JC, Benedetti A, Pollock NR, Denkinger CM. 2021.  
684 Performance of saliva, oropharyngeal swabs, and nasal swabs for SARS-CoV-2  
685 molecular detection: a systematic review and meta-analysis. *J Clin Microbiol*  
686 59:e02881-20.
- 687 43. Therchilsen JH, von Buchwald C, Koch A, Dam Nielsen S, Rasmussen DB,  
688 Thudium RF, Kirkby NS, Raaschou-Pedersen DET, Bundgaard JS, Iversen K,  
689 Bundgaard H, Todsén T. 2020. Self-collected versus healthcare worker-

- 690 collected swabs in the diagnosis of severe acute respiratory syndrome  
691 coronavirus 2. *Diagnostics* 10:678.
- 692 44. Craney AR, Velu PD, Satlin MJ, Fauntleroy KA, Callan K, Robertson A, La Spina  
693 M, Lei B, Chen A, Alston T, Rozman A, Loda M, Rennert H, Cushing M,  
694 Westblade LF. 2020. Comparison of two high-throughput reverse  
695 transcription-PCR systems for the detection of severe acute respiratory  
696 syndrome coronavirus 2. *J Clin Microbiol* 58:e00890-20.
- 697 45. Buchta C, Zeichhardt H, Badrick T, Coucke W, Wojtalewicz N, Griesmacher A,  
698 Aberle SW, Schellenberg I, Jacobs E, Nordin G, Schweiger C, Schwenoha K,  
699 Luppä PB, Gassner UM, Wagner T, Kammel M. 2023. Classification of "near-  
700 patient" and "point-of-care" SARS-CoV-2 nucleic acid amplification test  
701 systems and a first approach to evaluate their analytical independence of  
702 operator activities. *J Clin Virol* 165:105521.
- 703 46. May L, Robbins EM, Canchola JA, Chugh K, Tran NK. 2023. A study to assess  
704 the impact of the Cobas point-of-care RT-PCR assay (SARS-CoV-2 and  
705 Influenza A/B) on patient clinical management in the emergency department  
706 of the University of California at Davis Medical Center. *J Clin Virol*  
707 168:105597.
- 708 47. Jian MJ, Chung HY, Chang CK, Lin JC, Yeh KM, Chen CW, Li SY, Hsieh SS, Liu  
709 MT, Yang JR, Tang SH, Perng CL, Chang FY, Shang HS. 2021. Clinical  
710 comparison of three sample-to-answer systems for detecting SARS-CoV-2 in  
711 B.1.1.7 lineage emergence. *Infect Drug Resist* 14:3255–3261.

712 48. Perlitz B, Slagman A, Hitzek J, Riedlinger D, Möckel M. 2021. Point-of-care  
713 testing for influenza in a university emergency department: a prospective  
714 study. *Influenza Other Respir Viruses* 15:608–617.

715 49. Yan X, Li K, Lei Z, Luo J, Wang Q, Wei S. 2023. Prevalence and associated  
716 outcomes of coinfection between SARS-CoV-2 and influenza: a systematic  
717 review and meta-analysis. *Int J Infect Dis* 136:29–36.

718