

# 1 **Impact of pre-exposure prophylaxis on HIV-1 drug resistance and phylogenetic** 2 **cluster growth in British Columbia, Canada**

3 Angela McLaughlin<sup>1,2</sup>, Junine Toy<sup>1</sup>, Vince Montoya<sup>1</sup>, Paul Sereda<sup>1</sup>, Jason Trigg<sup>1</sup>, Mark Hull<sup>1</sup>, Chanson J.  
4 Brumme<sup>1,3</sup>, Rolando Barrios<sup>1</sup>, Julio S.G. Montaner<sup>1,3</sup>, \*Jeffrey B. Joy<sup>1,2,3</sup>

5 <sup>1</sup>British Columbia Centre for Excellence in HIV/AIDS

6 <sup>2</sup>Bioinformatics, University of British Columbia

7 <sup>3</sup>Department of Medicine, University of British Columbia

8 \*Corresponding author: [jjoy@bccfe.ca](mailto:jjoy@bccfe.ca)

9

## 10 **Abstract**

11 Oral HIV pre-exposure prophylaxis (PrEP) effectively prevents infection when taken during periods of risk,  
12 however, its population-level effectiveness is hindered by incomplete uptake, adherence, and retention.  
13 Since PrEP became available free-of-cost in British Columbia (BC), Canada, in January 2018, uptake has  
14 been rapid among gay, bisexual, and other men who have sex with men (GBM). Epidemiological evidence  
15 suggests adding PrEP onto a background of generalized access to free antiretroviral therapy, under the BC  
16 Treatment as Prevention (TasP) strategy, had a synergistic effect on reducing new infections. Here, we  
17 sought to evaluate the impact of PrEP on HIV transmission and drug resistance in phylogenetic clusters. In  
18 a retrospective cohort study, we evaluated whether baseline HIV drug resistance and phylogenetic  
19 clustering were more likely among newly diagnosed PrEP users in BC (n=39) compared to non-PrEP users  
20 (n=566) during the same diagnosis period from October 23, 2018 to December 5, 2022. Subsequently, we  
21 evaluated heterogeneity in PrEP-related reductions of the effective reproduction number ( $R_e$ ) across BC,  
22 key populations, and phylogenetic clusters. Stochastic branching processes of phylogenetic clusters  
23 informed by  $R_e$  preceding PrEP were used to estimate diagnoses averted via PrEP. Newly HIV diagnosed  
24 PrEP users were significantly more likely than non-PrEP users to join phylogenetic clusters and carry  
25 baseline nucleoside-analogue reverse transcriptase inhibitor (NRTI) resistance-associated mutation  
26 M184I/V. Despite reductions in growth rate and  $R_e$  in the GBM population overall and in 50% of active  
27 GBM-predominant clusters following PrEP availability, we highlight predominantly GBM and PWID  
28 clusters with high or increasing  $R_e$ . Across active phylogenetic clusters and non-clustered new diagnoses,  
29 we estimate PrEP averted approximately 20 new HIV diagnoses per year in BC since 2018. These findings  
30 highlight how PrEP has reduced HIV burden, while illuminating groups that could benefit from prioritized  
31 PrEP education, access, and retention.

32

33 **Funding** British Columbia Centre for Excellence in HIV/AIDS, Providence Health Care, Canadian  
34 Institutes of Health Research, Public Health Agency of Canada, Genome Canada, and Genome BC.

## 35 Introduction

36 Optimal control of HIV/AIDS requires equitable delivery of antiretroviral treatment (ART) to all people  
37 living with HIV (PLWH) immediately following HIV diagnosis and prevention interventions, including  
38 pre-exposure prophylaxis (PrEP) to populations at elevated risk, informed by longitudinal epidemiological  
39 monitoring, including via phylogenetic identification of HIV transmission clusters. Although HIV  
40 morbidity, mortality and incidence have declined in well-managed epidemics in the developed world,  
41 including in British Columbia (BC), Canada,<sup>1</sup> ongoing transmission continues to disproportionately affect  
42 some key populations.

43 Oral PrEP effectively prevents HIV-1 acquisition when taken during periods of risk among gay, bisexual,  
44 and other men who have sex with men (GBM),<sup>2</sup> transgender women (TGW),<sup>2</sup> heterosexuals,<sup>3</sup> and people  
45 who inject drugs (PWID).<sup>4</sup> Barriers to access, racial disparities,<sup>5</sup> limited eligibility or coverage, inconsistent  
46 adherence,<sup>6</sup> and program non-retention<sup>7</sup> have resulted in sub-optimal oral PrEP effectiveness. In 2016,  
47 Health Canada approved once-daily oral PrEP, Truvada<sup>®</sup>, comprised of tenofovir disoproxil fumarate  
48 (TDF)/emtricitabine (FTC) for adults at elevated risk of HIV acquisition, including GBM and  
49 serodiscordant heterosexual couples,<sup>8</sup> followed by generic TDF/FTC in 2017.<sup>9</sup>

50 Since January 1, 2018, PrEP has been fully publicly funded and centrally distributed for BC residents with  
51 greater likelihood of HIV acquisition as determined by local PrEP guidelines.<sup>10</sup> PrEP uptake in BC has  
52 expanded rapidly, with 9737 cumulative participants by June 30, 2022,<sup>7,11</sup> consisting of 97·0% cis GBM,  
53 1·3% TGW, 0·9% cis-women, and 0·5% transgender men (TGM).<sup>7</sup> Non-cisgender men (TGM, TGW, cis-  
54 women) were less likely to persist with PrEP, as were those who were younger and had no prior PrEP use.<sup>7</sup>  
55 Differences in PrEP awareness, uptake, access, and persistence manifest as differential reductions in HIV  
56 transmission. Lapsed prescriptions (greater than 6 months beyond expected refill date based on daily PrEP  
57 use) and incomplete adherence have resulted in 39 newly diagnosed HIV infections in PrEP users between  
58 October 23, 2018 and December 5, 2022 (0·4% of PrEP participants).

59 Population-level effectiveness of PrEP has been estimated through cohort studies, simulations, and  
60 mathematical models, but not often at the phylogenetic cluster level. In a compartmental model of HIV in  
61 BC, prioritized provision of PrEP to GBM with higher likelihood of HIV acquisition, in combination with  
62 Treatment as Prevention (TasP), was associated with reduced incidence and  $R_e$  below one in susceptible  
63 GBM.<sup>12,13</sup> Clustering the BC population by reported potential HIV exposure, testing behaviour, and PrEP  
64 interest increased the estimated population-level effectiveness of PrEP.<sup>14</sup> In the Australian EPIC-NSW  
65 cohort study, PrEP availability resulted in a 25% relative reduction of new HIV diagnoses in GBM.<sup>15</sup> In  
66 South Africa, prioritizing PrEP to groups with higher likelihood of HIV acquisition was more efficient than  
67 based on partnership alone.<sup>16</sup> A stochastic mechanistic model suggested PrEP averted 20% of HIV  
68 acquisitions from 2015-2021 in Montreal.<sup>17</sup> Expanding oral PrEP coverage to 80% was estimated to avert

69 8% of new HIV infections in Australia, 15% in Thailand, and 26% in China over 40 years.<sup>18</sup> In the US,  
70 network-based mathematical models were applied to estimate that 33% of cases over the next decade could  
71 be averted with 40% coverage of MSM and 62% adherence.<sup>19</sup> No HIV seroconversions were reported over  
72 850 person-years of PrEP use in Northern California, however there were two seroconversions in  
73 individuals who had discontinued PrEP use,<sup>20</sup> highlighting that PrEP effectiveness relies on long-term use  
74 and support.

75 Pre-treatment drug resistance, either through the transmission of resistant variants, or acquired resistance  
76 due to the use of TDF/FTC during undiagnosed or acute HIV infection, adversely impacts clinical outcomes  
77 by limiting treatment options.<sup>21-23</sup> Mutations conferring resistance to NRTI drugs in PrEP, TDF (K65R)  
78 and FTC (M184V/I), were identified in individuals retrospectively found to have acute HIV infections who  
79 were prescribed PrEP.<sup>24</sup> In New York, past and recent PrEP use were associated with significantly elevated  
80 risk of baseline M184I/V, adjusted for transmission risk group.<sup>21</sup> In a meta-analysis, individuals exposed to  
81 PrEP during acute infection were significantly more likely to have TDF or FTC resistance.<sup>25</sup> HIV  
82 acquisition during PrEP use has occurred in randomized control trials, but is confounded by incomplete  
83 adherence and reporting bias.<sup>24</sup> Evaluating HIV drug resistance in phylogenetic trees can illuminate  
84 transmission of drug resistance in expanding phylogenetic clusters, routinely monitored for HIV  
85 surveillance in BC,<sup>26</sup> which can represent groups linked by recent transmission events.

86 In this study, we sought to estimate impacts of PrEP use on baseline drug resistance and phylogenetic  
87 clustering among new HIV diagnoses, and the population-level impacts of PrEP on the effective  
88 reproductive number ( $R_e$ ) of phylogenetic clusters. We tested the hypotheses that i) newly diagnosed PrEP  
89 users were more likely to cluster than non-PrEP users, under the expectation that PrEP eligibility and use  
90 is related to behaviour associated with potential exposure and linkage to sexual transmission networks, and  
91 that ii) they have elevated baseline NRTI resistance, under the expectation that incomplete PrEP adherence  
92 led to suboptimal drug concentration during acute infection. We further hypothesized that iii) cluster-  
93 specific  $R_e$ , and diagnoses averted have been heterogeneous since PrEP availability, amid broad  $R_e$   
94 reductions in the BC GBM population.

95

## 96 **Methods**

### 97 **Study design**

98 Data for this retrospective cohort study were obtained on February 9, 2023, representing data up to  
99 December 31, 2022, from the Drug Treatment Program (DTP) at the BC Centre for Excellence in  
100 HIV/AIDS (BC-CfE) representing PLWH connected to publicly-funded treatment in BC, Canada.  
101 Participant data were de-identified and sequences were assigned random six-character identifiers.  
102 Sequencing was performed by clinical staff at the BC-CfE and genotypic data were stored in the BC-CfE

103 access-controlled facility within a secure, encrypted Oracle database. Investigators had no access to nominal  
104 data. Research ethics were approved by University of British Columbia-Providence Health Care Research  
105 Institute (REB #H20-02859) on December 7, 2020 and amended September 8, 2022.

106

## 107 **Participants**

108 We evaluated a subset of 10,740 participants with HIV sequences in the DTP including 39 newly diagnosed  
109 PrEP users, with dates of first detectable plasma HIV viral load (VL), used as a proxy for diagnosis, ranging  
110 from October 23, 2018 to December 5, 2022, and a control group of 566 non-PrEP users newly diagnosed  
111 over the same period. Individuals enrolled for PrEP who never filled prescriptions were not considered  
112 PrEP users. New participants with previous ART experience (PLWH who have immigrated) were excluded.

113

## 114 **Procedures and outcomes**

115 De-identified participant data included viral genetic sequences, gender, sex-at-birth, age, residence census  
116 tract and regional health authority, prescriber census tract, date of first VL, date of first ART, ART  
117 prescriptions, PrEP dispensations (if applicable), self-reported potential HIV exposures at DTP enrolment  
118 i.e., key populations (GBM; PWID; heterosexual (HET); blood; Hepatitis C virus; other), VL, baseline  
119 CD4+ cell count, history of acquired immune deficiency syndrome (AIDS) diagnosis, and if applicable,  
120 date and cause of death.

121 We analyzed 41,941 HIV-1 partial pol (*protease* and partial *reverse transcriptase*) sequences from 10,740  
122 DTP participants collected between May 30, 1996 and December 31, 2022 (cleaning, alignment, and  
123 subtype assignment in **Supplementary**) and 8739 *integrase* (int) sequences from 4052 patients (1-35  
124 sequences per patient). Sequences from newly diagnosed individuals were screened for resistance-  
125 associated mutations (RAMs) using the Stanford HIV Drug Resistance Database (HIVdb) version 9.6.<sup>27</sup>

126 A set of shuffled alignments were generated to infer 100 bootstrap approximate maximum likelihood (ML)  
127 phylogenetic trees in FastTree 2.1 with a generalized time reversible (GTR) substitution model.<sup>28</sup> Trees  
128 were outgroup rooted on the oldest subtype B sequence. Phylogenetic clusters comprised a minimum of  
129 five members with viruses sharing pairwise patristic distance <0.02 substitutions per site in greater than  
130 90% of bootstraps.<sup>26</sup> We evaluated the effect of rooting using outgroups, midpoint, and root-to-tip  
131 regression on the distribution of cluster sizes (**Fig. S3**). Separate ML trees were inferred for key clusters  
132 with IQ-TREE under a GTR substitution model and 1000 resamples for ultrafast bootstrap support  
133 values,<sup>29,30</sup> and rooted using root-to-tip regression optimized by residual mean squares in ape (**Fig. S8-15**).<sup>31</sup>  
134 We calculated annual HIV incidence and prevalence per 100,000 (**Fig. S16**) for 14,919 DTP participants  
135 (with or without a sequence available) up to December 31, 2022, adjusted by quarterly population size.<sup>32</sup>

136 The prevalent PLWH population size was calculated as cumulative new cases minus deaths and emigrants  
137 by quarter; and growth rate as new cases per prevalent case per quarter.

138 Diagnoses over time were used to estimate incidence,<sup>33</sup> and the instantaneous effective reproduction number  
139 ( $R_e$ ) in BC, key populations, and active phylogenetic clusters (with at least one new diagnosis since 2018)  
140 with at least 10 members (inadequate data for clusters sized 5-10) using EpiEstim with a gamma-distributed  
141 serial interval.<sup>34</sup> Parameters compared for  $R_e$  estimation in BC (**Figs. S19-22**), key populations (**Figs. S23-**  
142 **24**), and clusters (**Figs. S25-28**) included serial interval mean of 0.5 year (y), 1 y, 2 y, or 5 y, and standard  
143 deviation (sd) of 0.5 y, 1 y, or 2 y; estimation interval of 0.25 y, 0.5 y, or 1 y; and  $R_e$  smoothing over 30  
144 days (d), 90 d, or 365 d. Primary analyses represent mean 1 y, sd 0.5 y, estimation interval 0.5 y, and 90 d  
145 smoothing. We fitted average  $R_e$  in the periods before PrEP (Jan. 2016 – Dec. 2017), during PrEP and  
146 before COVID-19 (Jan. 2018 - Feb. 2020), during PrEP and COVID-19 (Mar. 2020 – Feb. 2022), and  
147 during PrEP and post-COVID-19 (Mar. 2022 - Dec. 2022). Fold-change (FC) in  $R_e$  with PrEP ('PrEP  
148 effect') was calculated as the ratio of  $R_e$  during PrEP and before COVID-19 over  $R_e$  before PrEP in key  
149 populations and clusters.

150 Projected lifetime ART cost savings were estimated by multiplying cases averted by the average lifetime  
151 cost of treating a PLWH in Canada (\$250,000).<sup>35</sup> This does not constitute a cost-effectiveness analysis, as  
152 we do not compare the costs of PrEP.<sup>41</sup>

153

#### 154 **Statistical analyses**

155 Characteristics associated with PrEP use among newly diagnosed were evaluated with chi-square tests or  
156 medians were compared using Kruskal-Wallis (**Table S4**), as were factors associated with clustering  
157 stratified by PrEP use (**Table S5**). We tested the hypothesis that newly diagnosed PrEP users had higher  
158 clustering proportion and higher proportion of baseline NRTI resistance than non-PrEP users with chi-  
159 squared tests if greater than 80% of expected frequencies exceeded five, otherwise Fisher's exact tests were  
160 applied. Lineage-level viral diversification rates in newly diagnosed with or without PrEP were compared  
161 using a Kruskal-Wallis test (**Supplementary**). Proportions of newly diagnosed with and without PrEP use  
162 who had baseline drug resistance mutations were compared using Fisher's exact tests with p-values adjusted  
163 using the Benjamini-Hochberg method.<sup>36</sup>

164 Stochastic branching processes were used to simulate HIV cluster growth with and without PrEP, whereby  
165 the number of secondary cases followed a negative binomial distribution defined by mean  $R_e$  and dispersion  
166  $k$ .<sup>37-39</sup> More details in **Supplementary**. We assumed a gamma-distributed serial interval (mean 1 y, sd 0.5  
167 y);  $k$  between 0.1 and 0.3; and  $R_e$  as the observed cluster  $R_e$  (to recapitulate observed cases with PrEP) or  
168 counterfactual cluster  $R_e$  adjusted by PrEP effect to simulate absence of PrEP. Seeds were adjusted to align  
169 the number of new samples observed and simulated using observed  $R_e$  (**Table S3**). For each cluster, 4000

170 simulations were run from January 1, 2018 to January 1, 2023. Averted diagnoses and samples were  
171 calculated as the difference in mean and bootstrapped 95% CI of simulations with and without PrEP.  
172 Poisson generalized linear models were evaluated to identify cluster characteristics associated with  
173 diagnoses averted. Factors evaluated for inclusion in the model included cluster size in 2017 (immediately  
174 preceding PrEP availability) and among cluster members, percentage in key populations, percentage  
175 residing in each BC health authority, median age in 2023 when the study was conducted, median age at  
176 first ART, and percentage of new diagnoses with PrEP use.

177

### 178 **Role of the funding source**

179 The study funders had no role in study design, data collection, analysis, interpretation, or writing.

180

## 181 **Results**

### 182 **Clustering of newly diagnosed PrEP users**

183 Newly HIV diagnosed PrEP users (n=39) in BC were significantly more likely than newly diagnosed non-  
184 PrEP users (n=566) to be male (100% vs. 79.5%; chi-squared test, p=0.011; **Table S4**), GBM (97.1% vs  
185 56.7% of reported, p<0.001), reflecting that the majority of PrEP users are GBM, younger at first ART  
186 (median 32 vs. 37 years old; Kruskal-Wallis test, p=0.033), and have a higher baseline CD4+ T-cell count  
187 (490 vs. 380, p=0.003).

188 By December 31<sup>st</sup>, 2022, there were 246 BC HIV phylogenetic clusters (comprising at least 5 individuals  
189 with viruses sharing pairwise patristic distance less than 0.02 substitutions per site in at least 90% of  
190 bootstraps), 84 of which were active, with at least one new diagnosis since 2018. Tree method negligibly  
191 affected cluster identification (**Fig. S3**). All clusters joined by PrEP users were also joined by at least one  
192 non-PrEP user (**Fig. S1**). Newly diagnosed PrEP users were significantly more likely to cluster than non-  
193 PrEP users (chi-squared test p=0.0075, **Fig. S2**). Of 39 newly diagnosed PrEP users, 30 joined 13 unique  
194 clusters (76.9% clustered, one-group proportions test 95% confidence interval (CI): 60.3-88.3%),  
195 compared to 303 of 566 non-PrEP users (53.5% clustered, 95% CI: 49.3-57.7%), who joined 84 unique  
196 clusters (**Table S6**). Among GBM, 82.4% of newly diagnosed PrEP users clustered, compared to 54.7% of  
197 non-PrEP users (**Table S5**). Newly diagnosed PrEP users also had significantly higher lineage-level viral  
198 diversification rates, indicative of rapid phylogenetic branching events, than non-PrEP users (**Fig. S2**). In a  
199 binomial model, newly diagnosed with PrEP use had 2.6-times (95% CI: 1.2-6.4) higher odds of clustering  
200 compared to non-PrEP users, adjusted for GBM, age at first ART and baseline CD4 count.

201

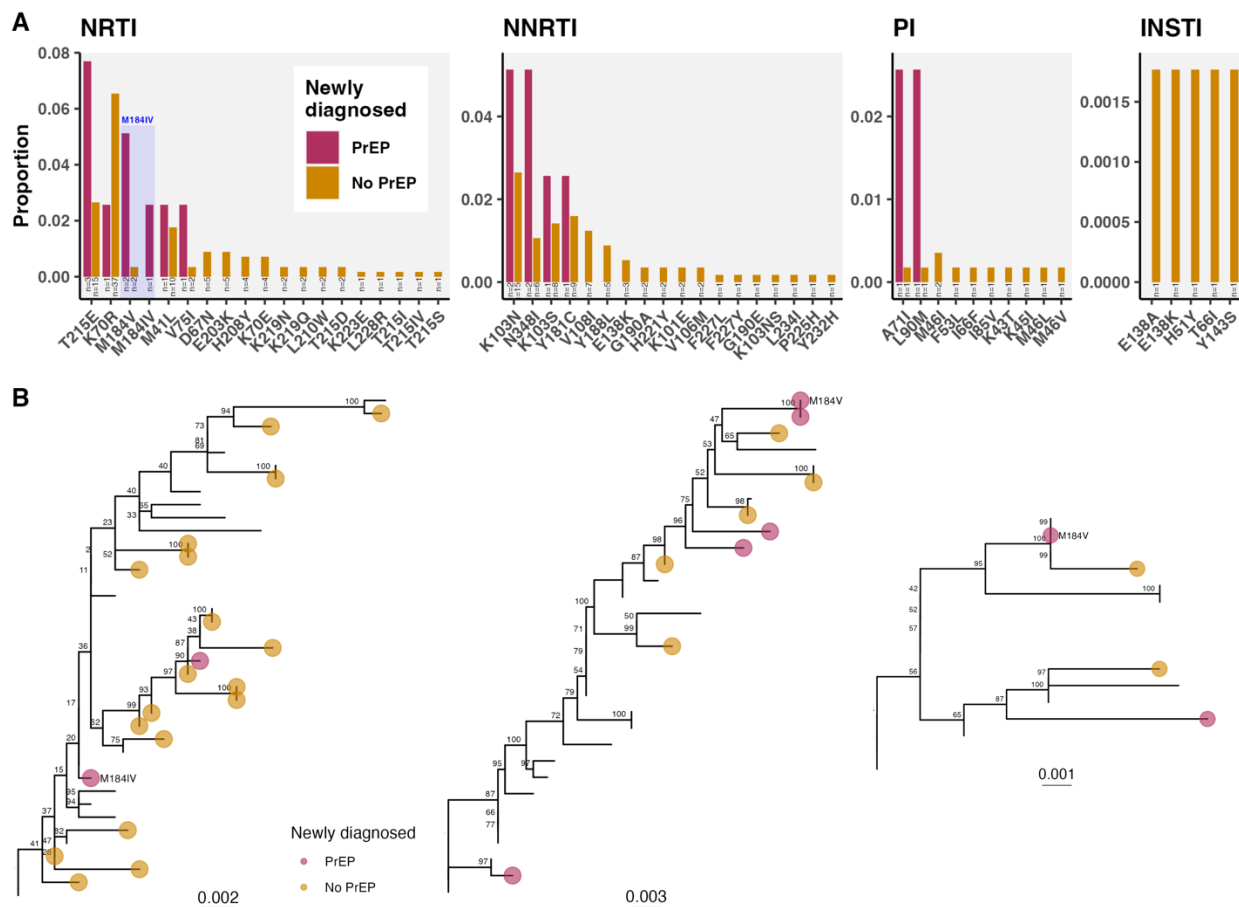
202

## 203 Comparison of baseline drug resistance among newly diagnosed by PrEP use

204 Drug resistance mutations were identified and resistance scores were calculated using Stanford HIVdb  
 205 version 9.6.<sup>40</sup> Differences in prevalence of baseline resistance-associated mutations (RAMs) between newly  
 206 diagnosed PrEP users and non-PrEP users were evaluated by drug class (**Fig. S5**) and mutation (**Fig. 1**,  
 207 **Table S7**), acknowledging that some RAMs like T215S and K219N do not on their own confer clinically-  
 208 relevant drug resistance levels. There were no significant differences in the proportion of newly diagnosed  
 209 PrEP users and non-PrEP users with baseline RAMs to any drug class (chi-squared test,  $p=0.12$ ), nor RAMs  
 210 of specific drug classes (NNRTI, Fisher's exact test:  $p=0.12$ ; NRTI,  $p=0.26$ ; PI,  $p=0.2$  (**Fig. S5**). Among  
 211 39 newly diagnosed PrEP users, there were 14 individuals with any RAMs, six with NNRTI RAMs, eight  
 212 with NRTI RAMs, and two with PI RAMs. There were no baseline integrase strand inhibitor (INSTI) RAMs  
 213 among newly diagnosed PrEP users, although five non-PrEP users had baseline INSTI RAMs (**Fig. 1**).  
 214

215

## PrEP use associated with elevated probability of baseline NRTI drug resistance



216

217 **Fig. 1. Baseline HIV drug resistance in newly diagnosed individuals with and without PrEP.** A)  
 218 Proportion of newly diagnosed with or without PrEP use with baseline drug resistance mutations to NRTI,  
 219 NNRTI, PI, and INSTI drug classes. Annotations indicate number of individuals with baseline resistance.

220 Mutation M184I/V shaded in blue. **B**) Clustered viruses with baseline M184V or M184I/V. Subtrees pruned  
221 from maximum likelihood trees inferred for individual clusters in IQTREE.

222

223 Baseline NRTI resistance to FTC, lamivudine (3TC), and abacavir (ABC), conferred by M184V or  
224 M184I/V, was more frequent in newly diagnosed PrEP users than non-PrEP users (**Fig. 1**). Three of 39  
225 newly diagnosed PrEP users (7.7%) had baseline M184V or M184I/V, compared to 2 of 566 (0.35%) non-  
226 PrEP users (Fisher's exact test, adjusted p-value=0.025; **Table S7**; power=79% at alpha=0.05). M184I/V  
227 was the only baseline RAM significantly more common in PrEP users than non-PrEP users (**Table S7**).

228 Newly diagnosed PrEP users with baseline M184V had the two lowest proportion of days covered by PrEP  
229 (0.60 and 0.63 vs. median=0.88 across newly diagnosed PrEP users) and had significantly shorter time  
230 from last PrEP dispensation to first detectable VL (76 d vs. 373 d; Kruskal-Wallis test, p=0.045). The newly  
231 diagnosed PrEP user with M184I/V had a PrEP prescription filled 29 days before first detectable VL. It was  
232 later identified that this was a clinical miss, as the individual had acute HIV seroconversion at PrEP  
233 initiation and were diagnosed at one month follow-up. Nearest phylogenetic neighbours to viruses with  
234 M184I/V did not have M184I/V (**Fig. 1B**).

235

### 236 **Transmission of resistance-associated mutations in phylogenetic clusters**

237 There were 28 active clusters with at least one new diagnosis since 2018 with baseline resistance mutations  
238 (**Fig. S6**). NRTI RAM, K70R, and NNRTI RAM, K103N, were increasingly detected at baseline (**Fig. S4**)  
239 and transmitted within clusters (**Fig. S6, Fig. S13**). NRTI RAMs detected multiple times within clusters,  
240 suggesting possible transmission include thymidine analogue mutation (TAM) revertant T215E (100% of  
241 14 new cases in cluster 114, **Fig. S13**), K70R (27.3% of 11 new cases in cluster 49, **Fig. S10**; 100% of 2  
242 new cases in cluster 185; and outside clusters, **Fig. S6**), D67N (11.5% of 26 new cases in cluster 137, **Fig.**  
243 **S14**), and M41L (4.1% of 94 new cases in cluster 31, **Fig. S9**; present in clade of cluster 137, **Fig. S14**).  
244 Baseline NNRTI RAMs detected multiple times within clusters included K103N (2.1% of 94 new cases in  
245 cluster 31, **Fig. S9**; 80% of 5 new cases in cluster 97; 40% of 5 in cluster 194), K103S (83.3% of 6 new  
246 cases in cluster 234), Y181C (100% of 5 new cases in cluster 197), and N348I (85.7% of 7 new cases in  
247 cluster 41). No baseline K65R, conferring resistance to tenofovir, was detected among new cases within or  
248 outside clusters.

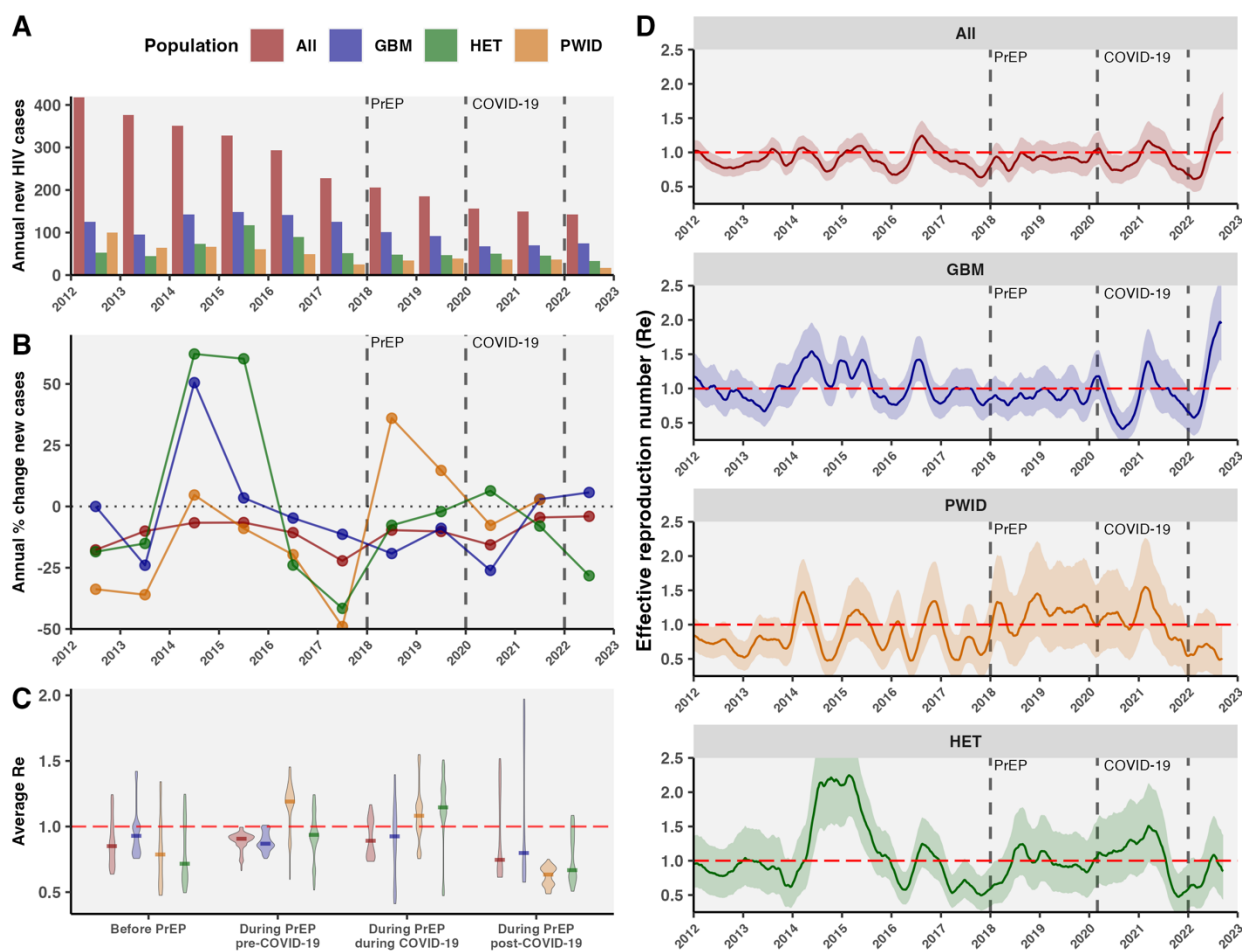
249

### 250 **Provincial HIV dynamics following PrEP**

251 Within the DTP, representing PLWH connected to publicly-funded treatment in BC, HIV incidence  
252 declined from 9.2 new cases per 100,000 in 2012 to 2.7 new cases per 100,000 in 2022 (**Fig. S16**). Before  
253 PrEP, new HIV cases overall decreased annually by -12.1% in 2016 and -23.4% in 2017 (**Fig. 2**), with most  
254 rapid declines among PWID (-19.7% in 2016, -49.0% in 2017), but less so among GBM (-4.7% in 2016, -



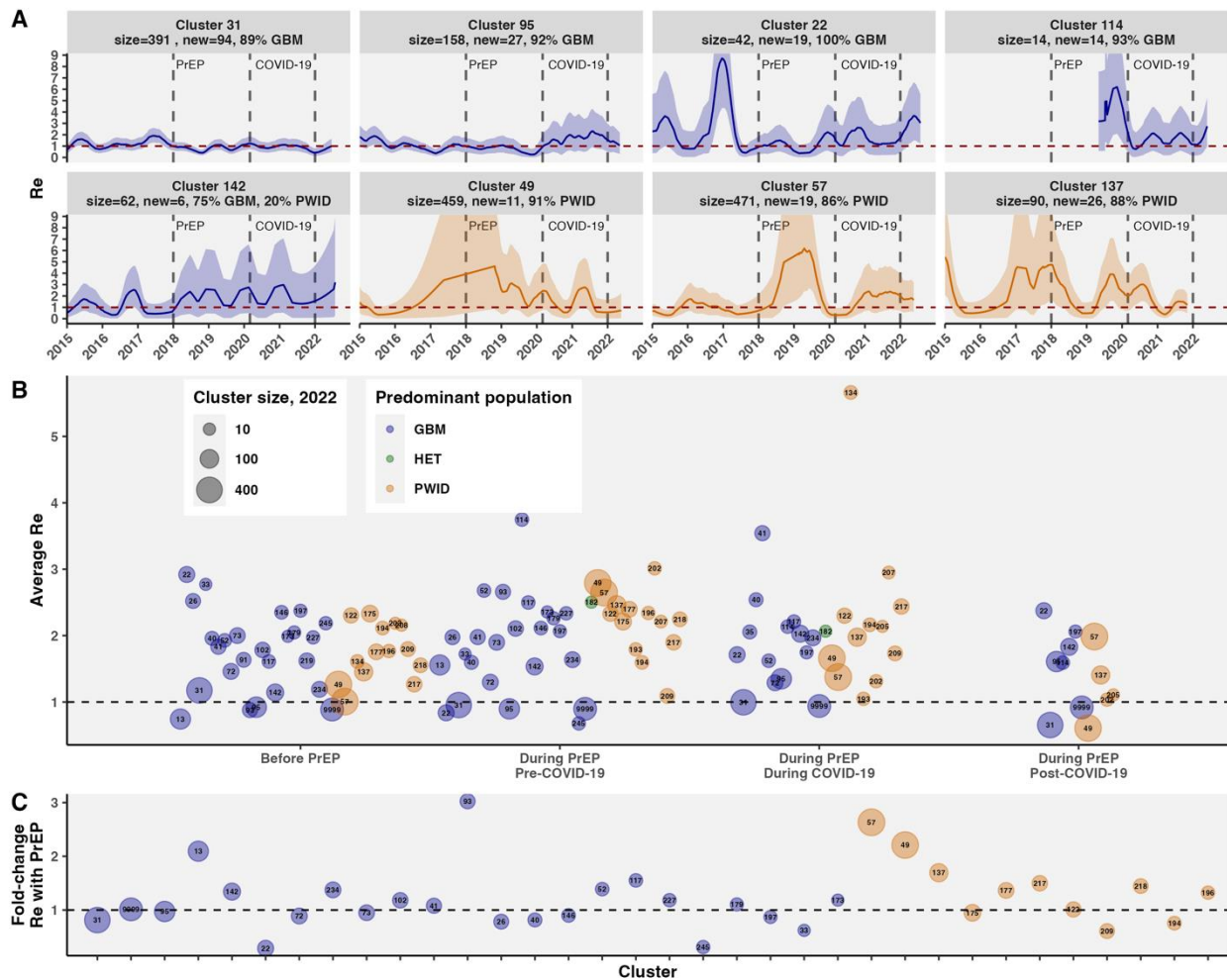
255 11.4% in 2017, **Fig. S18**). Following PrEP, annual new HIV cases in GBM declined -19.2% in 2018 and -  
 256 8.9% in 2019, and GBM accounted for fewer new cases. During COVID-19, new HIV cases in GBM  
 257 declined -26.1% in 2020, whereas they increased 6.4% among HET. Post-COVID, new HIV cases  
 258 increased by 5.7% in GBM in 2022 likely due to increased potential exposures and testing, despite lowering  
 259 -54.1% in PWID and -28.3% in HET. Among GBM, average  $R_e$  was around 1 before PrEP, then dropped  
 260 below 1 during PrEP, and further below 1 during COVID-19 (**Fig. 2, Fig. S23**).  $R_e$  among PWID (**Fig. S24**)  
 261 and HET were elevated following PrEP, increased during COVID-19, and have been relatively low post-  
 262 COVID-19.



263  
 264 **Fig. 2. HIV dynamics in BC from 2015 to 2023 in the context of PrEP and COVID-19. A)** Annual new  
 265 HIV diagnosed cases (based on first ART date) overall and among key populations, GBM, HET, and PWID.  
 266 **B)** Annual percentage change in new HIV diagnoses. **C)** Average effective reproduction number ( $R_e$ ) for  
 267 periods before PrEP (2016-2017), during PrEP and before COVID-19 (2018- Feb. 2020), during PrEP and  
 268 during COVID-19 (Mar. 2020-2021), and during PrEP and post-COVID-19 (2022). **D)** Temporal dynamics  
 269 of  $R_e$  overall and in key populations.  
 270  
 271

272 **Differential cluster growth following availability of PrEP**

273 We evaluated heterogeneity in  $R_e$  dynamics in phylogenetic clusters following PrEP. There were 84 active  
274 clusters with at least one new case since 2018; 53 clusters had more than 10 members by Feb. 2023 (**Fig.**  
275 **S1, Fig. S3**). Of active clusters, 52 were predominantly GBM, 30 PWID, and 2 HET (**Table S8**).  
276 Transmission within and outside BC HIV phylogenetic clusters was variably impacted by PrEP (**Fig. 3,**  
277 **Fig. S25-30**). Cluster 31, the largest GBM-predominant cluster (size=391, 89% GBM, 94 new cases since  
278 2018), had stable  $R_e$  near 1, followed by an increase in mid-2017, then a decline since PrEP availability  
279 (fold-change (FC)  $R_e$  with PrEP<1). Other GBM-predominant clusters (cluster 95, size=158, 27 new cases;  
280 and cluster 22, size=42, 19 new cases) had sustained declines through PrEP, with recent resurgences post-  
281 COVID-19 (**Fig. S30**). The two largest PWID-predominant clusters (clusters 49 and 57, sizes 459 and 471,  
282 91% and 86% PWID) have had limited new cases since 2018 (11 and 19).  $R_e$  of PWID cluster 57 was stably  
283 below or near 1 from 2015 to 2018, then rose significantly above 1 in 2019, coming down in 2020 before  
284 rising above 1 post-COVID-19. PWID cluster 137 (size=90, 26 new cases, 88% PWID) has also had volatile  
285  $R_e$ , peaking in 2017-2018, dropping in 2019, and rising again in late 2019 and 2020. Comparing the PrEP  
286 effect on cluster-level  $R_e$  in key populations, 50% of GBM clusters had reduced  $R_e$  following PrEP,  
287 compared to 33.3% of PWID clusters (**Fig. 3**).

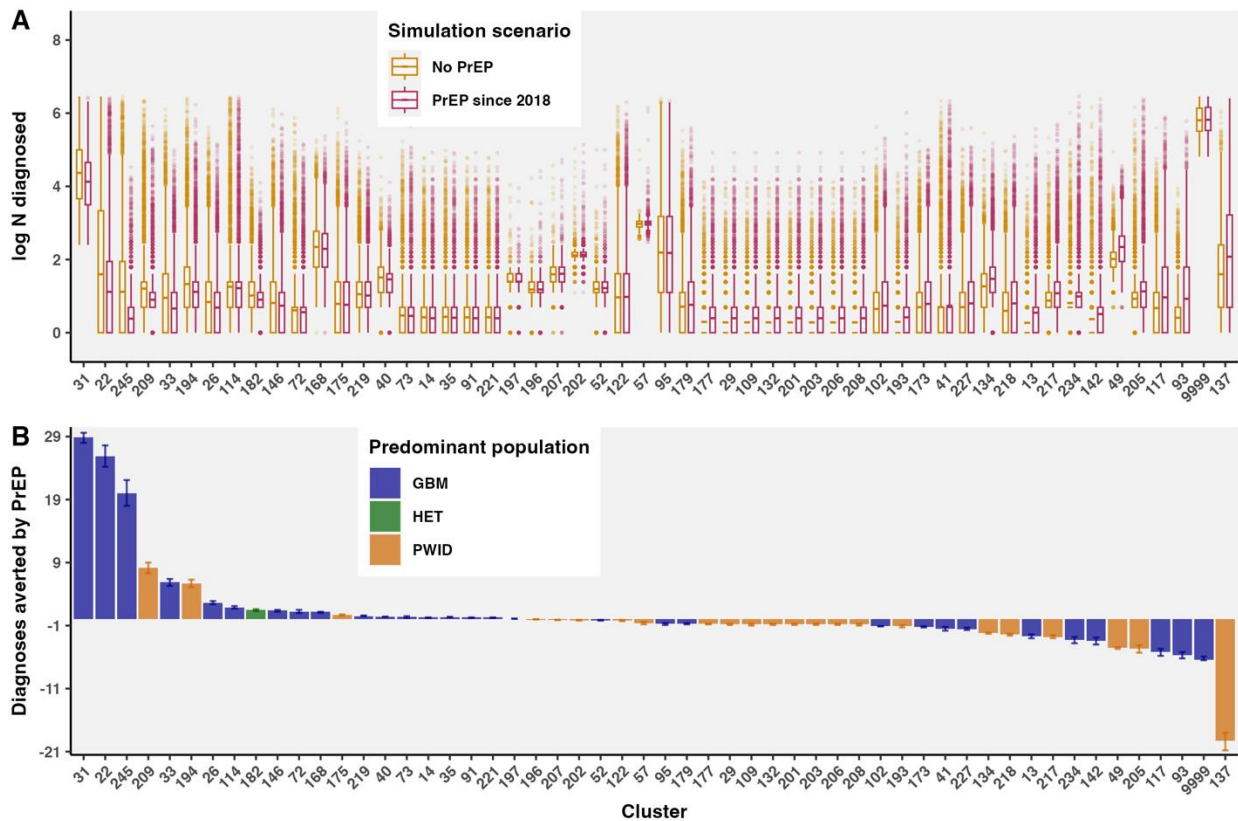


288  
 289 **Fig. 3. HIV phylogenetic cluster reproduction number in the context of PrEP and COVID-19.** A)  
 290 Phylogenetic cluster-level effective reproduction number ( $R_e$ ) for eight key active clusters in BC from 2015  
 291 to 2022.  $R_e$  estimated using EpiEstim with gamma-distributed serial interval with mean 1 y and sd 0.5 y,  
 292 estimating window 0.5 y, and 90 d smoothing. B) Piecewise average  $R_e$  for active clusters in periods before  
 293 PrEP, during PrEP and before COVID-19, during PrEP and during COVID-19, and during PrEP and post-  
 294 COVID-19. Annotated by arbitrary cluster identifier, colored by predominant risk group, and area by cluster  
 295 size in 2022. C) Fold-change (during/before) in active clusters'  $R_e$  following PrEP. Clusters sorted on the  
 296 x-axis by predominant risk group and size in 2022.

297

298

299 **Diagnoses averted via PrEP in phylogenetic clusters estimated with stochastic branching processes**



300 **Fig. 4. Diagnoses averted via PrEP in active phylogenetic clusters estimated using stochastic**  
 301 **branching processes. A)** Simulations of new diagnoses in clusters from January 2018 to January 2023  
 302 were run with observed cluster  $R_e$  (with PrEP since 2018) or with  $R_e$  adjusted by the estimated PrEP effect  
 303 (no PrEP counterfactual scenario). **B)** Diagnoses averted by PrEP from 2018 to 2022 by cluster, estimated  
 304 as the difference between new diagnoses in simulations with and without PrEP. Bar height represents the  
 305 mean and error bars represent the bootstrap 95% CI across simulations.

306  
 307  
 308 Diagnoses averted in phylogenetic clusters via PrEP between 2018 and 2022 were estimated using  
 309 stochastic branching processes (**Table S3, Fig. S32-34**).<sup>37-39</sup> Diagnoses averted were calculated as the  
 310 difference between new diagnoses without and with PrEP simulated with cluster  $R_e$  specified as observed  
 311  $R_e$  (with PrEP) or adjusted  $R_e$  (counterfactual without PrEP).

312 PrEP averted the most diagnoses in large and medium sized GBM-predominant clusters, including clusters  
 313 31, 22, 245, and 33 (**Fig. 4, Fig. S34**). In cluster 31, we estimated 86.8 new diagnoses (95% CI 84.2-89.4)  
 314 from 2018-2022 in simulations based on observed  $R_e$  (with PrEP, **Fig. S32**), consistent with the observed  
 315 94 new sequenced diagnoses; without PrEP, we estimated up to 115.7 (112.3-119.1) new diagnoses (**Fig.**  
 316 **S34**), amounting to 28.9 (28.1-29.7) diagnoses averted in cluster 31 in five years. In cluster 22, there were  
 317 24.0 (21.7-26.4) new diagnoses with PrEP (consistent with 19 new diagnoses since 2018), compared to  
 318 49.9 (45.9-54.1) without PrEP, amounting to 25.9 (24.2-27.7) diagnoses averted. PrEP was also associated

319 with reduced  $R_e$  in two medium-sized, relatively young, GBM-predominant clusters with one new diagnosis  
320 since 2018 (cluster 245, size 2023=13, median age=34; cluster and 33, size 2023=10, median age=37),  
321 dropping from  $R_e$  well above 1 before PrEP to below 1 during PrEP. We estimated 20.0 (17.9-22.1)  
322 diagnoses averted in cluster 245 and 6.0 (5.2-64.0) diagnoses averted in cluster 33. In total, among active  
323 phylogenetic clusters in BC with HIV diagnoses averted, we estimated 107.6 (99.1-115.7) diagnoses  
324 averted via PrEP in BC between Jan. 2018 and Jan. 2023, or 21.5 (19.8-23.1) diagnoses averted per year.  
325 Clusters with negative diagnoses averted represent missed opportunities for PrEP and include PWID-  
326 predominant clusters 137, 205, and 49, as well as non-clustered cases (cluster 9999, predominantly GBM  
327 but mixed) and GBM-predominant clusters 142, 234, and 13. Cluster characteristics univariately associated  
328 with fewer diagnoses averted include higher median age, lower proportion of new diagnoses with PrEP  
329 access, and living outside of Vancouver Coastal Health Authority. For instance, cluster 142 is comprised  
330 of relatively older individuals (median age=55, median age first ART=43), with a majority of new diagnoses  
331 in Vancouver Island Health Authority (**Table S8**). In a Poisson model of diagnoses averted, clusters with  
332 higher median age and lower % GBM had significantly fewer diagnoses averted, adjusted for cluster size  
333 at the end of 2017 and % residing in Vancouver Coastal Health Authority (**Table S9**).  
334 Assuming the overall lifetime cost associated with each HIV diagnosis is \$250,000 Canadian dollars,<sup>35</sup>  
335 107.6 (99.1-115.7) diagnoses averted via PrEP in BC between Jan. 2018 and Jan. 2023 represents an  
336 averted lifetime treatment cost of \$26,900,000 Canadian dollars (\$24,775,000 - \$28,925,000). However,  
337 cost-effectiveness analyses must weigh potential benefits of prioritized PrEP programs against the costs  
338 including drugs (estimated as \$360 USD per person per year in the US), clinic visits (\$104 USD), diagnostic  
339 tests, and administrative hours.<sup>41</sup>

340

## 341 **Discussion**

342 Our analyses suggest publicly funded PrEP in BC, layered on top of generalized access to free ART under  
343 the TasP strategy, has averted more than 100 new diagnoses since 2018, concentrated in active GBM  
344 clusters, resulting in substantial reductions in morbidity and mortality. While PrEP has dampened  
345 transmission in large GBM-predominant clusters, other clusters had fewer cases averted, illuminating  
346 treatment and prevention gaps for future public health interventions.

347 Newly diagnosed PrEP users were more likely to cluster than non-PrEP users, which could reflect  
348 systematic differences between health-seeking and risk-taking behaviour among those who did and did not  
349 access PrEP before seroconverting. We highlighted fewer cases averted via PrEP in clusters with higher  
350 median age, lower proportion GBM, and low proportion of previous PrEP use. PrEP uptake, adherence,  
351 and retention differ by age, risk perception,<sup>42</sup> geography, social norms, substance use, ease of refills,  
352 community support, and stigma. Newly diagnosed PrEP users represent missed opportunities for program

353 retention through better tools for support, such as peer workers or long-acting options. Whereas newly  
354 diagnosed non-PrEP users represent a missed opportunity for PrEP education and access. We further  
355 highlight that contacts of members of active phylogenetic clusters represent ongoing opportunities for PrEP  
356 education, eligibility, and access. Among HIV-negative GBM not using PrEP in Vancouver in 2018, 28%  
357 were uncomfortable asking doctors for PrEP, highlighting the importance of educating physicians as PrEP  
358 providers,<sup>42</sup> and exploring potential for alternative care delivery models such as online PrEP services to  
359 improve PrEP access and retention.

360 Newly diagnosed PrEP users were more likely to have baseline M184I/V conferring reduced susceptibility  
361 to NRTIs, FTC, 3TC, and ABC, and individuals with M184I/V had a short time since last PrEP  
362 dispensation. This suggests inadvertent PrEP exposure during acute infection may have strongly selected  
363 for M184V, or prevented the reversion of M184I/V-containing variants, potentially limiting treatment  
364 options with regimens containing 3TC or FTC.<sup>43</sup> Baseline M184I/V was found among individuals with  
365 more recent PrEP dispensations and in one instance occurred in an individual with acute HIV infection  
366 (false negative) during PrEP initiation. Phylogenetic neighbours of PrEP users with baseline M184V did  
367 not carry the mutation, suggesting it was acquired *de novo*, although we cannot exclude the possibility it  
368 may have been an undetected minority variant or had reverted to wild-type prior to testing in these  
369 individuals. PrEP clients likely undergo more frequent HIV diagnostic testing, raising the possibility of  
370 earlier enrolment in the DTP and earlier drug resistance testing, which could impact the likelihood of  
371 detecting M184V. We lack evidence of onward transmission of M184I/V, corroborating its fitness cost by  
372 the time baseline drug resistance testing occurs.

373 In the Swiss HIV epidemic, M184V along with RAMs, D67N, K70R, and K219Q conferred negative  
374 fitness, while L90M was advantageous.<sup>44</sup> In the absence of drug selection pressure, M184V was rapidly  
375 lost in a UK cohort, whereas T215 revertants, D67N, L210W, and K219Q/N persisted.<sup>45</sup> We reported  
376 probable transmission of RAMs within clusters with clinical implications, as K70R reduces susceptibility  
377 to AZT and K103N reduces susceptibility to nevirapine and efavirenz.<sup>27</sup> Detection of T215E TAM revertant  
378 mutation, in 100% of 14 new cases within a key cluster could suggest transmission of a resistant variant  
379 that is in the process of reverting to wild-type.

380  $R_e$  estimates depend on the serial interval, i.e., the time between successive infections' symptom onset.<sup>46</sup>  
381 Compared to viruses with short period of infectiousness, HIV serial intervals can vary widely, as  
382 transmission could occur during acute infection (45% of transmissions in the first year in a Detroit MSM  
383 cohort),<sup>47</sup> or later if there is viral rebound. We explored realistic serial intervals, settling on 1 y for the  
384 primary analysis under the premise of widely available testing and treatment in BC. Our estimates assume  
385 that serial interval is comparable across clusters and key populations. The cluster-specific  $R_e$  confidence  
386 intervals and uncertainty were wide when newly diagnosed cluster members were sparse (Fig. 3, Fig. S25).

387 Although we filtered estimates with CI width greater than 10, a more stringent cut-off or wider estimating  
388 window may have been warranted in some instances. Reducing noise in time-series data could improve  $R_e$   
389 estimates for low incidence,<sup>48</sup> which we circumvented with wide estimation windows and smoothing.  
390 Circumstantial changes could confound temporal dynamics. For instance, COVID-19 lockdown in 2020  
391 reduced availability of treatment and prevention resources, but also reduced social activity and testing,  
392 altogether resulting in elevated growth of some PWID clusters.<sup>49</sup> Although temporal trends were robust to  
393 serial intervals,  $R_e$  estimates remain uncertain due to noise, diagnosis delay, and incomplete sampling.  
394 PrEP has contributed to reducing HIV transmission in BC, alongside interventions such as combination  
395 ART,<sup>50,51</sup> TasP,<sup>52,53</sup> and safe injection sites.<sup>54</sup> Ongoing evaluations of the effectiveness of interventions  
396 including PrEP access, education, and delivery modes in clusters and key populations contributes towards  
397 evidence for intervention adoption in other jurisdictions, and to improve the efficiency of treatment and  
398 prevention resources locally. Our findings highlight the success of layering PrEP aimed to individuals at  
399 high risk of HIV infection on top of generalized free access to ART, under the BC TasP strategy, to optimize  
400 the control of HIV/AIDS. At the same time, longitudinal phylogenetic monitoring offers the unique  
401 advantage of identifying individuals and groups that could benefit from prioritized ART and prevention  
402 education, access, and support.

403

#### 404 **Contributors**

405 AM and JBJ conceived of the study and AM designed the study. JT, PS, and CJB facilitated the data request.  
406 AM conducted analyses, generated figures, and wrote the first version of the draft. JT and CJB provided  
407 methodological feedback. JT, VM, PS, JT, MH, CJB, RB, JSGM, and JBJ provided edits. JBJ, JSGM, and  
408 AM received funding for the study. AM and JBJ had access to data.

409

#### 410 **Declaration of interests**

411 JSGM received institutional grants from Gilead Sciences, Merck, and ViiV Healthcare. CJB has received  
412 grants and honoraria paid to his institution from Merck, Gilead Sciences and ViiV Healthcare. All other  
413 authors declare no competing interests.

414

#### 415 **Data sharing**

416 The BC-CfE is prohibited from making individuals' data publicly available due to provisions in our service  
417 contracts, institutional policy, and ethical requirements. Code available upon request.

418

419

420

421 **Acknowledgements**

422 We thank participants in the Drug Treatment Program and colleagues in the BC-CfE Molecular Laboratory  
423 and Drug Treatment Program. AM was supported by a doctoral grant from the Canadian Institutes of Health  
424 Research and the BC-CfE. JSGM is supported by grants paid to his institution by the British Columbia  
425 Ministry of Health, Health Canada, Public Health Agency of Canada, Vancouver Coastal Health,  
426 Vancouver General Hospital Foundation, and Genome British Columbia. JBJ is supported by the Canadian  
427 Institutes of Health Research, Genome British Columbia, Genome Canada, the Public Health Agency of  
428 Canada, and the BC-CfE. VM, PS, JT, MH, CJB, and RB were all supported by the BC-CfE.

429

430 **References**

431

432 1 British Columbia Centre for Disease Control (BCCDC). HIV in British Columbia: Annual  
433 Surveillance Report 2017. Retrieved from [http://www.bccdc.ca/health-professionals/data-](http://www.bccdc.ca/health-professionals/data-reports/hiv-aids-reports)  
434 [reports/hiv-aids-reports](http://www.bccdc.ca/health-professionals/data-reports/hiv-aids-reports). 2019; published online Sept. 23, 2019.

435 2 Grant RM, Lama JR, Anderson PL, *et al.* Preexposure Chemoprophylaxis for HIV Prevention  
436 in Men Who Have Sex with Men. *New Engl J Medicine* 2010; **363**: 2587–99.

437 3 Baeten JM, Donnell D, Ndase P, *et al.* Antiretroviral Prophylaxis for HIV Prevention in  
438 Heterosexual Men and Women. *New Engl J Medicine* 2012; **367**: 399–410.

439 4 Choopanya K, Martin M, Suntharasamai P, *et al.* Antiretroviral prophylaxis for HIV infection  
440 in injecting drug users in Bangkok, Thailand (the Bangkok Tenofovir Study): a randomised,  
441 double-blind, placebo-controlled phase 3 trial. *Lancet* 2013; **381**: 2083–90.

442 5 Jenness SM, Maloney KM, Smith DK, *et al.* Addressing Gaps in HIV Preexposure Prophylaxis  
443 Care to Reduce Racial Disparities in HIV Incidence in the United States. *Am J Epidemiology*  
444 2019; **188**: 743–52.

445 6 Corneli AL, Deese J, Wang M, *et al.* FEM-PrEP. *J Acquir Immune Defic Syndr* 2014; **66**: 324–  
446 31.

447 7 Toy J, Espinoza R, Trigg J, *et al.* Real-world utilization of HIV PrEP medication in a  
448 population-level PrEP program in British Columbia, Canada. *Conference on Retroviruses and*  
449 *Opportunistic Infections 2024 Poster* 2024; published online March 1.

450 8 Biospace. Health Canada Issues Notice of Compliance For Gilead’s Truvada For Reducing The  
451 Risk Of Sexually Acquired HIV Infection. 2016.  
452 [https://www.biospace.com/article/releases/health-canada-issues-notice-of-compliance-for-gilead-](https://www.biospace.com/article/releases/health-canada-issues-notice-of-compliance-for-gilead-s-truvada-for-reducing-the-risk-of-sexually-acquired-hiv-infection-/)  
453 [s-truvada-for-reducing-the-risk-of-sexually-acquired-hiv-infection-/](https://www.biospace.com/article/releases/health-canada-issues-notice-of-compliance-for-gilead-s-truvada-for-reducing-the-risk-of-sexually-acquired-hiv-infection-/).



- 454 9 Health Canada. Product information - APO-EMTRICITABINE-TENOFOVIR. 2023;  
455 published online May 25. [https://health-products.canada.ca/dpd-](https://health-products.canada.ca/dpd-bdpp/info?lang=eng&code=93840)  
456 [bdpp/info?lang=eng&code=93840](https://health-products.canada.ca/dpd-bdpp/info?lang=eng&code=93840) (accessed Nov 29, 2023).
- 457 10 British Columbia Centre for Excellence in HIV/AIDS (BC-CfE). Guidance for the use of pre-  
458 exposure prophylaxis (PrEP) for the prevention of HIV acquisition in British Columbia. 2020.
- 459 11 Toy KJ, Trigg J, Zhang WW, *et al.* Rapid uptake of HIV pre-exposure prophylaxis (PrEP) in  
460 a publicly funded population-based program in British Columbia, Canada. *Conference on*  
461 *Retroviruses and Opportunistic Infections 2019 poster* 2019; **956**: 1–1.
- 462 12 Lima VD, Zhu J, Card KG, *et al.* Can the combination of TasP and PrEP eliminate HIV  
463 among MSM in British Columbia, Canada? *Epidemics* 2021; **35**: 100461.
- 464 13 Lima VD, Zhu J, Barrios R, *et al.* Longitudinal evolution of the HIV effective reproduction  
465 number following sequential expansion of treatment as prevention and pre-exposure prophylaxis  
466 in British Columbia, Canada: a population-level programme evaluation. *Lancet HIV* 2024; **11**:  
467 E461–9.
- 468 14 Irvine MA, Salway T, Grennan T, Wong J, Gilbert M, Coombs D. Predicting the impact of  
469 clustered risk and testing behaviour patterns on the population-level effectiveness of pre-  
470 exposure prophylaxis against HIV among gay, bisexual and other men who have sex with men in  
471 Greater Vancouver, Canada. *Epidemics* 2020; **30**: 100360.
- 472 15 Grulich AE, Guy R, Amin J, *et al.* Population-level effectiveness of rapid, targeted, high-  
473 coverage roll-out of HIV pre-exposure prophylaxis in men who have sex with men: the EPIC-  
474 NSW prospective cohort study. *Lancet HIV* 2018; **5**: e629–37.
- 475 16 Roberts DA, Bridenbecker D, Haberer JE, Barnabas RV, Akullian A. The impact of  
476 prevention-effective PrEP use on HIV incidence: a mathematical modelling study. *J Int AIDS*  
477 *Soc* 2022; **25**: e26034.
- 478 17 Doyle CM, Milwid RM, Cox J, *et al.* Population-level effectiveness of pre-exposure  
479 prophylaxis for HIV prevention among men who have sex with men in Montréal (Canada): a  
480 modelling study of surveillance and survey data. *J Int AIDS Soc* 2023; **26**: e26194.
- 481 18 Zhao R, Fairley CK, Cook AR, *et al.* Optimising HIV pre-exposure prophylaxis and testing  
482 strategies in men who have sex with men in Australia, Thailand, and China: a modelling study  
483 and cost-effectiveness analysis. *Lancet Glob Heal* 2024; **12**: e243–56.
- 484 19 Jenness SM, Goodreau SM, Rosenberg E, *et al.* Impact of the Centers for Disease Control's  
485 HIV Preexposure Prophylaxis Guidelines for Men Who Have Sex With Men in the United  
486 States. *J Infect Dis* 2016; **214**: 1800–7.
- 487 20 Marcus JL, Hurley LB, Hare CB, *et al.* Preexposure Prophylaxis for HIV Prevention in a  
488 Large Integrated Health Care System. *J Acquir Immune Defic Syndr* 2016; **73**: 540–6.

- 489 21 Misra K, Huang JS, Udeagu C-CN, Forgione L, Xia Q, Torian LV. Pre-exposure prophylaxis  
490 (PrEP) use history in people with antiretroviral resistance at HIV diagnosis: Findings from New  
491 York City HIV surveillance and partner services, 2015-2022. *Clin Infect Dis* 2023; : ciad699.  
492 2023.
- 493 22 Dimitrov DT, Boily M-C, Hallett TB, *et al.* How Much Do We Know about Drug Resistance  
494 Due to PrEP Use? Analysis of Experts' Opinion and Its Influence on the Projected Public Health  
495 Impact. *PLoS ONE* 2016; **11**: e0158620.
- 496 23 Powell VE, Gibas KM, DuBow J, Krakower DS. Update on HIV Preexposure Prophylaxis:  
497 Effectiveness, Drug Resistance, and Risk Compensation. *Curr Infect Dis Rep* 2019; **21**: 28.
- 498 24 Gibas KM, Berg P van den, Powell VE, Krakower DS. Drug Resistance During HIV Pre-  
499 Exposure Prophylaxis. *Drugs* 2019; **79**: 609–19.
- 500 25 Fonner VA, Dalglish SL, Kennedy CE, *et al.* Effectiveness and safety of oral HIV  
501 preexposure prophylaxis for all populations. 2016; published online July, 2016.  
502 <https://www.ncbi.nlm.nih.gov/pmc/articles/PMC4949005/pdf/aids-30-1973.pdf>.
- 503 26 Poon A, Gustafson R, Daly P, Zerr L, Demlow SE. Near real-time monitoring of HIV  
504 transmission hotspots from routine HIV genotyping: an implementation case study. *The Lancet*  
505 *HIV* 2016; **3**: e231–8.
- 506 27 Liu TF, Shafer RW. Web Resources for HIV Type 1 Genotypic-Resistance Test  
507 Interpretation. *Clin Infect Dis* 2006; **42**: 1608–18.
- 508 28 Price MN, Dehal PS, Arkin AP. FastTree 2--approximately maximum-likelihood trees for  
509 large alignments. *PLoS ONE* 2010; **5**: e9490.
- 510 29 Hoang DT, Chernomor O, Haeseler A von, Minh BQ, Vinh LS. UFBoot2: Improving the  
511 Ultrafast Bootstrap Approximation. *Mol Biol Evol* 2018; **35**: 518–22.
- 512 30 Minh BQ, Schmidt HA, Chernomor O, *et al.* IQ-TREE 2: New Models and Efficient Methods  
513 for Phylogenetic Inference in the Genomic Era. *Molecular Biology and Evolution* 2020; **37**:  
514 1530–4.
- 515 31 Paradis E, Schliep K. ape 5.0: an environment for modern phylogenetics and evolutionary  
516 analyses in R. *Bioinformatics* 2018; **35**: 526–8.
- 517 32 Statistics Canada. Table 17-10-0009-01 Population estimates, quarterly. 2023; published  
518 online Nov 23. <https://www150.statcan.gc.ca/t1/tbl1/en/tv.action?pid=1710000901> (accessed  
519 Nov 20, 2023).
- 520 33 Kamvar ZN, Cai J, Pulliam JRC, Schumacher J, Jombart T. Epidemic curves made easy using  
521 the R package incidence. *F1000 Research* 2019; **8**: 139.

- 522 34 Cori A, Ferguson NM, Fraser C, Cauchemez S. A New Framework and Software to Estimate  
523 Time-Varying Reproduction Numbers During Epidemics. *American Journal of Epidemiology*  
524 2013; **178**: 1505–12.
- 525 35 Campbell AR, Kinvig K, Côté HC, *et al.* Health Care Provider Utilization and Cost of an  
526 mHealth Intervention in Vulnerable People Living With HIV in Vancouver, Canada: Prospective  
527 Study. *JMIR mHealth uHealth* 2018; **6**: e152.
- 528 36 Ferreira JA, Zwinderman AH. On the Benjamini–Hochberg method. *Ann Stat* 2006; **34**:  
529 1827–49.
- 530 37 Althaus CL. Ebola superspreading. *Lancet Infect Dis* 2015; **15**: 507–8.
- 531 38 Riou J, Althaus CL. Pattern of early human-to-human transmission of Wuhan 2019 novel  
532 coronavirus (2019-nCoV), December 2019 to January 2020. *Eurosurveillance* 2020; **25**:  
533 2000058.
- 534 39 Lloyd-Smith JO, Schreiber SJ, Kopp PE, Getz WM. Superspreading and the effect of  
535 individual variation on disease emergence. *Nature* 2005; **438**: 355–9.
- 536 40 Bennett DE, Camacho RJ, Otelea D, *et al.* Drug Resistance Mutations for Surveillance of  
537 Transmitted HIV-1 Drug-Resistance: 2009 Update. *PLoS ONE* 2009; **4**: e4724-8.
- 538 41 Amick AK, Eskibozkurt GE, Hosek SG, *et al.* Daily Oral HIV Pre-exposure Prophylaxis  
539 Among Young Men Who Have Sex With Men in the United States: Cost-saving at Generic Drug  
540 Price. *Clin Infect Dis* 2023; **78**: 402–10.
- 541 42 Lachowsky NJ, Tattersall TL, Sereda P, Wang C, Edwards J, Hull M. Community awareness  
542 of, use of and attitudes towards HIV pre-exposure prophylaxis (PrEP) among men who have sex  
543 with men in Vancouver, Canada: preparing health promotion for a publicly funded PrEP  
544 program. *Sex Health* 2019; **16**: 180-6.
- 545 43 Rhee S-Y, Liu T, Ravela J, Gonzales MJ, Shafer RW. Distribution of Human  
546 Immunodeficiency Virus Type 1 Protease and Reverse Transcriptase Mutation Patterns in 4,183  
547 Persons Undergoing Genotypic Resistance Testing. *Antimicrob Agents Chemother* 2004; **48**:  
548 3122–6.
- 549 44 Yang W-L, Kouyos RD, Böni J, *et al.* Persistence of Transmitted HIV-1 Drug Resistance  
550 Mutations Associated with Fitness Costs and Viral Genetic Backgrounds. *PLoS Pathog* 2015;  
551 **11**: e1004722.
- 552 45 Castro H, Pillay D, Cane P, *et al.* Persistence of HIV-1 Transmitted Drug Resistance  
553 Mutations. *J Infect Dis* 2013; **208**: 1459–63.
- 554 46 Wallinga J, Lipsitch M. How generation intervals shape the relationship between growth rates  
555 and reproductive numbers. *Proc R Soc B: Biol Sci* 2007; **274**: 599–604.

- 556 47 Volz EM, Ionides E, Romero-Severson EO, Brandt M-G, Mokotoff E, Koopman JS. HIV-1  
557 Transmission during Early Infection in Men Who Have Sex with Men: A Phylodynamic  
558 Analysis. *PLOS Medicine* 2013; **10**: e1001568-12.
- 559 48 Parag KV. Improved estimation of time-varying reproduction numbers at low case incidence  
560 and between epidemic waves. *PLoS Comput Biol* 2021; **17**: e1009347.
- 561 49 Miller RL, McLaughlin A, Montoya V, *et al.* Impact of SARS-CoV-2 lockdown on expansion  
562 of HIV transmission clusters among key populations: A retrospective phylogenetic analysis.  
563 *Lancet Regional Heal Am* 2022; : 100369.
- 564 50 Hogg RS, Rhone SA, Yip B, *et al.* Antiviral effect of double and triple drug combinations  
565 amongst HIV-infected adults: lessons from the implementation of viral load-driven antiretroviral  
566 therapy. *AIDS* 1998; **12**: 279–84.
- 567 51 Montaner JSG, Lima VD, Harrigan PR, *et al.* Expansion of HAART coverage is associated  
568 with sustained decreases in HIV/AIDS morbidity, mortality and HIV transmission: the “HIV  
569 Treatment as Prevention” experience in a Canadian setting. *PLoS ONE* 2014; **9**: e87872.
- 570 52 Montaner JS, Hogg R, Wood E, *et al.* The case for expanding access to highly active  
571 antiretroviral therapy to curb the growth of the HIV epidemic. *The Lancet* 2006; **368**: 531–6.
- 572 53 Lima VD, Brumme ZL, Brumme C, *et al.* The Impact of Treatment as Prevention on the HIV  
573 Epidemic in British Columbia, Canada. *Current HIV/AIDS Reports* 2020; : 1–11.
- 574 54 Tyndall MW, Wood E, Zhang R, Lai C, Montaner JSG, Kerr T. HIV seroprevalence among  
575 participants at a Supervised Injection Facility in Vancouver, Canada: implications for prevention,  
576 care and treatment. *Harm Reduction Journal* 2006; **3**: 36.