

1 **The roles of lifestyle factors and genetic risk in the association between night**
2 **shift work and cholelithiasis: a prospective cohort study.**

3 **Wangping He^{1,2†}, Ningning Mi^{1,2†}, Kecheng Jin^{1,2†}, Boru Jin^{1,2}, Ruyang Zhong^{1,2}, Zhen Liu^{1,2},**
4 **Yanyan Lin^{1,2}, Ping Yue^{1,2}, Bin Xia³, Qiangsheng He³, Fang Gao Smith^{4,5}, Jie Zhen^{6,7}, Jinqiu**
5 **Yuan^{3*}, Wenbo Meng^{1,2*}**

6
7 ¹The First School of Clinical Medicine, Lanzhou University, Lanzhou, Gansu, China.

8 ²Department of General Surgery, The First Hospital of Lanzhou University, Lanzhou, Gansu, China.

9 ³Clinical Research Center, Big Data Center, The Seventh Affiliated Hospital, Sun Yat-sen University,
10 Shenzhen, Guangdong, China.

11 ⁴Institute of Inflammation and Ageing, University of Birmingham, Birmingham, UK.

12 ⁵University Hospitals Birmingham NHS Foundation Trust and Health Data Research UK Midlands,
13 Birmingham, UK.

14 ⁶Department of Endocrine and Metabolic Diseases, Shanghai Institute of Endocrine and Metabolic
15 Diseases, Ruijin Hospital, Shanghai Jiaotong University School of Medicine, Shanghai, China.

16 ⁷Shanghai National Clinical Research Center for Metabolic Diseases, Key Laboratory for Endocrine
17 and Metabolic Diseases of the National Health Commission, Shanghai National Center for
18 Translational Medicine, Ruijin Hospital, Shanghai Jiaotong University School of Medicine, Shanghai,
19 China.

20

21 †These authors contributed equally to this work and shared the first authorship.

22 *These authors are corresponding author.

23 **Correspondence**

24 Wenbo Meng, Department of General Surgery, The First Hospital of Lanzhou University, Lanzhou,
25 730000, Gansu, China. Email: mengwb@lzu.edu.cn

26 Jinqiu Yuan, Clinical Research Center, Big Data Center, The Seventh Affiliated Hospital, Sun Yat-sen
27 University, Shenzhen, 518107, Guangdong, China. Email: yuanjq5@mail.sysu.edu.cn.

28

29 Words count for abstract: 320

30 Words count for manuscript: 3680

31

32

33 **Abstract**

34 **Background:** Night shift work has been linked to various adverse health outcomes, but its relationship
35 with incident cholelithiasis remains unclear. This study aims to investigate the association between
36 night shift work and the risk of cholelithiasis, assess the potential modifying effects of genetic
37 susceptibility, and explore the mediating roles of lifestyle factors.

38 **Methods:** A total of 219,810 subjects who were either in paid employment or self-employed were
39 included in the UK Biobank. Information on current and lifetime employment were collected. Genetic
40 risk was quantified and stratified by a polygenic risk score (PRS) incorporating 13 known
41 cholelithiasis-associated loci. We used Cox proportional hazard models to investigate associations
42 between night shift work and risk of cholelithiasis. Lifestyle factors measured at baseline were
43 explored as potential mediators.

44 **Results:** During a median follow-up of 13.76 years, 6450 incidents of cholelithiasis were documented.
45 Compared with day workers, the hazard ratio (HR) and 95% confidence interval (CI) of cholelithiasis
46 was 1.09 (1.01, 1.17) for individuals with rarely/some night shifts and 1.18 (1.04, 1.35) for those with
47 usual/permanent night shifts. Among the 62,558 participants who had reports on lifetime experience of
48 night shift work, those with a higher frequency of night shifts and a longer length of each night shift
49 were associated with an increased risk of cholelithiasis. Notably, individuals with usual/permanent
50 night shifts and high genetic risk exhibited the highest risk of cholelithiasis (HR: 1.48, 95% CI: 1.21,
51 1.81), with day workers at low genetic risk serving as the reference. Mediation analysis indicated that a
52 substantial portion (24.6%) of the association was mediated by BMI, followed by unhealthy alcohol

53 intake (4.5%) and sedentary time (1.8%).

54 **Conclusions:** Night shift work is associated with an increased risk of cholelithiasis, with this
55 relationship being largely mediated by lifestyle factors. These findings suggest that reducing the
56 frequency and duration of night shifts may help mitigate the incidence of cholelithiasis among night
57 shift workers, particularly for those with heightened genetic susceptibility.

58 **Keywords:** Night shift work, Cholelithiasis, Genetic risk, Lifestyle factors, Cohort study.

59

60 **Introduction**

61 Cholelithiasis is characterized by the presence of gallstones in the gallbladder or bile duct and
62 affects 10–20% of the global adult population. In the United States, approximately 800,000
63 cholecystectomies are performed annually for this condition, contributing to an estimated healthcare
64 cost of nearly 6.0 billion dollars¹. Given the rising prevalence of cholelithiasis, both primary and
65 secondary prevention through the management of risk factors is essential². While numerous risk factors,
66 including obesity, smoking, dietary habits, and physical inactivity, have been associated with the
67 development of cholelithiasis³, it is crucial to identify and control emerging risk factors early to reduce
68 the healthcare burden associated with this disease.

69 With the increasing demands of modern society and the specialization of labor, shift work is
70 becoming more prevalent among employees⁴. Shift work encompasses labor performed outside
71 conventional daytime hours, including evening, night, rotating, or irregular shifts. It is estimated that
72 15-20% of the working population in Europe and the United States are engaged in jobs that require
73 night shifts⁴. Despite the necessity of shift work, substantial evidence suggests that night shift work
74 disrupts the body's circadian rhythm and adversely affects metabolism and hormone secretion⁵⁻⁷.

75 Previous studies have linked night shift work to elevated risks of various health conditions,
76 including cardiovascular disease, metabolic disorders, and certain cancers^{6,8-10}, with the impact
77 potentially intensifying with prolonged exposure to night shifts. While the mechanisms through
78 which night shift work contributes to cardiovascular disease have been extensively studied¹¹,
79 there remains a significant knowledge gap concerning its association with cholelithiasis and the
80 underlying pathways involved.

81 In addition to environmental and lifestyle factors, genetic predisposition also contributes to the
82 development of cholelithiasis¹². Large-scale genome-wide association studies (GWAS) have identified
83 multiple independent genetic loci associated with cholelithiasis risk in European populations^{13,14}. Since
84 genetic susceptibility may modify the relationship between environmental and lifestyle factors and
85 chronic disease, we also investigated the combined effects of genetic susceptibility and night shift work
86 on the incidence of cholelithiasis.

87 To address these knowledge gaps, we utilized data from the UK Biobank to investigate the
88 relationships between exposure to night shift work and cholelithiasis risk among 219,810 participants.
89 Additionally, we integrated information on in-depth lifetime employment to examine the impact of the
90 length and frequency of night shifts on cholelithiasis risk. For gene-environment interactions, we
91 constructed a specific polygenic risk score (PRS) for cholelithiasis to investigate the combined effects
92 of night shift work and genetic variations on the cholelithiasis risk. Considering that night shift work
93 negatively impacts health through suboptimal health lifestyles¹⁵ and certain lifestyle factors are likely
94 to play a mediating role, simply adjusting for lifestyle factors as confounders may lead to
95 overadjustment bias¹⁶. Our study further explored the mediating role of lifestyle factors between night
96 shift work and cholelithiasis.

97

98 **Materials and Methods:**

99 **Study population**

100 The study population was drawn from the UK Biobank, a large-scale prospective cohort study that
101 recruited over 500,000 individuals aged 37 to 73 years from 22 assessment centers across England,
102 Scotland, and Wales between 2006 and 2010¹⁷. At baseline assessment, participants provided electronic
103 consent and completed a touch-screen questionnaire along with a face-to-face interview. Trained staff
104 collected various measurements, including height and weight. Participants also provided detailed
105 information on their lifestyle, medical conditions, work hours, and demographic background. Health
106 professionals inquired about medical history, health status, and medication use. Further details about
107 the UK Biobank have been extensively documented in prior studies^{18,19}.

108 For our analyses, we focused on participants who were in paid employment or self-employed
109 (n = 286,248). After excluding participants with a history of cholelithiasis or cholecystectomy at
110 baseline and missing lifestyle information and covariates, 219,810 participants were included in the
111 primary analysis. Among them, 165,282 subjects were included in the subsequent gene-environment
112 interaction analysis. Out of those, 62,558 subjects have complete lifetime employment information
113 from the follow-up in 2015 through online questionnaires (**Supplementary Figure S1**).

114 **Exposure assessment**

115 In the UK Biobank, shift work is defined as a work schedule outside normal daytime working
116 hours of 9:00 AM to 5:00 PM, which means working afternoons, evenings or nights or rotating through
117 these shifts. Participants who indicated paid employment or self-employment were then asked "Does
118 your work involve shift work?". If yes, participants were further asked whether their main job involved

119 night shifts, defined as "...a work schedule that involves working through the normal sleeping hours
120 (e.g., from 12:00 a.m. to 6:00 a.m.)." Response options for both questions included "never/rarely,"
121 "sometimes," "usually," or "always," with additional options for "prefer not to answer" and "do not
122 know"²⁰. Based on this information, participants' current night shift work status was categorized as
123 "day workers" "shift, but rarely/some night shifts" and "usual/permanent night shifts".

124 In assessing lifetime employment, subjects reported each job ever worked, the number of years in
125 each job, and the number of night shifts per month for each job. The detailed assessment method has
126 been described in previous studies^{8,20}. Based on the above information, we calculated the average
127 frequency (number/per month) of night shifts and average length (hours) of each night shift for each
128 participant.

129 **Outcome ascertainment**

130 The primary outcome of interest in our study was cholelithiasis. Incident cholelithiasis was
131 identified through linkage to the Health and Social Care Information Centre (in England and Wales)
132 and the National Health Service Central Register (in Scotland). Outcome events were determined based
133 on the International Classification of Diseases (ICD)-10 codes, specifically coded as K80.

134 **Assessment of polygenic risk score (PRS) to cholelithiasis**

135 Genotyping in the UK Biobank was performed on two arrays, UK BiLEVE and UK Biobank
136 Axiom. Genotyping, quality control, and imputation procedures have been previously described in
137 detail²¹. The polygenic risk score (PRS) was computed using the cholelithiasis-associated single
138 nucleotide polymorphisms (SNPs) identified in our previous study²². Detailed information about 13
139 independent SNPs is provided in **Supplementary Table S1**. In short, the number of alleles (0, 1, or 2)
140 for each individual was multiplied by the effect size of SNPs associated with cholelithiasis, and then

141 summed to derive PRS for all individuals in the UK Biobank²³. The PRS was formulated as:
142 $PRS = \beta_1 \times SNP_1 + \beta_2 \times SNP_2 + \dots + \beta_n \times SNP_n$ (β_n represents the effect size of the
143 n-th SNP, and SNP_n is the genotype value for the n-th SNP, indicating the number of risk alleles (0, 1,
144 or 2) present in the individual), where a higher score indicates a larger genetic susceptibility to
145 cholelithiasis onset. We then determined whether participants were at high or low genetic risk for
146 cholelithiasis based on the median value of PRS.

147 **Assessment of covariates and lifestyle factors**

148 Age, gender, race, UK Biobank assessment centers, index of multiple deprivation, education,
149 health rating, long-standing illness, multivitamin use and mineral use were considered as potential
150 covariates. Index of multiple deprivation (IMD) reflecting socioeconomic status and different research
151 centers acquired directly from the UK Biobank. Other sociodemographic characteristics (age, gender,
152 race, education) were collected through questionnaires or verbal interviews at baseline and health status
153 (health rating, long-standing illness, multivitamin use and mineral use) was collected through the
154 self-reported medical history or hospitalization records.

155 Lifestyle factors included status of body mass index (BMI), physical activity, smoking status,
156 alcohol intake, sleep duration, physical activity, sedentary time, and dietary characteristics. Weight and
157 height were measured at baseline during the initial assessment center visit. Body mass index (BMI)
158 was calculated as weight divided by height squared (kg/m²) at the initial assessment center visit.
159 Smoking status, alcohol intake, sleep duration was assessed by the touch-screen questionnaire. Physical
160 activity was assessed using the validated short International Physical Activity Questionnaire (IPAQ)²⁴,
161 which measures time spent on walking, and moderate and vigorous activities, which were also assessed
162 by the touchscreen questionnaire. We used TV time as a measure of sedentary time²⁵. Dietary

163 characteristics was assessed based on the intake of 5 dietary components (fruits, vegetables, fish, red
164 meat, and processed meat) following the American Heart Association Guideline²⁶. Healthy diet was
165 defined as adherence 2 or more ideal diet components (**Supplementary Table S2**).

166 **Statistical analysis**

167 Baseline characteristics were presented as mean (standard deviation, SD) for continuous variables,
168 and as a number (percentage) for categorical variables. The person-years of follow-up were calculated
169 from the assessment date for each participant until the first diagnosis of cholelithiasis, death, or the date
170 of last follow-up (31 MAY 2022), whichever came first.

171 We employed Cox proportional hazards models were used to estimate the hazard ratios (HRs) and
172 95% confidence intervals (CIs) for the association between current night shift work, average frequency
173 of night shifts and average length of each night shift and incident cholelithiasis. Schoenfeld tests for the
174 proportional hazard assumption were conducted in the UK Biobank, and no evidence of violation of
175 this assumption was observed.

176 Three models with increasing adjustment were utilized to control potential confounders. Model 1
177 was stratified by age, sex, and UK Biobank assessment centers. Model 2 was further adjusted for model
178 1 plus race, index of multiple deprivation and education level. In model 3, we further adjusted for
179 health rating, long-standing illness, multivitamin use and mineral use.

180 Kaplan-Meier analysis was performed to show the cumulative incidence rate across the different
181 PRS categories in all participants. To evaluate to what extent the association of night shift work with
182 cholelithiasis could be modified by genetic risk, joint effects were conducted for individuals with high
183 and low genetic risk of cholelithiasis.

184 To enhance our understanding of how night shift work contributes to cholelithiasis, we probed the

185 potential mediation pathways. Lifestyle factors associated with night shift work and/or cholelithiasis
186 were considered as potential mediators. These mediators were adjusted in the Cox models to examine
187 whether, and to what extent, the HRs between night shift work and cholelithiasis were attenuated.
188 Cause mediation analyses were based on counterfactual framework, which formally defines both direct
189 and indirect effects, and were more robust to the various limitations of traditional adjustment-based
190 mediation analysis²⁷. Natural indirect effect (NIE), natural direct effect (NDE), and total effect (TE)
191 were estimated by combining mediation and outcome models that adjusted for covariates in model 3.

192 The selected lifestyle factors were considered as potential mediators in a 3-step analysis. First, we
193 estimated the association of night shift work with each lifestyle factor using the multivariate-adjusted
194 linear or logistic regression models. Second, we used multivariate-adjusted Cox regression models to
195 assess the associations of lifestyle factors significantly associated with night shift work with the risk of
196 cholelithiasis (**Supplementary Table S3-4**). Third, we conducted mediating analyses based on lifestyle
197 factors that were significantly associated with night work shift and cholelithiasis.

198 To examine the robustness of the results, several sensitivity analyses were performed. Firstly, we
199 excluded incident cases that occurred within the first year, which could reduce the possibility of reverse
200 causation, enhance temporal considerations, and allow a time window for the development of
201 cholelithiasis. We further adjusted chronotype category in the models. All statistical analyses were
202 performed using R software (version 4.3.2) and Python (version 3.7.13), and a two-sided p-value <
203 0.05 was considered statistically significant.

204

205 **Results**

206 **Table 1** presents the baseline characteristics of the study population according to current night
207 shift status. In general, among 219,810 participants, night shift workers were more likely to be younger,

208 male, nonwhite, less educated and more physically active and to have higher BMI, less healthy
209 lifestyles, lower socioeconomic status and worse healthy status. The baseline characteristics of
210 participants according to average monthly frequency of night shifts and average length of each night
211 shift are presented in **Supplementary Table S5-6**. The participants possessing lifetime employment
212 information exhibited comparable characteristics.

213 During a median follow-up of 13.76 years, we documented 6450 incidents of cholelithiasis. We
214 first tested the association of current night shift work status and cholelithiasis (**Table 2**). In age-, sex-,
215 and UK Biobank assessment centers-stratified model 1, compared with day workers, the HR (95% CI)
216 of cholelithiasis was 1.21 (1.13, 1.30) in shift workers with rarely/some night shifts and 1.36 (1.20,
217 1.55) in those with usual/permanent night shifts. In addition, this association was still significant after
218 adjusting for race, index of multiple deprivation and education level in Model 2. Model 3 additionally
219 adjusted for health rating, long-standing illness, multivitamin use and mineral use, and although
220 estimates were further attenuated, results were overall comparable to model 2. In sensitivity analyses,
221 after excluded cholelithiasis cases within the first year and further adjusted for chronotype category in
222 the models (**Supplementary Table S7-8**), the results did not substantially differ from those observed
223 in our aforementioned analyses.

224 Lifestyle factors were selected as potential mediators and these groups of mediators were adjusted
225 in the Cox models to examine whether, and to what extent, the HRs between night shift work and
226 cholelithiasis were attenuated (**Table 3**). Adjustments for the seven groups (dietary characteristics,
227 smoking status, alcohol intake, physical activity, sleep duration, TV viewing, and BMI) of potential
228 mediators are based on model 1. The strongest attenuation was seen following adjustment for BMI (the
229 HR and 95% CI before adjustment: 1.09 [1.01,1.17] in rarely/some night shifts and 1.18 [1.04,1.35]

230 in rarely/some night shifts; after adjustment: 1.05 [0.98,1.13] in rarely/some night shifts and 1.12
231 [0.99,1.28] in rarely/some night shifts).

232 Mediation analyses were summarized in **Table 4**. Lifestyle factors associated with both night shift
233 work and outcomes were selected for mediating analysis (**Supplementary Table S3-4**). The primary
234 mediators identified were unhealthy alcohol intake (4.5%), unhealthy TV viewing or sedentary time
235 (1.8%), and BMI (24.2%). Detailed mediation charts illustrating the natural indirect effect (NIE) and
236 natural direct effect (NDE) of each lifestyle factor are provided in **Supplementary Figure S2**.

237 We then examined the associations between lifetime night shift work (frequency and length) and
238 the risk of cholelithiasis among 62,558 participants, with 1,578 incident cases. In fully adjusted models,
239 we found that an increased frequency of night shifts was associated with a higher risk of cholelithiasis
240 (**Table 5**). Compared with day workers, the HR (95% CI) of cholelithiasis was 1.18 (1.02, 1.37) in <
241 8 night shifts/month and 1.26 (1.08, 1.46) in ≥8 night shifts/month. Additionally, we observed that
242 night shift workers who undertook > 12 h/shift had the highest cholelithiasis risk (HR 1.25 [95% CI
243 1.06, 1.48]) (**Table 6**).

244 The Kaplan-Meier curve showed that genetic risk was significantly associated with cholelithiasis
245 (**Figure 1**). As expected, participants with high genetic risk had a broadly higher risk for cholelithiasis
246 than those with a low genetic risk (HR 1.16, 95% CI [1.11,1.23]), suggesting that the PRS could
247 effectively stratify risk for the cholelithiasis individuals. Furthermore, we observed significant joint
248 effects between genetic risk and current work schedule on the cholelithiasis risk (**Figure 2**). Compared
249 with day workers who had lower genetic risk, individuals with usual/permanent night shifts and high
250 genetic risk had the highest risk of cholelithiasis (HR 1.48 [95% CI 1.21, 1.81]).

251

252 **Discussion**

253 In this study, we identified a significant association between night shift work and an increased risk
254 of cholelithiasis. The risk showed a progressive increase from day work to irregular night shifts and
255 regular night shifts. Joint analysis revealed that participants with usual/permanent night shift work and
256 high genetic risk had the highest risk of incident cholelithiasis compared to those with day workers
257 who had lower genetic risk. Additionally, longer length of each night shift and greater frequency of
258 night shifts were related to a higher cholelithiasis risk. From a lifestyle perspective, BMI, alcohol
259 intake, and sedentary time could partially mediate the association between night shift work and
260 cholelithiasis, with the most notable mediating effect by BMI. These findings shed light on potential
261 targets for interventions to reduce the subsequent risk of cholelithiasis in population who are at higher
262 genetic risk.

263 To the best of our knowledge, this is the first prospective cohort study to investigate the
264 relationships between night shift work and the risk of incident cholelithiasis. While previous research
265 has extensively studied the association between night shift work and cardiovascular diseases^{28,29},
266 cancers^{30,31}, and metabolic diseases⁶, its adverse effects on the digestive system have been rarely
267 mentioned. However, some limited studies have reported that associations between shift work and
268 gastritis³², gastroesophageal reflux disease (GERD), irritable bowel syndrome (IBS), nonalcoholic
269 fatty liver disease (NAFLD)^{33,34}, as well as higher odds of certain cancers^{35,36}. To some extent, our
270 results may be partly supported by those findings. For example, Sangyoon Lee et al. proposed that
271 individuals working night shifts experienced more gastrointestinal symptom. They further found that
272 those workers had a greater risk of gastritis compared to day workers³². Consistently, Hangkai Huang et
273 al. found that the increased risk of NAFLD among individuals with night shift work was partly

274 attributable to an increase in BMI³⁴. Meanwhile, BMI is also recognized as an important risk factor for
275 cholelithiasis²³. In this study, we observed that the night shift was a significant and novel risk factor for
276 cholelithiasis. These findings not only enhance our understanding of the digestive health impacts of
277 night shifts but also provide crucial evidence for developing primary prevention strategies for
278 cholelithiasis.

279 Furthermore, we noted that a higher frequency of night shifts and a longer length of each night
280 shift and were important determinants of increased risk of cholelithiasis. Similarly, Eva et al. enrolled
281 78,586 women in the Nurses' Health Study and demonstrated that the increasing years of night shifts
282 was positively related to colorectal cancer risks³⁶. Hangkai Huang et al. suggested that a longer
283 duration, a higher frequency, more consecutive night shift work and longer hours per night shift were
284 associated with higher risks of NAFLD³⁴. All these findings provide evidence on detrimental
285 relationships between night shift work and health and suggest that reducing the frequency and length of
286 night shift work might be an effective measure to prevent digestive diseases in night shift workers.

287 The potential mechanism linking night shift work and cholelithiasis remains unclear, but there are
288 several possible explanations. First, it is well known that circadian disruption, light exposure at night,
289 and sleep deprivation are characteristic features of night shift work¹⁰. Evidence from animal studies has
290 suggested that disordered circadian rhythm and abnormal cholesterol metabolism in mice promote
291 gallstone formation³⁷. Additionally, unhealthy sleep traits may increase the risk of gallbladder disease³⁸.
292 Exposure to light at night can lead to suppression of pineal hormone melatonin and increase in
293 proinflammatory reactive oxygen species¹⁰. Meanwhile, inflammatory changes in gall bladder mucosa
294 and reduced gall bladder motility are considered as risk factors for cholelithiasis³⁹. As a result, Sreedevi
295 et al. suggest that melatonin could be a viable treatment for treat gallstones, targeting reactive oxygen

296 species and the hypomotility of the gall bladder⁴⁰. Second, the expression of genes that encode key
297 enzymes in hepatic bile acid and cholesterol metabolism, such as *Hmgcr* and *Cyp7a1*, is regulated by
298 circadian rhythm-related transcription factors⁴¹. Therefore, the disturbance of circadian rhythm caused
299 by night work can affect cholesterol metabolism and ultimately lead to the occurrence of cholelithiasis.
300 In addition, the composition of the gut microbiota also shows circadian fluctuations⁴², which when
301 disturbed by night work may contribute to the development of cholelithiasis. These findings suggest
302 that the disturbance of intestinal microbiota among night shift workers may be one of the reasons for
303 the increased incidence of cholelithiasis. Finally, the circadian disruption can disturb diurnal rhythms in
304 vagal afferents⁴³. The hepatic branch of the vagus nerve plays a critical role in biliary
305 function. Damage to the hepatic branch can lead to impaired gallbladder contraction, the accumulation
306 of bile salts, cholestasis, and eventually the formation of gallstones⁴⁴. Therefore, the high incidence of
307 cholelithiasis among night shift workers may be caused by abnormal vagal afferent rhythm.

308 In our study, after adjusting for lifestyle factors, the association between night shift work and
309 cholelithiasis was partially attenuated. Mediation analysis indicated that lifestyle factors such as
310 unhealthy alcohol intake, increased BMI, and sedentary behavior partially explained the relationship
311 between night shift work and cholelithiasis risk. These findings suggest that while promoting healthy
312 lifestyles may mitigate some adverse effects of night shift work, additional protective measures are
313 necessary.

314 We also investigated the interaction between night shift work and genetic predisposition on
315 cholelithiasis risk. As expected, individuals with high genetic risk who engaged in regular or permanent
316 night shift work had the highest risk of developing cholelithiasis. These results highlight the need for
317 personalized prevention strategies and suggest that future primary prevention efforts for night shift

318 workers should consider individual genetic susceptibility.

319 The strength of our study lies in its prospective design, large sample size, long-term follow-up,
320 and detailed current shift work information. Most importantly, this is the first cohort study to
321 investigate relationships between night shift work and cholelithiasis risk, while also assessing the
322 contribution of genetic factors in these relationships. This enabled us to precisely determine the effects
323 of night shifts on groups with varying levels of susceptibility. Additionally, a series of sensitivity
324 analyses were conducted to show the robustness of the findings. In addition, we have further clarified
325 the roles of multiple lifestyle factors, helping to guide and improve strategy development and practice
326 in health areas related to shift work.

327 Some limitations also remained in our study. First, as an observational study, it cannot establish
328 causality between night shift work and cholelithiasis. Second, the exposure data was obtained from
329 questionnaires which included whether participants were involved in night shift work and the
330 frequency and length of shift work. This method may not be as accurate as measuring exposures using
331 laboratory parameters. Third, the assessments of current and lifetime employment information in this
332 study were based on baseline levels rather than being dynamic which may not accurately represent
333 long-term status. In addition, despite careful adjustment for major confounders, bias from unknown and
334 unmeasured confounding factors may still exist. Lastly, the study predominantly included white
335 participants, limiting generalizability to other ethnic groups such as Asians and Blacks. Thus, caution
336 should be exercised when generalizing these findings to the broader population.

337

338 **Conclusions**

339 In conclusion, night shift work, particularly night shift work with higher frequency and longer length,

340 was significantly associated with an increased risk of cholelithiasis and maybe a novel risk factor for
341 cholelithiasis. Our study also revealed that the risk of cholelithiasis associated with night shift work is
342 further exacerbated by higher genetic risk. These findings highlight the importance of reducing the
343 burden of cholelithiasis through intervention of potential mediators.

344

345 **Abbreviations**

346 BMI: Body Mass Index; CI: Confidence interval; GWASs: genome-wide association studies; HR:
347 Hazard ratio; ICD: International Classification of Diseases; IMD: Index of multiple deprivation;
348 NDE:Natural direct effect (NDE); NIE: Natural indirect effect; PRS: Polygenic risk score; SNPs:
349 Single nucleotide polymorphisms; TE: Total effect.

350

351 **Declarations:**

352 **Funding**

353 This work was supported by the Natural Science Foundation of Gansu Province (23JRRA0956);
354 Medical Innovation and Development Project of Lanzhou University (lzuyxcx-2022-157); The Startup
355 Fund for the 100 Top Talents Program, SYSU (392012); Research Supporting Start-up Fund for
356 Associate Researcher of SAHSYSU (ZSQYRSSFAR0004).

357 **Competing interests**

358 The authors declared that no competing interests exist.

359 **Authors' contributions**

360 Wangping He: Conceptualization, Methodology, Writing-Original Draft. Ningning MI: Software, Data
361 Curation, Visualization, Funding acquisition. Kecheng Jin: Writing-Original Draft. Ruyang Zhong:
362 Writing-Original Draft. Boru Jin: Writing-Original Draft. Zhen Liu: Writing-Original Draft. Yanyan Lin:

363 Writing-Review & Editing. Ping Yue: Writing-Review & Editing. Bin Xia: Formal analysis, Funding
364 acquisition. Qiangsheng He: Software, Validation. Jinqiu Yuan: Formal analysis, Supervision, Project
365 administration, Funding acquisition. Wenbo Meng: Supervision, Project administration, Funding
366 acquisition.

367 **Ethics approval and consent to participate**

368 Each participant provided a written informed consent before data collection. The UK Biobank obtained
369 ethics approval from the National Research Ethics Committee (REC ID: 16/NW/0274).

370 **Consent for publication**

371 Not applicable.

372 **Acknowledgements**

373 We thank all participants and researchers from the UK Biobank who make the study possible.

374 **Availability of data and materials**

375 UK Biobank is an open access resource, and the study website <https://www.ukbiobank.ac.uk/> has
376 information on available data and access procedures. Data sets used for the analysis will be made
377 available under reasonable requests.

378

379 **Reference**

- 380 1. Lammert F, Gurusamy K, Ko CW, et al. Gallstones. *Nature reviews Disease primers*.
381 2016;2:16024.
- 382 2. Wang X, Yu W, Jiang G, et al. Global Epidemiology of Gallstones in the 21st Century:
383 A Systematic Review and Meta-Analysis. *Clinical gastroenterology and hepatology :
384 the official clinical practice journal of the American Gastroenterological Association*.

- 385 2024;22(8):1586-1595.
- 386 3. Wirth J, Joshi AD, Song M, et al. A healthy lifestyle pattern and the risk of symptomatic
387 gallstone disease: results from 2 prospective cohort studies. *The American journal of*
388 *clinical nutrition*. 2020;112(3):586-594.
- 389 4. Kecklund G, Axelsson J. Health consequences of shift work and insufficient sleep.
390 *BMJ (Clinical research ed)*. 2016;355:i5210.
- 391 5. Vetter C, Fischer D, Matera JL, Roenneberg T. Aligning work and circadian time in
392 shift workers improves sleep and reduces circadian disruption. *Current biology : CB*.
393 2015;25(7):907-911.
- 394 6. Wang F, Zhang L, Zhang Y, et al. Meta-analysis on night shift work and risk of
395 metabolic syndrome. *Obesity reviews : an official journal of the International*
396 *Association for the Study of Obesity*. 2014;15(9):709-720.
- 397 7. Wei T, Li C, Heng Y, et al. Association between night-shift work and level of melatonin:
398 systematic review and meta-analysis. *Sleep medicine*. 2020;75:502-509.
- 399 8. Wang N, Sun Y, Zhang H, et al. Long-term night shift work is associated with the risk
400 of atrial fibrillation and coronary heart disease. *European heart journal*.
401 2021;42(40):4180-4188.
- 402 9. Xiao Z, Xu C, Liu Q, et al. Night Shift Work, Genetic Risk, and Hypertension. *Mayo*
403 *Clinic proceedings*. 2022;97(11):2016-2027.
- 404 10. Haus EL, Smolensky MH. Shift work and cancer risk: potential mechanistic roles of
405 circadian disruption, light at night, and sleep deprivation. *Sleep medicine reviews*.
406 2013;17(4):273-284.

- 407 11. Ho FK, Celis-Morales C, Gray SR, et al. Association and pathways between shift work
408 and cardiovascular disease: a prospective cohort study of 238□661 participants from
409 UK Biobank. *International journal of epidemiology*. 2022;51(2):579-590.
- 410 12. Chuang SC, Hsi E, Lee KT. Genetics of gallstone disease. *Advances in clinical
411 chemistry*. 2013;60:143-185.
- 412 13. Joshi AD, Andersson C, Buch S, et al. Four Susceptibility Loci for Gallstone Disease
413 Identified in a Meta-analysis of Genome-Wide Association Studies. *Gastroenterology*.
414 2016;151(2):351-363.e328.
- 415 14. Ferkingstad E, Oddsson A, Gretarsdottir S, et al. Genome-wide association
416 meta-analysis yields 20 loci associated with gallstone disease. *Nature
417 communications*. 2018;9(1):5101.
- 418 15. Crowther ME, Ferguson SA, Reynolds AC. Longitudinal studies of sleep, physical
419 activity and nutritional intake in shift workers: A scoping review. *Sleep medicine
420 reviews*. 2022;63:101612.
- 421 16. Schisterman EF, Cole SR, Platt RW. Overadjustment bias and unnecessary
422 adjustment in epidemiologic studies. *Epidemiology (Cambridge, Mass)*.
423 2009;20(4):488-495.
- 424 17. Palmer LJ. UK Biobank: bank on it. *Lancet (London, England)*.
425 2007;369(9578):1980-1982.
- 426 18. Cox N. UK Biobank shares the promise of big data. *Nature*. 2018;562(7726):194-195.
- 427 19. Sudlow C, Gallacher J, Allen N, et al. UK biobank: an open access resource for
428 identifying the causes of a wide range of complex diseases of middle and old age.

- 429 *PLoS medicine*. 2015;12(3):e1001779.
- 430 20. Vetter C, Dashti HS, Lane JM, et al. Night Shift Work, Genetic Risk, and Type 2
431 Diabetes in the UK Biobank. *Diabetes care*. 2018;41(4):762-769.
- 432 21. Bycroft C, Freeman C, Petkova D, et al. The UK Biobank resource with deep
433 phenotyping and genomic data. *Nature*. 2018;562(7726):203-209.
- 434 22. Mi N, Liang Z, Yang M, et al. Genetic risk, adherence to healthy lifestyle behaviors,
435 and risk of cholelithiasis: A population-based cohort study. *Preventive medicine*.
436 2024;182:107942.
- 437 23. Lim J, Wirth J, Wu K, et al. Obesity, Adiposity, and Risk of Symptomatic Gallstone
438 Disease According to Genetic Susceptibility. *Clinical gastroenterology and*
439 *hepatology : the official clinical practice journal of the American Gastroenterological*
440 *Association*. 2022;20(5):e1083-e1120.
- 441 24. Craig CL, Marshall AL, Sjöström M, et al. International physical activity questionnaire:
442 12-country reliability and validity. *Medicine and science in sports and exercise*.
443 2003;35(8):1381-1395.
- 444 25. Foster HME, Celis-Morales CA, Nicholl BI, et al. The effect of socioeconomic
445 deprivation on the association between an extended measurement of unhealthy
446 lifestyle factors and health outcomes: a prospective analysis of the UK Biobank cohort.
447 *The Lancet Public health*. 2018;3(12):e576-e585.
- 448 26. Rutten-Jacobs LC, Larsson SC, Malik R, et al. Genetic risk, incident stroke, and the
449 benefits of adhering to a healthy lifestyle: cohort study of 306 473 UK Biobank
450 participants. *BMJ (Clinical research ed)*. 2018;363:k4168.

- 451 27. Tofighi D, MacKinnon DP. RMediation: an R package for mediation analysis
452 confidence intervals. *Behavior research methods*. 2011;43(3):692-700.
- 453 28. Vetter C, Devore EE, Wegrzyn LR, et al. Association Between Rotating Night Shift
454 Work and Risk of Coronary Heart Disease Among Women. *Jama*.
455 2016;315(16):1726-1734.
- 456 29. Su F, Huang D, Wang H, Yang Z. Associations of shift work and night work with risk of
457 all-cause, cardiovascular and cancer mortality: a meta-analysis of cohort studies.
458 *Sleep medicine*. 2021;86:90-98.
- 459 30. Wang F, Yeung KL, Chan WC, et al. A meta-analysis on dose-response relationship
460 between night shift work and the risk of breast cancer. *Annals of oncology : official
461 journal of the European Society for Medical Oncology*. 2013;24(11):2724-2732.
- 462 31. Yousef E, Mitwally N, Noufal N, Tahir MR. Shift work and risk of skin cancer: A
463 systematic review and meta-analysis. *Scientific reports*. 2020;10(1):2012.
- 464 32. Lee S, Chae CH, Park C, Lee HJ, Son J. Relationship of shift work with endoscopic
465 gastritis among workers of an electronics company. *Scandinavian journal of work,
466 environment & health*. 2020;46(2):161-167.
- 467 33. Li Q, Li FR, Zhen S, et al. Shift work and risk of incident gastroesophageal reflux
468 disease: the association and mediation. *Frontiers in public health*. 2023;11:1192517.
- 469 34. Huang H, Liu Z, Xie J, Xu C. Association between night shift work and NAFLD: a
470 prospective analysis of 281,280 UK Biobank participants. *BMC public health*.
471 2023;23(1):1282.
- 472 35. Lin Y, Nishiyama T, Kurosawa M, et al. Association between shift work and the risk of

- 473 death from biliary tract cancer in Japanese men. *BMC cancer*. 2015;15:757.
- 474 36. Schernhammer ES, Laden F, Speizer FE, et al. Night-shift work and risk of colorectal
475 cancer in the nurses' health study. *Journal of the National Cancer Institute*.
476 2003;95(11):825-828.
- 477 37. He C, Shen W, Chen C, et al. Circadian Rhythm Disruption Influenced Hepatic Lipid
478 Metabolism, Gut Microbiota and Promoted Cholesterol Gallstone Formation in Mice.
479 *Frontiers in endocrinology*. 2021;12:723918.
- 480 38. Ma Y, Yu S, Li Q, et al. Sleep patterns, genetic susceptibility, and digestive diseases:
481 A large-scale longitudinal cohort study. *International journal of surgery (London,*
482 *England)*. 2024.
- 483 39. E S, Srikanth MS, Shreyas A, et al. Recent advances, novel targets and treatments for
484 cholelithiasis; a narrative review. *European journal of pharmacology*.
485 2021;908:174376.
- 486 40. Koppiseti S, Jenigiri B, Terron MP, et al. Reactive oxygen species and the
487 hypomotility of the gall bladder as targets for the treatment of gallstones with
488 melatonin: a review. *Digestive diseases and sciences*. 2008;53(10):2592-2603.
- 489 41. Kudo T, Kawashima M, Tamagawa T, Shibata S. Clock mutation facilitates
490 accumulation of cholesterol in the liver of mice fed a cholesterol and/or cholic acid diet.
491 *American journal of physiology Endocrinology and metabolism*.
492 2008;294(1):E120-130.
- 493 42. Bishehsari F, Voigt RM, Keshavarzian A. Circadian rhythms and the gut microbiota:
494 from the metabolic syndrome to cancer. *Nature reviews Endocrinology*.

495 2020;16(12):731-739.

496 43. Kentish SJ, Christie S, Vincent A, Li H, Wittert GA, Page AJ. Disruption of the light
 497 cycle ablates diurnal rhythms in gastric vagal afferent mechanosensitivity.
 498 *Neurogastroenterology and motility*. 2019;31(12):e13711.

499 44. Zhang B, Nie P, Lin Y, et al. High incidence of gallstones after Roux-en-Y
 500 reconstruction gastrectomy in gastric cancer: a multicenter, long-term cohort study.
 501 *International journal of surgery (London, England)*. 2024;110(4):2253-2262.

502

Table 1. Basic characteristics of participants by current work schedule

Characteristics	Day workers (N=184817)	Shift, but rarely/some night shifts (N=27518)	Usual/always night shifts (N=7475)	Overall (N=219810)
Mean (SD) Age, years	52.7 (7.09)	51.7 (7.00)	51.0 (6.77)	52.5 (7.08)
Gender, N (%)				
Female	94079 (50.9)	12180 (44.3)	2597 (34.7)	108856 (49.5)
Male	90738 (49.1)	15338 (55.7)	4878 (65.3)	110954 (50.5)
Mean (SD) Index of multiple deprivation	15.6 (12.5)	19.7 (14.9)	21.8 (15.7)	16.3 (13.0)
Mean (SD) body mass index, kg/m²	26.9 (4.52)	27.7 (4.80)	28.3 (4.78)	27.1 (4.58)
Health rating, N (%)				
Excellent	38871 (21.0)	4337 (15.8)	1113 (14.9)	44321 (20.2)
Good	111484 (60.3)	16331 (59.3)	4324 (57.8)	132139 (60.1)
Poor	3438 (1.9)	760 (2.8)	242 (3.2)	4440 (2.0)
Long-standing illness, N (%)	43420 (23.5)	7250 (26.3)	1951 (26.1)	52621 (23.9)
Education level, N (%)				
A levels/AS levels or equivalent	24058 (13.0)	3391 (12.3)	841 (11.3)	28290 (12.9)
College or University degree	81664 (44.2)	7502 (27.3)	1267 (16.9)	90433 (41.1)
CSEs or equivalent	10410 (5.6)	2569 (9.3)	925 (12.4)	13904 (6.3)
NVQ or HND or HNC or equivalent	10956 (5.9)	2578 (9.4)	827 (11.1)	14361 (6.5)
O levels/GCSEs or equivalent	37304 (20.2)	6712 (24.4)	2074 (27.7)	46090 (21.0)
Other	6939 (3.8)	1579 (5.7)	545 (7.3)	9063 (4.1)
White, N (%)	175902 (95.2)	24850 (90.3)	6553 (87.7)	207305 (94.3)
Multivitamin use, N (%)	26105 (14.1)	3924 (14.3)	926 (12.4)	30955 (14.1)
Intake of mineral supplements, N (%)	41155 (22.3)	6333 (23.0)	1628 (21.8)	49116 (22.3)
Dietary characteristics, N (%)				
Unhealthy diet	93734 (50.7)	14471 (52.6)	4190 (56.1)	112395 (51.1)
Healthy diet	91083 (49.3)	13047 (47.4)	3285 (43.9)	107415 (48.9)
Smoking status, N (%)				

Current	17394 (9.4)	3895 (14.2)	1228 (16.4)	22517 (10.2)
Never	167423 (90.6)	23623 (85.8)	6247 (83.6)	197293 (89.8)
Alcohol intake, N (%)				
Healthy alcohol intake	175203 (94.8%)	25495 (92.6%)	6794 (90.9%)	207492 (94.4%)
Unhealthy alcohol intake	9614 (5.2%)	2023 (7.4%)	681 (9.1%)	12318 (5.6%)
Physical activity, N (%)				
Healthy physical activity	146714 (79.4)	23411 (85.1)	6513 (87.1)	176638 (80.4)
Unhealthy physical activity	38103 (20.6)	4107 (14.9)	962 (12.9)	43172 (19.6)
Sleep duration, N (%)				
Healthy sleep duration	139745 (75.6)	19007 (69.1)	4530 (60.6)	163282 (74.3)
Unhealthy sleep duration	45072 (24.4)	8511 (30.9)	2945 (39.4)	56528 (25.7)
Watch TV, N (%)				
Healthy TV viewing time	153273 (82.9)	21508 (78.2)	5426 (72.6)	180207 (82.0)
Unhealthy TV viewing time	31544 (17.1)	6010 (21.8)	2049 (27.4)	39603 (18.0)

503

504

Table 2. Current night shift work and cholelithiasis in the UK Biobank

Variables	HR (95% CI) by current work schedule			P for trend
	Day workers	Shift, but rarely/some night shifts	Usual/ permanent night shifts	
Cases	5292	899	259	
Person-years	2485075.9	367718.5	100067.0	
Incidence rate*	21.30	24.45	25.88	
Model 1	1.00 (ref)	1.21 (1.13-1.30)	1.36 (1.20-1.55)	<0.001
Model 2	1.00 (ref)	1.12 (1.04-1.21)	1.22 (1.07-1.39)	<0.001
Model 3	1.00 (ref)	1.09 (1.01-1.17)	1.18 (1.04-1.35)	0.001

505 Abbreviations: ref= reference.

506 *Per 10,000 person-years.

507 Model 1 stratified by age, sex and UK Biobank assessment centers; Model 2 further adjusted for race, index of multiple

508 deprivation and education level; Model 3 adjusted for terms in Model 2 and health rating, long-standing illness, multivitamin use

509 and mineral use.

510

511

512

513

514

Table 3. Association between current shift work and cholelithiasis by adjustment schemes.

Variables	HR (95% CI) by current work schedule			P for trend
	Day workers	Shift, but rarely/some night shifts	Usual/ permanent night shifts	

Cases	5292	899	259	
Person-years	2485075.9	367718.5	100067.0	
Incidence rate*	21.30	24.45	25.88	
Model 1	1.00 (ref)	1.09 (1.01-1.17)	1.18 (1.04-1.35)	0.001
Model 2 (Model 1 + dietary characteristics)	1.00 (ref)	1.09 (1.01-1.17)	1.18 (1.04-1.35)	0.001
Model 3 (Model 1 + smoking status)	1.00 (ref)	1.08 (1.01-1.17)	1.18 (1.04-1.34)	0.002
Model 4 (Model 1 + alcohol intake)	1.00 (ref)	1.09 (1.01-1.17)	1.18 (1.04-1.34)	0.001
Model 5 (Model 1 + physical activity)	1.00 (ref)	1.10 (1.02-1.19)	1.21 (1.06-1.37)	<0.001
Model 6 (Model 1 + sleep duration)	1.00 (ref)	1.09 (1.01-1.17)	1.18 (1.04-1.34)	0.002
Model 7 (Model 1 + TV viewing[†])	1.00 (ref)	1.08 (1.01-1.17)	1.17 (1.03-1.33)	0.002
Model 8 (Model 1 + BMI)	1.00 (ref)	1.05 (0.98-1.13)	1.12 (0.99-1.28)	0.032

515 Abbreviations: ref=reference, BMI= body mass index.

516 *Per 10,000 person-years.

517 [†]TV viewing was used to measure sedentary time.

518 Model 1 stratified by age, sex, and UK Biobank assessment centers and additionally adjusted for race, index of multiple

519 deprivation, education level, health rating, long-standing illness, multivitamin use and mineral use.

520

521

Table 4. Summary of Mediation Analyses

Characteristics	Incident cholelithiasis		
	Association with shift work ^a	Association with outcome ^b	% Mediated
Unhealthy dietary	-	+	NA
Current smoking	+	0	NA
Unhealthy alcohol intake	+	+	4.5
Low physical activity	-	+	NA
Unhealthy sleep duration	+	0	NA
Unhealthy TV viewing or sedentary time	+	+	1.8
BMI	+	+	24.6

522 Abbreviations: +: positive association; -: negative association; 0: no significant association; BMI: body mass index; TV:

523 television; NA: not available.

524 ^a Summarized from **Supplementary Table S3**; multiple linear or logistic regression models with the potential mediator as the

525 dependent variable and night shift work as the independent variable. Stratified by age, sex, and UK Biobank assessment centers

526 and additionally adjusted for each other and for race, index of multiple deprivation, education level, health rating, long-standing

527 illness, multivitamin use and mineral use.

528 ^b Summarized from **Supplementary Table S4**; Cox regression models with potential mediators as independent variables.
 529 Stratified by age, sex, and UK Biobank assessment centers and additionally adjusted for each other and for race, index of
 530 multiple deprivation, education level, health rating, long-standing illness, multivitamin use and mineral use.
 531
 532
 533
 534
 535

Table 5. Average lifetime night shift frequency and risk of cholelithiasis

Variables	HR (95% CI) by average lifetime night shift frequency			P for trend
	None	<8/month	≥8/month	
Cases	1122	232	224	
Person-years	645107.98	111648.07	92601.68	
Incidence rate*	17.39	20.78	24.19	
Model 1	1.00 (ref)	1.26 (1.10-1.46)	1.48 (1.28-1.71)	<0.001
Model 2	1.00 (ref)	1.20 (1.04-1.39)	1.31 (1.13-1.53)	<0.001
Model 3	1.00 (ref)	1.18 (1.02-1.37)	1.26 (1.08-1.46)	0.001

536 Abbreviations: ref= reference.
 537 *Per 10,000 person-years.
 538 Model 1 stratified for age, sex and UK Biobank assessment centers; Model 2 further adjusted for race, index of multiple
 539 deprivation and education level; Model 3 adjusted for terms in Model 2 and health rating, long-standing illness, multivitamin use
 540 and mineral use.
 541
 542
 543
 544
 545

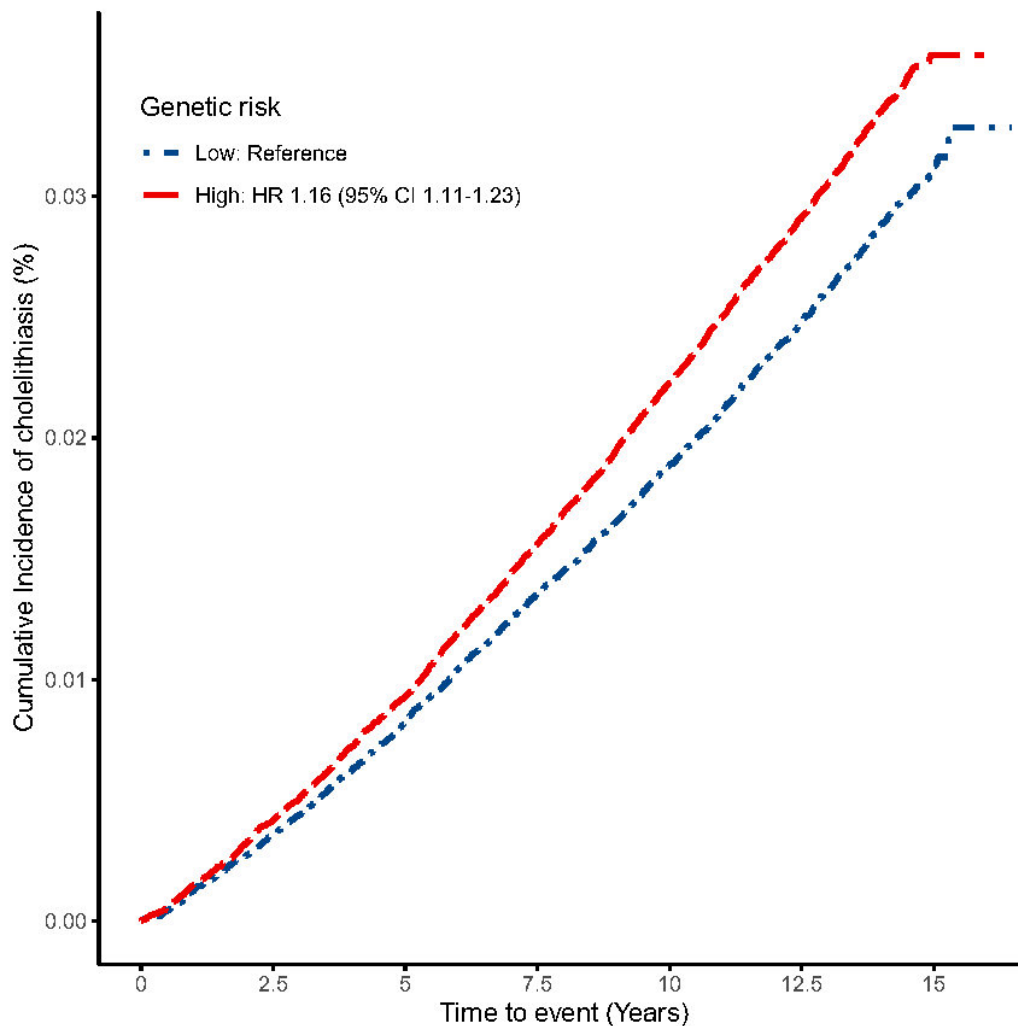
Table 6. Average length of each night shift and risk of cholelithiasis

Variables	HR (95% CI) by average length of each night shift during night shift periods				P for trend
	None	≤8h	8-12h	≥12h	
Cases	1122	166	126	164	
Person-years	645107.98	76709.80	56175.72	71364.23	
Incidence rate*	17.39	21.64	22.43	22.98	
Model 1	1.00 (ref)	1.40 (1.18-1.65)	1.29 (1.07-1.55)	1.38 (1.17-1.63)	<0.001
Model 2	1.00 (ref)	1.27 (1.07-1.51)	1.18 (0.97-1.42)	1.30 (1.09-1.53)	<0.001
Model 3	1.00 (ref)	1.23 (1.04-1.46)	1.16 (0.95-1.40)	1.25 (1.06-1.48)	0.002

546 Abbreviations: ref= reference.
 547 *Per 10,000 person-years.
 548 Model 1 stratified for age, sex and UK Biobank assessment centers; Model 2 further adjusted for race, index of multiple
 549 deprivation and education level; Model 3 adjusted for terms in Model 2 and health rating, long-standing illness, multivitamin use
 550 and mineral use.

551
552
553
554
555
556
557
558
559
560
561
562
563
564
565
566
567
568
569
570
571
572
573
574
575
576
577
578
579
580
581
582

Figure 1. Kaplan-Meier curves of time to cumulative incidence of cholelithiasis by night shift work.



583
584
585
586
587
588
589
590
591
592
593
594
595
596
597
598

Figure 2. Joint effects of genetic risk with current work schedule on cholelithiasis risk.

Characteristics	Cases / Person-years	HR (95%CI)	HR (95%CI)	P value
Low genetic risk				
Day workers	1,893 / 939,087		1.00 (ref)	
Shift, but rarely/some night shifts	328 / 131,314		1.14 (1.01-1.28)	0.034
Usual/permanent night shifts	65 / 35,439		0.87 (0.68-1.12)	0.284
High genetic risk				
Day workers	2,236 / 951,310		1.16 (1.09-1.23)	<0.001
Shift, but rarely/some night shifts	349 / 131,625		1.23 (1.09-1.38)	0.001
Usual/permanent night shifts	104 / 34,257		1.48 (1.21-1.81)	<0.001

599

600

601

602

603

Hazard ratios were stratified by age, sex and UK Biobank assessment centers and additionally adjusted for race, index of multiple deprivation, education level, health rating, long-standing illness, multivitamin use and mineral use.