

Evaluating the Risk of Cardiovascular Adverse Events and Appendicitis After COVID-19 Diagnosis in Adults in the United States: Implications of the Start of Follow-Up

J. Bradley Layton¹

Angela S. Cheng^{2*}

Arnstein Lindaas²

Zhiruo Wan²

Stella G Muthuri^{3*}

Pablo Freyria Duenas²

Patricia C. Lloyd⁴

Yangping Chen²

Morgan M. Richey^{1*}

Timothy Burrell³

Joann F. Gruber⁴

Minya Sheng^{3*}

Hai Lyu²

Azadeh Shoaibi^{4*}

Mollie M. McKillop^{3*}

Yoganand Chillarige²

Lisa S. Kowarski^{3*}

Jeffrey Beers³

Christine Bui¹

Mary S. Anthony¹

Shelby S. Fisher⁵

Richard A. Forshee⁴

Tainya C. Clarke⁴

Steven A. Anderson⁴

* Affiliation at time of study

¹RTI Health Solutions, Research Triangle Park, NC, USA; ²Acumen LLC, USA; ³IBM Consulting, Bethesda, MD, USA; ⁴US Food and Drug Administration, Center for Biologics Evaluation and Research, Silver Spring, MD, USA; ⁵RTI International, Research Triangle Park, NC, USA.

Correspondence: J. Bradley Layton

RTI Health Solutions

3040 East Cornwallis Rd, PO Box 12194

Research Triangle Park, North Carolina, USA 27709

Office: +1.919.541.8885

Fax: +1.919.541.7222

jblayton@rti.org

Source(s) of Support: US Food and Drug Administration

Word Count: 4,287

Abstract

Purpose: This study evaluated the association between coronavirus disease 2019 (COVID-19) diagnosis and adverse events (AEs), including cardiovascular AEs and appendicitis, in US adults before the introduction of COVID-19 vaccines. Real-world studies of AEs after COVID-19 suggest that diagnoses of AEs and COVID-19 frequently occur on the same day and may be a source of bias.

Methods: Cohort and self-controlled risk interval (SCRI) designs were used in 2 US administrative claims data sources—Merative™ MarketScan® (ages 18-64 years) and Medicare (ages ≥ 65 years). AEs included stroke (nonhemorrhagic and hemorrhagic), acute myocardial infarction, myocarditis/pericarditis, deep vein thrombosis, pulmonary embolism (PE), disseminated intravascular coagulation (DIC), unusual-site and common-site thrombosis with thrombocytopenia syndrome, and appendicitis. In cohort analyses, weighted hazard ratios (HRs) and 95% confidence intervals (CIs) compared adults with a COVID-19 diagnosis and matched comparators. In SCRI analysis, relative incidences (RIs) and 95% CIs compared risk and reference windows within individuals. Analyses were performed starting follow-up on Time 0 and Day 1.

Results: For cardiovascular AEs, all estimates starting follow-up on Day 1 were above 1.0 in both data sources. For cohort analyses, the strongest associations were for inpatient PE in both databases: MarketScan, HR=8.65 (95% CI, 6.06-12.35), Medicare HR=3.06 (95% CI, 2.88-3.26). For SCRI analyses, the strongest association in MarketScan was for DIC: RI=32.28 (95% CI, 17.06-61.09) and in Medicare was for myocarditis/pericarditis: RI=4.53 (95% CI, 3.89-5.27). AEs diagnosed concurrently with COVID-19 (ie, on Time 0) were common; including Time 0 in follow-

up/risk windows resulted in higher RIs, as well as higher HRs for some AEs. However, some AEs (eg, stroke) were more common on Time 0 in the comparator group resulting in lower HRs.

Conclusion: COVID-19 diagnoses had moderate to strong associations with cardiovascular AEs and weak or inconsistent associations with appendicitis, although estimates varied by design and methodology.

Keywords: Selection bias; reverse causation; COVID-19; cardiovascular; Time 0

Introduction

Coronavirus disease 2019 (COVID-19) severity may range from mild to fatal and has been associated with a variety of sequelae. Previous studies from several countries have evaluated the association between COVID-19 and select adverse events (AEs) using cohort,¹⁻⁶ case-control,⁷ and self-controlled^{3,5,8-10} study designs; these studies have generally reported increased risk of cardiovascular AEs, such as thromboembolism, pulmonary embolism, and acute myocardial infarction, and stroke. Limited evidence is available on the association of COVID-19 with appendicitis.^{11,12} Some real-world studies of the sequelae of COVID-19 have identified that AEs occurring on the same day as the COVID-19 diagnosis may have a substantial impact on effect measure estimates,^{9,13} but that effect may differ by study design, AE severity, and setting of COVID-19 diagnosis.

Understanding the risk of AEs after a COVID-19 diagnosis is important both for clinical care after COVID-19 and for better understanding the benefit-risk profile of COVID-19 vaccines, providing important context for vaccine safety surveillance findings. Additionally, understanding the implications of various study design choices on effect measure estimates may inform future research in this field. As part of its public health surveillance mandate, the US FDA Biologics Effectiveness and Safety (BEST) Initiative conducted this study to assess the association between COVID-19 and select AEs—including nonhemorrhagic stroke (NHS), hemorrhagic stroke (HS), acute myocardial infarction (AMI), myocarditis/pericarditis, deep vein thrombosis (DVT), pulmonary embolism(PE), disseminated intravascular coagulation (DIC), immune thrombocytopenia (ITP),

common-site and unusual-site thrombosis with thrombocytopenia syndrome (TTS), and appendicitis—before the introduction of COVID-19 vaccines in US adults. Neurologic/immune-mediated AEs were also evaluated but are presented elsewhere. To evaluate the potential impact of various biases (eg, exposure misclassification, confounding, reverse causality, and selection bias), two study designs (ie, a cohort and a self-controlled risk interval [SCRI]) were implemented with varying specifications (eg, start of follow-up/risk windows).

Material and Methods

Data Sources

This study used 2 administrative health insurance claims databases participating in the FDA CBER BEST Initiative: Merative™ MarketScan® Commercial Database and US Centers for Medicare and Medicaid Services (CMS) Medicare fee-for-service. All analyses were performed separately in each data source according to a common protocol.¹⁴ The analyses were restricted to individuals aged 18 to 64 years in MarketScan and those aged 65 years or older in Medicare. Individuals in Medicare were required to have coverage with Part A (inpatient hospital care) and Part B (outpatient care and physician services).

Study Designs

Two different study designs were used—an SCRI and a cohort—to evaluate each AE individually. Using data from the COVID-19 pandemic presented certain challenges, such as temporary disruptions in healthcare utilization,¹⁵⁻¹⁷ which may have different impacts on the 2 study designs. The cohort design used a matched comparator group, but because not all COVID-19 cases resulted in a medical diagnosis, exposure misclassification can be expected, and individuals with COVID-19 undiagnosed in clinical settings may be present in the comparator group, potentially resulting in estimates biased toward the null. Additionally, confounding between exposure groups may be difficult to account for if the COVID-19-diagnosed group differed from the comparator in ways that

were difficult to measure (eg, adherence to preventive measures, risk tolerance, behavioral or lifestyle factors). While misclassification of the COVID-19 diagnosis and residual confounding by time-invariant factors are less of a concern in the SCRI design, the SCRI requires key assumptions that may be violated (eg, AE event rates remain constant over time; a biologically relevant risk window for an AE that can be clearly defined relative to the COVID-19 diagnosis; and that events do not influence the end of the observation period). Thus, both study designs were used, and their results are presented as complementary. In both SCRI and cohort analyses, AE-specific exclusion criteria were applied, resulting in a unique analytic data set for each AE.

SCRI

The SCRI design¹⁸ included only those diagnosed with COVID-19 who also experienced an AE of interest during the study period, and compared an individual's risk of AEs during a risk window immediately after the COVID-19 diagnosis to reference windows before and after the diagnosis (Figure 1, Table 1).^{18,19} Individuals were eligible for the SCRI if they had a COVID-19 diagnosis between 1 June 2020 and 10 December 2020—the day before the first COVID-19 vaccine was authorized for use in the US. This period removed the potential for vaccine-associated AEs being counted as COVID-19-associated AEs. The SCRI study period began in June 2020, as pandemic-related reductions in diagnoses for a variety of conditions¹⁵⁻¹⁷ may violate underlying assumptions of the SCRI analysis that outcome rates are consistent over the time period¹⁸; by June 2020, many measures of healthcare utilization returned to pre-pandemic levels in healthcare claims.^{15,17}

Individuals included in the SCRI analyses were followed until disenrollment from the database, death (in Medicare only), or the end of the study period (Figure 2). The length of the risk window was defined separately for each AE (Figure 1). Pre-exposure and post-exposure reference windows were defined using data up to 365 days before and after the risk window (Figure 1); as much data as were available for an individual during the study period were included. Individuals were required to have at least 1 day in the pre-exposure reference window for inclusion. Buffer

periods immediately before (14 days) and after (28 days) the risk window were excluded from both risk and reference windows.

Cohort Design

The cohort design identified individuals with a recorded COVID-19 diagnosis and matched comparators who were not diagnosed with COVID-19 as of the matched calendar date (ie, the diagnosis date of the COVID-19 case). The study period for the cohort spanned the period between 1 April 2020—the date the *International Classification of Diseases, Tenth Revision, Clinical Modification* (ICD-10-CM) code for COVID-19 (U07.1) was introduced—to 10 December 2020.

Individuals were identified at their first COVID-19 diagnosis during the study period; the diagnosis date was used as Time 0 in the study. The calendar date of matching became Time 0 for the comparator group. Individuals in the COVID-19-diagnosed group were 1:1 exact-matched with replacement to comparators on age (5-year increments), sex, geographic region, immunocompromised status, hospitalization status on Time 0, and skilled nursing facility/long-term care residence on Time 0 (in Medicare). Hospitalization status on Time 0 was included as a matching variable as a proxy for COVID-19 disease severity, ensuring that a COVID-19 patient admitted to the hospital was matched to a comparator who was also admitted to the hospital on that same day (in Medicare) or who was already in the hospital (in MarketScan). Matching on hospitalization was also intended to address potential surveillance bias, present if the COVID-19-diagnosed group was more likely to have healthcare interactions than the comparator group, as typical patterns of healthcare utilization and diagnosis were temporarily altered during the early phase of the pandemic.^{16,20} Comparators who were matched to a COVID-19 case remained eligible to enter the COVID-19-diagnosed group or act as a comparator to an additional COVID-19 case as long as they remained eligible at a given calendar date. Individuals were followed until the end of the study period, disenrollment from the database, death (in Medicare only), the day before COVID-19 diagnosis in the matched comparator, or the occurrence of an outcome (Figure 2).

Variables

Recorded diagnoses were identified with ICD-10-CM diagnosis codes; additionally, Diagnosis Related Groups (DRGs) were also used to identify medical conditions. Pharmacy dispensing of influenza vaccines was identified with National Drug Codes in MarketScan only. Procedures were identified with Current Procedural Terminology (CPT), Healthcare Common Procedure Coding System (HCPCS), or *ICD-10 Procedure Coding System* (ICD-10-PCS) or DRG codes.

Exposure

In both study designs, the primary exposure of interest was a COVID-19 diagnosis (ICD-10-CM code U07.1) identified in claims data from inpatient, emergency department (ED), outpatient, or professional service claims in any coding position (in Medicare, admitting diagnosis codes were not considered). The diagnosis date was defined as the index date for the exposure group in each data source (eg, the date of admission for facility-level diagnoses, the service date for professional service-level diagnoses).

Outcomes

The outcomes of interest for this study included AEs that have previously been included in safety surveillance studies of COVID-19 vaccines, identified using ICD-10-CM diagnosis codes. AE-specific washout windows were employed in both study designs to restrict outcomes to new-onset AEs (Table 1). Washout windows for the cohort study were applied to the 12-month period before the date of COVID-19 diagnosis or the matched index date for comparators (Figure 1). The washout windows for the SCRI analysis were applied to a 12-month period before the date of the AE (Figure 2).

Covariates

Covariates were measured from claims, enrollment, and assessment information in each data source and included demographic and clinical characteristics, comorbidities, and healthcare

utilization. Covariates were used to describe the characteristics of each study sample in both study designs and to estimate propensity scores in the cohort analysis (details of AE-specific covariates are given in the supplemental information, sTable 1).

Follow-Up

For both study designs, analyses were performed both starting the follow-up/risk period on Time 0 (ie, the day of COVID-19 diagnosis or matched comparator date) and starting the follow-up/risk period on Day 1 (ie, the day after Time 0). Additionally, to evaluate the potential impact of AE cases on Time 0, risk estimates on Time 0 alone were evaluated.

SCRI Statistical Methods

The baseline descriptive characteristics of the included individuals with COVID-19 were described with means and standard deviations (SD) and medians and first and third quartiles (Q1, Q3) for continuous variables, and counts and percentages for categorical variables. Within each outcome-specific analysis set, the relative incidence (RI) and 95% confidence interval (CI)^{19,21} for the association between the AE and a COVID-19 diagnosis was estimated using conditional Poisson regression accounting for the variable length of follow-up in the risk and reference windows.¹³ Because some outcomes may increase the risk of mortality, the assumption of having no event-dependent censoring may be violated¹³ and an extended Poisson model accounting for event-dependent observation windows was used²² to estimate RI and 95% CI. AEs with particularly high case fatality rates (approximately 10% or greater, such as acute myocardial infarction, nonhemorrhagic and hemorrhagic stroke, and unusual-site and common-site TTS) were not evaluated with the SCRI design. Some AEs (i.e., pulmonary embolism, disseminated intravascular coagulation) were evaluated with the SCRI in MarketScan but not in Medicare due to higher case fatality rates in the older Medicare population compared to the younger commercially insured population in MarketScan. Additionally, models were further adjusted for calendar month to account for potential seasonality and time trends. To contextualize the RI observed in the SCRI analysis,

attributable risk (ie, the number of excess cases of the AE observed because of COVID-19 diagnosis) was estimated; a formula adapted from Yih and colleagues²³ and Ammann and colleagues²⁴ estimated the AR from the RI, the number of AE cases in the risk window, and the total number of eligible COVID-19 cases.

Cohort Study Statistical Methods

Patient characteristics were described in the overall matched cohort before application of the washout period (Table 1). The relative balance of characteristics between the COVID-19-diagnosed and matched comparator groups were described with absolute standardized differences (ASDs).²⁵ For each AE, after outcome-specific exclusion requirements were applied, an AE-specific propensity score model was estimated using a priori identified covariates, including potential confounders for each AE.^{26,27} The full list of covariates that were selected for inclusion in outcome-specific propensity score models, as appropriate for each outcome, are detailed in the supplemental information (sTable 1). The distributions of propensity scores were evaluated by exposure groups. The propensity scores were utilized to estimate stabilized inverse probability of treatment (sIPT) weights for each AE analysis. sIPT weights were truncated below the 1st and above the 99th percentiles to minimize the impact of extreme weights. Covariate balance between exposure groups was evaluated for both the crude and weighted cohorts using ASDs.²⁵

For the sIPT-weighted cohorts, Kaplan-Meier estimates of survival were generated,²⁸ and robust variance estimators were utilized to estimate 95% CIs to account for re-use of comparators.²⁹ The daily cumulative incidence estimates were calculated for each follow-up day by subtracting the Kaplan-Meier survival estimate and 95% CI from 1.0. Cox proportional hazard models were utilized to estimate crude and sIPT-weighted hazard ratios (HRs), and 95% CIs were estimated using robust sandwich variance estimators. Subgroup analyses were performed by hospitalization status at Time 0.

Analyses were conducted with SAS version 9.4 (SAS Institute Inc., Cary, NC, USA) and R versions 4.1.2 and 4.1.3 (R Core Team 2021). This surveillance activity was conducted as part of

the FDA public health surveillance mandate and was not subject to Institutional Review Board oversight.

Results

SCRI

For the SCRI analyses, we identified 330,799 eligible individuals with a COVID-19 diagnosis in MarketScan (mean [SD] age, 41.4 [13.7] years, 54.7% female), and 855,065 in Medicare (mean [SD] age, 77.4 [8.4] years, 56.9% female) (Table 2, sTable 2).

In the analyses starting the risk window on Day 1, elevated RI estimates (ie, $RI > 3$) were observed across both data sources for myocarditis/pericarditis and DVT (Table 3). Pulmonary embolism and DIC were only evaluated with the SCRI in MarketScan, and the resulting RI estimates were very high; the largest RI estimate observed was for DIC in MarketScan ($RI = 32.28$; 95% CI, 17.06-61.09). RI estimates for appendicitis were generally close to null (MarketScan $RI = 1.38$; 95% CI, 1.00-1.90; Medicare $RI = 0.98$; 95% CI, 0.70-1.36). The attributable risk estimates suggested large absolute numbers of AE cases associated with COVID-19 diagnosis (Table 3), with the largest estimate in MarketScan being for pulmonary embolism (177.23 cases per 100,000 COVID-19 cases) and for DVT in Medicare (437.75 cases per 100,000 COVID-19 cases).

In both data sources, a substantial number of AE cases were observed on Time 0 (the day of COVID-19 diagnosis) (sTable 3). RI estimates when Time 0 was included in the risk window were higher than those not including Time 0 in the risk window for all AEs in both data sources (sTable 3), and when the risk window consisted of only Time 0, RI estimates were extremely high (ie, $RI > 40$) for all outcomes.

Cohort

In the final, matched cohorts in MarketScan, we identified 358,306 eligible individuals aged 18 through 65 years with a COVID-19 diagnosis. After matching, 319,300 (89.11%) eligible adults in

the COVID-19-diagnosed group could be matched to an individual without a recorded COVID-19 diagnosis on or before the index date (sTable 4). In Medicare, we identified 1,085,418 eligible adults aged 65 years or older with new-onset COVID-19. Of these eligible adults, 1,017,410 (93.7%) could be matched to a comparator without a prior COVID-19 diagnosis (sTable 4). Among the 8,738 patients with a COVID-19 diagnosis in MarketScan who could not be matched, 22.4% were hospitalized at Time 0; whereas in Medicare, among the 68,008 patients with a COVID-19 diagnosis who could not be matched, 99.6% were hospitalized at Time 0 (sTable 5).

In the MarketScan cohort, the mean age of both the COVID-19-diagnosed group and comparator group was 41.8 years (SD 13.6), with 56% of the cohort being female. In Medicare, the mean age in both groups was 77.7 years (SD 8.6 years), and 58% were female. In both data sources, the characteristics of the overall COVID-19-diagnosed group and the comparator group were largely similar and well balanced (sTable 6). Within each outcome-specific analysis set and after sIPT weighting, all characteristics remained well balanced (sFigure 1).

The HRs for the analyses starting follow-up on Day 1 demonstrated generally elevated weighted HRs for all outcomes across both data sources (Table 4), with the largest HRs observed for inpatient pulmonary embolism (MarketScan HR = 8.65, 95% CI, 6.06-12.35; Medicare HR = 3.06, 95% CI, 2.88-3.26). The weakest associations were observed for appendicitis (MarketScan HR = 1.14, 95% CI, 0.86-1.50; Medicare HR = 1.22, 95% CI, 0.97-1.53).

Many AE cases were observed on Time 0, though the distribution of Time 0 cases across exposure groups differed by AE. For some severe AEs (NHS, HS, AMI, and unusual-site TTS in Medicare), AEs occurring on Time 0 were more common in the comparator group (Figure 3, sTable 7). For myocarditis/pericarditis, AEs on Time 0 were much more common in the COVID-19-diagnosed group (Figure 4, sTable 7). In the analyses including Time 0 in follow-up in both data sources, HR estimates for NHS, HS, and AMI were substantially lower than the analyses starting on Day 1; in Medicare, paradoxical HRs below 1 were observed for HS and NHS (sTable 7). However, for myocarditis/pericarditis, analyses including Time 0 in follow-up resulted in much higher HR estimates than those starting follow-up on Day 1, particularly in MarketScan (sTable 7). In both

instances, plots of the cumulative incidence by exposure group starting on Time 0 suggested that the largest difference between exposure groups occurred on Time 0, though the direction of the difference differed by AE (Figure 3, Figure 4).

In subgroup analyses by hospitalization status at Time 0, more differences in baseline characteristics were seen between exposure groups in the hospitalized subgroup, where some comorbidities and many measures of healthcare utilization were more common in the hospitalized comparator group than in the hospitalized COVID-19-diagnosed group (sTable 8). For all AEs, HRs were lower in the hospitalized subgroup than in the not-hospitalized subgroup (sTable 9).

Discussion

Diagnosis of COVID-19 was associated with a higher risk of cardiovascular AEs in both the cohort analyses and SCRI analyses and in both MarketScan and Medicare. RI estimates ranged from 3.18 (95% CI, 3.05-3.30) for DVT in Medicare to 32.28 (95% CI, 17.06-61.09) for DIC in MarketScan; HR estimates ranged from 1.26 (95% CI, 0.85-1.88) for unusual-site TTS in Medicare to 8.65 (95% CI, 6.06-12.35) for inpatient pulmonary embolism in MarketScan. Estimated associations were weak and inconsistent for appendicitis.

The strength of these observed associations varied by AE as well as by methodological aspects, including when to start follow-up, in both study designs. For the SCRI analyses, increased risk was observed for all AEs (except for appendicitis) in patients with COVID-19 diagnosis, regardless of whether Time 0 was included in the risk window; however, estimates not including Time 0 in the risk window were generally attenuated. For the cohort analyses, the direction and strength of association varied substantially depending on whether Time 0 was included or excluded in the follow-up period. As described in the following sections, HR and RI estimates starting follow-up on Day 1 were used as the primary basis to draw conclusions about the association between COVID-19 diagnoses and AEs.

The association of COVID-19 with cardiovascular events has been suggested by multiple studies from around the world. Studies (including our study) and reviews consistently identified

strong associations between COVID-19 and subsequent onset of myocarditis³⁰ and pericarditis.¹ Additionally, relationships with COVID-19 have been suggested for AMI,^{1,3,6-8,10,31} pulmonary embolism,³²⁻³⁸ DVT,^{38,39} stroke,^{40,41} and DIC.⁴² Little population-level research exists estimating the association between COVID-19 diagnosis and appendicitis, and we found little evidence to support an association. While the results of our study are generally consistent with many other studies suggesting increased risks of cardiovascular AEs associated with COVID-19, our study utilized 2 large data sources with national coverage, 2 study designs to address various potential biases, and methods to identify and describe potential effects of AE cases occurring on Time 0. Additionally, the estimated attributable risks provide information about the population-level impacts.

Variation Across Methodological Approaches

In both the SCRI and cohort designs, large numbers of AE events occurred on Time 0, which may suggest the presence of various biases that may manifest in distinct ways (ie, reverse causation, selection bias). Some concurrent cases removed by excluding Time 0 may be true cases where true COVID-19 illness precedes the AE, and investigators may be confronted with difficult decisions about ways to handle Time 0 events: eg, to exclude Time 0 from follow-up to reduce bias, at the expense of precision, generalizability, and complete case ascertainment.

Reverse Causation

For some individuals, the occurrence of an AE requiring healthcare attention may result in the recognition and recording of a COVID-19 diagnosis that otherwise would have gone unrecorded. Thus, a form of reverse causation may be present, where clinical presentation of individuals who experience an AE (ie, the study outcome) prompts the recognition and recording of a diagnosis of COVID-19 (ie, the study exposure) thus overestimating the effect of the exposure on the outcome.¹³ As an example in our study, the analyses of myocarditis/pericarditis are consistent with this phenomenon, with large numbers of AEs on Time 0 in both the SCRI and cohort study; and in the cohort study, more AEs occurred on Time 0 in the COVID-19-diagnosed group than the comparator

group relative to other nearby days of follow-up (Figure 4, sTable 3, sTable 7). This resulted in strongly elevated RI and HR estimates when Time 0 was included in the risk window/follow-up, and attenuated estimates when Time 0 was excluded. All RI estimates from the SCRI approach were attenuated when the start of follow-up was shifted from Time 0 to Day 1, which suggests (but does not confirm) the possibility of reverse causation and has been previously identified as a concern in SCRI analyses that start follow-up on Time 0.¹³

Conditioning on Hospitalization

Matching on hospitalization status at Time 0 was included in the cohort analysis to address disease severity and surveillance bias.¹⁴ However, conditioning on hospitalization status during periods of pandemic-related healthcare disruptions may have enriched the comparator group with individuals at greater risk of experiencing severe, emergent AEs. If individuals during the study period were less likely to present to clinicians or healthcare facilities for lower-severity events compared to the pre-pandemic period,⁴³ the matched hospitalized comparator group may, on average, contain more individuals with high-severity events. Matching on hospitalization status may have inadvertently introduced selection bias by conditioning on a collider on Time 0,⁴⁴ where hospitalization status on Time 0 results from both COVID-19 and occurrence of the AE. Subgroup analyses of patients who were hospitalized at Time 0 revealed that the comparator group in both data sources had a history of more inpatient admissions, ED visits, and risk factors for many of the AEs in this study.

While these factors are expected to affect analyses in both MarketScan and Medicare, this relationship was observed most strongly in Medicare, a population at higher baseline risk of most of the considered AE, as well as severe COVID-19. In Medicare, when follow-up started on Time 0, we observed 4 AEs with paradoxically protective HR estimates in Medicare, appendicitis, unusual-site TTS, HS, and NHS. For each of these AEs, AEs on Time 0 were more common in the comparator group than the COVID-19 group (sTable 7).

Strengths and Limitations

Strengths

Our study has several strengths, including 2 large, diverse data sources analyzed with 2 distinct analytic approaches able to account for changes in incidence rates during the early pandemic period. In the matched cohort study, a high proportion of cases were matched to comparators, and advanced control of observed confounders was achieved using sIPT weights. The use of a younger, commercially insured adult population along with the older Medicare population addresses questions about susceptibility among different adult age groups.

Limitations

While 2 large data sources with national reach were included, limitations of the study include a potential lack of generalizability. The study population included individuals with commercial or Medicare fee-for-service insurance, who may not be representative of the general population. Additionally, in the cohort analysis, large numbers of hospitalized COVID-19 cases were excluded due to failing to match, and thus the exposure group may not be reflective of all diagnosed COVID-19 cases. The use of diagnosis codes to identify COVID-19 only captured individuals who received a medically attended diagnosis, which restricts the generalizability of these findings by excluding COVID-19 cases who did not present to healthcare settings. Thus, there were likely individuals in the comparator group with medically undiagnosed COVID-19. The temporal ordering of events is also a limitation common to studies of infectious disease wherein infection occurs before diagnosis and the period between infection and elevated risk of an AE is not always well understood. If diagnosis of COVID-19 is sufficiently delayed, COVID-19-mediated events that occurred prior to diagnosis would be excluded, as they occurred in the pre-diagnosis washout window. Information bias is also an expectation, especially in the Medicare data, as diagnoses from facilities are often dated using the date of admission instead of the date of diagnosis, resulting in more COVID-19 and AE diagnoses being recorded on Time 0.

Conclusion

Estimates from the cohort and SCRI analyses suggest moderate to very strong associations between COVID-19 diagnosis and cardiovascular AEs. These results suggest that COVID-19 contributed to potentially large numbers of thrombotic cardiovascular AEs in the US during the COVID-19 pandemic. Consistent evidence of an association with appendicitis was not observed. While some variation was observed across study designs, conclusions from both the SCRI and cohort analyses were generally consistent with one another.

We based the overall conclusions for this study on the analyses starting follow-up on Day 1. The influence of AEs occurring on Time 0 was strong for both data sources, with estimates including or excluding Time 0 in follow-up occasionally being in opposite directions. Researchers should consider the risk of bias from sample selection that can be introduced by the study design (eg, matching on collider variables such as hospital admission) or in the analysis (eg, restricting analyses on disease severity). Also, trade-offs between the inclusion and exclusion of Time 0 need to be evaluated and considered.

These analyses add to mounting evidence of the importance of diagnosis and specialty care for CV events associated with COVID-19. Additionally, these findings further demonstrate the impact of COVID-19 on individuals and on public health and provide important context for COVID-19 vaccine safety surveillance and the benefit-risk balance of COVID-19 vaccines and therapeutics.

Acknowledgments

The authors acknowledge the support of the following: Sarah Harris, MA, of RTI International for project management and support; Melissa McPheeters, PhD, of RTI International for supervision; Deepa C Youssef, MBA, and Sofia Aschettino, BS, of IBM Consulting for project management and support; Pradeep Rajan, ScD, Marissa Meucci, PhD, and Molly Hensche, MS, of IBM Consulting for study design and protocol development; Veronica Hernandez-Medina, BS, Sania Abhari, MS, and Anna Go, BS, of IBM Consulting, for data acquisition and statistical analysis; Yu Sun, MS, of IBM

Consulting, for data acquisition; Pablo Freyria Duenas, MA, and Yangping Chen, MPH, of Acumen LLC, for study design and implementation of statistical analysis.

Disclosures

This study was funded by the US Food and Drug Administration as part of the FDA BEST Initiative. Acumen and RTI International are contractors of the BEST Initiative; IBM Consulting was a contractor of the BEST Initiative at the time of study conduct.

References

1. Barda N, Dagan N, Ben-Shlomo Y, et al. Safety of the bnt162b2 mrna covid-19 vaccine in a nationwide setting. *N Engl J Med*. Sep 16 2021;385(12):1078-1090. doi:10.1056/NEJMoa2110475
2. Boehmer TK, Kompaniyets L, Lavery AM, et al. Association between covid-19 and myocarditis using hospital-based administrative data - united states, march 2020-january 2021. *MMWR Morb Mortal Wkly Rep*. Sep 3 2021;70(35):1228-1232. doi:10.15585/mmwr.mm7035e5
3. Katsoularis I, Fonseca-Rodriguez O, Farrington P, Lindmark K, Fors Connolly AM. Risk of acute myocardial infarction and ischaemic stroke following covid-19 in sweden: A self-controlled case series and matched cohort study. *Lancet*. Aug 14 2021;398(10300):599-607. doi:10.1016/S0140-6736(21)00896-5
4. Priyadarshni S, Westra J, Kuo YF, Baillargeon JG, Khalife W, Raji M. Covid-19 infection and incidence of myocarditis: A multi-site population-based propensity score-matched analysis. *Cureus*. Feb 2022;14(2):e21879. doi:10.7759/cureus.21879
5. Katsoularis I, Fonseca-Rodriguez O, Farrington P, et al. Risks of deep vein thrombosis, pulmonary embolism, and bleeding after covid-19: Nationwide self-controlled cases series and matched cohort study. *BMJ*. Apr 6 2022;377:e069590. doi:10.1136/bmj-2021-069590

6. Knight R, Walker V, Ip S, et al. Association of covid-19 with major arterial and venous thrombotic diseases: A population-wide cohort study of 48 million adults in england and wales. *Circulation*. Sep 20 2022;146(12):892-906.
doi:10.1161/CIRCULATIONAHA.122.060785
7. Chevinsky JR, Tao G, Lavery AM, et al. Late conditions diagnosed 1-4 months following an initial coronavirus disease 2019 (covid-19) encounter: A matched-cohort study using inpatient and outpatient administrative data-united states, 1 march-30 june 2020. *Clin Infect Dis*. Jul 15 2021;73(Suppl 1):S5-S16. doi:10.1093/cid/ciab338
8. Modin D, Claggett B, Sindet-Pedersen C, et al. Acute covid-19 and the incidence of ischemic stroke and acute myocardial infarction. *Circulation*. Nov 24 2020;142(21):2080-2082. doi:10.1161/CIRCULATIONAHA.120.050809
9. Yang Q, Tong X, George MG, Chang A, Merritt RK. Covid-19 and risk of acute ischemic stroke among medicare beneficiaries aged 65 years or older: Self-controlled case series study. *Neurology*. Feb 22 2022;98(8):e778-e789. doi:10.1212/WNL.0000000000013184
10. Ho FK, Man KKC, Toshner M, et al. Thromboembolic risk in hospitalized and nonhospitalized covid-19 patients: A self-controlled case series analysis of a nationwide cohort. *Mayo Clin Proc*. Oct 2021;96(10):2587-2597. doi:10.1016/j.mayocp.2021.07.002
11. Georgakopoulou VE, Gkoufa A, Damaskos C, et al. Covid-19-associated acute appendicitis in adults. A report of five cases and a review of the literature. *Exp Ther Med*. 2022/06/01/2022;24(1):482. doi:10.3892/etm.2022.11409
12. Kaselas C, Florou M, Tsopozidi M, Spyridakis I. Acute appendicitis following covid-19 infection in pediatric patients: A single center's study in greece. *Diagnostics (Basel)*. Jun 15 2023;13(12)doi:10.3390/diagnostics13122070
13. Fonseca-Rodriguez O, Fors Connolly AM, Katsoularis I, Lindmark K, Farrington P. Avoiding bias in self-controlled case series studies of coronavirus disease 2019. *Stat Med*. Nov 30 2021;40(27):6197-6208. doi:10.1002/sim.9179

14. CBER Surveillance Program. *Evaluating the risk of adverse events after covid-19 diagnosis: Protocol*. Research CfBEa; 2023. 10 February. Accessed 2 March 2023.
https://bestinitiative.org/wp-content/uploads/2023/02/BEST-Post-COVID-19-AE-Protocol_2023.pdf
15. Ziedan E, Simon KI, Wing C. *Effects of state covid-19 closure policy on non-covid-19 health care utilization*. Working Paper. 2020. *Working Paper Series*. July. Accessed 20 October 2021. <http://www.nber.org/papers/w27621>
16. Whaley CM, Pera MF, Cantor J, et al. Changes in health services use among commercially insured us populations during the covid-19 pandemic. *JAMA Netw Open*. Nov 2 2020;3(11):e2024984. doi:10.1001/jamanetworkopen.2020.24984
17. CBER Surveillance Program. *Background rates of adverse events of special interest for covid-19 vaccine safety monitoring*. Research CfBEa; 2021. December. Accessed 30 November 2022. <https://bestinitiative.org/wp-content/uploads/2022/01/C19-Vax-Safety-AESI-Bkgd-Rate-Final-Report-2021.pdf>
18. Baker MA, Lieu TA, Li L, et al. A vaccine study design selection framework for the postlicensure rapid immunization safety monitoring program. *Am J Epidemiol*. Apr 15 2015;181(8):608-18. doi:10.1093/aje/kwu322
19. Petersen I, Douglas I, Whitaker H. Self controlled case series methods: An alternative to standard epidemiological study designs. *BMJ*. Sep 12 2016;354:i4515.
doi:10.1136/bmj.i4515
20. Moll K, Lufkin B, Fingar KR, et al. Background rates of adverse events of special interest for covid-19 vaccine safety monitoring in the united states, 2019-2020. *Vaccine*. Jan 9 2023;41(2):333-353. doi:10.1016/j.vaccine.2022.11.003
21. Farrington CP. Relative incidence estimation from case series for vaccine safety evaluation. *Biometrics*. Mar 1995;51(1):228-35.

22. Farrington CP, Anaya-Izquierdo K, Whitaker HJ, Hocine MN, Douglas I, Smeeth L. Self-controlled case series analysis with event-dependent observation periods. *Journal of the American Statistical Association*. Jun 2011;106(494):417-426.
doi:10.1198/jasa.2011.ap10108
23. Yih WK, Lieu TA, Kulldorff M, et al. Intussusception risk after rotavirus vaccination in u.S. Infants. *N Engl J Med*. Feb 6 2014;370(6):503-12. doi:10.1056/NEJMoa1303164
24. Ammann EM, Chrischilles EA, Carnahan RM, et al. Self-controlled assessment of thromboembolic event (tee) risk following intravenous immune globulin (igiv) in the u.S. (2006-2012). *J Thromb Thrombolysis*. Feb 2022;53(2):264-272. doi:10.1007/s11239-021-02610-4
25. Austin PC. Balance diagnostics for comparing the distribution of baseline covariates between treatment groups in propensity-score matched samples. *Stat Med*. Nov 10 2009;28(25):3083-107. doi:10.1002/sim.3697
26. Brookhart MA, Wyss R, Layton JB, Sturmer T. Propensity score methods for confounding control in nonexperimental research. *Circ Cardiovasc Qual Outcomes*. Sep 1 2013;6(5):604-11. doi:10.1161/CIRCOUTCOMES.113.000359
27. Brookhart MA, Schneeweiss S, Rothman KJ, Glynn RJ, Avorn J, Sturmer T. Variable selection for propensity score models. *Am J Epidemiol*. Jun 15 2006;163(12):1149-56.
doi:10.1093/aje/kwj149
28. Cole SR, Hernan MA. Adjusted survival curves with inverse probability weights. *Comput Methods Programs Biomed*. Jul 2004;75(1):45-9. doi:10.1016/j.cmpb.2003.10.004
29. Austin PC. Variance estimation when using inverse probability of treatment weighting (iptw) with survival analysis. *Stat Med*. Dec 30 2016;35(30):5642-5655. doi:10.1002/sim.7084
30. Jaiswal V, Sarfraz Z, Sarfraz A, et al. Covid-19 infection and myocarditis: A state-of-the-art systematic review. *J Prim Care Community Health*. 2021/12/02/2021;12:21501327211056800. doi:10.1177/21501327211056800

31. Del Prete A, Conway F, Della Rocca DG, et al. Covid-19, acute myocardial injury, and infarction. *Card Electrophysiol Clin.* 2022/03// 2022;14(1):29-39.
doi:10.1016/j.ccep.2021.10.004
32. Cui L-Y, Cheng W-W, Mou Z-W, et al. Risk factors for pulmonary embolism in patients with covid-19: A systemic review and meta-analysis. *International journal of infectious diseases: IJID: official publication of the International Society for Infectious Diseases.* 2021/10// 2021;111:154-163. doi:10.1016/j.ijid.2021.08.017
33. Liao S-C, Shao S-C, Chen Y-T, Chen Y-C, Hung M-J. Incidence and mortality of pulmonary embolism in covid-19: A systematic review and meta-analysis. *Crit Care.* 2020/07/27// 2020;24(1):464. doi:10.1186/s13054-020-03175-z
34. Suh YJ, Hong H, Ohana M, et al. Pulmonary embolism and deep vein thrombosis in covid-19: A systematic review and meta-analysis. *Radiology.* 2020/12/15/ 2020:203557.
doi:10.1148/radiol.2020203557
35. Roncon L, Zuin M, Barco S, et al. Incidence of acute pulmonary embolism in covid-19 patients: Systematic review and meta-analysis. *Eur J Intern Med.* 2020/12// 2020;82:29-37.
doi:10.1016/j.ejim.2020.09.006
36. Kwee RM, Adams HJA, Kwee TC. Pulmonary embolism in patients with covid-19 and value of d-dimer assessment: A meta-analysis. *Eur Radiol.* 2021 2021;31(11):8168-8186.
doi:10.1007/s00330-021-08003-8
37. Mir T, Attique HB, Sattar Y, et al. Does pulmonary embolism in critically ill covid-19 patients worsen the in-hospital mortality: A meta-analysis. *Cardiovasc Revasc Med.* 2021/10// 2021;31:34-40. doi:10.1016/j.carrev.2020.11.024
38. Longchamp G, Manzocchi-Besson S, Longchamp A, Righini M, Robert-Ebadi H, Blondon M. Proximal deep vein thrombosis and pulmonary embolism in covid-19 patients: A systematic review and meta-analysis. *Thromb J.* 2021/03/09/ 2021;19(1):15.
doi:10.1186/s12959-021-00266-x

39. Kollias A, Kyriakoulis KG, Lagou S, Kontopantelis E, Stergiou GS, Syrigos K. Venous thromboembolism in covid-19: A systematic review and meta-analysis. *Vasc Med.* 2021/08// 2021;26(4):415-425. doi:10.1177/1358863X21995566
40. Katsanos AH, Palaiodimou L, Zand R, et al. The impact of sars-cov-2 on stroke epidemiology and care: A meta-analysis. *Ann Neurol.* 2021/02// 2021;89(2):380-388. doi:10.1002/ana.25967
41. Cui Y, Zhao B, Li T, Yang Z, Li S, Le W. Risk of ischemic stroke in patients with covid-19 infection: A systematic review and meta-analysis. *Brain Res Bull.* 2022/03// 2022;180:31-37. doi:10.1016/j.brainresbull.2021.12.011
42. Zhou X, Cheng Z, Luo L, et al. Incidence and impact of disseminated intravascular coagulation in covid-19 a systematic review and meta-analysis. *Thromb Res.* 2021/05// 2021;201:23-29. doi:10.1016/j.thromres.2021.02.010
43. Nguyen JL, Benigno M, Malhotra D, et al. Pandemic-related declines in hospitalization for non-covid-19-related illness in the united states from january through july 2020. *PLOS ONE.* 2022;17(1):e0262347. doi:10.1371/journal.pone.0262347
44. Hernan MA, Monge S. Selection bias due to conditioning on a collider. *BMJ.* Jun 7 2023;381:1135. doi:10.1136/bmj.p1135

Tables

Table 1. Analysis Set and Definition for Each Specified Adverse Event

Adverse event	Care setting	Risk window for SCRI ^a	Washout window (days) ^b
Nonhemorrhagic stroke	IP	NA	365
Hemorrhagic stroke	IP	NA	365
Acute myocardial infarction	IP	NA	365
Myocarditis/pericarditis	IP, OP/PB	Days 1-41	365
Deep vein thrombosis	IP, OP/PB	Days 1-27	365
Pulmonary embolism – any setting ^c	IP, OP/PB	Days 1-27	365
Pulmonary embolism – inpatient only ^c	IP	Days 1-27	365
Disseminated intravascular coagulation	IP, OP/PB	Days 1-27	365
Unusual-site thrombosis with thrombocytopenia syndrome ▪ Unusual-site thrombosis (intracranial or intra-abdominal venous thrombosis, such as in portal, renal, and other veins) AND ▪ Thrombocytopenia within ≤ 14 days	Thrombosis: IP, ED Thrombocytopenia: IP, OP/PB	NA	365
Common-site thrombosis with thrombocytopenia syndrome ▪ Common-site thrombosis (AMI, HS, NHS, DVT, PE) AND ▪ Thrombocytopenia within ≤ 14 days	AMI, HS, and NHS: IP DVT, PE, and thrombocytopenia: IP, OP/PB	NA	365
Appendicitis	IP, OP-ED	Days 1-41	365

AMI = acute myocardial infarction; DVT = deep vein thrombosis; ED = emergency department; HS = hemorrhagic stroke; IP = inpatient; NA = not applicable; NHS = nonhemorrhagic stroke; OP/PB = outpatient or provider claims; PE = pulmonary embolism; SCRI = self-controlled risk interval.

^a For the SCRI analysis, the risk window for the main analysis started on Day 1; an additional analysis included Time 0 (ie, the date of the COVID-19 diagnosis) in the risk window.

^b For the cohort analysis, the washout windows is applied to the specified period before and including the date of COVID-19 diagnosis or matched date (ie, Time 0). For the SCRI, the washout window is applied to the specified period before and not including the date of the AE occurring in the risk or reference window.

^c Evaluated separately in inpatient settings only, and in combined inpatient, outpatient, or provider claims settings; both outcomes were evaluated in the same analysis set.

Note: Details of outcome algorithms given in the study protocol (CBER Surveillance Program¹⁴).

Table 2. Selected Characteristics of Included Individuals for SCRI and Cohort Analyses

Characteristic	SCRI Design		Cohort Design			
	MarketScan	Medicare	MarketScan		Medicare	
			Exposure Group (COVID-19)	Comparator Group	Exposure Group (COVID-19)	Comparator Group
Total observations ^{□a} (unique individuals)	330,799	855,065	319,300 (319,300)	319,300 (312,282)	1,017,410 (1,017,410)	1,017,410 (930,513)
Age, years						
Mean (SD)	41.4 (13.7)	77.4 (8.4)	41.8 (13.6)	41.8 (13.6)	77.7 (8.6)	77.7 (8.6)
Median (Q1, Q3)	42 (29, 53)	76 (70, 83)	43 (30, 53)	43 (30, 53)	76 (71, 84)	76 (71, 84)
Sex						
Female	180,800 (54.7)	486,381 (56.9)	178,975 (56.05)	178,975 (56.05)	590,584 (58.0)	590,584 (58.0)
Male	149,999 (45.3)	368,684 (43.1)	140,325 (43.95)	140,325 (43.95)	426,826 (42.0)	426,826 (42.0)
US geographic region, n (%)						
Northeast	44,345 (13.4)	125,327 (14.7)	62,215 (19.48)	62,224 (19.49)	218,277 (21.5)	218,107 (21.4)
North central	69,166 (20.9)	233,154 (27.3)	71,170 (22.29)	71,149 (22.28)	250,139 (24.6)	250,130 (24.6)
South	172,142 (52.0)	355,853 (41.6)	149,868 (46.94)	149,880 (46.94)	385,012 (37.8)	385,108 (37.9)
West	44,841 (13.6)	138,058 (16.1)	36,037 (11.29)	36,037 (11.29)	161,002 (15.8)	161,085 (15.8)
Unknown	305 (0.1)	2,673 (0.3)	10 (0.00)	10 (0.00)	2,980 (0.3)	2,980 (0.3)
Race/ethnicity, n (%) ^{□b}						
American Indian/Alaska Native	NA	7,165 (0.8)	NA	NA	7,510 (0.7)	5,240 (0.5)
Asian/Pacific Islander	NA	12,648 (1.5)	NA	NA	16,819 (1.7)	19,101 (1.9)
Black (or African American)	NA	67,441 (7.9)	NA	NA	90,997 (8.9)	87,757 (8.6)
Hispanic	NA	21,394 (2.5)	NA	NA	26,460 (2.6)	16,390 (1.6)
Non-Hispanic White	NA	722,056 (84.4)	NA	NA	845,042 (83.1)	857,204 (84.3)
Other	NA	10,840 (1.3)	NA	NA	13,898 (1.4)	14,649 (1.4)
Unknown	NA	13,521 (1.6)	NA	NA	16,684 (1.6)	17,069 (1.7)
Hospitalized on Time 0, n (%)	10,129 (3.1)	182,913 (21.4)	4,046 (1.27)	4,046 (1.27)	166,154 (16.3)	166,154 (16.3)
SNF/LTC ^{□b} residence on Time 0, n (%)	NA	186,367 (21.8)	NA	NA	250,193 (24.6)	250,193 (24.6)
Immunocompromised state, n (%)	35,924 (10.9)	357,587 (41.8)	37,672 (11.80)	37,672 (11.80)	438,954 (43.1)	438,954 (43.1)

COVID-19 = coronavirus disease 2019; LTC = long-term care; NA = not applicable; Q1 = first quartile; Q3 = third quartile; SD = standard deviation; SNF = skilled nursing facility; US = United States.

^a A unique individual may be included multiple times because of matching with replacement, and an individual may be included in both the exposure and comparator groups.

This table counts each instance of an individual's entry separately as distinct observations; the number of unique individuals is reported separately.

^b Only available in Medicare.

Table 3. Estimated Association of a COVID-19 Diagnosis With Cardiovascular Adverse Events and Appendicitis, Self-Controlled Risk Interval Analysis, Beginning Follow-Up on Day 1

Outcome	MarketScan		Medicare	
	RI (95% CI)	Attributable risk per 100,000 COVID-19 diagnoses	RI (95% CI)	Attributable risk per 100,000 COVID-19 diagnoses
Myocarditis/pericarditis	9.03 (7.22-11.29)	39.25	4.53 (3.89-5.27)	53.96
Deep vein thrombosis	8.04 (7.07-9.14)	119.11	3.18 (3.05-3.30)	437.75
Pulmonary embolism – any setting	13.55 (12.17-15.09)	177.23	NA	NA
Pulmonary embolism – inpatient only	27.36 (23.01-32.55)	72.23	NA	NA
Disseminated intravascular coagulation	32.28 (17.06-61.09)	6.15	NA	NA
Appendicitis	1.38 (1.00-1.90)	3.75	0.98 (0.70-1.36)	-0.13

CI = confidence interval; NA = not applicable; NE = not estimable; RI = relative incidence.

Table 4. Estimated Association of a COVID-19 Diagnosis With Cardiovascular Adverse Events and Appendicitis, Cohort Analysis, Beginning Follow-Up on Day 1

Outcome	Exposure group	Outcome cases	Person-time (days)	sIPT-weighted HR (95% CI)
MarketScan				
Nonhemorrhagic stroke	COVID-19	81	26,599,705	3.04 (1.97-4.70)
	Comparator	28	26,621,192	—
Hemorrhagic stroke	COVID-19	30	26,716,896	2.49 (1.27-4.89)
	Comparator	12	26,715,076	—
Acute myocardial infarction	COVID-19	195	26,634,722	2.43 (1.84-3.23)
	Comparator	75	26,639,357	—
Myocarditis/pericarditis	COVID-19	215	26,700,741	4.51 (3.15-6.45)
	Comparator	42	26,724,690	—
Deep vein thrombosis	COVID-19	712	26,547,204	2.80 (2.39-3.27)
	Comparator	235	26,617,199	—
Pulmonary embolism	COVID-19	843	26,554,368	5.89 (4.86-7.12)
	Comparator	131	26,657,071	—
Pulmonary embolism – inpatient only	COVID-19	349	26,616,045	8.65 (6.06-12.35)
	Comparator	38	26,665,112	—
Disseminated intravascular coagulation	COVID-19	24	26,739,439	6.58 (2.27-19.06)
	Comparator	4	26,738,869	—
Unusual-site thrombosis with thrombocytopenia syndrome	COVID-19	4	26,742,577	1.98 (0.35-11.05)
	Comparator	2	26,739,280	—
Common-site thrombosis with thrombocytopenia syndrome	COVID-19	94	26,718,682	4.71 (2.89-7.68)
	Comparator	20	26,727,813	—
Appendicitis	COVID-19	112	26,675,864	1.14 (0.86-1.50)
	Comparator	95	26,681,933	—
Medicare				
Nonhemorrhagic stroke	COVID-19	3,315	73,357,490	1.35 (1.28-1.43)
	Comparator	2,525	78,143,257	—
Hemorrhagic stroke	COVID-19	997	79,037,154	1.35 (1.22-1.50)
	Comparator	771	84,917,216	—
Acute myocardial infarction	COVID-19	9,168	76,240,828	1.94 (1.86-2.01)
	Comparator	4,786	82,064,128	—
Myocarditis/pericarditis	COVID-19	1,105	79,824,722	2.07 (1.84-2.32)
	Comparator	544	86,125,013	—
Deep vein thrombosis	COVID-19	11,877	76,449,557	1.69 (1.63-1.74)
	Comparator	7,457	82,624,314	—
Pulmonary embolism	COVID-19	9,244	77,850,826	2.53 (2.42-2.63)
	Comparator	3,846	84,283,945	—
Pulmonary embolism – inpatient only	COVID-19	4,924	78,114,621	3.06 (2.88-3.26)
	Comparator	1,702	84,436,728	—
Disseminated intravascular coagulation	COVID-19	655	79,988,878	2.54 (2.17-2.98)
	Comparator	271	86,258,848	—
Unusual-site thrombosis with thrombocytopenia syndrome	COVID-19	55	80,040,985	1.26 (0.85-1.88)
	Comparator	47	86,281,346	—
Common-site thrombosis with thrombocytopenia syndrome	COVID-19	4,556	79,033,139	2.35 (2.22-2.49)
	Comparator	2,006	85,128,856	—
Appendicitis	COVID-19	177	79,950,149	1.22 (0.97-1.53)
	Comparator	149	86,150,387	—

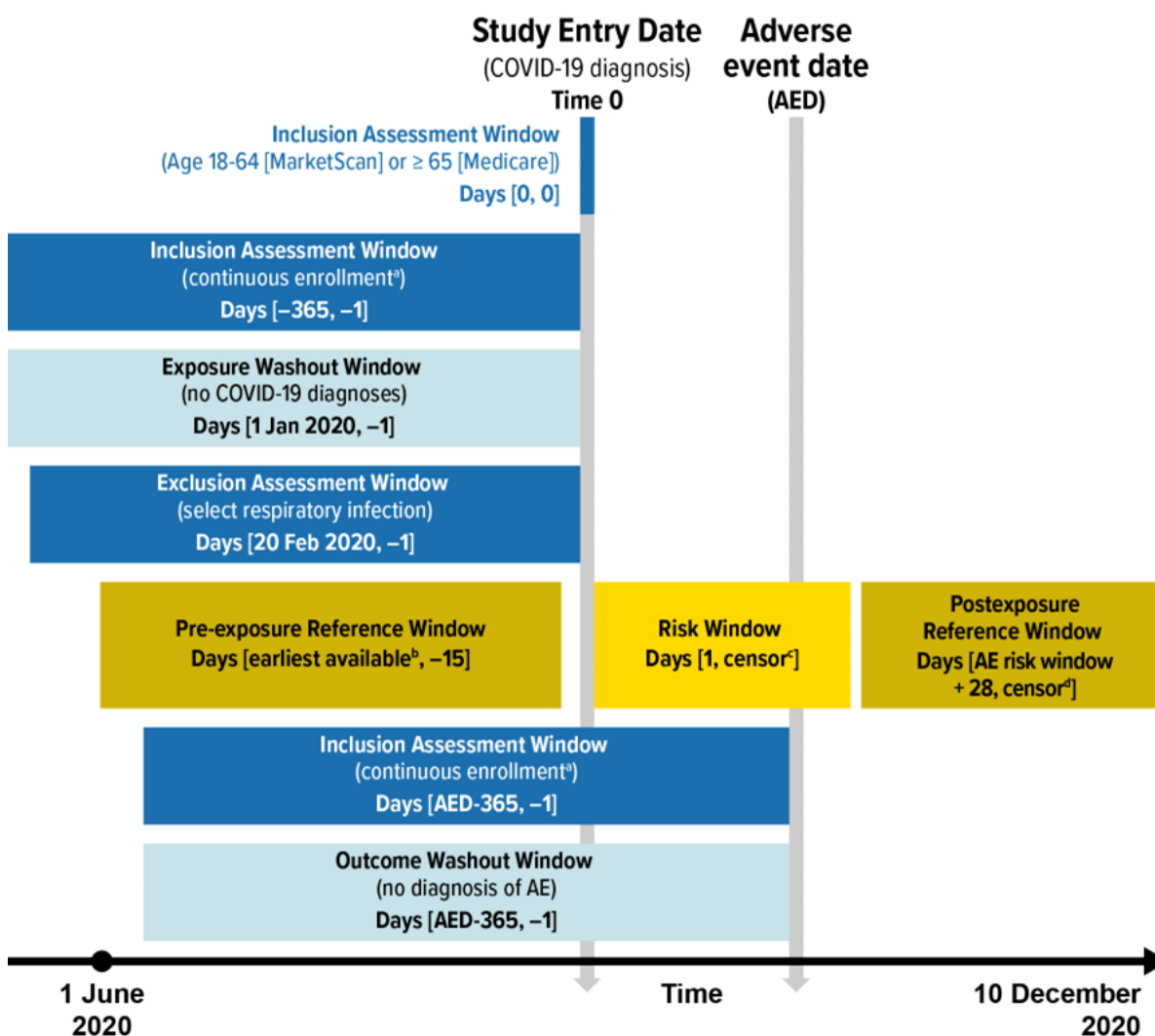
CI = confidence interval; COVID-19 = coronavirus disease 2019; ED = emergency department; HR = hazard ratio;
sIPT = stabilized inverse probability of treatment.
— denotes the reference group.

Figure Legend

- Figure 1. Eligibility Assessment, Covariate Assessment, Risk Windows, and Reference Windows Relative to Time 0 for the Self-Controlled Risk Interval Design.**
- Figure 2. Eligibility Assessment, Covariate Assessment, and Follow-Up Windows Relative to Time 0 for the Cohort Design.**
- Figure 3. Weighted Cumulative Incidence of Nonhemorrhagic Stroke by Exposure Group in the Cohort Analysis, Starting Follow-Up on Time 0**
- A. MarketScan**
 - B. Medicare**
- Figure 4. Weighted Cumulative Incidence of Myocarditis/Pericarditis by Exposure Group in the Cohort Analysis, Starting Follow-Up on Time 0**
- A. MarketScan**
 - B. Medicare**

Figures

Figure 1. Eligibility Assessment, Covariate Assessment, Risk Windows, and Reference Windows Relative to Time 0 for the Self-Controlled Risk Interval Design.



AE = adverse event; AED = adverse event date; COVID-19 = coronavirus disease 2019.

^a Gaps of up to 31 days are permitted in MarketScan.

^b Latest of the following: 365 days after the beginning of continuous enrollment; beginning of the study period (1 June 2020).

^c Earliest of the following: end of the AE-specific risk window; disenrollment from the database (gaps in insurance coverage of a maximum of 31 days were permitted); death (available in Medicare only); end of the study period (10 December 2020).

^d Earliest of the following: 365 days; disenrollment from the database (gaps insurance coverage of a maximum of 31 days were permitted); death (available in Medicare only); end of the study period (10 December 2020).

Note: Covariates for descriptive purposes were evaluated relative to Time 0 using the same process and assessment windows used for the cohort design

Note: The study entry period (the calendar time during which all Time 0 dates must have occurred) began on 1 June 2020. However, lookback periods may have extended before 1 June 2020.

Note: this figure represents the analysis with the risk window beginning Day 1; additional analyses were performed with the risk window starting follow-up on Time 0.

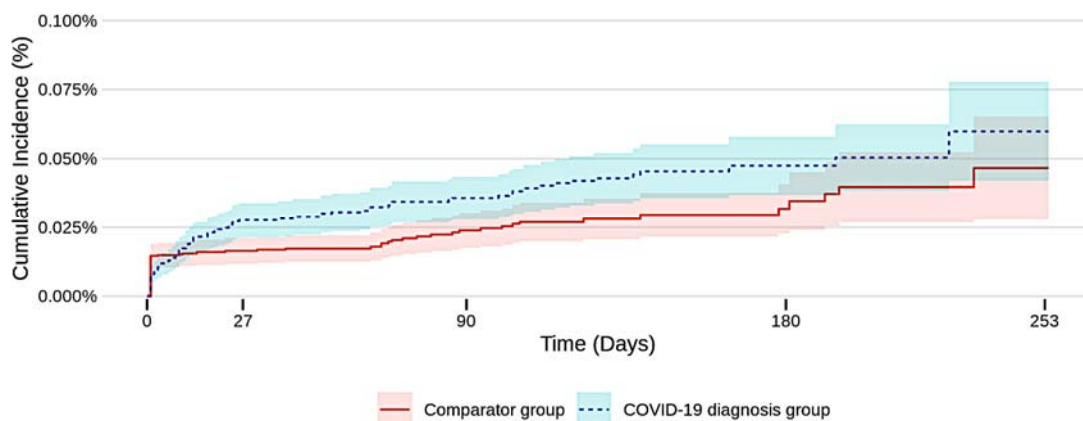
^d Occurrence of the event of interest or censoring at the earliest of the following: disenrollment from the database (gaps in insurance coverage of a maximum of 31 days are permitted in MarketScan); death (available in Medicare only); end of the study period (10 December 2020); or the day before COVID-19 diagnosis in comparators for both the comparator and the individual with COVID-19 to whom they were matched.

Note: The cohort entry period (the time during which all Time 0 dates must occur) began on 1 April 2020, but lookback periods may have extended before 1 April 2020, as far back as 2 April 2019.

Note: this figure represents the analysis beginning follow-up on Day 1; additional analyses were performed ending the outcome washout windows on the day before Time 0 and starting follow-up on Time 0.

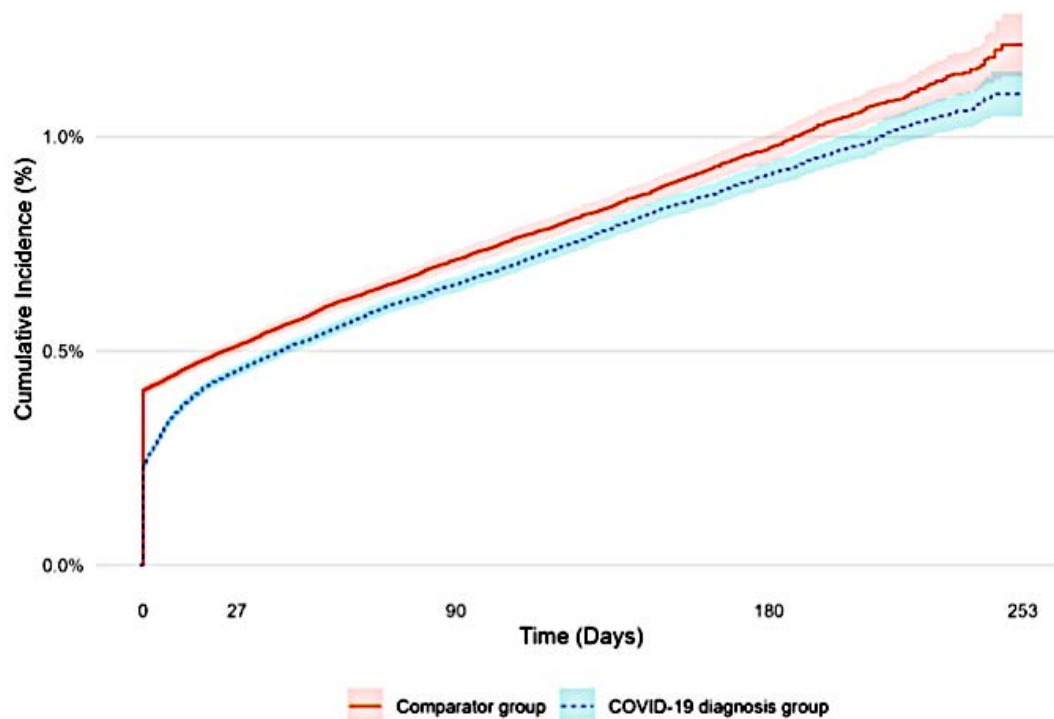
Figure 3. Weighted Cumulative Incidence of Nonhemorrhagic Stroke by Exposure Group in the Cohort Analysis, Starting Follow-Up on Time 0

A. MarketScan



	Comparator group		COVID-19 diagnosis group	
At Risk	317294	223841	127494	36790
Censored	4451	96787	190843	280680
Events	46	51	62	70
At Risk	317828	223657	126311	35917
Censored	4449	97530	192529	282040
Events	25	80	92	103

B. Medicare

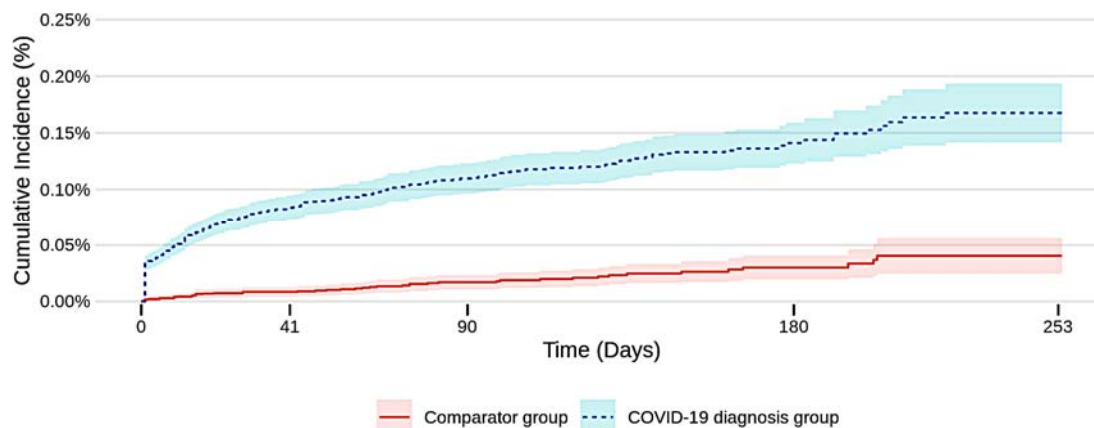


	Comparator group				
At Risk	928031	643872	371650	138713	1641
Censored	14523	289115	553733	783981	921630
Events	3802	4607	5576	6243	6401
	COVID-19 diagnosis group				
At Risk	927951	604023	343271	125366	1414
Censored	16073	329557	582668	797970	922394
Events	2182	3918	4825	5437	5556

COVID-19 = coronavirus disease 2019.

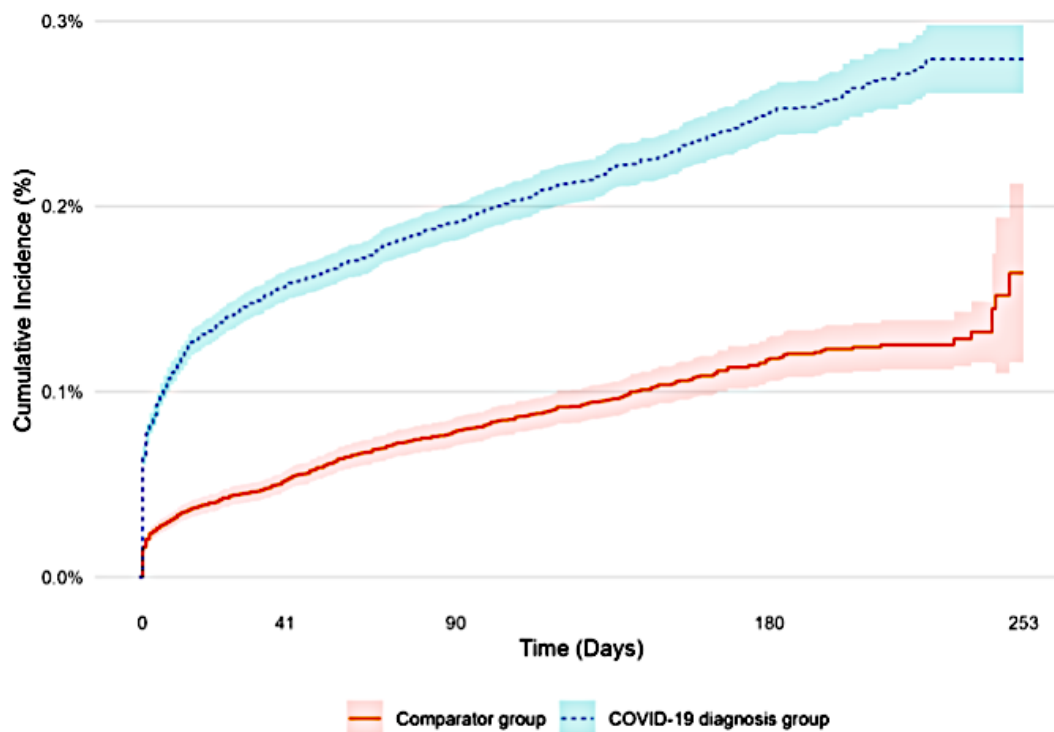
Figure 4. Weighted Cumulative Incidence of Myocarditis/Pericarditis by Exposure Group in the Cohort Analysis, Starting Follow-Up on Time 0

A. MarketScan



	Comparator group				
At Risk	318407	187643	127973	36965	538
Censored	4471	132710	191508	281643	318356
Events	5	23	37	48	51
	COVID-19 diagnosis group				
At Risk	319156	186973	126822	36131	523
Censored	4474	133937	193156	282952	318843
Events	109	241	281	306	314

B. Medicare



Comparator group					
At Risk	1014903	597318	409253	153828	1883
Censored	16189	423345	608317	861393	1014182
Events	164	466	599	706	721
COVID-19 diagnosis group					
At Risk	1015041	549840	372223	135813	1503
Censored	18286	469786	644319	878414	1013286
Events	668	1431	1584	1732	1755

COVID-19 = coronavirus disease 2019.