

Safety and tolerability of intravenous liposomal GM1 in patients with Parkinson disease: A single center open-label clinical phase I trial (NEON trial)

1 Stefan Halbherr¹, Stefanie Lerch^{1,2}, Sebastian Bellwald³, Petra Polakova^{1,4}, Bettina Bannert⁵, Marie
2 Roumet⁶, Roch-Philippe Charles^{1,7}, Martin A. Walter⁸, Corrado Bernasconi⁹, Camille Peitsch¹, Pascal C.
3 Baumgartner¹, Céline Kaufmann¹, Heinrich P. Mattle¹⁰, Alain Kaelin-Lang¹¹, Andreas Hartmann¹²,
4 Michael Schuepbach^{3*}

5

6 1 InnoMedica Schweiz AG, Switzerland
7 2 Skin and Soft Tissue Research Center, University Children's Hospital Zurich, Switzerland
8 3 Institute of Neurology, Konolfingen, Switzerland
9 4 Swiss pediatric oncology group, Bern, Switzerland
10 5 Department of Clinical Research, University of Basel, Switzerland
11 6 Department of Clinical Research, University of Bern, Switzerland
12 7 Swiss Group for Clinical Cancer Research, Switzerland
13 8 St. Anna Hospital, University of Lucerne, Switzerland
14 9 Limites Medical Research Ltd., Vacallo, Switzerland – ORCID 0000-0002-1019-5468
15 10 University of Bern, Switzerland, ORCID 0000-0001-7968-1731
16 11 Ente Ospedaliero Cantonale, Lugano Switzerland
17 12 Assistance-Publique Hôpitaux de Paris, Groupe Hospitalier Pitié-Salpêtrière, Département de Neurologie, Paris, France

18

19 **Revision date: 16.08.2024**

20 **Revised word count: 6288**

21 *corresponding Author

22 E-mail: nik@hin.ch

23 Participating Center: Institute of Neurology, Konolfingen, Switzerland

24 Safety re-assessment: Clinical Trial Unit, Department of Clinical Research, University of Basel

25 Database programming & Statistical Analysis: Clinical Trial Unit, University of Bern

26 Data and Safety Monitoring Board (DSMB): Andreas Hartmann, Alain Kaelin-Lang, Heinrich Mattle
NOTE: This preprint reports new research that has not been certified by peer review and should not be used to guide clinical practice.

27 Data access and responsibility: InnoMedica Schweiz AG

28 **ABSTRACT**

29 **Background:**

30 Parkinson disease (PD) is a chronic progressive neurodegenerative disorder leading to motor and non-
31 motor impairment often resulting in severe loss of quality of life. There are symptomatic treatments
32 without effect on the progression of PD. A disease-modifying treatment that could ideally stop the
33 neurodegenerative process is direly needed. Monosialotetrahexosylganglioside (GM1) is a promising
34 molecule with neuroprotective effects in preclinical models of PD and has yielded encouraging results
35 in patients with PD in a randomized placebo-controlled trial. Talineuren (TLN) is a liposomal
36 formulation of GM1 that has been shown to cross the blood-brain barrier in animals. We assessed the
37 safety and pharmacokinetics of TLN in patients with PD.

38 **Methods and Findings**

39 We prospectively enrolled 12 patients with PD into a single-center, open-label phase I trial to assess
40 the safety and tolerability of weekly infusions with Talineuren. The maximum suitable dose of
41 Talineuren was determined by dose escalation in three patients. Subsequently, these and nine further
42 patients received weekly infusions at the maximum suitable dose of Talineuren over two months (1
43 patient stopped prematurely). All adverse events were continuously assessed as the primary objective
44 and coded according to the Medical Dictionary for Regulatory Activities (MedDRA®). Clinical
45 manifestations of PD were assessed as secondary outcomes using the Movement Disorders Society
46 Unified Parkinson's Disease Rating Scale (MDS-UPDRS) including a levodopa challenge test at baseline
47 and end. In addition to weekly history taking, scales to measure mood, behaviour, quality of life,
48 sleepiness, non-motor symptoms of PD, and cognition were used. Dose escalation identified a
49 maximum suitable weekly dose of 720 mg. Overall, 304, mostly mild adverse events occurred. Twenty-
50 three were considered related to the study treatment. Very mild to severe acute infusion reactions at
51 the 2nd, 3rd, or 4th administration of TLN within the first minutes of the infusion occurred in seven
52 patients. All reported back or neck pain. Other acute infusion reactions were urticaria, plethora,

53 nausea, and chest pain. These adverse reactions disappeared within minutes of stopping the infusion
54 and did not recur when Talineuren administration was resumed at a very low rate. Beyond the 4th
55 administration, infusions could be given at increased rates up to 370 ml/h and no acute reaction
56 occurred anymore. The mechanism of this acute infusion reaction remains unclear. Some patients
57 reported mild dizziness for a few hours after Talineuren following many but not all administrations
58 throughout the study. Non-motor symptoms of PD, motor parkinsonian signs off medication, and
59 quality of life improved significantly during the treatment phase, including the MDS-UPDRS total score
60 (mean decrease 11.09 ± 10.47 points; $p=0.006$) and the PDQ-39 summary index (mean decrease
61 2.91 ± 2.25 points, $p=0.002$). Dopaminergic medications remained stable during the study.

62 **Conclusion:**

63 Talineuren is safe and well-tolerated in general. This prospective phase I trial revealed non-allergic
64 habituating acute infusion reactions at the 2nd, 3rd, or 4th treatment that can be prevented by a
65 slower rate of infusion. Importantly, the exploratory results suggest a consistent improvement of signs
66 and symptoms of PD.

67 **Abstract word count:** 487

68 **Trial Registration:** The NEON trial is registered at the US National Institutes of Health
69 (ClinicalTrials.gov) #NCT04976127 and in the Swiss National Clinical Trials Portal (SNCTP000004631)

70 **Funding:** NEON was fully funded by InnoMedica Switzerland AG.

71 **Introduction**

72 Parkinson disease (PD) is a chronic progressive neurodegenerative disorder with motor signs and non-
73 motor symptoms. Its clinical hallmark is Parkinsonism, i.e., bradykinesia associated with rest tremor
74 or rigidity (1). Although the motor signs remain the primary defining feature of PD, vegetative,
75 behavioural, and cognitive symptoms may have a predominant effect on quality of life, and often
76 precede motor signs (2). Histologically, PD is characterized by alpha-synuclein containing neuronal
77 inclusions called Lewy bodies that propagate through the brain resulting in impaired function of
78 numerous systems (3,4). Some manifestations of PD can symptomatically be relieved with medication
79 or stereotactic procedures, but despite considerable ongoing research efforts (5), there is currently
80 no known disease-modifying treatment available for PD. The most important therapeutic potential
81 currently consists of medications for the substitution of dopamine loss due to degeneration of
82 dopaminergic neurons in the substantia nigra. However, over decades of disease progression
83 levodopa-resistant symptoms become the main cause for disability. A treatment to slow down or even
84 halt the pathological process in PD is direly needed.

85 The glycosphingolipid GM1 (monosialotetrahexosylganglioside) is an important component of the cell
86 membrane of neurons that is diminished in patients with PD (6). GM1 has shown neurotrophic and
87 neuroprotective properties in preclinical research (7), and decreased levels of GM1 in patients with
88 PD may contribute to the pathogenesis (8). Studies in animal models of PD have shown recovery with
89 GM1 treatment (9), and a randomized double-blinded placebo-controlled clinical study in 77 patients
90 treated with twice daily subcutaneous administration of 100 mg GM1 resulted in a significant benefit
91 compared to placebo over 120 weeks (10) Administration and therapeutic effects of GM1 may be
92 improved by using a neurotropic nanoparticle carrier. Talineuren (TLN) is a liposomal formulation
93 consisting of the active pharmaceutical ingredient (API) GM1 at 6 mg/ml and the carrier liposomes
94 consisting of sphingomyelin and cholesterol. We conducted a phase I safety trial in 12 PD patients
95 receiving weekly TLN infusions over 8 weeks minimum.

96 **Methods**

97 **Study Design**

98 In this single-centre, open-label phase I interventional trial we enrolled 12 patients with PD to assess
99 the safety, tolerability, and preliminary efficacy of liposomal GM1 as add-on medication with weekly
100 intravenous infusions. Three patients received weekly ascending doses for 14 weeks to establish the
101 highest well-tolerated dose (dose escalation group [DE]). The highest tested weekly dose of the API
102 was 720 mg based on previous use of GM1 in humans (11) and was reached in all three patients. DE
103 patients and 9 additional patients (dose consolidation group [DC]) received thereafter weekly TLN with
104 an API dose of 720 mg for 8 weeks between December 13, 2021 and June 20, 2022. One of these
105 patients stopped participation prematurely. One month after the last administration of TLN, a final
106 safety follow-up visit was performed. Antiparkinsonian medication was kept stable if possible. In two
107 patients with bilateral subthalamic nucleus stimulation, stimulation remained on and parameters
108 unchanged throughout the study.

109 An independent data safety monitoring board (DSMB) evaluated safety data when the 3 DE patients
110 had reached a GM1 dose of 180 mg and after completion of the dose escalation. The trial was
111 approved by the local ethics committee (Kantonale Ethikkommission Bern) and the competent
112 authority October 30, 2021. The trial is registered at the US National Institute for Health
113 (ClinicalTrials.gov NCT04976127). The trial was conducted according to the principles of the
114 Declaration of Helsinki and Good Clinical Practice guidelines. Talineuren is provided by the
115 manufacturer and sponsor of the study, InnoMedica Switzerland AG. Talineuren is produced under
116 GMP conditions at InnoMedica's Nanofactory in Marly (Freiburg, Switzerland).

117 **Patients**

118 Patients aged 40-80 years were eligible if they were diagnosed with PD according to British brain bank
119 criteria (12), had a Hoehn and Yahr Stage 0 – 2.5 on medication (13) and stable PD treatment for at
120 least 4 weeks. To exclude major cognitive deficits, a score >25 on the Montreal Cognitive Assessment

121 (14) was required. Patients were carefully selected to exclude medical, psychological, and behavioural
122 problems that may have interfered with their compliance for study participation. Patients provided
123 written informed consent and fulfilled all eligibility criteria.

124 **Dose escalation (DE)**

125 In patients 1-3 dose escalation was started at 6 mg GM1 and then increased weekly to 12 mg, 60 mg,
126 followed by increases of 60 mg/week up to 720 mg. TLN was provided as a concentrated liposomal
127 suspension containing cholesterol, sphingomyelin, and the active pharmaceutical ingredient GM1 in
128 30ml vials (180 mg GM1) in a phosphate buffered solution. Talineuren was diluted in phosphate
129 buffered saline with a final concentration of 6 mg/ml GM1. TLN was added to 250 ml NaCl 0.9% and
130 administered with 250 ml/h with a perfusor. The speed of infusion could be increased up to 370 ml/h
131 if tolerated but reduced if necessary. Three days after the infusion each weekly dose increase of the
132 TLN had to be cleared by an internal safety monitoring committee (MS, RPC, MW) by assessing clinical
133 symptoms and lab values (Appendix 1). The second and third patient could start with the lowest dose
134 with a delay of 1 week after confirmation of safety in the first patient. This 1+2 schedule was
135 maintained for each weekly increase to allow for modification of the increasing of doses if needed
136 according to a predefined dose modification matrix. All 3 patients had two clinical and lab assessments
137 each week during the 14 weeks of the dose escalation phase. The average of the three maximal
138 tolerated doses was defined as maximal suitable dose (MSD) for the dose consolidation (DC) part of
139 the trial.

140 **Dose consolidation (DC)**

141 After DE, the initial 3 and additional 9 patients received weekly infusions of TLN with an API dose of
142 720 mg and clinical and lab safety assessments over 8 weeks except for one patient who stopped
143 participation early. A final safety assessment was performed one month after the last administration
144 of TLN.

145 **Pharmacokinetics**

146 Pharmacokinetic parameters were determined for GM1 from individual concentration time profiles
147 obtained after the first intravenous infusion administration of 720 mg GM1 in the 9 DC patients. Blood
148 samples were drawn before the infusion started and after the start of the infusion (250 ml/h, 370 ml
149 total volume) at 5 minutes, 1 hour, 4, 8, 24, 48, 72, and 96 hours. Samples were immediately
150 centrifuged and frozen at -70°C. GM1 concentration was measured using liquid chromatography with
151 tandem mass spectrometry.

152 Noncompartmental pharmacokinetic analysis was performed using Phoenix WinNonlin version 8.0
153 [Pharsight Corporation, Mountain View, CA, USA] using the intravenous infusion dosing option.

154 Pharmacokinetic variables were estimated from the plasma concentration versus time curves: t_{\max}
155 (time to reach the maximum plasma concentration read directly from the plasma concentration-time
156 curve), C_{\max} (maximum plasma concentration read directly from the plasma concentration-time
157 curve), $AUC_{0-\infty}$ (area under the plasma concentration-time curve from time point zero to infinity,
158 estimated from $AUC_{0-t} + C_t/\lambda_z$, where t is the last sampling time with a concentration above the limit
159 of quantification and λ_z is the terminal elimination rate constant, estimated by log-linear least squares
160 regression of the plasma concentration versus time data in the terminal phase; $AUC_{0-\infty}$ was calculated
161 according to the linear trapezoidal with linear/log interpolation rule), $t_{1/2}$: (apparent terminal half-life
162 calculated as $\ln 2/\lambda_z$), CL: (apparent clearance calculated as dose divided by $AUC_{0-\infty}$), V_z (apparent
163 volume of distribution calculated as dose divided by $\lambda_z * AUC_{0-\infty}$).

164 **Outcome measures**

165 The primary outcome was safety defined as the occurrence of adverse events. Safety assessments
166 included a full medical history at baseline, a full general physical medical and neurological examination
167 at baseline, a final assessment and last follow-up, and detailed unstructured interviews at each visit
168 and if needed by phone. A narrative description of adverse events and their duration, intensity,
169 seriousness, and relation to TLN were recorded by the site investigators. Adverse events were coded
170 by an independent expert with the Medical Dictionary for Regulatory Activities (MedDRA®).

171 Adverse events were considered unrelated to TLN if a plausible other explanation for the observation
172 was available. Otherwise, adverse events without plausible causal relation to TLN but lacking a
173 different explanation were considered to be unlikely related to TLN. Safety data were weekly reviewed
174 by an internal safety board (MS, RPC, MAW) during the dose escalation period. Any out-of-range
175 laboratory result was counted as an adverse event.

176 Parkinsonian motor signs and non-motor symptoms were further explored weekly using the
177 Movement Disorders Society-Unified Parkinson’s Disease Rating Scale (MDS-UPDRS) (15) parts 1 (non-
178 motor experiences of daily living), 2 (motor experiences of daily living), 3 (motor examination), and 4
179 (motor complications). The MDS-UPDRS-2 was assessed for best and worst condition in the preceding
180 week in patients with motor fluctuations. The MDS-UPDRS-3 was assessed before and after each
181 administration of TLN and also at baseline and final assessment in a levodopa challenge test (LCT). For
182 the LCT patients paused their dopaminergic medications for at least 12 hours before the assessment
183 “off” medication. The usual morning dose of levodopa equivalence plus 50 mg levodopa was then
184 given as liquid formulation of levodopa/benserazide (in 1 patient levodopa/carbidopa) for the ensuing
185 assessment “on” medication. Levodopa equivalent daily doses were noted weekly and calculated
186 according to standard procedures (16). The number of PD-related non-motor symptoms was assessed
187 with the Non-Motor Symptoms Questionnaire (NMSQuest) (17) at baseline and weekly during the
188 course of the trial. Questionnaires at baseline and final assessment included the Parkinson’s disease
189 Questionnaire-39 (PDQ-39) (18) for disease-related quality of life, the Epworth Sleepiness Scale (19),
190 the Montreal Cognitive Assessment (MoCA) (20) for mental performance, the Beck Depression
191 Inventory (BDI) (21) to assess mood, and the Starkstein Apathy Scale (22).

192 **Statistical analysis**

193 After completion of data entry, data validation and cleaning were performed. Data analysis was
194 started. All patients enrolled in this study received at least one dose of study medication and were
195 considered in the safety and tolerability analysis.

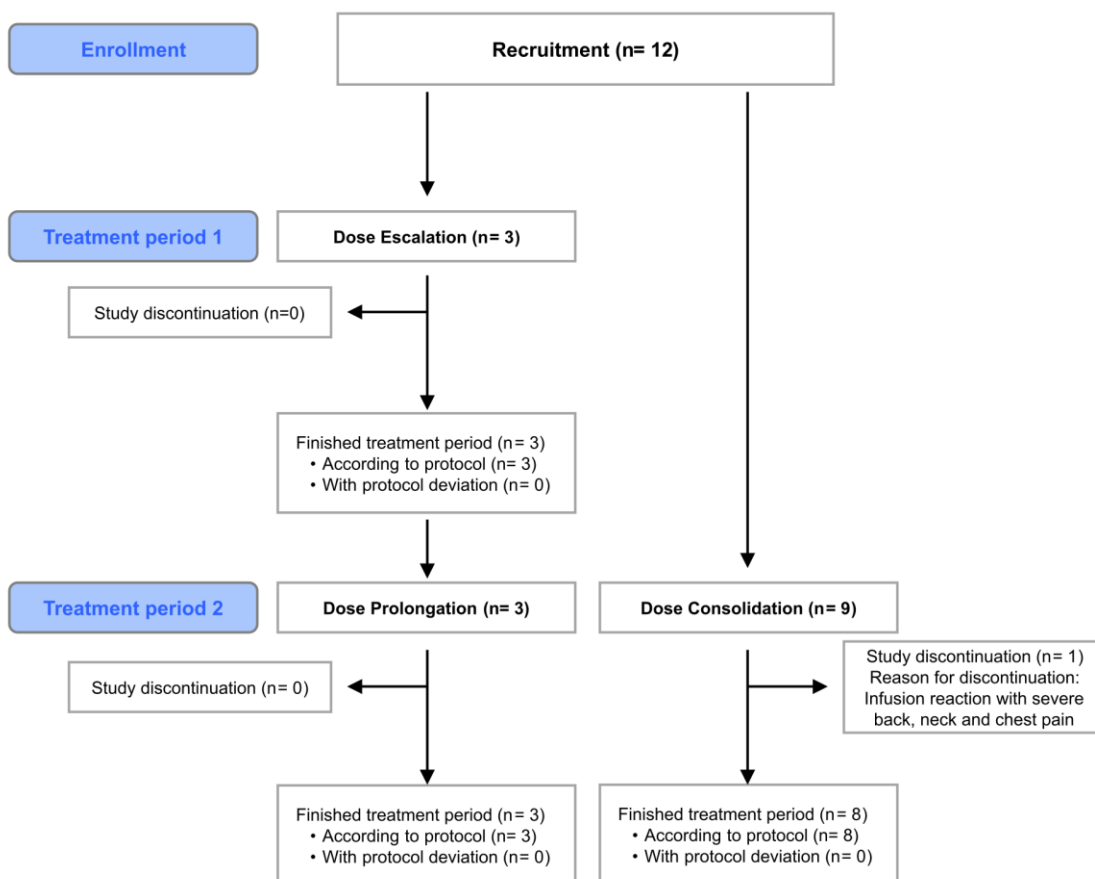
196 PK analysis plasma concentrations and PK parameters were analyzed for the 9 patients of the
197 consolidation group and reported in a descriptive fashion. Descriptive statistics include arithmetic
198 mean, SD, minimum, median, maximum, geometric mean, and coefficient of variation of arithmetic
199 and geometric means.

200

201 Other study outcomes including scores measuring the Parkinsonian motor signs and non-motor
202 symptoms, disease related quality of life, levodopa equivalent daily dose, and mental performance
203 were assessed in the 11 patients who received at least two full-dose infusions and completed at least
204 the MDS-UPDRS at these two visits. For patients included in the escalation part we used as baseline
205 value the values assessed at the start of the trial (i.e. before the start of the escalation part).

206 We used summary statistics to describe the outcomes values at baseline, after 8 weeks of treatment,
207 and the observed changes. For each outcome, the significance of the change from baseline was
208 assessed using a paired Wilcoxon signed-rank test. No correction for multiplicity was applied.

209 Few outcomes including the blood lab values of cholesterol (total, LDL, HDL, ratio total/HDL),
210 triglycerides, and apolipoprotein B were defined, post-hoc, as additional outcomes. For these
211 outcomes, we used summary statistics to describe the weekly assessed values. At each time point, the
212 significance of the change from baseline was assessed using a paired Wilcoxon signed-rank test.



213

214 **Fig 1: CONSORT diagram of dose escalation group (with prolongation) and dose consolidation group.**

215 Results

216 Trial population

217 There were no screening failures. Twelve patients (including three women) were recruited. At
 218 inclusion the median age was 65 (range 46-75) years old and had had motor parkinsonian signs for
 219 7.9 ± 5.2 (range 2-19, median 6.5) years. Three patients had only akinetic-rigid signs and nine patients
 220 also rest tremor. All patients had been clinically diagnosed with PD. For the patient characteristics see
 221 Table 1.

222 **Table 1. Patient characteristics.**

Characteristic	Overall, N = 12	Dose consolidation, N = 9	Dose escalation, N = 3
Age at registration (years)			
Median (range)	65.0 (46.0–75.0)	65.0 (51.0–75.0)	63.0 (46.0–68.0)
Sex - Female, n (%)	3 (25%)	2 (22%)	1 (33%)
Height (cm)			
Median (range)	172.0 (159.0–183.0)	172.0 (160.0–183.0)	174.0 (159.0–182.0)
Weight (kg)			
in	78.5 (60.0–99.0)	78.0 (64.0–99.0)	88.0 (60.0–99.0)
BMI (kg/m ²)			
Median (range)	26.2 (21.6–32.7)	25.8 (21.6–30.8)	26.6 (23.7–32.7)
Hoehn and Yahr stage at screening, n (%)			
Stage 0 (no signs of disease)	0 (0%)	0 (0%)	0 (0%)
Stage 1 (unilateral involvement only)	3 (25%)	2 (22%)	1 (33%)
Stage 1.5 (unilateral and axial involvement)	5 (42%)	4 (44%)	1 (33%)
Stage 2 (Bilateral involvement without impairment of balance)	4 (33%)	3 (33%)	1 (33%)
Stage 2.5 (Mild bilateral disease with recovery on pull test)	0 (0%)	0 (0%)	0 (0%)
Drugs			
L-DOPA, n (%)	12 (100%)	9 (100%)	3 (100%)
Non-ergot-derived dopamine receptor agonist, n (%)	8 (67%)	6 (67%)	2 (67%)
MAO-B Inhibitor, n (%)	4 (33%)	3 (33%)	1 (33%)
COMT inhibitor, n (%)	3 (25%)	3 (33%)	0 (0%)
NMDA agonist, n (%)	1 (8.3%)	1 (11%)	0 (0%)
Other, n (%)	1 (8.3%)	1 (11%)	0 (0%)
LEDD (mg)			
Median (range)	650.0 (340.0–1,275.0)	750.0 (340.0–1,275.0)	550.0 (375.0–1,010.0)

223

224 **Safety**

225 *Dose escalation*

226 Weekly dose escalation of TLN from 6 to 720 mg GM1 i.v. at a rate of 250 ml/h was well tolerated
227 without major adverse effects. Mild neck and lumbar pain occurred for 15 minutes in one patient
228 during the second (12 mg) and reappeared very mildly for a few minutes during the third (60 mg)
229 infusion with TLN. Otherwise, dose escalation was unremarkable for all three patients and reached
230 720 mg with good tolerance. One patient reported transient beneficial effects of TLN treatment on
231 sleep, mood, and general energy levels during dose escalation lasting longer with increasing doses. At
232 the end of the dose escalation, the subjective beneficial effects of the weekly infusions lasted almost
233 a week in this patient.

234

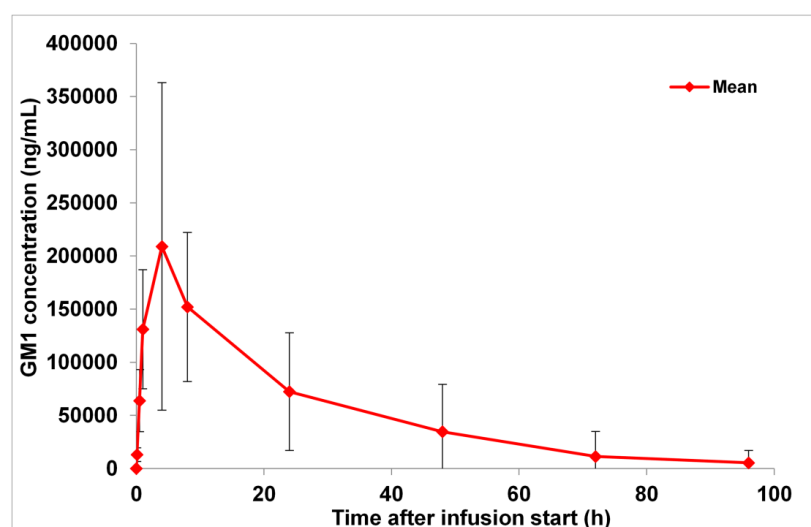
235 *Pharmacokinetics*

236 After first intravenous application of TLN with an API dose of 720 mg, repeated blood sampling showed
237 the plasma peak of TLN in the sample taken 4 hours after start of the infusion in all but one patient in
238 whom the peak was reached at 1 hour after start of the infusion. This patient was the patient who had
239 the severe acute infusion reaction at the second administration. Pharmacokinetic variables are given
240 in Table 2.

241 **Table 2. Pharmacokinetic variables for GM1 after i.v. infusion administration of 720 mg GM1 in the**
 242 **dose consolidation patients group (n = 9).**

n=9	C _{BL} (ng/ml)	C _{max} (ug/ml)	t _½ (h)	AUC _{0-∞} (h*ug/ml)	V _z (ml)	CL (ml/h)
Mean	52.8	212	15.0	5'011	4'188	210
SD	30.8	153	6.48	4'035	2'666	113
Minimum	0	84	10.2	1'920	2'020	49
Median	65.4	147	12.6	3'860	3'290	187
Maximum	84.5	582	30.7	14'700	10'000	375

243 C_{BL}: baseline plasma concentration before TLN administration. C_{max}: maximum plasma concentration
 244 read directly from the plasma concentration-time curve. t_½: apparent terminal half-life. AUC_{0-∞}: area
 245 under the plasma concentration-time curve from time point zero to infinity. V_z: apparent volume of
 246 distribution. CL: apparent clearance.



247 **Fig 2. Mean (±SD) GM1 plasma concentration-time profiles after intravenous infusion**
 248 **administration of 720 mg GM1 (linear).**
 249

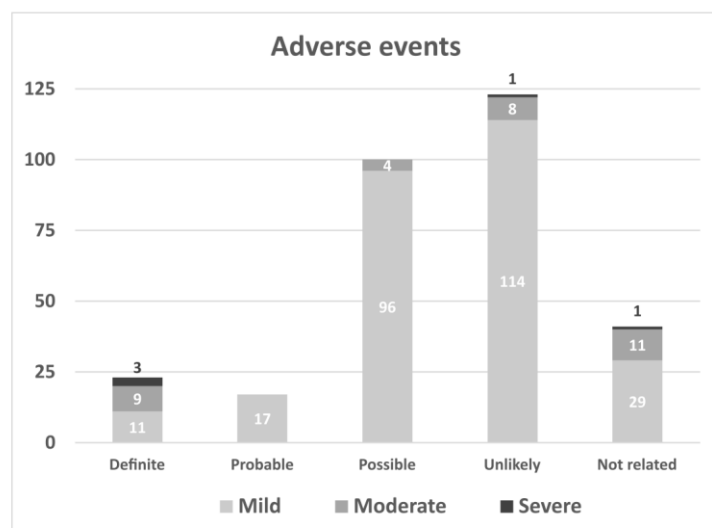
250 Dose consolidation

251 During the dose consolidation phase, acute infusion reactions occurred in 6 patients shortly after the
252 start of the 2nd (6 patients), 3rd (1 patient), and 4th (1 patient) administration of TLN (see below). One
253 patient with a severe infusion reaction did not receive any further TLN treatment. During all following
254 treatments with TLN, no acute infusion reactions occurred. The maximum dose of GM1 720 mg/week
255 could be maintained throughout the study.

256 Adverse events

257 Overall, 304, mostly mild adverse events occurred. No serious adverse event was reported in this
258 study. Twenty-three adverse events were affirmatively related to the study treatment. The causal
259 relation to the study treatment was considered probable in 17 (all mild), possible in 100, and unlikely
260 in 123 observations. Forty-one adverse events were unrelated to the study treatment.

261



262

263 **Fig 3. Observed adverse events (n = 304) during dose escalation and dose consolidation with**
264 **Talineuren.**

265 Adverse events definitively or probably related to TLN can be separated into a group of immediate
266 mild to severe infusion reactions that abated after halting the administration of TLN (see below), and
267 a group of more diffuse, always mild reactions often occurring with some hours' delay after the TLN
268 infusion. The latter group comprises mild tension headache (n=3), nausea (n=1), and arterial
269 hypertension during emotional tension (n=1) during the infusion, and dizziness (n=6), inner tension
270 and tremulousness (n=2), and tension headache (n=4) occurring within hours after the infusion,
271 spontaneously remitting within less than a day. One patient suffered from mildly depressed mood
272 during the withdrawal of TLN after the dose escalation phase, partly because he missed the beneficial
273 effects of the weekly infusions. This symptom remitted spontaneously before TLN was resumed in the
274 consolidation phase of the study.

275 Acute infusion reactions occurred in one patient during dose escalation (2nd and 3rd administration),
276 and in six patients during dose consolidation, always within minutes of the 2nd administration of TLN.
277 In two patients, an acute infusion reaction was observed at the 3rd administration, in one very mildly
278 during the 4th administration. Symptoms occurred after as little as 3 mg of liposomal GM1 was
279 administered and as early as within 1 minute after start of the infusion. Symptoms built up at variable
280 speeds and with mild to severe intensity among different patients. All symptoms abated within
281 minutes after stopping the infusion. Infusion could then be resumed at a low speed (10 ml/h) without
282 recurrence of symptoms. In most cases, infusion speed could be increased swiftly up to the planned
283 250 ml/h except in one patient who required several hours for the 2nd infusion. However, later the
284 patient tolerated administrations of TLN at 250 ml/h without any adverse events. In one patient, the
285 acute infusion reaction at the beginning of the 2nd administration quickly led to severe back, neck, and
286 chest pain. According to the study protocol, the patient had to be removed from the study and could
287 not be re-exposed at a lower infusion rate despite the patients' explicit request to continue study
288 participation. The acute infusion reactions (Table 3) included lower back, neck, and chest pain as the
289 most common symptom; lower back pain was present in all patients with an acute infusion reaction.
290 Lower back pain was very mild in two patients during three administrations and did not require the

291 infusion to be halted. One patient had itching during 2nd, 3rd, and 4th administration of TLN, and
 292 urticaria on the trunk and the thighs (Table 3) during the 3rd infusion. Tryptase was normal before start
 293 of TLN and within 30 minutes of the appearance of urticaria. Clemastine 2 mg was given i.v. and TLN
 294 could be resumed without worsening of symptoms. Urticaria disappeared within a day and did not
 295 recur during the following administrations of TLN. After the last occurrence of an acute infusion
 296 reaction, patients received 19 (n=1, dose escalation), 6 (n=4), and 4 (n=1) infusions without
 297 experiencing an acute infusion reaction. One patient was withdrawn from the study (Figure 1). In the
 298 remaining 5 patients overall 68 TLN infusions were given without an acute infusion reaction.

299 **Table 3. The number of patients with acute infusion reaction and the presented symptoms early**
 300 **during the infusion.**

Acute infusion reaction	2nd administration	3rd administration	4th administration
lower back pain	7*	2*	1
neck pain	2*	1*	0
itching, urticaria	1	1	1
nausea, chest pain	2	0	0
hypotension	1	0	0
thoracic congestion, plethora	1	0	0
eye flickering	1	0	0

301 The number of patients presenting with acute symptoms early during the infusion is given.

302 *one patient from the dose escalation group, all others are from the dose consolidation group.

303 Adverse events possibly related to TLN (Table 4) comprised 46 mild out of normal range measures of
 304 cholesterol, triglycerides, or apolipoprotein B. These observations were considered possibly related
 305 to TLN because the study drug contains cholesterol and sphingomyelin. However, lipid assessments
 306 were performed in a non-fasting state for which no ranges of normality were available. The lipid levels
 307 of all study participants were fluctuating over the study period but did not consistently change except

308 for HDL cholesterol that was slightly but significantly reduced on all visits compared to baseline (see
 309 Appendix 2). In one patient, one observation of a slightly elevated level of anti-GM1 IgM antibodies
 310 was clinically asymptomatic and followed by normal levels in consecutive assessments. Many adverse
 311 events possibly related to TLN could also be explained as motor (e.g. muscle cramps, tremor,
 312 dysarthria, dysphagia) or non-motor (e.g., fatigue, sleep disorders, constipation, dysphoria) signs and
 313 symptoms of PD. During the four weeks pause after the dose escalation phase, one patient reported
 314 25 adverse events of worsening parkinsonian motor and non-motor problems beyond baseline level.
 315 This rebound remitted spontaneously to baseline for all reported aspects before TLN was resumed in
 316 the dose consolidation phase. Mild tension headache, dizziness, nausea, and neck and lumbar pain
 317 were noted as possible infusion reaction symptoms.

318 **Table 4. Adverse effects possibly related to the study treatment (n=100).**

Category of adverse events	n	System organ class terms	Preferred terms of grade 2 adverse events
Abnormal blood lipids	46	Investigations	
Elevated anti-GM1-IgM antibodies	1	Investigations	
Neurologic and psychiatric events	25	Nervous system disorders. Psychiatric disorders. Eye disorders. Renal and urinary disorders. Reproductive system and breast disorders	
Gastrointestinal disorders	7	Gastrointestinal disorders	nausea
Asthenia and fatigue	5	General disorders and administration site conditions	fatigue
Possible infusion reactions	7	Injury, poisoning and procedural	procedural dizziness

		complications	
Musculoskeletal problems	8	Musculoskeletal and connective tissue disorders	muscle spasms
Skin disorders	1	Skin and subcutaneous tissue disorders	

319

320 System organ class terms and preferred terms were used according to the MedDRA coding system for
 321 adverse effects.

322 Adverse events unlikely related to TLN (table 4) comprised mainly lab results mildly outside of the
 323 normal range. Two measures of hyperkalaemia (5.5 and 5.8 mmol/l) were clinically asymptomatic and
 324 occurred without other lab abnormalities; an artefact due to erroneous sample handling was
 325 assumed. A self-remitting episode of acute vestibular vertigo was the only severe adverse event
 326 considered unlikely to be related to TLN.

327 **Table 5. Adverse effects unlikely related to the study treatment (n=123).**

Category of adverse events	n	System organ class terms	Preferred terms of grade 2 and 3 adverse events
Out of range laboratory findings	79	Blood and lymphatic system disorders. Investigations. Metabolism and nutrition disorders	increased blood potassium, pseudohyperkalemia
Ear, nose and labyrinth disorder	4	Ear and labyrinth disorders. Respiratory, thoracic and mediastinal disorders	acute vestibular syndrome
Gastrointestinal disorders	18	Gastrointestinal disorders	nausea, upper abdominal pain

Infections and infestations	2	Infections and infestations	post viral fatigue syndrome
Cardiovascular disorders	2	Cardiac disorders. Eye disorders	amaurosis fugax
Musculoskeletal and connective tissue disorders	9	Musculoskeletal and connective tissue disorders	back pain
Nervous system and psychiatric disorders	8	Nervous system disorders. Psychiatric disorders	tension headache
Skin and subcutaneous tissue disorders	1	Skin and subcutaneous tissue disorders	

328 System organ class terms and preferred terms were used according to the MedDRA coding system for
329 adverse effects.

330 **Secondary outcome measures**

331 At an early stage, 1 patient discontinued the study and was removed from the efficacy analysis,
332 meaning that the present analysis was performed on 11 patients. At the final assessment,
333 parkinsonian motor signs off medication improved 6.73 ± 7.16 points ($P_{val} = 0.01$) on the MDS-UPDRS
334 3 assessed after 12 hours of withdrawal of dopaminergic medication (see Table 6). This corresponded
335 with the observation that pausing medication for the final assessment was much better tolerated than
336 at baseline. With medication (on state), no significant change in motor signs was found during the
337 study. TLN treatment did not result in a consistent and clinically relevant immediate beneficial effect
338 on parkinsonian motor signs (data not shown). Motor complications of dopaminergic treatment (MDS-
339 UPDRS 4) did not change significantly during the study. There were fewer non-motor symptoms at
340 follow-up compared to baseline as assessed with the NMS-Quest (8.64 vs. 4.63, $P_{val} = 0.009$). Non-
341 motor parkinsonian symptoms (MDS-UPDRS 1) and activities of daily living in the best condition (MDS-
342 UPDRS 2 best) were significantly improved at follow-up compared to baseline (mean difference from
343 baseline -1.91, $p_{val} = 0.057$ and -2.82, $p_{val} = 0.02$; respectively).

344 The total MDS-UPDRS (including the MDS-UPDRS 2 in the worst condition and the MDS-UPDRS 3 off
345 medication) improved by 11.1 ± 10.47 from baseline to follow-up (pval = 0.006).

346 Quality of life related to PD as measured with the PDQ39-SI improved by 2.91 ± 2.25 (pval = 0.005),
347 mainly driven by an improvement of quality of life for activities of daily living. The other subdomains
348 of the PDQ39 did not improve significantly. No significant change in mood (BDI), motivation (Starkstein
349 Apathy Scale), overall cognition (MoCA), and dopaminergic medication (levodopa equivalent daily
350 dose [LEDD]) was observed.

351 During dose-escalation, one patient reported a general effect of well-being and more energy that
352 lasted longer with increasing doses up to 1 week with GM1 720 mg. All patients reported mild to
353 moderate reduction of the previously perceived beneficial effects during the month between the last
354 infusion and the follow-up safety assessment. No lasting worsening beyond baseline was observed
355 after one month's withdrawal of TLN. In the first three patients, total GM1 dose was resumed at 720
356 mg weekly after a month's pause following dose escalation; within one or two infusions the previous
357 level of well-being was re-attained. All patients emphatically requested to prolong TLN treatment at
358 the end of the study. An amendment for study prolongation was therefore submitted.

359 Table 6. Motor signs and non-motor symptoms, quality of life, and LEDD for the 11 patients.

Assessment (n=11)	Baseline Mean±SD	Follow-up Mean±SD	Mean Change from Baseline Mean±SD	Baseline Median (min,max)	Follow-up Median (min,max)	Median change from baseline (min,max)	p-value (Wilcoxon)
MDS-UPDRS 1	7.82±4.92	5.91±4.11	-1.91±2.66	6.00 (2.00, 17.00)	7.00 (1.00, 13.00)	-2.00 (-5.00, 4.00)	0.057
MDS-UPDRS 2 best	8.00±6.91	5.18±7.22	-2.82±3.34	7.00 (0.00, 23.00)	3.00 (0.00, 21.00)	-2.00 (-9.00, 1.00)	0.017
MDS-UPDRS 2 worst	8.18±7.36	6.45±7.55	-1.73±3.98	7.00 (0.00, 25.00)	3.00 (0.00, 22.00)	-1.00 (-9.00, 6.00)	0.122
MDS-UPDRS 3 off	16.09±8.32	9.36±5.55	-6.73±7.16	17.00 (6.00, 36.00)	8.00 (1.00, 19.00)	-7.00 (-24.00, 2.00)	0.009
MDS-UPDRS 3 on	6.45±3.42	6.00±4.98	-0.45±3.42	5.00 (2.00, 12.00)	5.00 (1.00, 17.00)	-1.00 (-6.00, 5.00)	0.561
MDS-UPDRS 4	2.18±3.52	1.45±3.30	-0.73±1.10	1.00 (0.00, 12.00)	0.00 (0.00, 11.00)	0.00 (-3.00, 0.00)	0.098
MDS-UPDRS total	34.27±21.79	23.18±16.86	-11.09±10.47	29.00 (10.00, 90.00)	16.00 (5.00, 58.00)	-5.00 (-32.00, 0.00)	0.006
NMS-Quest	8.64±3.98	4.36±3.29	-4.27±3.29	8.00 (2.00, 15.00)	5.00 (1.00, 10.00)	-5.00 (-9.00, 0.00)	0.009
MoCA	28.18±1.33	27.45±2.16	-0.73±2.00	29.00 (26.00, 30.00)	28.00 (24.00, 30.00)	-1.00 (-4.00, 3.00)	0.255
PDQ39-Summary index	20.11±8.32	17.21±7.02	-2.91±2.25	16.25 (9.69, 33.91)	15.52 (9.17, 28.65)	-2.92 (-6.30, 1.77)	0.005

PDQ39 activities of daily	15.91±13.41	8.71±9.21	-7.20±8.35	12.50 (0.00, 33.33)	4.17 (0.00, 25.00)	-4.17 (-20.83, 4.17)	0.035
PDQ39 bodily	34.85±17.41	30.30±18.36	-4.55±12.00	41.67 (0.00, 58.33)	33.33 (0.00, 58.33)	0.00 (-25.00, 16.66)	0.309
PDQ39 cognitive	22.73±18.39	19.32±13.24	-3.41±15.65	25.00 (0.00, 56.25)	18.75 (0.00, 50.00)	0.00 (-37.50, 12.50)	0.518
PDQ39 communication	18.18±22.92	21.97±27.46	3.79±12.00	8.33 (0.00, 66.67)	16.67 (0.00, 75.00)	0.00 (-16.67, 25.00)	0.339
PDQ39 mobility	12.05±7.40	8.86±7.93	-3.18±6.90	12.50 (2.50, 22.50)	5.00 (0.00, 22.50)	-2.50 (-15.00, 10.00)	0.066
PDQ39 social support	12.12±10.78	7.58±6.93	-4.55±8.63	8.33 (0.00, 33.33)	8.33 (0.00, 16.67)	0.00 (-25.00, 8.34)	0.203
PDQ39 stigma	20.45±17.48	21.59±20.98	1.14±6.14	12.50 (0.00, 50.00)	18.75 (0.00, 62.50)	0.00 (-6.25, 12.50)	0.588
PDQ39 emotional	24.62±17.33	19.32±12.54	-5.30±12.37	20.83 (0.00, 58.33)	16.67 (8.33, 41.67)	-4.17 (-29.16, 8.33)	0.332
Epworth Sleepiness	7.73±5.20	7.82±4.85	0.09±3.96	6.00 (3.00, 19.00)	8.00 (1.00, 16.00)	0.00 (-7.00, 8.00)	>0.999
Beck Depression	10.55±4.27	9.27±5.20	-1.27±3.77	10.00 (4.00, 19.00)	8.00 (3.00, 21.00)	0.00 (-7.00, 4.00)	0.257
Starkstein Apathy Scale	11.64±4.90	12.00±4.29	0.36±2.98	12.00 (3.00, 19.00)	10.00 (4.00, 18.00)	1.00 (-4.00, 6.00)	0.822
LEDD	745.91±330.5	754.09±327.	8.18±23.69	750.00 (340.00,	750.00 (340.00,	0.00 (-10.00, 75.00)	0.423

361 **Discussion**

362 In this open phase I clinical safety trial 12 PD patients received weekly infusions with liposomal GM1
363 for 8 to 22 weeks. Tolerability was overall very good with no or mild unspecific adverse reactions to
364 the infusion. Some fatigue and dizziness occurred repeatedly in some but not all patients after the
365 infusion and lasted for a few hours, so a causal link to TLN seems probable. However, there were acute
366 infusion reactions in 7 of the 12 patients at the 2nd, 3rd, or 4th exposure to TLN. The intensity was
367 mild to moderate and in one case severe leading to exclusion from further study treatment. These
368 reactions were most pronounced at second exposure, consisted mostly of neck and lumbar back pain,
369 and swiftly abated within minutes after TLN infusions were paused. An allergic IgE-mediated
370 anaphylactic reaction seems highly unlikely as re-exposure did not lead to reappearance of the
371 symptoms but to habituation. Moreover, tryptase was measured before and after an acute infusion
372 reaction with urticaria at the 3rd exposure in one patient and remained stable in the normal range.
373 We therefore considered a complement activation related pseudo-allergy (CARPA) to the liposome as
374 an explanation for the acute infusion reactions (23). However, CARPAs typically occur with the first
375 exposure and habituate thereafter, whereas in our patients the first exposure was unproblematic in
376 all 12 patients. Moreover, the clinical manifestation of CARPAs is not typically reported as back pain
377 which was the main manifestation in our patients. The occurrence of the acute infusion reaction only
378 at the 2nd administration is suggestive of a sensitization to TLN, however, the unproblematic tolerance
379 of re-exposure makes autoantibodies to GM1 an unlikely explanation, especially as anti-GM1-IgM
380 levels remained normal throughout the study in these patients and did not increase. Although we
381 cannot explain the mechanism of the observed acute infusion reactions, slowing the infusion rate and
382 possibly progressively increasing doses over the first weeks of treatment with TLN seem to prevent
383 such reactions. Free GM1 has been administered intravenously for over three decades in several
384 neurological disorders for up to 2500 mg/d without observing acute infusion reactions (24). In
385 particular in the randomized placebo-controlled trial with subcutaneous free GM1 patients received

386 a single intravenous loading dose of 1000 mg GM1. The subsequent subcutaneous administration of
387 GM1 in this study was a route of administration with a much higher risk of triggering an allergic
388 reaction to GM1 than intravenous administration, but no allergic side effects were reported.
389 Therefore, we suspect the acute infusion reactions in our patients to be related to the liposomal
390 carrier of GM1. Further analyses of possible mechanisms for an acute reaction to TLN are ongoing
391 outside of this trial. Other safety assessments of TLN will include lab analyses of blood samples drawn
392 after potential further acute infusion reactions to assess tryptase, thromboxanes, complement
393 factors, activation of factor XII, and measures of basophile activation. However, we try to completely
394 avoid further adverse reactions of this nature by gradually increasing the dose of TLN over the first
395 weeks and by starting the speed of infusion at a very low rate and ramping up as tolerated, especially
396 for the 2nd and 3rd administration of TLN.

397 Although hyperlipidemia was present in some of our patients already at baseline, there was no
398 consistent increase of lipid levels throughout the trial as had been observed with the administration
399 of very high doses of free GM1 previously (24). Hyperlipidemia was likely overestimated in our patients
400 as blood was drawn in non-fasting conditions. However, HDL cholesterol was slightly but significantly
401 lowered under TLN treatment which may consist in a vascular risk factor. There were no adverse
402 events related to atherosclerosis in this study, but the observation period was very short. For more
403 conclusive results, lipid levels must be assessed systematically and under standardized fasting
404 conditions in patients treated with TLN in future studies.

405 Although this is an uncontrolled phase I safety trial, we gathered exploratory data on the possible
406 therapeutic effects of TLN as a basis for power calculations for a therapeutic trial. In terms of PD
407 symptoms, all patients felt stable or better over the study period. Improvements of sleep quality,
408 motivation, sense of smell, and overall energy were reported, gradually occurring over several weeks.
409 The drug withdrawal for the second levodopa challenge test was much better tolerated by most
410 patients than the first, and several participants reported that accidental omission of a dose of

411 levodopa was much less perceived than before the treatment with TLN. These encouraging
412 observations are reflected in an improvement of non-motor (MDS-UPDRS-1, NMS-Quest) and motor
413 aspects of experiences of daily living (MDS-UPDRS-2), and of parkinsonian motor signs (MDS-UPDRS-
414 3) resulting in an improvement of disease-related quality of life (PDQ-39). The observed improvements
415 of the MDS-UPDRS-1 and MDS-UPDRS-2 of 1.91 and 2.82 points are below the minimal clinically
416 relevant difference of 2.64 and 3.05 for these scales (25). However, for the motor signs, the minimal
417 clinical improvement on the MDS-UPDRS-3 has been suggested at 3.5 points (26), and our patients
418 improved by 6.73 points. The minimal clinically relevant improvement on the MDS-UPDRS total score
419 has been estimated at 7.1 points (27), whereas our patients improved by 11.09 points. However, for
420 disease-related quality of life measured by the PDQ-39 the minimal clinically important improvement
421 of 4.72% (28) is not reached with 2.9% observed in our patients. These exploratory observations are
422 encouraging, especially as they uniformly point towards an improvement on different established
423 scales despite a very small number of patients. The observed improvements occurred gradually over
424 the study period. No immediate effect on motor signs was found in the ratings before and after TLN
425 infusions. A rapid symptomatic beneficial effect of TLN on parkinsonian signs and symptoms is
426 therefore most unlikely. Moreover, as there was no selection of patients based on minimum disease
427 severity, regression to the mean is unlikely to explain the observed improvement in this study. If there
428 is indeed a therapeutic effect of TLN, either a long-term symptomatic effect or a disease-modifying
429 effect seems possible. As the annual progression of PD in its natural course has been estimated at 5.05
430 points in the untreated and 2.13 points in the treated condition for the sum of the MDS-UPDRS-2 and
431 -3 (29), the observed improvement among our patients may point to a long-term symptomatic or even
432 a neurorestorative effect. Indeed, GM1 can stabilize alpha-synuclein (7) and has a neurorestorative
433 effect on neurons in animal models of PD (30). Suffering neurons in patients with PD may therefore
434 be rescued by GM1 treatment, and a liposomal formulation may be an effective approach to deliver
435 GM1 into the central and peripheral nervous system. This may explain a gradual and long-lasting
436 reparative effect of TLN despite its short plasma half-life of 12.6h. However, all this remains

437 speculative at present. As this trial is not designed to show a therapeutic effect of TLN given the open
438 design without placebo control, a placebo effect may explain the observed improvements. An
439 adequately powered randomized placebo-controlled trial of TLN in PD is needed to further explore
440 this promising new treatment.

441 **Acknowledgments**

442 MedDRA® trademark is registered by ICH.

443 References

- 444 1. Postuma RB, Berg D, Stern M, Poewe W, Olanow CW, Oertel W, et al. MDS clinical
445 diagnostic criteria for Parkinson's disease. *Mov Disord* [Internet]. 2015 Oct 1 [cited
446 2023 Jun 20];30(12):1591–601. Available from:
447 <https://pubmed.ncbi.nlm.nih.gov/26474316/>
- 448 2. Berg D, Borghammer P, Fereshtehnejad SM, Heinzel S, Horsager J, Schaeffer E, et al.
449 Prodromal Parkinson disease subtypes - key to understanding heterogeneity. *Nat Rev*
450 *Neurol* [Internet]. 2021 Jun 1 [cited 2023 Jun 20];17(6):349–61. Available from:
451 <https://pubmed.ncbi.nlm.nih.gov/33879872/>
- 452 3. Braak H, Del Tredici K, Rüb U, De Vos RAI, Jansen Steur ENH, Braak E. Staging of brain
453 pathology related to sporadic Parkinson's disease. *Neurobiol Aging* [Internet]. 2003
454 Mar [cited 2023 Jun 20];24(2):197–211. Available from:
455 <https://pubmed.ncbi.nlm.nih.gov/12498954/>
- 456 4. Rietdijk CD, Perez-Pardo P, Garssen J, van Wezel RJA, Kraneveld AD. Exploring Braak's
457 Hypothesis of Parkinson's Disease. *Front Neurol* [Internet]. 2017 Feb 13 [cited 2023
458 Jun 20];8(FEB). Available from: <https://pubmed.ncbi.nlm.nih.gov/28243222/>
- 459 5. McFarthing K, Rafaloff G, Baptista M, Mursaleen L, Fuest R, Wyse RK, et al. Parkinson's
460 Disease Drug Therapies in the Clinical Trial Pipeline: 2022 Update. *J Parkinsons Dis*
461 [Internet]. 2022 [cited 2023 Jun 20];12(4):1073–82. Available from:
462 <https://pubmed.ncbi.nlm.nih.gov/35527571/>
- 463 6. te Vrugte D, Sturchio A, Priestman DA, Tsitsi P, Hertz E, Andréasson M, et al.
464 Glycosphingolipid Changes in Plasma in Parkinson's Disease Independent of
465 Glucosylceramide Levels. *Mov Disord* [Internet]. 2022 Oct 1 [cited 2023 Jun
466 20];37(10):2129–34. Available from: <https://pubmed.ncbi.nlm.nih.gov/35876461/>
- 467 7. Sonnino S. The relationship between depletion of brain GM1 ganglioside and
468 Parkinson's disease. *FEBS Open Bio* [Internet]. 2023 [cited 2023 Jun 20]; Available
469 from: <https://pubmed.ncbi.nlm.nih.gov/36638010/>
- 470 8. Chowdhury S, Ledeen R. The Key Role of GM1 Ganglioside in Parkinson's Disease.
471 *Biomolecules* [Internet]. 2022 Jan 21 [cited 2023 Jun 20];12(2). Available from:
472 <https://pubmed.ncbi.nlm.nih.gov/35204675/>
- 473 9. Schneider JS, Pope A, Simpson K, Taggart J, Smith MG, DiStefano L. Recovery from
474 experimental parkinsonism in primates with GM1 ganglioside treatment. *Science*
475 [Internet]. 1992 [cited 2023 Jun 20];256(5058):843–6. Available from:
476 <https://pubmed.ncbi.nlm.nih.gov/1350379/>
- 477 10. Schneider JS, Gollomp SM, Sendek S, Colcher A, Cambi F, Du W, et al. A Randomized,
478 Controlled, Delayed Start Trial of GM1 Ganglioside in Treated Parkinson's Disease
479 Patients Jay. *J Neurol Sci* [Internet]. 2013;324(1–2):140–8. Available from:
480 <http://dx.doi.org/10.1016/j.jns.2012.10.024>
- 481 11. Schneider JS, Gollomp SM, Sendek S, Colcher A, Cambi F, Du W. A randomized,
482 controlled, delayed start trial of GM1 ganglioside in treated Parkinson's disease

- 483 patients. J Neurol Sci [Internet]. 2013 Jan 15 [cited 2023 Jun 20];324(1–2):140–8.
484 Available from: <https://pubmed.ncbi.nlm.nih.gov/23199590/>
- 485 12. Hughes AJ, Daniel SE, Kilford L, Lees AJ. Accuracy of clinical diagnosis of idiopathic
486 Parkinson’s disease: a clinico-pathological study of 100 cases. J Neurol Neurosurg
487 Psychiatry [Internet]. 1992 [cited 2023 Jun 20];55(3):181–4. Available from:
488 <https://pubmed.ncbi.nlm.nih.gov/1564476/>
- 489 13. Hoehn MM, Yahr MD. Parkinsonism: onset, progression and mortality. Neurology
490 [Internet]. 1967 [cited 2023 Jun 20];17(5):427–42. Available from:
491 <https://pubmed.ncbi.nlm.nih.gov/6067254/>
- 492 14. Nasreddine ZS, Phillips NA, Bédirian V, Charbonneau S, Whitehead V, Collin I, et al. The
493 Montreal Cognitive Assessment, MoCA: a brief screening tool for mild cognitive
494 impairment. J Am Geriatr Soc [Internet]. 2005 [cited 2023 Jun 20];53(4):695–9.
495 Available from: <https://pubmed.ncbi.nlm.nih.gov/15817019/>
- 496 15. Goetz CG, Tilley BC, Shaftman SR, Stebbins GT, Fahn S, Martinez-Martin P, et al.
497 Movement Disorder Society-sponsored revision of the Unified Parkinson’s Disease
498 Rating Scale (MDS-UPDRS): scale presentation and clinimetric testing results. Mov
499 Disord [Internet]. 2008 Nov 15 [cited 2023 Jun 20];23(15):2129–70. Available from:
500 <https://pubmed.ncbi.nlm.nih.gov/19025984/>
- 501 16. Nyholm D, Jost WH. An updated calculator for determining levodopa-equivalent dose.
502 Neurol Res Pract [Internet]. 2021 Dec 1 [cited 2023 Jun 20];3(1). Available from:
503 <https://pubmed.ncbi.nlm.nih.gov/34689840/>
- 504 17. Chaudhuri KR, Martinez-Martin P, Schapira AHV, Stocchi F, Sethi K, Odin P, et al.
505 International multicenter pilot study of the first comprehensive self-completed
506 nonmotor symptoms questionnaire for Parkinson’s disease: the NMSQuest study. Mov
507 Disord [Internet]. 2006 [cited 2023 Jun 20];21(7):916–23. Available from:
508 <https://pubmed.ncbi.nlm.nih.gov/16547944/>
- 509 18. Peto V, Jenkinson C, Fitzpatrick R, Greenhall R. The development and validation of a
510 short measure of functioning and well being for individuals with Parkinson’s disease.
511 Qual Life Res [Internet]. 1995 Jun [cited 2023 Jun 20];4(3):241–8. Available from:
512 <https://pubmed.ncbi.nlm.nih.gov/7613534/>
- 513 19. Johns MW. A new method for measuring daytime sleepiness: the Epworth sleepiness
514 scale. Sleep [Internet]. 1991 [cited 2023 Jun 20];14(6):540–5. Available from:
515 <https://pubmed.ncbi.nlm.nih.gov/1798888/>
- 516 20. Nasreddine ZS, Phillips NA, Bédirian V, Charbonneau S, Whitehead V, Collin I, et al. The
517 Montreal Cognitive Assessment, MoCA: a brief screening tool for mild cognitive
518 impairment. J Am Geriatr Soc [Internet]. 2005 [cited 2023 Jun 20];53(4):695–9.
519 Available from: <https://pubmed.ncbi.nlm.nih.gov/15817019/>
- 520 21. Beck AT, Ward CH, Mendelson M, Mock J, Erbaugh J. An inventory for measuring
521 depression. Arch Gen Psychiatry [Internet]. 1961 [cited 2023 Jun 20];4(6):561–71.
522 Available from: <https://pubmed.ncbi.nlm.nih.gov/13688369/>
- 523 22. Starkstein SE, Mayberg HS, Preziosi TJ, Andrezejewski P, Leiguarda R, Robinson RG.
524 Reliability, validity, and clinical correlates of apathy in Parkinson’s disease. J

- 525 Neuropsychiatry Clin Neurosci [Internet]. 1992 [cited 2023 Jun 20];4(2):134–9.
526 Available from: <https://pubmed.ncbi.nlm.nih.gov/1627973/>
- 527 23. Szebeni J, Simberg D, González-Fernández Á, Barenholz Y, Dobrovolskaia MA.
528 Roadmap and strategy for overcoming infusion reactions to nanomedicines. Nat
529 Nanotechnol [Internet]. 2018 Dec 1 [cited 2023 Jun 20];13(12):1100–8. Available from:
530 <https://pubmed.ncbi.nlm.nih.gov/30348955/>
- 531 24. Roberts JW, Hoeg JM, Maral Mouradian M, Linfante I, Chase TN. Iatrogenic
532 hyperlipidaemia with GM1 ganglioside. Lancet [Internet]. 1993 Jul 10 [cited 2023 Jun
533 20];342(8863):115. Available from: <https://pubmed.ncbi.nlm.nih.gov/8100881/>
- 534 25. Horváth K, Aschermann Z, Kovács M, Makkos A, Harmat M, Janszky J, et al. Minimal
535 clinically important differences for the experiences of daily living parts of movement
536 disorder society-sponsored unified Parkinson’s disease rating scale. Mov Disord
537 [Internet]. 2017 May 1 [cited 2023 Jun 20];32(5):789–93. Available from:
538 <https://pubmed.ncbi.nlm.nih.gov/28218413/>
- 539 26. Horváth K, Aschermann Z, Ács P, Deli G, Janszky J, Komoly S, et al. Minimal clinically
540 important difference on the Motor Examination part of MDS-UPDRS. Parkinsonism
541 Relat Disord [Internet]. 2015 Dec 1 [cited 2023 Jun 20];21(12):1421–6. Available from:
542 <https://pubmed.ncbi.nlm.nih.gov/26578041/>
- 543 27. Makkos A, Kovács M, Aschermann Z, Harmat M, Janszky J, Karádi K, et al. Are the
544 MDS-UPDRS-Based Composite Scores Clinically Applicable? Mov Disord [Internet].
545 2018 May 1 [cited 2023 Jun 20];33(5):835–9. Available from:
546 <https://pubmed.ncbi.nlm.nih.gov/29488318/>
- 547 28. Horváth K, Aschermann Z, Kovács M, Makkos A, Harmat M, Janszky J, et al. Changes in
548 Quality of Life in Parkinson’s Disease: How Large Must They Be to Be Relevant?
549 Neuroepidemiology [Internet]. 2017 Jun 1 [cited 2023 Jun 20];48(1–2):1–8. Available
550 from: <https://pubmed.ncbi.nlm.nih.gov/28161701/>
- 551 29. Latourelle JC, Beste MT, Hadzi TC, Miller RE, Oppenheim JN, Valko MP, et al. Large-
552 scale identification of clinical and genetic predictors of motor progression in patients
553 with newly diagnosed Parkinson’s disease: a longitudinal cohort study and validation.
554 Lancet Neurol [Internet]. 2017 Nov 1 [cited 2023 Jun 20];16(11):908–16. Available
555 from: <https://pubmed.ncbi.nlm.nih.gov/28958801/>
- 556 30. Schneider JS, Aras R, Williams CK, Koprach JB, Brotchie JM, Singh V. GM1 Ganglioside
557 Modifies α -Synuclein Toxicity and is Neuroprotective in a Rat α -Synuclein Model of
558 Parkinson’s Disease. Sci Rep [Internet]. 2019 Dec 1 [cited 2023 Jun 20];9(1). Available
559 from: <https://pubmed.ncbi.nlm.nih.gov/31182727/>

560

561

562 Supporting information

563 S1 Checklist. Transparent Reporting of Evaluations with Nonrandomized Designs (TREND)

564 statement checklist.

565

566 S2 Text. Clinical trial protocol.

567

568 Appendix 1 Laboratory analysis list

569 Sodium, potassium, calcium, phosphate, creatinine, urea, albumin, total protein, cystatin C, lactate

570 dehydrogenase, ferritin, HbA1c, ALT, AST, total bilirubin, pancreatic amylase, alkaline phosphatase,

571 cholesterol (total, LDL, HDL), apolipoprotein B, differentiated red and white blood cell count,

572 thrombocytes, ganglioside GM1 IgG antibodies

573 Appendix 2: Observed lab values and weekly change

Variable	Week	Median (min,max)	Median change from Baseline (min, max)	p-value (Wilcoxon)	Mean (SD)	Mean change from Baseline (SD)
Total cholesterol (mmol/L)	Baseline (week 1 assessment)	5.81 (4.20, 6.27)	-	-	5.44 (0.71)	-
	Week 2	5.64 (3.79, 6.14)	-0.13 (-0.89, 0.40)	0.398	5.32 (0.84)	-0.12 (0.37)
	Week 3	5.35 (3.83, 6.35)	-0.09 (-0.85, 0.69)	0.577	5.36 (0.89)	-0.08 (0.48)
	Week 4	5.15 (3.90, 6.62)	-0.34 (-1.44, 0.67)	0.147	5.13 (0.86)	-0.31 (0.59)
	Week 5	5.25 (3.80, 6.46)	-0.13 (-0.88, 0.54)	0.240	5.27 (0.90)	-0.18 (0.44)
	Week 6	5.56 (3.80, 6.18)	-0.25 (-0.66, 0.36)	0.056	5.23 (0.83)	-0.21 (0.32)
	Week 7	5.61 (3.85, 6.80)	-0.15 (-0.83, 0.88)	0.533	5.40 (0.92)	-0.05 (0.43)
	Week 8	5.78 (3.96, 6.58)	0.03 (-0.50, 0.61)	0.638	5.50 (0.89)	0.05 (0.34)
	Final Assessment	5.48 (4.05, 6.56)	0.10 (-0.41, 0.64)	0.700	5.50 (0.85)	0.05 (0.40)
LDL cholesterol (mmol/L)	Baseline (week 1 assessment)	3.44 (2.46, 4.22)	-	-	3.35 (0.64)	-
	Week 2	3.27 (2.00, 4.62)	-0.12 (-0.84, 0.69)	0.359	3.21 (0.87)	-0.14 (0.46)
	Week 3	3.20 (2.28, 4.74)	-0.17 (-0.62, 0.88)	0.898	3.40 (0.83)	0.05 (0.54)
	Week 4	3.10 (1.73, 4.54)	-0.35 (-0.95, 0.61)	0.147	3.09 (0.79)	-0.26 (0.52)
	Week 5	3.07 (1.90, 4.80)	-0.11 (-1.00, 0.87)	0.240	3.24 (0.90)	-0.11 (0.46)
	Week 6	3.28 (2.04, 4.12)	-0.11 (-0.50, 0.47)	0.413	3.26 (0.66)	-0.09 (0.31)
	Week 7	3.72 (1.95, 4.33)	0.01 (-0.95, 0.83)	0.898	3.36 (0.83)	0.01 (0.48)
	Week 8	3.50 (1.73, 4.41)	0.05 (-1.12, 0.61)	0.898	3.27 (0.89)	-0.08 (0.56)
	Final Assessment	3.72 (1.94, 4.57)	0.25 (-0.55, 0.89)	0.240	3.55 (0.75)	0.20 (0.51)
HDL cholesterol (mmol/L)	Baseline (week 1 assessment)	1.22 (0.90, 2.76)	-	-	1.35 (0.50)	-
	Week 2	1.08 (0.72, 2.47)	-0.14 (-0.29, -0.05)	0.004	1.20 (0.45)	-0.15 (0.07)
	Week 3	1.13 (0.79, 2.59)	-0.16 (-0.27, -0.02)	<0.001	1.19 (0.49)	-0.16 (0.07)
	Week 4	1.05 (0.72, 2.23)	-0.18 (-0.53, -0.10)	<0.001	1.14 (0.40)	-0.21 (0.12)
	Week 5	1.09 (0.70, 2.24)	-0.18 (-0.52, -0.05)	<0.001	1.15 (0.40)	-0.20 (0.13)
	Week 6	1.04 (0.72, 2.20)	-0.18 (-0.56, -0.10)	0.004	1.11 (0.39)	-0.24 (0.15)
	Week 7	0.97 (0.72, 2.53)	-0.23 (-0.39, 0.00)	0.006	1.13 (0.50)	-0.22 (0.11)
	Week 8	1.13 (0.72, 2.52)	-0.18 (-0.36, 0.05)	0.005	1.18 (0.48)	-0.17 (0.10)
	Final Assessment	1.14 (0.76, 2.41)	-0.14 (-0.35, 0.09)	0.021	1.21 (0.44)	-0.13 (0.14)
Follow up	1.14 (0.77, 2.45)	-0.11 (-0.34, 0.05)	0.008	1.22 (0.44)	-0.13 (0.12)	

Triglycerides (mmol/L)	Baseline (week 1 assessment)	1.54 (0.59, 2.71)	-	-	1.64 (0.71)	-
	Week 2	1.44 (0.82, 3.60)	0.37 (-0.81, 1.56)	0.123	2.00 (1.13)	0.35 (0.69)
	Week 3	1.77 (0.72, 2.90)	0.09 (-0.94, 1.10)	0.563	1.71 (0.75)	0.06 (0.58)
	Week 4	1.35 (0.64, 4.52)	0.05 (-0.60, 2.98)	0.625	1.99 (1.22)	0.35 (1.04)
	Week 5	1.89 (0.70, 3.03)	0.23 (-0.76, 1.29)	0.175	1.92 (0.79)	0.28 (0.62)
	Week 6	1.72 (0.82, 3.26)	0.08 (-0.17, 1.59)	0.130	1.92 (0.81)	0.28 (0.50)
	Week 7	2.05 (1.15, 4.85)	0.44 (-0.46, 2.14)	0.042	2.24 (1.11)	0.59 (0.80)
	Week 8	2.13 (0.78, 4.47)	0.31 (-0.62, 2.99)	0.102	2.29 (1.32)	0.65 (1.08)
	Final Assessment	1.45 (0.54, 2.98)	-0.18 (-1.38, 0.67)	0.765	1.61 (0.71)	-0.03 (0.59)
	Follow up	1.12 (0.61, 2.95)	-0.20 (-1.62, 1.21)	0.320	1.49 (0.79)	-0.15 (0.69)
Apolipoprotein B (g/L)	Baseline (week 1 assessment)	0.91 (0.71, 1.11)	-	-	0.94 (0.13)	0.00 (0.00)
	Week 2	0.83 (0.66, 1.13)	0.02 (-0.25, 0.08)	>0.999	0.92 (0.17)	-0.02 (0.10)
	Week 3	0.87 (0.70, 1.16)	0.02 (-0.21, 0.11)	0.638	0.94 (0.16)	0.01 (0.09)
	Week 4	0.88 (0.74, 1.20)	0.02 (-0.17, 0.09)	>0.999	0.93 (0.16)	-0.01 (0.09)
	Week 5	0.94 (0.72, 1.24)	0.02 (-0.19, 0.22)	0.126	0.97 (0.18)	0.03 (0.10)
	Week 6	0.96 (0.74, 1.18)	0.06 (-0.17, 0.15)	0.240	0.98 (0.16)	0.04 (0.10)
	Week 7	1.01 (0.74, 1.22)	0.08 (-0.17, 0.30)	0.036	1.02 (0.16)	0.08 (0.12)
	Week 8	1.08 (0.80, 1.32)	0.10 (-0.11, 0.27)	0.032	1.04 (0.17)	0.11 (0.13)
	Final Assessment	1.12 (0.88, 1.38)	0.14 (-0.03, 0.27)	0.008	1.07 (0.16)	0.14 (0.11)
	Follow up	0.96 (0.79, 1.25)	0.04 (-0.13, 0.19)	0.168	0.98 (0.14)	0.05 (0.10)
Total/HDL cholesterol (mmol/mmol)	Baseline (week 1 assessment)	4.42 (2.14, 5.15)	-	-	4.29 (0.84)	-
	Week 2	4.85 (2.49, 5.85)	0.50 (-0.57, 1.14)	0.024	4.72 (1.06)	0.43 (0.46)
	Week 3	5.28 (2.38, 5.96)	0.55 (-0.18, 1.54)	0.002	4.83 (1.02)	0.53 (0.41)
	Week 4	4.87 (2.59, 6.09)	0.39 (-0.20, 1.67)	0.010	4.78 (1.06)	0.48 (0.55)
	Week 5	5.05 (2.53, 6.15)	0.57 (-0.45, 1.43)	0.010	4.85 (1.06)	0.55 (0.53)
	Week 6	5.24 (2.64, 6.39)	0.49 (-0.11, 2.04)	0.002	4.99 (1.06)	0.70 (0.58)
	Week 7	5.35 (2.69, 6.73)	0.79 (0.21, 2.11)	<0.001	5.15 (1.05)	0.86 (0.49)
	Week 8	5.25 (2.54, 6.08)	0.54 (-0.01, 1.86)	0.002	4.99 (1.01)	0.70 (0.55)
	Final Assessment	4.99 (2.72, 6.13)	0.55 (-0.47, 1.51)	0.010	4.80 (0.96)	0.51 (0.55)
	Follow up	4.57 (2.23, 5.82)	0.08 (-0.36, 1.40)	0.365	4.52 (1.08)	0.22 (0.58)

574