

1 Methodological Challenges using Routine  
2 Clinical Care Data for Real-World Evidence: a  
3 Rapid Review utilizing a systematic literature  
4 search and focus group discussion

5

6 Michelle Pfaffenlehner<sup>1,2\*</sup>, Max Behrens<sup>1,2</sup>, Daniela Zöller<sup>1,2</sup>, Kathrin Ungethüm<sup>3,4</sup>, Kai  
7 Günther<sup>3,4</sup>, Viktoria Rücker<sup>4</sup>, Jens-Peter Reese<sup>3-6</sup>, Peter Heuschmann<sup>3,4,6</sup>, Miriam  
8 Kesselmeier<sup>7</sup>, Flavia Remo<sup>7</sup>, André Scherag<sup>7</sup>, Harald Binder<sup>1,2</sup>, Nadine Binder<sup>8,2</sup> – for  
9 the EVA4MII project

10 <sup>1</sup> Institute of Medical Biometry and Statistics, Faculty of Medicine and Medical Centre – University of  
11 Freiburg, Freiburg, Germany

12 <sup>2</sup> Freiburg Centre for Data Analysis and Modelling, University of Freiburg, Freiburg, Germany

13 <sup>3</sup> Institute for Medical Data Sciences, University Hospital Würzburg, Würzburg, Germany

14 <sup>4</sup> Institute for Clinical Epidemiology and Biometry, University Würzburg, Würzburg, Germany

15 <sup>5</sup> Faculty of Health Sciences, THM Technische Hochschule Mittelhessen, University of Applied  
16 Sciences

17 <sup>6</sup> Clinical Trial Centre, University Hospital Würzburg, Würzburg, Germany

18 <sup>7</sup> Institute of Medical Statistics, Computer and Data Sciences, Friedrich Schiller University & Jena  
19 University Hospital, Jena, Germany

20 <sup>8</sup> Institute of General Practice/Family Medicine, Faculty of Medicine and Medical Centre - University of  
21 Freiburg, Freiburg, Germany

22 \*corresponding author: [michelle.pfaffenlehner@uniklinik-freiburg.de](mailto:michelle.pfaffenlehner@uniklinik-freiburg.de)

## 23 Abstract

### 24 Background

25 The integration of real-world evidence (RWE) from real-world data (RWD) in clinical  
26 research is crucial for bridging the gap between clinical trial results and real-world  
27 outcomes. Analyzing routinely collected data to generate clinical evidence faces  
28 methodological concerns like confounding and bias, similar to prospectively  
29 documented observational studies. This study focuses on additional limitations  
30 frequently reported in the literature, providing an overview of the challenges and  
31 biases inherent to analyzing routine clinical care data, including health claims data  
32 (hereafter: routine data).

### 33 Methods

34 We conducted a literature search on routine data studies in four high-impact journals  
35 based on the Journal Citation Reports (JCR) category “Medicine, General & Internal”  
36 as of 2022 and three oncology journals, covering articles published from January  
37 2018 to October 2023. Articles were screened and categorized into three scenarios  
38 based on their potential to provide meaningful RWE: (1) Burden of Disease, (2)  
39 Safety and Risk Group Analysis, and (3) Treatment Comparison. Limitations of this  
40 type of data cited in the discussion sections were extracted and classified according  
41 to different bias types: main bias categories in non-randomized studies (information  
42 bias, reporting bias, selection bias, confounding) and additional routine data-specific  
43 challenges (i.e., operationalization, coding, follow-up, missing data, validation, and  
44 data quality). These classifications were then ranked by relevance in a focus group  
45 meeting of methodological experts. The search was pre-specified and registered in  
46 PROSPERO (CRD42023477616).

## 47 Results

48 In October 2023, 227 articles were identified, 69 were assessed for eligibility, and 39  
49 were included in the review: 11 on the burden of disease, 17 on safety and risk group  
50 analysis, and 11 on treatment comparison. Besides typical biases in observational  
51 studies, we identified additional challenges specific to RWE frequently mentioned in  
52 the discussion sections. The focus group had varied opinions on the limitations of  
53 Safety and Risk Group Analysis and Treatment Comparison but agreed on the  
54 essential limitations for the Burden of Disease category.

## 55 Conclusion

56 This review provides a comprehensive overview of potential limitations and biases in  
57 analyzing routine data reported in recent high-impact journals. We highlighted key  
58 challenges that have high potential to impact analysis results, emphasizing the need  
59 for thorough consideration and discussion for meaningful inferences.

60 Keywords: rapid review, limitation, bias, routine clinical care data, real-world  
61 evidence, EHR

62

## 63 Background

64 Real-world evidence (RWE) derived from real-world data (RWD) becomes  
65 increasingly important to support clinical evidence. The growing availability of such  
66 data opens up new research opportunities to improve our understanding of clinical  
67 practice. A recent definition of real-world data includes data sources such as routine  
68 clinical care data, frequently called electronic health records (EHRs), disease-specific  
69 registries, administrative data, such as claims data or death registries, and data  
70 collected through personal devices [1–4].

71 This review is limited to routine clinical care data (hereafter: routine data) derived  
72 from the health care system, such as EHR and administrative data including  
73 insurance and claims data. We focus on methodological challenges and biases that  
74 researchers may face when analyzing routine data.

75 For structuring an investigation on limitations, we suggest three scenarios, derived  
76 from the field of clinical epidemiology where routine data hold high potential for  
77 generating RWE: (1) *Burden of Disease*, (2) *Safety and Risk Group Analysis*, and (3)  
78 *Treatment Comparison*. *Burden of Disease* describes the impact of a disease or  
79 health problem on a specified population, quantified by metrics such as incidence,  
80 prevalence, mortality, morbidity, quality of life, and economic impact [5]. As this  
81 scenario typically includes the given health care setting in the definition of the study  
82 population, we consider it as the most natural application of routine data. *Safety and*  
83 *Risk Group Analysis* covers adverse events of various medical interventions such as  
84 treatments, medications, devices and procedures, with a potential focus on  
85 identifying and characterizing subgroups with a higher risk profile in the respective  
86 population (e.g., due to comorbidities, genetic predispositions, or general  
87 demographic characteristics) [6]. Here, routine data offer the possibility of long-term  
88 observations, to study rare subgroups and adverse events, as well as to observe  
89 patients with different comorbidities, and co-medications. As this scenario is  
90 characterized by time-sensitive and potentially unobservable or undocumented  
91 information, it is more complex than the *Burden of Disease* scenario. *Treatment*  
92 *Comparison* deals with the causal effects of medical treatments. This area is and will  
93 continue to be dominated by evidence from randomized controlled trials (RCTs).  
94 However, with the beginning of 2025, a new EU regulation (2021/2282) for health  
95 technology assessment (HTA) – a systematic assessment of the added benefits,  
96 effectiveness, costs and impact of interventions, medication, devices or procedures

97 for further decision making– will enter into force [7]. Although the process is still in  
98 development, health technology developers will need to address a high number of  
99 PICO (Population, Intervention, Comparison, Outcome) schemes with diverse  
100 comparators given that each state has its standards of care to generate sufficient  
101 evidence for their technology [8]. Combined with the tight timelines in the joint clinical  
102 assessment (EU-level HTA) process, clinical studies will not be available for all PICO  
103 schemes, creating a high need for additional data sources like routine data. In  
104 addition, routine data offer the opportunity to study the effects in a routine setting,  
105 including effects of noncompliance, rare subgroups or subgroups not typically eligible  
106 for clinical studies, confounding by indication as well as potential effects of site-  
107 specific impact factors on treatment outcome. Here, similar issues as in *Safety and*  
108 *Risk Group Analysis* complicate the statistical analysis, especially due to the causal  
109 interpretation of the primary outcome.

110 Although routine data are not primarily collected for research purposes, their use and  
111 longitudinal linkage with data from other sources such as registries or biobanks has  
112 the potential to improve health care and regulatory decision making [2,9]. However, it  
113 is not only the linkage to other data sources that is important but also the ability to  
114 aggregate data from different hospitals or even across different countries and health  
115 care systems given a common data model.

116 RCTs are the gold standard for answering questions about treatment efficacy and  
117 safety. However, analyzing RWD may be useful to bridge evidence gaps at the  
118 interface to clinical practice. Utilizing routine data offers several advantages,  
119 including a large number of observations, especially when leveraging and linking  
120 multiple clinical data sources. It allows the coverage of different locations, patient  
121 populations (e.g., different age distribution or disease severity), and practice patterns  
122 in routine health care [1,3,10]. Routine data analysis can also be valuable when

123 RCTs are not feasible due to ethical or practical reasons. Particularly in the context of  
124 treatment comparisons, the use of the target trial emulation framework allows to  
125 obtain comparable results to those observed in RCTs when carefully and fully  
126 emulated [7–9]. An alternative approach, rather than relying solely on routine data or  
127 their linkage for treatment comparison, is to use the data as an external control  
128 [2,10].

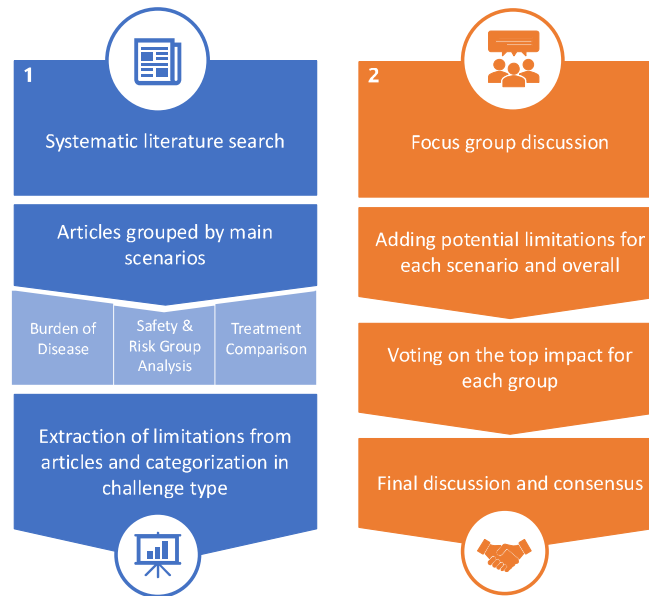
129 Yet, as routine data are documented for reimbursement or clinical care purposes, the  
130 quality of the data from a research perspective is typically lower than that of other  
131 prospectively planned studies – including RCTs. Routine data may lack  
132 harmonization and interoperability, may often be incomplete and some relevant  
133 information may be missing [4]. For instance, body mass index is generally irrelevant  
134 for reimbursement purposes but might be a potential risk factor, confounder or effect  
135 modifier for several research questions, especially in the field of non-communicable  
136 diseases, such as those investigated by Zöller et al. [11] on chronic obstructive  
137 pulmonary disease (COPD). The analysis of such data is therefore fraught with  
138 methodological challenges, including confounding and several potential biases which  
139 are already well-known from clinical epidemiology. Beyond these common concerns,  
140 it remains unclear which additional limitations related to routinely collected data,  
141 particularly challenges at measurement level – such as how data is collected and  
142 translated into variables used for analysis – appear frequently [12].

143 In this work, we aim to provide an overview of the reported challenges and biases  
144 inherent in routine data analysis with respect to their potential impact in the three  
145 main scenarios. Consequently, we identify challenges that have a comparably high  
146 potential to affect the analysis findings and require thorough consideration and  
147 discussion in order to draw meaningful conclusions.

## 148 Methods

149 To provide an overview of possible limitations in routine data analyses, we followed a  
150 step-wise approach visualized in Figure 1 **Error! Reference source not found.** First,  
151 a systematic literature search of publications generating RWE within the predefined  
152 scenarios was conducted to obtain the limitations outlined in the respective  
153 discussion sections. Second, a subsequent focus group discussion with experts was  
154 held to supplement and to evaluate the identified list of challenges.

155 *Figure 1 Process Flow Diagram*



156  
157 Overview of the process used in this work to identify and evaluate challenges and biases in  
158 routine care data analysis. This includes (1) a systematic literature search to extract and categorize  
159 reported limitations followed by (2) expert focus group discussions to supplement and discuss these  
160 challenges regarding their impact on real-world evidence.

## 161 Data sources and search strategies

162 In October 2023, we conducted a systematic search of MEDLINE via PubMed. The  
163 search focused on English-language publications in the following top-ranked journals  
164 based on the Journal Citation Reports (JCR) category “Medicine, General & Internal”  
165 as of 2022 [13]: (i) The Lancet, (ii) New England Journal of Medicine, (iii) Journal of

166 the American Medical Association (JAMA) and (iv) British Medical Journal (BMJ). In  
167 addition, we included the following oncology journals, based on our experience, as  
168 RWE is particularly prevalent in this therapeutic field [14]: (v) JAMA Oncology, (vi)  
169 The Lancet Oncology, and (vii) Journal of Clinical Oncology. In order to ensure  
170 recency and thereby relevance of the articles, the search included all original articles  
171 published between January 2018 and October 2023. The following terms were  
172 queried in the title or abstract: “real-world evidence”, “RWE”, “Real-world data”, “real-  
173 world”, “routine data”, “routine care data”, “Emulation” and “Electronic health data”. A  
174 study was defined as being eligible if routine clinical care data collected by the  
175 healthcare system, such as longitudinal claims data or EHR, was analyzed. Other  
176 types of publications, such as comments, letters, perspectives or reviews were  
177 excluded. Studies were also excluded, in which only registry data or manually  
178 collected data were analyzed. In addition, we assessed if any aspect from the three  
179 pre-defined scenario categories were investigated in the studies: (1) Burden of  
180 Disease, (2) Safety and Risk Group Analysis, and (3) Treatment Comparison. If this  
181 was not the case, the study was excluded. The detailed search strategy is described  
182 in the Supplementary Material (Supplementary S1). All articles were indexed and  
183 organized using Zotero.

184 Three reviewers (MP, KG, KU) independently screened each publication through all  
185 stages of the review process. One reviewer (MP) independently screened all articles,  
186 while the other two reviewers (KG, KU) distributed the articles between themselves  
187 and reviewed them independently. First, titles and abstracts of the search results  
188 were screened to ensure relevance and adherence to the inclusion and exclusion  
189 criteria. In a second step, the full texts of the included abstracts were assessed to  
190 obtain a final decision on inclusion in the review. In case of any discrepancy between  
191 two reviewers regarding the eligibility of specific studies, an additional independent



192 reviewer (MB) was consulted to resolve the issue. The review was pre-specified and  
193 registered in PROSPERO (CRD42023477616).

194

## 195 [Data extraction and categorization](#)

196 Methodological challenges and limitations mentioned in the discussion sections of  
197 the included publications were extracted as the main outcome. In addition, study  
198 characteristics such as design, the underlying data sources, the country from which  
199 data was obtained, the methods employed, and the purpose of the published studies  
200 were retrieved. The extracted information was summarized in an Excel spreadsheet  
201 (MP) and checked for accuracy (KG, KU). Publications were categorized into the  
202 three predefined main areas of application (Burden of Disease, Safety and Risk  
203 Group Analysis, Treatment Comparison), based on their research question. The  
204 extracted limitations were subsequently assigned to the main bias categories in non-  
205 randomized studies as defined in the Cochrane Handbook: confounding, selection  
206 bias, information bias and reporting bias [15]. Additionally, we derived categories by  
207 grouping resembling limitations that seemed specific to the use of routine data (see  
208 Results section).

209 We did not assess the quality or risk of bias of individual studies since we were not  
210 extracting data or outcomes of the studies for subsequent analysis and we were only  
211 interested in their stated limitations. Still, we expected that there were challenges not  
212 reported in the study publications, e.g., because of limited relevance or lack of  
213 awareness. Therefore, a subsequent focus group meeting was initiated for  
214 complementing and ranking the identified list of challenges.

## 215 [Focus Group](#)

216 At a four-hour workshop, the results of the systematic literature search were  
217 presented in the form of a slide presentation for each scenario to a selected group.

218 The focus group members consisted of all associates of the EVA4MII project [16]  
219 funded by the German Federal Ministry of Education and Research, which is  
220 dedicated to building the infrastructure for methodological support in EHR data  
221 analyses in Germany and to identifying the requirements of various interest holders.  
222 In addition, one independent statistical expert from the area of health technology  
223 assessments joined the discussion in order to specifically emphasize the  
224 requirements for benefit assessment. All participants work in the field of (clinical)  
225 epidemiology, medical biometry and statistics with background in mathematics or  
226 informatics. After each scenario was presented, focus group members were asked to  
227 add potential additional challenges in a moderated joint discussion. In addition,  
228 through a *General* category, we left room for limitations and challenges that can be  
229 found in RWD studies not specific to any of the three scenarios. All identified  
230 challenges were listed for a subsequent voting on their potential impact within each  
231 scenario. Every focus group member had two votes for each of the three main  
232 scenarios, plus one additional vote for the *General* category. All challenges with at  
233 least one vote were summarized and considered as key challenges deemed to have  
234 a high potential to influence the evidence to be generated and require thorough  
235 consideration in analyses. This assessment was based on the participants'  
236 experience across numerous projects where they contributed to evaluation  
237 components.

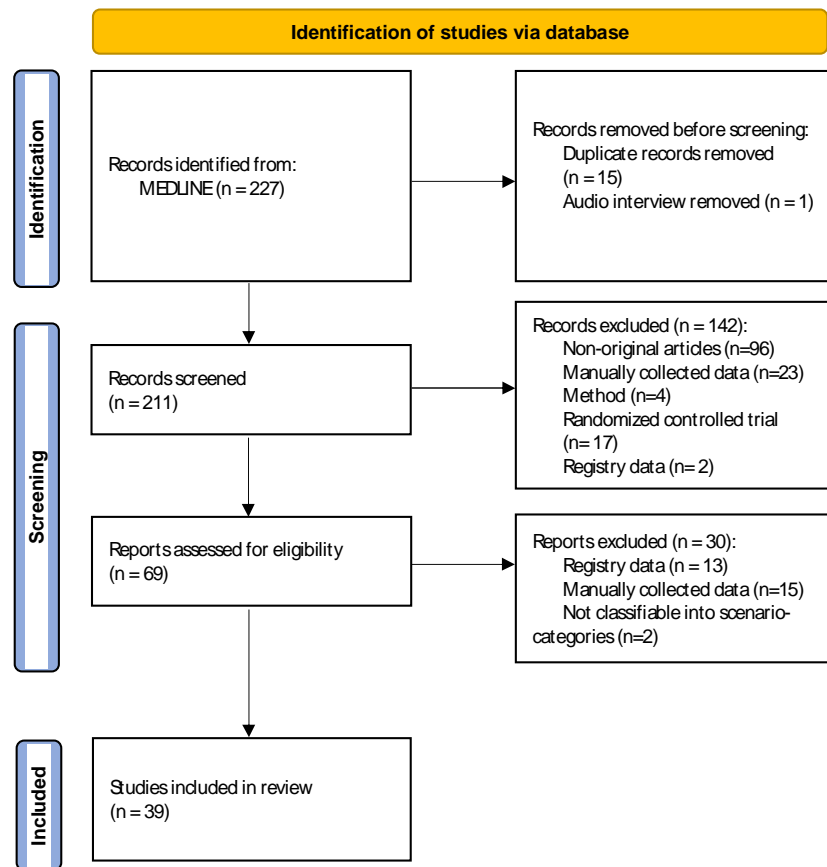
## 238 Results

### 239 Study selection and characteristics

240 In total, 227 records were identified from MEDLINE of which 15 duplicate publications  
241 and 1 audio interview were removed, leading to 211 records eligible for title and  
242 abstract screening. From this first screening, we excluded 142 publications because

243 they were not original research articles, were only methods articles, or did not use  
244 routinely collected data from clinical care. In a second step, 69 records were  
245 evaluated in a full-text screening for verifying the data source as coming from  
246 electronic health records or administrative data, and to be categorizable into the  
247 three main scenarios. Finally, 39 studies were included in the review. An overview of  
248 the review process and study selection is depicted in Figure 2.

249 *Figure 2 PRISMA flow diagram [17]*



250

251 A brief summary of the study characteristics is shown in Table 1. Most of the studies  
252 were published in BMJ (36%), with 55% being published in the past two years (2022  
253 and 2023). This is supporting our decision to limit the search to the past five years.  
254 The majority of extracted publications (46%) was based on data from the US. While

255 some publications used only EHR data (59%), other studies linked this information to  
 256 additional sources, such as biobanks or registries (28%). The use of data sources  
 257 varied between studies, from single-country to multinational studies. The highest  
 258 proportion of the publications used nation-wide (46%) or multi-center data (38%),  
 259 while the remaining studies used multi-national (10%), single-center (3%) and  
 260 territory-wide (3%) data.

261 *Table 1 Summary of study characteristics*

Study Characteristics	n (%)
<b>Journals</b>	
BMJ	14 (35.9)
JAMA	9 (23.1)
New England Journal of Medicine	4 (10.2)
The Lancet	5 (12.8)
JAMA Oncology	2 (5.1)
Journal of Clinical Oncology	5 (12.8)
The Lancet Oncology	0 (0)
<b>Year</b>	
2018	1 (2.6)
2019	5 (12.8)
2020	4 (10.3)
2021	7 (18.0)
2022	10 (25.6)
2023	12 (30.8)
<b>Country</b>	
Canada	1 (2.6)
France	1 (2.6)
Hong Kong	1 (2.6)
Israel	3 (7.7)
South Korea	1 (2.6)
UK	5 (12.8)
UK + Canada	1 (2.6)
UK + USA	2 (5.1)
USA	18 (46.2)
USA + South Korea	1 (2.6)
Qatar	1 (2.6)
>2 countries	4 (10.2)
<b>Data Source</b>	
EHR	23 (59.0)
EHR + additional linked data*	11 (28.2)
Administrative data**	5 (12.8)
<b>Scope of Data</b>	
single-center	1 (2.6)
multi-center	15 (38.5)

territory-wide	1 (2.6)
nation-wide	18 (46.2)
multi-national	4 (10.3)

262 In this table, the number of studies  $n$ , along with its percentage in brackets (%), is presented for  
263 each category. EHR= Electronic health records

264 \* additional linked data include exome sequencing data, hospital admission data, mortality data,  
265 data from biobanks, claims data, questionnaire data, and data from registries

266 \*\* administrative data include insurance information and claims data

267 We identified five specific categories to highlight potential biases that are specific to  
268 the use of routine data. First, as clinical routine data is primarily collected for  
269 reimbursement purposes based on clinic-specific coding practices, the category  
270 *Coding Challenges* is introduced. This category includes for example discrepancies  
271 in coding practices between clinics or specificities of the ICD10 (the International  
272 Classification of Diseases and Related Health Problems) coding system [18]. This  
273 challenge may lead to information bias, specifically misclassification or detection  
274 bias, regardless of the already well-known detection bias, which typically result from  
275 varying quality in detection methods. Second, as one of the main drivers of  
276 documentation quality is again reimbursement as well as patient care rather than  
277 research, the category *Operationalization or Availability of Variables* is established to  
278 address to which extent studies were restricted by the availability of the data for  
279 answering the research question. This type of missing data may lead to unmeasured  
280 confounding and potential selection bias. Third, routine data may suffer from other  
281 types of missing data, i.e., missing records in certain variables, as typically known  
282 from observational studies, resulting in the category *Missing Data*. Fourth, routine  
283 data may also suffer from different lengths of follow-up largely varying between  
284 patients, for which we introduce a further category called *Follow-up Challenges*.  
285 Finally, the category *Validation & Data Quality* is added, which leads to potential bias

286 as large amounts of routine data typically cannot be carefully validated. This also  
 287 includes the variability of data quality over time arising e.g., due to changes in coding  
 288 systems, such as transitions between versions of the ICD coding standard, or the  
 289 ongoing digitalization of hospitals. An overview of the types of biases and limitations  
 290 are presented in the Supplementary Material S2 – Table S3.

291 Table 2 provides a summary of the limitations mentioned in the discussion section of  
 292 the extracted studies stratified into the data source types and according to their  
 293 assigned scenario category. In total, there are 11 publications in the category *Burden*  
 294 *of Disease*, 17 publications in *Safety and Risk Group Analysis* and 11 publications in  
 295 *Treatment Comparison*. As expected, the main bias types are typically mentioned in  
 296 the publications. However, it is important to recognize the additional biases that  
 297 frequently appear. A detailed overview for each publication is provided in the  
 298 Supplementary Material S3 – Table S4, including a broad overview of the study  
 299 design including the main outcomes and their respective methods, objectives, and  
 300 the scope of the analysis in terms of data use.

301 Table 2 Summary of biases extracted from the studies

		Main Bias Categories					Additional Bias Categories				
		Total	Confounding	Selection Bias	Information Bias	Reporting Bias	Coding Challenges	Operationalization or Availability of Variables	Missing Data	Follow-up Challenges	Validation & Data Quality
<b>Burden of Disease</b>	EHR	21	3 (14%)	4 (19%)	5 (24%)	2 (10%)	2 (10%)	2 (10%)	3 (14%)		
	Linked EHR	13	2 (15%)	3 (23%)	2 (15%)	1 (8%)			1 (8%)	2 (15%)	2 (15%)
	Admin. Data	1		1 (100%)							
<b>Safety &amp; Risk Group</b>	EHR	28	7 (25%)	4 (14%)	5 (18%)	2 (7%)		3 (11%)	2 (7%)	3 (11%)	2 (7%)
	Linked EHR	25	4 (16%)	4 (16%)	6 (24%)	4 (16%)	2 (8%)	1 (4%)	2 (8%)		2 (8%)
	Admin. Data	12	2 (17%)	2 (17%)	2 (17%)	1 (8%)		2 (17%)	1 (8%)	2 (17%)	
<b>on</b>	EHR	32	9 (28%)	9 (28%)	7 (22%)		1 (3%)	3 (9%)	2 (6%)		1 (3%)

Linked EHR	0				
Admin. Data	6	2 (33%)	2 (33%)	1 (17%)	1 (17%)

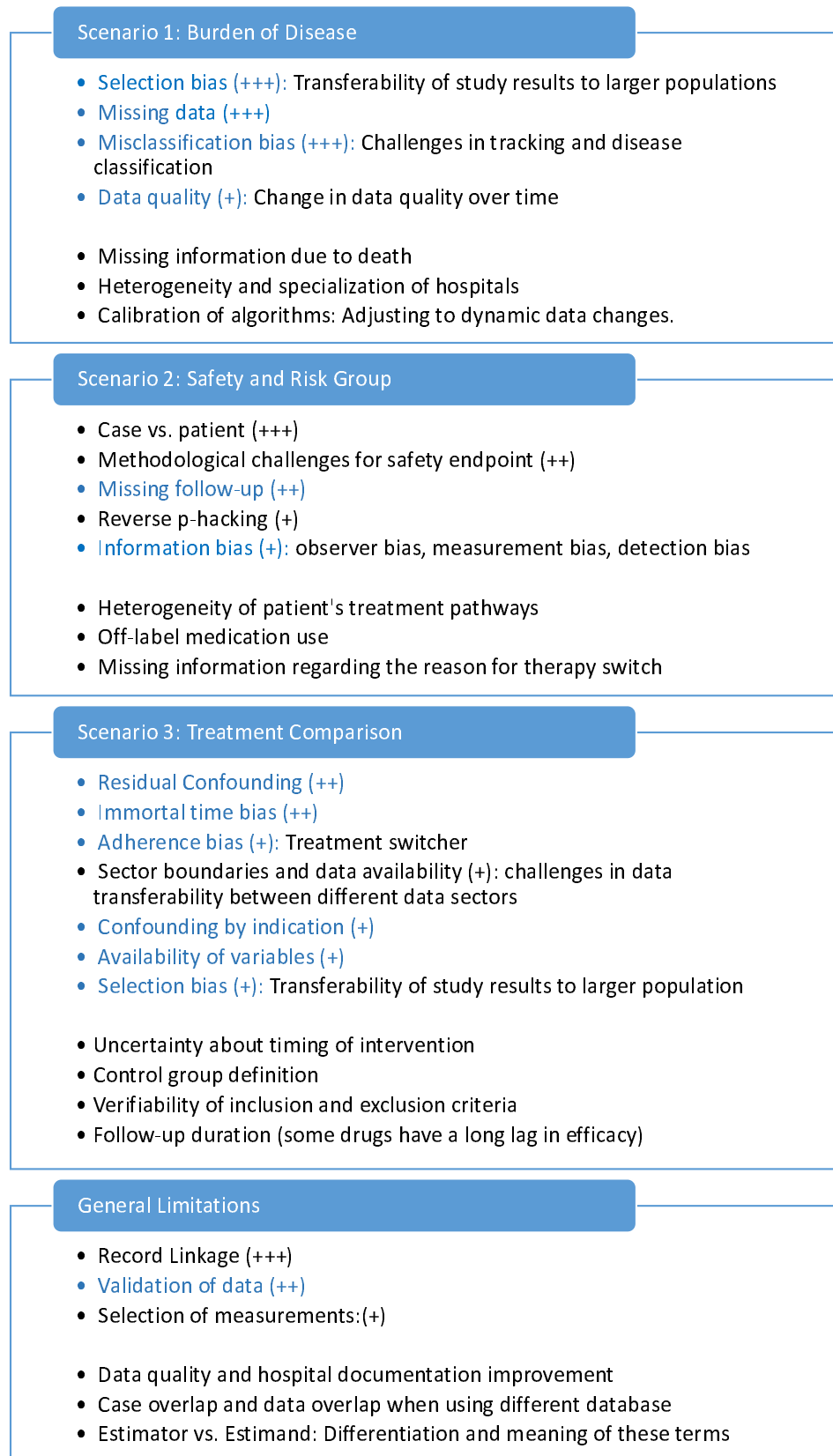
302

303           Number (percentage) of studies facing the main biases and additional identified bias  
304 categories grouped by data source types and the main scenarios: *Burden of Disease, Safety and*  
305 *Risk Group Analysis, and Treatment Comparison*. Abbreviations: EHR...Electronic Health  
306 Records, Admin. Data... Administrative Data

307

308   In Figure 3, all challenges that were added and ranked according to their relevance in  
309 the focus group discussion are summarized.

310 *Figure 3 Overview of Workshop Results*





312 Findings of the focus group discussion divided into the three main scenarios: *Burden of*  
313 *Disease, Safety and Risk Group Analysis, and Treatment Comparison*, as well as the additional  
314 category *General Limitations*. The content stated within the blue colored areas are the voting  
315 results. All bullet points in this area were deemed important, with the plus signs representing the  
316 number of votes received. A single plus sign (+) indicates sporadic votes, whereas three plus  
317 signs (+++) denote a majority vote. The blue font highlights challenges and limitations identified in  
318 the systematic search, whereas the black font denotes those added by the focus group. The  
319 challenges and limitations listed outside the blue area did not receive any votes of particular  
320 importance from the focus group.

321

322 In the following, we outline the findings on methodological challenges and limitations  
323 from both the review and the focus group workshop for each main scenario,  
324 separately.

325

### 326 **Burden of disease**

327 Five publications reported limitations potentially leading to confounding. Of these, two  
328 studies had limited availability of variables included in the analysis resulting in the  
329 possibility of unmeasured confounding [19,20]. However, Kamran et al. [20] argued  
330 that with the use of a limited number of variables in the model a reliable identification  
331 and validation of all variables even across different institutions was feasible.  
332 Limitations related to the risk of selection bias were present in eight studies. On the  
333 one hand, in Canavan et al. [19] a volunteer bias could not be ruled out because the  
334 data used for the analyses included individuals who opted to be included in the study  
335 database. On the other hand, in Witberg et al. [21] the absence of simultaneously  
336 enrolled comparison groups was mentioned which could lead to a potential selection  
337 bias. Moreover, some studies highlighted the fact that the results might not be  
338 transferable to other clinical practices or populations [19,22–24]. The primary type of

339 information bias (n=7) observed was misclassification bias, affecting either the  
340 exposure or outcome [19,22,25,26]. Beck et al. [22] highlighted that clinical  
341 diagnoses were probably not fully captured due to challenges in diagnostic and  
342 physician coding. On the other hand, Manz et al. [26] noted a limitation indicating that  
343 they were limited to use only patients with a coded classifier variable for comparing  
344 the machine learning model with the commonly used prognostic reference. This  
345 limitation resulted from differences in the characteristics of the patients with and  
346 without the coded variable. Kamran et al. [20] additionally emphasized that even  
347 though a common EHR provider across facilities was implemented, it remains crucial  
348 to have in-depth knowledge of the local deployment. Two studies reported limited  
349 follow-up time [24,27]. However, Bicler et al. [27] noted that despite the longer  
350 follow-up period compared to clinical trials, it was still insufficient to evaluate very  
351 long-term effects. The lack of health record validation was reported in two studies  
352 [27,28]. While all studies acknowledged limitations in their discussions, only three  
353 studies [20,23,25] took an additional step to assess these limitations in the context of  
354 their specific study.

355 During the focus group discussion, further limitations were added to those identified  
356 in the literature review and are presented in the first part of Figure 3. Some relevant  
357 and reasonable limitations added by the experts were the inconsistency of the data  
358 quality over time. This challenge is interconnected to the adjustment or calibration of  
359 algorithms to dynamic data changes, especially when using a model that  
360 continuously uses recent data from routine clinical care. Additionally, the  
361 heterogeneity and specialization of hospitals substantially impact the burden of  
362 disease. Including only hospitals with specializations in a certain disease treatment  
363 would overestimate the burden. Another added limitation was *missing information*

364 *due to death* in situations with death as competing risk, where it would be impossible  
365 to diagnose the disease even though the patient may have had it [29].

366 The rating of the limitations of *Burden of Disease* is indicated by the blue area in  
367 Figure 3. The transferability of study results to a larger population, which goes hand  
368 in hand with the possibilities of selection bias, missing data and misclassification of  
369 data, was weighted by the experts to be most important. The importance of data  
370 quality in EHR data was also recognized, specifically the variability of data quality  
371 over time due to e.g., changes in coding systems, such as transitions between  
372 versions of the ICD coding standard, or individual coding behavior. This could  
373 potentially introduce bias to the results concerning the burden of a disease,  
374 particularly when comparing diagnoses from the present to the past or the burden  
375 over an extended period of time.

### 376 [Safety and Risk Group Analysis](#)

377 In this category, the information bias was predominantly manifested as the risk for  
378 misclassification bias [30–38] with only one study addressing immortal time bias [36].  
379 Specifically, certain limitations were connected with coding challenges, since the  
380 classification was based on diagnosis codes from the EHR systems [31,33]. In  
381 addition, some form of potential information bias occurred because the drug use in  
382 an EHR system had been defined as the prescription of the medication and not as  
383 the actual drug intake [34,39]. Aspects like the quantification and analysis of  
384 information concerning the physician's decision-making process for treatment  
385 selection, treatment switching or the effect of pre-treatment were often missing or  
386 inadequately explored [36,38,40] which could lead to confounded results. Details  
387 regarding adherence or dosage, as well as unstructured free-text information, were  
388 not accessible [38,40,41]. Additionally, significant risk factors, such as smoking, were  
389 not available, creating a potentially high risk of confounding in the analysis. Selection

390 bias limitations were evident in ten studies including volunteer bias due to the  
391 involvement of individuals who volunteered to join the database used for analysis  
392 [33,42]. Moreover, several studies highlighted site heterogeneity, noting that certain  
393 hospitals with robust programs may have had a higher burden of disease [31–33].  
394 The limitation of missing data was mentioned in five studies [31,34,36,37,43], for  
395 instance, in Li et al. [34] who stated that EHR data sources lacked comprehensive  
396 coverage of medical events recorded in other healthcare facilities. While only three  
397 studies [36,41,42] explicitly stated their limitations without providing further  
398 elaboration, the remaining studies either addressed how they mitigated certain  
399 limitations through selected methodologies or sensitivity analyses [32,34,35,37–40,44].  
400 Alternatively, they presented arguments explaining why certain limitations were  
401 unlikely or invalid in the context of their specific study [30,31,33,37,43,45].  
402 A few specific challenges were added by the experts in the focus group discussion as  
403 displayed in the second section of Figure 3. First, it is considered important to  
404 correctly distinguish between the case and patient definition. Given that patients may  
405 have multiple cases associated with them in routine clinical data, it is essential for the  
406 research question to specify whether the data refers to the patient level or the  
407 individual case level. The lack of clarity could potentially violate the i.i.d-assumptions  
408 (independent and identically distributed assumption), which is the basis for many  
409 commonly used statistical methods.  
410 Second, another challenge mentioned is the problem of reverse p-hacking for safety  
411 endpoints, where the analysis is manipulated to intentionally favor non-significant  
412 results [46]. Third, the focus group emphasized the importance of the limitation  
413 related to the lack of follow-up data, especially in health care systems where no  
414 linkage with routine outcome information is available. A longer follow-up period is  
415 crucial for conducting thorough safety analyses to observe adverse events. This

416 aspect is closely linked to the issue of missing information due to death, as death  
417 prevents the observation of subsequent adverse events.

418 Moreover, the experts added several limitations related to medication use. These  
419 included insufficient information on the reasons for change in medication and its  
420 effect, as well as information on dosage. Additionally, concerns were raised about the  
421 off-label use of medication. Unlike in controlled clinical trials, the treatment paths of  
422 patients are quite heterogeneous due to the decisions of the clinician or the different  
423 specializations of the hospitals.

#### 424 [Treatment Comparison](#)

425 Confounding remained a particular area of concern, specifically in achieving balance  
426 between the groups. Kim et al. [47] reported persistent imbalance in variables even  
427 after applying matching techniques. However, they addressed this issue by adjusting  
428 for these variables in further analyses. Likewise, Xie et al. [48] stated that individuals  
429 treated with the study medication had a higher baseline health burden, potentially  
430 leading to underestimated findings due to residual confounding. Only two studies  
431 explicitly report missing risk factors that could subsequently not be used for balancing  
432 [49,50]. Wang et al. [51] highlighted that claims data had not recorded medication  
433 use in hospital, therefore, they needed to use alternative index date and follow-up  
434 definition. Similar to the *Safety and Risk Group Analysis*, most potential information  
435 biases were a type of misclassification [48,52–55]. Rentsch et al. [50] reported that  
436 the identification of outcome events was not provided by a validated algorithm, which  
437 could also potentially lead to information bias. Same holds true for Wong et al. [56]  
438 as they did not distinguish the reason for deaths. Kim et al. [47] emphasized the  
439 general issues of immortal time and time lag biases in the discussion section, but  
440 elaborated on the methods used to address and avoid these biases. One study noted  
441 the concern of potential upcoding, i.e. the intentional use of ICD-10 and OPS

442 (Operation and Procedure Classification System) codes with the greatest  
443 reimbursement rather than those with the greatest clinical relevance, resulting in  
444 overstating the patient's severity of disease [57]. Xie et al. [54] highlighted that the  
445 effectiveness of the investigated drug could be overestimated in individuals with poor  
446 health characteristics who opt not to receive treatment, while those with better health  
447 characteristics who decide not to be treated could lead to underestimation. The  
448 studies predominantly stated their open limitations including those that persisted  
449 despite implementing causal inference methods or conducting sensitivity analyses  
450 aimed at addressing them [48,50,52,54]. Beyond that, Kim et al. [47] detailed how  
451 they mitigated their limitations.

452 The focus group discussion resulted in the following additions. First, data availability  
453 with regard to the transferability within different health care sectors, e.g., ambulatory  
454 and stationary sector, was added as challenge, especially for Germany [58]. Second,  
455 the timing of an intervention is also critical to assess its effectiveness accurately,  
456 understand its impact on patient outcomes, and make informed clinical decisions. In  
457 EHR or administrative databases, the timing may not be explicitly recorded or may be  
458 subject to errors or omissions. Third, the difficulty in defining control groups for  
459 comparison was highlighted as well as the verifiability of the inclusion or exclusion  
460 criteria [59,60]. Fourth, similar to the *Safety and Risk Group Analysis* scenario,  
461 follow-up duration is critical. However, in the context of treatment comparison, the  
462 criticality arises also from the possibility that drugs can have a longer delay in  
463 efficacy.

464 Compared to the previous scenarios the ratings of the *Treatment Comparison*  
465 category were more widely distributed, with votes spread across numerous  
466 limitations. This distribution highlighted the wide range of challenges to consider.  
467 Residual confounding and immortal time bias received the majority of votes. Not only

468 the data availability of different data sectors, but also the availability of variables was  
469 considered important which is connected to residual confounding, e.g. absence of  
470 known confounders.

### 471 [General limitations and challenges](#)

472 The focus group viewed the linkage of records, the validation of data and the  
473 selection of measurements as critical to conduct routine care data analysis. If there  
474 are multiple measurements, it can be challenging to specify which measurement is  
475 considered as the relevant one. In connection with record-linkage, both with other  
476 hospitals and other data sources, the cases and patient data may overlap between  
477 hospitals and other data sources. In addition, the challenges with the definition of  
478 estimands and estimators was highlighted [6,61,62].

### 479 [Discussion](#)

480 This review aimed to present a comprehensive overview of the limitations and biases  
481 inherent in the analysis of routine clinical care data. Additionally, we pinpointed the  
482 challenges with the greatest potential to influence the results of the analysis  
483 emphasizing thorough consideration and discussion for the derivation of meaningful  
484 inference. We have intentionally provided a comprehensive overview of the study's  
485 features to serve as a guide, categorically organized into different scenarios.

486 While our focus was specifically on limitations stated in the discussion section of  
487 publications, we did not provide explicit methods to address these limitations but  
488 emphasized which studies mitigated biases or explained why certain limitations were  
489 deemed unlikely. However, methods to handle limitations have already been partially  
490 discussed in other works [63,64]. In the extracted publications, various approaches  
491 were applied to address confounding, such as large scale propensity score model,  
492 matching, inverse probability of treatment weights, active comparator, prevalent new

493 user design, quantitative bias analysis with e-values and confounder adjustment  
494 [25,30,32,35,38–40,50,52,53]. In order to diminish publication bias and p-hacking,  
495 Suchard et al.[39] made all results available through an interactive website,  
496 facilitating correction for multiple testing. To address missing data, studies applied  
497 multiple imputation with subsequent sensitivity analysis, or performed complete case  
498 analysis [31,34,37]. By conducting subgroup analyses based on the duration of  
499 follow-up, Filion et al.[32] mitigate concerns about the limitation of short median  
500 follow-up, while Cohen-Stavi et al.[30] focused solely on short-term effectiveness due  
501 to limited follow-up time. Heterogeneity between sites was accounted for by using a  
502 random effects model [32]. Some limitations were addressed by referencing previous  
503 studies [34,50]. Finally, several studies have conducted a target trial emulation to  
504 mimic controlled trials and thus infer causality for observational data  
505 [30,35,43,48,51,52,54,57,65].

506 Naturally, this study is also subject to limitations. Firstly, by restricting our search  
507 strategy to high-impact publications from 2018 onwards for the sake of recency and  
508 relevance, there is a possibility that we overlooked certain publications and their  
509 associated limitations. However, the incorporation of expert experiences and  
510 knowledge may cover missed challenges. In addition, data sources from high-impact  
511 publications may be of higher quality which can inherently reduce the limitations  
512 encountered. Second, given that our panel consisted solely of self-selected German  
513 experts in the field of statistics and clinical epidemiology, the added limitations might  
514 be influenced by local challenges specific to this context and might miss the  
515 important aspects such as the international or the clinical perspective. Finally, this  
516 review only included studies that were successfully published implying a publication  
517 bias. Therefore, we could not identify challenges that prevented successful data  
518 analyses and publication.



519 Our study assessed various limitations faced across different study scenarios of  
520 interest, resulting in a ranked list of potentially relevant challenges. In the next step,  
521 we aim to explore the requirements and concerns of various interest holders  
522 regarding the use of routine clinical data to achieve different objectives, particularly in  
523 therapeutic evaluations. This will involve understanding the diverse expectations,  
524 needs, and potential challenges faced by interest holders in leveraging routine  
525 clinical data for meaningful and accurate therapeutic assessments.

## 526 Conclusion

527 This review provides a comprehensive examination of potential limitations and biases  
528 in analyses of routine clinical care data reported in recent high-impact journals.  
529 Based on expert's opinion, we highlighted challenges that could have a high potential  
530 to influence analysis results, stressing the necessity for thorough consideration and  
531 discussion to derive meaningful conclusions.

532

## 533 Abbreviations

COPD	Chronic Obstructive Pulmonary Disease
EHR	Electronic Health Records
HTA	Health Technology Assessment
ICD	International Classification of Diseases and Related Health Problems
JCR	Journal Citation Report
OPS	Operation and Procedure Classification System
PICO	Population Intervention Comparator Outcome
RCT	Randomized Controlled Trial
RWD	Real-World Data
RWE	Real-World Evidence

## 534 Ethics approval and consent to participate

535 Not applicable

## 536 Consent for publication

537 Not applicable

## 538 Availability of data and materials

539 Not applicable

## 540 Competing interests

541 The authors declare that they have no competing interests.

## 542 Funding

543 This work was funded by the Federal Ministry of Education and Research (BMBF) in  
544 Germany in the framework of the EVA4MII project (FKZ 01ZZ2308A, 01ZZ2308B,  
545 01ZZ2308C). The funding agency had no role in the design, data collection,  
546 analyses, interpretation, and reporting of the study. The work of HB, MB, and NB has  
547 also been funded by the Deutsche Forschungsgemeinschaft (DFG, German  
548 Research Foundation) – Project-ID 499552394 – SFB 1597.

## 549 Authors' contributions

550 MP, DZ, HB and NB developed the study conception and design. MP, MB, KU and  
551 KG were involved in the systematic search process. MP extracted the data from the  
552 publications. KU and KG critically reviewed the extraction. MP wrote the first draft of  
553 the manuscript; NB supervised this process. MB, DZ, HB, VR, JRP, PH, MK, FR and  
554 AS provided additional intellectual content to the manuscript. All authors critically  
555 reviewed and approved the final version.

## 556 Acknowledgments

557 We would like to thank the participants of the focus group workshop for the joint  
558 discussion.

559

## 560 References

- 561 [1] Sherman RE, Anderson SA, Dal Pan GJ, Gray GW, Gross T, Hunter NL, et al. Real-  
562 World Evidence — What Is It and What Can It Tell Us? *N Engl J Med* 2016;375:2293–7.  
563 <https://doi.org/10.1056/NEJMs1609216>.
- 564 [2] Rahman R, Ventz S, McDunn J, Louv B, Reyes-Rivera I, Polley M-YC, et al.  
565 Leveraging external data in the design and analysis of clinical trials in neuro-oncology.  
566 *Lancet Oncol* 2021;22:e456–65. [https://doi.org/10.1016/S1470-2045\(21\)00488-5](https://doi.org/10.1016/S1470-2045(21)00488-5).
- 567 [3] Franklin JM, Schneeweiss S. When and How Can Real World Data Analyses  
568 Substitute for Randomized Controlled Trials? *Clin Pharmacol Ther* 2017;102:924–33.  
569 <https://doi.org/10.1002/cpt.857>.
- 570 [4] Liu F, Panagiotakos D. Real-world data: a brief review of the methods, applications,  
571 challenges and opportunities. *BMC Med Res Methodol* 2022;22:287.  
572 <https://doi.org/10.1186/s12874-022-01768-6>.
- 573 [5] Hessel F. Burden of Disease. In: Kirch W, editor. *Encycl. Public Health*, Dordrecht: Springer Netherlands; 2008, p. 94–6. [https://doi.org/10.1007/978-1-4020-5614-7\\_297](https://doi.org/10.1007/978-1-4020-5614-7_297).
- 576 [6] Unkel S, Amiri M, Benda N, Beyersmann J, Knoerzer D, Kupas K, et al. On  
577 estimands and the analysis of adverse events in the presence of varying follow-up times  
578 within the benefit assessment of therapies. *Pharm Stat* 2019;18:166–83.  
579 <https://doi.org/10.1002/pst.1915>.
- 580 [7] European Commission: Directorate-General for Health and Food Safety.  
581 Implementing the EU health technology assessment regulation. Publications Office of the  
582 European Union; 2023. <https://doi.org/10.2875/246730>.
- 583 [8] Buchholz I. PT28 Lost in PICO? a Simulation of the EU HTA Scoping Process n.d.
- 584 [9] Cowie MR, Blomster JI, Curtis LH, Duclaux S, Ford I, Fritz F, et al. Electronic health  
585 records to facilitate clinical research. *Clin Res Cardiol* 2017;106:1–9.  
586 <https://doi.org/10.1007/s00392-016-1025-6>.
- 587 [10] Sheldrick RC. Randomized Trials vs Real-world Evidence: How Can Both Inform  
588 Decision-making? *JAMA* 2023;329:1352–3. <https://doi.org/10.1001/jama.2023.4855>.
- 589 [11] Zöller D, Haverkamp C, Makoudjou A, Sofack G, Kiefer S, Gebele D, et al. Alpha-1-  
590 antitrypsin-deficiency is associated with lower cardiovascular risk: an approach based on  
591 federated learning. *Respir Res* 2024;25:38. <https://doi.org/10.1186/s12931-023-02607-y>.
- 592 [12] Schneeweiss S. Von Real-World-Daten zur Real-World-Evidenz: eine praktische  
593 Anleitung. *Prävent Gesundheitsförderung* 2023. <https://doi.org/10.1007/s11553-023-01026-7>.
- 594 [13] 2022 Journal Impact Factor, Journal Citation Reports (Clarivate, 2023) n.d.
- 595 [14] Purpura CA, Garry EM, Honig N, Case A, Rassen JA. The Role of Real-World  
596 Evidence in FDA-Approved New Drug and Biologics License Applications. *Clin Pharmacol*  
597 *Ther* 2022;111:135–44. <https://doi.org/10.1002/cpt.2474>.
- 598 [15] Sterne JAC, Hernán MA, McAleenan A, Reeves BC, Higgins JPT. Chapter 25:  
599 Assessing risk of bias in a non-randomized study. In: Higgins JPT, Thomas J, Chandler J,  
600 Cumpston M, Li T, Page MJ, Welch VA (editors). *Cochrane Handbook for Systematic*  
601 *Reviews of Interventions* version 6.4 (updated August 2023). Cochrane, 2023. Available from

- 602 : [www.training.cochrane.org/handbook](http://www.training.cochrane.org/handbook).
- 603 [16] EVA4MII- EVALuation research based on data from routine clinical care 4 the MII
- 604 2024. <https://ukw.de/eva4mii> (accessed November 8, 2024).
- 605 [17] Page MJ, McKenzie JE, Bossuyt PM, Boutron I, Hoffmann TC, Mulrow CD, et al.
- 606 The PRISMA 2020 statement: an updated guideline for reporting systematic reviews. *Syst*
- 607 *Rev* 2021;10:89. <https://doi.org/10.1186/s13643-021-01626-4>.
- 608 [18] World Health Organization. ICD-10<sup>□</sup>: international statistical classification of
- 609 diseases and related health problems<sup>□</sup>: tenth revision, 2nd ed. World Health Organization.
- 610 2004. <https://iris.who.int/handle/10665/42980>.
- 611 [19] Canavan M, Wang X, Ascha M, Miksad R, Showalter TN, Calip G, et al. End-of-Life
- 612 Systemic Oncologic Treatment in the Immunotherapy Era: The Role of Race, Insurance, and
- 613 Practice Setting. *J Clin Oncol Off J Am Soc Clin Oncol* 2023;41:4729–38.
- 614 <https://doi.org/10.1200/JCO.22.02180>.
- 615 [20] Kamran F, Tang S, Otles E, McEvoy DS, Saleh SN, Gong J, et al. Early identification
- 616 of patients admitted to hospital for covid-19 at risk of clinical deterioration: model
- 617 development and multisite external validation study. *BMJ* 2022;376:e068576.
- 618 <https://doi.org/10.1136/bmj-2021-068576>.
- 619 [21] Witberg G, Barda N, Hoss S, Richter I, Wiessman M, Aviv Y, et al. Myocarditis after
- 620 Covid-19 Vaccination in a Large Health Care Organization. *N Engl J Med* 2021;385:2132–9.
- 621 <https://doi.org/10.1056/NEJMoa2110737>.
- 622 [22] Beck DB, Bodian DL, Shah V, Mirshahi UL, Kim J, Ding Y, et al. Estimated
- 623 Prevalence and Clinical Manifestations of UBA1 Variants Associated With VEXAS
- 624 Syndrome in a Clinical Population. *JAMA* 2023;329:318–24.
- 625 <https://doi.org/10.1001/jama.2022.24836>.
- 626 [23] Forrest IS, Petrazzini BO, Duffy Á, Park JK, Marquez-Luna C, Jordan DM, et al.
- 627 Machine learning-based marker for coronary artery disease: derivation and validation in two
- 628 longitudinal cohorts. *Lancet Lond Engl* 2023;401:215–25. [https://doi.org/10.1016/S0140-](https://doi.org/10.1016/S0140-6736(22)02079-7)
- 629 [6736\(22\)02079-7](https://doi.org/10.1016/S0140-6736(22)02079-7).
- 630 [24] Vasileiou E, Simpson CR, Shi T, Kerr S, Agrawal U, Akbari A, et al. Interim findings
- 631 from first-dose mass COVID-19 vaccination roll-out and COVID-19 hospital admissions in
- 632 Scotland: a national prospective cohort study. *Lancet Lond Engl* 2021;397:1646–57.
- 633 [https://doi.org/10.1016/S0140-6736\(21\)00677-2](https://doi.org/10.1016/S0140-6736(21)00677-2).
- 634 [25] Haas EJ, Angulo FJ, McLaughlin JM, Anis E, Singer SR, Khan F, et al. Impact and
- 635 effectiveness of mRNA BNT162b2 vaccine against SARS-CoV-2 infections and COVID-19
- 636 cases, hospitalisations, and deaths following a nationwide vaccination campaign in Israel: an
- 637 observational study using national surveillance data. *Lancet Lond Engl* 2021;397:1819–29.
- 638 [https://doi.org/10.1016/S0140-6736\(21\)00947-8](https://doi.org/10.1016/S0140-6736(21)00947-8).
- 639 [26] Manz CR, Chen J, Liu M, Chivers C, Regli SH, Braun J, et al. Validation of a
- 640 Machine Learning Algorithm to Predict 180-Day Mortality for Outpatients With Cancer.
- 641 *JAMA Oncol* 2020;6:1723–30. <https://doi.org/10.1001/jamaoncol.2020.4331>.
- 642 [27] Biccler JL, Glimelius I, Eloranta S, Smeland KB, Brown P de N, Jakobsen LH, et al.
- 643 Relapse Risk and Loss of Lifetime After Modern Combined Modality Treatment of Young
- 644 Patients With Hodgkin Lymphoma: A Nordic Lymphoma Epidemiology Group Study. *J Clin*
- 645 *Oncol Off J Am Soc Clin Oncol* 2019;37:703–13. <https://doi.org/10.1200/JCO.18.01652>.
- 646 [28] Chang AR, Moore BS, Luo JZ, Sartori G, Fang B, Jacobs S, et al. Exome Sequencing
- 647 of a Clinical Population for Autosomal Dominant Polycystic Kidney Disease. *JAMA*
- 648 2022;328:2412–21. <https://doi.org/10.1001/jama.2022.22847>.
- 649 [29] Binder N, Blümle A, Balmford J, Motschall E, Oeller P, Schumacher M. Cohort
- 650 studies were found to be frequently biased by missing disease information due to death. *J Clin*
- 651 *Epidemiol* 2019;105:68–79. <https://doi.org/10.1016/j.jclinepi.2018.09.010>.
- 652 [30] Cohen-Stavi CJ, Magen O, Barda N, Yaron S, Peretz A, Netzer D, et al. BNT162b2

- 653 Vaccine Effectiveness against Omicron in Children 5 to 11 Years of Age. *N Engl J Med*  
654 2022;387:227–36. <https://doi.org/10.1056/NEJMoa2205011>.
- 655 [31] Damrauer SM, Chaudhary K, Cho JH, Liang LW, Argulian E, Chan L, et al.  
656 Association of the V122I Hereditary Transthyretin Amyloidosis Genetic Variant With Heart  
657 Failure Among Individuals of African or Hispanic/Latino Ancestry. *JAMA* 2019;322:2191–  
658 202. <https://doi.org/10.1001/jama.2019.17935>.
- 659 [32] Fillion KB, Lix LM, Yu OH, Dell’Aniello S, Douros A, Shah BR, et al. Sodium  
660 glucose cotransporter 2 inhibitors and risk of major adverse cardiovascular events: multi-  
661 database retrospective cohort study. *BMJ* 2020;370:m3342.  
662 <https://doi.org/10.1136/bmj.m3342>.
- 663 [33] Forrest IS, Chaudhary K, Vy HMT, Petrazzini BO, Bafna S, Jordan DM, et al.  
664 Population-Based Penetrance of Deleterious Clinical Variants. *JAMA* 2022;327:350–9.  
665 <https://doi.org/10.1001/jama.2021.23686>.
- 666 [34] Li X, Ostropolets A, Makadia R, Shoaibi A, Rao G, Sena AG, et al. Characterising the  
667 background incidence rates of adverse events of special interest for covid-19 vaccines in eight  
668 countries: multinational network cohort study. *BMJ* 2021;373:n1435.  
669 <https://doi.org/10.1136/bmj.n1435>.
- 670 [35] Lyu H, Zhao SS, Zhang L, Wei J, Li X, Li H, et al. Denosumab and incidence of type  
671 2 diabetes among adults with osteoporosis: population based cohort study. *BMJ*  
672 2023;381:e073435. <https://doi.org/10.1136/bmj-2022-073435>.
- 673 [36] Martin P, Cohen JB, Wang M, Kumar A, Hill B, Villa D, et al. Treatment Outcomes  
674 and Roles of Transplantation and Maintenance Rituximab in Patients With Previously  
675 Untreated Mantle Cell Lymphoma: Results From Large Real-World Cohorts. *J Clin Oncol*  
676 Off J Am Soc Clin Oncol 2023;41:541–54. <https://doi.org/10.1200/JCO.21.02698>.
- 677 [37] Seymour CW, Kennedy JN, Wang S, Chang C-CH, Elliott CF, Xu Z, et al. Derivation,  
678 Validation, and Potential Treatment Implications of Novel Clinical Phenotypes for Sepsis.  
679 *JAMA* 2019;321:2003–17. <https://doi.org/10.1001/jama.2019.5791>.
- 680 [38] You SC, Rho Y, Bikdeli B, Kim J, Siapos A, Weaver J, et al. Association of  
681 Ticagrelor vs Clopidogrel With Net Adverse Clinical Events in Patients With Acute Coronary  
682 Syndrome Undergoing Percutaneous Coronary Intervention. *JAMA* 2020;324:1640–50.  
683 <https://doi.org/10.1001/jama.2020.16167>.
- 684 [39] Suchard MA, Schuemie MJ, Krumholz HM, You SC, Chen R, Pratt N, et al.  
685 Comprehensive comparative effectiveness and safety of first-line antihypertensive drug  
686 classes: a systematic, multinational, large-scale analysis. *Lancet Lond Engl* 2019;394:1816–  
687 26. [https://doi.org/10.1016/S0140-6736\(19\)32317-7](https://doi.org/10.1016/S0140-6736(19)32317-7).
- 688 [40] Vinogradova Y, Coupland C, Hill T, Hippisley-Cox J. Risks and benefits of direct oral  
689 anticoagulants versus warfarin in a real world setting: cohort study in primary care. *BMJ*  
690 2018;362:k2505. <https://doi.org/10.1136/bmj.k2505>.
- 691 [41] Chavez-MacGregor M, Lei X, Zhao H, Scheet P, Giordano SH. Evaluation of  
692 COVID-19 Mortality and Adverse Outcomes in US Patients With or Without Cancer. *JAMA*  
693 *Oncol* 2022;8:69–78. <https://doi.org/10.1001/jamaoncol.2021.5148>.
- 694 [42] Berry ASF, Finucane BM, Myers SM, Abril A, Kirchner HL, Ledbetter DH, et al.  
695 Association of Supernumerary Sex Chromosome Aneuploidies With Venous  
696 Thromboembolism. *JAMA* 2023;329:235–43. <https://doi.org/10.1001/jama.2022.23897>.
- 697 [43] Deng Y, Polley EC, Wallach JD, Dhruva SS, Herrin J, Quinto K, et al. Emulating the  
698 GRADE trial using real world data: retrospective comparative effectiveness study. *BMJ*  
699 2022;379:e070717. <https://doi.org/10.1136/bmj-2022-070717>.
- 700 [44] Chemaitelly H, AlMukdad S, Ayoub HH, Altarawneh HN, Coyle P, Tang P, et al.  
701 Covid-19 Vaccine Protection among Children and Adolescents in Qatar. *N Engl J Med*  
702 2022;387:1865–76. <https://doi.org/10.1056/NEJMoa2210058>.
- 703 [45] Harstad E, Shults J, Barbaresi W, Bax A, Cacia J, Deavenport-Saman A, et al.  $\alpha$ 2-

- 704 Adrenergic Agonists or Stimulants for Preschool-Age Children With Attention-  
705 Deficit/Hyperactivity Disorder. *JAMA* 2021;325:2067–75.  
706 <https://doi.org/10.1001/jama.2021.6118>.
- 707 [46] Chuard PJC, Vrtilek M, Head ML, Jennions MD. Evidence that nonsignificant results  
708 are sometimes preferred: Reverse P-hacking or selective reporting? *PLOS Biol*  
709 2019;17:e3000127. <https://doi.org/10.1371/journal.pbio.3000127>.
- 710 [47] Kim NH, Han KH, Choi J, Lee J, Kim SG. Use of fenofibrate on cardiovascular  
711 outcomes in statin users with metabolic syndrome: propensity matched cohort study. *BMJ*  
712 2019;366:l5125. <https://doi.org/10.1136/bmj.l5125>.
- 713 [48] Xie Y, Bowe B, Al-Aly Z. Molnupiravir and risk of hospital admission or death in  
714 adults with covid-19: emulation of a randomized target trial using electronic health records.  
715 *BMJ* 2023;380:e072705. <https://doi.org/10.1136/bmj-2022-072705>.
- 716 [49] Mahévas M, Tran V-T, Roumier M, Chabrol A, Paule R, Guillaud C, et al. Clinical  
717 efficacy of hydroxychloroquine in patients with covid-19 pneumonia who require oxygen:  
718 observational comparative study using routine care data. *BMJ* 2020;369:m1844.  
719 <https://doi.org/10.1136/bmj.m1844>.
- 720 [50] Rentsch CT, Beckman JA, Tomlinson L, Gellad WF, Alcorn C, Kidwai-Khan F, et al.  
721 Early initiation of prophylactic anticoagulation for prevention of coronavirus disease 2019  
722 mortality in patients admitted to hospital in the United States: cohort study. *BMJ*  
723 2021;372:n311. <https://doi.org/10.1136/bmj.n311>.
- 724 [51] Wang SV, Schneeweiss S, Franklin JM, Desai RJ, Feldman W, Garry EM, et al.  
725 Emulation of Randomized Clinical Trials With Nonrandomized Database Analyses: Results  
726 of 32 Clinical Trials. *JAMA* 2023;329:1376–85. <https://doi.org/10.1001/jama.2023.4221>.
- 727 [52] Andersson NW, Thiesson EM, Baum U, Pihlström N, Starrfelt J, Faksová K, et al.  
728 Comparative effectiveness of bivalent BA.4-5 and BA.1 mRNA booster vaccines among  
729 adults aged  $\geq 50$  years in Nordic countries: nationwide cohort study. *BMJ* 2023;382:e075286.  
730 <https://doi.org/10.1136/bmj-2022-075286>.
- 731 [53] Deputy NP, Deckert J, Chard AN, Sandberg N, Moulia DL, Barkley E, et al. Vaccine  
732 Effectiveness of JYNNEOS against Mpox Disease in the United States. *N Engl J Med*  
733 2023;388:2434–43. <https://doi.org/10.1056/NEJMoa2215201>.
- 734 [54] Xie Y, Bowe B, Al-Aly Z. Nirmatrelvir and risk of hospital admission or death in  
735 adults with covid-19: emulation of a randomized target trial using electronic health records.  
736 *BMJ* 2023;381:e073312. <https://doi.org/10.1136/bmj-2022-073312>.
- 737 [55] Zheng B, Green ACA, Tazare J, Curtis HJ, Fisher L, Nab L, et al. Comparative  
738 effectiveness of sotrovimab and molnupiravir for prevention of severe covid-19 outcomes in  
739 patients in the community: observational cohort study with the OpenSAFELY platform. *BMJ*  
740 2022;379:e071932. <https://doi.org/10.1136/bmj-2022-071932>.
- 741 [56] Wong CKH, Au ICH, Lau KTK, Lau EHY, Cowling BJ, Leung GM. Real-world  
742 effectiveness of molnupiravir and nirmatrelvir plus ritonavir against mortality, hospitalisation,  
743 and in-hospital outcomes among community-dwelling, ambulatory patients with confirmed  
744 SARS-CoV-2 infection during the omicron wave in Hong Kong: an observational study.  
745 *Lancet Lond Engl* 2022;400:1213–22. [https://doi.org/10.1016/S0140-6736\(22\)01586-0](https://doi.org/10.1016/S0140-6736(22)01586-0).
- 746 [57] Marafino BJ, Escobar GJ, Baiocchi MT, Liu VX, Plimier CC, Schuler A. Evaluation  
747 of an intervention targeted with predictive analytics to prevent readmissions in an integrated  
748 health system: observational study. *BMJ* 2021;374:n1747. <https://doi.org/10.1136/bmj.n1747>.
- 749 [58] Lang C, Gottschall M, Sauer M, Köberlein-Neu J, Bergmann A, Voigt K. „Da kann  
750 man sich ja totklingeln, geht ja keiner ran“ – Schnittstellenprobleme zwischen stationärer,  
751 hausärztlicher und ambulant-fachspezialisierter Patientenversorgung aus Sicht Dresdner  
752 Hausärzte. *Gesundheitswesen* 2019;81:822–30. <https://doi.org/10.1055/a-0664-0470>.
- 753 [59] Hernán MA, Robins JM. Using Big Data to Emulate a Target Trial When a  
754 Randomized Trial Is Not Available: Table 1. *Am J Epidemiol* 2016;183:758–64.

755 <https://doi.org/10.1093/aje/kwv254>.  
 756 [60] D’Arcy M, Stürmer T, Lund JL. The importance and implications of comparator  
 757 selection in pharmacoepidemiologic research. *Curr Epidemiol Rep* 2018;5:272–83.  
 758 <https://doi.org/10.1007/s40471-018-0155-y>.  
 759 [61] Luijken K, van Eekelen R, Gardarsdottir H, Groenwold RHH, van Geloven N. Tell me  
 760 what you want, what you really really want: Estimands in observational  
 761 pharmacoepidemiologic comparative effectiveness and safety studies. *Pharmacoepidemiol*  
 762 *Drug Saf* 2023;32:863–72. <https://doi.org/10.1002/pds.5620>.  
 763 [62] European Medicines Agency. ICH E9 (R1) addendum on estimands and sensitivity  
 764 analysis in clinical trials to the guideline on statistical principles for clinical trials 2020.  
 765 [63] Burger HU, Gerlinger C, Harbron C, Koch A, Posch M, Rochon J, et al. The use of  
 766 external controls: To what extent can it currently be recommended? *Pharm Stat*  
 767 2021;20:1002–16. <https://doi.org/10.1002/pst.2120>.  
 768 [64] Nguyen VT, Engleton M, Davison M, Ravaud P, Porcher R, Boutron I. Risk of bias in  
 769 observational studies using routinely collected data of comparative effectiveness research: a  
 770 meta-research study. *BMC Med* 2021;19:279. <https://doi.org/10.1186/s12916-021-02151-w>.  
 771 [65] Hernán MA, Wang W, Leaf DE. Target Trial Emulation: A Framework for Causal  
 772 Inference From Observational Data. *JAMA* 2022;328:2446.  
 773 <https://doi.org/10.1001/jama.2022.21383>.  
 774 [66] Coltin H, Pequeno P, Liu N, Tsang DS, Gupta S, Taylor MD, et al. The Burden of  
 775 Surviving Childhood Medulloblastoma: A Population-Based, Matched Cohort Study in  
 776 Ontario, Canada. *J Clin Oncol Off J Am Soc Clin Oncol* 2023;41:2372–81.  
 777 <https://doi.org/10.1200/JCO.22.02466>.  
 778 [67] Song Q, Bates B, Shao YR, Hsu F-C, Liu F, Madhira V, et al. Risk and Outcome of  
 779 Breakthrough COVID-19 Infections in Vaccinated Patients With Cancer: Real-World  
 780 Evidence From the National COVID Cohort Collaborative. *J Clin Oncol Off J Am Soc Clin*  
 781 *Oncol* 2022;40:1414–27. <https://doi.org/10.1200/JCO.21.02419>.  
 782

## 783 Supplementary Material

### 784 Supplementary S1

785 *Table S1 Search strategy*

(1) In Title and Abstract	(2) Journals	(3) Time
real-world evidence <b>OR</b> Real-world data <b>OR</b> real-world <b>OR</b> RWE <b>OR</b> routine data <b>OR</b>	<b>AND</b> The New England journal of medicine <b>OR</b> The Lancet. Oncology <b>OR</b> BMJ (Clinical research ed.) <b>OR</b> JAMA <b>OR</b> Journal of clinical oncology: official journal of the American Society of Clinical Oncology <b>OR</b> JAMA oncology <b>OR</b> Lancet (London, England)	Filter: 2018 – 2023
routine care data <b>OR</b> Emulation <b>OR</b> Electronic health record		

786 *Table S2 Detailed Search History PubMed on October 31st 2023*

Search	Query	Results
--------	-------	---------

#1	<b>Search:</b> ("The New England journal of medicine"[Journal]) OR ("BMJ (Clinical research ed.)" [Journal]) OR ("The Lancet. Oncology" [Journal]) OR ("JAMA" [Journal]) OR ("Journal of clinical oncology : official journal of the American Society of Clinical Oncology" [Journal]) OR ("JAMA oncology"(Journal)) OR ("Lancet (London, England)"[Journal])	435,802
#2	<b>Search:</b> "real-world evidence" [tiab] OR "Real-world data" [tiab] OR real-world[tiab] OR RWE[tiab] OR "routine data" [tiab] or "routine care data " [tiab] OR Emulation [tiab] OR "Electronic health record" [tiab]	103,854
#3	<b>Search:</b> #1 AND #2	387
#4	<b>Search:</b> #1 AND #2 <b>Filters:</b> from 2018-2023	227

788

789 [Supplementary S2](#)

790 *Table S3 Glossary of terms including RWD-specific indication*

Category	Definition	RWD
<b>Confounding</b>	Confounding appears if the intervention/exposition is associated with the outcome. Includes confounding by indication and residual confounding (unmeasured confounding). [15]	
<b>Selection Bias</b>	Bias introduced by the selection of the reference group. Including racial, survivor and volunteer bias. [15]	
<b>Information Bias</b>	Misclassification of the intervention status or outcomes, or measurement error in outcomes, can lead to information bias. [15]	
<b>Reporting Bias</b>	Bias due to the selection of the reported results [15]	
<b>Coding Challenges</b>	Heterogeneity in coding practices, also with respect to upcoding, or coding systems	x
<b>Operationalization or Availability of Variables</b>	Variables are not available in the EHR-system to the extend or in the form needed for research. This may lead to potential unmeasured confounding or selection bias.	x
<b>Missing Data</b>	Missing records within variables available in the EHR-system. E.g. not all laboratory variables will be measured at each visit because they might be irrelevant for routine care.	x
<b>Follow-up Challenges</b>	Handling different lengths of follow-ups, limited follow up due changes over time	



<b>Validation &amp; Data Quality</b>	Challenges in validation of EHR-Data and changing data quality over time, e.g. due to ongoing digitalization.	x
Burden of Disease challenges*	Missing information due to death	
	Heterogeneity and specialization of hospitals	
	Calibration of algorithms	
Safety and Risk Group challenges*	Case vs. patients: a patient has multiple cases associated with them in routine clinical data. Specifying whether the study is on case- or patient-level.	x
	Reverse p-hacking: intentionally favoring non-significant results	
	Missing information regarding the reason for therapy switch	x
	Treatment pathways heterogeneity	
Treatment Comparison challenges*	Off-label medication use	x
	Sector boundaries and data availability: challenges in data transferability between different data sectors	x
	Uncertainty about timing of intervention	x
	Control group definition	x
	Verifiability of inclusion and exclusion criteria	x
Added General Limitations	Follow up duration- specifically with regards to the lag of efficacy in drugs	
	Record Linkage: the linkage of different data sources (e.g. registries, biobanks, etc.) or other hospitals/medical facilities	x
	Selection of measurements	x
	Case overlap and data overlap when using different data bases	x
	Estimator vs. Estimand: differentiation and meaning of these terms.	

791

792 \*Challenges that were added by the focus group discussion, Abbreviations: EHR...Electronic

793 Health Records

794

### 795 [Supplementary S3](#)

796 Table S4 provides a comprehensive overview of the extracted studies, including their

797 characteristics and limitations described in their respective discussion section. Note,

798 that for some publications (indicated with an asterisk) the category could not be

799 clearly assigned, especially in the case of *Treatment Comparison* and *Safety and*

800 *Risk Group Analysis*. These publications did not only compare the effectiveness of

801 treatments but specifically compared the risk of adverse events between two or more

802 treatments [32,35,38–40,43,45].

803 All studies categorized into the Burden of Disease scenario were cohort studies

804 except for three studies [20,23,26] that were developing or validating a machine

805 learning model to predict certain endpoints using EHR data. Three studies [24,27,66]  
806 examined time-to-event outcomes using Cox regression as well as Kaplan-Meier  
807 estimator partly with inverse propensity weights. Prevalence and incidences were  
808 analyzed in four studies [21,22,25,28]. The studies that were assigned to the  
809 category Safety and Risk Group Analysis were mostly cohort studies, in addition to  
810 two case-control studies and one cross-sectional cohort study [30,31]. Similar to the  
811 category Burden of Disease, predominantly time-to-event outcomes were evaluated  
812 using Kaplan-Meier estimation or Cox (proportional hazards) regression models  
813 [32,35,36,38–40,42–44]. In contrast, many studies have used propensity score  
814 methods such as matching and weighting [30,32,35,38–40,43,44] or applied the  
815 concept of target trial emulation [30,35,43]. Similar to the category Safety and Risk  
816 Group Analysis, most studies in the Treatment Comparison scenario examined time-  
817 to-event outcomes. They employed propensity score methods such as matching and  
818 weighting or applied the concept of target trial emulation. In addition to that, two  
819 studies used the clone method, a special form of emulating a target trial where each  
820 individual is cloned into both treatment groups, censored patients according to their  
821 designated treatment strategy and weighted the uncensored to avoid selection bias  
822 [48,54,59].

Author	Study Design	Aim of Study	Outcome	Methods	Scope	Countries	Limitations								
							Main Bias Categories				Additional Bias Category				
Burden of disease							Confounding	Selection bias	Information bias	Reporting bias	Follow-up Challenges	Missing Data	Coding Challenges	Validation & Data quality	Operationalization or availability of variables
Beck et al. [22]	cohort study	genetic association	prevalence	Poisson test	multi-center	USA		x	x				x		
Bicler et al. [27]	cohort study	relapse risk and loss of lifetime after treatment	relapse risks, survival	logistic regression, KM estimation, Aalen-Johansen estimation	multi-national	Nordic countries	x				x			x	
Canavan et al. [19]	cohort study	association of EOL treatment and practice-level factors	use of EOL therapy	adjusted logistic regression with random intercept	nation-wide	USA	x	x	x	x		x			x
Chang et al. [28]	cohort study	genetic association	prevalence	adjusted Firth logistic regression	multi-center	USA		x	x	x				x	
Coltin et al. [66]	cohort study	burden of surviving disease	cumulative incidence of mortality	time-to-event analyses, Cox model	multi-center	Canada		x			x				
Forrest et al. [23]	cohort study	disease-predictive ML	disease prediction	random forest model, model evaluation: AUROC, Sensitivity, Specificity, PPV, NPV, Brier score, adj. linear -,	nation-wide	UK		x	x			x			

It is made available under a [CC-BY 4.0 International license](https://creativecommons.org/licenses/by/4.0/).

				logistic -, and Cox regression												
Haas et al. [25]	cohort study	impact and effectiveness of treatment	prevalence, incidence rate ratio	negative binomial regression	nation-wide	Israel	x	x	x	x						
Kamran et al. [20]	cohort study	ML model development	mortality, treatment events	regularized logistic regression, AUROC, model calibration	multi-center	USA	x									x
Manz et al. [26]	cohort study	Validation of ML Algorithm	mortality	AUROC, AUPRC, scaled Brier score, logistic regression	multi-center	USA			x			x	x			
Vasileiou et al. [24]	cohort study	hospital admission after vaccination	hospital admission	time-dependent Cox model & Poisson regression with inverse propensity weights	nation-wide	UK	x	x			x					
Witberg et al. [21]	cohort study	frequency and severity of disease after treatment	(cumulative) incidence	KM estimation	nation-wide	Israel		x	x			x				
Safety and Risk Group							Confoundin g	Selec tion bias	Inform ation bias	Reporti ng bias	Follow- up Challen ges	Missing Data	Coding Challen ges	Validati on & Data quality	Operatio nalization or availabilit y of variables	
Berry et al. [42]	cohort study	genetic association	incidence, prevalence	Cox regression, adj. logistic regression	multi-center	USA UK	x	x	x					x		
Chavez-MacGrego	cohort study	outcome comparison of	mortality, ventilation	adj. logistic regression	multi-center	USA	x	x								x

r et al. [41]		risk groups	, ICU stay, hospitalization		r										
Chemaitelly et al. [44]	cohort studies	treatment effectiveness among children and adolescents	incidence rate, cumulative incidence	1:1 matching, KM estimation, Cox regression	nation-wide	Qatar	x	x		x					
Cohen-Stavi et al. [30]	cohort study, case-control study	treatment effectiveness among children	cumulative incidence	target trial emulation, matching, KM estimation	multi-center	Israel	x		x		x				
Damrauer et al. [31]	case-control study, cross sectional study	genetic association	prevalence	adj. logistic regressions	multi-center	USA		x	x			x	x		
Deng et al. [43]*	cohort study	comparative effectiveness	time to event	target trial emulation, inverse probability of treatment weighting, generalized boosted models for PS, inverse probability of treatment weighted Kaplan-Meier method, PS-weighted Cox regression	nation-wide	USA	x	x	x		x	x			x
Filion et al. [32]*	cohort study	adverse event association	major adverse events	time conditional PS using conditional logistic regression, 1:1	multi-center	Canada UK	x	x	x	x	x				x

				matching, Cox regression											
Forrest et al. [33]	cohort study	disease risk associated with gene variants	risk difference between prevalence	2-sided Fisher's exact tests	multi-center	USA UK		x	x				x		
Harstad et al. [45]*	observational study	treatment effectiveness	frequency, relative risk of Adverse Effects	logistic and Cox regression	multi-center	USA	x	x			x			x	
Li et al. [34]	cohort study	adverse event association	incidence rate	descriptive analyses	multi-national	Australia France Germany Japan Netherlands Spain UK US			x	x		x		x	
Lyu et al. [35]*	cohort study	comparative effectiveness	incidence	target trial emulation, PS-matching, Cox regression	nation-wide	UK	x		x		x				
Martin et al. [36]	cohort study	therapy evaluation	time-to-next-treatment, overall survival	KM, Cox regression	nation-wide	USA	x		x			x			x
Seymour et al. [37]	cohort study	phenotype derivation	phenotype frequency, mortality	Multiple imputation, k-means clustering	single-center	USA		x	x			x			
Song et al. [67]	cohort study	comparative effectiveness	disease risk	adj. logistic regression	nation-wide	USA	x			x					
Suchard et al. [39]*	cohort study	comparative effectiveness	relative risk	PS model, matching, Cox regression,	multi-national	USA South Korea	x	x	x	x					

				meta analysis		Japan Germany												
Vinogradova et al.[40]*	cohort study	treatment association	hospital admission or death	PS, Cox regression	nation-wide	UK	x		x	x							x	
You et al. [38]*	cohort study	treatment association	net adverse clinical events	PS-matching, Cox regression	multi-center	South Korea USA	x		x	x					x		x	
Treatment Comparison							Confounding	Selection bias	Information bias	Reporting bias	Follow-up Challenges	Missing Data	Coding Challenges	Validation & Data quality	Operationalization or availability of variables			
Andersson et al. [52]	cohort study	comparative effectiveness	hospital admission, death	target trial emulation, PS-matching, inverse probability of treatment weights, KM	multi-national	Nordic countries	x	x	x									
Deputy et al. [53]	case-control study	vaccine effectiveness	association between vaccination status and case patient or control patient status	matching, conditional logistic regression	nation-wide	USA	x	x	x									
Kim et al. [47]	cohort study	treatment effectiveness	time to cardiovascular events	PS-matching, stratified Cox regression	nation-wide	South Korea	x	x	x	x								
Mahévas et al. [49]	case-control study	treatment effectiveness	survival	inverse probability of treatment weighting, Cox	multi-center	France	x	x									x	

				regression, KM, multiple imputation											
Marafino et al. [57]	cohort study	intervention association	mortality, readmission	target-trail emulation, generalized linear mixed effects models, difference-in-difference analysis	multi-center	USA	x	x					x		
Rentsch et al. [50]	cohort study	early treatment association	mortality	inverse probability of treatment weighted KM, Cox regression	nation-wide	USA	x	x	x			x		x	x
Wang et al. [51]	cohort study	RCT comparison	time to event	target trail emulation, PS matching, Cox regression	nation-wide	USA	x	x		x	x				
Wong et al. [56]	cohort study, case-control study	comparative effectiveness	mortality, hospital admission, progression	propensity score matching, Cox regression, conditional logistic regression	territory-wide	Hong Kong	x	x	x			x			
Xie et al. [48]	cohort study	treatment association	relative risk, event rate, absolute risk reduction: hospital admission, death	target trail emulation, clone method, inverse probability of censoring weight	nation-wide	USA	x		x						
Xie et al. [54]	cohort study	treatment effectiveness	relative risk, event rate,	target trail emulation, inverse probability	nation-wide	USA	x	x	x						



			absolute risk reduction: hospital admission, death	weighting, clone method, weighted KM											
Zheng et al. [55]	cohort study	comparative effectiveness	hospital admission, death	Cox regression, PS- weighting	natio n-wide	UK	x	x	x						x

824  
825  
826  
827  
828

Abbreviation: KM... Kaplan-Meier, PS... Propensity Score, EOL... End-of-Life, ICU... Intensive Care Unit, ML... Machine Learning, AUROC... Area under the receiver operating curve, AUPRC... Area under the precision-recall curve  
 \* This indicates publications that were not uniquely categorizable into the main scenarios. Specifically, they did not only compare the effectiveness of treatments but compared the risk of adverse events between two or more treatments