

1 **Risks and long-term prognosis of new-onset heart failure**
2 **after *de novo* permanent pacemaker implantation:**
3 **nationwide cohort study**

4
5 Young Jun Park, MD^a; Sungjoo Lee, PhD^b; Sungjun Hong, PhD^{b,c}; Kyunga Kim, PhD^{b,d*};
6 Juwon Kim, MD, PhD^e; Ju Youn Kim, MD, PhD^e; Kyoung-Min Park, MD, PhD^e; Young Keun
7 On, MD, PhD^e; Seung-Jung Park, MD, PhD^{e*}

8
9 ^a Division of Cardiology, Department of Internal Medicine, Wonju Severance Christian
10 Hospital, Yonsei University Wonju College of Medicine, Wonju, Republic of Korea

11 ^b Department of Digital Health, Samsung Advanced Institute for Health Sciences &
12 Technology, Sungkyunkwan University, Seoul, Korea

13 ^c Medical AI Research Center, Research Institute for Future Medicine, Samsung Medical
14 Center, Seoul, Republic of Korea

15 ^d Biomedical Statistics Center, Research Institute for Future Medicine, Samsung Medical
16 Center, Seoul, Korea

17 ^e Division of Cardiology, Department of Internal Medicine, Heart Vascular and Stroke Institute,
18 Samsung Medical Center, Sungkyunkwan University School of Medicine, Seoul, Korea

19
20 The first two authors contributed equally to this work.

21
22 **Short title:** Prognosis of Pacemaker-associated Heart Failure

23
24 ***Address for correspondence:**

25 ***Seung-Jung Park, MD, PhD***

26 Division of Cardiology, Department of Internal Medicine, Heart Vascular and Stroke Institute
27 Samsung Medical Center, Sungkyunkwan University School of Medicine

28 81 Irwon-ro, Gangnam-gu, Seoul, Korea, 06351

29 Tel. +82-2-3410-3419, Fax. +82-2-3410-3849

30 **NOTE:** This preprint reports new research that has not been certified by peer review and should not be used to guide clinical practice.
E-mail: orthovics@gmail.com

31

32 ***Kyunga Kim, PhD***

33 Biomedical Statistics Center, Research Institute for Future Medicine, Samsung Medical Center,

34 Department of Digital Health, Samsung Advanced Institute for Health Sciences & Technology,

35 Sungkyunkwan University, Seoul, Korea

36 Tel. +82-2-3410-6745

37 Email: kyunga.j.kim@samsung.com

38

39

40 Word count: 4769

41 **Abstract**

42 **Background:** Previous studies on pacemaker-associated heart failure (PaHF) have
43 predominantly analyzed relatively small, single-center datasets, mainly focusing on incidence
44 and predictors. However, the clinical implications of PaHF on mortality, particularly in relation
45 to standard HF medications or upgrading to cardiac resynchronization therapy (CRT), has been
46 underexplored.

47 **Methods:** Utilizing nationwide real-world data from the Korean National Health Insurance
48 Service database, we analyzed 32,216 patients undergoing permanent pacemaker (PPM)
49 implantation without preexisting HF between 2008 and 2019. The incidence, predictors, and
50 mortality risk of PaFH were evaluated. To address potential immortal-time bias due to the time-
51 dependent occurrence of PaHF, the time from the PPM implantation to the first diagnosis of
52 PaHF was analyzed as a time-dependent covariate. For patients with PaHF, a propensity score-
53 matched analysis was conducted based on CRT-upgrade status to explore the effect of CRT-
54 upgrade on the risk of all-cause mortality.

55 **Results:** During the median 3.8-year follow-up period, PaHF and all-cause death occurred in
56 4170 (12.9%) and 6184 (19.2%) of the 32,216 PPM patients (42.3% male, mean age 70.6 years),
57 respectively. PaHF development was closely associated with all-cause mortality, with a
58 significantly higher mortality risk in the PaHF than in the non-PaHF group (hazard ratio
59 [HR]=3.11, 95% confidence interval [CI]=2.93–3.32, $P<0.001$) after adjusting for immortal-
60 time bias. The PaHF incidence and PaHF-associated mortality risk, although highest for the
61 first six months post-PPM, did not disappear and increased again with follow-up time. In both
62 the entire cohort ($n=4170$) and the propensity score-matched cohort ($n=1685$) of PaHF patients,
63 CRT upgrade (HR=0.34, 95% CI=0.24–0.47, $P<0.001$), the use of beta-blockers (HR=0.75, 95%
64 CI=0.61–0.93, $P=0.010$), and angiotensin receptor neprilysin inhibitor (ARNI) use (HR=0.28,

65 95% CI=0.14–0.54, P<0.001) were identified as potent protective factors against post-PaHF
66 all-cause mortality.

67 **Conclusions:** PaHF development independently predicted post-PPM mortality, while
68 upgrading to CRT and the use of beta-blockers or ARNI were identified as favorable prognostic
69 factors for post-PaHF overall survival. Therefore, for PaHF patients, an immediate change into
70 CRT or conduction system pacing, may be required along with optimal HF medications owing
71 to the ongoing mortality risk.

72
73 **Keywords:** Pacemaker, Heart failure, Mortality, Predictor, Nationwide registry, cardiac
74 resynchronization therapy, beta-blocker, angiotensin receptor neprilysin inhibitor

75
76
77 **Abbreviations**

78 ACEI: angiotensin-converting-enzyme inhibitors

79 AF: atrial fibrillation

80 ARB: angiotensin II receptor blockers

81 ARNI: angiotensin receptor neprilysin inhibitor

82 AVB: atrioventricular block

83 CCI: Charlson comorbidity index

84 CKD: chronic kidney disease

85 CRT: cardiac resynchronization therapy

86 DM: diabetes mellitus

87 EF: ejection fraction

88 ESRD: end-stage renal disease

89 MRA: mineralocorticoid receptor antagonists

90 PaHF: pacemaker-associated HF

91 PPM: Permanent pacemaker

92 SND: sinus node dysfunction

93

94

95 **Introduction**

96 Permanent pacemaker (PPM) implantation is the definitive treatment for patients with
97 symptomatic bradyarrhythmia, such as sinus node dysfunction (SND) or atrioventricular block
98 (AVB). However, pacing-induced left ventricular (LV) electromechanical dyssynchrony can
99 lead to progressive LV dilatation, LV ejection fraction (EF) deterioration, and, eventually,
100 clinical heart failure (HF), which can be specifically defined as pacemaker-associated HF
101 (PaHF).¹⁻⁴

102 PaHF occurs in approximately 6–25% of patients with PPM 2–4 years after
103 implantation.^{1,5-7} Several PaHF risk factors have been reported, including older age, male, pre-
104 existing LV systolic dysfunction, baseline left bundle branch block, right ventricular apical
105 pacing, prolonged paced QRS duration, and a higher right ventricular (RV)-pacing percentage.
106^{1-3,5-8} In addition, patients with PaHF had a significantly higher mortality rate than those without,
107^{1,6} suggesting that a better understanding of PaHF is essential for improving the prognosis of
108 this patient population. However, most previous studies on PaHF were single-center studies
109 with relatively small sample sizes, primarily focusing on the incidence and predictors of PaHF.
110 Moreover, the clinical impact of PaHF on mortality has only been evaluated in a limited number
111 of studies.^{1,5,6} In addition, the role of standard HF medications or upgrading to cardiac
112 resynchronization therapy (CRT) devices on the prognosis of PaHF has not been thoroughly
113 investigated in a large-scale registry.

114 Accordingly, we sought to investigate the incidence, predictors, and prognosis of PaHF
115 using a nationwide database. Furthermore, we evaluated the effects of standard HF medications
116 or CRT-upgrade on overall mortality in PaHF patients.

117 **Methods**

118 *Data sources*

119 This nationwide retrospective cohort study used data from the National Health Information
120 Database (NHID) administered by the Korean National Health Insurance Service. The National
121 Health Insurance Service is a mandatory, single payer social health insurance system that is
122 managed by the Korean government and covers almost the entire (≥ 52 million) South Korean
123 population.⁹ The NHID contains comprehensive information on healthcare services, including
124 demographics, diagnoses (based on the International Classification of Disease 10th Revision
125 [ICD-10]), hospital visits and admissions, prescription drugs (based on Anatomical
126 Therapeutic Chemical codes), procedures, medical device usage, and mortality data. It was
127 established nationwide in 2000 and has been accessible to the public on the National Health
128 Insurance Data Sharing Service homepage (<http://nhiss.nhis.or.kr>), primarily for academic or
129 public policy purposes since 2009.^{10,11} Favorable reliability of the diagnostic codes in the
130 NHID has previously been reported for major cardiovascular or intractable diseases, such as
131 hypertrophic cardiomyopathy (93% accuracy) or myocardial infarction (92% accuracy).^{9,12,13}
132 This study was approved by the Institutional Review Board (IRB) of Samsung Medical Center
133 (IRB File No. 2019-05-075). The requirement of informed consent was waived as data are
134 public and deidentified under confidentiality guidelines.

135 *Study design and population*

136 Two retrospective cohorts were designed for a twofold purpose. The primary cohort consists
137 of patients with *de novo* PPM implantation without preexisting HF to evaluate the incidence of
138 PaHF and the all-cause mortality risk (PPM Cohort, Supplementary Figure 1). We identified
139 38,921 adult patients (≥ 18 years) who underwent *de novo* PPM implantation between January
140 1, 2008, and December 31, 2019, using the procedure and device codes for claims
141 reimbursement (Supplementary Table 1). We excluded patients who had a previous history of

142 HF before PPM implantation (n=6,389). The previous history of HF was defined as
143 hospitalization with HF code (I50.9) or prescription history of angiotensin receptor neprilysin
144 inhibitor (ARNI) prior to PPM implantation. Additional exclusions were made for those who
145 underwent reimplantation of a pulse generator and pacing leads following PPM system removal
146 (n=892), or who died on the day of PPM implantation (n=6). Finally, the primary cohort
147 contained 32,216 patients for analyses, including 4,170 patients who developed PaHF and
148 28,046 patients who did not, respectively.

149 The secondary cohort consisted only of 4,166 patients who developed PaHF in the
150 primary cohort, excluding 4 who died on the day of PaHF diagnosis (PaHF Cohort,
151 Supplementary Figure 1). The secondary cohort was further stratified into patients who were
152 managed with CRT-upgrade (n=330) and those without (n=3,836) to explore the effect of CRT-
153 upgrade on the risk of all-cause mortality. To emulate a randomized controlled trial, we further
154 built a propensity-score (PS) matched cohort of PaHF patients with 1:4 ratio, including 316
155 and 1,139 patients with and without CRT-upgrade, respectively.

156 ***Data acquisition***

157 Demographic data such as age and sex were obtained. Comorbidities were identified based on
158 ICD-10 codes from claims data between one year before the index date and the date of PaHF
159 (Supplementary Table 2). The Charlson comorbidity index (CCI) that represents the overall
160 comorbidity load at baseline was calculated based on CCI-related variables with their ICD-10
161 codes (Supplementary Table 3). We identified medication history for renin-angiotensin system
162 (RAS) inhibitors including angiotensin-converting-enzyme inhibitors (ACEIs), angiotensin II
163 receptor blockers (ARBs), and ARNI. Information on beta-blockers, mineralocorticoid
164 receptor antagonists (MRAs), loop diuretics, thiazide, antiplatelet agents, and anticoagulants
165 were also retrieved. Pacemaker type and CRT-upgrade were defined using ICD-10 codes for
166 cardiac implantable electronic device and procedure (Supplementary Table 1).

167 ***Study outcomes and follow-up***

168 Two outcomes were considered in the analyses of the primary PPM cohort: the incidences of
169 PaHF and all-cause death after *de novo* PPM implantation. First, PaHF was strictly defined as
170 hospitalization with a newly assigned HF code (I50.9) following PPM implantation and ≥ 2
171 claims for HF medications among ACEIs/ARBs, beta-blockers, or MRAs. In addition, PPM
172 patients who received CRT-upgrade or ARNI treatment were considered to meet the PaHF
173 definition, regardless of HF code assignment or utilization of other HF medications. A broad
174 PaHF definition was further considered to include all patients with a newly assigned HF code.
175 Details of PaHF definitions are summarized in Supplementary Table 4. All main analyses
176 were conducted based on the strict PaHF definition, whereas sensitivity analyses were based
177 on the broad definition. Time-to-PaHF was defined as the time from the date of PPM
178 implantation to the first diagnosis of PaHF during the follow-up. It was censored at the time of
179 death, at the time of new HF-related events developing prior to PaHF diagnosis due to causes
180 other than PaHF, such as myocardial infarction, myocarditis, alcoholic cardiomyopathy,
181 cardiac sarcoidosis, and cardiac amyloidosis (Supplementary Table 5), or at the time of last
182 follow-up (December 31, 2019), whichever came first. Second, post-PPM follow-up duration
183 for all-cause mortality was defined as the time from the date of PPM implantation to the all-
184 cause death or the date of last follow-up, whichever came first.

185 The outcome of the secondary PaHF cohort was all-cause death. Post-PaHF follow-up
186 duration for all-cause mortality was defined as the time from the first diagnosis of PaHF to the
187 all-cause death or the date of last follow-up, whichever came first.–

188 ***Statistical analyses***

189 Baseline characteristics were described as means with standard deviations for continuous
190 variables, and as counts with percentages for categorical variables. Continuous variables were
191 compared using a Student's t-test or Mann–Whitney rank-sum test, whereas categorical

192 variables were compared using the χ^2 test or Fisher exact test, as appropriate. Incidence rates
193 of PaHF and all-cause death were calculated as events per 100 patient-years (PYs) with exact
194 Poisson 95 % confidence intervals (CIs).

195 The cumulative incidence rate of PaHF was estimated using the Kaplan-Meier (K-M)
196 method. In addition, the instantaneous incidence rate of PaHF was calculated using a
197 nonparametric smoothing method based on B-splines and a generalized linear mixed model
198 across the entire follow-up period.¹⁴ Multivariable Cox proportional hazards (PHs) regression
199 analysis was performed and HRs with 95% CIs were estimated to explore risk factors
200 associated with the occurrence of PaHF.

201 In the analysis of all-cause mortality after *de novo* PPM implantation, PaHF was
202 considered as a primary exposure. Because PaHF exposure was determined during the follow-
203 up period rather than at baseline, there exists a potential immortal-time bias when comparing
204 the mortality risk according to PaHF. Immortal time refers to the duration wherein the outcome
205 could not have occurred until the exposure was determined in observational studies¹⁵, and was
206 the time from the PPM implantation to the first diagnosis of PaHF in this study (Supplementary
207 Figure 2). To account for the potential immortal-time bias, PaHF was considered as a time-
208 dependent covariate in the extended K-M estimation and multivariable Cox PH regression
209 analysis. The extended K-M estimator updates the cohorts at each time of PaHF development
210 by allowing the PaHF group to contribute risk to the non-PaHF group before they experience
211 PaHF.¹⁶ In addition, multivariable Cox regression analysis with cubic spline functions was
212 performed to investigate the time-varying effect of time-dependent PaHF occurrence on all-
213 cause mortality across the entire follow-up period.¹⁷ To evaluate a possible modification on
214 the association between the PaHF and mortality, we conducted subgroup analyses stratified by
215 age (<65, 65–75, and >75 years), sex, comorbidities, pacemaker type (single- vs. dual-
216 chamber), pacing indication (AVB vs. SND), and medication (user vs. non-user). The age

217 stratification was determined based on studies and recent guidelines that have developed or
218 recommended risk stratification schemes for predicting stroke and thromboembolism in
219 patients with atrial fibrillation (AF).¹⁸⁻²⁰ The potential modification was tested by assessing
220 the interaction term of each subgrouping variable with PaHF.

221 In the secondary PaHF cohort and also in its PS-matched cohort, post-PaHF all-cause
222 mortality was compared between patient groups treated with and without CRT-upgrade
223 (Supplementary Figure 1). PS was defined as the probability of receiving CRT-upgrade, and
224 estimated using a multivariable binary logistic regression model with potential confounders.
225 PaHF patients with CRT-upgrade were matched to those without at a 1:4 ratio by greedy
226 matching without replacement using a caliper width equal to 0.25 times the pooled standard
227 deviation of the logit of the PS. Standardized mean differences (SMDs) were used for balance
228 diagnostics, and absolute values of $SMD > 0.1$ were considered as significant sign of imbalance.
229 Overall survival curves were estimated by the K-M method, and were compared between the
230 CRT-upgrade and non-upgrade groups using log-rank and stratified log-rank tests in the entire
231 and the PS-matched PaHF cohorts, respectively. Multivariable Cox PH models were used to
232 identify the associations between the CRT-upgrade status and all-cause mortality in both
233 cohorts, and the robust standard errors were estimated by considering matched pairs as clusters
234 in the matched cohort. To account for a potential violation against PH assumption, a sensitivity
235 analysis was conducted using the extended K-M method and multivariable Cox regression with
236 CRT-upgrade considered as a time-dependent covariate.

237 For our multivariable analysis, we carefully selected variables that have been previously
238 investigated as potential risk factors or confounders for HF or mortality in patients with PPM
239 or cardiovascular diseases. These variables include age,^{5,6, 21, 22} sex,^{4-7,21-23} diabetes mellitus
240 (DM),^{4,5,24} hypertension,^{4,6} coronary artery disease,^{4,6,21} peripheral artery disease,²⁵ chronic
241 kidney disease including end stage renal disease (CKD/ESRD),^{5,21,26} valvular heart disease,²⁷

242 AF,^{8,19,20,27,28} chronic obstructive pulmonary disease,^{6,27} pacing indication,^{5,22,29-31} CRT-
243 upgrade,^{2,32} RAS inhibitors,^{7,32,33} beta blockers,^{7,32,33} MRAs.^{7,32,33} To mitigate the risk of
244 overfitting, we included covariates with P values < 0.05 from univariable analyses and
245 clinically relevant variables (such as age and sex) in our multivariable analyses. Additionally,
246 we performed supplementary multivariable analyses, incorporating variables in a non-
247 parsimonious manner within both the primary and secondary cohorts to minimize the risk of
248 inadvertently excluding potentially important variables from the multivariable analysis.

249 Multicollinearity was assessed by variance inflation factor whose value greater than 4
250 was considered to indicate non-negligible collinearity. In multivariable time-to-event analyses,
251 the adjusted HRs were reported with 95% CIs. The PH assumption was tested based on the
252 scaled Schoenfeld residuals. Statistical significance was considered with two-sided P values
253 <0.05. Statistical analyses were performed using SAS version 9.3 (SAS Institute, Cary, NC,
254 USA) and R version 4.1.0 (The R Foundation, www.R-project.org).

255

256 **Results**

257 *Baseline characteristics of PPM cohort*

258 Among 32,216 PPM patients in the primary cohort, 13,632 (42.3%), 20,246 (63.4%), and
259 27,073 (84.0%) had male sex, AVB, and dual-chamber PPMs, respectively. The mean age was
260 70.6±12.1 years. Details of baseline characteristics of PPM cohort are summarized in Table 1.
261 The median follow-up duration was 3.8 (interquartile range, 1.7–6.7) years.

262 *PaHF incidence and risk factors*

263 New-onset PaHF developed in 4,170 (12.9%) of 32,216 PPM patients with an incidence rate
264 of 3.3 per 100 PYs (95% CI 3.2–3.4) (Supplementary Figures 1 and 3). The mean time-to-
265 PaHF was 3.0±2.8 years. When the broad PaHF definition was used, PaHF was observed in
266 6,118 (19.0%) patients with much higher incidence rate of 4.9 per 100 PYs (95% CI 4.8–5.0).

267 Patients in the PaHF group exhibited worse baseline features for most variables: more
268 advanced age, a higher proportion of comorbidities, and more frequent use of medications
269 (Table 1). The multivariable Cox regression analysis identified age (as continuous or
270 dichotomous variable), male, and various comorbidities as independent risk factors of PaHF
271 development (Table 2); diabetes mellitus (DM), hypertension, coronary heart disease, chronic
272 kidney disease including end stage renal disease (CKD/ESRD), valvular heart disease, AF, and
273 chronic obstructive pulmonary disease were significantly associated with PaHF occurrence. In
274 contrast, AVB (vs. SND) and peripheral artery diseases did not significantly affect PaHF
275 occurrence after PPM implantation.

276 ***Risk of all-cause mortality according to the development of PaHF***

277 During the study period, all-cause deaths occurred in 6,184 (19.2%) PPM patients. Patients
278 with PaHF had higher incidence rate of all-cause death than those without; 6.2 (95% CI 5.9–6.5)
279 vs. 4.0 (3.9–4.1) per 100 PYs, $P < 0.001$. After adjusting for immortal-time bias, the extended
280 K-M curves also demonstrated worse prognosis of the PaHF compared to non-PaHF groups
281 (Figure 1). On multivariable Cox PH regression analysis, PaHF development was identified as
282 an independent risk factor of post-PPM all-cause mortality (HR 3.11, 95% CI 2.93–3.32, P
283 < 0.001), with adjustment for immortal-time bias as well as potential confounders, including
284 age, sex, DM, hypertension, coronary artery disease, peripheral artery disease, CKD/ESRD,
285 valvular heart disease, AF, chronic obstructive pulmonary disease, pacing indication, CCI,
286 types of PPM, and medications (Supplementary Table 6). In most subgroup analyses, patients
287 with PaHF consistently had higher mortality risk than those without (Figure 2).

288 ***Time courses of PaHF incidence and PaHF-associated mortality***

289 The instantaneous incidence rates of strictly- and broadly-defined PaHFs were highest during
290 the first 6 months following PPM implantation (Figure 3A). However, they remained above
291 zero during the entire follow-up period, making L-shaped curves. Analysis of the time-varying

292 effect of PaHF on all-cause mortality, revealed that the PaHF-associated mortality risk was
293 also highest in the first 6 months, then gradually decreased reaching its nadir around 5 years
294 post-PPM (Figure 3B). Thereafter it began to rise up again with follow-up time, creating a U-
295 shaped curve. Overall, the risk of PaHF-associated mortality remained significantly throughout
296 the entire follow-up period.

297 *Prognosis of patients with PaHF according to CRT-upgrade*

298 Table 3 displayed baseline characteristics at the time of PaHF diagnosis for the entire and PS-
299 matched cohorts of PaHF patients. In the PS-matched cohort, most baseline characteristics
300 were well balanced between the two treatment groups, except for age ≥ 65 years (absolute SMD,
301 0.131) and use of ARNI (0.212) or loop diuretics (0.219).

302 During the median follow-up period of 1.9 (interquartile range, 0.7–2.6) years, a lower
303 post-PaHF all-cause mortality was observed for the CRT-upgrade group, compared to the non-
304 upgrade group in the entire cohort (incidence rate 4.1 [95% CI 3.0–5.5] vs. 14.6 [13.8–15.3]
305 per 100PYs, $P < 0.001$) and in the PS-matched cohort (4.1 [3.0–5.5] vs. 11.4 [10.3–12.6] per
306 100PYs, $P < 0.001$). The K-M curve analyses also indicated a better prognosis for PaHF patients
307 with CRT-upgrade compared to those without (log-rank P value < 0.001 for the entire cohort
308 and stratified log-rank P value < 0.001 for the matched cohort) (Figures 4A and 4B).

309 Patient factors such as age (as a dichotomous or continuous variable), male, DM or
310 CKD/ESRD were significantly associated with increased all-cause mortality, while treatment
311 modalities including CRT-upgrade, RAS inhibitors, and beta-blockers were independent
312 protective factors, with the lowest HR observed for CRT-upgrade in multivariable analysis
313 model 1 (HR 0.34, 95% CI 0.24–0.47, $P < 0.001$; Table 4 and Supplementary Table 7).
314 However, when RAS inhibitors were broken down into ACEIs/ARBs and ARNI, only the use
315 of ARNI was identified as a strong protective factor (HR 0.28, 95% CI 0.14–0.54, $P < 0.001$;
316 multivariable analysis model 2 in Table 4 and Supplementary Table 7).

317 *Sensitivity analyses*

318 Results of sensitivity analyses based on the broad PaHF definition were consistent with the
319 primary results based on the strict definition, demonstrating the PaHF group exhibited a
320 significantly higher mortality than the non-PaHF group in the whole population
321 (Supplementary Figures 4 and 5) and in various subgroup analyses (Supplementary Figure 6).
322 Because the time from PaHF diagnosis to CRT-upgrade was very short (median 0.0,
323 interquartile range 0.0–2.8 months), the immortal-time bias was not expected to be significant.
324 Nonetheless, an additional sensitivity analysis was conducted to adjust for the immortal-time
325 bias introduced by the PaHF-to-upgrade time. The results consistently indicated a significant
326 protective effect of CRT-upgrade on the all-cause death (HR 0.45, 95% CI 0.32–0.63, P
327 <0.001), compared to medical treatment alone without CRT-upgrade in patients with PaHF
328 (Supplementary Table 8). In addition, we conducted additional multivariable analyses which
329 incorporated variables in a non-parsimonious manner within both the primary and secondary
330 cohorts. The overall results remained consistent (Supplementary Tables 6 and 9).

331

332 **Discussion**

333 *Main findings and merits of this study*

334 Our main findings were: (1) PaHF, when strictly or broadly defined, occurred in 12.9% and
335 19.0% of PPM patients, respectively, during long-term follow-up of 3.8 (interquartile range,
336 1.7–6.7) years; (2) the overall post-PPM mortality rate was 19.2%. PaHF development was an
337 independent predictor for post-PPM all-cause death after adjusting for immortal-time bias and
338 other potential confounders, and the risk was approximately three times higher in the PaHF
339 group than in the non-PaHF group; (3) the PaHF incidence and PaHF-associated mortality rates
340 were highest for the first six months post-PPM. However, the risk was likely persistent and

341 increased again with follow-up time (Figures 3A and 3B); and (4) in the entire and propensity-
342 matched cohorts of patients with PaHF, CRT-upgrade (HR 0.34), RAS inhibitors (HR 0.71),
343 and beta blockers (HR 0.75) were identified as strong favorable prognostic factors for overall
344 survival. However, when RAS inhibitors were categorized into ACEIs/ARBs and ARNI, a
345 significant association with reduced mortality was observed only in ARNI, not in ACEIs/ARBs.

346 Our study has several merits compared to previous studies. First, this study was based
347 on the two largest real-world cohorts to date: the PPM and PaHF cohorts, potentially enhancing
348 the generalizability of our findings. Second, unlike previous studies^{1,6}, we evaluated more
349 rigorously the impact of PaHF on mortality risk, by addressing ‘the time-dependent occurrence
350 of PaHF’ and ‘the time-dependent effect of PaHF on mortality’. Third, more importantly, our
351 study is the first to investigate the effects of standard HF medical treatment, particularly the
352 latest RAS inhibitor of ARNI, and upgrading to CRT devices on the prognosis of patients with
353 PaHF, using a propensity score-matched nationwide cohort.

354 *PaHF incidence and predictors*

355 During the median post-PPM follow-up period of 3.8 (interquartile range, 1.7–6.7) years, the
356 PaHF incidence was 12.9% using the strict definition, which likely represented moderate to
357 severe PaHF. However, the incidence increased to 19.0% using the broad definition, probably
358 including mild forms of PaHF as well. Similar to our results, the PaHF incidence was 12.3%
359 in a large single-center study where PaHF was strictly defined by including patients with
360 moderate to severe LV systolic dysfunction.² However, a nationwide MarketScan database
361 study reported that 25.8% of PPM patients developed PaHF, using a broader PaHF definition
362 based only on the HF diagnosis code.²⁸

363 The independent predictors for PaHF identified in our study were also consistent with
364 previous reports: advanced age (≥ 65 years), male, DM, CKD/ESRD, and AF.^{5-7,21,24,28}
365 However, contrary to our initial expectation, AVB was not associated with PaHF risk (Table

366 2). This discrepancy might be because pacing indications (e.g., AVB or SND) cannot reflect
367 exact RV-pacing percentages. For example, in the DANPACE study, patients with SND who
368 were presumed to have a low RV-pacing burden, had a much higher RV-pacing percentage of
369 85% with dual-chamber PPM implanted.²⁹ In contrast, in the IDEAL RVP study, the RV-
370 pacing burden was below 40% in AVB patients who used PPM algorithms for minimizing RV-
371 pacing.³⁴ This explanation may also be the reason why a large-scale German registry study
372 showed no difference in the PaHF incidence (6% vs. 5.3%) or all-cause death (17% vs. 17%)
373 rates between AVB and SND groups.⁵

374 ***Post-PPM mortality***

375 Controversy remains regarding the mortality risk caused by chronic RV-pacing because PPM
376 algorithms for minimizing the RV-pacing burden have failed to reduce all-cause mortality in
377 previous randomized studies and a meta-analysis.^{5,22,29-31} However, these unexpected results
378 may be related to follow-up periods that were too short (e.g., mean duration of 2.5 years or less)
379 to verify the mortality benefit of the algorithms. Indeed, in our data, the PPM-to-PaHF and
380 PPM-to-death intervals were 3.0 ± 2.8 years and 3.6 ± 2.8 years on average, respectively.
381 Moreover, the risk of post-PPM mortality rise up again approximately 5 years after PPM
382 implant, making a U-shape curve over the entire follow-up period (Figure 3B and
383 Supplementary Figure 5).

384 In line with previous reports, CKD, male, and advanced age (≥ 65 years) were
385 significantly associated with increased mortality in patients with PaHF (Table 4). In CKD
386 patients, several factors, including ventricular hypertrophy, myocardial fibrosis, and uremia,
387 decelerate myocardial conduction velocity^{35,36}, aggravating pacing-induced dyssynchrony.
388 Furthermore, CKD and ESRD have been reported as independent predictors of PaHF and
389 mortality in PPM patients.^{6,21,26} Compared to women, men are more likely to have a larger
390 heart size and greater myocardial mass, consequently requiring more time to activate the whole

391 heart by single-site stimulation, and resulting in a more severe degree of pacing-induced
392 dyssynchrony and higher mortality.^{23,37} Greater susceptibility to PaHF in male patients with
393 larger hearts may be a counterpart phenomenon of better CRT responses in female patients
394 with smaller hearts.³⁸ The specific role of DM on PaHF occurrence or PaHF-associated
395 mortality has rarely been addressed. However, DM is frequently associated with advanced age,
396 CKD/ESRD, and coronary artery disease, which could potentially impact mortality risk.^{24,39}

397 ***PaHF prevention***

398 When PPM is indicated for patients with preserved EF or no pre-existing HF, prophylactic
399 CRT implantation may not be supported, considering the low incidence of PaHF observed in
400 our data (12.9%) and in the two most recent large-scale registry-based studies (10.6% and
401 25.8%).^{21,28} Instead, cardiac conduction system pacing might be the preferred option over
402 conventional PPM or prophylactic CRT for patients with multiple risk factors of PaHF,
403 particularly for younger patients with a high predicted RV-pacing burden.^{8,40} According to
404 our data, the absolute mortality rate was higher in older PPM patients; however, the relative
405 contribution of PaHF to mortality gradually increased in younger age groups ($P_{\text{interaction}} < 0.001$,
406 Figure 2 and Supplementary Figure 6). In elderly PPM patients, comorbidities would exert a
407 heavier impact on mortality than the RV-pacing burden. In contrast, the prognosis of younger
408 PPM patients might be more strongly affected by the RV-pacing burden because they are likely
409 to have fewer comorbidities but more RV-pacing burden during a longer and more active life.

410 ***PaHF monitoring***

411 After PPM implantation, there are no guidelines regarding when or how often patients with
412 PPM should be monitored for PaHF. Tayal et al. suggested a six-month echocardiographic
413 evaluation would likely identify the majority of PaHF patients based on their findings that the
414 PaHF incidence was significantly higher in the early phase (i.e., within six months post-PPM),
415 whereas the risk significantly decreased during the late phase (i.e., beyond six months).²¹

416 Indeed, our data supported these results, demonstrating that the risk of PaHF or its related
417 mortality was highest within six months (Figures 3A and 3B). However, no recommendation
418 was provided after six months. According to our data, the risk was unlikely to attenuate
419 thereafter. Particularly, PaHF-associated mortality began to rise up again approximately 5 years
420 after PPM implant. Furthermore, risk factors for PaHF or PaHF-associated mortality, such as
421 advanced age (≥ 65 years), DM, CKD/ESRD, or AF, could be accumulated with time,
422 sustaining or increasing the risks, even after six months post-implantation. Therefore, long-
423 term and regular follow-ups of cardiac function may be required after PPM implantation.

424 *PaHF management*

425 After a PaHF diagnosis, it is also unclear whether CRT-upgrade should be performed
426 immediately or HF medications should be prescribed for a certain period, for example, at least
427 three to six months before CRT-upgrade. In a recent interesting report from Duke University,
428 approximately 60% of patients with left bundle branch block and reduced EF ($< 35\%$), exhibited
429 no improvement or even worsening of their LV EF despite three to six months of guideline-
430 directed medical therapy (GDMT). Furthermore, the mean LV EF increase was only 2.0%,
431 significantly smaller than that in patients with a narrow QRS (8.0%, $P < 0.0001$). The authors
432 called into question current guidelines that mandate at least three months of GDMT before
433 CRT implantation, particularly in HF patients with left bundle branch block.³³ Likewise, the
434 beneficial effect of pre-CRT GDMT was not clear in pacing-dependent HF patients in some
435 studies.^{7,32} Indeed, in our study, beneficial effect of MRAs and ACEIs/ARBs were not clear
436 in the secondary cohort of patients with PaHF, while only ARNI and beta-blockers were closely
437 associated with reduced mortality (Table 4). Interestingly, our findings appear to corroborate
438 recent guidelines that recommend the prioritized use of ARNI over ACEIs or ARBs in HF
439 patients with reduced EF.^{41,42} In addition, the prognosis was significantly better for patients
440 who received CRT-upgrade in combination with medical treatment compared to those who

441 received medical treatment alone without CRT-upgrade. The K-M curve analyses suggest that
442 the prognosis of the two groups began to diverge significantly in the early stages after PaHF
443 diagnosis (Figure 4). Accordingly, immediate changes to biventricular pacing or conduction
444 system pacing along with HF medications, preferably ARNI and beta-blockers, might be a
445 more reasonable option than the delayed upgrade strategy.

446 The presence of hypertension was also shown to be associated with reduced mortality in the
447 PaHF cohort (Table 5). However, we speculate that this counterintuitive finding is not due to
448 the beneficial effect of hypertension, but rather to the facts that patients with hypertension
449 received HF medications with mortality benefit, especially RAS inhibitors and beta-blockers,
450 much more frequently than those without (absolute SMDs 1.621 and 1.042 for RAS inhibitors
451 and beta-blockers, respectively, Supplementary table 10).

452 ***Limitations***

453 We acknowledge several limitations. First, echocardiographic data were not available.
454 Therefore, we could not separately analyze the incidence of PaHF with preserved or reduced
455 EF. However, our sensitivity analysis used the broad PaHF definition, which likely
456 encompassed PaHF patients with preserved EF and demonstrated consistent results with the
457 main outcomes. Second, device interrogation data were lacking for this cohort. Therefore, the
458 correlation between the RV-pacing burden and the risk of PaHF occurrence or associated
459 mortality could not be evaluated quantitatively. In addition, the lack of RV-pacing data raises
460 the question of whether our PaHF cases were caused by RV-pacing-induced electromechanical
461 dyssynchrony. However, in Korea, CRT-upgrades are refundable only when RV-pacing
462 percentage exceeds 40% on PPM interrogation. Moreover, improved survival of PaHF patients
463 after CRT-upgrade is also likely to support that our PaHF patients were really under the
464 detrimental effects of chronic RV-pacing. Next, it may be premature to conclude ARNI is
465 superior to ACEIs/ARBs for the management of patients with PaHF. More data are needed to

466 validate our findings on the efficacy of ARNI in comparison with ACEIs/ARBs. Finally, the
467 impact of sodium-glucose cotransporter-2 inhibitors on overall mortality was not evaluated due
468 to the limited number of PaHF patients treated with the agent. Further studies are worth
469 conducting regarding the efficacy of sodium-glucose cotransporter-2 inhibitors or other novel
470 HF agents.

471 However, our study, despite its limitations, may offer valuable insights into the risk profile of
472 PaHF-associated mortality over the entire follow-up period, the optimal timing for CRT-
473 upgrade, and the selection of more suitable HF medications for patients with PaHF.

474

475 **Conclusions**

476 Our nationwide real-world cohort-based study found that PaHF development was closely
477 associated with increased mortality following PPM implantation while upgrading to CRT
478 devices and treatment with beta-blockers and ARNI were strong protective factors for all-cause
479 death in patients with PaHF. Furthermore, the PaHF incidence and PaHF-associated mortality
480 were highest during the early post-PPM phase (e.g., within six months), but the risks of PaHF
481 occurrence and associated mortality were likely to continue or increase again with time.
482 Therefore, regular and ongoing cardiac function assessments may be required following PPM
483 implantation. In addition, once PaHF is detected, immediate changes into cardiac physiological
484 pacing modalities, such as biventricular pacemaker or cardiac conduction system pacing, must
485 be considered, along with optimal HF medications.

486

487 **Acknowledgement**

488 We thank Mi Yang (Seoul Mental Health Welfare Center) for her great help in retrieving the
489 raw data, and Professor Minsu Park (Department of Information and Statistics, Chungnam
490 National University) for his expert opinions on the study design in the early stage of this study.

491

492 **Funding**

493 None declared.

494

495 **Disclosure of interest**

496 S.J.-P. received research grants from Boston Scientific, Biotronik, Abbott, and Medtronic. K.-

497 P. received research grants from Boston Scientific. Y.K.-O. received research grants from

498 Bayer AG, Daiichi Sankyo Company. All other authors declare no conflicts of interest.

499

500 **References**

- 501 1. Cho SW, Gwag HB, Hwang JK, Chun KJ, Park KM, On YK, Kim JS, Park SJ. Clinical
502 features, predictors, and long-term prognosis of pacing-induced cardiomyopathy. *Eur*
503 *J Heart Fail.* 2019;21:643-651. doi: 10.1002/ejhf.1427
- 504 2. Kiehl EL, Makki T, Kumar R, Gumber D, Kwon DH, Rickard JW, Kanj M, Wazni OM,
505 Saliba WI, Varma N, et al. Incidence and predictors of right ventricular pacing-induced
506 cardiomyopathy in patients with complete atrioventricular block and preserved left
507 ventricular systolic function. *Heart Rhythm.* 2016;13:2272-2278. doi:
508 10.1016/j.hrthm.2016.09.027
- 509 3. Cho EJ, Park SJ, Park KM, On YK, Kim JS. Paced QT interval as a risk factor for new-
510 onset left ventricular systolic dysfunction and cardiac death after permanent pacemaker
511 implantation. *Int J Cardiol.* 2016;203:158-163. doi: 10.1016/j.ijcard.2015.10.128
- 512 4. Boriani G, Vitolo M, Proietti M. Cardiomyopathy associated with long-term right
513 ventricular pacing: an intriguing clinical issue. *Eur J Heart Fail.* 2019;21:652-654. doi:
514 10.1002/ejhf.1449
- 515 5. Ebert M, Jander N, Minners J, Blum T, Doering M, Bollmann A, Hindricks G, Arentz
516 T, Kalusche D, Richter S. Long-Term Impact of Right Ventricular Pacing on Left
517 Ventricular Systolic Function in Pacemaker Recipients With Preserved Ejection
518 Fraction: Results From a Large Single-Center Registry. *J Am Heart Assoc.* 2016;5. doi:
519 10.1161/jaha.116.003485
- 520 6. Dor O, Haim M, Barrett O, Novack V, Konstantino Y. Incidence and Clinical Outcomes
521 of Pacing Induced Cardiomyopathy in Patients With Normal Left Ventricular Systolic
522 Function and Atrioventricular Block. *Am J Cardiol.* 2020;128:174-180. doi:
523 10.1016/j.amjcard.2020.05.017

- 524 7. Khurshid S, Epstein AE, Verdino RJ, Lin D, Goldberg LR, Marchlinski FE, Frankel
525 DS. Incidence and predictors of right ventricular pacing-induced cardiomyopathy.
526 *Heart Rhythm*. 2014;11:1619-1625. doi: 10.1016/j.hrthm.2014.05.040
- 527 8. Merchant FM, Mittal S. Pacing induced cardiomyopathy. *J Cardiovasc Electrophysiol*.
528 2020;31:286-292. doi: 10.1111/jce.14277
- 529 9. Choi EK. Cardiovascular Research Using the Korean National Health Information
530 Database. *Korean Circ J*. 2020;50:754-772. doi: 10.4070/kcj.2020.0171
- 531 10. Kim JA, Yoon S, Kim LY, Kim DS. Towards Actualizing the Value Potential of Korea
532 Health Insurance Review and Assessment (HIRA) Data as a Resource for Health
533 Research: Strengths, Limitations, Applications, and Strategies for Optimal Use of
534 HIRA Data. *J Korean Med Sci*. 2017;32:718-728. doi: 10.3346/jkms.2017.32.5.718
- 535 11. Kim JY, Kim SH, Myong JP, Kim YR, Kim TS, Kim JH, Jang SW, Oh YS, Lee MY,
536 Rho TH. Outcomes of Direct Oral Anticoagulants in Patients With Mitral Stenosis. *J*
537 *Am Coll Cardiol*. 2019;73:1123-1131. doi: 10.1016/j.jacc.2018.12.047
- 538 12. Choi YJ, Choi EK, Han KD, Jung JH, Park J, Lee E, Choe W, Lee SR, Cha MJ, Lim
539 WH, et al. Temporal trends of the prevalence and incidence of atrial fibrillation and
540 stroke among Asian patients with hypertrophic cardiomyopathy: A nationwide
541 population-based study. *Int J Cardiol*. 2018;273:130-135. doi:
542 10.1016/j.ijcard.2018.08.038
- 543 13. Park J, Kwon S, Choi E-K, Choi Y-j, Lee E, Choe W, Lee S-R, Cha M-J, Lim W-H,
544 Oh S. Validation of diagnostic codes of major clinical outcomes in a National Health
545 Insurance database. *International Journal of Arrhythmia*. 2019;20:1-7.
- 546 14. Rebora P, Salim A, Reilly M. Bshazard: a flexible tool for nonparametric smoothing of
547 the hazard function. *The R Journal*. 2014;6:114-122.

- 548 15. Axtell AL, Bhambhani V, Moonsamy P, Healy EW, Picard MH, Sundt TM, 3rd, Wasfy
549 JH. Surgery Does Not Improve Survival in Patients With Isolated Severe
550 Tricuspid Regurgitation. *J Am Coll Cardiol.* 2019;74:715-725. doi:
551 10.1016/j.jacc.2019.04.028
- 552 16. Snapinn SM, Jiang Q, Iglewicz B. Illustrating the impact of a time-varying covariate
553 with an extended Kaplan-Meier estimator. *The American Statistician.* 2005;59:301-307.
- 554 17. Heinzl H, Kaider A, Zlabinger G. Assessing interactions of binary time-dependent
555 covariates with time in cox proportional hazards regression models using cubic spline
556 functions. *Stat Med.* 1996;15:2589-2601. doi: 10.1002/(sici)1097-
557 0258(19961215)15:23<2589::Aid-sim373>3.0.Co;2-o
- 558 18. Olesen JB, Lip GY, Hansen ML, Hansen PR, Tolstrup JS, Lindhardsen J, Selmer C,
559 Ahlehoff O, Olsen AM, Gislason GH, et al. Validation of risk stratification schemes for
560 predicting stroke and thromboembolism in patients with atrial fibrillation: nationwide
561 cohort study. *Bmj.* 2011;342:d124. doi: 10.1136/bmj.d124
- 562 19. Joglar JA, Chung MK, Armbruster AL, Benjamin EJ, Chyou JY, Cronin EM, Deswal
563 A, Eckhardt LL, Goldberger ZD, Gopinathannair R, et al. 2023 ACC/AHA/ACCP/HRS
564 Guideline for the Diagnosis and Management of Atrial Fibrillation: A Report of the
565 American College of Cardiology/American Heart Association Joint Committee on
566 Clinical Practice Guidelines. *Circulation.* 2024;149:e1-e156. doi:
567 10.1161/cir.0000000000001193
- 568 20. Hindricks G, Potpara T, Dagres N, Arbelo E, Bax JJ, Blomström-Lundqvist C, Boriani
569 G, Castella M, Dan GA, Dilaveris PE, et al. 2020 ESC Guidelines for the diagnosis and
570 management of atrial fibrillation developed in collaboration with the European
571 Association for Cardio-Thoracic Surgery (EACTS): The Task Force for the diagnosis
572 and management of atrial fibrillation of the European Society of Cardiology (ESC)

- 573 Developed with the special contribution of the European Heart Rhythm Association
574 (EHRA) of the ESC. *Eur Heart J.* 2021;42:373-498. doi: 10.1093/eurheartj/ehaa612
- 575 21. Tayal B, Fruelund P, Sogaard P, Riahi S, Polcwiartek C, Atwater BD, Gislason G,
576 Risum N, Torp-Pedersen C, Kober L, et al. Incidence of heart failure after pacemaker
577 implantation: a nationwide Danish Registry-based follow-up study. *Eur Heart J.*
578 2019;40:3641-3648. doi: 10.1093/eurheartj/ehz584
- 579 22. Brunner M, Olschewski M, Geibel A, Bode C, Zehender M. Long-term survival after
580 pacemaker implantation. Prognostic importance of gender and baseline patient
581 characteristics. *Eur Heart J.* 2004;25:88-95. doi: 10.1016/j.ehj.2003.10.022
- 582 23. Krzemień-Wolska K, Tomasik A, Nowalany-Kozielska E, Jacheć W. Prognosis of
583 patients with implanted pacemakers in 4-year follow-up : Impact of right ventricular
584 pacing site. *Herz.* 2018;43:315-324. doi: 10.1007/s00059-017-4561-6
- 585 24. Chen HC, Liu WH, Tseng CH, Chen YL, Lee WC, Fang YN, Chong SZ, Chen MC.
586 Diabetes Increases Risk of Cardiovascular Events in Patients Receiving Permanent
587 Pacemaker: A Propensity Score-Matched Cohort Study. *J Diabetes Res.*
588 2022;2022:6758297. doi: 10.1155/2022/6758297
- 589 25. Butt JH, Kondo T, Yang M, Jhund PS, Docherty KF, Vaduganathan M, Claggett BL,
590 Hernandez AF, Lam CSP, Inzucchi SE, et al. Heart failure, peripheral artery disease,
591 and dapagliflozin: a patient-level meta-analysis of DAPA-HF and DELIVER. *Eur*
592 *Heart J.* 2023;44:2170-2183. doi: 10.1093/eurheartj/ehad276
- 593 26. Liao JN, Chao TF, Tuan TC, Kong CW, Chen SA. Long-term outcome in patients
594 receiving permanent pacemaker implantation for atrioventricular block: Comparison of
595 VDD and DDD pacing. *Medicine (Baltimore).* 2016;95:e4668. doi:
596 10.1097/md.0000000000004668

- 597 27. Ziaecian B, Fonarow GC. Epidemiology and aetiology of heart failure. *Nat Rev Cardiol.*
598 2016;13:368-378. doi: 10.1038/nrcardio.2016.25
- 599 28. Merchant FM, Hoskins MH, Musat DL, Prillinger JB, Roberts GJ, Nabutovsky Y,
600 Mittal S. Incidence and Time Course for Developing Heart Failure With High-Burden
601 Right Ventricular Pacing. *Circ Cardiovasc Qual Outcomes.* 2017;10. doi:
602 10.1161/circoutcomes.117.003564
- 603 29. Riahi S, Nielsen JC, Hjortshøj S, Thomsen PE, Højberg S, Møller M, Dalsgaard D,
604 Nielsen T, Asklund M, Friis EV, et al. Heart failure in patients with sick sinus syndrome
605 treated with single lead atrial or dual-chamber pacing: no association with pacing mode
606 or right ventricular pacing site. *Europace.* 2012;14:1475-1482. doi:
607 10.1093/europace/eus069
- 608 30. Stockburger M, Boveda S, Moreno J, Da Costa A, Hatala R, Brachmann J, Butter C,
609 Garcia Seara J, Rolando M, Defaye P. Long-term clinical effects of ventricular pacing
610 reduction with a changeover mode to minimize ventricular pacing in a general
611 pacemaker population. *Eur Heart J.* 2015;36:151-157. doi: 10.1093/eurheartj/ehu336
- 612 31. Shurrab M, Healey JS, Haj-Yahia S, Kaoutskaia A, Boriani G, Carrizo A, Botto G,
613 Newman D, Padeletti L, Connolly SJ, et al. Reduction in unnecessary ventricular pacing
614 fails to affect hard clinical outcomes in patients with preserved left ventricular function:
615 a meta-analysis. *Europace.* 2017;19:282-288. doi: 10.1093/europace/euw221
- 616 32. Khurshid S, Obeng-Gyimah E, Supple GE, Schaller R, Lin D, Owens AT, Epstein AE,
617 Dixit S, Marchlinski FE, Frankel DS. Reversal of Pacing-Induced Cardiomyopathy
618 Following Cardiac Resynchronization Therapy. *JACC Clin Electrophysiol.*
619 2018;4:168-177. doi: 10.1016/j.jacep.2017.10.002
- 620 33. Sze E, Samad Z, Dunning A, Campbell KB, Loring Z, Atwater BD, Chiswell K, Kisslo
621 JA, Velazquez EJ, Daubert JP. Impaired Recovery of Left Ventricular Function in

- 622 Patients With Cardiomyopathy and Left Bundle Branch Block. *J Am Coll Cardiol.*
623 2018;71:306-317. doi: 10.1016/j.jacc.2017.11.020
- 624 34. Murakami Y, Tsuboi N, Inden Y, Yoshida Y, Murohara T, Ihara Z, Takami M.
625 Difference in percentage of ventricular pacing between two algorithms for minimizing
626 ventricular pacing: results of the IDEAL RVP (Identify the Best Algorithm for
627 Reducing Unnecessary Right Ventricular Pacing) study. *Europace.* 2010;12:96-102.
628 doi: 10.1093/europace/eup252
- 629 35. Boriani G, Savelieva I, Dan GA, Deharo JC, Ferro C, Israel CW, Lane DA, La Manna
630 G, Morton J, Mitjans AM, et al. Chronic kidney disease in patients with cardiac rhythm
631 disturbances or implantable electrical devices: clinical significance and implications for
632 decision making-a position paper of the European Heart Rhythm Association endorsed
633 by the Heart Rhythm Society and the Asia Pacific Heart Rhythm Society. *Europace.*
634 2015;17:1169-1196. doi: 10.1093/europace/euv202
- 635 36. Jankowski J, Floege J, Fliser D, Böhm M, Marx N. Cardiovascular Disease in Chronic
636 Kidney Disease: Pathophysiological Insights and Therapeutic Options. *Circulation.*
637 2021;143:1157-1172. doi: 10.1161/circulationaha.120.050686
- 638 37. Riesenhuber M, Spannauer A, Rauscha F, Schmidinger H, Boszotta A, Pezawas T,
639 Schukro C, Gwechenberger M, Stix G, Anvari A, et al. Sex Differences and Long-Term
640 Outcome in Patients With Pacemakers. *Front Cardiovasc Med.* 2020;7:569060. doi:
641 10.3389/fcvm.2020.569060
- 642 38. Varma N, Lappe J, He J, Niebauer M, Manne M, Tchou P. Sex-Specific Response to
643 Cardiac Resynchronization Therapy: Effect of Left Ventricular Size and QRS Duration
644 in Left Bundle Branch Block. *JACC Clin Electrophysiol.* 2017;3:844-853. doi:
645 10.1016/j.jacep.2017.02.021

- 646 39. Kirkman MS, Briscoe VJ, Clark N, Florez H, Haas LB, Halter JB, Huang ES,
647 Korytkowski MT, Munshi MN, Odegard PS, et al. Diabetes in older adults. *Diabetes*
648 *Care*. 2012;35:2650-2664. doi: 10.2337/dc12-1801
- 649 40. Tokavanich N, Prasitlumkum N, Mongkonsritragoon W, Cheungpasitporn W,
650 Thongprayoon C, Vallabhajosyula S, Chokesuwattanaskul R. A network meta-analysis
651 and systematic review of change in QRS duration after left bundle branch pacing, His
652 bundle pacing, biventricular pacing, or right ventricular pacing in patients requiring
653 permanent pacemaker. *Sci Rep*. 2021;11:12200. doi: 10.1038/s41598-021-91610-8
- 654 41. Heidenreich PA, Bozkurt B, Aguilar D, Allen LA, Byun JJ, Colvin MM, Deswal A,
655 Drazner MH, Dunlay SM, Evers LR, et al. 2022 AHA/ACC/HFSA Guideline for the
656 Management of Heart Failure: A Report of the American College of
657 Cardiology/American Heart Association Joint Committee on Clinical Practice
658 Guidelines. *Circulation*. 2022;145:e895-e1032. doi: 10.1161/cir.0000000000001063
- 659 42. Wang Y, Zhou R, Lu C, Chen Q, Xu T, Li D. Effects of the Angiotensin-Receptor
660 Neprilysin Inhibitor on Cardiac Reverse Remodeling: Meta-Analysis. *J Am Heart*
661 *Assoc*. 2019;8:e012272. doi: 10.1161/jaha.119.012272
- 662
- 663

664 **Figure legends**

665

666 **Figure 1. Extended Kaplan–Meier survival curves for all-cause death**

667 Overall survival of patients with PaHF was significantly reduced compared to those without,
668 even adjusted for time from PPM implant to PaHF diagnosis as a time-dependent covariate.

669 Hazard ratio (HR) of patients with PaHF relative to those without, along with 95% confidence
670 interval (CI) and P value for the difference between the two curves, were derived from the
671 corresponding adjusted Cox regression analysis.

672 Abbreviations: PaHF, pacemaker-associated heart failure; PPM, permanent pacemaker.

673

674 **Figure 2. Forest plot of association between PaHF and all-cause mortality by subgroups.**

675 Patients with PaHF were consistently associated with higher mortality than those without,
676 regardless of age, sex, comorbidities, or use of HF medications.

677 Abbreviations: PaHF, pacemaker-associated heart failure; CI, confidence interval; CAD,
678 coronary artery disease; PAD, peripheral artery disease; CKD, chronic kidney disease; ESRD,
679 end-stage renal disease; VHD, valvular heart disease; AF, atrial fibrillation; COPD, chronic
680 obstructive pulmonary disease; SND, sinus node dysfunction; AVB, atrioventricular block;
681 ACEI, angiotensin-converting enzyme inhibitor; ARB, angiotensin receptor blocker; MRA,
682 mineralocorticoid receptor antagonist.

683

684 **Figure 3. Time-varying instantaneous incidence rates of PaHF occurrence (A) and hazard
685 ratio of PaHF on all-cause mortality (B) throughout the entire follow-up period.**

686 Enlarged graphs depicting the first year after PPM implant were overlaid for clarity (A). The
687 hazard ratios of post-PPM mortality by cubic spline Cox regression analysis were invariably
688 greater in the PaHF group than in the non-PaHF group throughout the entire follow-up period.

689 The solid and dashed lines represent the hazard ratio and its 95% confidence interval,
690 respectively (B).

691 Abbreviations: PaHF, pacemaker-associated heart failure; PPM, permanent pacemaker.

692

693 **Figure 4. Kaplan–Meier survival curves for all-cause death in the secondary PaHF cohort.**

694 The long-term prognosis was significantly improved for patients who received CRT-upgrade
695 in combination with medical treatment compared to those who received medical treatment
696 alone without CRT-upgrade.

697 Abbreviations: CRT, cardiac resynchronisation therapy; PaHF, pacemaker-associated heart
698 failure.

699

700

701 **Supplementary Figure Legends**

702 **Supplementary Figure 1. Study profile**

703 Abbreviations: PPM, permanent pacemaker; HF, heart failure; PaHF, pacemaker-associated
704 heart failure; CRT, cardiac resynchronisation therapy.

705 *, 4 patients died on the day of PaHF diagnosis.

706

707 **Supplementary Figure 2. Graphical depiction of immortal-time bias in the PPM cohort**

708 Abbreviations: PaHF, pacemaker-associated heart failure; PPM, permanent pacemaker.

709

710 **Supplementary Figure 3. Cumulative incidence rates of PaHF development according to
711 strict and broad definitions.**

712 Abbreviations: PaHF, pacemaker-associated heart failure.

713

714 **Supplementary Figure 4. Extended Kaplan–Meier survival curves for all-cause death in**
715 **PPM cohort according to the occurrence of broadly-defined PaHF.**

716 Abbreviations: PaHF, pacemaker-associated heart failure.

717

718 **Supplementary Figure 5. Time-varying hazard ratio of broadly-defined PaHF on all-**
719 **cause mortality throughout entire follow-up period.**

720 Hazard ratios across time were estimated using a multivariable Cox regression analysis with a
721 cubic spline function. Solid and dashed lines refer to hazard ratio and its 95% confidence
722 interval, respectively.

723 Abbreviations: PaHF, pacemaker-associated heart failure; PPM, permanent pacemaker.

724

725 **Supplementary Figure 6. Forest plot of association between broadly-defined PaHF and**
726 **all-cause mortality by subgroups.**

727 Abbreviations: PaHF, pacemaker-associated heart failure; CI, confidence interval; CAD,
728 coronary artery disease; PAD, peripheral artery disease; CKD, chronic kidney disease; ESRD,
729 end-stage renal disease; VHD, valvular heart disease; AF, atrial fibrillation; COPD, chronic
730 obstructive pulmonary disease; SND, sinus node dysfunction; AVB, atrioventricular block;
731 ACEI, angiotensin-converting enzyme inhibitor; ARB, angiotensin receptor blocker; MRA,
732 mineralocorticoid receptor antagonist.

733

734 **Supplementary Figure 7. Graphical depiction of immortal-time bias in the PaHF cohort**

735 Abbreviations: CRT, cardiac resynchronization therapy; PaHF, pacemaker-associated heart
736 failure.

737

738 **Supplementary Figure 8. Extended Kaplan–Meier survival curves for all-cause death in**
739 **PaHF cohort.**

740 Overall survival according to CRT-upgrade after adjusting for immortal-time bias and potential
741 confounders (A) before propensity score matching, and (B) after propensity score matching.

742 Abbreviations: CRT, cardiac resynchronization therapy; PaHF, pacemaker-associated heart
743 failure.

744

745

1 **Table 1.** Baseline characteristics of the PPM cohort

Variables	Overall (n = 32 216)	PaHF (n = 4170)	No PaHF (n = 28 046)	aSMD	P value
<i>Demographics and medical history</i>					
Age, years	70.6 ± 12.1	71.9 ± 11.2	70.4 ± 12.2	0.128	<.001
Age ≥ 65 years	24 033 (74.6)	3314 (79.5)	20 719 (73.9)	0.133	<.001
Male	13 632 (42.3)	1815 (43.5)	11 817 (42.1)	0.028	0.093
Diabetes	10 291 (31.9)	1578 (37.8)	8713 (31.1)	0.143	<.001
Hypertension	24 711 (76.7)	3557 (85.3)	21 154 (75.4)	0.250	<.001
Coronary artery disease	13 003 (40.4)	2170 (52.0)	10 833 (38.6)	0.272	<.001
Peripheral artery disease	7453 (23.1)	1015 (24.3)	6438 (23.0)	0.033	0.050
CKD/ESRD	2263 (7.0)	390 (9.4)	1873 (6.7)	0.099	<.001
Valvular heart disease	2976 (9.2)	631 (15.1)	2345 (8.4)	0.211	<.001
Atrial fibrillation	7297 (22.7)	1169 (28.0)	6128 (21.8)	0.143	<.001
COPD	6294 (19.5)	1007 (24.1)	5287 (18.9)	0.129	<.001
CCI ≥ 3 unit	19 612 (60.9)	2885 (69.2)	16 727 (59.6)	0.200	<.001
<i>Pacemaker-related variables</i>					
AV block	20 246 (63.4)	2502 (60.0)	17 744 (63.3)	0.068	<.001
Sinus node dysfunction	11 675 (36.6)	1631 (39.1)	10 044 (35.8)	0.262	<.001
Dual chamber	27 073 (84.0)	3136 (75.2)	23 937 (85.3)	0.262	<.001
<i>Medications</i>					
ACEIs or ARBs	21 490 (66.7)	3309 (79.4)	18 181 (64.8)	0.328	<.001

Beta blockers	13 905 (43.2)	2390 (57.3)	11 515 (41.1)	0.330	<.001
MRAs	5274 (16.4)	1222 (29.3)	4072 (14.5)	0.363	<.001
Loop diuretics	12 611 (39.1)	2389 (57.3)	10 222 (36.4)	0.427	<.001
Thiazide	6200 (19.2)	1038 (24.9)	5162 (18.4)	0.158	<.001
Antiplatelet agents	19 301 (59.9)	2990 (71.7)	16311 (58.2)	0.287	<.001
Anticoagulants	6382 (19.8)	1127 (27.0)	5255 (18.7)	0.198	<.001

2 Values are expressed as means \pm standard deviations or n (%).

3 Abbreviations: PPM, permanent pacemaker; PaHF, pacemaker-associated heart failure; aSMD, absolute standardised mean difference; CKD,
4 chronic kidney disease; ESRD, end-stage renal disease; COPD, chronic obstructive pulmonary disease; CCI, Charlson comorbidity index; AV
5 block, atrioventricular block; ACEIs, angiotensin-converting enzyme inhibitors; ARBs, angiotensin II receptor antagonists; MRAs,
6 mineralocorticoid receptor antagonists.

7 **Table 2.** Independent risk factors of pacemaker-associated heart failure in the PPM cohort

Variable	<i>Univariable analyses</i>		<i>Multivariable analysis model 1</i>		<i>Multivariable analysis model 2</i>	
	HR (95% CI)	P value	HR (95% CI)	P value	HR (95% CI)	P value
Age (continuous)	1.03 (1.02 to 1.03)	<.001	1.02 (1.02 to 1.02)	<.001		
Age ≥ 65 years	1.77 (1.64 to 1.91)	<.001			1.43 (1.32 to 1.55)	<.001
Male	1.15 (1.08 to 1.22)	<.001	1.09 (1.03 to 1.16)	0.005	1.08 (1.01 to 1.15)	0.023
Diabetes mellitus	1.53 (1.44 to 1.63)	<.001	1.15 (1.07 to 1.23)	<.001	1.14 (1.06 to 1.22)	<.001
Hypertension	2.06 (1.90 to 2.25)	<.001	1.41 (1.29 to 1.54)	<.001	1.49 (1.36 to 1.64)	<.001
Coronary artery disease	1.66 (1.56 to 1.77)	<.001	1.35 (1.26 to 1.43)	<.001	1.36 (1.28 to 1.45)	<.001
Peripheral artery disease	1.19 (1.11 to 1.27)	<.001	0.97 (0.90 to 1.04)	0.355	0.97 (0.90 to 1.05)	0.471
CKD/ESRD	2.13 (1.92 to 2.37)	<.001	1.48 (1.32 to 1.65)	<.001	1.49 (1.34 to 1.67)	<.001
Valvular heart disease	1.80 (1.65 to 1.96)	<.001	1.69 (1.55 to 1.84)	<.001	1.65 (1.51 to 1.80)	<.001
Atrial fibrillation	1.92 (1.79 to 2.06)	<.001	1.70 (1.58 to 1.83)	<.001	1.70 (1.58 to 1.84)	<.001
COPD	1.44 (1.34 to 1.54)	<.001	1.18 (1.10 to 1.27)	<.001	1.20 (1.11 to 1.29)	<.001
AVB versus SND	0.90 (0.85 to 0.96)	0.001	0.99 (0.92 to 1.05)	0.679	1.00 (0.94 to 1.07)	0.985

8 Abbreviations: PPM, permanent pacemaker; HR, hazard ratio; CI, confidence interval; CKD, chronic kidney disease; ESRD, end-stage renal
 9 disease; COPD, chronic obstructive pulmonary disease; AVB, atrioventricular block; SND, sinus node dysfunction.

10

11 **Table 3.** Baseline characteristics of PaHF cohorts

Variables	Entire PaHF cohort			PS-matched PaHF cohort		
	CRT-upgrade* (n = 330)	No CRT-upgrade* (n = 3836)	aSMD	CRT-upgrade* (n = 316)	No CRT-upgrade* (n = 1139)	aSMD
<i>Demographics and medical history</i>						
Age, years	67.5 ± 13.7	75.6 ± 10.5	0.670	67.7 ± 13.4	70.3 ± 12.4	0.196
Age ≥ 65 years	215 (65.2)	3313 (86.4)	0.511	207 (65.5)	817 (71.7)	0.131
Male	155 (47.0)	1658 (43.2)	0.075	149 (47.2)	524 (46.0)	0.022
Diabetes	89 (27.0)	1270 (33.1)	0.134	84 (26.6)	342 (30.0)	0.078
Hypertension	247 (74.8)	2944 (76.7)	0.044	236 (74.7)	895 (78.6)	0.089
Coronary artery disease	183 (55.5)	2725 (71.0)	0.328	174 (55.1)	651 (57.2)	0.042
Peripheral artery disease	113 (34.2)	1573 (41.0)	0.140	111 (35.1)	418 (36.7)	0.033
CKD/ESRD	39 (11.8)	720 (18.8)	0.194	39 (12.3)	168 (14.7)	0.073
Valvular heart disease	60 (18.2)	742 (19.3)	0.030	54 (17.1)	176 (15.5)	0.043
Atrial fibrillation	116 (35.2)	1881 (49.0)	0.284	116 (36.7)	439 (38.5)	0.038
COPD	117 (35.5)	1793 (46.7)	0.231	111 (35.1)	419 (36.8)	0.035
<i>Pacemaker-related variables</i>						
AV block	231 (70.0)	2284 (59.5)	0.255	226 (71.5)	790 (69.4)	0.048
Sinus node disease	90 (27.3)	1524 (39.7)		90 (28.5)	349 (30.6)	
Dual chamber	289 (87.1)	2843 (73.9)	0.338	276 (87.3)	987 (86.7)	0.021
<i>Medications</i>						

RAS inhibitors [†]	220 (66.7)	2425 (63.2)	0.072	209 (66.1)	786 (69.0)	0.061
ARNI	21 (6.4)	296 (7.7)	0.053	19 (6.0)	126 (11.1)	0.212
Beta blockers	151 (45.8)	1964 (51.2)	0.109	141 (44.6)	523 (45.9)	0.026
MRAs	106 (32.1)	1121 (29.2)	0.063	97 (30.7)	359 (31.5)	0.018
Loop diuretics	146 (44.2)	2151 (56.1)	0.238	135 (42.7)	610 (53.6)	0.219
Thiazide	17 (5.2)	211 (5.5)	0.016	17 (5.4)	52 (4.6)	0.036

12 Values were expressed as means \pm standard deviations or n (%).

13 *, CRT-upgrade and No CRT-upgrade represent patients who were treated with CRT-upgrade plus HF medications and those with HF
14 medications alone without CRT-upgrade, respectively.

15 [†], RAS inhibitors included ACEIs, ARBs, and ARNI.–

16 Abbreviations: PaHF, pacemaker-associated heart failure; PS, propensity score; CRT, cardiac resynchronisation therapy; aSMD, absolute
17 standardised mean difference; CKD, chronic kidney disease; ESRD, end-stage renal disease; COPD, chronic obstructive pulmonary disease; AV
18 block, atrioventricular block; ACEIs, angiotensin-converting enzyme inhibitors; ARBs, angiotensin II receptor antagonists; ARNI, angiotensin
19 receptor neprilysin inhibitor; MRAs, mineralocorticoid receptor antagonists.

20

21 **Table 4.** Independent risk factors of all-cause mortality in the propensity score-matched PaHF cohort

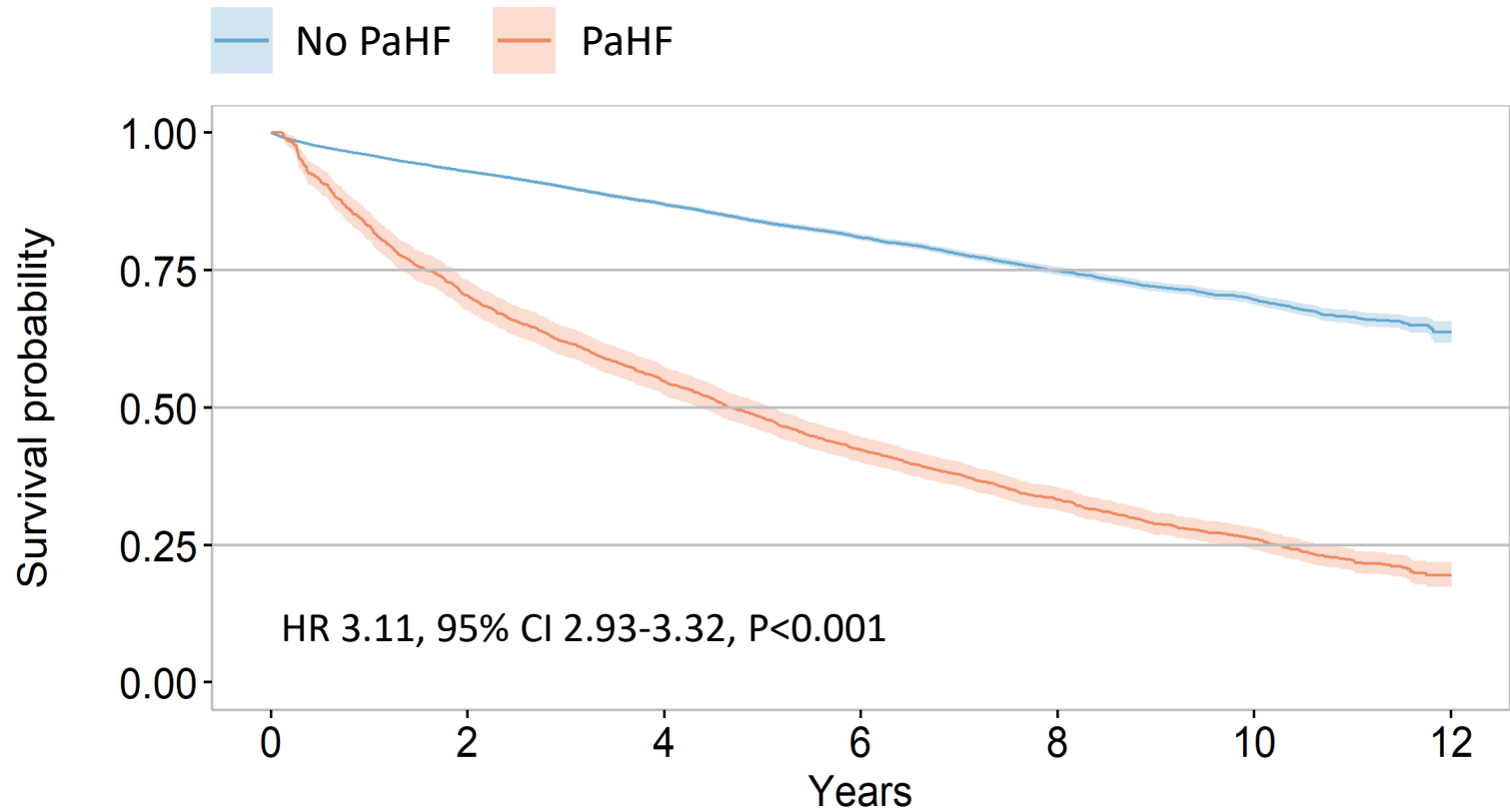
Variable	<i>Univariable analyses</i>		<i>Multivariable analysis model 1</i>		<i>Multivariable analysis model 2</i>	
	HR (95% CI)	P value	HR (95% CI)	P value	HR (95% CI)	P value
CRT-upgrade	0.36 (0.26 to 0.49)	<.001	0.34 (0.24 to 0.47)	<.001	0.32 (0.23 to 0.45)	<.001
Age ≥ 65 years*	2.57 (1.98 to 3.33)	<.001	2.53 (1.87 to 3.41)	<.001	2.58 (1.90 to 3.50)	<.001
Male	1.19 (0.99 to 1.44)	0.063	1.26 (1.04 to 1.52)	0.019	1.30 (1.08 to 1.57)	0.006
Diabetes mellitus	1.45 (1.18 to 1.77)	<.001	1.27 (1.02 to 1.58)	0.033	1.25 (1.01 to 1.56)	0.045
Hypertension	0.60 (0.47 to 0.77)	<.001	0.53 (0.39 to 0.71)	<.001	0.46 (0.34 to 0.63)	<.001
Coronary artery disease	1.21 (0.99 to 1.48)	0.063				
Peripheral artery disease	1.20 (0.97 to 1.48)	0.098				
CKD/ESRD	2.22 (1.78 to 2.77)	<.001	1.83 (1.44 to 2.32)	<.001	1.77 (1.40 to 2.25)	<.001
Valvular heart disease	0.76 (0.58 to 1.00)	0.048	1.00 (0.75 to 1.33)	0.999	0.97 (0.73 to 1.29)	0.837
Atrial fibrillation	0.72 (0.57 to 0.91)	0.006	0.75 (0.59 to 0.94)	0.014	0.82 (0.65 to 1.04)	0.103
COPD	1.38 (1.13 to 1.69)	0.002	1.22 (1.01 to 1.49)	0.043	1.20 (0.99 to 1.46)	0.063
RAS inhibitors [†]	0.59 (0.48 to 0.73)	<.001	0.71 (0.56 to 0.88)	0.002		
ACEIs or ARBs [†]	0.71 (0.57 to 0.87)	0.001			0.86 (0.68 to 1.10)	0.239
ARNI [†]	0.30 (0.16 to 0.55)	<.001			0.28 (0.14 to 0.54)	<.001
Beta blockers	0.66 (0.54 to 0.82)	<.001	0.75 (0.61 to 0.93)	0.010	0.76 (0.61 to 0.93)	0.009
MRAs	1.14 (0.91 to 1.41)	0.248				

22 *, Age as a continuous variable was also identified as an independent predictor (Supplementary Table 7).

23 †, RAS inhibitors included ACEIs, ARBs, and ARNI. The variable of RAS inhibitors was included into the Multivariable analysis model 1 as a
24 single variable while ACEIs/ARBs and ARNI separately into the Multivariable analysis model 2.

25 Abbreviations: PaHF, pacemaker-associated heart failure; PS, propensity score; HR, hazard ratio; CI, confidence interval; CRT, cardiac
26 resynchronisation therapy; CKD, chronic kidney disease; ESRD, end-stage renal disease; COPD, chronic obstructive pulmonary disease; ACEIs,
27 angiotensin-converting enzyme inhibitors; ARBs, angiotensin II receptor antagonists; ARNI, angiotensin receptor neprilysin inhibitor; MRAs,
28 mineralocorticoid receptor antagonists; AVB, atrioventricular block; SND, sinus node dysfunction; PPM, permanent pacemaker.

Figure 1



No PaHF	32216	21394	13929	8470	4593	1938	7
PaHF	0	1327	1338	1105	805	412	4

Figure 2

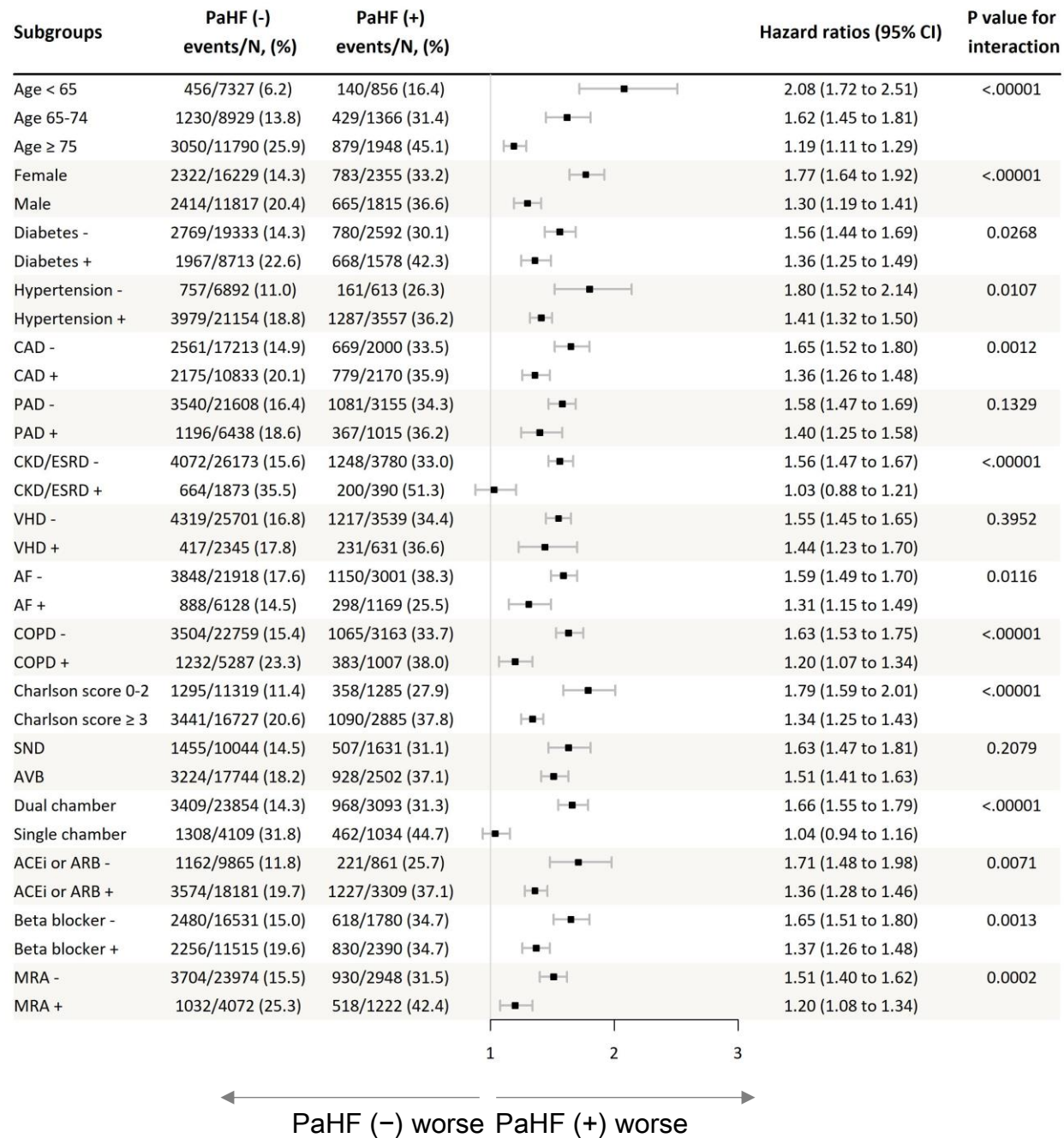


Figure 3(A)

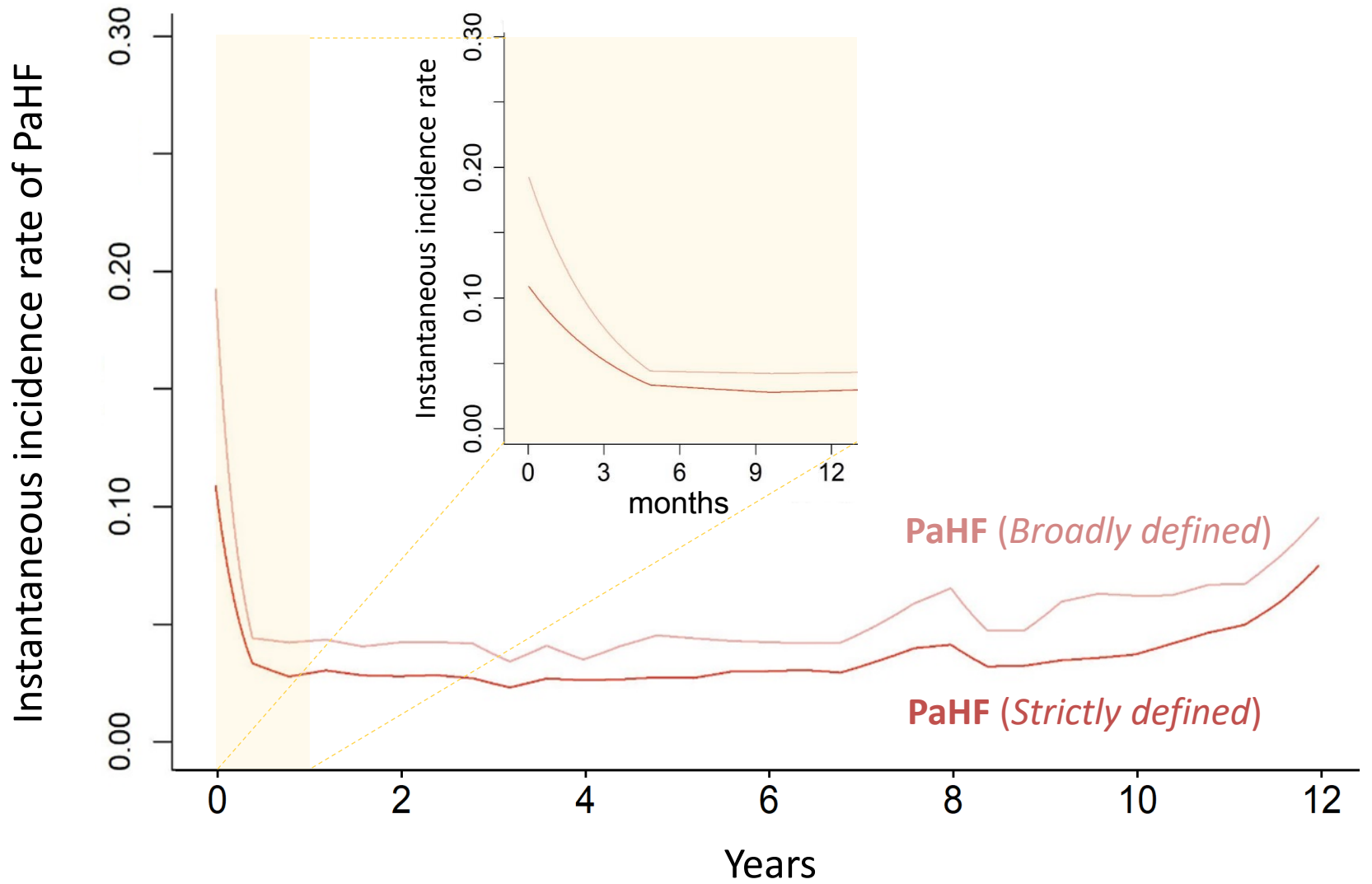


Figure 3(B)

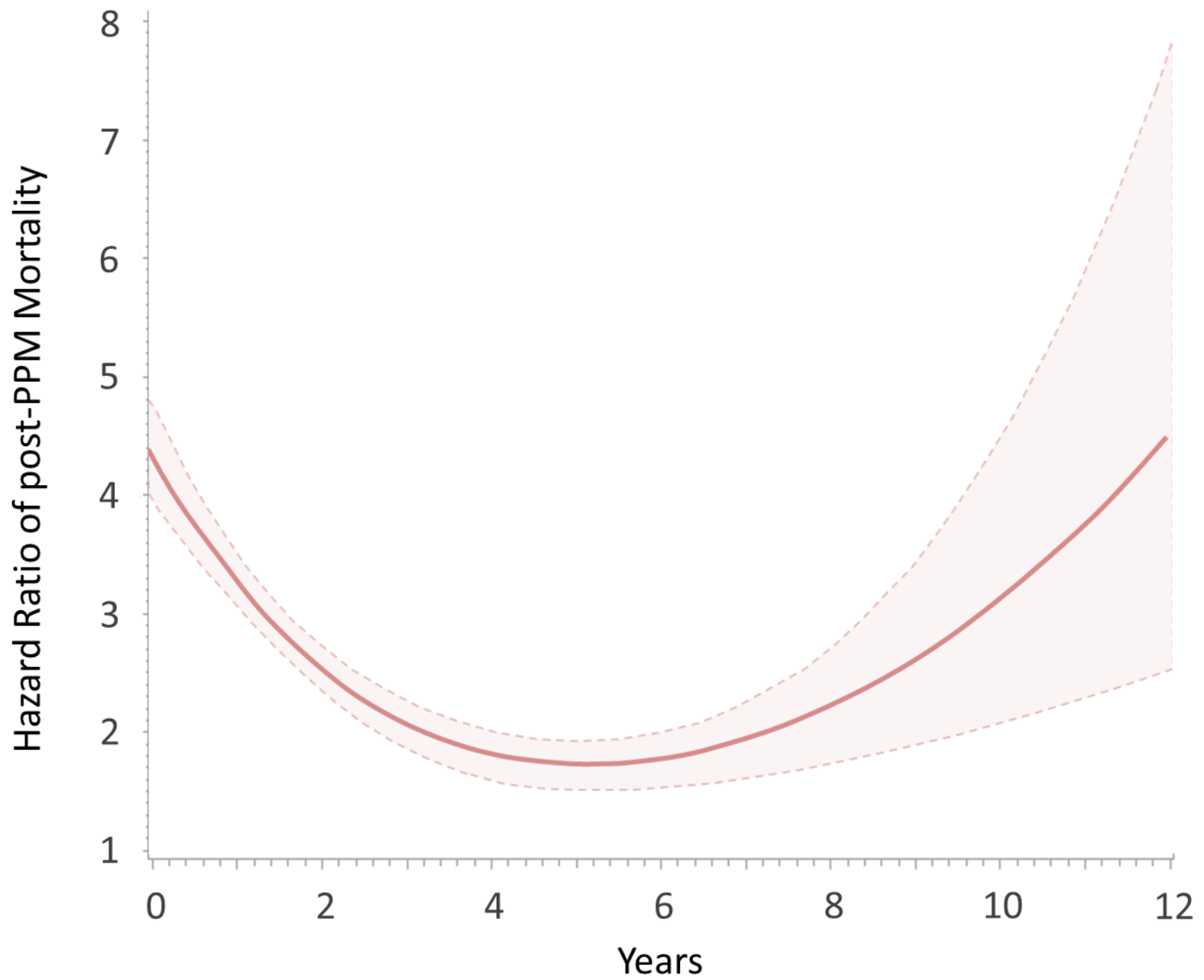
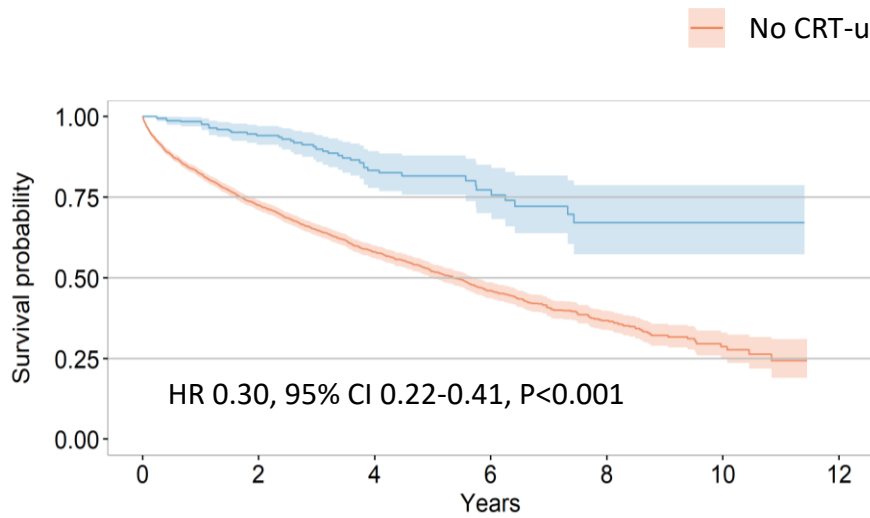


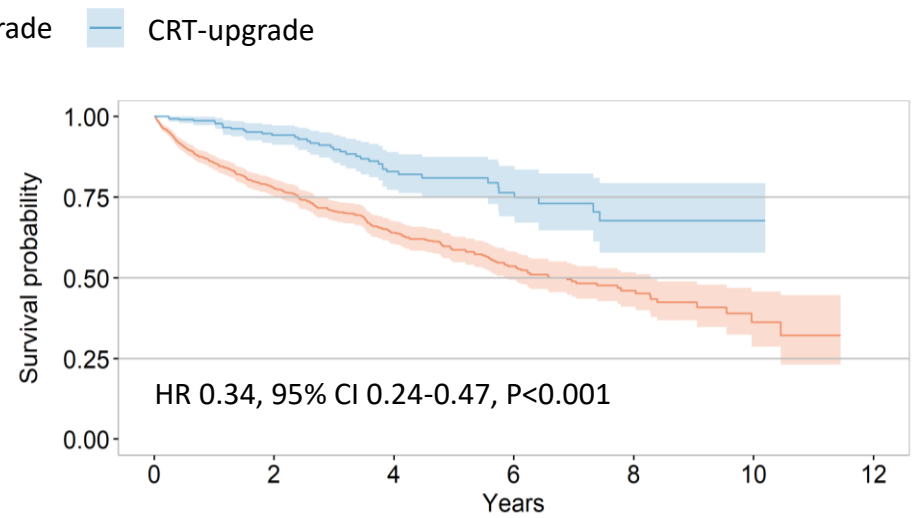
Figure 4

(A) Before Propensity Score Matching



No CRT	3836	1791	815	374	145	32	0
CRT	330	184	102	51	12	2	0

(B) After Propensity Score Matching



No CRT	1139	572	274	132	53	13	0
CRT	316	175	97	48	11	1	0