

1 **Adverse events affecting recovery from seasonal influenza**
2 **vaccination in the hypertensive population: A population-based**
3 **pharmacovigilance analysis**

4 Short title: AEs affecting flu vaccine recovery in hypertensives

5 Hao Wu^{1,2}, Xiaona He^{1,2}, Yu Cao^{1,2}, Wei Gao^{1,2,*}

6

7 ¹ Department of Epidemiology & Health Statistics, School of Public Health, Jiangxi

8 Medical College, Nanchang University, Nanchang, Jiangxi, China

9 ² Jiangxi Provincial Key Laboratory of Disease Prevention and Public Health,

10 Nanchang University, Nanchang, China

11

12 *Corresponding author

13 E-mail: wei.gao@ncu.edu.cn (Wei Gao)

14

15 **Abstract**

16 Seasonal influenza vaccination is crucial for preventing influenza and its complications.

17 Data from the U.S. Vaccine Adverse Event Reporting System (VAERS) indicate a

18 higher proportion of adverse events (AEs) after influenza vaccination in hypertensive

19 people. However, there is limited evidence on AEs in hypertensive people following

20 seasonal influenza vaccination. We collected a total of 4647 individuals on seasonal

21 influenza vaccination and 6380 AEs from VAERS for hypertensive people aged 18

NOTE: This preprint reports new research that has not been certified by peer review and should not be used to guide clinical practice.

22 years or older from 1 January 2013 to 23 June 2023. We conducted propensity score
23 matching (PSM) by adjusting for the demographic characteristics of the seasonal
24 influenza-vaccinated hypertensive population and the season of onset. Cox regression
25 analysis was used to calculate the risk ratio of reported adverse events (AEs) that
26 affected recovery after seasonal influenza vaccination. Most AEs were nonserious and
27 occurred within 48 hours. The most common AEs were general disorders and
28 administration site conditions (therapeutic and non-therapeutic responses,
29 inflammation) and musculoskeletal and connective tissue disorders (musculoskeletal
30 and connective tissue pain and discomfort, bursal disorders, joint-related signs, and
31 symptoms). All three types of seasonal influenza vaccines were associated with
32 injection site reactions (47.07% trivalent influenza vaccine [TIA], hazard ratio, HR
33 2.04, 95% confidence interval, CI 1.22–3.40; 20.00% quadrivalent influenza vaccine
34 [QIA], HR 2.81, 95% CI, 1.81–4.37; 67.48% influenza vaccine, unknown manufacturer
35 [FLUX], HR 2.83, 95% CI, 1.12–7.15) and were the AEs affecting the largest
36 proportion of delayed recoveries in the hypertensive population. Potential AEs
37 following seasonal influenza vaccination may affect the recovery of the hypertensive
38 population. The majority of AEs reported were general disorders, predominantly
39 injection site reactions, and nonserious.

40

41 **Introduction**

42 Influenza is a highly transmissible viral infection caused by the influenza virus, leading

43 to severe respiratory illnesses in approximately 3–5 million people and 290,000–
44 650,000 deaths globally every year[1,2]. Influenza has become a serious public health
45 issue. Since the 20th century, several influenza pandemics have occurred in human
46 history, such as the ‘Spanish Flu’ in 1918–1919, the ‘Asian Flu’ in 1957–1958, the
47 ‘Hong Kong Flu’ in 1968–1969, the ‘Swine Flu’ in 1976, the ‘Russian Flu’ in 1977,
48 and the Influenza A in 2009, which also caused millions of deaths[3,4]. Pandemic and
49 seasonal influenza cause substantial morbidity and mortality worldwide, posing a
50 serious threat to public health and the global economy[5]. Seasonal influenza infections
51 occur in all age groups, but children under 59 months of age, adults over 65 years of
52 age, and pregnant women are more vulnerable[6–8]. Despite the high incidence of
53 annual seasonal influenza infections, annual vaccination programs remain a critical
54 public health tool to reduce the disease burden of seasonal influenza[9]. Currently,
55 seasonal influenza vaccines are produced as ‘trivalent’ or ‘quadrivalent’
56 formulations[10,11]. Seasonal influenza vaccines are generally considered safe;
57 however, they can sometimes cause adverse events following immunization (AEFIs).
58 Generally, AEFI is deemed less serious than influenza[12]. Therefore,
59 pharmacovigilance (PV) is an important tool for monitoring AEFI and confirming the
60 benefits of immunization in different target groups[13].

61 The U.S. Vaccine Adverse Event Reporting System (VAERS) was created in
62 1990 and co-administered by the U.S. Centers for Disease Control and Prevention
63 (CDC) and the U.S. Food and Drug Administration (FDA) to collect spontaneous

64 reports of adverse events (AEs) and manage vaccine safety VAERS accepts reports of
65 AEs from health-care providers, vaccine manufacturers, and the public[14,15]. The
66 main objectives of VAERS are to detect new, unusual, or rare vaccine AEs; assess the
67 safety of newly approved vaccines; make new recommendations for existing vaccines;
68 identify potential risk factors, monitor the increase in known AEs; and determine and
69 address possible reporting clusters[16]. Real-world monitoring of vaccine safety is
70 crucial for understanding suspected AEFIs, assessing their incidence, and determining
71 risk factors to identify potential vaccine contraindications[17]. Moreover, the recently
72 published World Health Organization (WHO) guidelines on the economic evaluation of
73 influenza vaccination suggest considering AEFI when possible[18].**Error! Reference source not**
74 **found.**

75 Although influenza is mostly self-limiting, serious complications can occur in
76 vulnerable patient groups[12]. Hypertension is an established cardiovascular risk factor
77 for the general population. Patients with hypertension are regarded as a high-risk group
78 for being infected with seasonal influenza due to the high possibility of a compromised
79 immune system, especially in the elderly[19,20]. The WHO[1] and U.S. CDC[21]
80 recommend that patients with chronic diseases should be priority groups for influenza
81 vaccination. The Chinese CDC has recommended that it is of vital importance for older
82 hypertensive patients to receive an influenza vaccine[22], which is consistent with the
83 recommendations of the U.S. CDC[23]and the WHO. One study showed that the
84 coverage rate of influenza vaccinations in which only 0.4% of people with chronic

85 diseases had received an influenza vaccine[24], a history of influenza vaccination, and
86 the perceived safety and effectiveness of the vaccination are responsible for the lower
87 values of influenza vaccination coverage in mainland China[25,26].

88 Thus, the objective of our study was to better understand the AEs affecting
89 recovery from seasonal influenza vaccination in the hypertensive population. We
90 investigated all possible AEs for the three types of seasonal influenza vaccines
91 (trivalent influenza vaccine [TIA], quadrivalent influenza vaccine [QIA], and influenza
92 vaccine, unknown manufacturer [FLUX]) between January 1, 2013, and June 23, 2023
93 on the VAERS database.

94

95 **Materials and Methods**

96 **Study data selection**

97 A total of 81,713 AEs were initially investigated during the study period; of these, 4647
98 individuals with a history of hypertension with a unique VAERS ID were screened:
99 2135 for TIA, 2300 for QIA, and 212 for FLUX. The primary endpoint was all AEs
100 within one month in individuals with a history of hypertension. The exclusion criteria
101 were missing data on age or being under 18 years of age, missing data on the number of
102 days associated with vaccine-related AEs, cases reported after one month, failure to
103 report recovery from vaccine-induced AEs, outliers or flawed logic, and data for which
104 the year of vaccination did not coincide with the year reported. S1 Fig displays the
105 workflow, illustrating the data collection process and the number of individuals

106 excluded at different stages.

107

108 **Study population**

109 Data from the original reports are publicly available as an online downloadable dataset

110 on the VAERS website, with sensitive patient information removed[14]. The raw

111 dataset comprised three distinct files in the VAERS database between January 1, 2013,

112 and June 23, 2023. It included demographic information and medical history in

113 VAERSDATA, vaccination-associated adverse symptoms in VAERSSYMPTOMS,

114 and vaccine type in VAERSVAX. We identified all cases related to the seasonal

115 influenza vaccine by using a unique case identification number in the raw dataset. We

116 examined the medical records for each individual's medical history, particularly

117 focusing on pre-diagnosed diseases at the time of seasonal vaccination. We used

118 keywords such as high blood pressure, hypertension, HBP, and high blood pressure to

119 extract individuals with a history of high blood pressure as the primary population. The

120 analysis of medical records included general information (VAERS ID, age, sex, state,

121 and medical history when vaccinated), vaccination information (vaccine type,

122 vaccination date, AEs onset date, and the interval between the vaccination date and the

123 occurrence of AEs), and recovery from vaccine-induced AEs.

124

125 **Selection of AE reports**

126 According to the unique ID identification number, 4647 individuals with a history of

127 hypertension were included after the deletion of blank values, age under 18 years, and
128 certain records with logical errors. Additionally, we examined five adverse symptoms
129 for each participant to more precisely measure the AEs affecting their recovery from
130 seasonal influenza vaccination. Seasonal influenza vaccine AEs were defined as reports
131 submitted that contained the word ‘FLU’ , but did not specifically mention H1N1
132 influenza in the vaccine code. To compare the different types of seasonal influenza
133 vaccines, we classified them into three primary categories: (1) TIA, including FLU3,
134 FLUA3, FLUC3, FLUR3, and FLUN3; (2) QIA, including FLU4, FLUA4, FLUC4,
135 FLUR4, and FLUN4; and (3) FLUX with no brand name.

136

137 **Standard medical terms for vaccine AEs**

138 The Medical Dictionary for Regulatory Activities (MedDRA) is a medical coding
139 dictionary used by regulatory authorities, pharmaceutical companies, clinical research
140 organizations, and health care professionals[27]. MedDRA is organized into a
141 five-level hierarchy, with the highest level being the Systematic Organ Classification
142 (SOC), which is further divided into High-Level Group Terms (HLGT), High-Level
143 Terms (HLT), Preferred Terms (PT), and Low-Level Terms (LLT). In release version
144 26.1[28], the hierarchy consists of 27,337, 1738, 24,313, and 81,885 terms. The
145 VAERS database provides several AEs at the PT level, but these are highly fragmented
146 into signs, symptoms, diagnoses, investigations, or medical procedures, which may fail
147 to recognize differences in the incidence of AEs[29]. Therefore, we converted the

148 standard terminology associated with all AEs (PT) into HLT[30]. AEs at the primary
149 SOC level were selected for MedDRA's hierarchical structure analysis.

150 **Statistical analysis**

151 The VAERS database collected data on age groups, sex, region, and season of onset.
152 The type of vaccine used may depend on individual characteristics; therefore,
153 individual choices may influence vaccine-associated AEs and recovery. Therefore, we
154 applied propensity score matching (PSM) to reduce bias due to these confounding
155 variables. A nearest-neighbor approach with a 1:1 matching ratio was used. PSM shifts
156 the regulation of confounders to the control of propensity scores to 'downscale' and to
157 control for confounding bias. The propensity score (PS) for seasonal influenza vaccine
158 exposure was estimated using logistic regression modeling with age group (18-59,
159 60-64, 65-69, 70-74, 75-79, and ≥ 80 years), region (West, Midwest, Northeast, South,
160 and Overseas territory), sex (female and male), and season of onset (spring including
161 March, April, and May; summer including June, July, and August; fall including
162 September, October, and November; and winter including December, January, and
163 February) as predictors. To control for confounding variables, estimates were obtained
164 using a binomial logistic regression analysis. The caliper value was defined as
165 '0.2 \times standard deviation of the PS estimates with logit transformation applied'.
166 Standardized mean difference (SMD) was calculated to assess variable balance in the
167 matched data, and a SMD value <0.1 was considered balanced[31]. Using PS estimates
168 and caliper values, the hypertensive population seasonal influenza vaccine recovery and

169 non-recovery groups were matched. The case selection for proportional imbalance
170 analysis is shown in S1 Fig.

171 A total of 6380 seasonal influenza vaccine-induced AEs reported for each
172 individual over one month were considered independent variables in our study. The
173 dependent variable was whether the hypertensive population recovered from influenza
174 vaccine-induced AEs or not. Cox proportional hazards regression analysis was used to
175 examine the association between these AEs and recovery. AEs with a total frequency of
176 less than 10 were removed to address any monotonic likelihood issues that may have
177 occurred in the Cox proportional hazards regression models[30]. The results of the Cox
178 regression models are expressed as hazard ratios (HR) and 95% confidence intervals
179 (CI). A consistency index was used to determine the discriminatory power of the
180 multivariate Cox proportional hazard regression model. All statistical analyses were
181 performed using R version 4.3.2 (R Foundation for Statistical Computing, Vienna,
182 Austria). Prism version 9 (GraphPad Software, USA) was used as a mapping tool, and
183 the MedDRA desktop viewer was used for hierarchical structure analysis of the medical
184 terms[29,30].

185

186 **Results**

187 Of the 4647 validated cases with a history of hypertension, the mean baseline age of the
188 study participants was 64.46 years. The gender distribution was 3132 females
189 (67.40%), and 1500 males (32.28%), with a male-to-female ratio of approximately

190 1:2.08. The southern region had the highest number of seasonally influenza-vaccinated
 191 hypertensive individuals (34.02%). In contrast, there was little difference in the number
 192 of individuals vaccinated in the western (22.04%) and midwestern regions (23.28%).
 193 The AE period coincided with the peak season for seasonal influenza vaccination in
 194 autumn, which had the highest number of episodes among the four seasons.
 195 Additionally, the AEs episode interval for the seasonal influenza vaccine was 3.30
 196 days: 3.03 for TIA; 3.38 for QIA; and 5.06 for FLUX. The results showed that 2188
 197 (47.08%) patients in the hypertensive population did not recover from AEs (Table 1).
 198 After PSM was paired at 1:1 ratio to eliminate selection bias, the caliper width was
 199 adjusted to 0.2, resulting in the disappearance of differences between groups
 200 (SMD<0.1, P>0.05). The total number of seasonal influenza vaccinations after
 201 matching was 3914. We found differences in age, sex, region, and season of onset
 202 between the non-recovered and recovered groups in the hypertensive population before
 203 PSM for TIA, QIA, and FLUX (S1-S3 Tables).

204

205 **Table 1. Demographic characteristics of seasonal influenza vaccination in the**
 206 **hypertensive population.**

Variable	TIA [N (%)]	QIA [N (%)]	FLUX [N (%)]	Total [N (%)]
Total	2135(45.95)	2300(49.49)	212(4.56)	4647(100.00)
Age [mean (SD)]	68.33±11.51	61.35±13.09	59.28±13.86	64.46±12.94
Age group(years)				
18-59	378(17.70)	938(40.78)	102(48.11)	1418(30.51)
60-64	137(6.42)	395(17.17)	26(12.26)	558(12.01)
65-69	615(28.81)	379(16.48)	34(16.04)	1028(22.12)
70-74	401(18.78)	241(10.49)	24(11.32)	666(14.13)
75-79	289(13.54)	185(8.04)	11(5.19)	485(10.44)

	≥80	315(14.75)	162(7.04)	15(7.08)	492(10.59)
Sex	Female	1447(67.78)	1548(67.30)	137(64.62)	3132(67.40)
	Male	679(31.80)	746(32.44)	75(35.38)	1500(32.28)
	Unknown	9(0.42)	6(0.26)	0(0.00)	15(0.32)
State	West	495(23.19)	469(20.39)	60(28.30)	1024(22.04)
	Midwest	460(21.55)	576(25.04)	46(21.70)	1082(23.28)
	Northeast	434(20.33)	399(17.35)	37(17.45)	870(18.72)
	South	712(33.35)	807(35.09)	62(29.25)	1581(34.02)
	Overseas territory	34(1.58)	49(2.13)	7(3.30)	90(1.94)
Onset season	Spring	224(10.49)	250(10.87)	14(6.60)	488(10.50)
	Summer	308(14.43)	303(13.17)	28(13.21)	639(13.75)
	Autumn	1271(59.53)	1375(59.79)	137(64.62)	2783(59.89)
	Winter	332(15.55)	372(16.17)	33(15.57)	737(15.86)
Recovery	Yes	1263(59.16)	1096(47.65)	100(47.17)	2459(52.92)
	No	872(40.84)	1204(52.35)	112(52.83)	2188(47.08)
AEs onset interval(days) [mean (SD)]		3.03±27.46	3.38±21.90	5.06±27.52	3.30±24.86
AEs median onset interval(range) in days		0(0–1097)	0(0–731)	1(0–359)	0(0–1097)

207 SD, standard deviation; TIA, trivalent influenza vaccine; QIA, quadrivalent influenza vaccine;

208 FLUX, influenza vaccine, unknown manufacturer; AEs, adverse events.

209

210 In the PS-matched hypertensive population, 75 AEs with TIA have been reported

211 in the PS-matched hypertensive population. Furthermore, we identified 12 AEs

212 affecting recovery that were associated with the estimated risk of occurrence using a

213 multivariate Cox regression model with a consistency index of 0.58. Overall, 12 AEs

214 were linked to TIA (Fig 1), with an adjusted HR range of 1.82 to 3.91, and were

215 categorized into eight SOC terms (S4 Table). Among the SOC terms, two common AEs

216 accounted for the majority: general disorders and administration site conditions

217 (61.68%) and musculoskeletal and connective tissue disorders (23.85%). Especially,

218 injection site reactions (47.07%; HR=2.04; 95% CI, 1.22–3.40), musculoskeletal and

219 connective tissue pain and discomfort (15.71%; HR=2.40; 95% CI, 1.43–4.10), pain

220 and discomfort NEC (13.11%; HR=1.99; 95% CI, 1.17–3.40) showed an increased risk
221 of non-recovery in hypertensive individuals. After the QIA, 94 AEs were reported, and
222 57 AEs were estimated using the multivariate Cox regression model, with a consistency
223 index of 0.63 (Fig 2). The adjusted HR distribution ranged from 2.08 to 5.85 and was
224 grouped into 15 SOC terms (S5 Table).

225

226 **Fig 1. Adverse events (AEs) hazard ratios after trivalent influenza vaccines (TIA)**
227 **vaccination estimated from a multivariate Cox proportional hazard model.**

228 The results showed 12 trivalent influenza vaccine (TIA) vaccine-induced adverse
229 events (AEs) with a statistically significant difference ($P<0.05$), estimated using
230 multivariate Cox proportional hazard regression analysis. N denotes the number of
231 adverse cases in the non-recovered group; HR, hazard ratio; CI, confidence interval.

232 **Fig 2. Adverse events (AEs) hazard ratios after quadrivalent influenza vaccines**
233 **(QIA) vaccination estimated from a multivariate Cox proportional hazard model.**

234 The results showed that 57 quadrivalent influenza vaccine (QIA) vaccine-induced
235 adverse events (AEs) with a statistically significant difference ($P<0.05$), estimated with
236 a multivariate Cox proportional hazard regression analysis. N denotes the number of
237 adverse cases in the non-recovered group; HR, hazard ratio; CI, confidence interval.

238

239 Four AEs were more common in the nonrecovery group: general disorders and
240 administration site conditions (46.74%), musculoskeletal and connective tissue

241 disorders (14.95%), skin and subcutaneous tissue disorders (12.17%), and nervous
242 system disorders (9.63%). Among them, injection site reactions (20.00%; HR=2.81;
243 95% CI, 1.81–4.37), musculoskeletal and connective tissue pain and discomfort
244 (6.84%; HR=3.69; 95% CI, 2.35–5.78), pain and discomfort NEC (6.34%; HR=3.67;
245 95% CI, 2.33–5.78), asthenic conditions (5.39%; HR=2.25; 95% CI, 1.41–3.58)
246 typically exhibited a higher risk with QIA. Additionally, 28 AEs with FLUX were
247 observed and five AEs were associated with the risk of developing AE, as estimated by
248 the multivariate Cox regression model (Fig 3). The consistency index is 0.59. The
249 adjusted HR distribution ranged from 2.83 to 6.31 and was subsequently categorized
250 into three SOC terms (S6 Table). General disorders, administration site conditions
251 (71.54%), and musculoskeletal and connective tissue disorders (23.58%) were the most
252 frequent (similar to the TIA results). In particular, injection site reactions (67.48%;
253 HR=2.83; 95% CI, 1.12–7.15), tissue condition NEC (13.01%; HR=3.64; 95% CI,
254 1.29–10.23), and joint-related signs and symptoms (10.57%; HR=3.75; 95% CI, 1.25–
255 11.26) were at heightened risk in the non-recovery group. A comparison of PSM before
256 and after TIA, QIA, and FLUX vaccinations is shown in S2 Fig.

257

258 **Fig 3. Adverse events (AEs) hazard ratios after influenza unknown manufacturer**
259 **(FLUX) vaccination estimated from a multivariate Cox proportional hazard**
260 **model.** The results showed five influenza unknown manufacturer (FLUX)
261 vaccine-induced adverse events (AEs) with a statistically significant difference

262 ($P<0.05$), estimated using multivariate Cox proportional hazard regression analysis. N
263 denotes the number of adverse cases in the non-recovered group; HR, hazard ratio; CI,
264 confidence interval.

265

266 **Discussion**

267 We analyzed whether major AEs influenced recovery following seasonal influenza
268 vaccination in a hypertensive population. Among the 27 SOCs examined, four terms
269 (general disorders and administration site conditions, musculoskeletal and connective
270 tissue disorders, skin and subcutaneous tissue disorders, and nervous system disorders)
271 were associated with a higher frequency of AEs in the PS-matched hypertensive
272 population. Among the non-recovery group, the most common AEs were injection site
273 reactions, musculoskeletal and connective tissue pain and discomfort, pain and
274 discomfort NEC, and joint-related signs and symptoms. Most AEs (95.5%) occurred
275 within 48 hours of vaccination. These results are consistent with those of several
276 previous studies, suggesting that local and systemic reactions are common[32,33], and
277 that all reported AEs were nonserious. Furthermore, our study showed results related to
278 neurological aspects after seasonal influenza vaccination in the hypertensive
279 population. Paraesthesias and dysesthesias (4.09%) were the main manifestations of
280 TIA, and nervous system disorders were found in 9.63% with QIA; the most frequent
281 AEs were headache NEC (3.33%), neurological signs and symptoms NEC (2.55%),
282 paresthesia, and dysesthesia (2.73%). In addition, no association was found between

283 FLUX and neurological aspects. Some studies have shown an association between the
284 incidence of Greene-Barrow syndrome[33], Acute Disseminated Encephalomyelitis
285 (ADEM), and seasonal influenza vaccination[34].

286 After TIA vaccination, there were 20 cases (0.88%) of disturbances in initiating
287 and maintaining sleep, and 37 cases (1.63%) of NEC skin injuries in the population.
288 Disturbances in initiating and maintaining sleep are psychiatric disorders; however, no
289 studies have been conducted on seasonal influenza vaccines and psychiatric disorders.
290 In a study evaluating the relationship between maternally inactivated influenza
291 vaccination (IIV) and the risk of diagnosis of neurodevelopmental disorders in early
292 childhood, no increased risk of neurodevelopmental disorders was found in children
293 after maternal exposure to IIV[35]. The majority of rare AEs associated with QIA,
294 including ear and labyrinth disorders (0.83%), eye disorders (1.03%), appetite disorders
295 (0.51%), and respiratory, thoracic, and mediastinal disorders (0.83%), may hinder
296 recovery in the hypertensive population. Rare AEs associated with vaccination with
297 FLUX were primarily NEC (4.88%) in the hypertensive population.

298 Clinical trials are the gold standard to evaluate the safety and efficacy of new
299 vaccines. However, they have limitations in evaluating rare AEs due to the short
300 observation period and limited size of the testing populations. Post-marketing
301 surveillance, such as a spontaneous reporting database, plays a critical role in
302 continually monitoring the safety signals of AEs[36]. Nevertheless, our study had some
303 limitations. First, the VAERS database suffers from underreporting, overreporting,

304 missing data, and possible reporting based on indirect information such as media
305 sources[32]. Thus, mild-to-moderate or severe AEs may be rarer than our findings[31].
306 Moreover, we cannot rule out the possibility of conditions or regulatory agency
307 interventions due to unadjusted confounders, such as exposure to previous infections
308 and individual occupational characteristics[37,38], which may affect the VAERS
309 database information based on the year of reporting. Therefore, our findings may have
310 involved unknown or invalidated AEs. Furthermore, the reduced sample size of the
311 post-PSM study may have led to a selection bias, and we used a limited number of
312 covariates that met the user-defined sample thresholds in the propensity score-matched
313 target outcome.

314

315 **Conclusion**

316 Our study provides insights into the AEs associated with seasonal influenza vaccination
317 in hypertensive individuals, highlighting common local and systemic reactions.
318 However, further research with larger and more diverse populations is needed to
319 confirm these findings and better understand the impact of specific AEs on recovery in
320 hypertensive populations. Additionally, ongoing post-marketing surveillance is
321 essential to continuously monitor the safety signals of AEs and to inform future
322 vaccination strategies.

323

324 **Supporting information**

325 **S1 Appendix.**

326 (DOCX)

327 **Acknowledgments**

328 The authors thank the study participants involved in this study.

329

330 **Author contributions**

331 **Conceptualization:** Hao Wu, Xiaona He

332 **Data curation:** Hao Wu

333 **Formal analysis:** Hao Wu, Yu Cao

334 **Methodology:** Hao Wu

335 **Funding acquisition:** Wei Gao

336 **Supervision:** Wei Gao

337 **Project administration:** Wei Gao

338 **Writing-original draft:** Hao Wu

339 **Writing-review & editing:** Wei Gao

340

341 **References**

342 [1] World Health Organization. Influenza (Seasonal). <https://www.who.int/news-room/>

343 fact-sheets/detail/influenza-(seasonal) (accessed 29 August 2024).

344 [2] Hutchinson EC. Influenza Virus. Trends Microbiol. 2018;26:809–10.

345 <https://doi.org/10.1016/J.TIM.2018.05.013>.

- 346 [3] Martini M, Gazzaniga V, Bragazzi NL, Barberis I. The Spanish Influenza
347 Pandemic: a lesson from history 100 years after 1918. *J Prev Med Hyg.* 2019;60:E64–
348 7. <https://doi.org/10.15167/2421-4248/JPMH2019.60.1.1205>.
- 349 [4] Akin L, Gözel MG. Understanding dynamics of pandemics. *Turk J Med Sci.*
350 2020;50:515–9. <https://doi.org/10.3906/SAG-2004-133>.
- 351 [5] Li J, Zhang Y, Zhang X, Liu L. Influenza and Universal Vaccine Research in China.
352 *Viruses.* 2022;15. <https://doi.org/10.3390/V15010116>.
- 353 [6] Czaja CA, Miller L, Alden N, Wald HL, Cummings CN, Rolfes MA, et al.
354 Age-Related Differences in Hospitalization Rates, Clinical Presentation, and Outcomes
355 Among Older Adults Hospitalized With Influenza-U.S. Influenza Hospitalization
356 Surveillance Network (FluSurv-NET). *Open Forum Infect Dis.* 2019;6.
357 <https://doi.org/10.1093/OFID/OFZ225>.
- 358 [7] Holstein R, Dawood FS, O'Halloran A, Cummings C, Ujamaa D, Kirley PD, et al.
359 Characteristics and Outcomes of Hospitalized Pregnant Women With Influenza, 2010
360 to 2019: A Repeated Cross-Sectional Study. *Ann Intern Med.* 2022;175:149–58.
361 <https://doi.org/10.7326/M21-3668>.
- 362 [8] Olson SM, Newhams MM, Halasa NB, Feldstein LR, Novak T, Weiss SL, et al.
363 Vaccine Effectiveness Against Life-Threatening Influenza Illness in US Children.
364 *Clinical Infectious Diseases.* 2022;75:230–8. <https://doi.org/10.1093/CID/CI AB931>.
- 365 [9] Andrejko KL, Myers JF, Openshaw J, Fukui N, Li S, Watt JP, et al. Receipt of
366 COVID-19 and seasonal influenza vaccines in California (USA) during the 2021-2022

367 influenza season. *Vaccine*. 2023;41:1190–7. [https://doi.org/10.1016/J.VACCINE.](https://doi.org/10.1016/J.VACCINE.2022.12.052)
368 2022.12.052.

369 [10] Harding AT, Heaton NS. Efforts to Improve the Seasonal Influenza Vaccine.
370 *Vaccines (Basel)*. 2018;6. <https://doi.org/10.3390/VACCINES6020019>.

371 [11] McKeage K. Inactivated quadrivalent split-virus seasonal influenza vaccine
372 (Fluarix® Quadrivalent): A review of its use in the prevention of disease caused by
373 influenza A and B. *Drugs*. 2013;73:1587–94. [https://doi.org/10.1007/](https://doi.org/10.1007/s40265-013-0114-3)
374 s40265-013-0114-3.

375 [12] Fens T, De Boer PT, Van Puijenbroek EP, Postma MJ. Inclusion of Safety-Related
376 Issues in Economic Evaluations for Seasonal Influenza Vaccines: A Systematic
377 Review. *Vaccines (Basel)*. 2021;9:1–28. [https://doi.org/10.3390/](https://doi.org/10.3390/VACCINES9020111) VACCINES9020111.

378 [13] Asturias EJ, Wharton M, Pless R, MacDonald NE, Chen RT, Andrews N, et al.
379 Contributions and challenges for worldwide vaccine safety: The Global Advisory
380 Committee on Vaccine Safety at 15 years. *Vaccine*. 2016;34:3342–9.
381 <https://doi.org/10.1016/J.VACCINE.2016.05.018>.

382 [14] Shimabukuro TT, Nguyen M, Martin D, DeStefano F. Safety monitoring in the
383 Vaccine Adverse Event Reporting System (VAERS). *Vaccine*. 2015;33:4398–405.
384 <https://doi.org/10.1016/J.VACCINE.2015.07.035>.

385 [15] Varricchio F, Iskander J, Destefano F, Ball R, Pless R, Braun MM, et al.
386 Understanding vaccine safety information from the Vaccine Adverse Event Reporting
387 System. *Pediatr Infect Dis J*. 2004;23:287–94. <https://doi.org/10.1097/>

388 00006454-200404000-00002.

389 [16] World Health Organization. Causality assessment of an adverse event following
390 immunization (AEFI): user manual for the revised WHO classification, 2nd ed., 2019
391 update. <https://www.who.int/publications/i/item/9789241516990> (accessed 29 August
392 2024).

393 [17] World Health Organizatio. Global manual on surveillance of adverse events
394 following immunization. <https://www.who.int/publications/i/item/9789241507769>
395 (accessed 29 August 2024).

396 [18] Newall AT, Chaiyakunapruk N, Lambach P, Hutubessy RCW. WHO guide on the
397 economic evaluation of influenza vaccination. *Influenza Other Respir Viruses*.
398 2018;12:211–9. <https://doi.org/10.1111/IRV.12510>.

399 [19] Chen Q, Wang L, Xie M, Li X. Recommendations for influenza and Streptococcus
400 pneumoniae vaccination in elderly people in China. *Aging Med (Milton)*. 2020;3:1–11.
401 <https://doi.org/10.1002/AGM2.12102>.

402 [20] Clar C, Oseni Z, Flowers N, Keshtkar-Jahromi M, Rees K. Influenza vaccines for
403 preventing cardiovascular disease. *Cochrane Database Syst Rev*. 2015;2015.
404 <https://doi.org/10.1002/14651858.CD005050.PUB3>.

405 [21] Recommended adult immunization schedule for ages 19 years or older: United
406 States, 2022. *JAAPA*. 2022;35:1–22. [https://doi.org/10.1097/01.JAA.00008
407 22520.39079.BD](https://doi.org/10.1097/01.JAA.0000822520.39079.BD).

408 [22] Feng L, Peng Z, Wang D, Yang P, Yang J, Zhang Y, et al. Technical guidelines for

- 409 seasonal influenza vaccination in China, 2018-2019. *Zhonghua Liu Xing Bing Xue Za*
410 *Zhi*. 2018;39:1413–25. <https://doi.org/10.3760/CMA.J.ISSN.0254-6450.2018.11.001>.
- 411 [23] Centers for Disease Control and Prevention. National Center for Immunization and
412 Respiratory Diseases (NCIRD). [https://www.cdc.gov/about/leadership/leaders/ncird.](https://www.cdc.gov/about/leadership/leaders/ncird.html)
413 [https://www.cdc.gov/about/leadership/leaders/ncird.](https://www.cdc.gov/about/leadership/leaders/ncird.html)
413 html (accessed 29 August 2024).
- 414 [24] Li Q, Zhang M, Chen H, Wu F, Xian J, Zheng L, et al. Influenza Vaccination
415 Coverage among Older Adults with Hypertension in Shenzhen, China: A
416 Cross-Sectional Survey during the COVID-19 Pandemic. *Vaccines (Basel)*. 2021;9.
417 <https://doi.org/10.3390/VACCINES9101105>.
- 418 [25] Wang Q, Yue N, Zheng M, Wang D, Duan C, Yu X, et al. Influenza vaccination
419 coverage of population and the factors influencing influenza vaccination in mainland
420 China: A meta-analysis. *Vaccine*. 2018;36:7262–9.
421 <https://doi.org/10.1016/J.VACCINE.2018.10.045>.
- 422 [26] Centers for Disease Control and Prevention. Seasonal Influenza Vaccine Safety: A
423 Summary for Clinicians. [https://www.cdc.gov/flu/professionals/vaccination/vaccine_](https://www.cdc.gov/flu/professionals/vaccination/vaccine_safety.htm)
424 [https://www.cdc.gov/flu/professionals/vaccination/vaccine_](https://www.cdc.gov/flu/professionals/vaccination/vaccine_safety.htm)
424 [safety.htm](https://www.cdc.gov/flu/professionals/vaccination/vaccine_safety.htm) (accessed 29 August 2024).
- 425 [27] S. MS, V. SM, M. TN, M. Š-ZM. Medical dictionary MedDRA: Used in over 60
426 countries, among which is Montenegro. *Hospital Pharmacology*. 2015;2:266–71.
427 <https://doi.org/10.5937/HPIMJ1502266M>.
- 428 [28] MedDRA. What's New with MedDRA Version 26.1.
429 https://admin.meddra.org/sites/default/files/guidance/file/whatsnew_26_1_English.pdf

430 (accessed 29 August 2024).

431 [29] Brown EG, Wood L, Wood S. The medical dictionary for regulatory activities
432 (MedDRA). *Drug Saf.* 1999;20:109–17. [https://doi.org/10.2165/00002018-199920020-](https://doi.org/10.2165/00002018-199920020-00002)
433 00002.

434 [30] So CS, Jin SH, Kang WS. Propensity-Score-Matched Evaluation of Adverse
435 Events Affecting Recovery after COVID-19 Vaccination: On Adenovirus and mRNA
436 Vaccines. *Vaccines (Basel)*. 2022;10. <https://doi.org/10.3390/VACCINES10020284>.

437 [31] Ali MS, Prieto-Alhambra D, Lopes LC, Ramos D, Bispo N, Ichihara MY, et al.
438 Propensity score methods in health technology assessment: Principles, extended
439 applications, and recent advances. *Front Pharmacol.* 2019;10. [https://doi.org/10.3389/](https://doi.org/10.3389/FPHAR.2019.00973/PDF)
440 FPHAR.2019.00973/PDF.

441 [32] Tebaa A, Benkirane R, Alj L, Cherkaoui I, Soulaymani-Bencheikh R. Monitoring
442 the safety of influenza A/H1N1 pandemic and seasonal vaccines in Morocco. *Ther Adv*
443 *Vaccines Immunother.* 2022;10. <https://doi.org/10.1177/25151355221088157>.

444 [33] Gattás VL, Braga PE, Koike ME, Lucchesi MBB, de Oliveira MMM, Piorelli R de
445 O, et al. Safety assessment of seasonal trivalent influenza vaccine produced by Instituto
446 Butantan from 2013 to 2017. *Rev Inst Med Trop Sao Paulo.* 2018;61.
447 <https://doi.org/10.1590/S1678-9946201961004>.

448 [34] Fujimori M, Nakamura M. Association between seasonal influenza vaccines and
449 the increased risk of acute disseminated encephalomyelitis, estimated using the Vaccine
450 Adverse Event Reporting System. *Pharmazie.* 2022;77:262–9.

451 <https://doi.org/10.1691/PH.2022.2354>.

452 [35] Foo D, Sarna M, Pereira G, Moore HC, Regan AK. Association between maternal
453 influenza vaccination and neurodevelopmental disorders in childhood: a longitudinal,
454 population-based linked cohort study. *Arch Dis Child*. 2023;108:647–53.
455 <https://doi.org/10.1136/ARCHDISCHILD-2022-324269>.

456 [36] Du J, Xiang Y, Sankaranarayananpillai M, Zhang M, Wang J, Si Y, et al. Extracting
457 postmarketing adverse events from safety reports in the vaccine adverse event reporting
458 system (VAERS) using deep learning. *Journal of the American Medical Informatics
459 Association*. 2021;28:1393–400. <https://doi.org/10.1093/JAMIA/OCAB014>.

460 [37] Thompson MG, Stenehjem E, Grannis S, Ball SW, Naleway AL, Ong TC, et al.
461 Effectiveness of Covid-19 Vaccines in Ambulatory and Inpatient Care Settings. *New
462 England Journal of Medicine* 2021;385:1355–71. [https://doi.org/10.1056/
463 NEJMOA2110362/SUPPL_FILE/NEJMOA2110362_DATA-SHARING.PDF](https://doi.org/10.1056/NEJMOA2110362/SUPPL_FILE/NEJMOA2110362_DATA-SHARING.PDF).

464 [38] Mosterín Höpping A, McElhaney J, Fonville JM, Powers DC, Beyer WEP, Smith
465 DJ. The confounded effects of age and exposure history in response to influenza
466 vaccination. *Vaccine*. 2016;34:540–6. <https://doi.org/10.1016/J.VACCINE.2015.11.058>.

TIA

Multivariate analysis

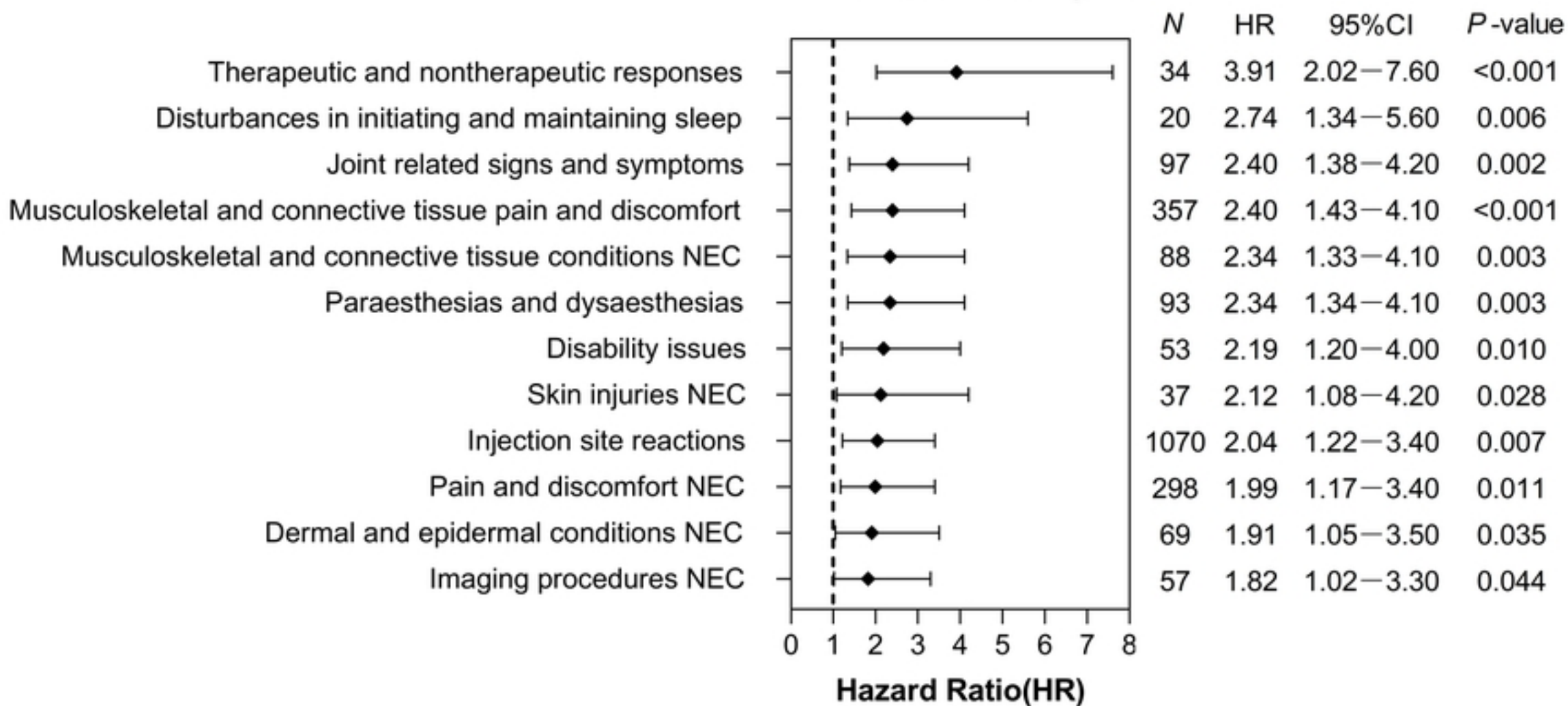


Fig 1.

Multivariate analysis

QIA

medRxiv preprint doi: <https://doi.org/10.1101/2024.09.03.24313030>; this version posted September 4, 2024. The copyright holder for this preprint (which was not certified by peer review) is the author/funder, who has granted medRxiv a license to display the preprint in perpetuity. It is made available under a [CC-BY 4.0 International license](https://creativecommons.org/licenses/by/4.0/).

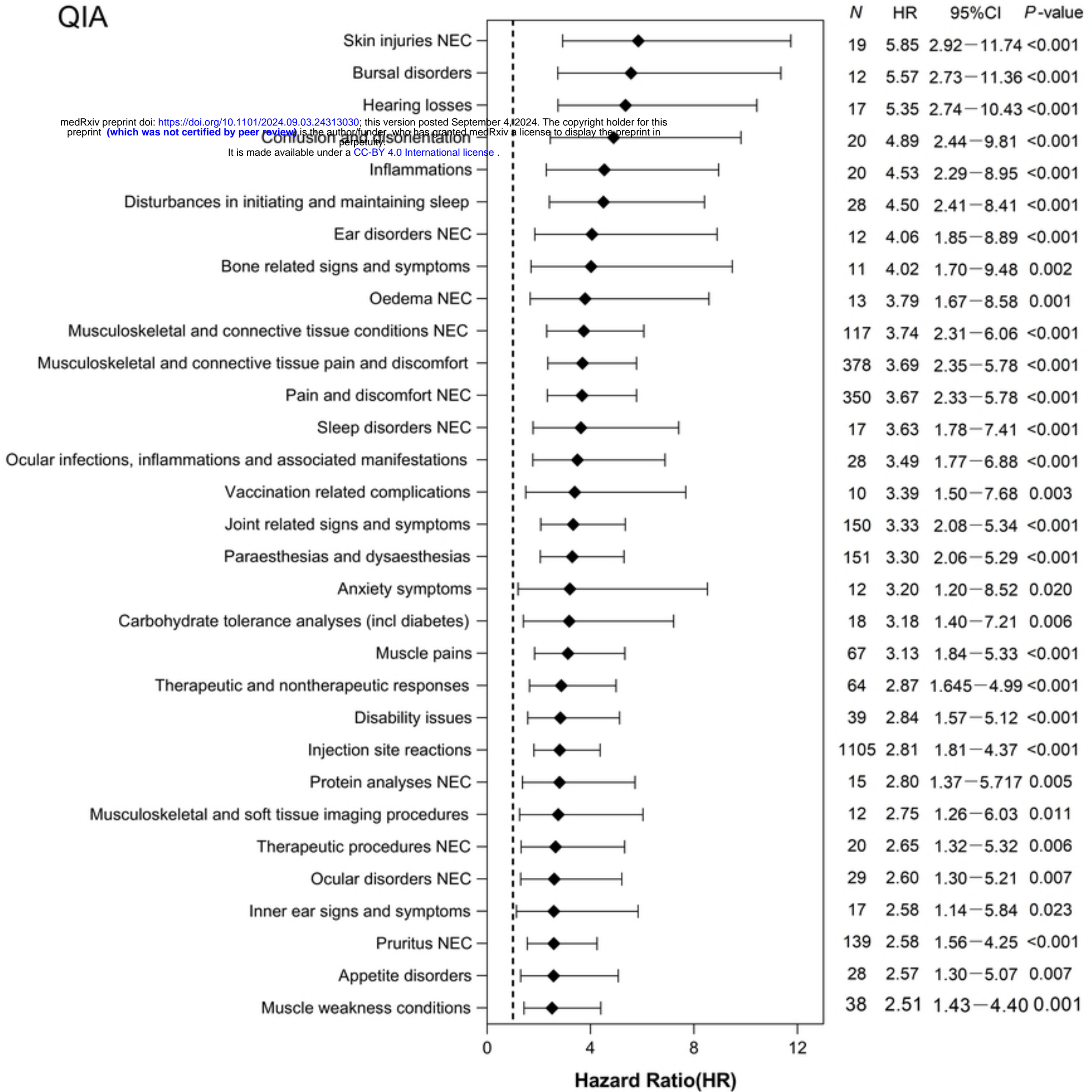


Fig 2.

FLUX

Multivariate analysis

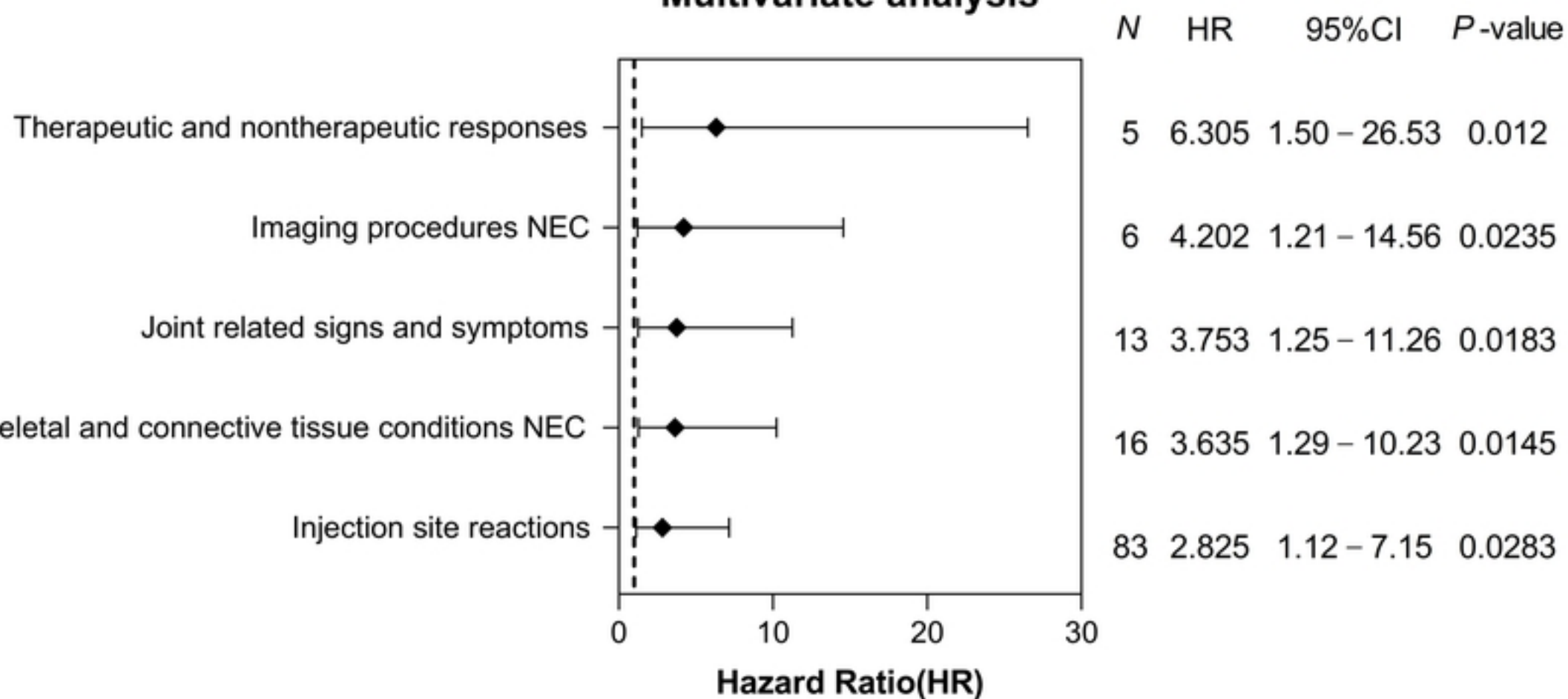


Fig 3.